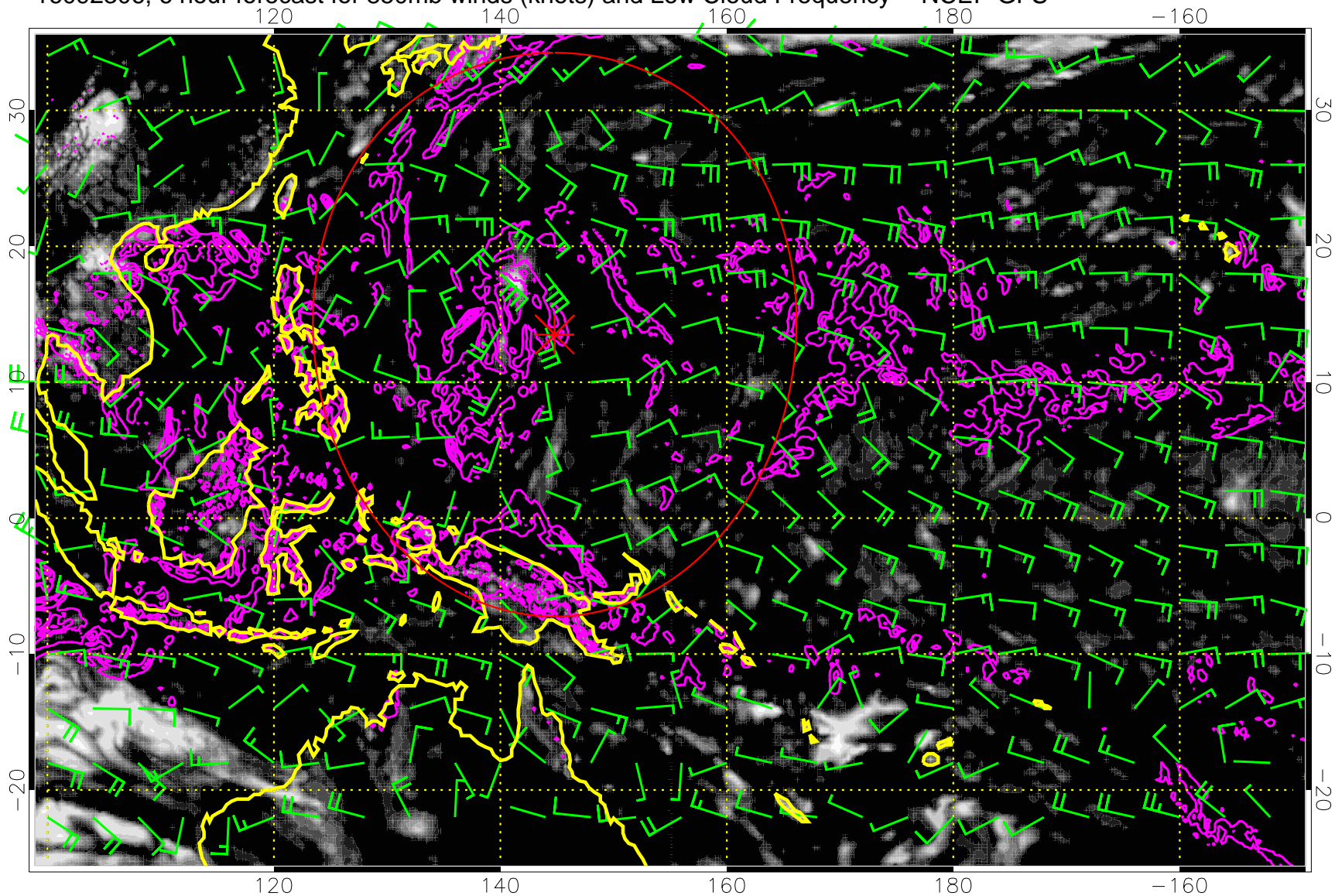


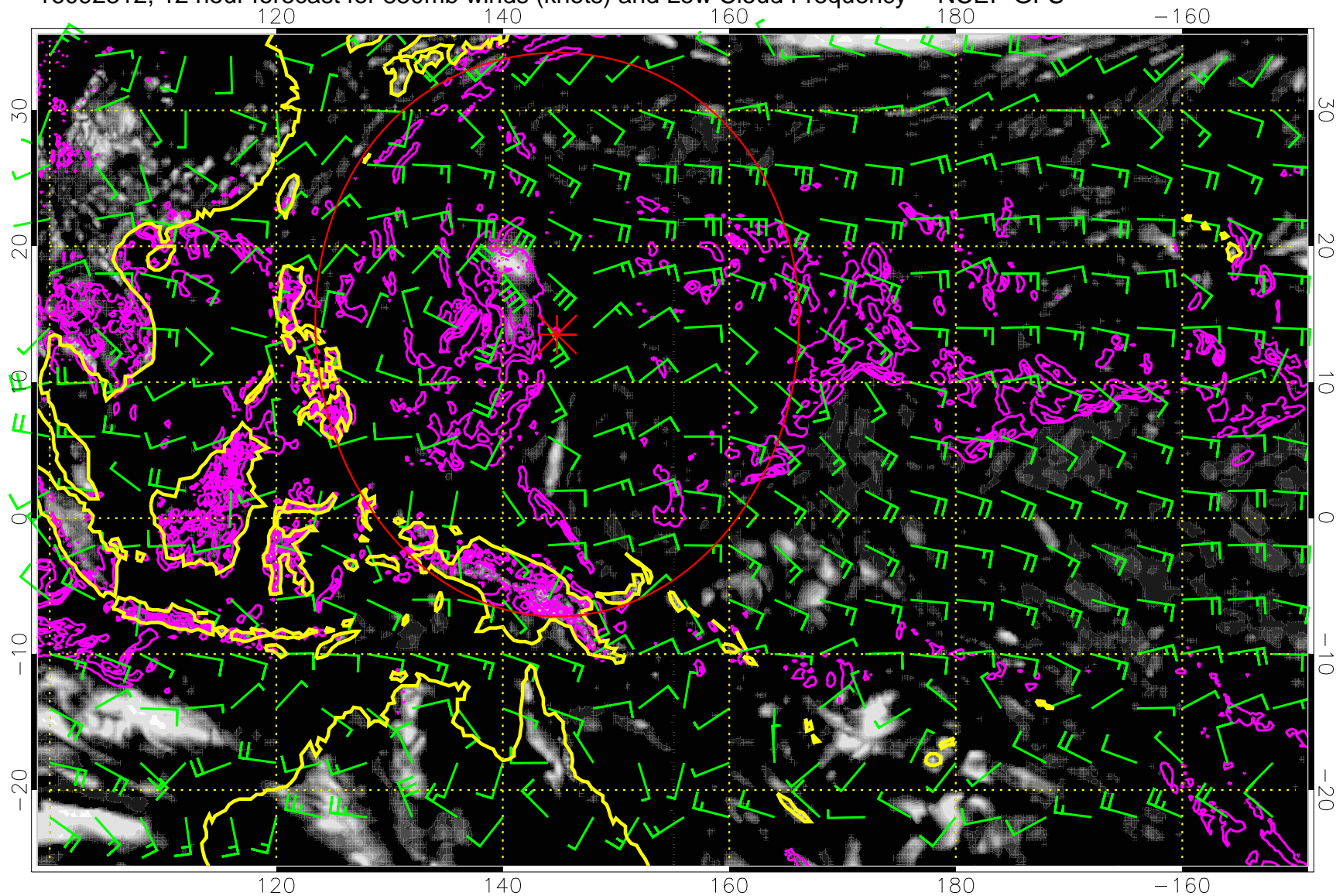
16092306, 6 hour forecast for 850mb winds (knots) and Low Cloud Frequency -- NCEP GFS



Precip (tot dot, conv sol) mm/day 40 mm/day contours, min 20

Range ring of 2304 km

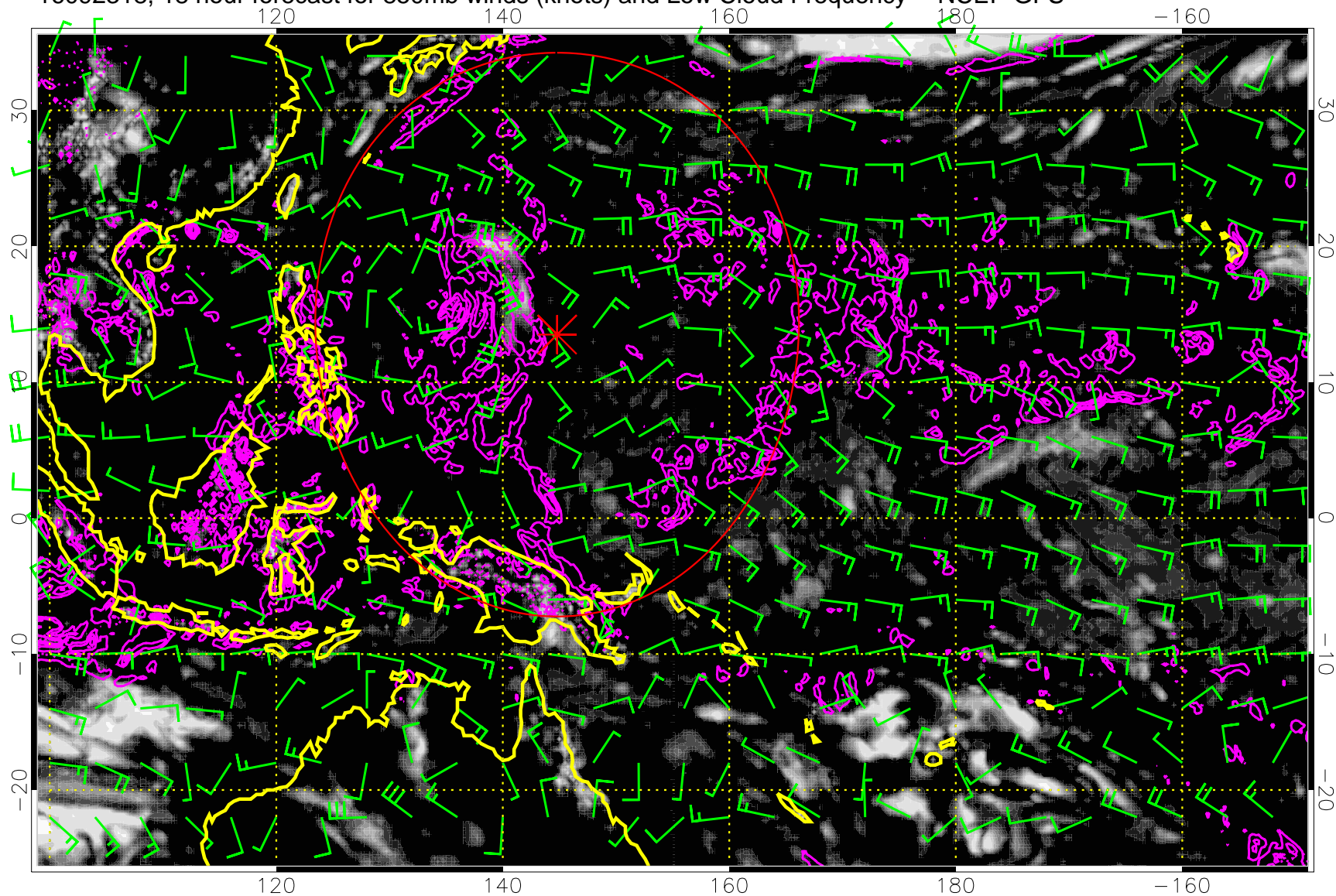
16092312, 12 hour forecast for 850mb winds (knots) and Low Cloud Frequency -- NCEP GFS



Precip (tot dot, conv sol) mm/day 40 mm/day contours, min 20

Range ring of 2304 km

16092318, 18 hour forecast for 850mb winds (knots) and Low Cloud Frequency -- NCEP GFS

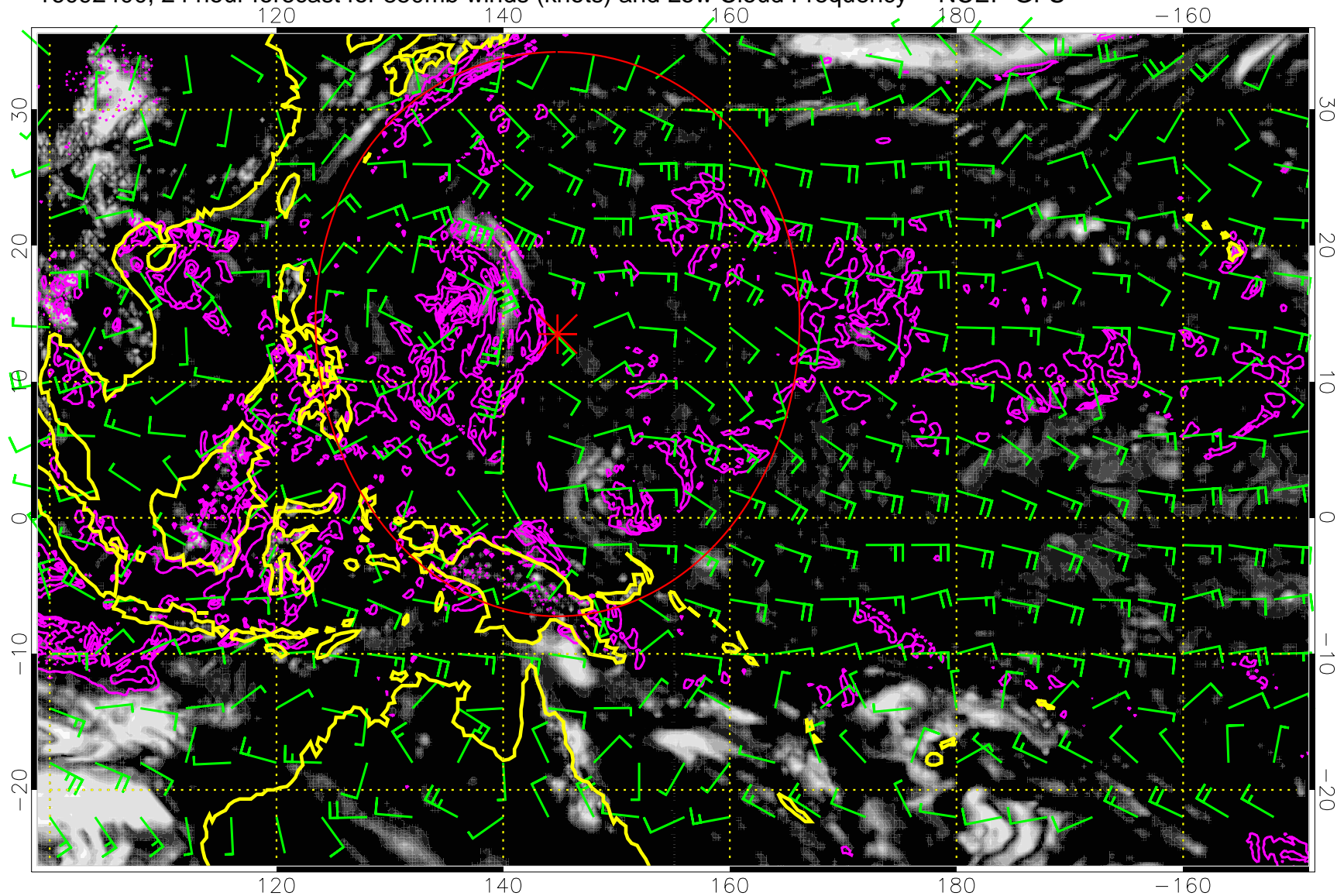


0.0 0.2 0.4 0.6 0.8 1.0  
Low Cloud Frequency

Precip (tot dot, conv sol) mm/day 40 mm/day contours, min 20

Range ring of 2304 km

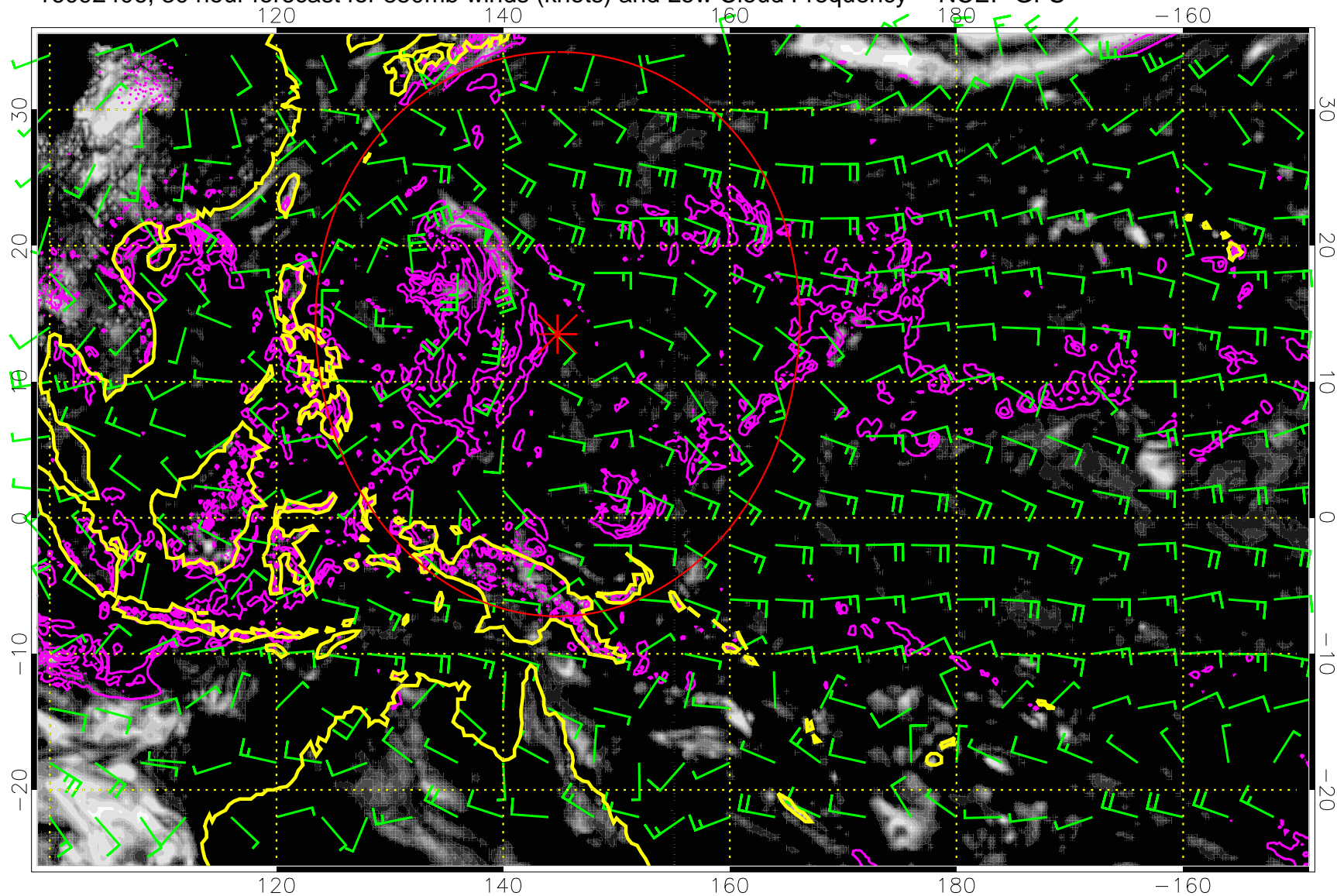
16092400, 24 hour forecast for 850mb winds (knots) and Low Cloud Frequency -- NCEP GFS



Precip (tot dot, conv sol) mm/day 40 mm/day contours, min 20

Range ring of 2304 km

16092406, 30 hour forecast for 850mb winds (knots) and Low Cloud Frequency -- NCEP GFS

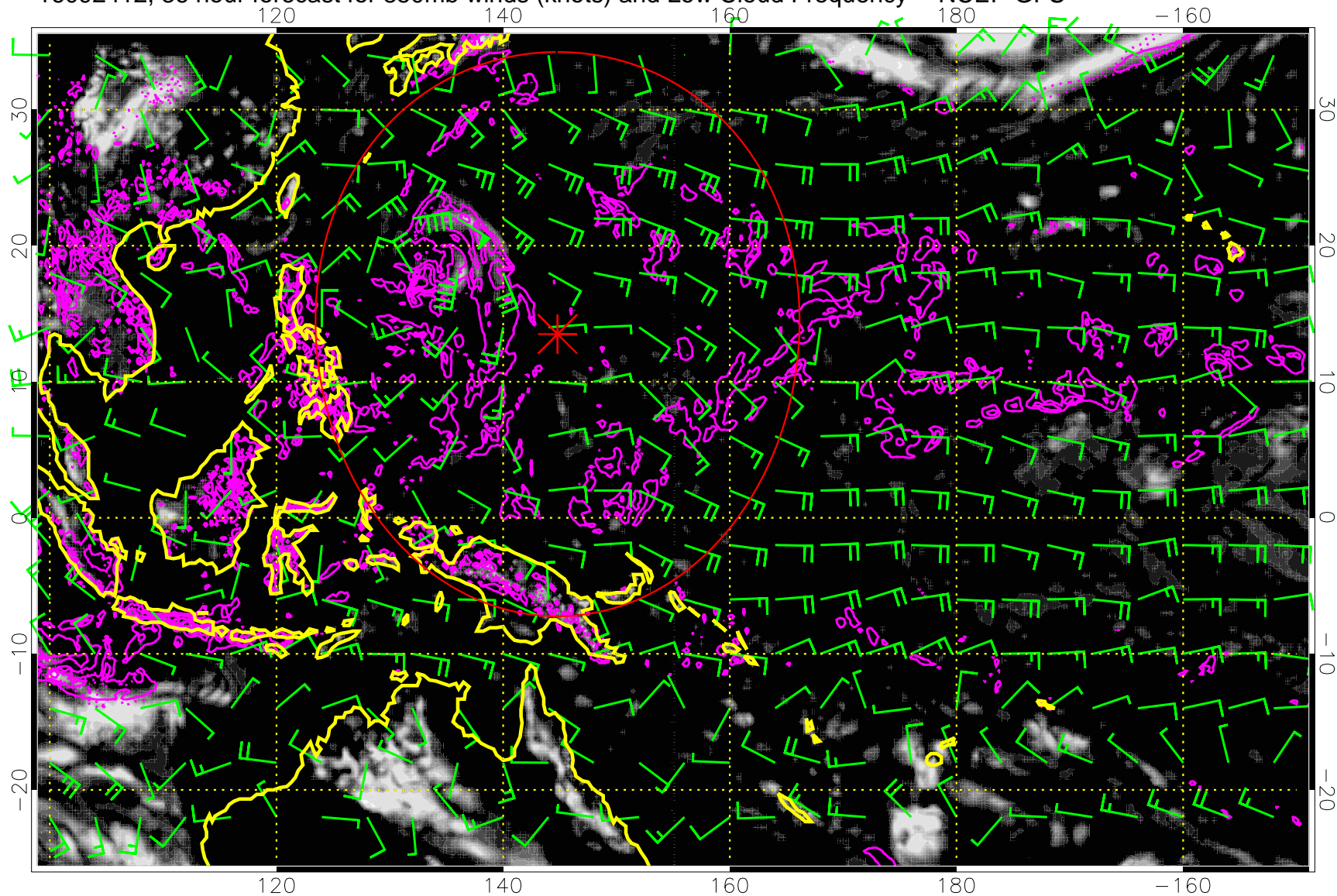


0.0 0.2 0.4 0.6 0.8 1.0  
Low Cloud Frequency

Precip (tot dot, conv sol) mm/day 40 mm/day contours, min 20

Range ring of 2304 km

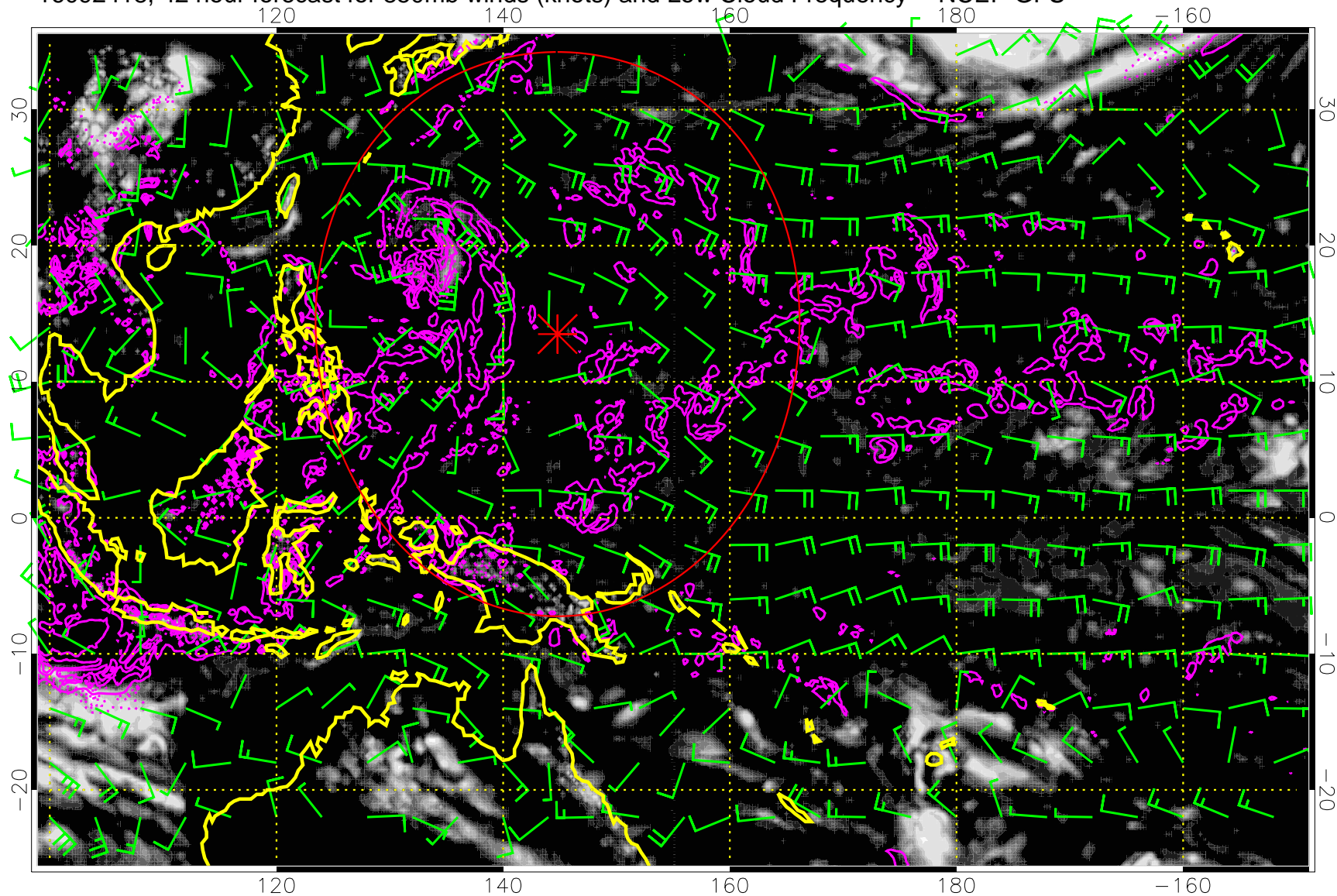
16092412, 36 hour forecast for 850mb winds (knots) and Low Cloud Frequency -- NCEP GFS



Precip (tot dot, conv sol) mm/day 40 mm/day contours, min 20

Range ring of 2304 km

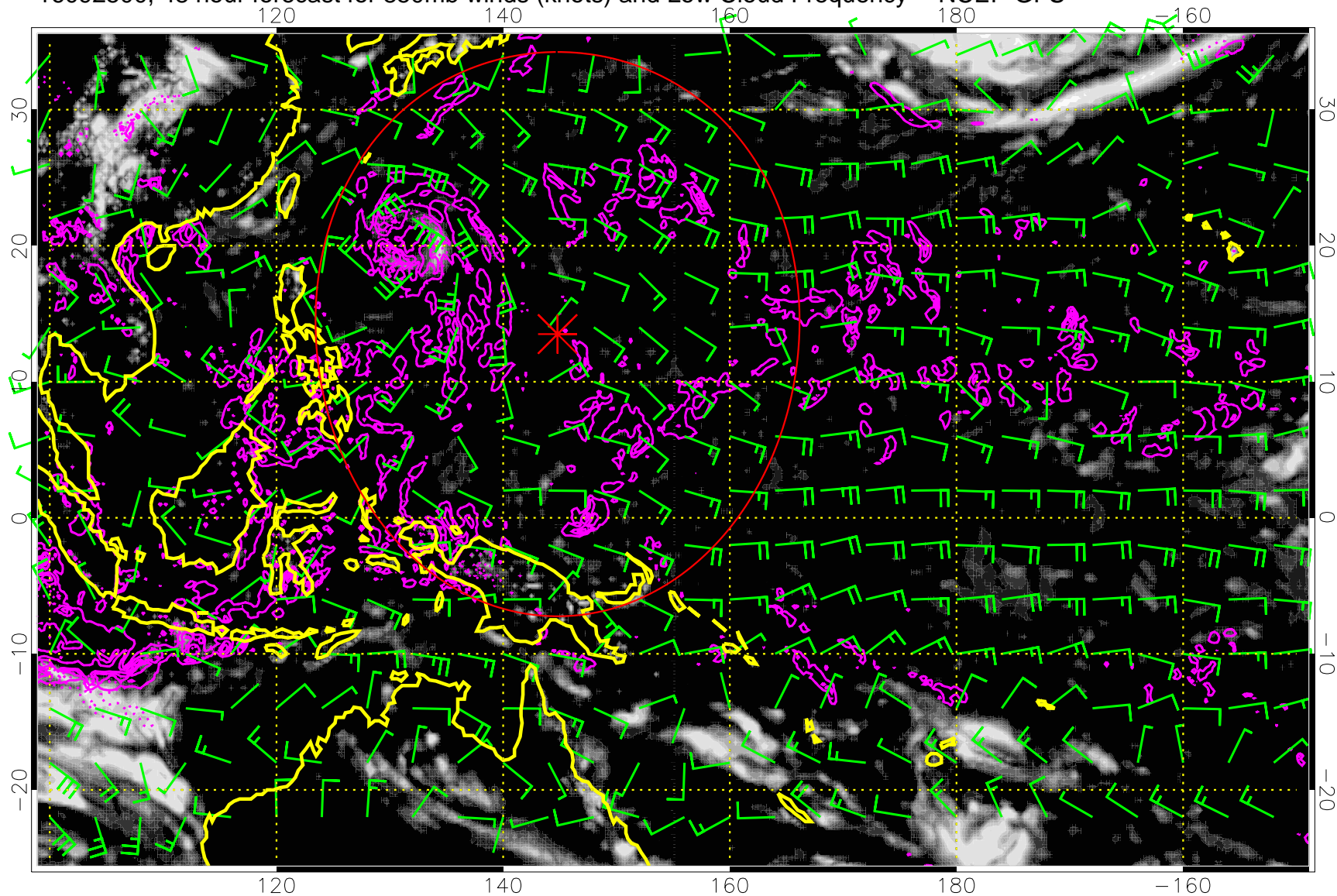
16092418, 42 hour forecast for 850mb winds (knots) and Low Cloud Frequency -- NCEP GFS



Precip (tot dot, conv sol) mm/day 40 mm/day contours, min 20

Range ring of 2304 km

16092500, 48 hour forecast for 850mb winds (knots) and Low Cloud Frequency -- NCEP GFS



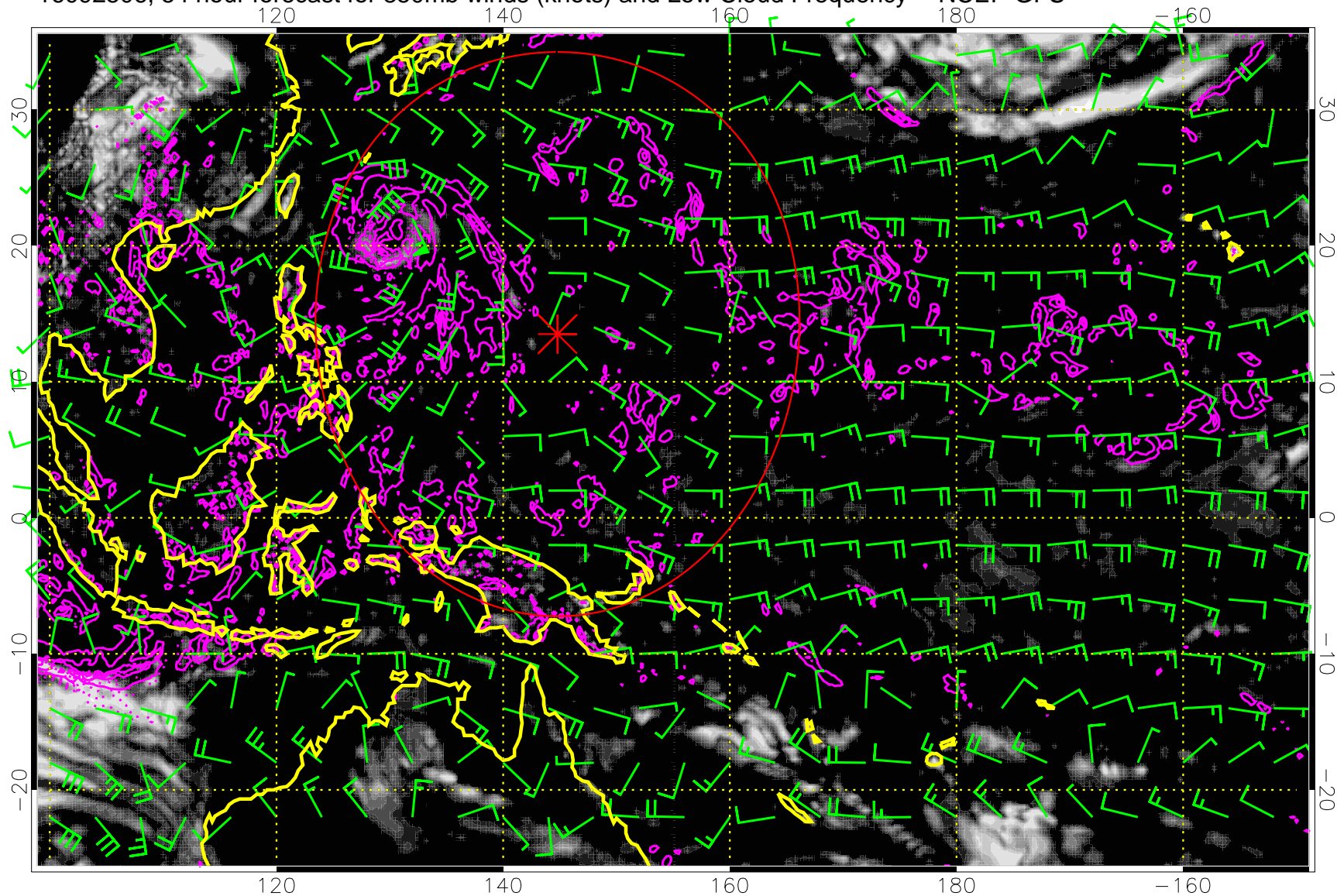
0.0 0.2 0.4 0.6 0.8 1.0  
Low Cloud Frequency

Precip (tot dot, conv sol) mm/day 40 mm/day contours, min 20

Range ring of 2304 km



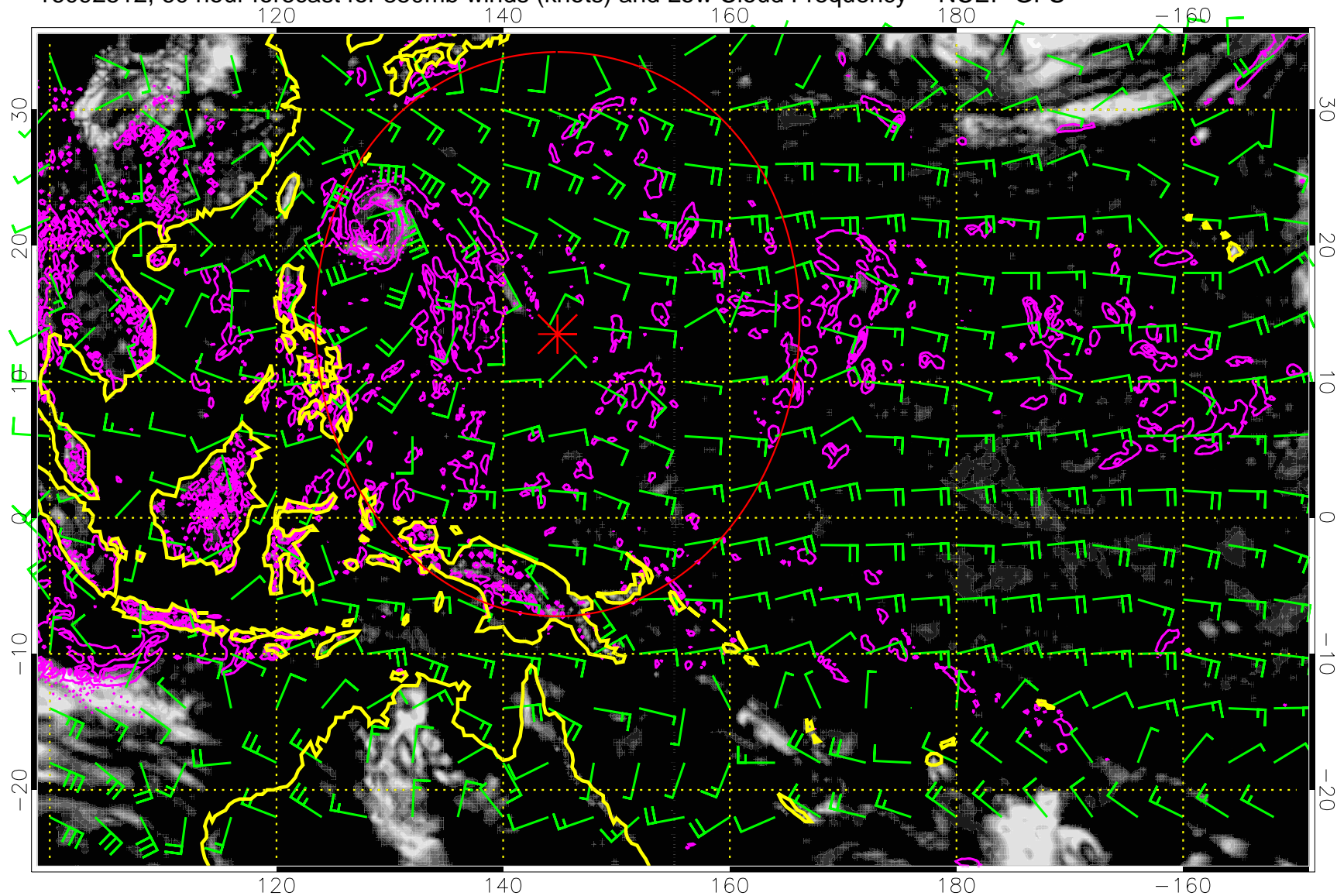
16092506, 54 hour forecast for 850mb winds (knots) and Low Cloud Frequency -- NCEP GFS



Precip (tot dot, conv sol) mm/day 40 mm/day contours, min 20

Range ring of 2304 km

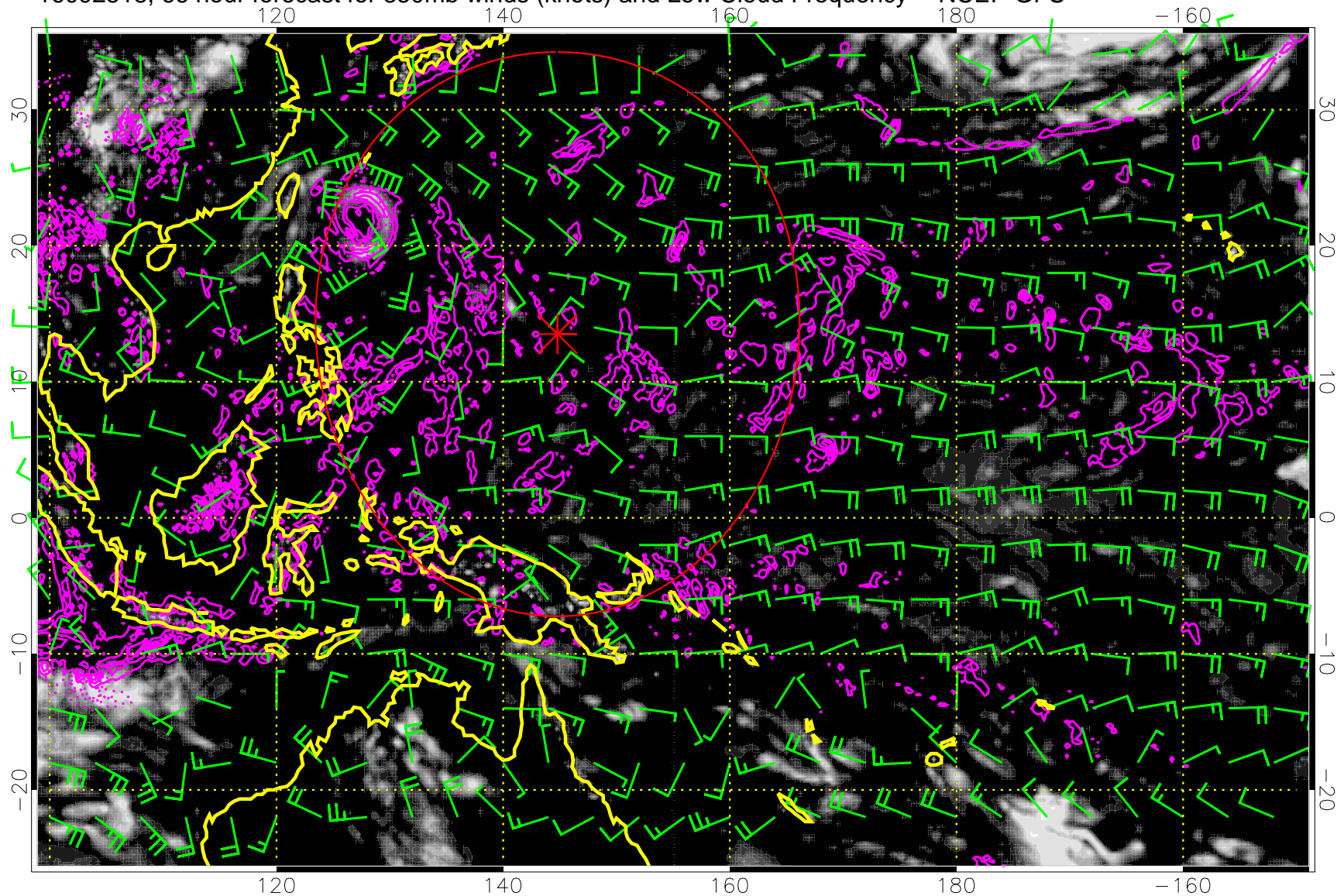
16092512, 60 hour forecast for 850mb winds (knots) and Low Cloud Frequency -- NCEP GFS



Precip (tot dot, conv sol) mm/day 40 mm/day contours, min 20

Range ring of 2304 km

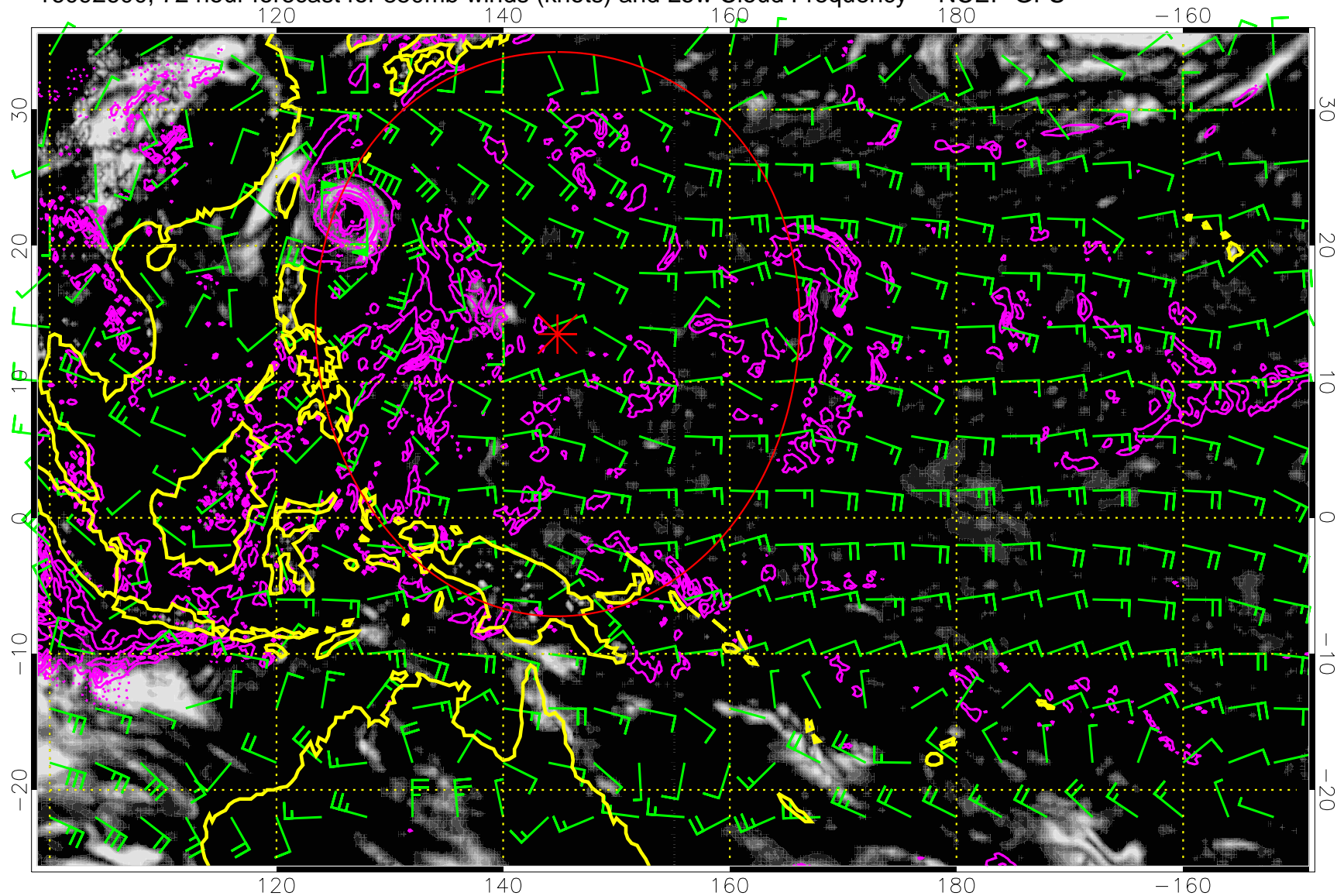
16092518, 66 hour forecast for 850mb winds (knots) and Low Cloud Frequency -- NCEP GFS



Precip (tot dot, conv sol) mm/day 40 mm/day contours, min 20

Range ring of 2304 km

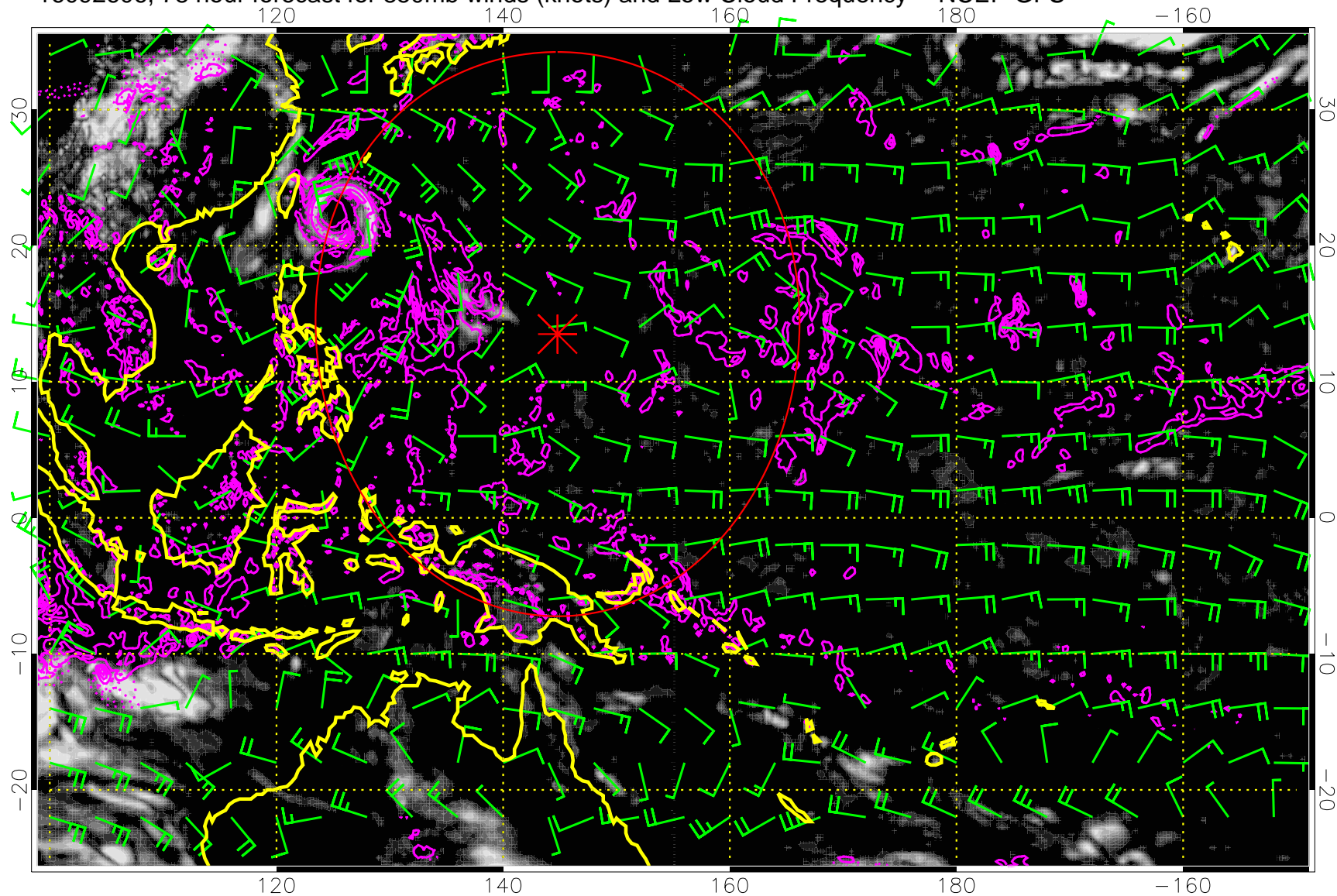
16092600, 72 hour forecast for 850mb winds (knots) and Low Cloud Frequency -- NCEP GFS



Precip (tot dot, conv sol) mm/day 40 mm/day contours, min 20

Range ring of 2304 km

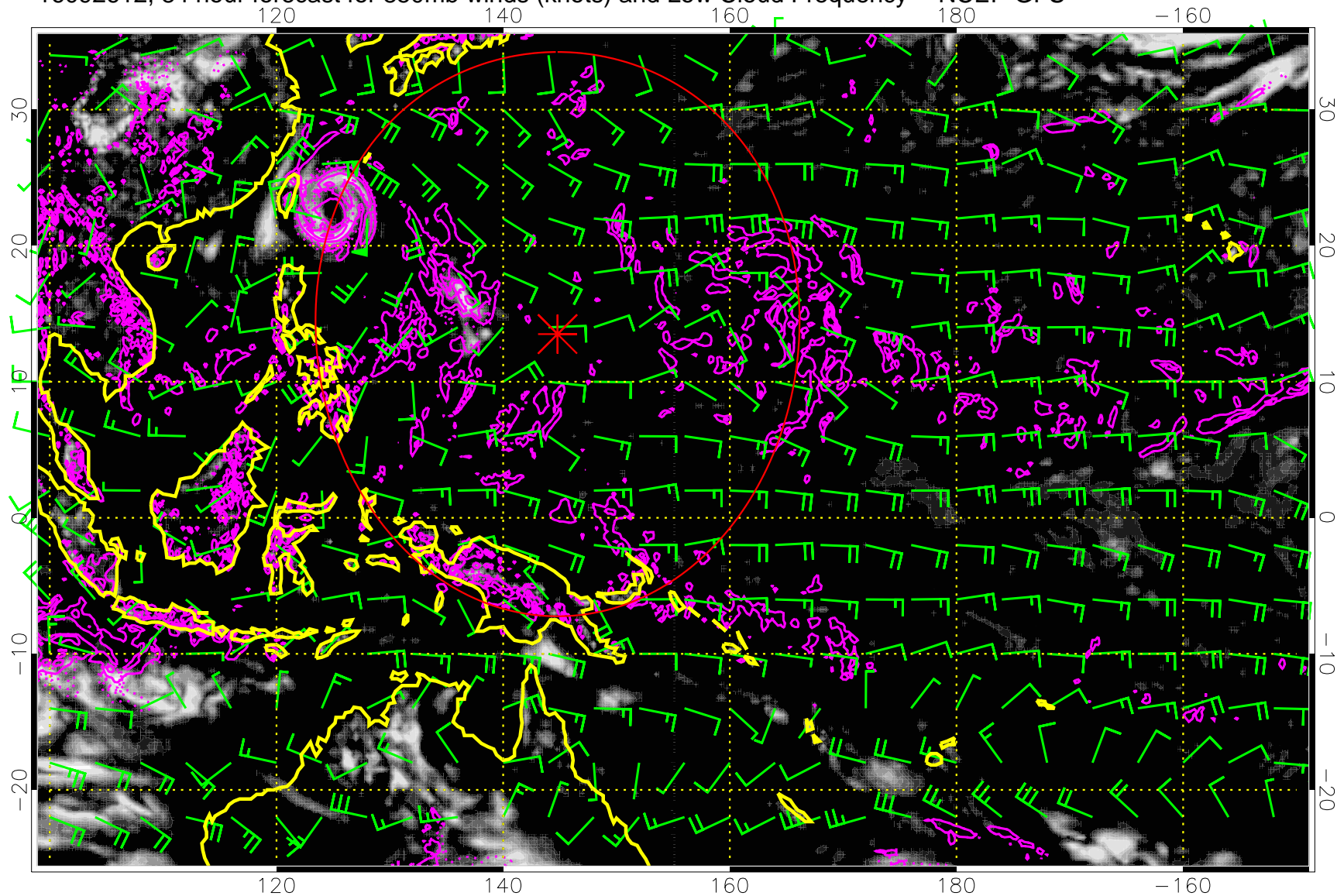
16092606, 78 hour forecast for 850mb winds (knots) and Low Cloud Frequency -- NCEP GFS



Precip (tot dot, conv sol) mm/day 40 mm/day contours, min 20

Range ring of 2304 km

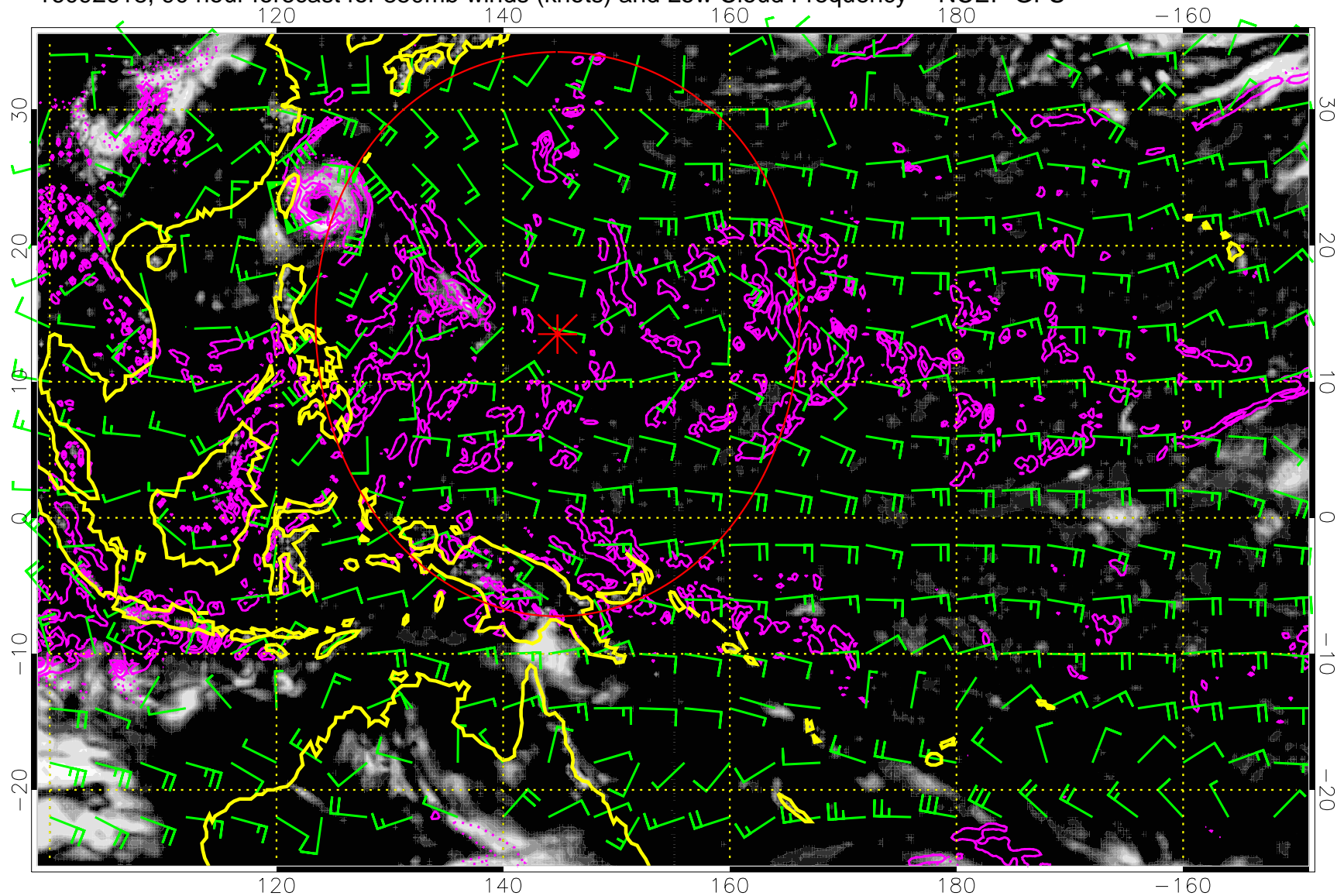
16092612, 84 hour forecast for 850mb winds (knots) and Low Cloud Frequency -- NCEP GFS



Precip (tot dot, conv sol) mm/day 40 mm/day contours, min 20

Range ring of 2304 km

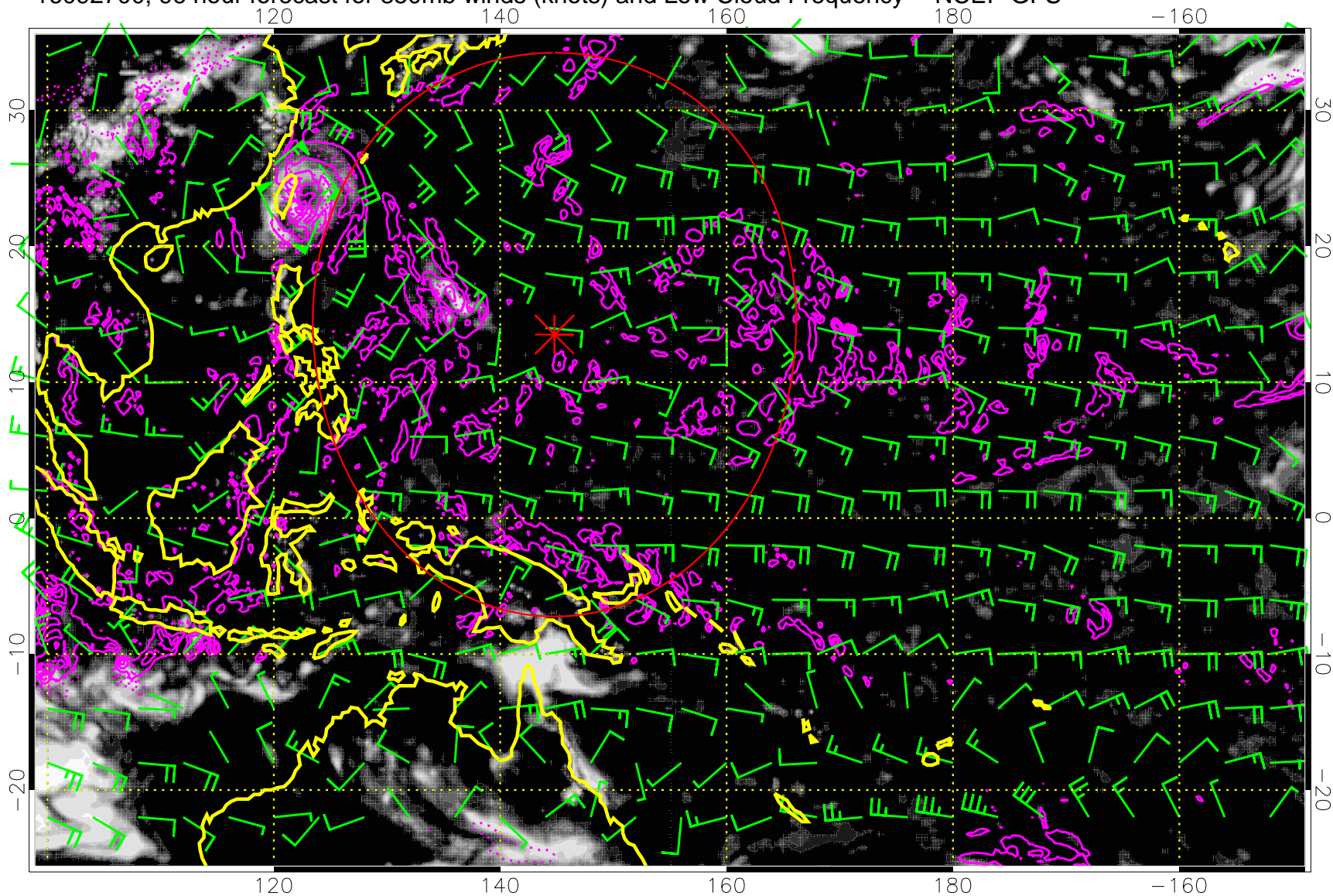
16092618, 90 hour forecast for 850mb winds (knots) and Low Cloud Frequency -- NCEP GFS



Precip (tot dot, conv sol) mm/day 40 mm/day contours, min 20

Range ring of 2304 km

16092700, 96 hour forecast for 850mb winds (knots) and Low Cloud Frequency -- NCEP GFS

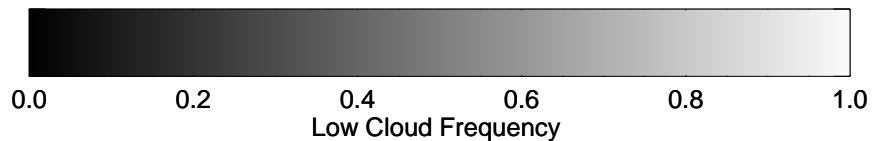
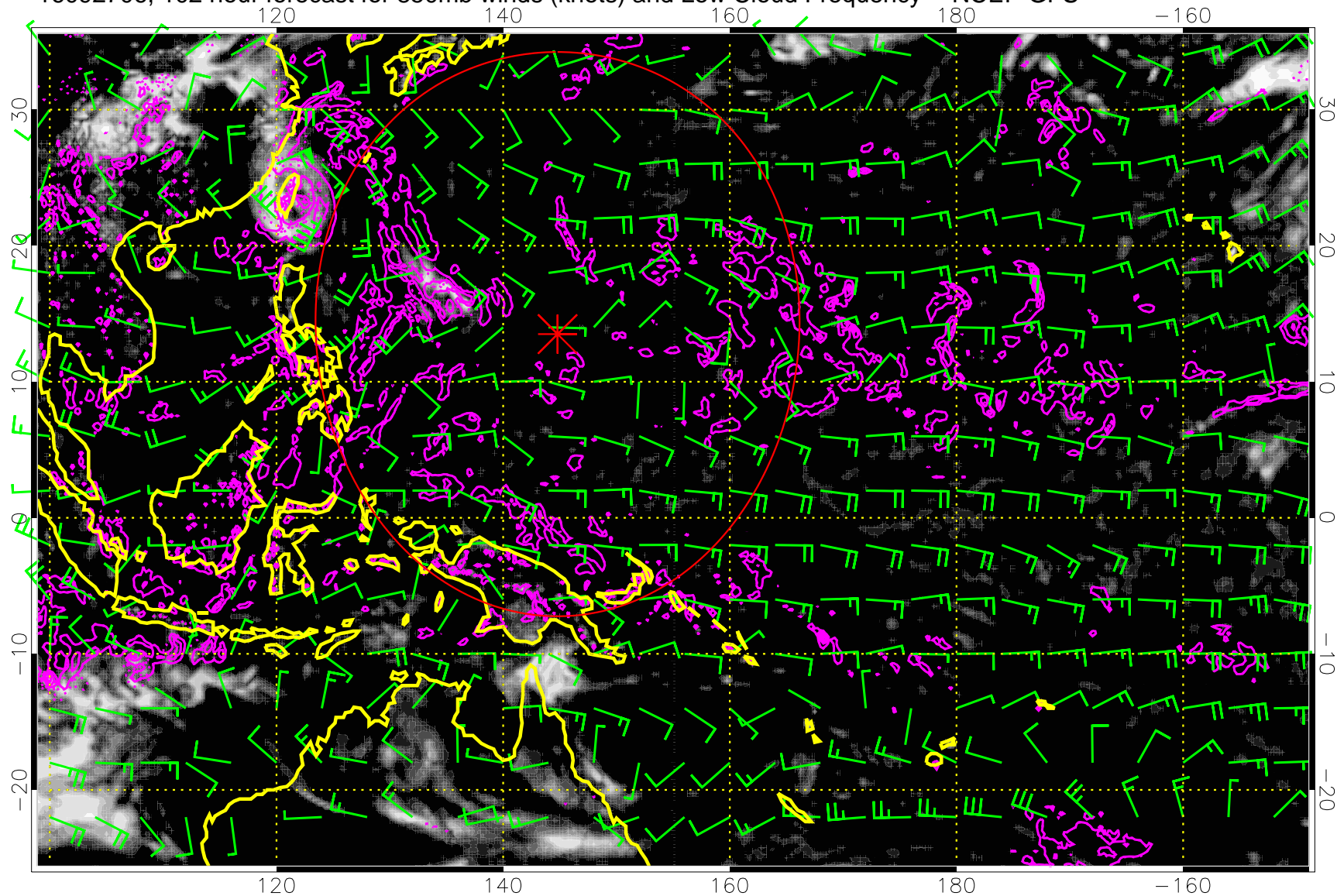


Precip (tot dot, conv sol) mm/day 40 mm/day contours, min 20

Range ring of 2304 km



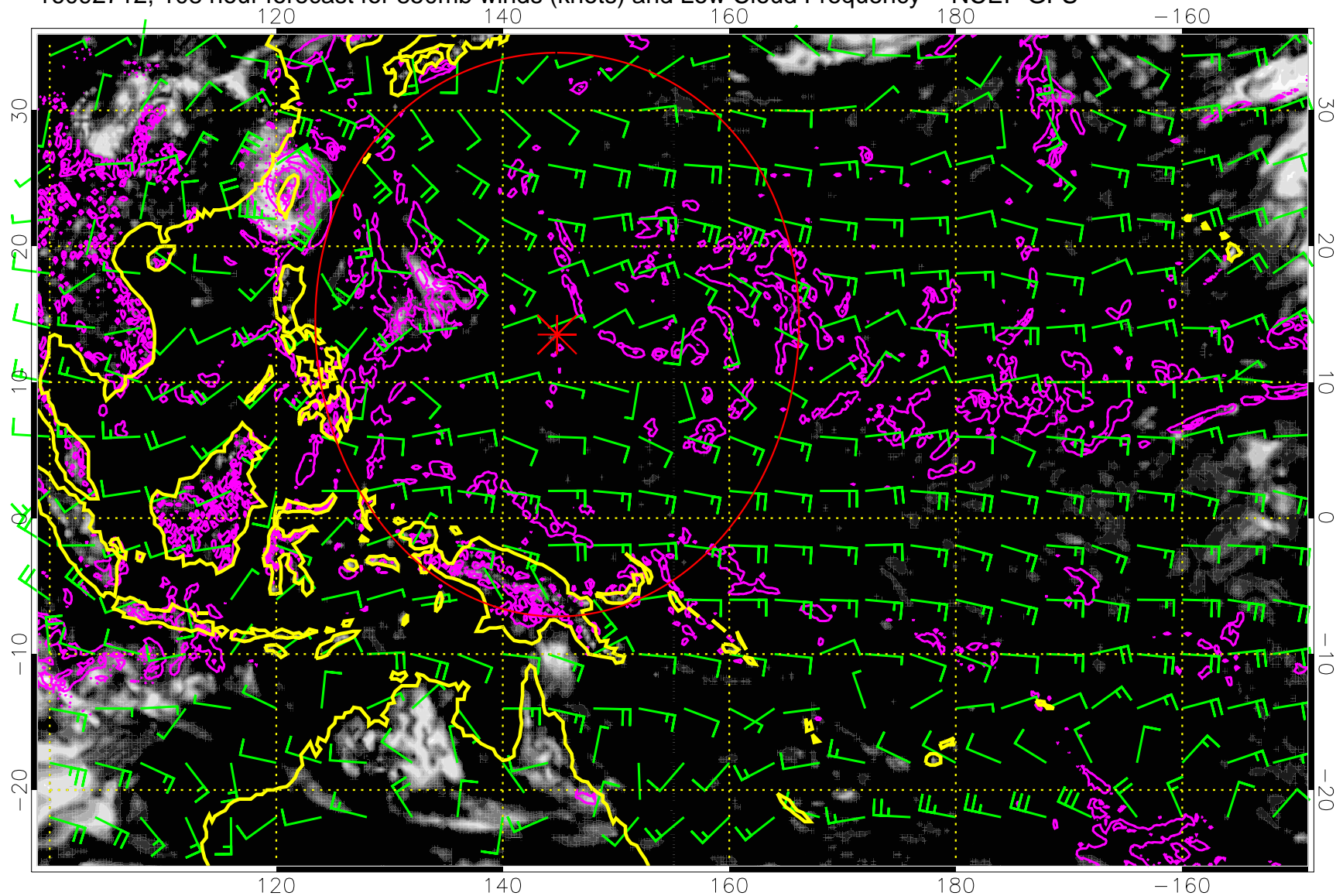
16092706, 102 hour forecast for 850mb winds (knots) and Low Cloud Frequency -- NCEP GFS



Precip (tot dot, conv sol) mm/day 40 mm/day contours, min 20

Range ring of 2304 km

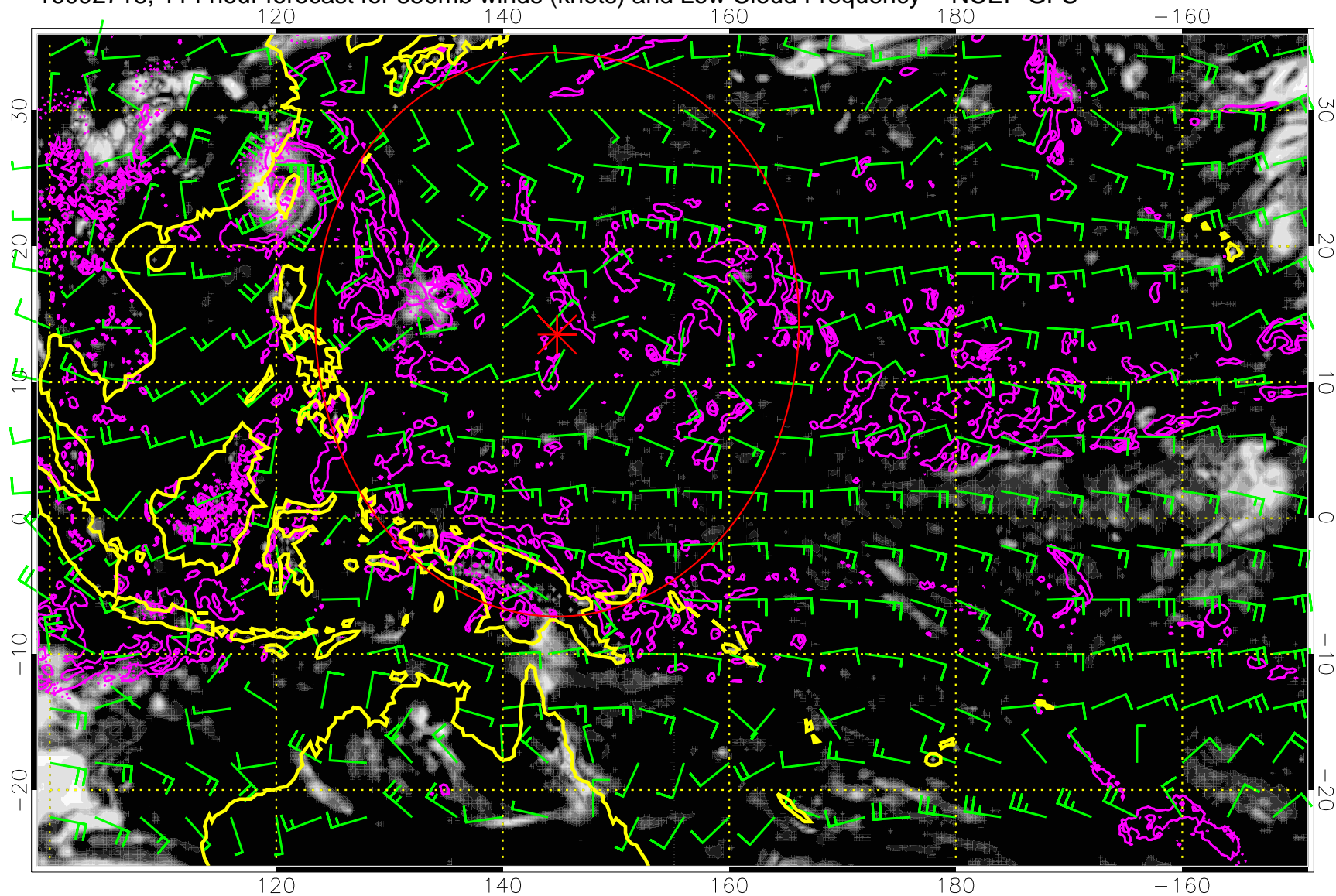
16092712, 108 hour forecast for 850mb winds (knots) and Low Cloud Frequency -- NCEP GFS



Precip (tot dot, conv sol) mm/day 40 mm/day contours, min 20

Range ring of 2304 km

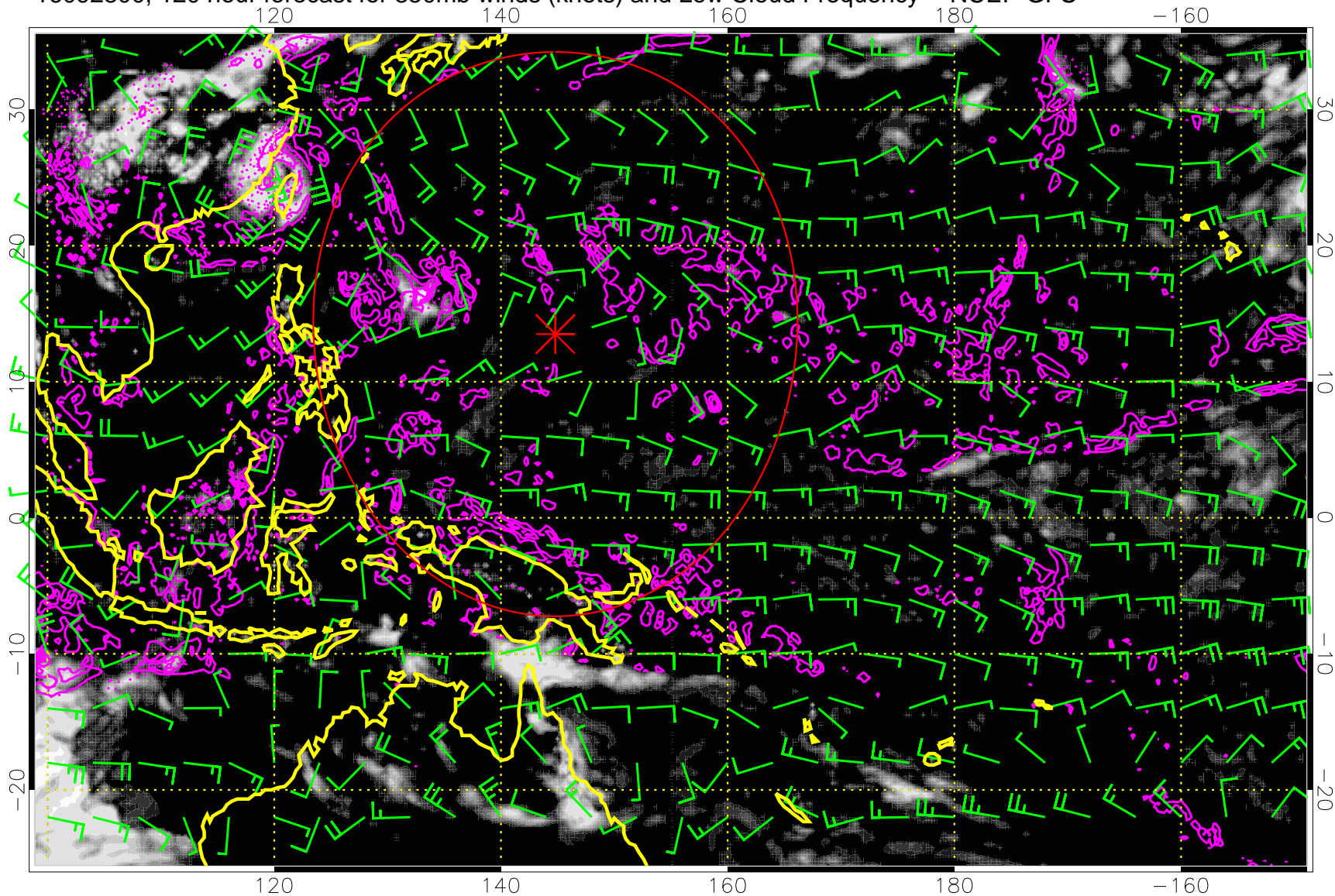
16092718, 114 hour forecast for 850mb winds (knots) and Low Cloud Frequency -- NCEP GFS



Precip (tot dot, conv sol) mm/day 40 mm/day contours, min 20

Range ring of 2304 km

16092800, 120 hour forecast for 850mb winds (knots) and Low Cloud Frequency -- NCEP GFS



Precip (tot dot, conv sol) mm/day 40 mm/day contours, min 20

Range ring of 2304 km