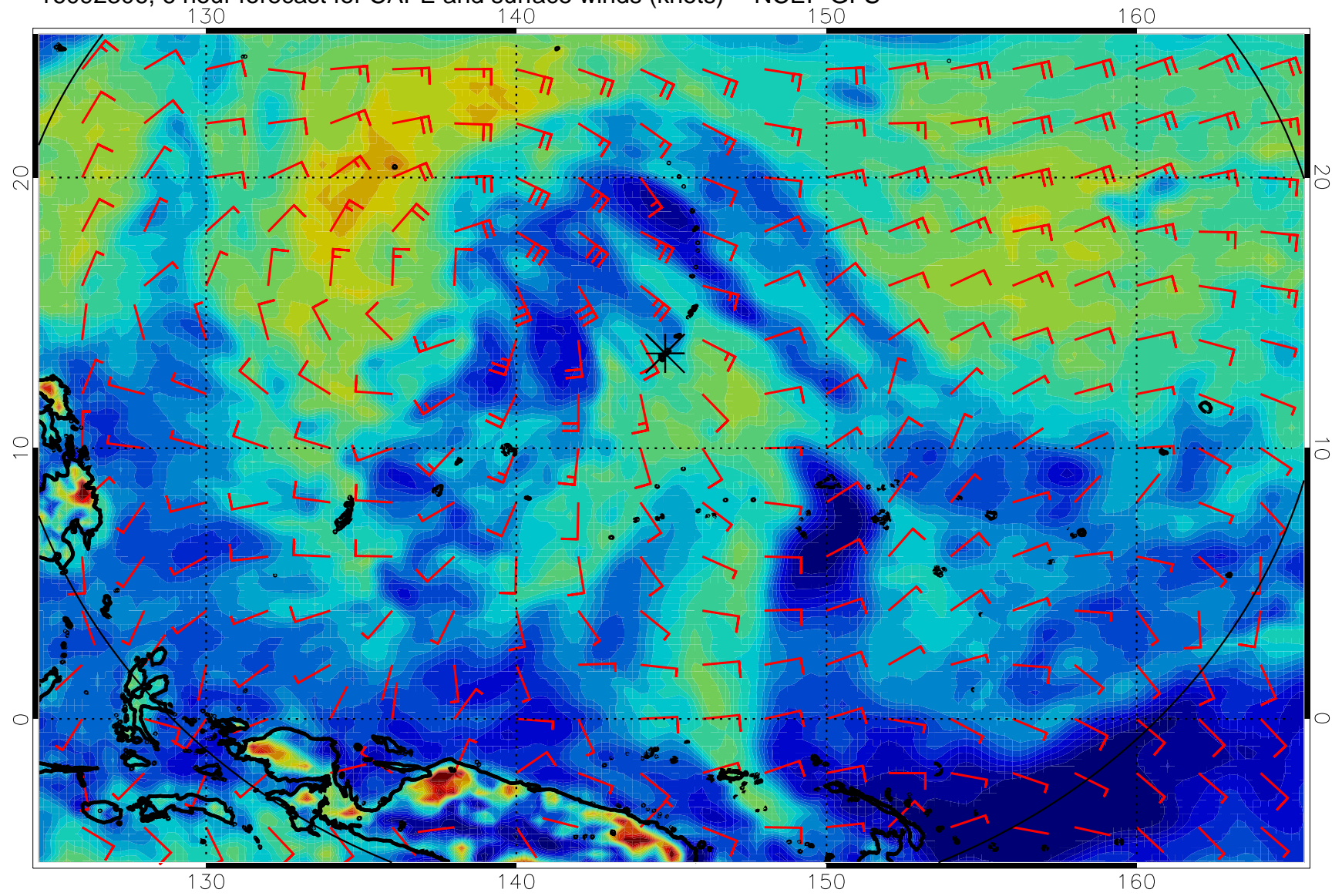
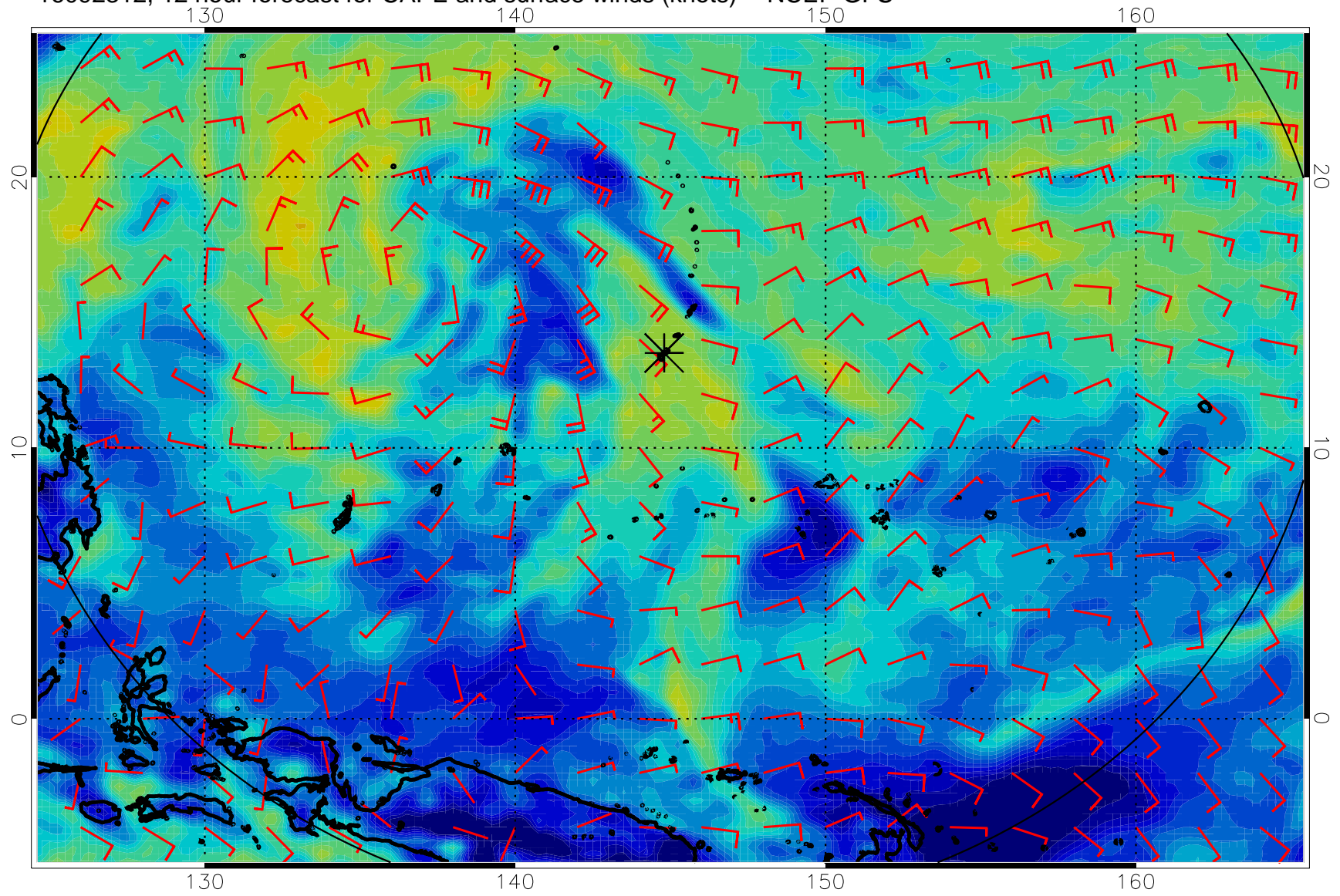


16092306, 6 hour forecast for CAPE and surface winds (knots) -- NCEP GFS

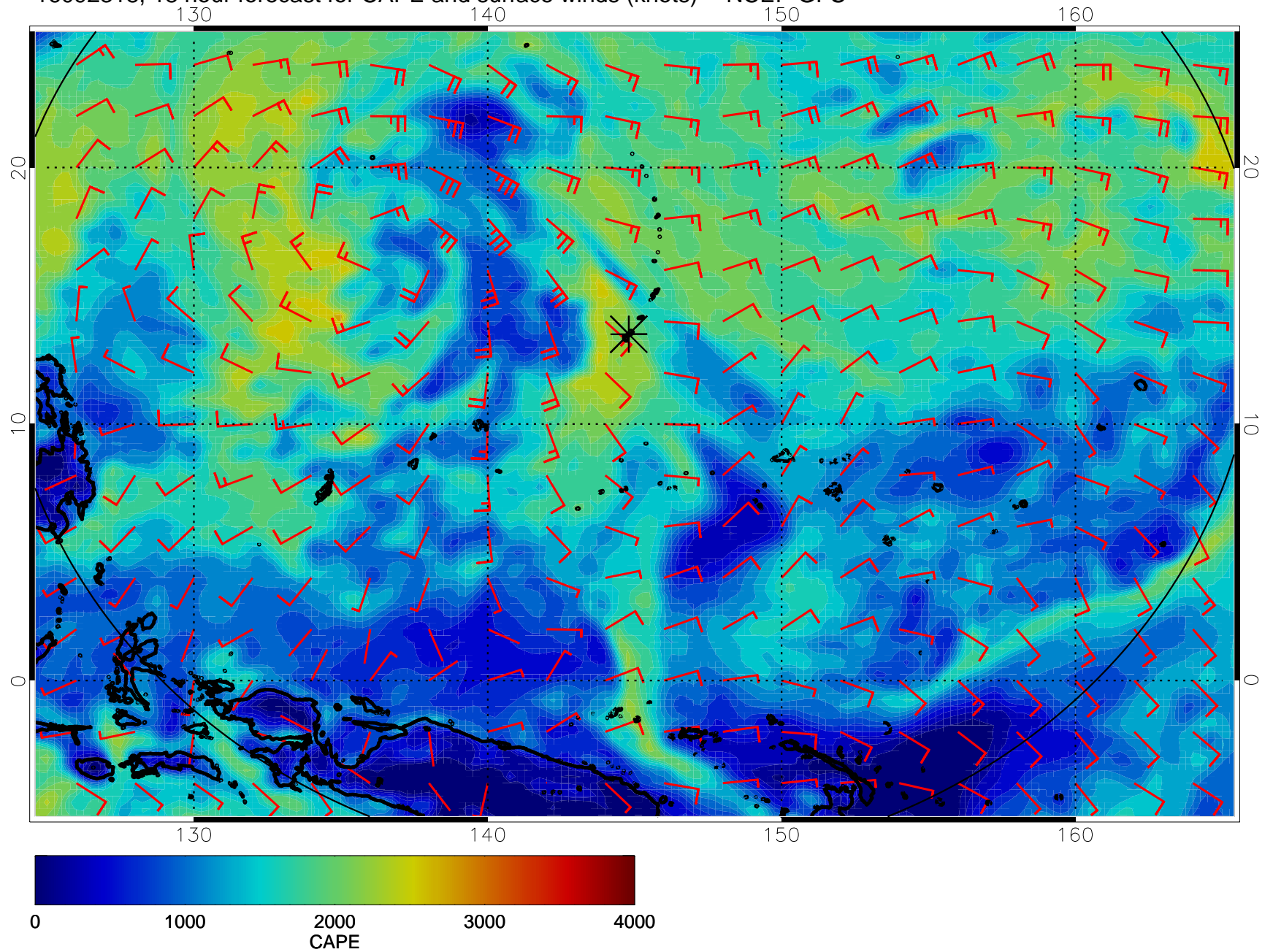


16092312, 12 hour forecast for CAPE and surface winds (knots) -- NCEP GFS

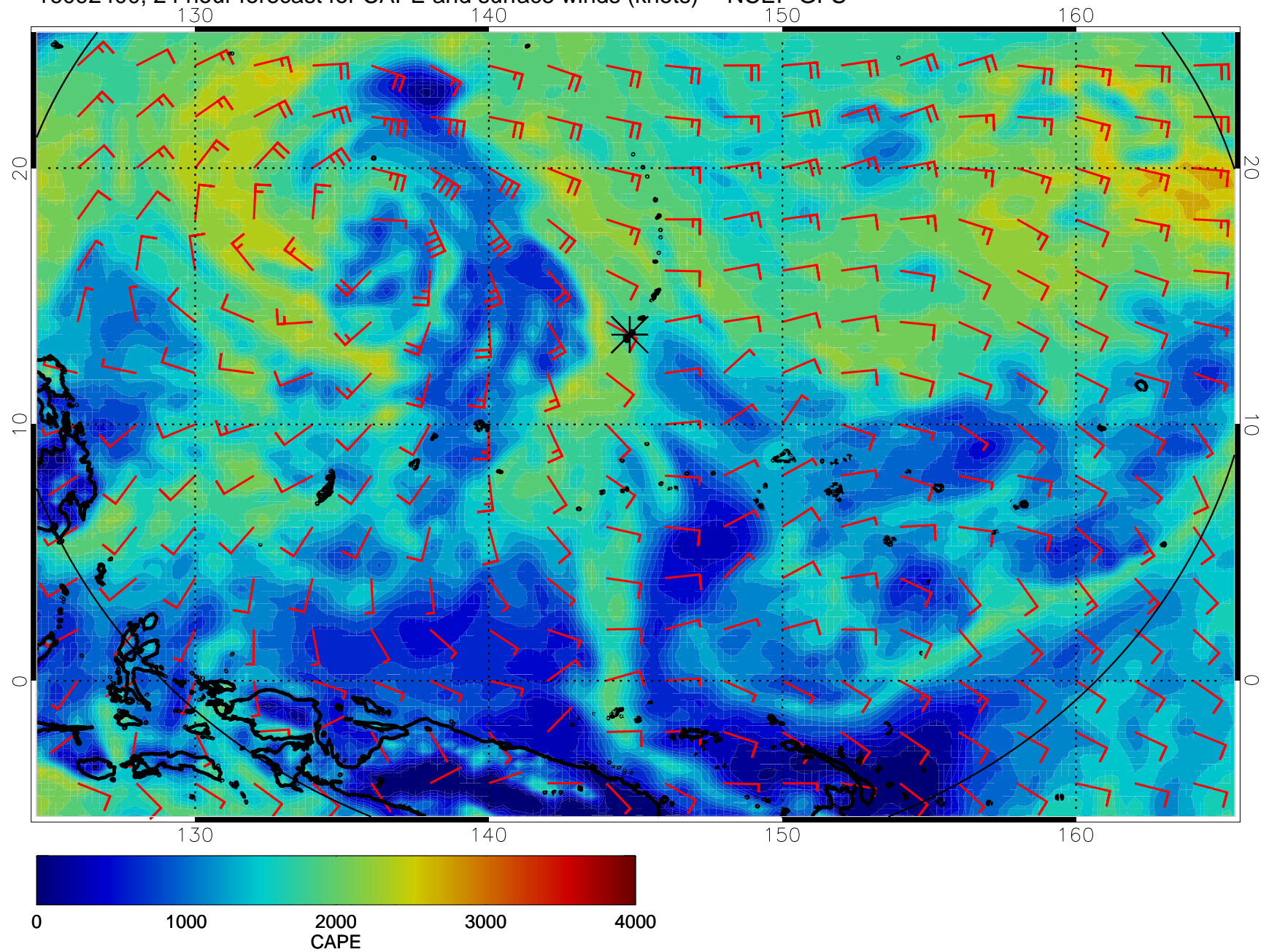




16092318, 18 hour forecast for CAPE and surface winds (knots) -- NCEP GFS

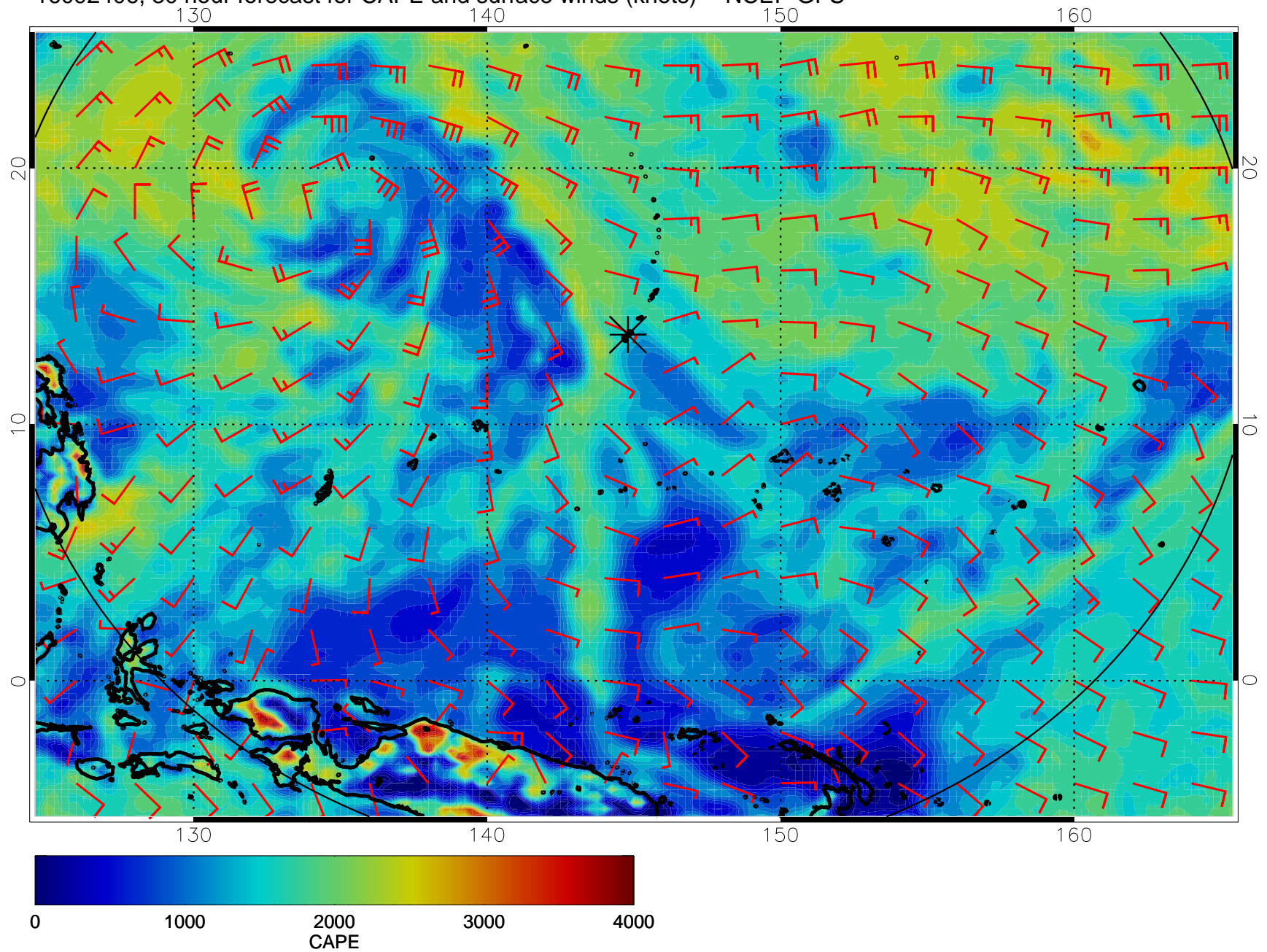


16092400, 24 hour forecast for CAPE and surface winds (knots) -- NCEP GFS

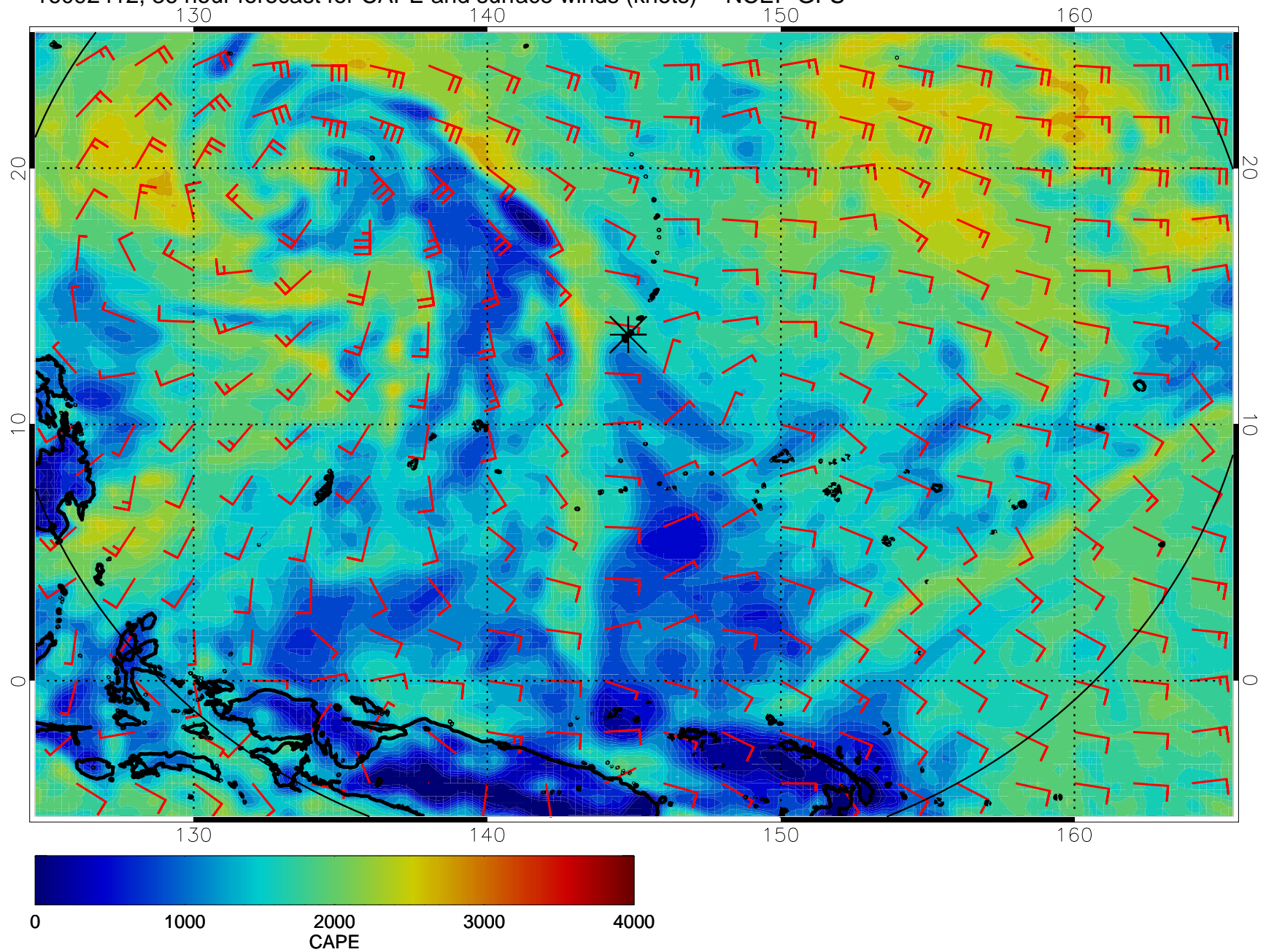




16092406, 30 hour forecast for CAPE and surface winds (knots) -- NCEP GFS

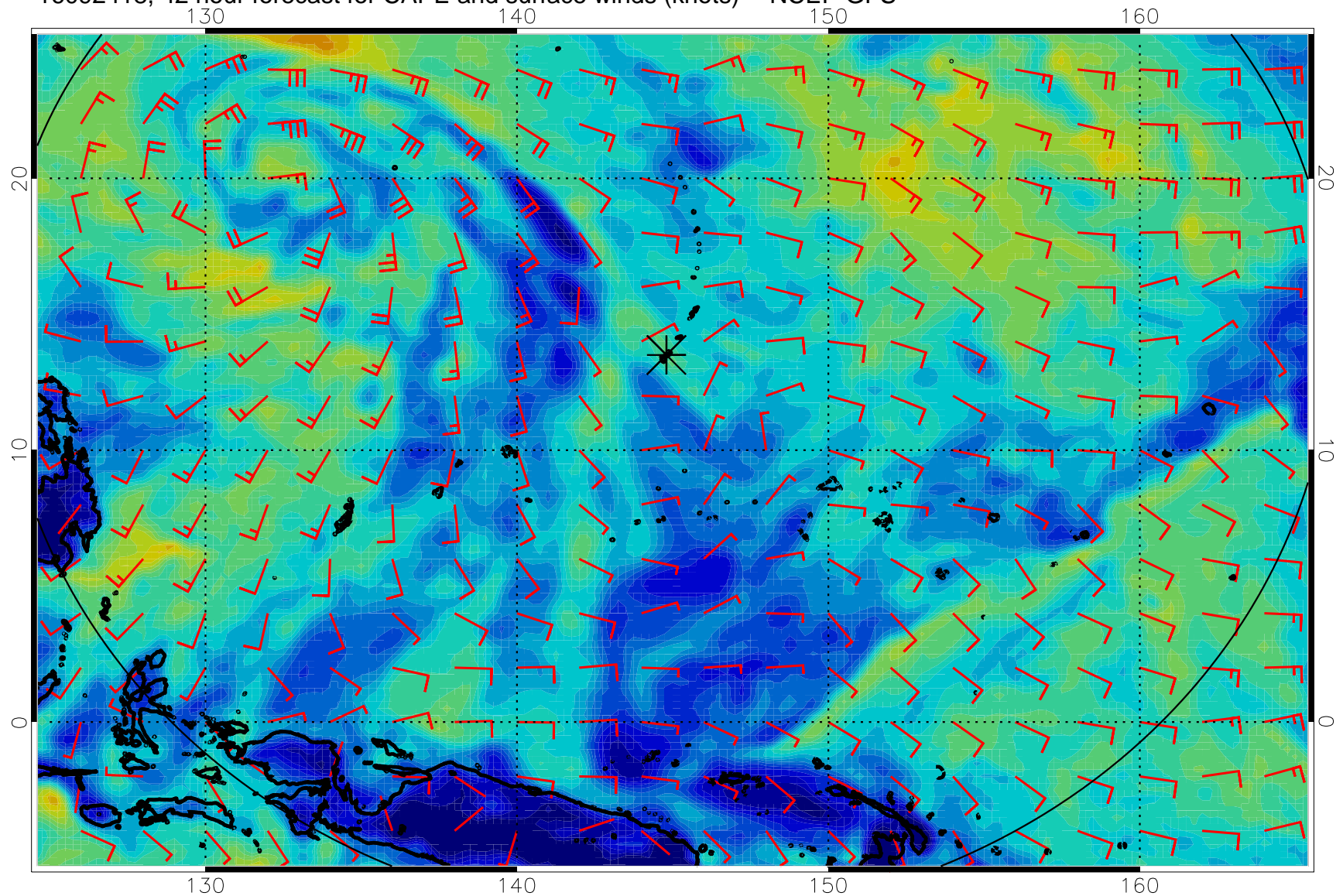


16092412, 36 hour forecast for CAPE and surface winds (knots) -- NCEP GFS

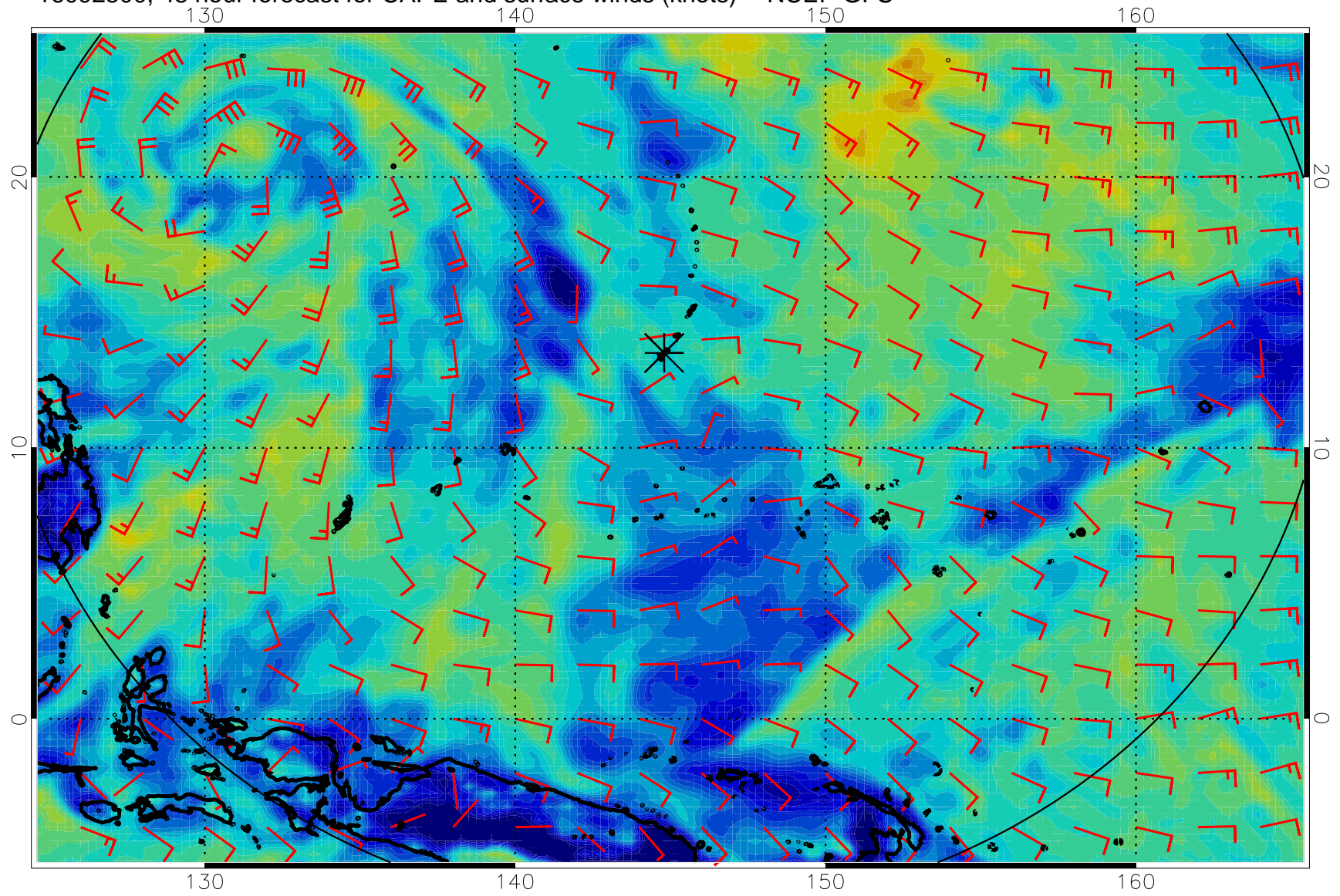




16092418, 42 hour forecast for CAPE and surface winds (knots) -- NCEP GFS

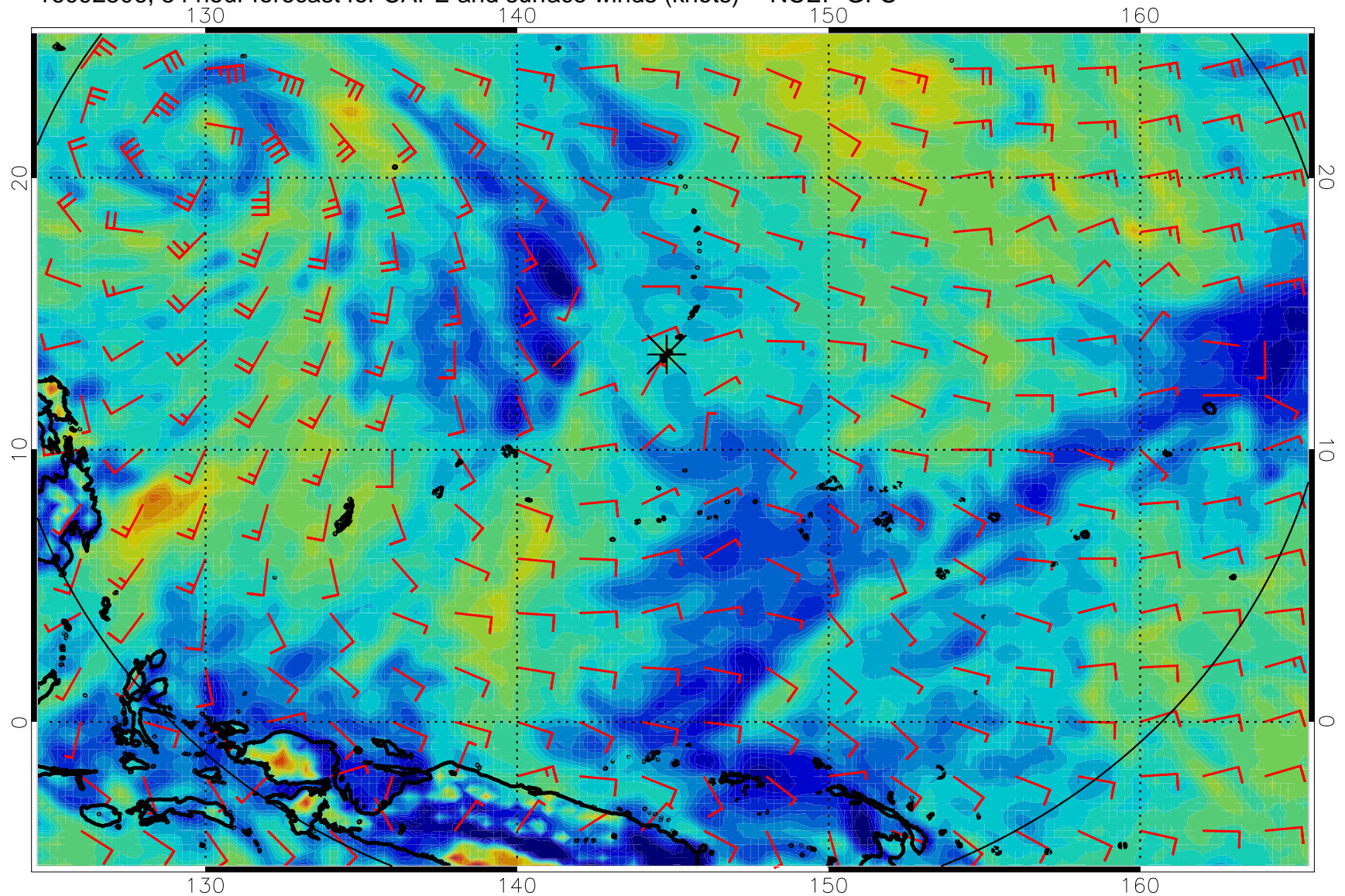


16092500, 48 hour forecast for CAPE and surface winds (knots) -- NCEP GFS

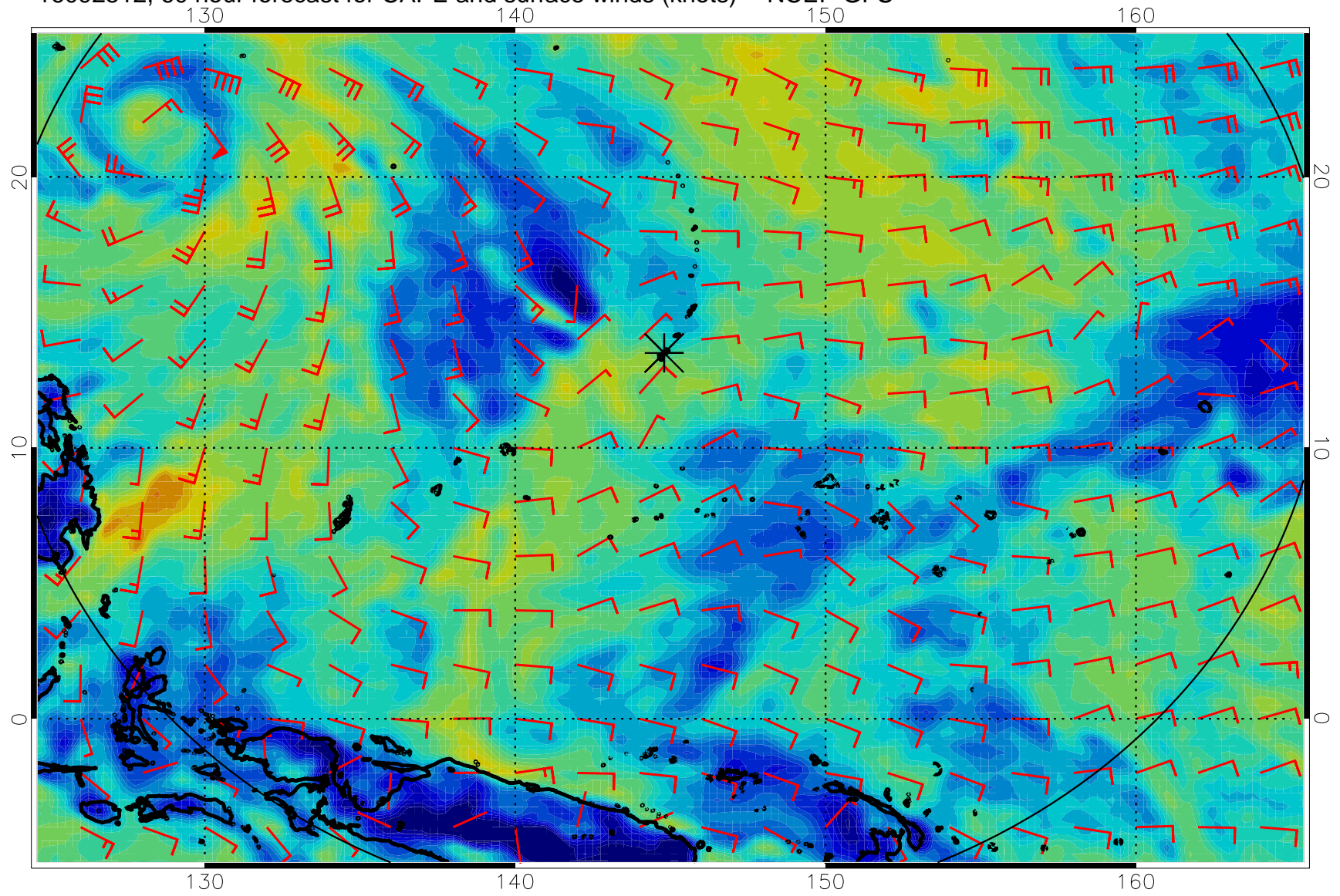




16092506, 54 hour forecast for CAPE and surface winds (knots) -- NCEP GFS

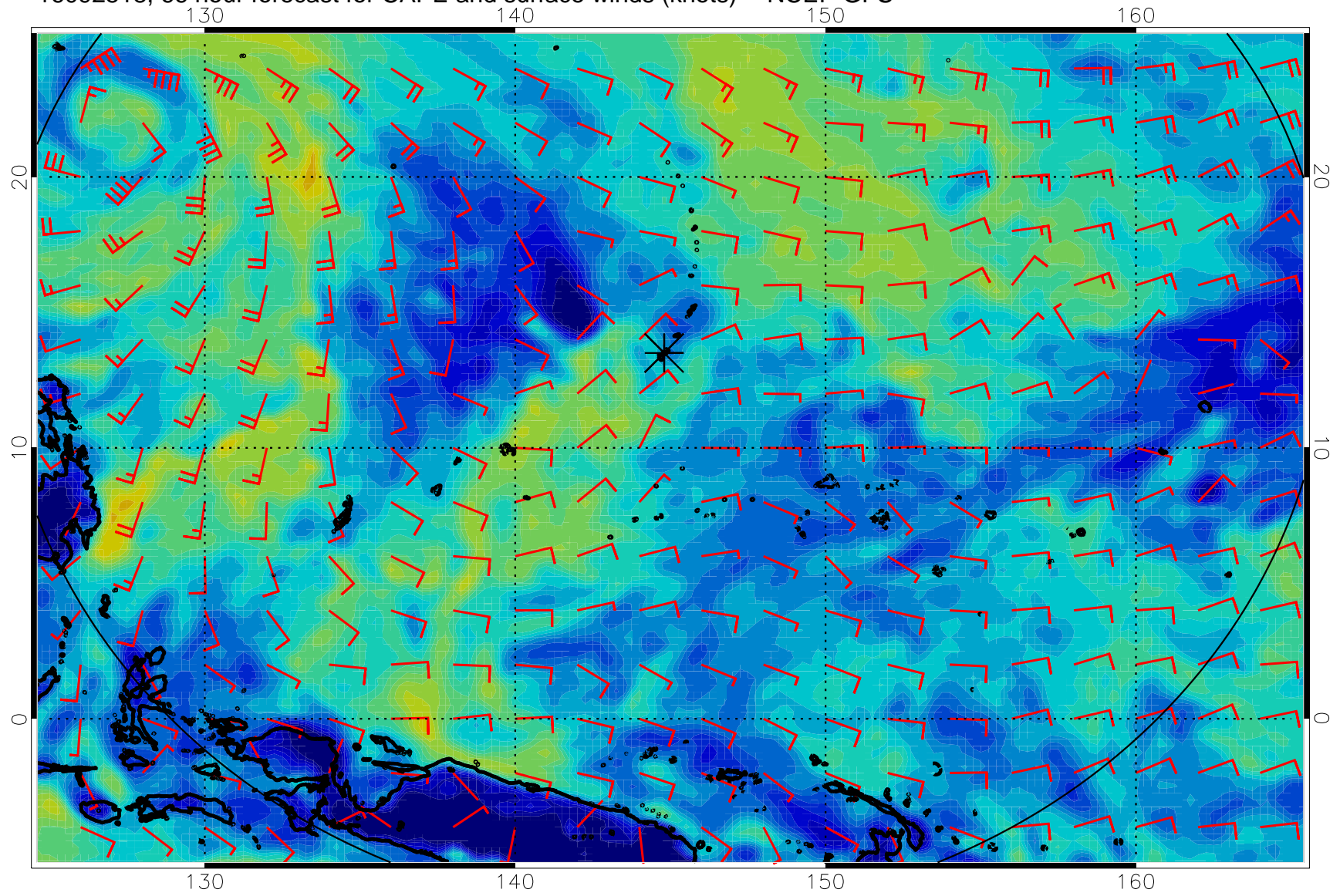


16092512, 60 hour forecast for CAPE and surface winds (knots) -- NCEP GFS

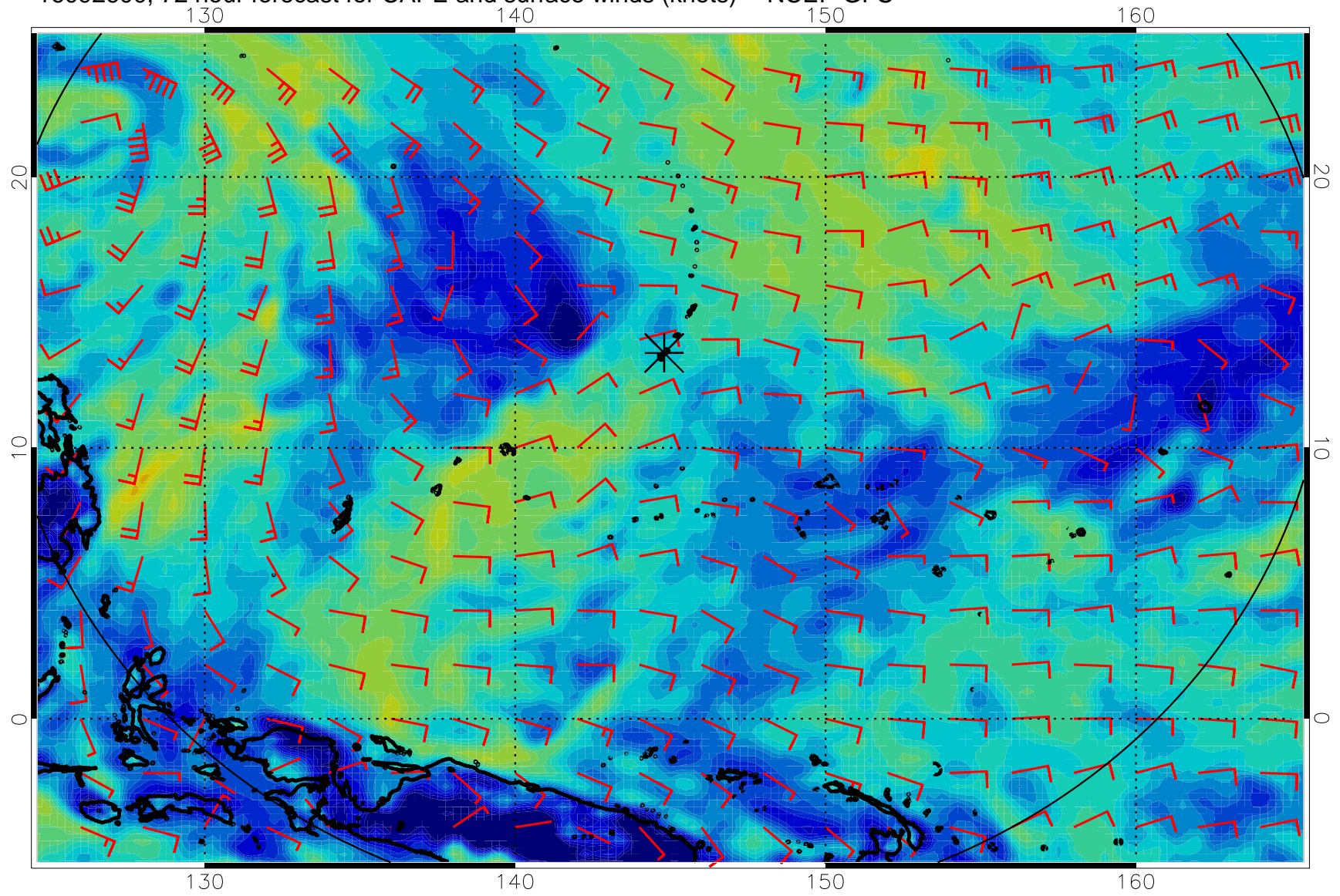




16092518, 66 hour forecast for CAPE and surface winds (knots) -- NCEP GFS

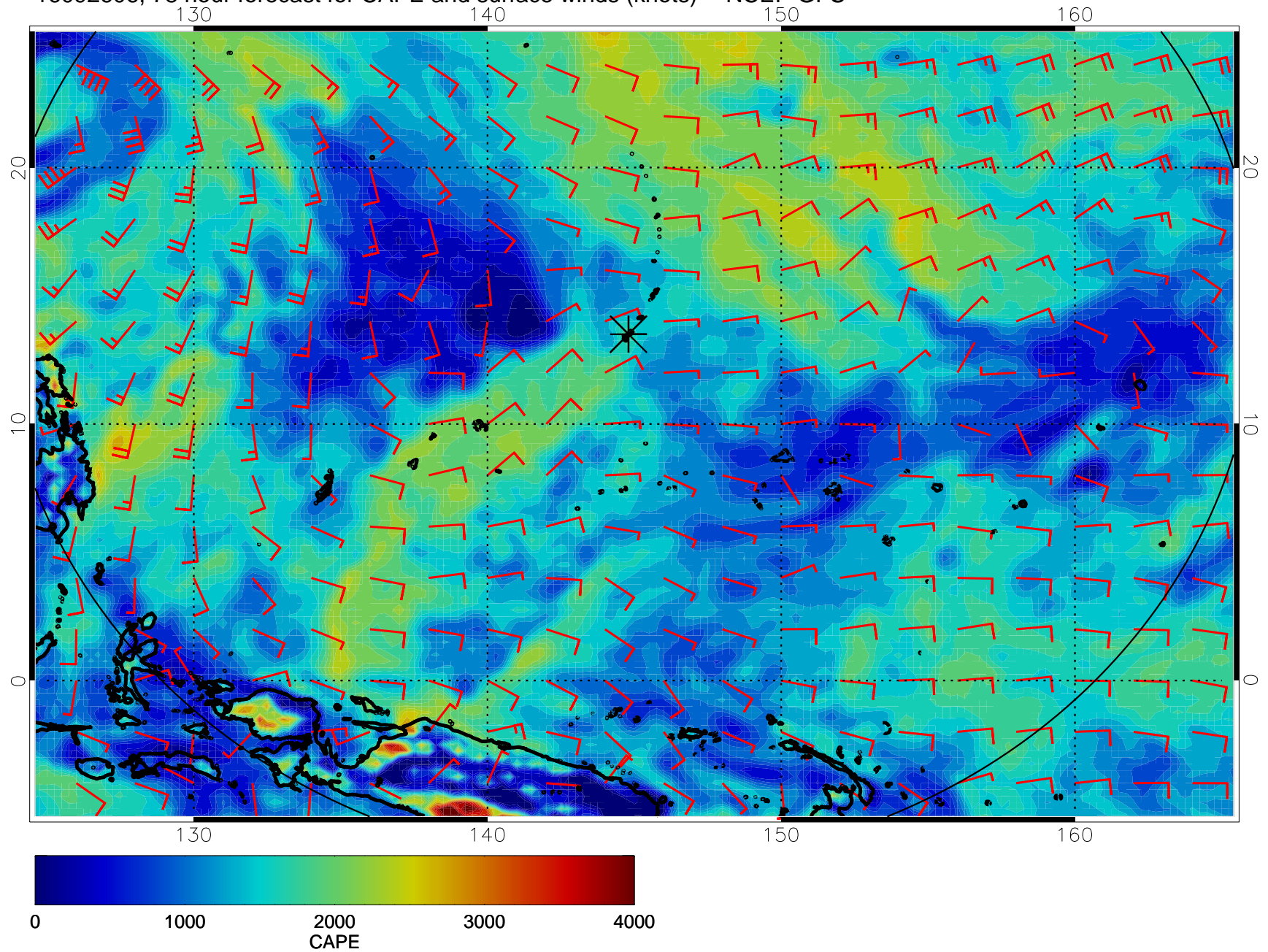


16092600, 72 hour forecast for CAPE and surface winds (knots) -- NCEP GFS

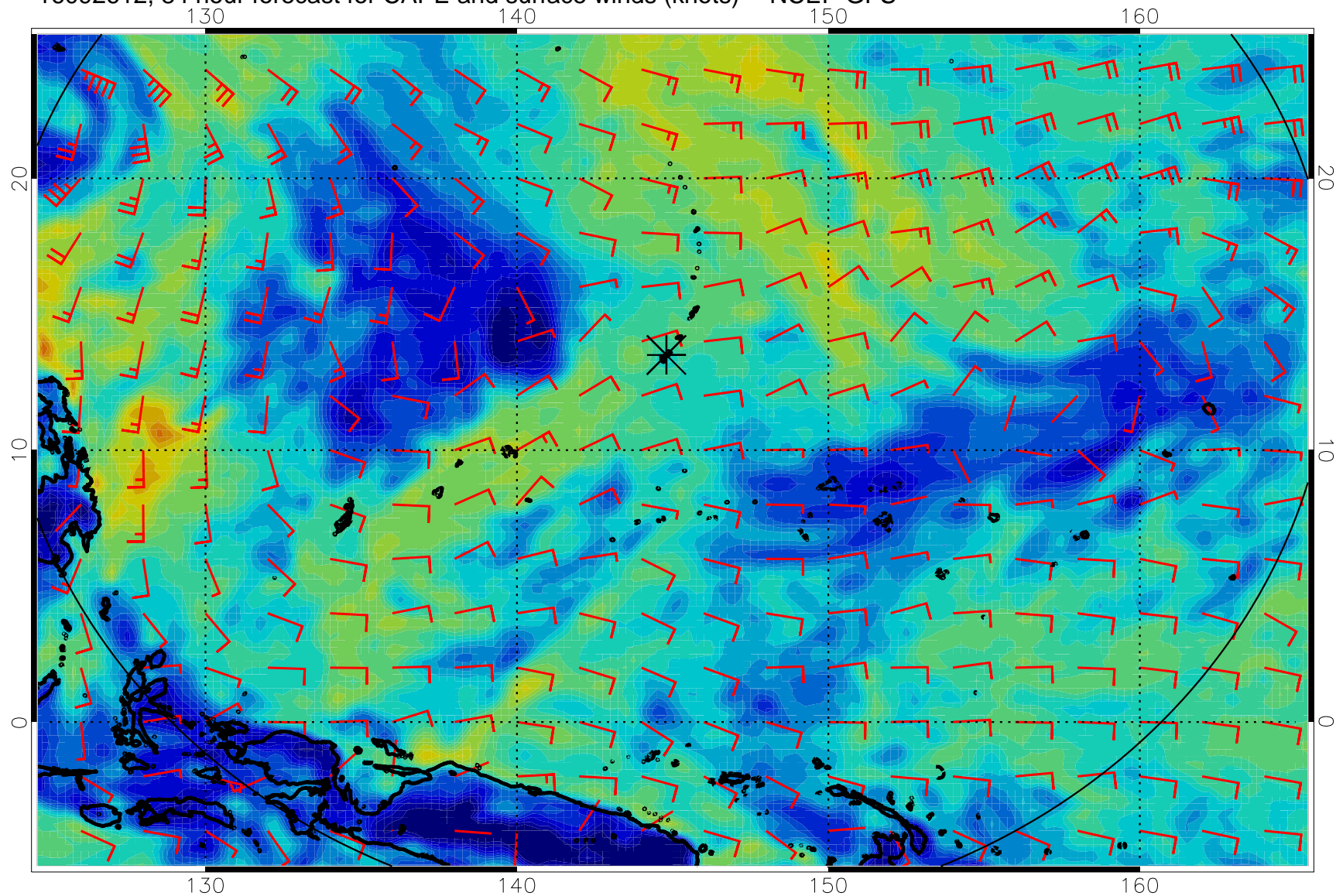




16092606, 78 hour forecast for CAPE and surface winds (knots) -- NCEP GFS

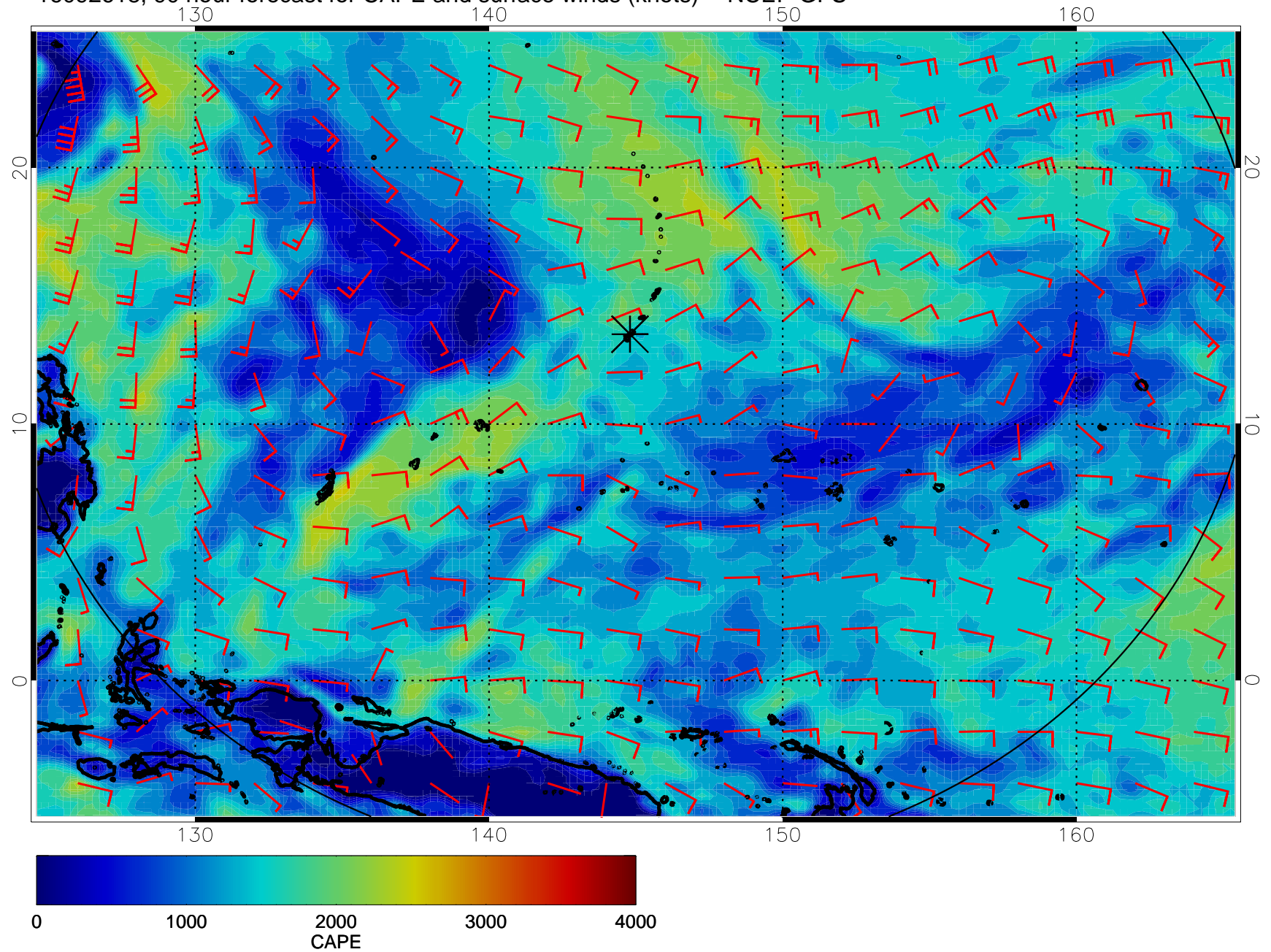


16092612, 84 hour forecast for CAPE and surface winds (knots) -- NCEP GFS

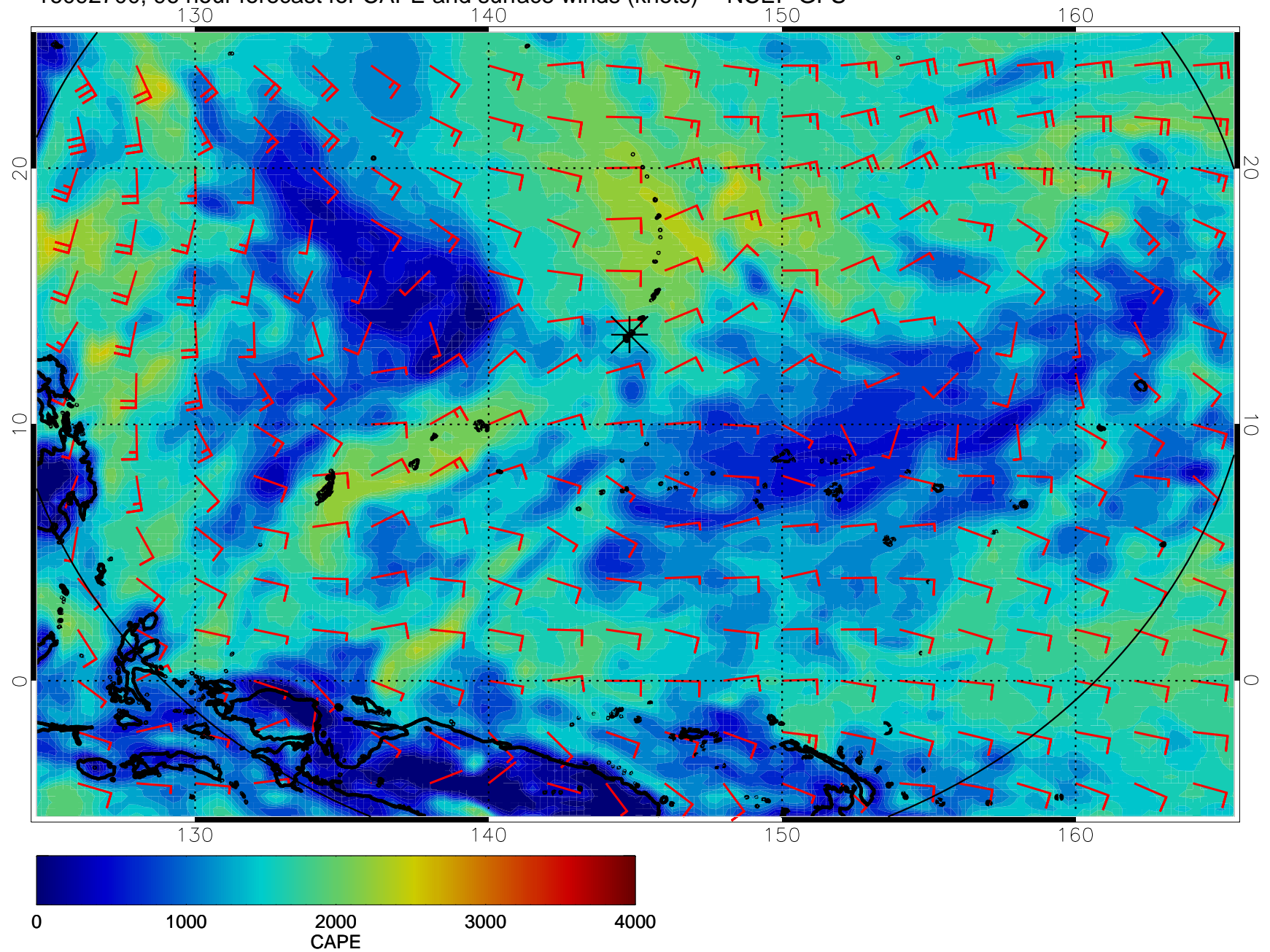




16092618, 90 hour forecast for CAPE and surface winds (knots) -- NCEP GFS

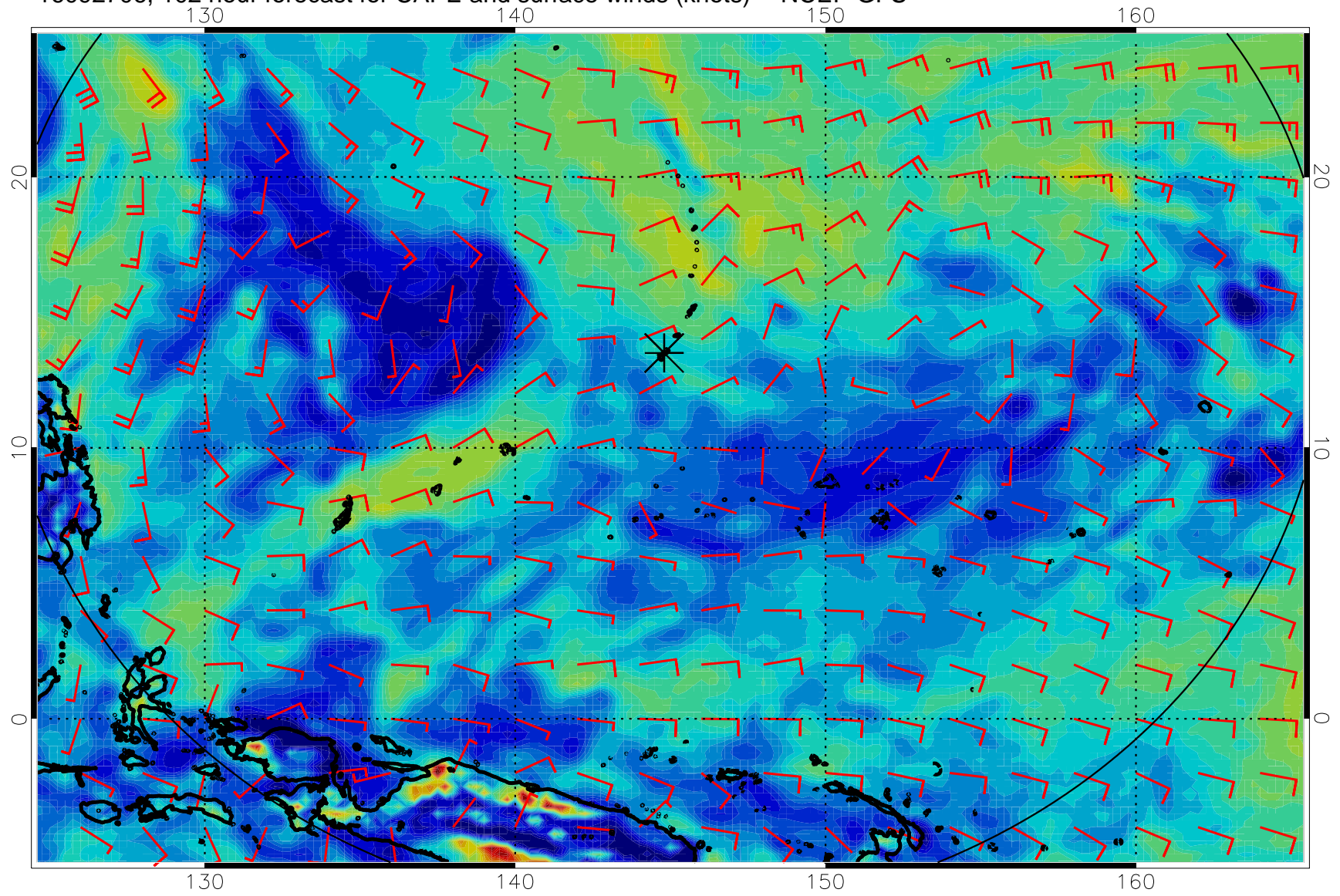


16092700, 96 hour forecast for CAPE and surface winds (knots) -- NCEP GFS

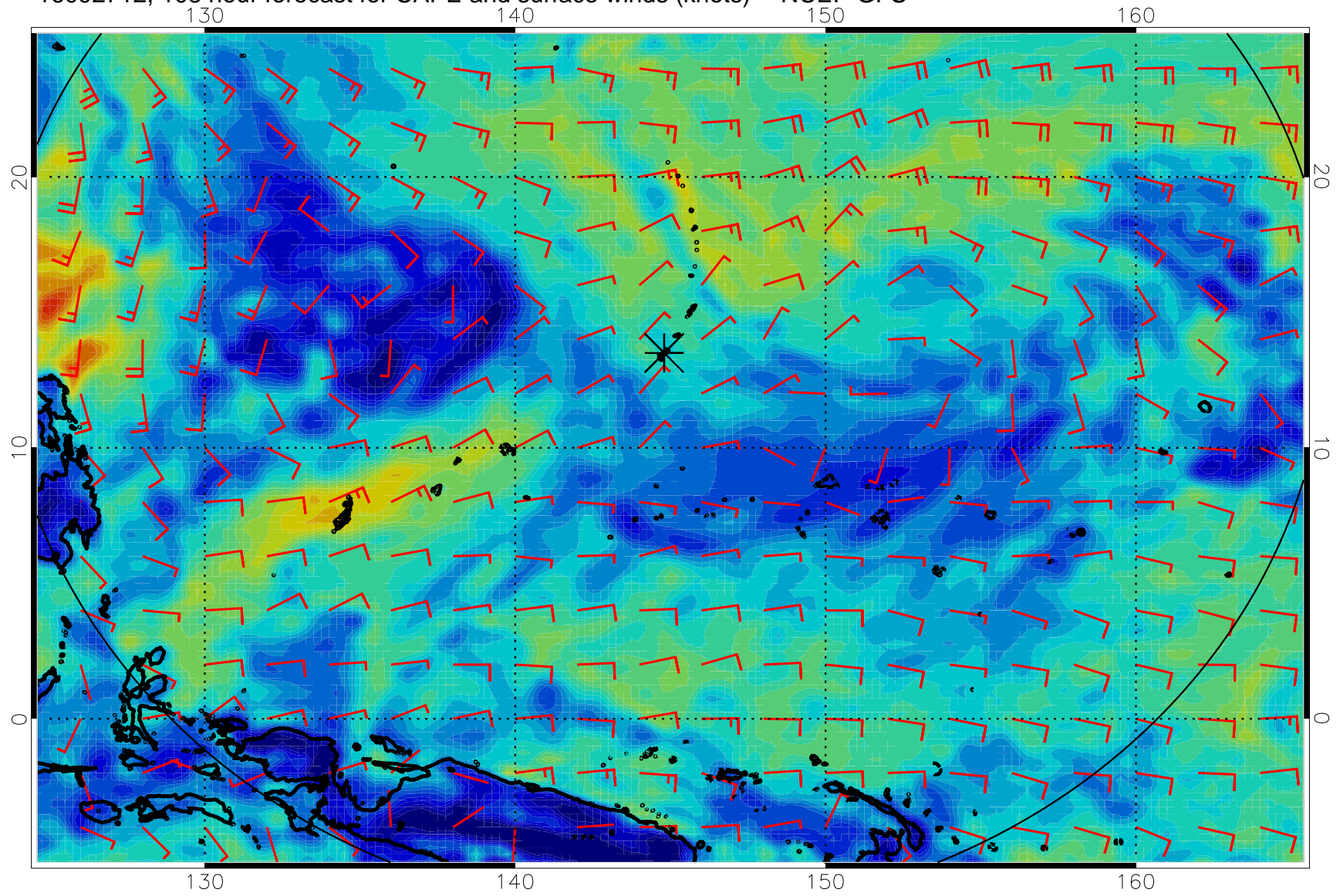




16092706, 102 hour forecast for CAPE and surface winds (knots) -- NCEP GFS

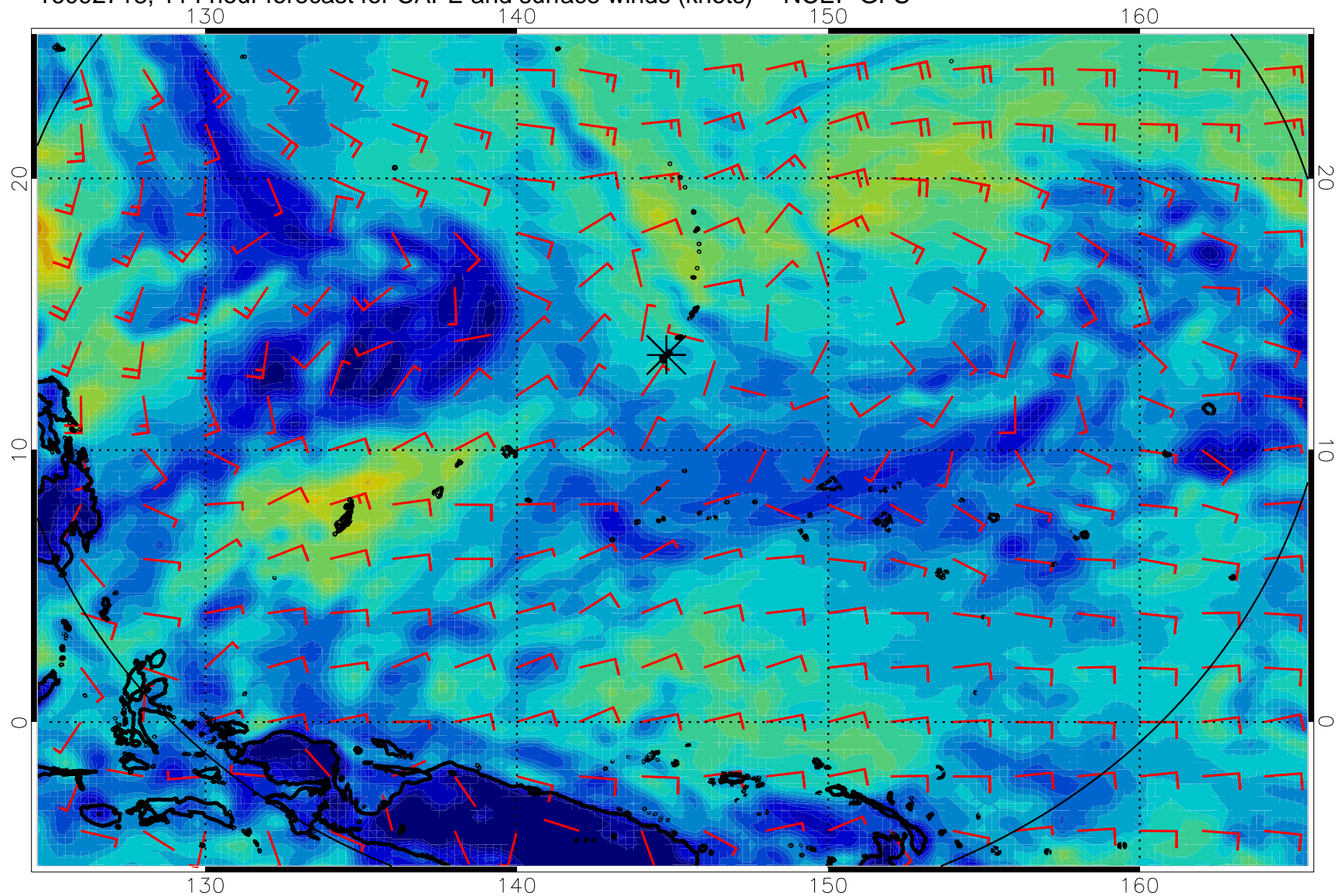


16092712, 108 hour forecast for CAPE and surface winds (knots) -- NCEP GFS





16092718, 114 hour forecast for CAPE and surface winds (knots) -- NCEP GFS



16092800, 120 hour forecast for CAPE and surface winds (knots) -- NCEP GFS

