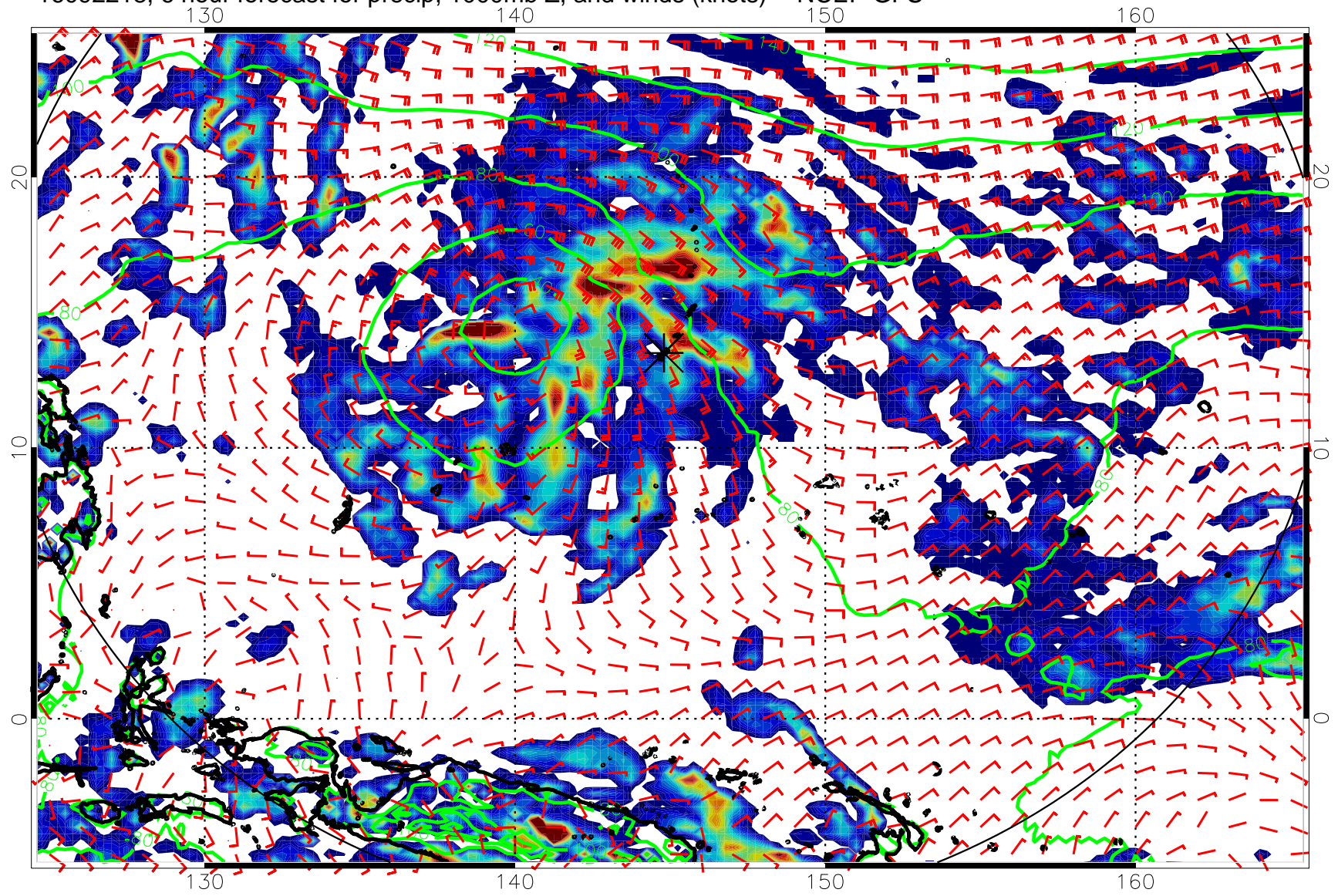
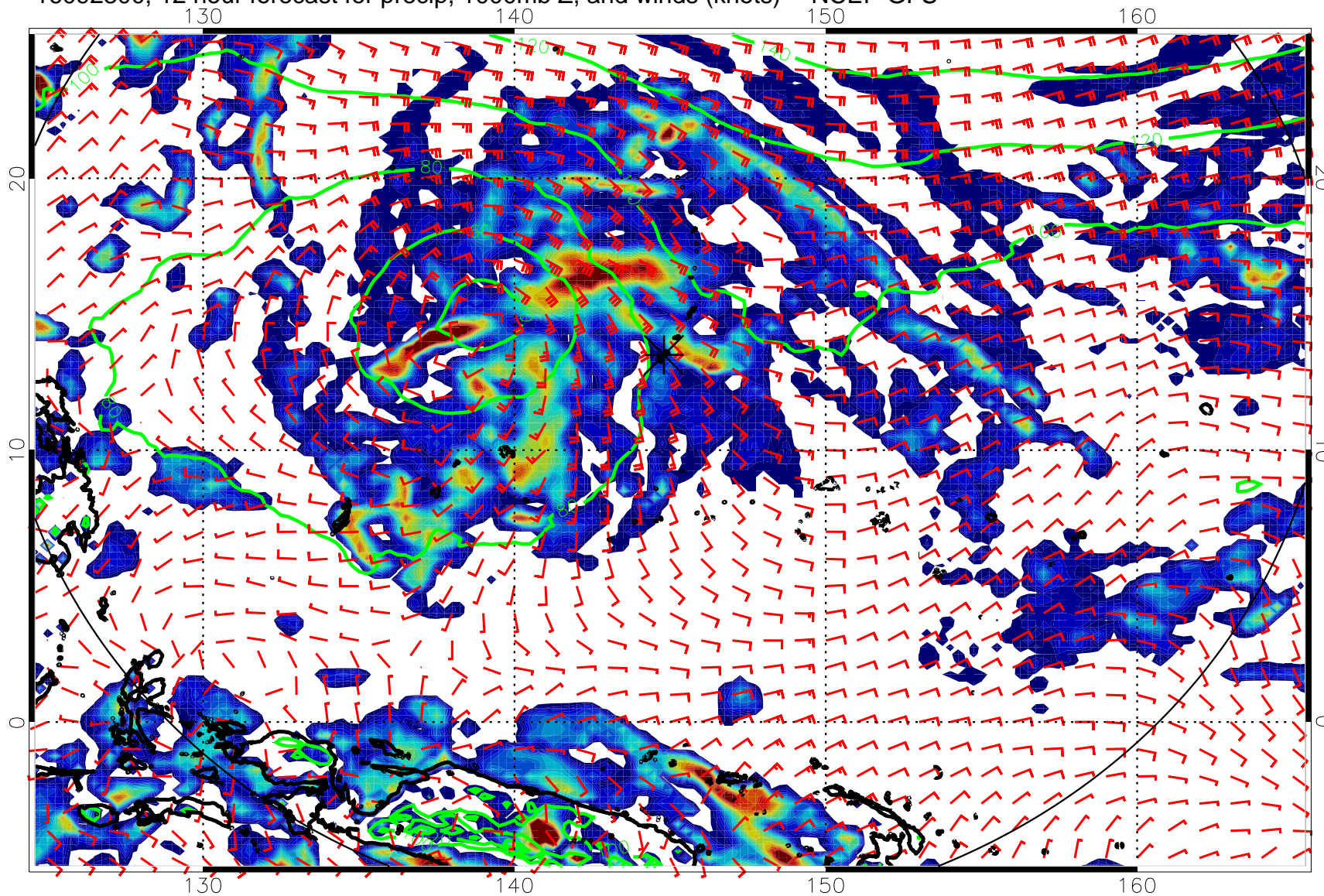


16092218, 6 hour forecast for precip, 1000mb Z, and winds (knots) -- NCEP GFS



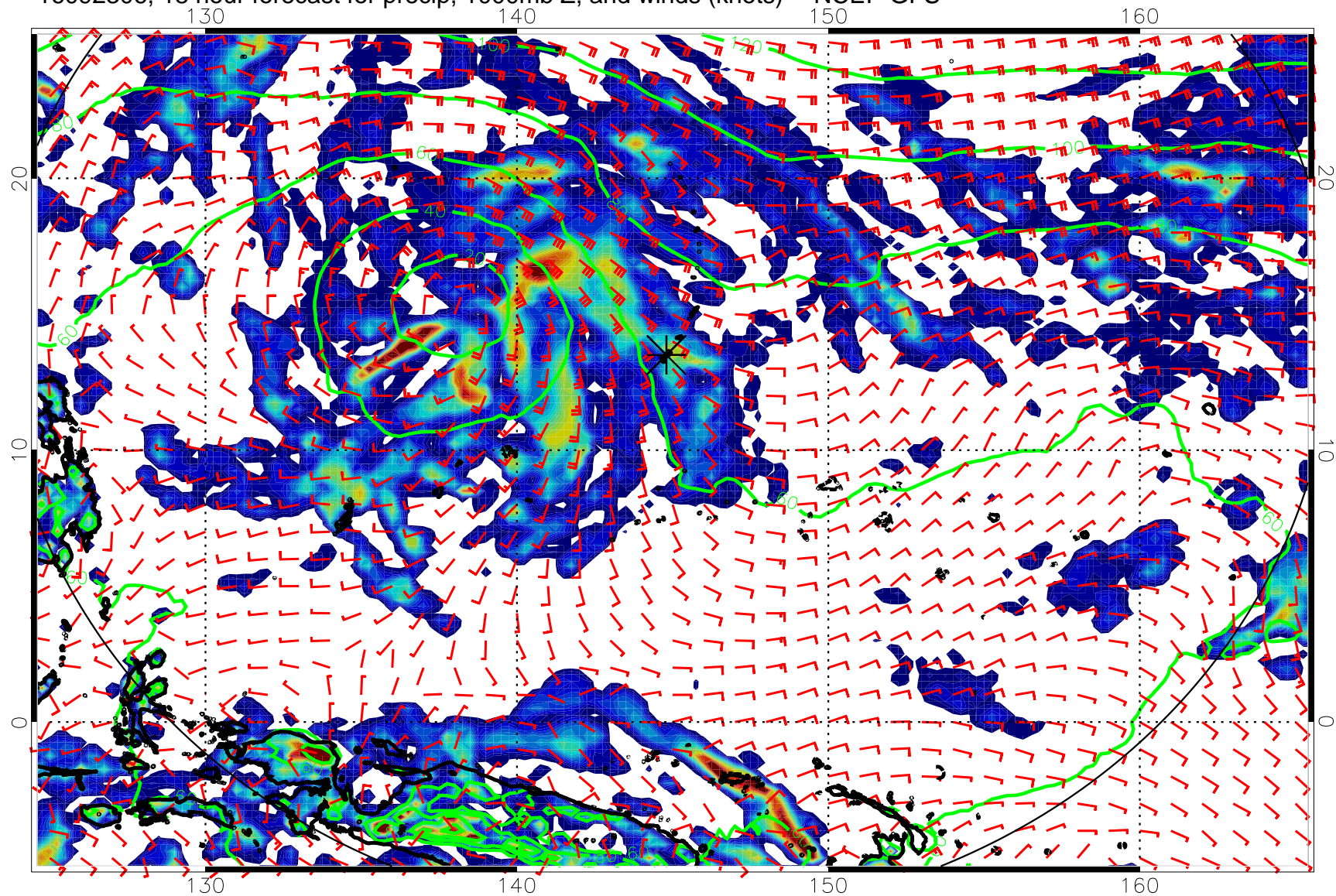
20 40 60 80
Precipitation, mm/day

16092300, 12 hour forecast for precip, 1000mb Z, and winds (knots) -- NCEP GFS



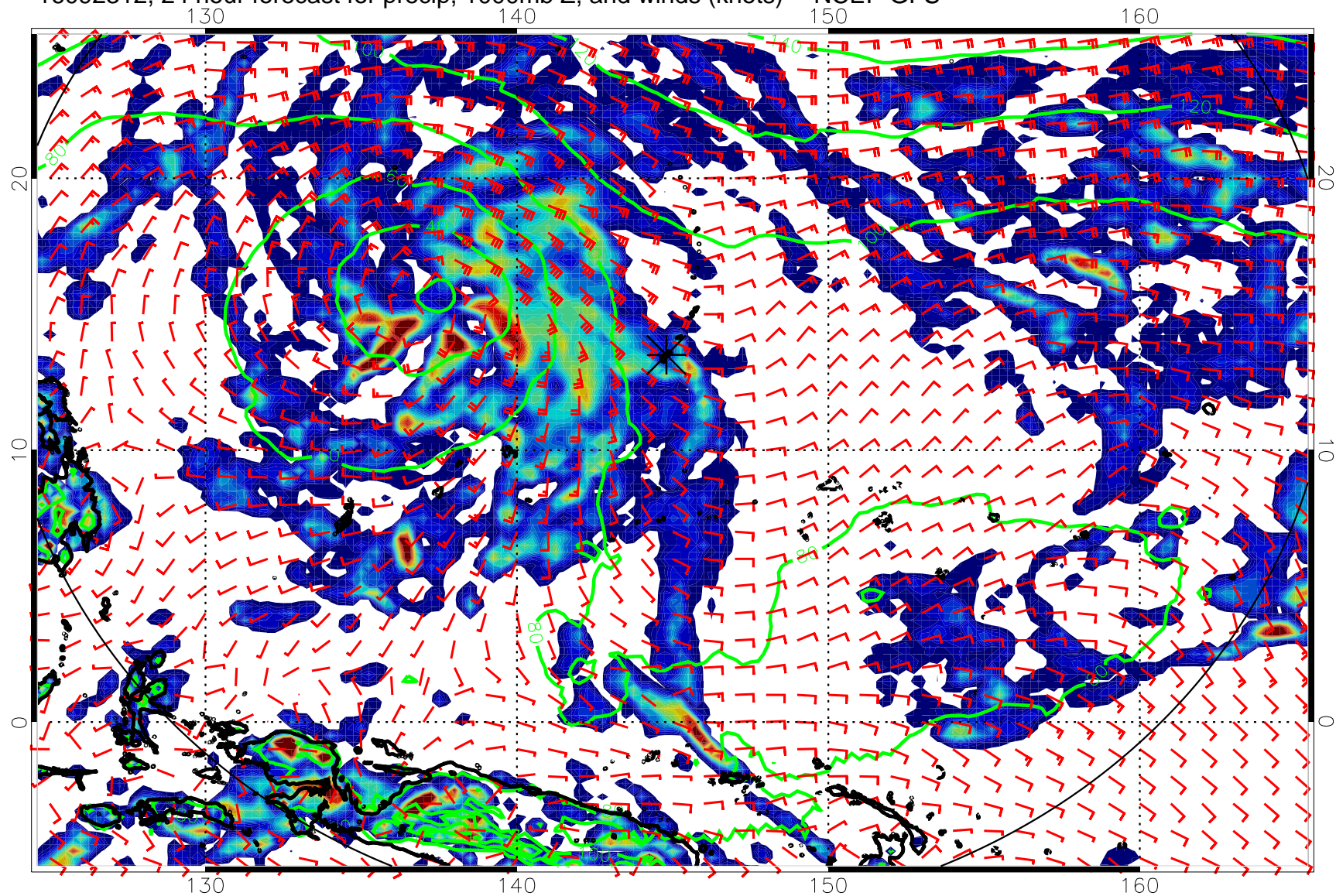
Precipitation, mm/day

16092306, 18 hour forecast for precip, 1000mb Z, and winds (knots) -- NCEP GFS



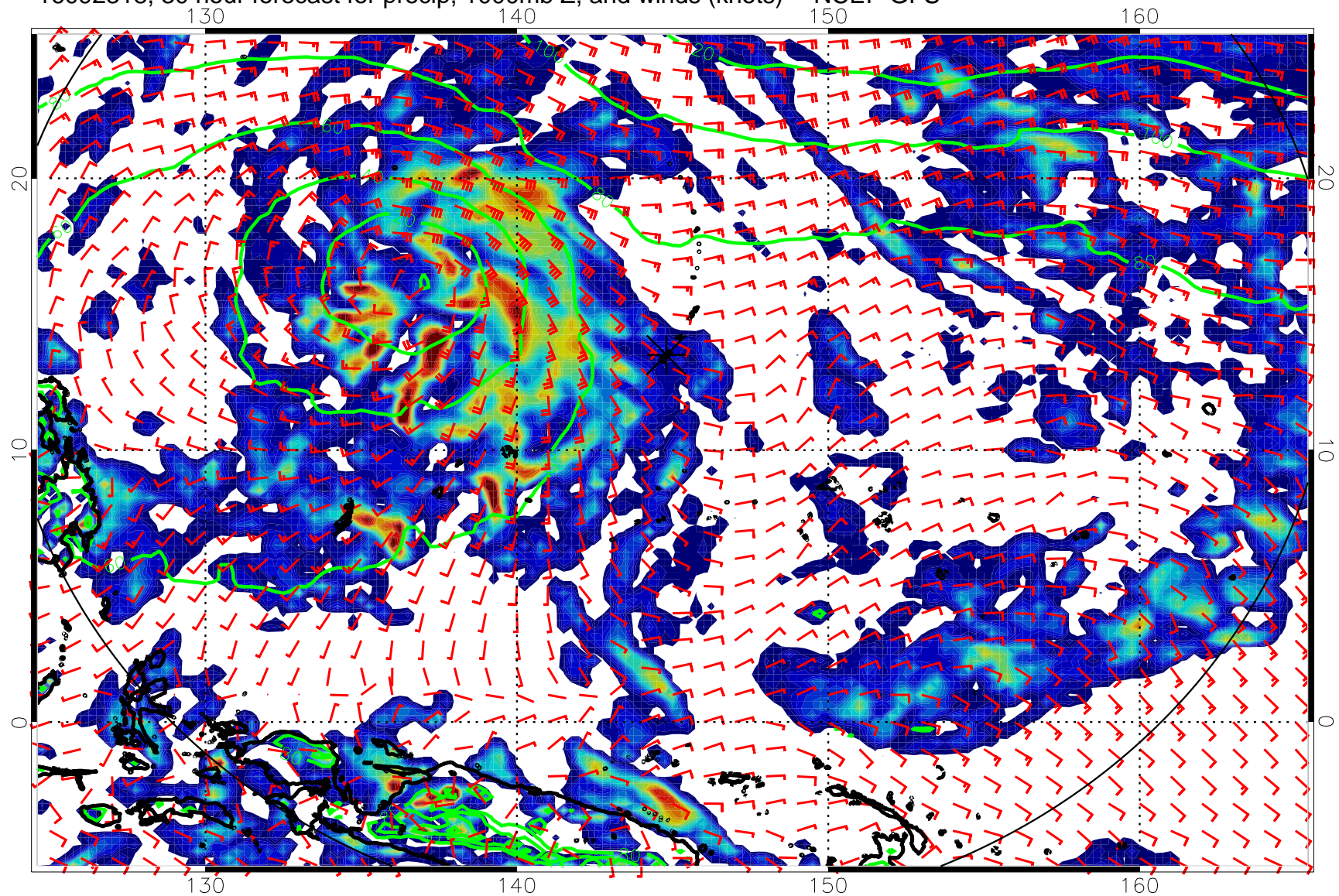
20 40 60 80
Precipitation, mm/day

16092312, 24 hour forecast for precip, 1000mb Z, and winds (knots) -- NCEP GFS



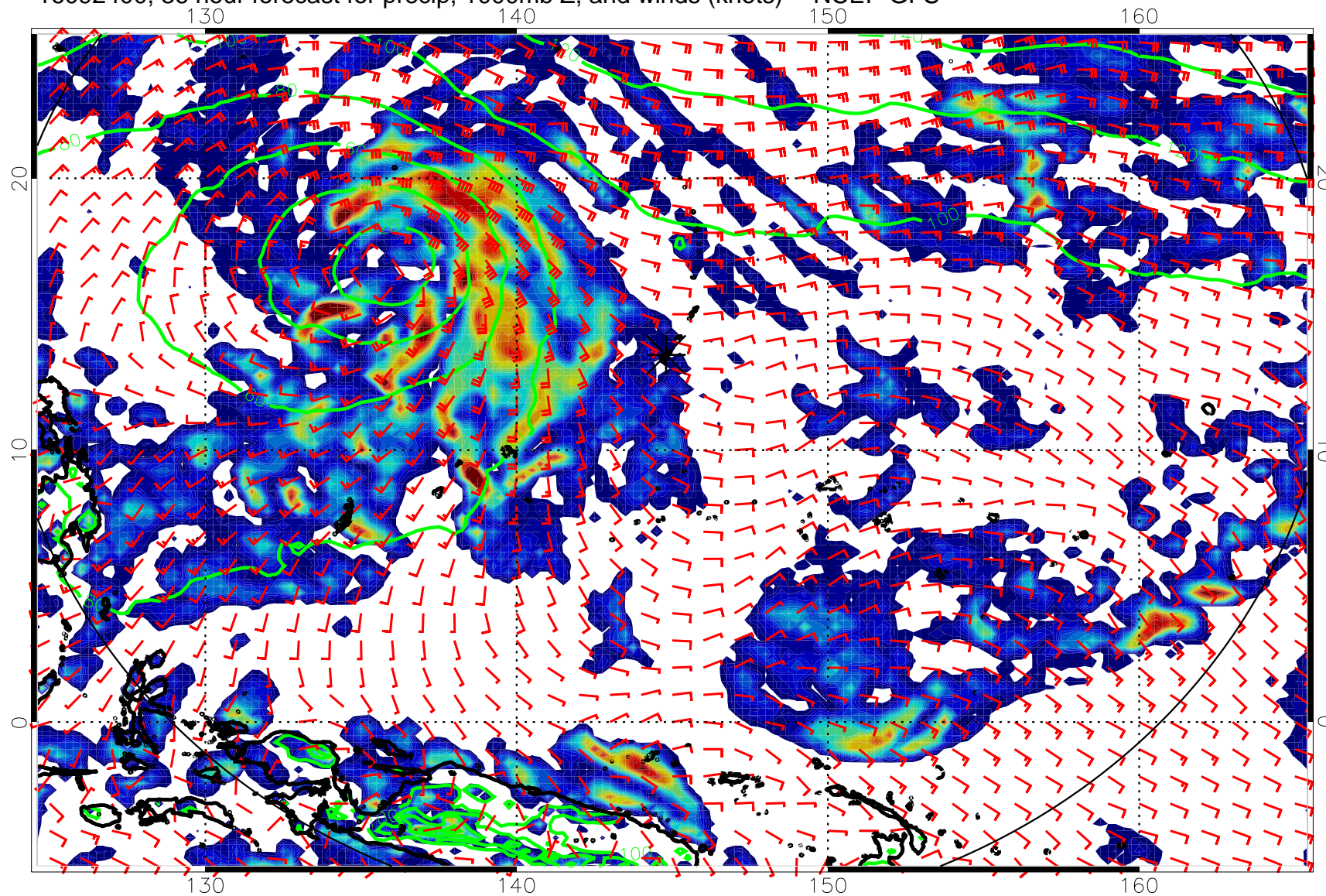
20 40 60 80
Precipitation, mm/day

16092318, 30 hour forecast for precip, 1000mb Z, and winds (knots) -- NCEP GFS



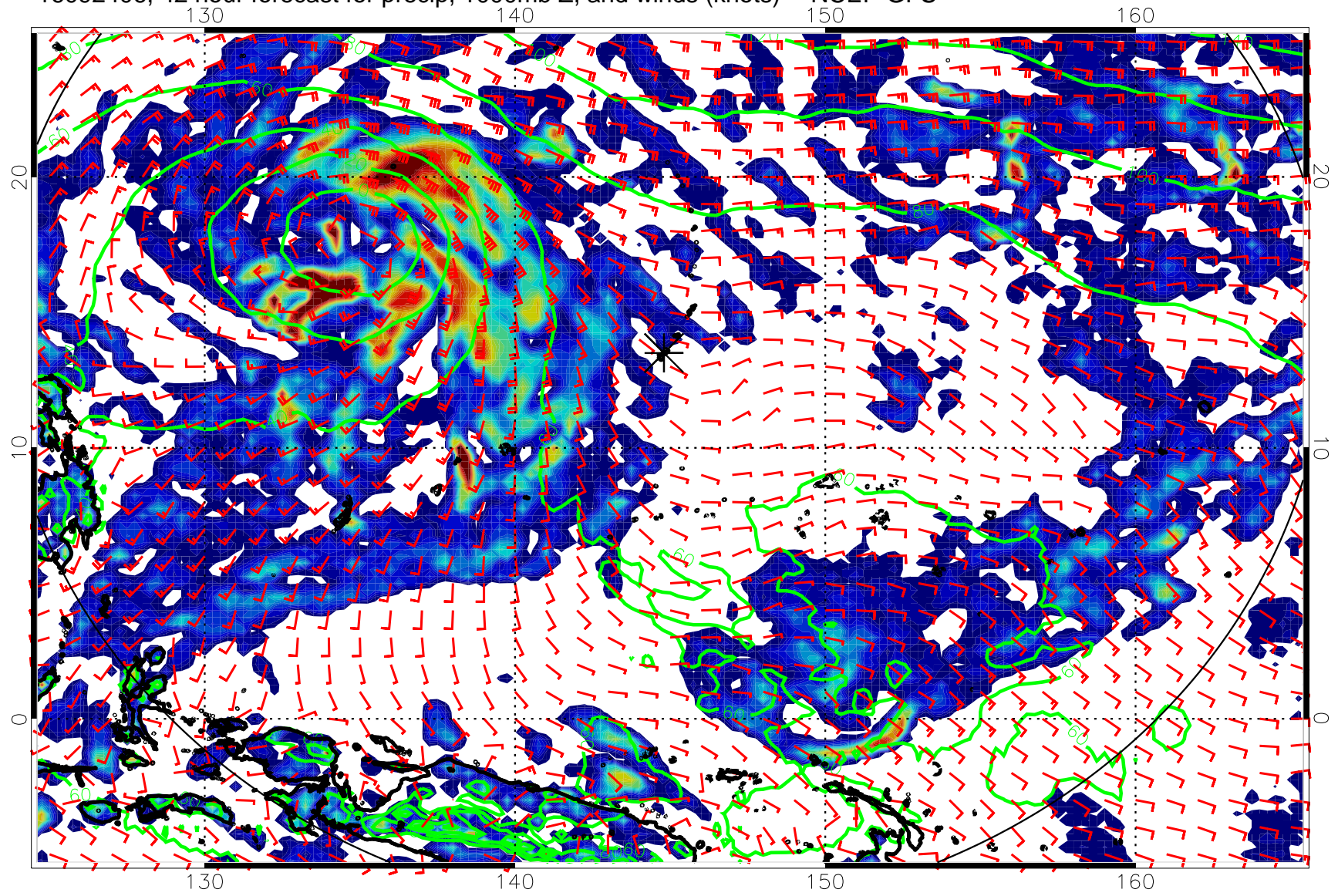
20 40 60 80
Precipitation, mm/day

16092400, 36 hour forecast for precip, 1000mb Z, and winds (knots) -- NCEP GFS



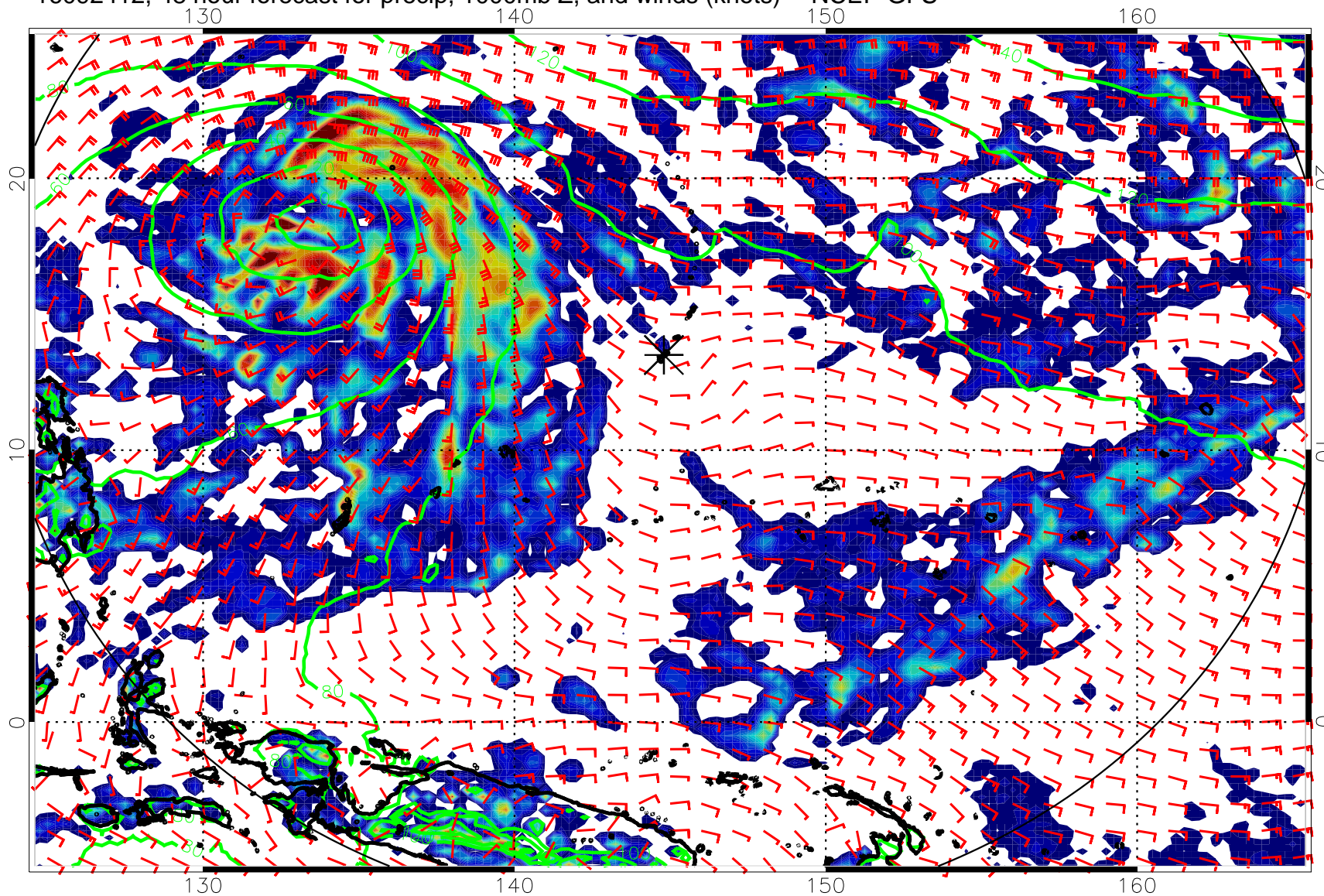
20 40 60 80
Precipitation, mm/day

16092406, 42 hour forecast for precip, 1000mb Z, and winds (knots) -- NCEP GFS



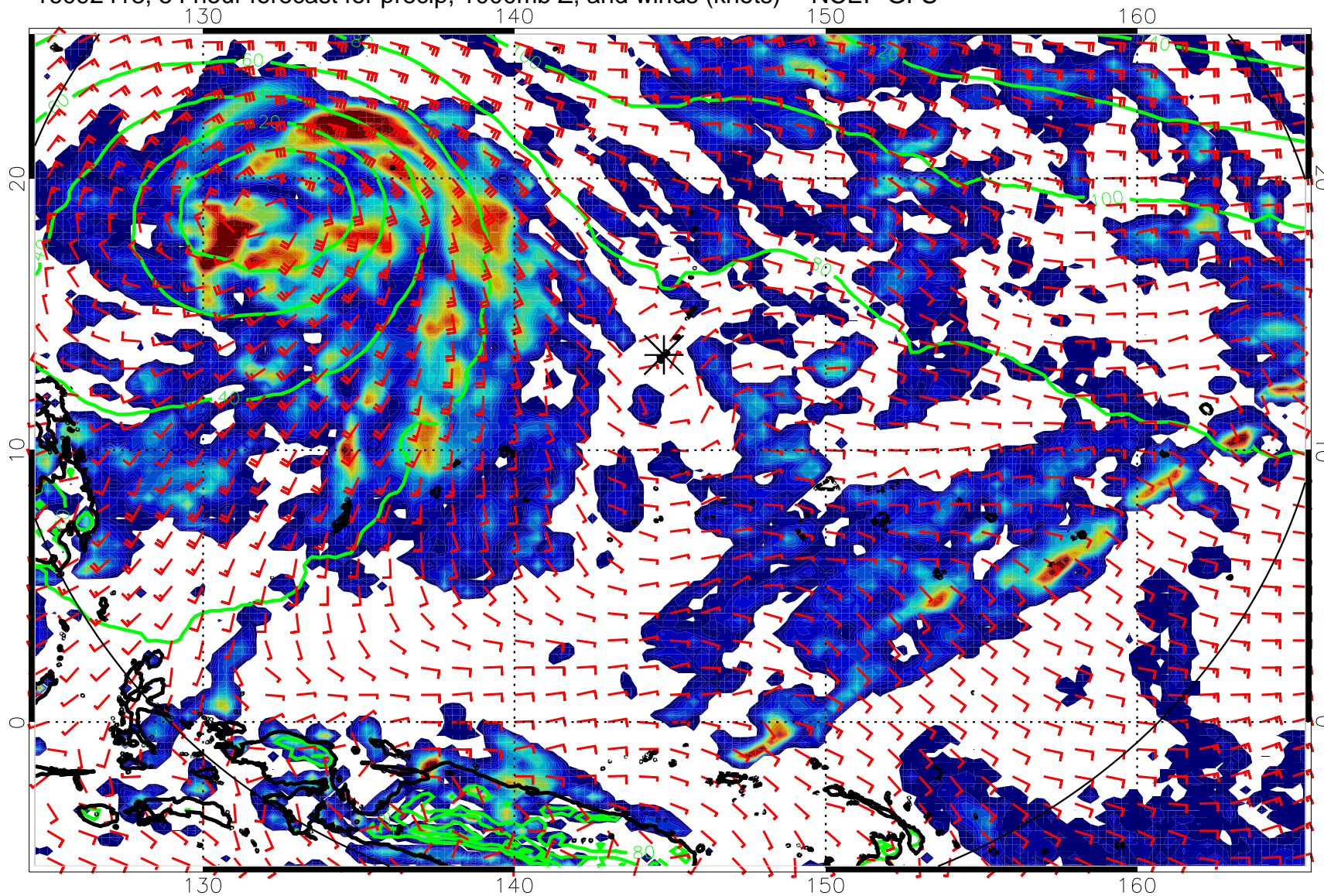
20 40 60 80
Precipitation, mm/day

16092412, 48 hour forecast for precip, 1000mb Z, and winds (knots) -- NCEP GFS



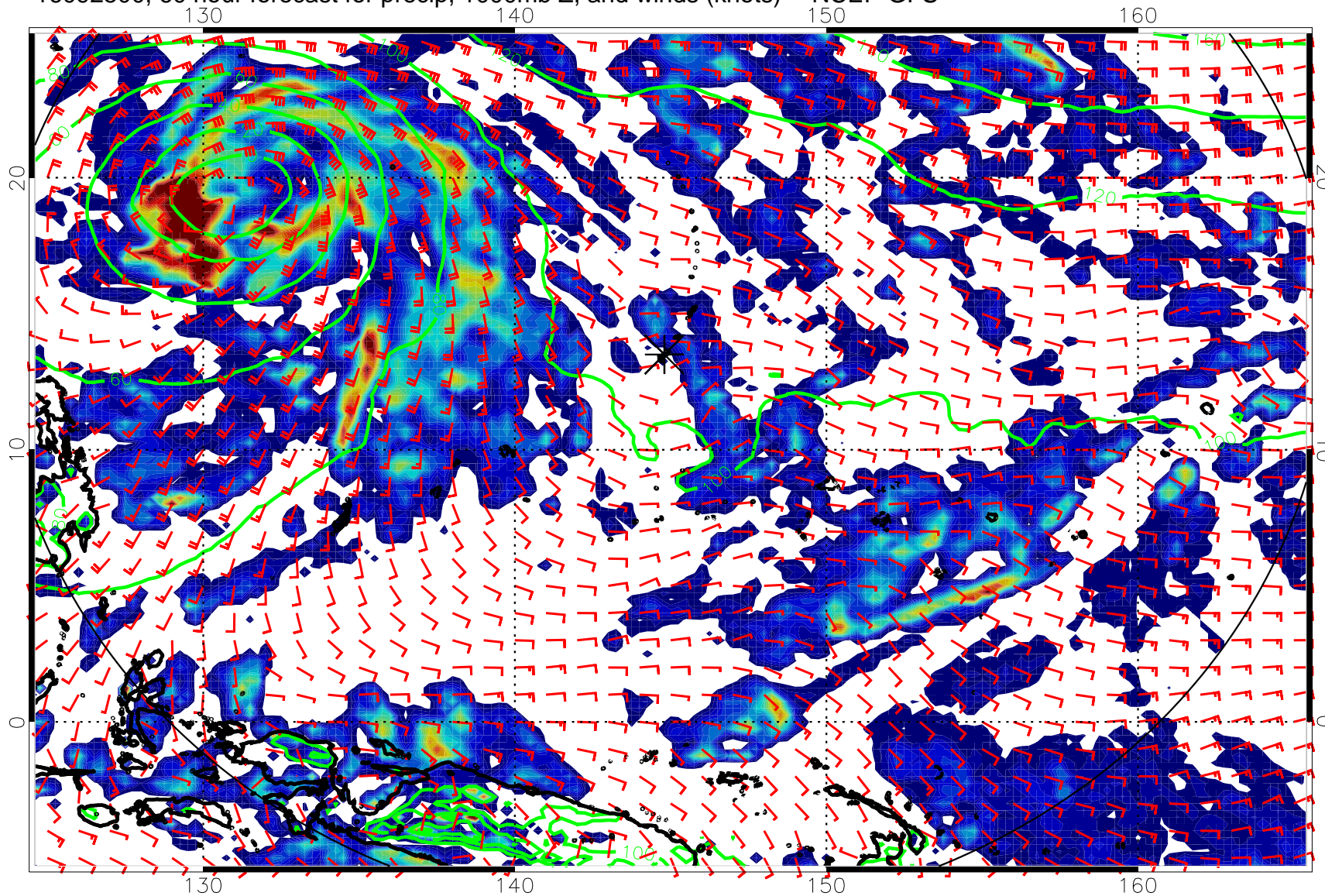
20 40 60 80
Precipitation, mm/day

16092418, 54 hour forecast for precip, 1000mb Z, and winds (knots) -- NCEP GFS



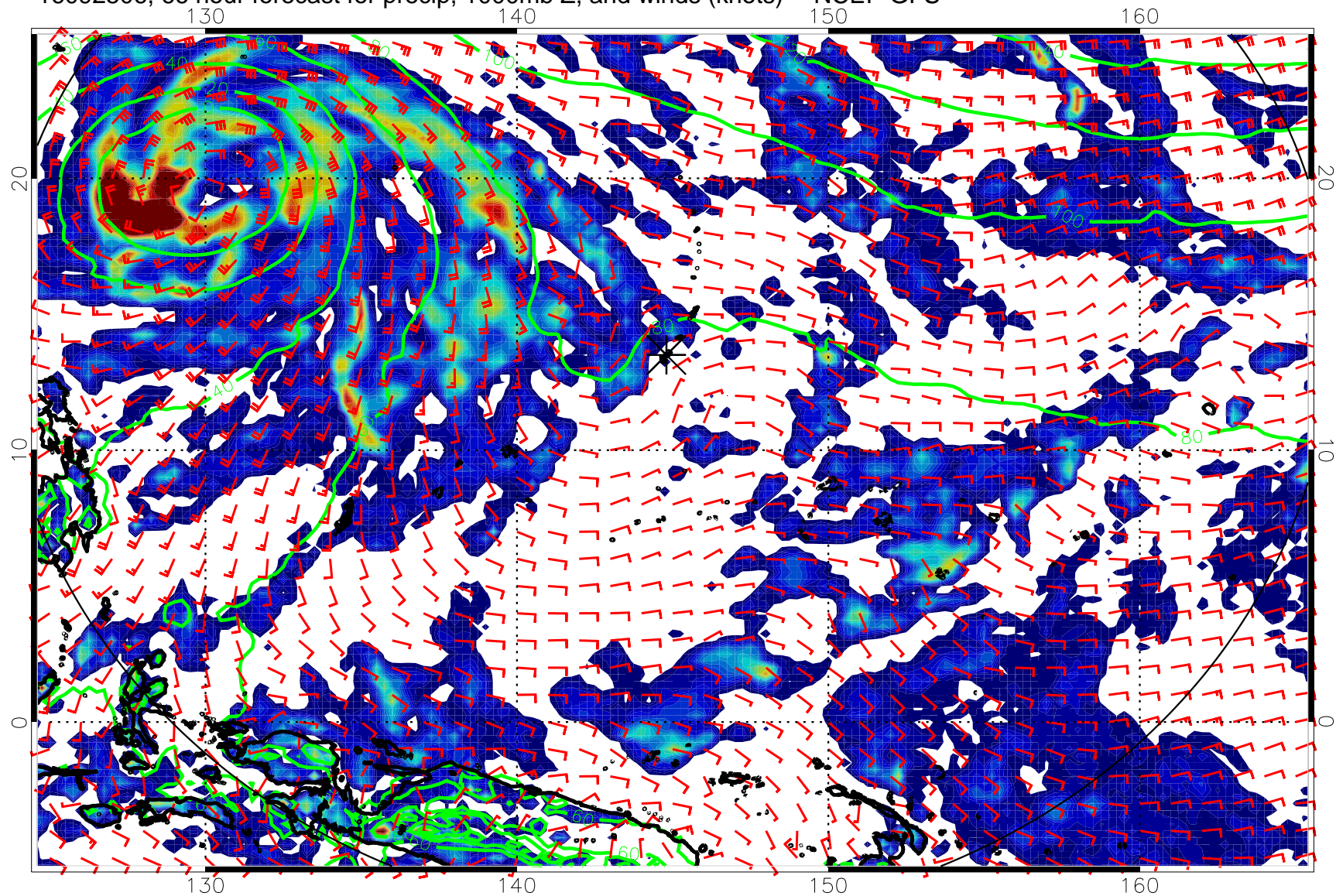
Precipitation, mm/day

16092500, 60 hour forecast for precip, 1000mb Z, and winds (knots) -- NCEP GFS



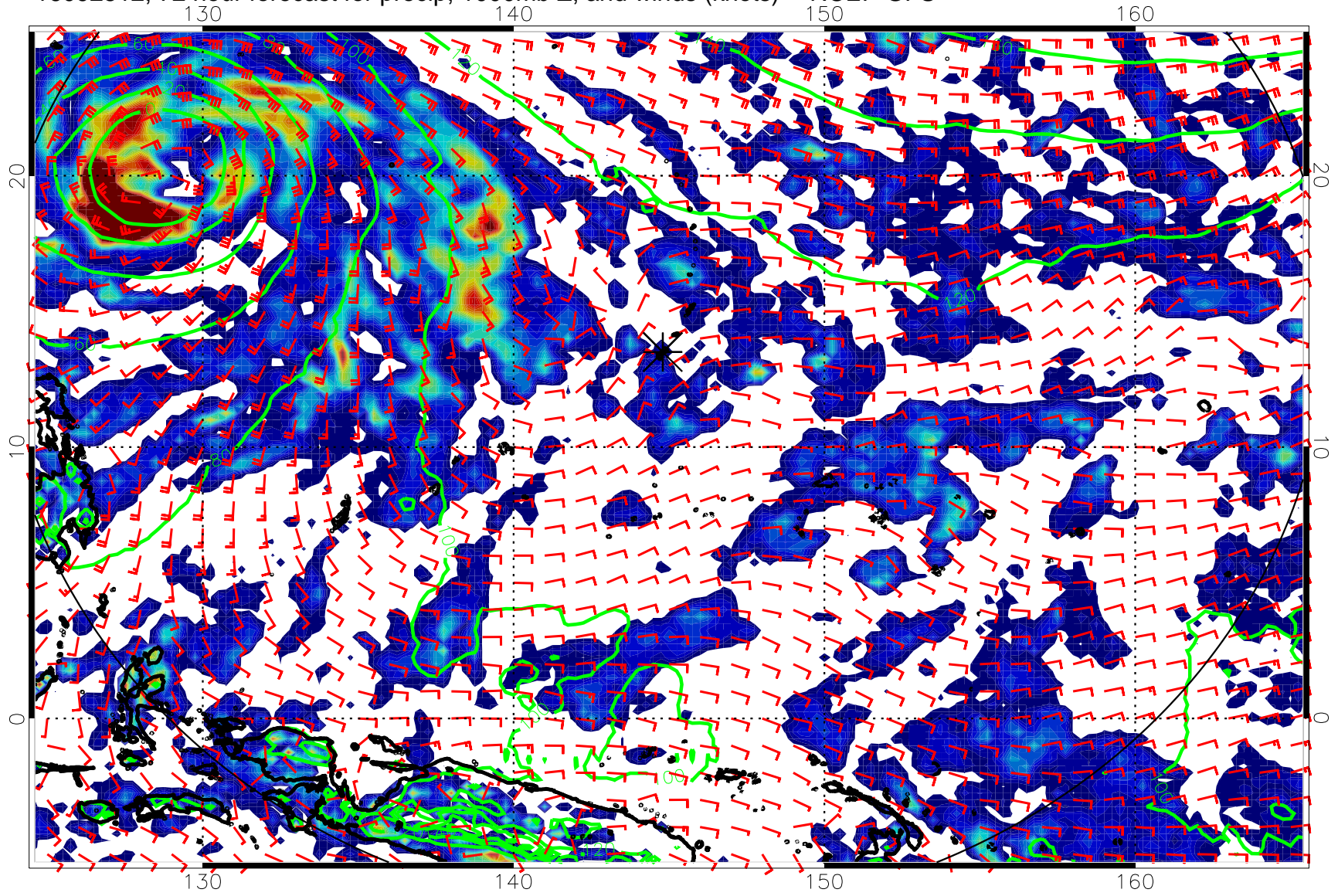
20 40 60 80
Precipitation, mm/day

16092506, 66 hour forecast for precip, 1000mb Z, and winds (knots) -- NCEP GFS



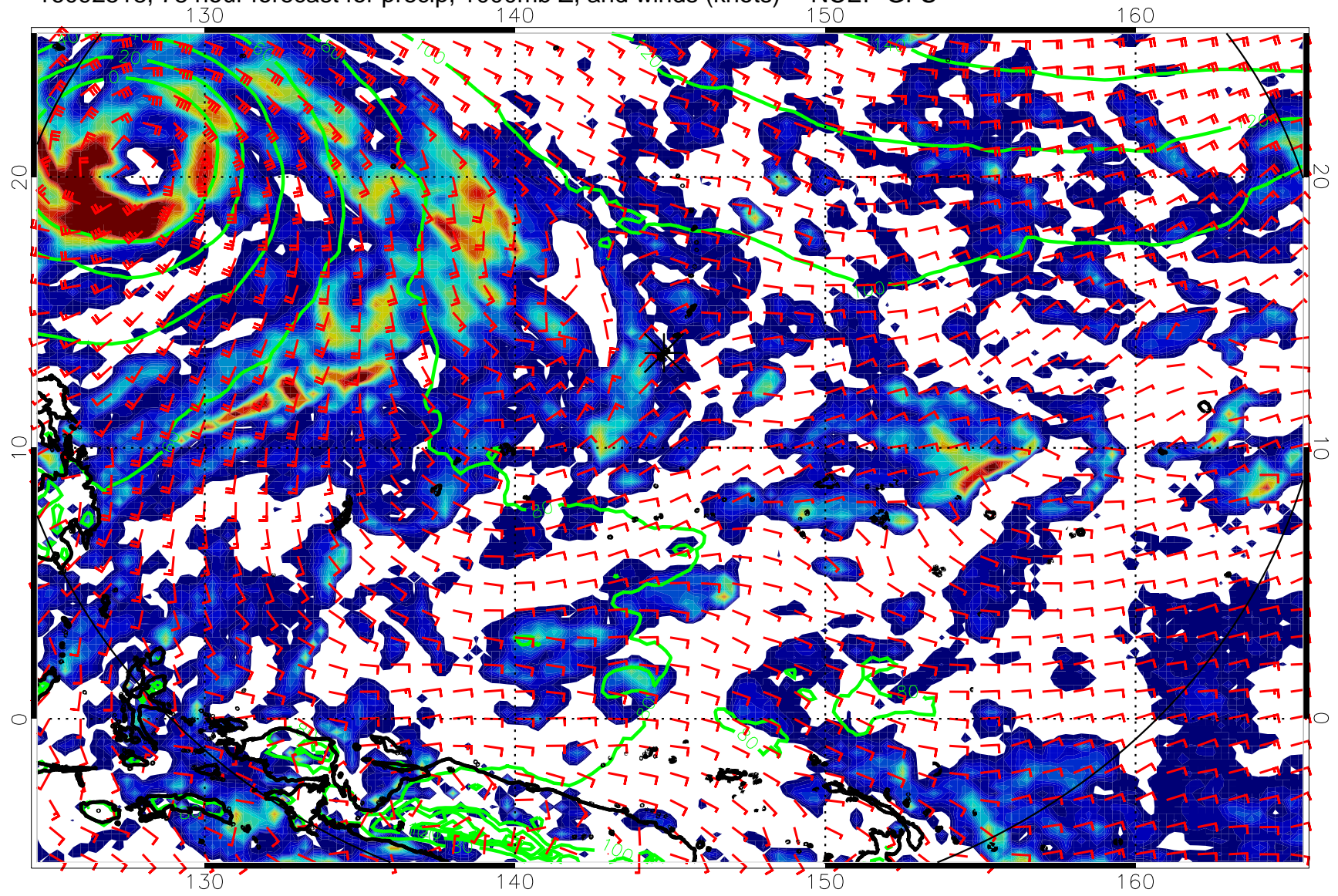
20 40 60 80
Precipitation, mm/day

16092512, 72 hour forecast for precip, 1000mb Z, and winds (knots) -- NCEP GFS



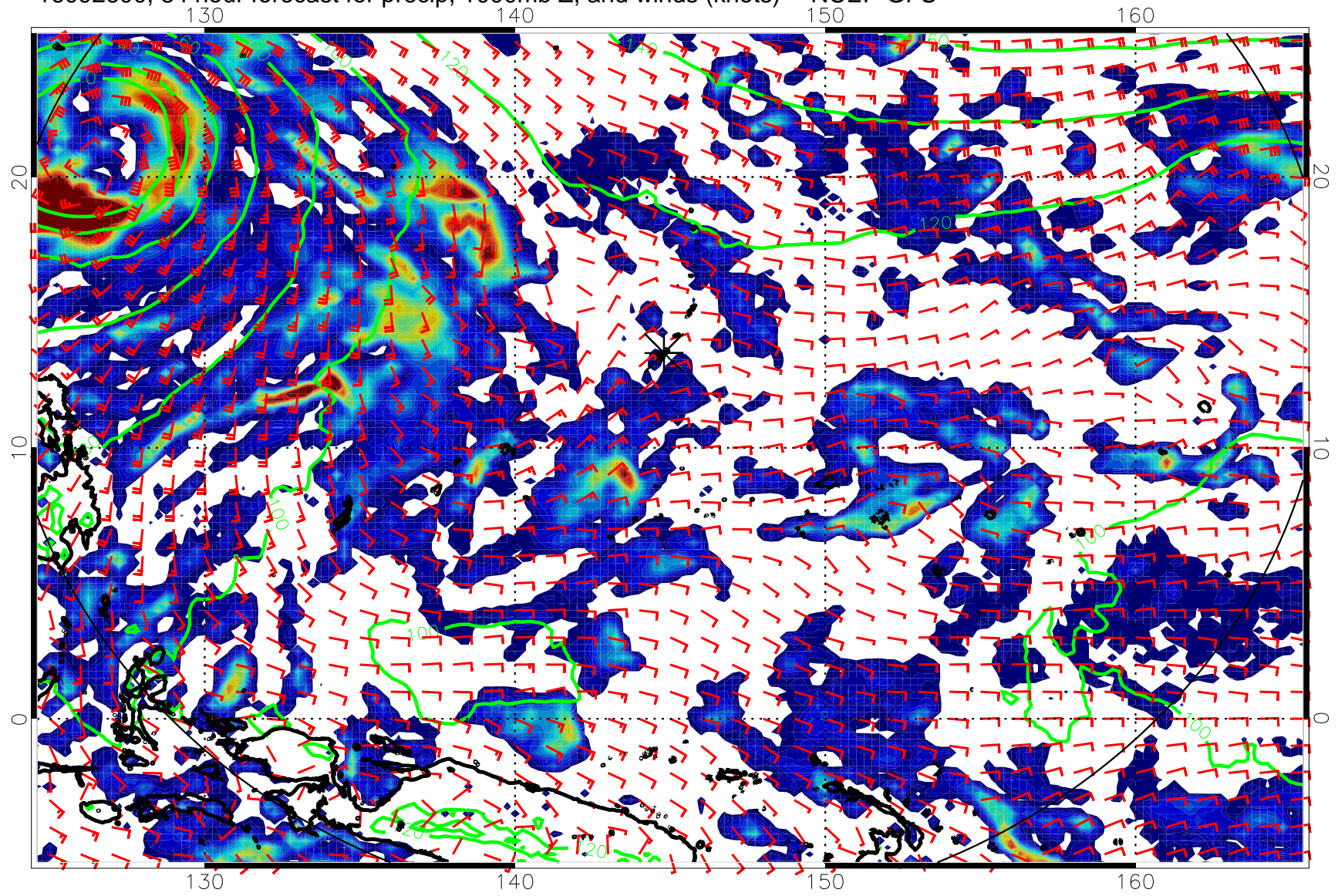
20 40 60 80
Precipitation, mm/day

16092518, 78 hour forecast for precip, 1000mb Z, and winds (knots) -- NCEP GFS



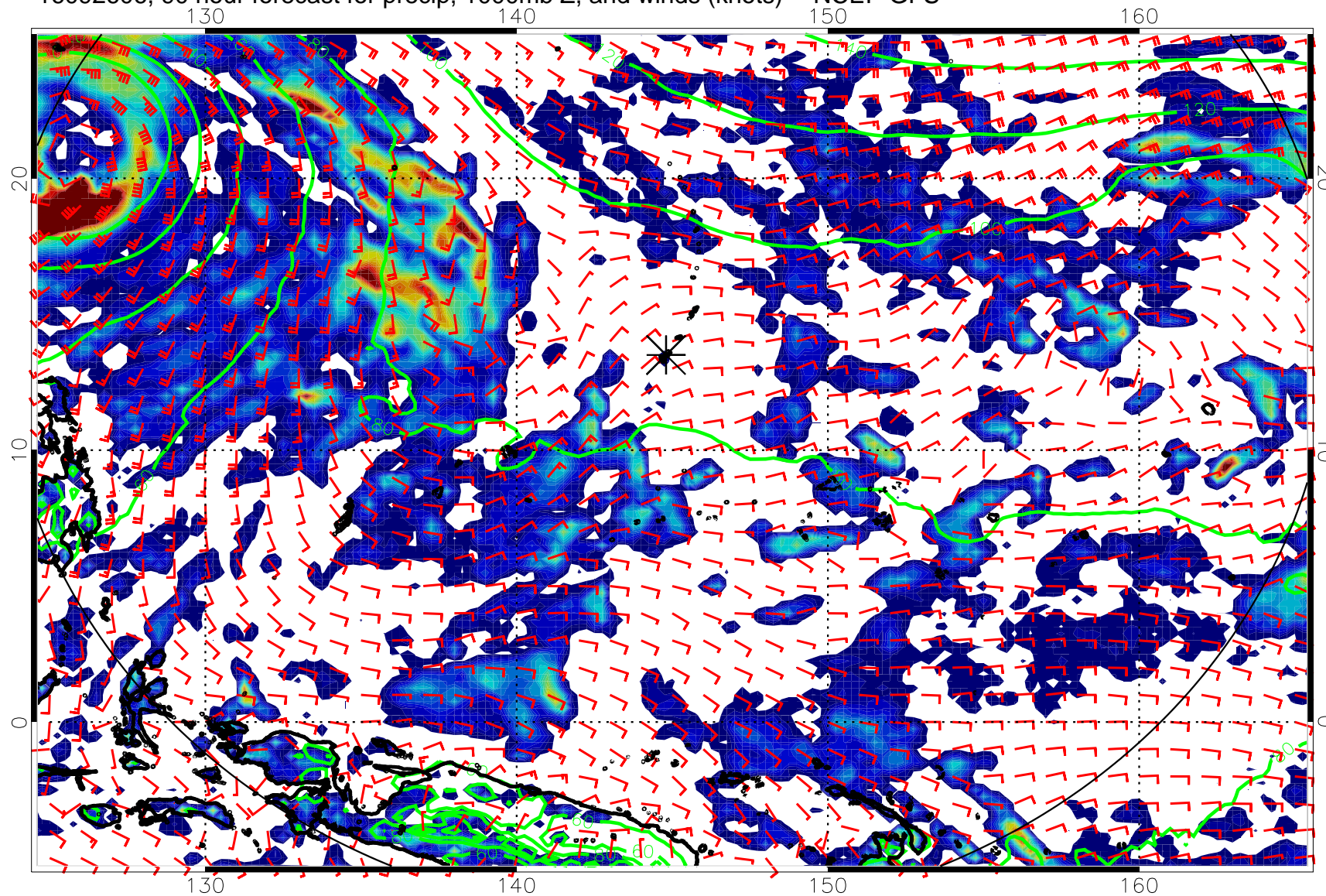
20 40 60 80
Precipitation, mm/day

16092600, 84 hour forecast for precip, 1000mb Z, and winds (knots) -- NCEP GFS



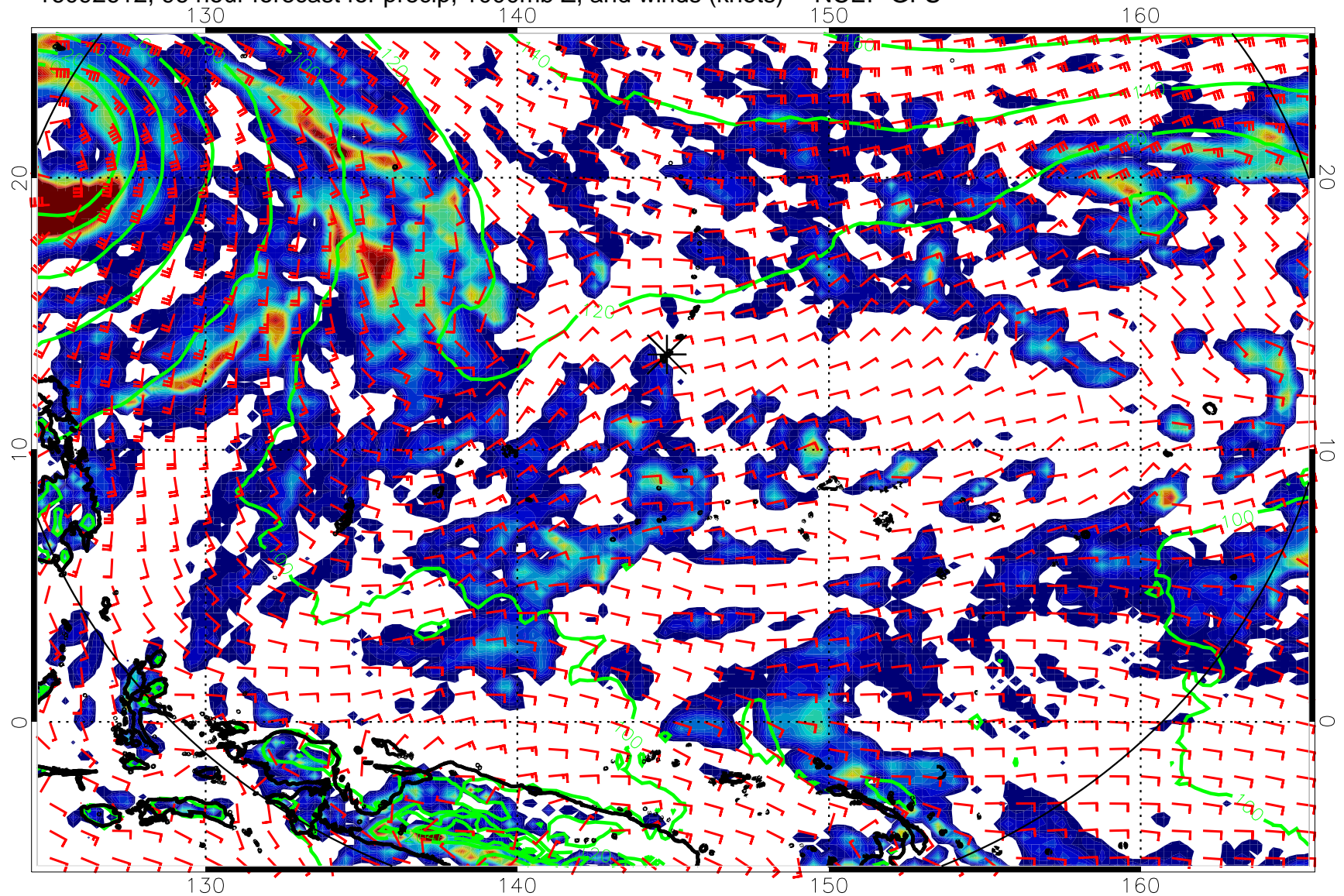
20 40 60 80
Precipitation, mm/day

16092606, 90 hour forecast for precip, 1000mb Z, and winds (knots) -- NCEP GFS



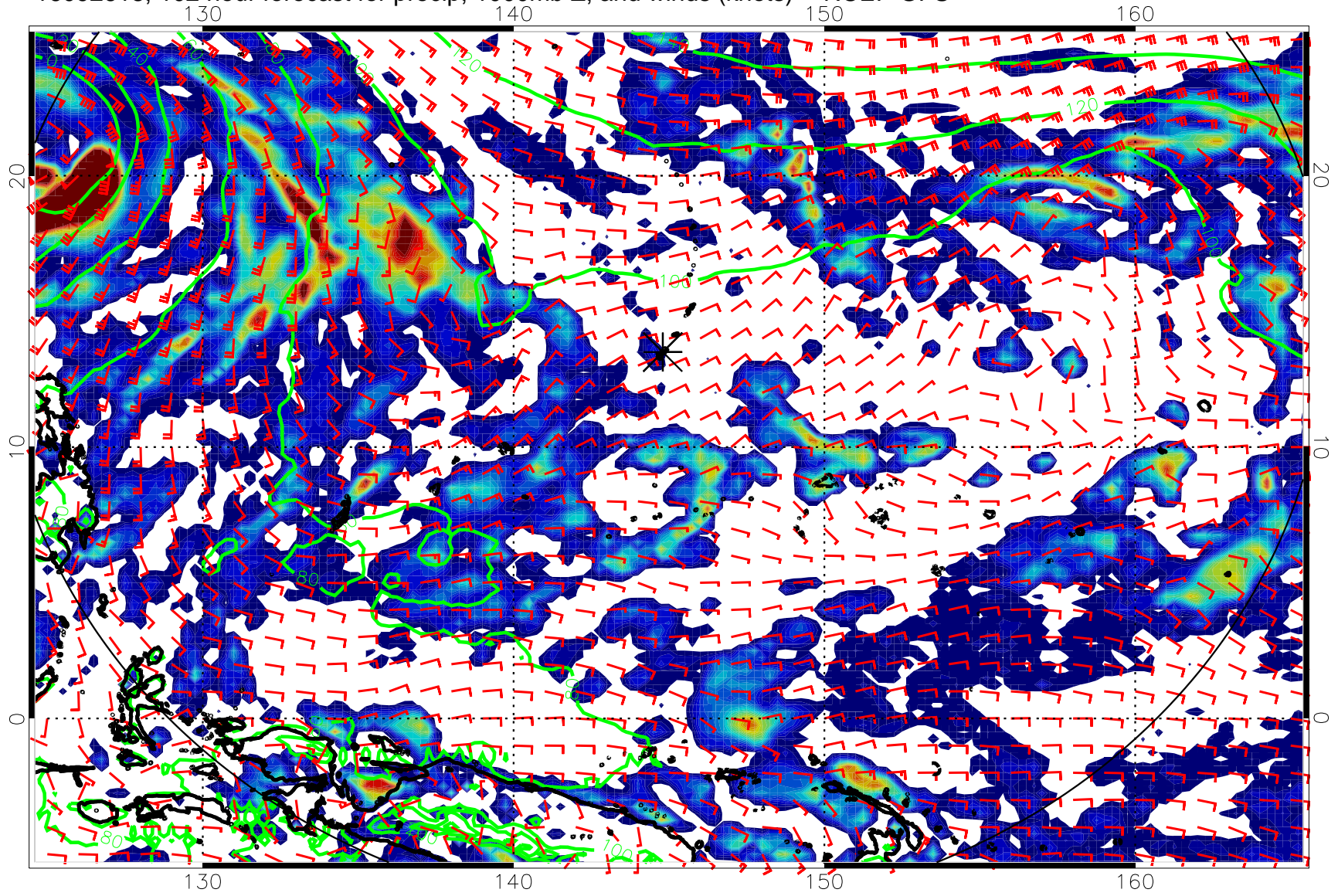
20 40 60 80
Precipitation, mm/day

16092612, 96 hour forecast for precip, 1000mb Z, and winds (knots) -- NCEP GFS



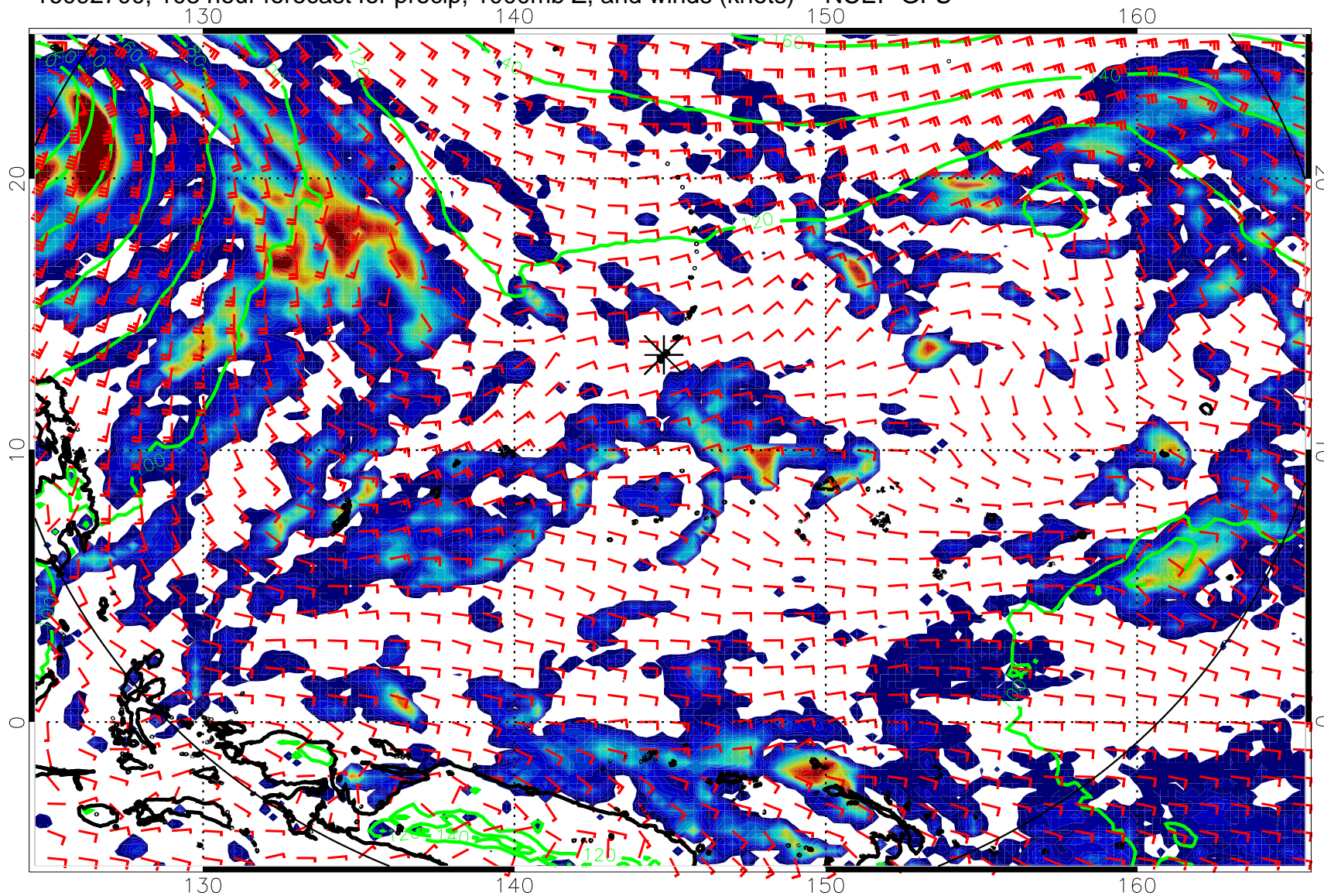
20 40 60 80
Precipitation, mm/day

16092618, 102 hour forecast for precip, 1000mb Z, and winds (knots) -- NCEP GFS



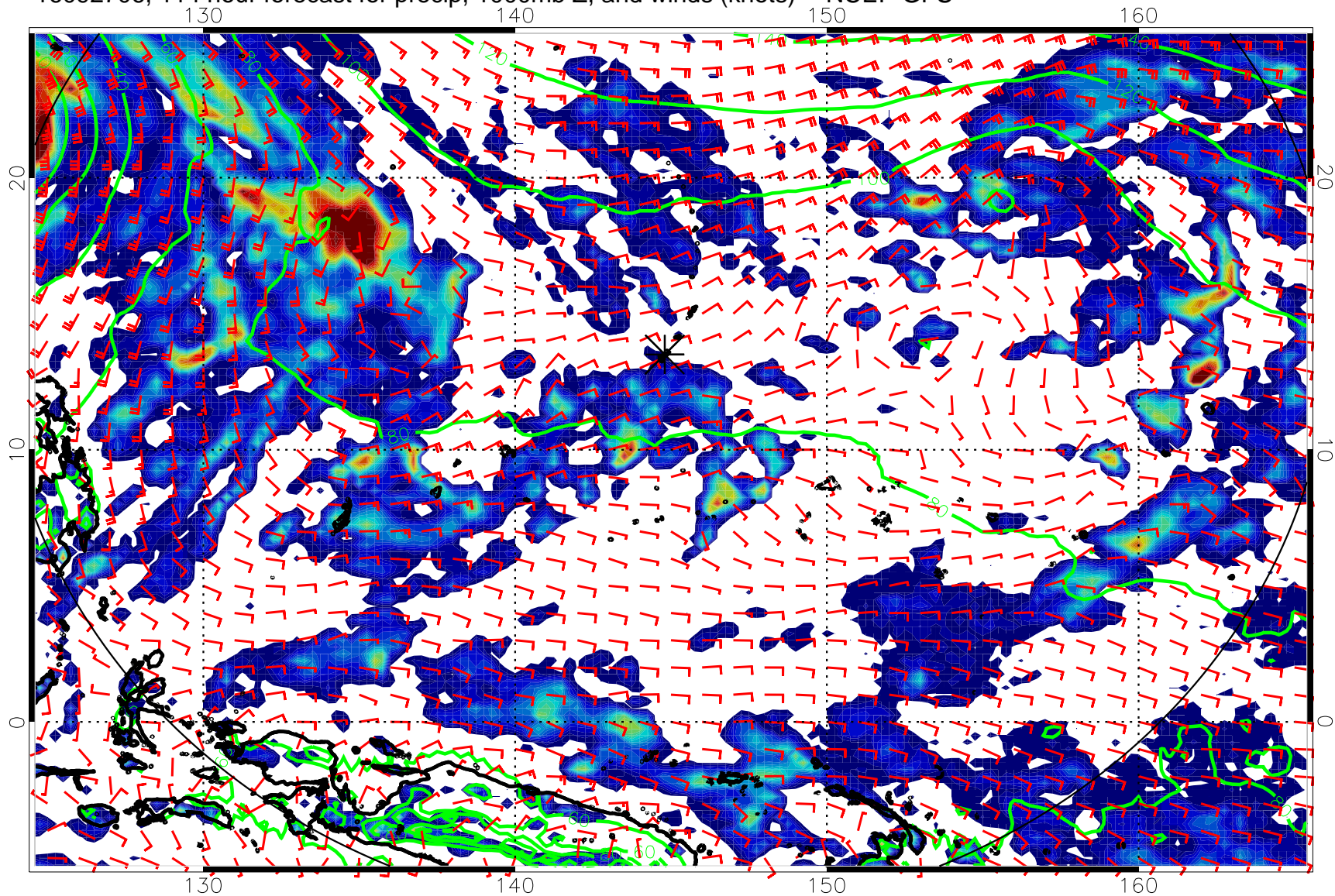
20 40 60 80
Precipitation, mm/day

16092700, 108 hour forecast for precip, 1000mb Z, and winds (knots) -- NCEP GFS



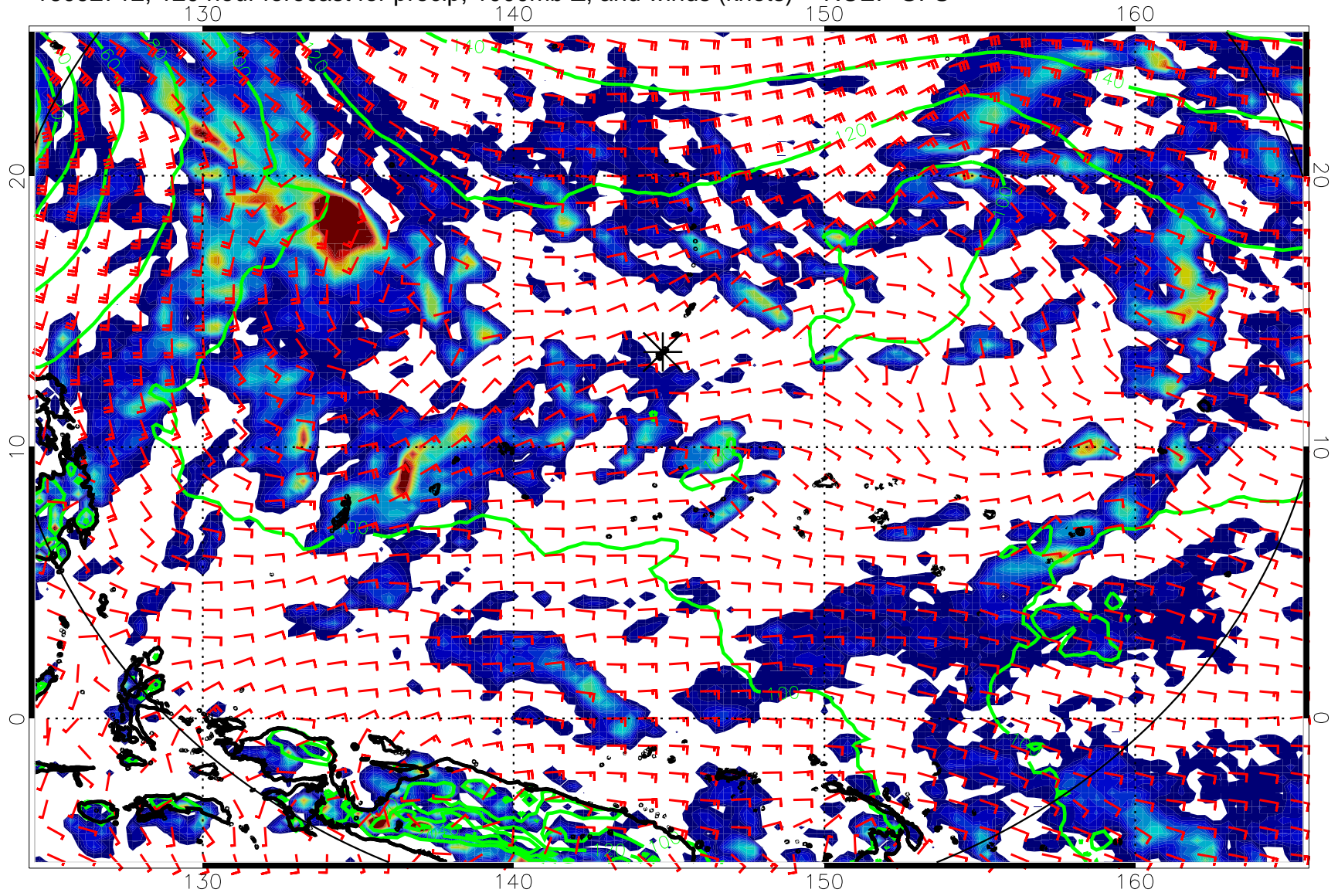
20 40 60 80
Precipitation, mm/day

16092706, 114 hour forecast for precip, 1000mb Z, and winds (knots) -- NCEP GFS



20 40 60 80
Precipitation, mm/day

16092712, 120 hour forecast for precip, 1000mb Z, and winds (knots) -- NCEP GFS



20 40 60 80
Precipitation, mm/day