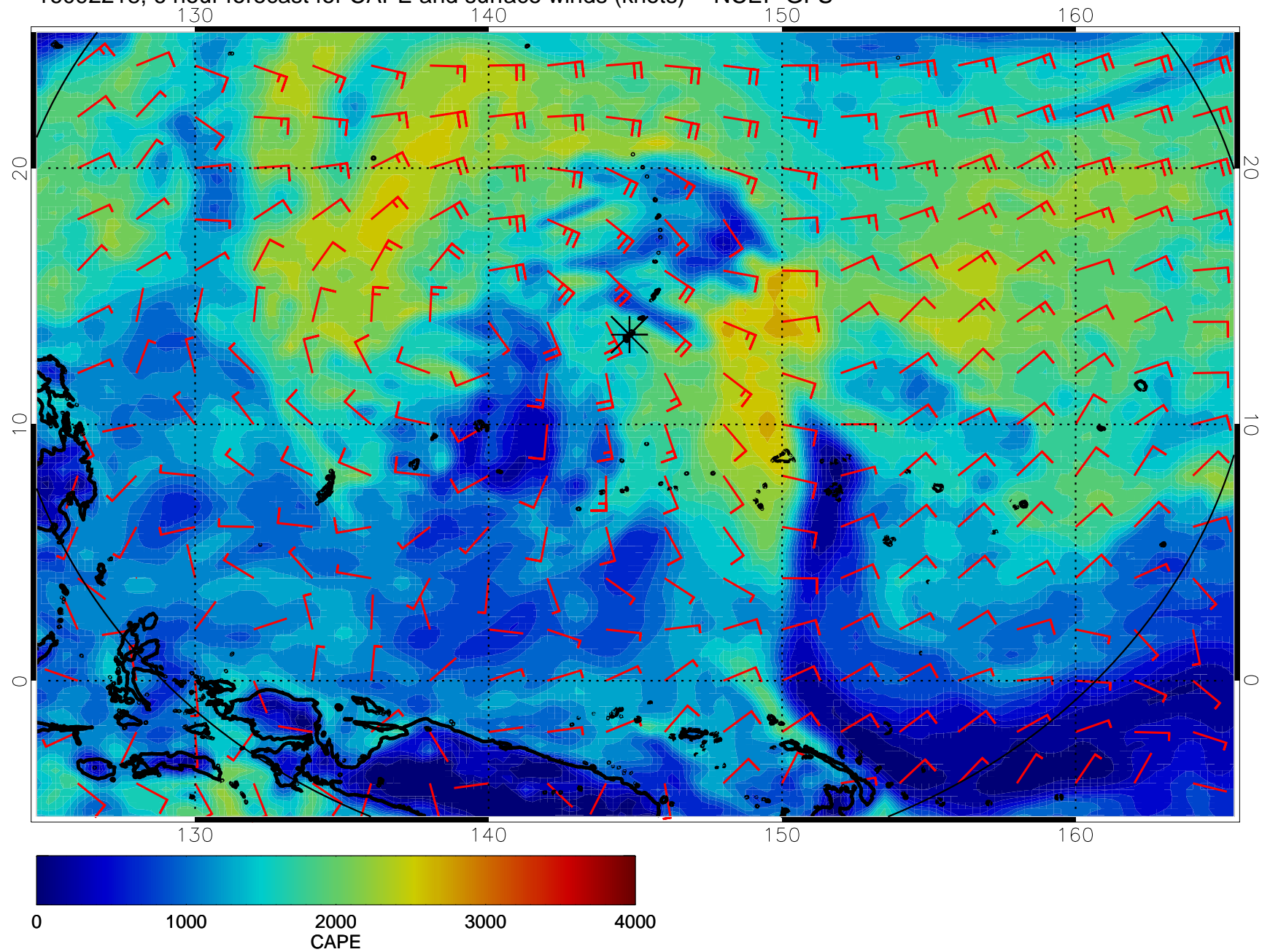
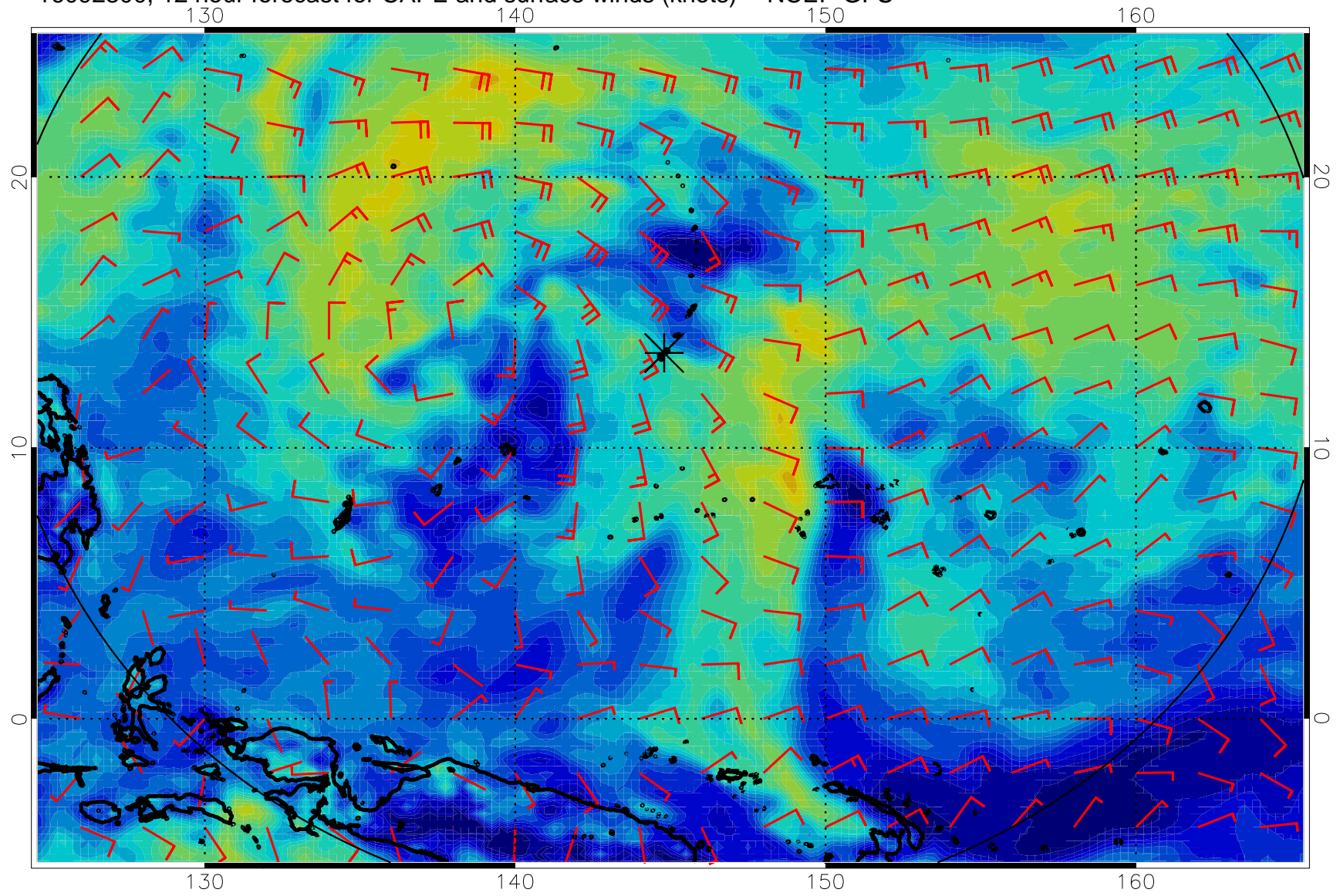


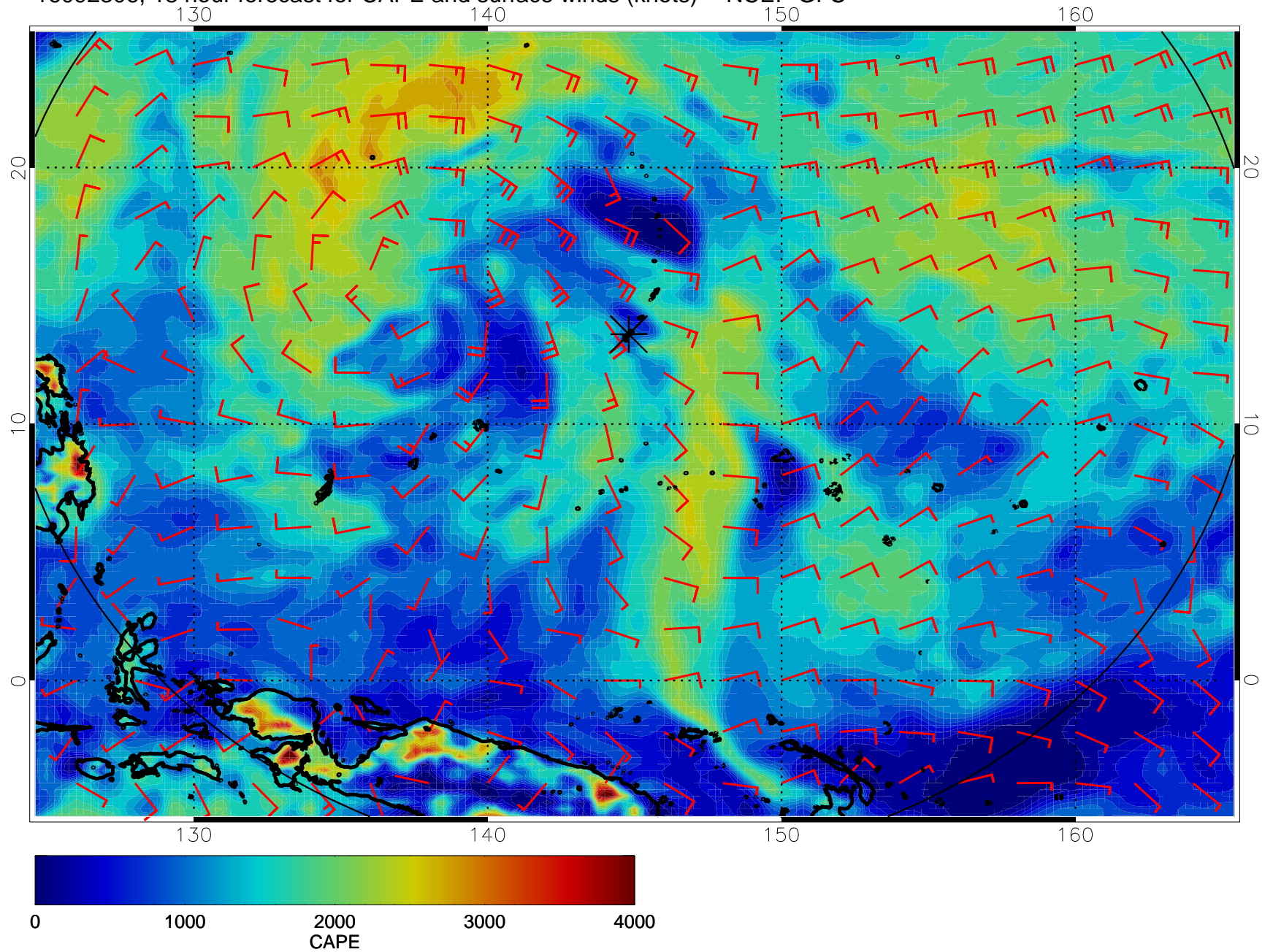
16092218, 6 hour forecast for CAPE and surface winds (knots) -- NCEP GFS



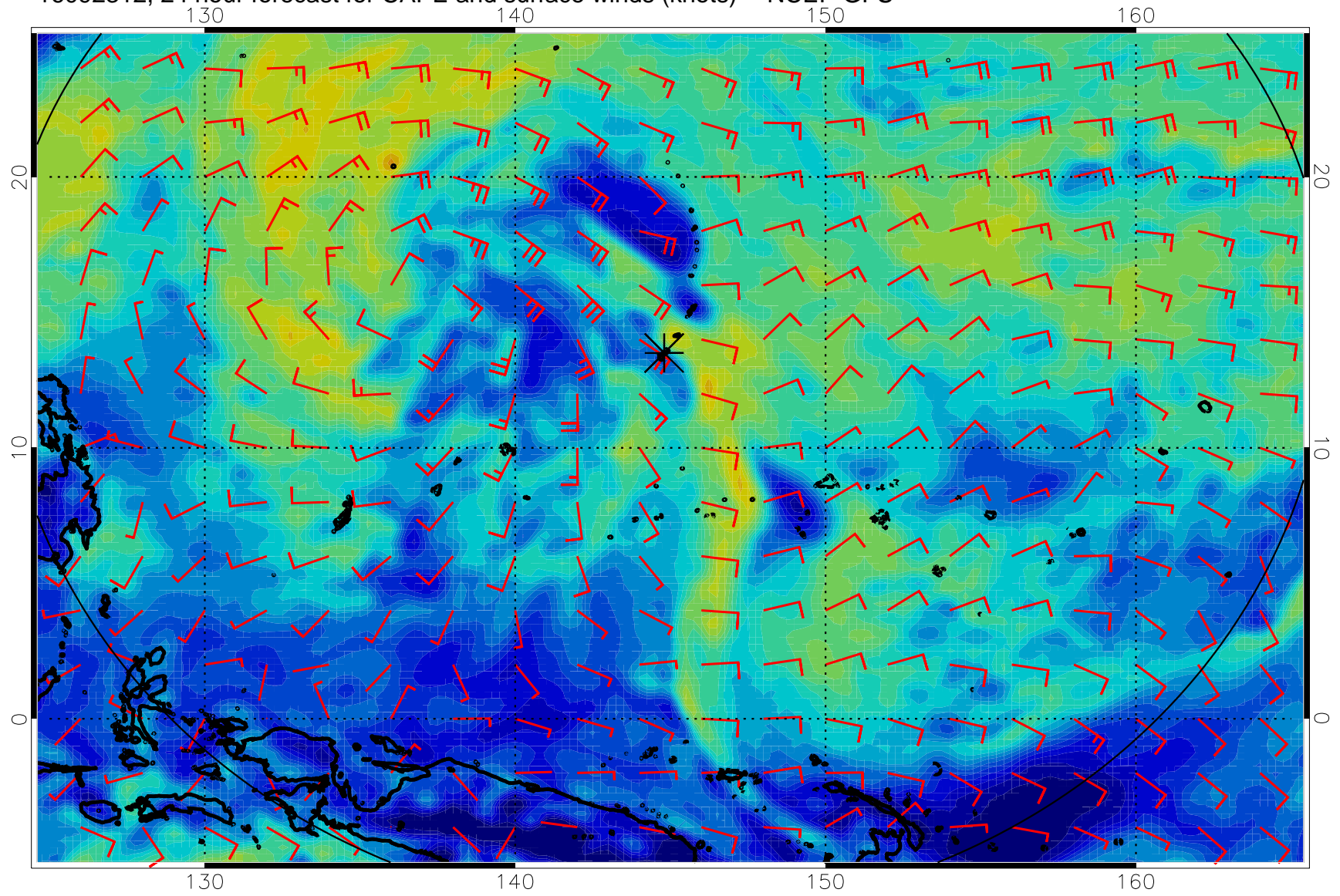
16092300, 12 hour forecast for CAPE and surface winds (knots) -- NCEP GFS



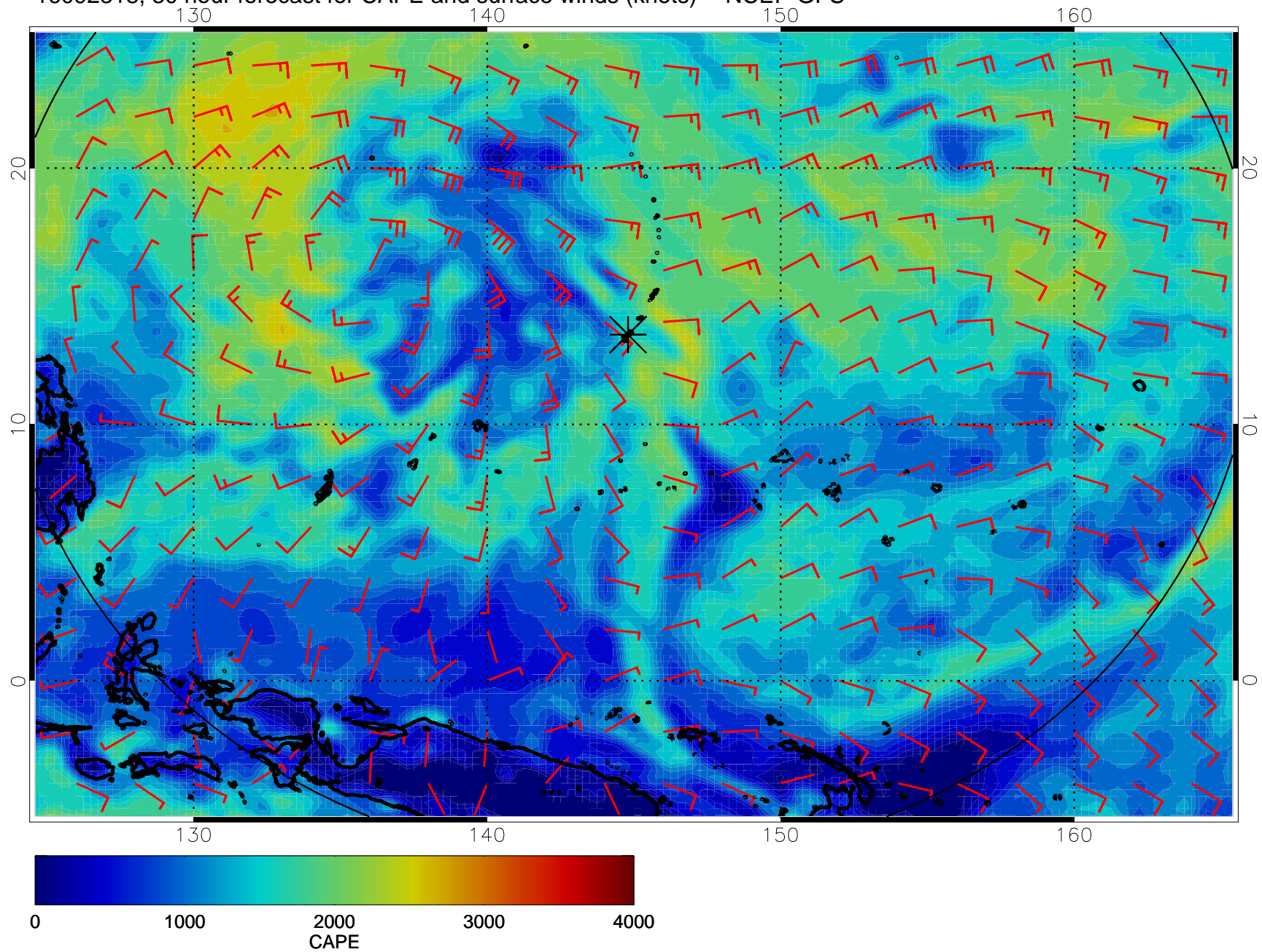
16092306, 18 hour forecast for CAPE and surface winds (knots) -- NCEP GFS



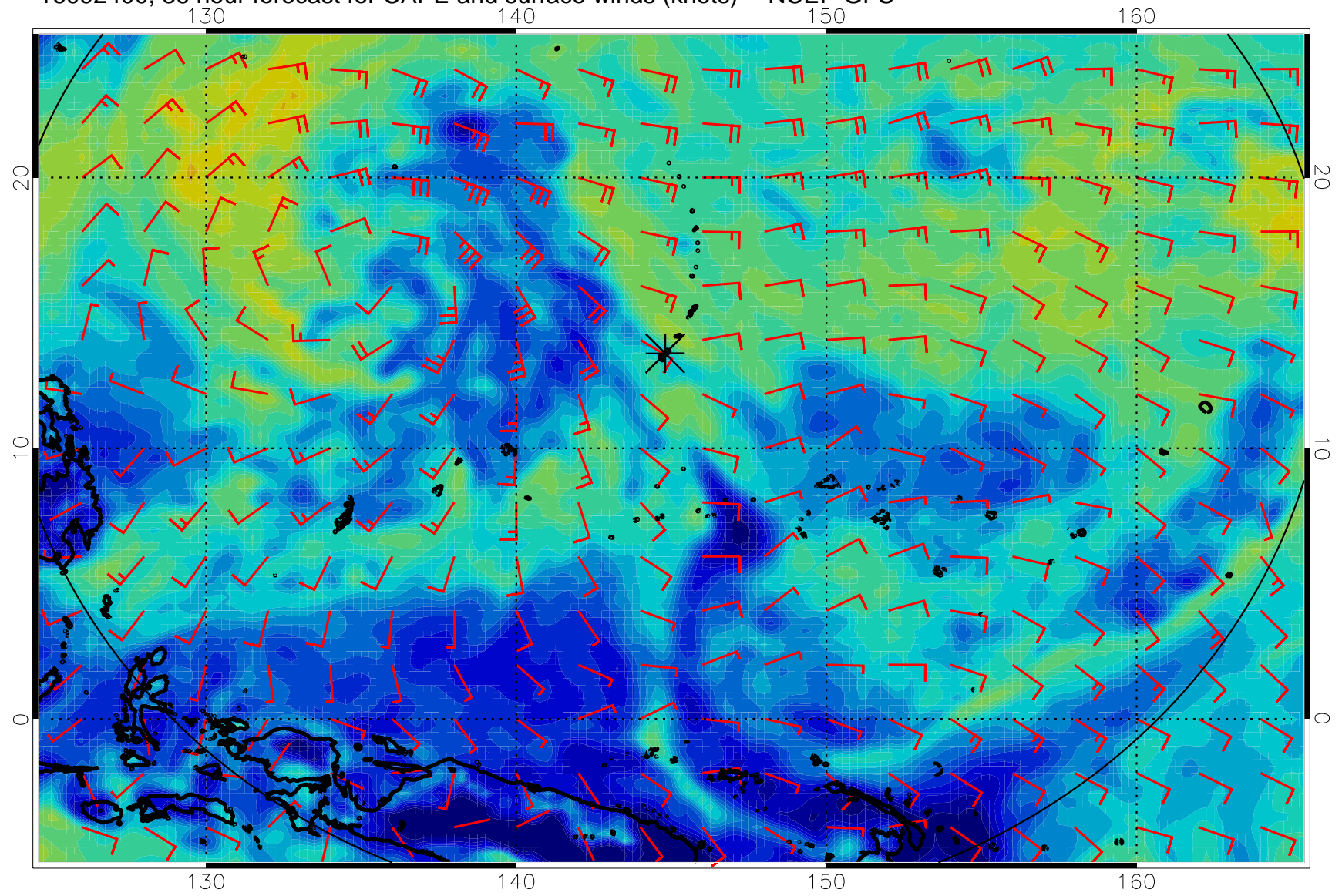
16092312, 24 hour forecast for CAPE and surface winds (knots) -- NCEP GFS



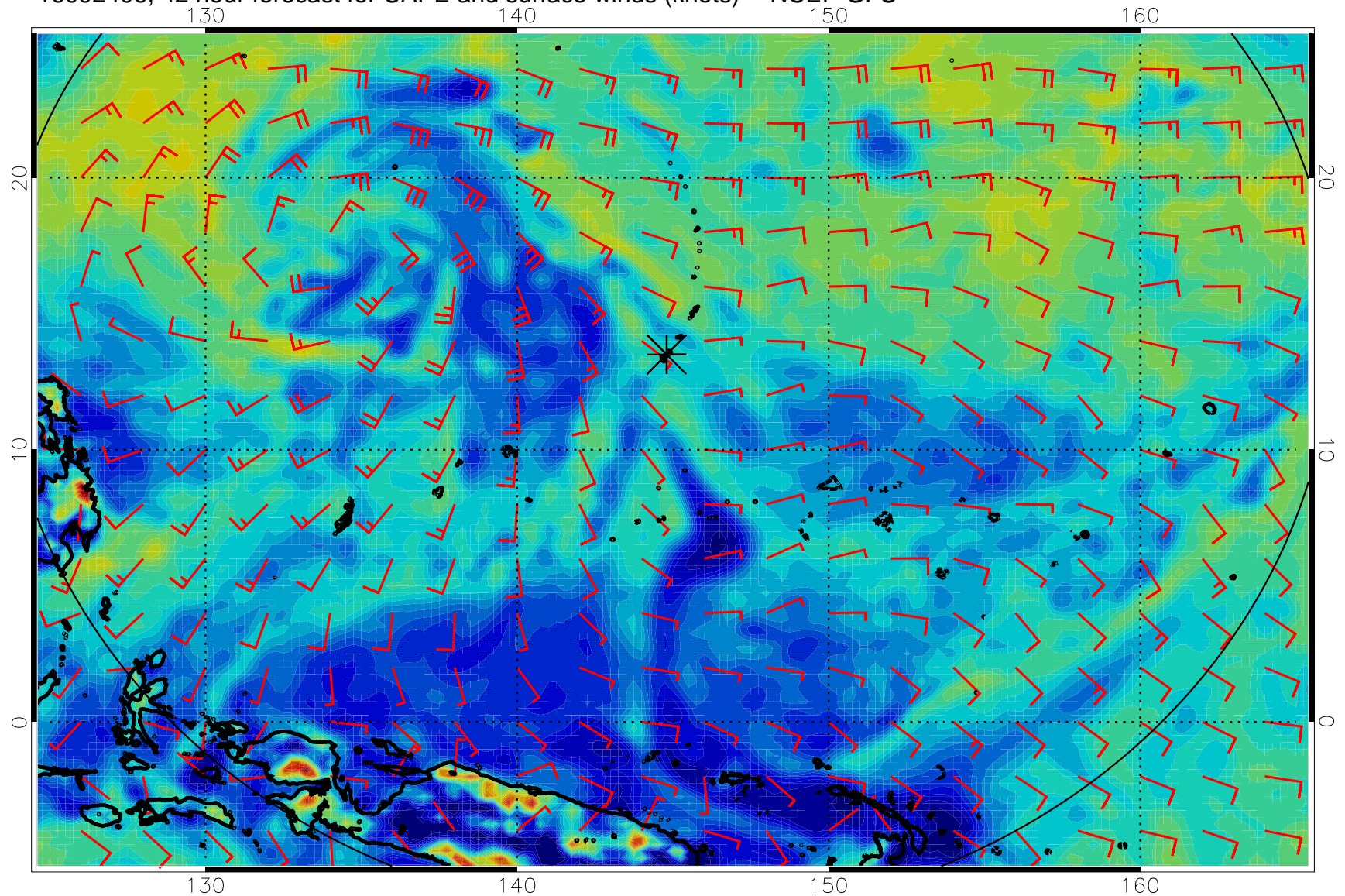
16092318, 30 hour forecast for CAPE and surface winds (knots) -- NCEP GFS



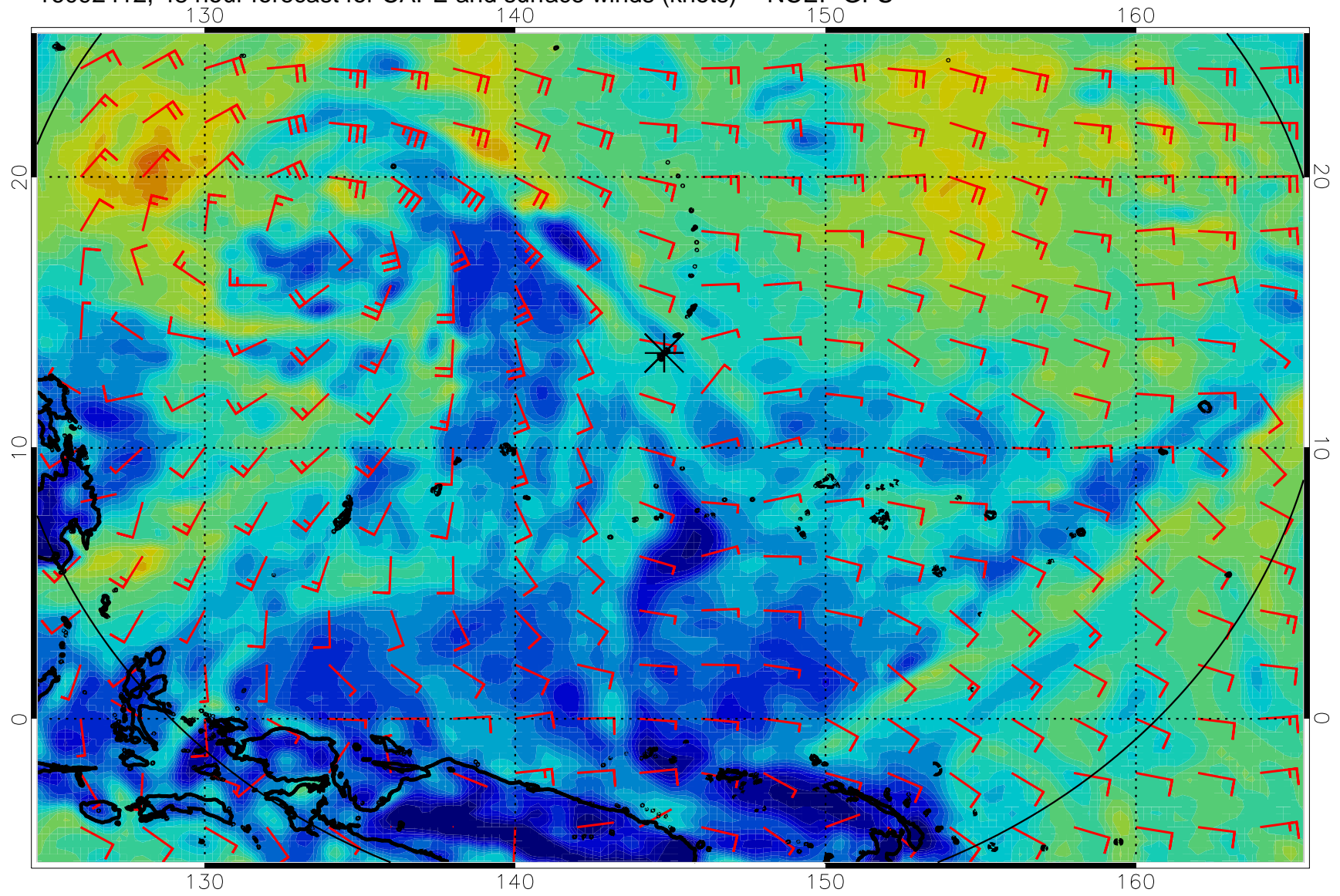
16092400, 36 hour forecast for CAPE and surface winds (knots) -- NCEP GFS



16092406, 42 hour forecast for CAPE and surface winds (knots) -- NCEP GFS

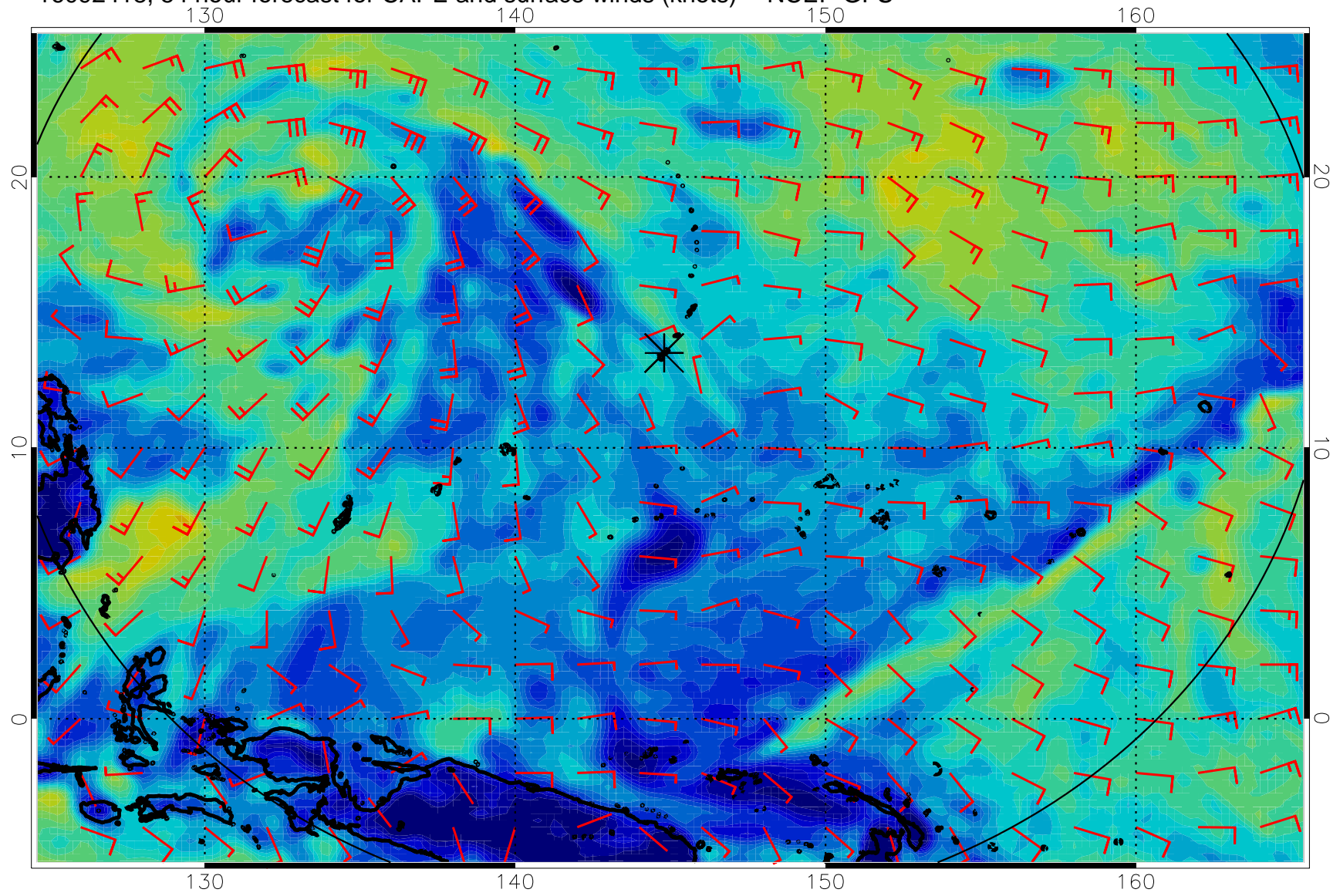


16092412, 48 hour forecast for CAPE and surface winds (knots) -- NCEP GFS

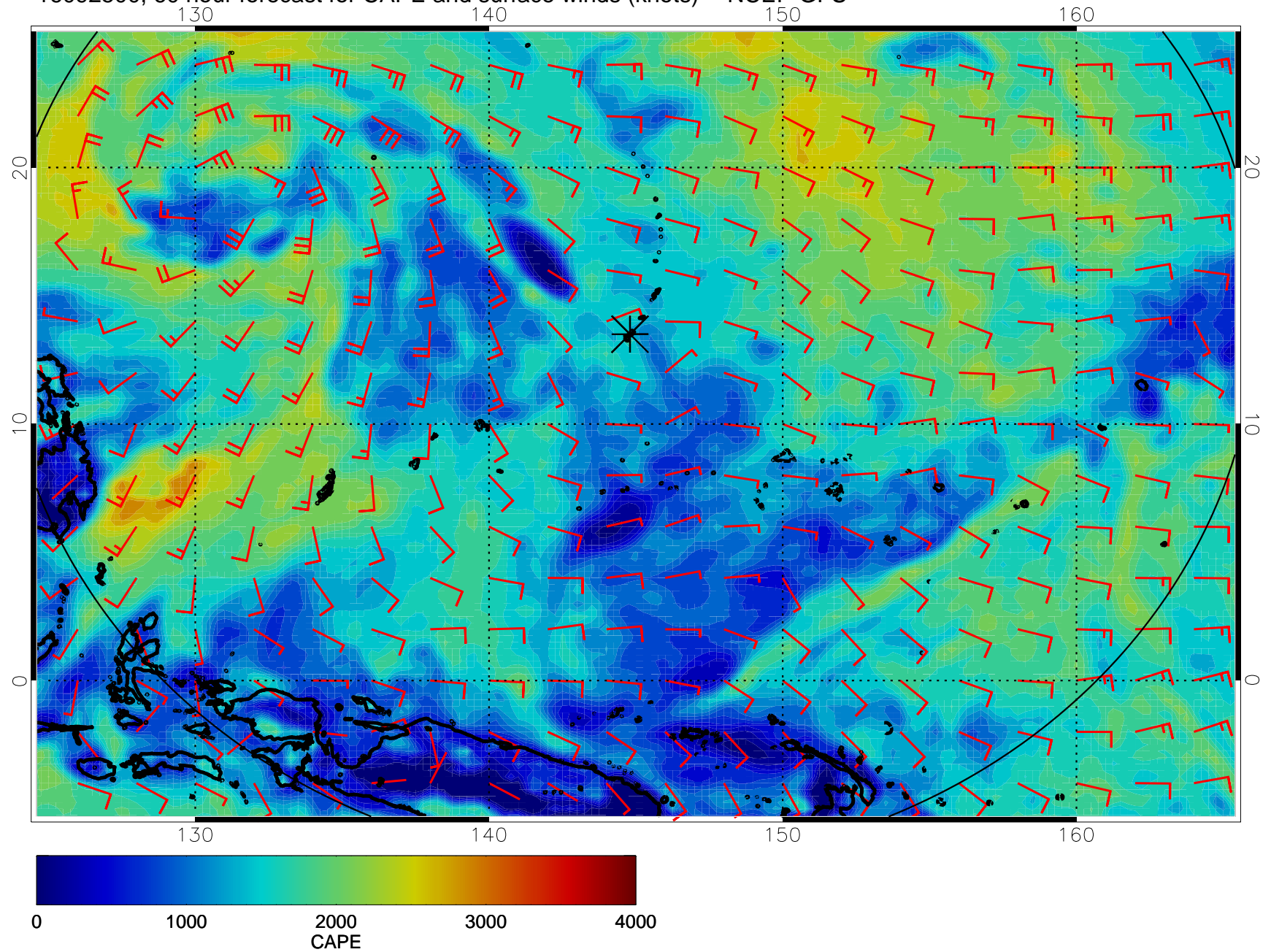




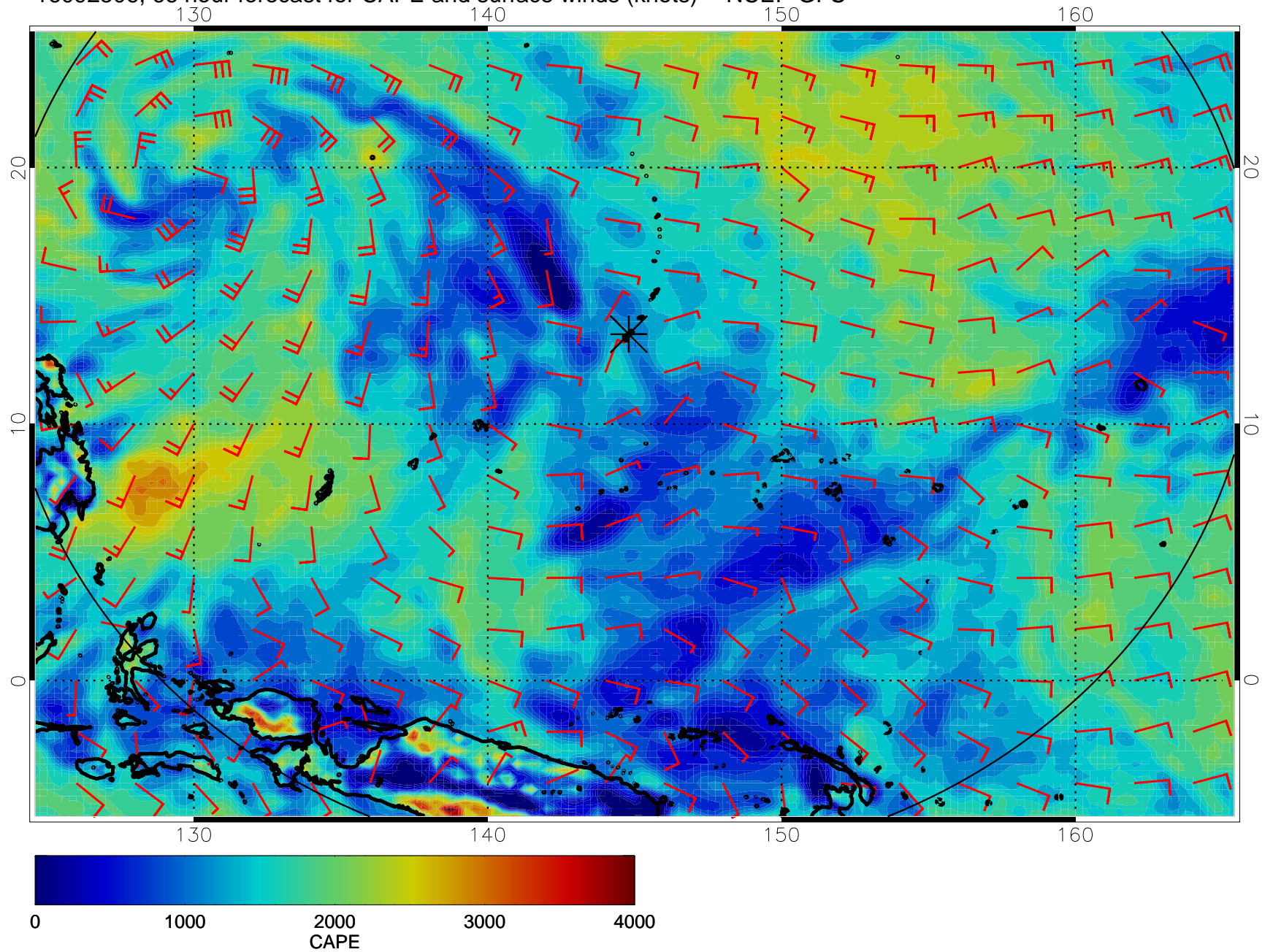
16092418, 54 hour forecast for CAPE and surface winds (knots) -- NCEP GFS



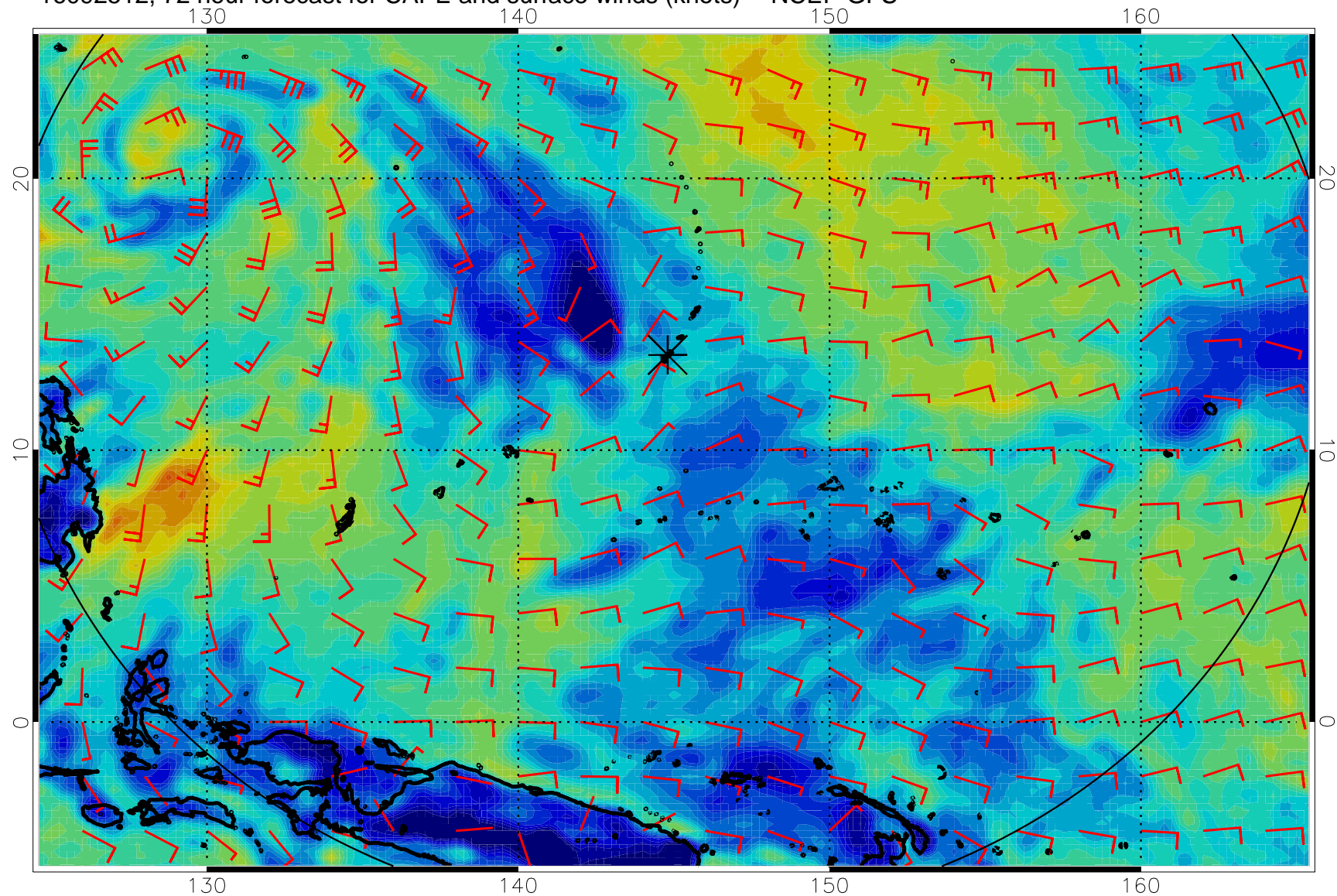
16092500, 60 hour forecast for CAPE and surface winds (knots) -- NCEP GFS



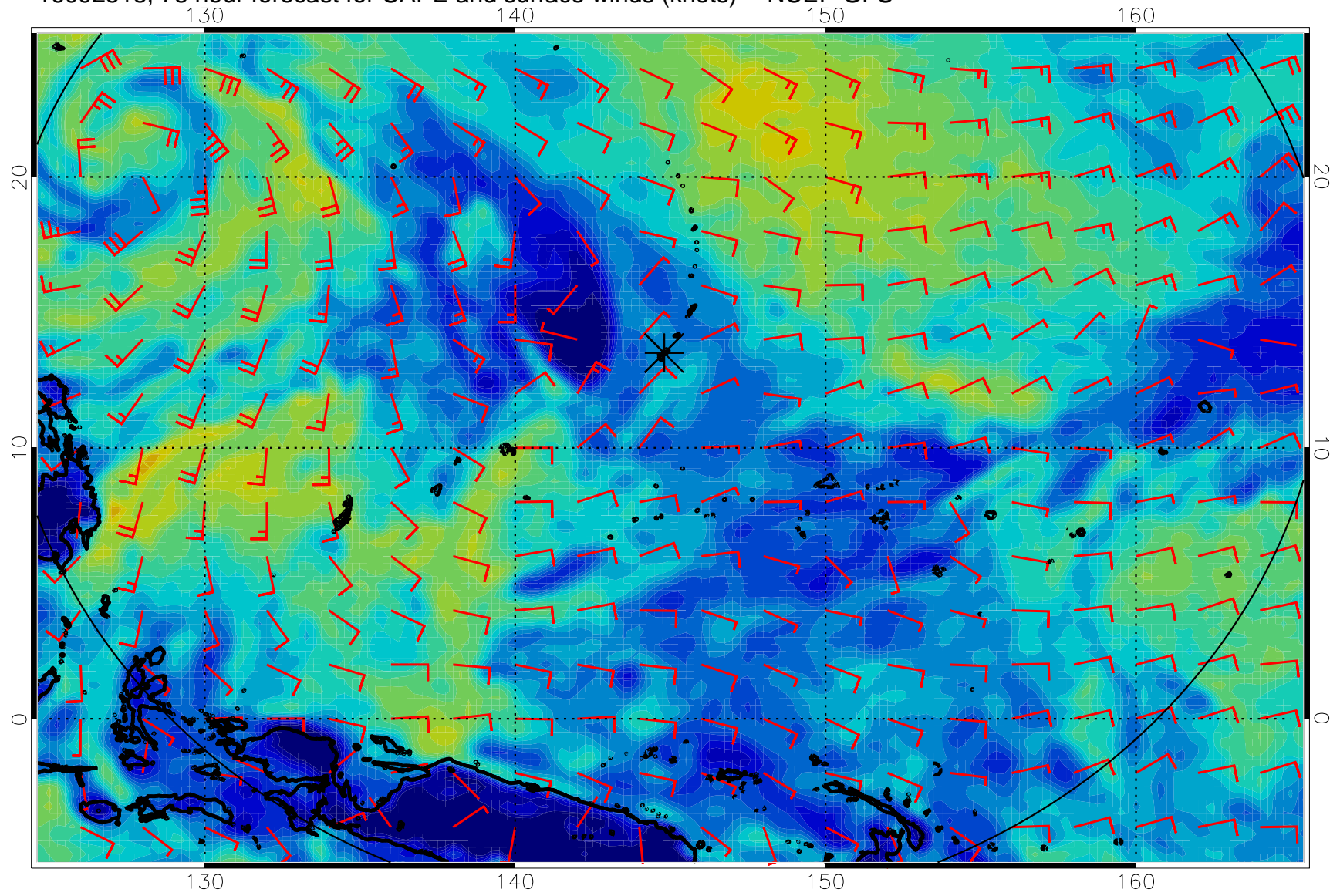
16092506, 66 hour forecast for CAPE and surface winds (knots) -- NCEP GFS



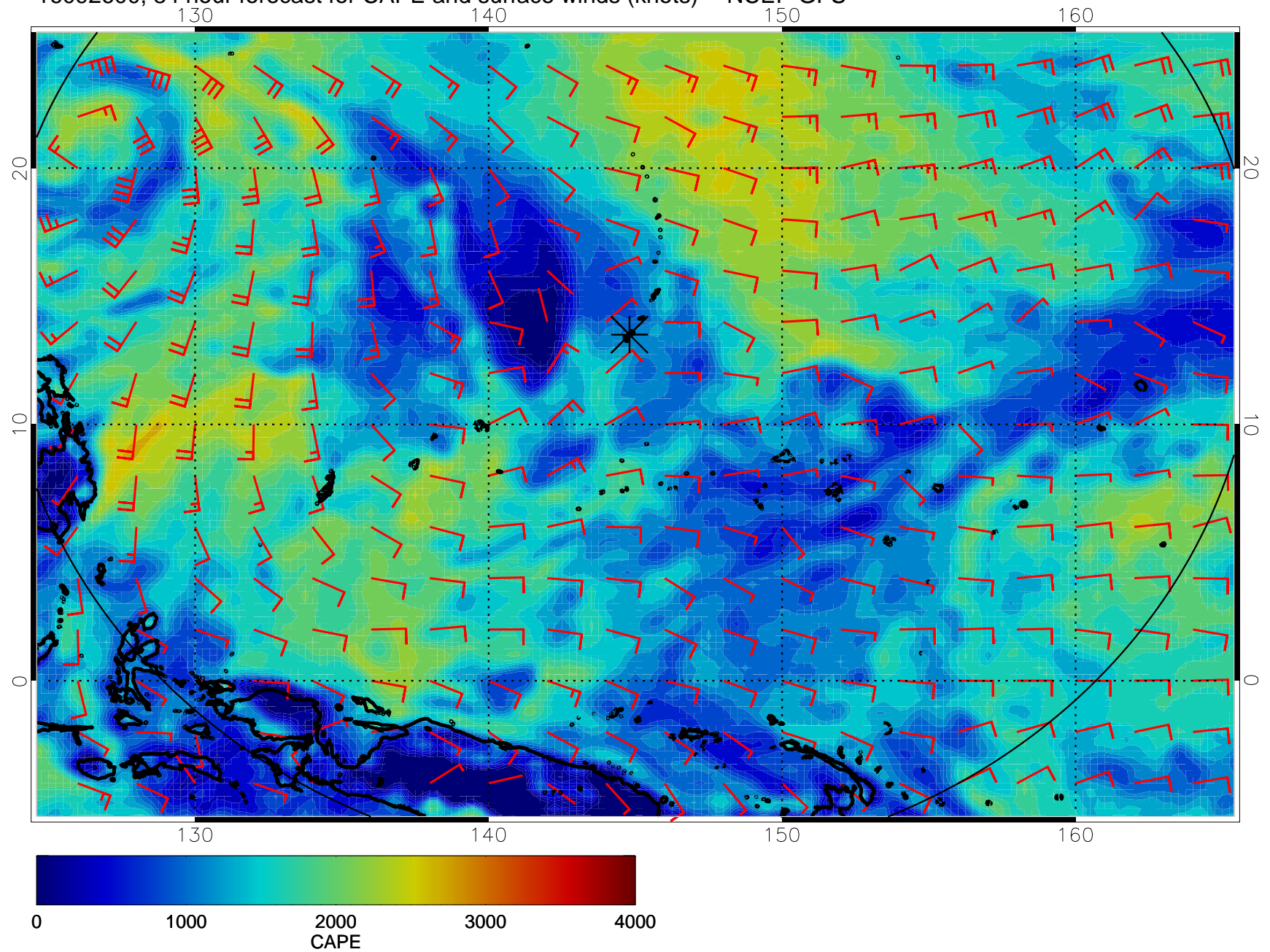
16092512, 72 hour forecast for CAPE and surface winds (knots) -- NCEP GFS



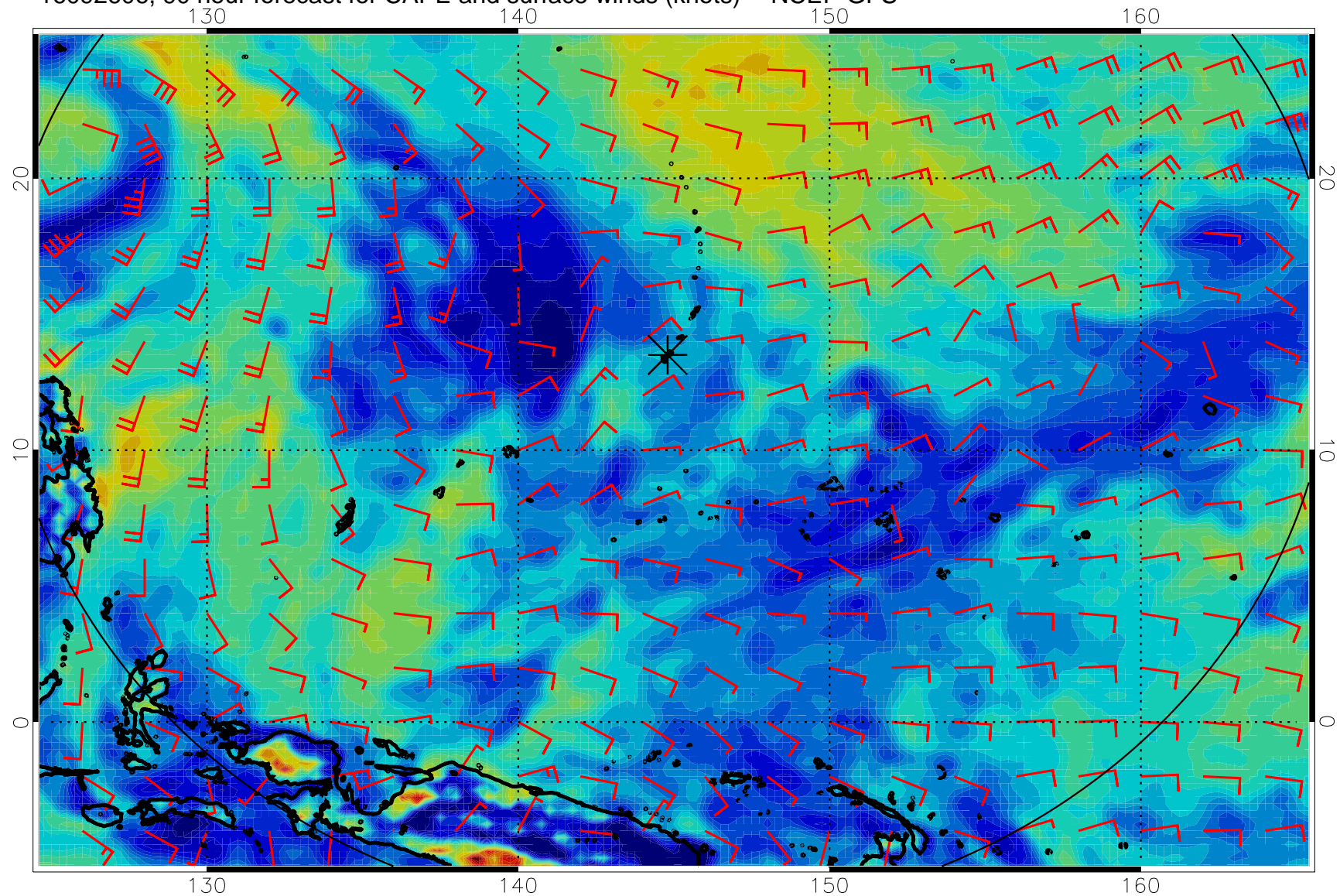
16092518, 78 hour forecast for CAPE and surface winds (knots) -- NCEP GFS



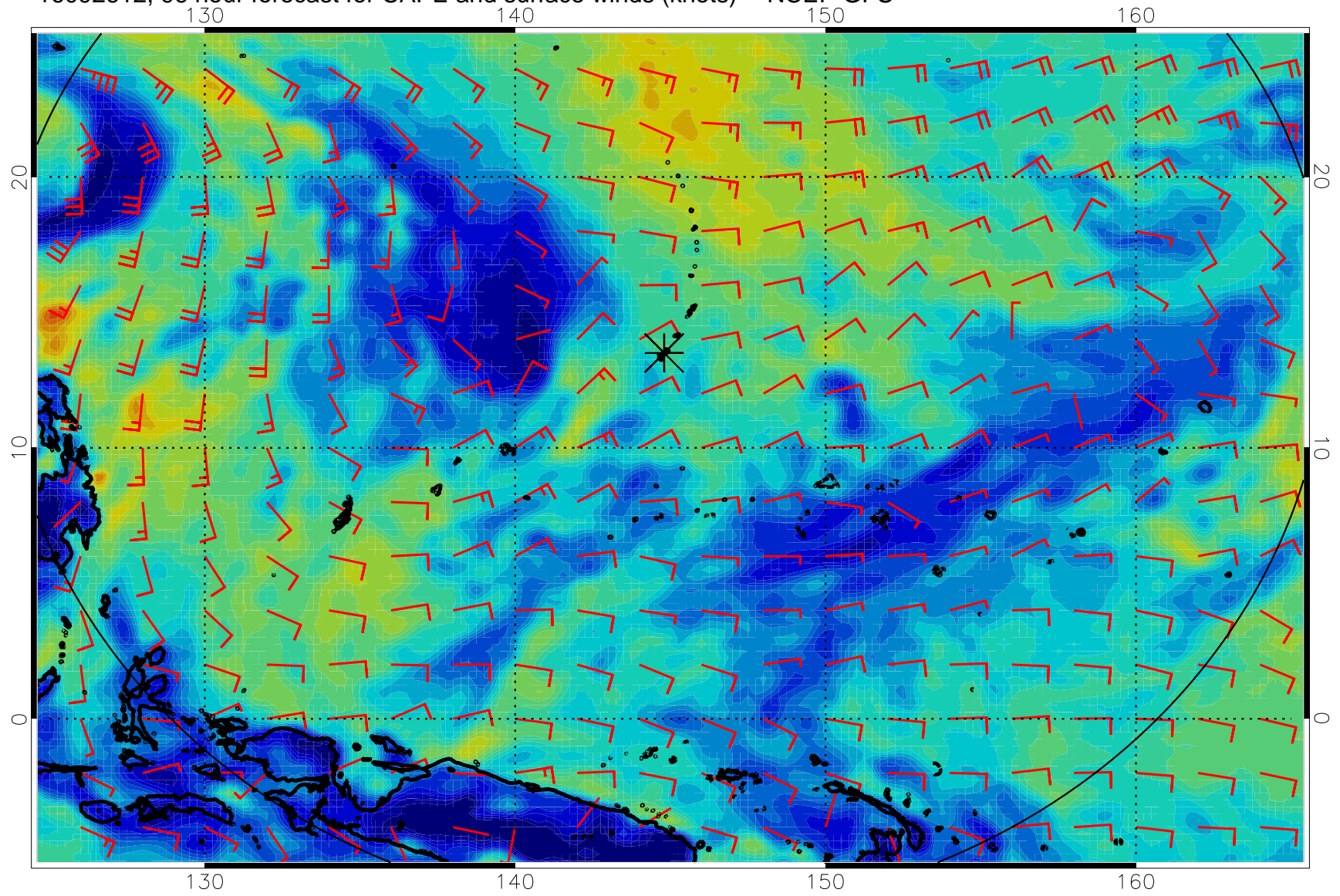
16092600, 84 hour forecast for CAPE and surface winds (knots) -- NCEP GFS



16092606, 90 hour forecast for CAPE and surface winds (knots) -- NCEP GFS

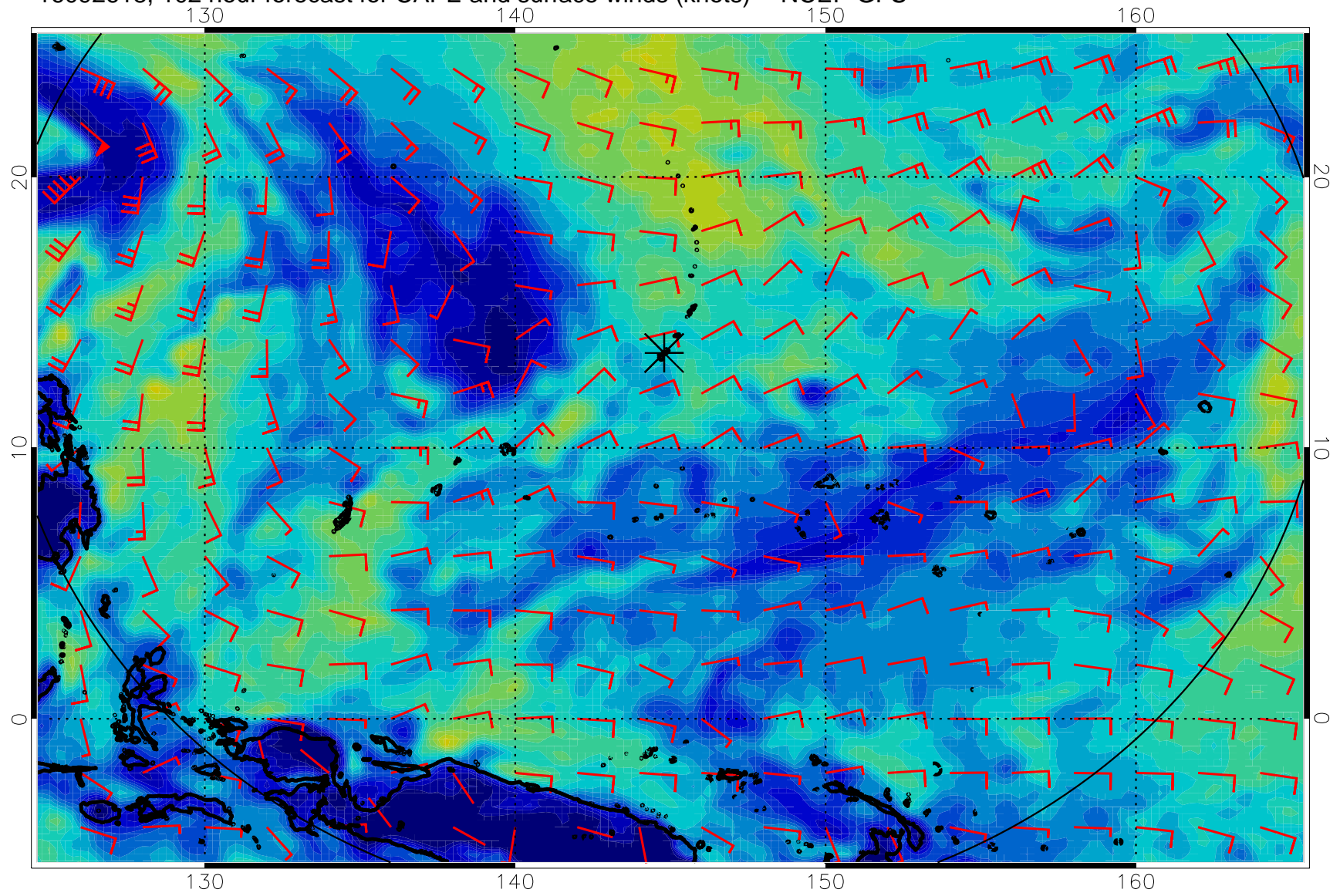


16092612, 96 hour forecast for CAPE and surface winds (knots) -- NCEP GFS

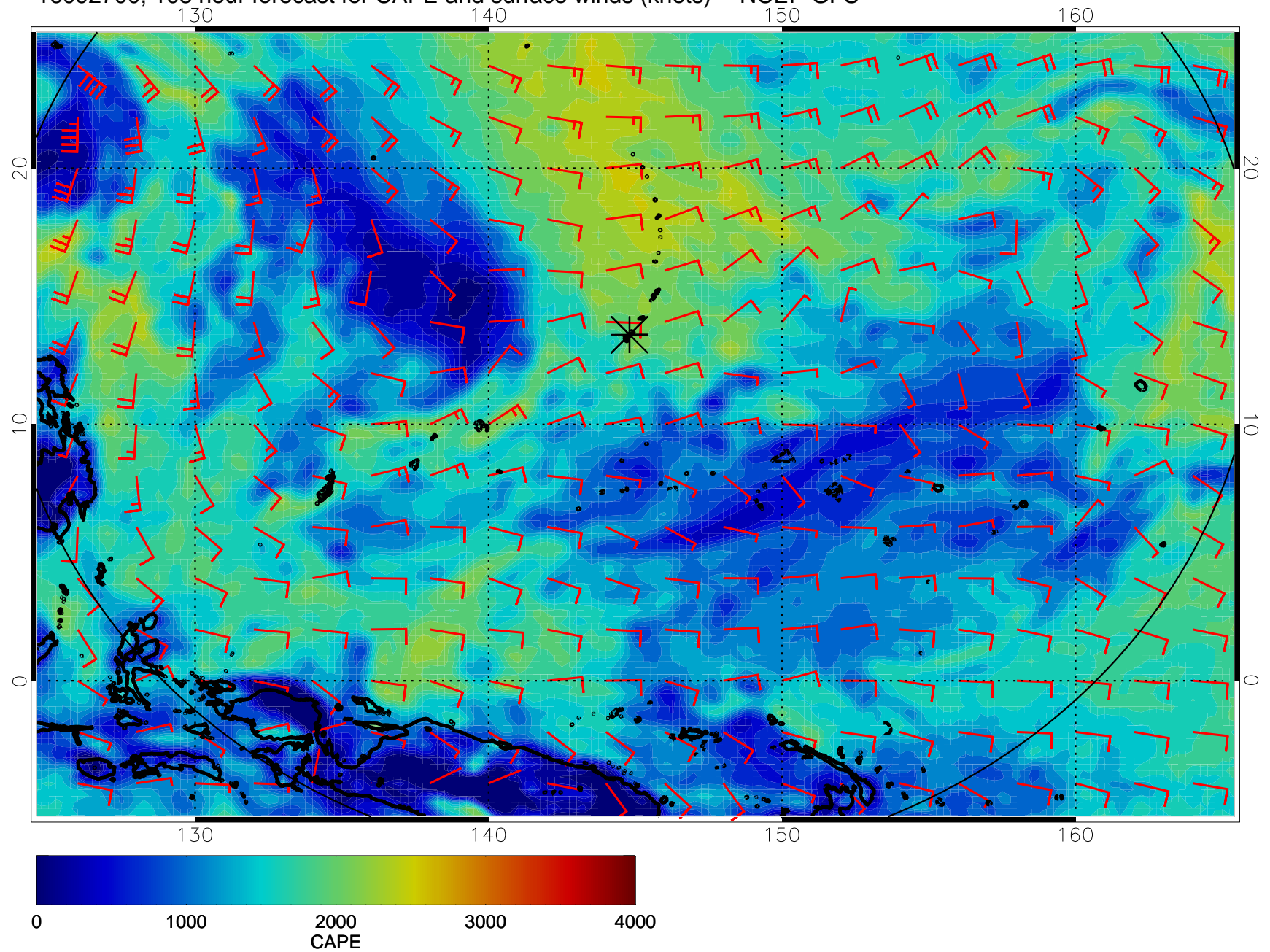




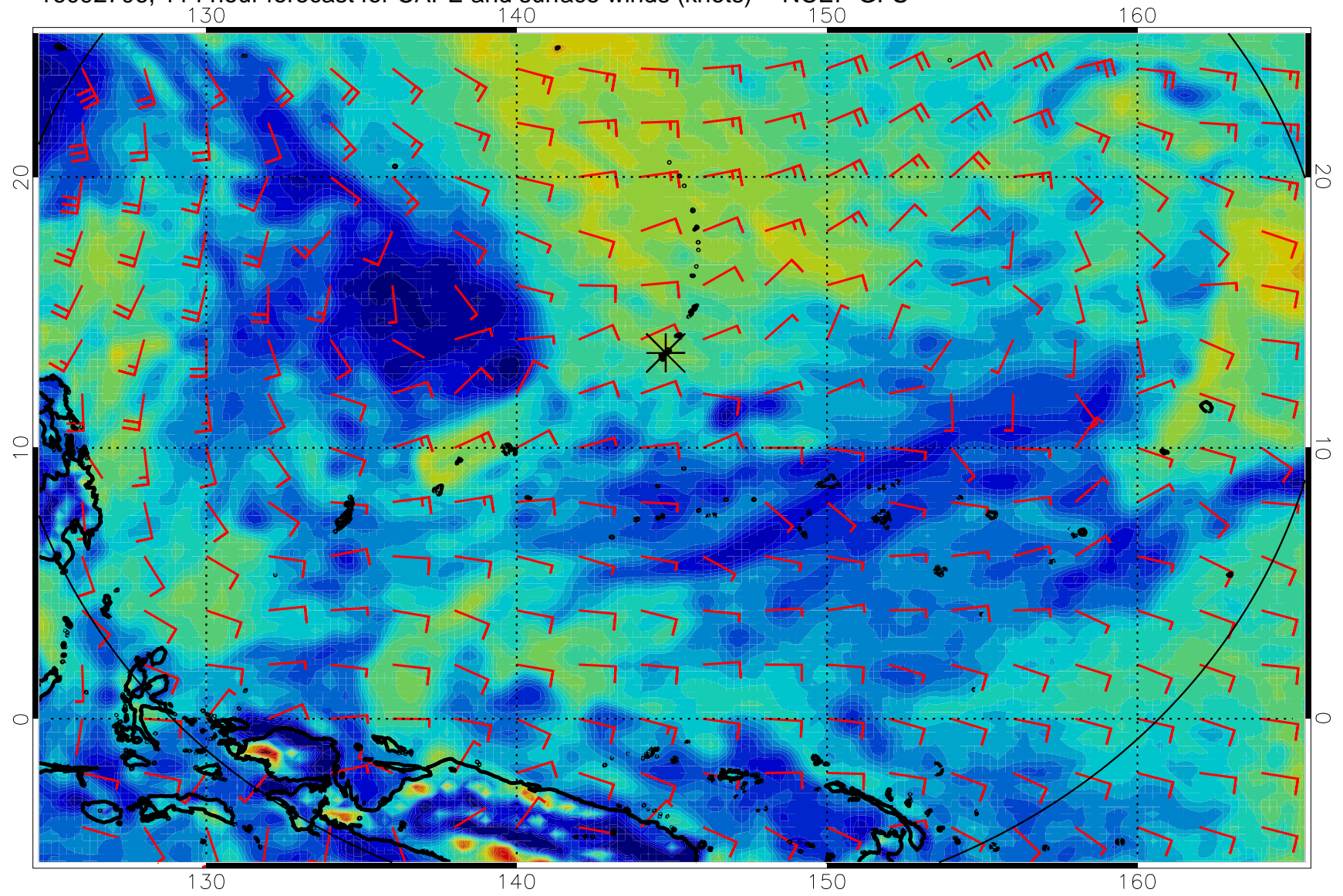
16092618, 102 hour forecast for CAPE and surface winds (knots) -- NCEP GFS



16092700, 108 hour forecast for CAPE and surface winds (knots) -- NCEP GFS



16092706, 114 hour forecast for CAPE and surface winds (knots) -- NCEP GFS



16092712, 120 hour forecast for CAPE and surface winds (knots) -- NCEP GFS

