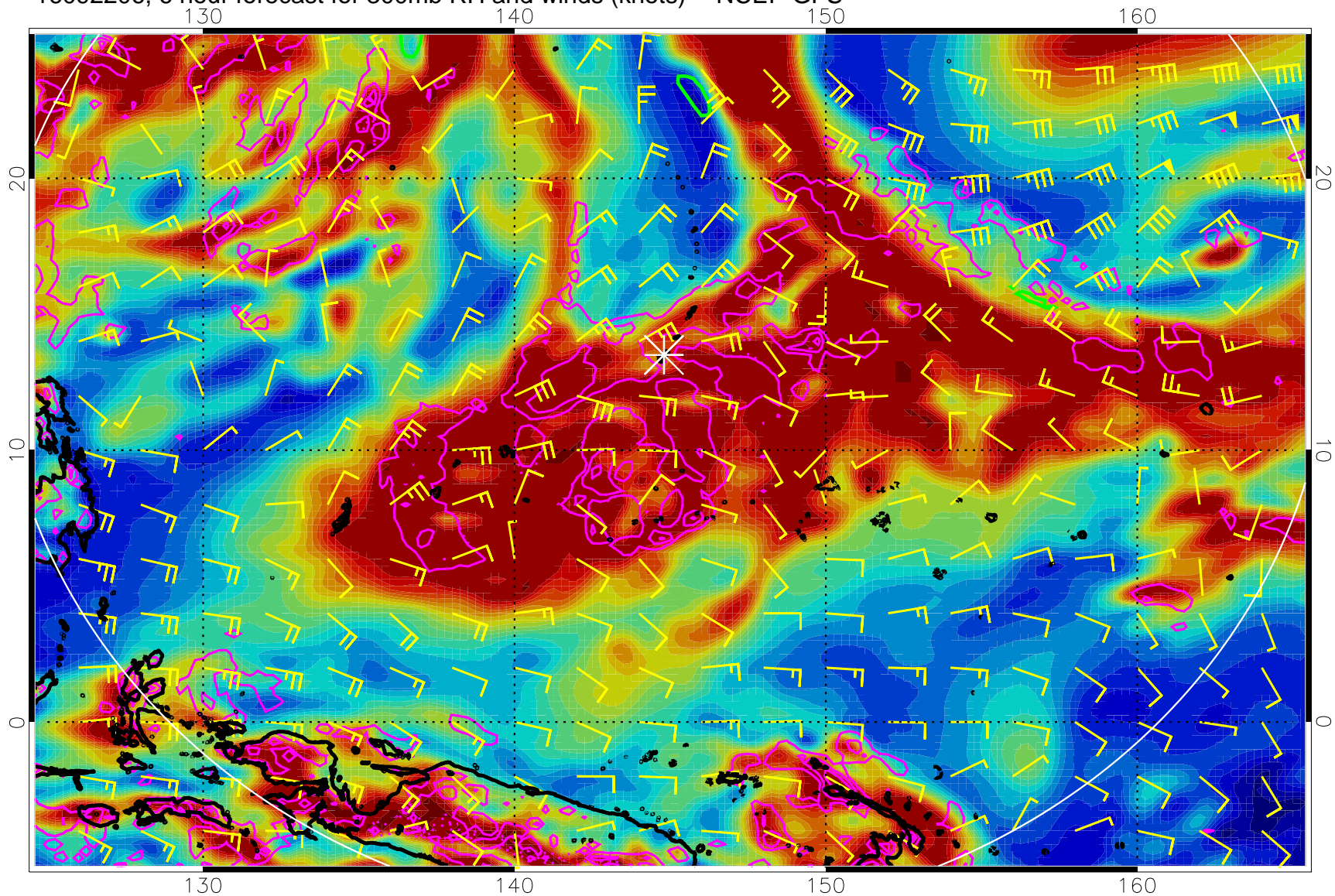


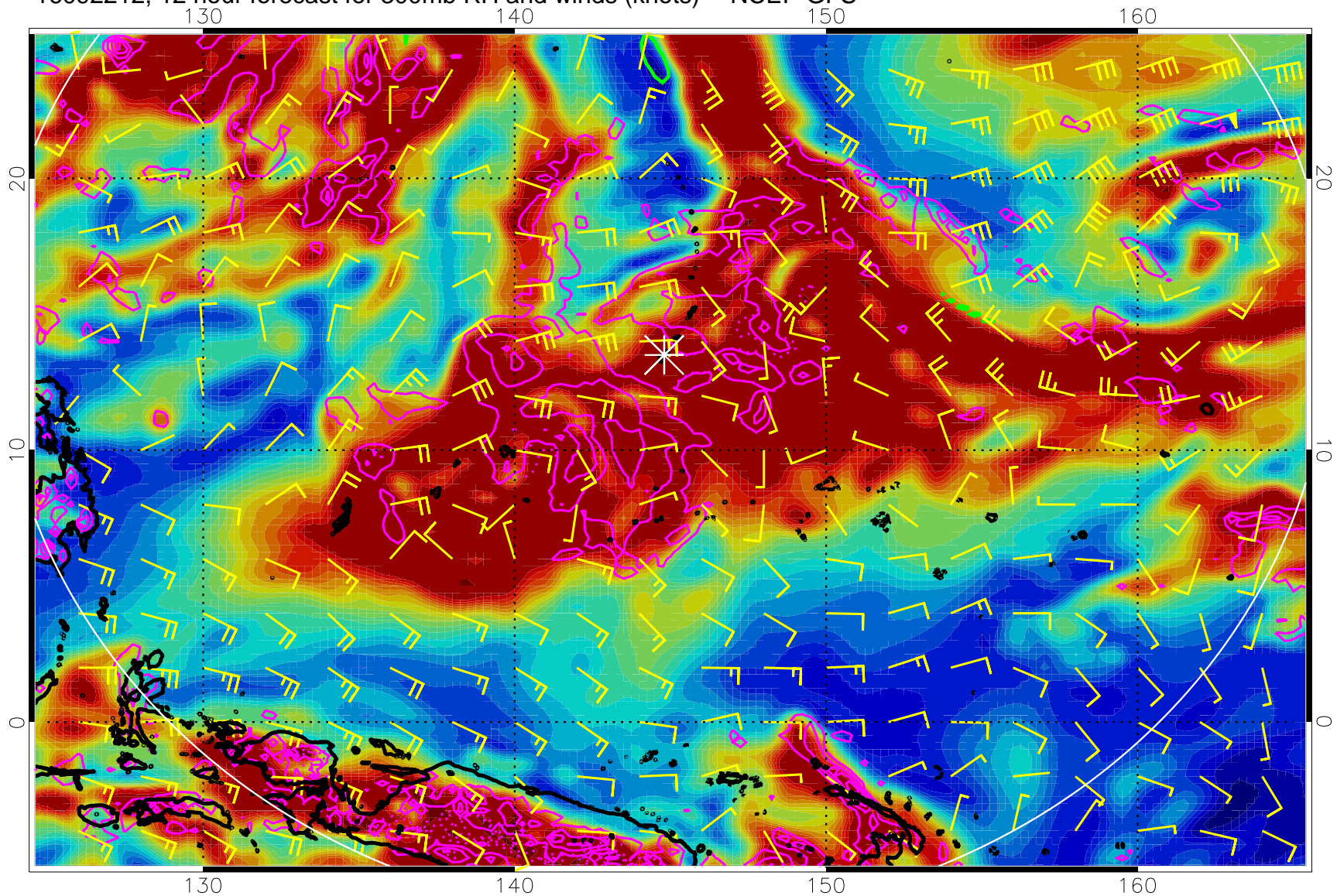
16092206, 6 hour forecast for 300mb RH and winds (knots) -- NCEP GFS



Precip (tot dot, conv sol) mm/day 40 mm/day contours, min 20

EPV Tropopause (2 PVU) Position

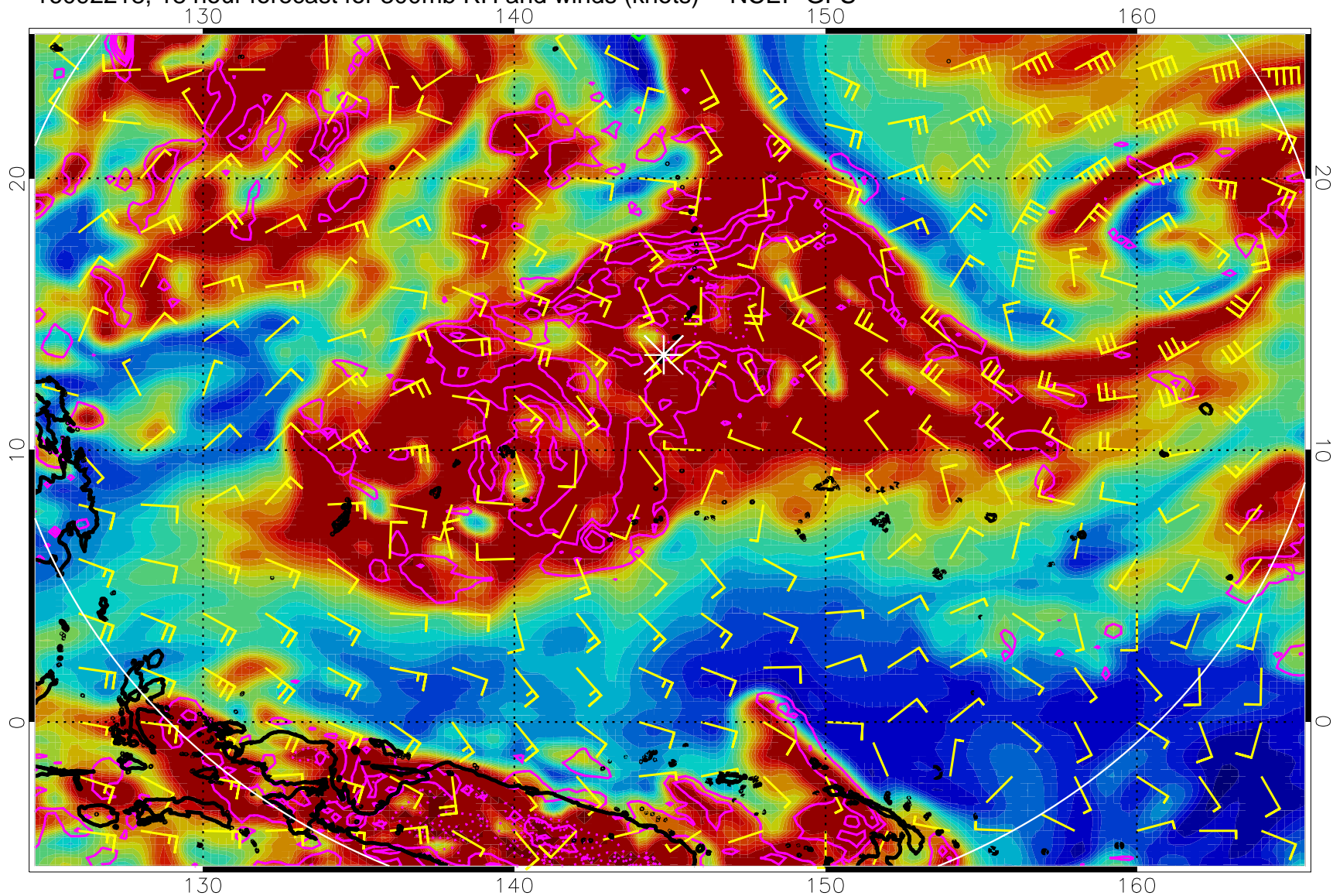
16092212, 12 hour forecast for 300mb RH and winds (knots) -- NCEP GFS



Precip (tot dot, conv sol) mm/day 40 mm/day contours, min 20

EPV Tropopause (2 PVU) Position

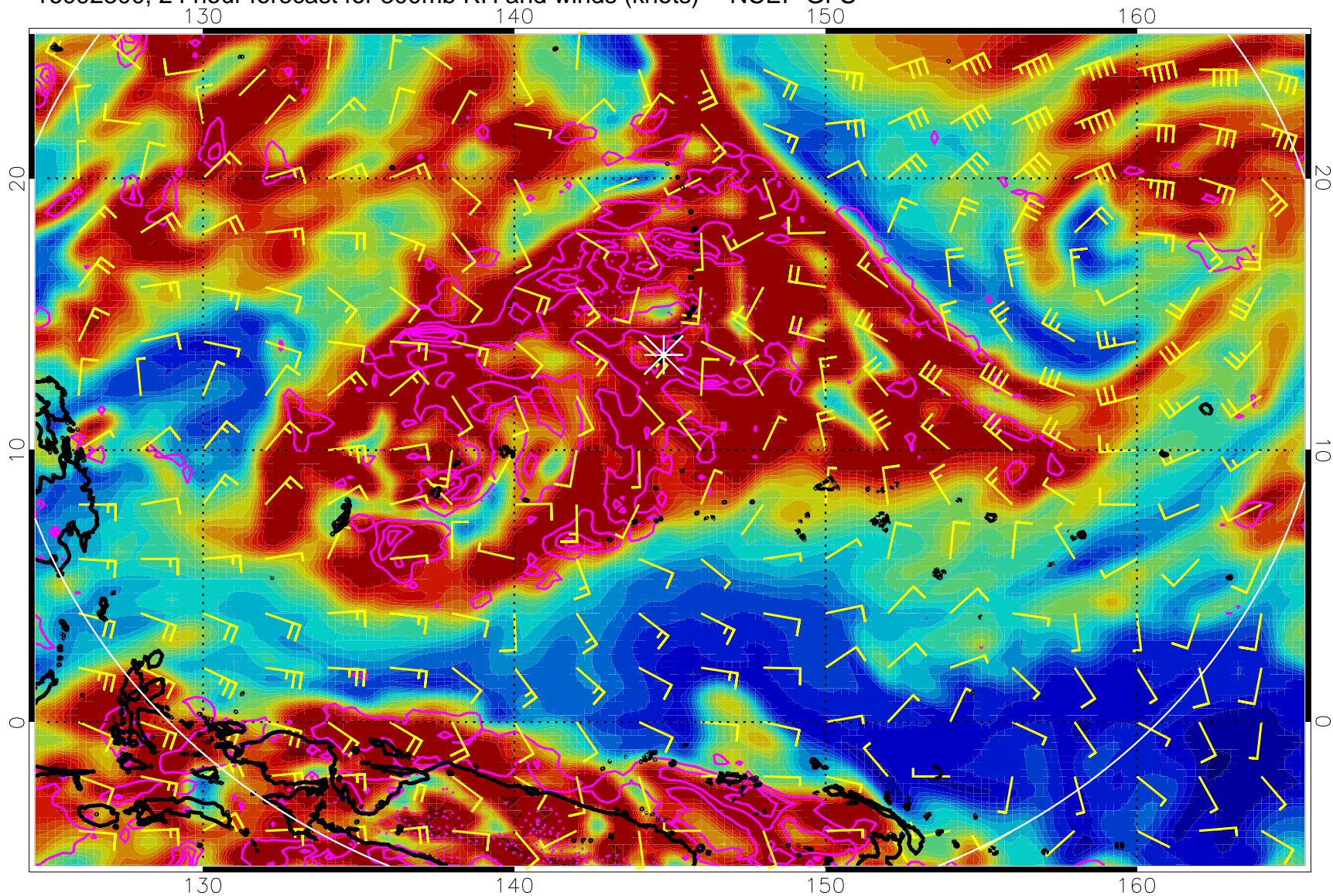
16092218, 18 hour forecast for 300mb RH and winds (knots) -- NCEP GFS



Precip (tot dot, conv sol) mm/day 40 mm/day contours, min 20

EPV Tropopause (2 PVU) Position

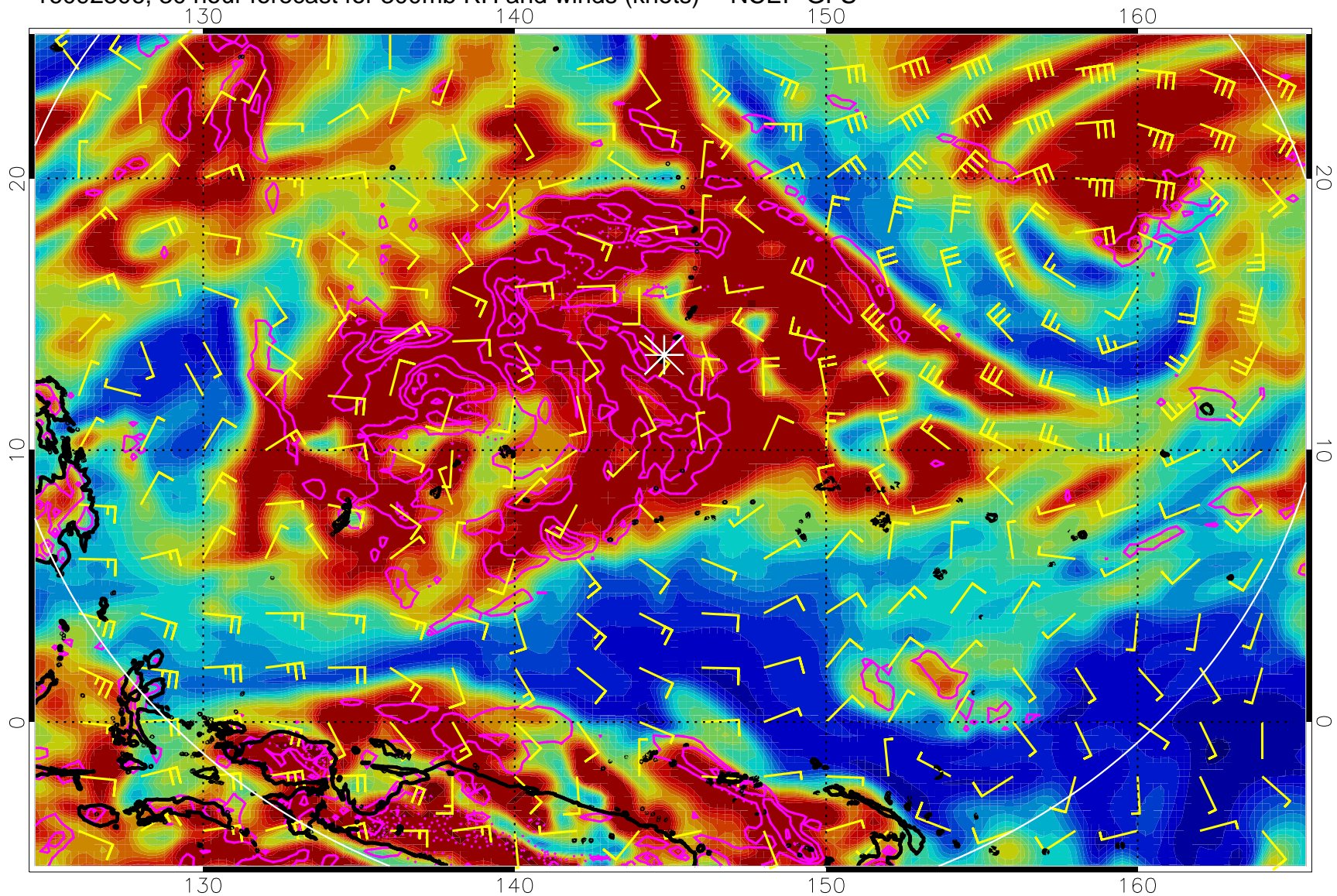
16092300, 24 hour forecast for 300mb RH and winds (knots) -- NCEP GFS



Precip (tot dot, conv sol) mm/day 40 mm/day contours, min 20

EPV Tropopause (2 PVU) Position

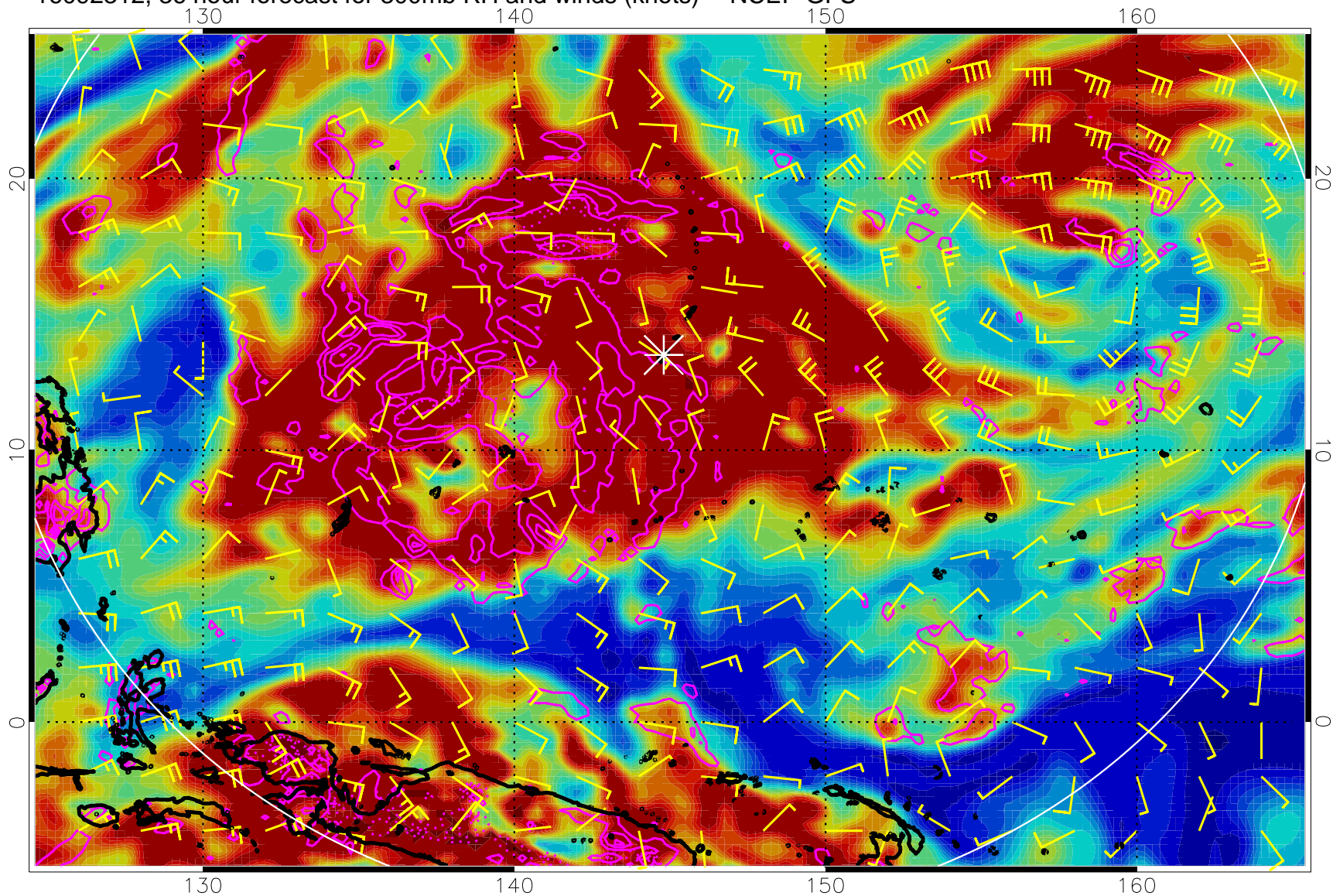
16092306, 30 hour forecast for 300mb RH and winds (knots) -- NCEP GFS



Precip (tot dot, conv sol) mm/day 40 mm/day contours, min 20

EPV Tropopause (2 PVU) Position

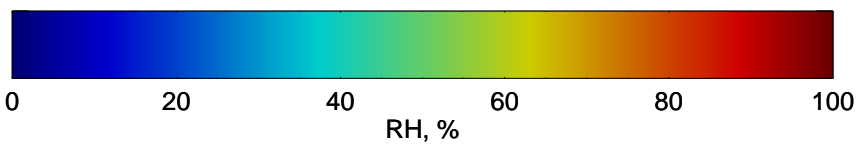
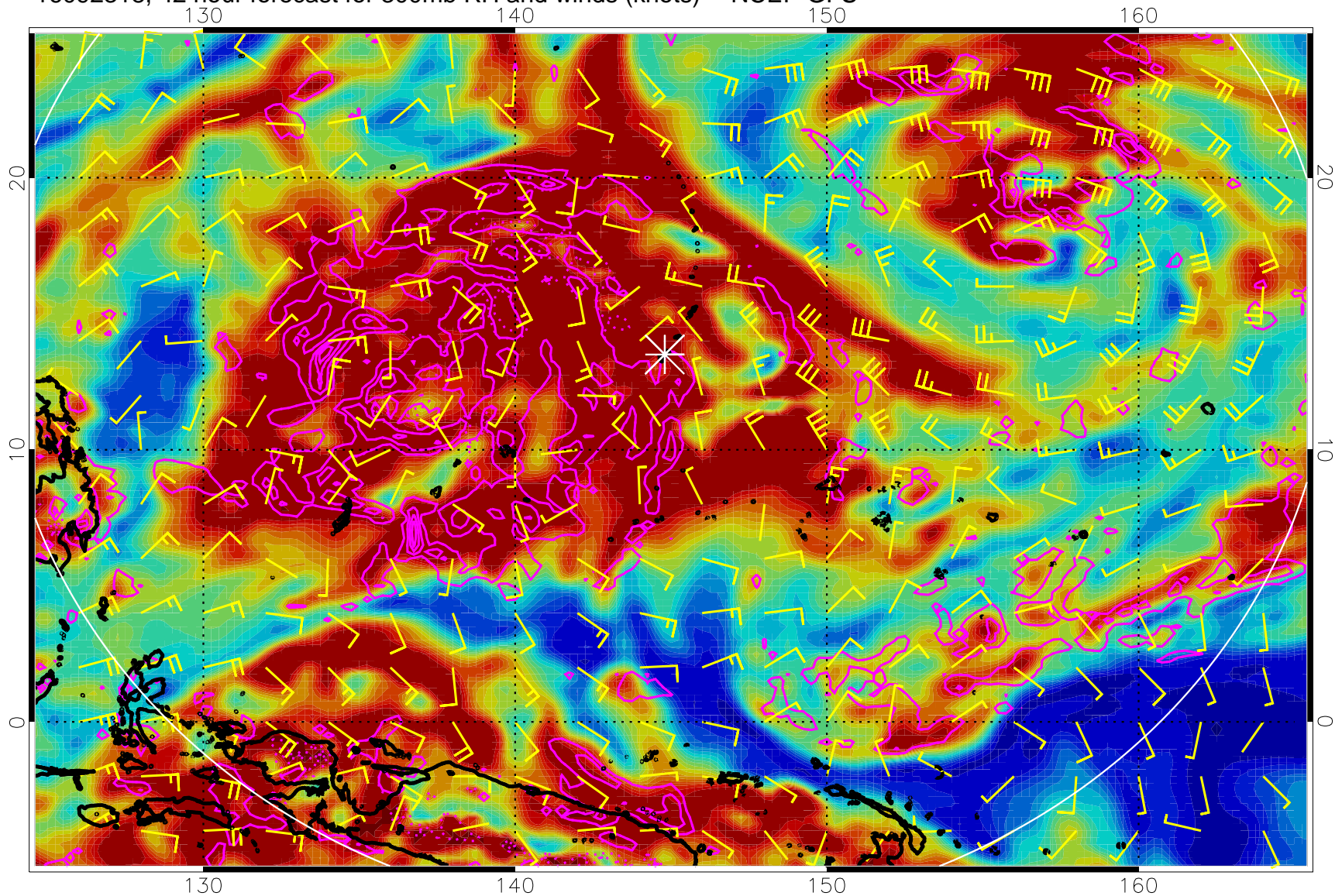
16092312, 36 hour forecast for 300mb RH and winds (knots) -- NCEP GFS



Precip (tot dot, conv sol) mm/day 40 mm/day contours, min 20

EPV Tropopause (2 PVU) Position

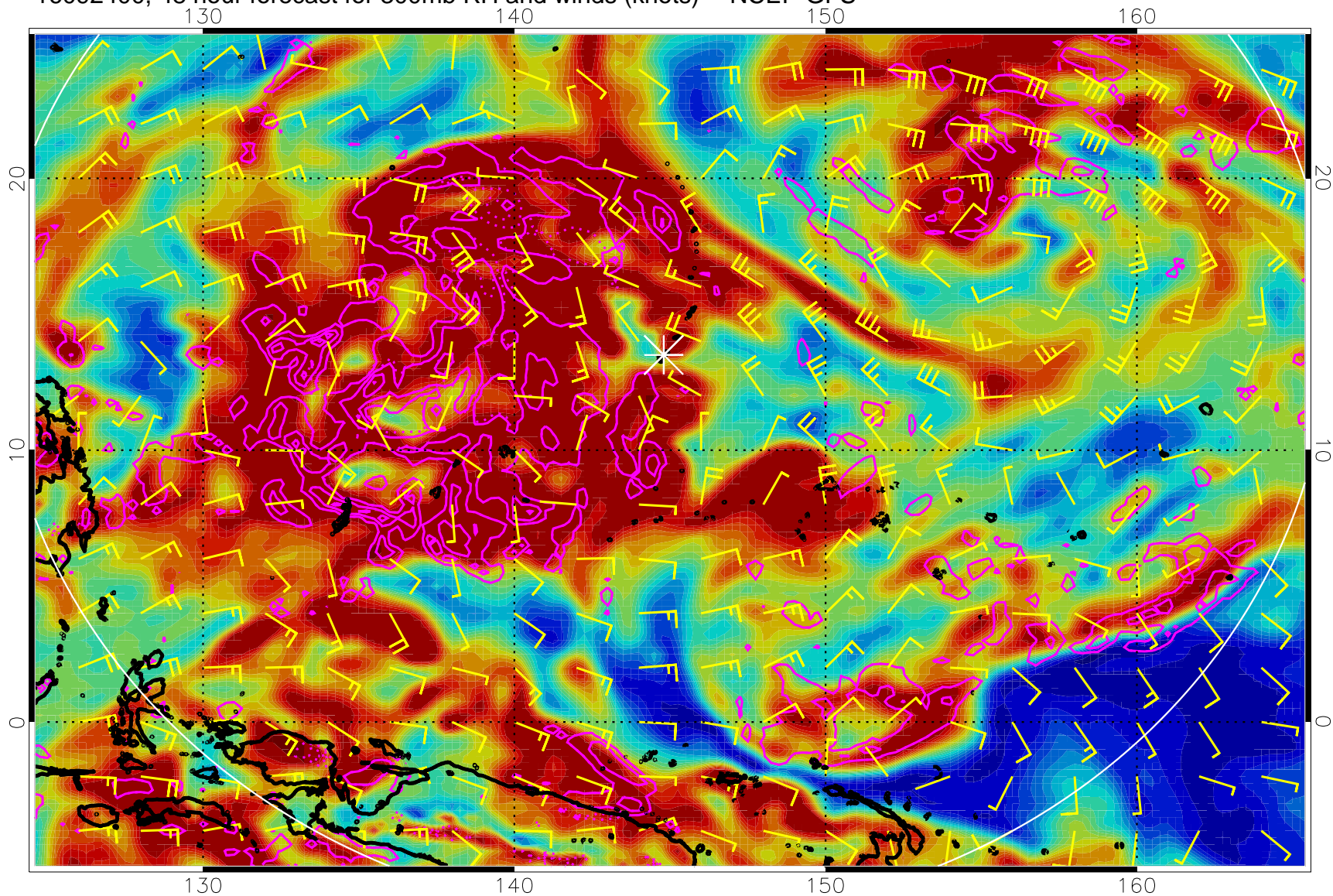
16092318, 42 hour forecast for 300mb RH and winds (knots) -- NCEP GFS



Precip (tot dot, conv sol) mm/day 40 mm/day contours, min 20

EPV Tropopause (2 PVU) Position

16092400, 48 hour forecast for 300mb RH and winds (knots) -- NCEP GFS

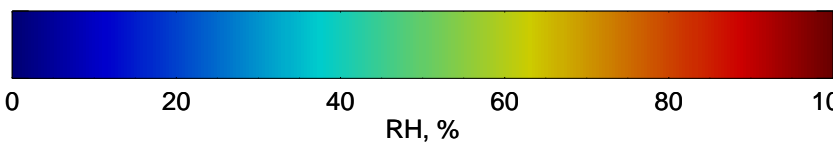
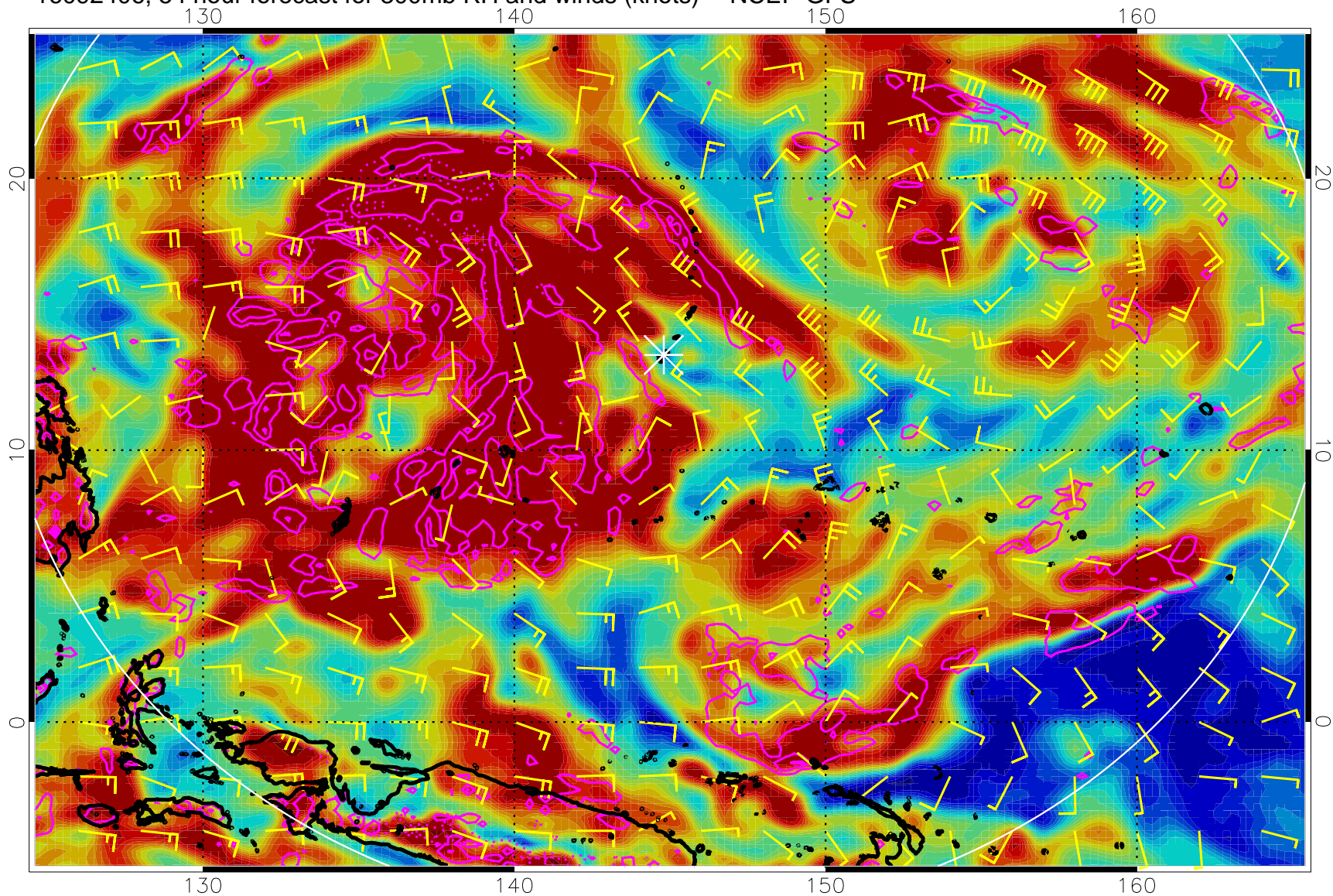


Precip (tot dot, conv sol) mm/day 40 mm/day contours, min 20

EPV Tropopause (2 PVU) Position



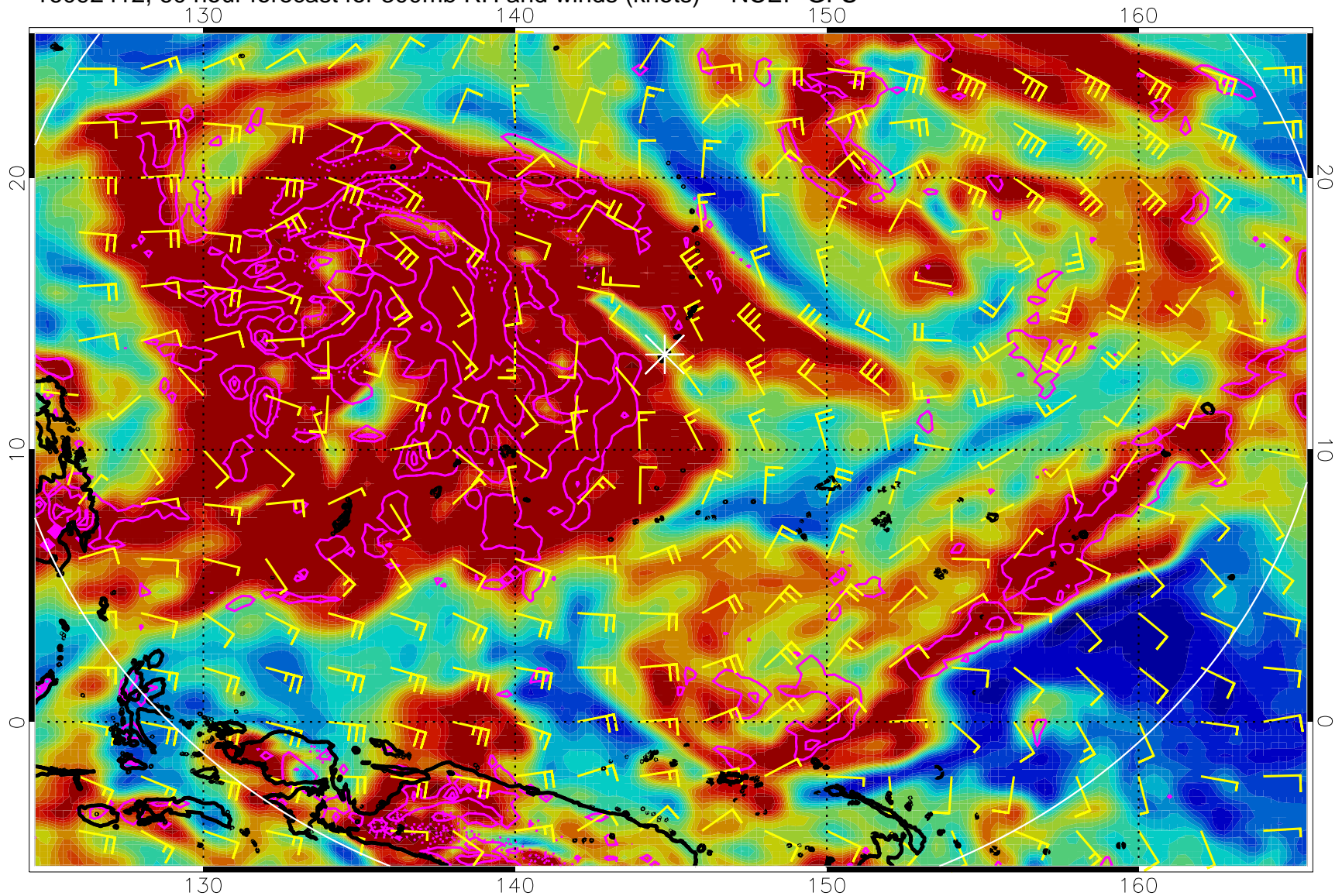
16092406, 54 hour forecast for 300mb RH and winds (knots) -- NCEP GFS



Precip (tot dot, conv sol) mm/day 40 mm/day contours, min 20

EPV Tropopause (2 PVU) Position

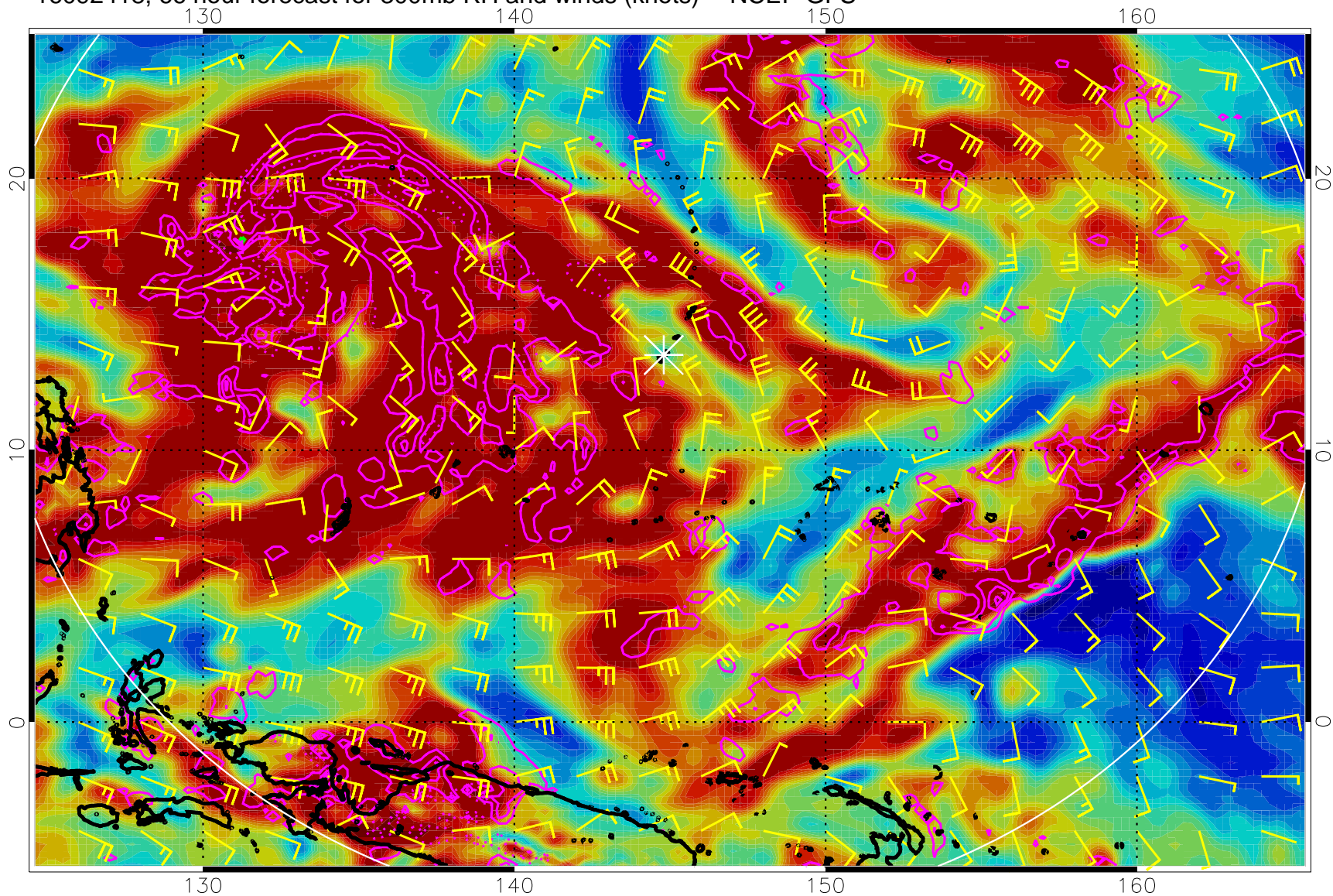
16092412, 60 hour forecast for 300mb RH and winds (knots) -- NCEP GFS



Precip (tot dot, conv sol) mm/day 40 mm/day contours, min 20

EPV Tropopause (2 PVU) Position

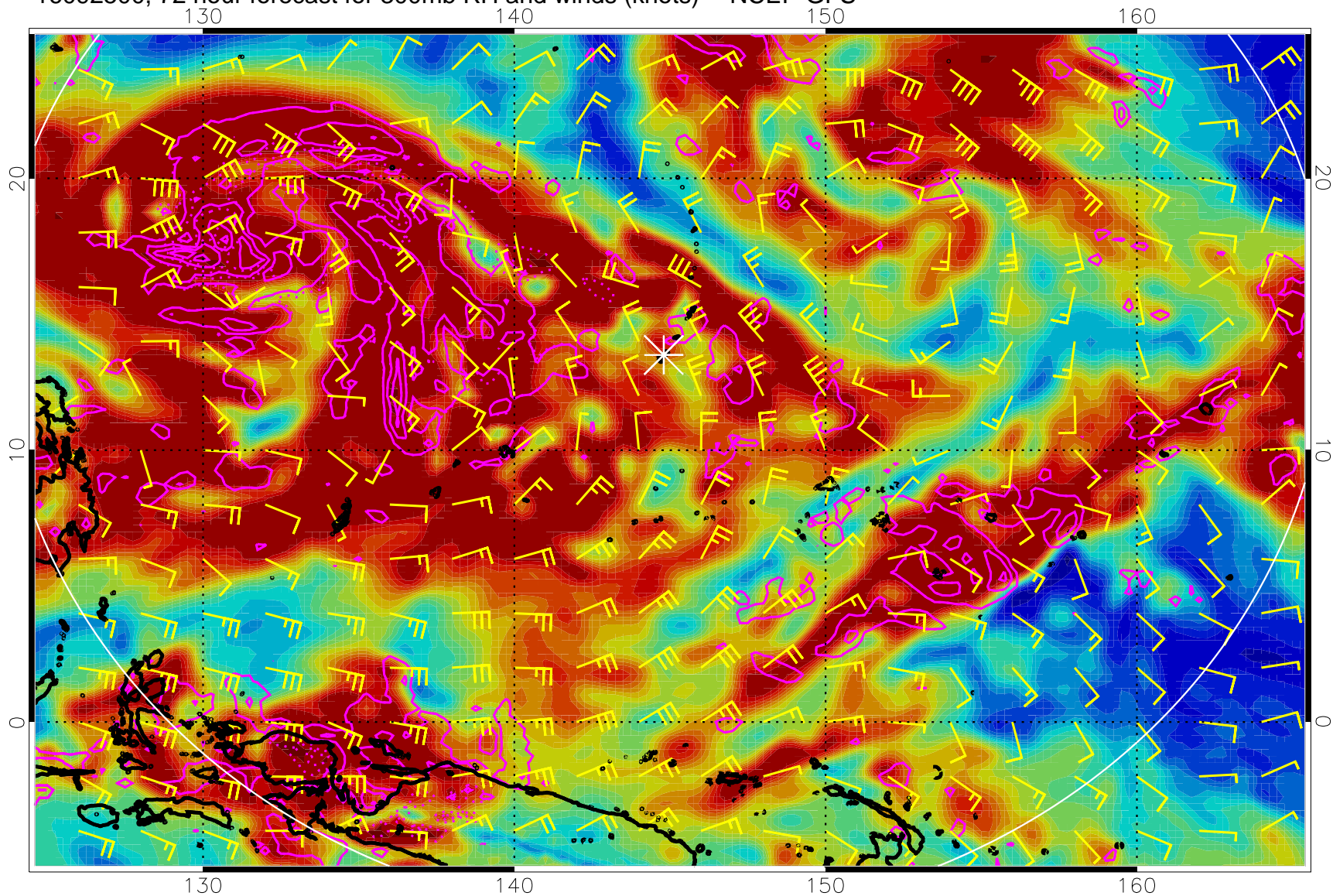
16092418, 66 hour forecast for 300mb RH and winds (knots) -- NCEP GFS



Precip (tot dot, conv sol) mm/day 40 mm/day contours, min 20

EPV Tropopause (2 PVU) Position

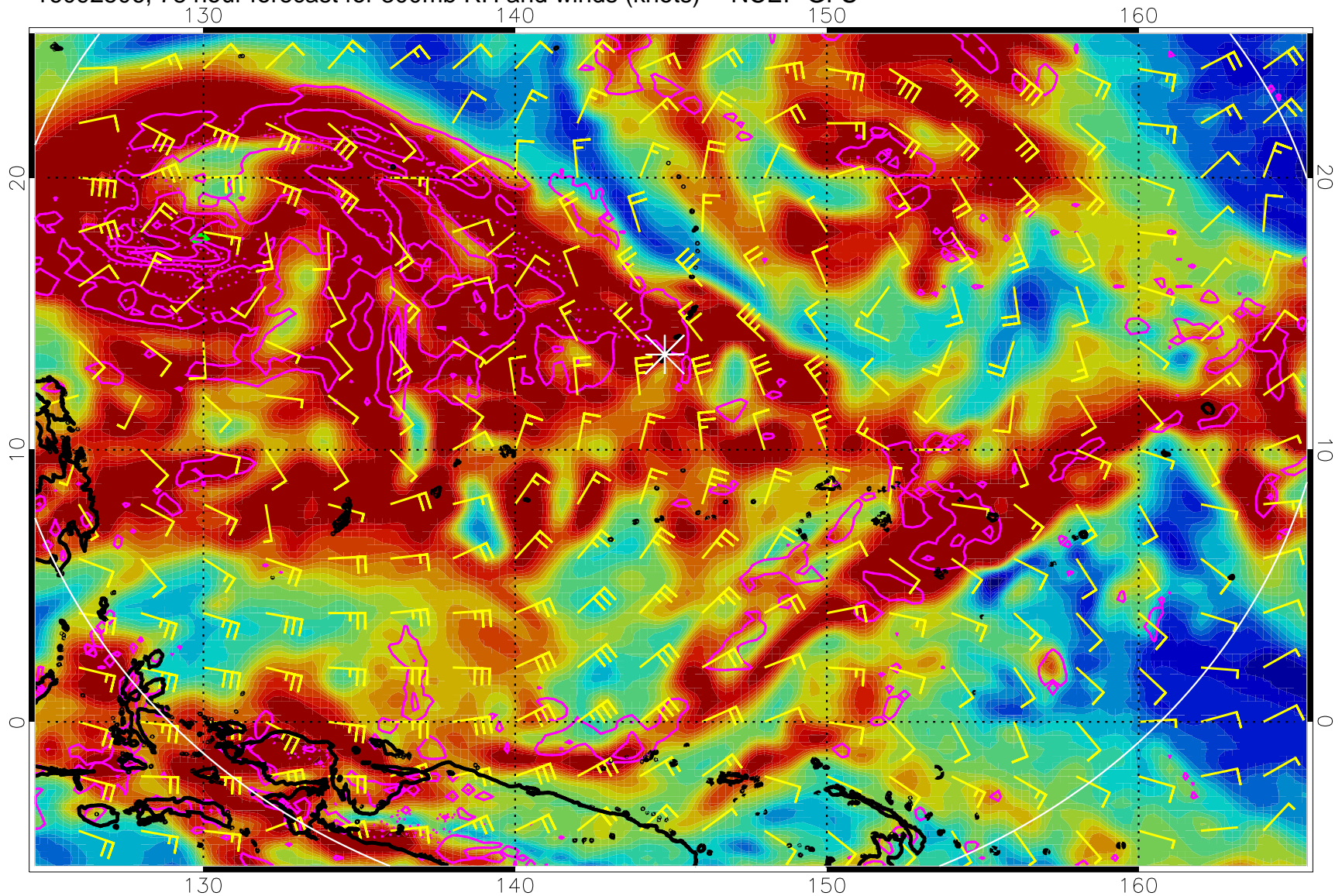
16092500, 72 hour forecast for 300mb RH and winds (knots) -- NCEP GFS



Precip (tot dot, conv sol) mm/day 40 mm/day contours, min 20

EPV Tropopause (2 PVU) Position

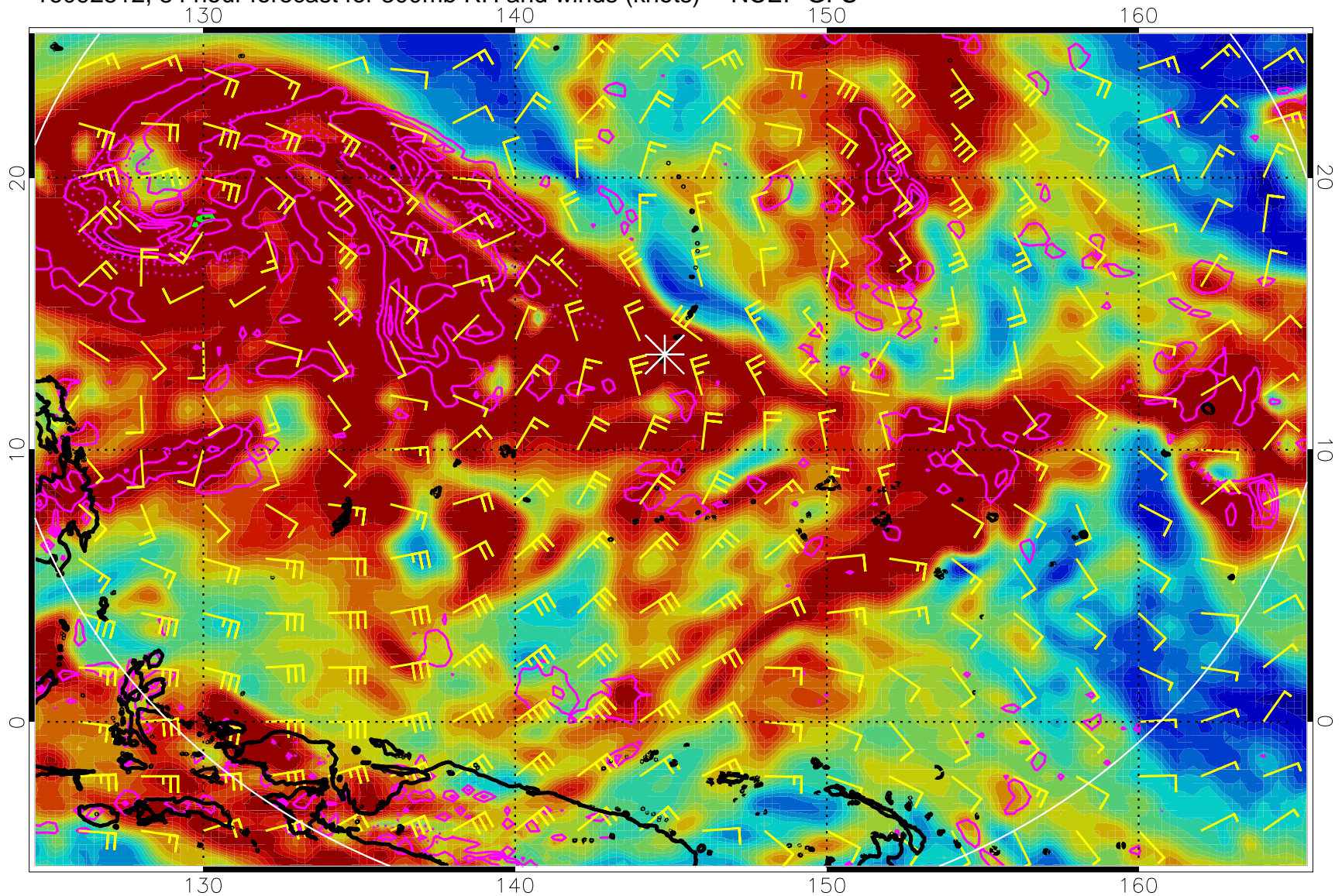
16092506, 78 hour forecast for 300mb RH and winds (knots) -- NCEP GFS



Precip (tot dot, conv sol) mm/day 40 mm/day contours, min 20

EPV Tropopause (2 PVU) Position

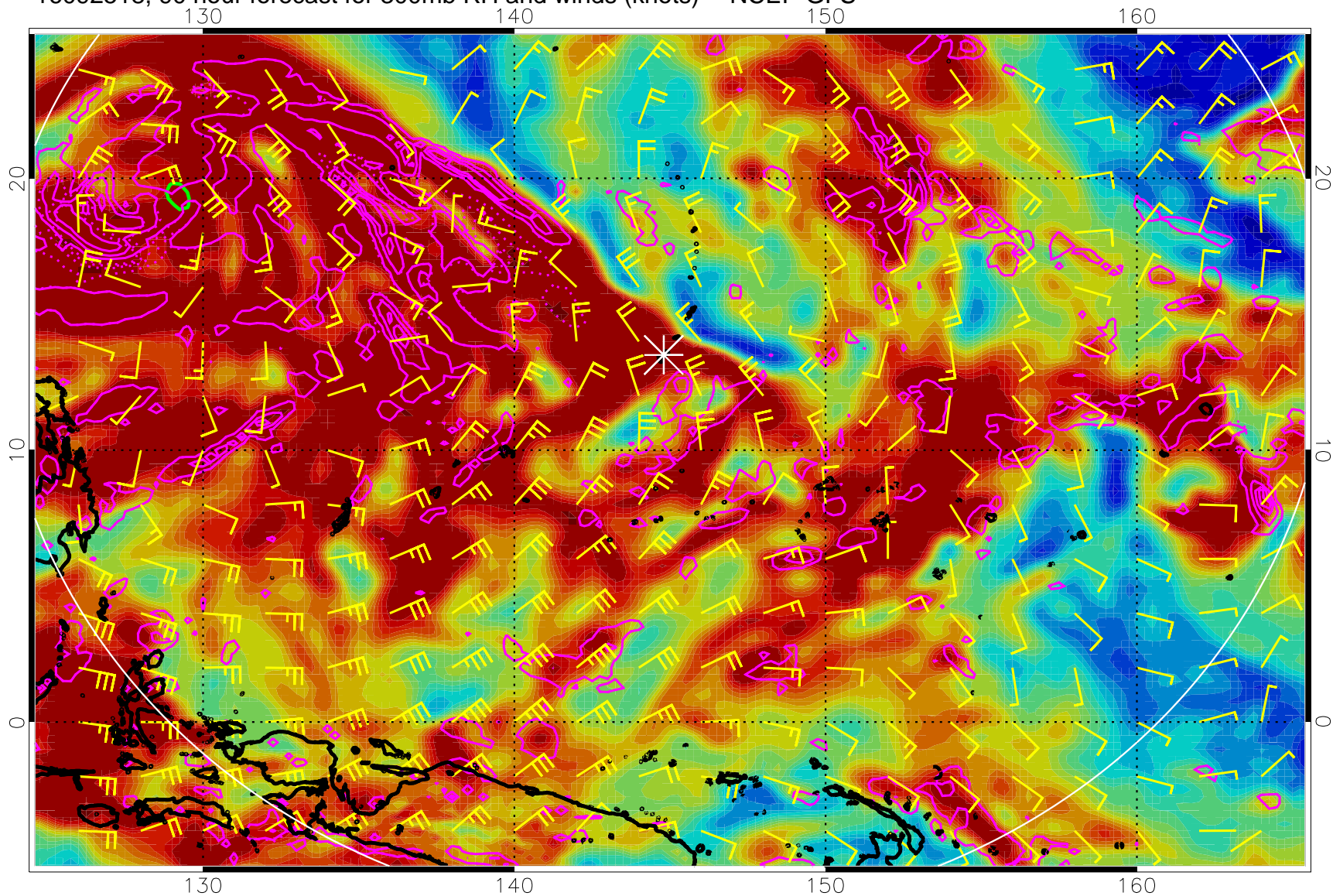
16092512, 84 hour forecast for 300mb RH and winds (knots) -- NCEP GFS



Precip (tot dot, conv sol) mm/day 40 mm/day contours, min 20

EPV Tropopause (2 PVU) Position

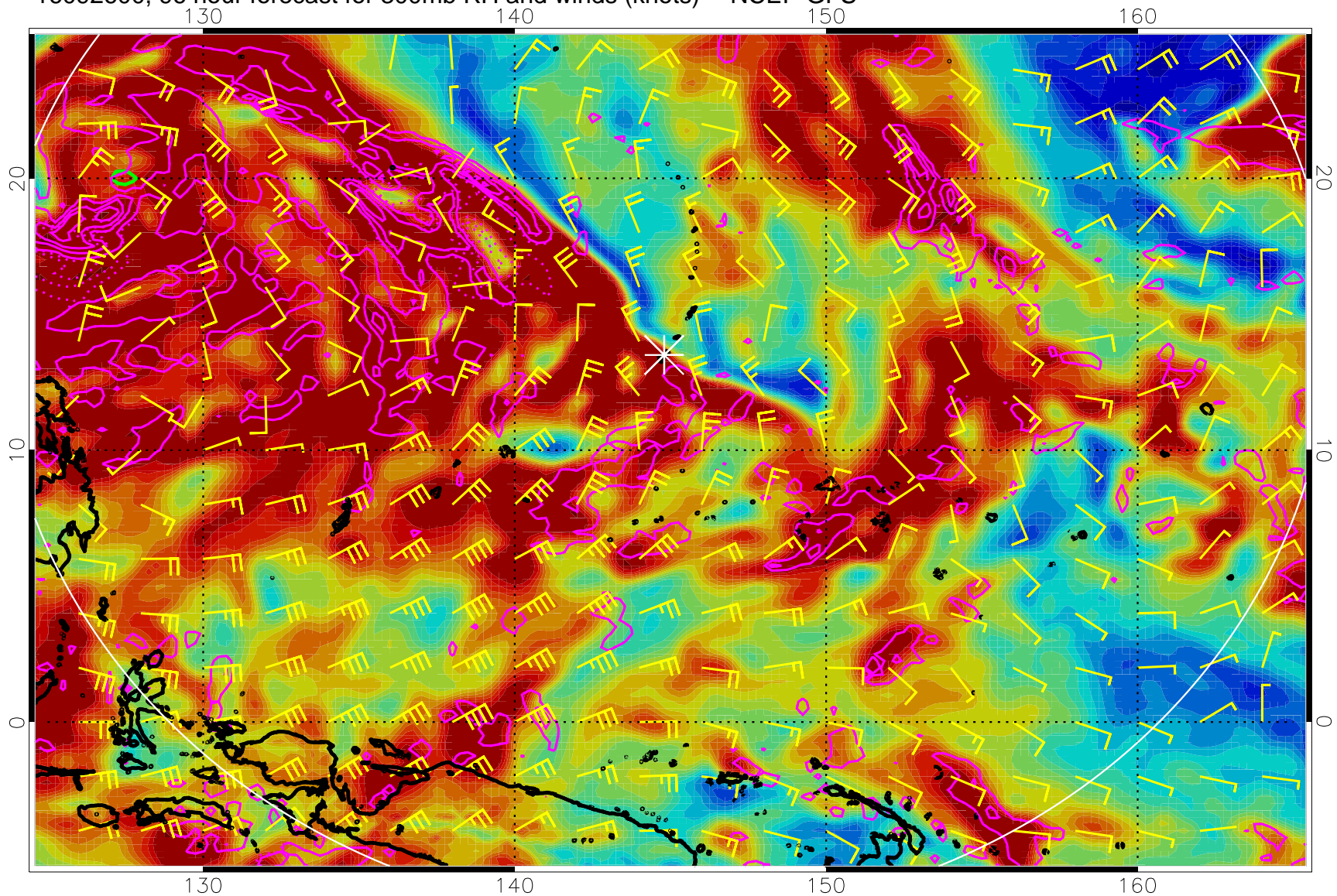
16092518, 90 hour forecast for 300mb RH and winds (knots) -- NCEP GFS



Precip (tot dot, conv sol) mm/day 40 mm/day contours, min 20

EPV Tropopause (2 PVU) Position

16092600, 96 hour forecast for 300mb RH and winds (knots) -- NCEP GFS

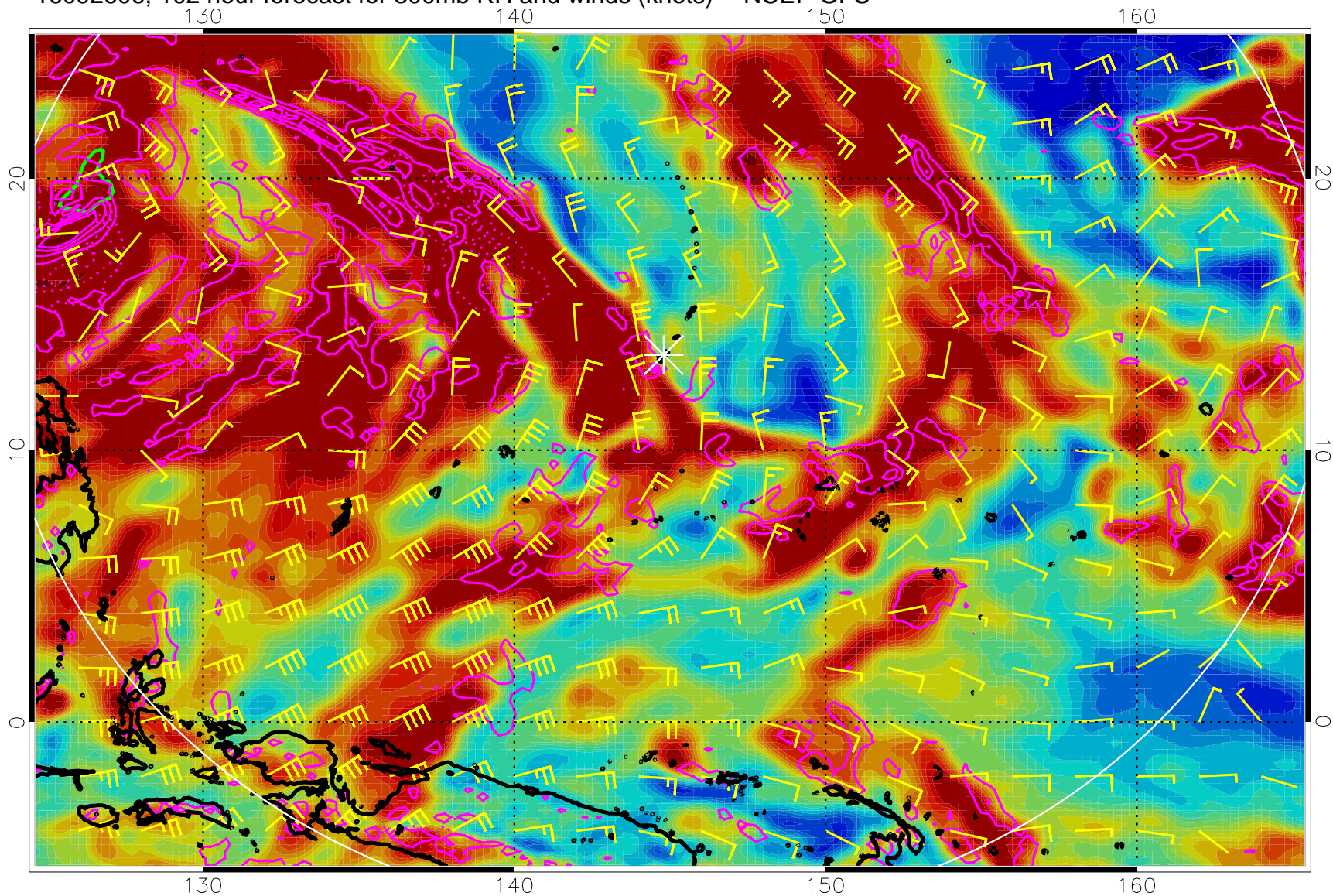


Precip (tot dot, conv sol) mm/day 40 mm/day contours, min 20

EPV Tropopause (2 PVU) Position



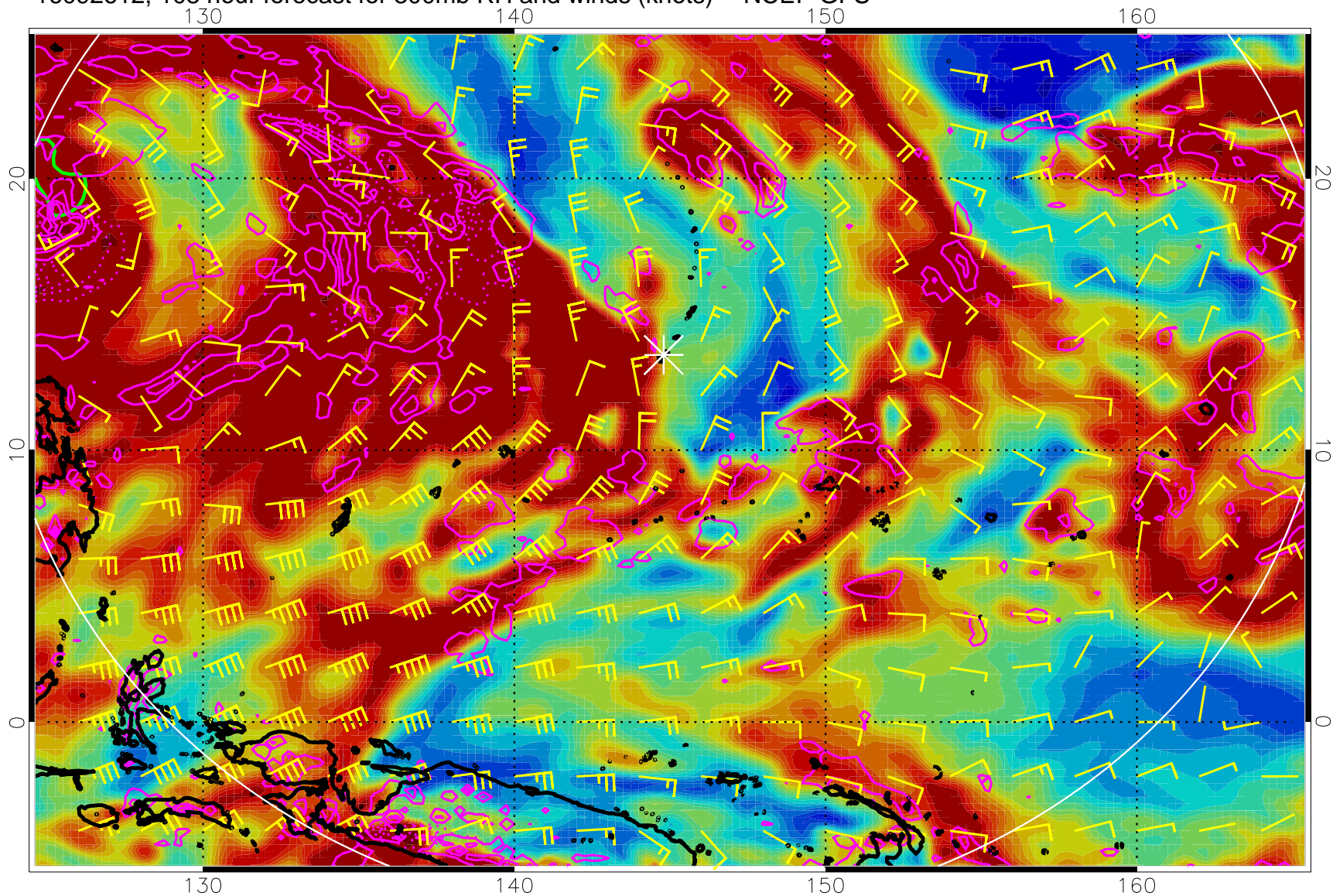
16092606, 102 hour forecast for 300mb RH and winds (knots) -- NCEP GFS



Precip (tot dot, conv sol) mm/day 40 mm/day contours, min 20

EPV Tropopause (2 PVU) Position

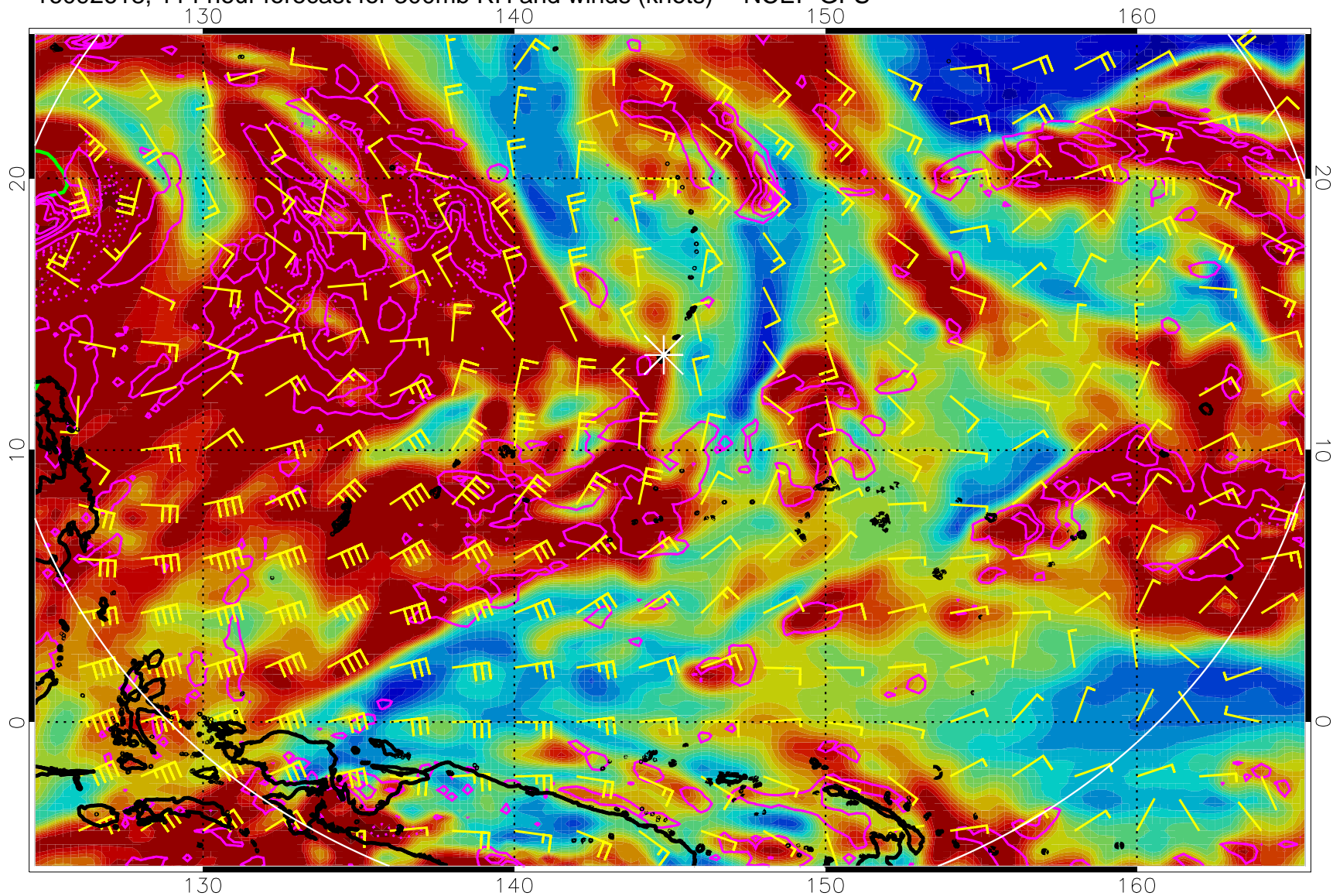
16092612, 108 hour forecast for 300mb RH and winds (knots) -- NCEP GFS



Precip (tot dot, conv sol) mm/day 40 mm/day contours, min 20

EPV Tropopause (2 PVU) Position

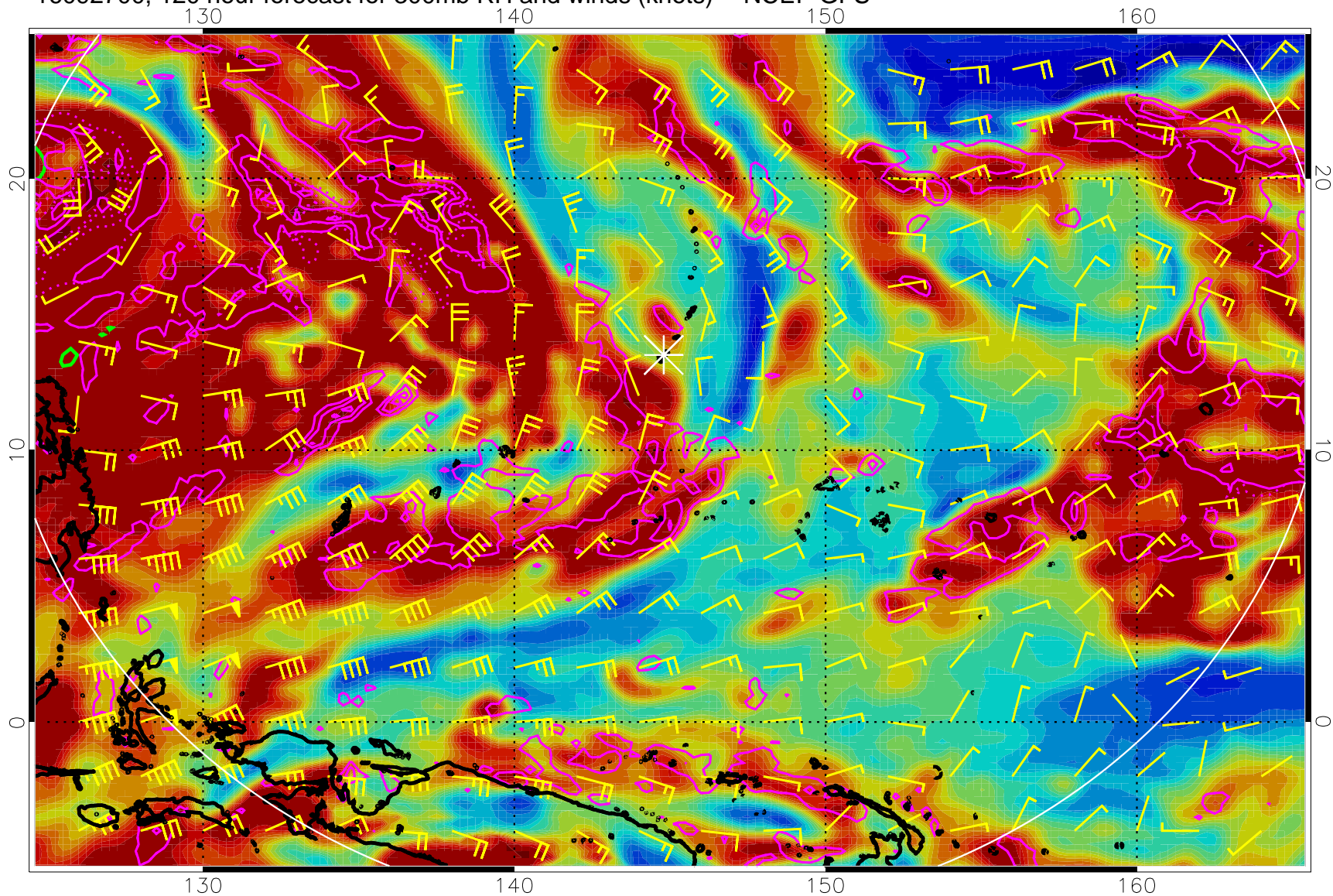
16092618, 114 hour forecast for 300mb RH and winds (knots) -- NCEP GFS



Precip (tot dot, conv sol) mm/day 40 mm/day contours, min 20

EPV Tropopause (2 PVU) Position

16092700, 120 hour forecast for 300mb RH and winds (knots) -- NCEP GFS



Precip (tot dot, conv sol) mm/day 40 mm/day contours, min 20

EPV Tropopause (2 PVU) Position