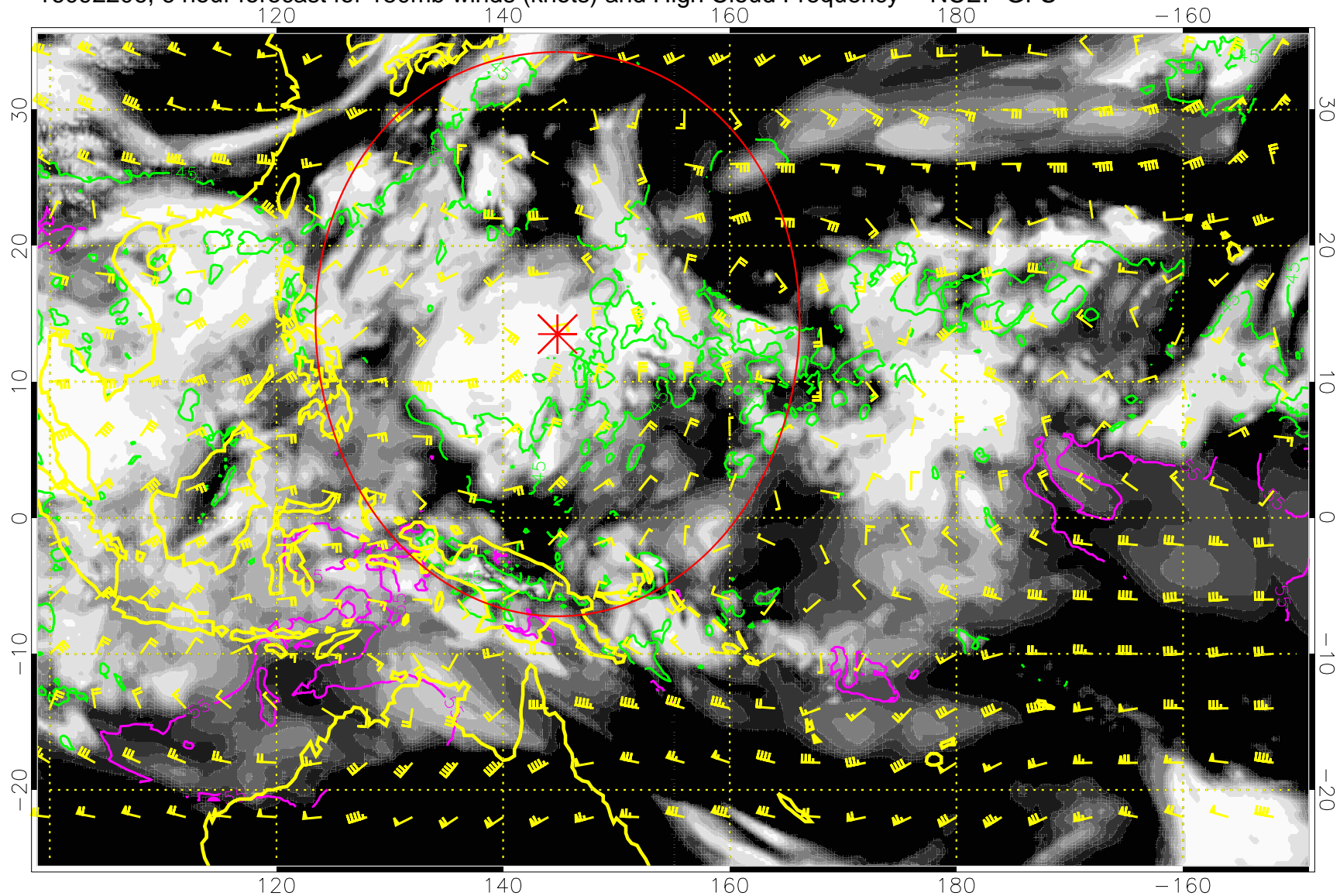


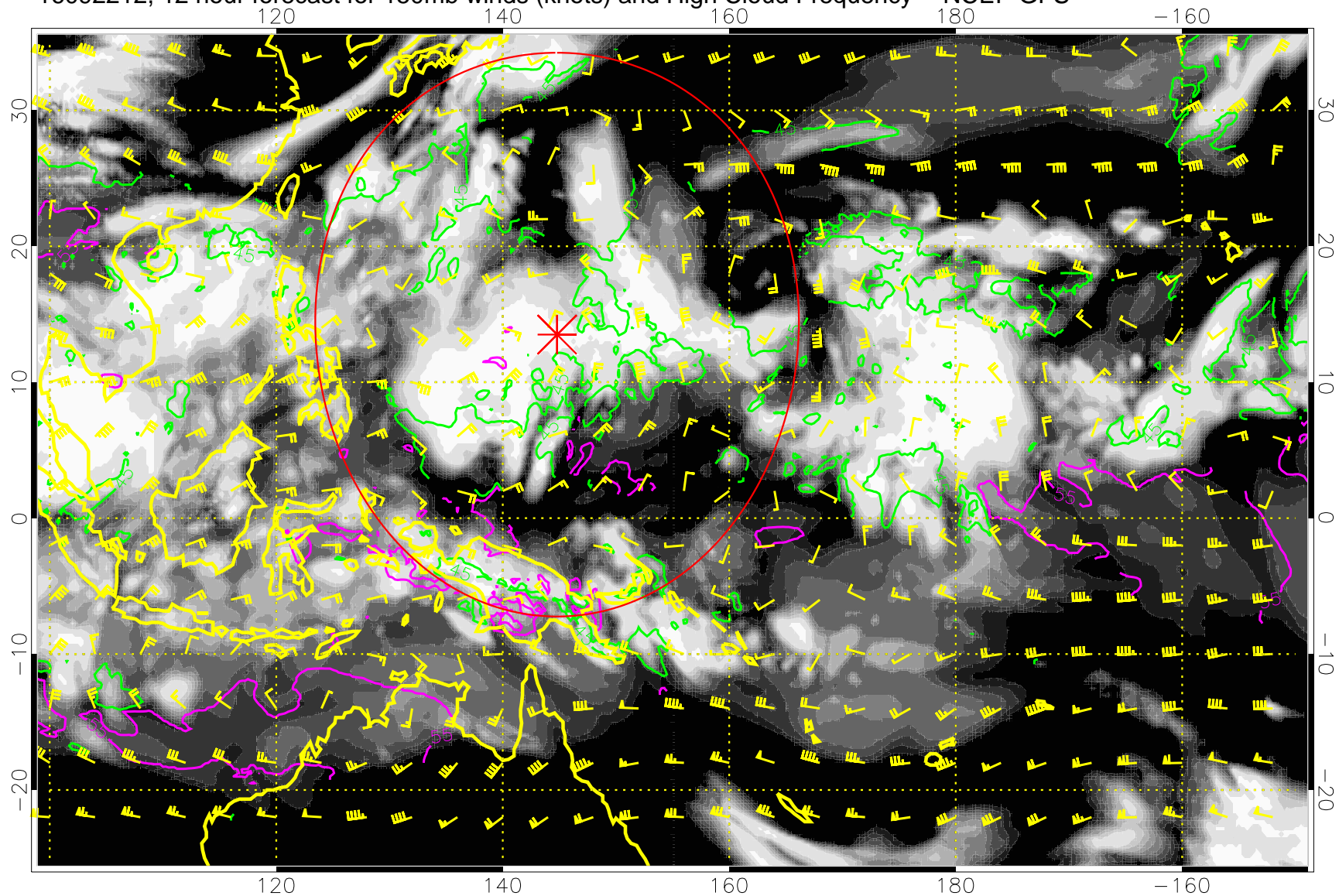
16092206, 6 hour forecast for 150mb winds (knots) and High Cloud Frequency -- NCEP GFS



45 kft  
55 kft

Range ring of 2304 km

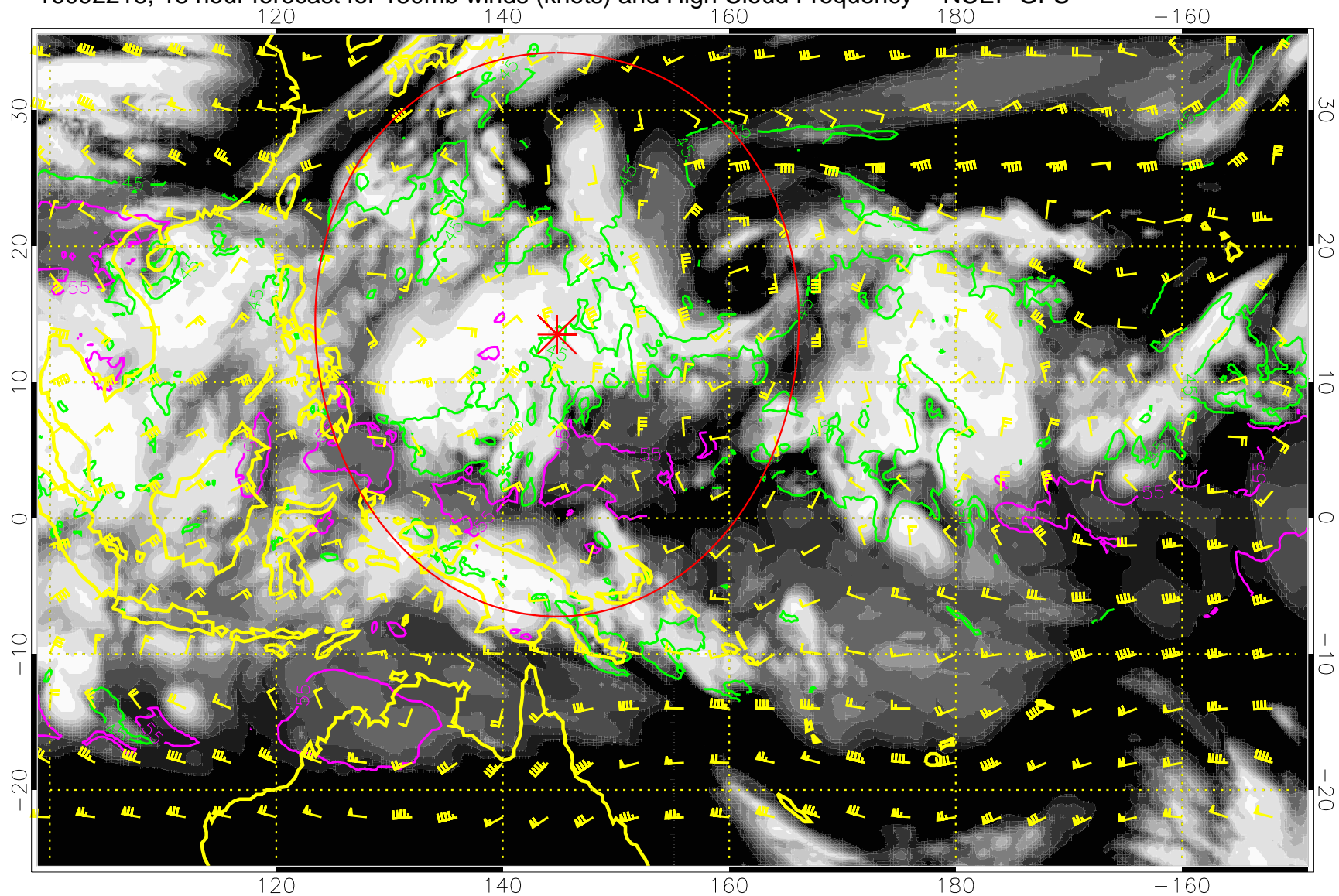
16092212, 12 hour forecast for 150mb winds (knots) and High Cloud Frequency -- NCEP GFS



45 kft  
55 kft

Range ring of 2304 km

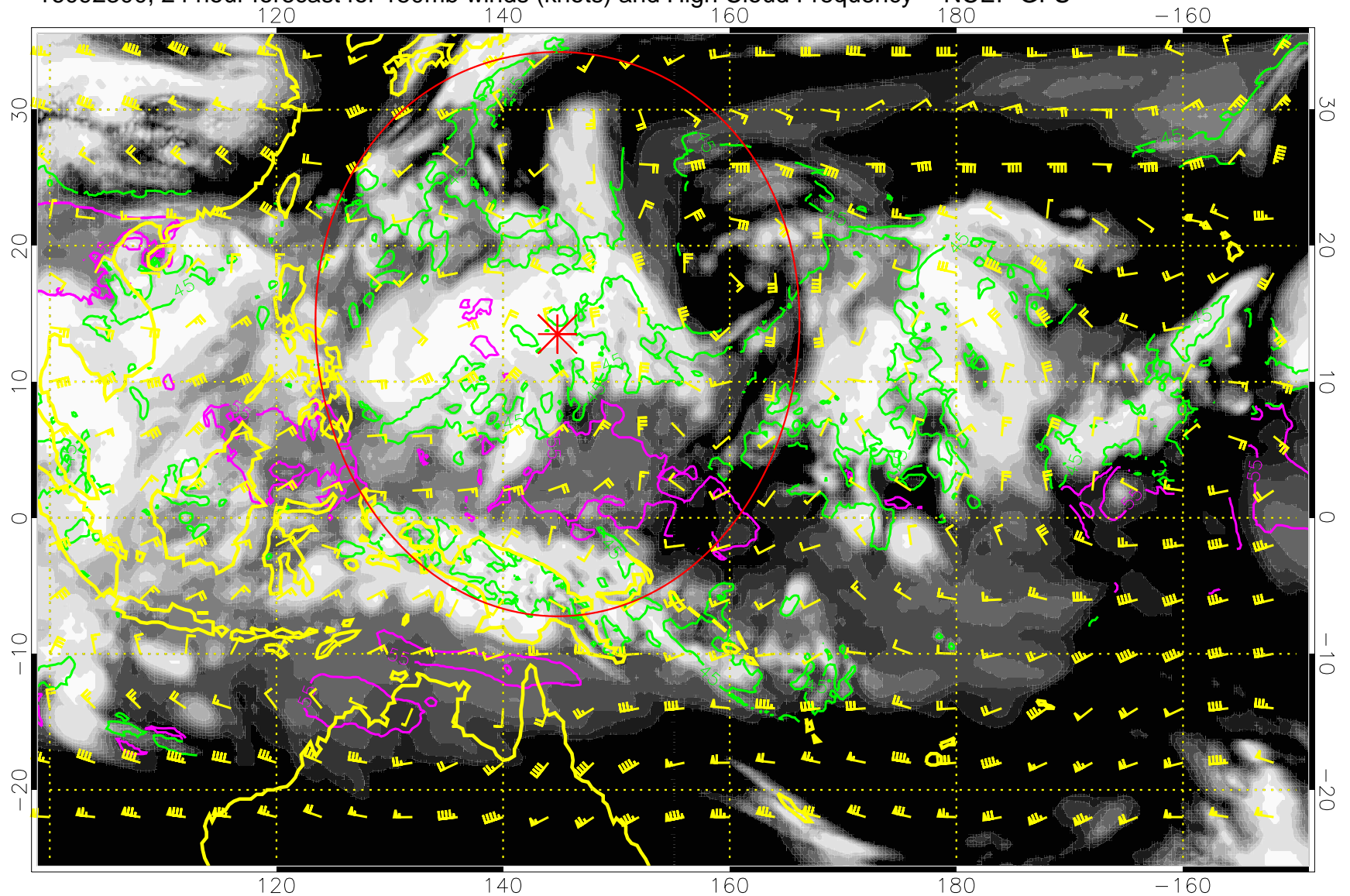
16092218, 18 hour forecast for 150mb winds (knots) and High Cloud Frequency -- NCEP GFS



45 kft  
55 kft

Range ring of 2304 km

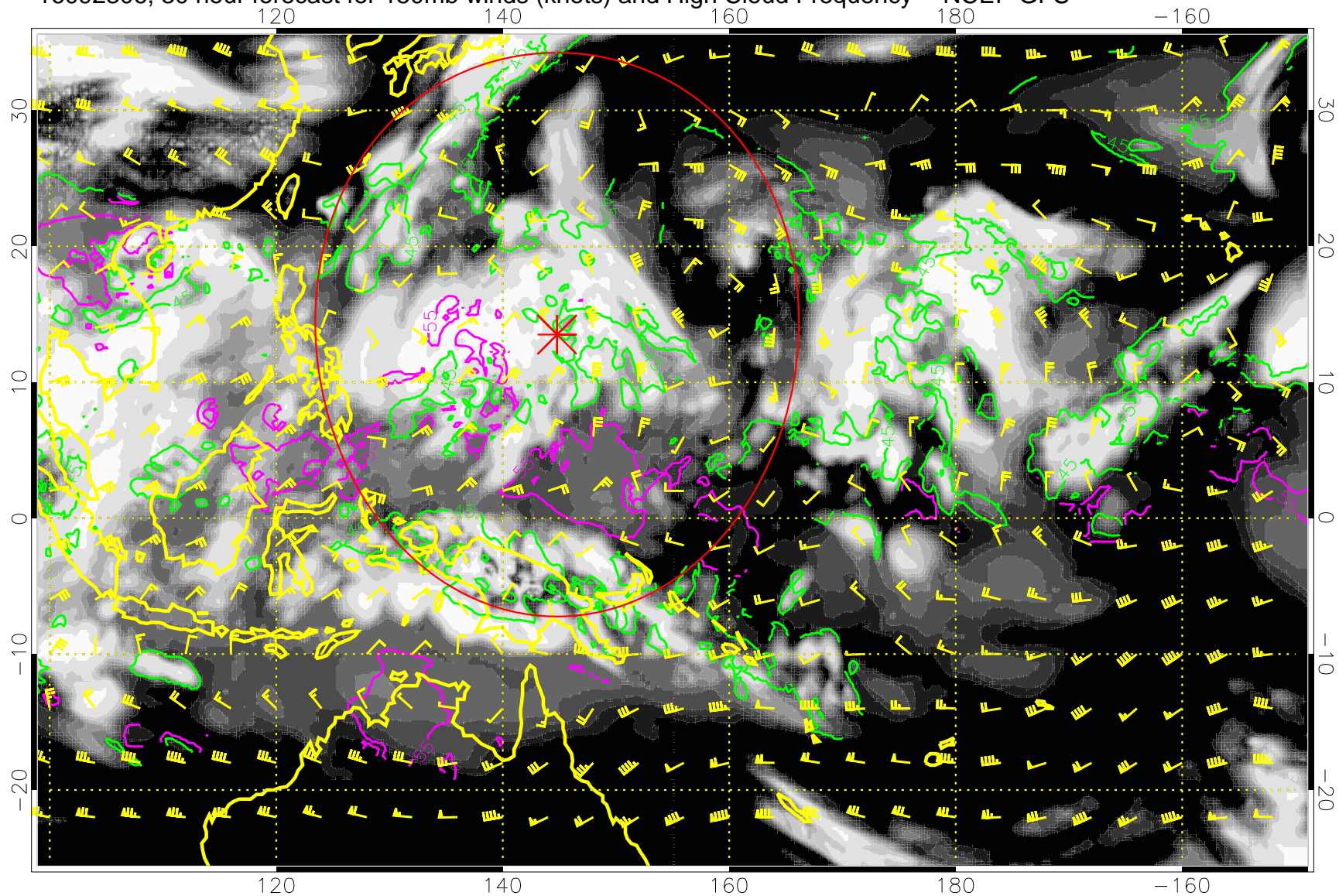
16092300, 24 hour forecast for 150mb winds (knots) and High Cloud Frequency -- NCEP GFS



45 kft  
55 kft

Range ring of 2304 km

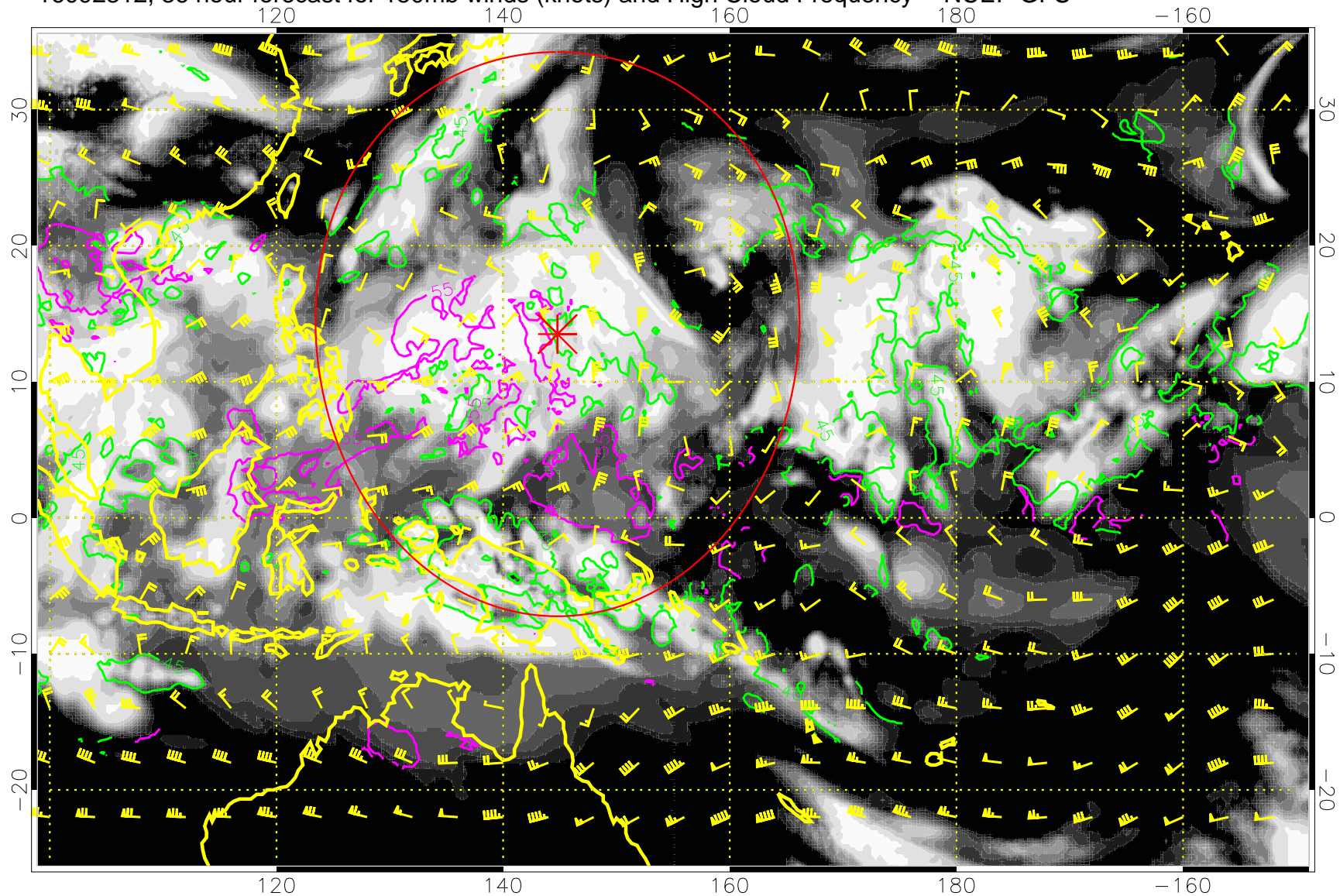
16092306, 30 hour forecast for 150mb winds (knots) and High Cloud Frequency -- NCEP GFS



45 kft  
55 kft

Range ring of 2304 km

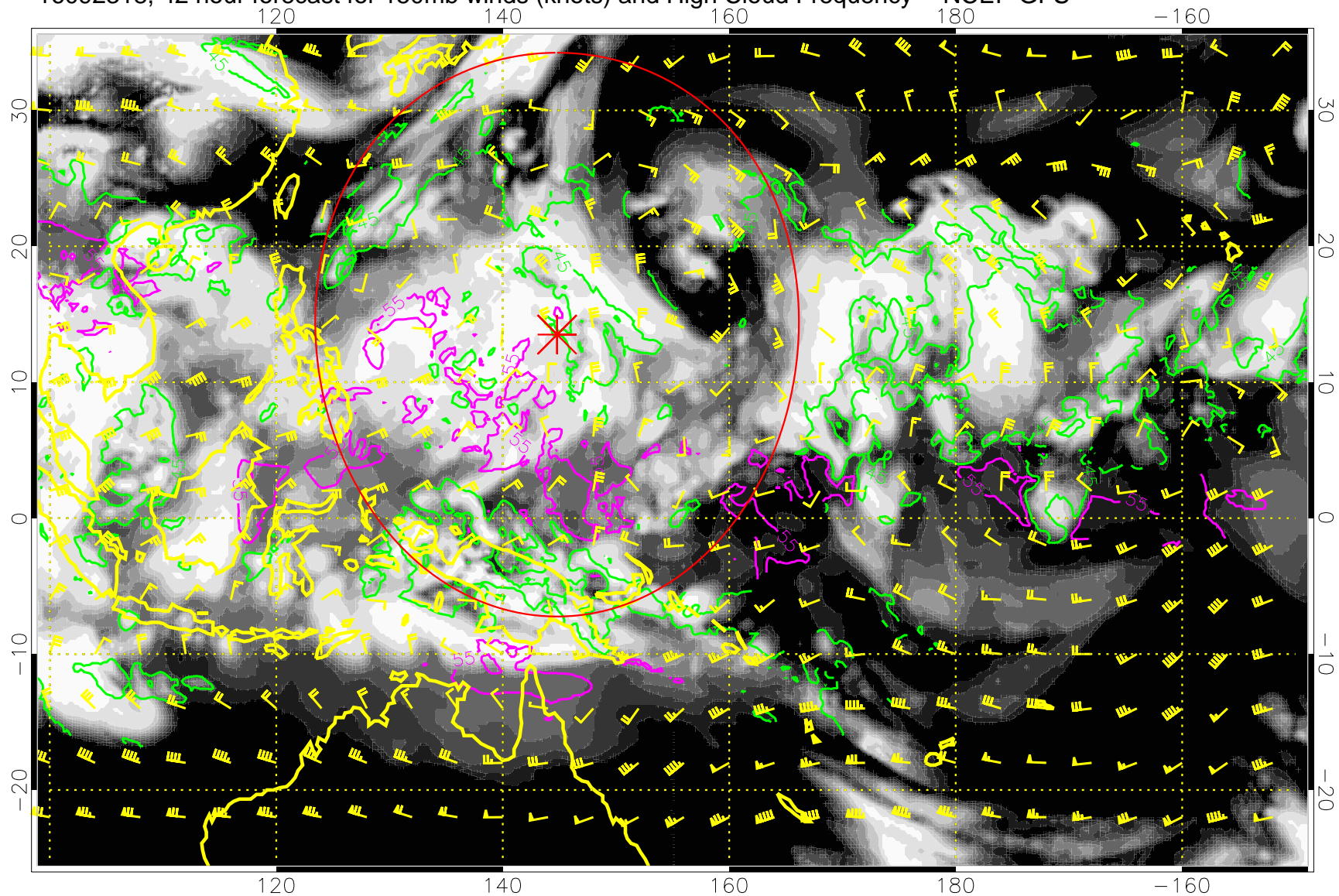
16092312, 36 hour forecast for 150mb winds (knots) and High Cloud Frequency -- NCEP GFS



45 kft  
55 kft

Range ring of 2304 km

16092318, 42 hour forecast for 150mb winds (knots) and High Cloud Frequency -- NCEP GFS

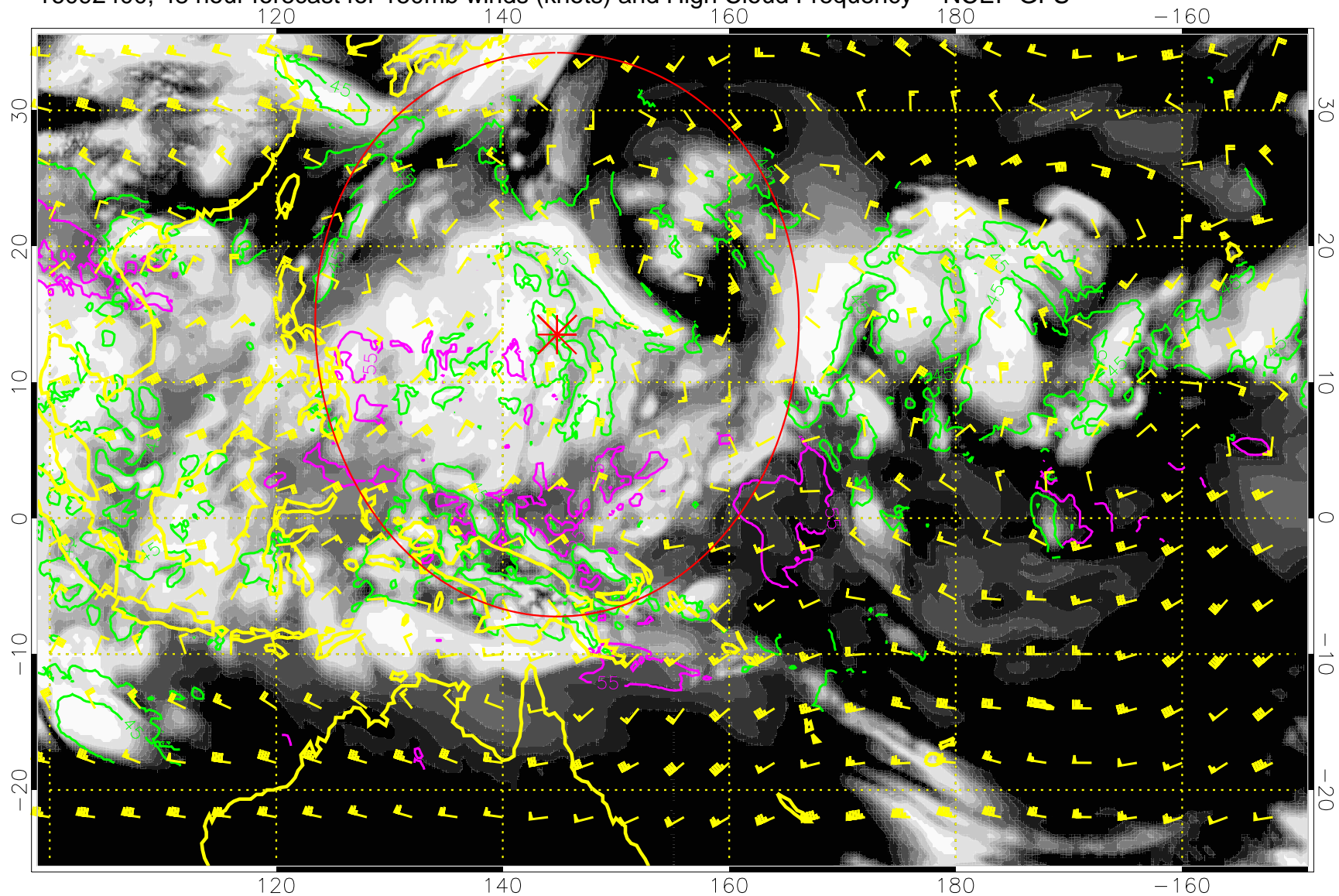


0.0 0.2 0.4 0.6 0.8 1.0  
High Cloud Frequency

45 kft  
55 kft

Range ring of 2304 km

16092400, 48 hour forecast for 150mb winds (knots) and High Cloud Frequency -- NCEP GFS

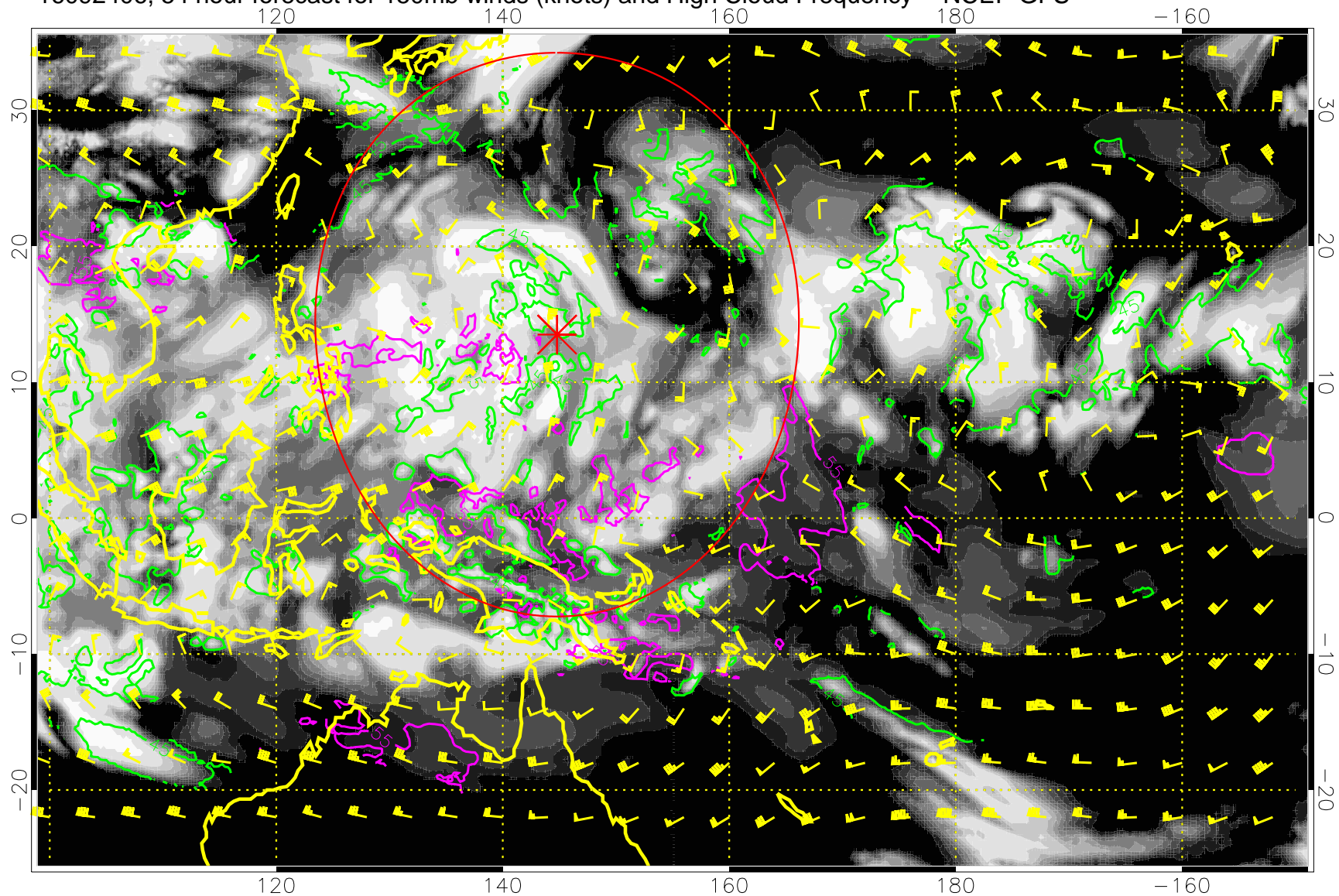


45 kft  
55 kft

Range ring of 2304 km



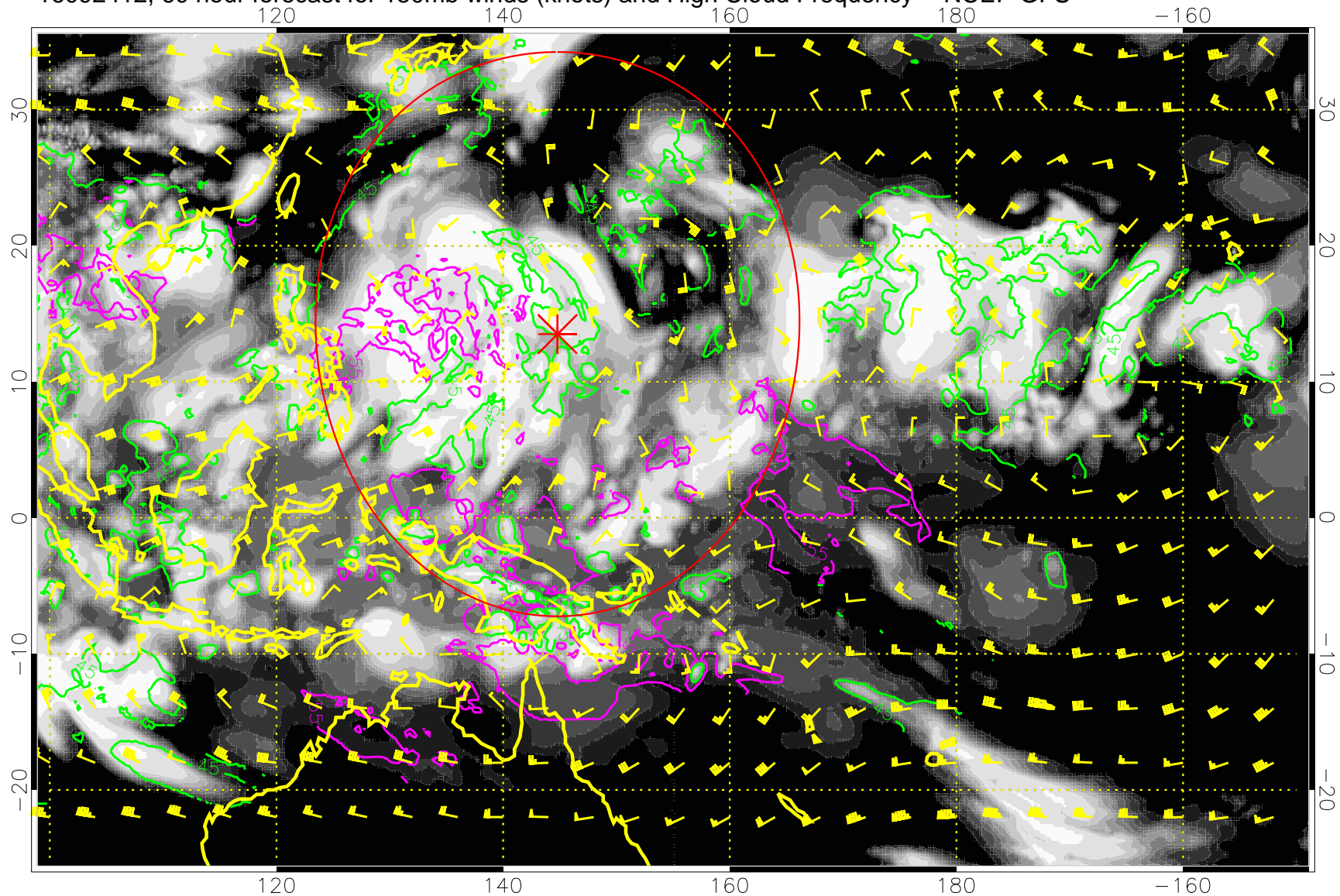
16092406, 54 hour forecast for 150mb winds (knots) and High Cloud Frequency -- NCEP GFS



45 kft  
55 kft

Range ring of 2304 km

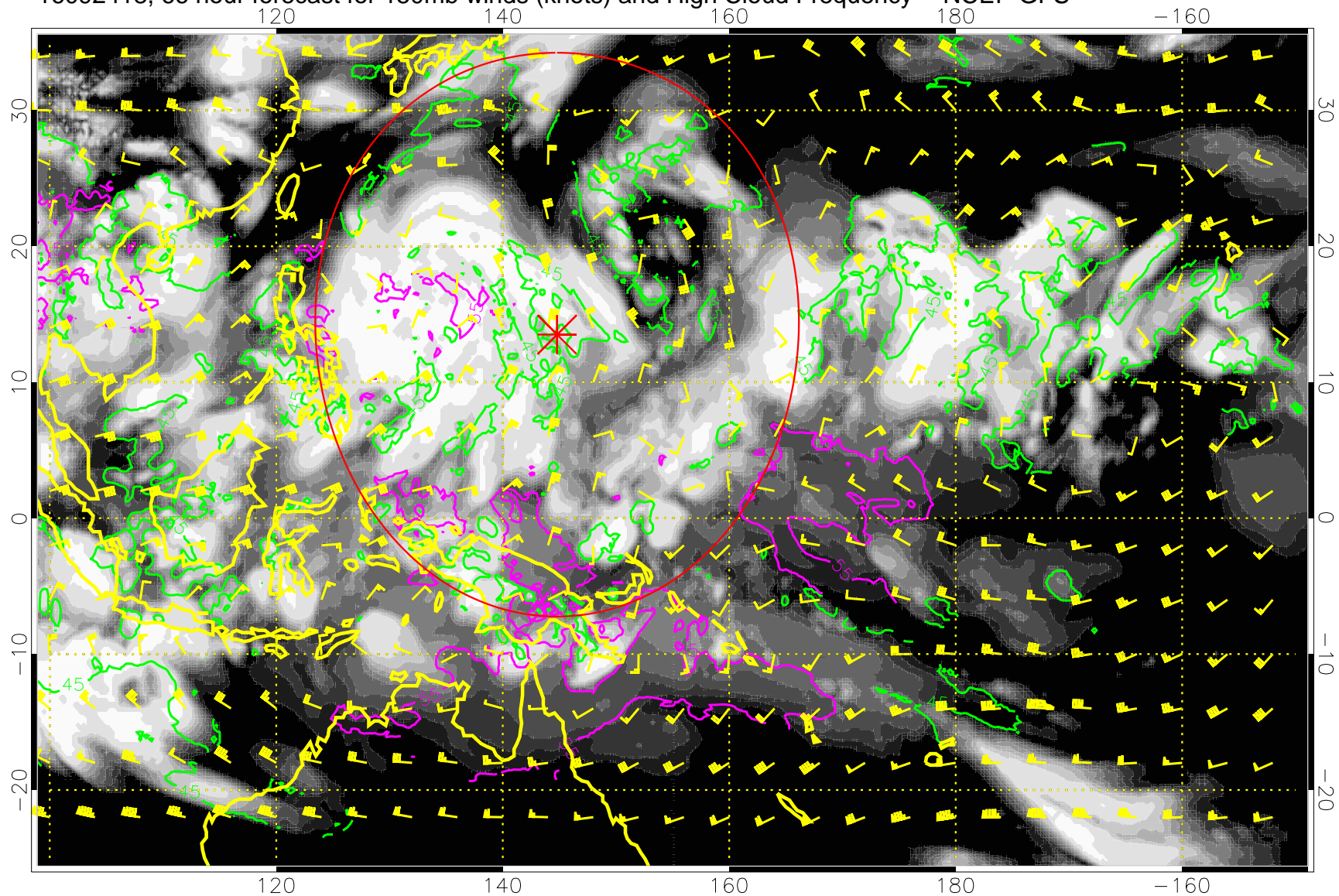
16092412, 60 hour forecast for 150mb winds (knots) and High Cloud Frequency -- NCEP GFS



45 kft  
55 kft

Range ring of 2304 km

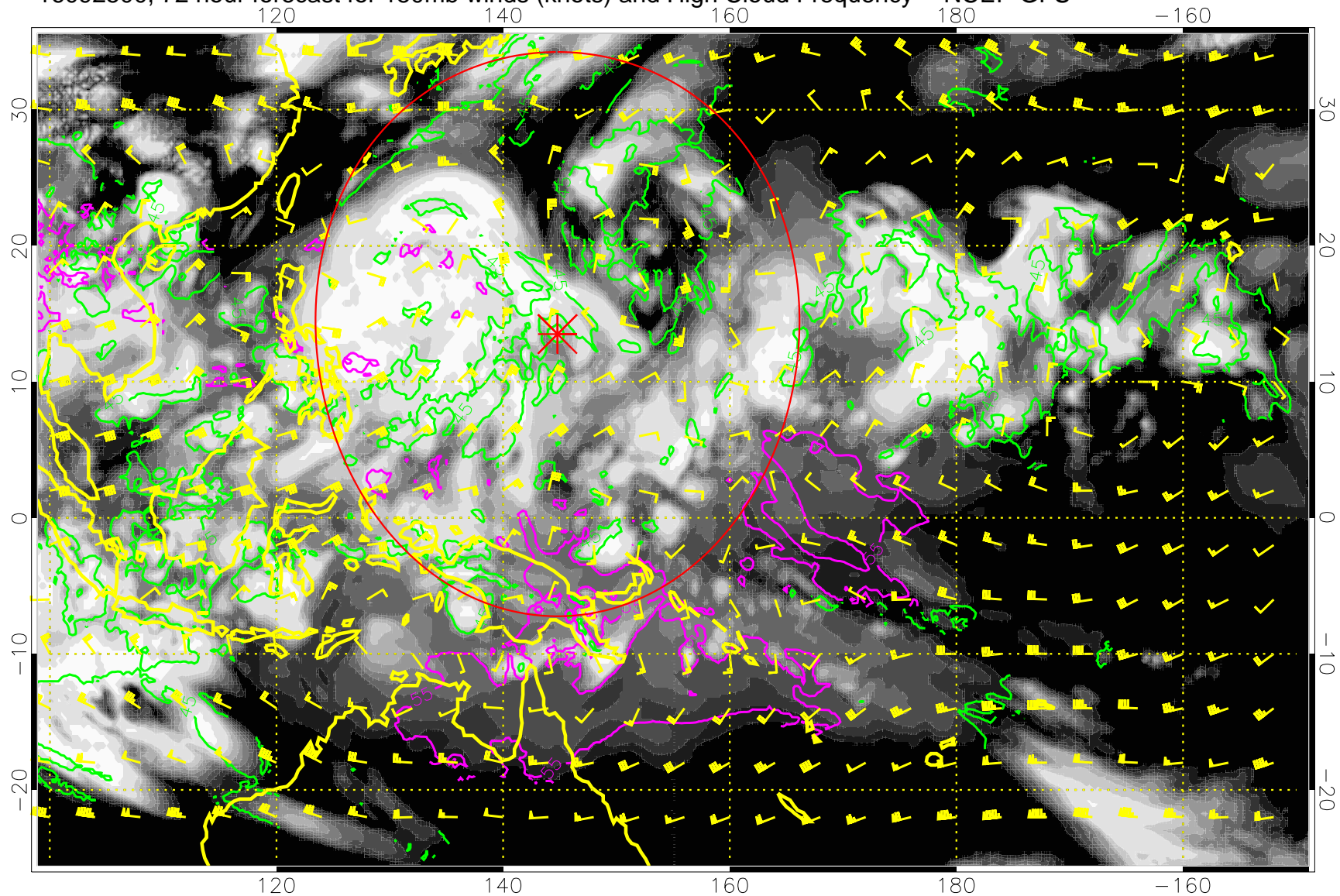
16092418, 66 hour forecast for 150mb winds (knots) and High Cloud Frequency -- NCEP GFS



45 kft  
55 kft

Range ring of 2304 km

16092500, 72 hour forecast for 150mb winds (knots) and High Cloud Frequency -- NCEP GFS

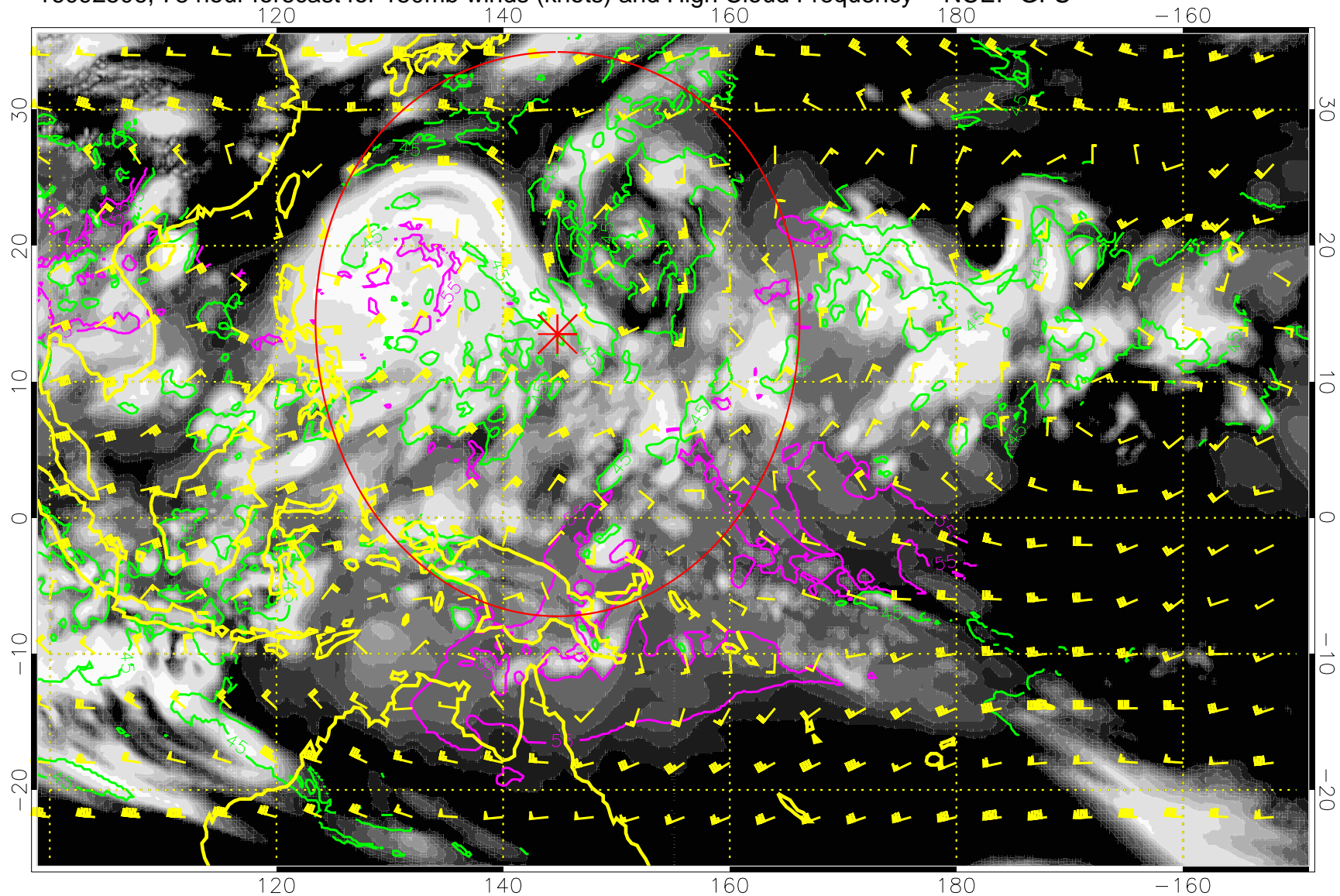


0.0    0.2    0.4    0.6    0.8    1.0  
High Cloud Frequency

45 kft  
55 kft

Range ring of 2304 km

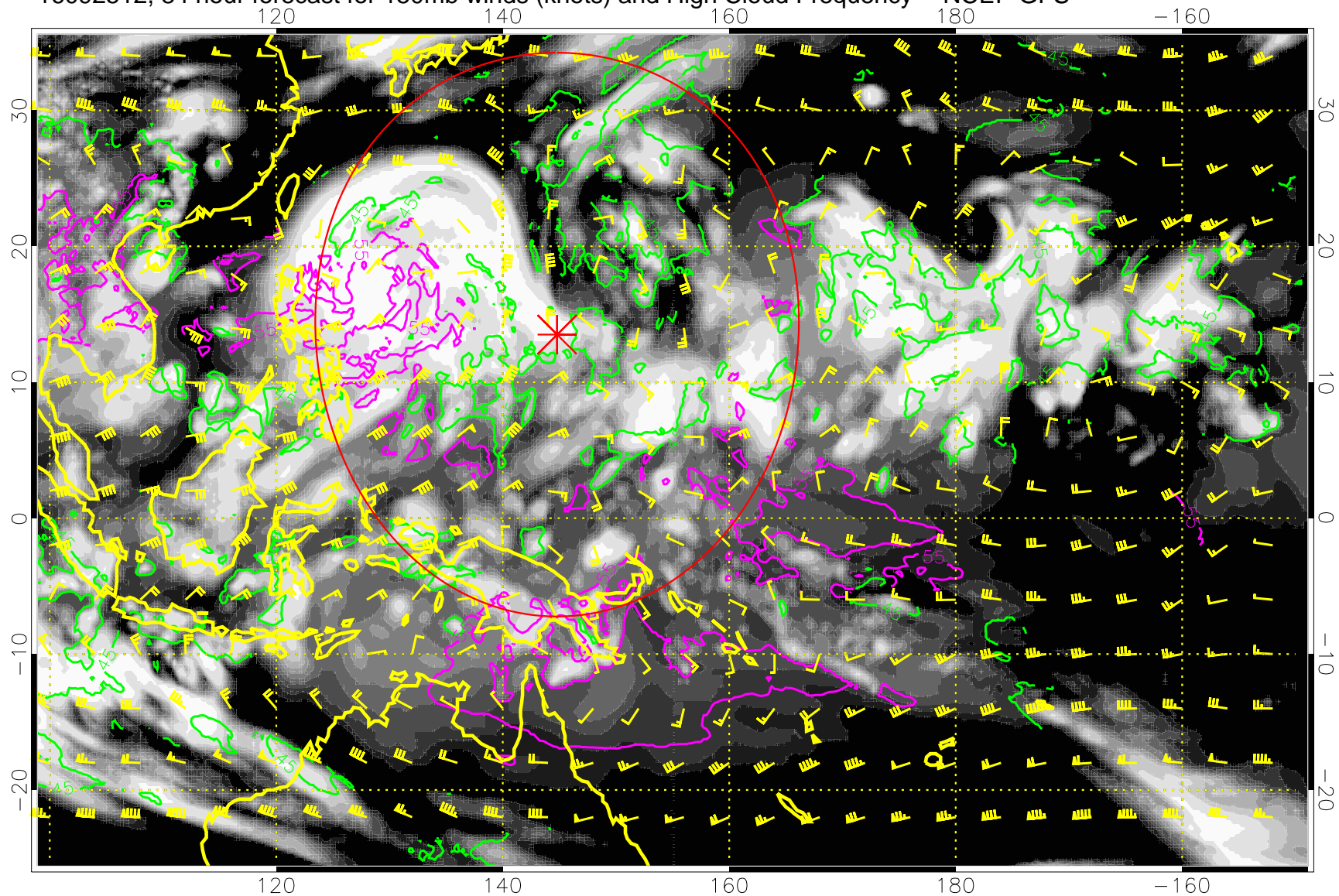
16092506, 78 hour forecast for 150mb winds (knots) and High Cloud Frequency -- NCEP GFS



45 kft  
55 kft

Range ring of 2304 km

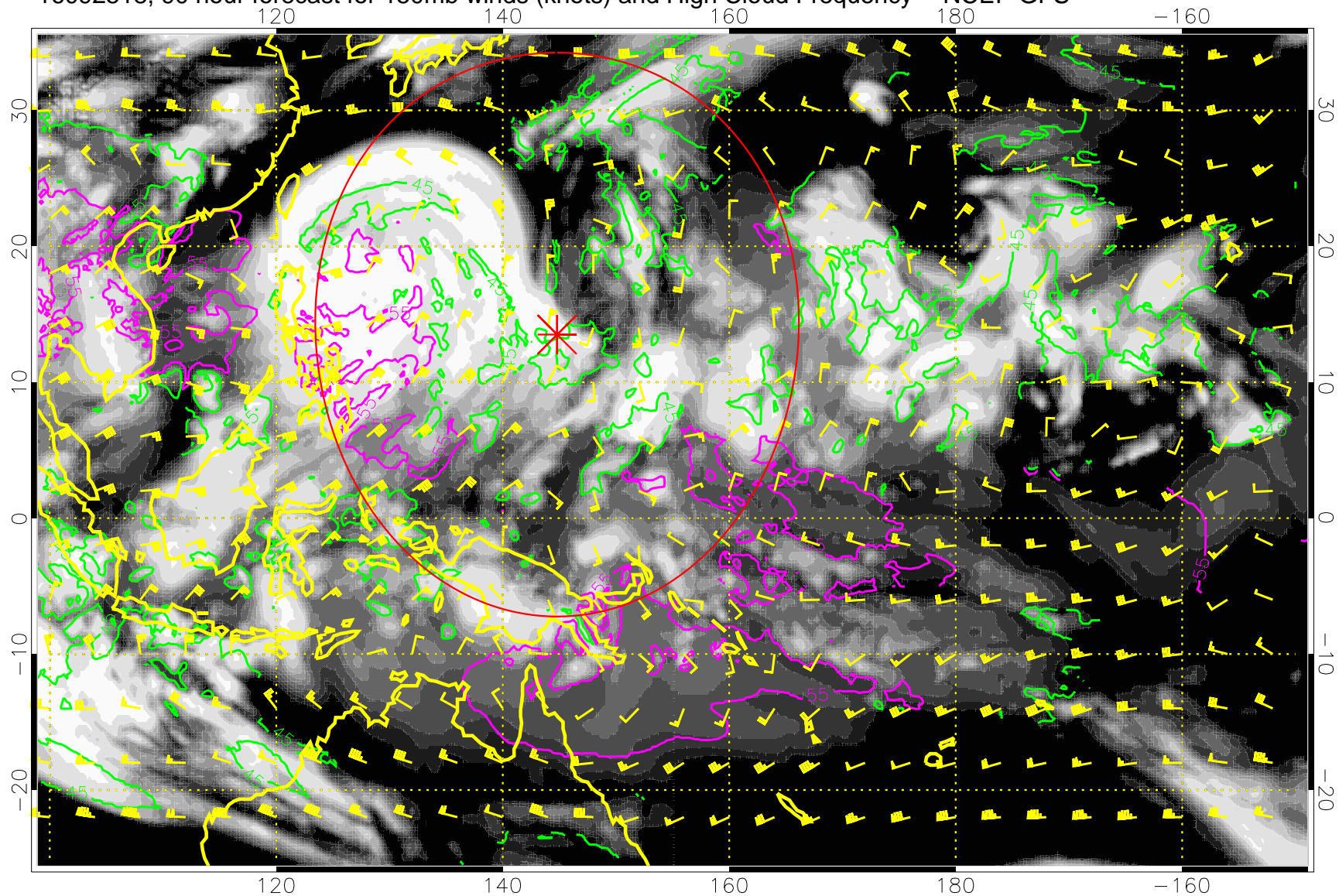
16092512, 84 hour forecast for 150mb winds (knots) and High Cloud Frequency -- NCEP GFS



45 kft  
55 kft

Range ring of 2304 km

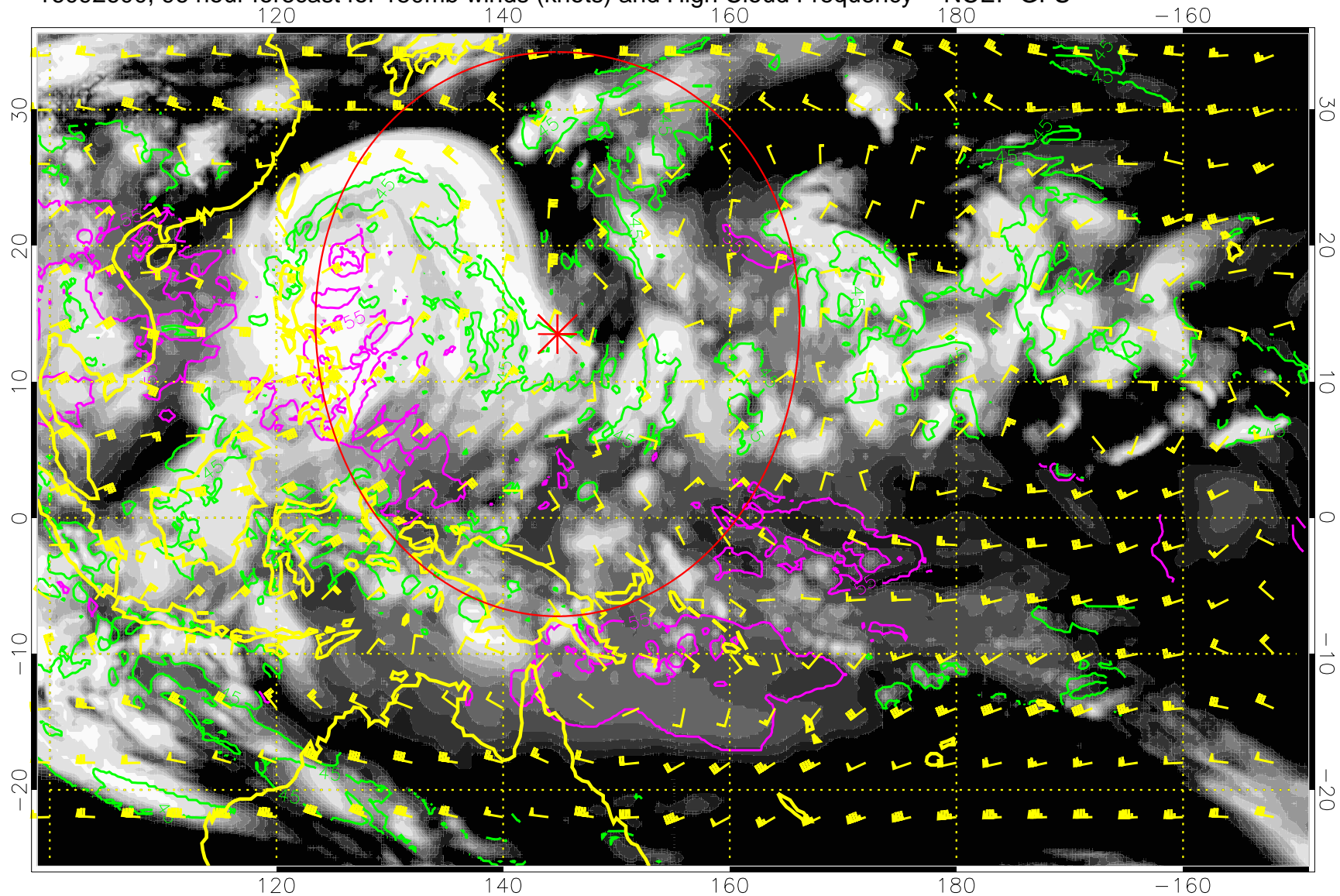
16092518, 90 hour forecast for 150mb winds (knots) and High Cloud Frequency -- NCEP GFS



45 kft  
55 kft

Range ring of 2304 km

16092600, 96 hour forecast for 150mb winds (knots) and High Cloud Frequency -- NCEP GFS

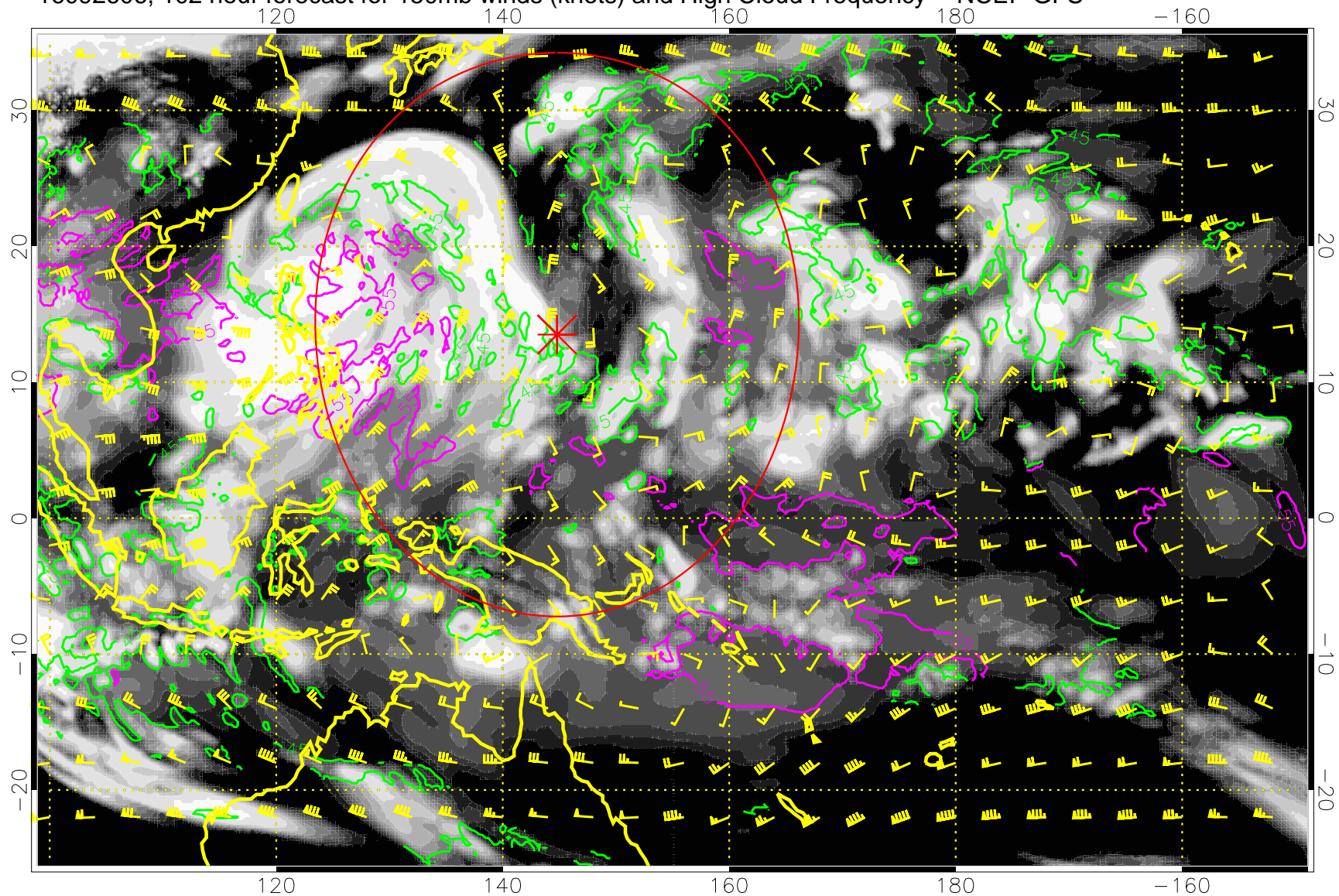


45 kft  
55 kft

Range ring of 2304 km



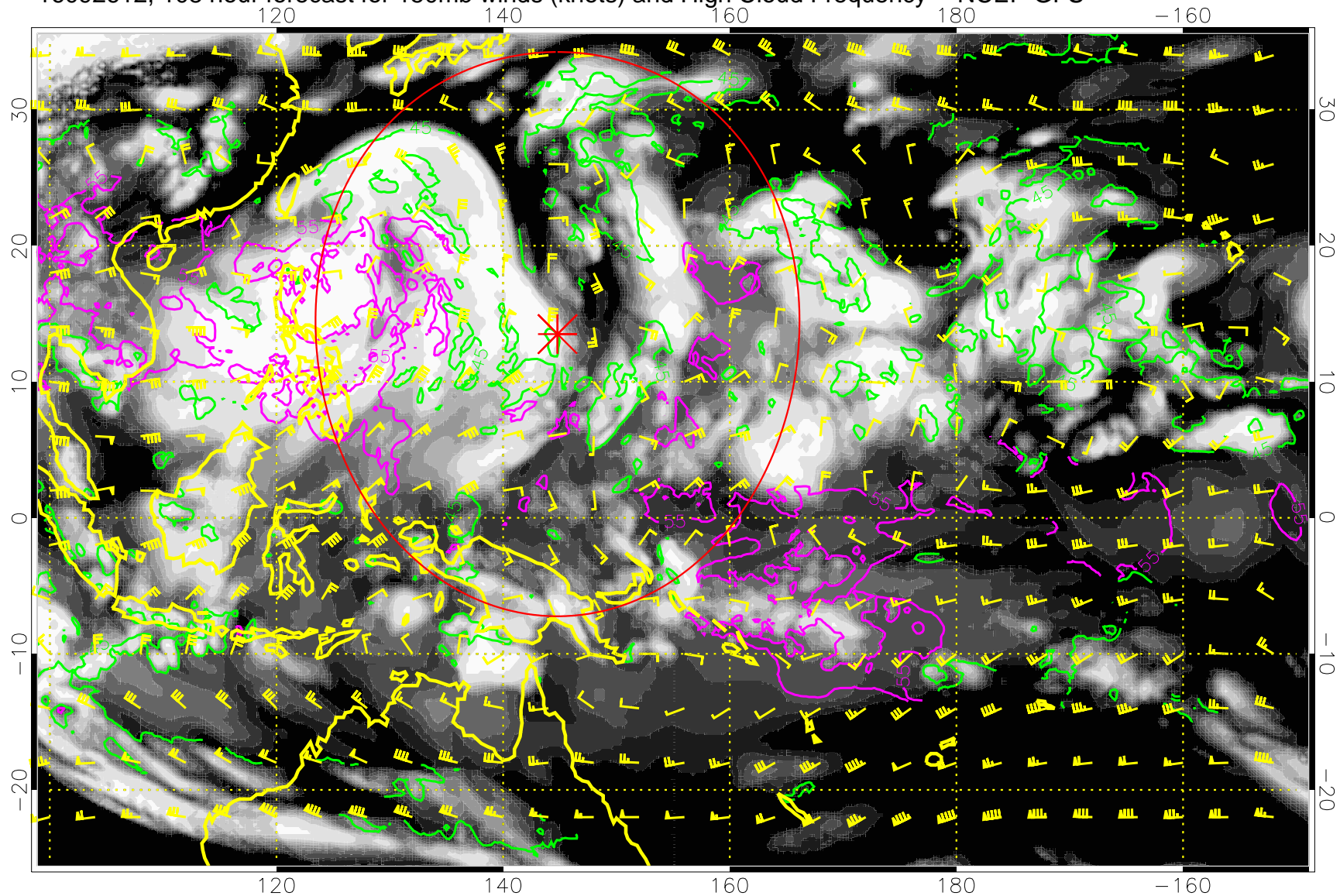
16092606, 102 hour forecast for 150mb winds (knots) and High Cloud Frequency -- NCEP GFS



45 kft  
55 kft

Range ring of 2304 km

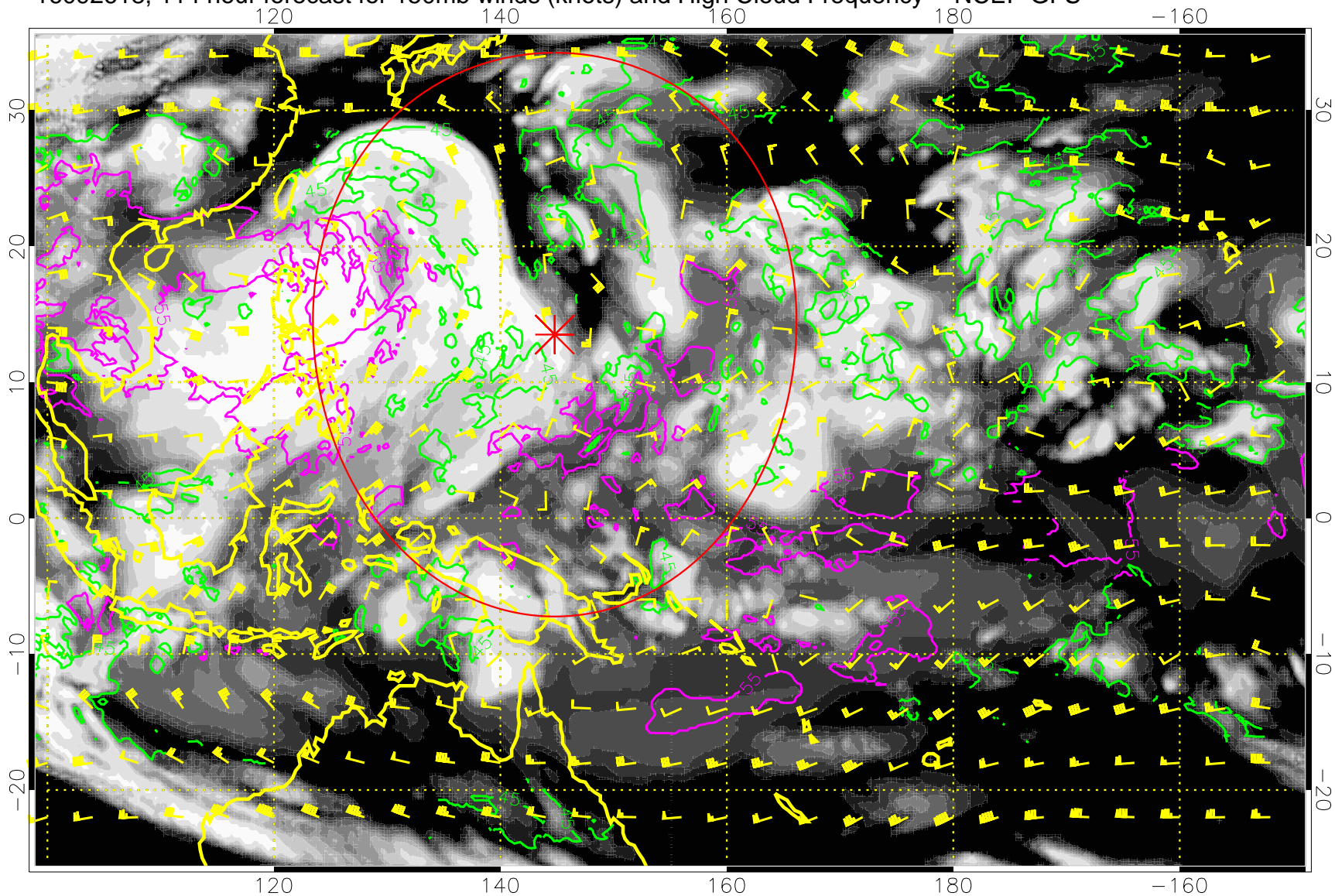
16092612, 108 hour forecast for 150mb winds (knots) and High Cloud Frequency -- NCEP GFS



45 kft  
55 kft

Range ring of 2304 km

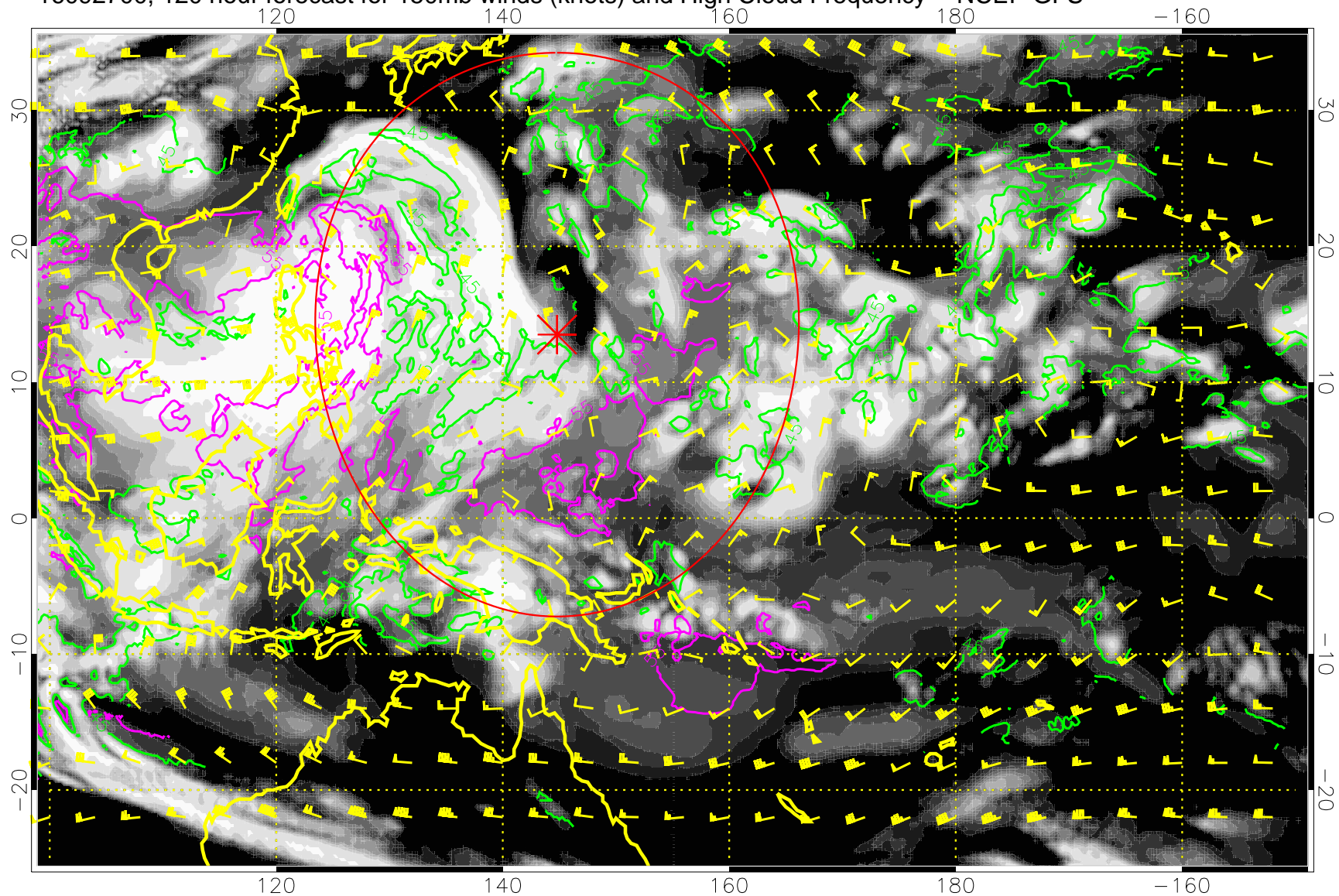
16092618, 114 hour forecast for 150mb winds (knots) and High Cloud Frequency -- NCEP GFS



45 kft  
55 kft

Range ring of 2304 km

16092700, 120 hour forecast for 150mb winds (knots) and High Cloud Frequency -- NCEP GFS



45 kft  
55 kft

Range ring of 2304 km