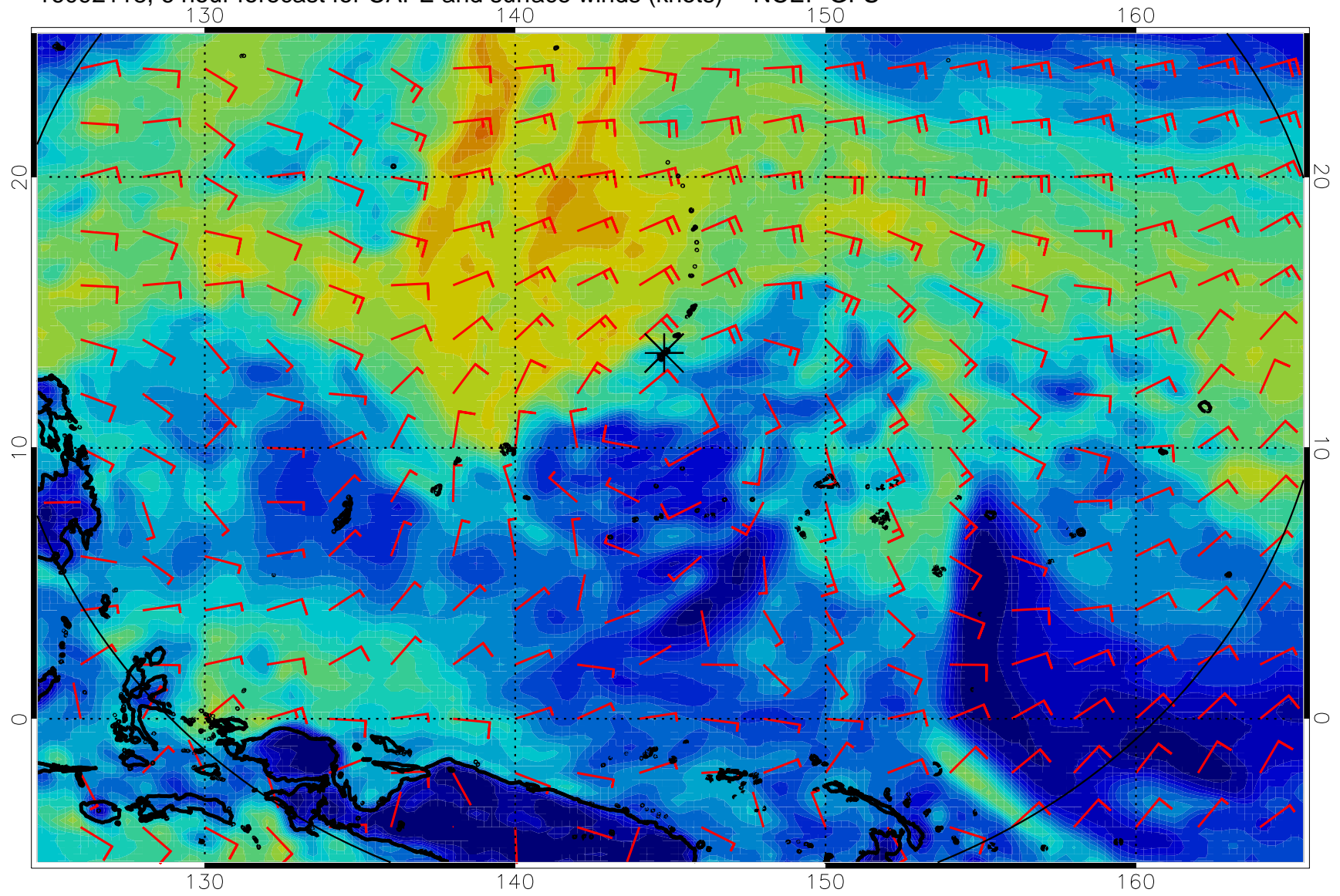
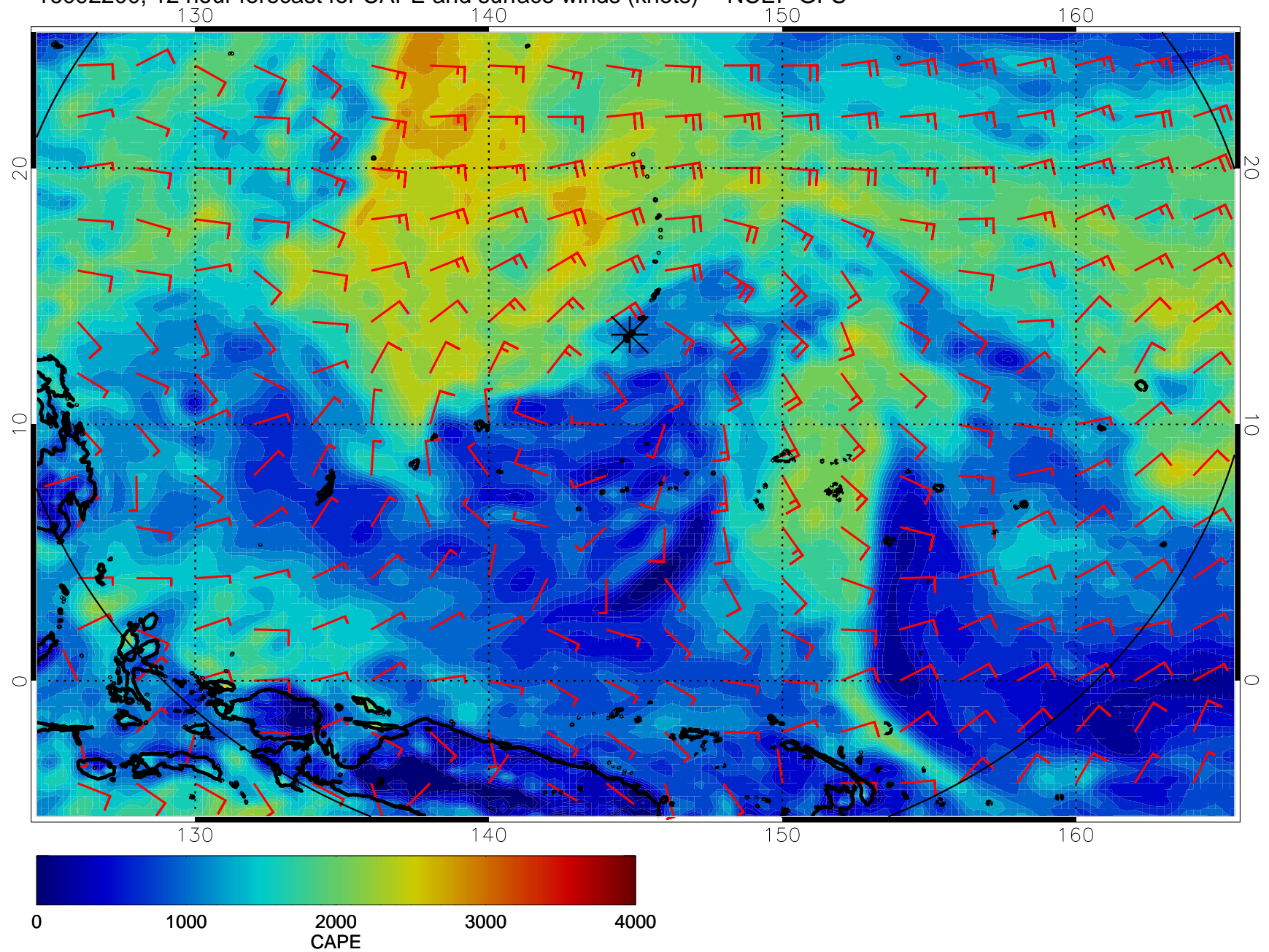


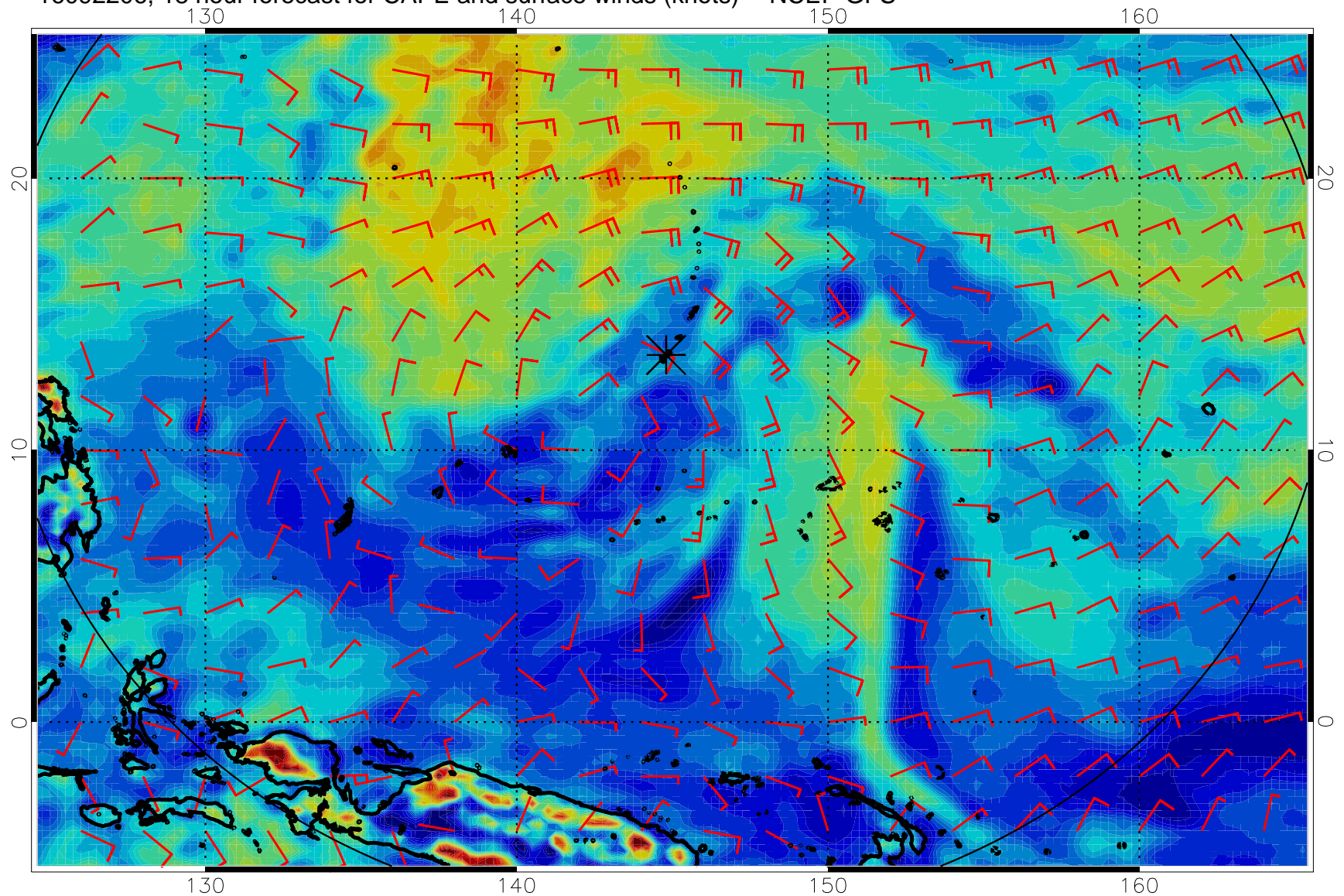
16092118, 6 hour forecast for CAPE and surface winds (knots) -- NCEP GFS



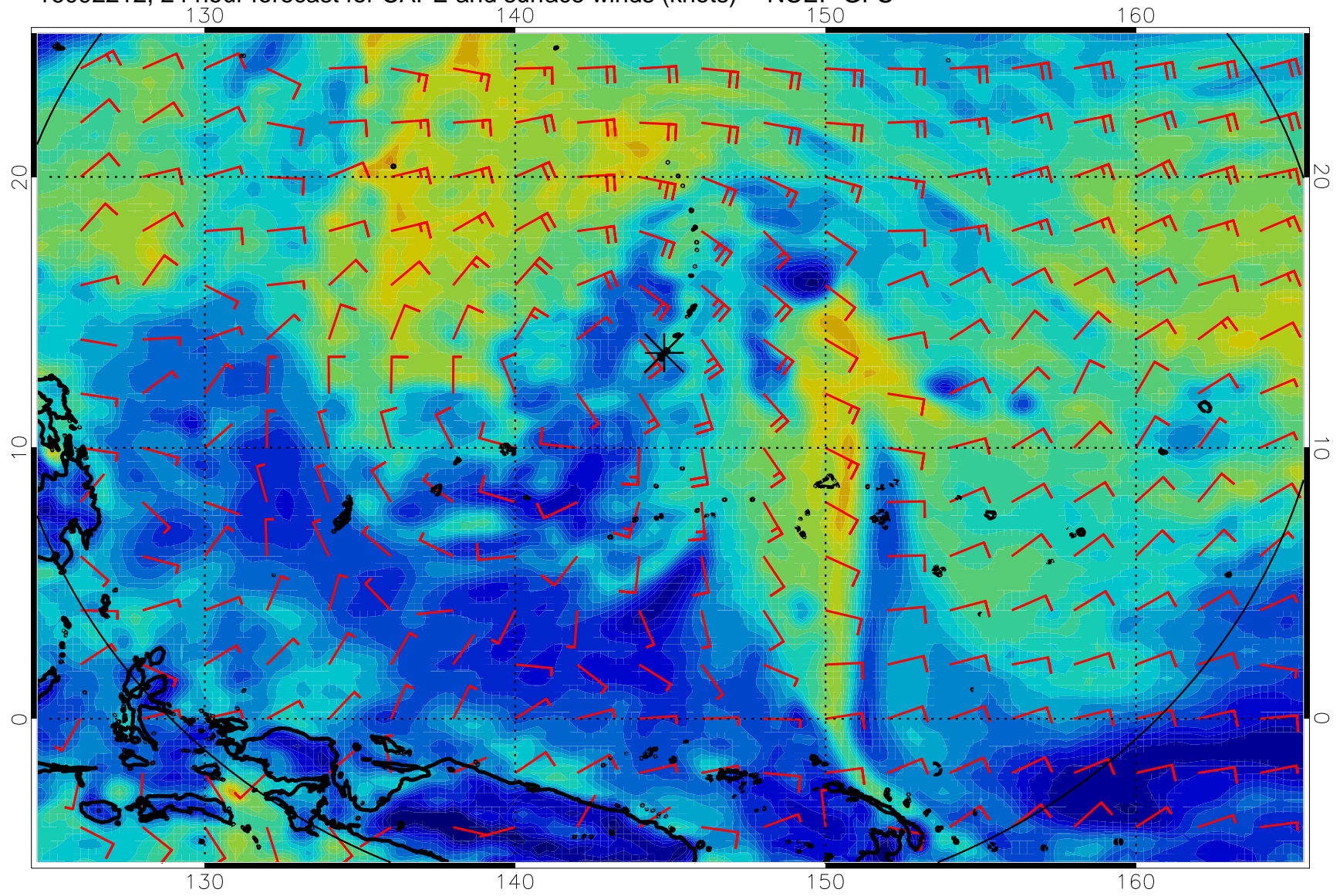
16092200, 12 hour forecast for CAPE and surface winds (knots) -- NCEP GFS



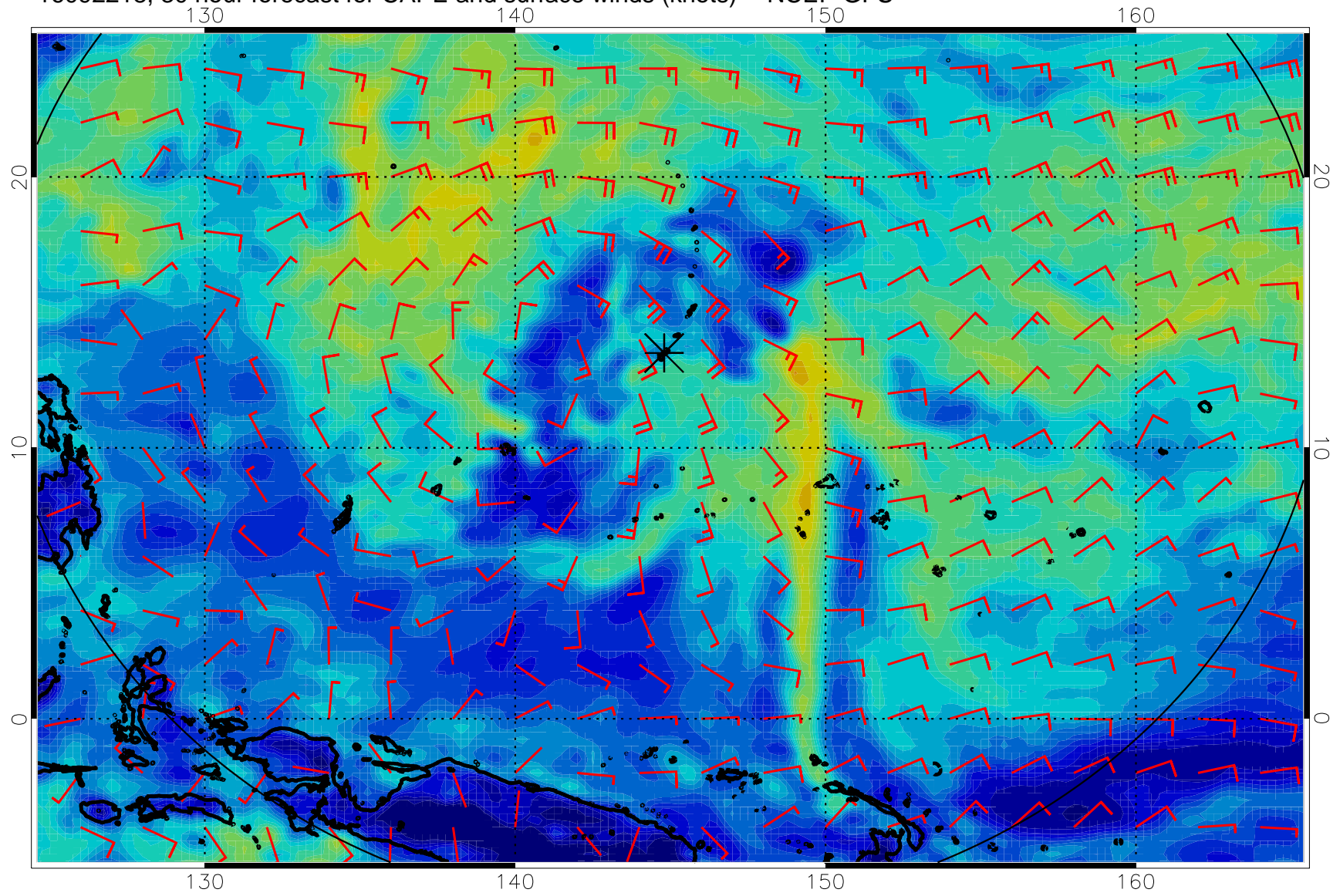
16092206, 18 hour forecast for CAPE and surface winds (knots) -- NCEP GFS



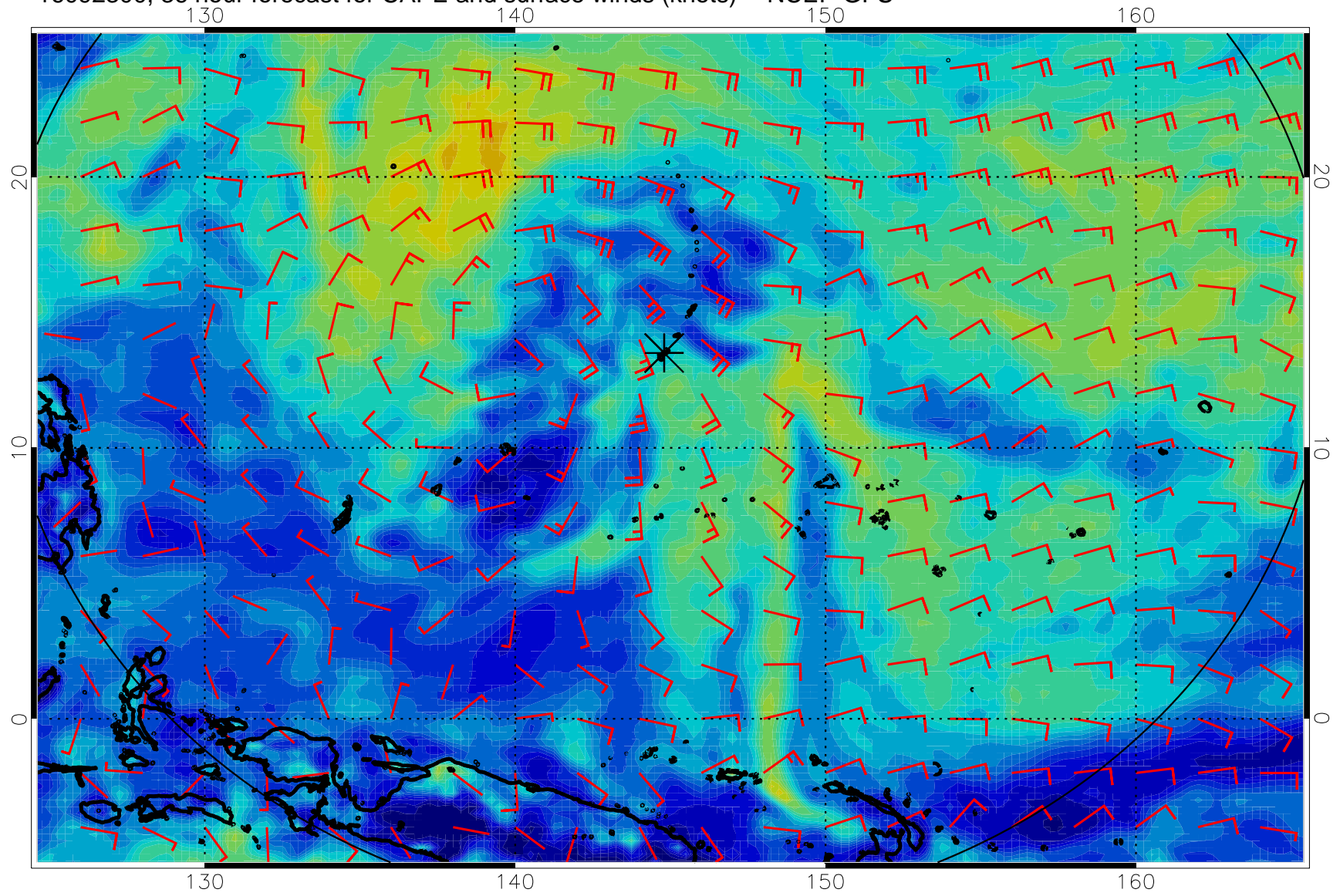
16092212, 24 hour forecast for CAPE and surface winds (knots) -- NCEP GFS



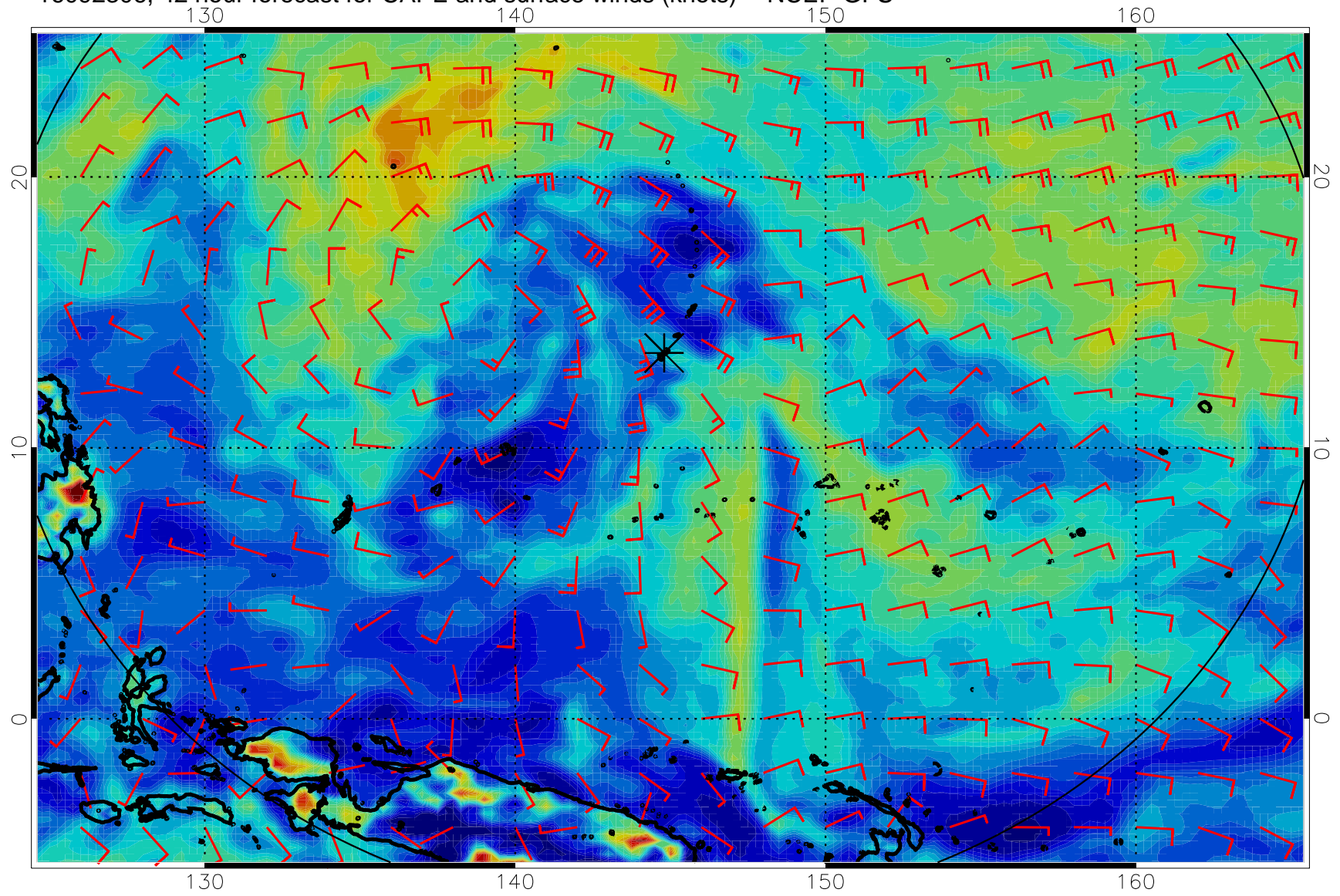
16092218, 30 hour forecast for CAPE and surface winds (knots) -- NCEP GFS



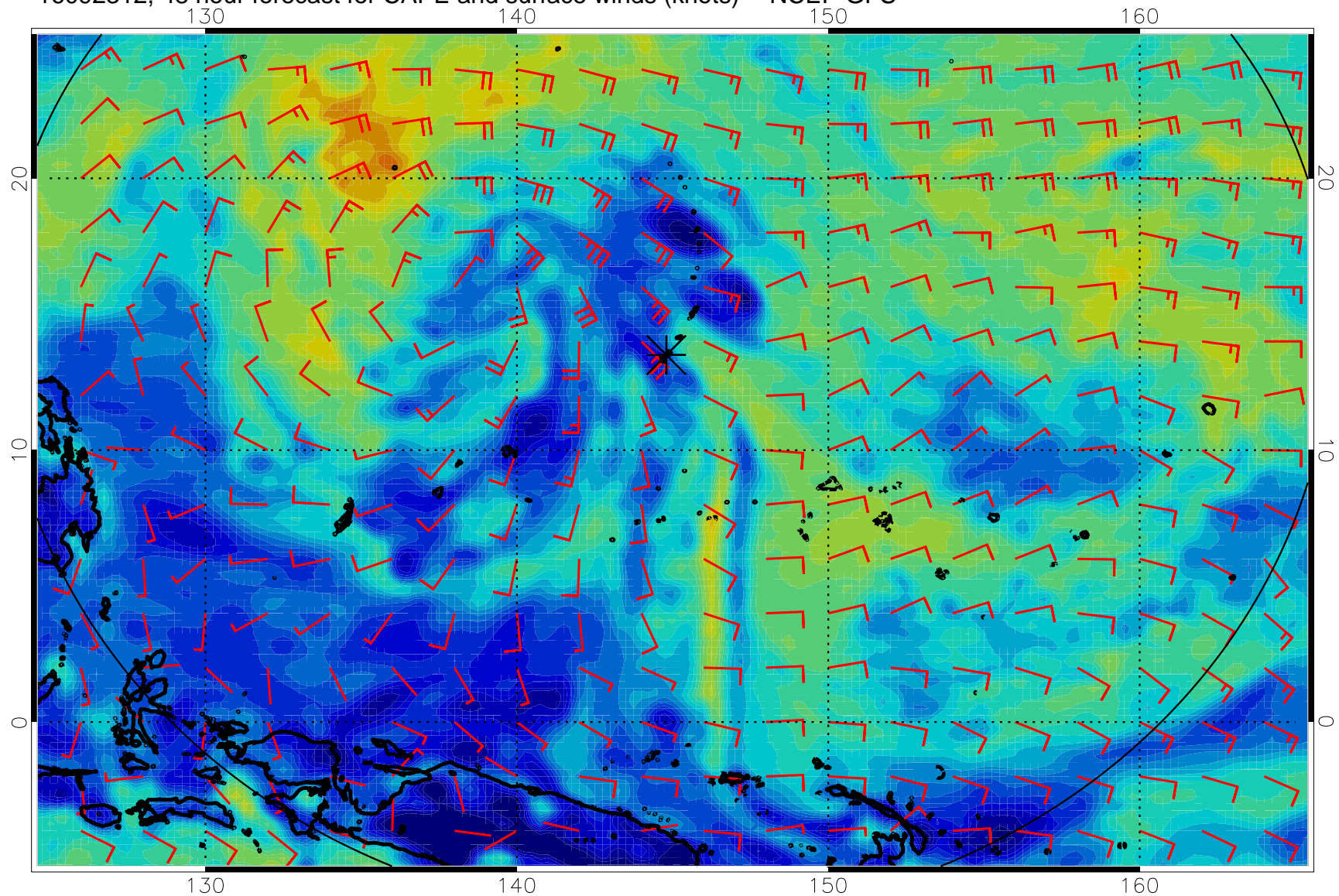
16092300, 36 hour forecast for CAPE and surface winds (knots) -- NCEP GFS



16092306, 42 hour forecast for CAPE and surface winds (knots) -- NCEP GFS

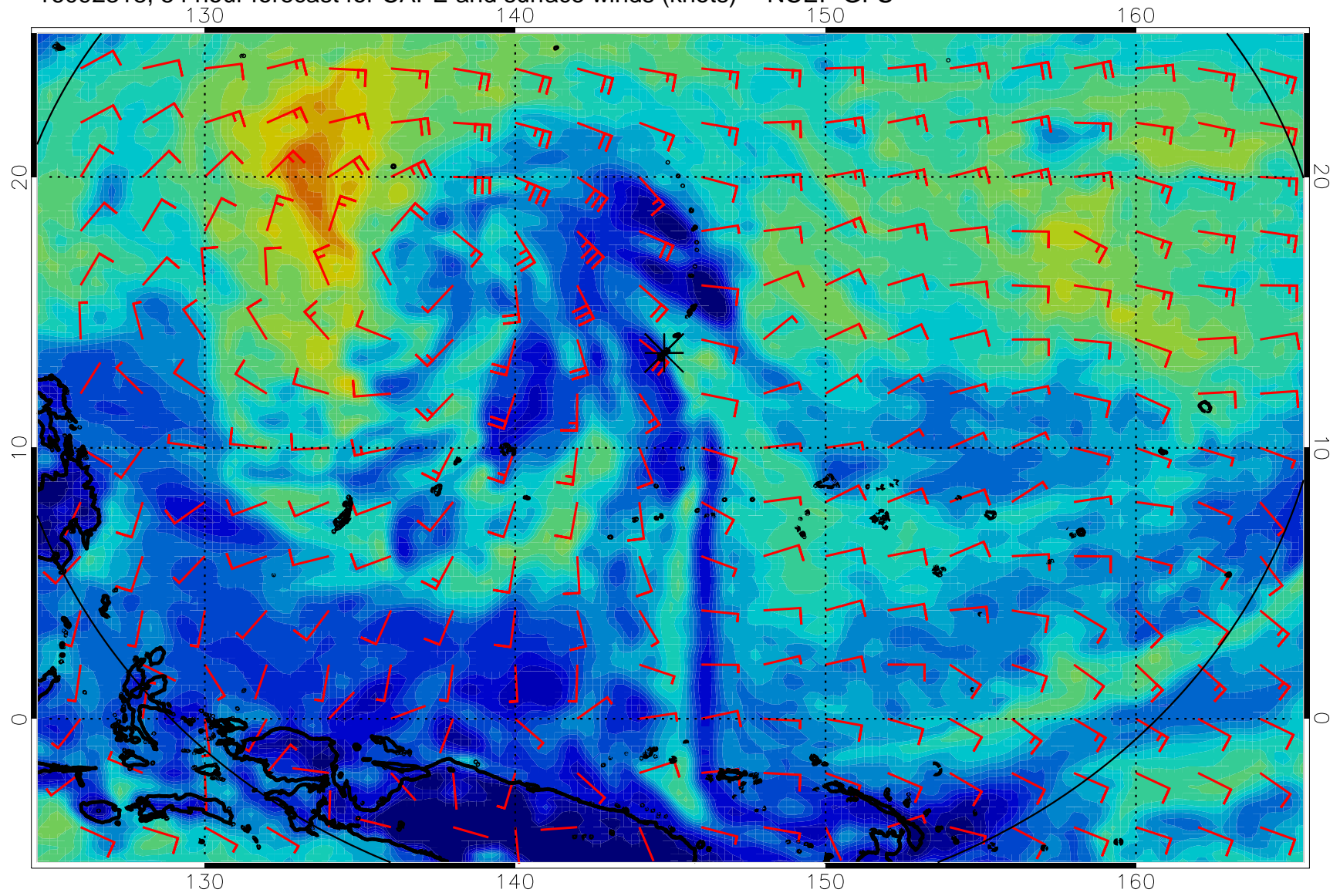


16092312, 48 hour forecast for CAPE and surface winds (knots) -- NCEP GFS

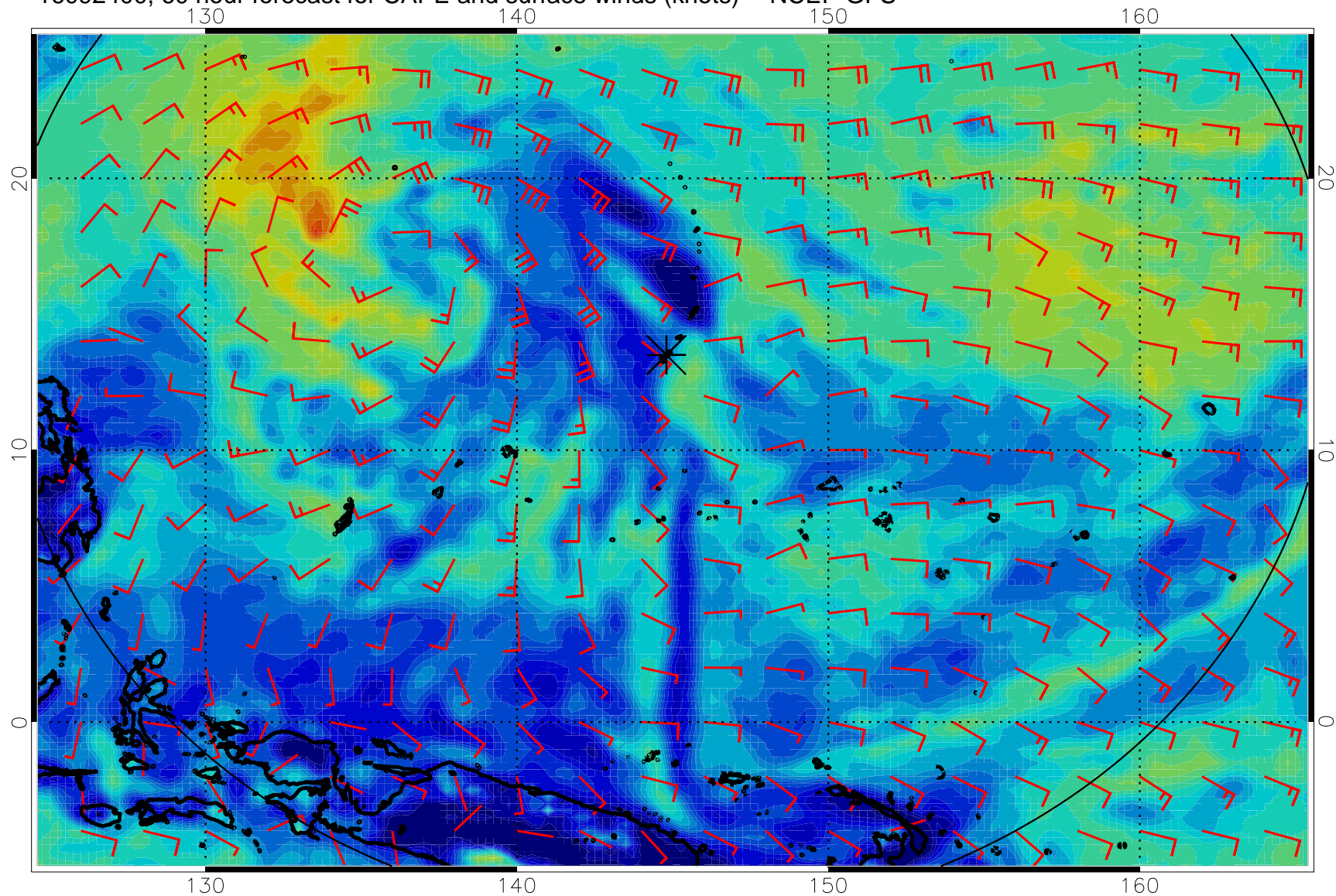




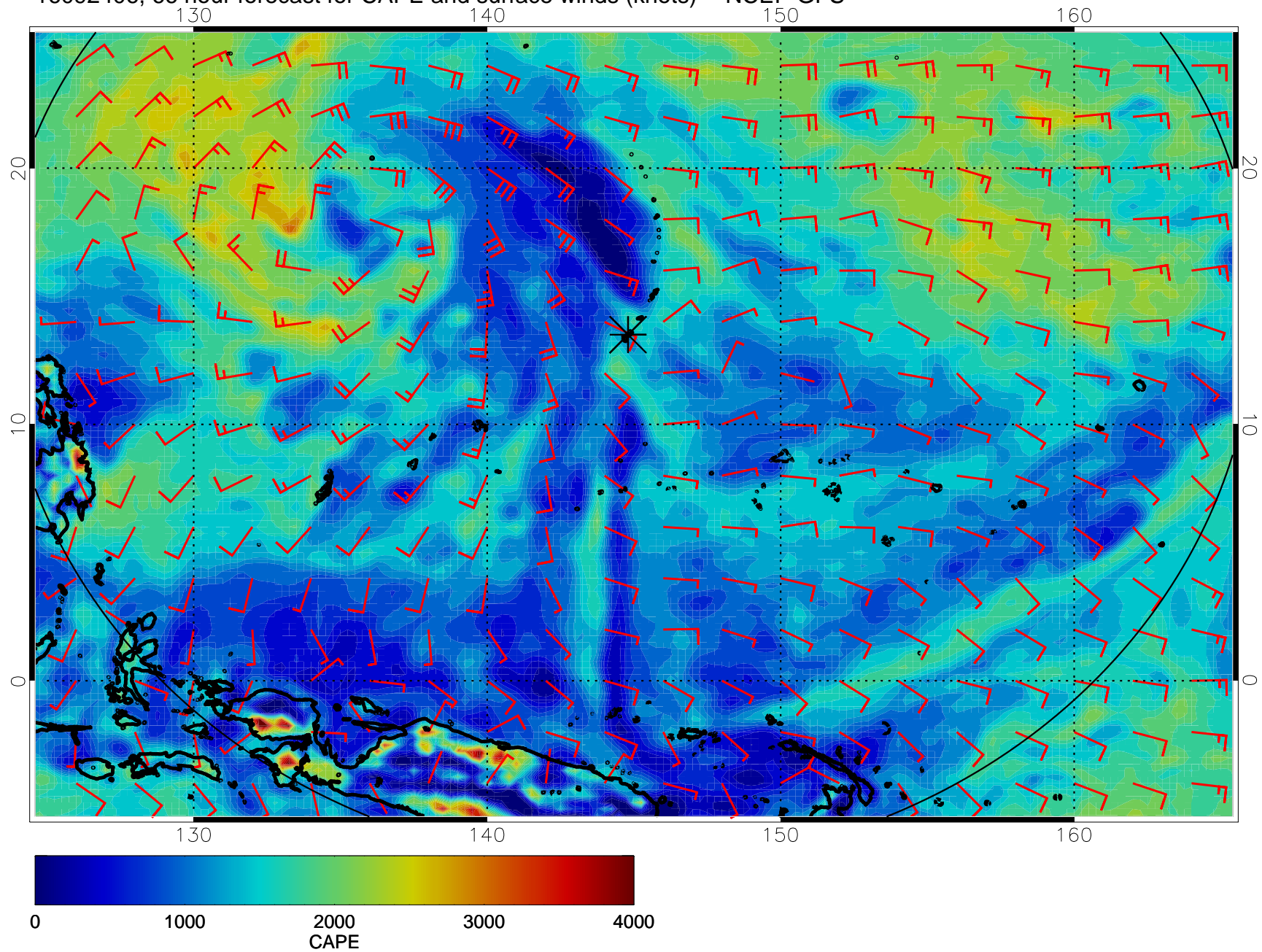
16092318, 54 hour forecast for CAPE and surface winds (knots) -- NCEP GFS



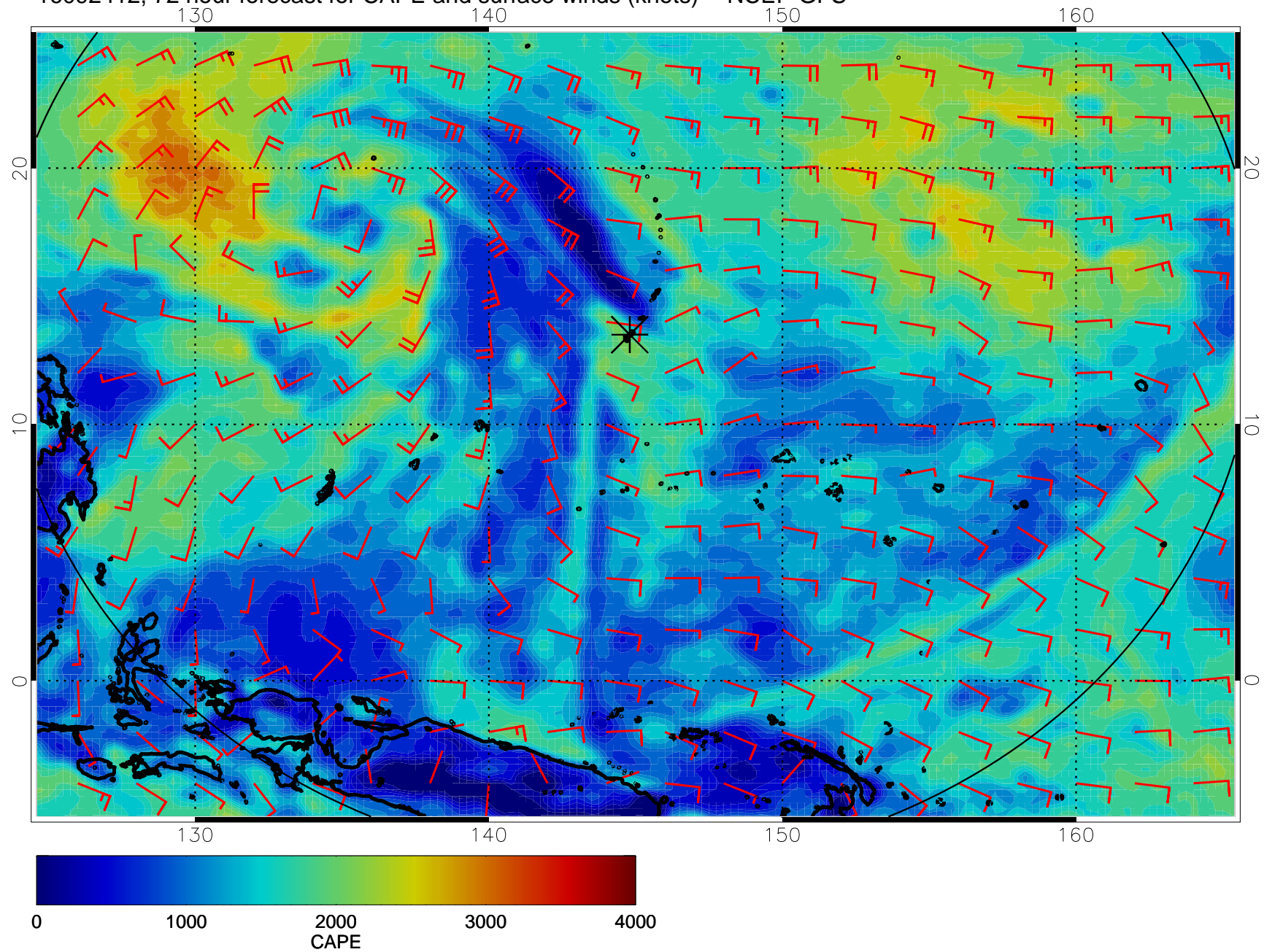
16092400, 60 hour forecast for CAPE and surface winds (knots) -- NCEP GFS



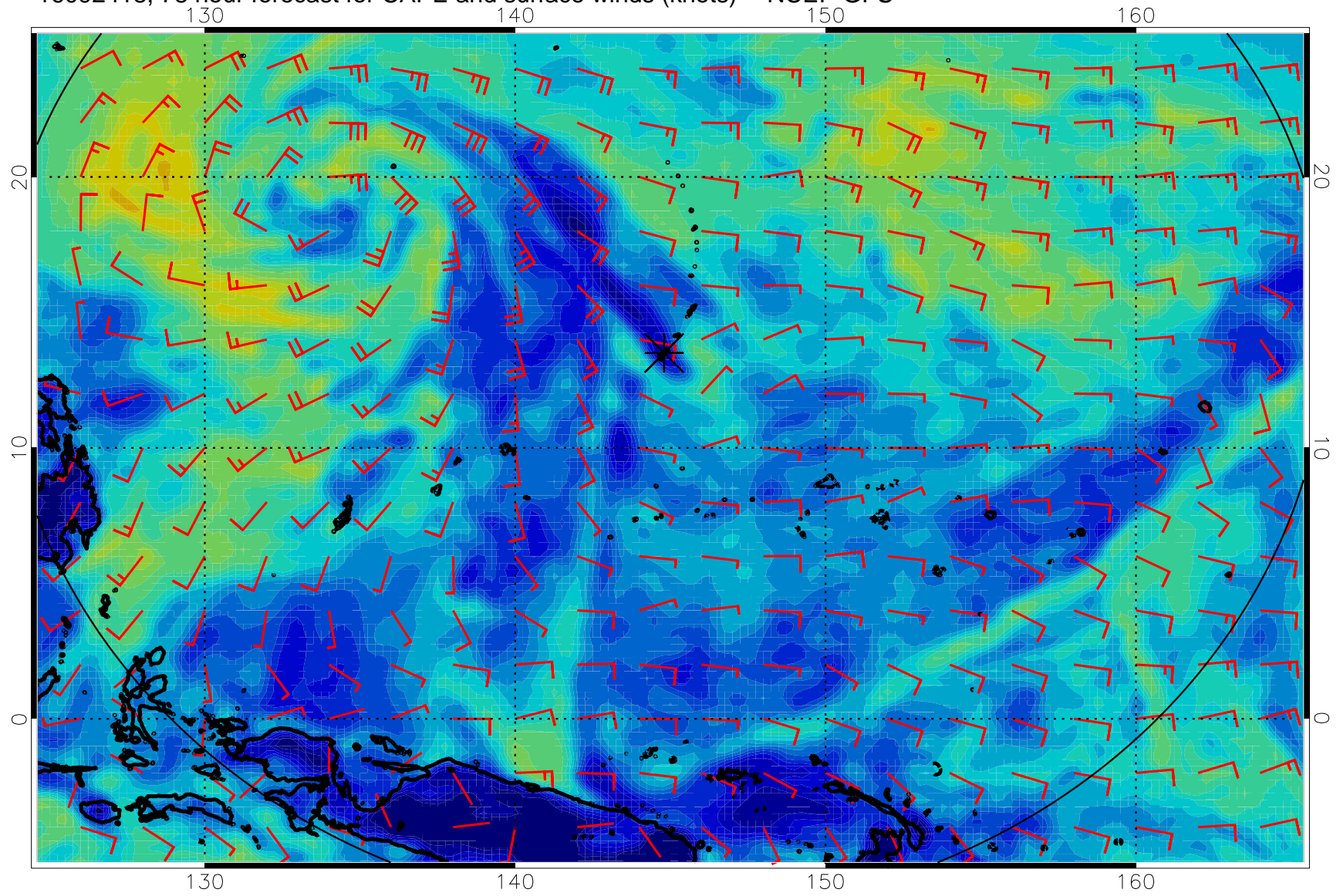
16092406, 66 hour forecast for CAPE and surface winds (knots) -- NCEP GFS



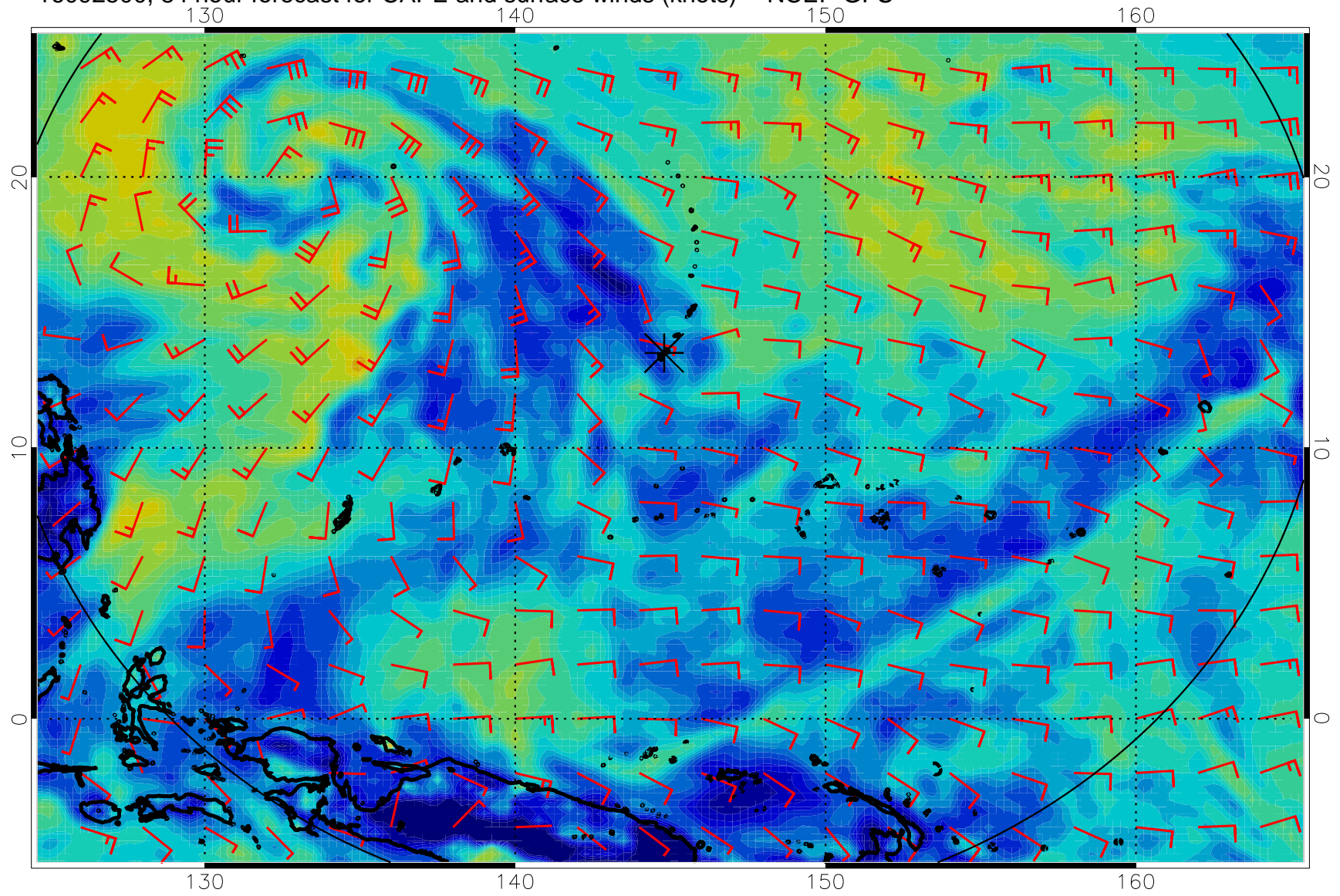
16092412, 72 hour forecast for CAPE and surface winds (knots) -- NCEP GFS



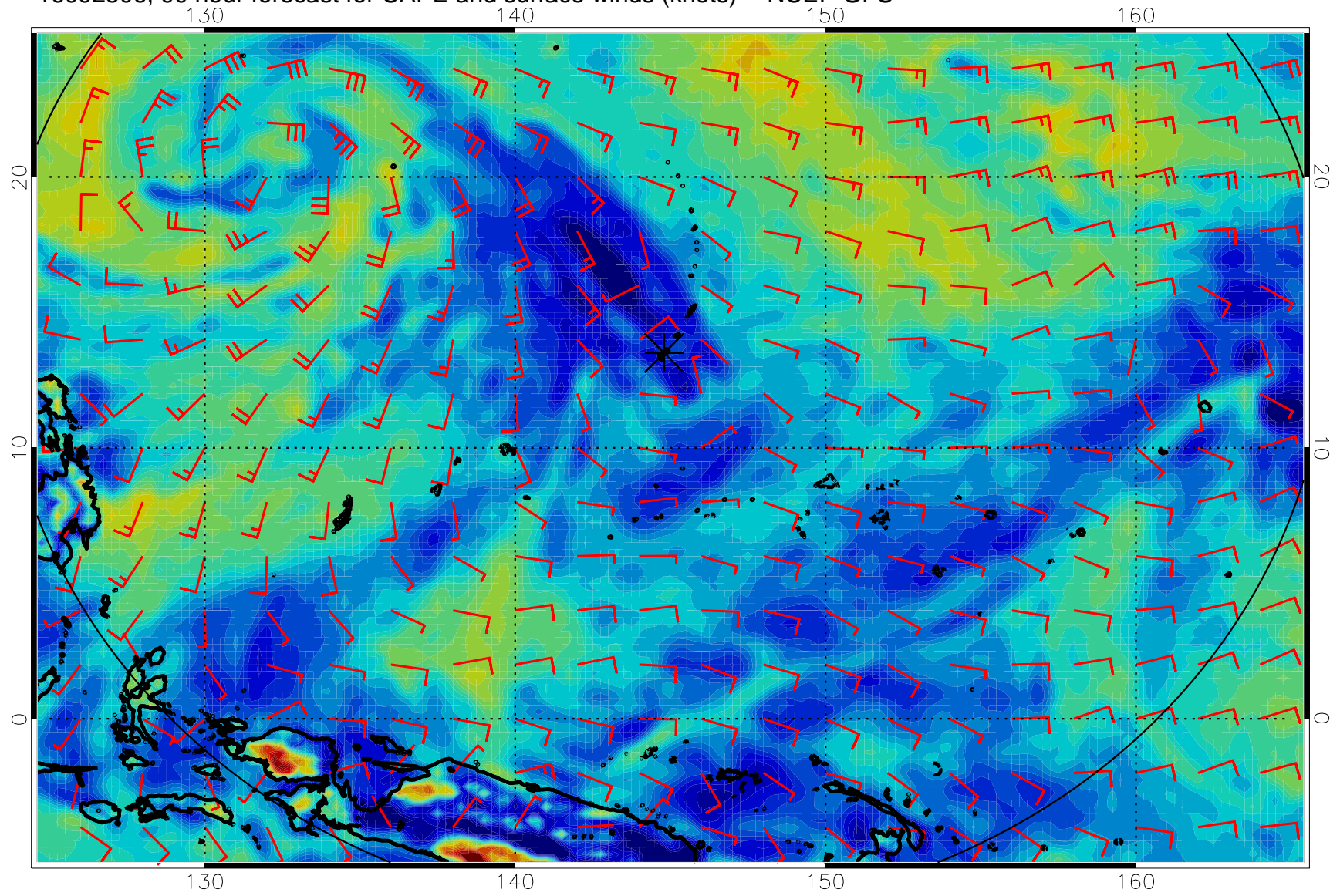
16092418, 78 hour forecast for CAPE and surface winds (knots) -- NCEP GFS



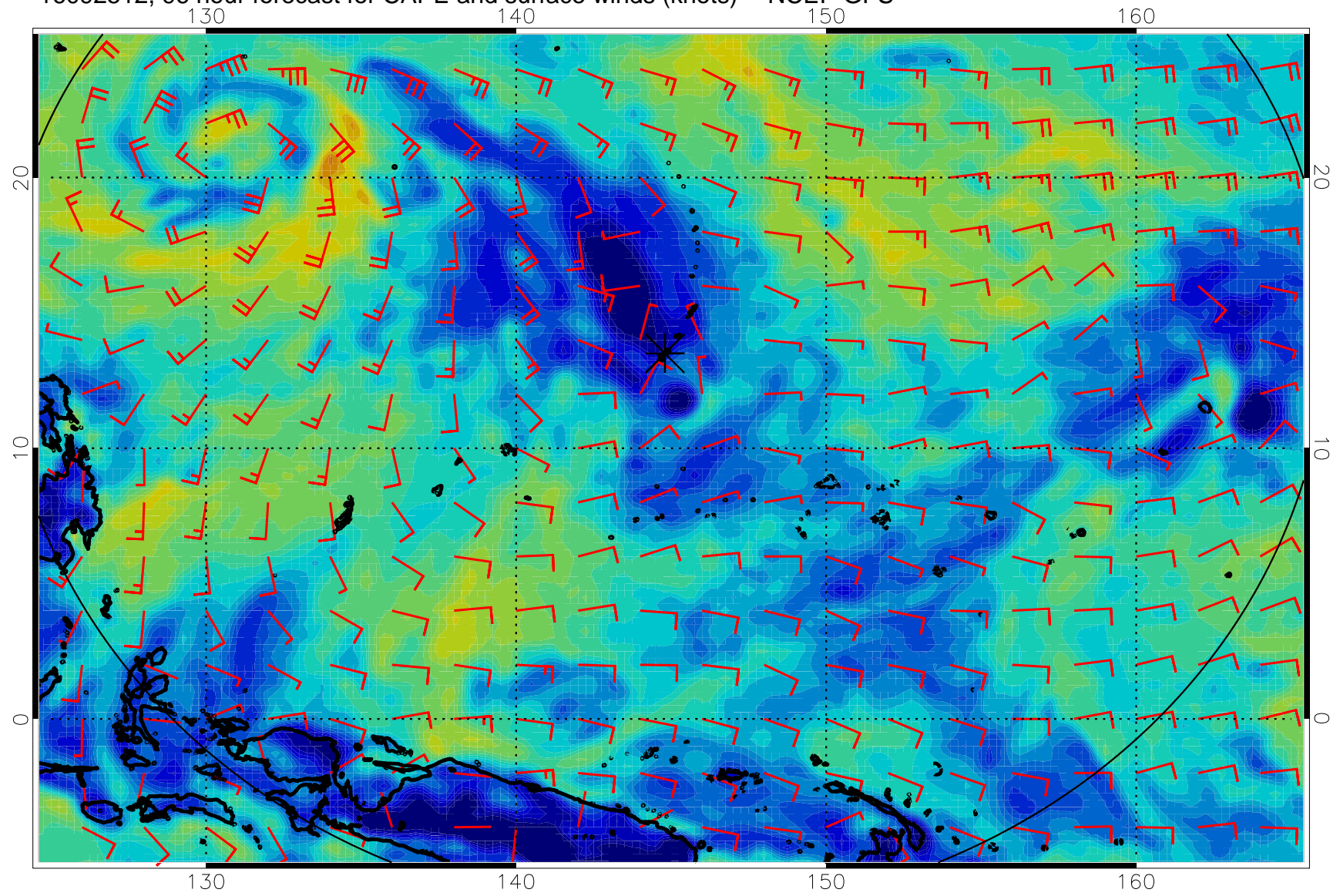
16092500, 84 hour forecast for CAPE and surface winds (knots) -- NCEP GFS



16092506, 90 hour forecast for CAPE and surface winds (knots) -- NCEP GFS

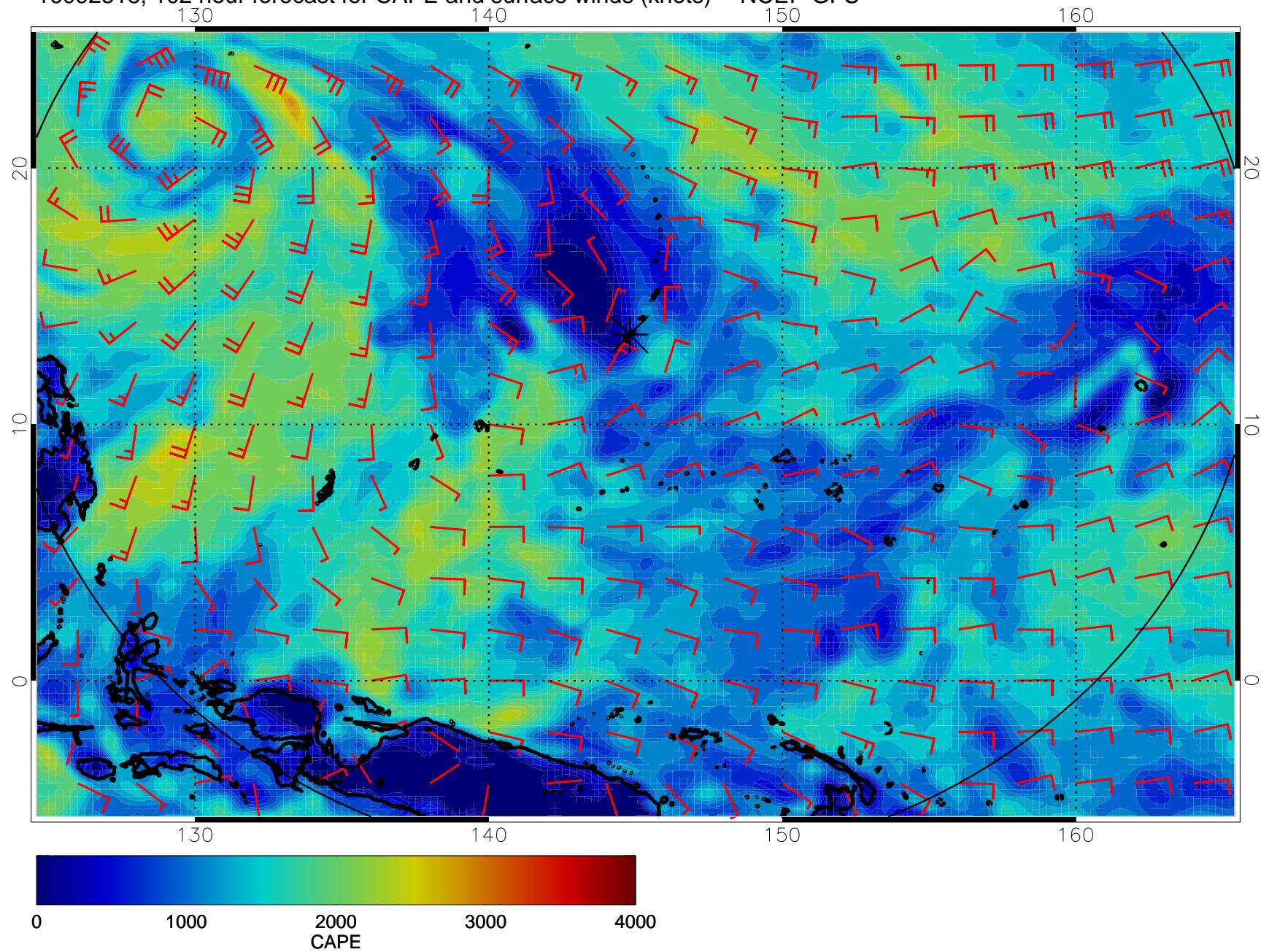


16092512, 96 hour forecast for CAPE and surface winds (knots) -- NCEP GFS

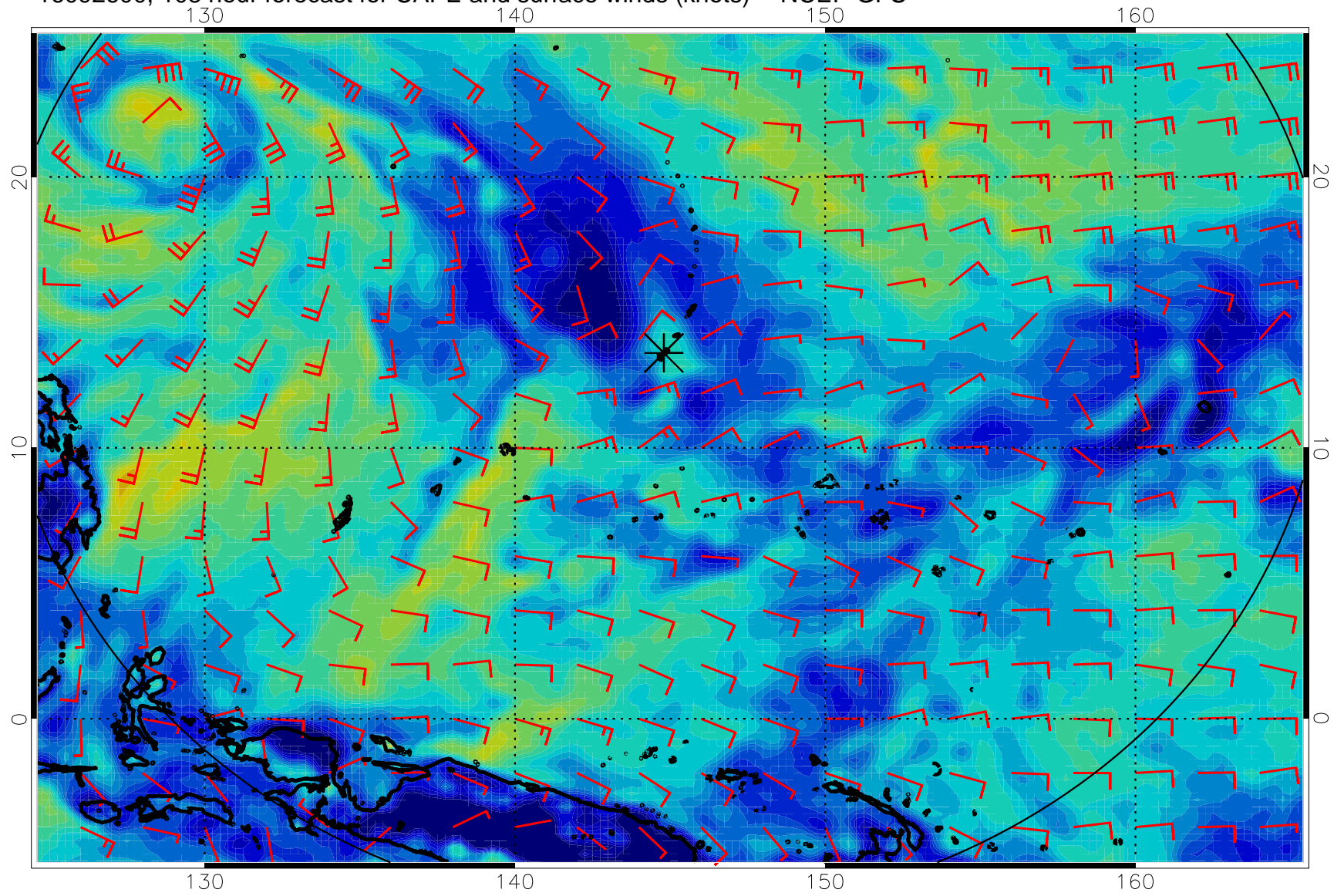




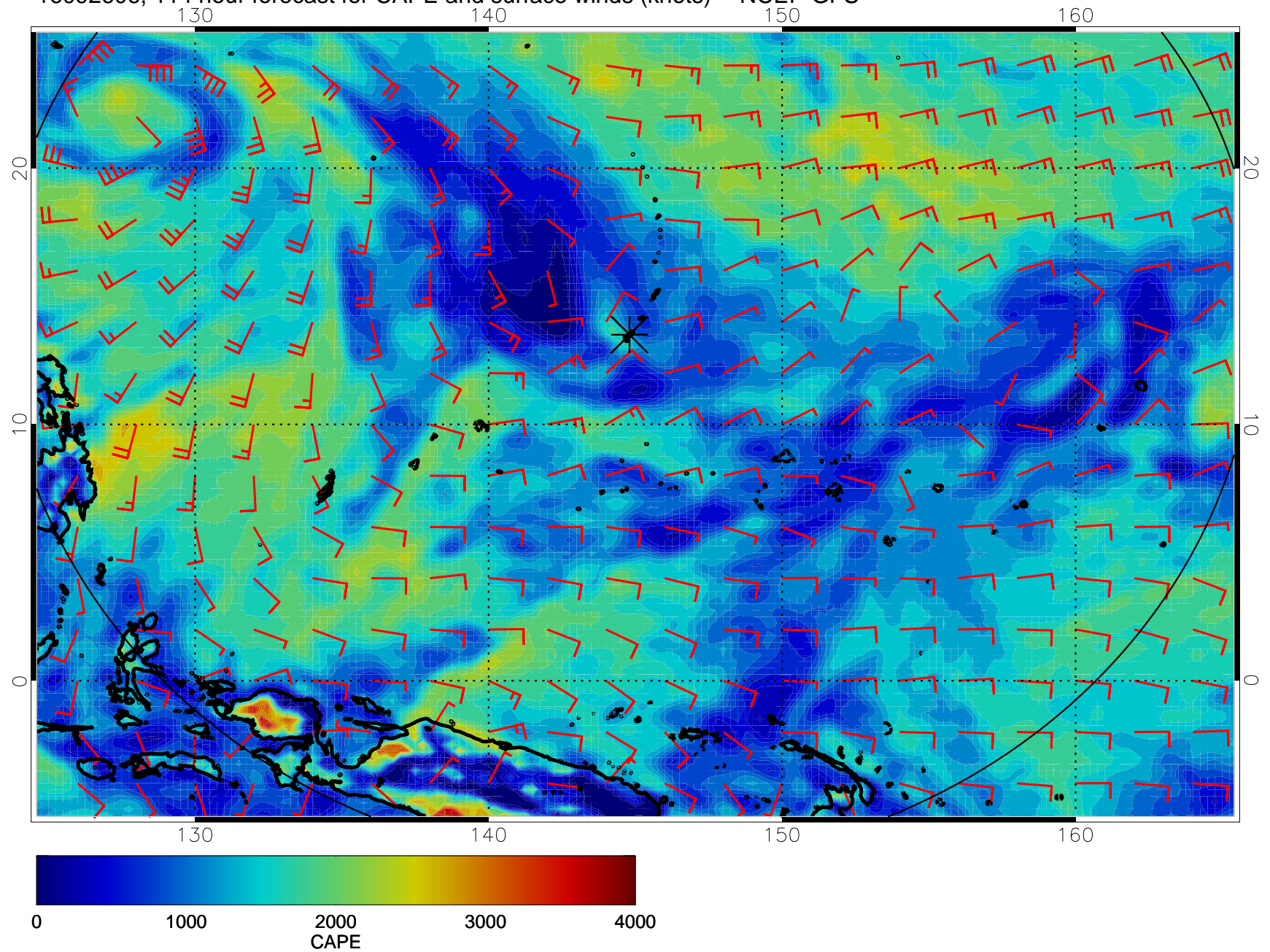
16092518, 102 hour forecast for CAPE and surface winds (knots) -- NCEP GFS



16092600, 108 hour forecast for CAPE and surface winds (knots) -- NCEP GFS



16092606, 114 hour forecast for CAPE and surface winds (knots) -- NCEP GFS



16092612, 120 hour forecast for CAPE and surface winds (knots) -- NCEP GFS

