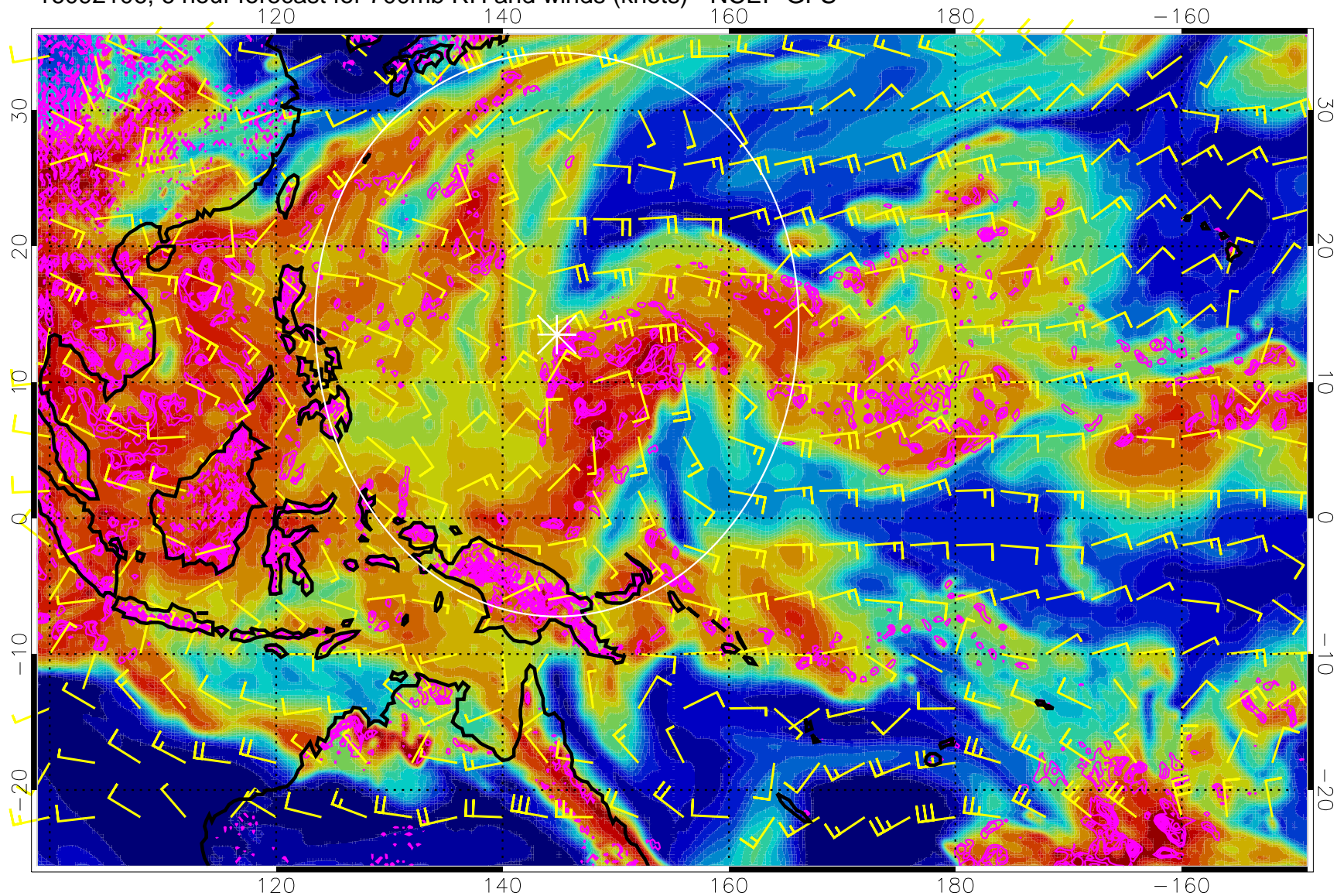


16092106, 6 hour forecast for 700mb RH and winds (knots) - NCEP GFS

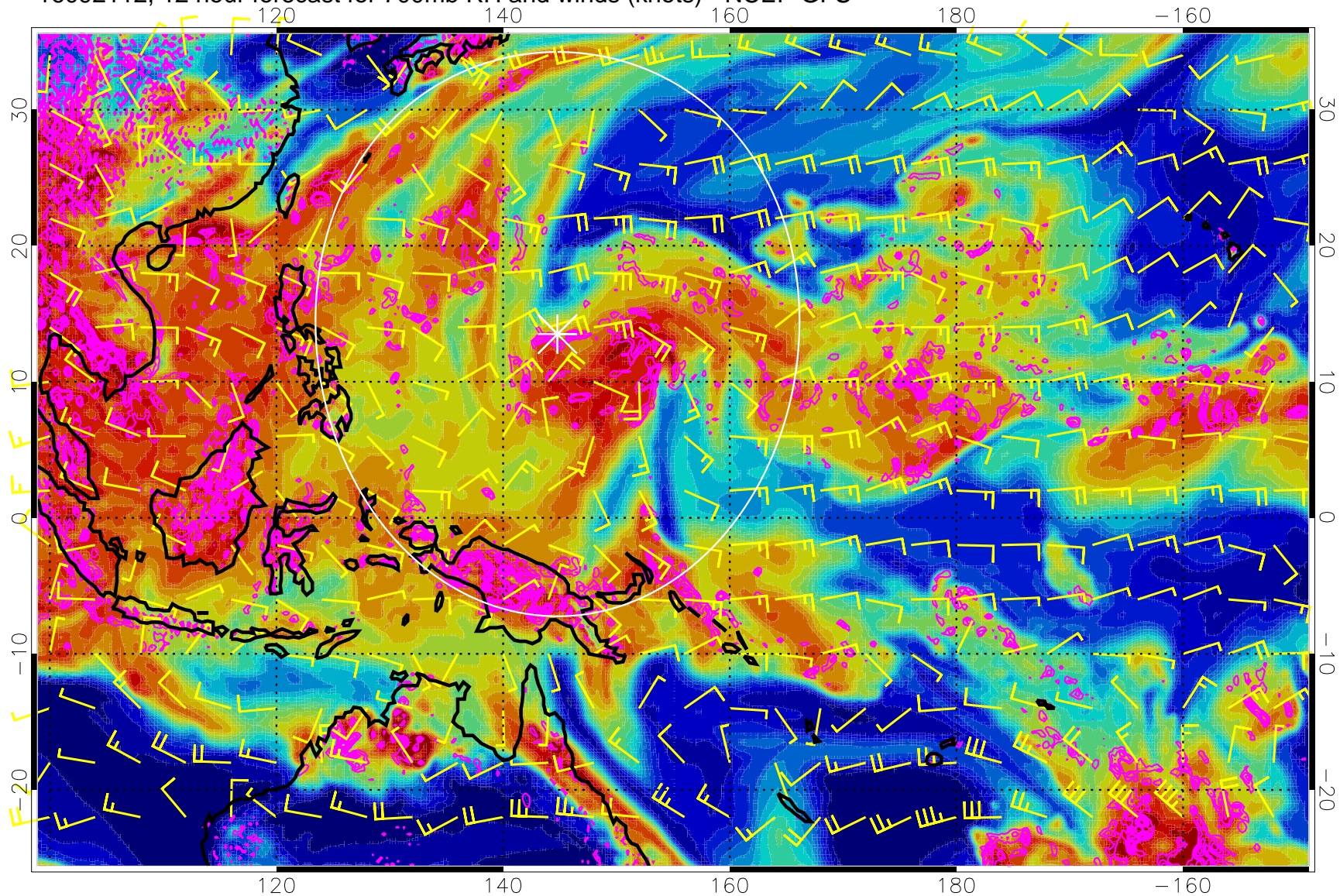


Negative Omegas less than  $-0.3$ , contours of  $0.3$  Pa/s

Range ring of 2304 km



16092112, 12 hour forecast for 700mb RH and winds (knots) - NCEP GFS

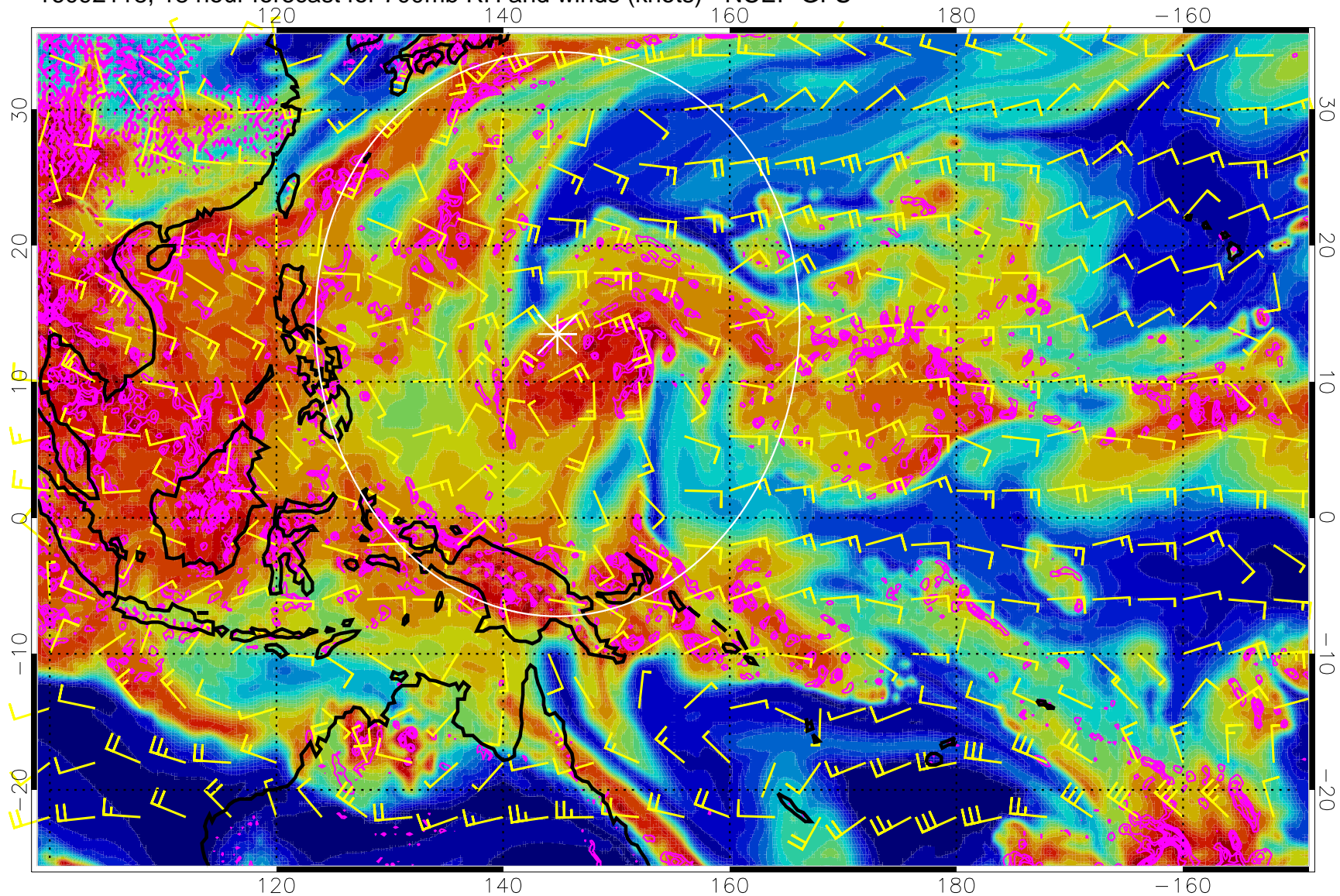


Negative Omegas less than  $-0.3$ , contours of  $0.3$  Pa/s

Range ring of 2304 km



16092118, 18 hour forecast for 700mb RH and winds (knots) - NCEP GFS

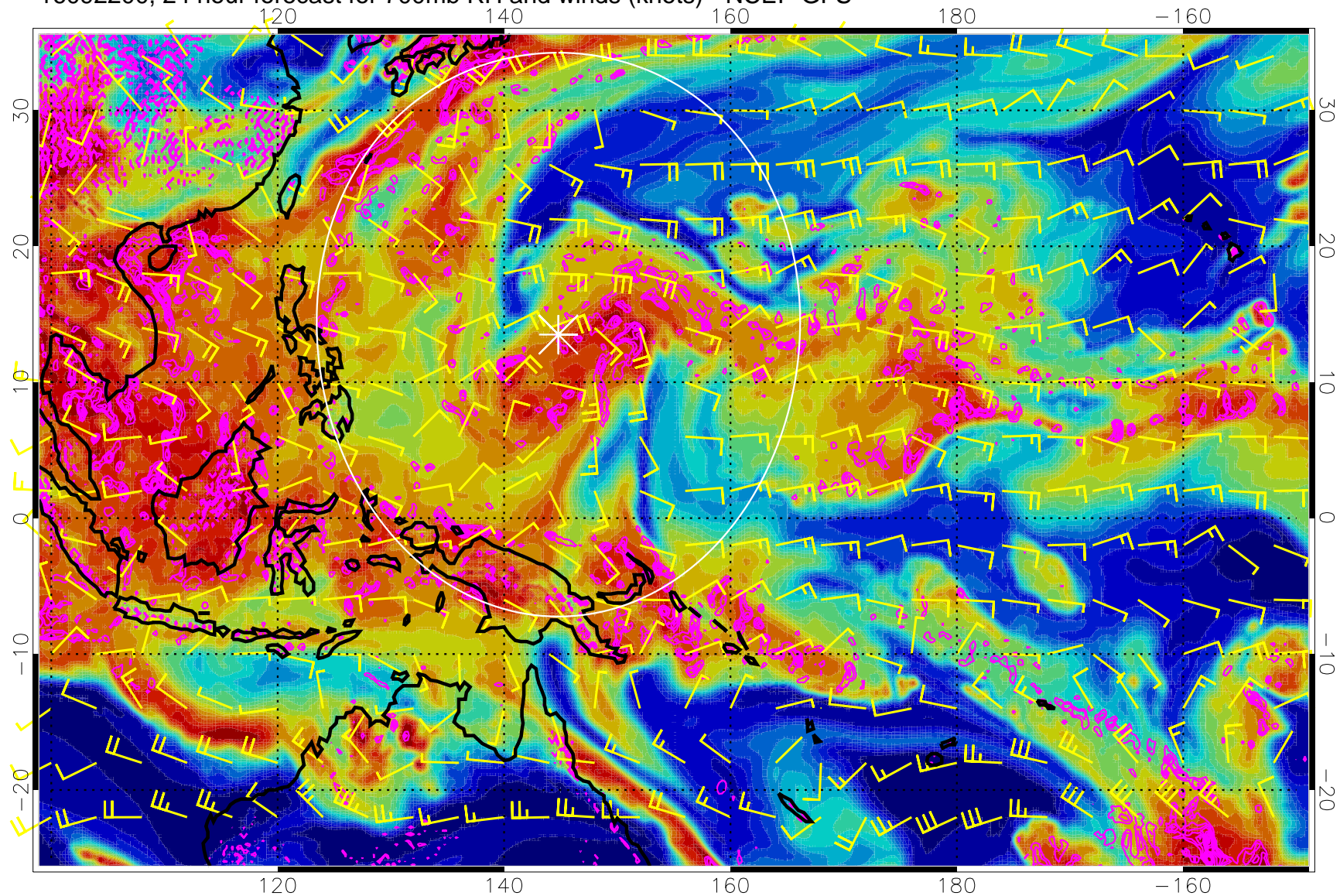


Negative Omegas less than  $-0.3$ , contours of  $0.3$  Pa/s

Range ring of 2304 km



16092200, 24 hour forecast for 700mb RH and winds (knots) - NCEP GFS

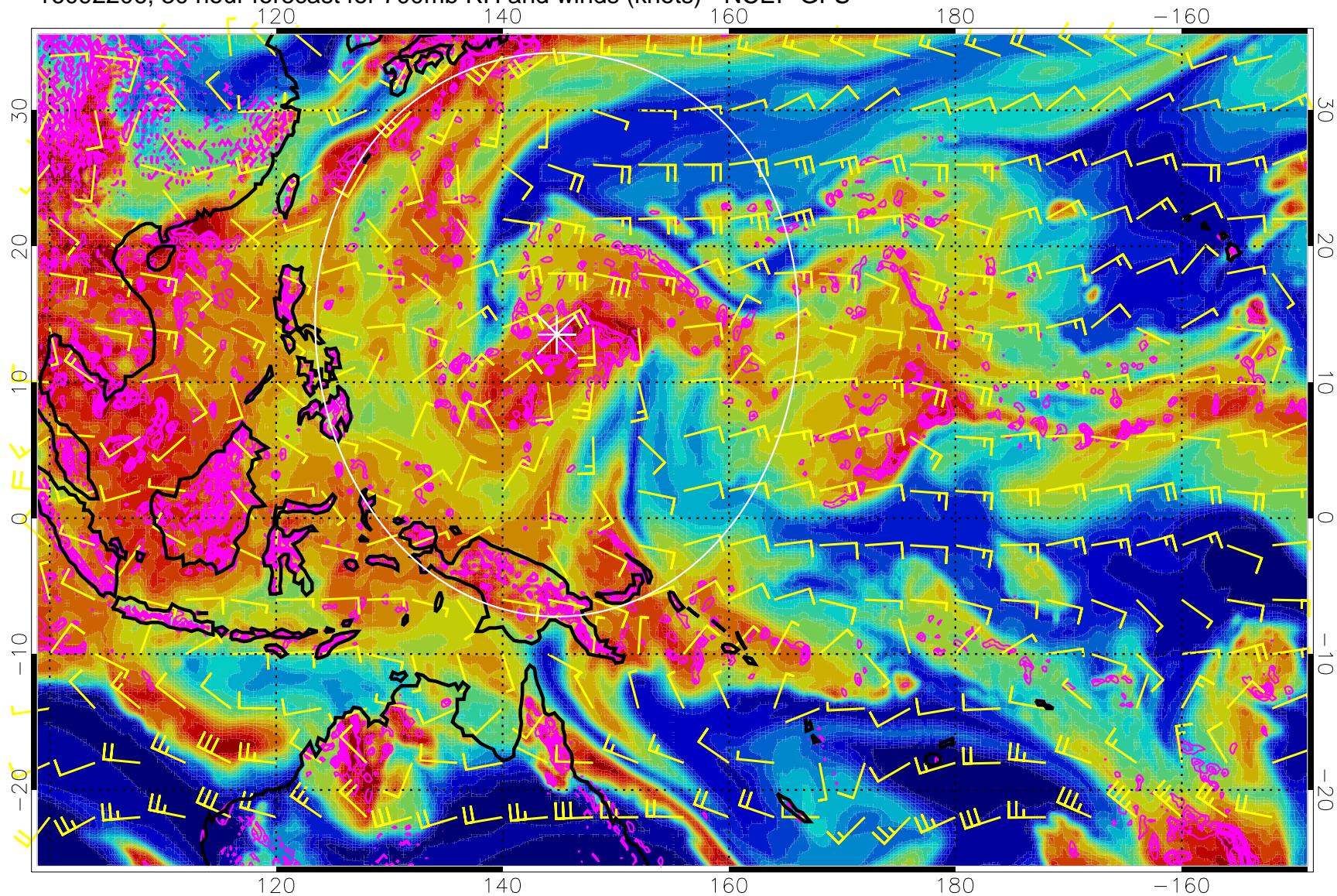


Negative Omegas less than  $-0.3$ , contours of  $0.3$  Pa/s

Range ring of 2304 km



16092206, 30 hour forecast for 700mb RH and winds (knots) - NCEP GFS



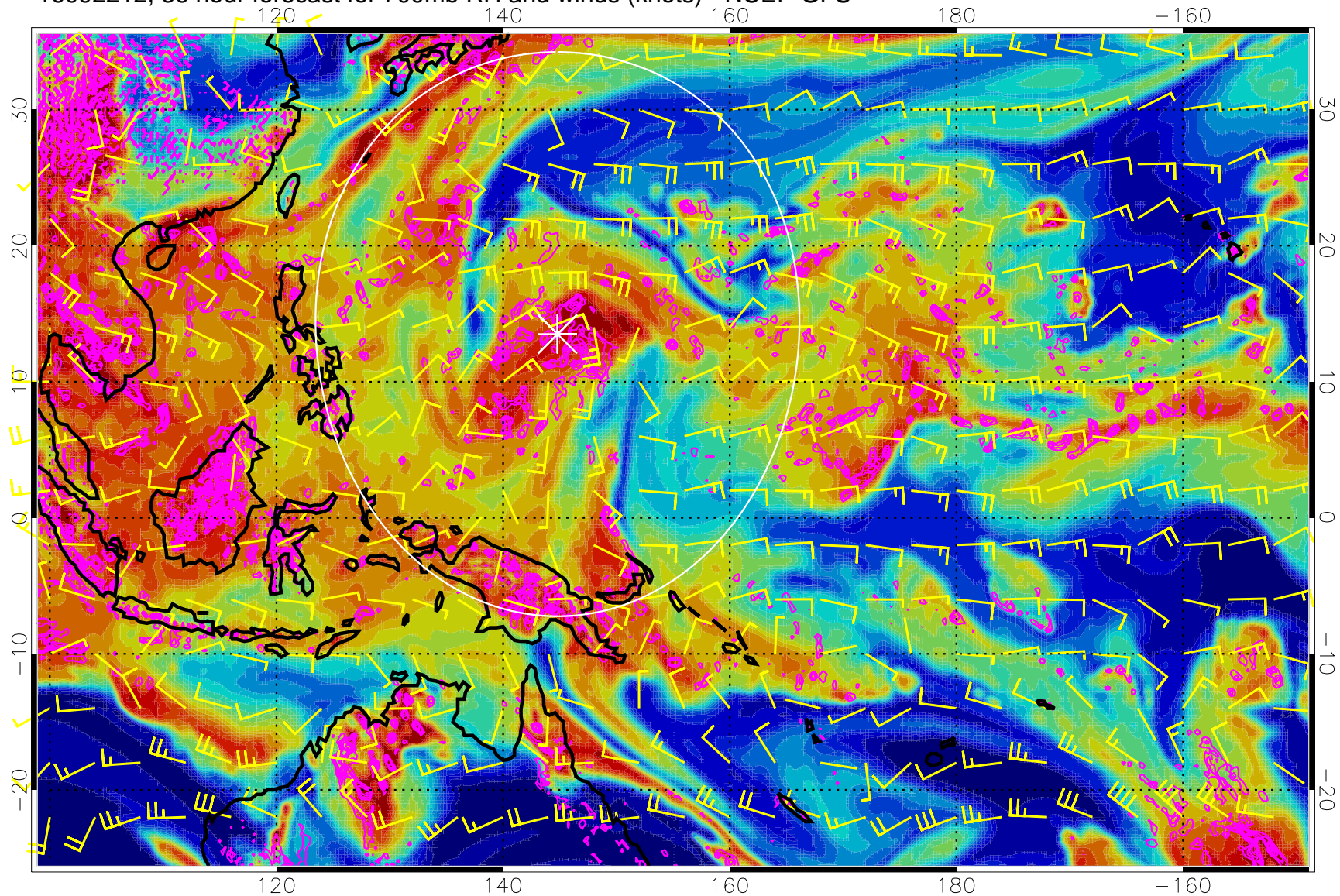
0 20 40 60 80 100  
RH, %

Negative Omegas less than  $-0.3$ , contours of  $0.3$  Pa/s

Range ring of 2304 km



16092212, 36 hour forecast for 700mb RH and winds (knots) - NCEP GFS

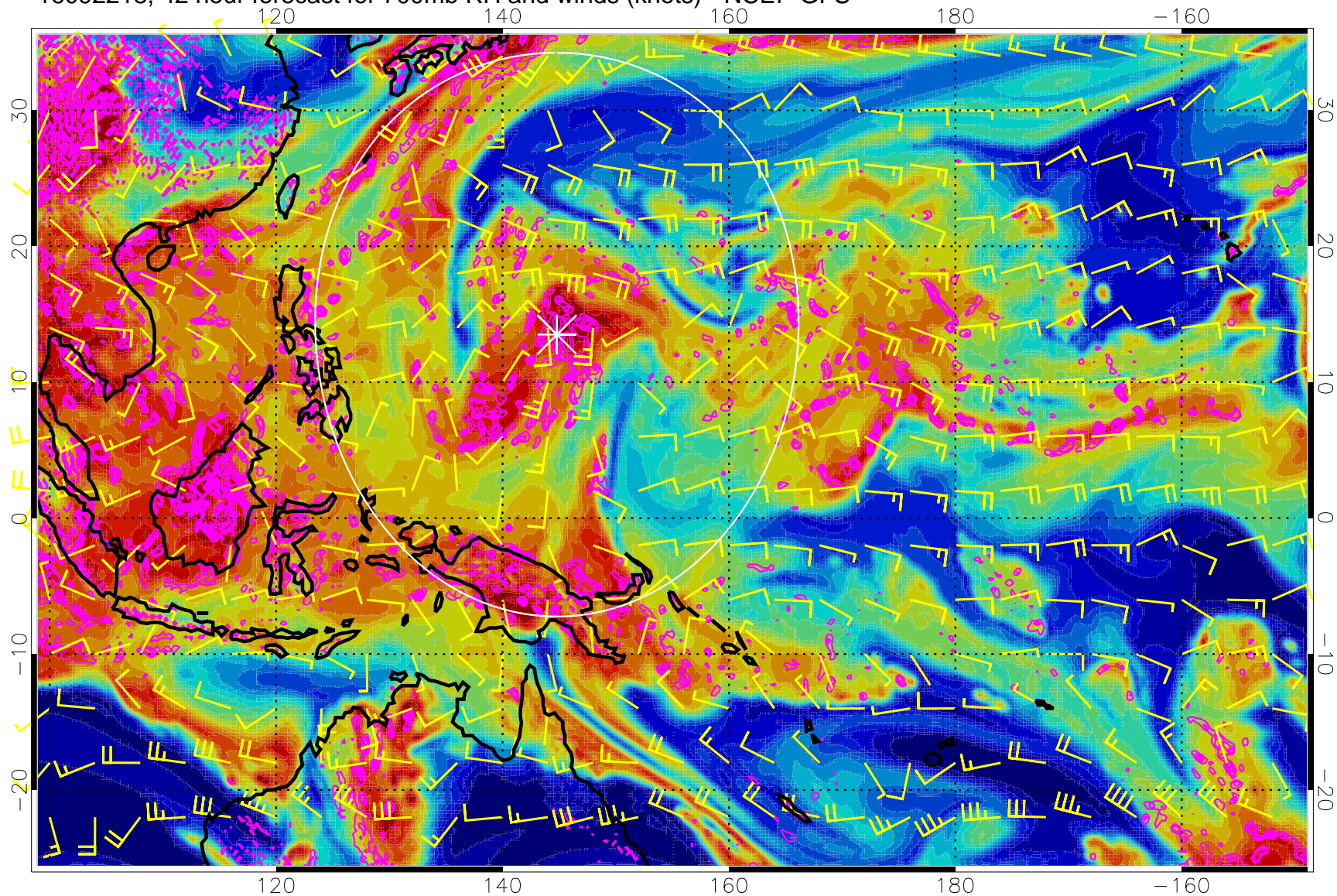


Negative Omegas less than  $-0.3$ , contours of  $0.3$  Pa/s

Range ring of 2304 km



16092218, 42 hour forecast for 700mb RH and winds (knots) - NCEP GFS



Negative Omegas less than  $-0.3$ , contours of  $0.3$  Pa/s

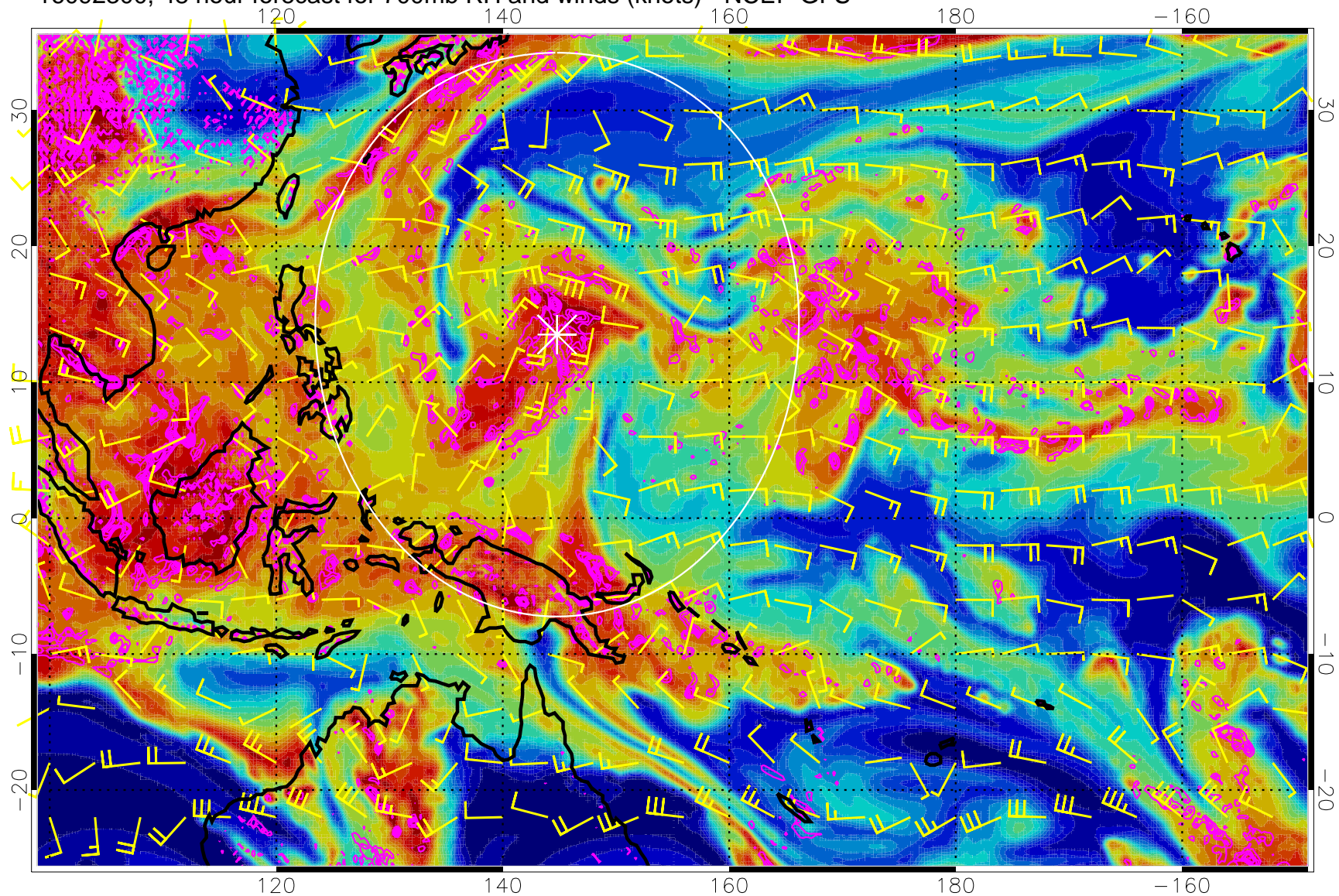


0 20 40 60 80 100  
RH, %

Range ring of 2304 km



16092300, 48 hour forecast for 700mb RH and winds (knots) - NCEP GFS

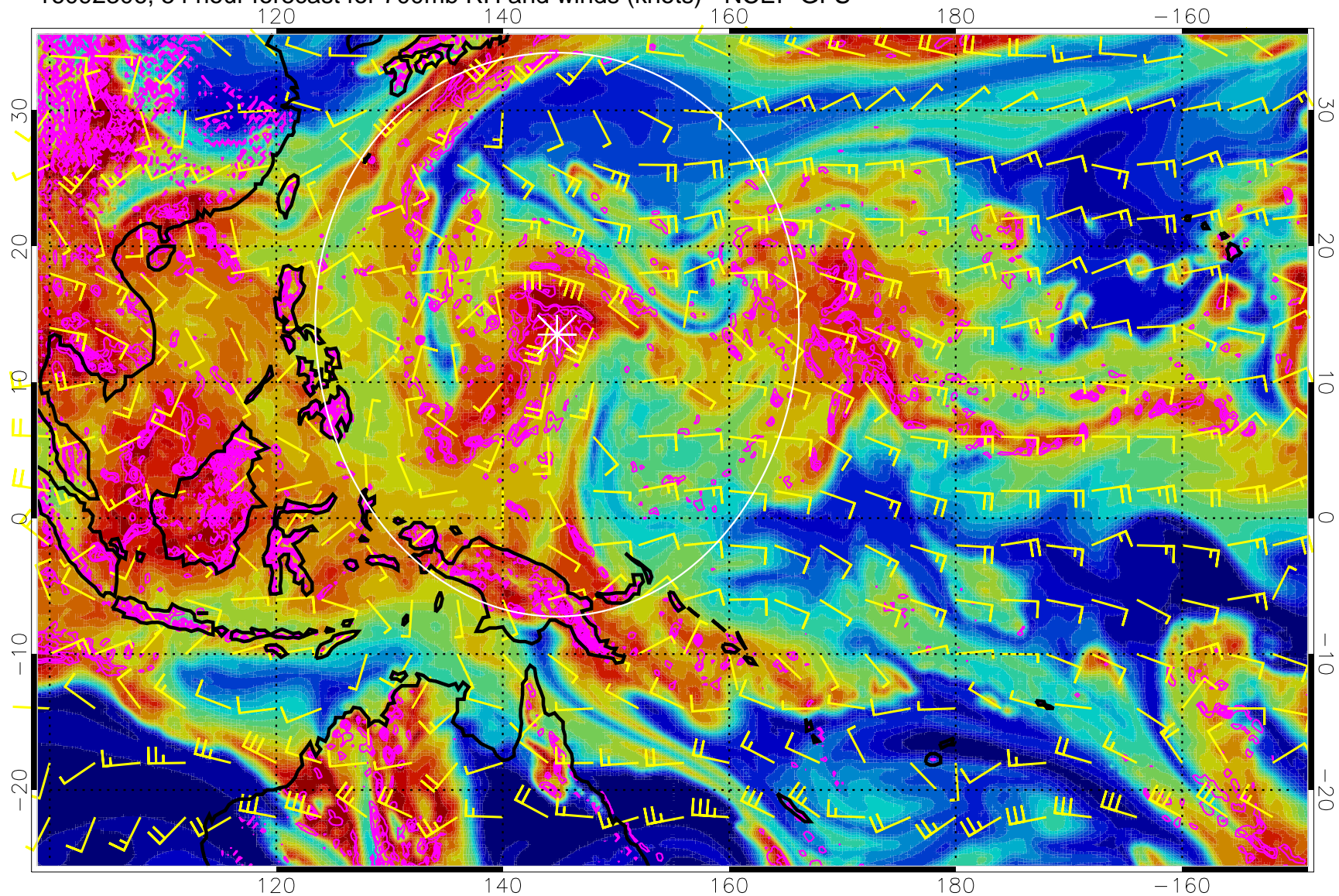


Negative Omegas less than  $-0.3$ , contours of  $0.3$  Pa/s

Range ring of 2304 km



16092306, 54 hour forecast for 700mb RH and winds (knots) - NCEP GFS

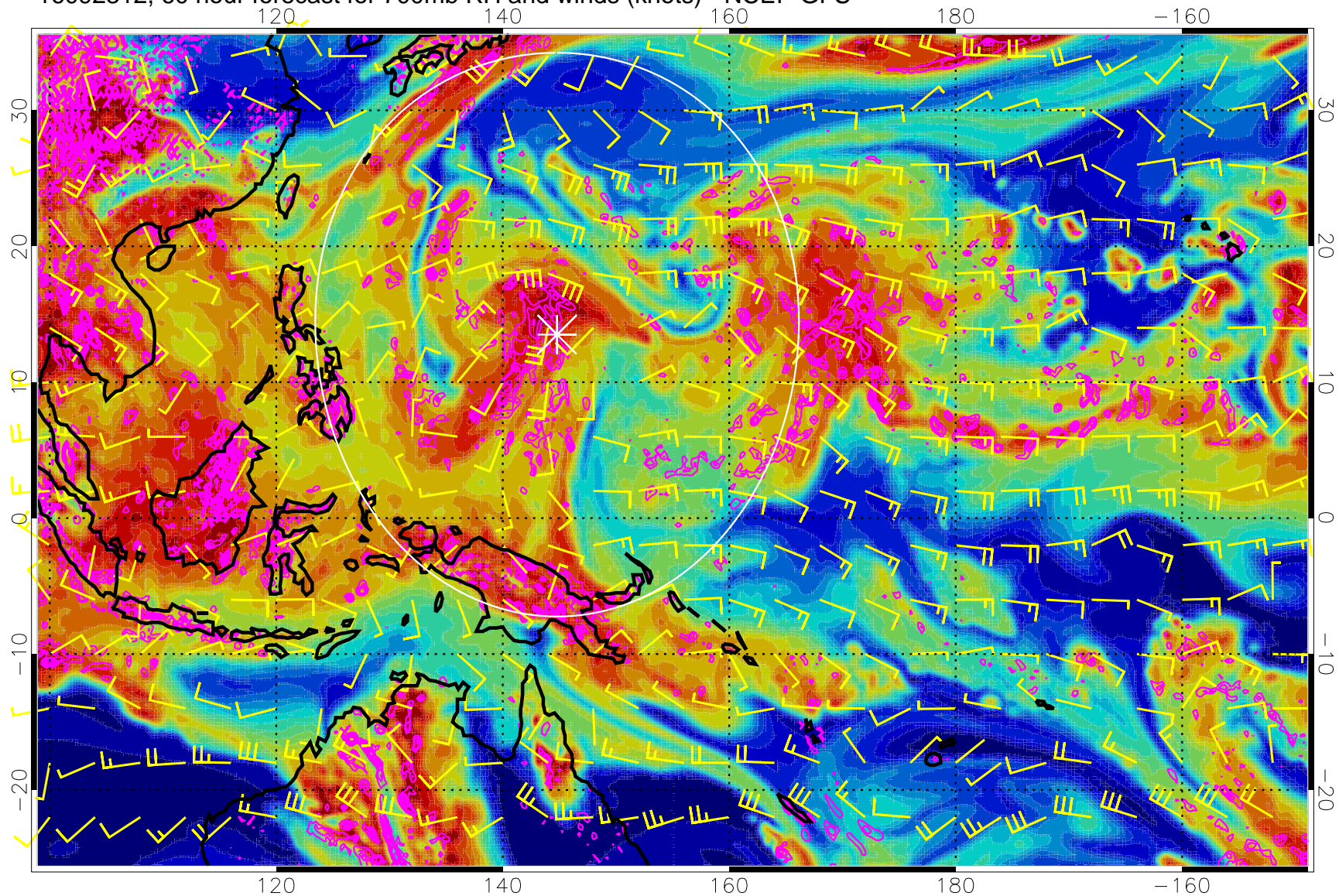


Negative Omegas less than  $-0.3$ , contours of  $0.3$  Pa/s

Range ring of 2304 km



16092312, 60 hour forecast for 700mb RH and winds (knots) - NCEP GFS



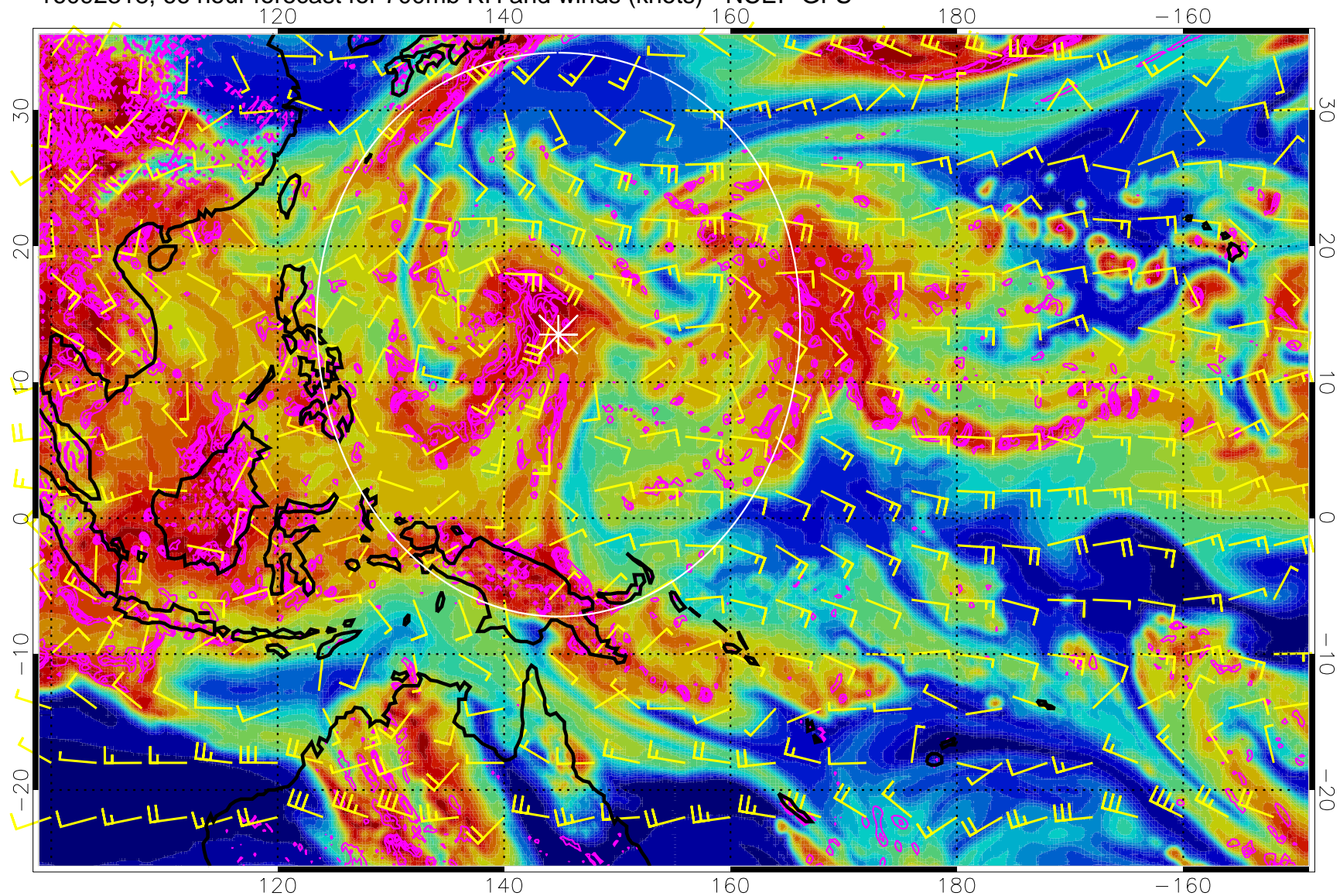
0 20 40 60 80 100  
RH, %

Negative Omegas less than  $-0.3$ , contours of  $0.3$  Pa/s

Range ring of 2304 km



16092318, 66 hour forecast for 700mb RH and winds (knots) - NCEP GFS

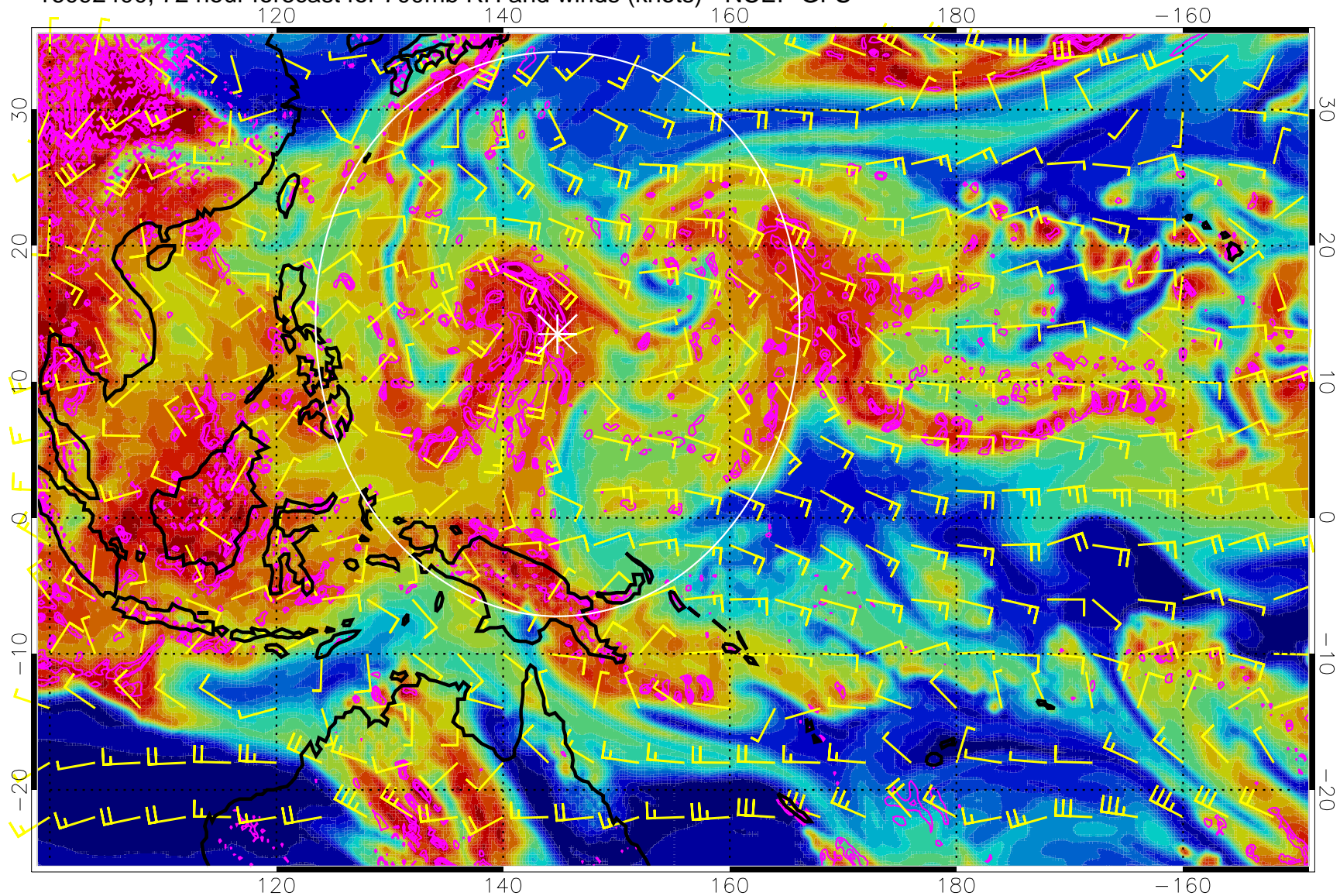


Negative Omegas less than  $-0.3$ , contours of  $0.3$  Pa/s

Range ring of 2304 km



16092400, 72 hour forecast for 700mb RH and winds (knots) - NCEP GFS

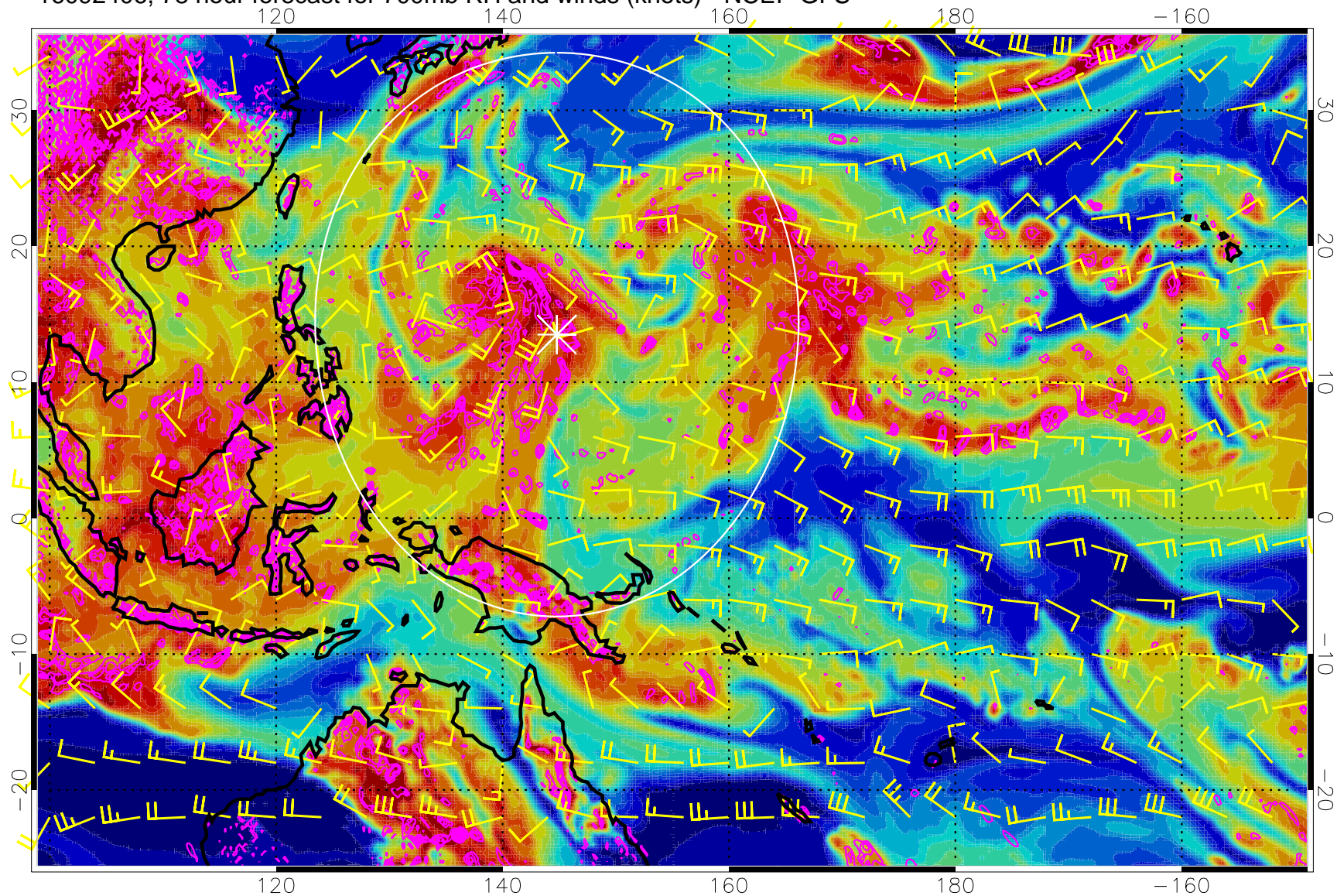


Negative Omegas less than  $-0.3$ , contours of  $0.3$  Pa/s

Range ring of 2304 km



16092406, 78 hour forecast for 700mb RH and winds (knots) - NCEP GFS



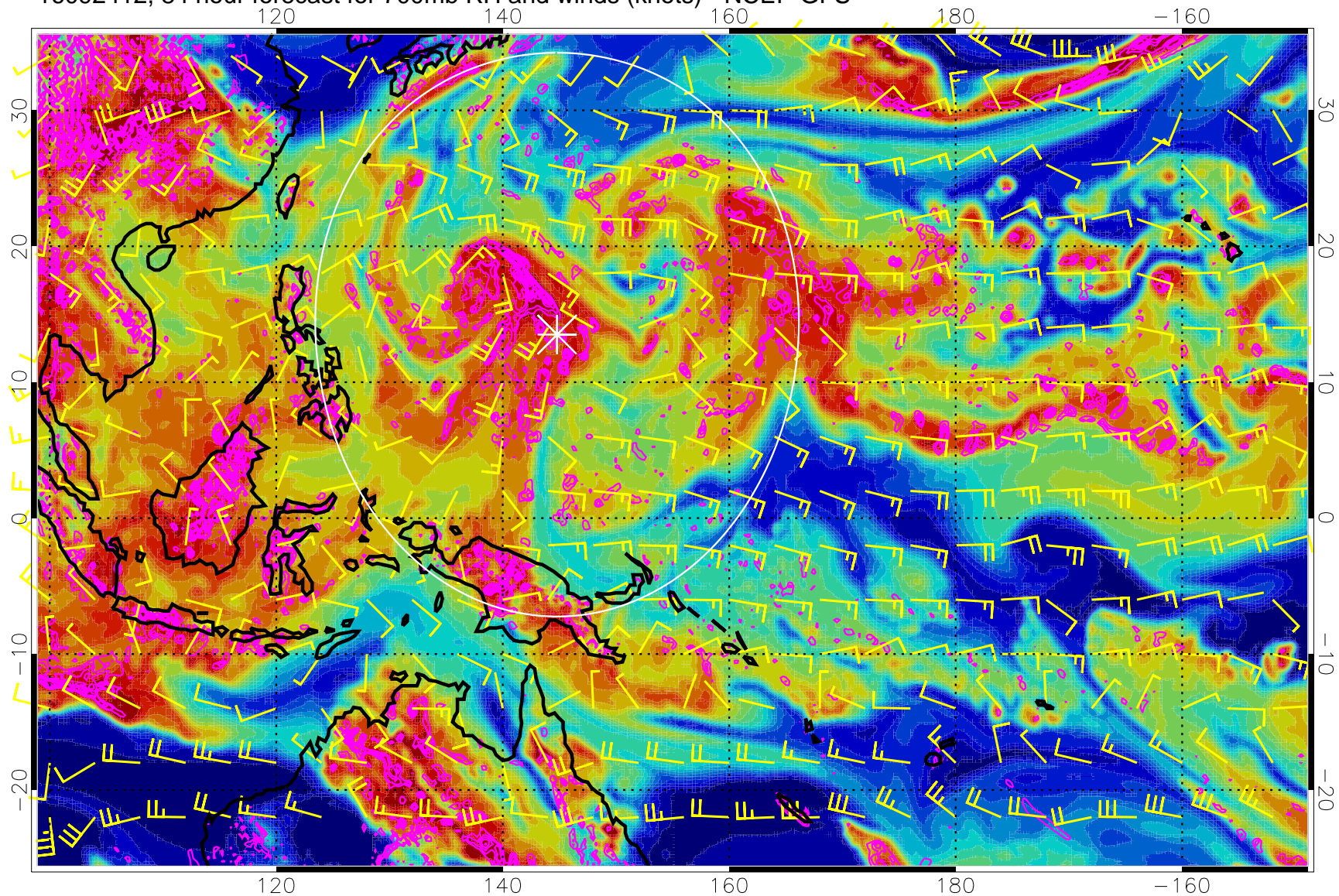
0 20 40 60 80 100  
RH, %

Negative Omegas less than  $-0.3$ , contours of  $0.3$  Pa/s

Range ring of 2304 km



16092412, 84 hour forecast for 700mb RH and winds (knots) - NCEP GFS

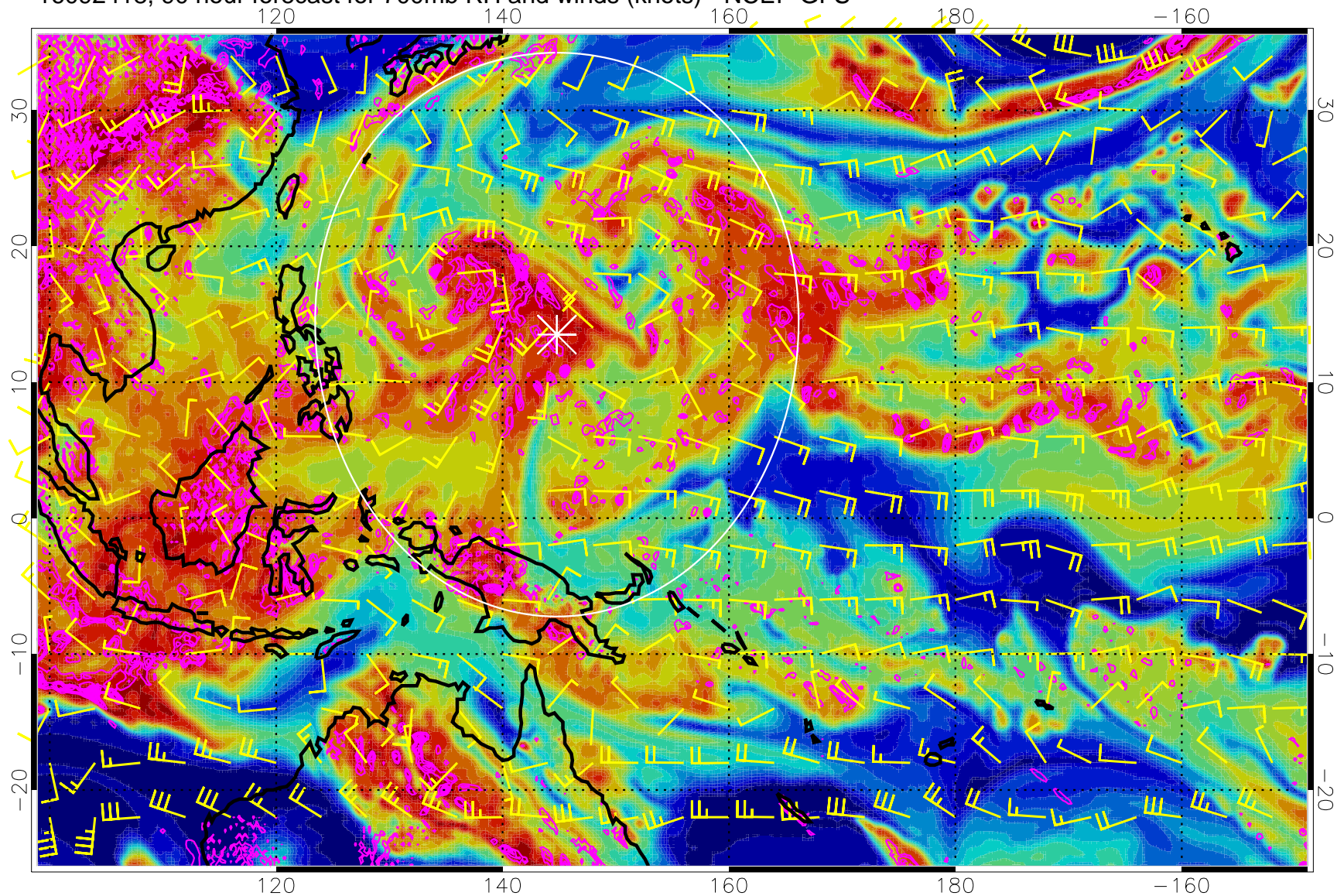


Negative Omegas less than  $-0.3$ , contours of  $0.3$  Pa/s

Range ring of 2304 km



16092418, 90 hour forecast for 700mb RH and winds (knots) - NCEP GFS



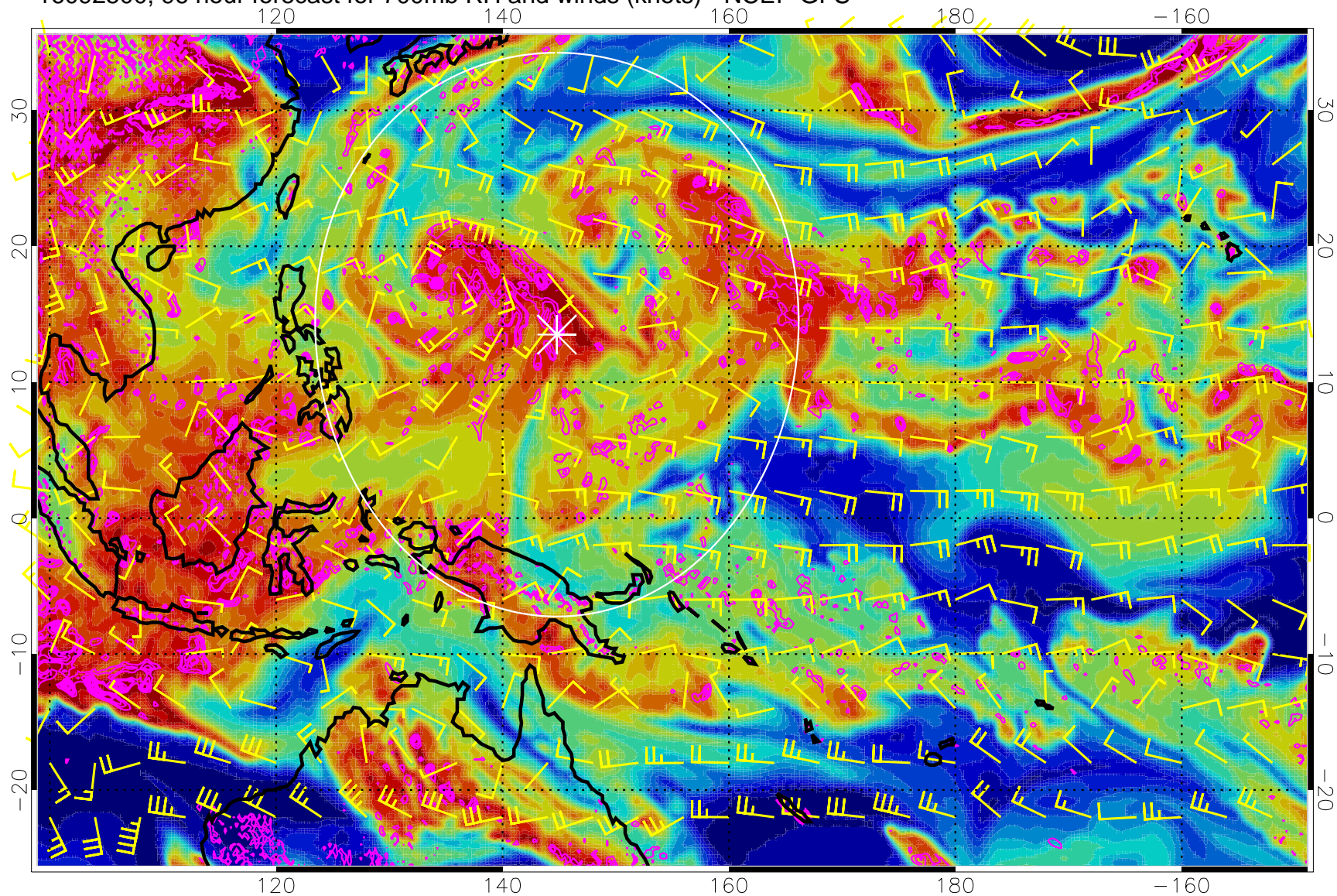
0 20 40 60 80 100  
RH, %

Negative Omegas less than  $-0.3$ , contours of  $0.3$  Pa/s

Range ring of 2304 km



16092500, 96 hour forecast for 700mb RH and winds (knots) - NCEP GFS



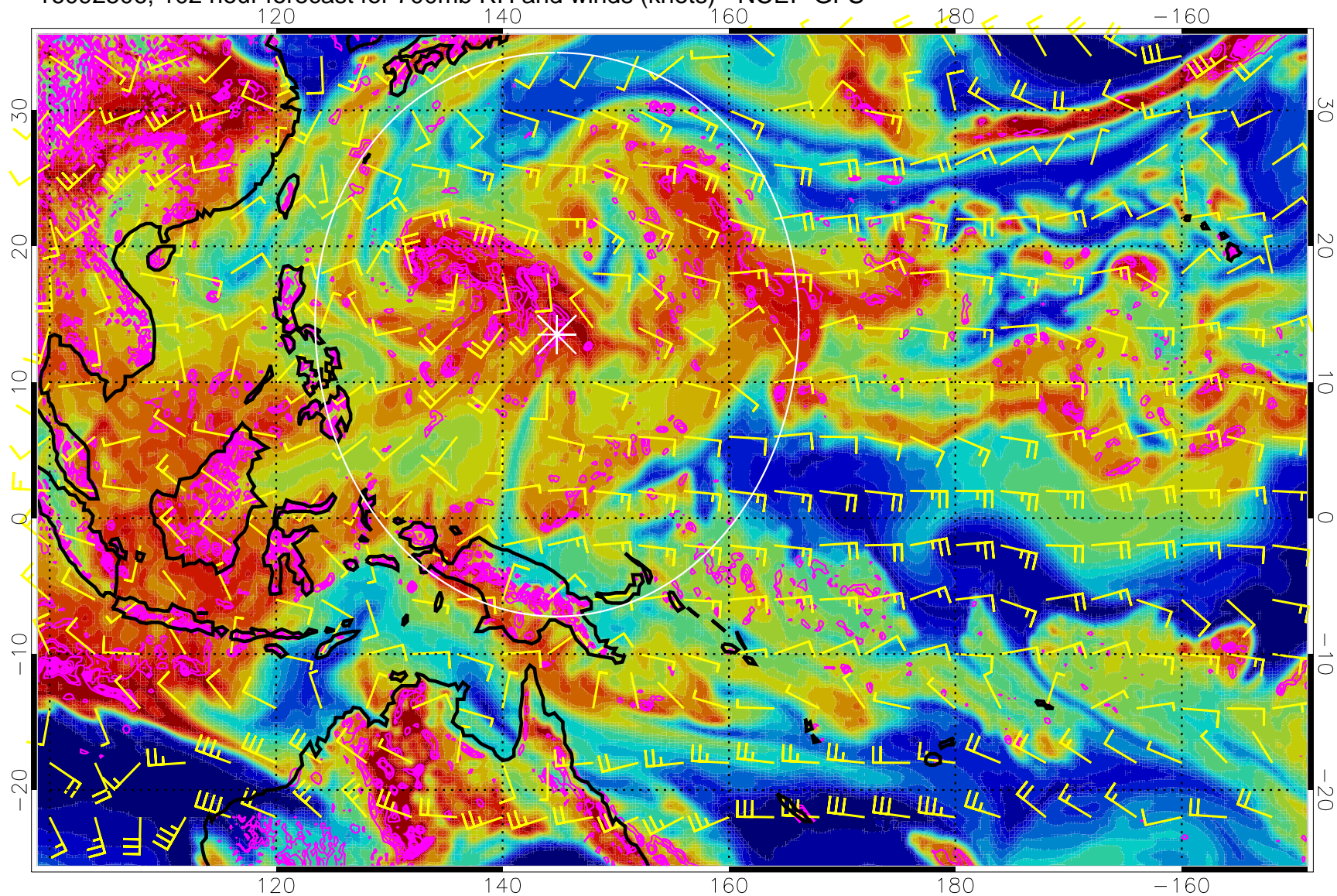
0 20 40 60 80 100  
RH, %

Negative Omegas less than  $-0.3$ , contours of  $0.3$  Pa/s

Range ring of 2304 km



16092506, 102 hour forecast for 700mb RH and winds (knots) - NCEP GFS



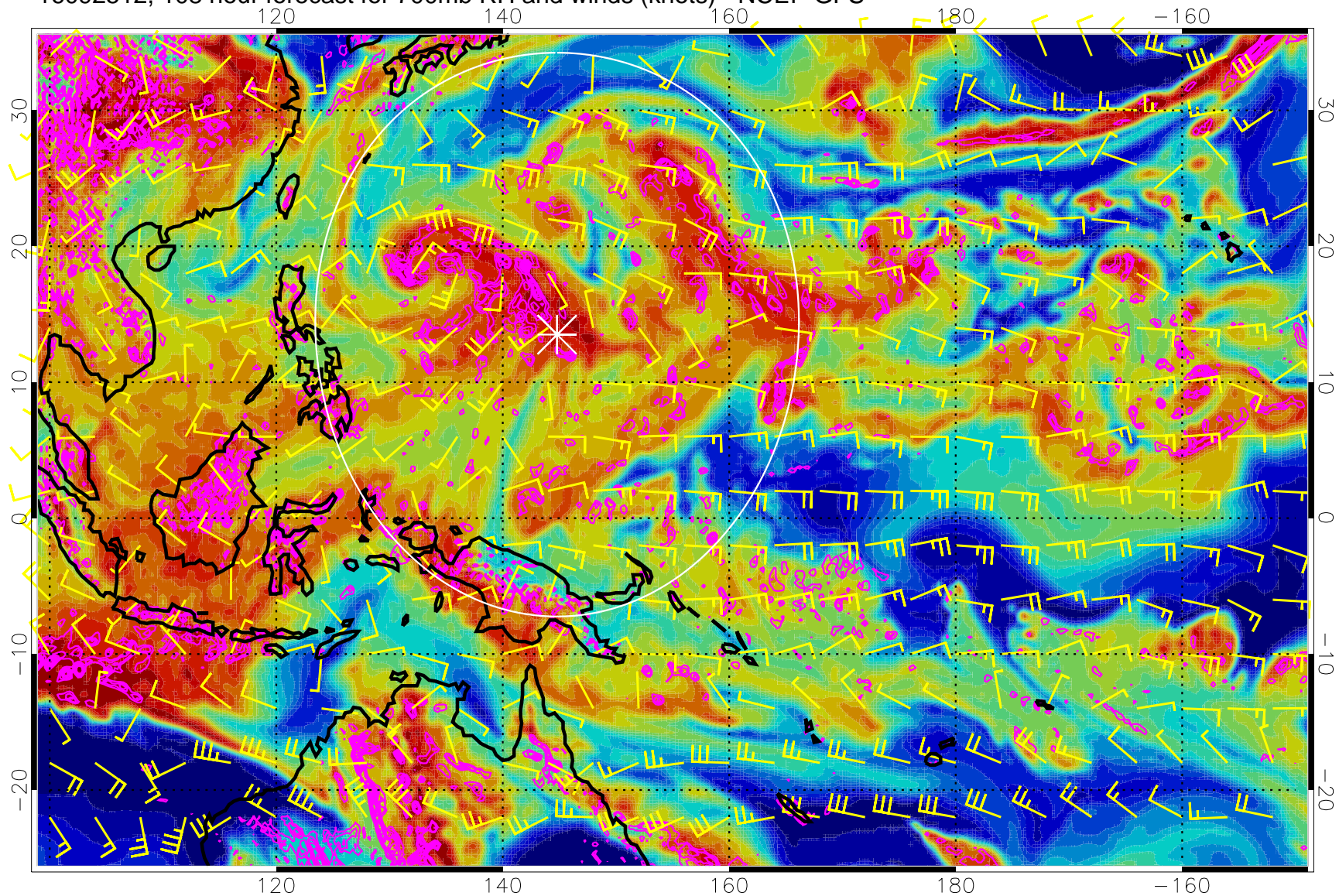
0 20 40 60 80 100  
RH, %

Negative Omegas less than  $-0.3$ , contours of  $0.3$  Pa/s

Range ring of 2304 km



16092512, 108 hour forecast for 700mb RH and winds (knots) - NCEP GFS

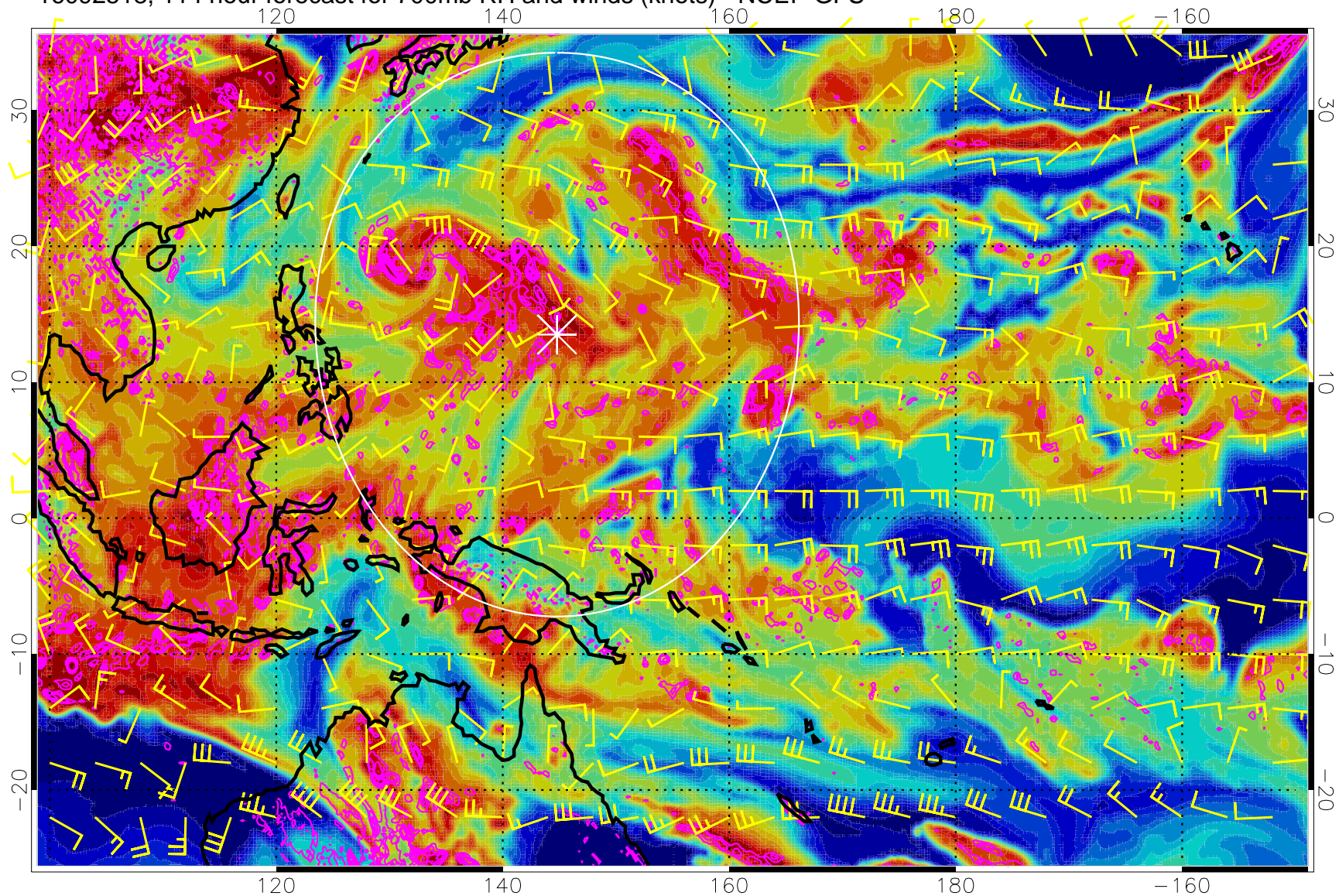


Negative Omegas less than  $-0.3$ , contours of  $0.3$  Pa/s

Range ring of 2304 km



16092518, 114 hour forecast for 700mb RH and winds (knots) - NCEP GFS

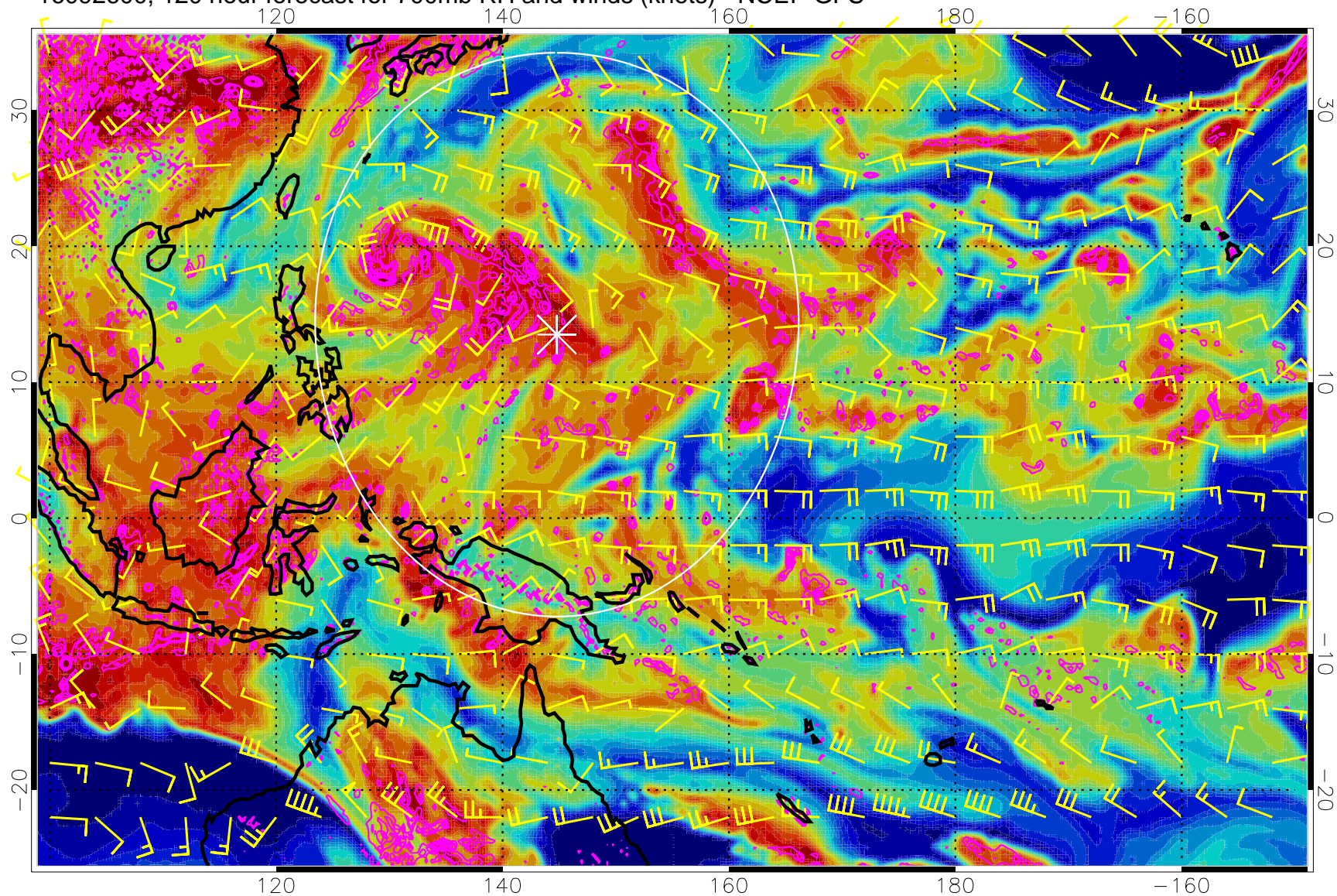


Negative Omegas less than  $-0.3$ , contours of  $0.3$  Pa/s

Range ring of 2304 km



16092600, 120 hour forecast for 700mb RH and winds (knots) - NCEP GFS



Negative Omegas less than  $-0.3$ , contours of  $0.3$  Pa/s



0 20 40 60 80 100  
RH, %

Range ring of 2304 km