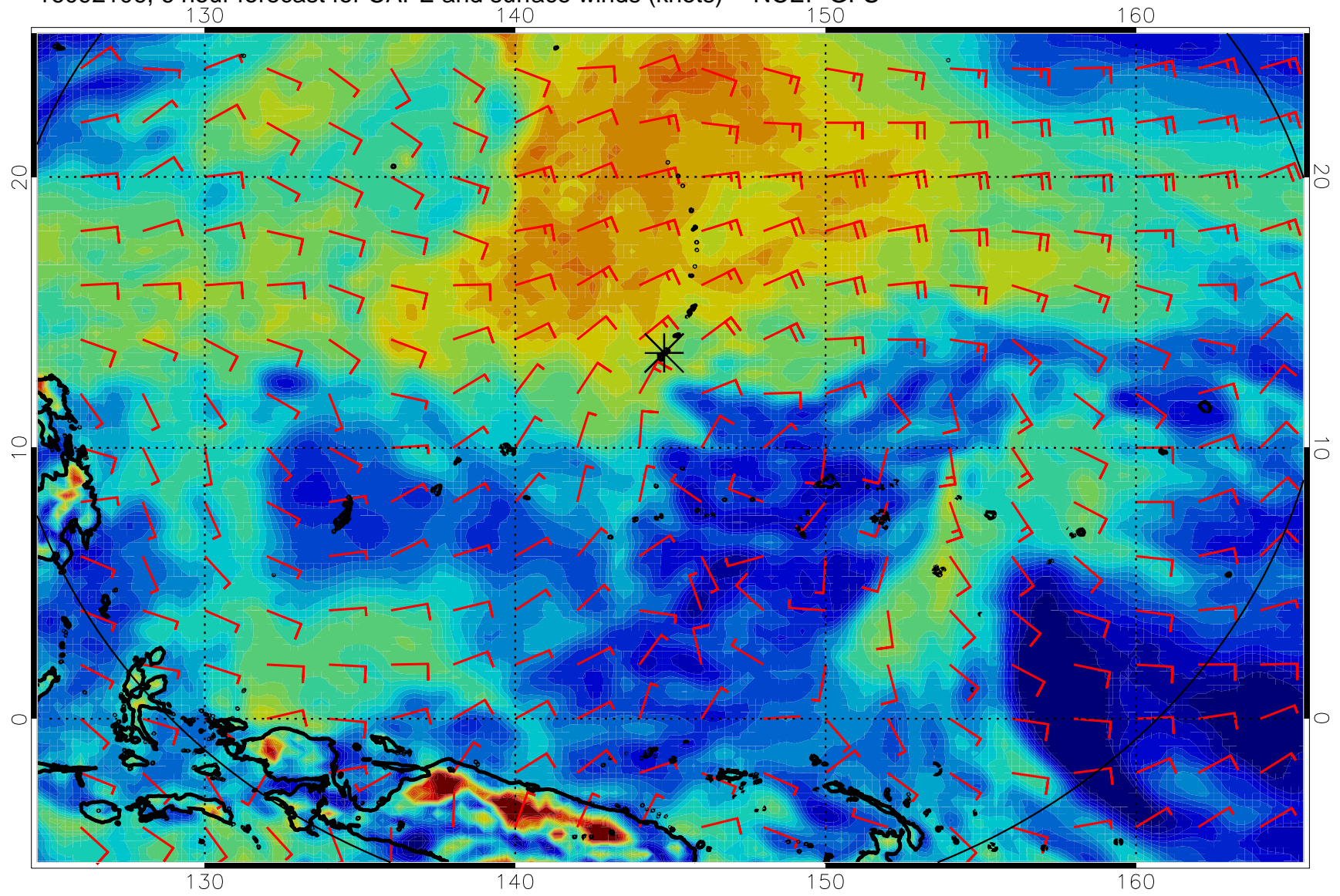
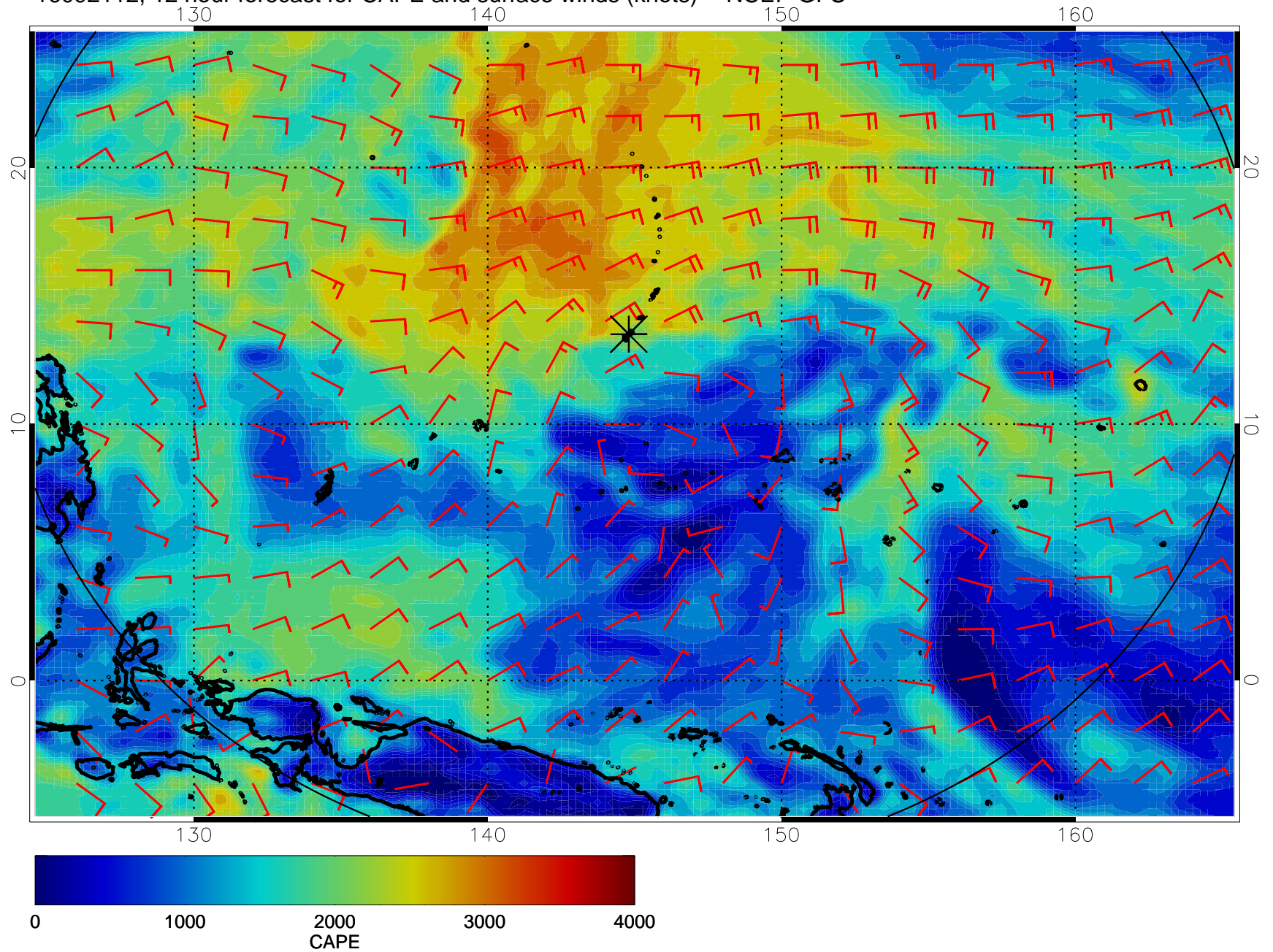


16092106, 6 hour forecast for CAPE and surface winds (knots) -- NCEP GFS

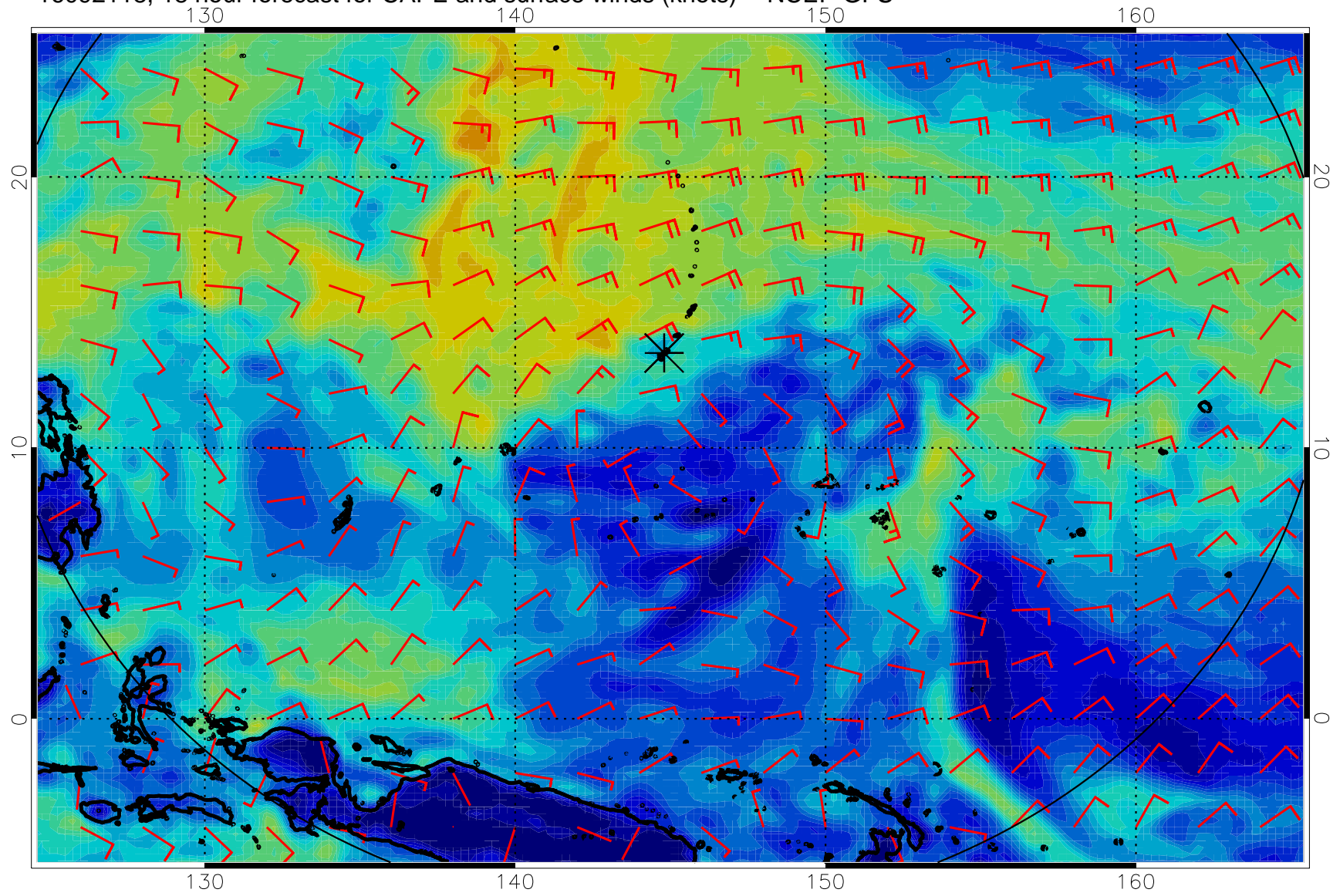


16092112, 12 hour forecast for CAPE and surface winds (knots) -- NCEP GFS

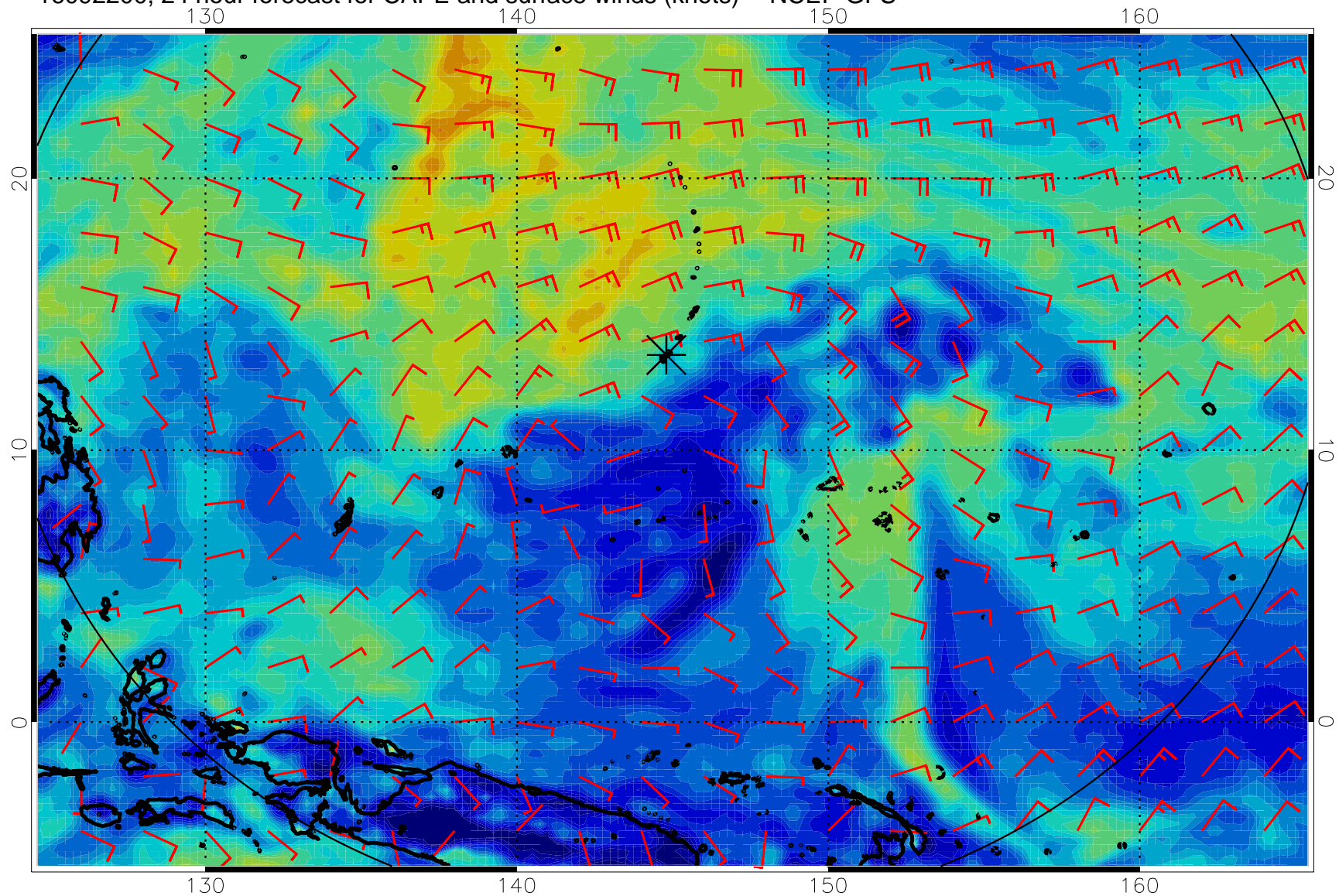




16092118, 18 hour forecast for CAPE and surface winds (knots) -- NCEP GFS

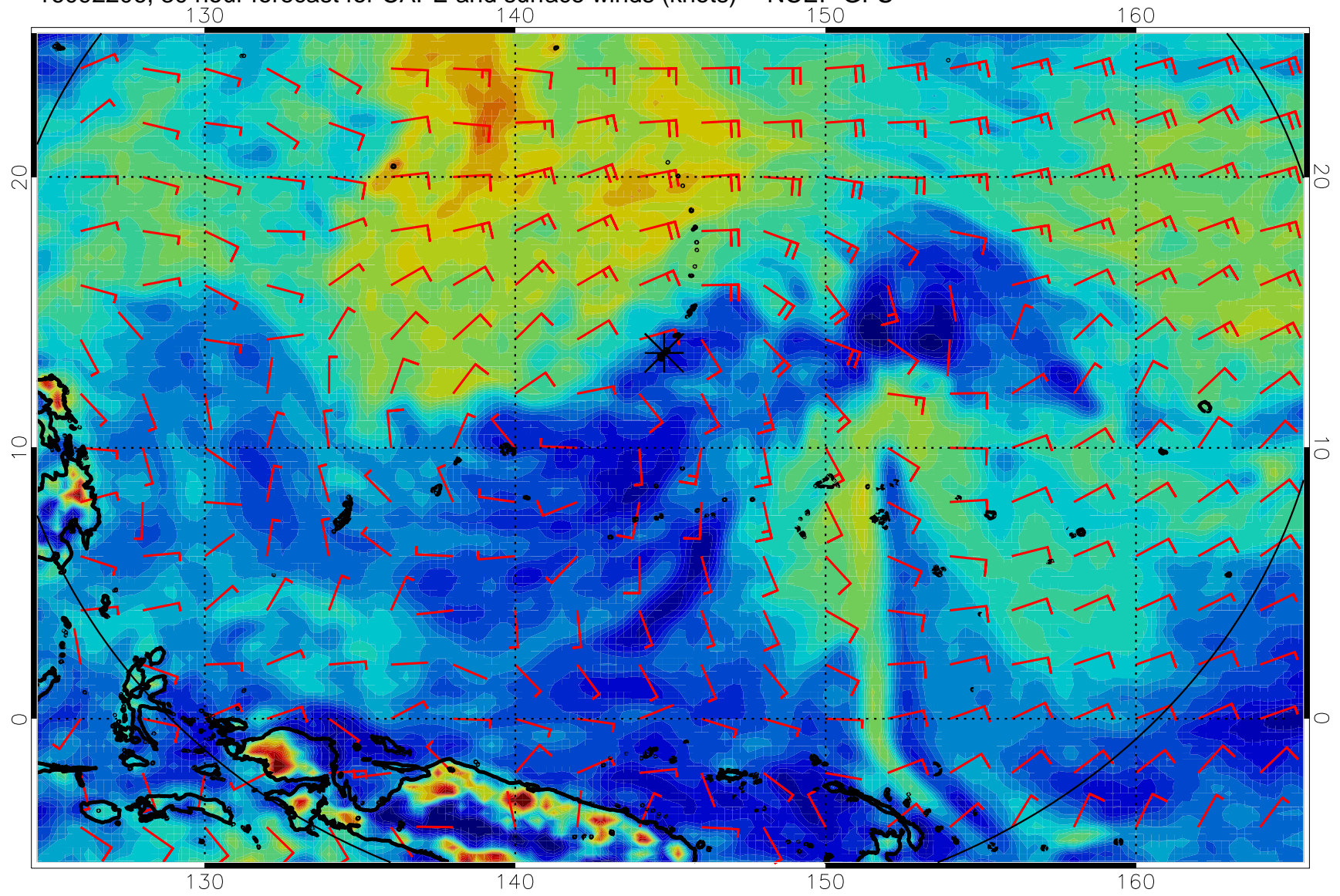


16092200, 24 hour forecast for CAPE and surface winds (knots) -- NCEP GFS

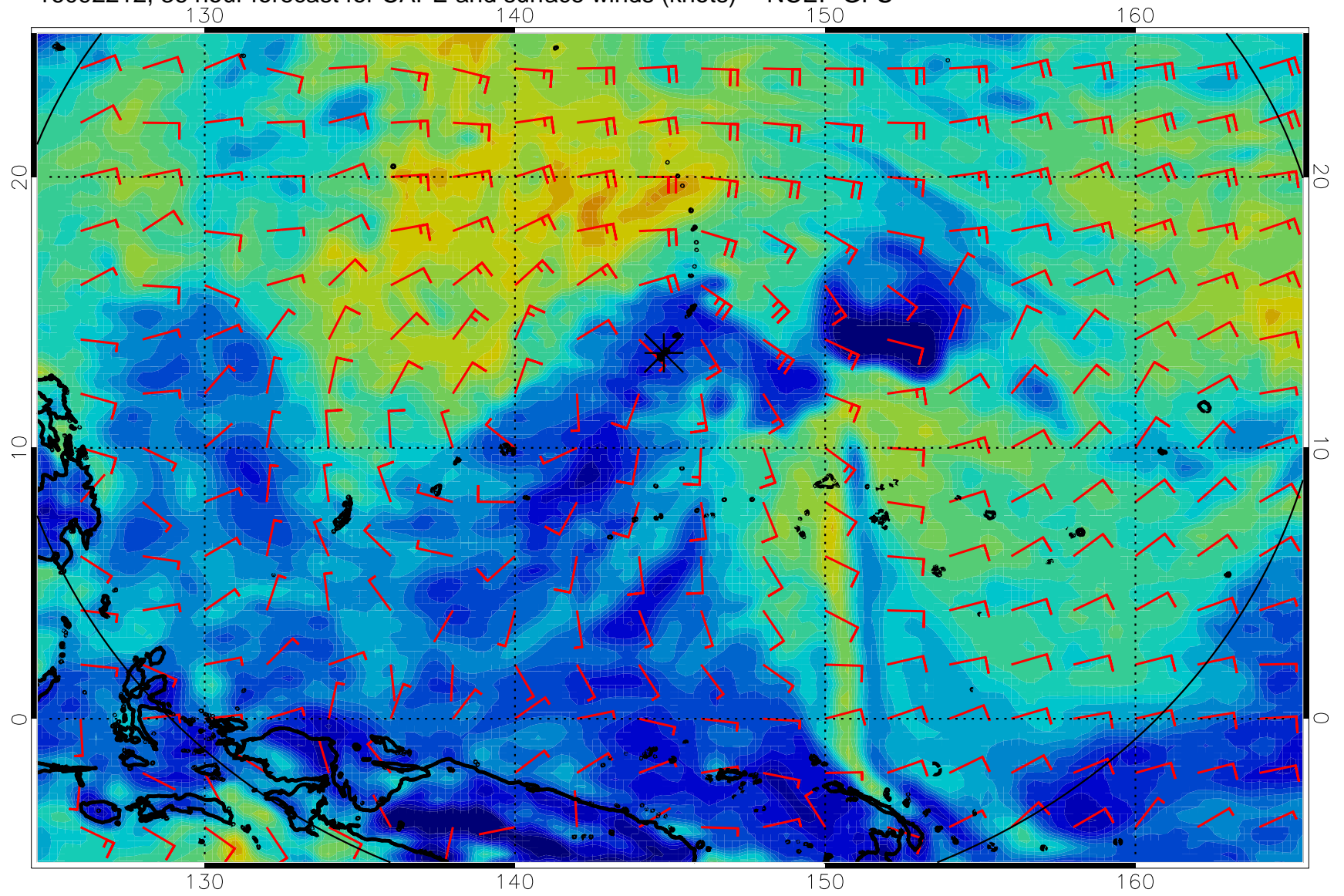




16092206, 30 hour forecast for CAPE and surface winds (knots) -- NCEP GFS

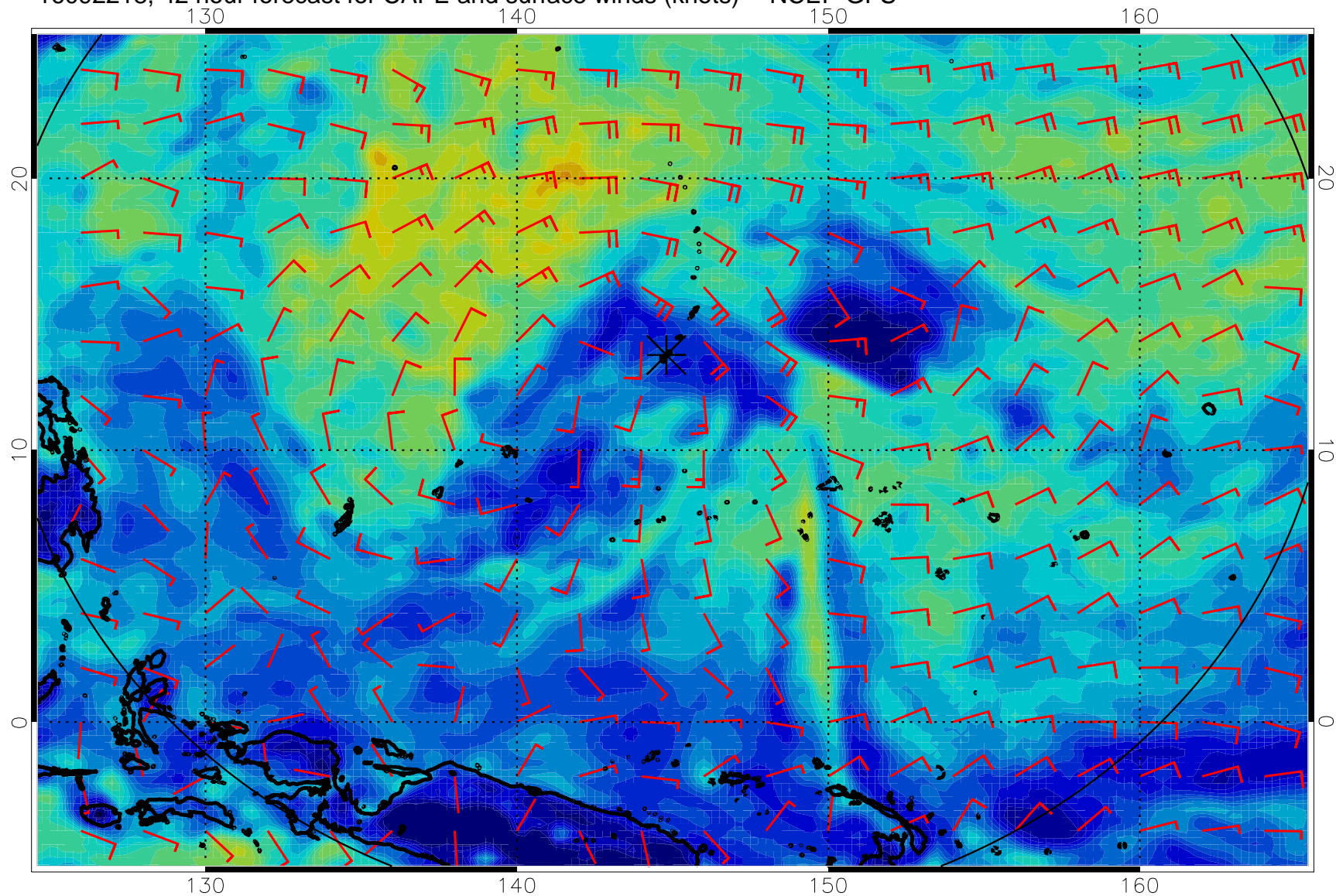


16092212, 36 hour forecast for CAPE and surface winds (knots) -- NCEP GFS

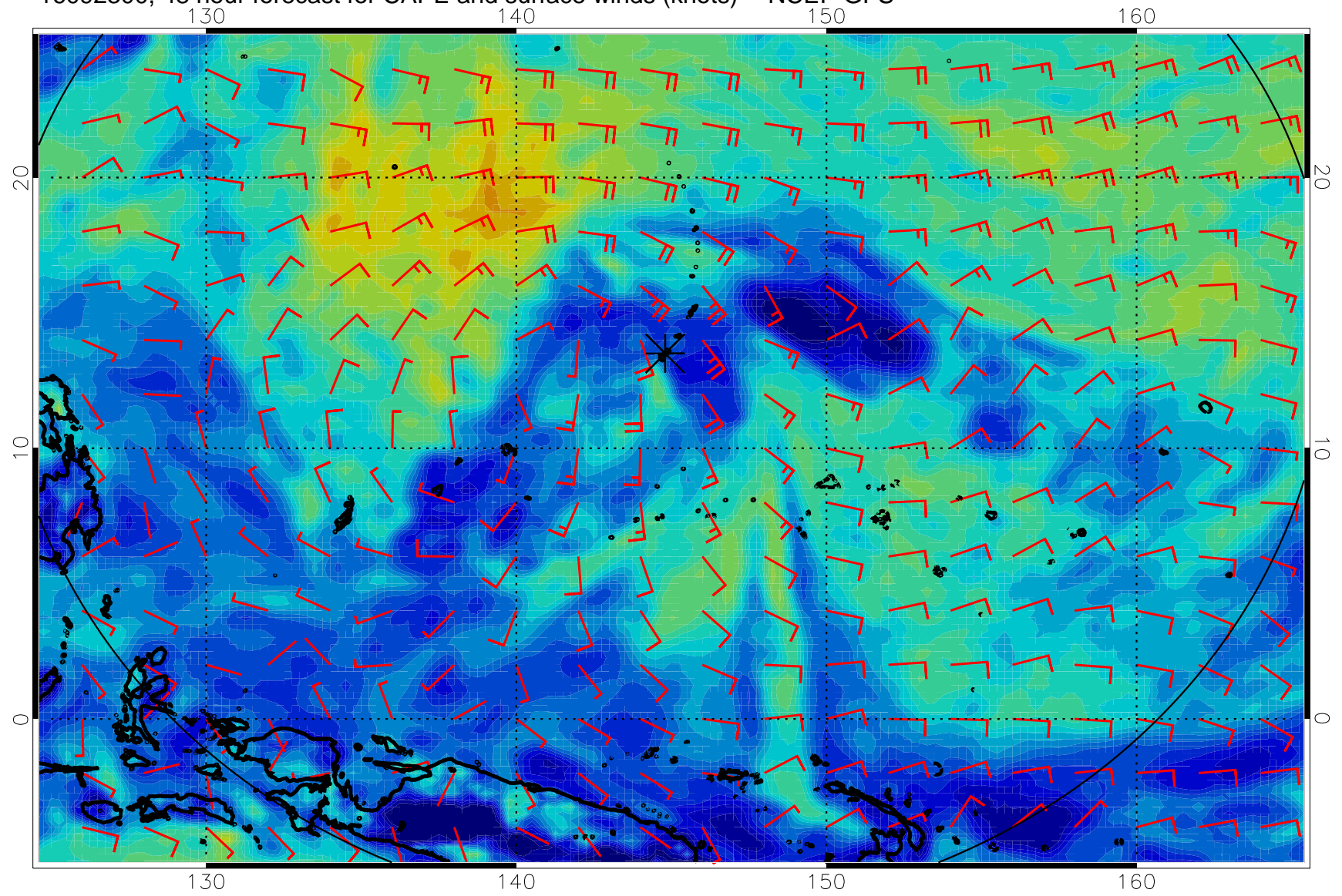




16092218, 42 hour forecast for CAPE and surface winds (knots) -- NCEP GFS

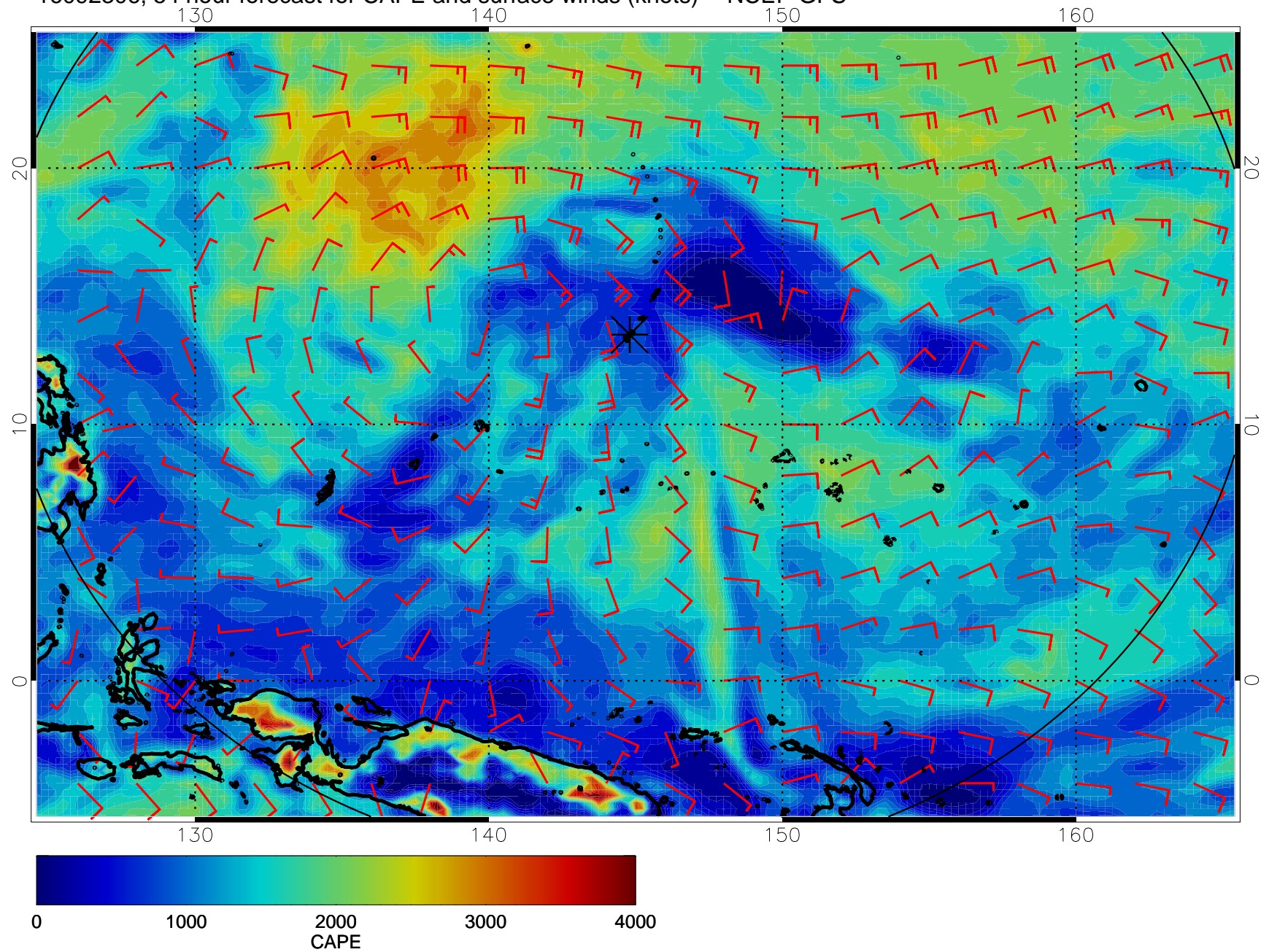


16092300, 48 hour forecast for CAPE and surface winds (knots) -- NCEP GFS

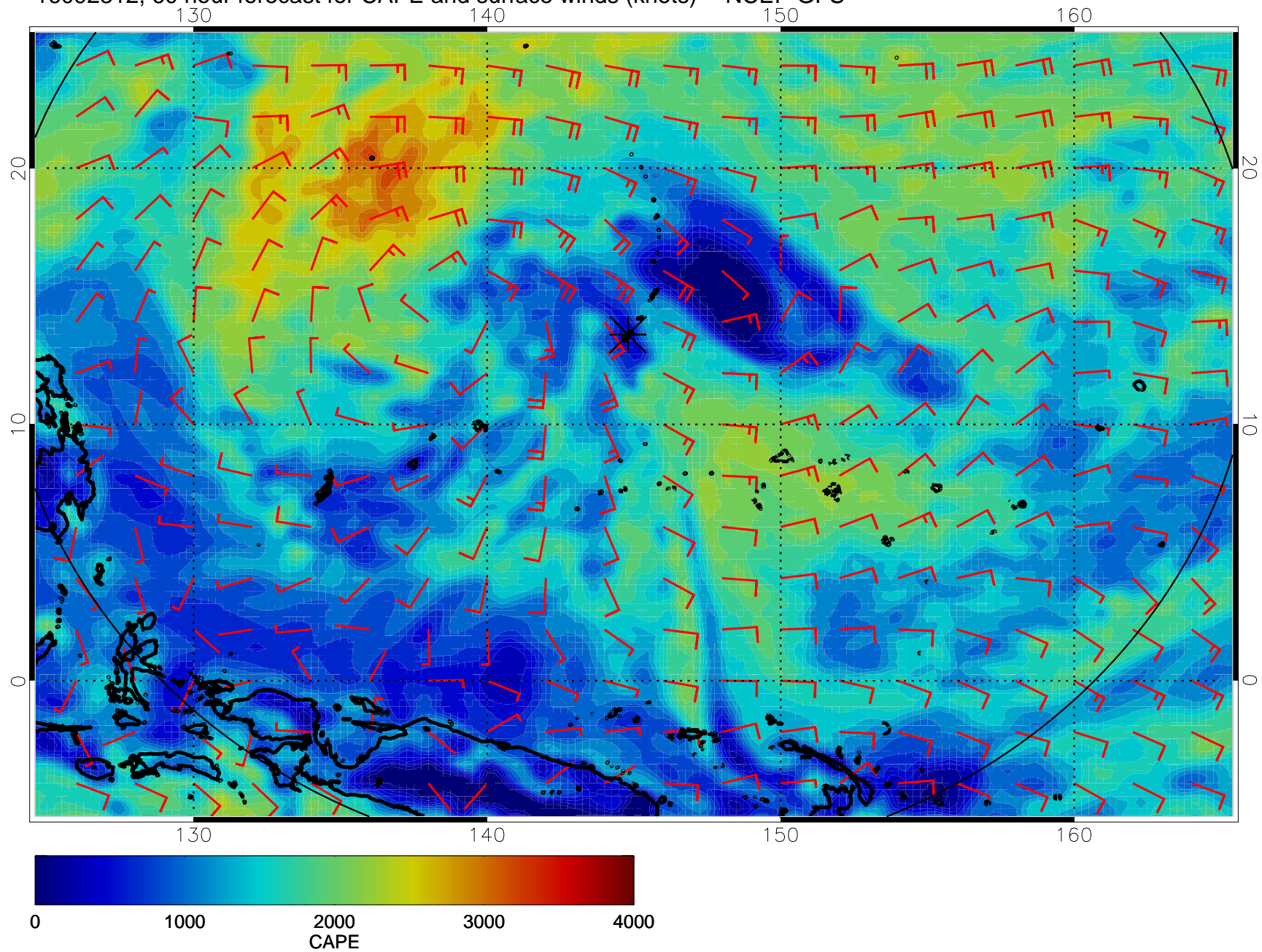




16092306, 54 hour forecast for CAPE and surface winds (knots) -- NCEP GFS

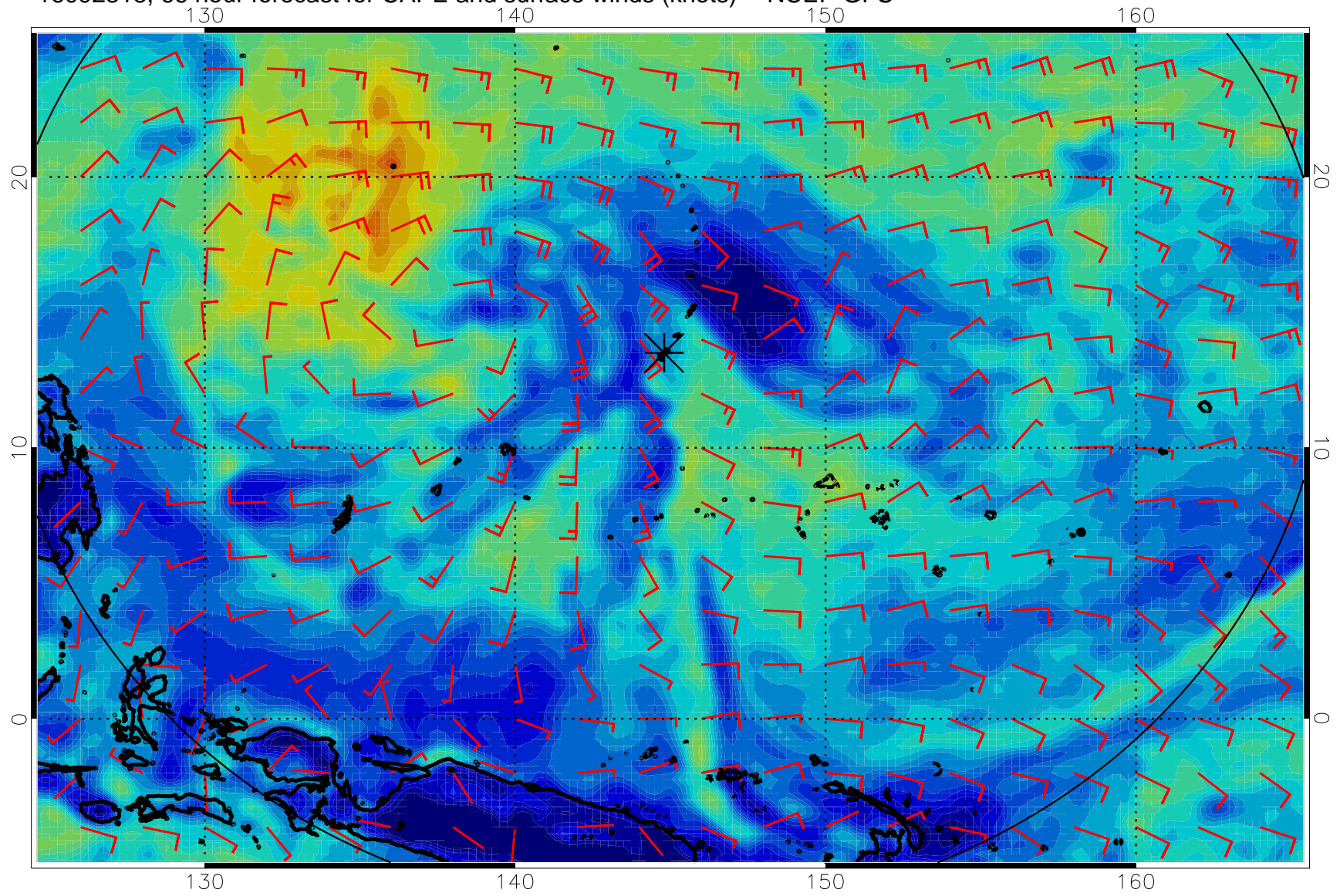


16092312, 60 hour forecast for CAPE and surface winds (knots) -- NCEP GFS

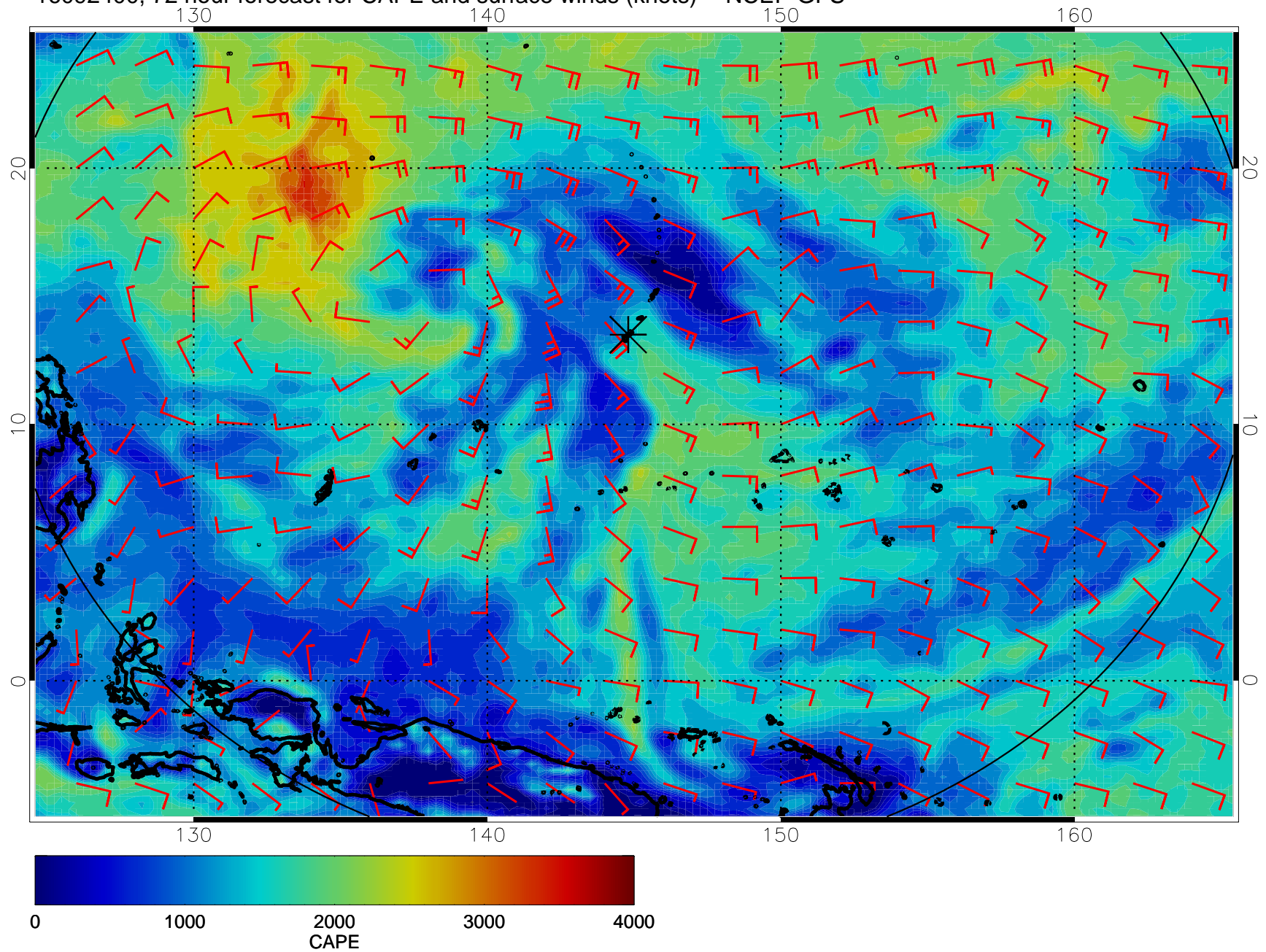




16092318, 66 hour forecast for CAPE and surface winds (knots) -- NCEP GFS

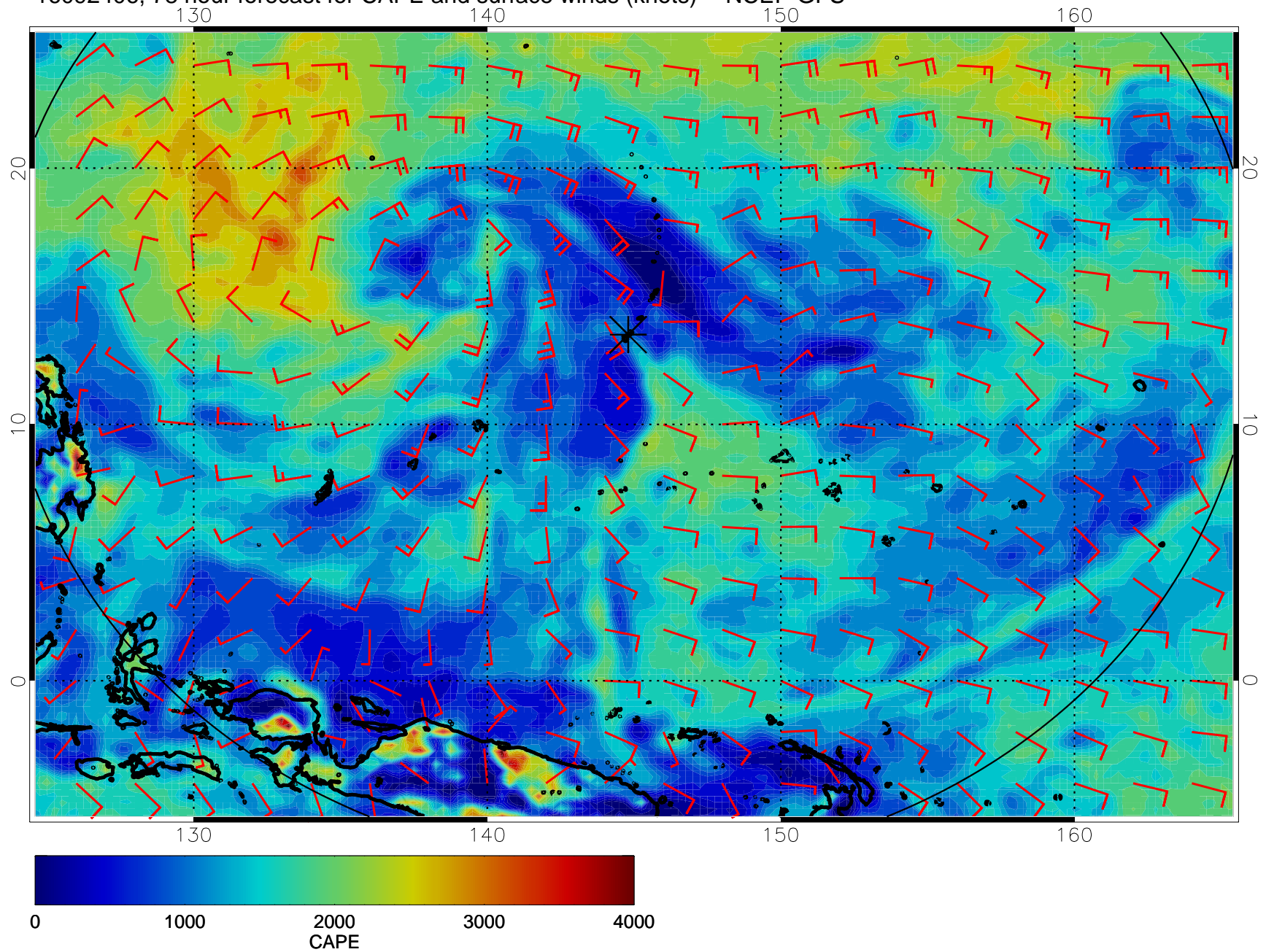


16092400, 72 hour forecast for CAPE and surface winds (knots) -- NCEP GFS

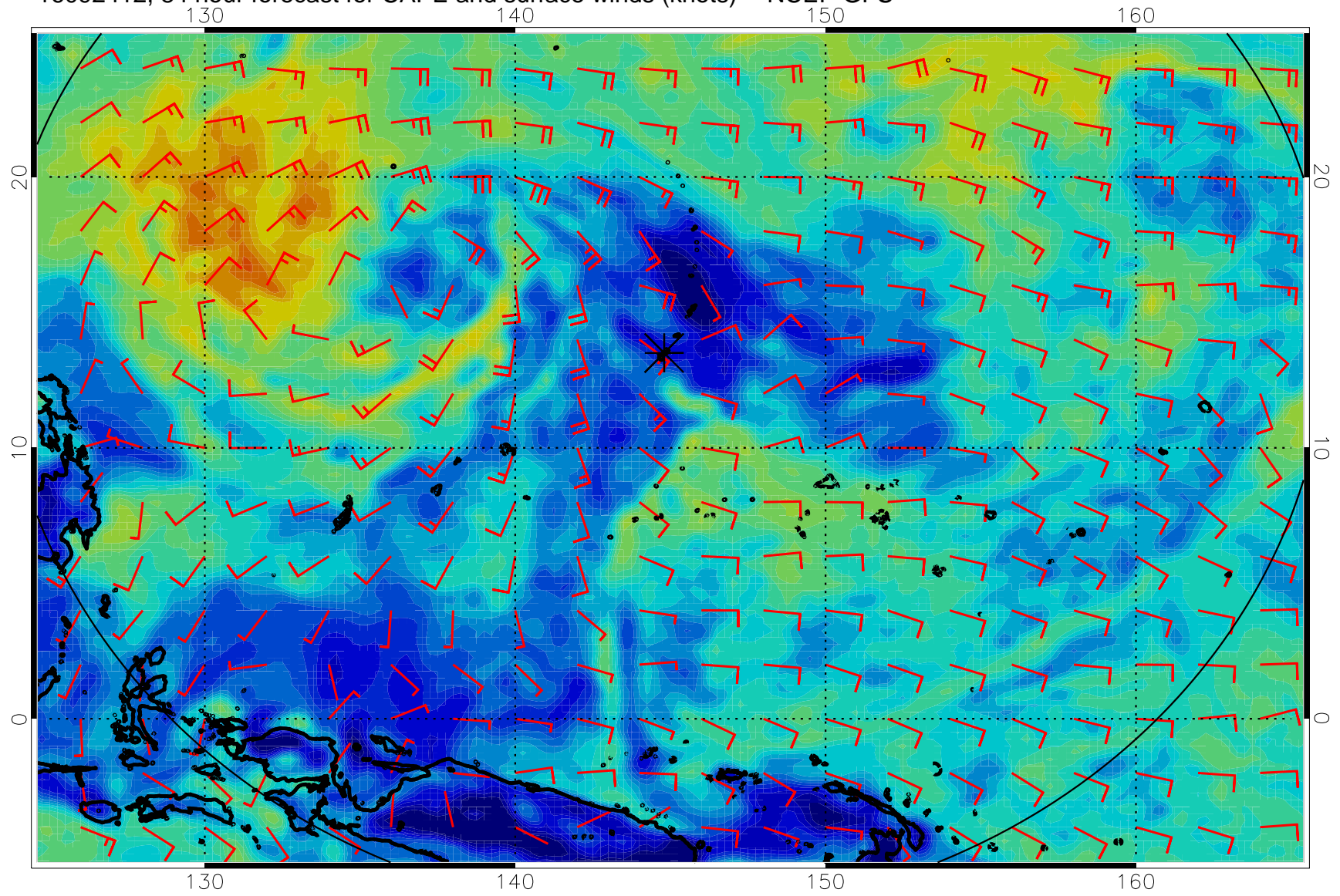




16092406, 78 hour forecast for CAPE and surface winds (knots) -- NCEP GFS

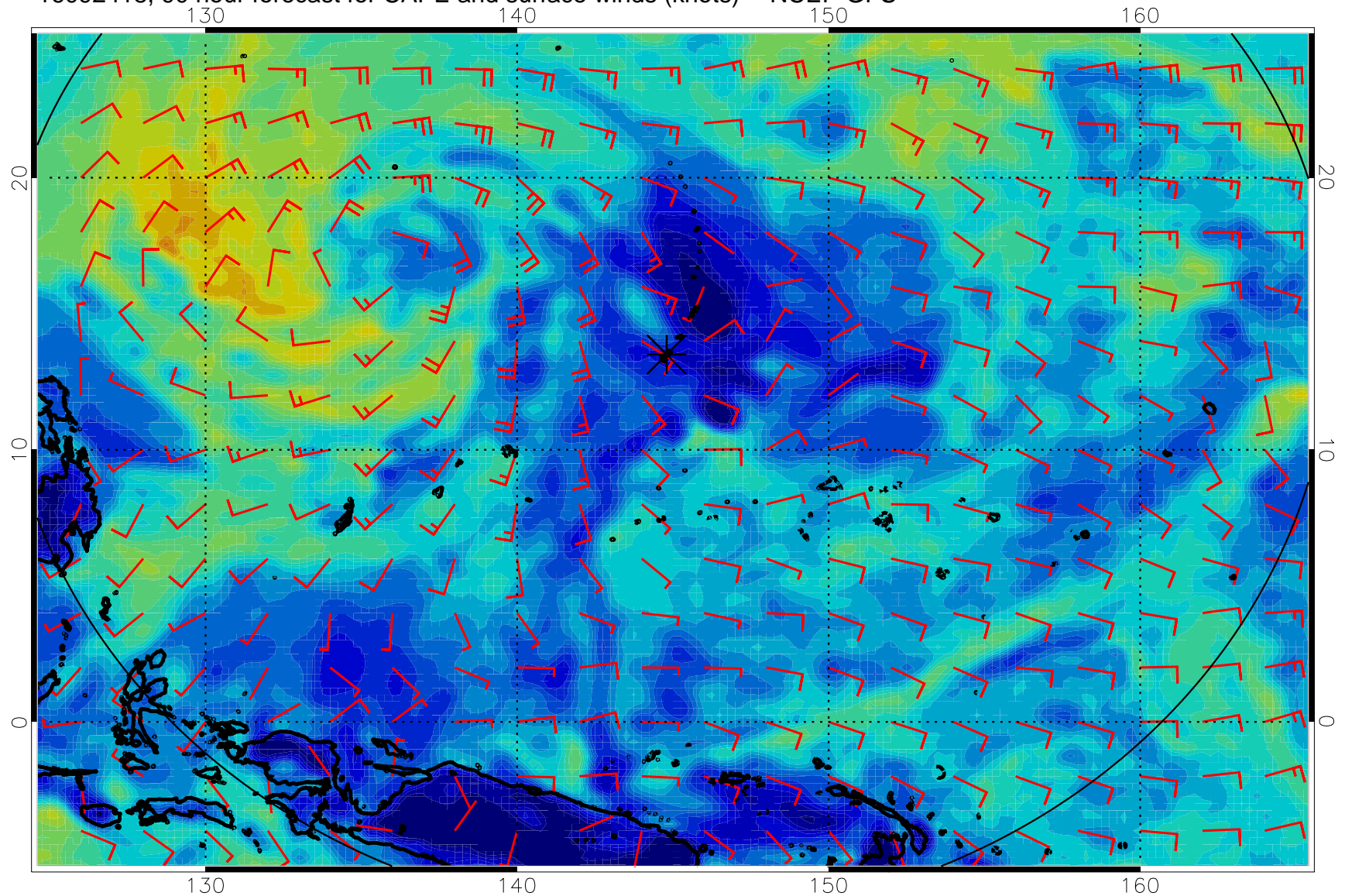


16092412, 84 hour forecast for CAPE and surface winds (knots) -- NCEP GFS

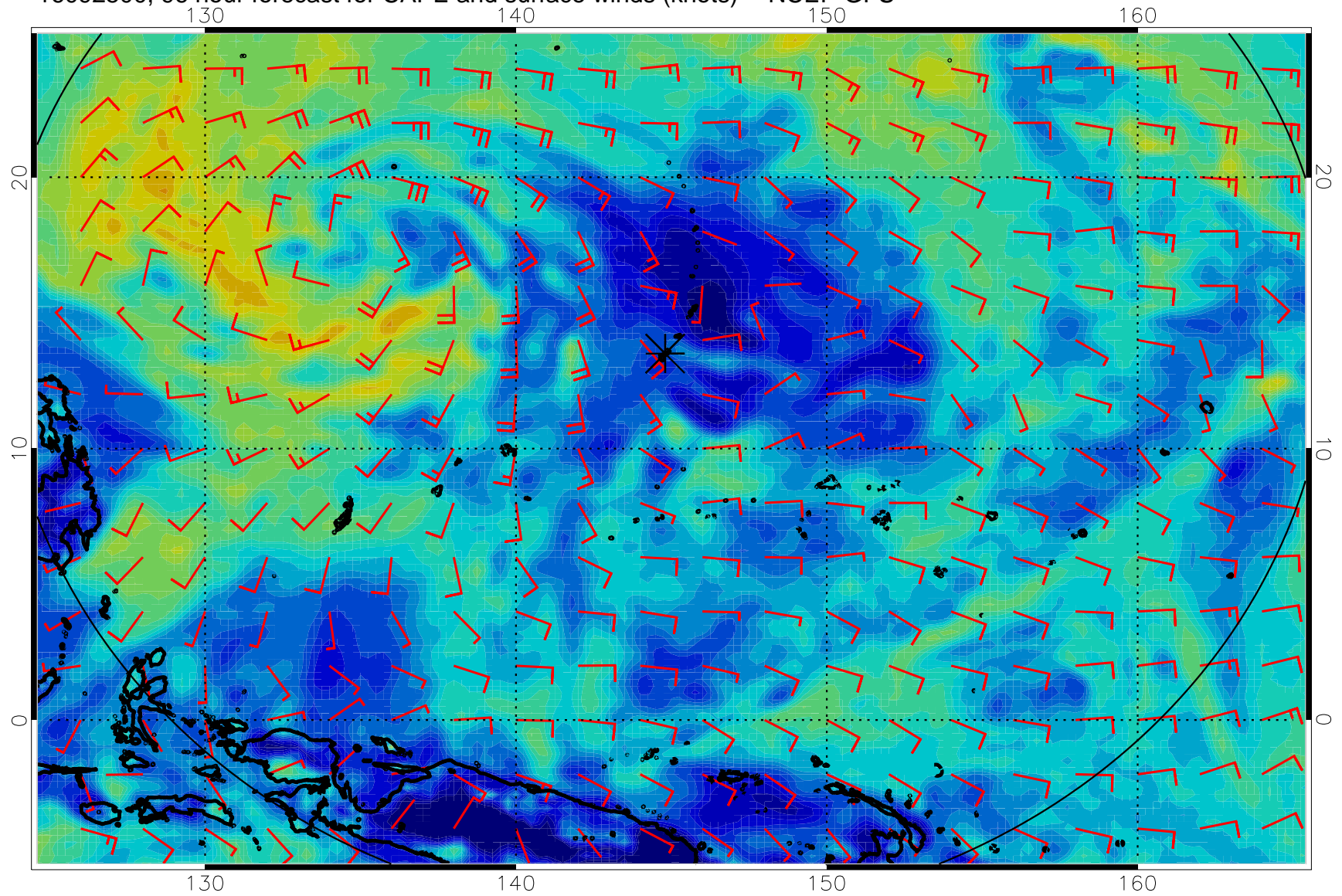




16092418, 90 hour forecast for CAPE and surface winds (knots) -- NCEP GFS

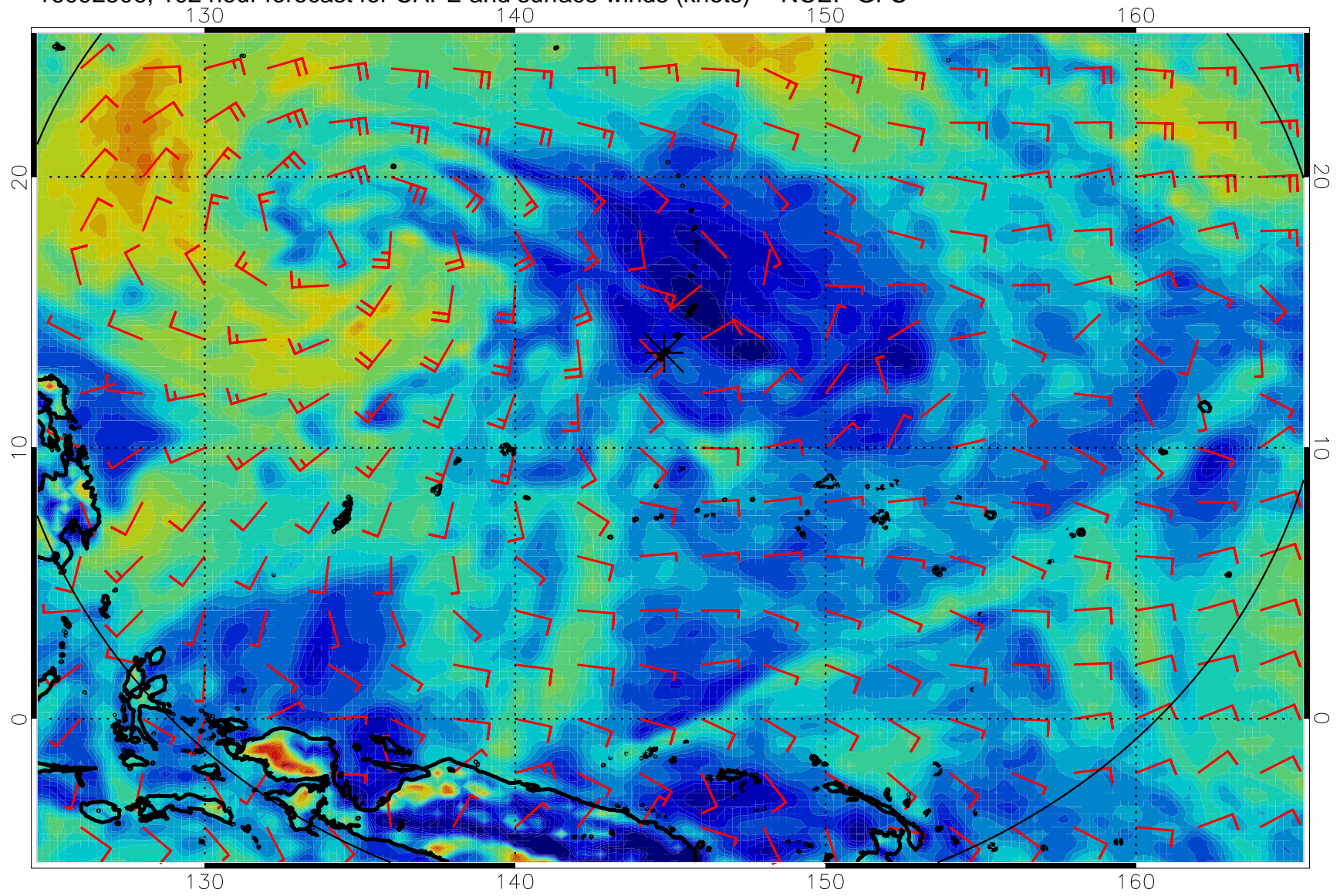


16092500, 96 hour forecast for CAPE and surface winds (knots) -- NCEP GFS

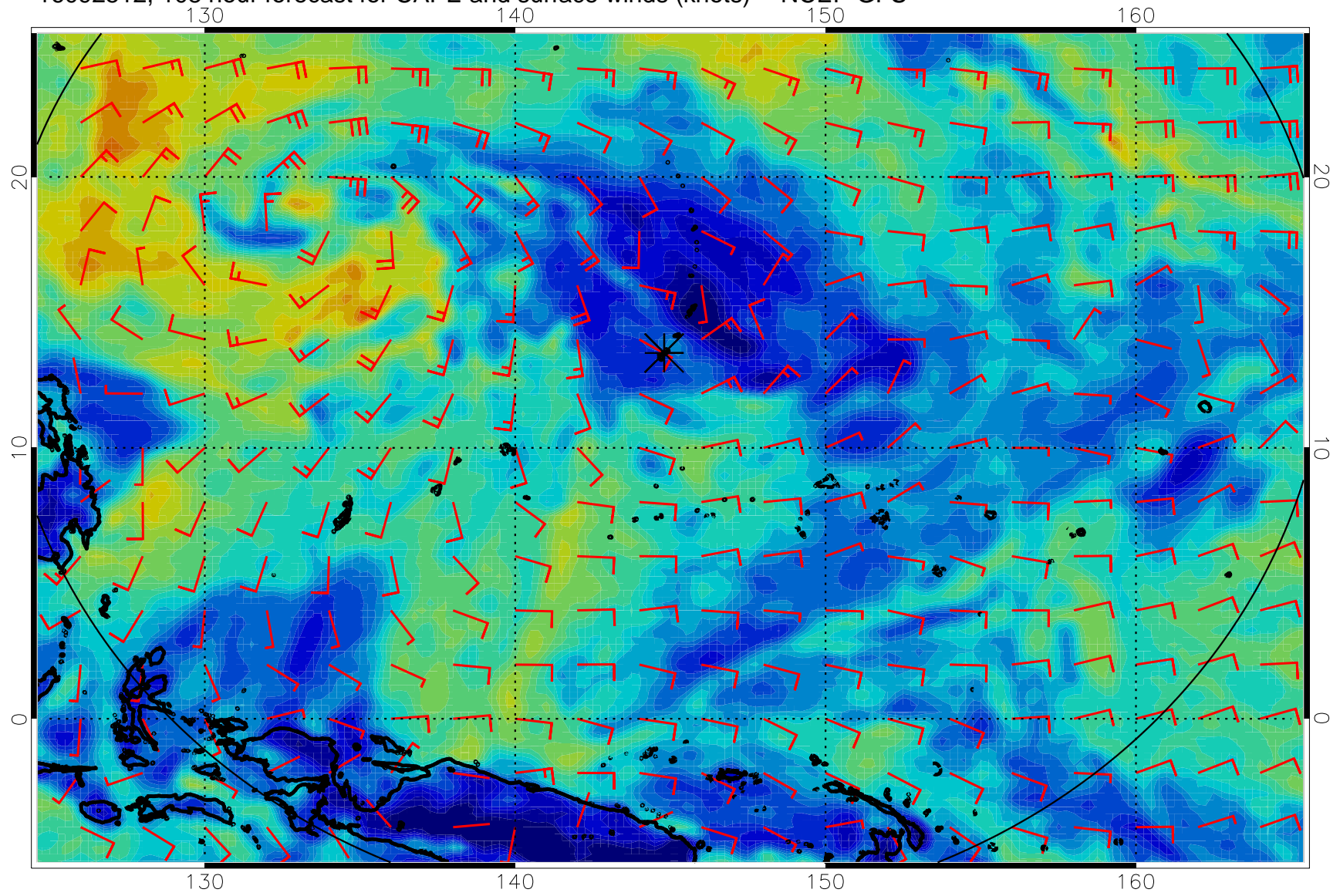




16092506, 102 hour forecast for CAPE and surface winds (knots) -- NCEP GFS

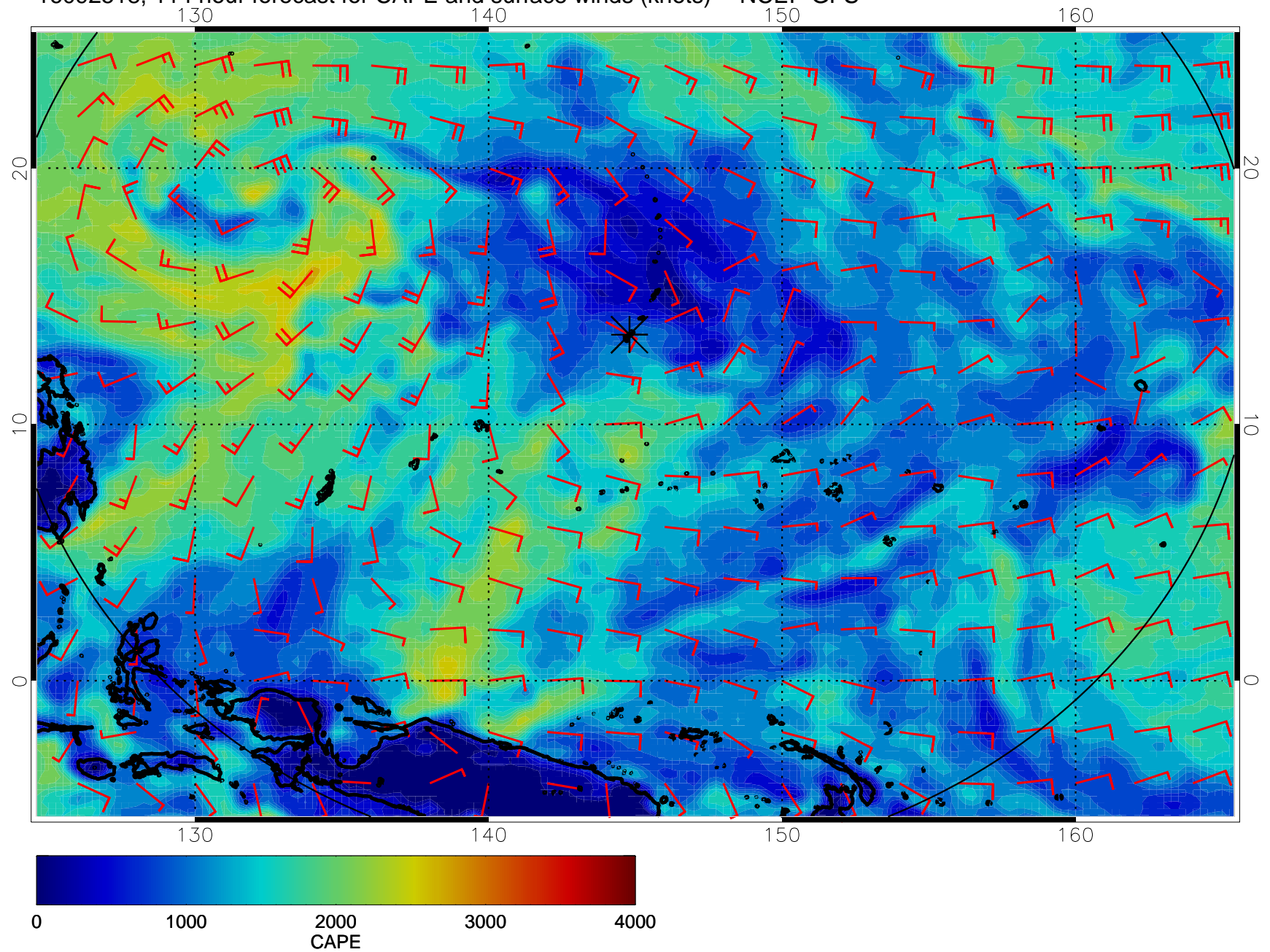


16092512, 108 hour forecast for CAPE and surface winds (knots) -- NCEP GFS





16092518, 114 hour forecast for CAPE and surface winds (knots) -- NCEP GFS



16092600, 120 hour forecast for CAPE and surface winds (knots) -- NCEP GFS

