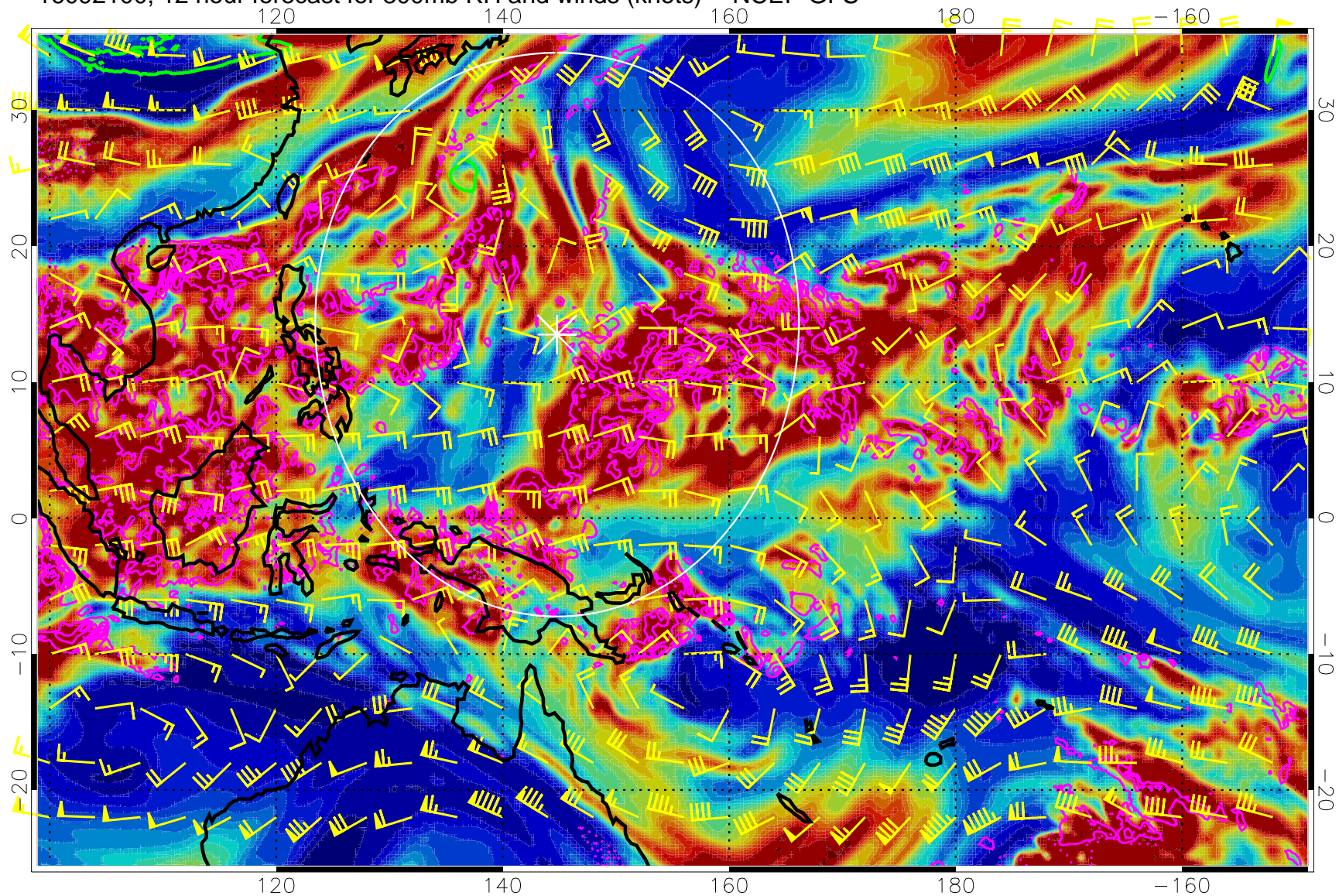


16092100, 12 hour forecast for 300mb RH and winds (knots) -- NCEP GFS

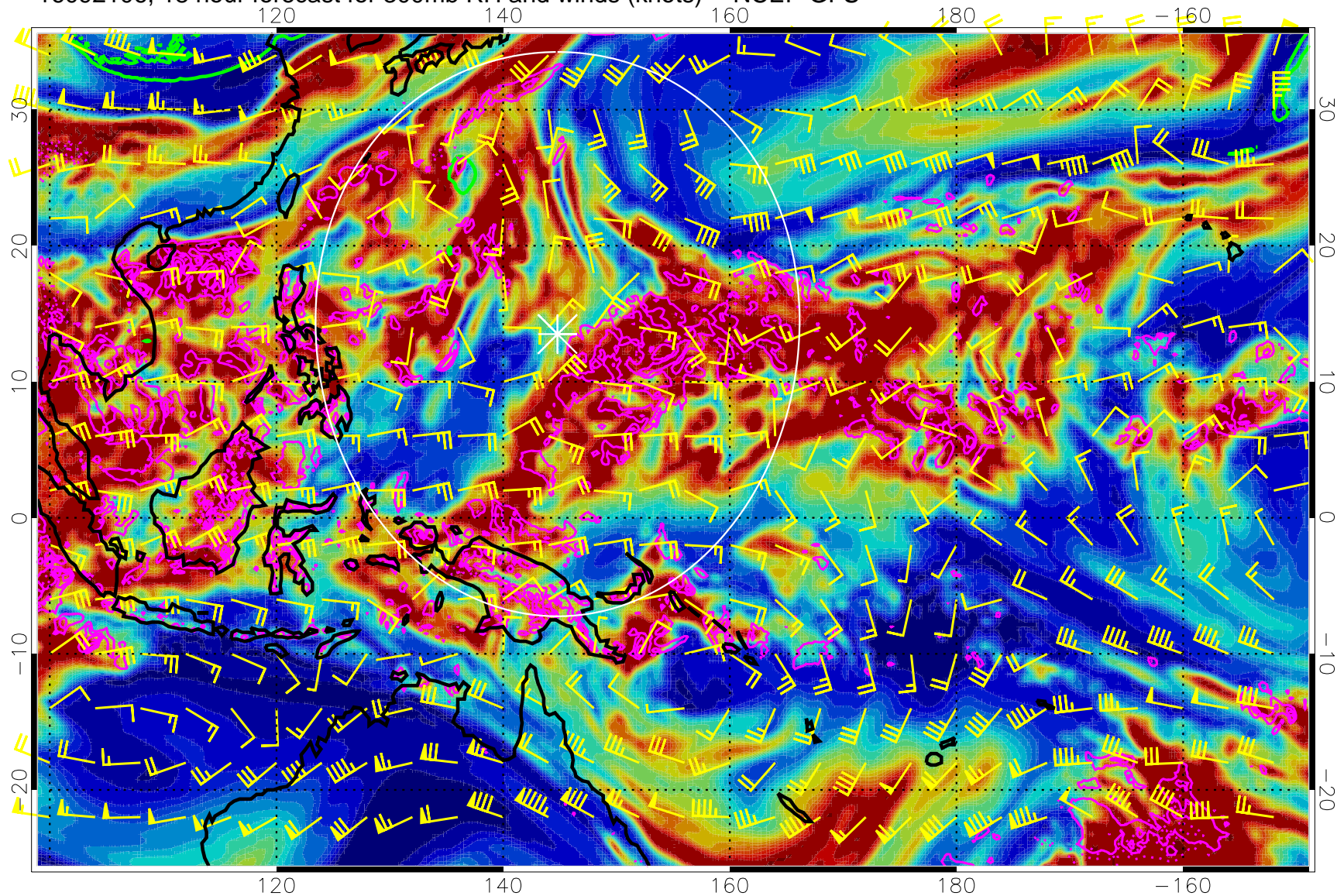


Precip (tot dot, conv sol) mm/day 40 mm/day contours, min 20

EPV Tropopause (2 PVU) Position

Range ring of 2304 km

16092106, 18 hour forecast for 300mb RH and winds (knots) -- NCEP GFS

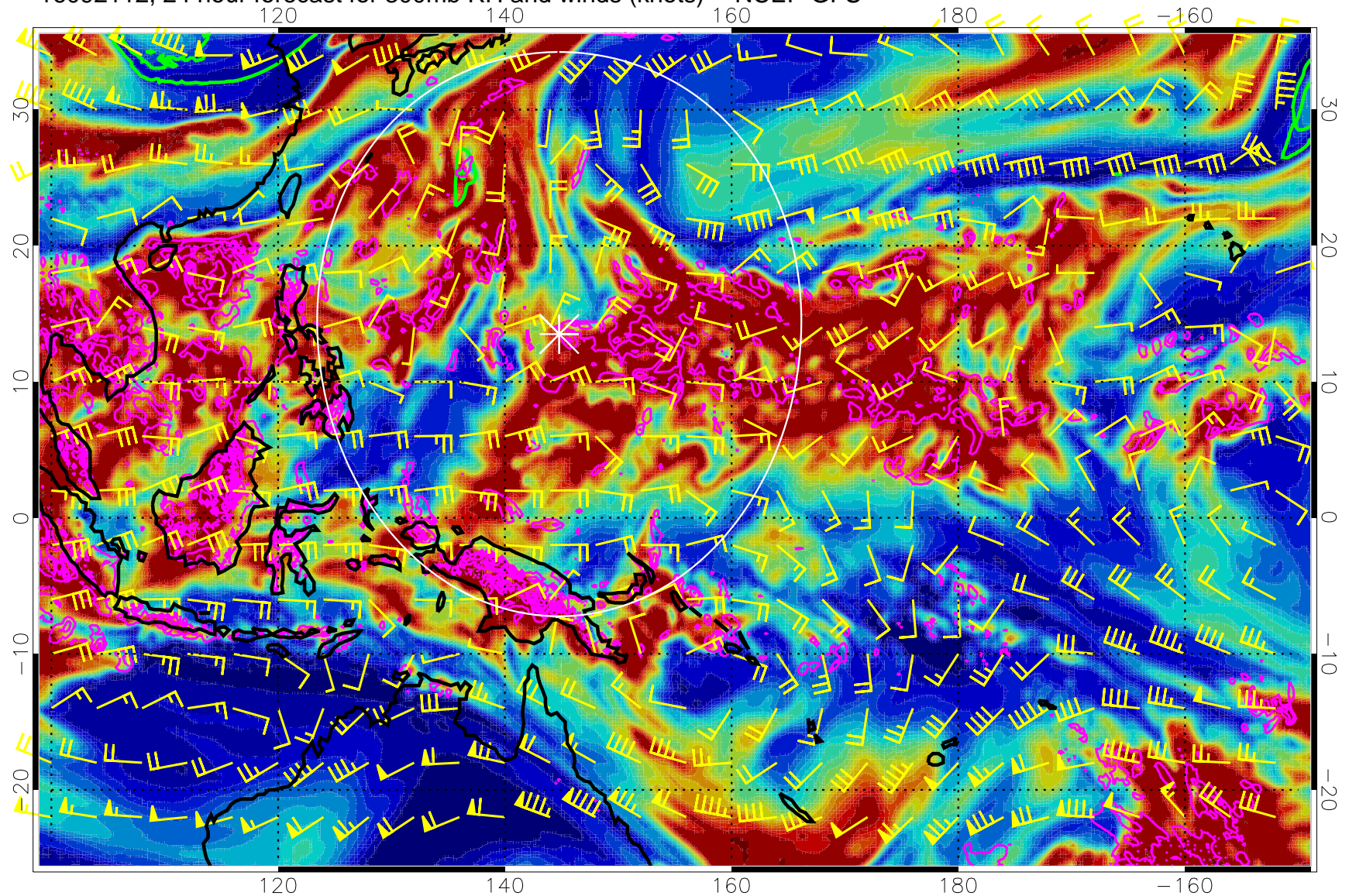


Precip (tot dot, conv sol) mm/day 40 mm/day contours, min 20

EPV Tropopause (2 PVU) Position

Range ring of 2304 km

16092112, 24 hour forecast for 300mb RH and winds (knots) -- NCEP GFS

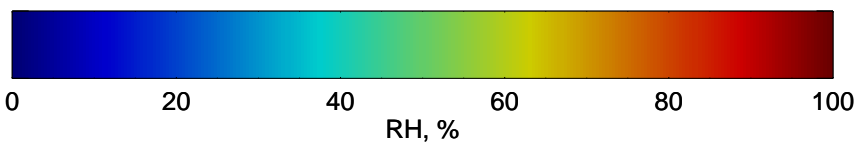
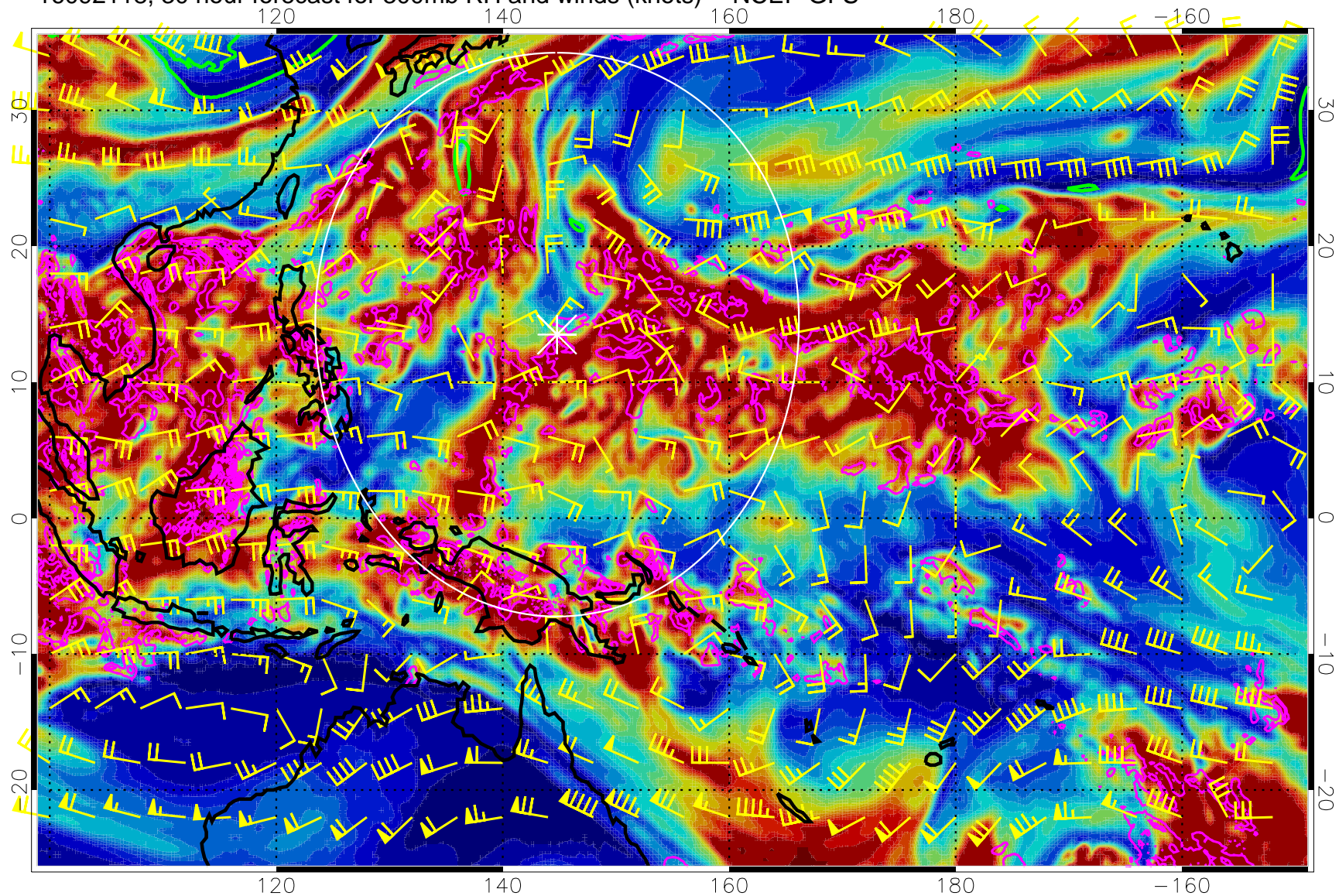


Precip (tot dot, conv sol) mm/day 40 mm/day contours, min 20

EPV Tropopause (2 PVU) Position

Range ring of 2304 km

16092118, 30 hour forecast for 300mb RH and winds (knots) -- NCEP GFS

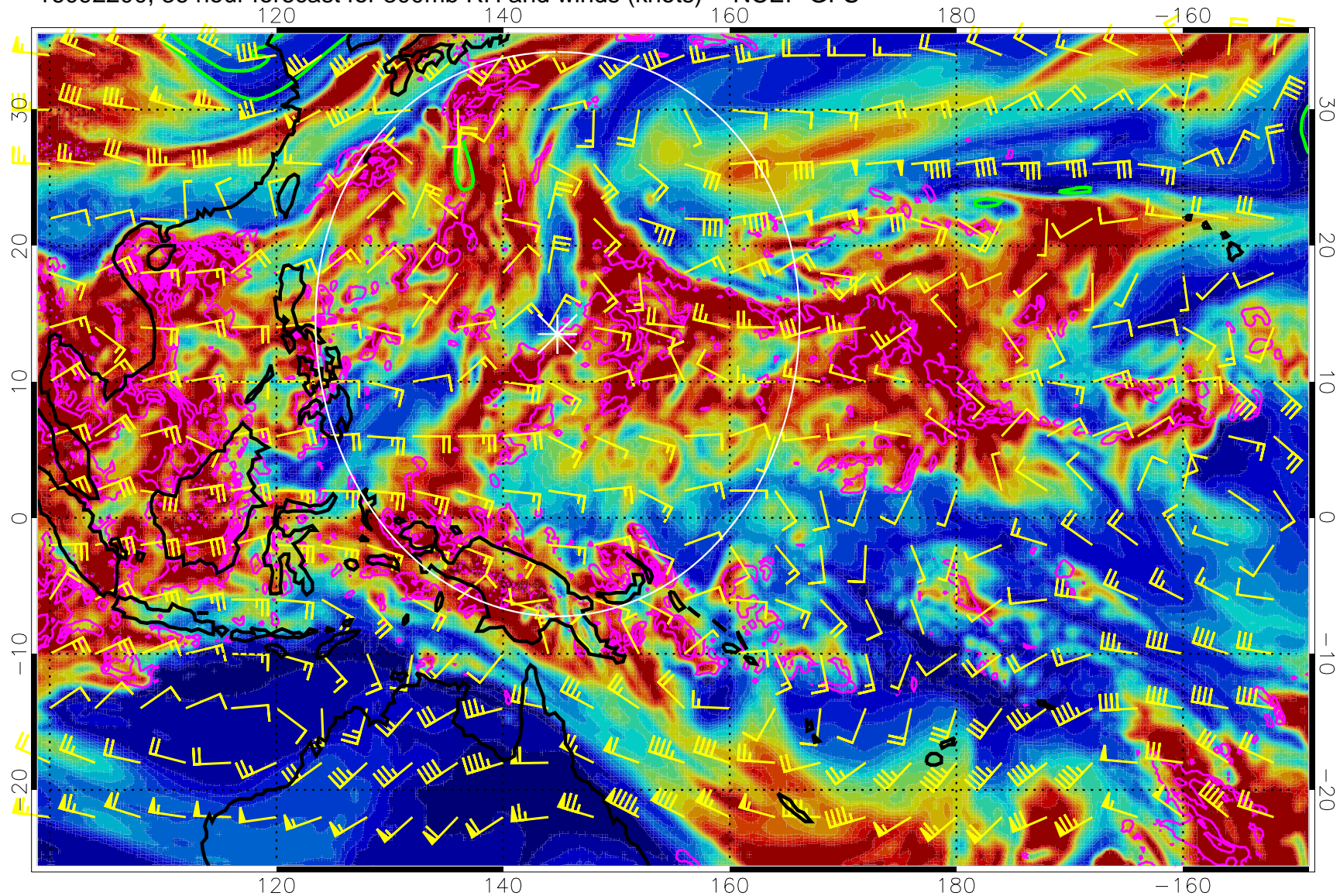


Precip (tot dot, conv sol) mm/day 40 mm/day contours, min 20

EPV Tropopause (2 PVU) Position

Range ring of 2304 km

16092200, 36 hour forecast for 300mb RH and winds (knots) -- NCEP GFS

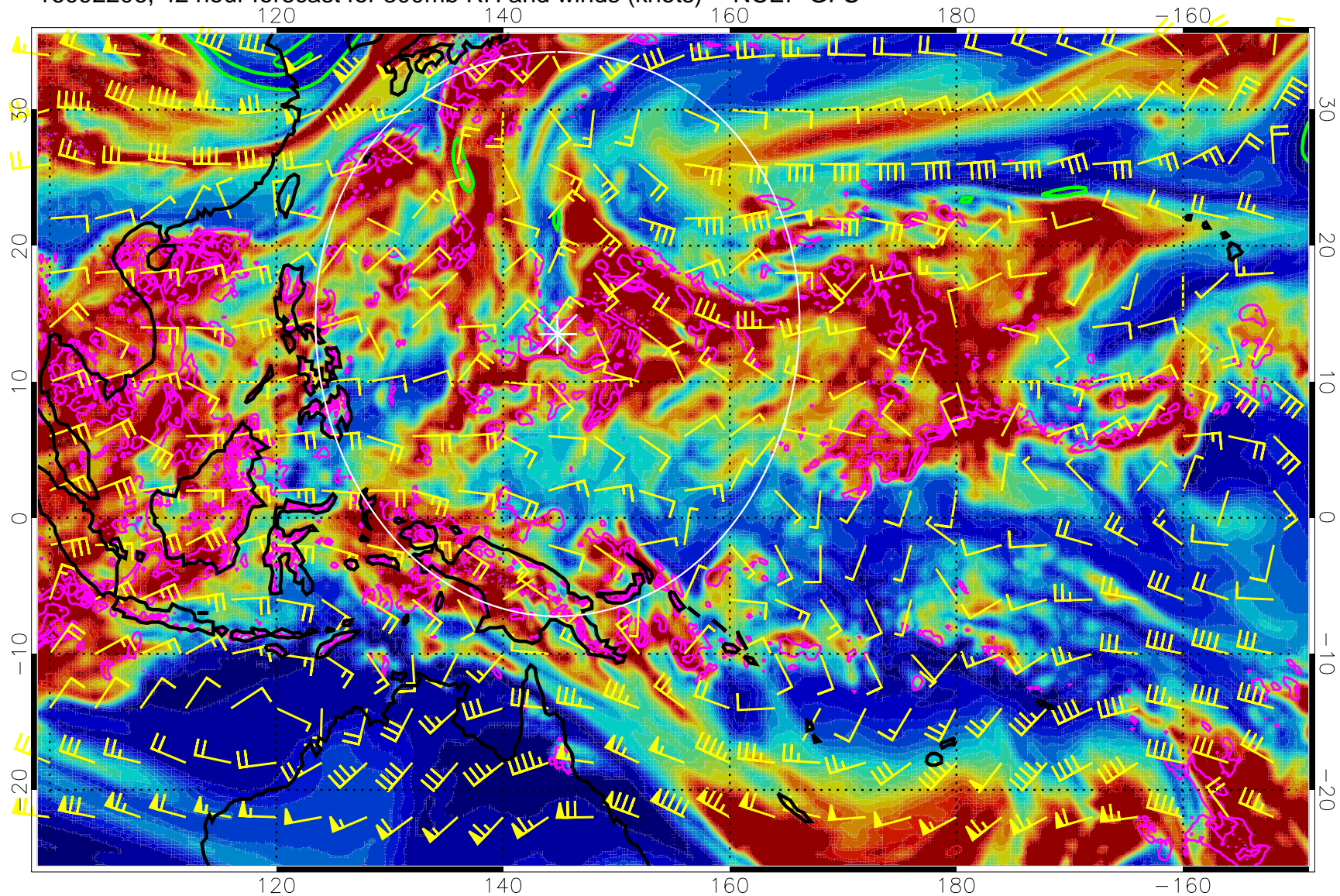


Precip (tot dot, conv sol) mm/day 40 mm/day contours, min 20

EPV Tropopause (2 PVU) Position

Range ring of 2304 km

16092206, 42 hour forecast for 300mb RH and winds (knots) -- NCEP GFS



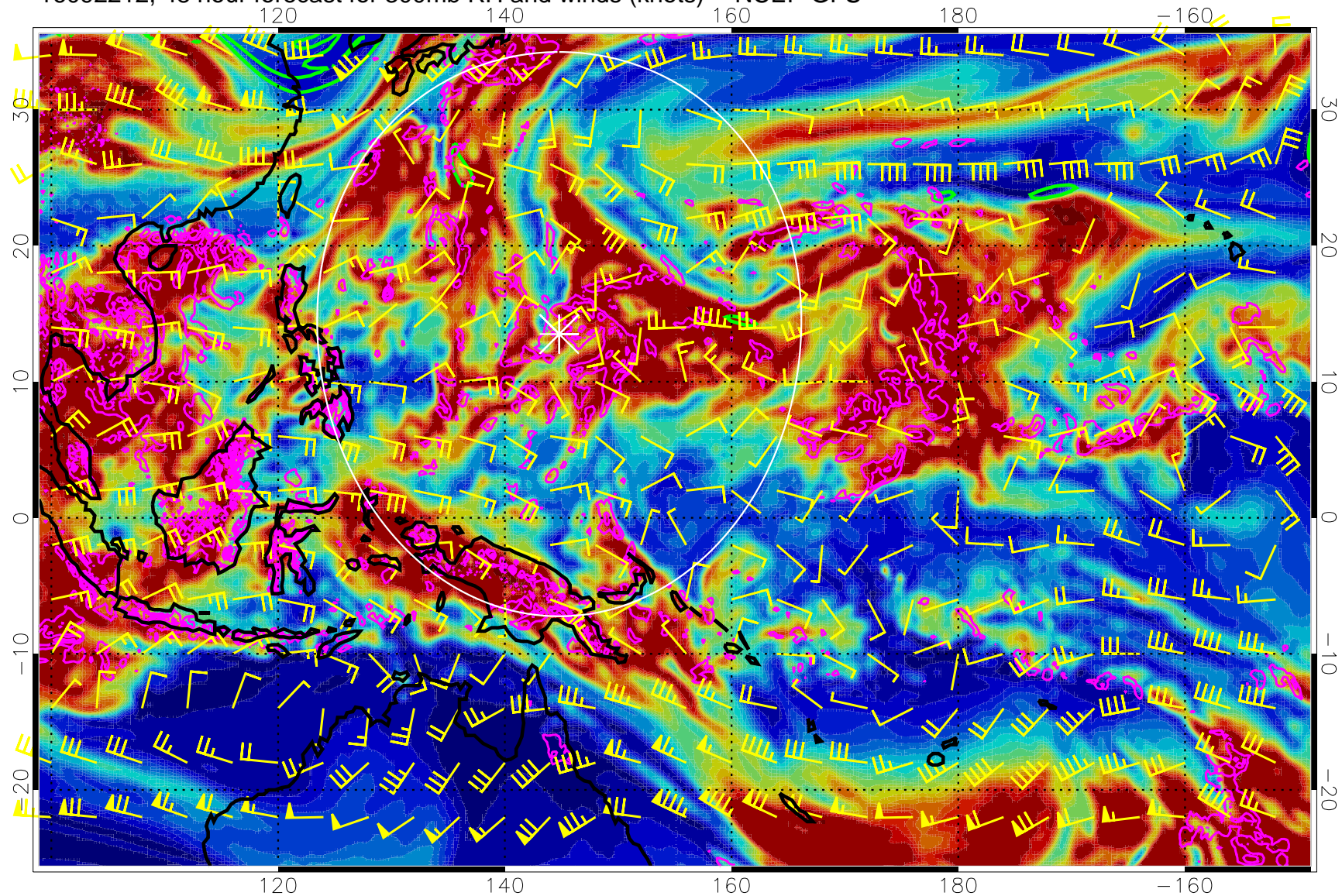
0 20 40 60 80 100
RH, %

Precip (tot dot, conv sol) mm/day 40 mm/day contours, min 20

EPV Tropopause (2 PVU) Position

Range ring of 2304 km

16092212, 48 hour forecast for 300mb RH and winds (knots) -- NCEP GFS

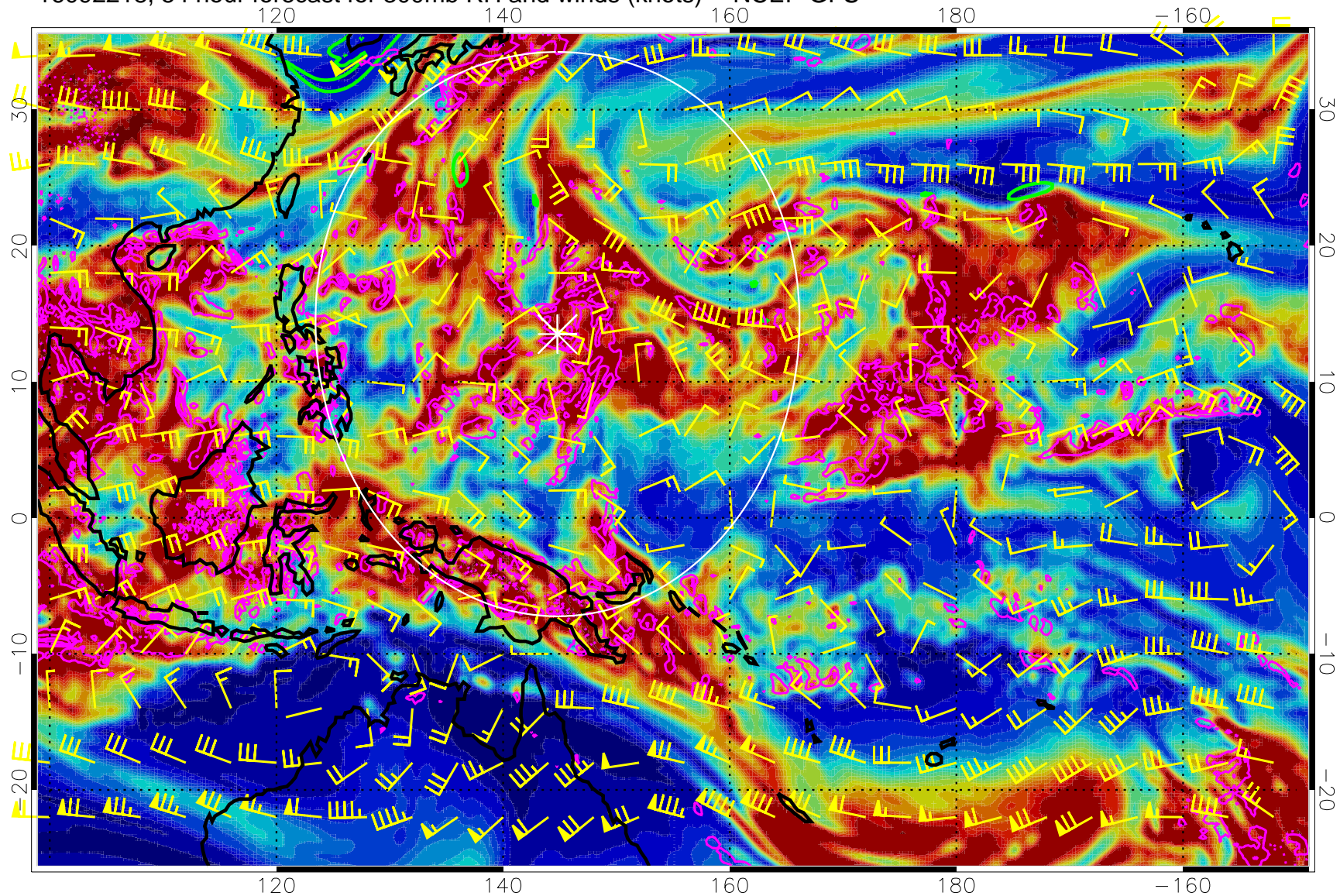


Precip (tot dot, conv sol) mm/day 40 mm/day contours, min 20

EPV Tropopause (2 PVU) Position

Range ring of 2304 km

16092218, 54 hour forecast for 300mb RH and winds (knots) -- NCEP GFS

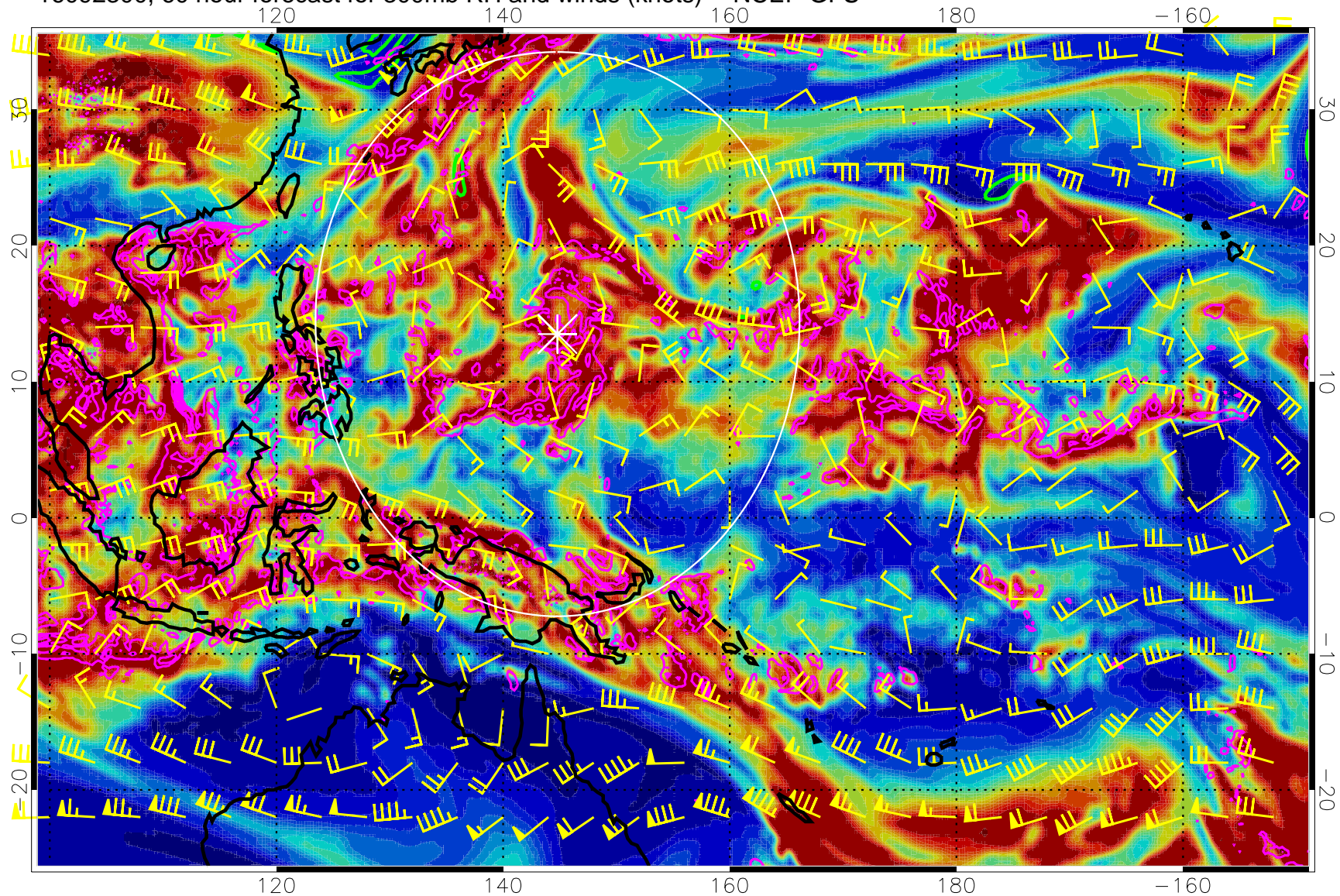


Precip (tot dot, conv sol) mm/day 40 mm/day contours, min 20

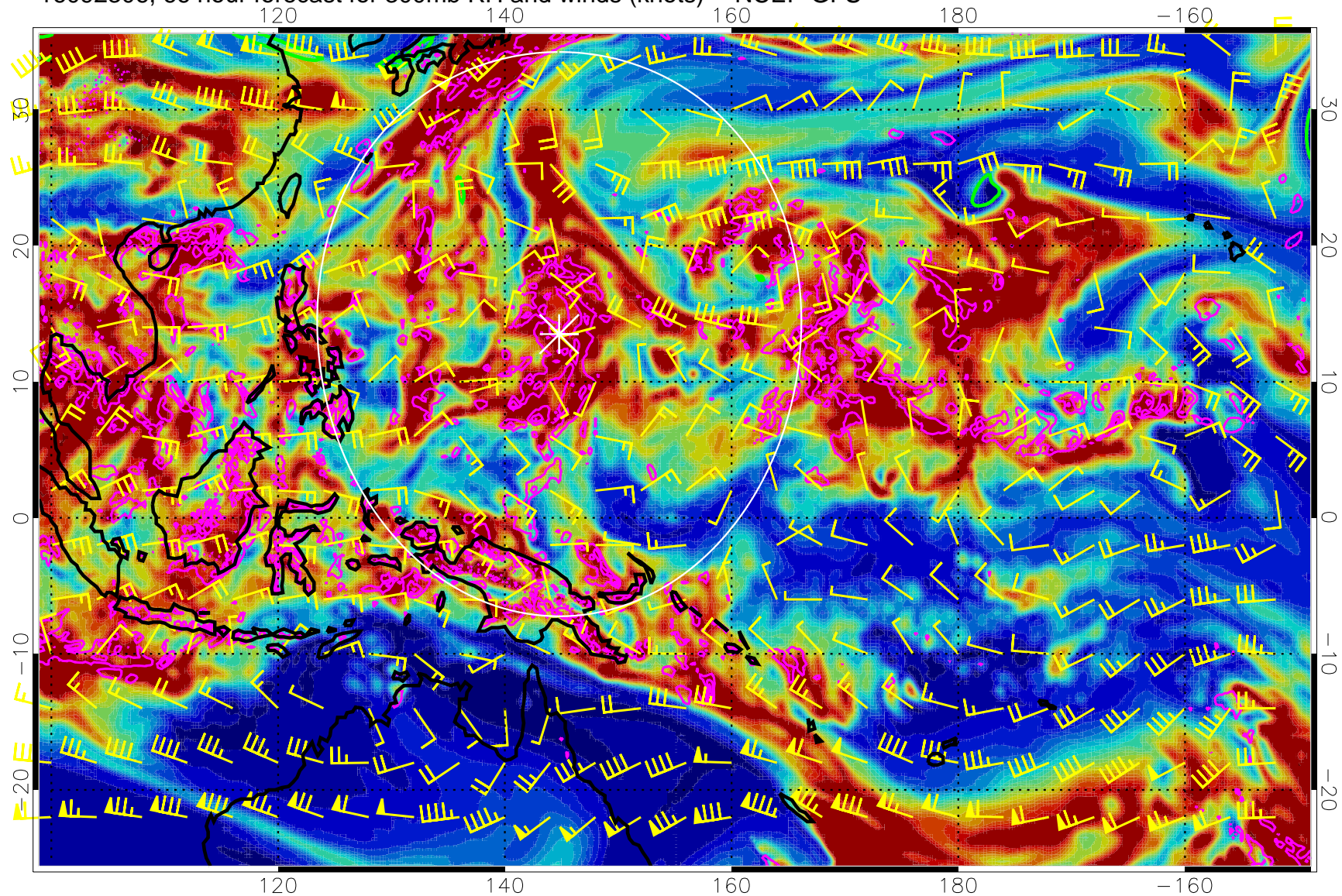
EPV Tropopause (2 PVU) Position

Range ring of 2304 km

16092300, 60 hour forecast for 300mb RH and winds (knots) -- NCEP GFS



16092306, 66 hour forecast for 300mb RH and winds (knots) -- NCEP GFS

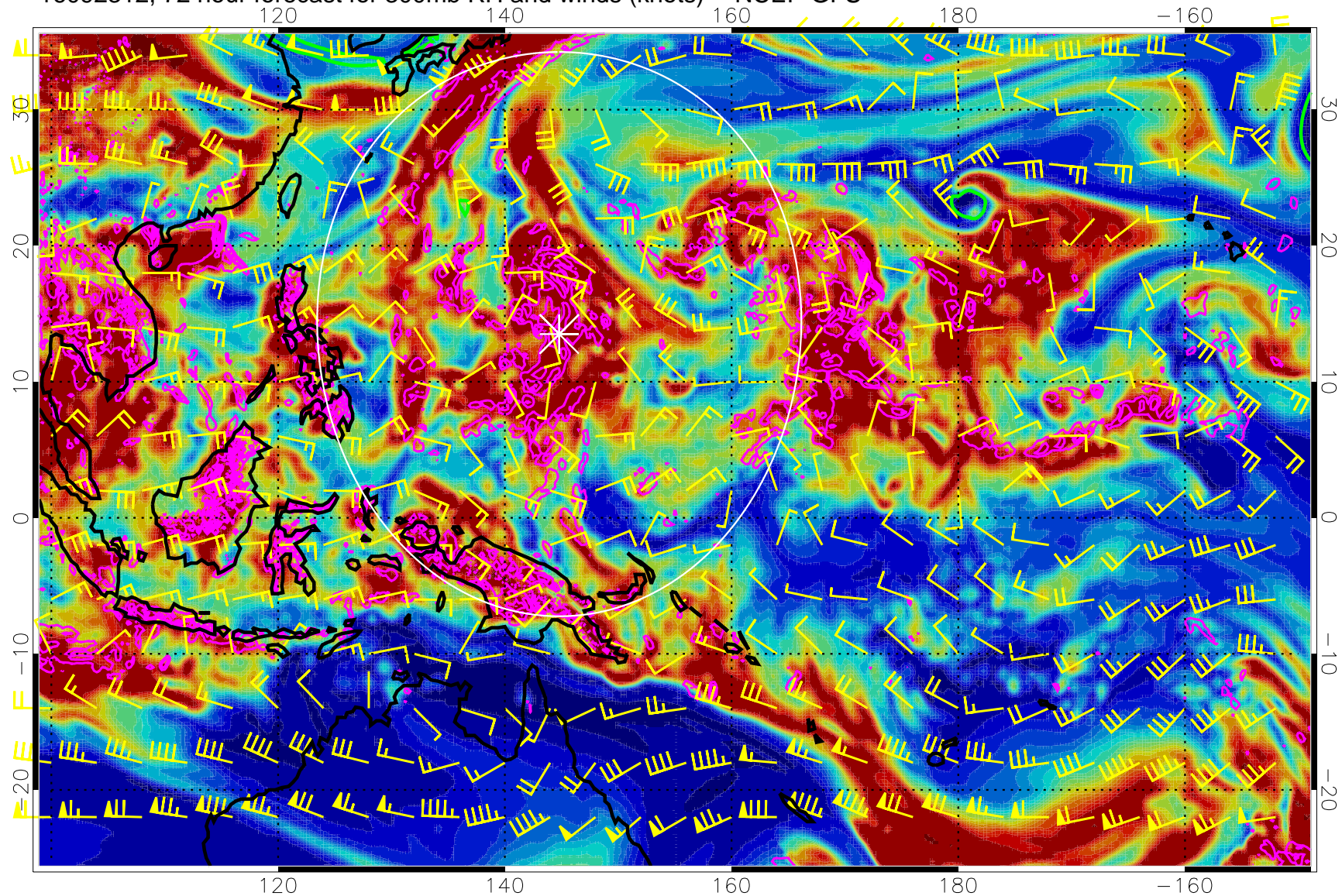


Precip (tot dot, conv sol) mm/day 40 mm/day contours, min 20

EPV Tropopause (2 PVU) Position

Range ring of 2304 km

16092312, 72 hour forecast for 300mb RH and winds (knots) -- NCEP GFS

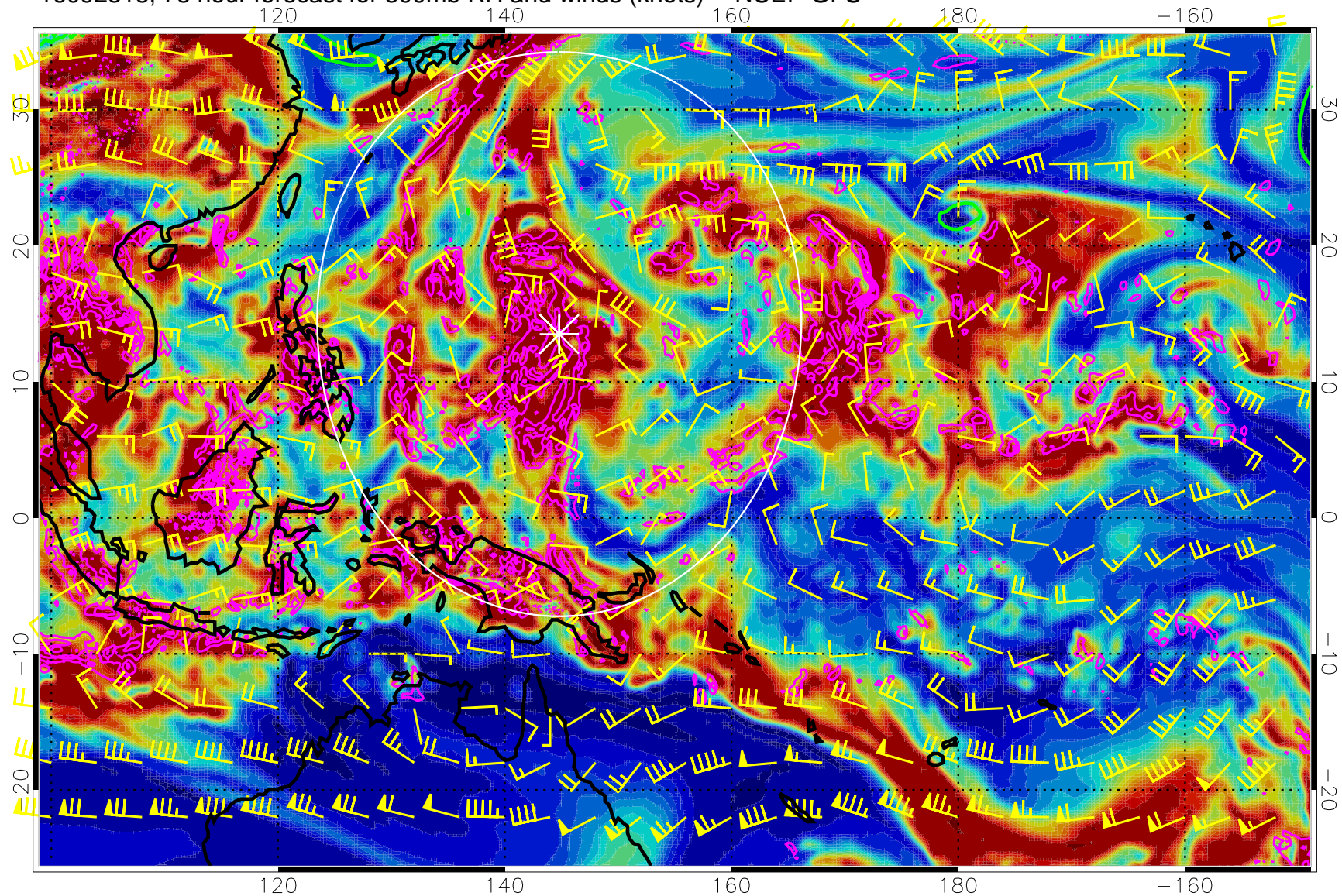


Precip (tot dot, conv sol) mm/day 40 mm/day contours, min 20

EPV Tropopause (2 PVU) Position

Range ring of 2304 km

16092318, 78 hour forecast for 300mb RH and winds (knots) -- NCEP GFS



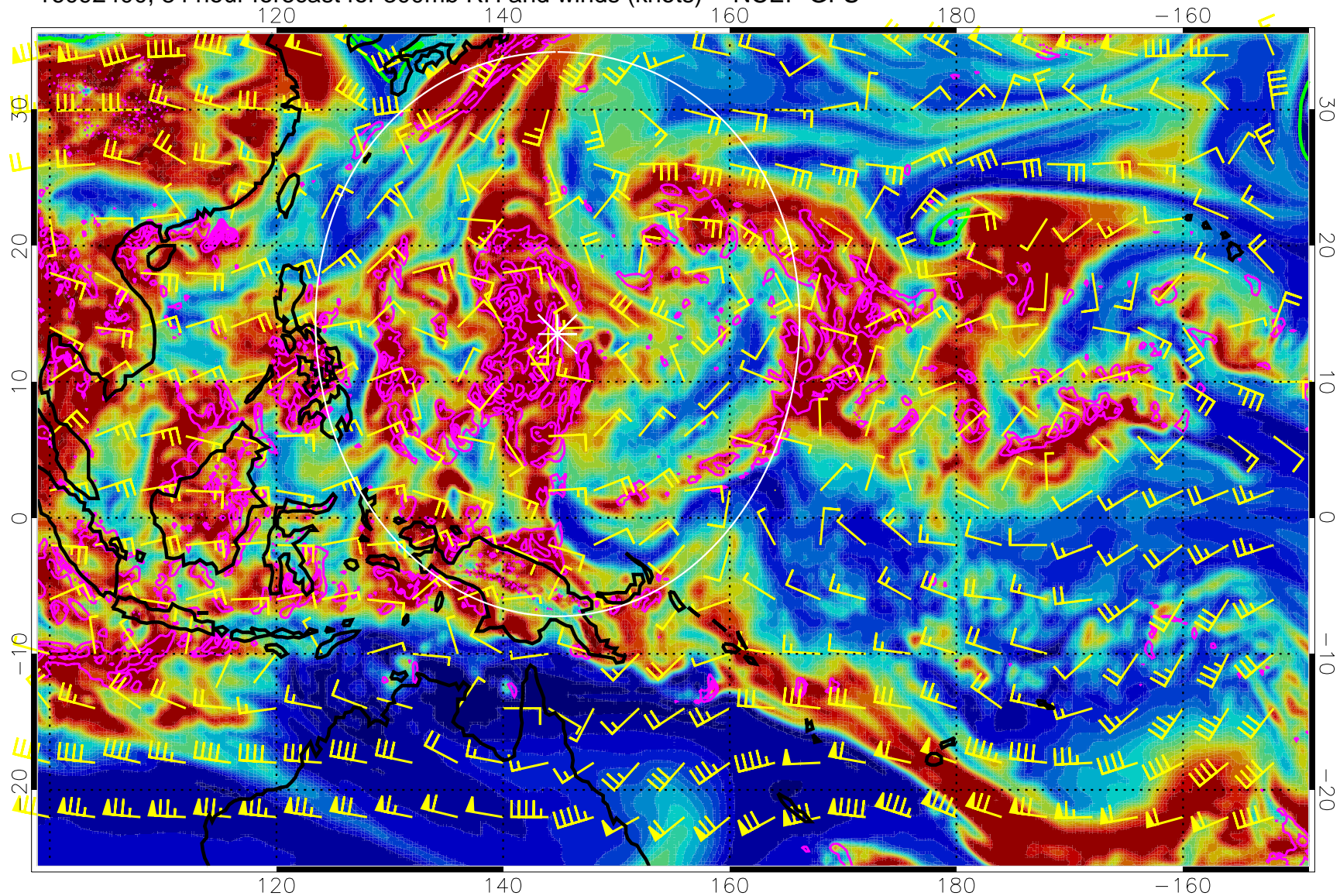
0 20 40 60 80 100
RH, %

Precip (tot dot, conv sol) mm/day 40 mm/day contours, min 20

EPV Tropopause (2 PVU) Position

Range ring of 2304 km

16092400, 84 hour forecast for 300mb RH and winds (knots) -- NCEP GFS

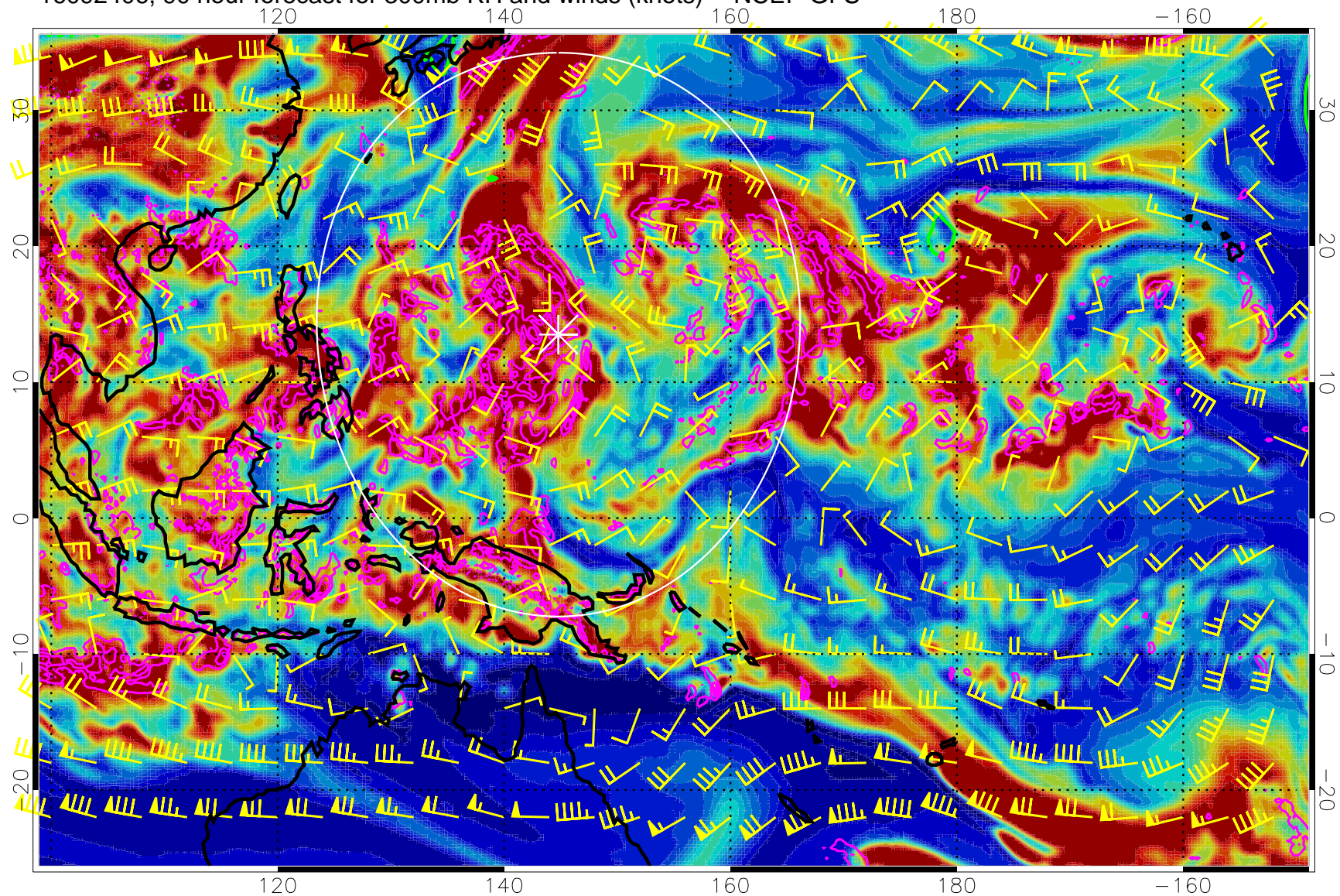


Precip (tot dot, conv sol) mm/day 40 mm/day contours, min 20

EPV Tropopause (2 PVU) Position

Range ring of 2304 km

16092406, 90 hour forecast for 300mb RH and winds (knots) -- NCEP GFS



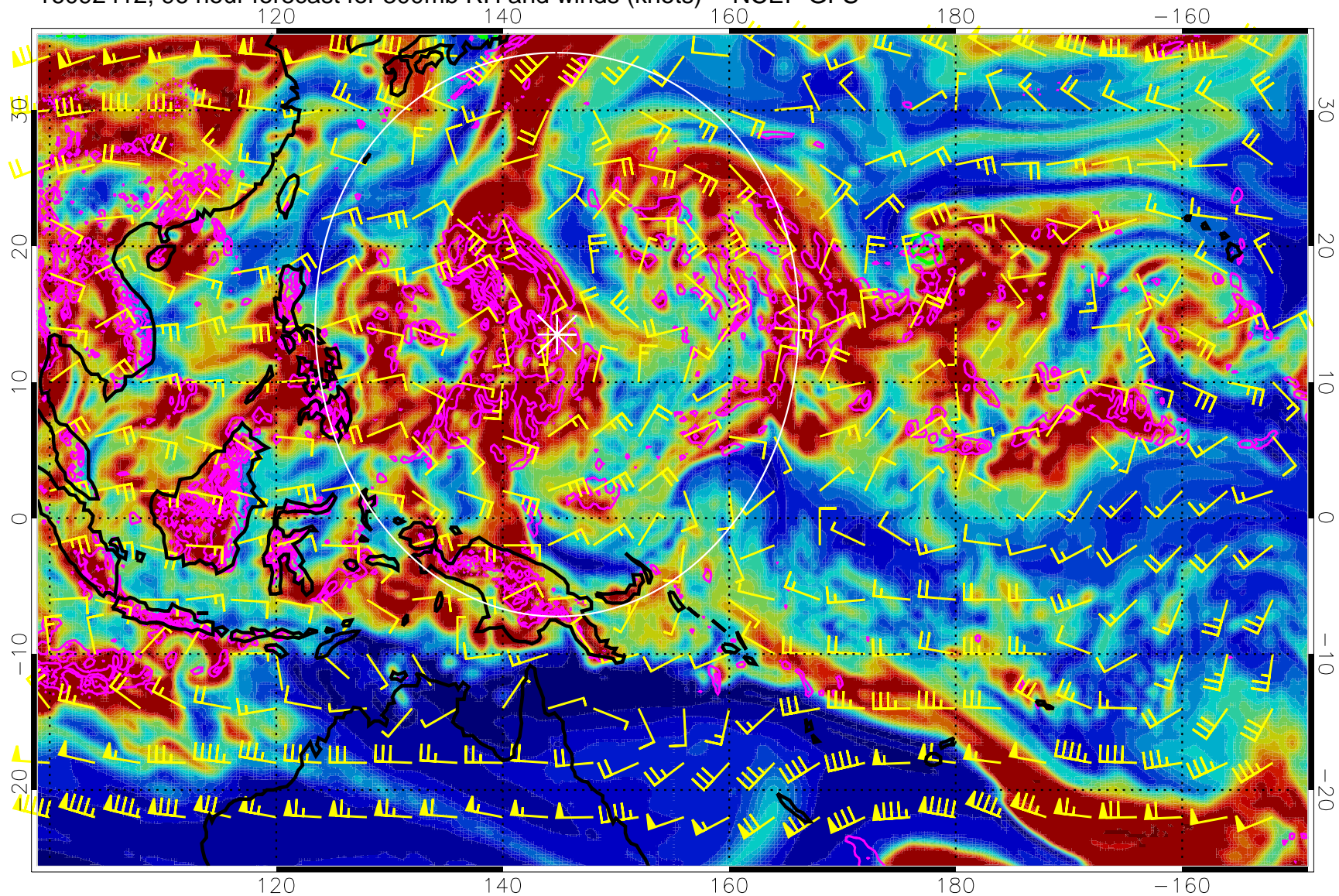
0 20 40 60 80 100
RH, %

Precip (tot dot, conv sol) mm/day 40 mm/day contours, min 20

EPV Tropopause (2 PVU) Position

Range ring of 2304 km

16092412, 96 hour forecast for 300mb RH and winds (knots) -- NCEP GFS

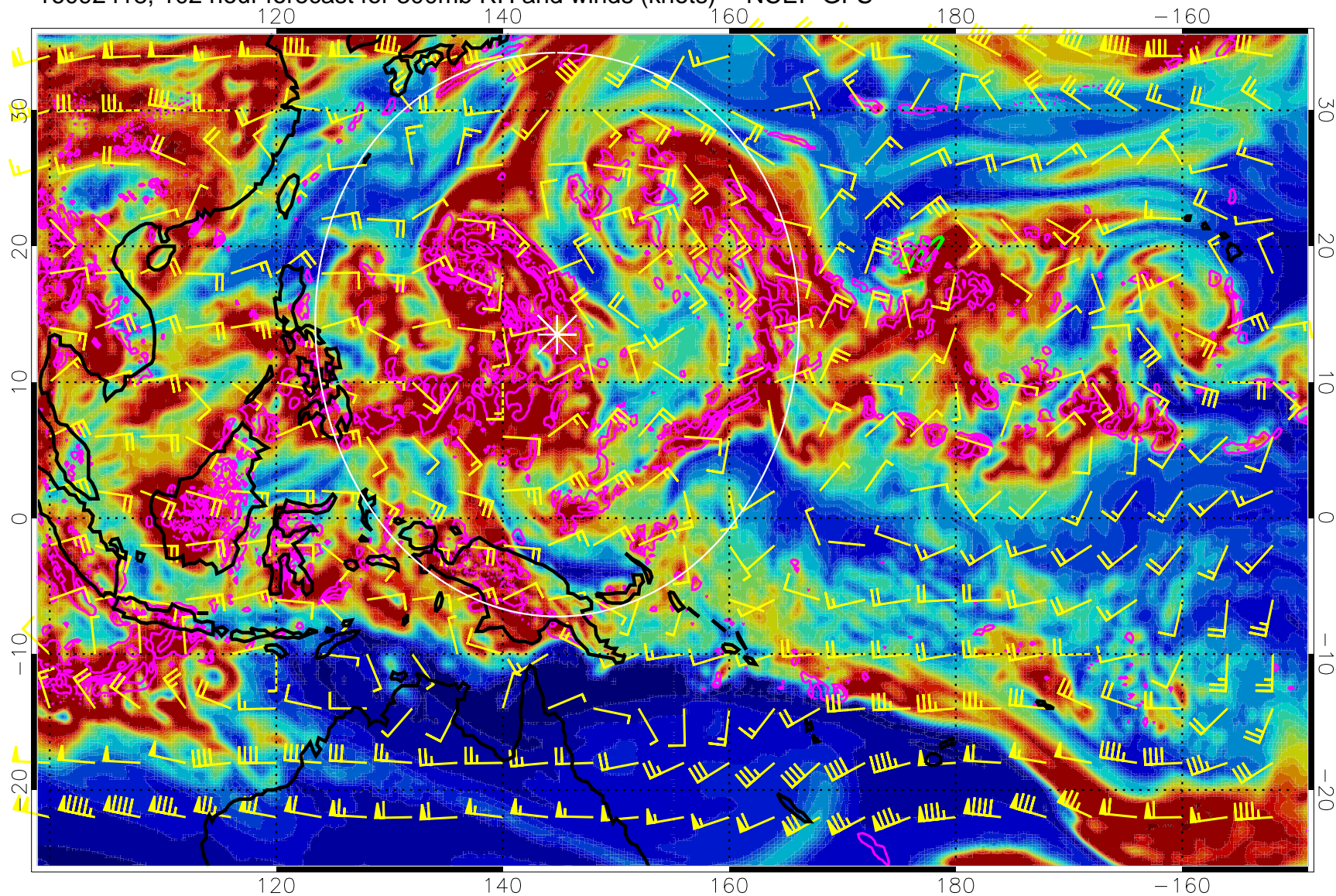


Precip (tot dot, conv sol) mm/day 40 mm/day contours, min 20

EPV Tropopause (2 PVU) Position

Range ring of 2304 km

16092418, 102 hour forecast for 300mb RH and winds (knots) -- NCEP GFS

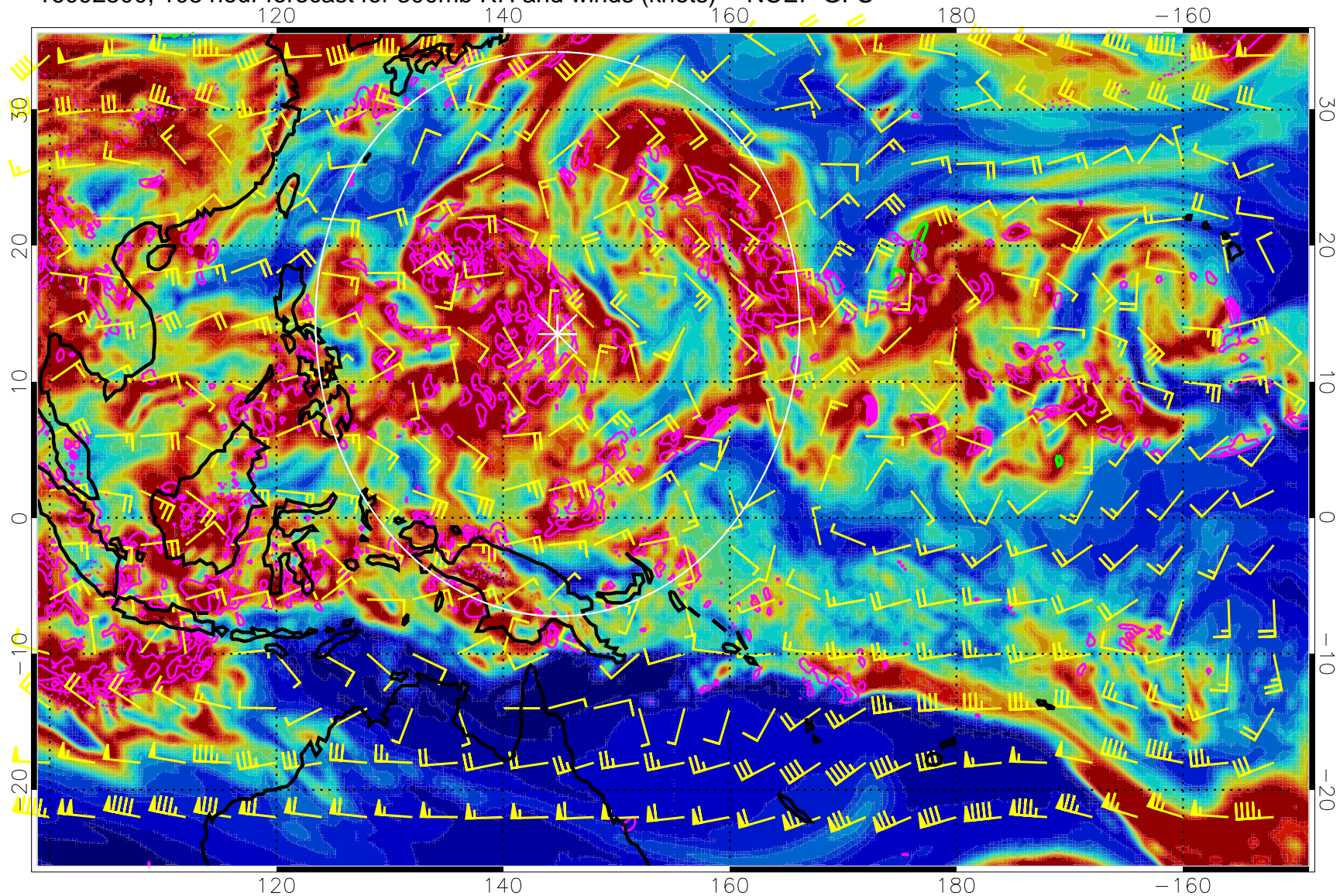


Precip (tot dot, conv sol) mm/day 40 mm/day contours, min 20

EPV Tropopause (2 PVU) Position

Range ring of 2304 km

16092500, 108 hour forecast for 300mb RH and winds (knots) -- NCEP GFS



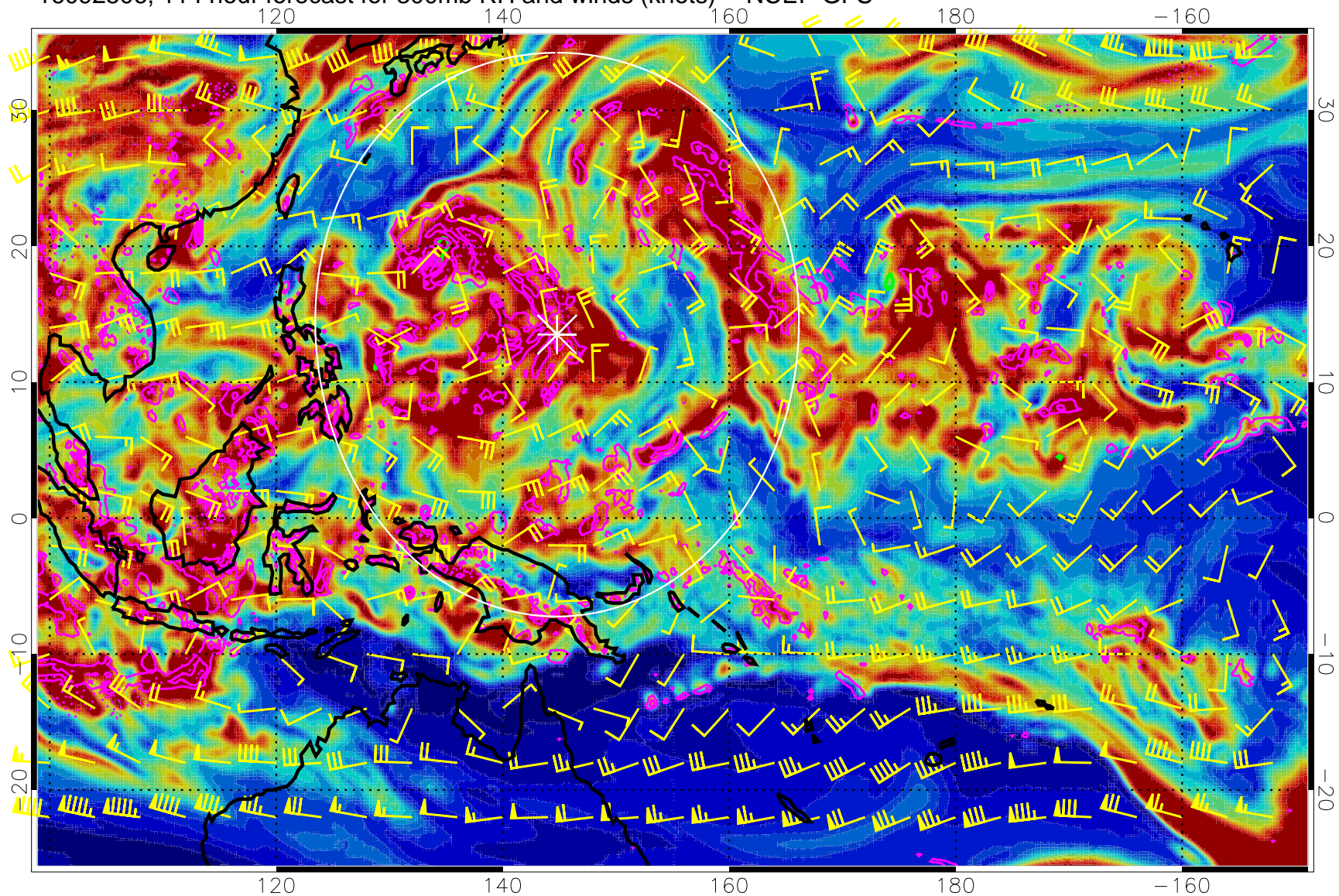
0 20 40 60 80 100
RH, %

Precip (tot dot, conv sol) mm/day 40 mm/day contours, min 20

EPV Tropopause (2 PVU) Position

Range ring of 2304 km

16092506, 114 hour forecast for 300mb RH and winds (knots) -- NCEP GFS

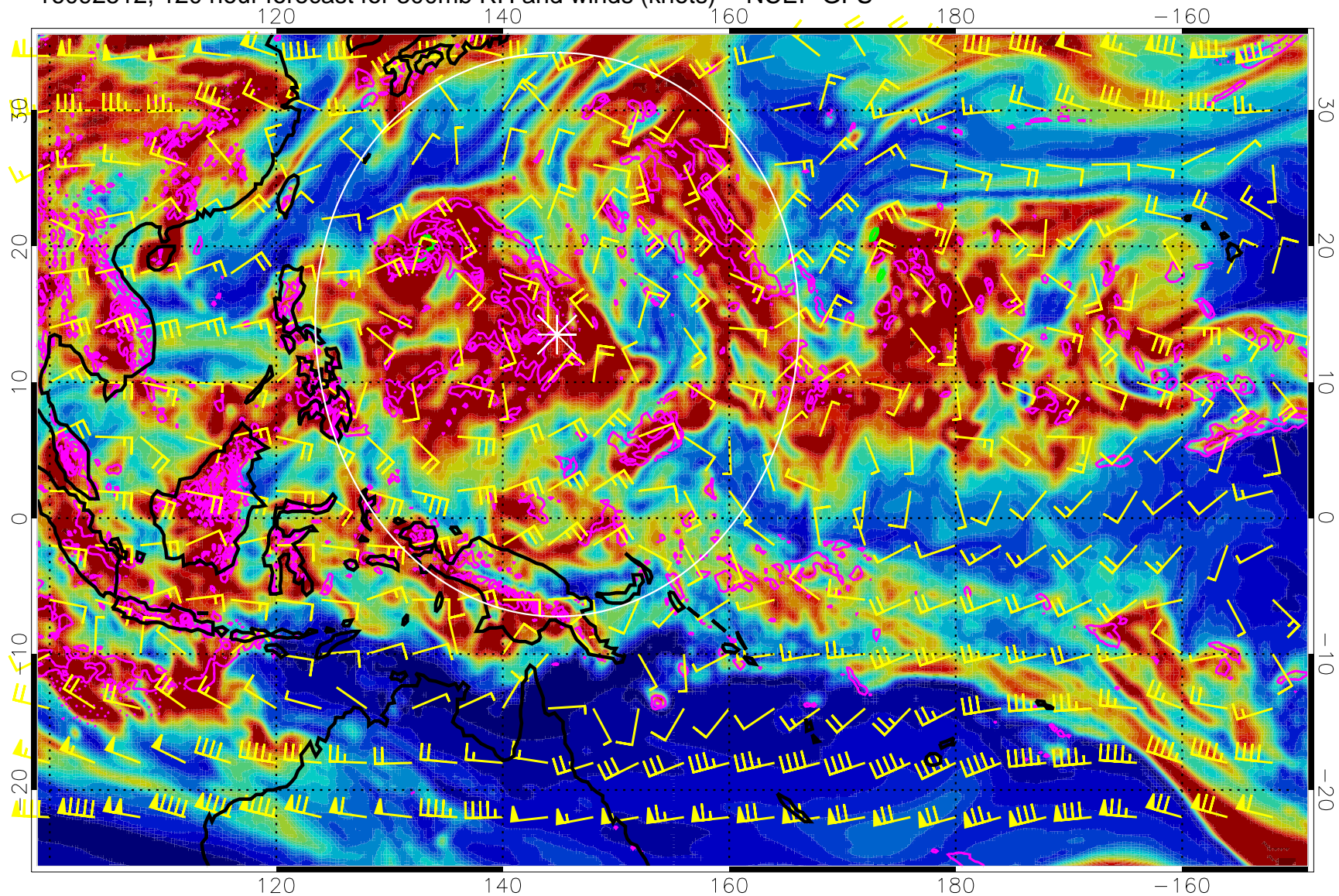


Precip (tot dot, conv sol) mm/day 40 mm/day contours, min 20

EPV Tropopause (2 PVU) Position

Range ring of 2304 km

16092512, 120 hour forecast for 300mb RH and winds (knots) -- NCEP GFS



Precip (tot dot, conv sol) mm/day 40 mm/day contours, min 20

EPV Tropopause (2 PVU) Position

Range ring of 2304 km