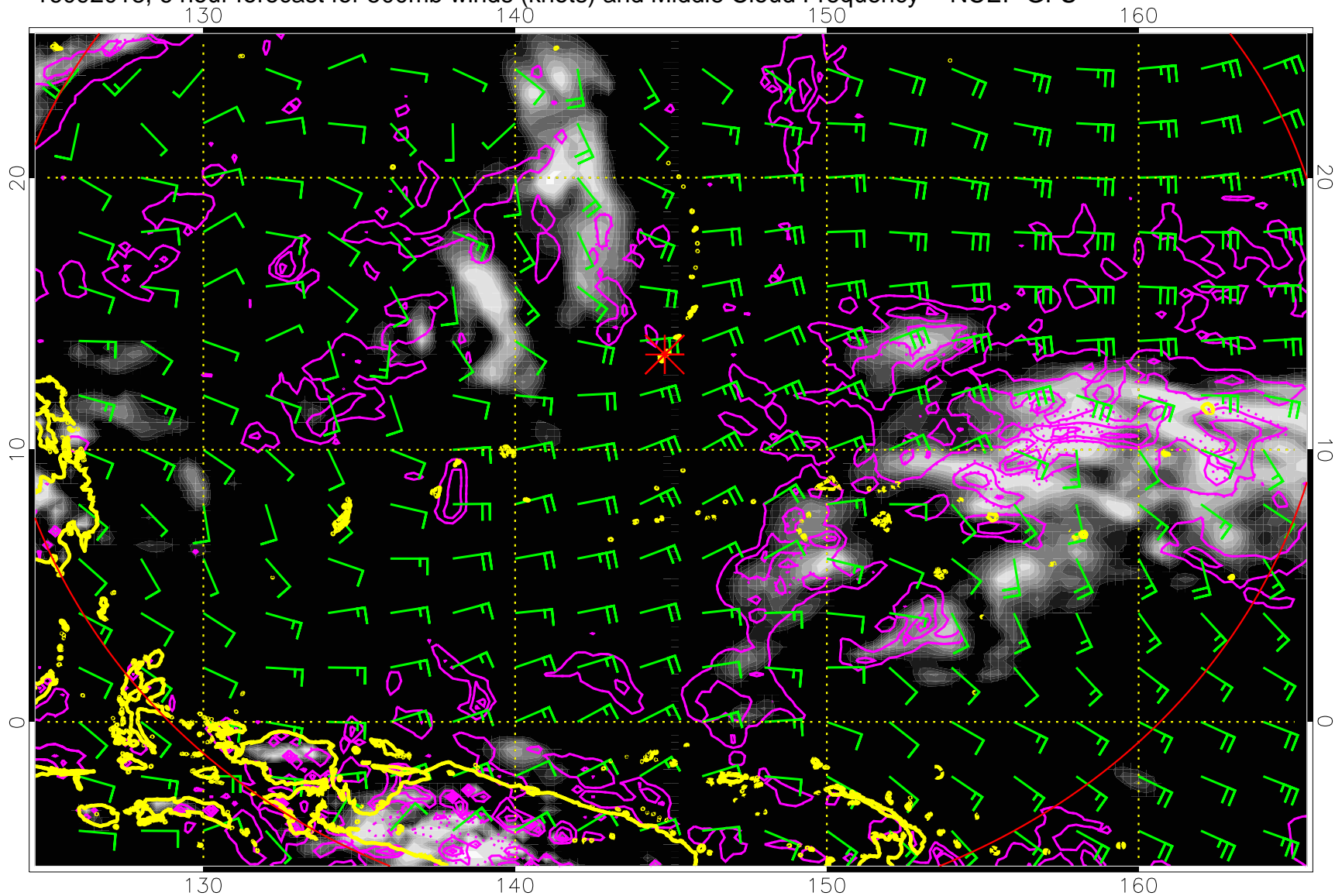
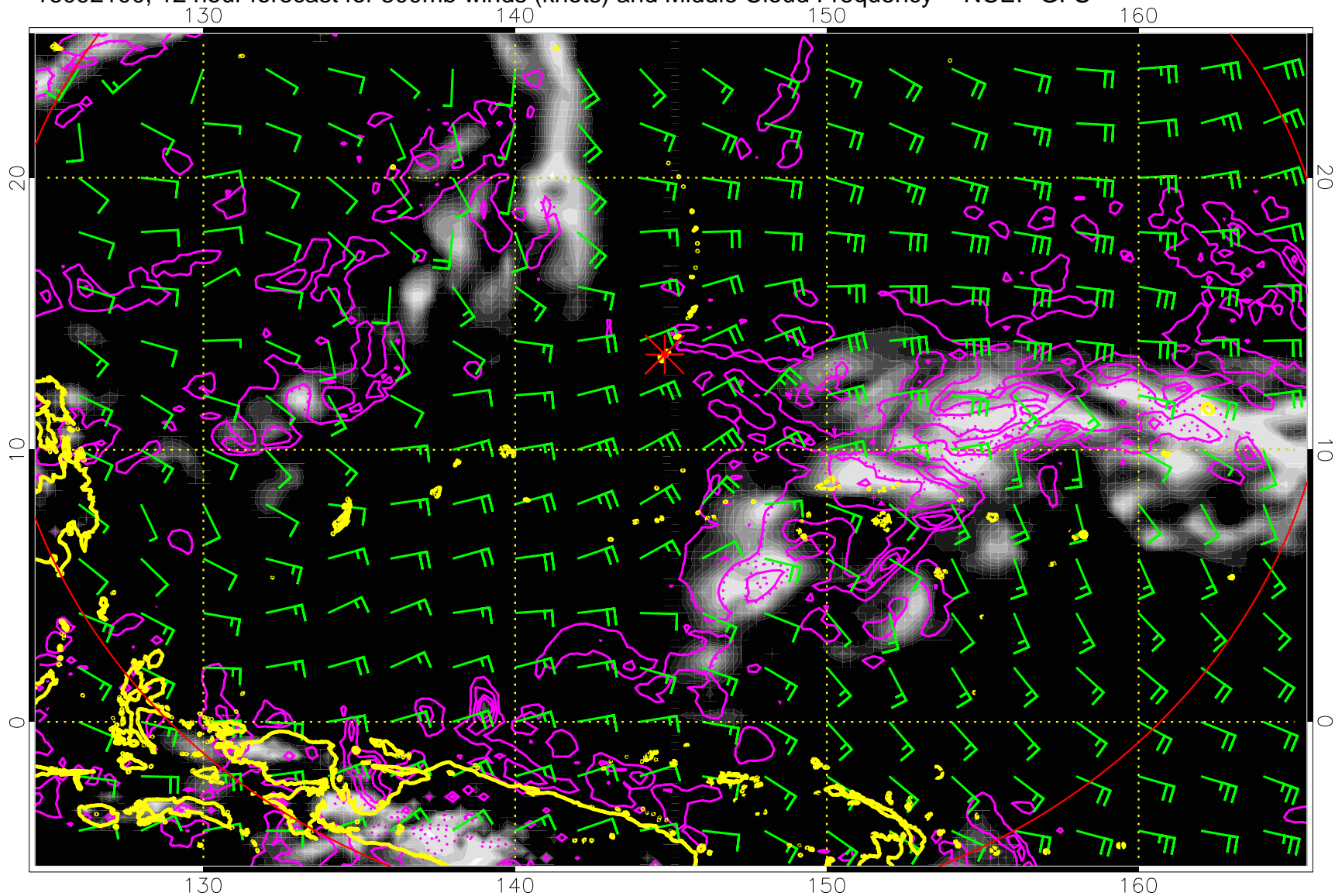


16092018, 6 hour forecast for 500mb winds (knots) and Middle Cloud Frequency -- NCEP GFS



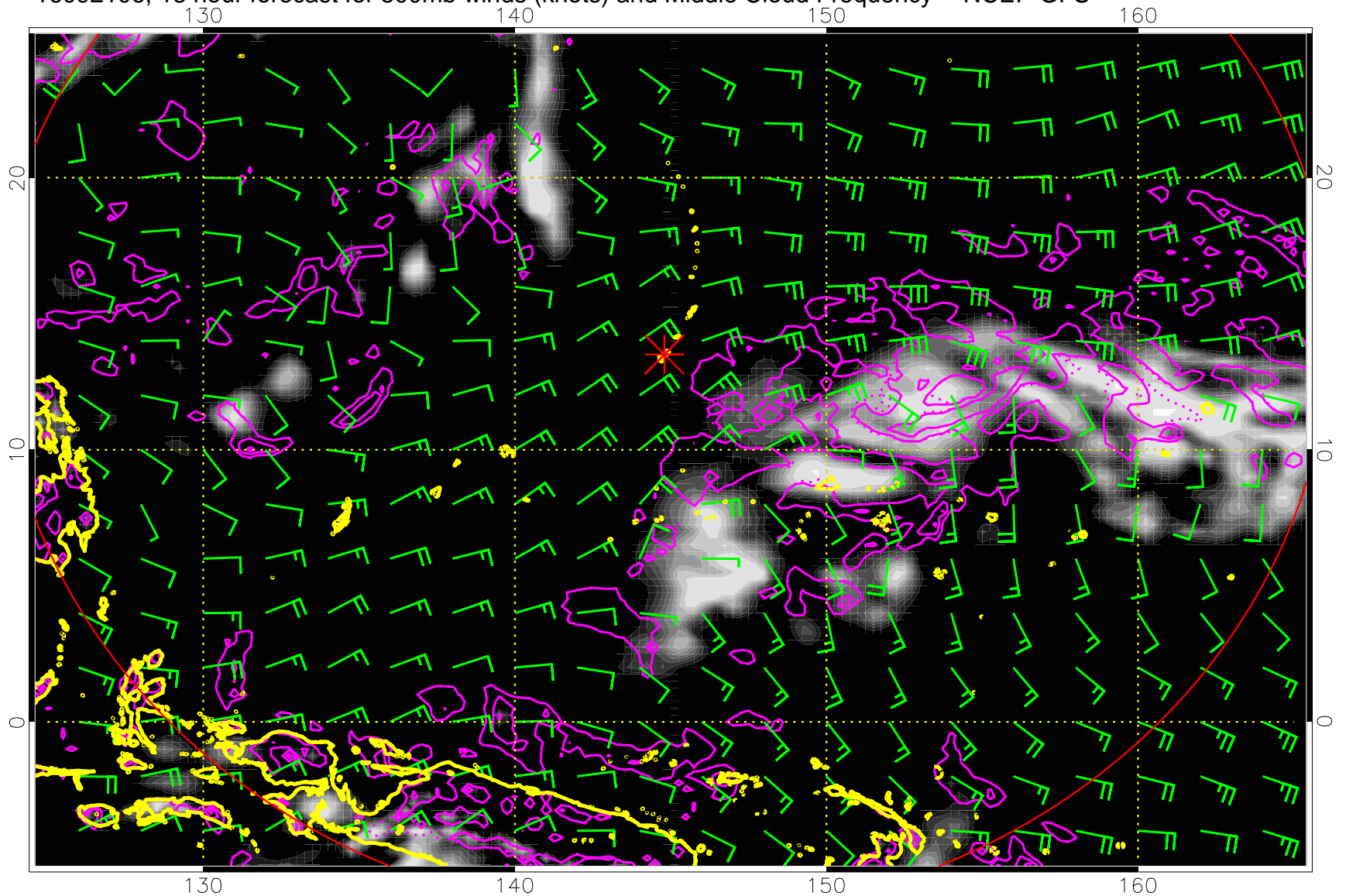
Precip (tot dot, conv sol) mm/day 40 mm/day contours, min 20

16092100, 12 hour forecast for 500mb winds (knots) and Middle Cloud Frequency -- NCEP GFS

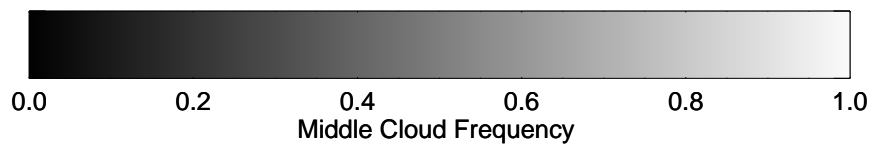


Precip (tot dot, conv sol) mm/day 40 mm/day contours, min 20

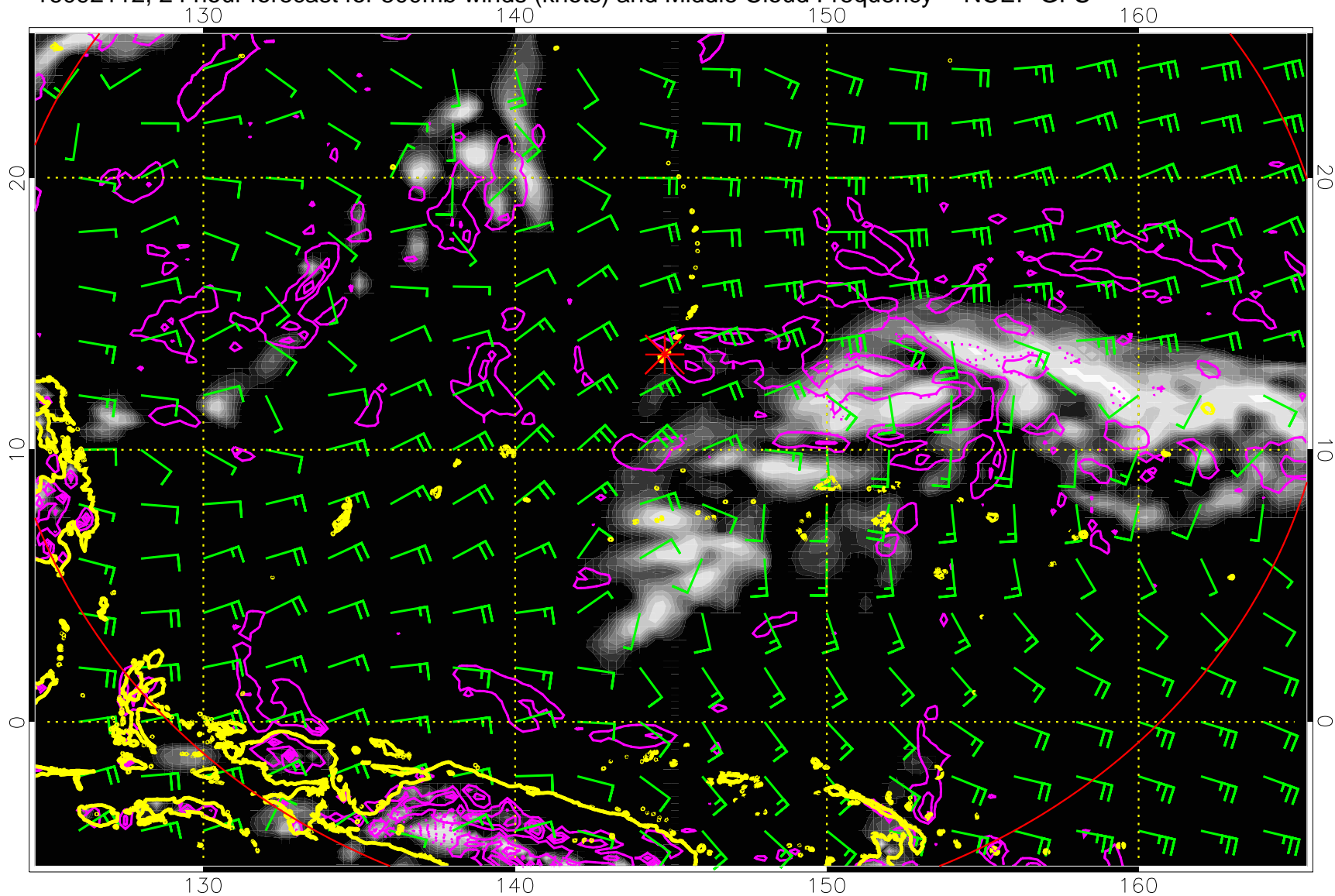
16092106, 18 hour forecast for 500mb winds (knots) and Middle Cloud Frequency -- NCEP GFS



Precip (tot dot, conv sol) mm/day 40 mm/day contours, min 20

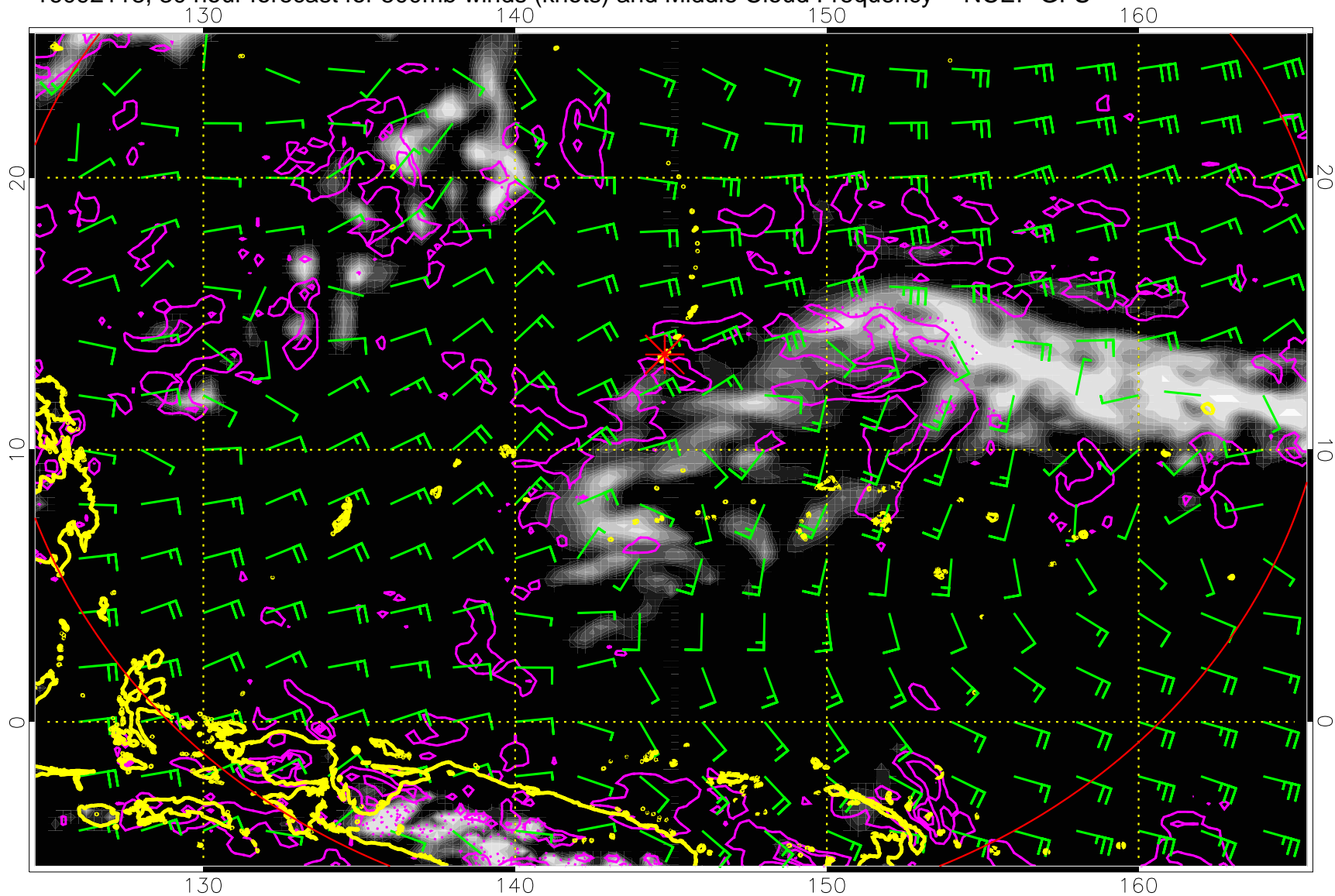


16092112, 24 hour forecast for 500mb winds (knots) and Middle Cloud Frequency -- NCEP GFS



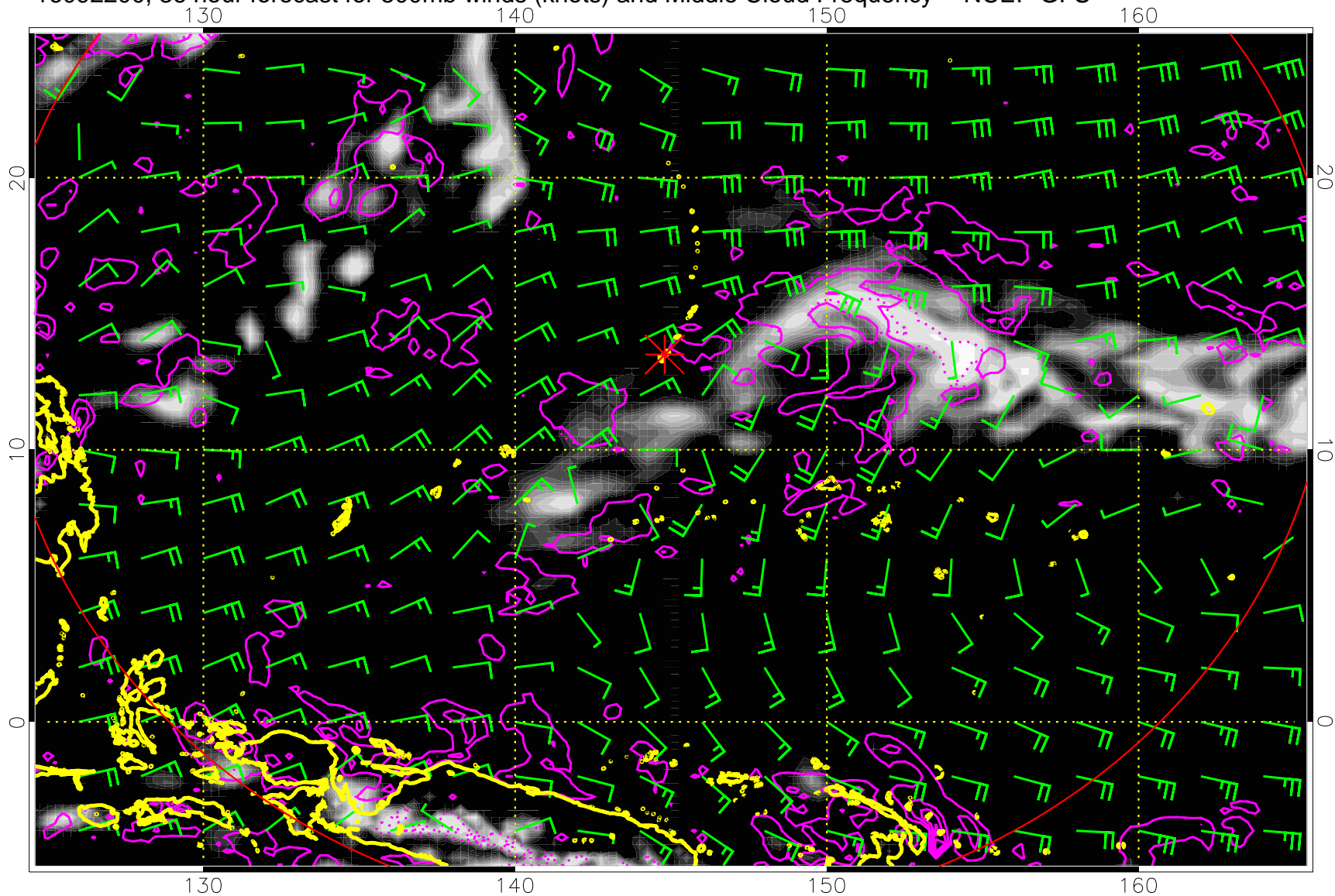
Precip (tot dot, conv sol) mm/day 40 mm/day contours, min 20

16092118, 30 hour forecast for 500mb winds (knots) and Middle Cloud Frequency -- NCEP GFS



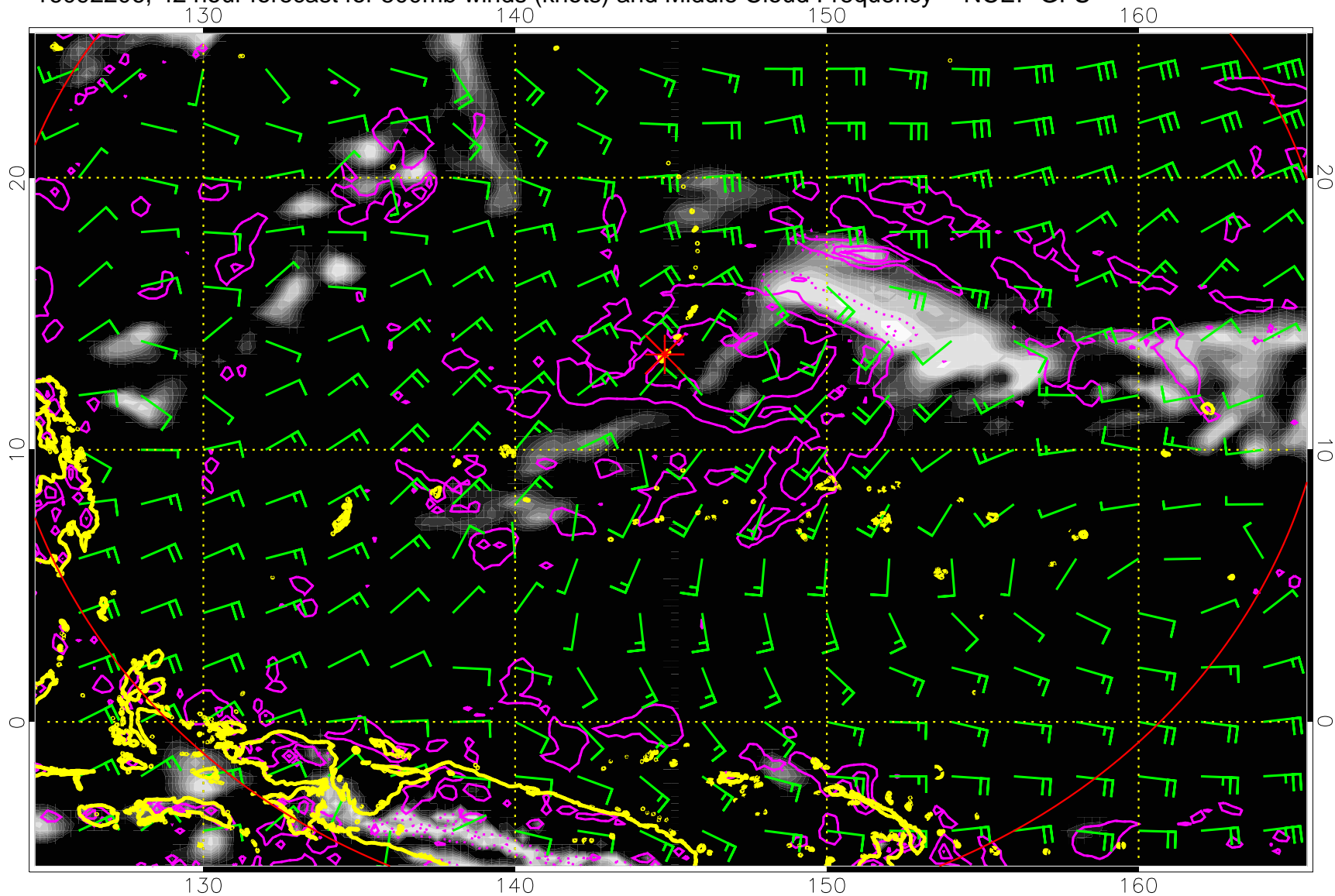
Precip (tot dot, conv sol) mm/day 40 mm/day contours, min 20

16092200, 36 hour forecast for 500mb winds (knots) and Middle Cloud Frequency -- NCEP GFS



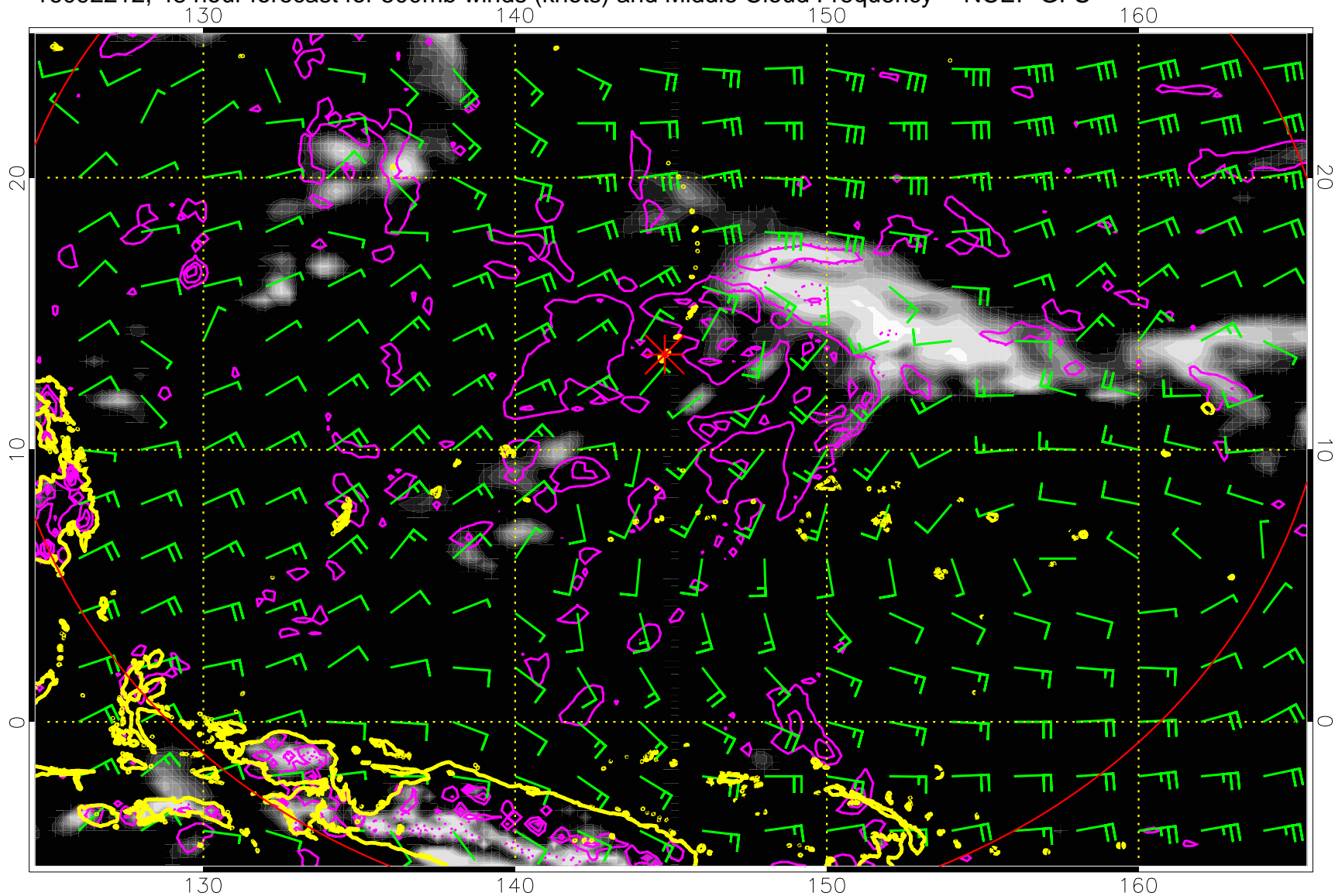
Precip (tot dot, conv sol) mm/day 40 mm/day contours, min 20

16092206, 42 hour forecast for 500mb winds (knots) and Middle Cloud Frequency -- NCEP GFS



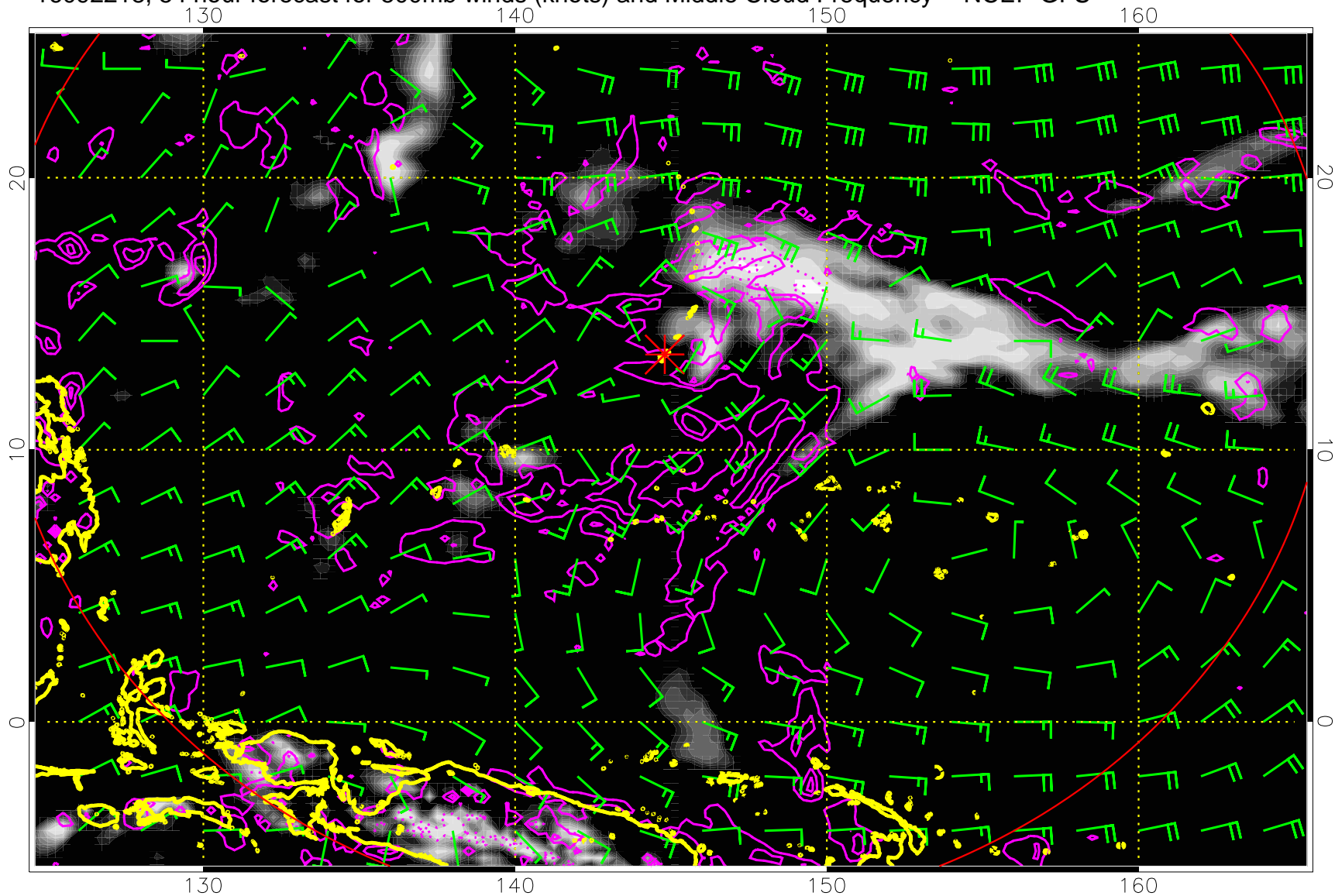
Precip (tot dot, conv sol) mm/day 40 mm/day contours, min 20

16092212, 48 hour forecast for 500mb winds (knots) and Middle Cloud Frequency -- NCEP GFS



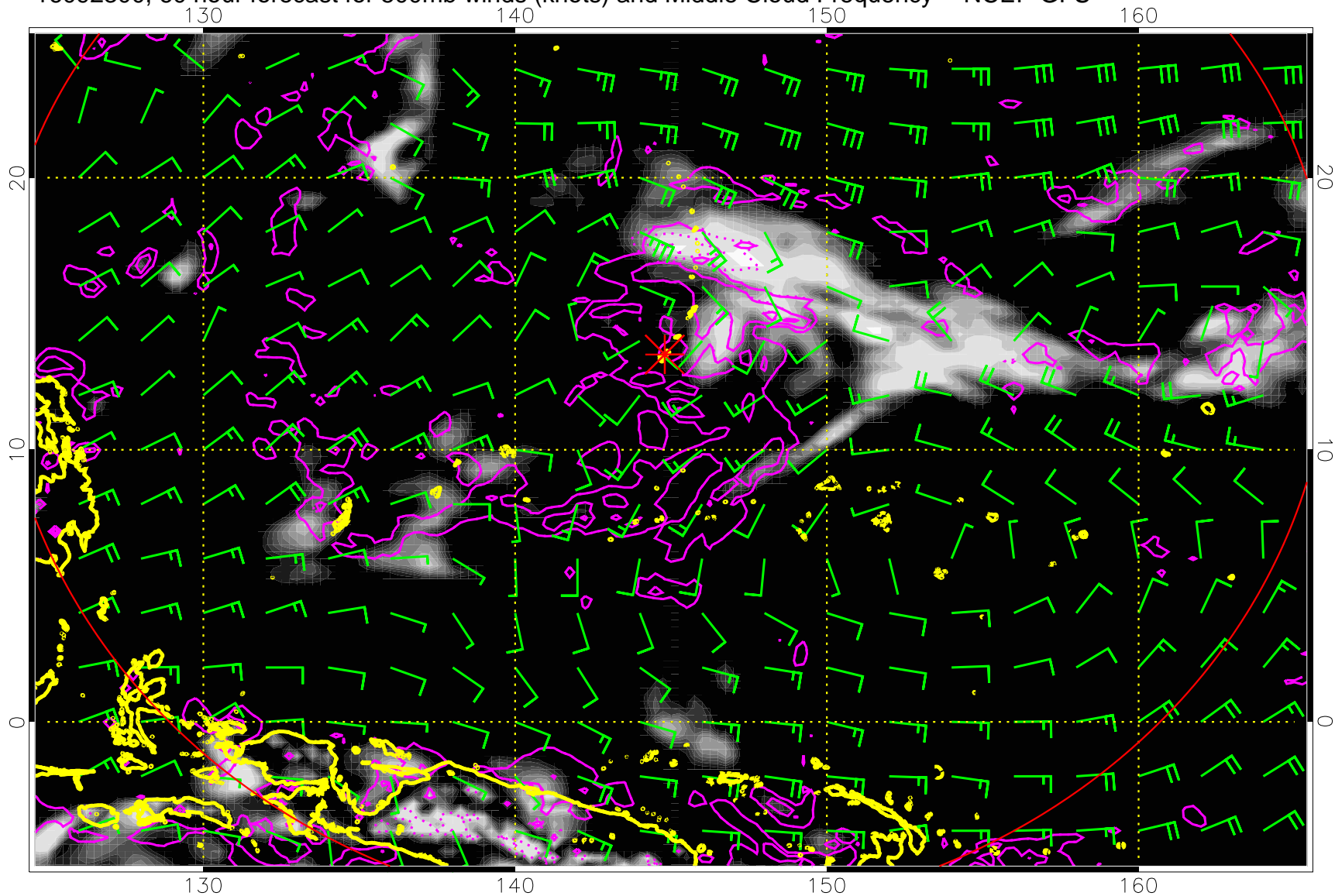
Precip (tot dot, conv sol) mm/day 40 mm/day contours, min 20

16092218, 54 hour forecast for 500mb winds (knots) and Middle Cloud Frequency -- NCEP GFS



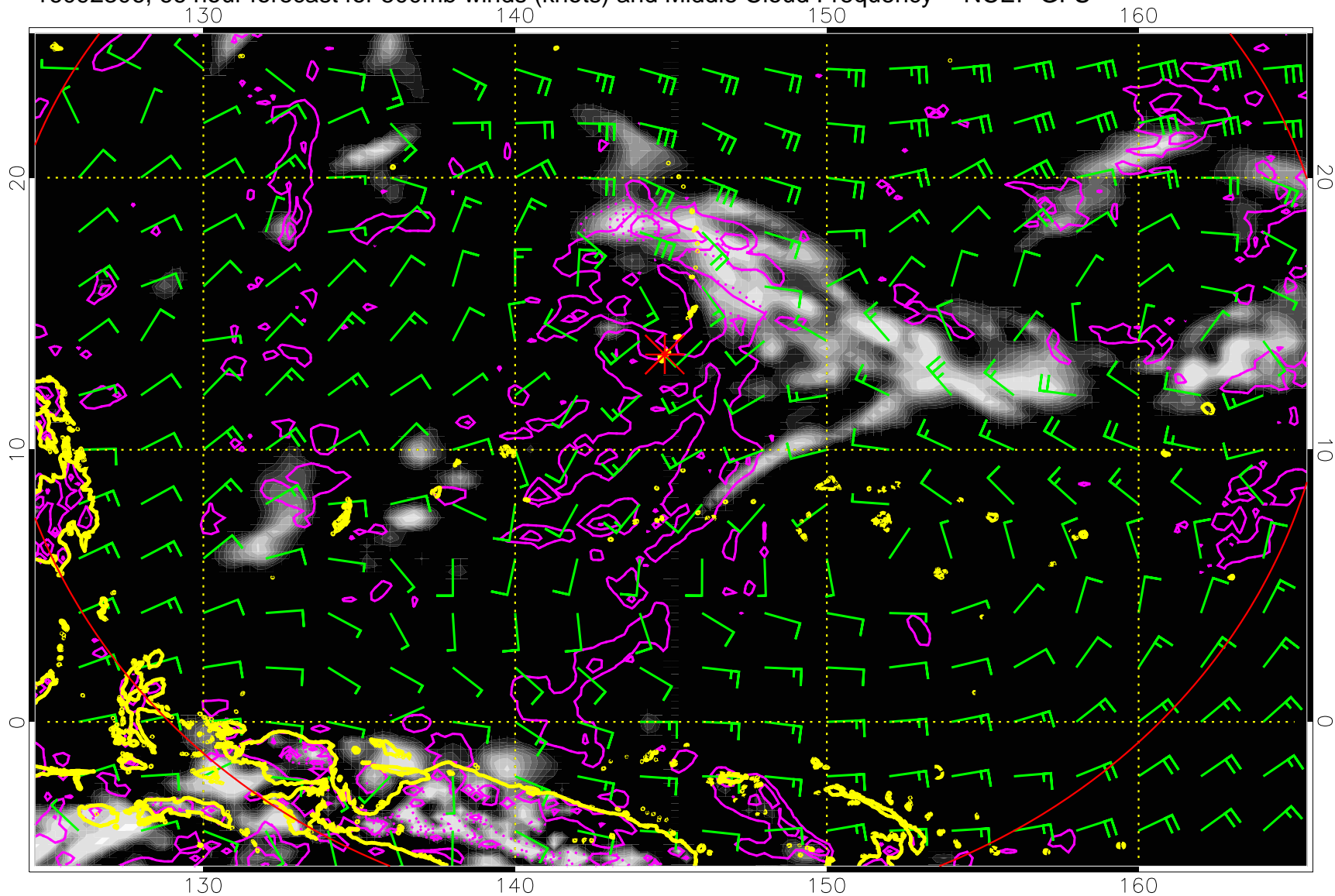
Precip (tot dot, conv sol) mm/day 40 mm/day contours, min 20

16092300, 60 hour forecast for 500mb winds (knots) and Middle Cloud Frequency -- NCEP GFS



Precip (tot dot, conv sol) mm/day 40 mm/day contours, min 20

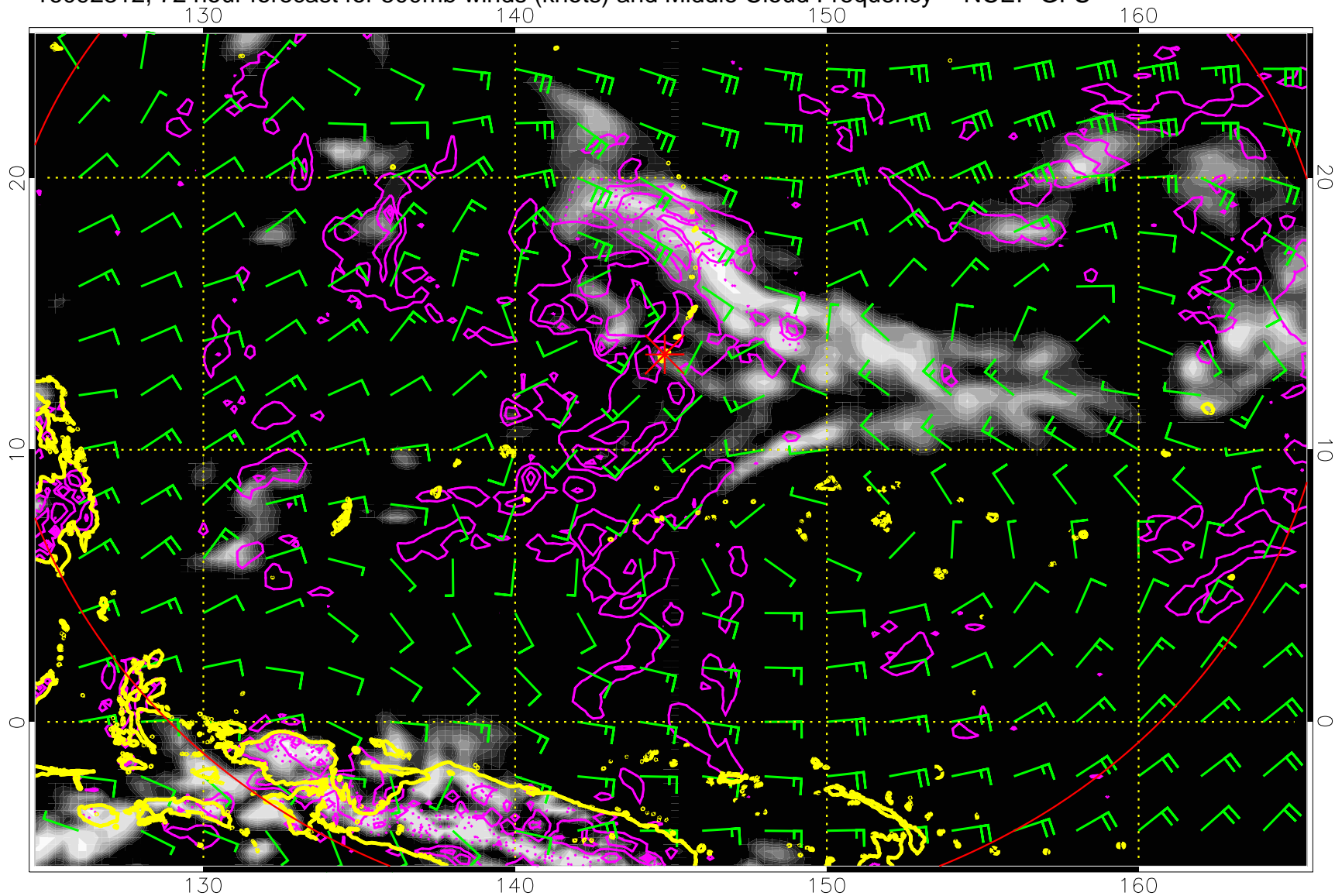
16092306, 66 hour forecast for 500mb winds (knots) and Middle Cloud Frequency -- NCEP GFS



0.0 0.2 0.4 0.6 0.8 1.0
Middle Cloud Frequency

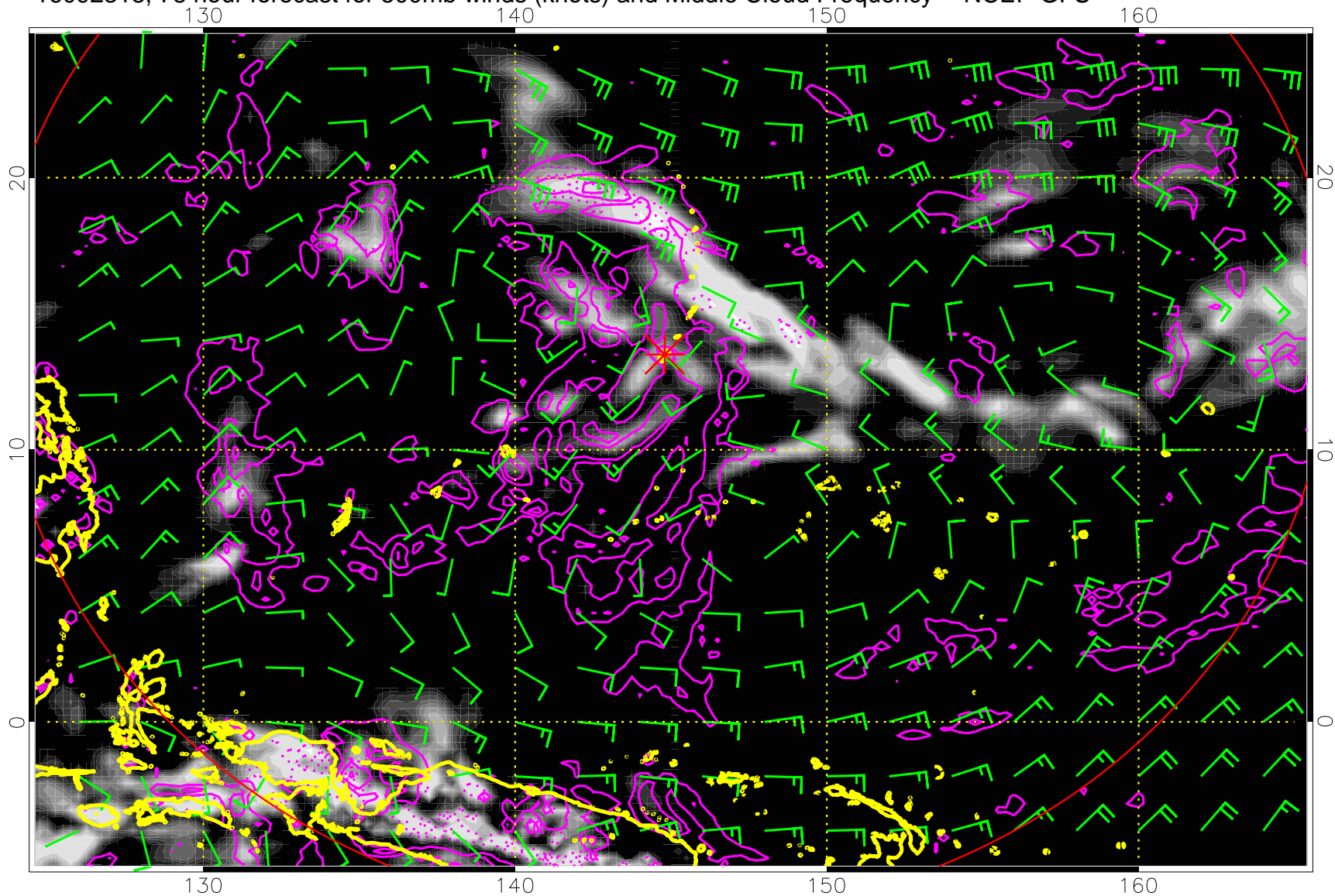
Precip (tot dot, conv sol) mm/day 40 mm/day contours, min 20

16092312, 72 hour forecast for 500mb winds (knots) and Middle Cloud Frequency -- NCEP GFS



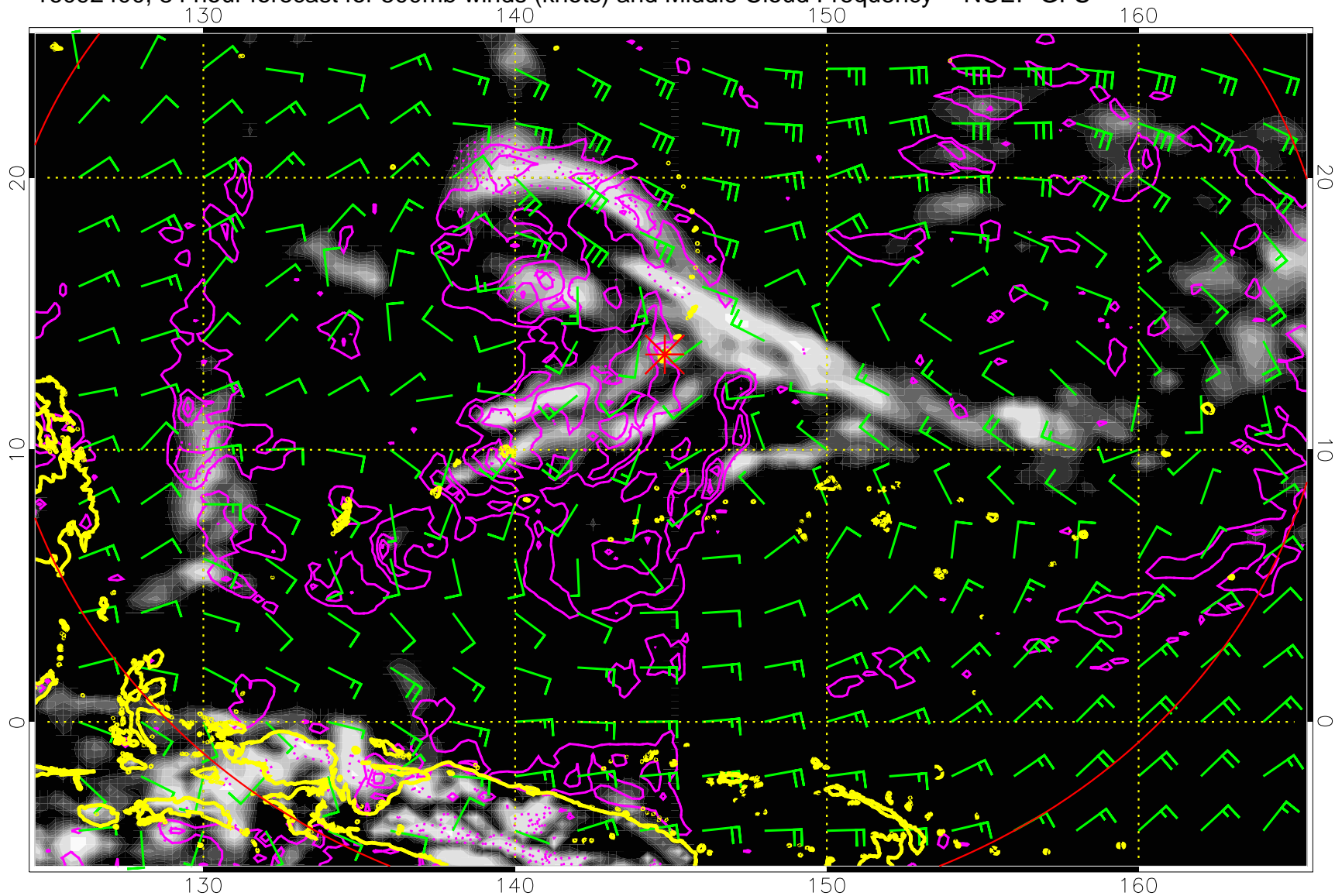
Precip (tot dot, conv sol) mm/day 40 mm/day contours, min 20

16092318, 78 hour forecast for 500mb winds (knots) and Middle Cloud Frequency -- NCEP GFS



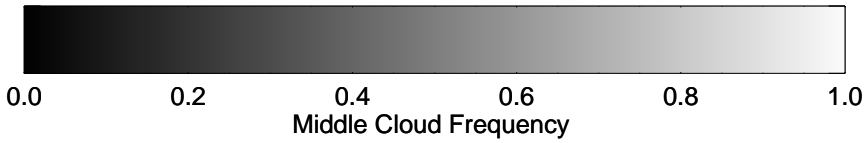
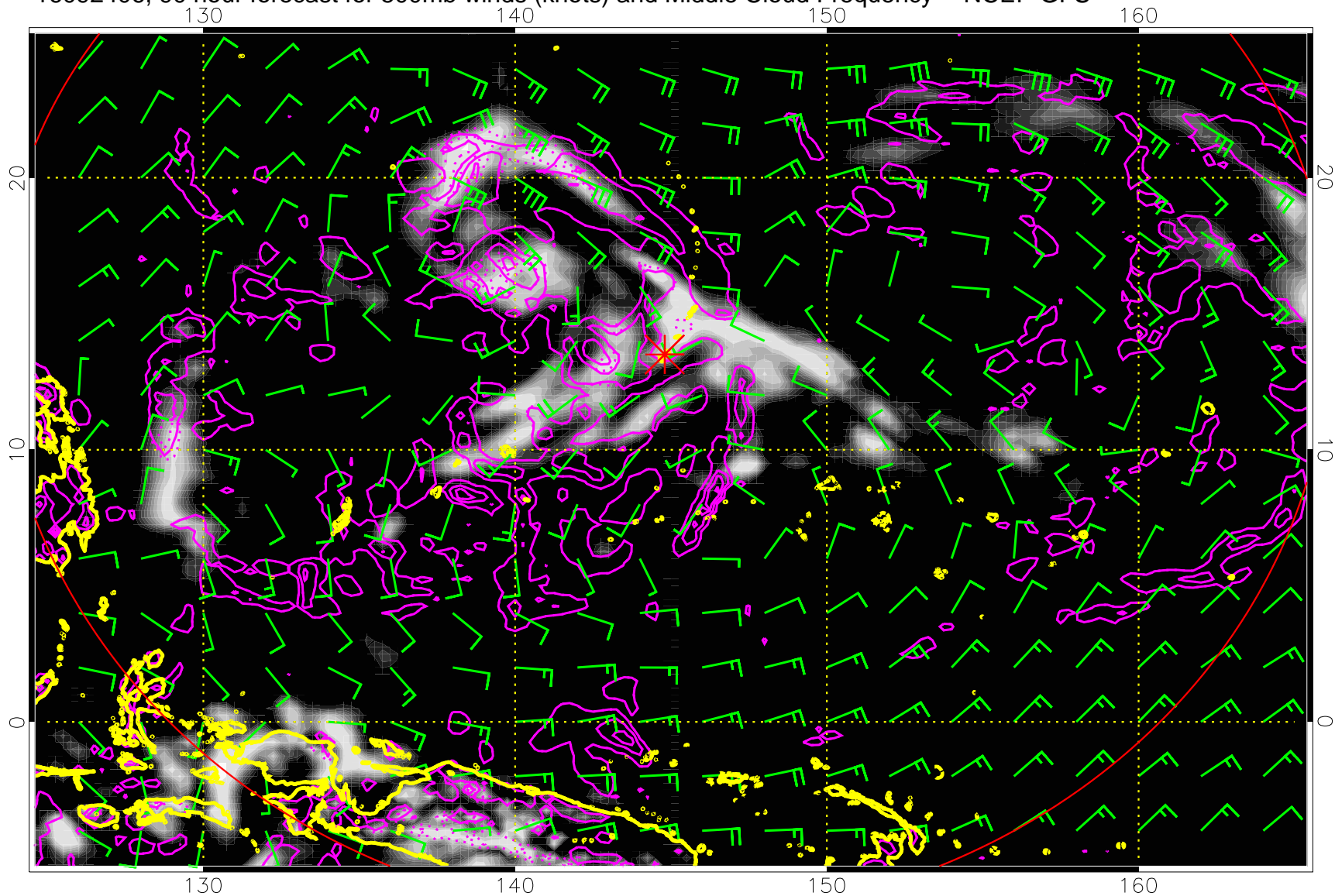
Precip (tot dot, conv sol) mm/day 40 mm/day contours, min 20

16092400, 84 hour forecast for 500mb winds (knots) and Middle Cloud Frequency -- NCEP GFS



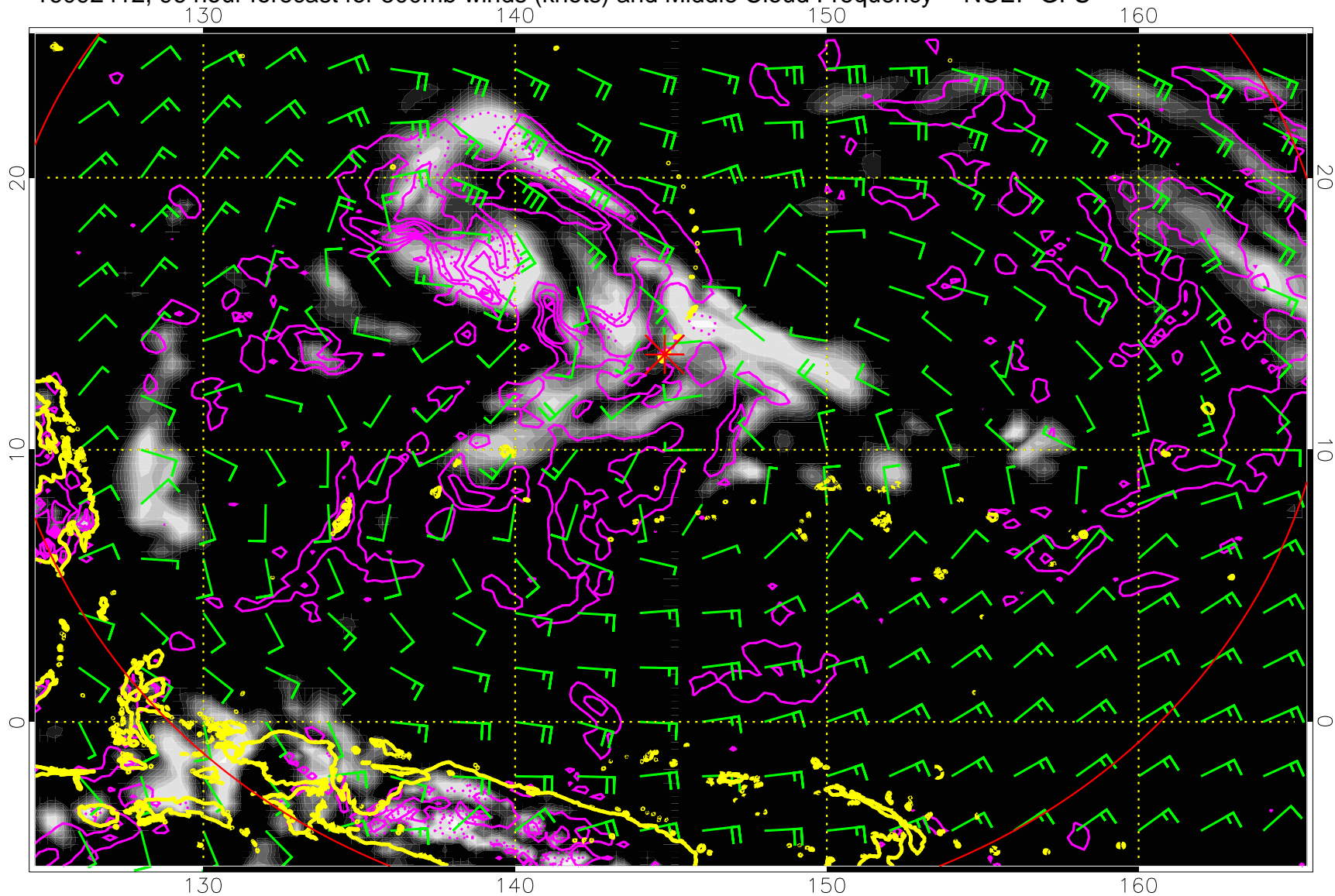
Precip (tot dot, conv sol) mm/day 40 mm/day contours, min 20

16092406, 90 hour forecast for 500mb winds (knots) and Middle Cloud Frequency -- NCEP GFS



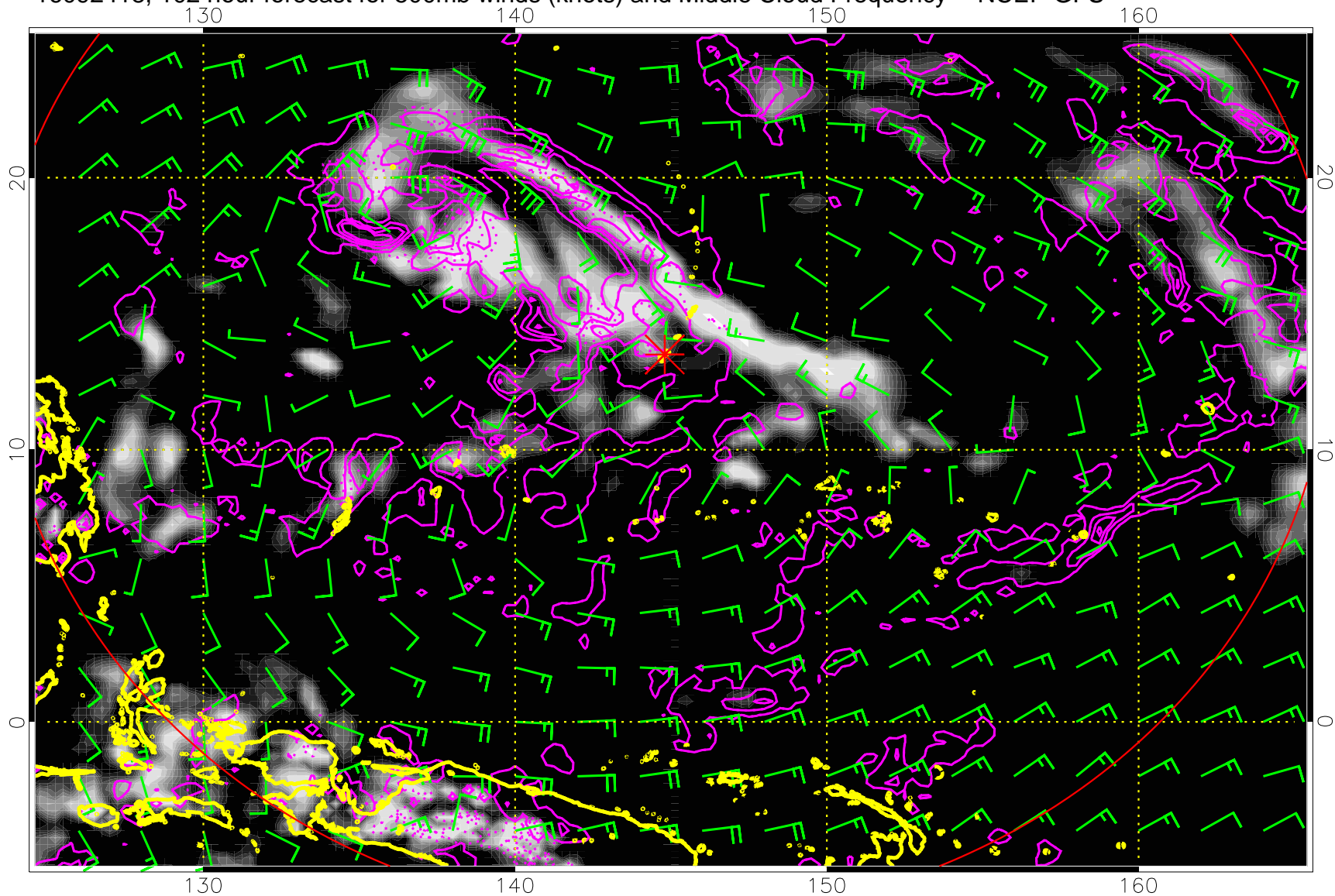
Precip (tot dot, conv sol) mm/day 40 mm/day contours, min 20

16092412, 96 hour forecast for 500mb winds (knots) and Middle Cloud Frequency -- NCEP GFS



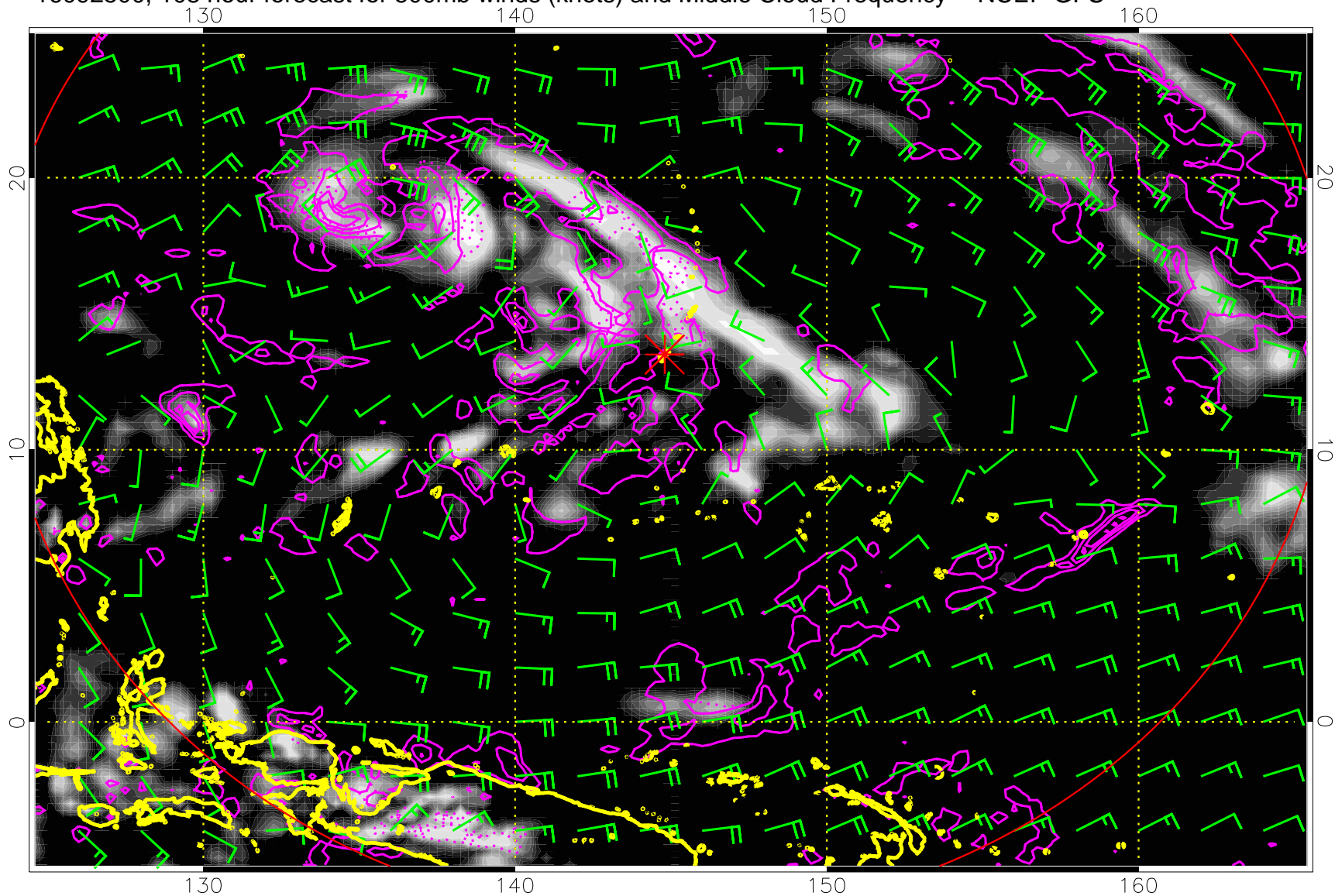
Precip (tot dot, conv sol) mm/day 40 mm/day contours, min 20

16092418, 102 hour forecast for 500mb winds (knots) and Middle Cloud Frequency -- NCEP GFS



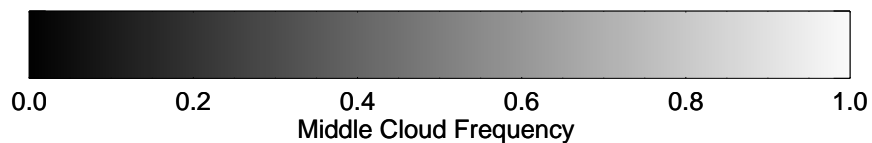
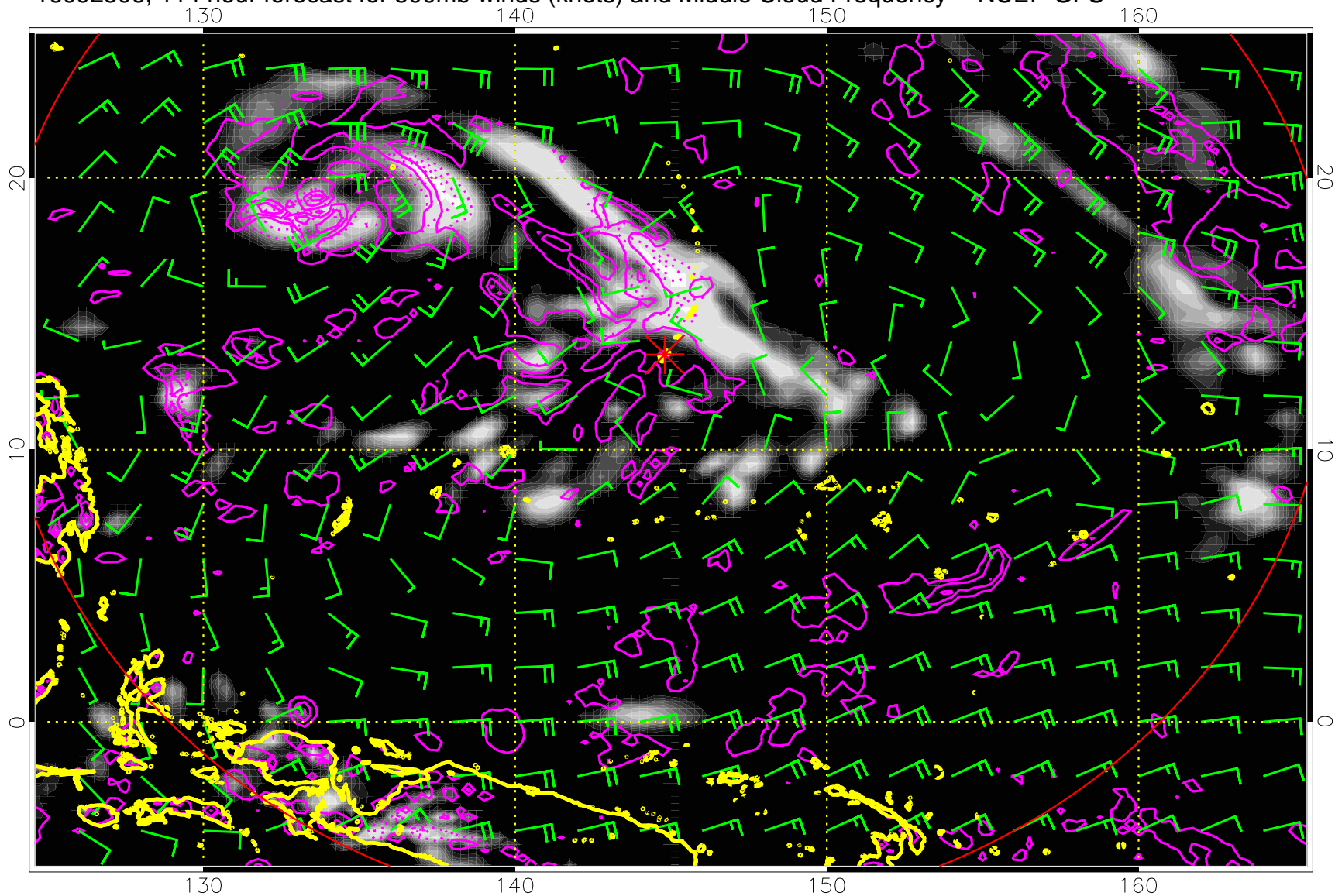
Precip (tot dot, conv sol) mm/day 40 mm/day contours, min 20

16092500, 108 hour forecast for 500mb winds (knots) and Middle Cloud Frequency -- NCEP GFS



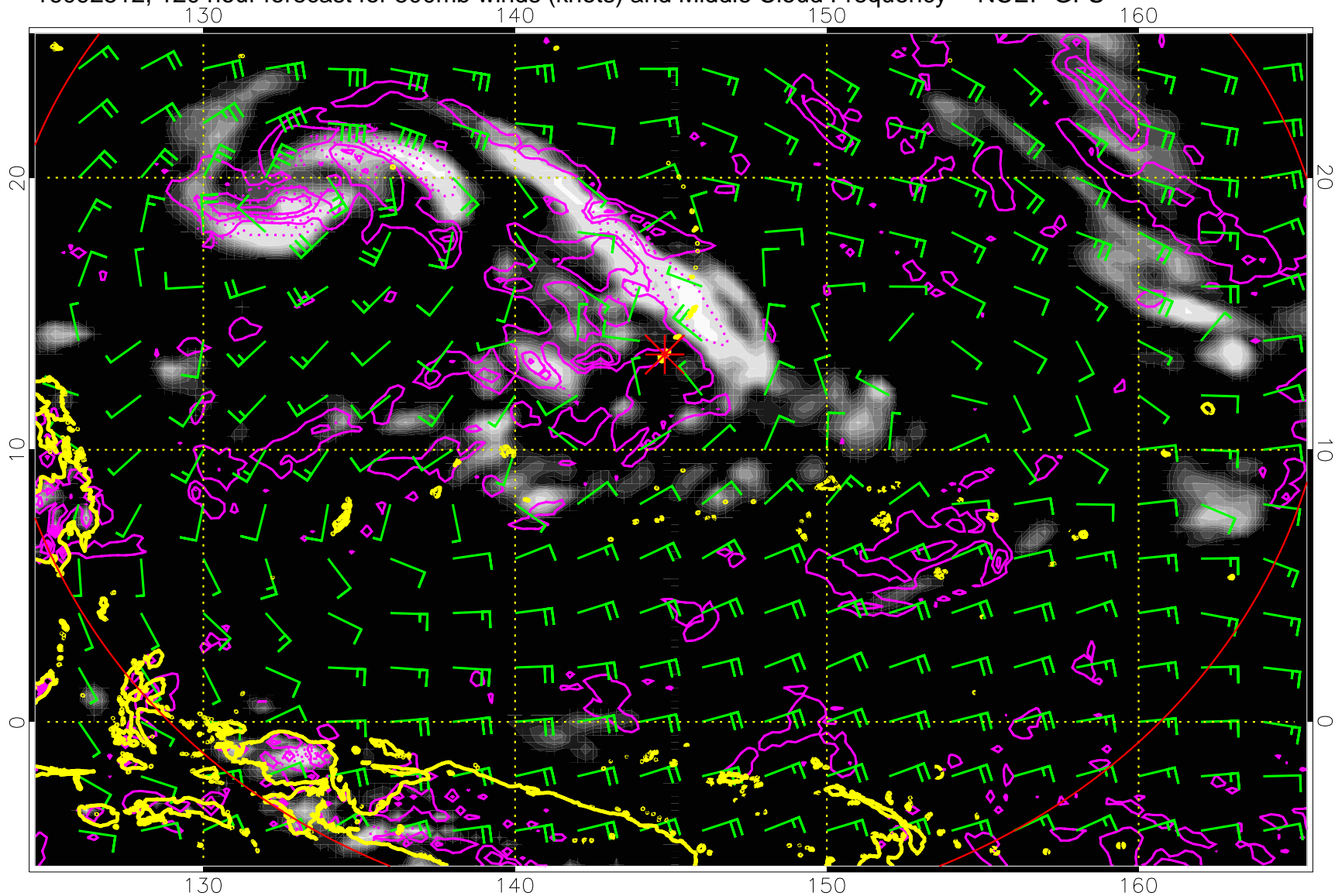
Precip (tot dot, conv sol) mm/day 40 mm/day contours, min 20

16092506, 114 hour forecast for 500mb winds (knots) and Middle Cloud Frequency -- NCEP GFS



Precip (tot dot, conv sol) mm/day 40 mm/day contours, min 20

16092512, 120 hour forecast for 500mb winds (knots) and Middle Cloud Frequency -- NCEP GFS



Precip (tot dot, conv sol) mm/day 40 mm/day contours, min 20