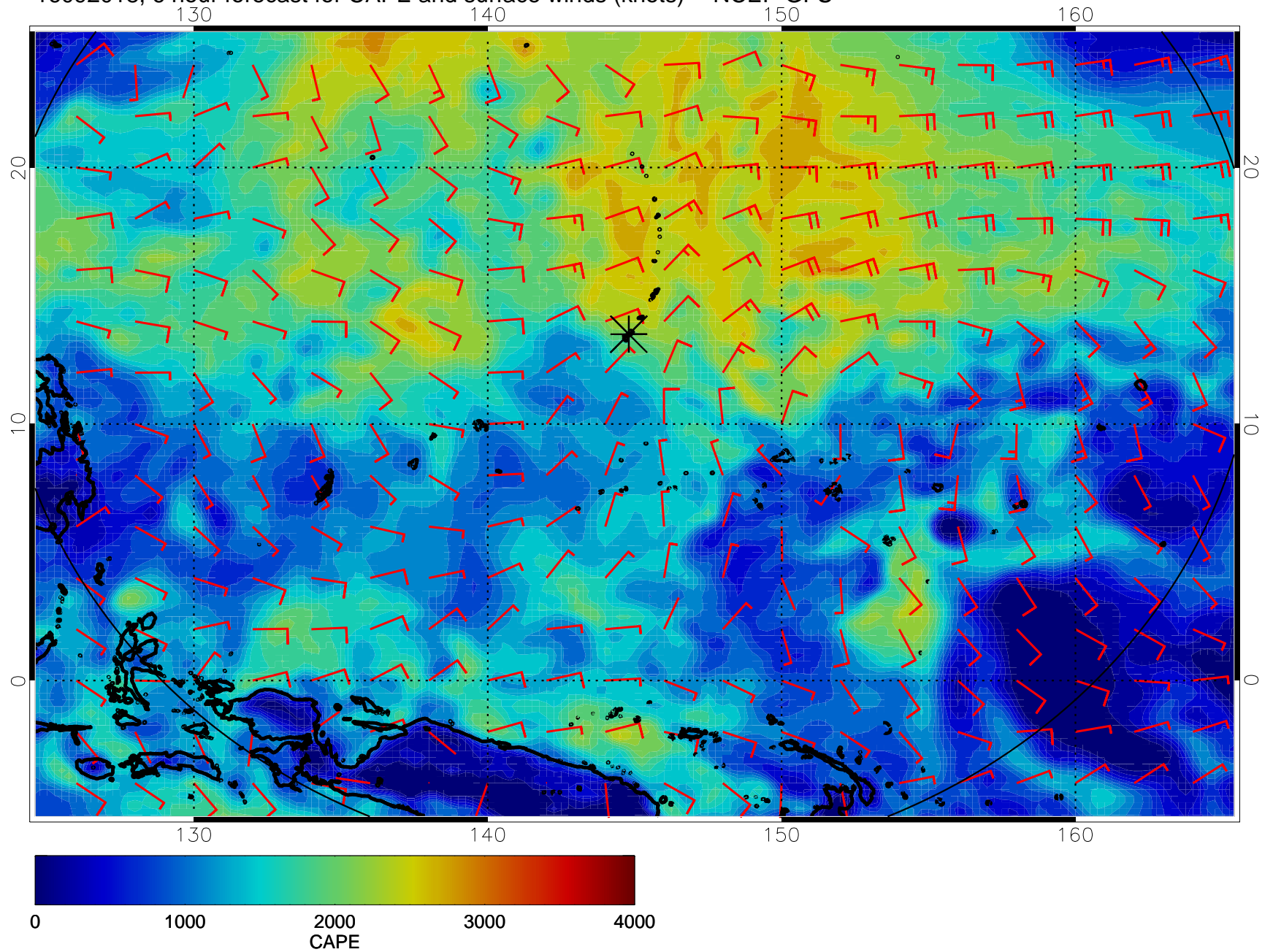
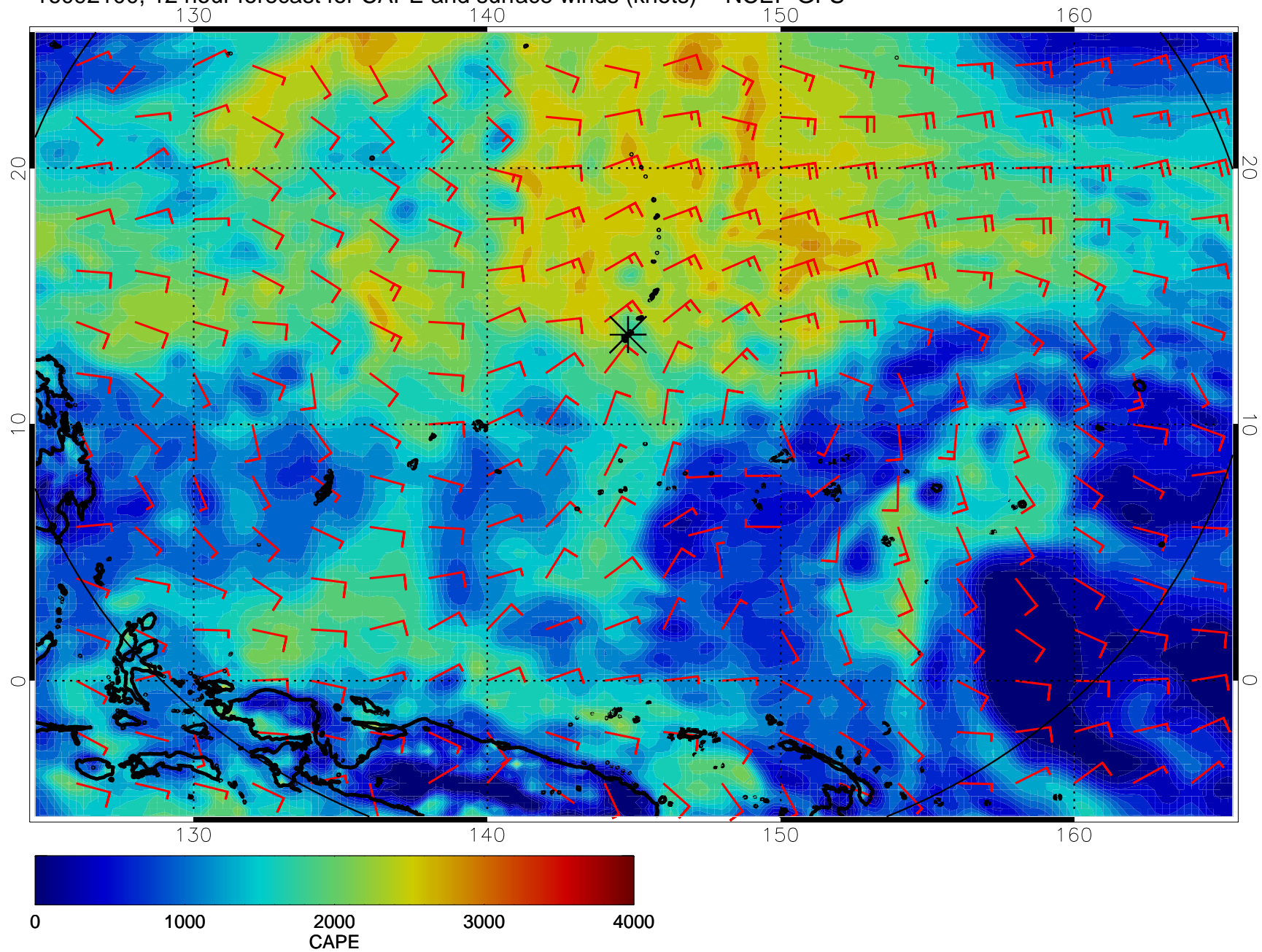


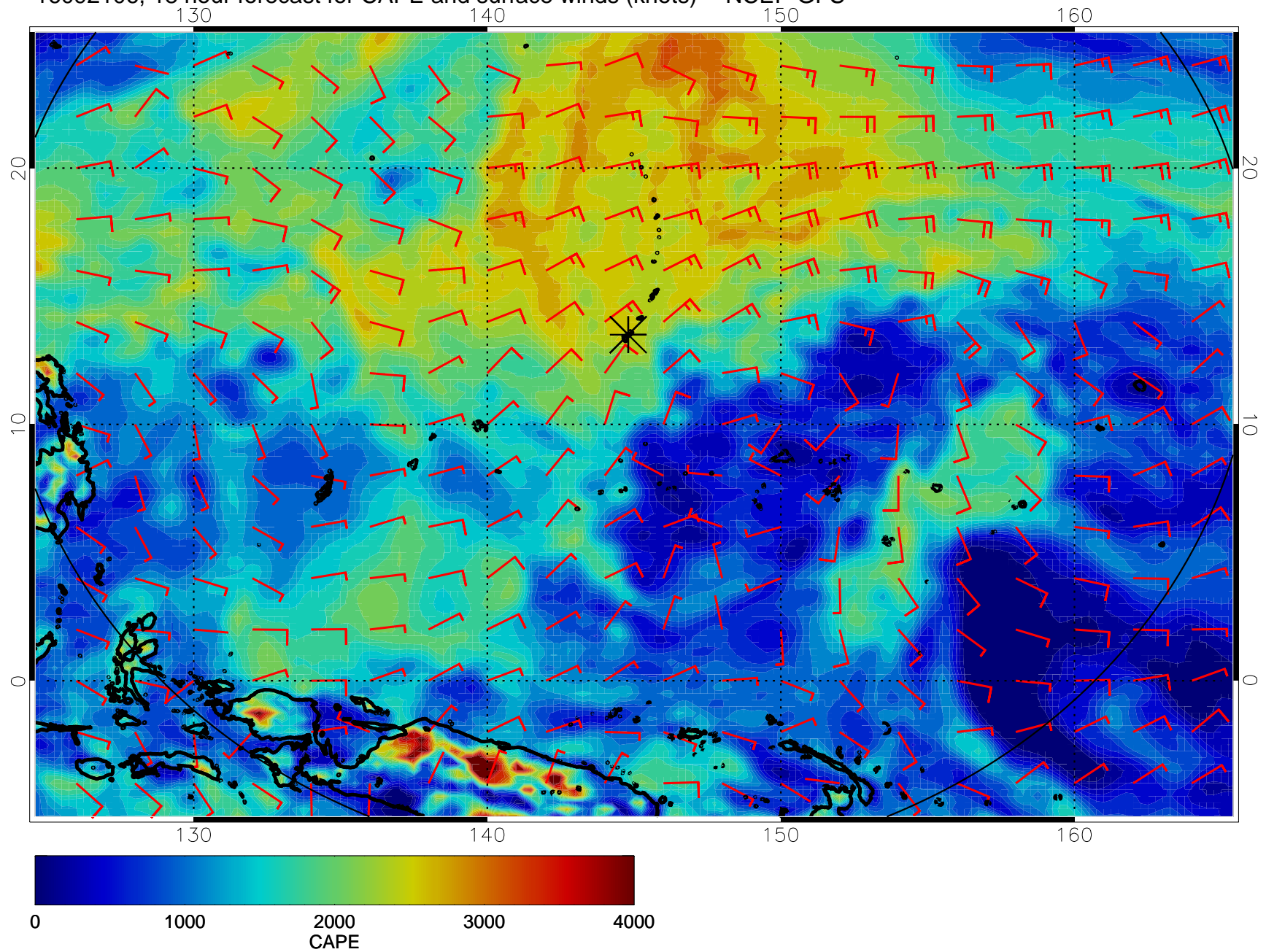
16092018, 6 hour forecast for CAPE and surface winds (knots) -- NCEP GFS



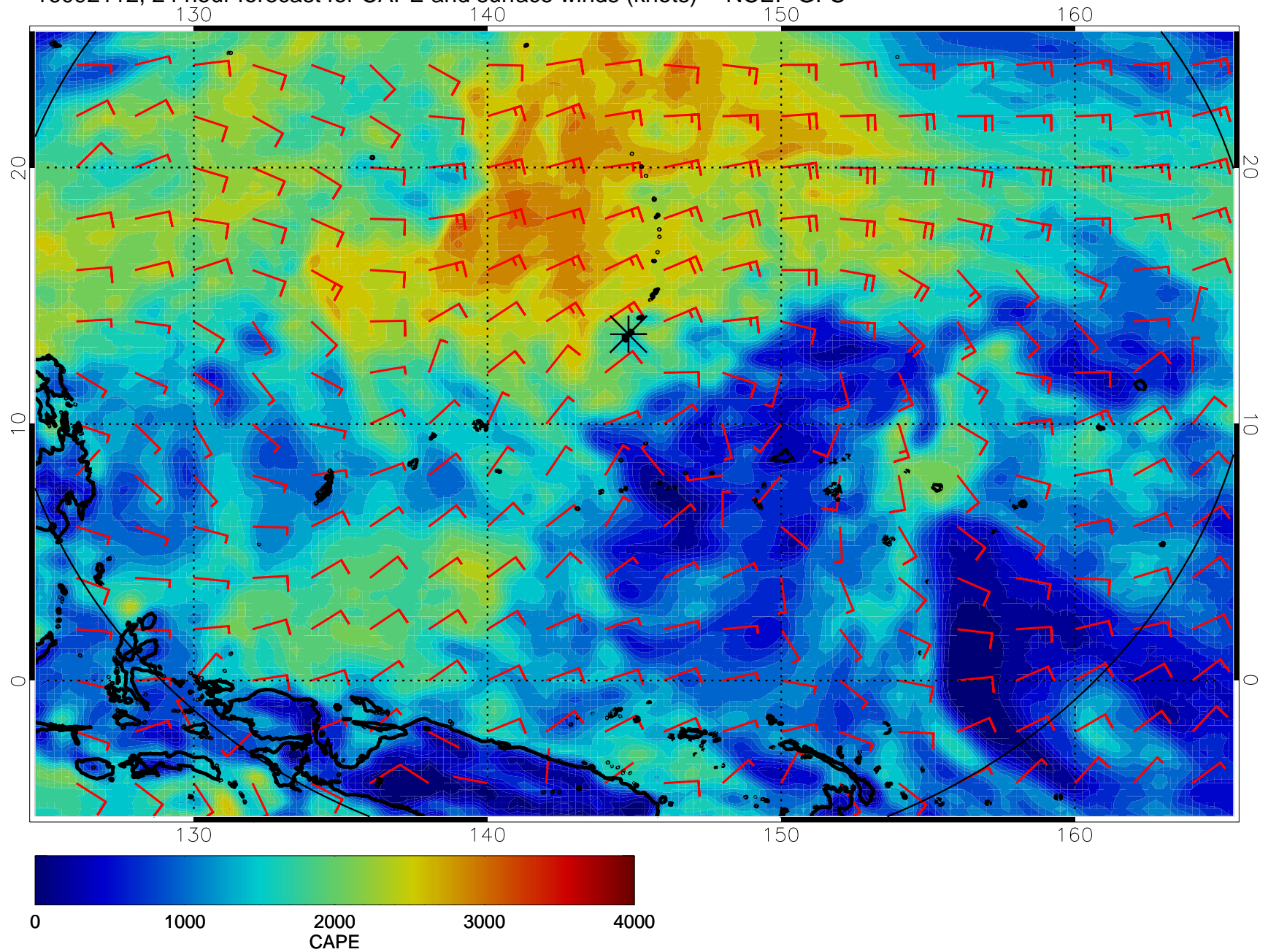
16092100, 12 hour forecast for CAPE and surface winds (knots) -- NCEP GFS



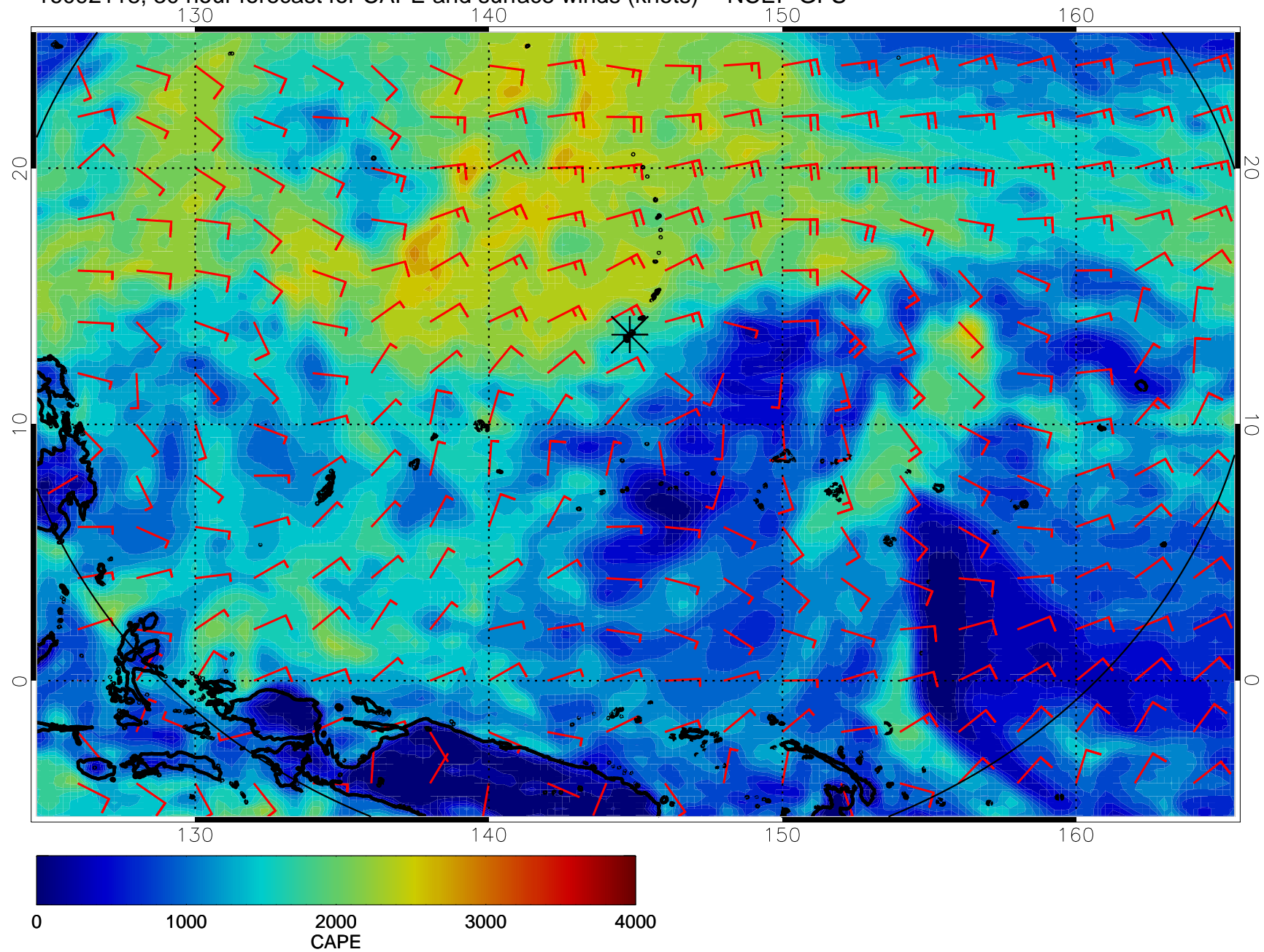
16092106, 18 hour forecast for CAPE and surface winds (knots) -- NCEP GFS



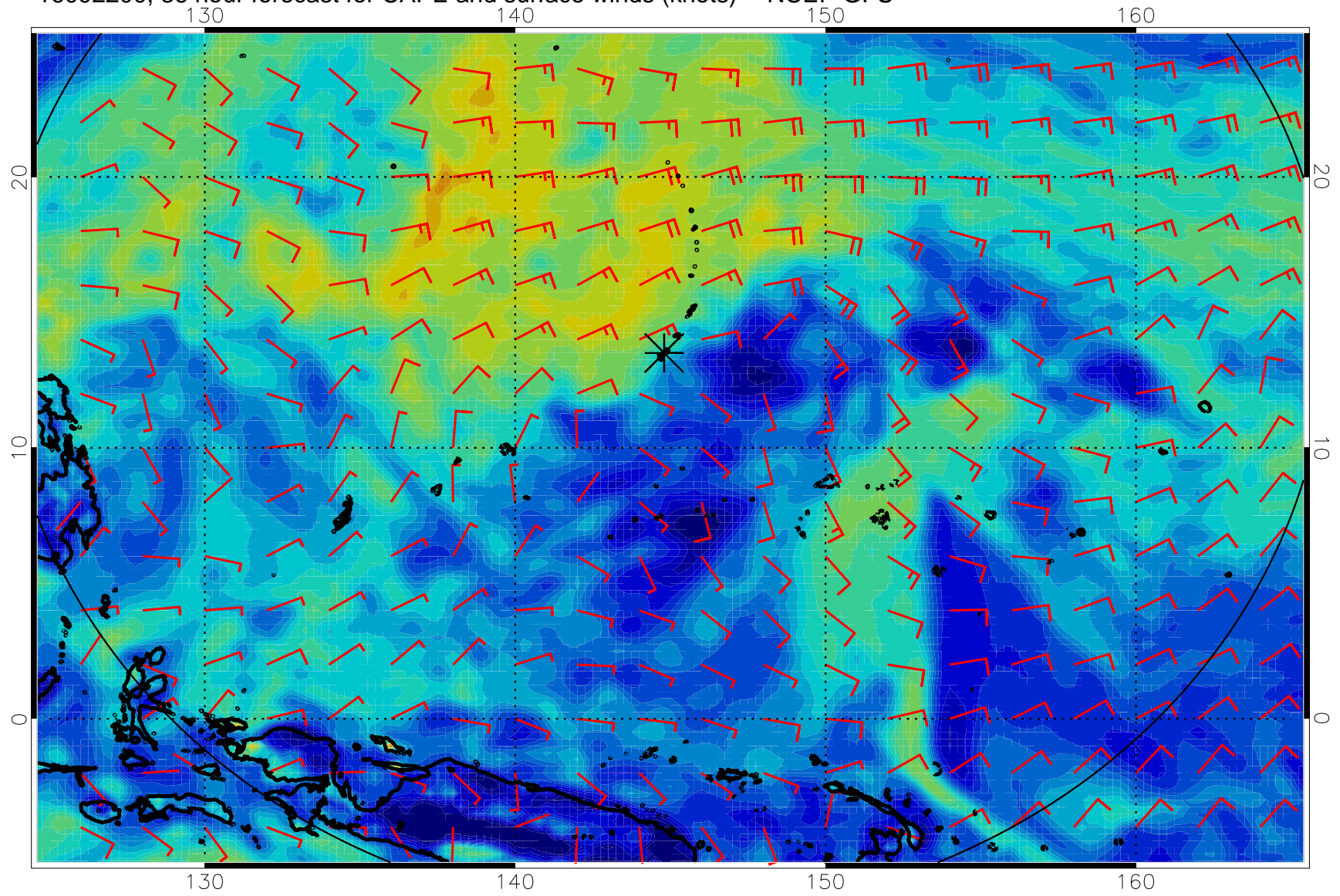
16092112, 24 hour forecast for CAPE and surface winds (knots) -- NCEP GFS



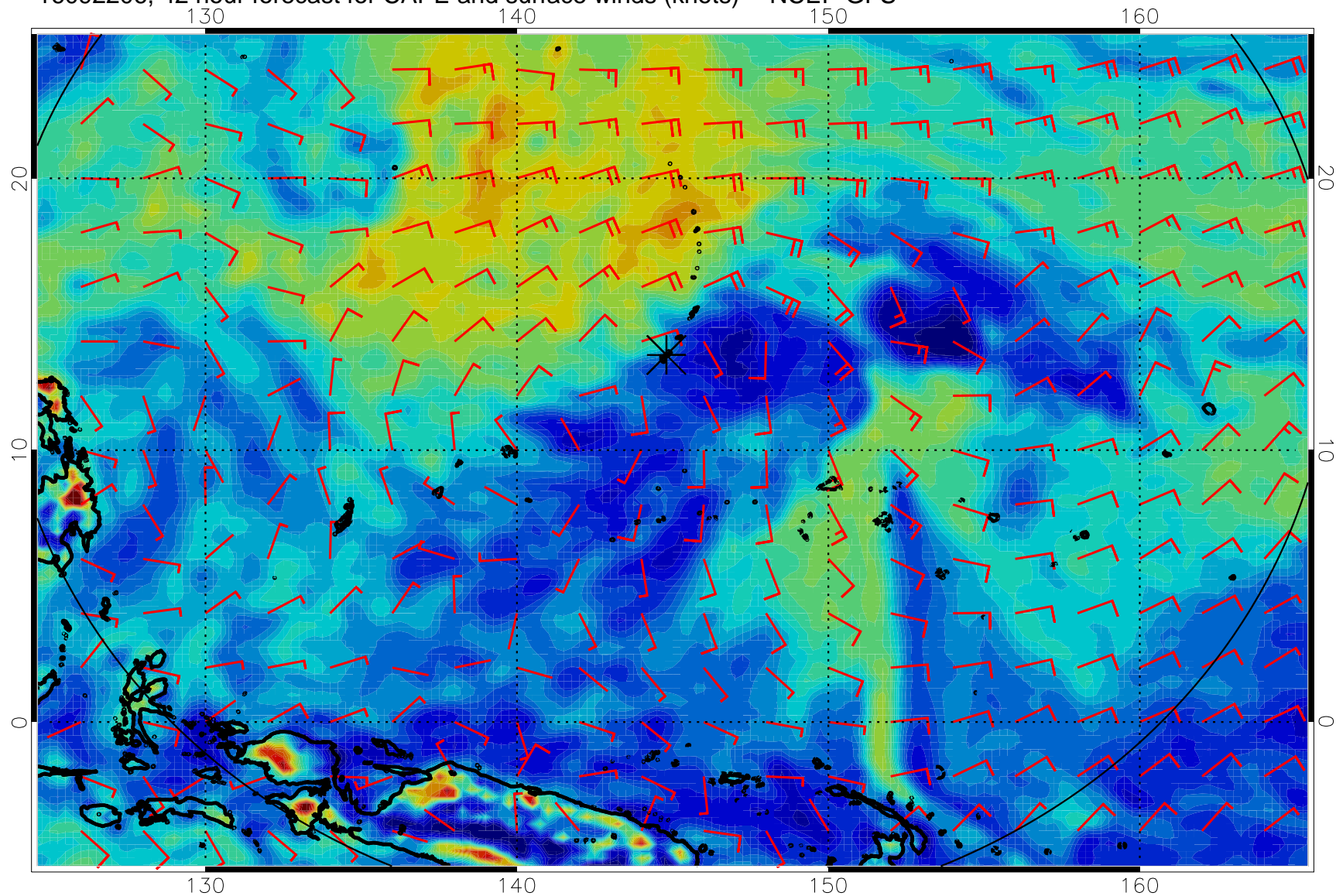
16092118, 30 hour forecast for CAPE and surface winds (knots) -- NCEP GFS



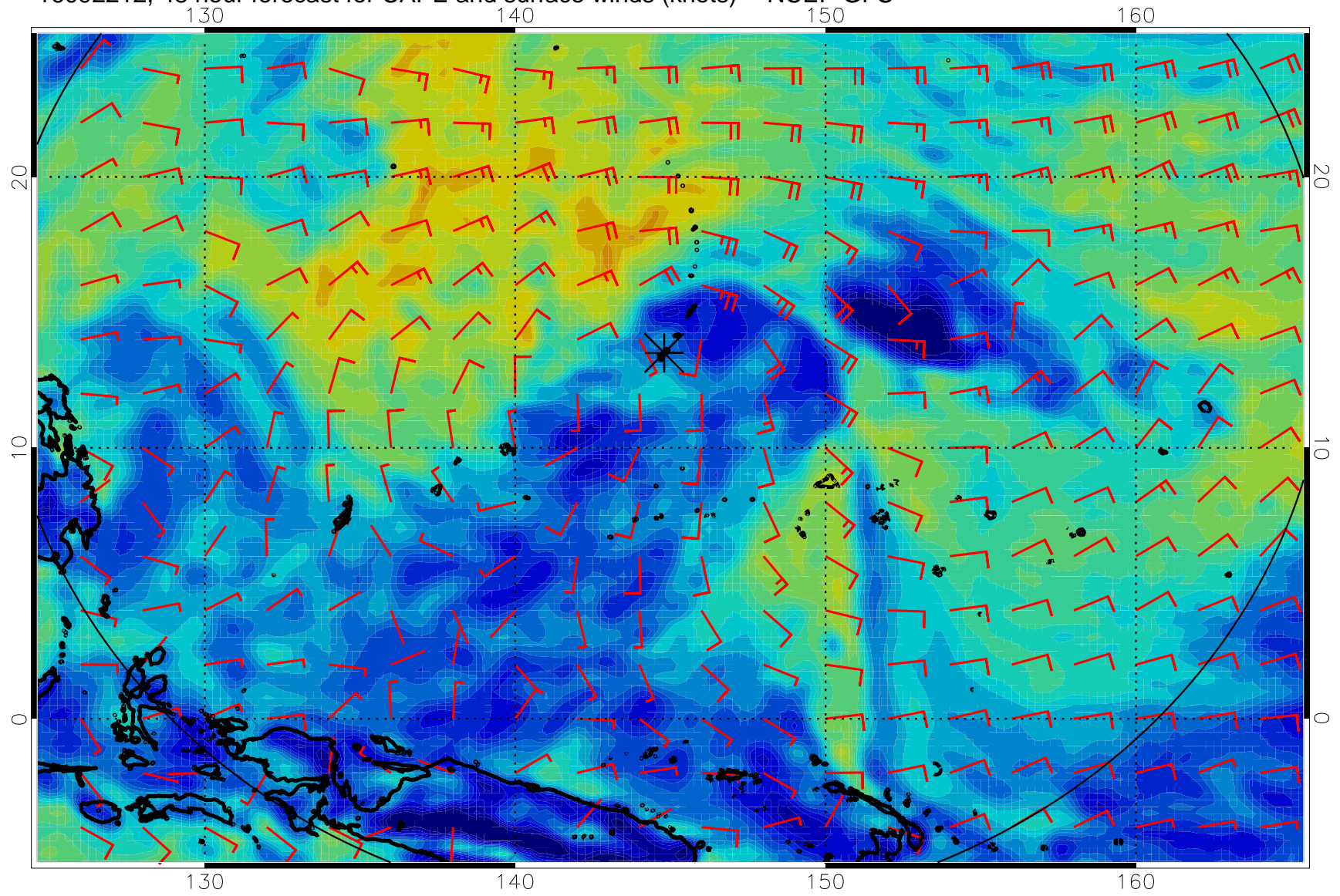
16092200, 36 hour forecast for CAPE and surface winds (knots) -- NCEP GFS



16092206, 42 hour forecast for CAPE and surface winds (knots) -- NCEP GFS

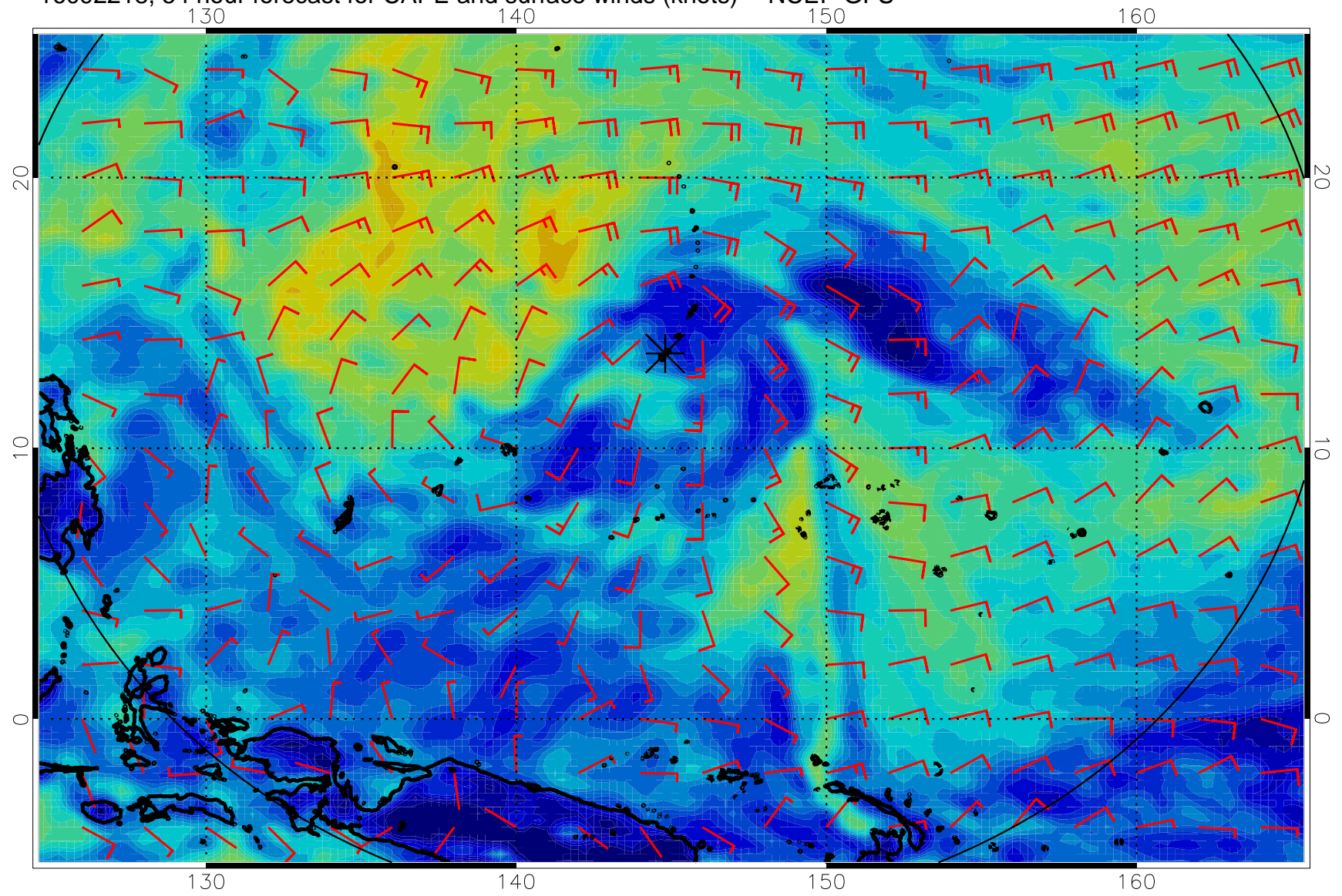


16092212, 48 hour forecast for CAPE and surface winds (knots) -- NCEP GFS

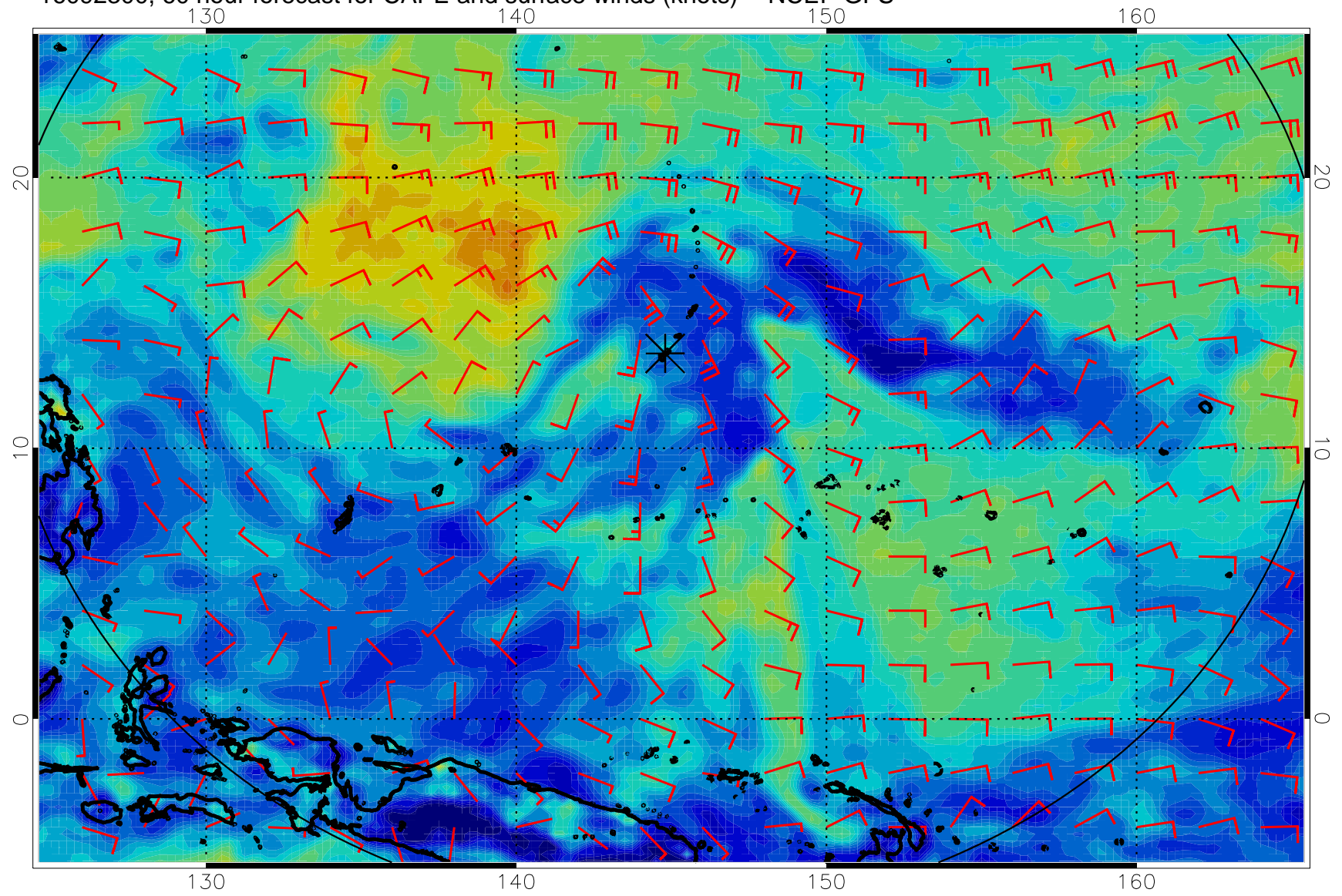




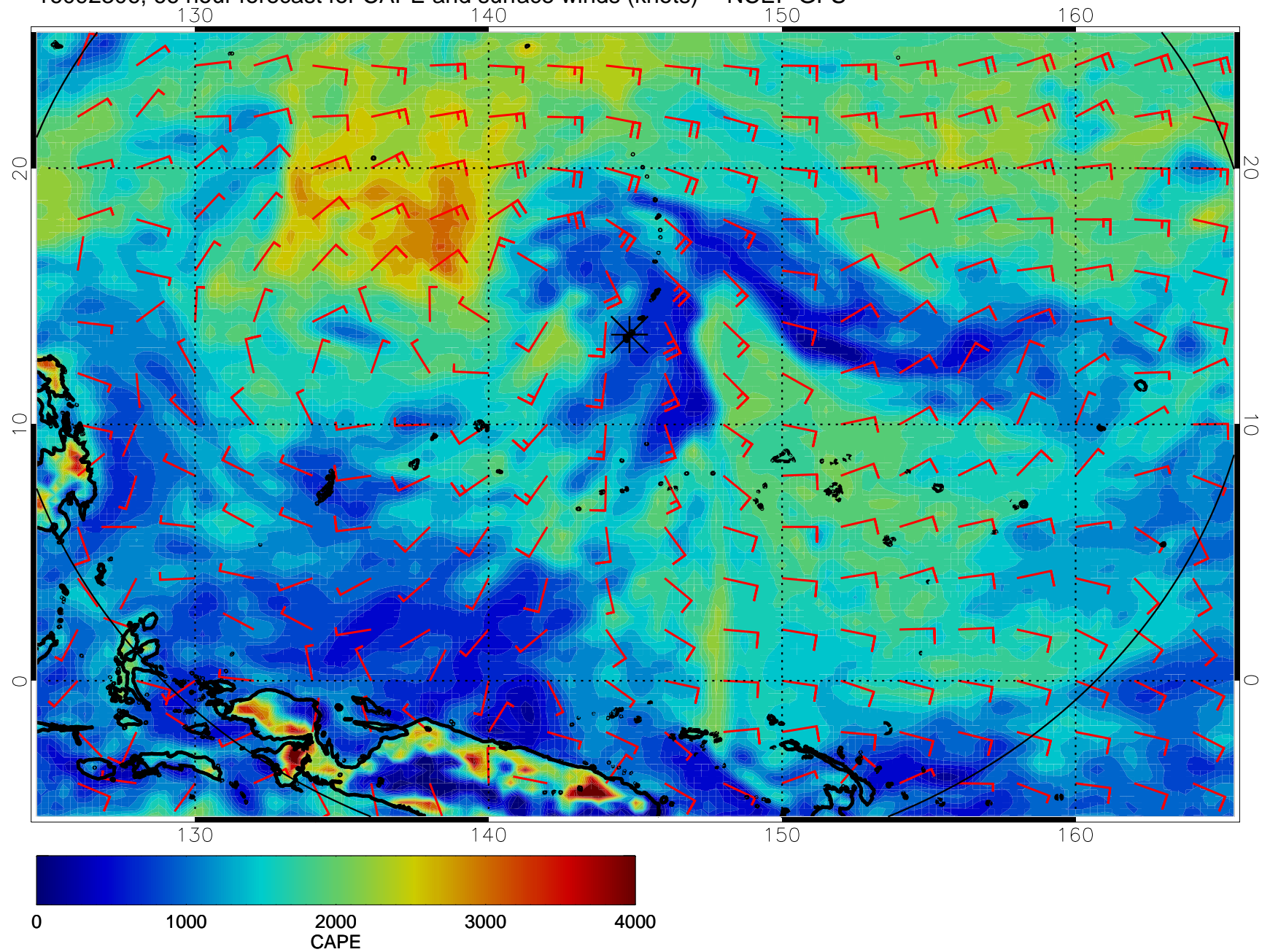
16092218, 54 hour forecast for CAPE and surface winds (knots) -- NCEP GFS



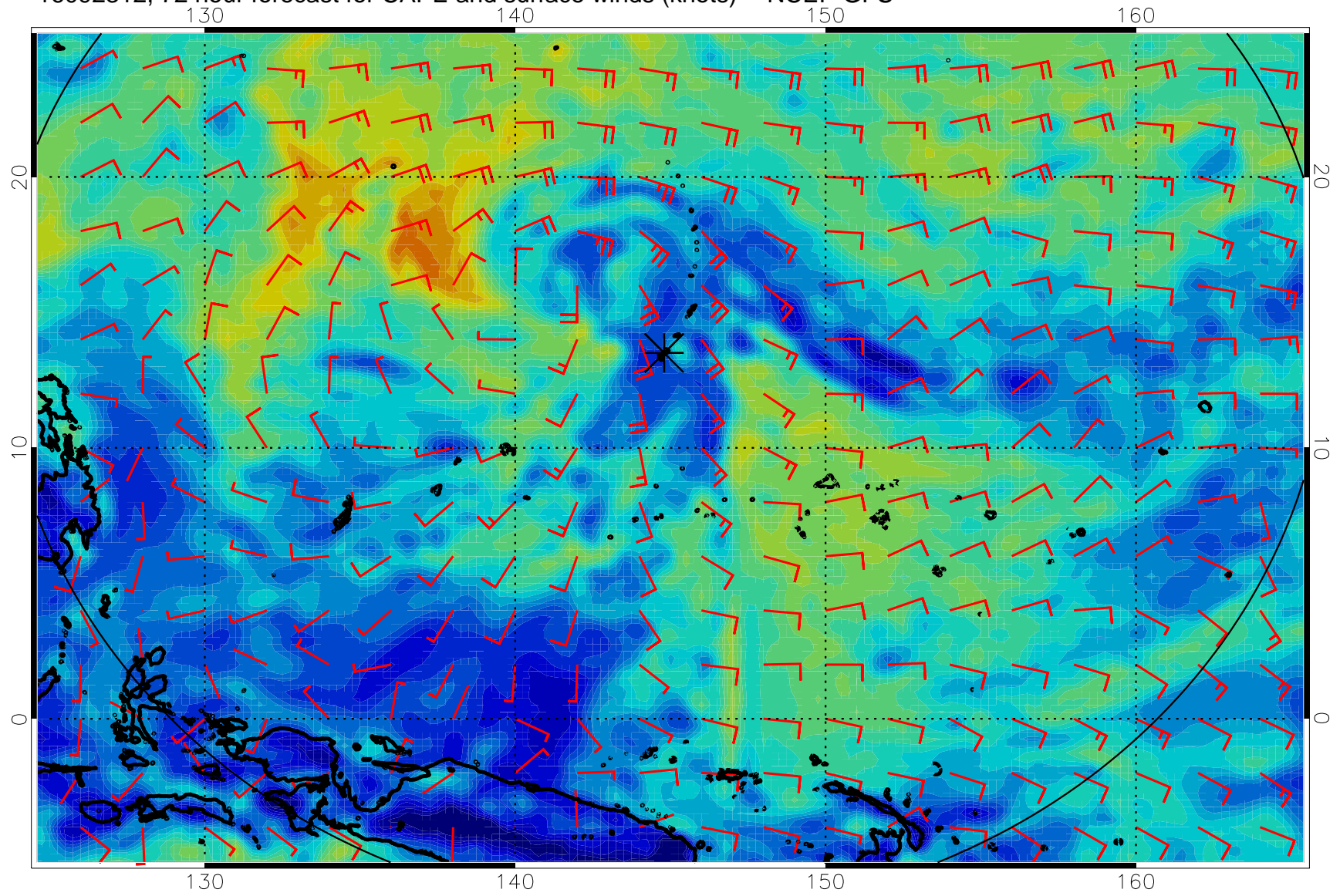
16092300, 60 hour forecast for CAPE and surface winds (knots) -- NCEP GFS



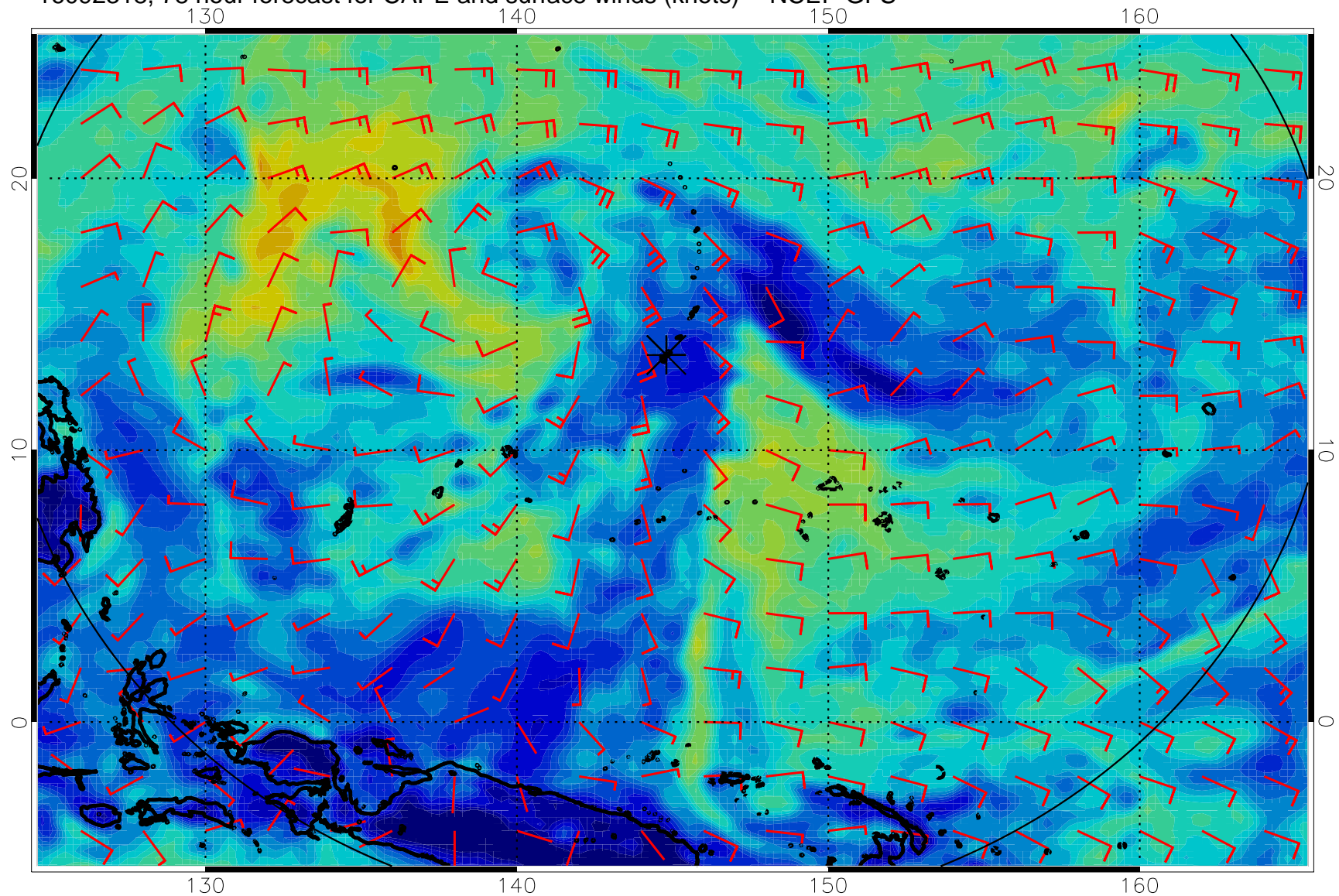
16092306, 66 hour forecast for CAPE and surface winds (knots) -- NCEP GFS



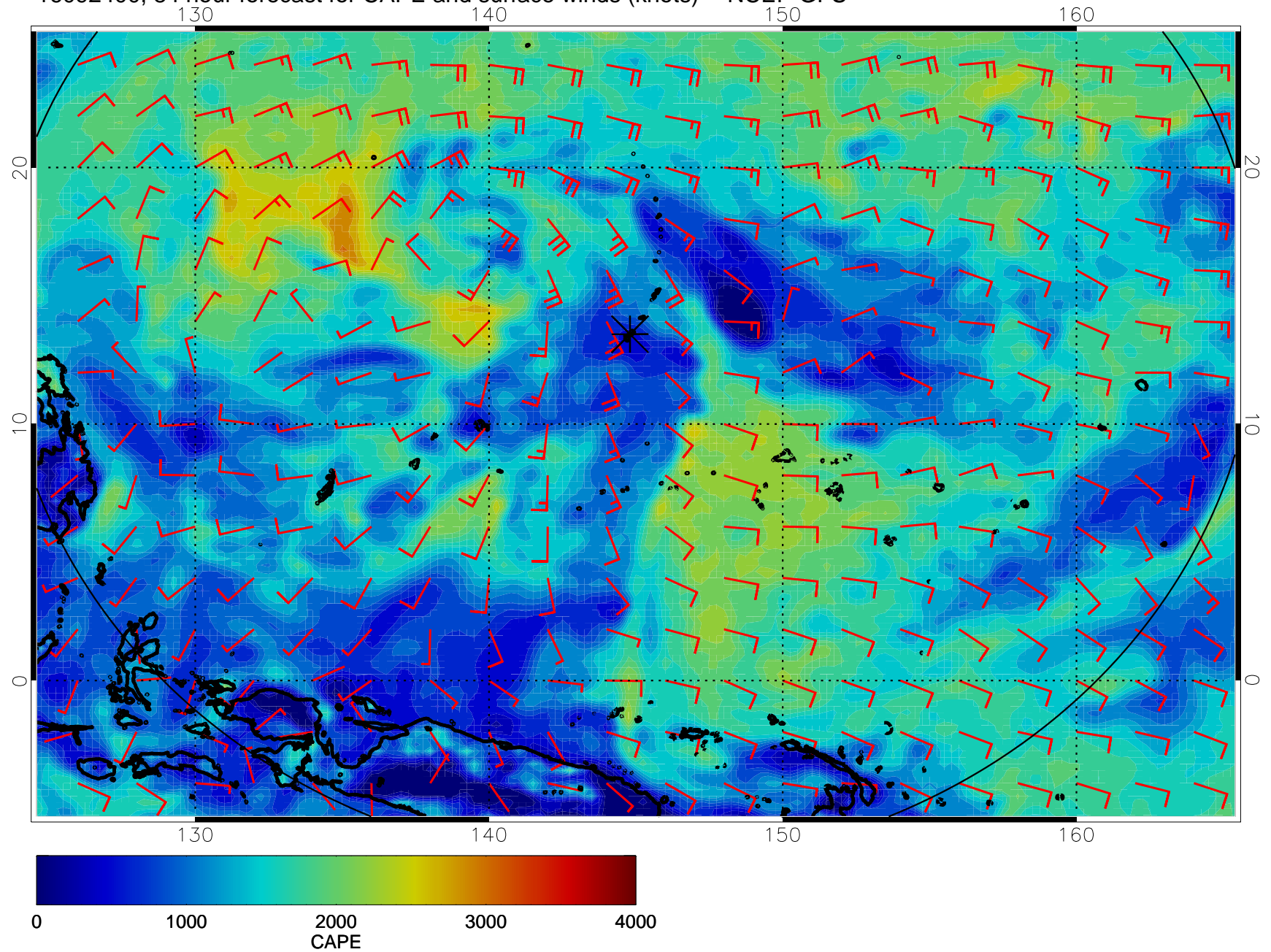
16092312, 72 hour forecast for CAPE and surface winds (knots) -- NCEP GFS



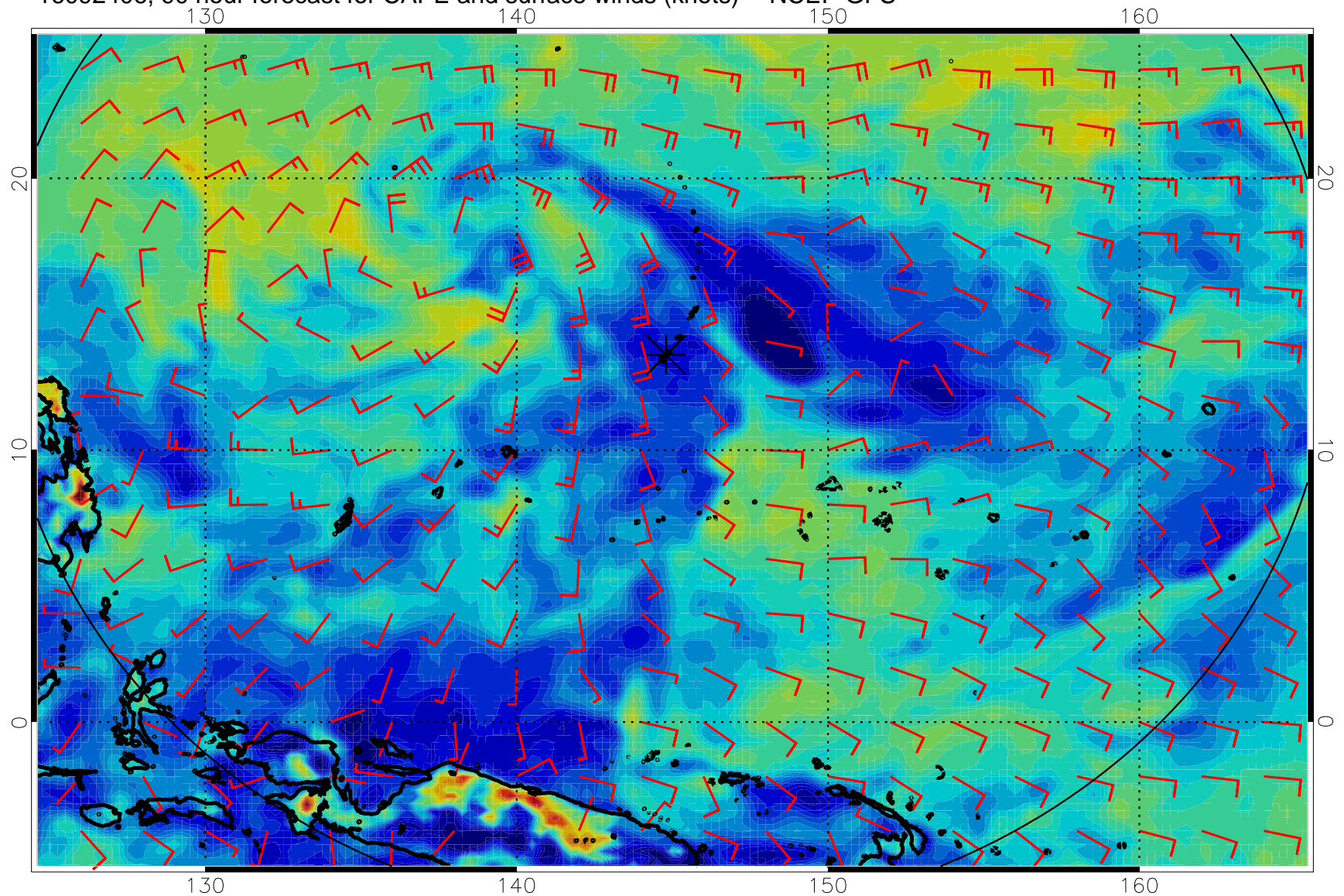
16092318, 78 hour forecast for CAPE and surface winds (knots) -- NCEP GFS



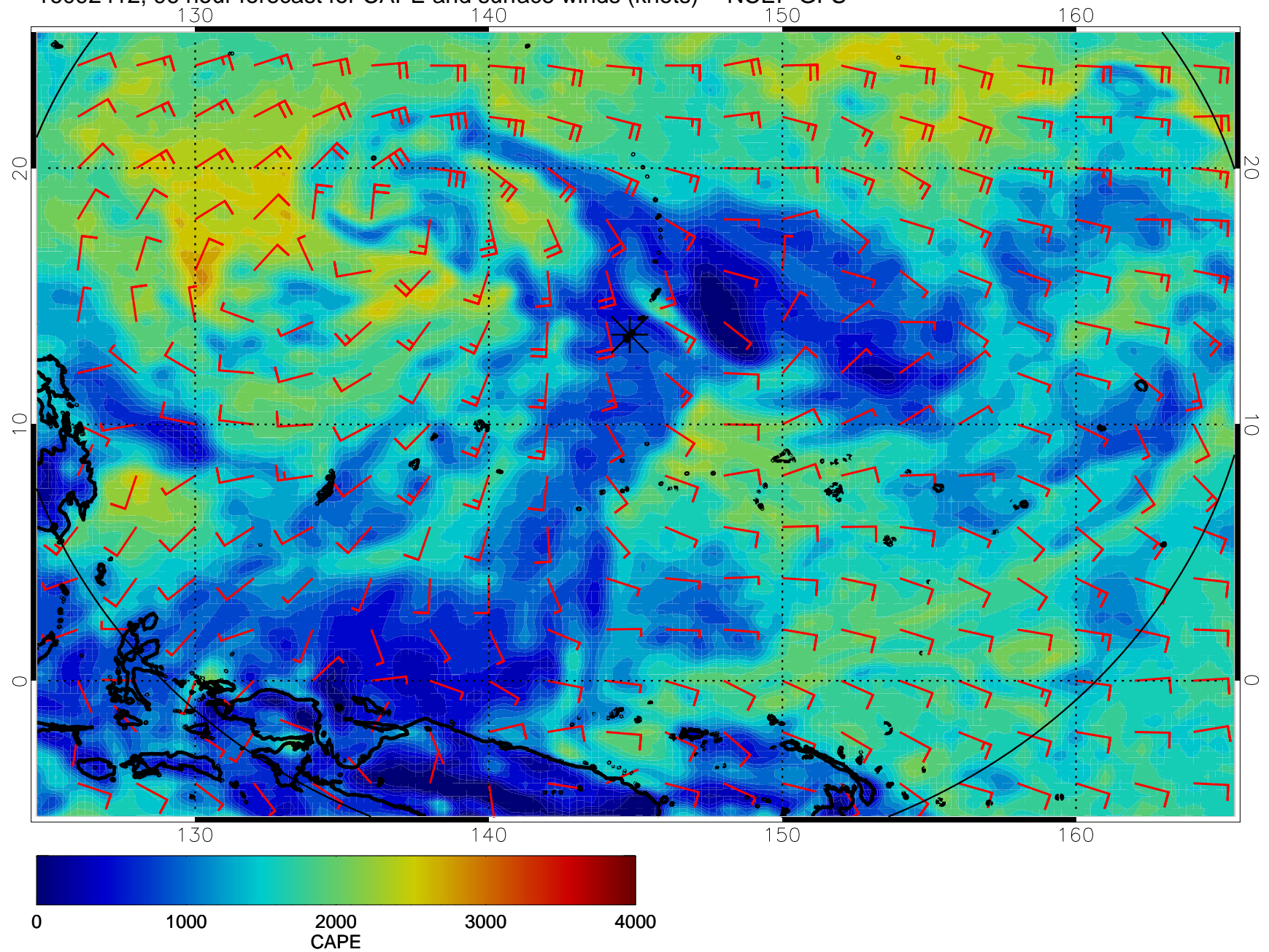
16092400, 84 hour forecast for CAPE and surface winds (knots) -- NCEP GFS



16092406, 90 hour forecast for CAPE and surface winds (knots) -- NCEP GFS

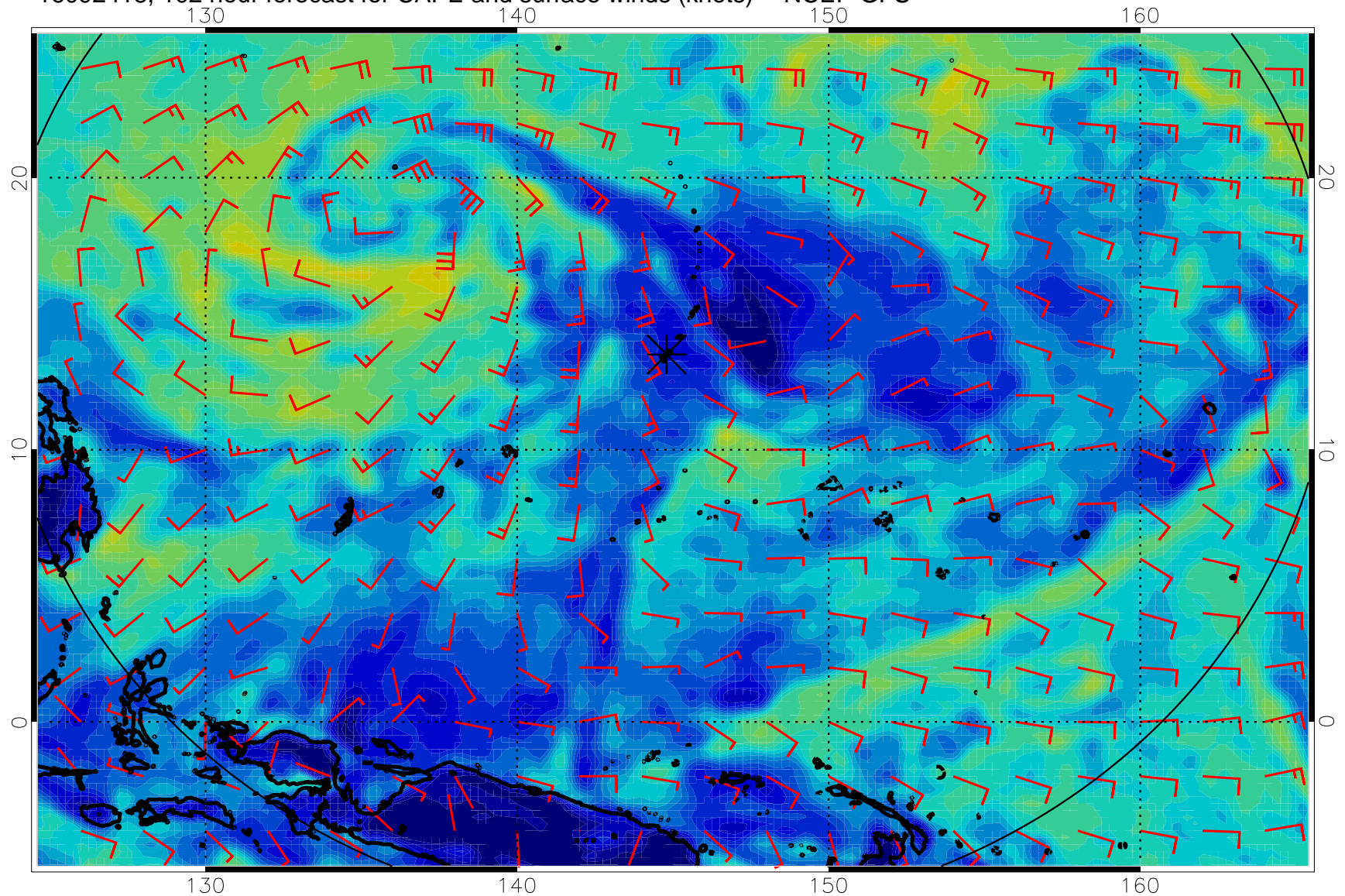


16092412, 96 hour forecast for CAPE and surface winds (knots) -- NCEP GFS

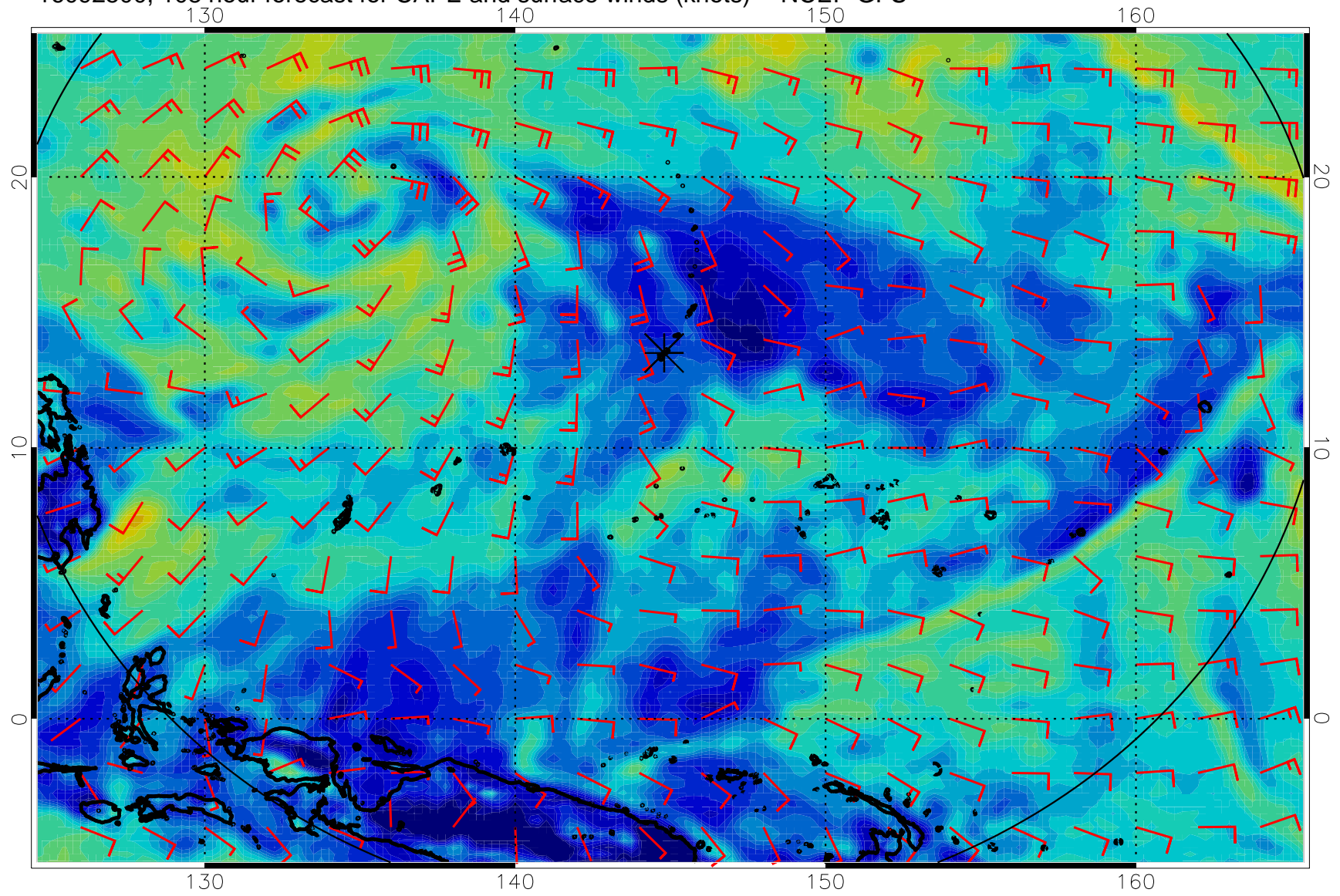




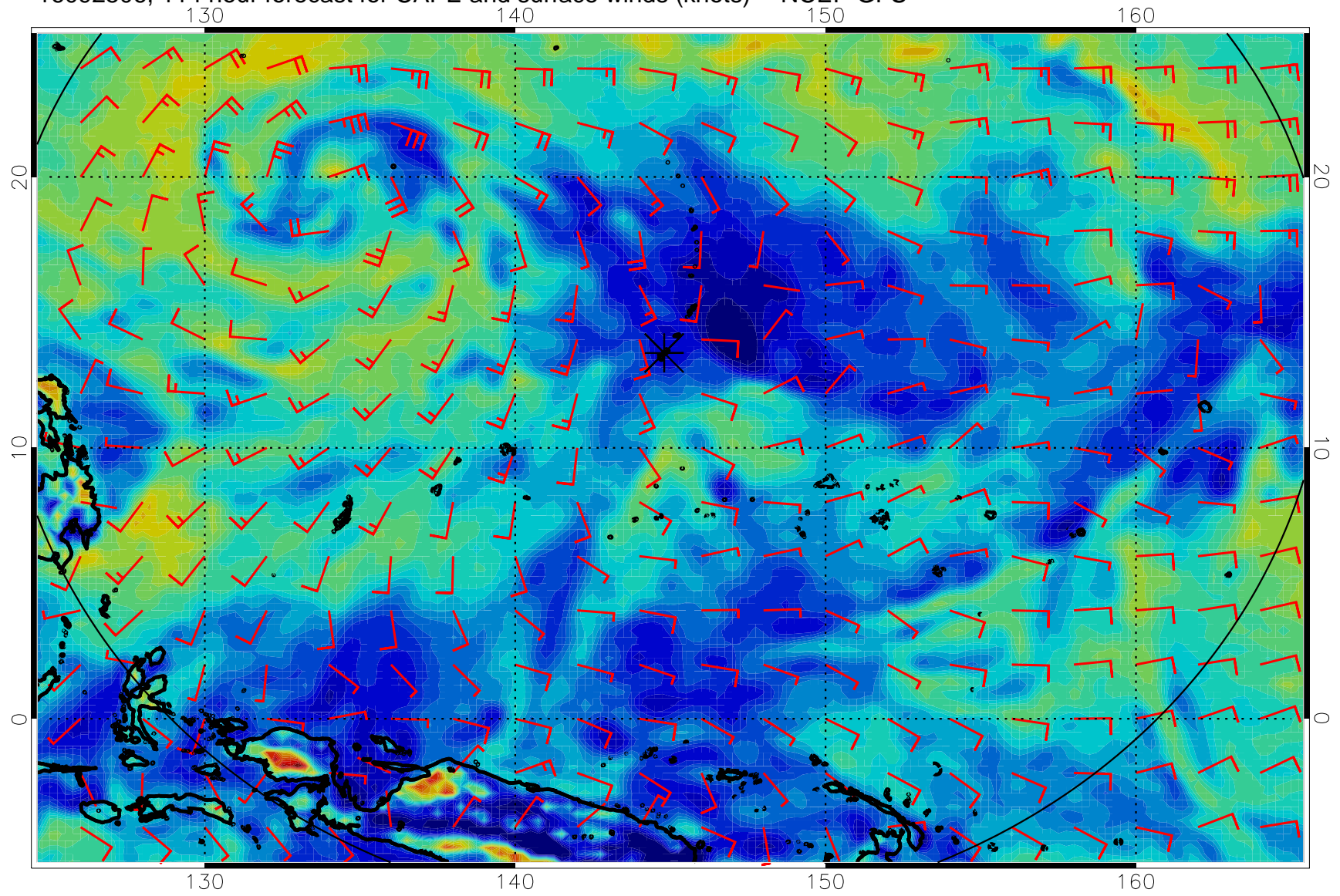
16092418, 102 hour forecast for CAPE and surface winds (knots) -- NCEP GFS



16092500, 108 hour forecast for CAPE and surface winds (knots) -- NCEP GFS



16092506, 114 hour forecast for CAPE and surface winds (knots) -- NCEP GFS



16092512, 120 hour forecast for CAPE and surface winds (knots) -- NCEP GFS

