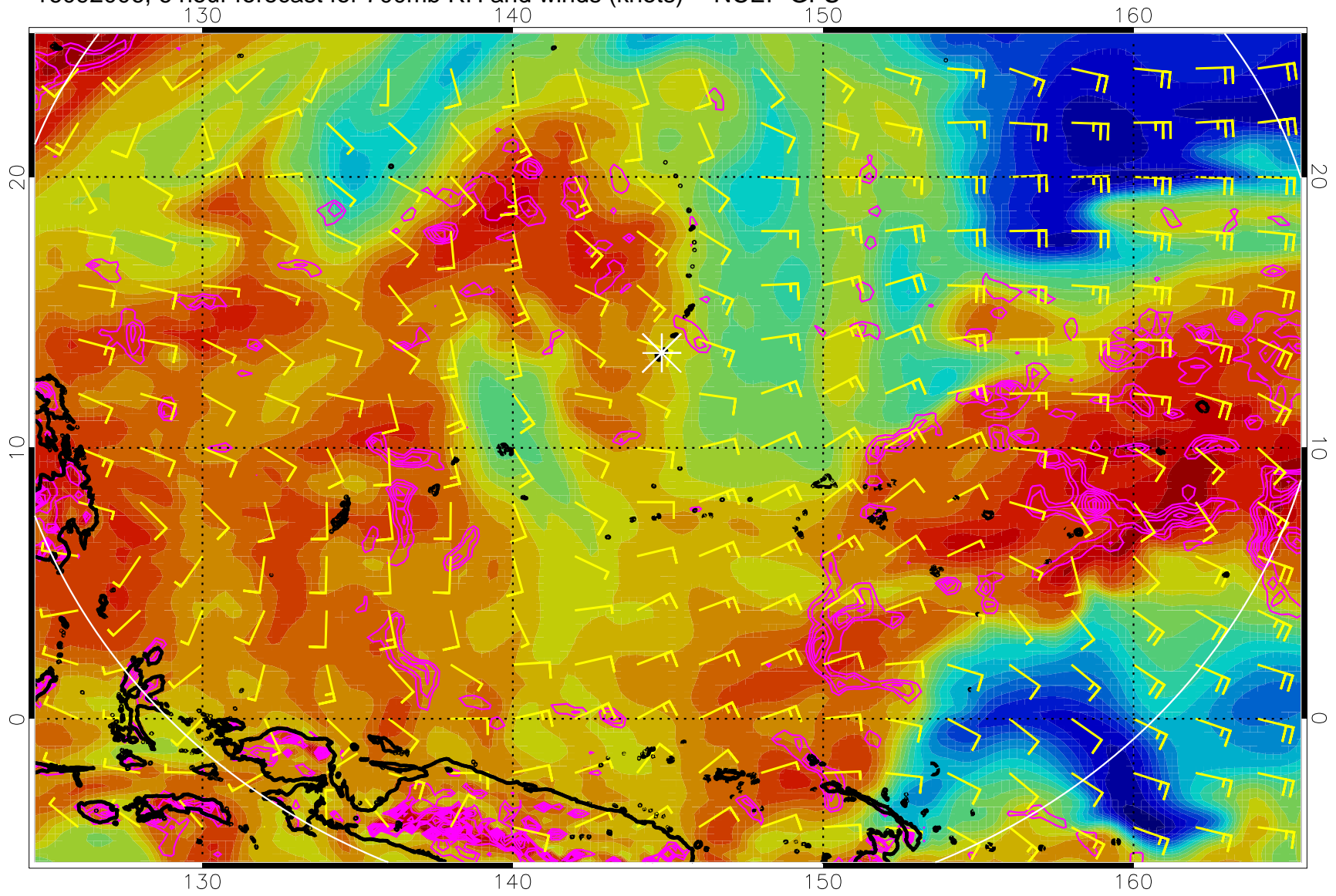
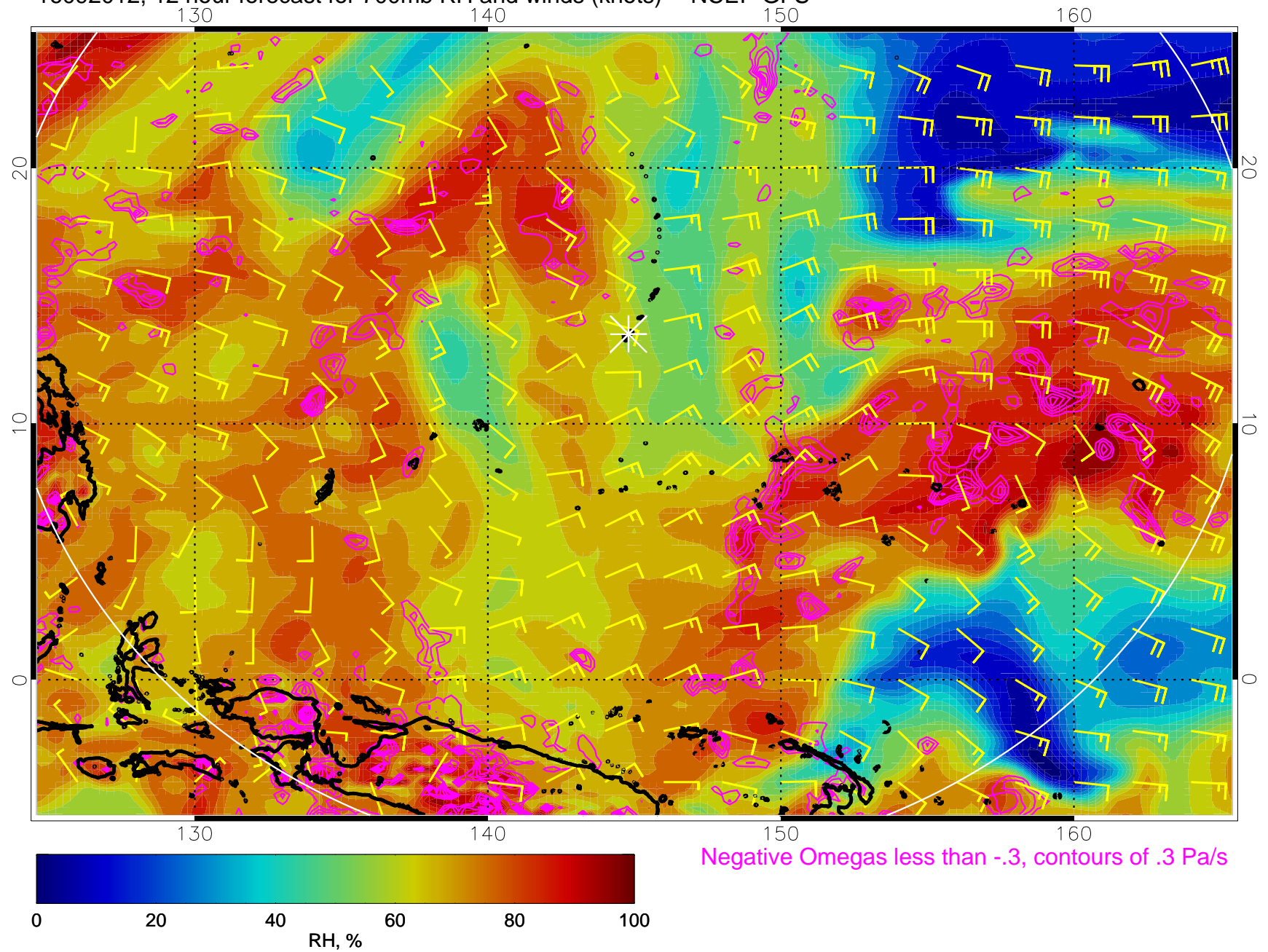


16092006, 6 hour forecast for 700mb RH and winds (knots) -- NCEP GFS

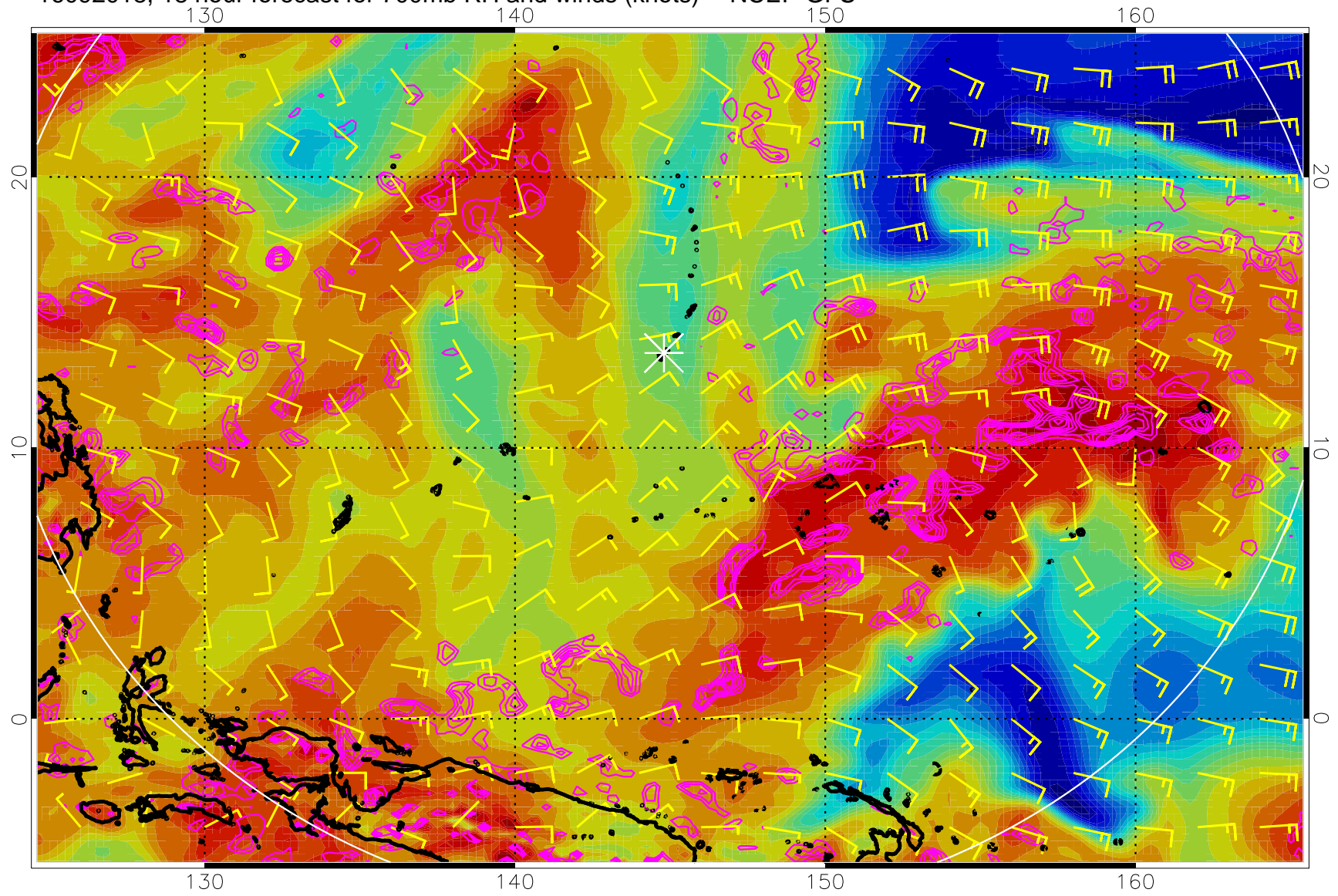


Negative Omegas less than  $-0.3$ , contours of  $0.3$  Pa/s

16092012, 12 hour forecast for 700mb RH and winds (knots) -- NCEP GFS

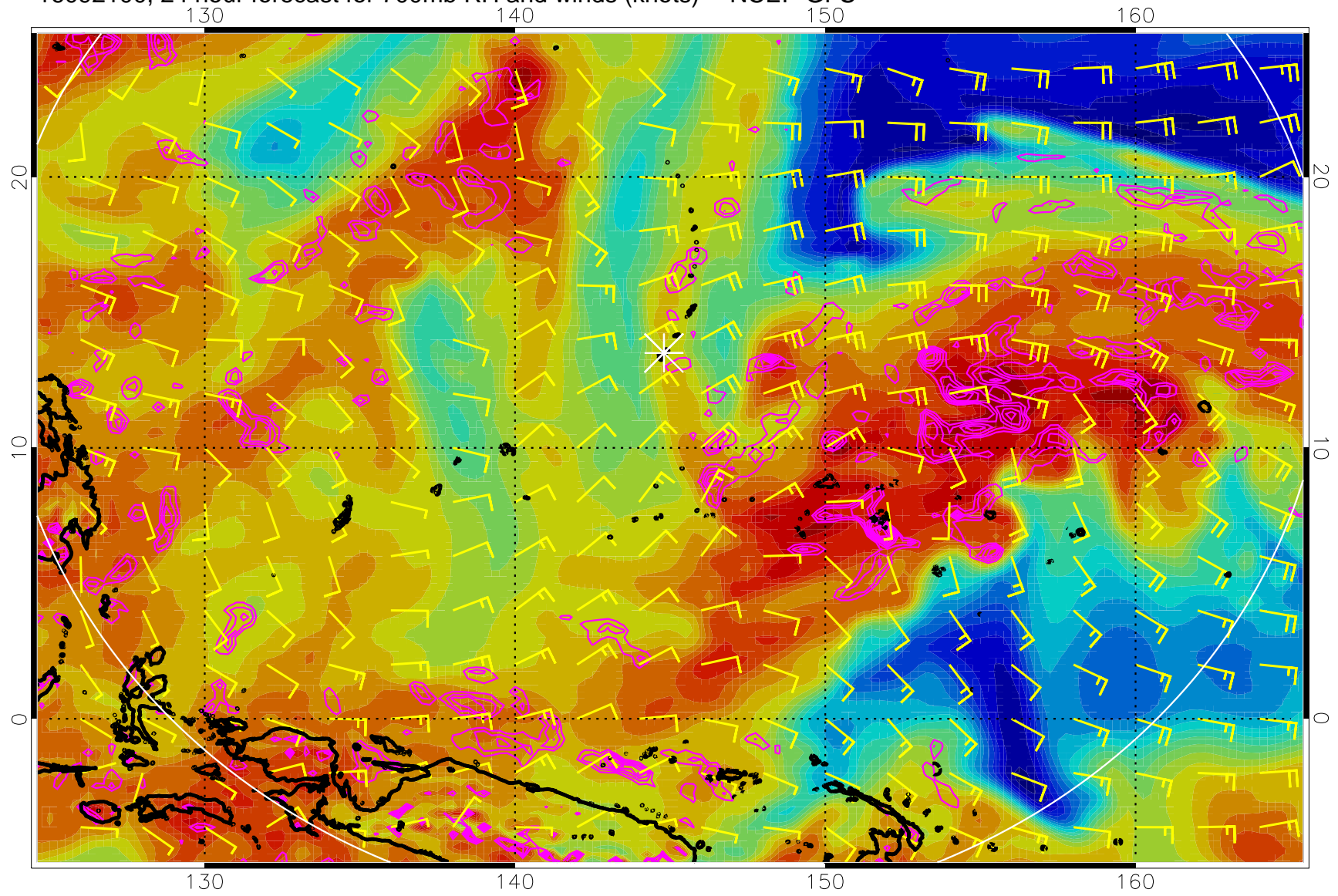


16092018, 18 hour forecast for 700mb RH and winds (knots) -- NCEP GFS



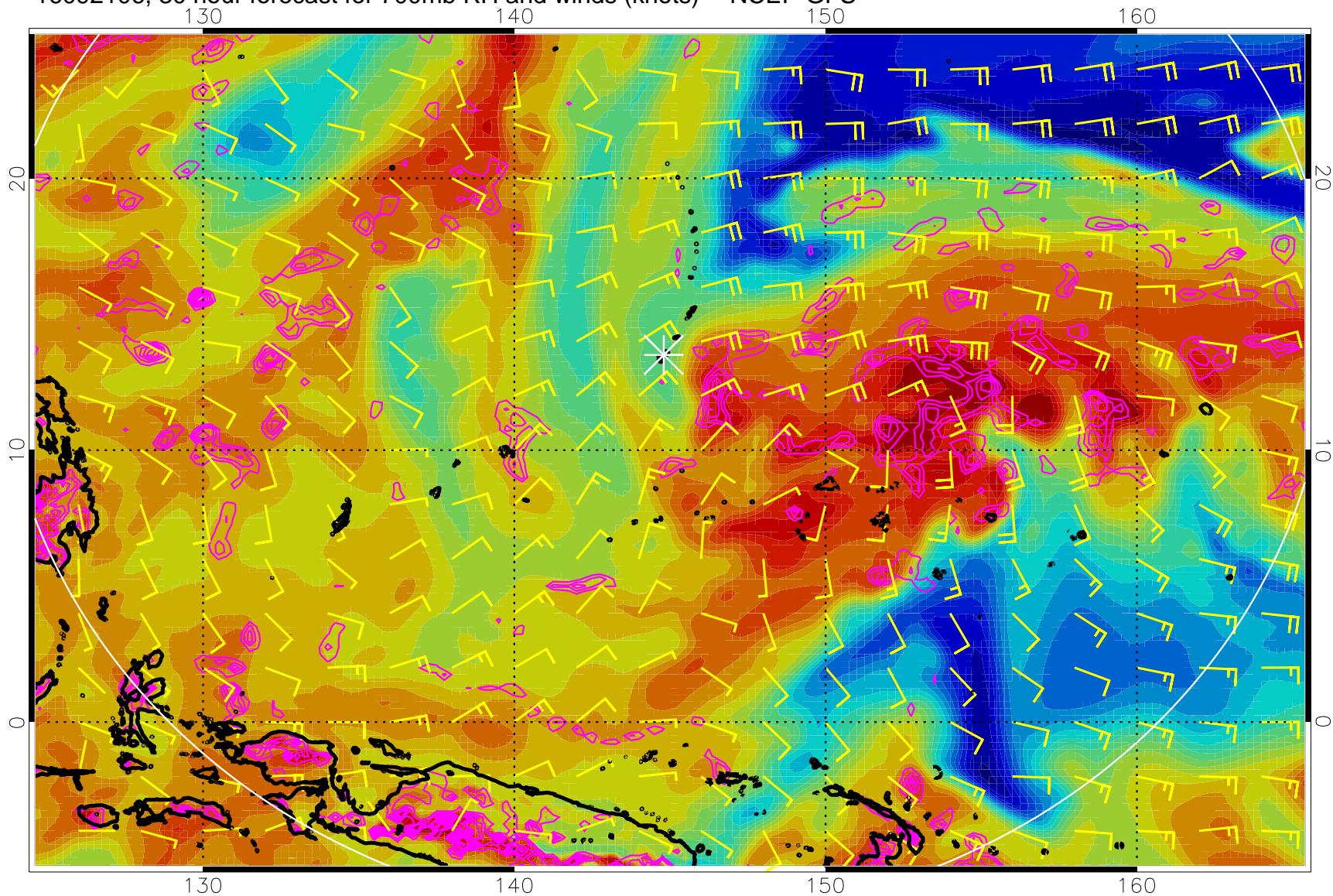
Negative Omegas less than  $-0.3$ , contours of  $0.3$  Pa/s

16092100, 24 hour forecast for 700mb RH and winds (knots) -- NCEP GFS



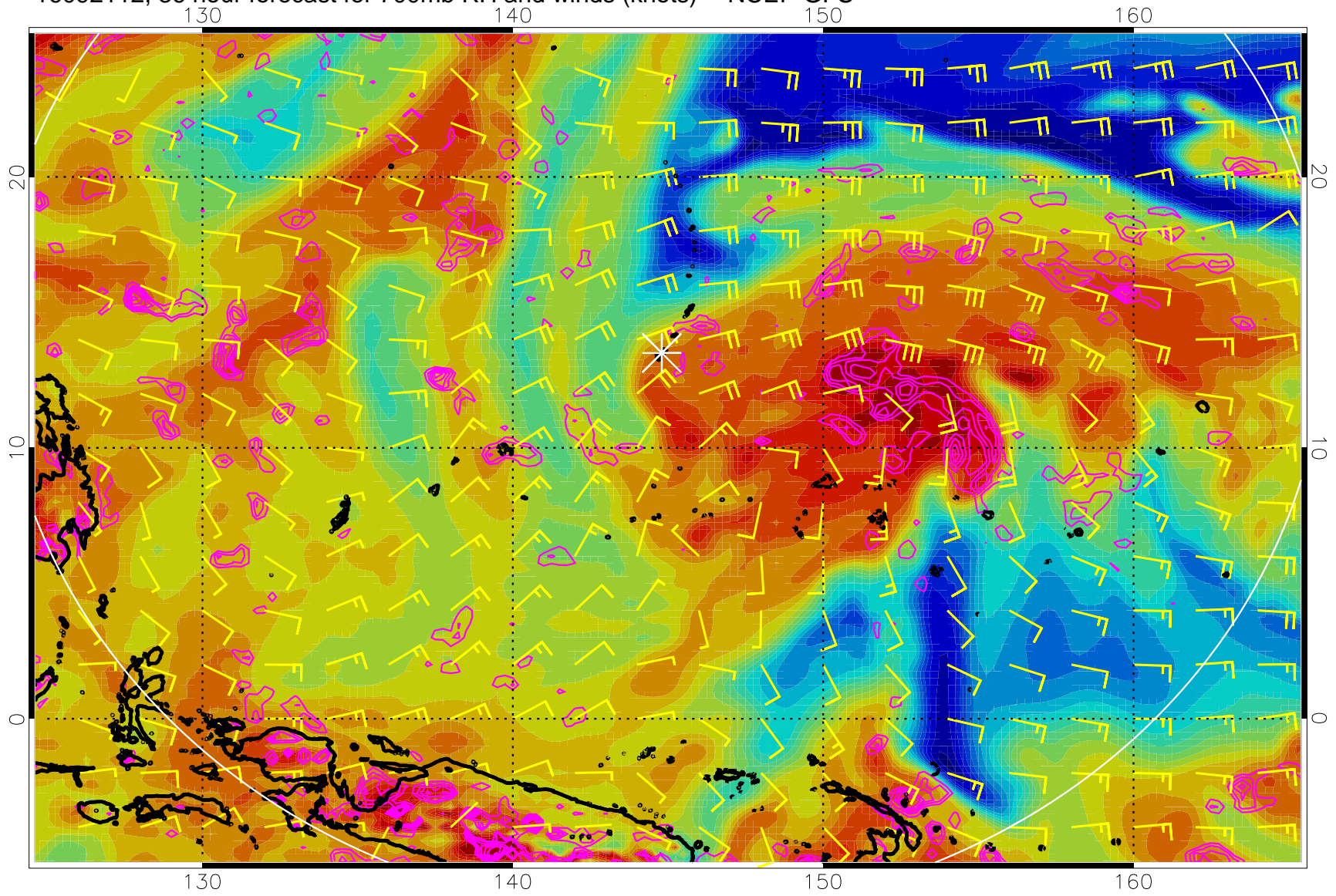
Negative Omegas less than  $-0.3$ , contours of  $0.3$  Pa/s

16092106, 30 hour forecast for 700mb RH and winds (knots) -- NCEP GFS



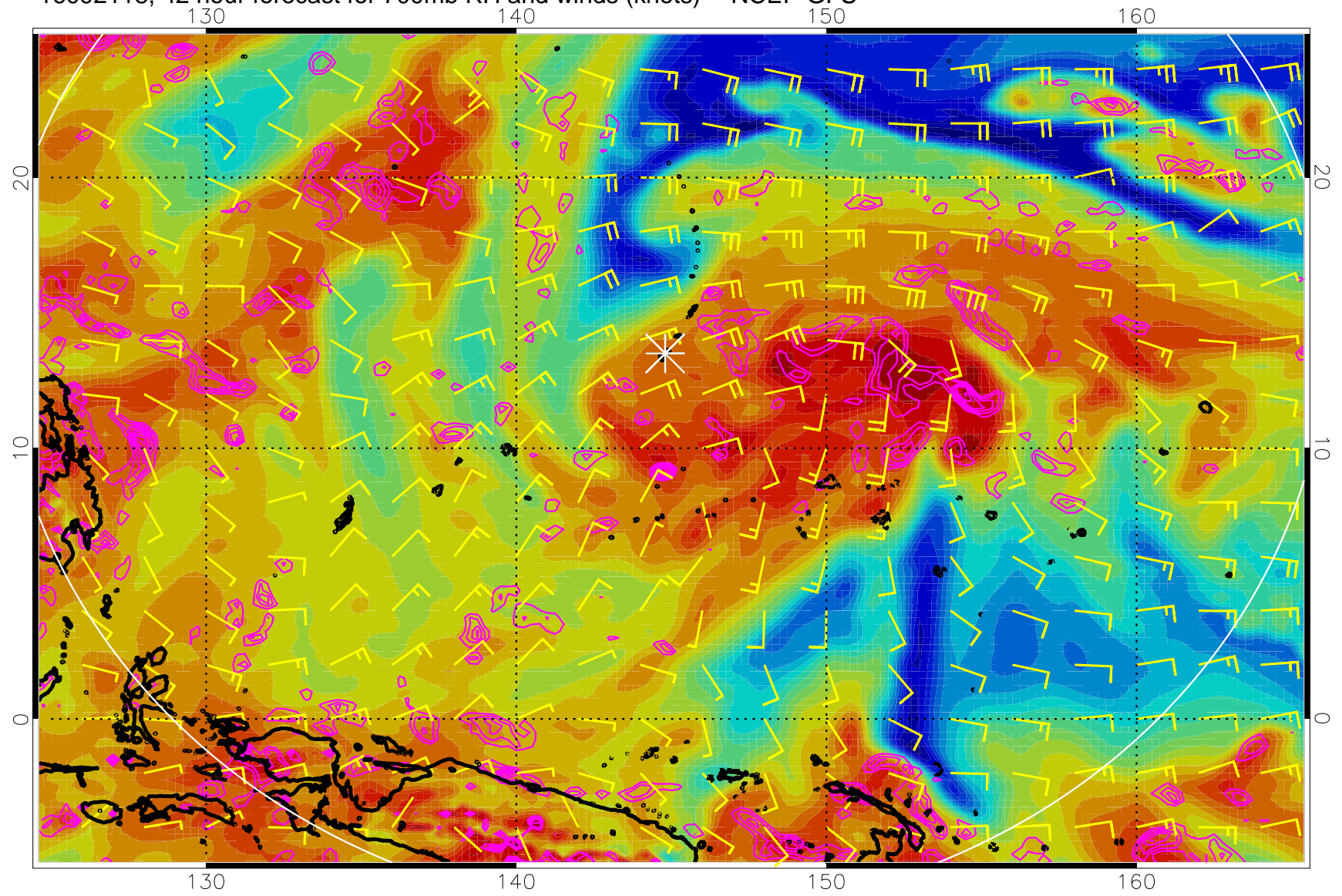
Negative Omegas less than  $-0.3$ , contours of  $0.3$  Pa/s

16092112, 36 hour forecast for 700mb RH and winds (knots) -- NCEP GFS



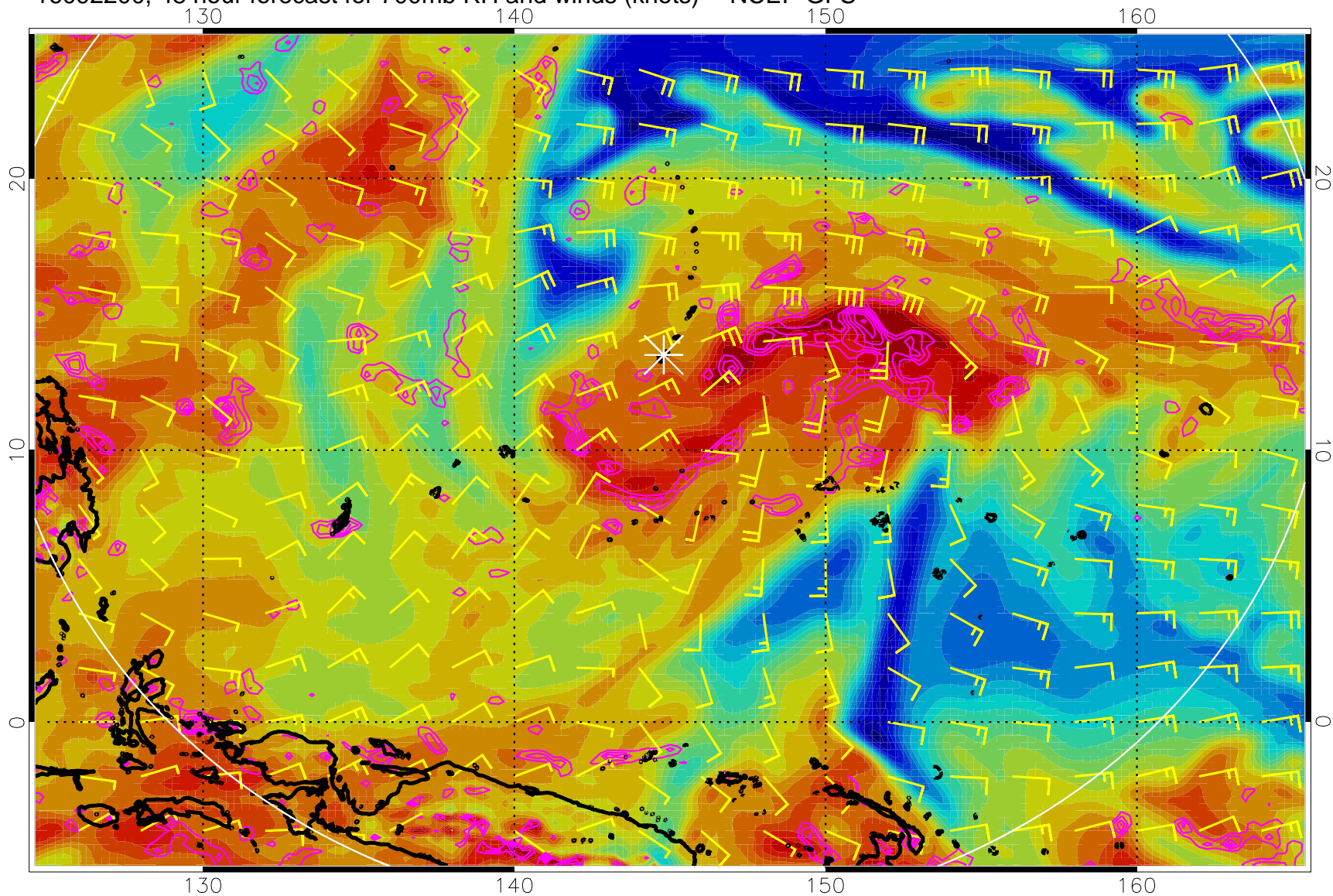
Negative Omegas less than  $-0.3$ , contours of  $0.3$  Pa/s

16092118, 42 hour forecast for 700mb RH and winds (knots) -- NCEP GFS



Negative Omegas less than  $-0.3$ , contours of  $0.3$  Pa/s

16092200, 48 hour forecast for 700mb RH and winds (knots) -- NCEP GFS

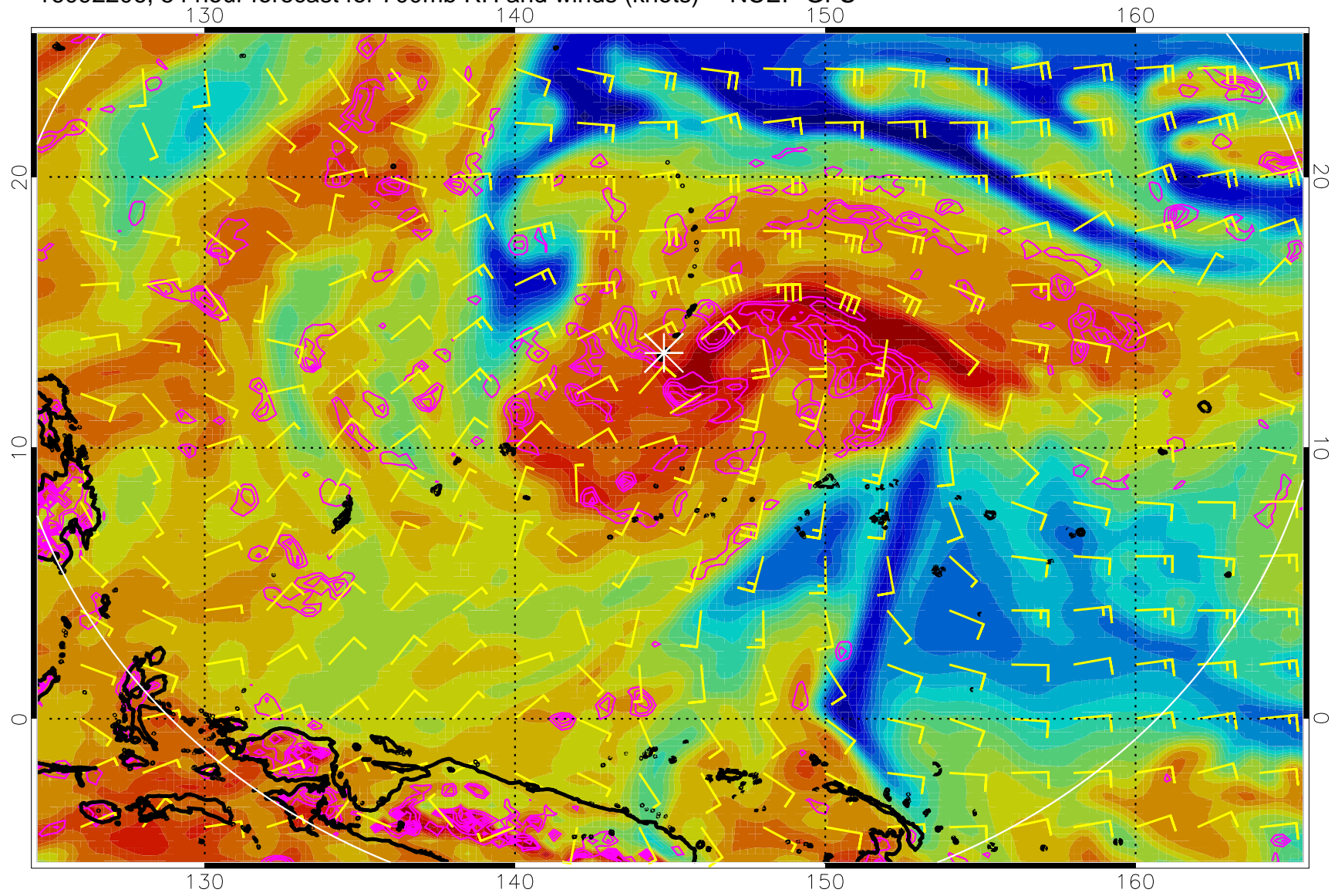


0 20 40 60 80 100  
RH, %

Negative Omegas less than  $-0.3$ , contours of  $0.3$  Pa/s

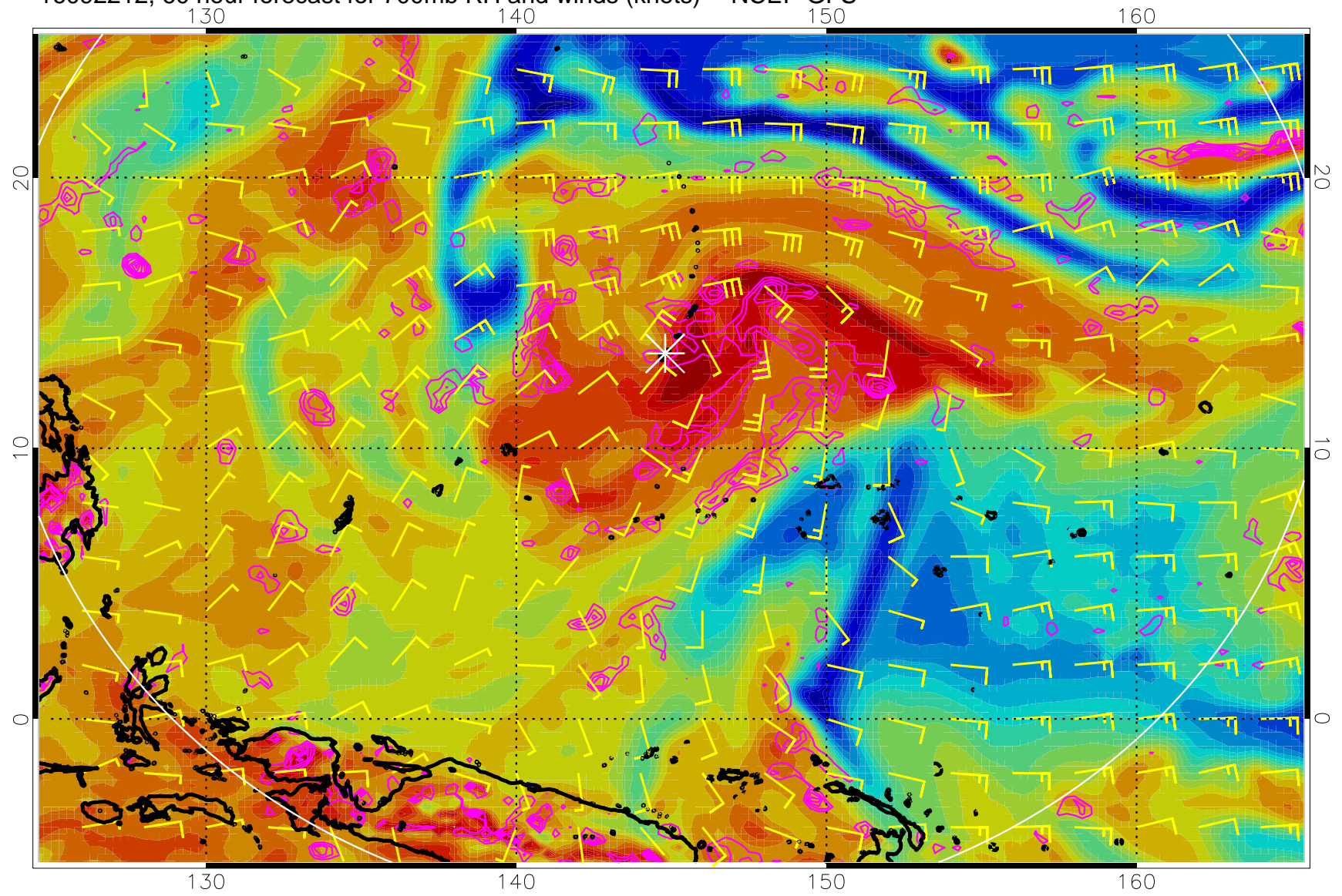


16092206, 54 hour forecast for 700mb RH and winds (knots) -- NCEP GFS



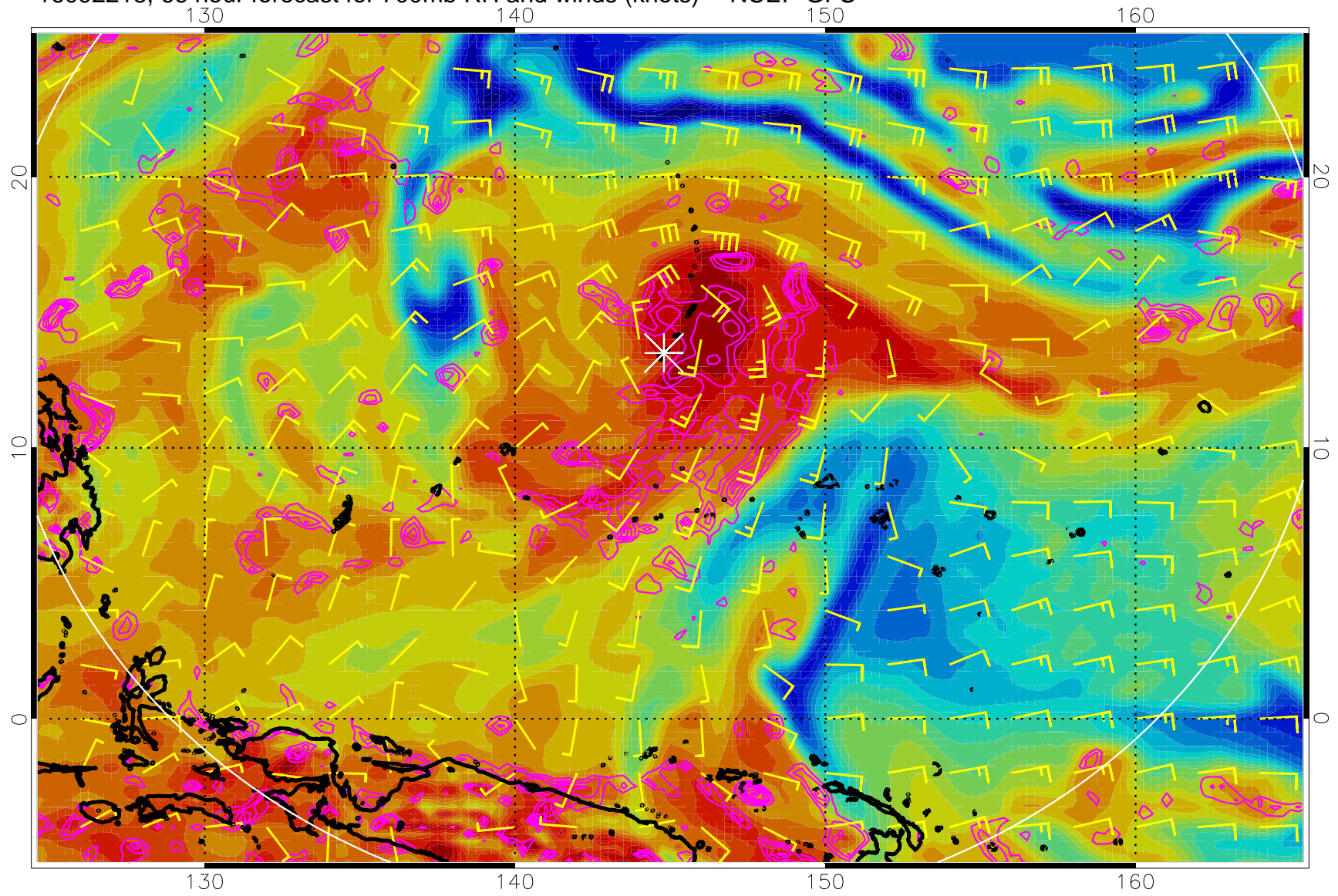
Negative Omegas less than  $-0.3$ , contours of  $0.3$  Pa/s

16092212, 60 hour forecast for 700mb RH and winds (knots) -- NCEP GFS



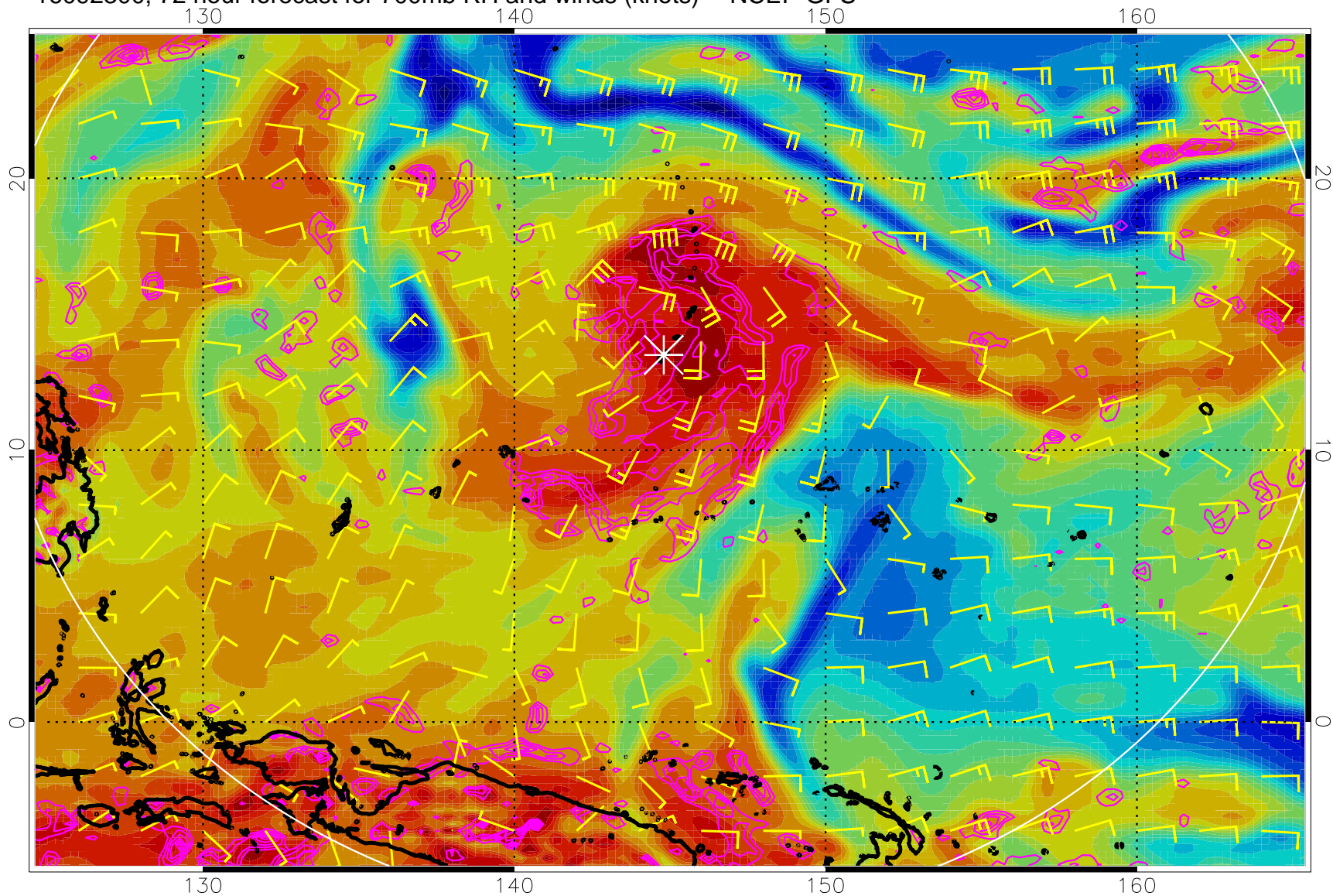
Negative Omegas less than  $-0.3$ , contours of  $0.3$  Pa/s

16092218, 66 hour forecast for 700mb RH and winds (knots) -- NCEP GFS



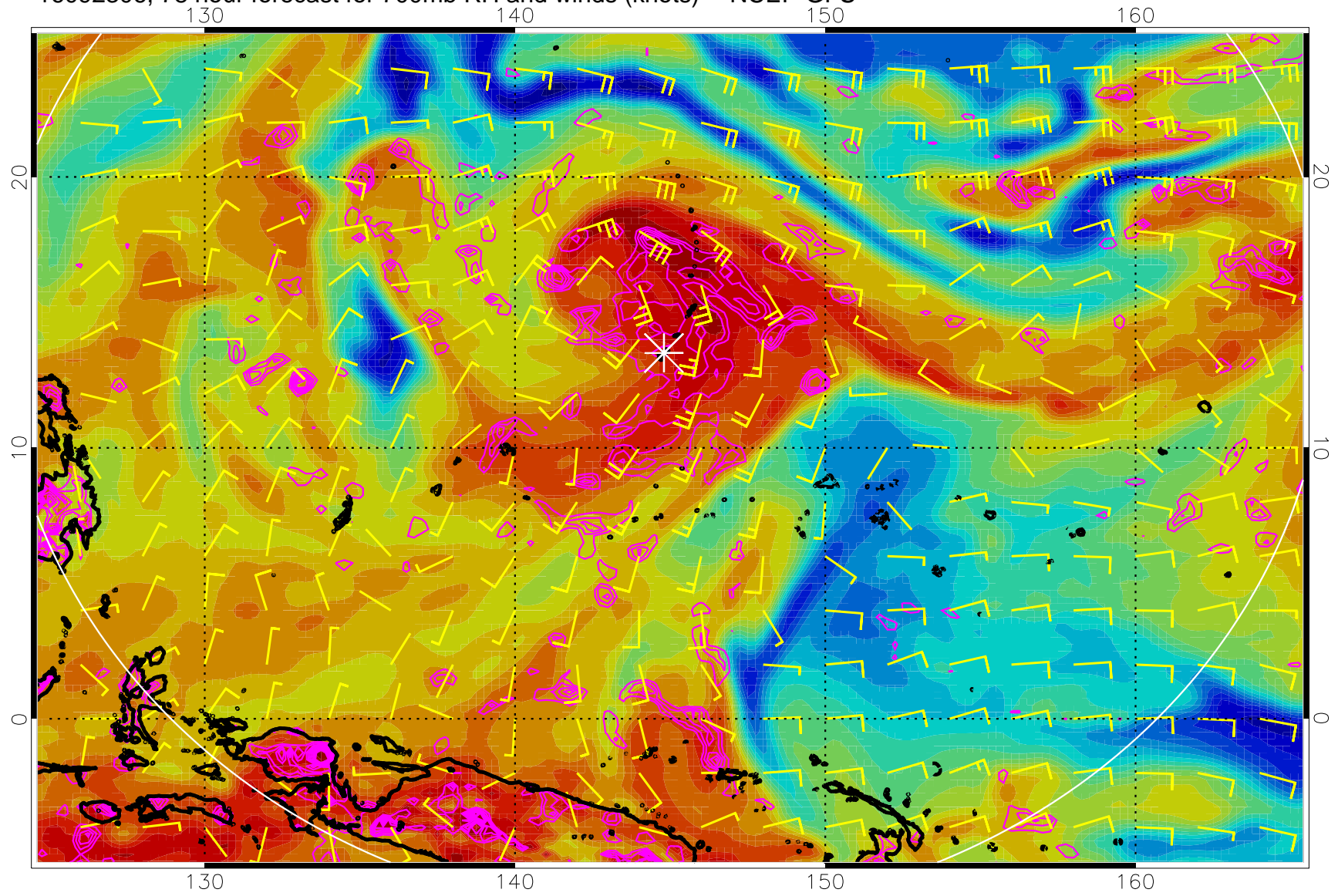
Negative Omegas less than  $-0.3$ , contours of  $0.3$  Pa/s

16092300, 72 hour forecast for 700mb RH and winds (knots) -- NCEP GFS



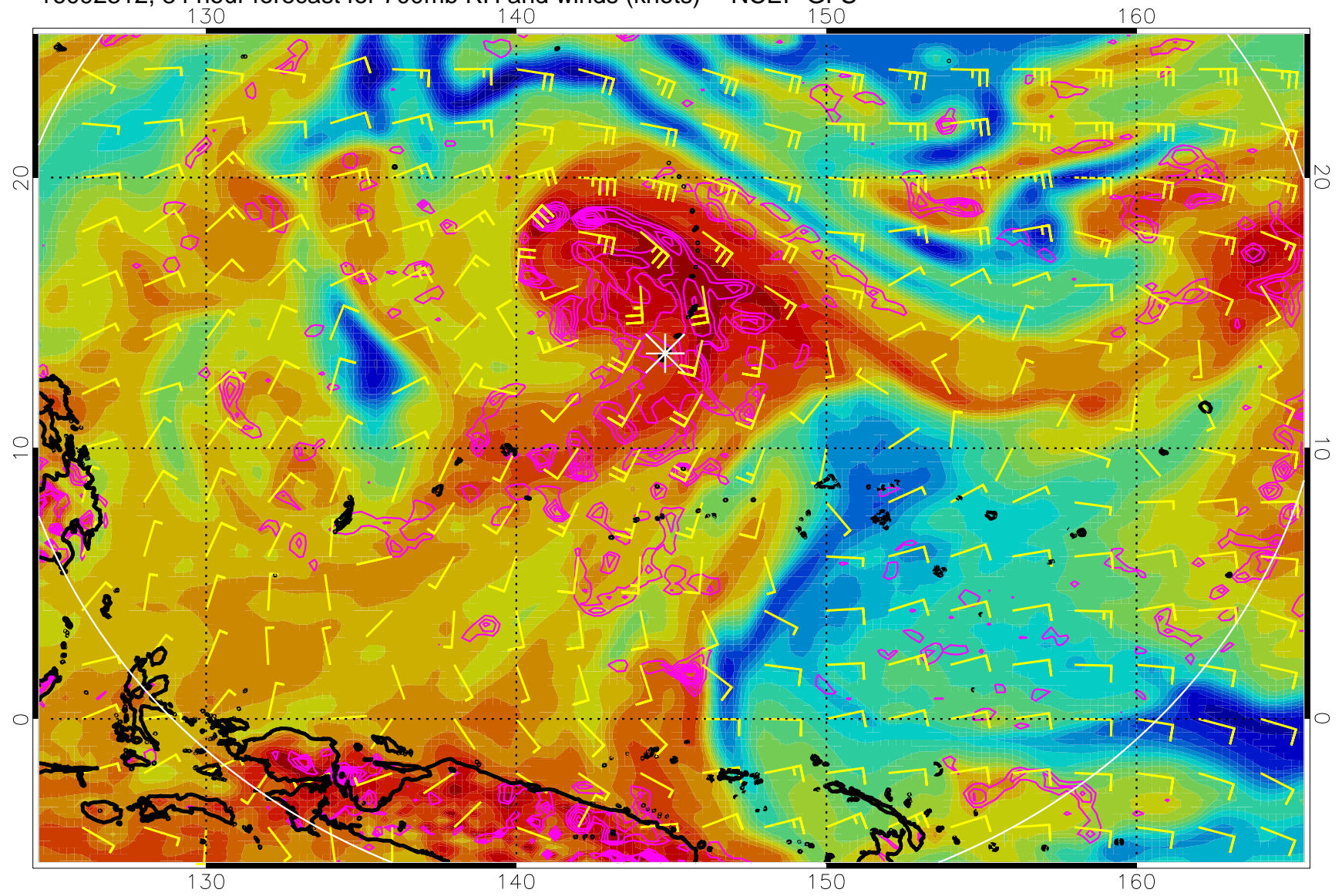
Negative Omegas less than -.3, contours of .3 Pa/s

16092306, 78 hour forecast for 700mb RH and winds (knots) -- NCEP GFS



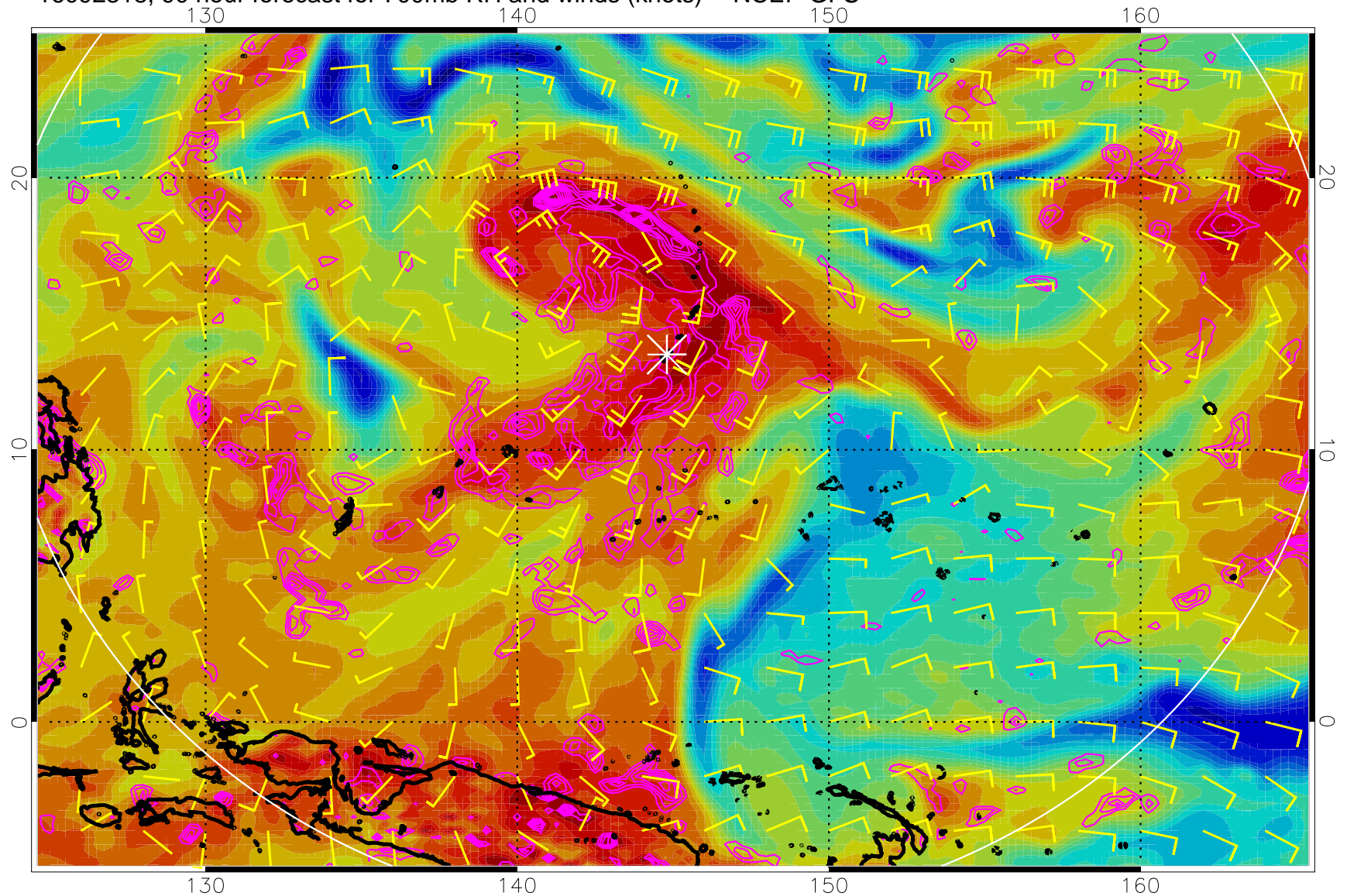
Negative Omegas less than  $-0.3$ , contours of  $0.3$  Pa/s

16092312, 84 hour forecast for 700mb RH and winds (knots) -- NCEP GFS



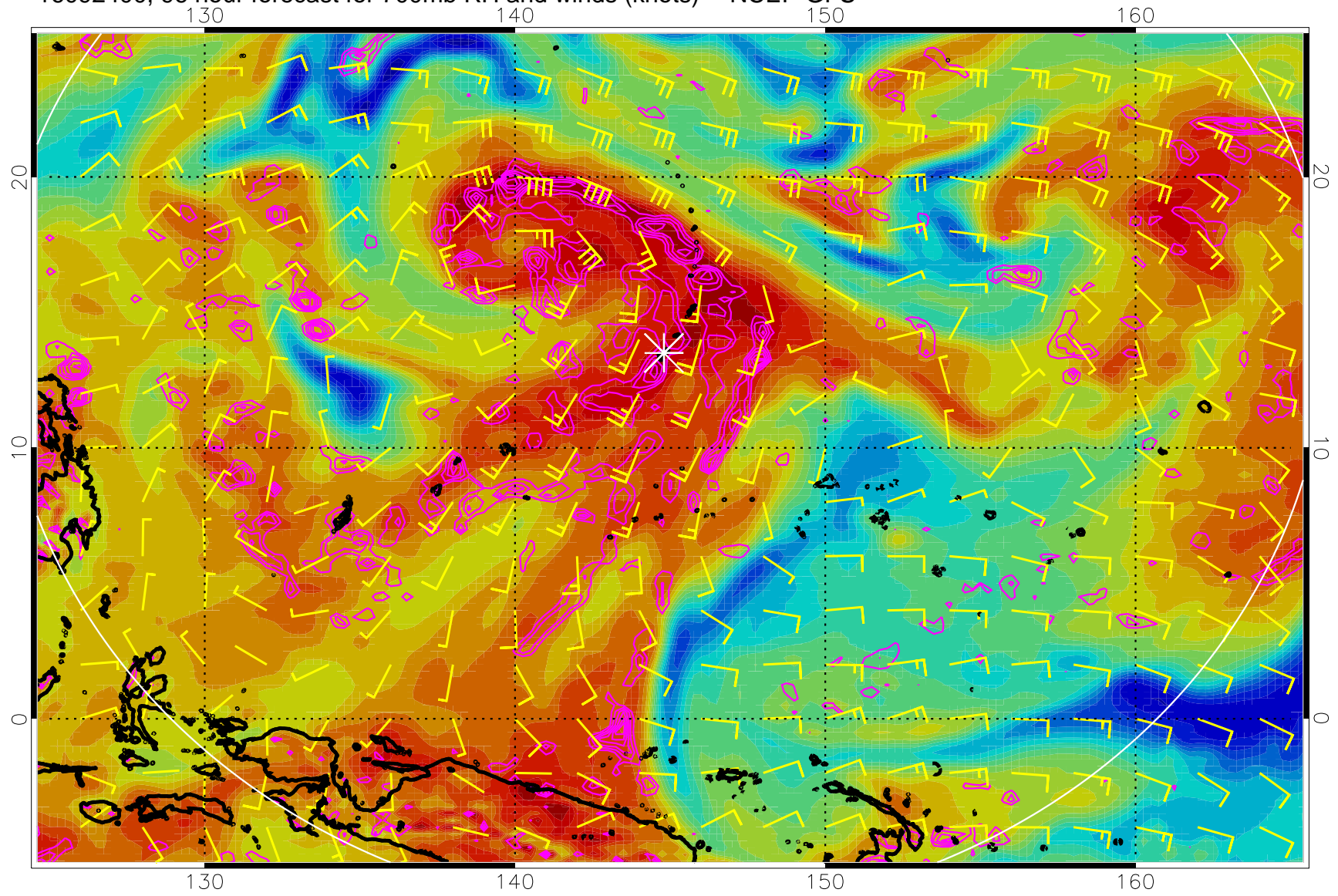
Negative Omegas less than  $-0.3$ , contours of  $0.3$  Pa/s

16092318, 90 hour forecast for 700mb RH and winds (knots) -- NCEP GFS



Negative Omegas less than  $-0.3$ , contours of  $0.3$  Pa/s

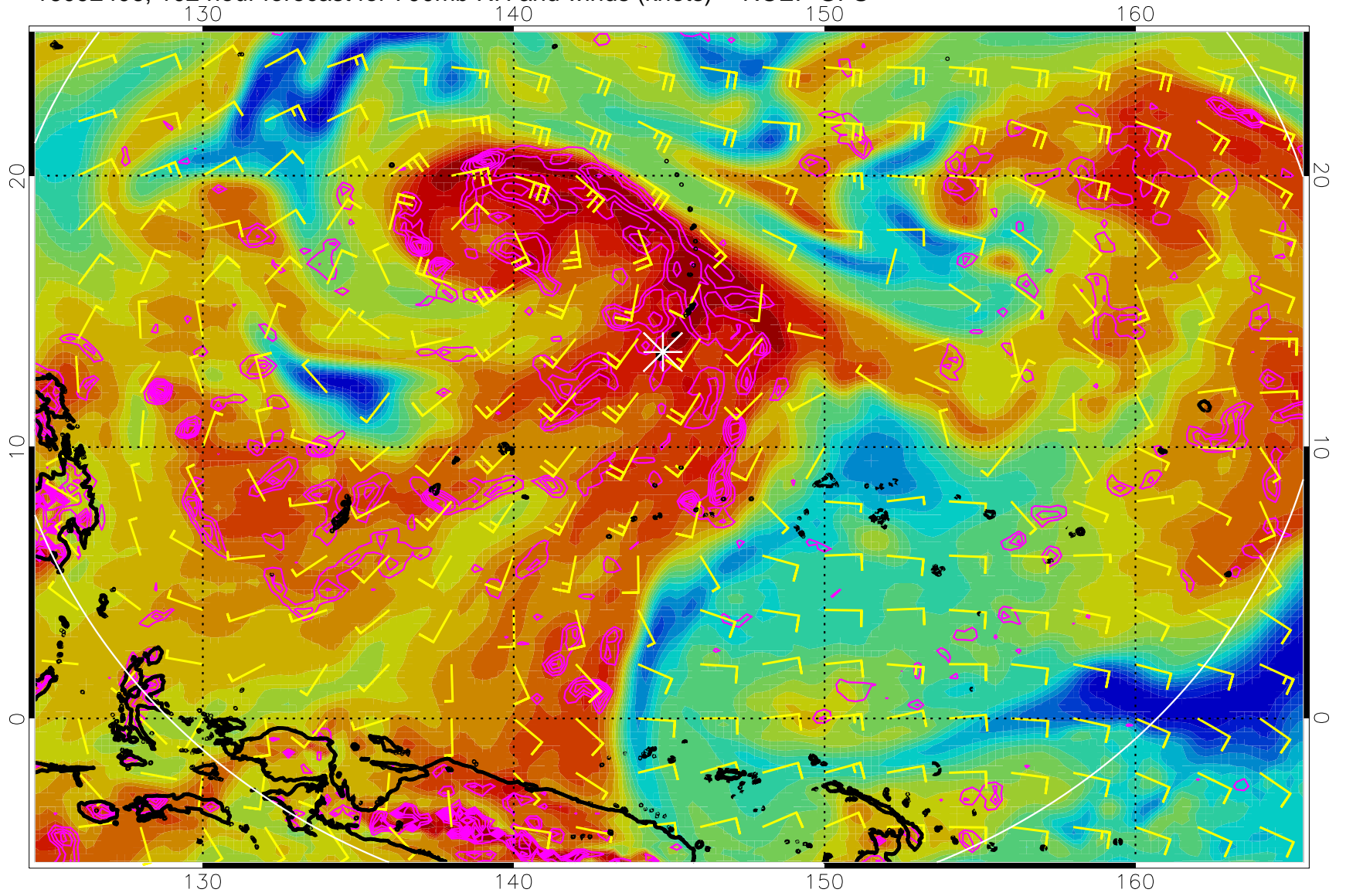
16092400, 96 hour forecast for 700mb RH and winds (knots) -- NCEP GFS



Negative Omegas less than  $-0.3$ , contours of  $0.3$  Pa/s

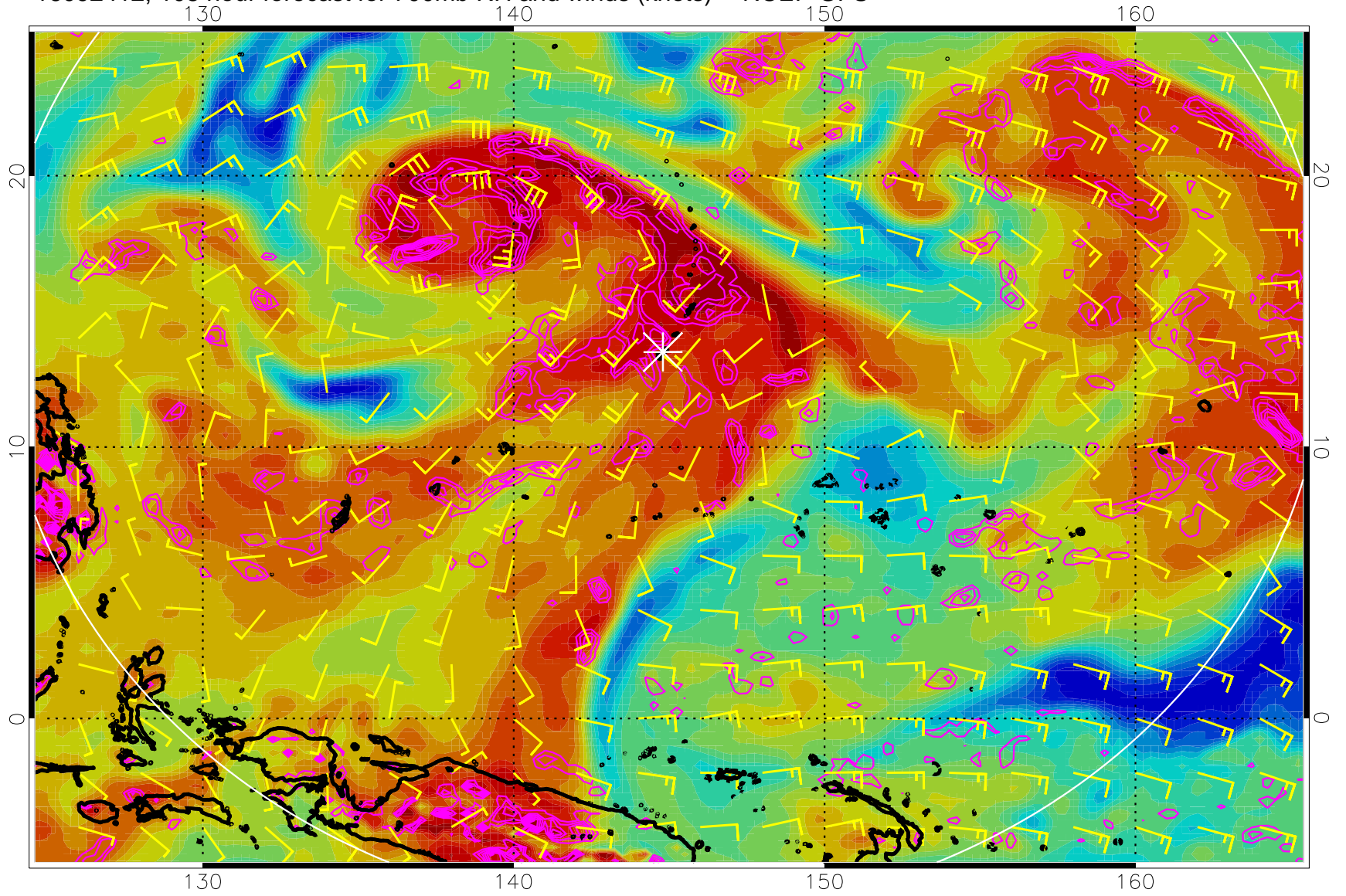


16092406, 102 hour forecast for 700mb RH and winds (knots) -- NCEP GFS



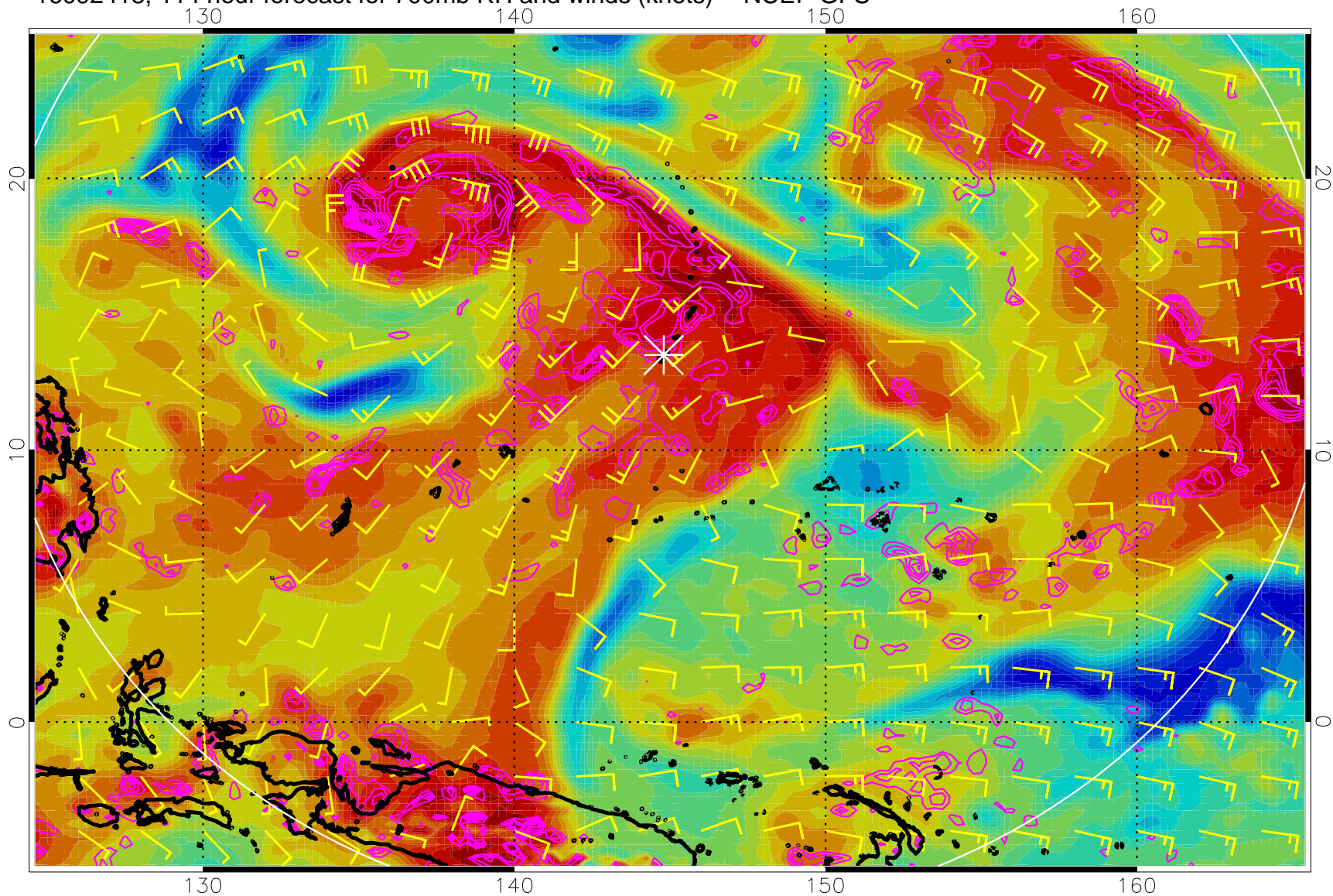
Negative Omegas less than -.3, contours of .3 Pa/s

16092412, 108 hour forecast for 700mb RH and winds (knots) -- NCEP GFS



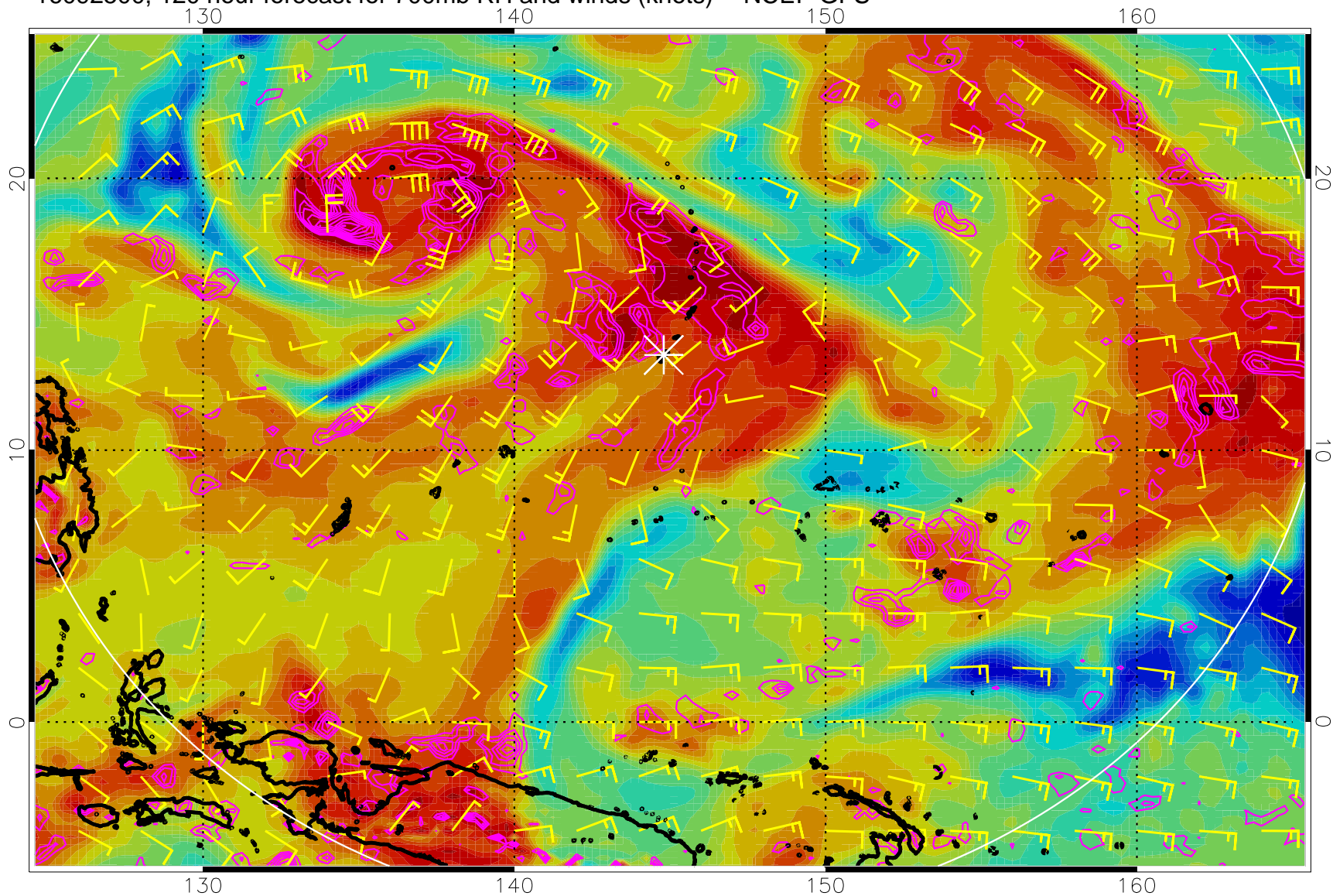
Negative Omegas less than -.3, contours of .3 Pa/s

16092418, 114 hour forecast for 700mb RH and winds (knots) -- NCEP GFS



Negative Omegas less than  $-.3$ , contours of  $.3$  Pa/s

16092500, 120 hour forecast for 700mb RH and winds (knots) -- NCEP GFS



Negative Omegas less than  $-.3$ , contours of  $.3$  Pa/s