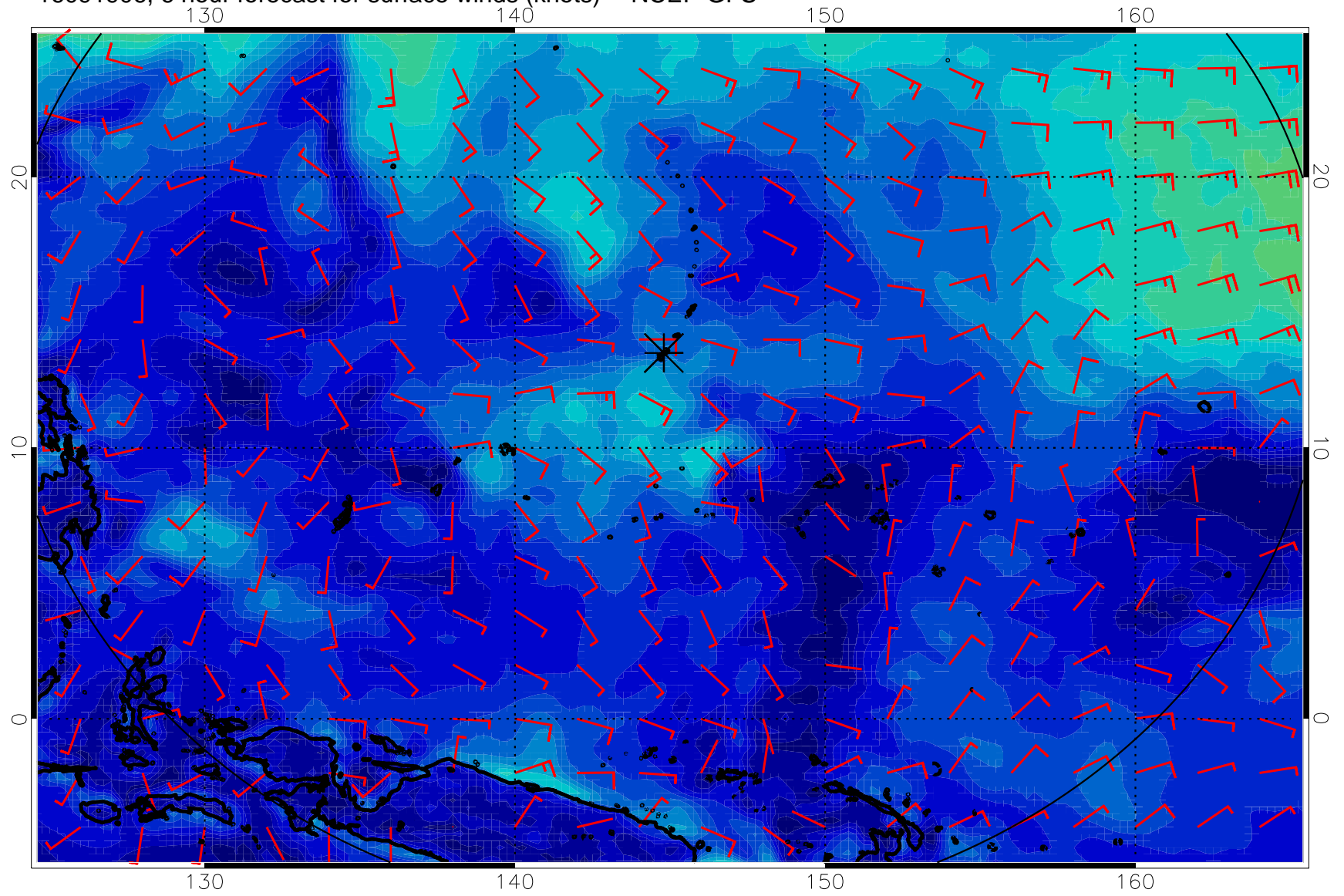
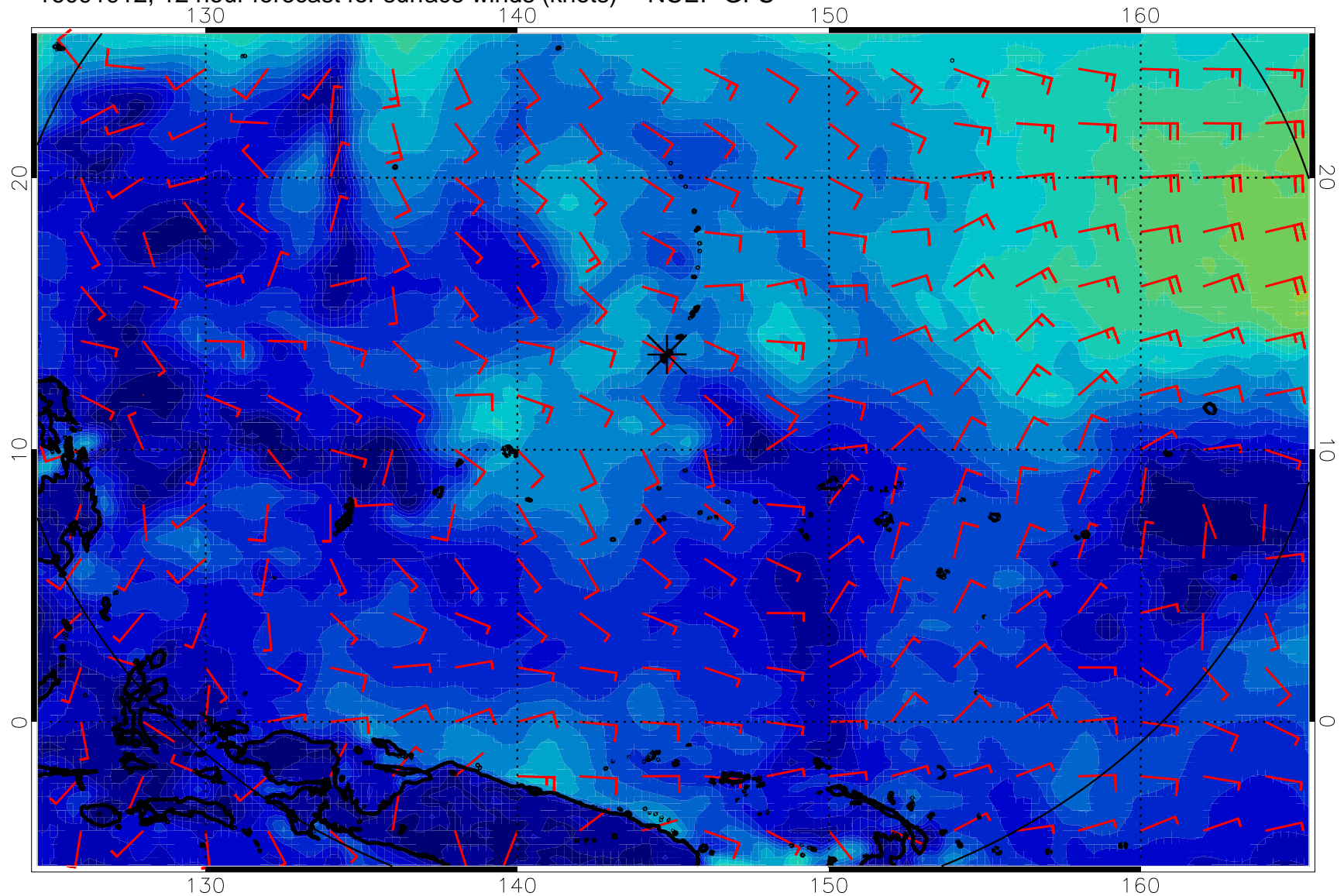


16091906, 6 hour forecast for surface winds (knots) -- NCEP GFS



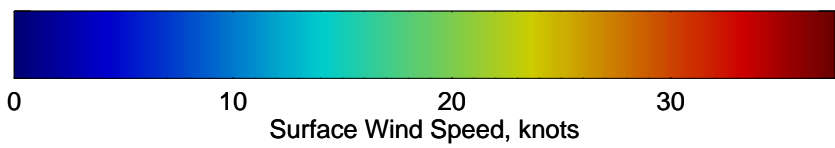
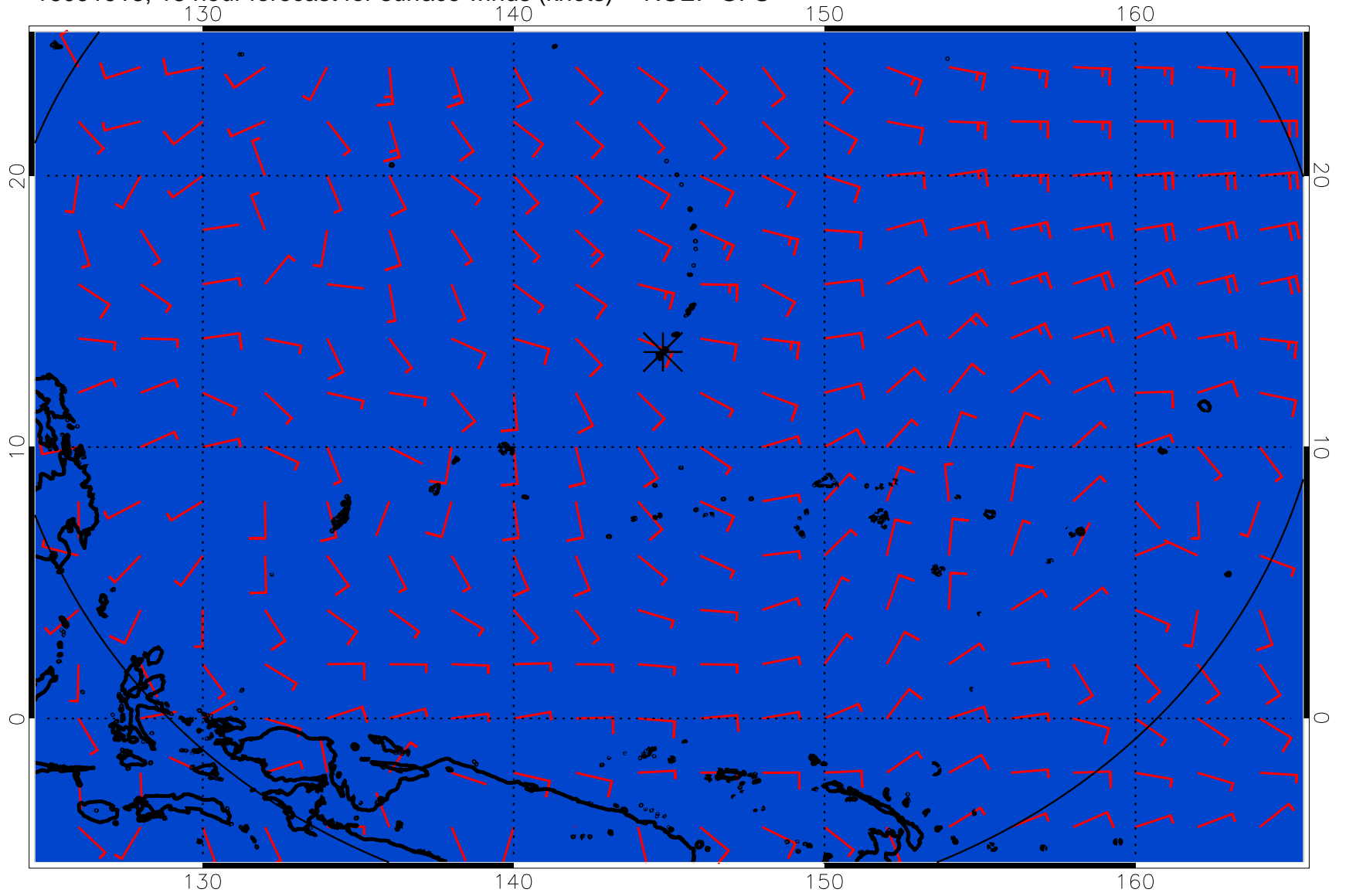
0      10      20      30  
Surface Wind Speed, knots

16091912, 12 hour forecast for surface winds (knots) -- NCEP GFS

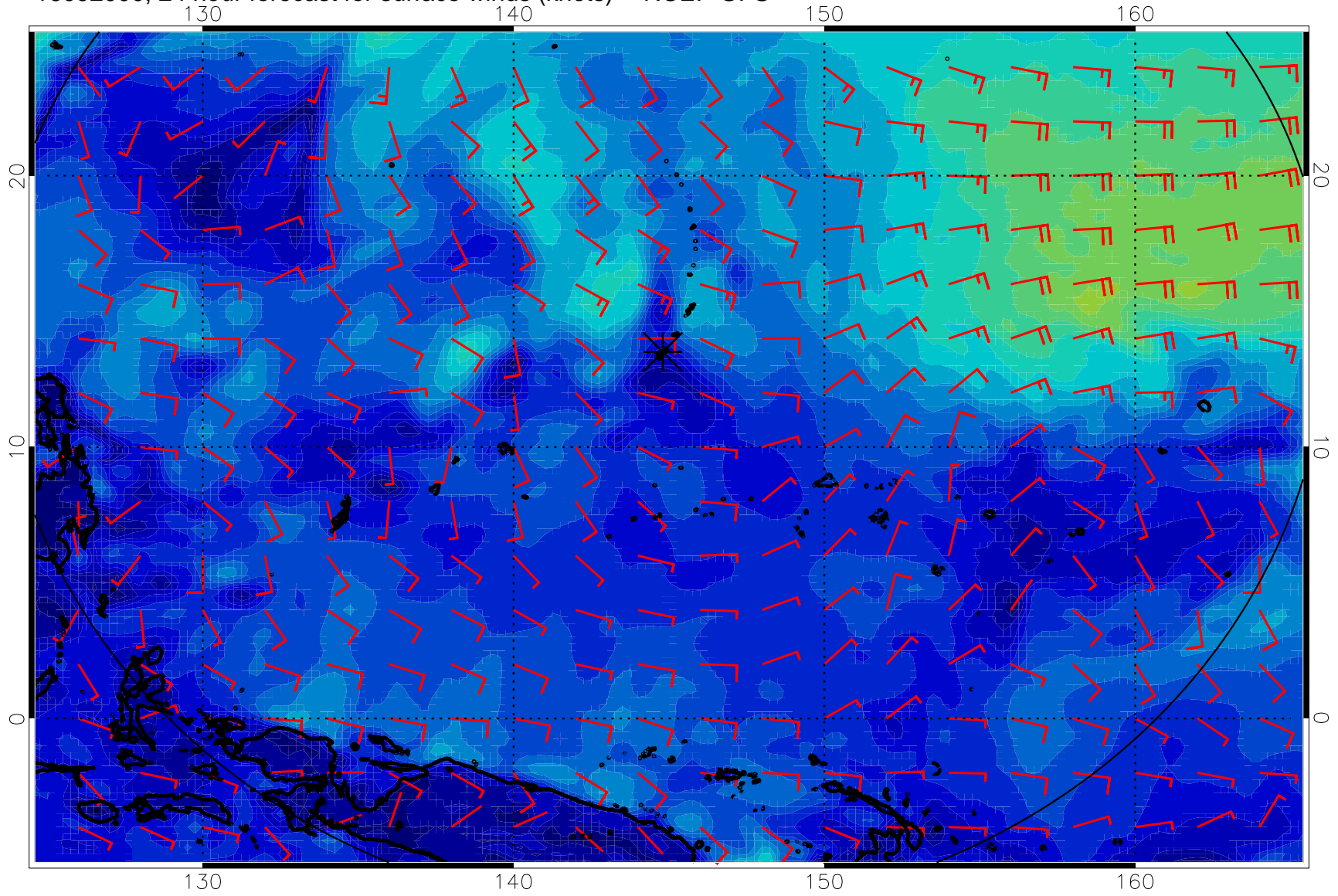


0      10      20      30  
Surface Wind Speed, knots

16091918, 18 hour forecast for surface winds (knots) -- NCEP GFS

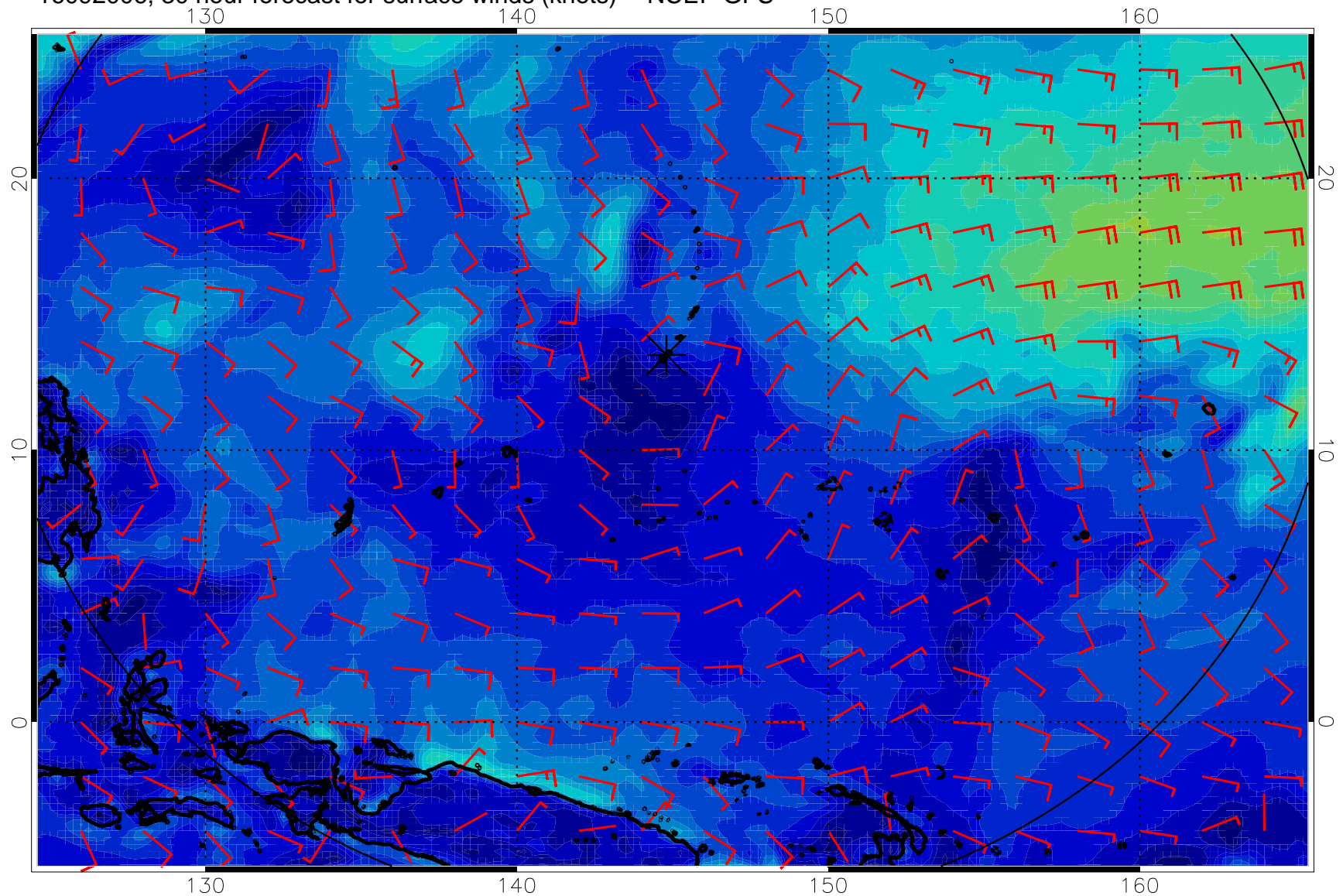


16092000, 24 hour forecast for surface winds (knots) -- NCEP GFS



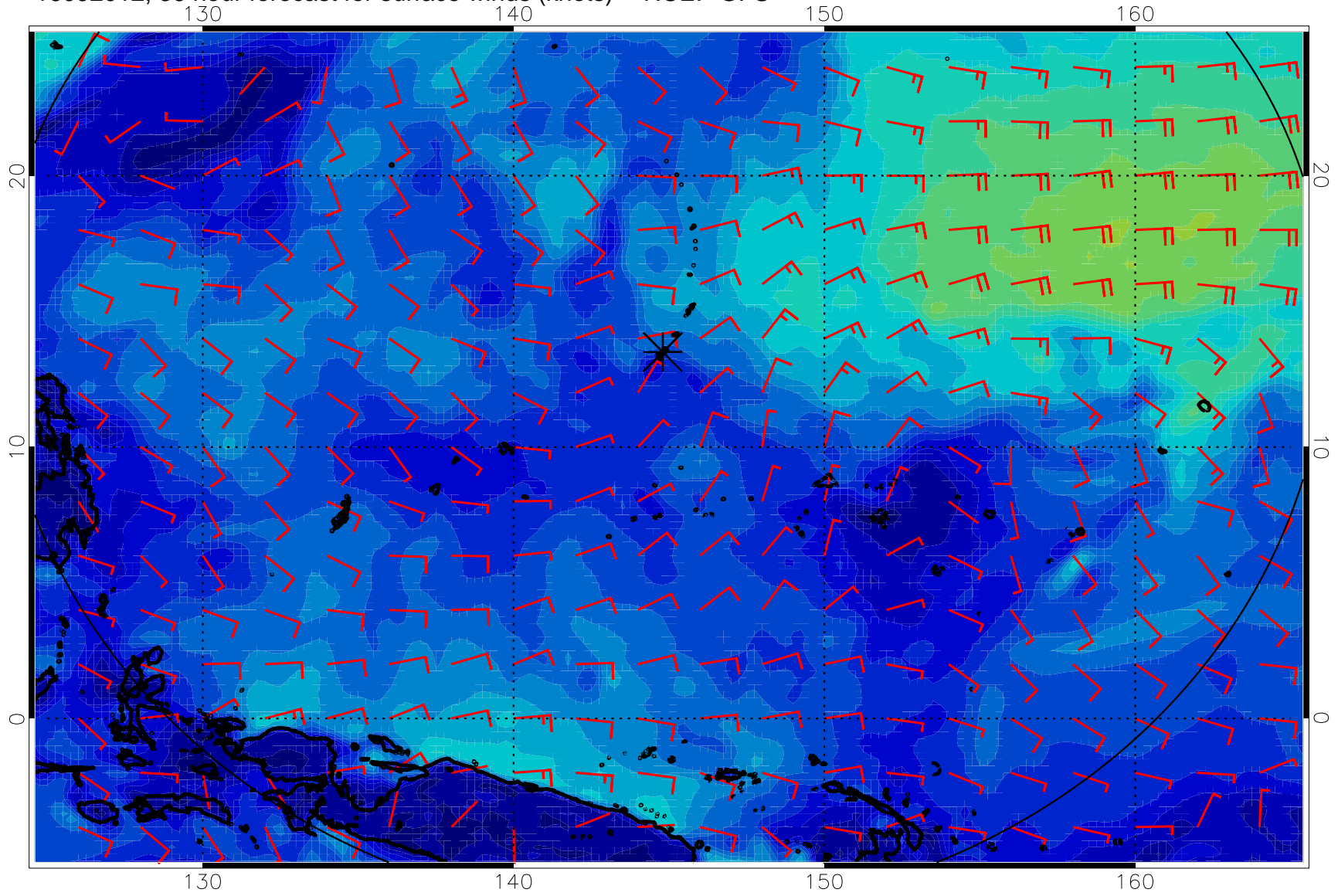
0      10      20      30  
Surface Wind Speed, knots

16092006, 30 hour forecast for surface winds (knots) -- NCEP GFS



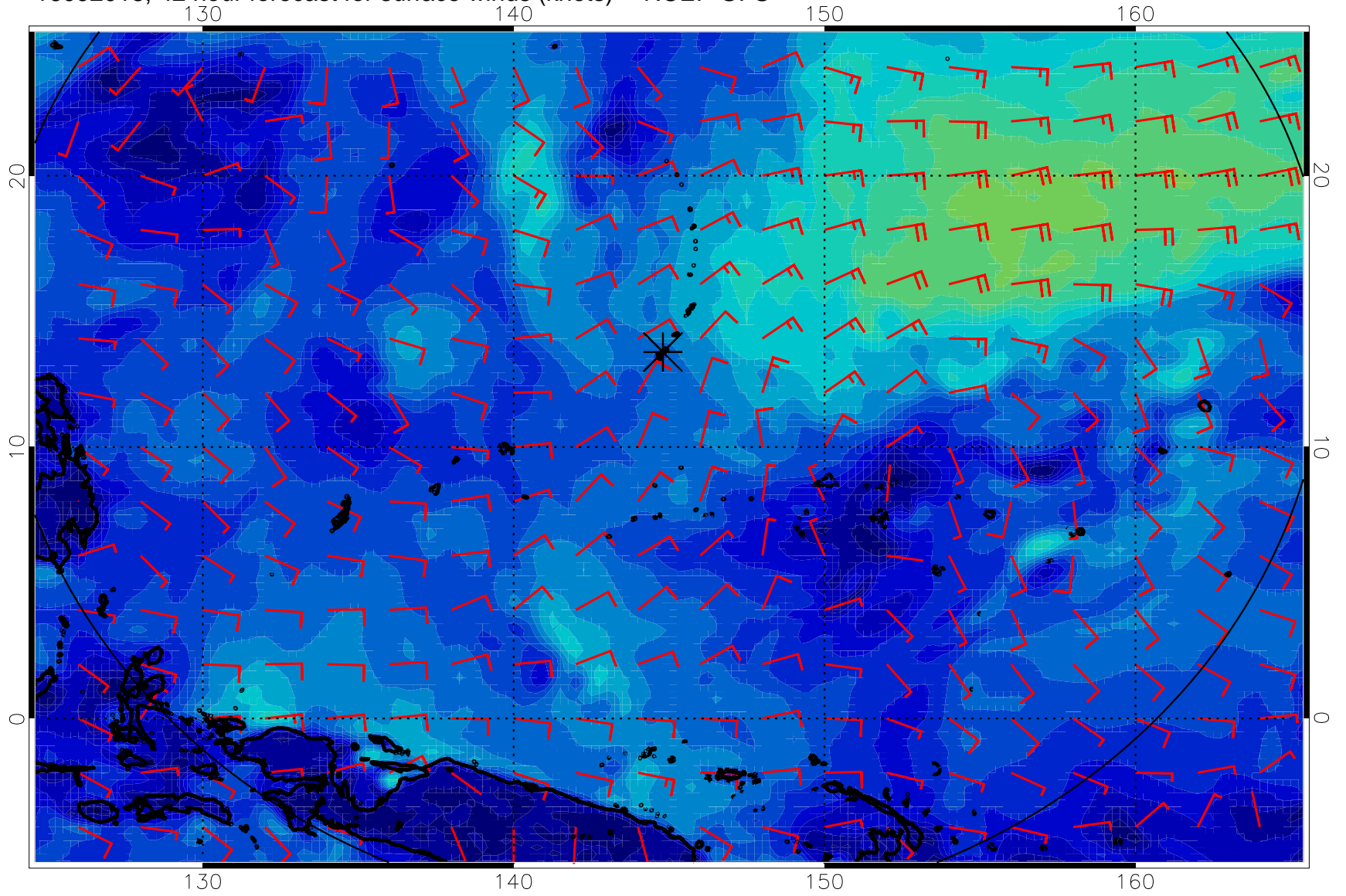
0      10      20      30  
Surface Wind Speed, knots

16092012, 36 hour forecast for surface winds (knots) -- NCEP GFS



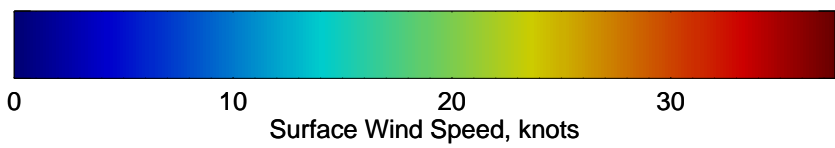
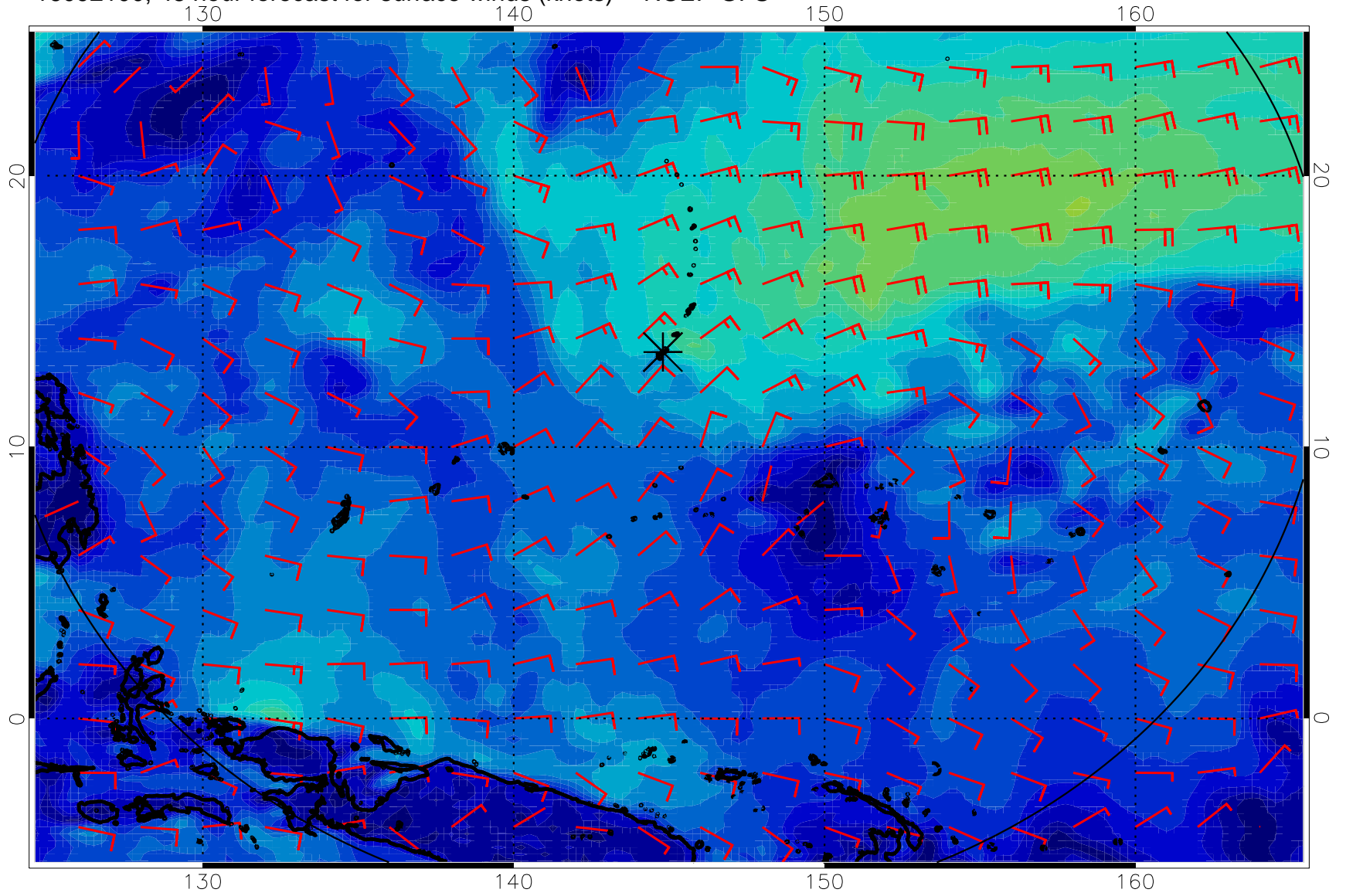
0      10      20      30  
Surface Wind Speed, knots

16092018, 42 hour forecast for surface winds (knots) -- NCEP GFS



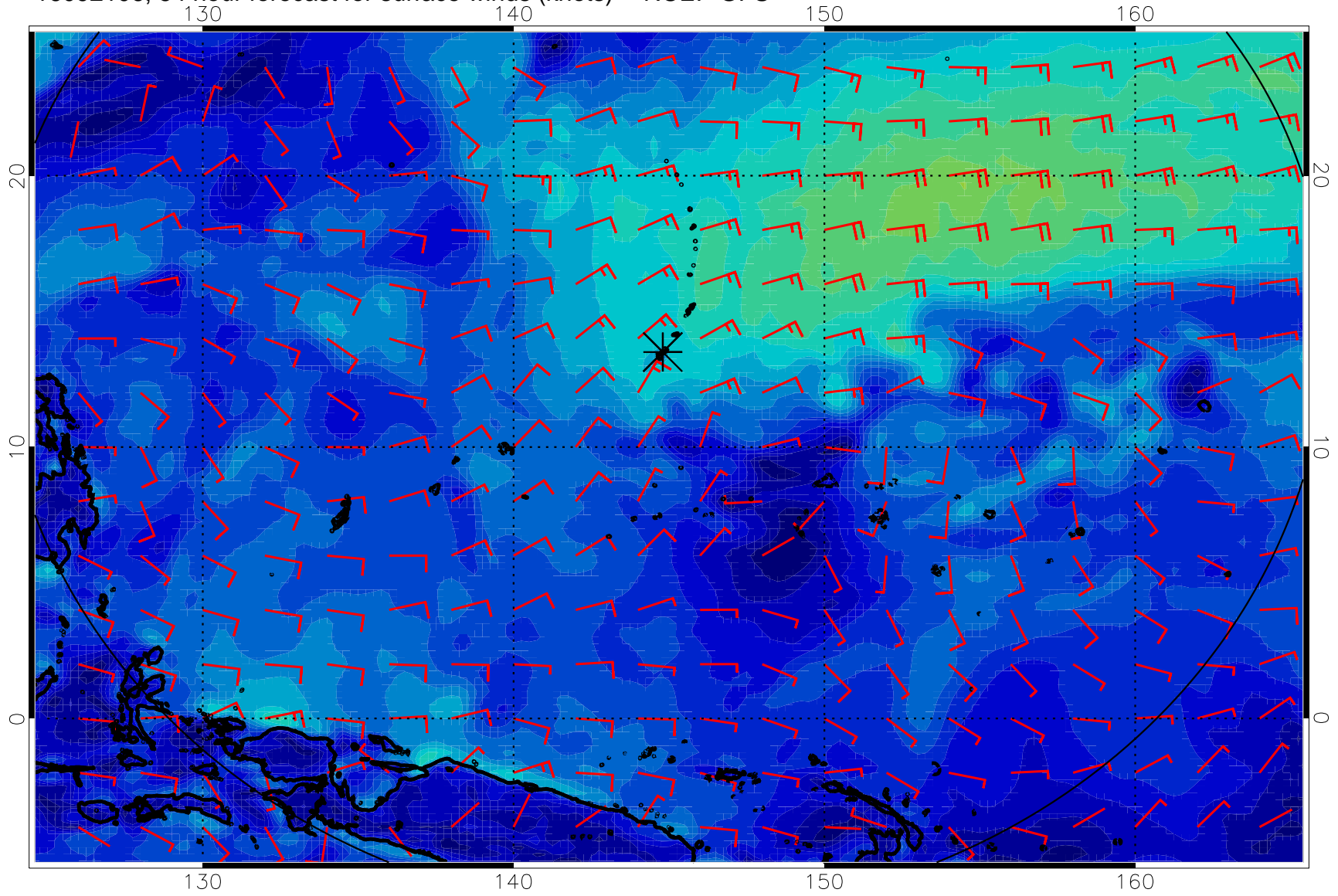
0      10      20      30  
Surface Wind Speed, knots

16092100, 48 hour forecast for surface winds (knots) -- NCEP GFS



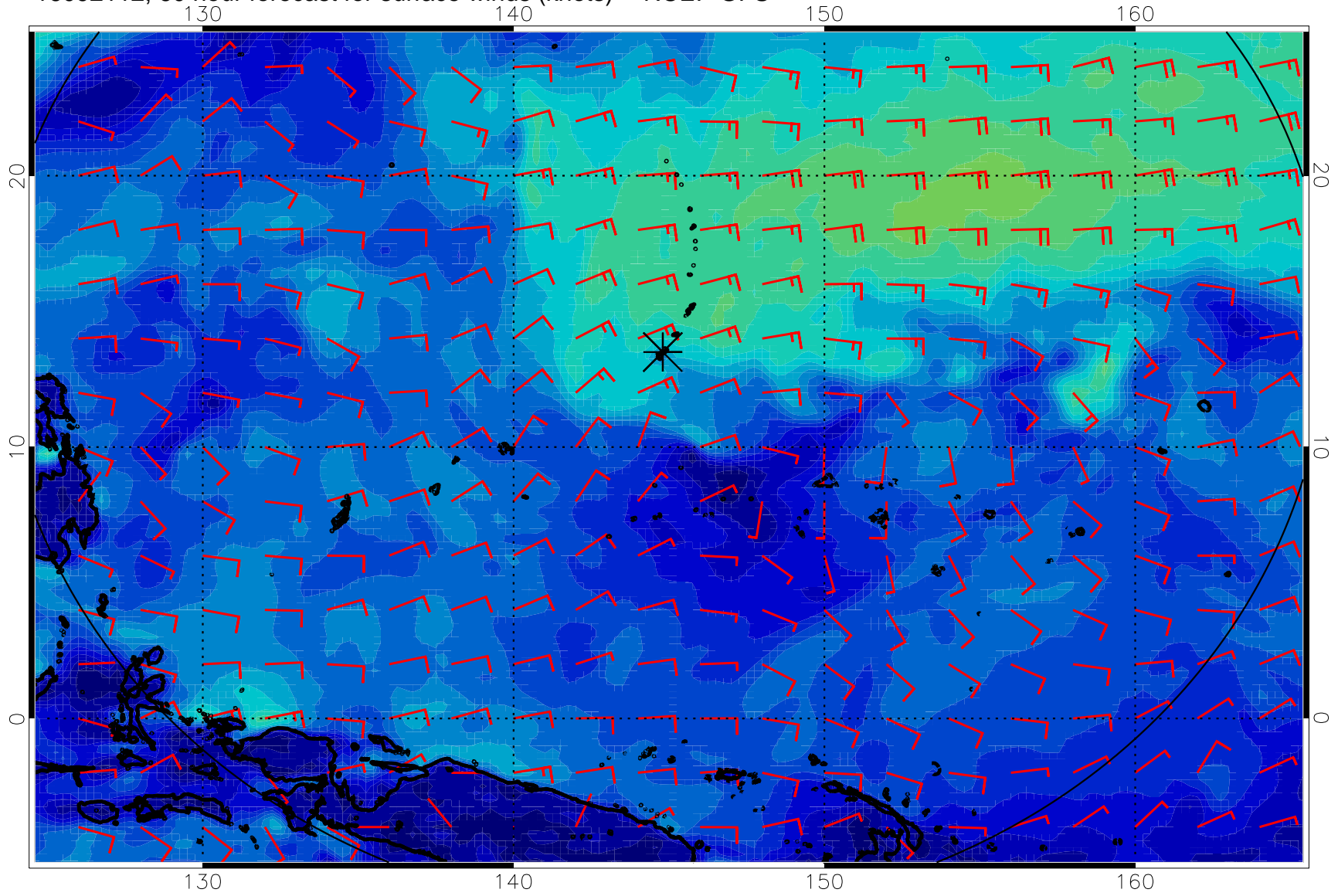


16092106, 54 hour forecast for surface winds (knots) -- NCEP GFS



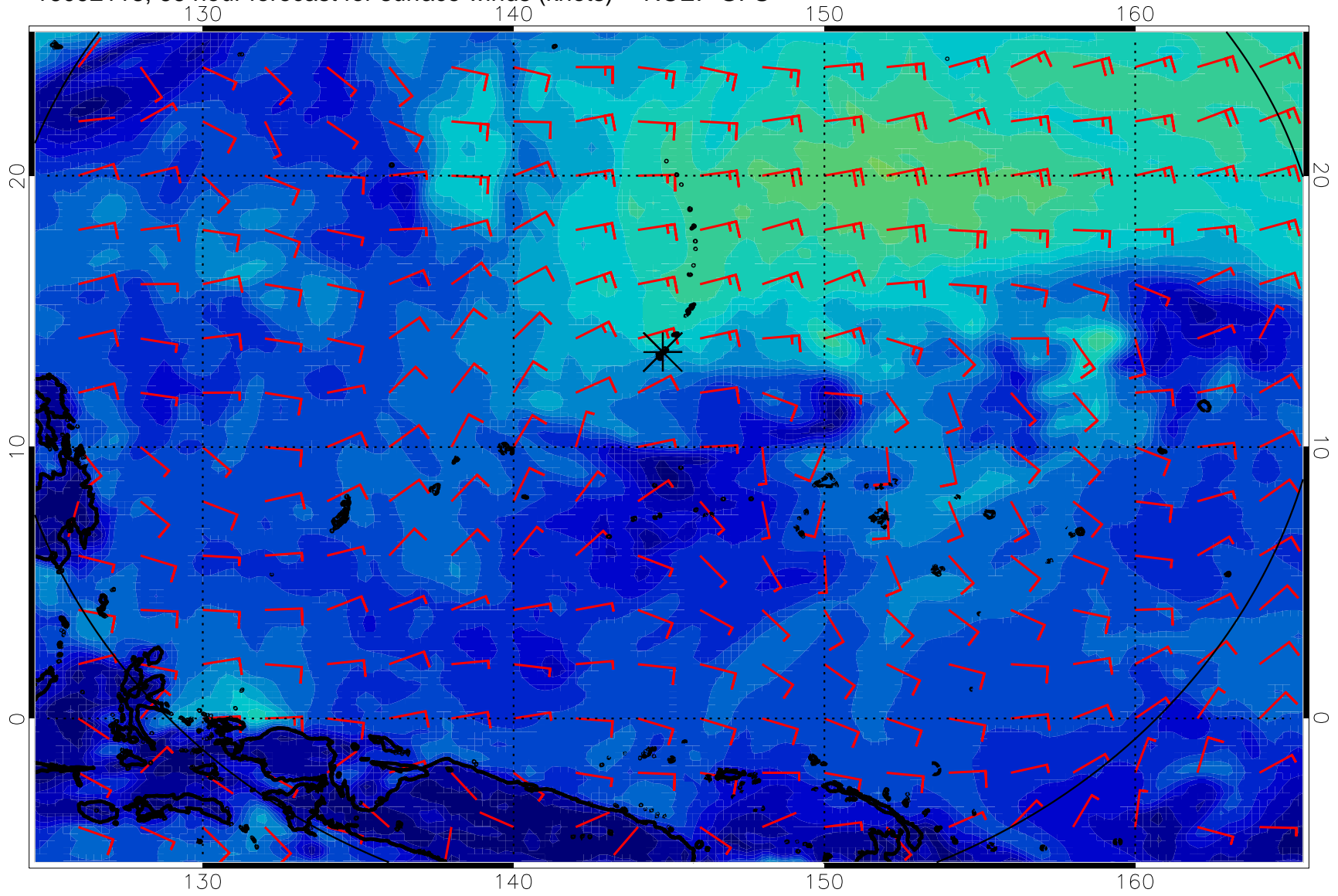
0      10      20      30  
Surface Wind Speed, knots

16092112, 60 hour forecast for surface winds (knots) -- NCEP GFS



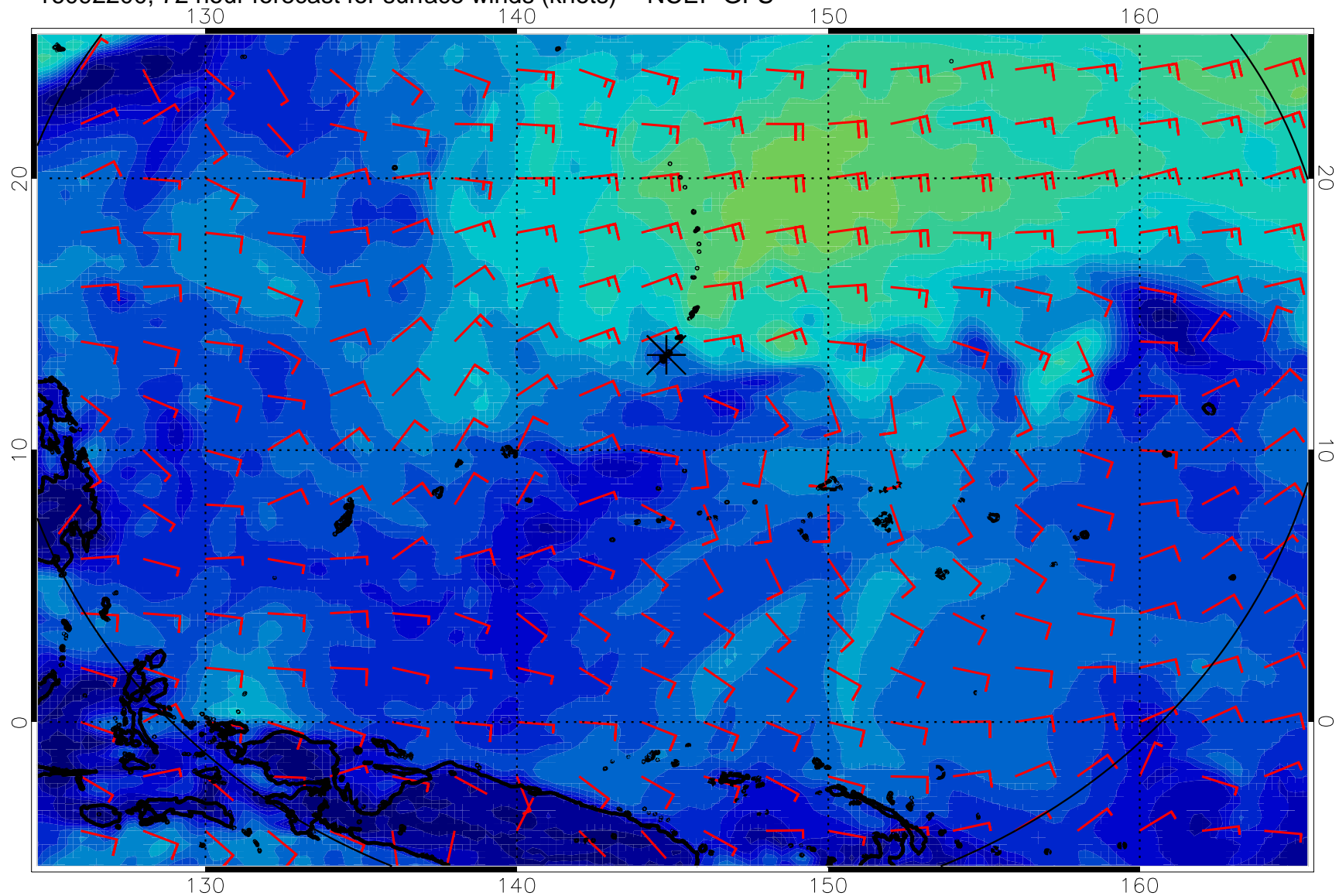
0      10      20      30  
Surface Wind Speed, knots

16092118, 66 hour forecast for surface winds (knots) -- NCEP GFS



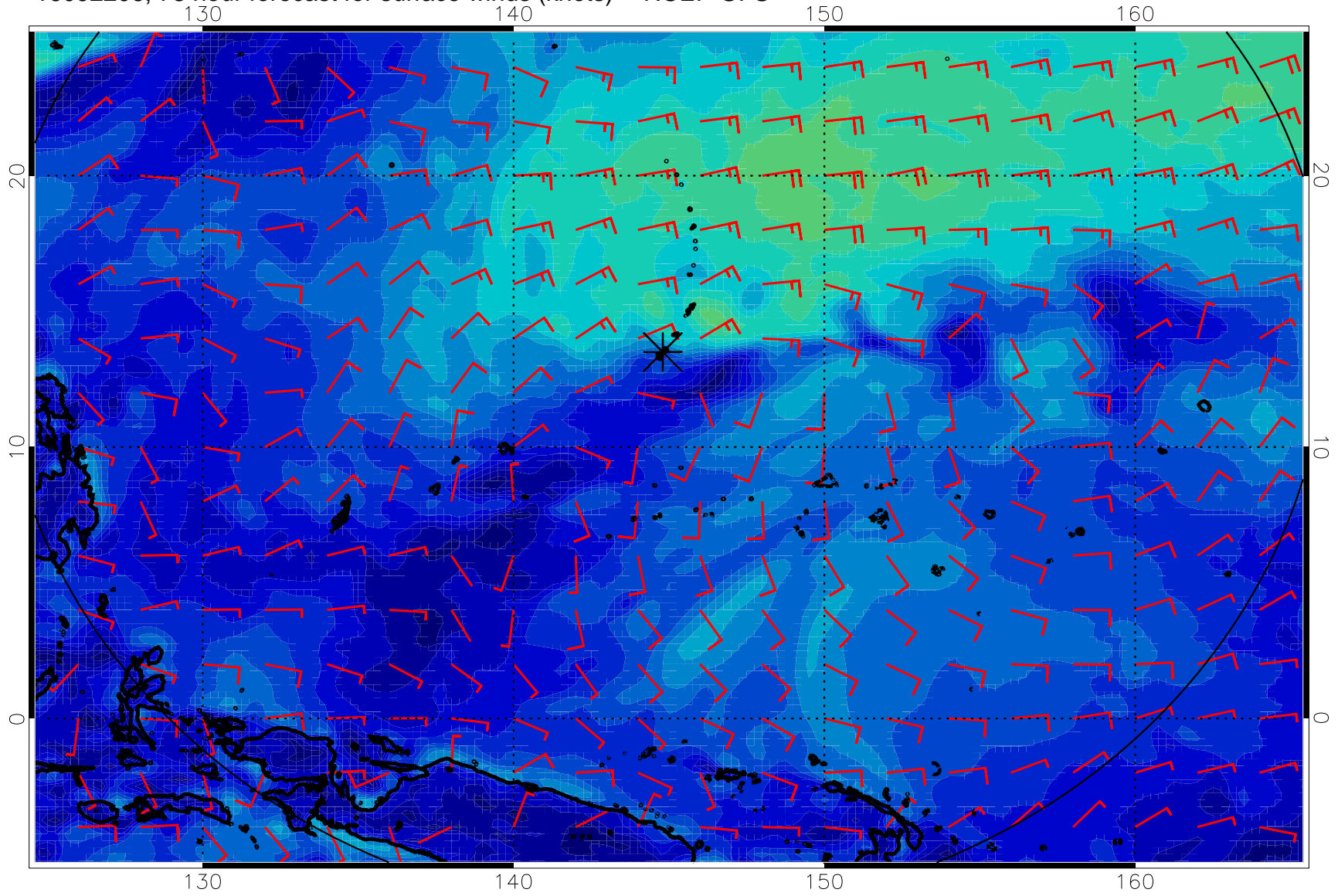
0      10      20      30  
Surface Wind Speed, knots

16092200, 72 hour forecast for surface winds (knots) -- NCEP GFS



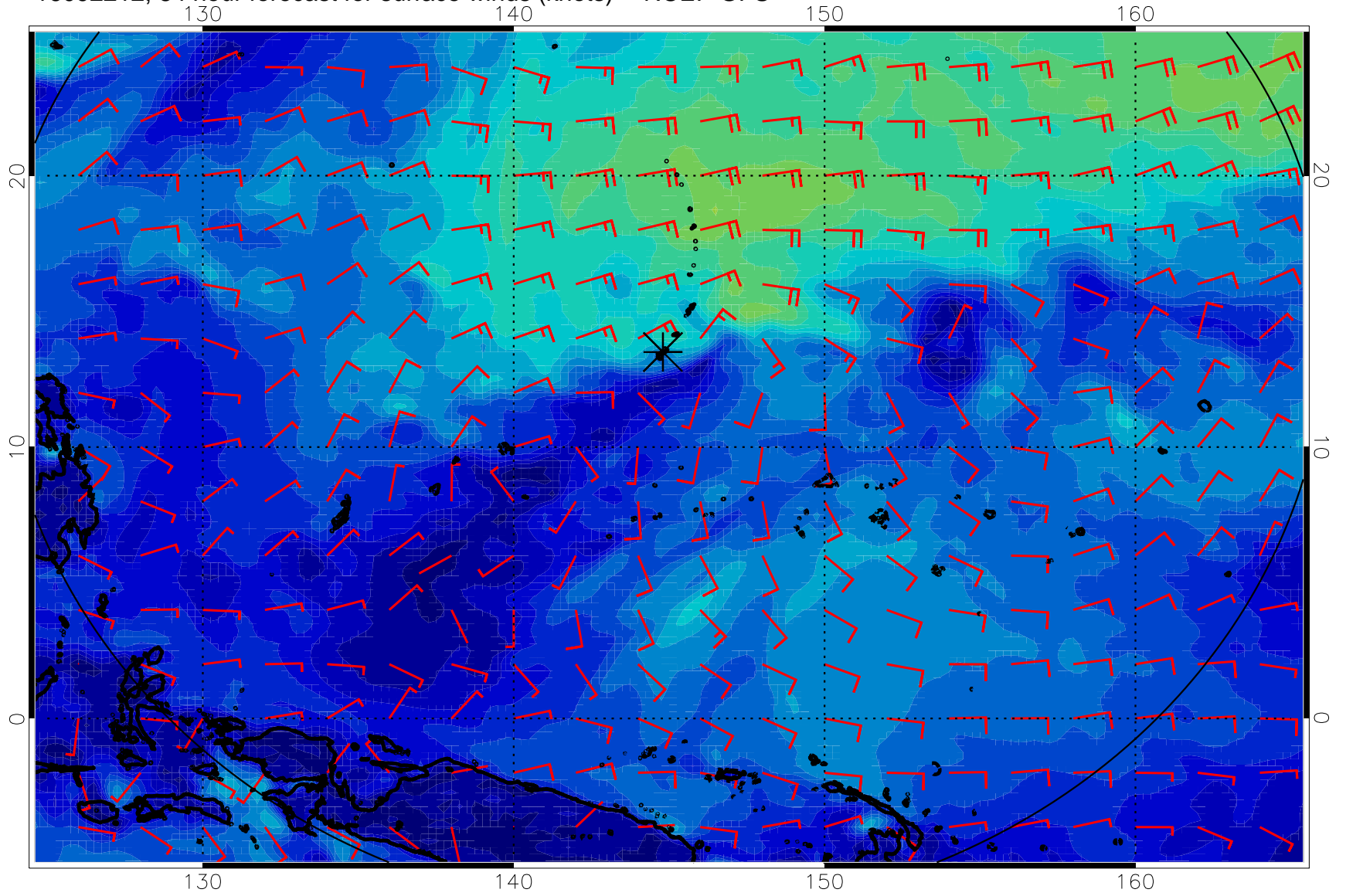
0      10      20      30  
Surface Wind Speed, knots

16092206, 78 hour forecast for surface winds (knots) -- NCEP GFS



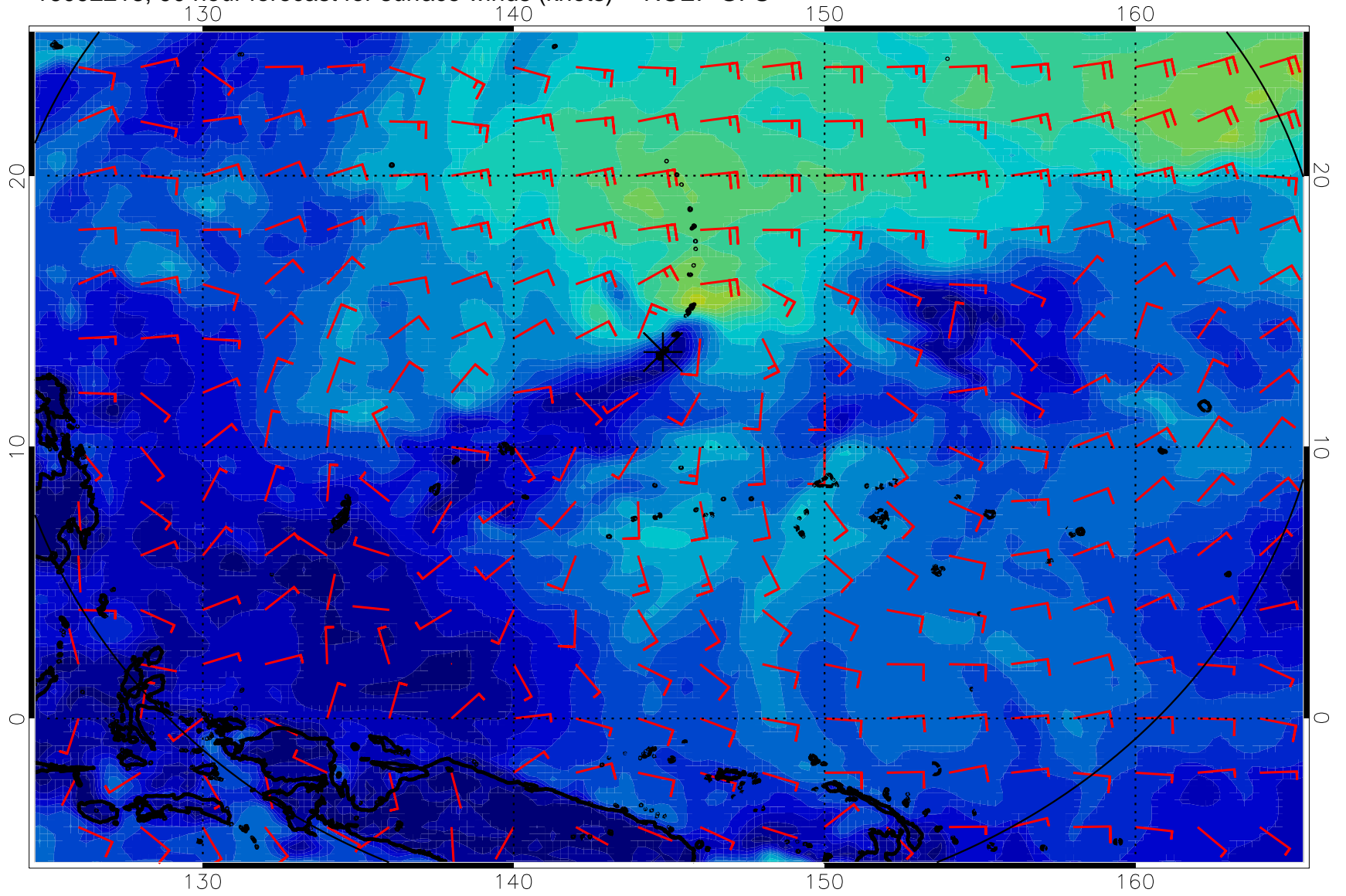
0 10 20 30  
Surface Wind Speed, knots

16092212, 84 hour forecast for surface winds (knots) -- NCEP GFS



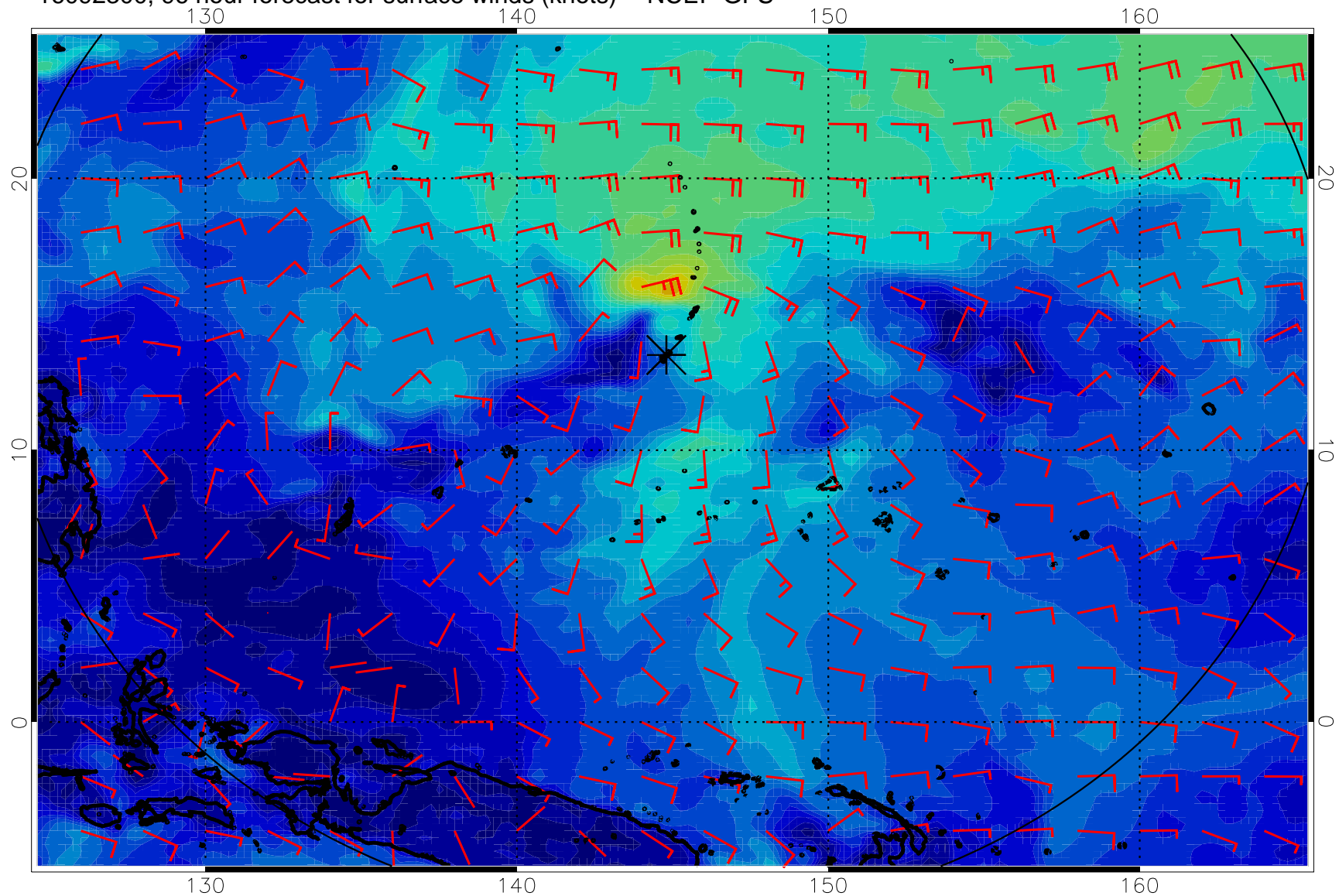
0      10      20      30  
Surface Wind Speed, knots

16092218, 90 hour forecast for surface winds (knots) -- NCEP GFS



0 10 20 30  
Surface Wind Speed, knots

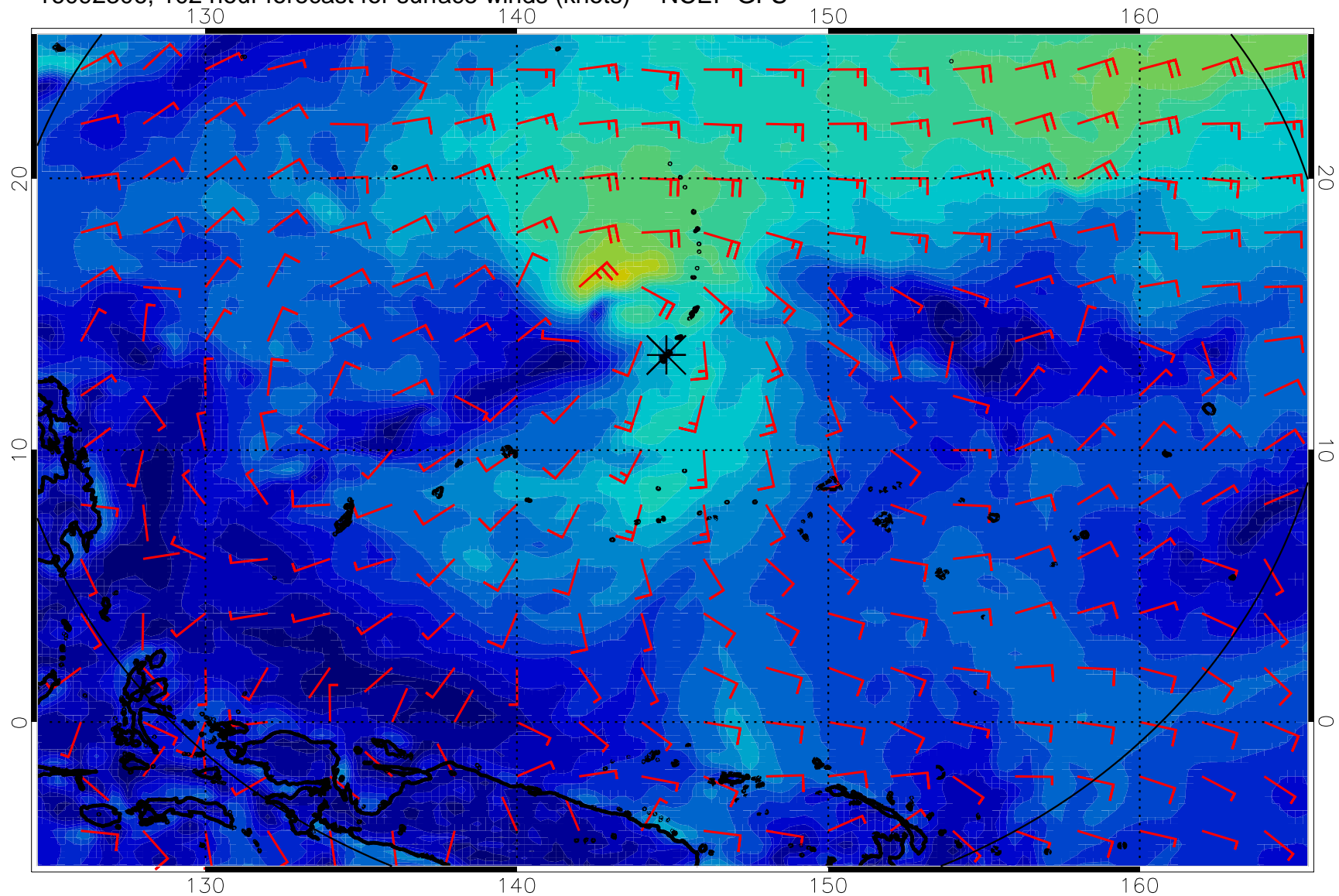
16092300, 96 hour forecast for surface winds (knots) -- NCEP GFS



0      10      20      30  
Surface Wind Speed, knots

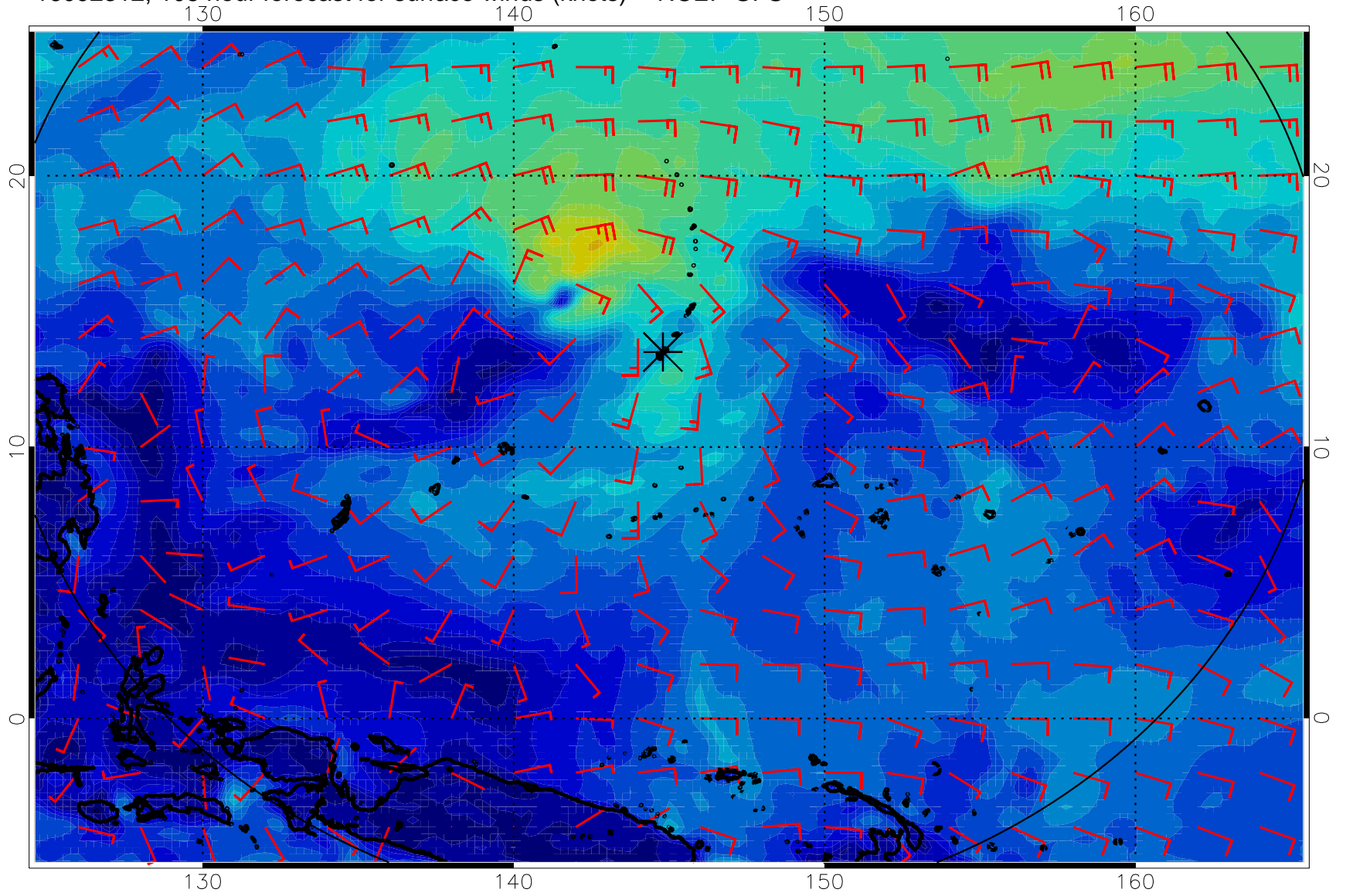


16092306, 102 hour forecast for surface winds (knots) -- NCEP GFS



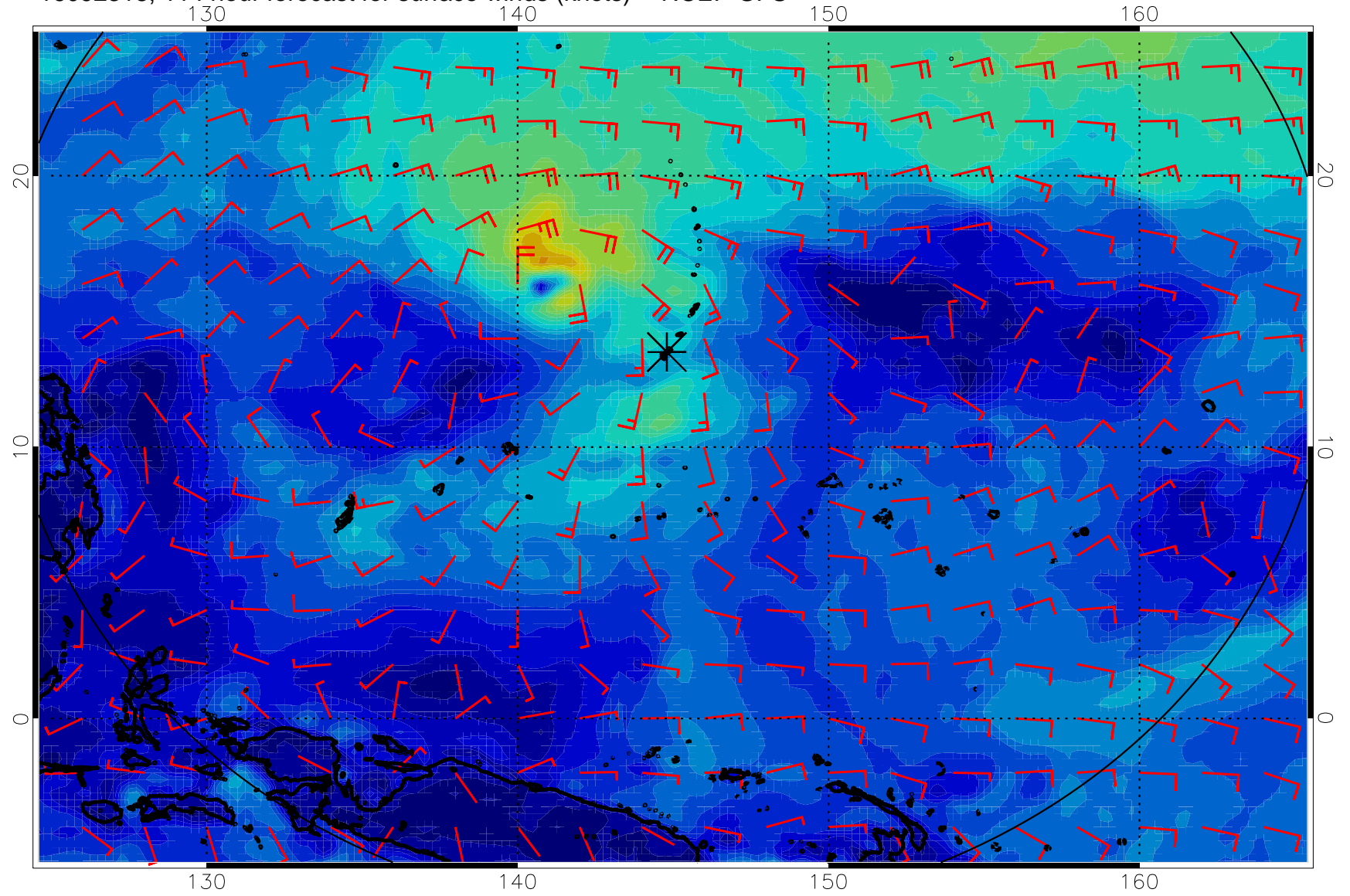
0 10 20 30  
Surface Wind Speed, knots

16092312, 108 hour forecast for surface winds (knots) -- NCEP GFS



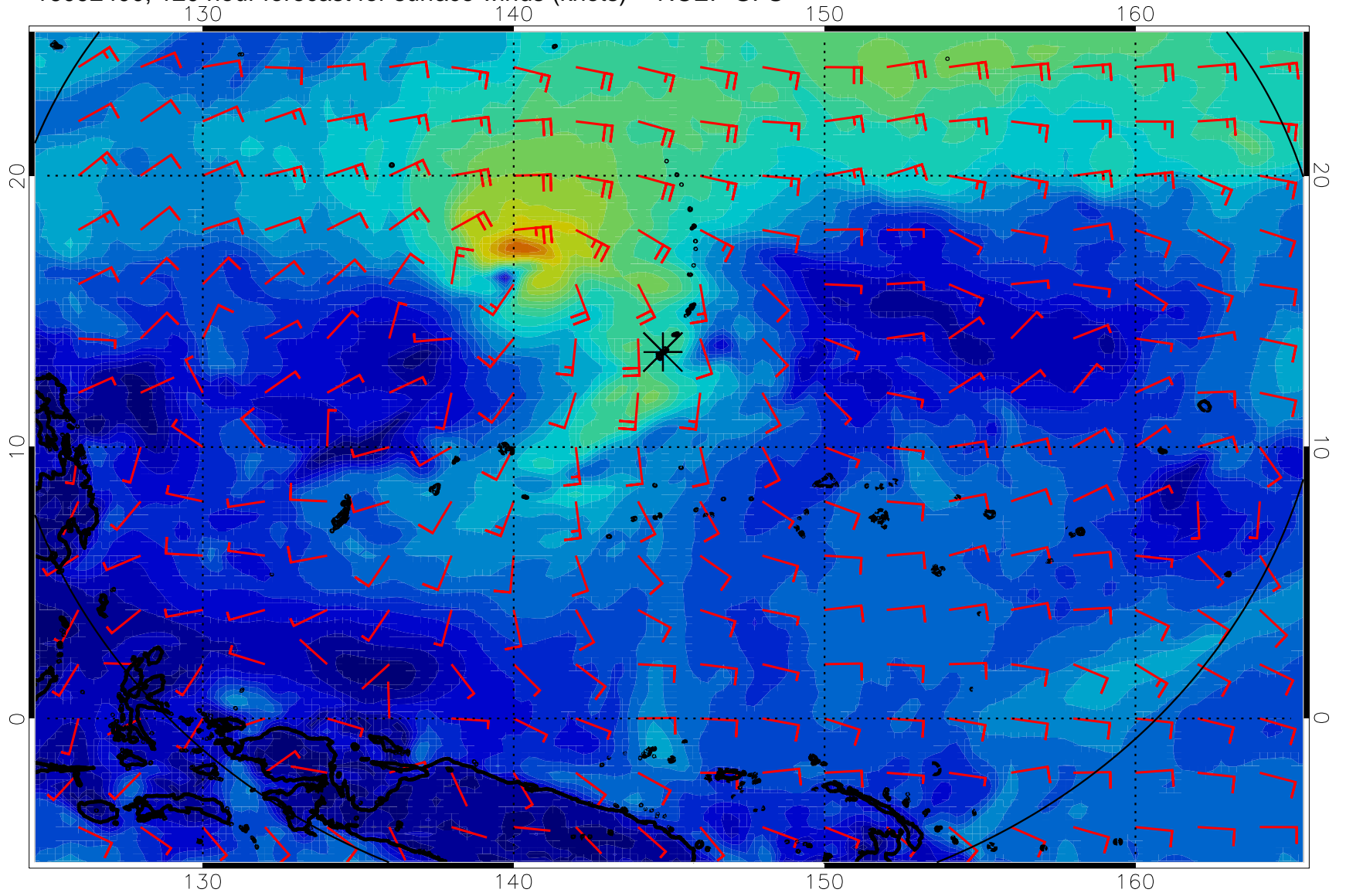
0      10      20      30  
Surface Wind Speed, knots

16092318, 114 hour forecast for surface winds (knots) -- NCEP GFS



0 10 20 30  
Surface Wind Speed, knots

16092400, 120 hour forecast for surface winds (knots) -- NCEP GFS



0 10 20 30  
Surface Wind Speed, knots