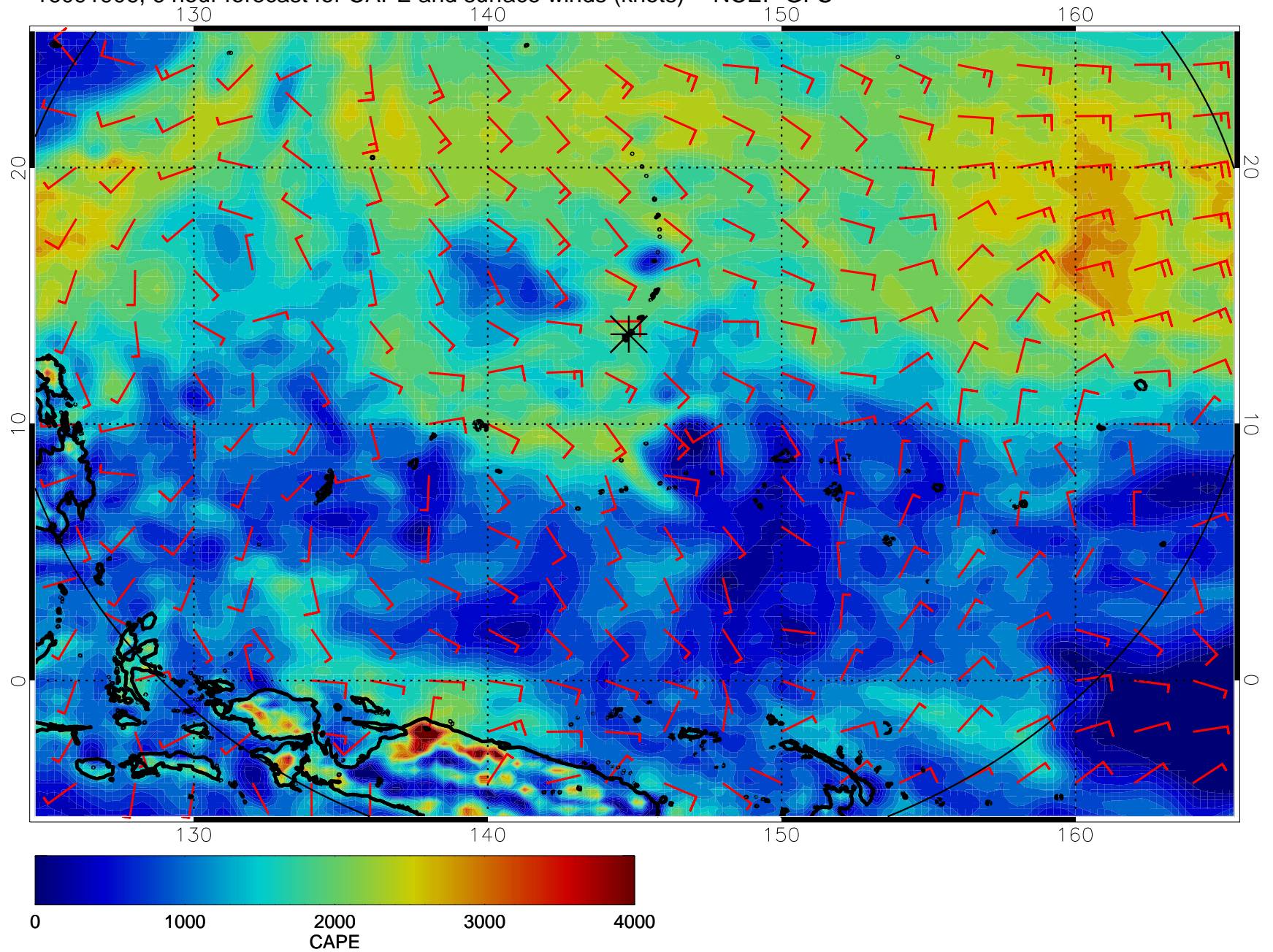
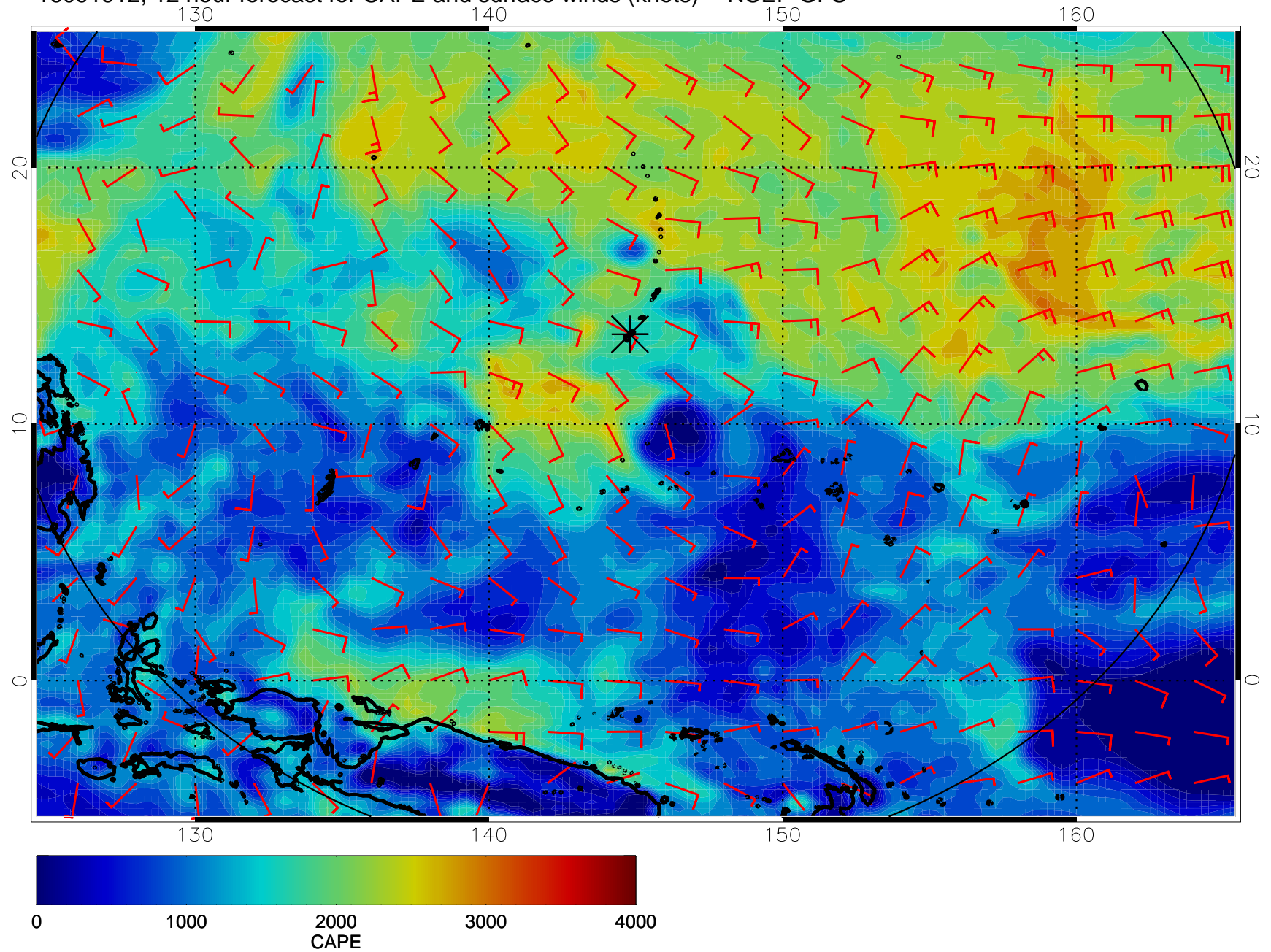


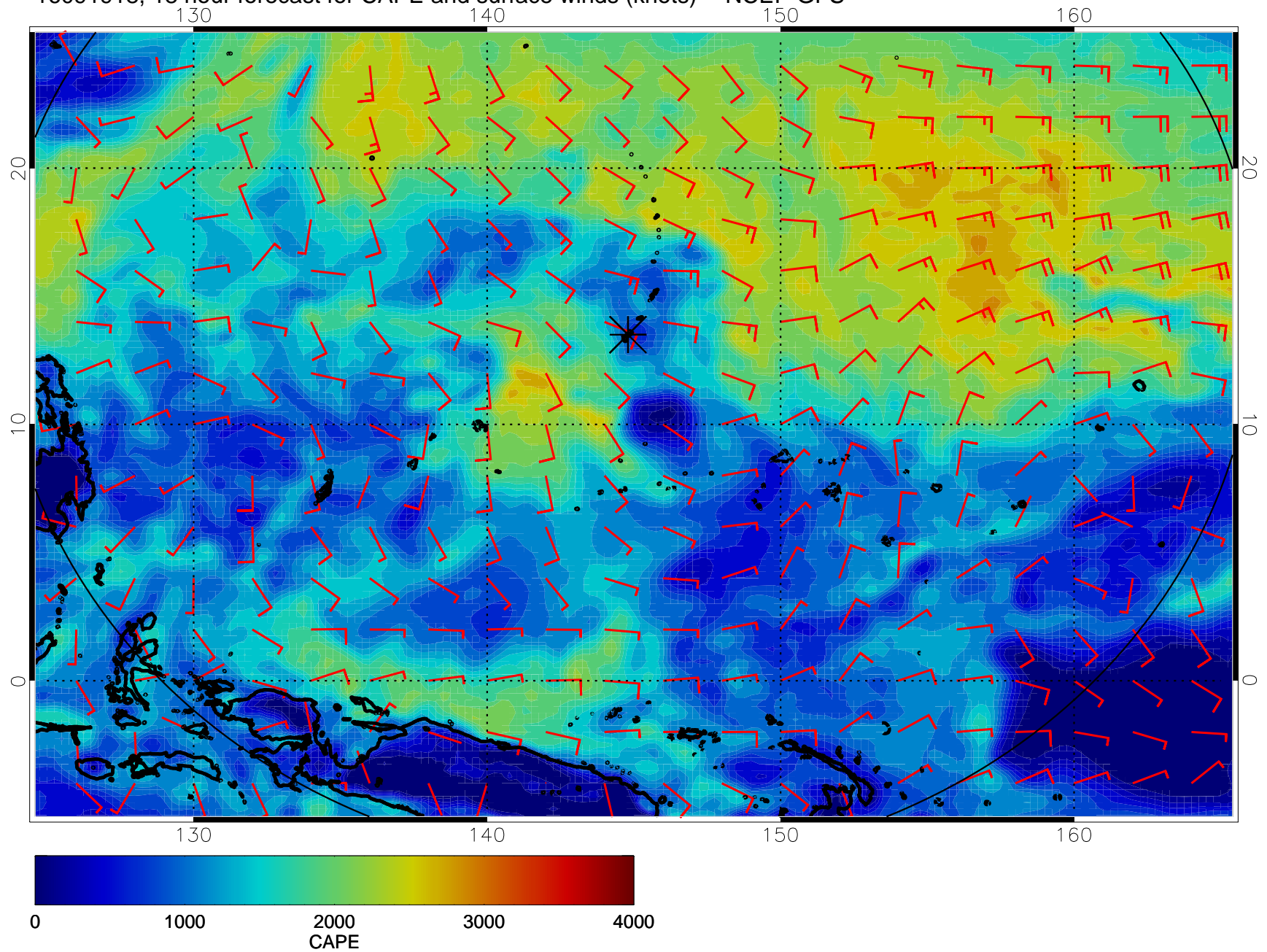
16091906, 6 hour forecast for CAPE and surface winds (knots) -- NCEP GFS



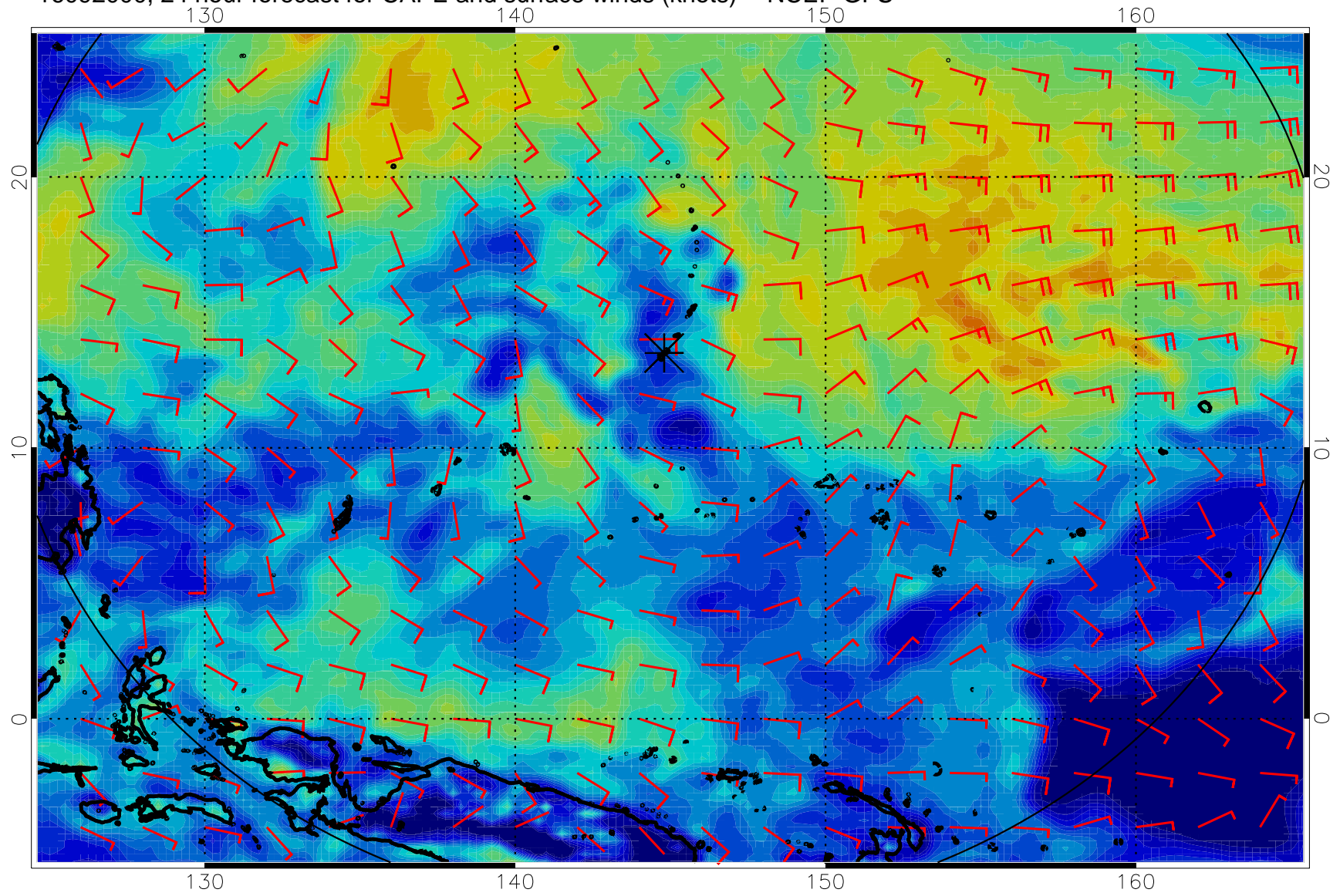
16091912, 12 hour forecast for CAPE and surface winds (knots) -- NCEP GFS



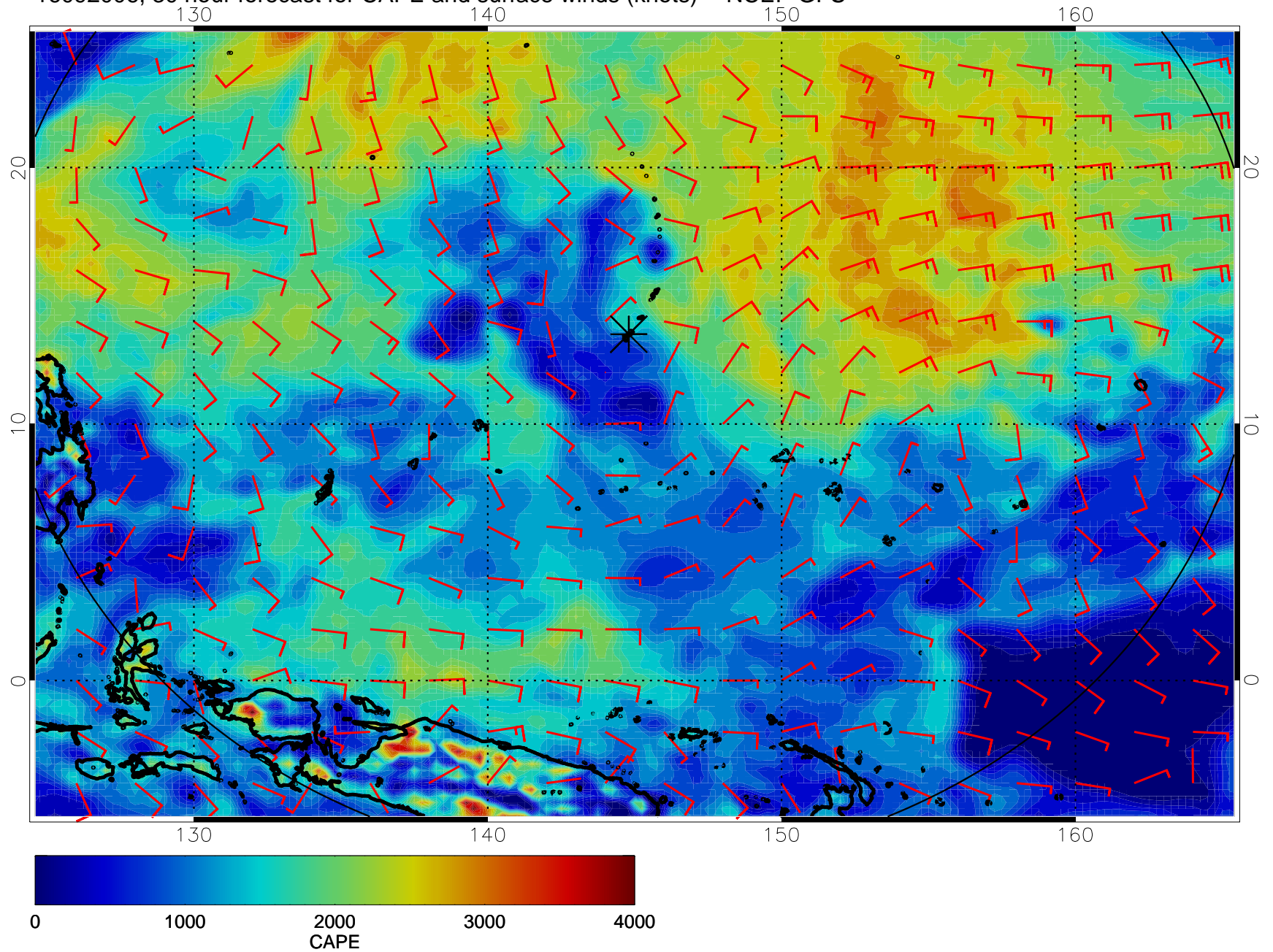
16091918, 18 hour forecast for CAPE and surface winds (knots) -- NCEP GFS



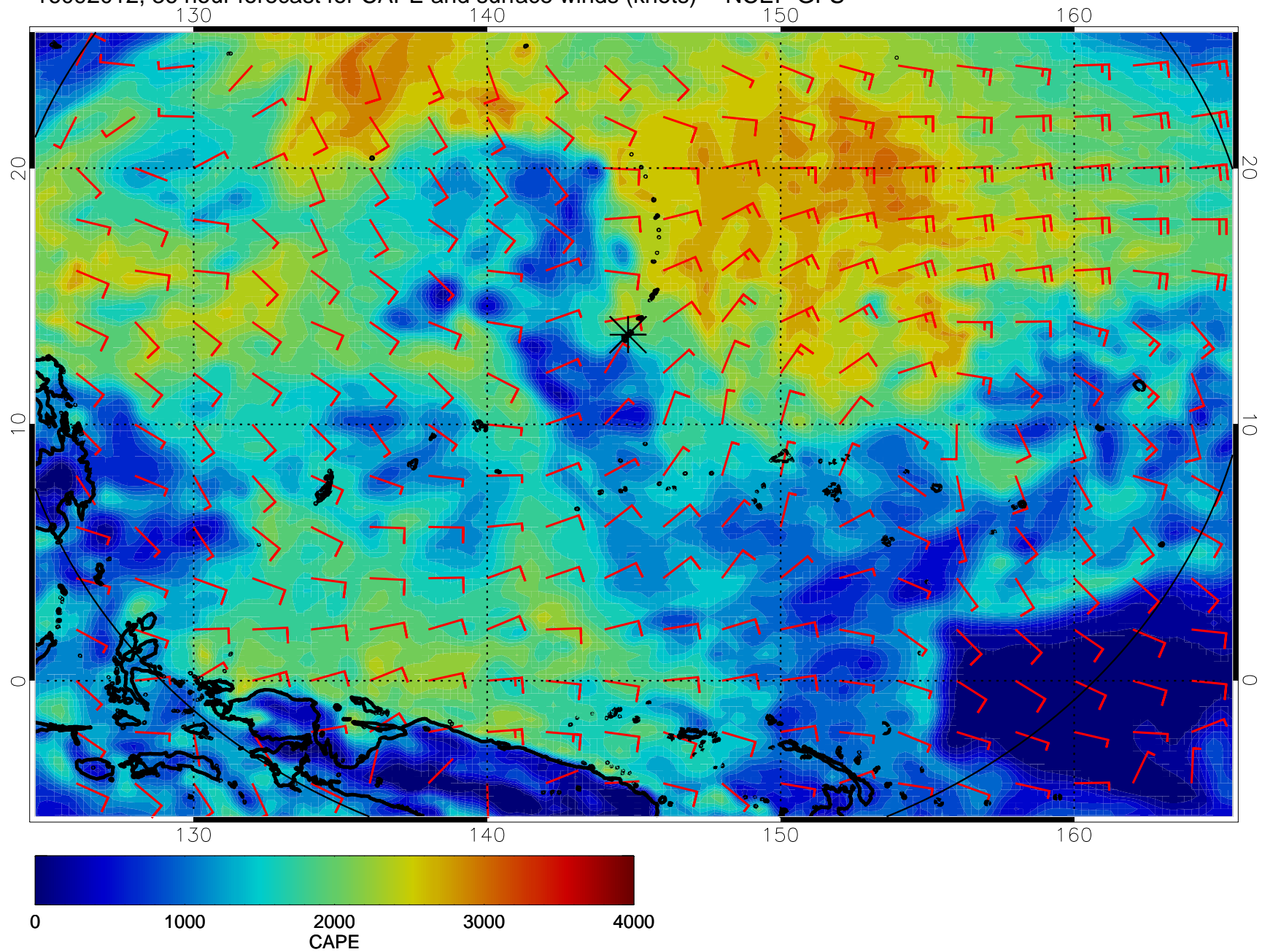
16092000, 24 hour forecast for CAPE and surface winds (knots) -- NCEP GFS



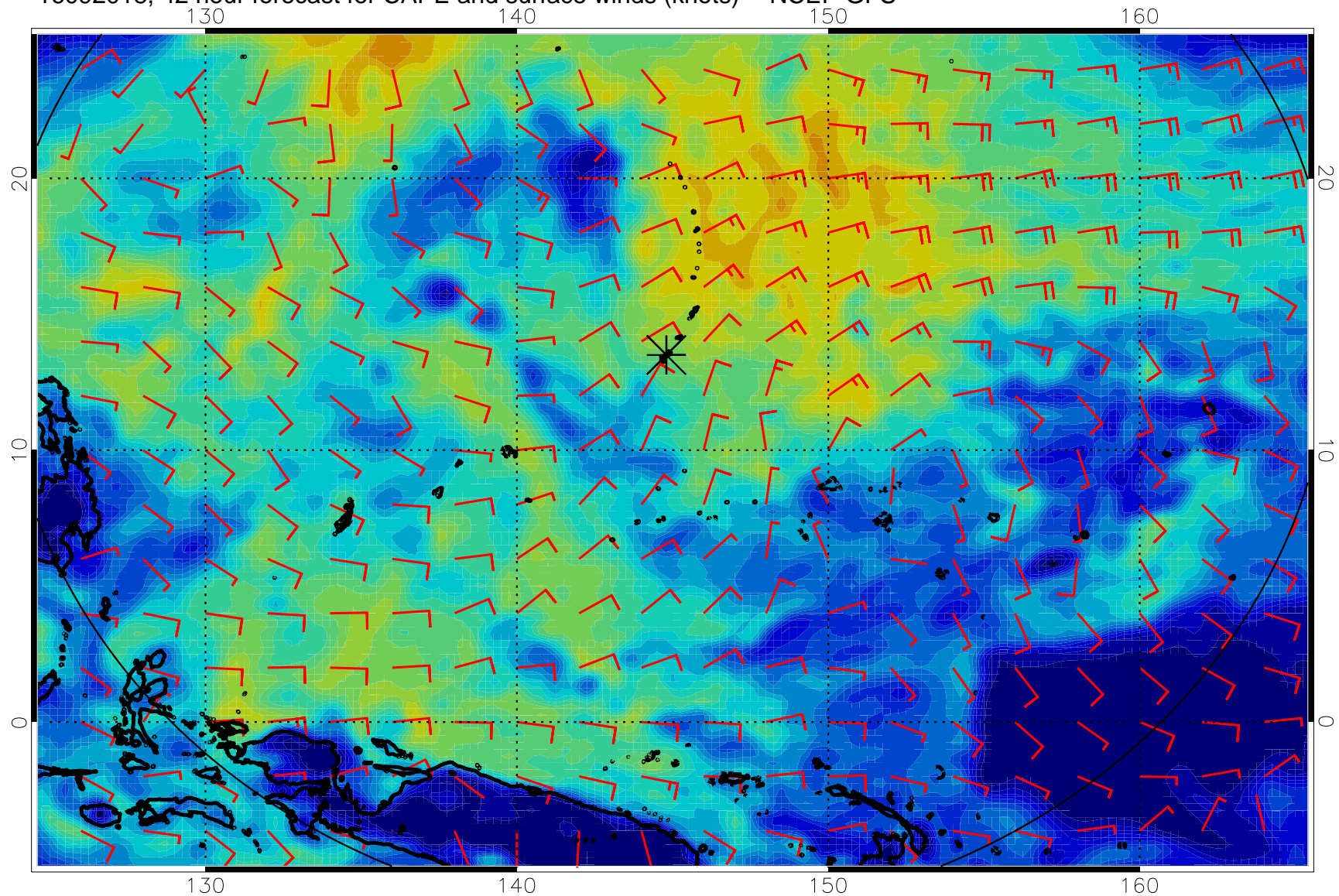
16092006, 30 hour forecast for CAPE and surface winds (knots) -- NCEP GFS



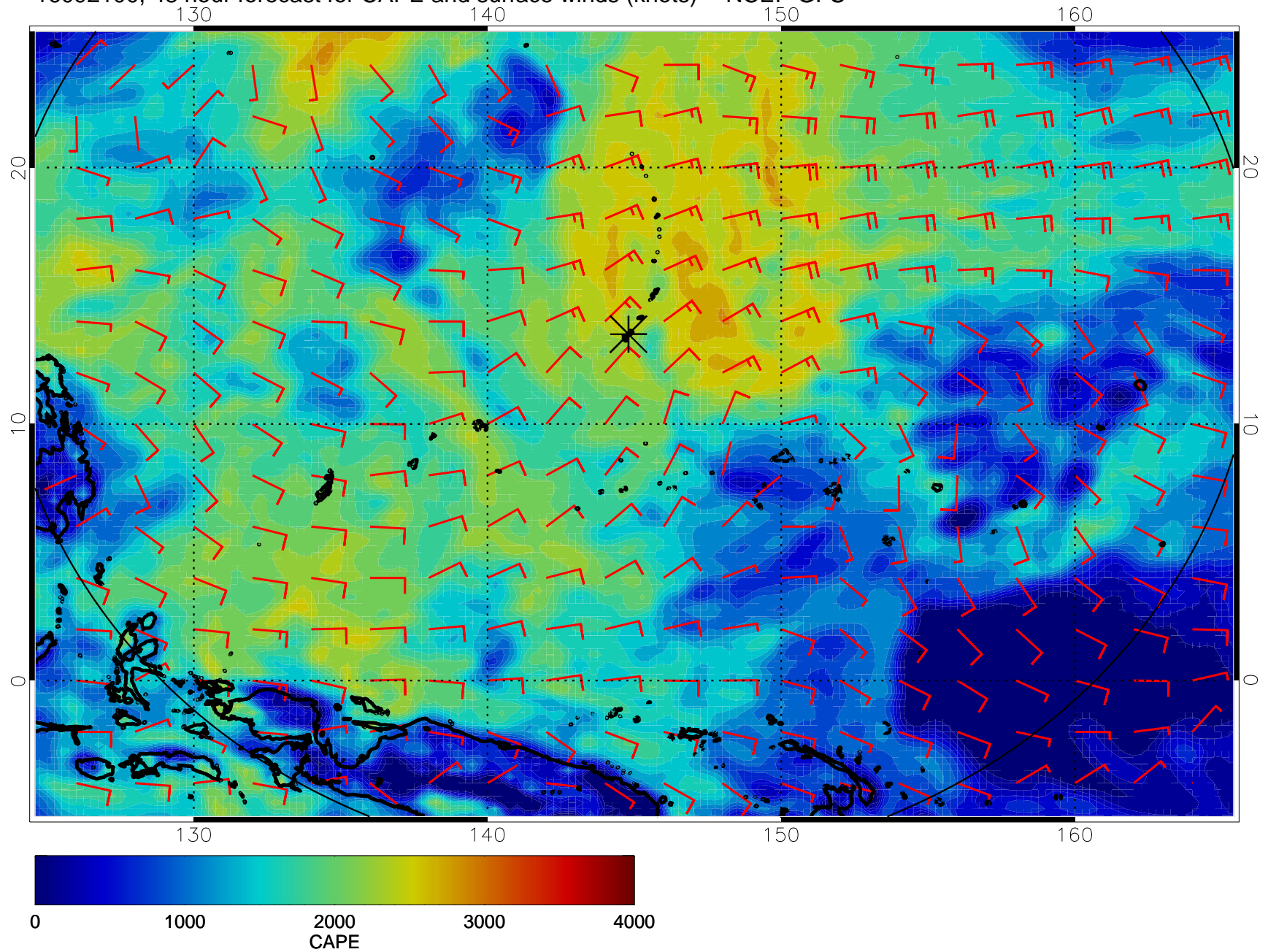
16092012, 36 hour forecast for CAPE and surface winds (knots) -- NCEP GFS



16092018, 42 hour forecast for CAPE and surface winds (knots) -- NCEP GFS

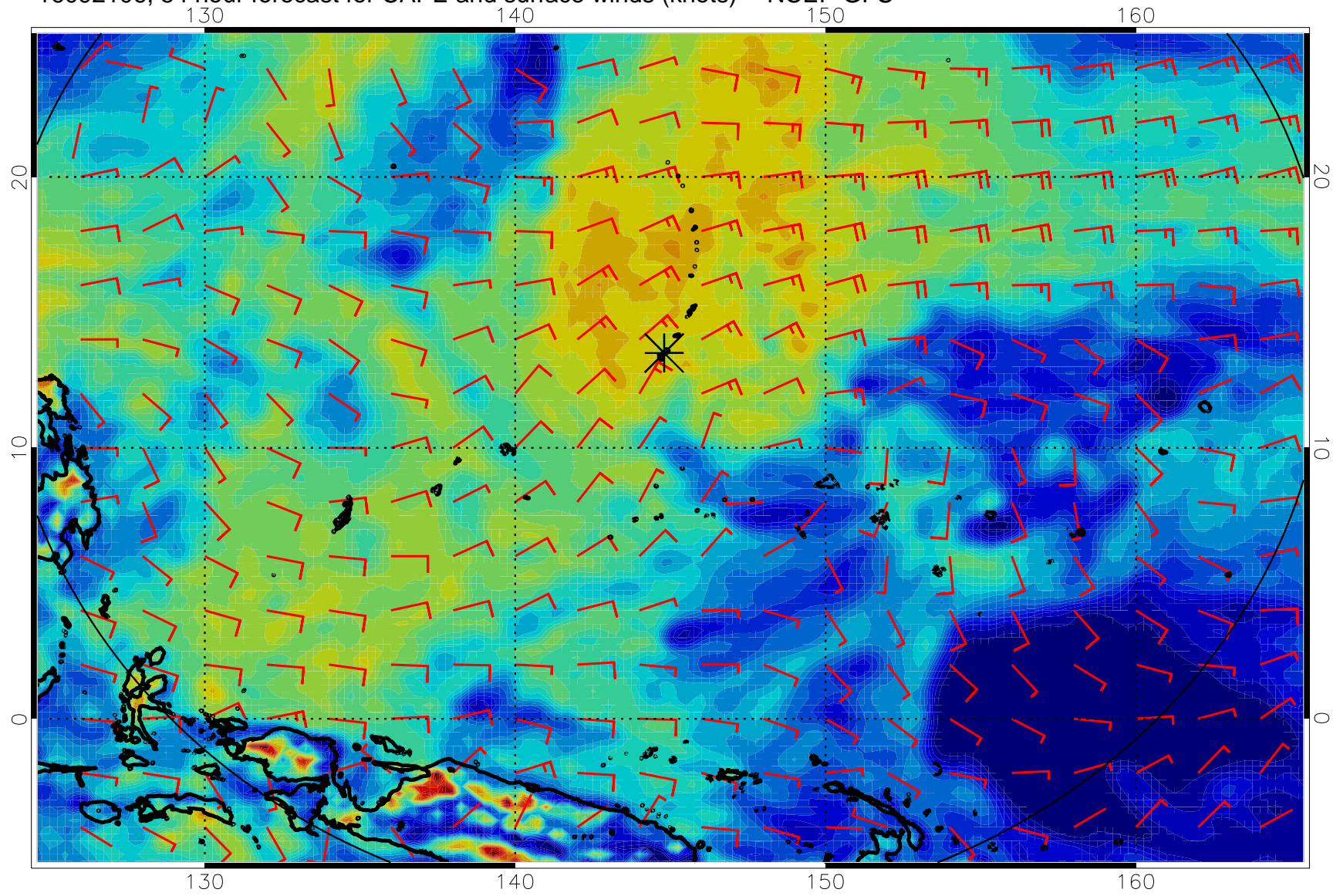


16092100, 48 hour forecast for CAPE and surface winds (knots) -- NCEP GFS

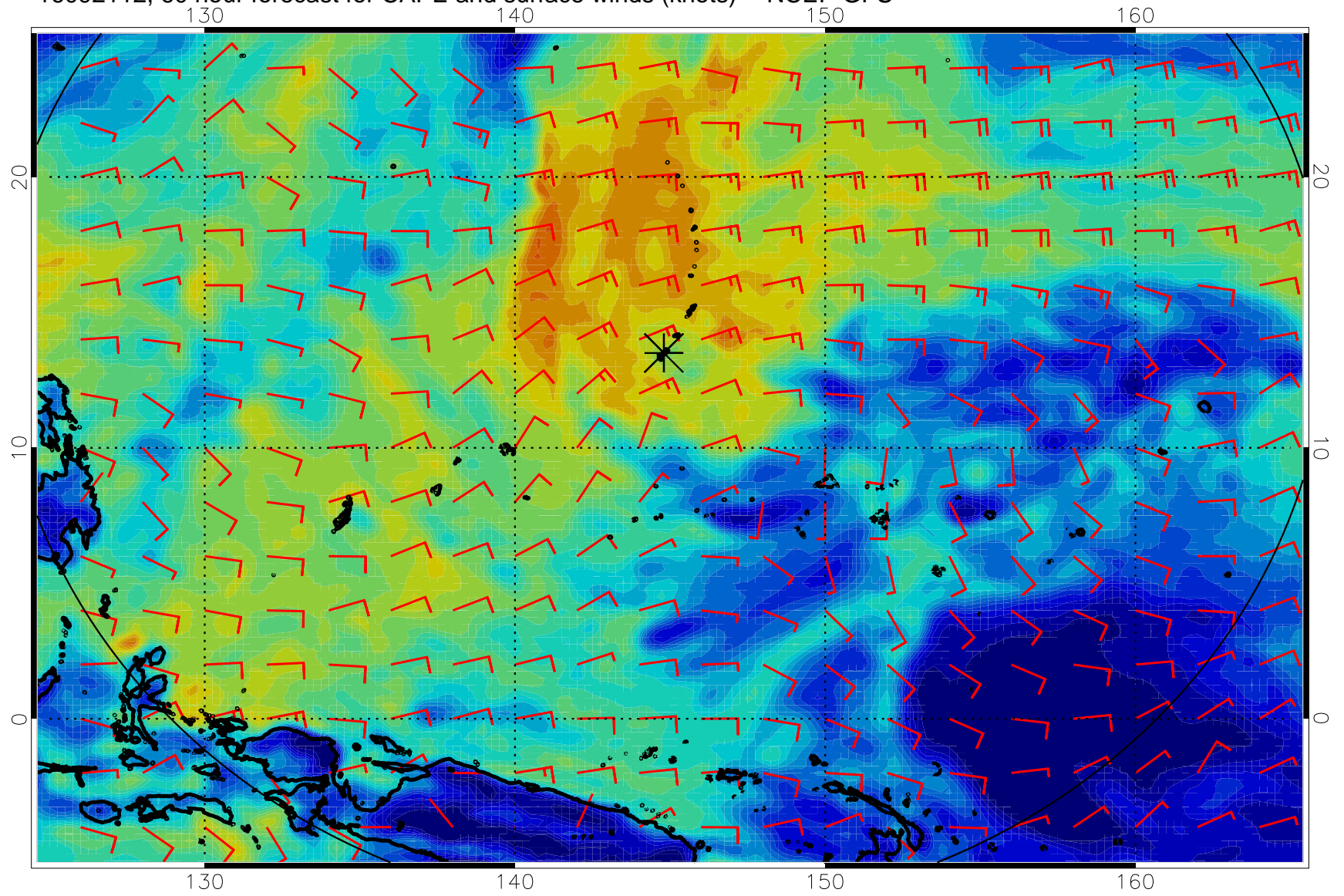




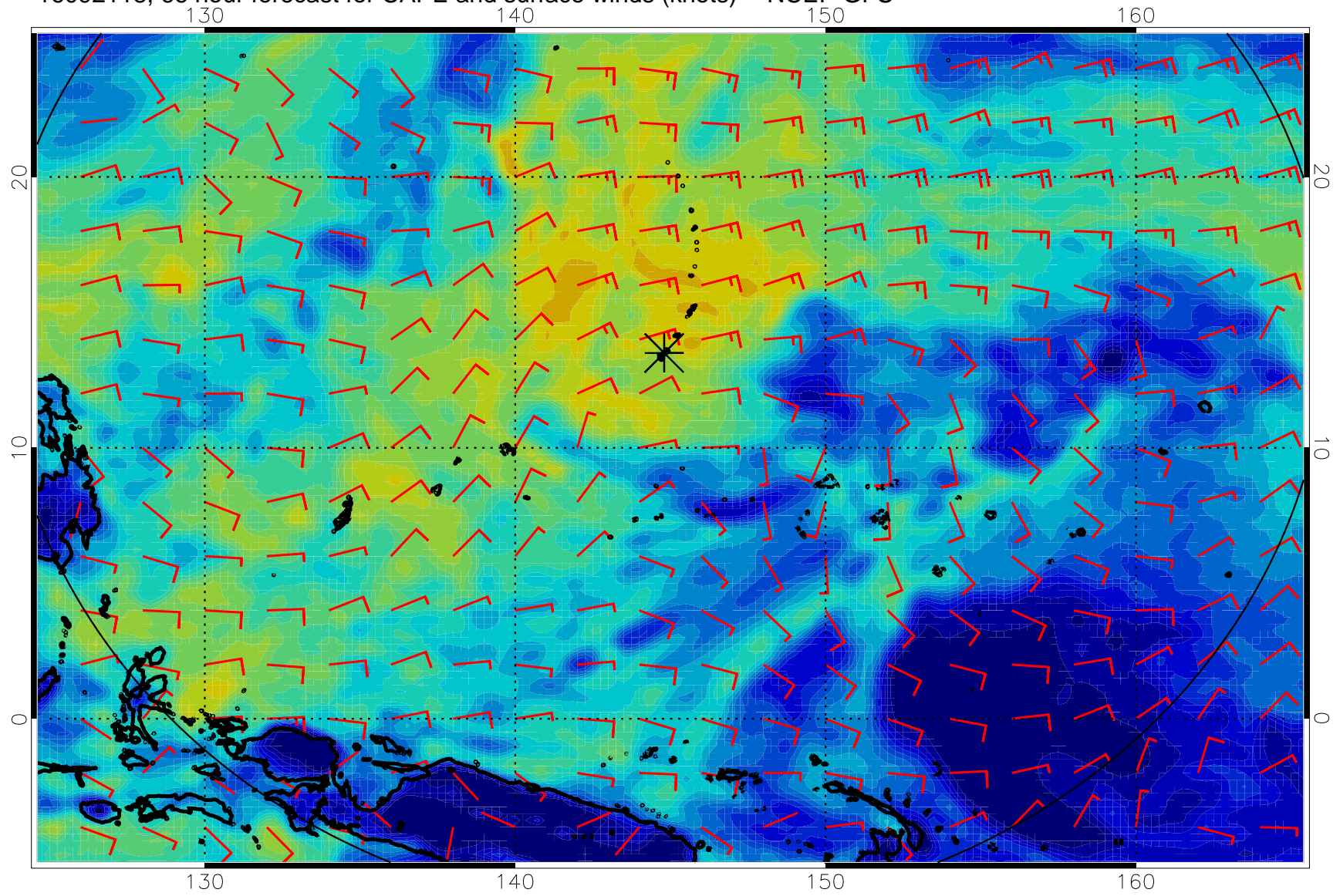
16092106, 54 hour forecast for CAPE and surface winds (knots) -- NCEP GFS



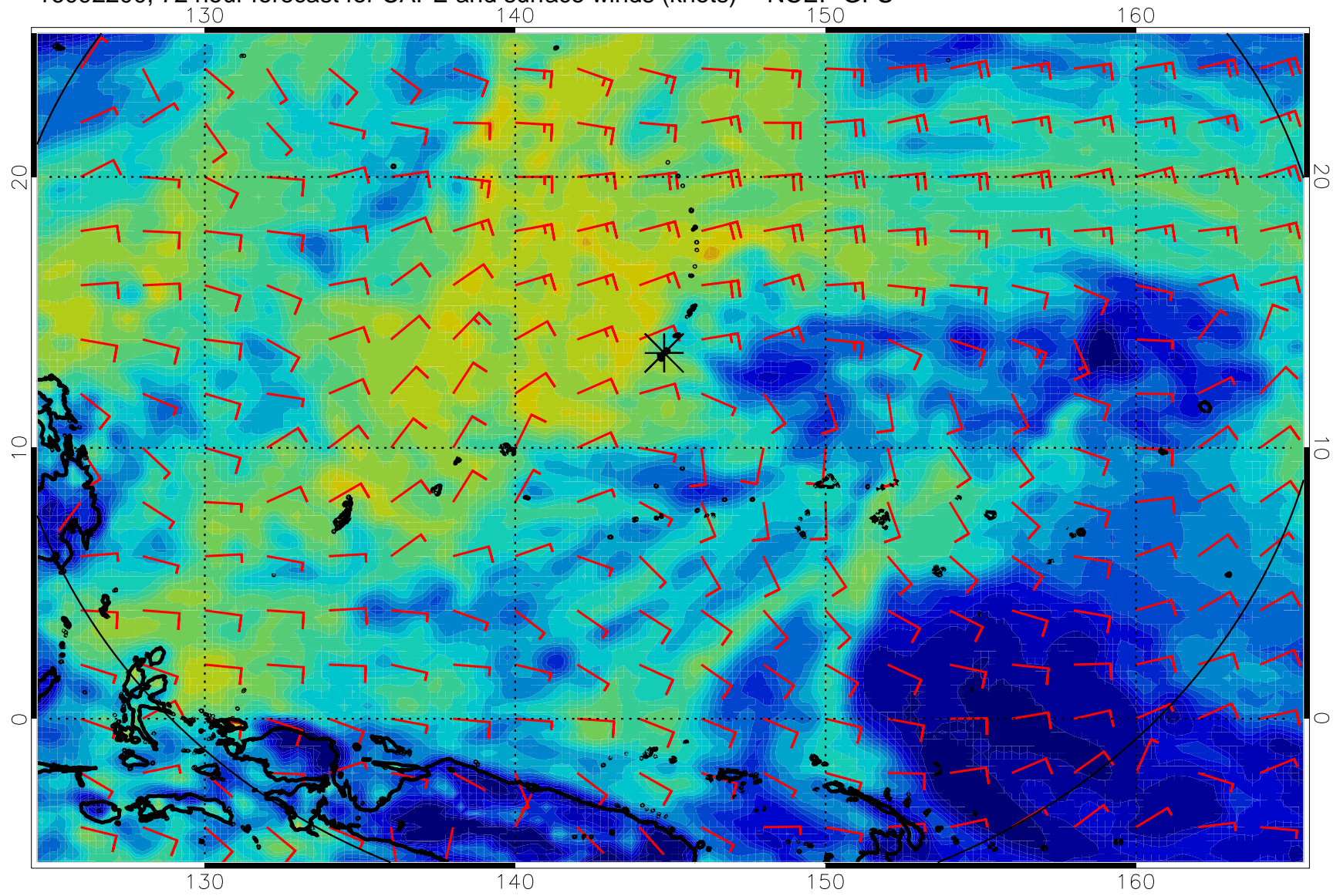
16092112, 60 hour forecast for CAPE and surface winds (knots) -- NCEP GFS



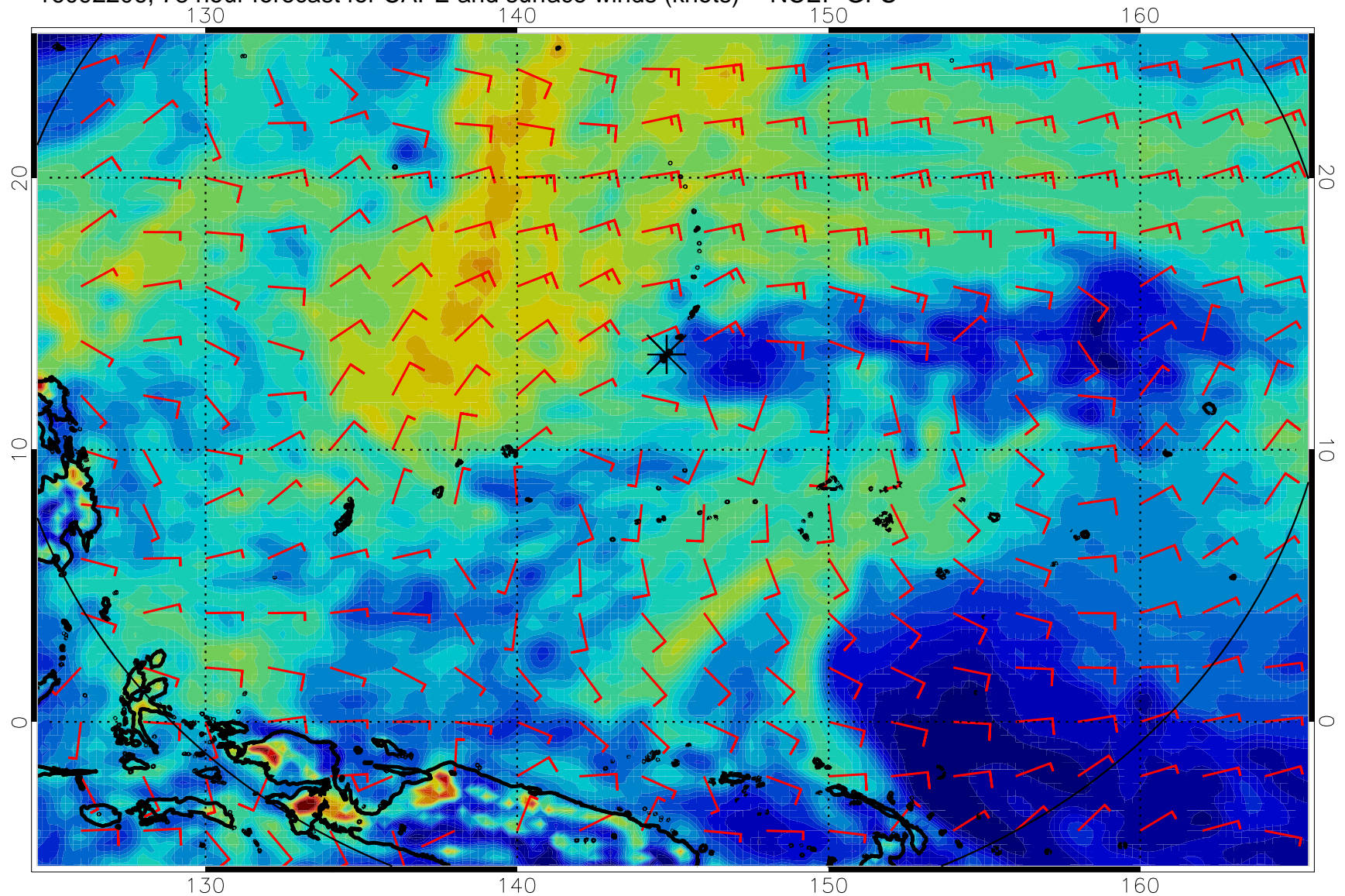
16092118, 66 hour forecast for CAPE and surface winds (knots) -- NCEP GFS



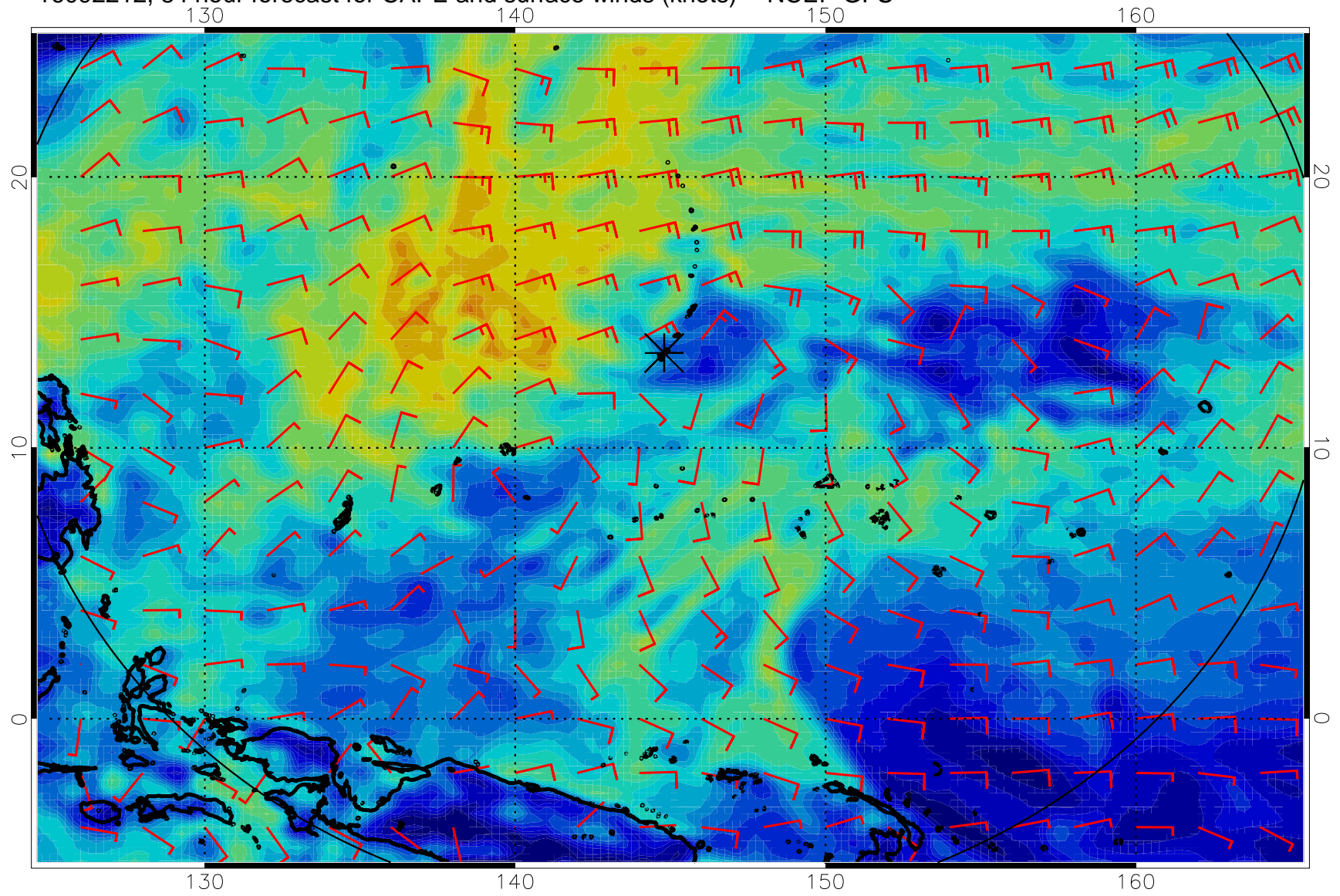
16092200, 72 hour forecast for CAPE and surface winds (knots) -- NCEP GFS



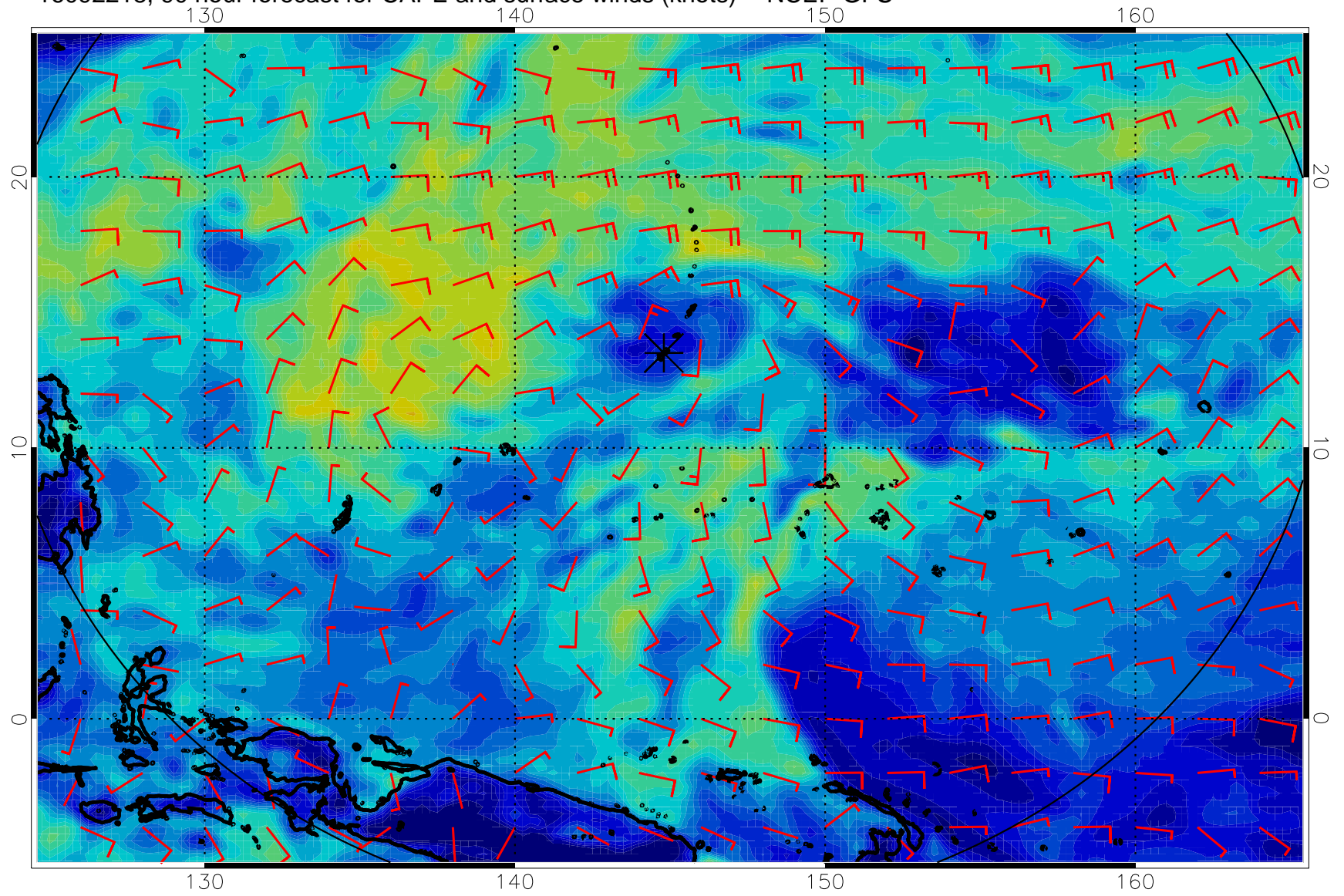
16092206, 78 hour forecast for CAPE and surface winds (knots) -- NCEP GFS



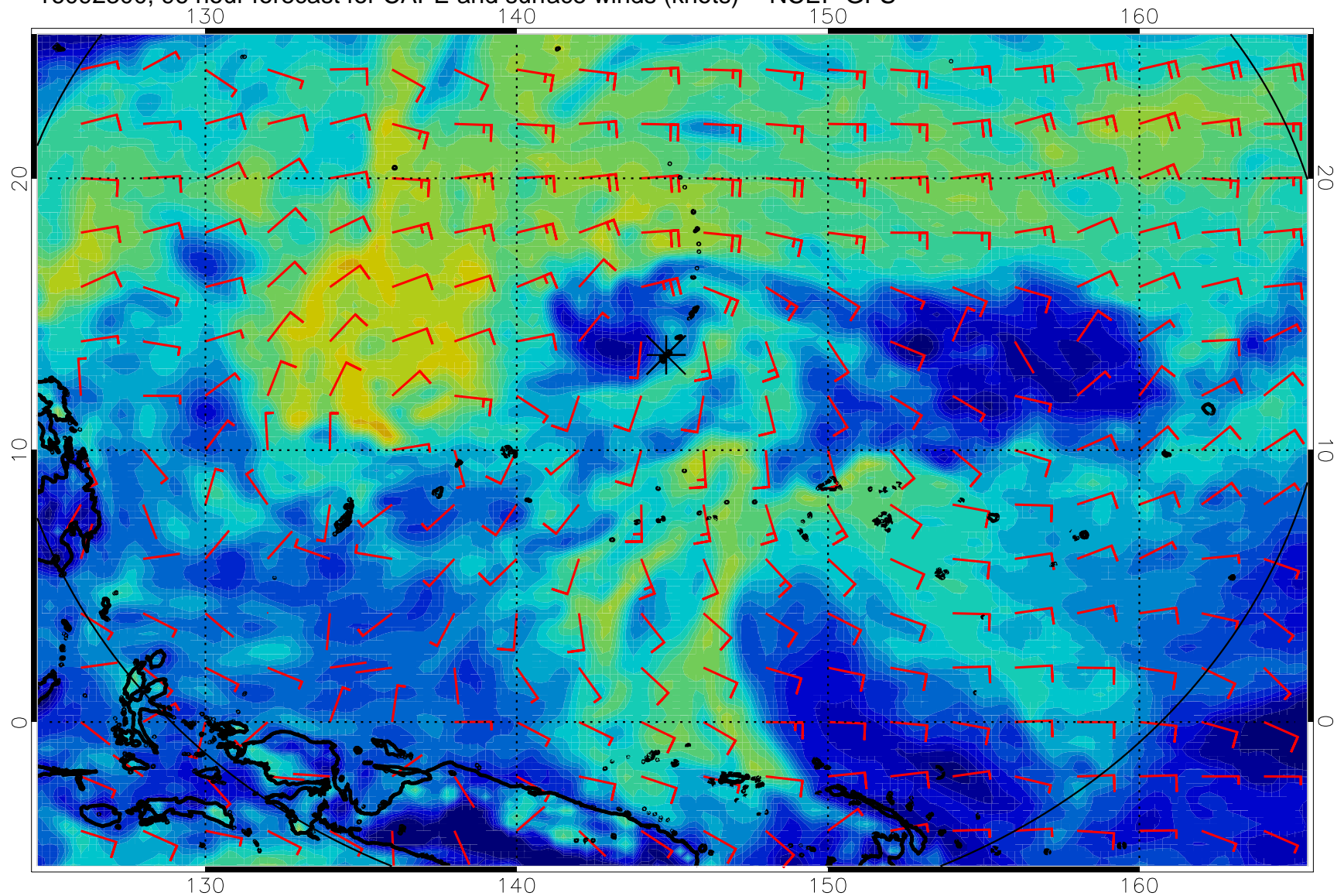
16092212, 84 hour forecast for CAPE and surface winds (knots) -- NCEP GFS



16092218, 90 hour forecast for CAPE and surface winds (knots) -- NCEP GFS

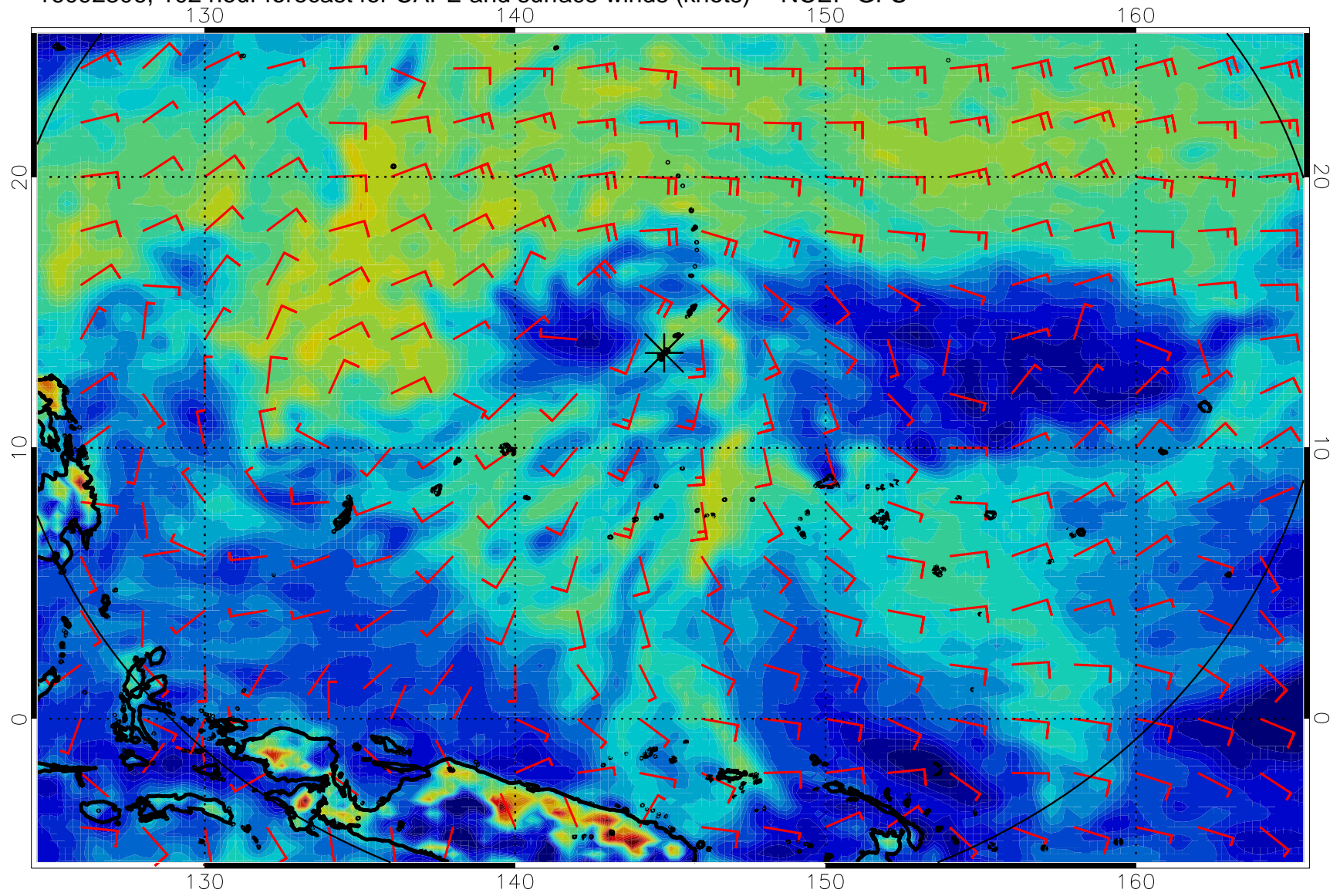


16092300, 96 hour forecast for CAPE and surface winds (knots) -- NCEP GFS

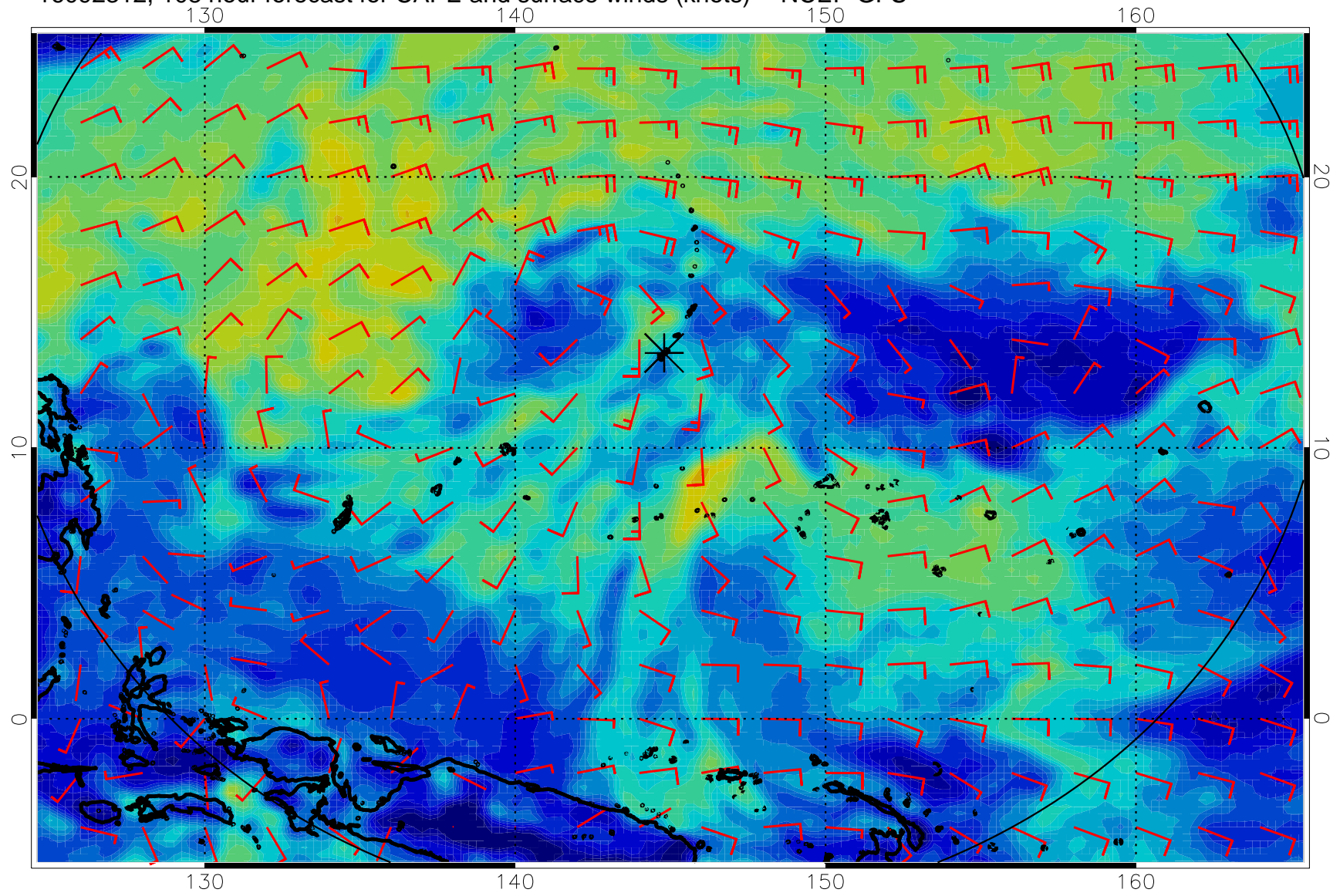




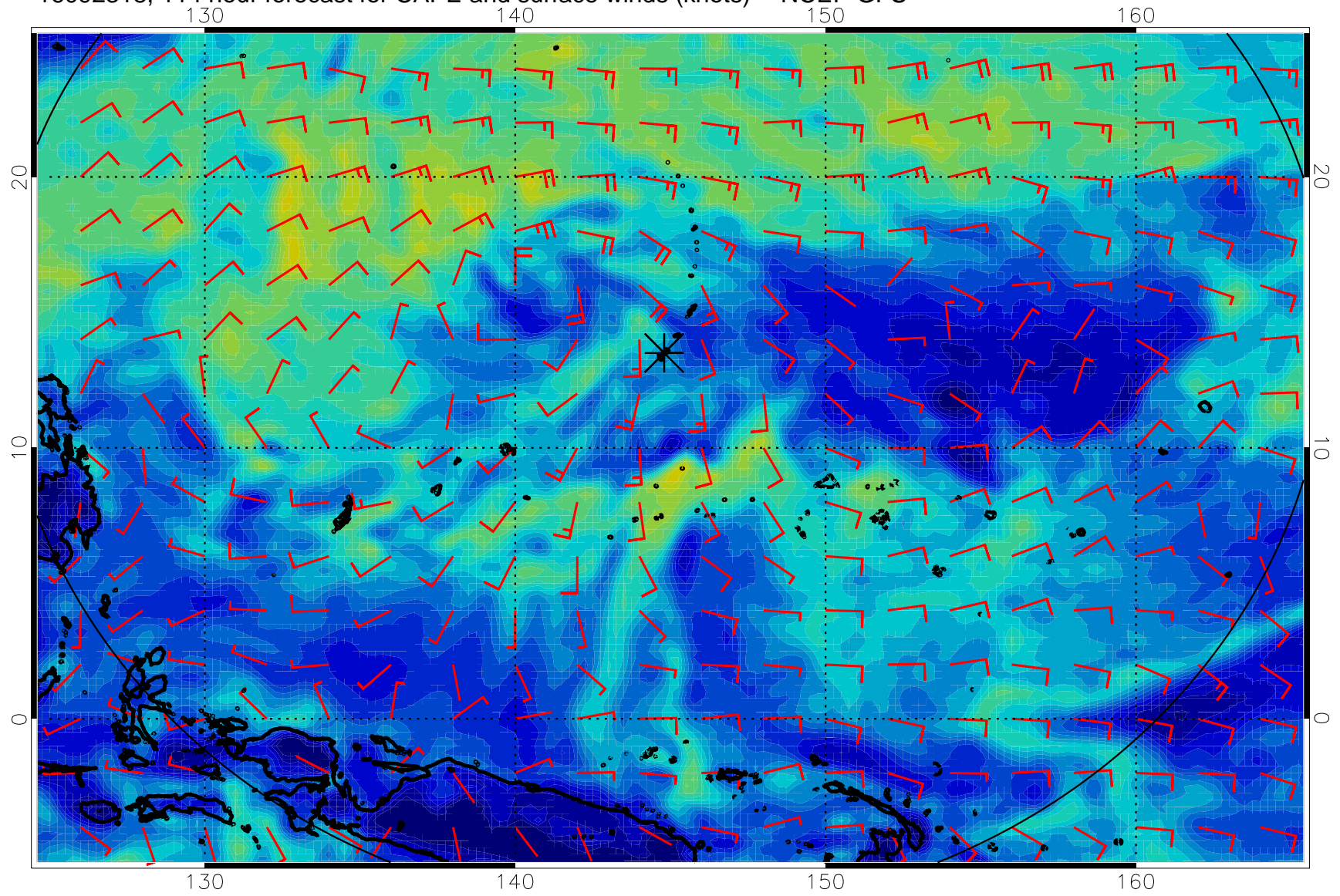
16092306, 102 hour forecast for CAPE and surface winds (knots) -- NCEP GFS



16092312, 108 hour forecast for CAPE and surface winds (knots) -- NCEP GFS



16092318, 114 hour forecast for CAPE and surface winds (knots) -- NCEP GFS



16092400, 120 hour forecast for CAPE and surface winds (knots) -- NCEP GFS

