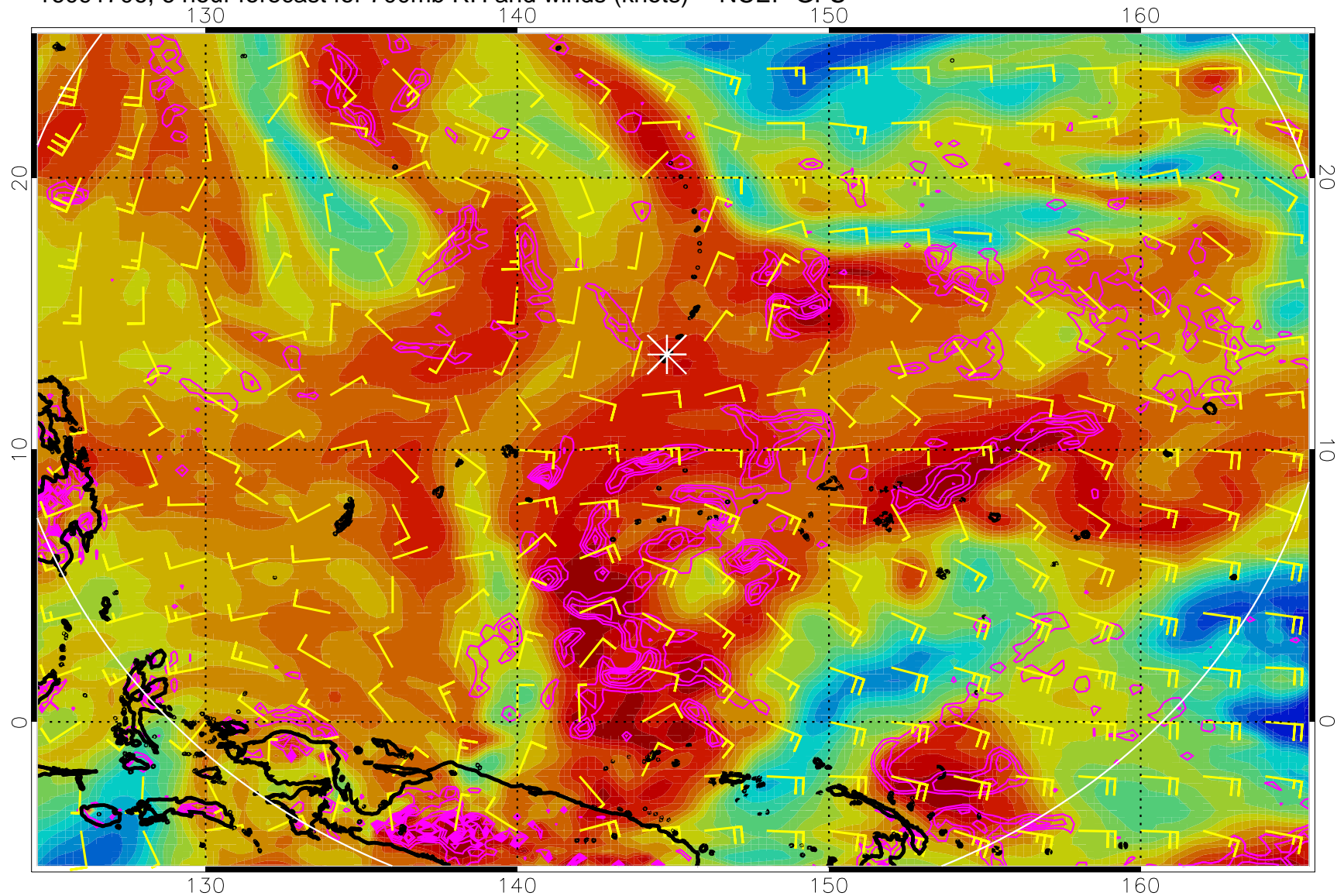
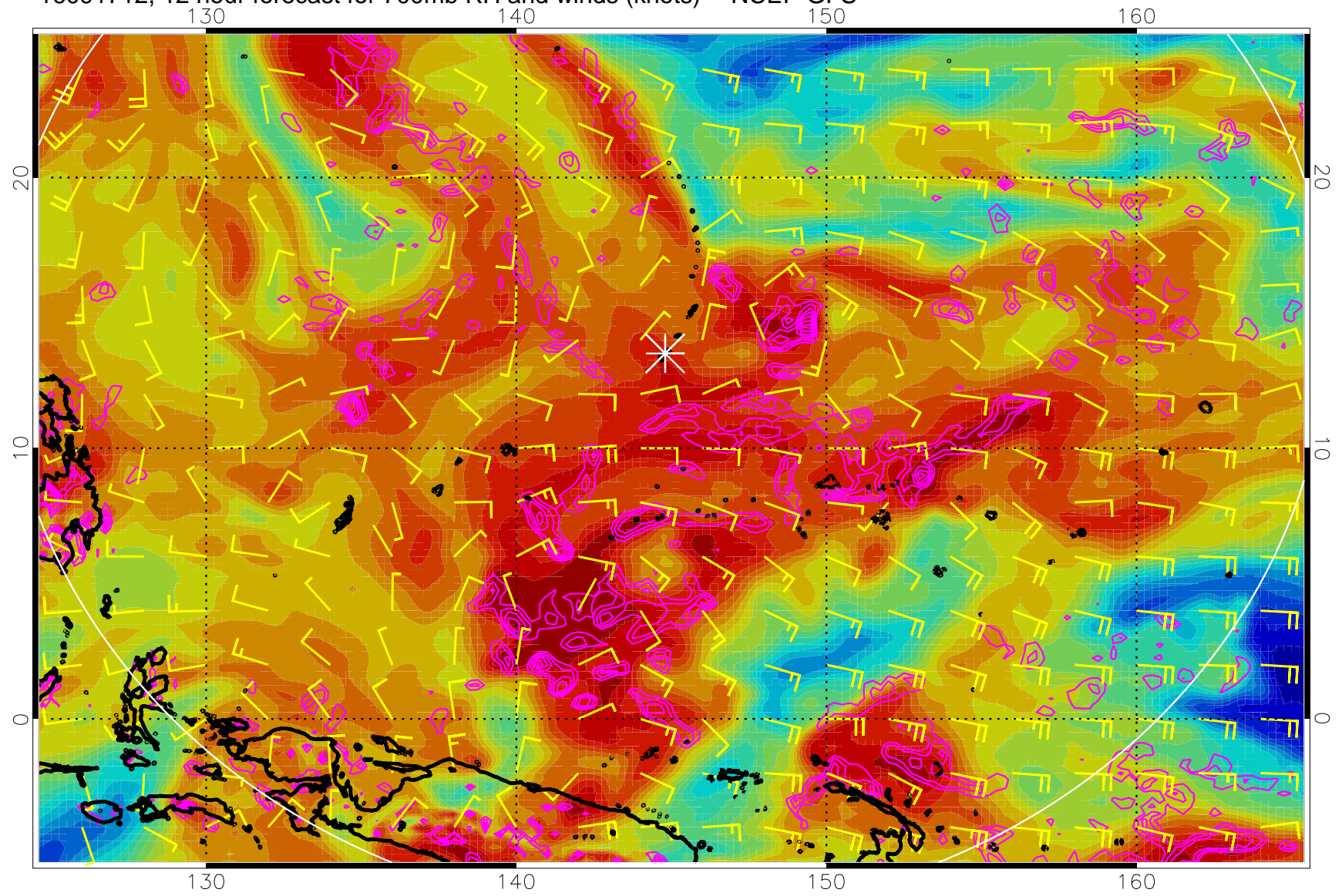


16091706, 6 hour forecast for 700mb RH and winds (knots) -- NCEP GFS



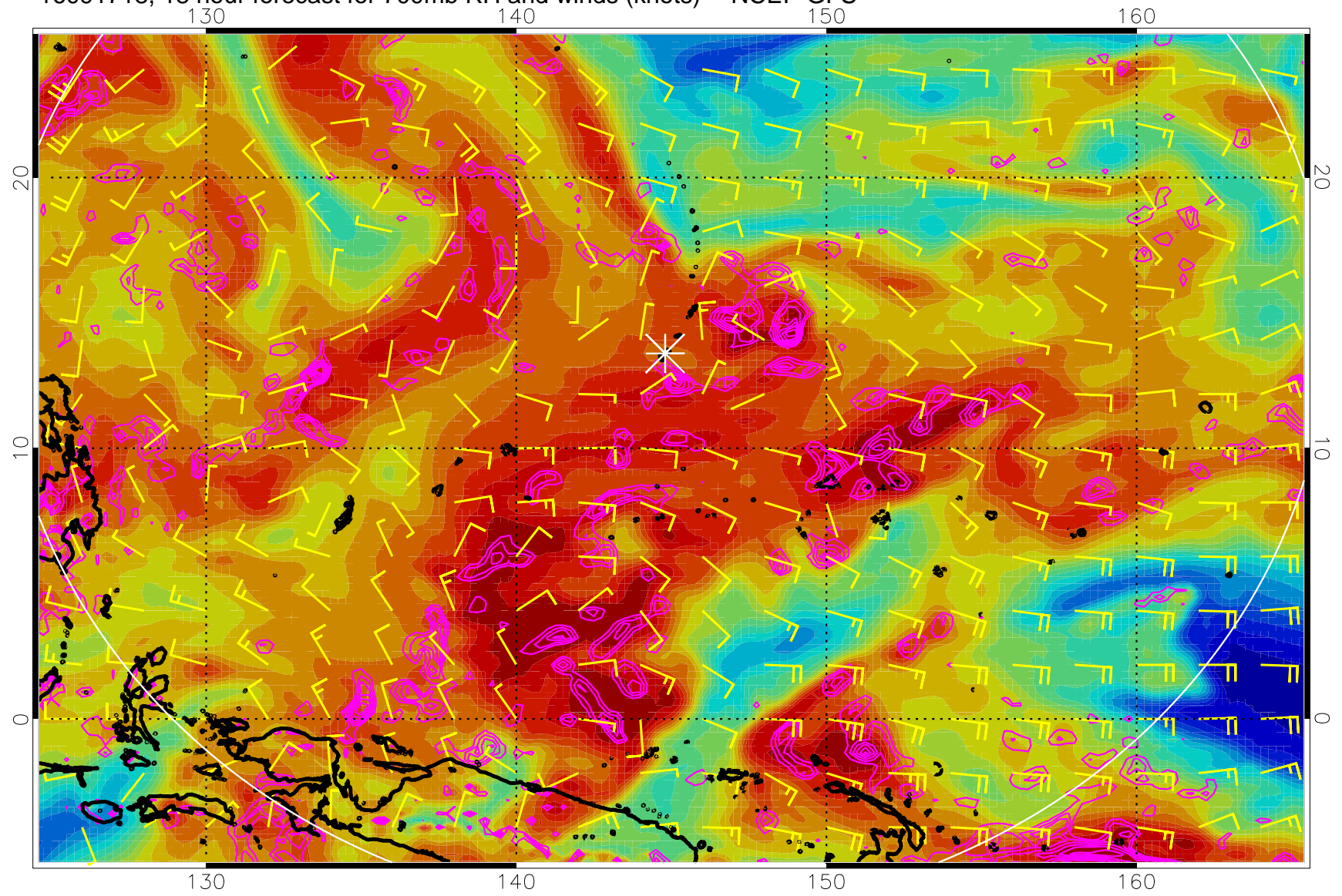
Negative Omegas less than -0.3 , contours of 0.3 Pa/s

16091712, 12 hour forecast for 700mb RH and winds (knots) -- NCEP GFS



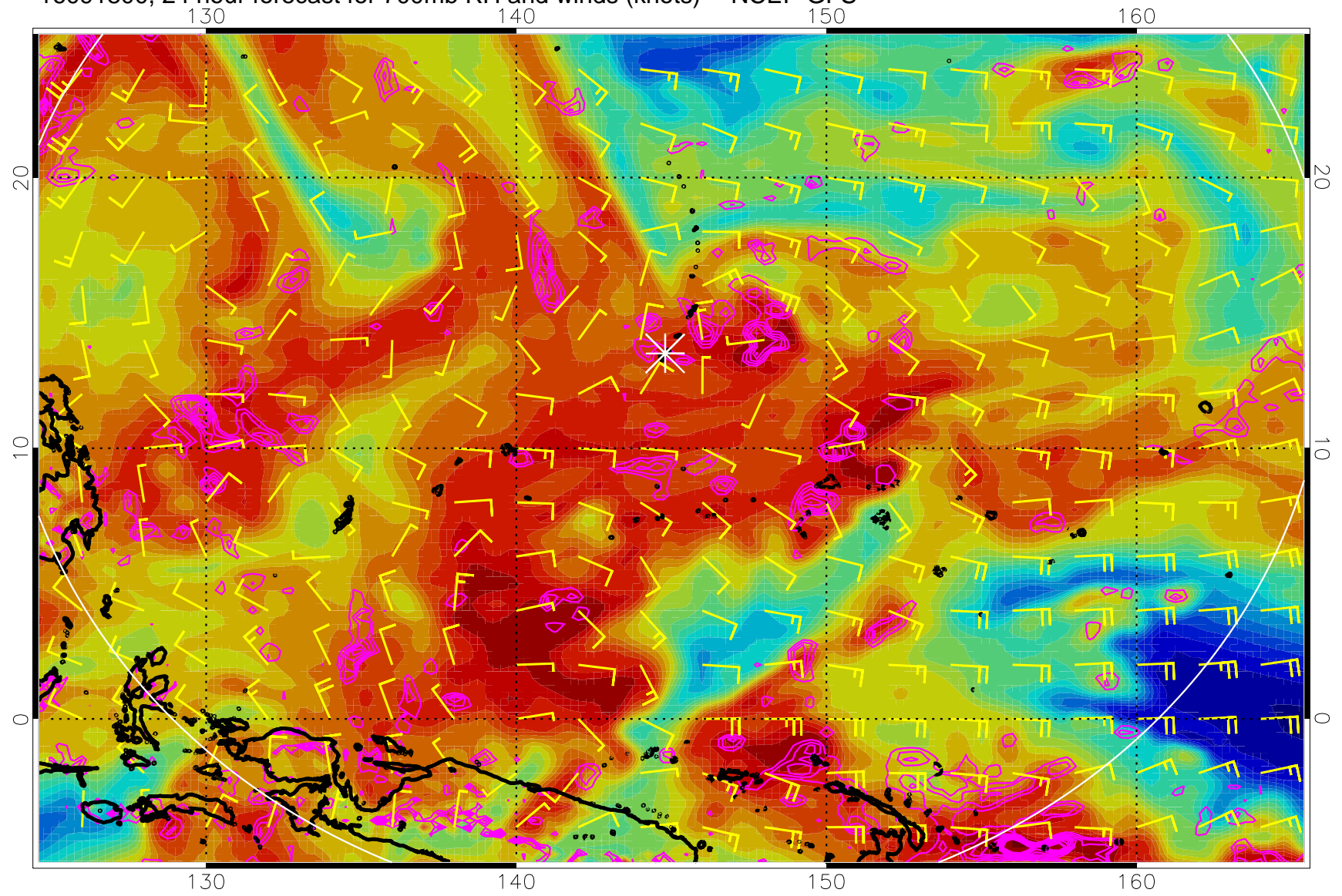
Negative Omegas less than -.3, contours of .3 Pa/s

16091718, 18 hour forecast for 700mb RH and winds (knots) -- NCEP GFS



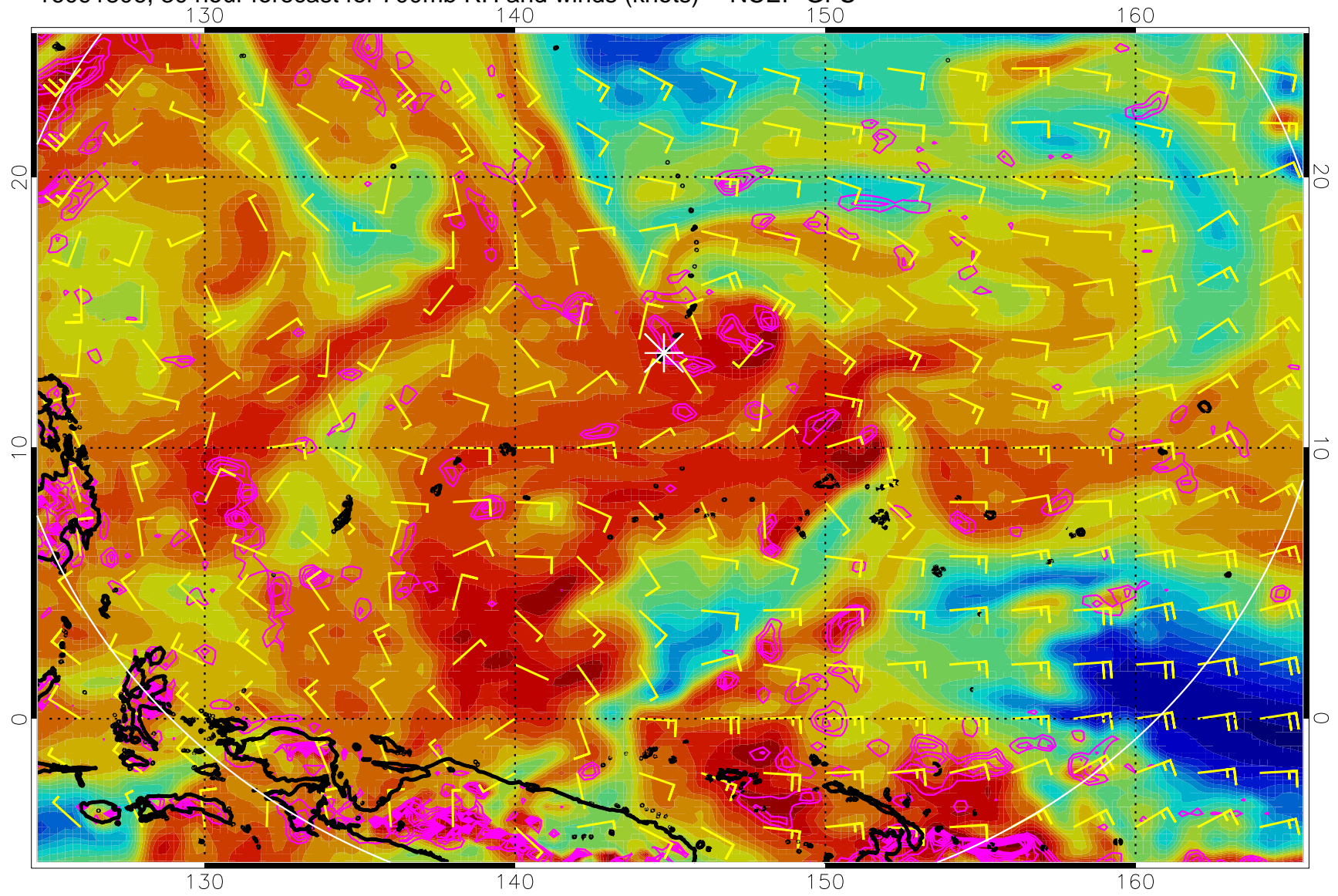
Negative Omegas less than -0.3 , contours of 0.3 Pa/s

16091800, 24 hour forecast for 700mb RH and winds (knots) -- NCEP GFS



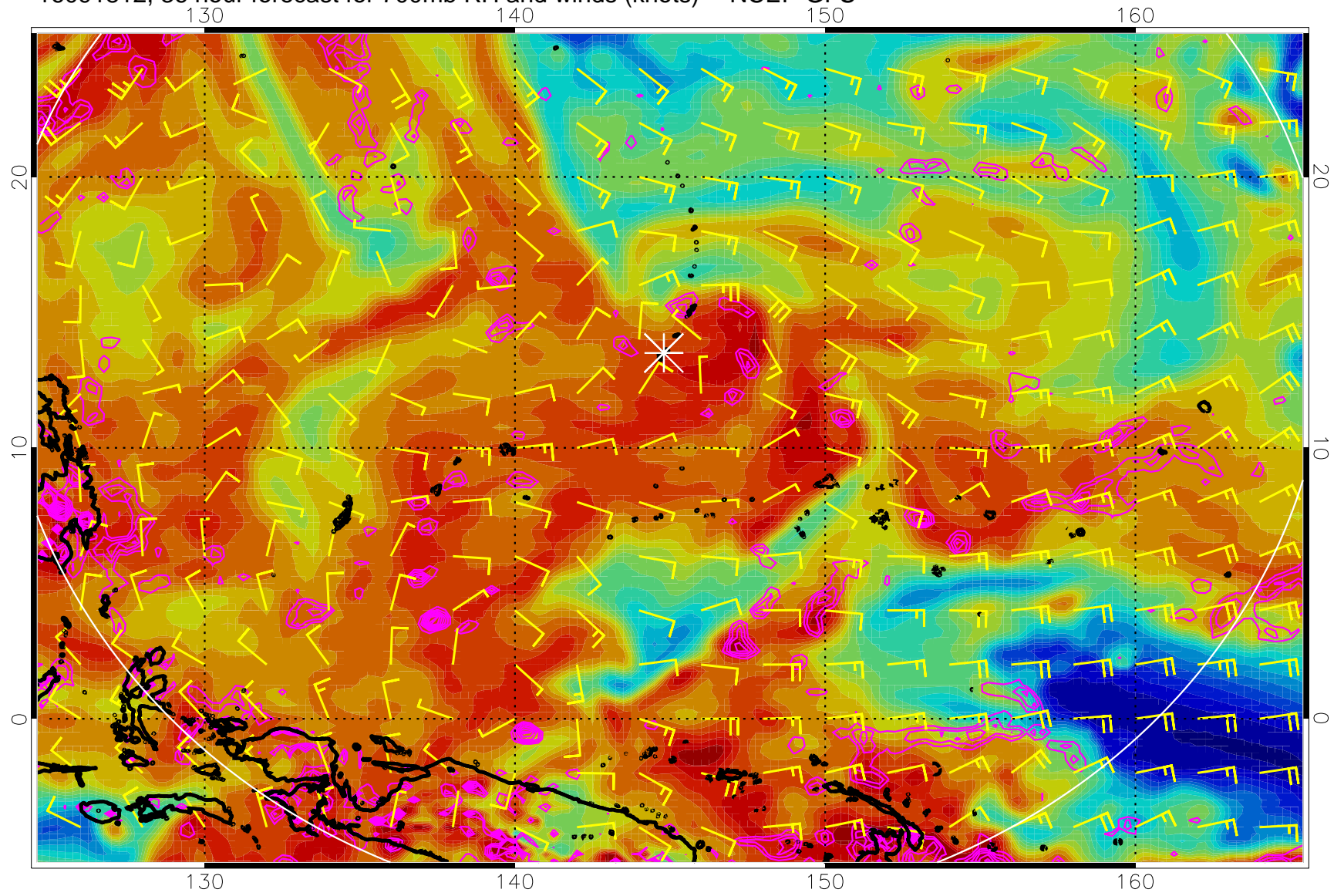
Negative Omegas less than -0.3 , contours of 0.3 Pa/s

16091806, 30 hour forecast for 700mb RH and winds (knots) -- NCEP GFS



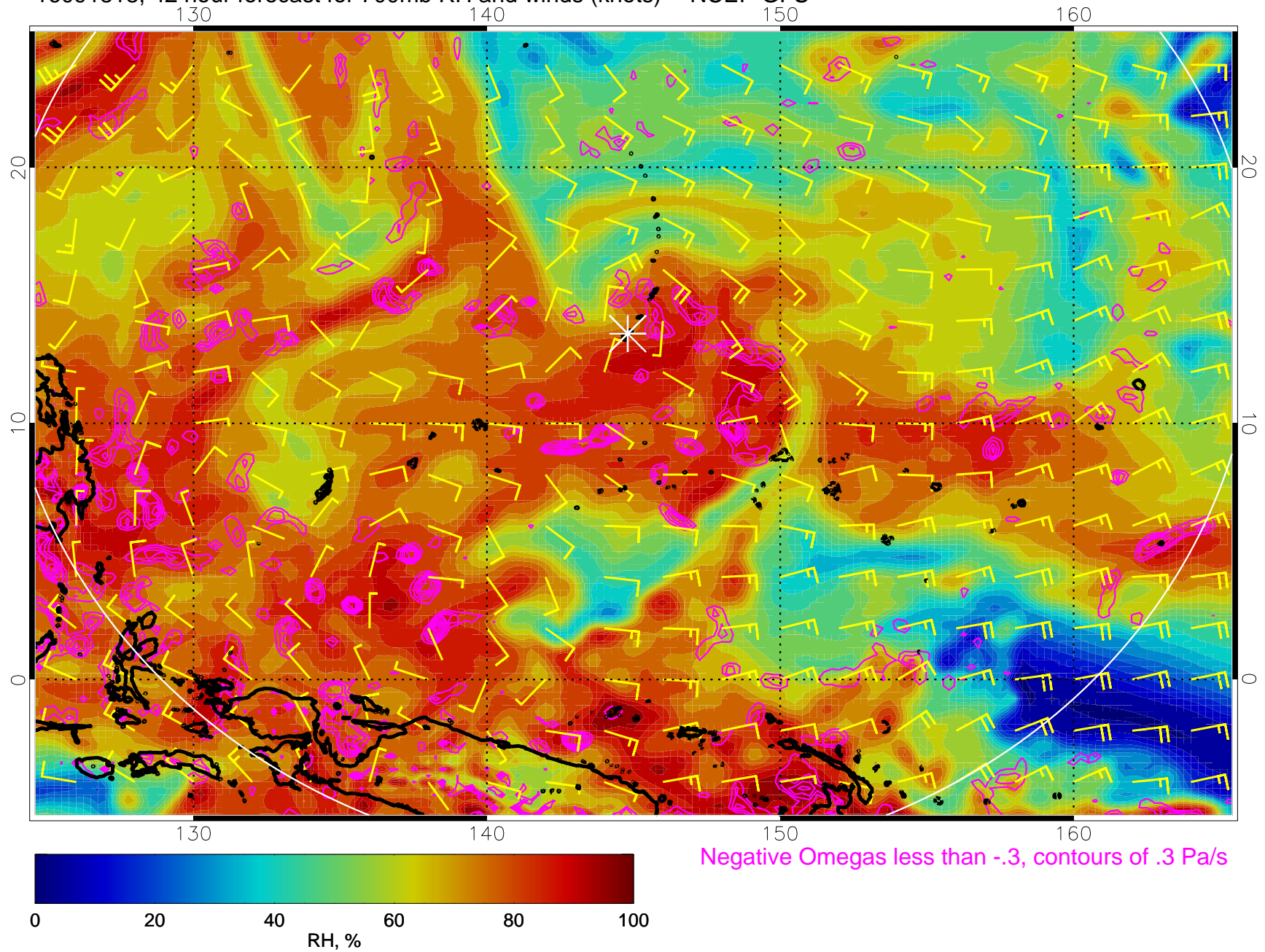
Negative Omegas less than $-.3$, contours of $.3$ Pa/s

16091812, 36 hour forecast for 700mb RH and winds (knots) -- NCEP GFS

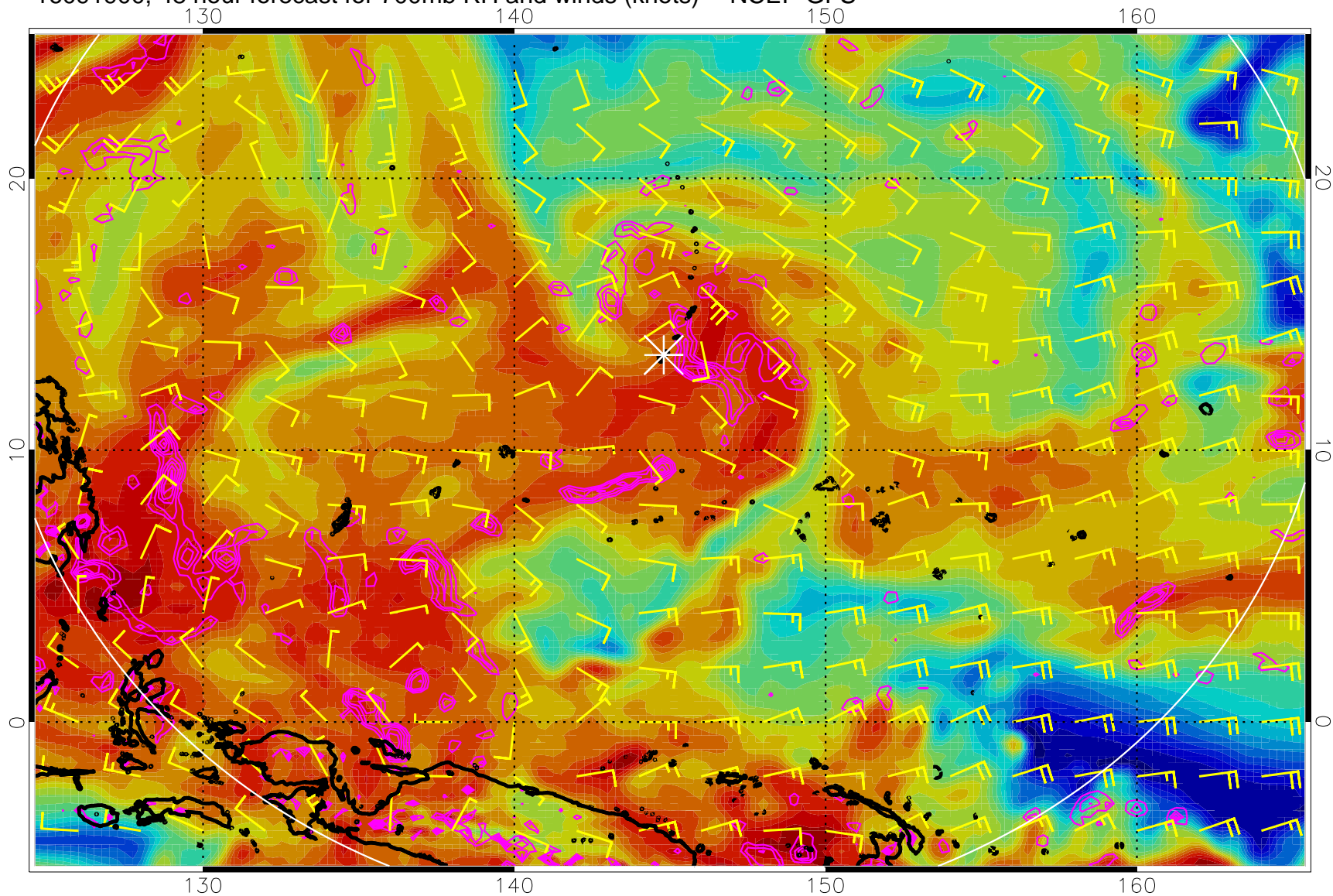


Negative Omegas less than -0.3 , contours of 0.3 Pa/s

16091818, 42 hour forecast for 700mb RH and winds (knots) -- NCEP GFS

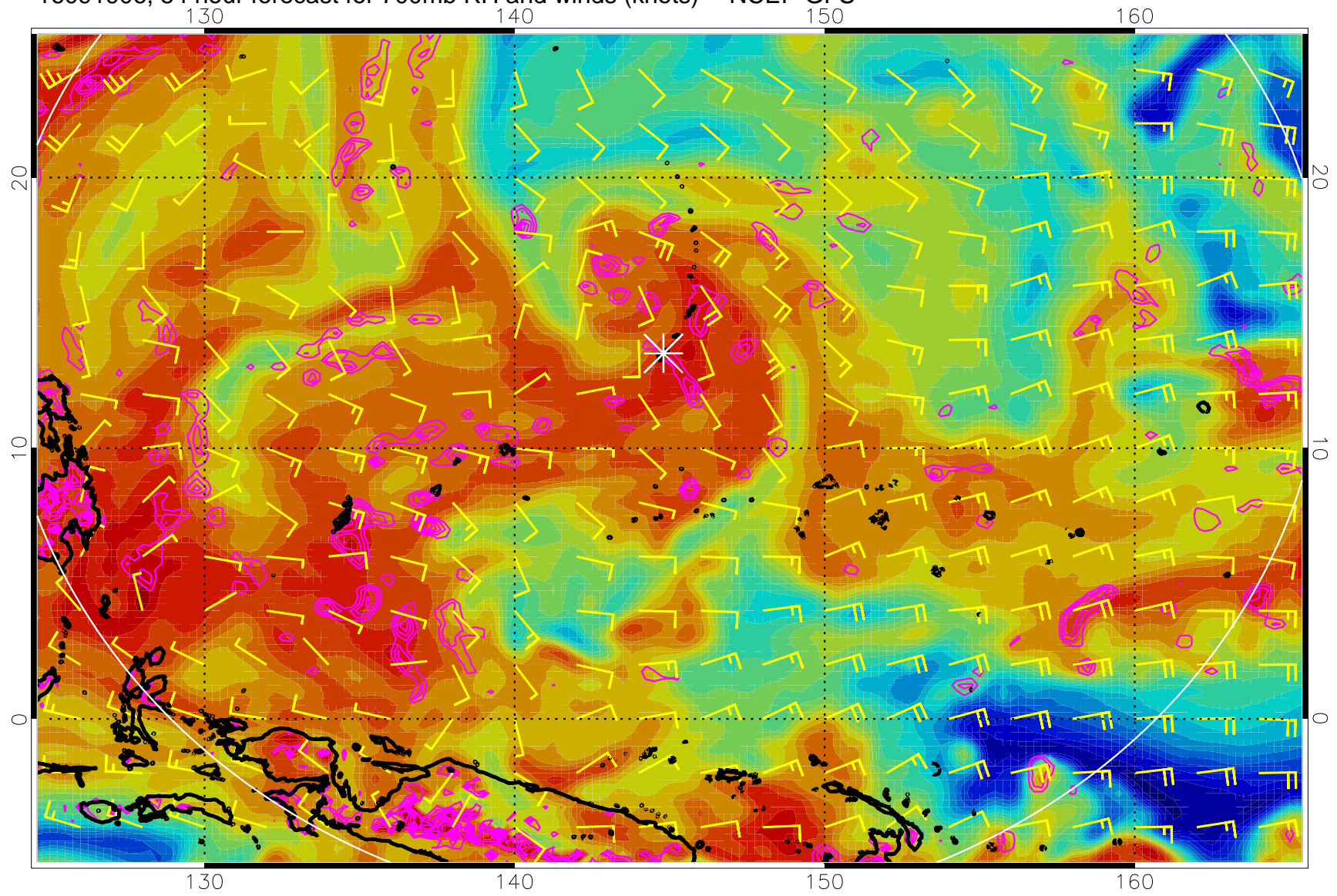


16091900, 48 hour forecast for 700mb RH and winds (knots) -- NCEP GFS



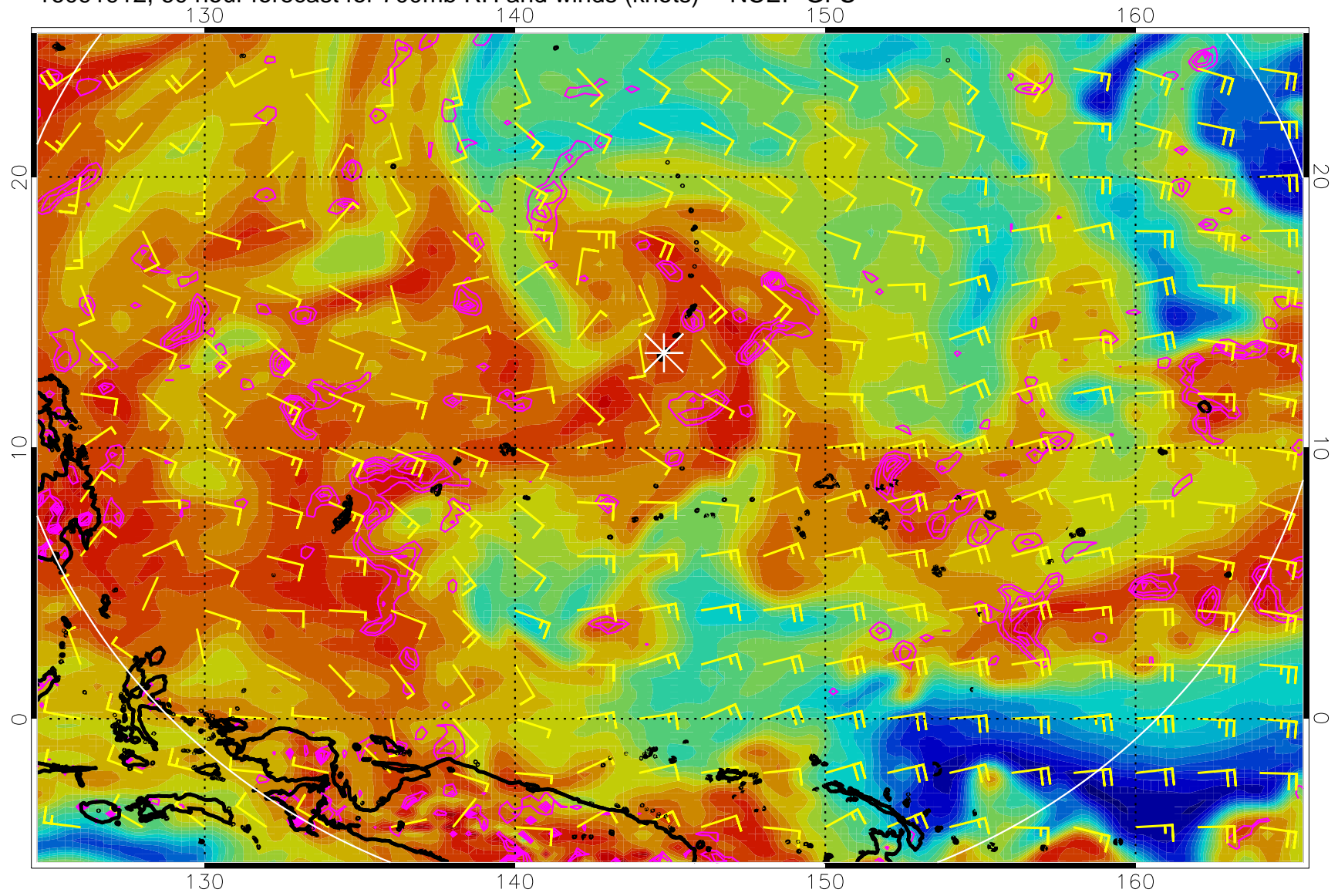
Negative Omegas less than -0.3 , contours of 0.3 Pa/s

16091906, 54 hour forecast for 700mb RH and winds (knots) -- NCEP GFS



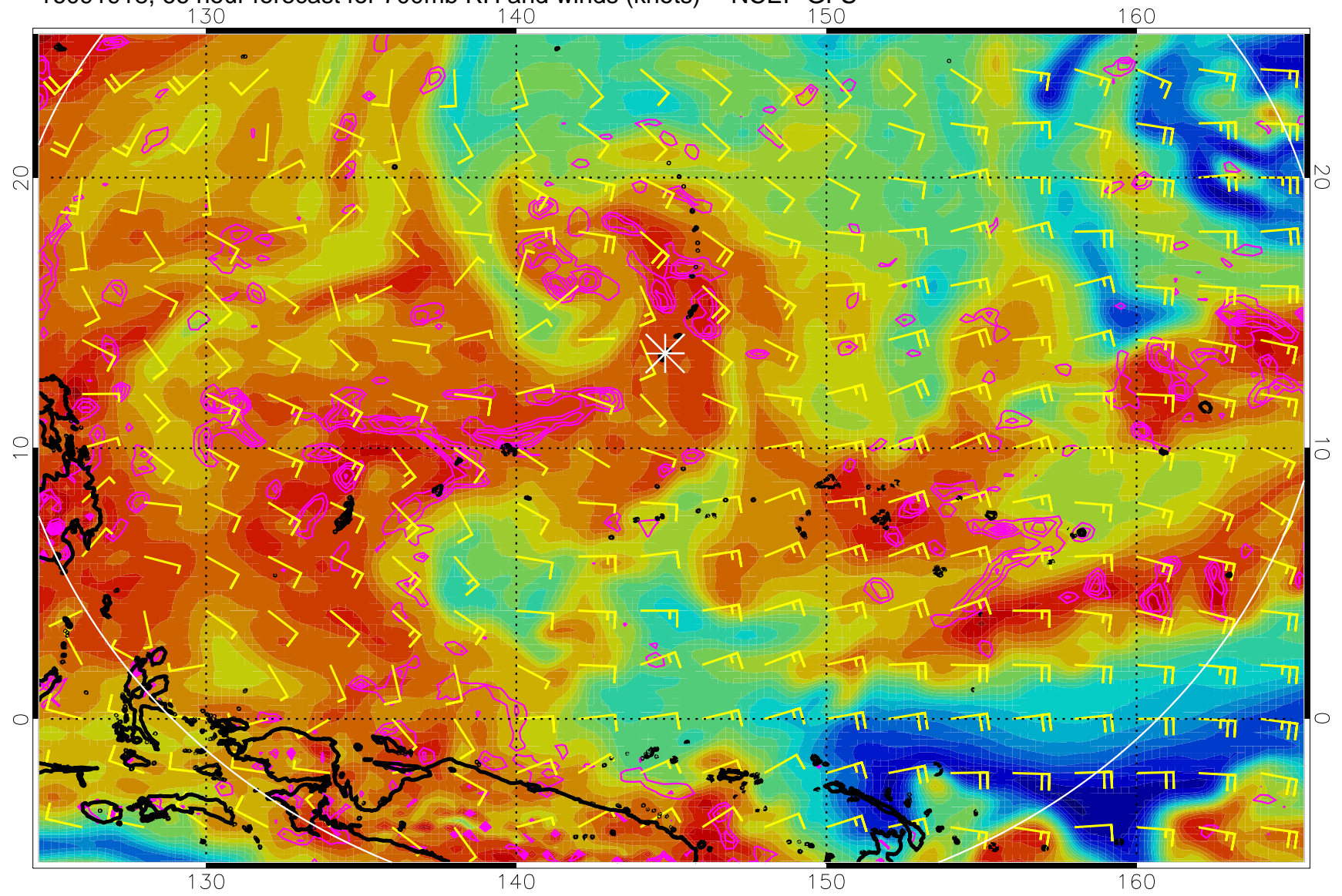
Negative Omegas less than -0.3 , contours of 0.3 Pa/s

16091912, 60 hour forecast for 700mb RH and winds (knots) -- NCEP GFS



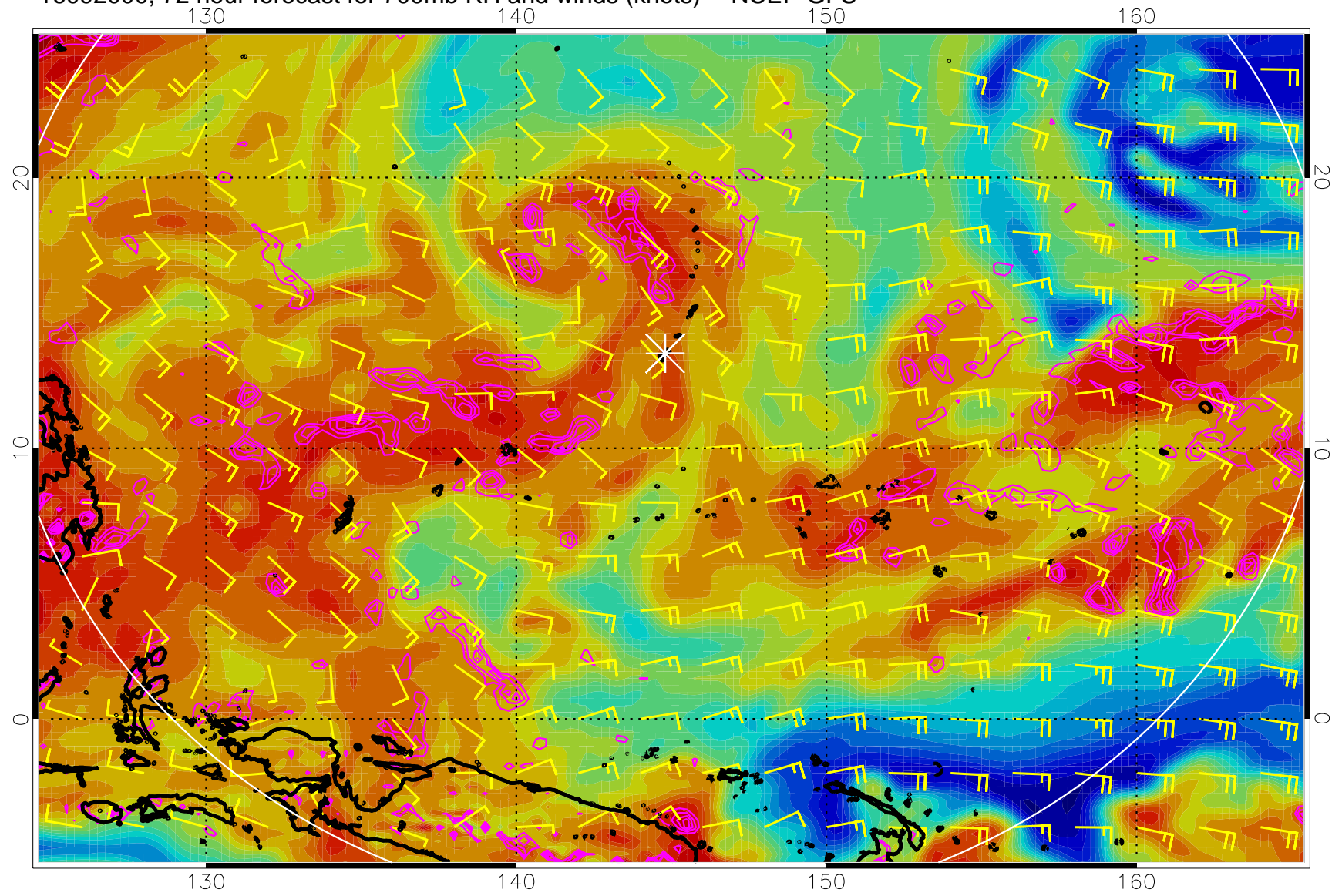
Negative Omegas less than -0.3 , contours of 0.3 Pa/s

16091918, 66 hour forecast for 700mb RH and winds (knots) -- NCEP GFS



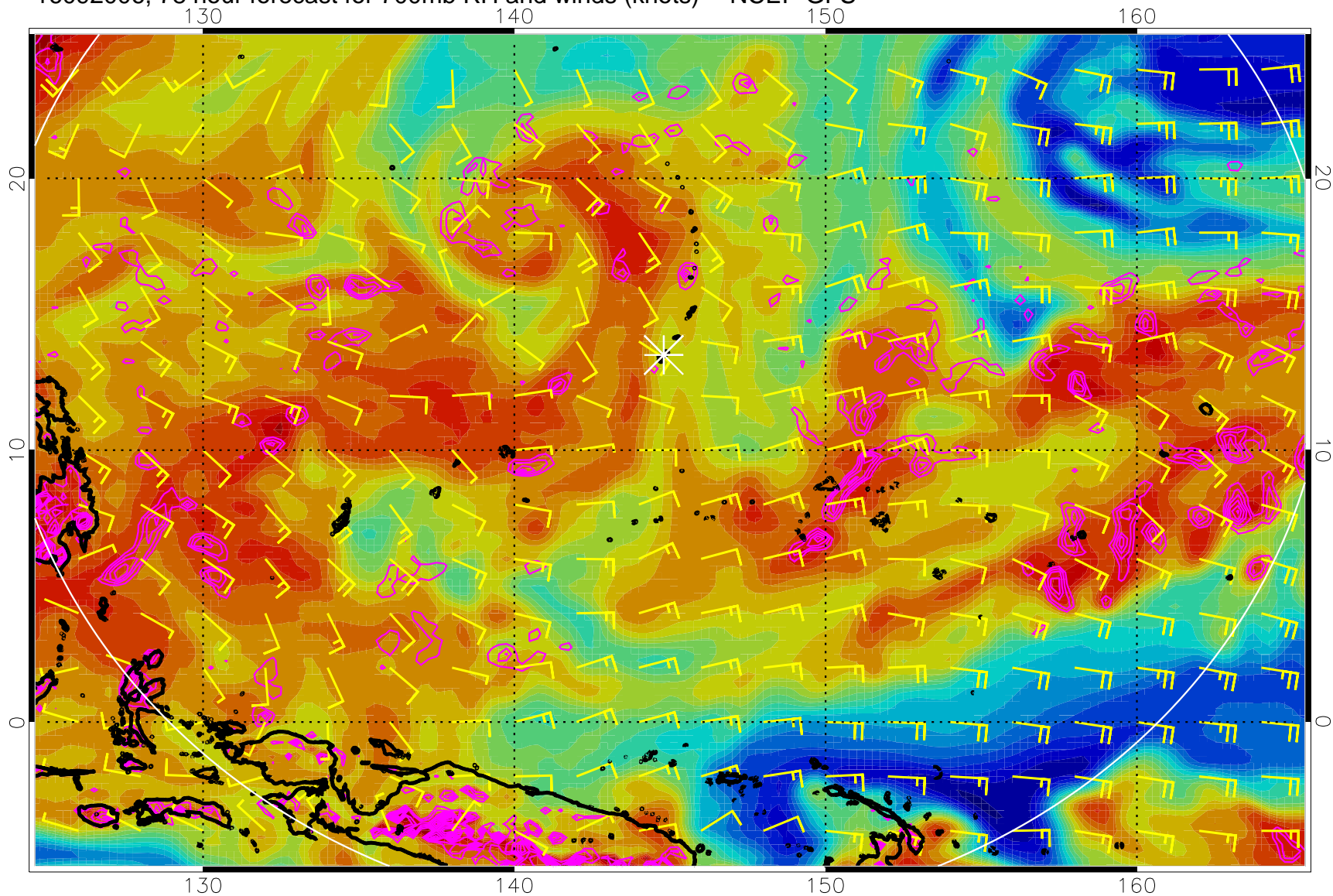
Negative Omegas less than -0.3 , contours of 0.3 Pa/s

16092000, 72 hour forecast for 700mb RH and winds (knots) -- NCEP GFS



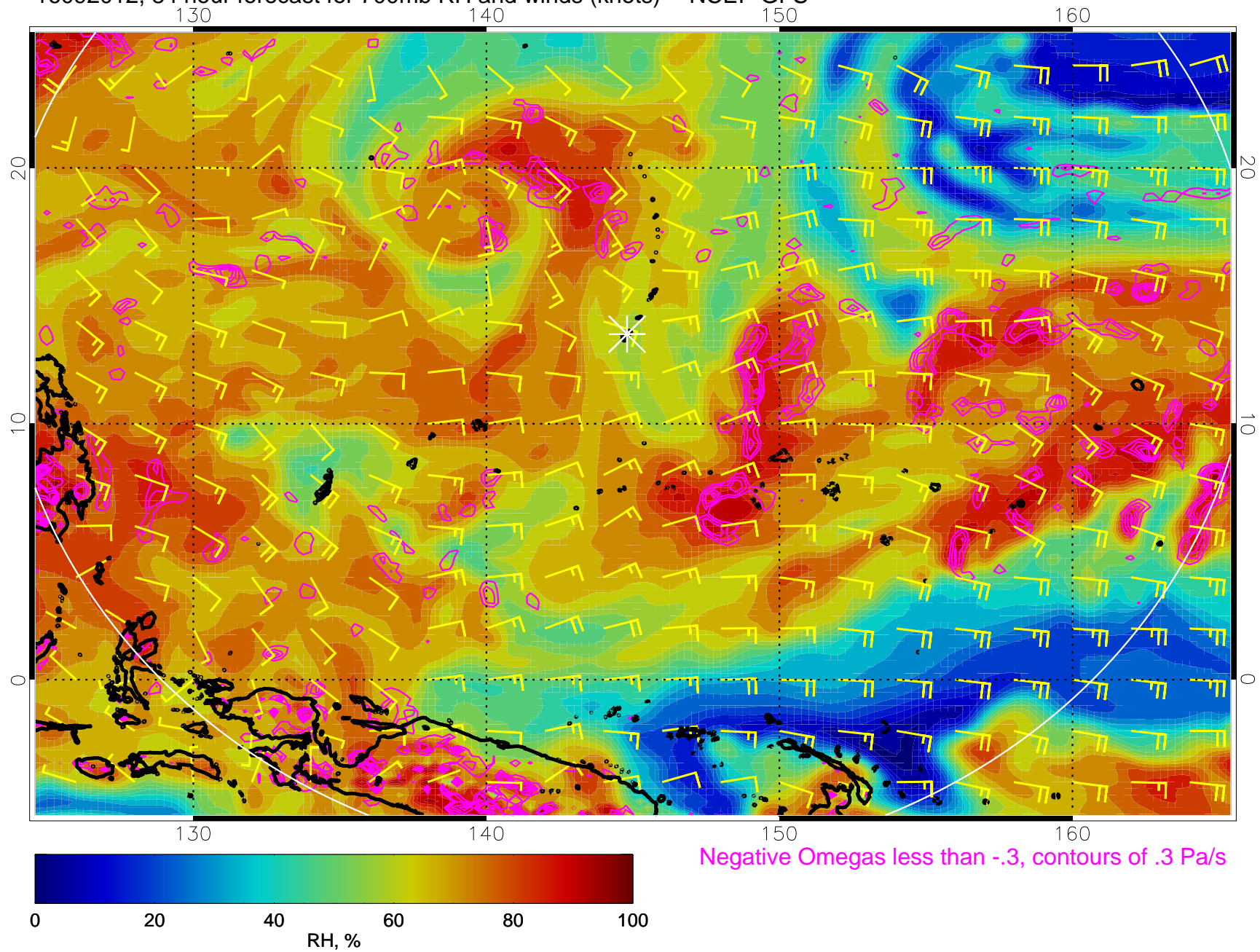
Negative Omegas less than -0.3 , contours of 0.3 Pa/s

16092006, 78 hour forecast for 700mb RH and winds (knots) -- NCEP GFS

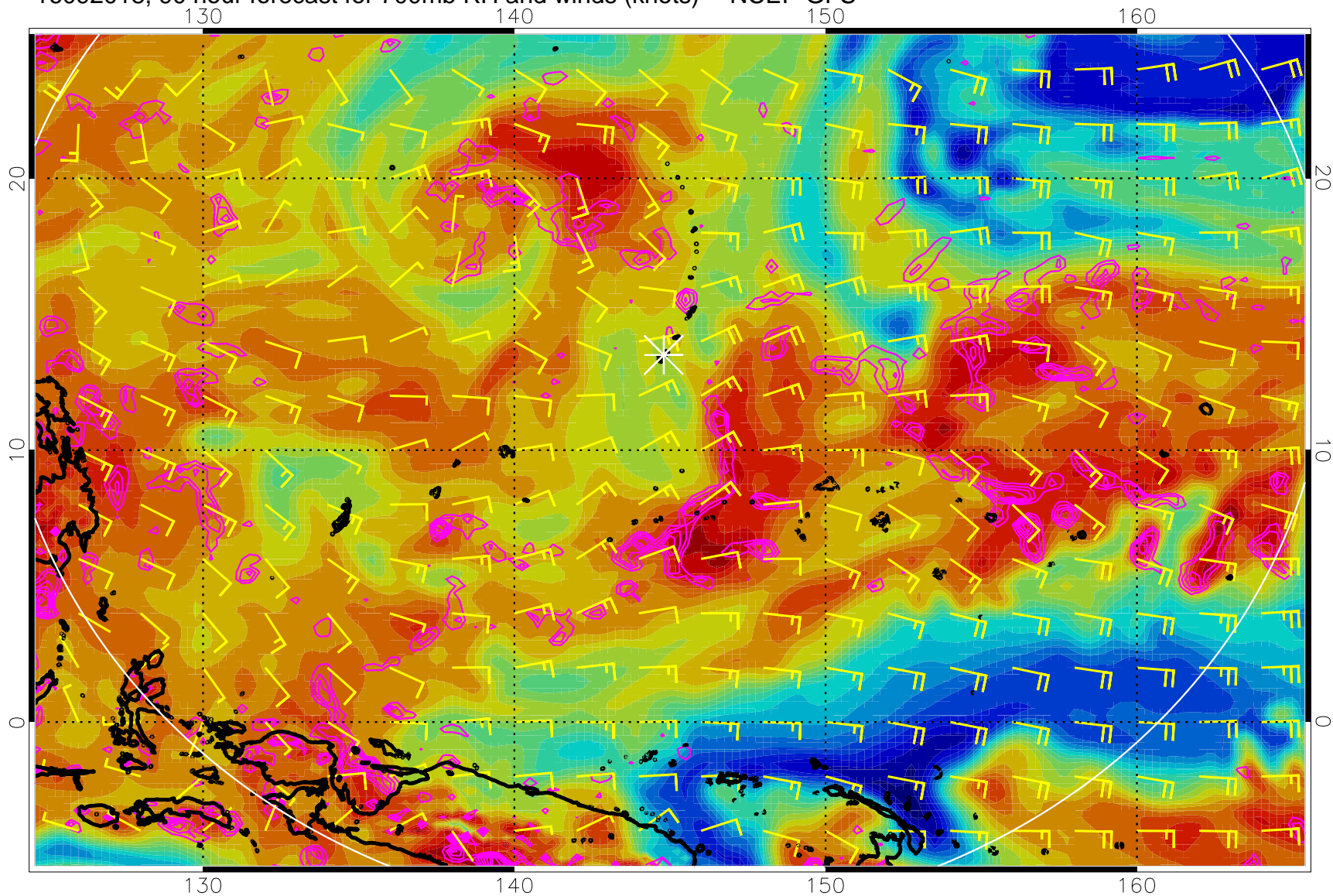


Negative Omegas less than -0.3 , contours of 0.3 Pa/s

16092012, 84 hour forecast for 700mb RH and winds (knots) -- NCEP GFS

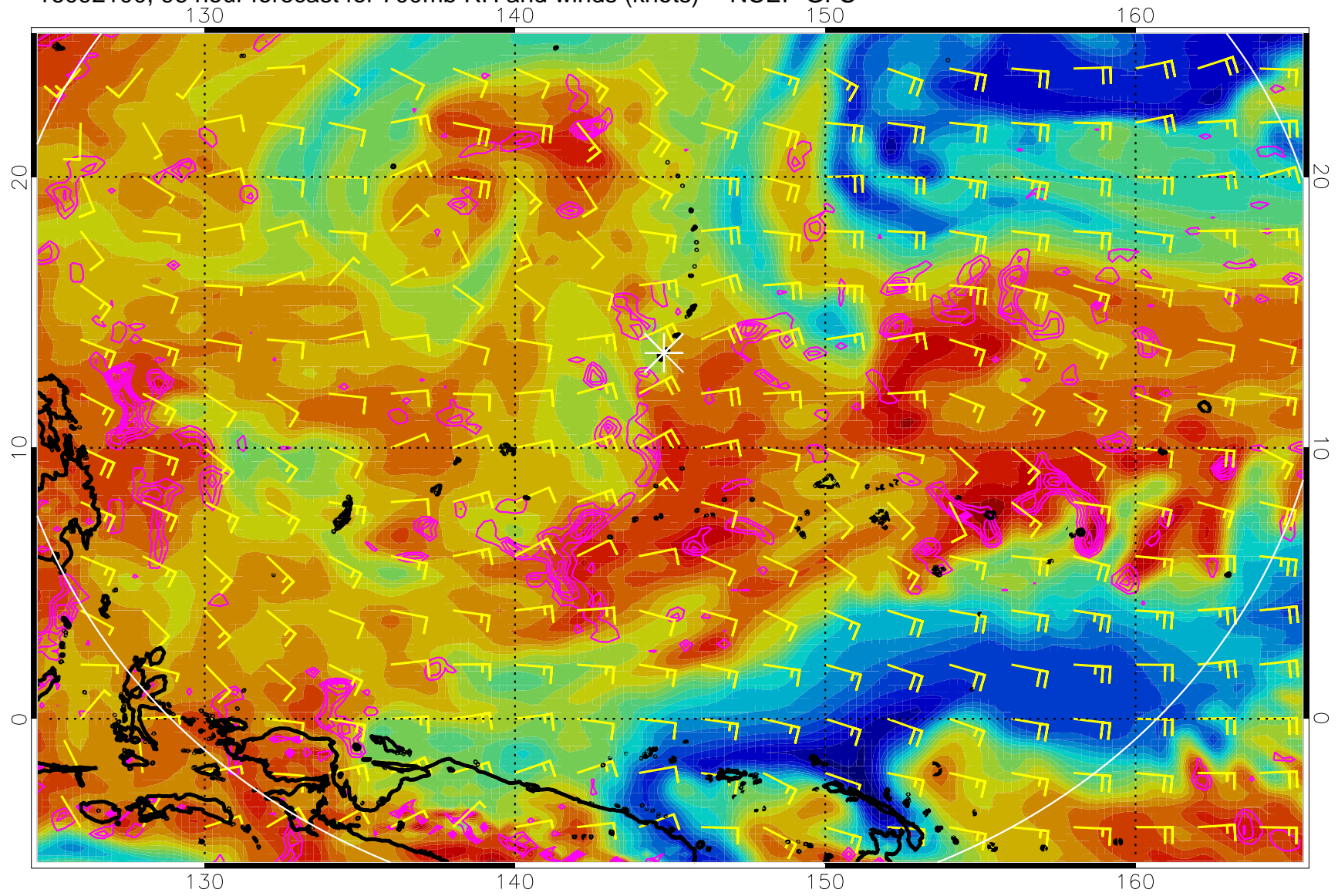


16092018, 90 hour forecast for 700mb RH and winds (knots) -- NCEP GFS



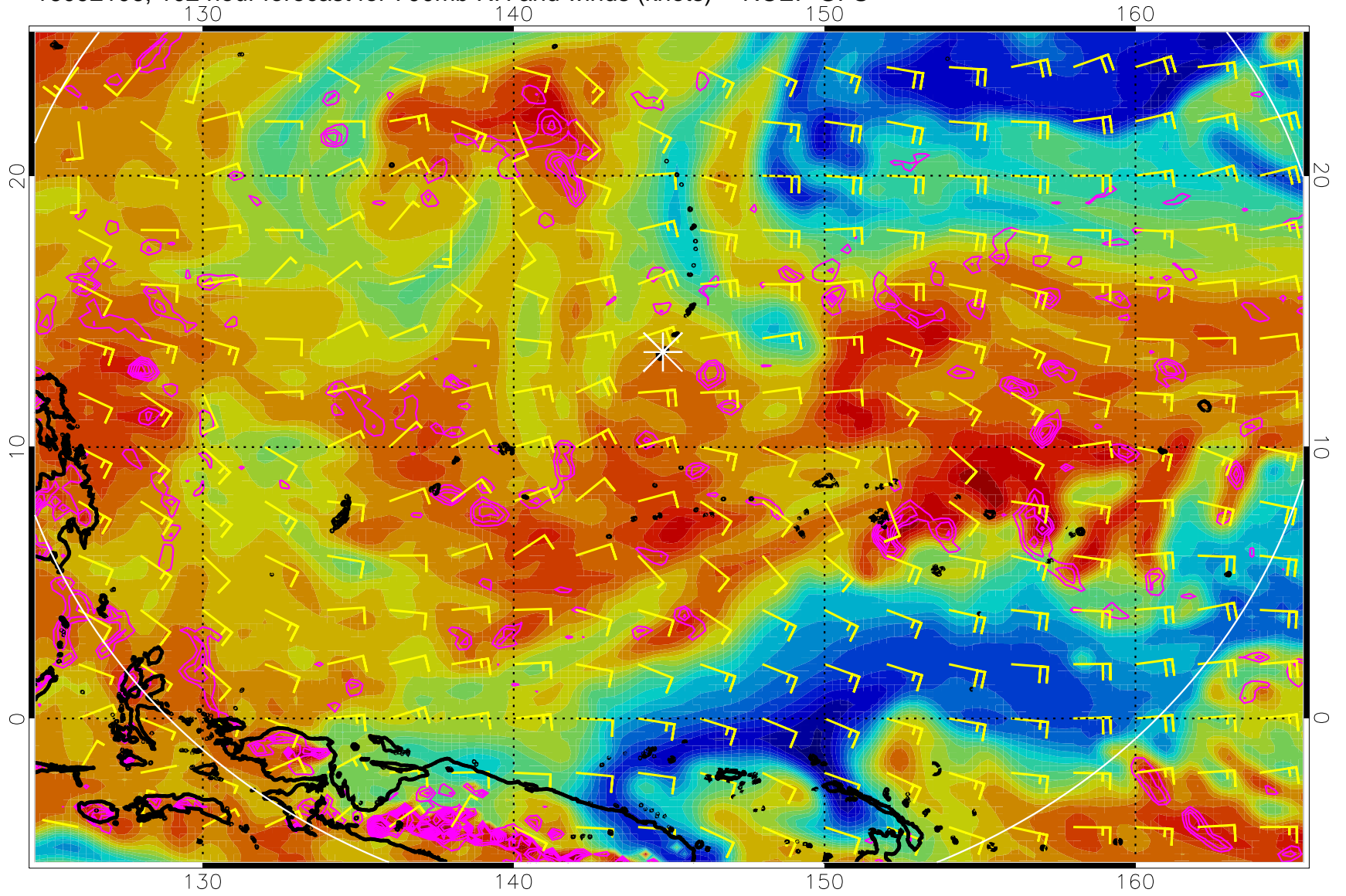
Negative Omegas less than -0.3 , contours of 0.3 Pa/s

16092100, 96 hour forecast for 700mb RH and winds (knots) -- NCEP GFS



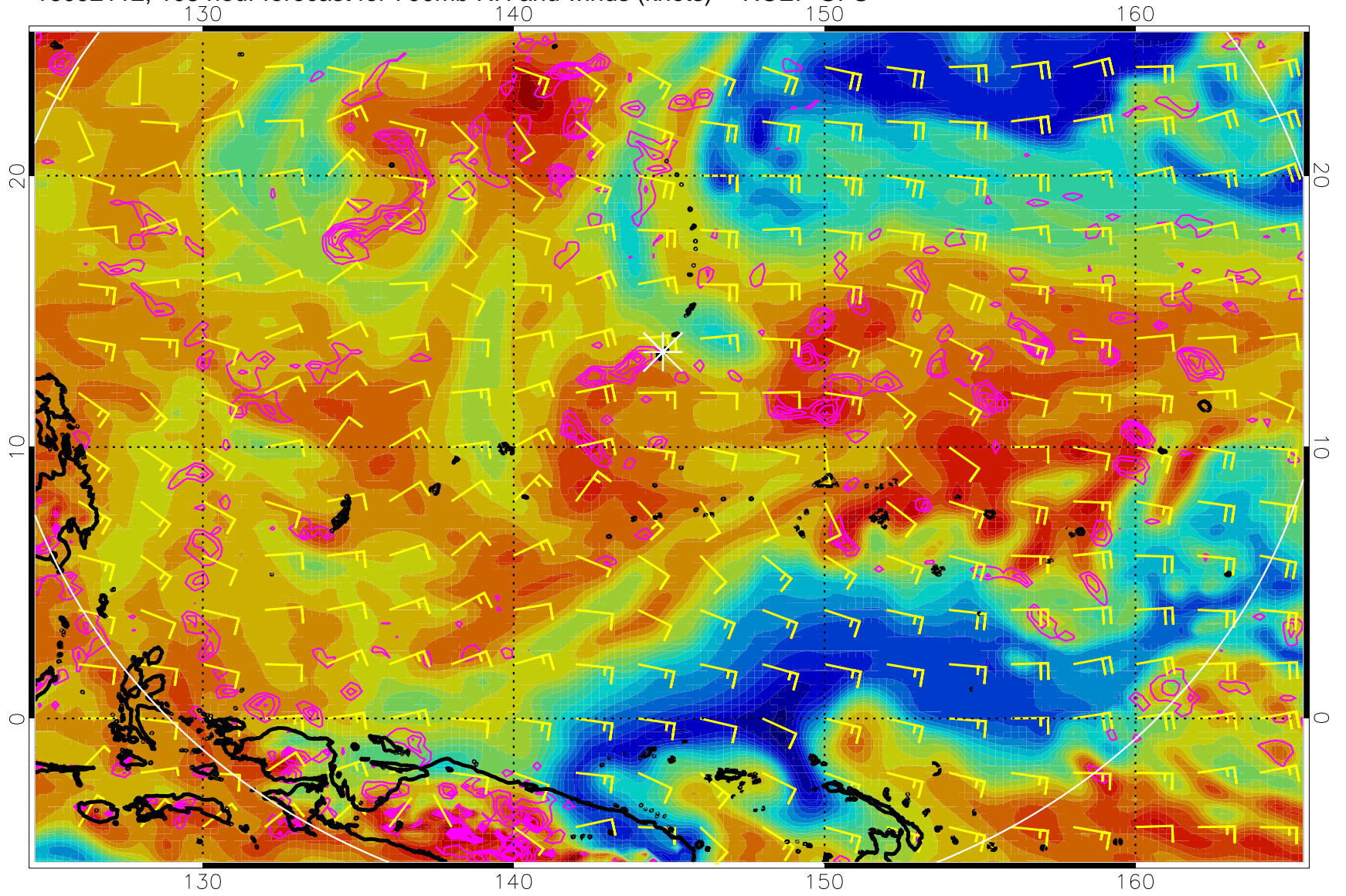
Negative Omegas less than $-.3$, contours of $.3$ Pa/s

16092106, 102 hour forecast for 700mb RH and winds (knots) -- NCEP GFS



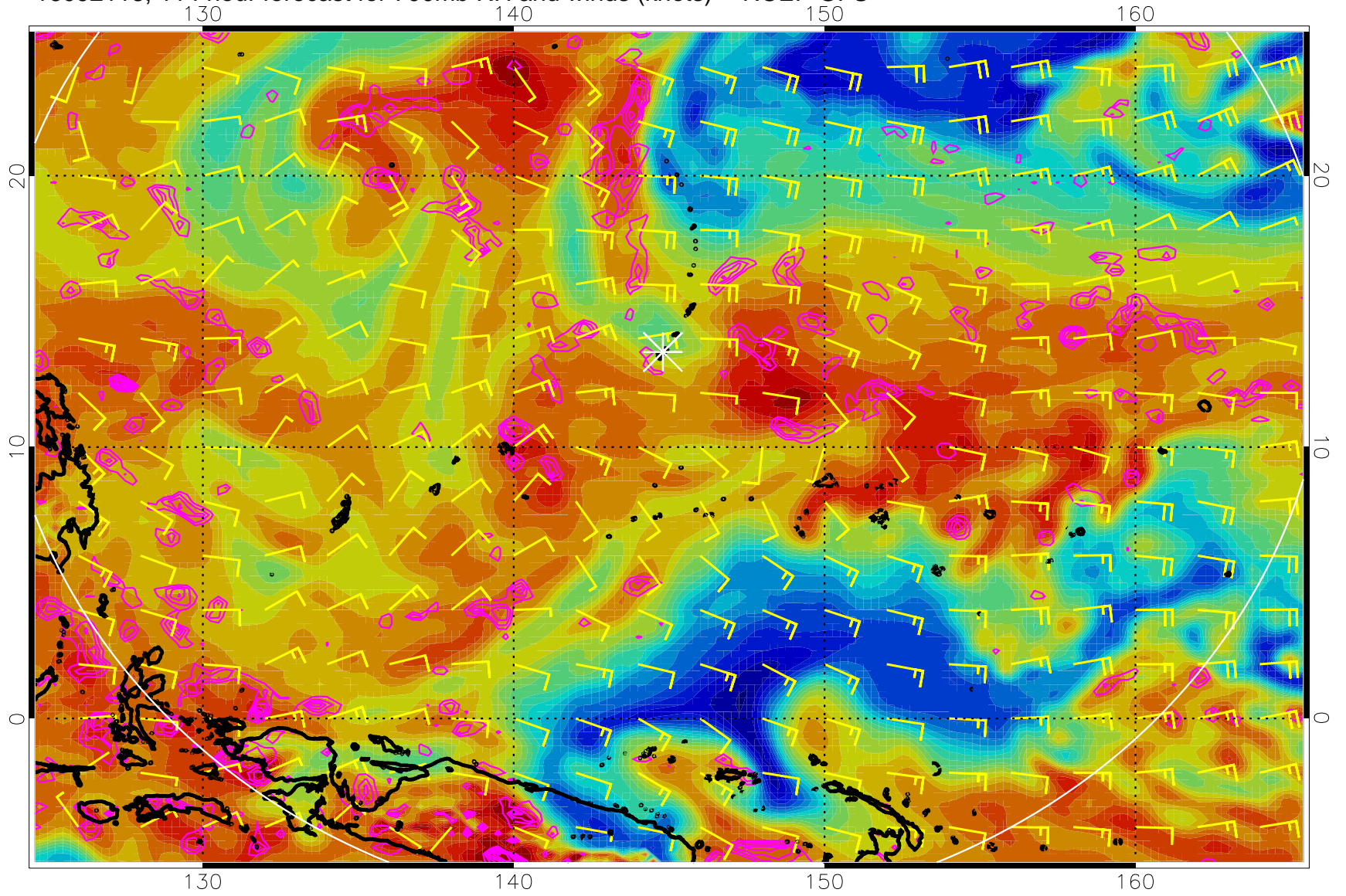
Negative Omegas less than -0.3 , contours of 0.3 Pa/s

16092112, 108 hour forecast for 700mb RH and winds (knots) -- NCEP GFS



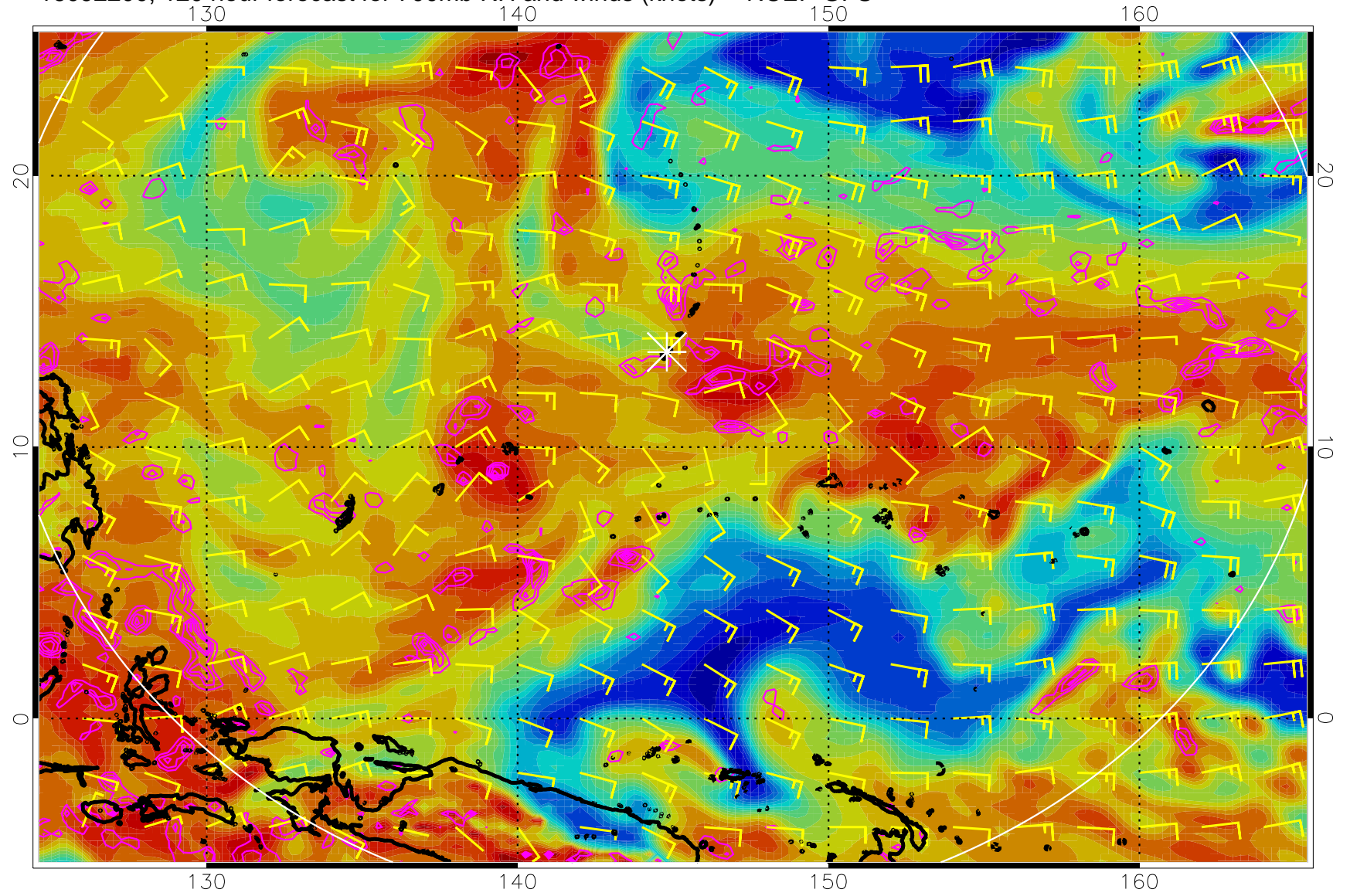
Negative Omegas less than -0.3 , contours of 0.3 Pa/s

16092118, 114 hour forecast for 700mb RH and winds (knots) -- NCEP GFS



Negative Omegas less than -0.3 , contours of 0.3 Pa/s

16092200, 120 hour forecast for 700mb RH and winds (knots) -- NCEP GFS



Negative Omegas less than -0.3 , contours of 0.3 Pa/s