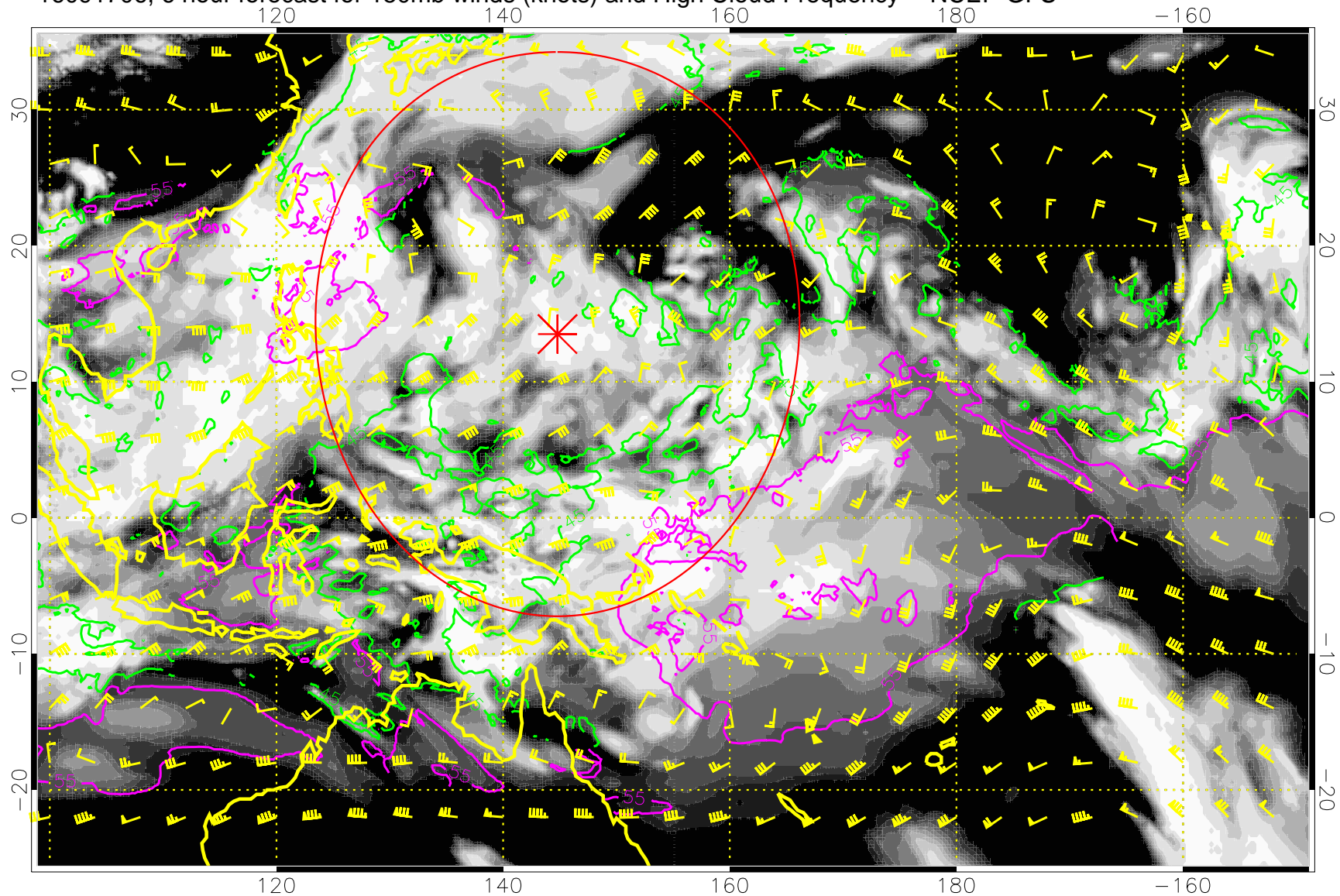


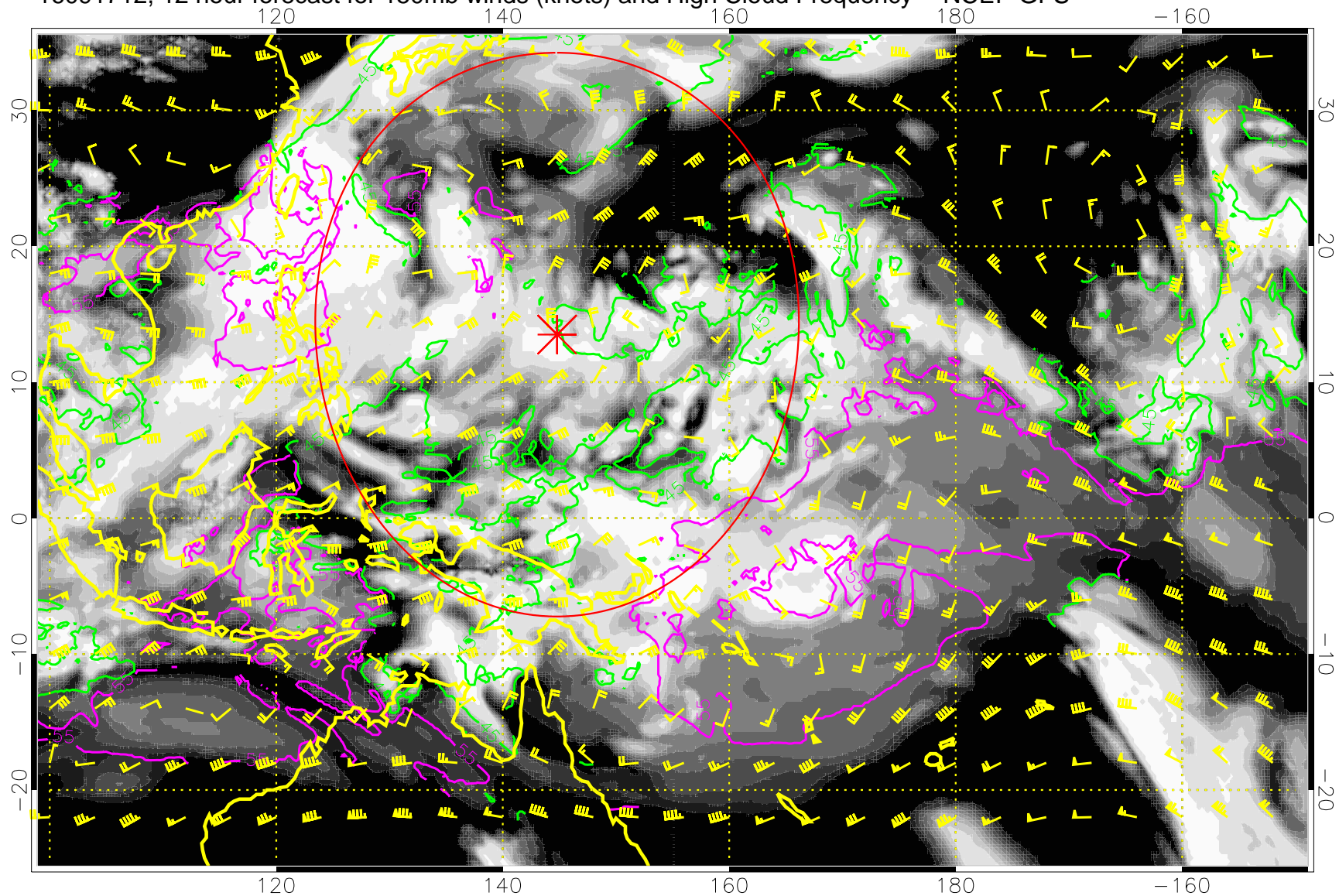
16091706, 6 hour forecast for 150mb winds (knots) and High Cloud Frequency -- NCEP GFS



45 kft  
55 kft

Range ring of 2304 km

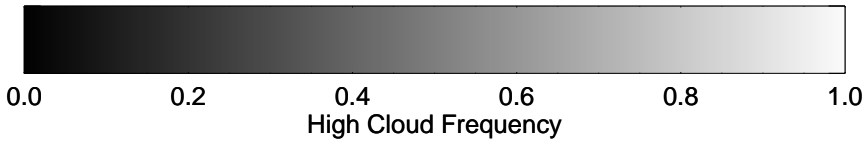
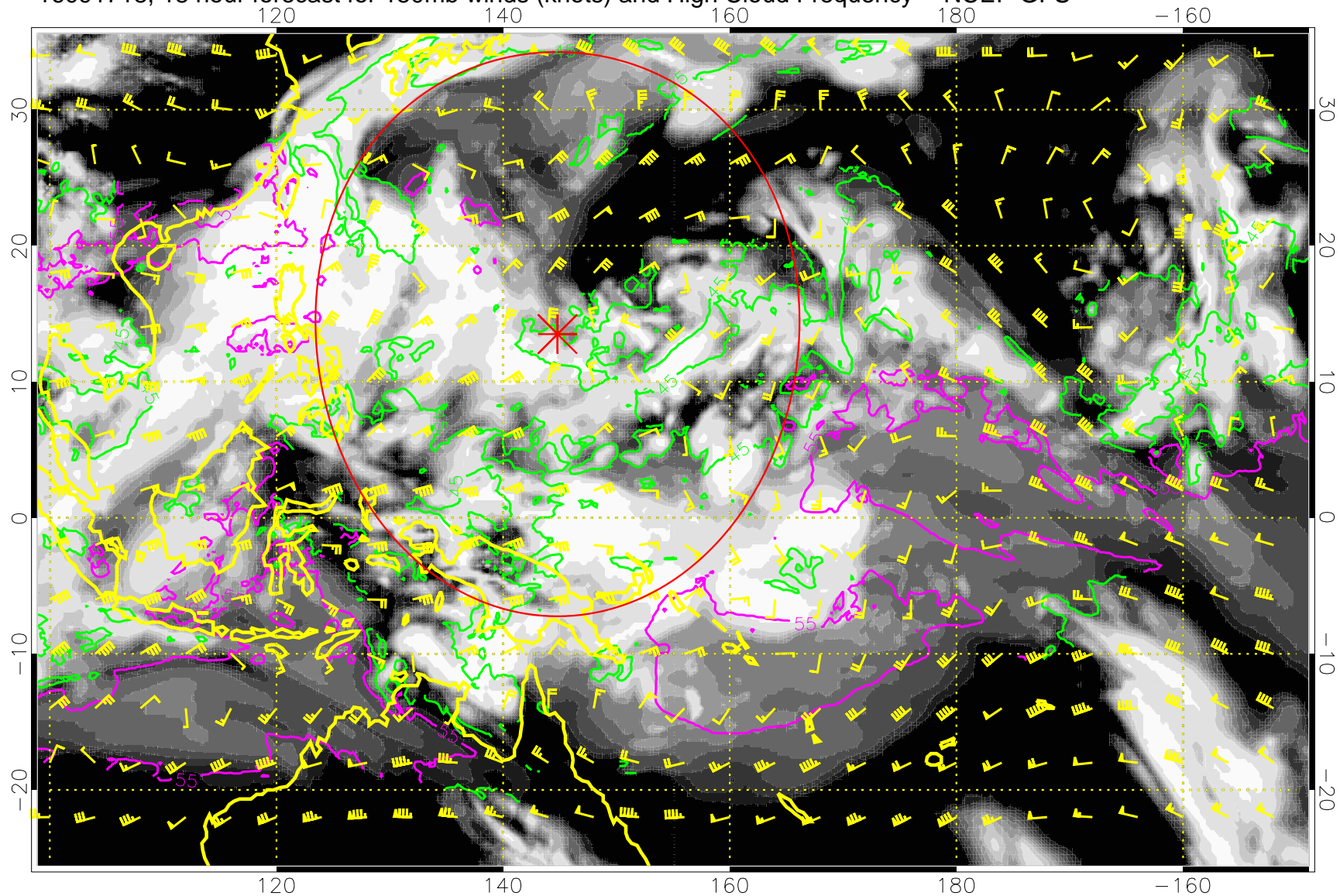
16091712, 12 hour forecast for 150mb winds (knots) and High Cloud Frequency -- NCEP GFS



45 kft  
55 kft

Range ring of 2304 km

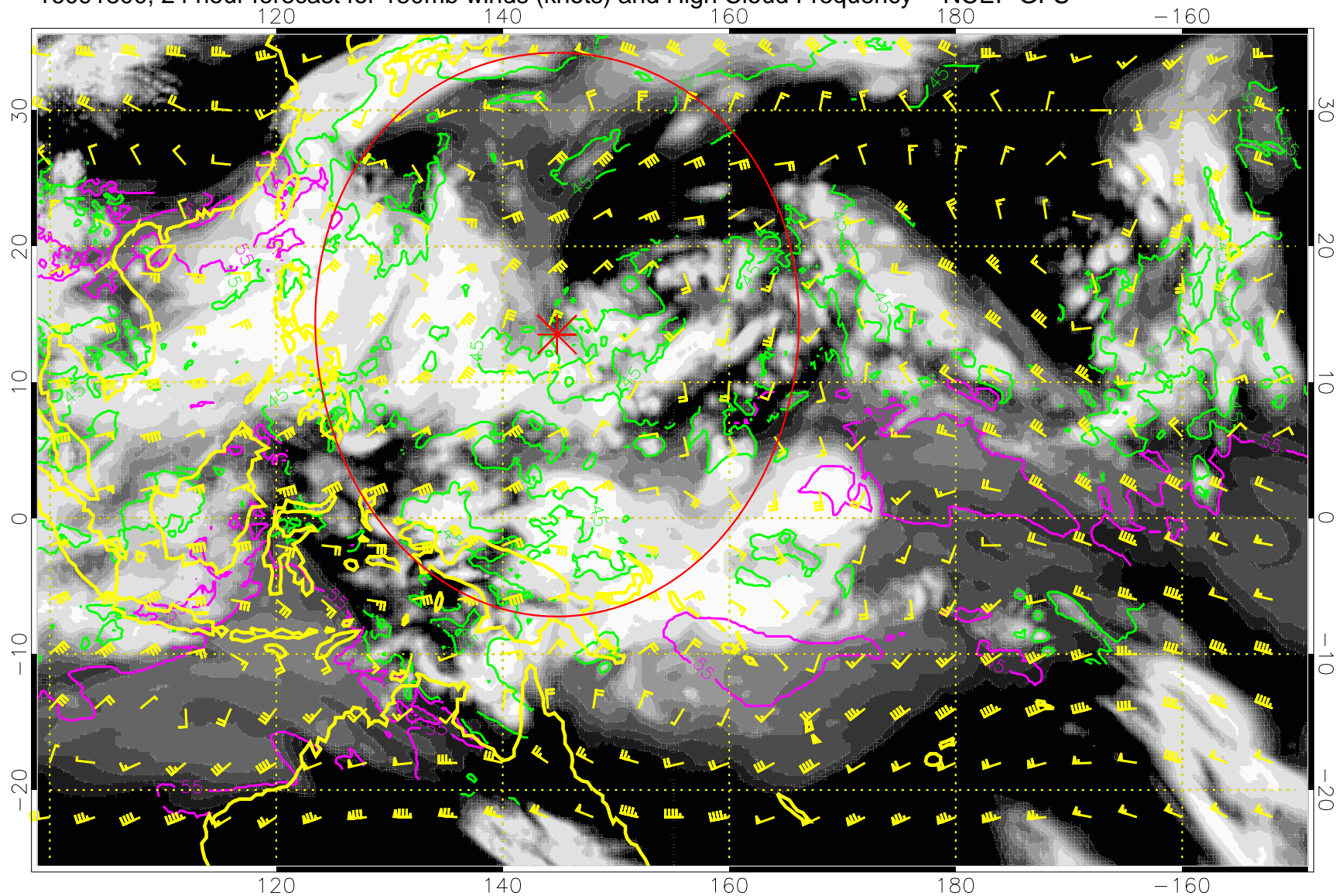
16091718, 18 hour forecast for 150mb winds (knots) and High Cloud Frequency -- NCEP GFS



45 kft  
55 kft

Range ring of 2304 km

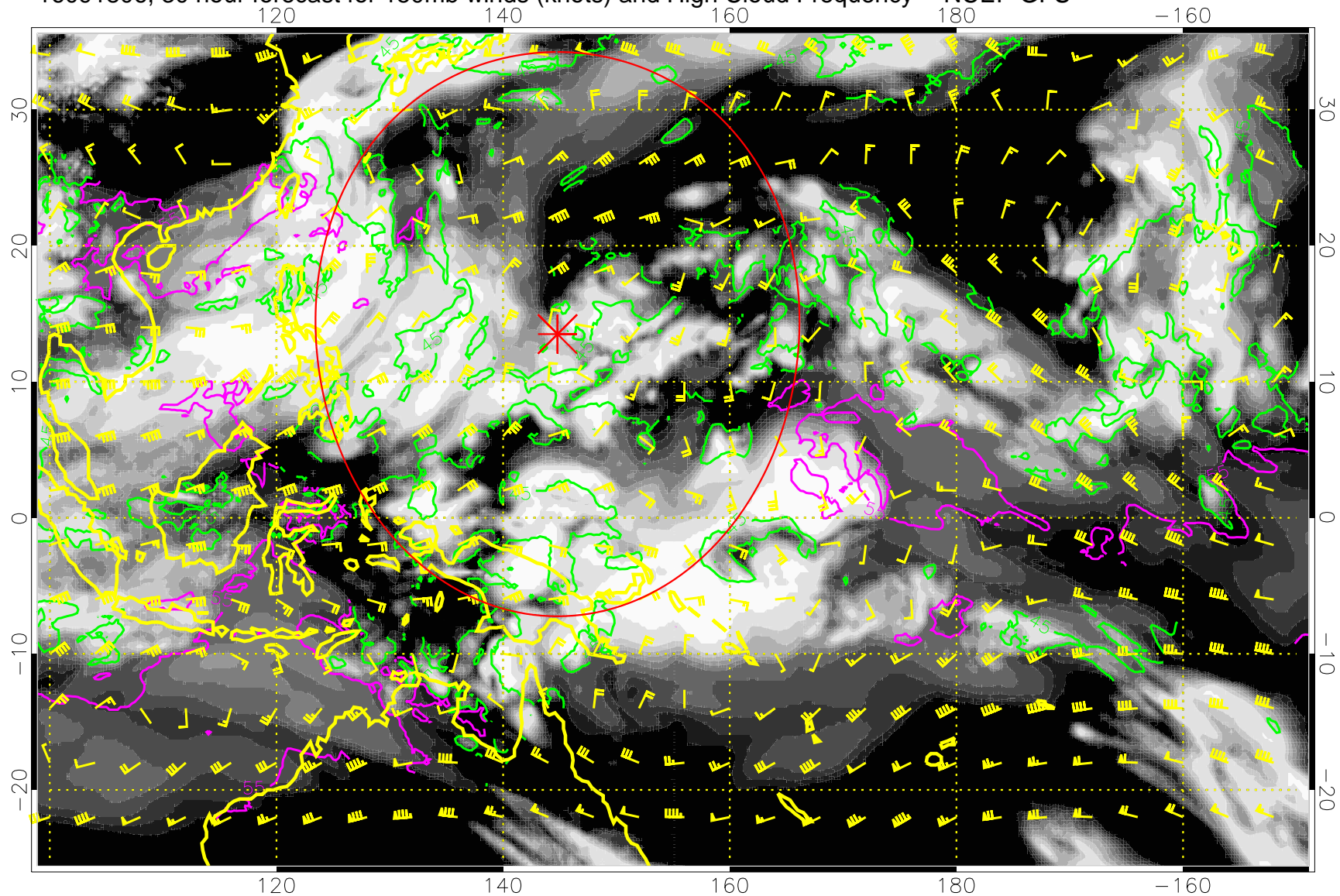
16091800, 24 hour forecast for 150mb winds (knots) and High Cloud Frequency -- NCEP GFS



45 kft  
55 kft

Range ring of 2304 km

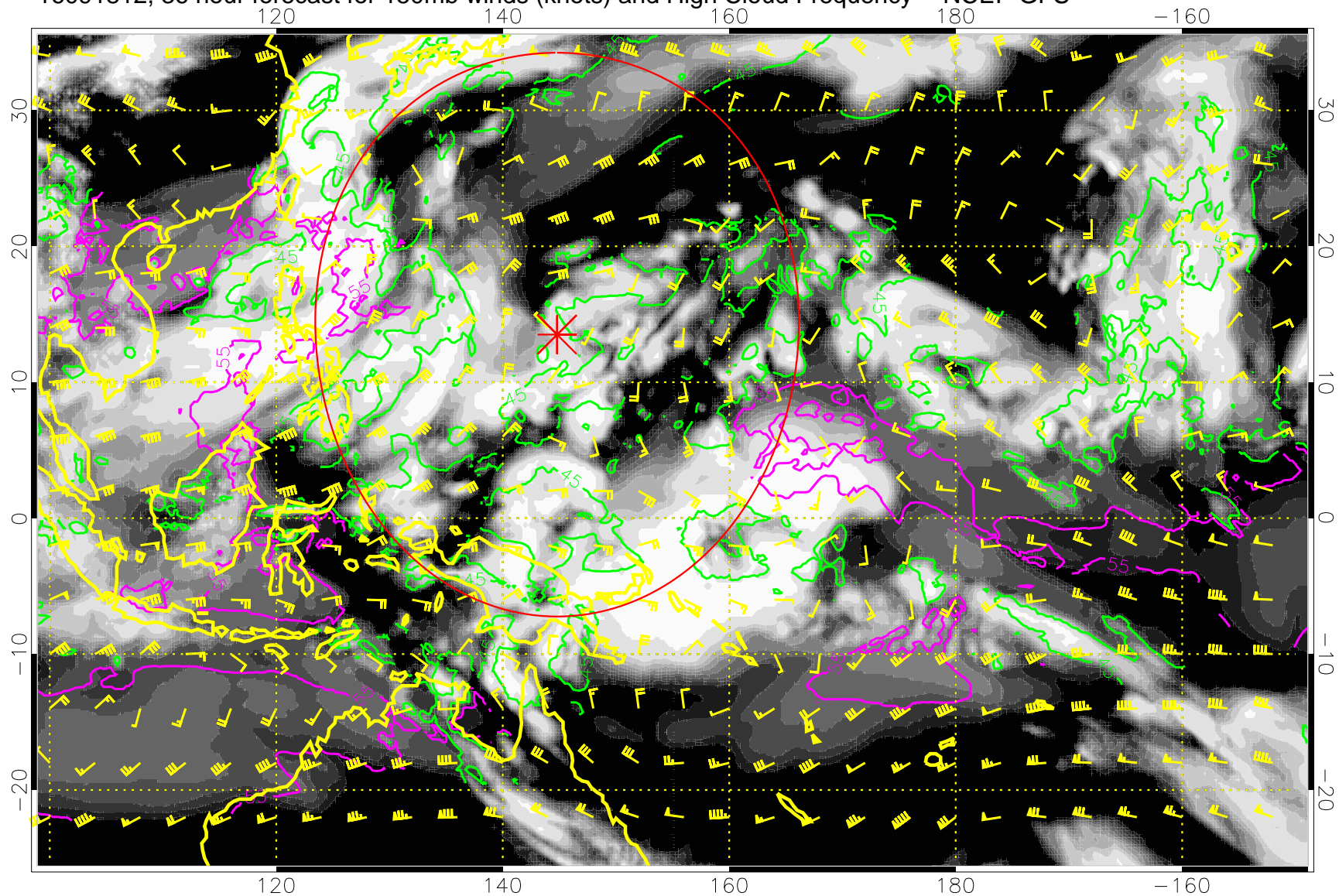
16091806, 30 hour forecast for 150mb winds (knots) and High Cloud Frequency -- NCEP GFS



45 kft  
55 kft

Range ring of 2304 km

16091812, 36 hour forecast for 150mb winds (knots) and High Cloud Frequency -- NCEP GFS

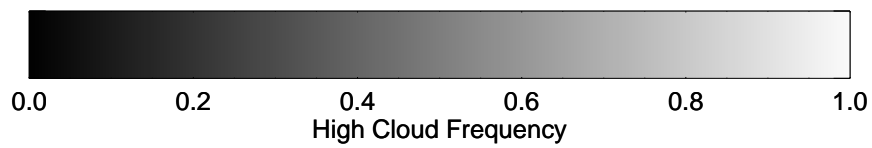
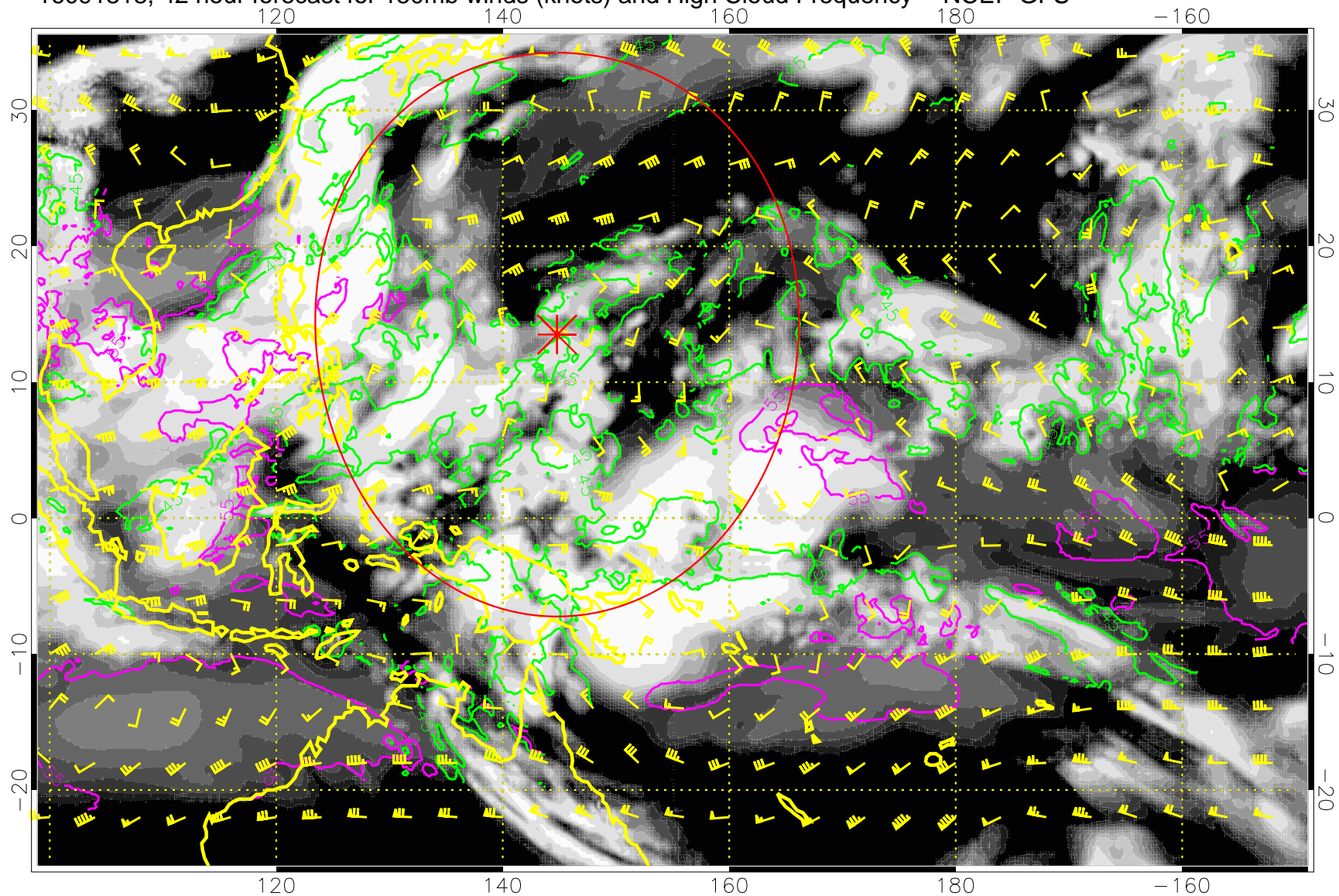


0.0      0.2      0.4      0.6      0.8      1.0  
High Cloud Frequency

45 kft  
55 kft

Range ring of 2304 km

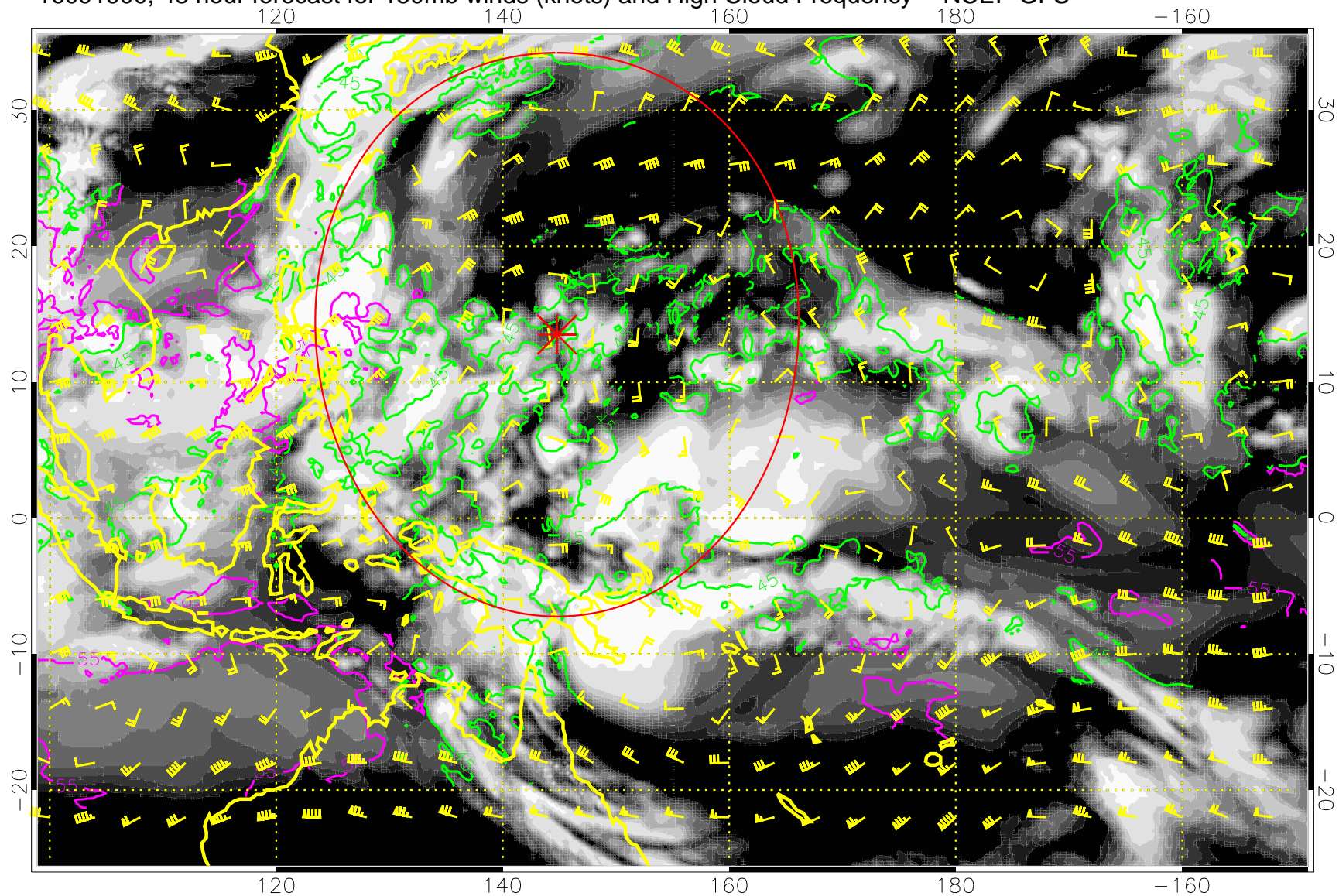
16091818, 42 hour forecast for 150mb winds (knots) and High Cloud Frequency -- NCEP GFS



45 kft  
55 kft

Range ring of 2304 km

16091900, 48 hour forecast for 150mb winds (knots) and High Cloud Frequency -- NCEP GFS

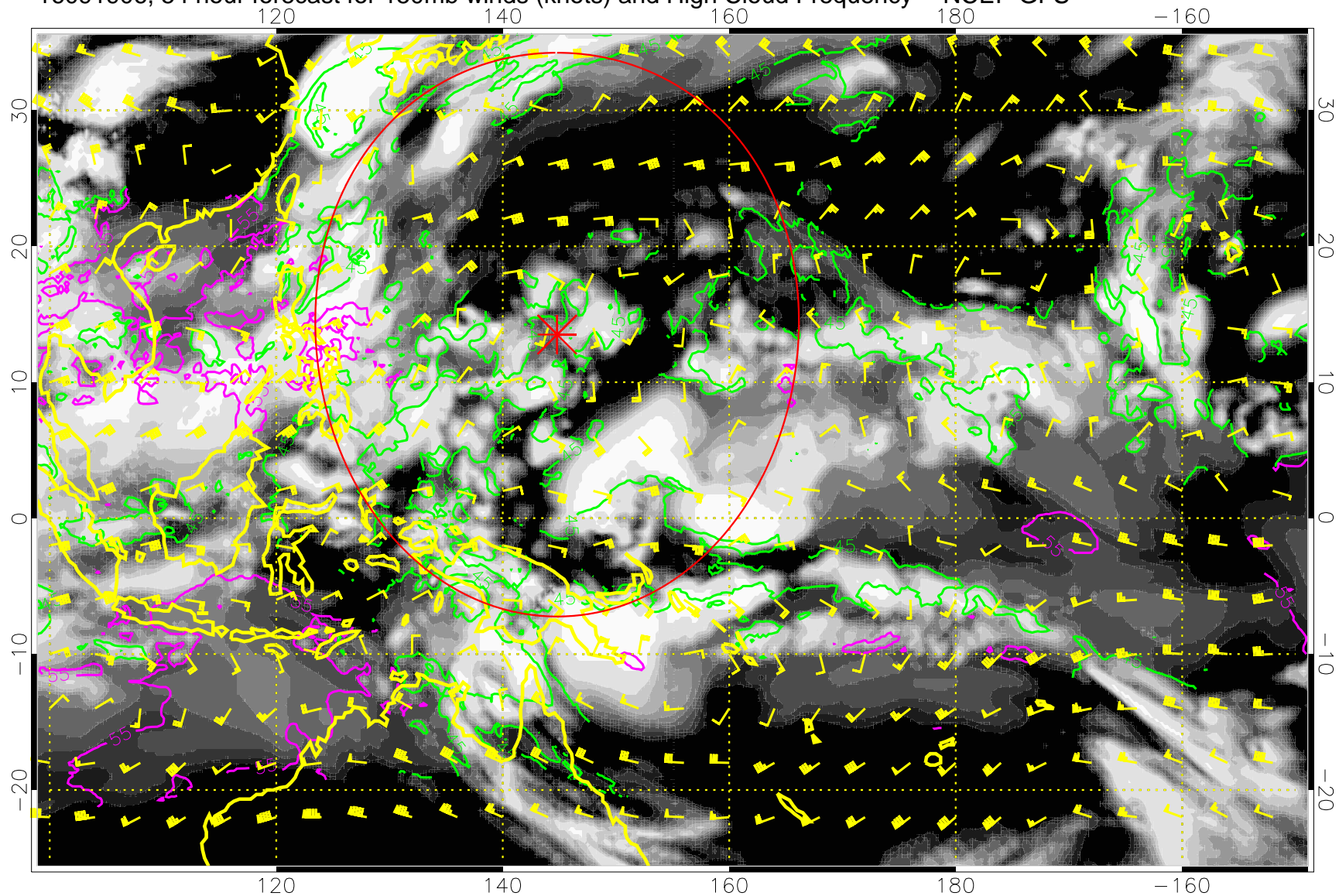


45 kft  
55 kft

Range ring of 2304 km



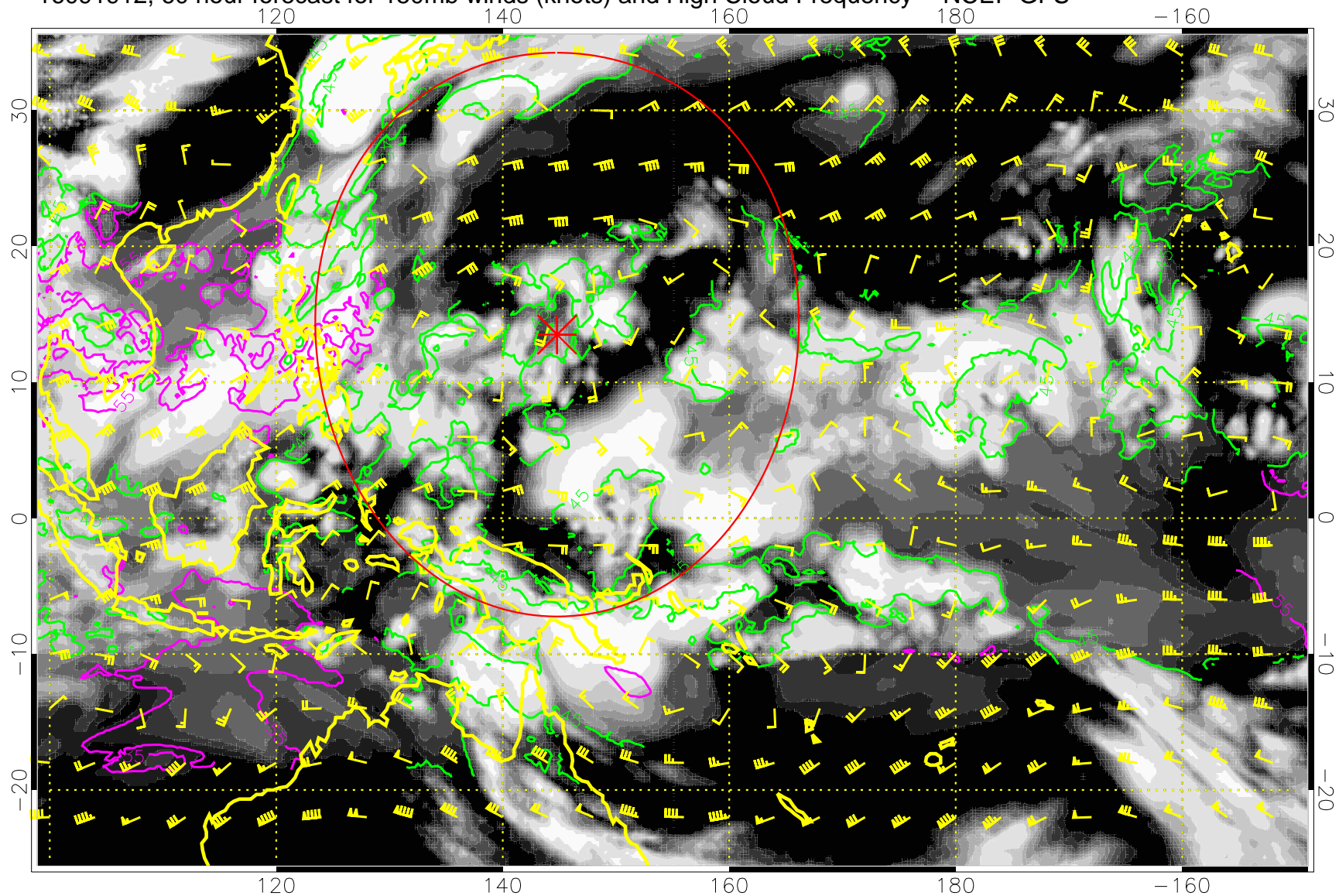
16091906, 54 hour forecast for 150mb winds (knots) and High Cloud Frequency -- NCEP GFS



45 kft  
55 kft

Range ring of 2304 km

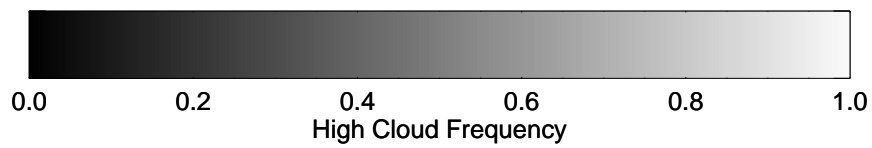
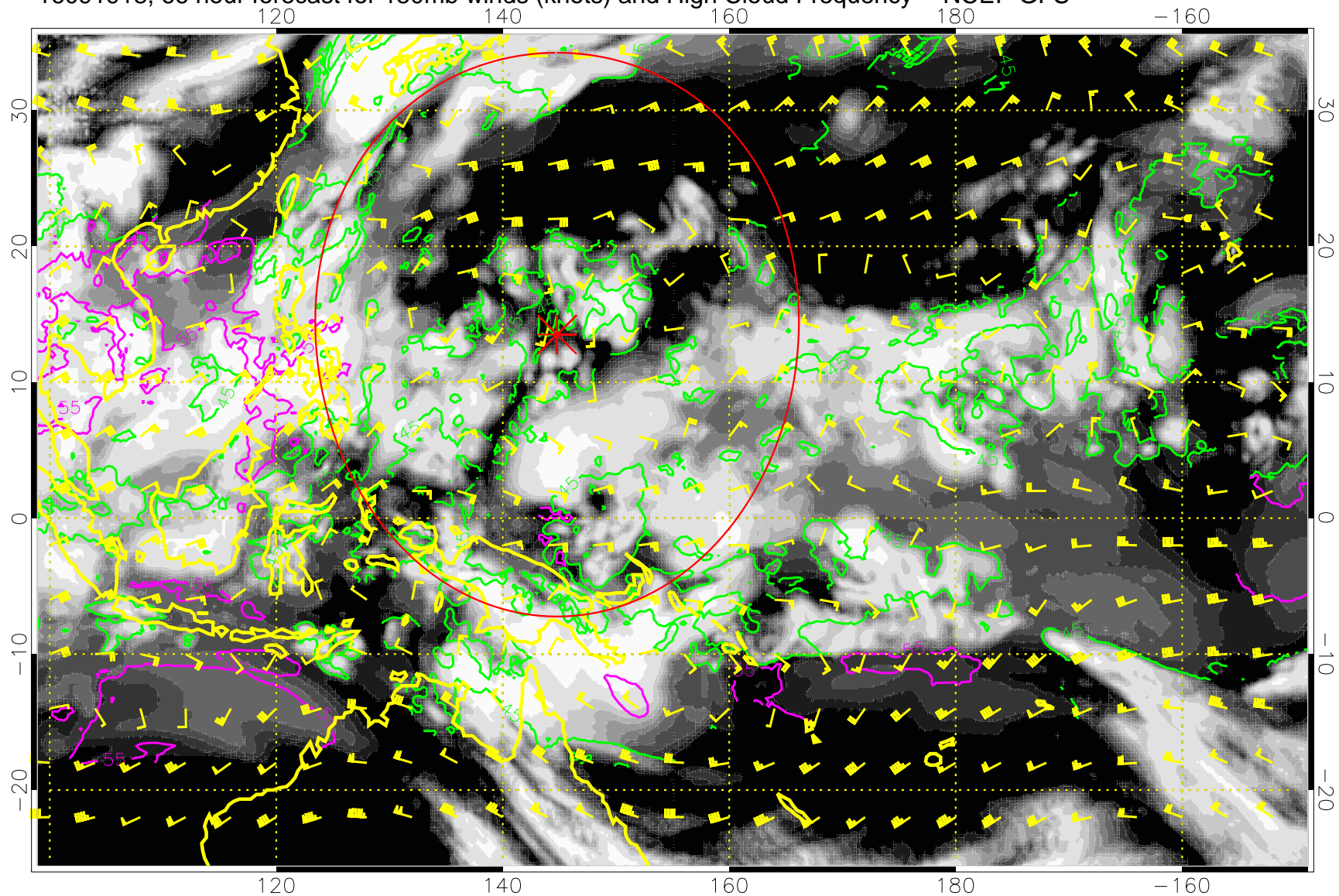
16091912, 60 hour forecast for 150mb winds (knots) and High Cloud Frequency -- NCEP GFS



45 kft  
55 kft

Range ring of 2304 km

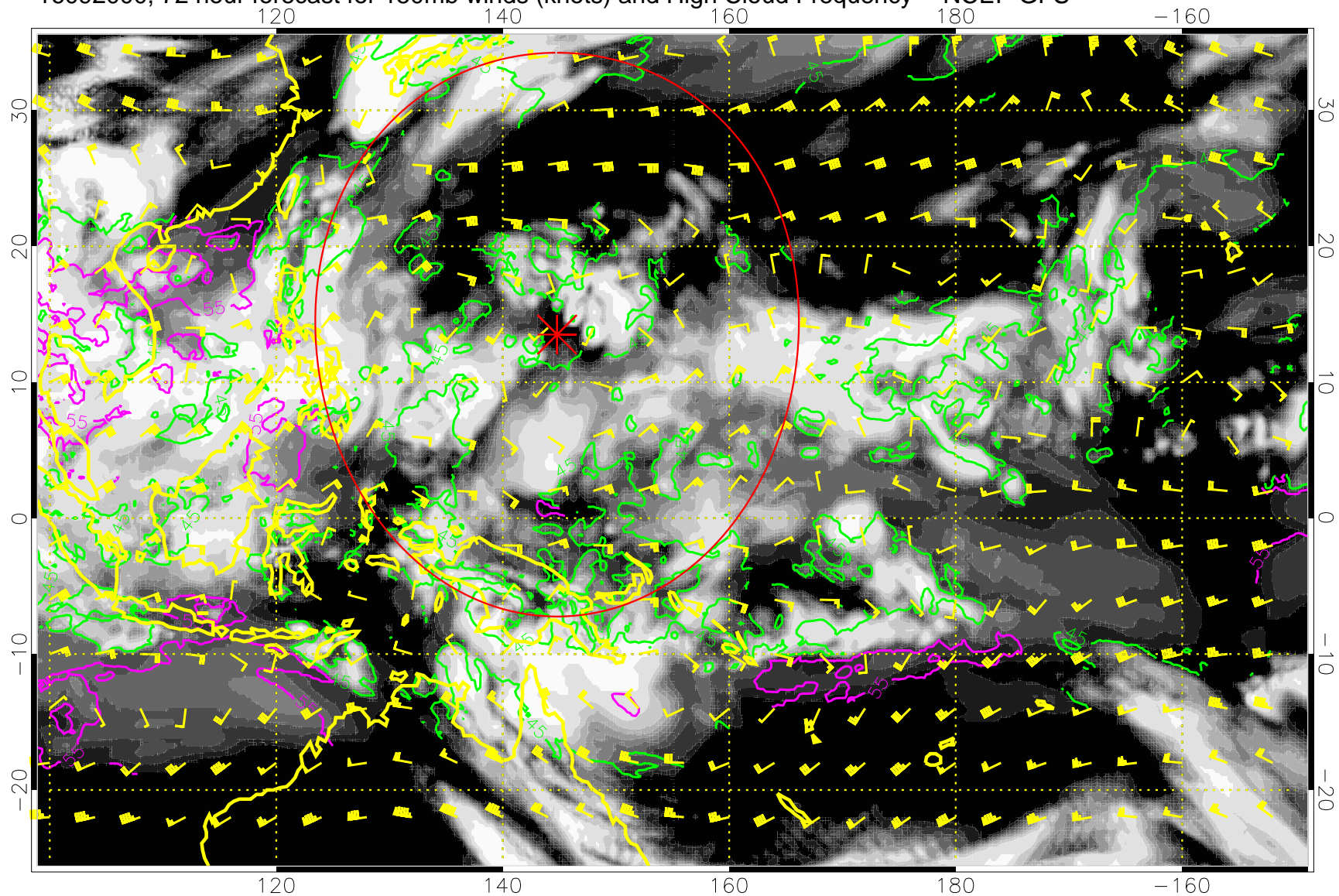
16091918, 66 hour forecast for 150mb winds (knots) and High Cloud Frequency -- NCEP GFS



45 kft  
55 kft

Range ring of 2304 km

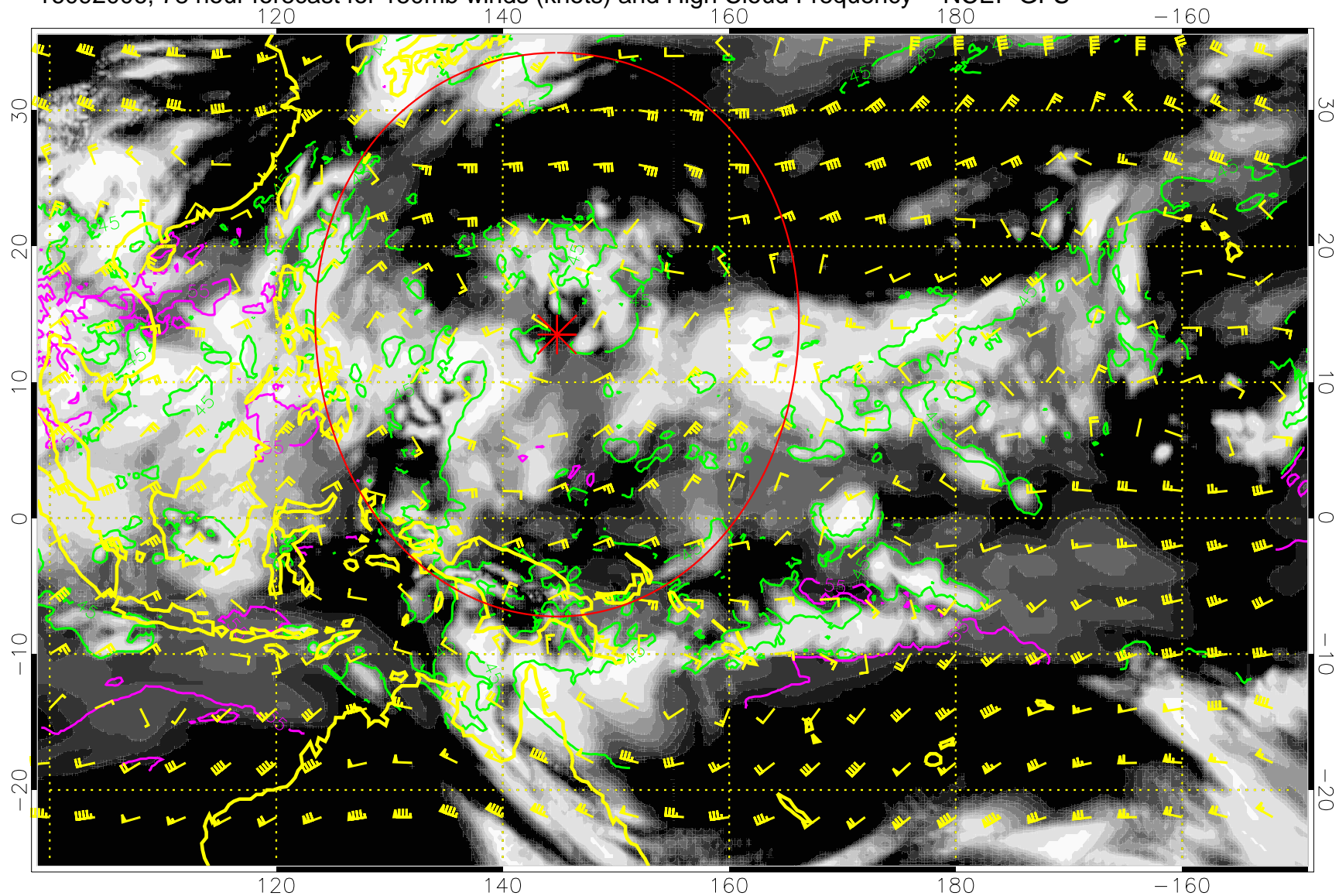
16092000, 72 hour forecast for 150mb winds (knots) and High Cloud Frequency -- NCEP GFS



45 kft  
55 kft

Range ring of 2304 km

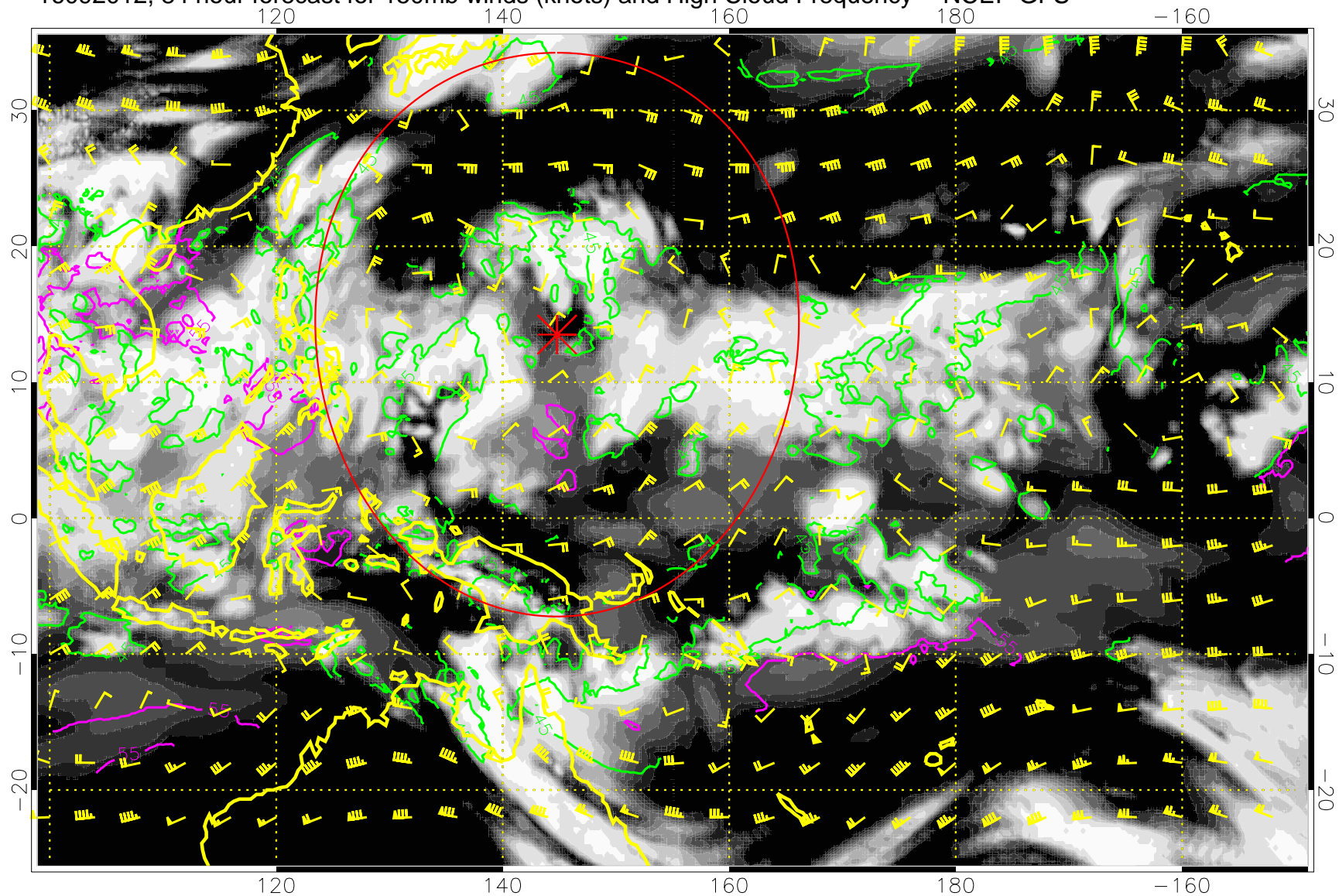
16092006, 78 hour forecast for 150mb winds (knots) and High Cloud Frequency -- NCEP GFS



45 kft  
55 kft

Range ring of 2304 km

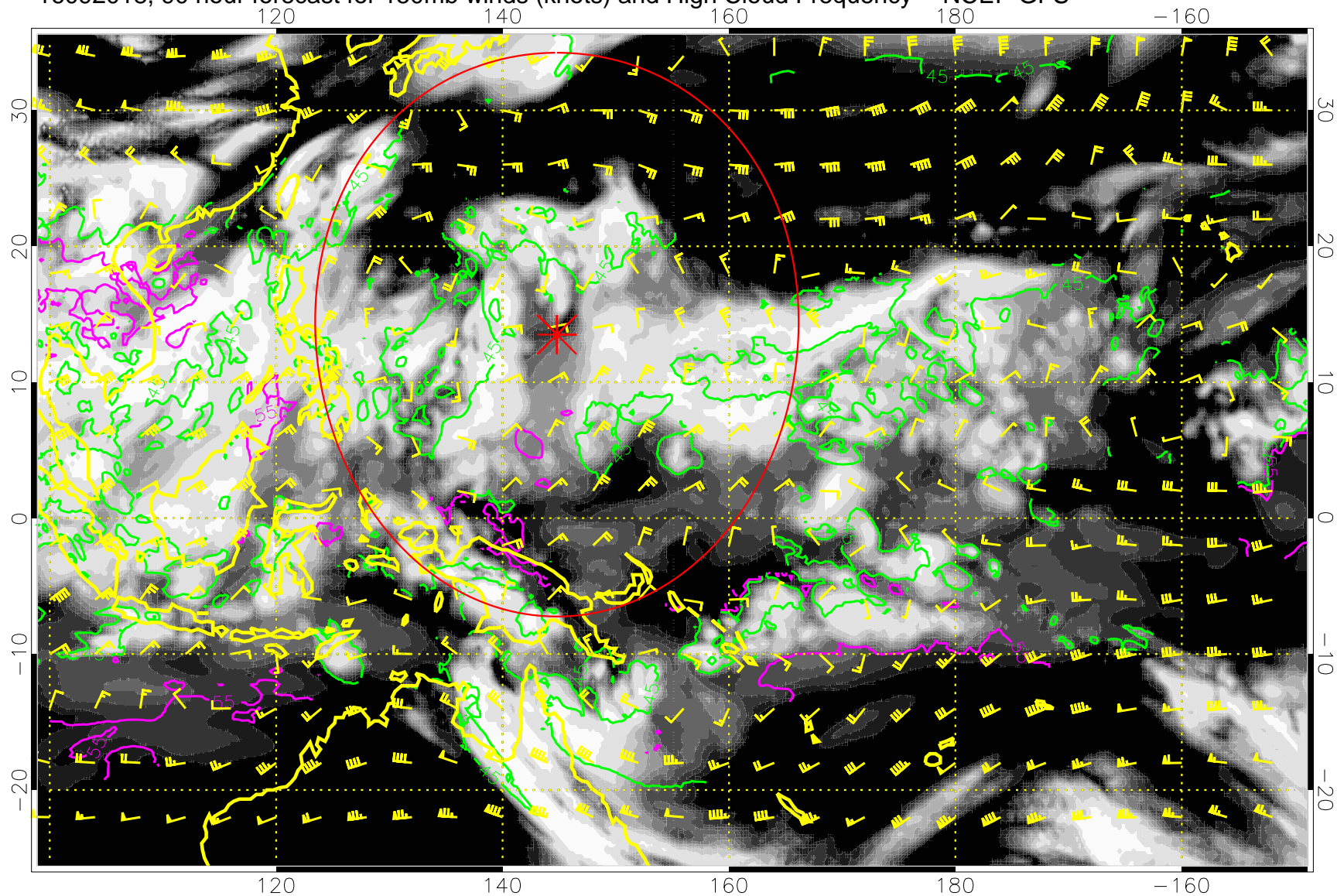
16092012, 84 hour forecast for 150mb winds (knots) and High Cloud Frequency -- NCEP GFS



45 kft  
55 kft

Range ring of 2304 km

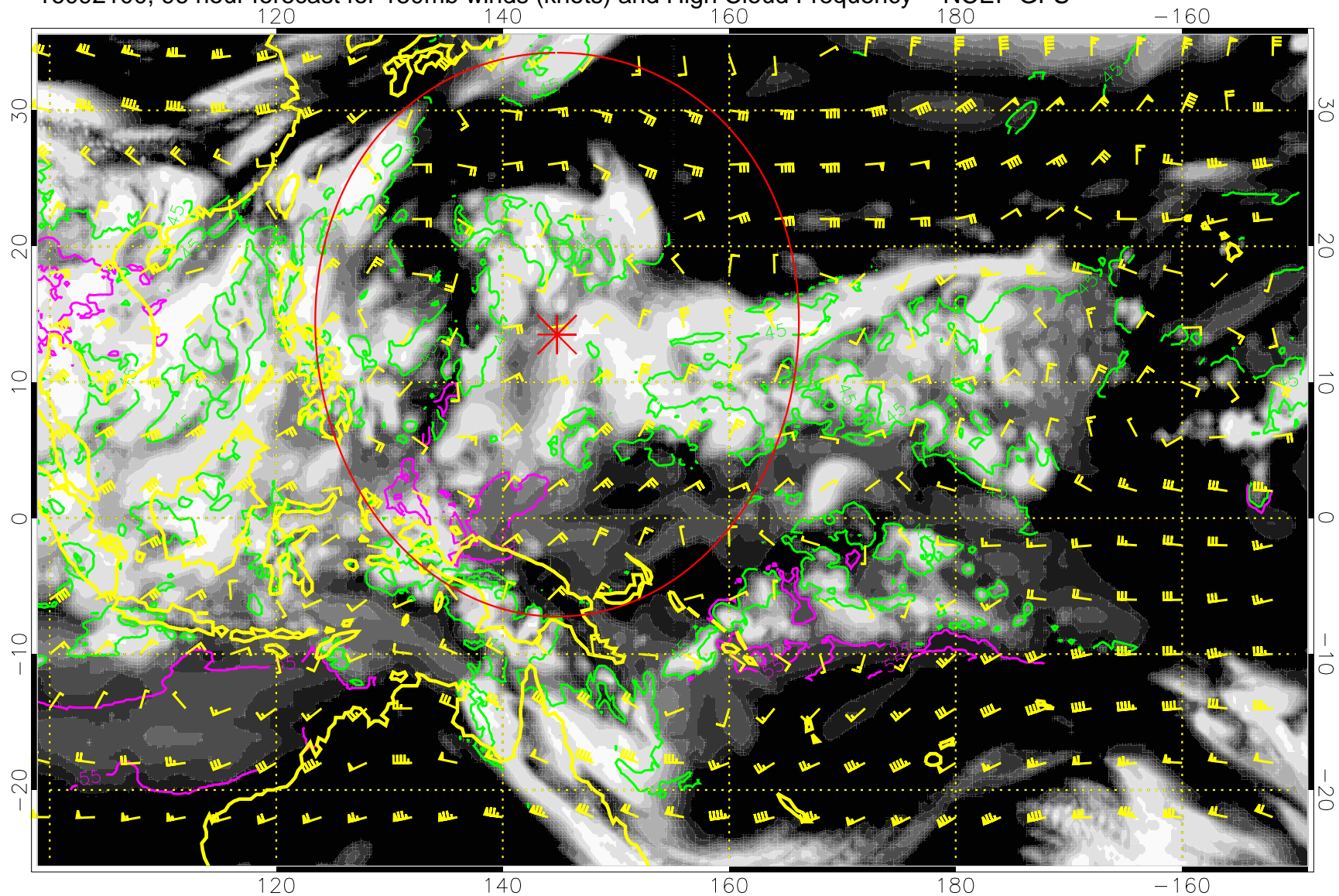
16092018, 90 hour forecast for 150mb winds (knots) and High Cloud Frequency -- NCEP GFS



45 kft  
55 kft

Range ring of 2304 km

16092100, 96 hour forecast for 150mb winds (knots) and High Cloud Frequency -- NCEP GFS

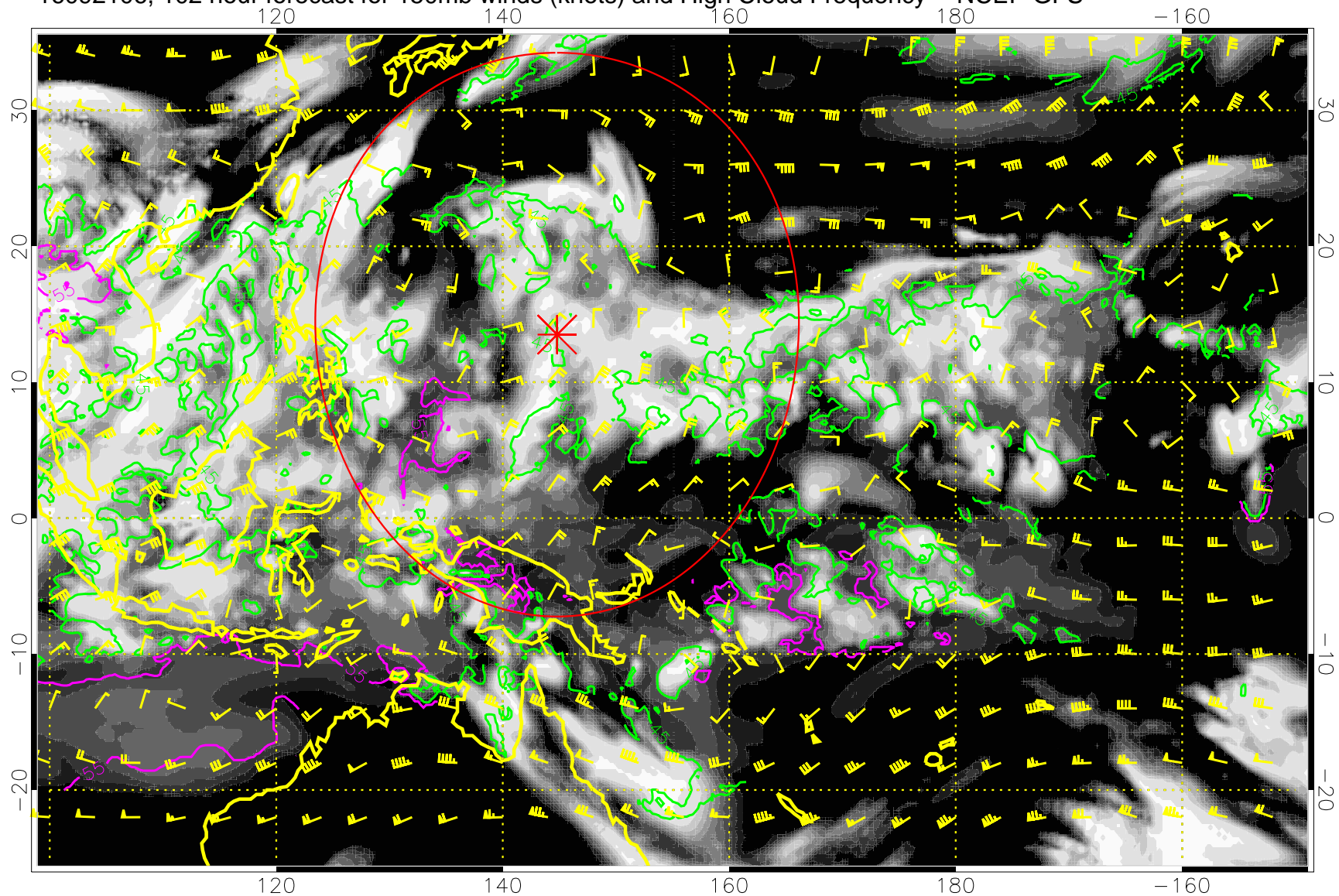


45 kft  
55 kft

Range ring of 2304 km



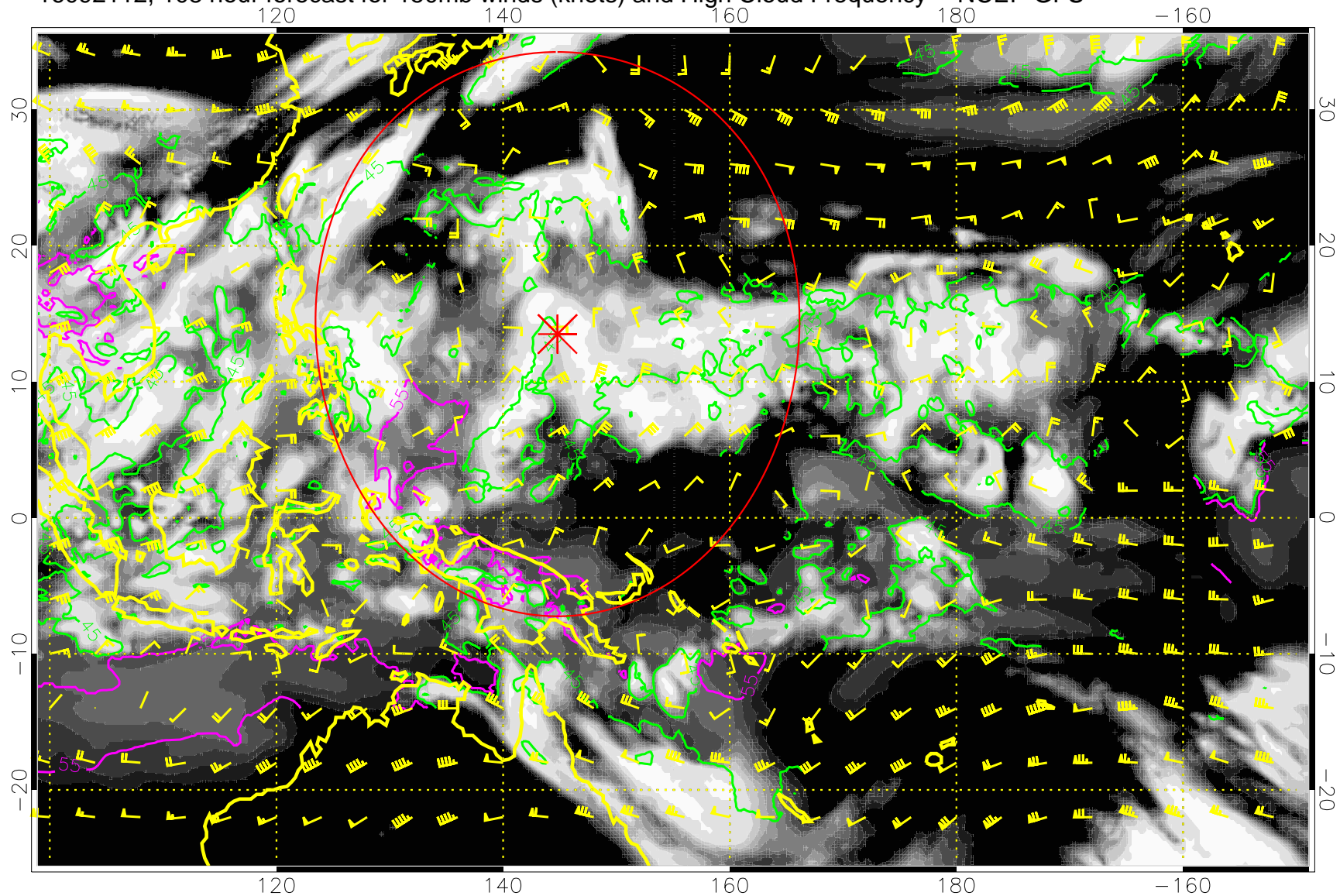
16092106, 102 hour forecast for 150mb winds (knots) and High Cloud Frequency -- NCEP GFS



45 kft  
55 kft

Range ring of 2304 km

16092112, 108 hour forecast for 150mb winds (knots) and High Cloud Frequency -- NCEP GFS

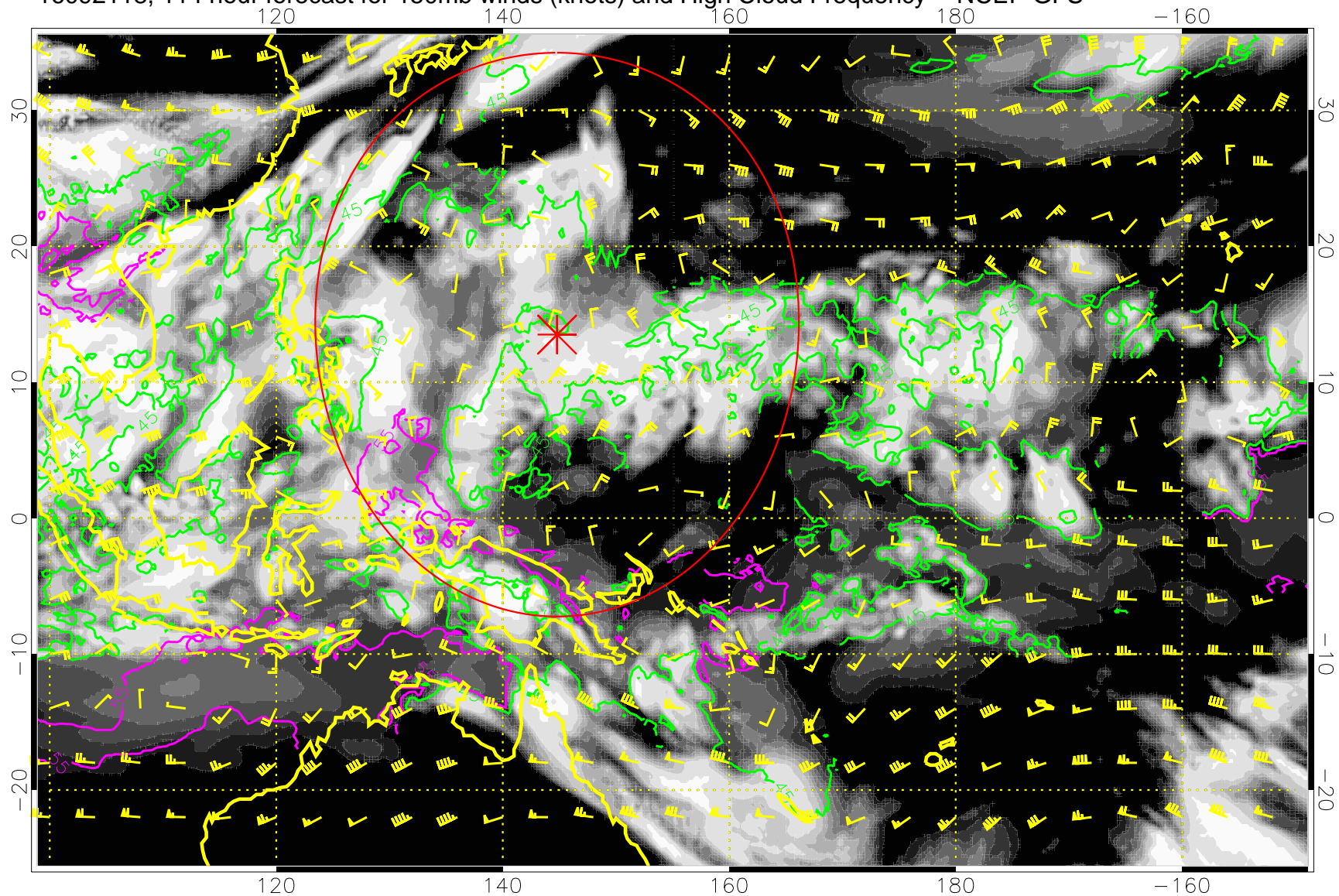


High Cloud Frequency

45 kft  
55 kft

Range ring of 2304 km

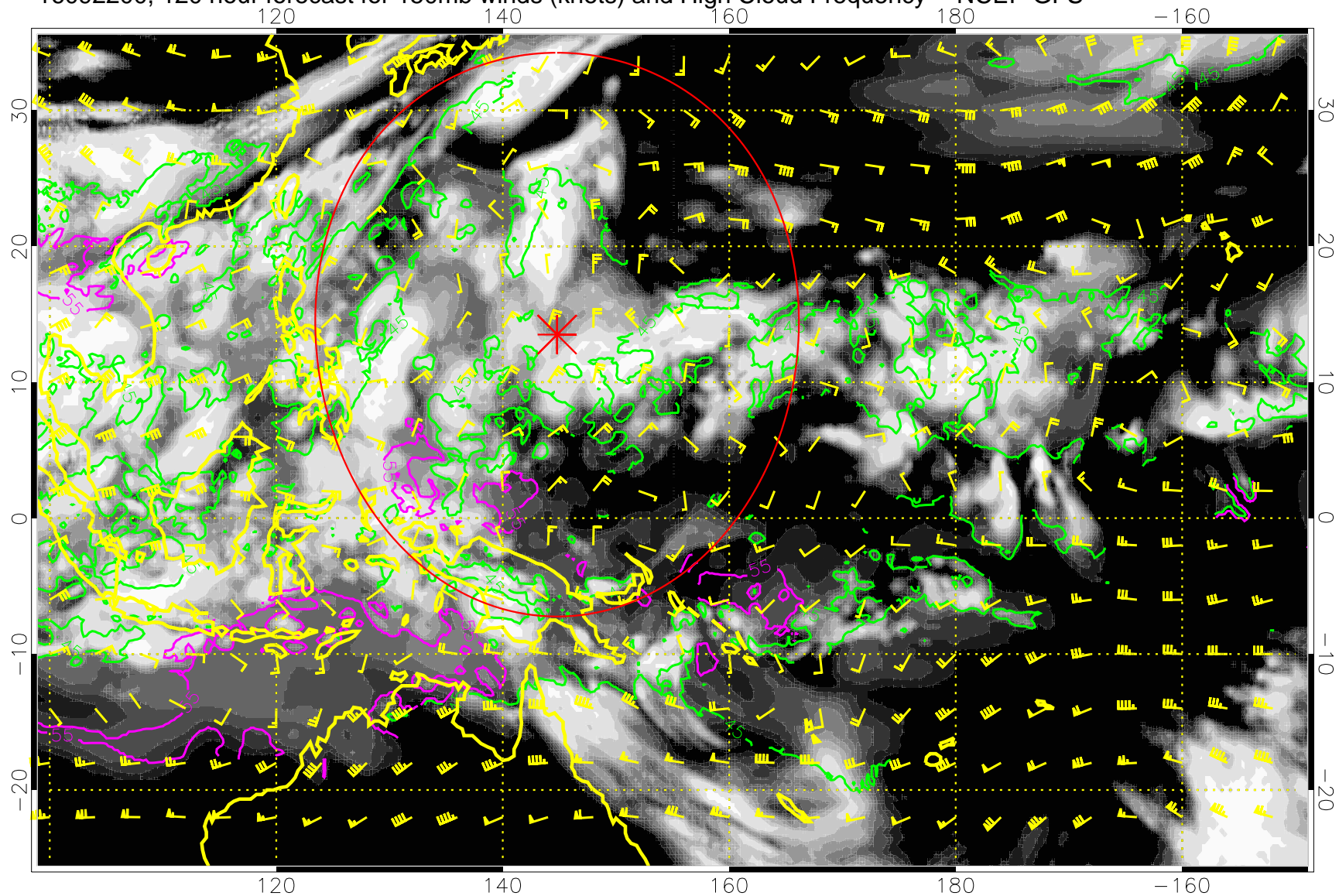
16092118, 114 hour forecast for 150mb winds (knots) and High Cloud Frequency -- NCEP GFS



45 kft  
55 kft

Range ring of 2304 km

16092200, 120 hour forecast for 150mb winds (knots) and High Cloud Frequency -- NCEP GFS



45 kft  
55 kft

Range ring of 2304 km