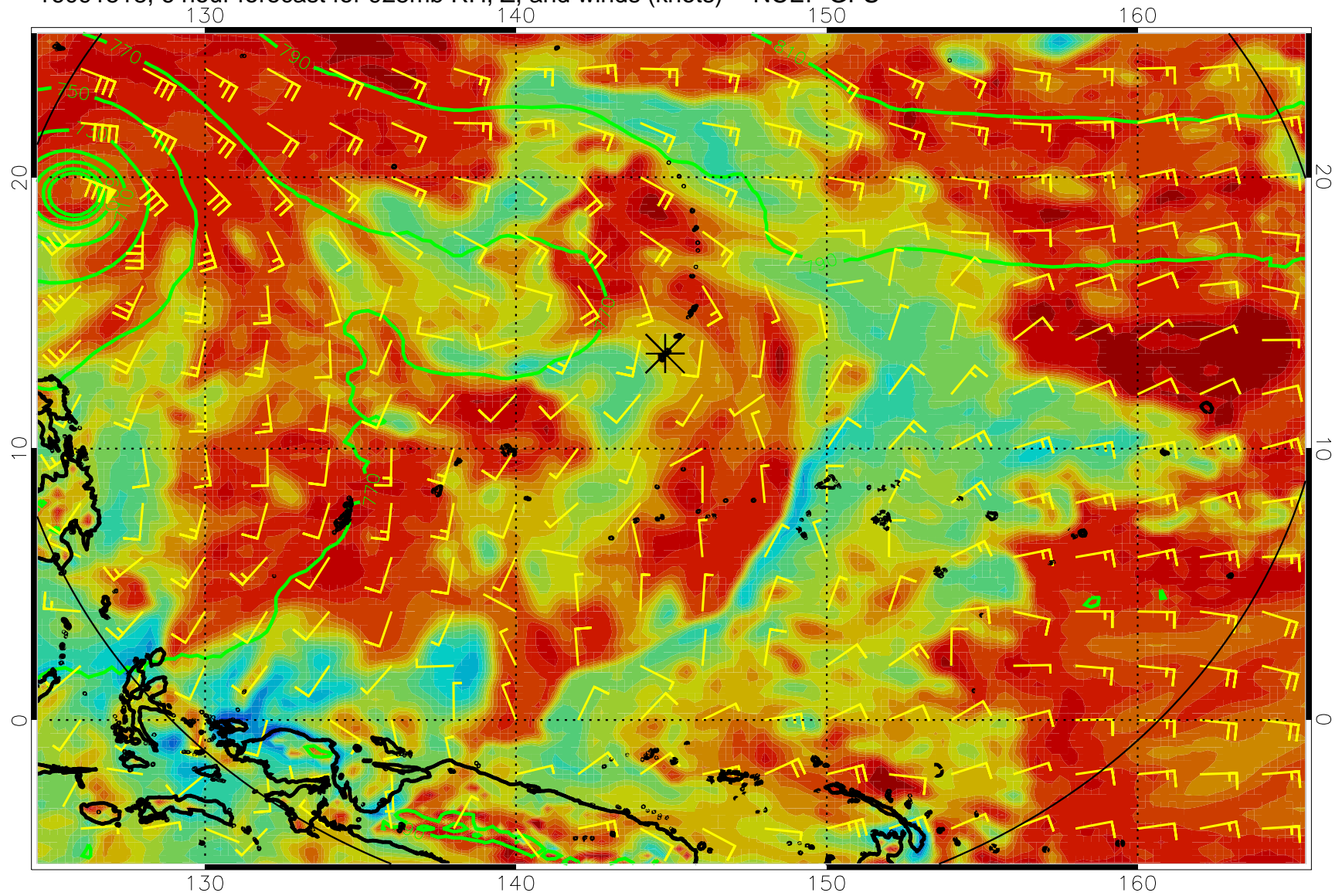
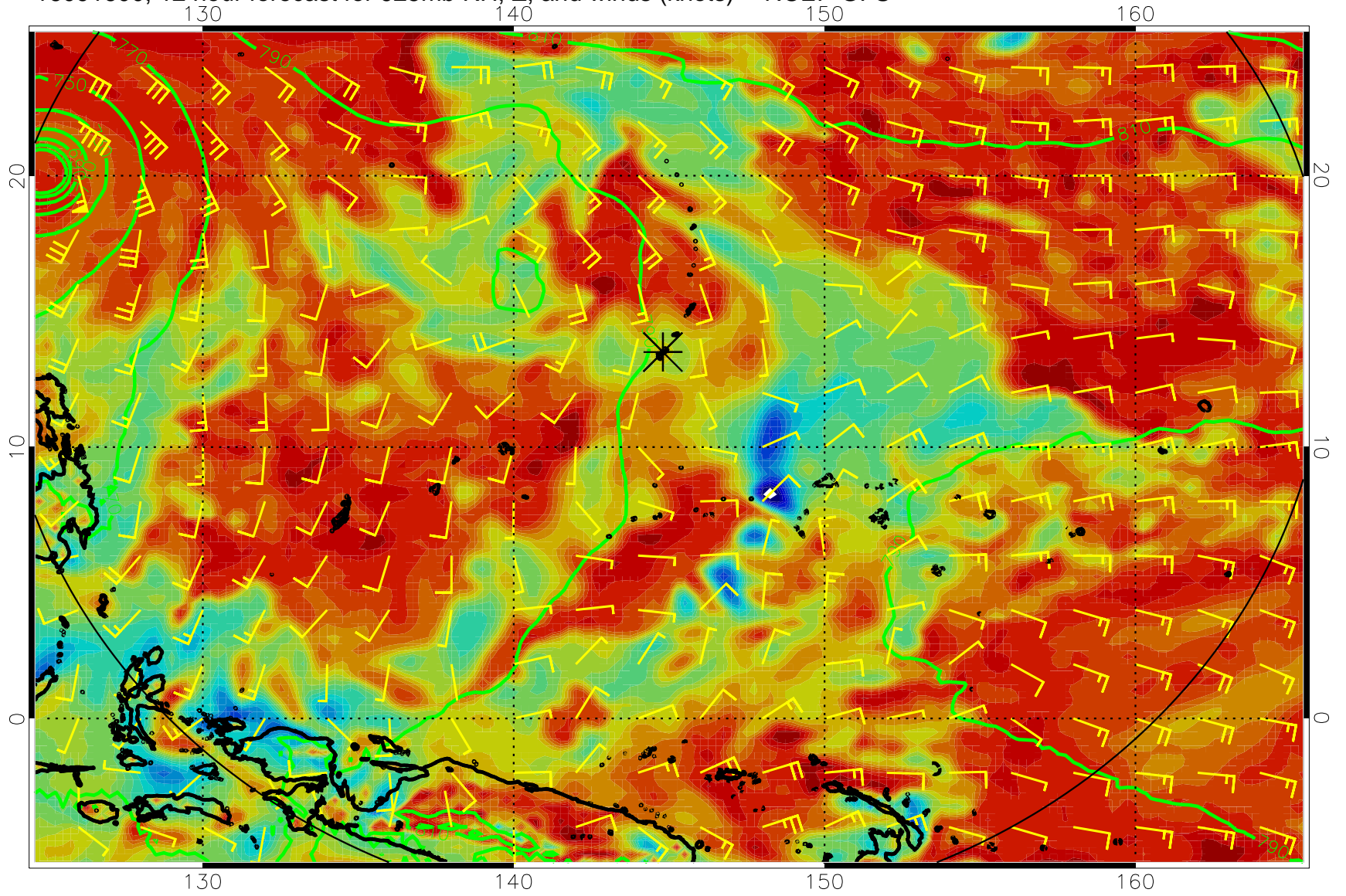


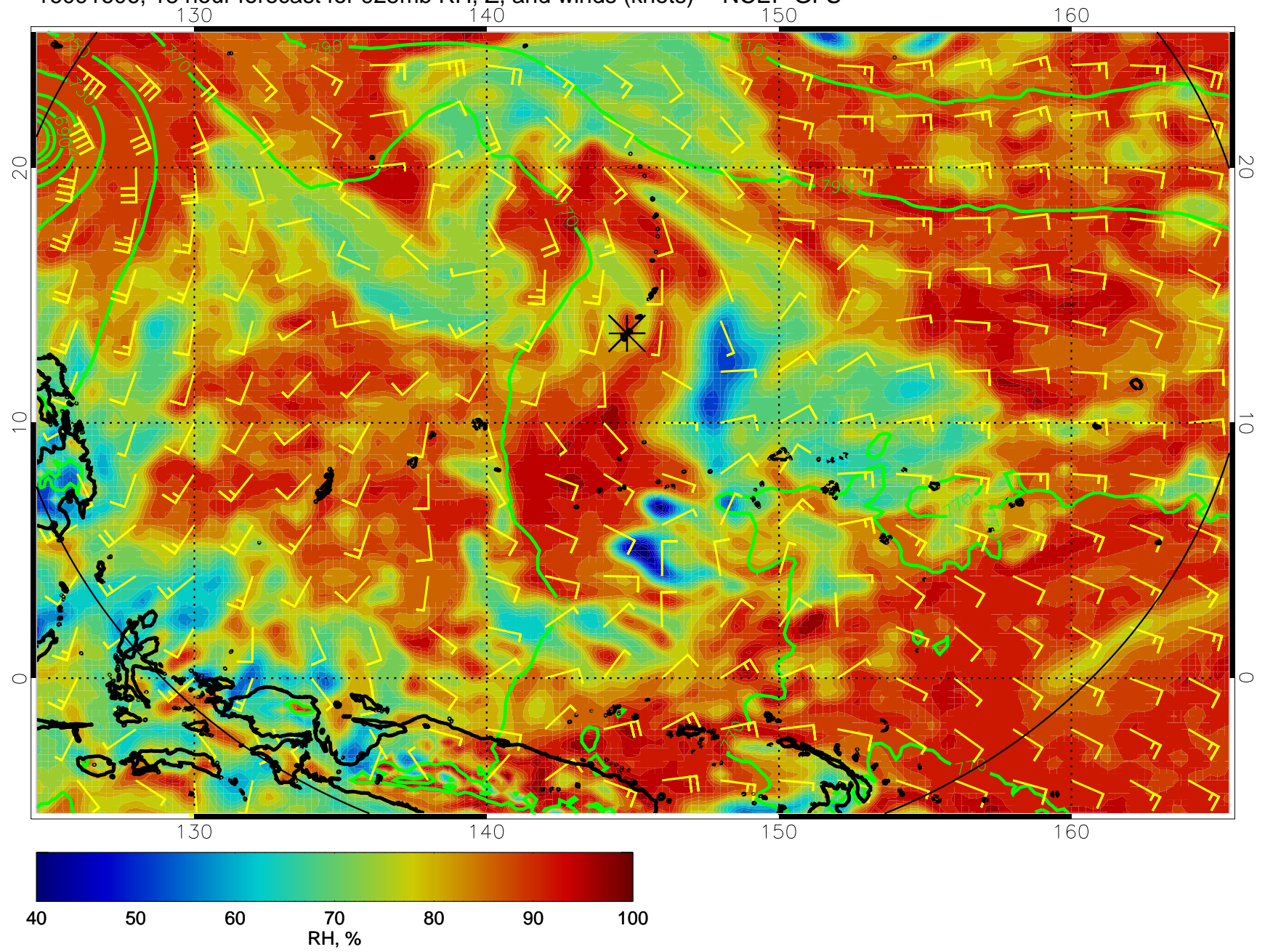
16091518, 6 hour forecast for 925mb RH, Z, and winds (knots) -- NCEP GFS



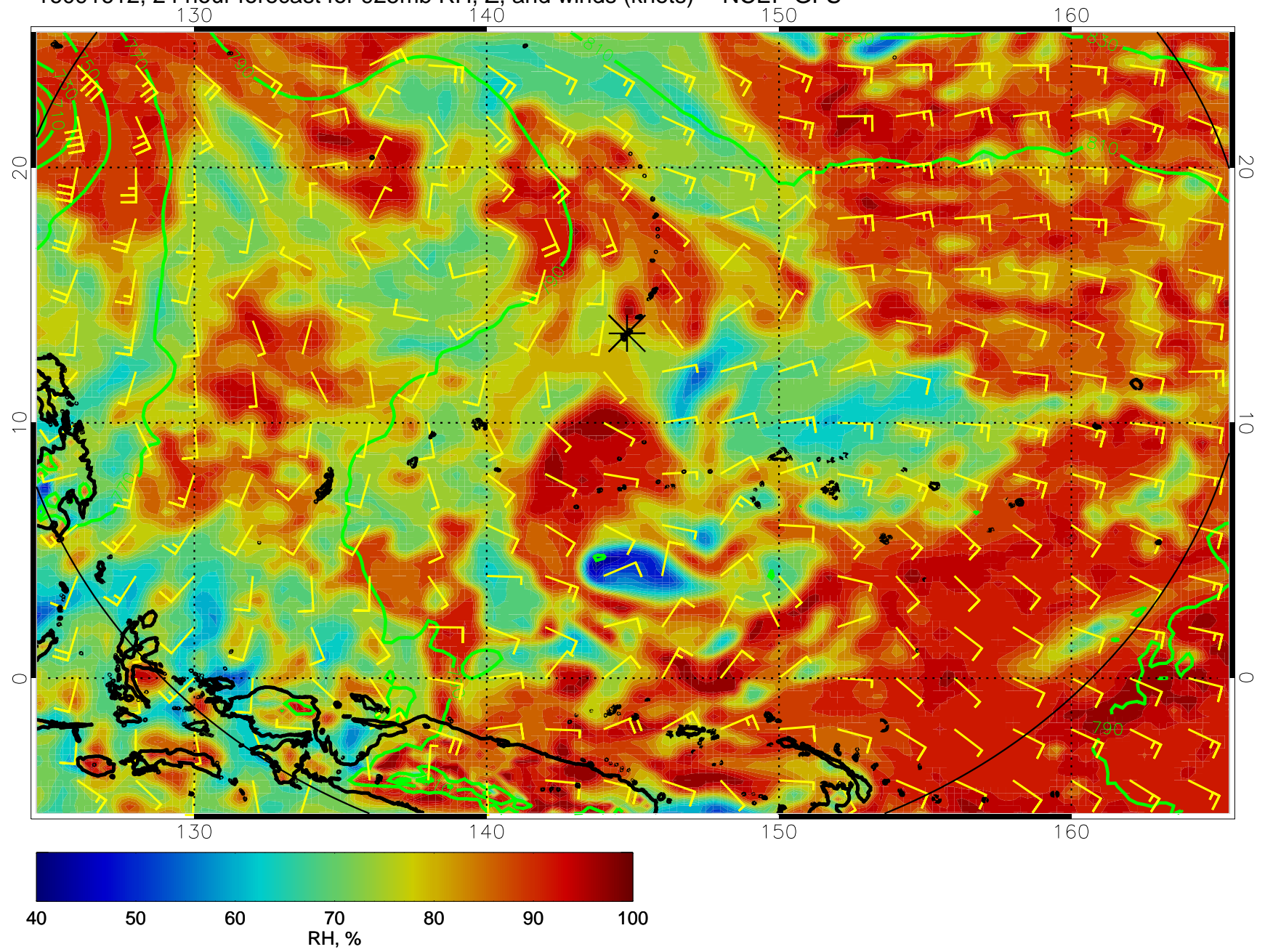
16091600, 12 hour forecast for 925mb RH, Z, and winds (knots) -- NCEP GFS



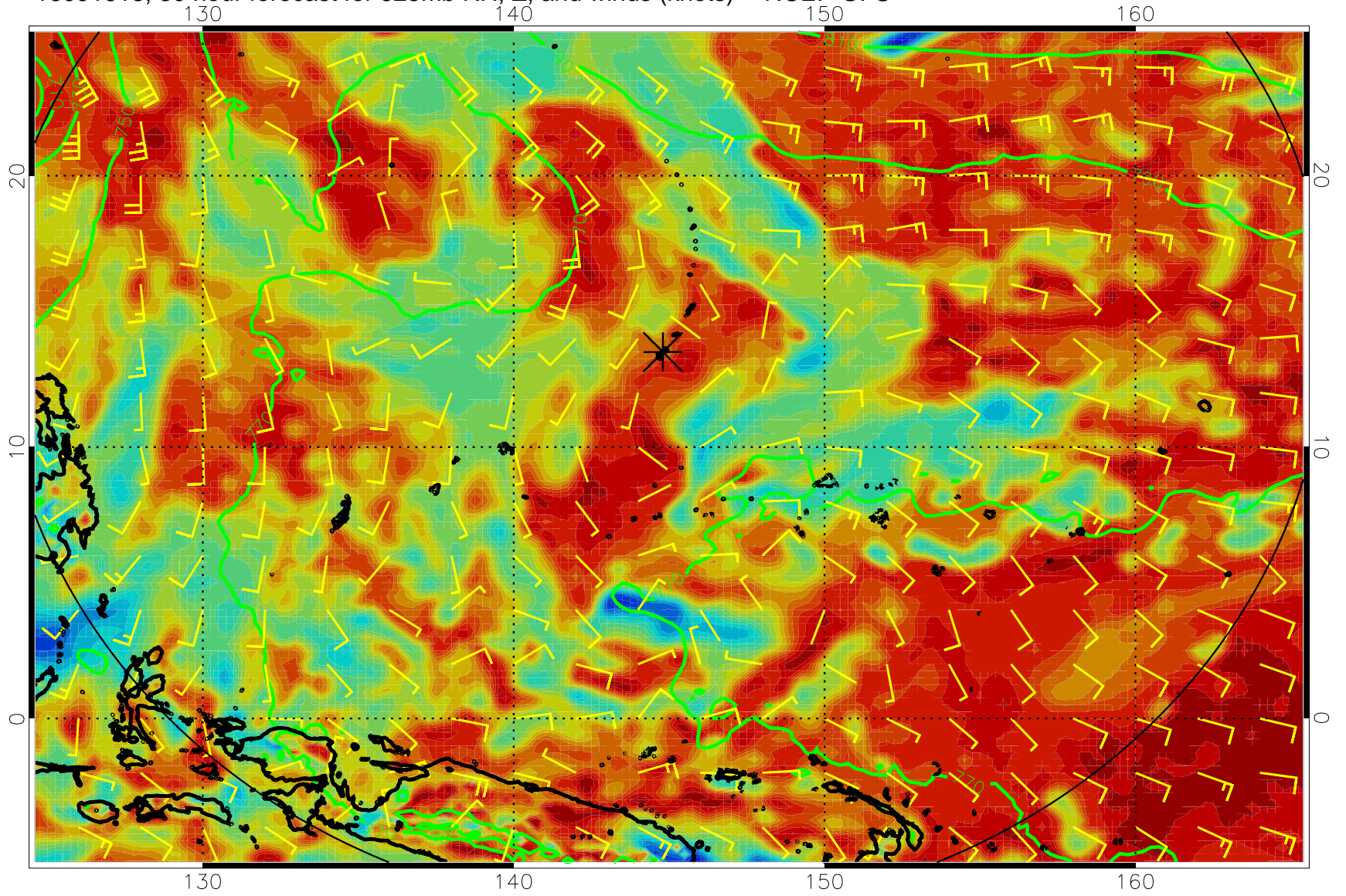
16091606, 18 hour forecast for 925mb RH, Z, and winds (knots) -- NCEP GFS



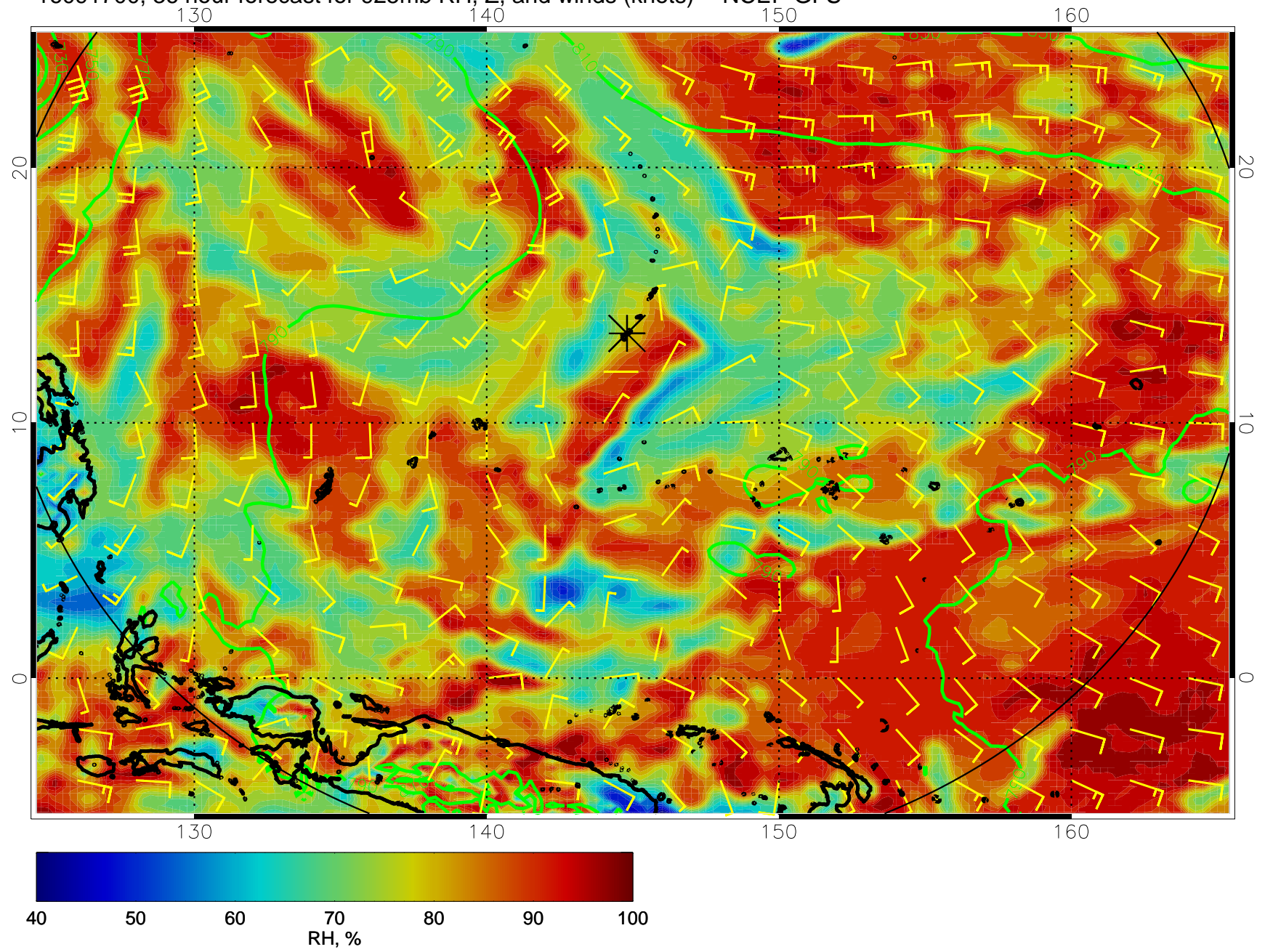
16091612, 24 hour forecast for 925mb RH, Z, and winds (knots) -- NCEP GFS



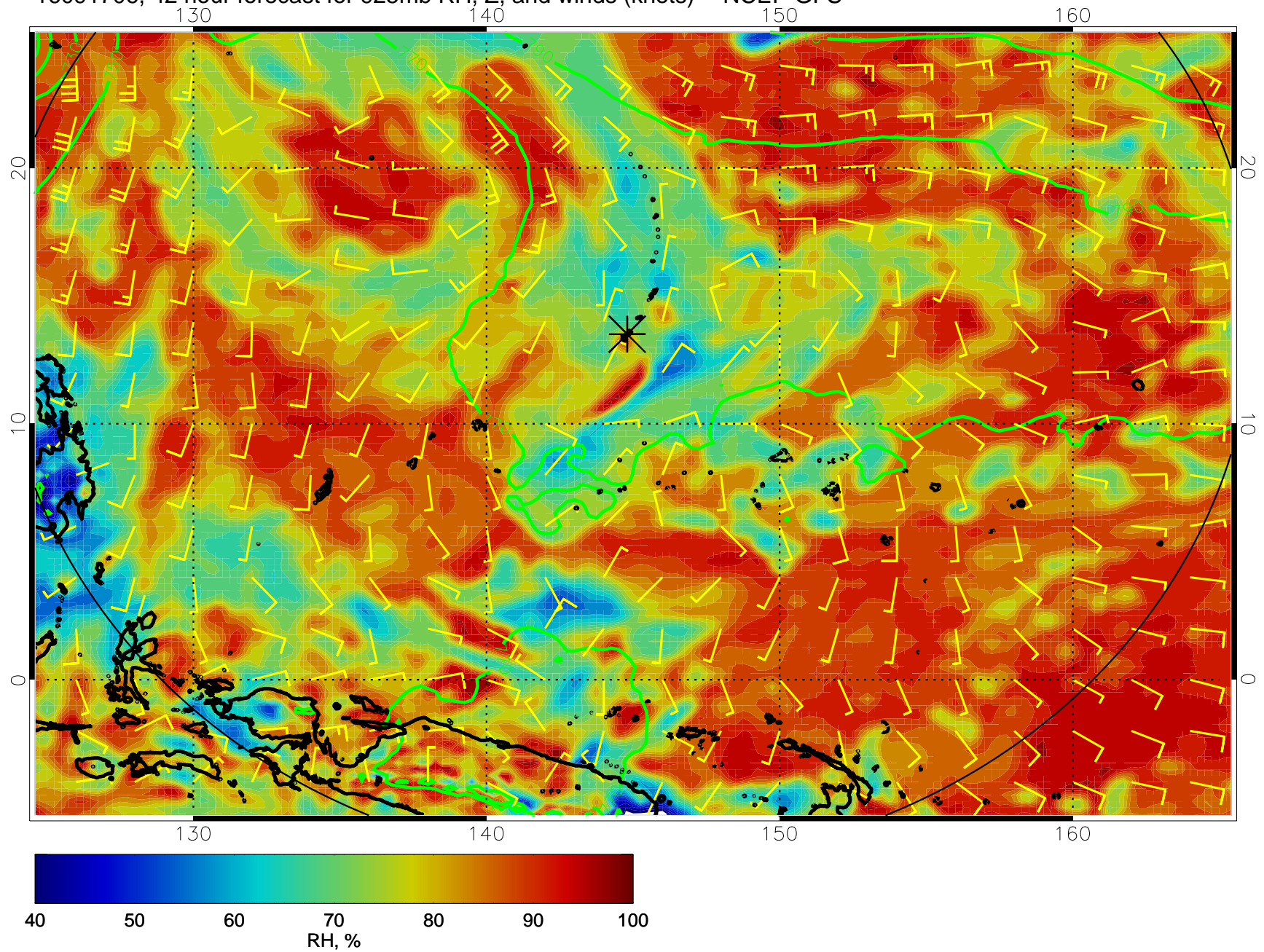
16091618, 30 hour forecast for 925mb RH, Z, and winds (knots) -- NCEP GFS



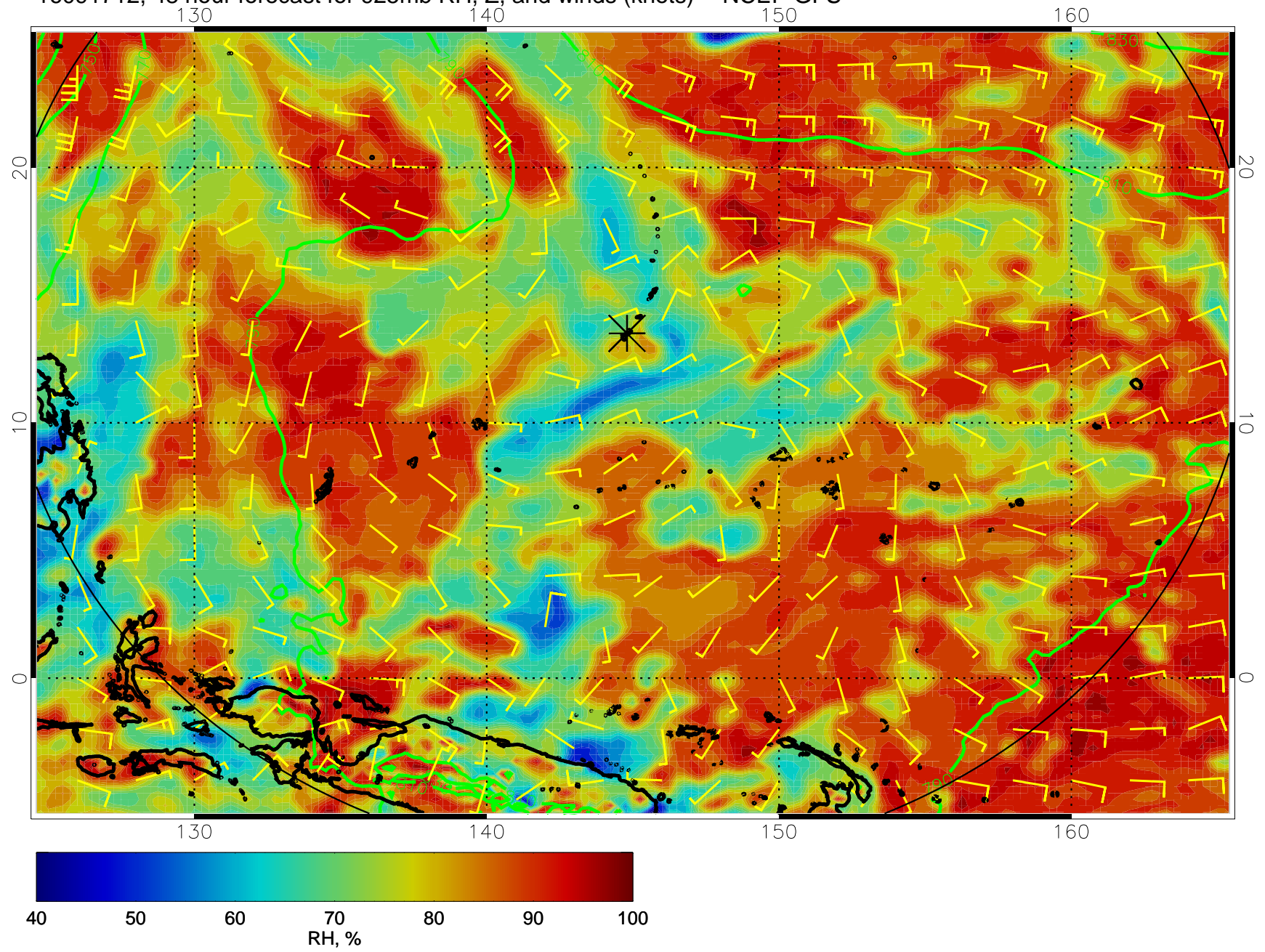
16091700, 36 hour forecast for 925mb RH, Z, and winds (knots) -- NCEP GFS



16091706, 42 hour forecast for 925mb RH, Z, and winds (knots) -- NCEP GFS

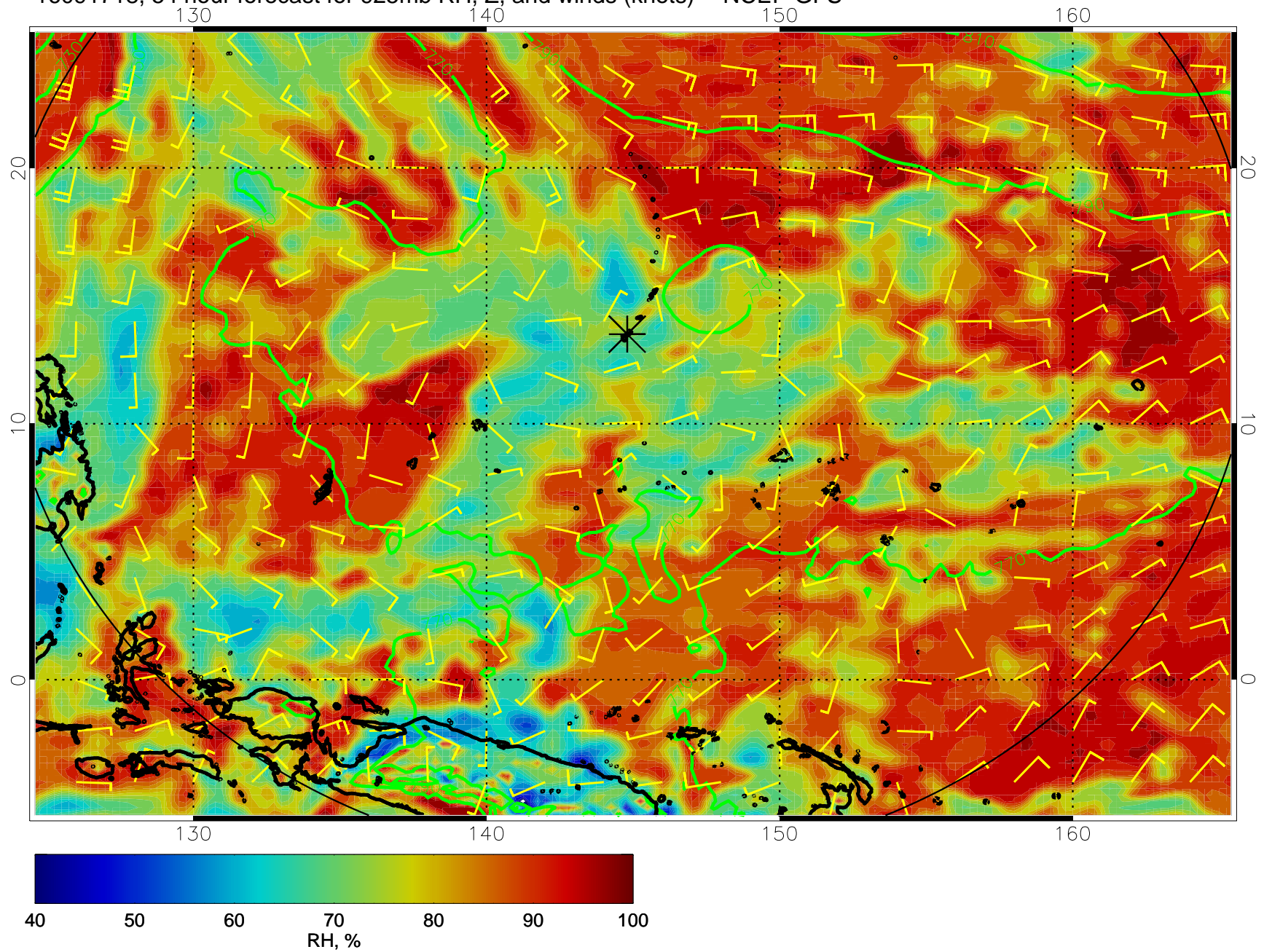


16091712, 48 hour forecast for 925mb RH, Z, and winds (knots) -- NCEP GFS

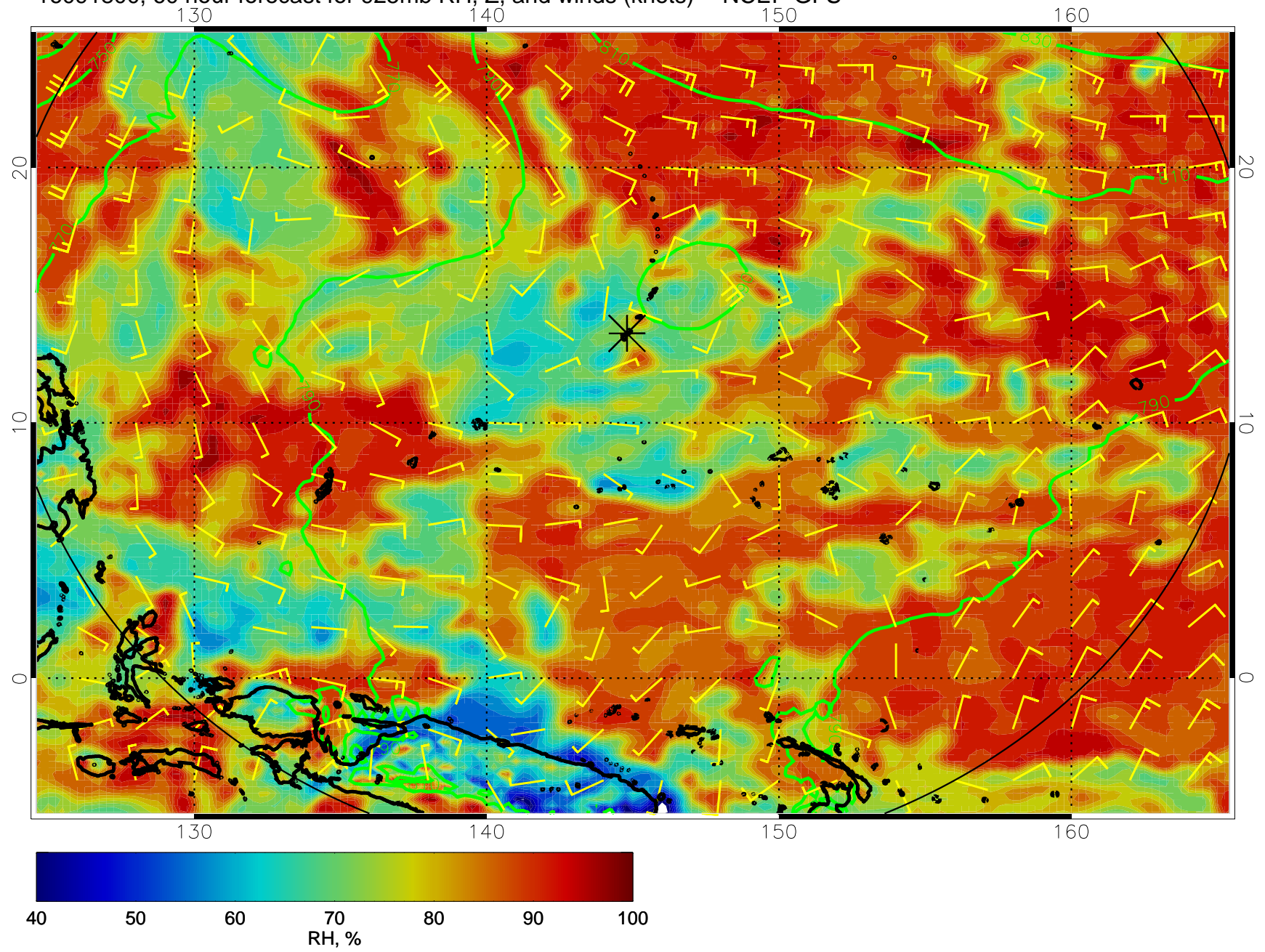




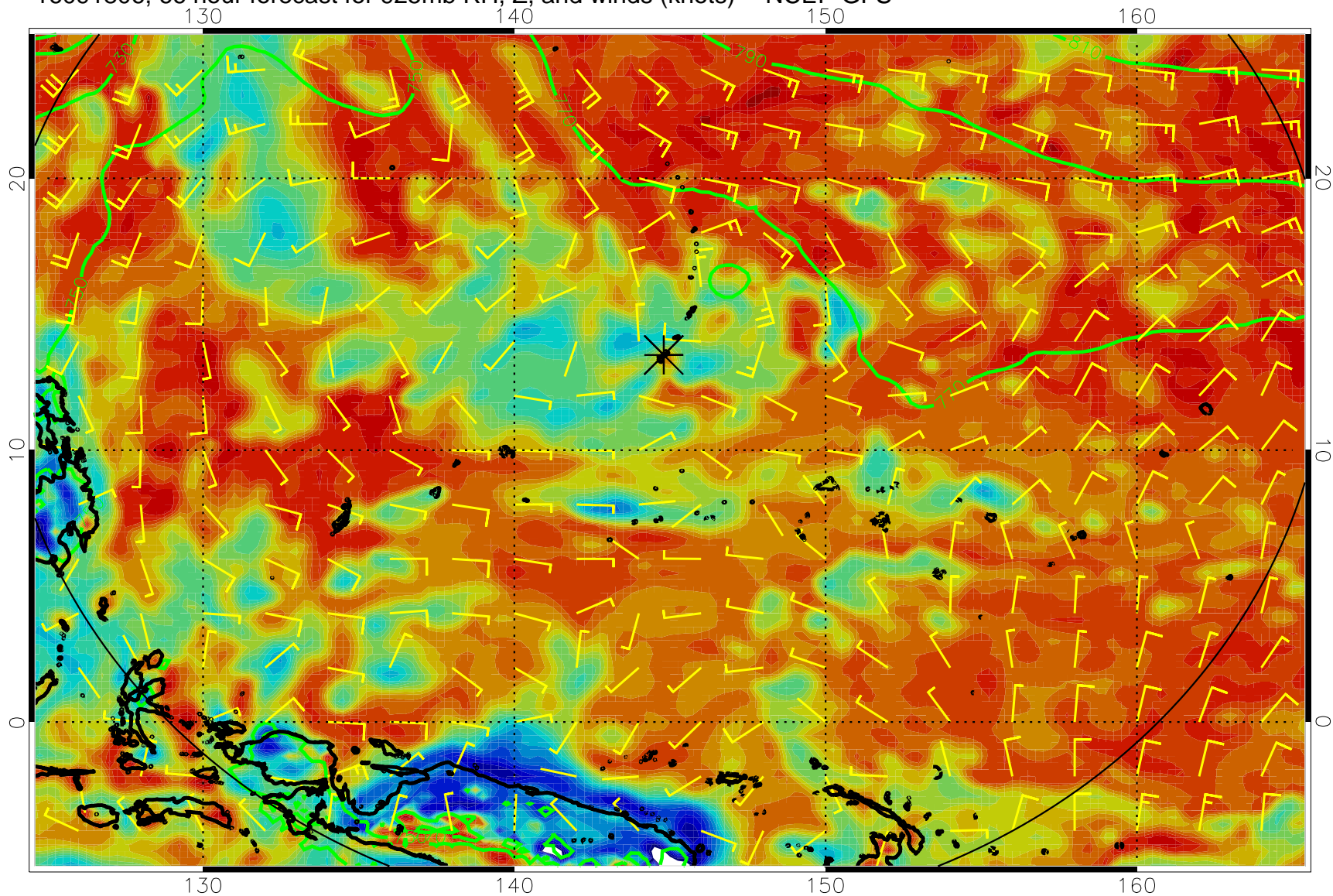
16091718, 54 hour forecast for 925mb RH, Z, and winds (knots) -- NCEP GFS



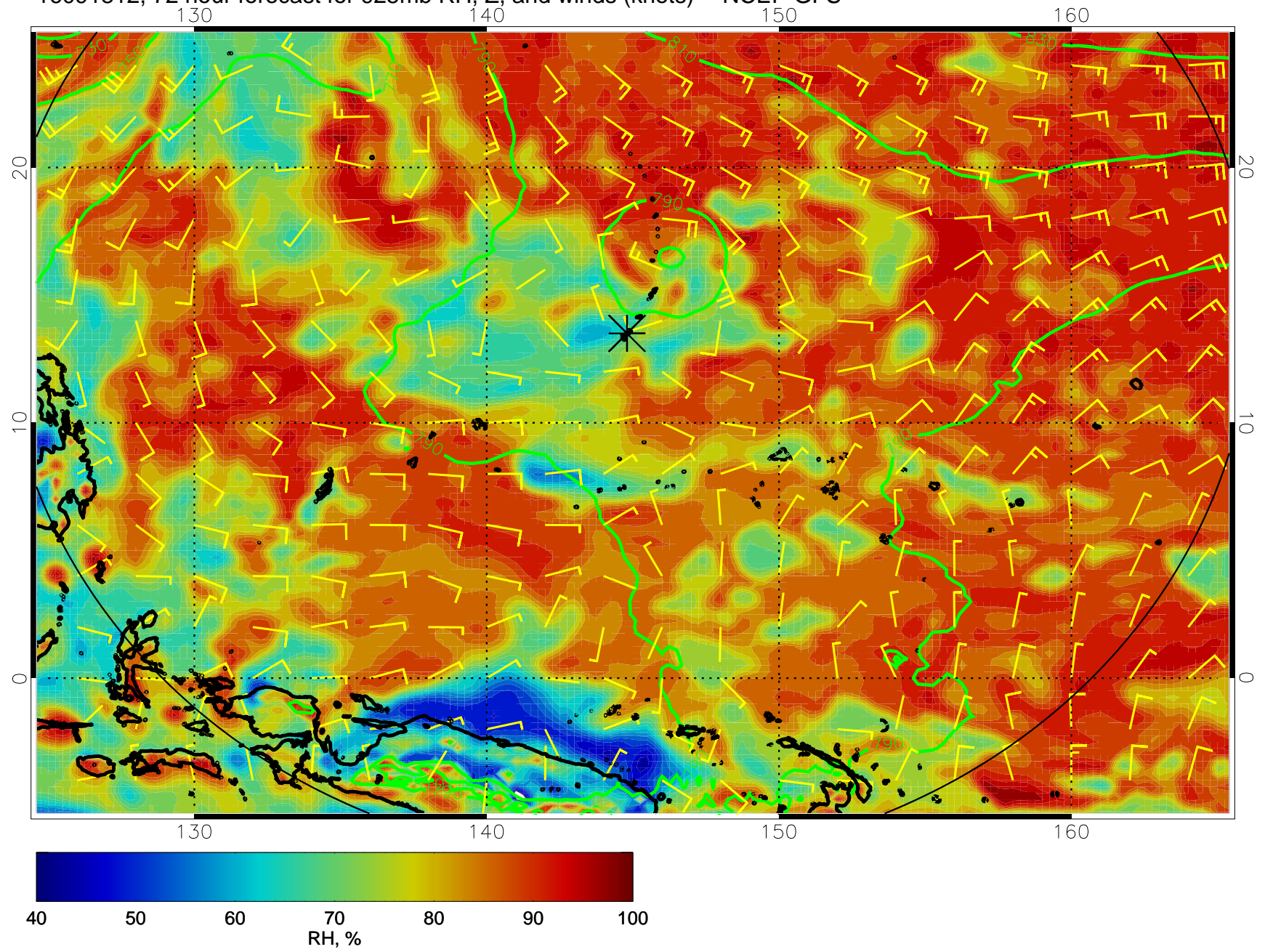
16091800, 60 hour forecast for 925mb RH, Z, and winds (knots) -- NCEP GFS



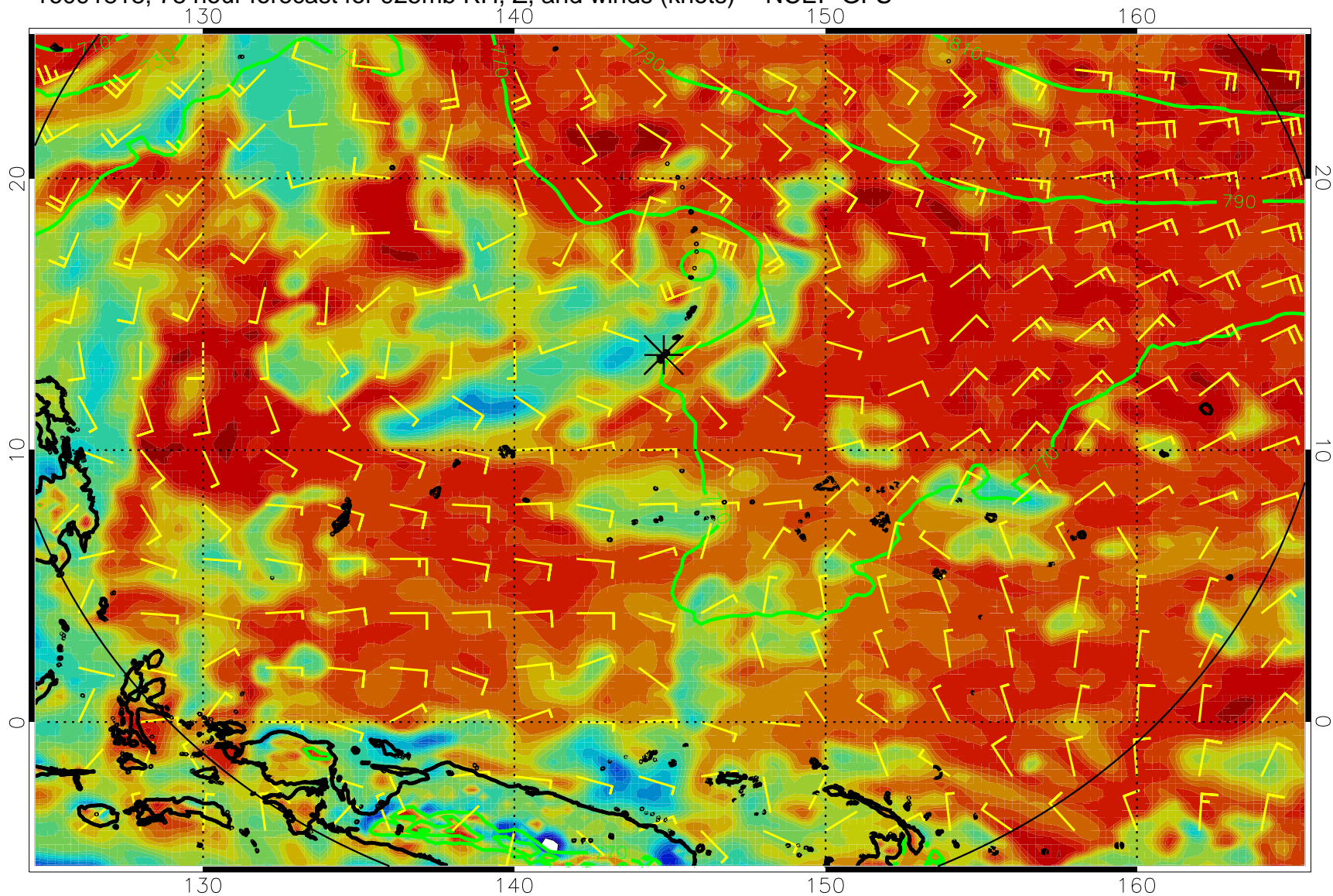
16091806, 66 hour forecast for 925mb RH, Z, and winds (knots) -- NCEP GFS



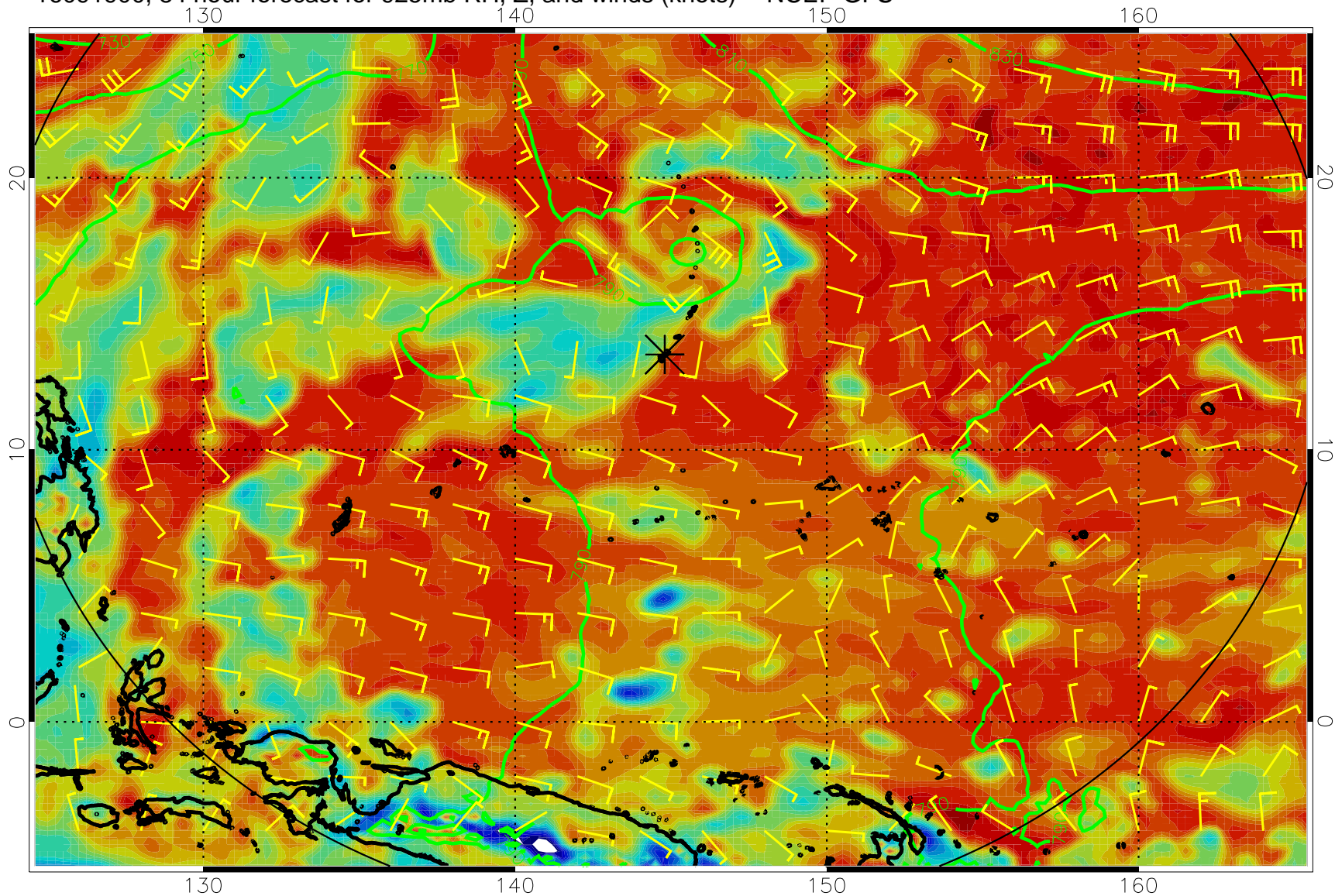
16091812, 72 hour forecast for 925mb RH, Z, and winds (knots) -- NCEP GFS



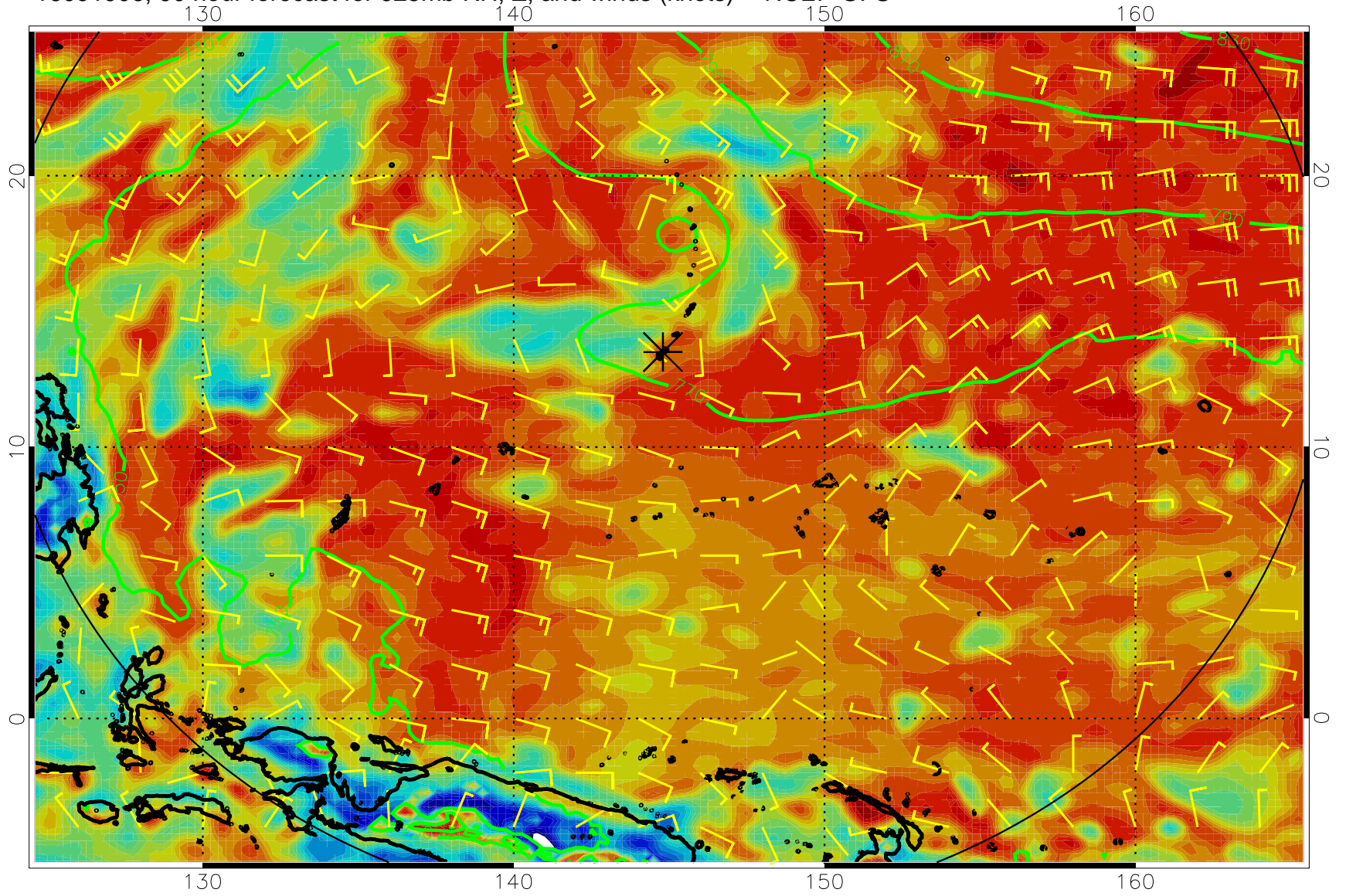
16091818, 78 hour forecast for 925mb RH, Z, and winds (knots) -- NCEP GFS



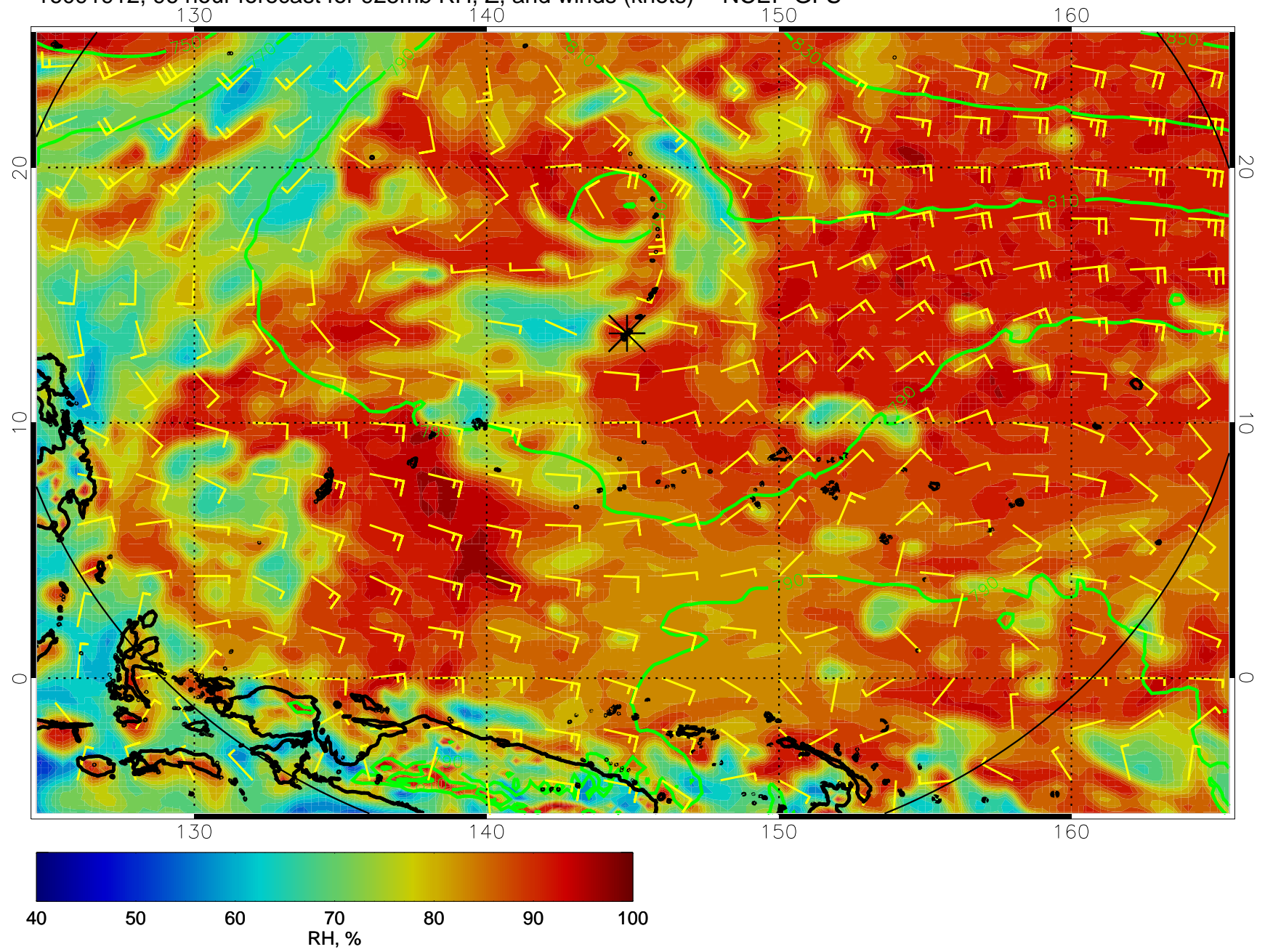
16091900, 84 hour forecast for 925mb RH, Z, and winds (knots) -- NCEP GFS



16091906, 90 hour forecast for 925mb RH, Z, and winds (knots) -- NCEP GFS

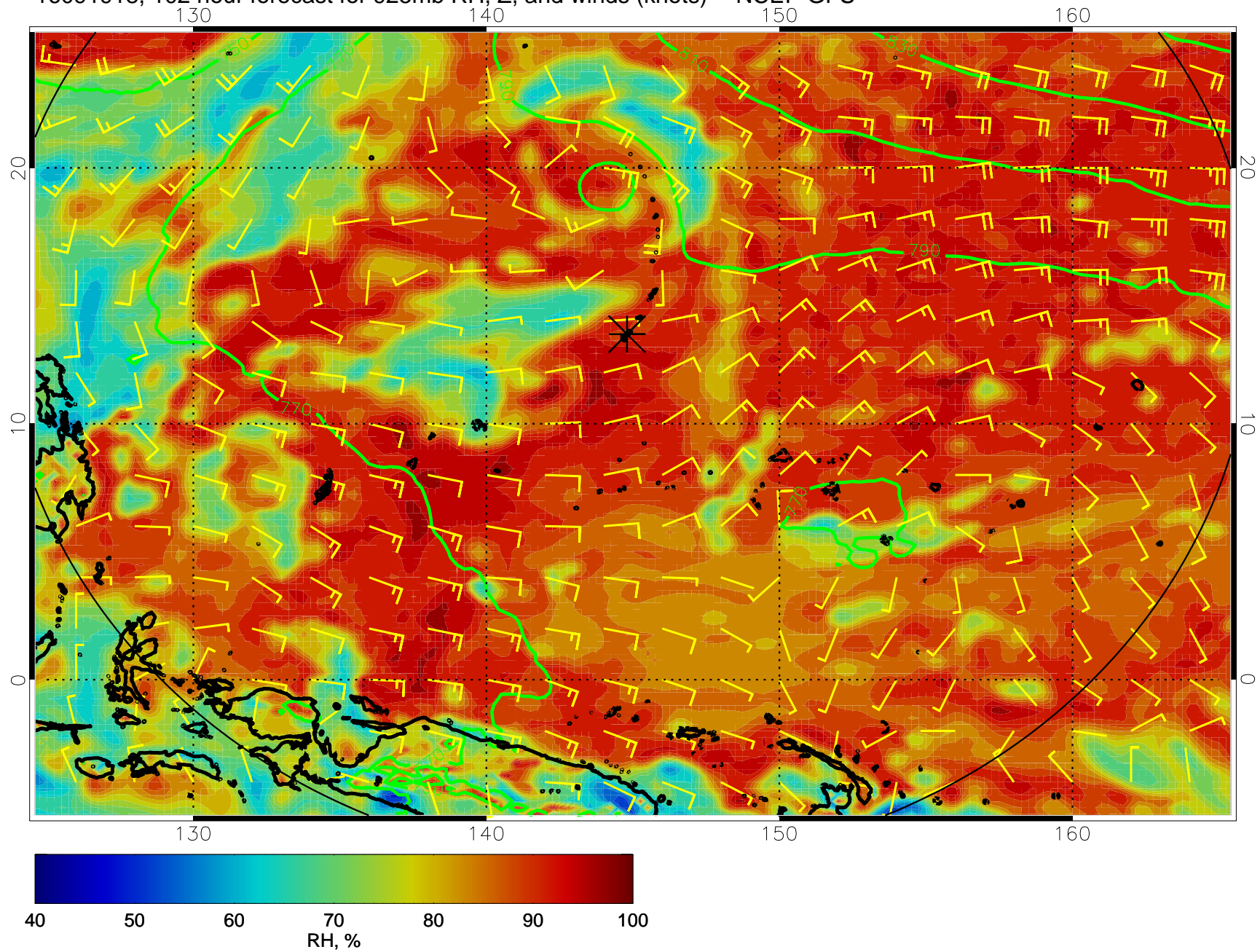


16091912, 96 hour forecast for 925mb RH, Z, and winds (knots) -- NCEP GFS

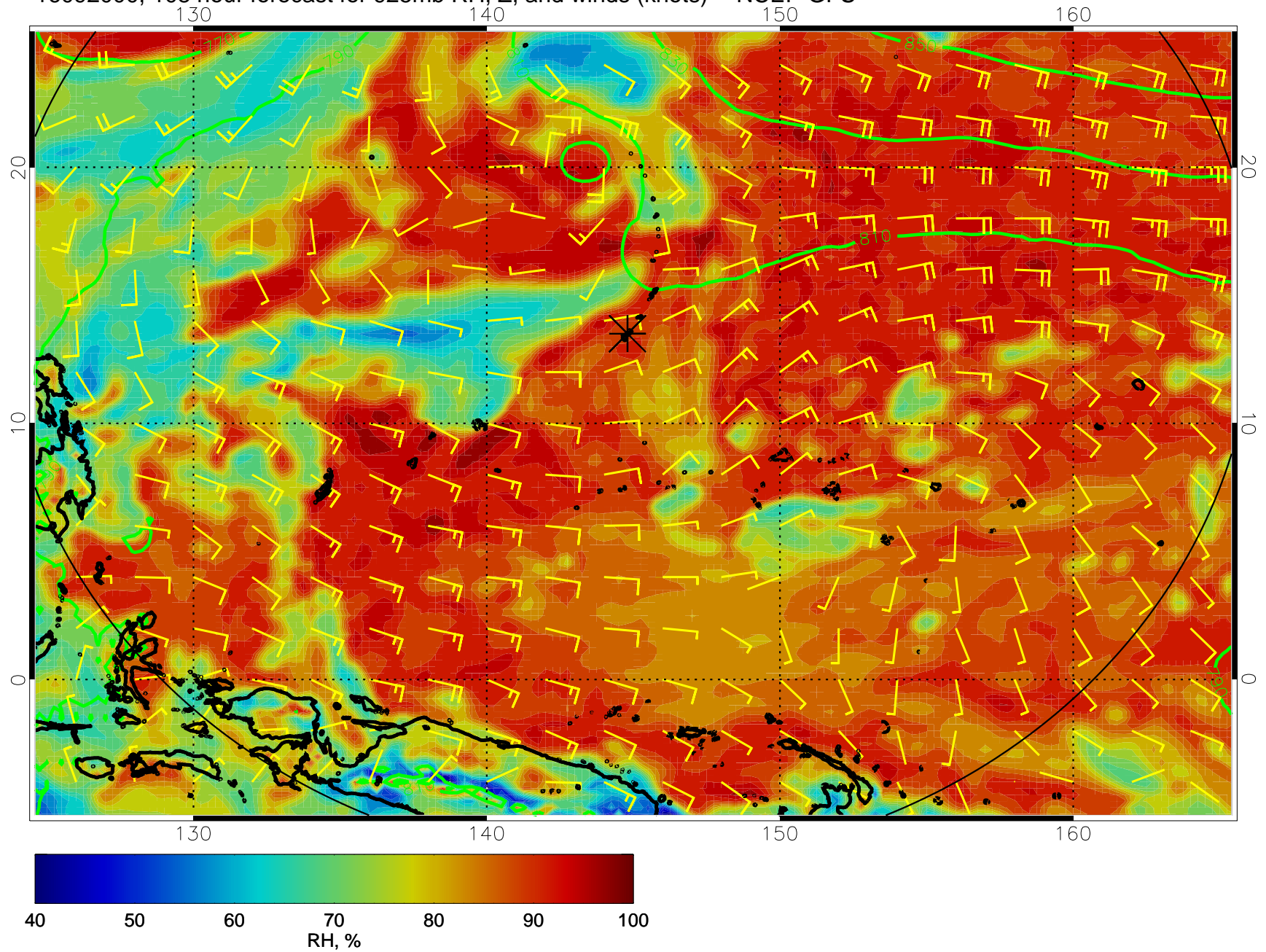




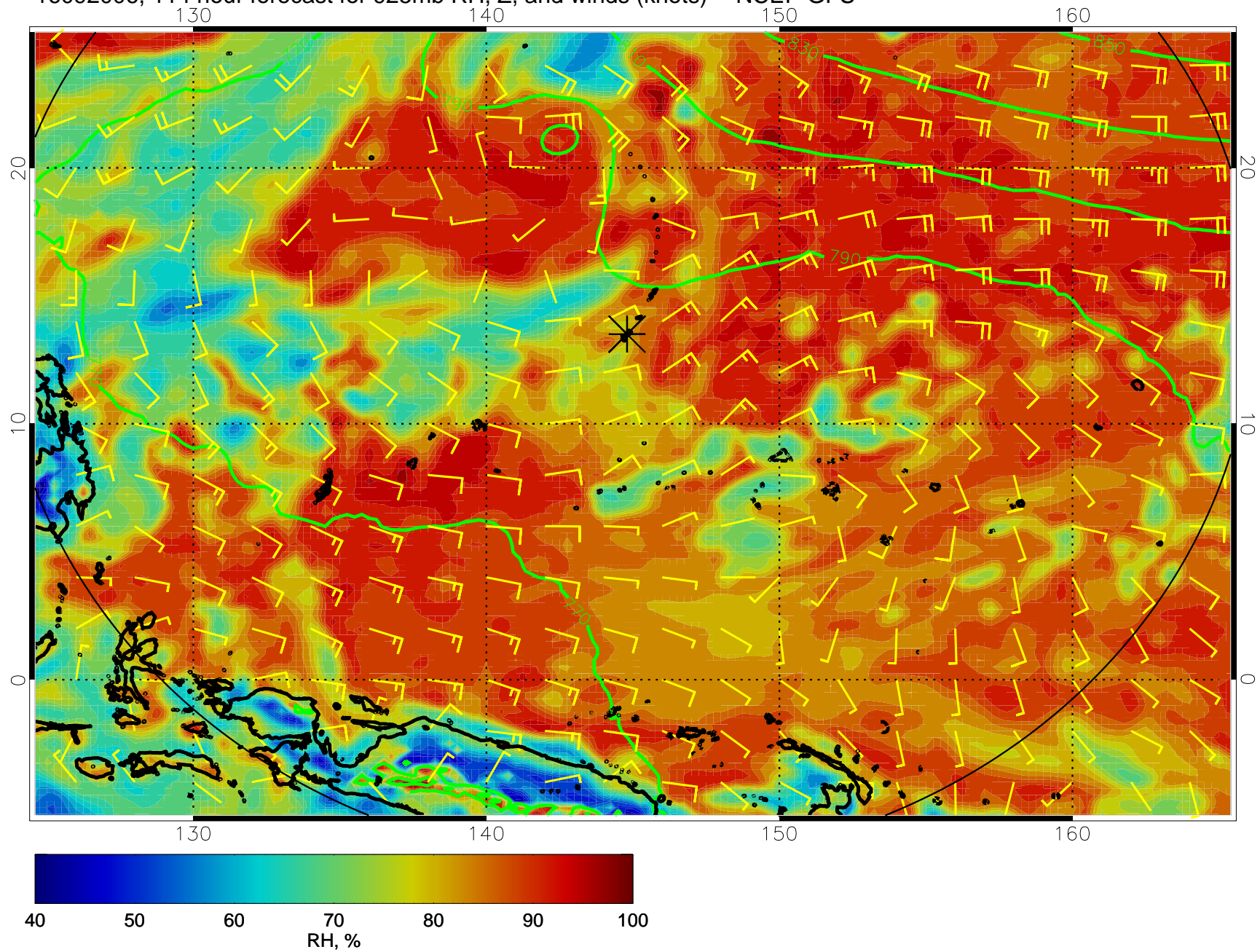
16091918, 102 hour forecast for 925mb RH, Z, and winds (knots) -- NCEP GFS



16092000, 108 hour forecast for 925mb RH, Z, and winds (knots) -- NCEP GFS



16092006, 114 hour forecast for 925mb RH, Z, and winds (knots) -- NCEP GFS



16092012, 120 hour forecast for 925mb RH, Z, and winds (knots) -- NCEP GFS

