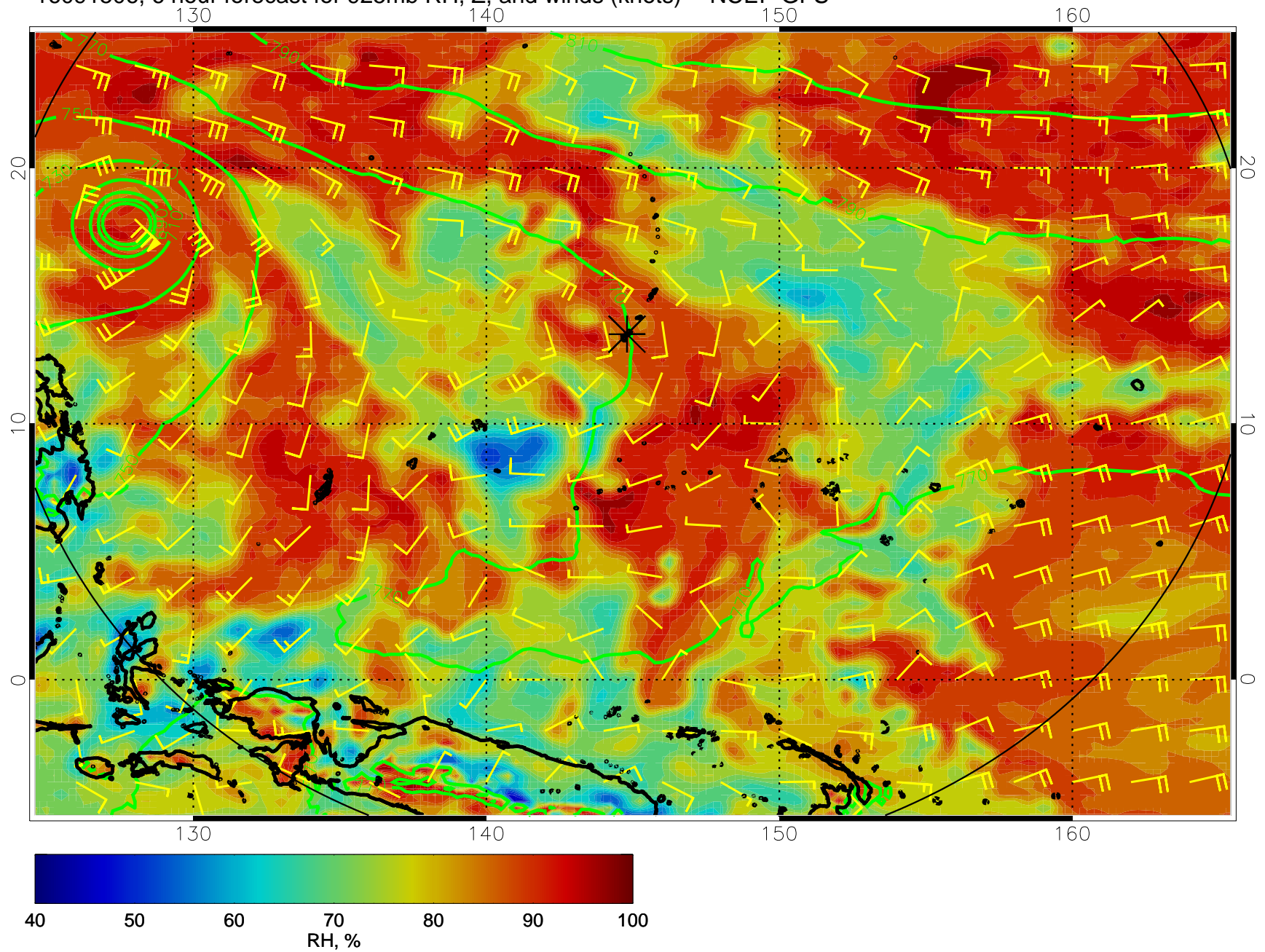
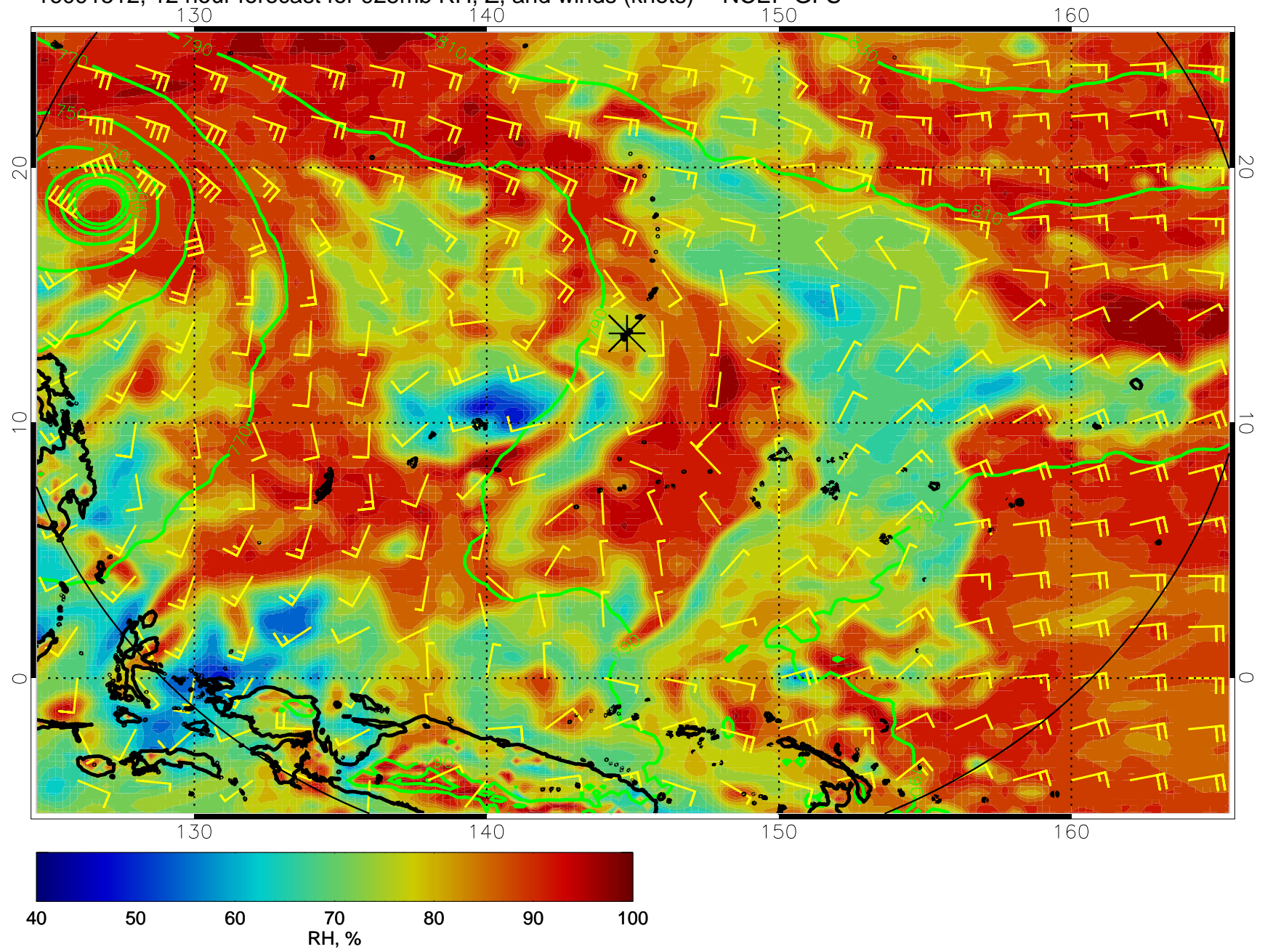


16091506, 6 hour forecast for 925mb RH, Z, and winds (knots) -- NCEP GFS

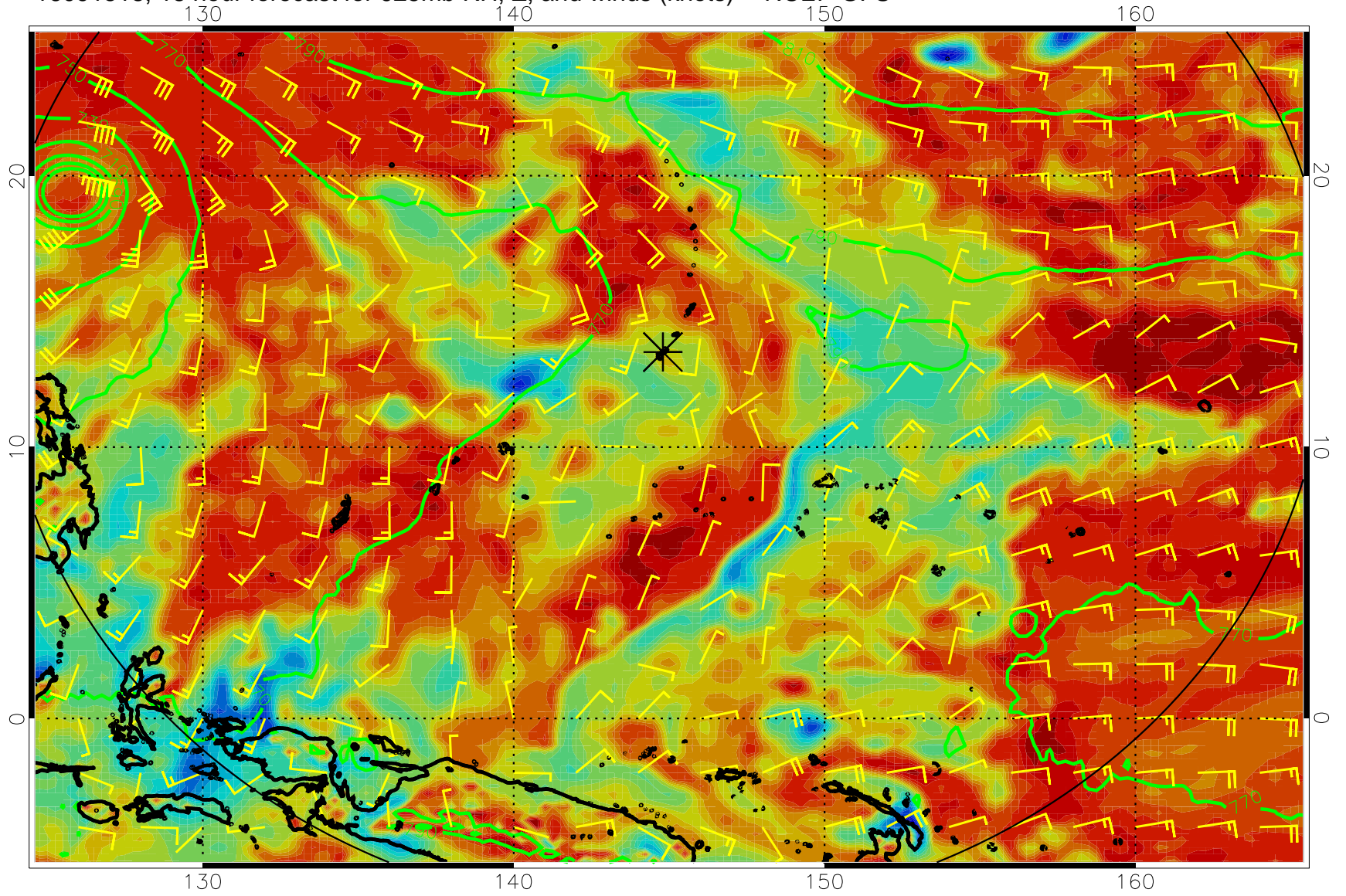


16091512, 12 hour forecast for 925mb RH, Z, and winds (knots) -- NCEP GFS

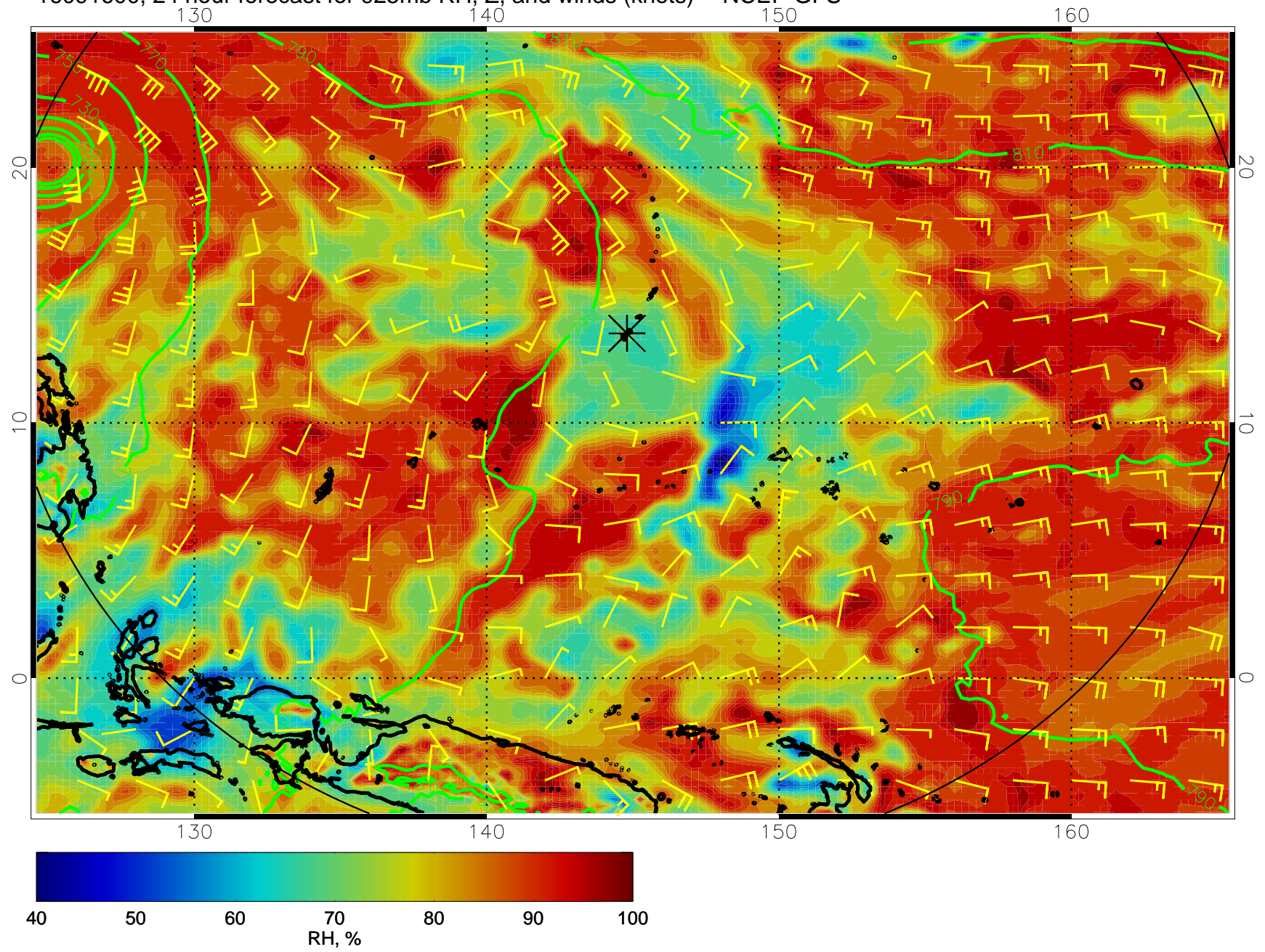




16091518, 18 hour forecast for 925mb RH, Z, and winds (knots) -- NCEP GFS

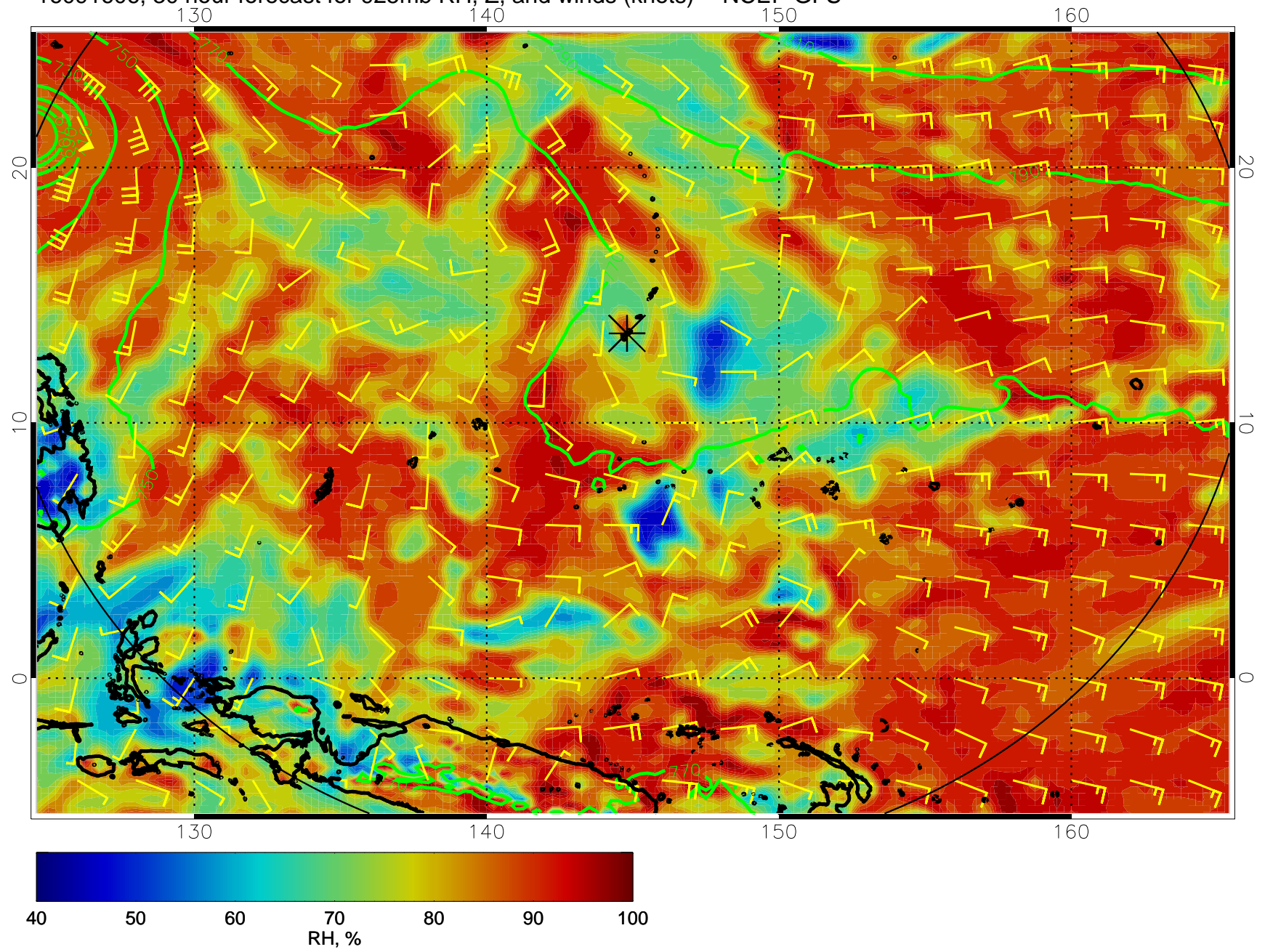


16091600, 24 hour forecast for 925mb RH, Z, and winds (knots) -- NCEP GFS

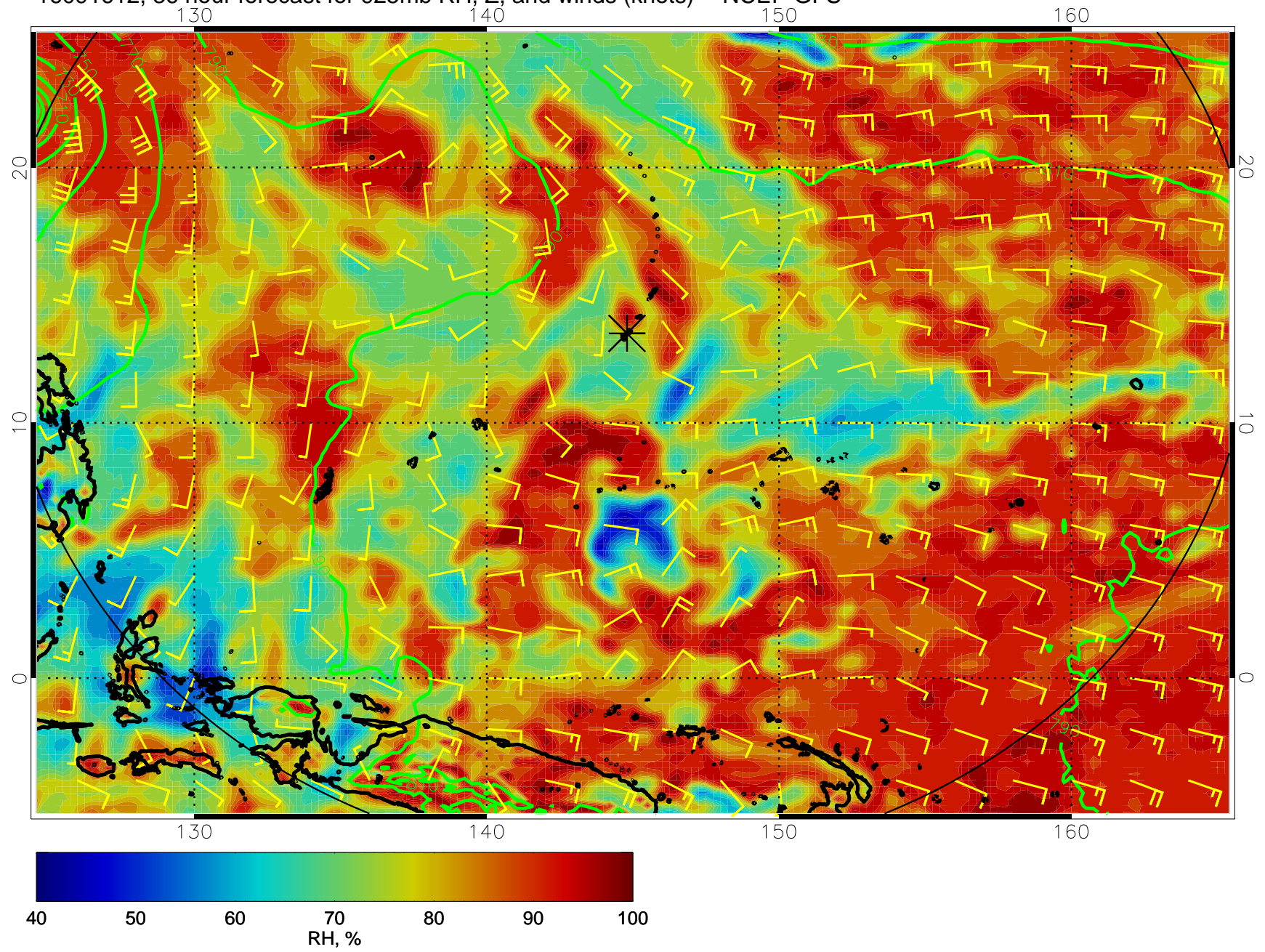




16091606, 30 hour forecast for 925mb RH, Z, and winds (knots) -- NCEP GFS

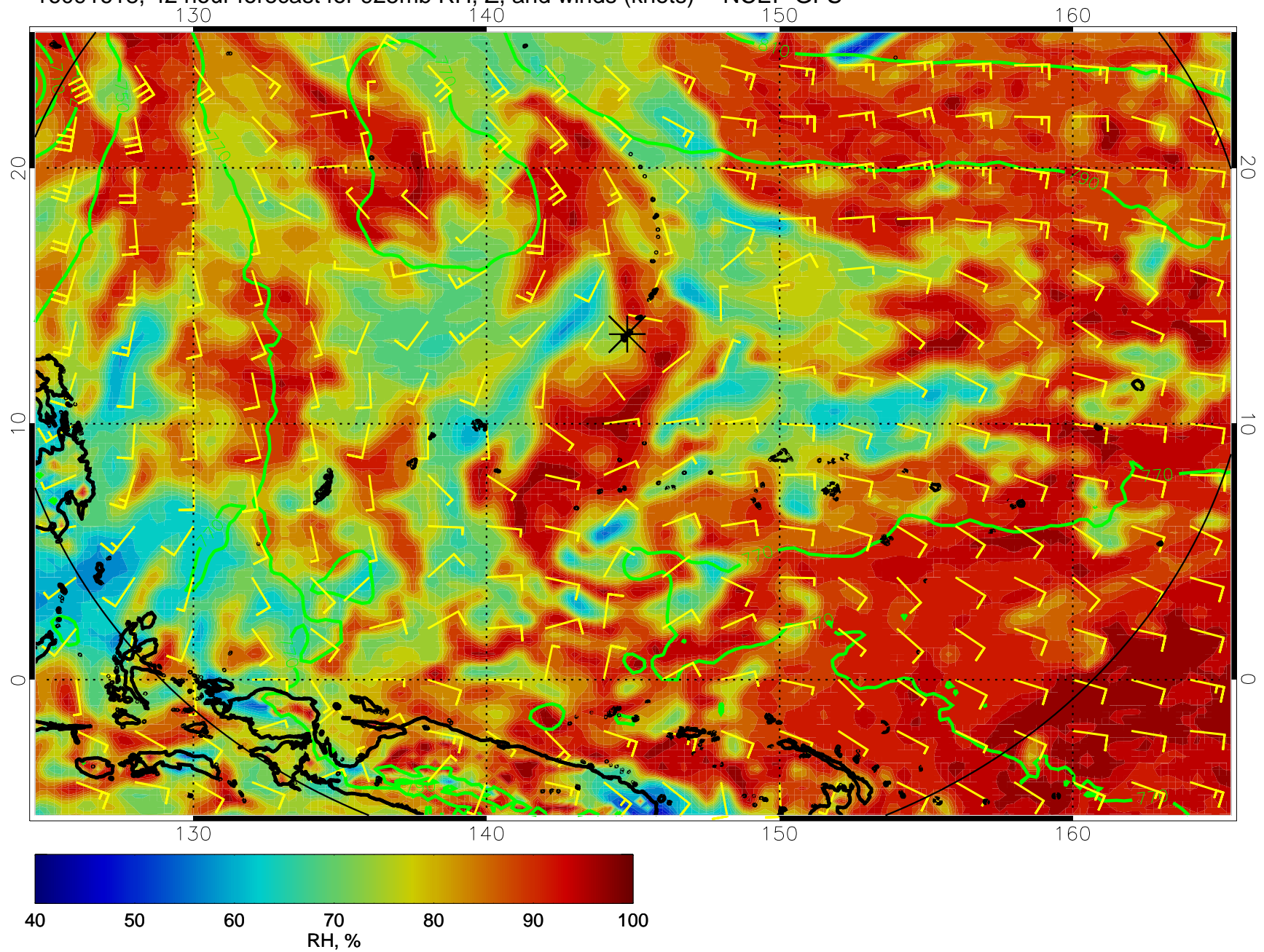


16091612, 36 hour forecast for 925mb RH, Z, and winds (knots) -- NCEP GFS

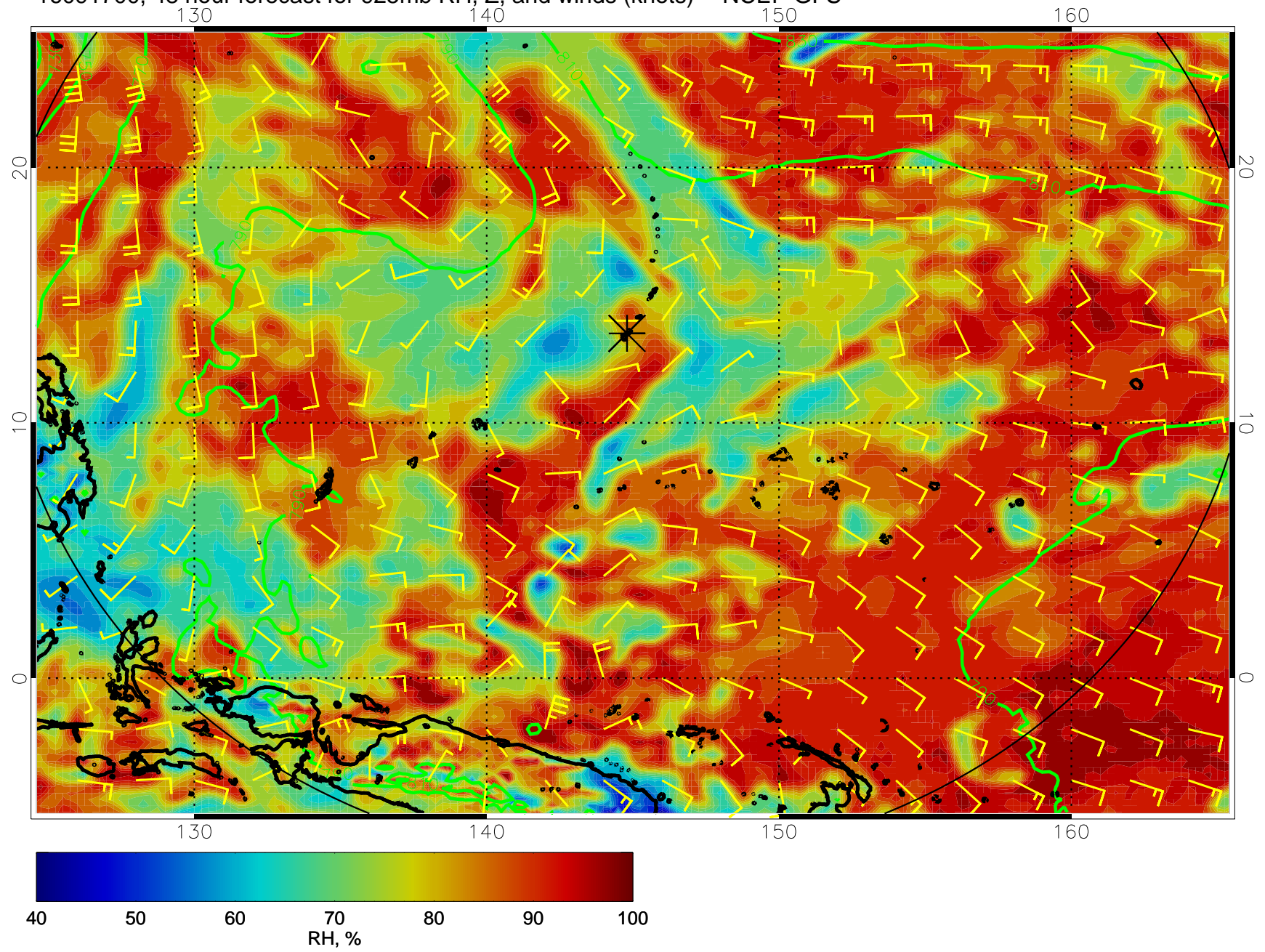




16091618, 42 hour forecast for 925mb RH, Z, and winds (knots) -- NCEP GFS

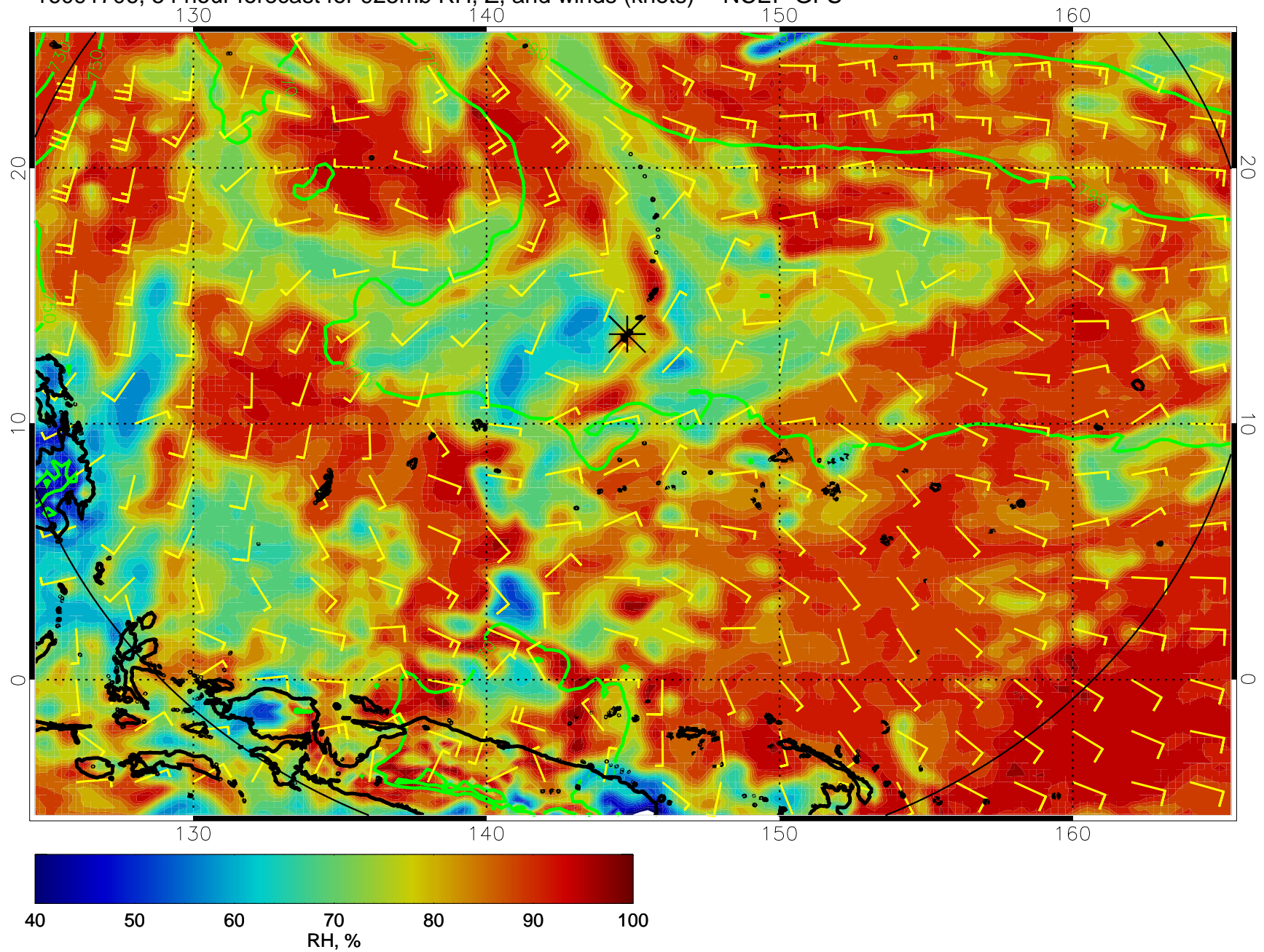


16091700, 48 hour forecast for 925mb RH, Z, and winds (knots) -- NCEP GFS

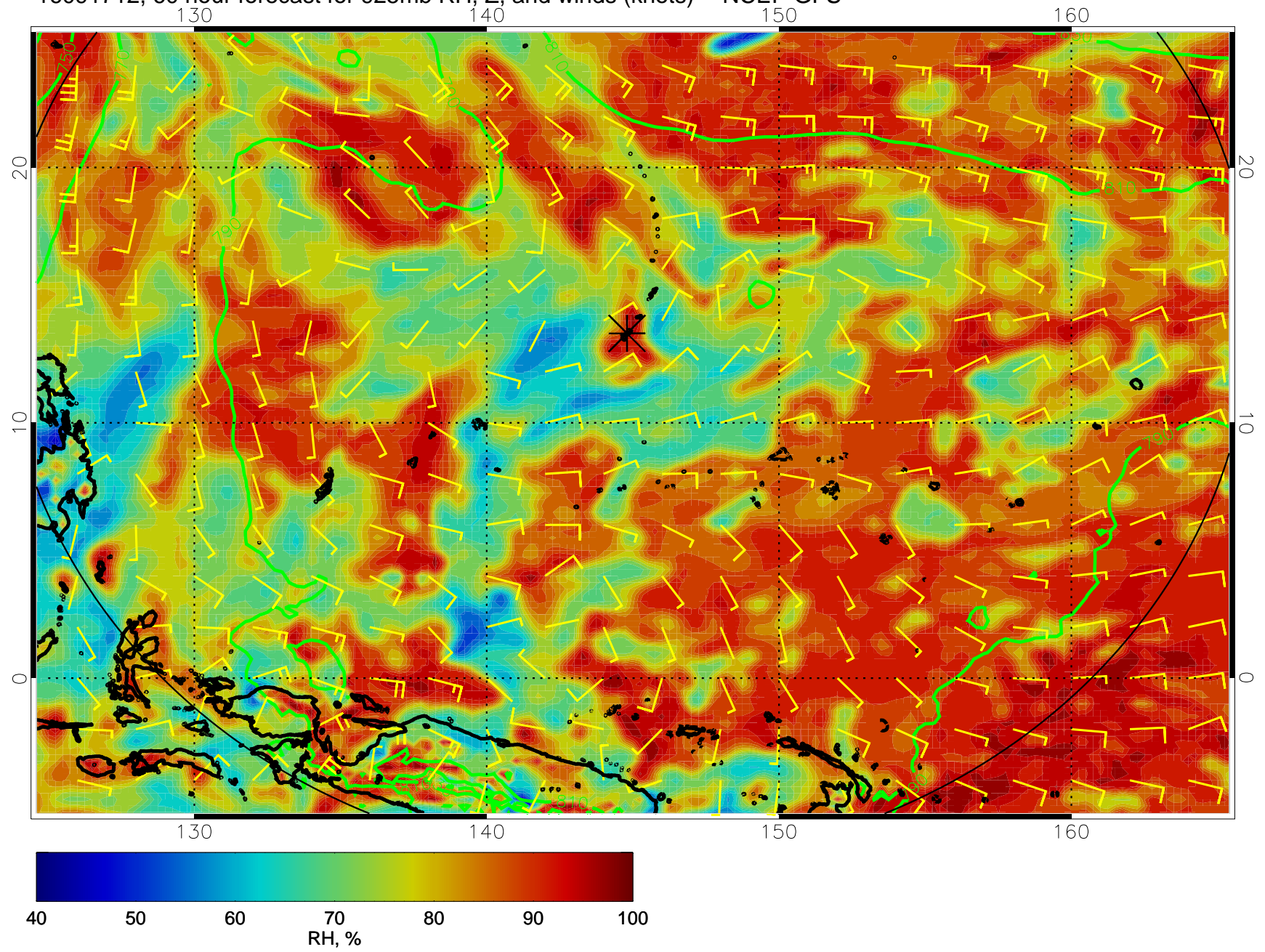




16091706, 54 hour forecast for 925mb RH, Z, and winds (knots) -- NCEP GFS

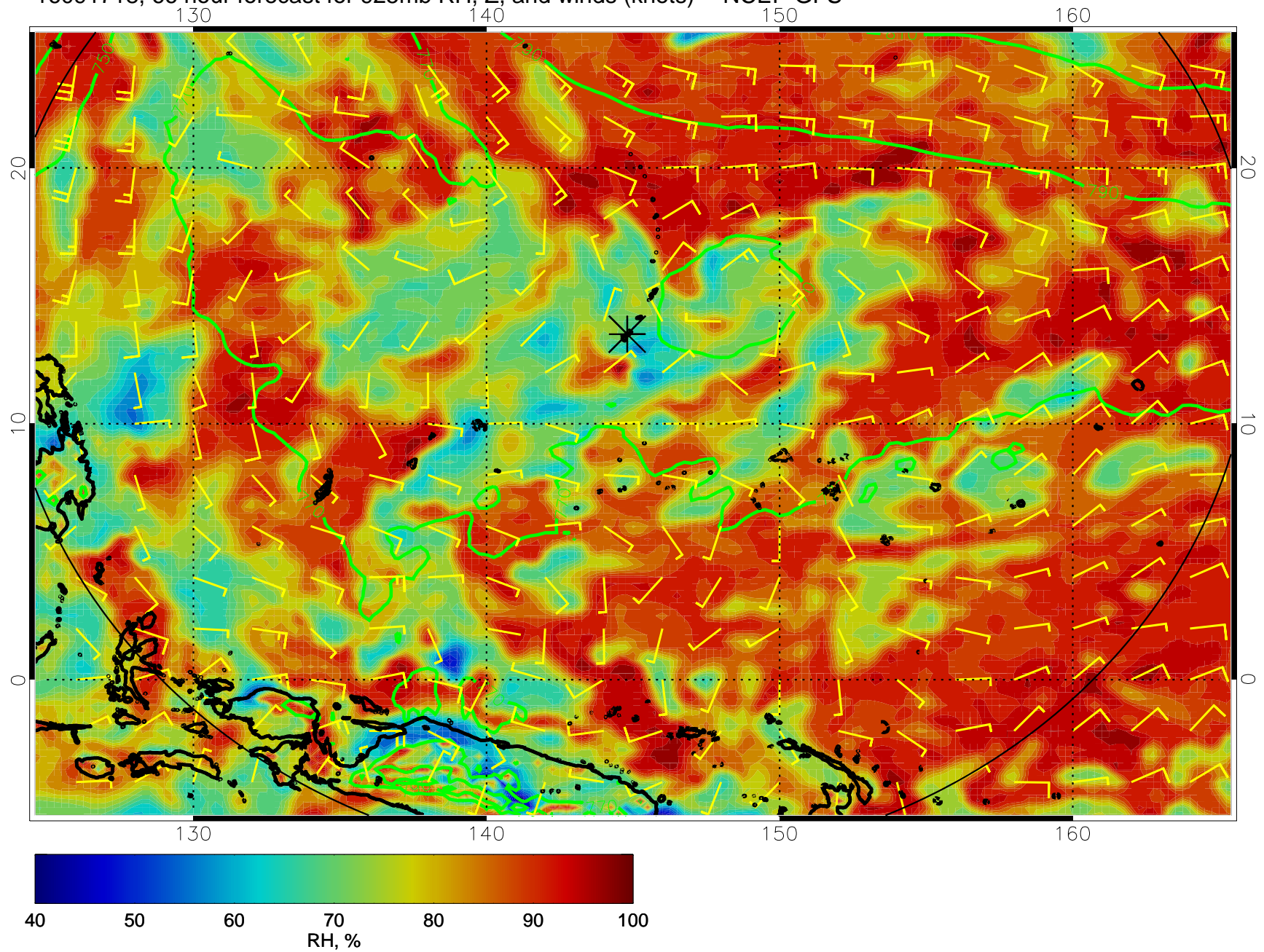


16091712, 60 hour forecast for 925mb RH, Z, and winds (knots) -- NCEP GFS

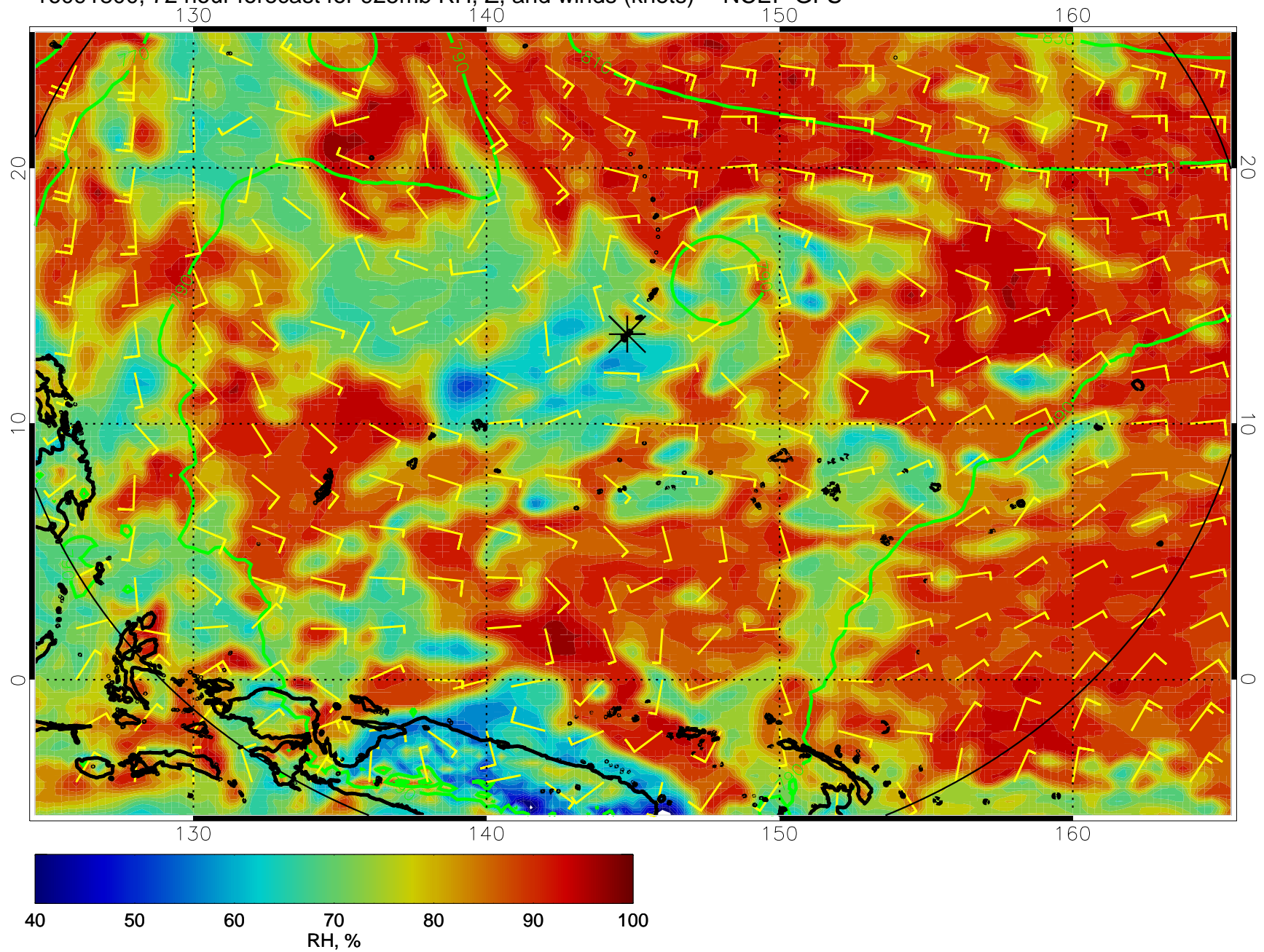




16091718, 66 hour forecast for 925mb RH, Z, and winds (knots) -- NCEP GFS

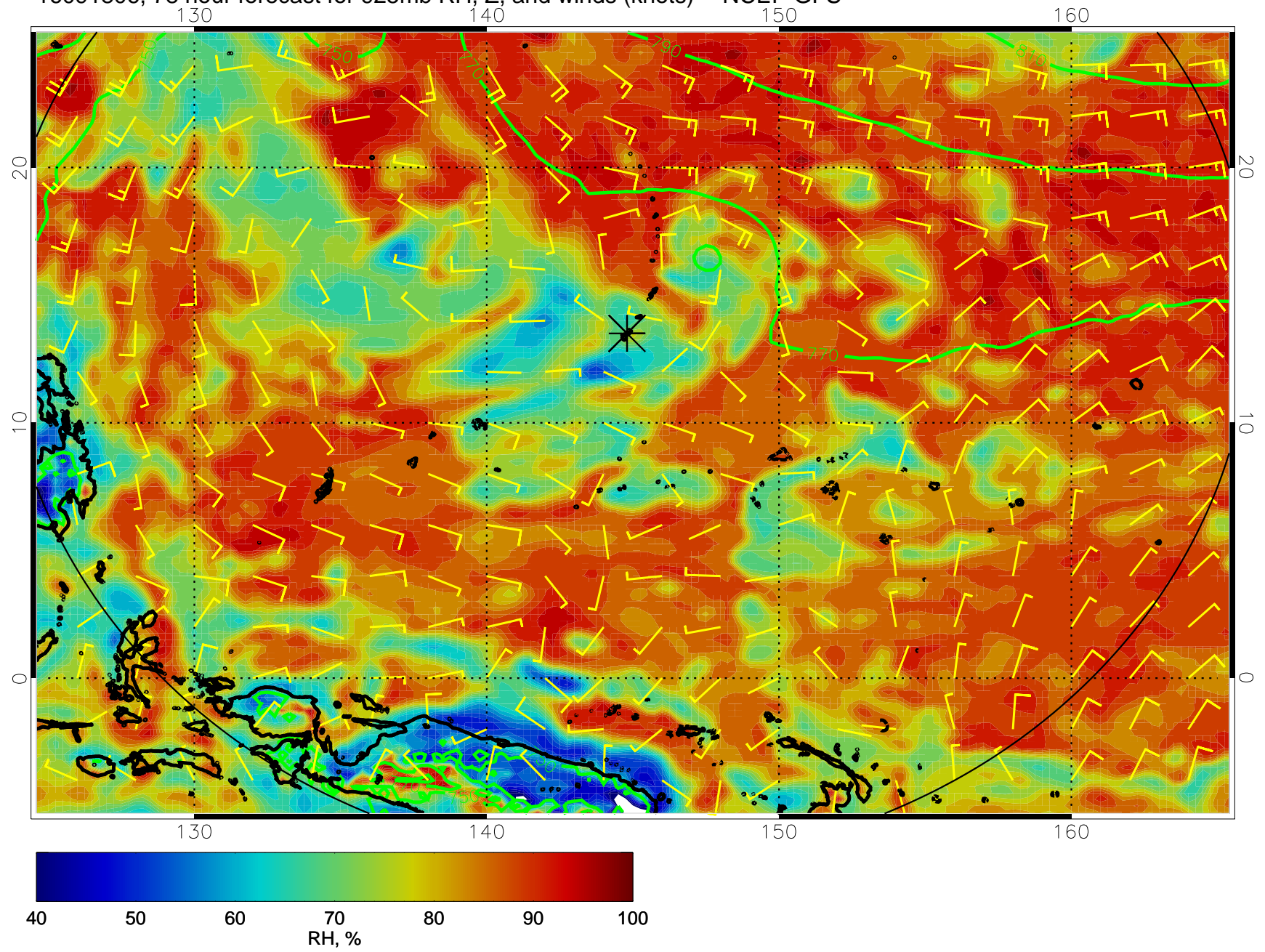


16091800, 72 hour forecast for 925mb RH, Z, and winds (knots) -- NCEP GFS

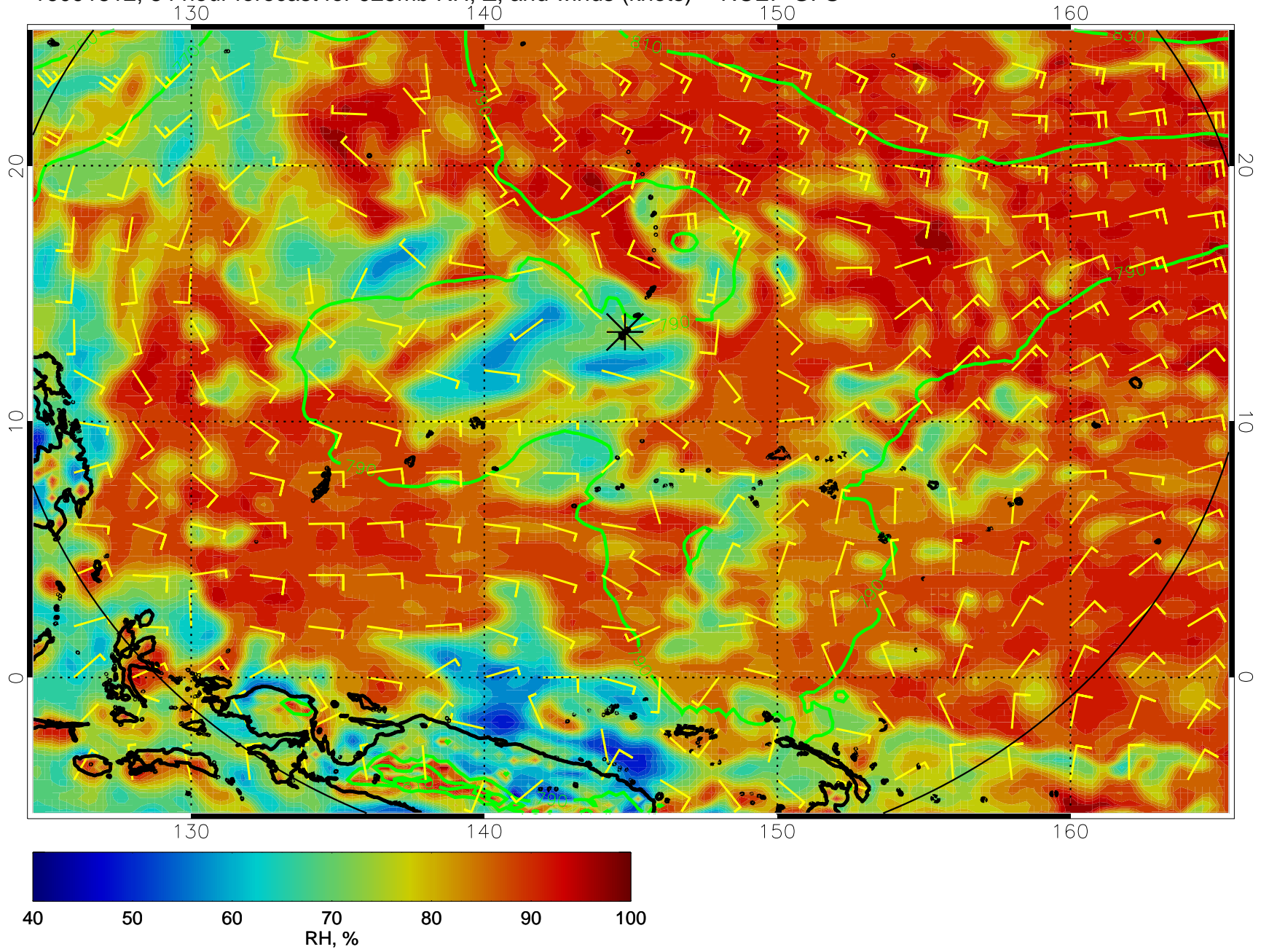




16091806, 78 hour forecast for 925mb RH, Z, and winds (knots) -- NCEP GFS

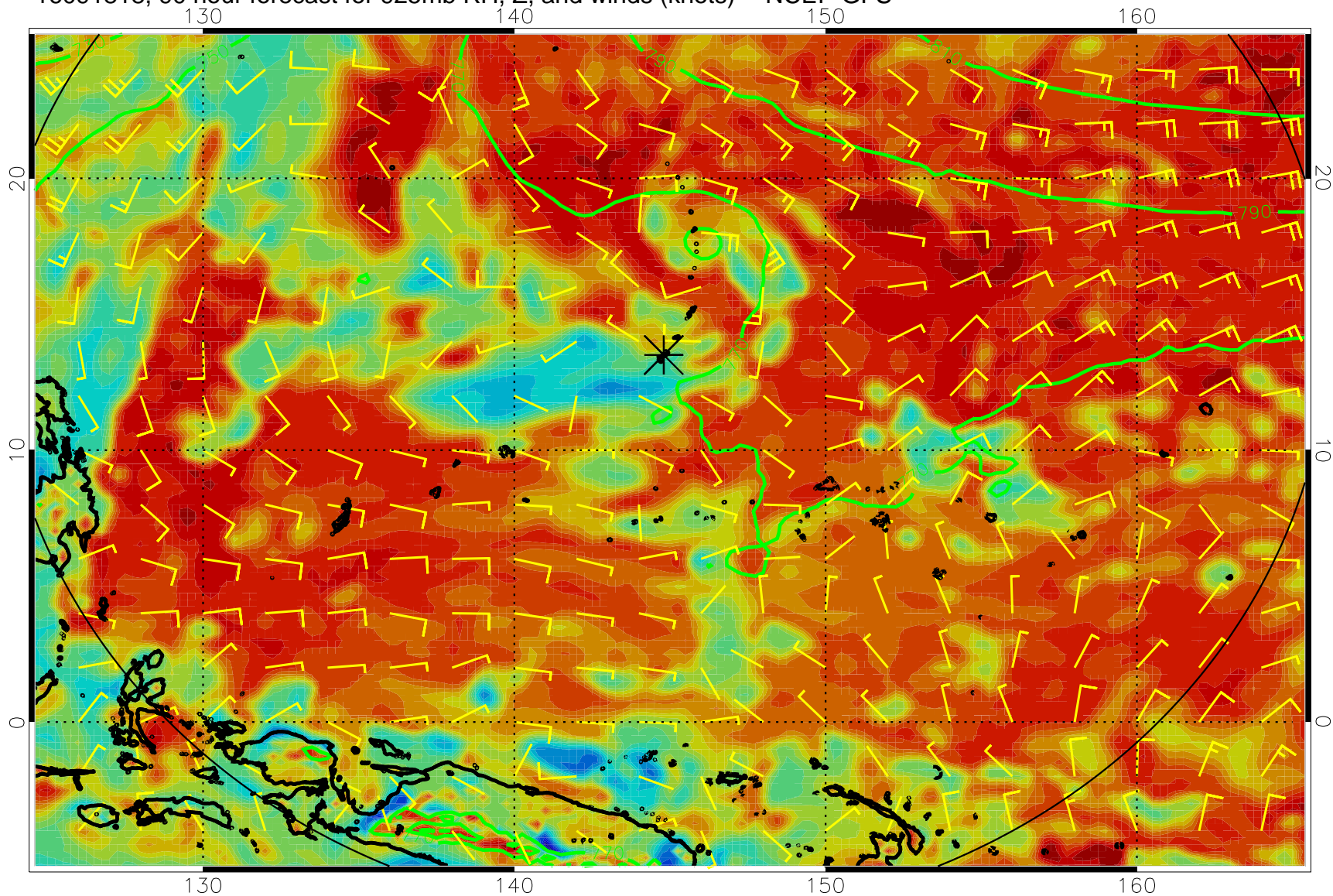


16091812, 84 hour forecast for 925mb RH, Z, and winds (knots) -- NCEP GFS

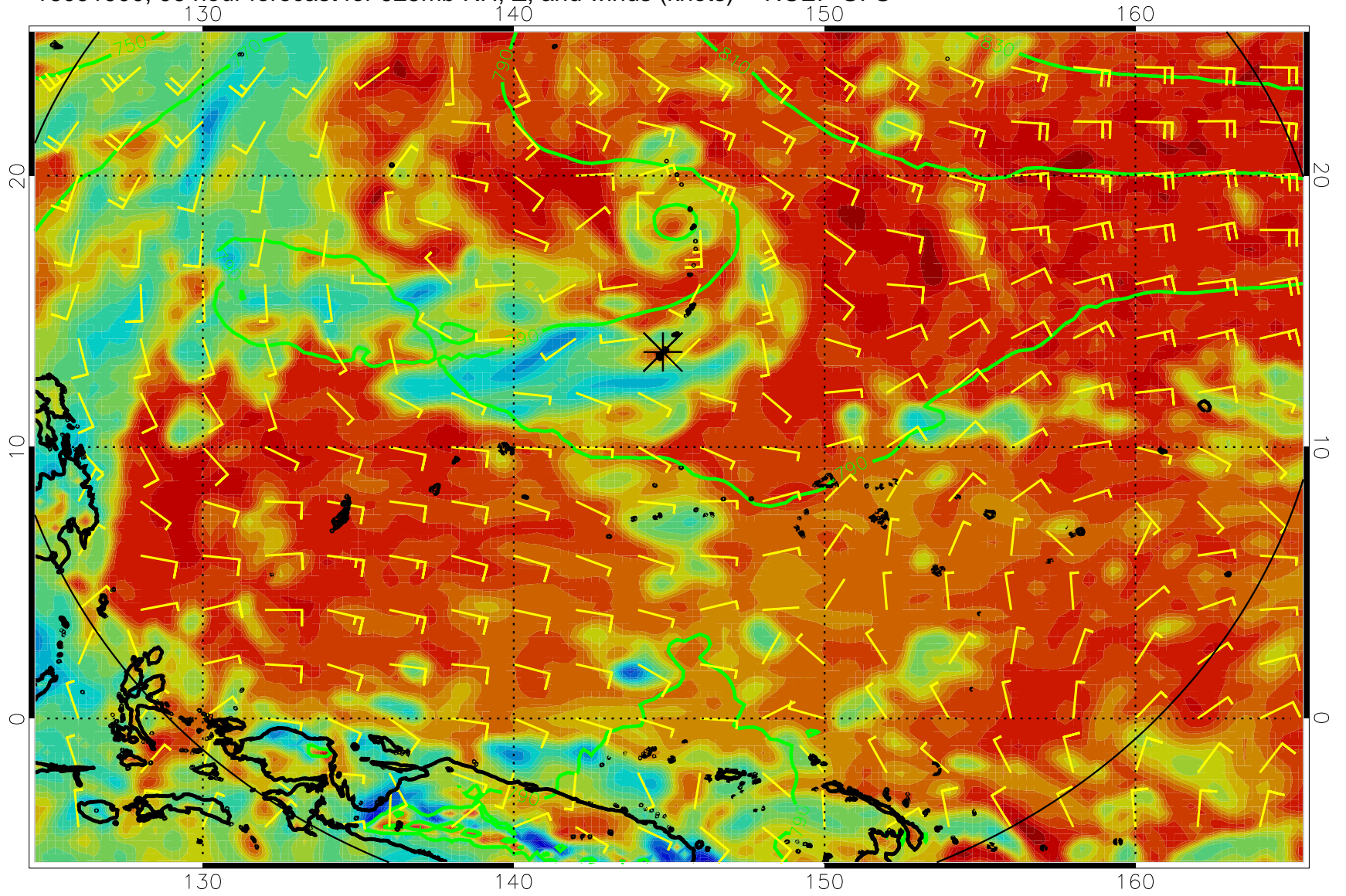




16091818, 90 hour forecast for 925mb RH, Z, and winds (knots) -- NCEP GFS

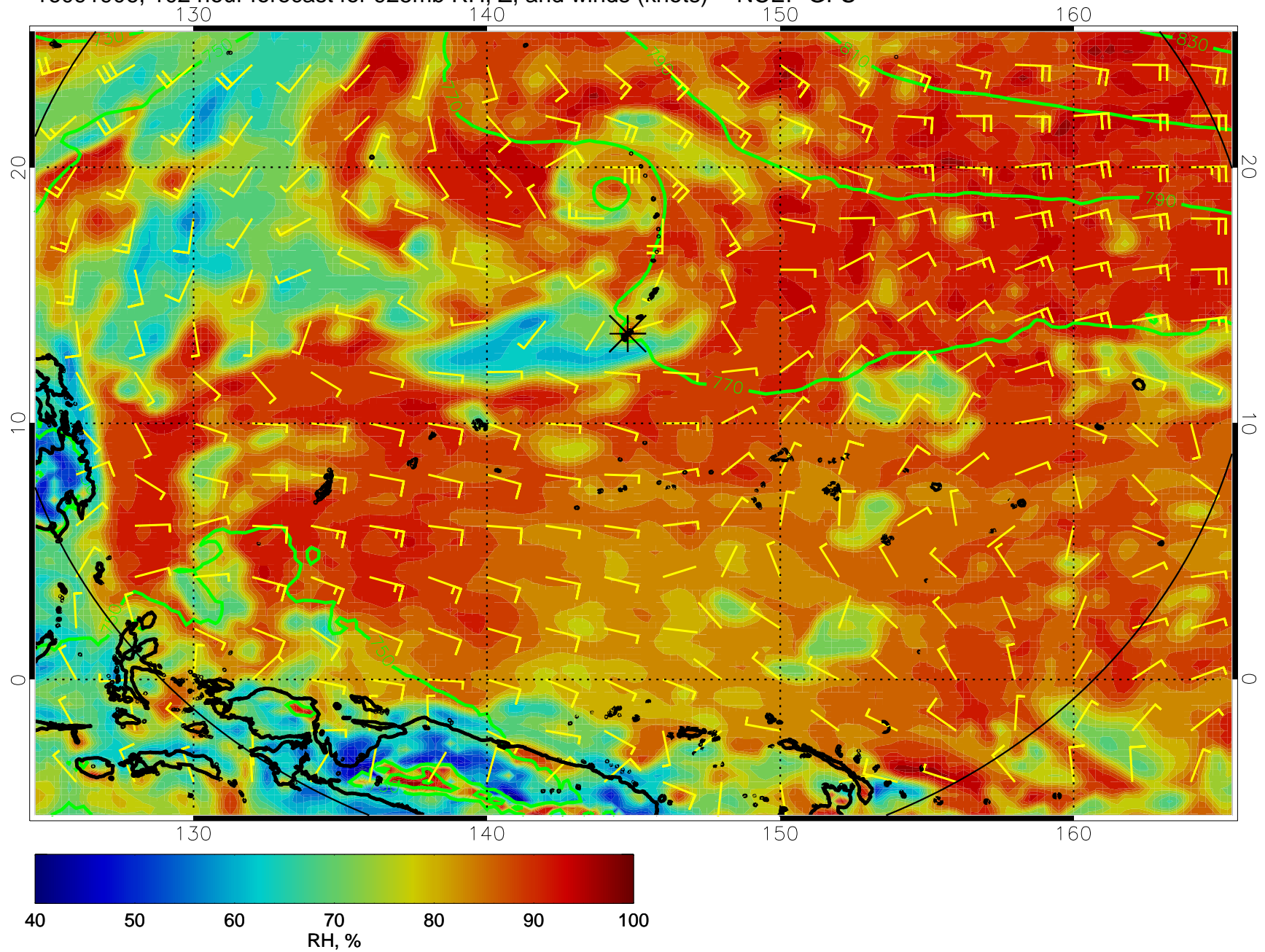


16091900, 96 hour forecast for 925mb RH, Z, and winds (knots) -- NCEP GFS

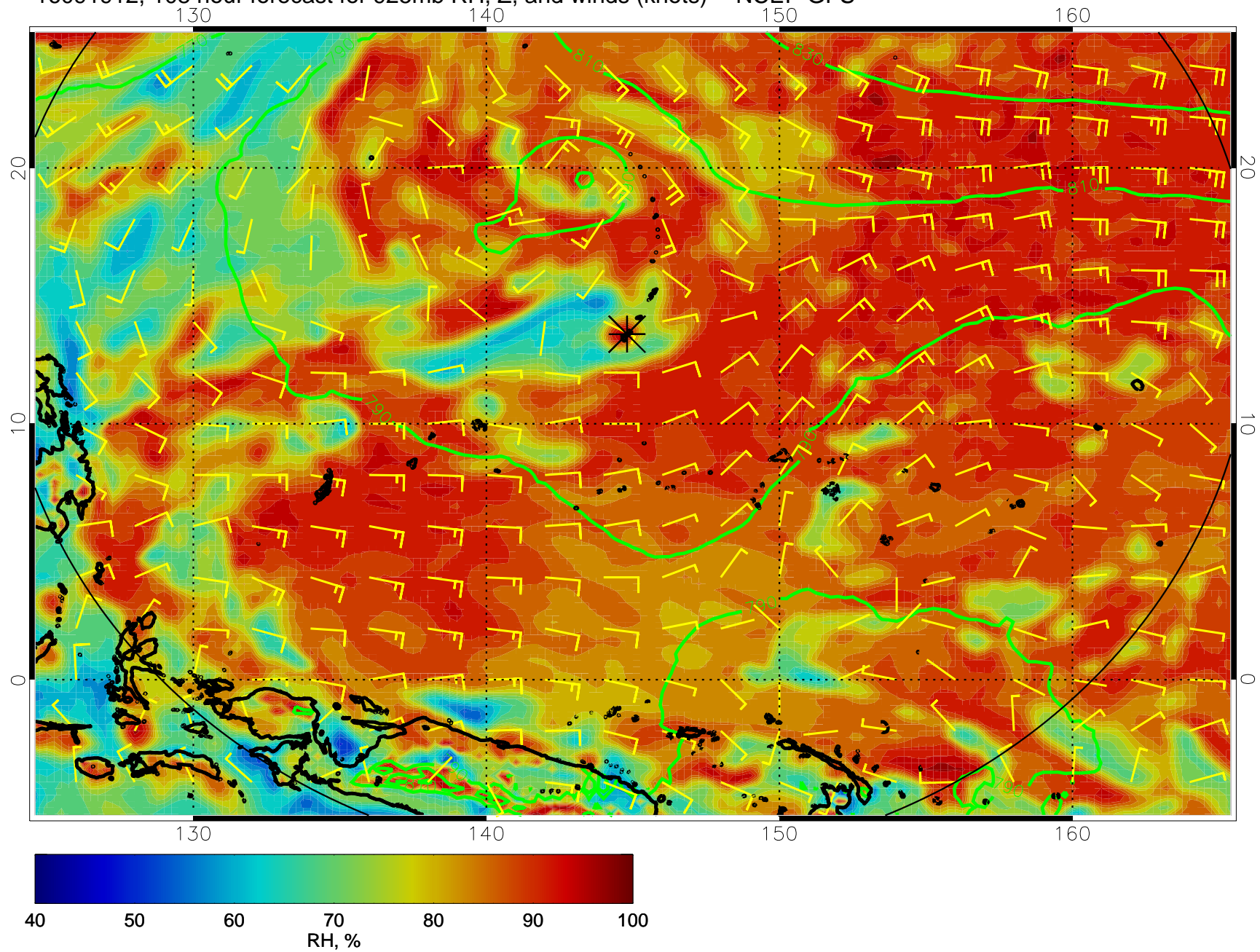




16091906, 102 hour forecast for 925mb RH, Z, and winds (knots) -- NCEP GFS

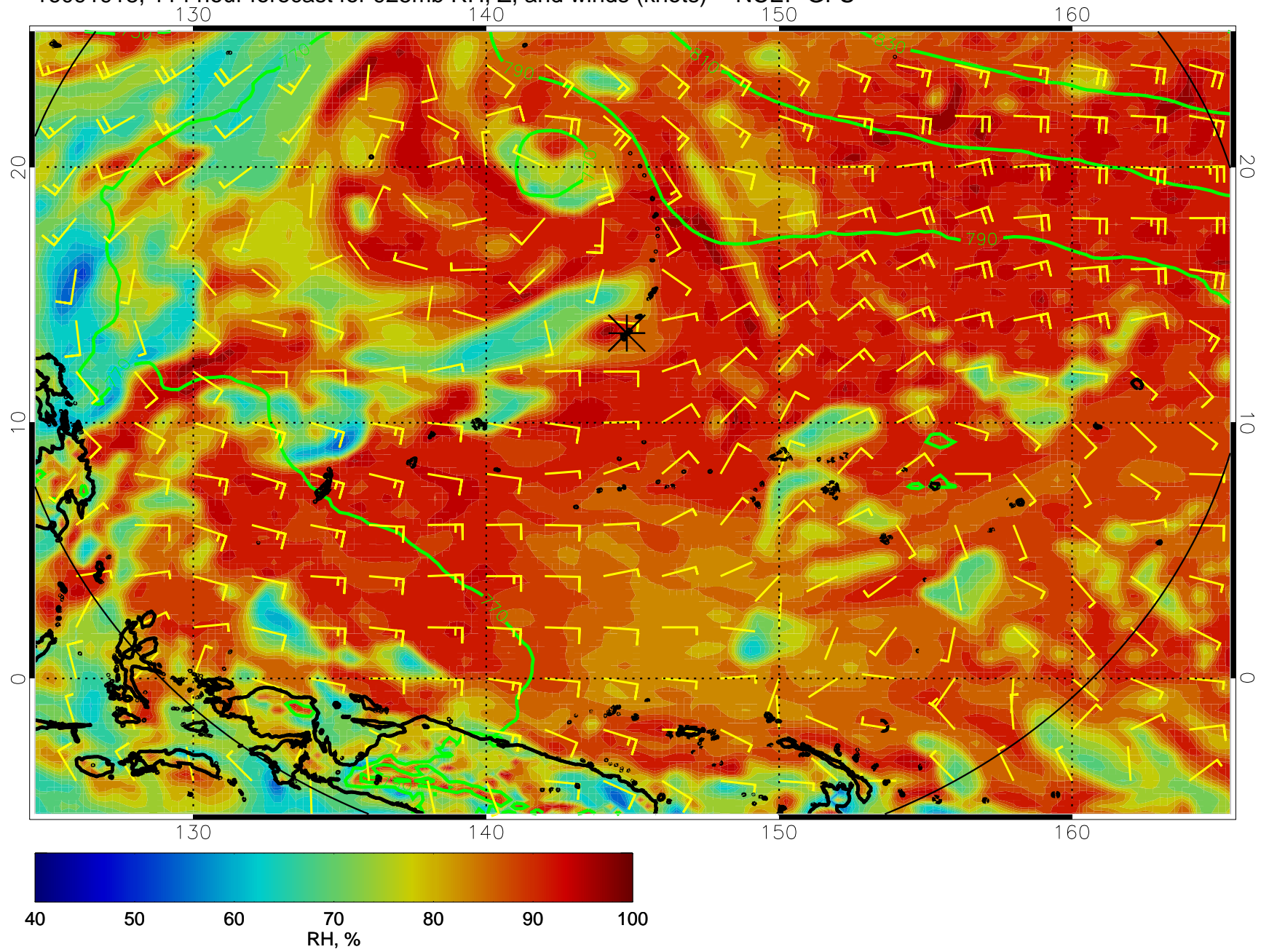


16091912, 108 hour forecast for 925mb RH, Z, and winds (knots) -- NCEP GFS





16091918, 114 hour forecast for 925mb RH, Z, and winds (knots) -- NCEP GFS



16092000, 120 hour forecast for 925mb RH, Z, and winds (knots) -- NCEP GFS

