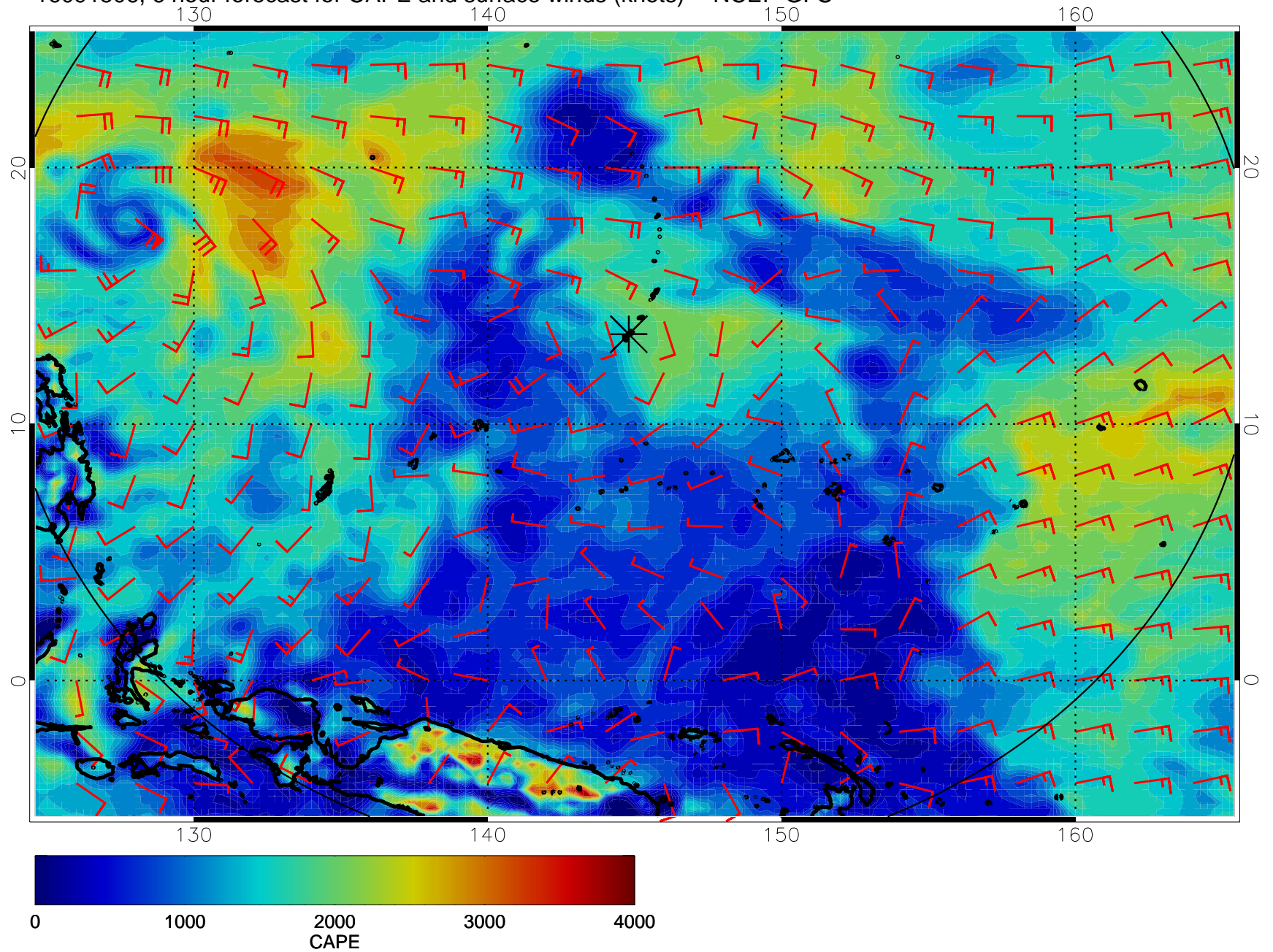
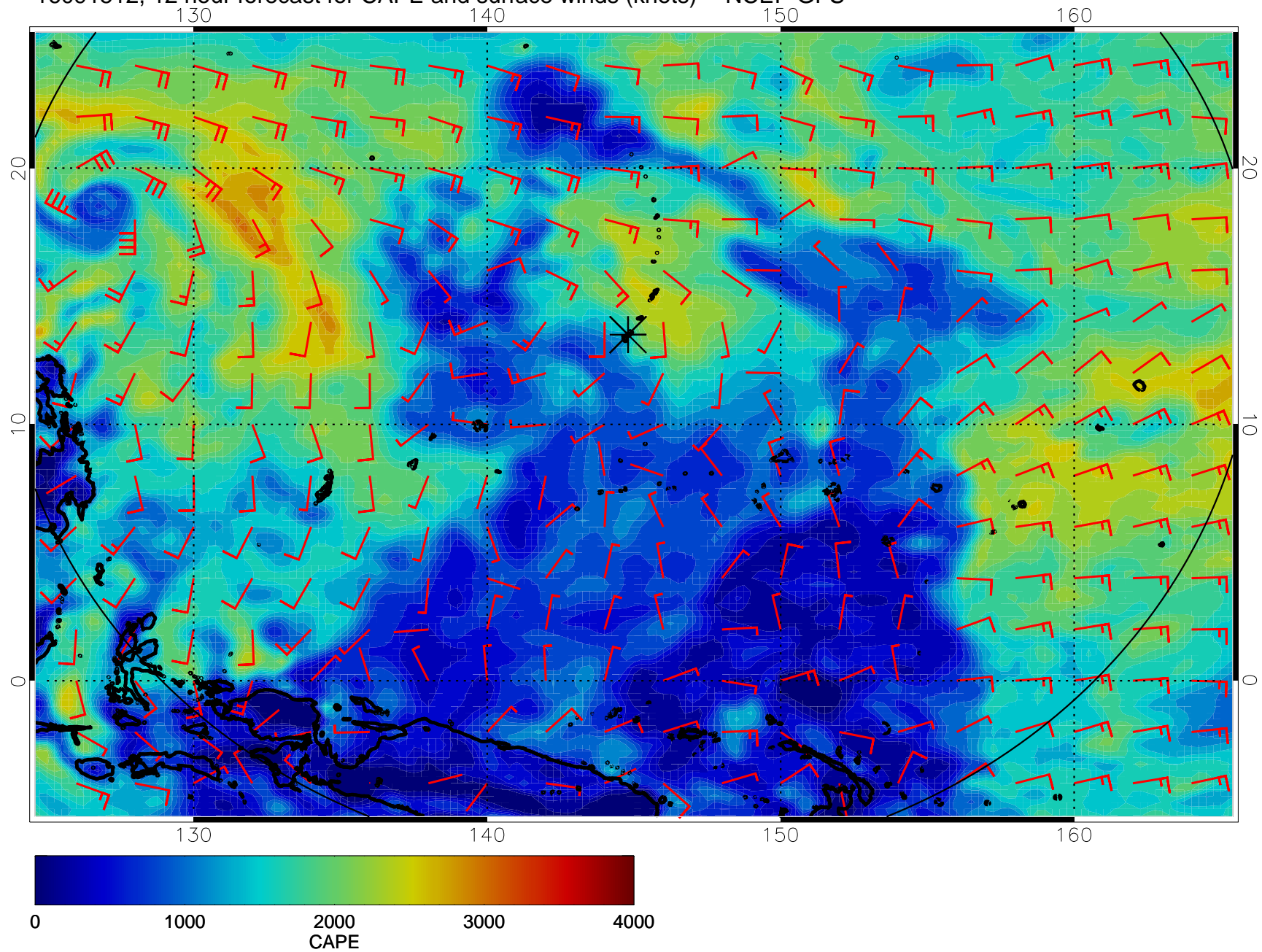


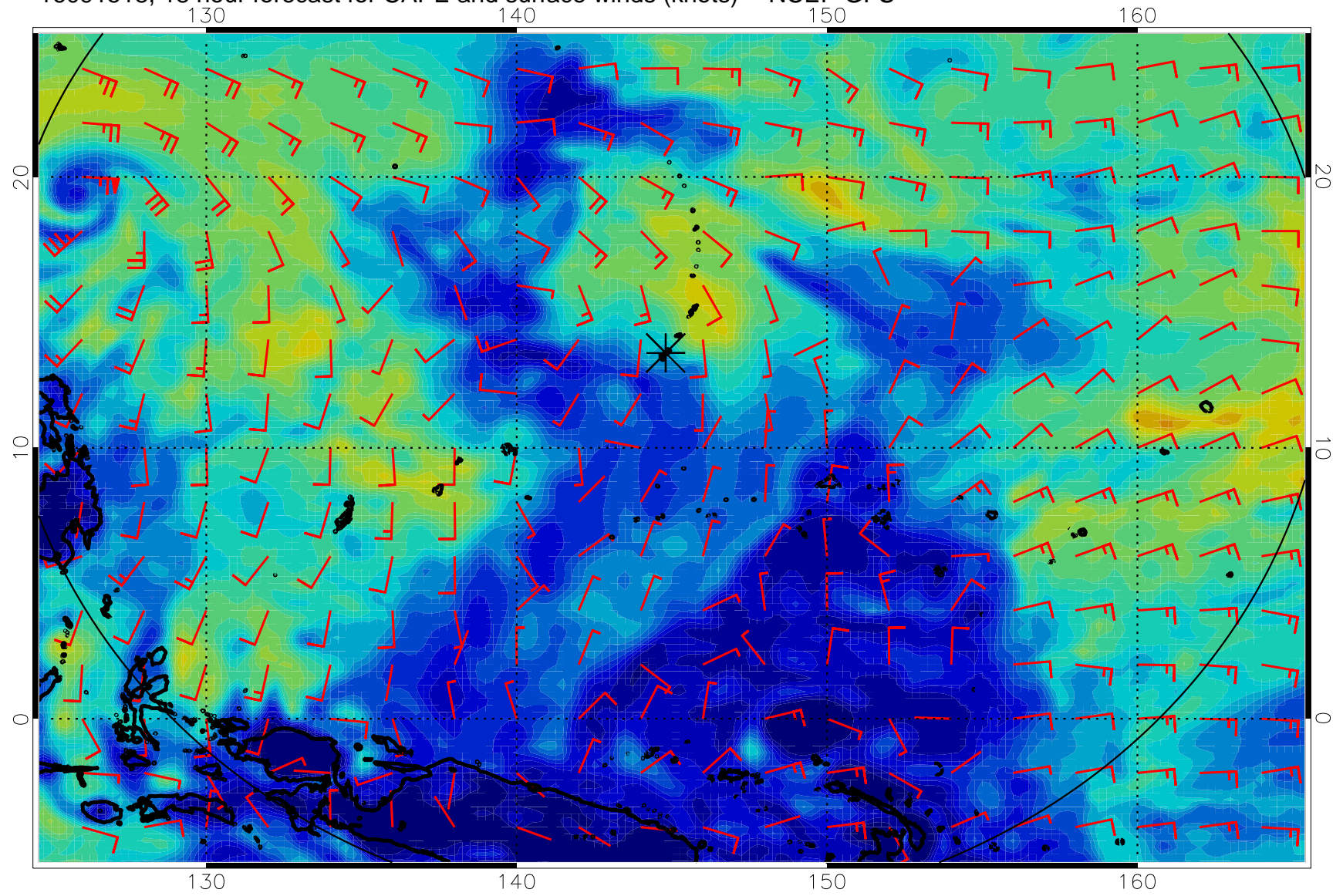
16091506, 6 hour forecast for CAPE and surface winds (knots) -- NCEP GFS



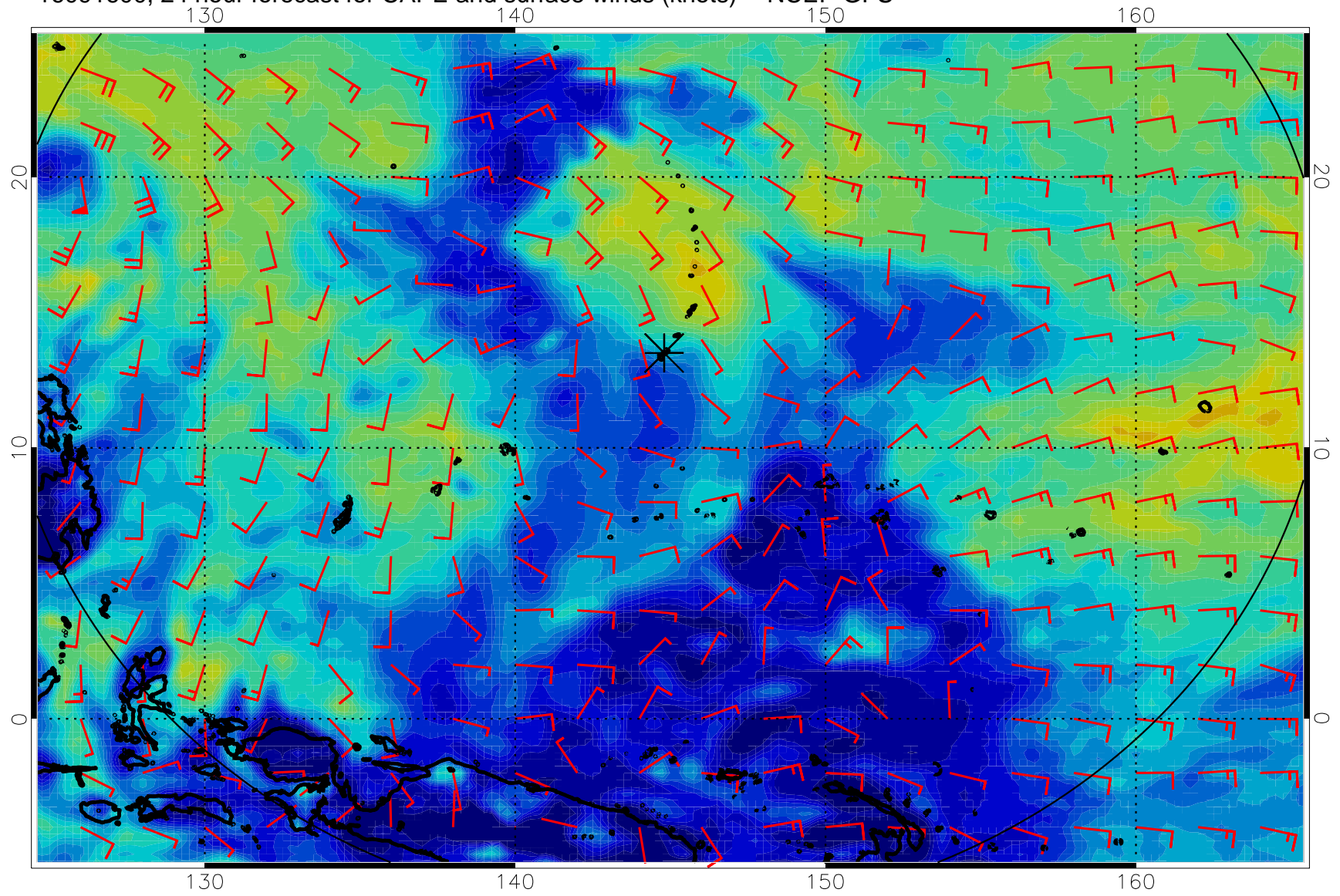
16091512, 12 hour forecast for CAPE and surface winds (knots) -- NCEP GFS



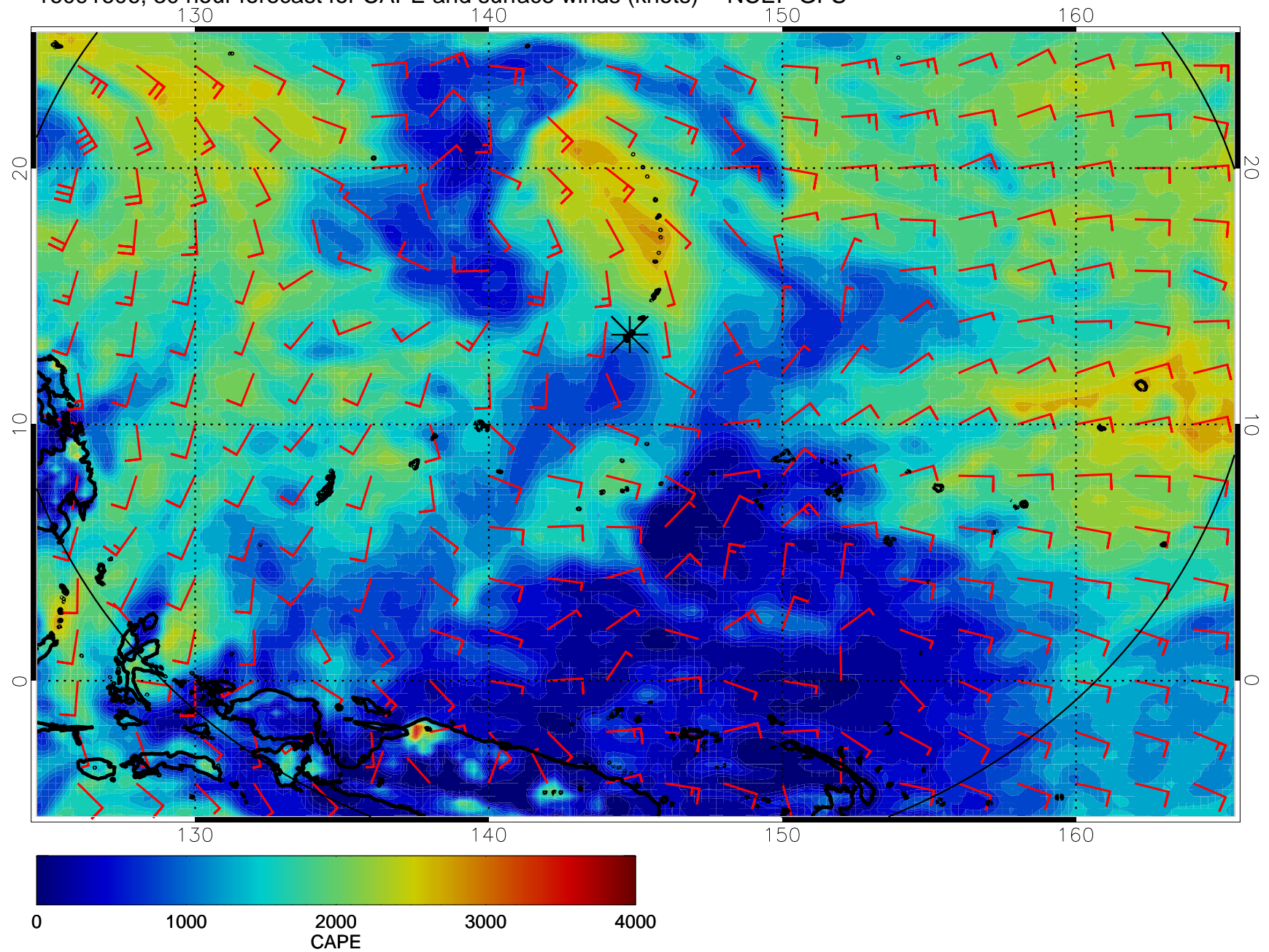
16091518, 18 hour forecast for CAPE and surface winds (knots) -- NCEP GFS



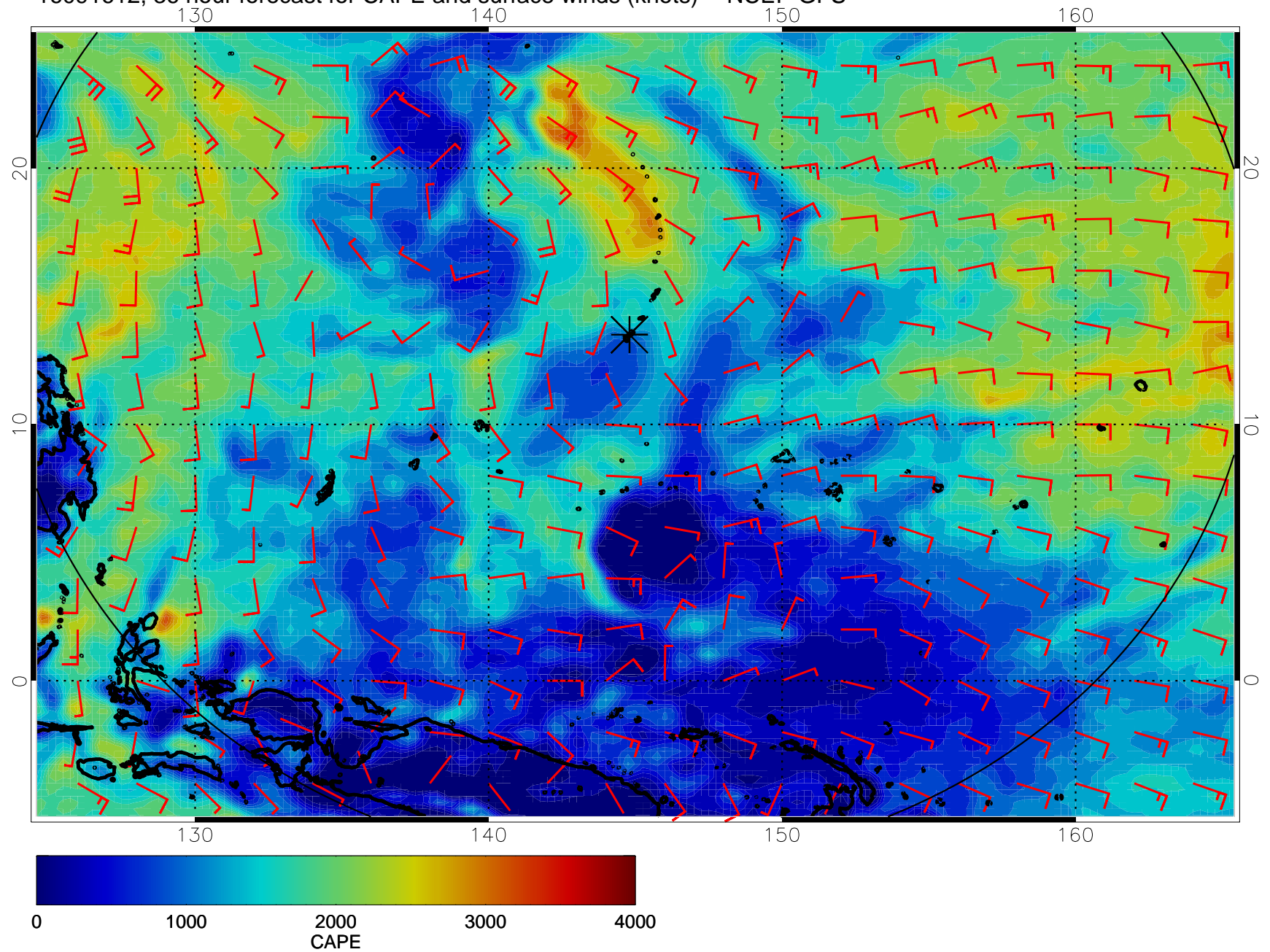
16091600, 24 hour forecast for CAPE and surface winds (knots) -- NCEP GFS



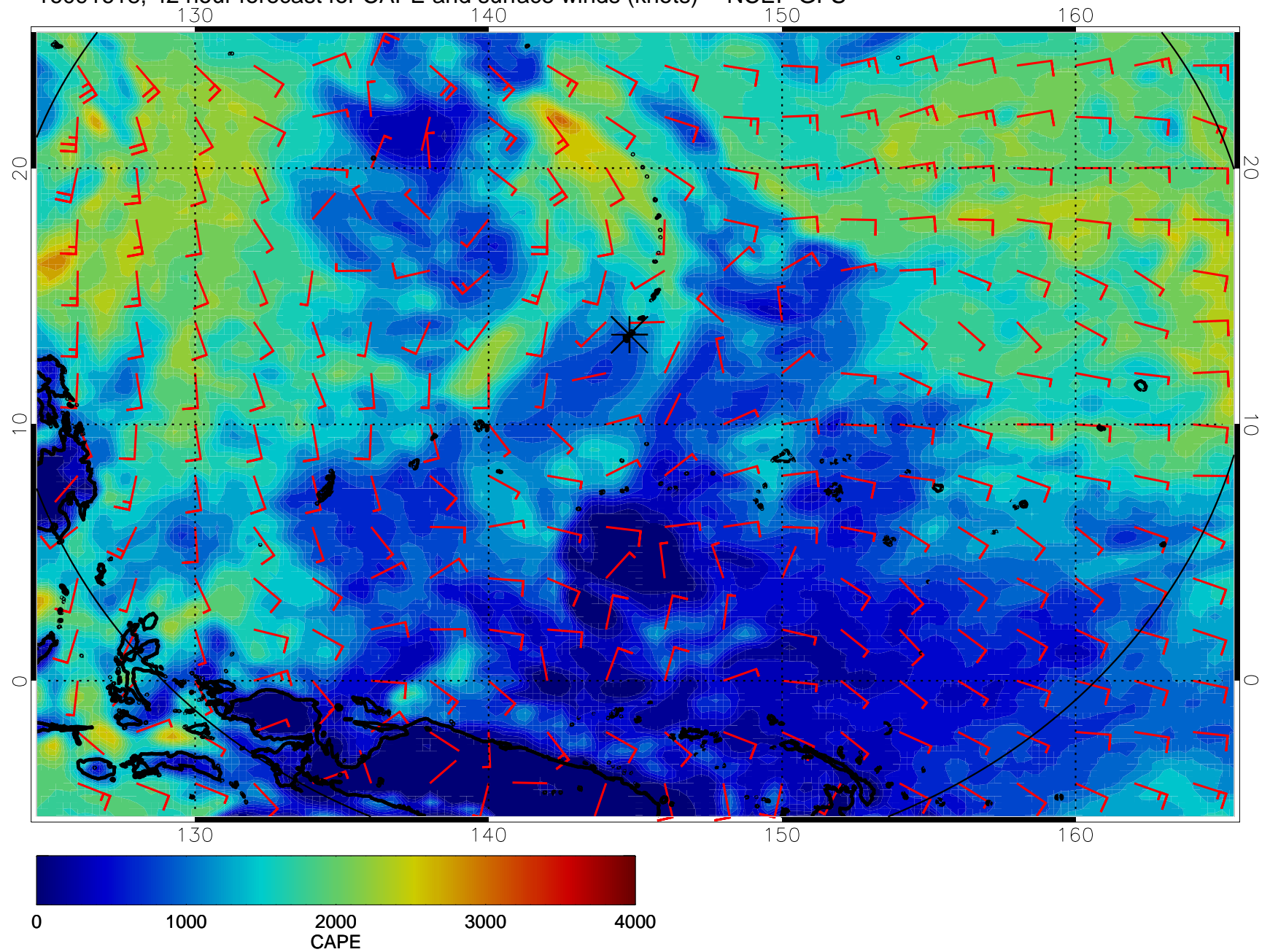
16091606, 30 hour forecast for CAPE and surface winds (knots) -- NCEP GFS



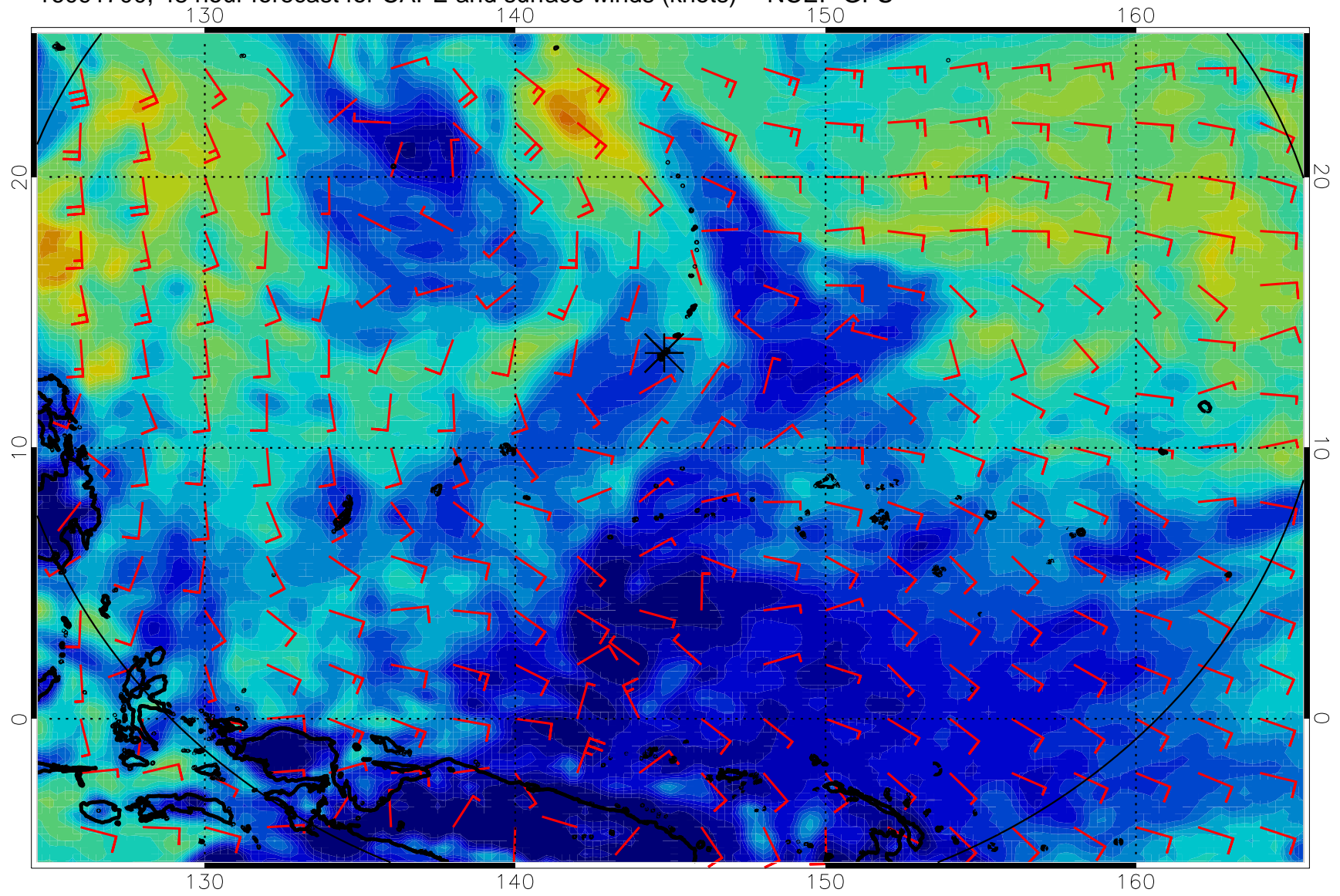
16091612, 36 hour forecast for CAPE and surface winds (knots) -- NCEP GFS



16091618, 42 hour forecast for CAPE and surface winds (knots) -- NCEP GFS

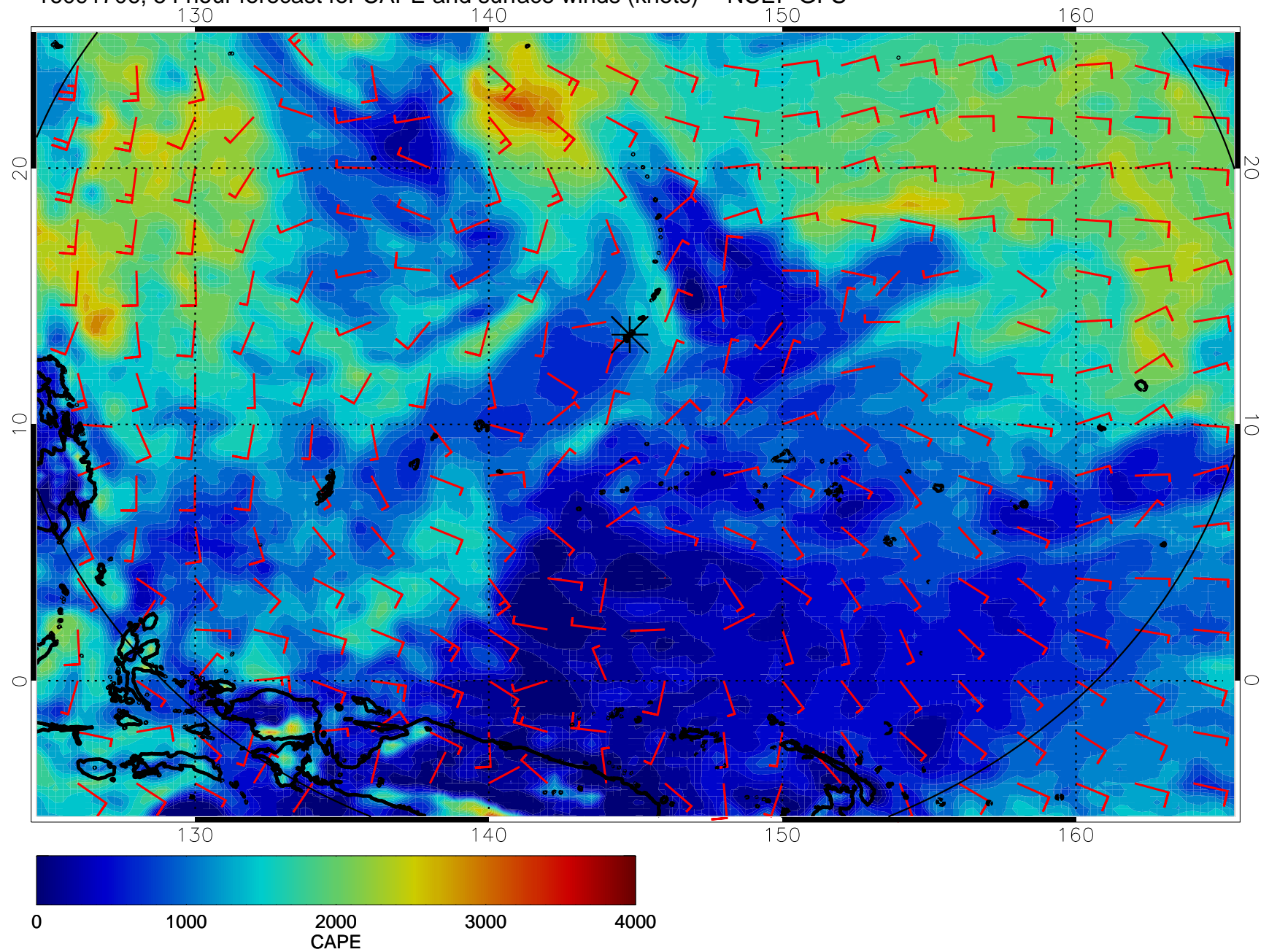


16091700, 48 hour forecast for CAPE and surface winds (knots) -- NCEP GFS

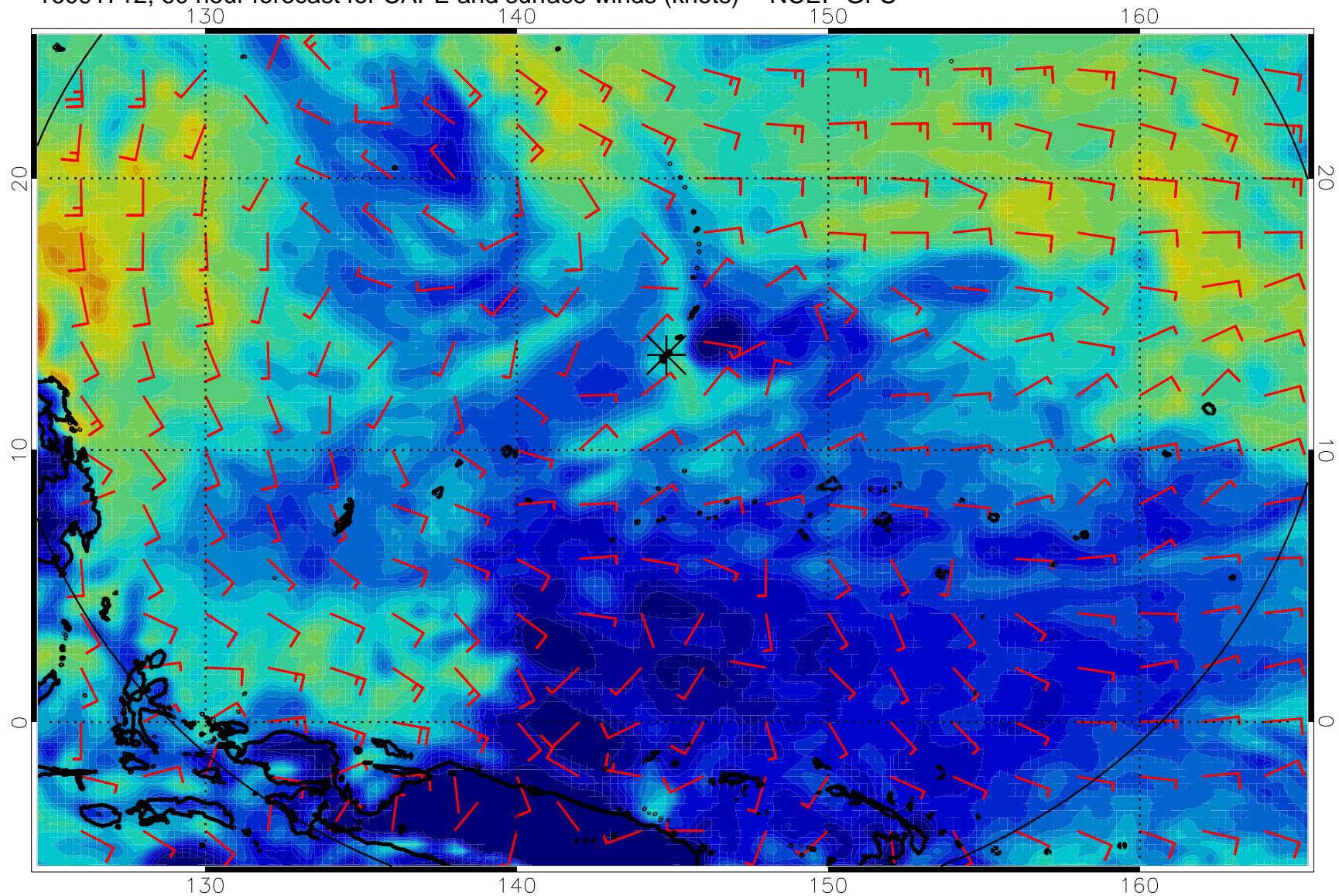




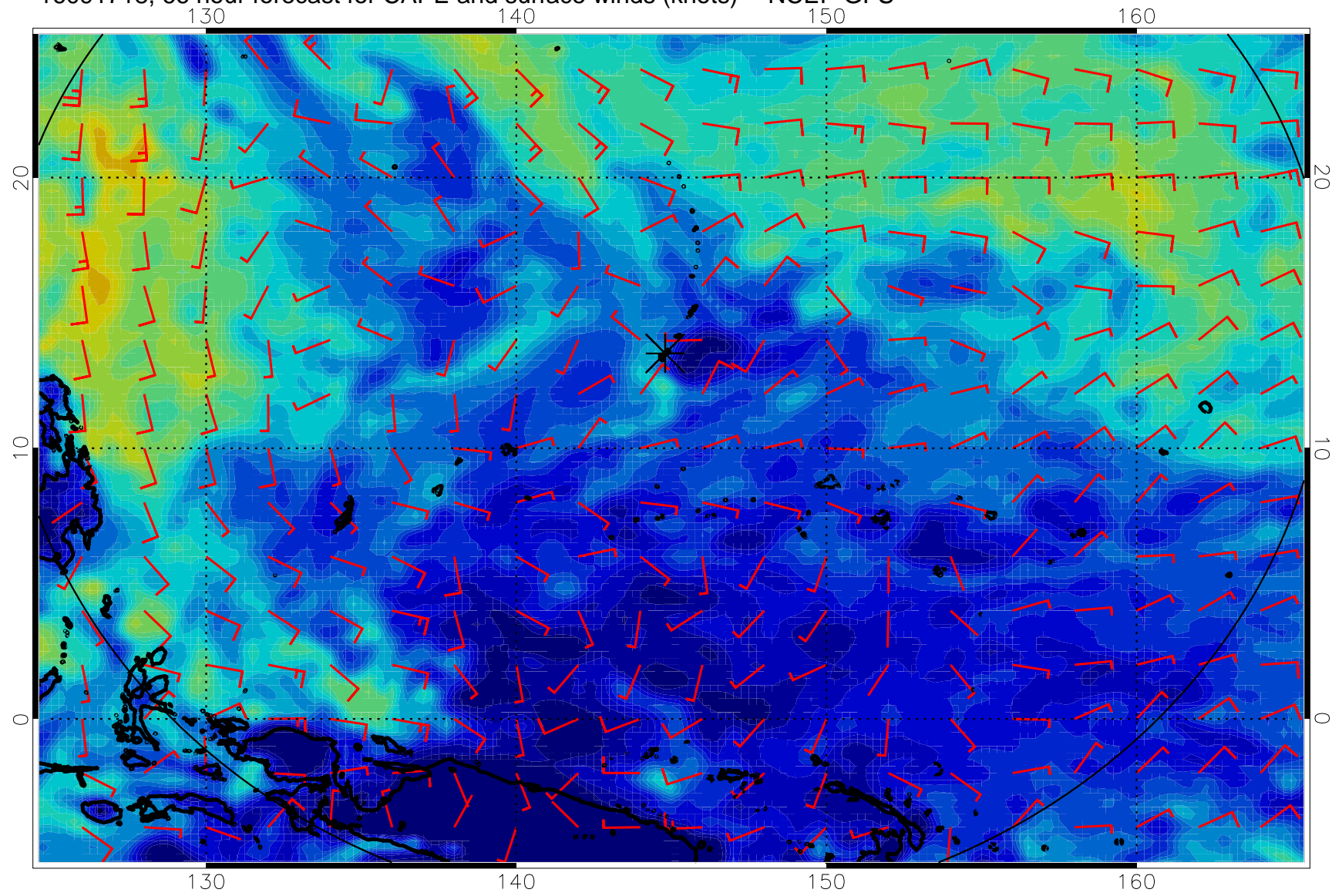
16091706, 54 hour forecast for CAPE and surface winds (knots) -- NCEP GFS



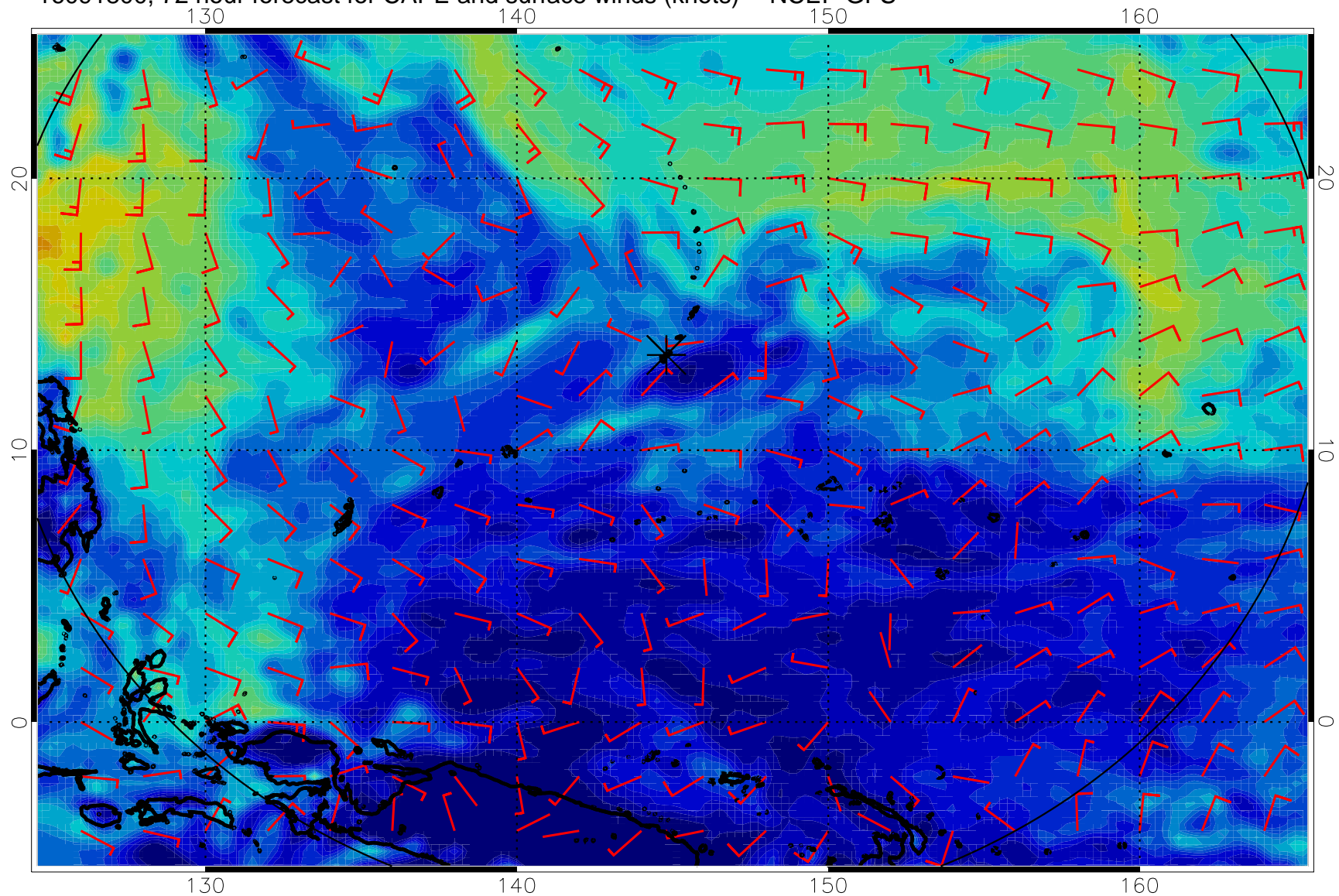
16091712, 60 hour forecast for CAPE and surface winds (knots) -- NCEP GFS



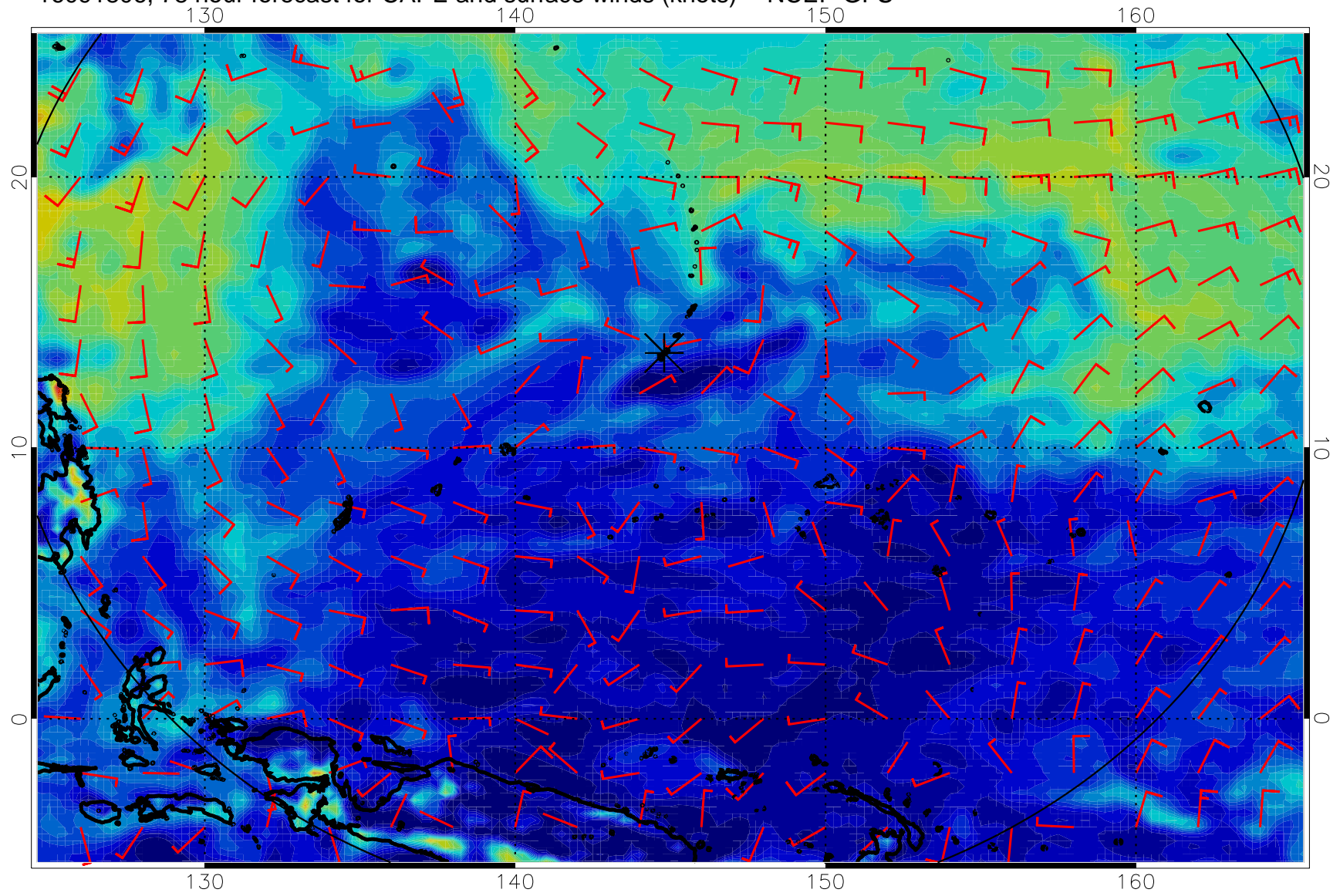
16091718, 66 hour forecast for CAPE and surface winds (knots) -- NCEP GFS



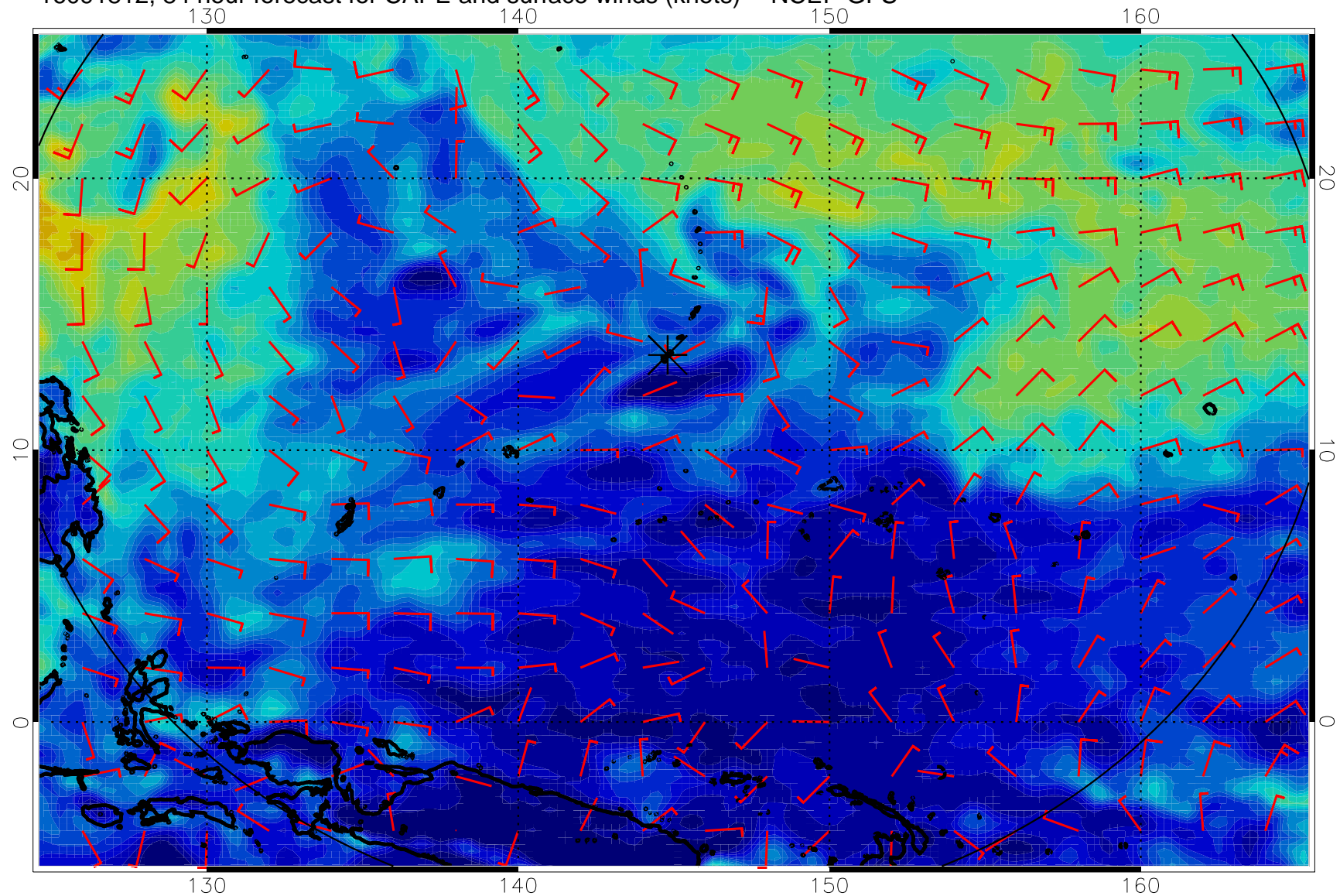
16091800, 72 hour forecast for CAPE and surface winds (knots) -- NCEP GFS



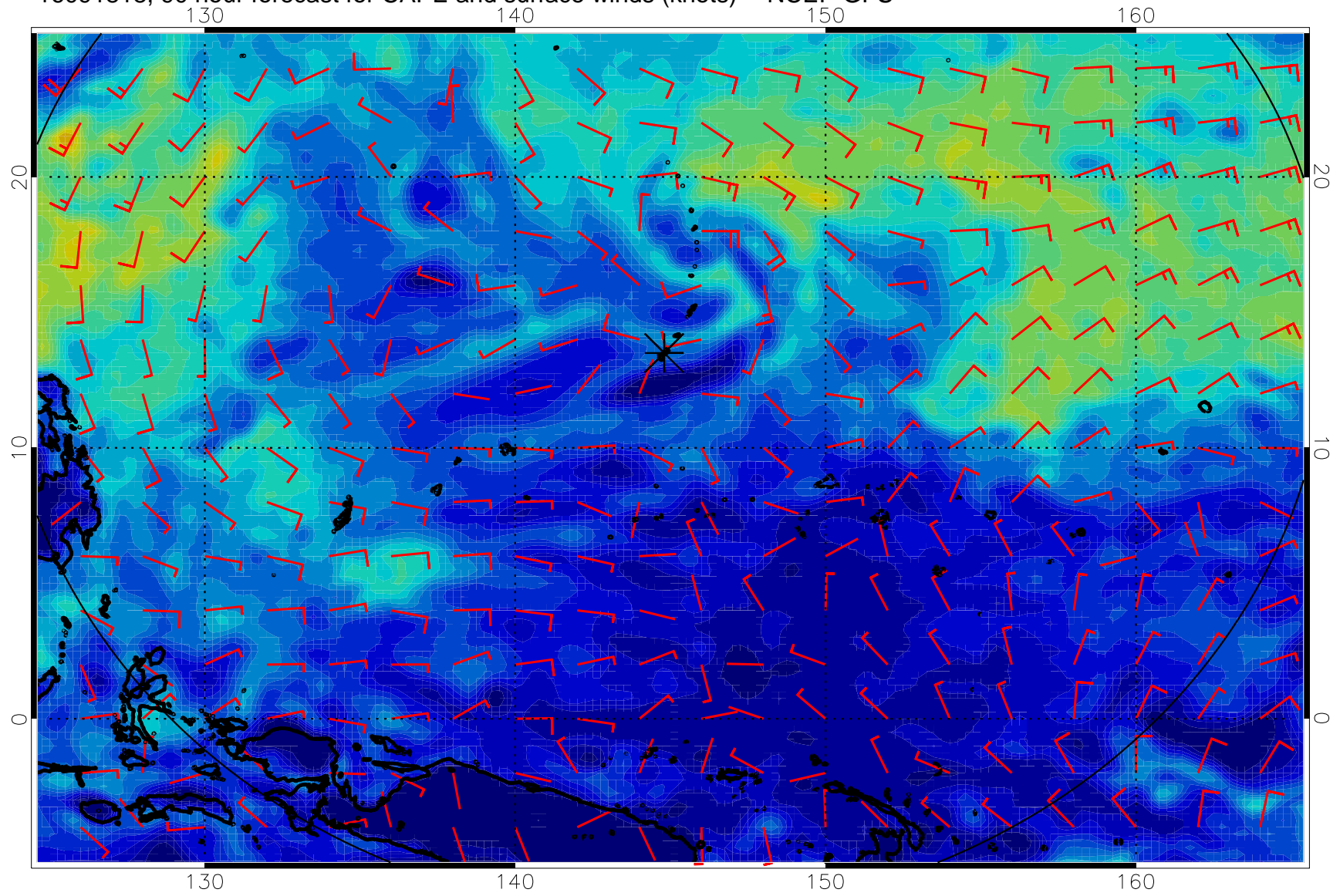
16091806, 78 hour forecast for CAPE and surface winds (knots) -- NCEP GFS



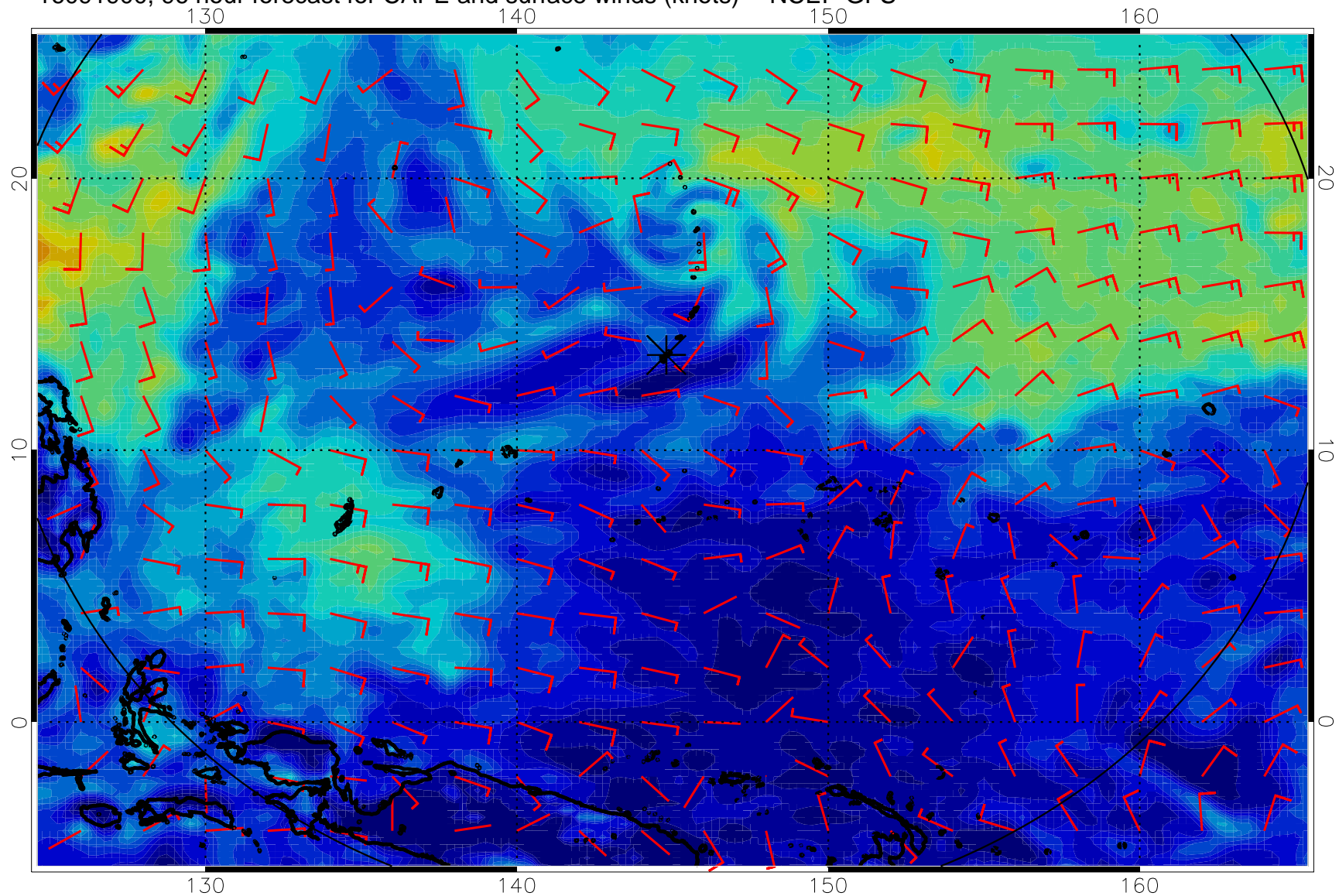
16091812, 84 hour forecast for CAPE and surface winds (knots) -- NCEP GFS



16091818, 90 hour forecast for CAPE and surface winds (knots) -- NCEP GFS

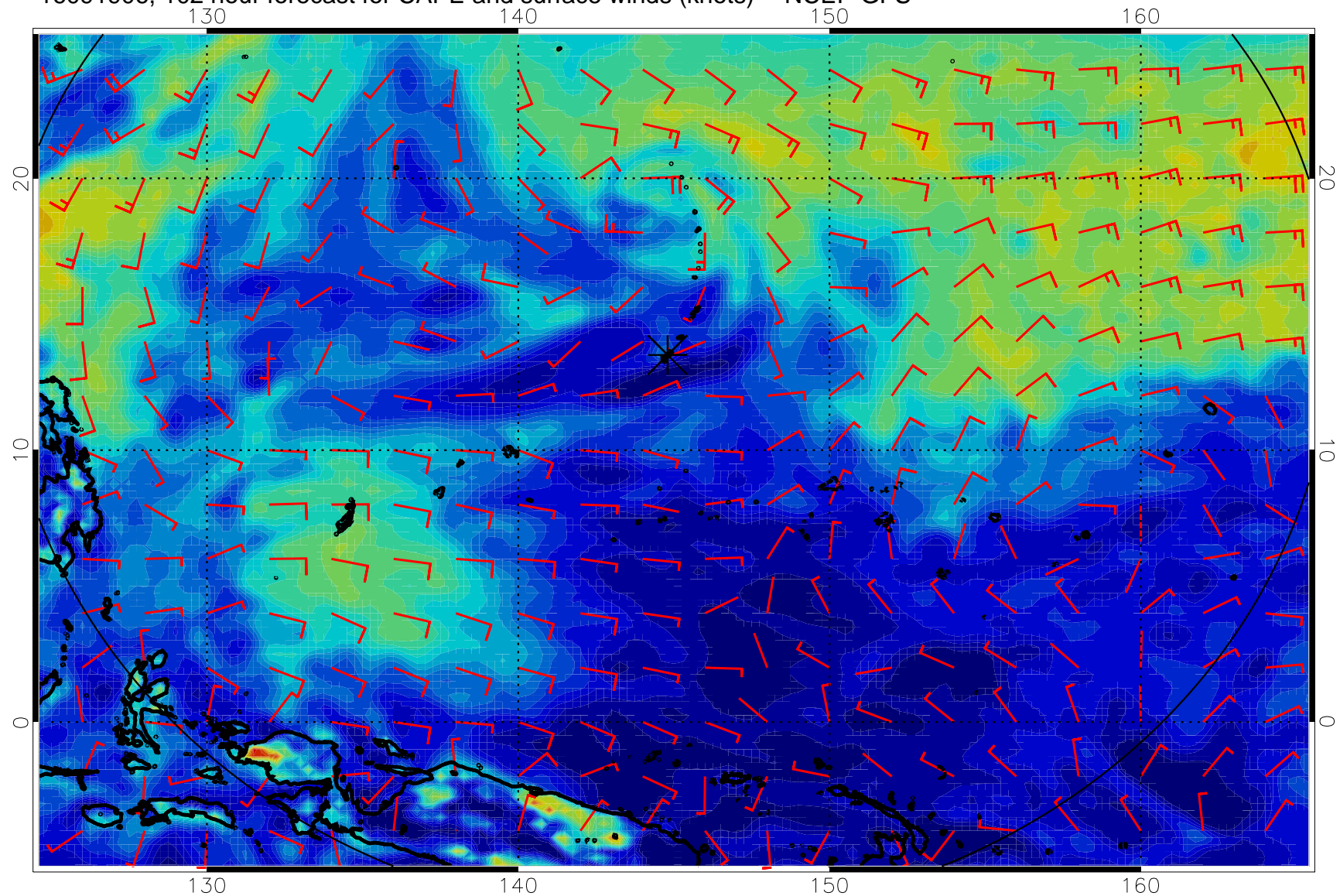


16091900, 96 hour forecast for CAPE and surface winds (knots) -- NCEP GFS

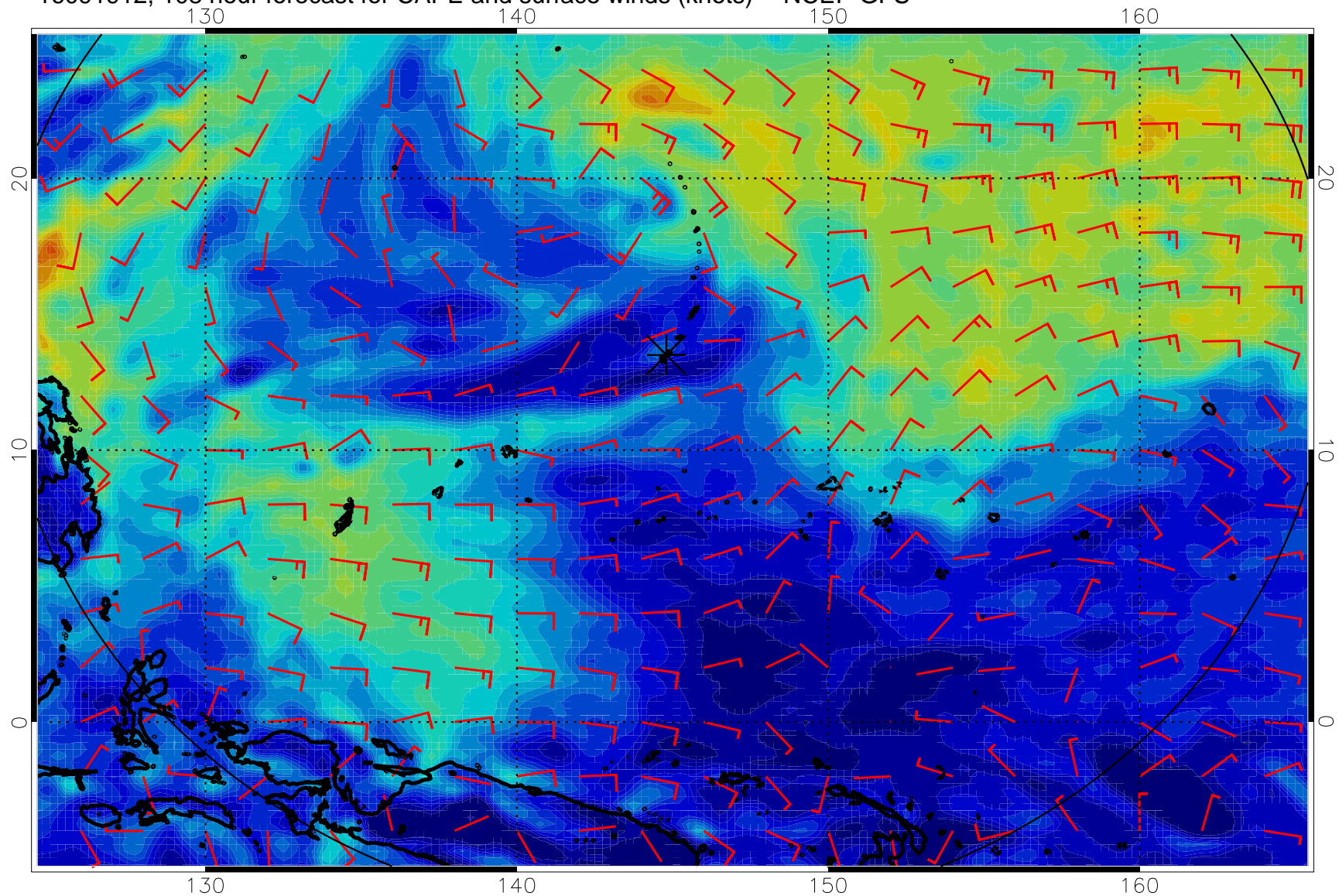




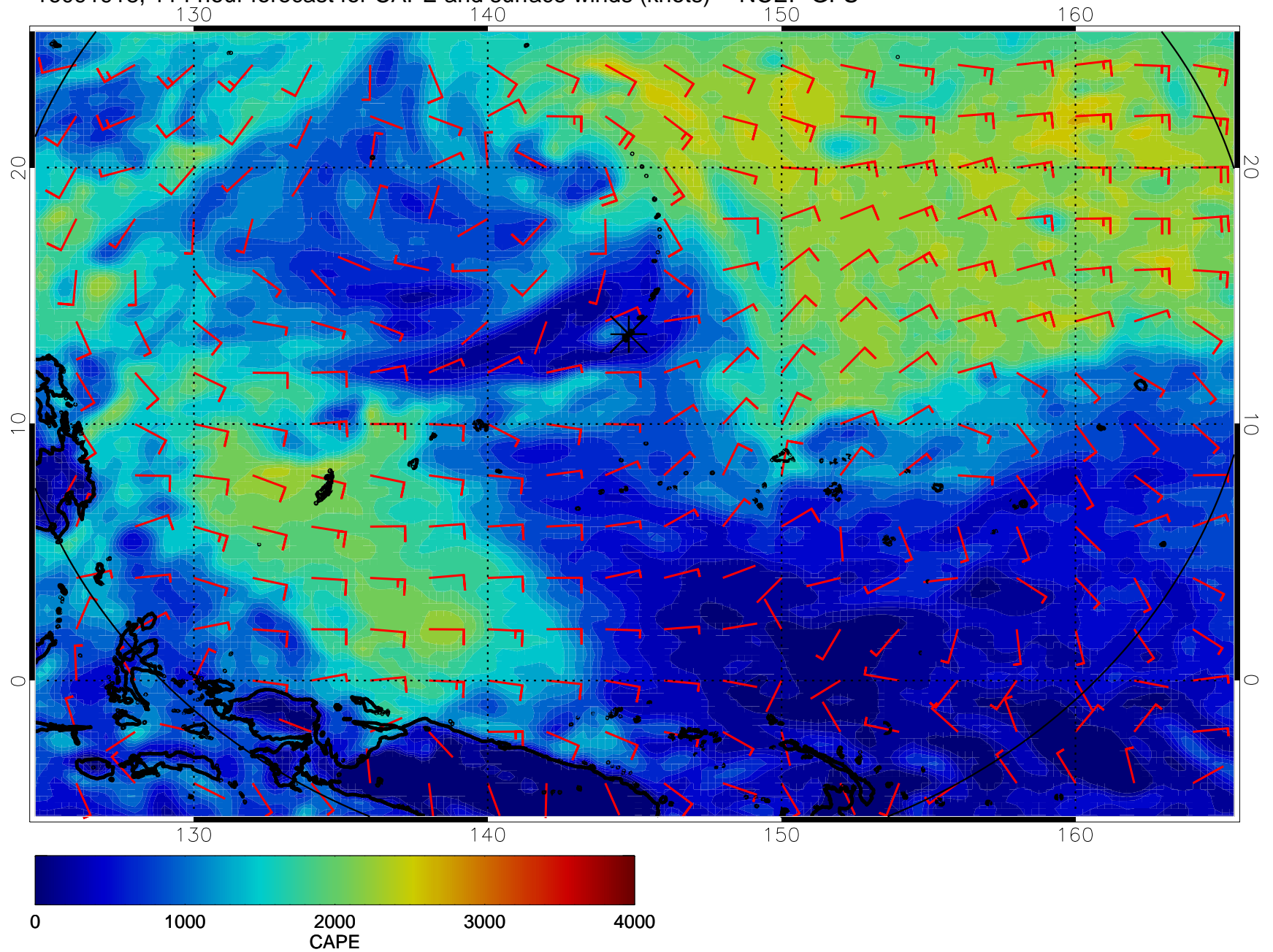
16091906, 102 hour forecast for CAPE and surface winds (knots) -- NCEP GFS



16091912, 108 hour forecast for CAPE and surface winds (knots) -- NCEP GFS



16091918, 114 hour forecast for CAPE and surface winds (knots) -- NCEP GFS



16092000, 120 hour forecast for CAPE and surface winds (knots) -- NCEP GFS

