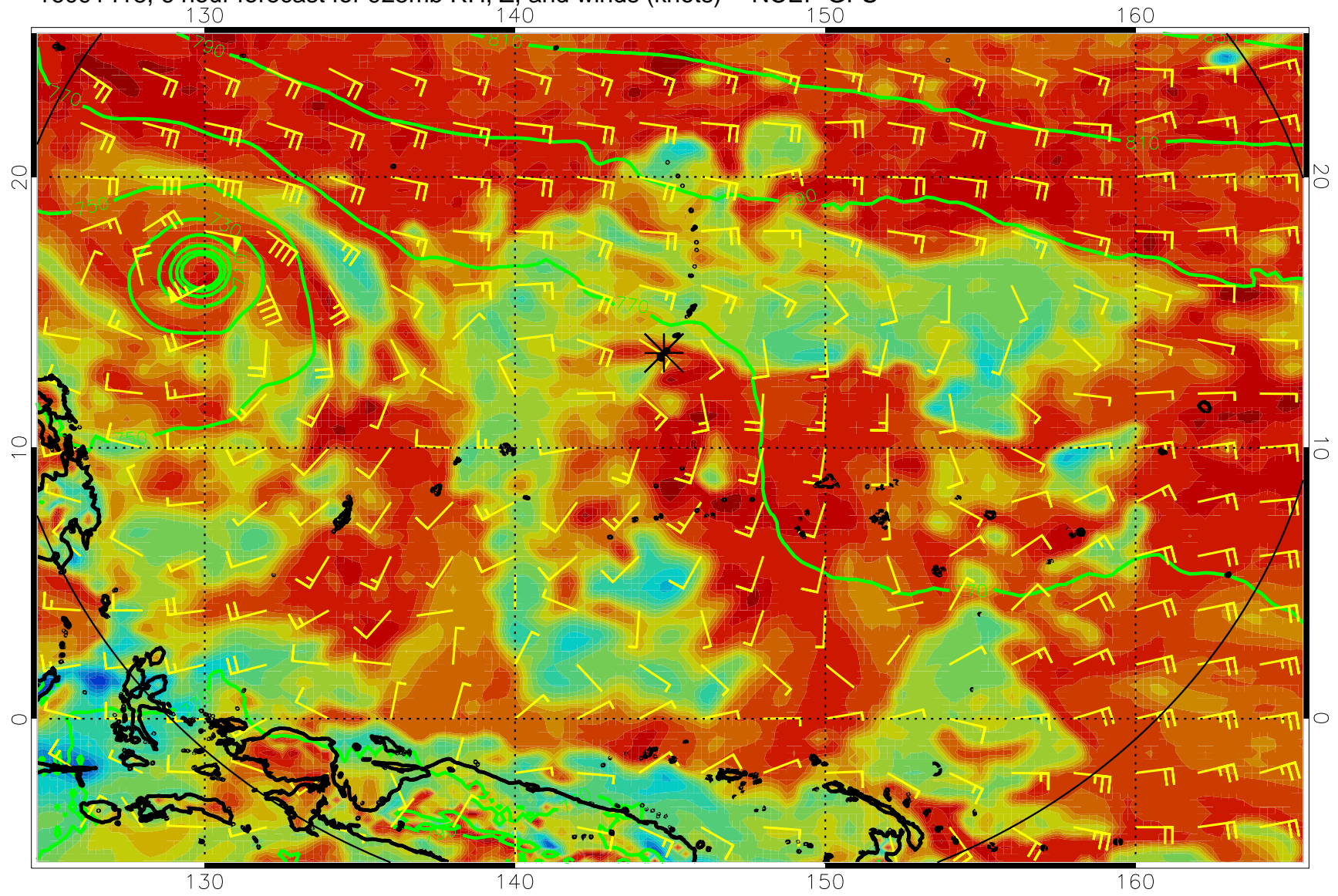
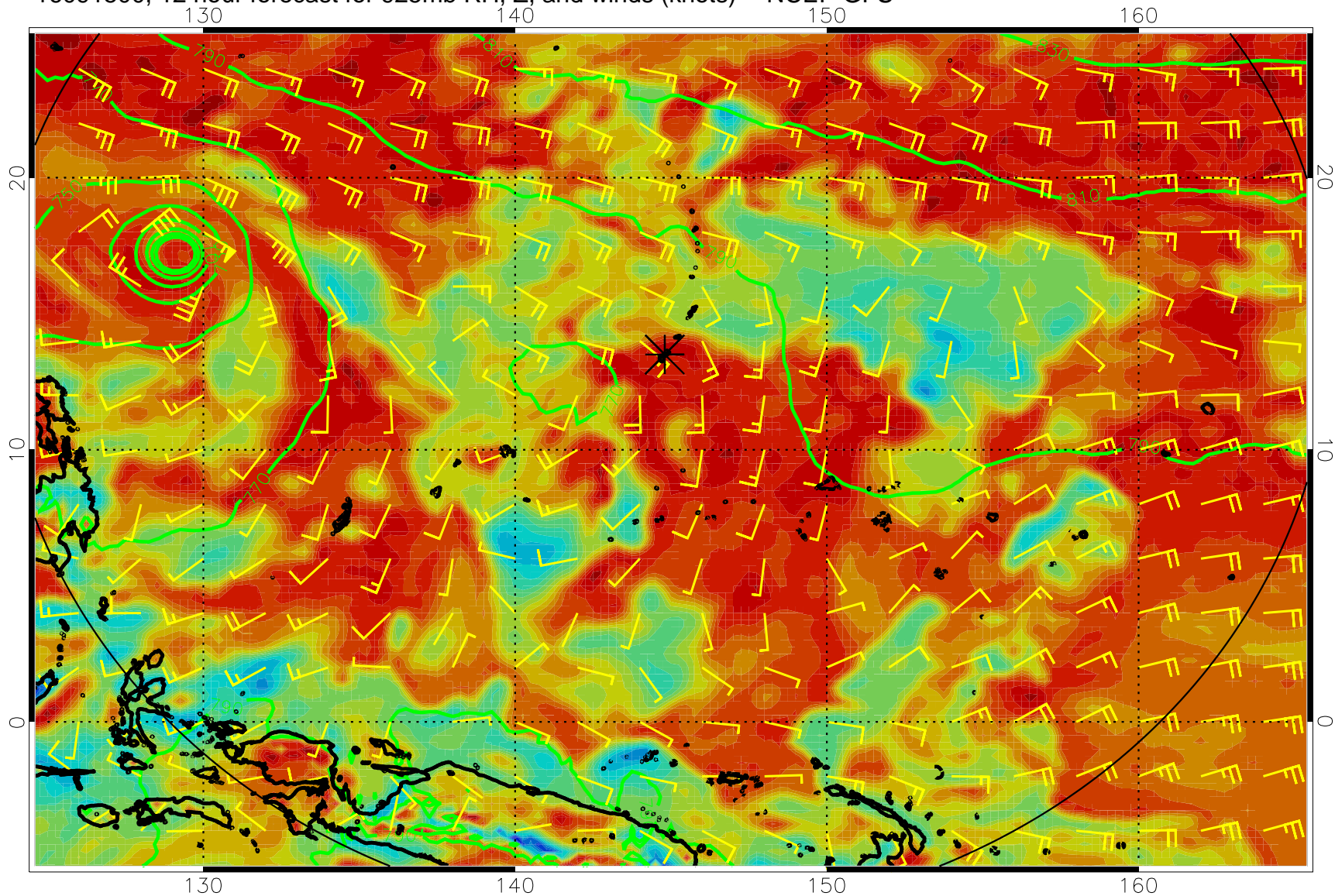


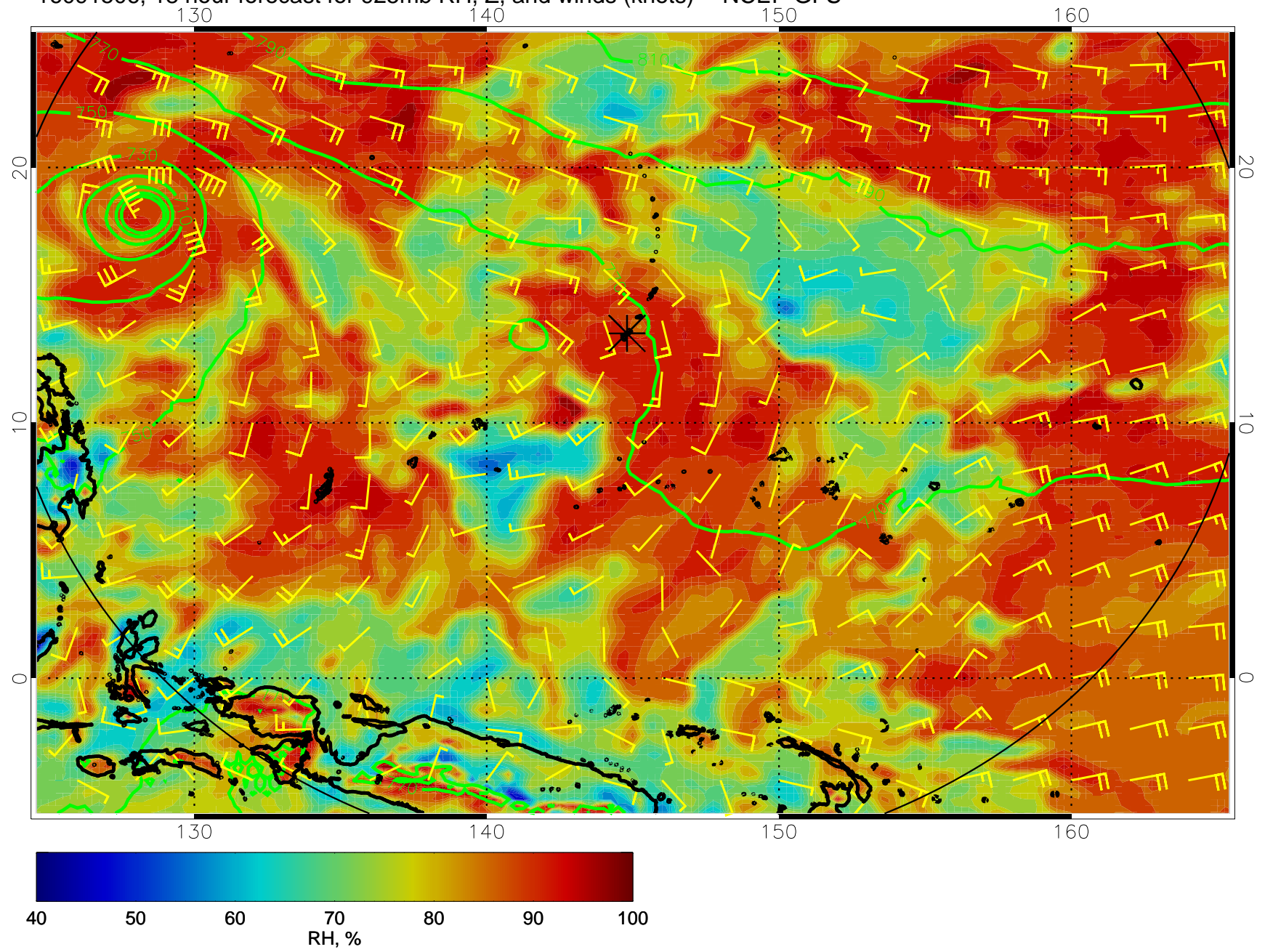
16091418, 6 hour forecast for 925mb RH, Z, and winds (knots) -- NCEP GFS



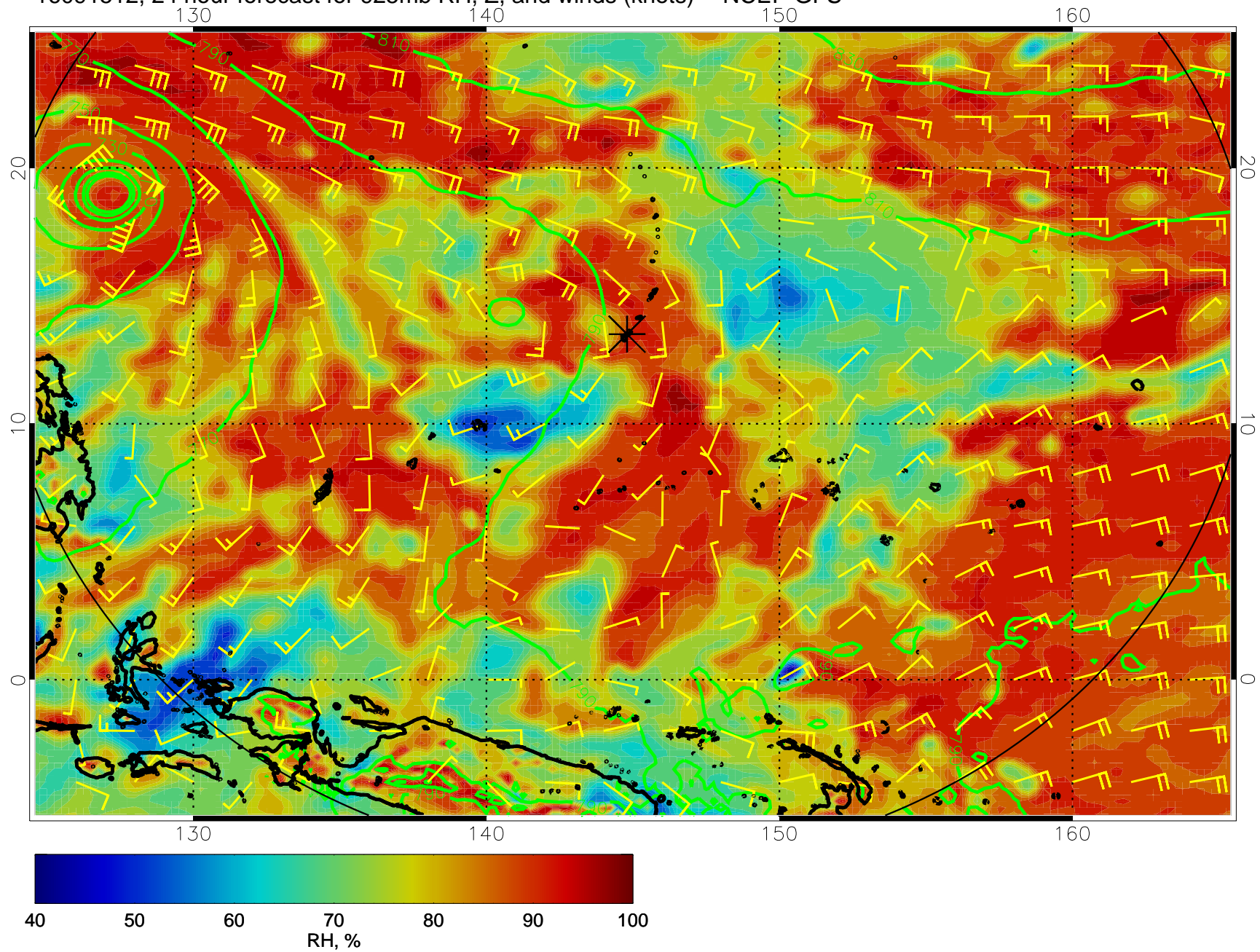
16091500, 12 hour forecast for 925mb RH, Z, and winds (knots) -- NCEP GFS



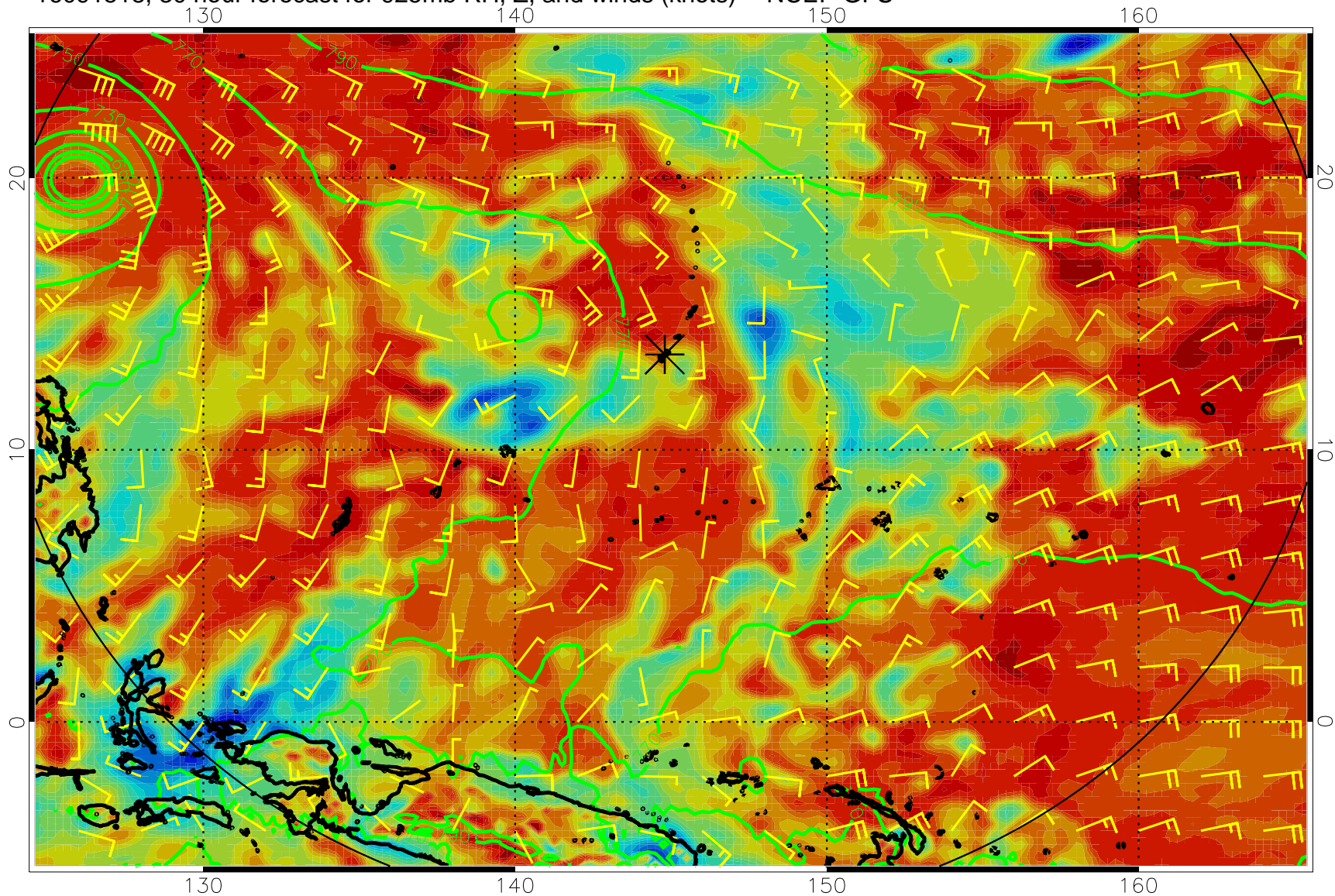
16091506, 18 hour forecast for 925mb RH, Z, and winds (knots) -- NCEP GFS



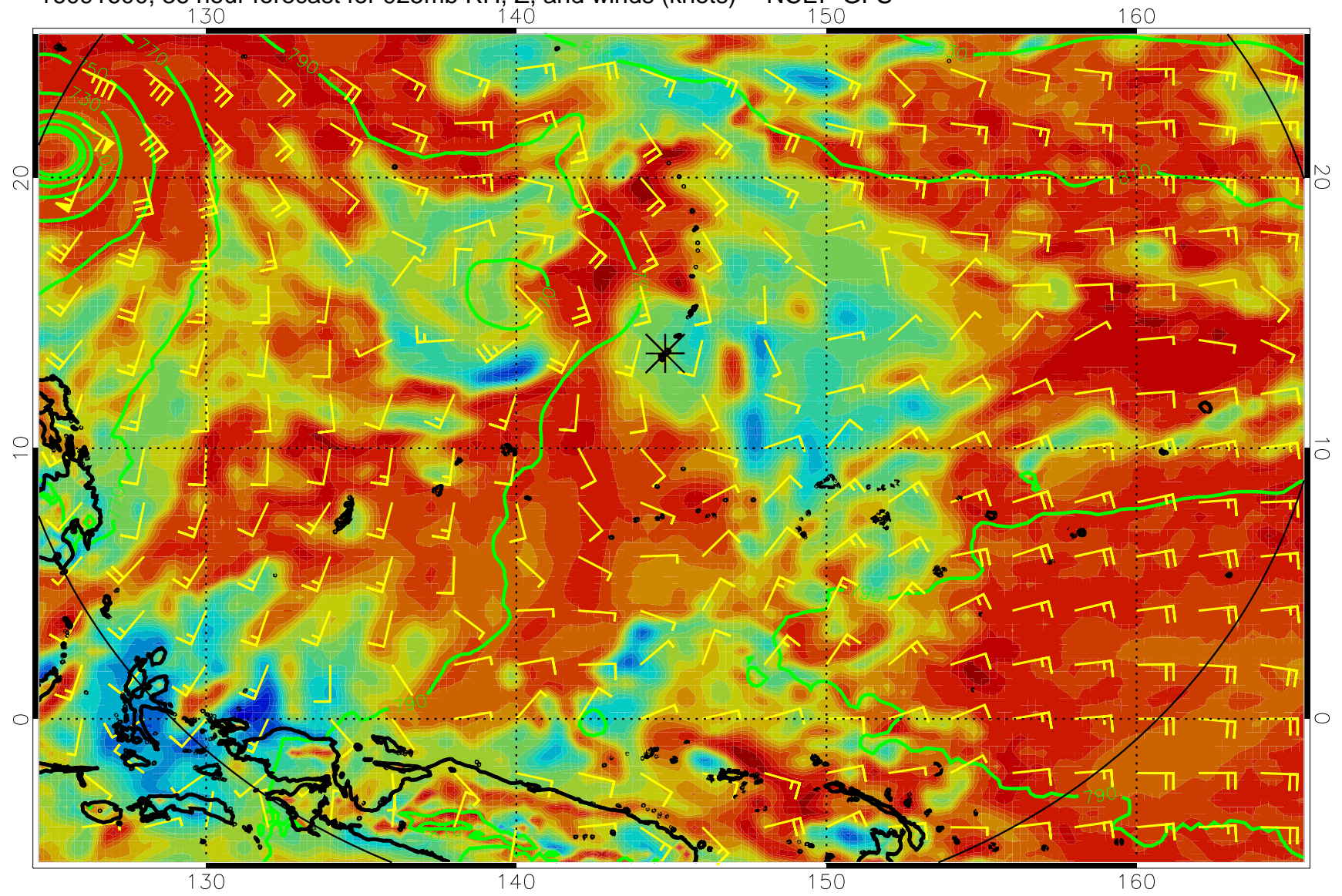
16091512, 24 hour forecast for 925mb RH, Z, and winds (knots) -- NCEP GFS



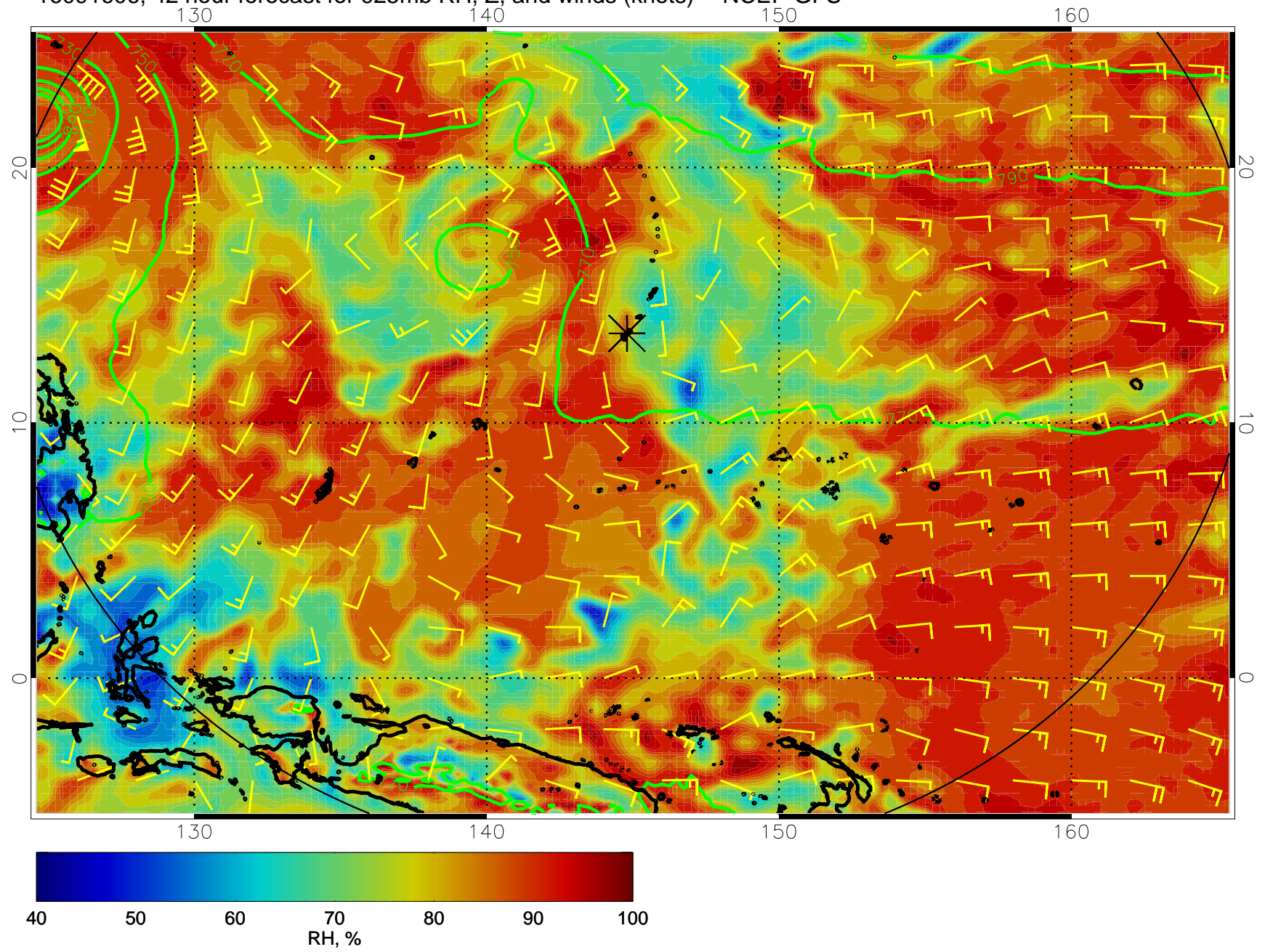
16091518, 30 hour forecast for 925mb RH, Z, and winds (knots) -- NCEP GFS



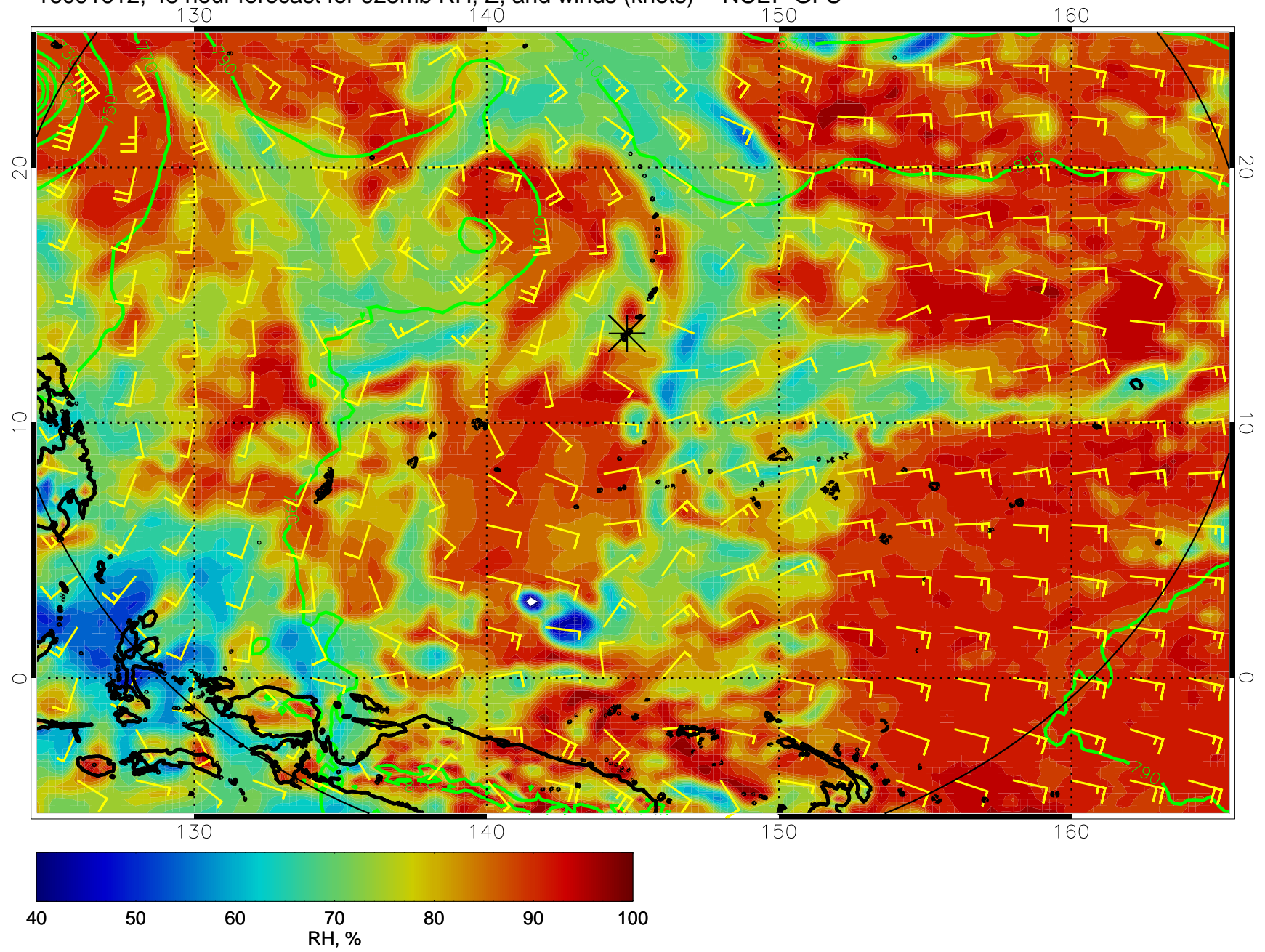
16091600, 36 hour forecast for 925mb RH, Z, and winds (knots) -- NCEP GFS



16091606, 42 hour forecast for 925mb RH, Z, and winds (knots) -- NCEP GFS

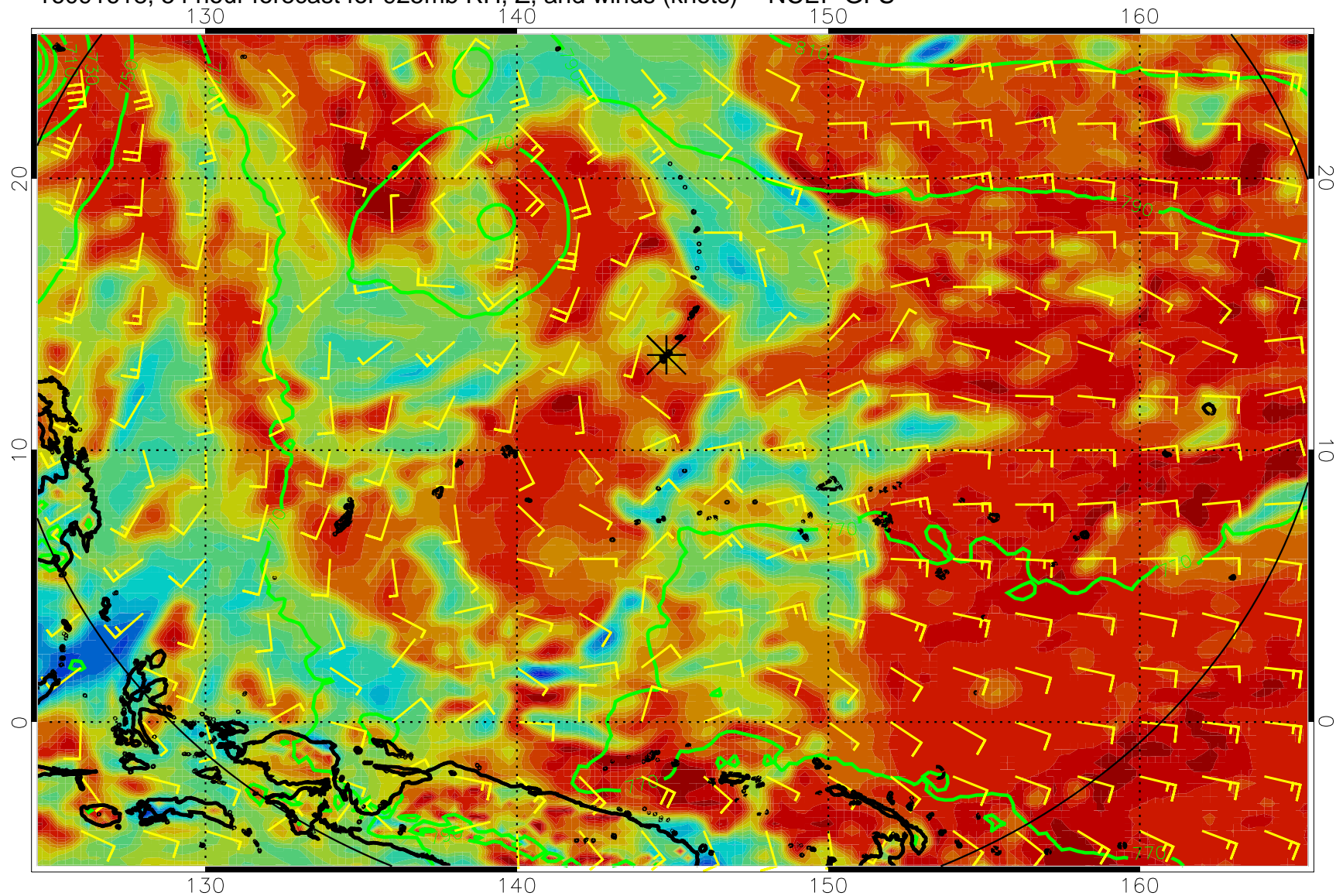


16091612, 48 hour forecast for 925mb RH, Z, and winds (knots) -- NCEP GFS

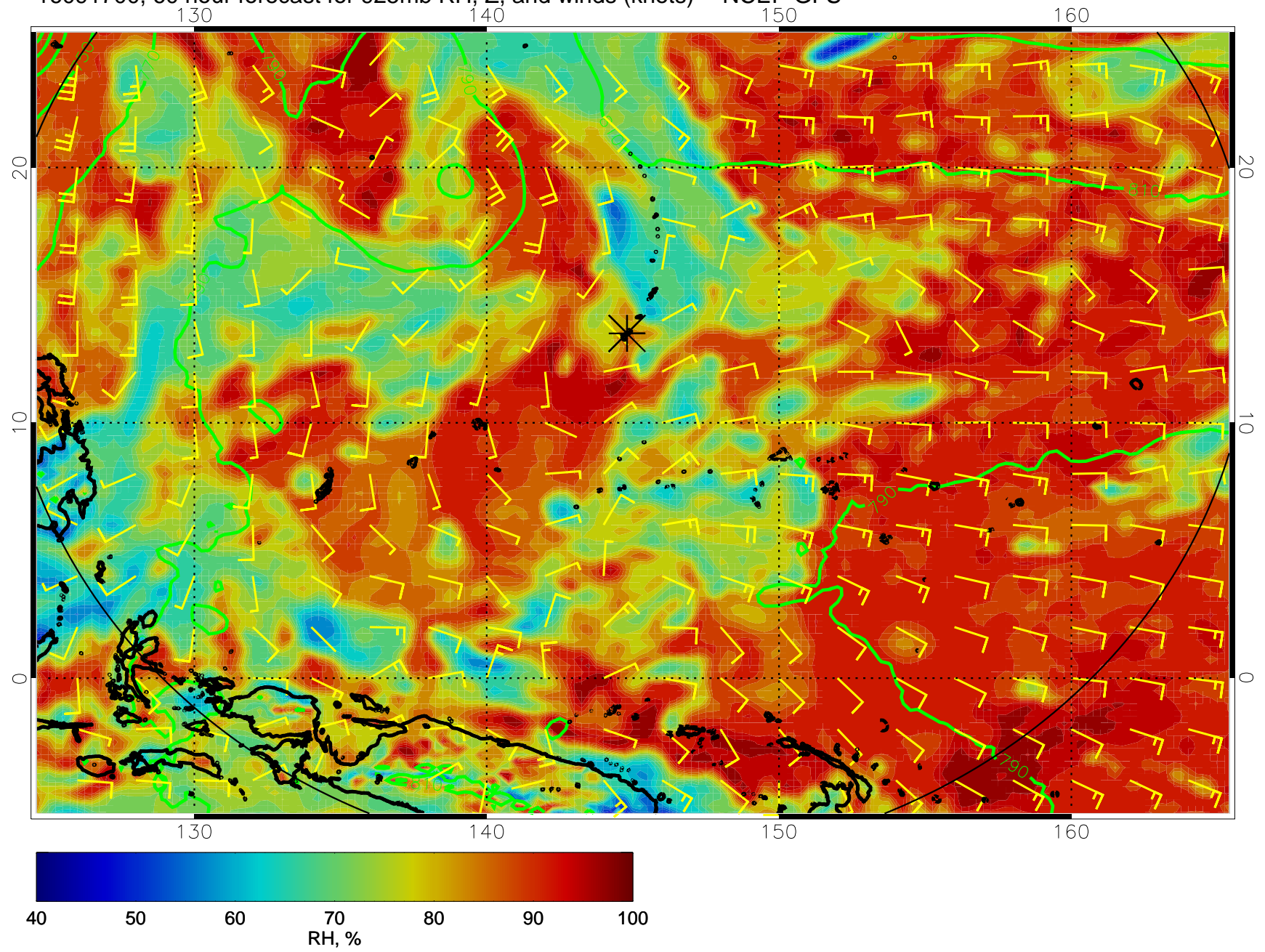




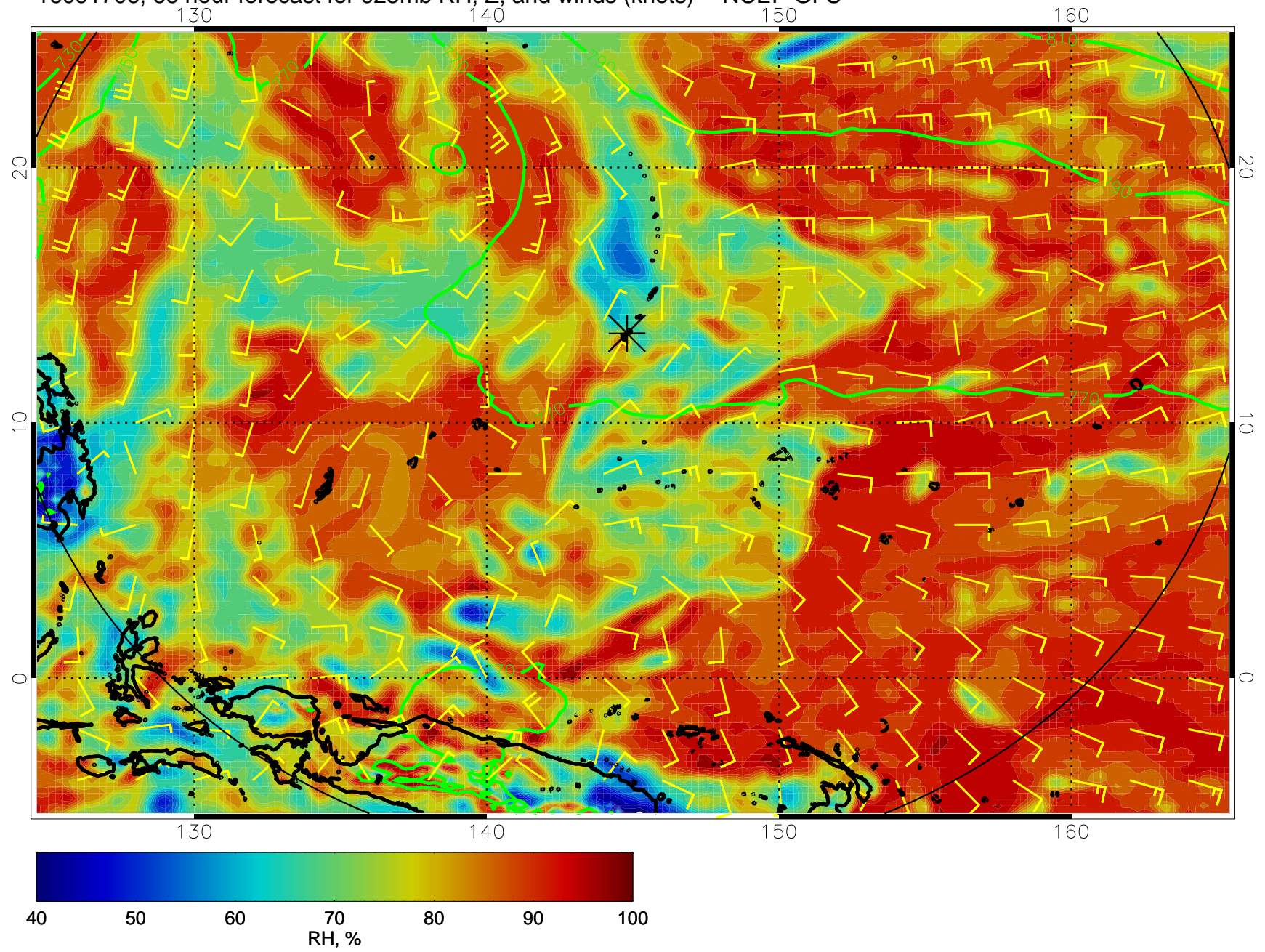
16091618, 54 hour forecast for 925mb RH, Z, and winds (knots) -- NCEP GFS



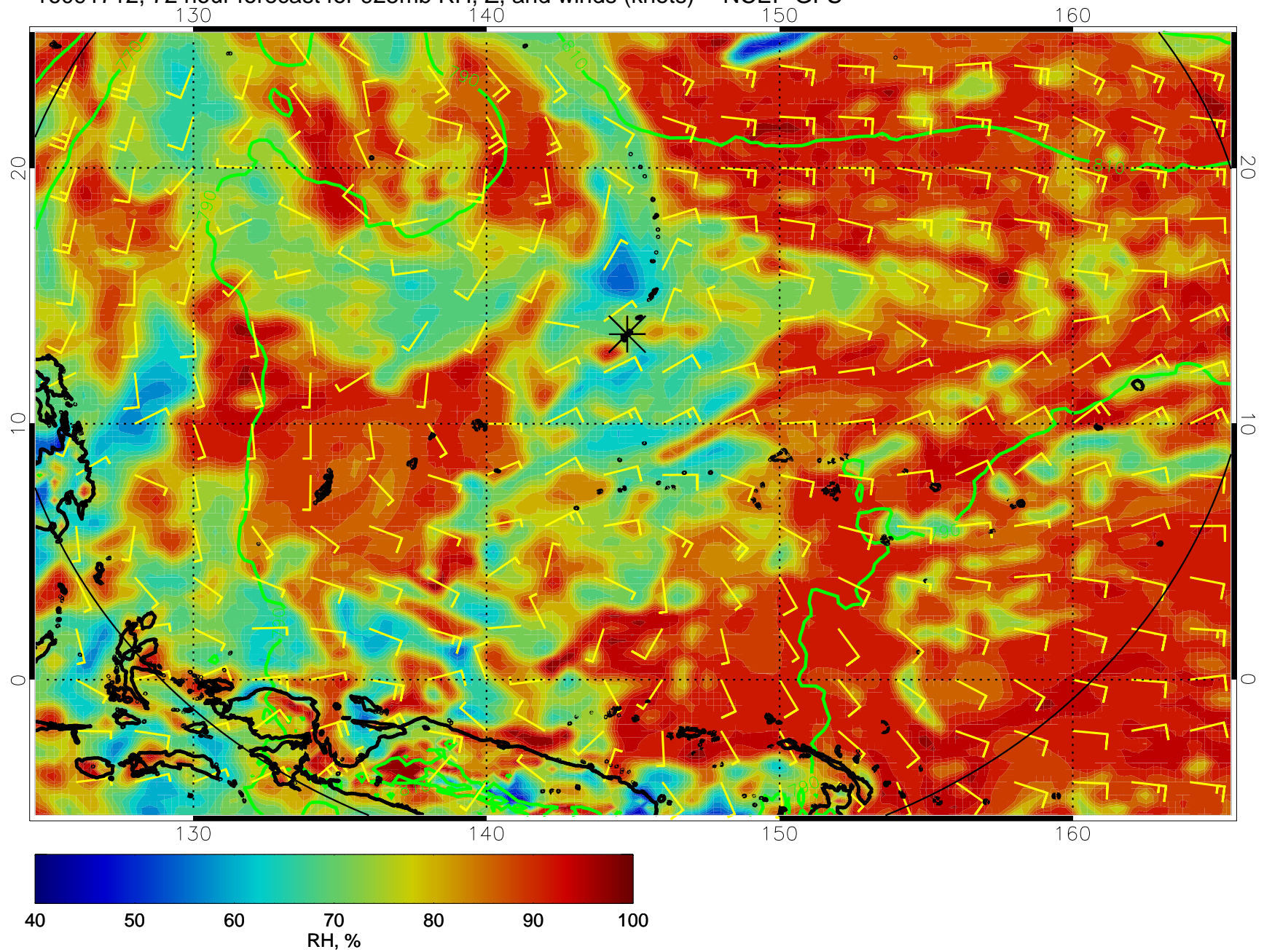
16091700, 60 hour forecast for 925mb RH, Z, and winds (knots) -- NCEP GFS



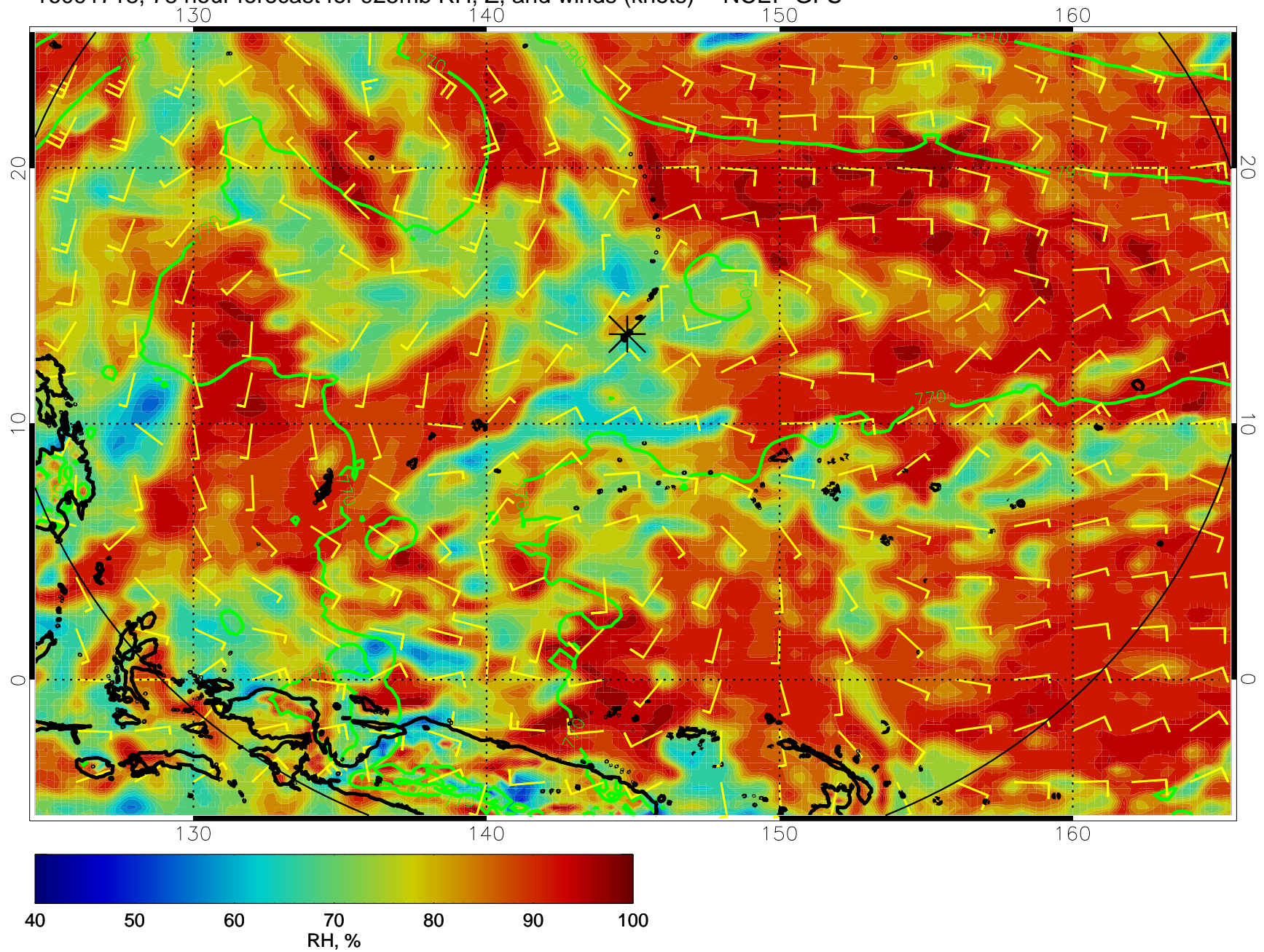
16091706, 66 hour forecast for 925mb RH, Z, and winds (knots) -- NCEP GFS



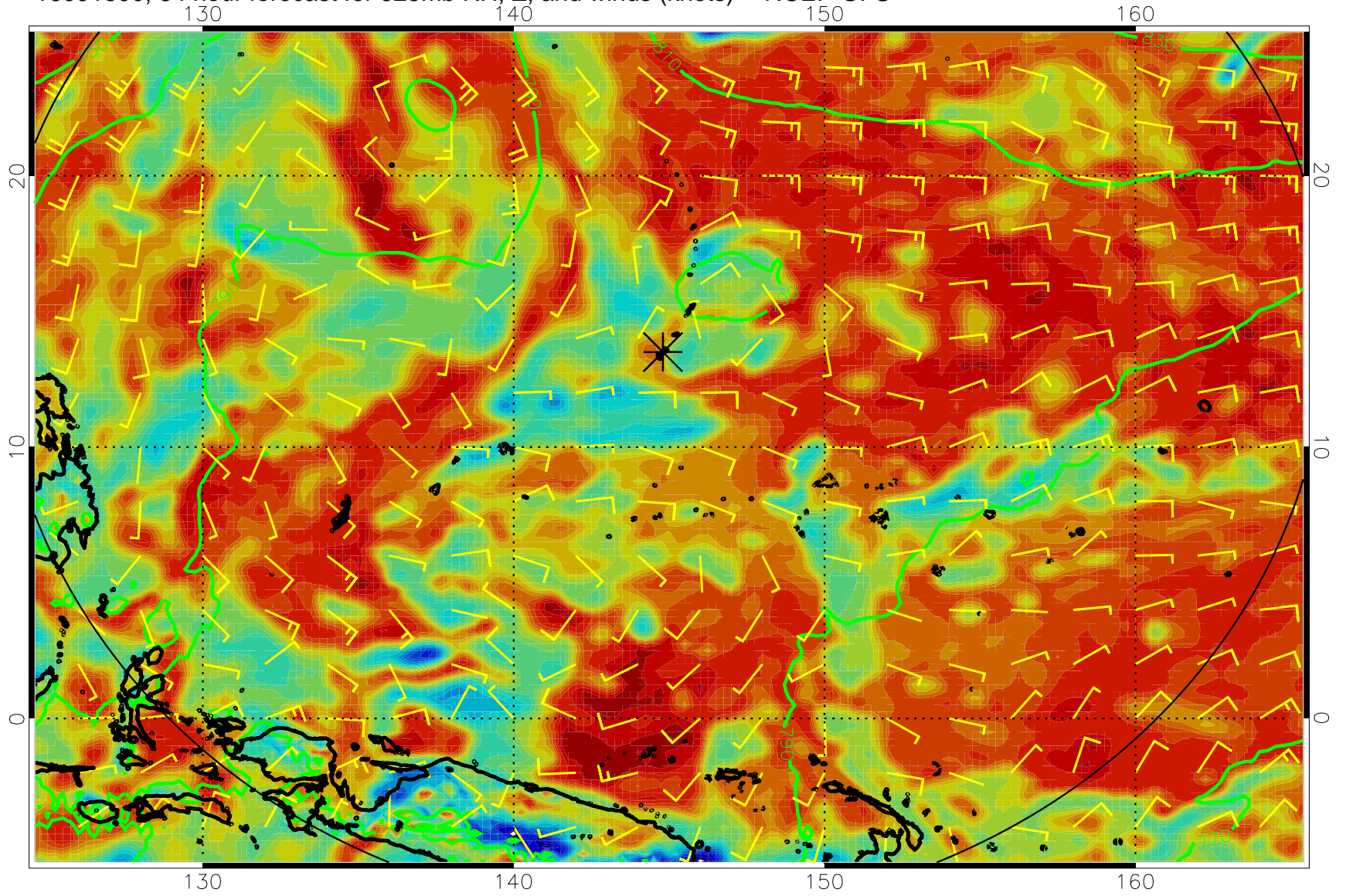
16091712, 72 hour forecast for 925mb RH, Z, and winds (knots) -- NCEP GFS



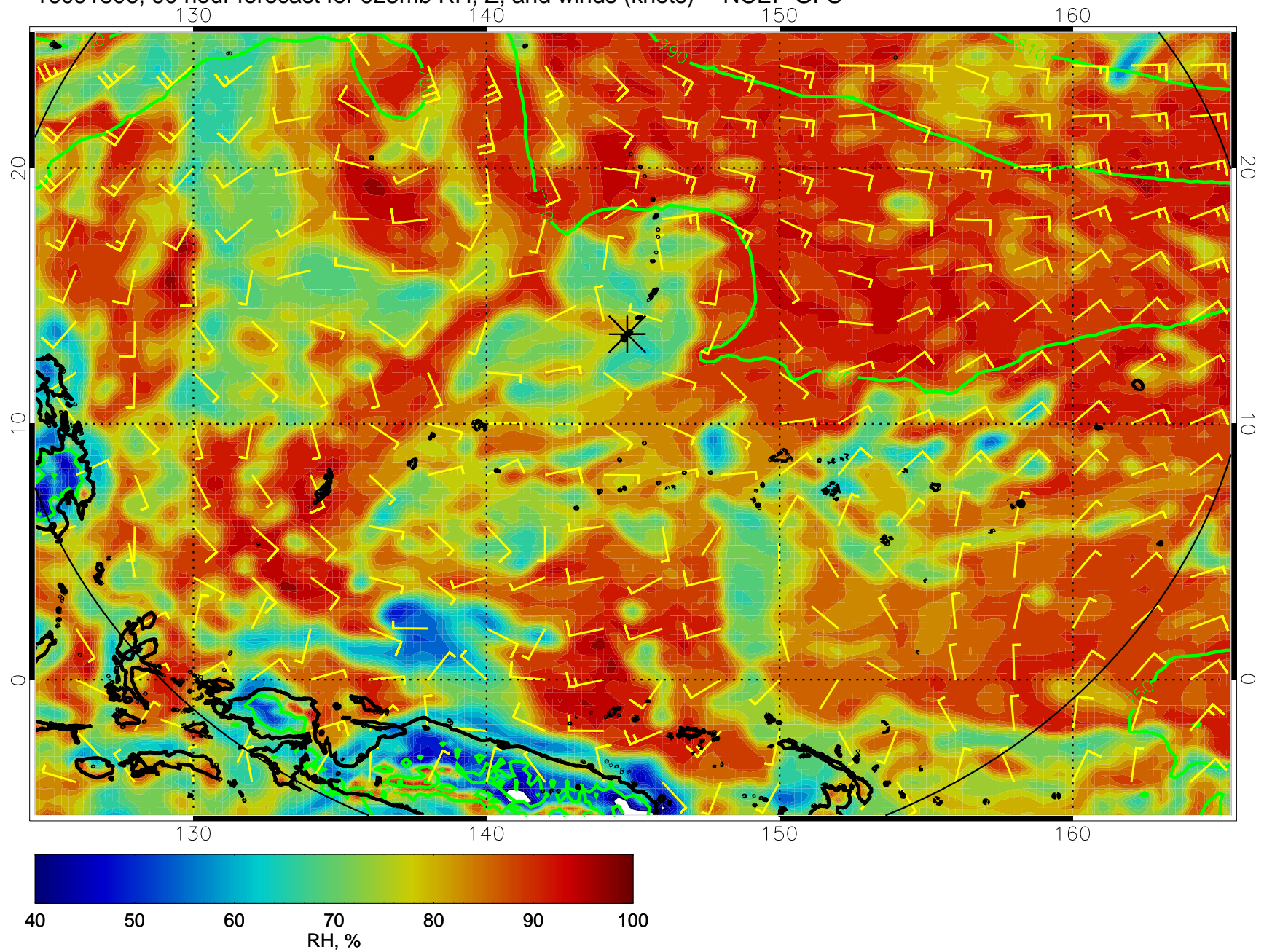
16091718, 78 hour forecast for 925mb RH, Z, and winds (knots) -- NCEP GFS



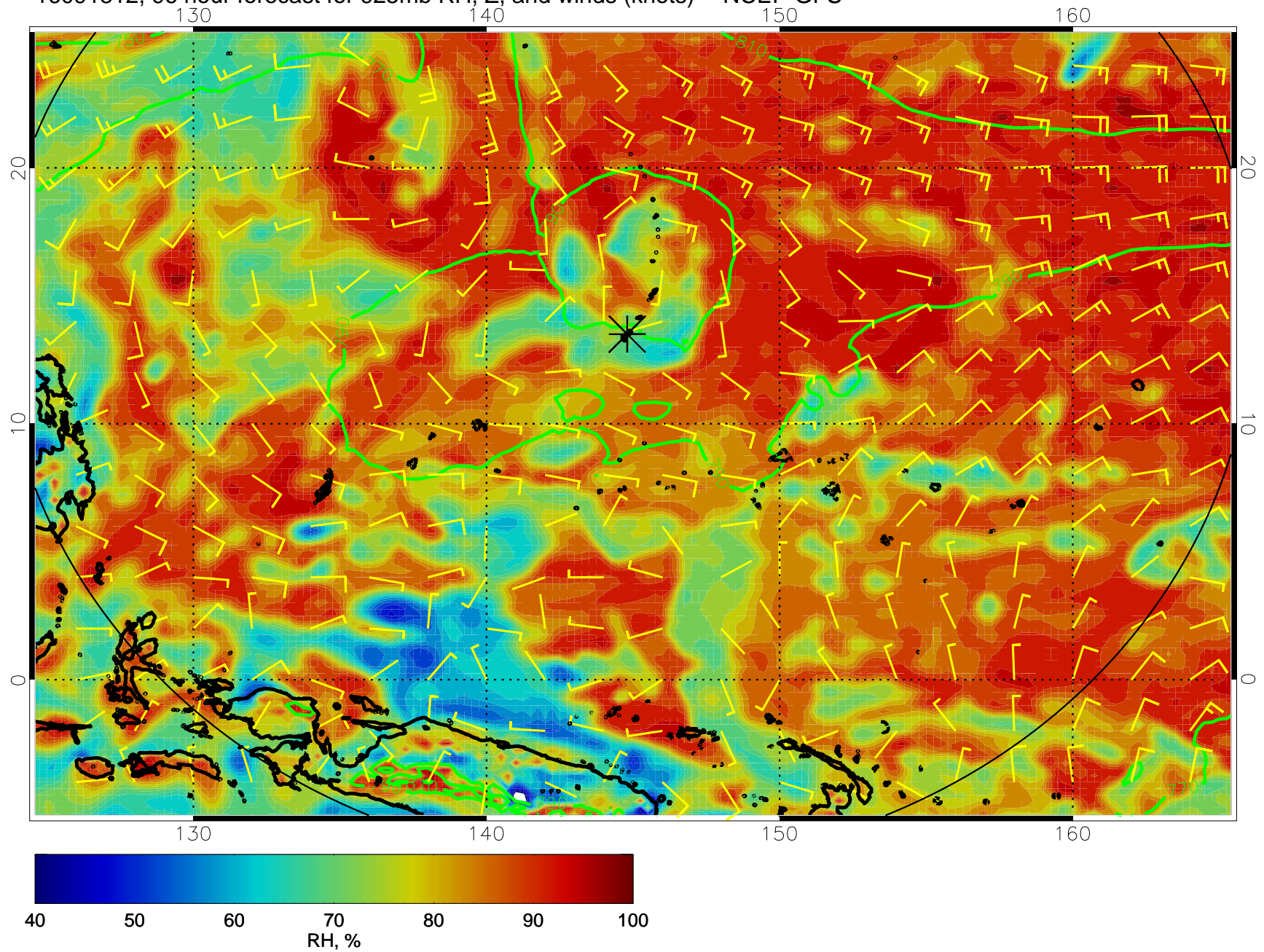
16091800, 84 hour forecast for 925mb RH, Z, and winds (knots) -- NCEP GFS



16091806, 90 hour forecast for 925mb RH, Z, and winds (knots) -- NCEP GFS

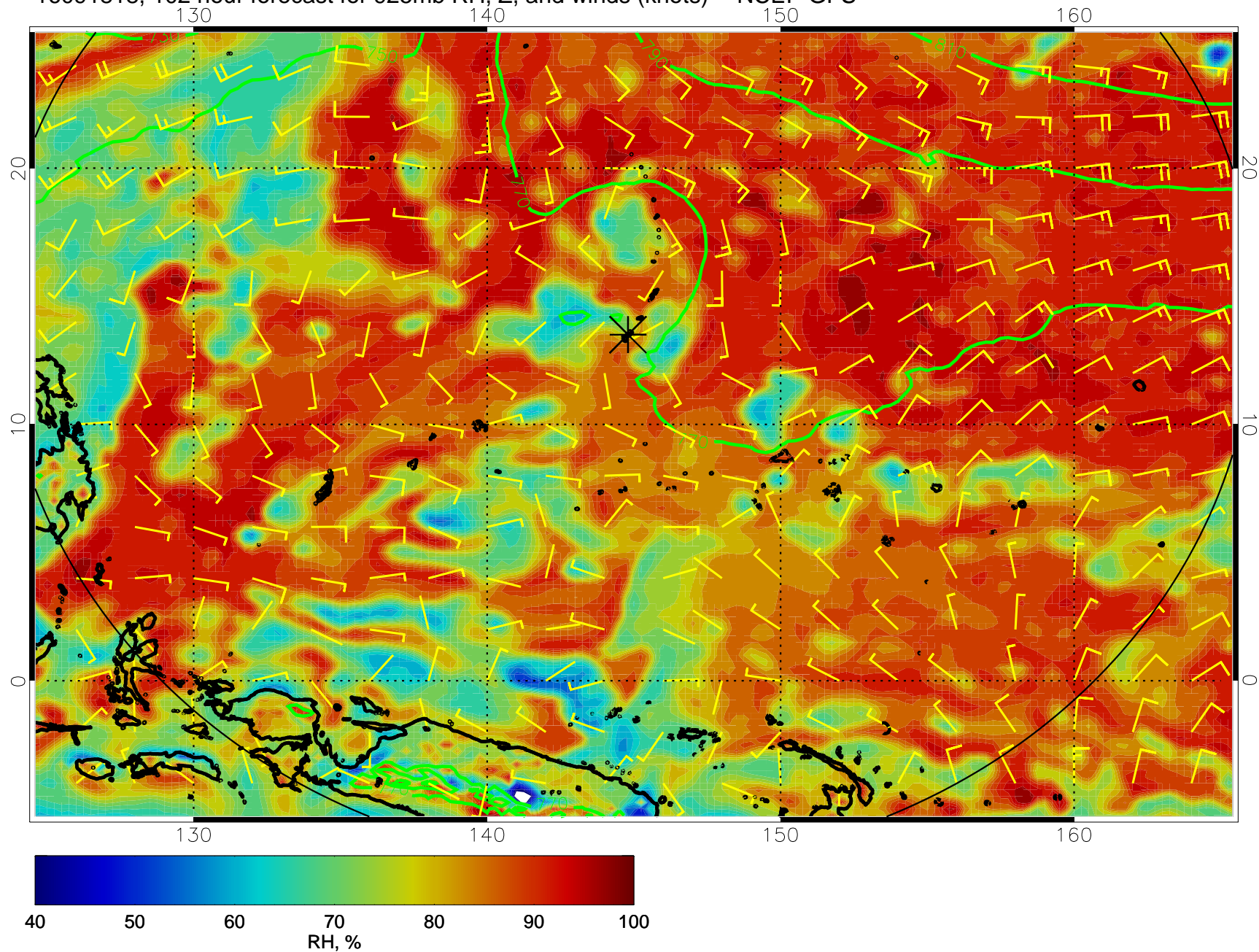


16091812, 96 hour forecast for 925mb RH, Z, and winds (knots) -- NCEP GFS

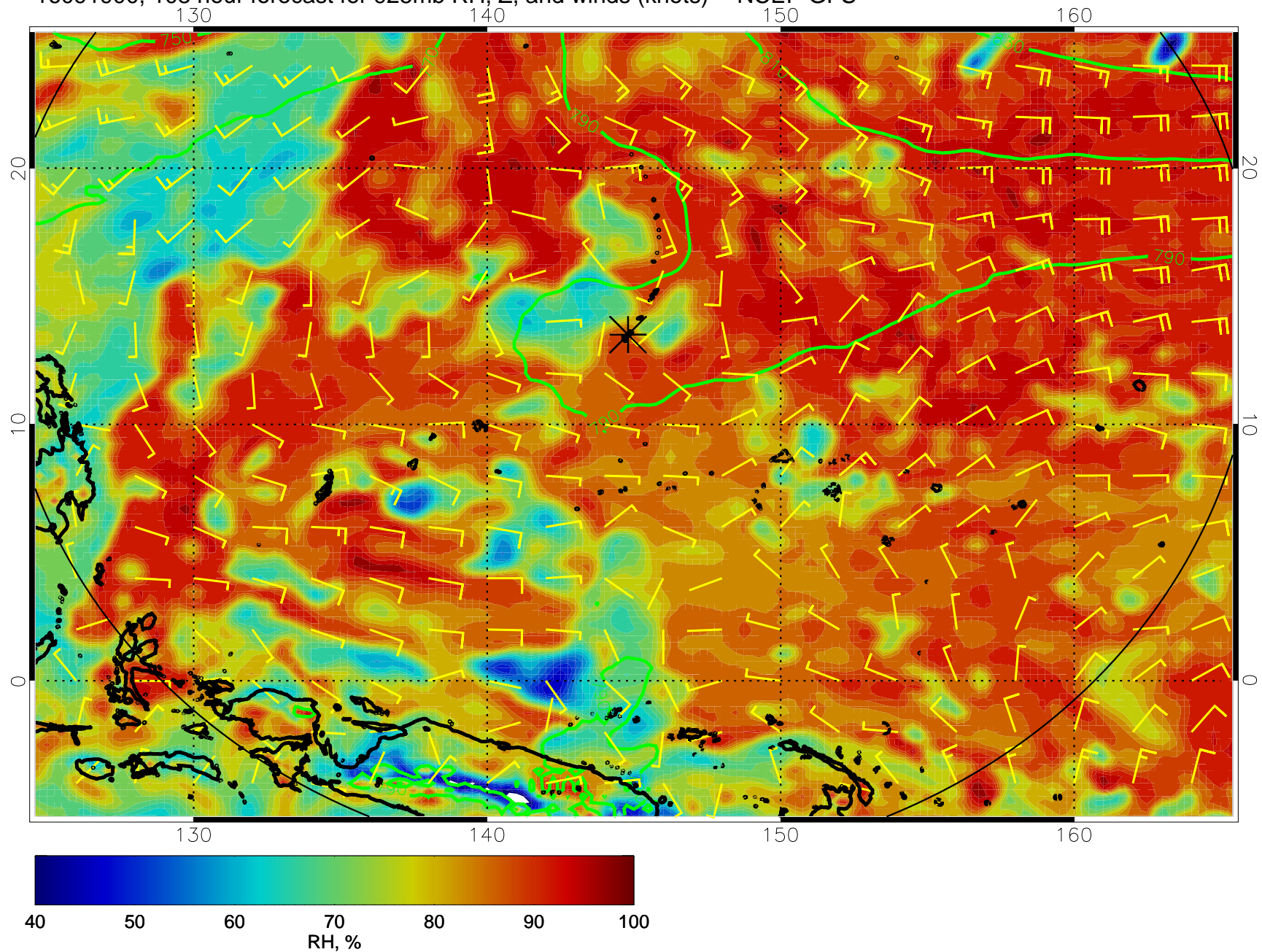




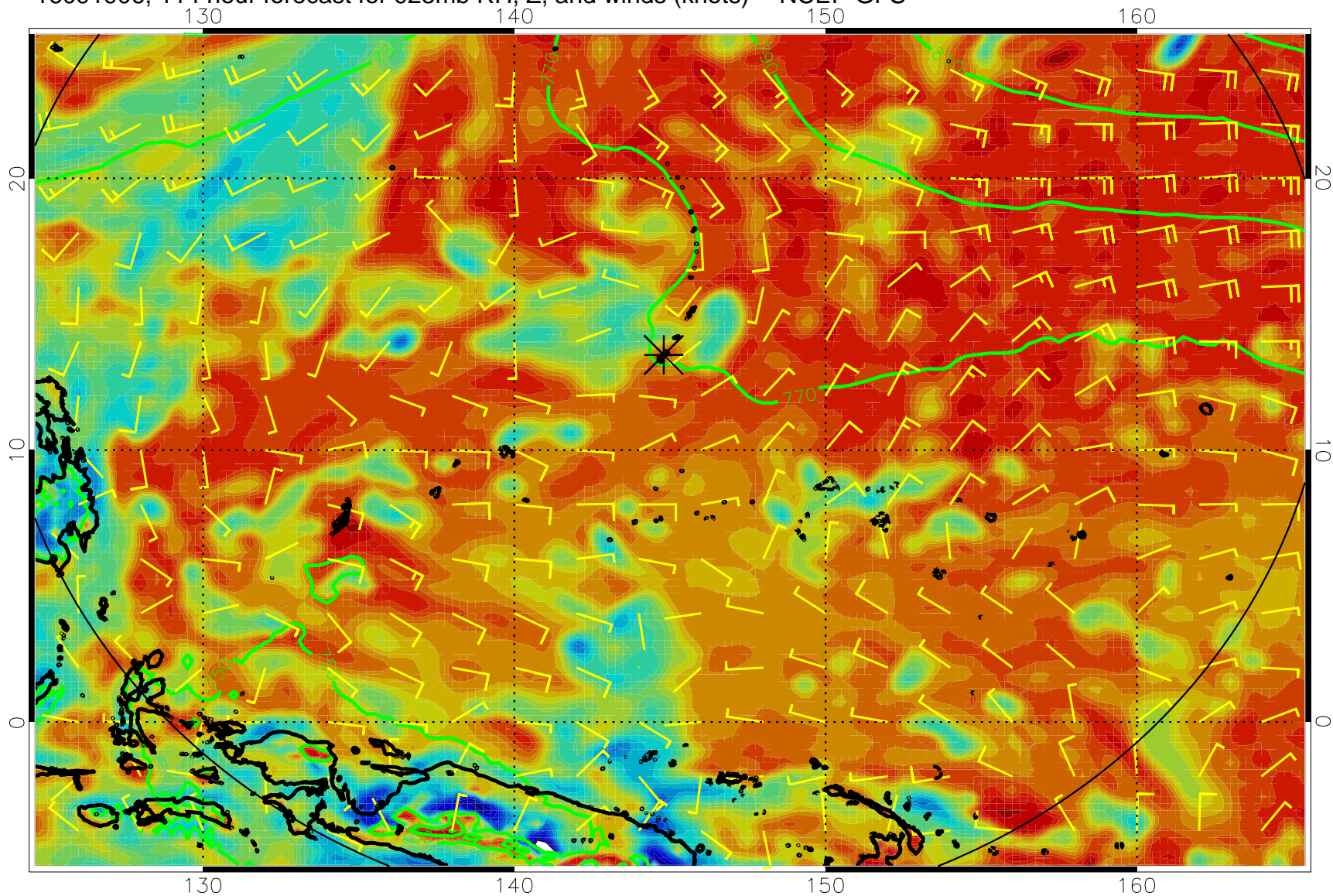
16091818, 102 hour forecast for 925mb RH, Z, and winds (knots) -- NCEP GFS



16091900, 108 hour forecast for 925mb RH, Z, and winds (knots) -- NCEP GFS



16091906, 114 hour forecast for 925mb RH, Z, and winds (knots) -- NCEP GFS



16091912, 120 hour forecast for 925mb RH, Z, and winds (knots) -- NCEP GFS

