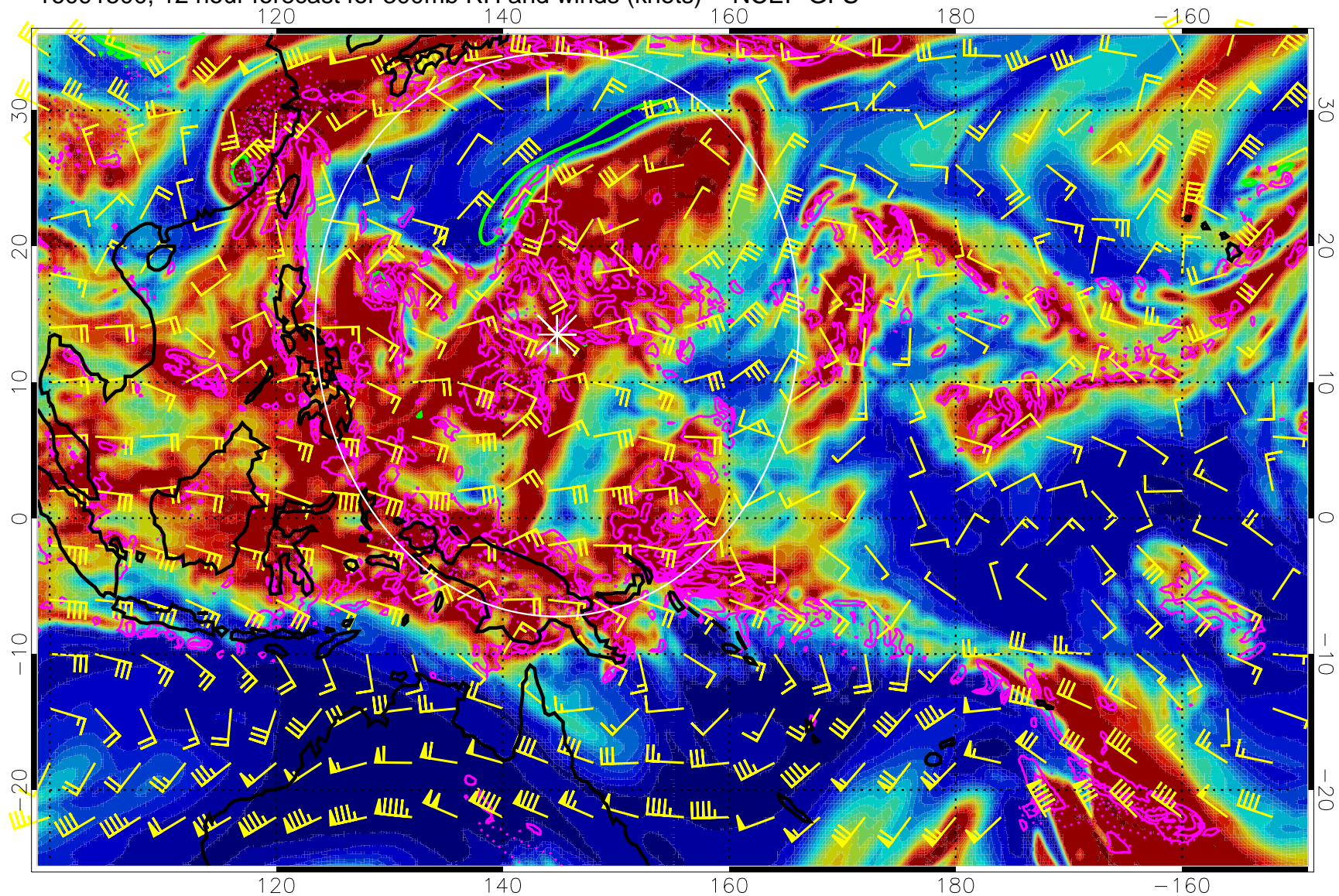


16091500, 12 hour forecast for 300mb RH and winds (knots) -- NCEP GFS

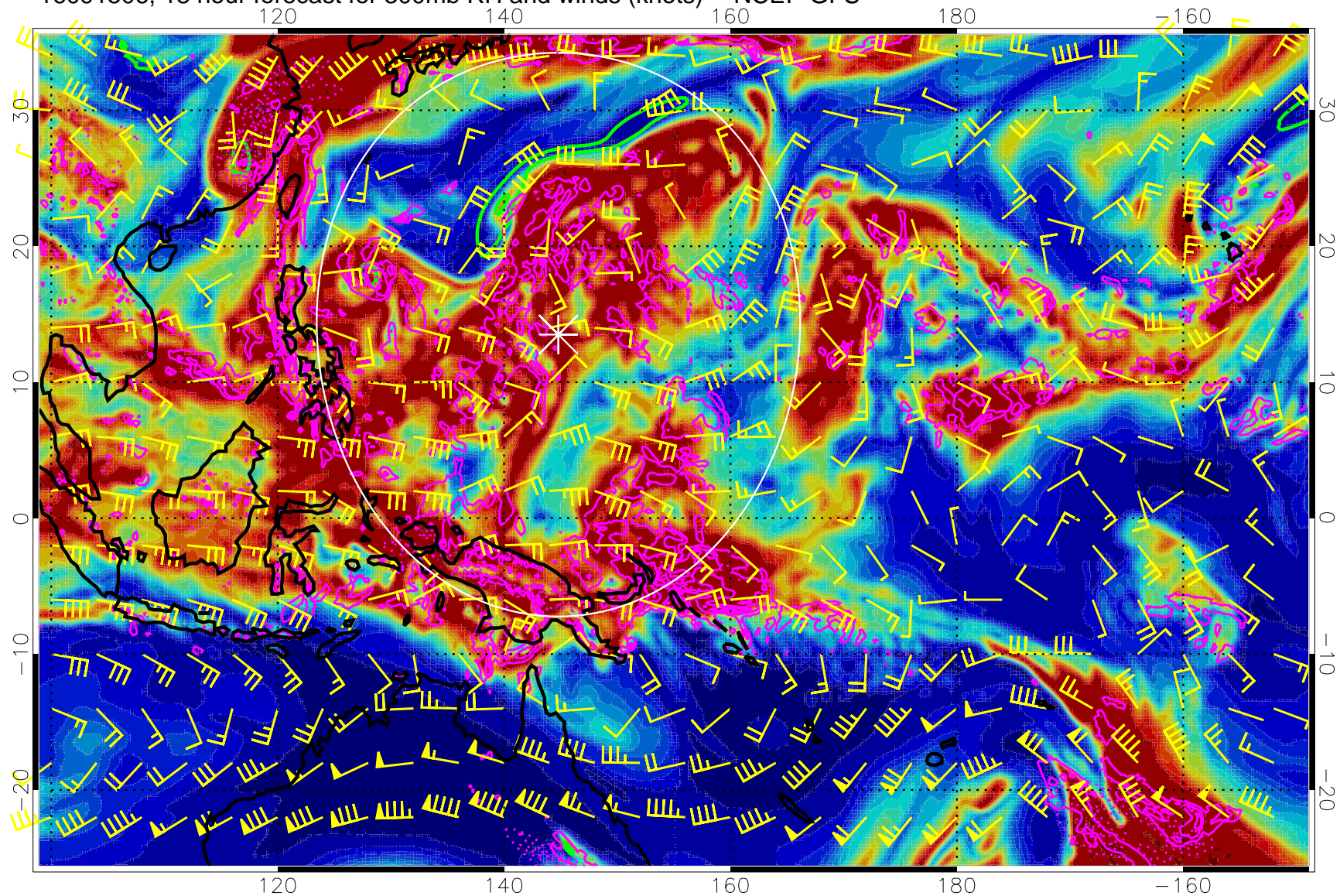


Precip (tot dot, conv sol) mm/day 40 mm/day contours, min 20

EPV Tropopause (2 PVU) Position

Range ring of 2304 km

16091506, 18 hour forecast for 300mb RH and winds (knots) -- NCEP GFS

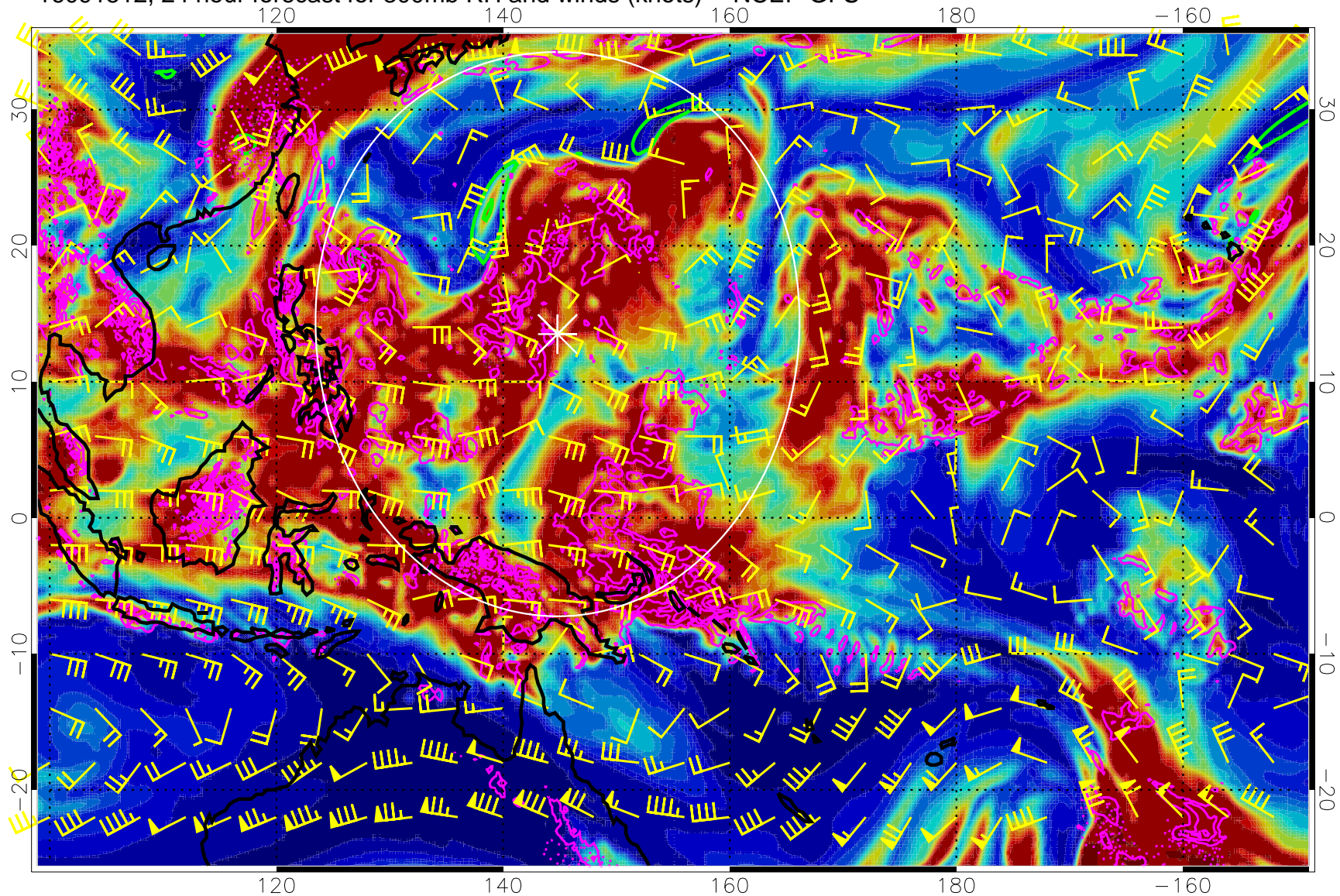


Precip (tot dot, conv sol) mm/day 40 mm/day contours, min 20

EPV Tropopause (2 PVU) Position

Range ring of 2304 km

16091512, 24 hour forecast for 300mb RH and winds (knots) -- NCEP GFS

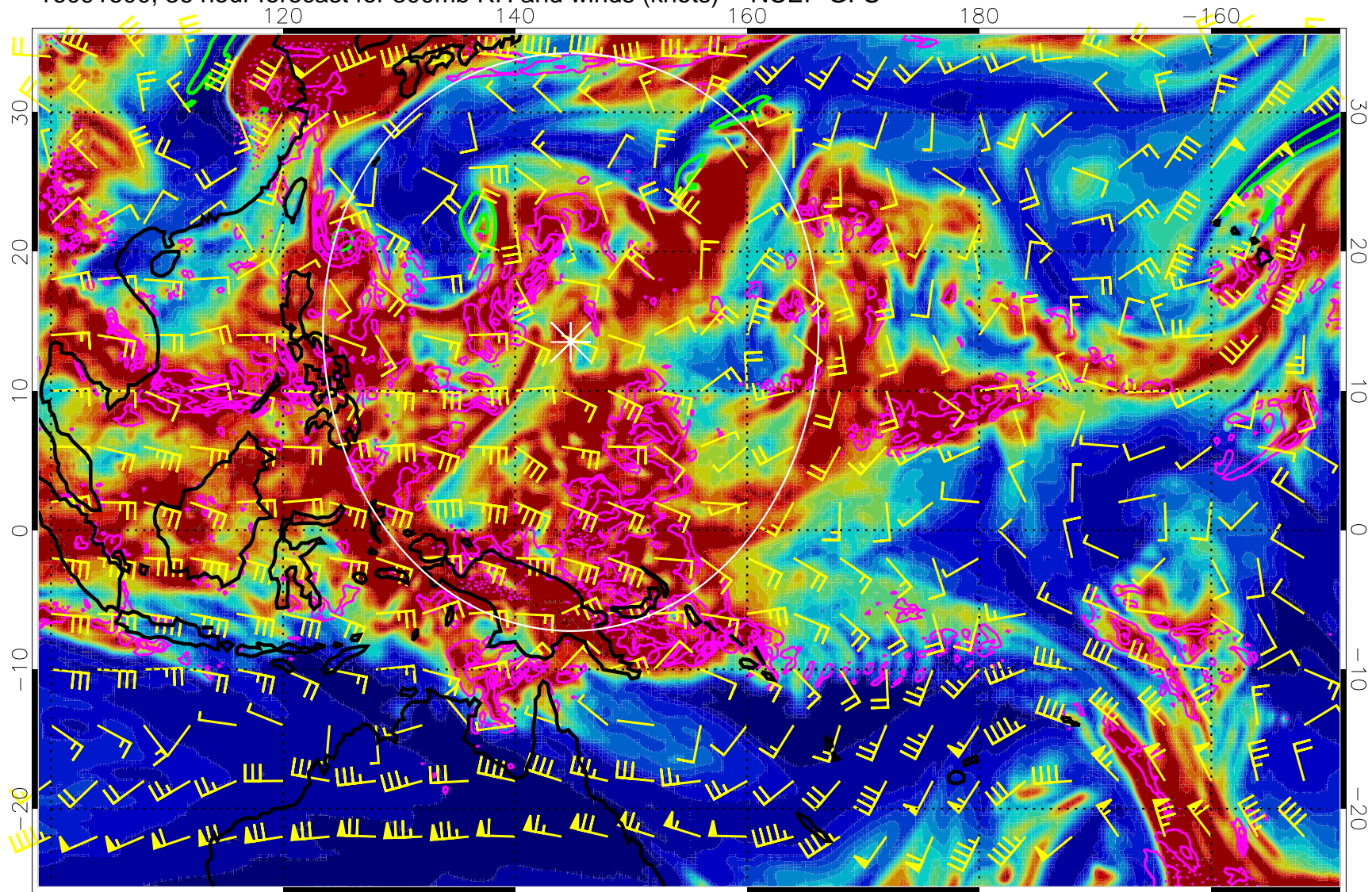


Precip (tot dot, conv sol) mm/day 40 mm/day contours, min 20

EPV Tropopause (2 PVU) Position

Range ring of 2304 km

16091600, 36 hour forecast for 300mb RH and winds (knots) -- NCEP GFS



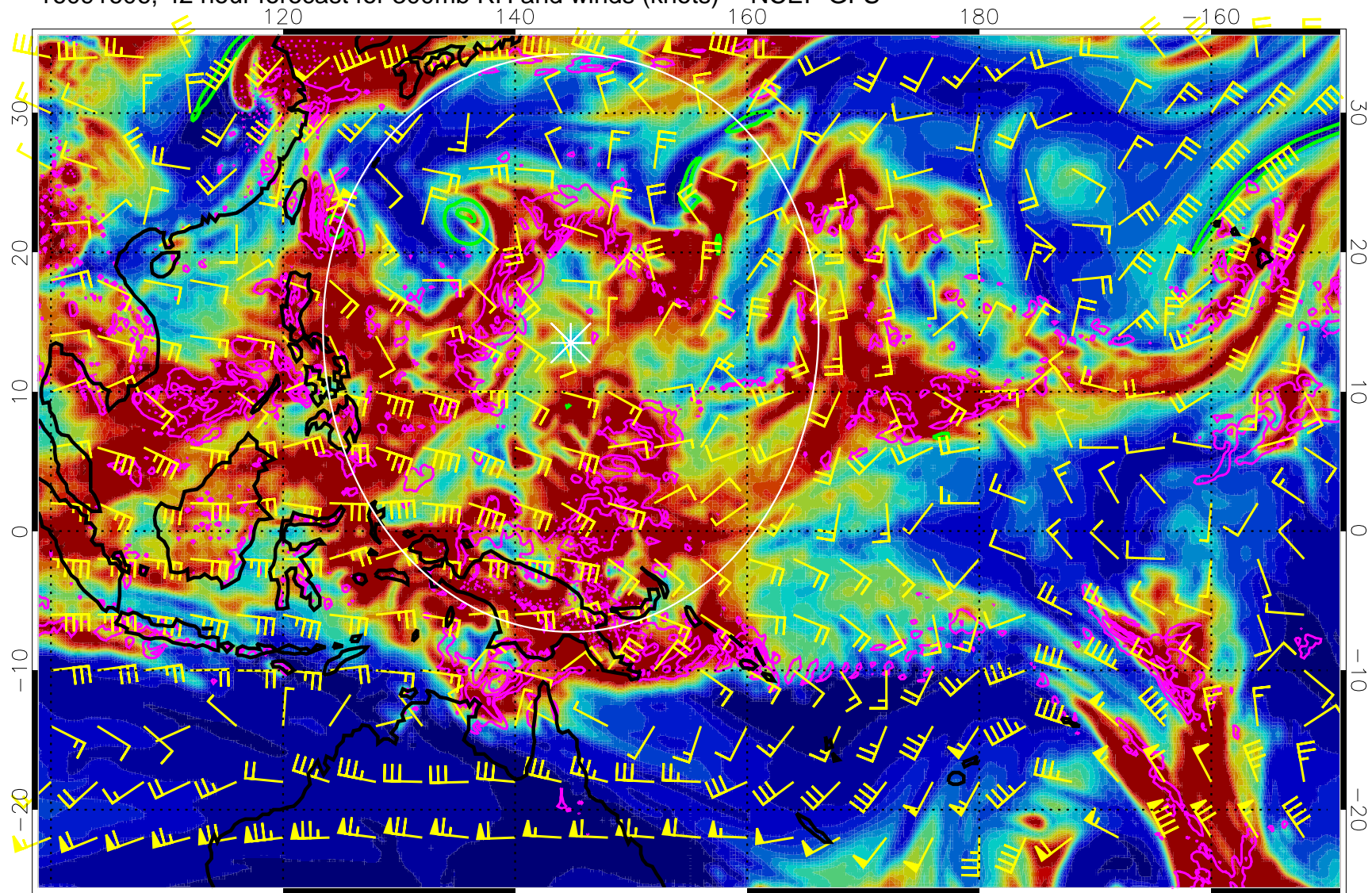
0 20 40 60 80 100
RH, %

Precip (tot dot, conv sol) mm/day 40 mm/day contours, min 20

EPV Tropopause (2 PVU) Position

Range ring of 2304 km

16091606, 42 hour forecast for 300mb RH and winds (knots) -- NCEP GFS

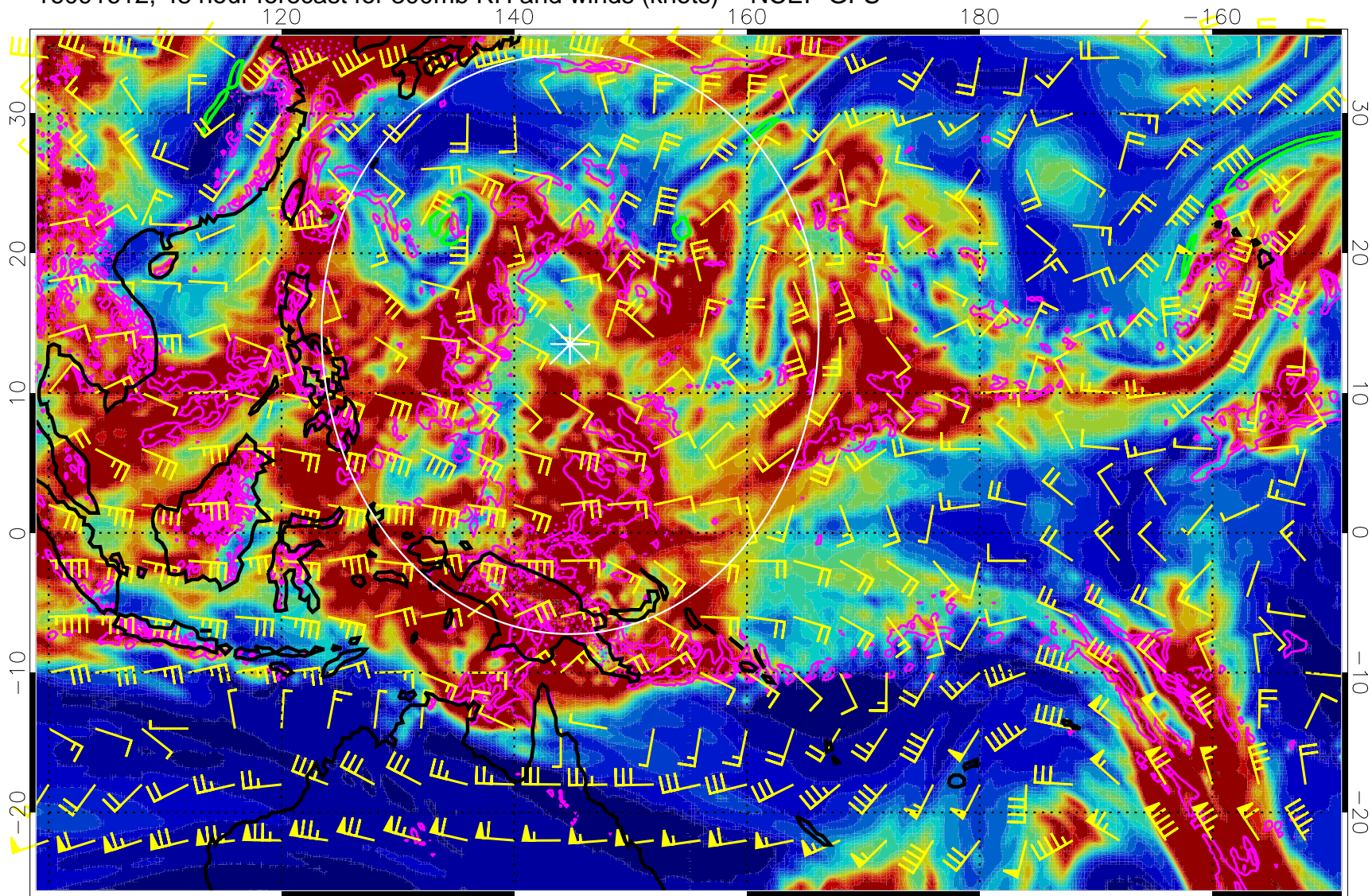


Precip (tot dot, conv sol) mm/day 40 mm/day contours, min 20

EPV Tropopause (2 PVU) Position

Range ring of 2304 km

16091612, 48 hour forecast for 300mb RH and winds (knots) -- NCEP GFS

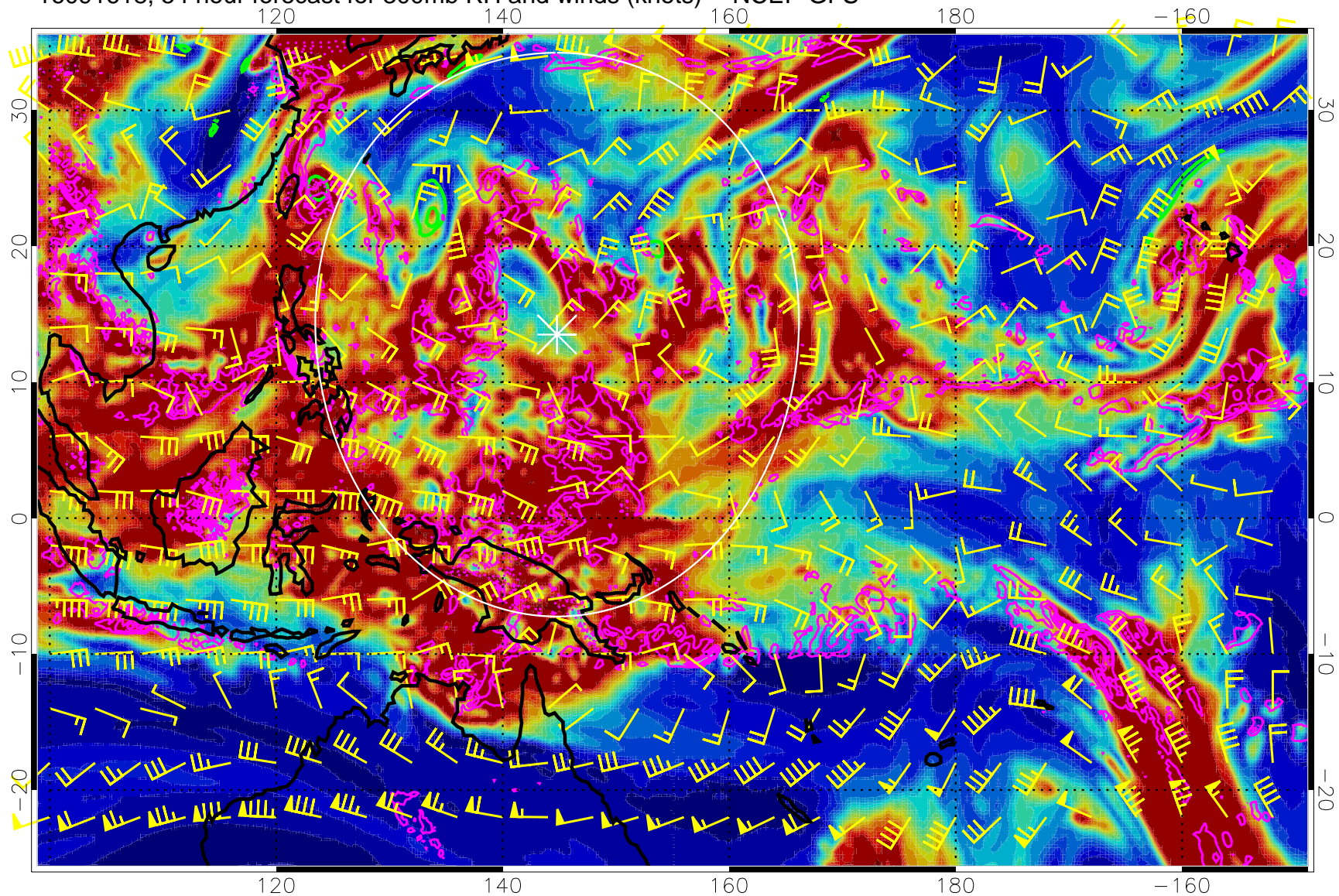


Precip (tot dot, conv sol) mm/day 40 mm/day contours, min 20

EPV Tropopause (2 PVU) Position

Range ring of 2304 km

16091618, 54 hour forecast for 300mb RH and winds (knots) -- NCEP GFS

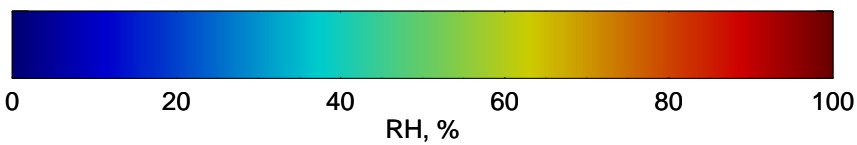
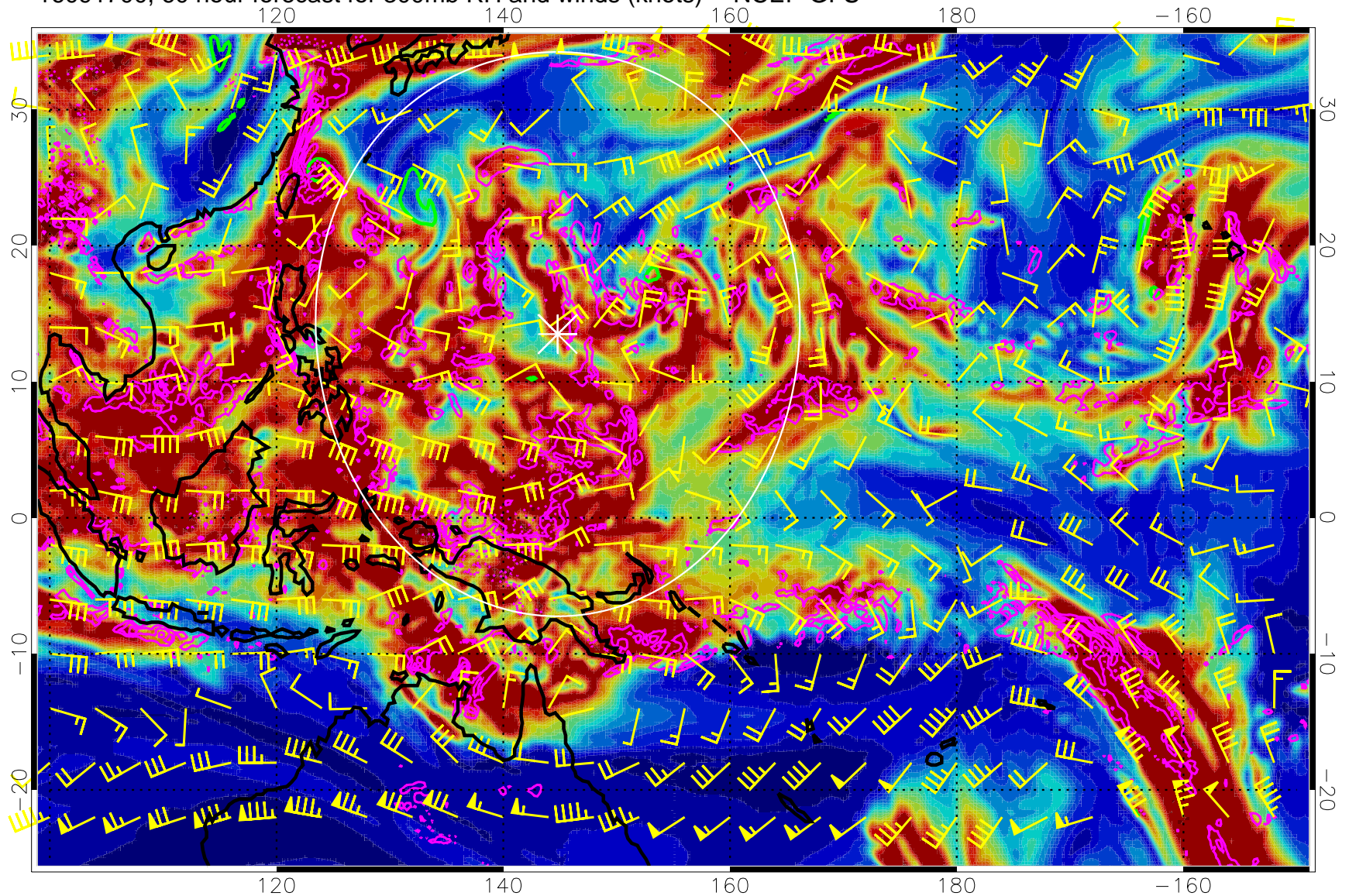


Precip (tot dot, conv sol) mm/day 40 mm/day contours, min 20

EPV Tropopause (2 PVU) Position

Range ring of 2304 km

16091700, 60 hour forecast for 300mb RH and winds (knots) -- NCEP GFS

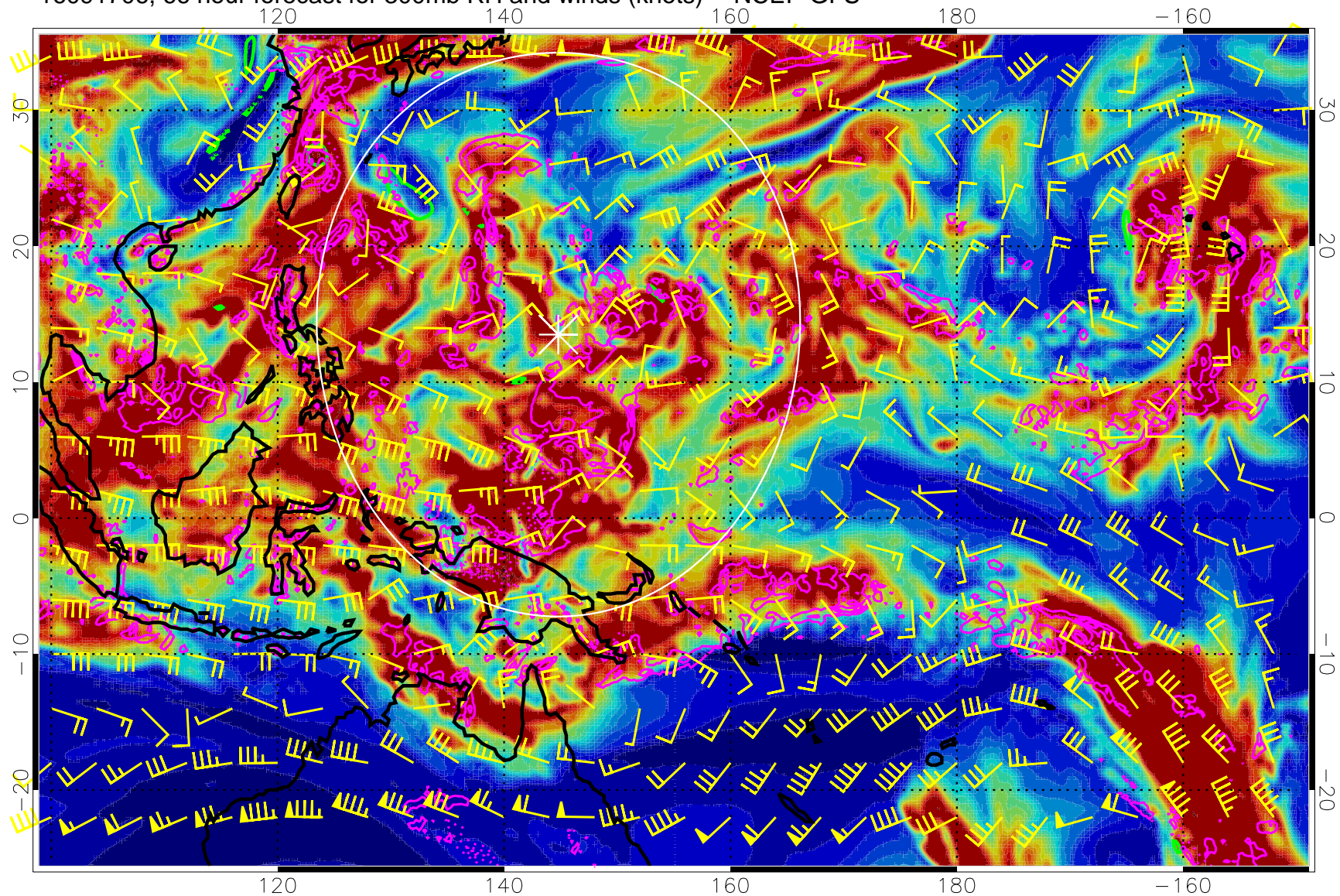


Precip (tot dot, conv sol) mm/day 40 mm/day contours, min 20

EPV Tropopause (2 PVU) Position

Range ring of 2304 km

16091706, 66 hour forecast for 300mb RH and winds (knots) -- NCEP GFS

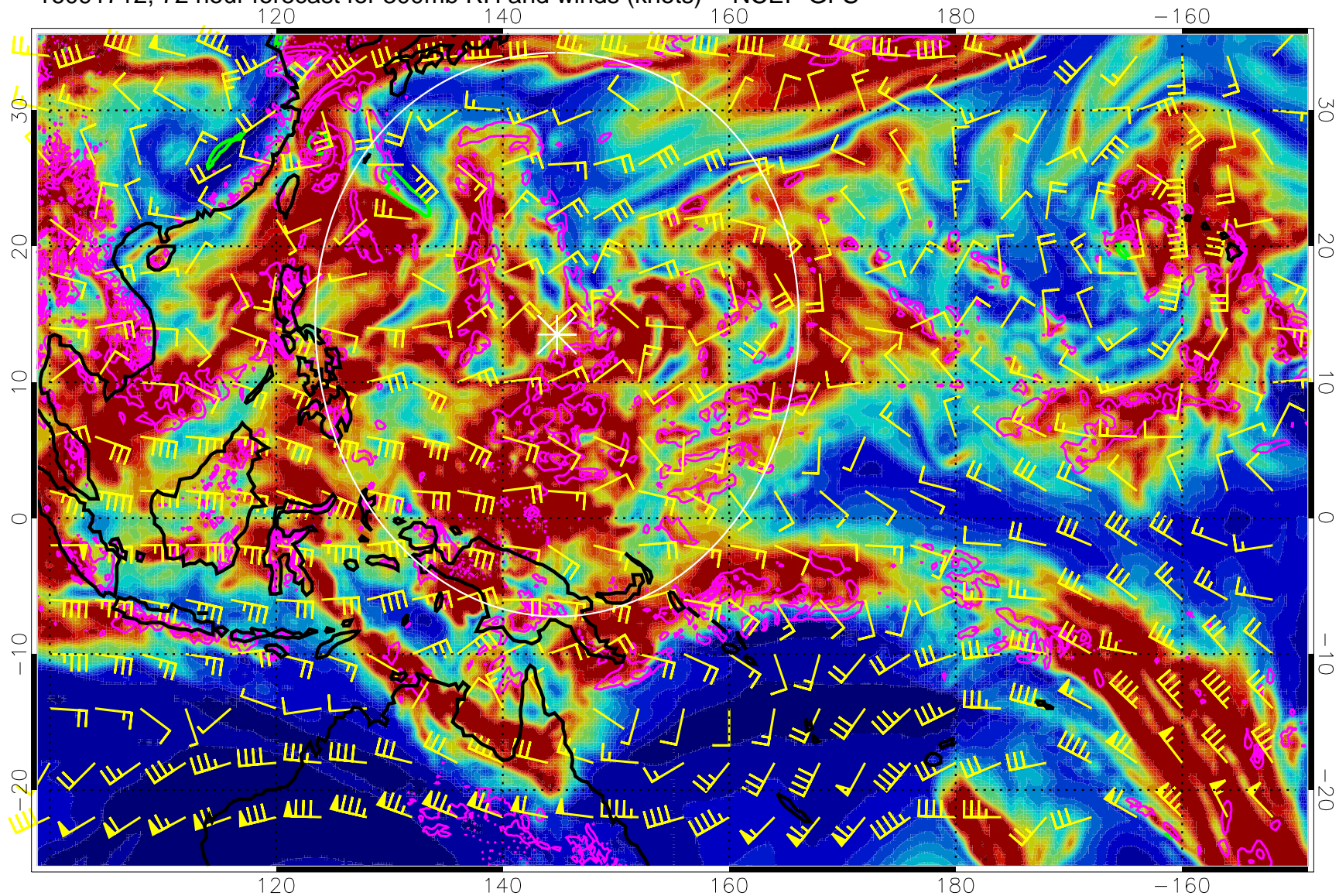


Precip (tot dot, conv sol) mm/day 40 mm/day contours, min 20

EPV Tropopause (2 PVU) Position

Range ring of 2304 km

16091712, 72 hour forecast for 300mb RH and winds (knots) -- NCEP GFS

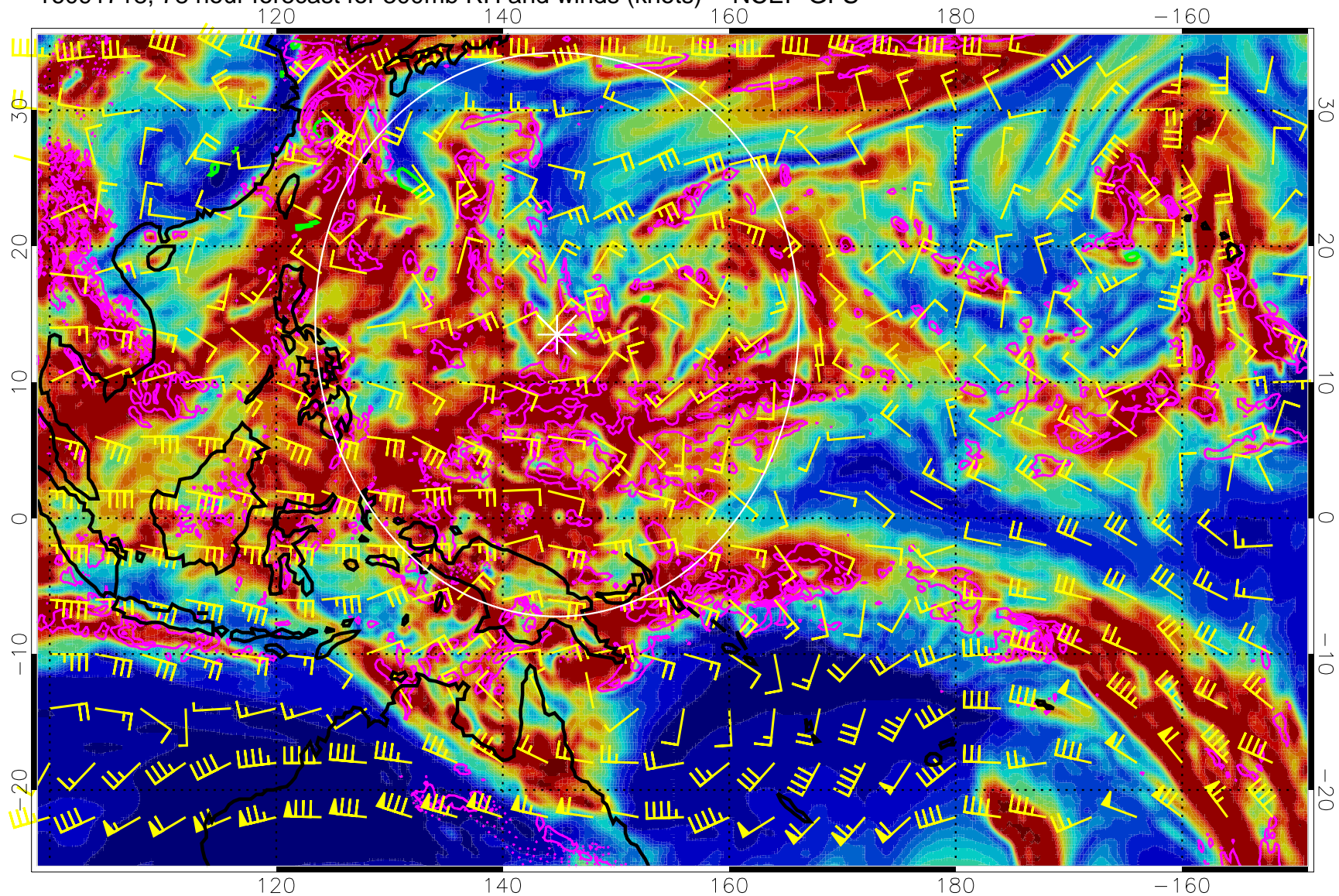


Precip (tot dot, conv sol) mm/day 40 mm/day contours, min 20

EPV Tropopause (2 PVU) Position

Range ring of 2304 km

16091718, 78 hour forecast for 300mb RH and winds (knots) -- NCEP GFS



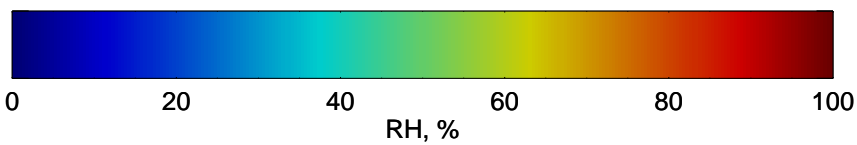
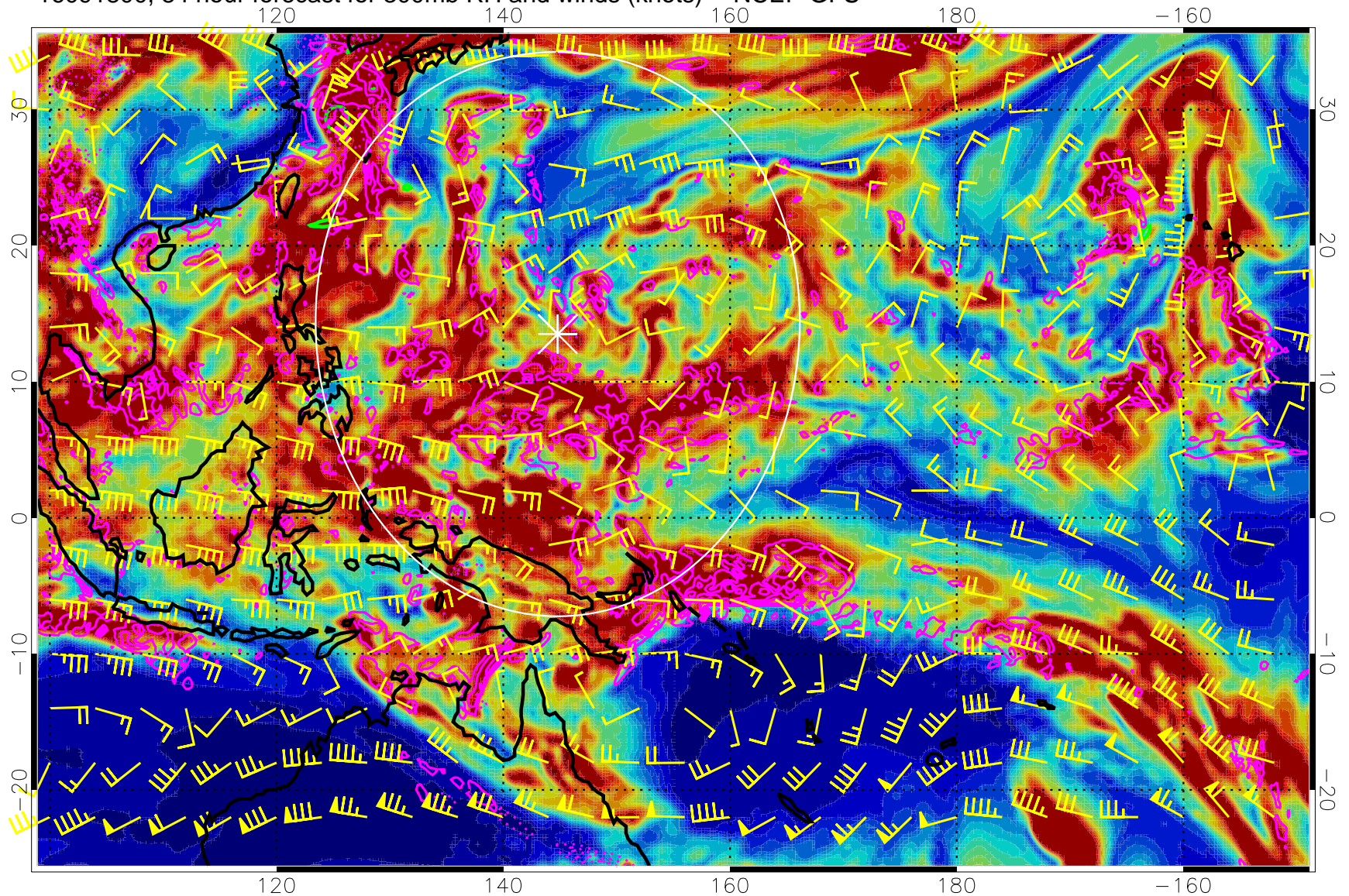
0 20 40 60 80 100
RH, %

Precip (tot dot, conv sol) mm/day 40 mm/day contours, min 20

EPV Tropopause (2 PVU) Position

Range ring of 2304 km

16091800, 84 hour forecast for 300mb RH and winds (knots) -- NCEP GFS

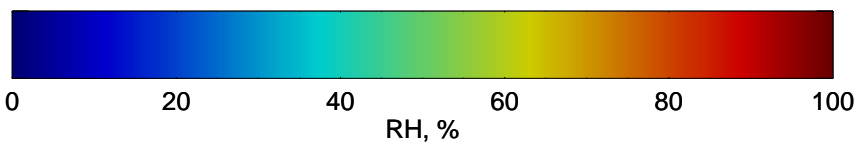
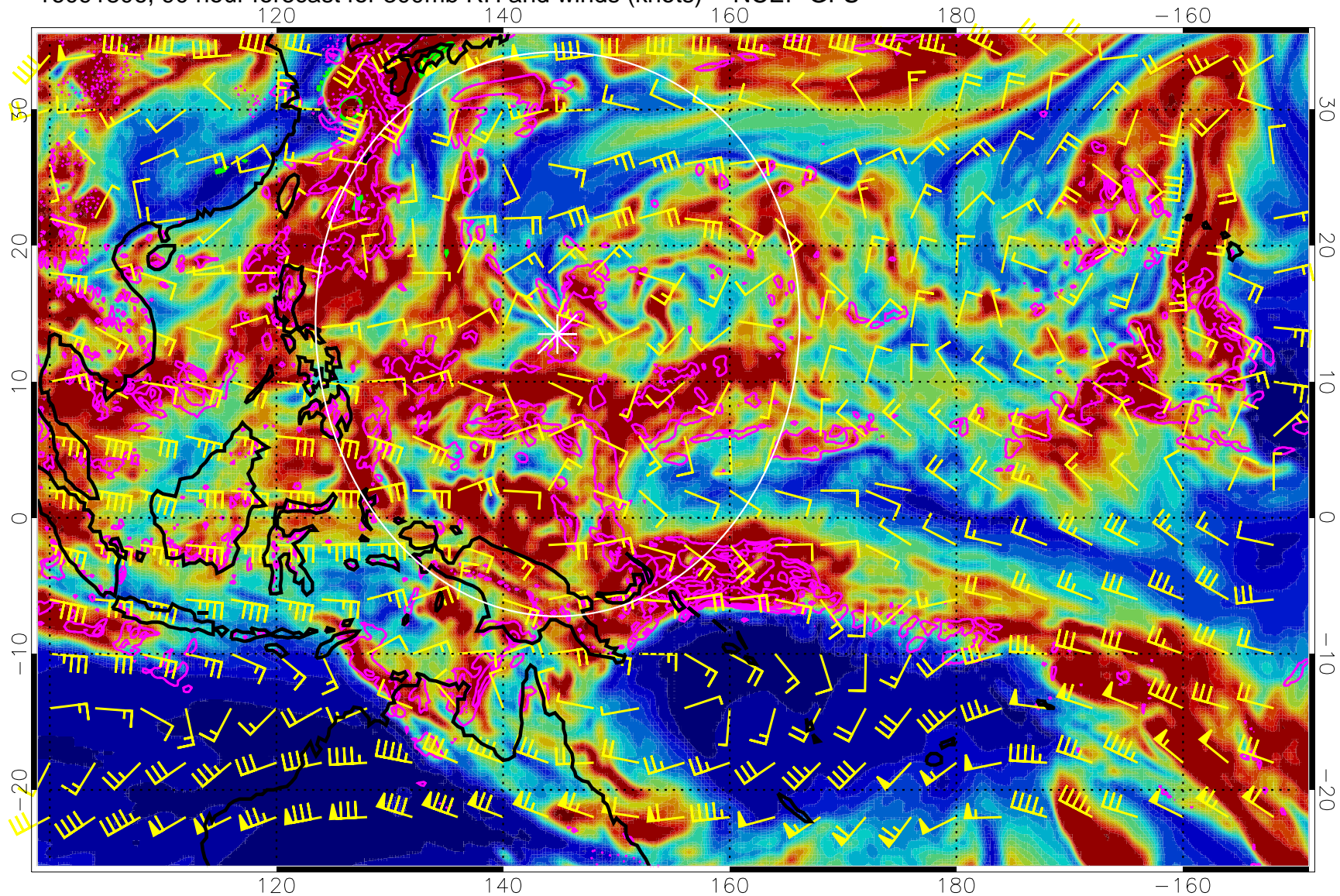


Precip (tot dot, conv sol) mm/day 40 mm/day contours, min 20

EPV Tropopause (2 PVU) Position

Range ring of 2304 km

16091806, 90 hour forecast for 300mb RH and winds (knots) -- NCEP GFS

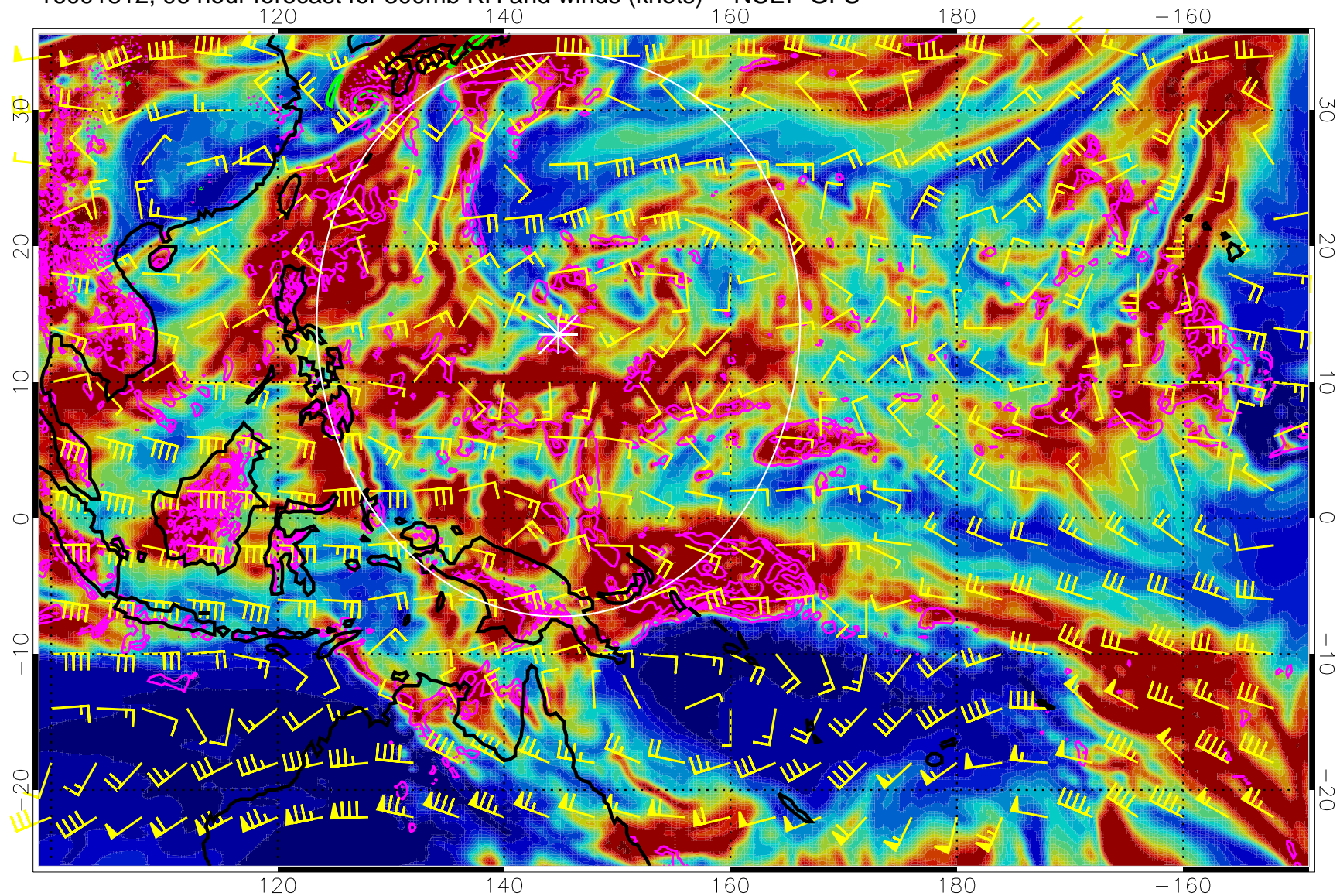


Precip (tot dot, conv sol) mm/day 40 mm/day contours, min 20

EPV Tropopause (2 PVU) Position

Range ring of 2304 km

16091812, 96 hour forecast for 300mb RH and winds (knots) -- NCEP GFS

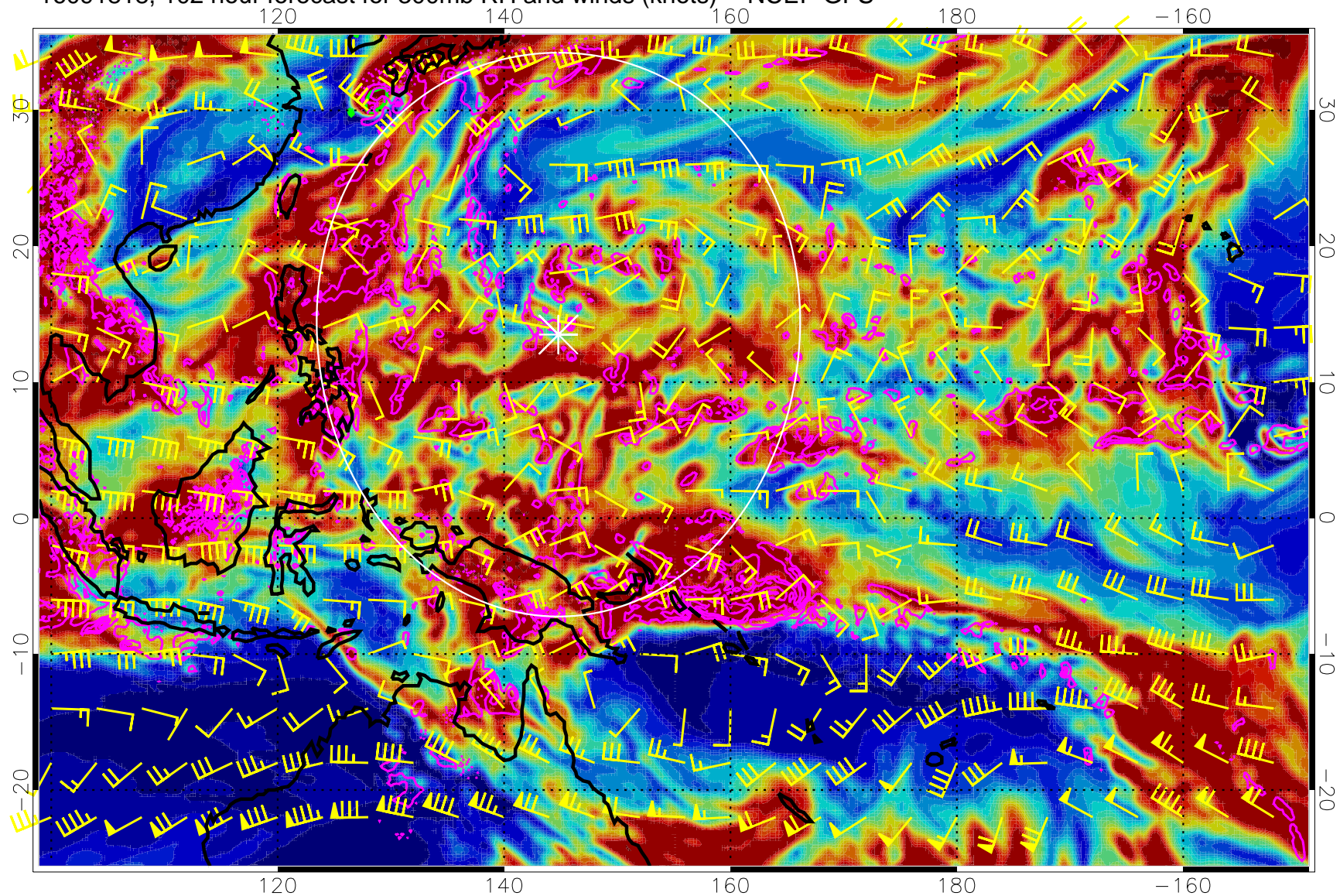


Precip (tot dot, conv sol) mm/day 40 mm/day contours, min 20

EPV Tropopause (2 PVU) Position

Range ring of 2304 km

16091818, 102 hour forecast for 300mb RH and winds (knots) -- NCEP GFS



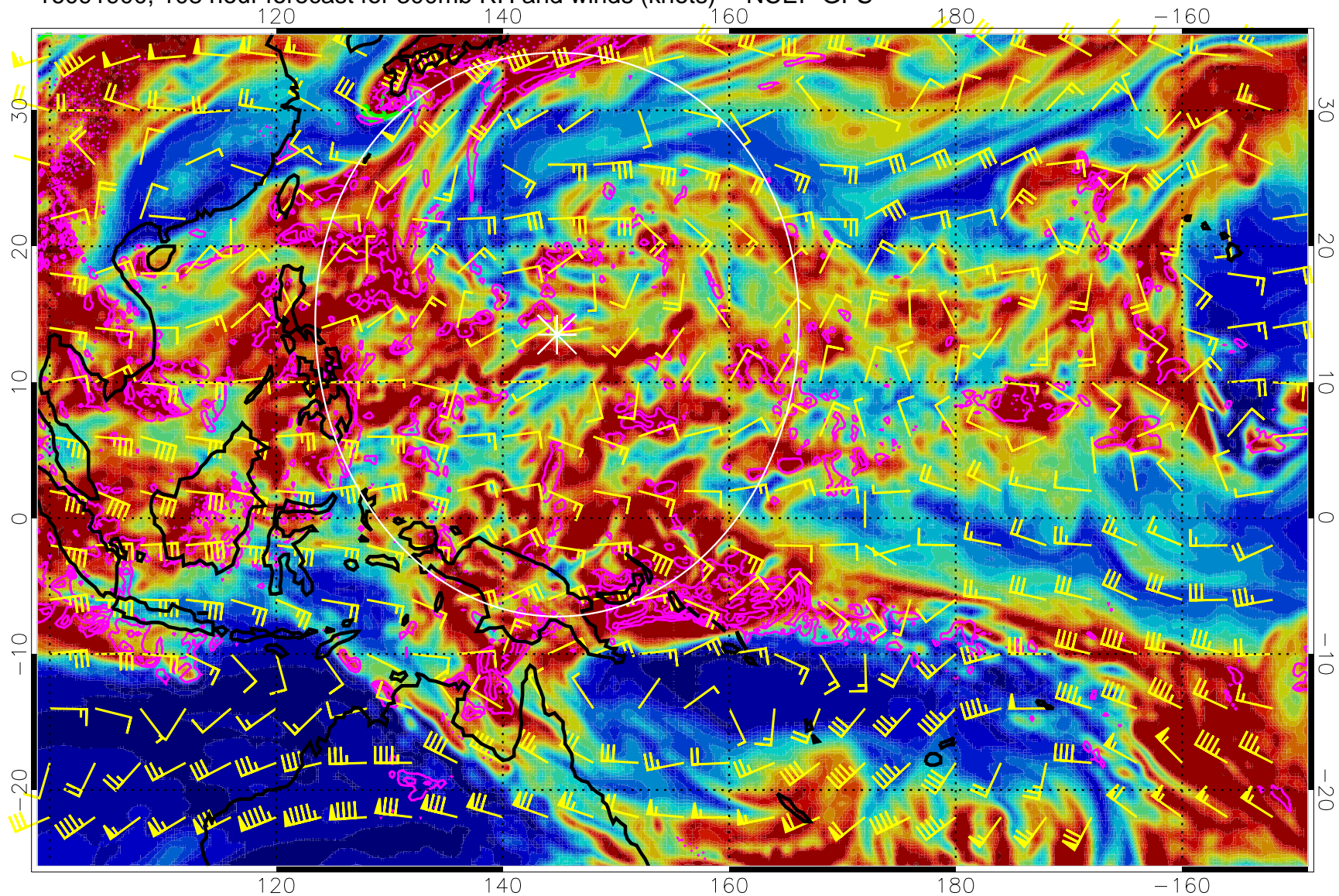
0 20 40 60 80 100
RH, %

Precip (tot dot, conv sol) mm/day 40 mm/day contours, min 20

EPV Tropopause (2 PVU) Position

Range ring of 2304 km

16091900, 108 hour forecast for 300mb RH and winds (knots) -- NCEP GFS



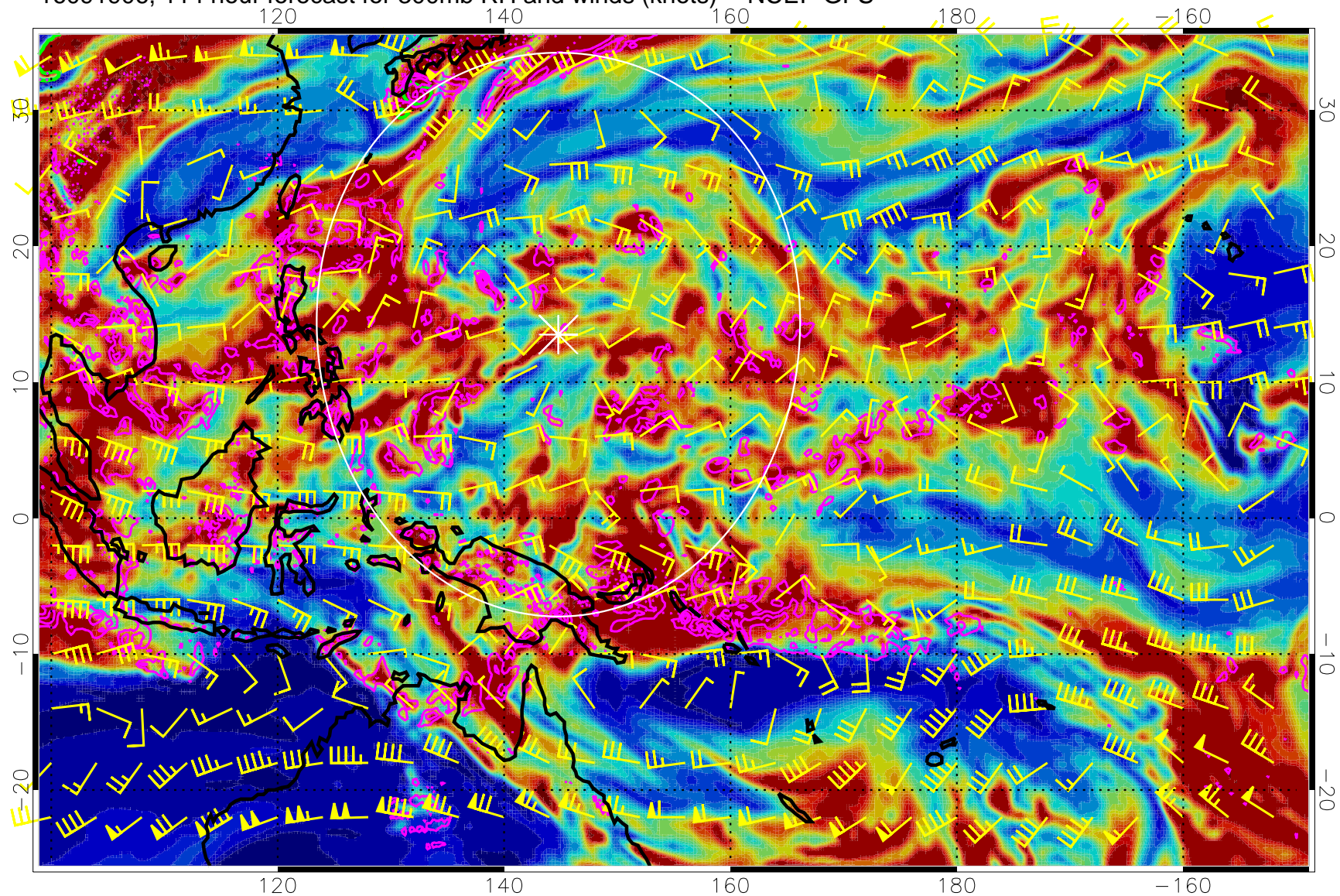
0 20 40 60 80 100
RH, %

Precip (tot dot, conv sol) mm/day 40 mm/day contours, min 20

EPV Tropopause (2 PVU) Position

Range ring of 2304 km

16091906, 114 hour forecast for 300mb RH and winds (knots) -- NCEP GFS



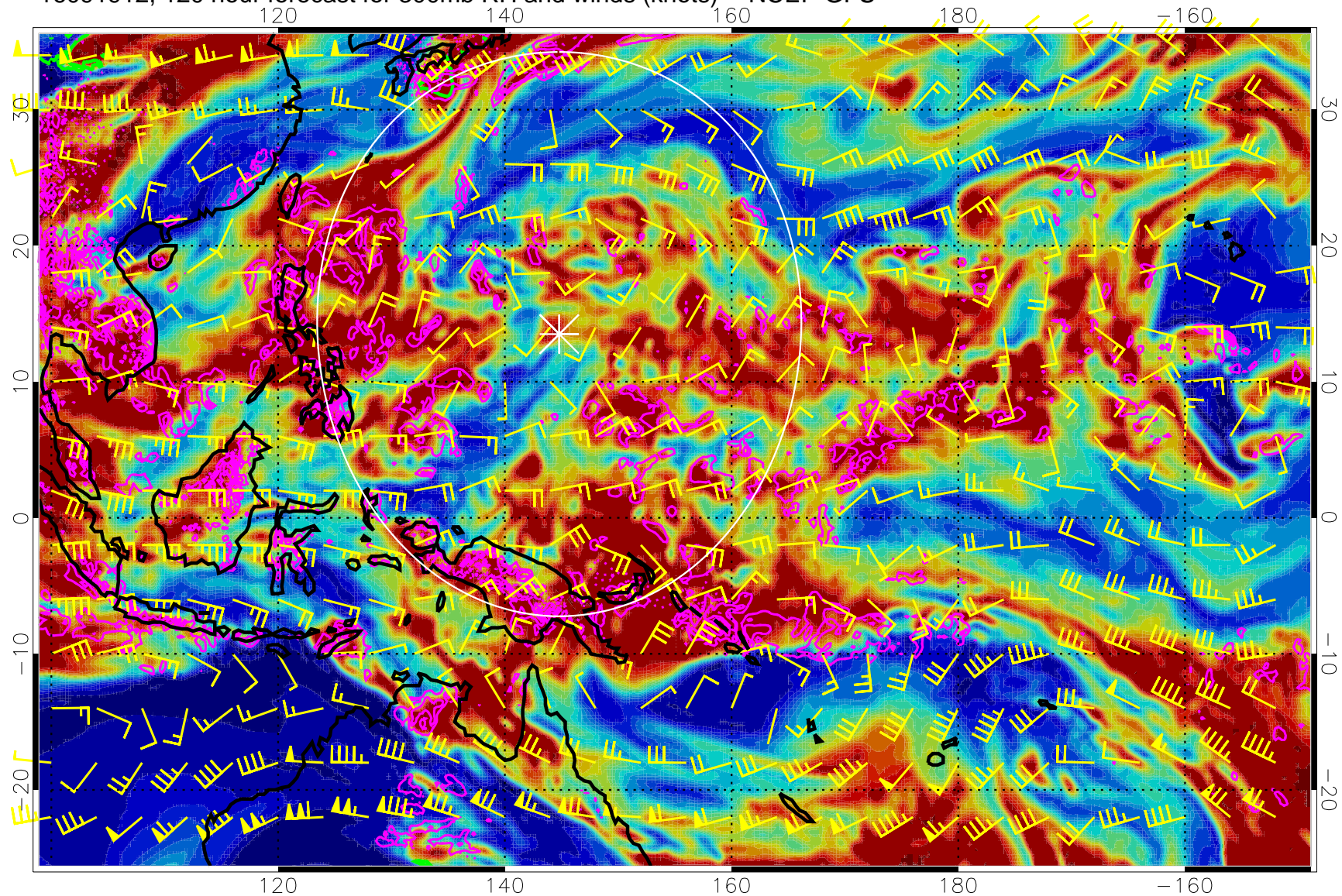
0 20 40 60 80 100
RH, %

Precip (tot dot, conv sol) mm/day 40 mm/day contours, min 20

EPV Tropopause (2 PVU) Position

Range ring of 2304 km

16091912, 120 hour forecast for 300mb RH and winds (knots) -- NCEP GFS



0 20 40 60 80 100
RH, %

Precip (tot dot, conv sol) mm/day 40 mm/day contours, min 20

EPV Tropopause (2 PVU) Position

Range ring of 2304 km