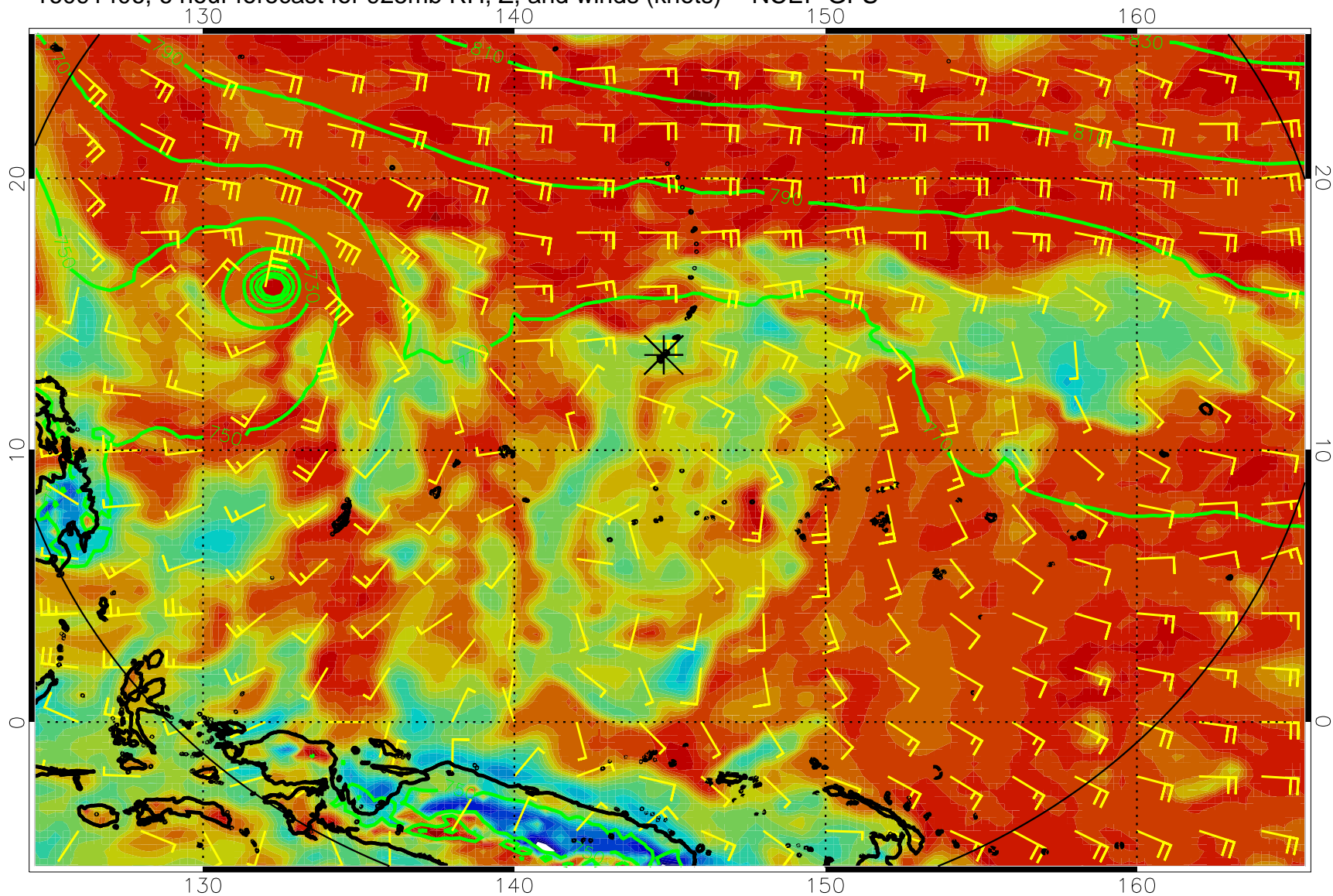
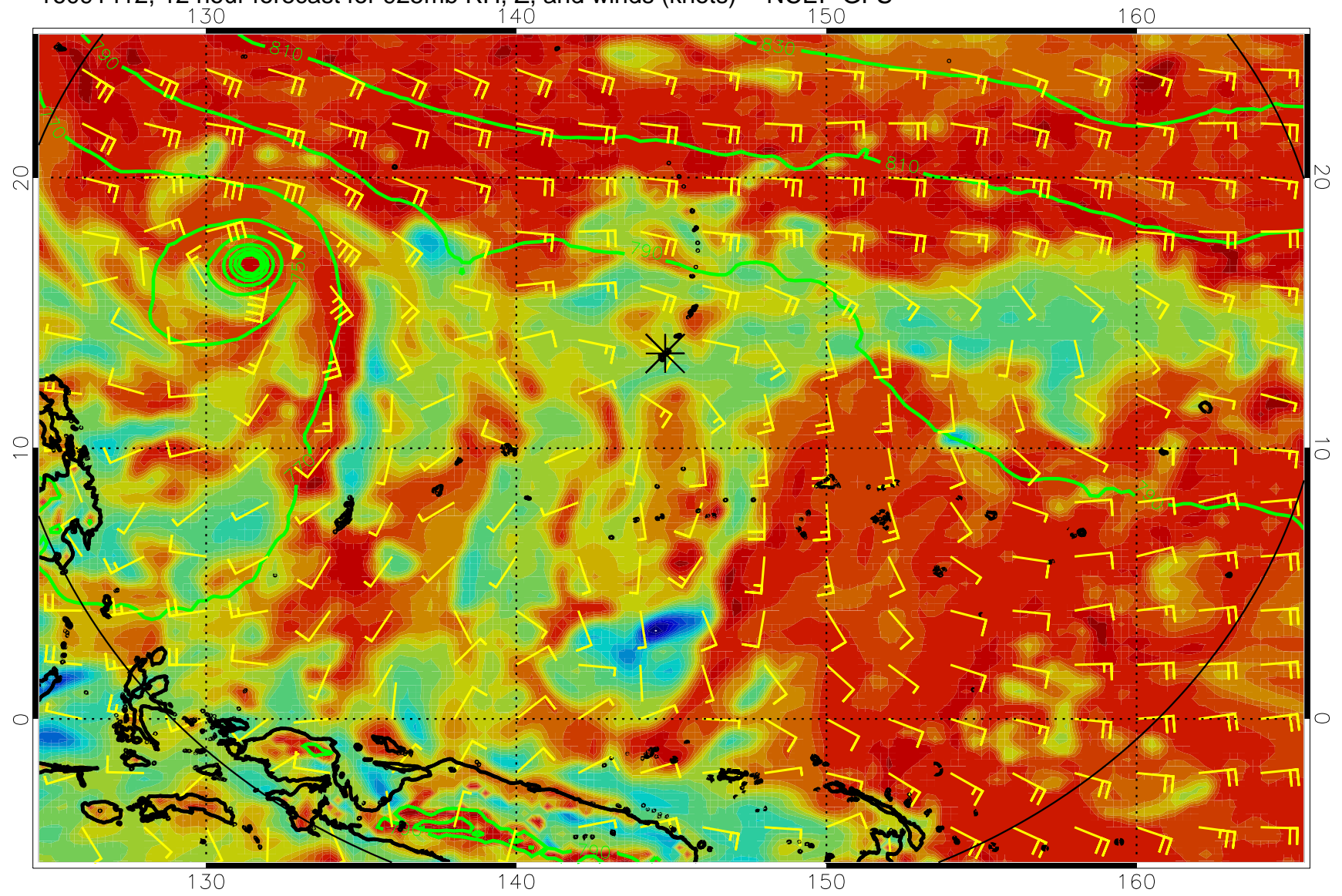


16091406, 6 hour forecast for 925mb RH, Z, and winds (knots) -- NCEP GFS

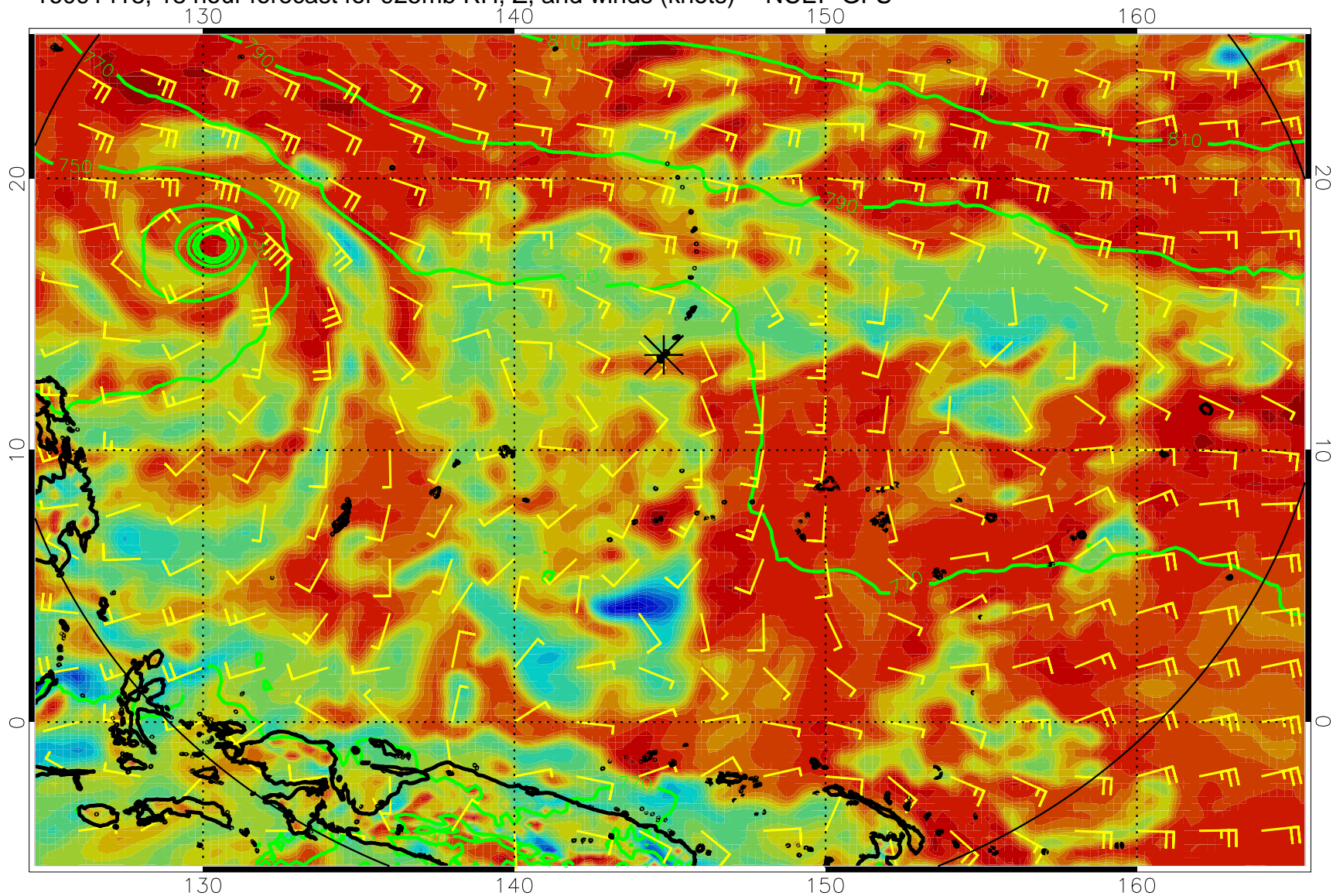


16091412, 12 hour forecast for 925mb RH, Z, and winds (knots) -- NCEP GFS

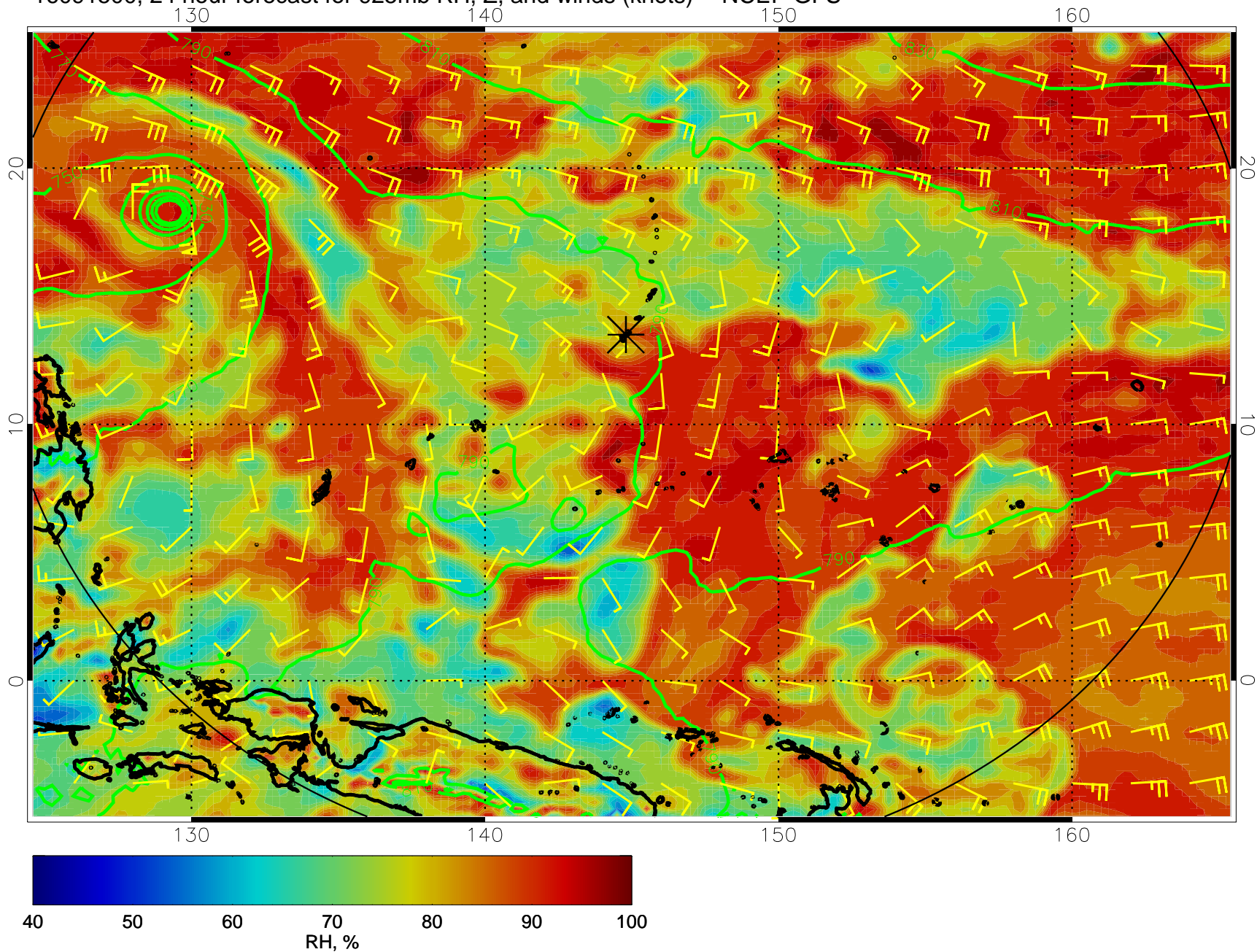




16091418, 18 hour forecast for 925mb RH, Z, and winds (knots) -- NCEP GFS

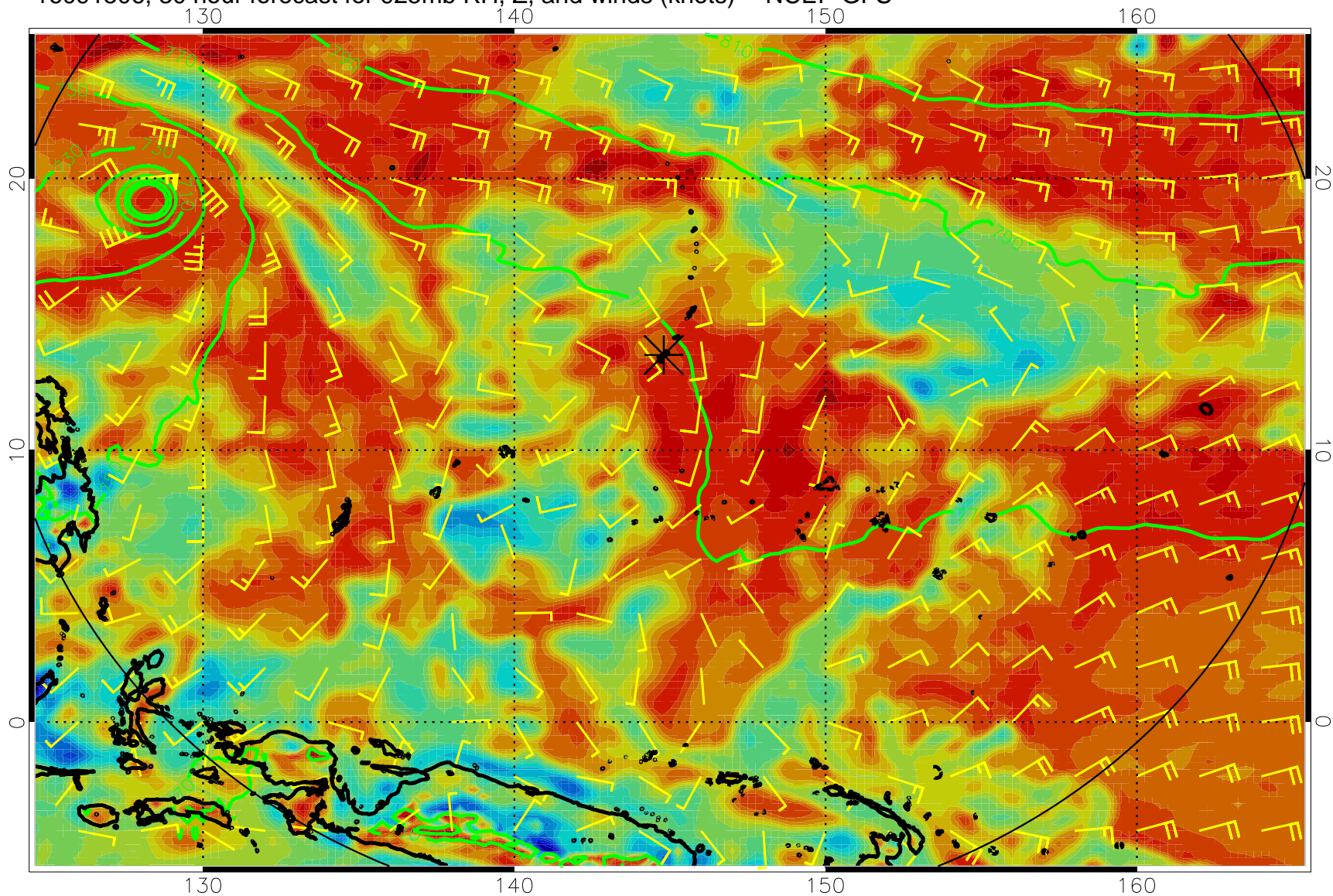


16091500, 24 hour forecast for 925mb RH, Z, and winds (knots) -- NCEP GFS

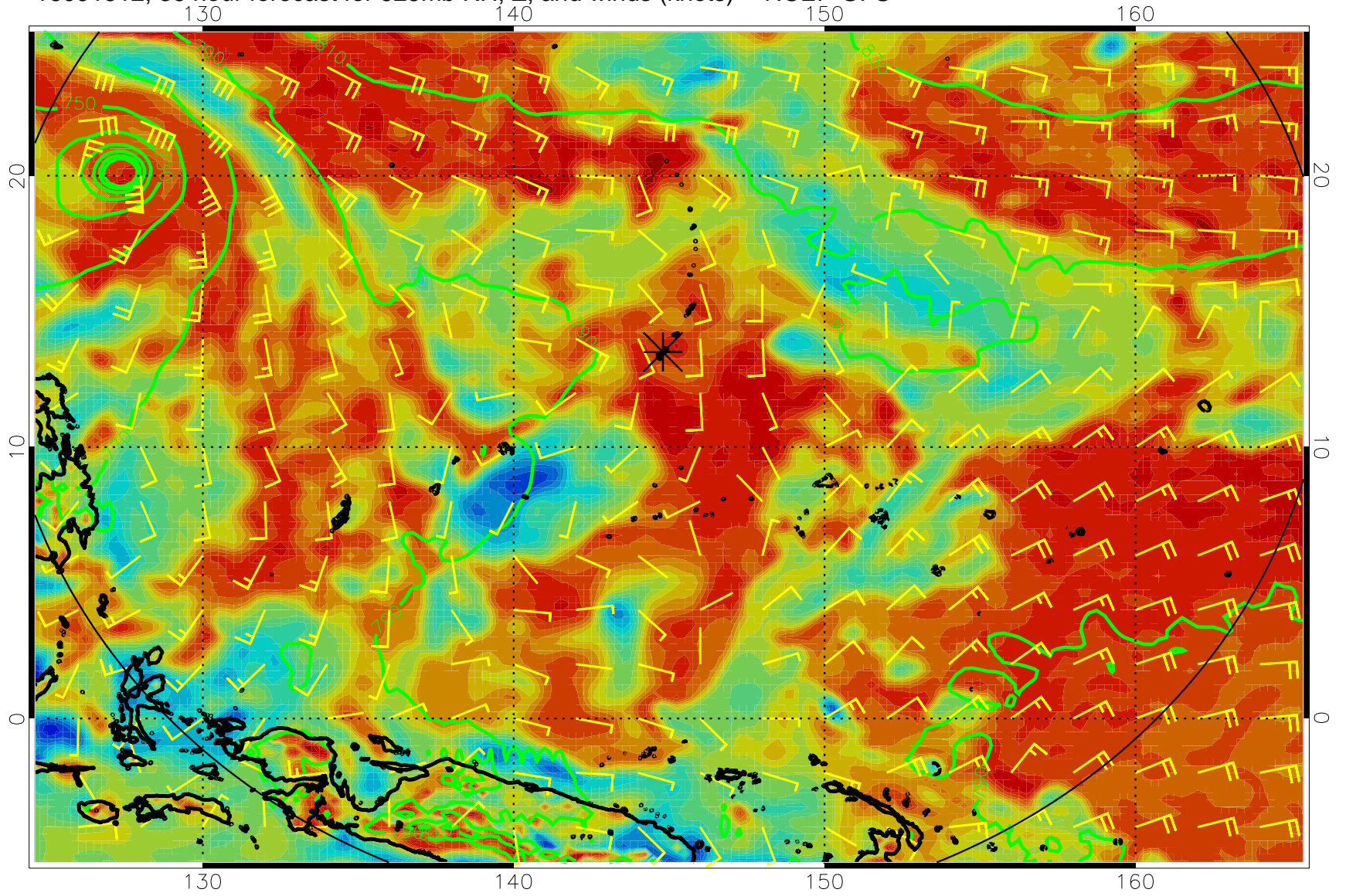




16091506, 30 hour forecast for 925mb RH, Z, and winds (knots) -- NCEP GFS

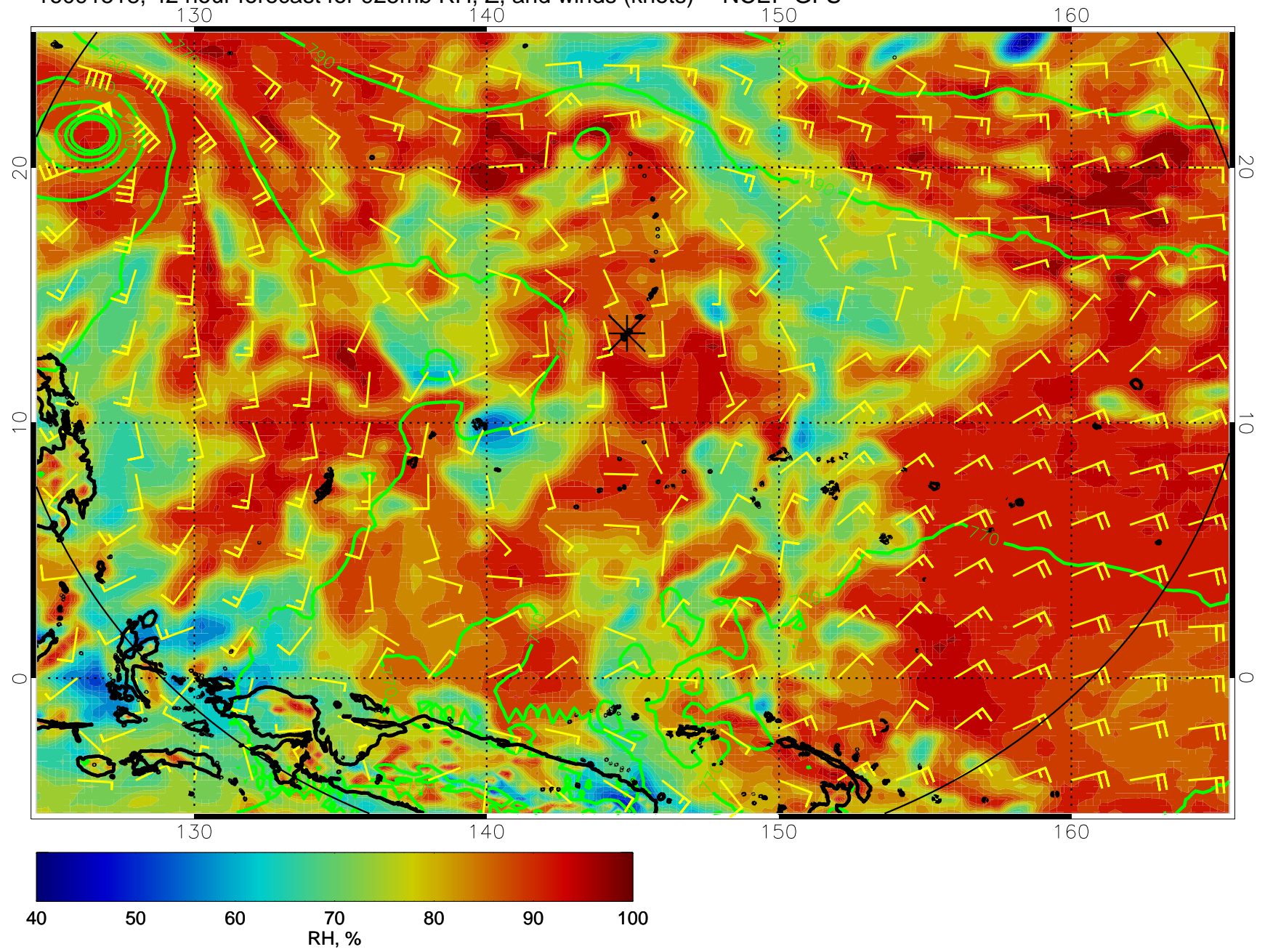


16091512, 36 hour forecast for 925mb RH, Z, and winds (knots) -- NCEP GFS

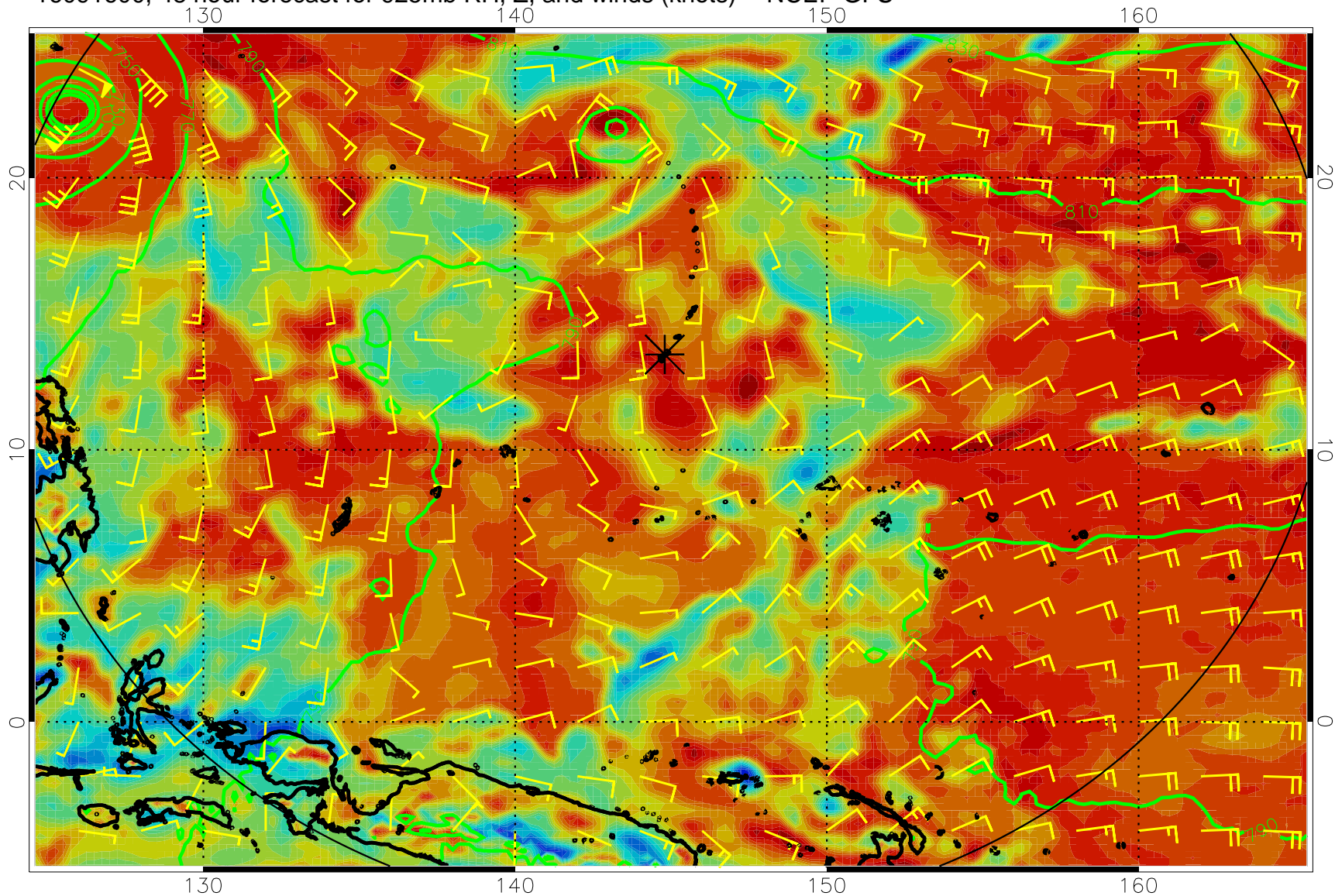




16091518, 42 hour forecast for 925mb RH, Z, and winds (knots) -- NCEP GFS

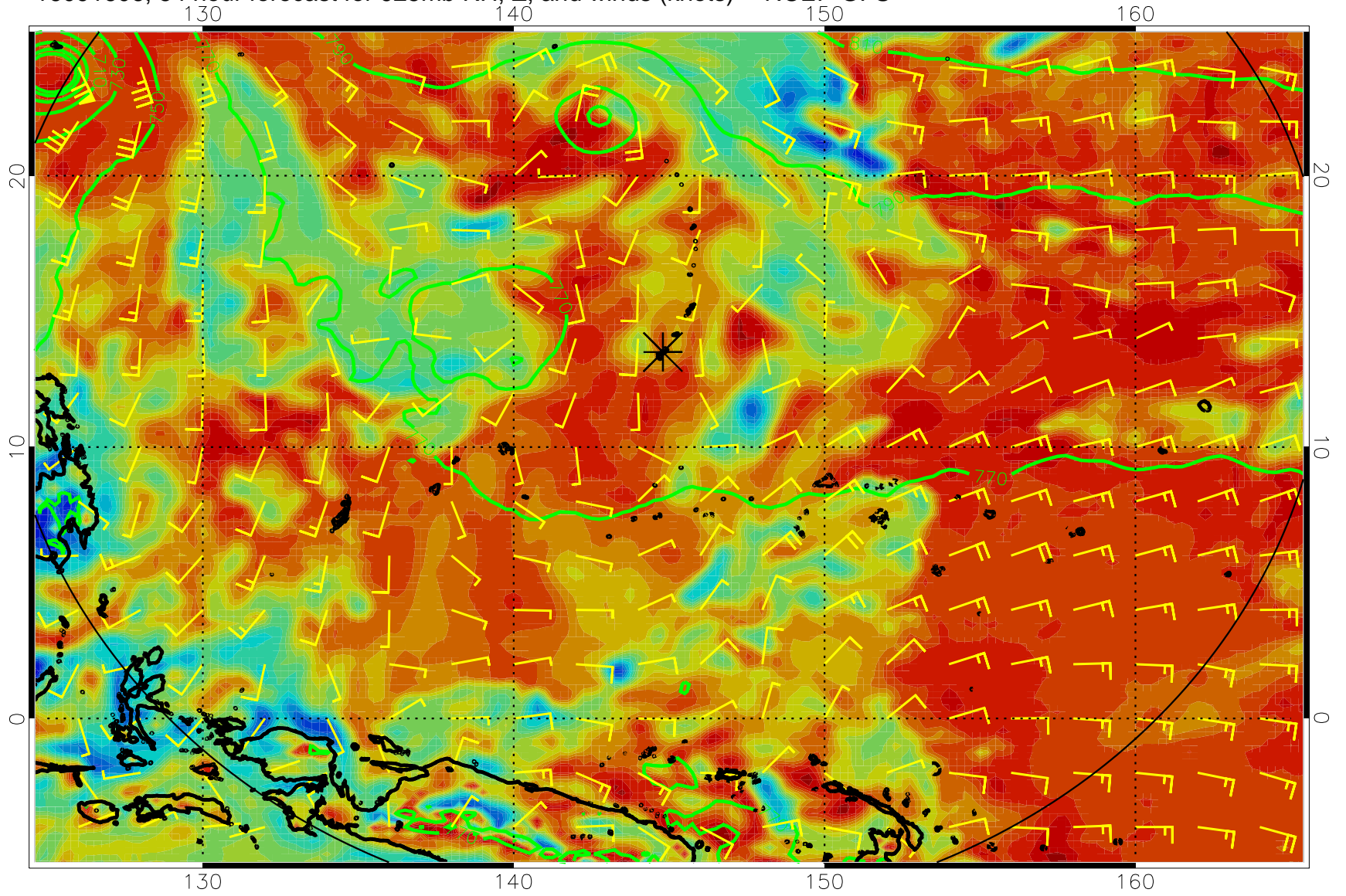


16091600, 48 hour forecast for 925mb RH, Z, and winds (knots) -- NCEP GFS

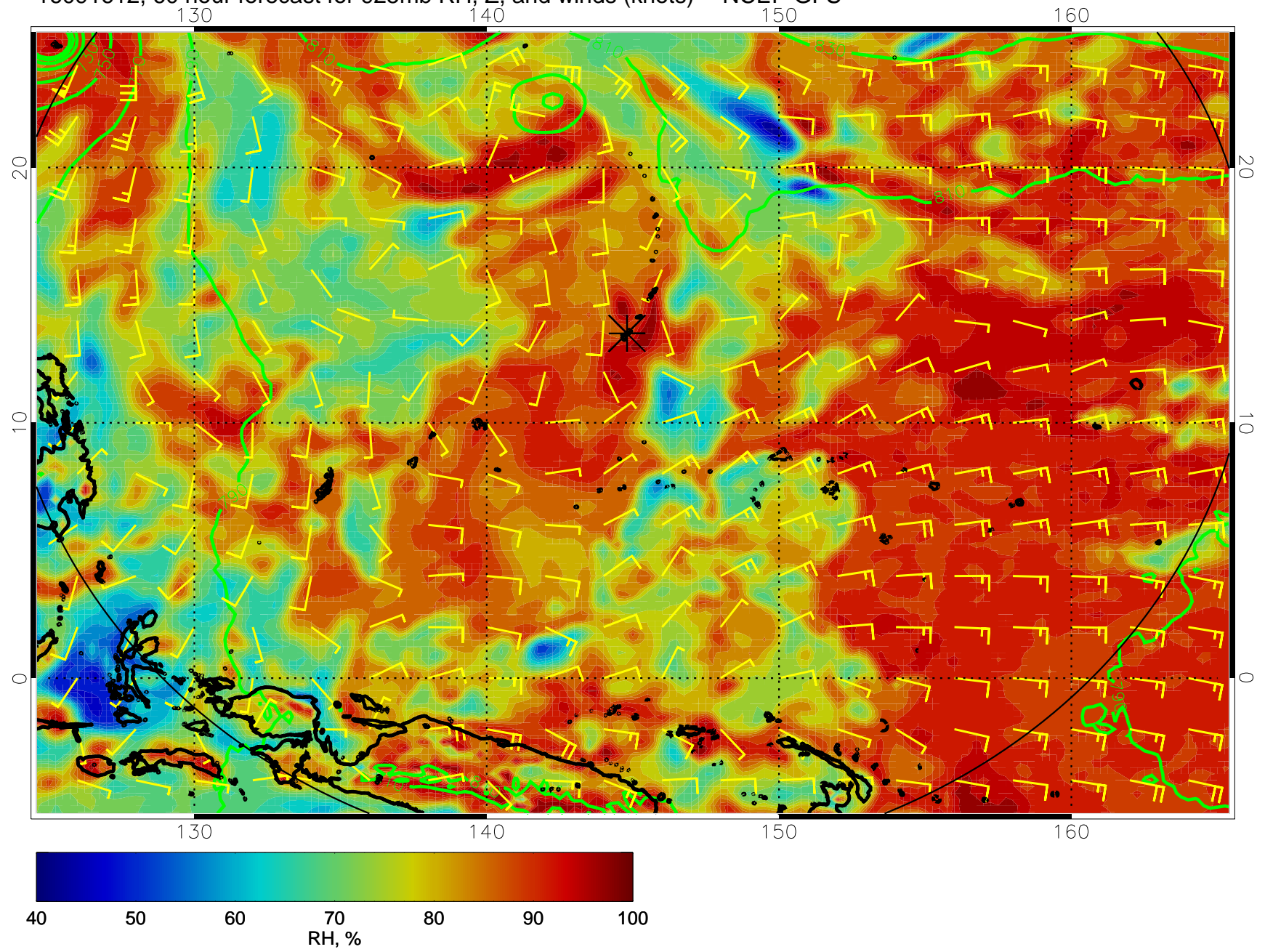




16091606, 54 hour forecast for 925mb RH, Z, and winds (knots) -- NCEP GFS

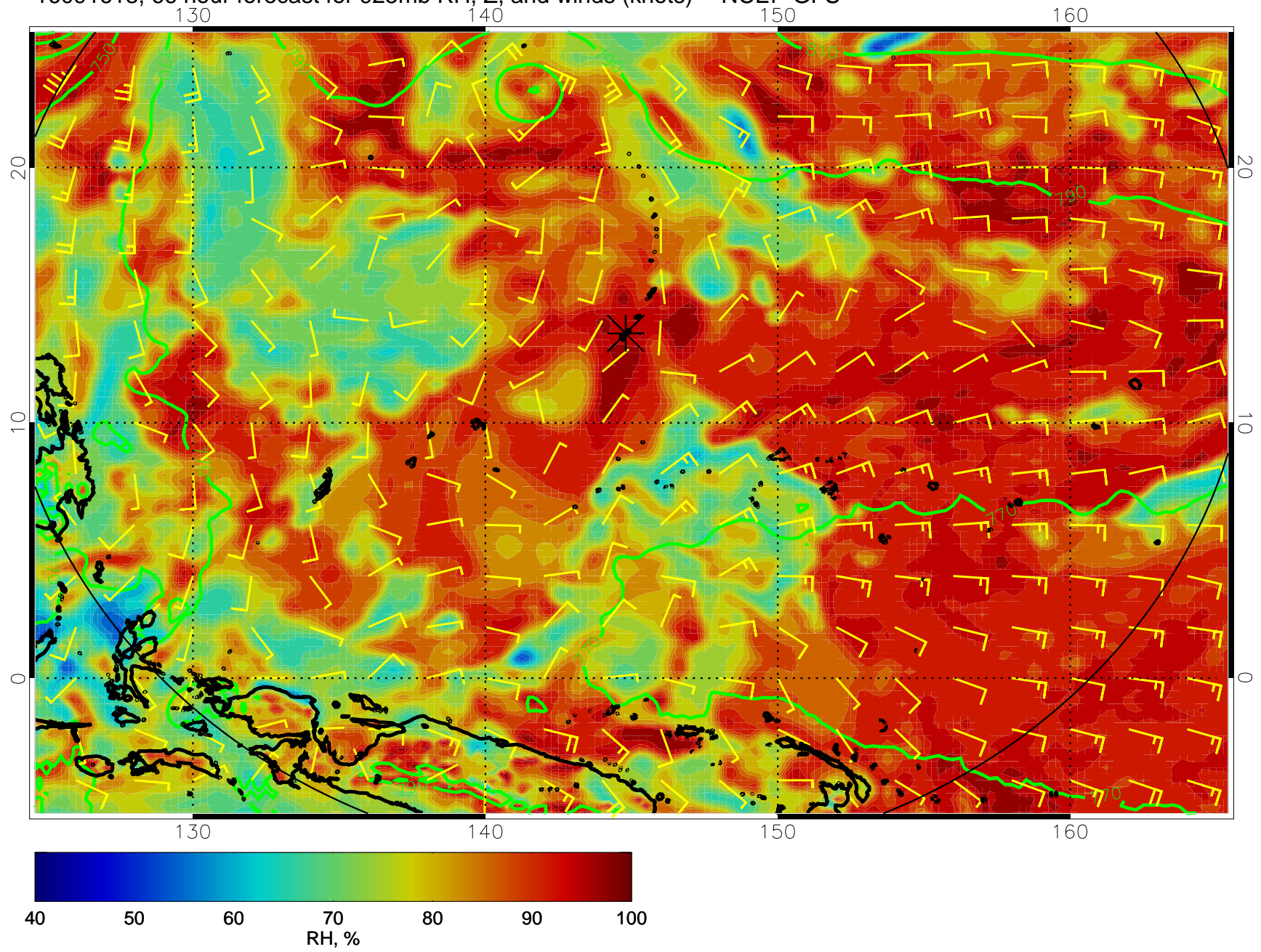


16091612, 60 hour forecast for 925mb RH, Z, and winds (knots) -- NCEP GFS

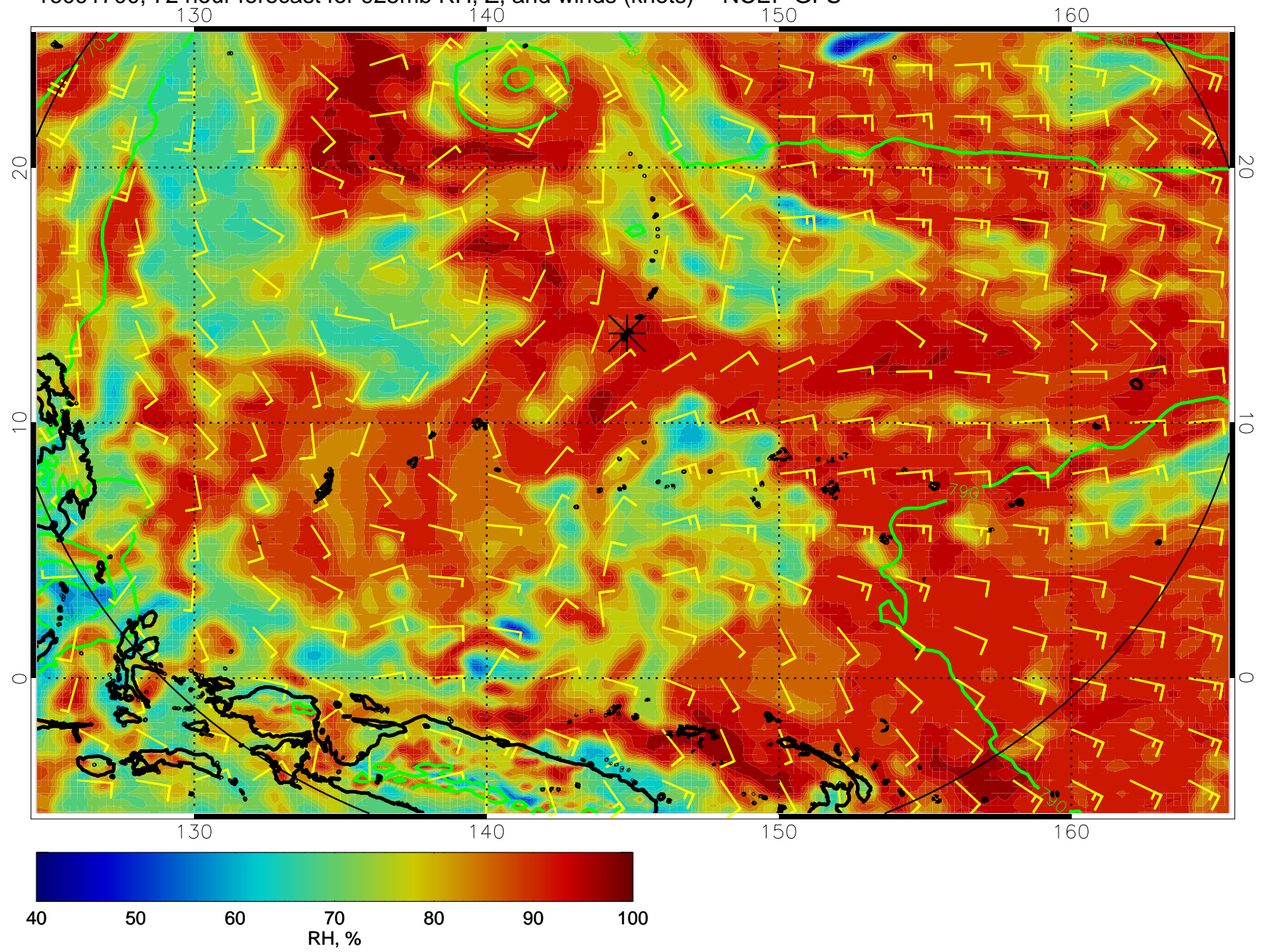




16091618, 66 hour forecast for 925mb RH, Z, and winds (knots) -- NCEP GFS

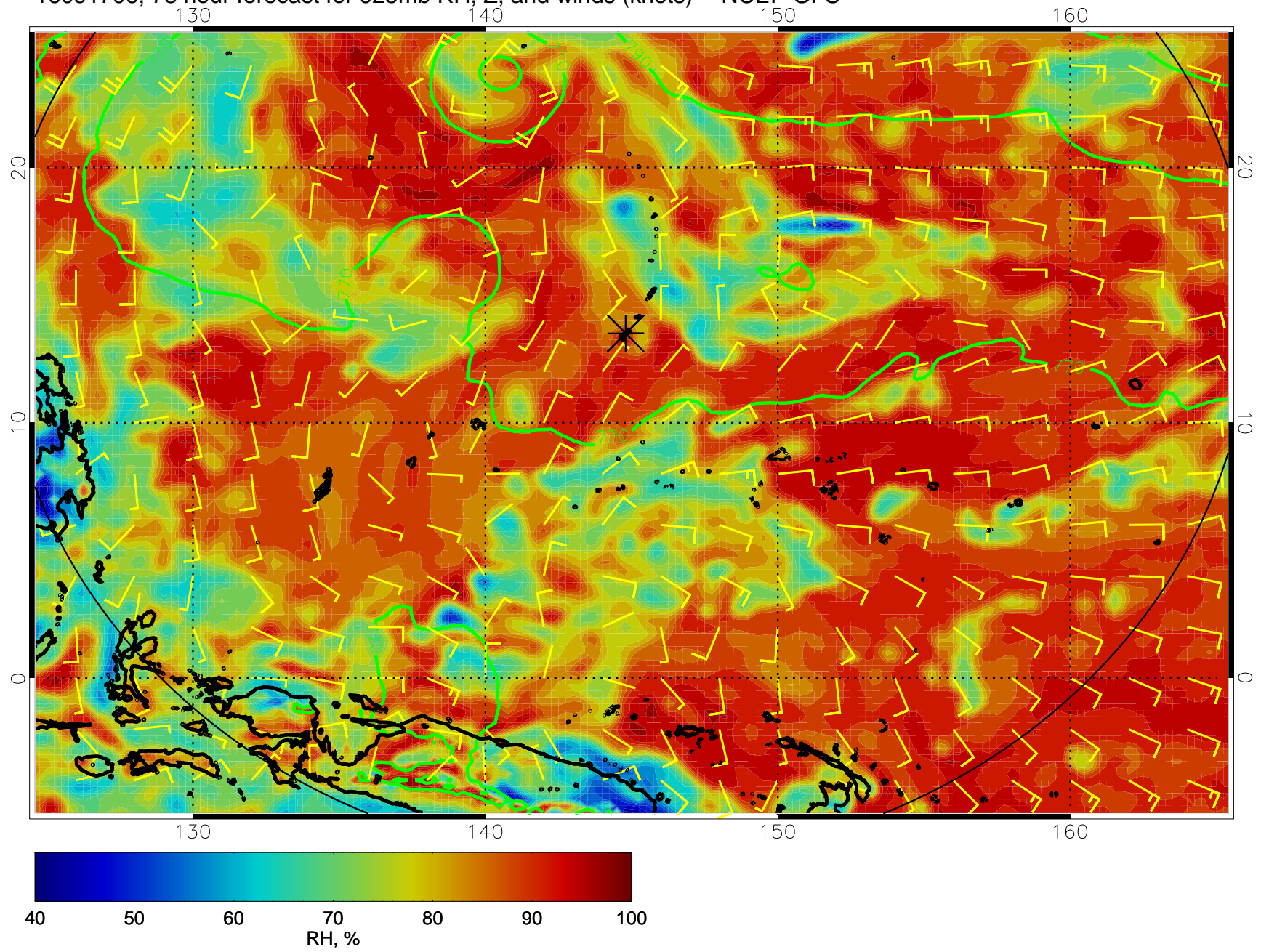


16091700, 72 hour forecast for 925mb RH, Z, and winds (knots) -- NCEP GFS

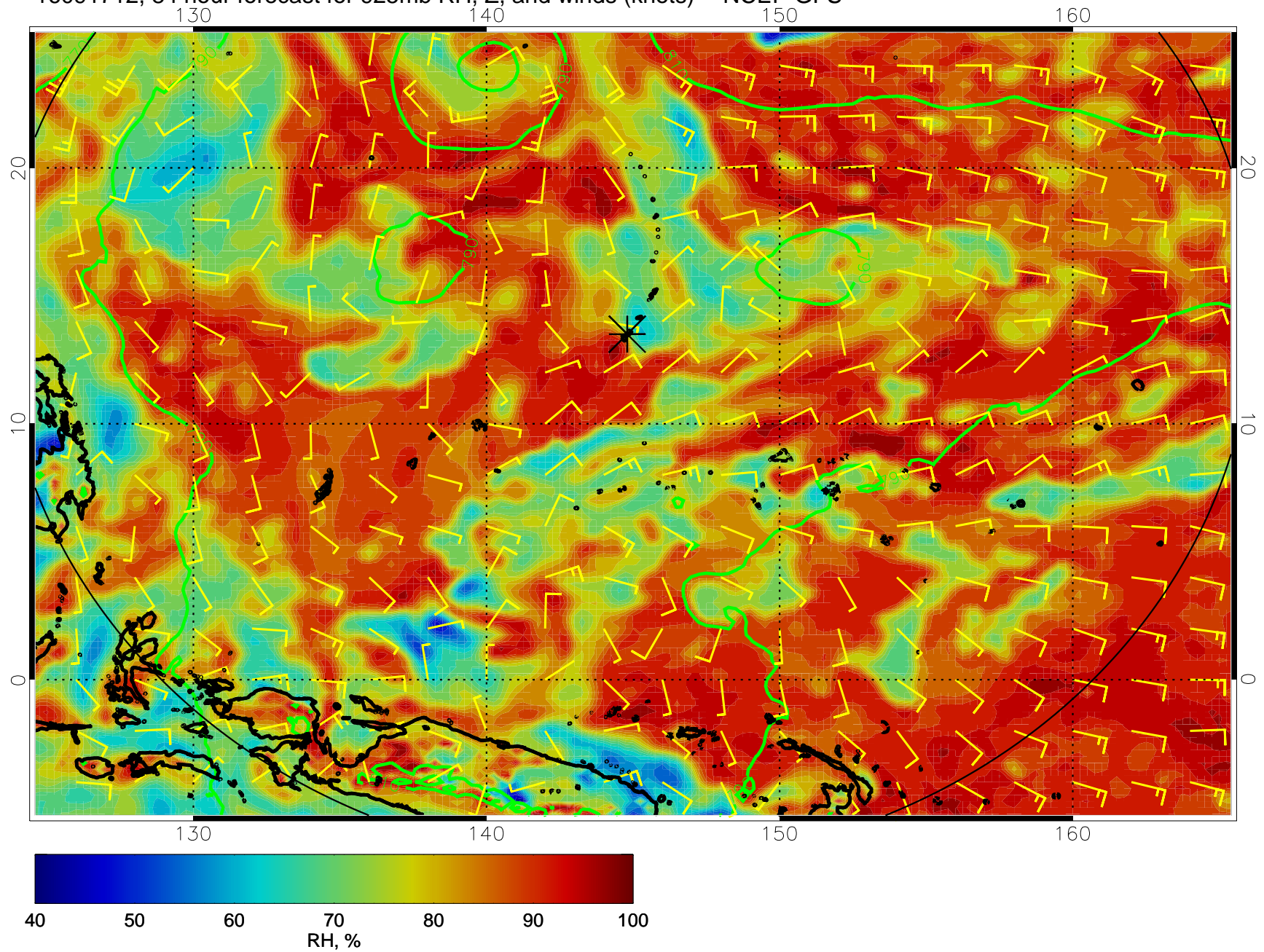




16091706, 78 hour forecast for 925mb RH, Z, and winds (knots) -- NCEP GFS

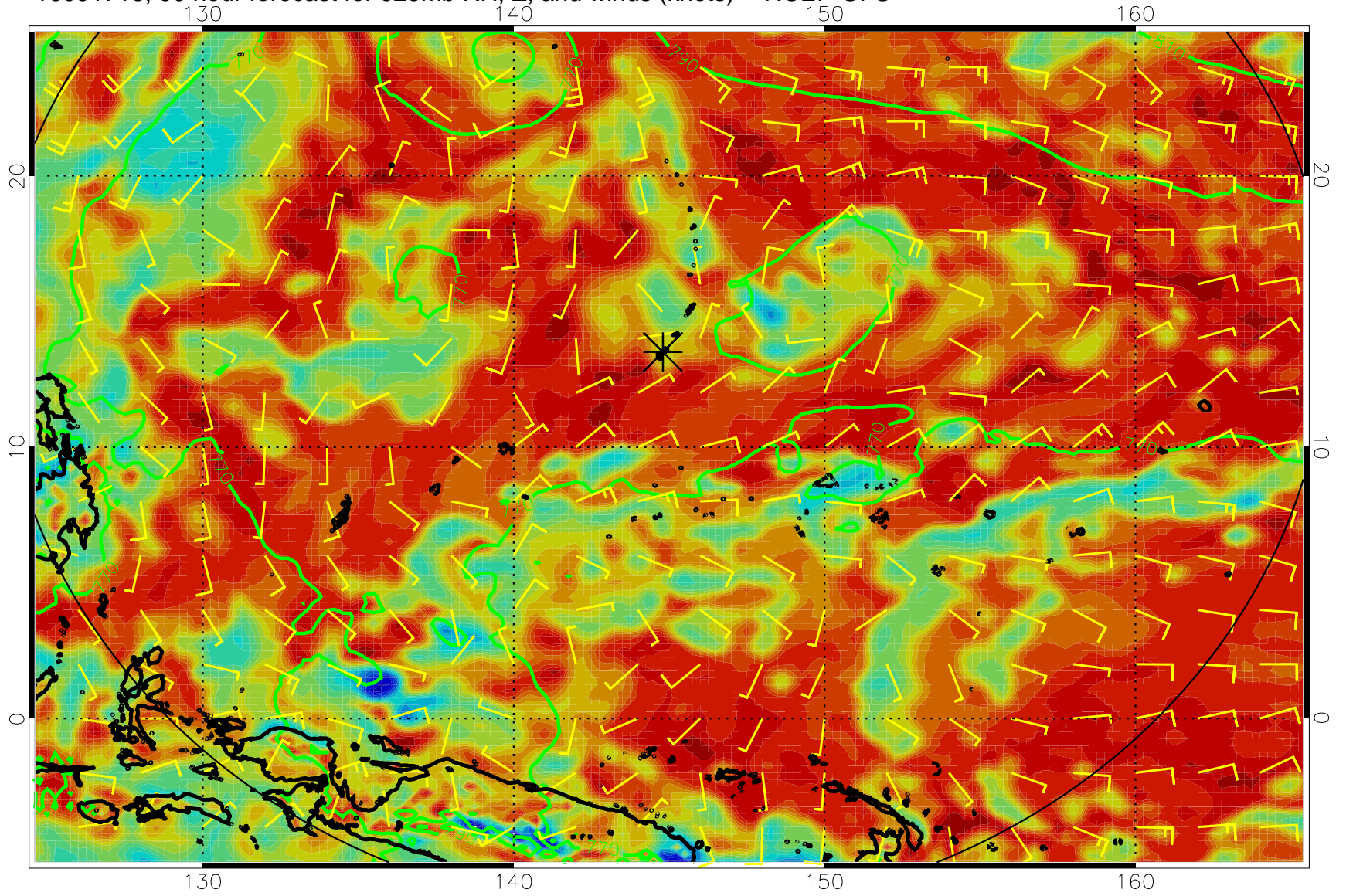


16091712, 84 hour forecast for 925mb RH, Z, and winds (knots) -- NCEP GFS

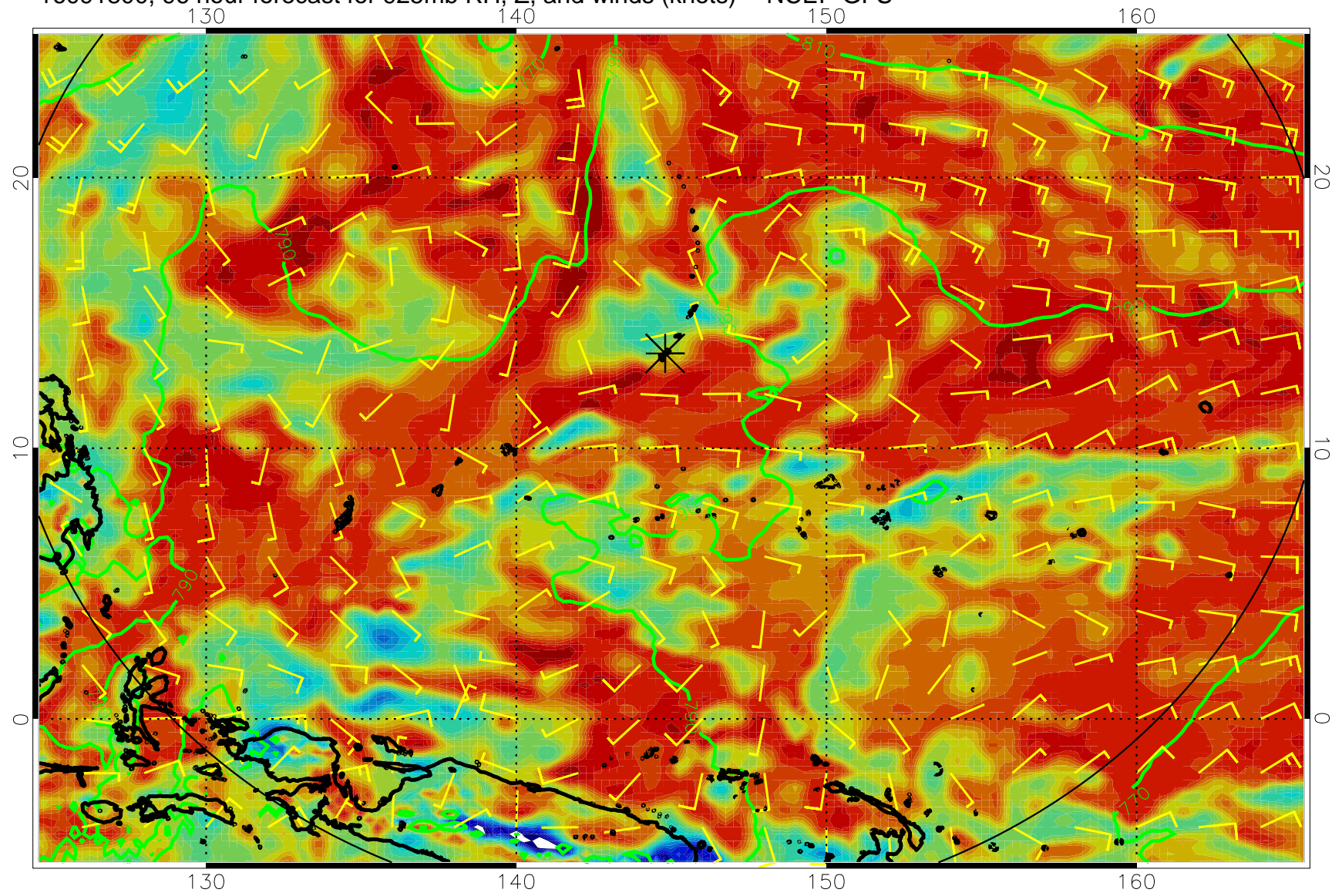




16091718, 90 hour forecast for 925mb RH, Z, and winds (knots) -- NCEP GFS

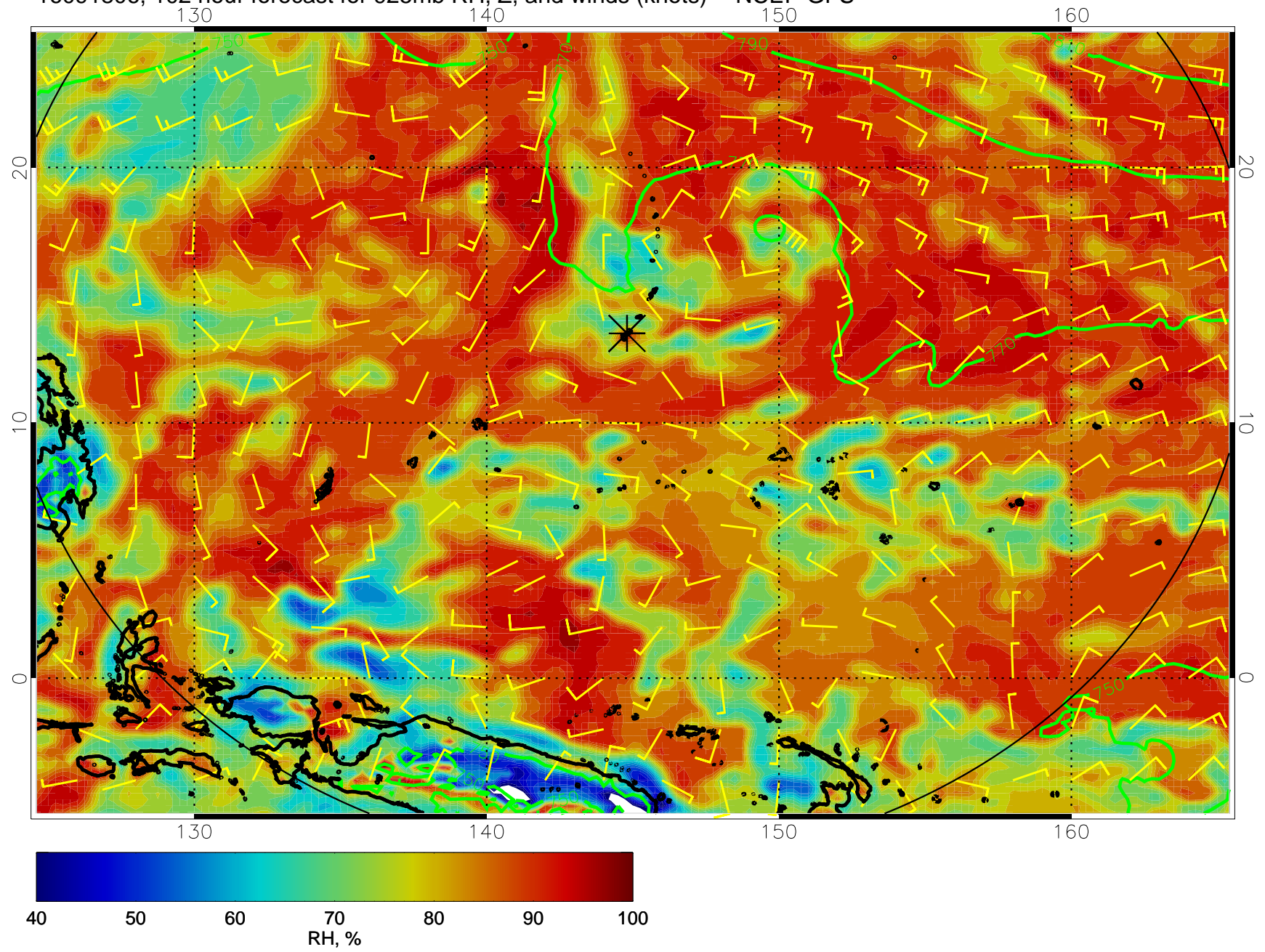


16091800, 96 hour forecast for 925mb RH, Z, and winds (knots) -- NCEP GFS

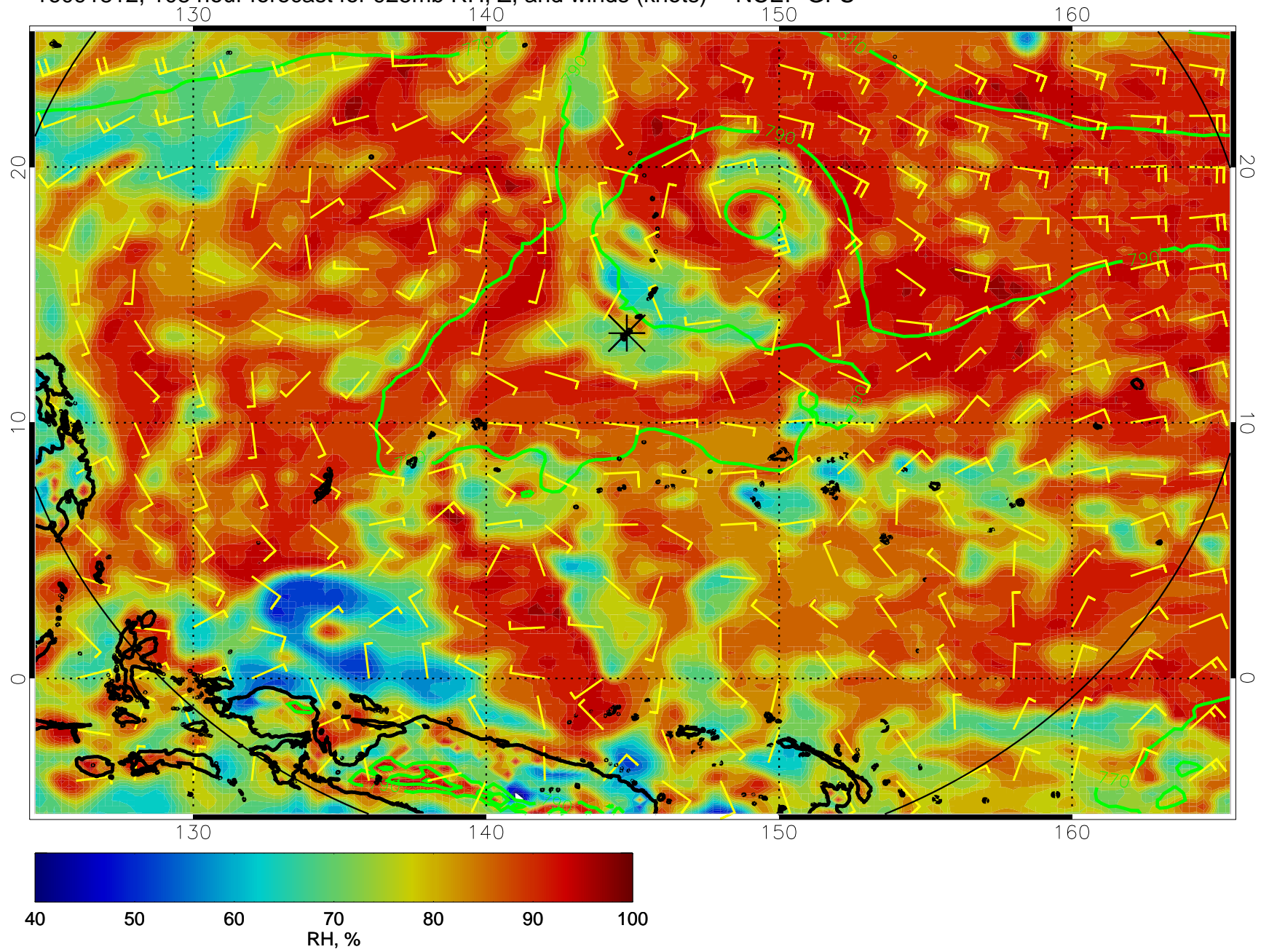




16091806, 102 hour forecast for 925mb RH, Z, and winds (knots) -- NCEP GFS

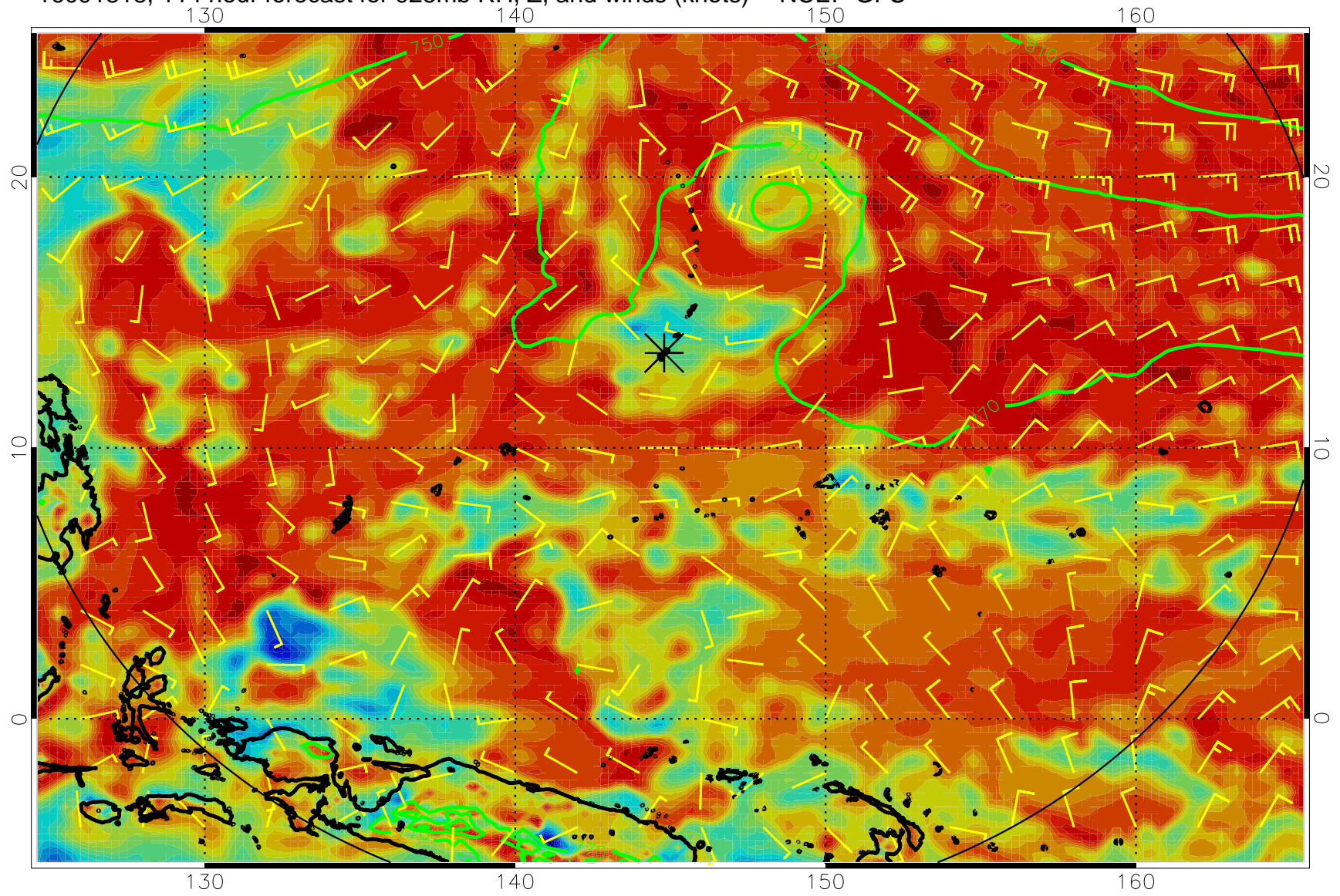


16091812, 108 hour forecast for 925mb RH, Z, and winds (knots) -- NCEP GFS





16091818, 114 hour forecast for 925mb RH, Z, and winds (knots) -- NCEP GFS



16091900, 120 hour forecast for 925mb RH, Z, and winds (knots) -- NCEP GFS

