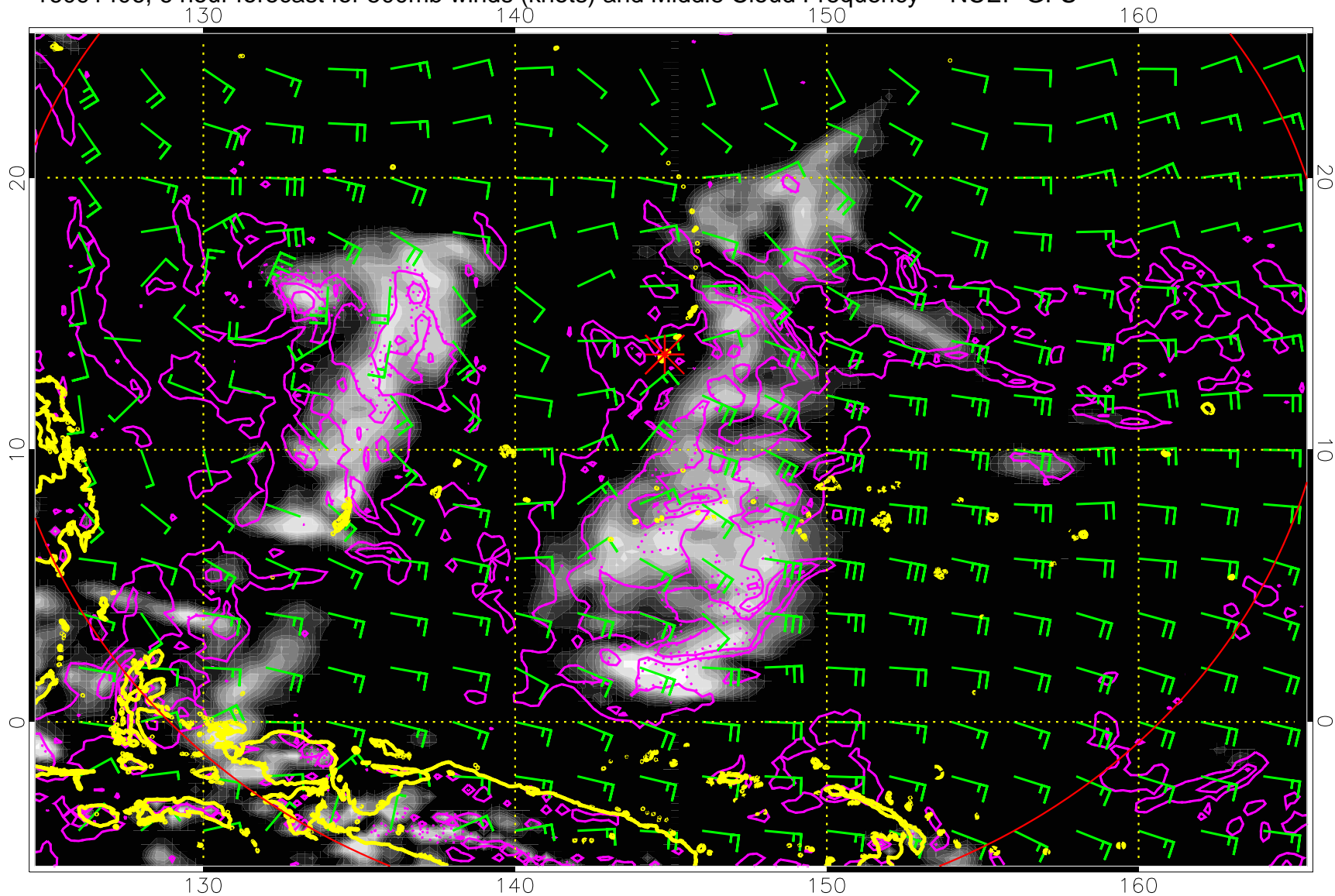
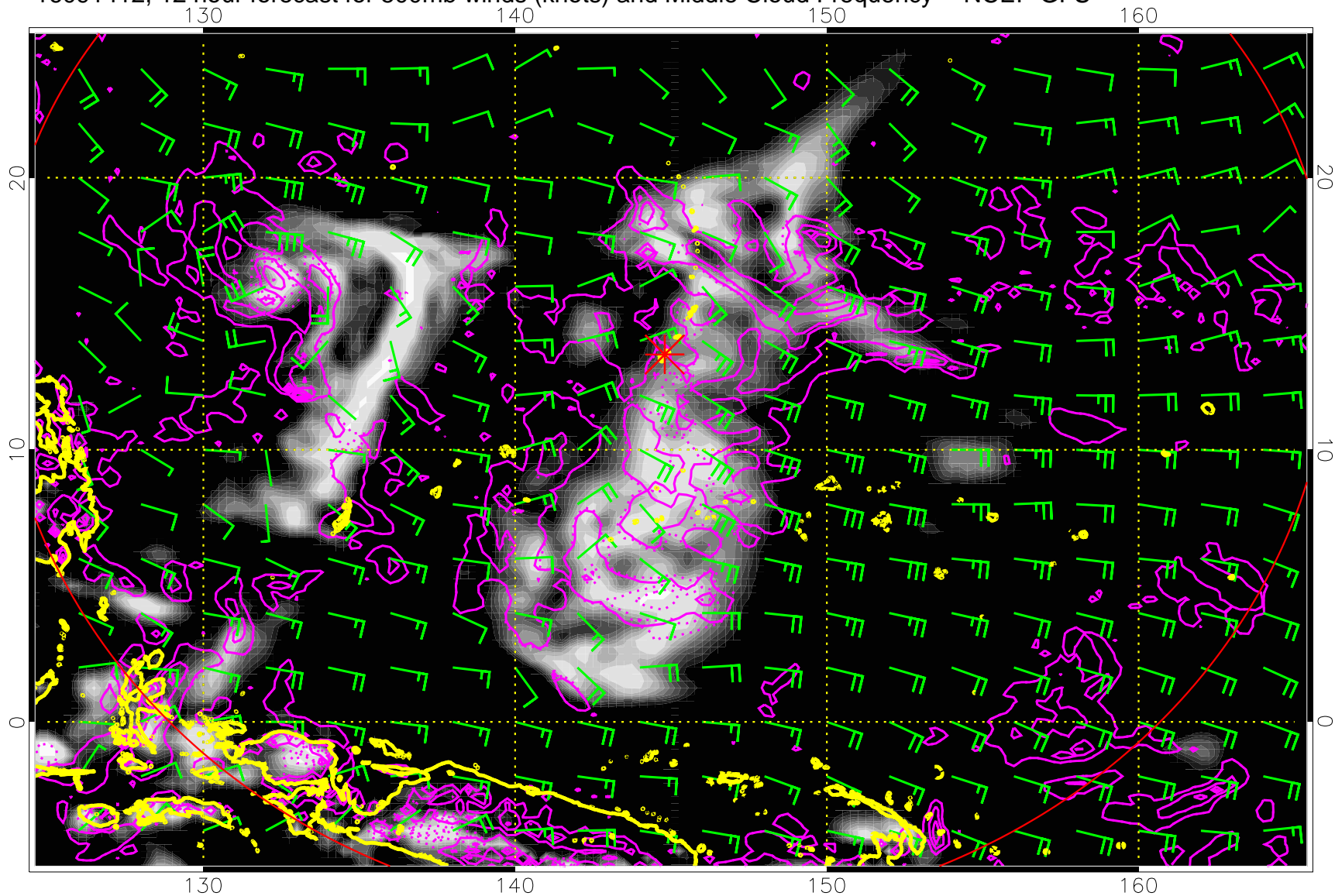


16091406, 6 hour forecast for 500mb winds (knots) and Middle Cloud Frequency -- NCEP GFS



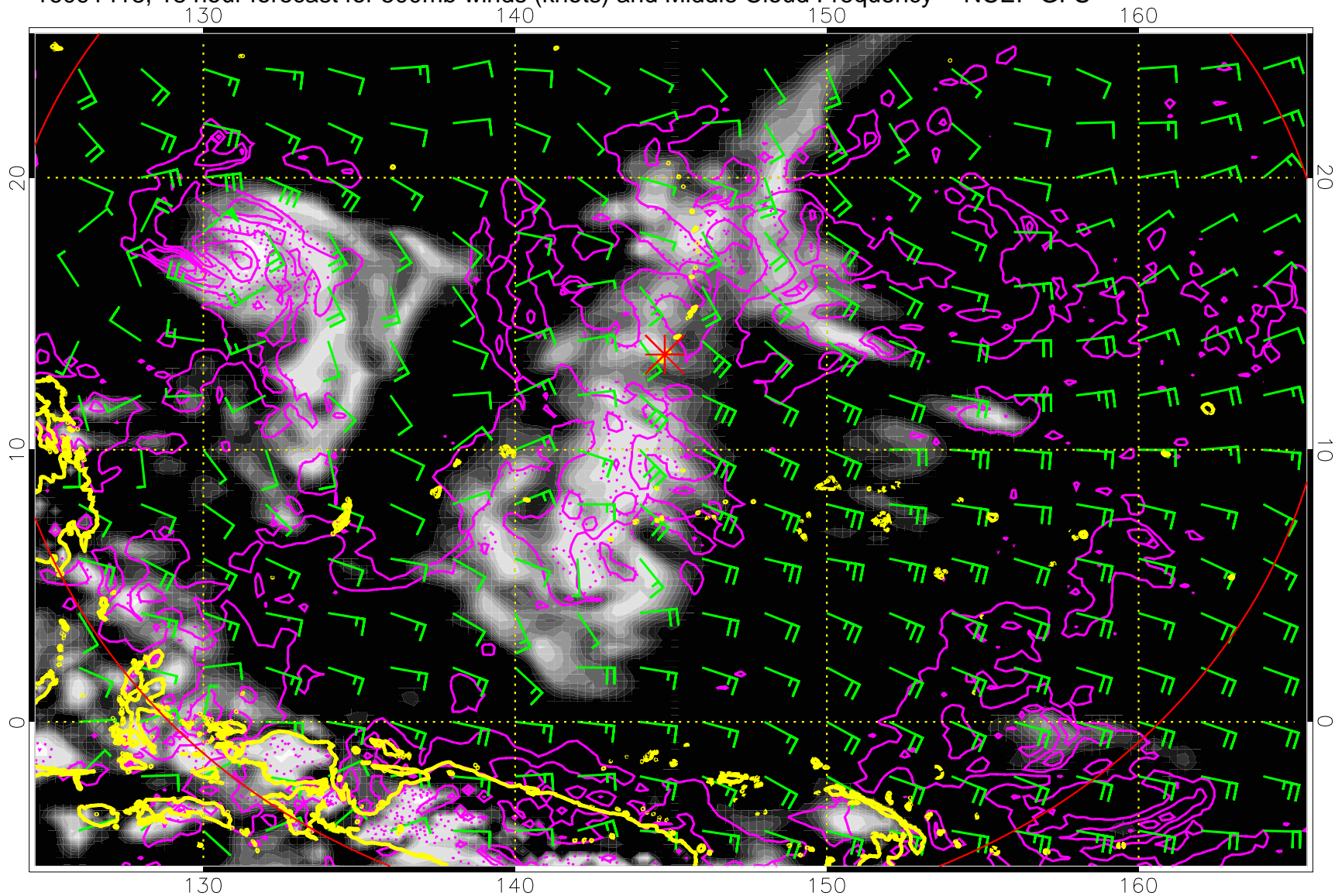
Precip (tot dot, conv sol) mm/day 40 mm/day contours, min 20

16091412, 12 hour forecast for 500mb winds (knots) and Middle Cloud Frequency -- NCEP GFS



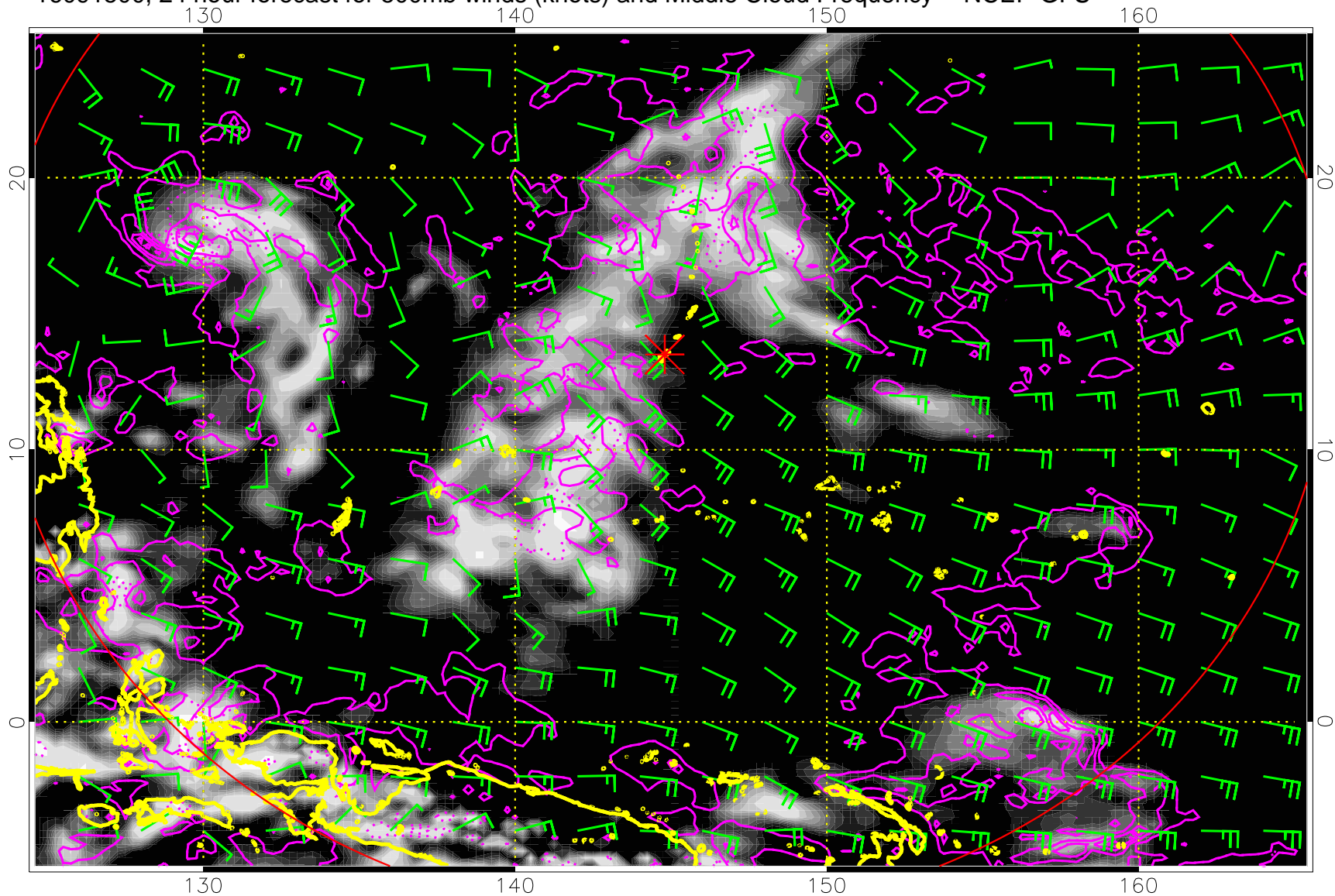
Precip (tot dot, conv sol) mm/day 40 mm/day contours, min 20

16091418, 18 hour forecast for 500mb winds (knots) and Middle Cloud Frequency -- NCEP GFS



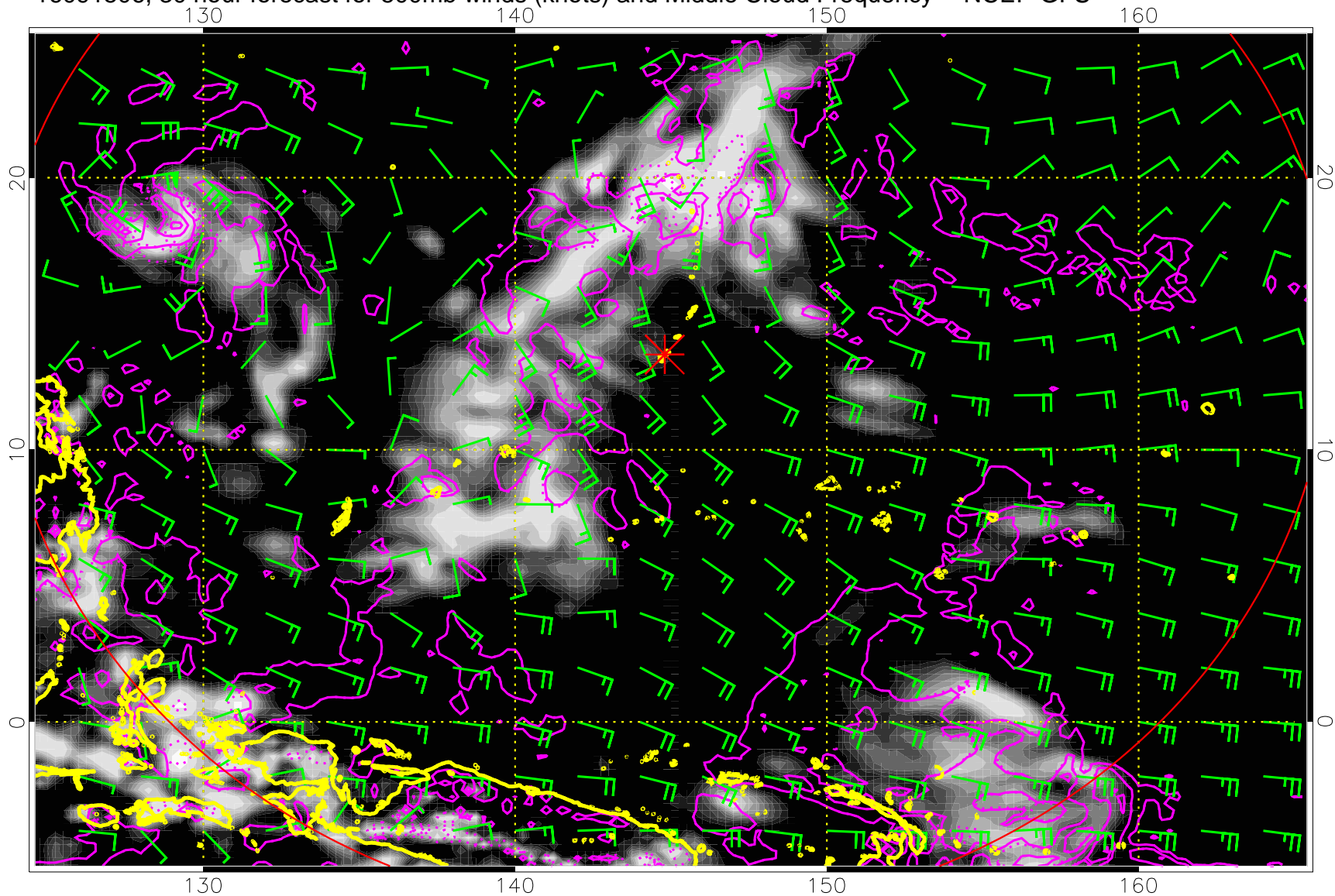
Precip (tot dot, conv sol) mm/day 40 mm/day contours, min 20

16091500, 24 hour forecast for 500mb winds (knots) and Middle Cloud Frequency -- NCEP GFS



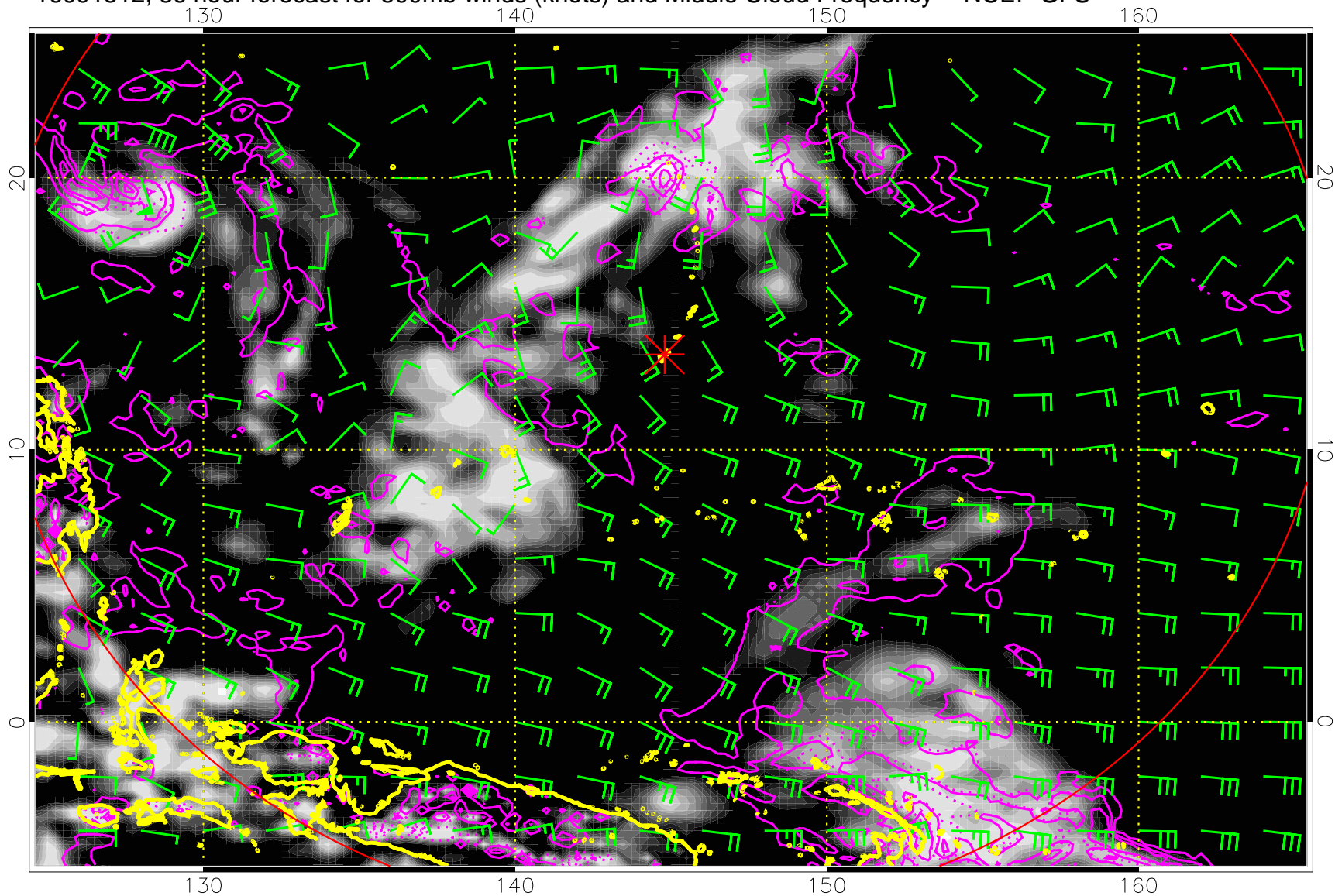
Precip (tot dot, conv sol) mm/day 40 mm/day contours, min 20

16091506, 30 hour forecast for 500mb winds (knots) and Middle Cloud Frequency -- NCEP GFS



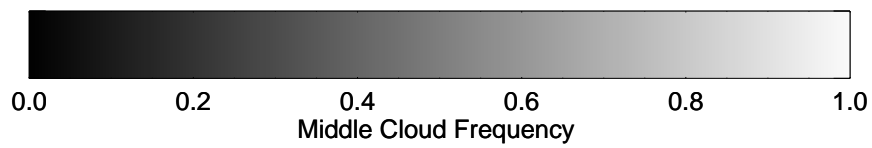
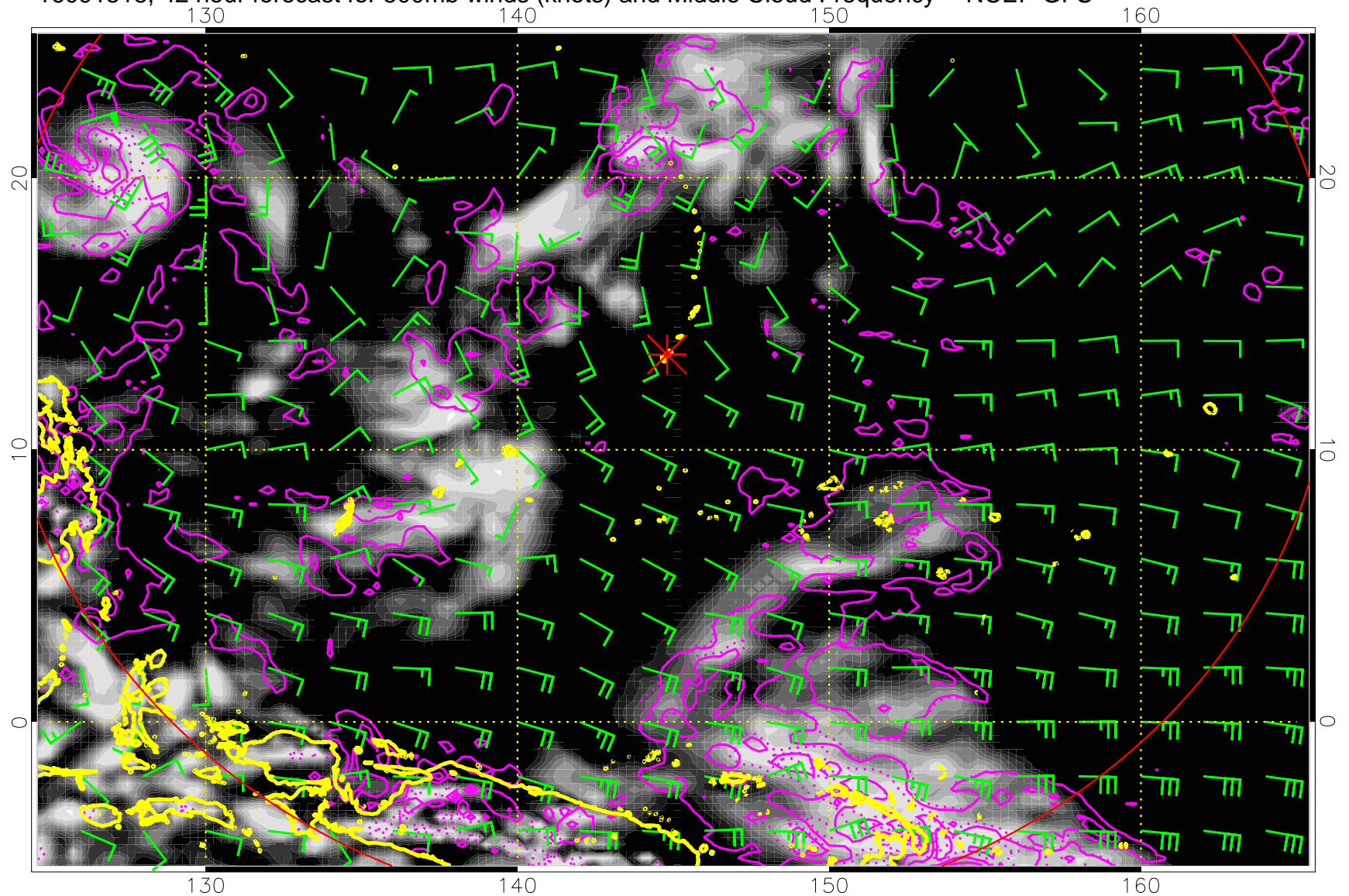
Precip (tot dot, conv sol) mm/day 40 mm/day contours, min 20

16091512, 36 hour forecast for 500mb winds (knots) and Middle Cloud Frequency -- NCEP GFS



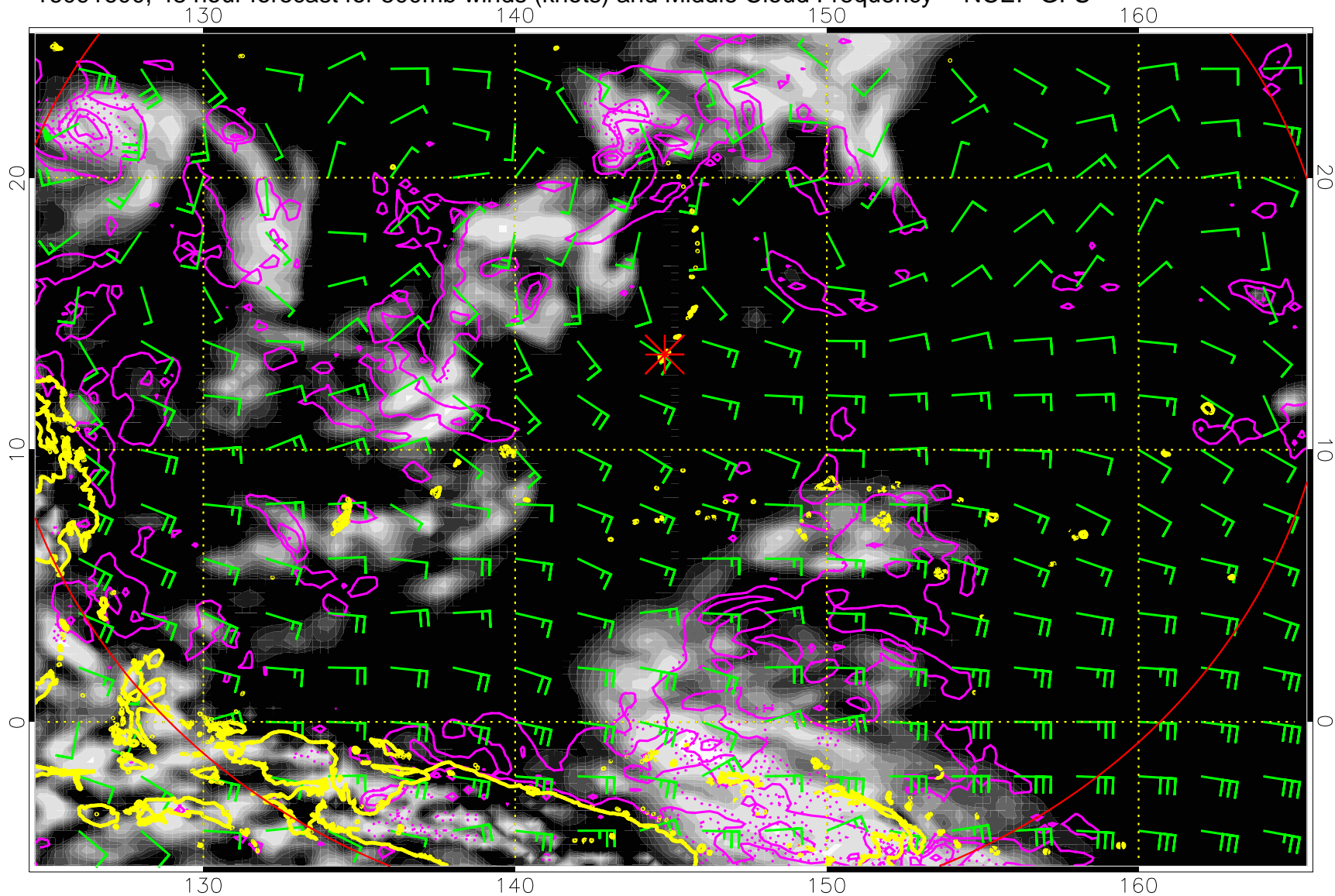
Precip (tot dot, conv sol) mm/day 40 mm/day contours, min 20

16091518, 42 hour forecast for 500mb winds (knots) and Middle Cloud Frequency -- NCEP GFS



Precip (tot dot, conv sol) mm/day 40 mm/day contours, min 20

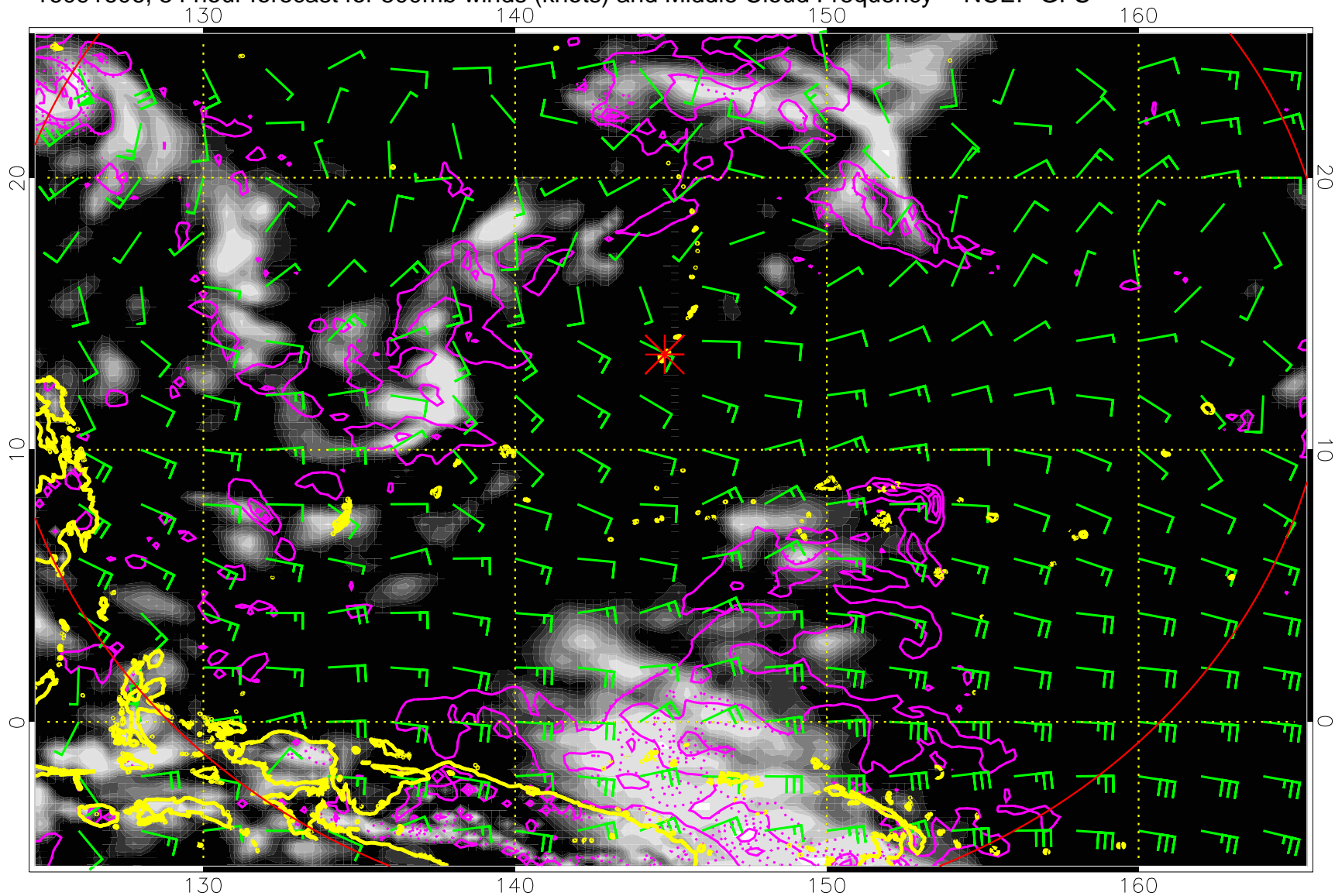
16091600, 48 hour forecast for 500mb winds (knots) and Middle Cloud Frequency -- NCEP GFS



Precip (tot dot, conv sol) mm/day 40 mm/day contours, min 20

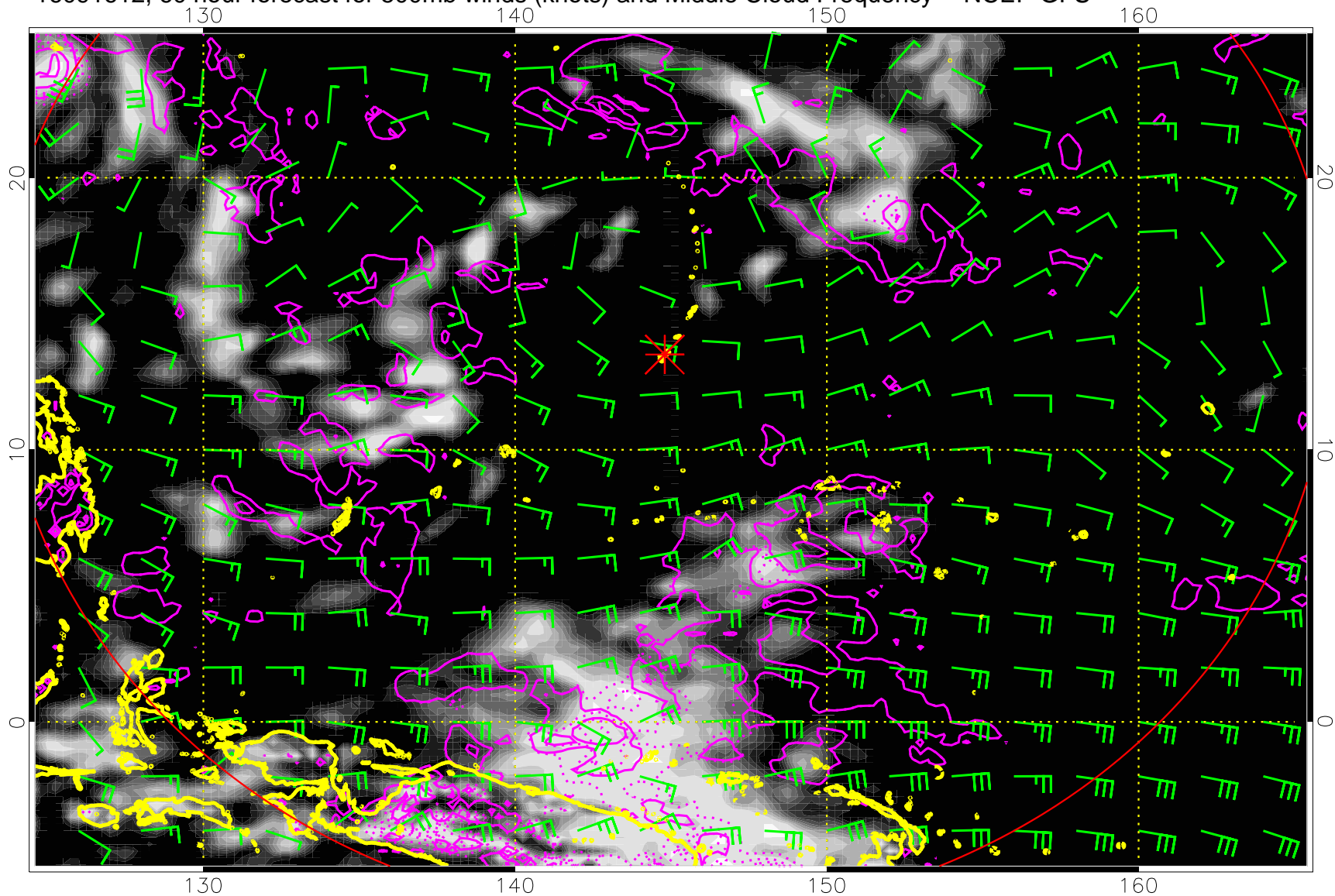


16091606, 54 hour forecast for 500mb winds (knots) and Middle Cloud Frequency -- NCEP GFS



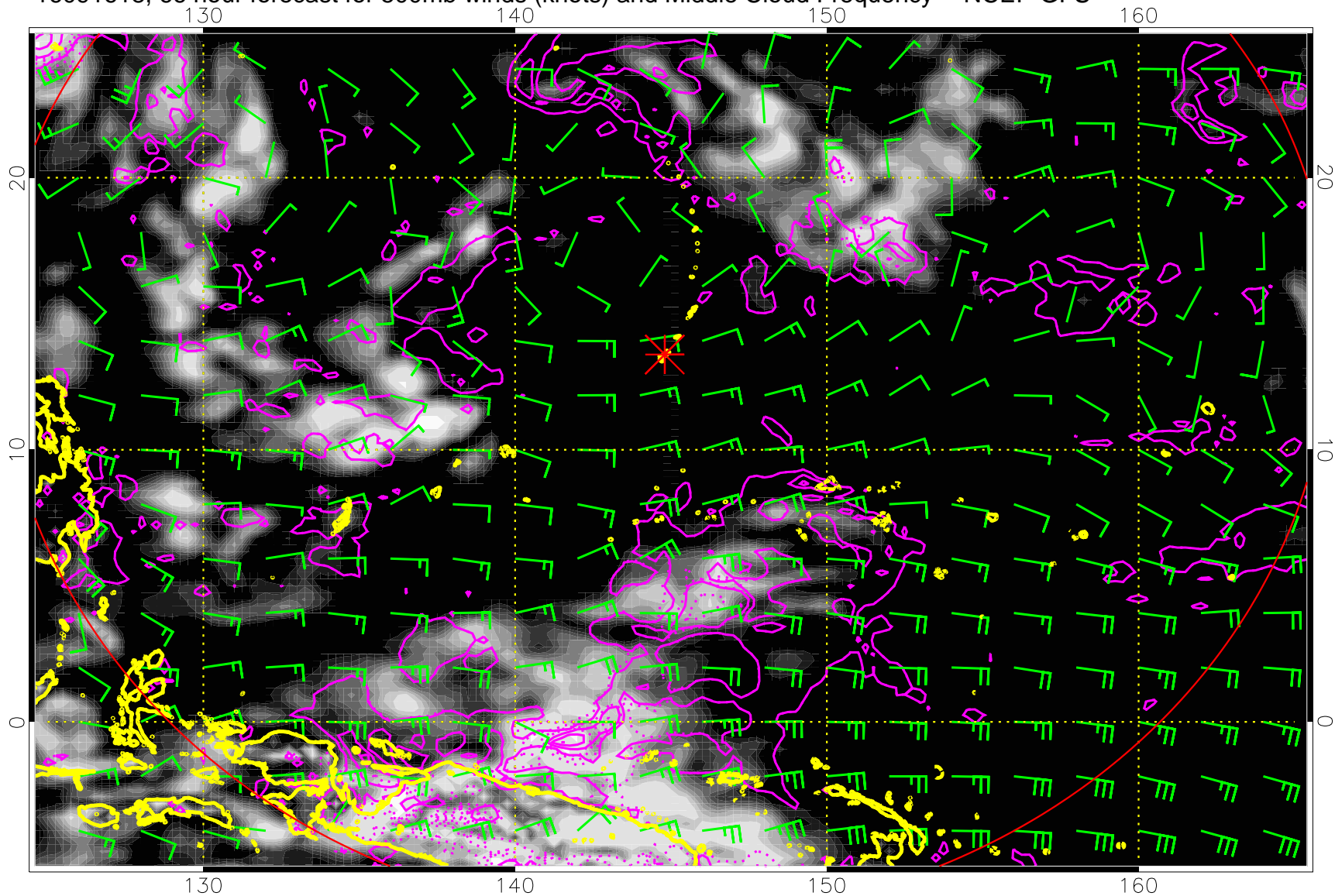
Precip (tot dot, conv sol) mm/day 40 mm/day contours, min 20

16091612, 60 hour forecast for 500mb winds (knots) and Middle Cloud Frequency -- NCEP GFS



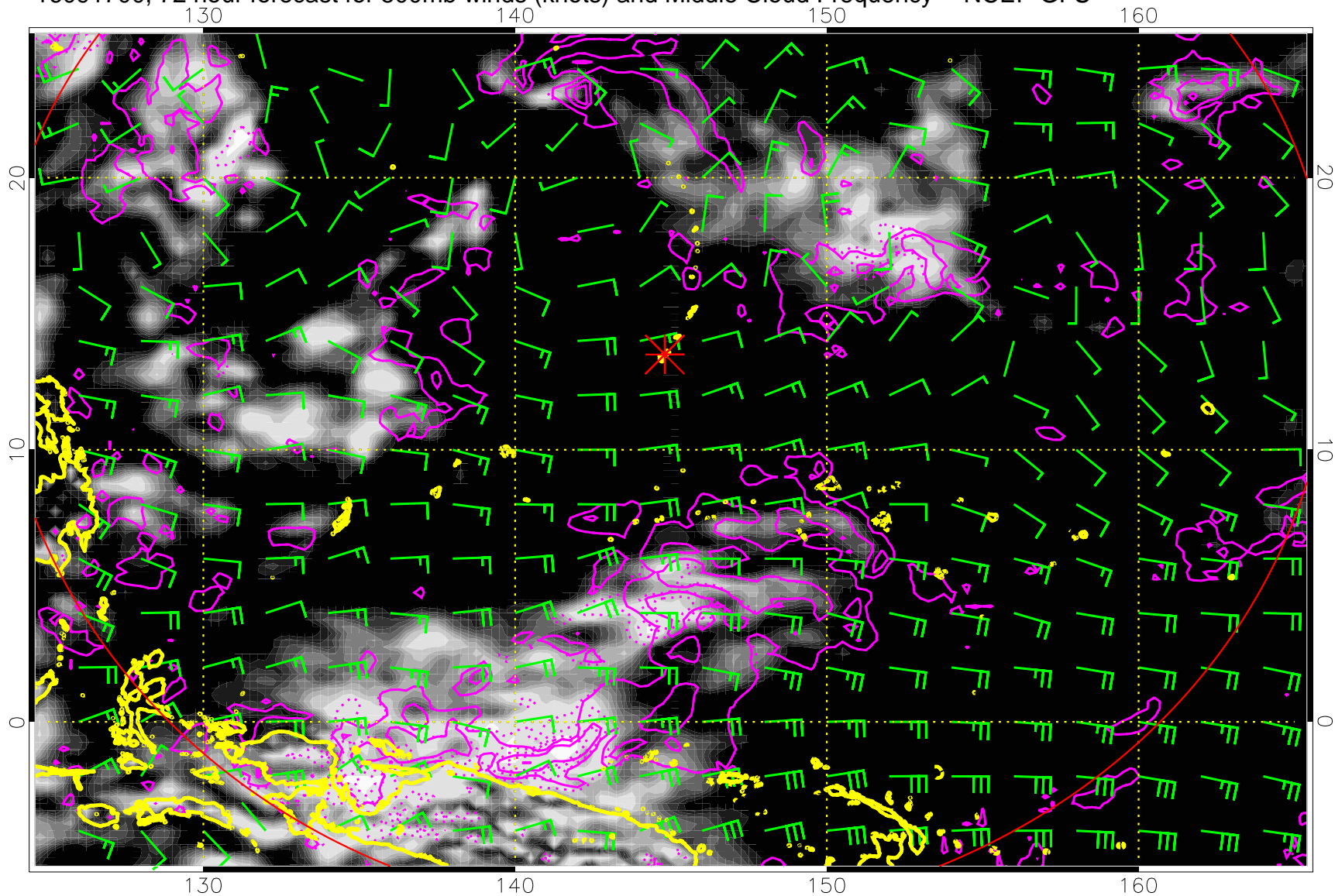
Precip (tot dot, conv sol) mm/day 40 mm/day contours, min 20

16091618, 66 hour forecast for 500mb winds (knots) and Middle Cloud Frequency -- NCEP GFS



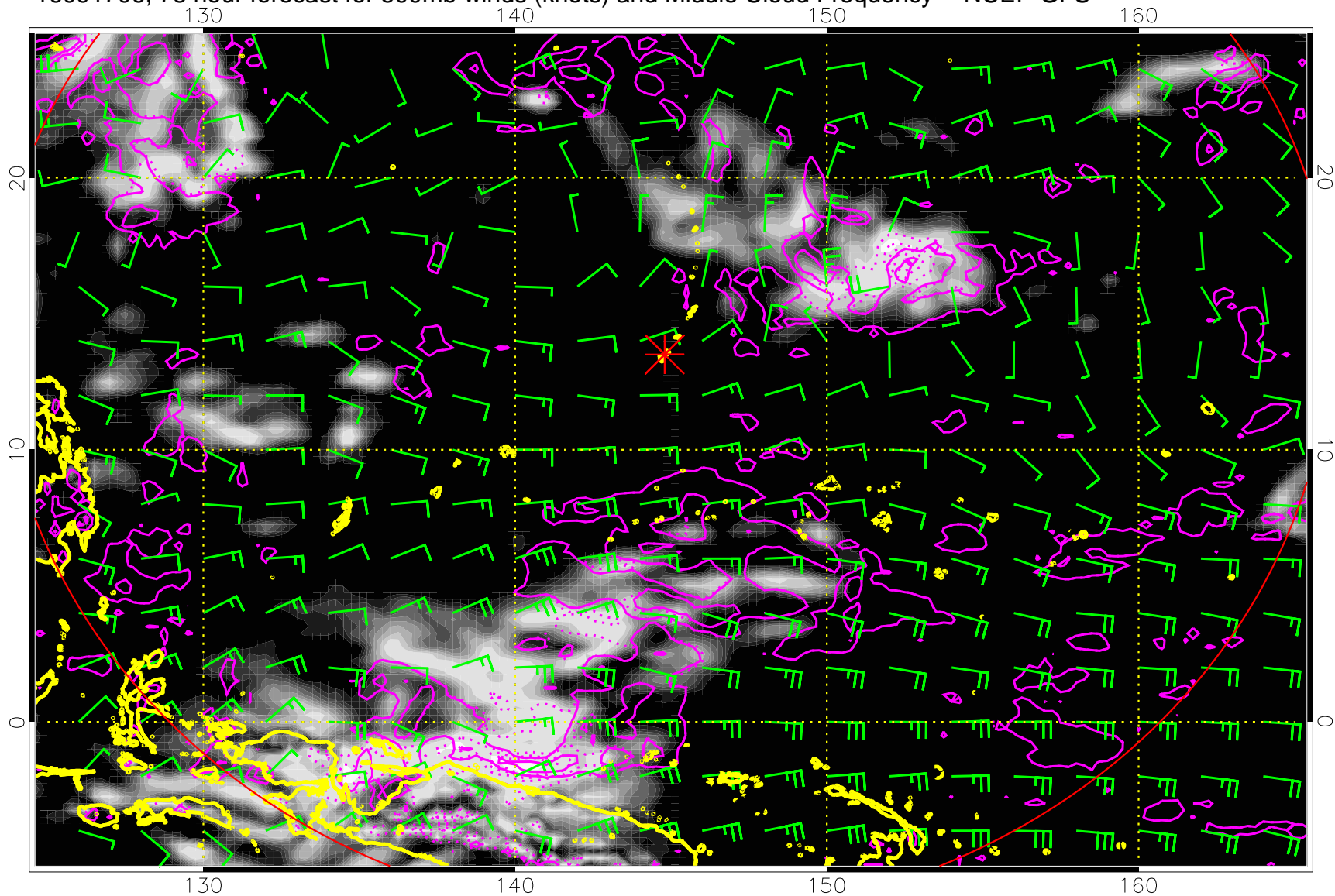
Precip (tot dot, conv sol) mm/day 40 mm/day contours, min 20

16091700, 72 hour forecast for 500mb winds (knots) and Middle Cloud Frequency -- NCEP GFS



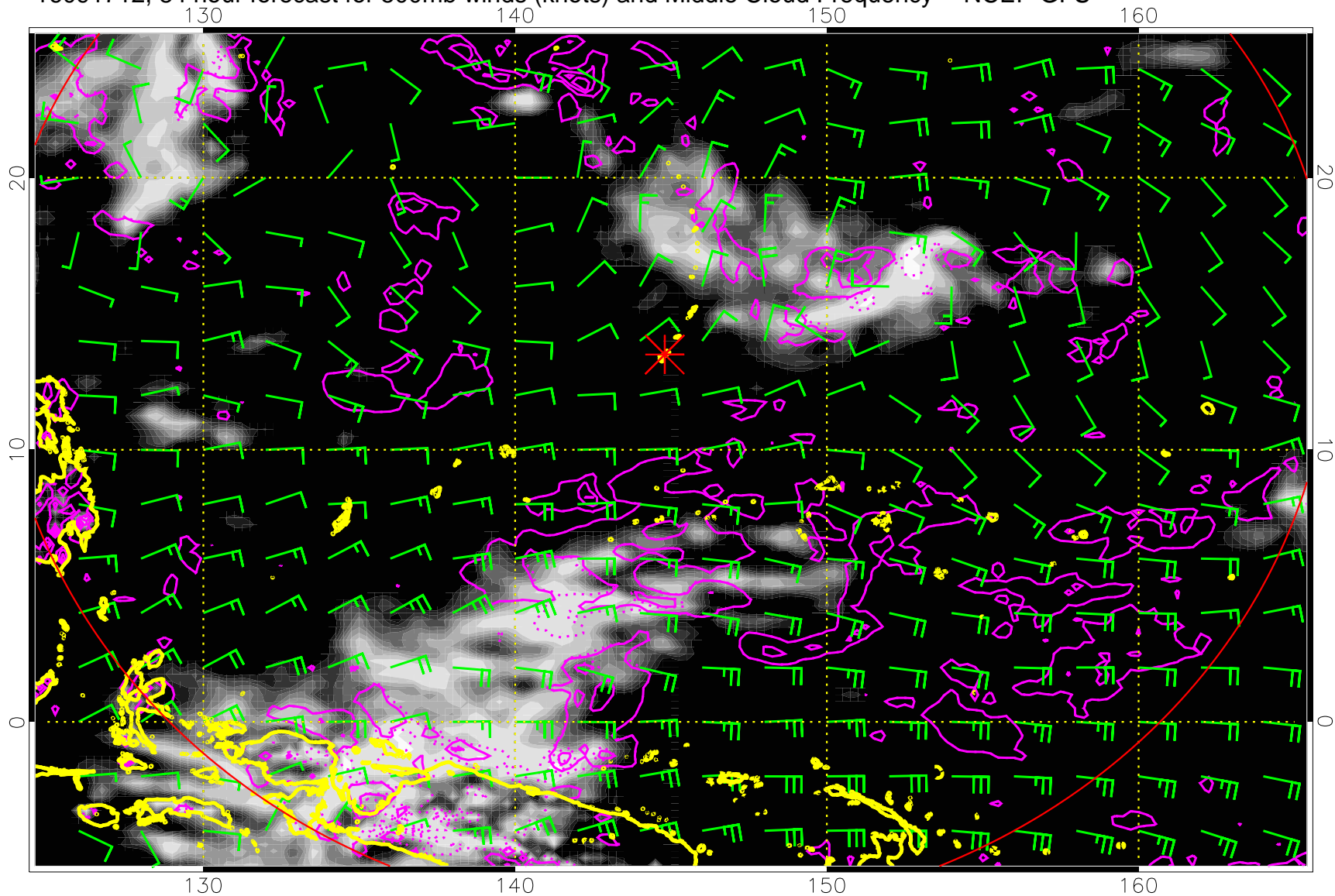
Precip (tot dot, conv sol) mm/day 40 mm/day contours, min 20

16091706, 78 hour forecast for 500mb winds (knots) and Middle Cloud Frequency -- NCEP GFS



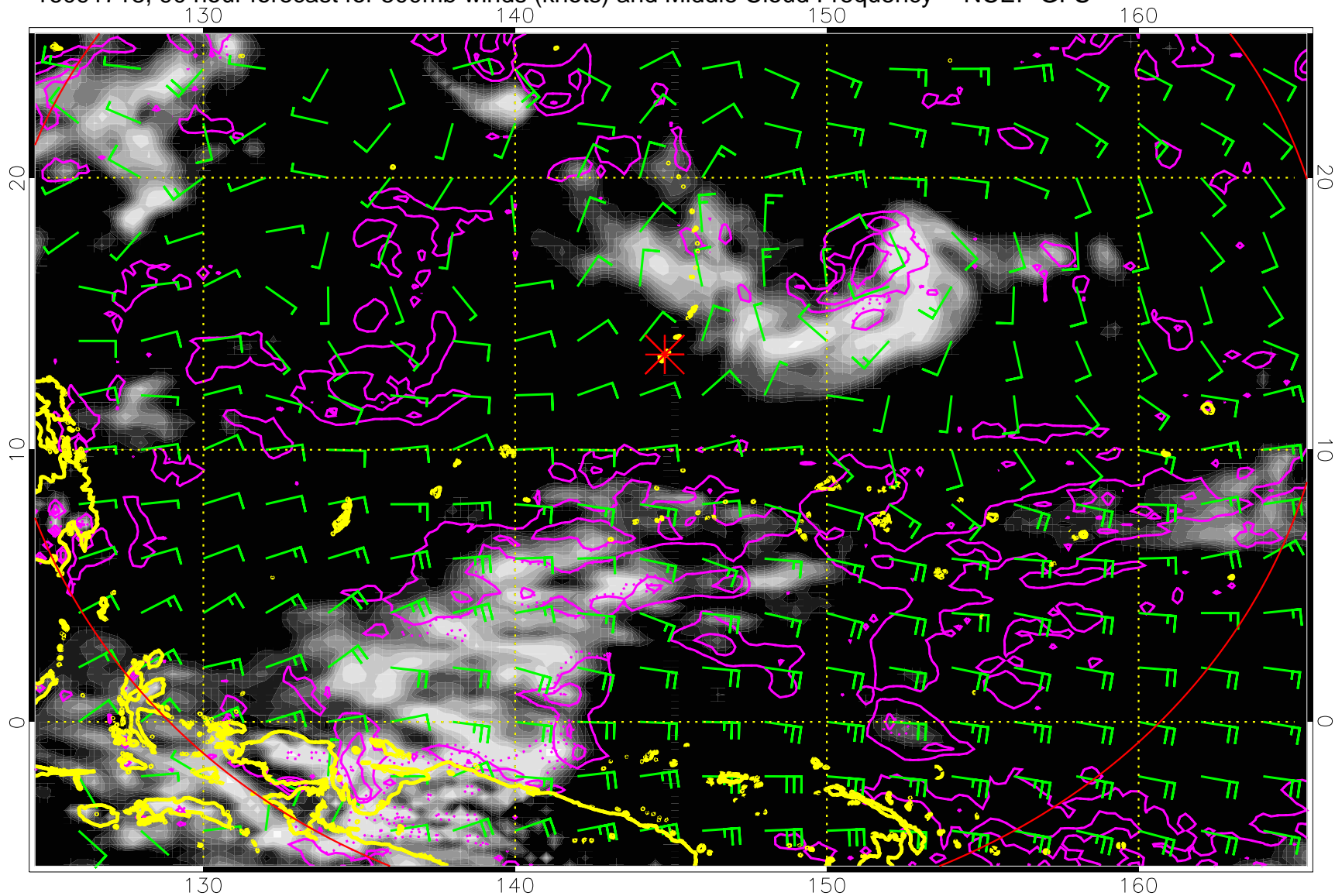
Precip (tot dot, conv sol) mm/day 40 mm/day contours, min 20

16091712, 84 hour forecast for 500mb winds (knots) and Middle Cloud Frequency -- NCEP GFS



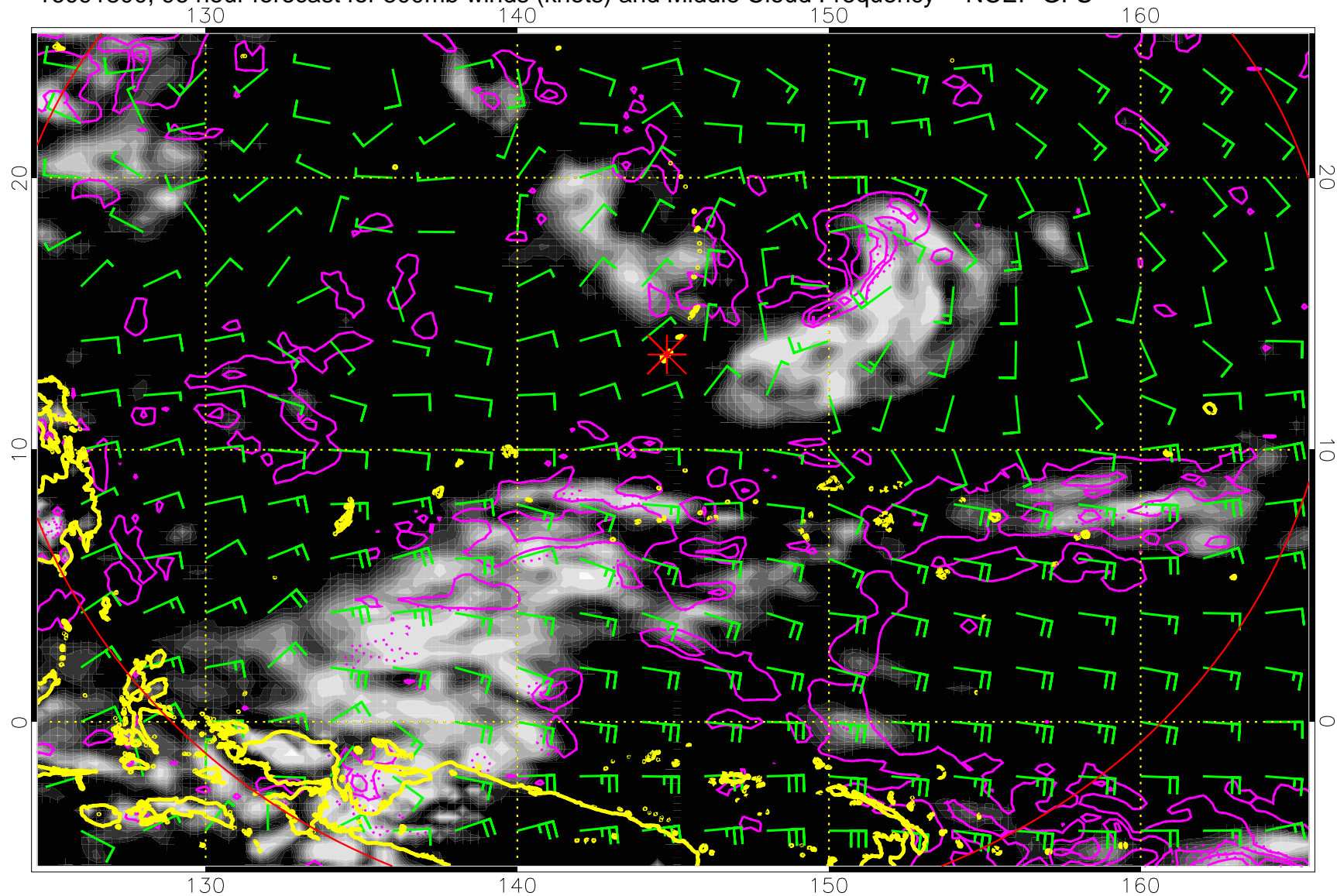
Precip (tot dot, conv sol) mm/day 40 mm/day contours, min 20

16091718, 90 hour forecast for 500mb winds (knots) and Middle Cloud Frequency -- NCEP GFS



Precip (tot dot, conv sol) mm/day 40 mm/day contours, min 20

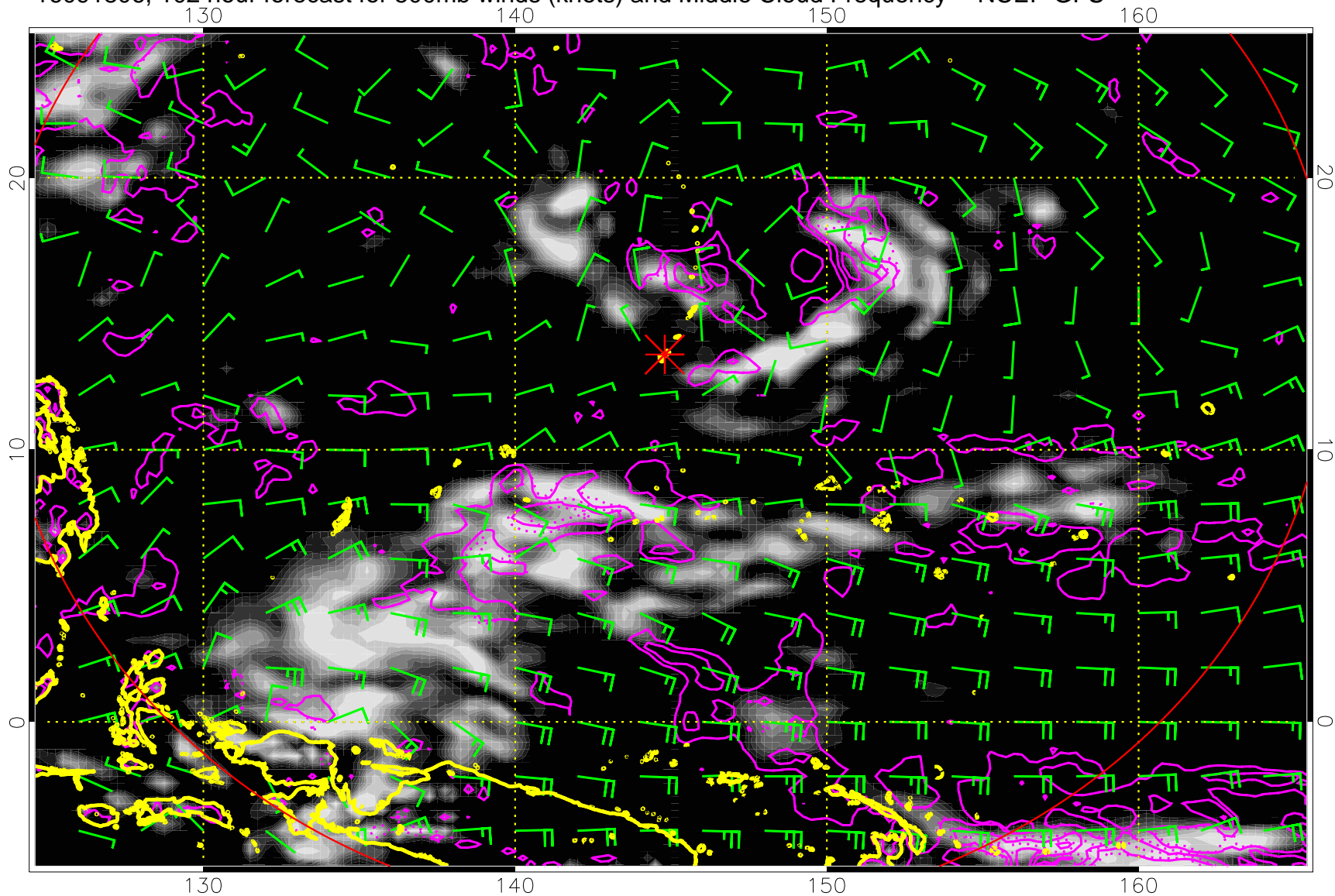
16091800, 96 hour forecast for 500mb winds (knots) and Middle Cloud Frequency -- NCEP GFS



Precip (tot dot, conv sol) mm/day 40 mm/day contours, min 20

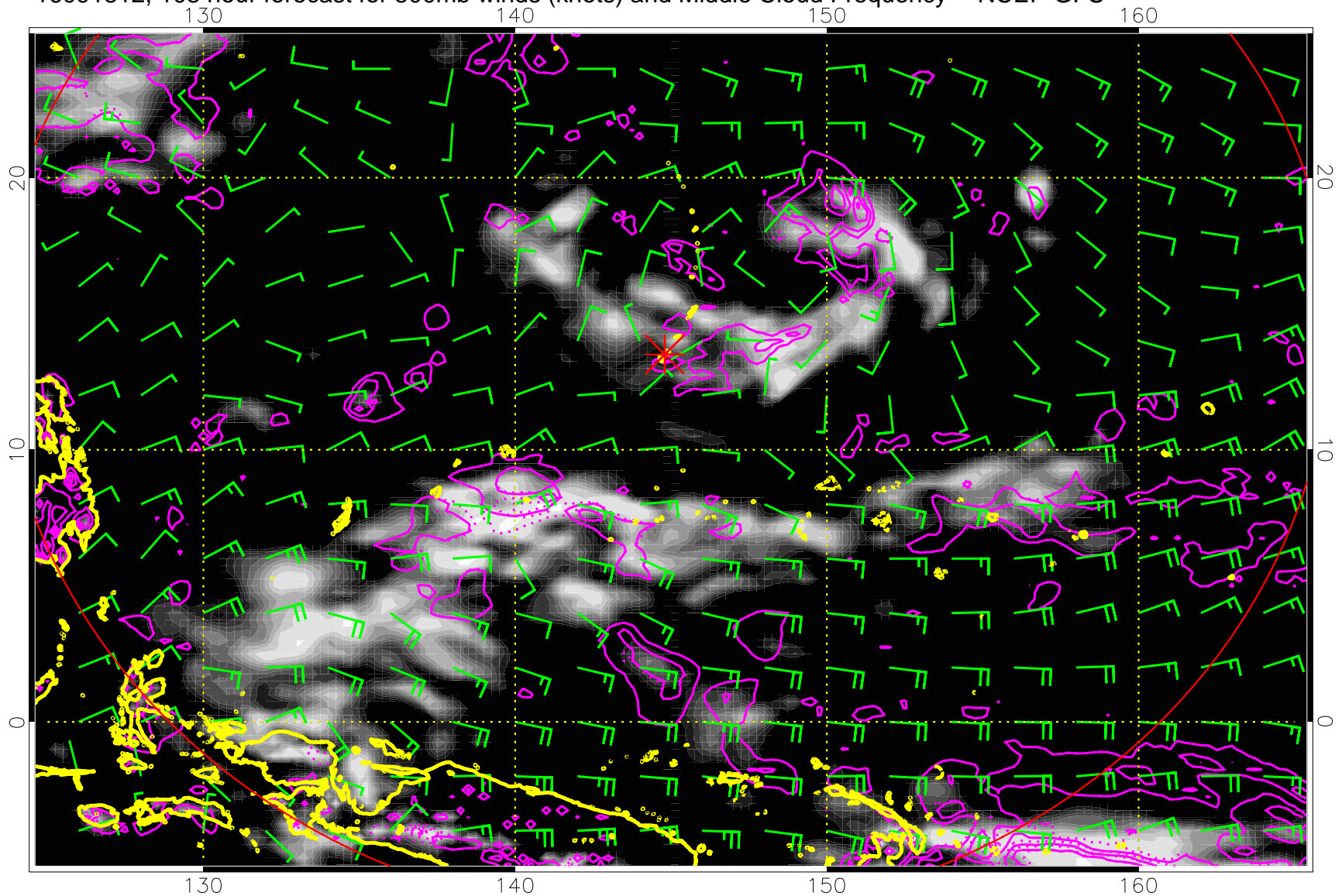


16091806, 102 hour forecast for 500mb winds (knots) and Middle Cloud Frequency -- NCEP GFS



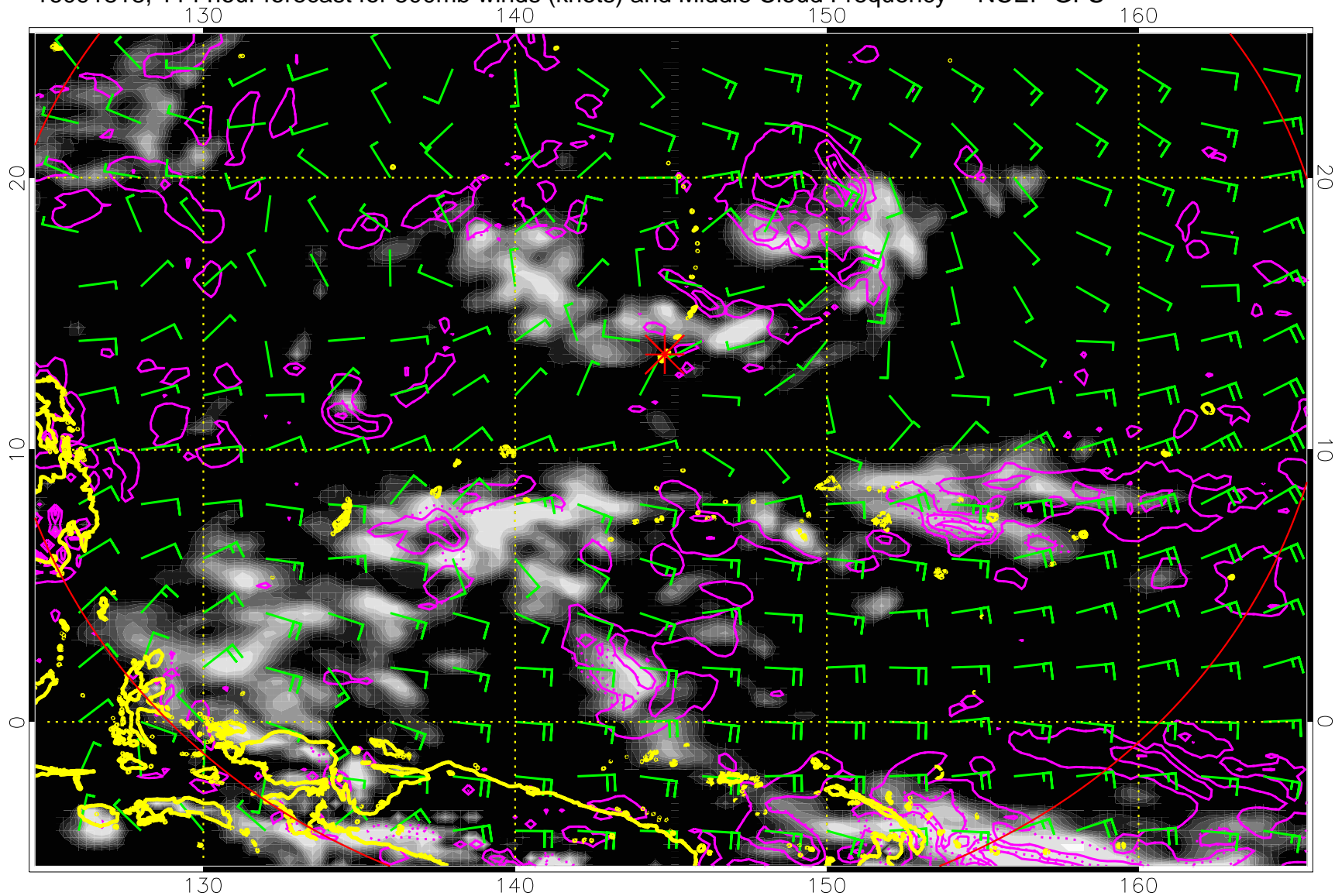
Precip (tot dot, conv sol) mm/day 40 mm/day contours, min 20

16091812, 108 hour forecast for 500mb winds (knots) and Middle Cloud Frequency -- NCEP GFS



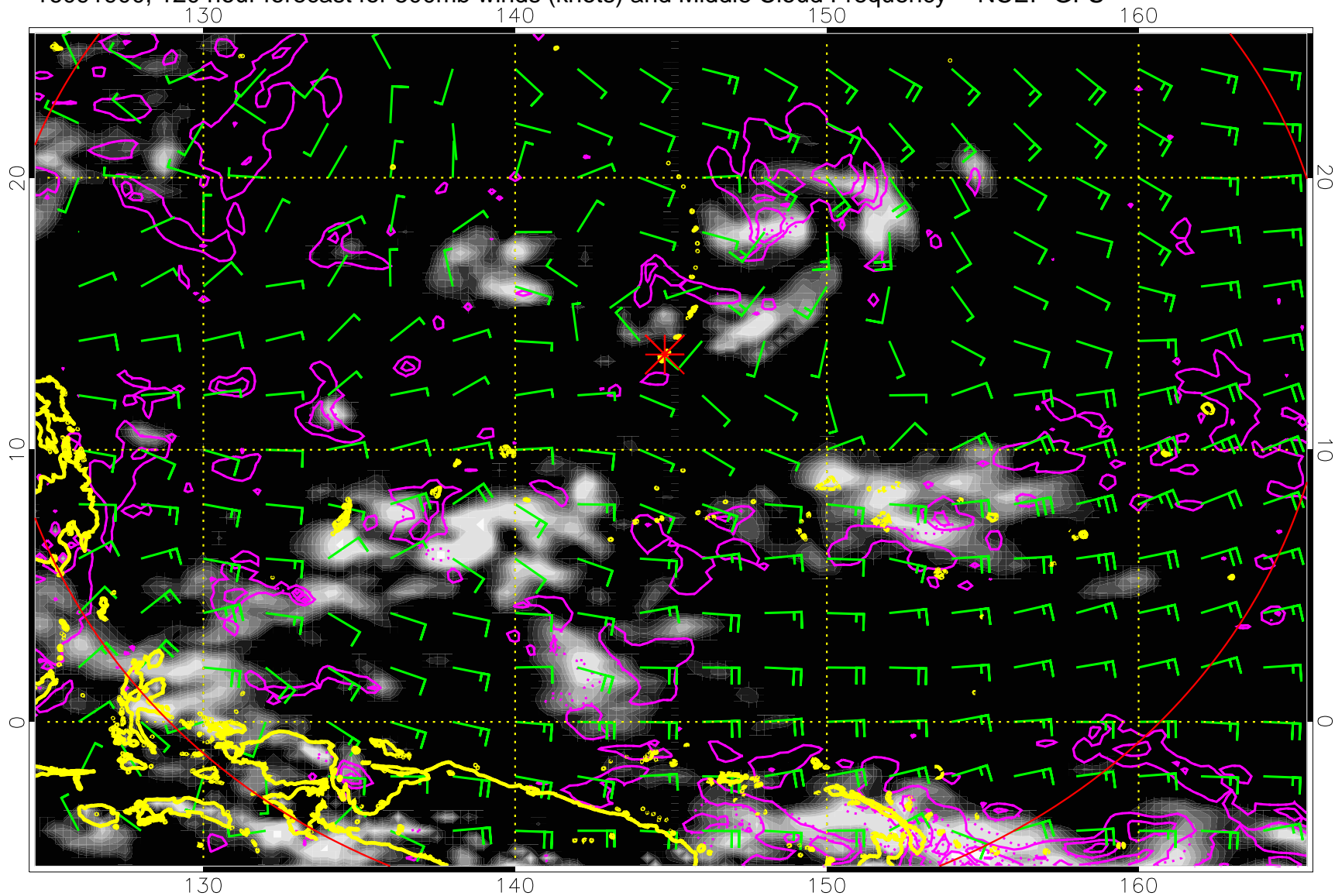
Precip (tot dot, conv sol) mm/day 40 mm/day contours, min 20

16091818, 114 hour forecast for 500mb winds (knots) and Middle Cloud Frequency -- NCEP GFS



Precip (tot dot, conv sol) mm/day 40 mm/day contours, min 20

16091900, 120 hour forecast for 500mb winds (knots) and Middle Cloud Frequency -- NCEP GFS



Middle Cloud Frequency

Precip (tot dot, conv sol) mm/day 40 mm/day contours, min 20