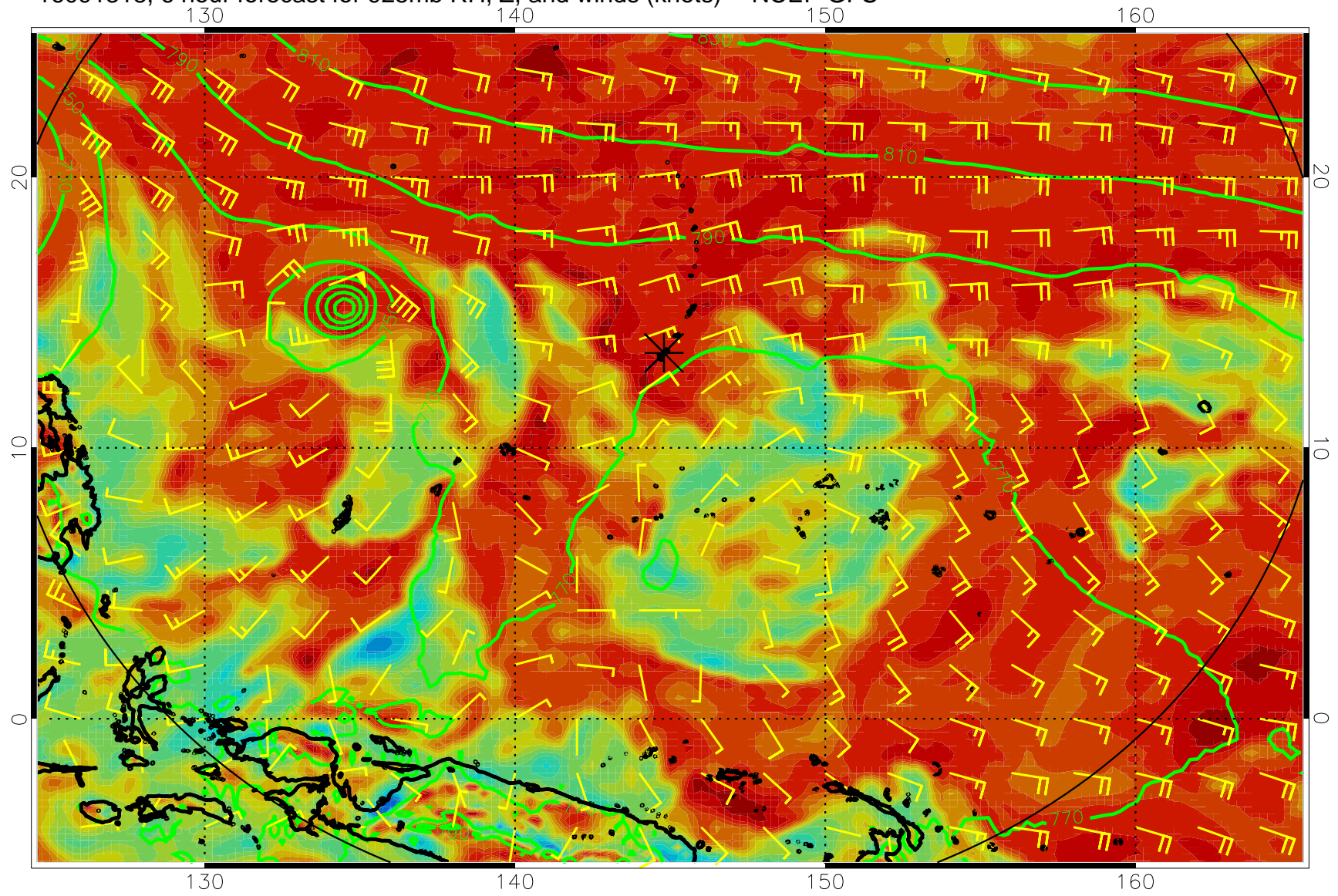
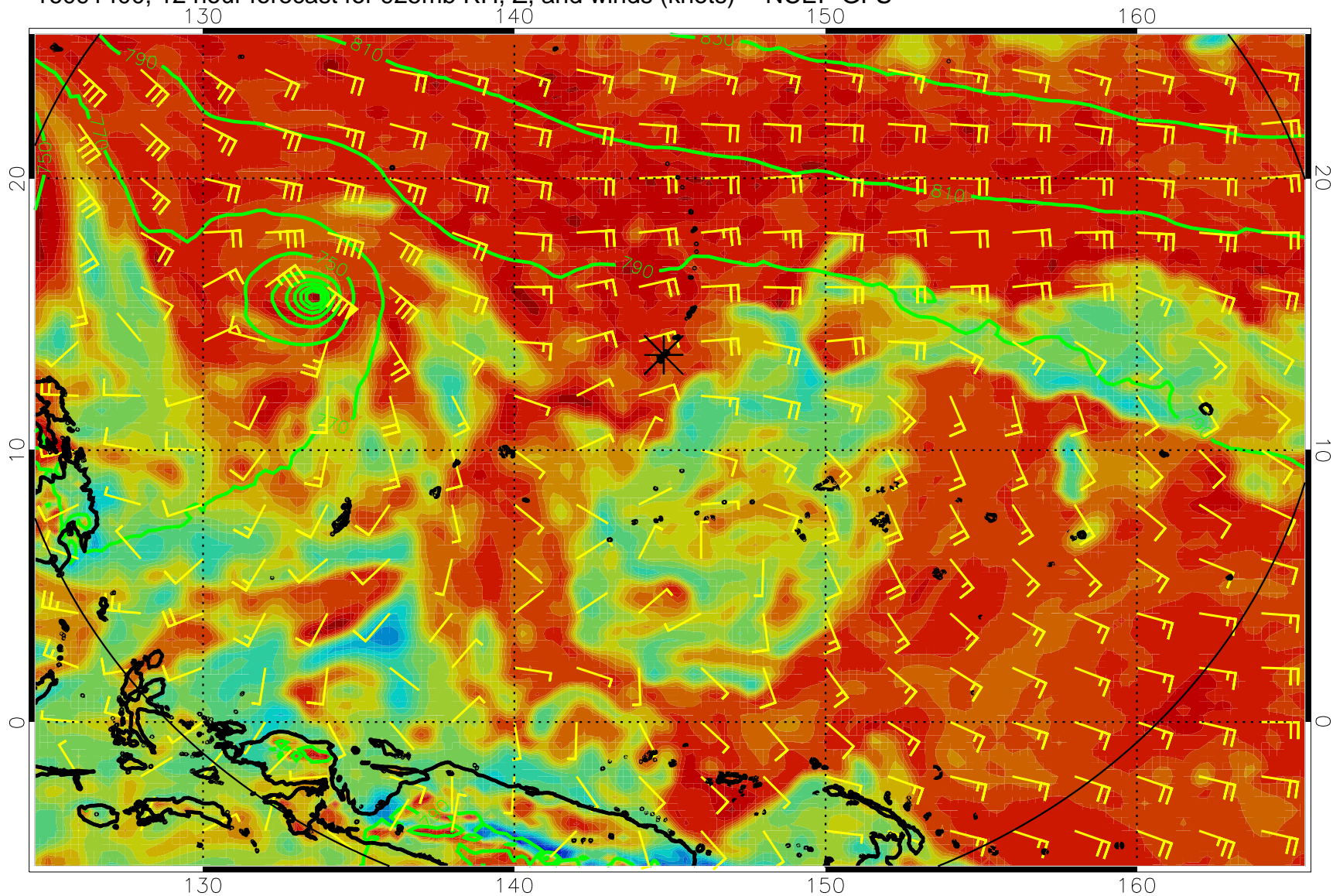


16091318, 6 hour forecast for 925mb RH, Z, and winds (knots) -- NCEP GFS

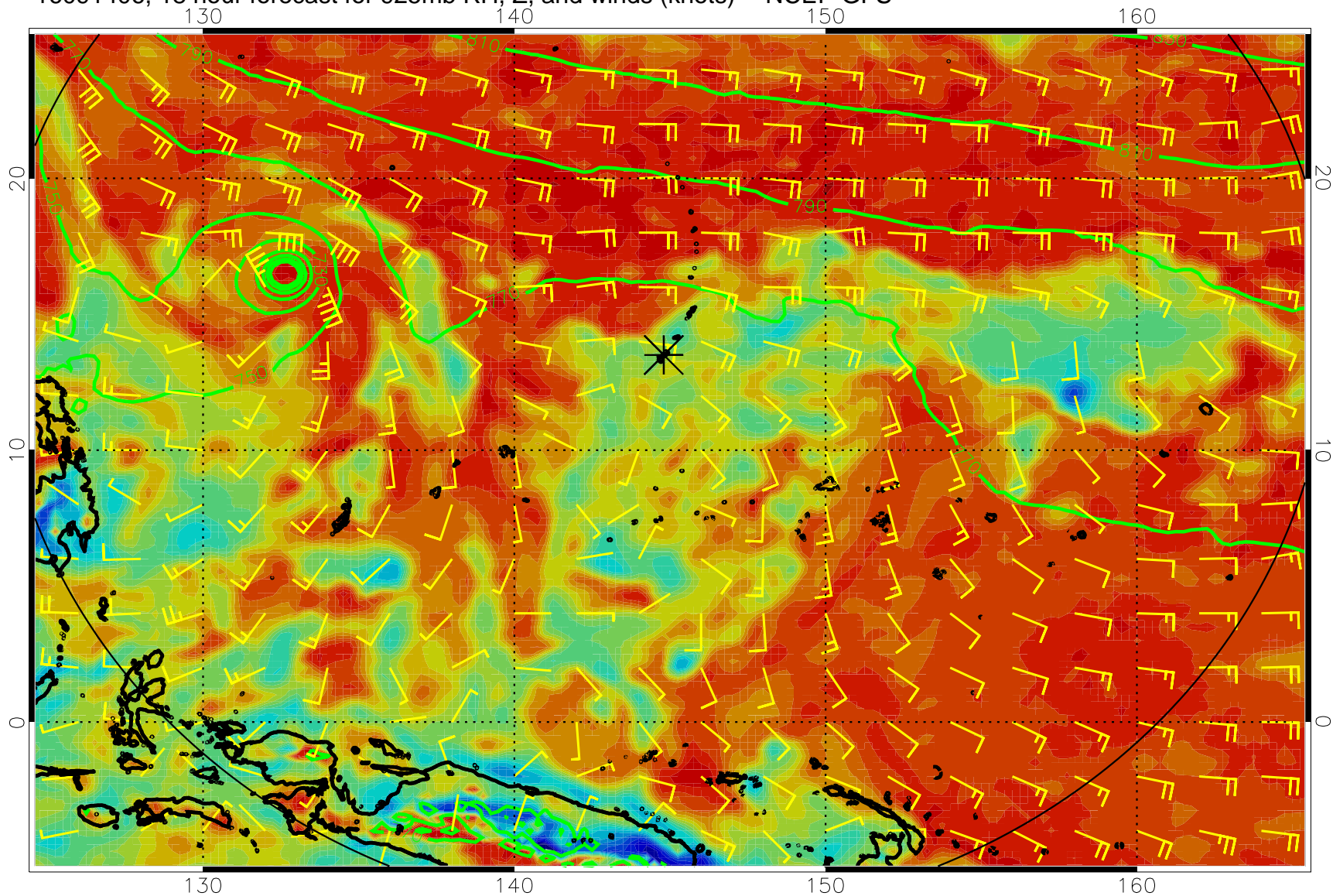


16091400, 12 hour forecast for 925mb RH, Z, and winds (knots) -- NCEP GFS

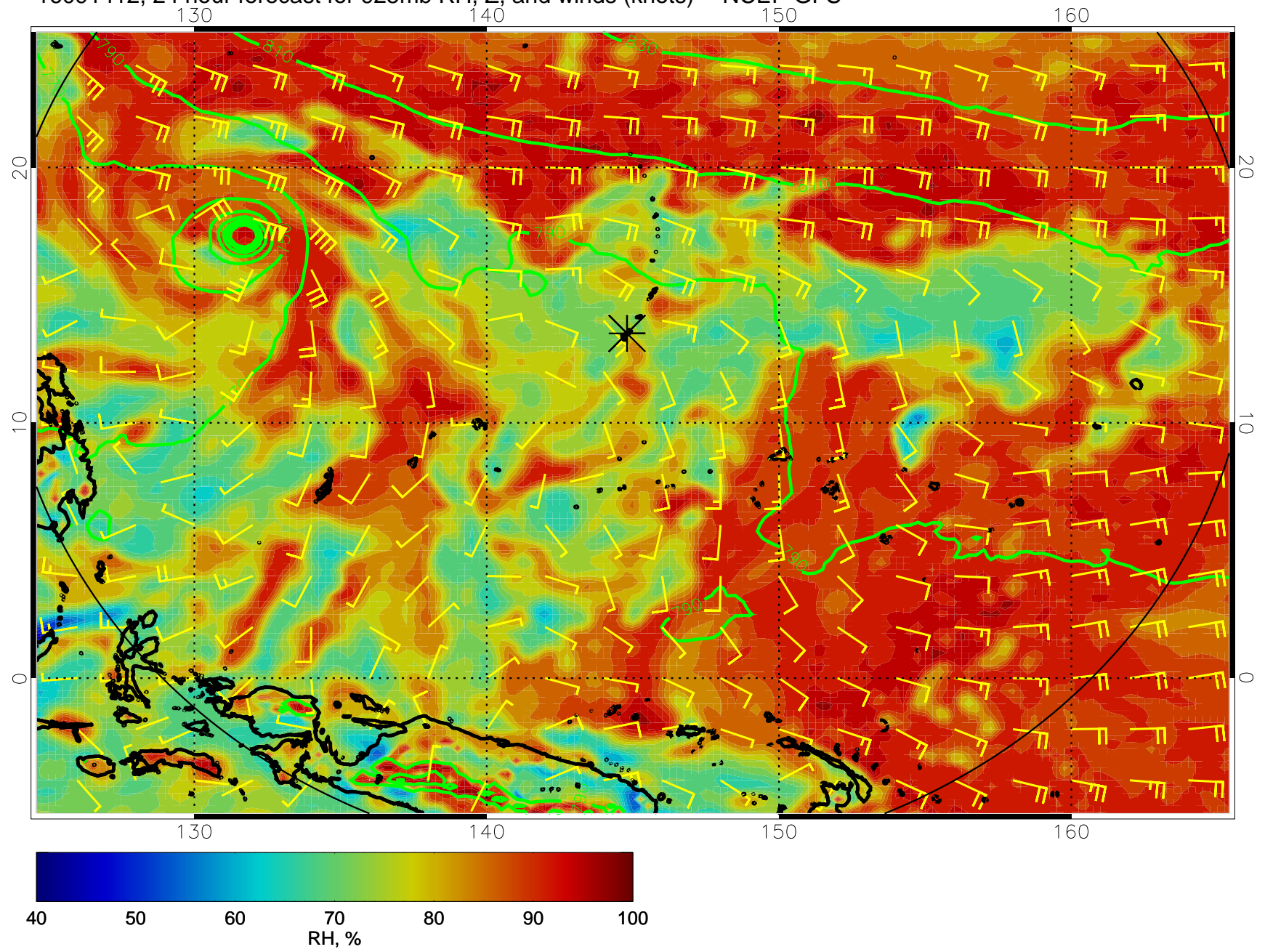




16091406, 18 hour forecast for 925mb RH, Z, and winds (knots) -- NCEP GFS

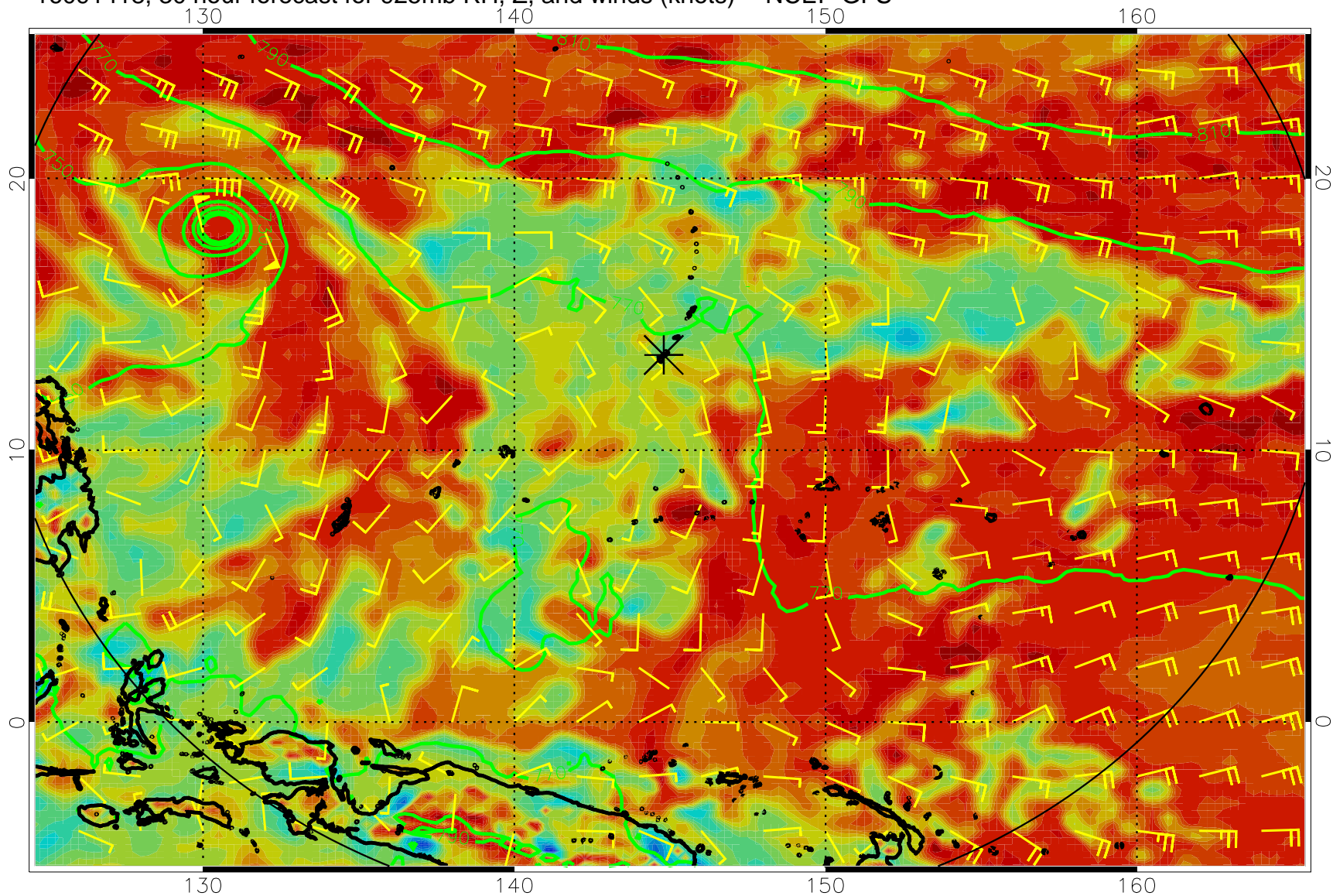


16091412, 24 hour forecast for 925mb RH, Z, and winds (knots) -- NCEP GFS

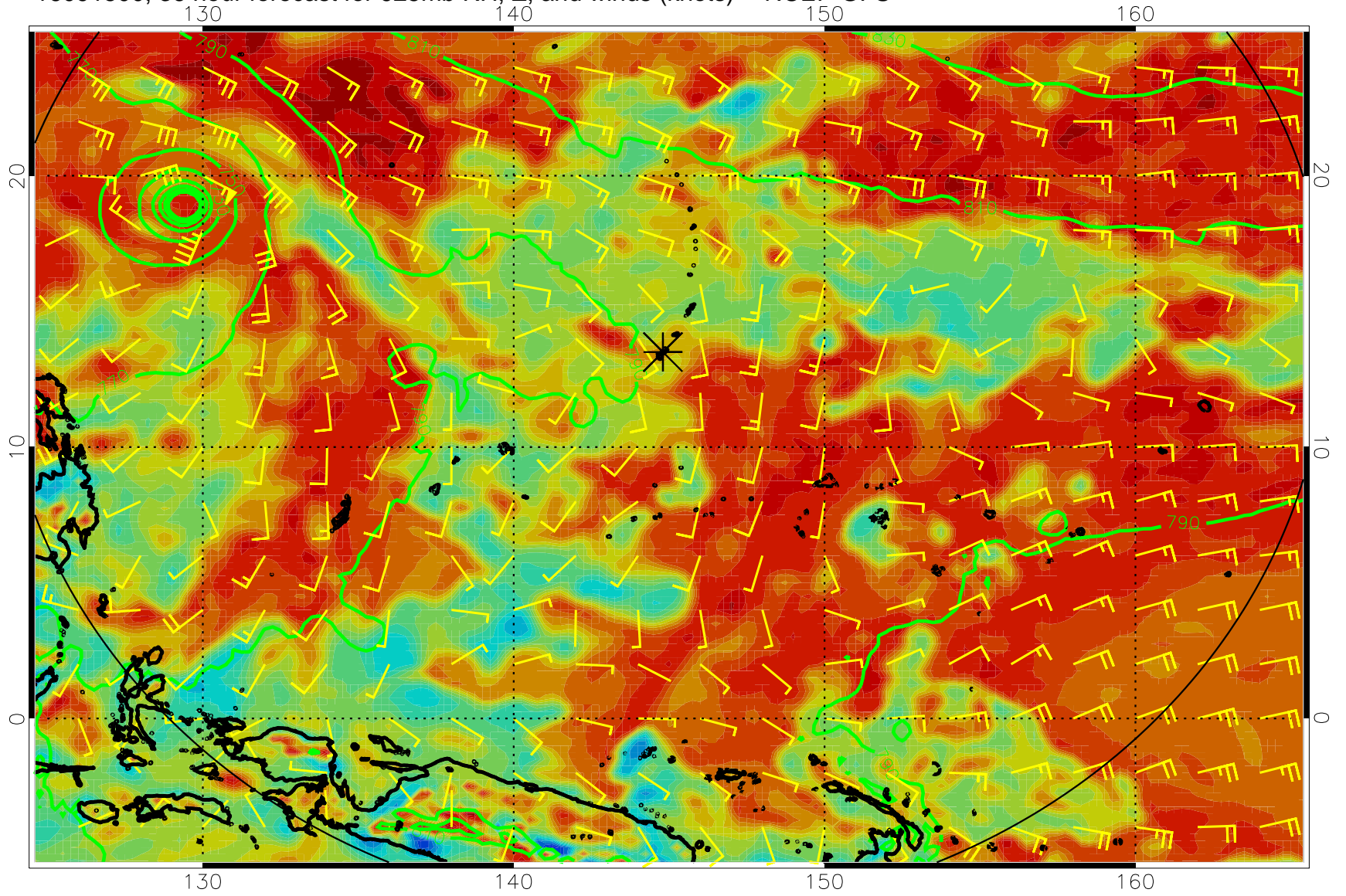




16091418, 30 hour forecast for 925mb RH, Z, and winds (knots) -- NCEP GFS

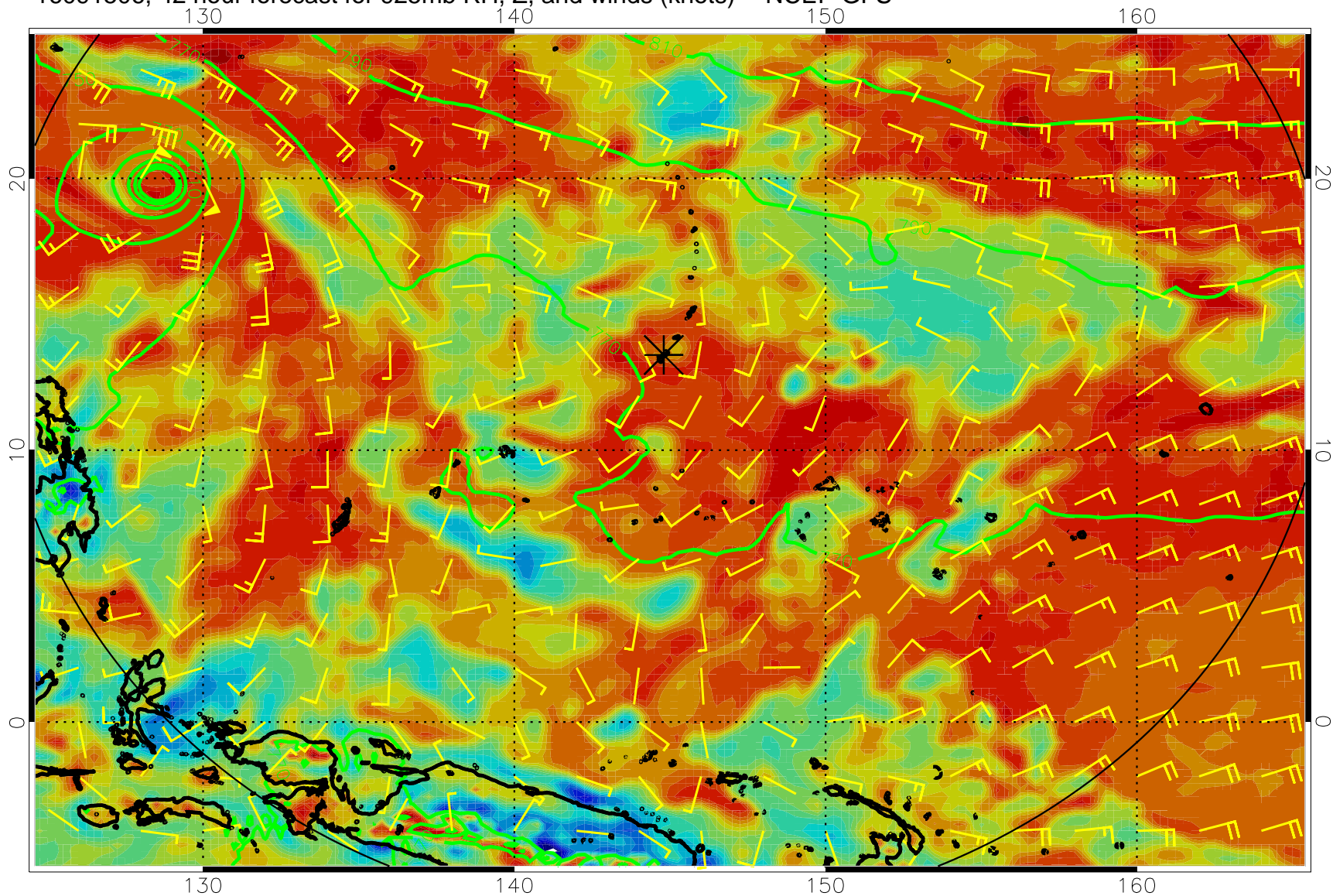


16091500, 36 hour forecast for 925mb RH, Z, and winds (knots) -- NCEP GFS

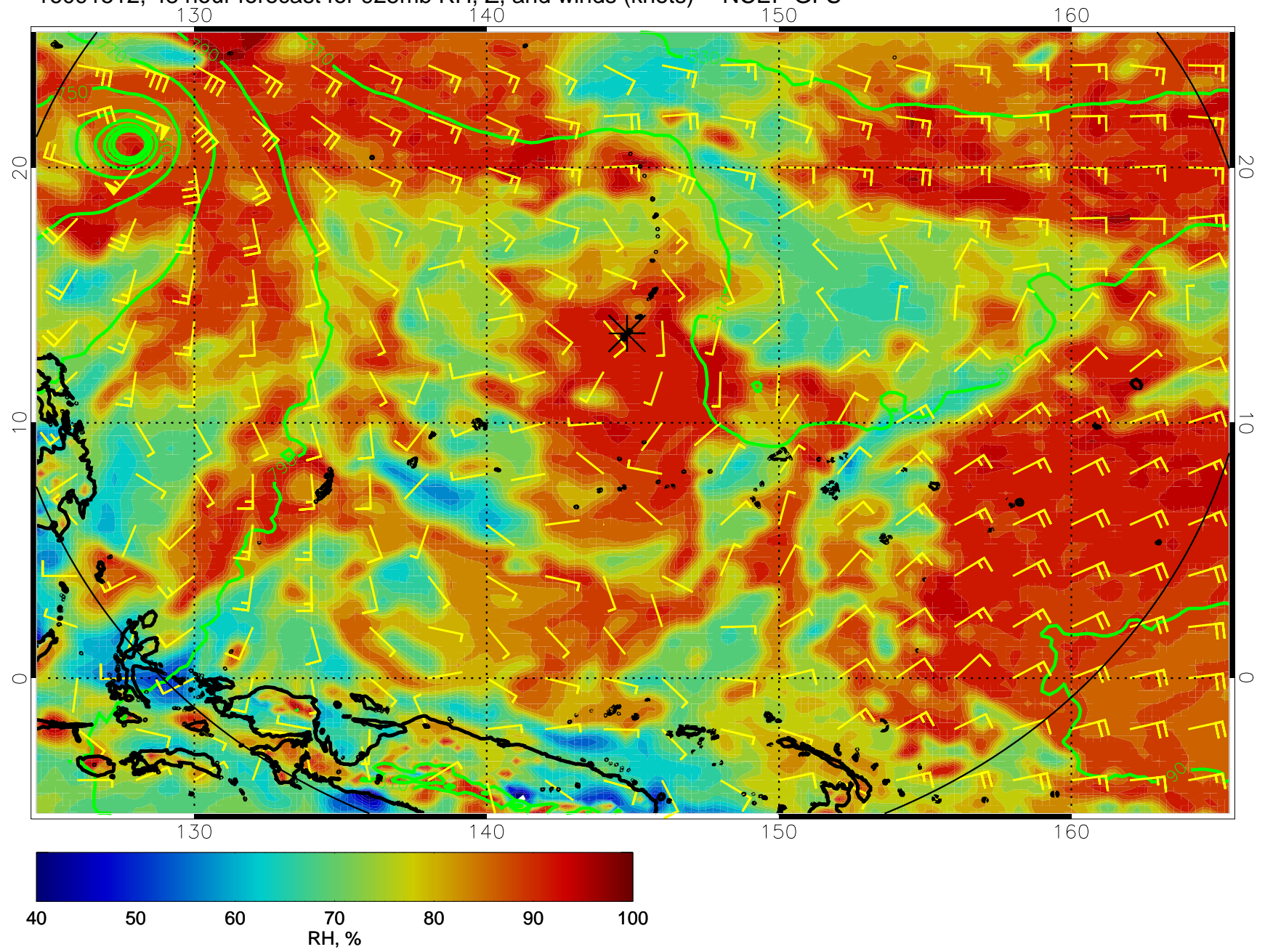




16091506, 42 hour forecast for 925mb RH, Z, and winds (knots) -- NCEP GFS

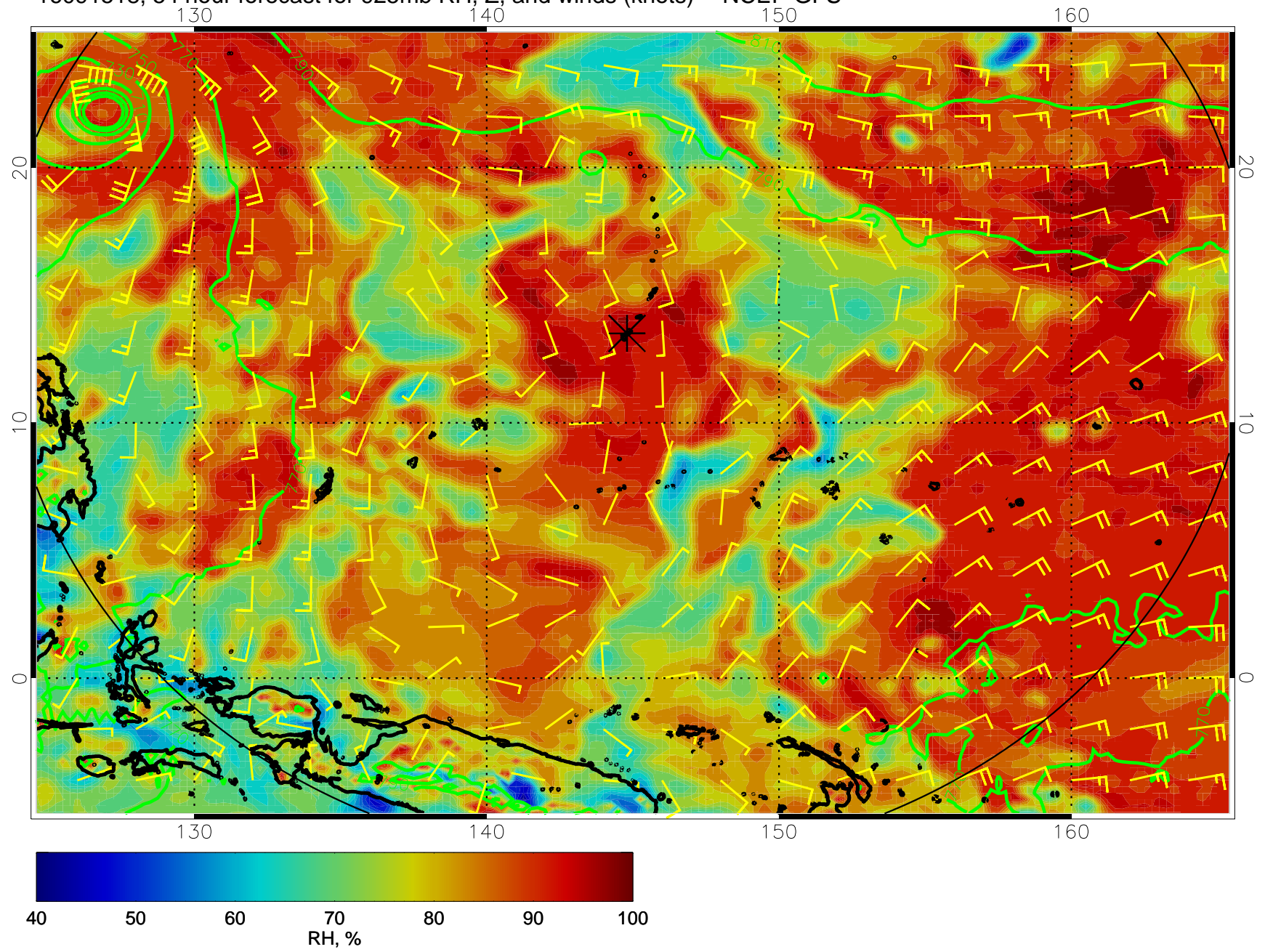


16091512, 48 hour forecast for 925mb RH, Z, and winds (knots) -- NCEP GFS

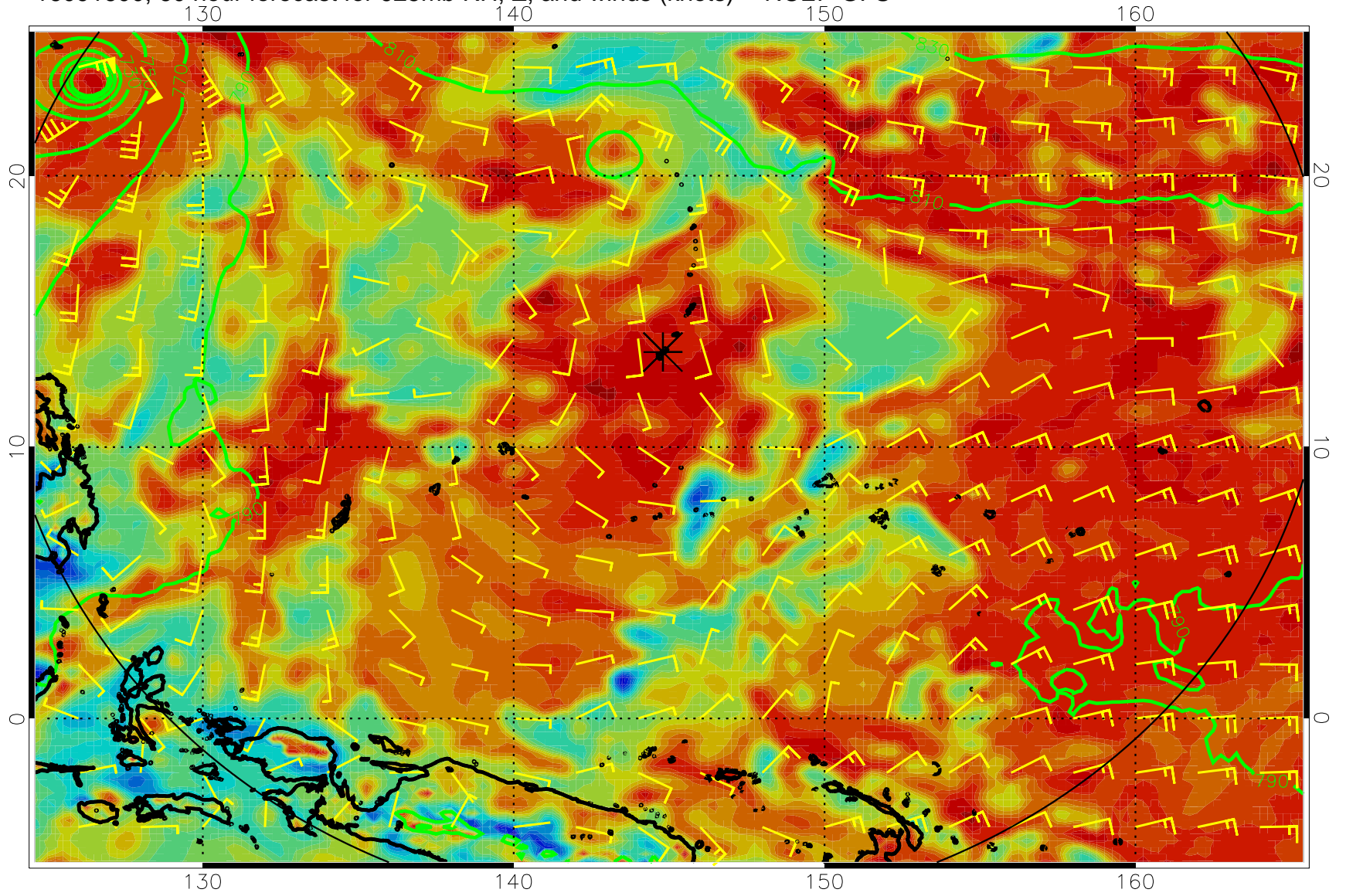




16091518, 54 hour forecast for 925mb RH, Z, and winds (knots) -- NCEP GFS

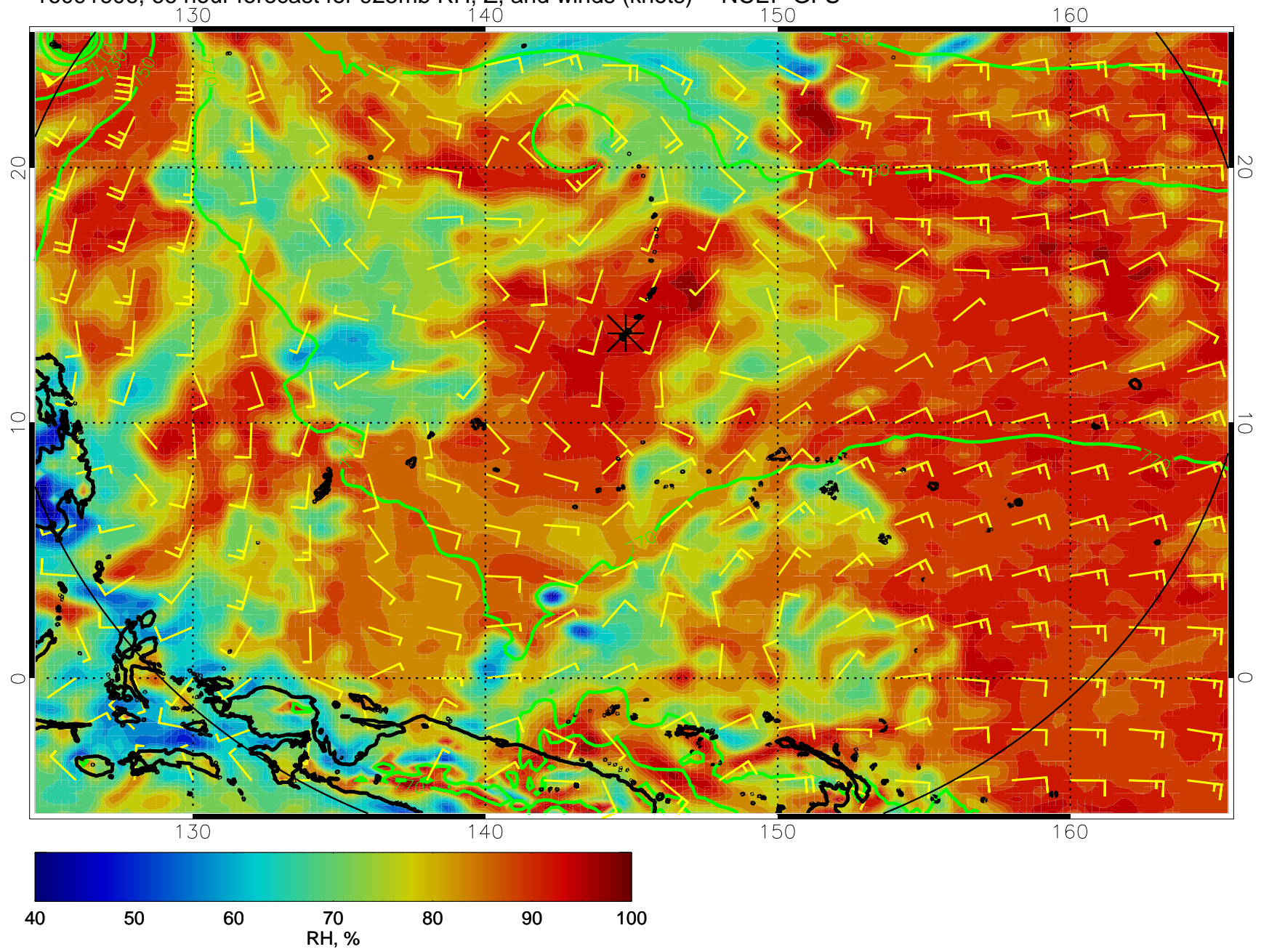


16091600, 60 hour forecast for 925mb RH, Z, and winds (knots) -- NCEP GFS

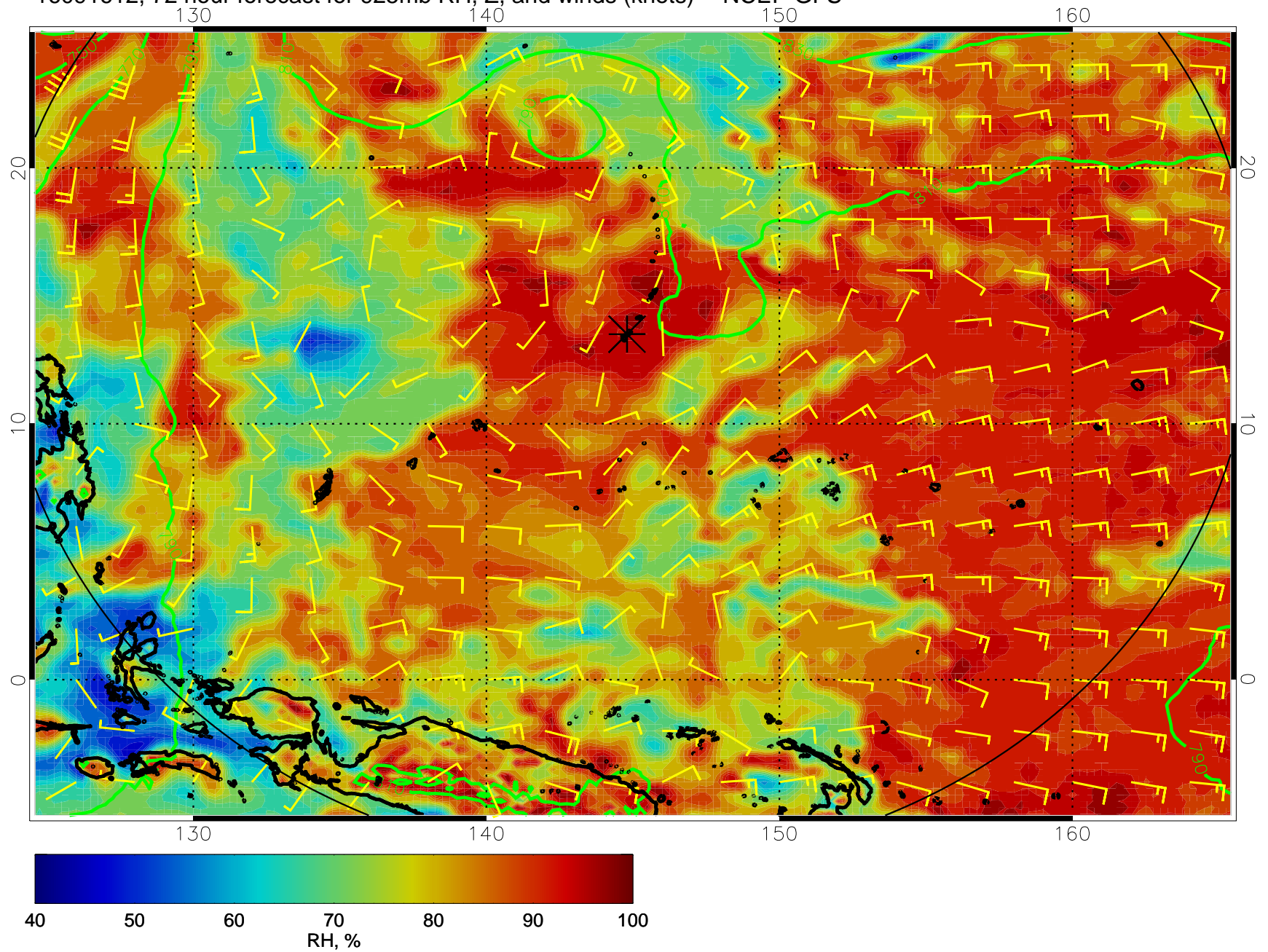




16091606, 66 hour forecast for 925mb RH, Z, and winds (knots) -- NCEP GFS

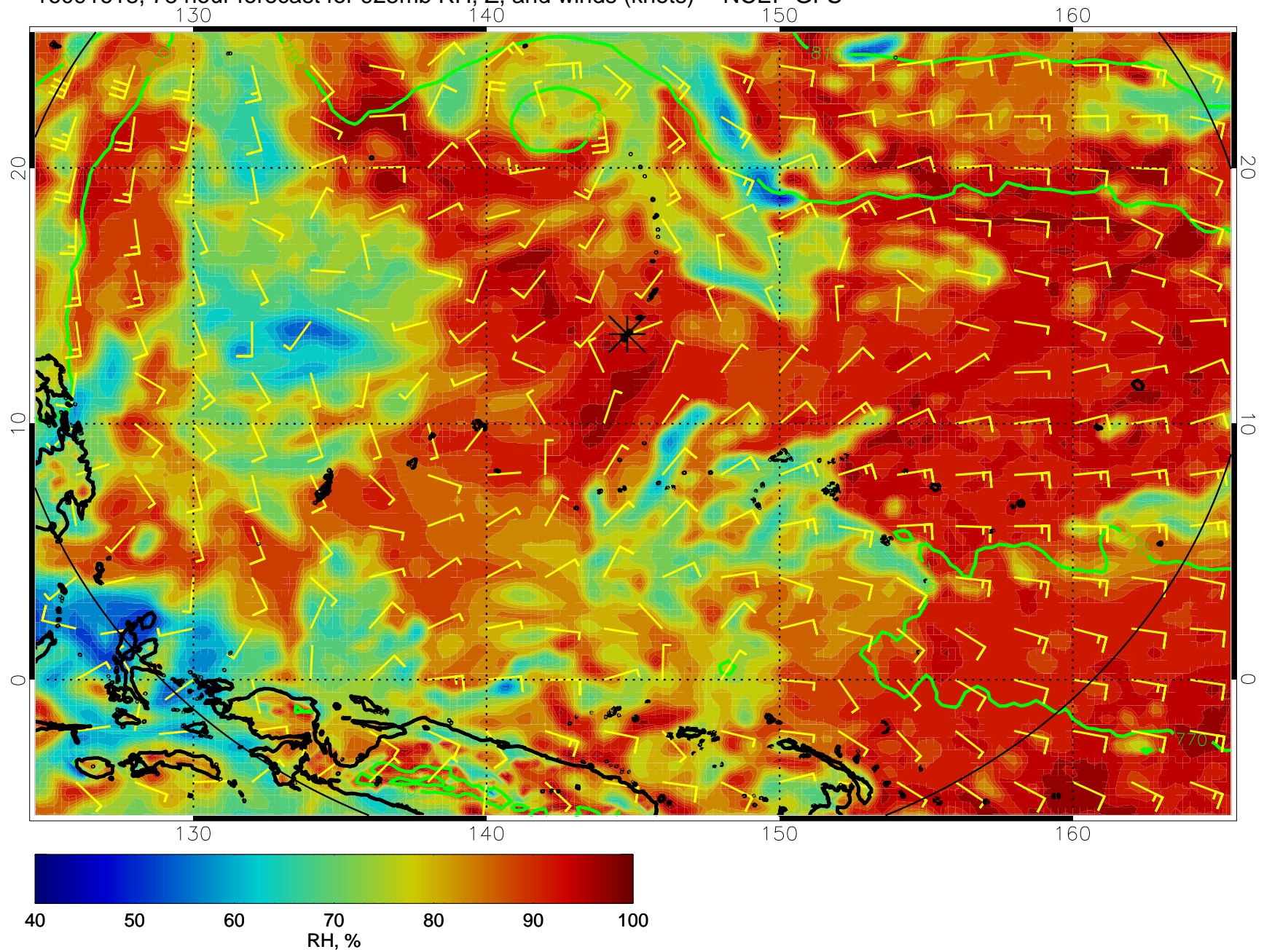


16091612, 72 hour forecast for 925mb RH, Z, and winds (knots) -- NCEP GFS

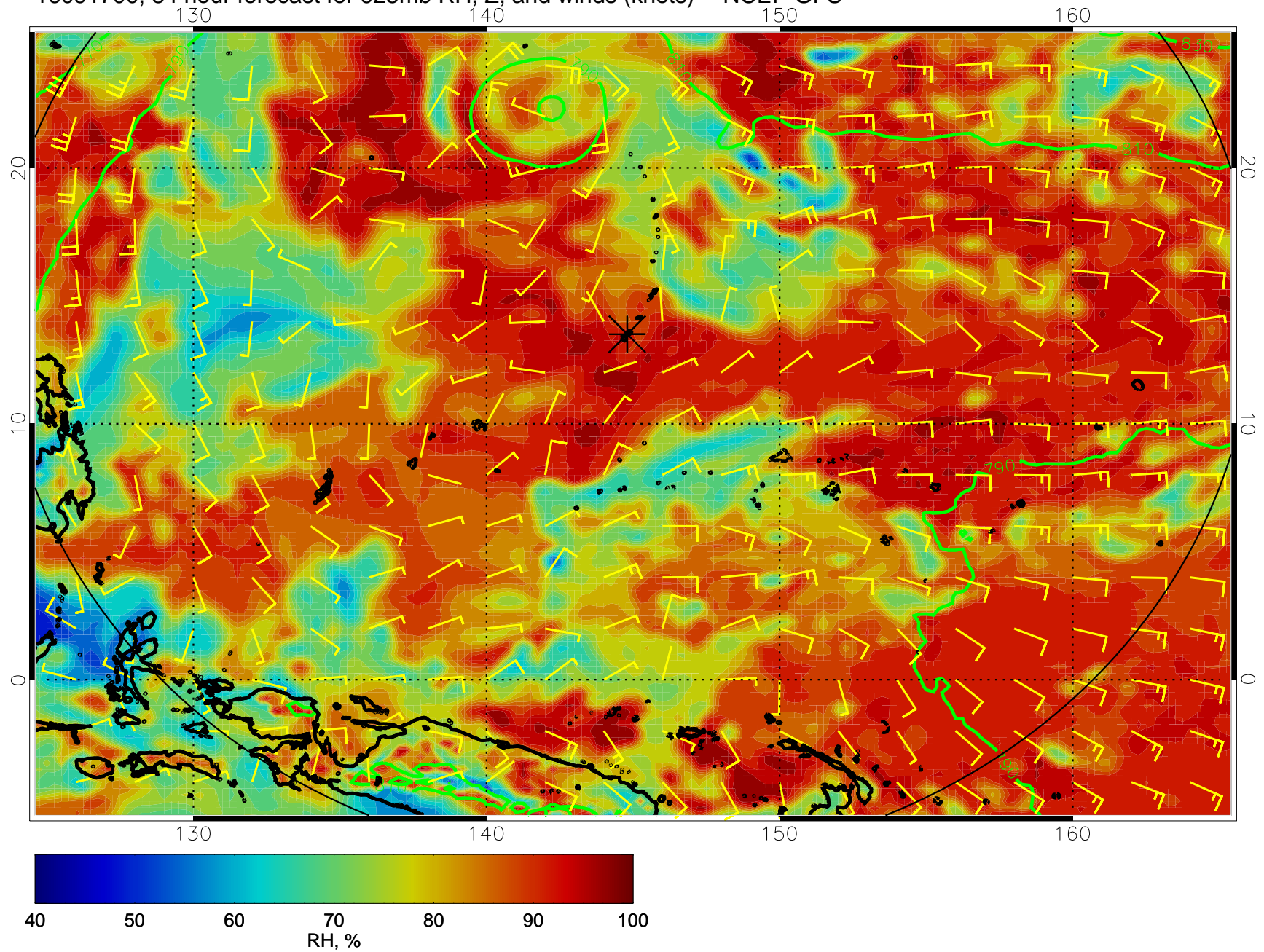




16091618, 78 hour forecast for 925mb RH, Z, and winds (knots) -- NCEP GFS

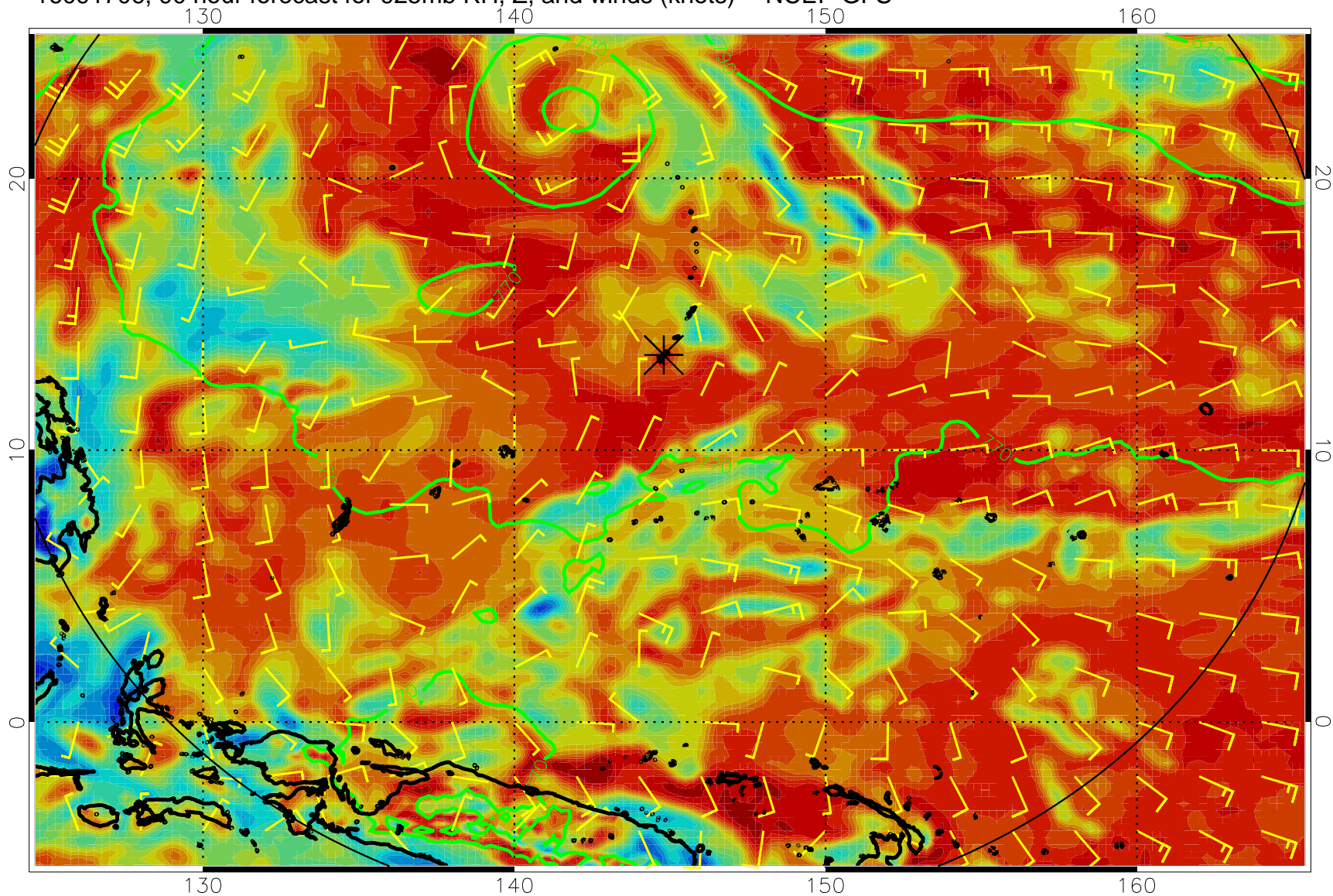


16091700, 84 hour forecast for 925mb RH, Z, and winds (knots) -- NCEP GFS

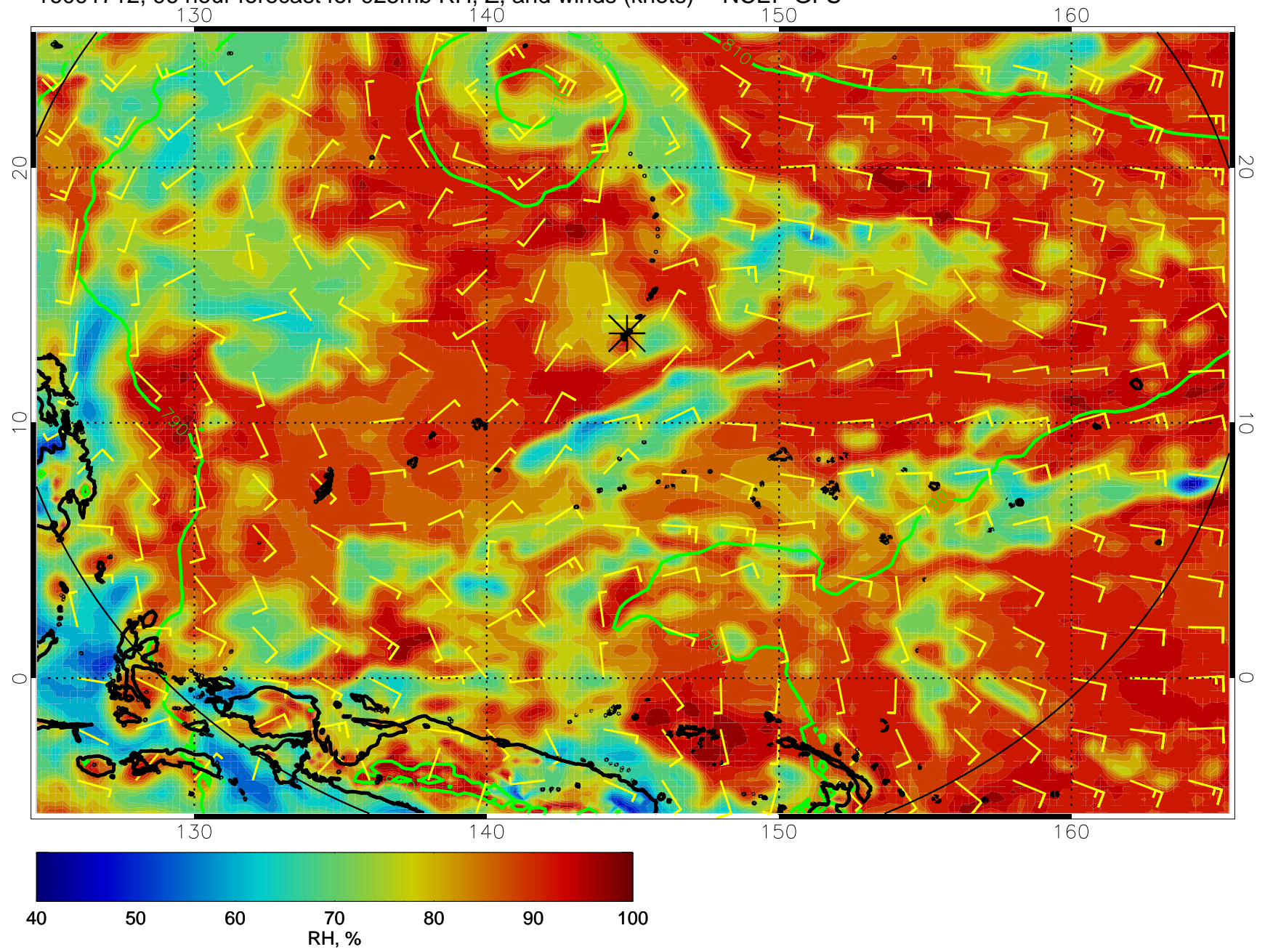




16091706, 90 hour forecast for 925mb RH, Z, and winds (knots) -- NCEP GFS

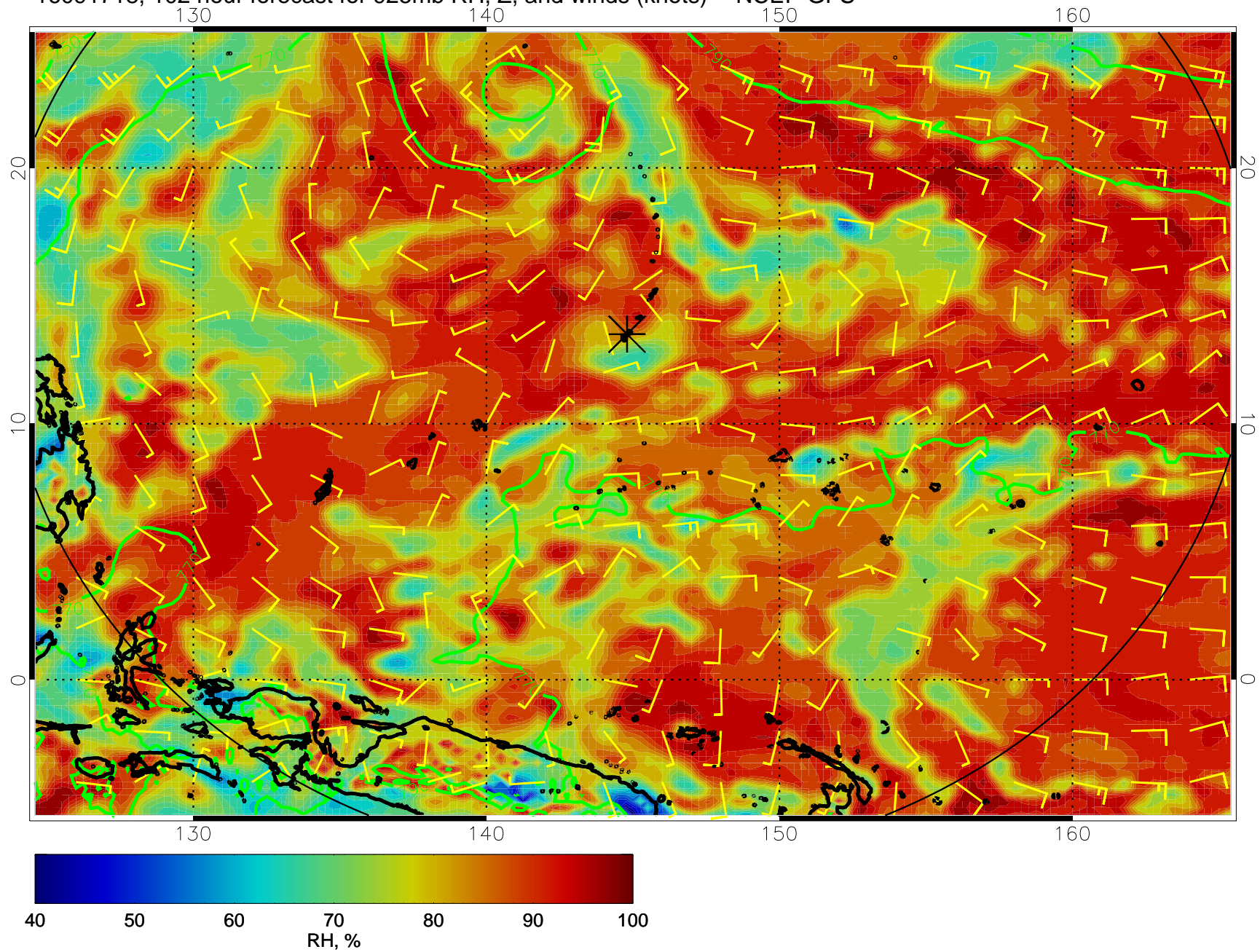


16091712, 96 hour forecast for 925mb RH, Z, and winds (knots) -- NCEP GFS

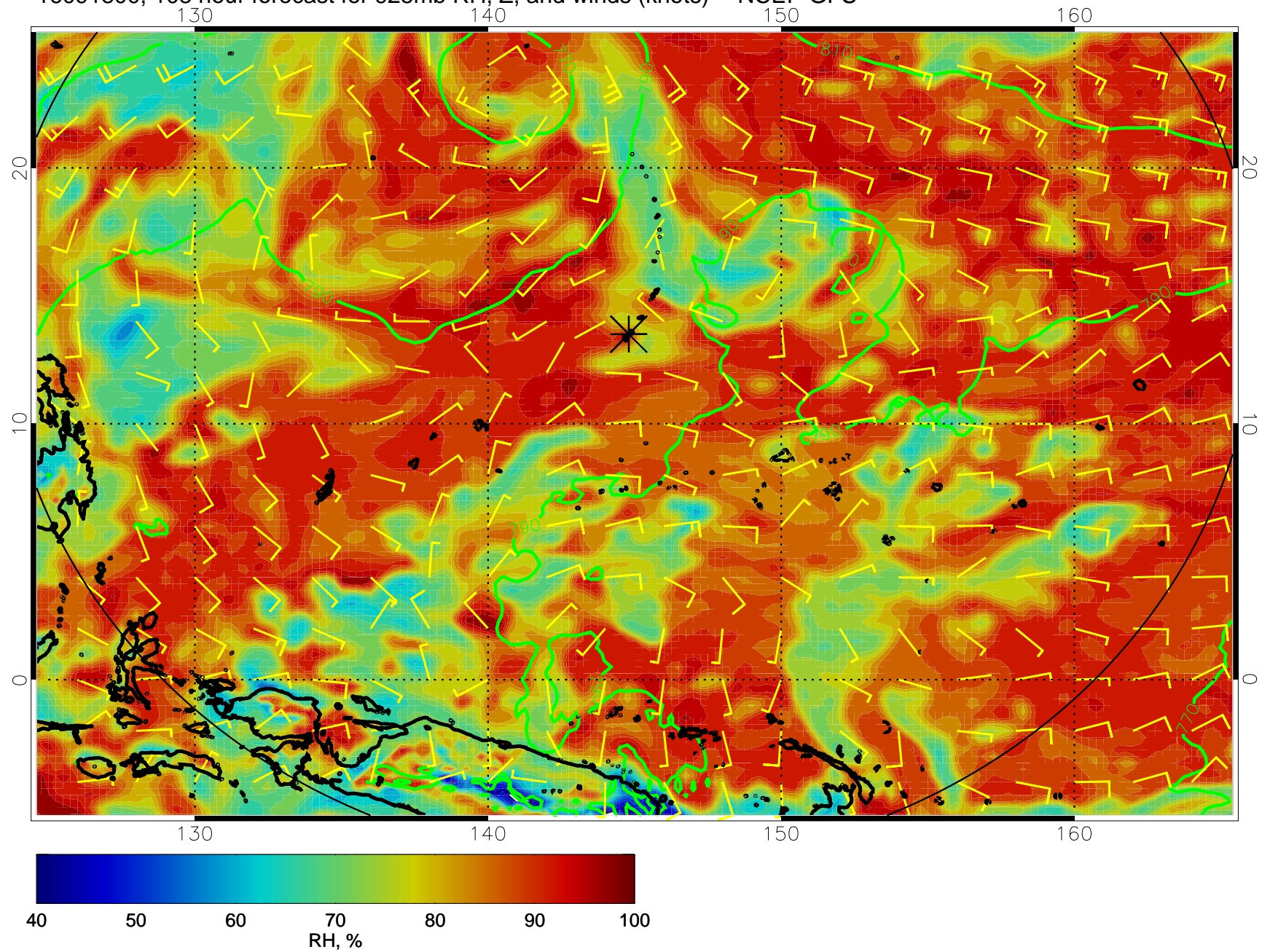




16091718, 102 hour forecast for 925mb RH, Z, and winds (knots) -- NCEP GFS

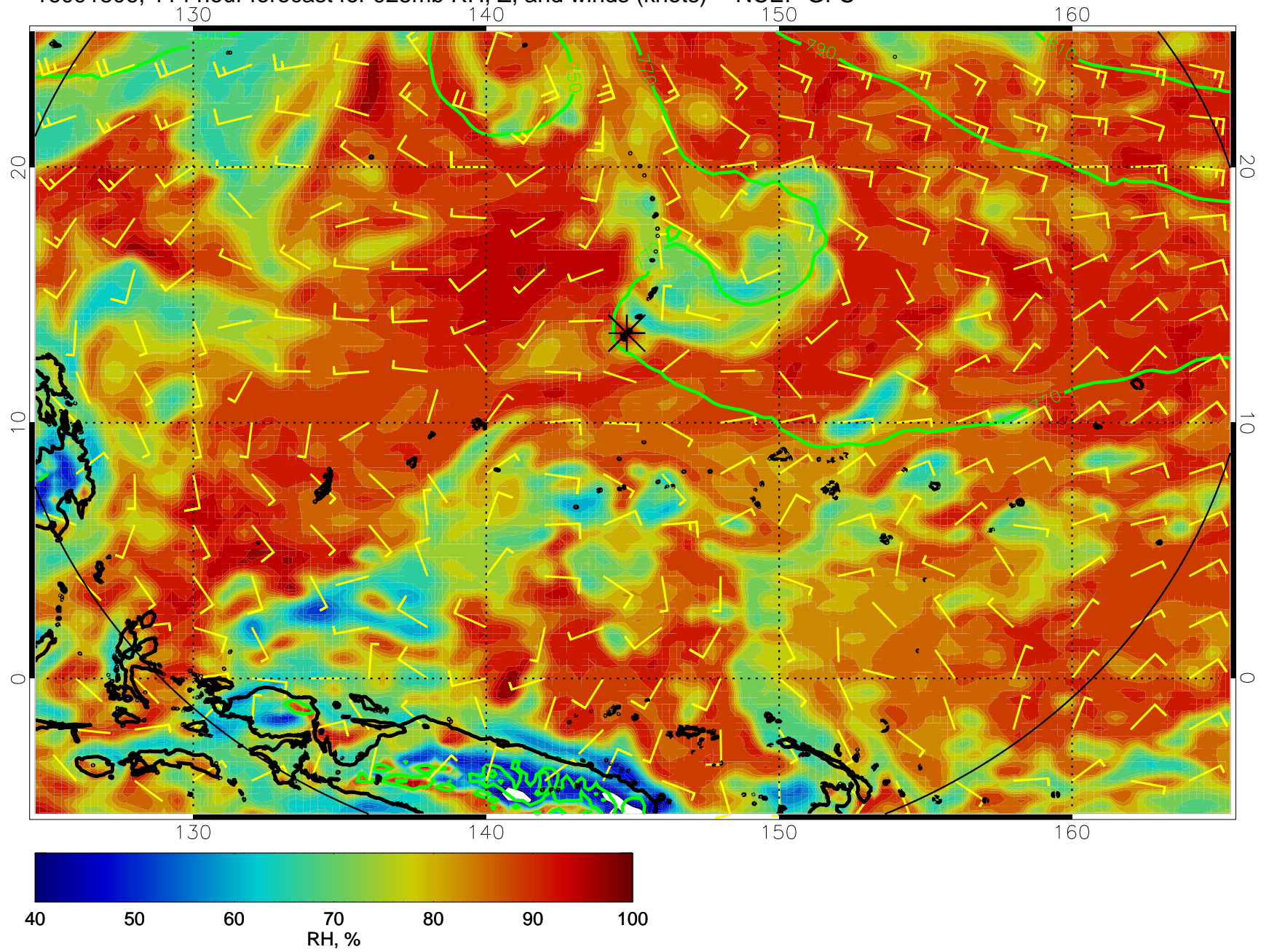


16091800, 108 hour forecast for 925mb RH, Z, and winds (knots) -- NCEP GFS





16091806, 114 hour forecast for 925mb RH, Z, and winds (knots) -- NCEP GFS



16091812, 120 hour forecast for 925mb RH, Z, and winds (knots) -- NCEP GFS

