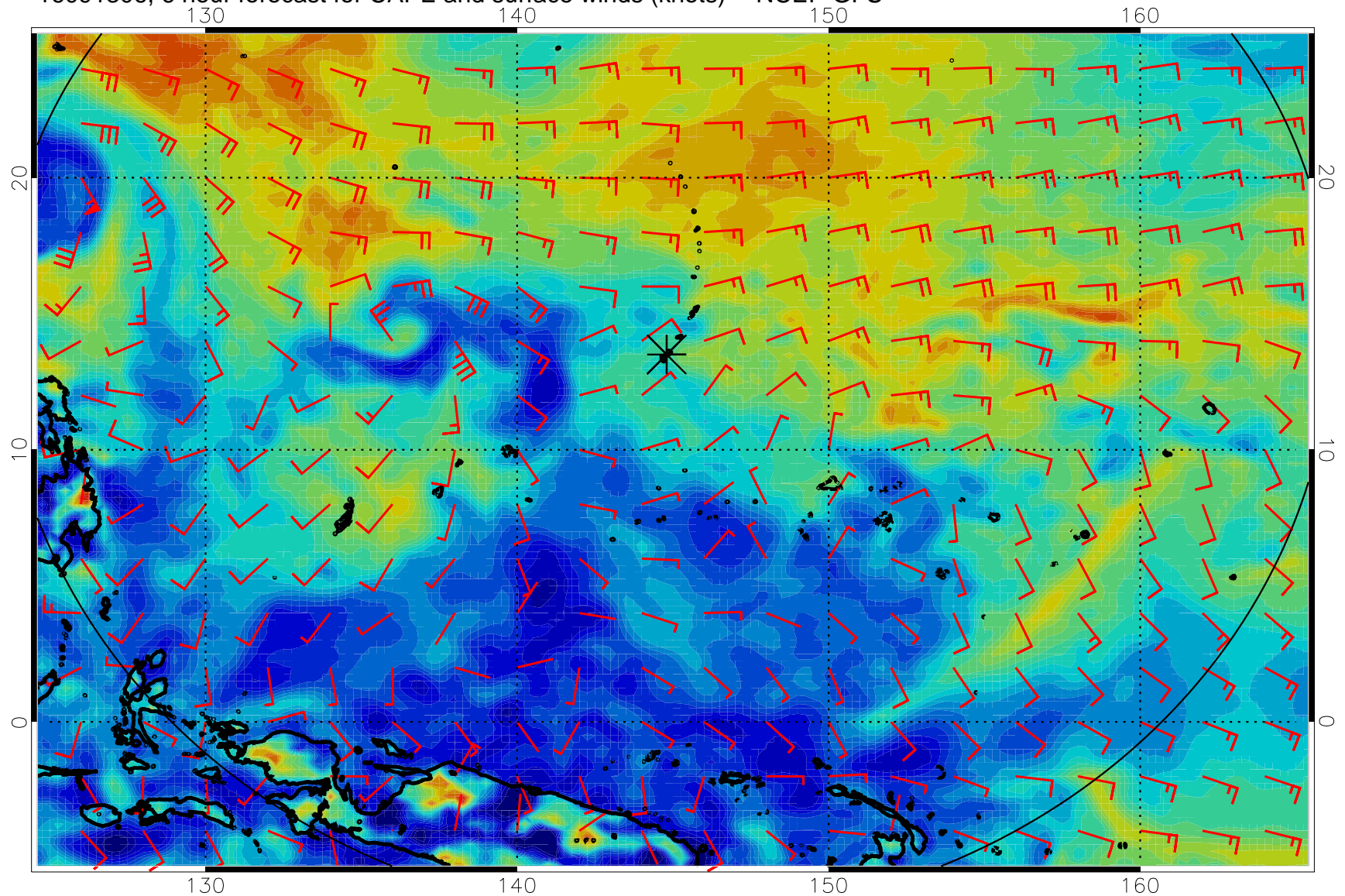
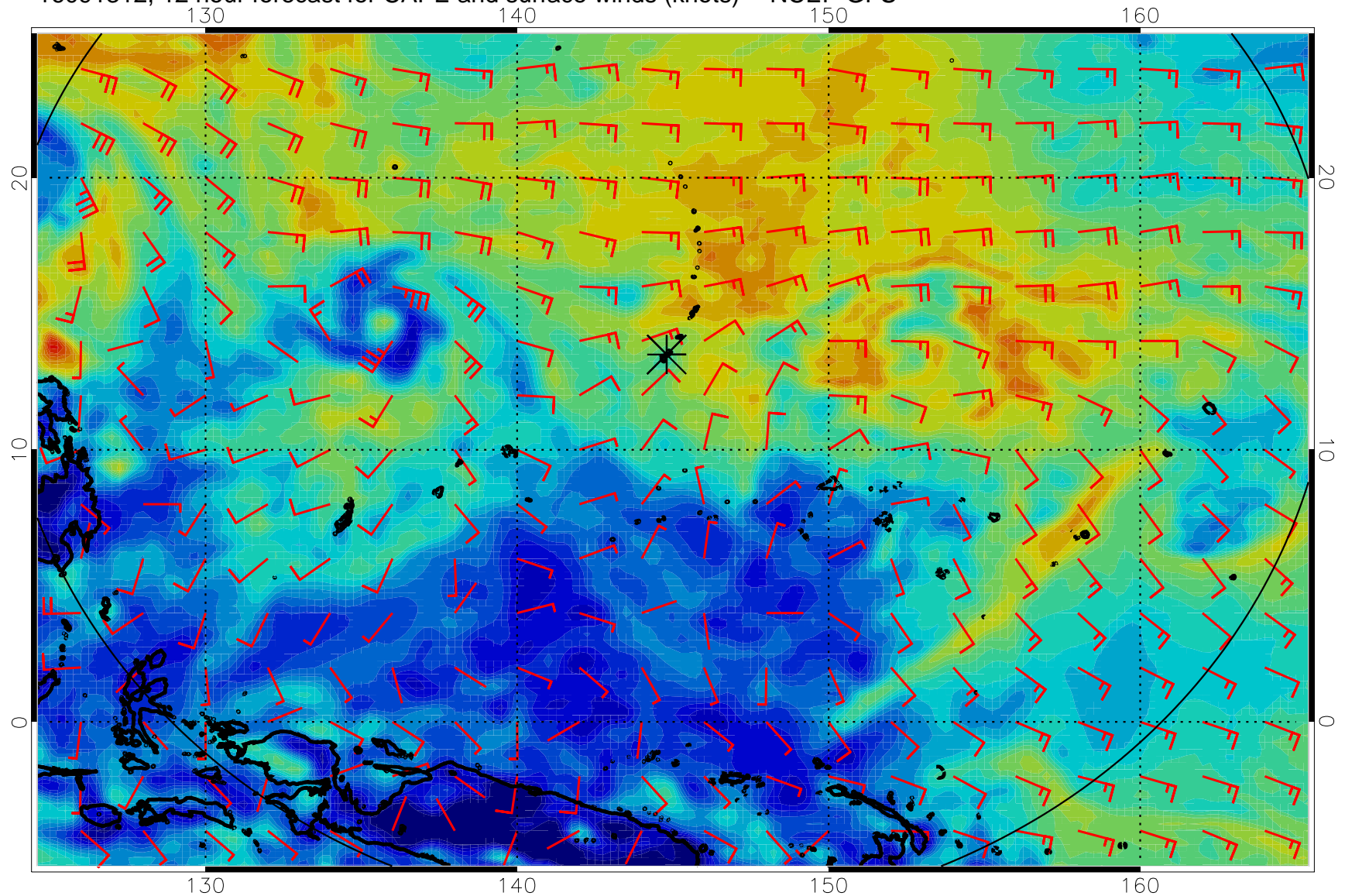


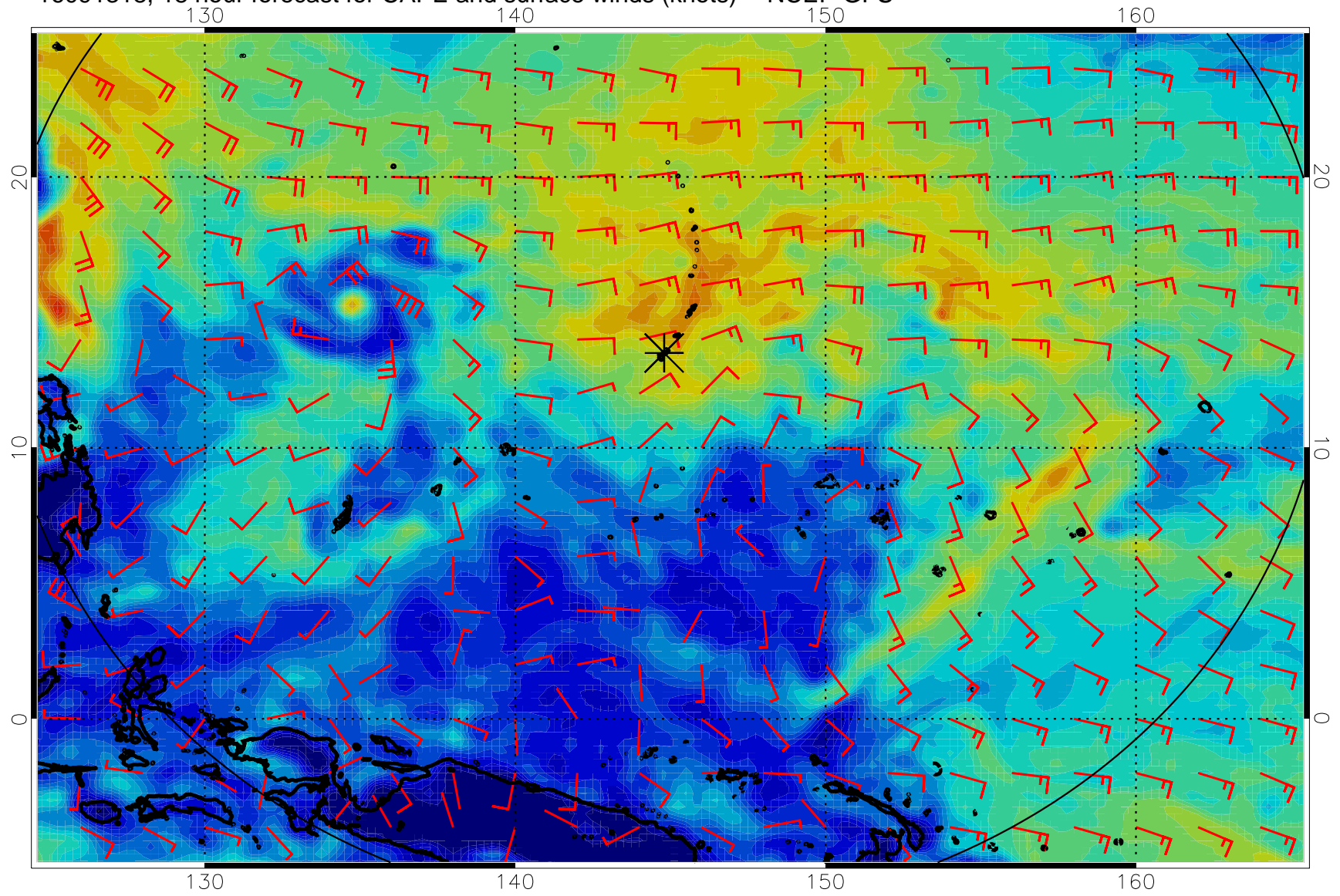
16091306, 6 hour forecast for CAPE and surface winds (knots) -- NCEP GFS



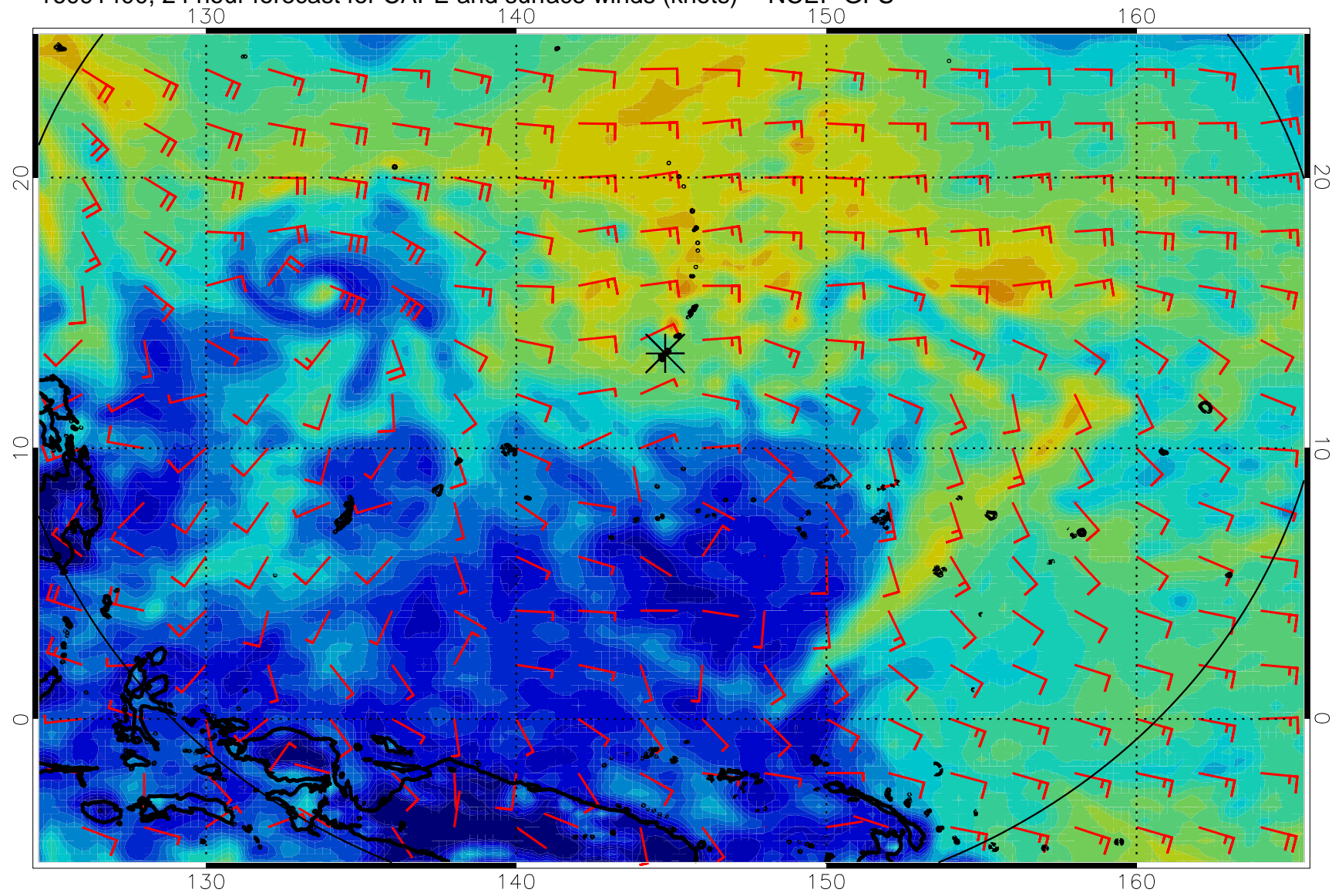
16091312, 12 hour forecast for CAPE and surface winds (knots) -- NCEP GFS



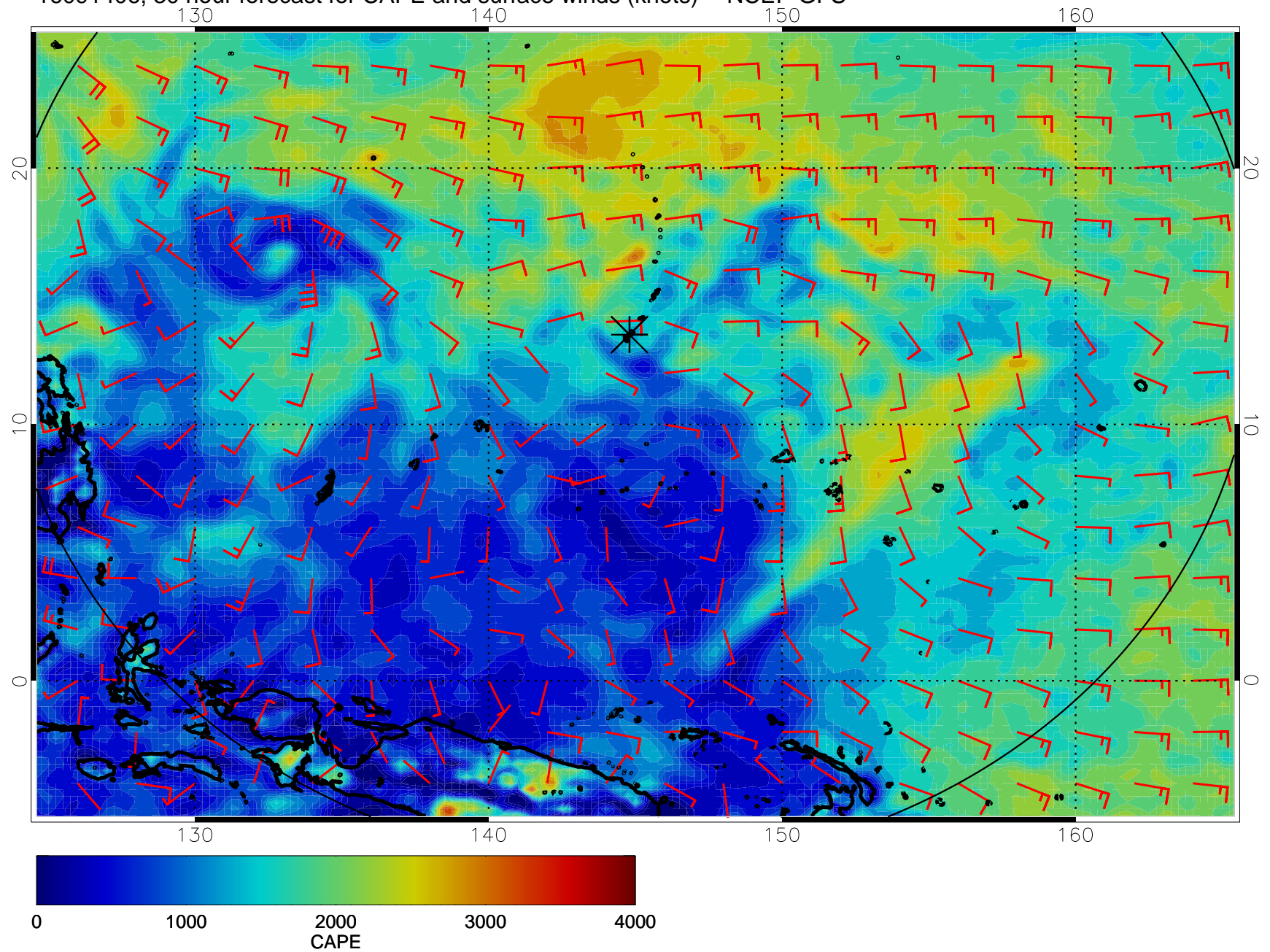
16091318, 18 hour forecast for CAPE and surface winds (knots) -- NCEP GFS



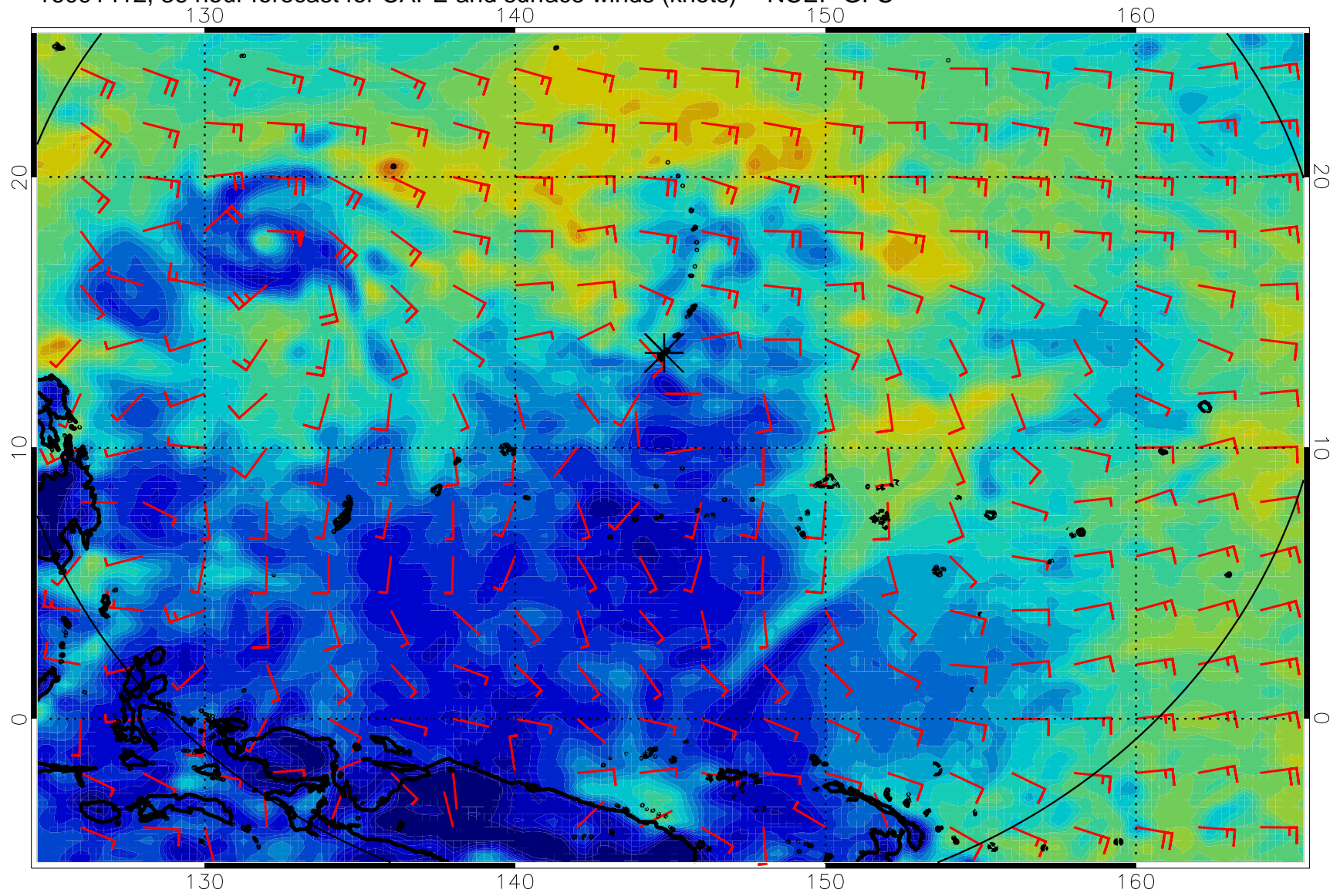
16091400, 24 hour forecast for CAPE and surface winds (knots) -- NCEP GFS



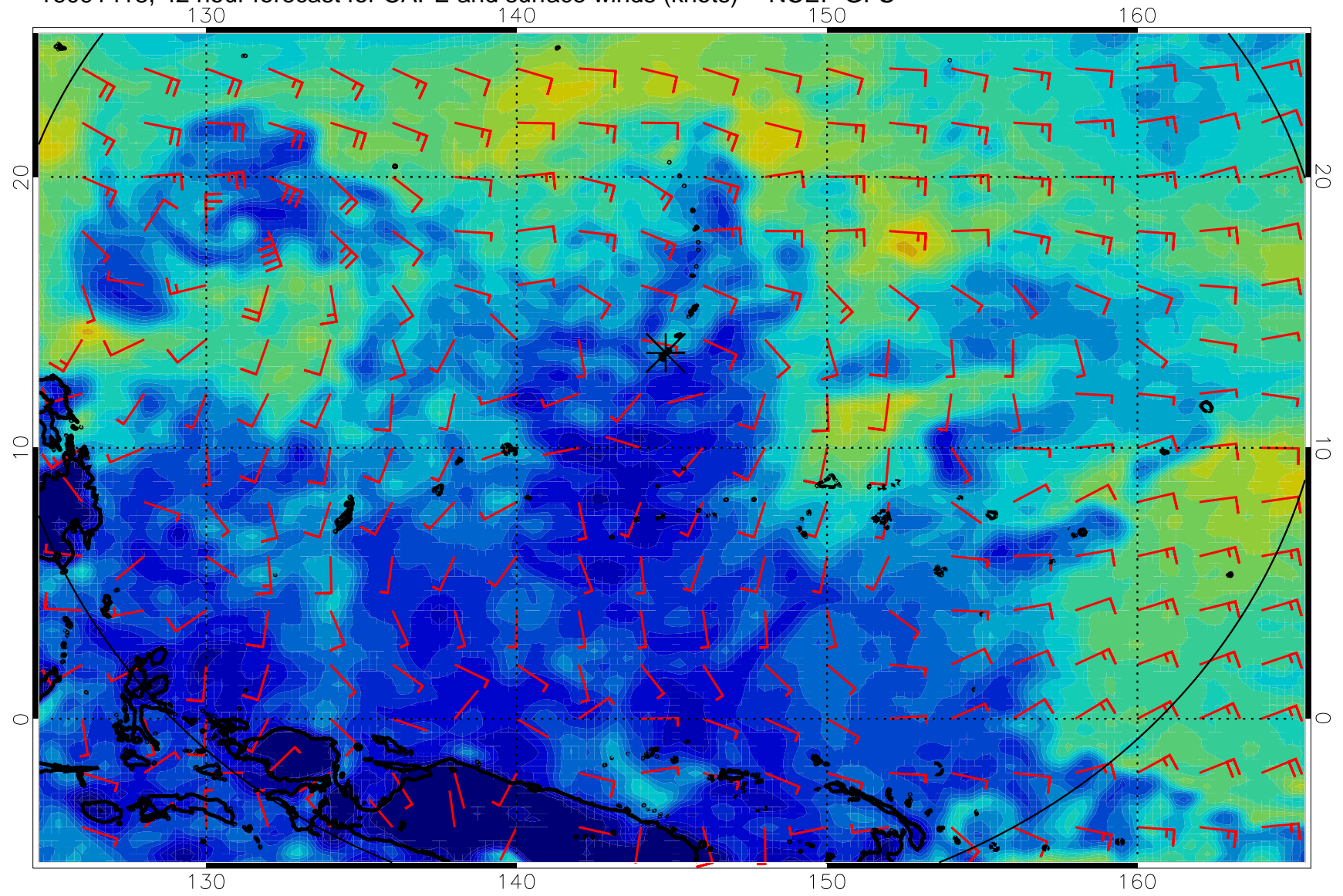
16091406, 30 hour forecast for CAPE and surface winds (knots) -- NCEP GFS



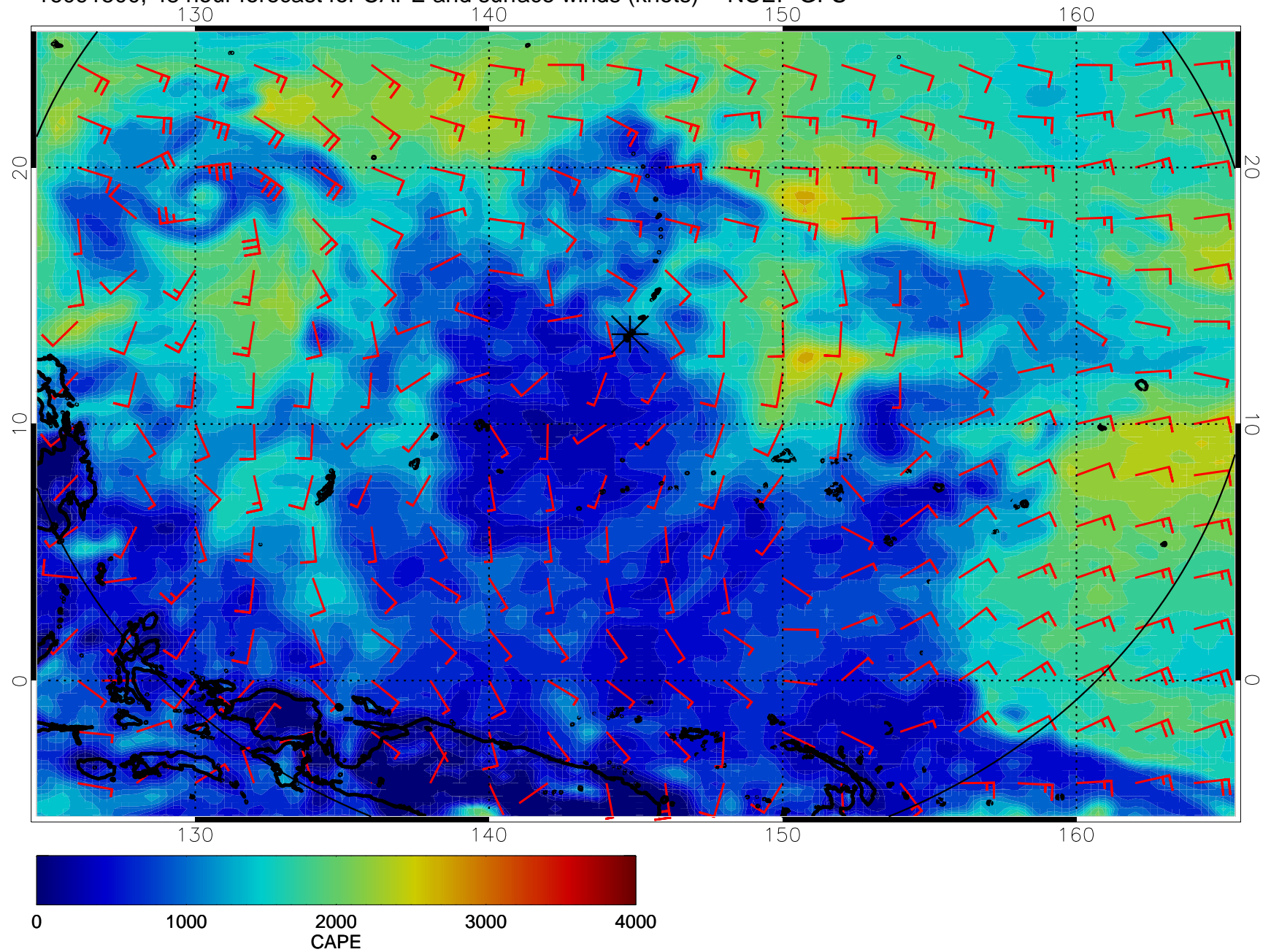
16091412, 36 hour forecast for CAPE and surface winds (knots) -- NCEP GFS



16091418, 42 hour forecast for CAPE and surface winds (knots) -- NCEP GFS

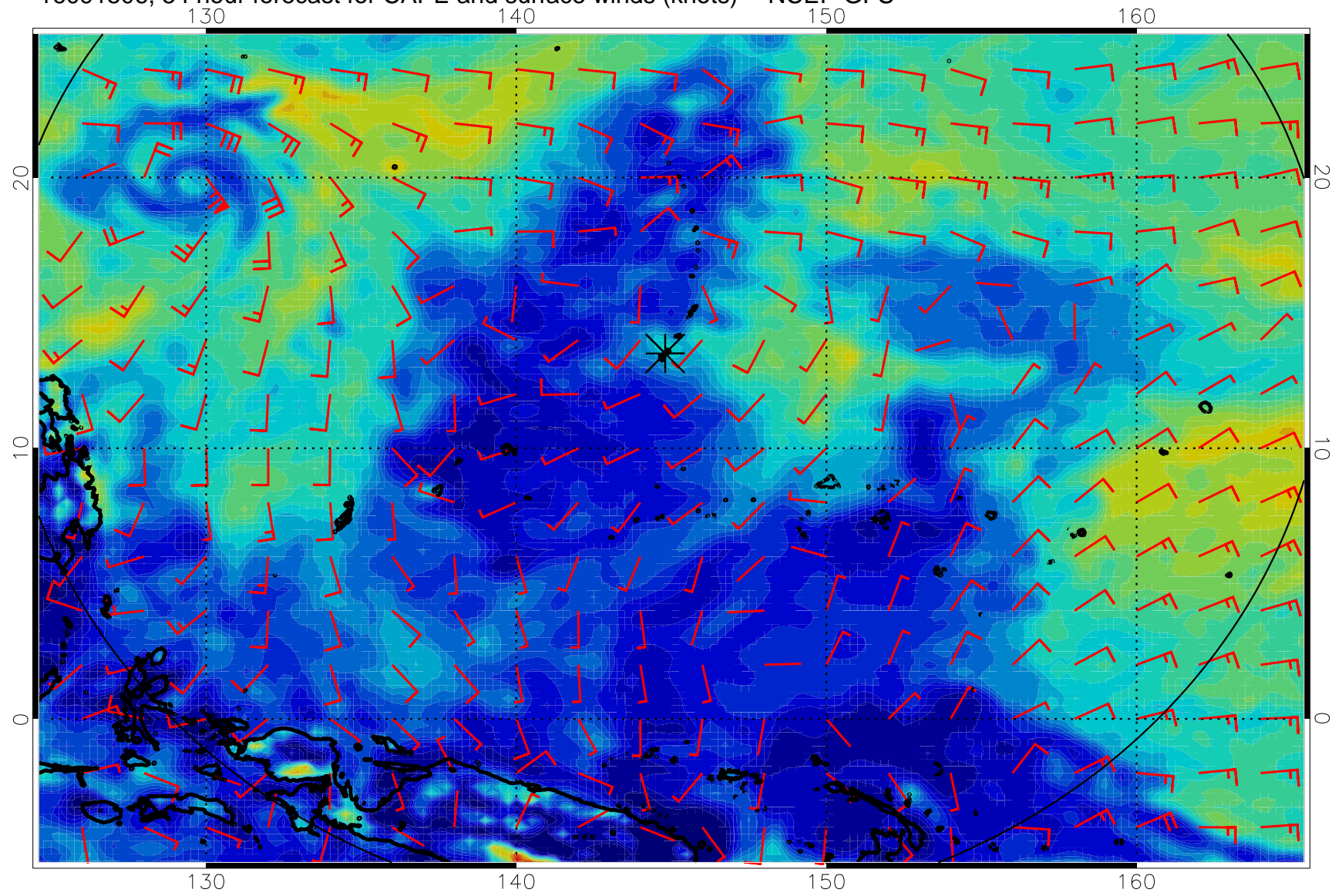


16091500, 48 hour forecast for CAPE and surface winds (knots) -- NCEP GFS

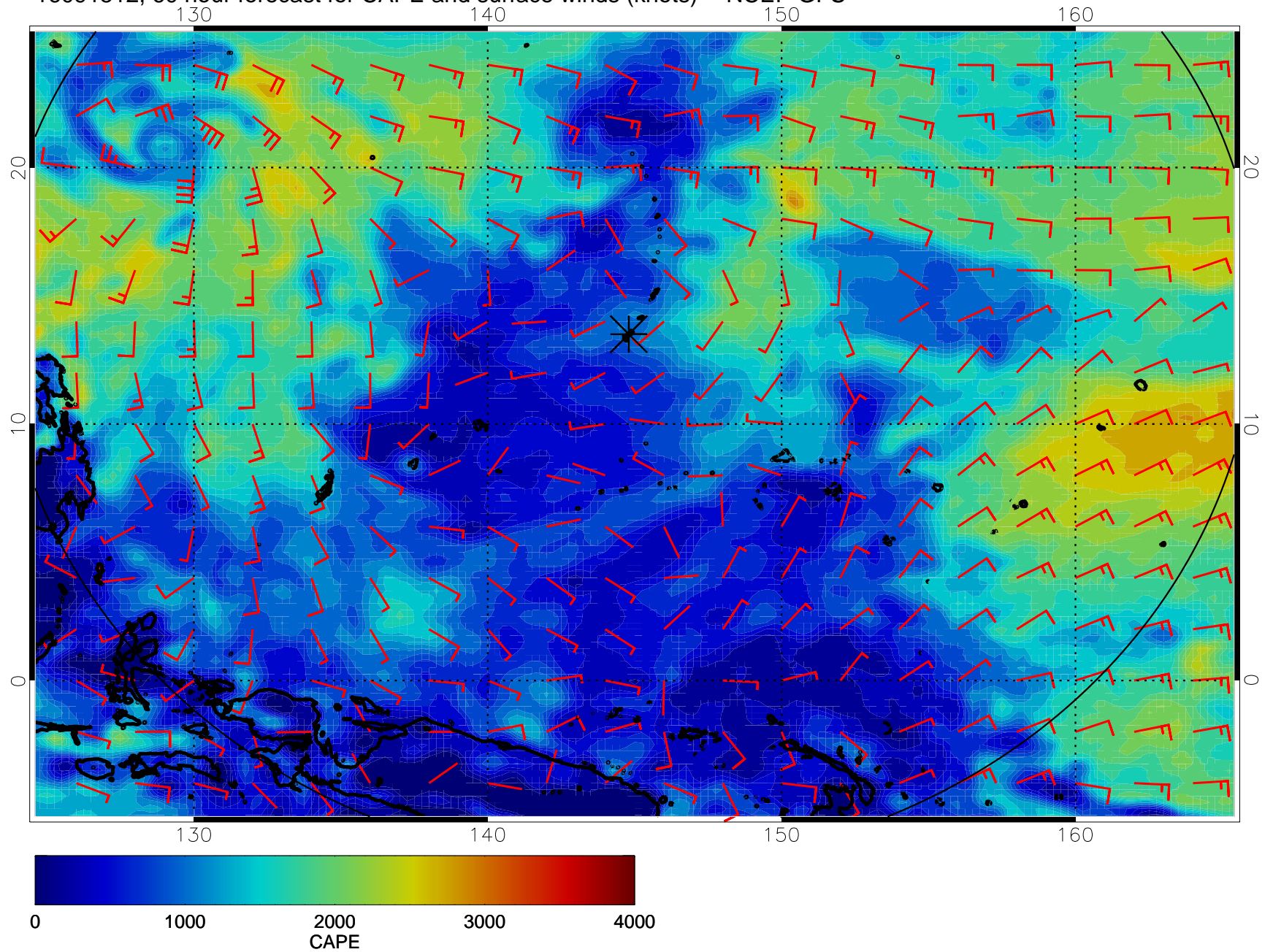




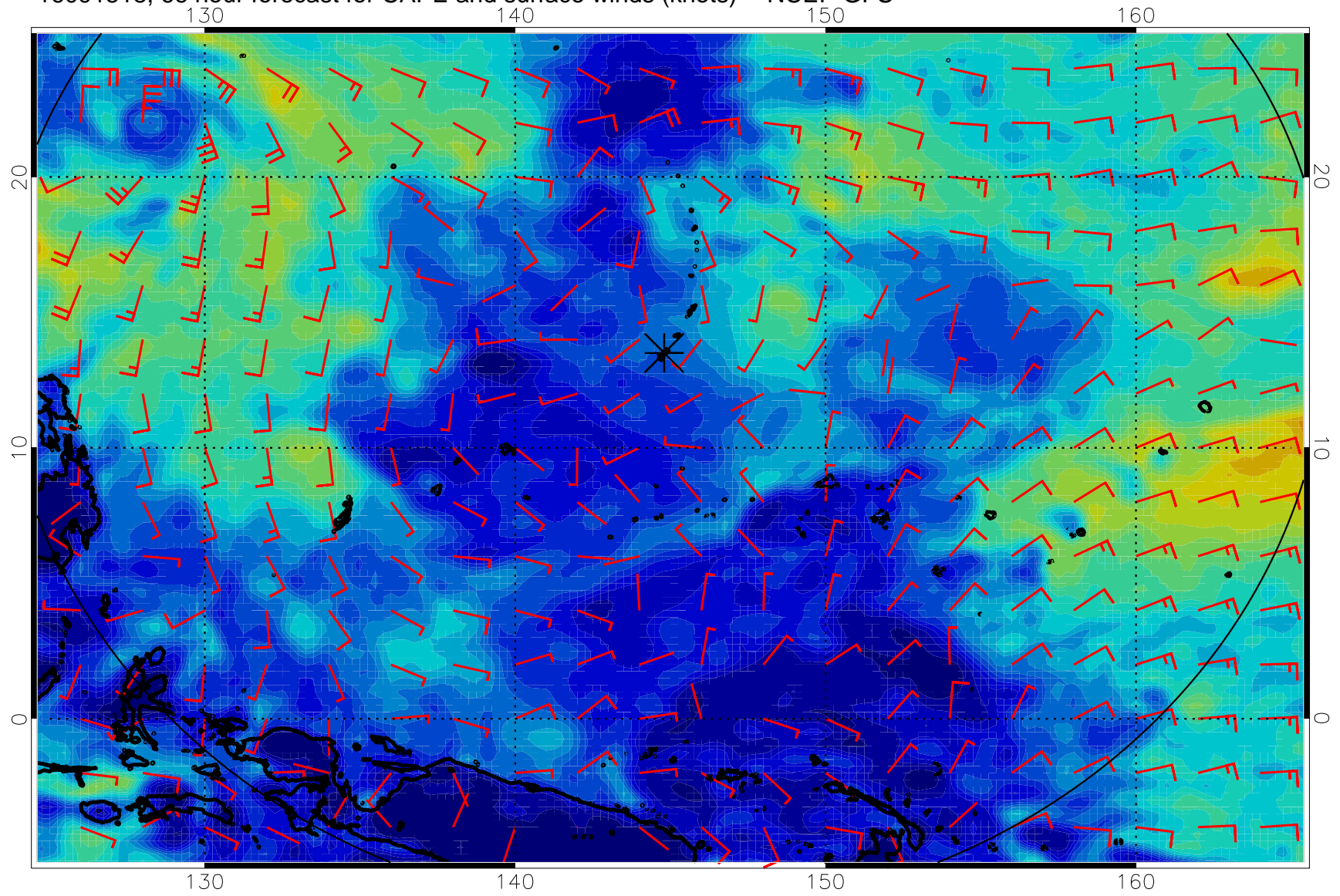
16091506, 54 hour forecast for CAPE and surface winds (knots) -- NCEP GFS



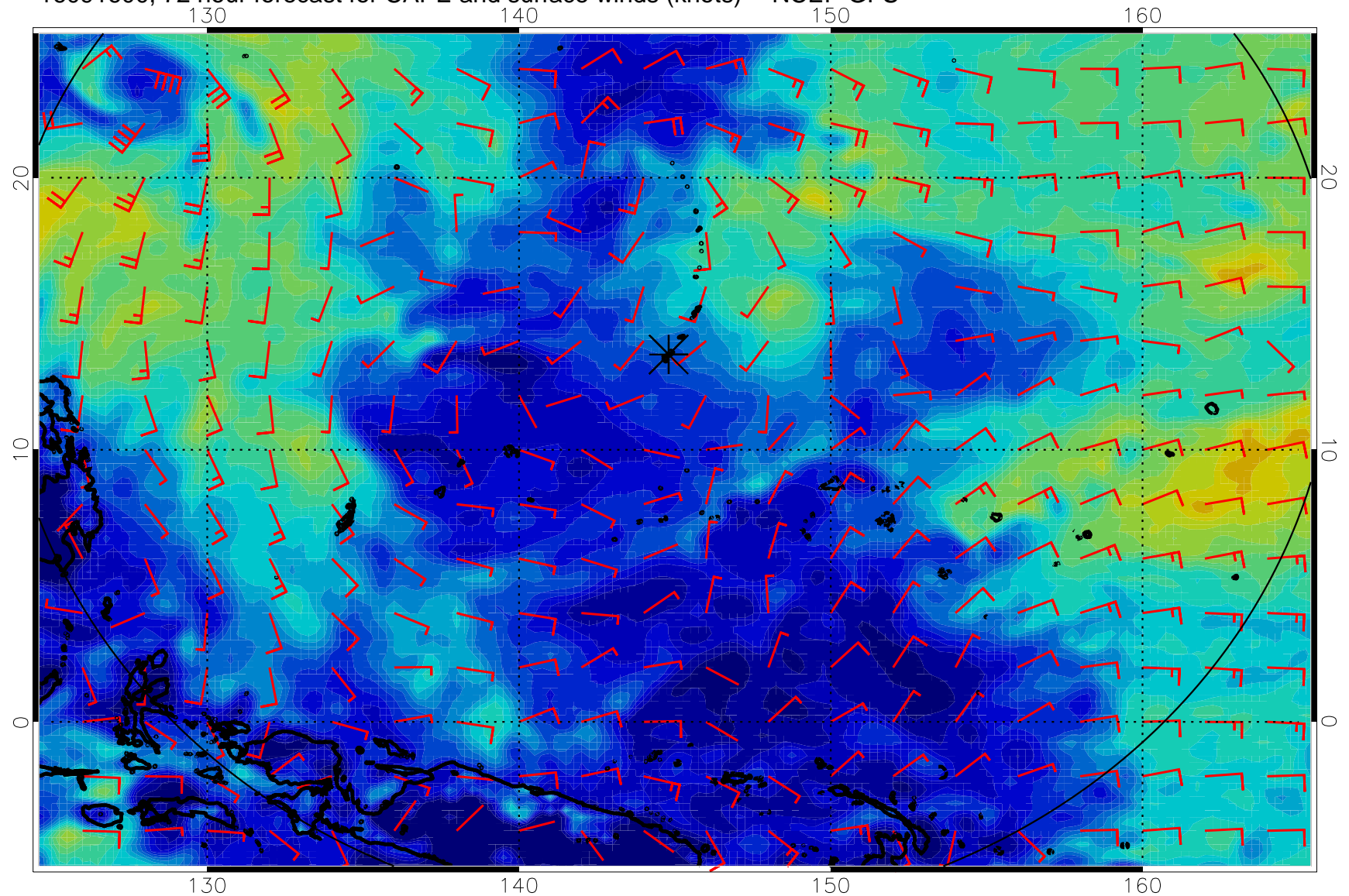
16091512, 60 hour forecast for CAPE and surface winds (knots) -- NCEP GFS



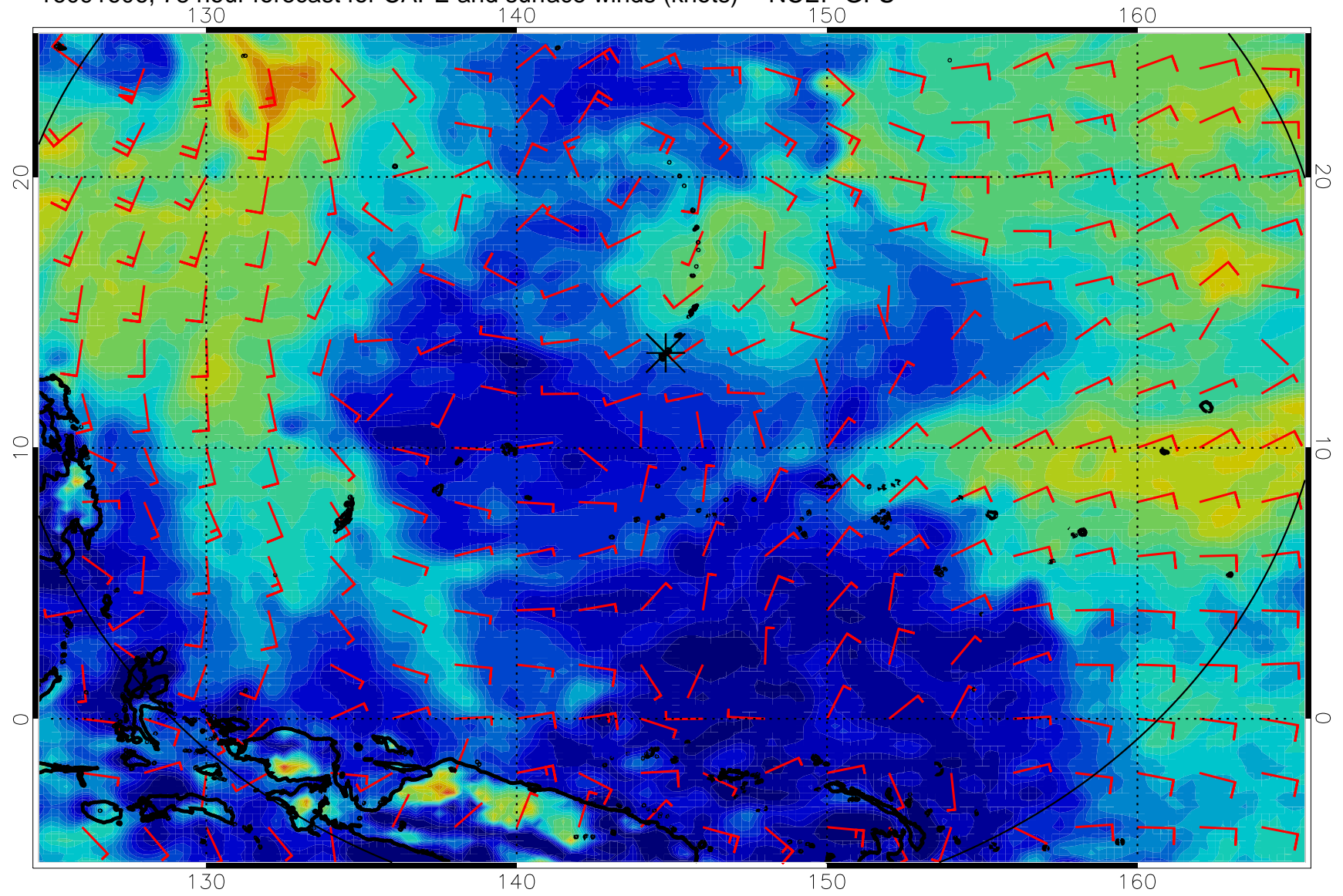
16091518, 66 hour forecast for CAPE and surface winds (knots) -- NCEP GFS



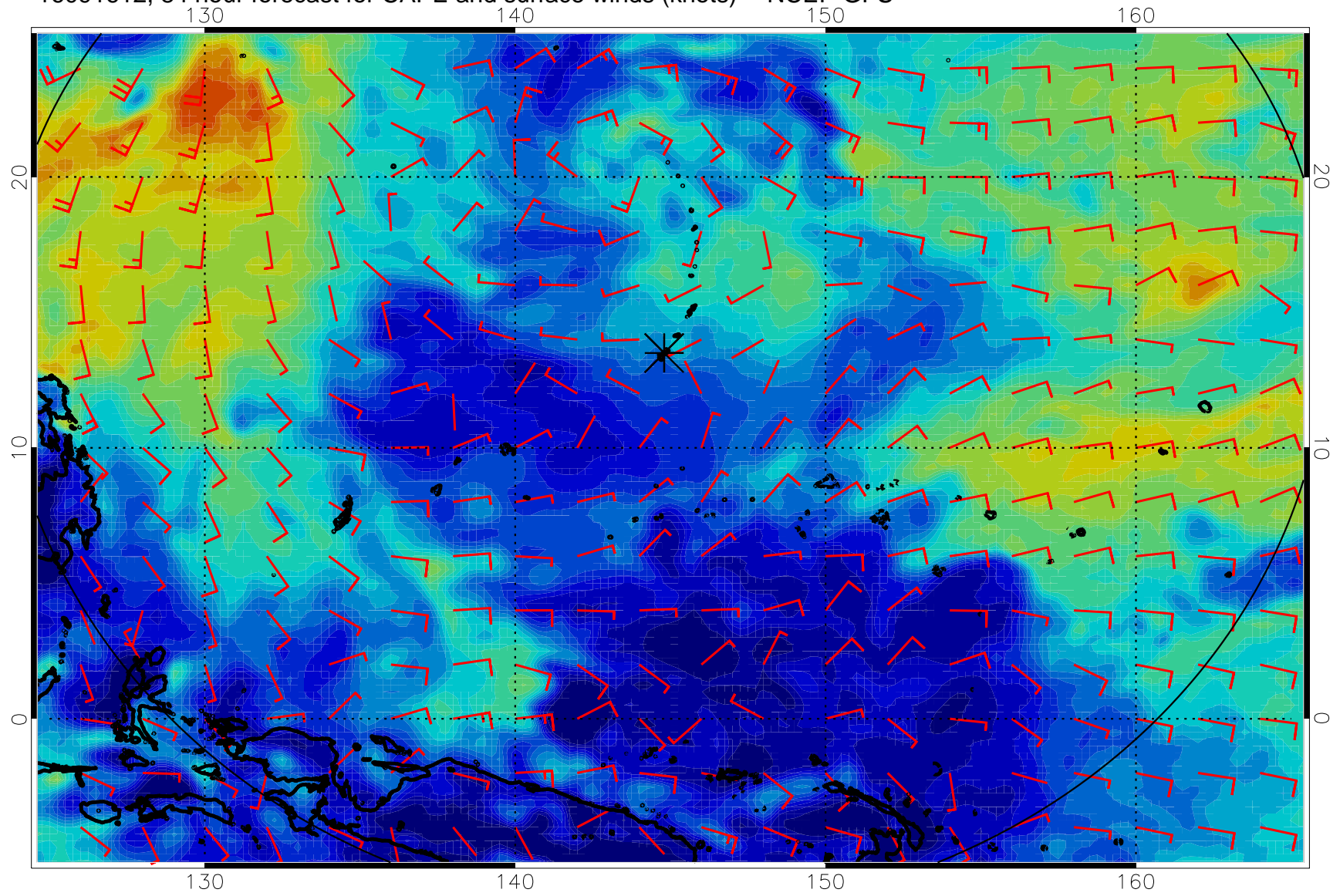
16091600, 72 hour forecast for CAPE and surface winds (knots) -- NCEP GFS



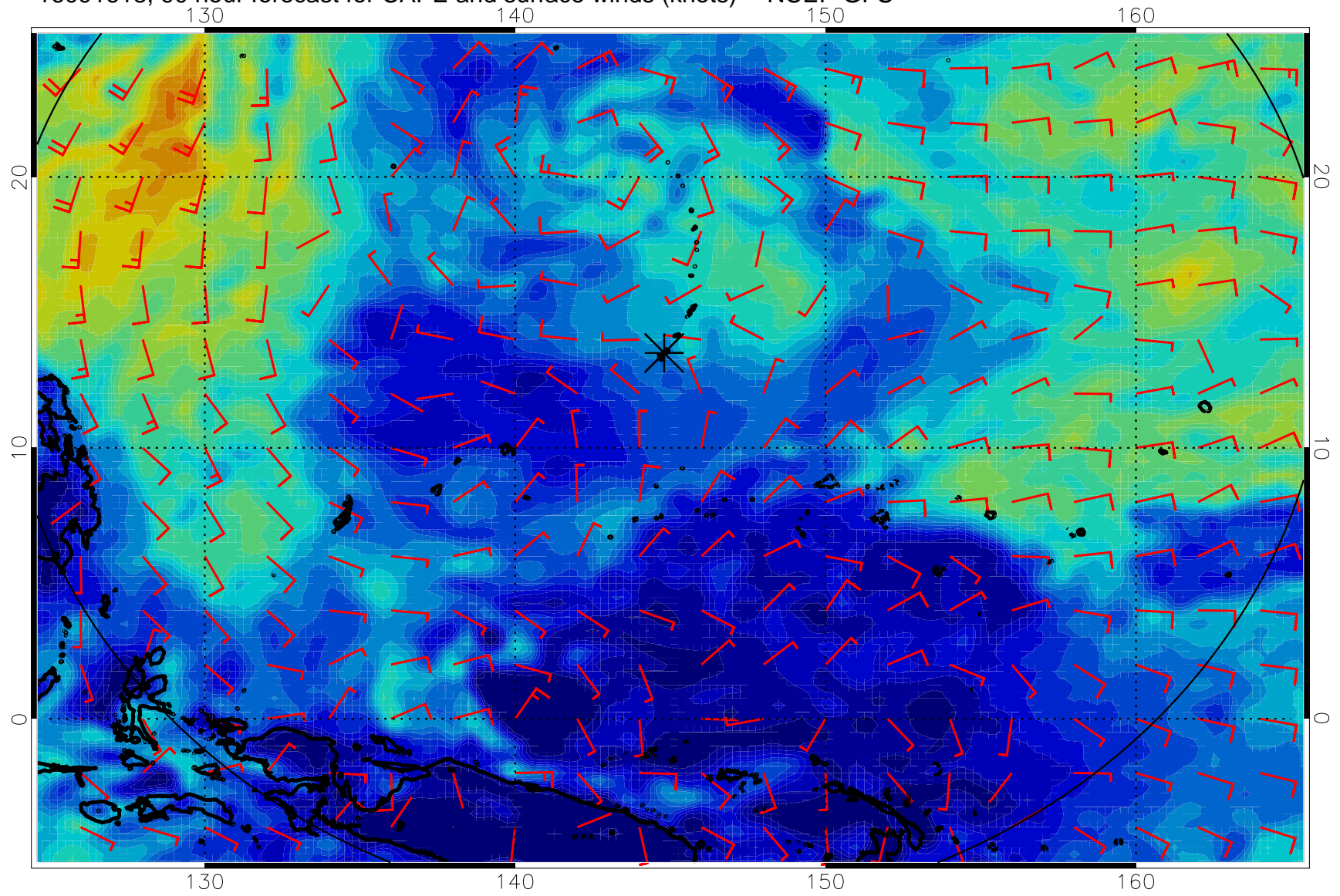
16091606, 78 hour forecast for CAPE and surface winds (knots) -- NCEP GFS



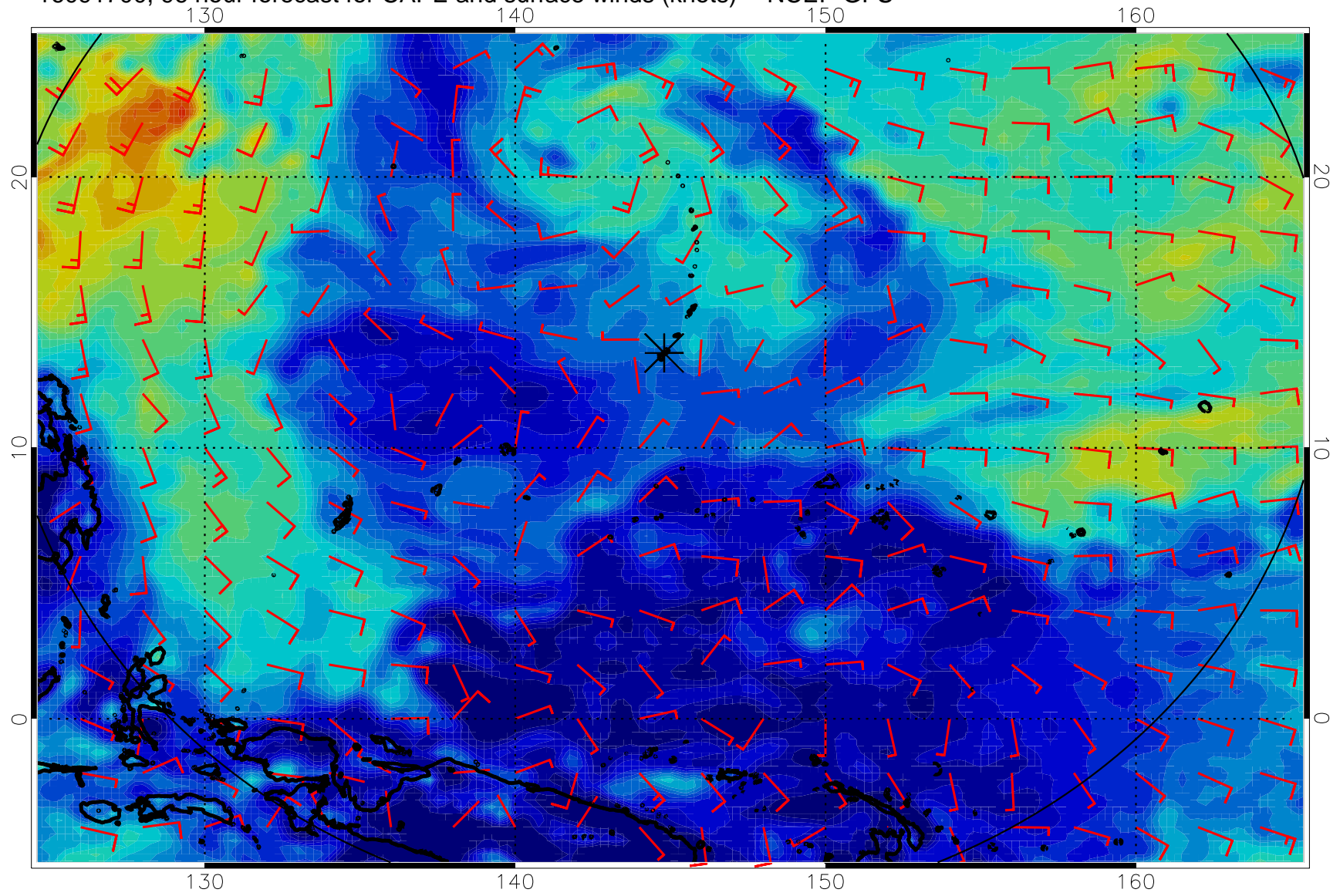
16091612, 84 hour forecast for CAPE and surface winds (knots) -- NCEP GFS



16091618, 90 hour forecast for CAPE and surface winds (knots) -- NCEP GFS

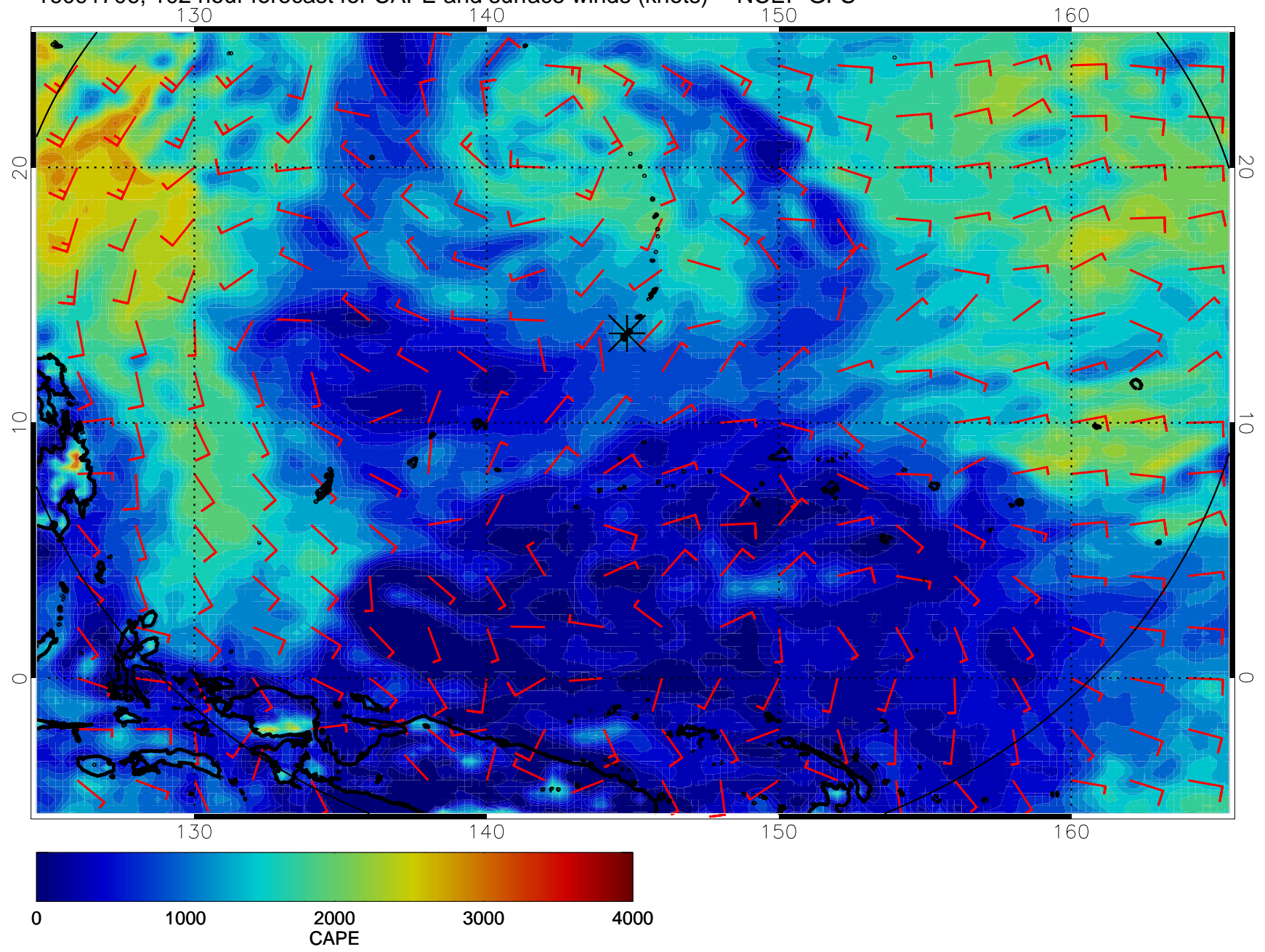


16091700, 96 hour forecast for CAPE and surface winds (knots) -- NCEP GFS

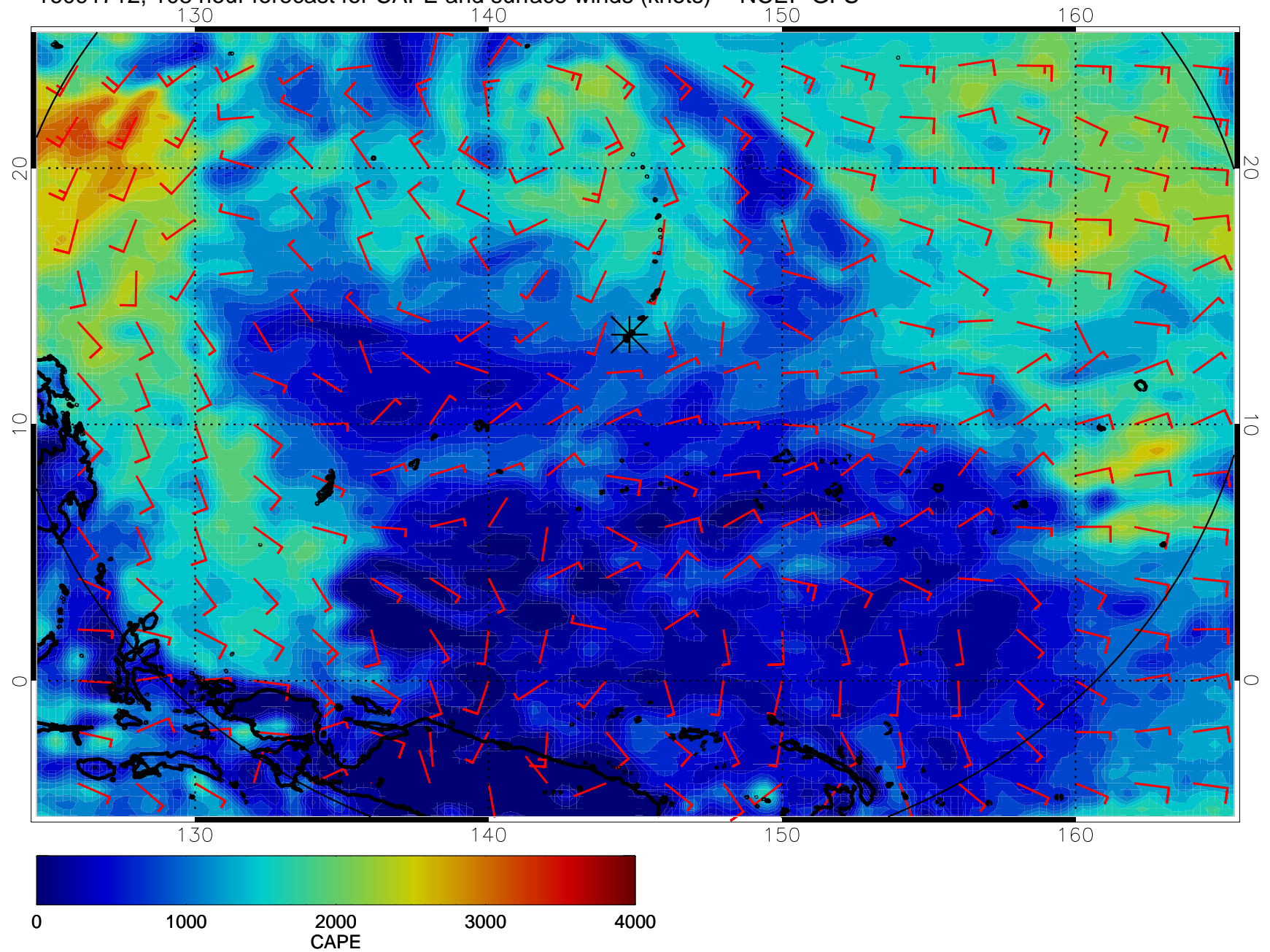




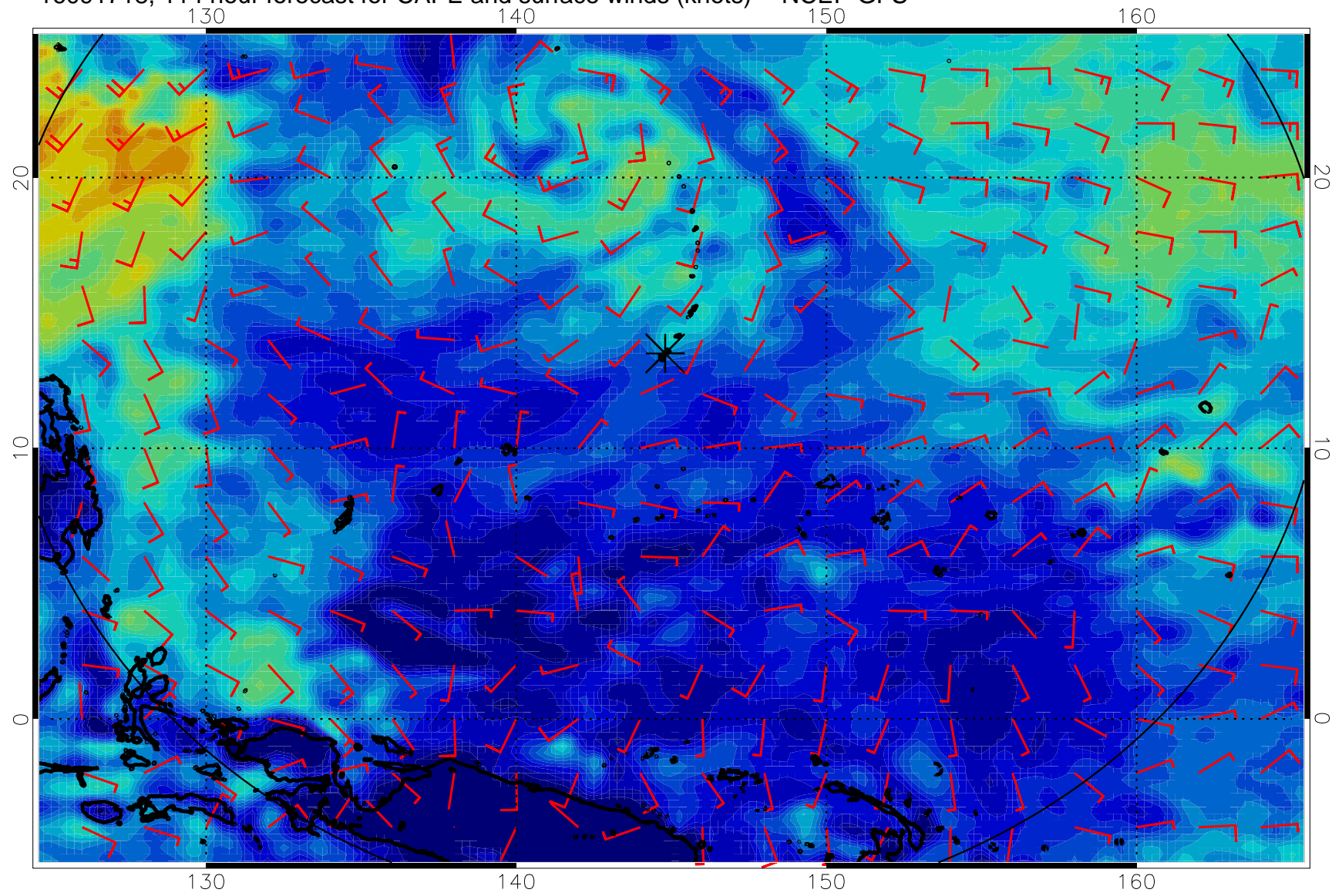
16091706, 102 hour forecast for CAPE and surface winds (knots) -- NCEP GFS



16091712, 108 hour forecast for CAPE and surface winds (knots) -- NCEP GFS



16091718, 114 hour forecast for CAPE and surface winds (knots) -- NCEP GFS



16091800, 120 hour forecast for CAPE and surface winds (knots) -- NCEP GFS

