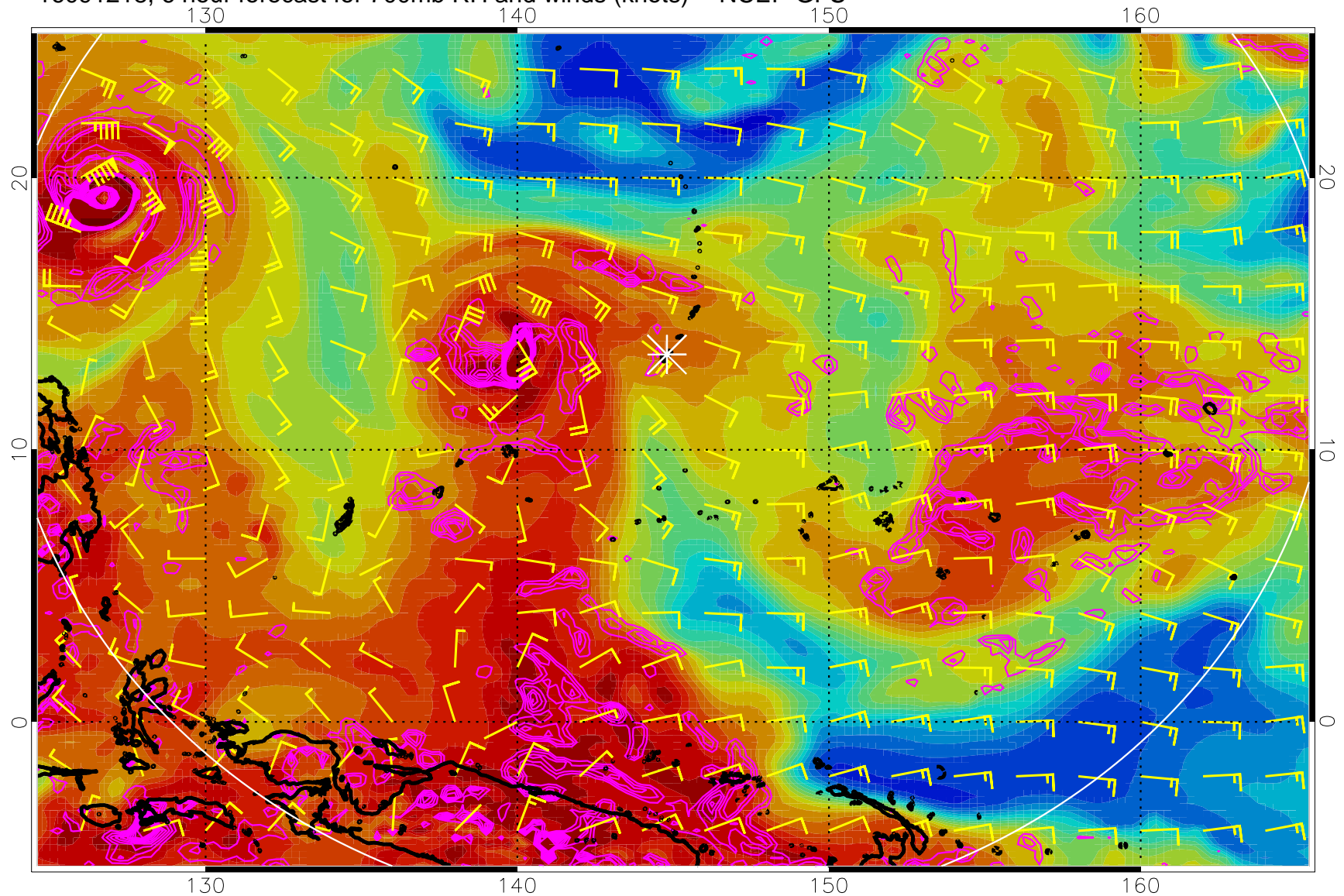
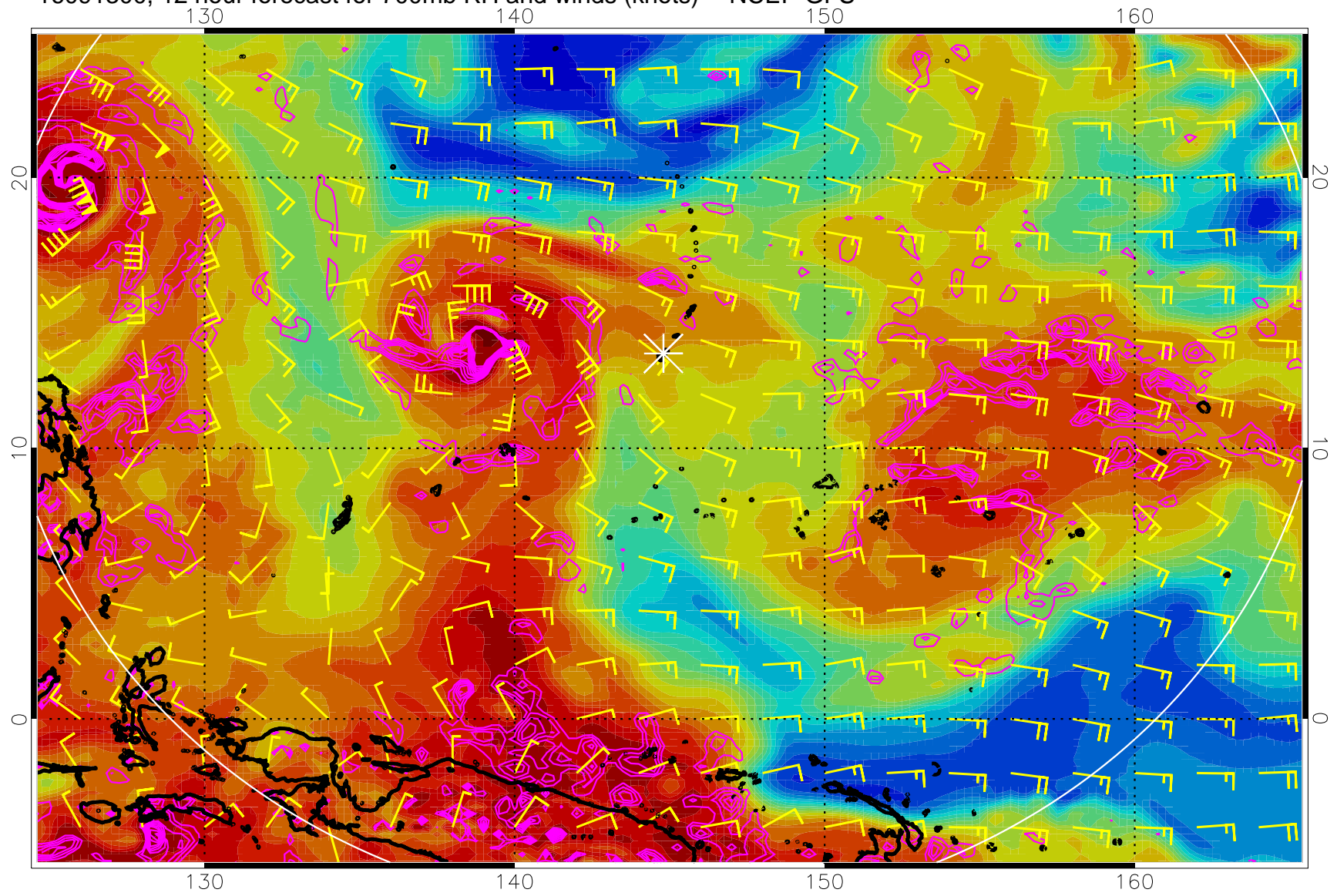


16091218, 6 hour forecast for 700mb RH and winds (knots) -- NCEP GFS



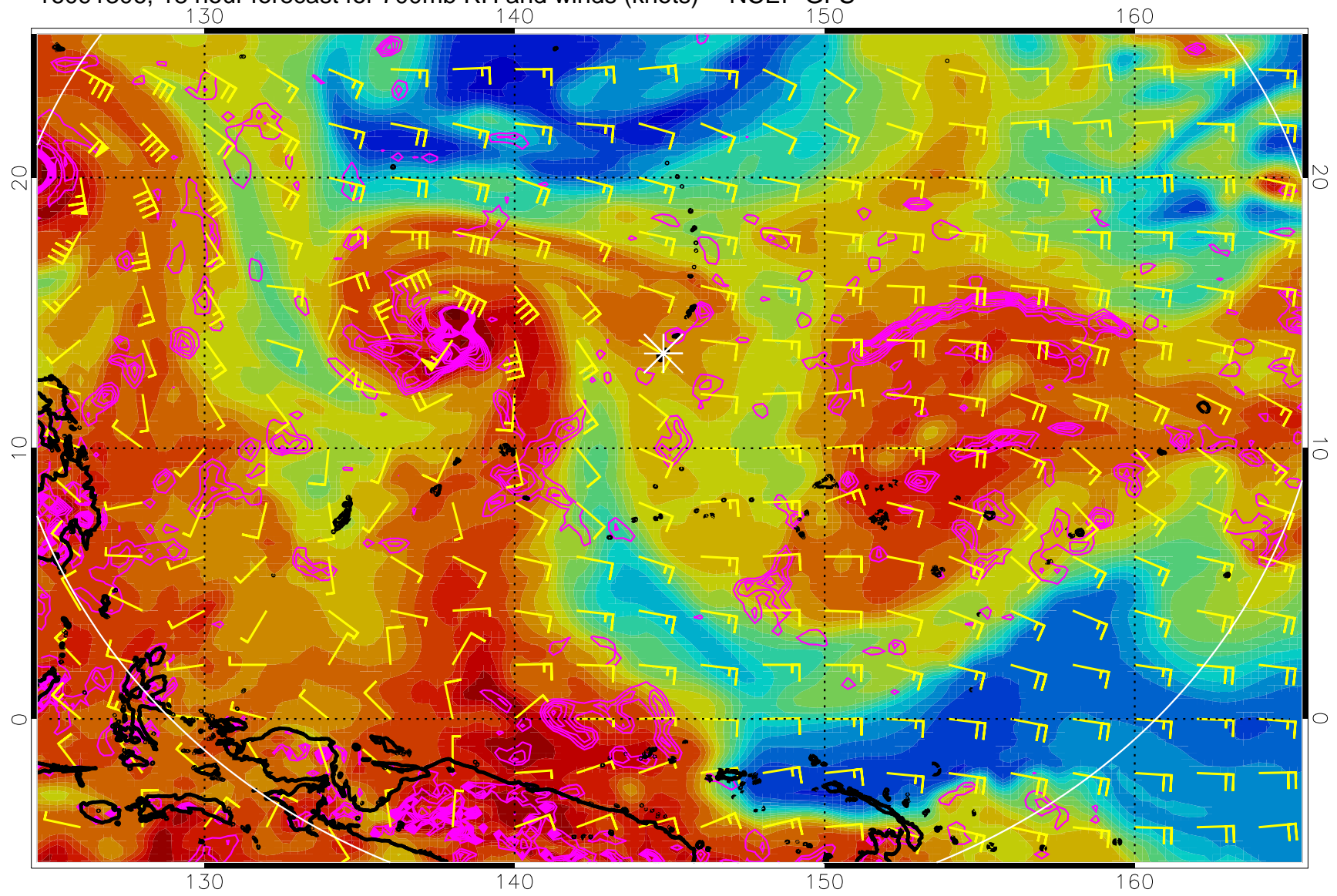
Negative Omegas less than -.3, contours of .3 Pa/s

16091300, 12 hour forecast for 700mb RH and winds (knots) -- NCEP GFS



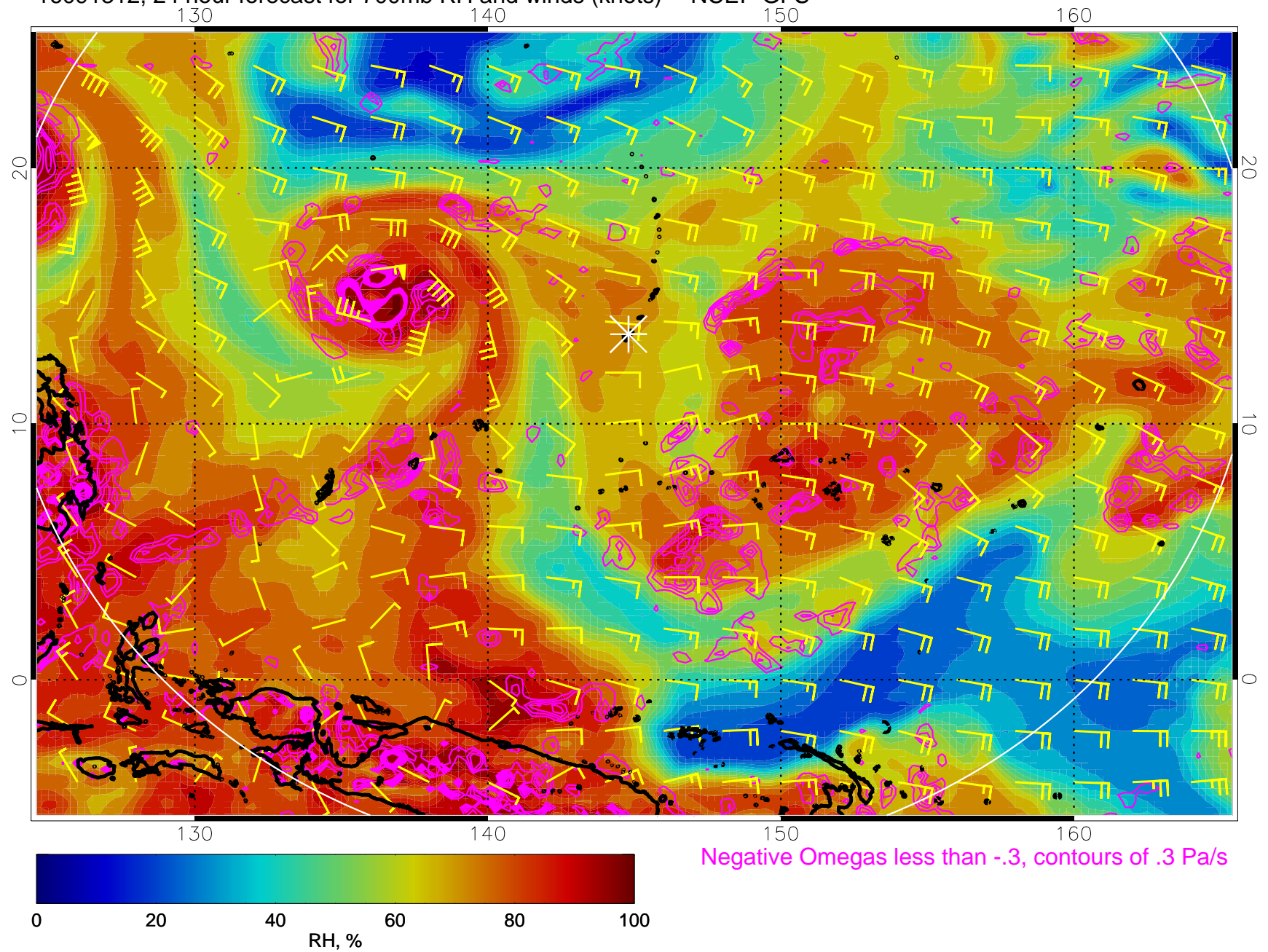
Negative Omegas less than  $-0.3$ , contours of  $0.3$  Pa/s

16091306, 18 hour forecast for 700mb RH and winds (knots) -- NCEP GFS

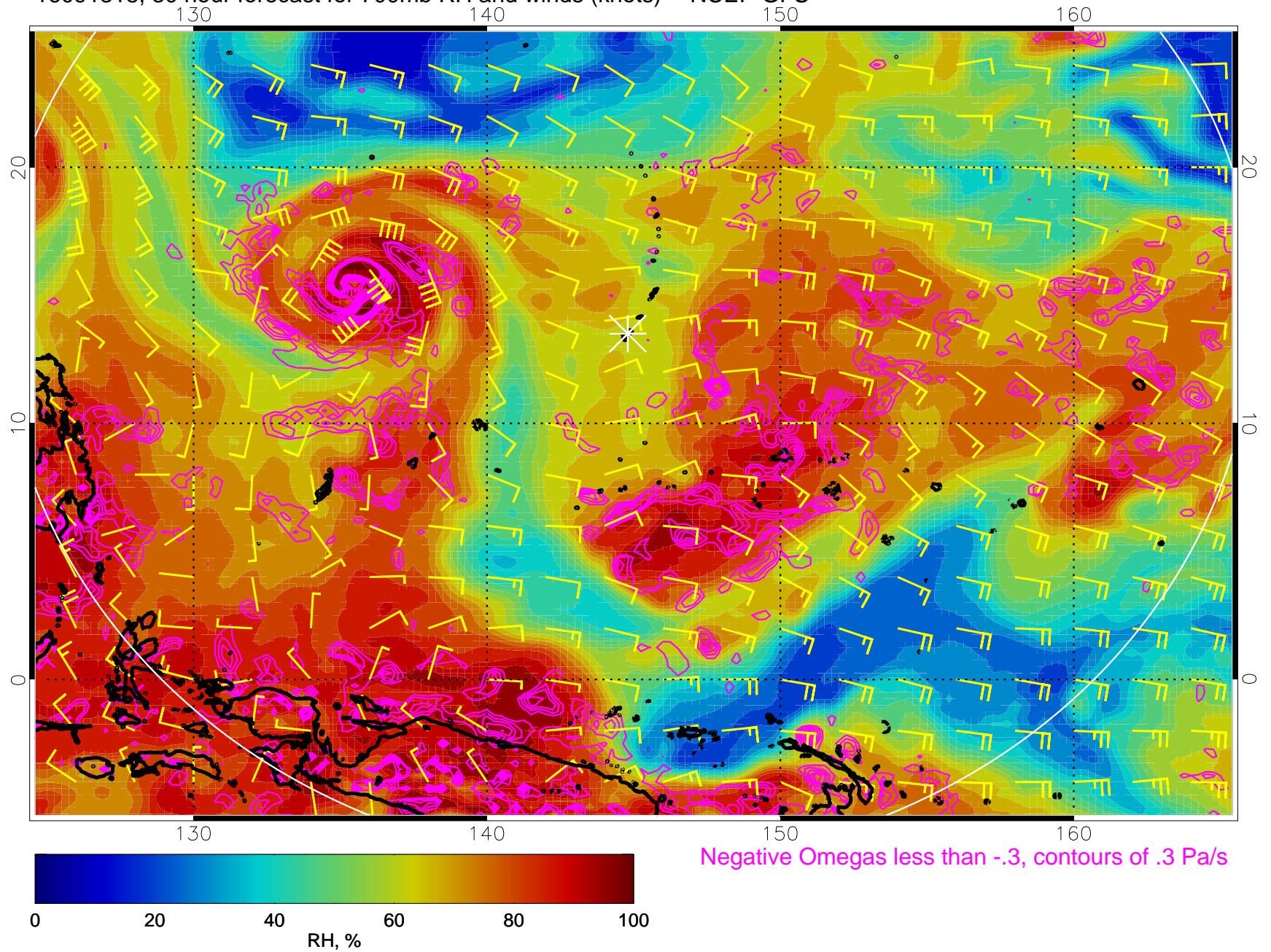


Negative Omegas less than  $-0.3$ , contours of  $0.3$  Pa/s

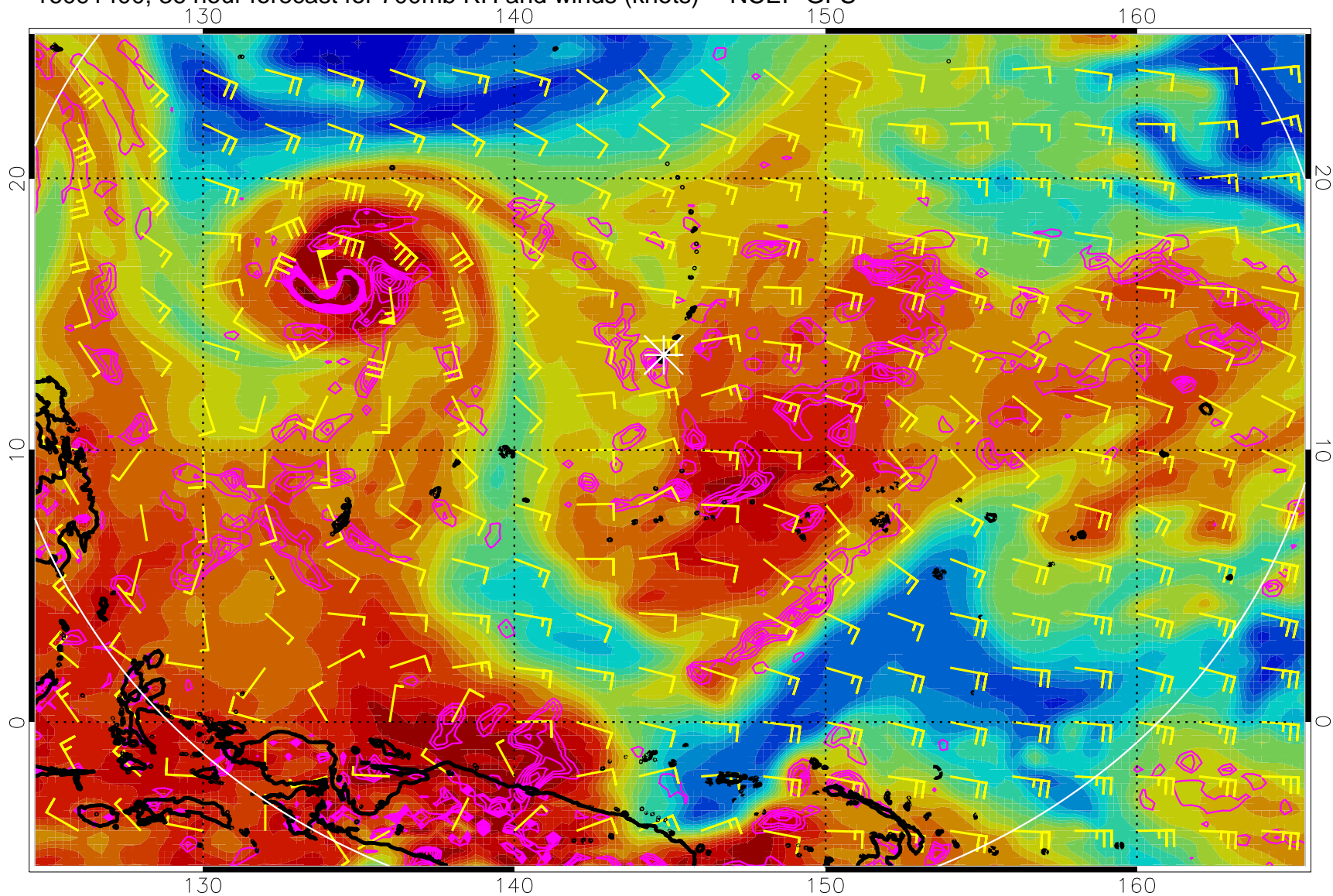
16091312, 24 hour forecast for 700mb RH and winds (knots) -- NCEP GFS



16091318, 30 hour forecast for 700mb RH and winds (knots) -- NCEP GFS

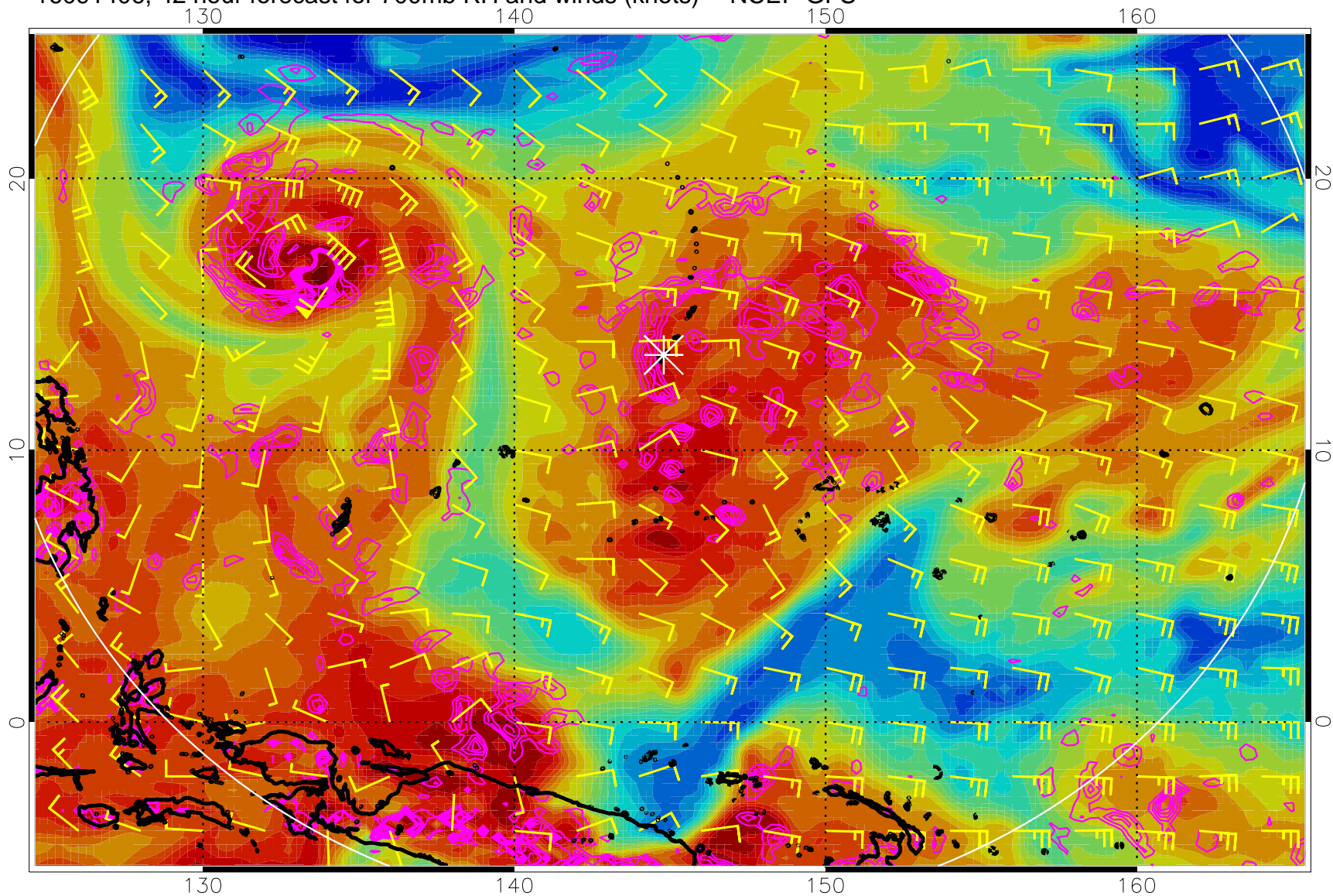


16091400, 36 hour forecast for 700mb RH and winds (knots) -- NCEP GFS



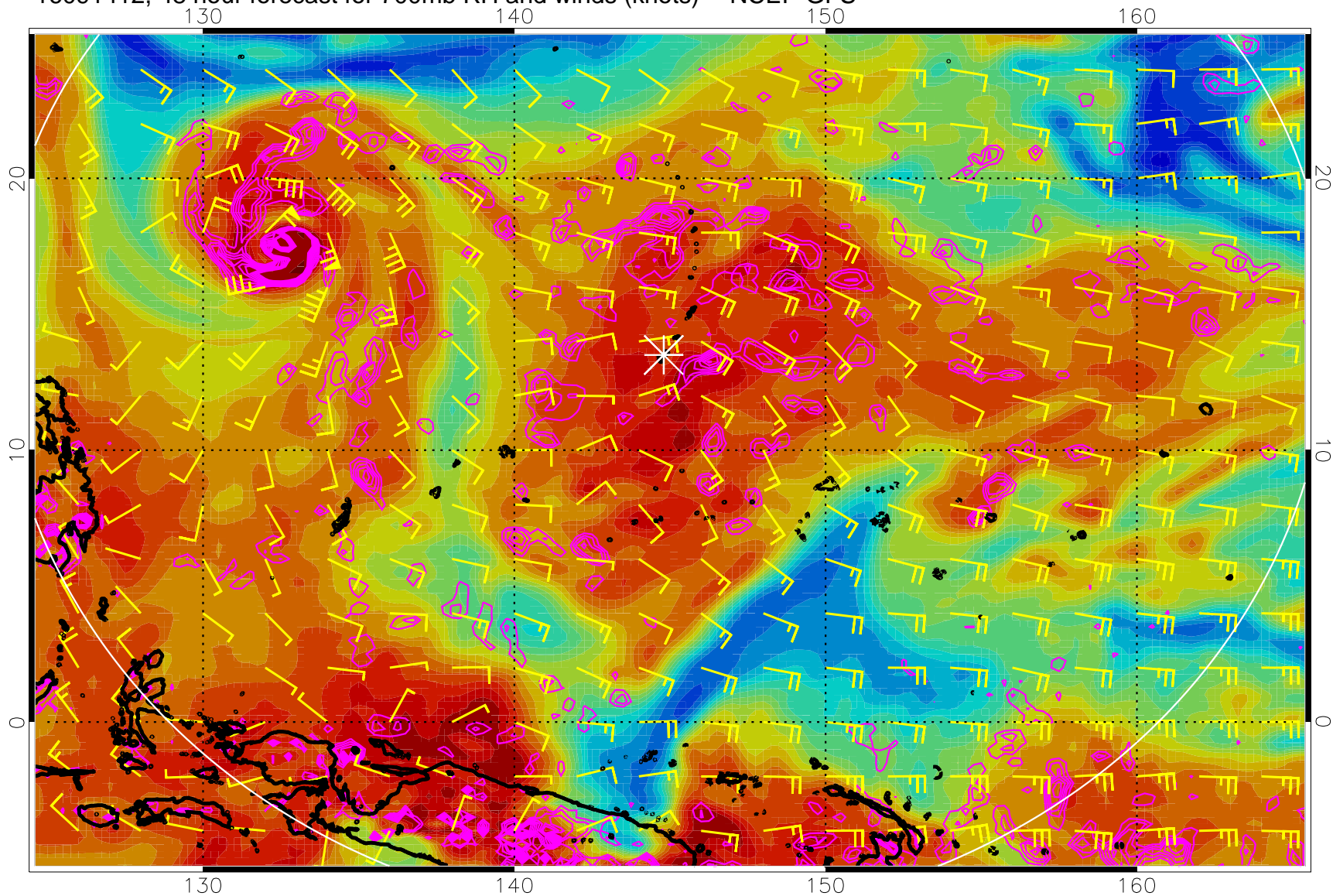
Negative Omegas less than -.3, contours of .3 Pa/s

16091406, 42 hour forecast for 700mb RH and winds (knots) -- NCEP GFS



Negative Omegas less than  $-0.3$ , contours of  $0.3$  Pa/s

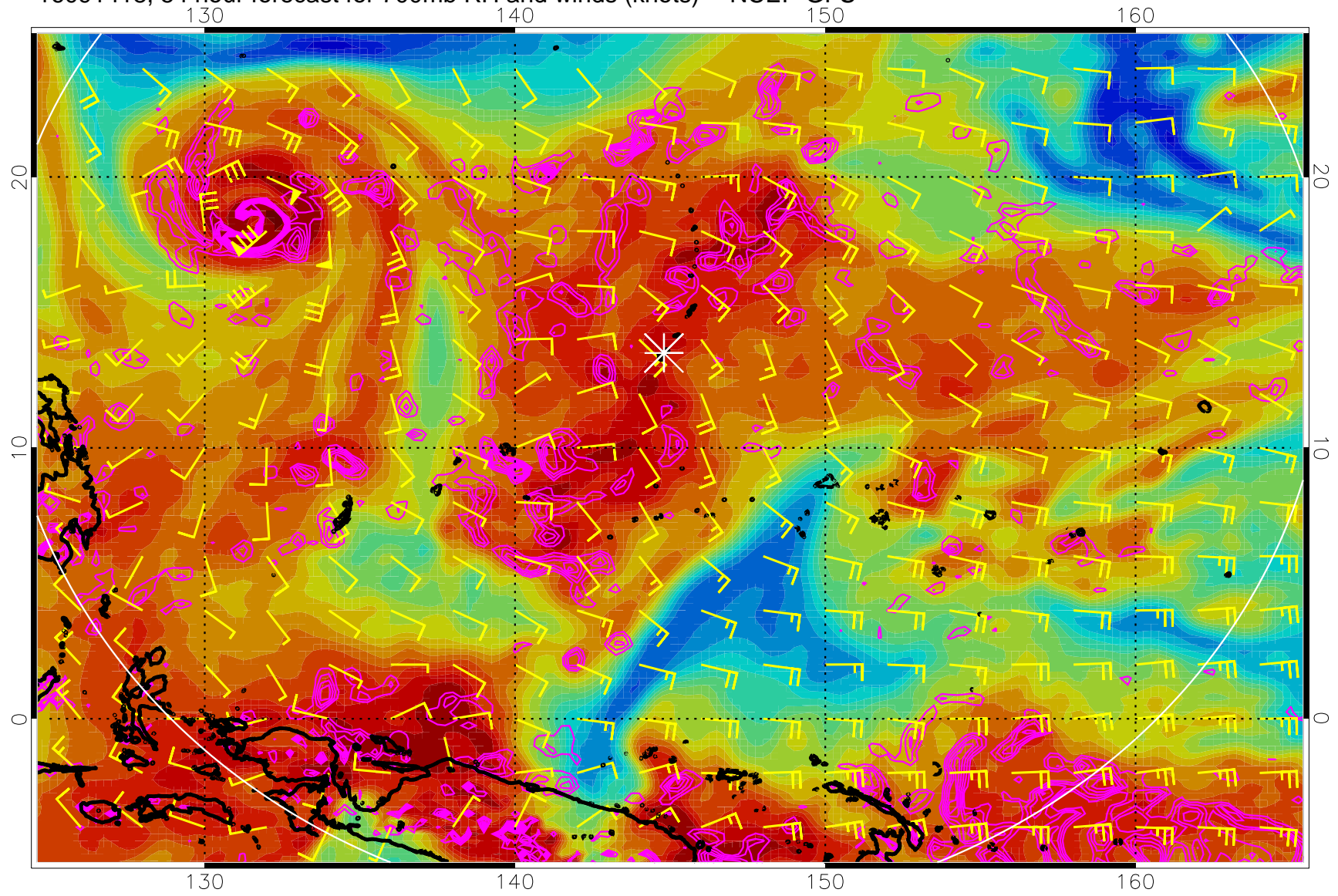
16091412, 48 hour forecast for 700mb RH and winds (knots) -- NCEP GFS



Negative Omegas less than  $-0.3$ , contours of  $0.3$  Pa/s

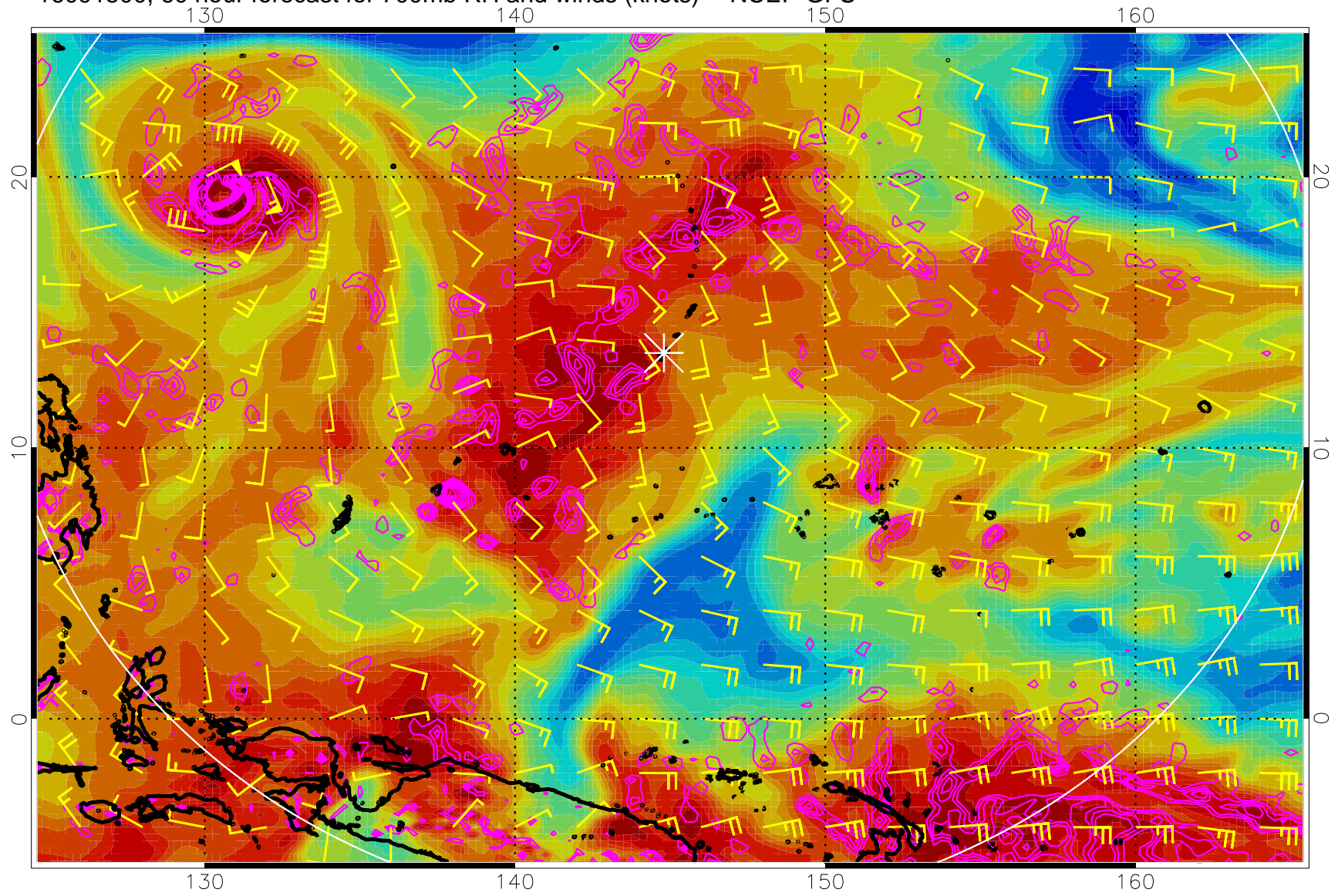


16091418, 54 hour forecast for 700mb RH and winds (knots) -- NCEP GFS



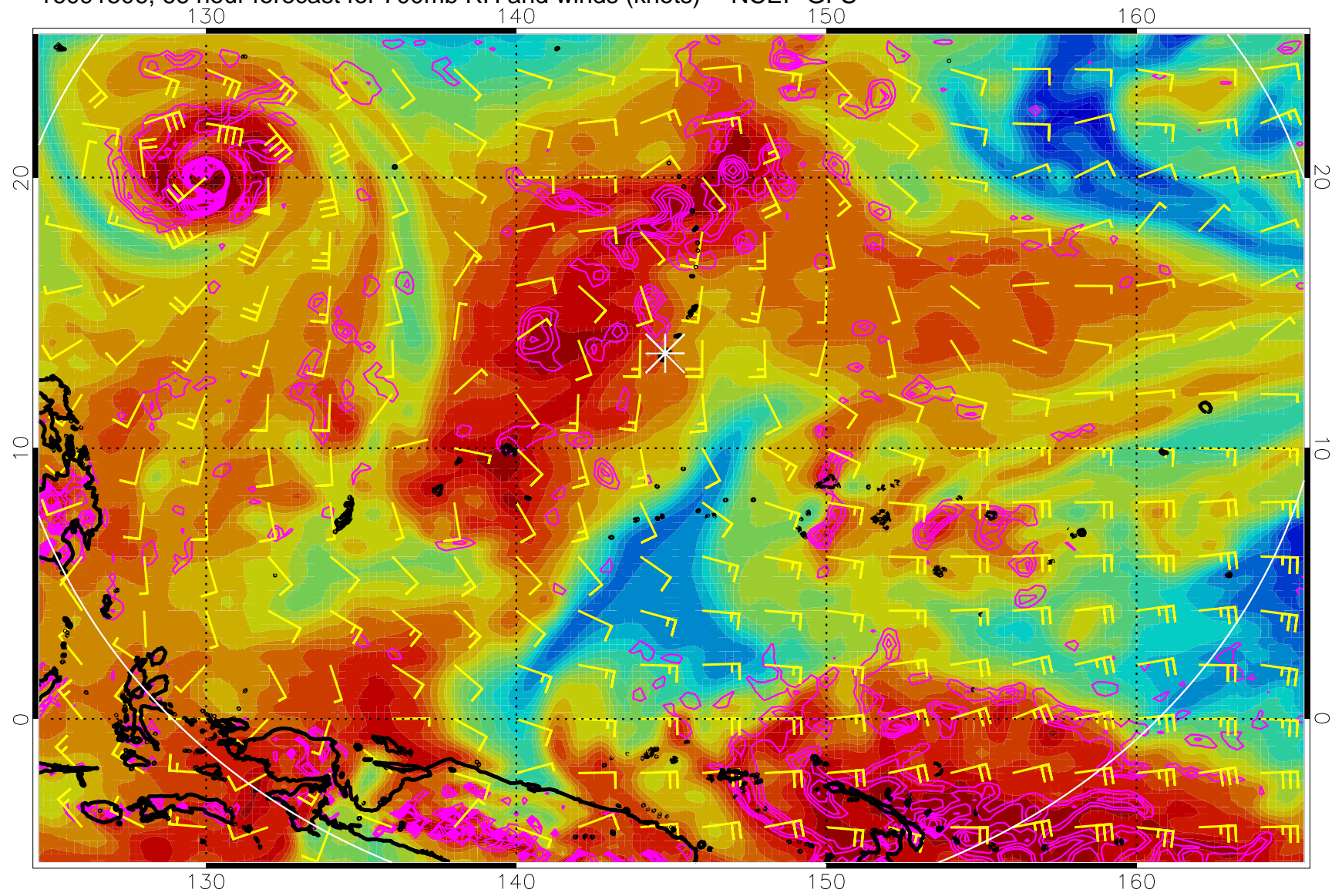
Negative Omegas less than  $-0.3$ , contours of  $0.3$  Pa/s

16091500, 60 hour forecast for 700mb RH and winds (knots) -- NCEP GFS



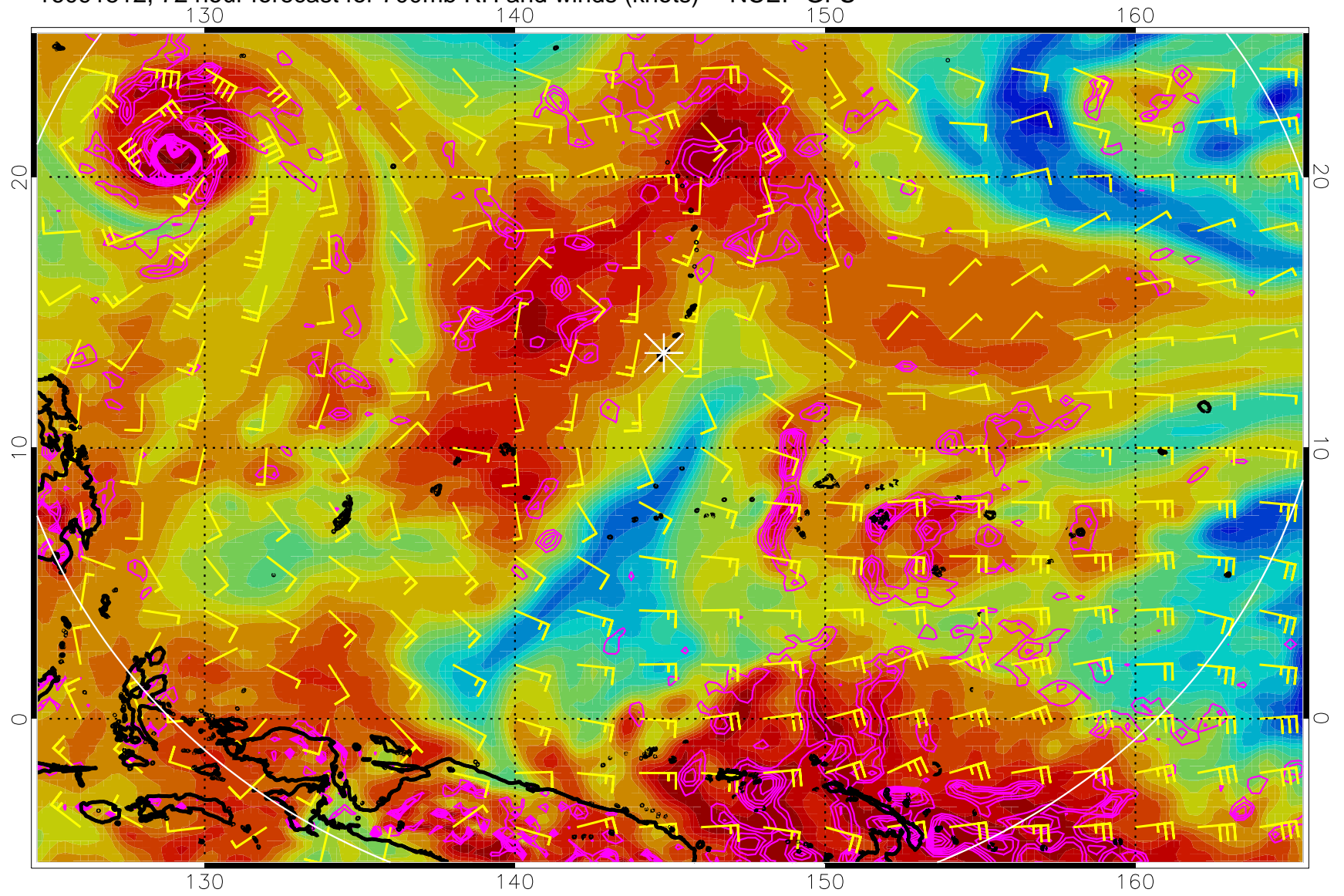
Negative Omegas less than -.3, contours of .3 Pa/s

16091506, 66 hour forecast for 700mb RH and winds (knots) -- NCEP GFS



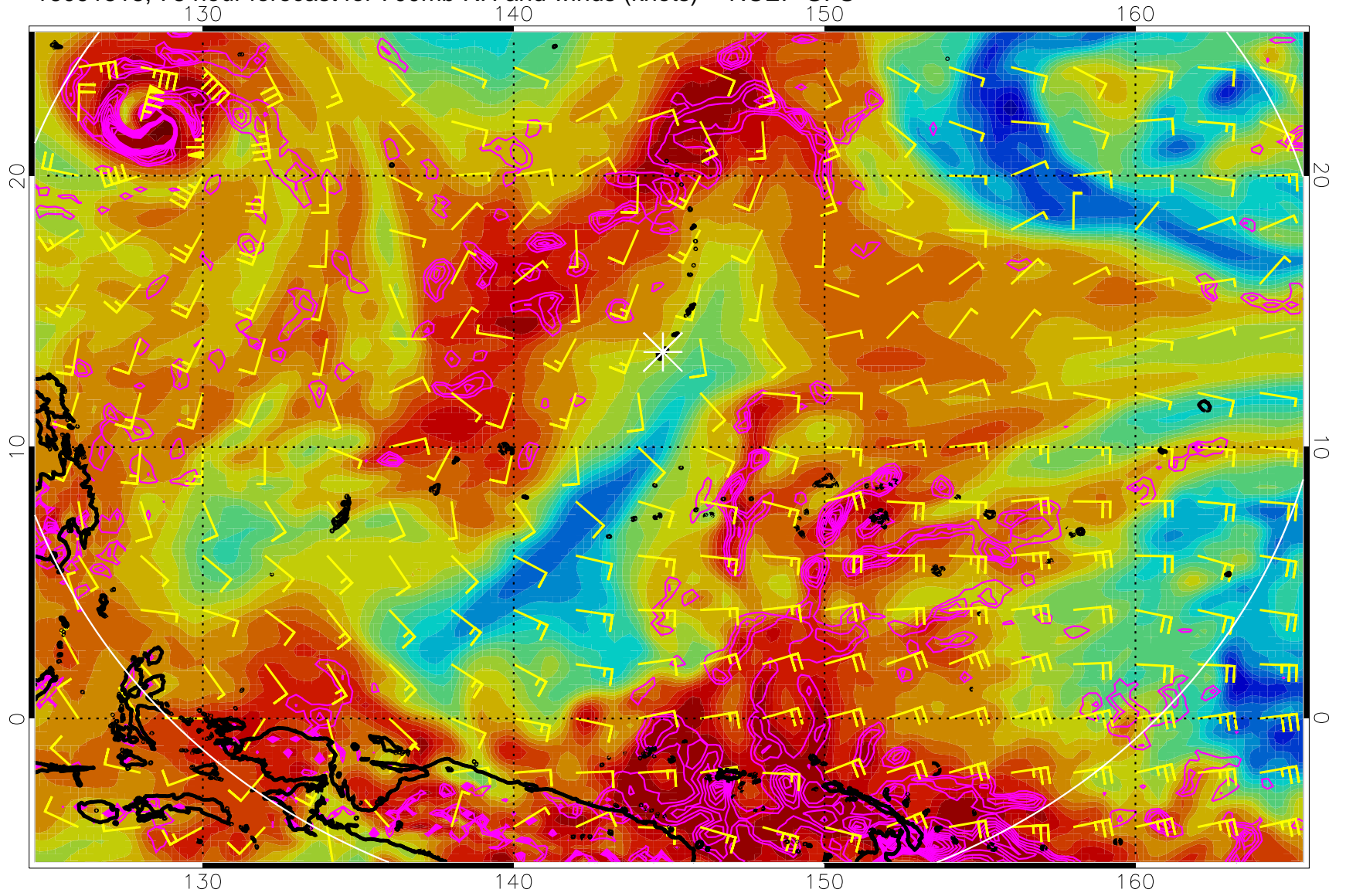
Negative Omegas less than  $-0.3$ , contours of  $0.3$  Pa/s

16091512, 72 hour forecast for 700mb RH and winds (knots) -- NCEP GFS



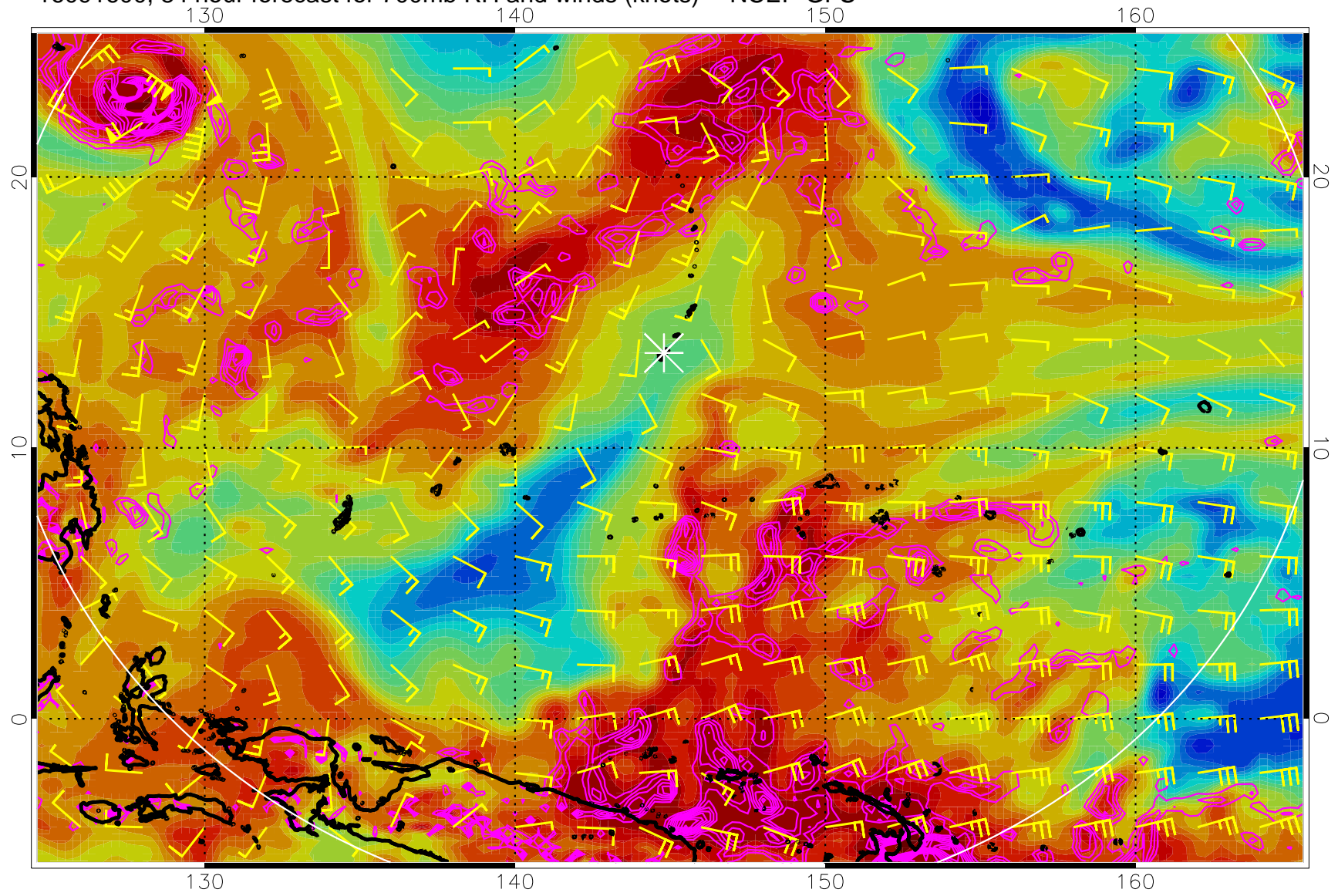
Negative Omegas less than  $-0.3$ , contours of  $0.3$  Pa/s

16091518, 78 hour forecast for 700mb RH and winds (knots) -- NCEP GFS



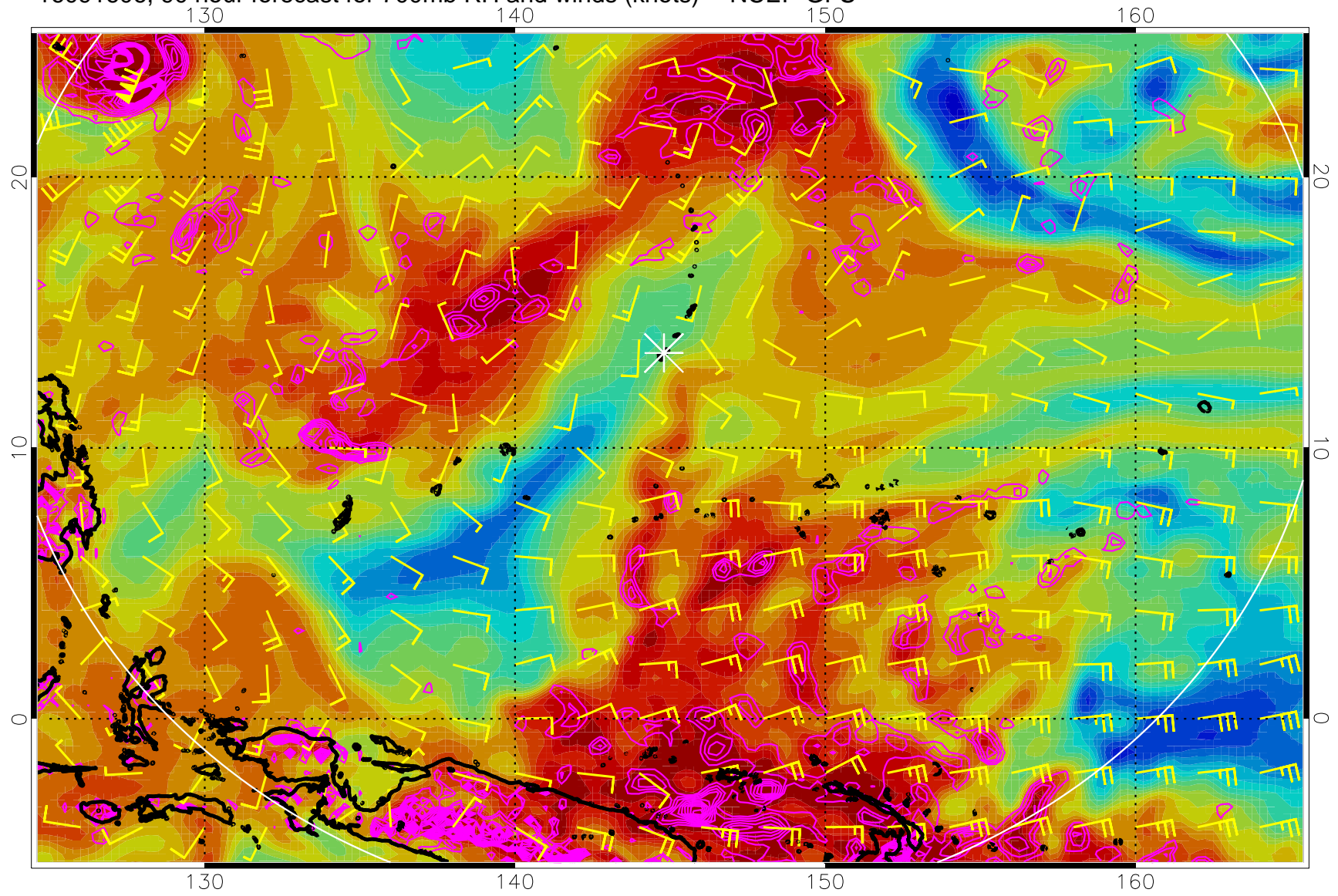
Negative Omegas less than  $-0.3$ , contours of  $0.3$  Pa/s

16091600, 84 hour forecast for 700mb RH and winds (knots) -- NCEP GFS



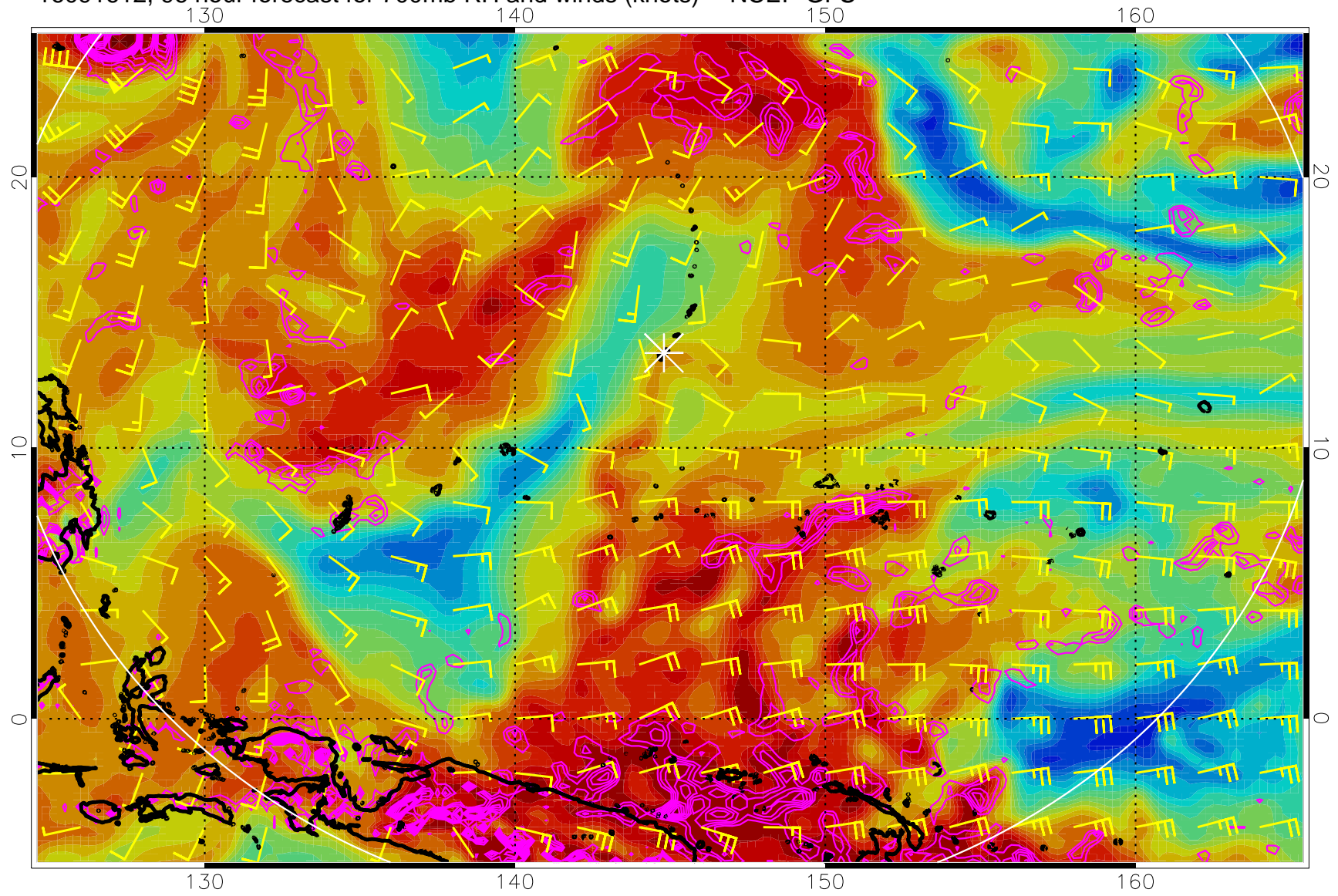
Negative Omegas less than  $-0.3$ , contours of  $0.3$  Pa/s

16091606, 90 hour forecast for 700mb RH and winds (knots) -- NCEP GFS



Negative Omegas less than  $-0.3$ , contours of  $0.3$  Pa/s

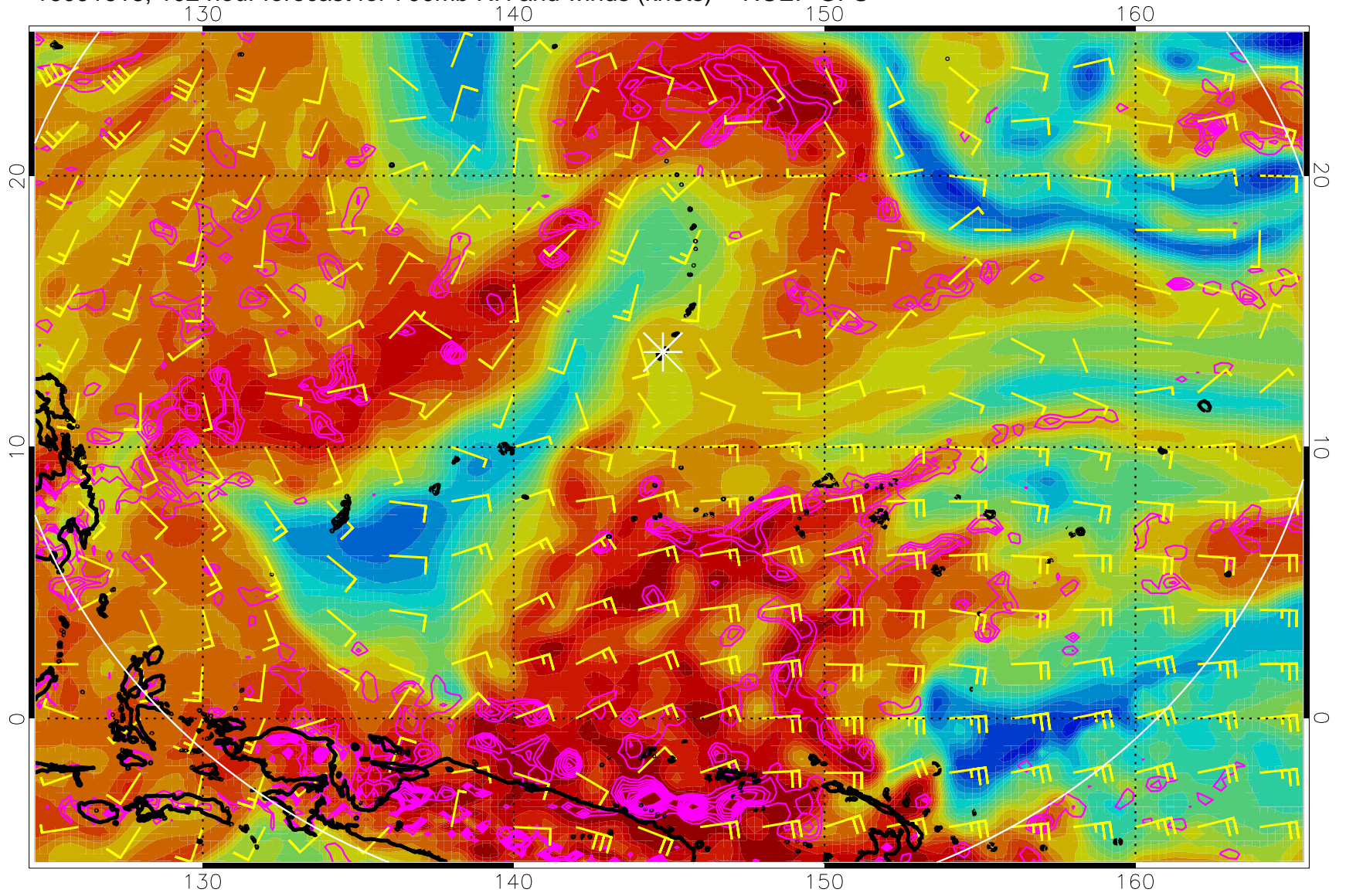
16091612, 96 hour forecast for 700mb RH and winds (knots) -- NCEP GFS



Negative Omegas less than  $-0.3$ , contours of  $0.3$  Pa/s

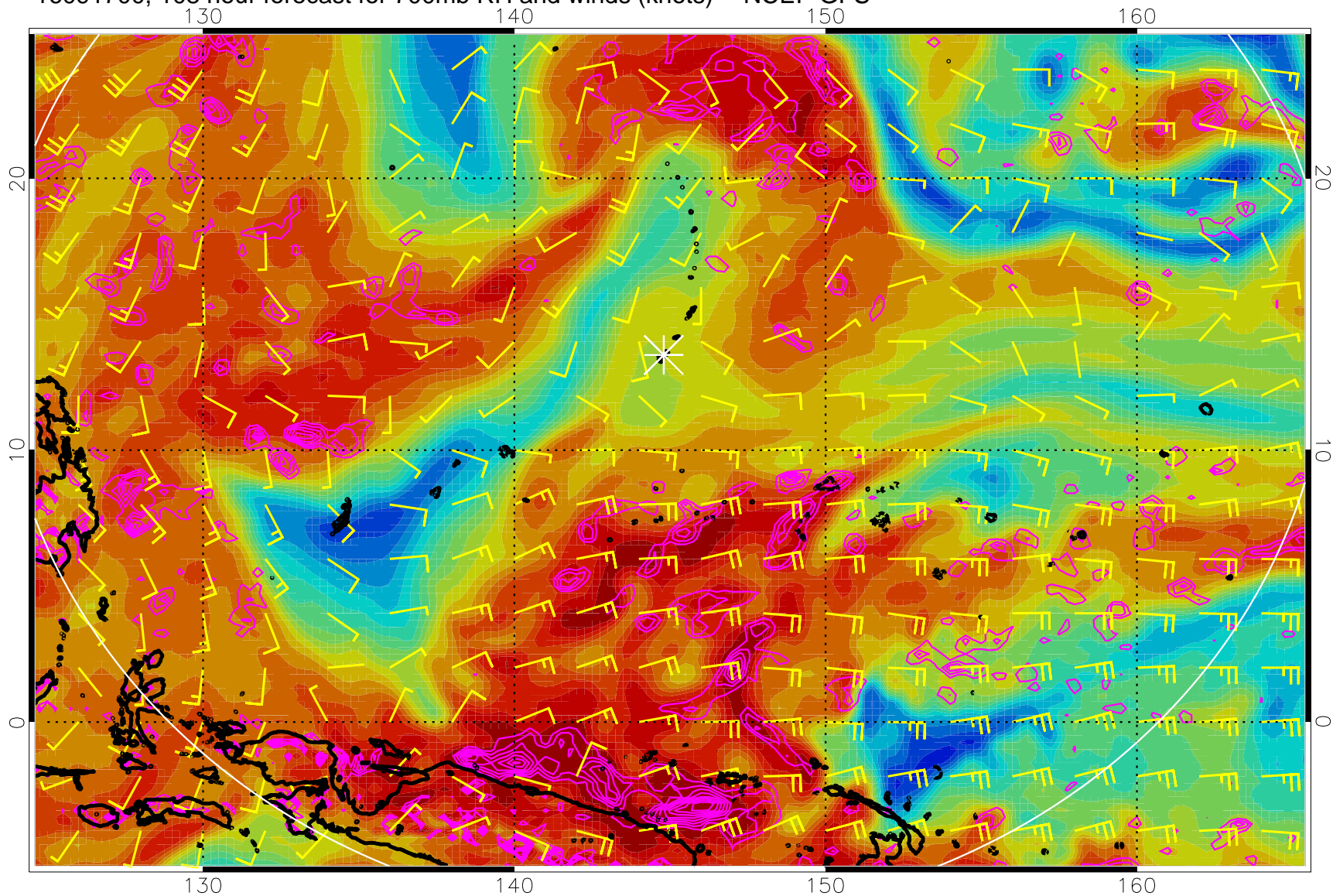


16091618, 102 hour forecast for 700mb RH and winds (knots) -- NCEP GFS



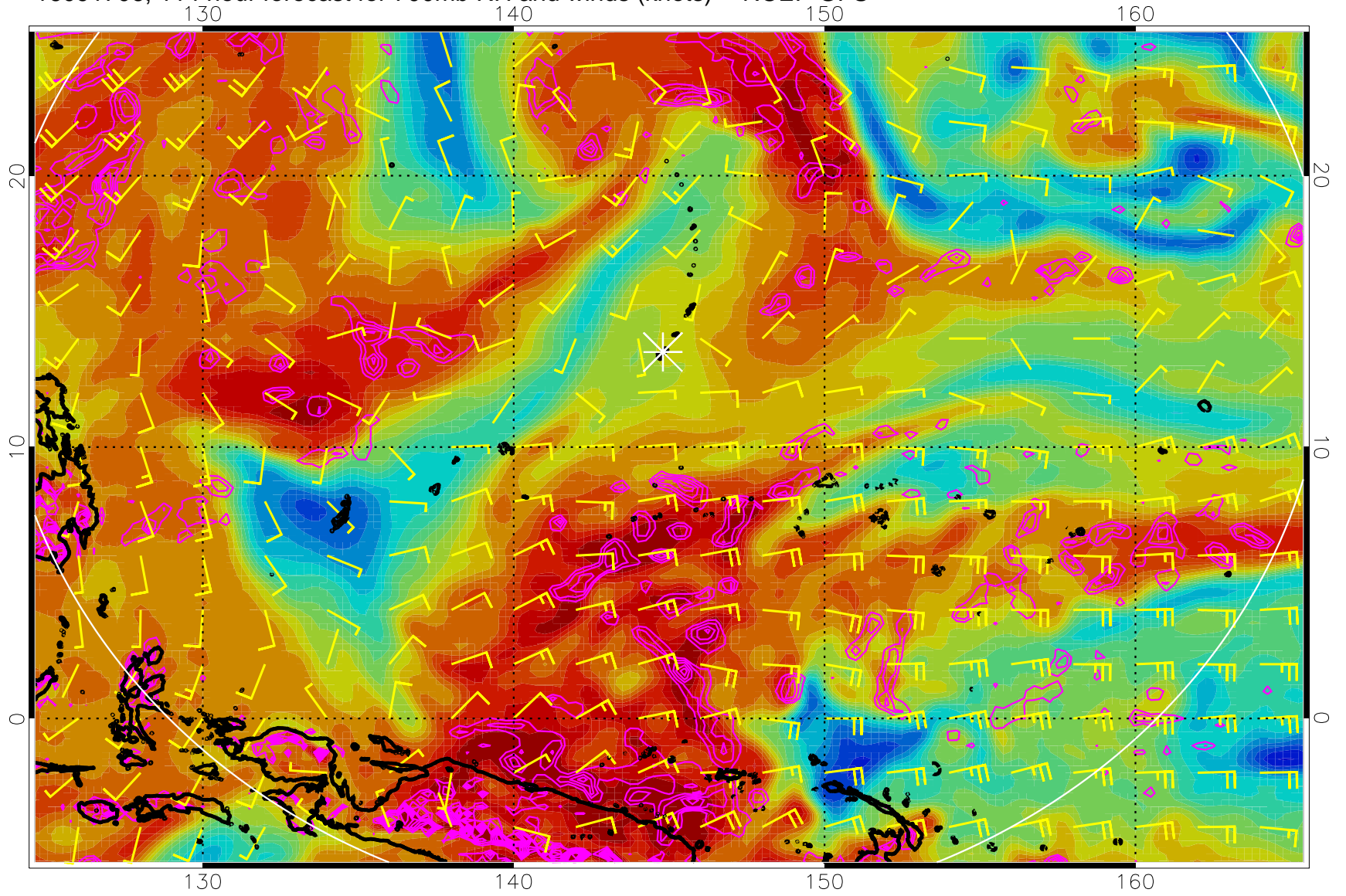
Negative Omegas less than  $-0.3$ , contours of  $0.3$  Pa/s

16091700, 108 hour forecast for 700mb RH and winds (knots) -- NCEP GFS



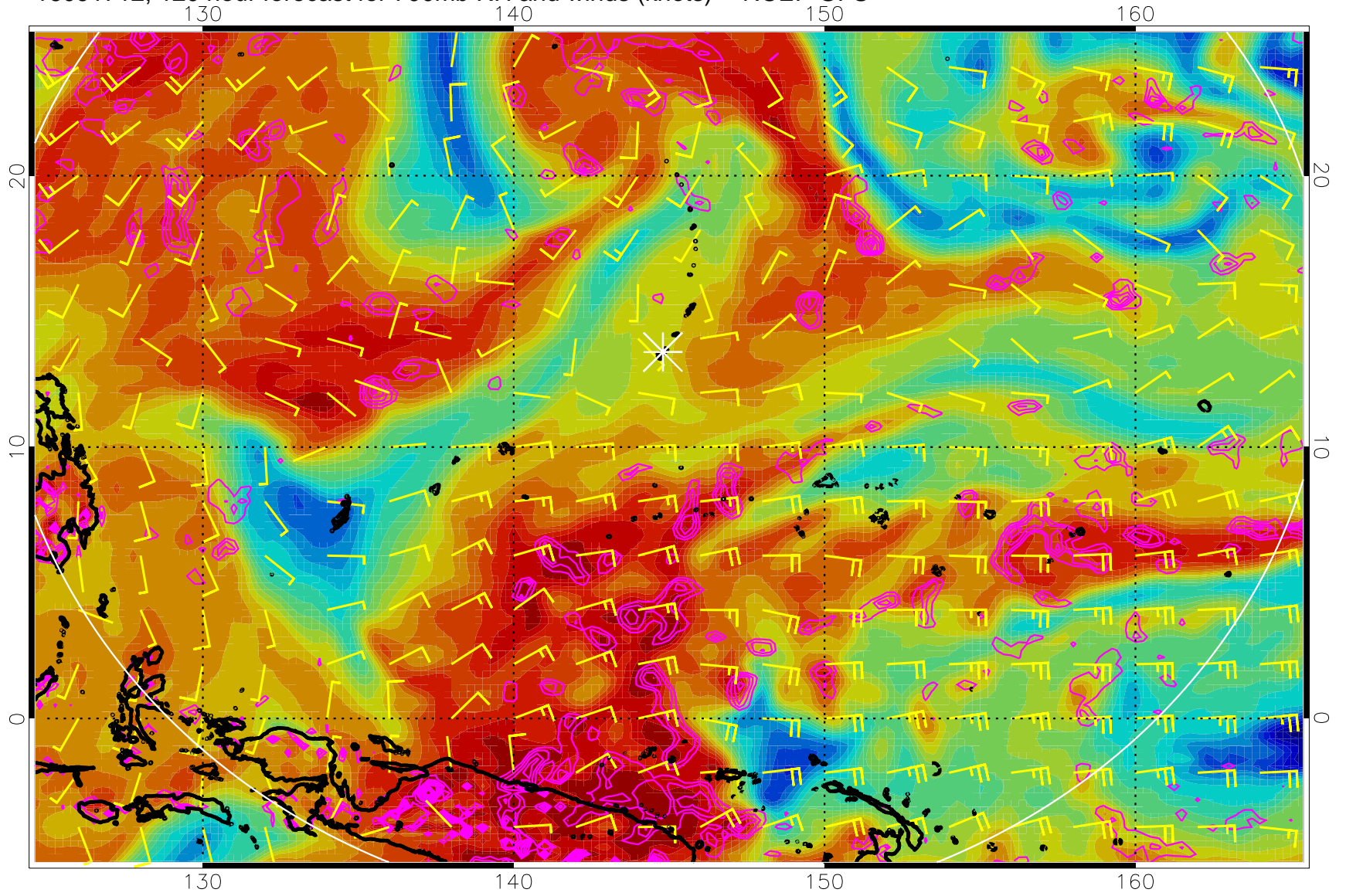
Negative Omegas less than  $-0.3$ , contours of  $0.3$  Pa/s

16091706, 114 hour forecast for 700mb RH and winds (knots) -- NCEP GFS



Negative Omegas less than  $-0.3$ , contours of  $0.3$  Pa/s

16091712, 120 hour forecast for 700mb RH and winds (knots) -- NCEP GFS



Negative Omegas less than  $-0.3$ , contours of  $0.3$  Pa/s