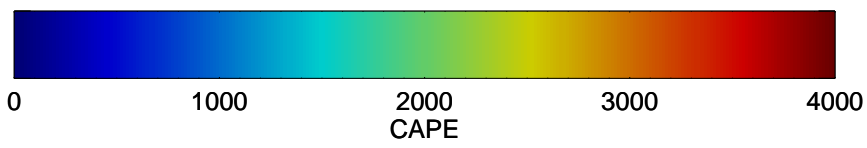
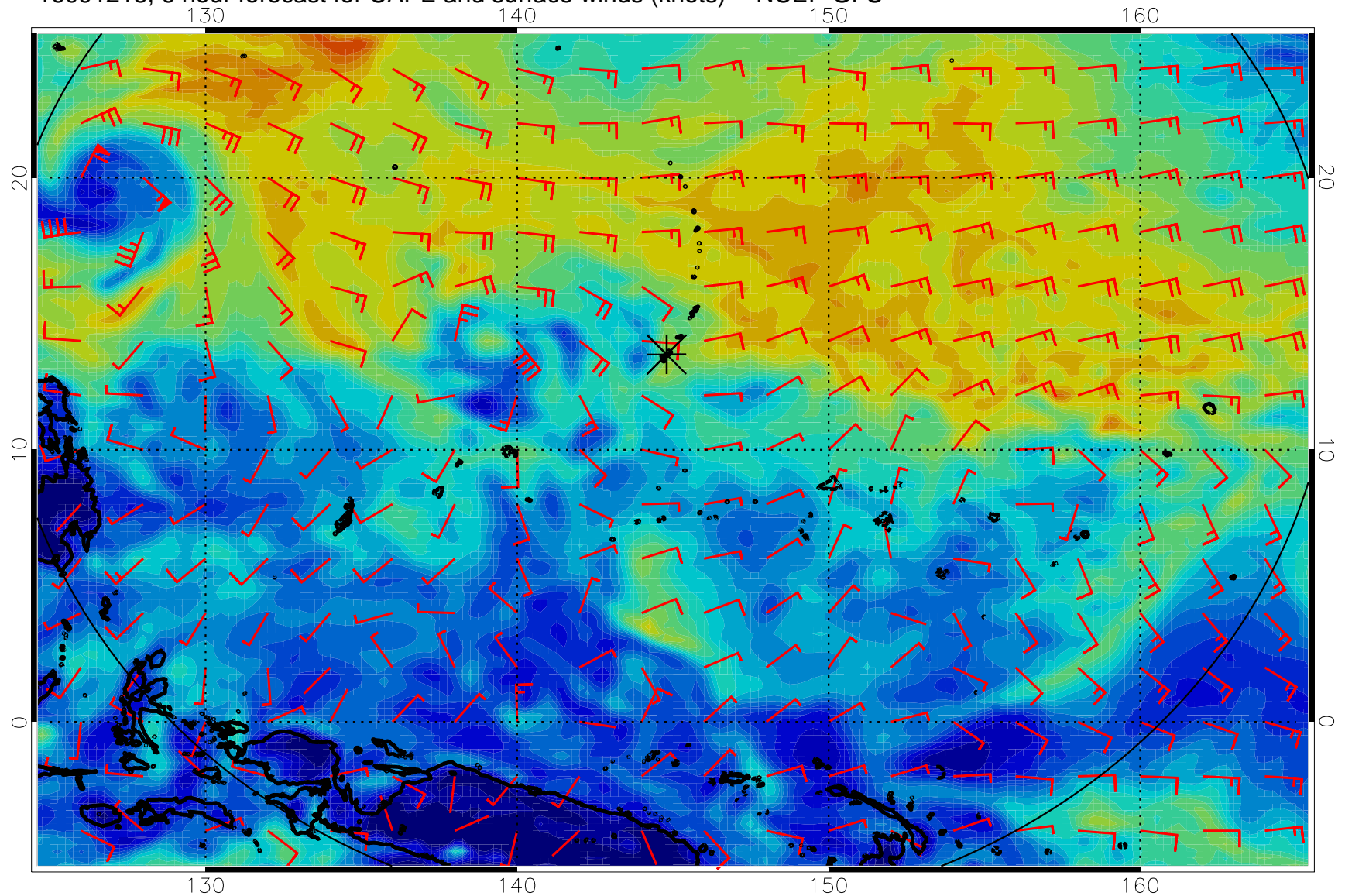
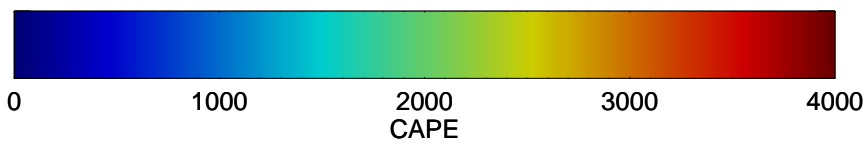
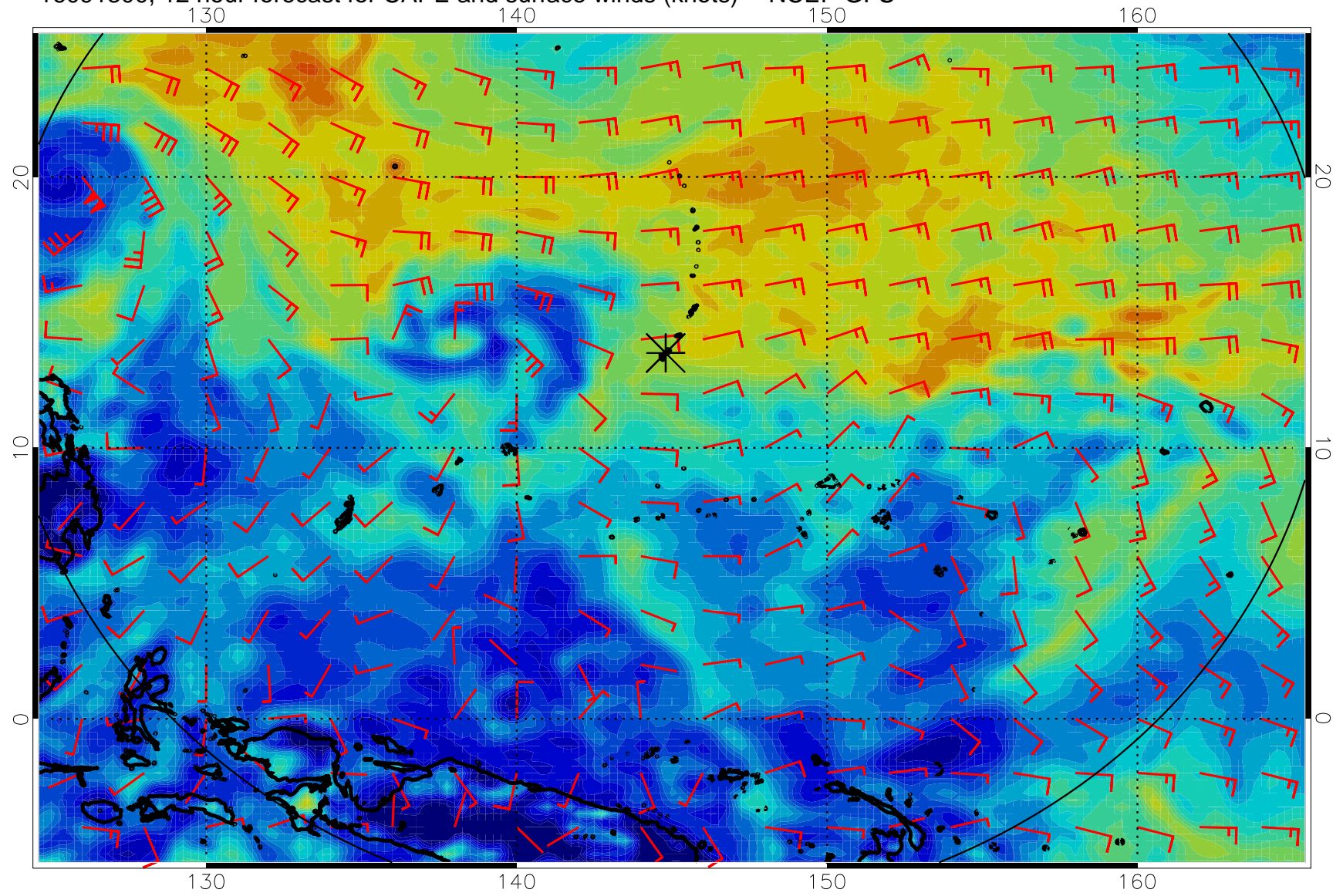


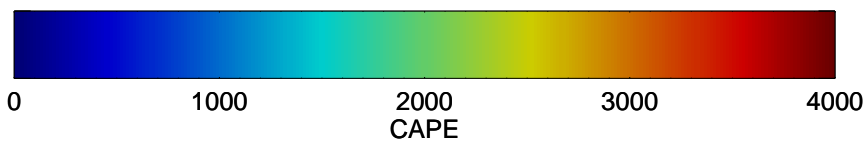
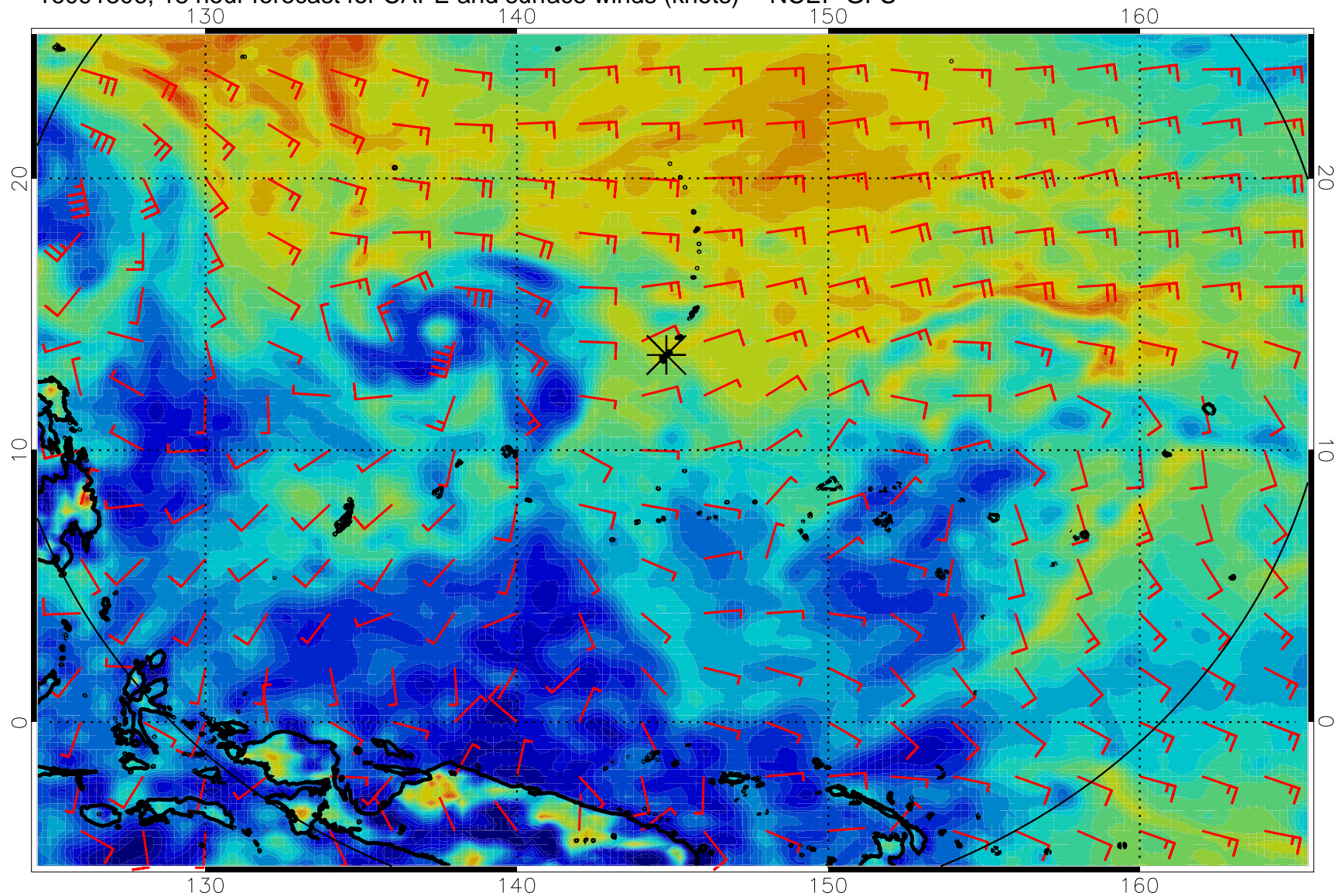
16091218, 6 hour forecast for CAPE and surface winds (knots) -- NCEP GFS



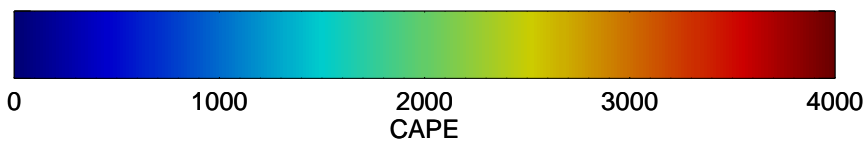
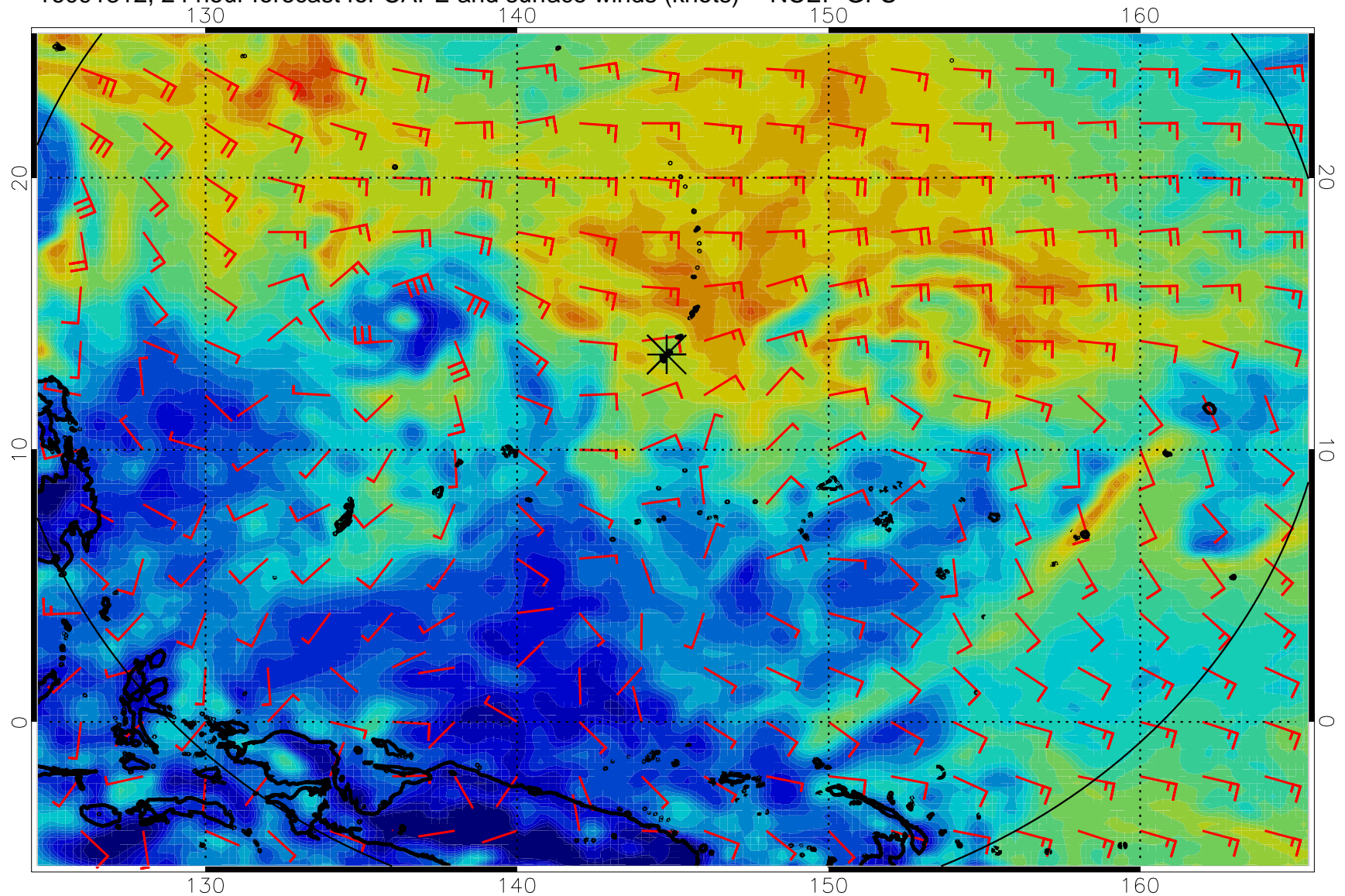
16091300, 12 hour forecast for CAPE and surface winds (knots) -- NCEP GFS



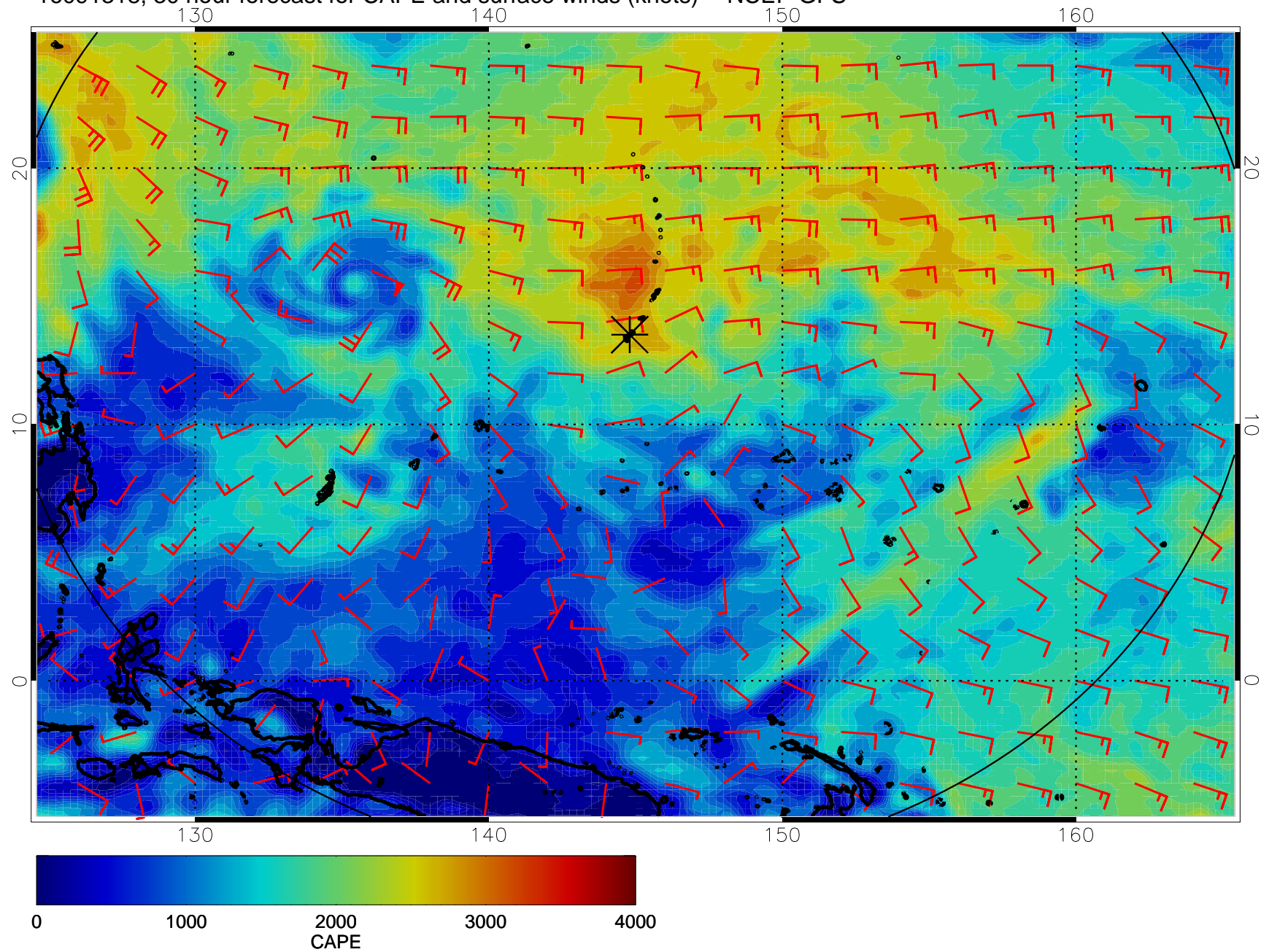
16091306, 18 hour forecast for CAPE and surface winds (knots) -- NCEP GFS



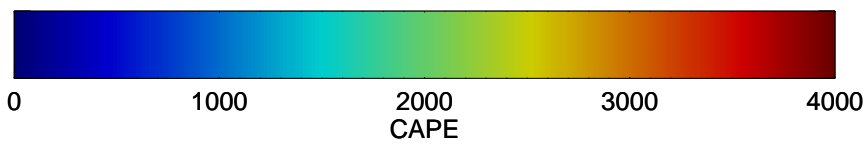
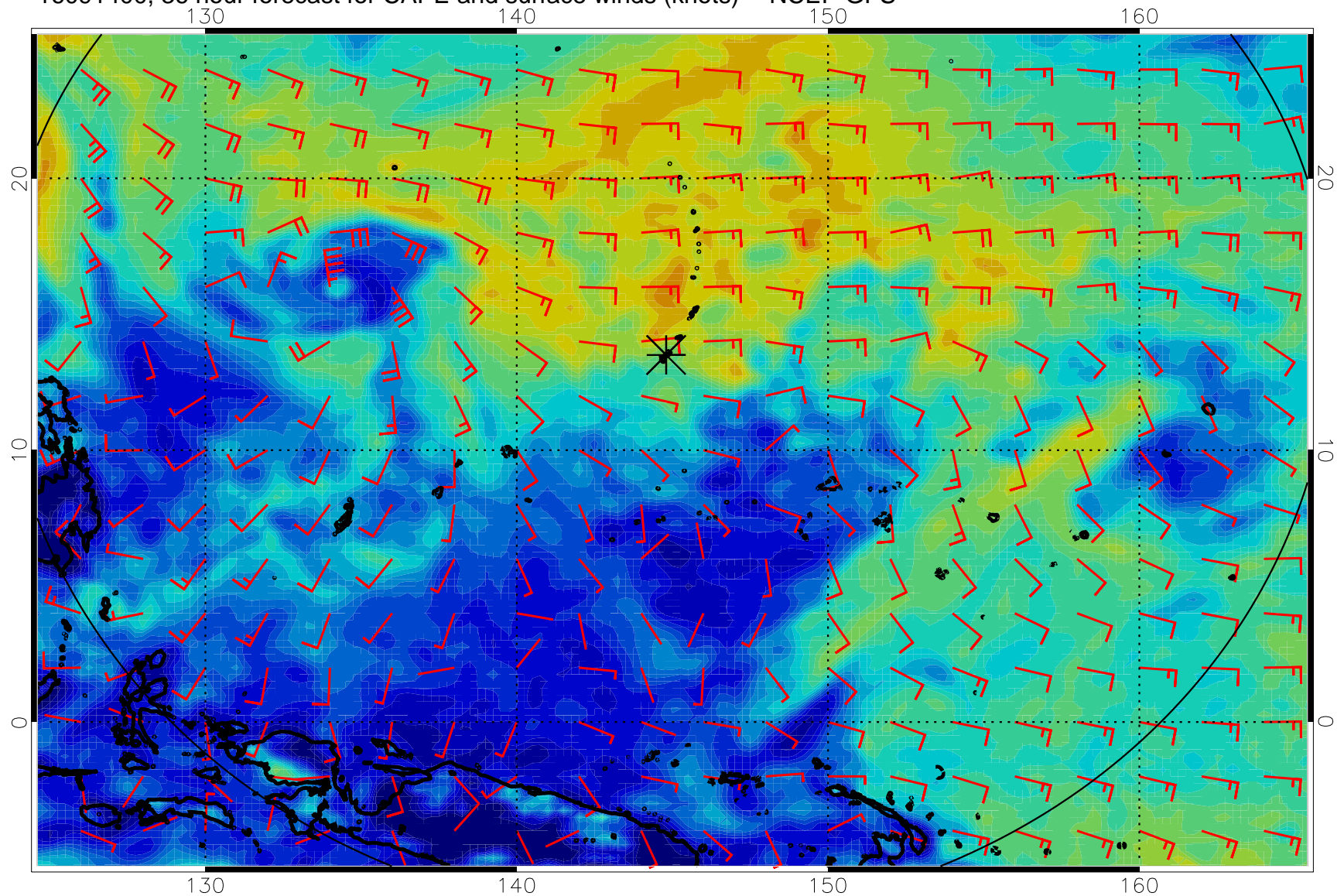
16091312, 24 hour forecast for CAPE and surface winds (knots) -- NCEP GFS



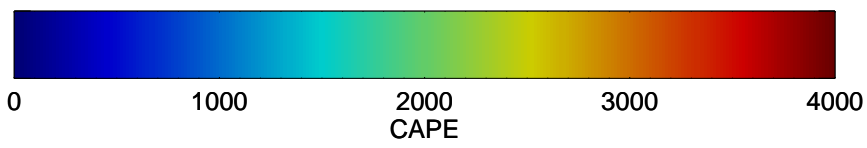
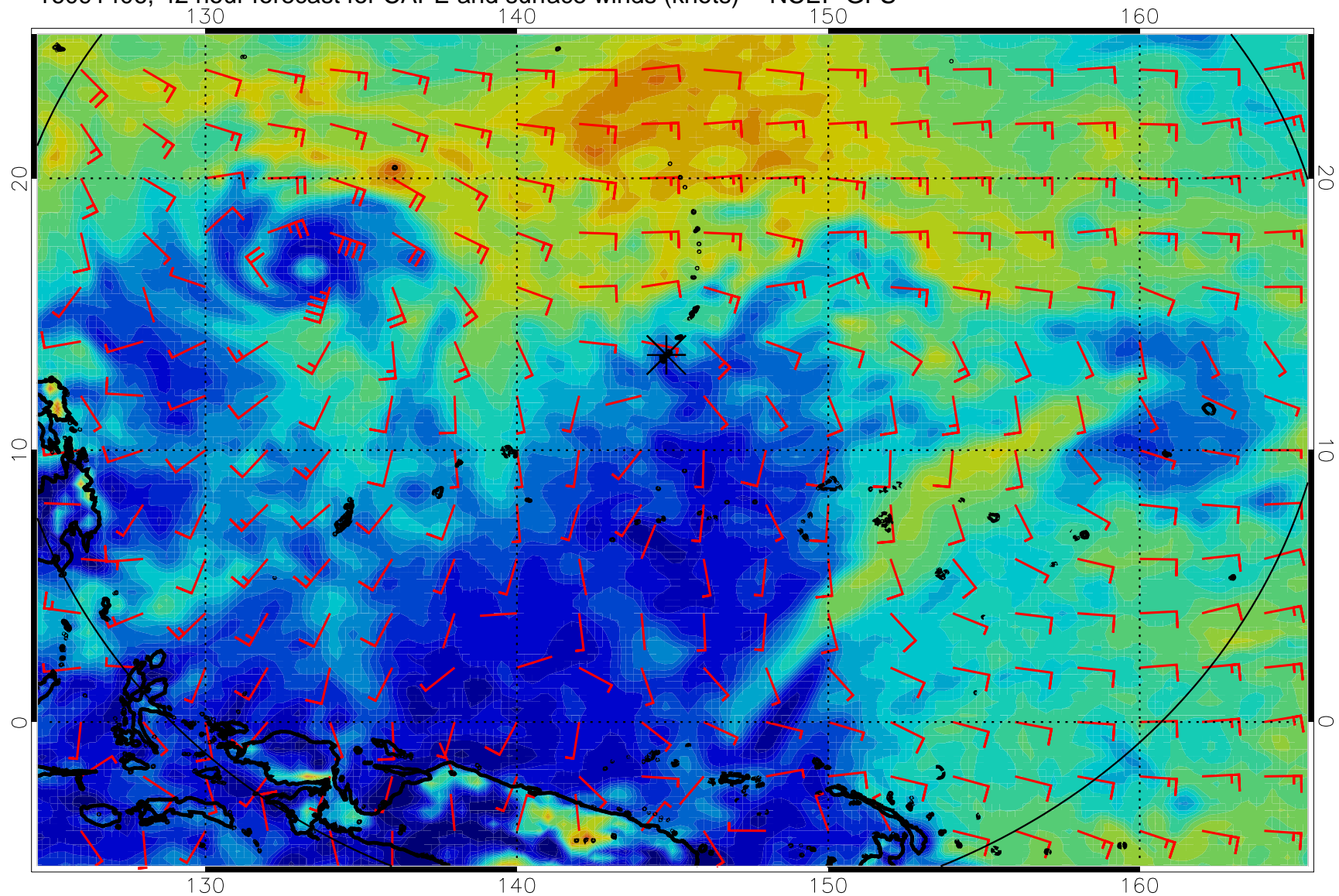
16091318, 30 hour forecast for CAPE and surface winds (knots) -- NCEP GFS



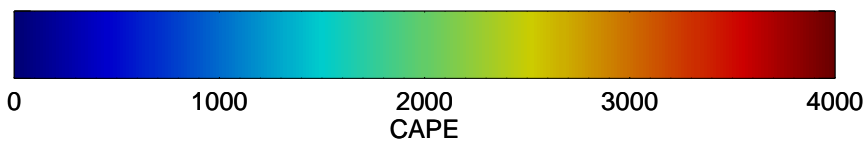
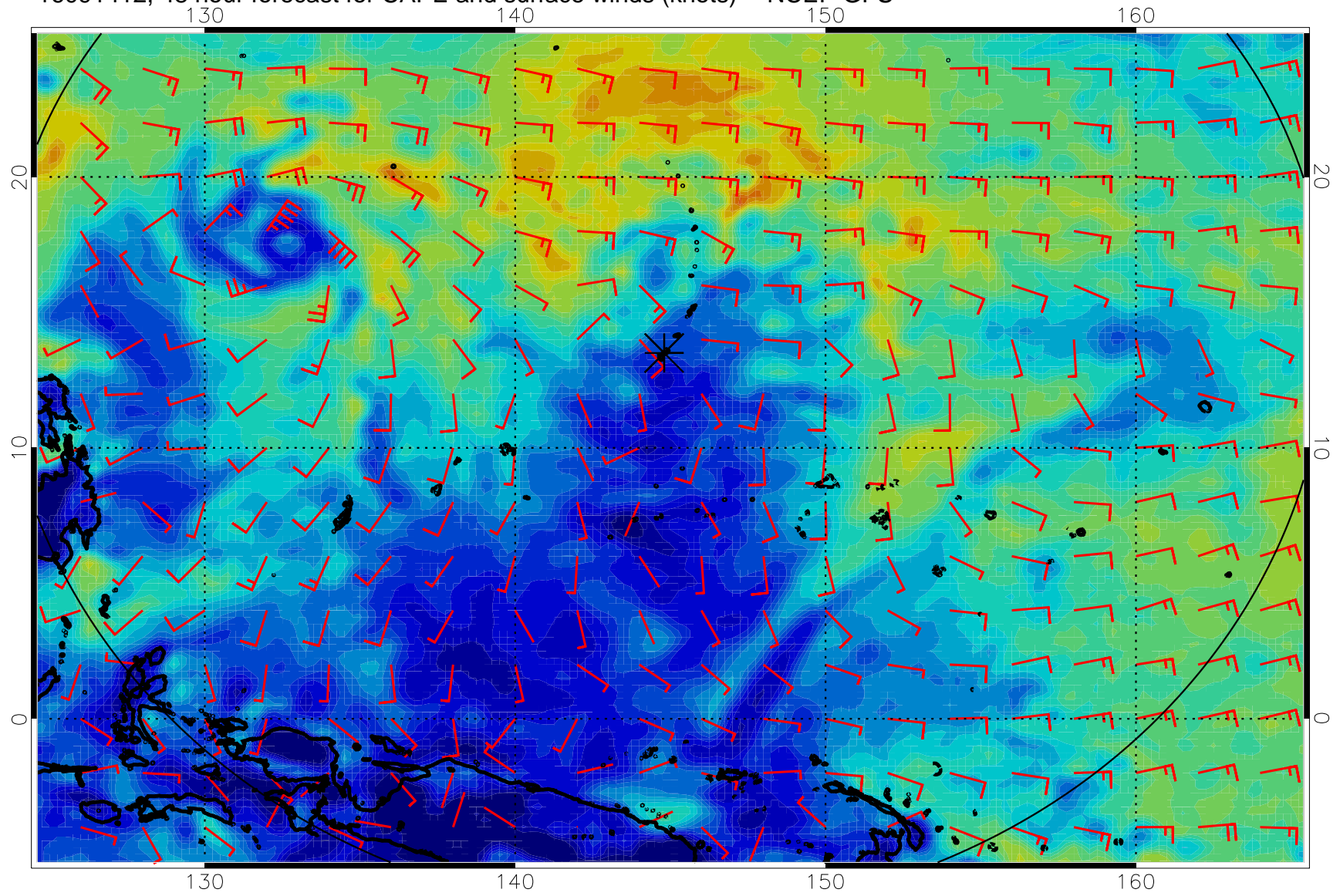
16091400, 36 hour forecast for CAPE and surface winds (knots) -- NCEP GFS



16091406, 42 hour forecast for CAPE and surface winds (knots) -- NCEP GFS

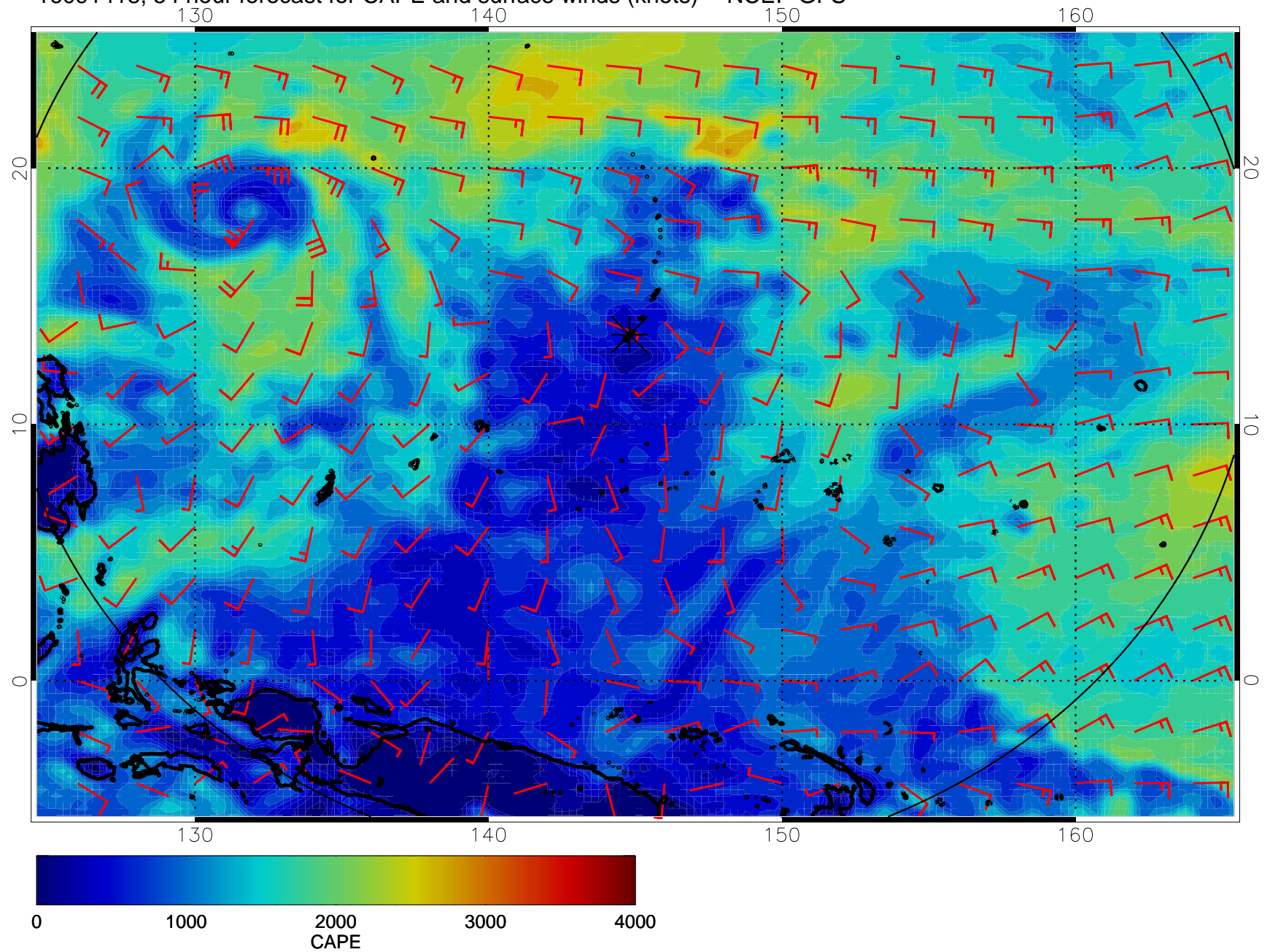


16091412, 48 hour forecast for CAPE and surface winds (knots) -- NCEP GFS

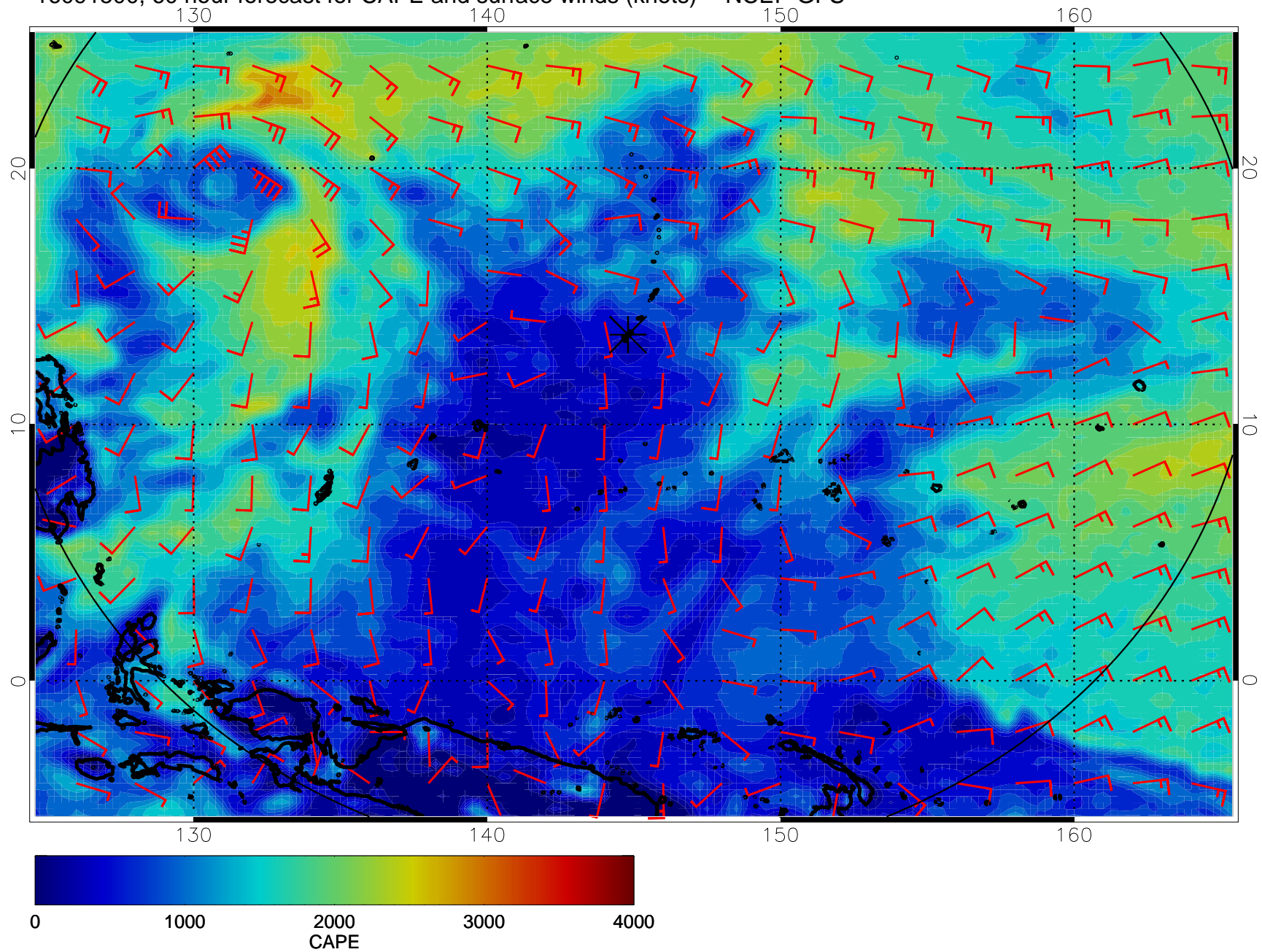




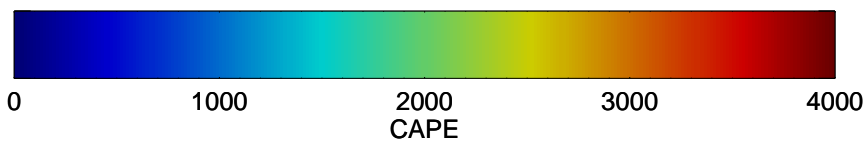
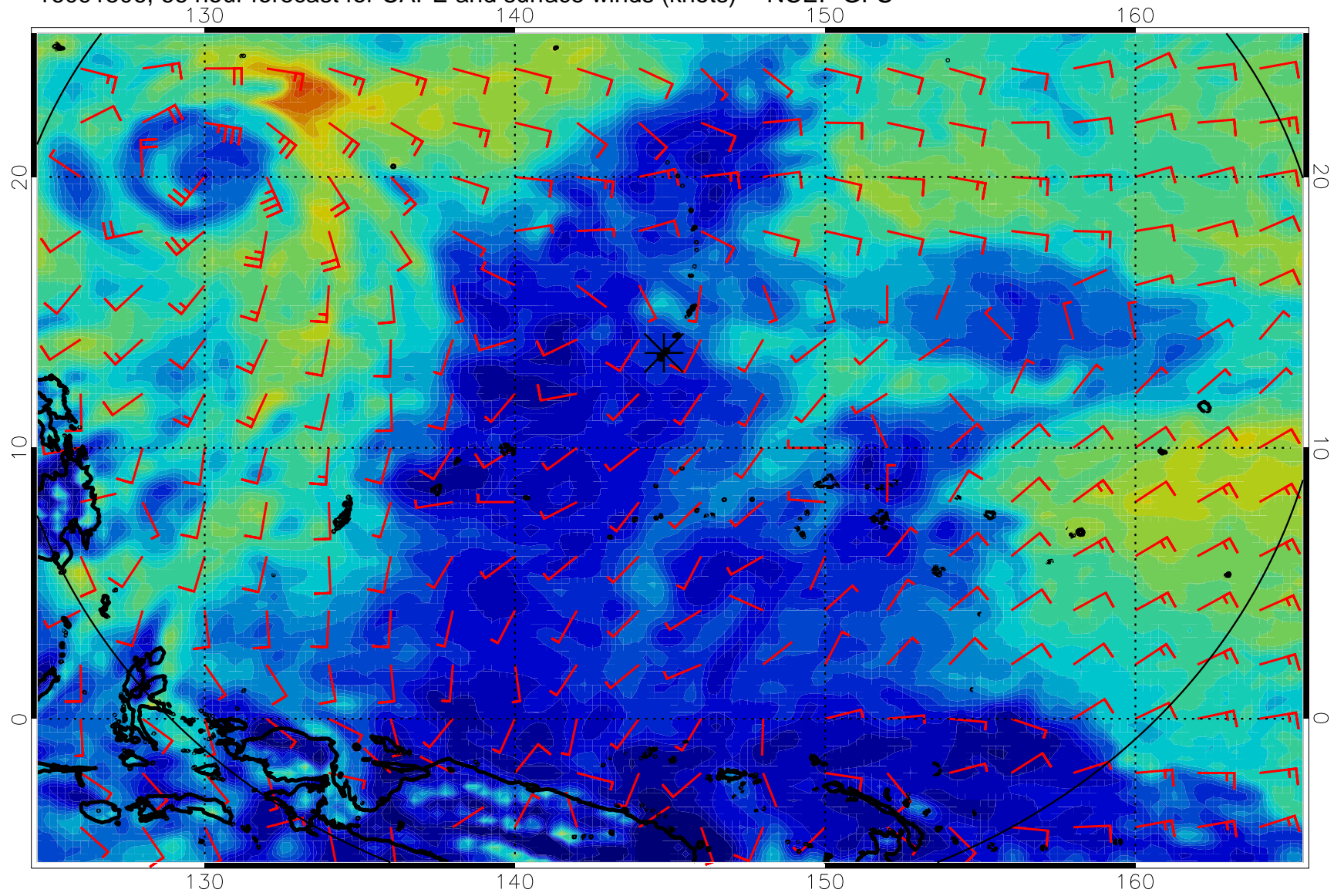
16091418, 54 hour forecast for CAPE and surface winds (knots) -- NCEP GFS



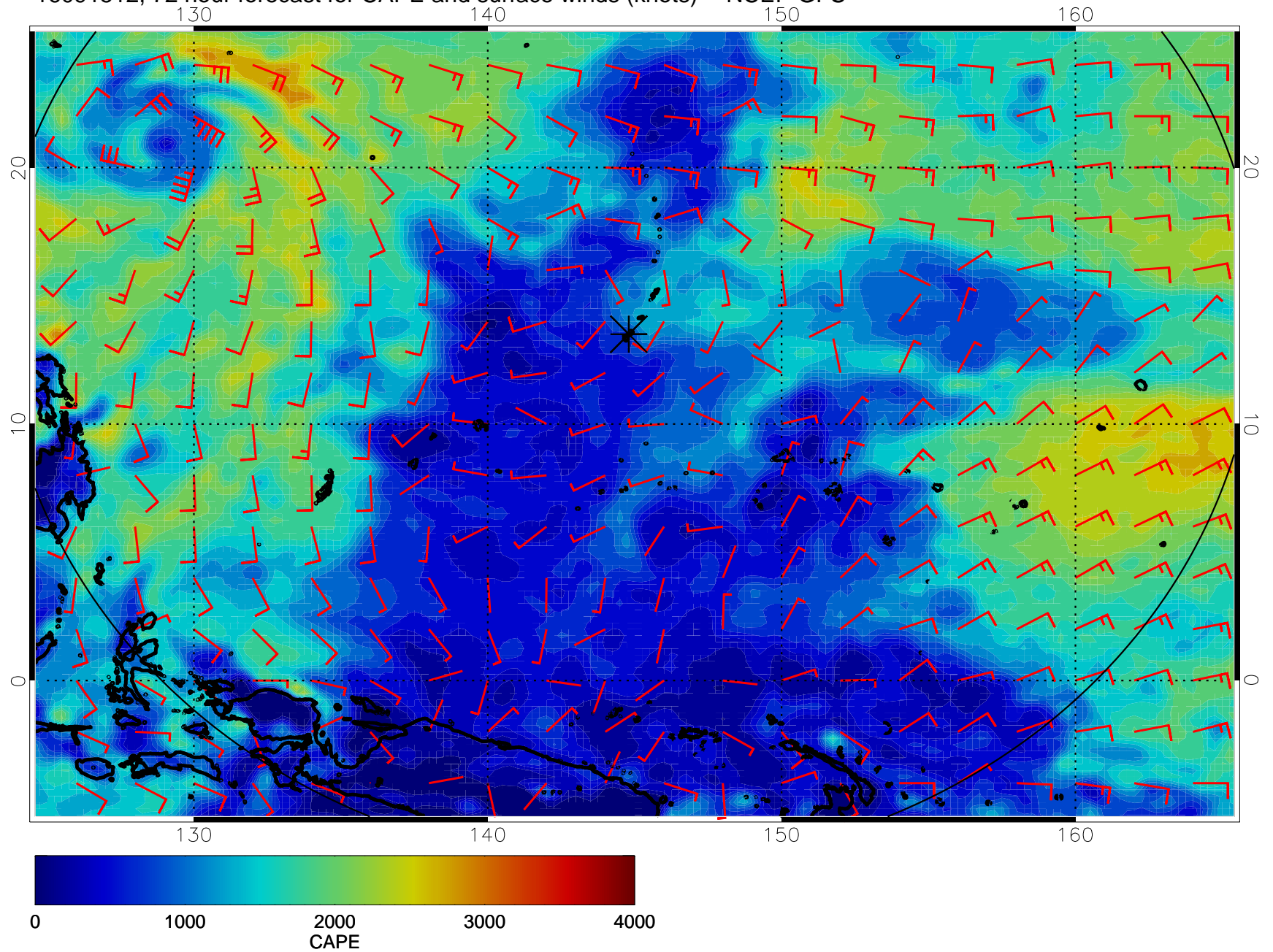
16091500, 60 hour forecast for CAPE and surface winds (knots) -- NCEP GFS



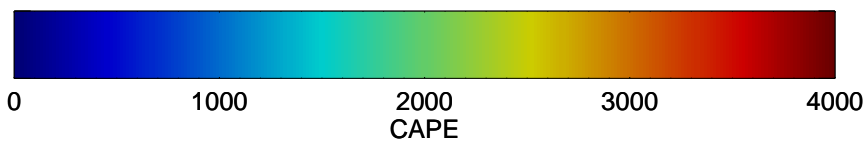
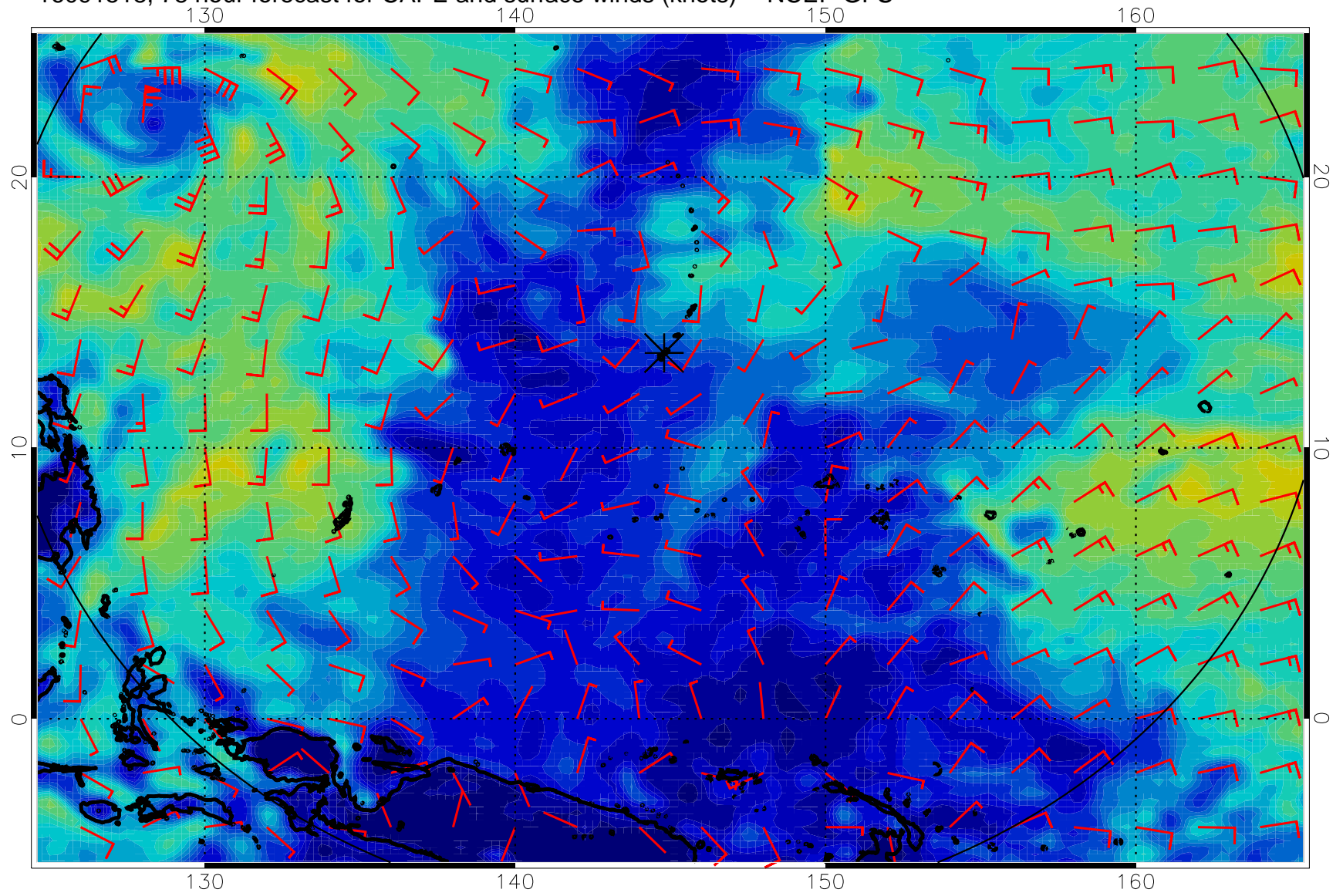
16091506, 66 hour forecast for CAPE and surface winds (knots) -- NCEP GFS



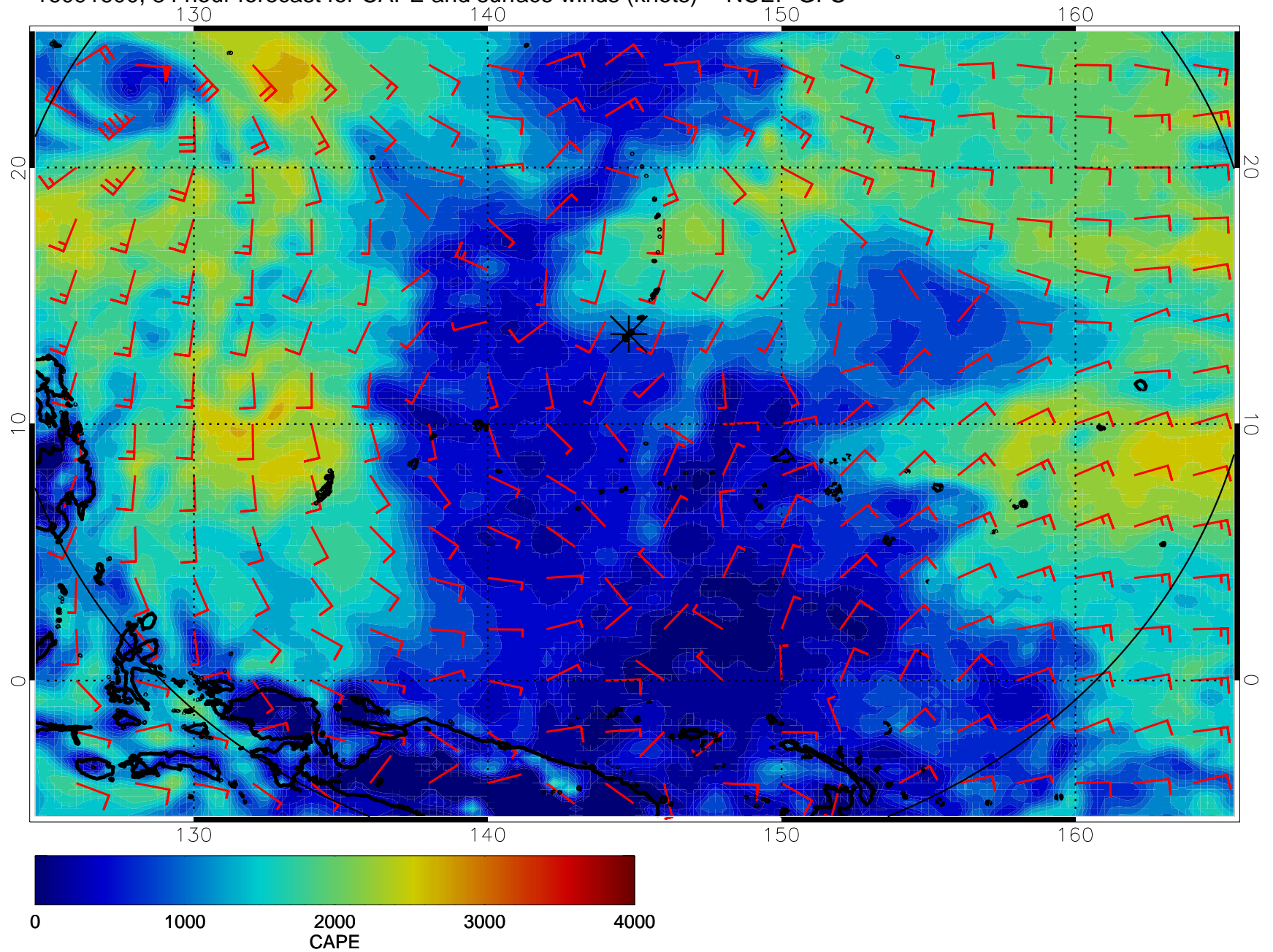
16091512, 72 hour forecast for CAPE and surface winds (knots) -- NCEP GFS



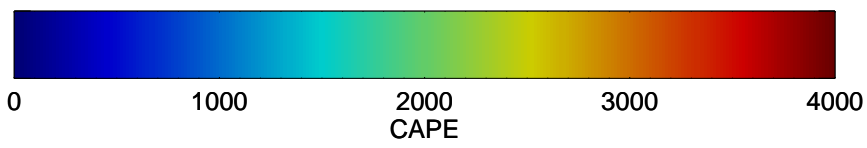
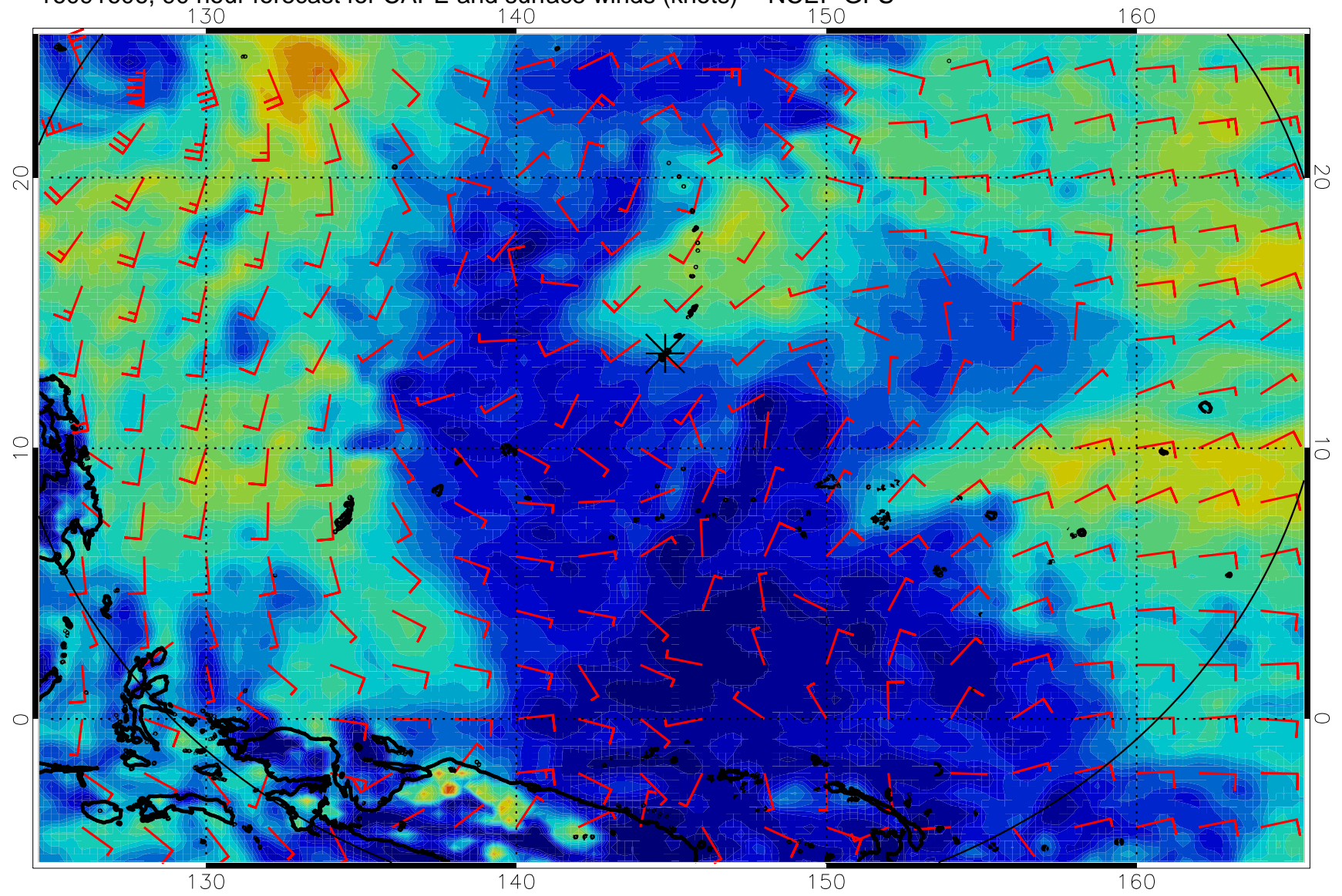
16091518, 78 hour forecast for CAPE and surface winds (knots) -- NCEP GFS



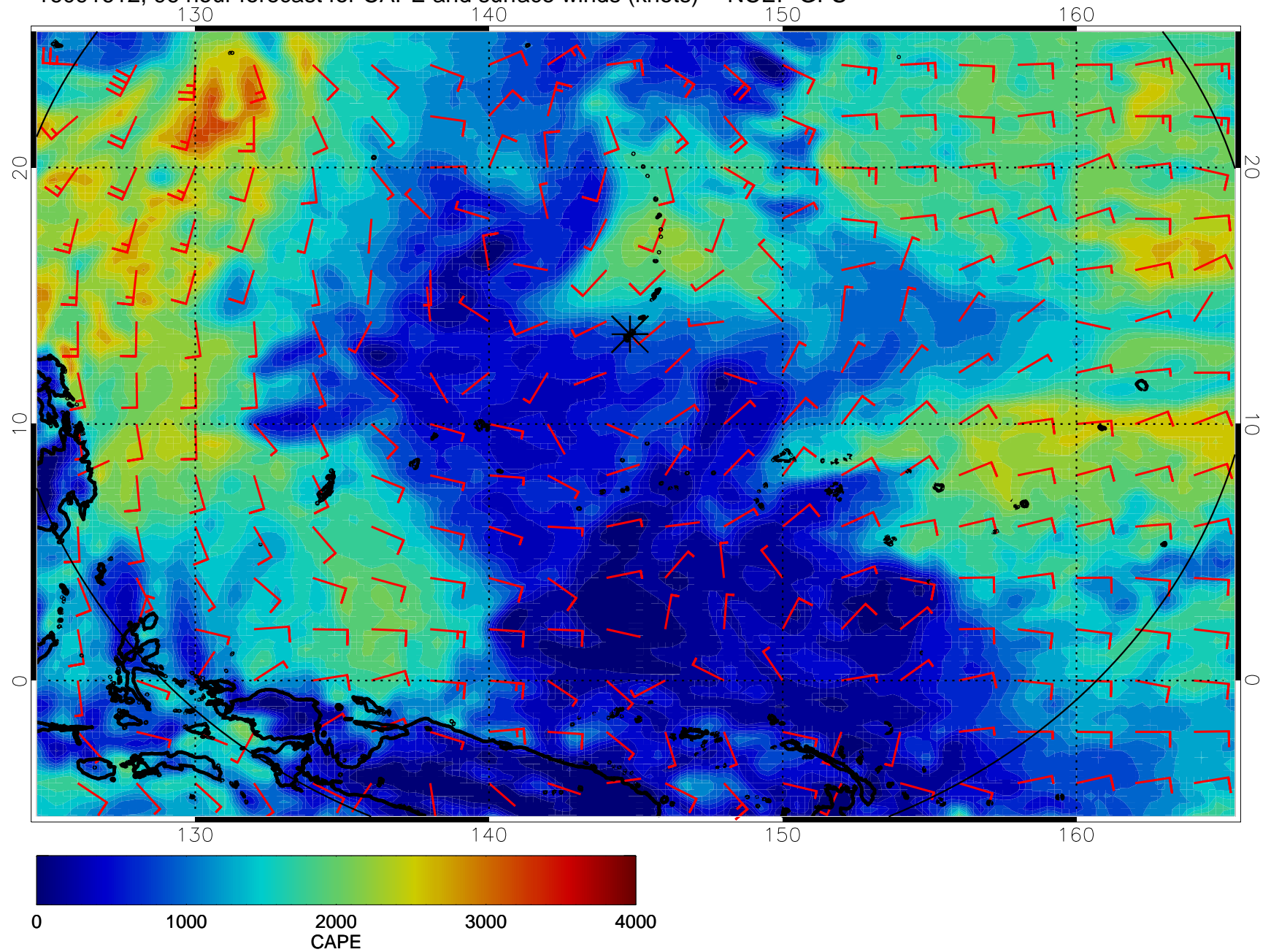
16091600, 84 hour forecast for CAPE and surface winds (knots) -- NCEP GFS



16091606, 90 hour forecast for CAPE and surface winds (knots) -- NCEP GFS

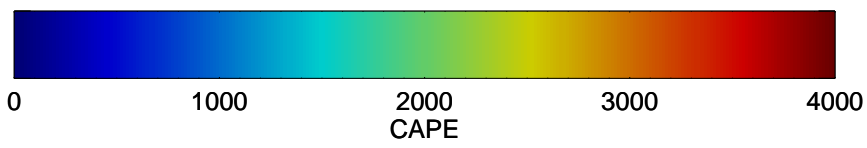
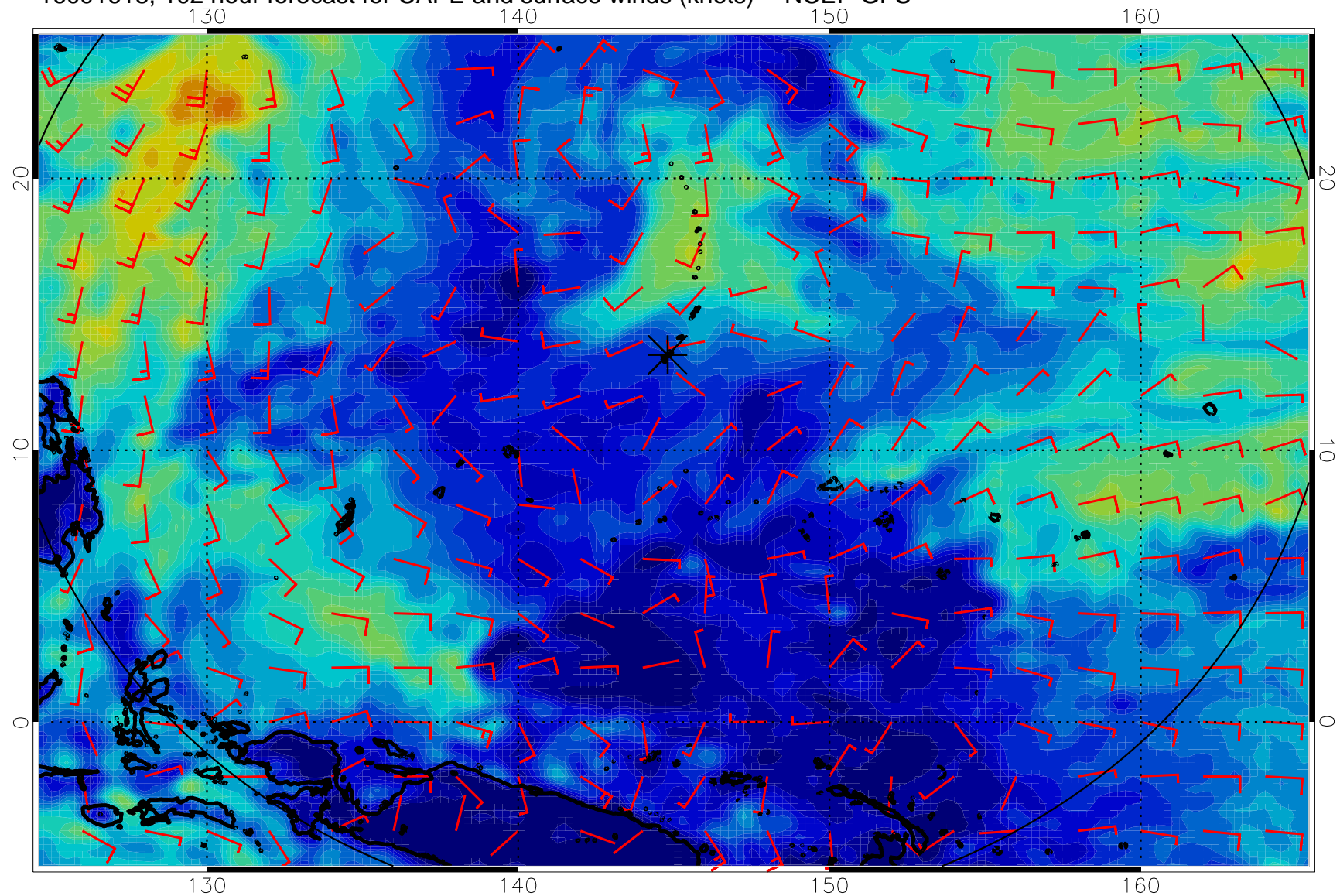


16091612, 96 hour forecast for CAPE and surface winds (knots) -- NCEP GFS

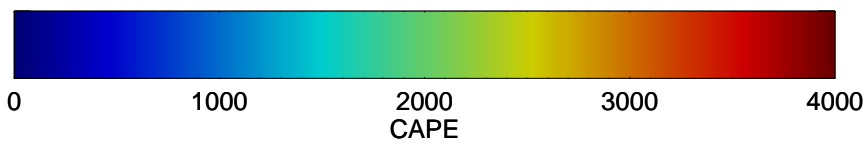
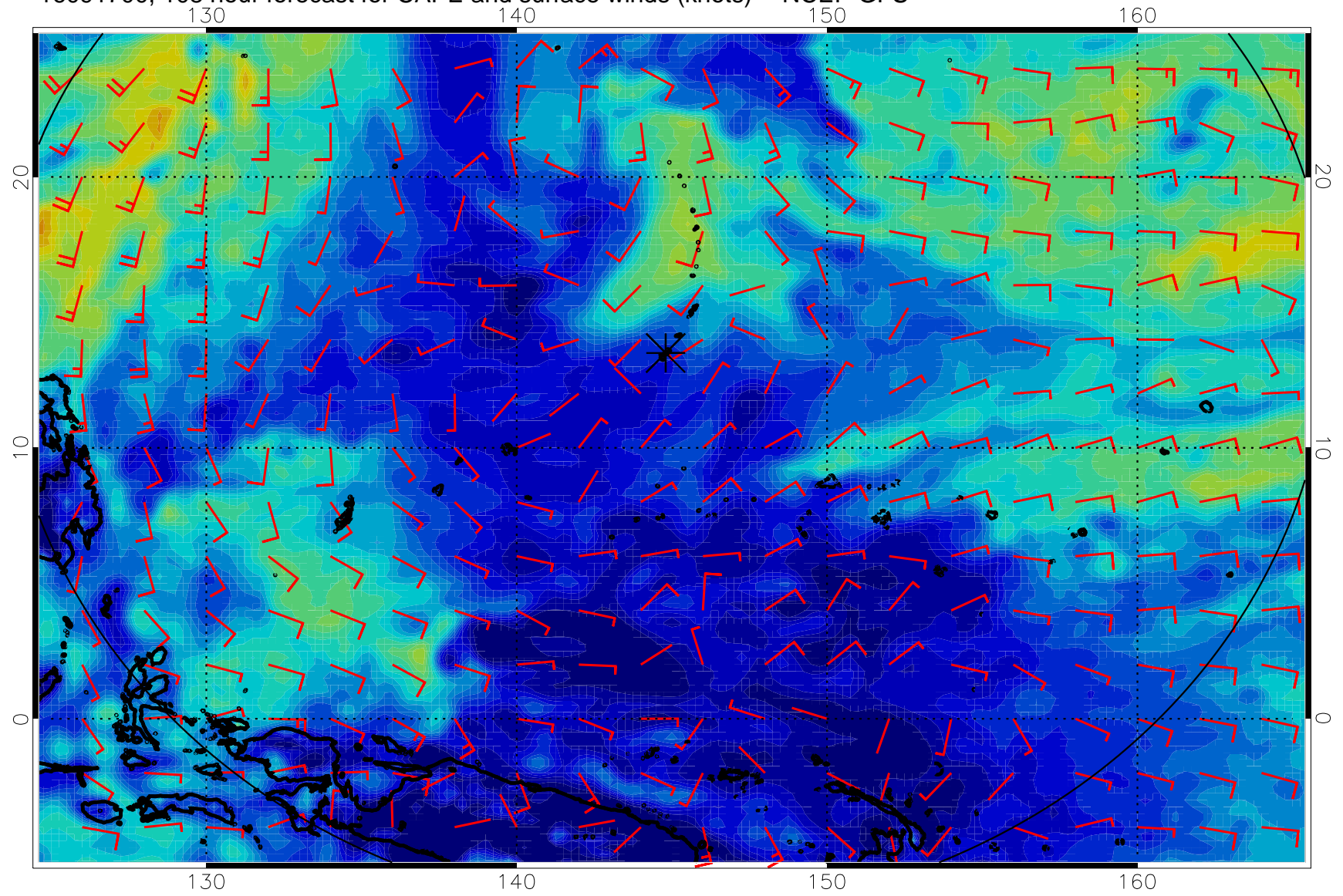




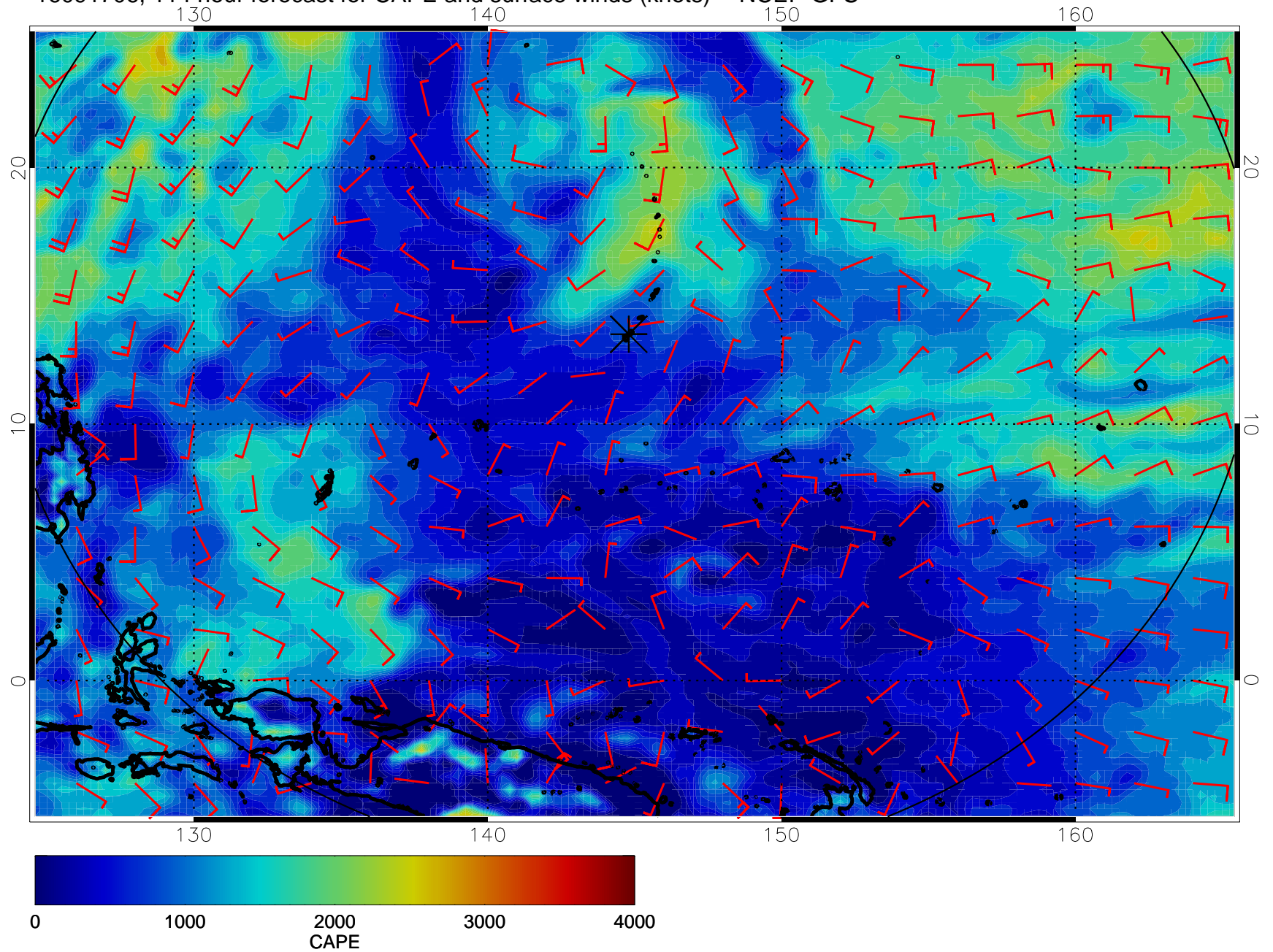
16091618, 102 hour forecast for CAPE and surface winds (knots) -- NCEP GFS



16091700, 108 hour forecast for CAPE and surface winds (knots) -- NCEP GFS



16091706, 114 hour forecast for CAPE and surface winds (knots) -- NCEP GFS



16091712, 120 hour forecast for CAPE and surface winds (knots) -- NCEP GFS

