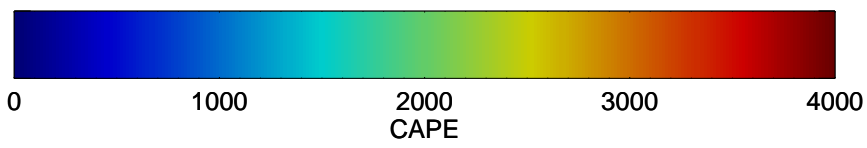
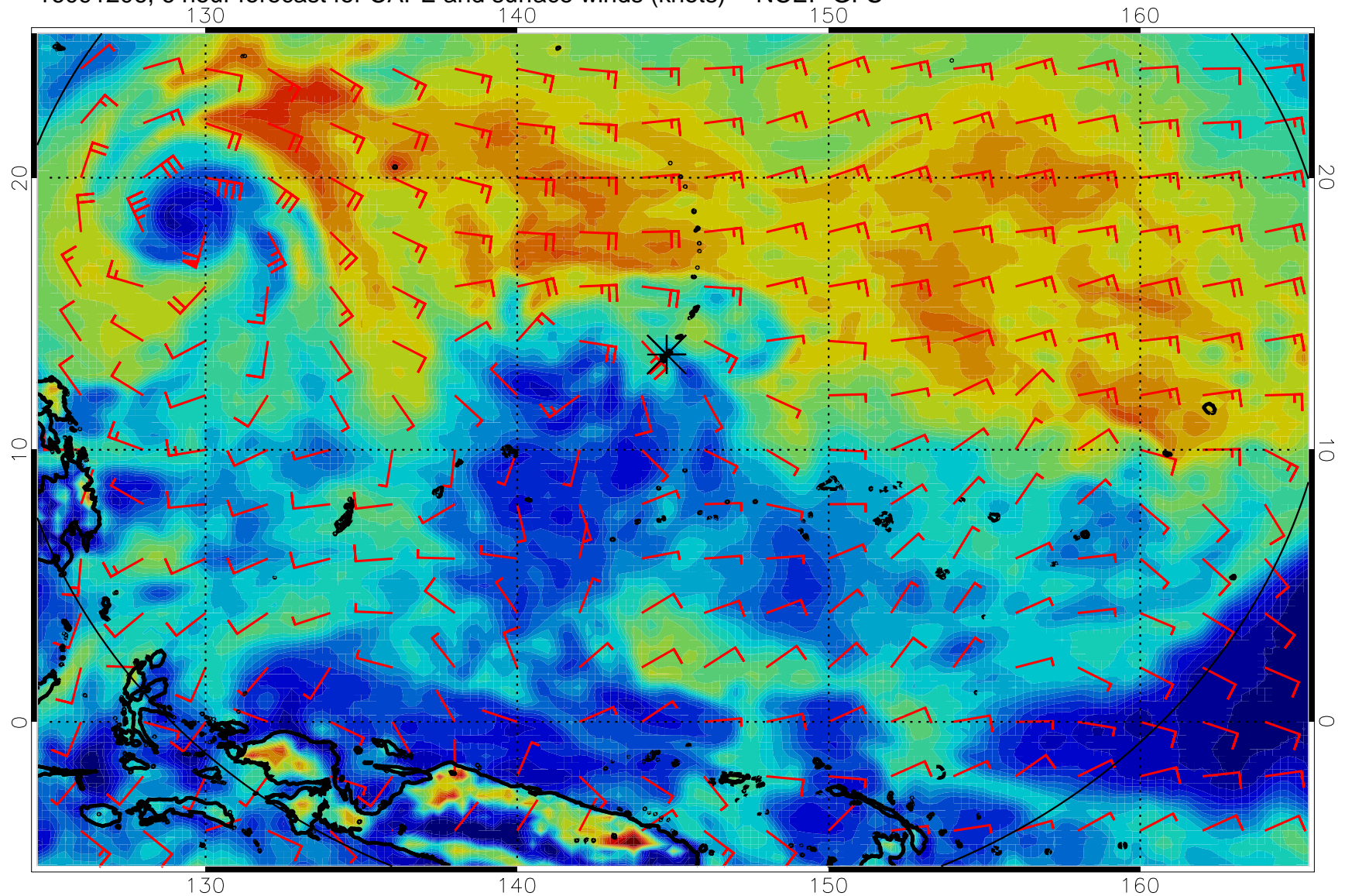
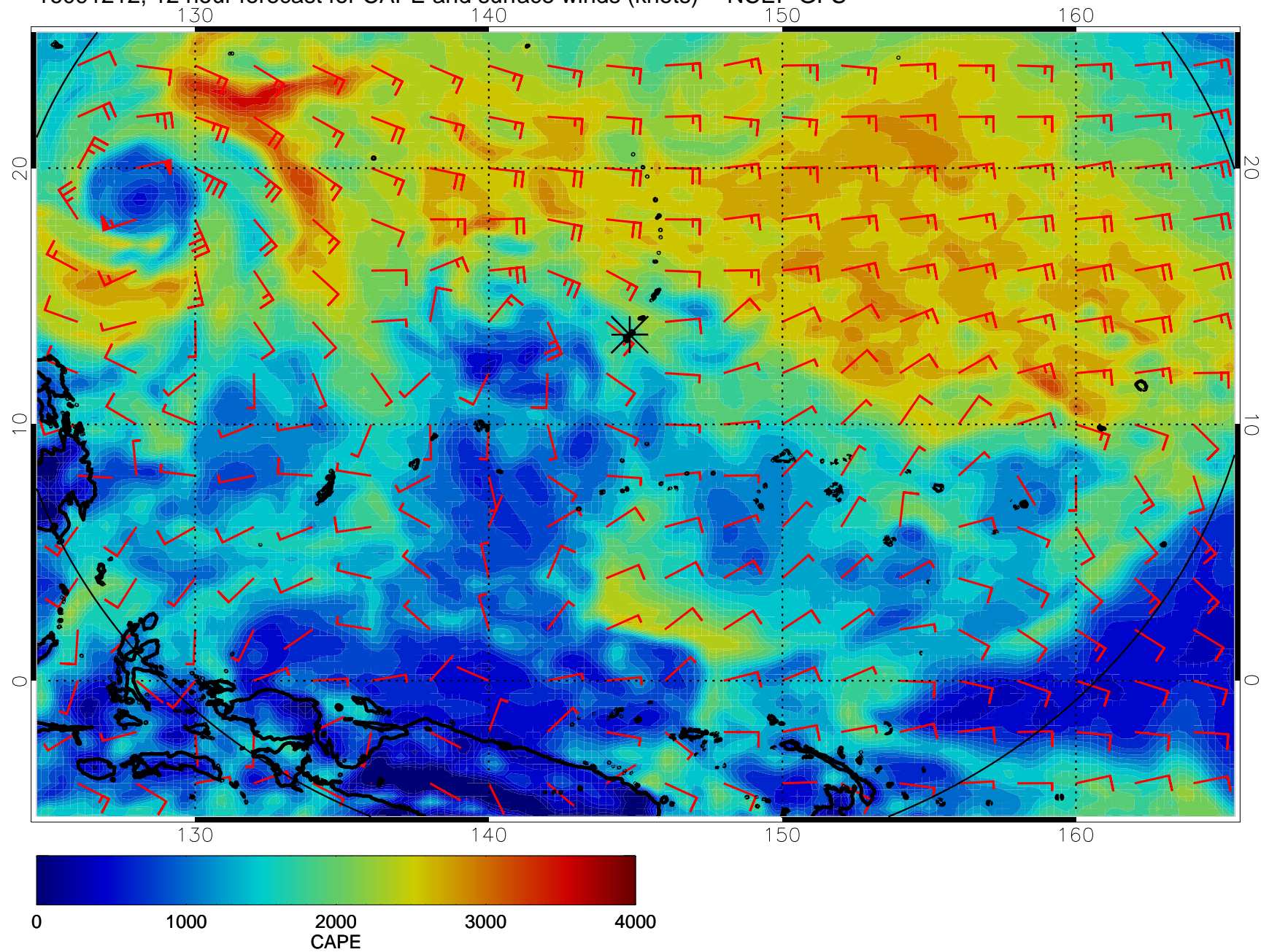


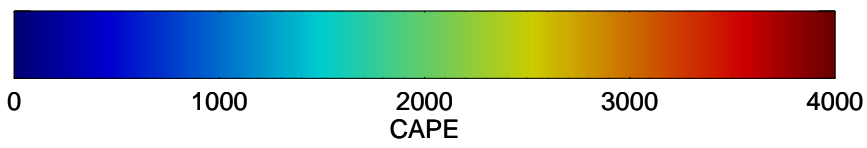
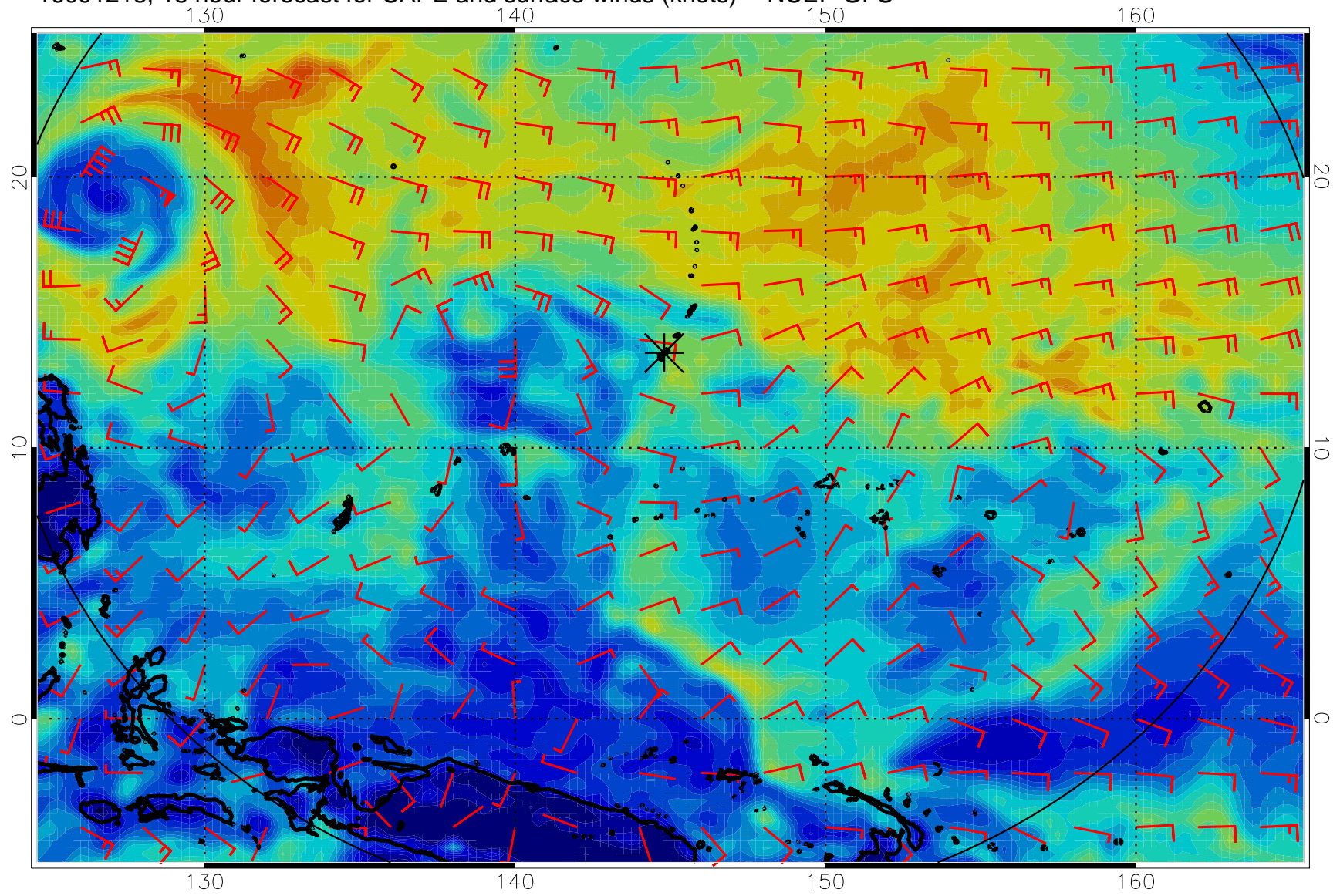
16091206, 6 hour forecast for CAPE and surface winds (knots) -- NCEP GFS



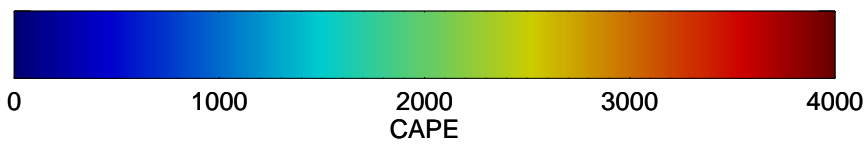
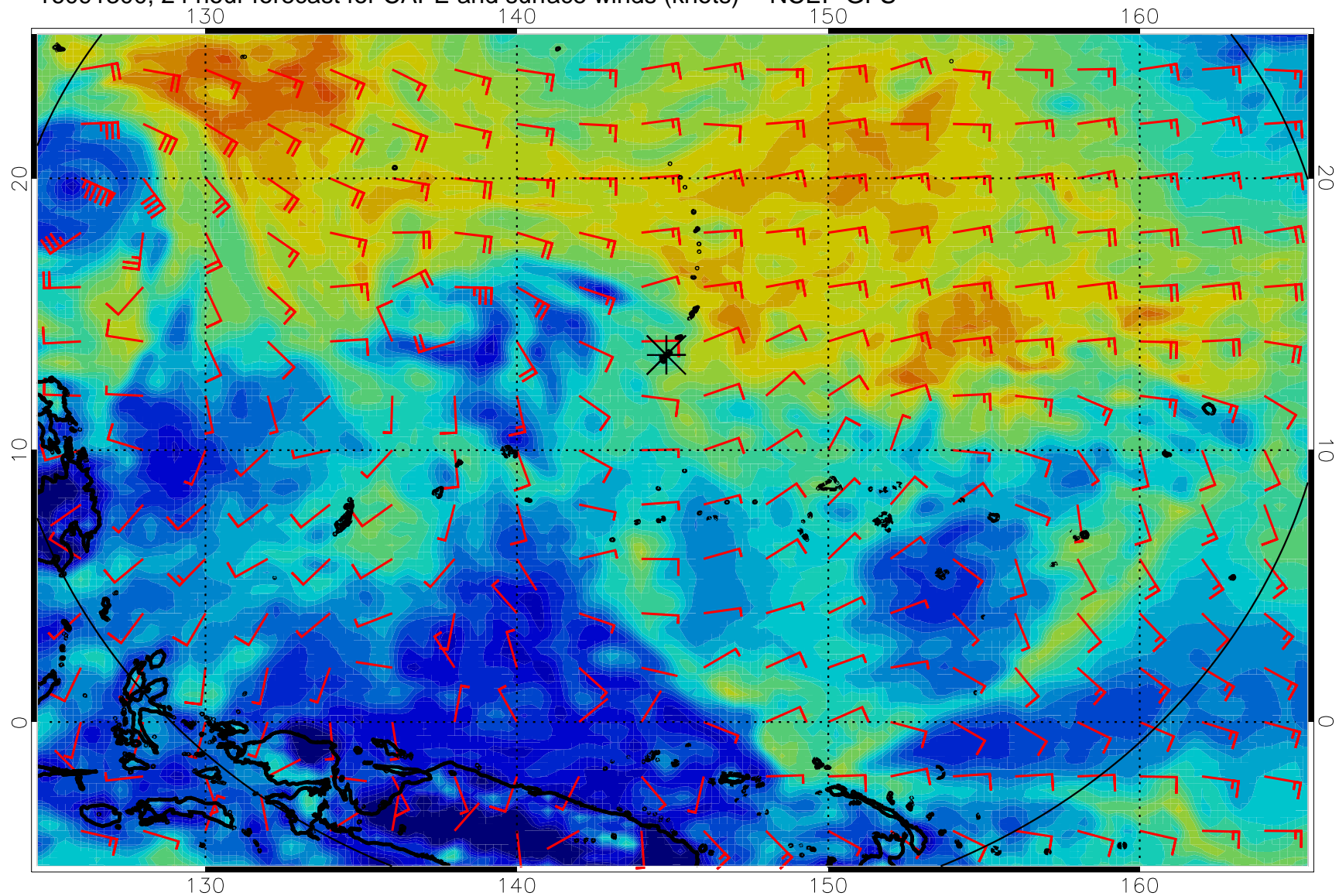
16091212, 12 hour forecast for CAPE and surface winds (knots) -- NCEP GFS



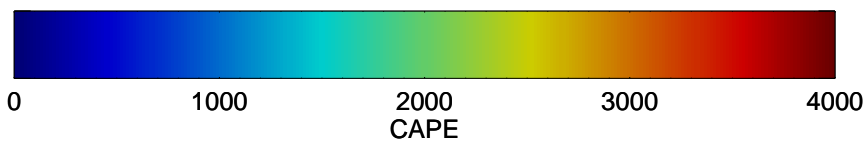
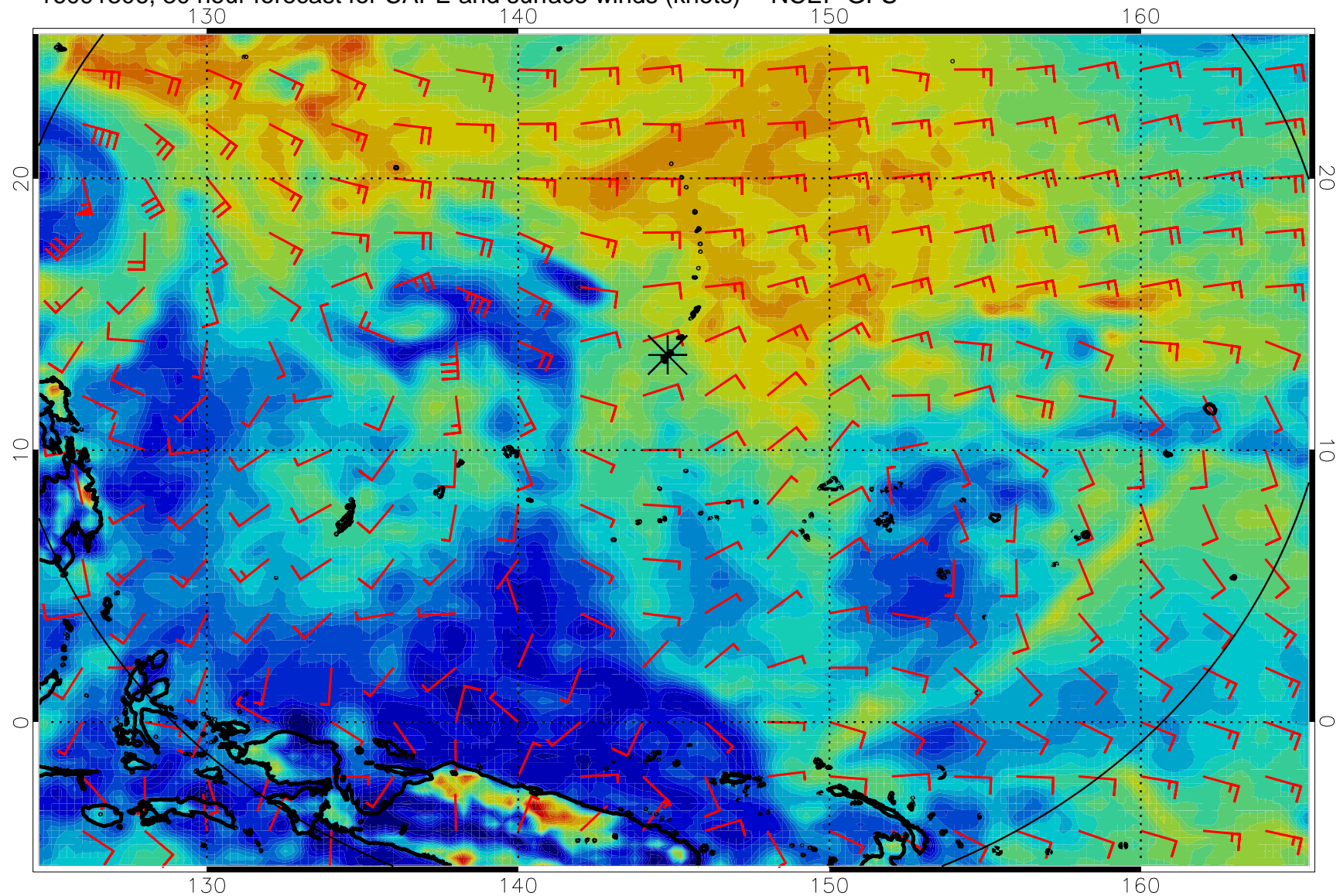
16091218, 18 hour forecast for CAPE and surface winds (knots) -- NCEP GFS



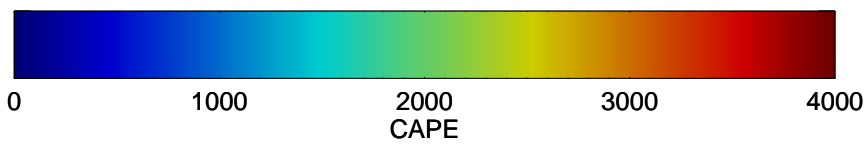
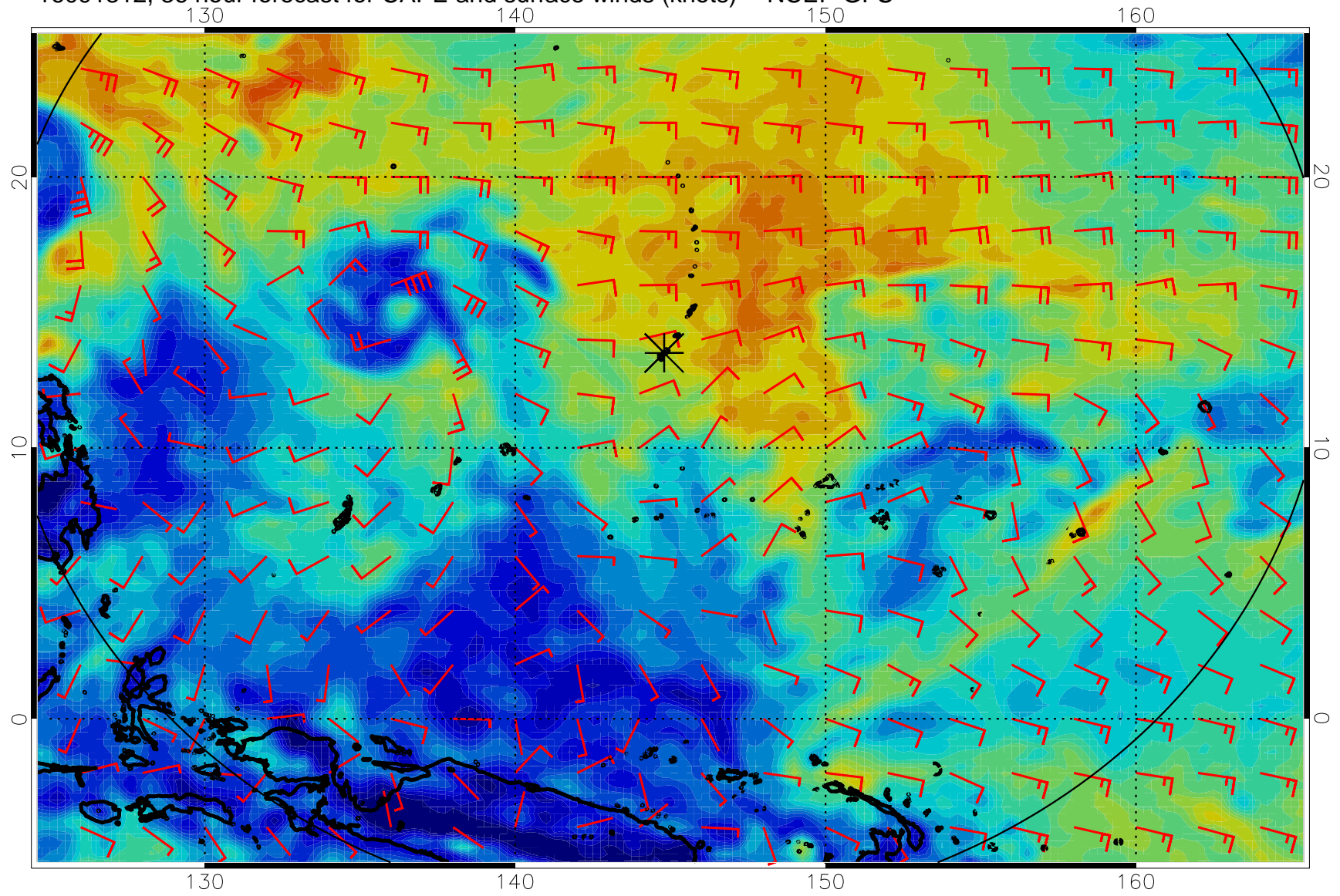
16091300, 24 hour forecast for CAPE and surface winds (knots) -- NCEP GFS



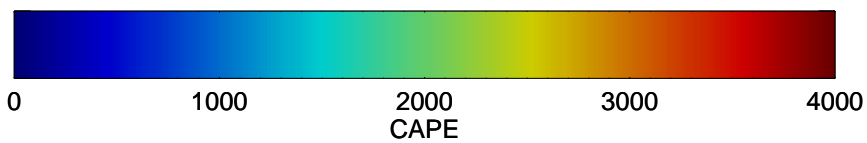
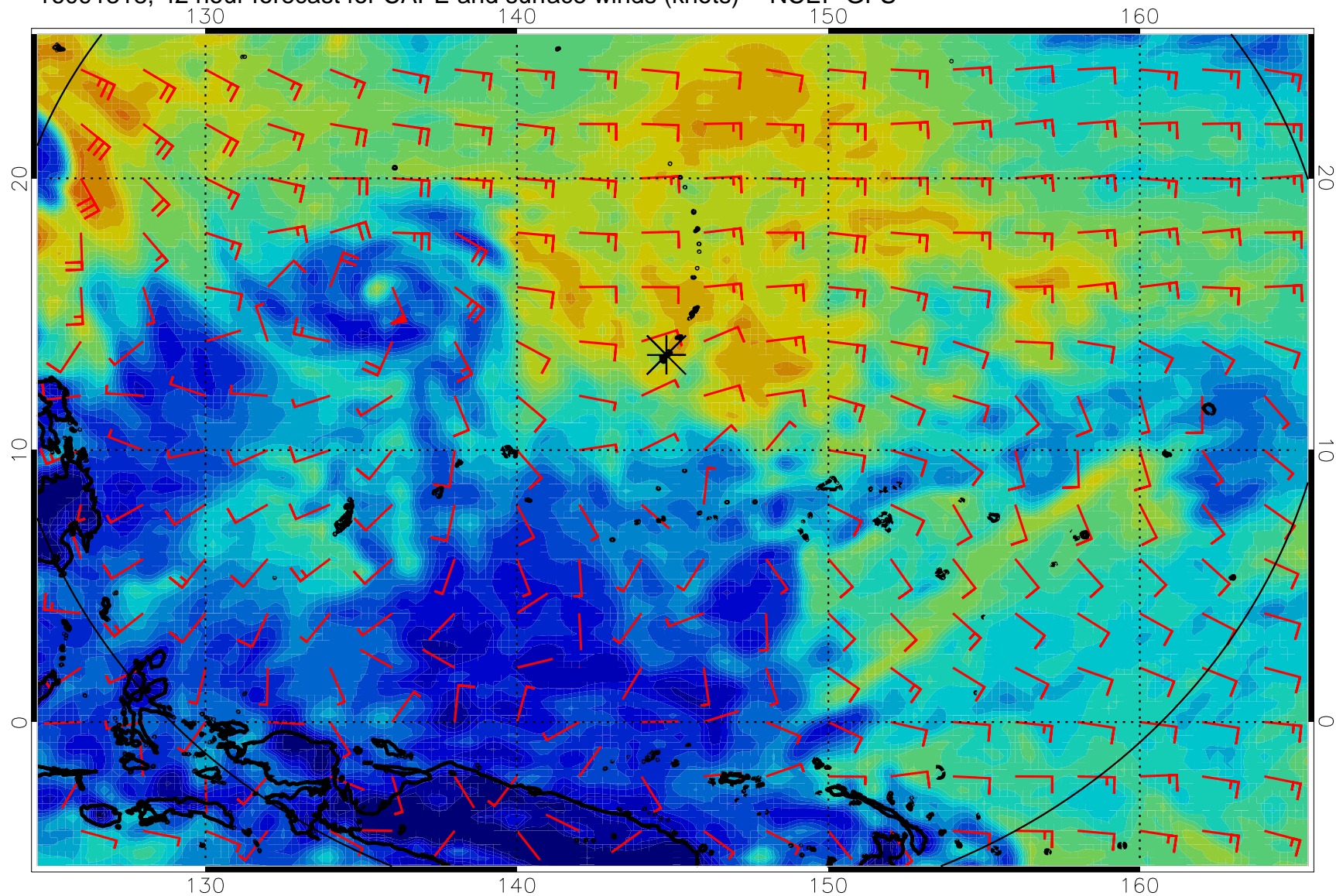
16091306, 30 hour forecast for CAPE and surface winds (knots) -- NCEP GFS



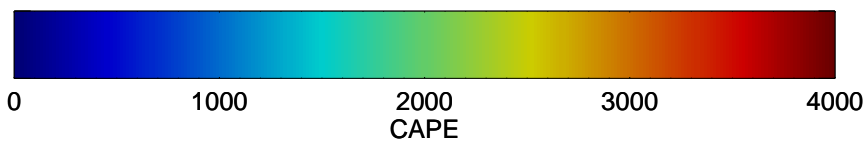
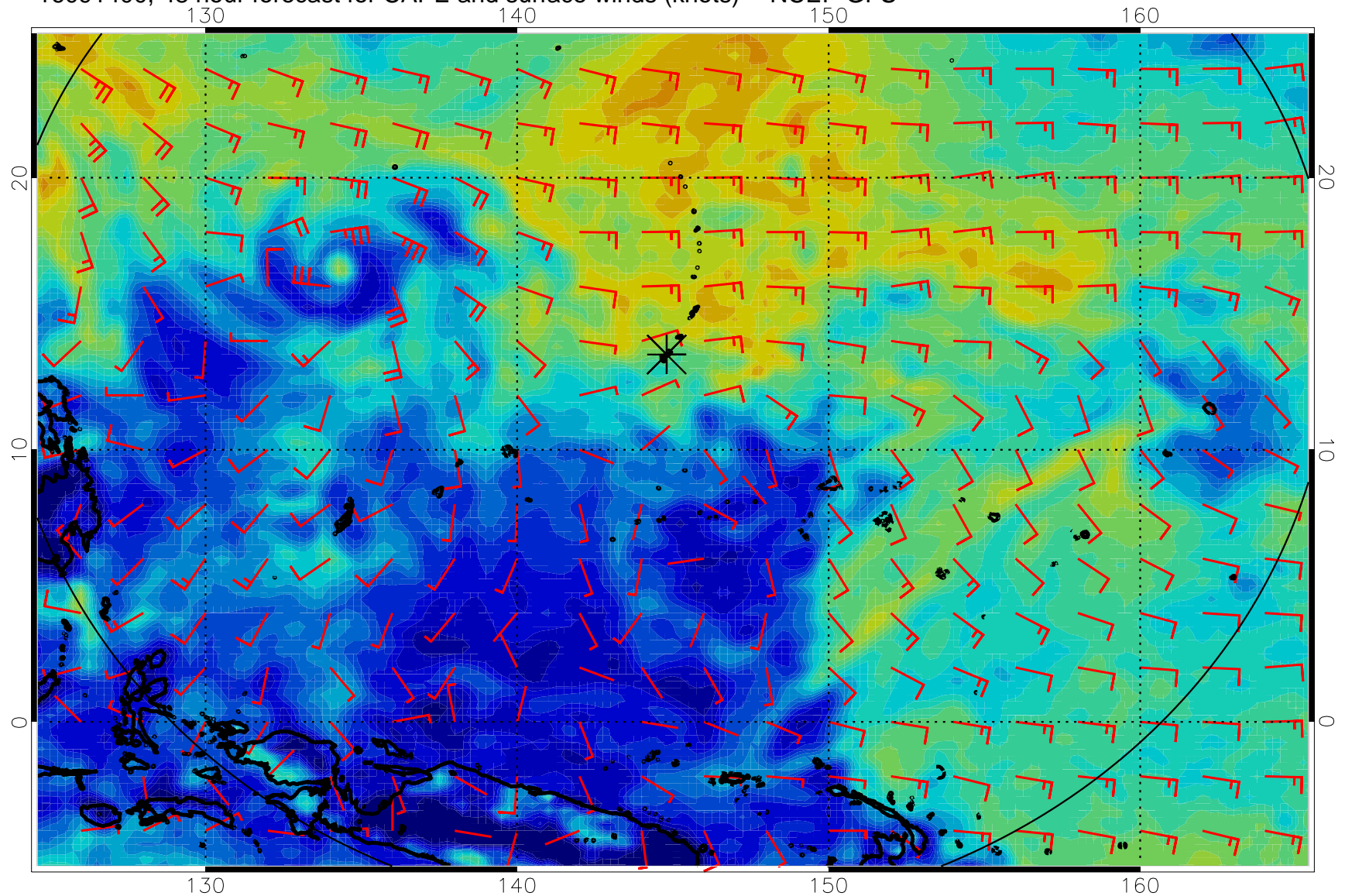
16091312, 36 hour forecast for CAPE and surface winds (knots) -- NCEP GFS



16091318, 42 hour forecast for CAPE and surface winds (knots) -- NCEP GFS

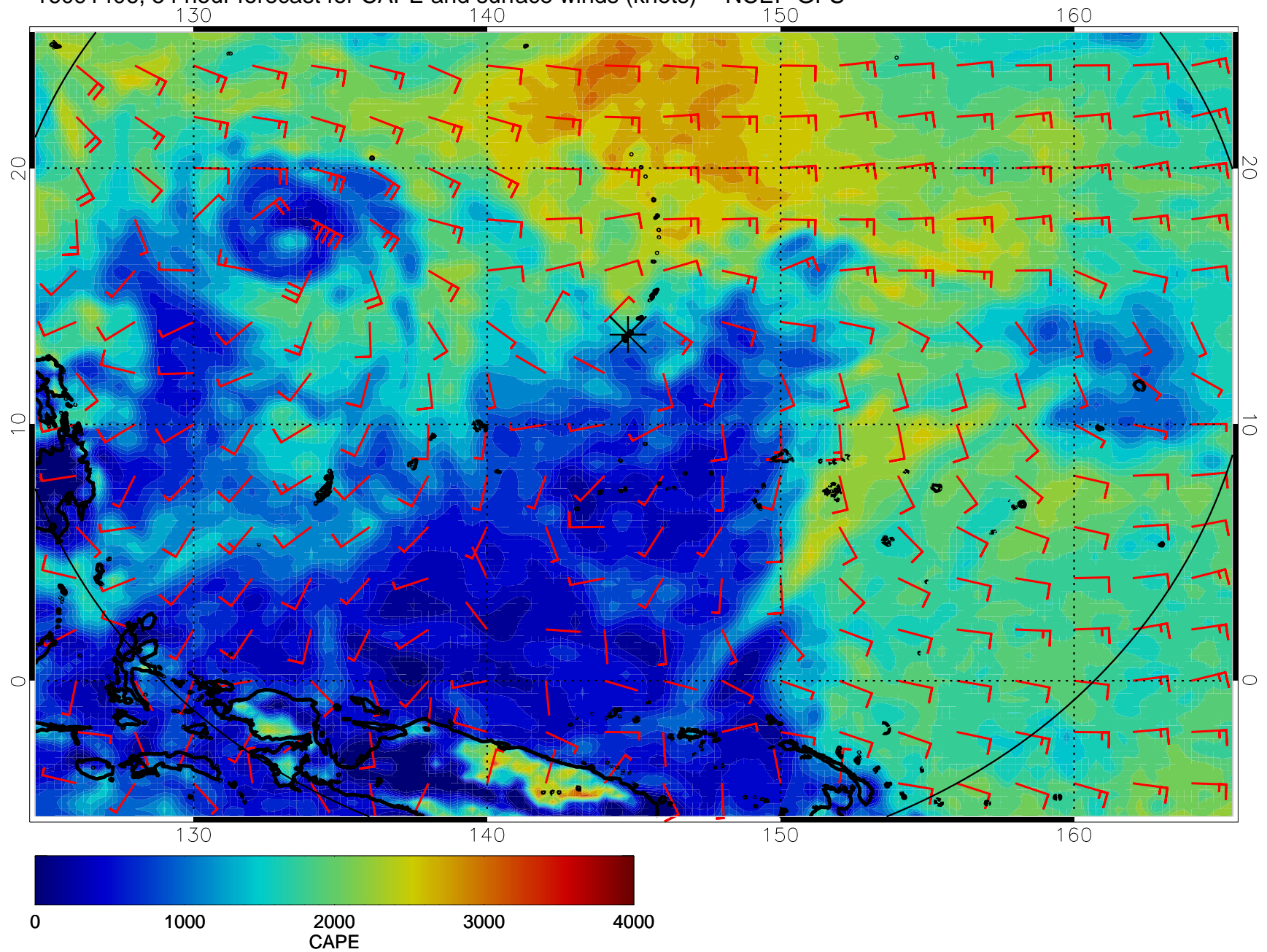


16091400, 48 hour forecast for CAPE and surface winds (knots) -- NCEP GFS

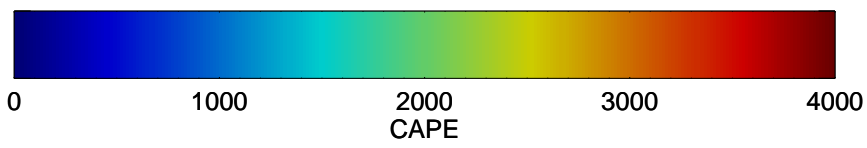
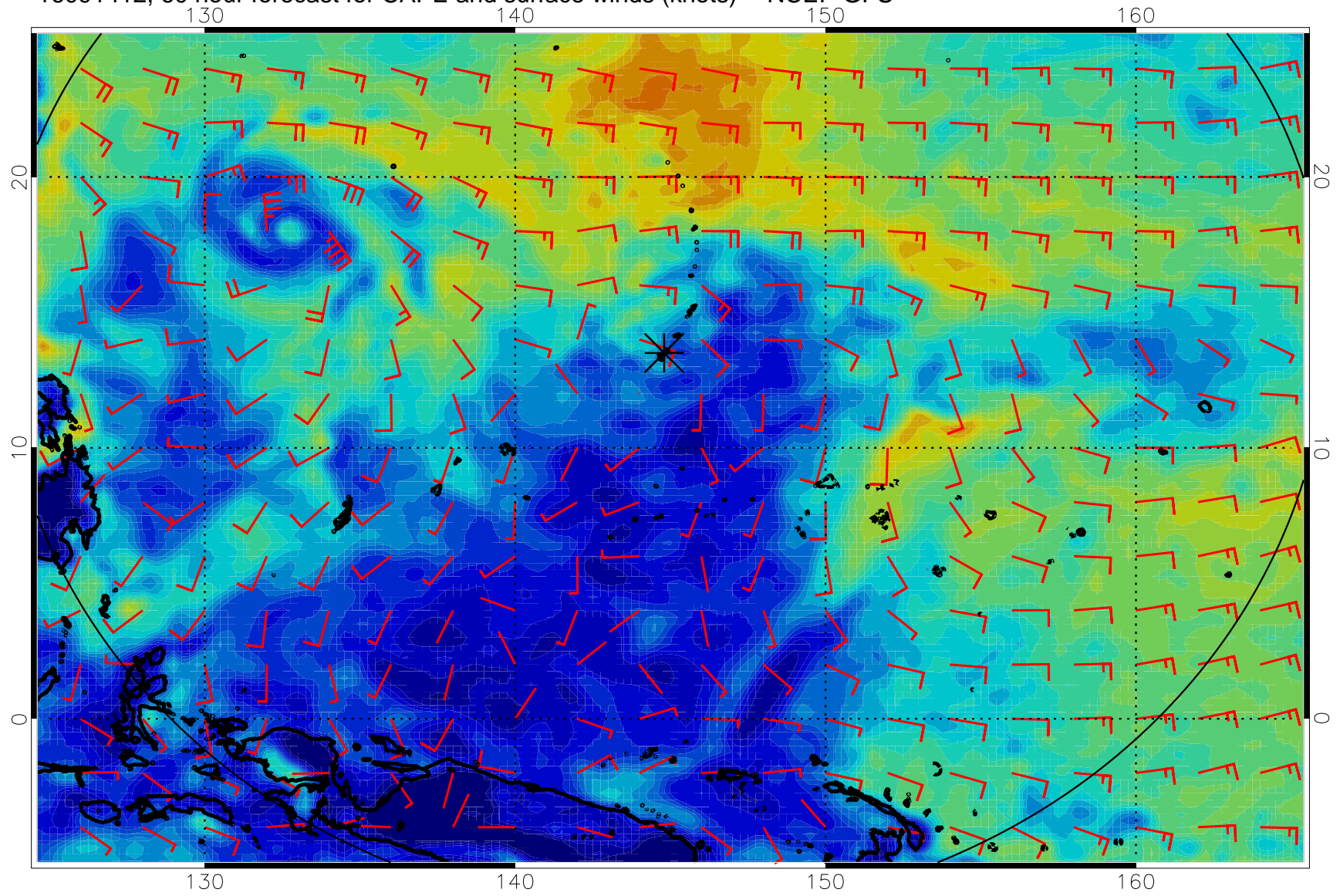




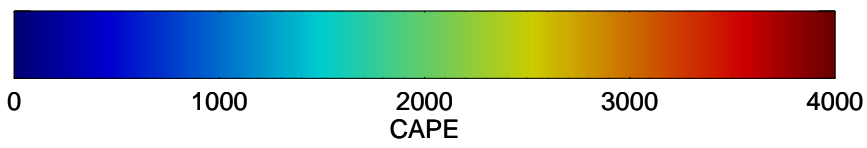
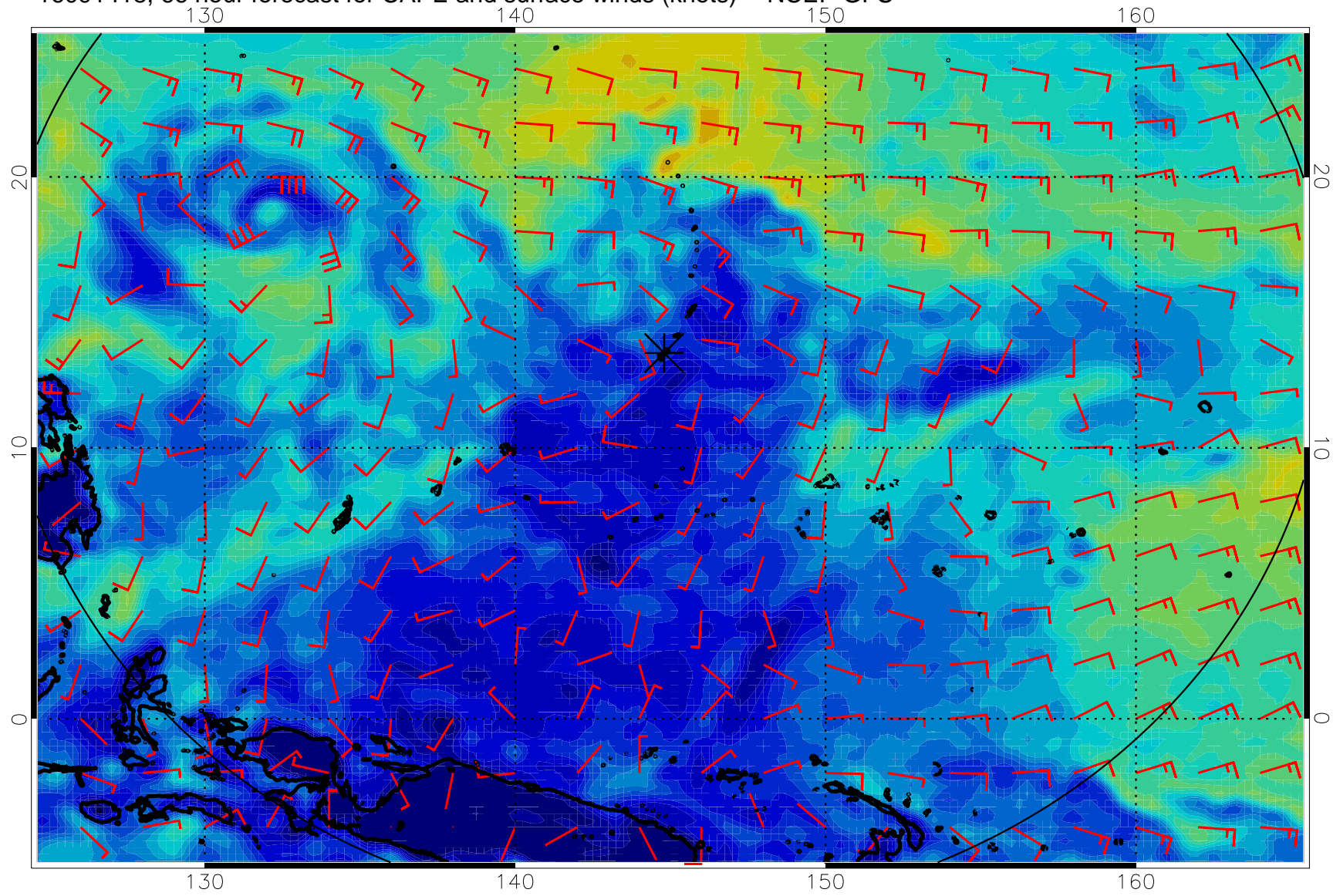
16091406, 54 hour forecast for CAPE and surface winds (knots) -- NCEP GFS



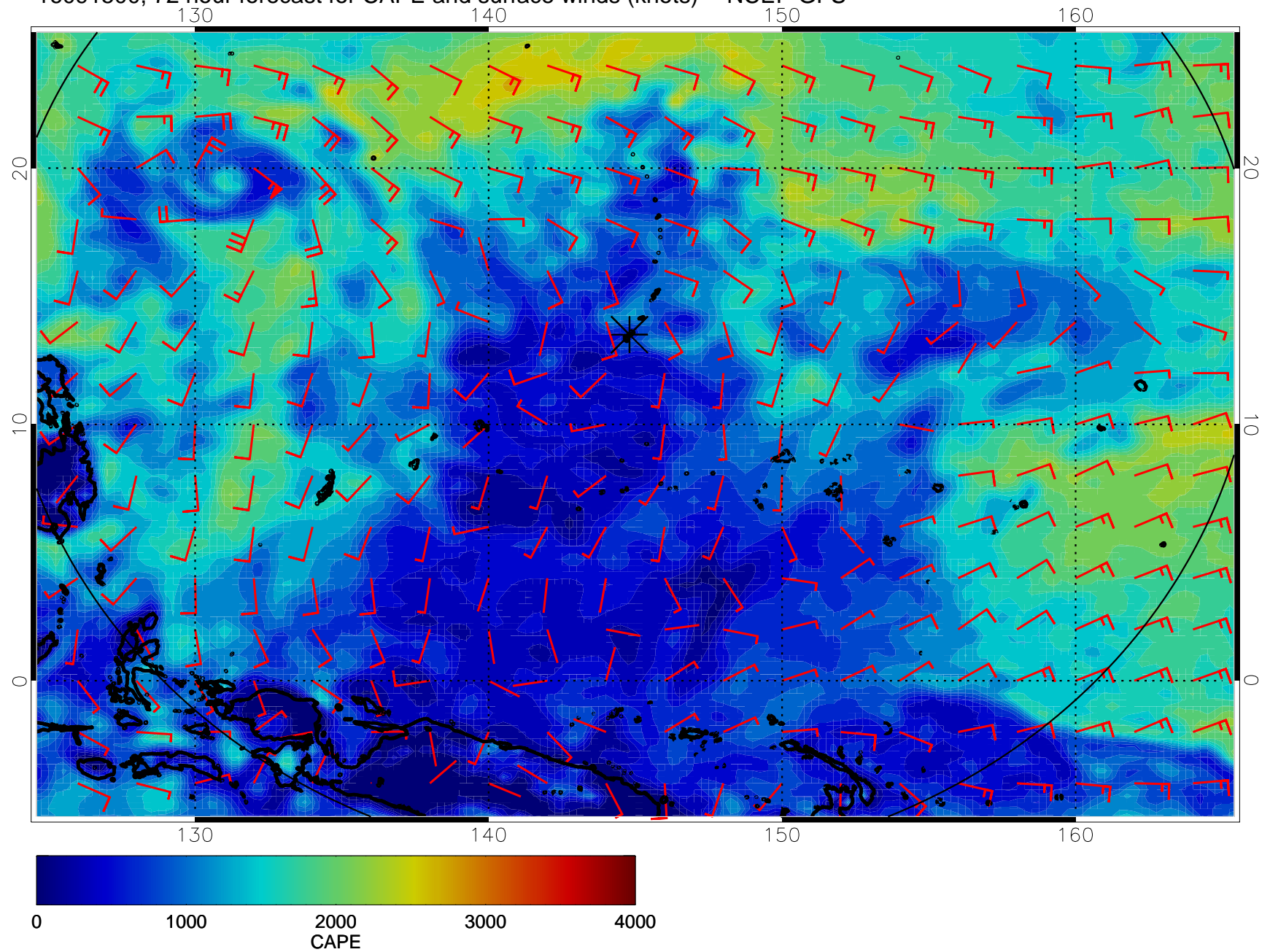
16091412, 60 hour forecast for CAPE and surface winds (knots) -- NCEP GFS



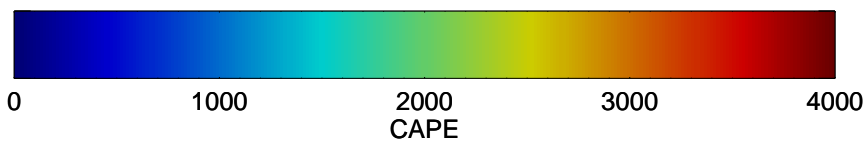
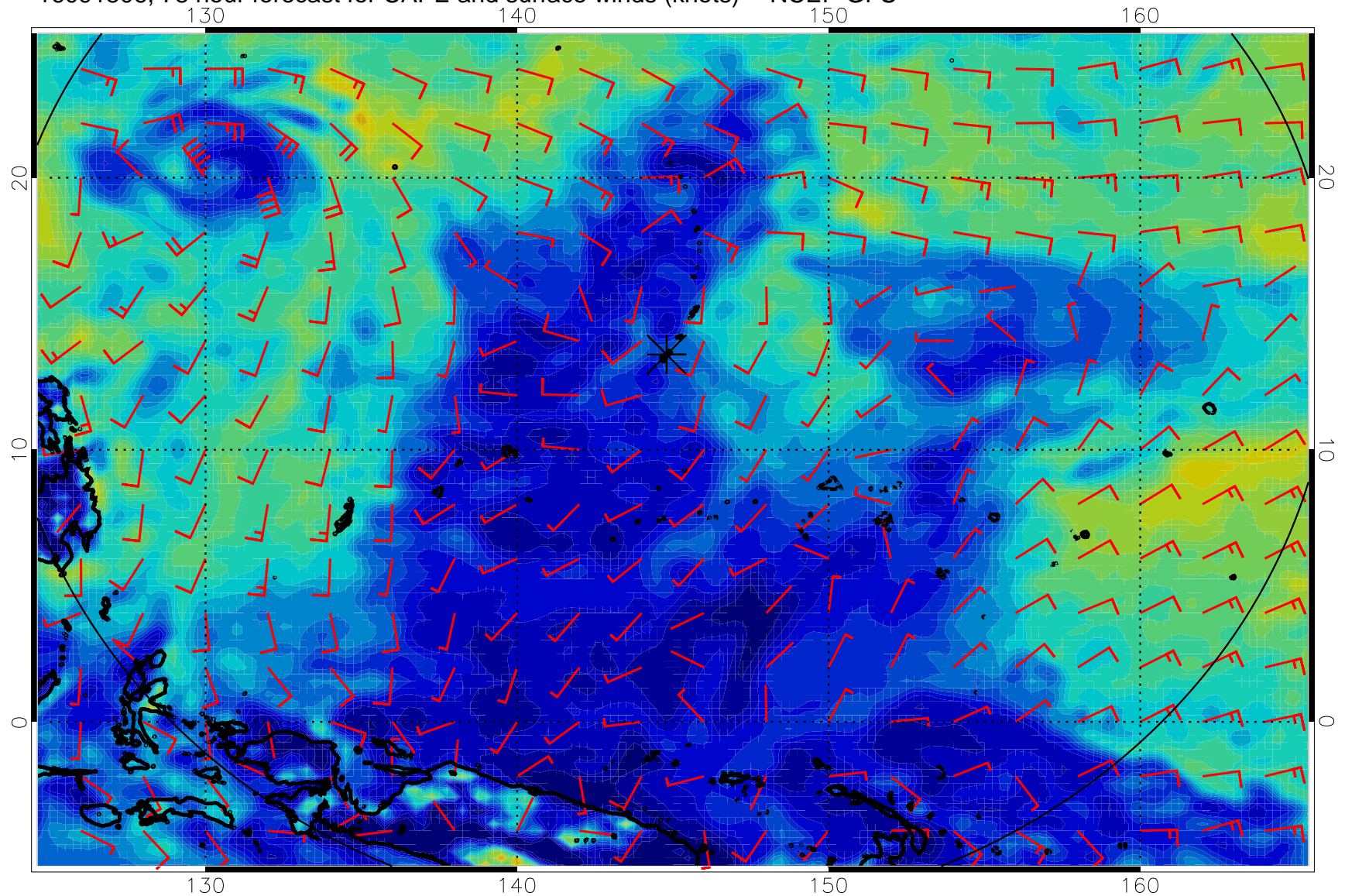
16091418, 66 hour forecast for CAPE and surface winds (knots) -- NCEP GFS



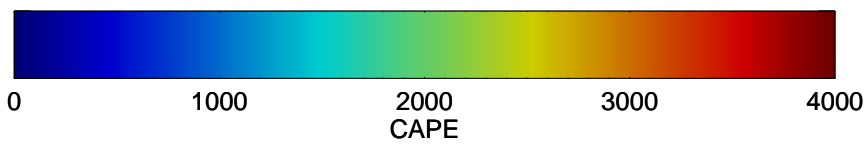
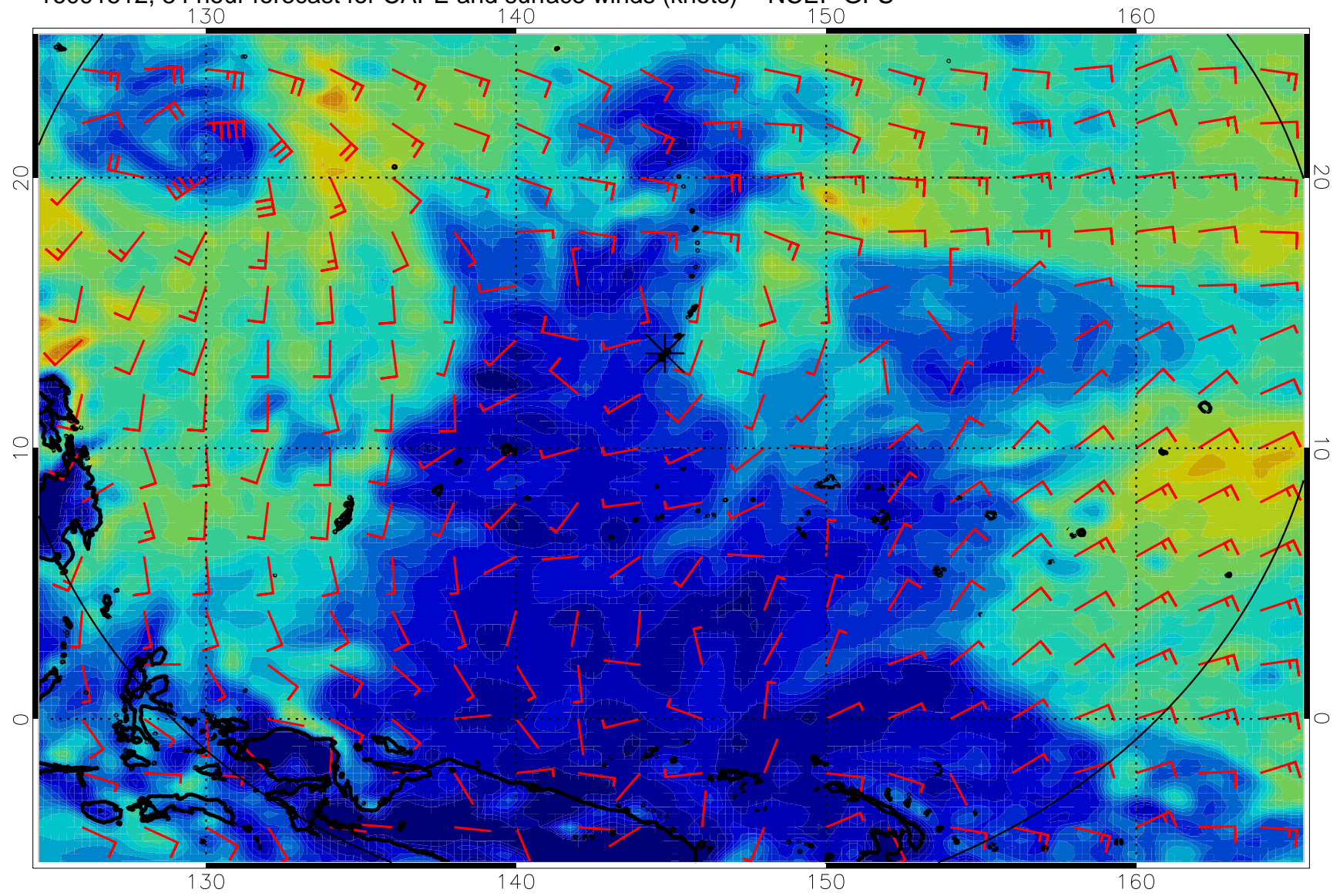
16091500, 72 hour forecast for CAPE and surface winds (knots) -- NCEP GFS



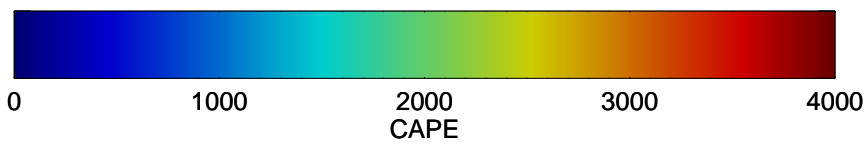
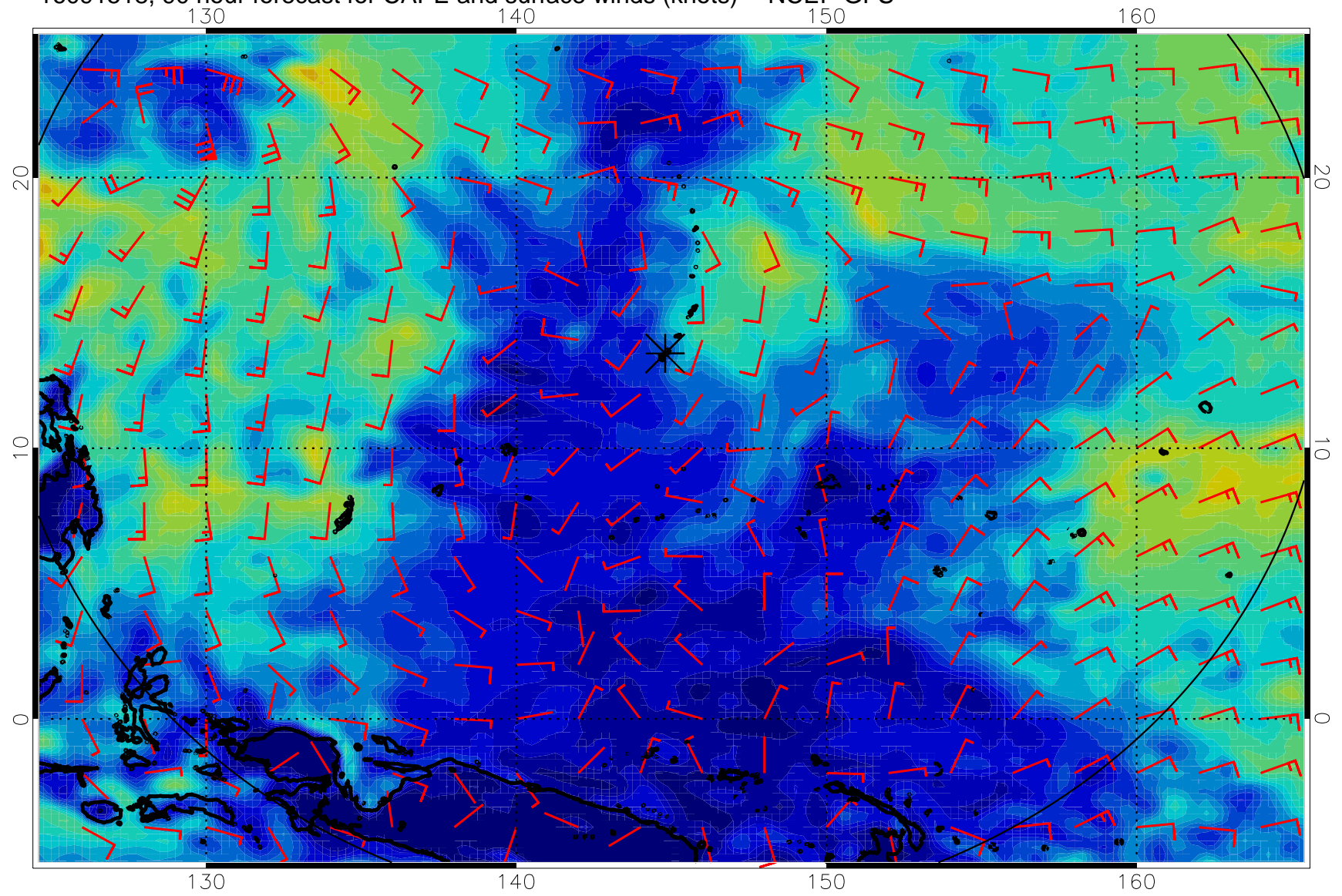
16091506, 78 hour forecast for CAPE and surface winds (knots) -- NCEP GFS



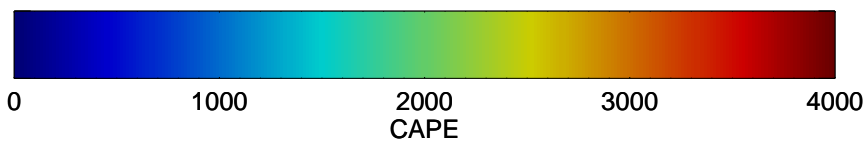
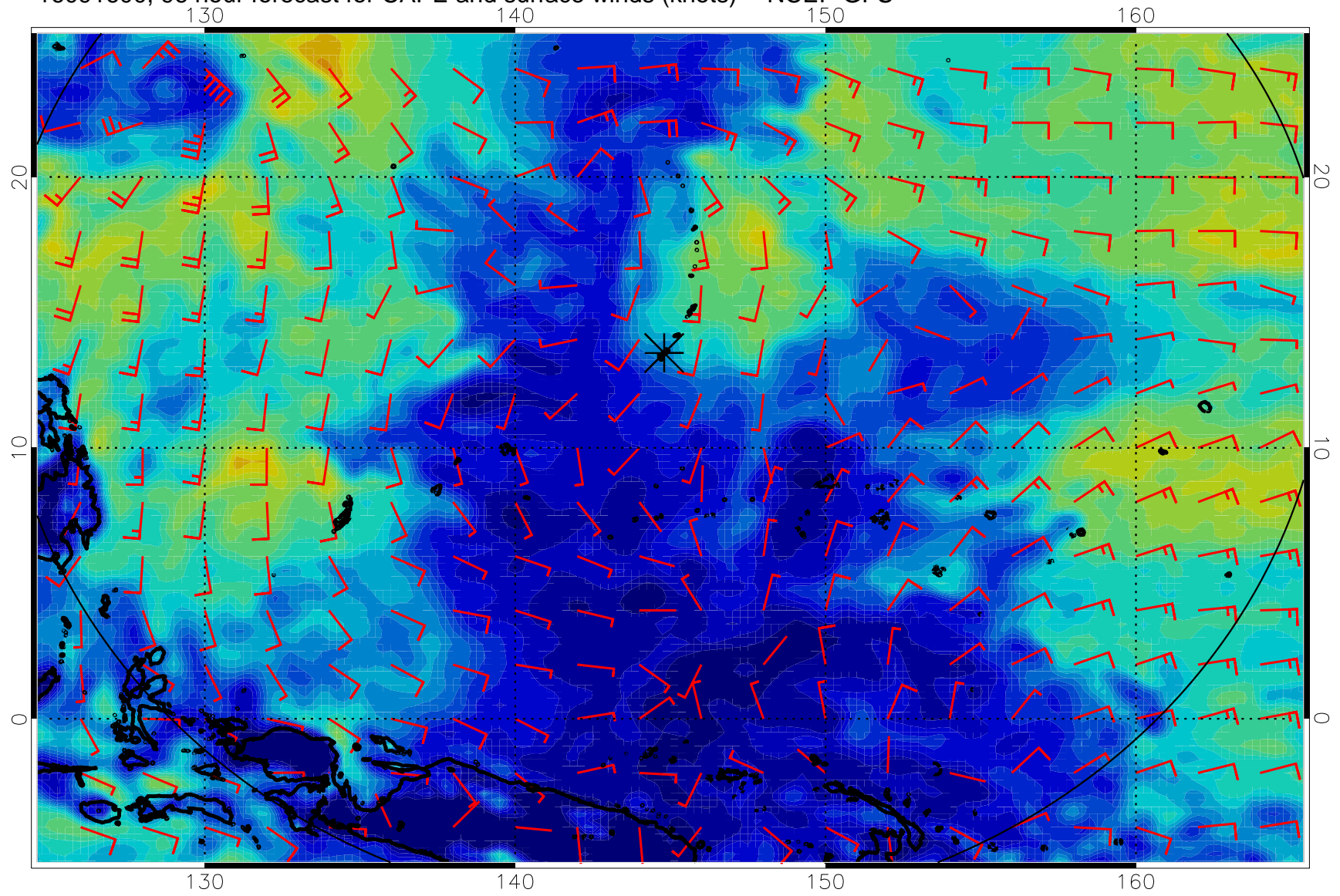
16091512, 84 hour forecast for CAPE and surface winds (knots) -- NCEP GFS



16091518, 90 hour forecast for CAPE and surface winds (knots) -- NCEP GFS

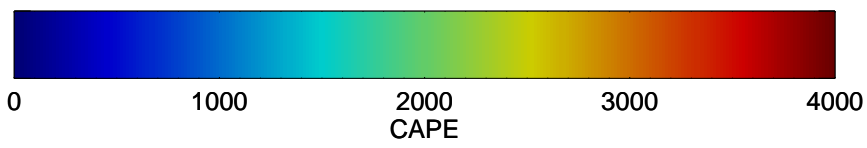
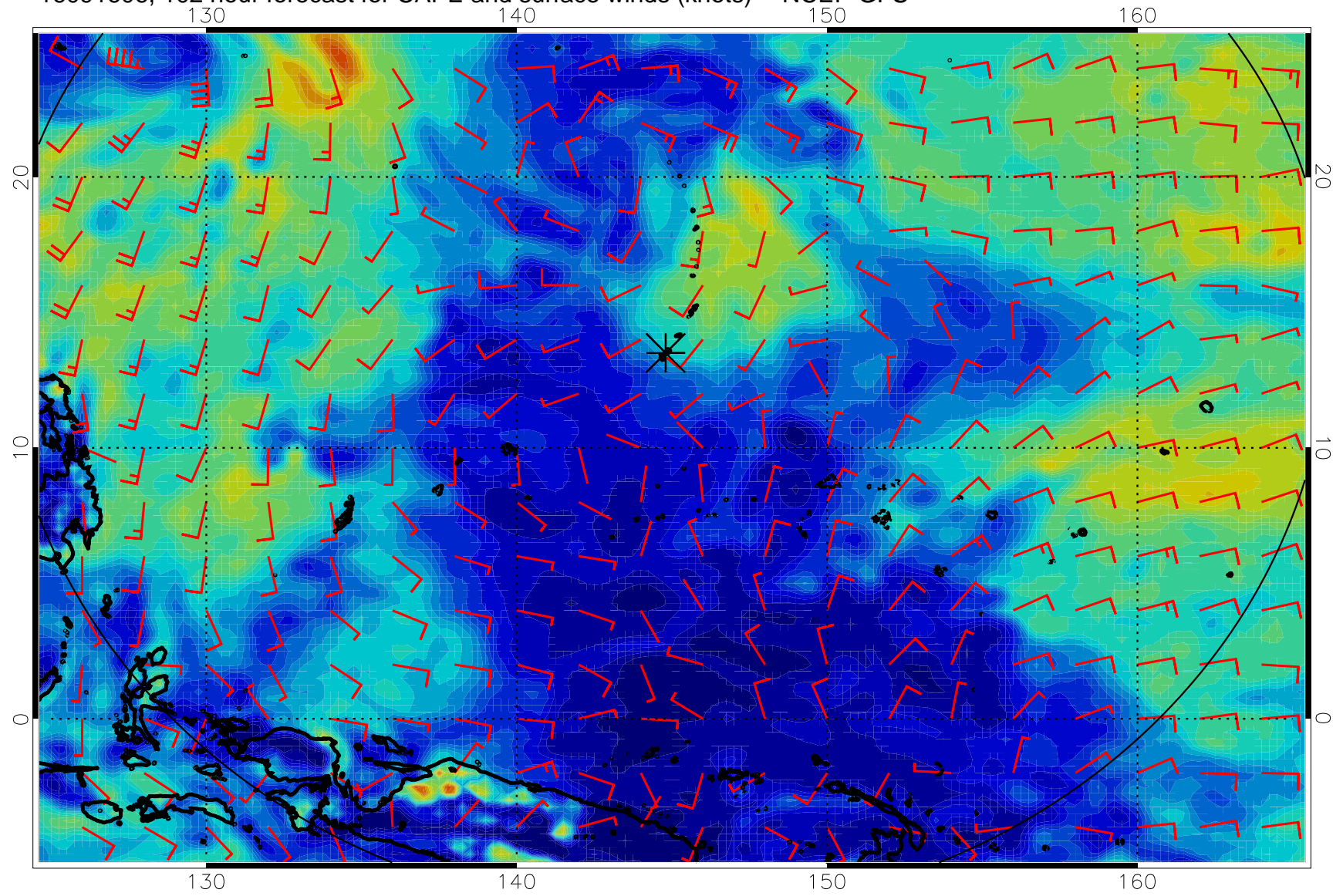


16091600, 96 hour forecast for CAPE and surface winds (knots) -- NCEP GFS

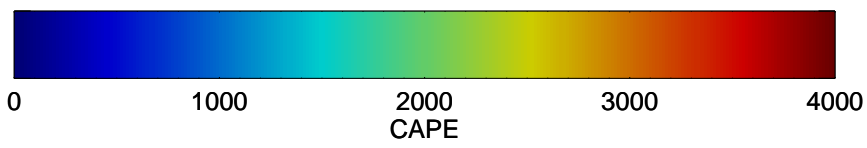
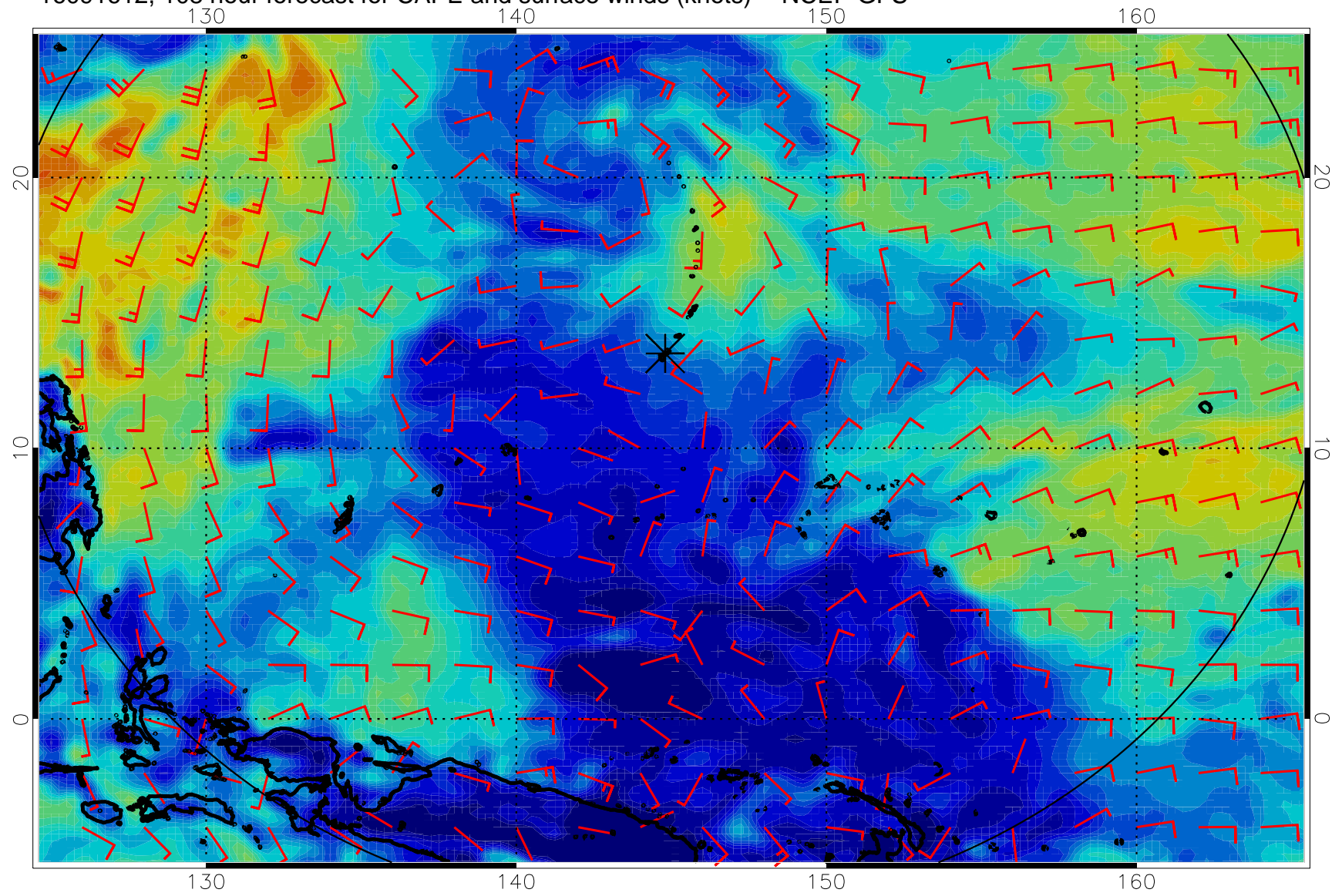




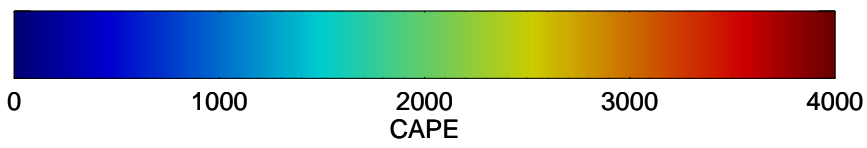
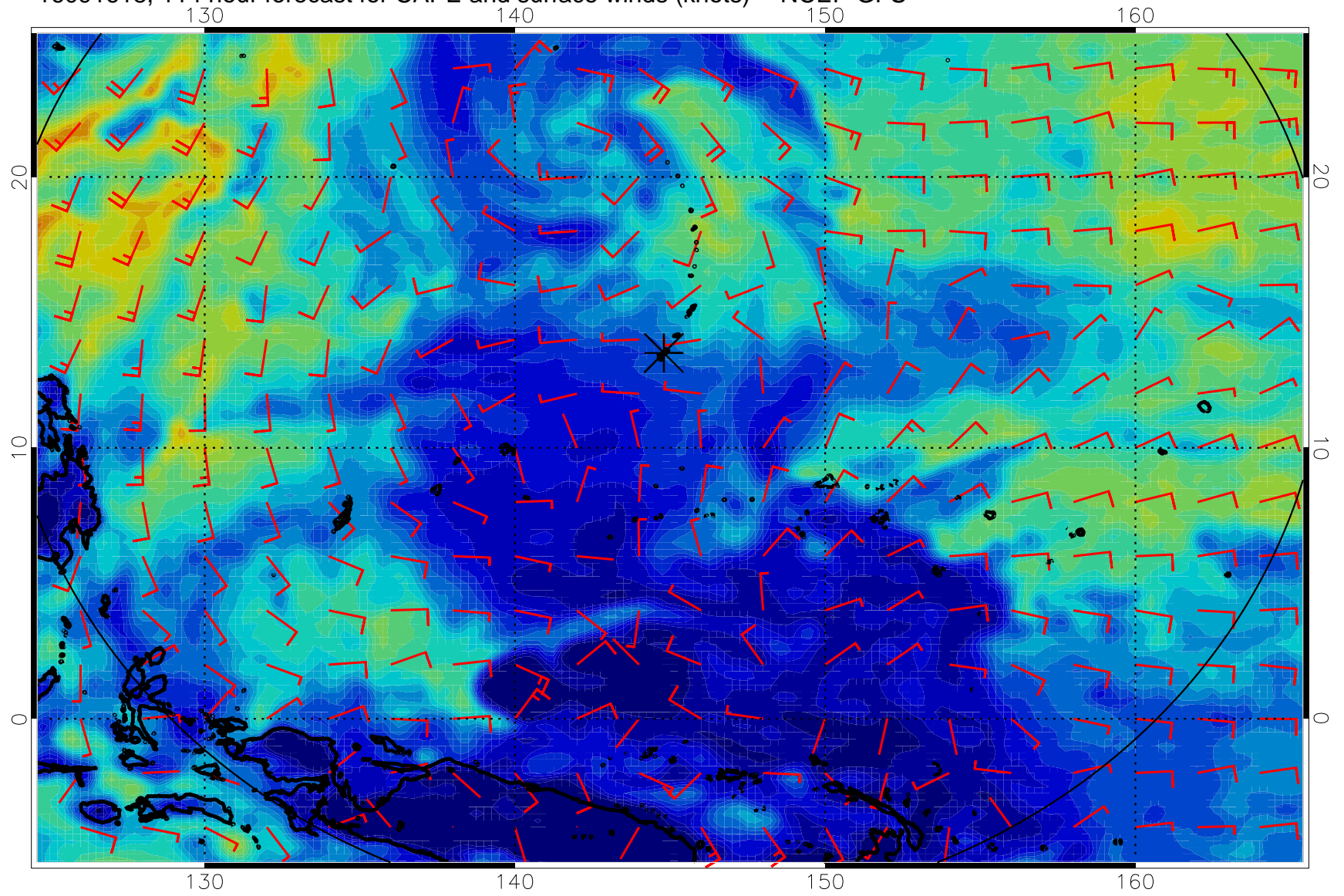
16091606, 102 hour forecast for CAPE and surface winds (knots) -- NCEP GFS



16091612, 108 hour forecast for CAPE and surface winds (knots) -- NCEP GFS



16091618, 114 hour forecast for CAPE and surface winds (knots) -- NCEP GFS



16091700, 120 hour forecast for CAPE and surface winds (knots) -- NCEP GFS

