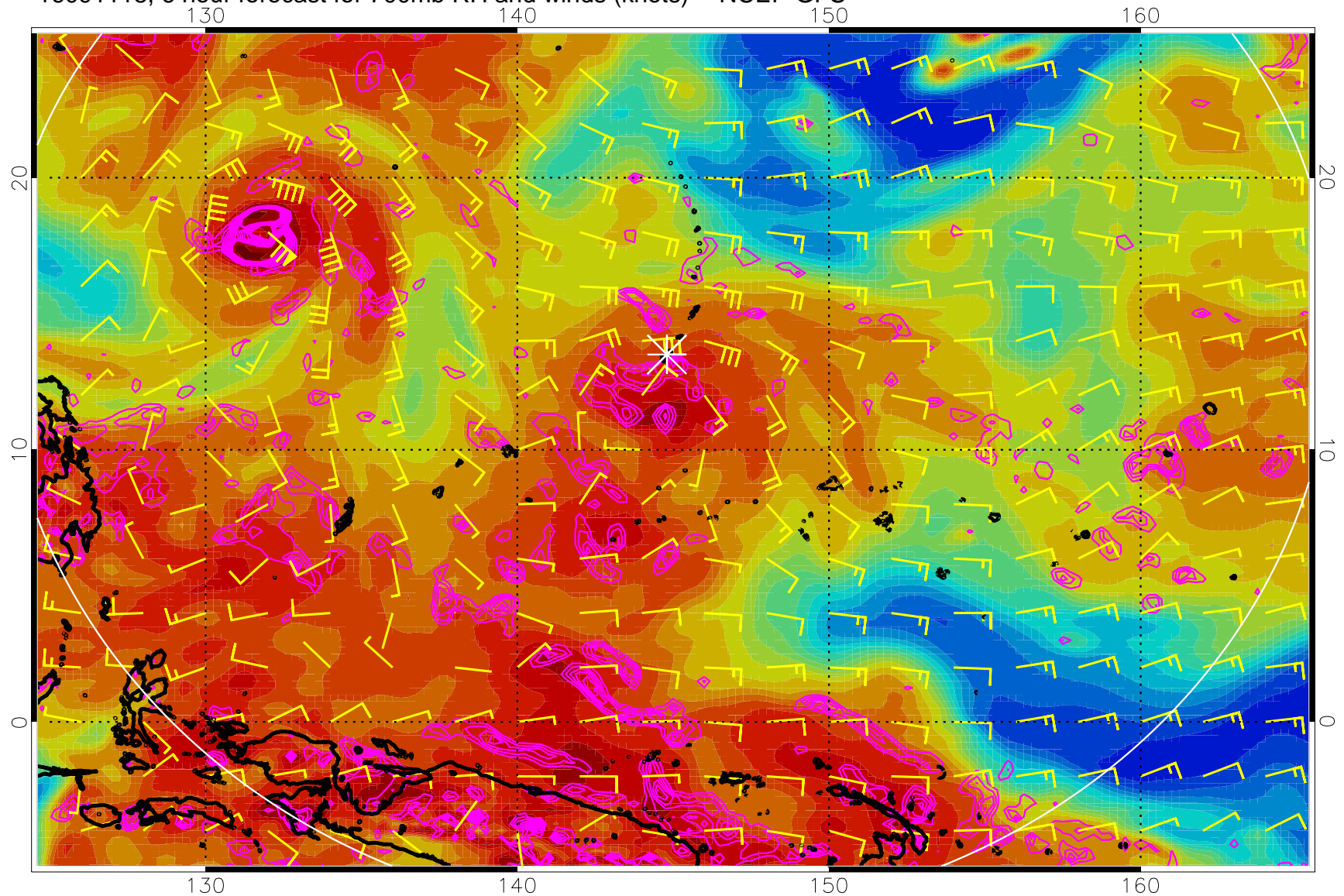
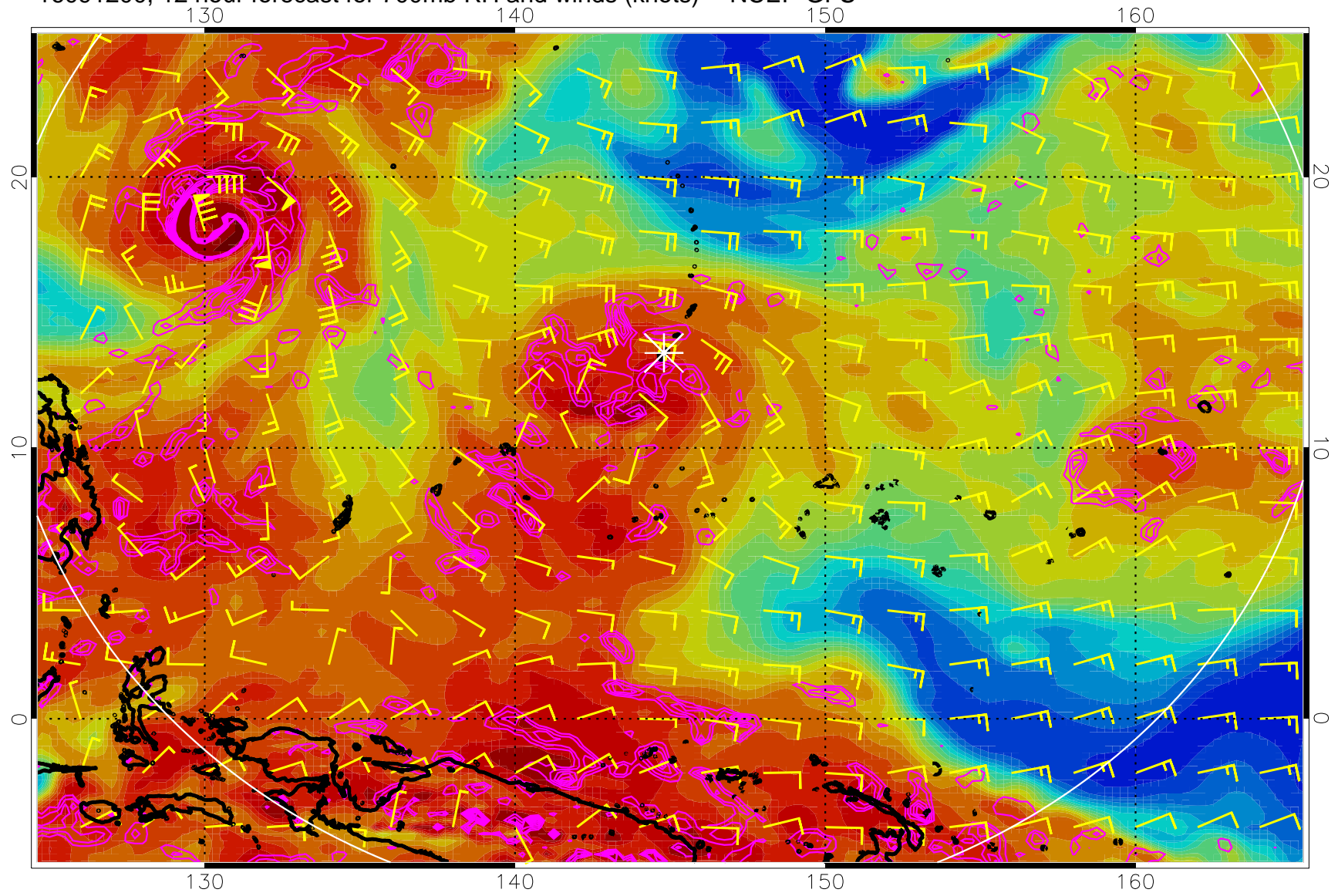


16091118, 6 hour forecast for 700mb RH and winds (knots) -- NCEP GFS



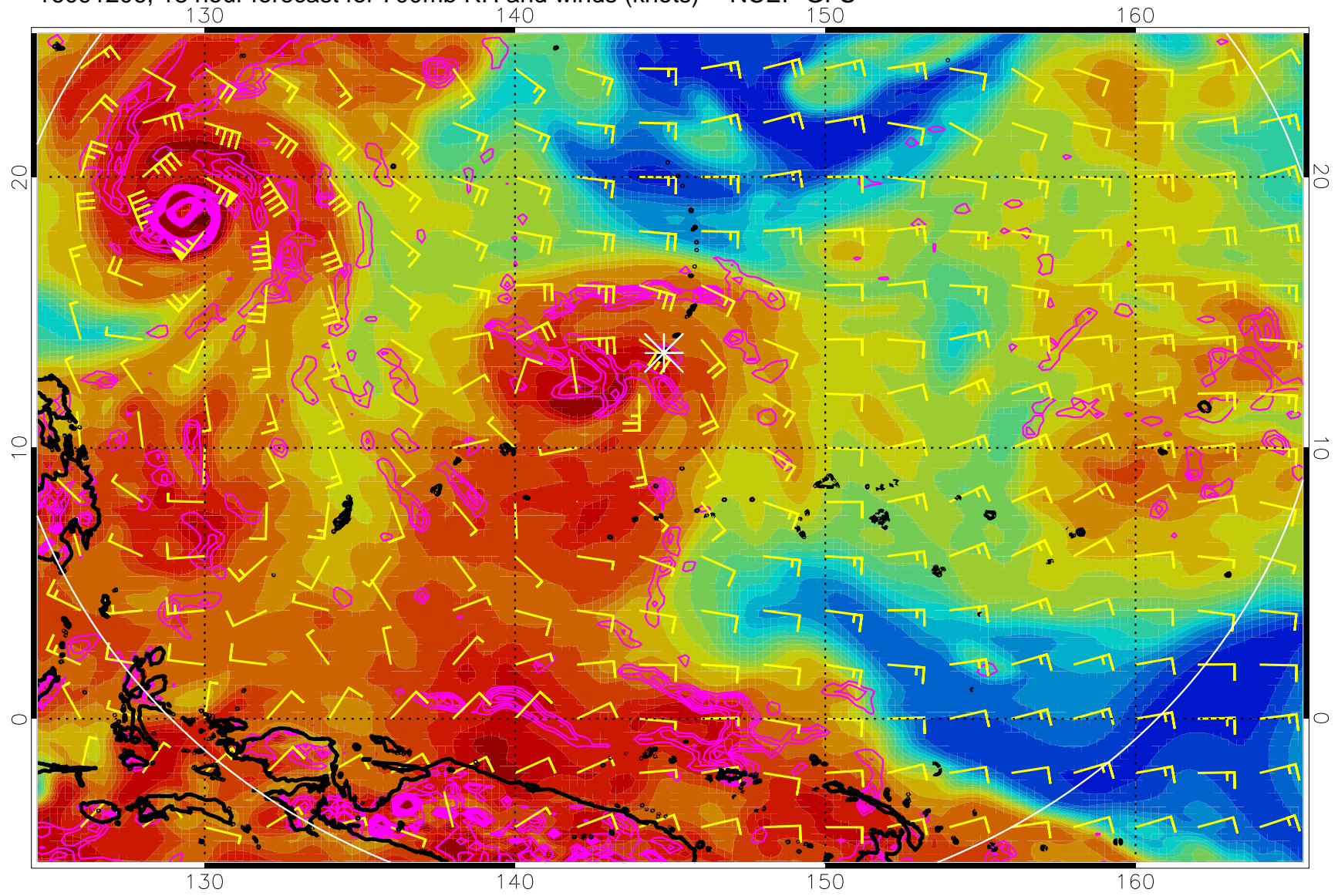
Negative Omegas less than  $-0.3$ , contours of  $0.3$  Pa/s

16091200, 12 hour forecast for 700mb RH and winds (knots) -- NCEP GFS

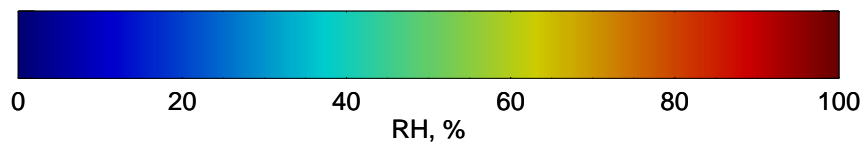


Negative Omegas less than -.3, contours of .3 Pa/s

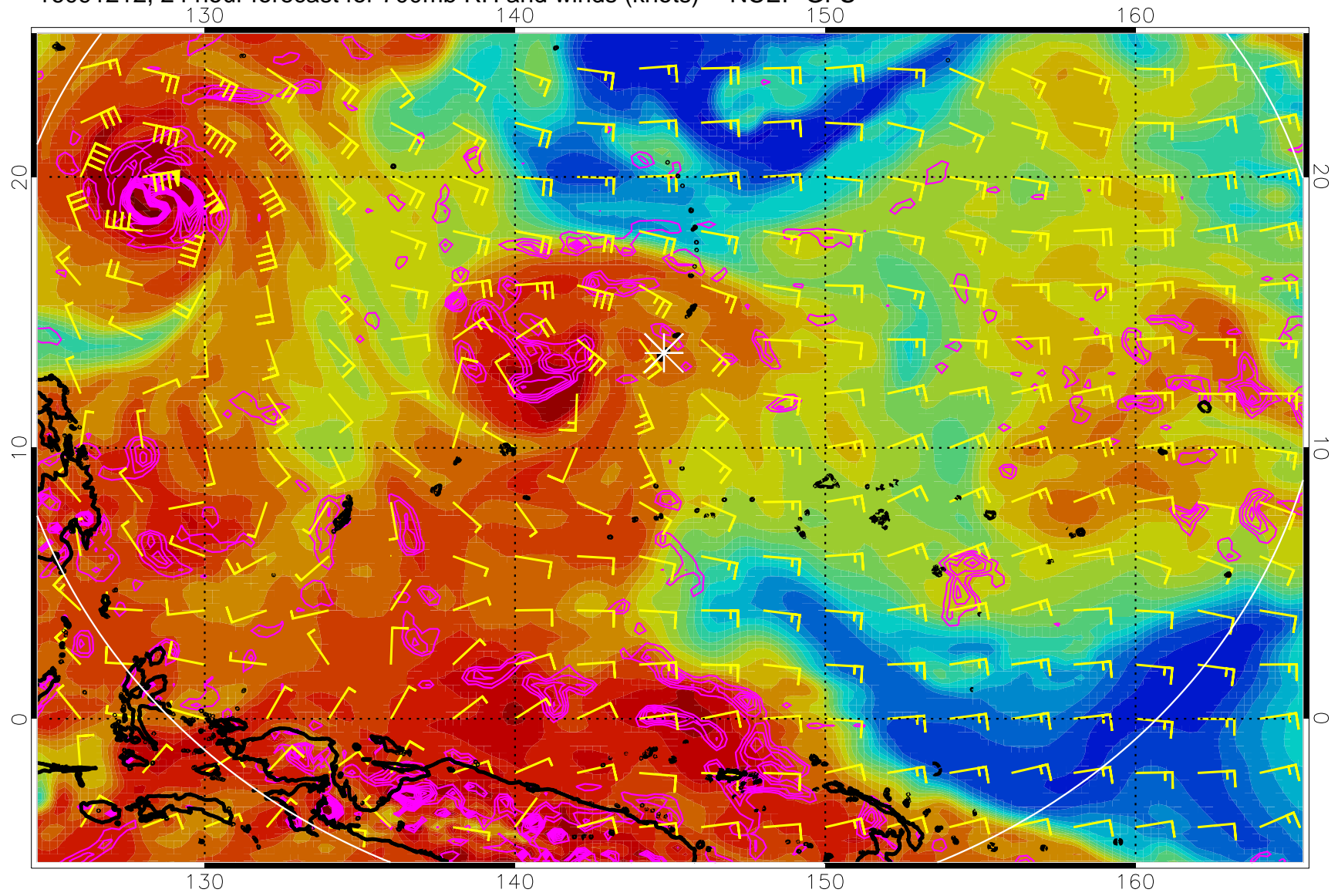
16091206, 18 hour forecast for 700mb RH and winds (knots) -- NCEP GFS



Negative Omegas less than  $-0.3$ , contours of  $0.3$  Pa/s

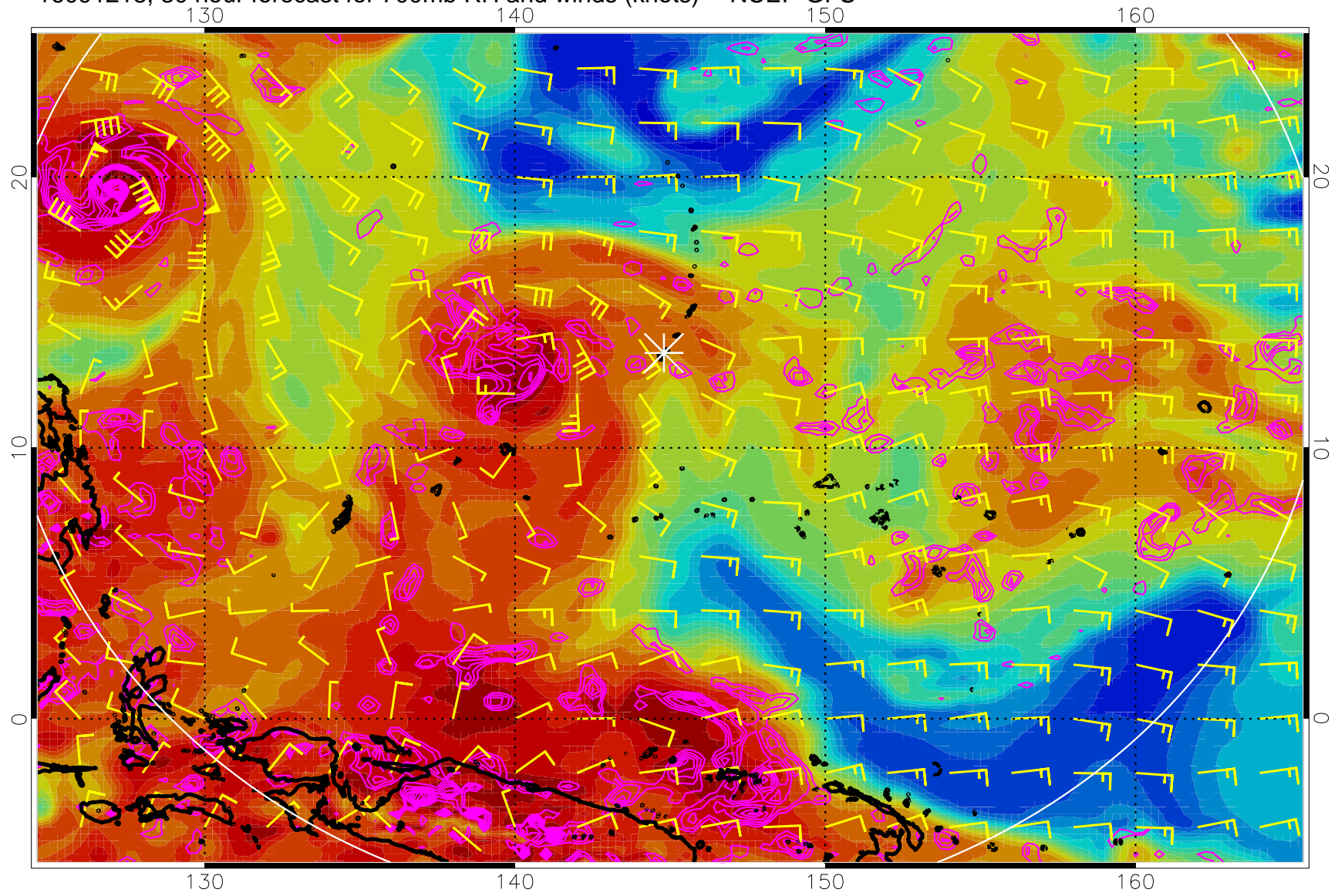


16091212, 24 hour forecast for 700mb RH and winds (knots) -- NCEP GFS



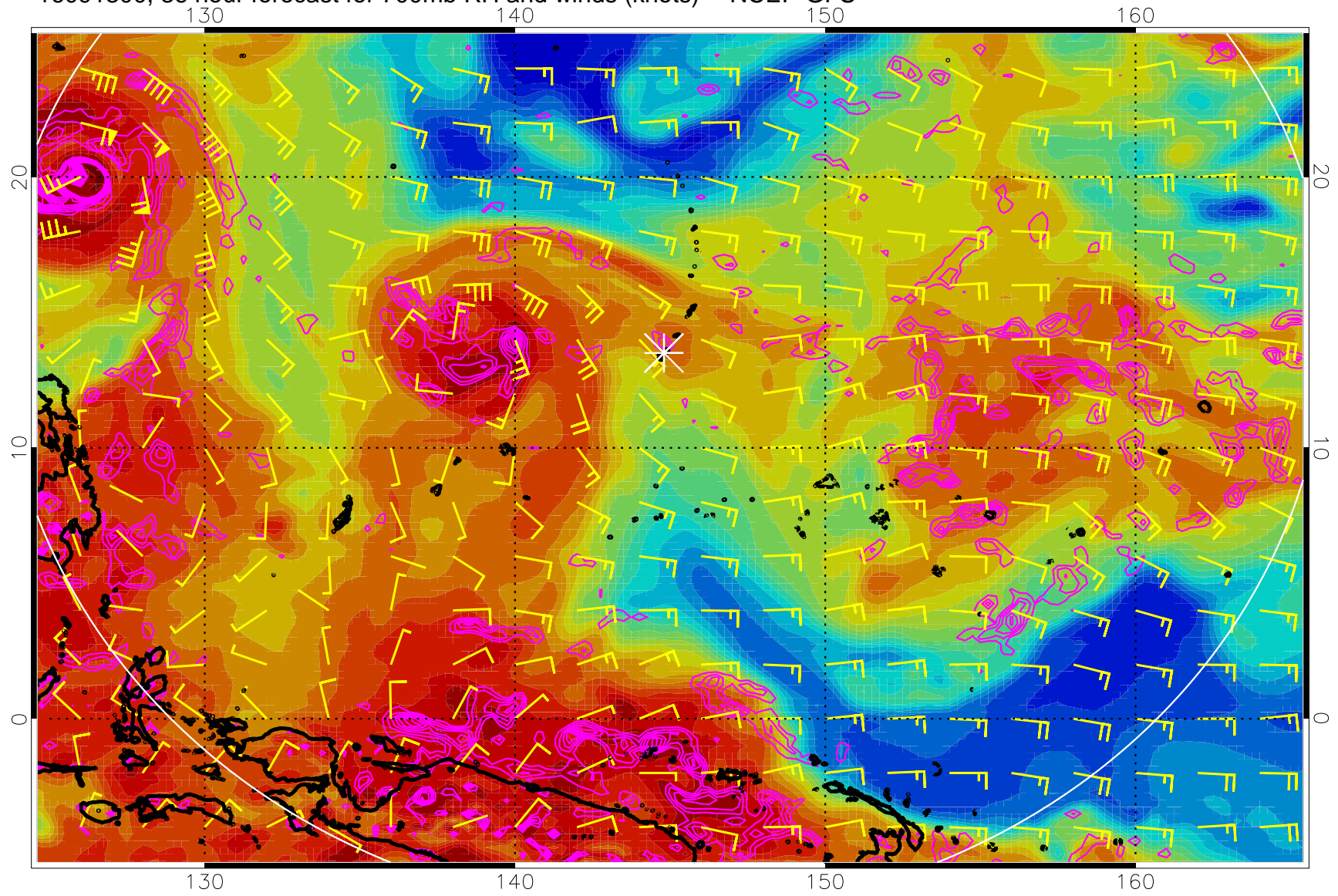
Negative Omegas less than  $-0.3$ , contours of  $0.3$  Pa/s

16091218, 30 hour forecast for 700mb RH and winds (knots) -- NCEP GFS



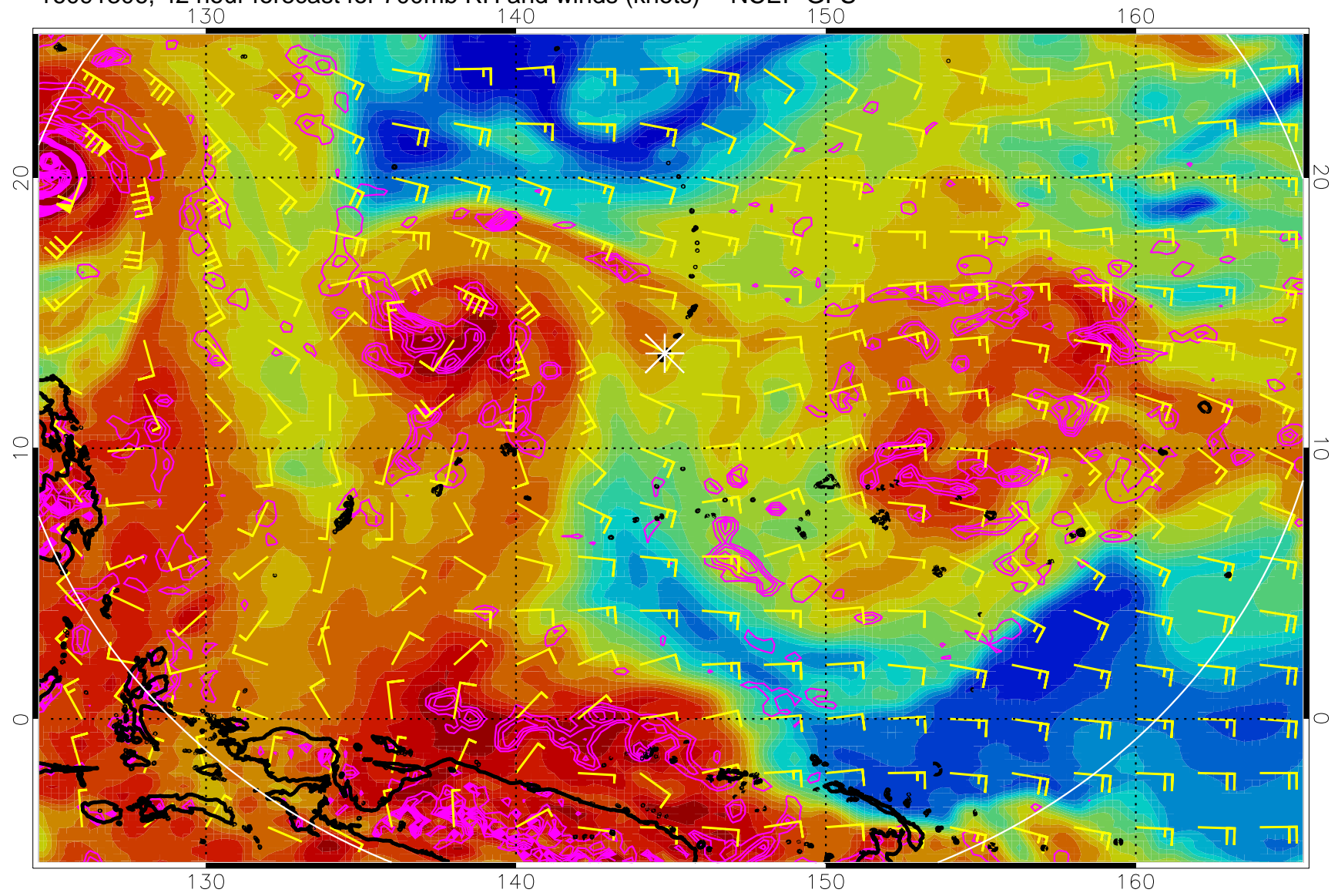
Negative Omegas less than  $-0.3$ , contours of  $0.3$  Pa/s

16091300, 36 hour forecast for 700mb RH and winds (knots) -- NCEP GFS



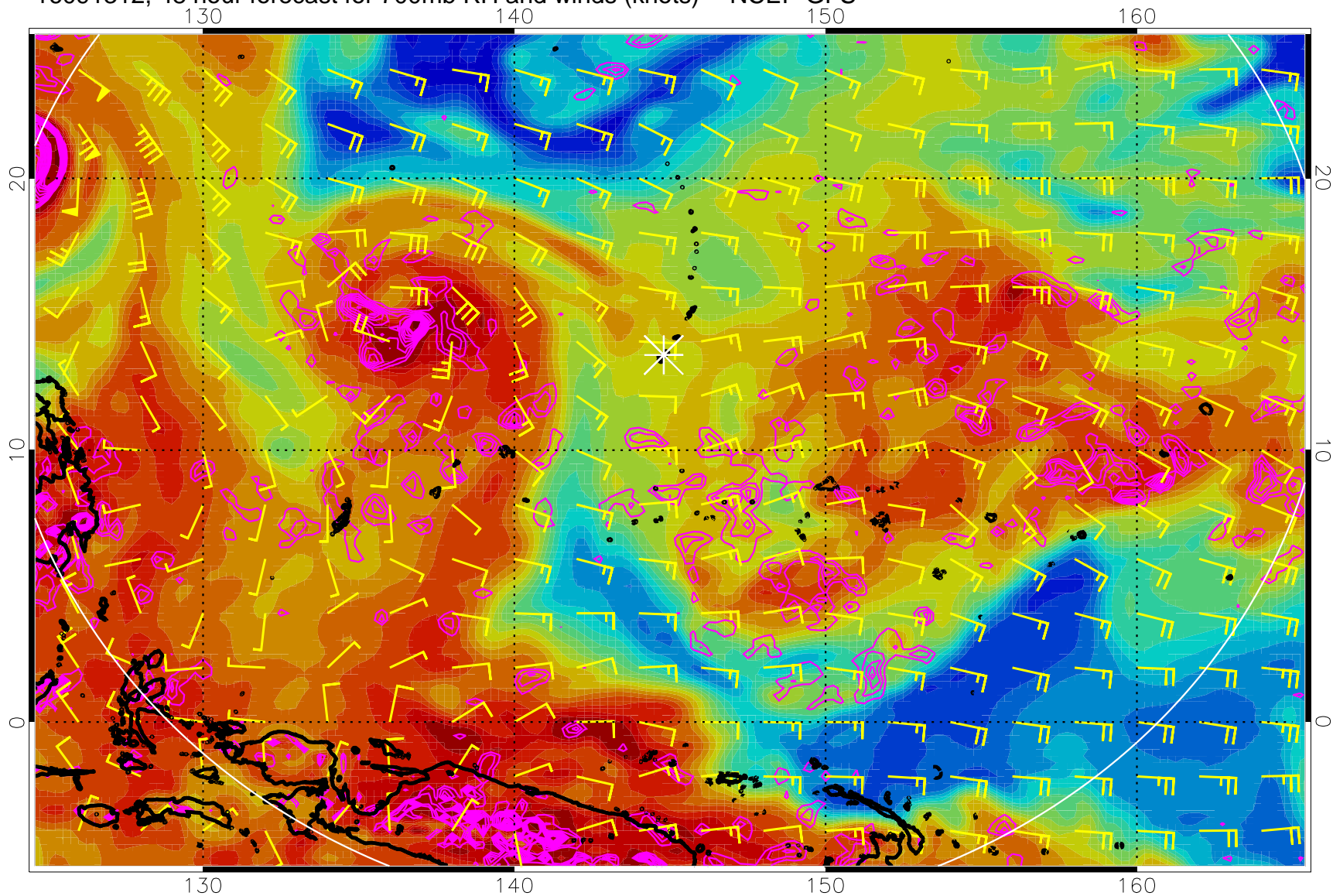
Negative Omegas less than  $-0.3$ , contours of  $0.3$  Pa/s

16091306, 42 hour forecast for 700mb RH and winds (knots) -- NCEP GFS



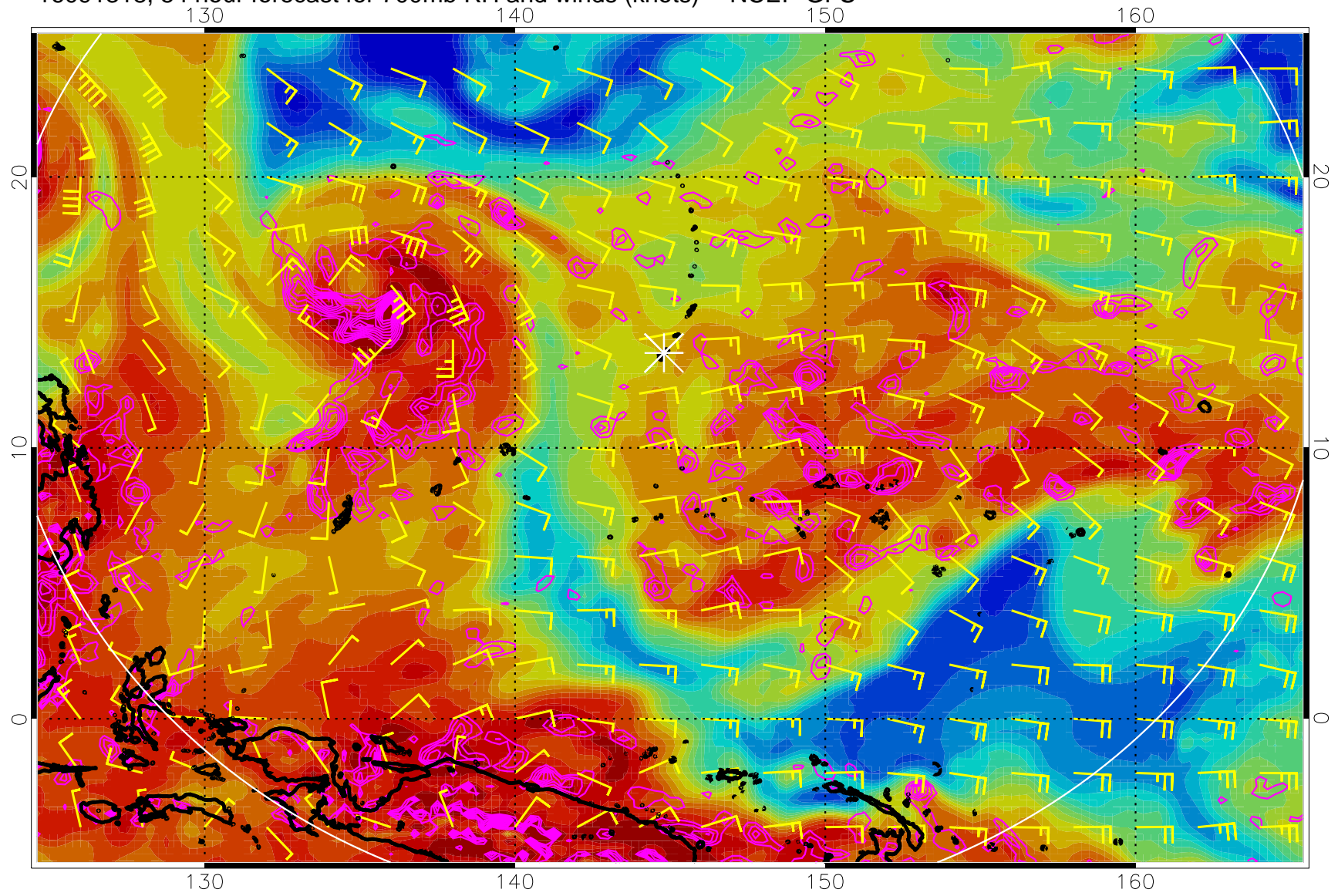
Negative Omegas less than  $-0.3$ , contours of  $0.3$  Pa/s

16091312, 48 hour forecast for 700mb RH and winds (knots) -- NCEP GFS



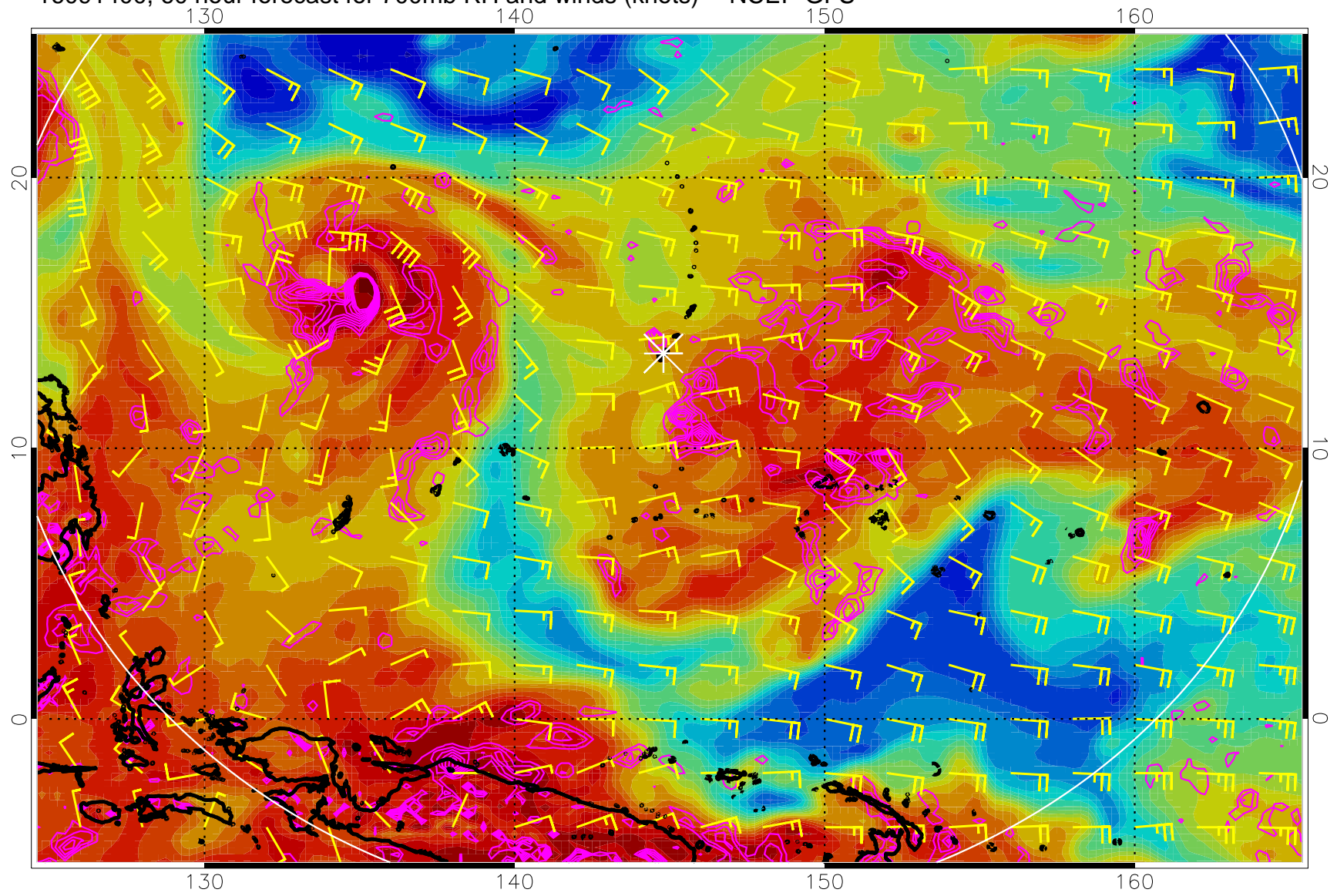


16091318, 54 hour forecast for 700mb RH and winds (knots) -- NCEP GFS



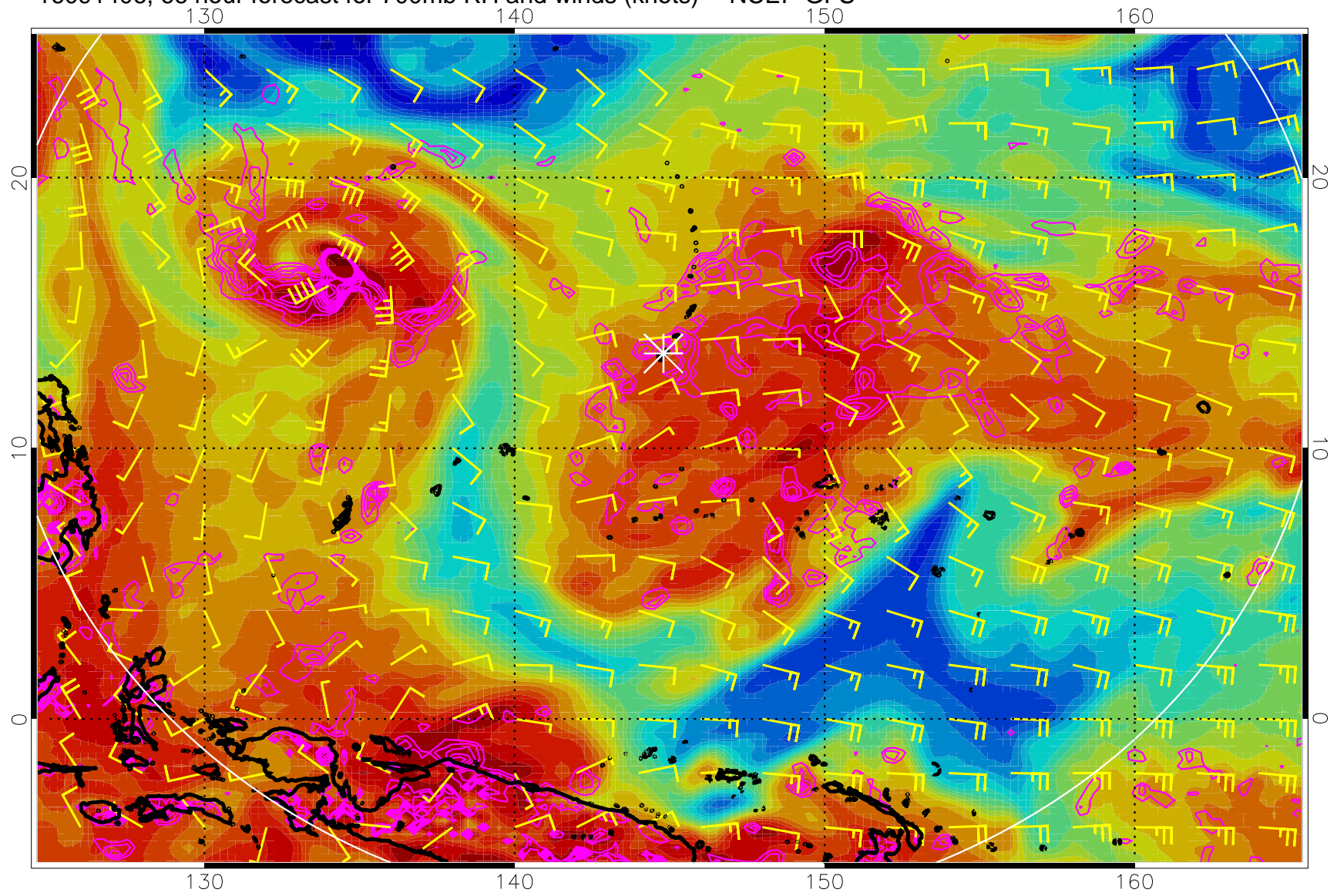
Negative Omegas less than  $-0.3$ , contours of  $0.3$  Pa/s

16091400, 60 hour forecast for 700mb RH and winds (knots) -- NCEP GFS



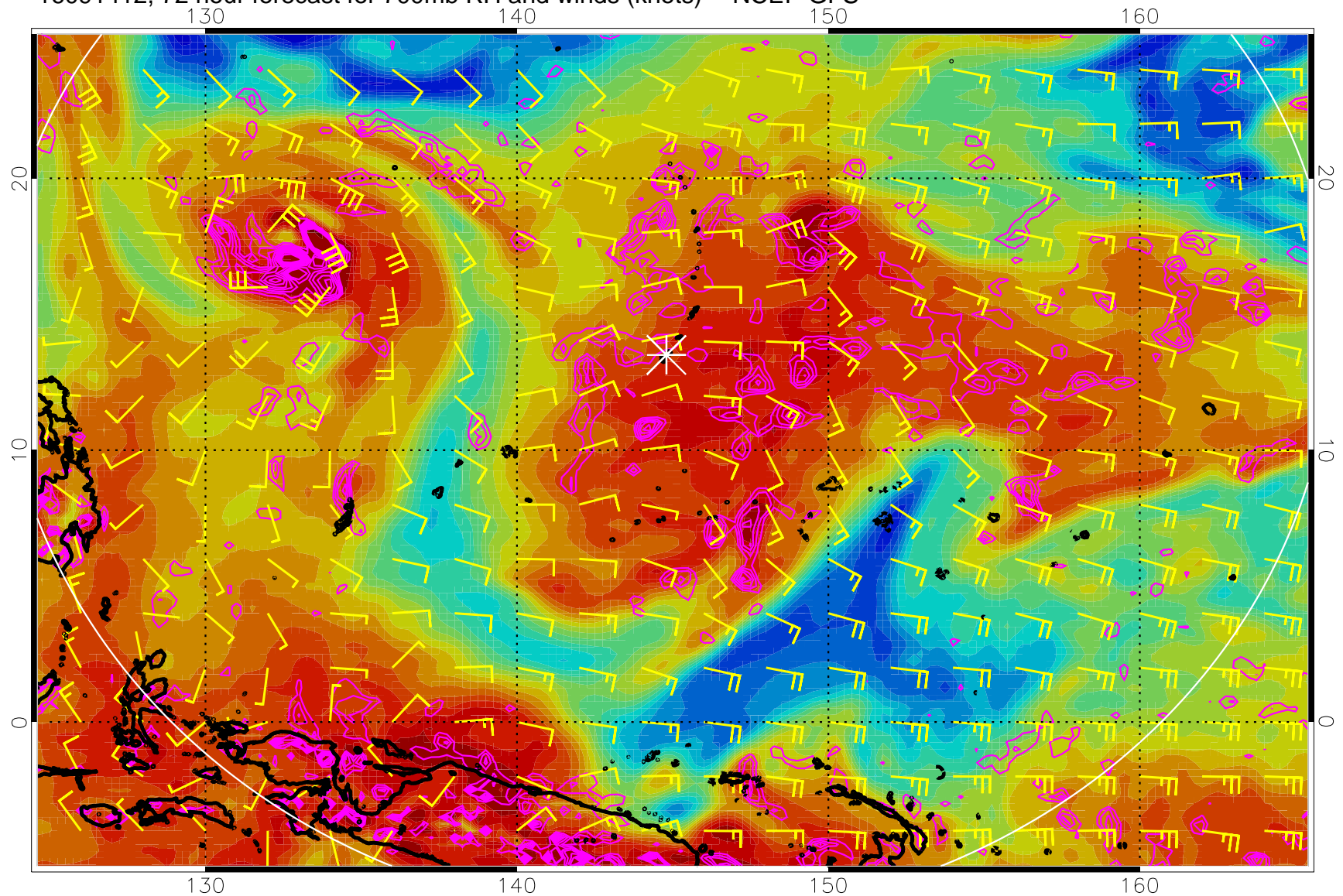
Negative Omegas less than  $-0.3$ , contours of  $0.3$  Pa/s

16091406, 66 hour forecast for 700mb RH and winds (knots) -- NCEP GFS



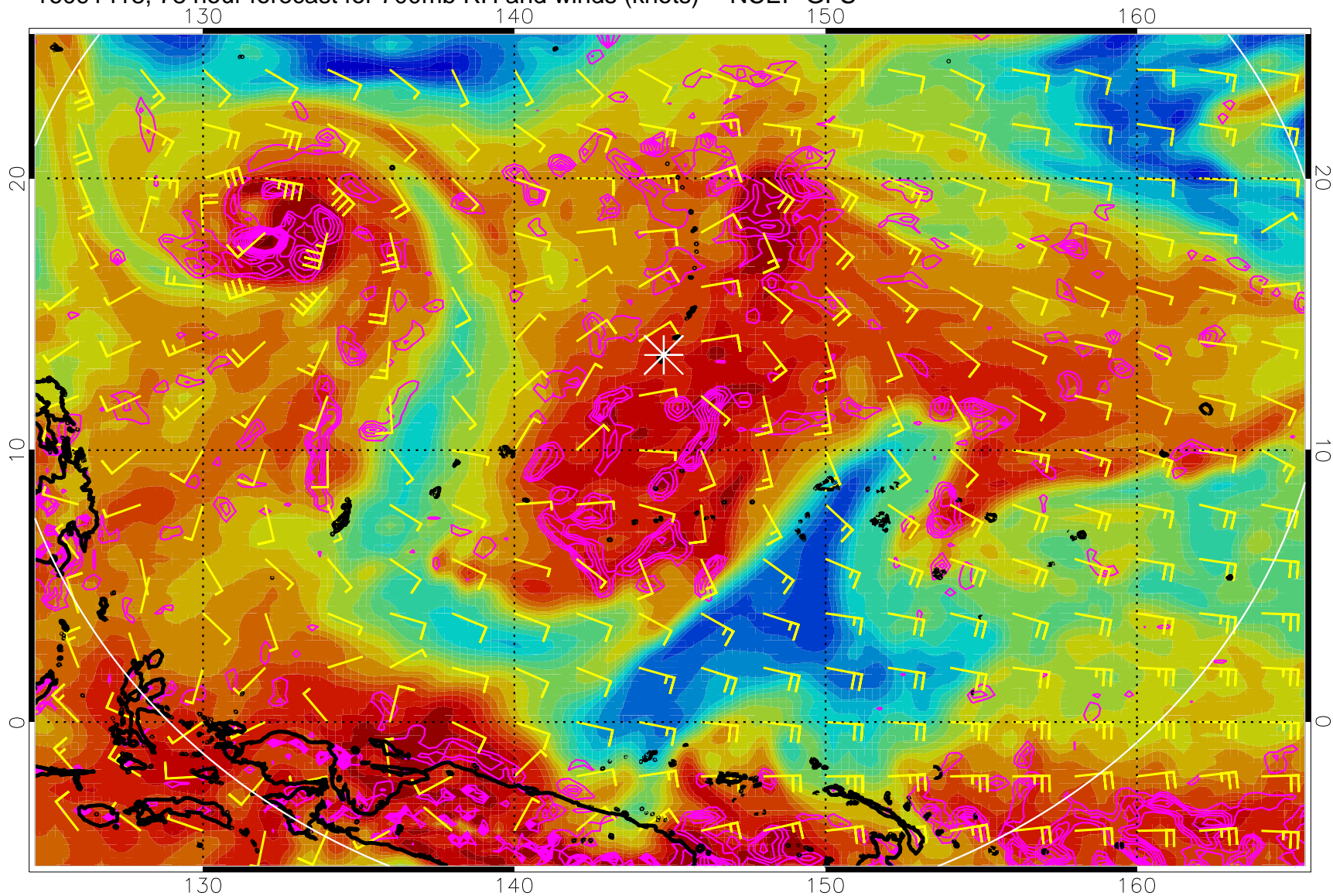
Negative Omegas less than  $-0.3$ , contours of  $0.3$  Pa/s

16091412, 72 hour forecast for 700mb RH and winds (knots) -- NCEP GFS



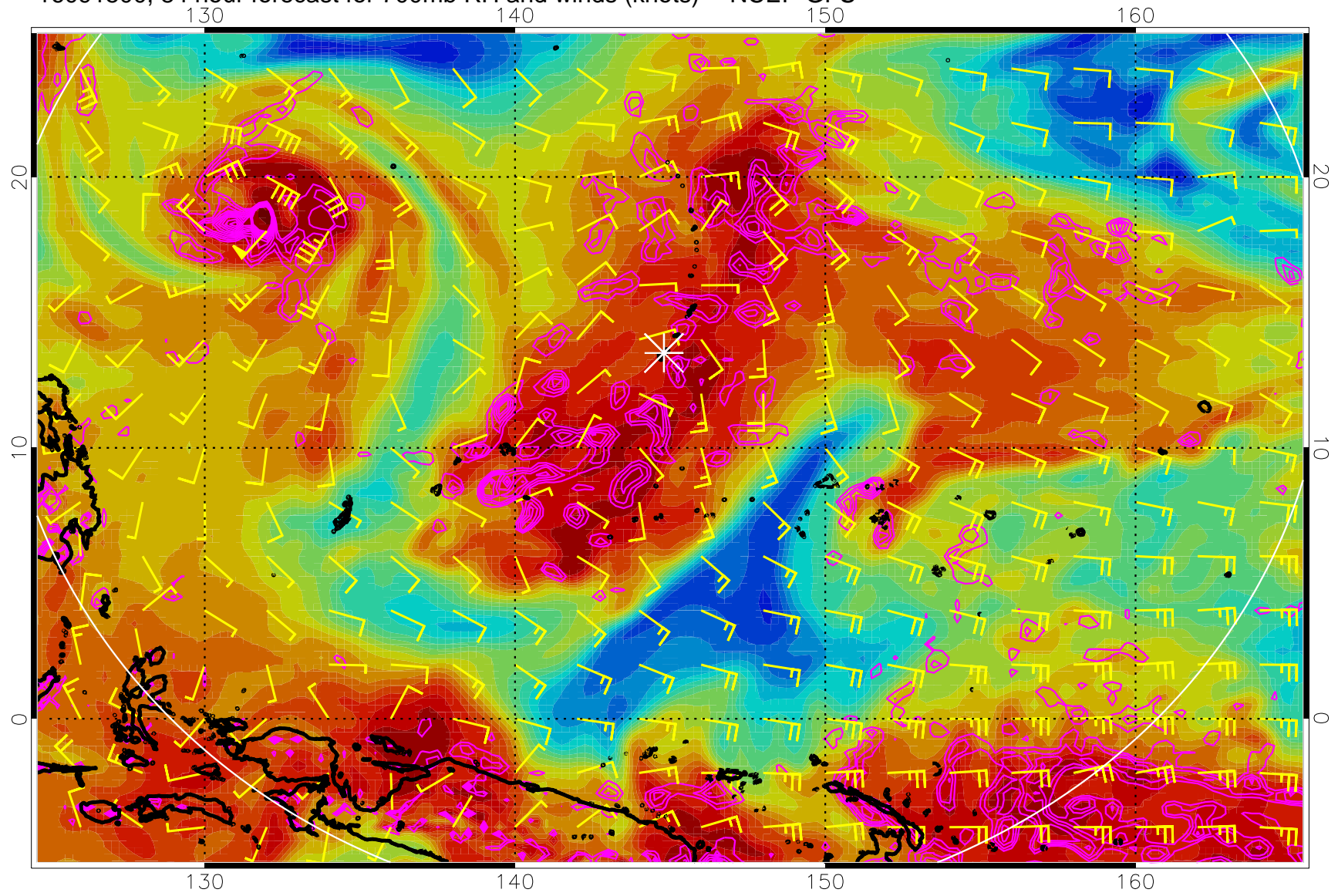
Negative Omegas less than  $-0.3$ , contours of  $0.3$  Pa/s

16091418, 78 hour forecast for 700mb RH and winds (knots) -- NCEP GFS



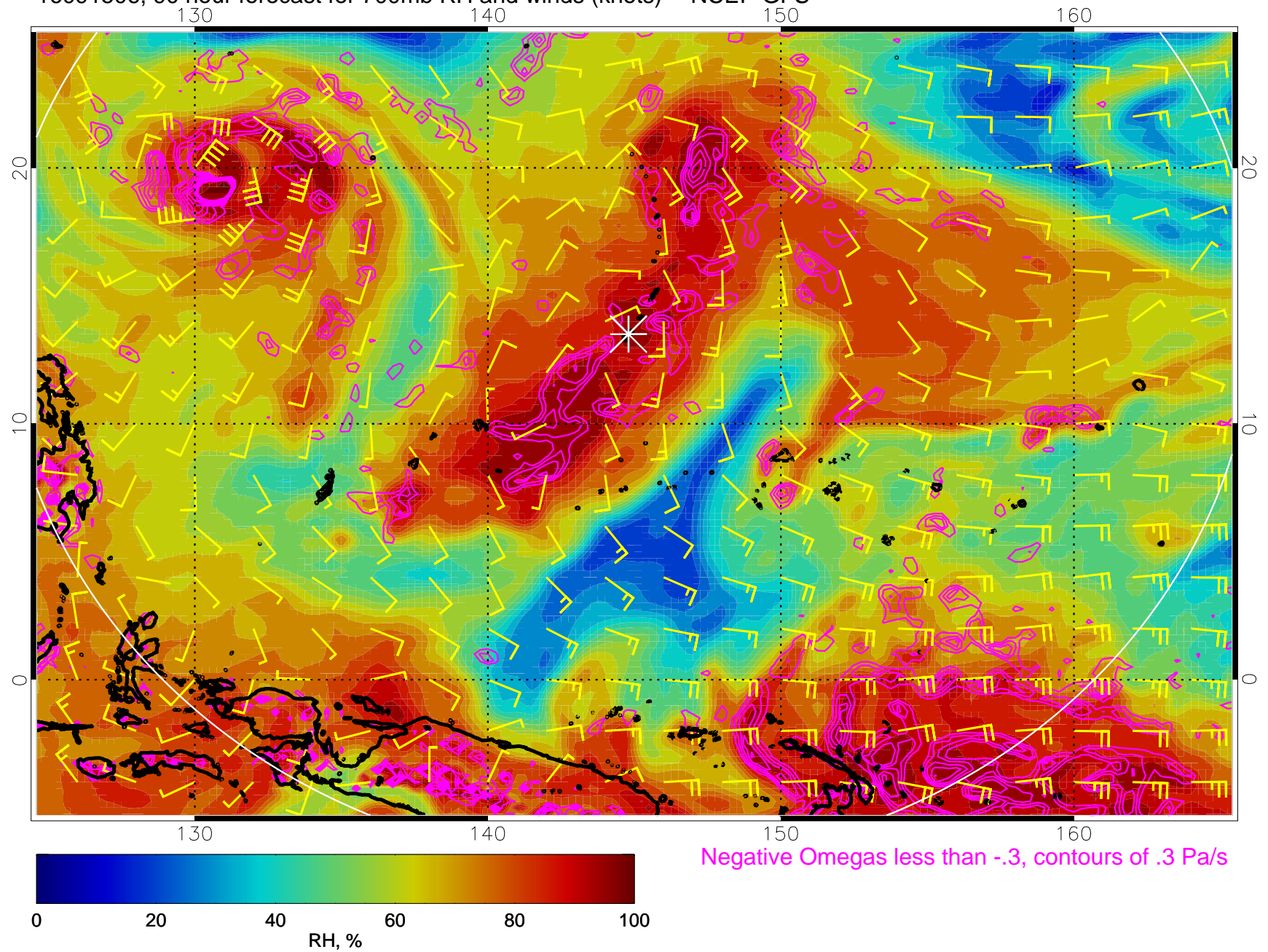
Negative Omegas less than  $-0.3$ , contours of  $0.3$  Pa/s

16091500, 84 hour forecast for 700mb RH and winds (knots) -- NCEP GFS

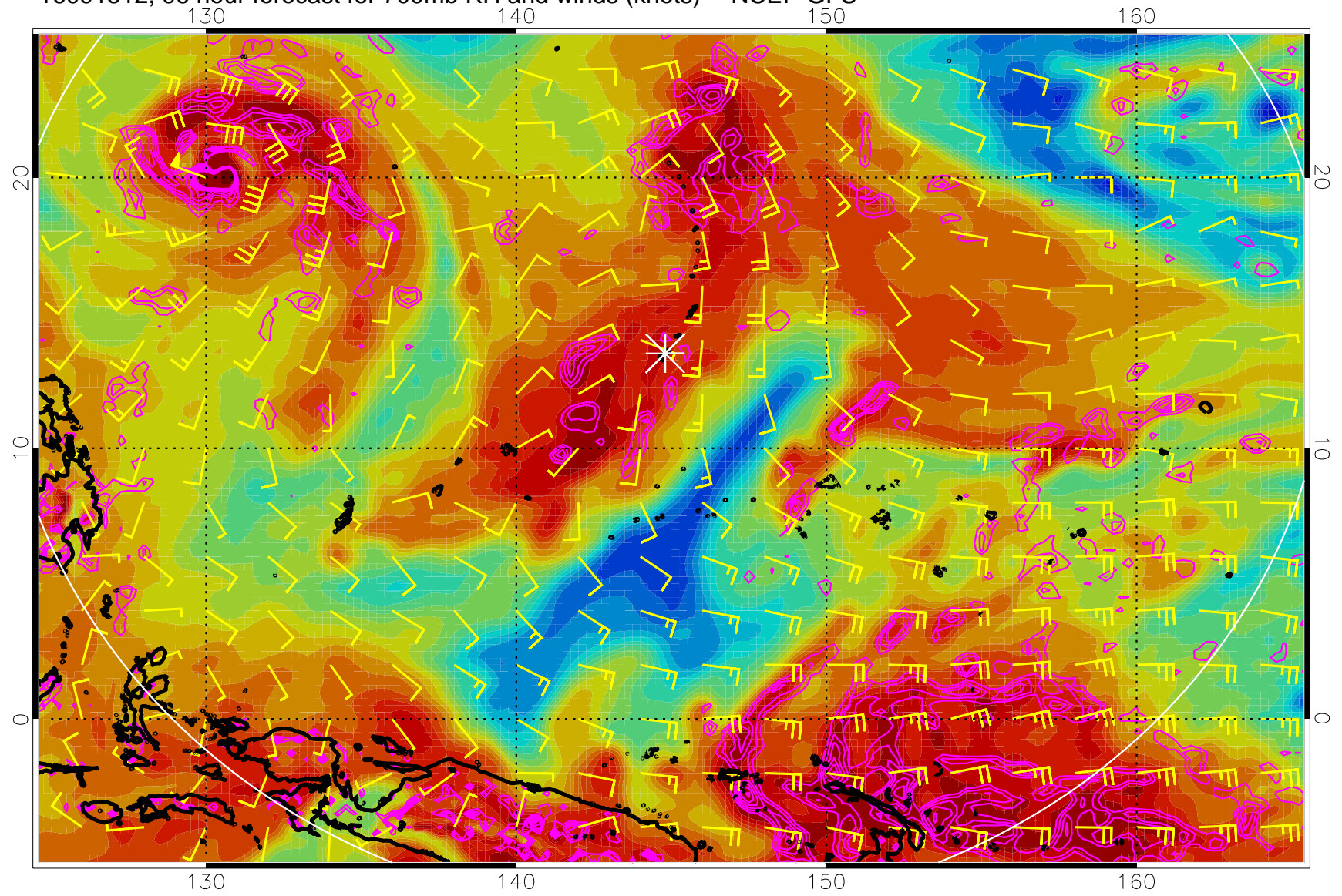


Negative Omegas less than  $-0.3$ , contours of  $0.3$  Pa/s

16091506, 90 hour forecast for 700mb RH and winds (knots) -- NCEP GFS



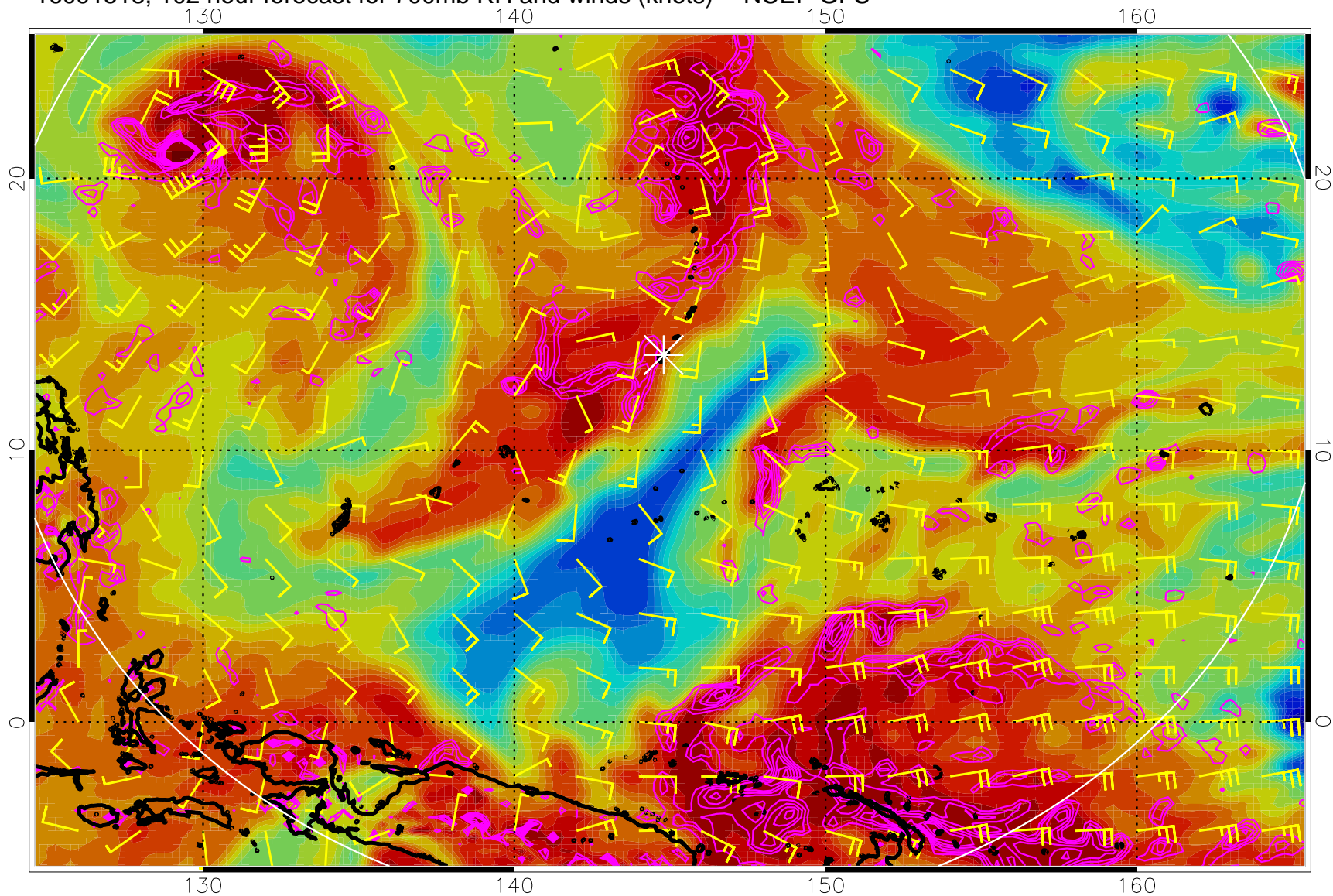
16091512, 96 hour forecast for 700mb RH and winds (knots) -- NCEP GFS



Negative Omegas less than  $-0.3$ , contours of  $0.3$  Pa/s

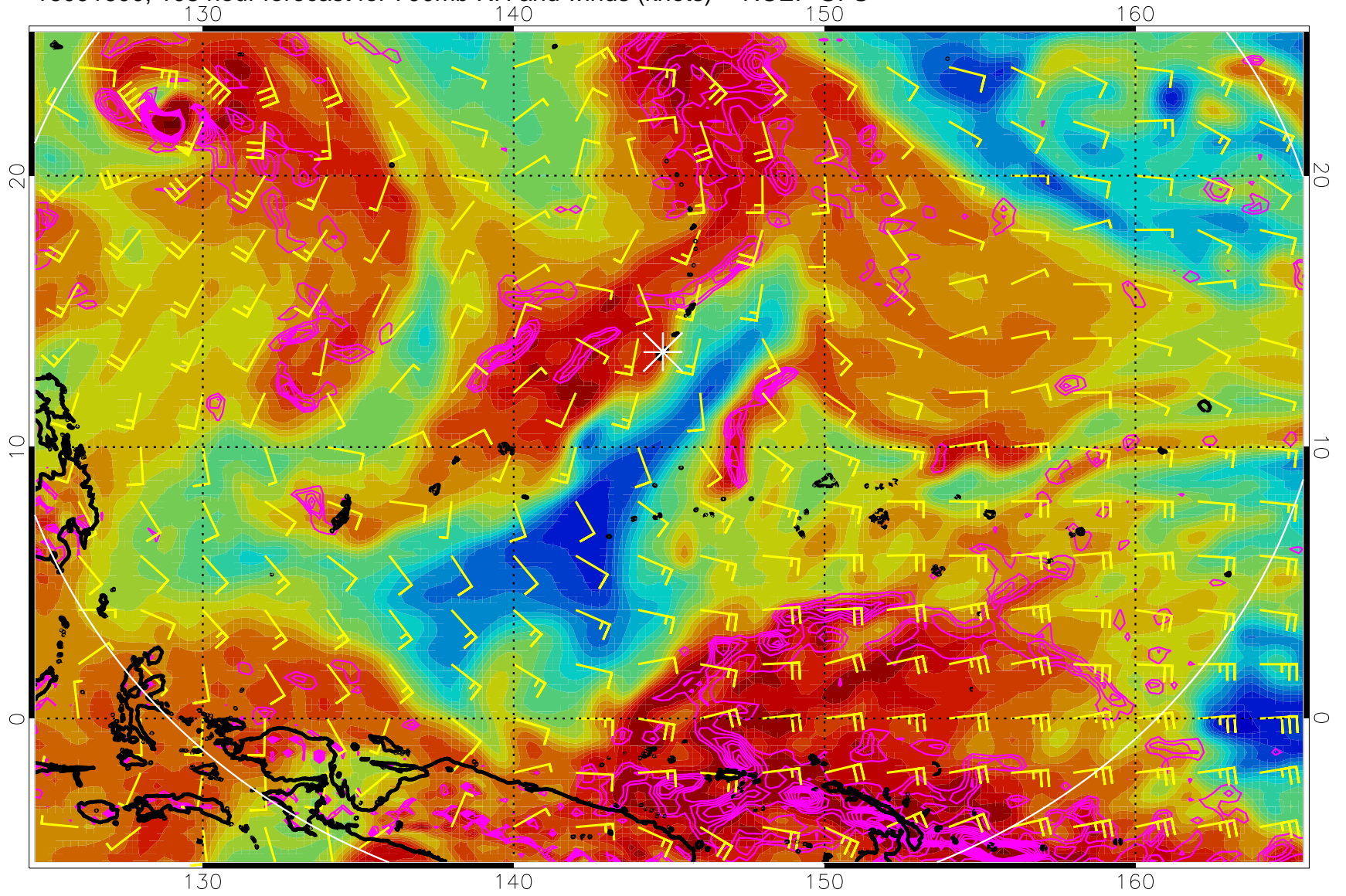


16091518, 102 hour forecast for 700mb RH and winds (knots) -- NCEP GFS



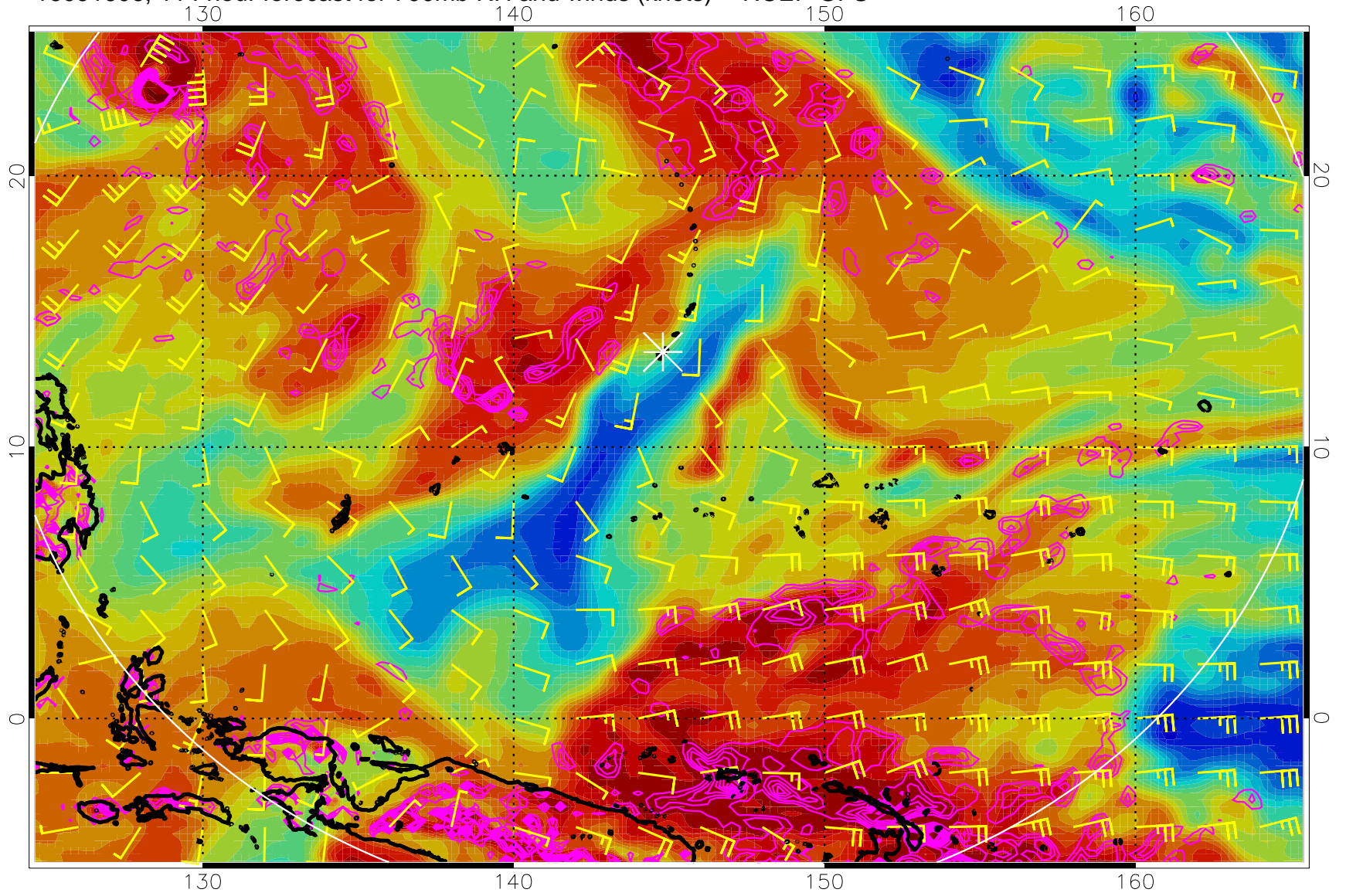
Negative Omegas less than  $-.3$ , contours of  $.3$  Pa/s

16091600, 108 hour forecast for 700mb RH and winds (knots) -- NCEP GFS



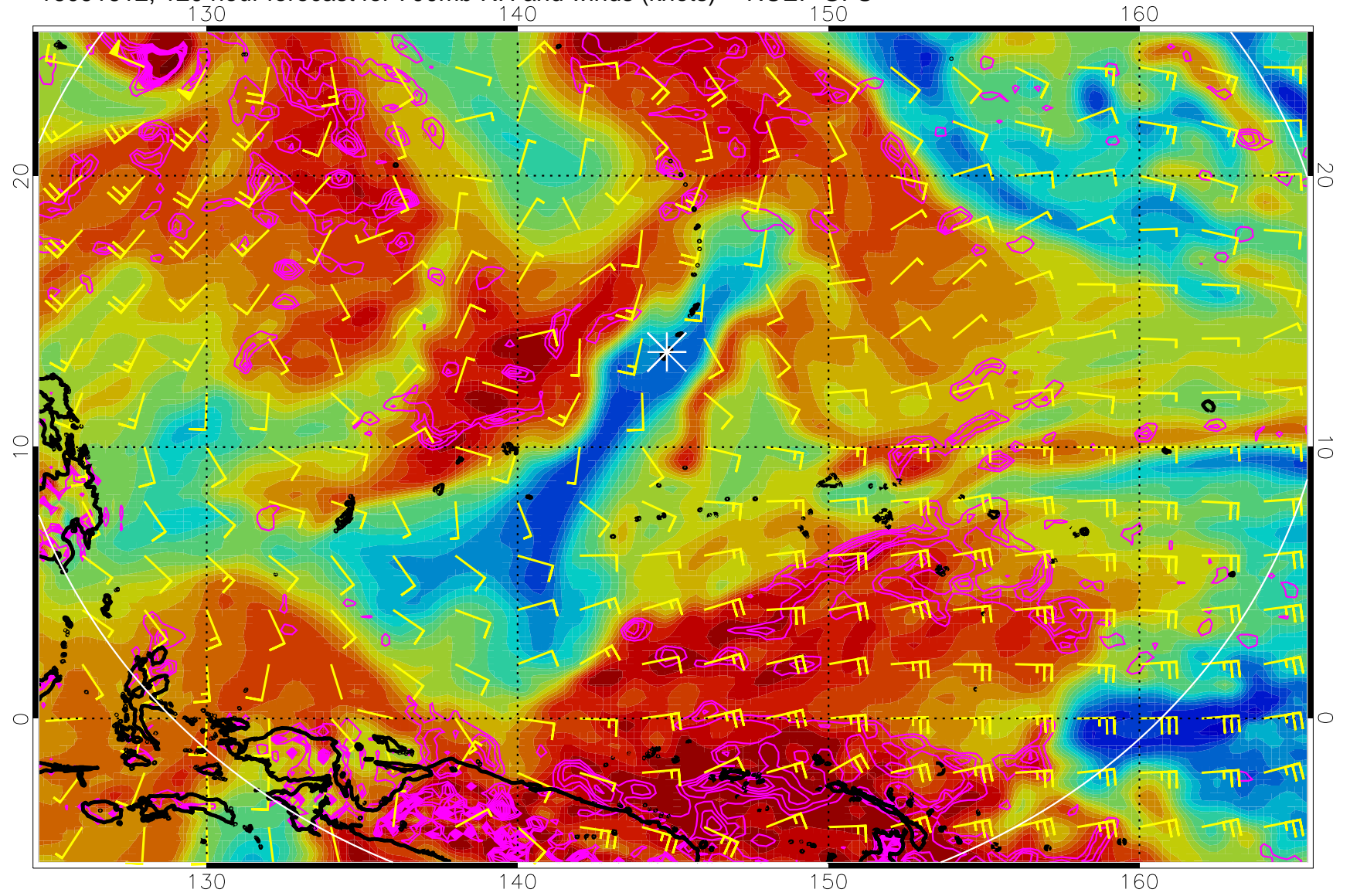
Negative Omegas less than  $-0.3$ , contours of  $0.3$  Pa/s

16091606, 114 hour forecast for 700mb RH and winds (knots) -- NCEP GFS



Negative Omegas less than  $-0.3$ , contours of  $0.3$  Pa/s

16091612, 120 hour forecast for 700mb RH and winds (knots) -- NCEP GFS



Negative Omegas less than  $-0.3$ , contours of  $0.3$  Pa/s