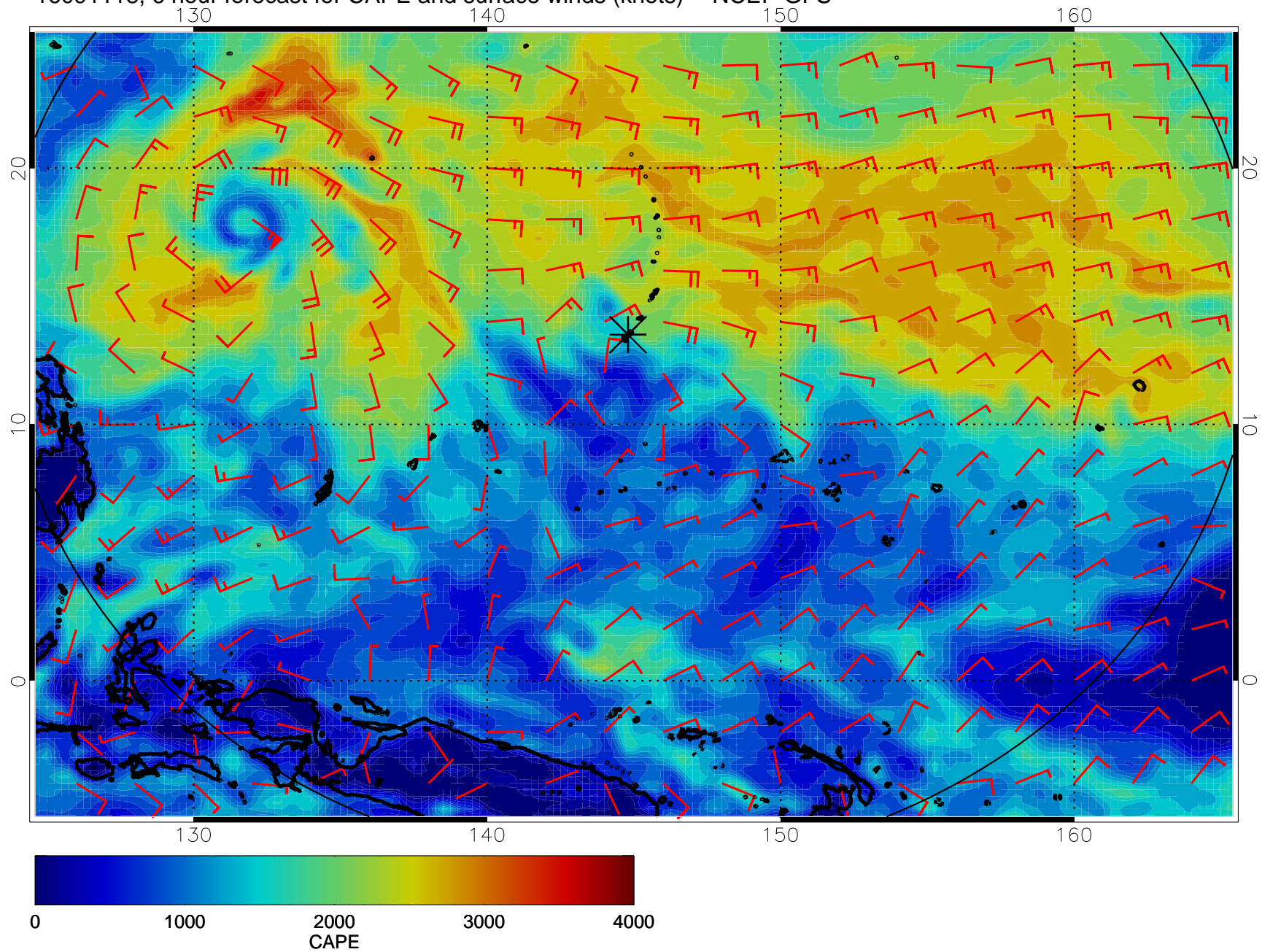
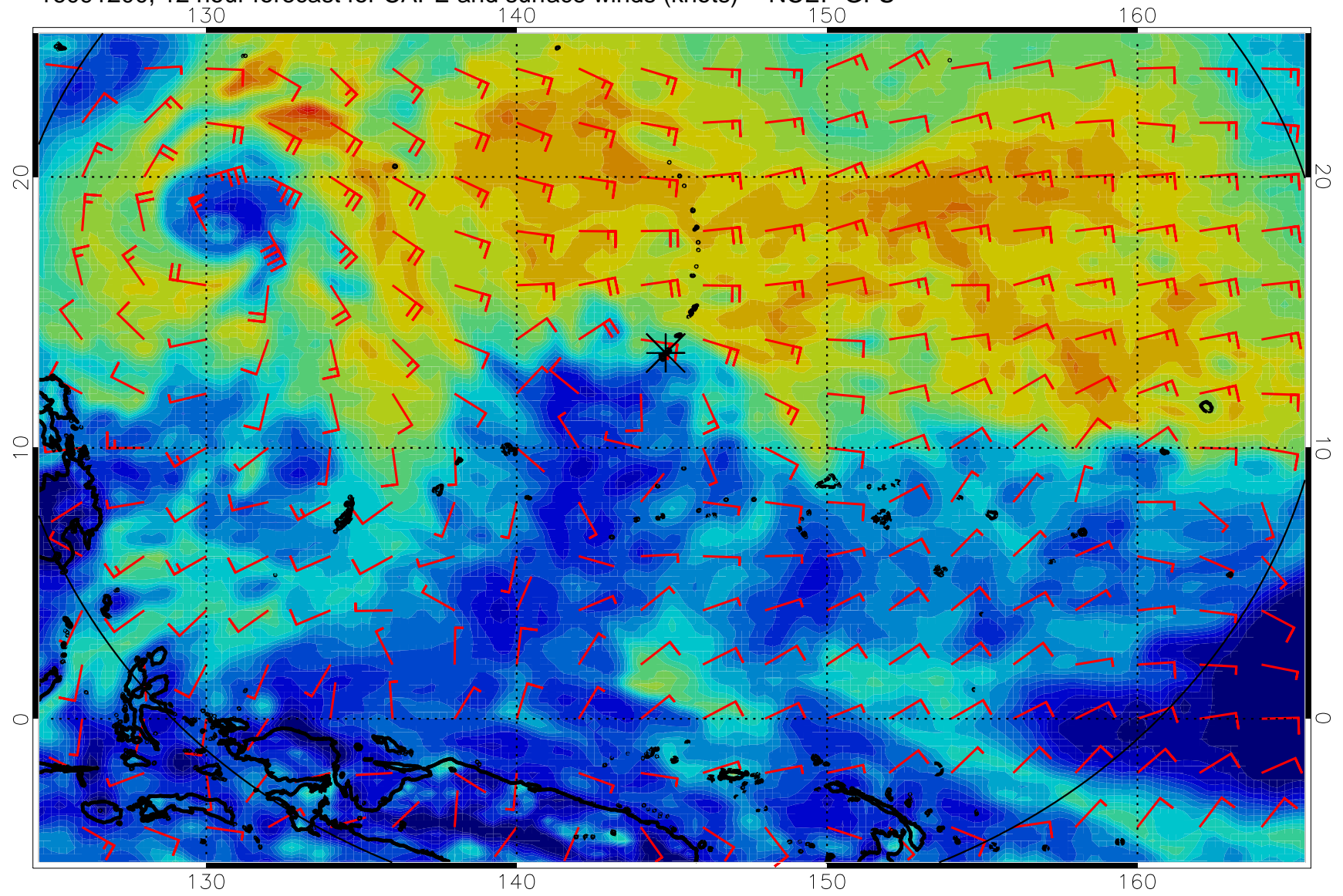


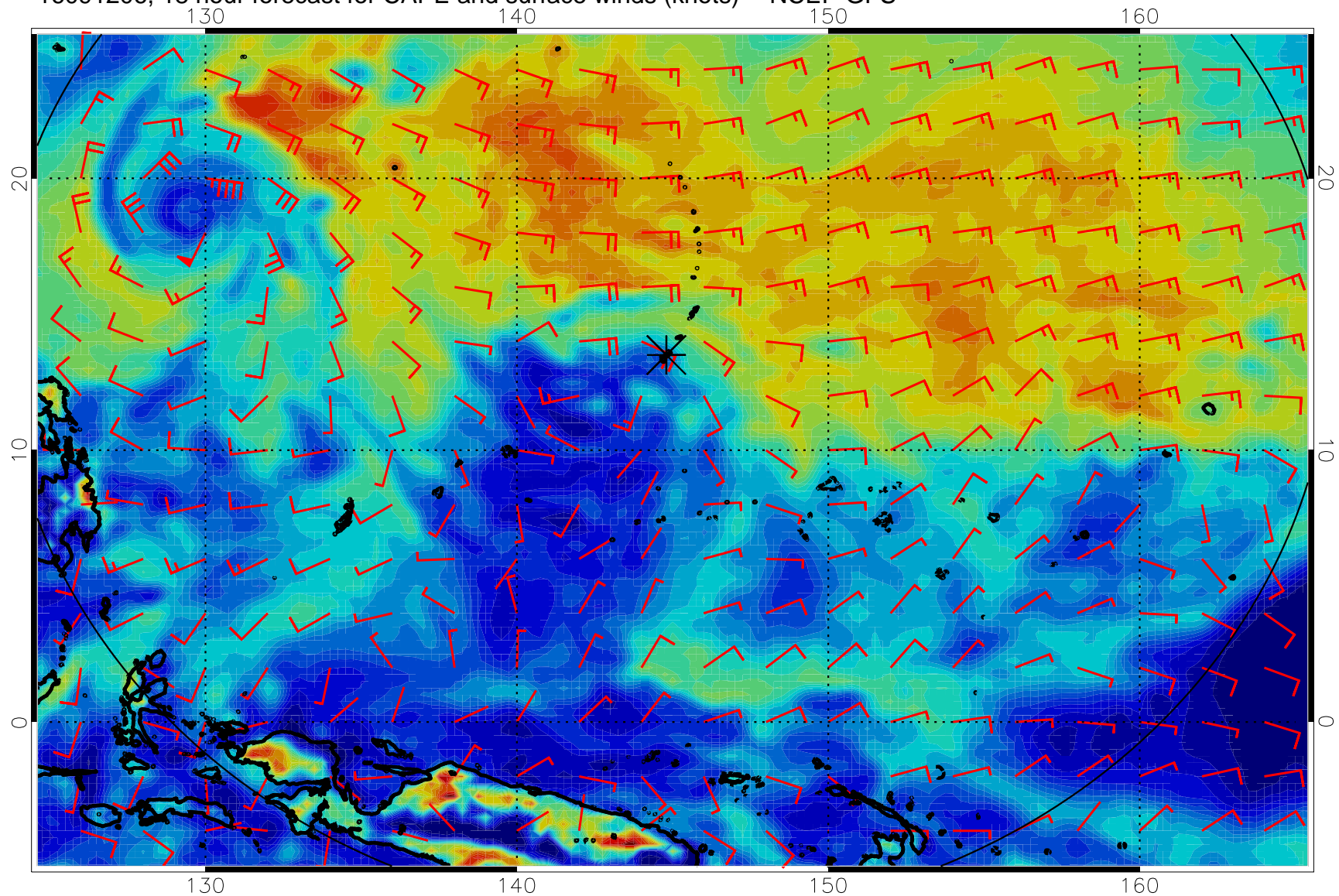
16091118, 6 hour forecast for CAPE and surface winds (knots) -- NCEP GFS



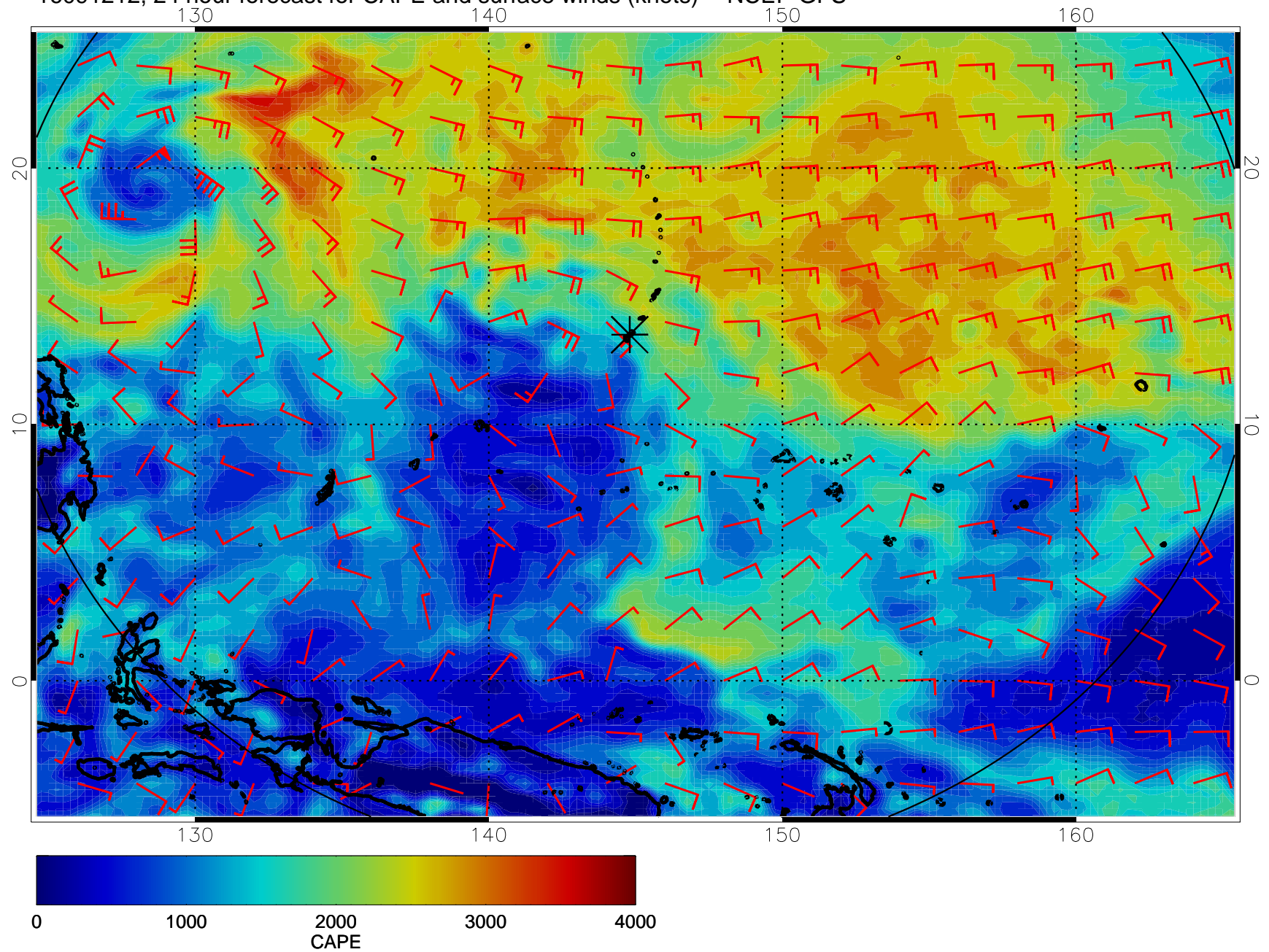
16091200, 12 hour forecast for CAPE and surface winds (knots) -- NCEP GFS



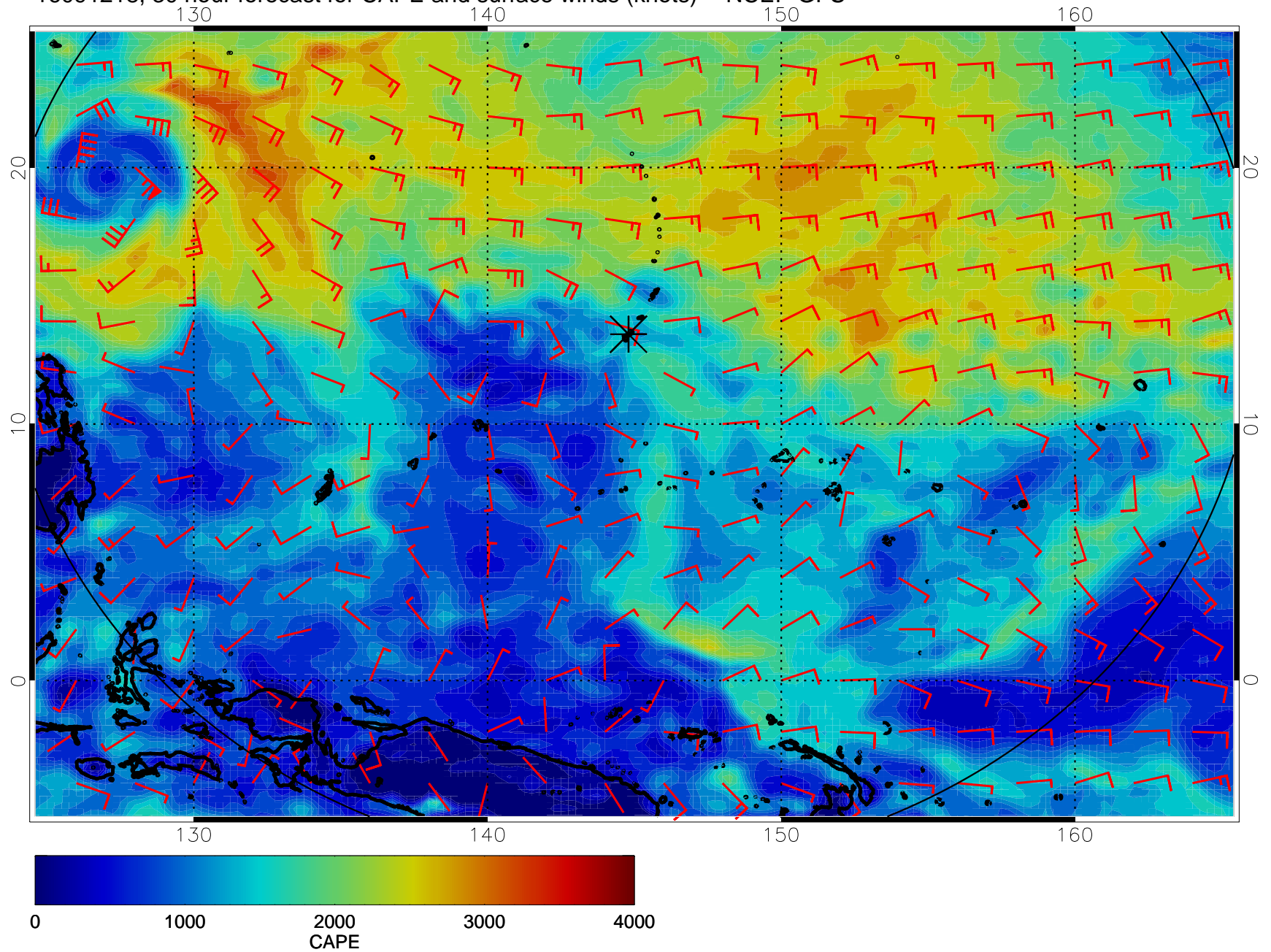
16091206, 18 hour forecast for CAPE and surface winds (knots) -- NCEP GFS



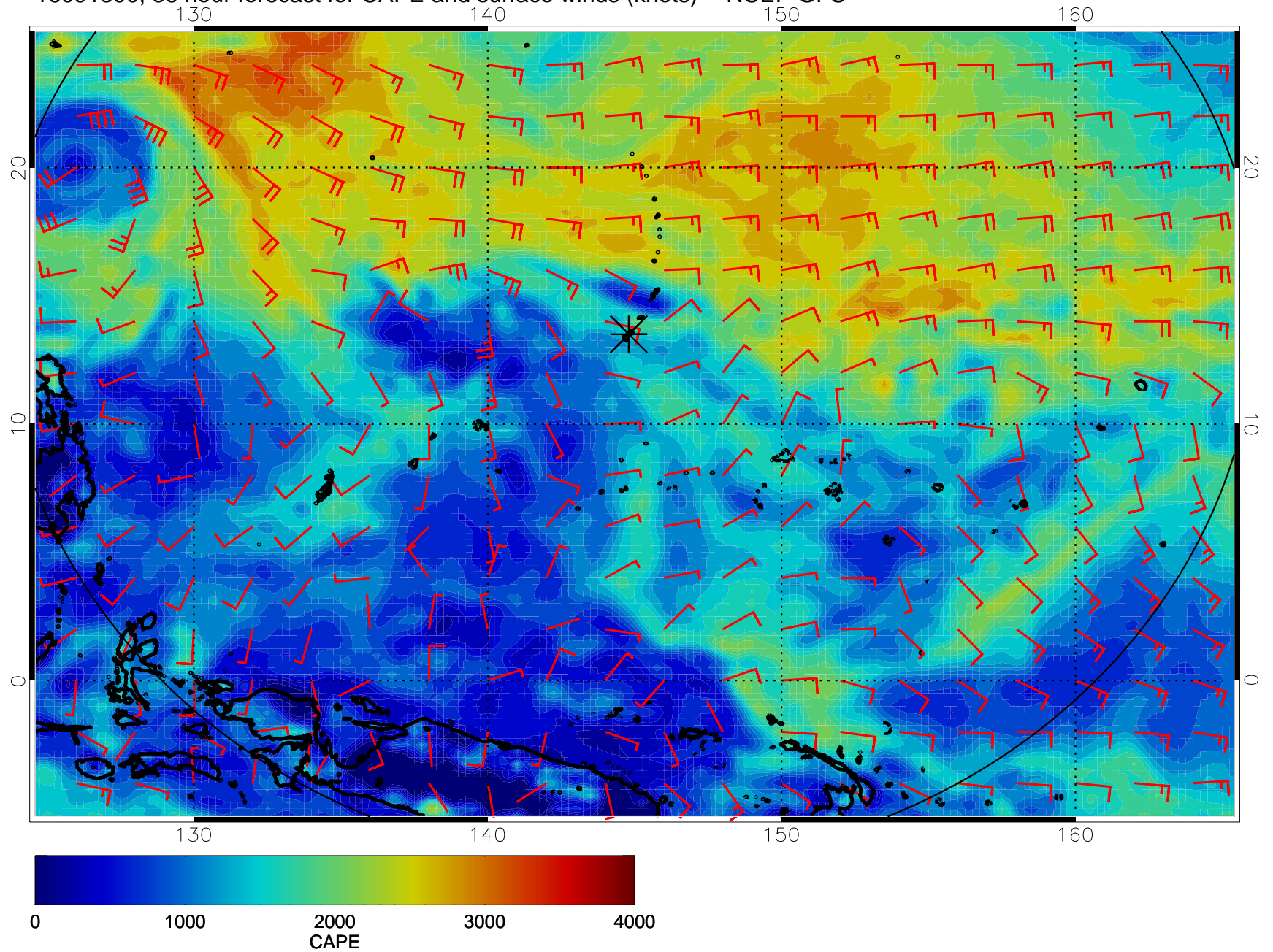
16091212, 24 hour forecast for CAPE and surface winds (knots) -- NCEP GFS



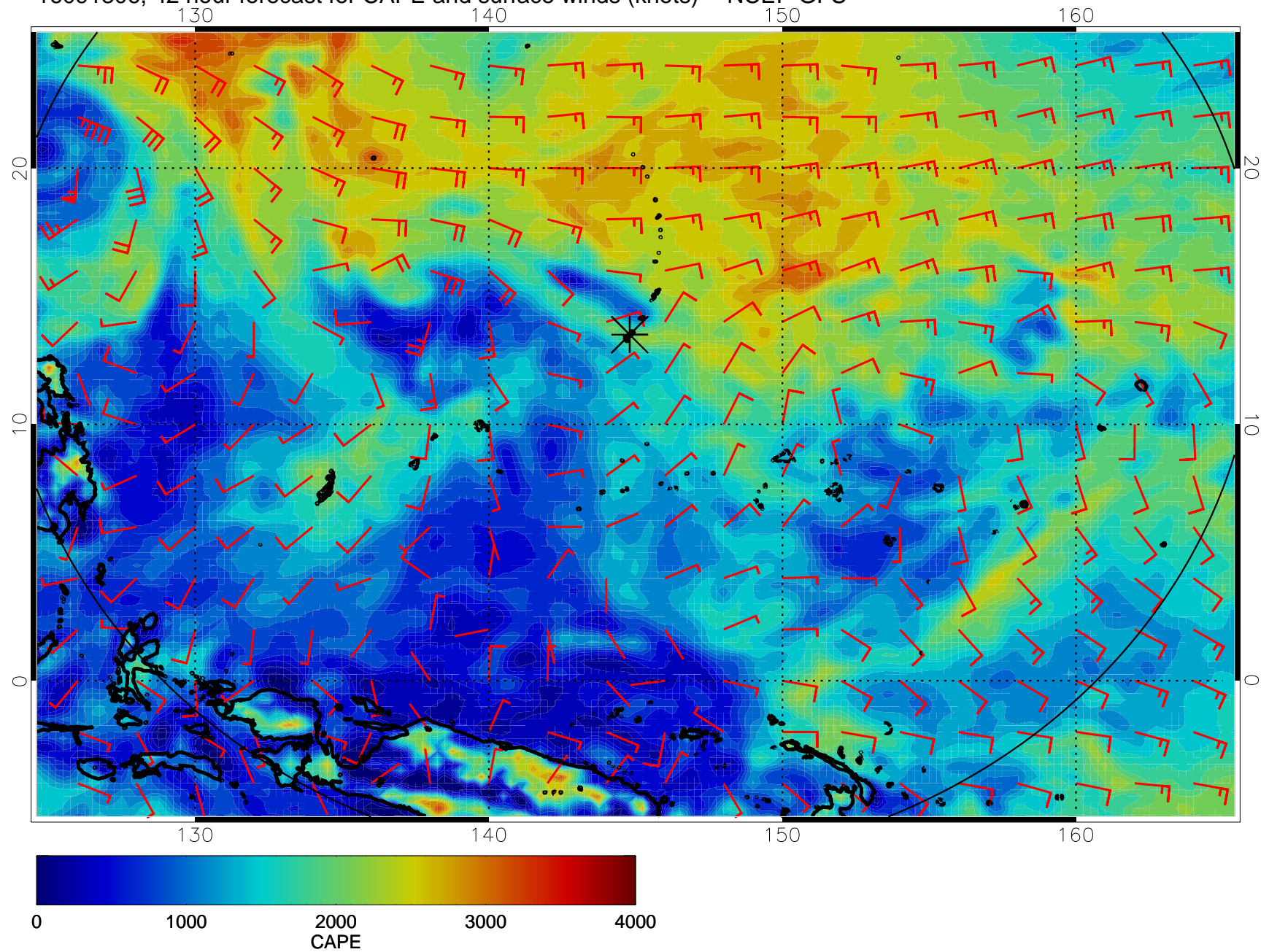
16091218, 30 hour forecast for CAPE and surface winds (knots) -- NCEP GFS



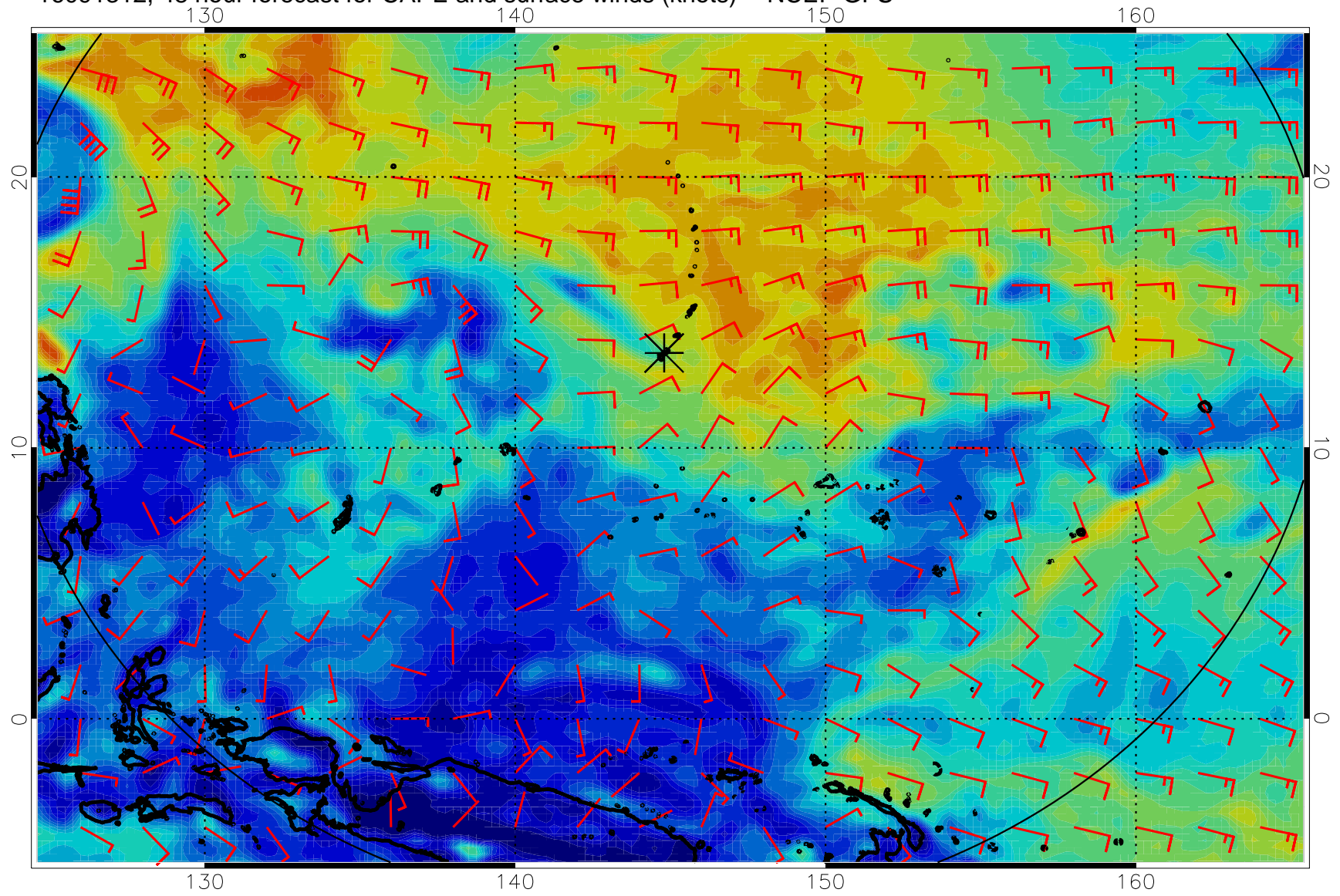
16091300, 36 hour forecast for CAPE and surface winds (knots) -- NCEP GFS



16091306, 42 hour forecast for CAPE and surface winds (knots) -- NCEP GFS

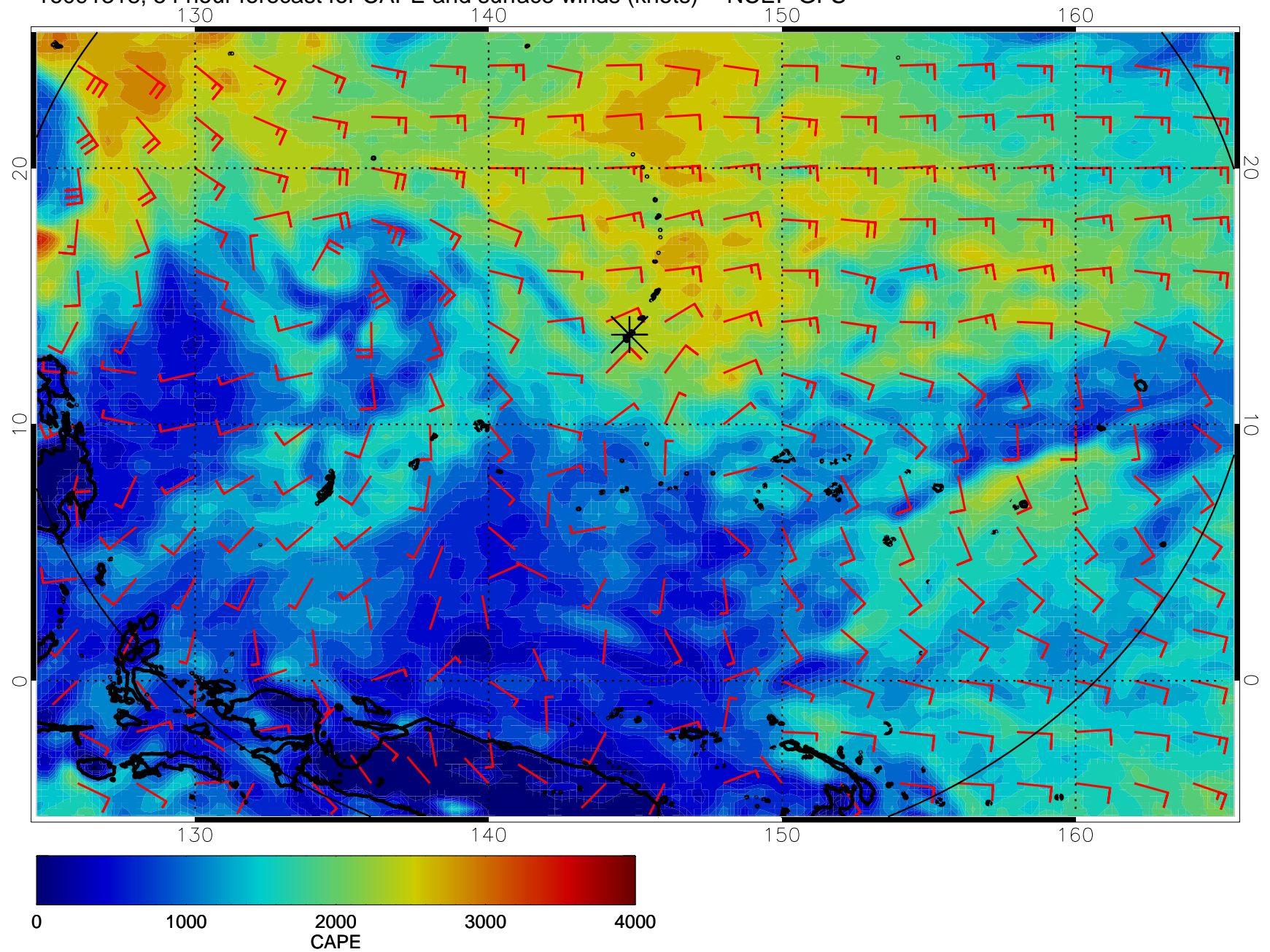


16091312, 48 hour forecast for CAPE and surface winds (knots) -- NCEP GFS

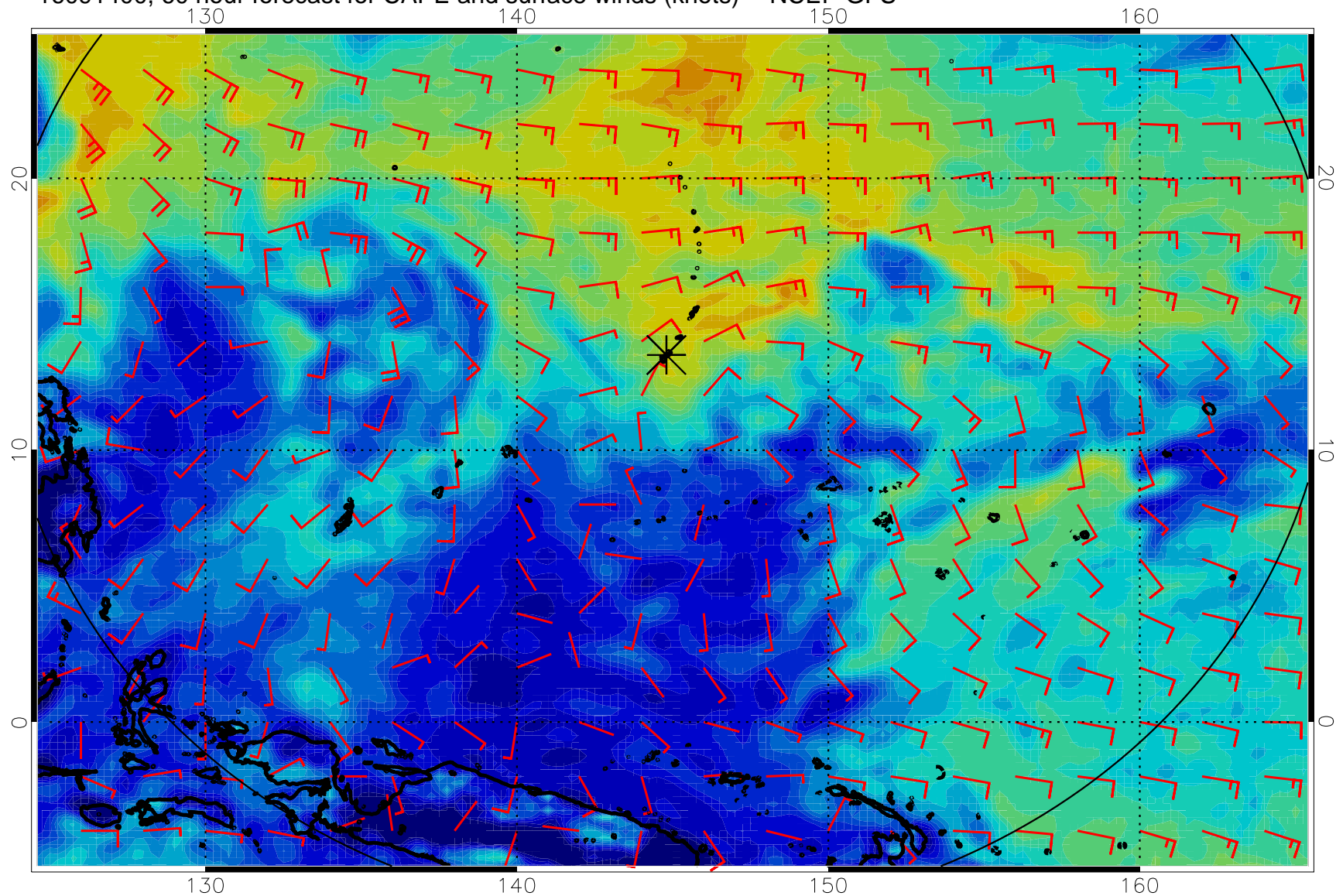




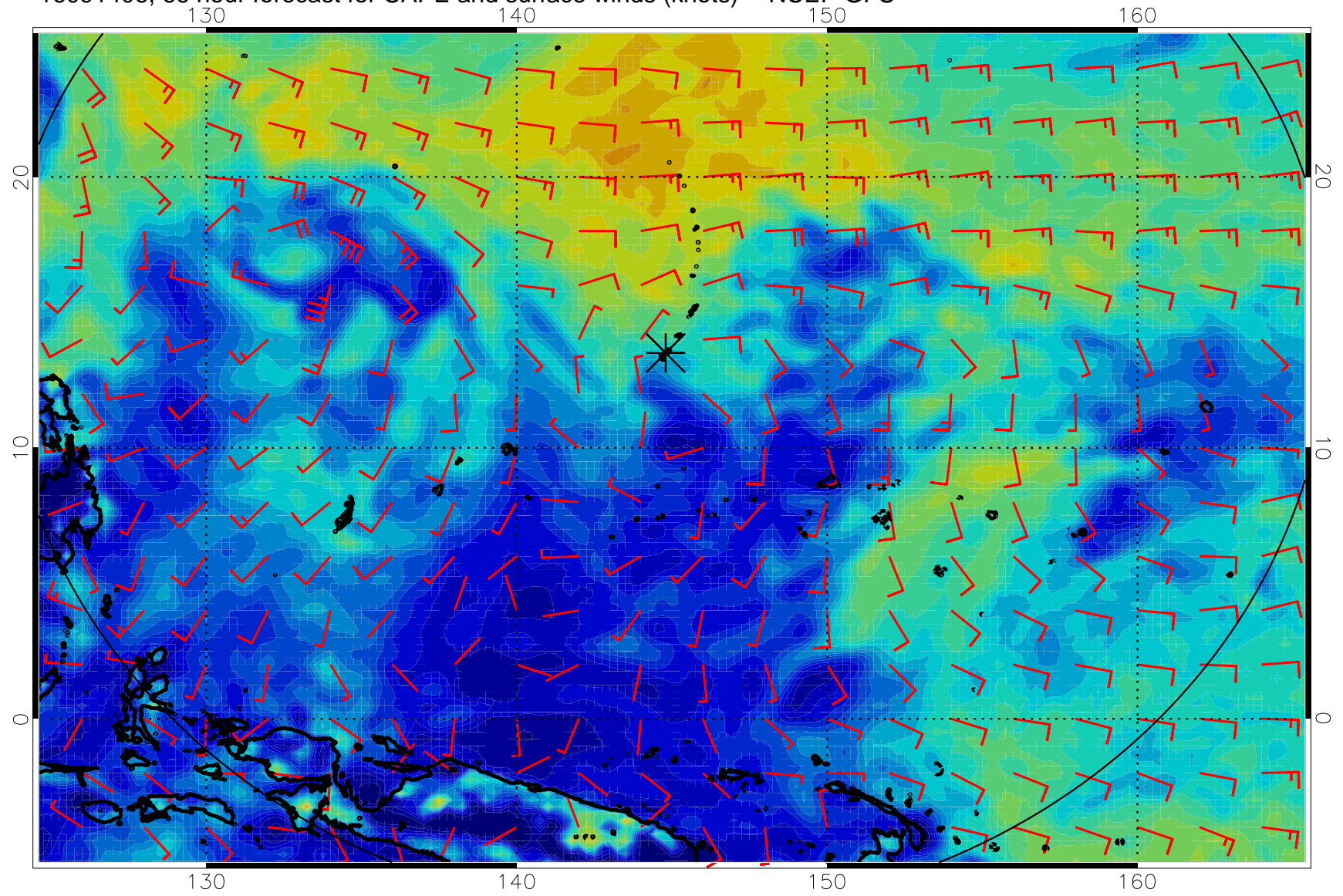
16091318, 54 hour forecast for CAPE and surface winds (knots) -- NCEP GFS



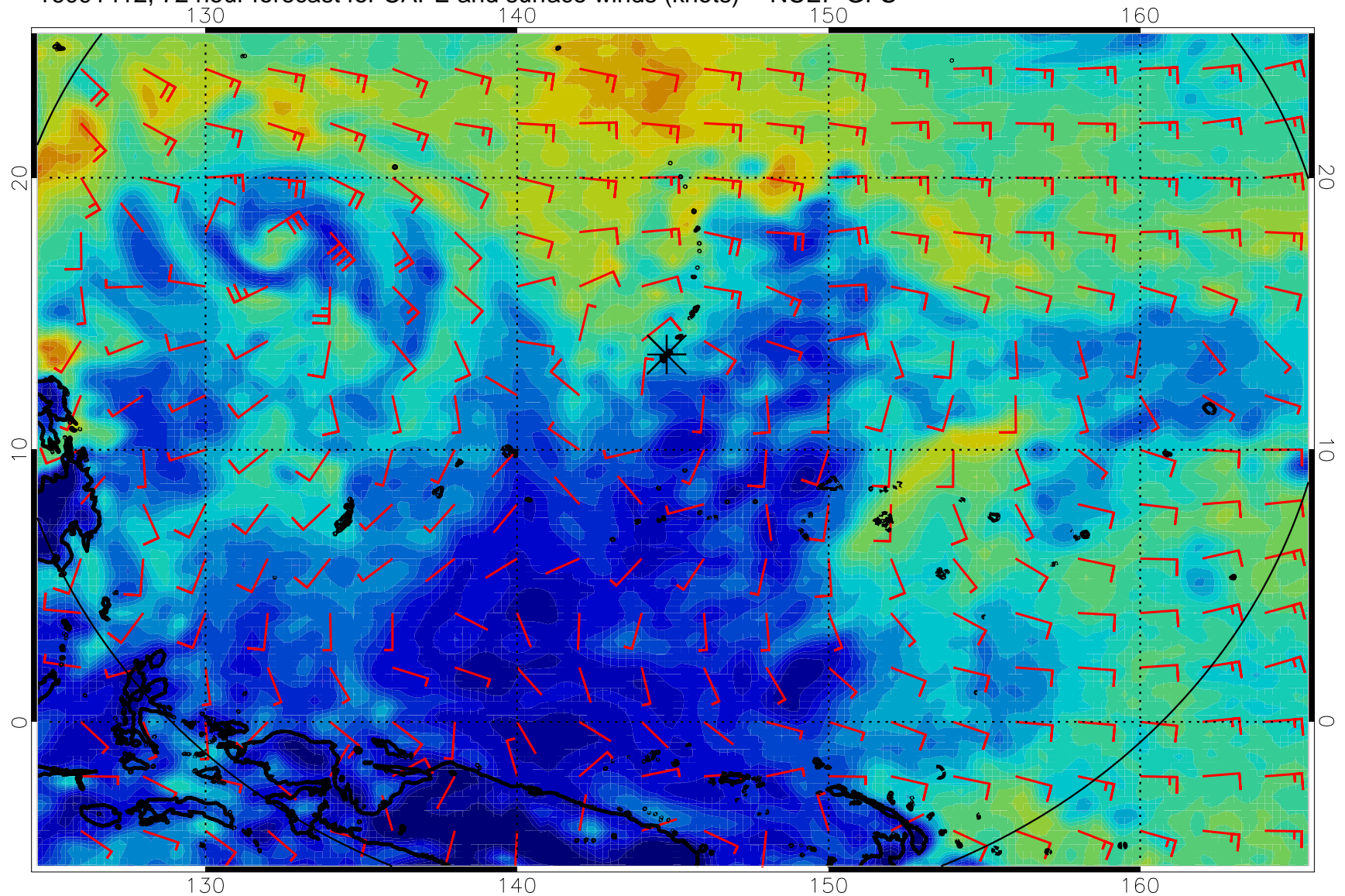
16091400, 60 hour forecast for CAPE and surface winds (knots) -- NCEP GFS



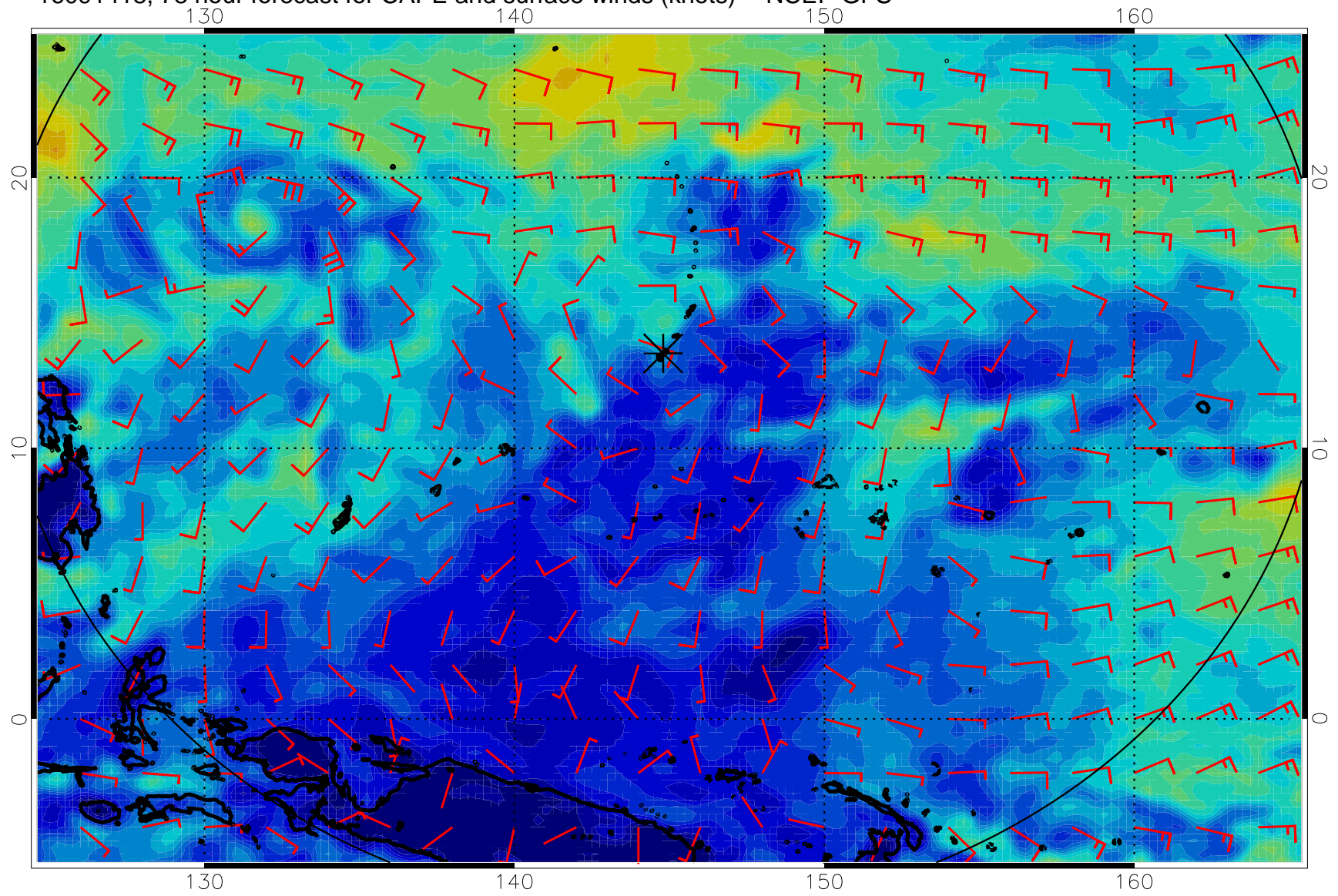
16091406, 66 hour forecast for CAPE and surface winds (knots) -- NCEP GFS



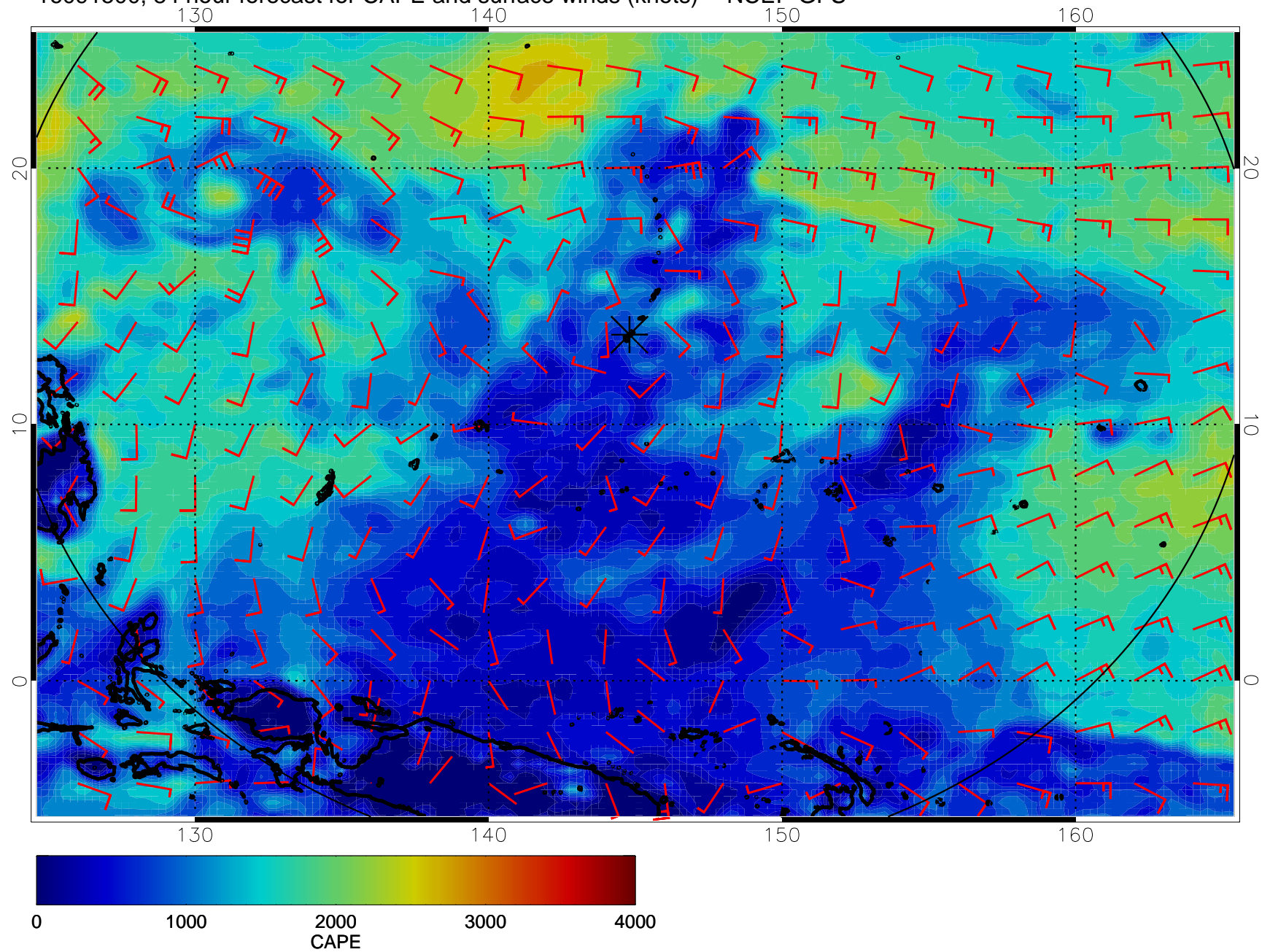
16091412, 72 hour forecast for CAPE and surface winds (knots) -- NCEP GFS



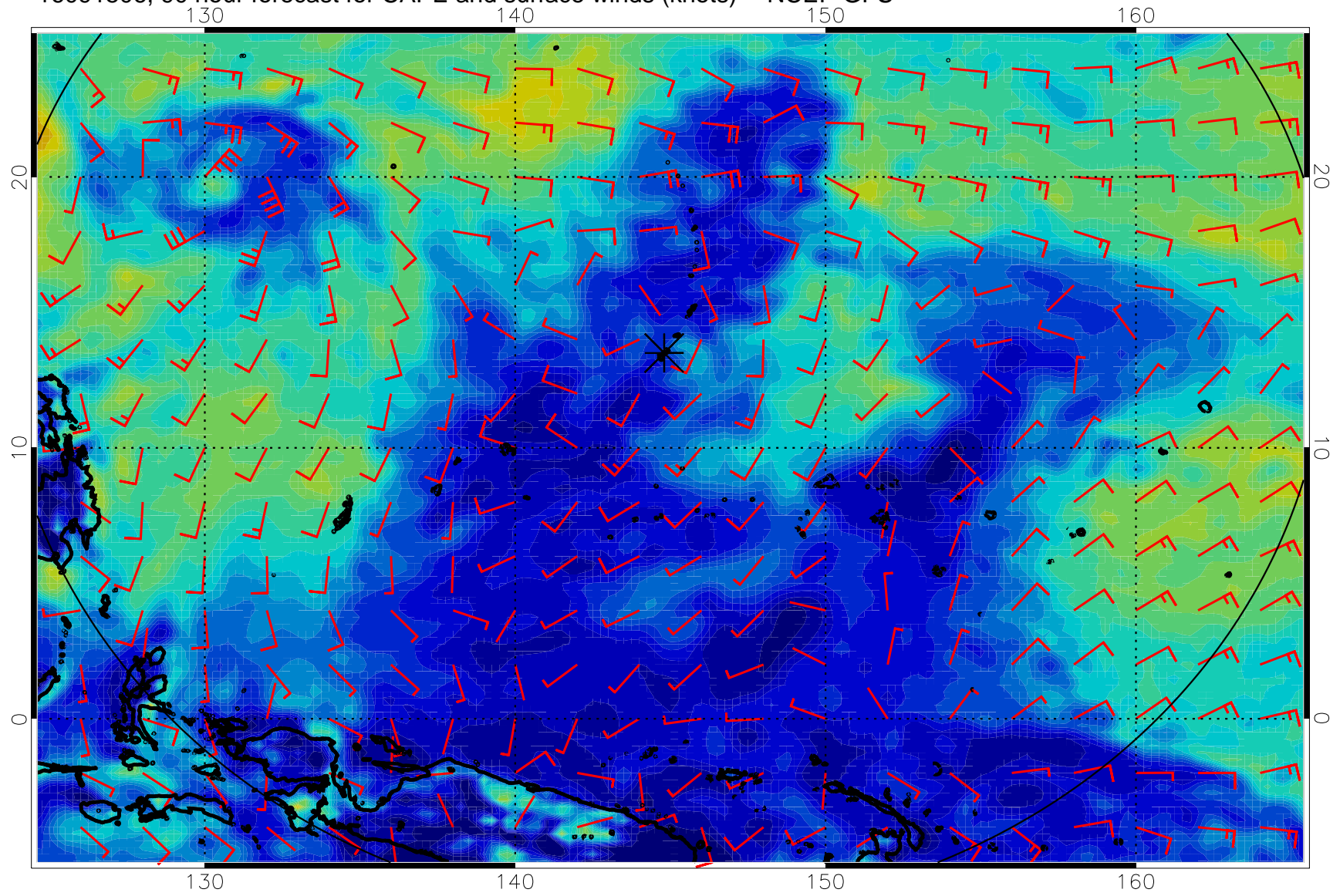
16091418, 78 hour forecast for CAPE and surface winds (knots) -- NCEP GFS



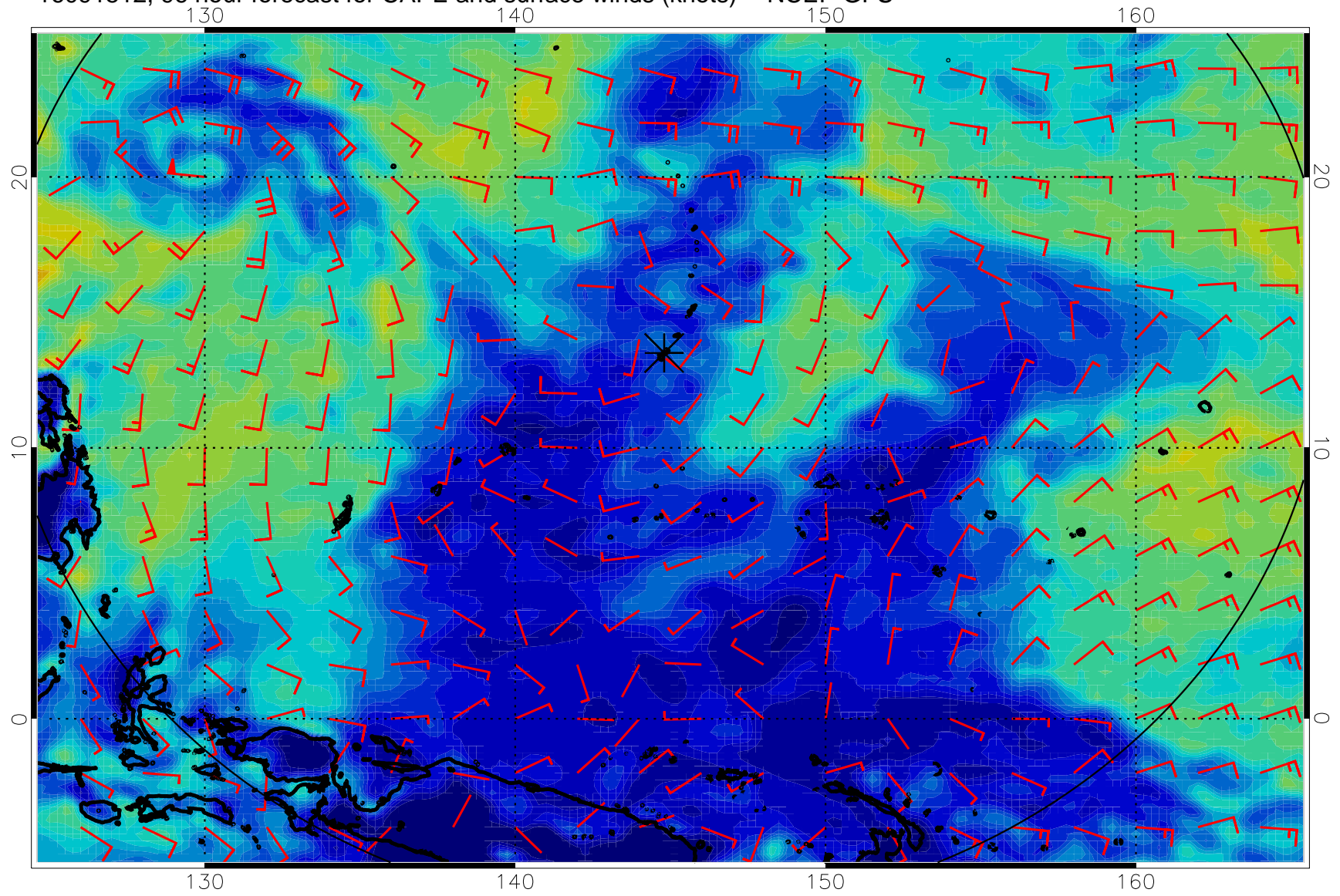
16091500, 84 hour forecast for CAPE and surface winds (knots) -- NCEP GFS



16091506, 90 hour forecast for CAPE and surface winds (knots) -- NCEP GFS

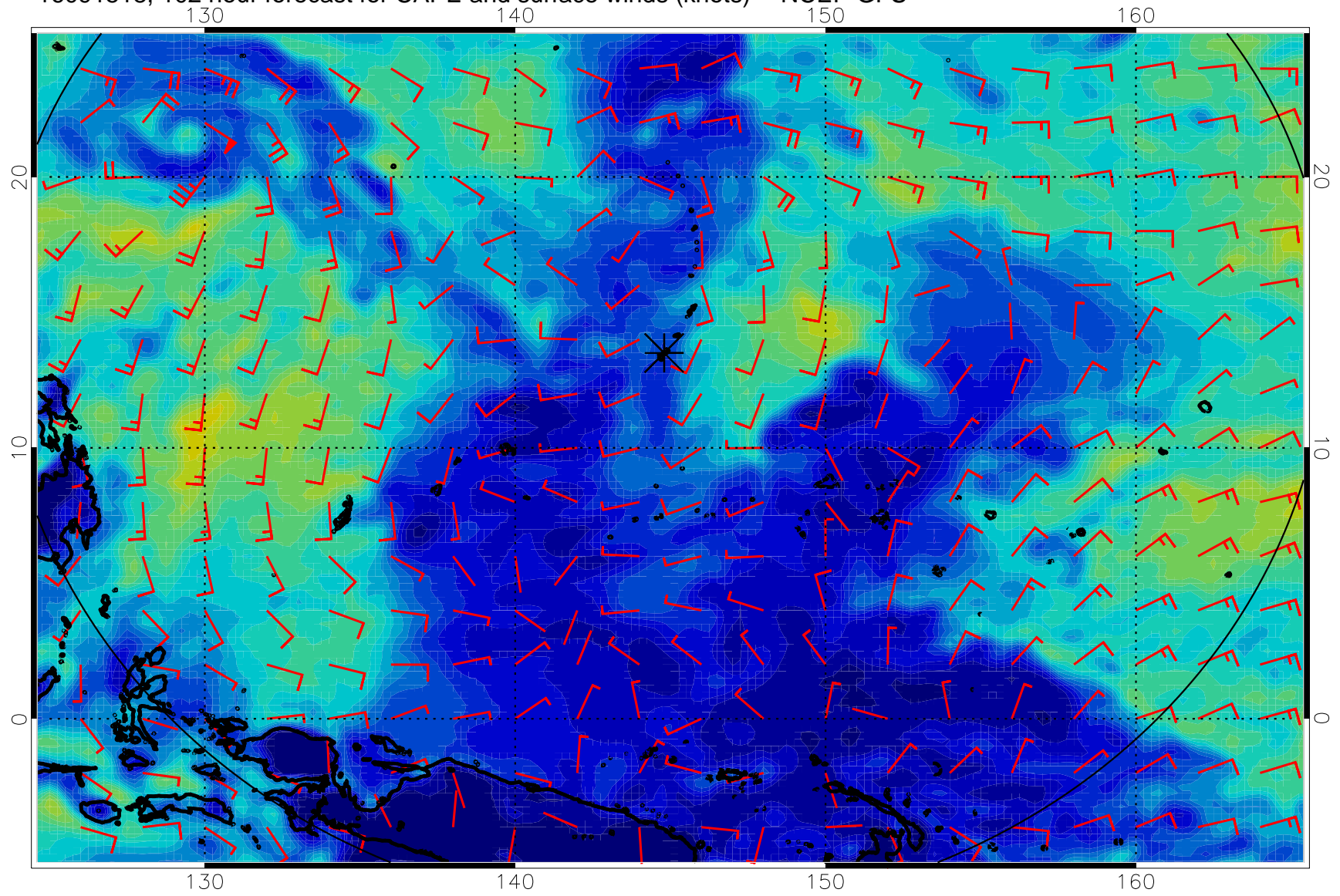


16091512, 96 hour forecast for CAPE and surface winds (knots) -- NCEP GFS

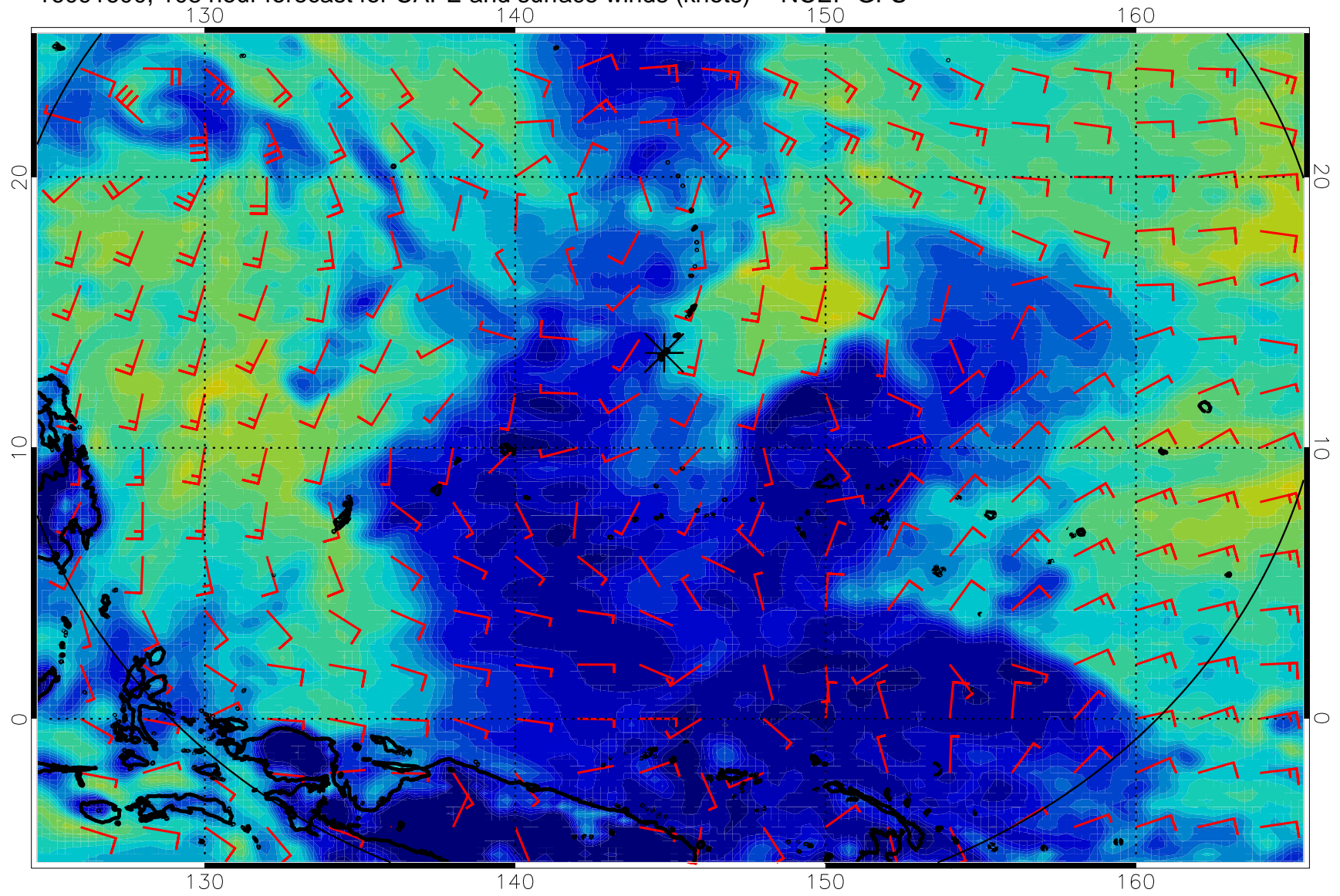




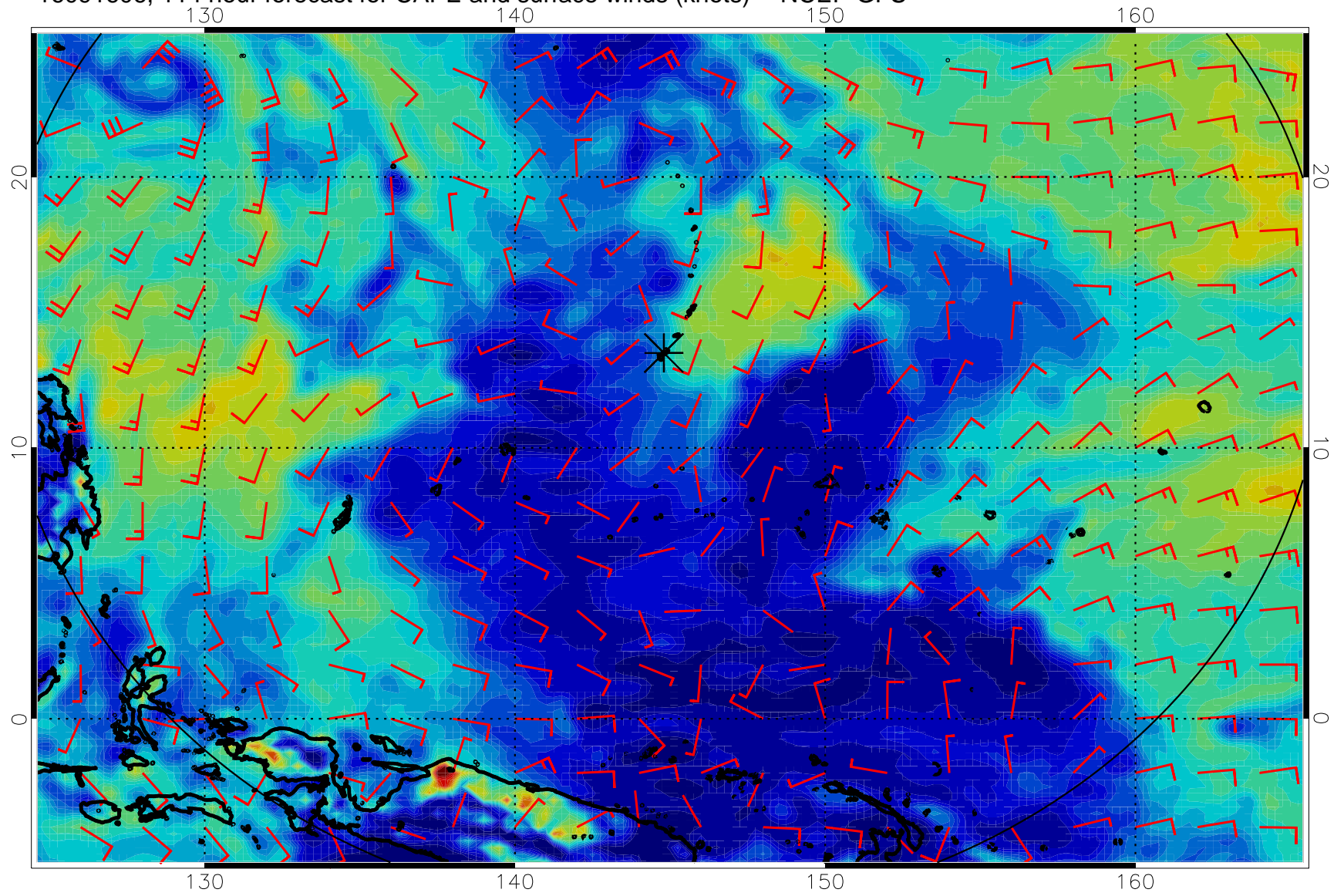
16091518, 102 hour forecast for CAPE and surface winds (knots) -- NCEP GFS



16091600, 108 hour forecast for CAPE and surface winds (knots) -- NCEP GFS



16091606, 114 hour forecast for CAPE and surface winds (knots) -- NCEP GFS



16091612, 120 hour forecast for CAPE and surface winds (knots) -- NCEP GFS

