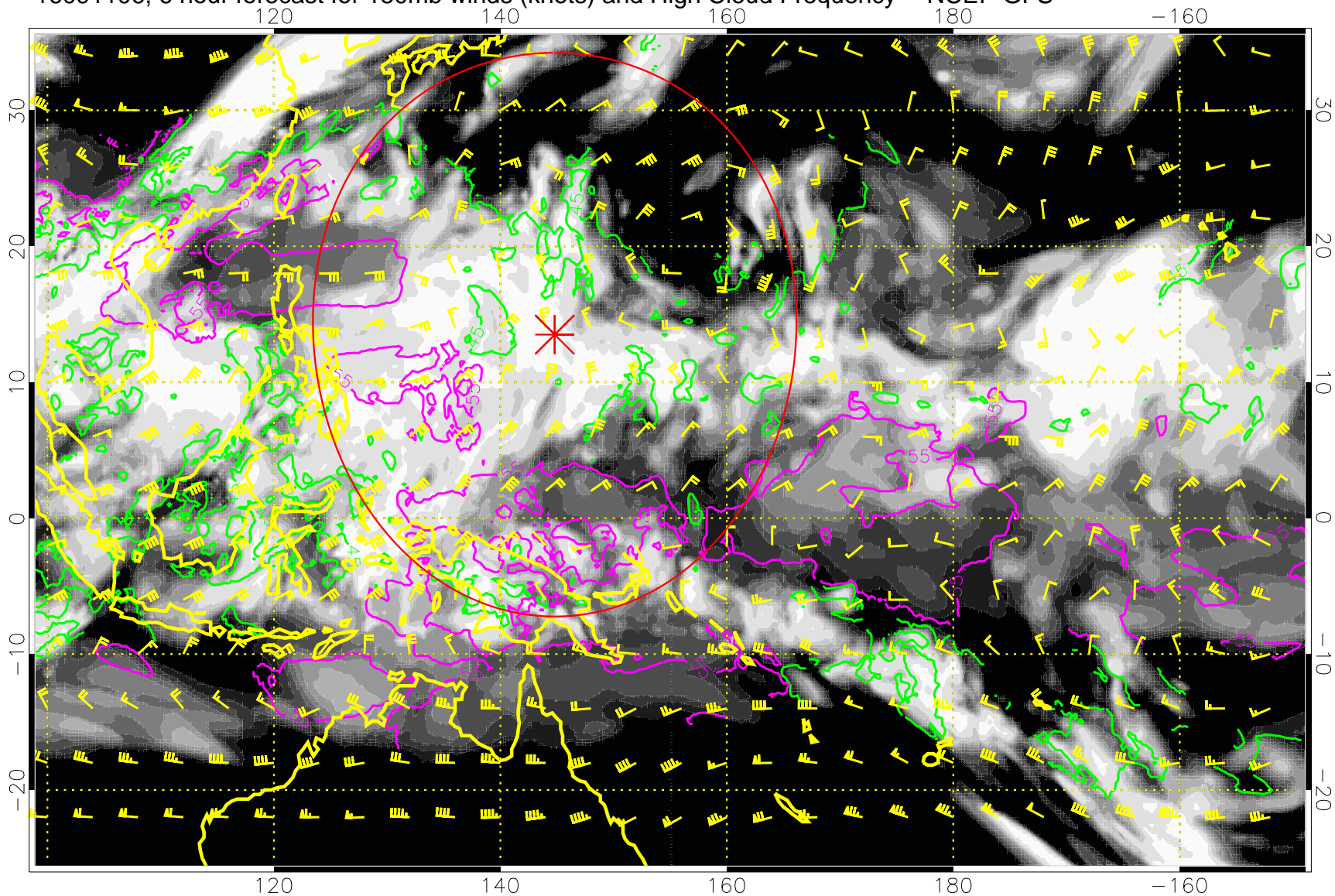


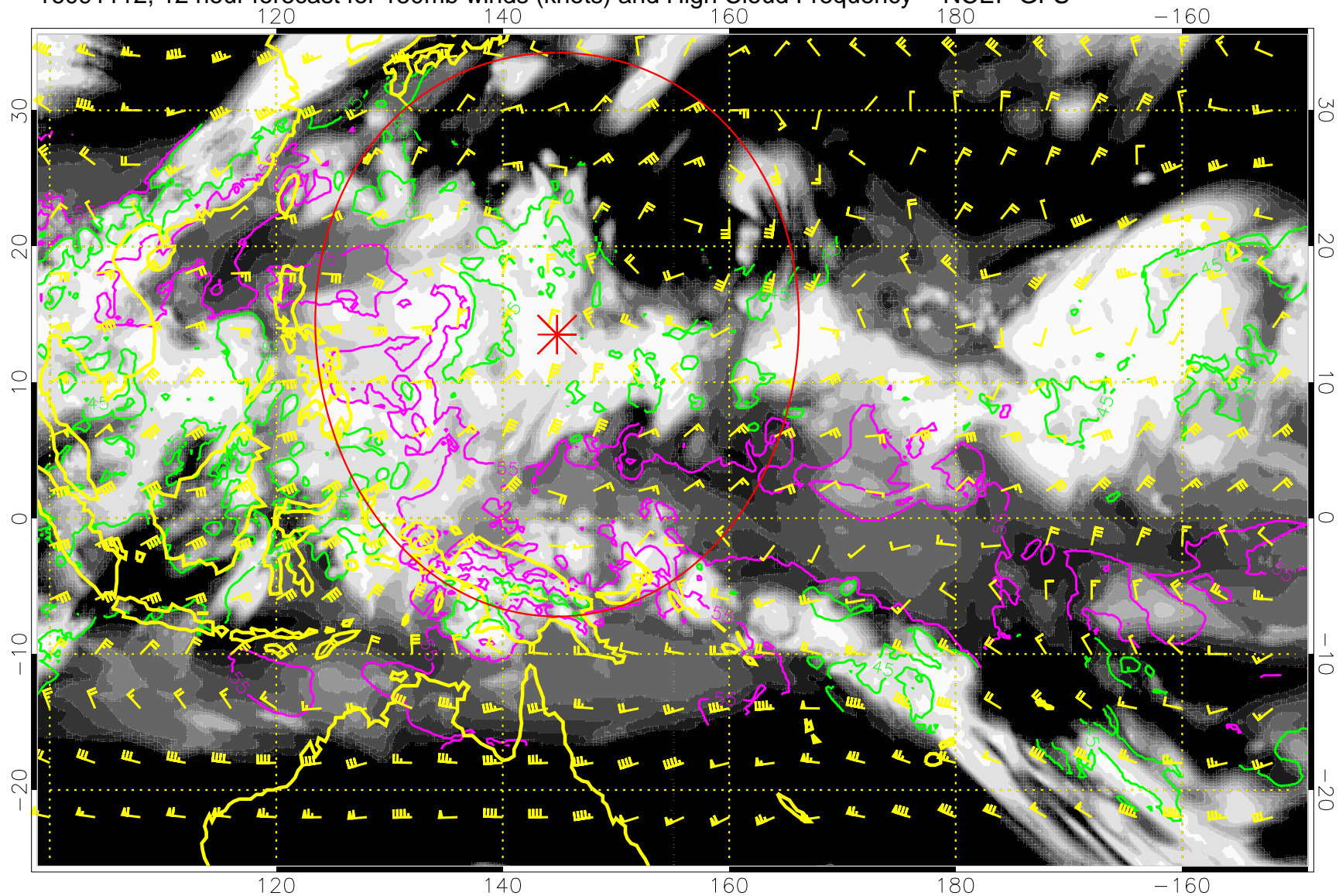
16091106, 6 hour forecast for 150mb winds (knots) and High Cloud Frequency -- NCEP GFS



45 kft
55 kft

Range ring of 2304 km

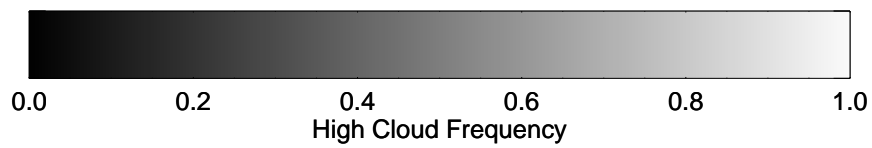
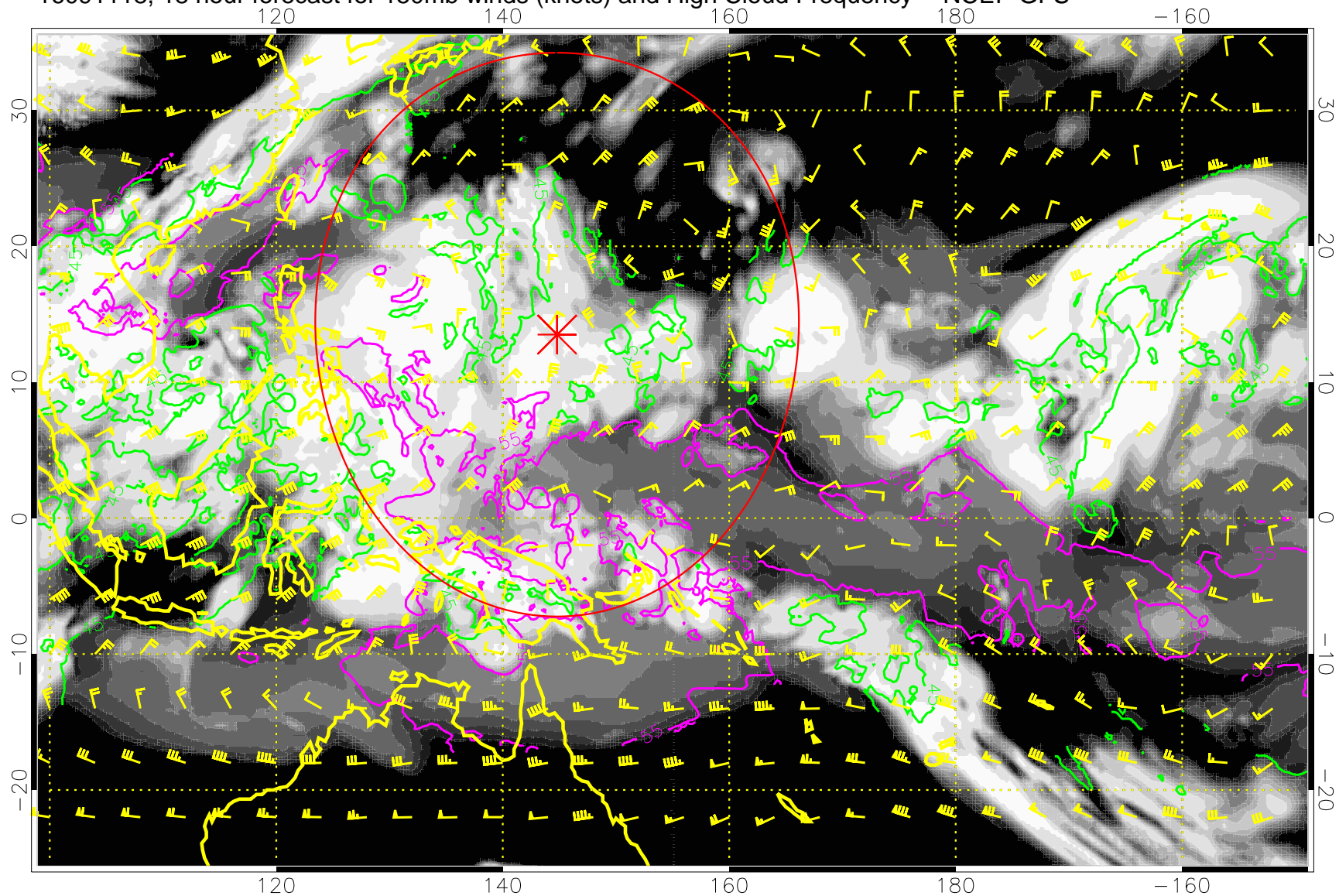
16091112, 12 hour forecast for 150mb winds (knots) and High Cloud Frequency -- NCEP GFS



45 kft
55 kft

Range ring of 2304 km

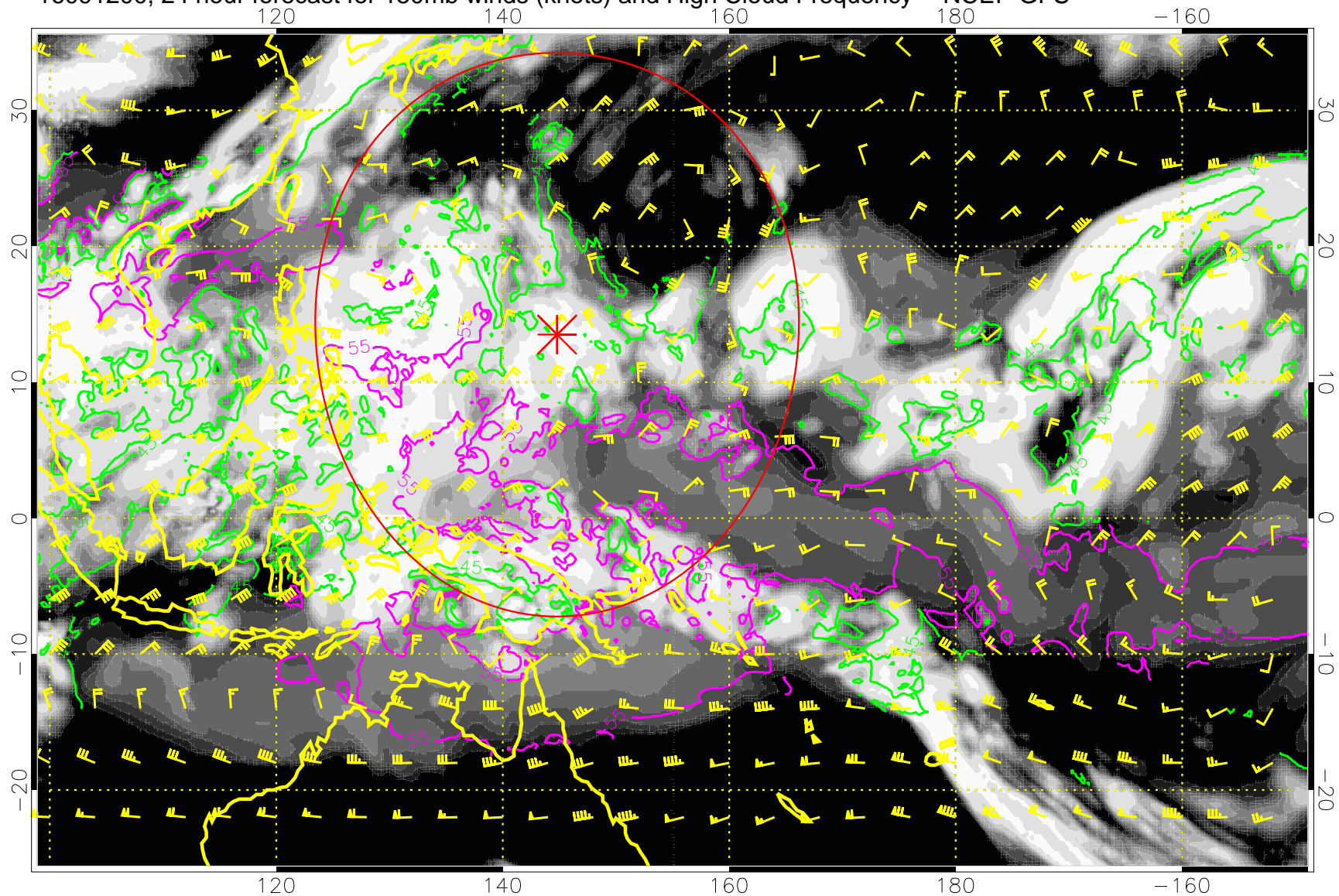
16091118, 18 hour forecast for 150mb winds (knots) and High Cloud Frequency -- NCEP GFS



45 kft
55 kft

Range ring of 2304 km

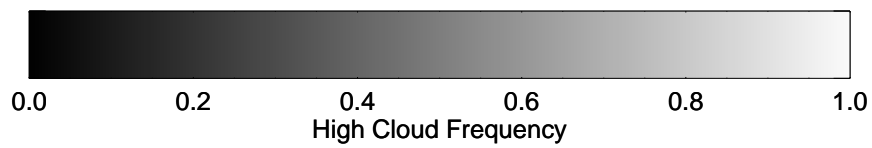
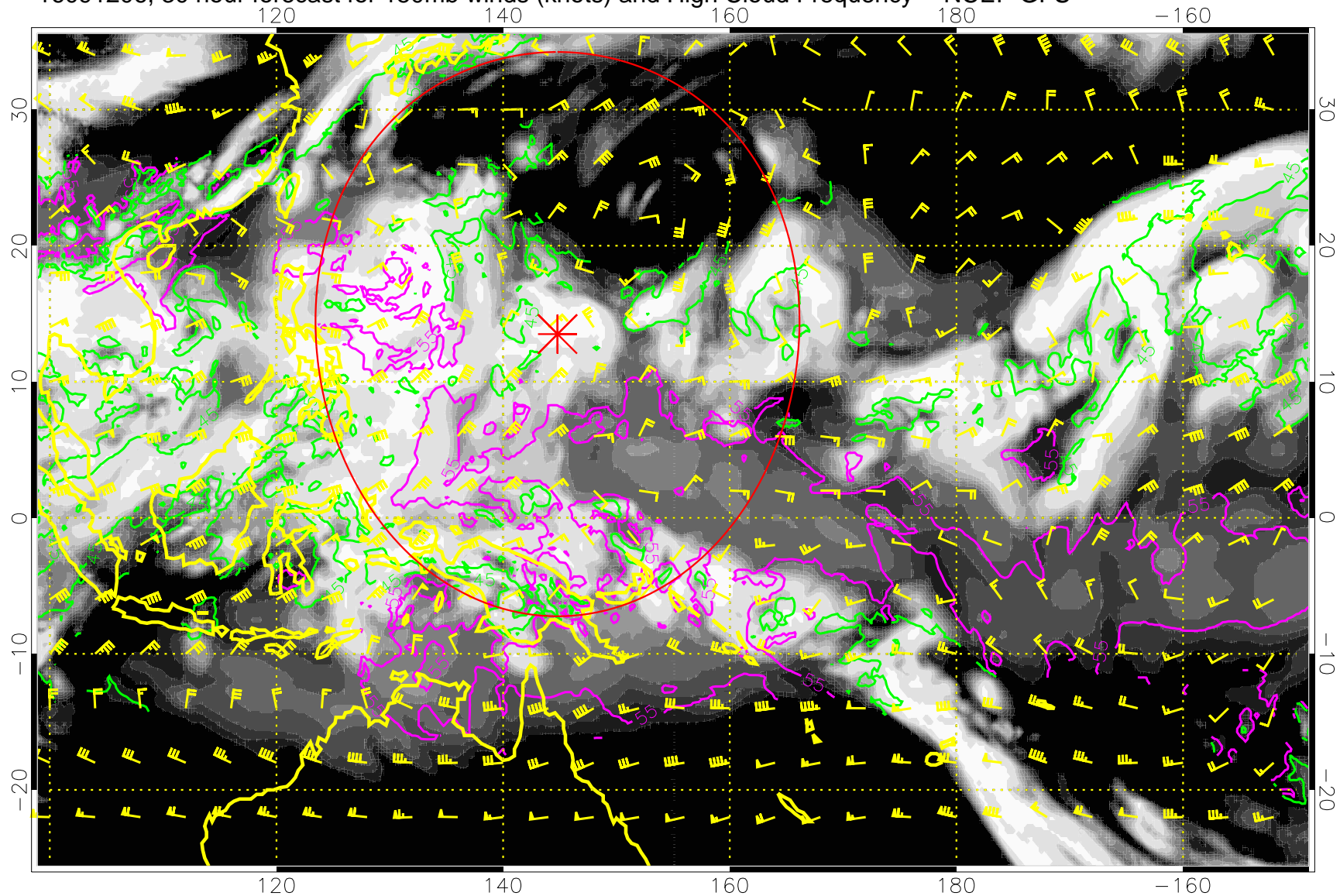
16091200, 24 hour forecast for 150mb winds (knots) and High Cloud Frequency -- NCEP GFS



45 kft
55 kft

Range ring of 2304 km

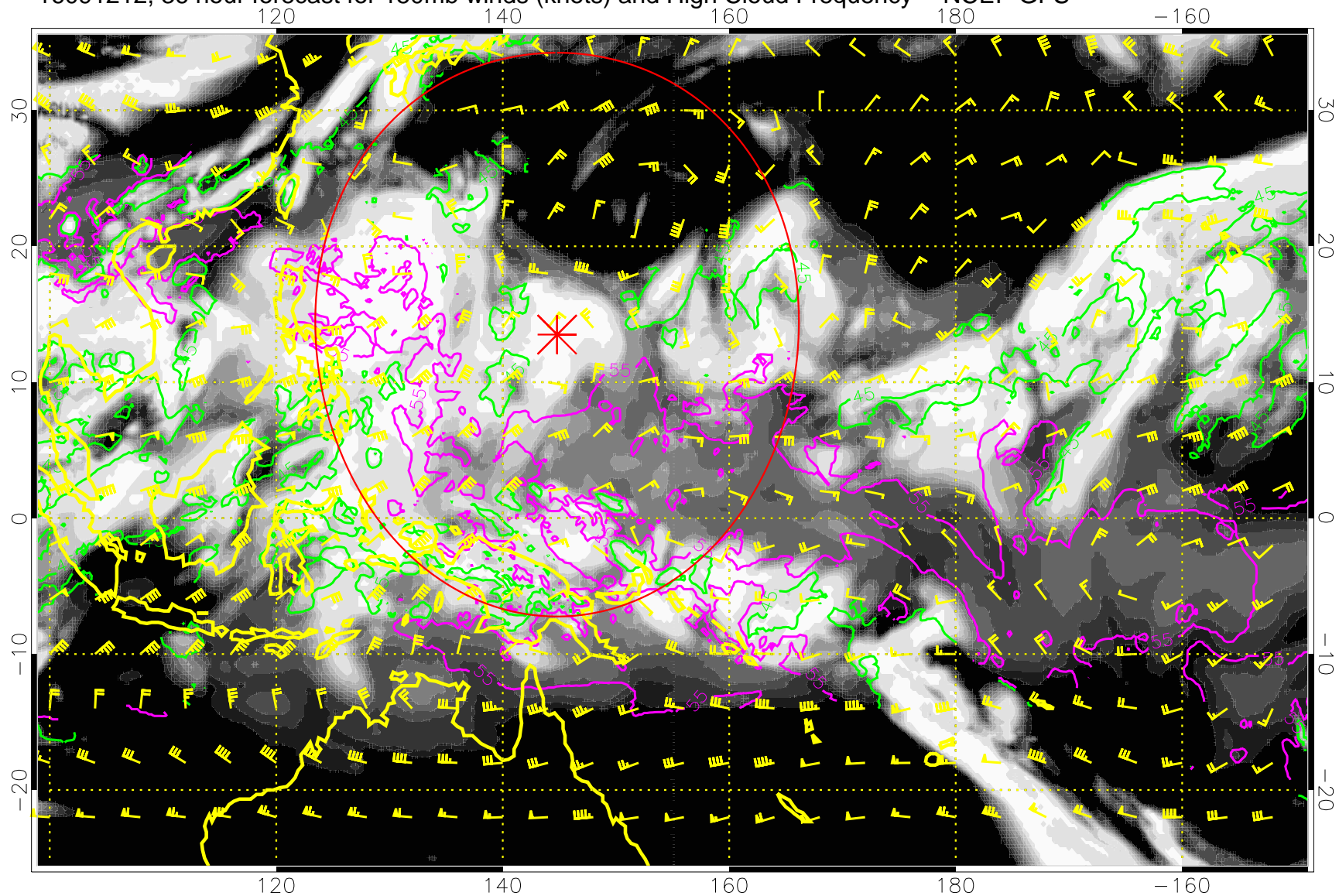
16091206, 30 hour forecast for 150mb winds (knots) and High Cloud Frequency -- NCEP GFS



45 kft
55 kft

Range ring of 2304 km

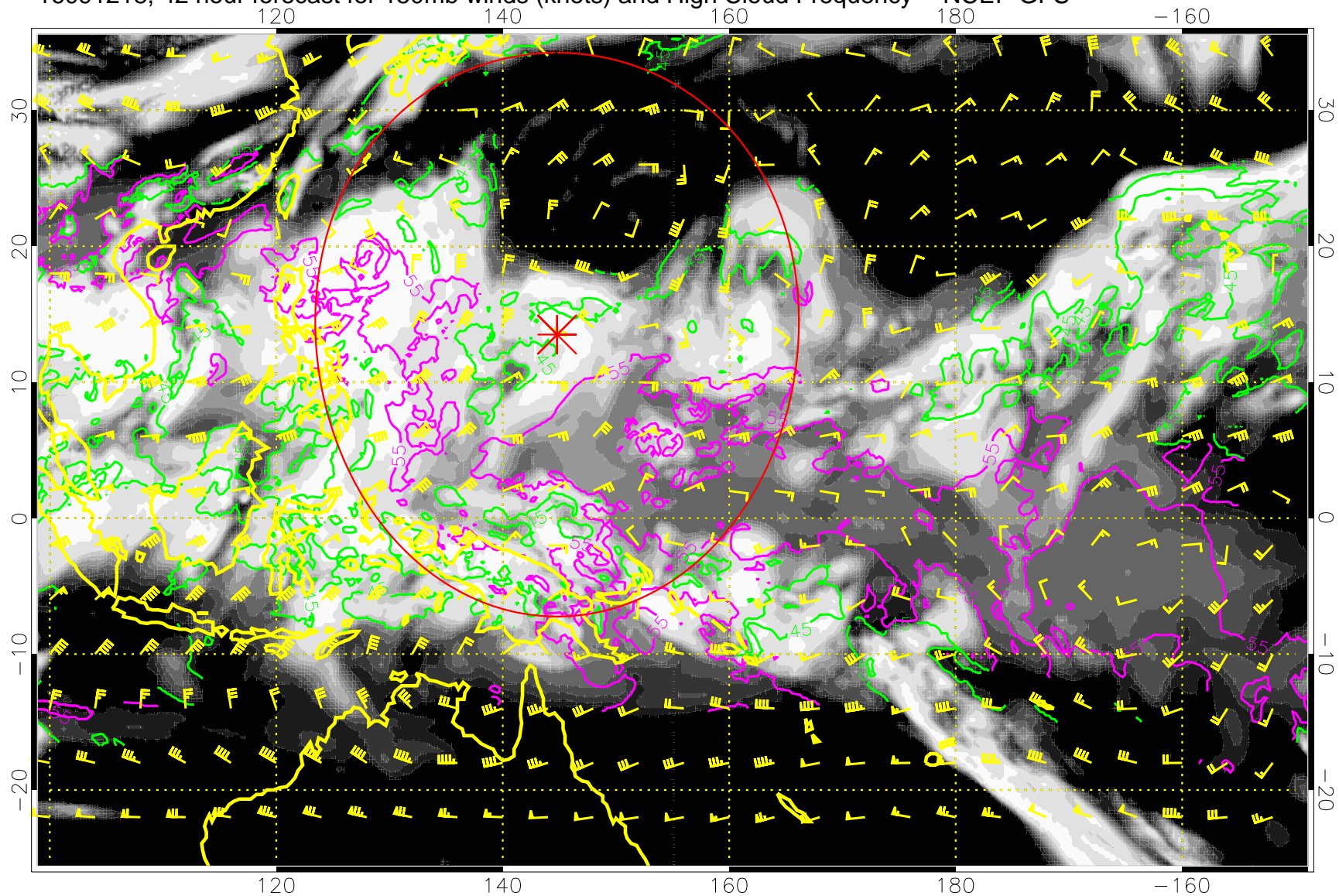
16091212, 36 hour forecast for 150mb winds (knots) and High Cloud Frequency -- NCEP GFS



45 kft
55 kft

Range ring of 2304 km

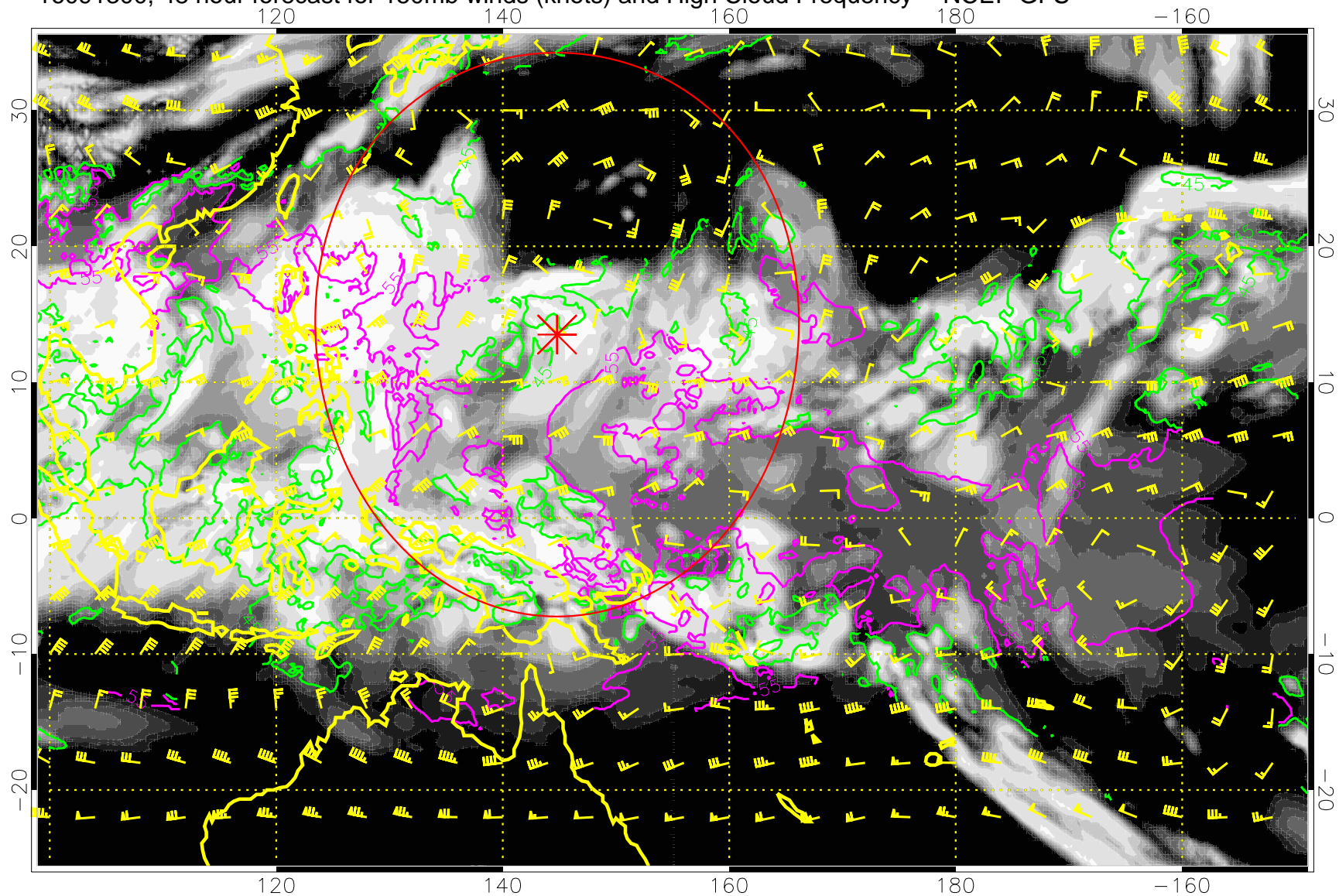
16091218, 42 hour forecast for 150mb winds (knots) and High Cloud Frequency -- NCEP GFS



45 kft
55 kft

Range ring of 2304 km

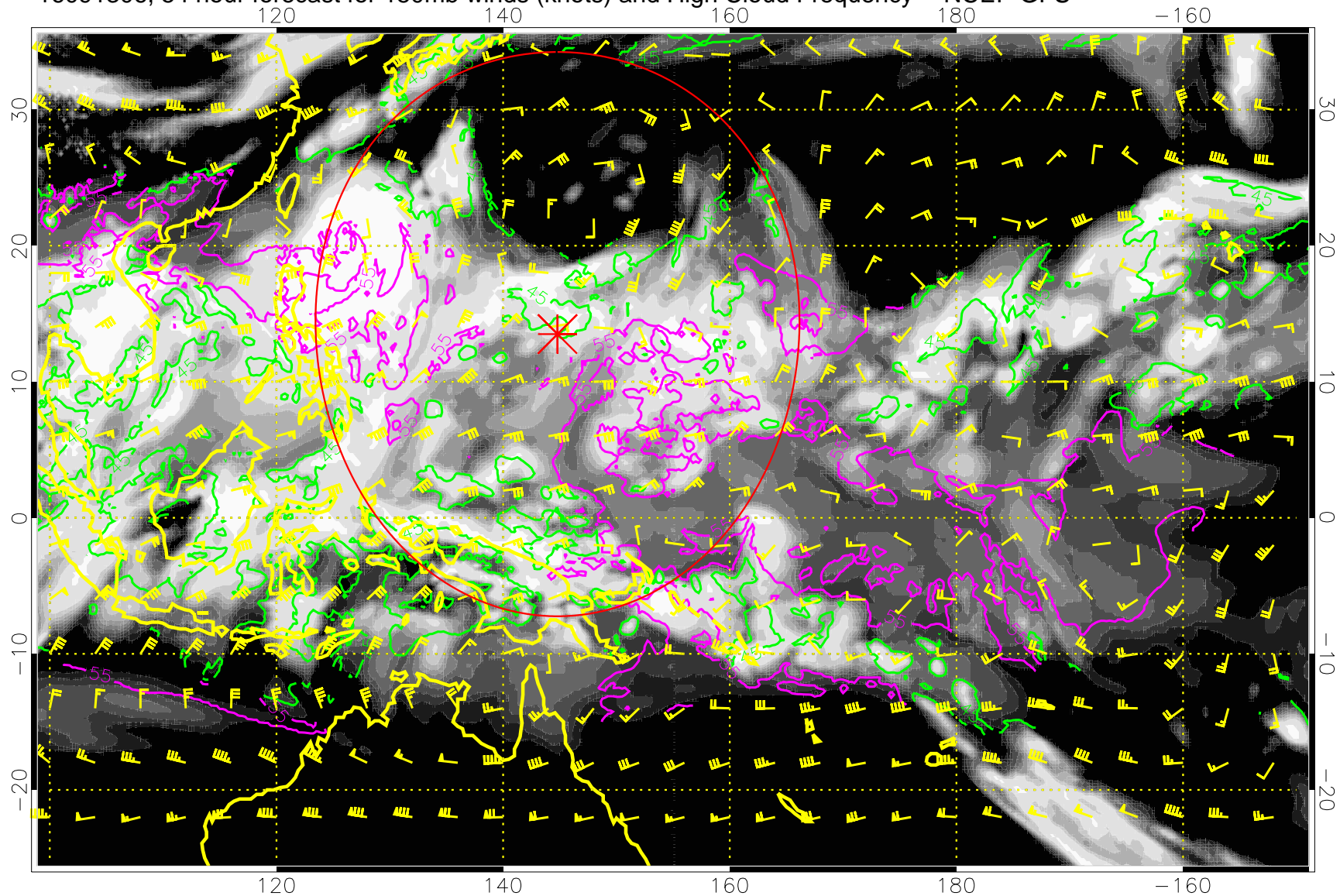
16091300, 48 hour forecast for 150mb winds (knots) and High Cloud Frequency -- NCEP GFS



45 kft
55 kft

Range ring of 2304 km

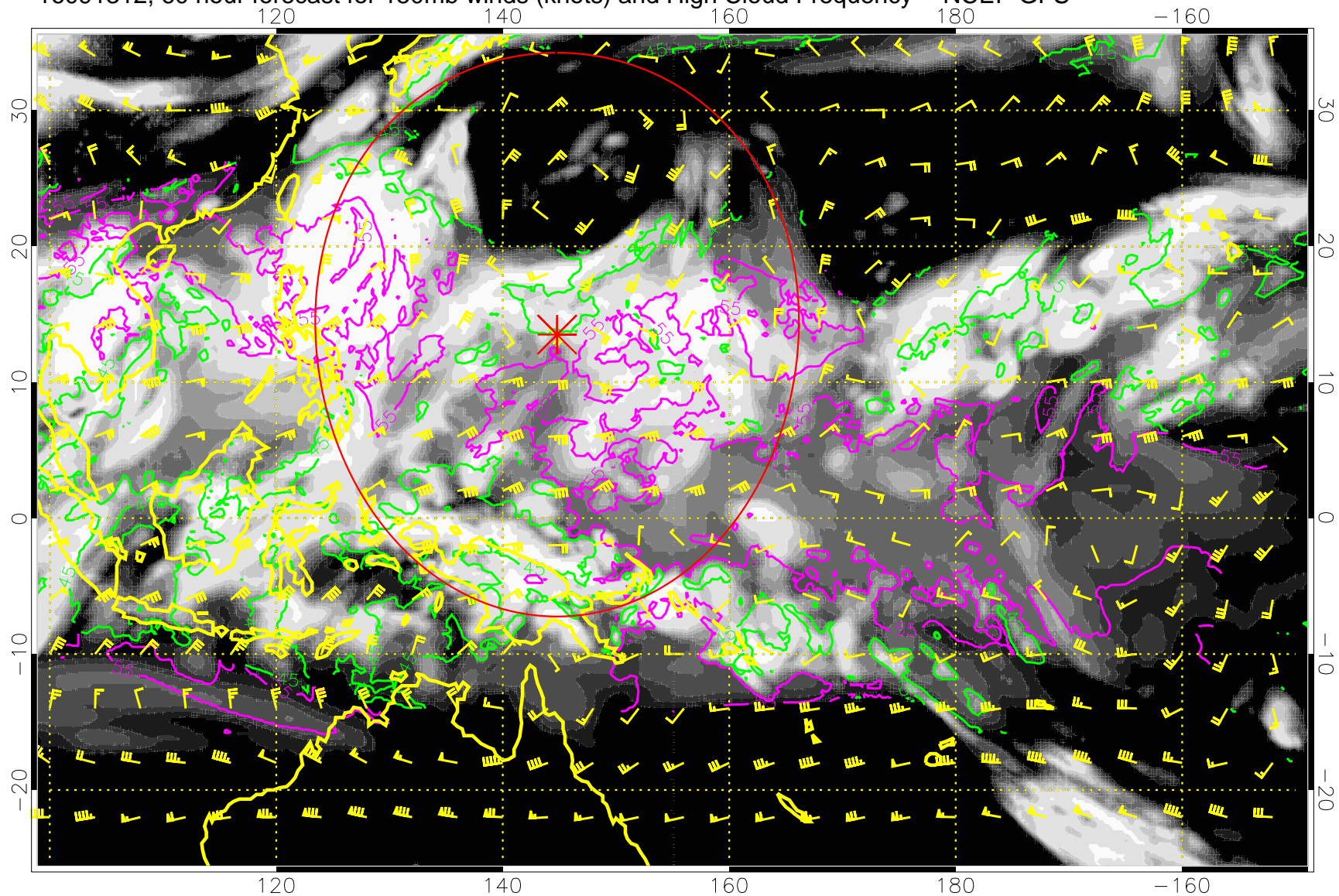
16091306, 54 hour forecast for 150mb winds (knots) and High Cloud Frequency -- NCEP GFS



45 kft
55 kft

Range ring of 2304 km

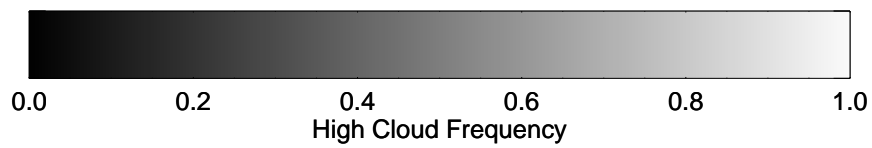
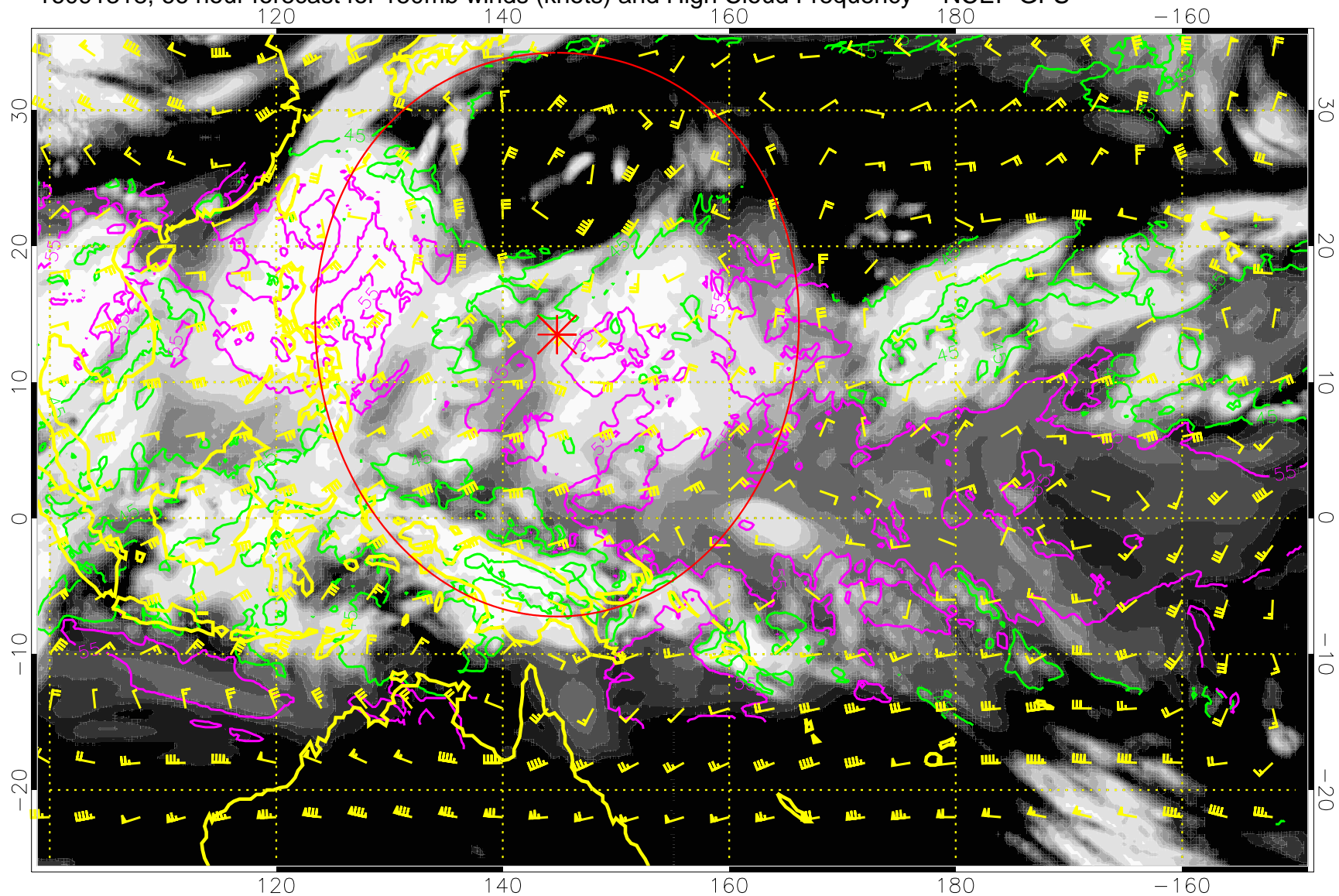
16091312, 60 hour forecast for 150mb winds (knots) and High Cloud Frequency -- NCEP GFS



45 kft
55 kft

Range ring of 2304 km

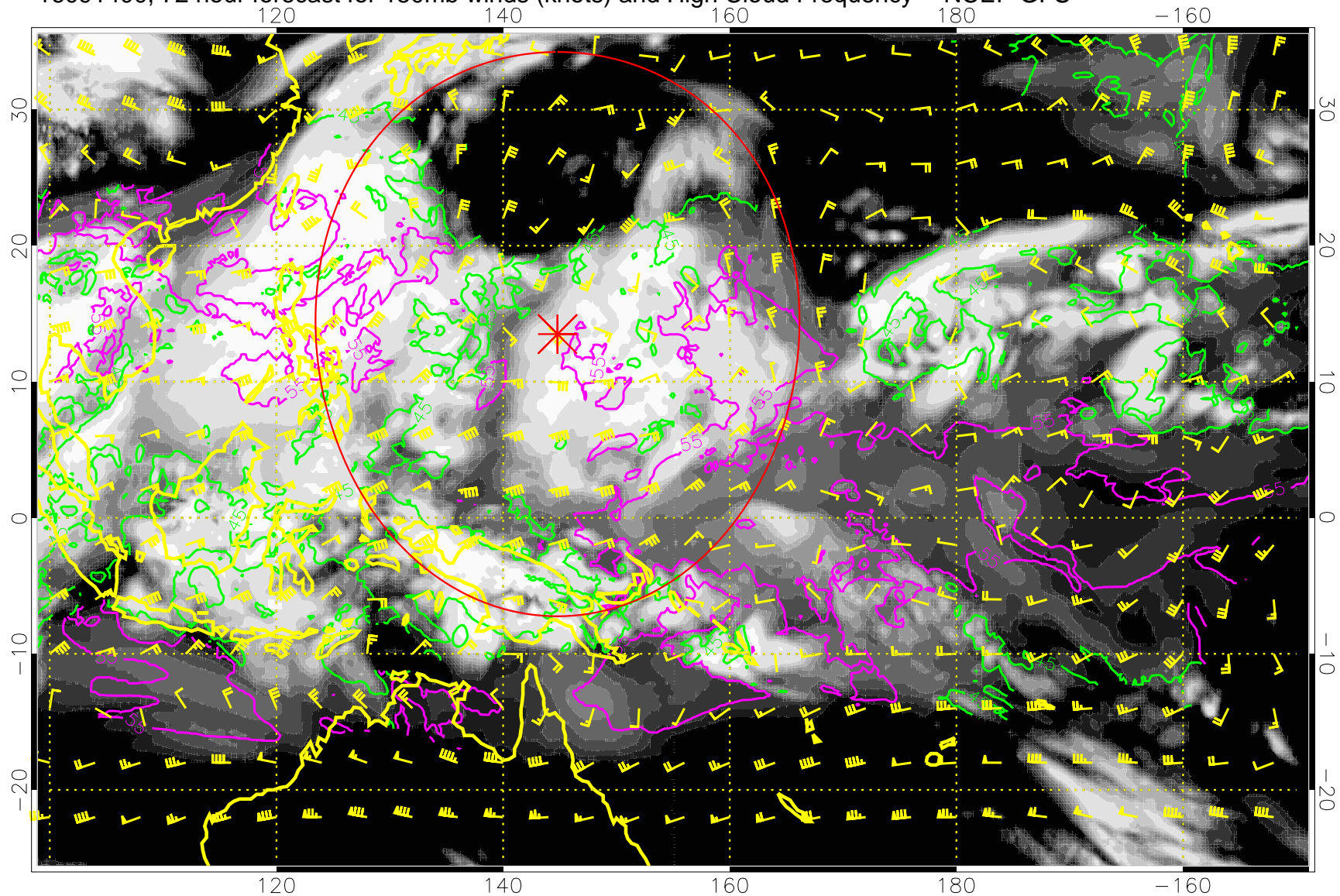
16091318, 66 hour forecast for 150mb winds (knots) and High Cloud Frequency -- NCEP GFS



45 kft
55 kft

Range ring of 2304 km

16091400, 72 hour forecast for 150mb winds (knots) and High Cloud Frequency -- NCEP GFS

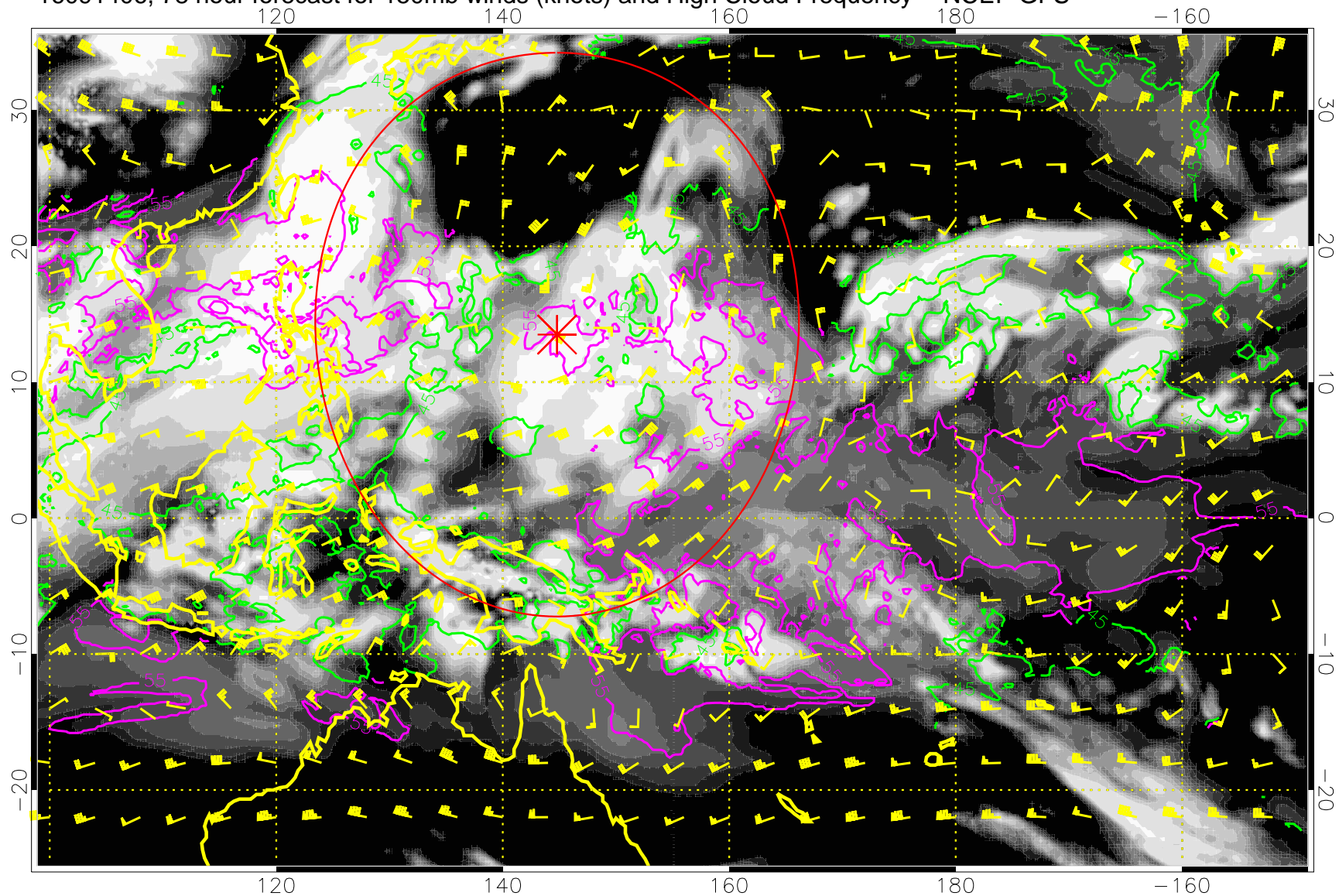


High Cloud Frequency

45 kft
55 kft

Range ring of 2304 km

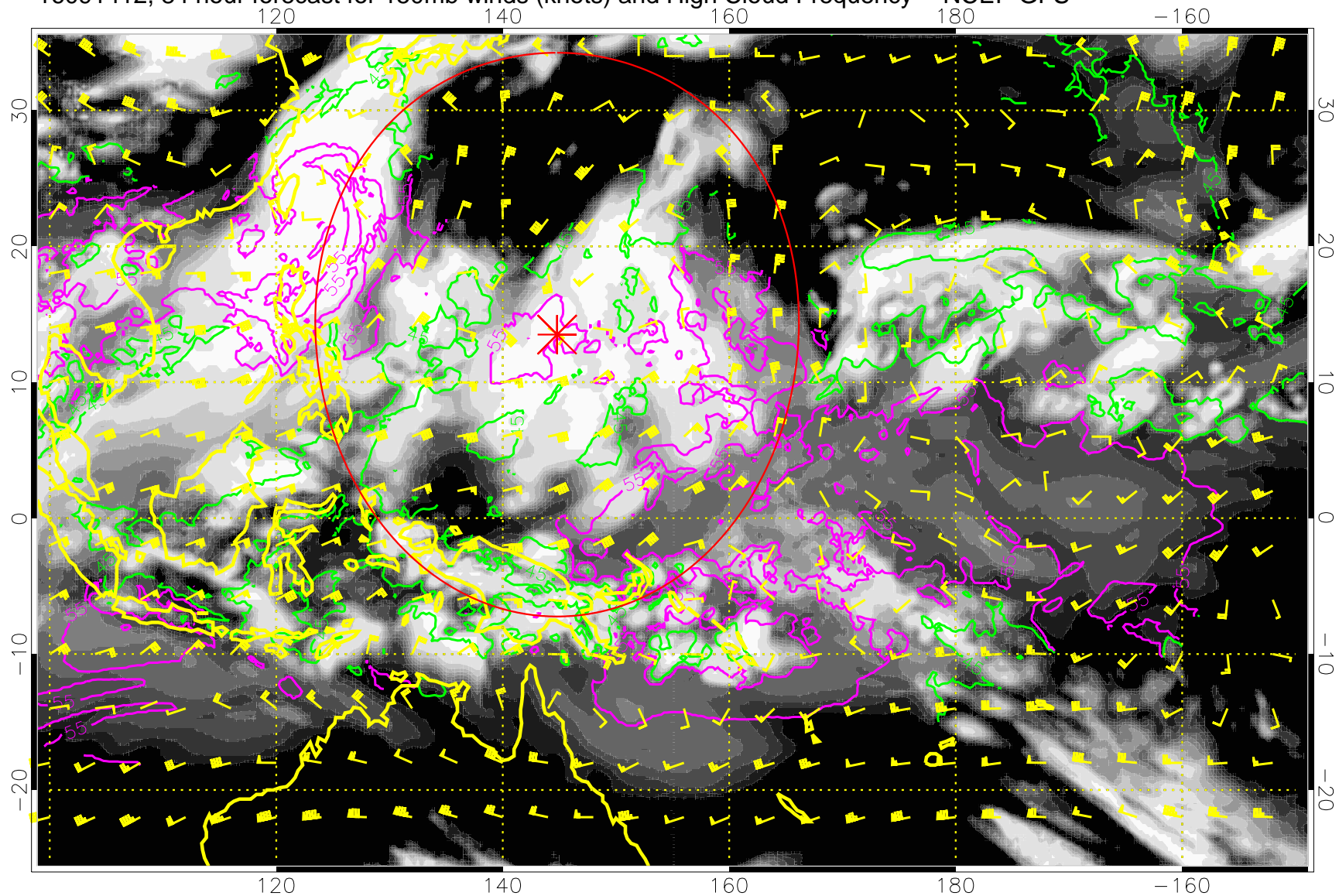
16091406, 78 hour forecast for 150mb winds (knots) and High Cloud Frequency -- NCEP GFS



45 kft
55 kft

Range ring of 2304 km

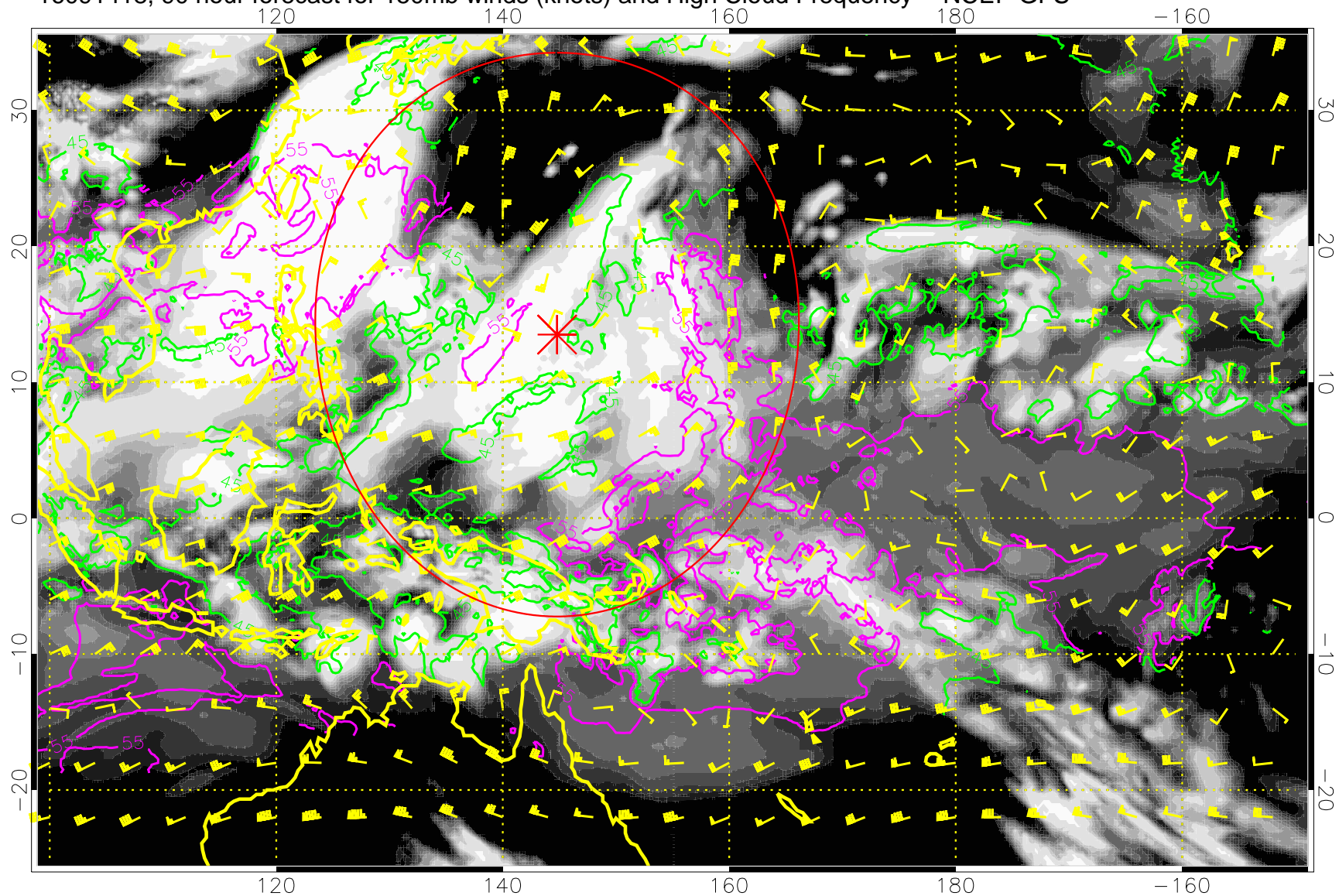
16091412, 84 hour forecast for 150mb winds (knots) and High Cloud Frequency -- NCEP GFS



45 kft
55 kft

Range ring of 2304 km

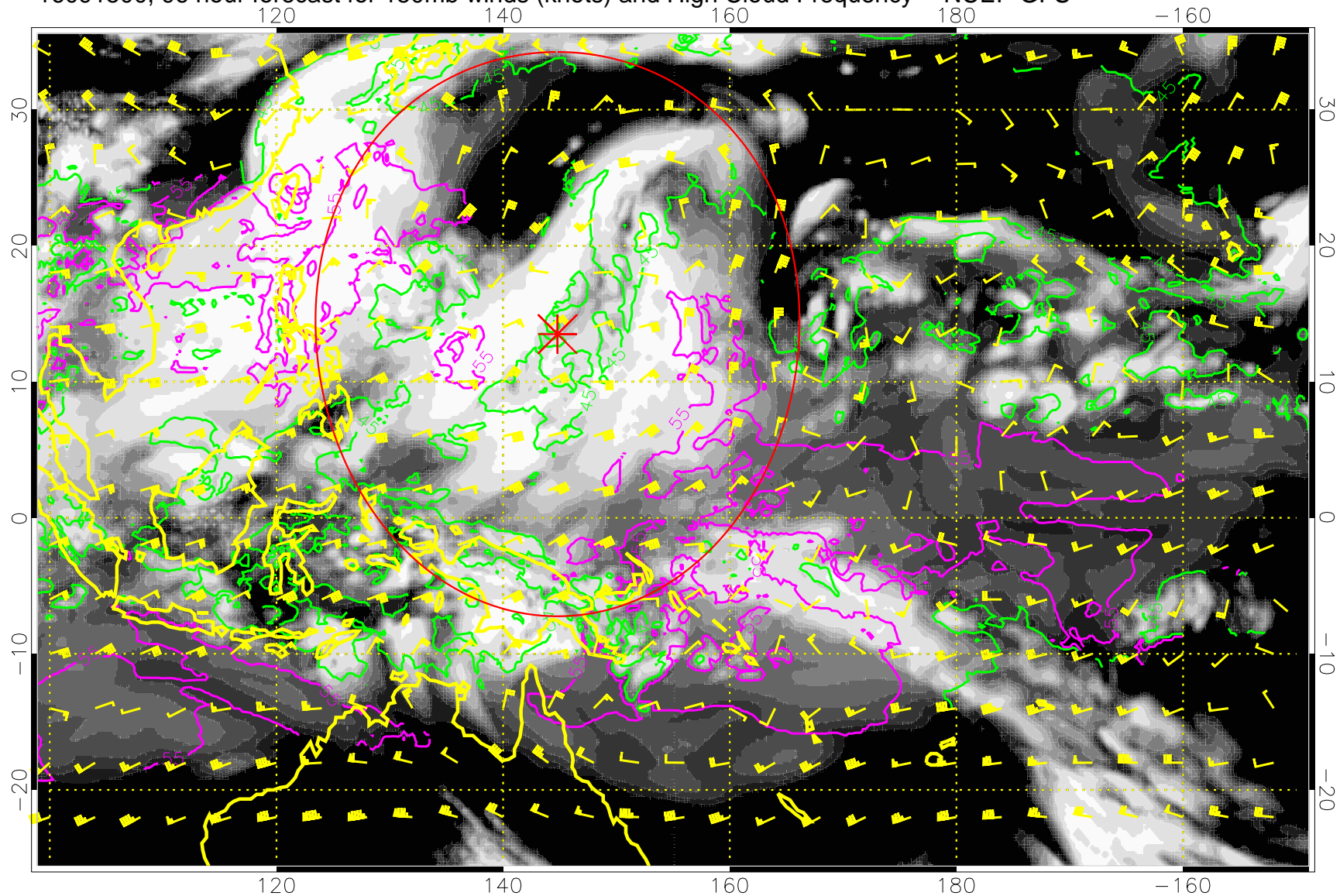
16091418, 90 hour forecast for 150mb winds (knots) and High Cloud Frequency -- NCEP GFS



45 kft
55 kft

Range ring of 2304 km

16091500, 96 hour forecast for 150mb winds (knots) and High Cloud Frequency -- NCEP GFS

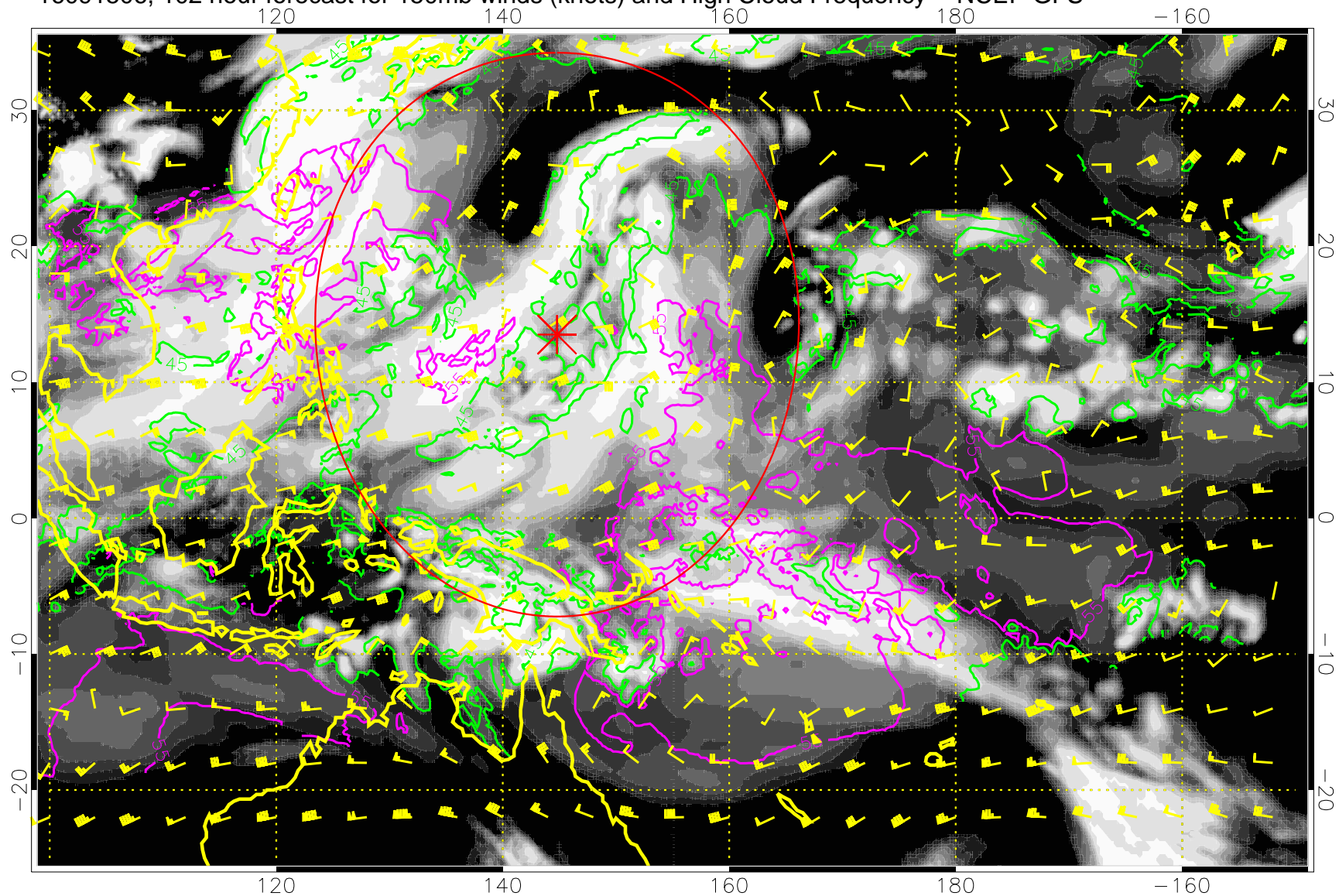


0.0 0.2 0.4 0.6 0.8 1.0
High Cloud Frequency

45 kft
55 kft

Range ring of 2304 km

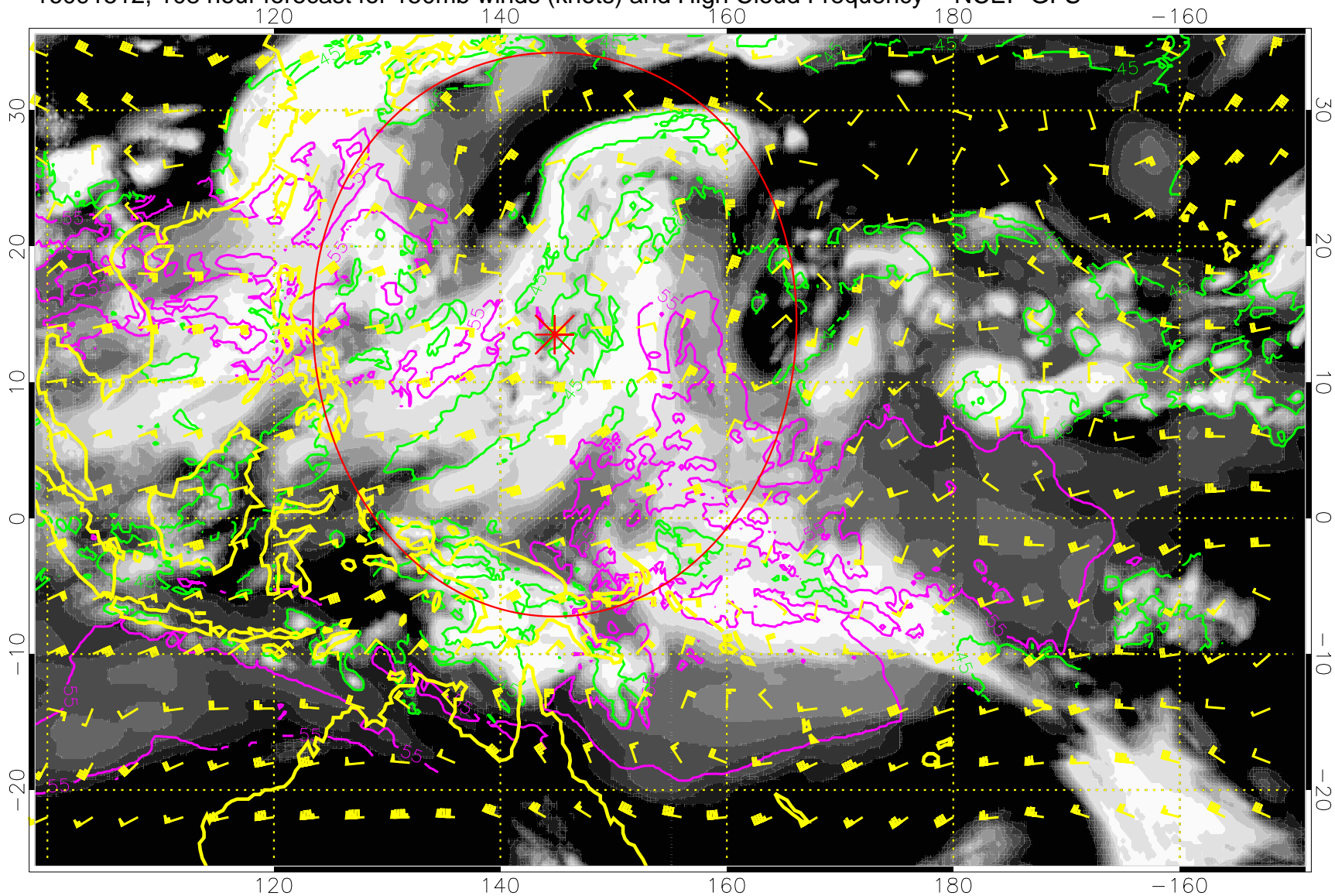
16091506, 102 hour forecast for 150mb winds (knots) and High Cloud Frequency -- NCEP GFS



45 kft
55 kft

Range ring of 2304 km

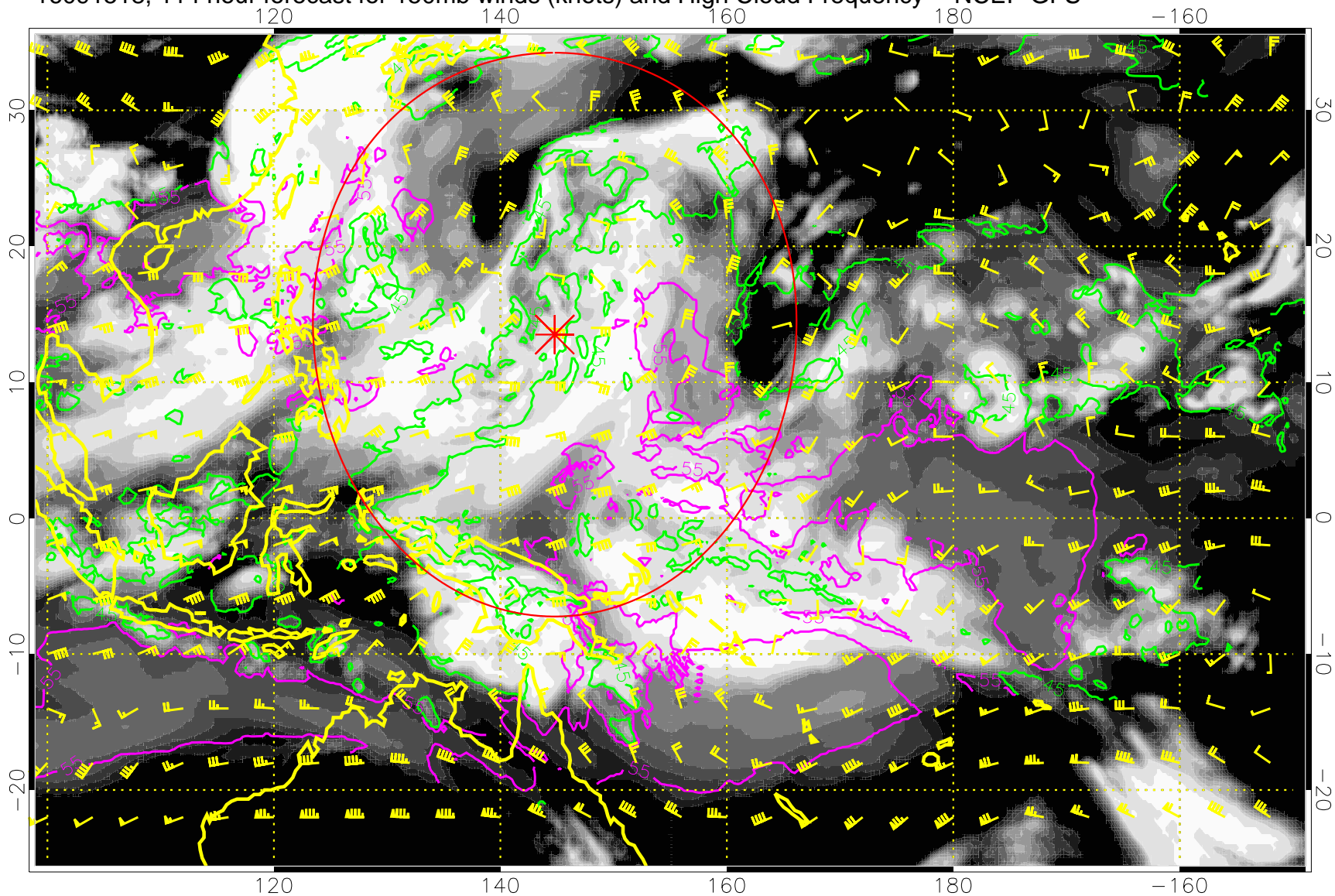
16091512, 108 hour forecast for 150mb winds (knots) and High Cloud Frequency -- NCEP GFS



45 kft
55 kft

Range ring of 2304 km

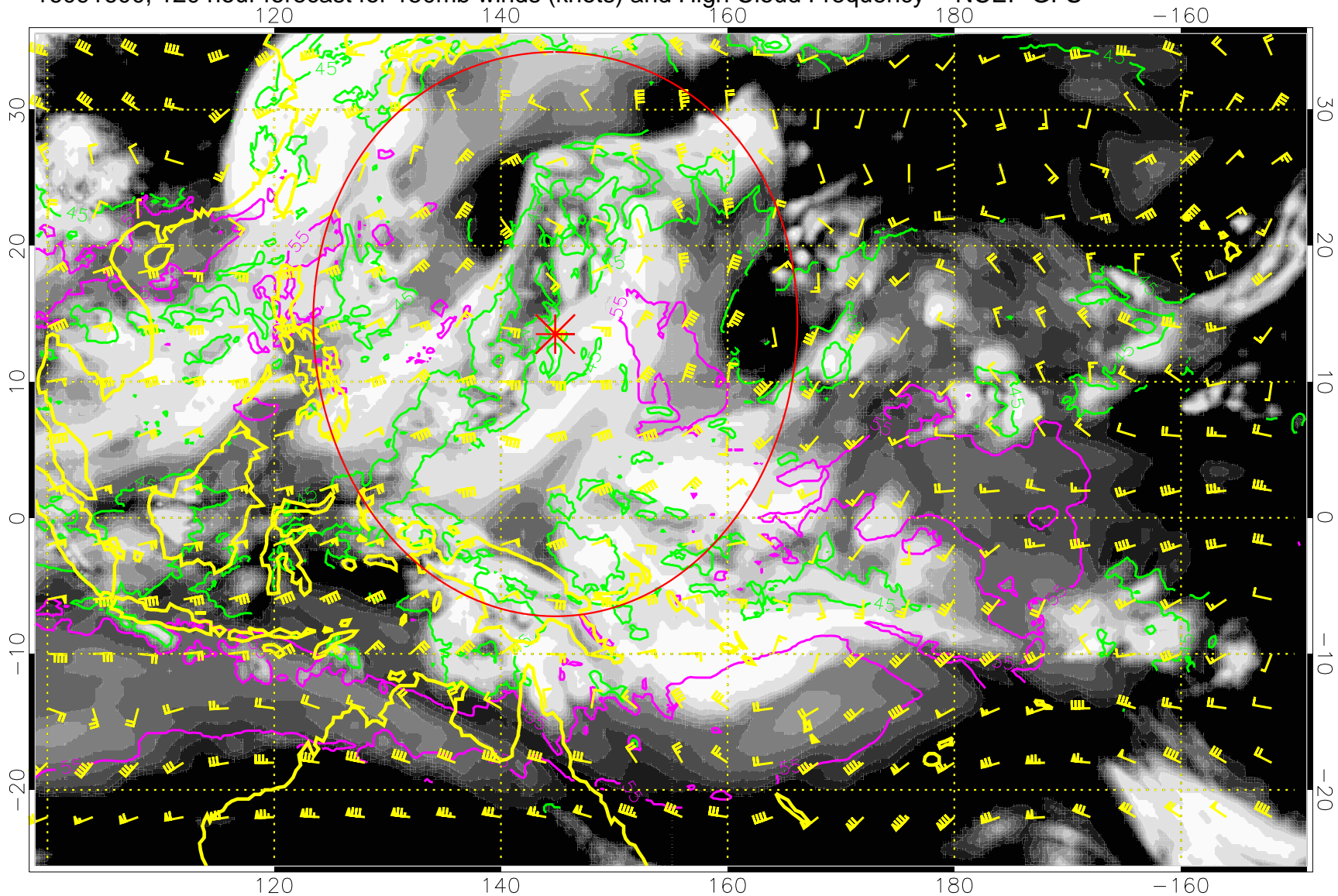
16091518, 114 hour forecast for 150mb winds (knots) and High Cloud Frequency -- NCEP GFS



45 kft
55 kft

Range ring of 2304 km

16091600, 120 hour forecast for 150mb winds (knots) and High Cloud Frequency -- NCEP GFS



0.0 0.2 0.4 0.6 0.8 1.0
High Cloud Frequency

45 kft
55 kft

Range ring of 2304 km