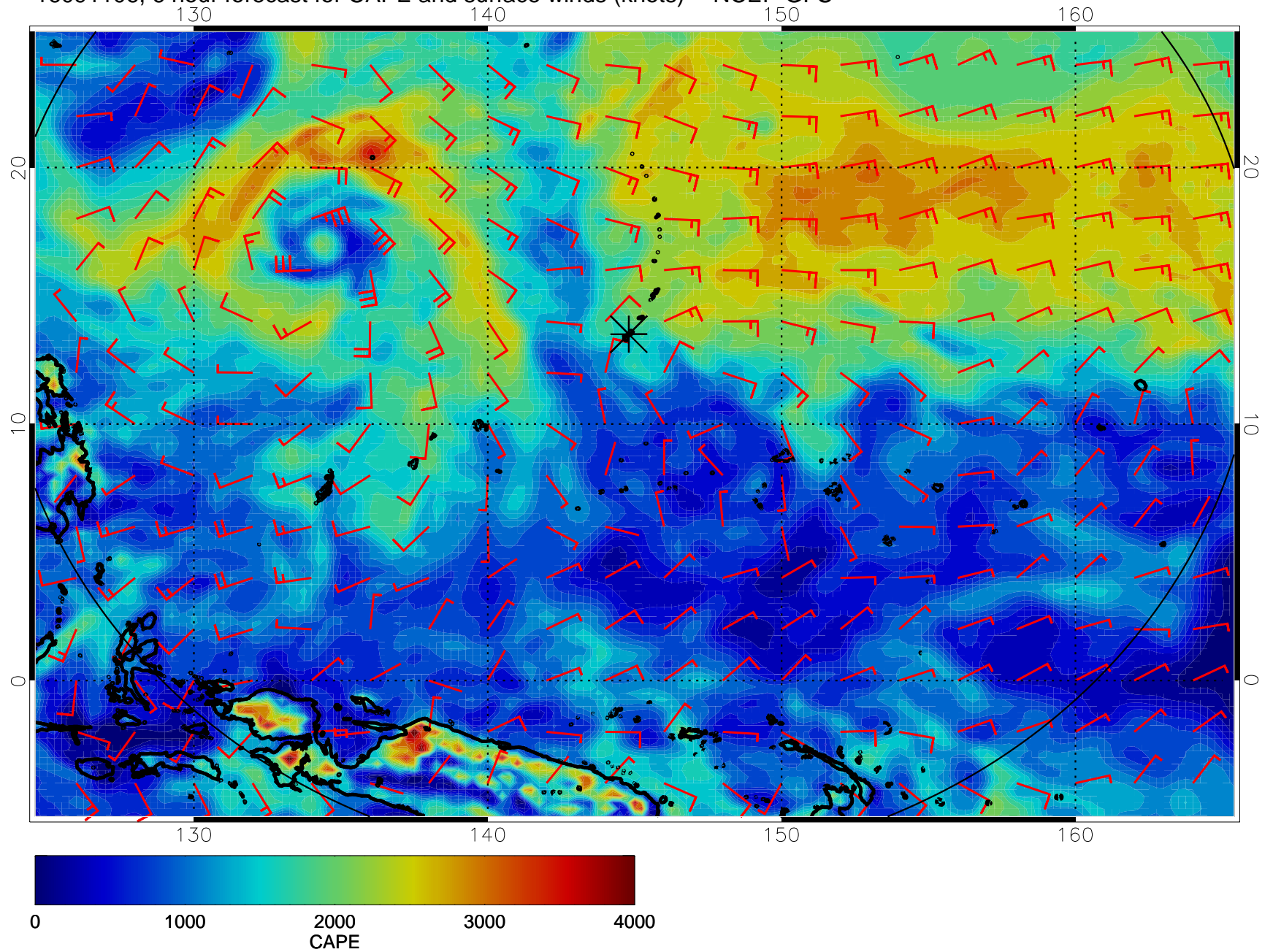
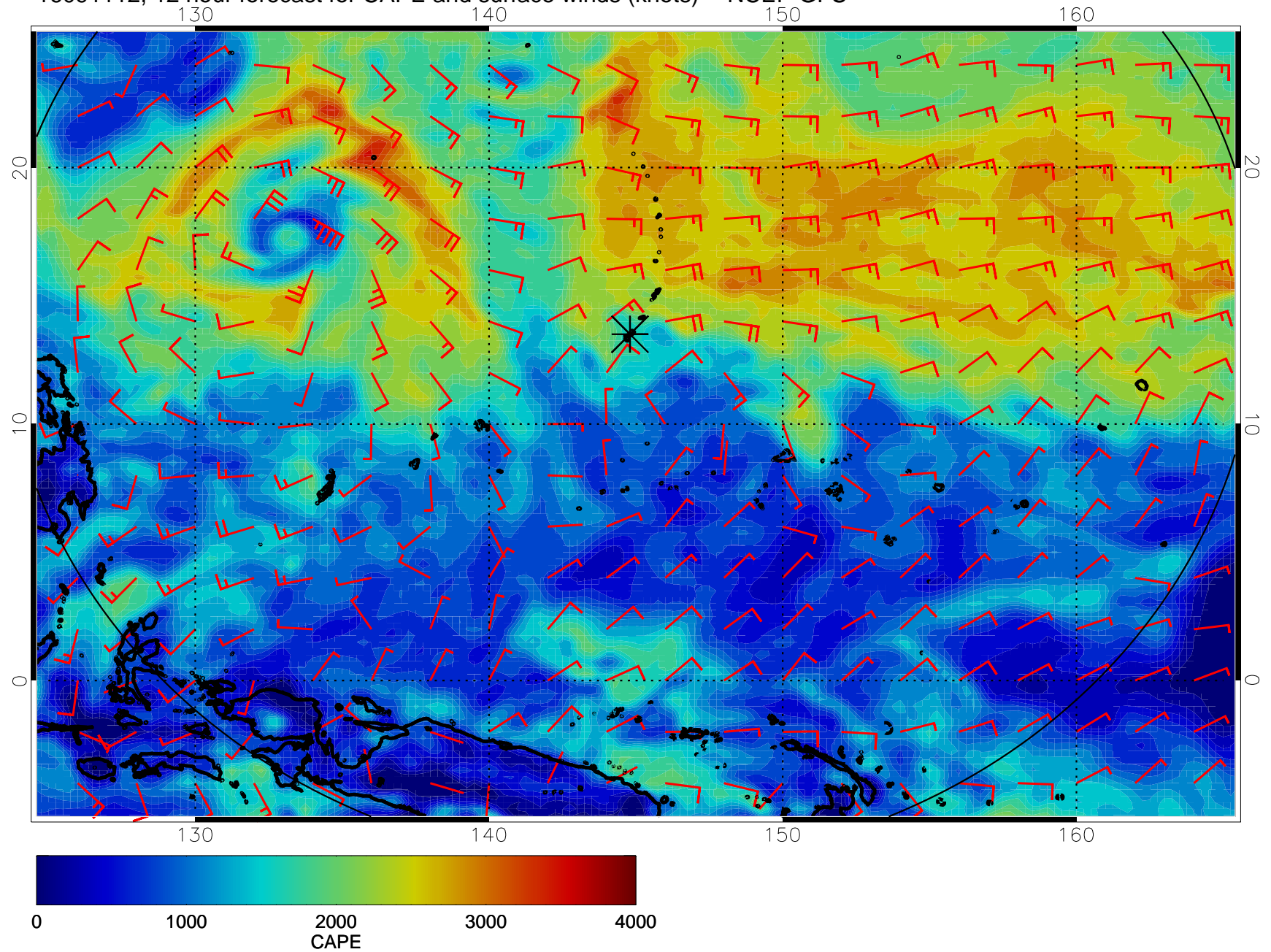


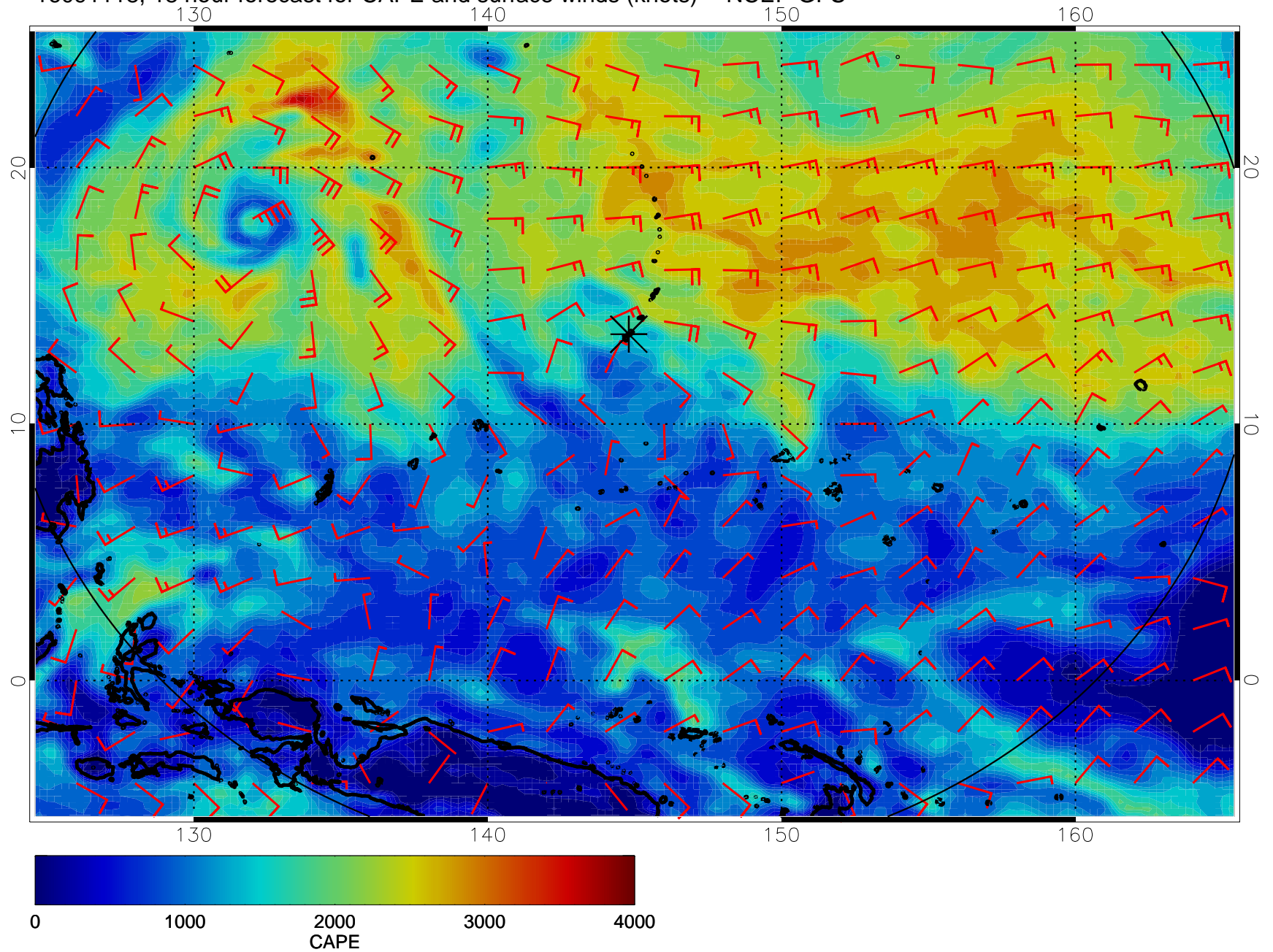
16091106, 6 hour forecast for CAPE and surface winds (knots) -- NCEP GFS



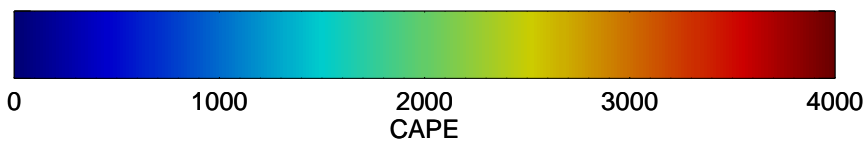
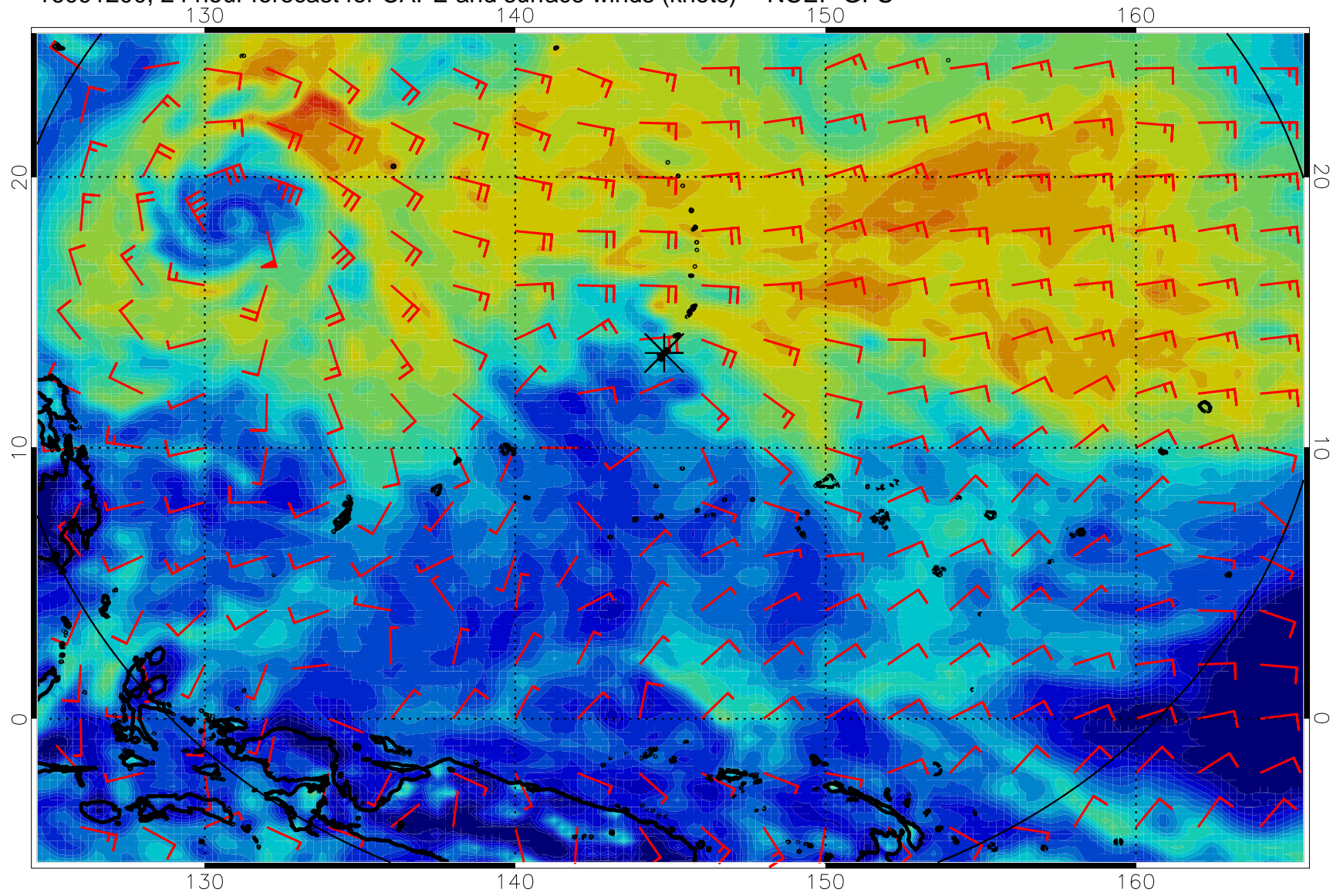
16091112, 12 hour forecast for CAPE and surface winds (knots) -- NCEP GFS



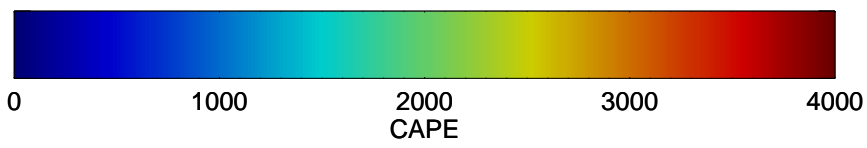
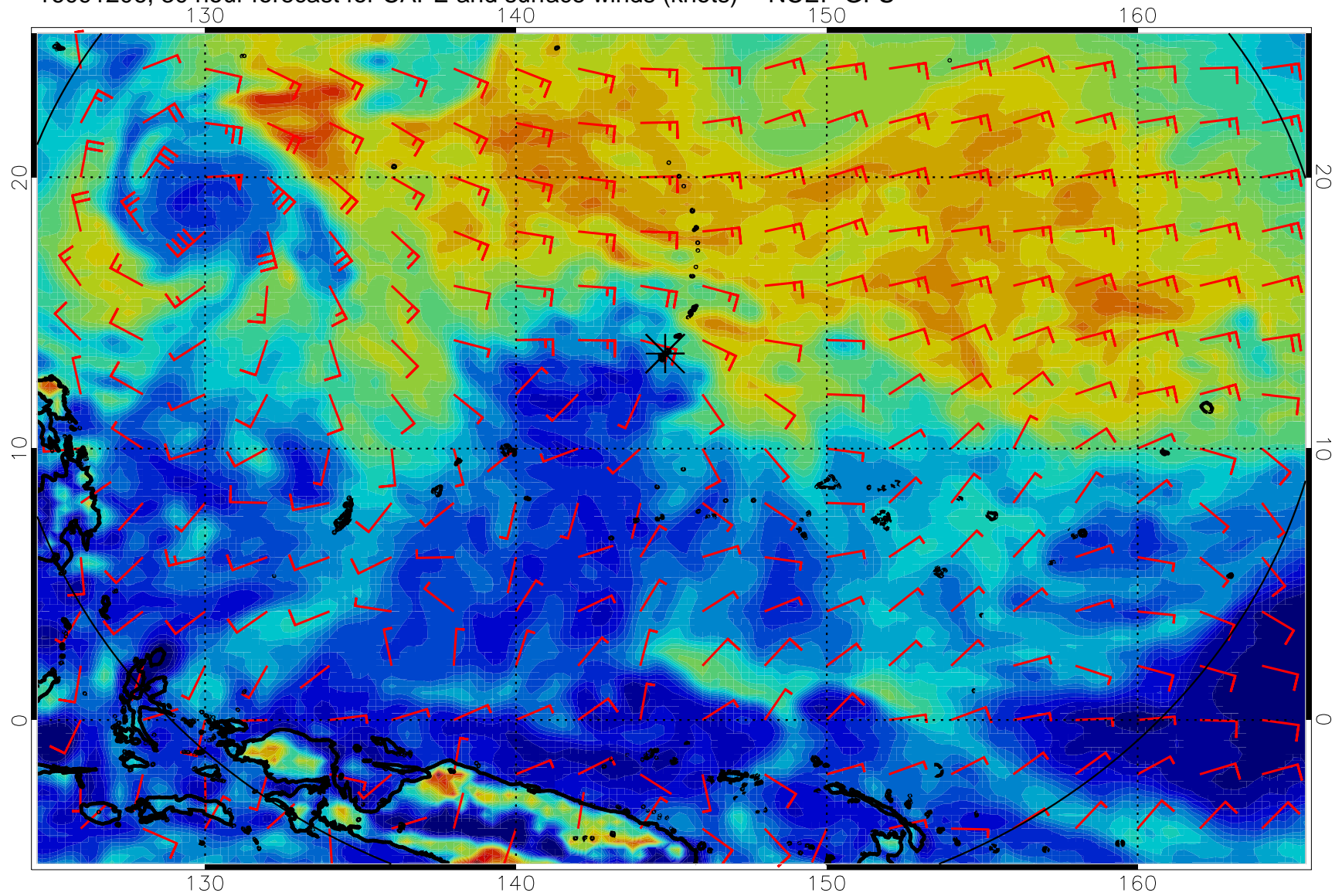
16091118, 18 hour forecast for CAPE and surface winds (knots) -- NCEP GFS



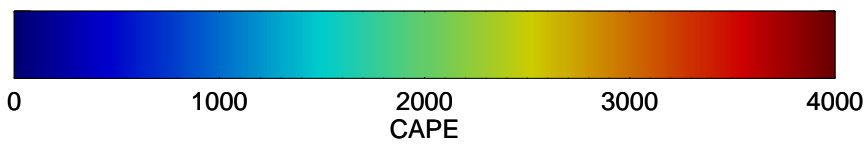
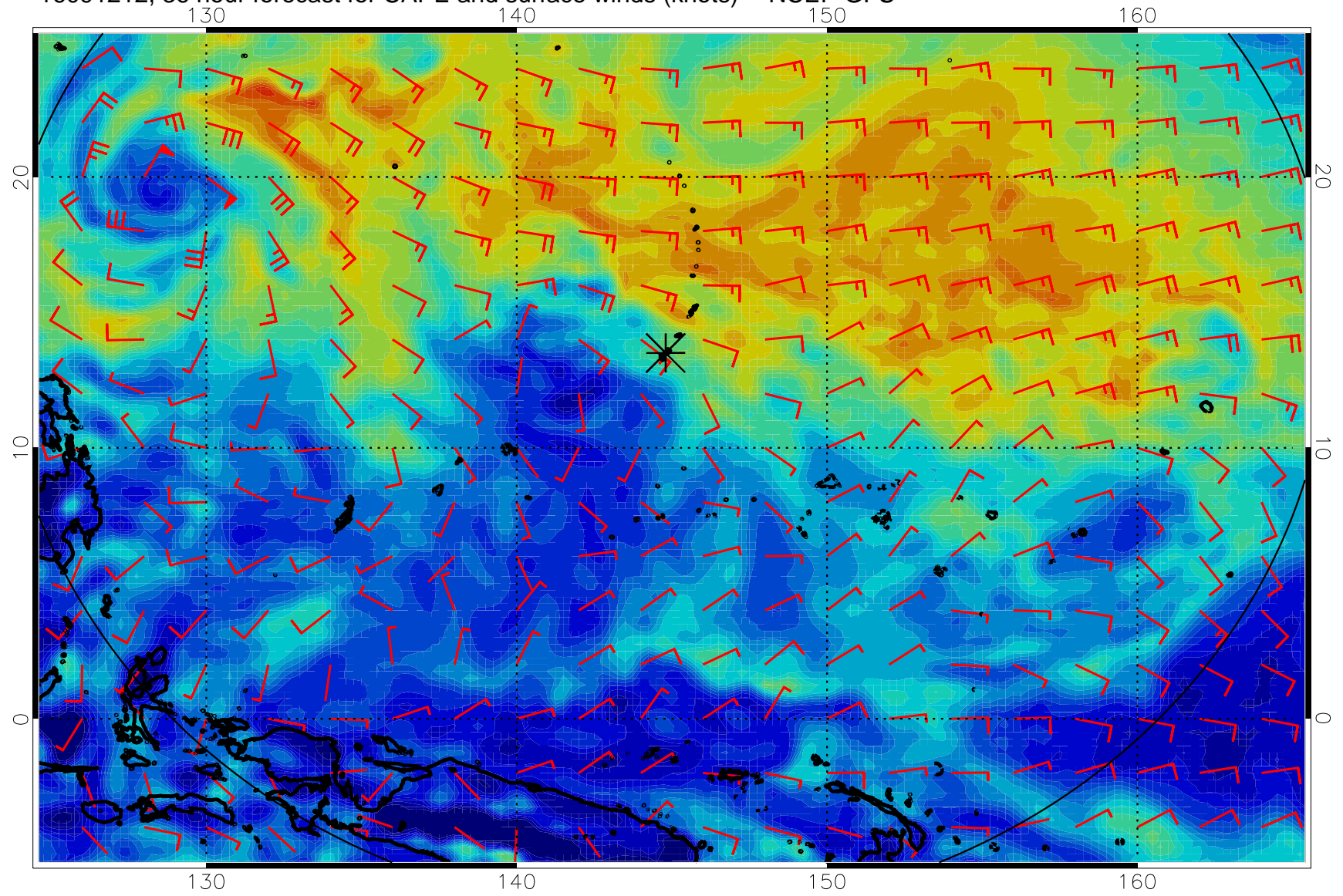
16091200, 24 hour forecast for CAPE and surface winds (knots) -- NCEP GFS



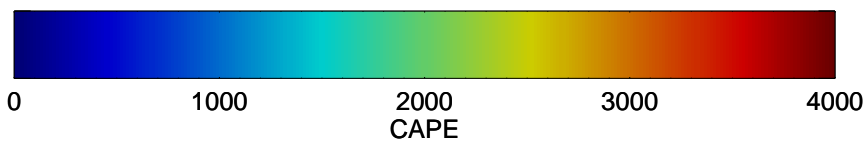
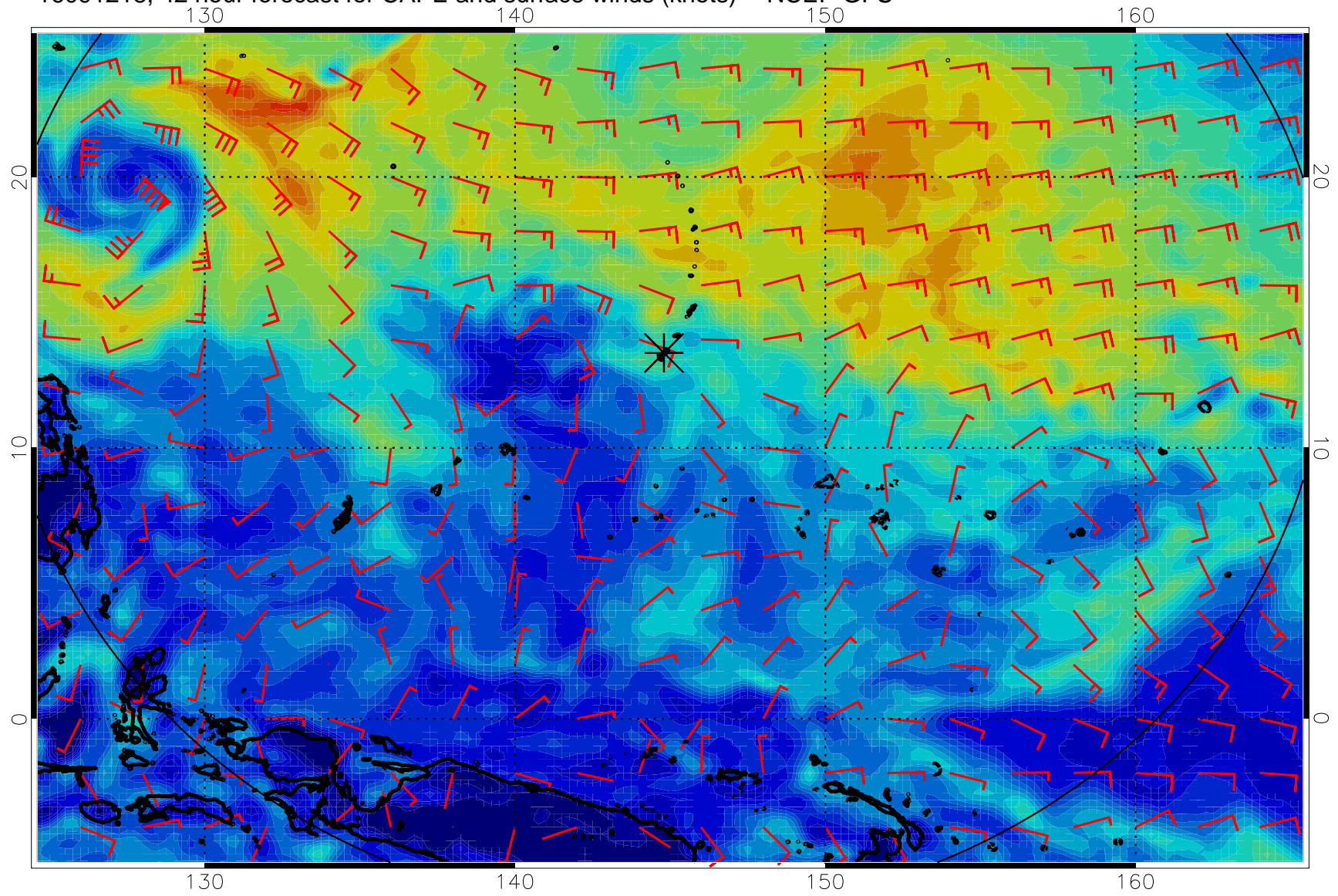
16091206, 30 hour forecast for CAPE and surface winds (knots) -- NCEP GFS



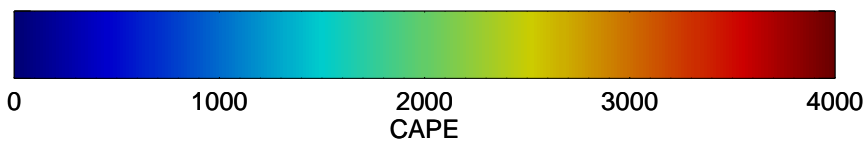
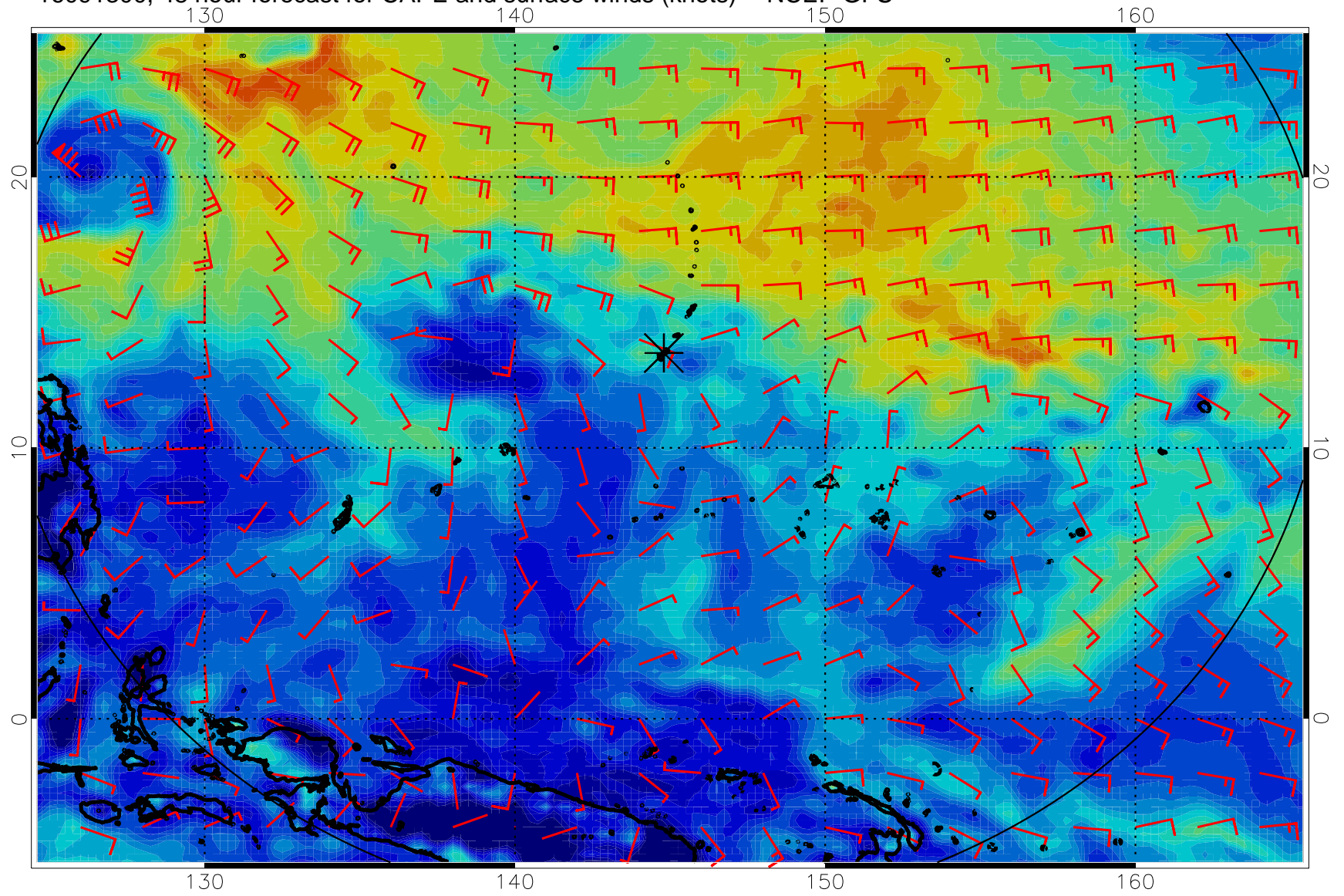
16091212, 36 hour forecast for CAPE and surface winds (knots) -- NCEP GFS



16091218, 42 hour forecast for CAPE and surface winds (knots) -- NCEP GFS

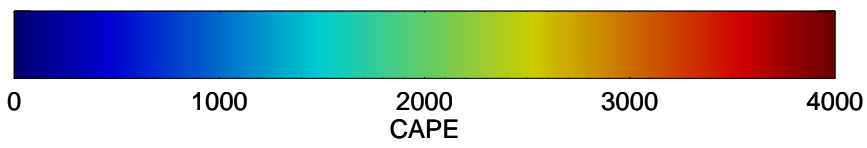
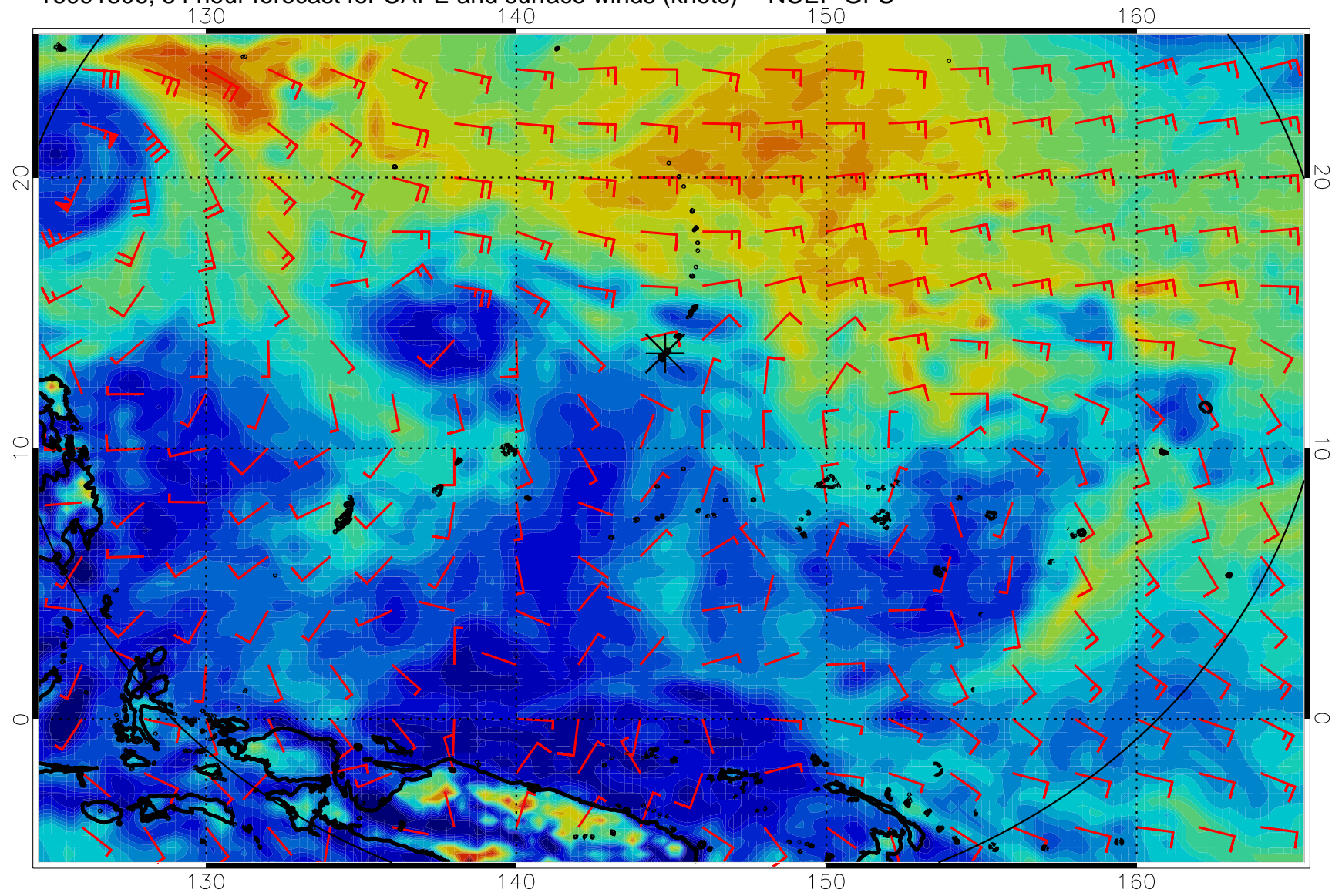


16091300, 48 hour forecast for CAPE and surface winds (knots) -- NCEP GFS

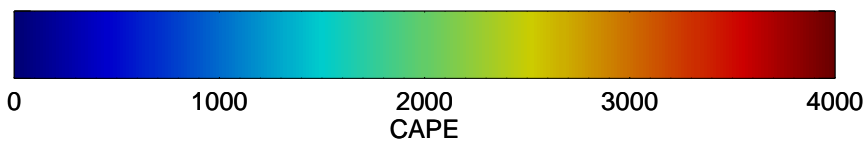
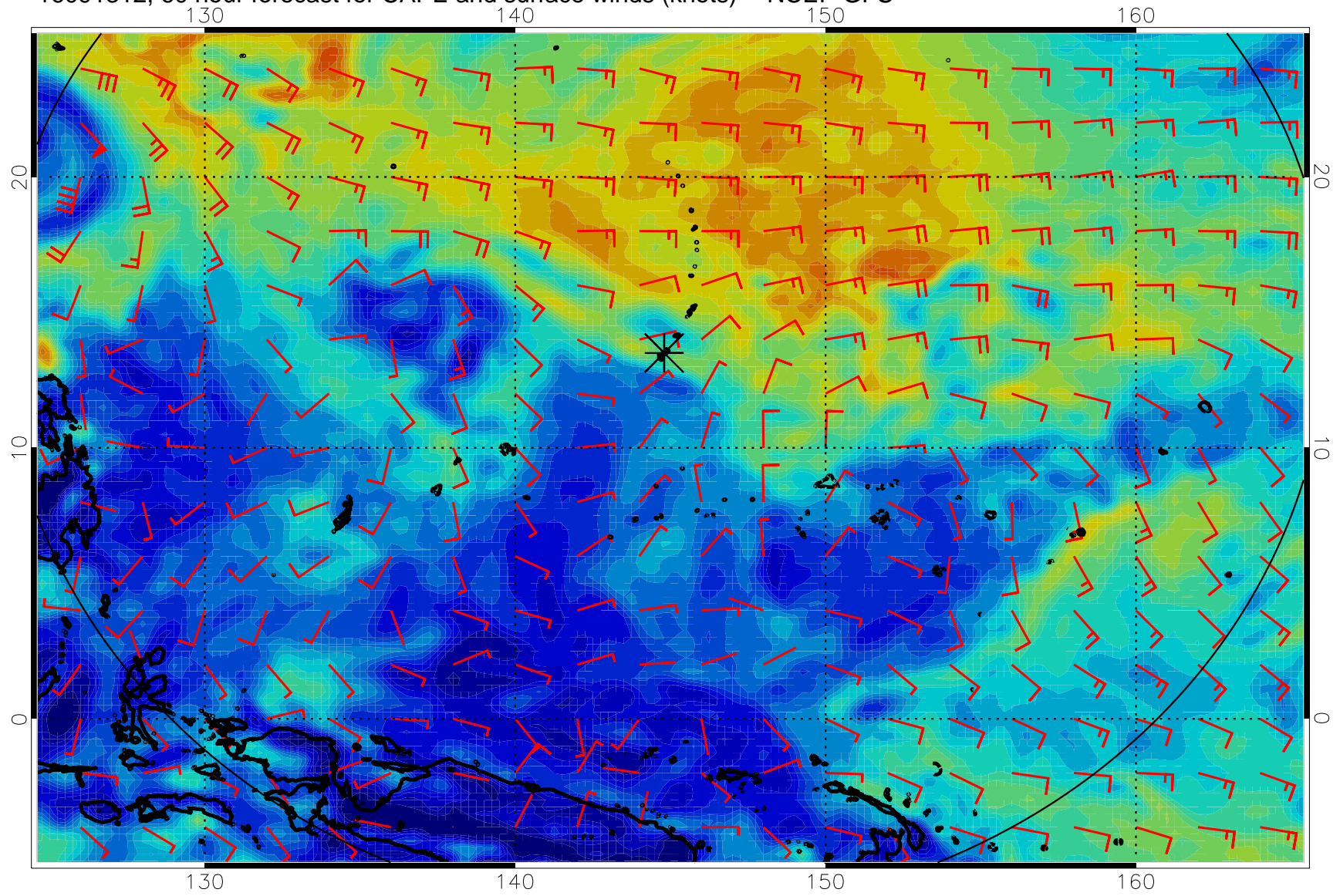




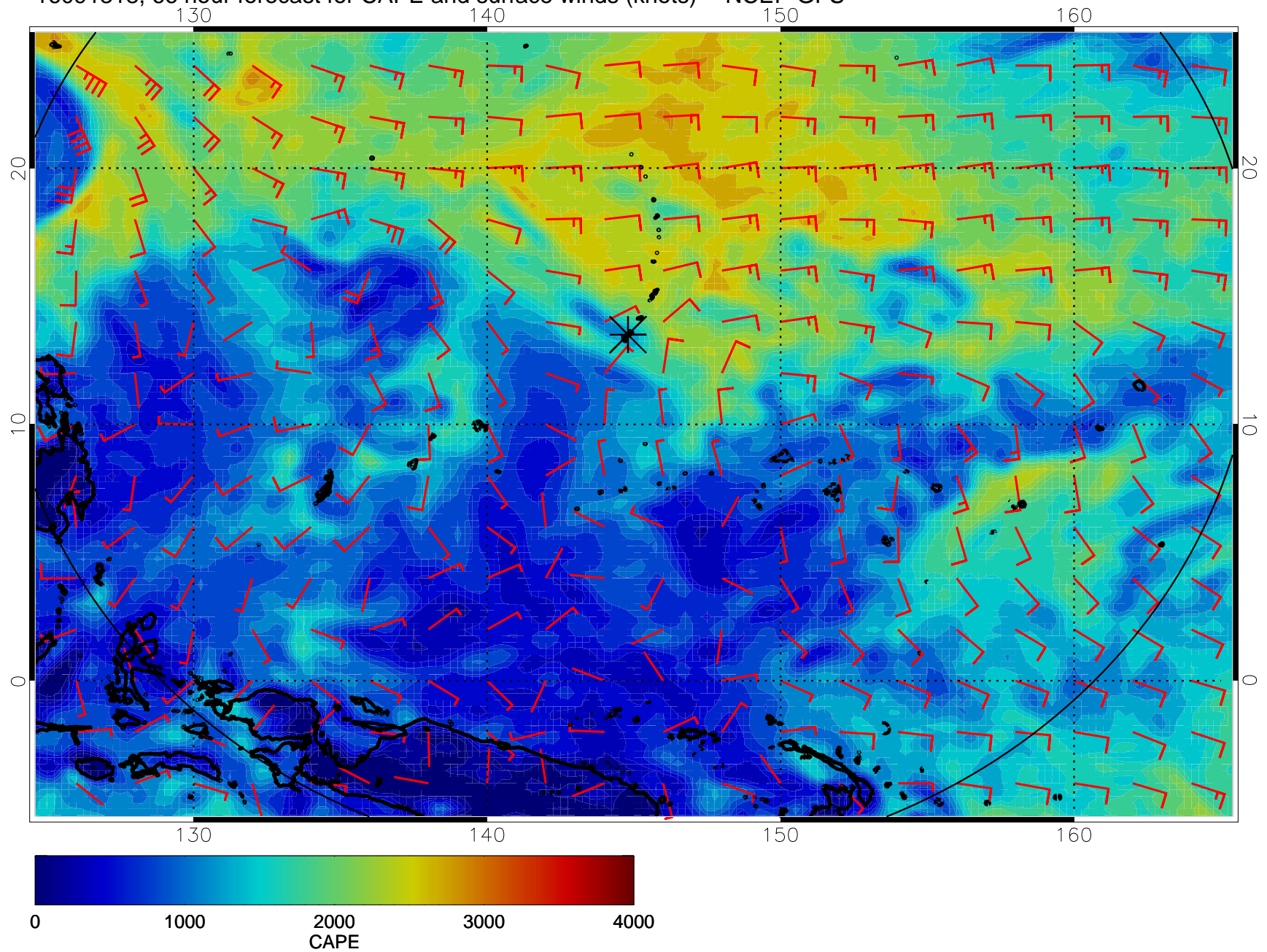
16091306, 54 hour forecast for CAPE and surface winds (knots) -- NCEP GFS



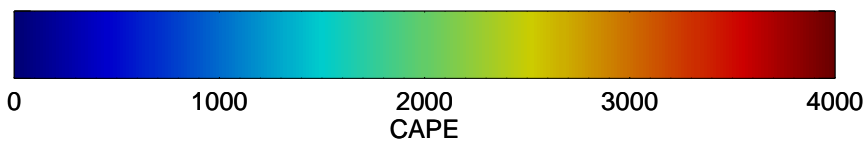
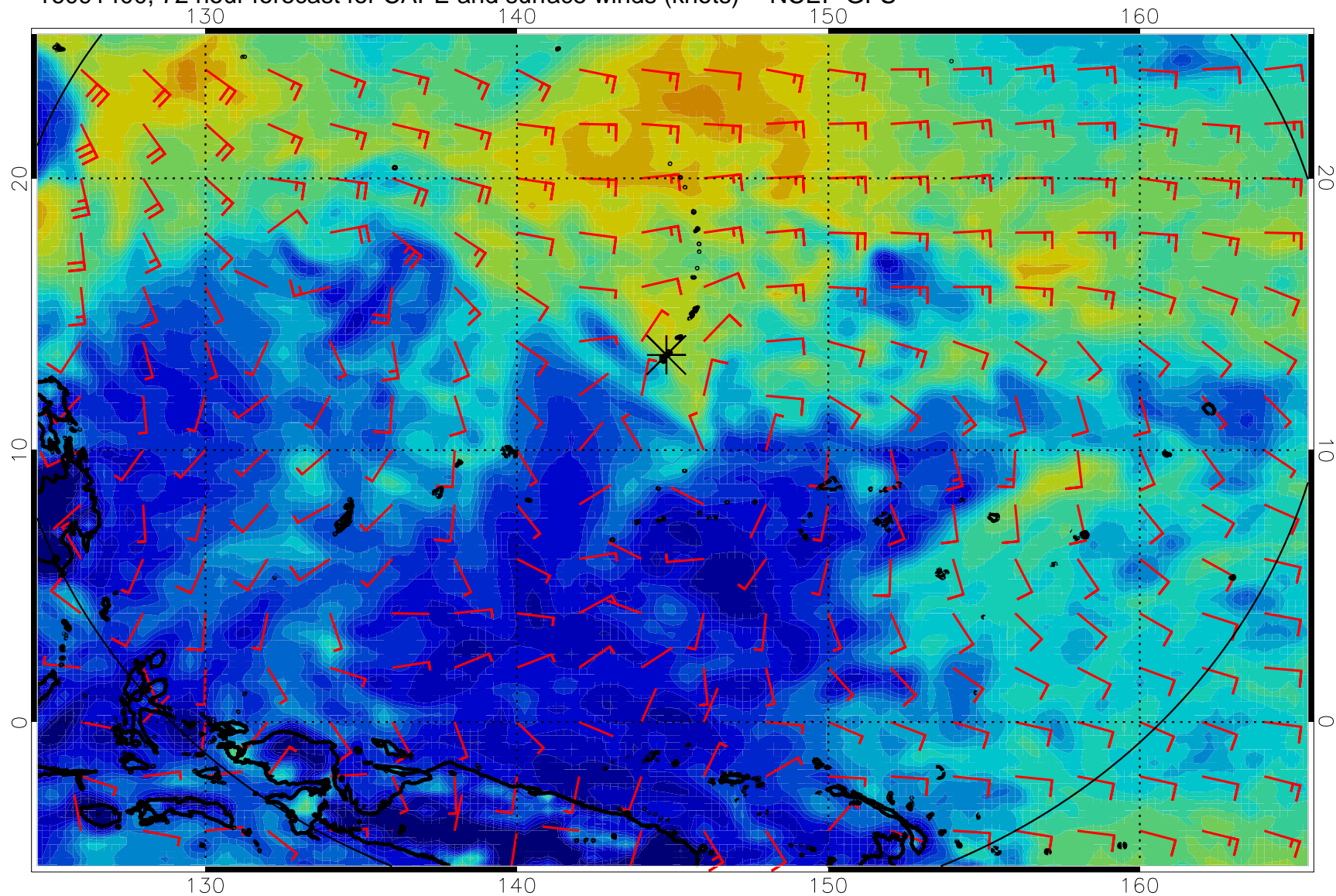
16091312, 60 hour forecast for CAPE and surface winds (knots) -- NCEP GFS



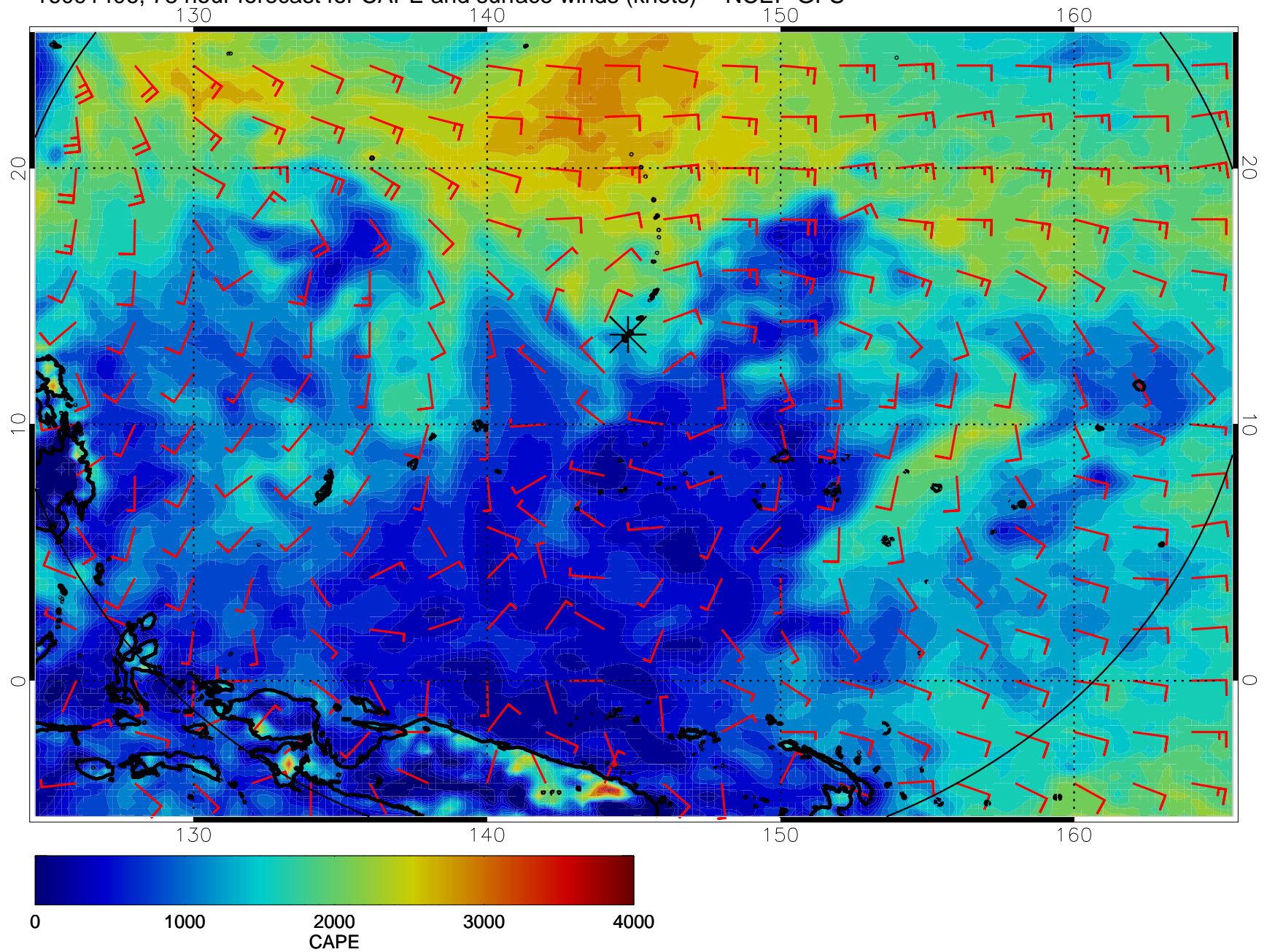
16091318, 66 hour forecast for CAPE and surface winds (knots) -- NCEP GFS



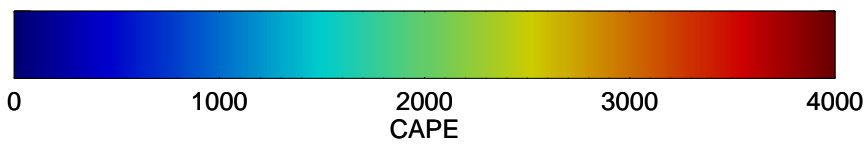
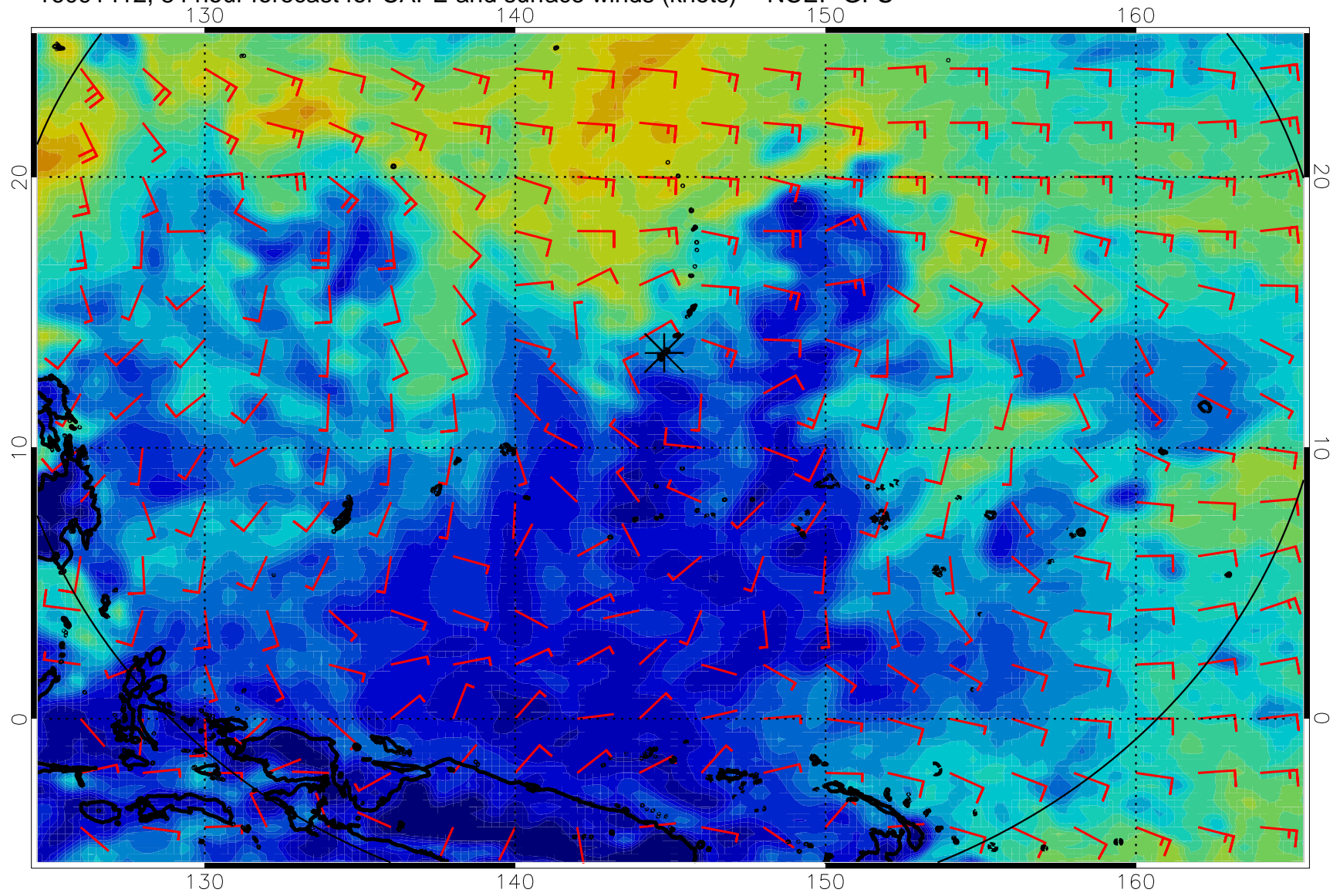
16091400, 72 hour forecast for CAPE and surface winds (knots) -- NCEP GFS



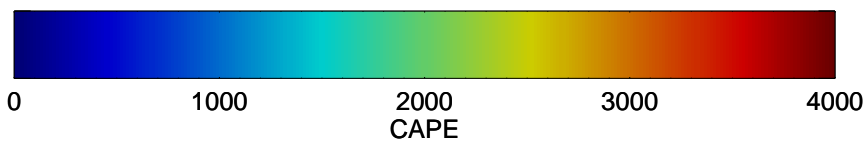
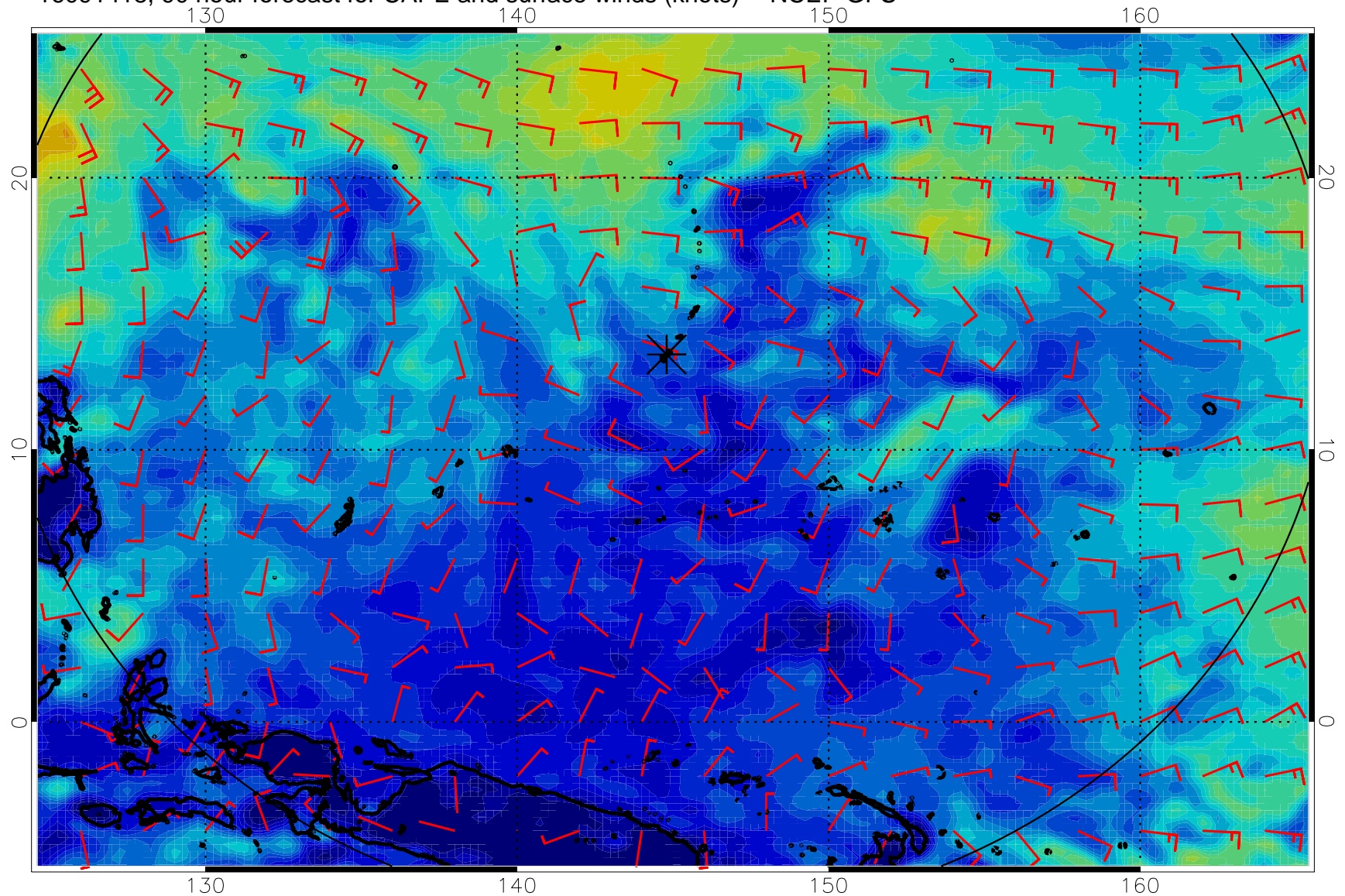
16091406, 78 hour forecast for CAPE and surface winds (knots) -- NCEP GFS



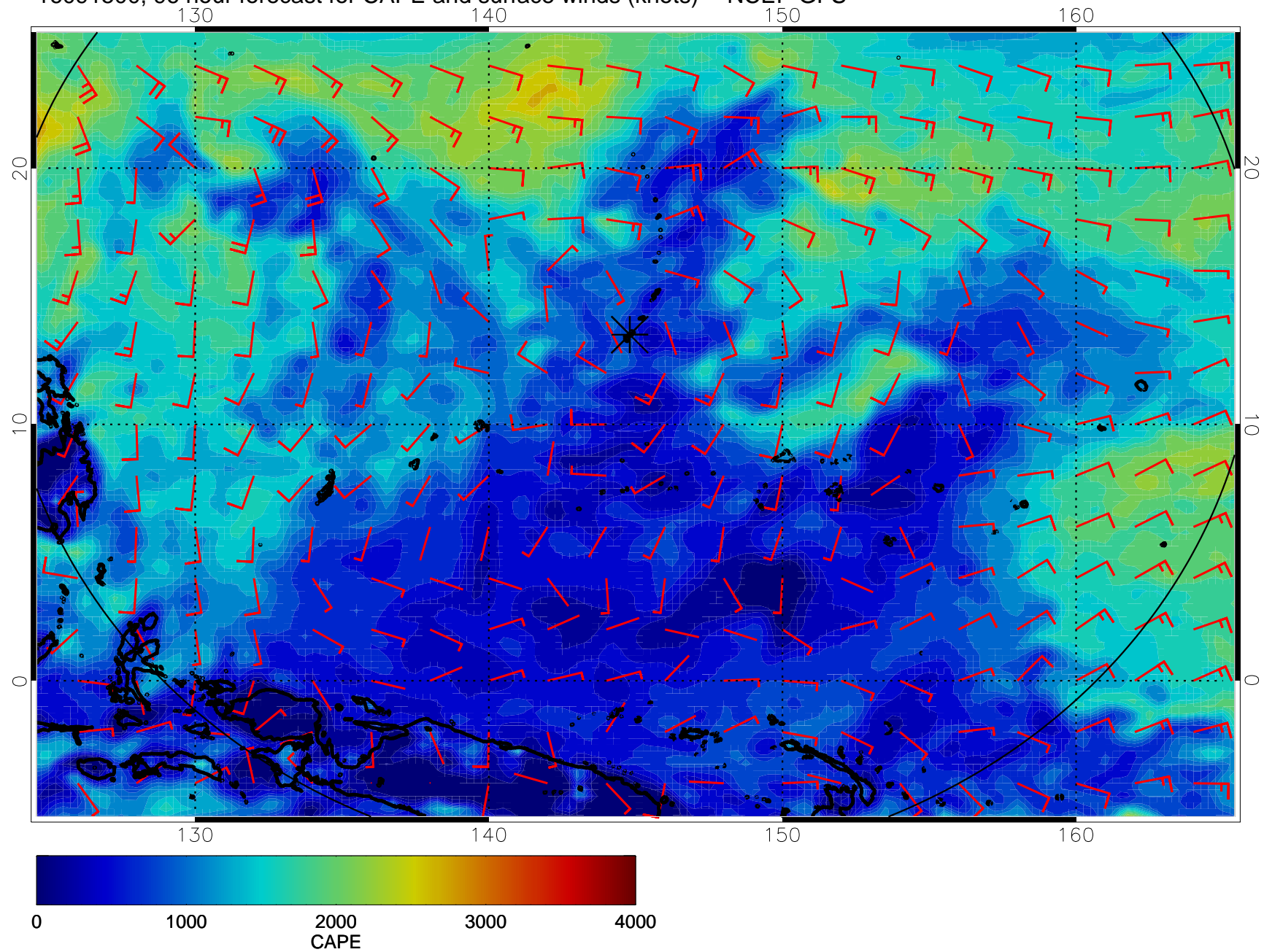
16091412, 84 hour forecast for CAPE and surface winds (knots) -- NCEP GFS



16091418, 90 hour forecast for CAPE and surface winds (knots) -- NCEP GFS

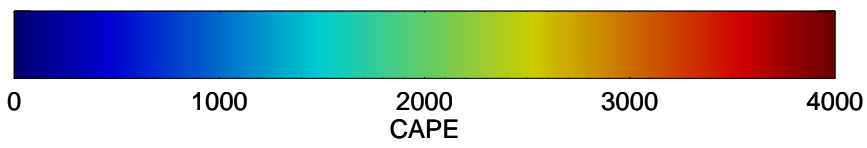
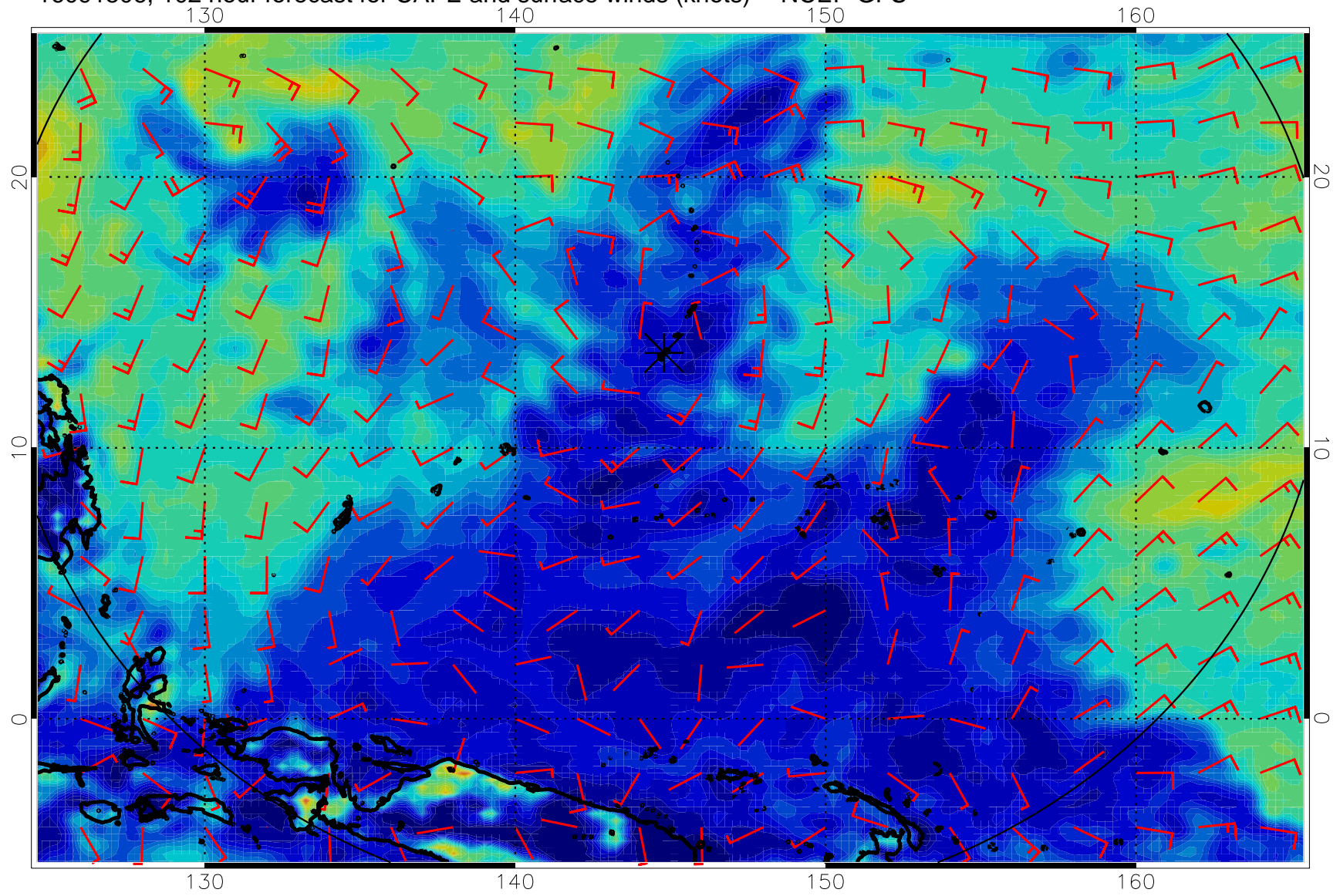


16091500, 96 hour forecast for CAPE and surface winds (knots) -- NCEP GFS

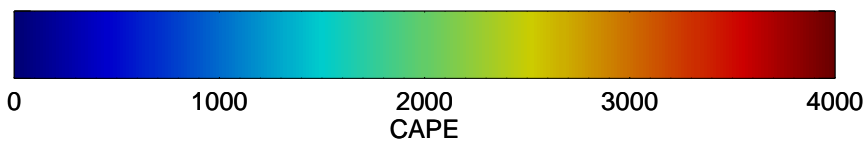
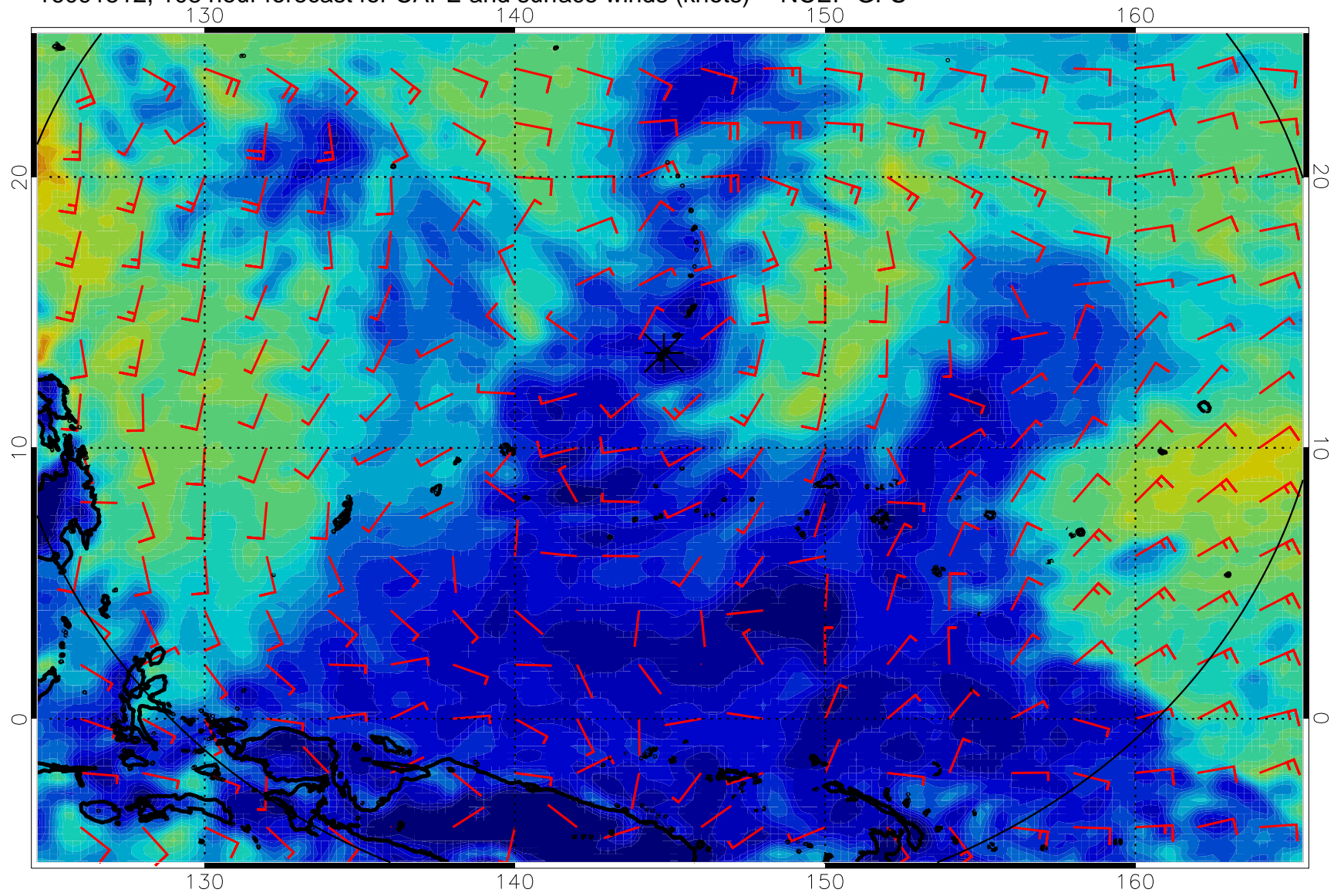




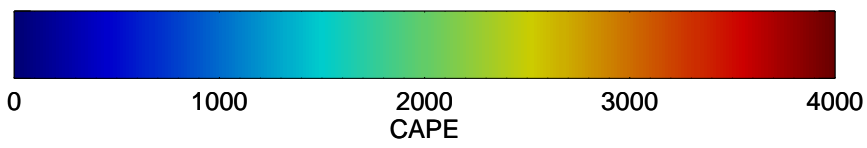
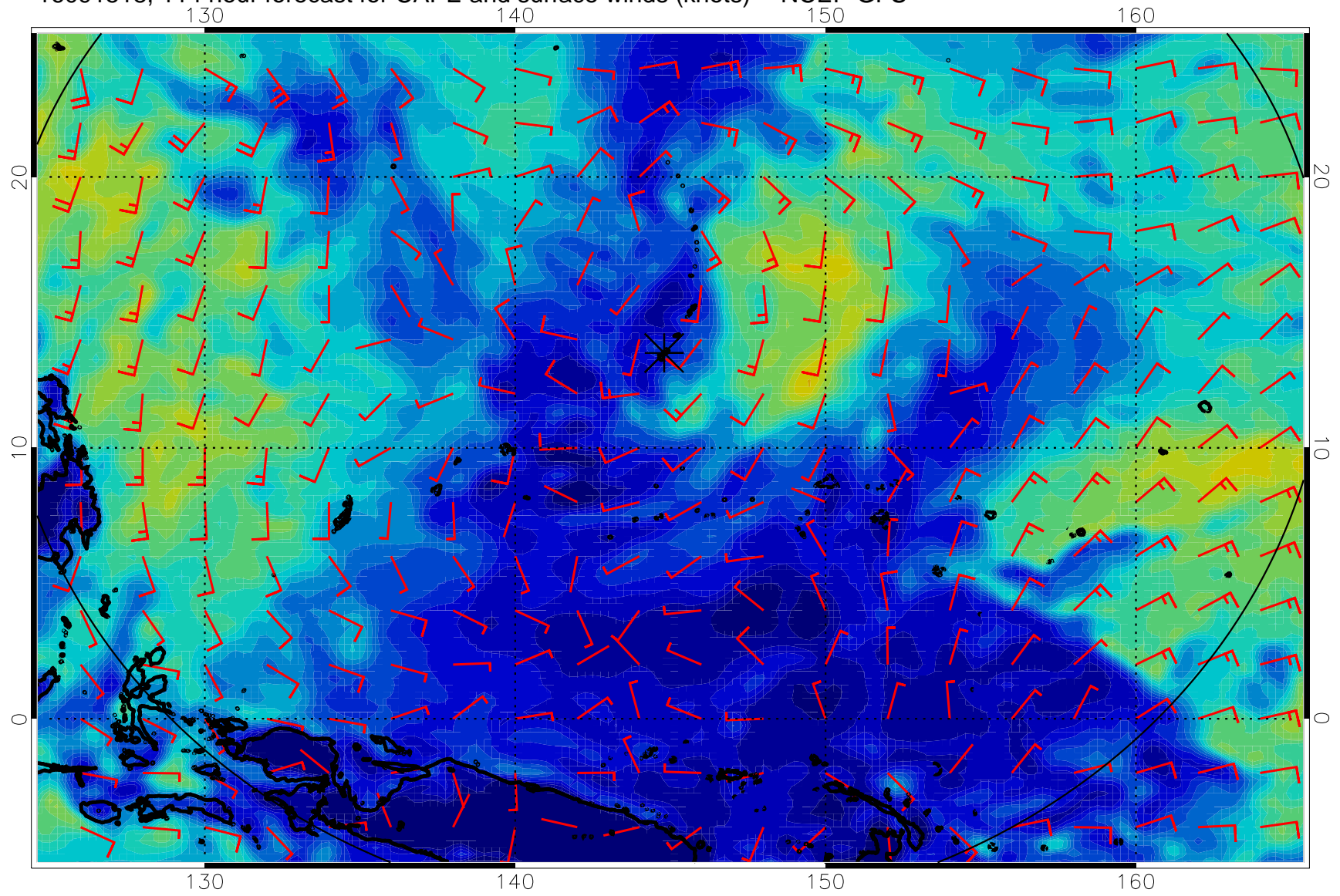
16091506, 102 hour forecast for CAPE and surface winds (knots) -- NCEP GFS



16091512, 108 hour forecast for CAPE and surface winds (knots) -- NCEP GFS



16091518, 114 hour forecast for CAPE and surface winds (knots) -- NCEP GFS



16091600, 120 hour forecast for CAPE and surface winds (knots) -- NCEP GFS

