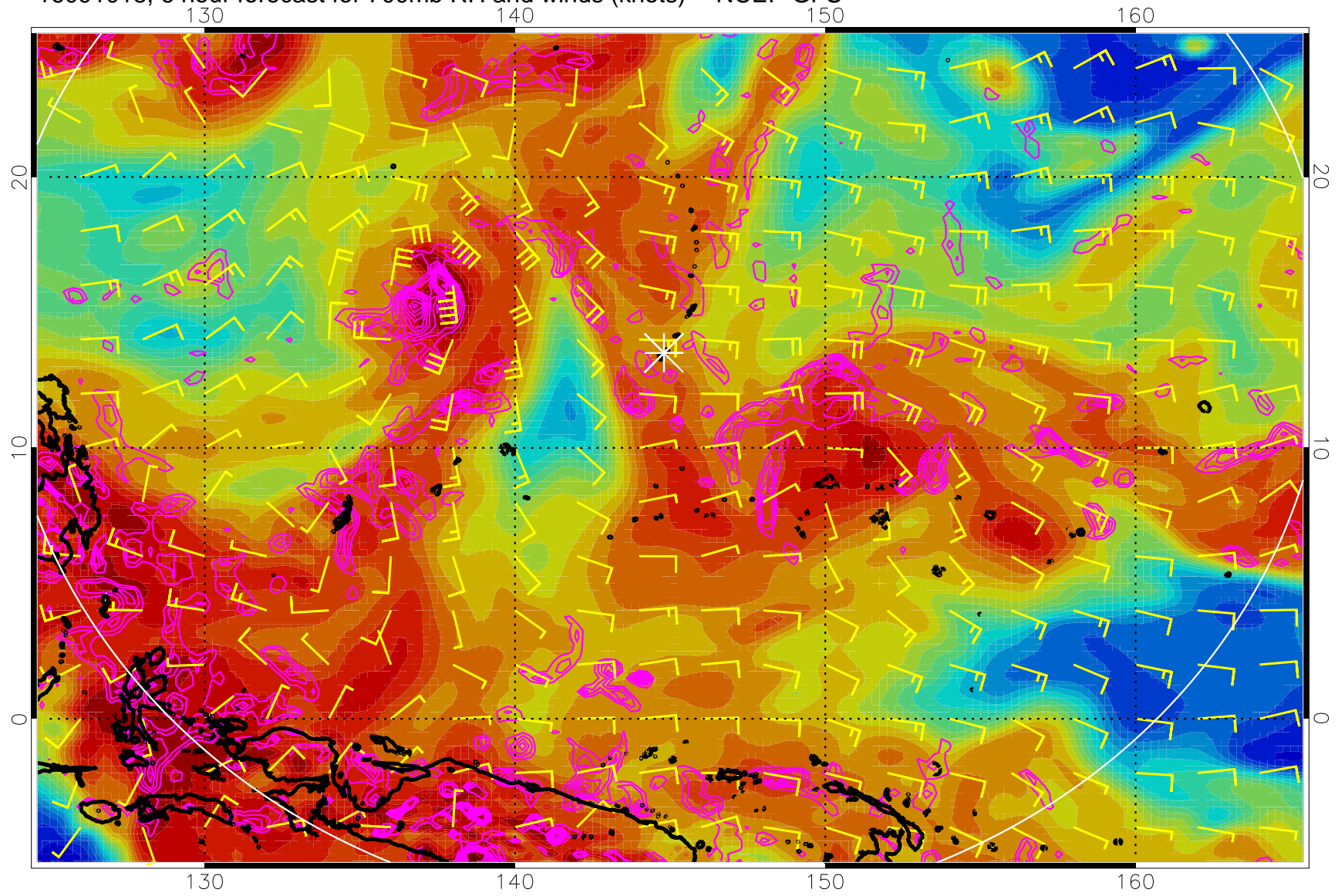
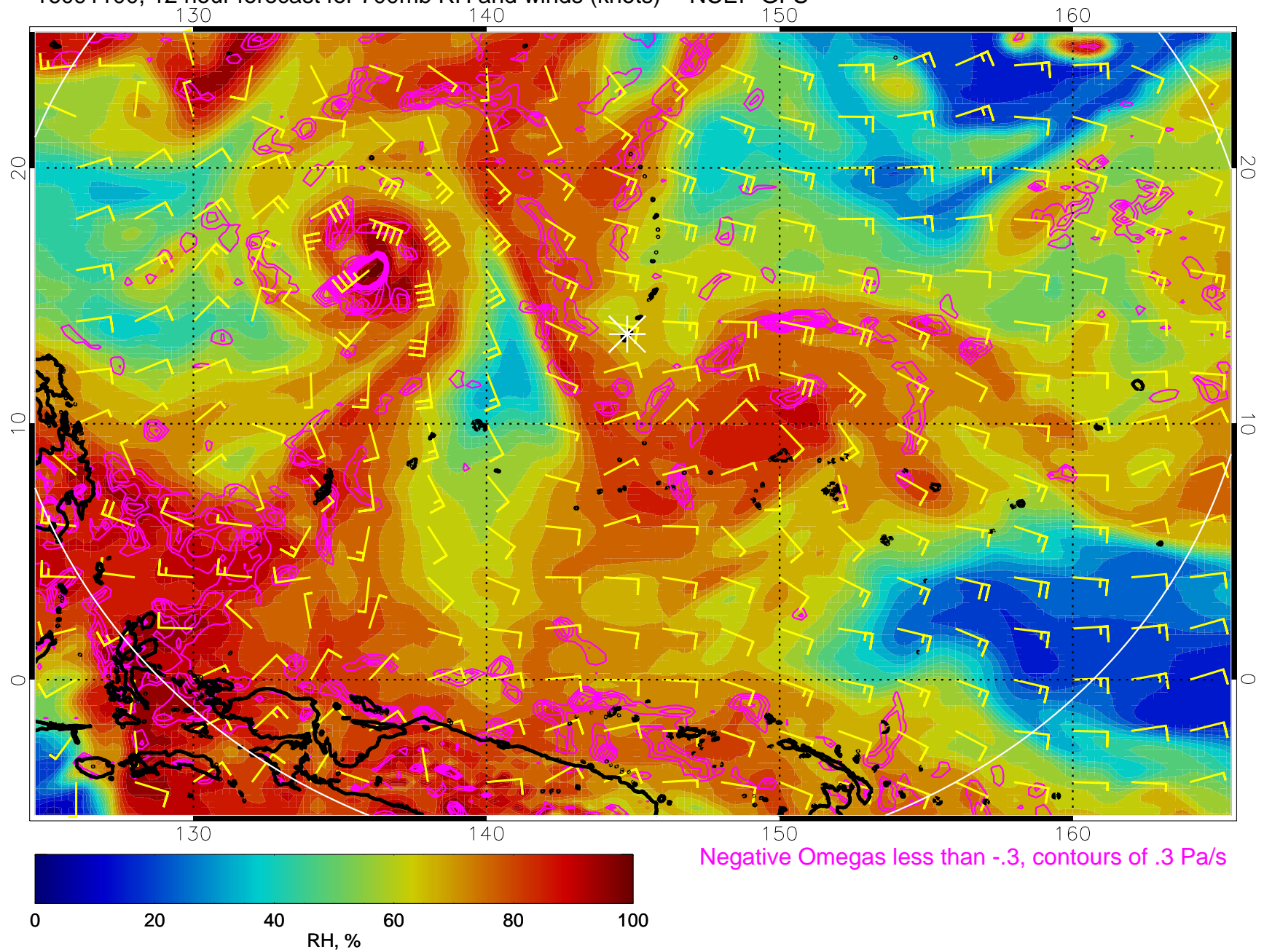


16091018, 6 hour forecast for 700mb RH and winds (knots) -- NCEP GFS



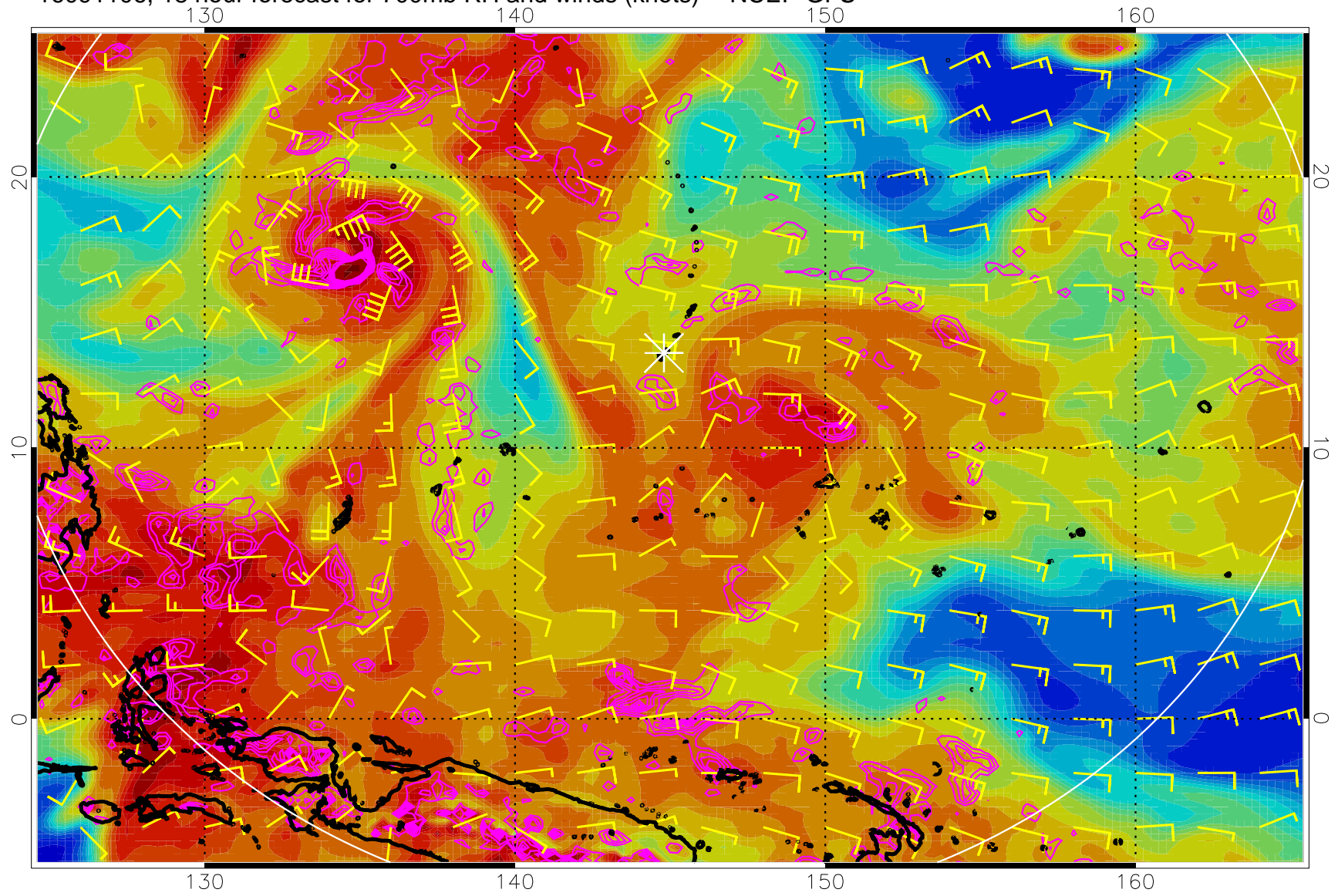
Negative Omegas less than -.3, contours of .3 Pa/s

16091100, 12 hour forecast for 700mb RH and winds (knots) -- NCEP GFS



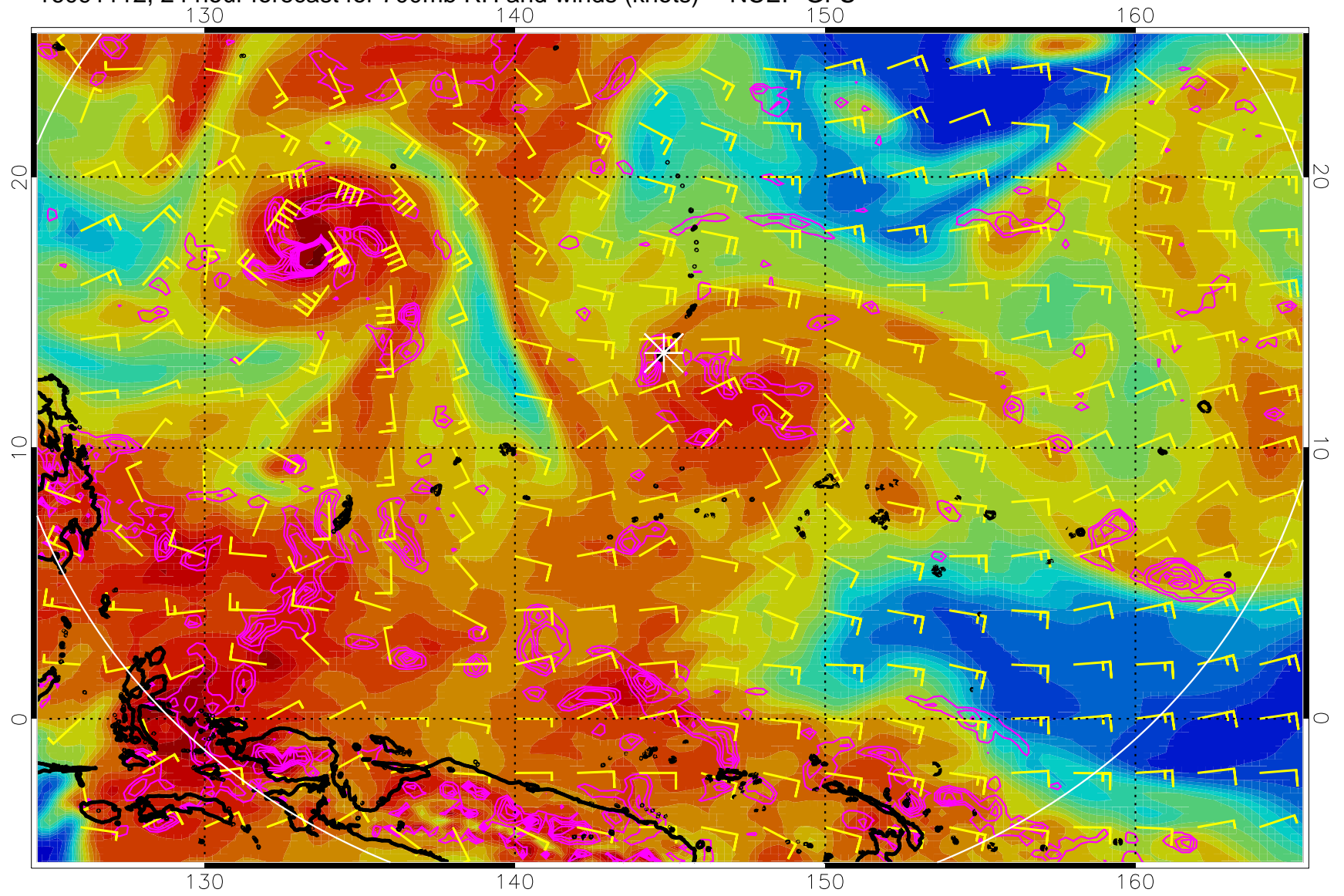
Negative Omegas less than -0.3 , contours of 0.3 Pa/s

16091106, 18 hour forecast for 700mb RH and winds (knots) -- NCEP GFS



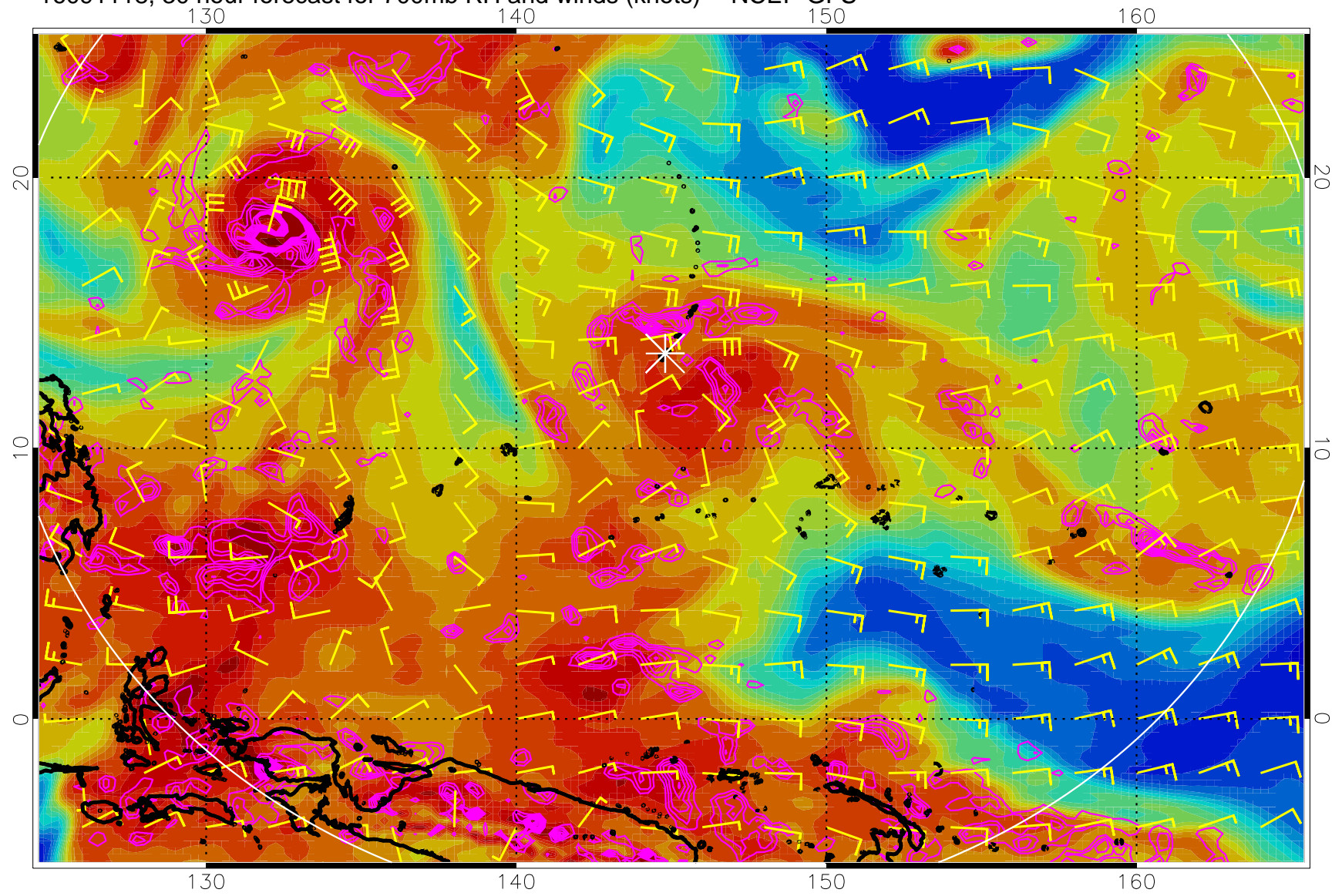
Negative Omegas less than $-.3$, contours of $.3$ Pa/s

16091112, 24 hour forecast for 700mb RH and winds (knots) -- NCEP GFS



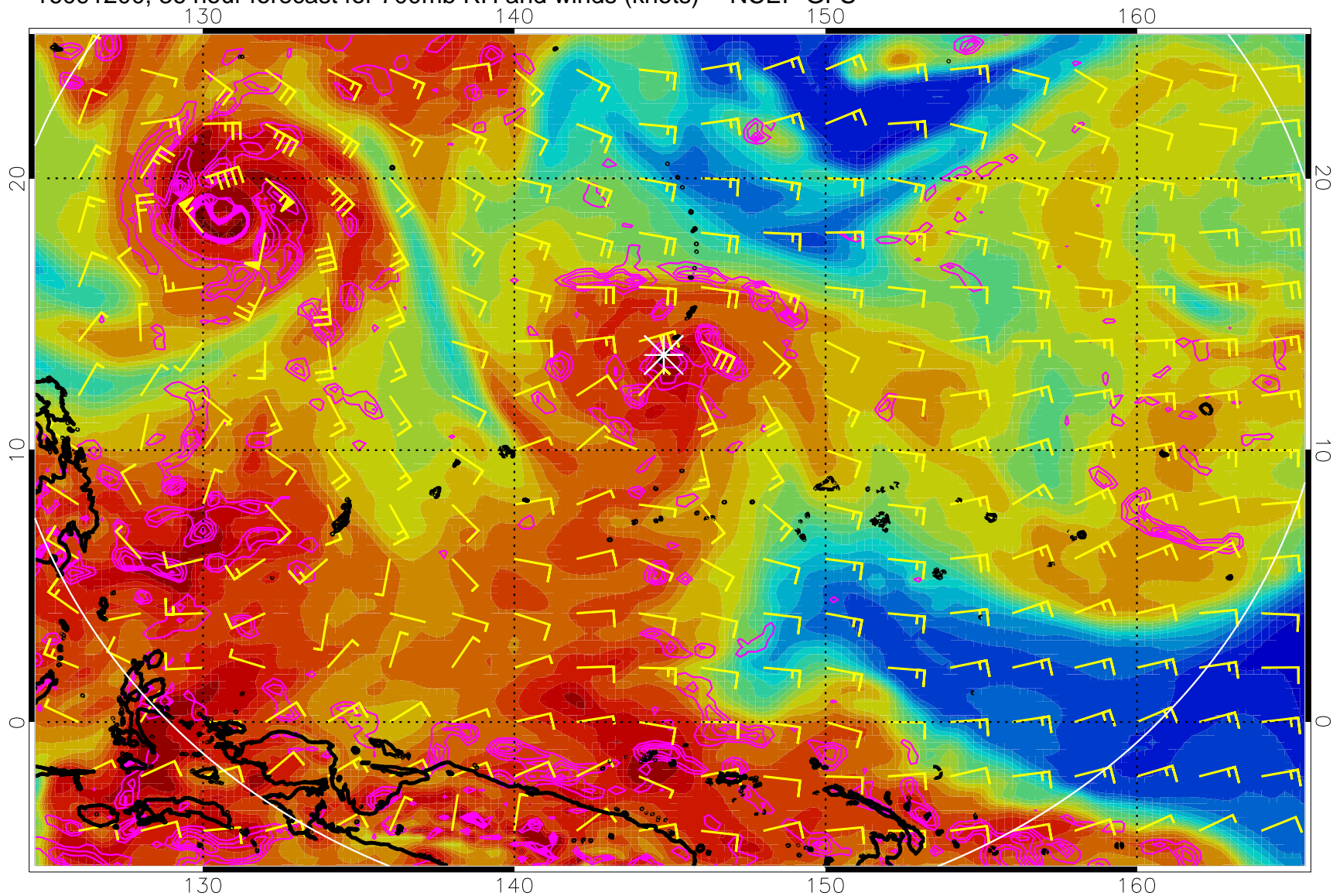
Negative Omegas less than -0.3 , contours of 0.3 Pa/s

16091118, 30 hour forecast for 700mb RH and winds (knots) -- NCEP GFS



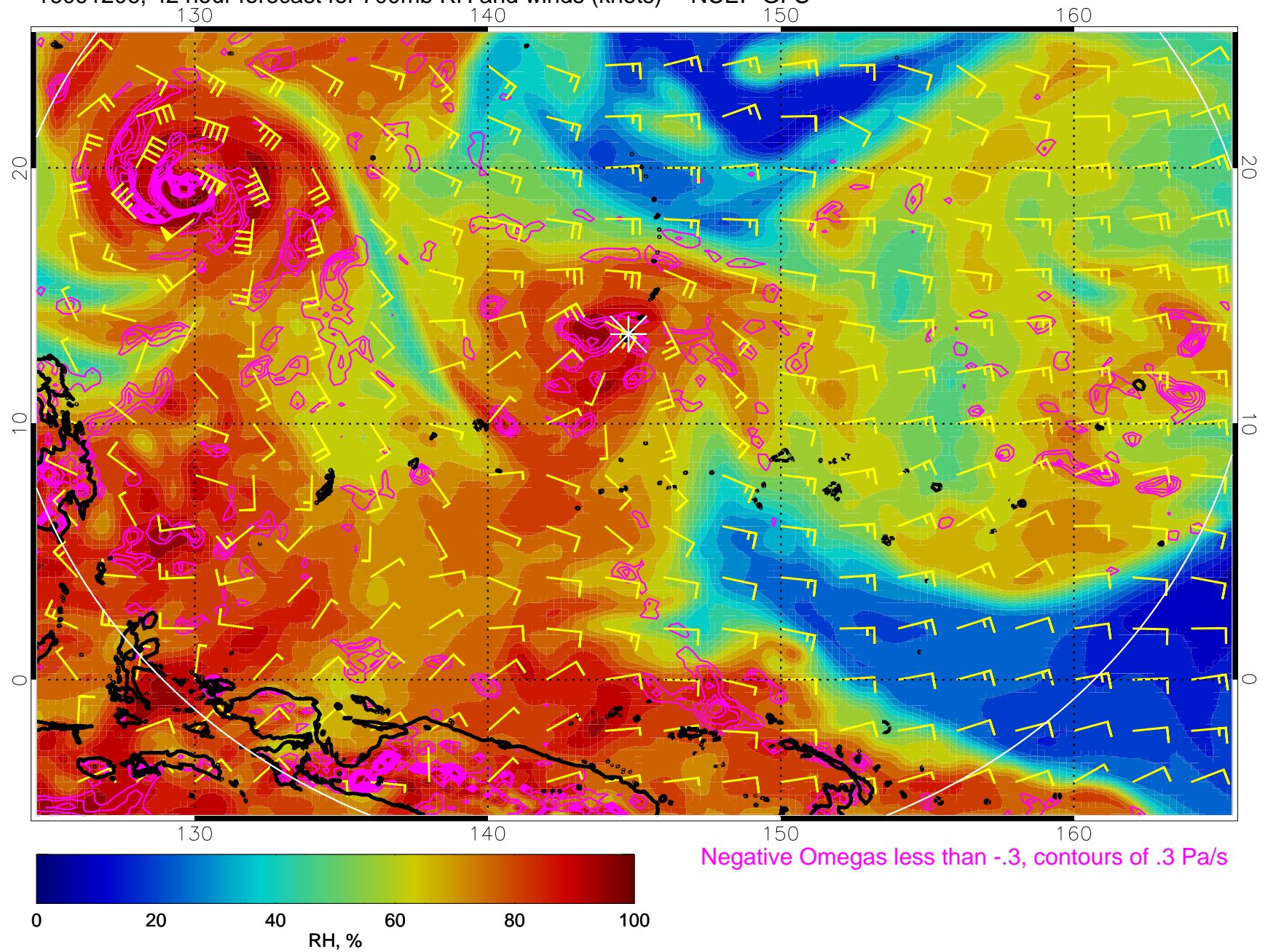
Negative Omegas less than -0.3 , contours of 0.3 Pa/s

16091200, 36 hour forecast for 700mb RH and winds (knots) -- NCEP GFS



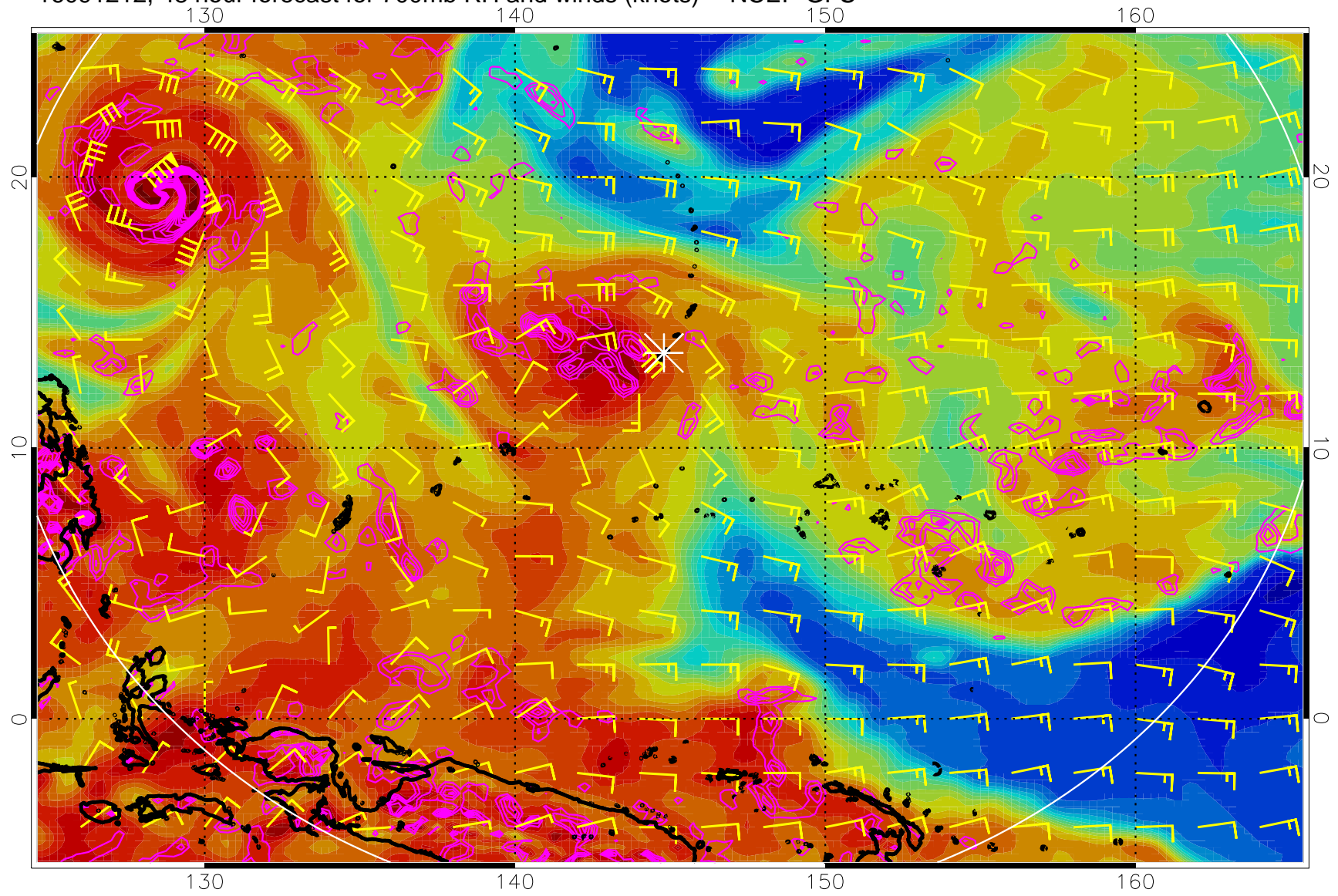
Negative Omegas less than -0.3 , contours of 0.3 Pa/s

16091206, 42 hour forecast for 700mb RH and winds (knots) -- NCEP GFS



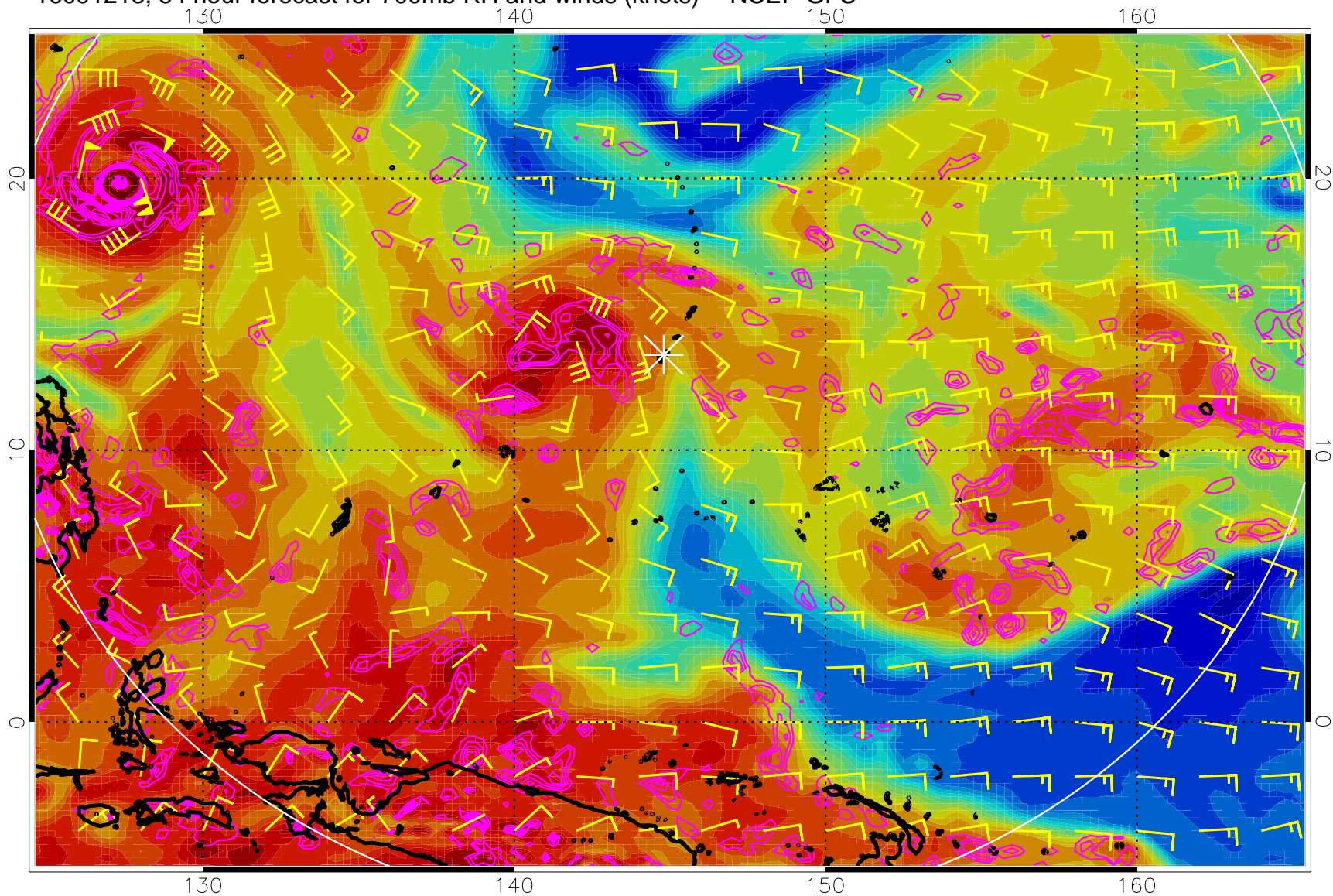
Negative Omegas less than -0.3 , contours of 0.3 Pa/s

16091212, 48 hour forecast for 700mb RH and winds (knots) -- NCEP GFS



Negative Omegas less than -0.3 , contours of 0.3 Pa/s

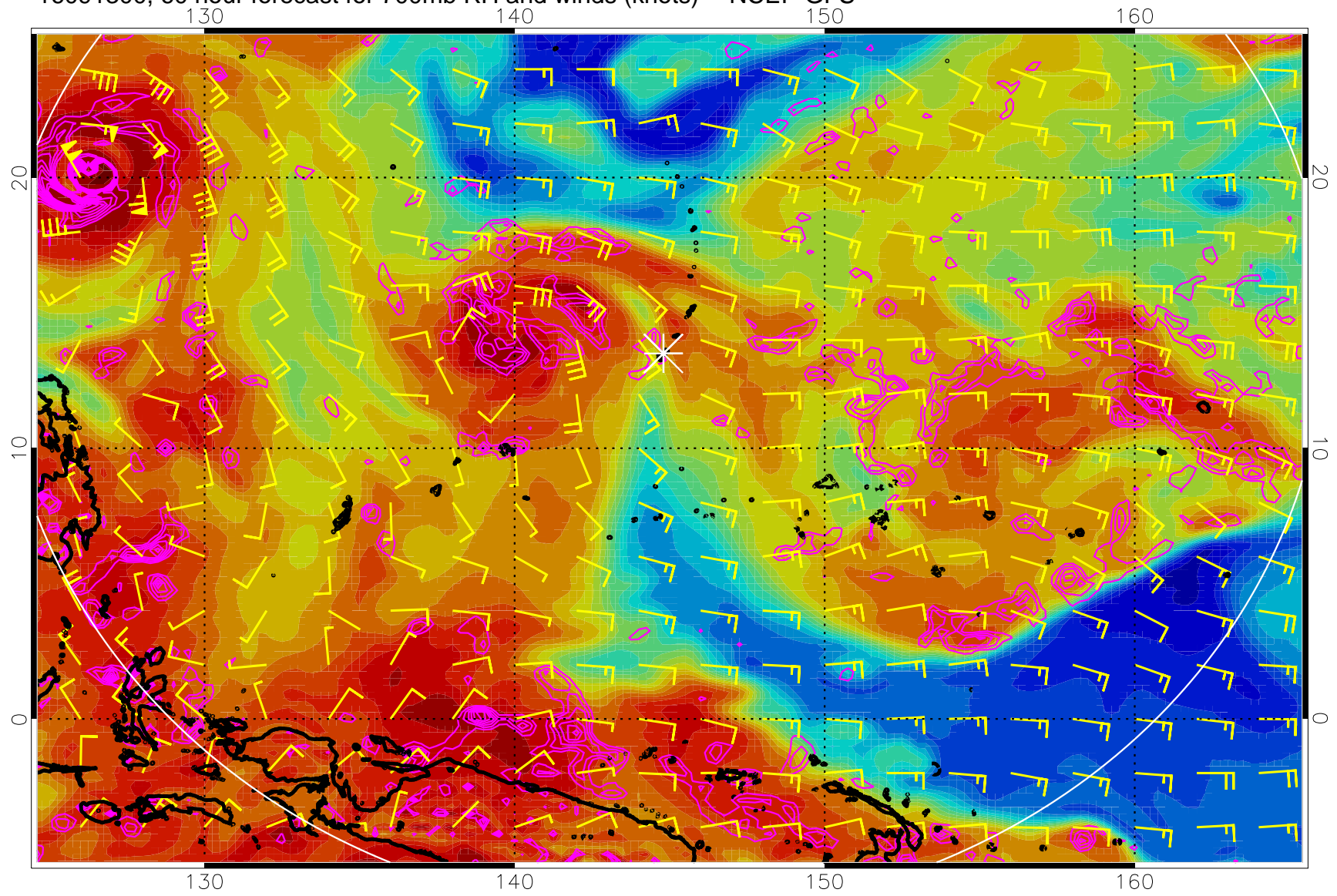
16091218, 54 hour forecast for 700mb RH and winds (knots) -- NCEP GFS



Negative Omegas less than -0.3 , contours of 0.3 Pa/s

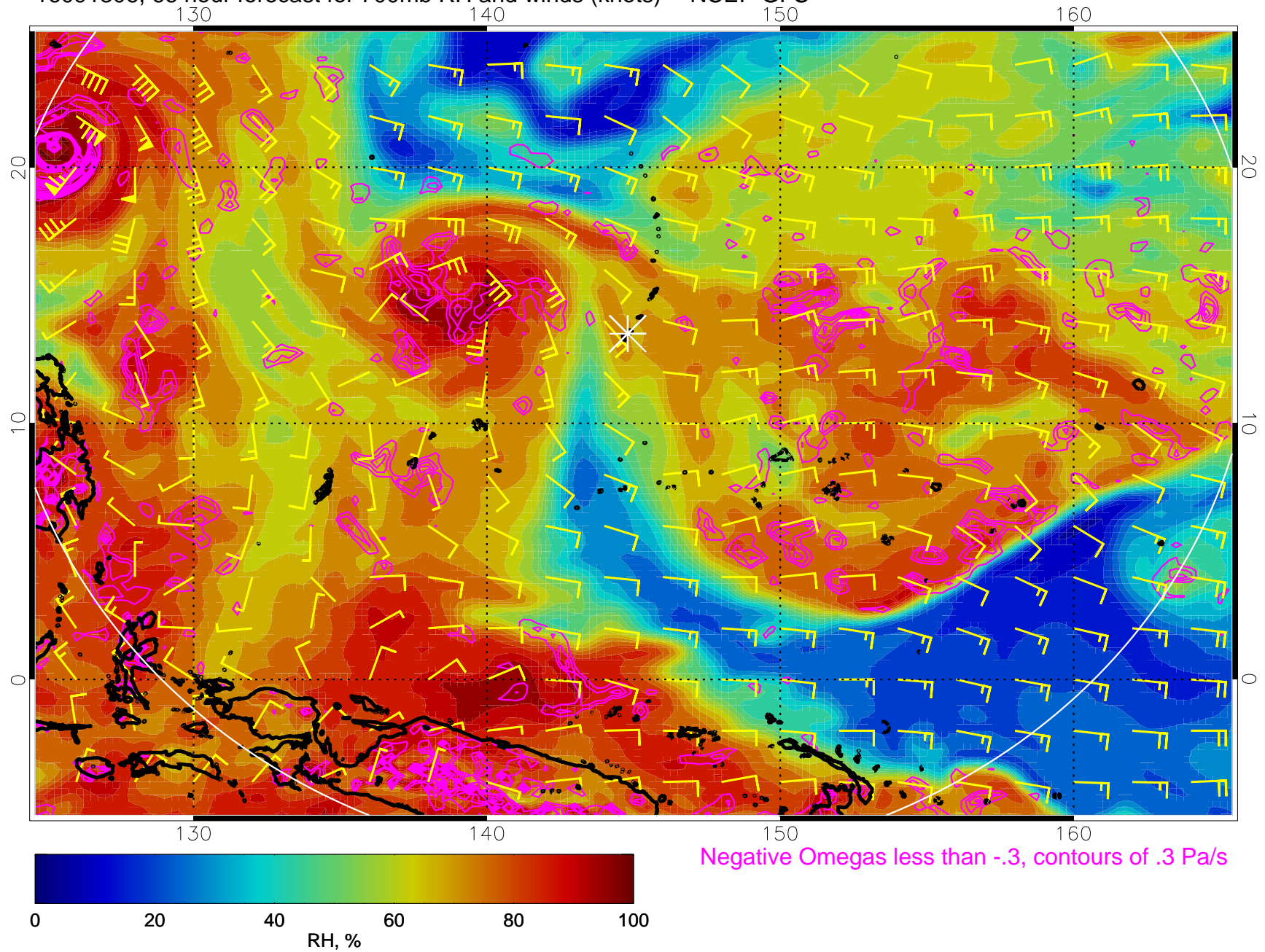


16091300, 60 hour forecast for 700mb RH and winds (knots) -- NCEP GFS

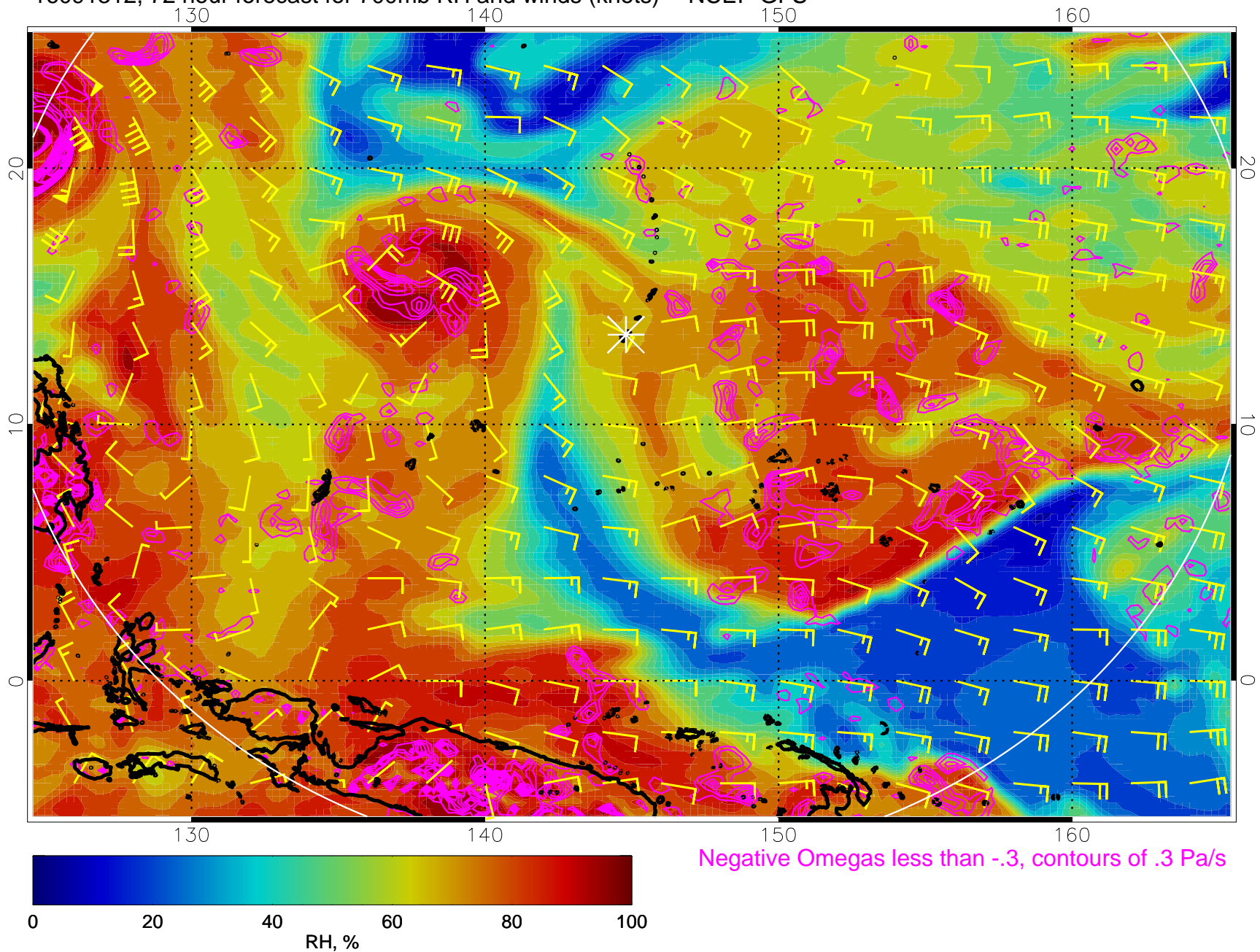


Negative Omegas less than -0.3 , contours of 0.3 Pa/s

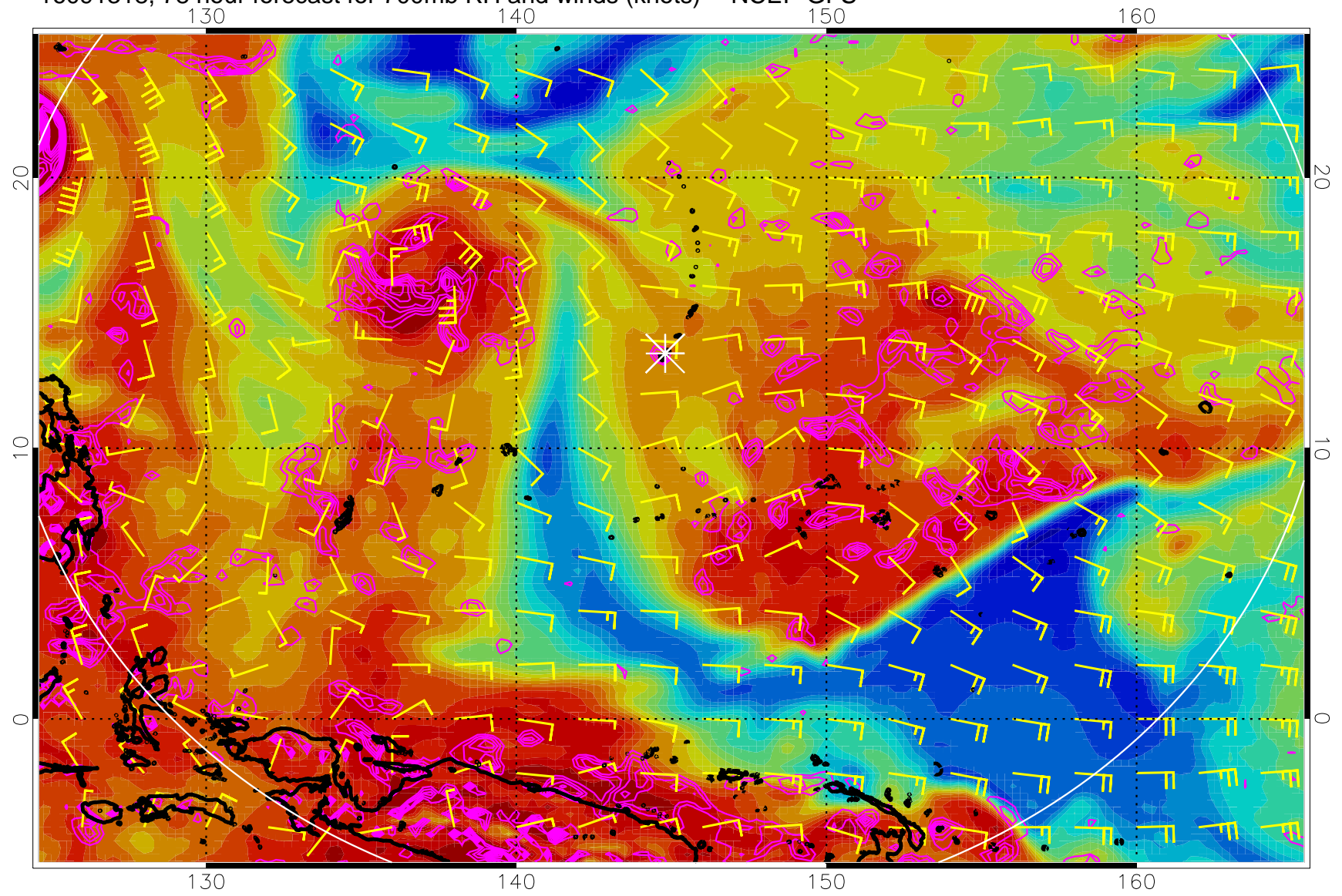
16091306, 66 hour forecast for 700mb RH and winds (knots) -- NCEP GFS



16091312, 72 hour forecast for 700mb RH and winds (knots) -- NCEP GFS

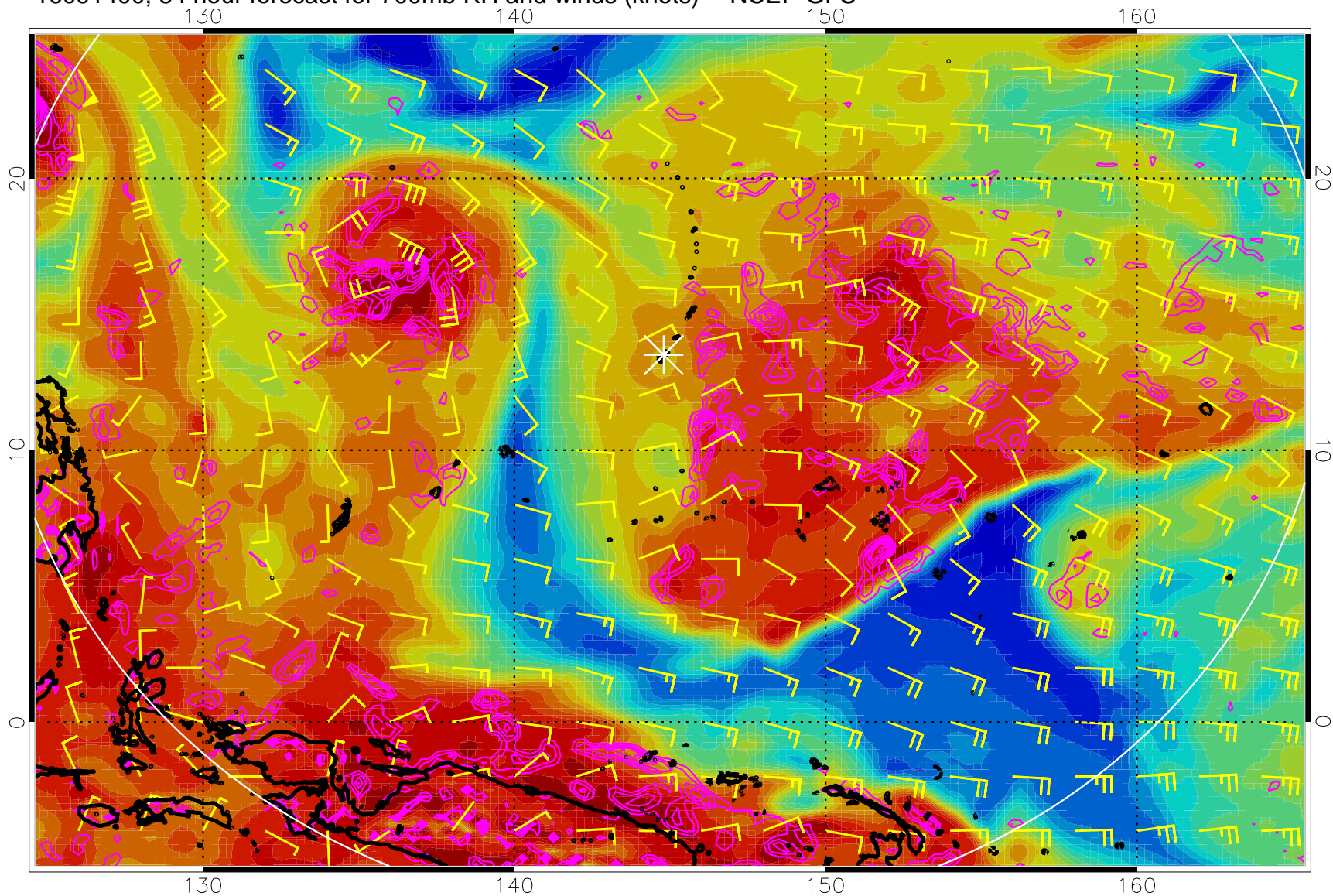


16091318, 78 hour forecast for 700mb RH and winds (knots) -- NCEP GFS



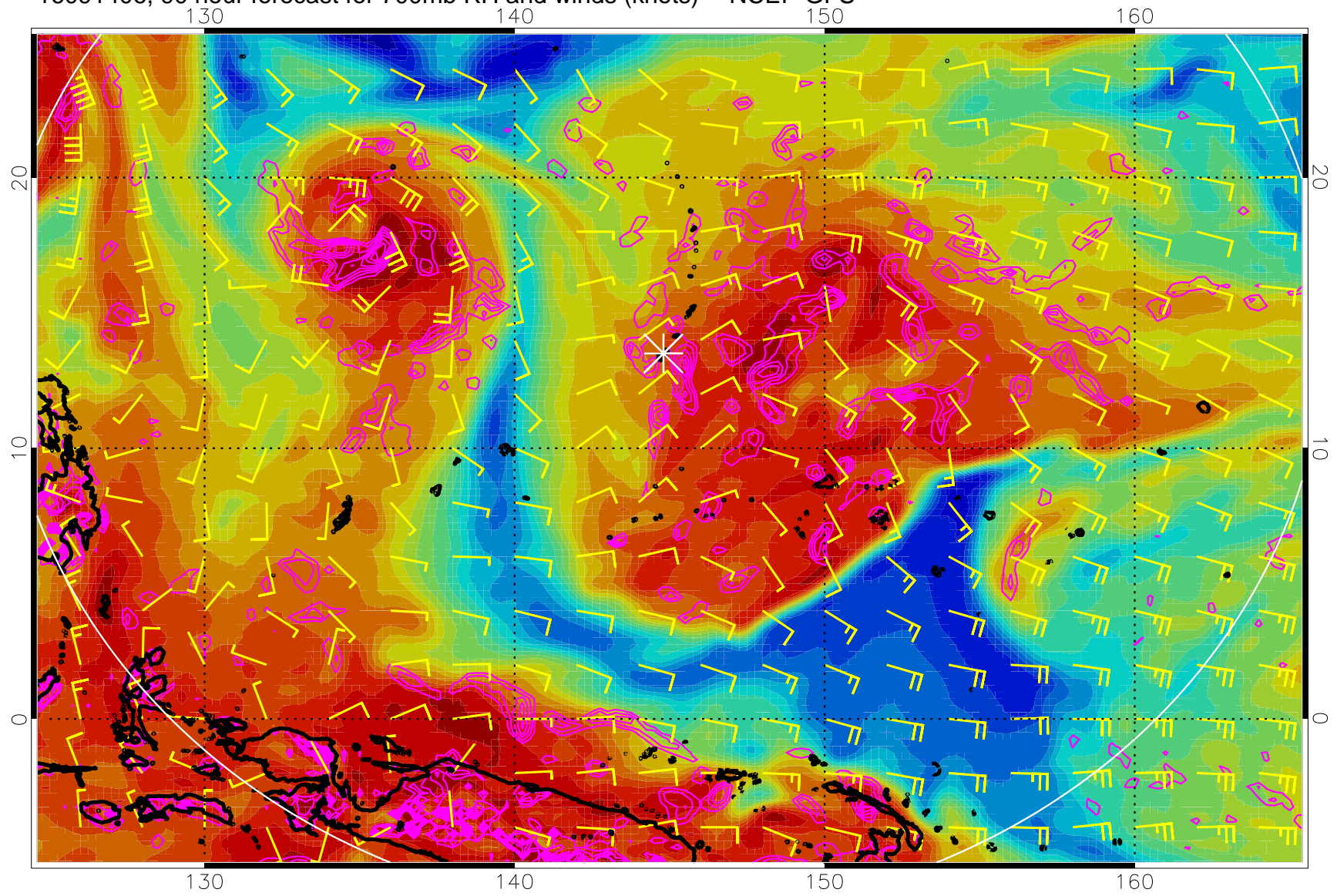
Negative Omegas less than -0.3 , contours of 0.3 Pa/s

16091400, 84 hour forecast for 700mb RH and winds (knots) -- NCEP GFS



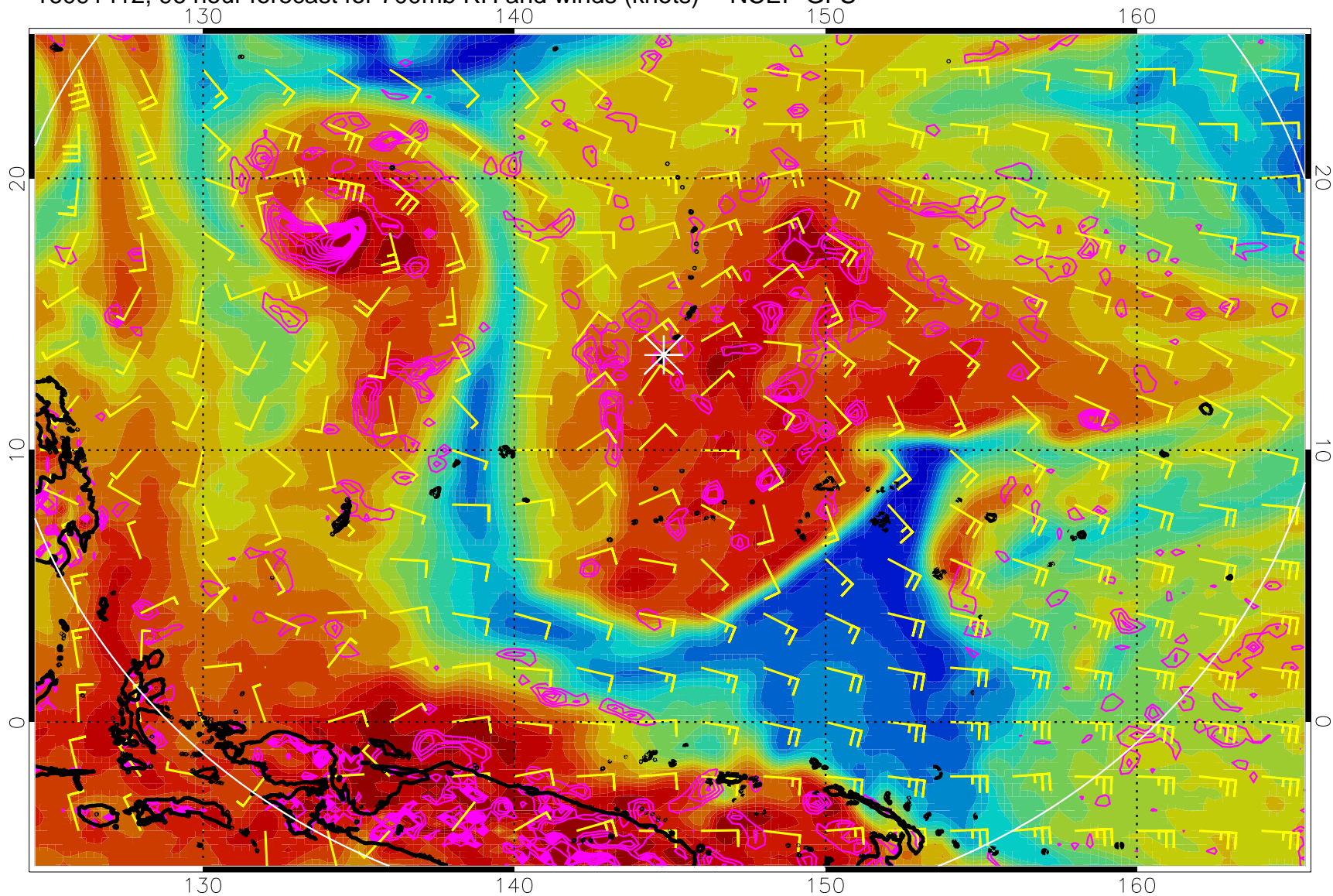
Negative Omegas less than -0.3 , contours of 0.3 Pa/s

16091406, 90 hour forecast for 700mb RH and winds (knots) -- NCEP GFS



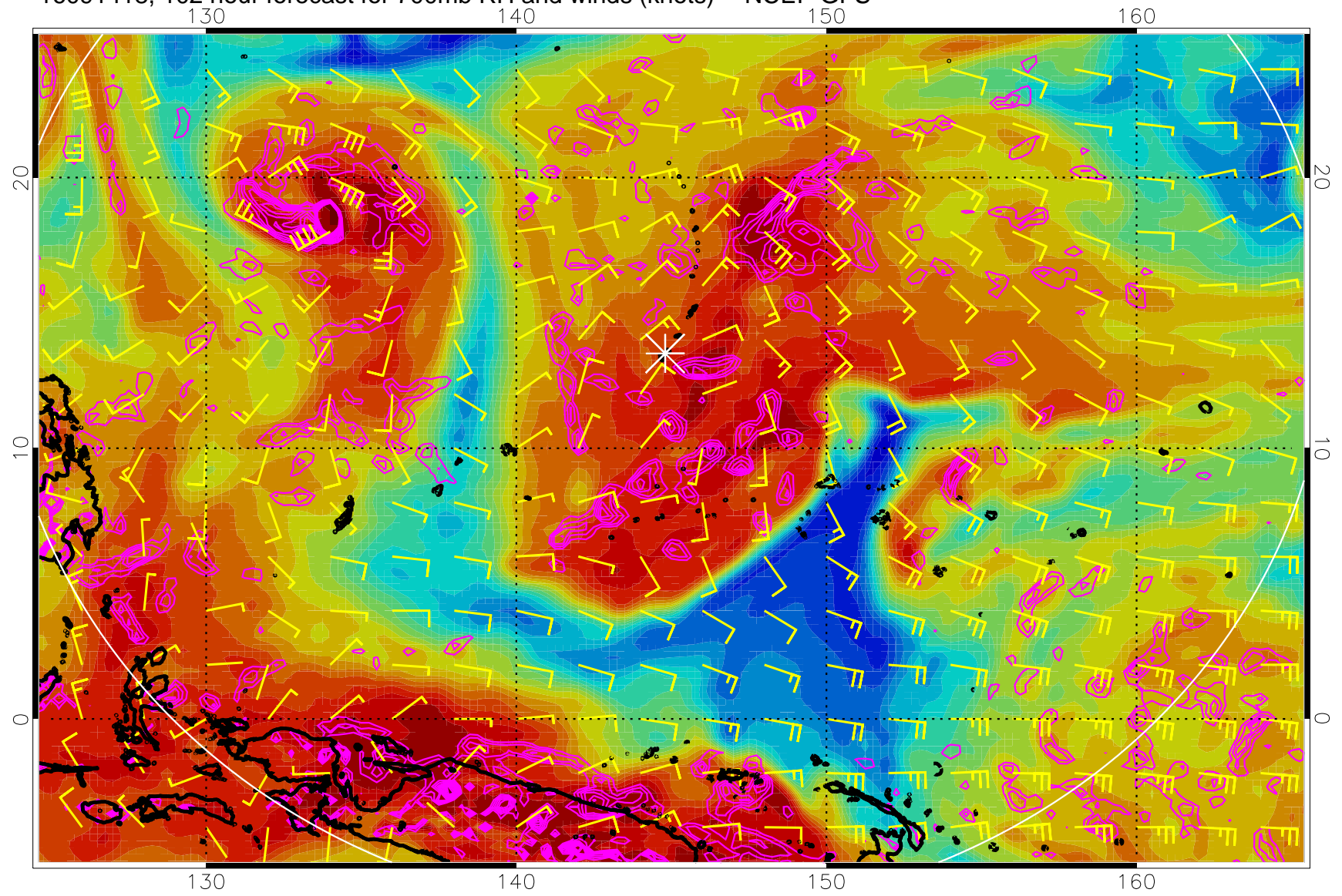
Negative Omegas less than -.3, contours of .3 Pa/s

16091412, 96 hour forecast for 700mb RH and winds (knots) -- NCEP GFS

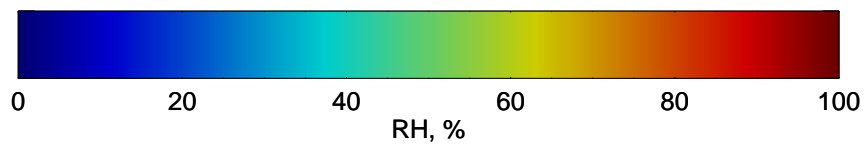


Negative Omegas less than -0.3 , contours of 0.3 Pa/s

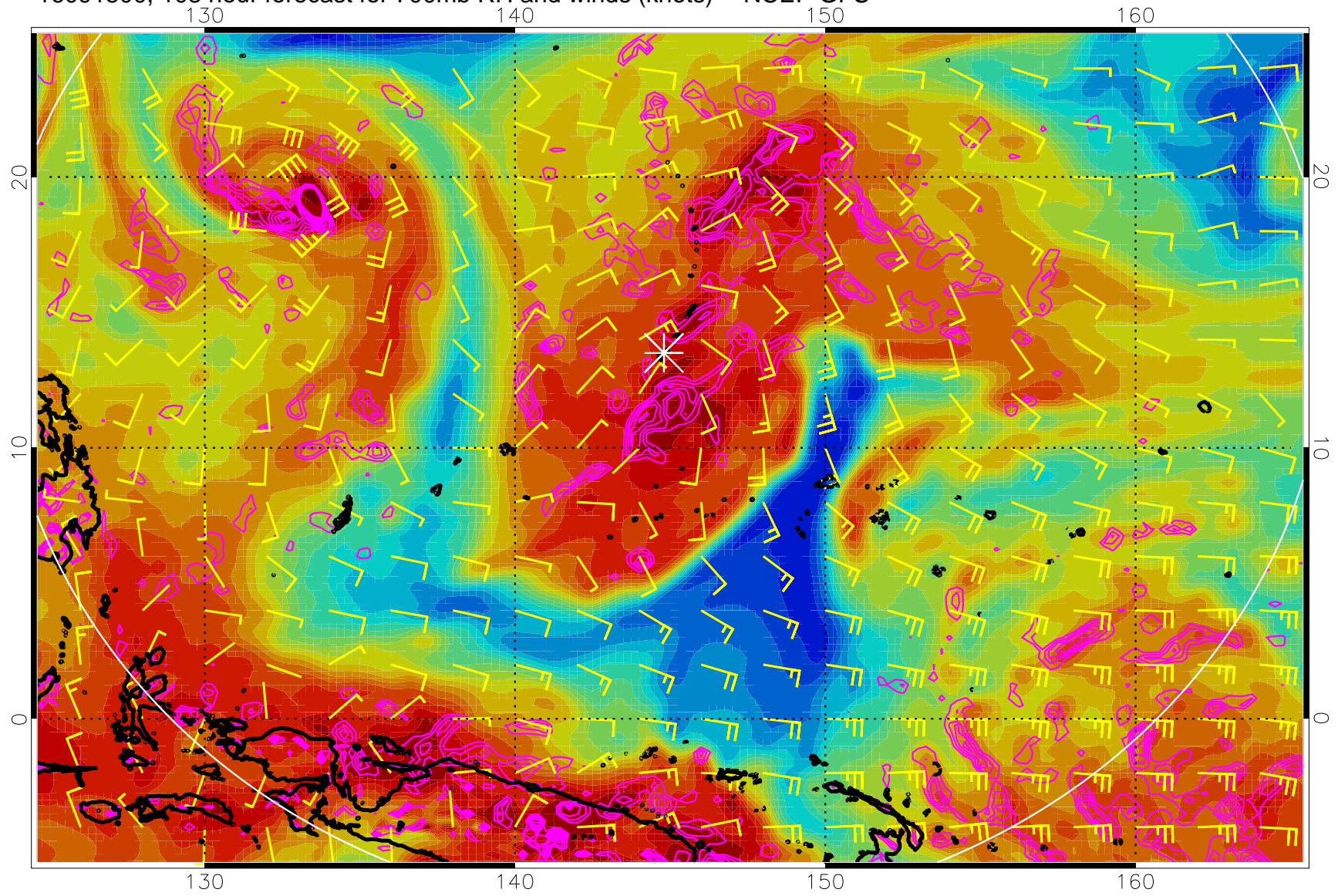
16091418, 102 hour forecast for 700mb RH and winds (knots) -- NCEP GFS



Negative Omegas less than -0.3 , contours of 0.3 Pa/s

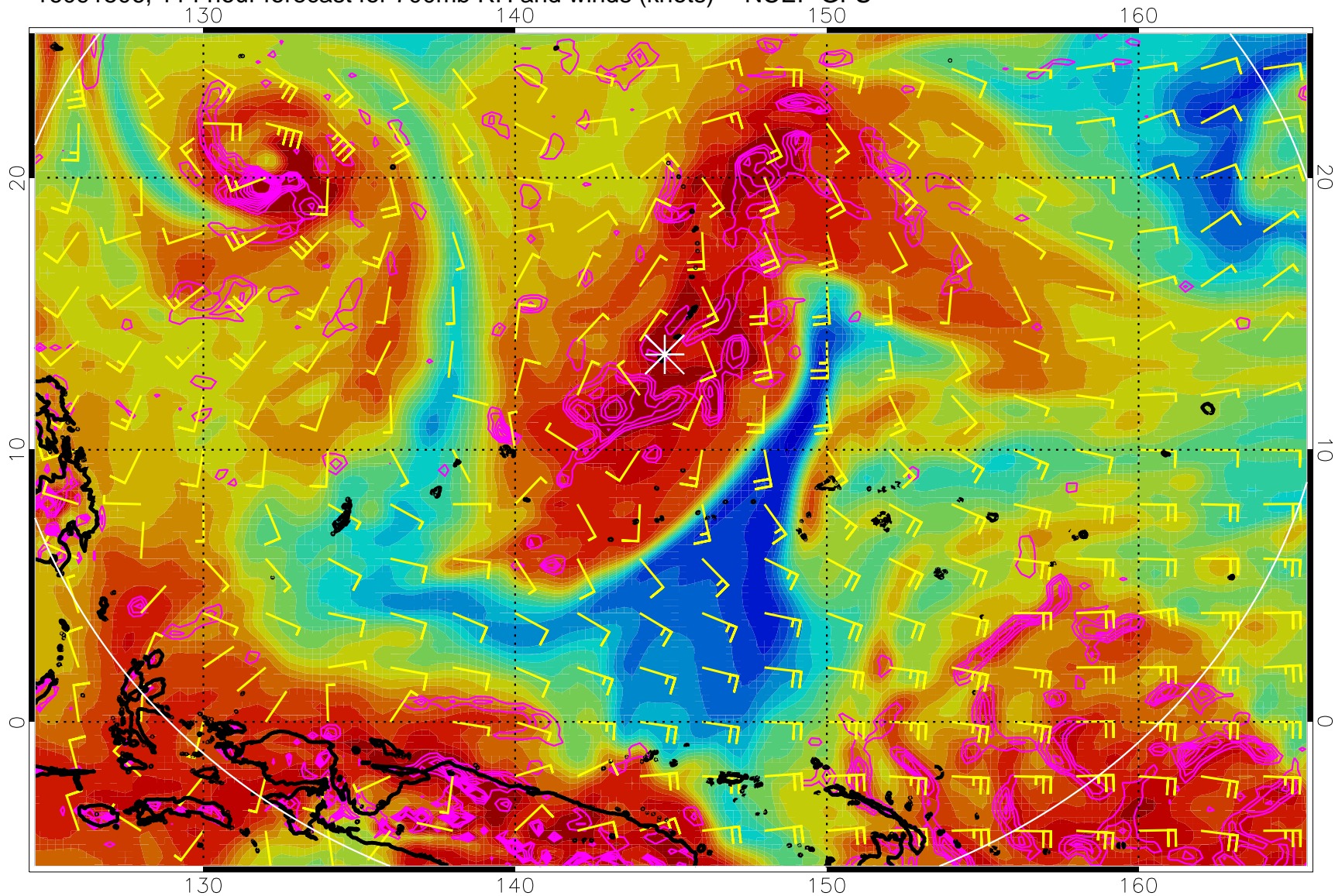


16091500, 108 hour forecast for 700mb RH and winds (knots) -- NCEP GFS



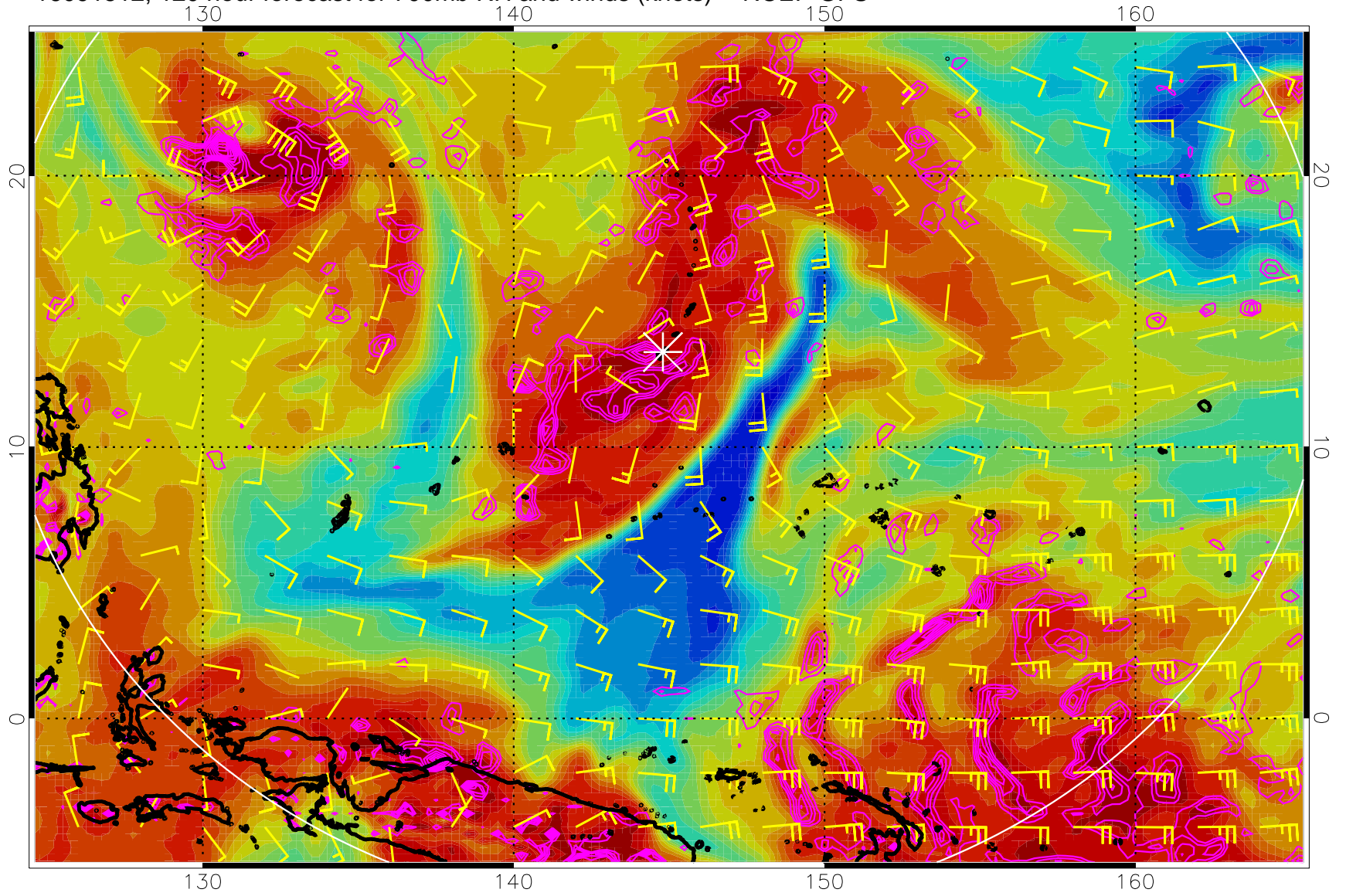
Negative Omegas less than -.3, contours of .3 Pa/s

16091506, 114 hour forecast for 700mb RH and winds (knots) -- NCEP GFS



Negative Omegas less than $-.3$, contours of $.3$ Pa/s

16091512, 120 hour forecast for 700mb RH and winds (knots) -- NCEP GFS



Negative Omegas less than -0.3 , contours of 0.3 Pa/s