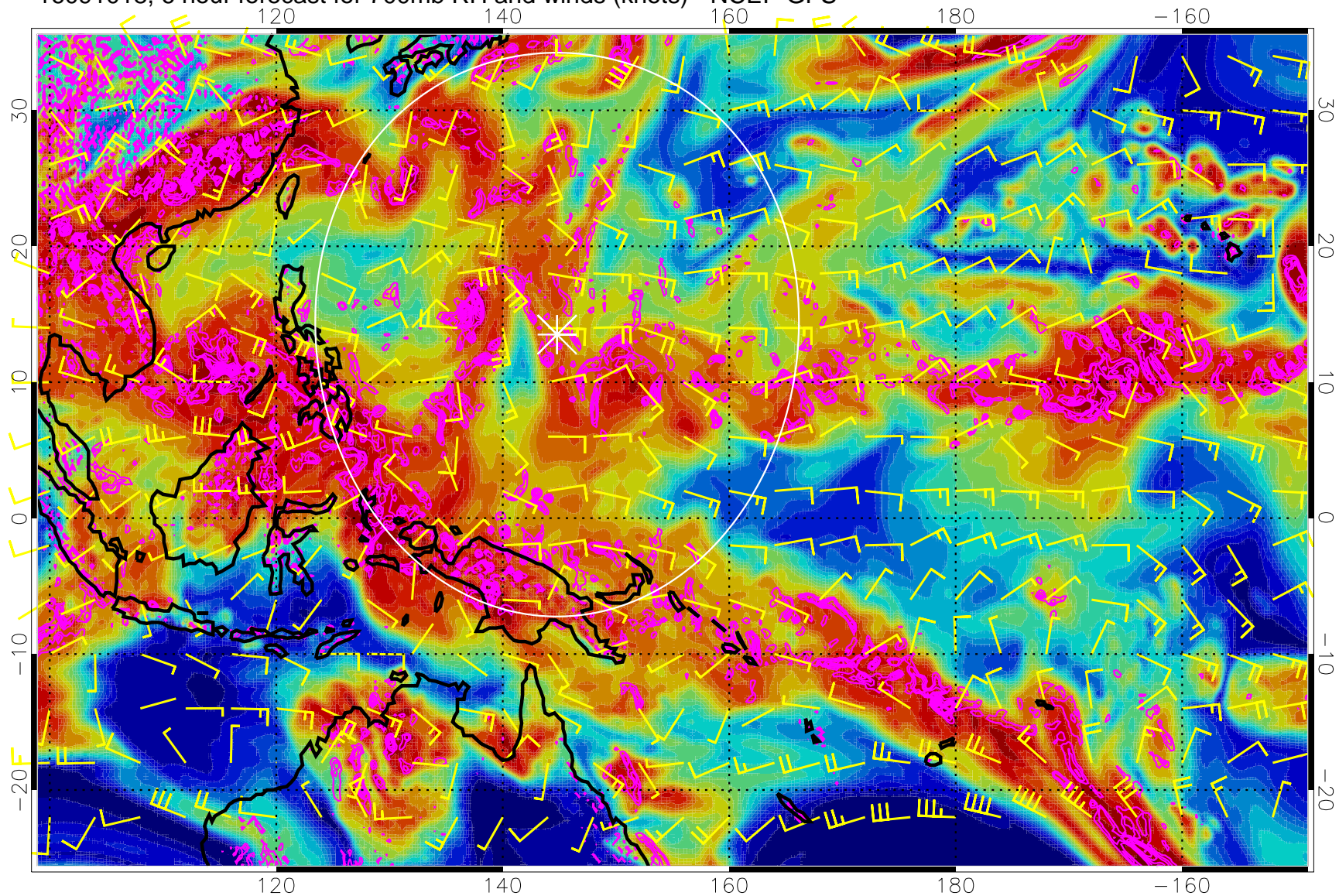


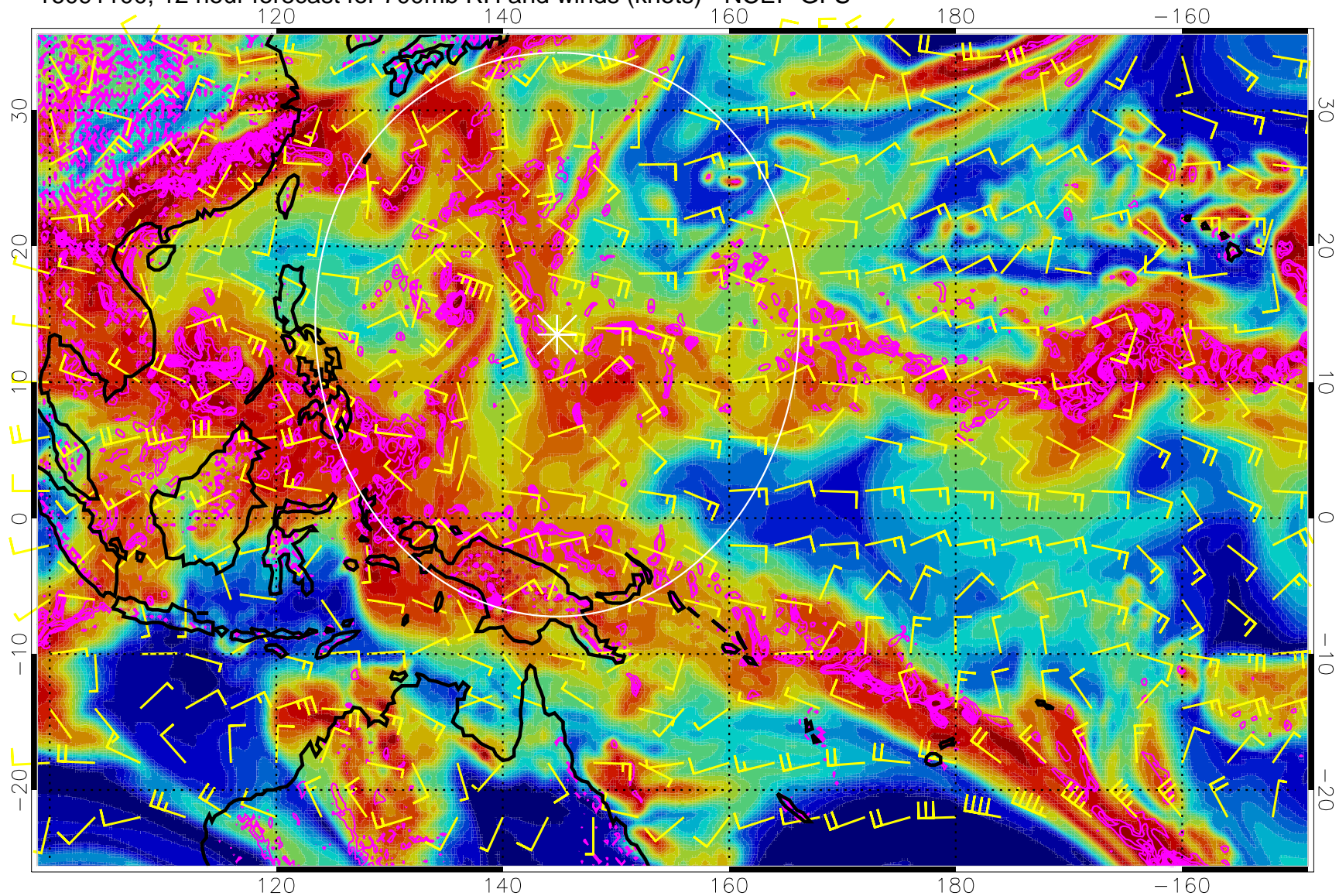
16091018, 6 hour forecast for 700mb RH and winds (knots) - NCEP GFS



Negative Omegas less than -0.3 , contours of 0.3 Pa/s

Range ring of 2304 km

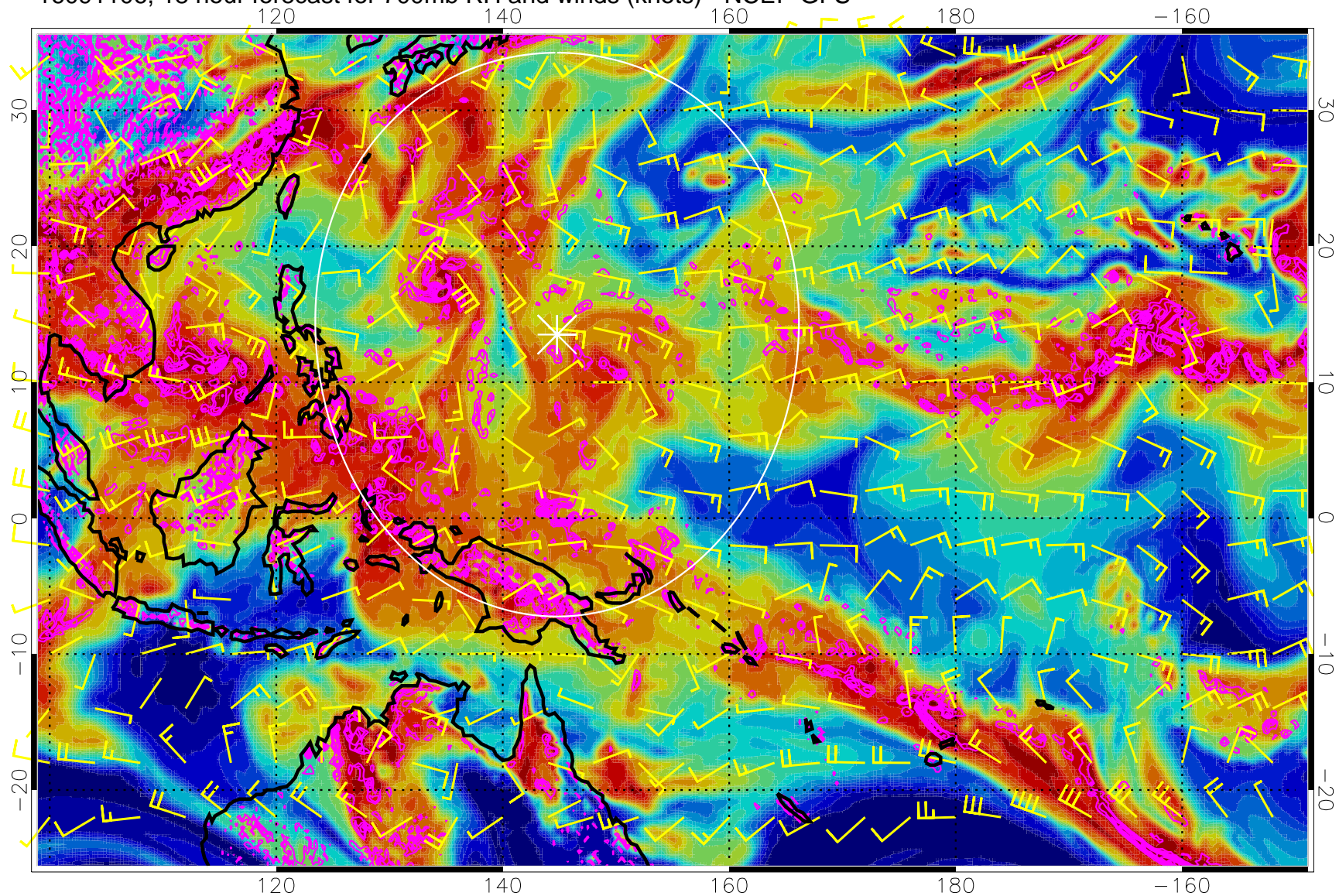
16091100, 12 hour forecast for 700mb RH and winds (knots) - NCEP GFS



Negative Omegas less than -0.3 , contours of 0.3 Pa/s

Range ring of 2304 km

16091106, 18 hour forecast for 700mb RH and winds (knots) - NCEP GFS

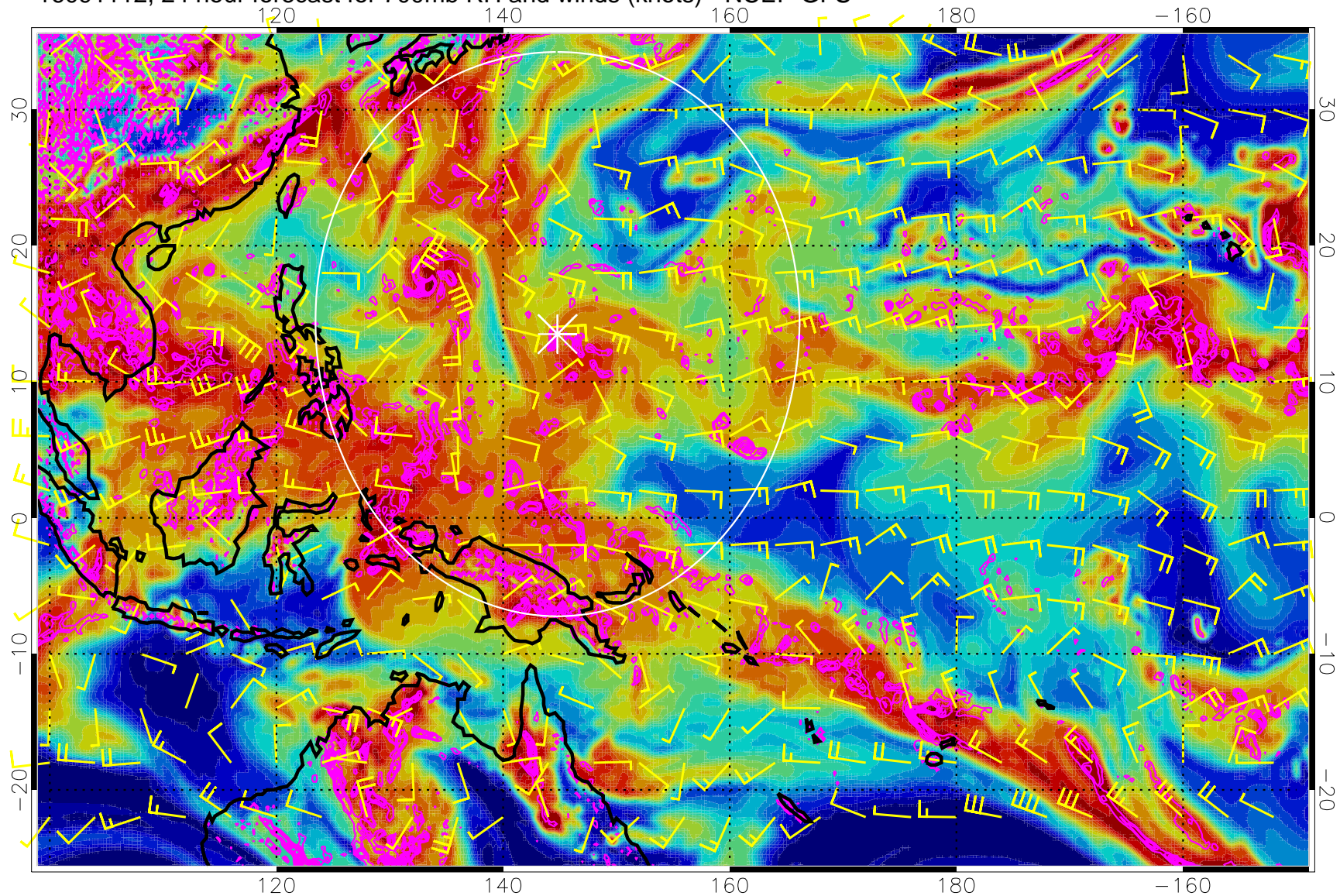


0 20 40 60 80 100
RH, %

Negative Omegas less than -0.3 , contours of 0.3 Pa/s

Range ring of 2304 km

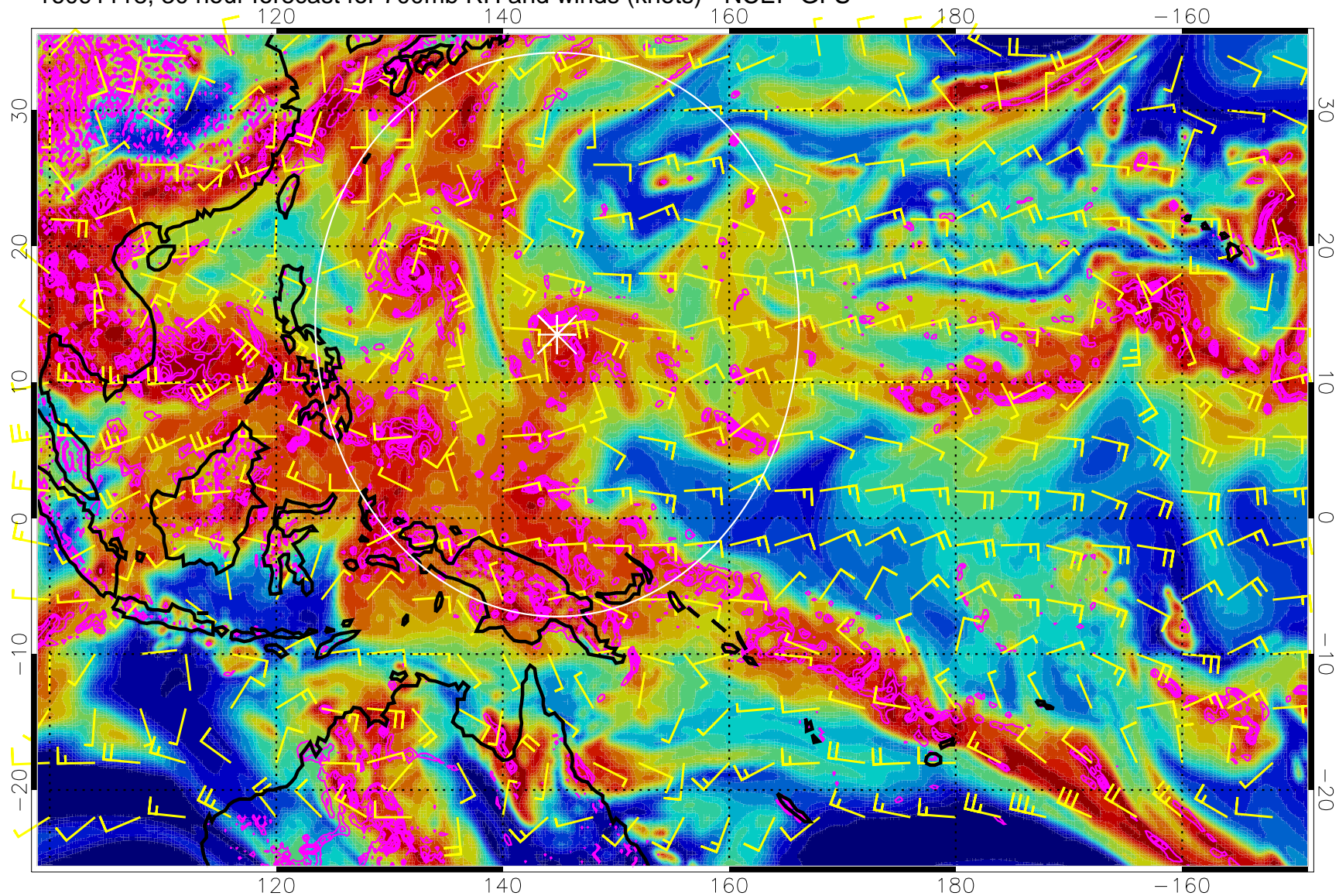
16091112, 24 hour forecast for 700mb RH and winds (knots) - NCEP GFS



Negative Omegas less than -0.3 , contours of 0.3 Pa/s

Range ring of 2304 km

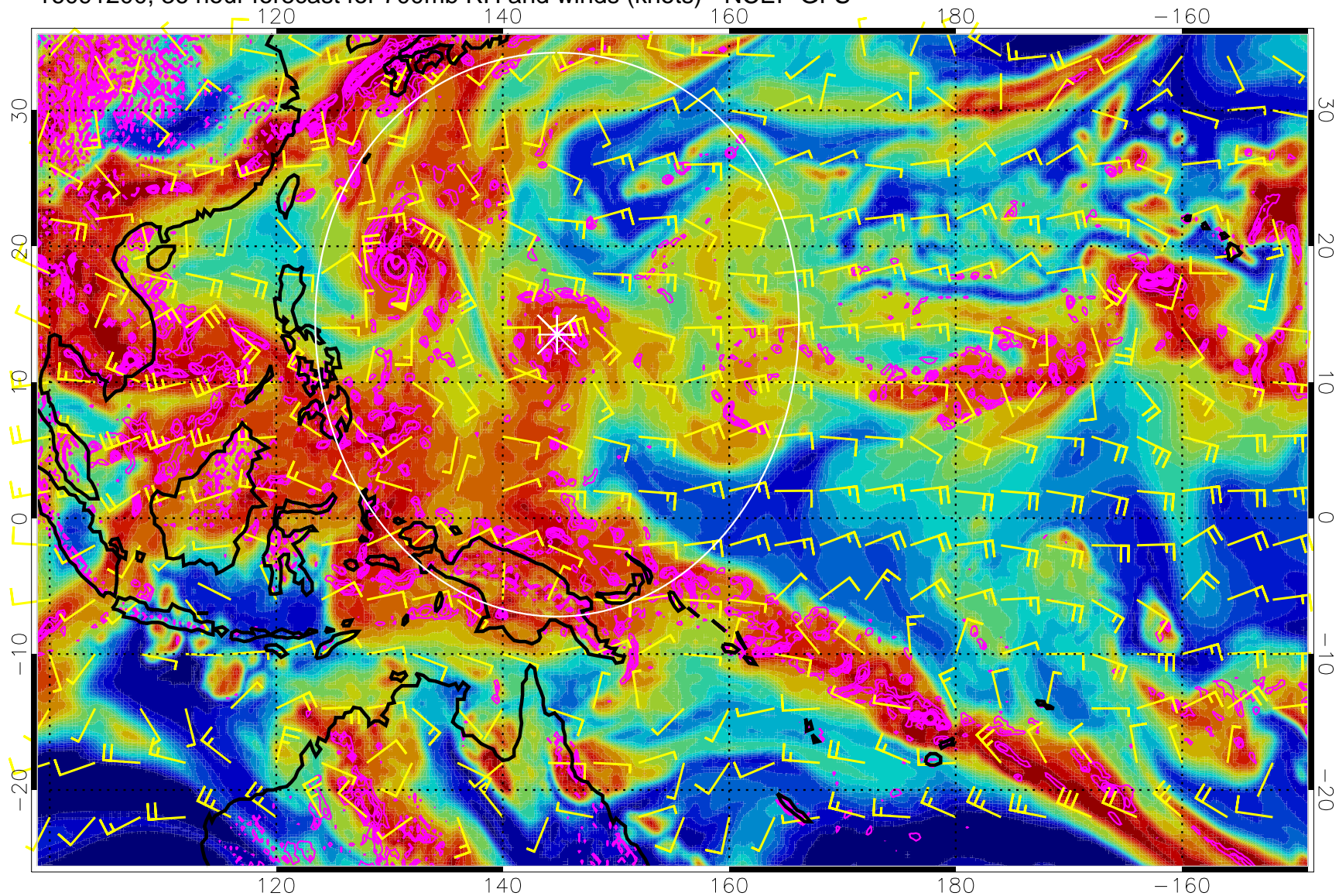
16091118, 30 hour forecast for 700mb RH and winds (knots) - NCEP GFS



Negative Omegas less than -0.3 , contours of 0.3 Pa/s

Range ring of 2304 km

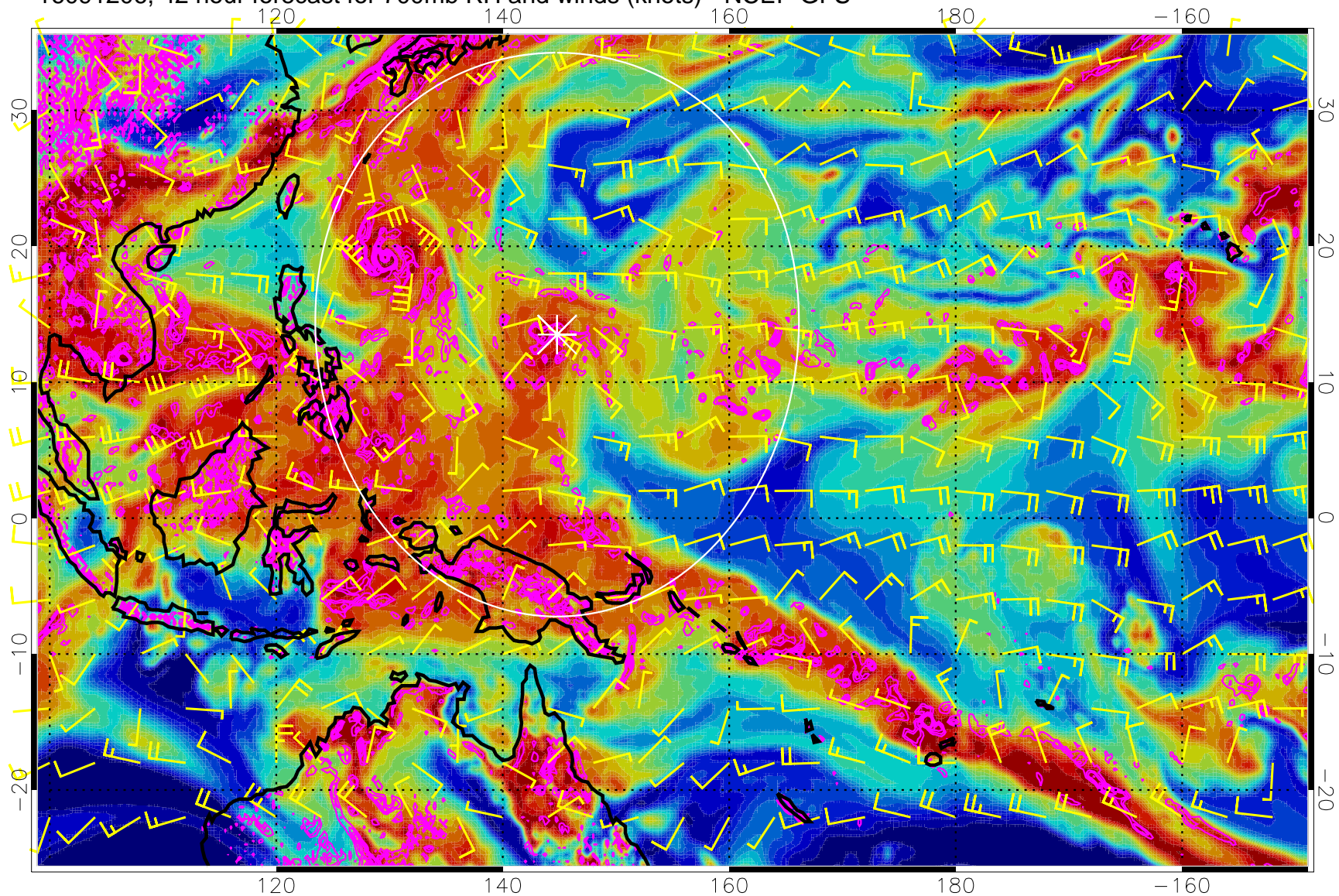
16091200, 36 hour forecast for 700mb RH and winds (knots) - NCEP GFS



Negative Omegas less than -0.3 , contours of 0.3 Pa/s

Range ring of 2304 km

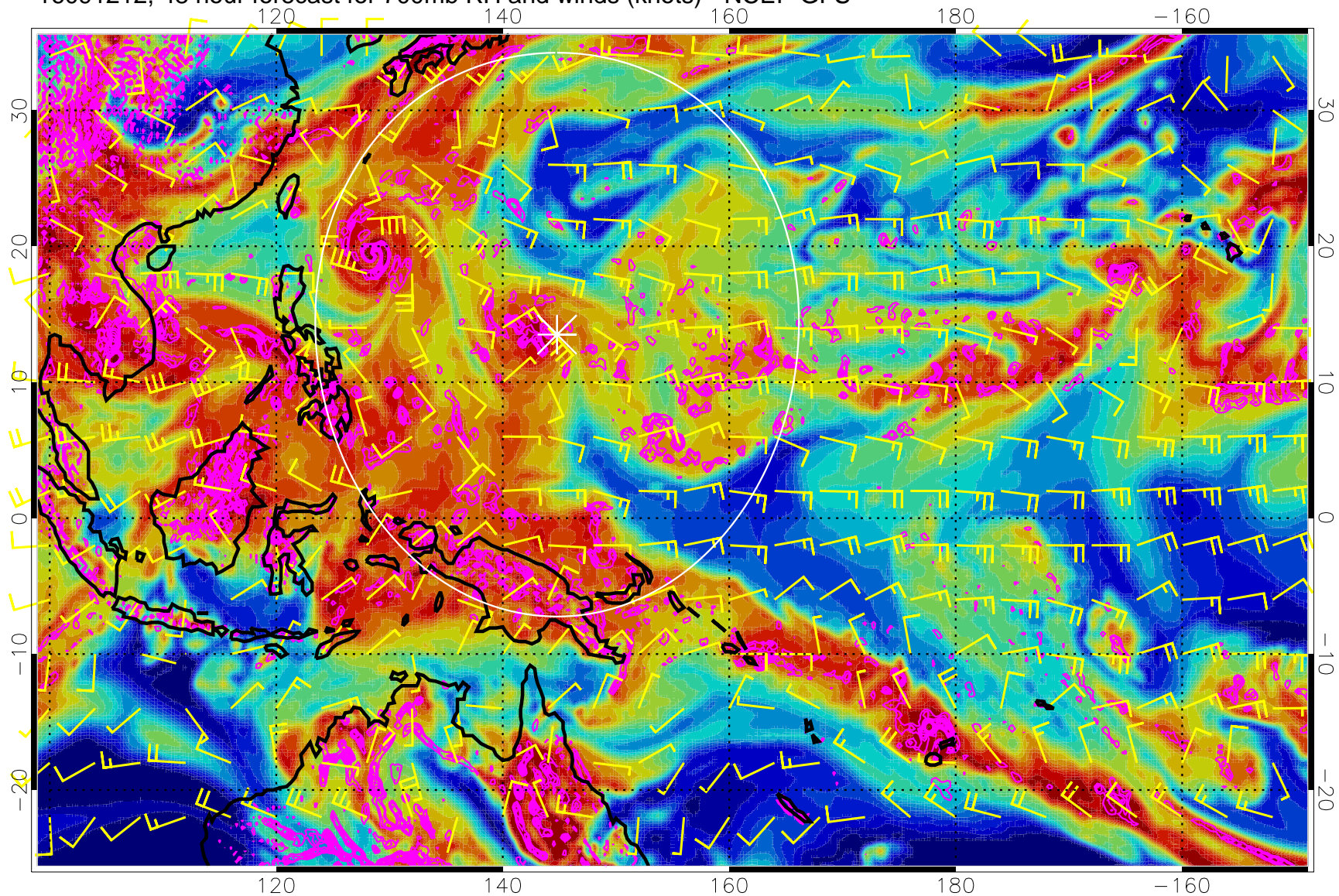
16091206, 42 hour forecast for 700mb RH and winds (knots) - NCEP GFS



Negative Omegas less than -0.3 , contours of 0.3 Pa/s

Range ring of 2304 km

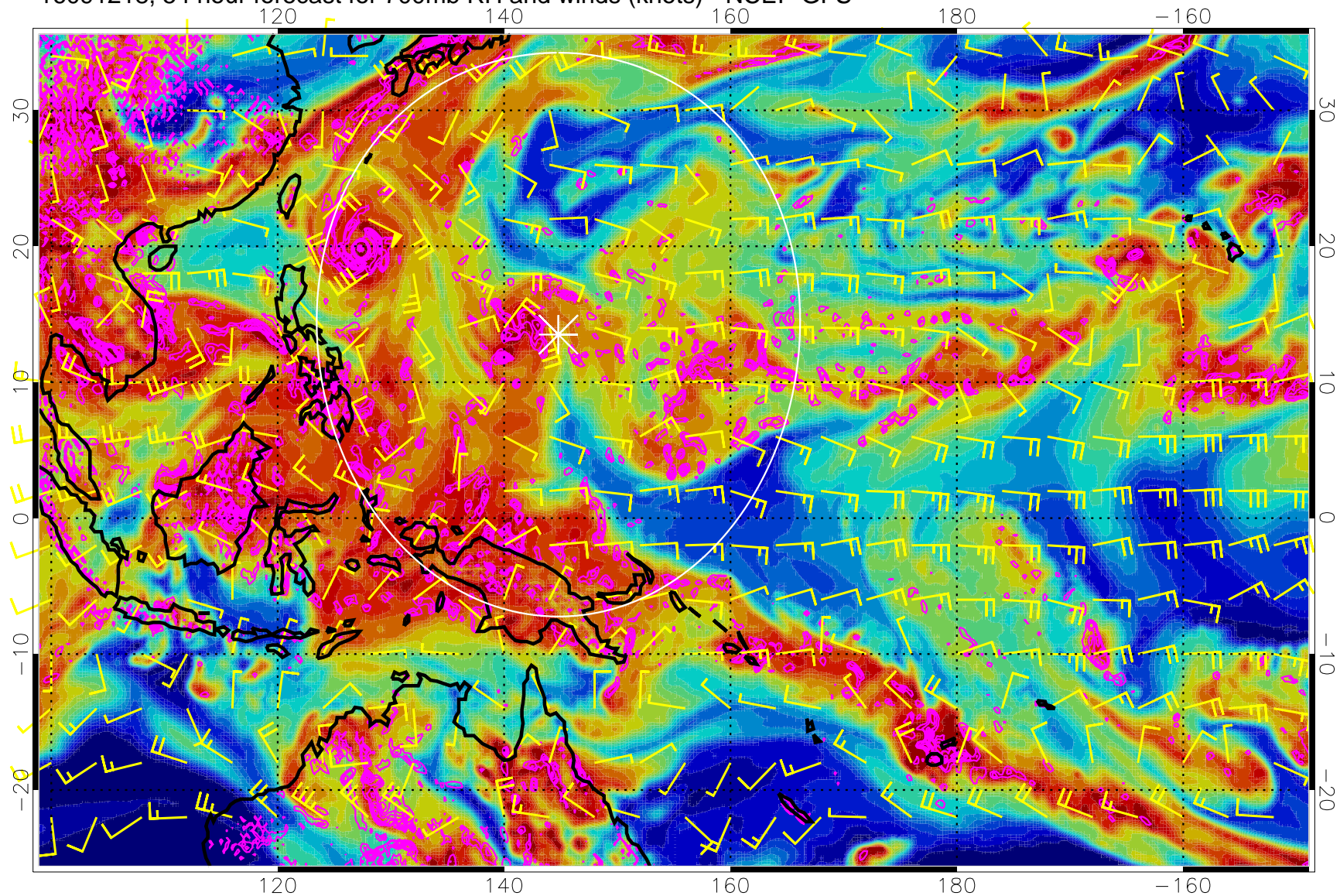
16091212, 48 hour forecast for 700mb RH and winds (knots) - NCEP GFS



Negative Omegas less than -0.3 , contours of 0.3 Pa/s

Range ring of 2304 km

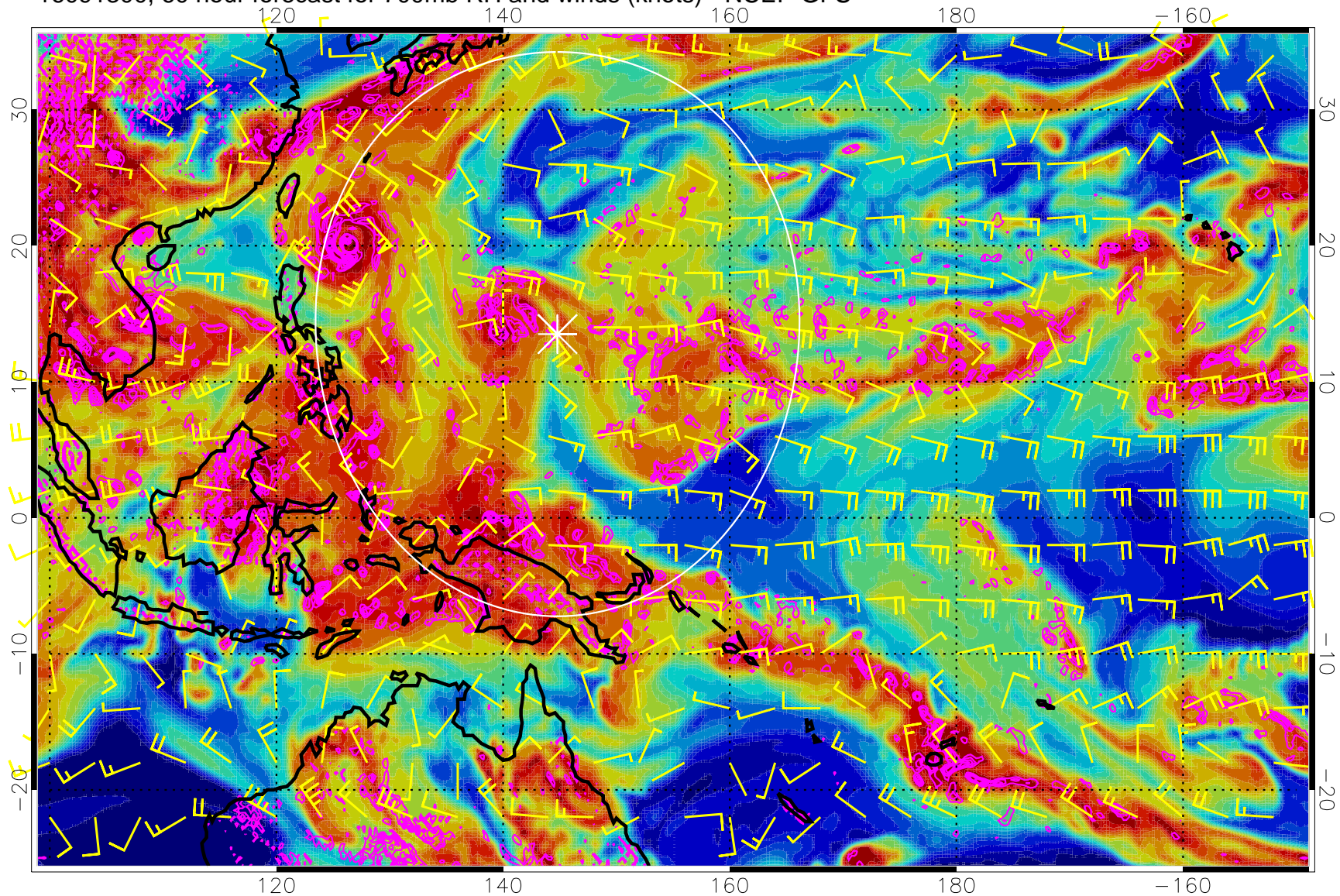
16091218, 54 hour forecast for 700mb RH and winds (knots) - NCEP GFS



Negative Omegas less than -0.3 , contours of 0.3 Pa/s

Range ring of 2304 km

16091300, 60 hour forecast for 700mb RH and winds (knots) - NCEP GFS

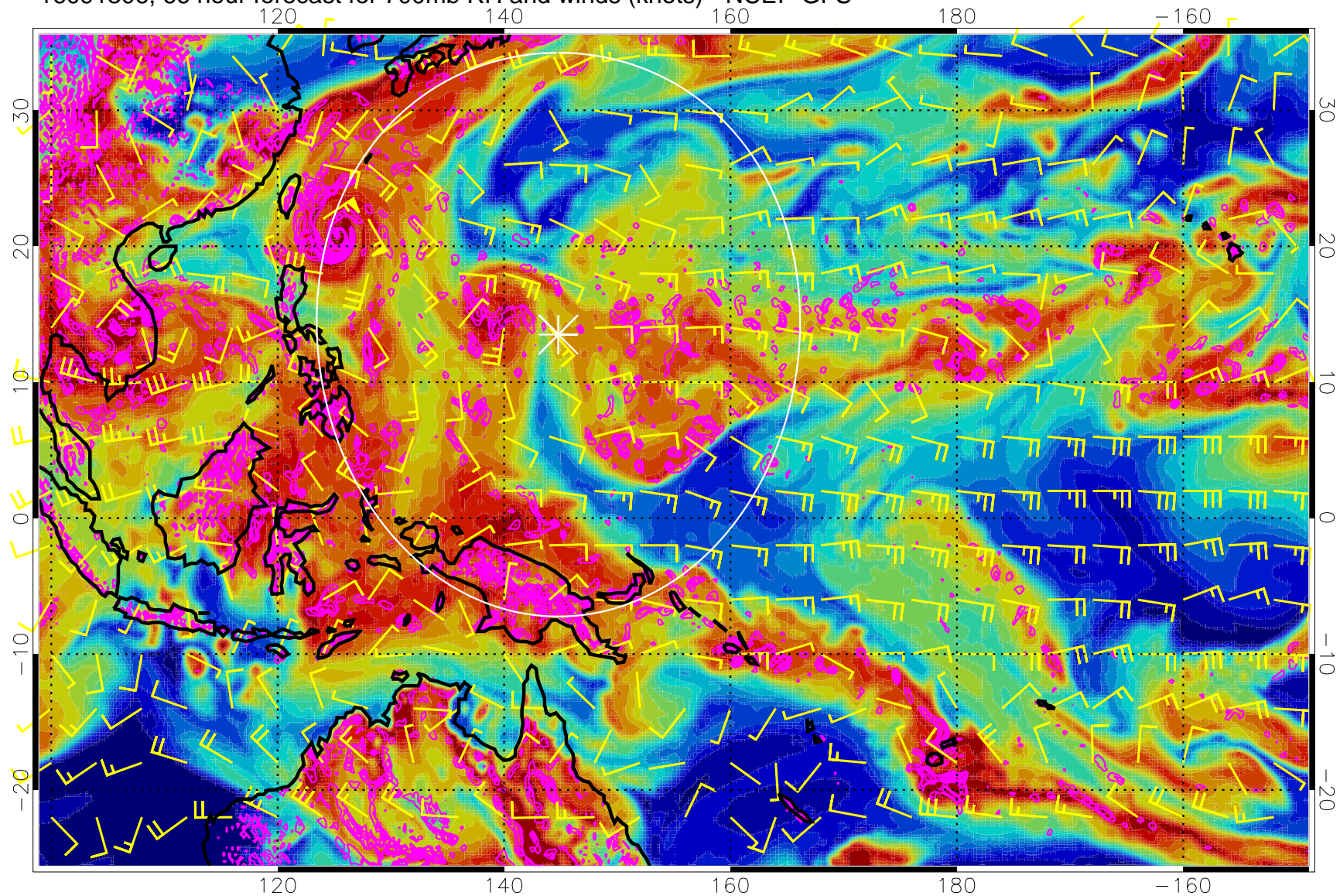


0 20 40 60 80 100
RH, %

Negative Omegas less than -0.3 , contours of 0.3 Pa/s

Range ring of 2304 km

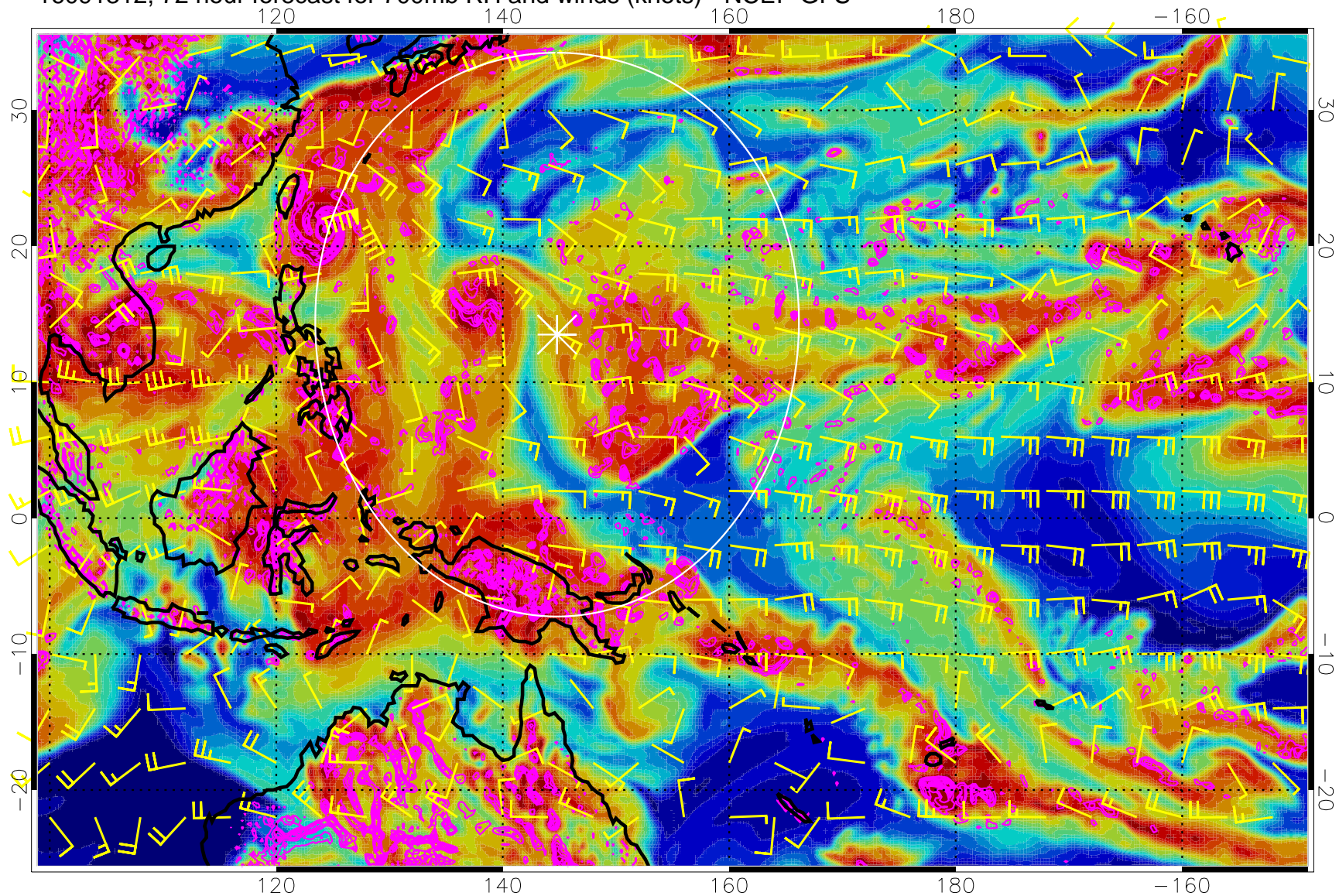
16091306, 66 hour forecast for 700mb RH and winds (knots) - NCEP GFS



Negative Omegas less than -0.3 , contours of 0.3 Pa/s

Range ring of 2304 km

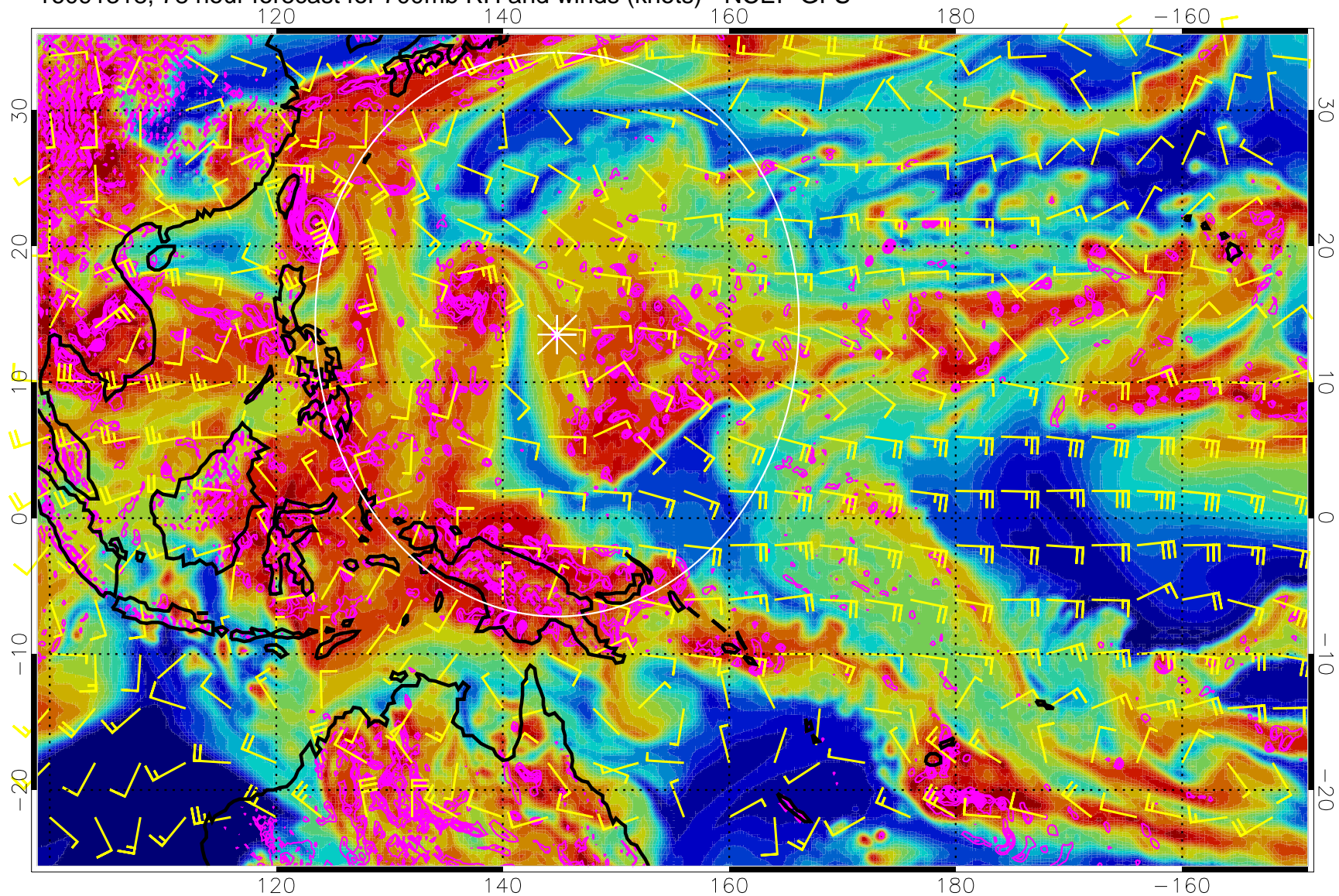
16091312, 72 hour forecast for 700mb RH and winds (knots) - NCEP GFS



Negative Omegas less than -0.3 , contours of 0.3 Pa/s

Range ring of 2304 km

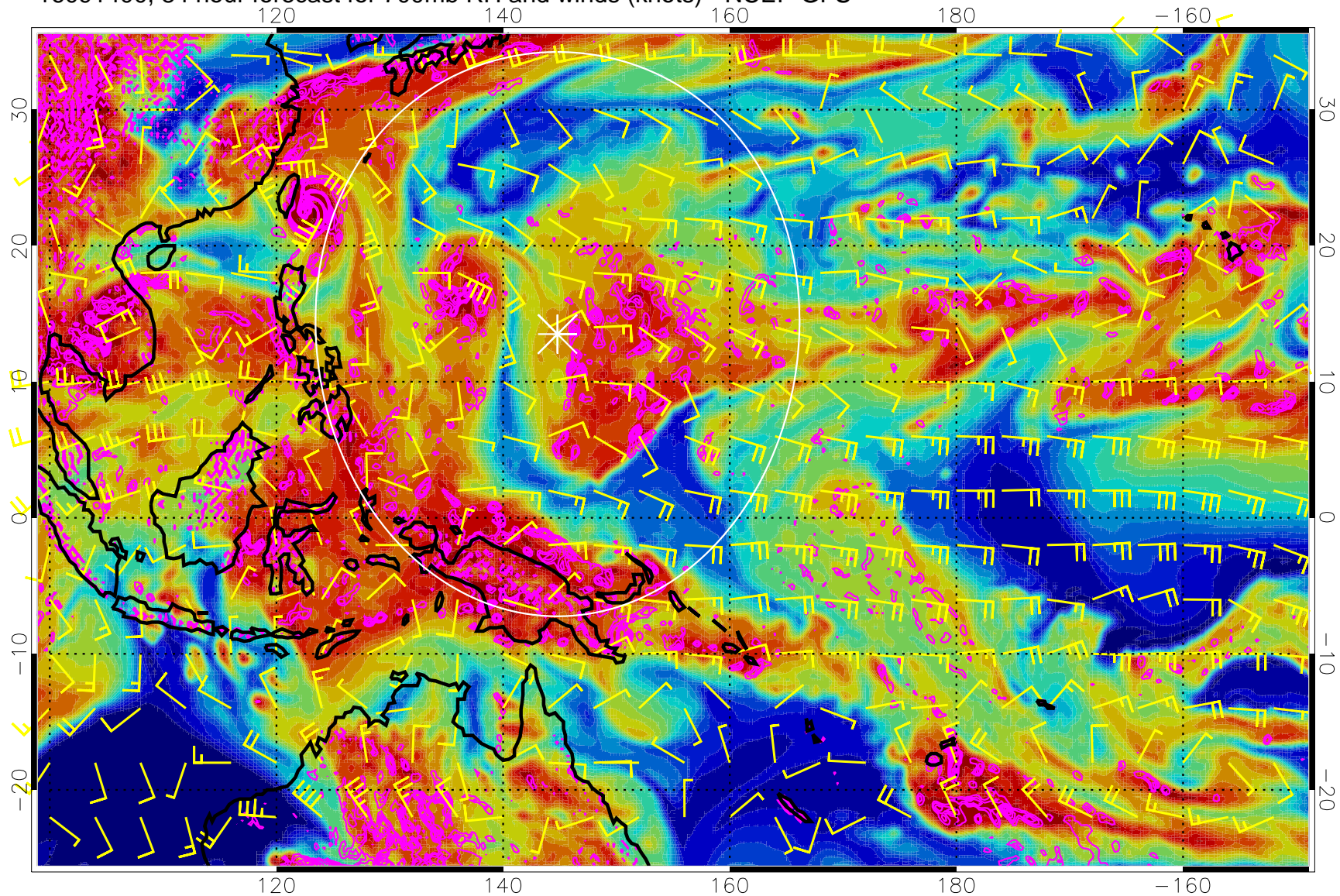
16091318, 78 hour forecast for 700mb RH and winds (knots) - NCEP GFS



Negative Omegas less than -0.3 , contours of 0.3 Pa/s

Range ring of 2304 km

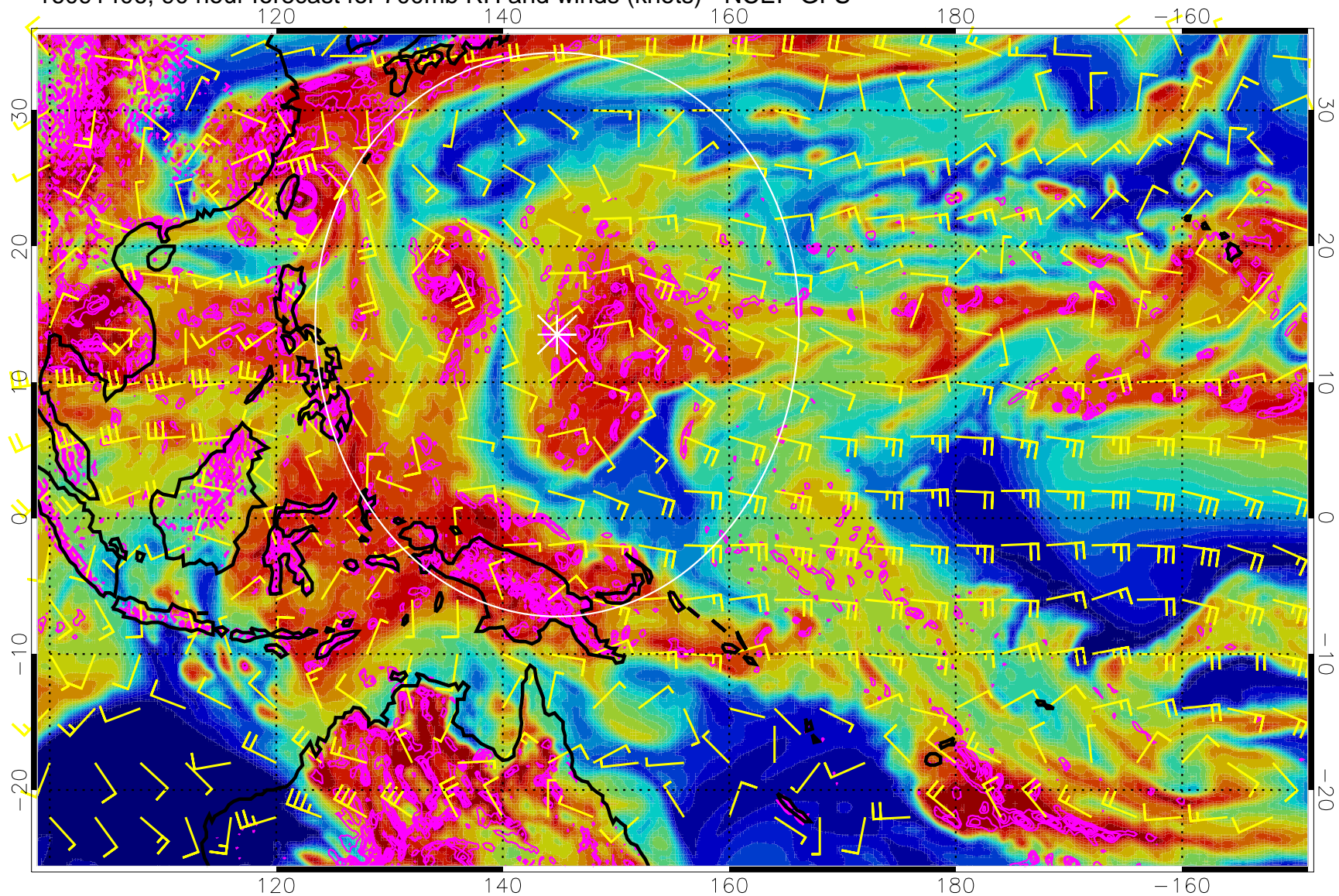
16091400, 84 hour forecast for 700mb RH and winds (knots) - NCEP GFS



Negative Omegas less than -0.3 , contours of 0.3 Pa/s

Range ring of 2304 km

16091406, 90 hour forecast for 700mb RH and winds (knots) - NCEP GFS



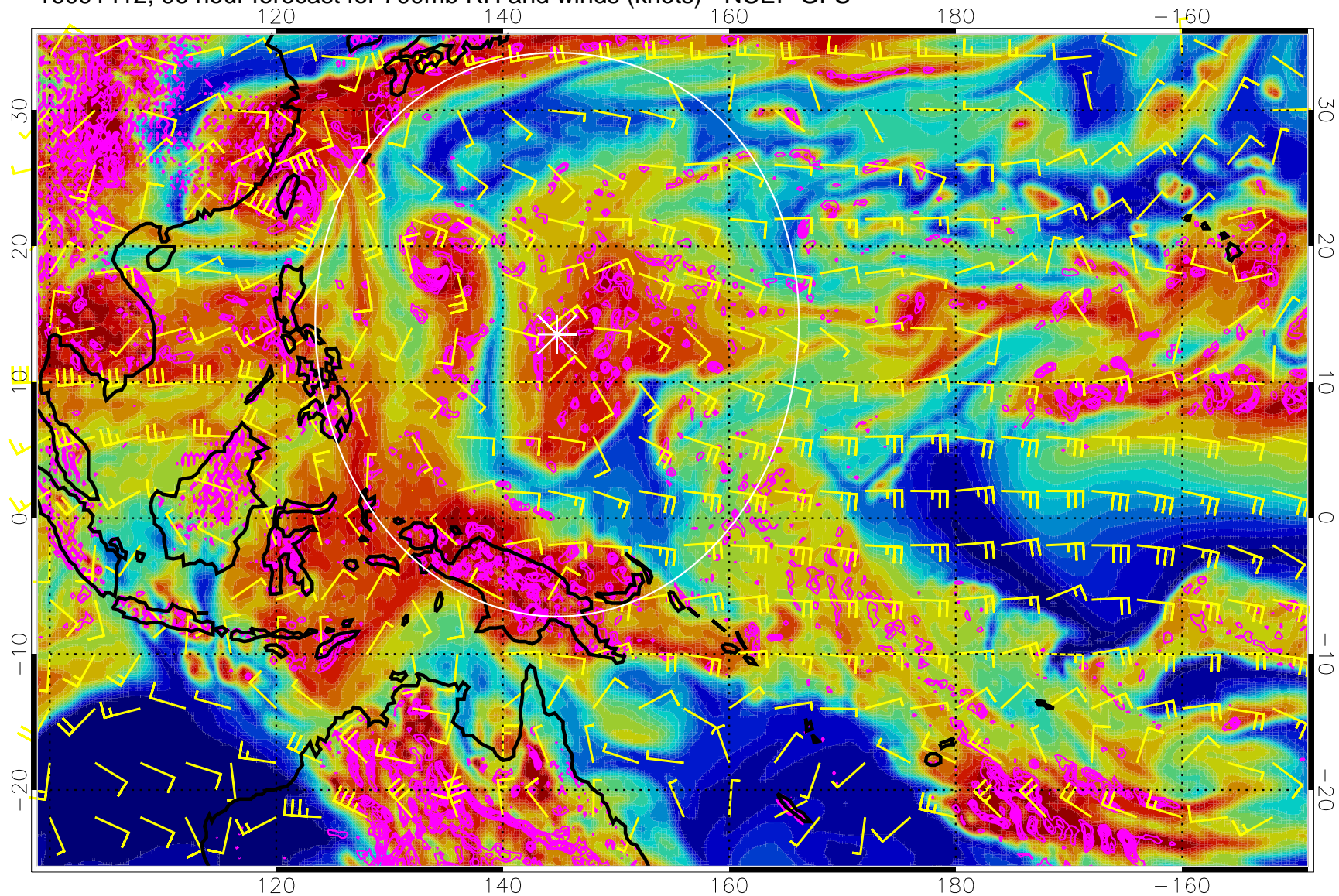
Negative Omegas less than -0.3 , contours of 0.3 Pa/s



0 20 40 60 80 100
RH, %

Range ring of 2304 km

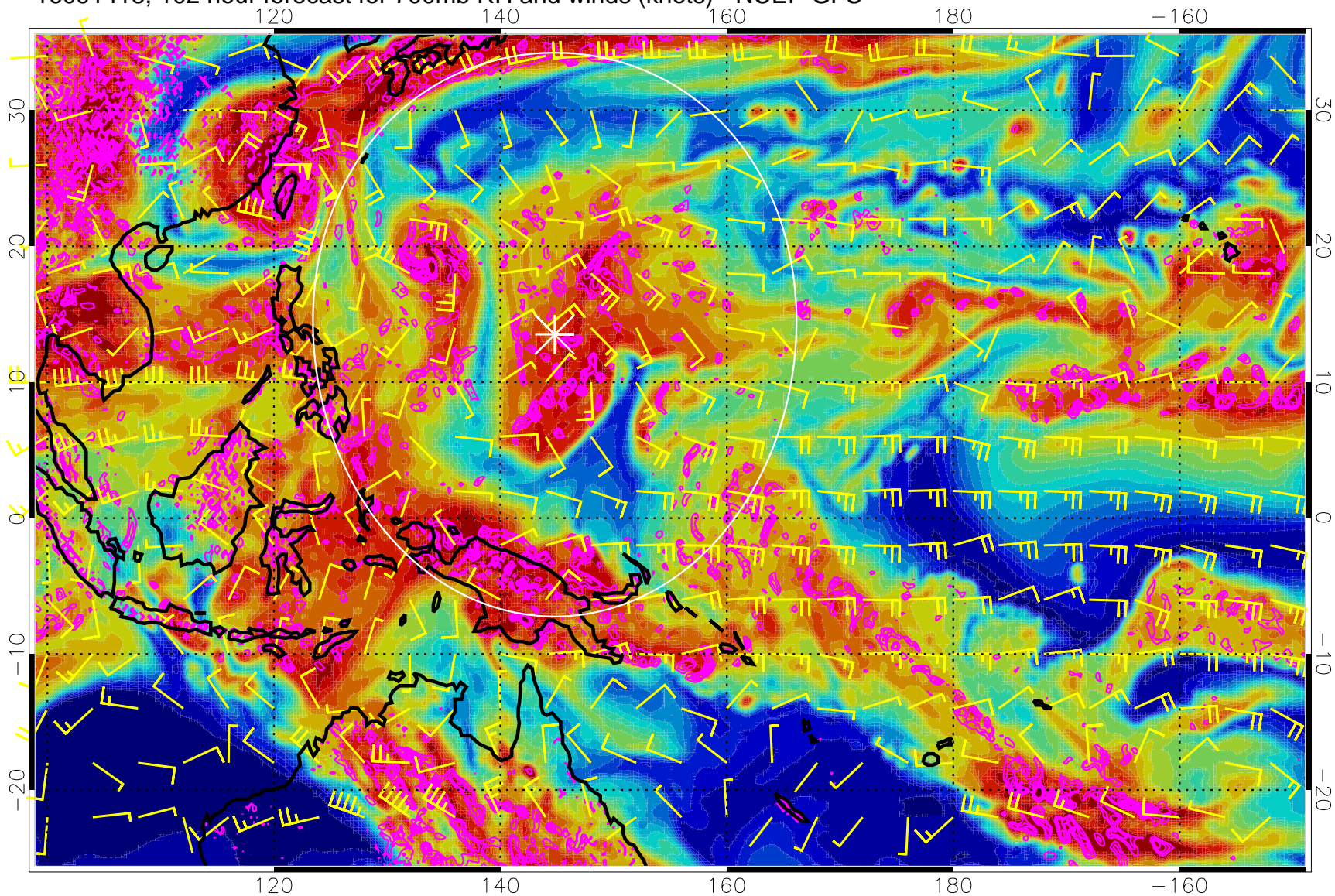
16091412, 96 hour forecast for 700mb RH and winds (knots) - NCEP GFS



Negative Omegas less than -0.3 , contours of $.3$ Pa/s

Range ring of 2304 km

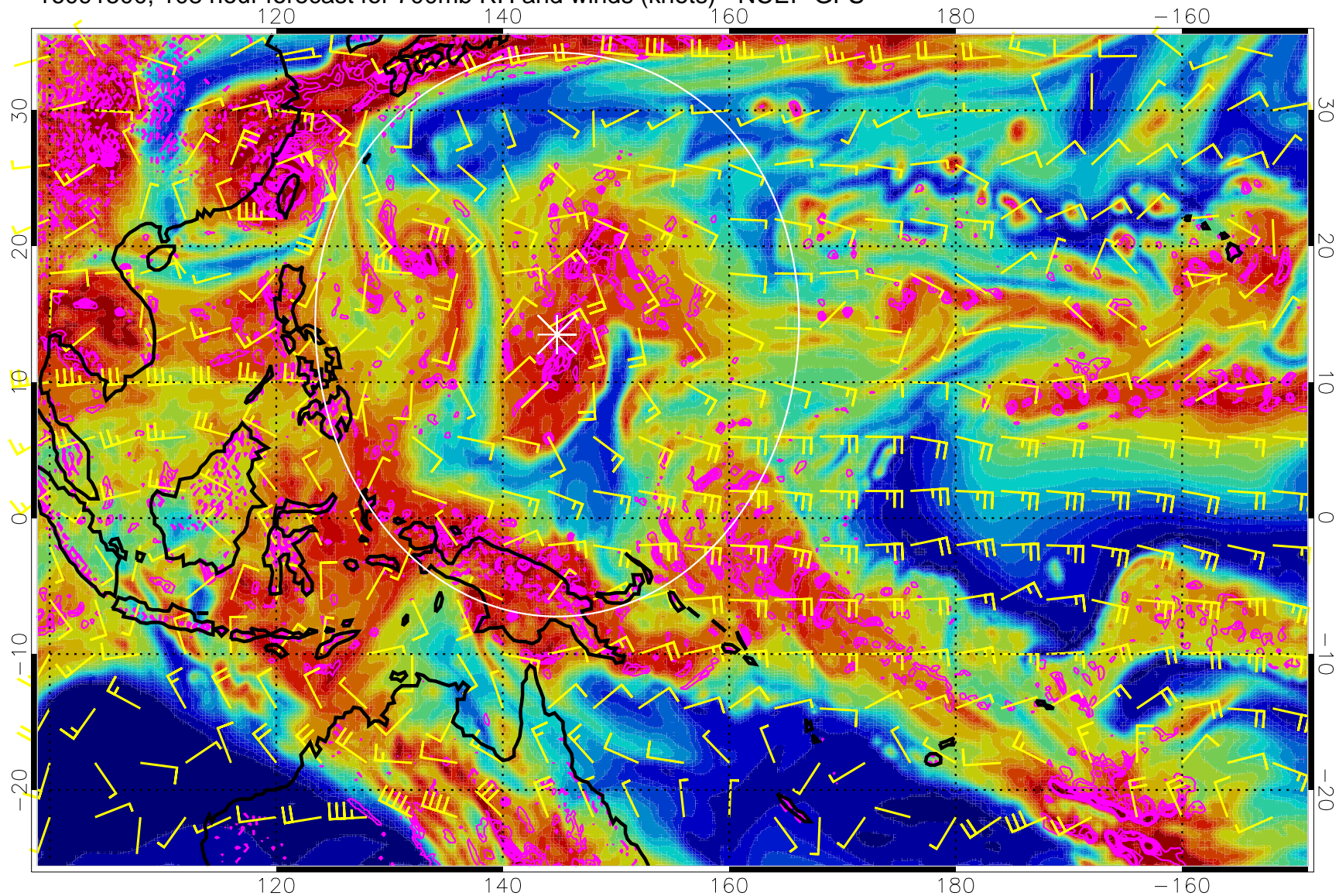
16091418, 102 hour forecast for 700mb RH and winds (knots) - NCEP GFS



Negative Omegas less than -0.3 , contours of $.3$ Pa/s

Range ring of 2304 km

16091500, 108 hour forecast for 700mb RH and winds (knots) - NCEP GFS



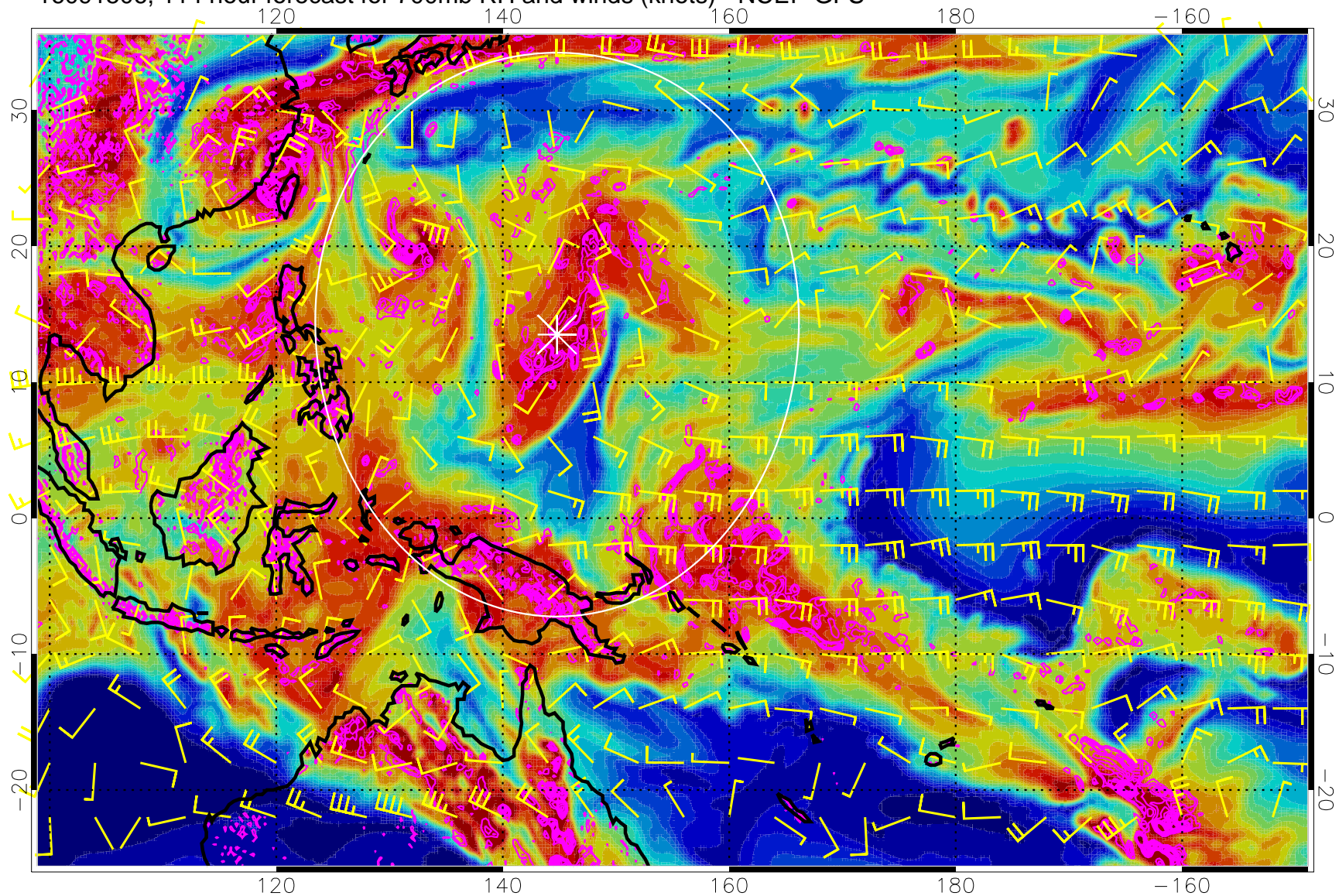
Negative Omegas less than -0.3 , contours of 0.3 Pa/s



0 20 40 60 80 100
RH, %

Range ring of 2304 km

16091506, 114 hour forecast for 700mb RH and winds (knots) - NCEP GFS

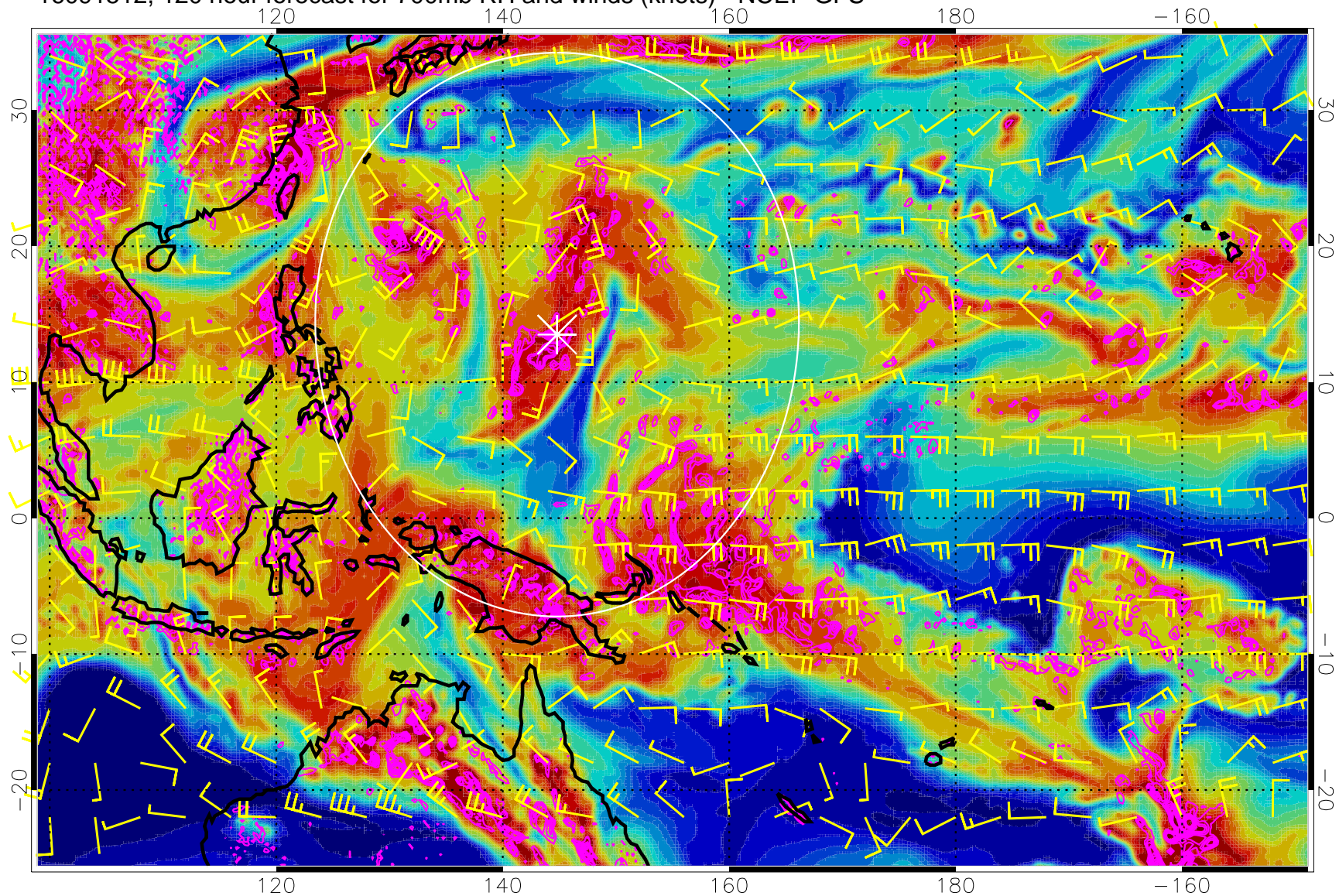


0 20 40 60 80 100
RH, %

Negative Omegas less than -0.3 , contours of 0.3 Pa/s

Range ring of 2304 km

16091512, 120 hour forecast for 700mb RH and winds (knots) - NCEP GFS



Negative Omegas less than -0.3 , contours of 0.3 Pa/s

Range ring of 2304 km