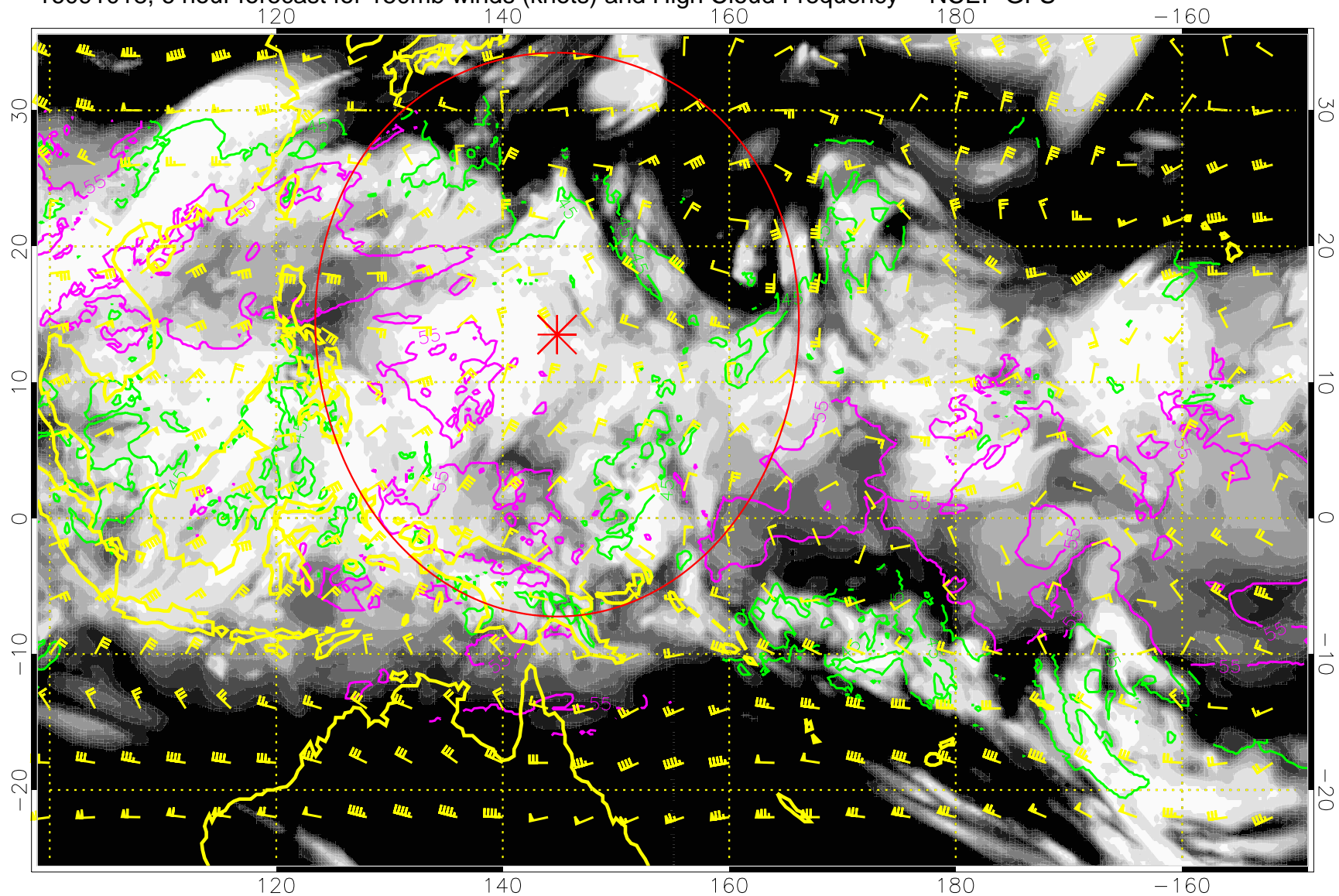


16091018, 6 hour forecast for 150mb winds (knots) and High Cloud Frequency -- NCEP GFS

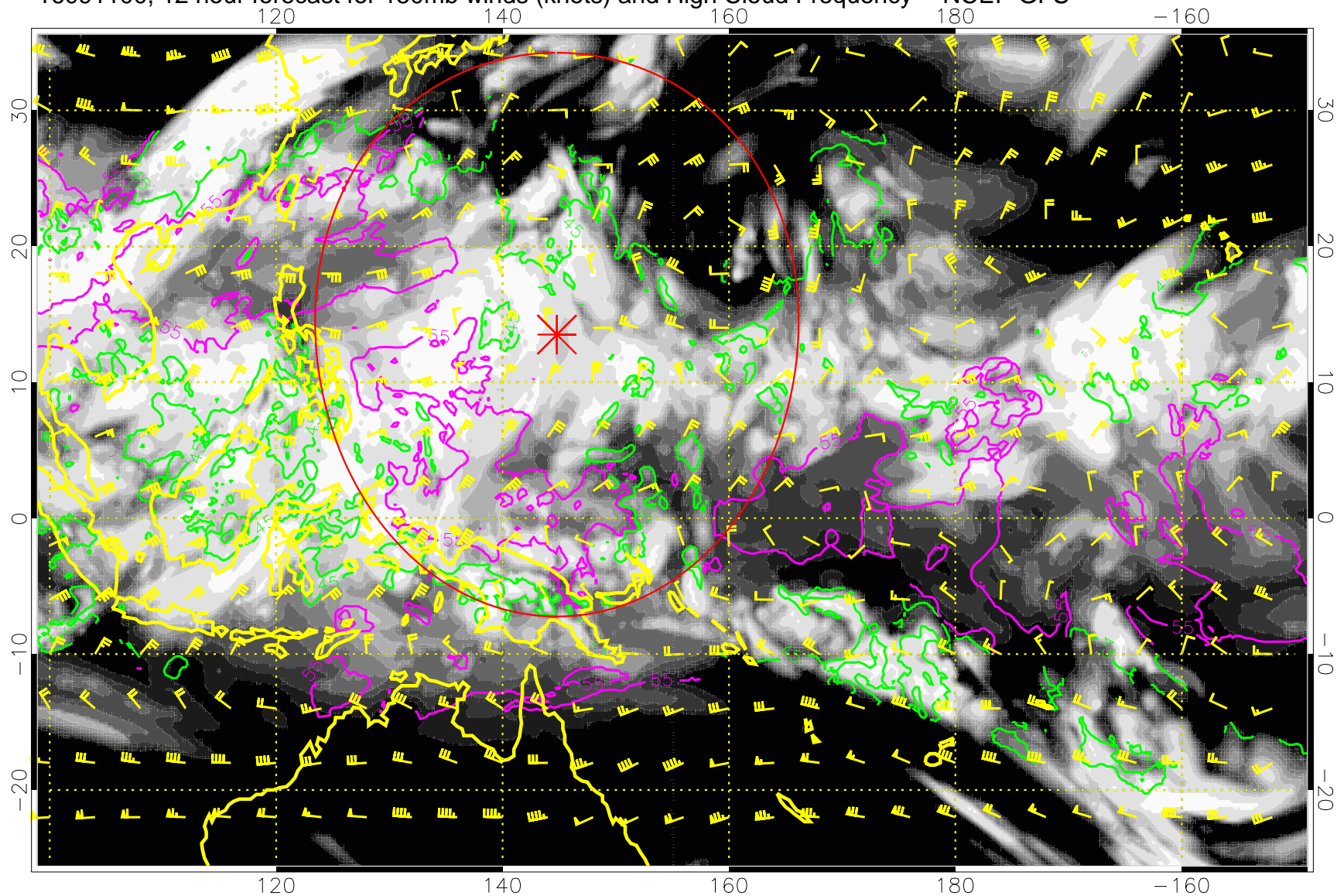


High Cloud Frequency

45 kft  
55 kft

Range ring of 2304 km

16091100, 12 hour forecast for 150mb winds (knots) and High Cloud Frequency -- NCEP GFS

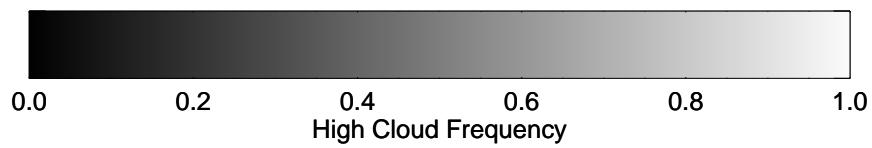
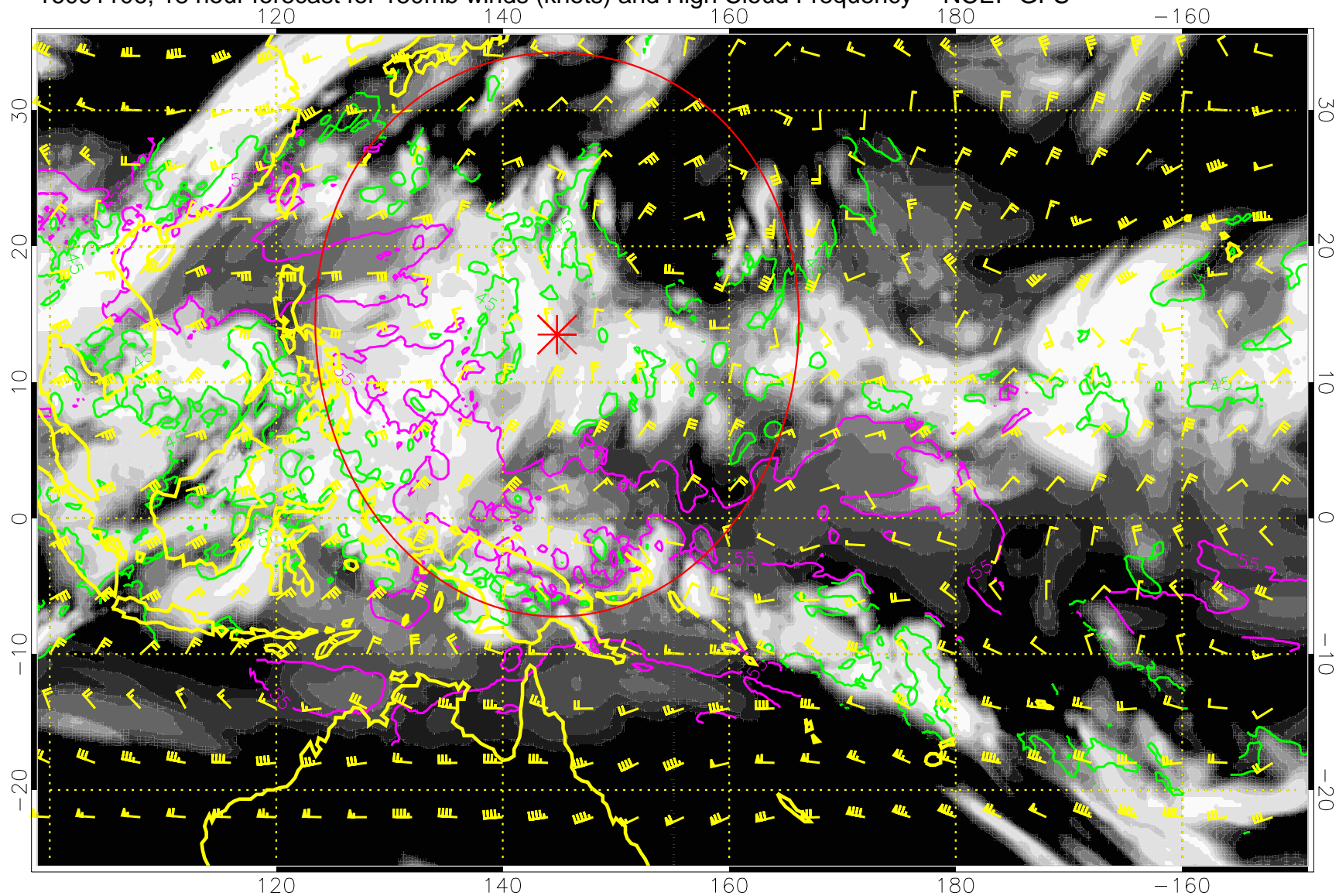


High Cloud Frequency

45 kft  
55 kft

Range ring of 2304 km

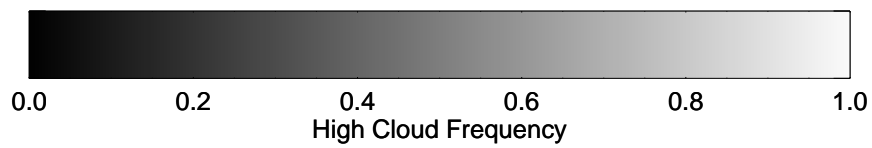
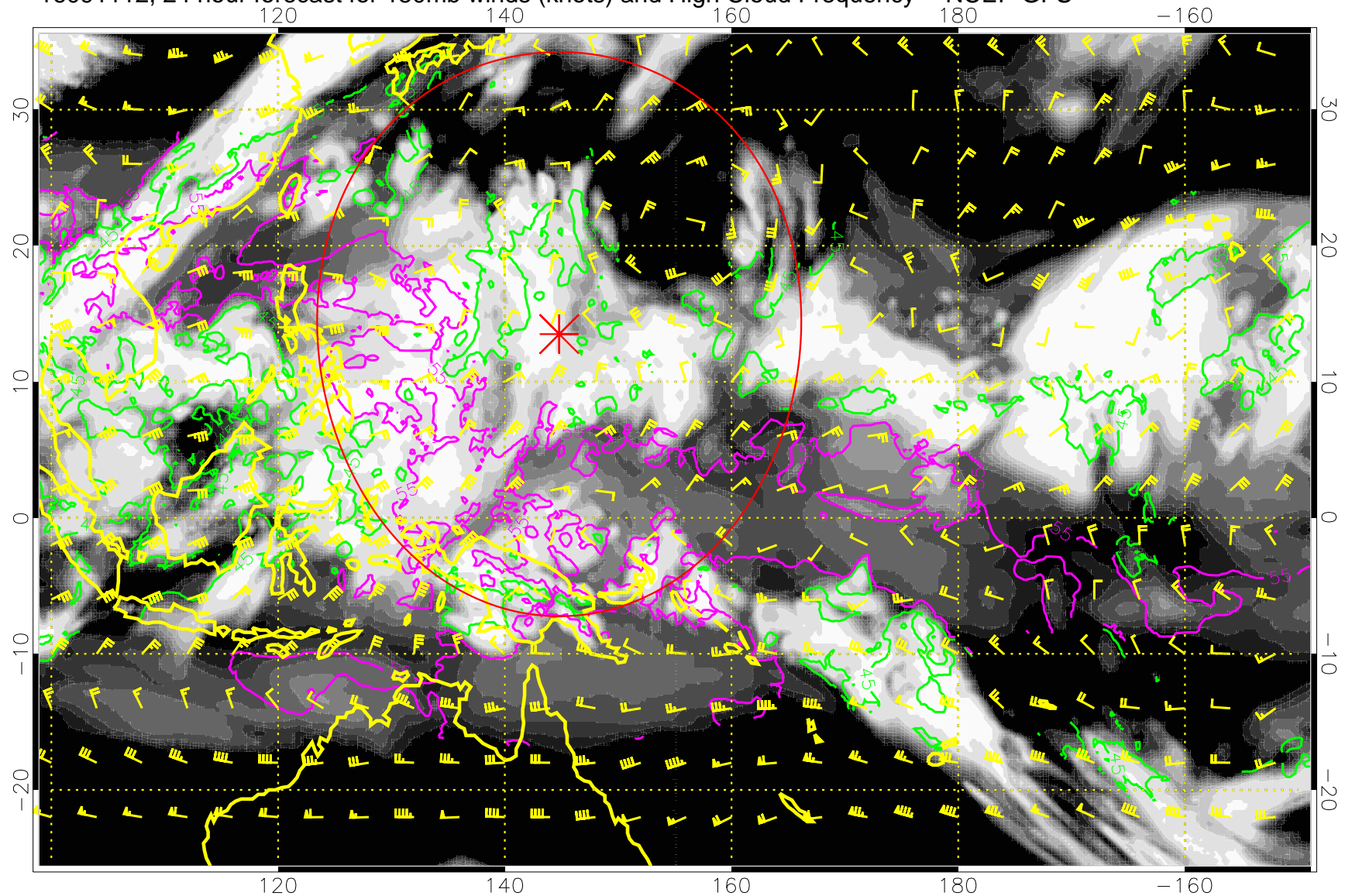
16091106, 18 hour forecast for 150mb winds (knots) and High Cloud Frequency -- NCEP GFS



45 kft  
55 kft

Range ring of 2304 km

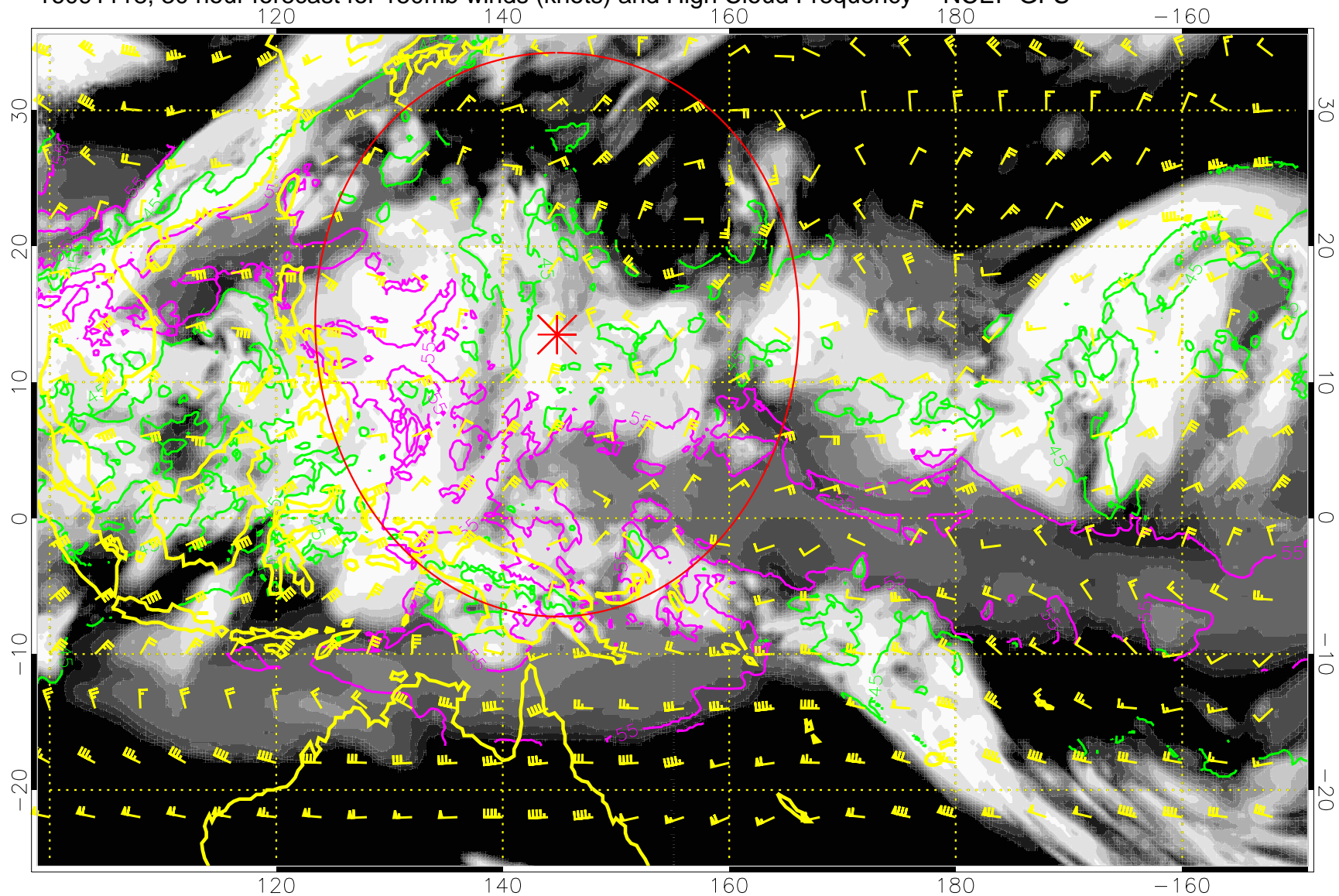
16091112, 24 hour forecast for 150mb winds (knots) and High Cloud Frequency -- NCEP GFS



45 kft  
55 kft

Range ring of 2304 km

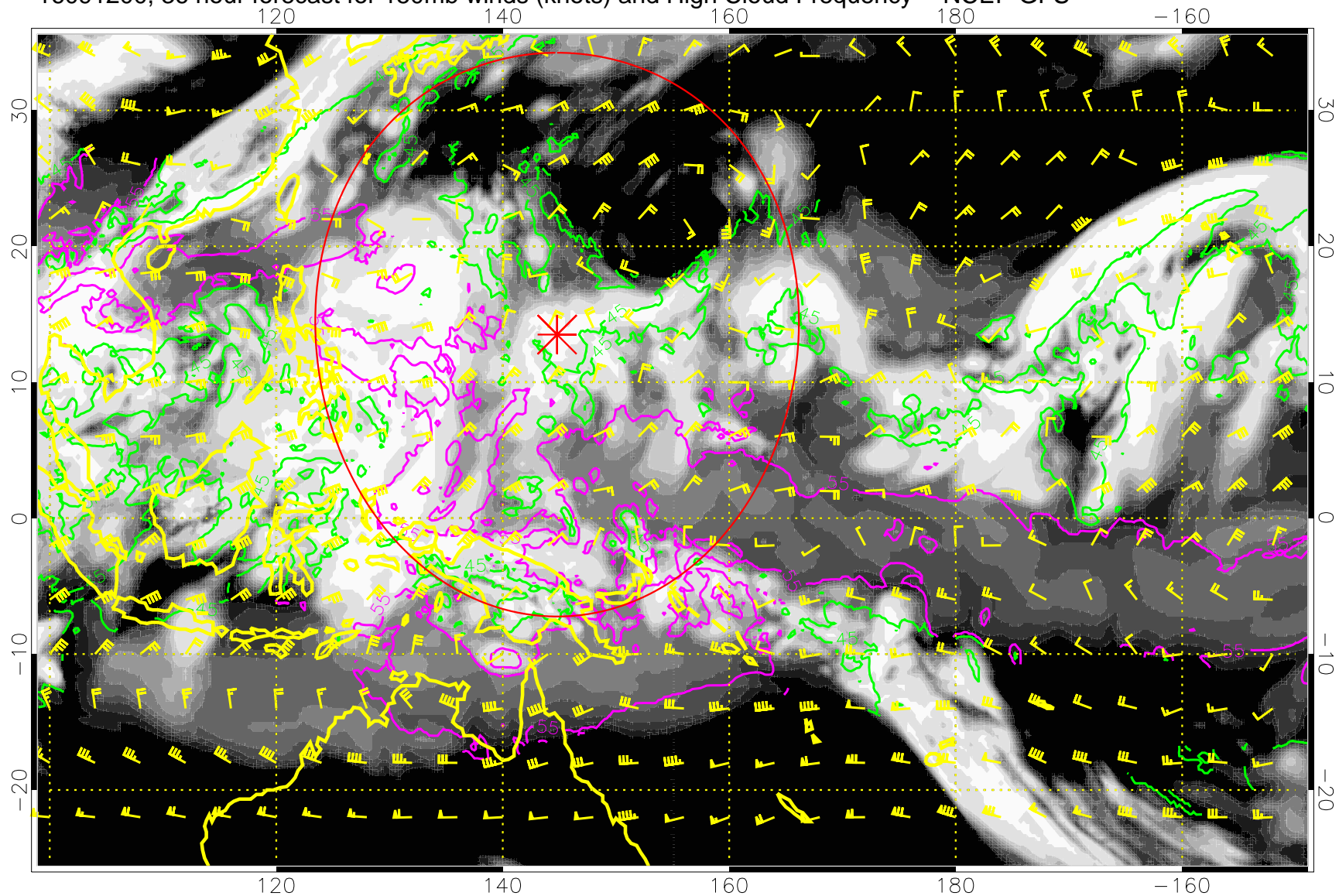
16091118, 30 hour forecast for 150mb winds (knots) and High Cloud Frequency -- NCEP GFS



45 kft  
55 kft

Range ring of 2304 km

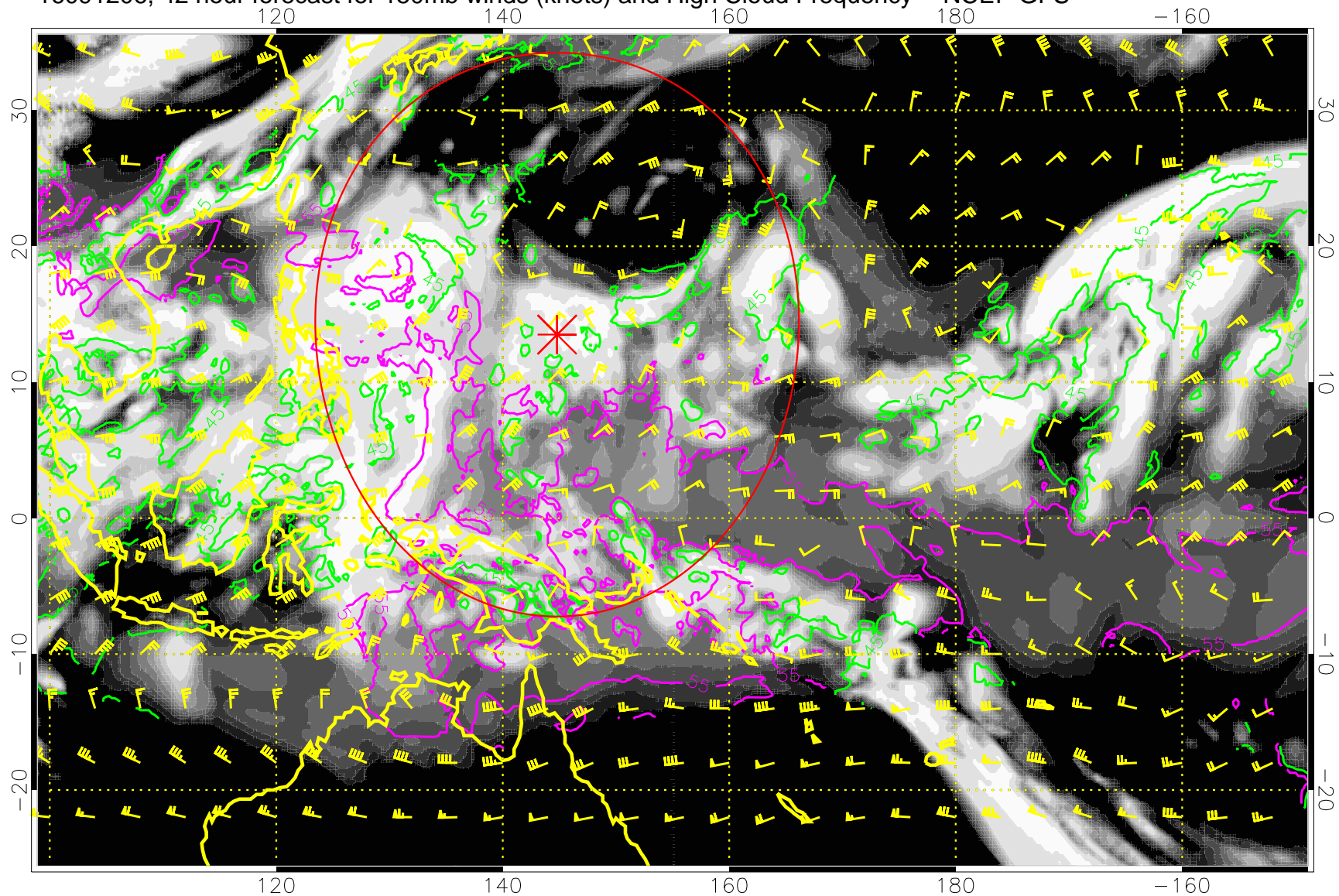
16091200, 36 hour forecast for 150mb winds (knots) and High Cloud Frequency -- NCEP GFS



45 kft  
55 kft

Range ring of 2304 km

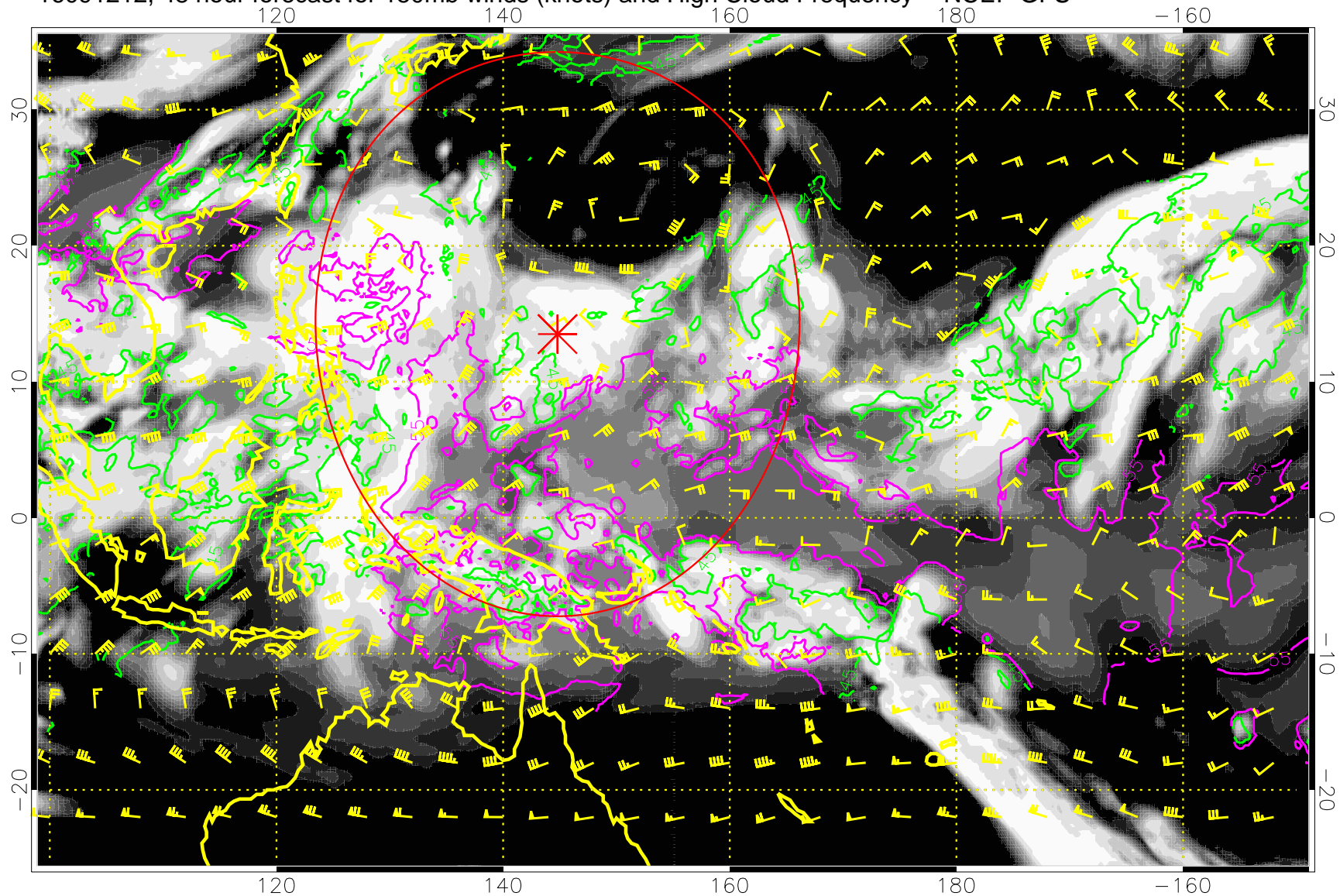
16091206, 42 hour forecast for 150mb winds (knots) and High Cloud Frequency -- NCEP GFS



45 kft  
55 kft

Range ring of 2304 km

16091212, 48 hour forecast for 150mb winds (knots) and High Cloud Frequency -- NCEP GFS

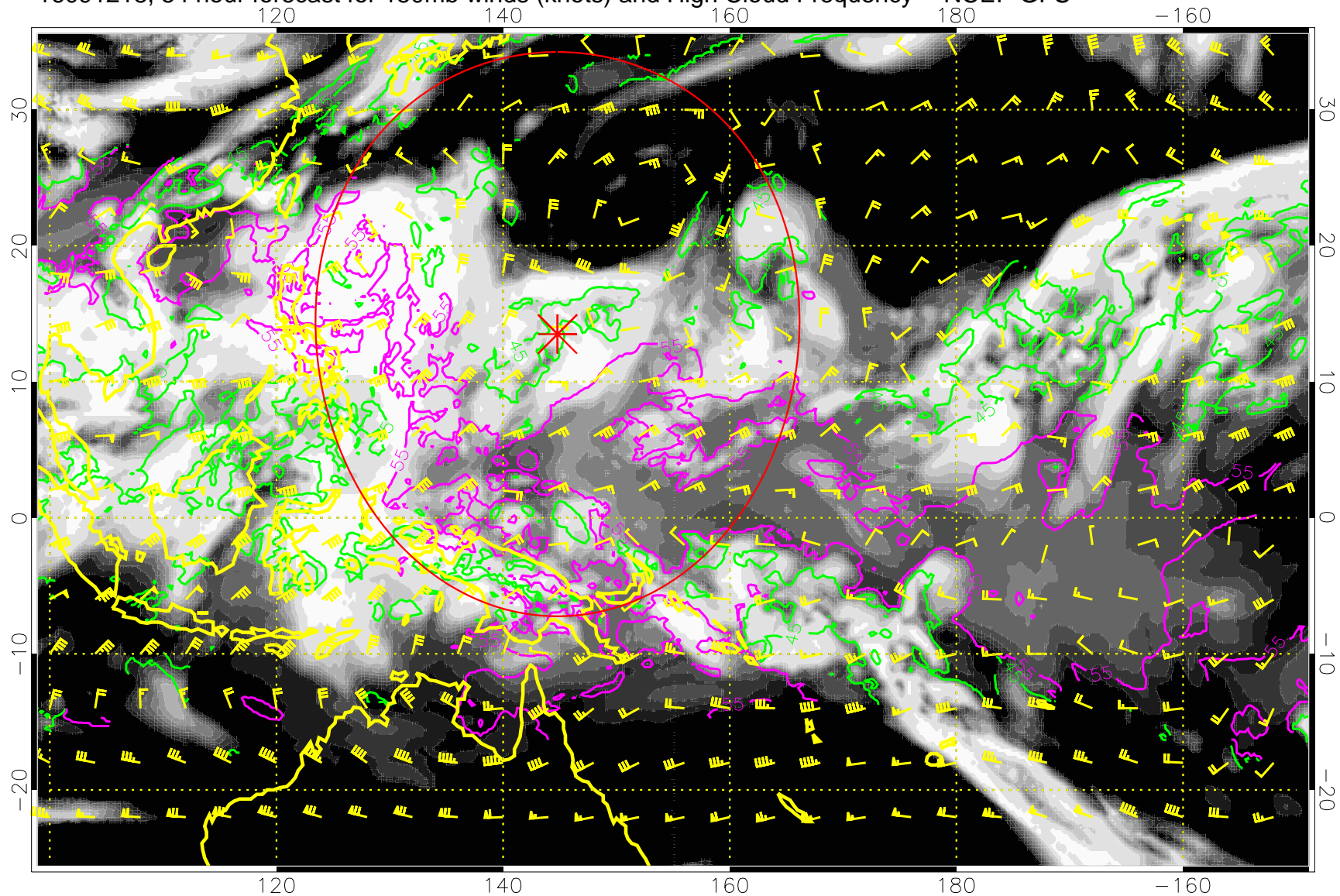


45 kft  
55 kft

Range ring of 2304 km



16091218, 54 hour forecast for 150mb winds (knots) and High Cloud Frequency -- NCEP GFS

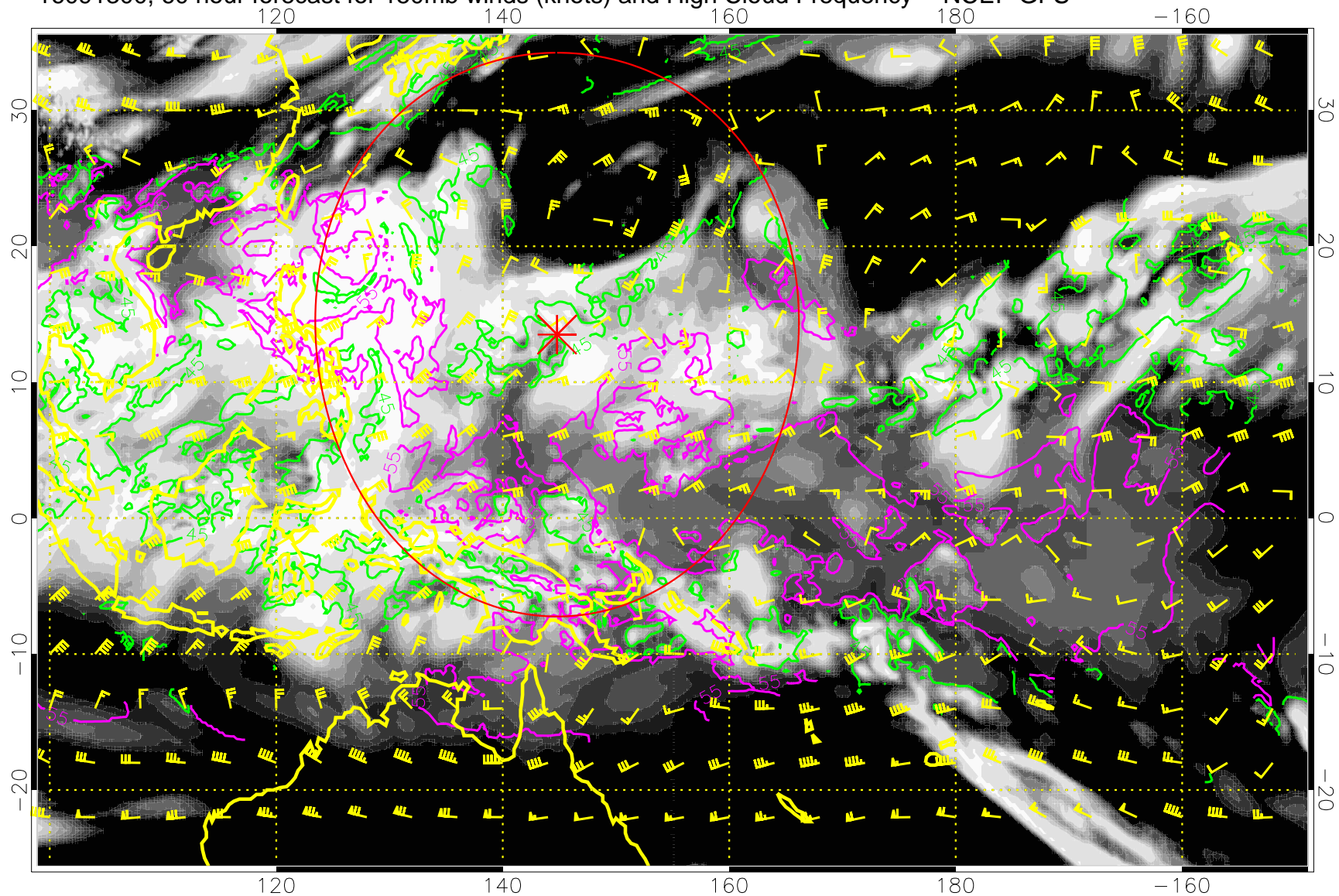


High Cloud Frequency

45 kft  
55 kft

Range ring of 2304 km

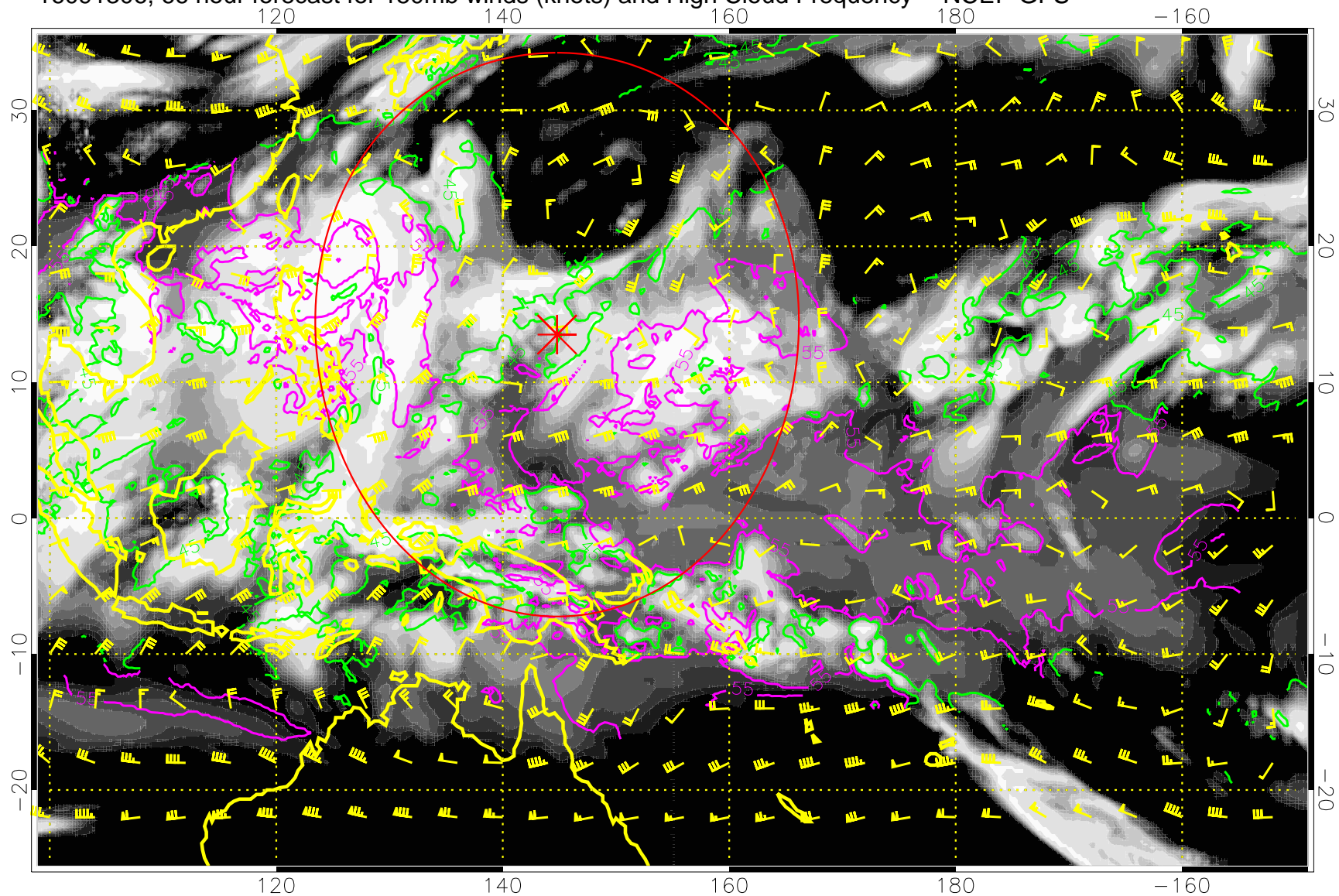
16091300, 60 hour forecast for 150mb winds (knots) and High Cloud Frequency -- NCEP GFS



45 kft  
55 kft

Range ring of 2304 km

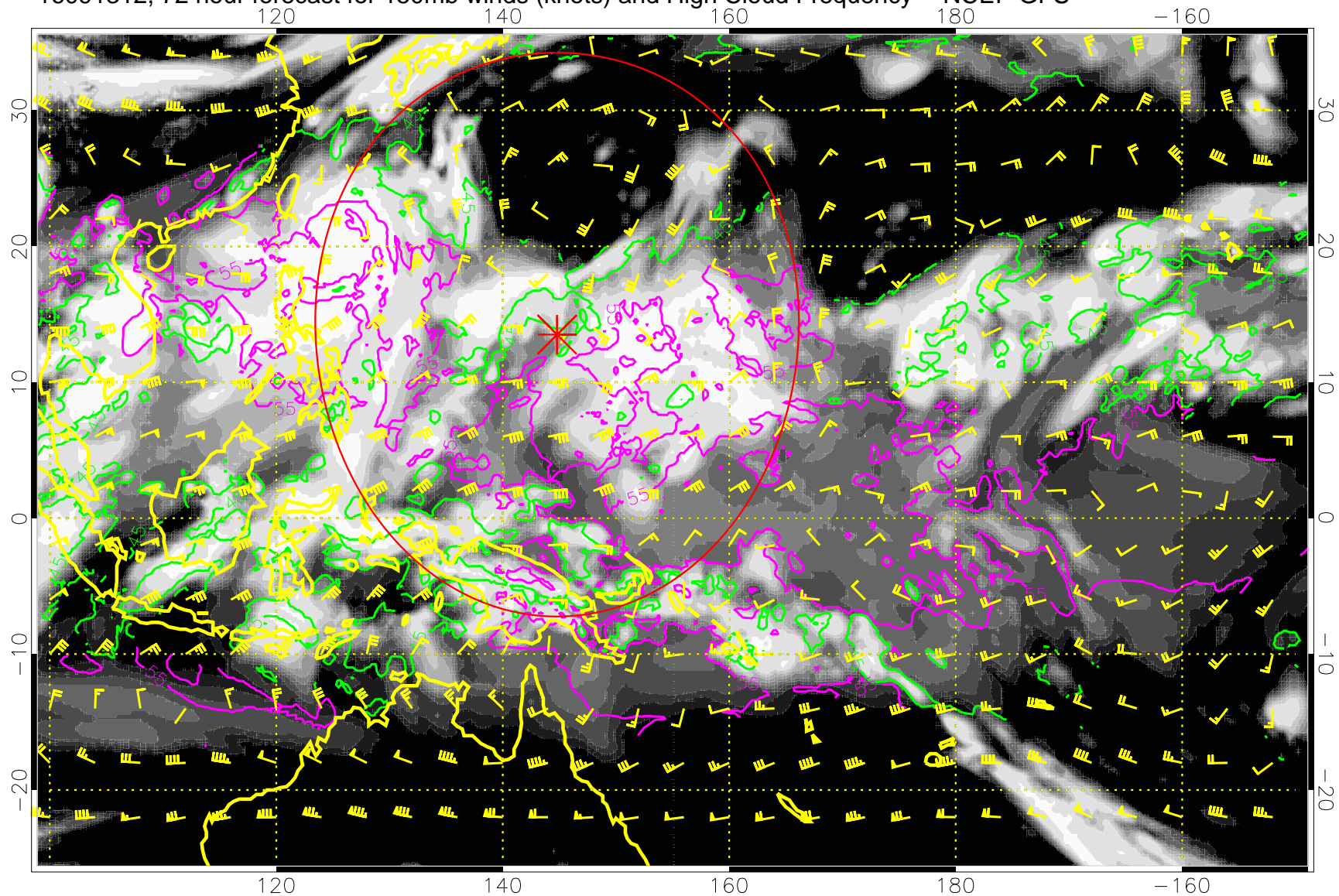
16091306, 66 hour forecast for 150mb winds (knots) and High Cloud Frequency -- NCEP GFS



45 kft  
55 kft

Range ring of 2304 km

16091312, 72 hour forecast for 150mb winds (knots) and High Cloud Frequency -- NCEP GFS

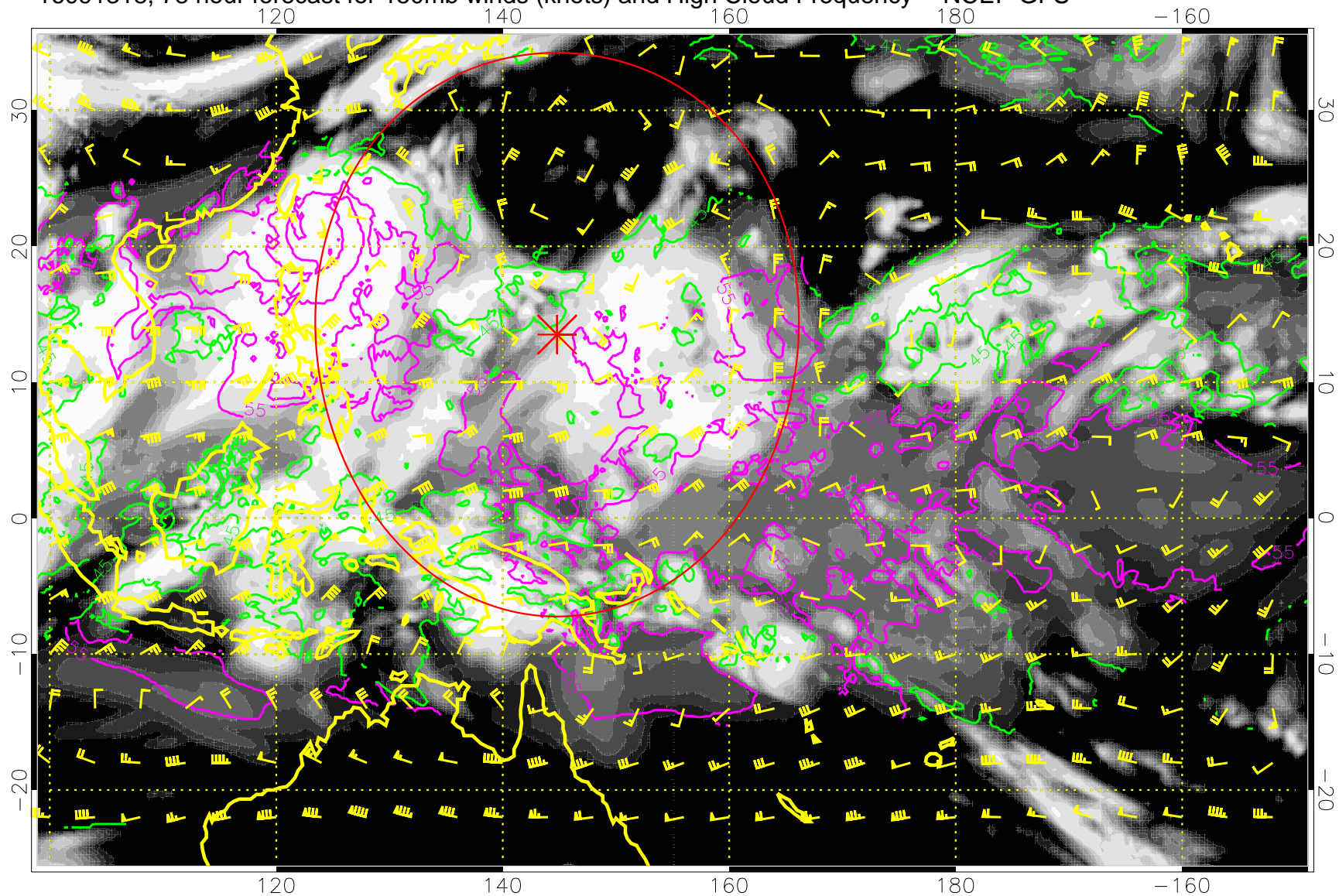


0.0 0.2 0.4 0.6 0.8 1.0  
High Cloud Frequency

45 kft  
55 kft

Range ring of 2304 km

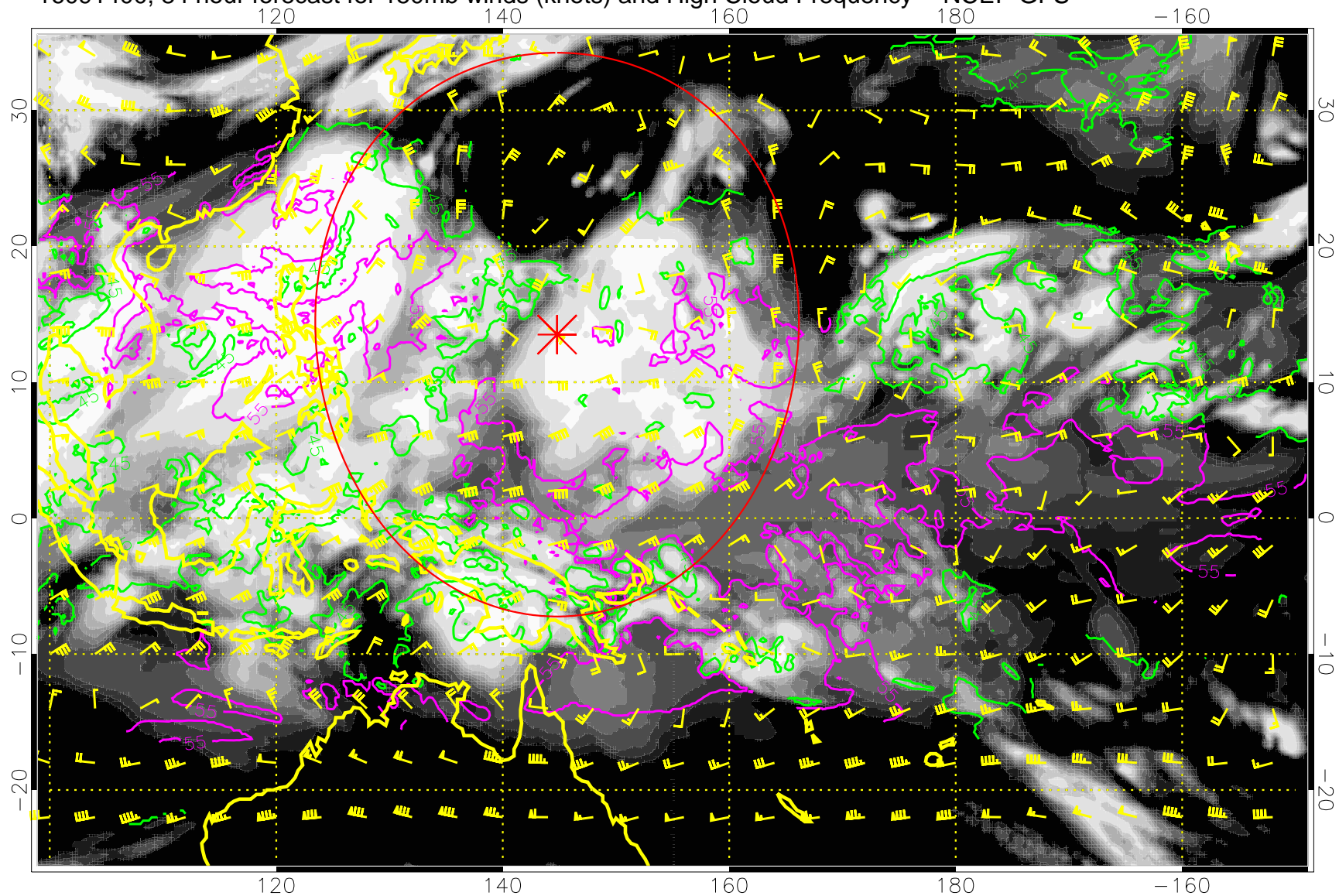
16091318, 78 hour forecast for 150mb winds (knots) and High Cloud Frequency -- NCEP GFS



45 kft  
55 kft

Range ring of 2304 km

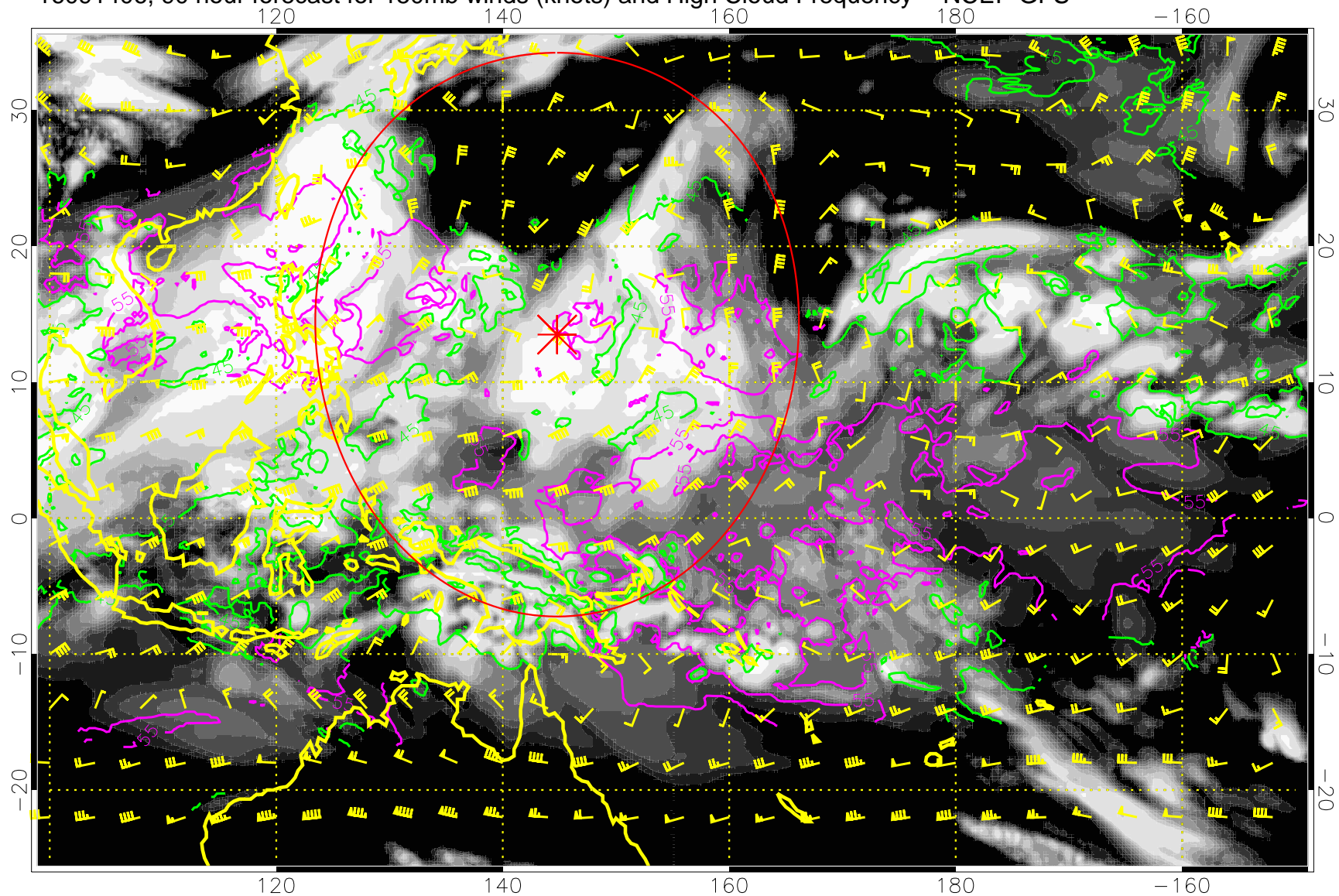
16091400, 84 hour forecast for 150mb winds (knots) and High Cloud Frequency -- NCEP GFS



45 kft  
55 kft

Range ring of 2304 km

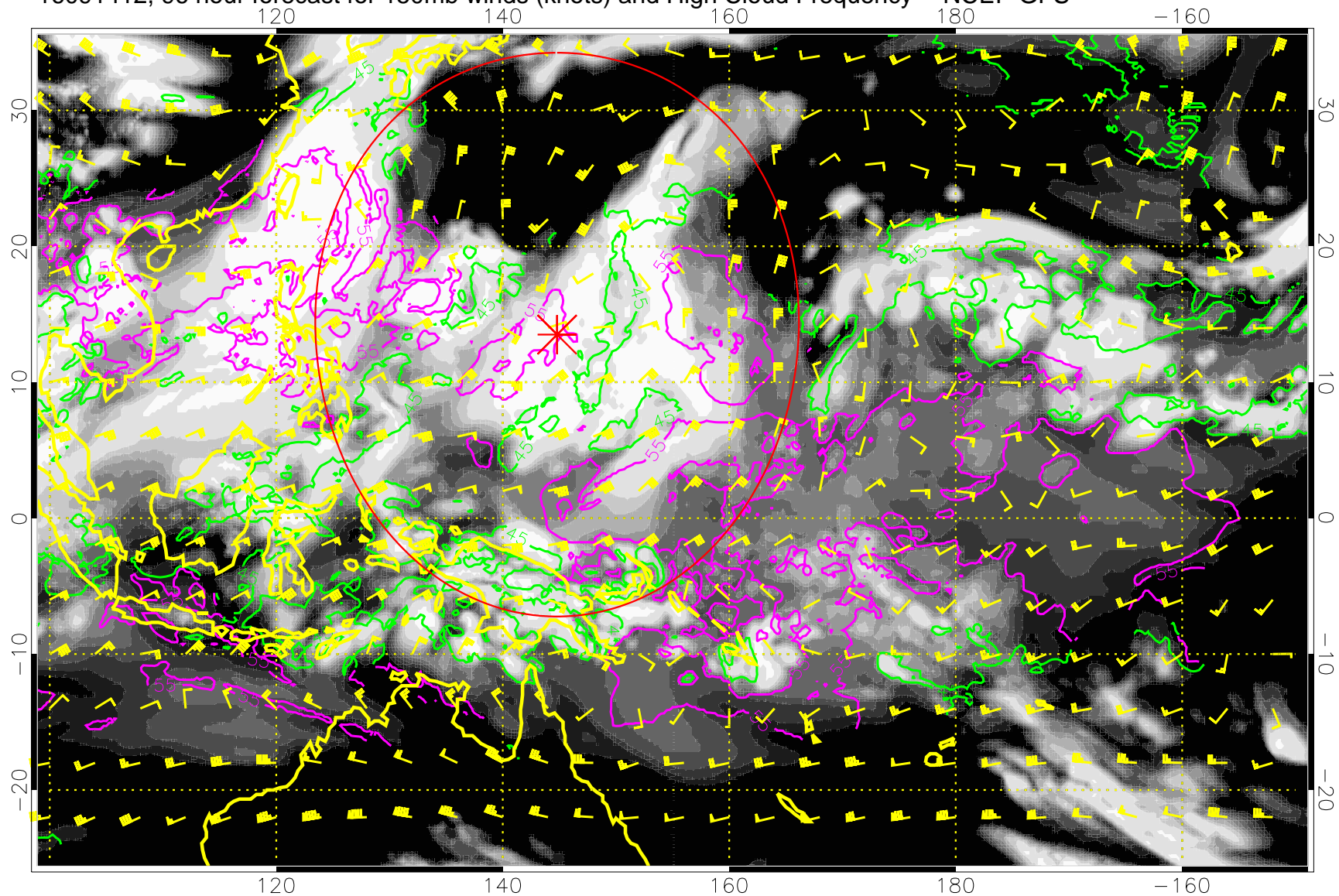
16091406, 90 hour forecast for 150mb winds (knots) and High Cloud Frequency -- NCEP GFS



45 kft  
55 kft

Range ring of 2304 km

16091412, 96 hour forecast for 150mb winds (knots) and High Cloud Frequency -- NCEP GFS

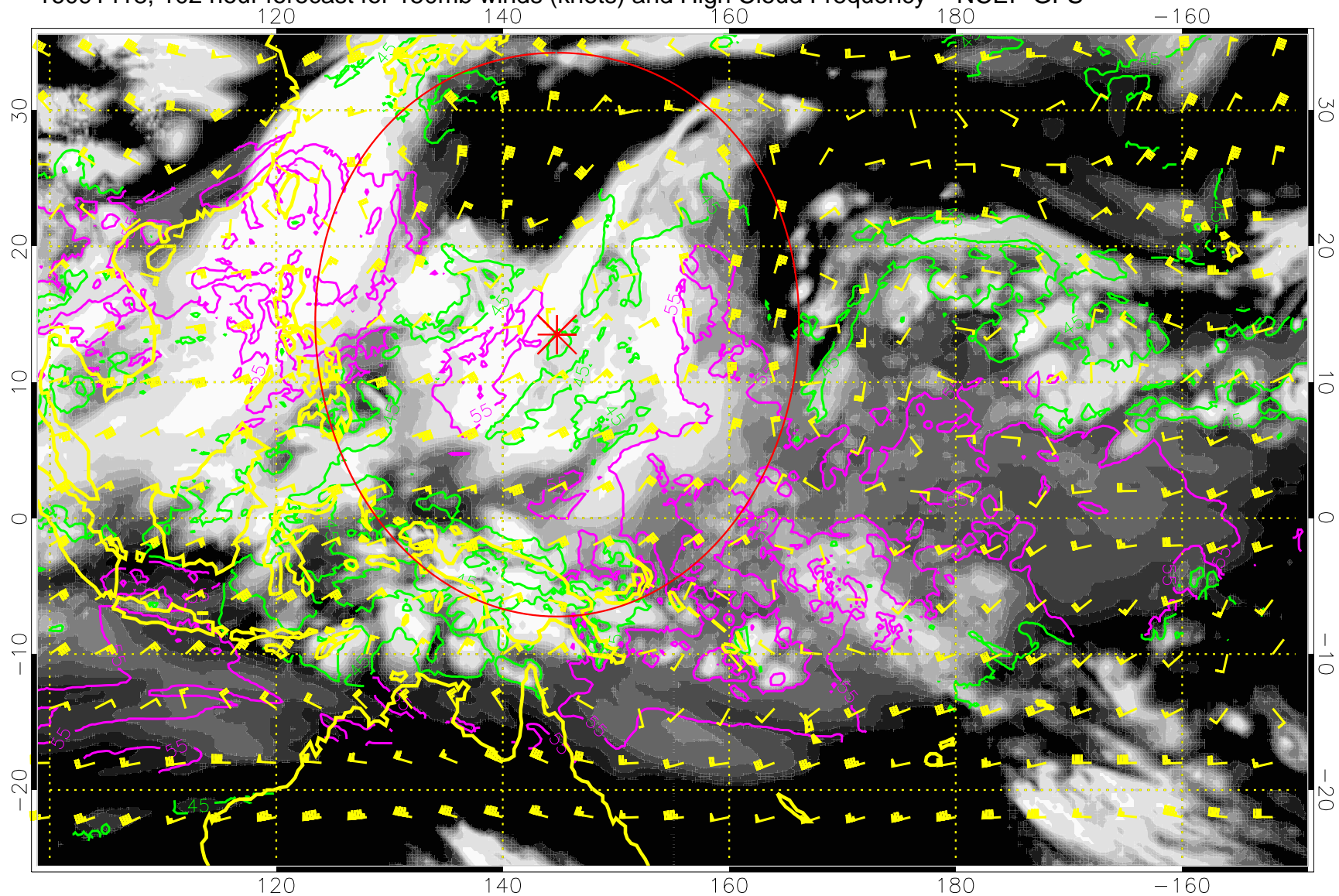


45 kft  
55 kft

Range ring of 2304 km



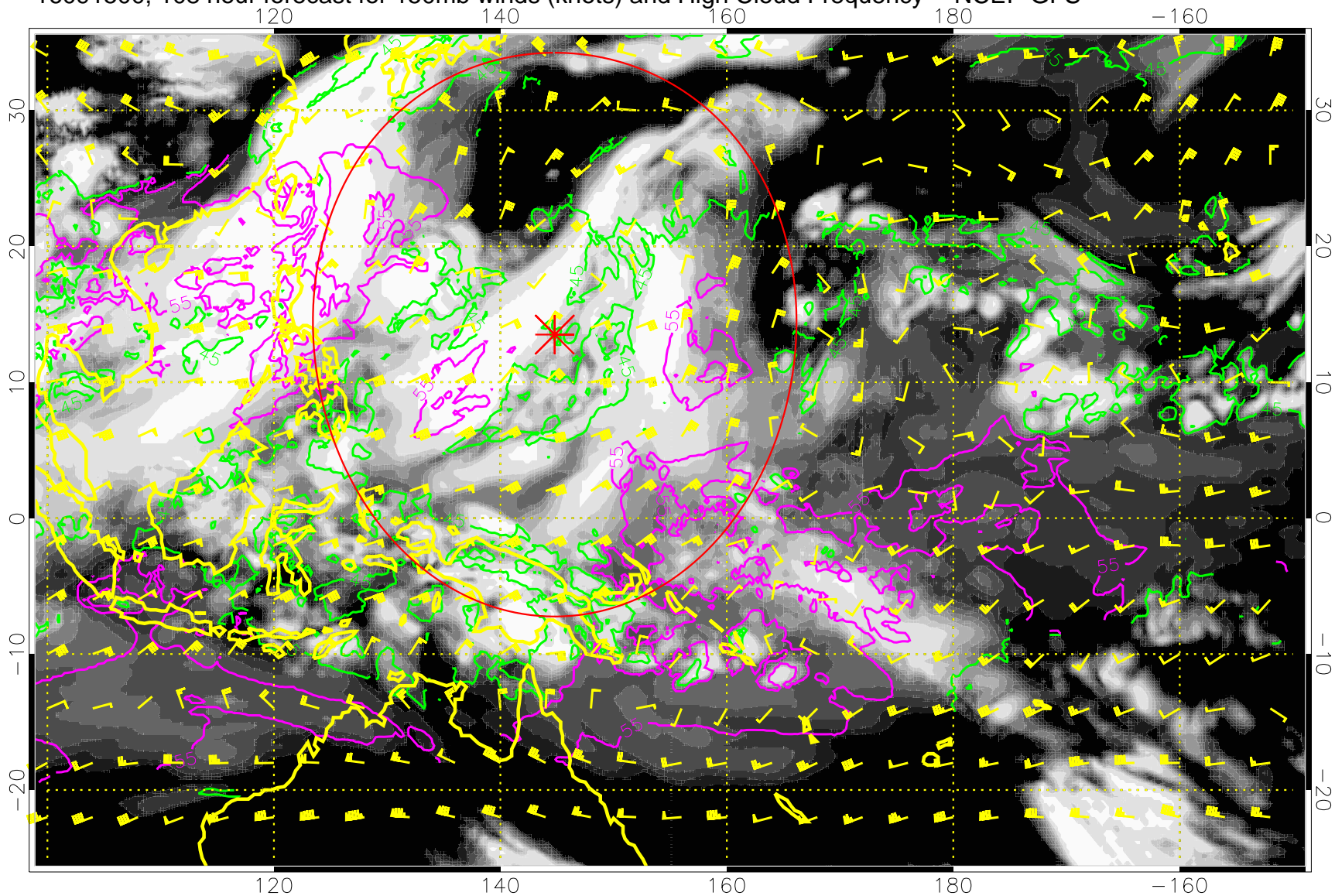
16091418, 102 hour forecast for 150mb winds (knots) and High Cloud Frequency -- NCEP GFS



45 kft  
55 kft

Range ring of 2304 km

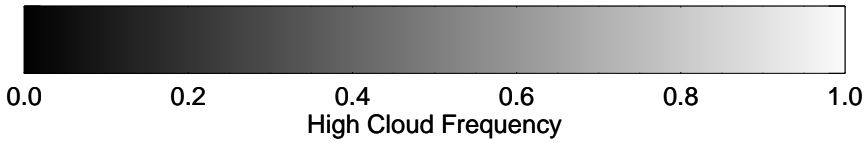
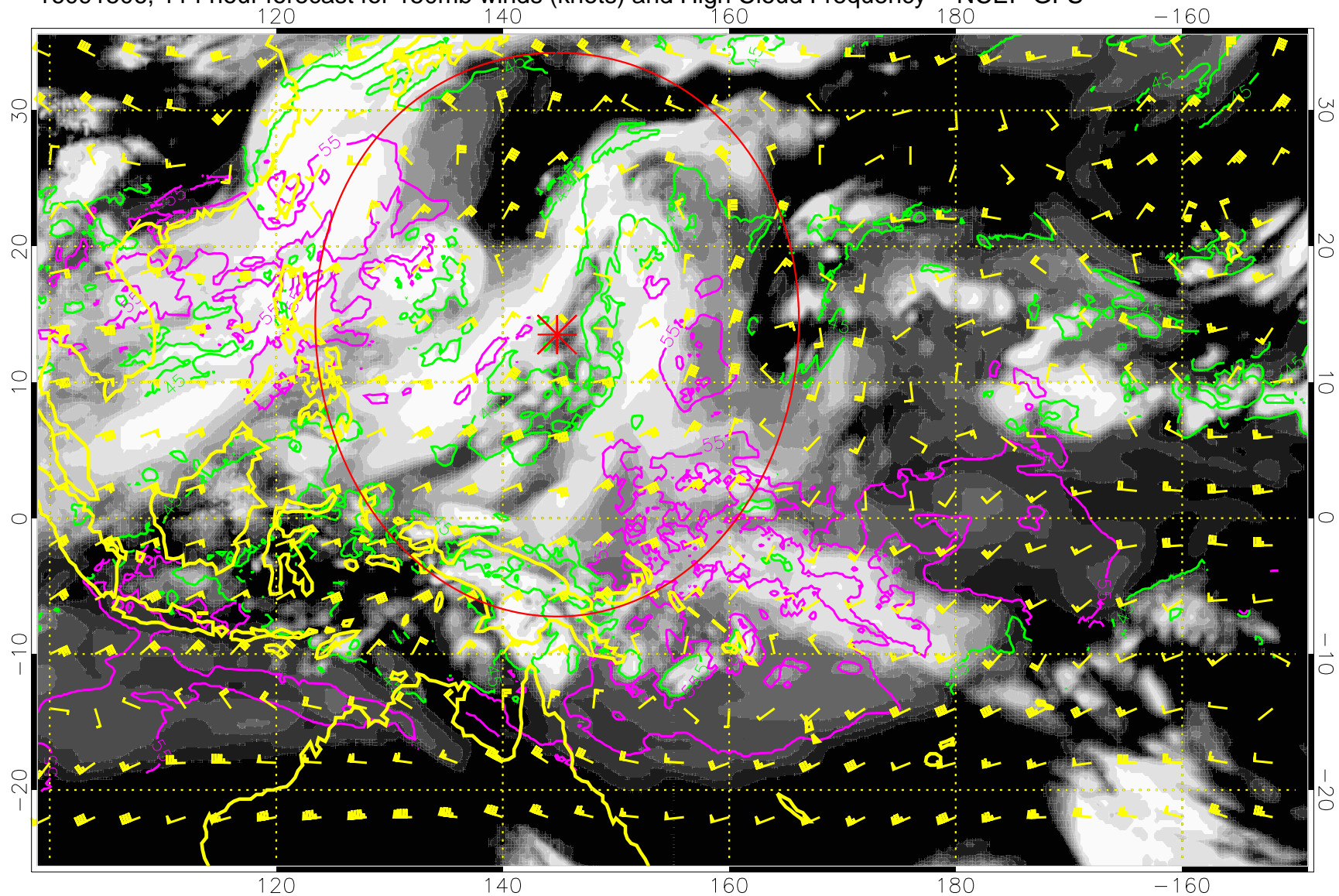
16091500, 108 hour forecast for 150mb winds (knots) and High Cloud Frequency -- NCEP GFS



45 kft  
55 kft

Range ring of 2304 km

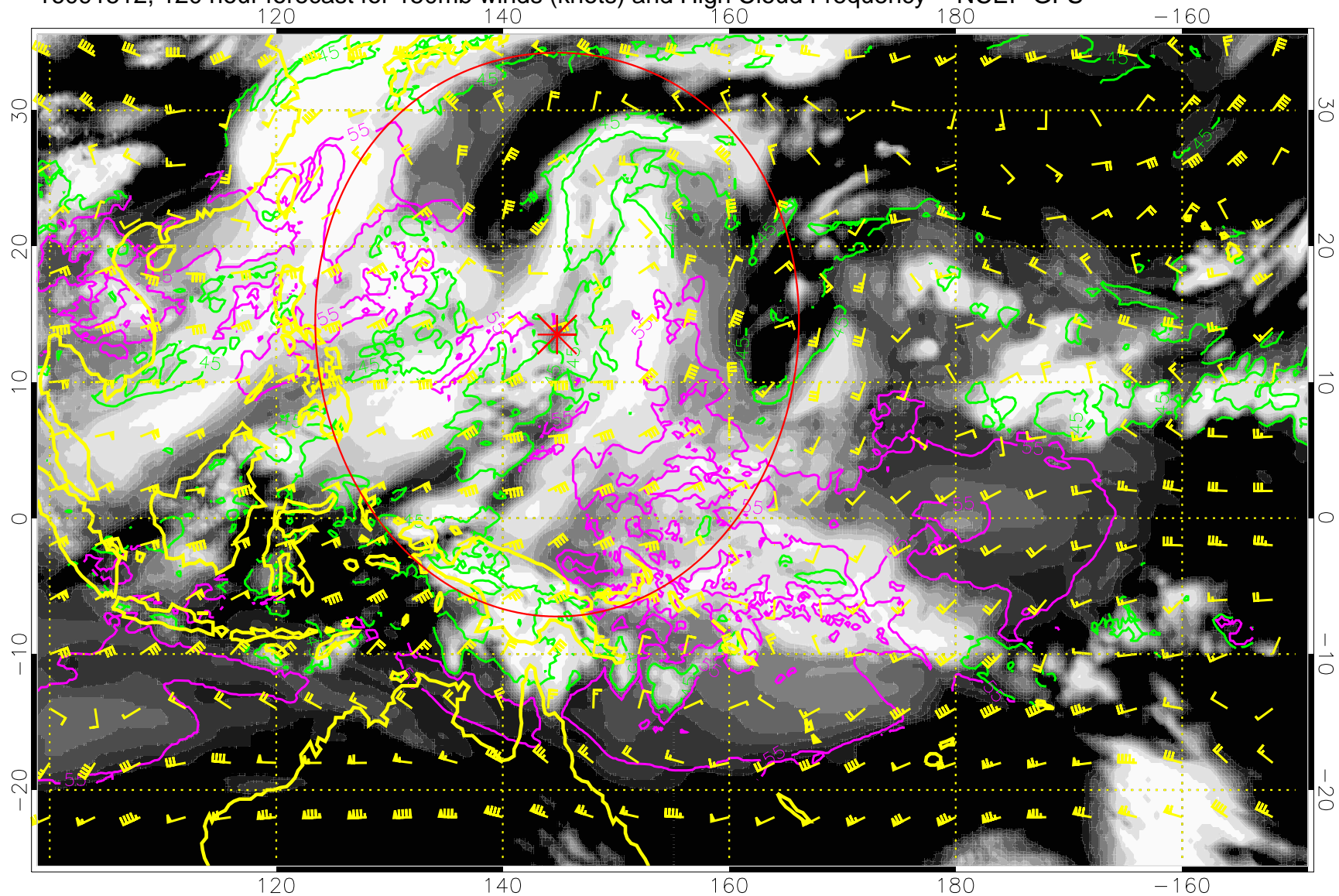
16091506, 114 hour forecast for 150mb winds (knots) and High Cloud Frequency -- NCEP GFS



45 kft  
55 kft

Range ring of 2304 km

16091512, 120 hour forecast for 150mb winds (knots) and High Cloud Frequency -- NCEP GFS



45 kft  
55 kft

Range ring of 2304 km