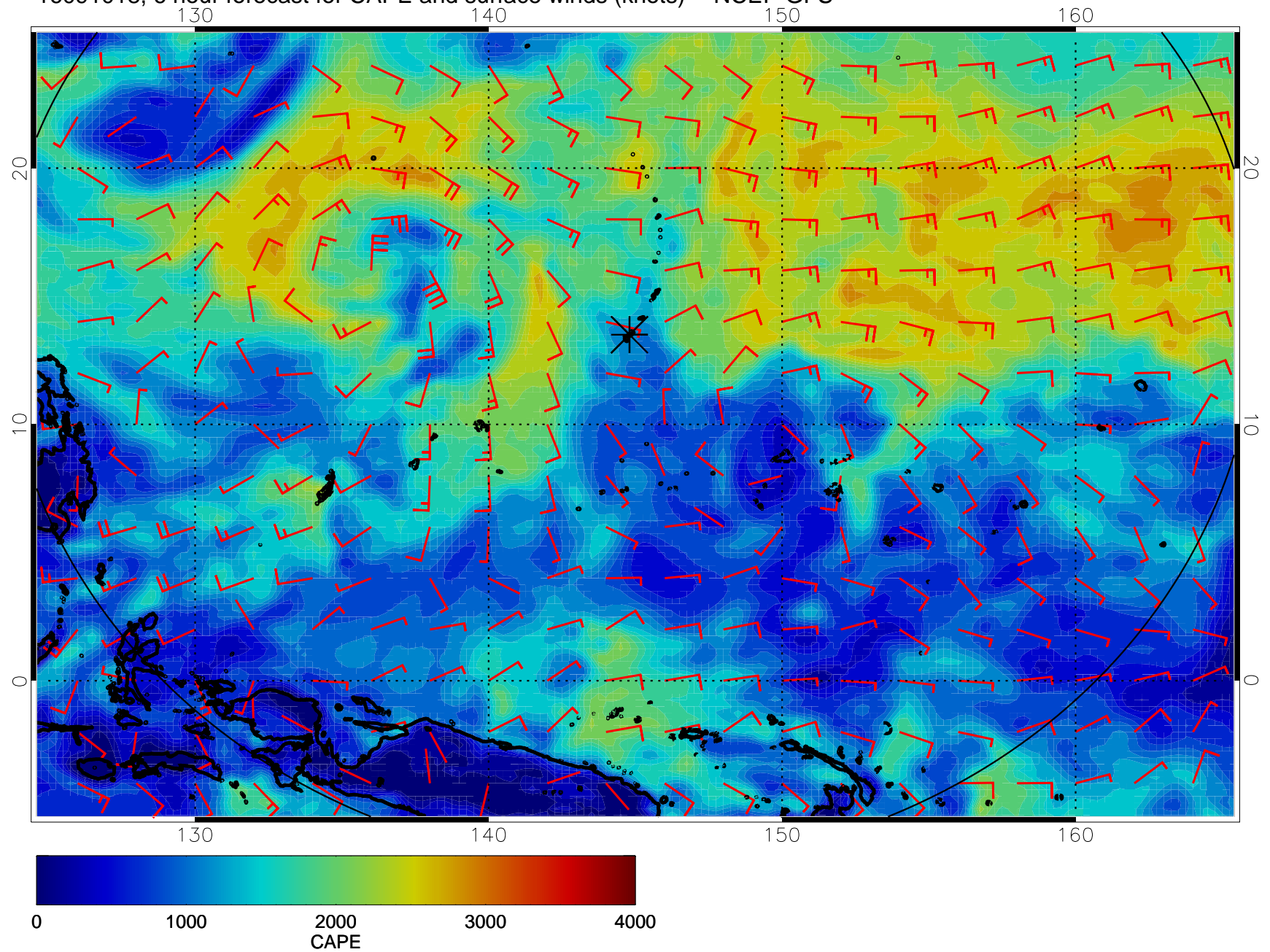
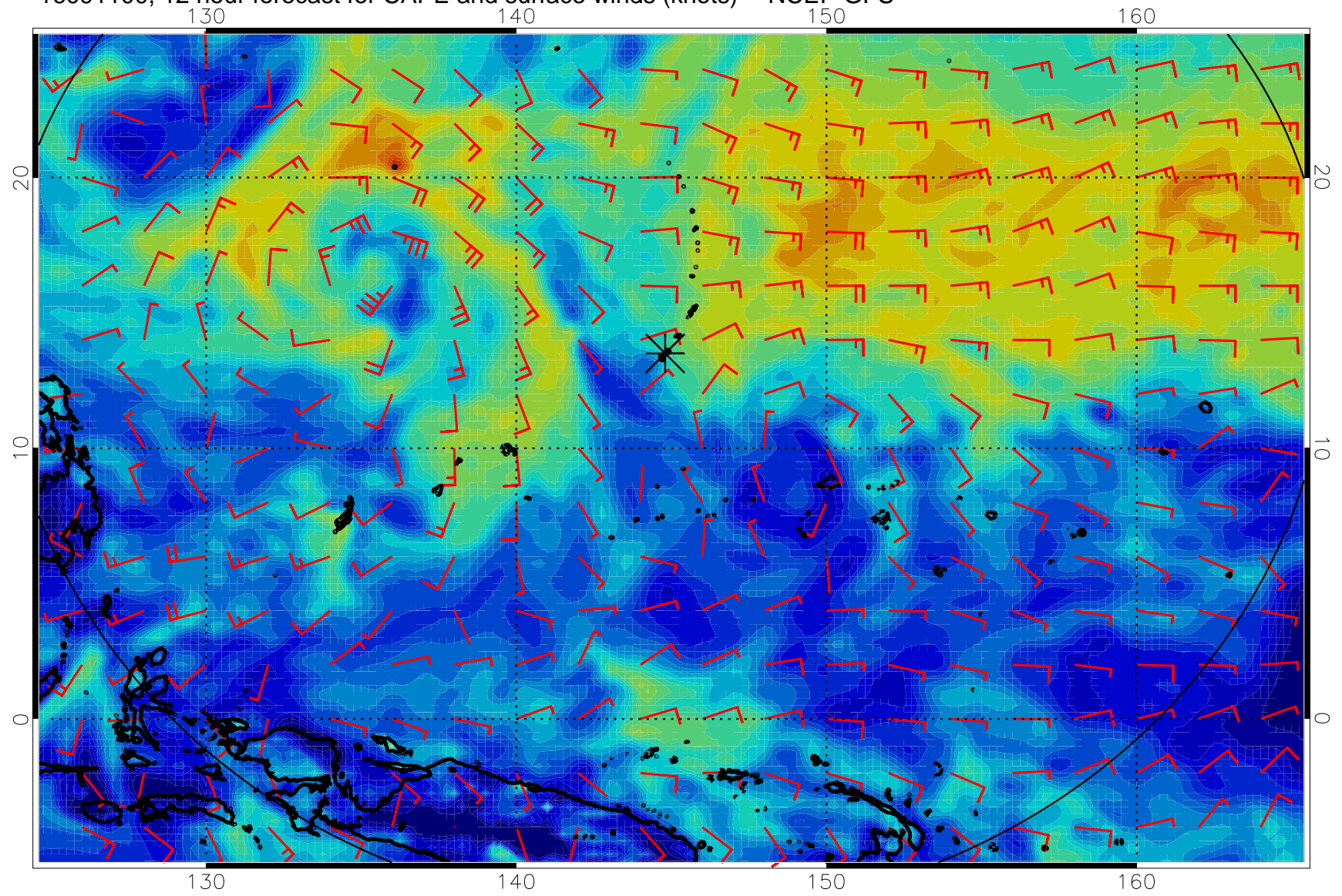


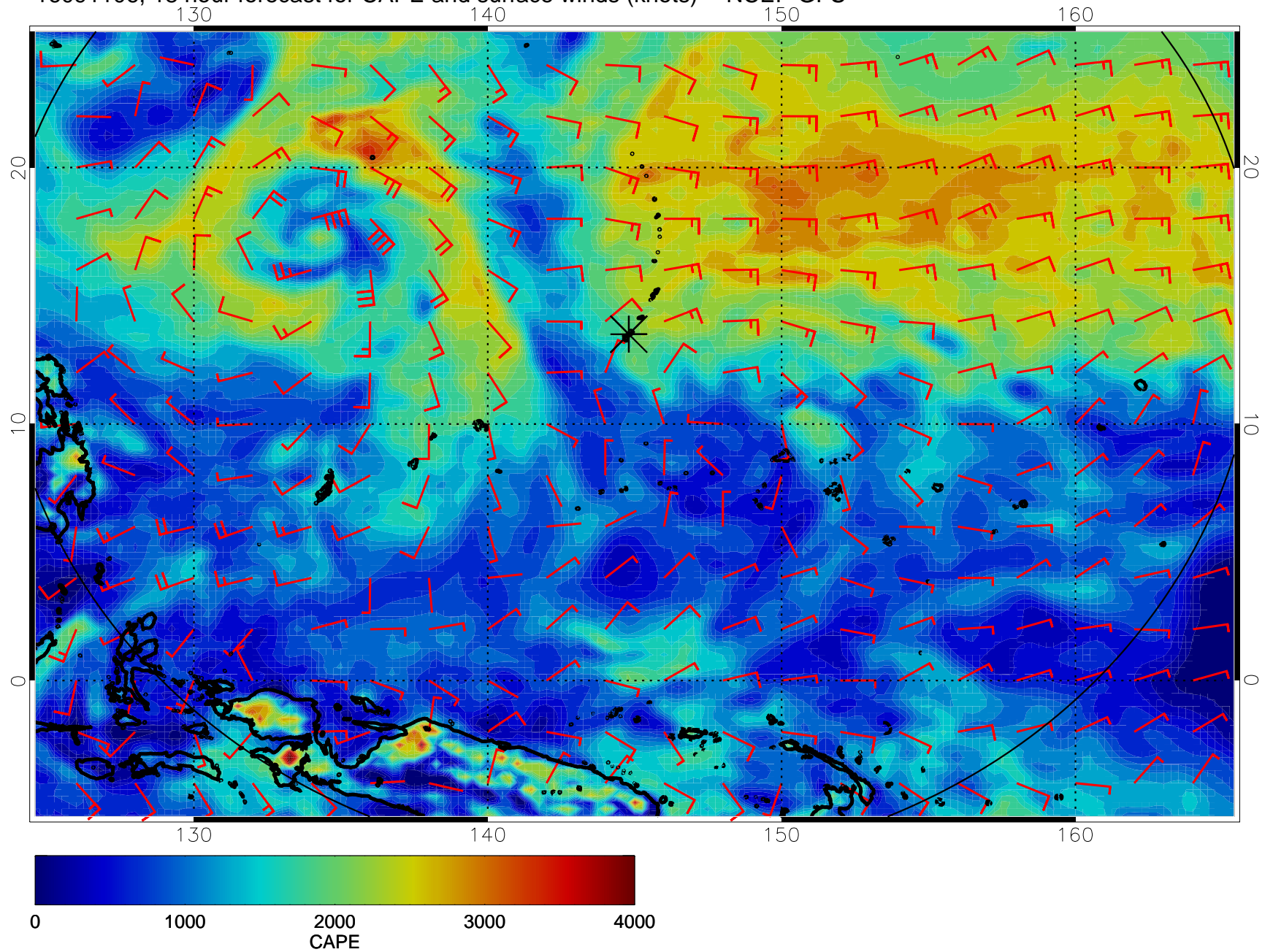
16091018, 6 hour forecast for CAPE and surface winds (knots) -- NCEP GFS



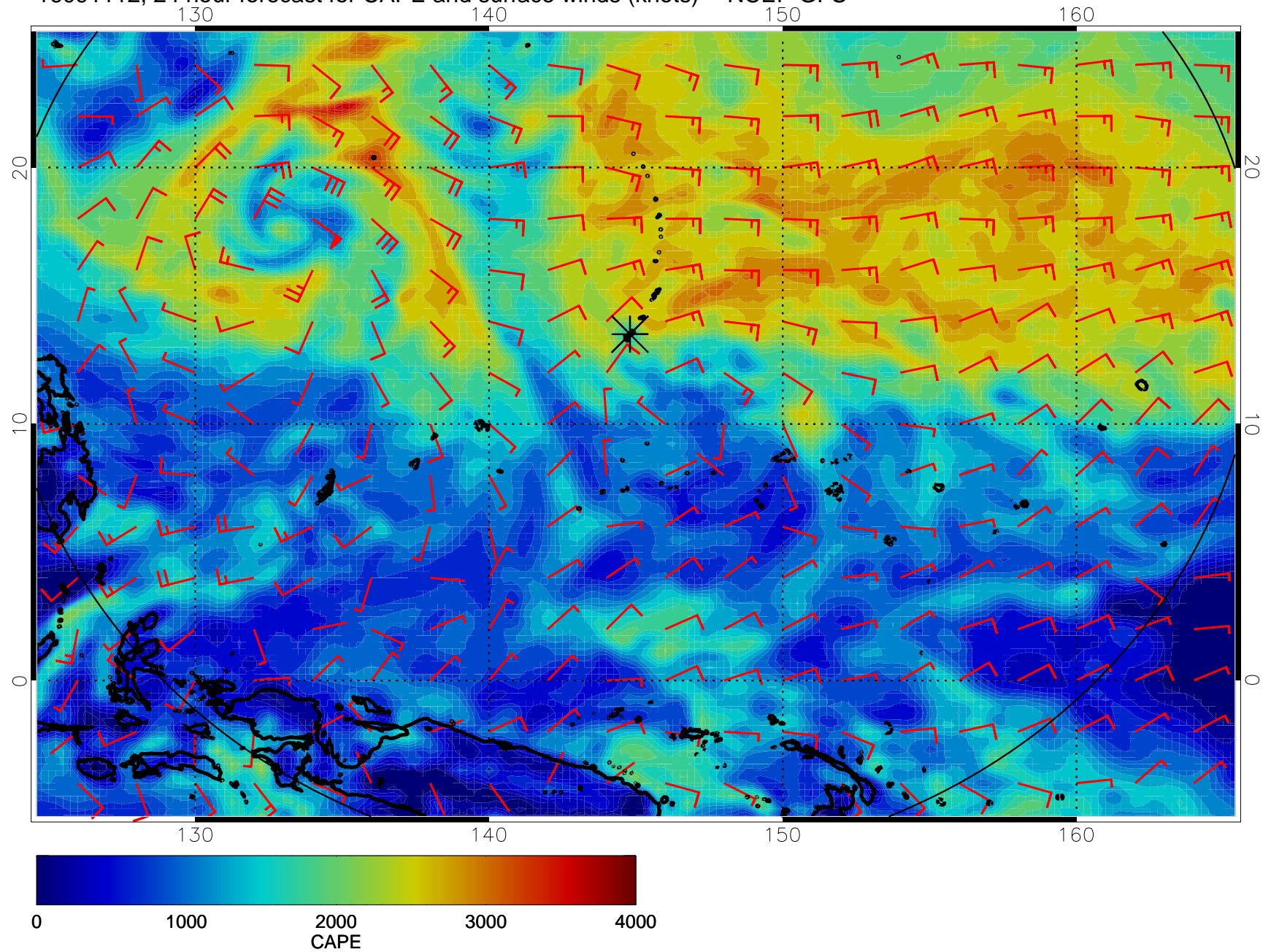
16091100, 12 hour forecast for CAPE and surface winds (knots) -- NCEP GFS



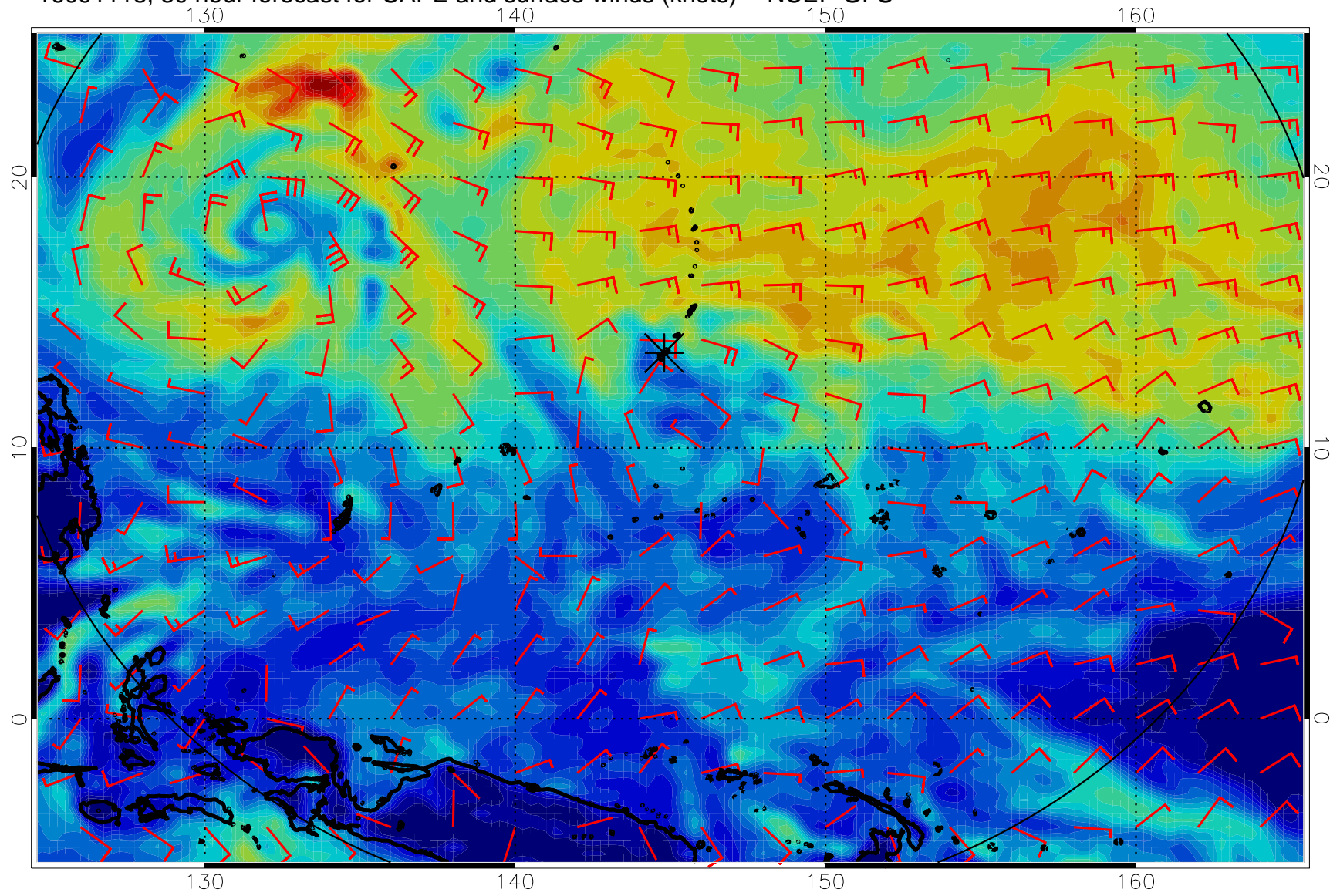
16091106, 18 hour forecast for CAPE and surface winds (knots) -- NCEP GFS



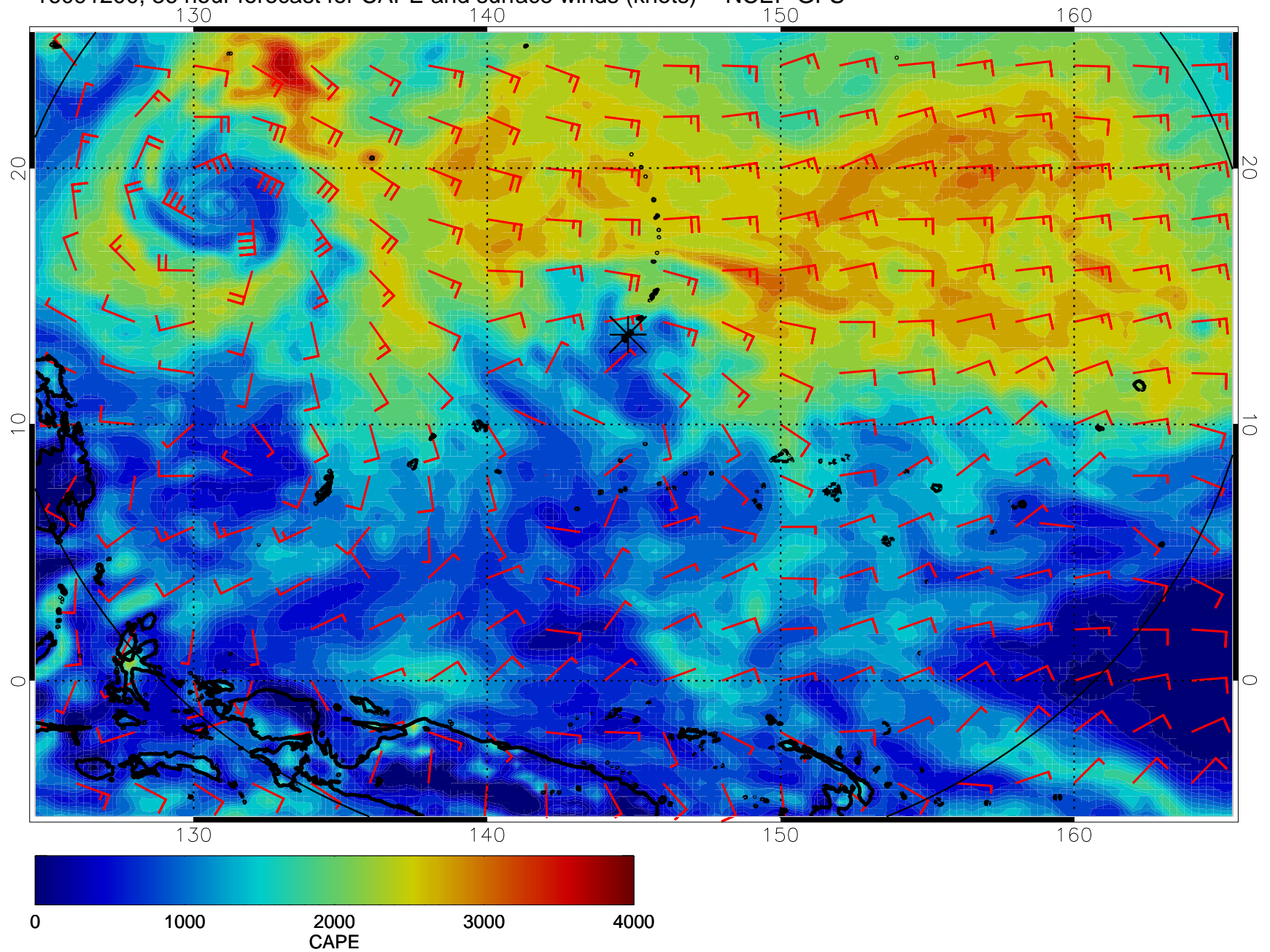
16091112, 24 hour forecast for CAPE and surface winds (knots) -- NCEP GFS



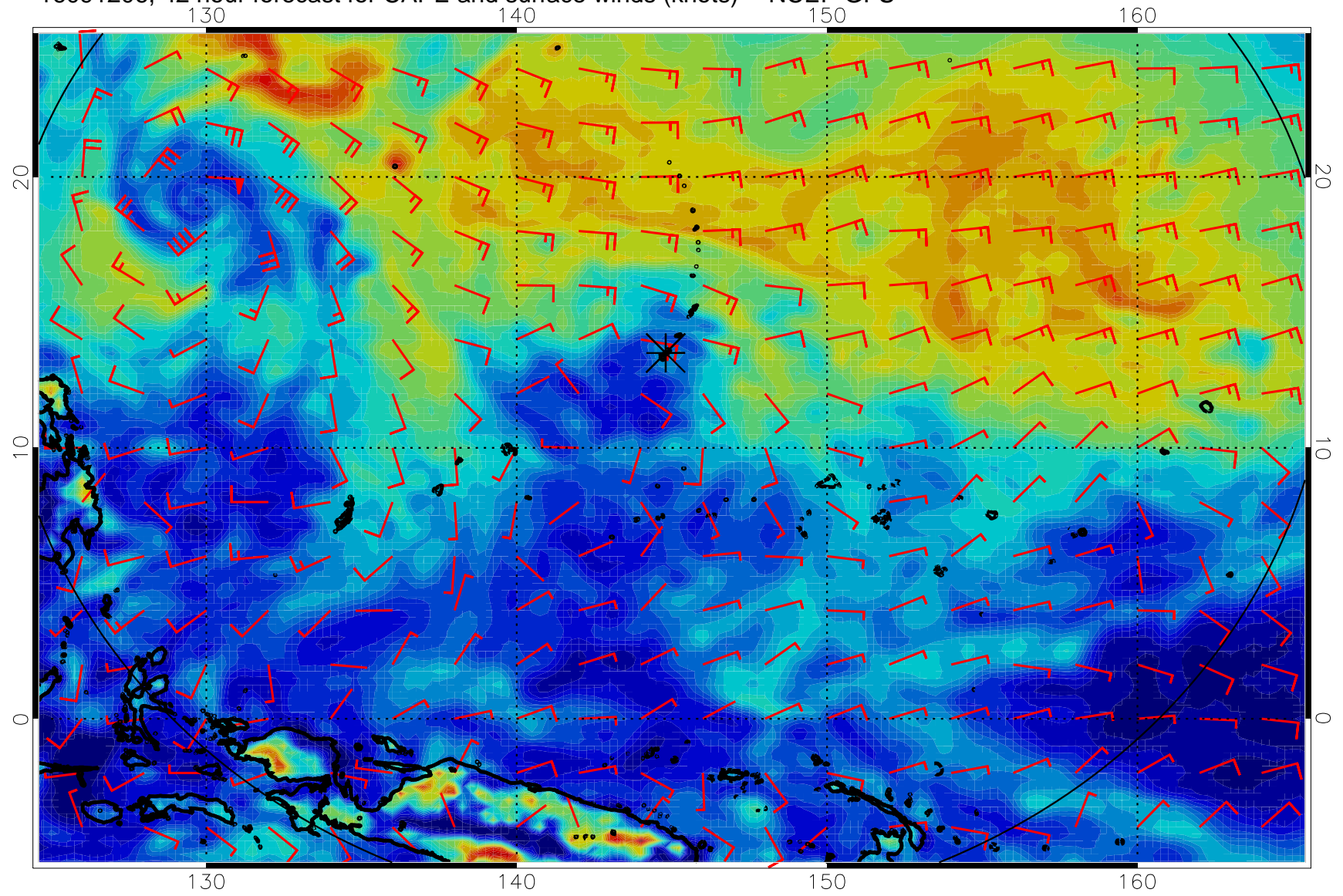
16091118, 30 hour forecast for CAPE and surface winds (knots) -- NCEP GFS



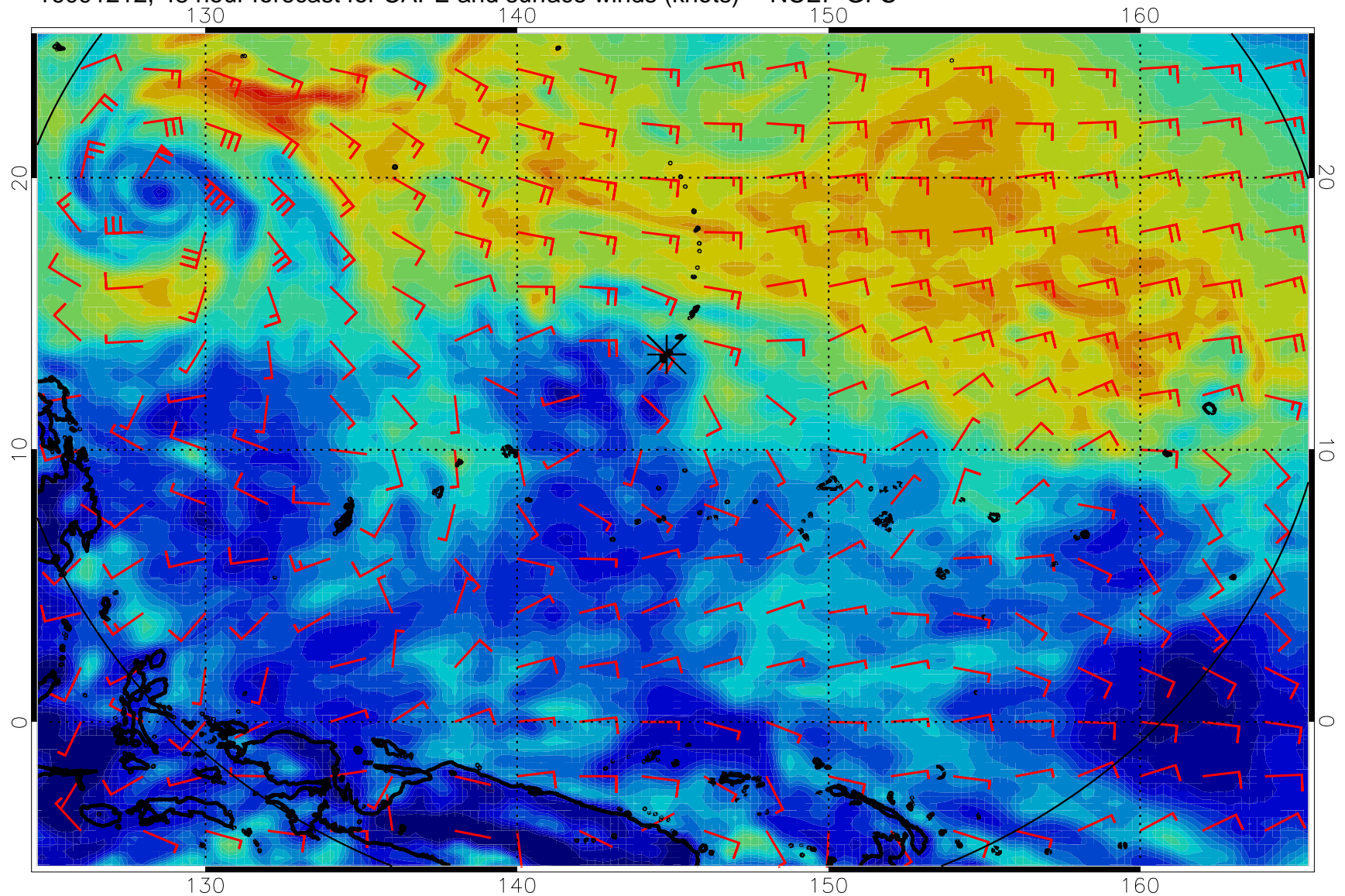
16091200, 36 hour forecast for CAPE and surface winds (knots) -- NCEP GFS



16091206, 42 hour forecast for CAPE and surface winds (knots) -- NCEP GFS

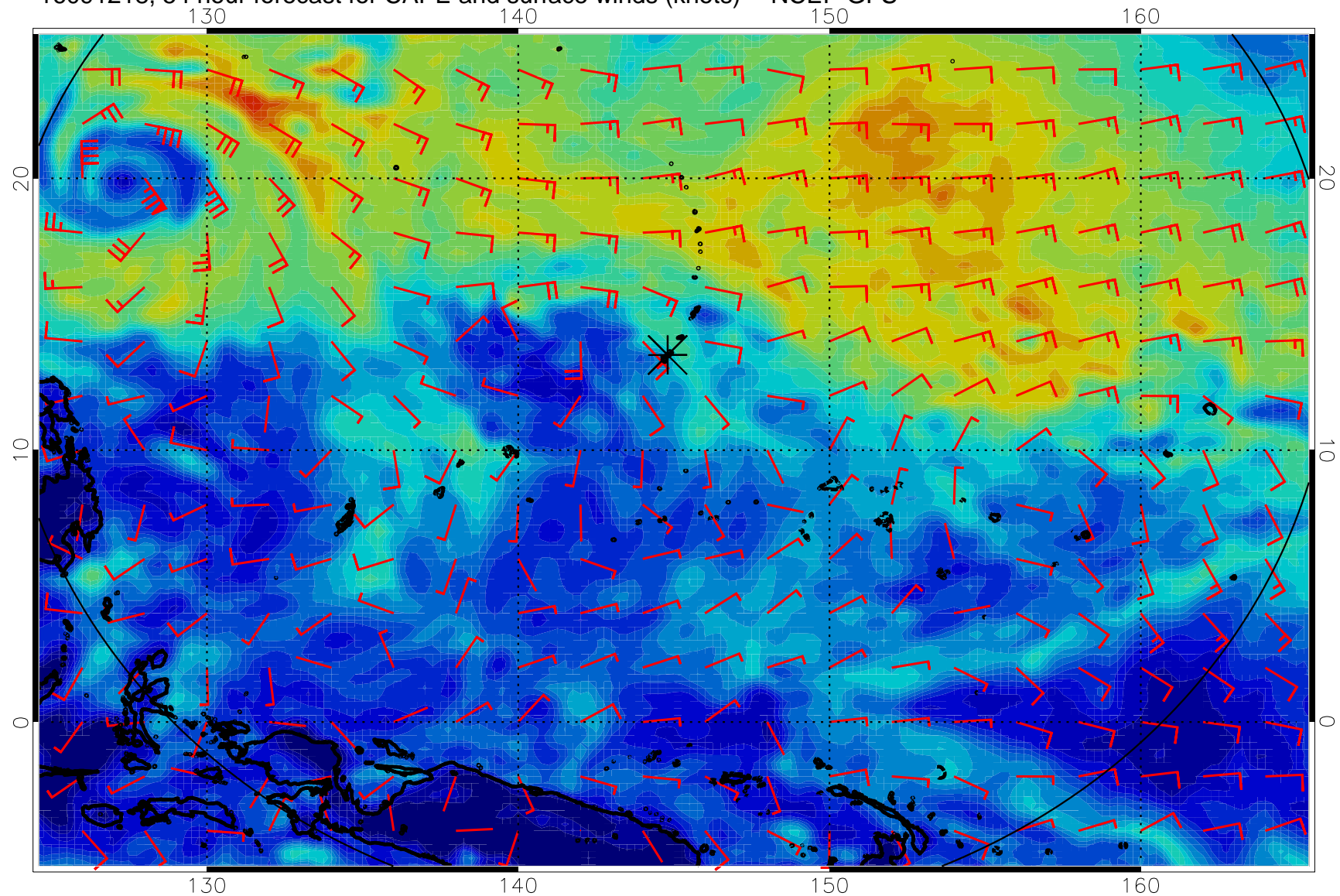


16091212, 48 hour forecast for CAPE and surface winds (knots) -- NCEP GFS

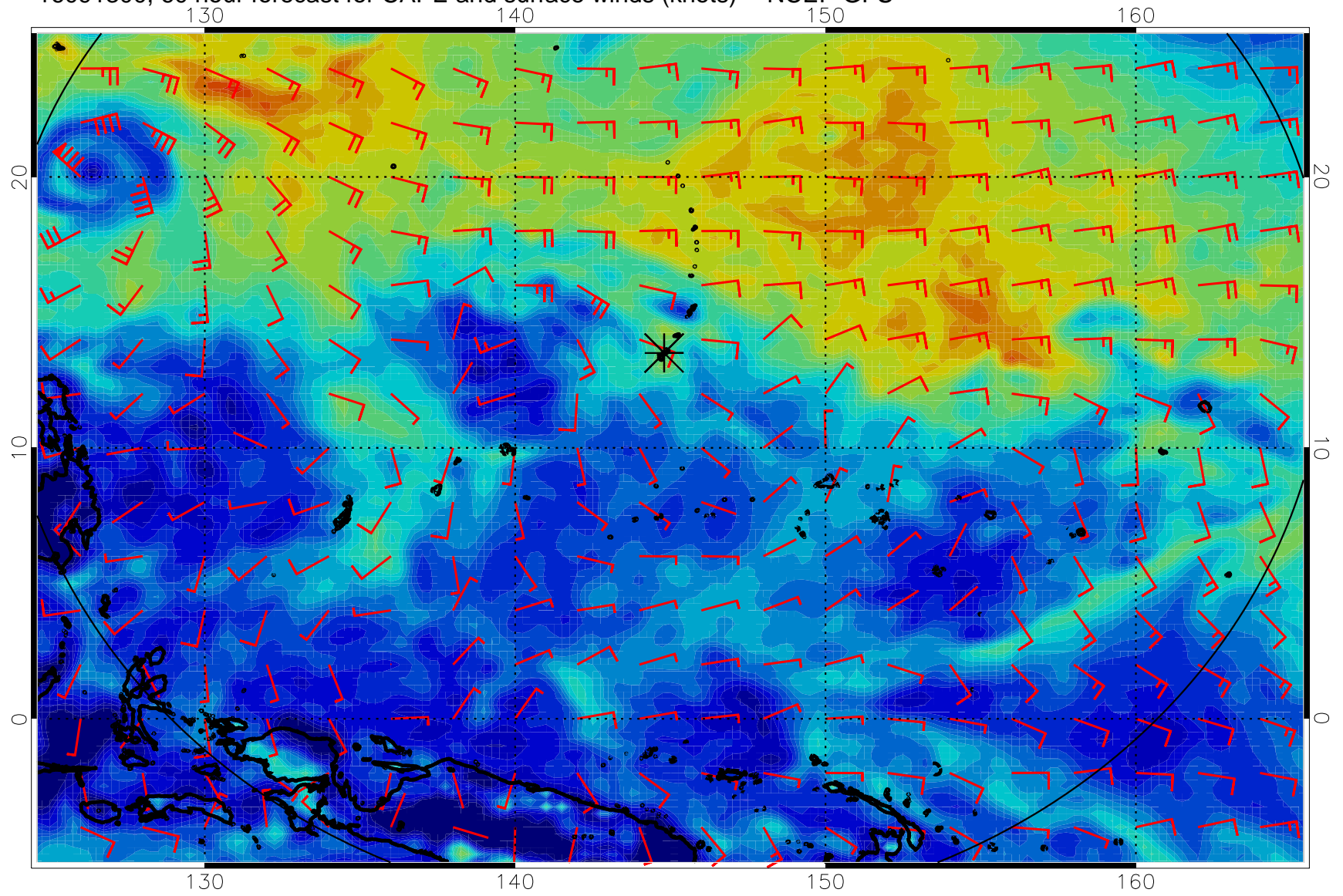




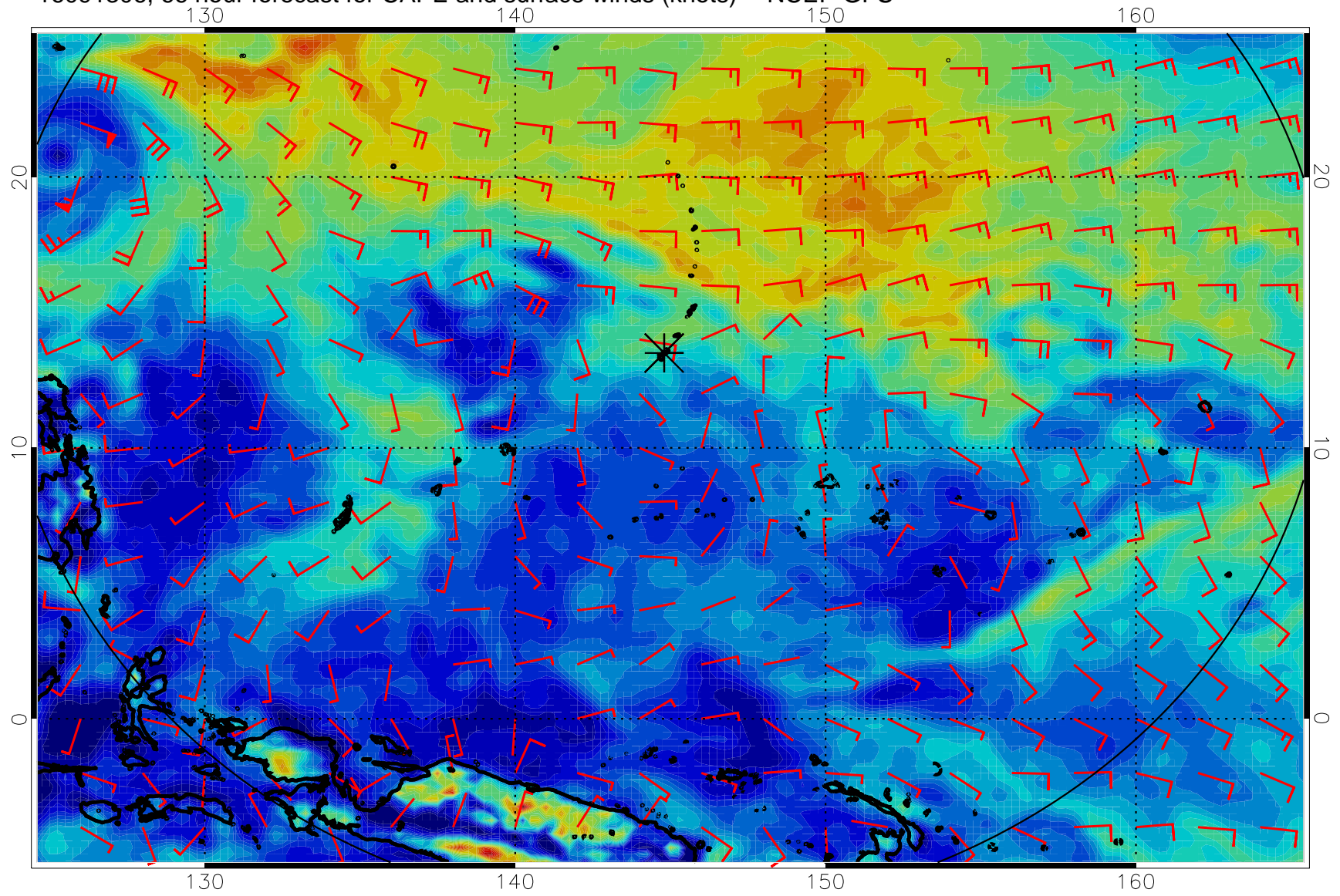
16091218, 54 hour forecast for CAPE and surface winds (knots) -- NCEP GFS



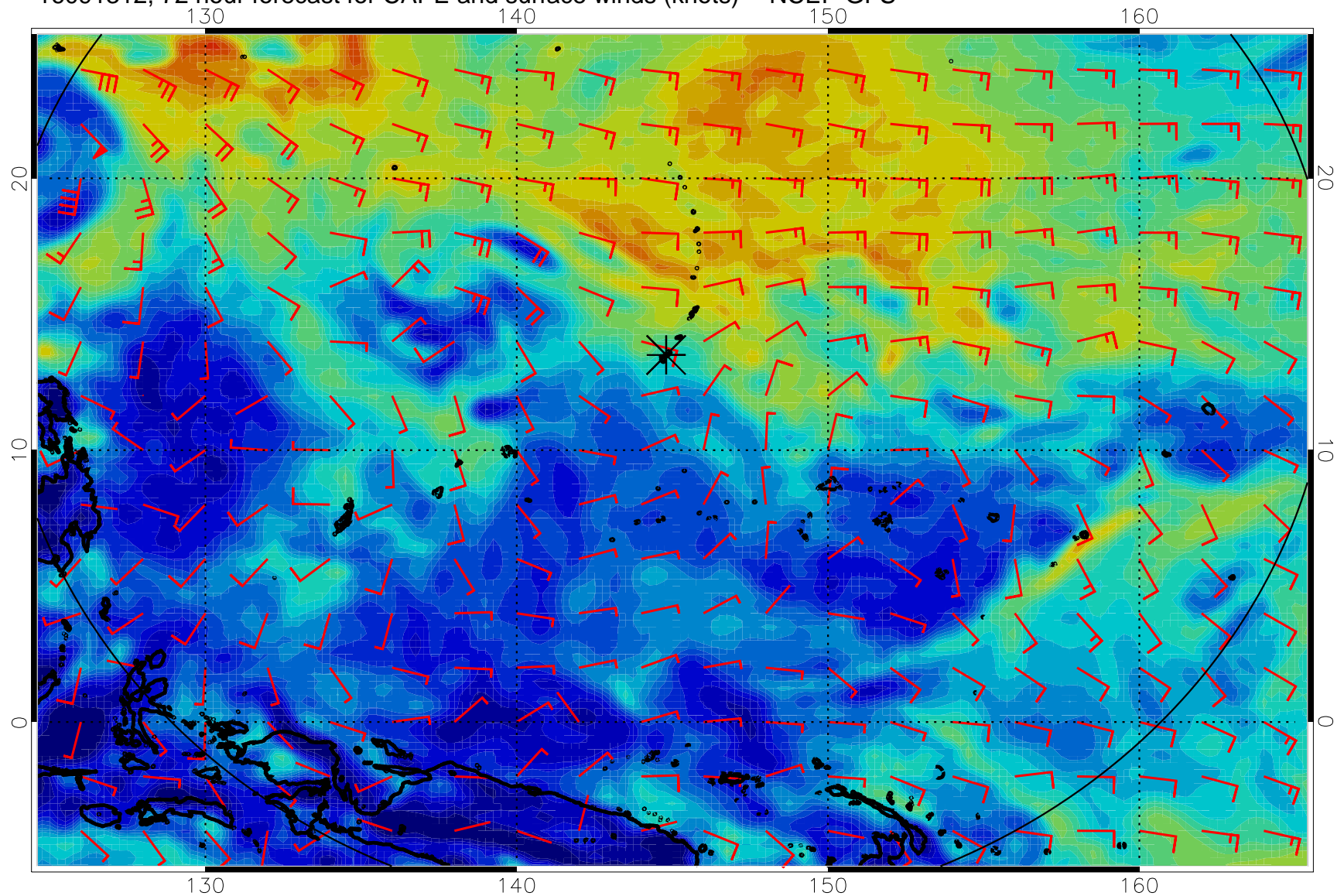
16091300, 60 hour forecast for CAPE and surface winds (knots) -- NCEP GFS



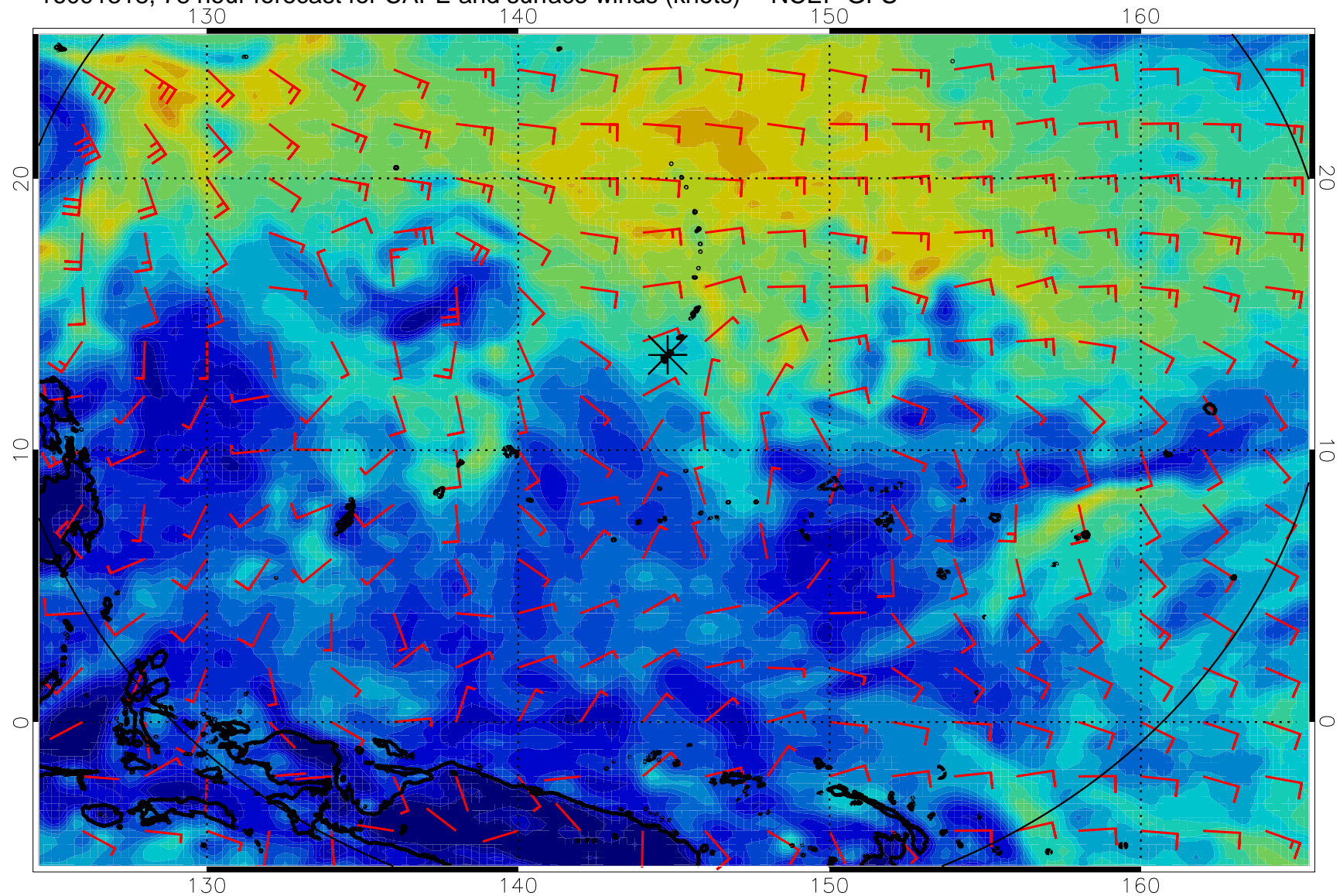
16091306, 66 hour forecast for CAPE and surface winds (knots) -- NCEP GFS



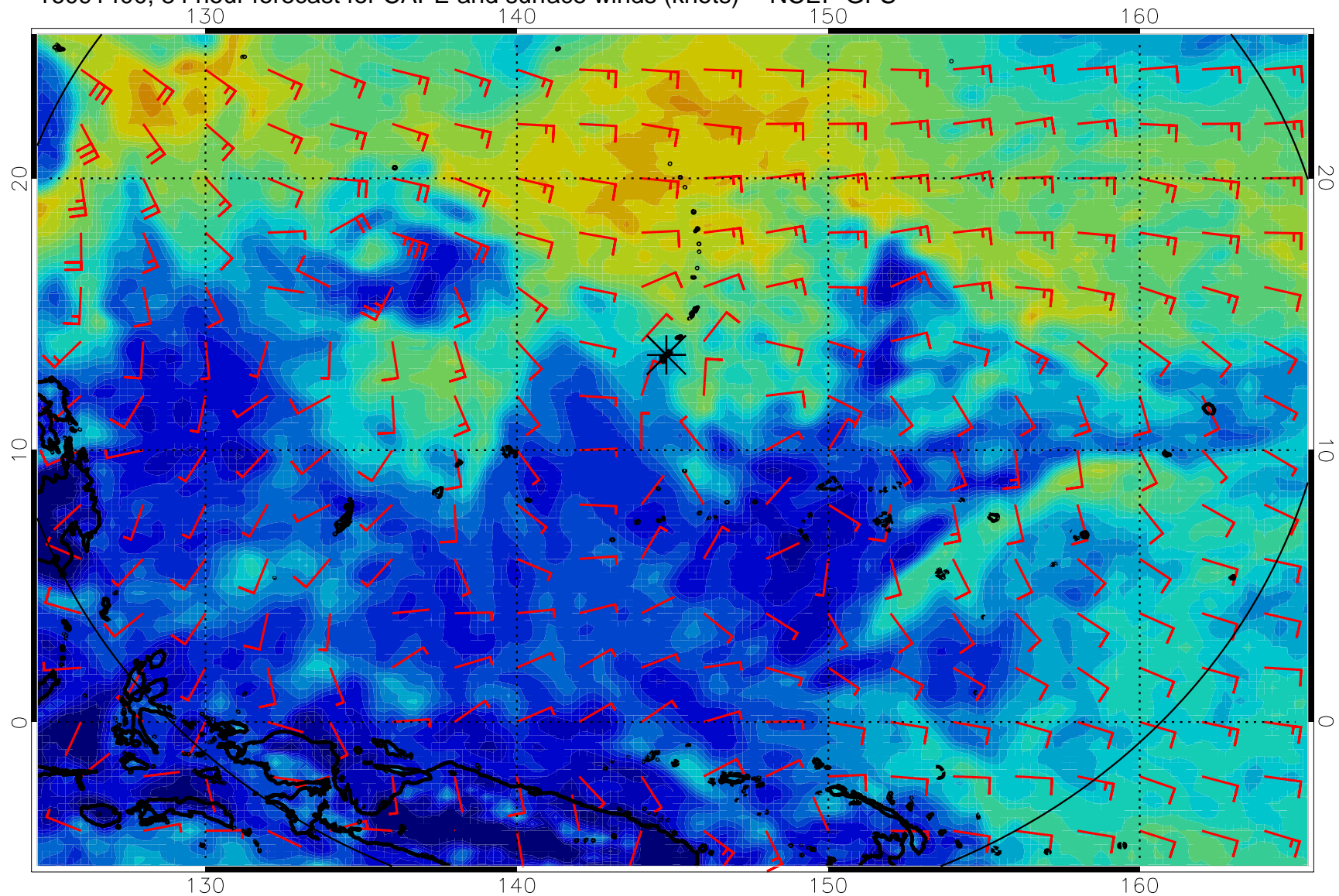
16091312, 72 hour forecast for CAPE and surface winds (knots) -- NCEP GFS



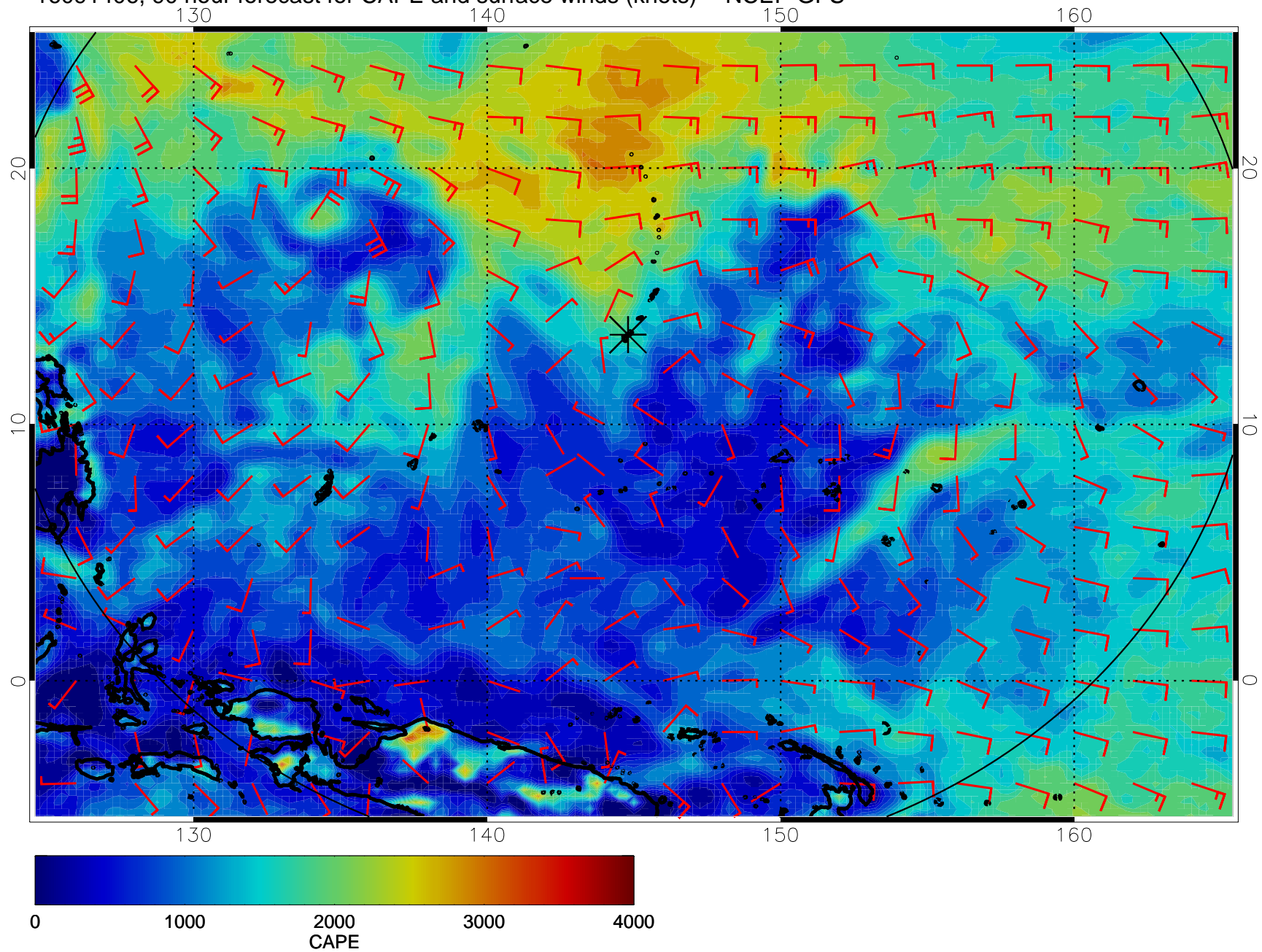
16091318, 78 hour forecast for CAPE and surface winds (knots) -- NCEP GFS



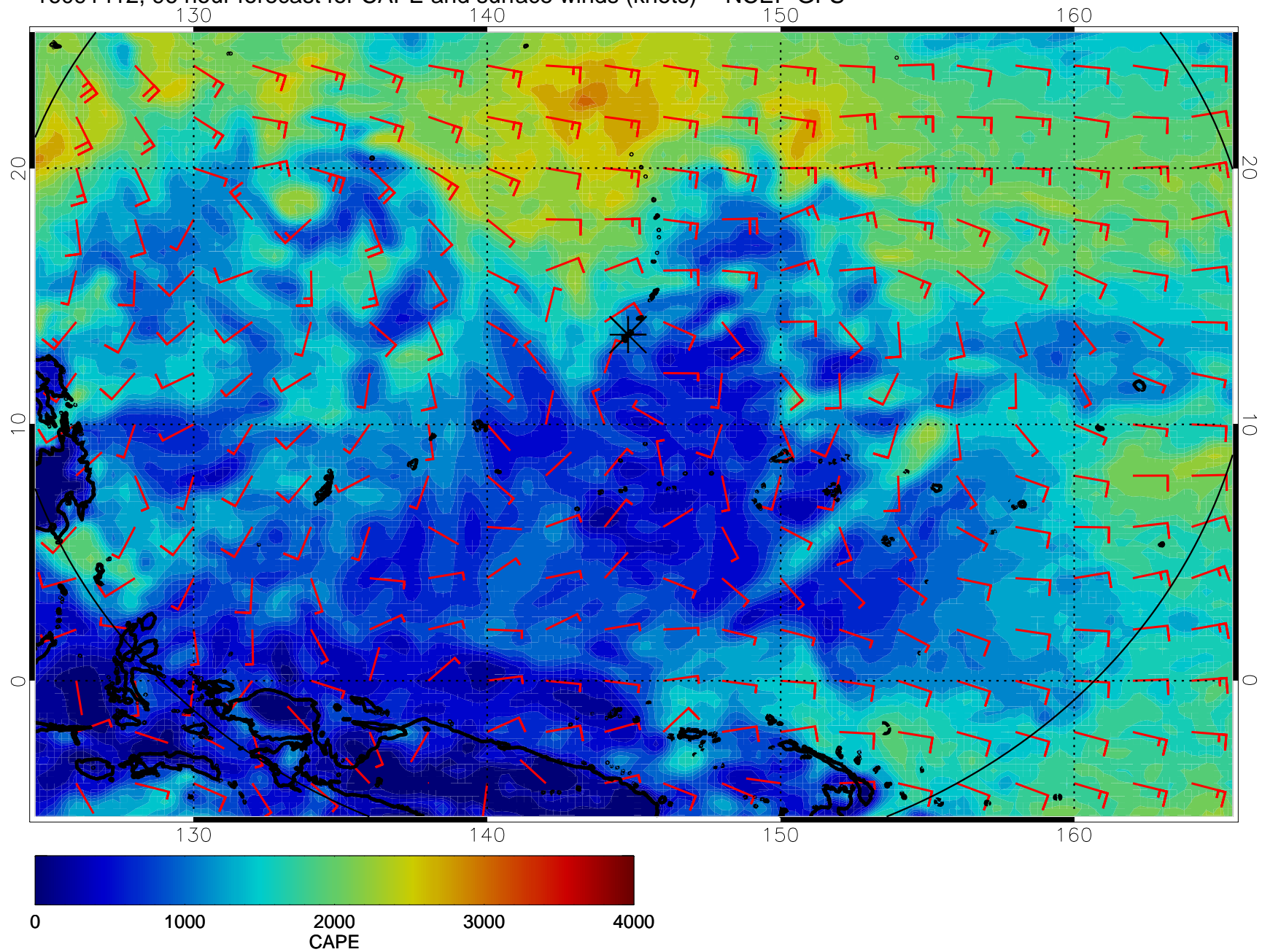
16091400, 84 hour forecast for CAPE and surface winds (knots) -- NCEP GFS



16091406, 90 hour forecast for CAPE and surface winds (knots) -- NCEP GFS

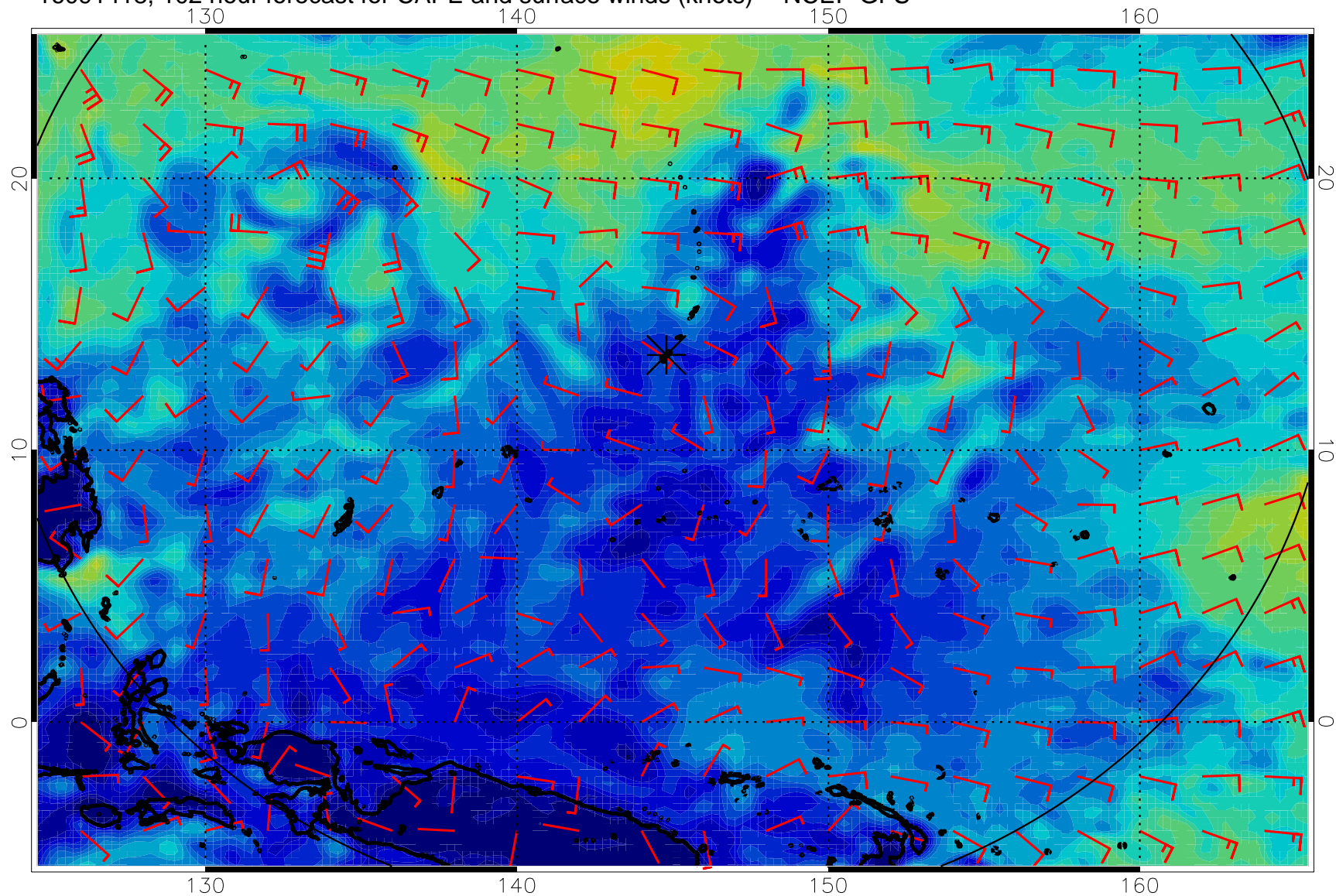


16091412, 96 hour forecast for CAPE and surface winds (knots) -- NCEP GFS

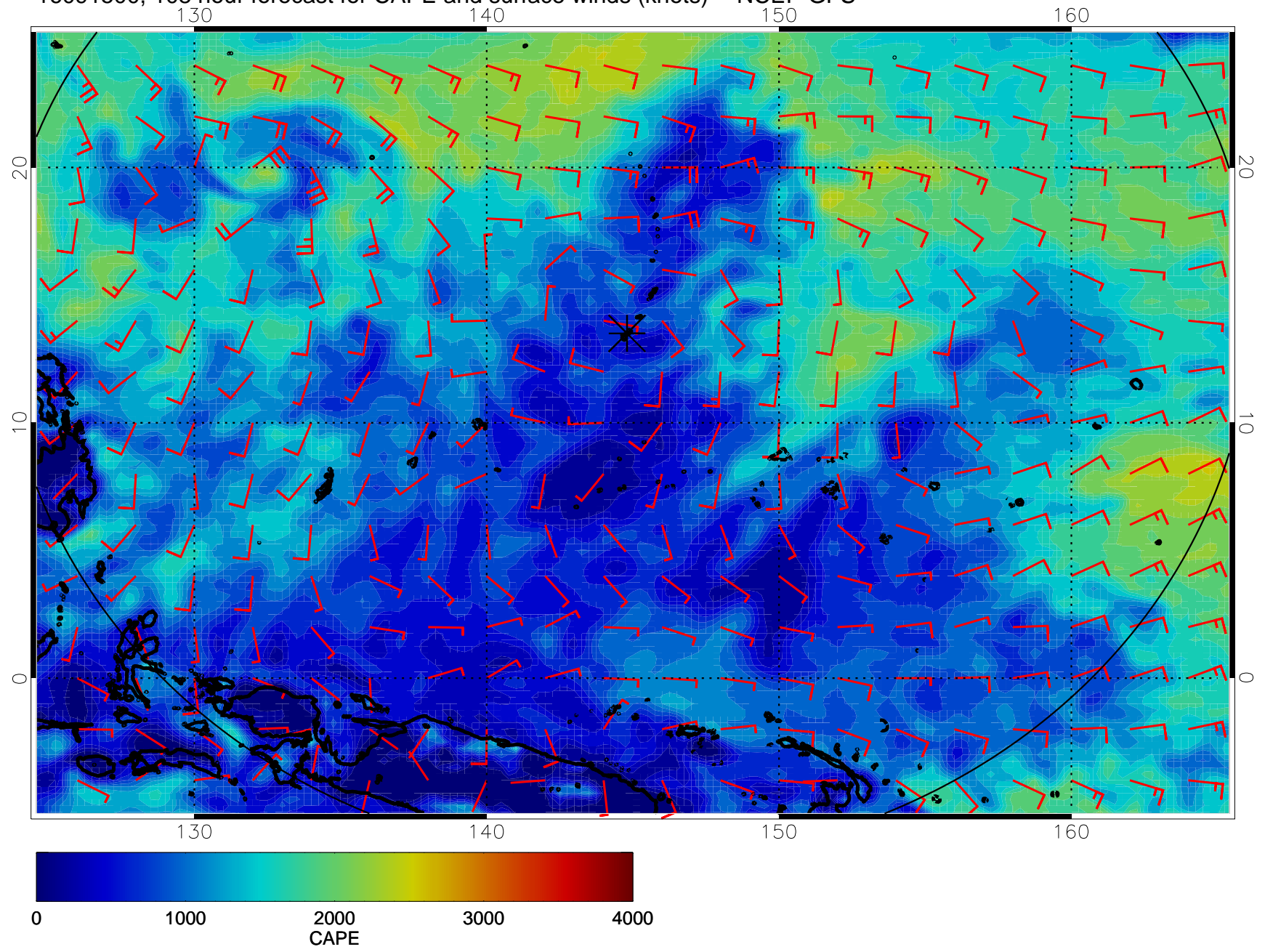




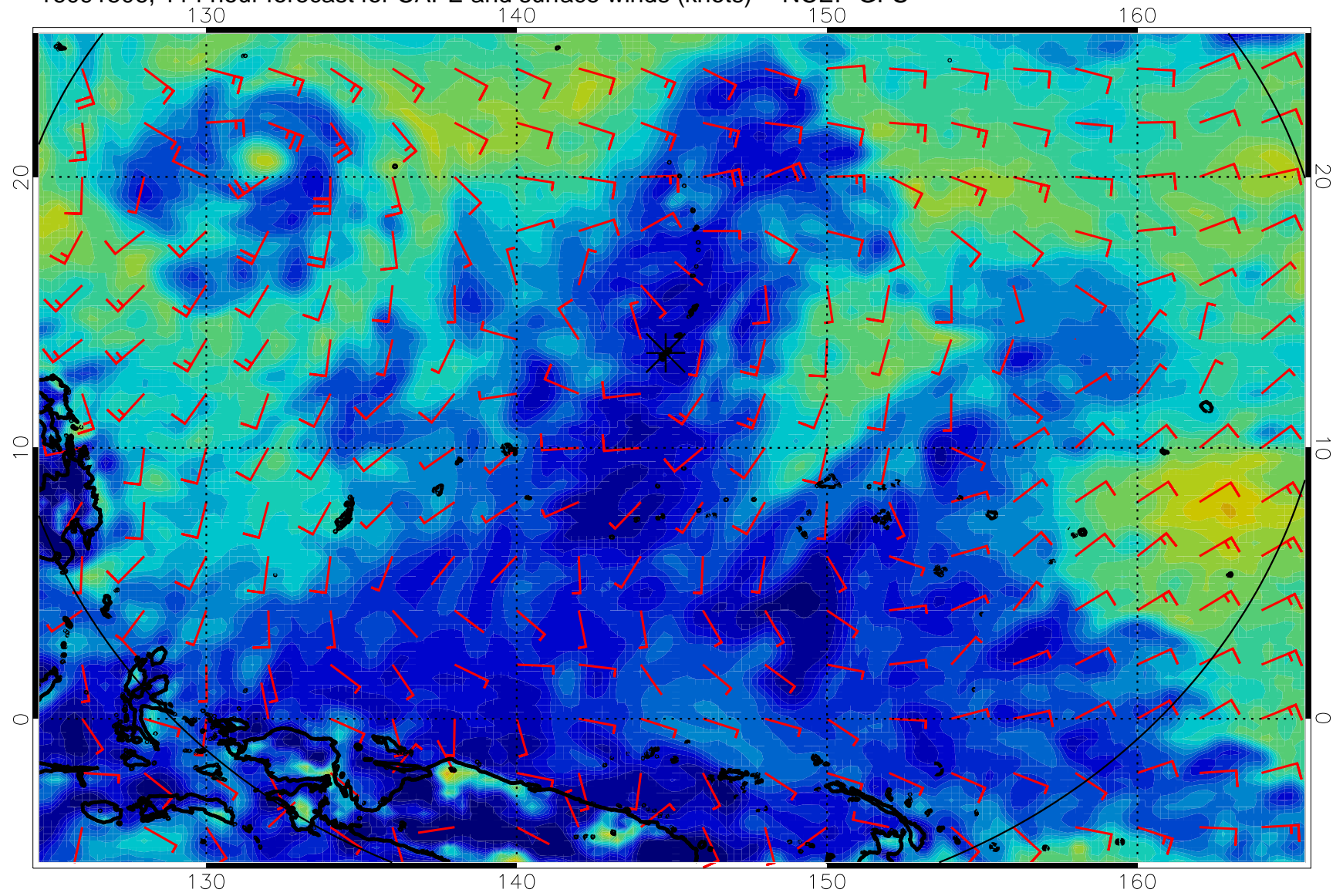
16091418, 102 hour forecast for CAPE and surface winds (knots) -- NCEP GFS



16091500, 108 hour forecast for CAPE and surface winds (knots) -- NCEP GFS



16091506, 114 hour forecast for CAPE and surface winds (knots) -- NCEP GFS



16091512, 120 hour forecast for CAPE and surface winds (knots) -- NCEP GFS

