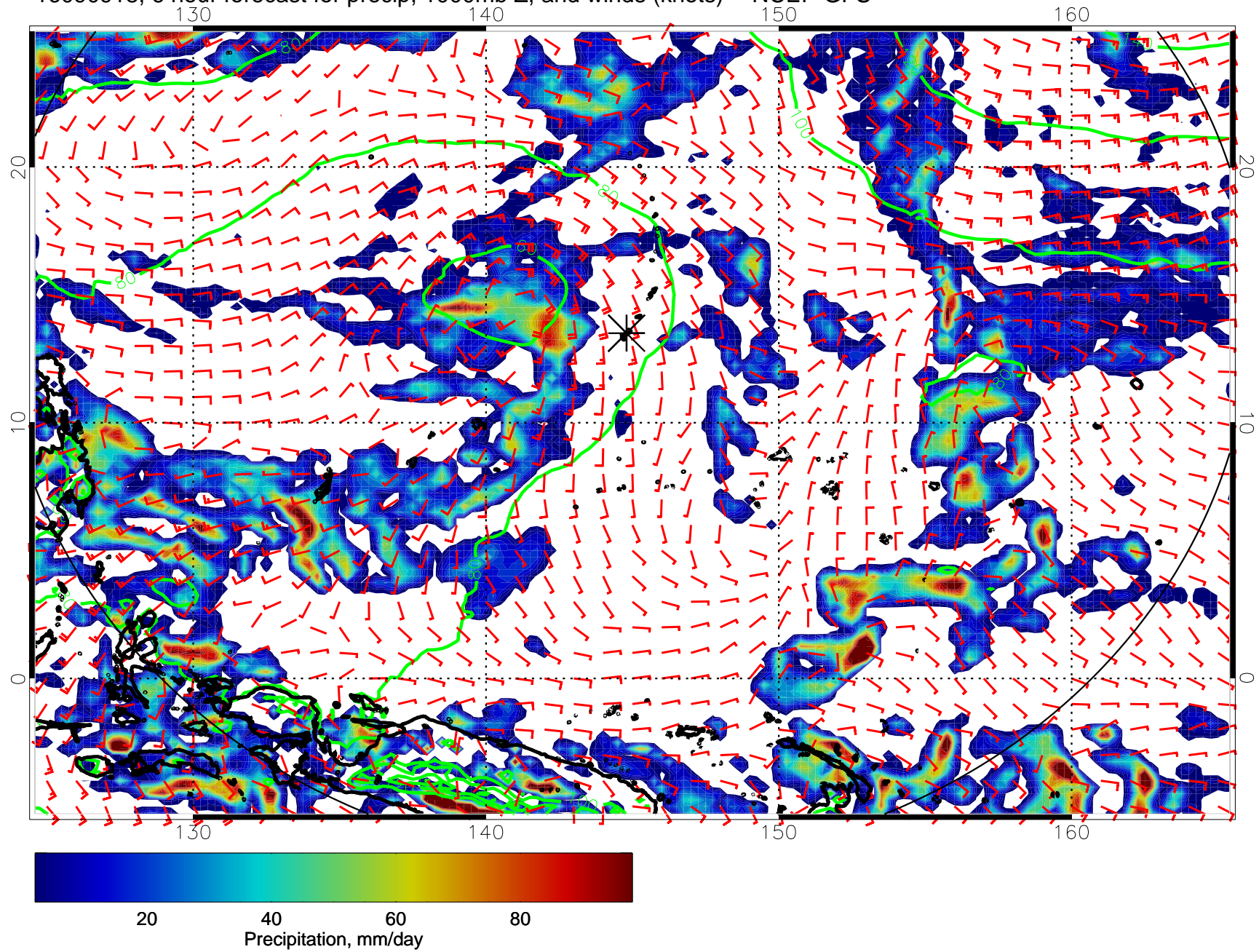
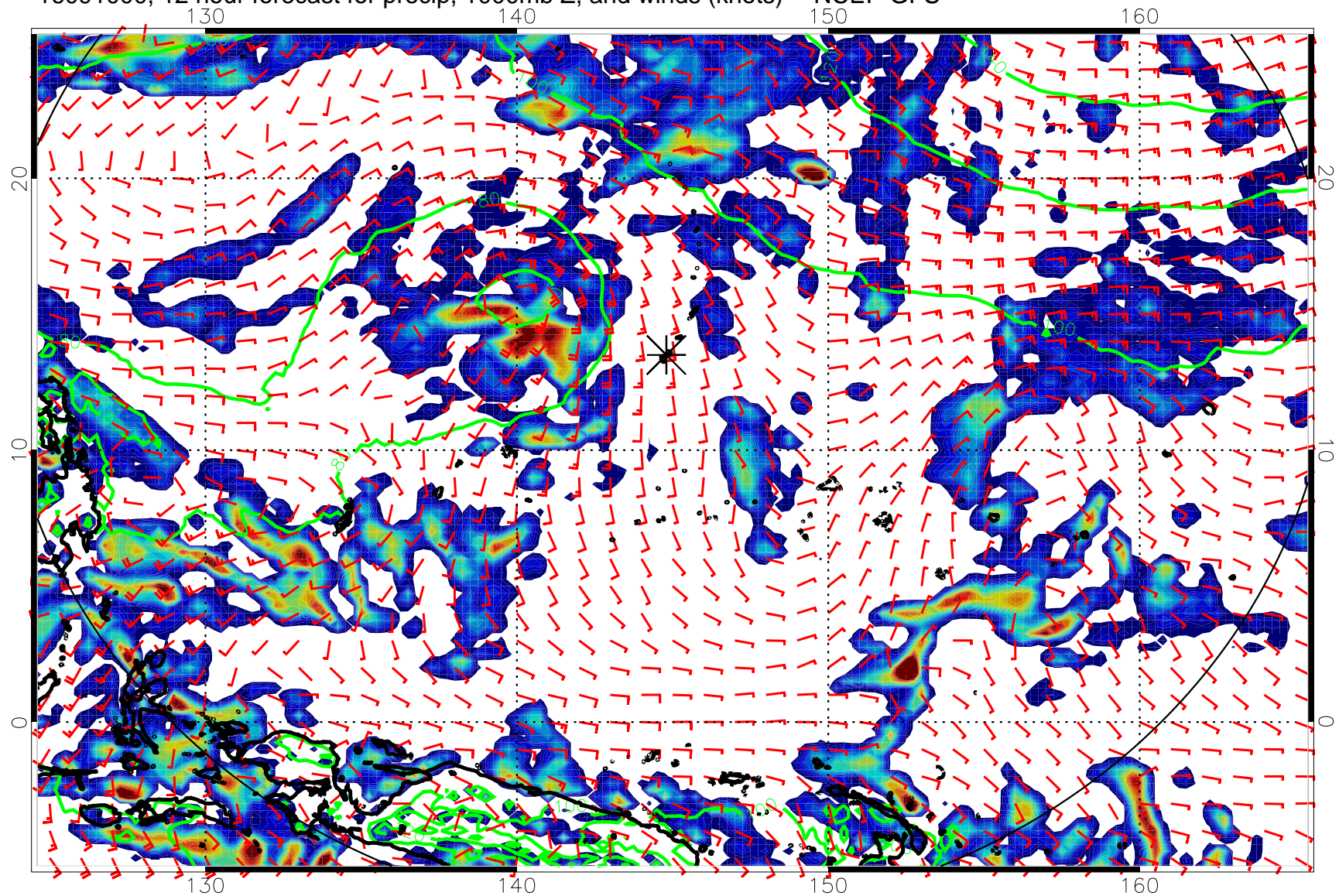


16090918, 6 hour forecast for precip, 1000mb Z, and winds (knots) -- NCEP GFS

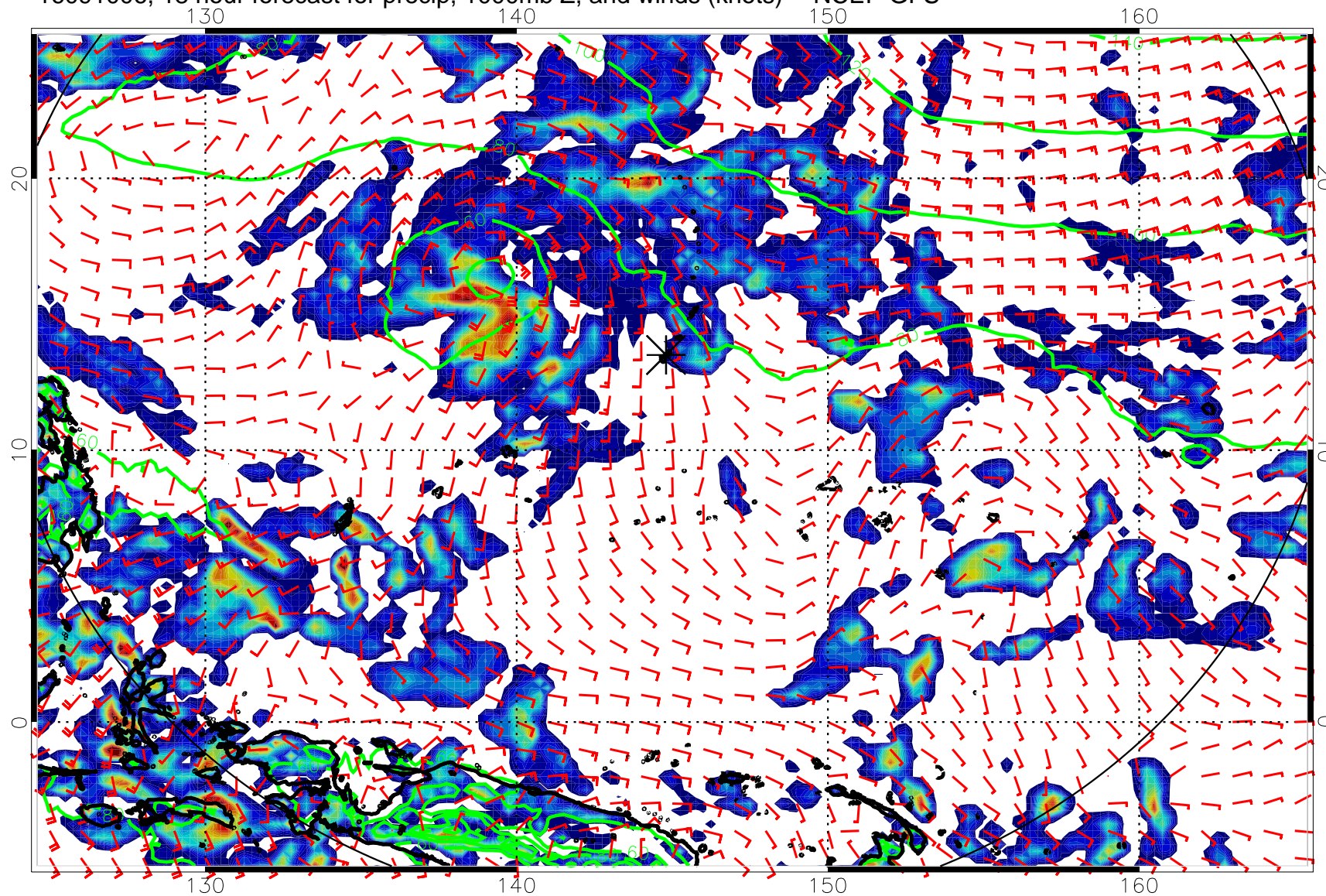


16091000, 12 hour forecast for precip, 1000mb Z, and winds (knots) -- NCEP GFS



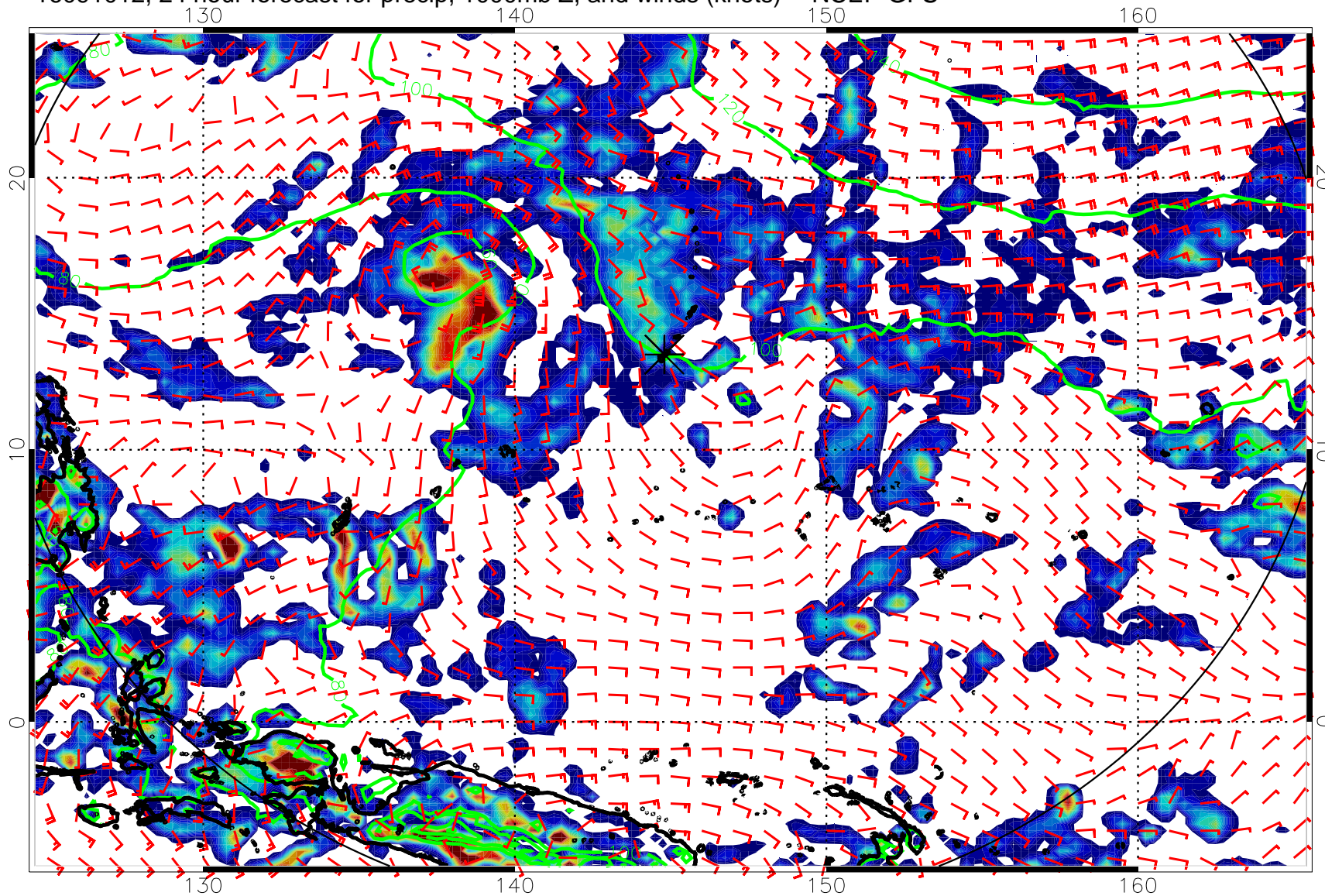
20 40 60 80
Precipitation, mm/day

16091006, 18 hour forecast for precip, 1000mb Z, and winds (knots) -- NCEP GFS



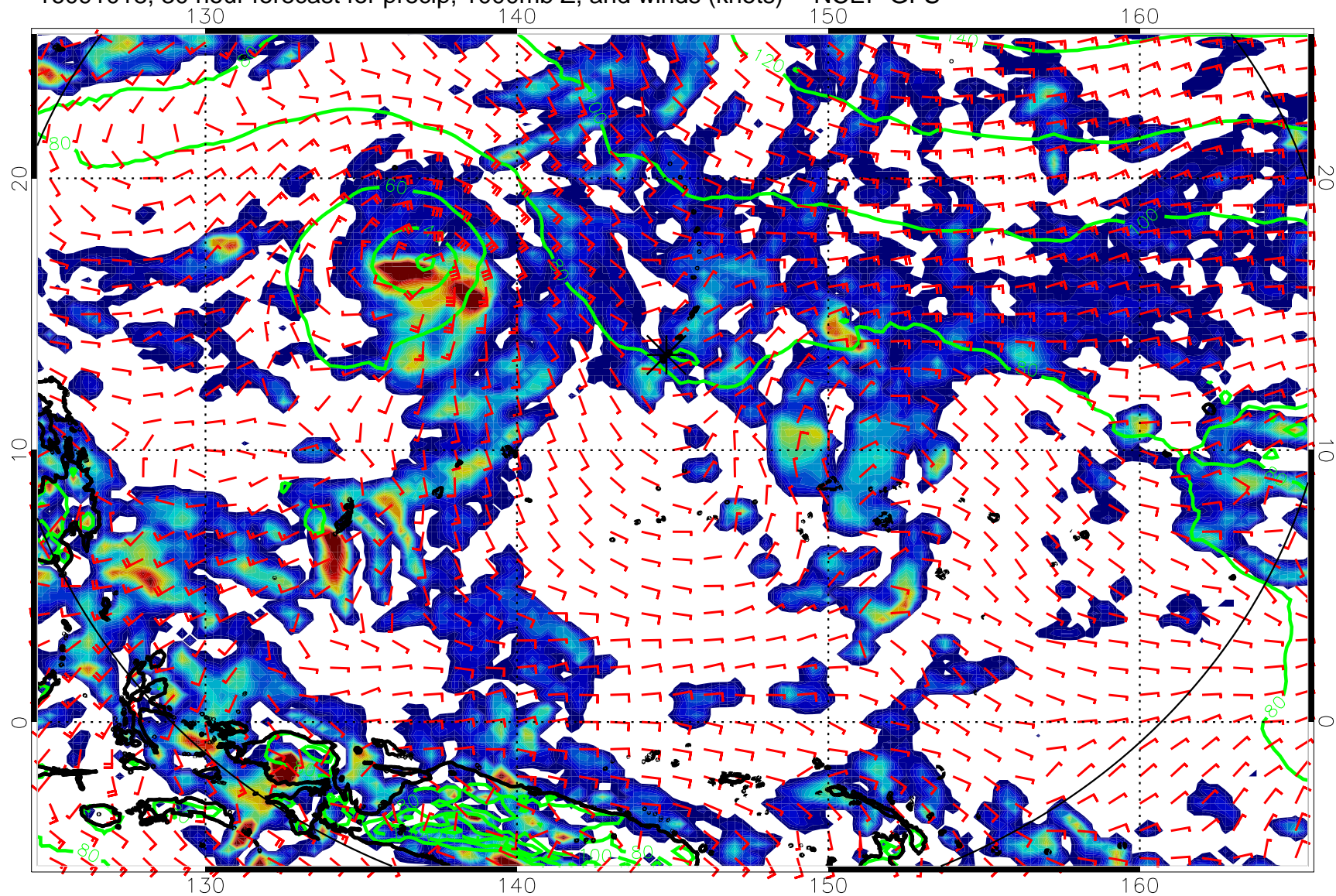
Precipitation, mm/day

16091012, 24 hour forecast for precip, 1000mb Z, and winds (knots) -- NCEP GFS



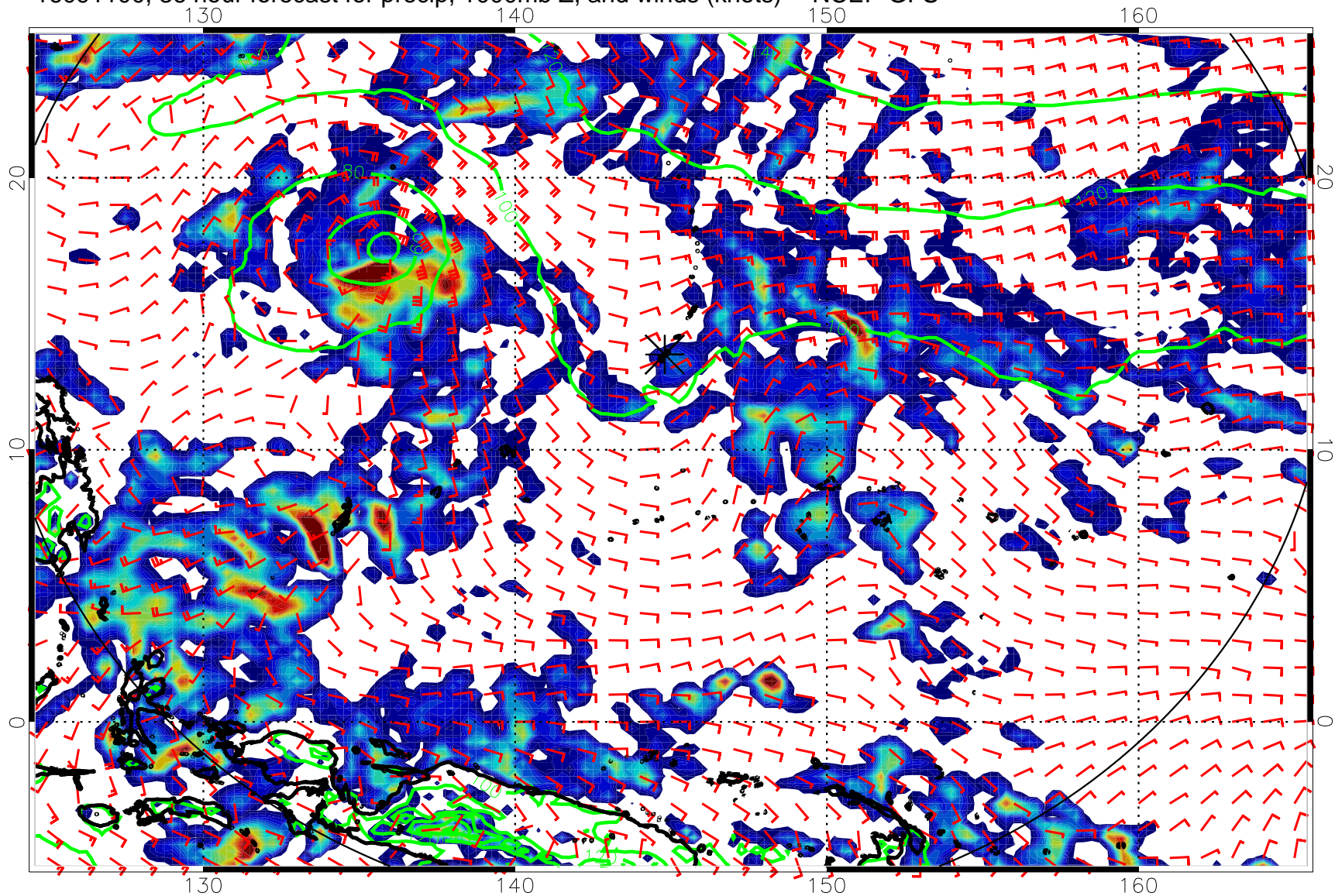
Precipitation, mm/day

16091018, 30 hour forecast for precip, 1000mb Z, and winds (knots) -- NCEP GFS



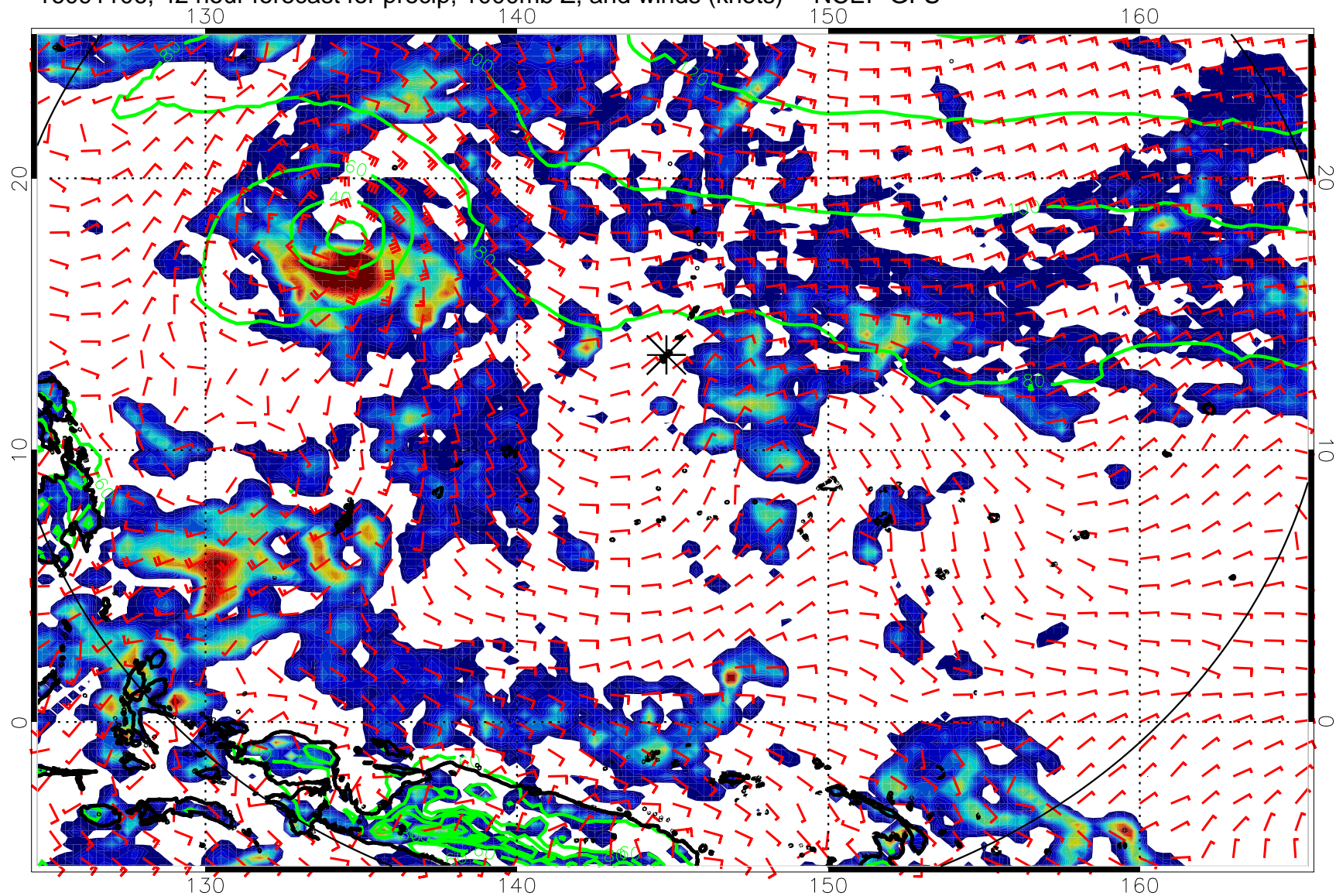
20 40 60 80
Precipitation, mm/day

16091100, 36 hour forecast for precip, 1000mb Z, and winds (knots) -- NCEP GFS



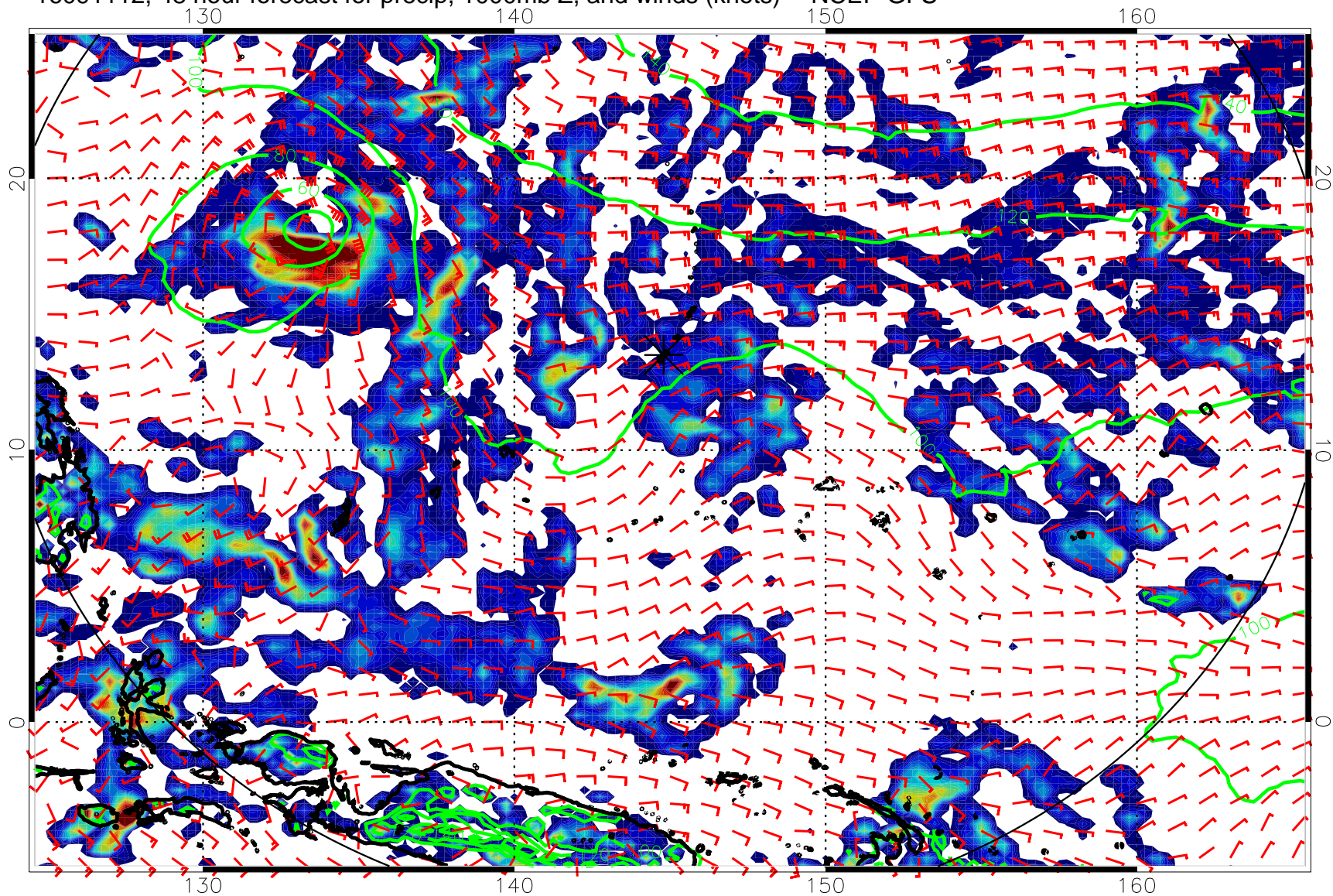
20 40 60 80
Precipitation, mm/day

16091106, 42 hour forecast for precip, 1000mb Z, and winds (knots) -- NCEP GFS



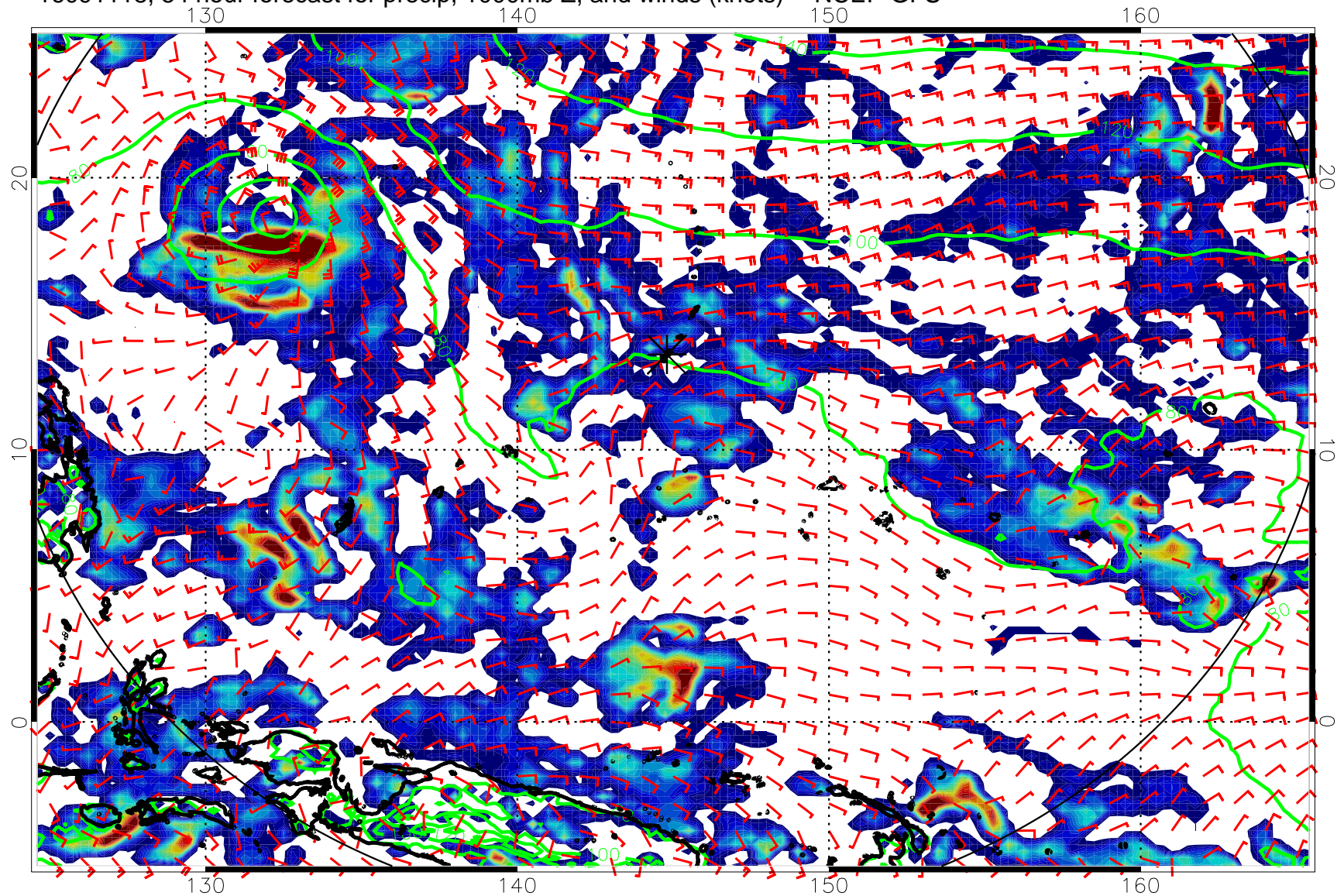
20 40 60 80
Precipitation, mm/day

16091112, 48 hour forecast for precip, 1000mb Z, and winds (knots) -- NCEP GFS



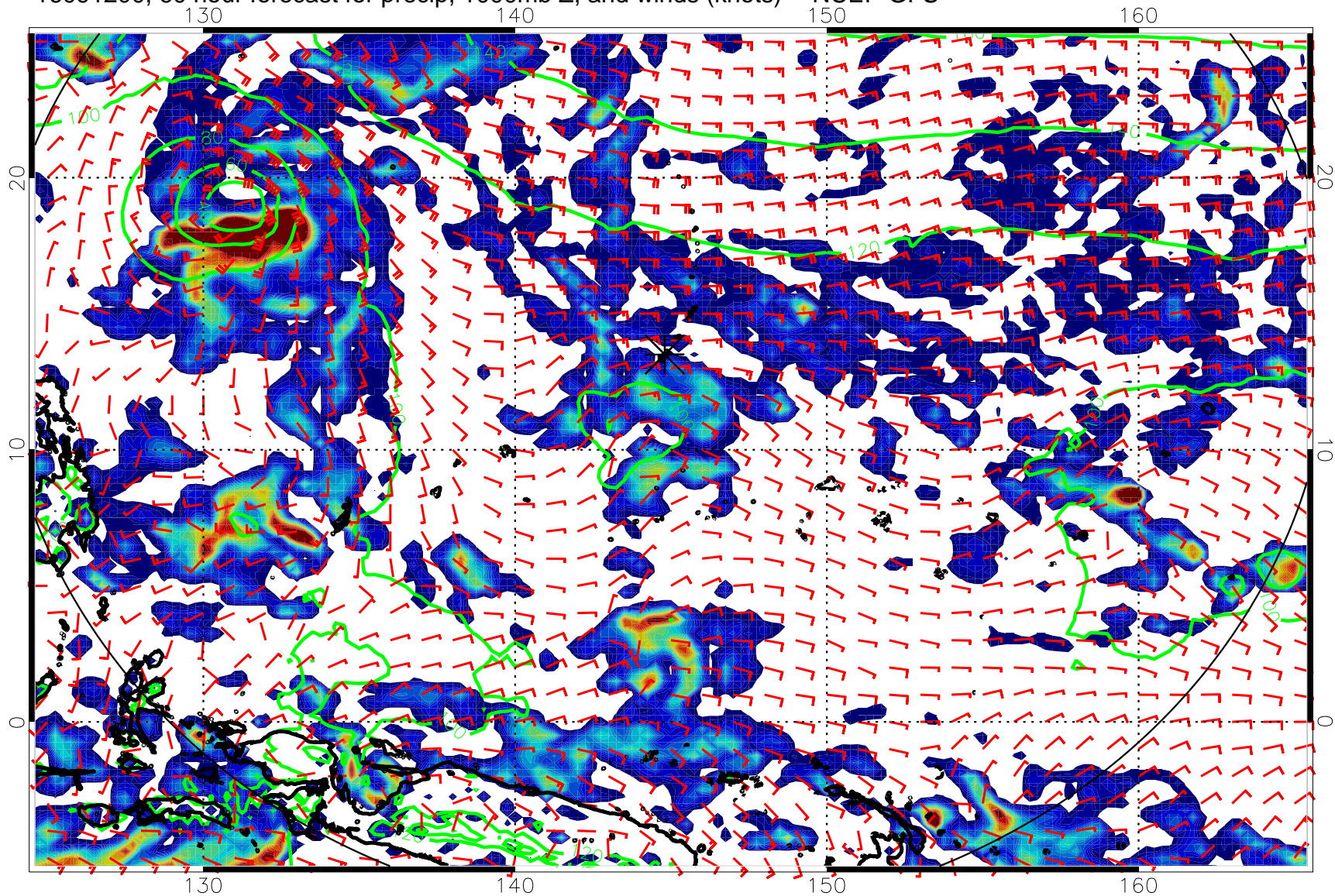
20 40 60 80
Precipitation, mm/day

16091118, 54 hour forecast for precip, 1000mb Z, and winds (knots) -- NCEP GFS



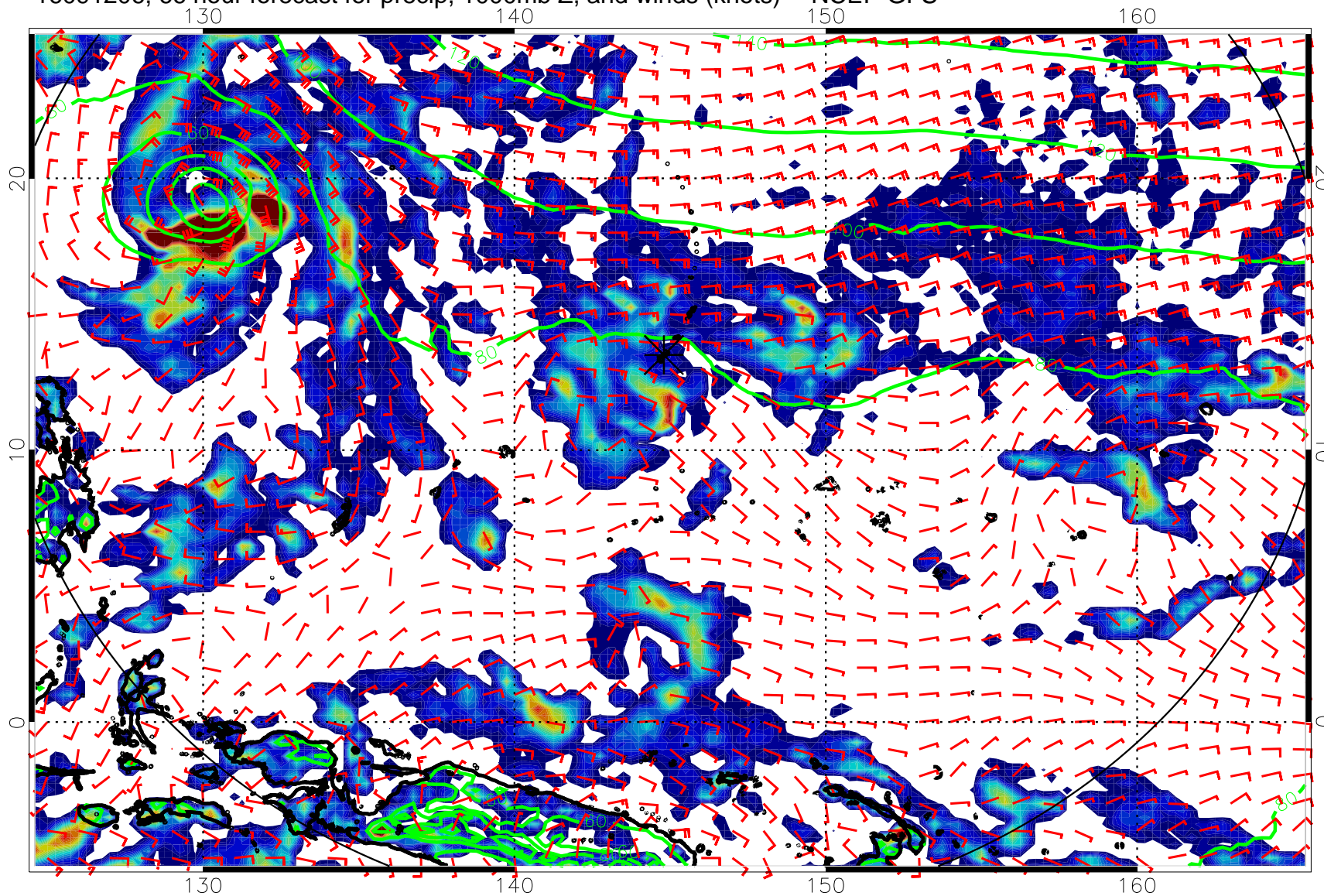
20 40 60 80
Precipitation, mm/day

16091200, 60 hour forecast for precip, 1000mb Z, and winds (knots) -- NCEP GFS



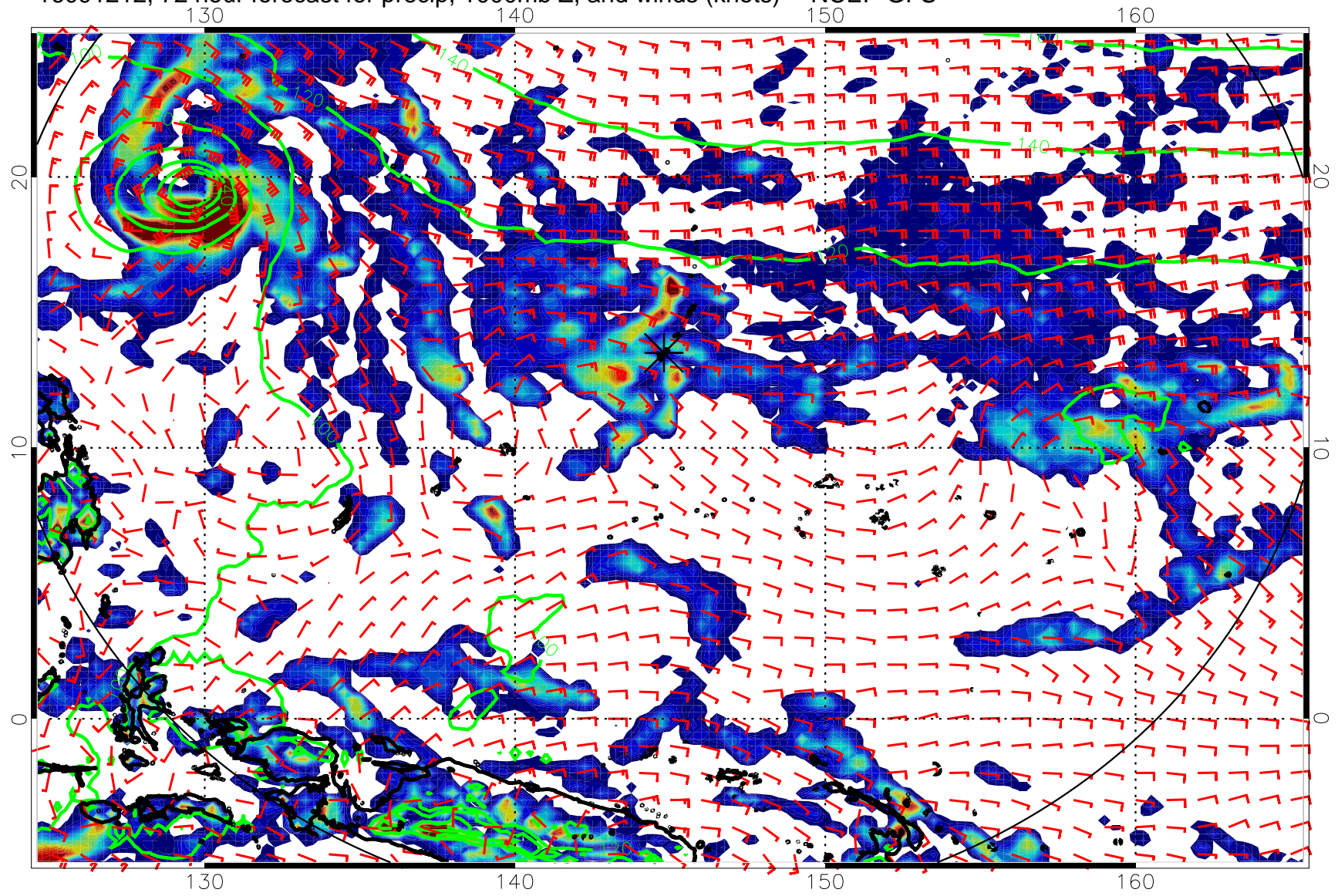
20 40 60 80
Precipitation, mm/day

16091206, 66 hour forecast for precip, 1000mb Z, and winds (knots) -- NCEP GFS



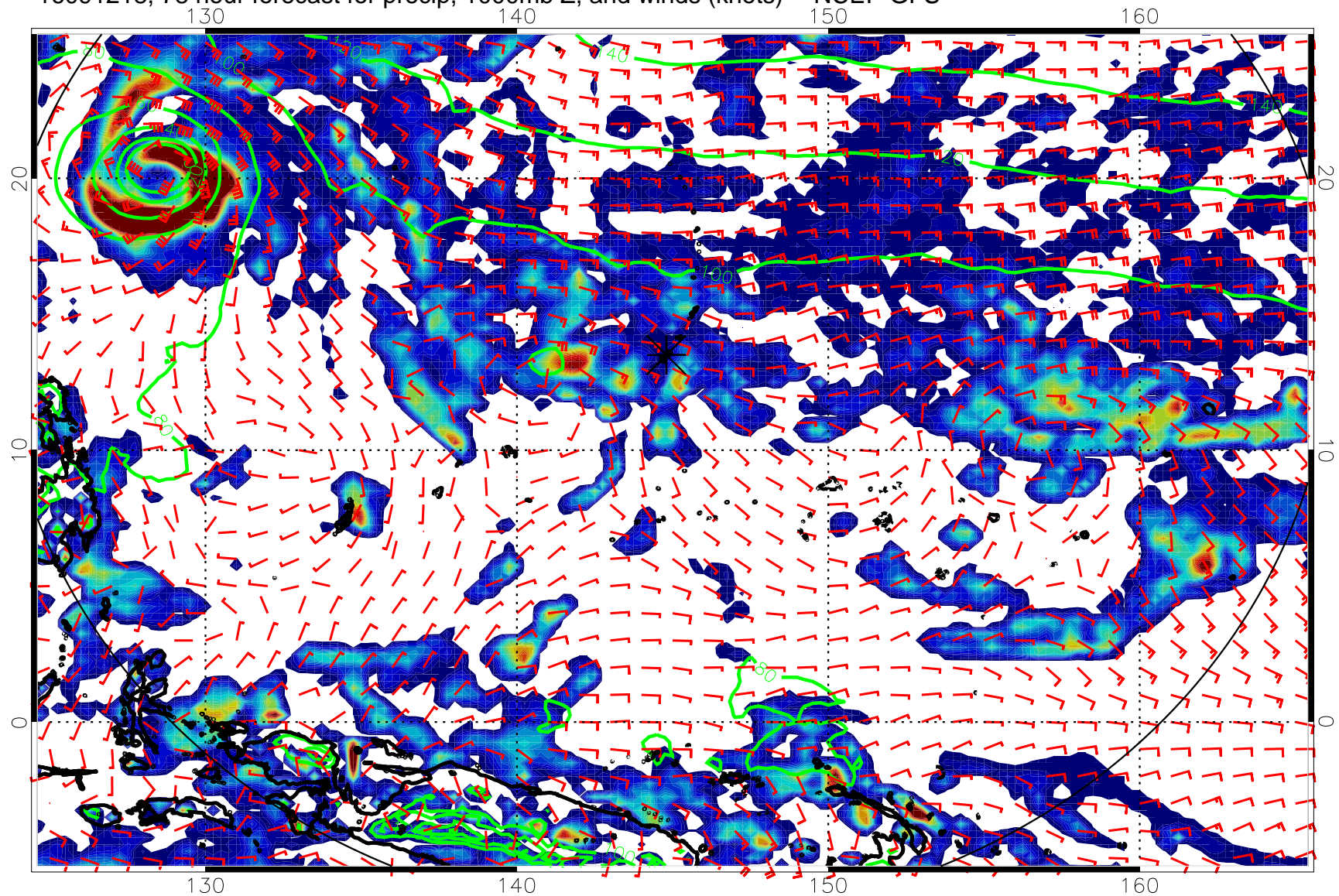
20 40 60 80
Precipitation, mm/day

16091212, 72 hour forecast for precip, 1000mb Z, and winds (knots) -- NCEP GFS



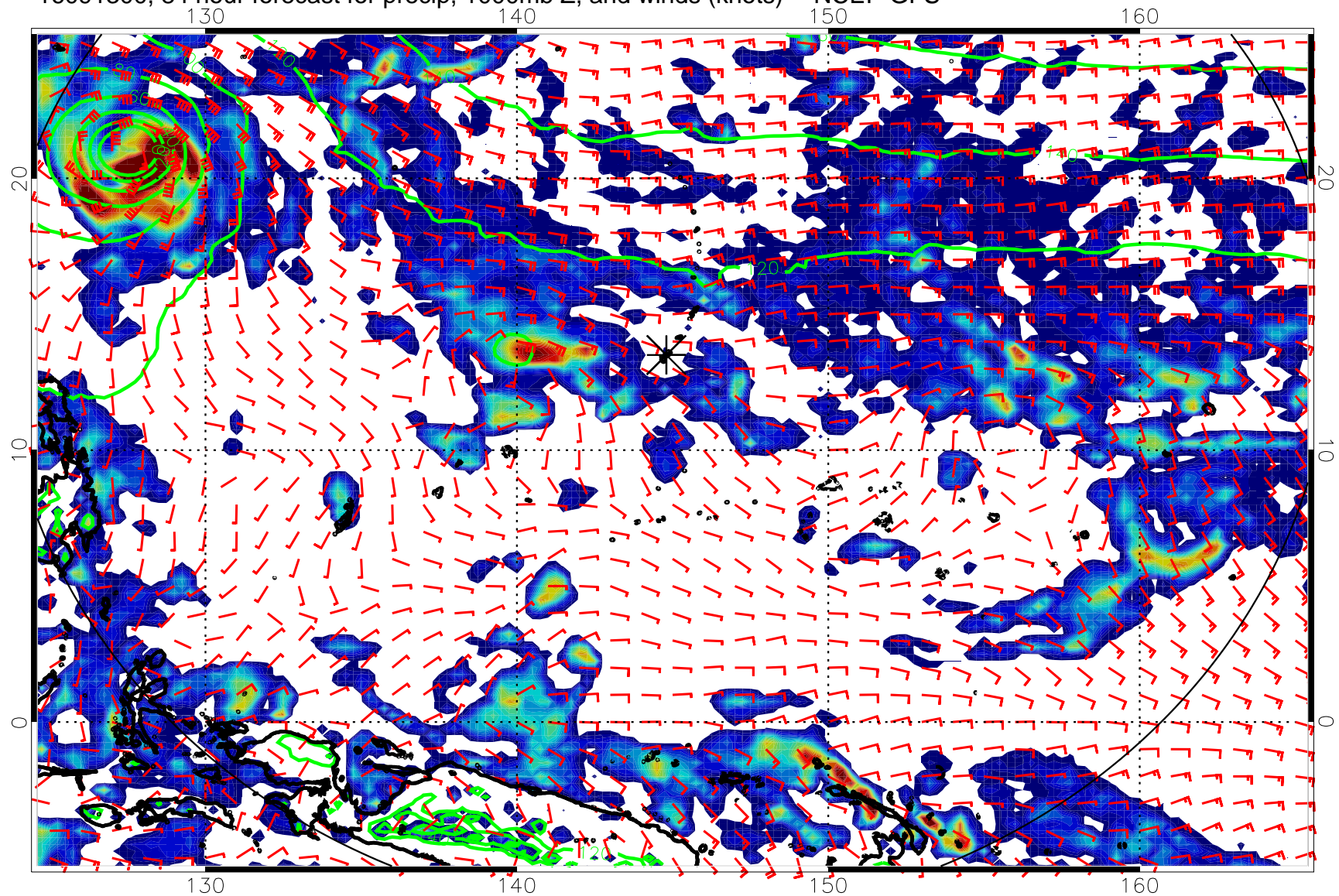
20 40 60 80
Precipitation, mm/day

16091218, 78 hour forecast for precip, 1000mb Z, and winds (knots) -- NCEP GFS



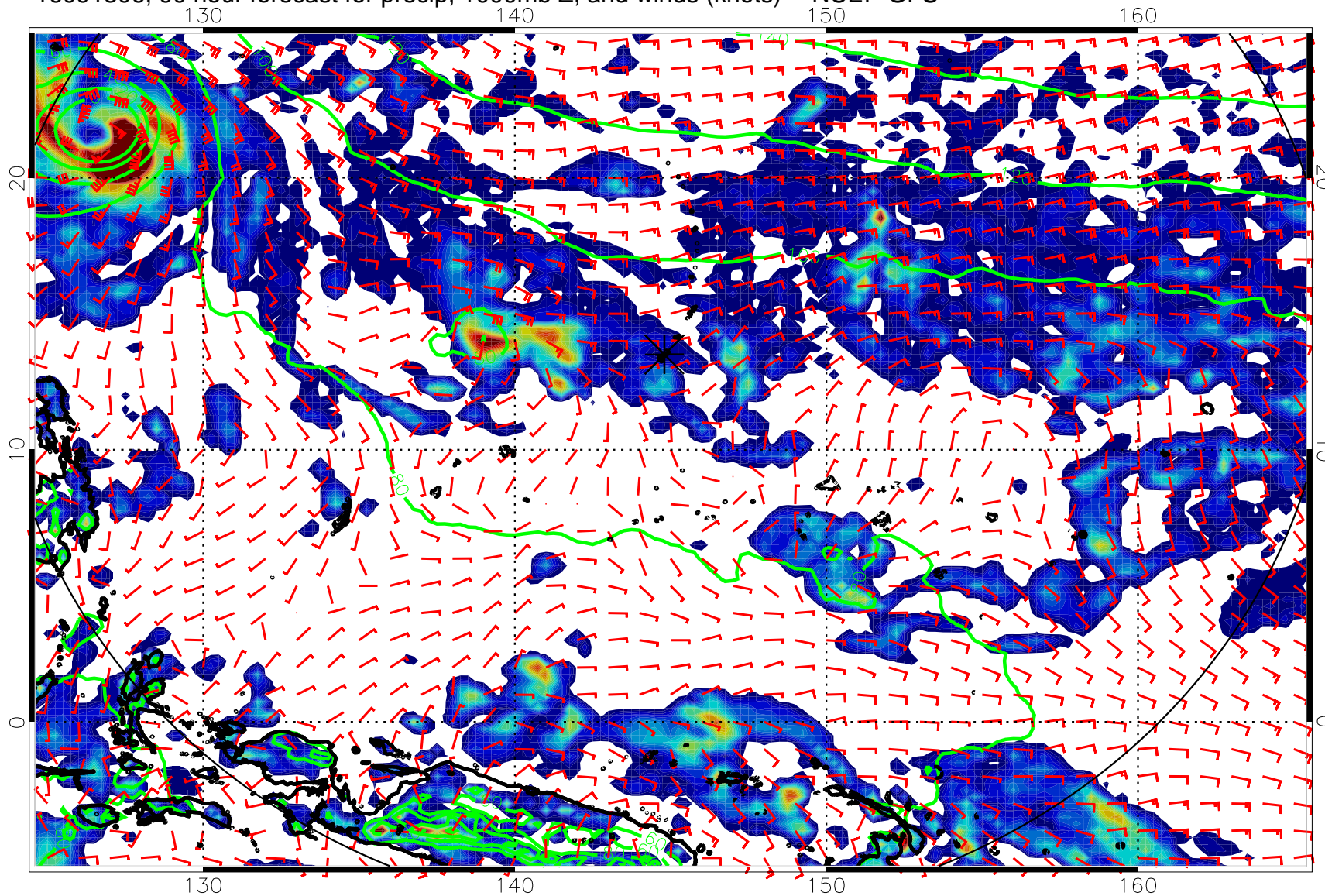
20 40 60 80
Precipitation, mm/day

16091300, 84 hour forecast for precip, 1000mb Z, and winds (knots) -- NCEP GFS



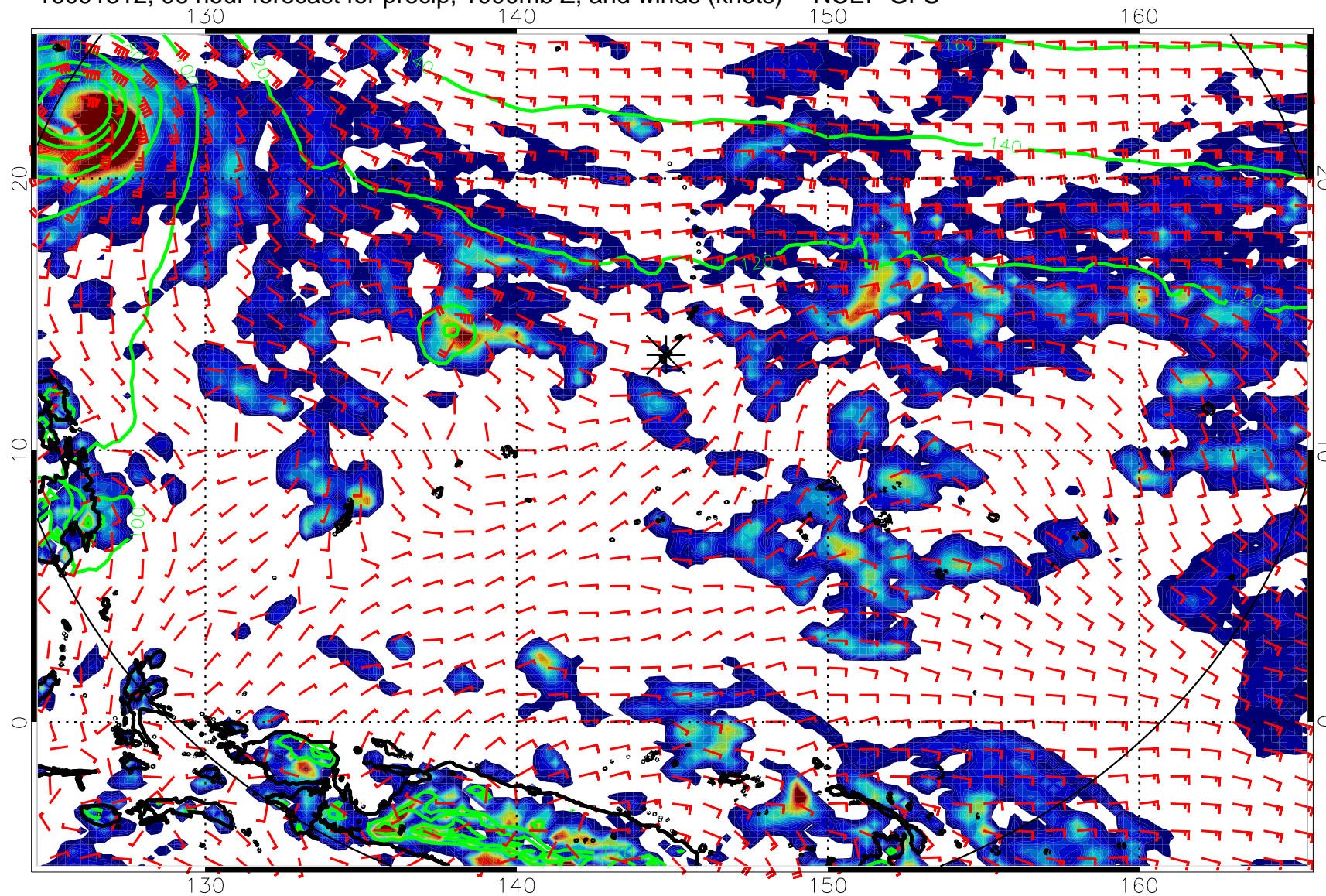
20 40 60 80
Precipitation, mm/day

16091306, 90 hour forecast for precip, 1000mb Z, and winds (knots) -- NCEP GFS

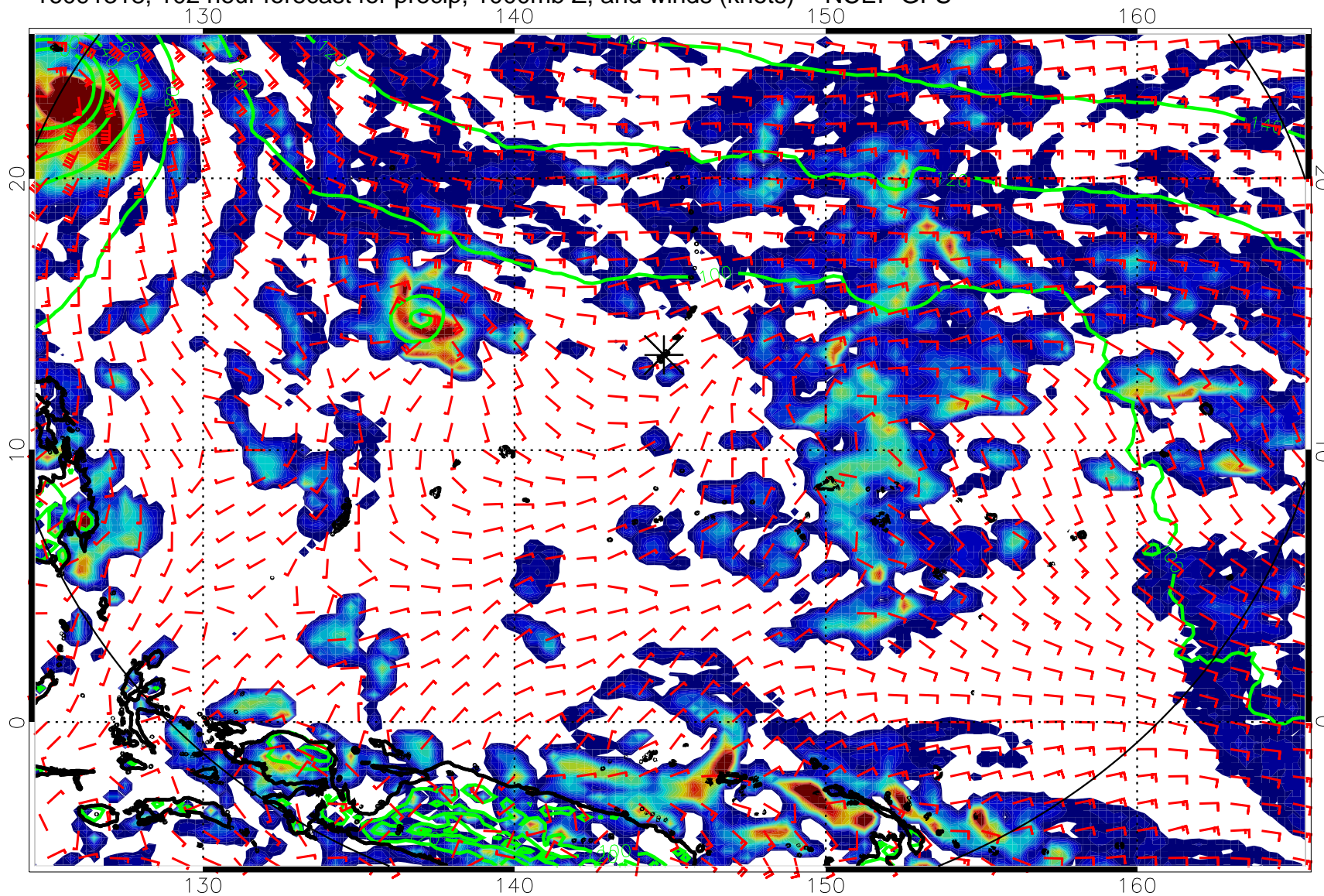


20 40 60 80
Precipitation, mm/day

16091312, 96 hour forecast for precip, 1000mb Z, and winds (knots) -- NCEP GFS

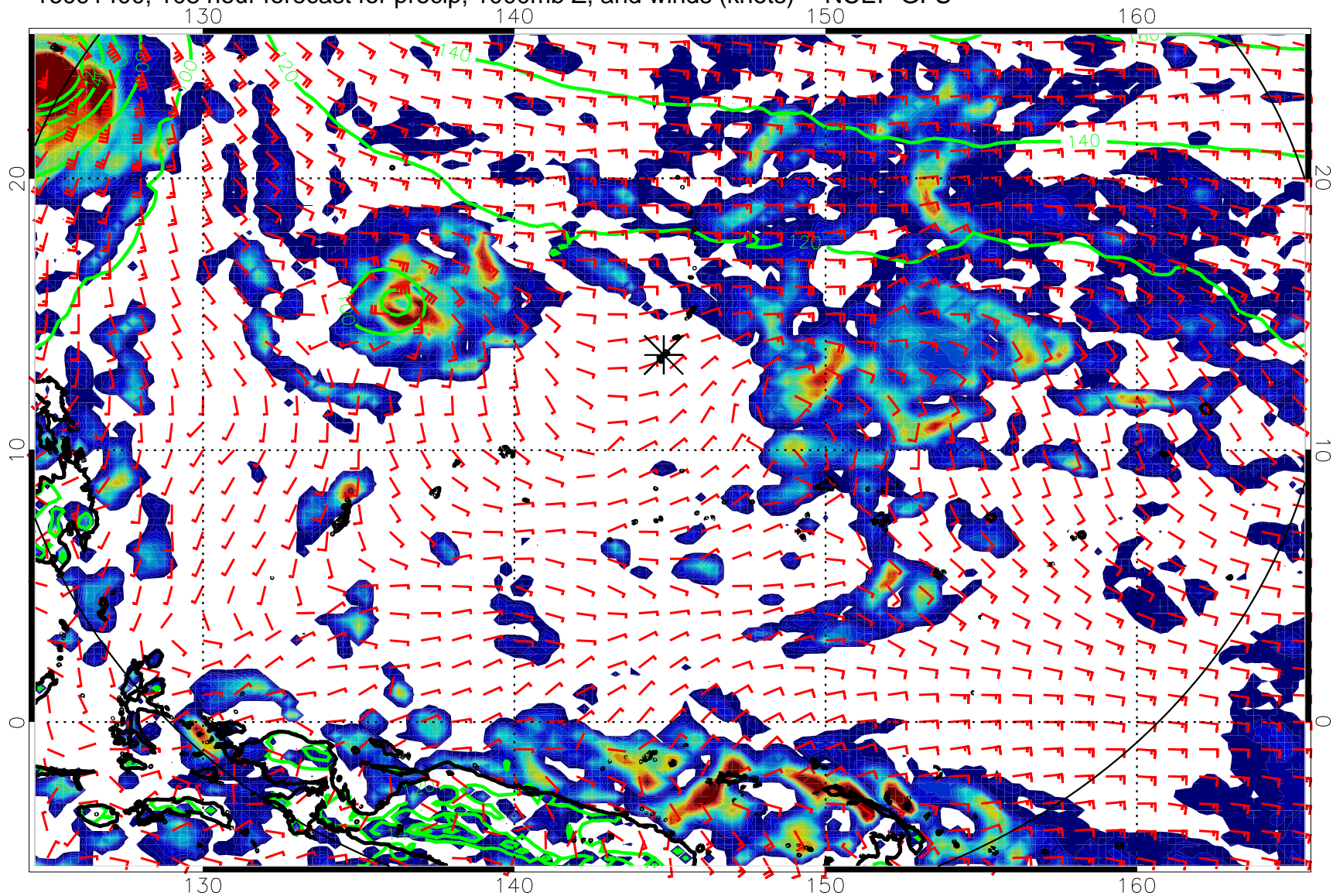


16091318, 102 hour forecast for precip, 1000mb Z, and winds (knots) -- NCEP GFS



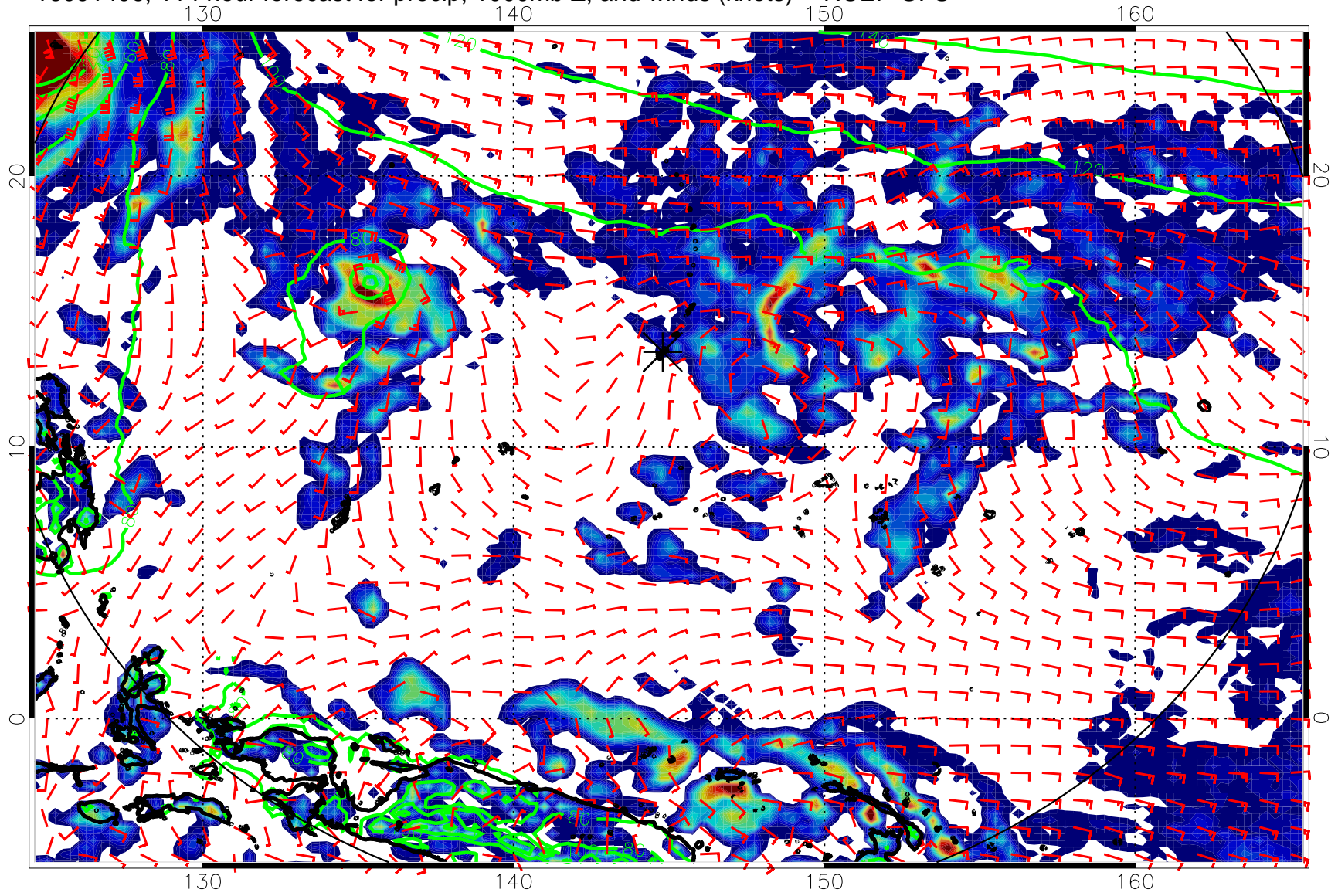
20 40 60 80
Precipitation, mm/day

16091400, 108 hour forecast for precip, 1000mb Z, and winds (knots) -- NCEP GFS



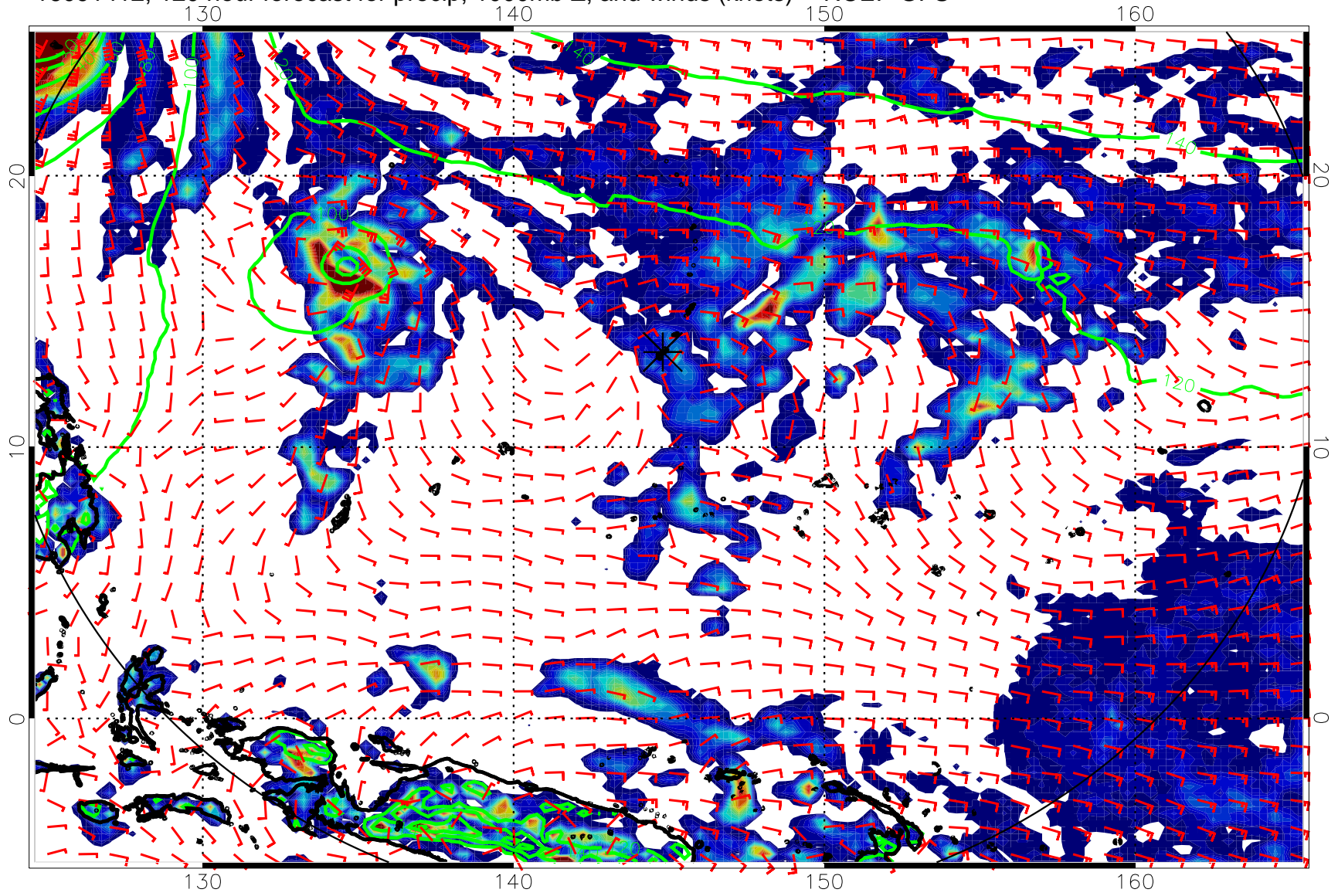
20 40 60 80
Precipitation, mm/day

16091406, 114 hour forecast for precip, 1000mb Z, and winds (knots) -- NCEP GFS



20 40 60 80
Precipitation, mm/day

16091412, 120 hour forecast for precip, 1000mb Z, and winds (knots) -- NCEP GFS



20 40 60 80
Precipitation, mm/day