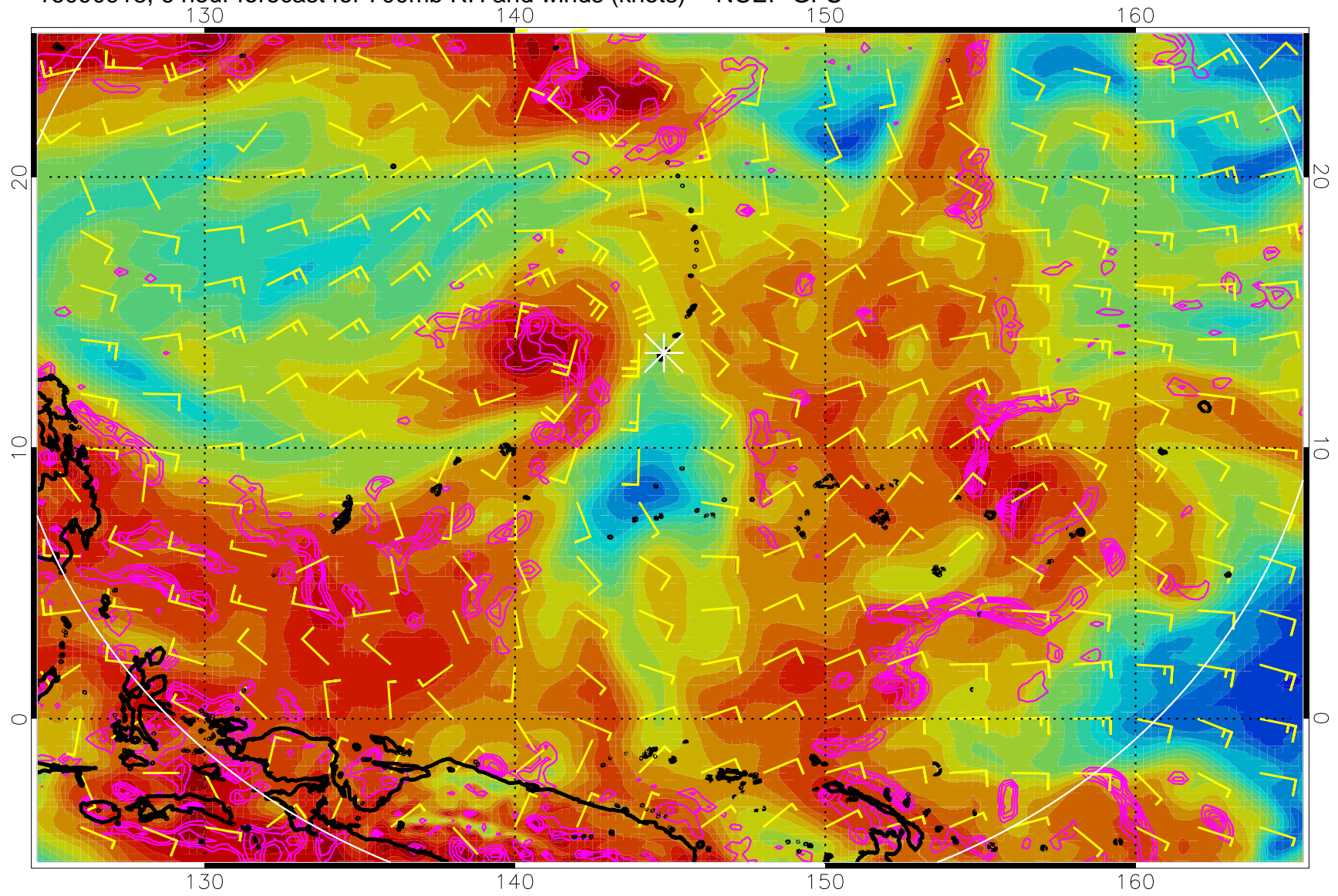
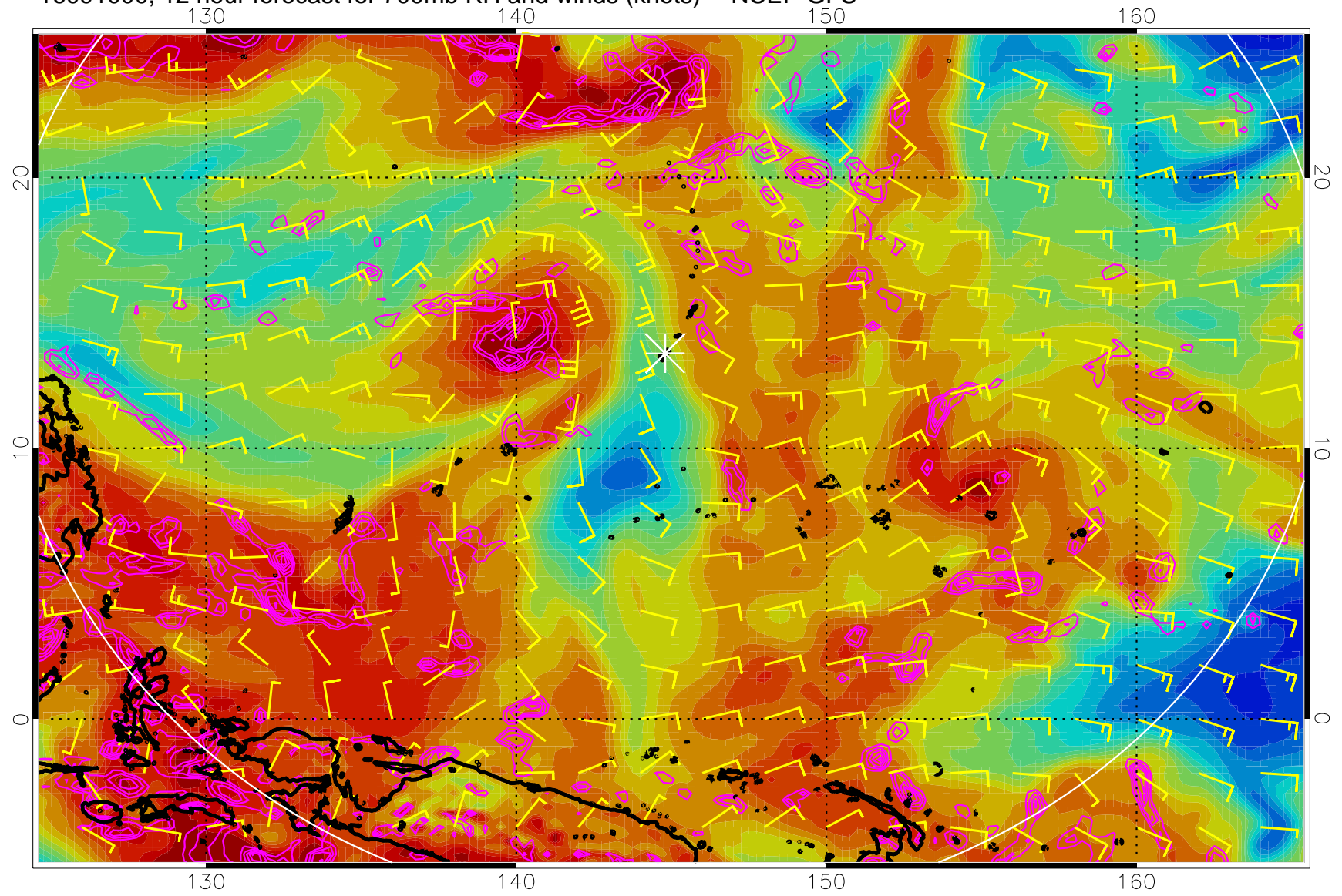


16090918, 6 hour forecast for 700mb RH and winds (knots) -- NCEP GFS



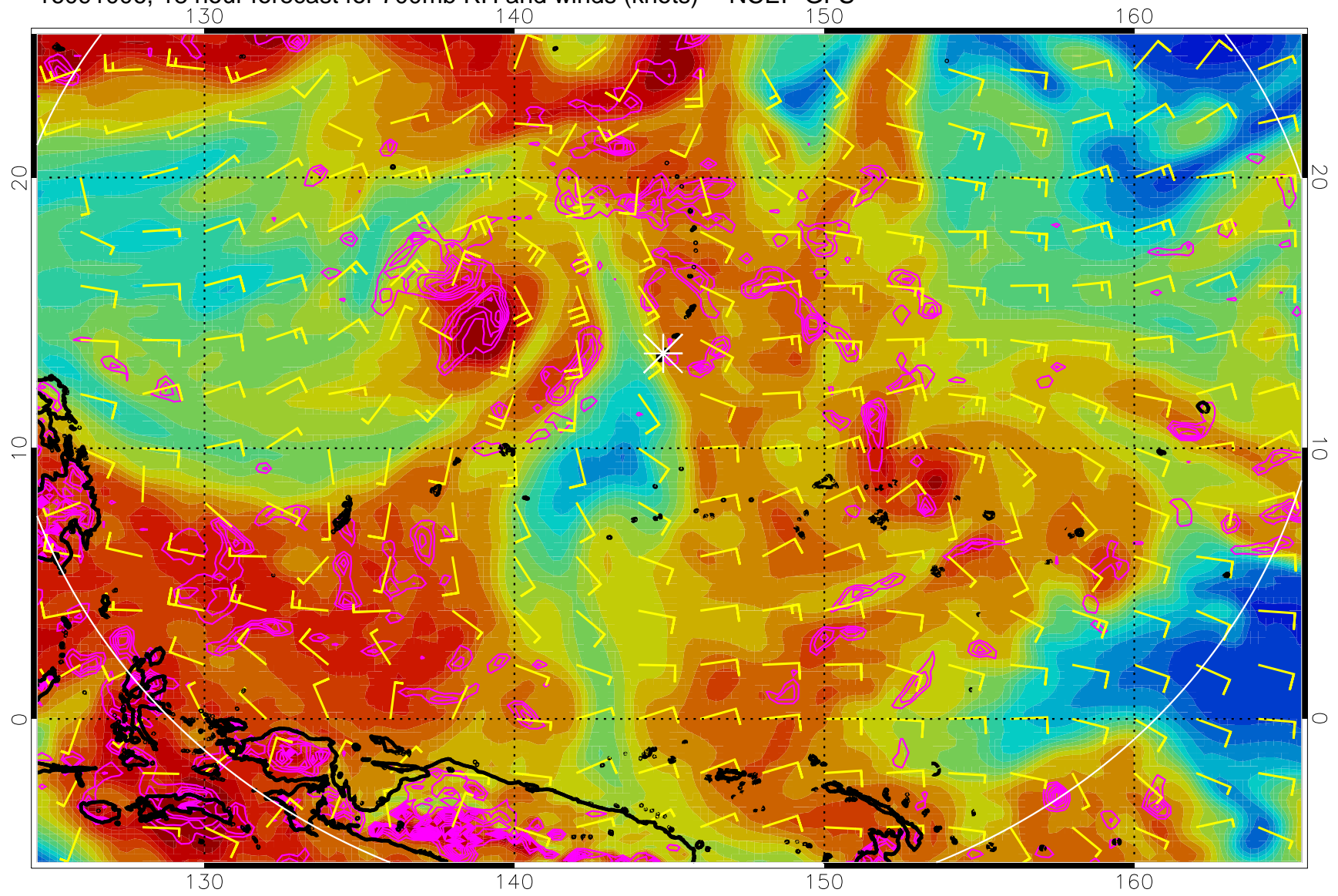
Negative Omegas less than $-.3$, contours of $.3$ Pa/s

16091000, 12 hour forecast for 700mb RH and winds (knots) -- NCEP GFS



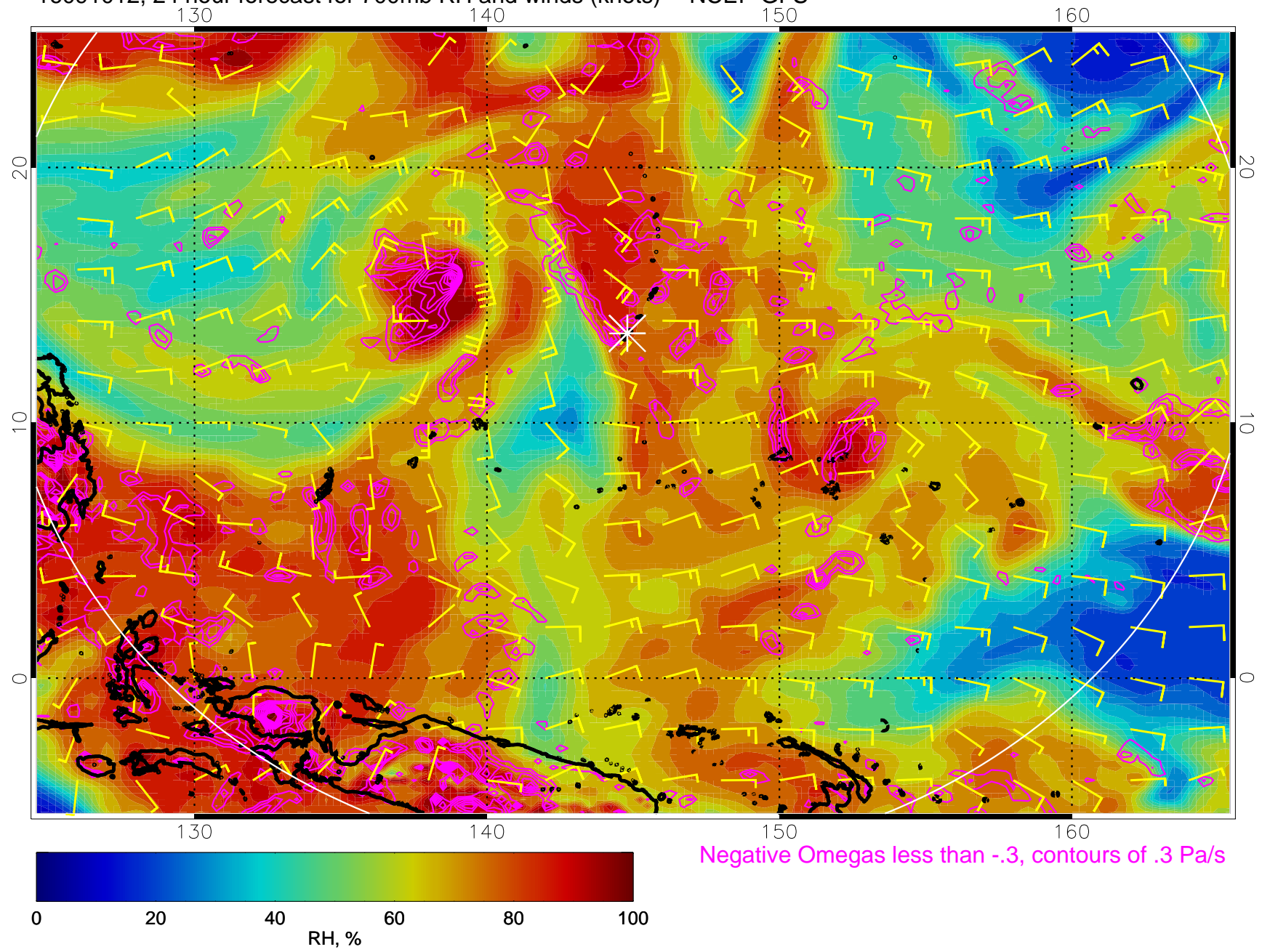
Negative Omegas less than $-.3$, contours of $.3$ Pa/s

16091006, 18 hour forecast for 700mb RH and winds (knots) -- NCEP GFS

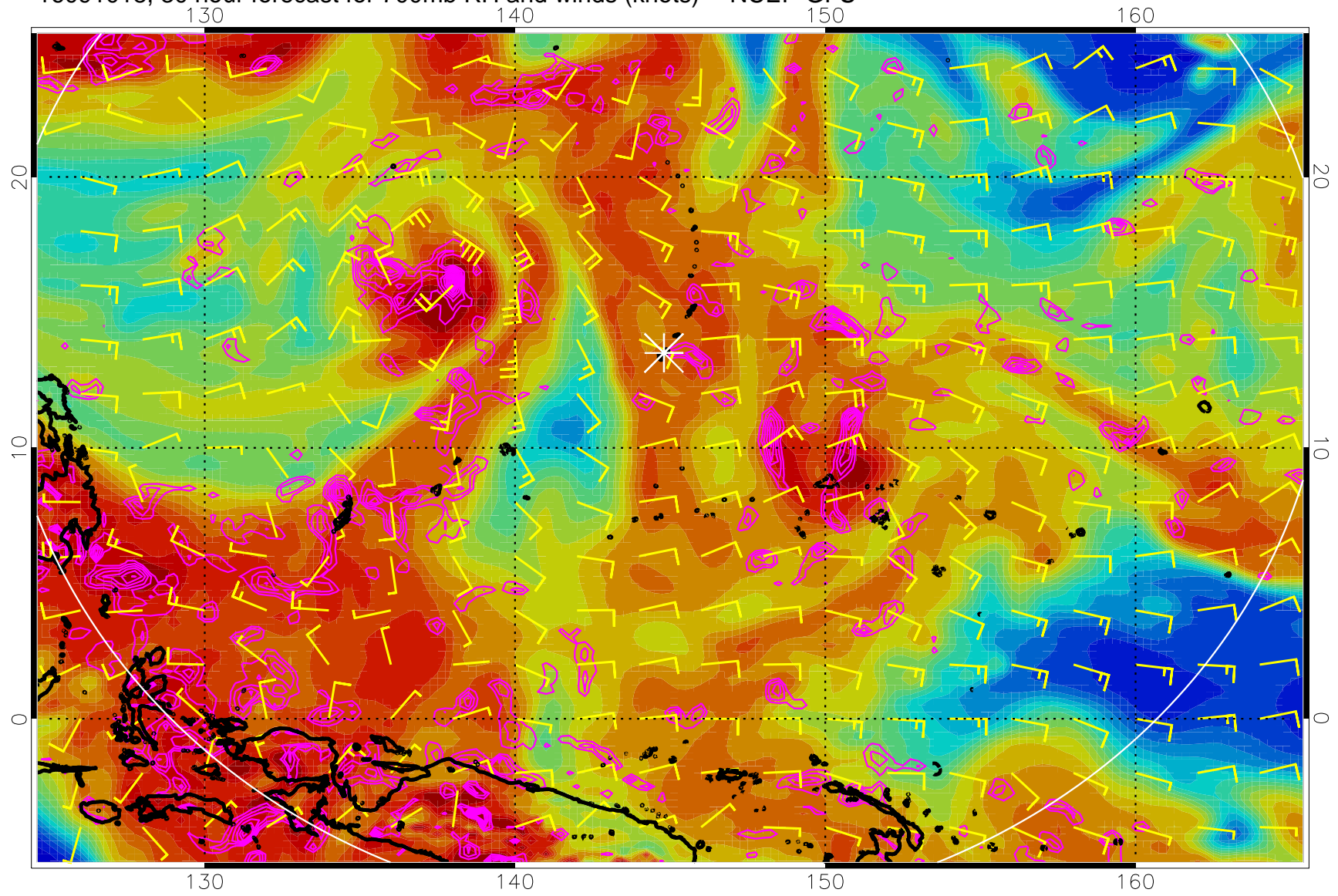


Negative Omegas less than -0.3 , contours of 0.3 Pa/s

16091012, 24 hour forecast for 700mb RH and winds (knots) -- NCEP GFS

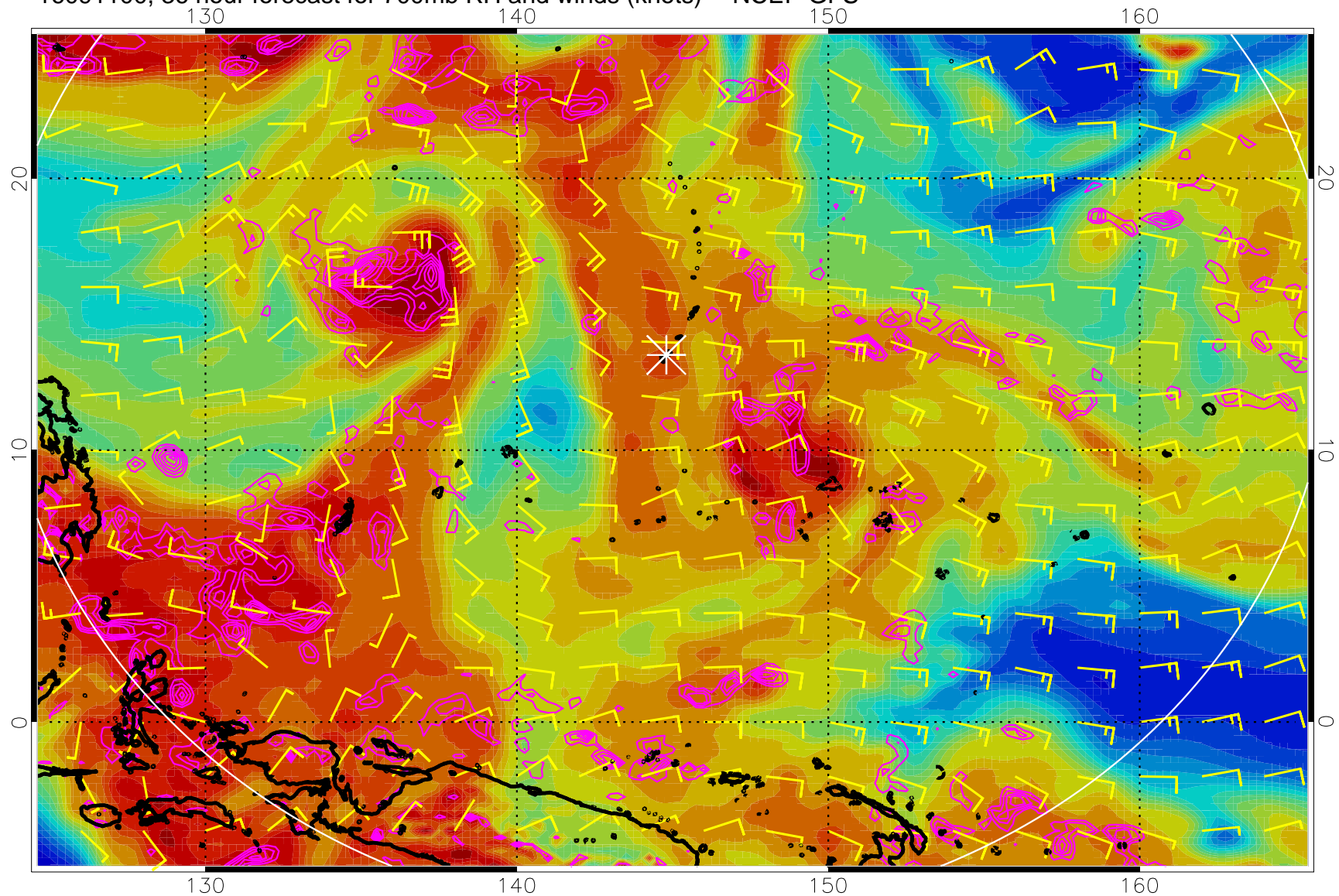


16091018, 30 hour forecast for 700mb RH and winds (knots) -- NCEP GFS



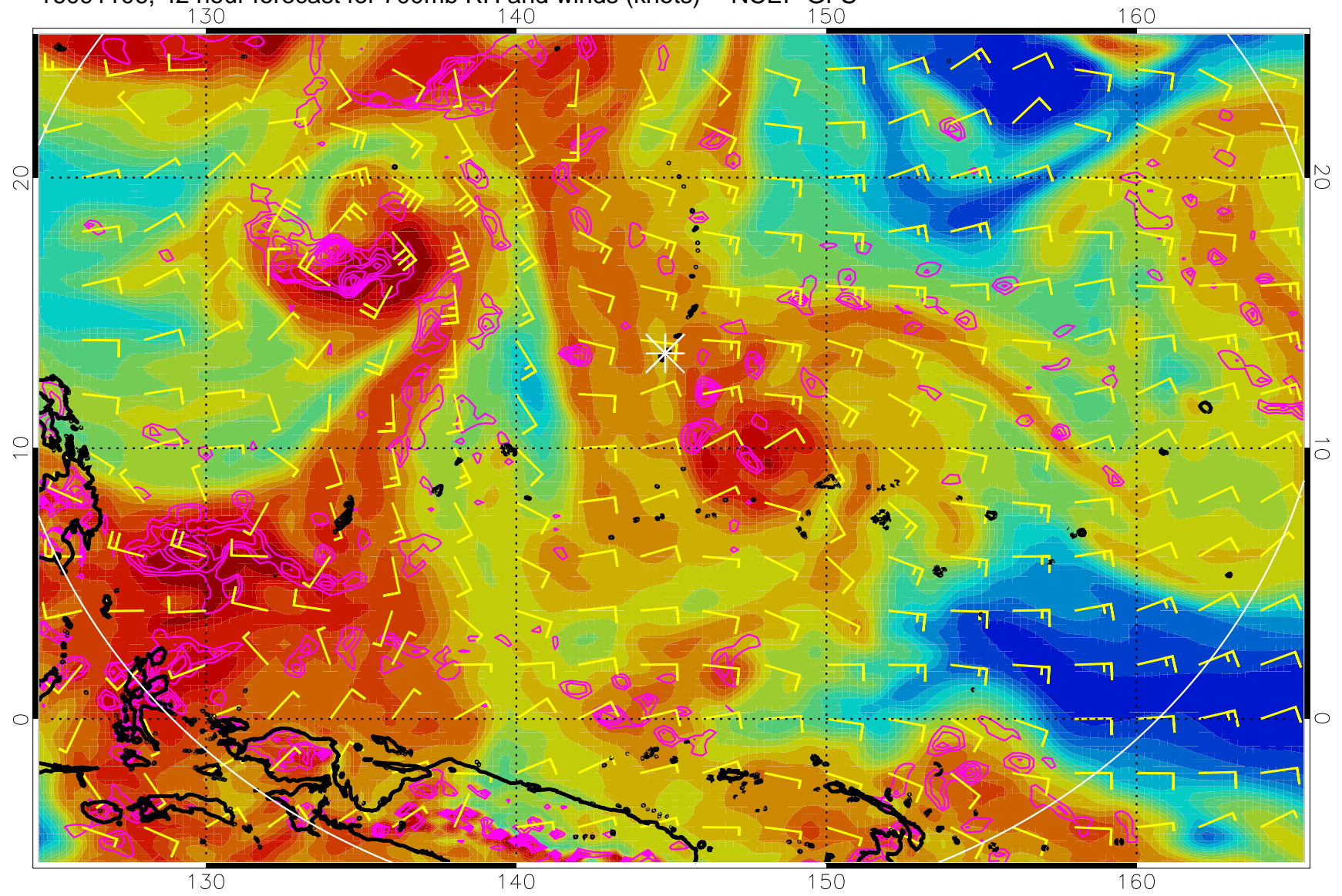
Negative Omegas less than -.3, contours of .3 Pa/s

16091100, 36 hour forecast for 700mb RH and winds (knots) -- NCEP GFS



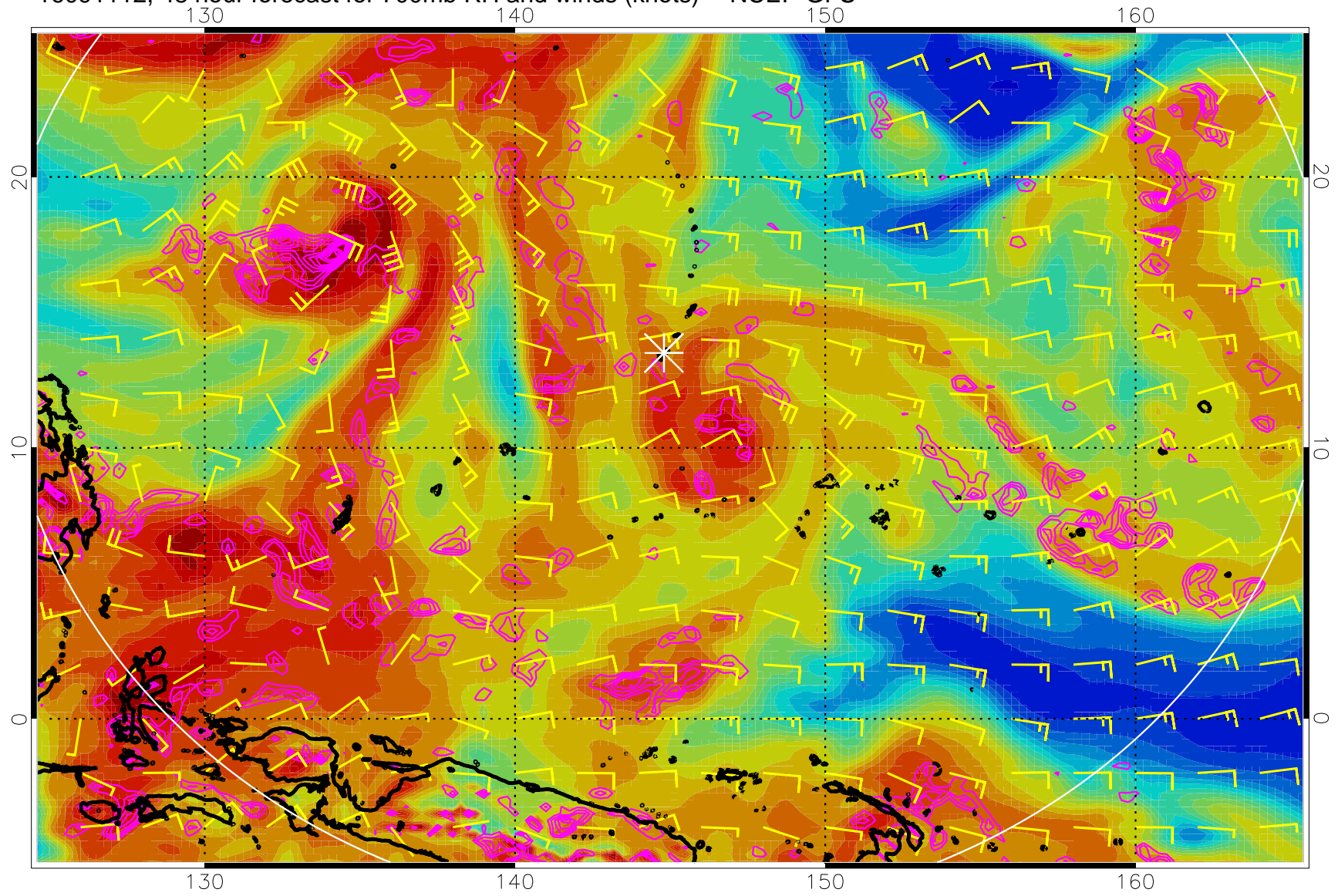
Negative Omegas less than -0.3 , contours of 0.3 Pa/s

16091106, 42 hour forecast for 700mb RH and winds (knots) -- NCEP GFS



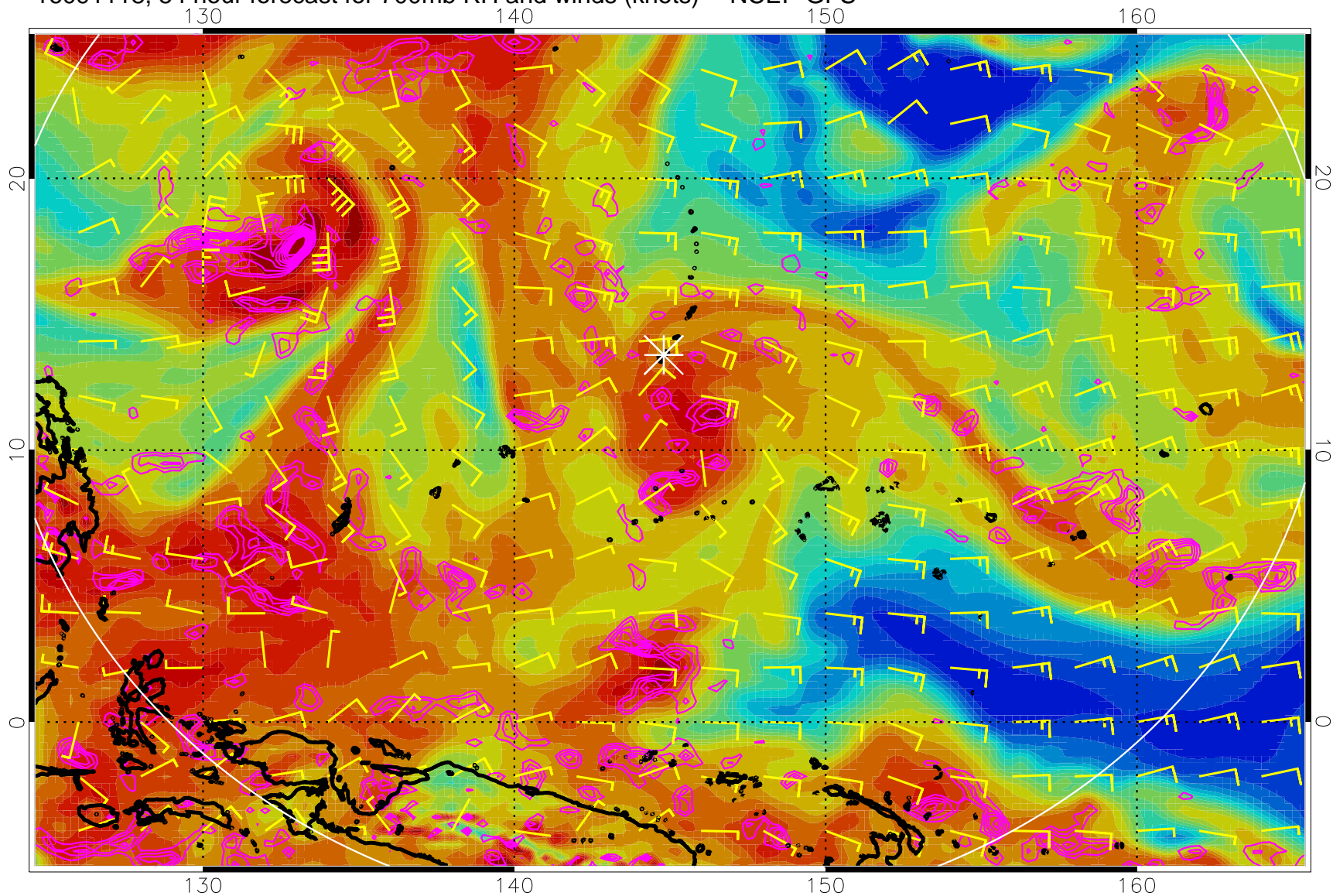
Negative Omegas less than -0.3 , contours of 0.3 Pa/s

16091112, 48 hour forecast for 700mb RH and winds (knots) -- NCEP GFS



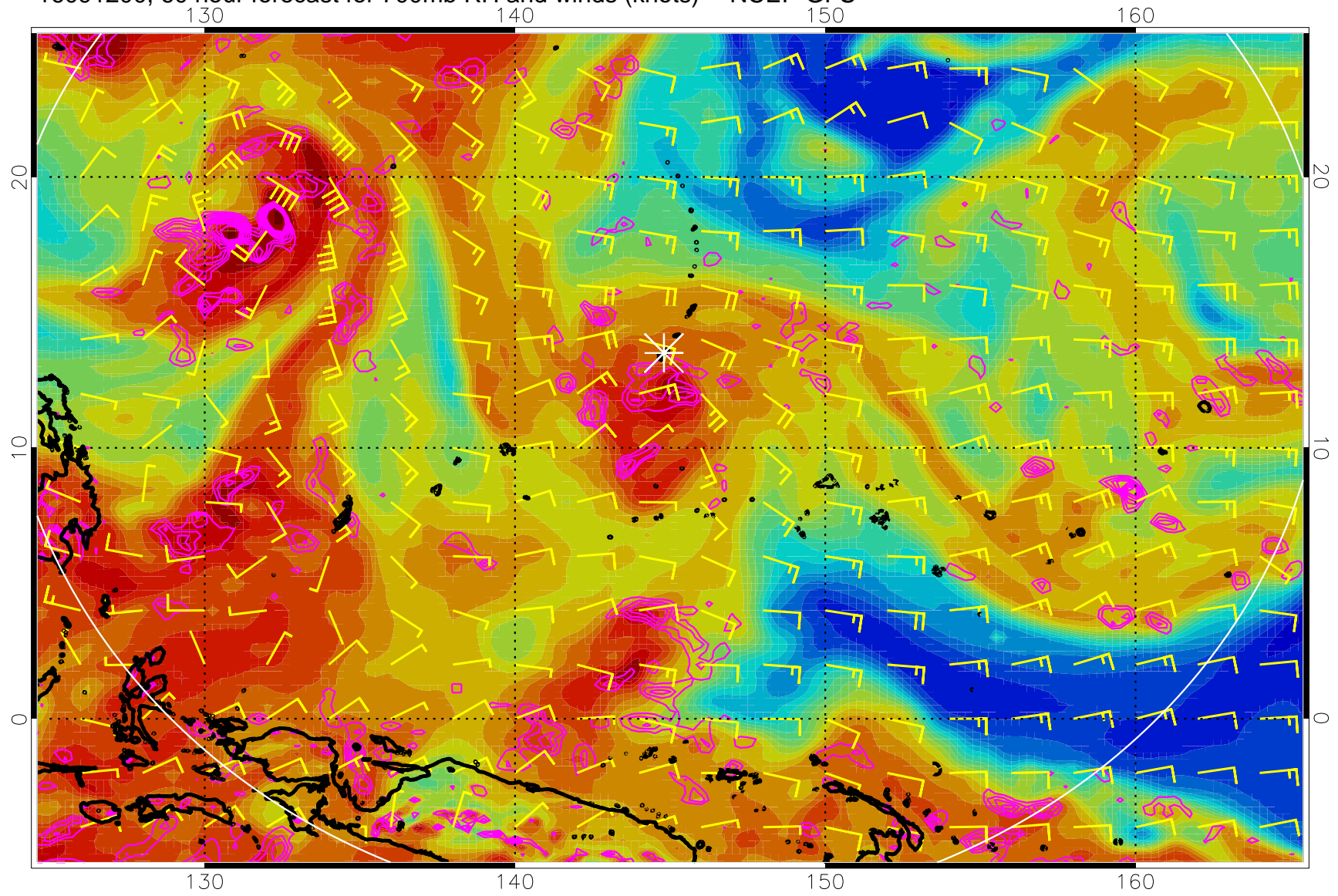
Negative Omegas less than -0.3 , contours of 0.3 Pa/s

16091118, 54 hour forecast for 700mb RH and winds (knots) -- NCEP GFS



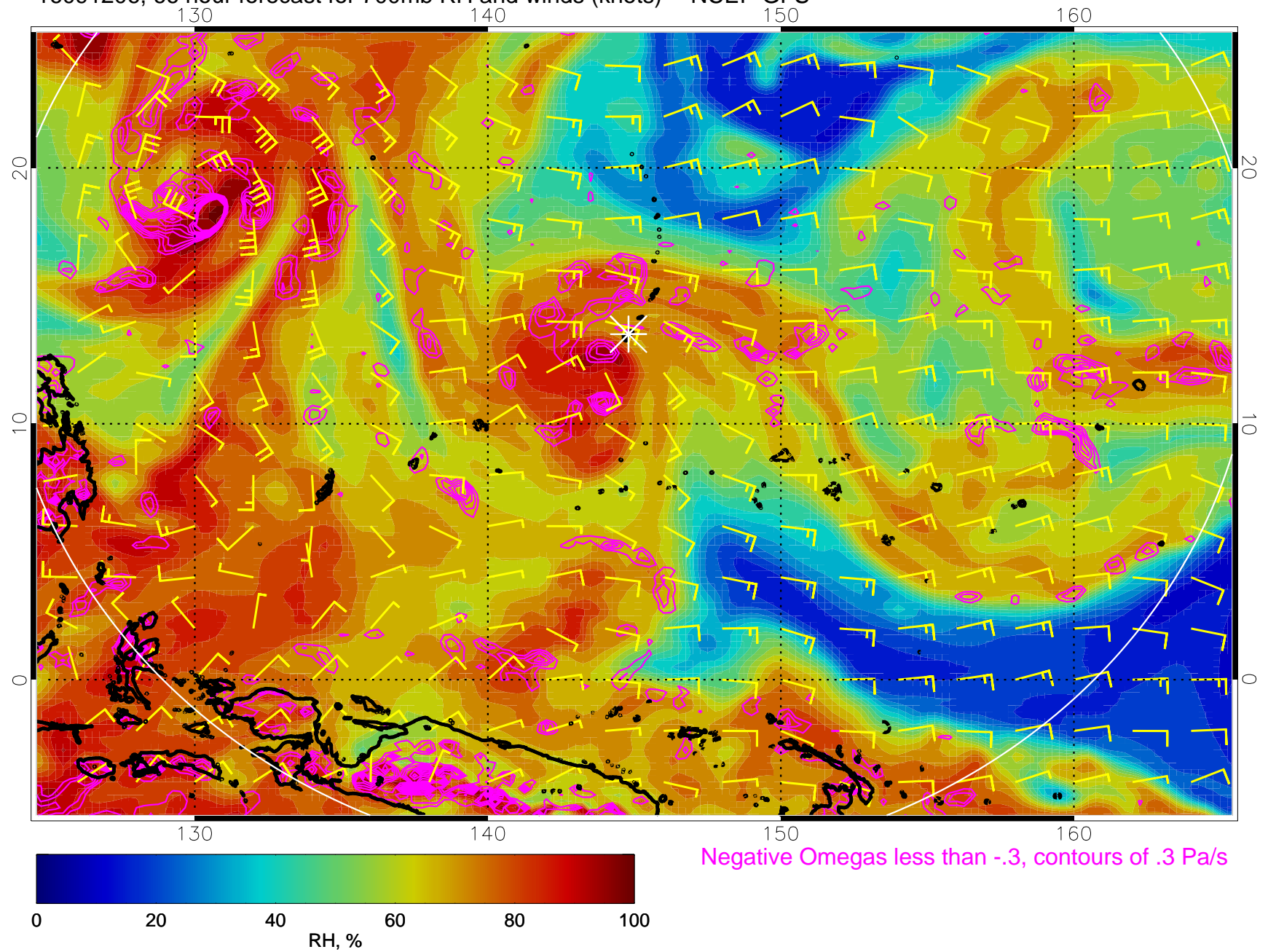
Negative Omegas less than -0.3 , contours of 0.3 Pa/s

16091200, 60 hour forecast for 700mb RH and winds (knots) -- NCEP GFS

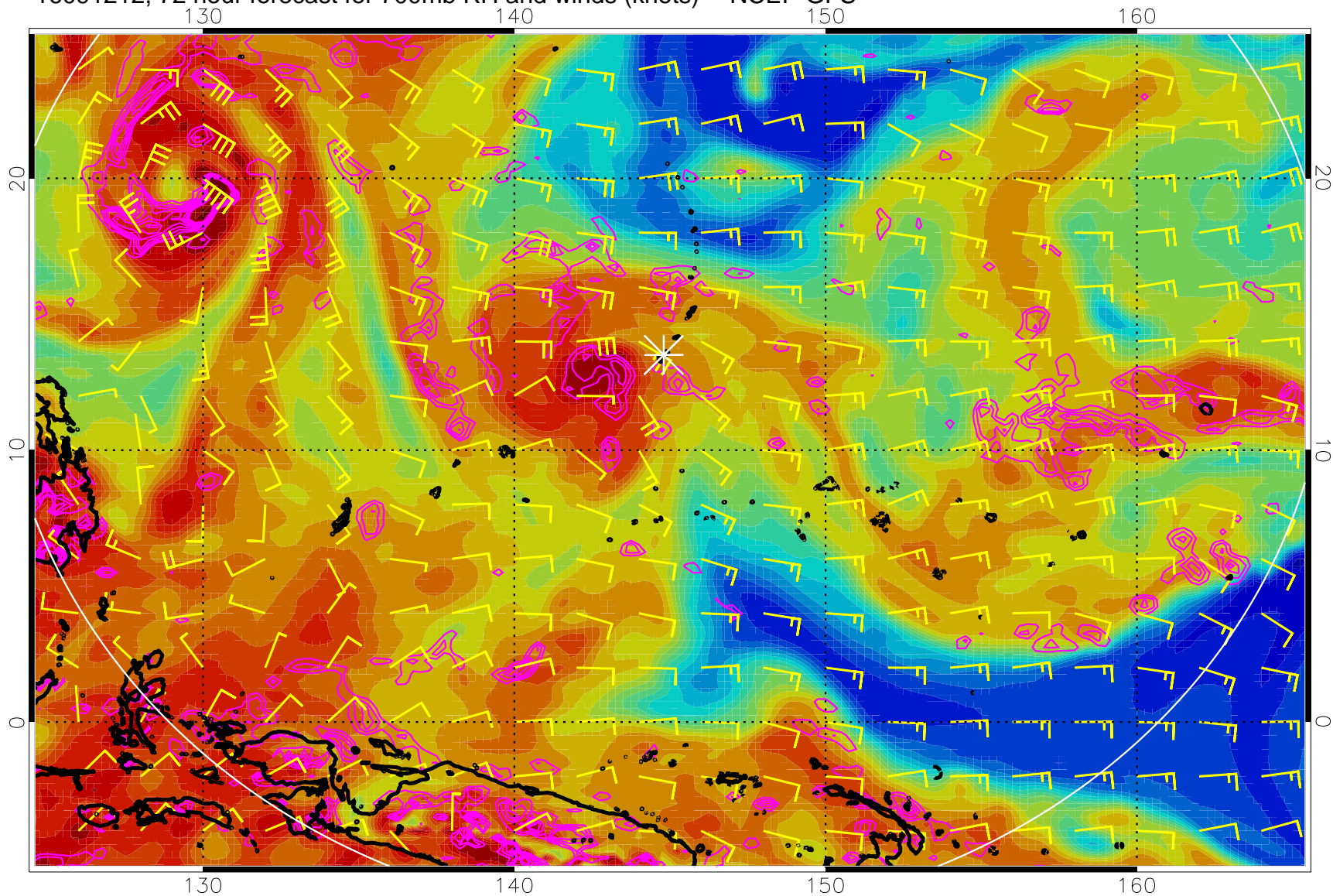


Negative Omegas less than -0.3 , contours of 0.3 Pa/s

16091206, 66 hour forecast for 700mb RH and winds (knots) -- NCEP GFS

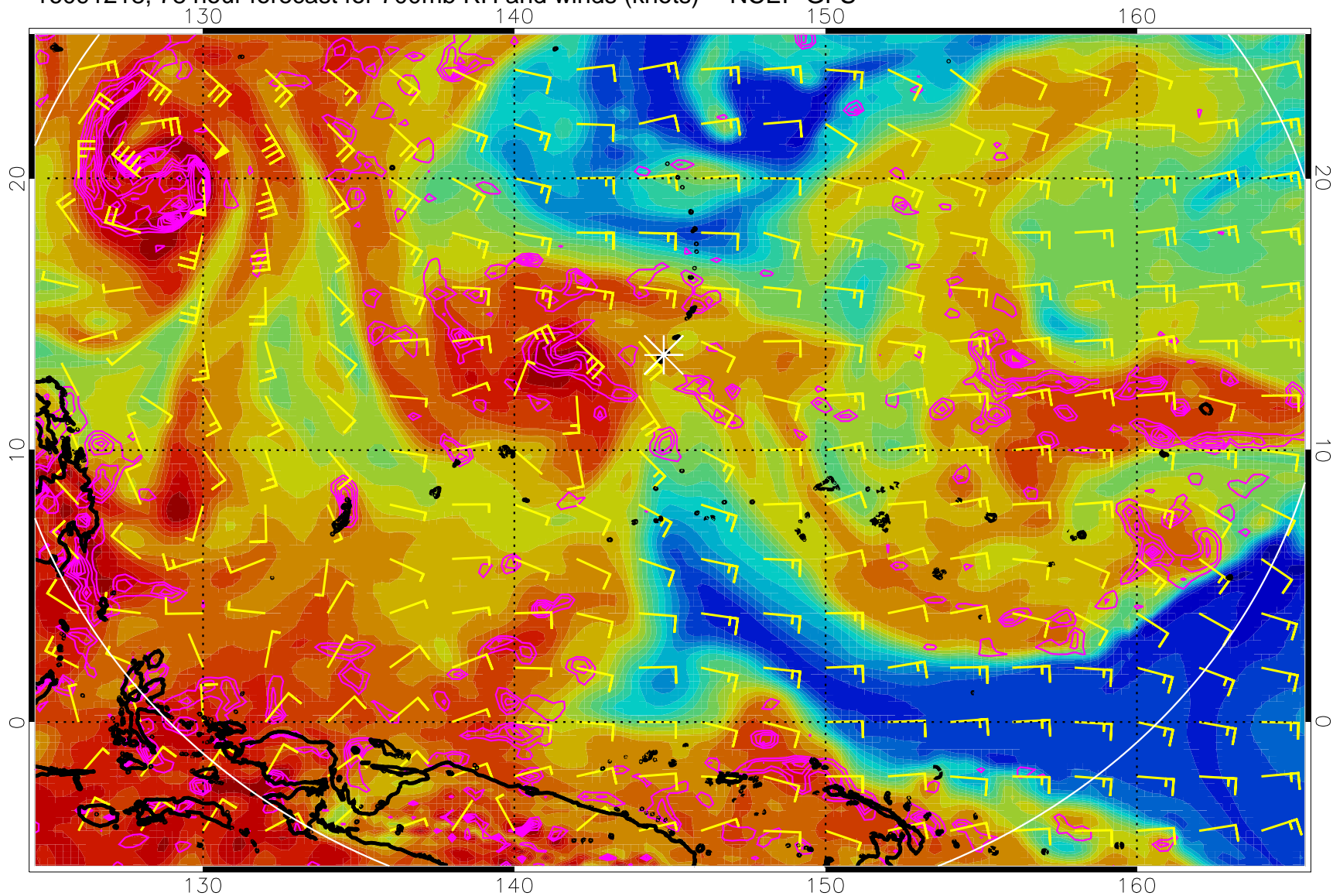


16091212, 72 hour forecast for 700mb RH and winds (knots) -- NCEP GFS



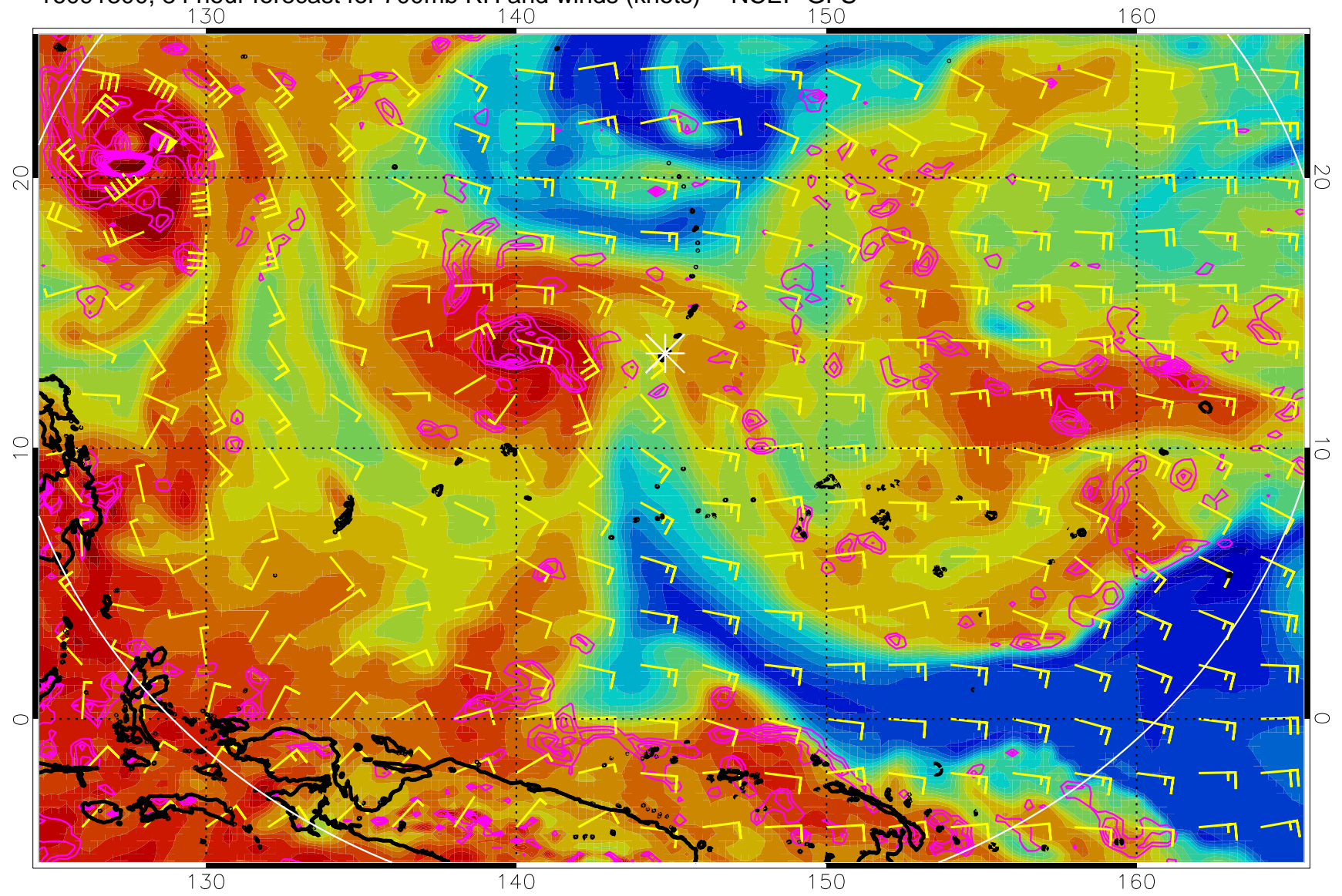
Negative Omegas less than -.3, contours of .3 Pa/s

16091218, 78 hour forecast for 700mb RH and winds (knots) -- NCEP GFS



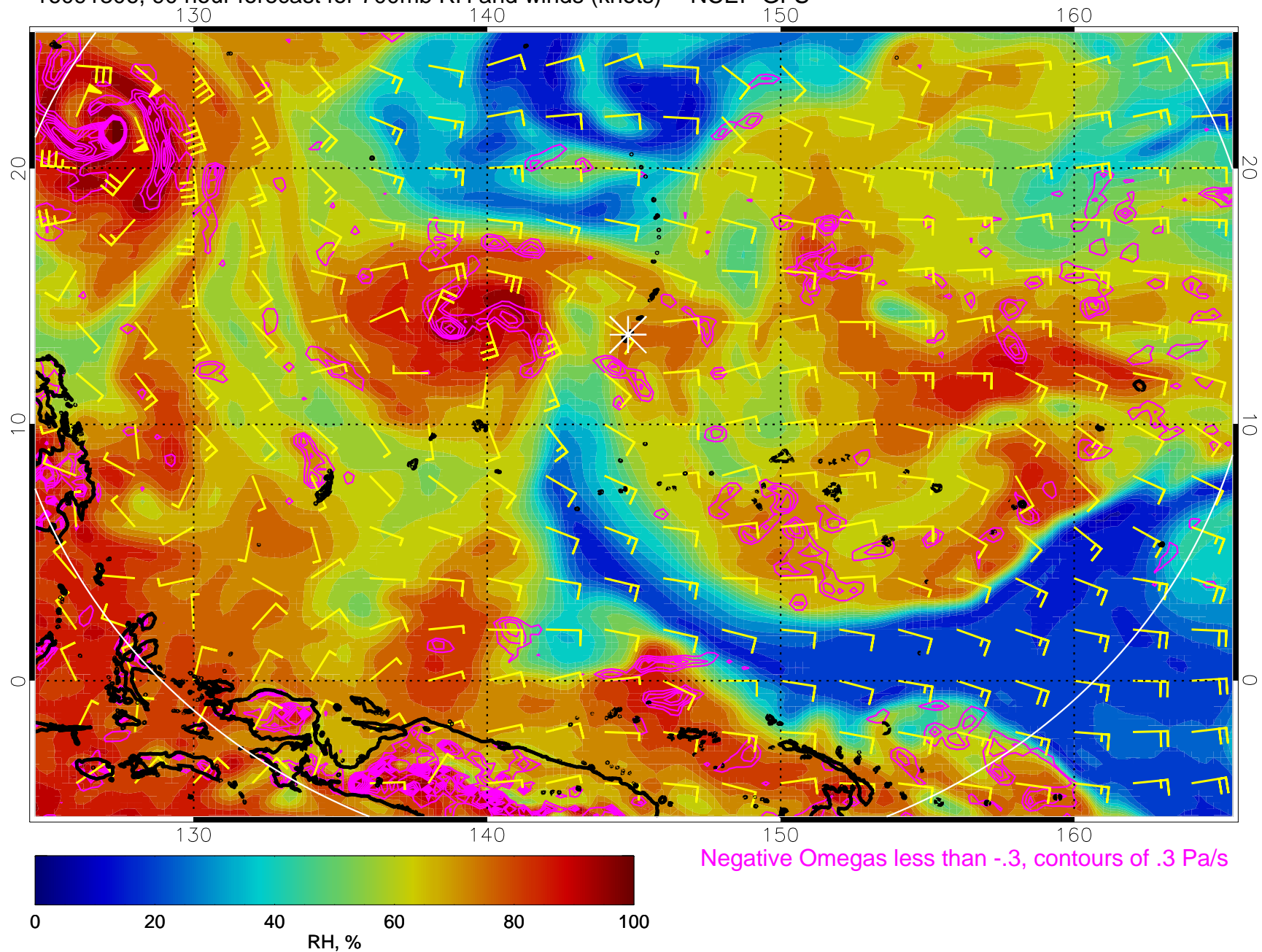
Negative Omegas less than -0.3 , contours of 0.3 Pa/s

16091300, 84 hour forecast for 700mb RH and winds (knots) -- NCEP GFS

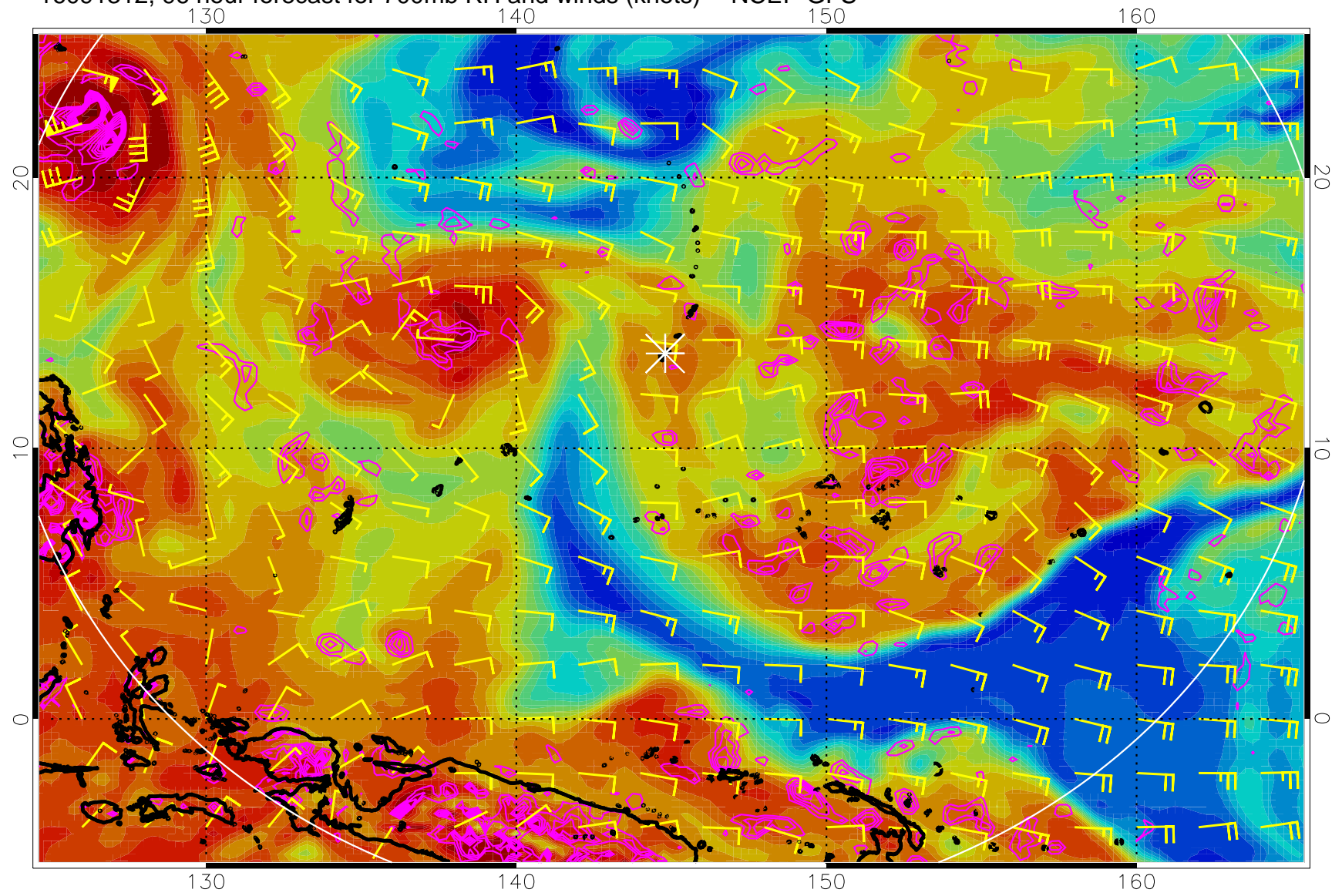


Negative Omegas less than $-.3$, contours of $.3$ Pa/s

16091306, 90 hour forecast for 700mb RH and winds (knots) -- NCEP GFS

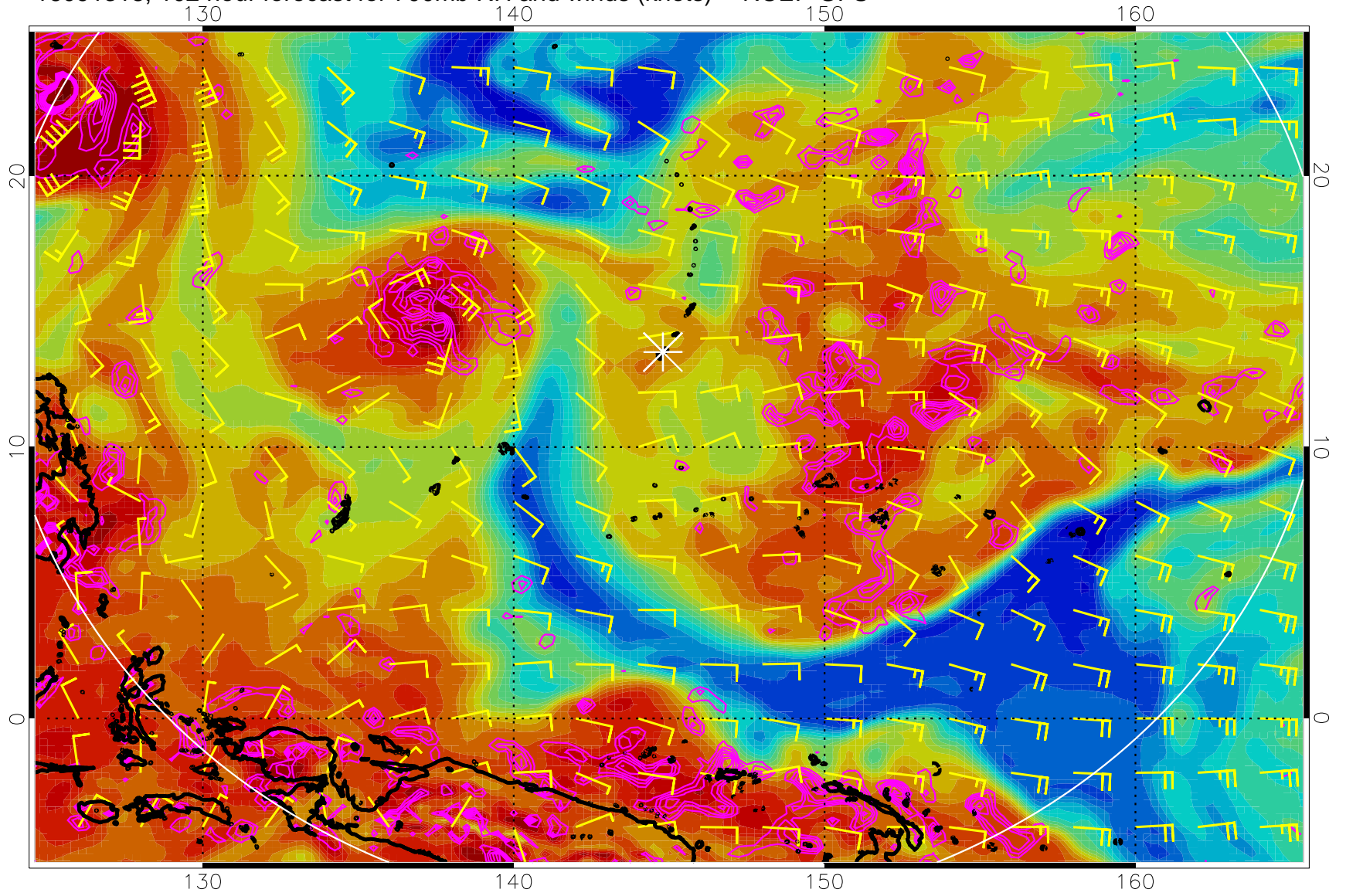


16091312, 96 hour forecast for 700mb RH and winds (knots) -- NCEP GFS



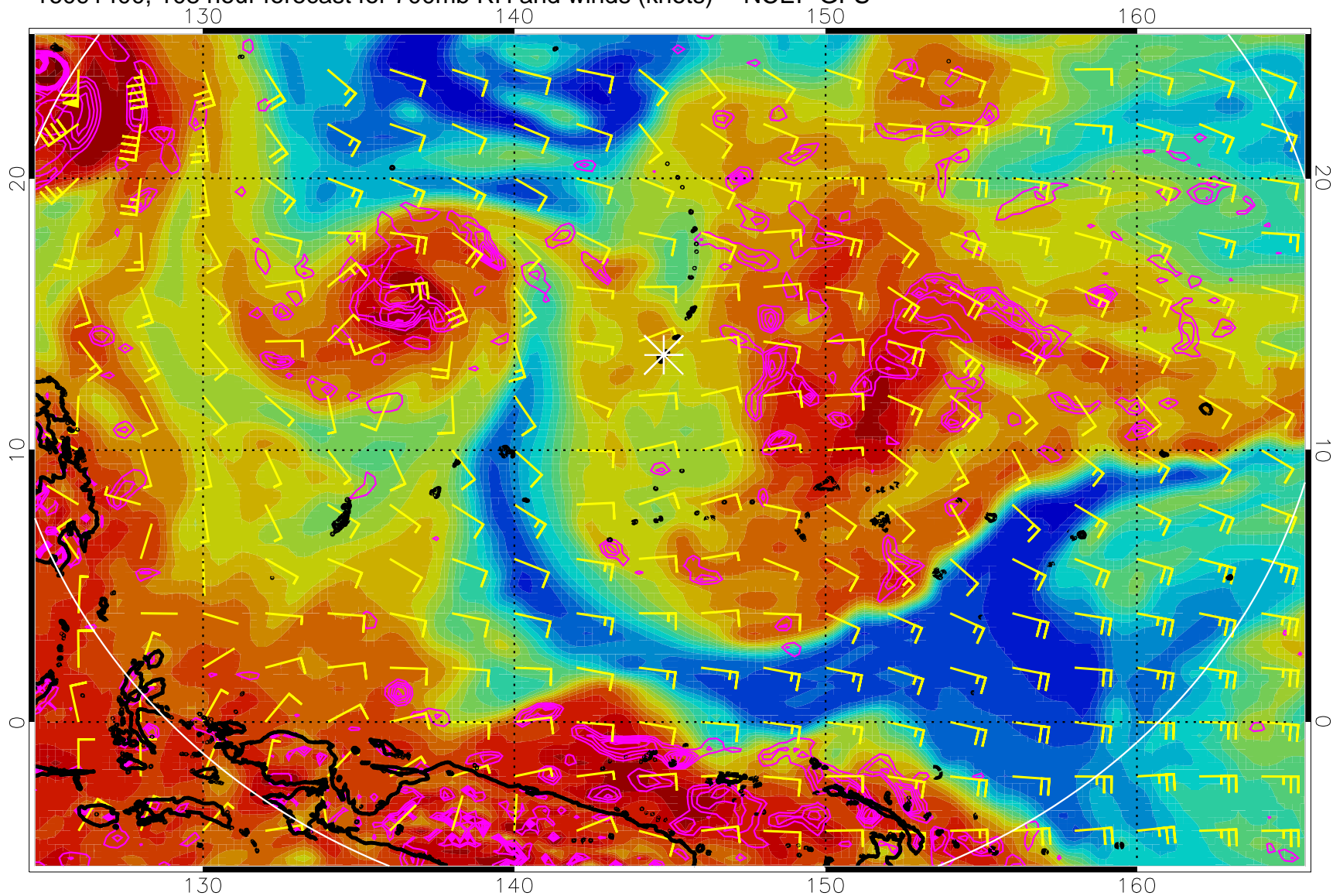
Negative Omegas less than -0.3 , contours of 0.3 Pa/s

16091318, 102 hour forecast for 700mb RH and winds (knots) -- NCEP GFS



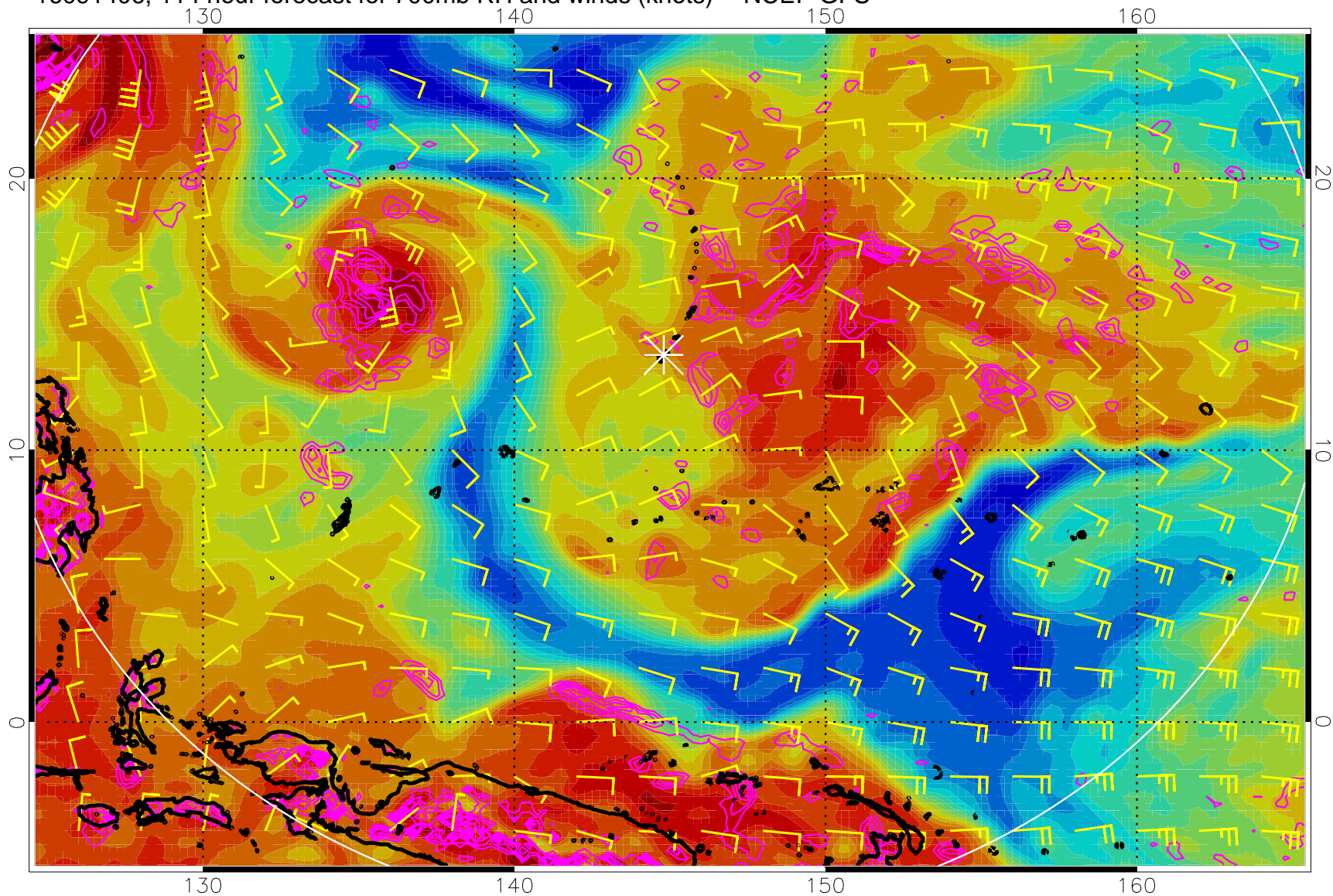
Negative Omegas less than -0.3 , contours of 0.3 Pa/s

16091400, 108 hour forecast for 700mb RH and winds (knots) -- NCEP GFS



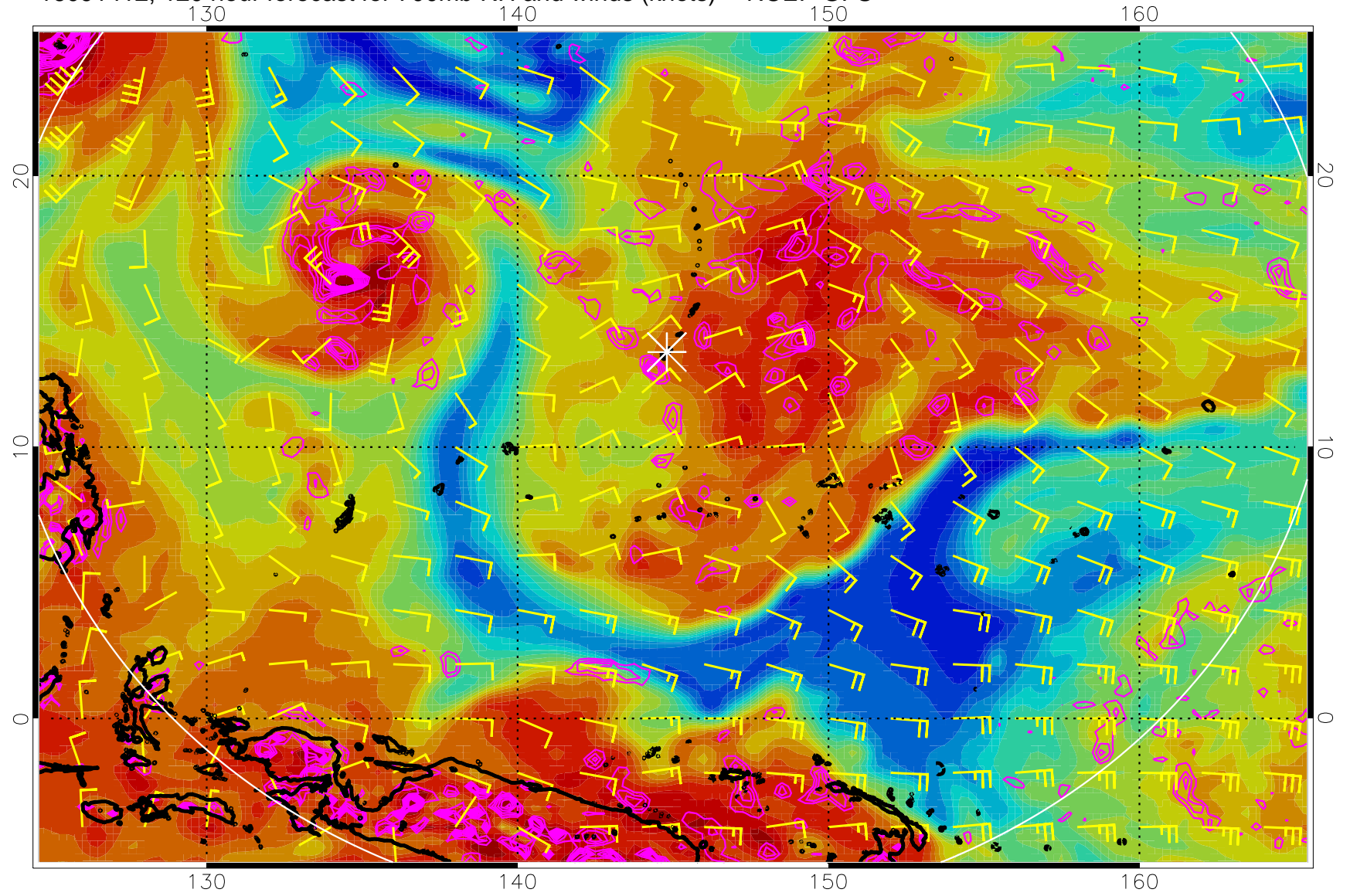
Negative Omegas less than -0.3 , contours of 0.3 Pa/s

16091406, 114 hour forecast for 700mb RH and winds (knots) -- NCEP GFS



Negative Omegas less than $-.3$, contours of $.3$ Pa/s

16091412, 120 hour forecast for 700mb RH and winds (knots) -- NCEP GFS



Negative Omegas less than -.3, contours of .3 Pa/s