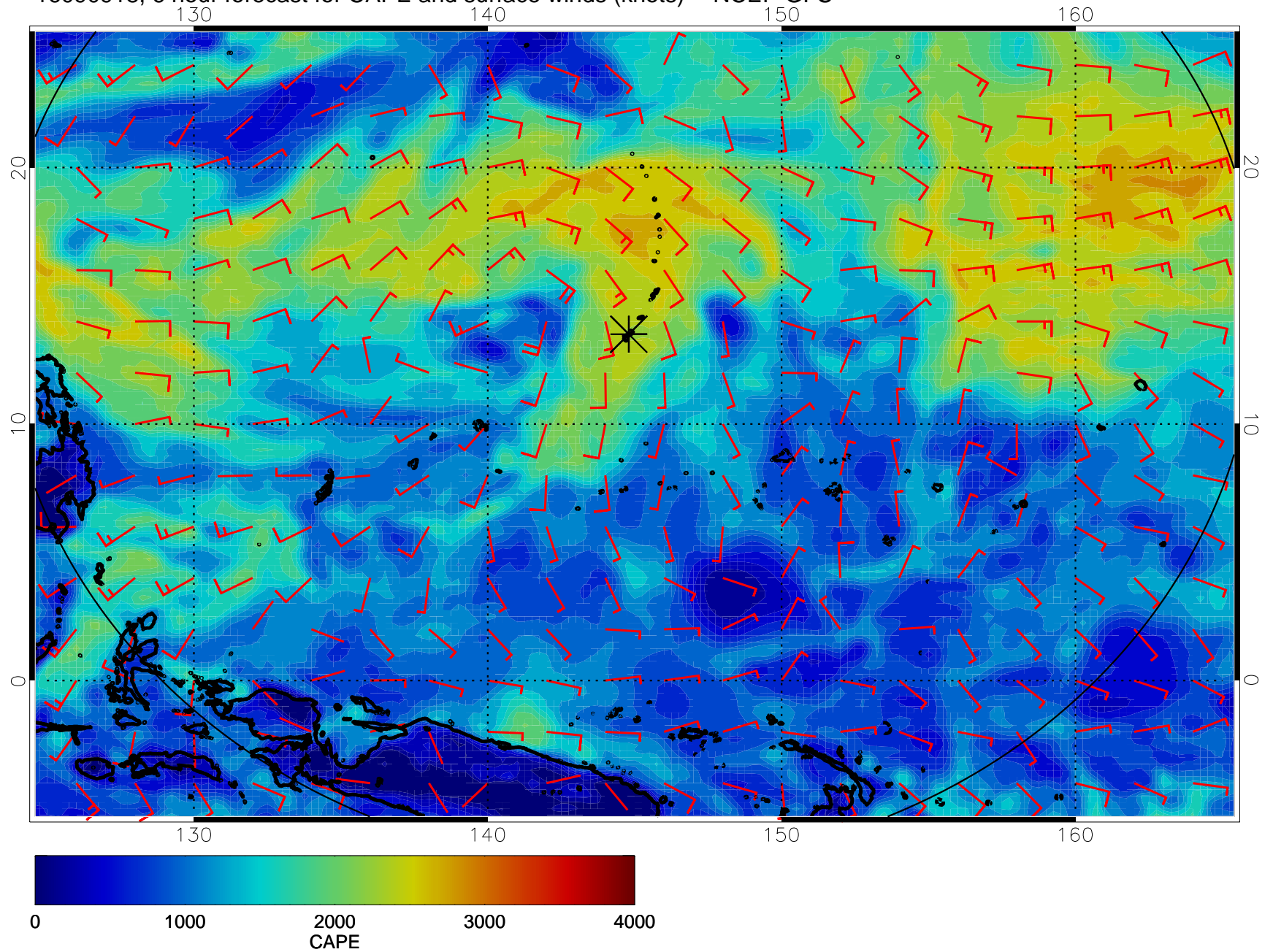
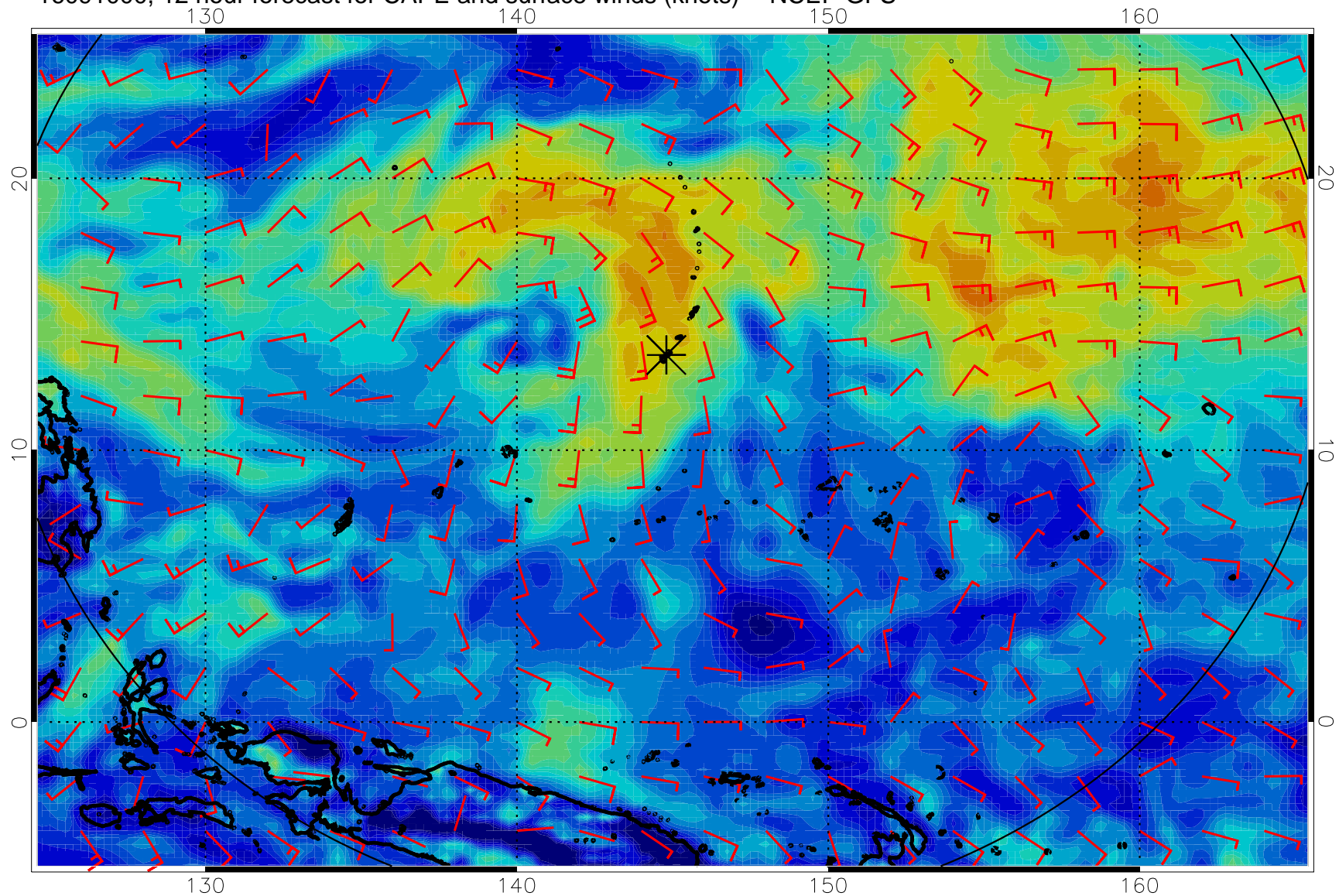


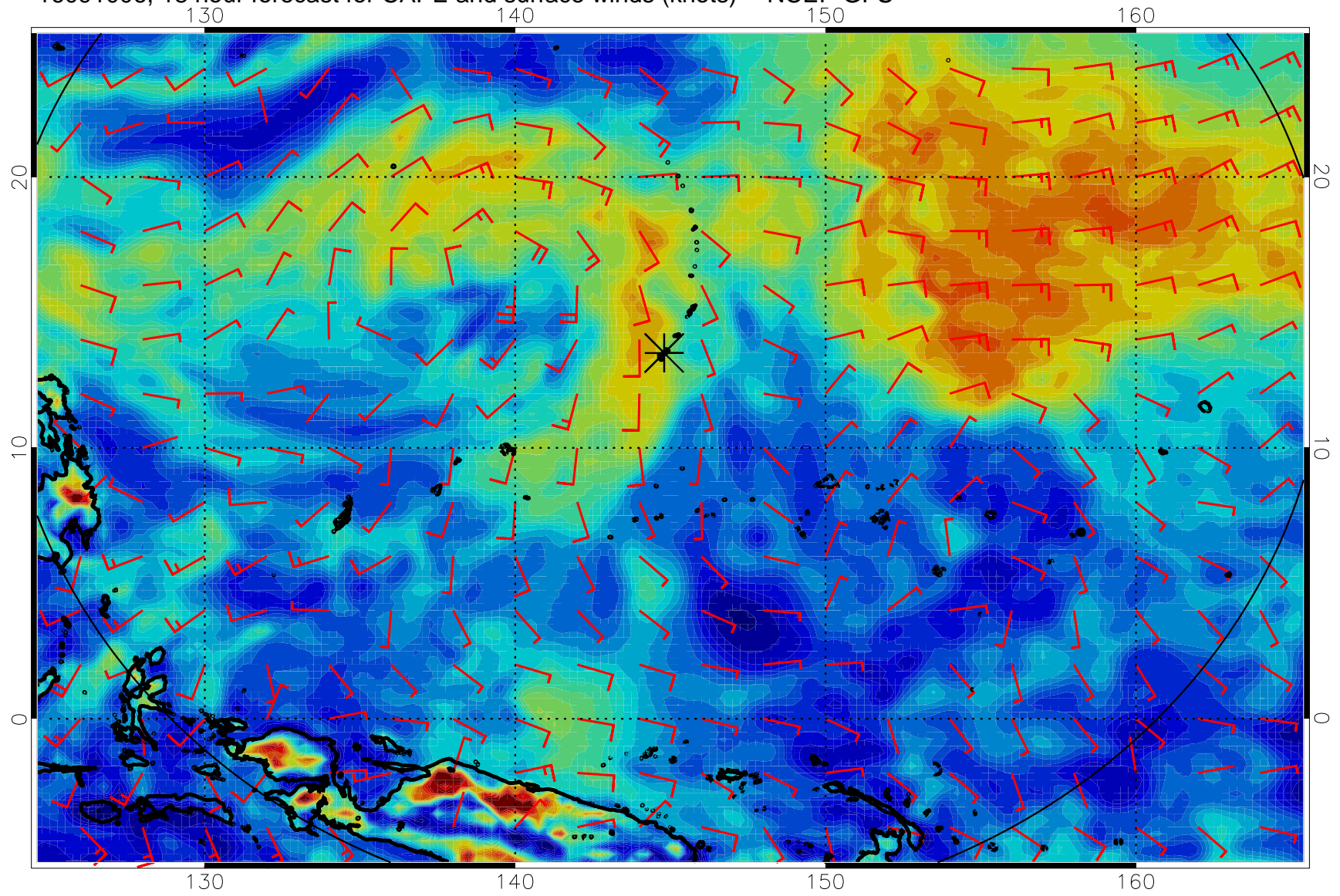
16090918, 6 hour forecast for CAPE and surface winds (knots) -- NCEP GFS



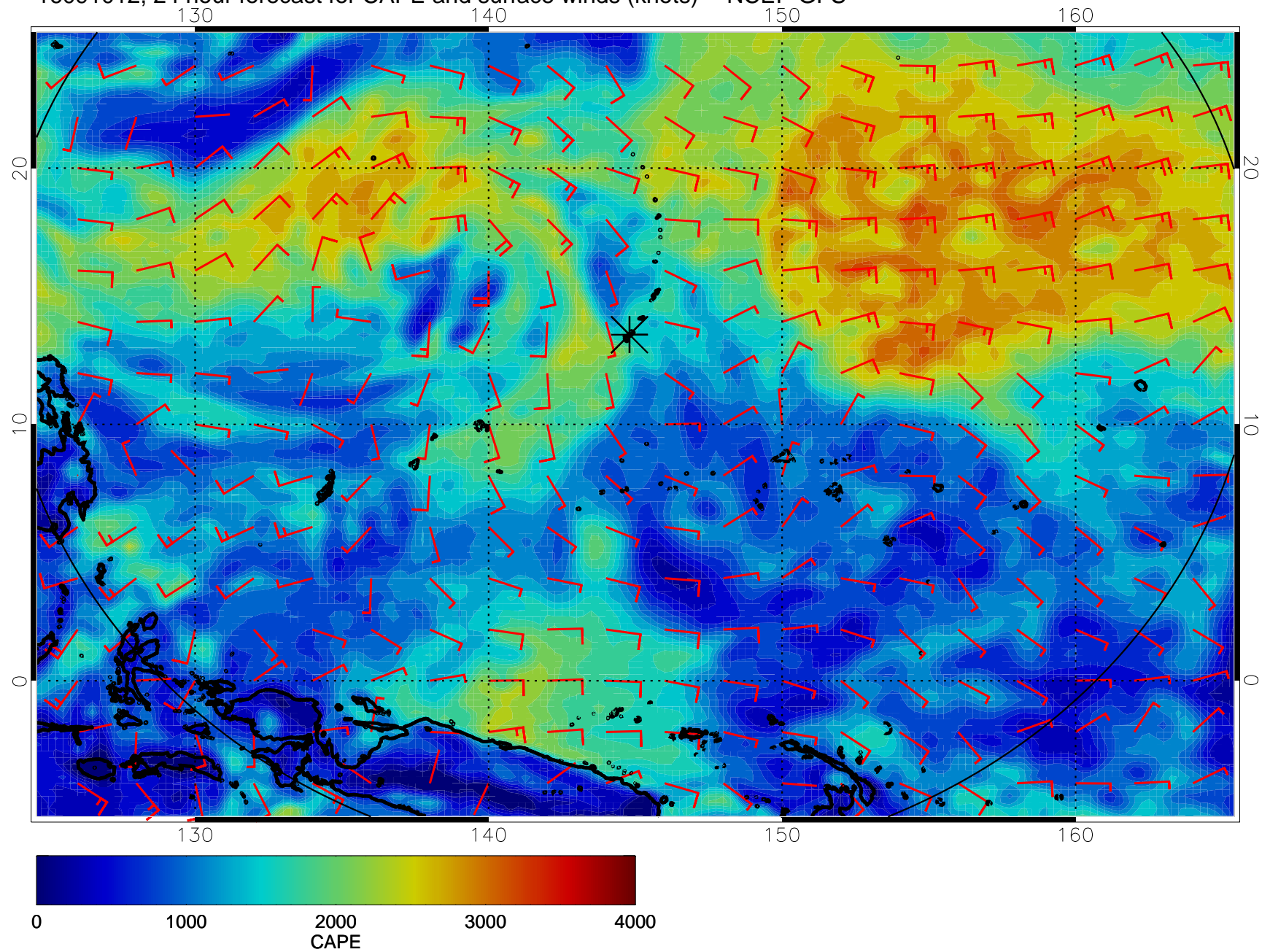
16091000, 12 hour forecast for CAPE and surface winds (knots) -- NCEP GFS



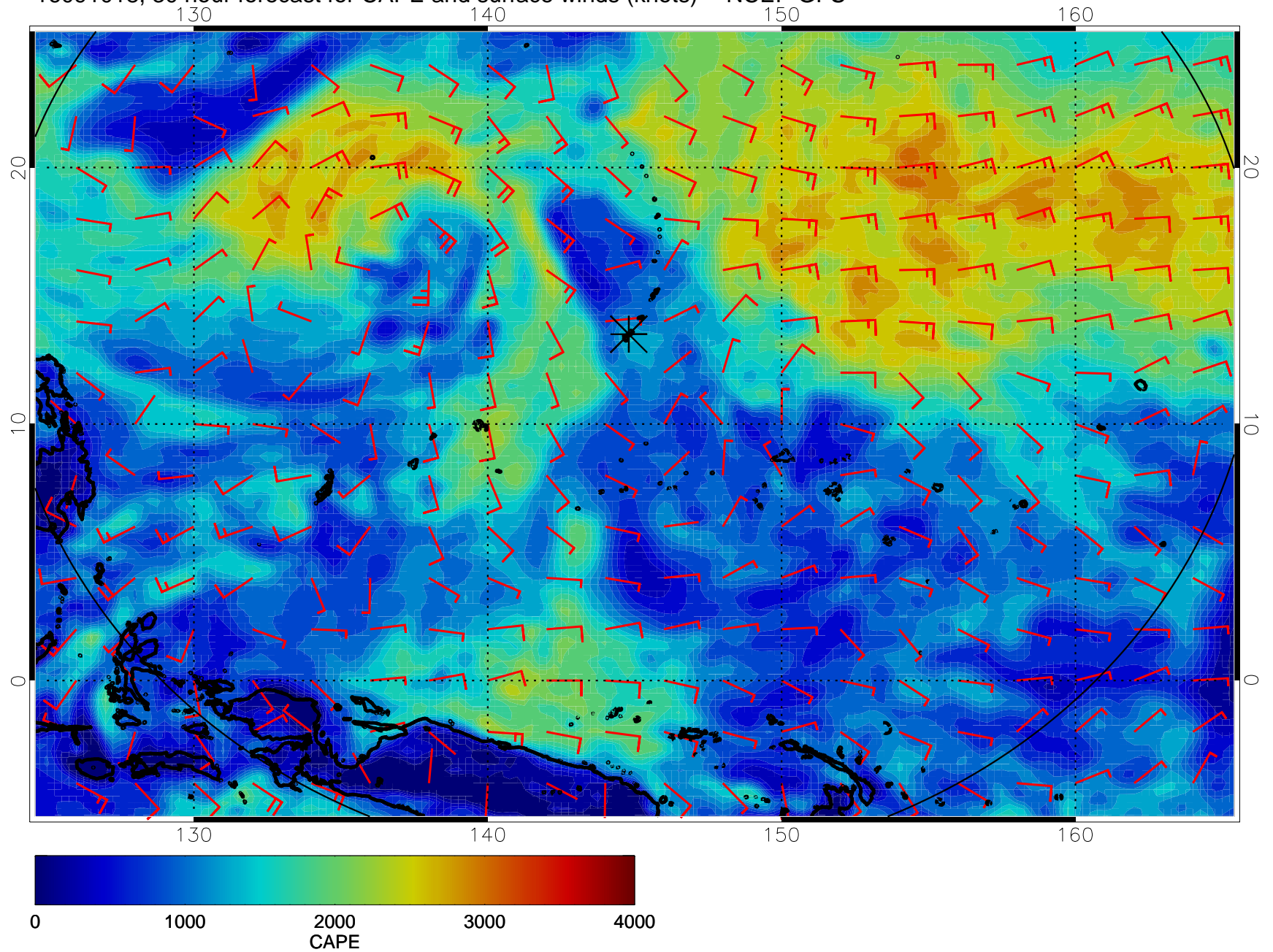
16091006, 18 hour forecast for CAPE and surface winds (knots) -- NCEP GFS



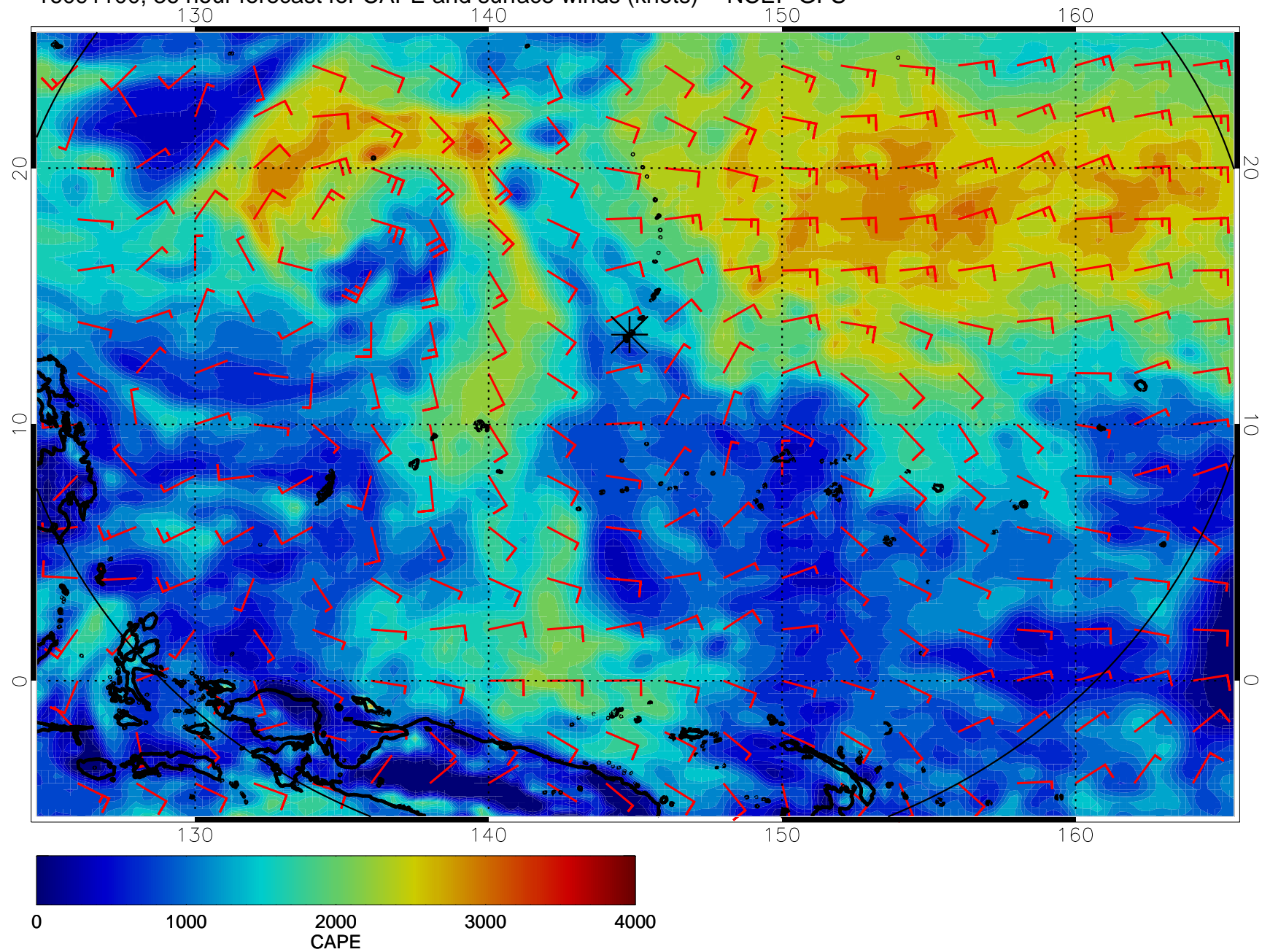
16091012, 24 hour forecast for CAPE and surface winds (knots) -- NCEP GFS



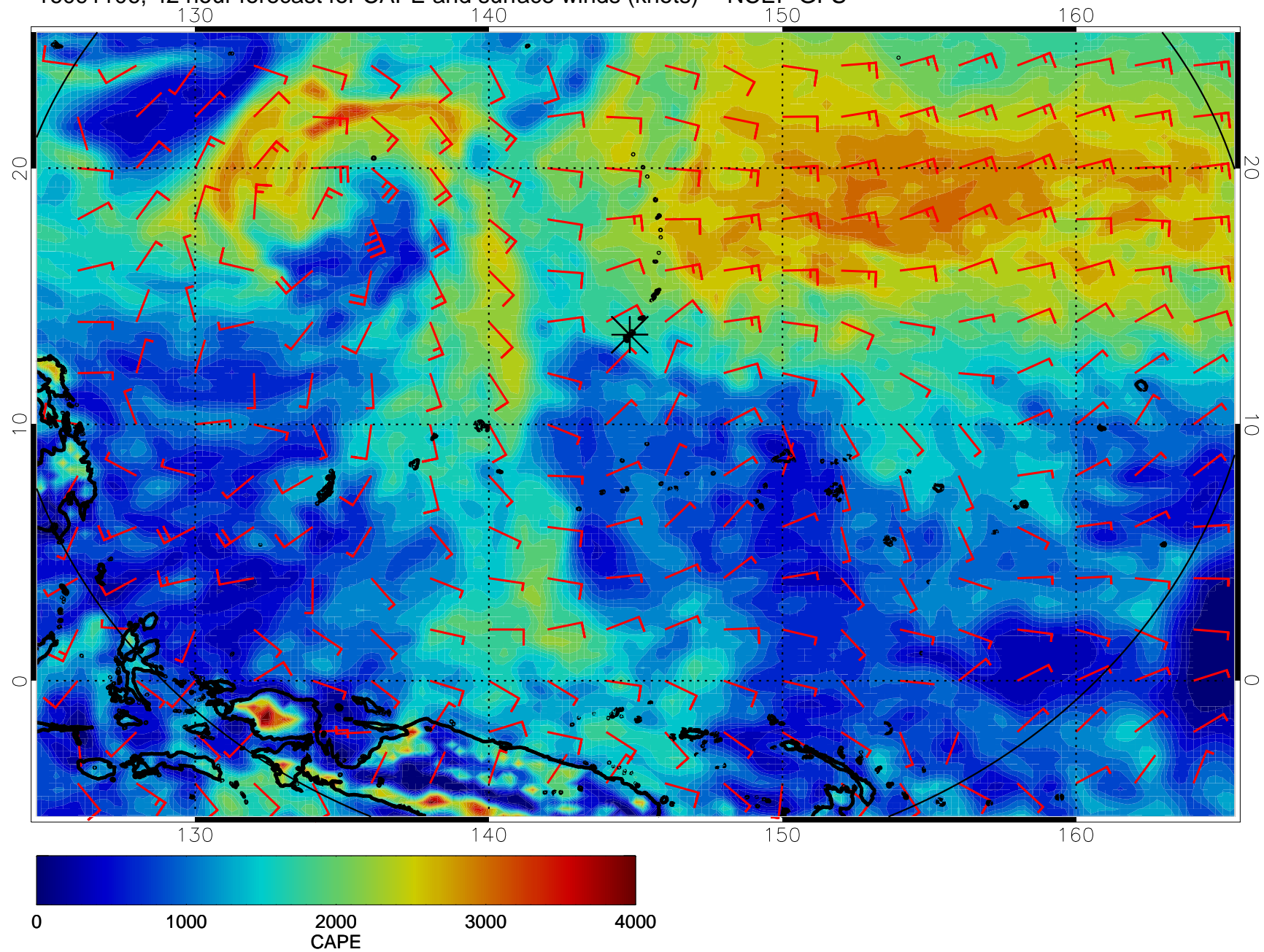
16091018, 30 hour forecast for CAPE and surface winds (knots) -- NCEP GFS



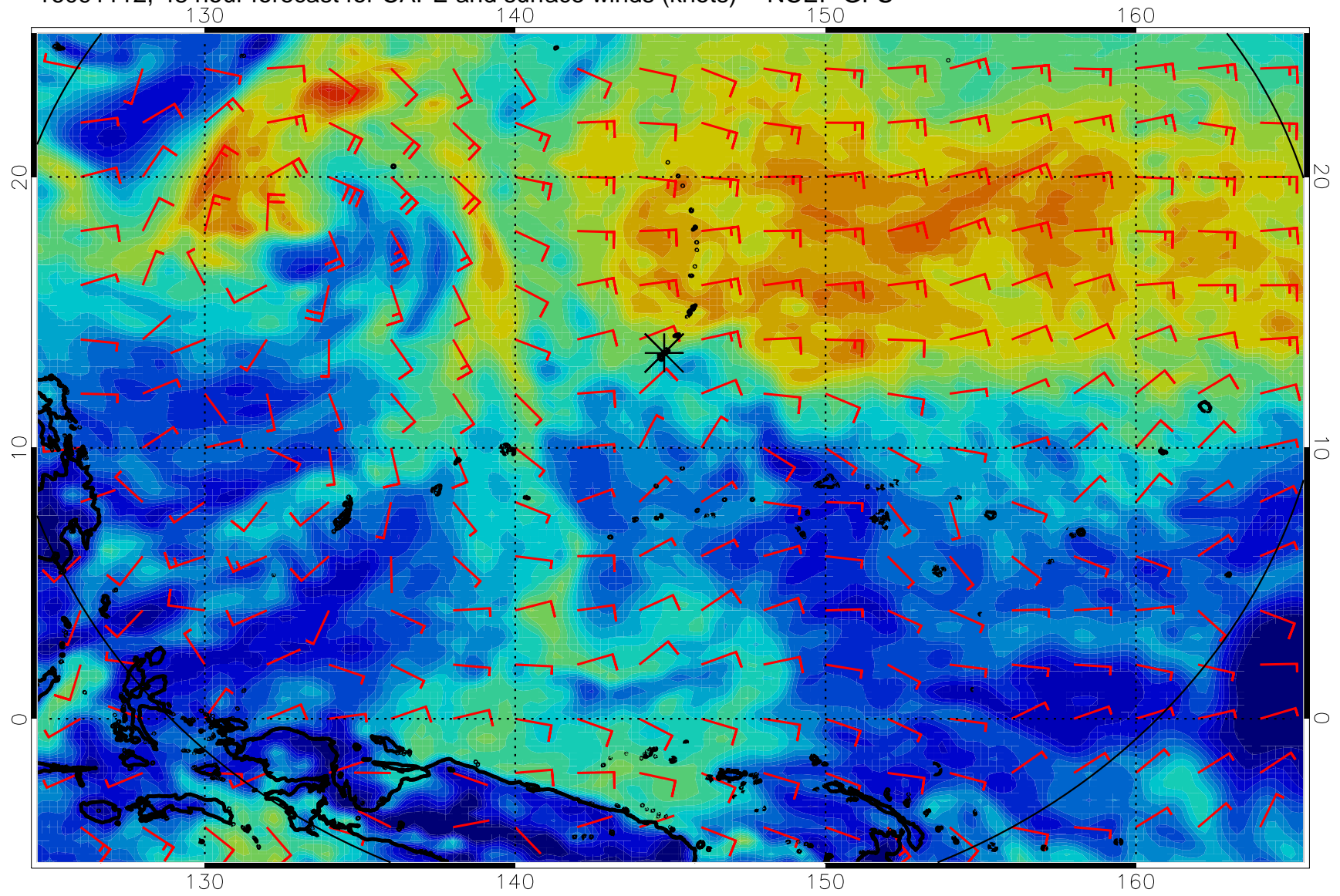
16091100, 36 hour forecast for CAPE and surface winds (knots) -- NCEP GFS



16091106, 42 hour forecast for CAPE and surface winds (knots) -- NCEP GFS

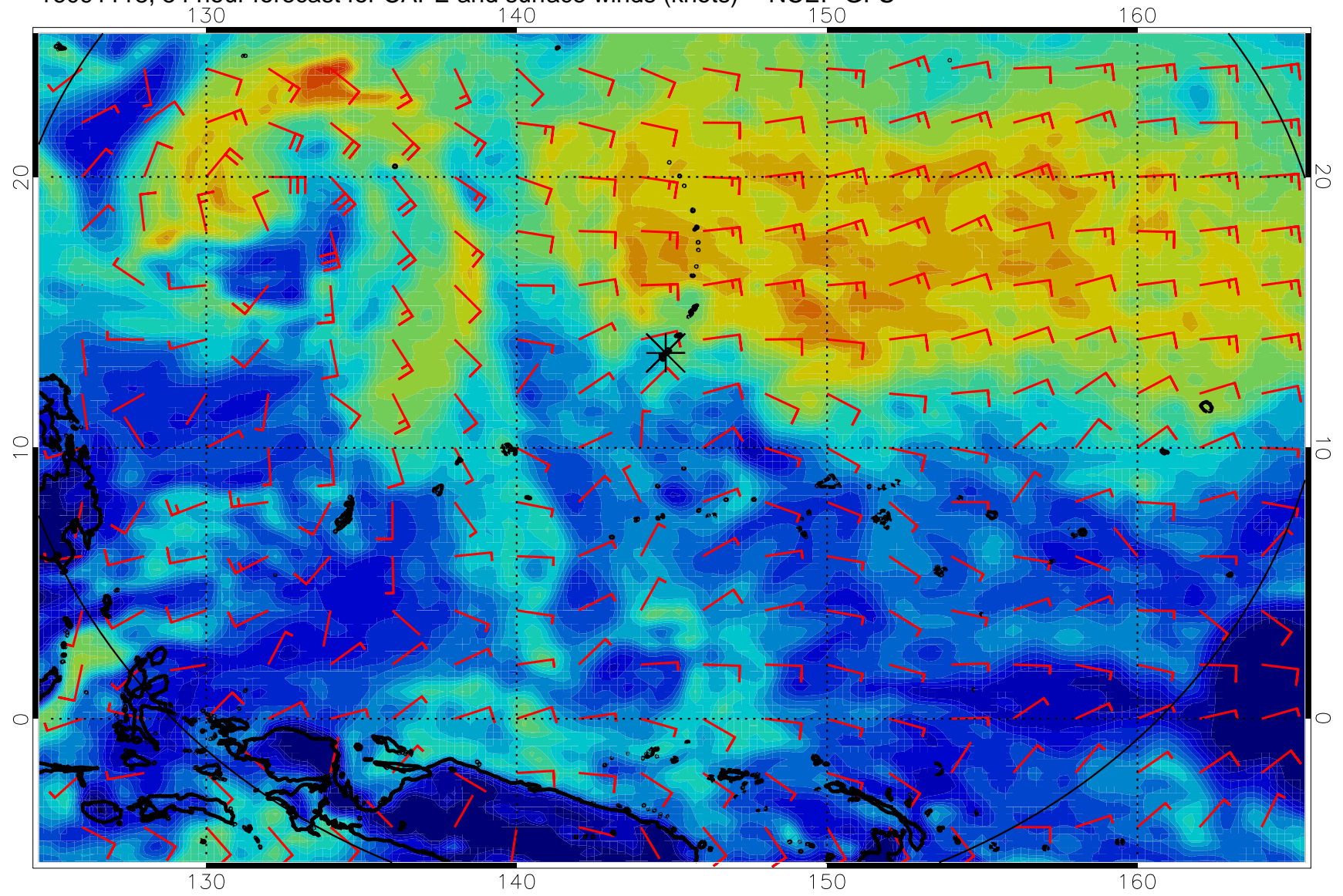


16091112, 48 hour forecast for CAPE and surface winds (knots) -- NCEP GFS

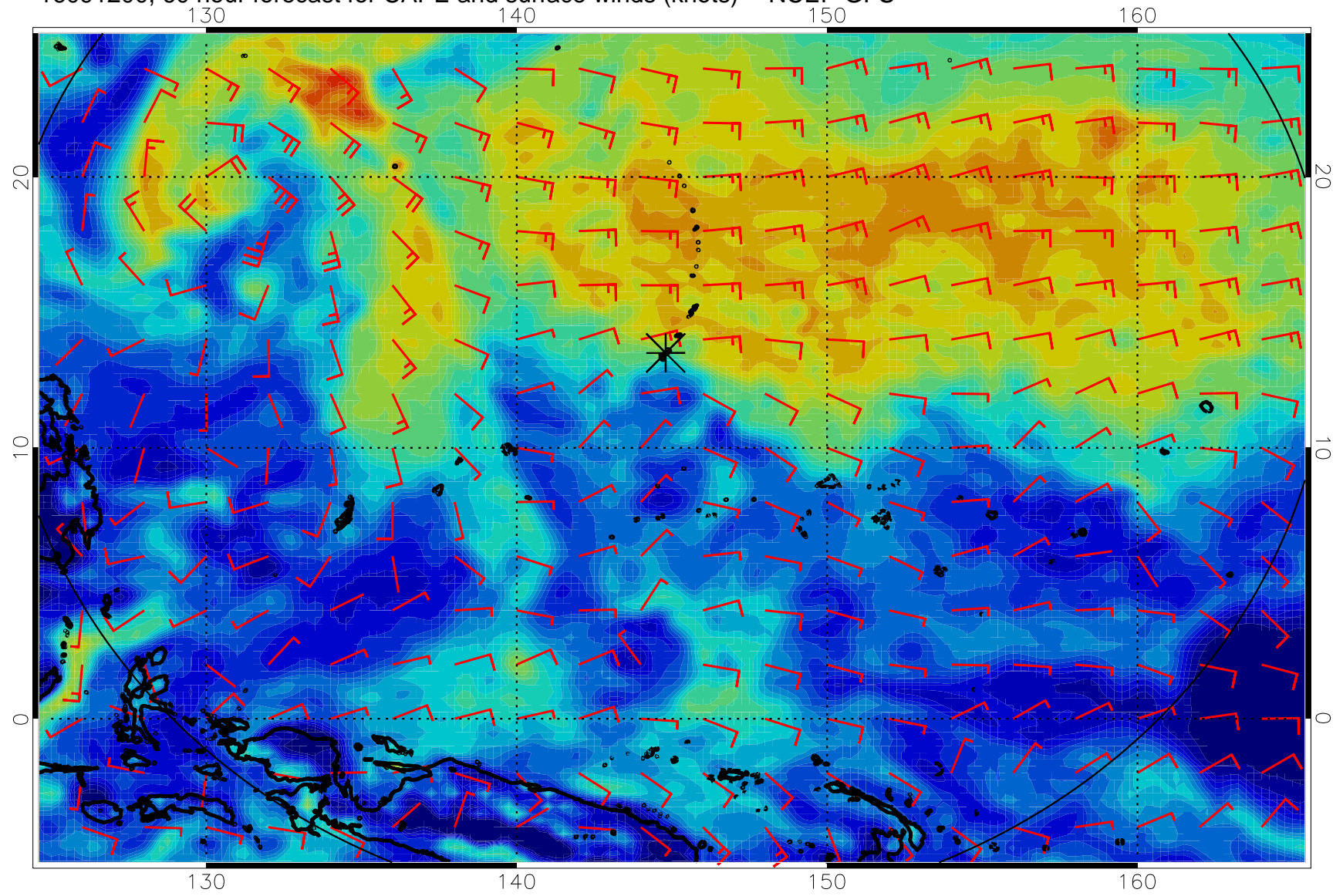




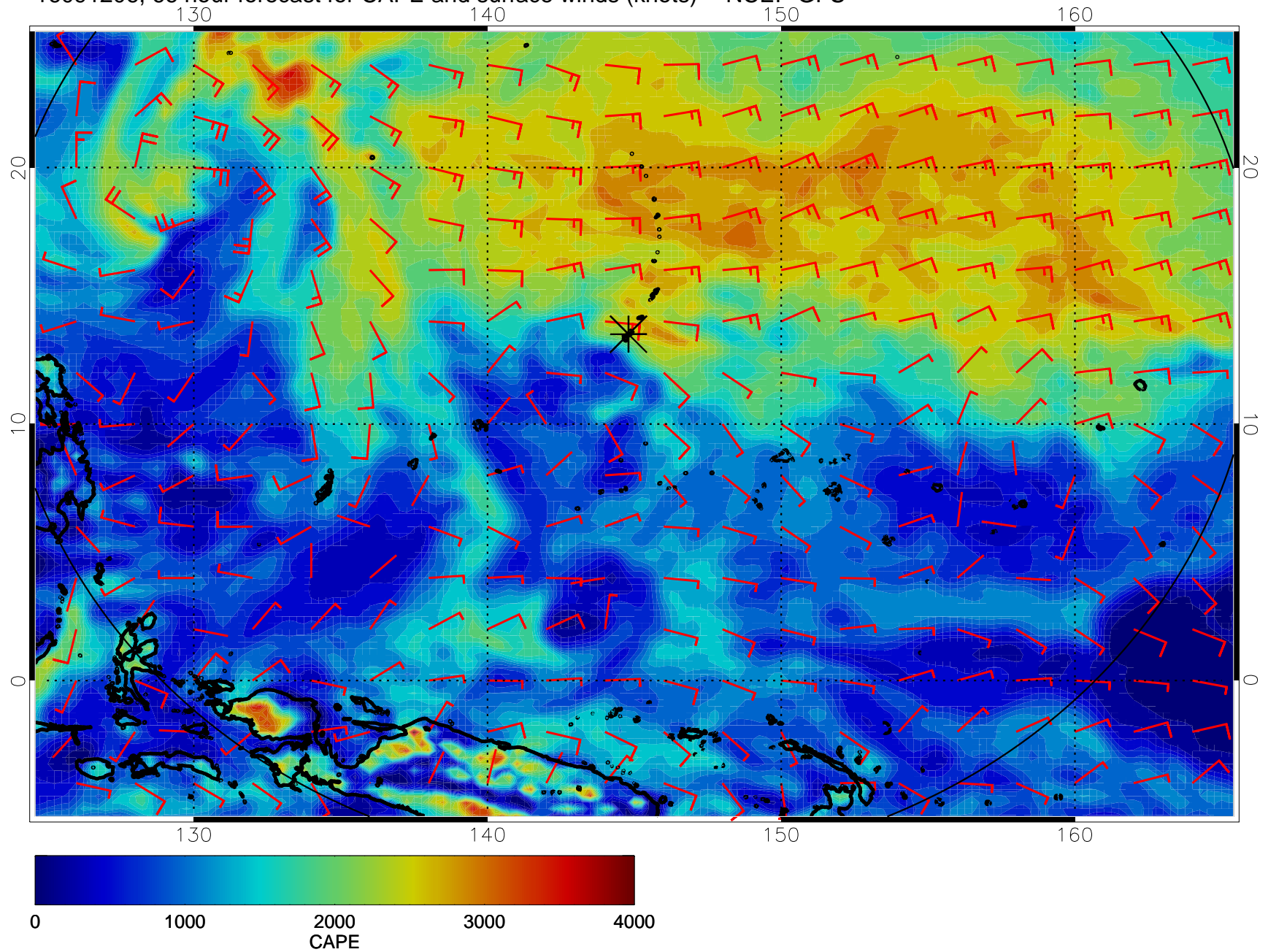
16091118, 54 hour forecast for CAPE and surface winds (knots) -- NCEP GFS



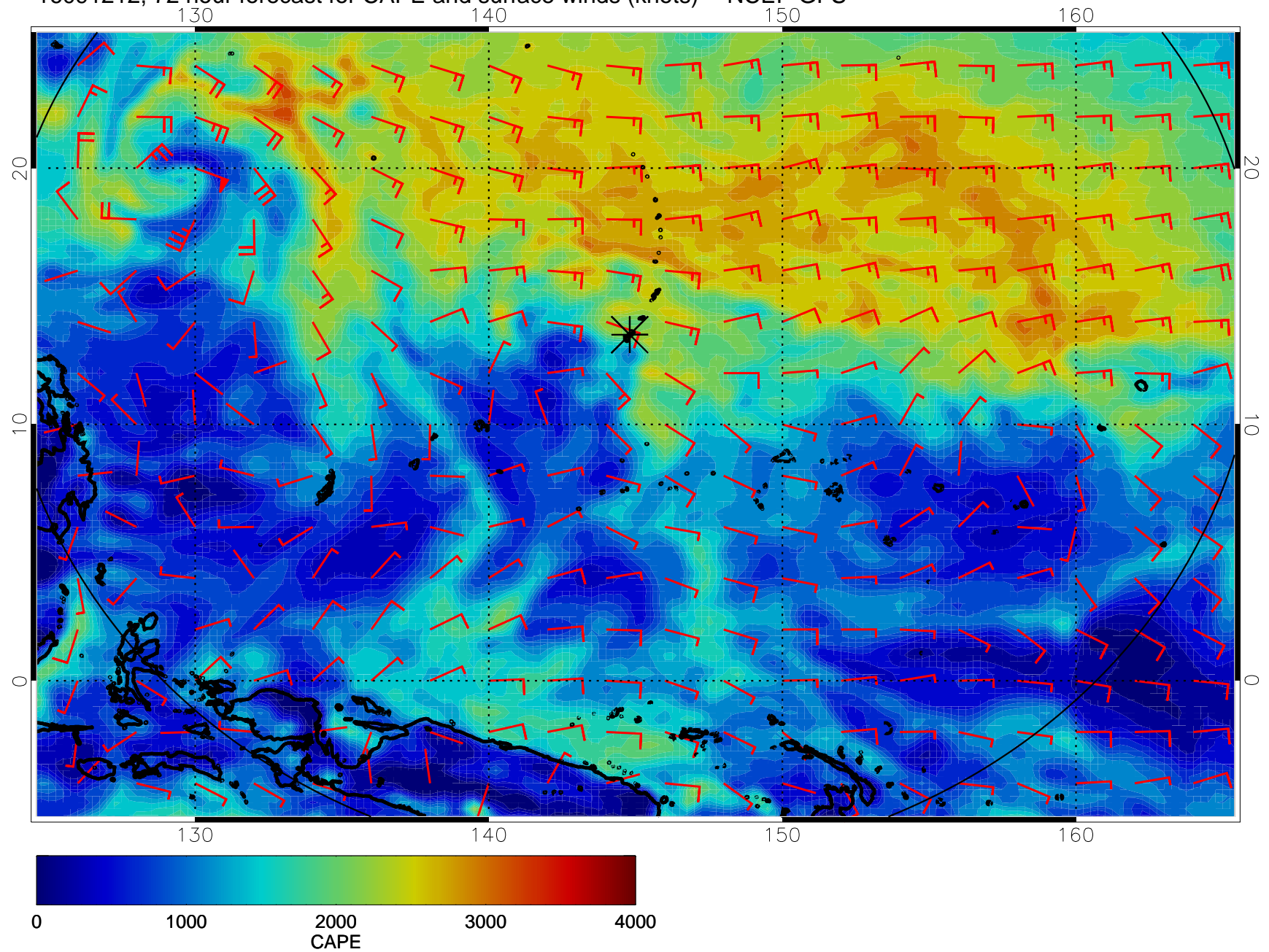
16091200, 60 hour forecast for CAPE and surface winds (knots) -- NCEP GFS



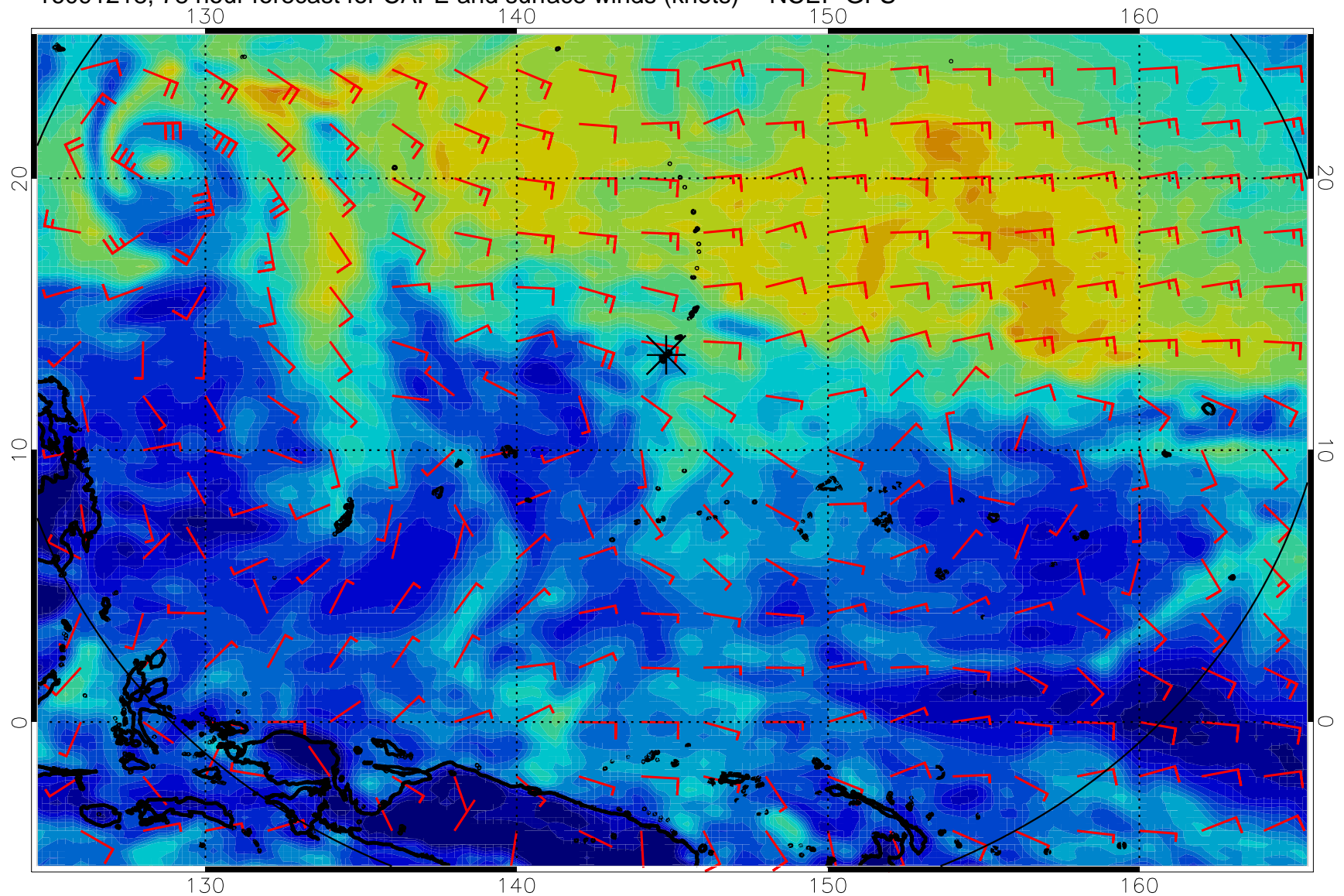
16091206, 66 hour forecast for CAPE and surface winds (knots) -- NCEP GFS



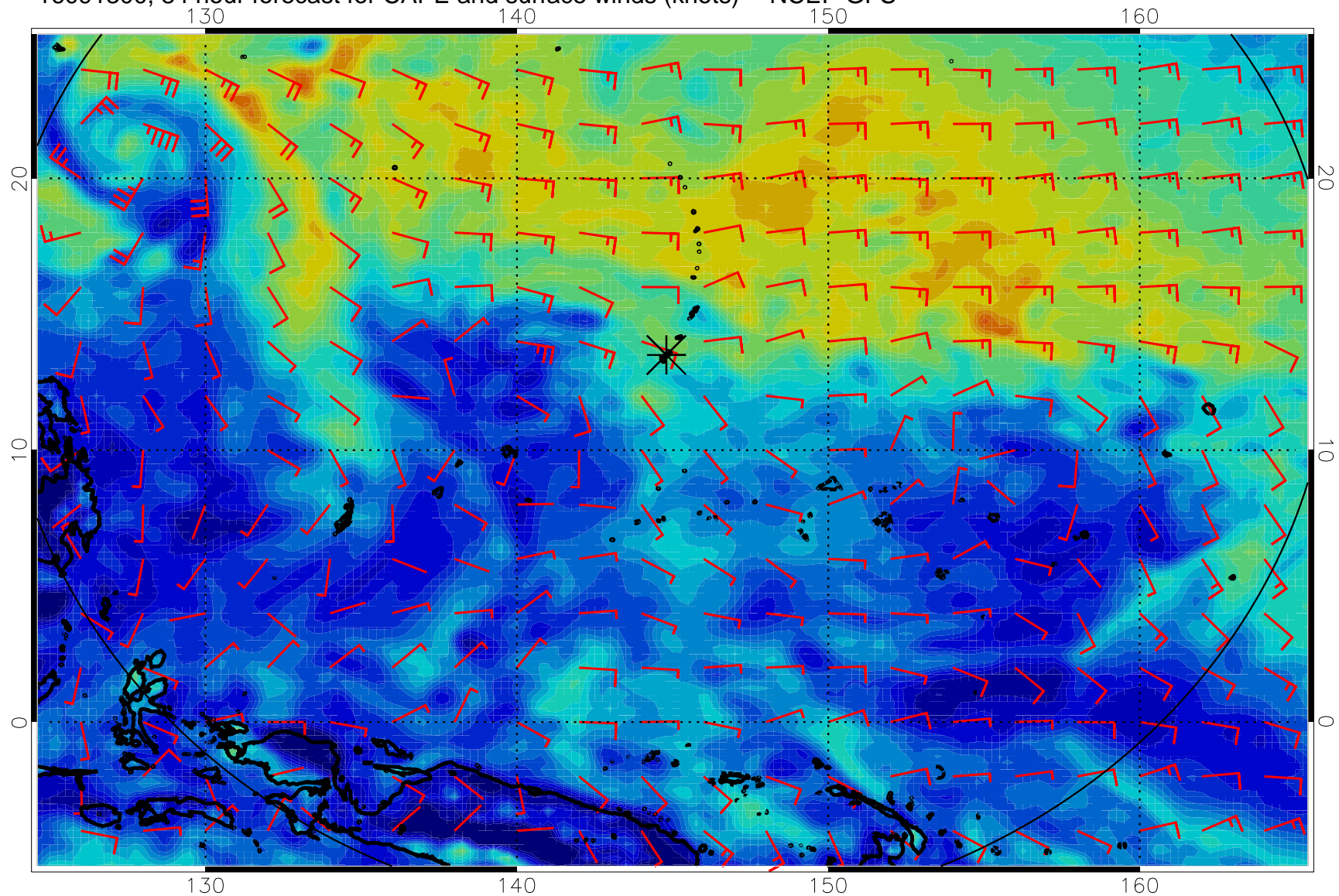
16091212, 72 hour forecast for CAPE and surface winds (knots) -- NCEP GFS



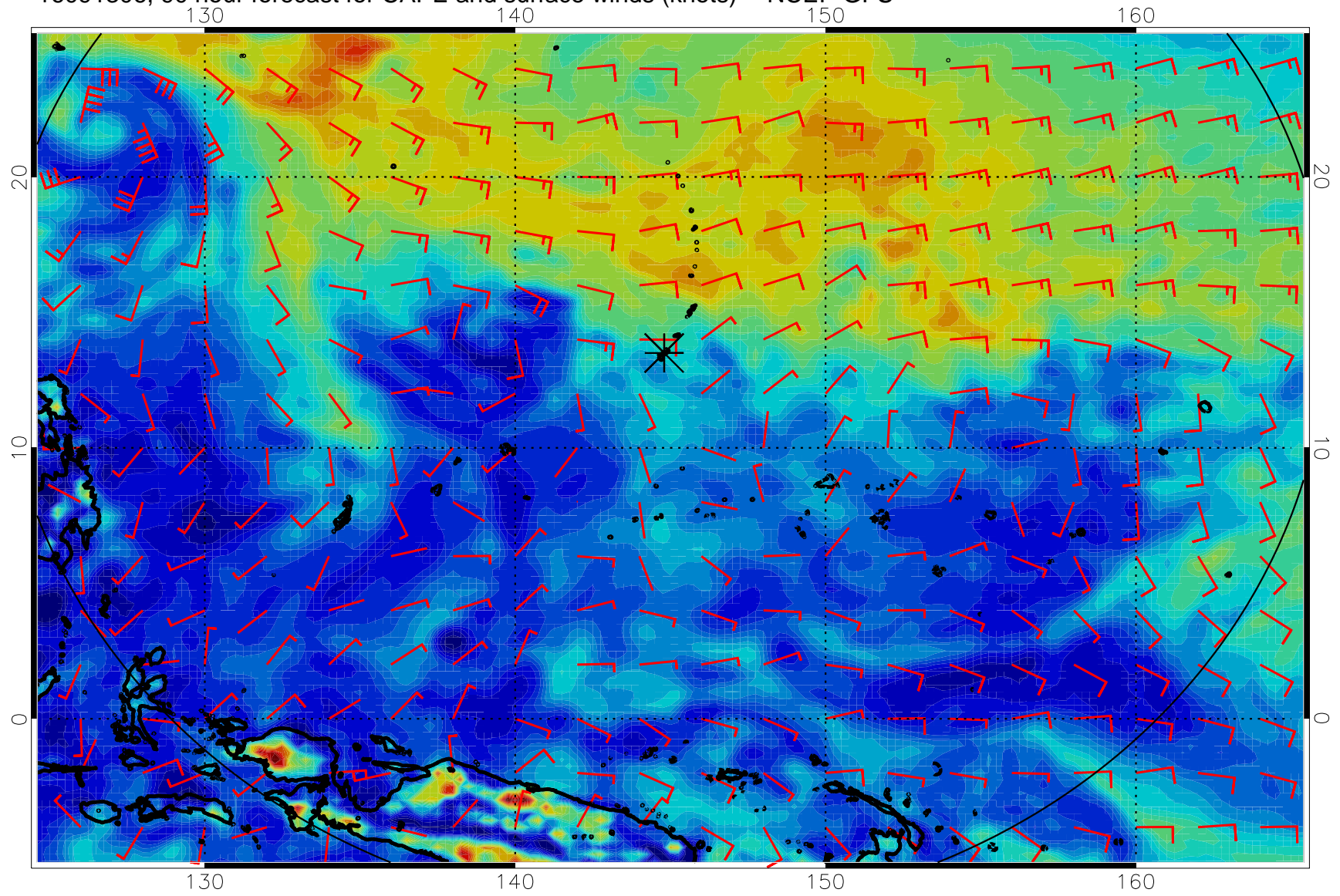
16091218, 78 hour forecast for CAPE and surface winds (knots) -- NCEP GFS



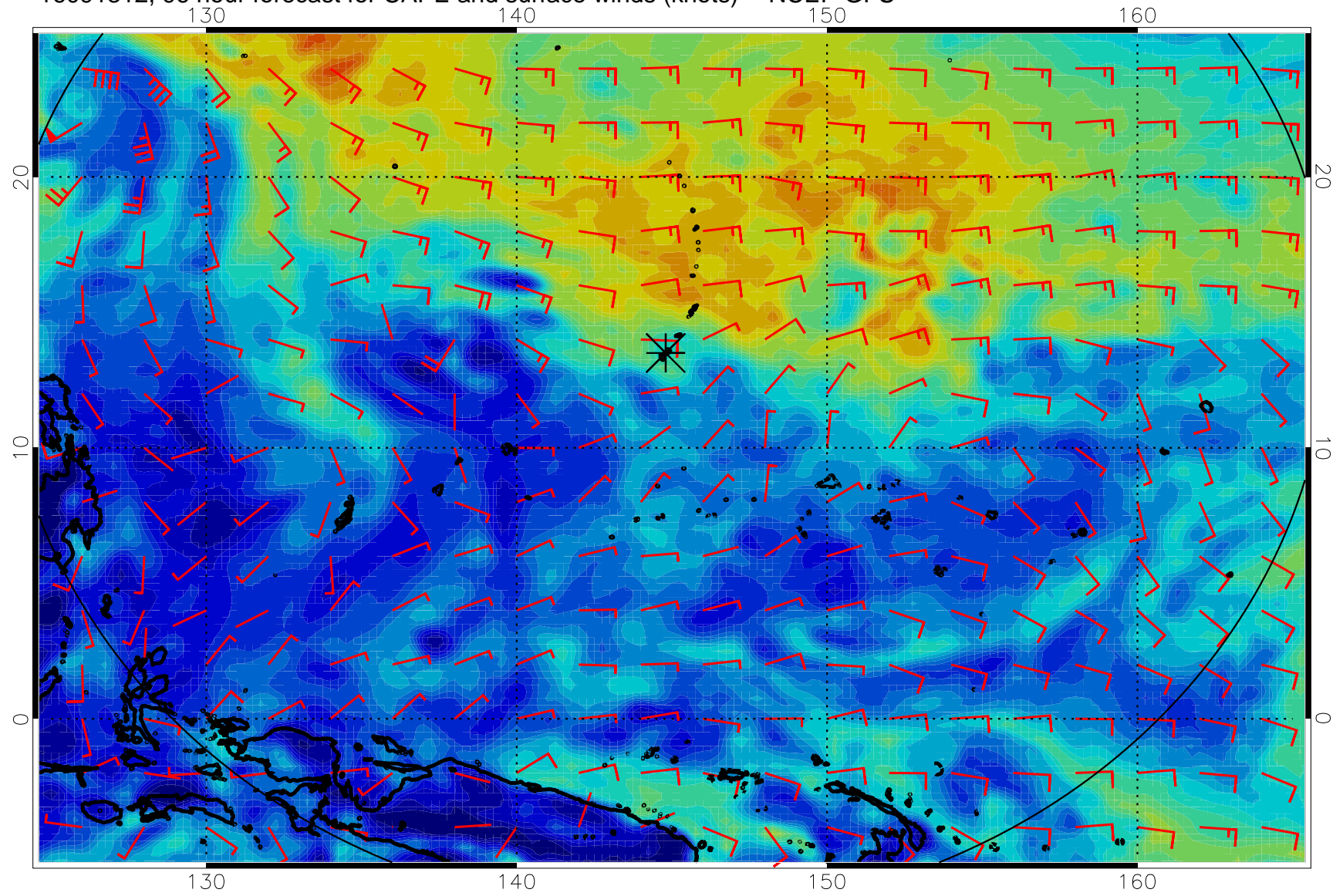
16091300, 84 hour forecast for CAPE and surface winds (knots) -- NCEP GFS



16091306, 90 hour forecast for CAPE and surface winds (knots) -- NCEP GFS

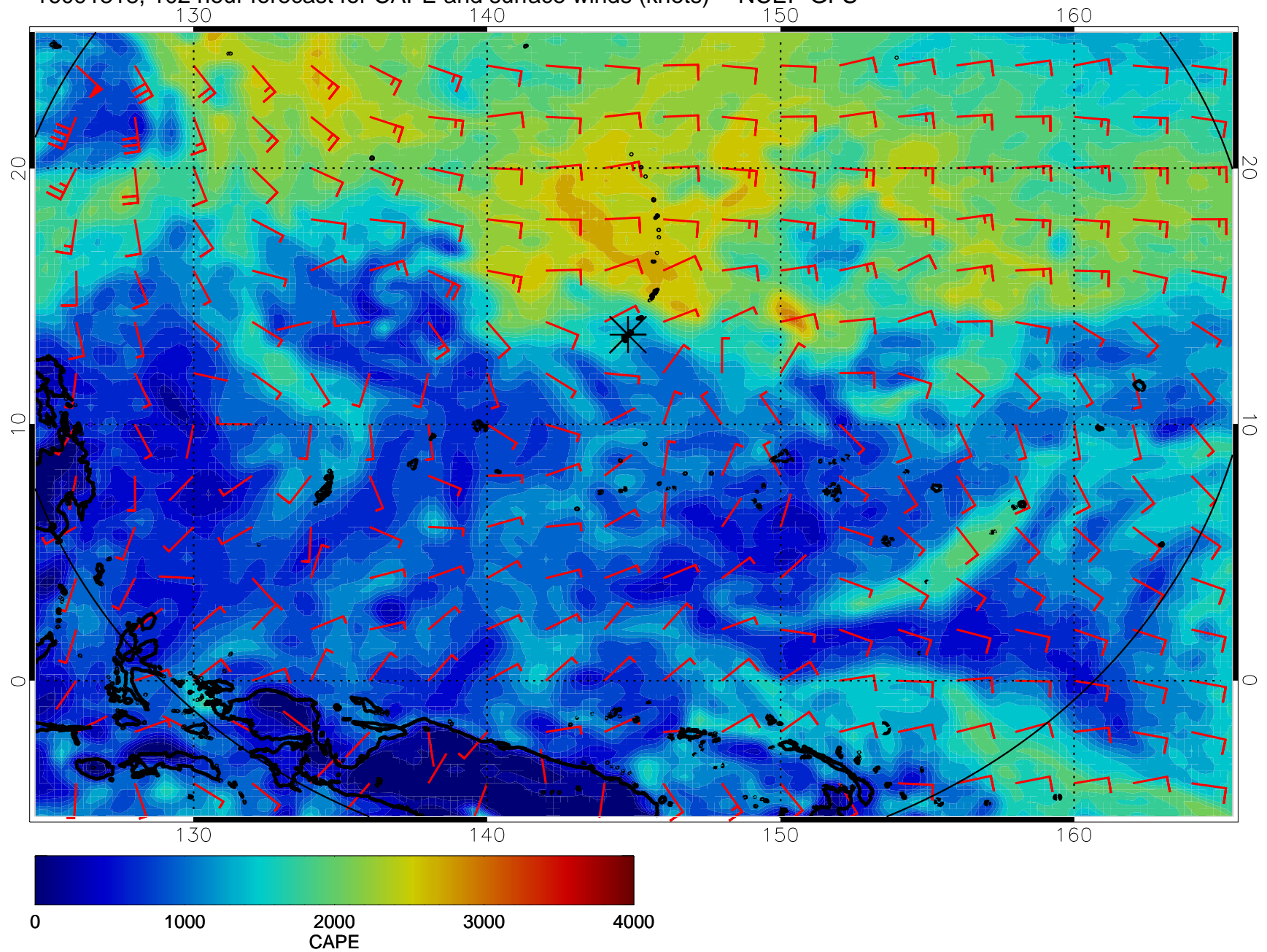


16091312, 96 hour forecast for CAPE and surface winds (knots) -- NCEP GFS

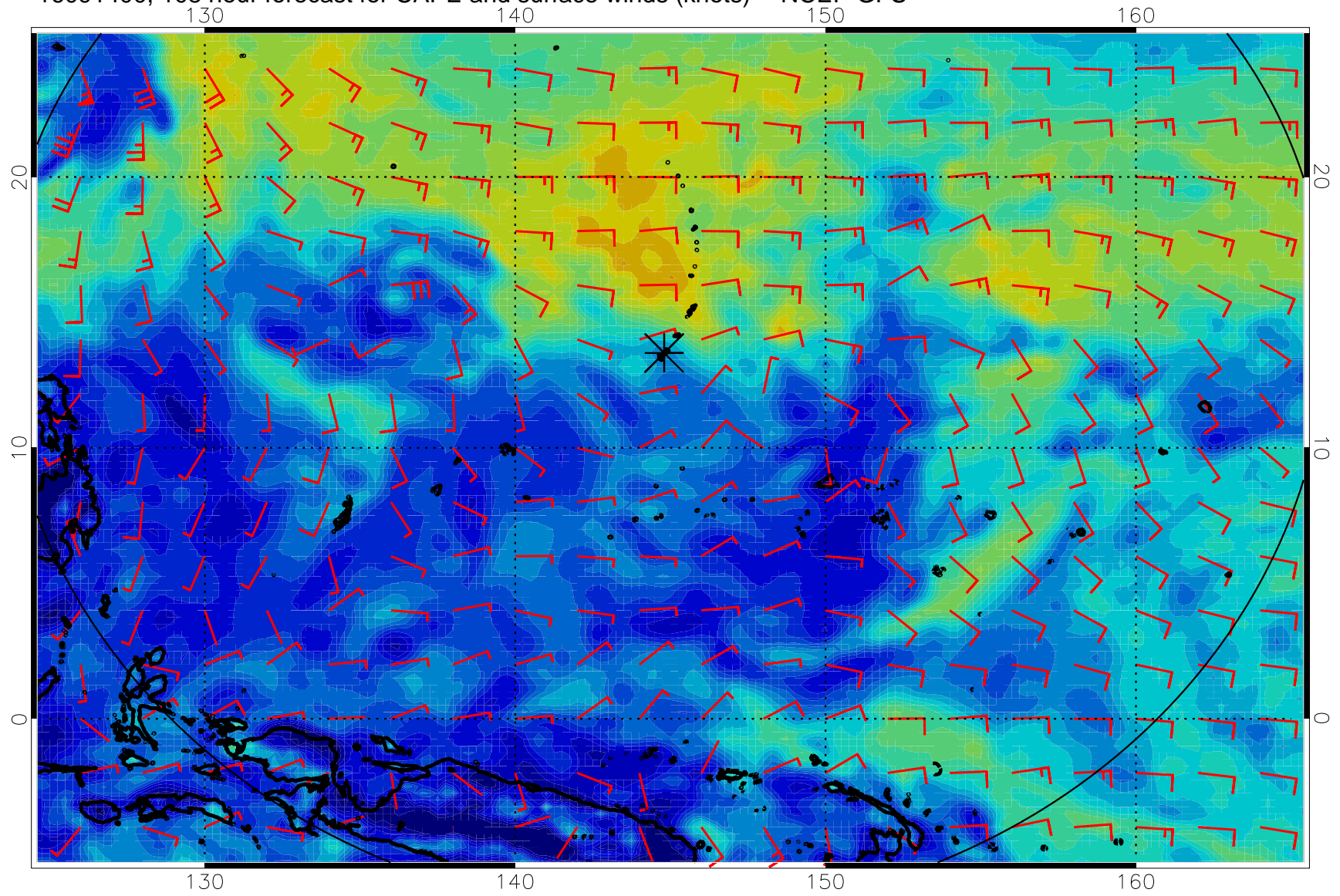




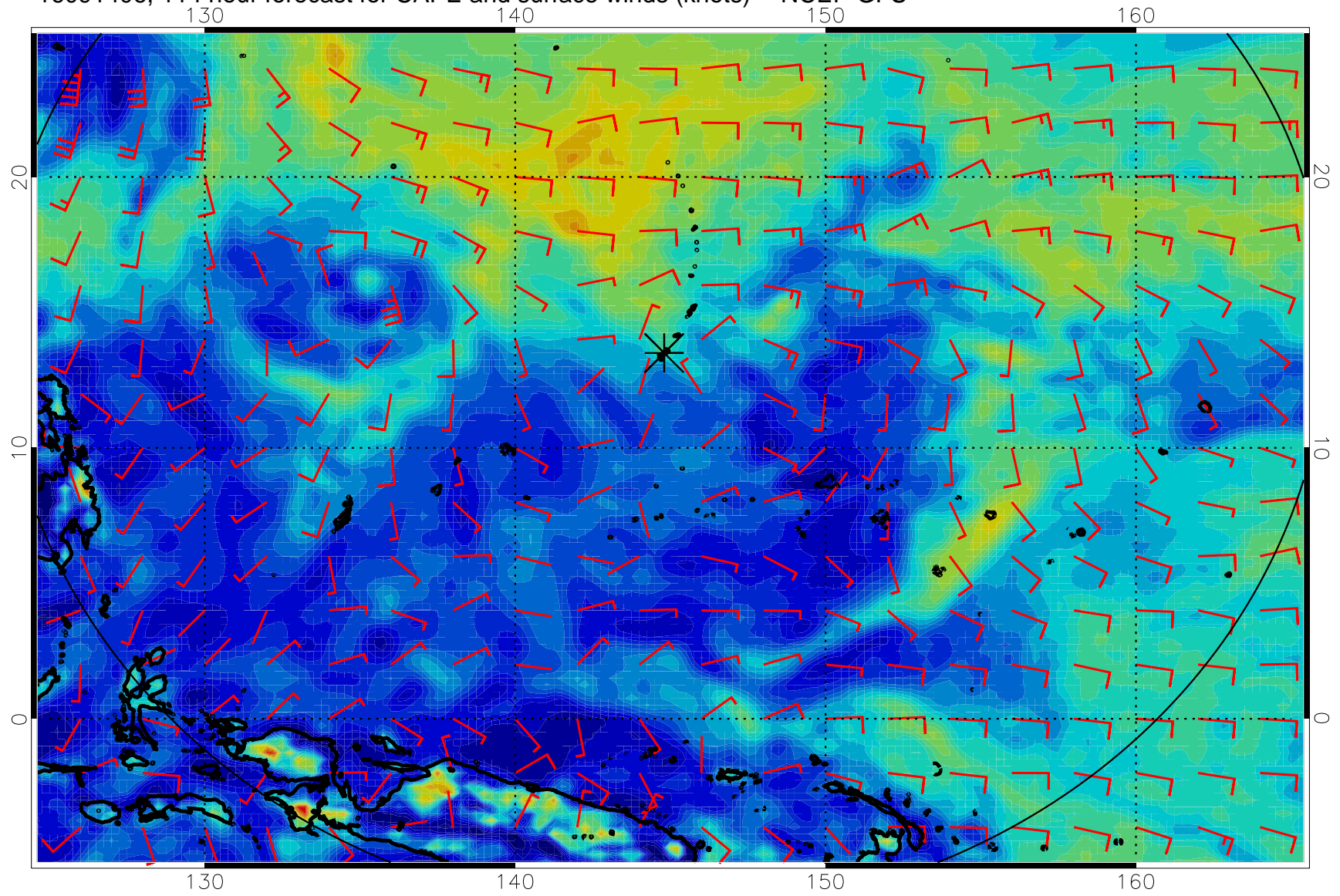
16091318, 102 hour forecast for CAPE and surface winds (knots) -- NCEP GFS



16091400, 108 hour forecast for CAPE and surface winds (knots) -- NCEP GFS



16091406, 114 hour forecast for CAPE and surface winds (knots) -- NCEP GFS



16091412, 120 hour forecast for CAPE and surface winds (knots) -- NCEP GFS

