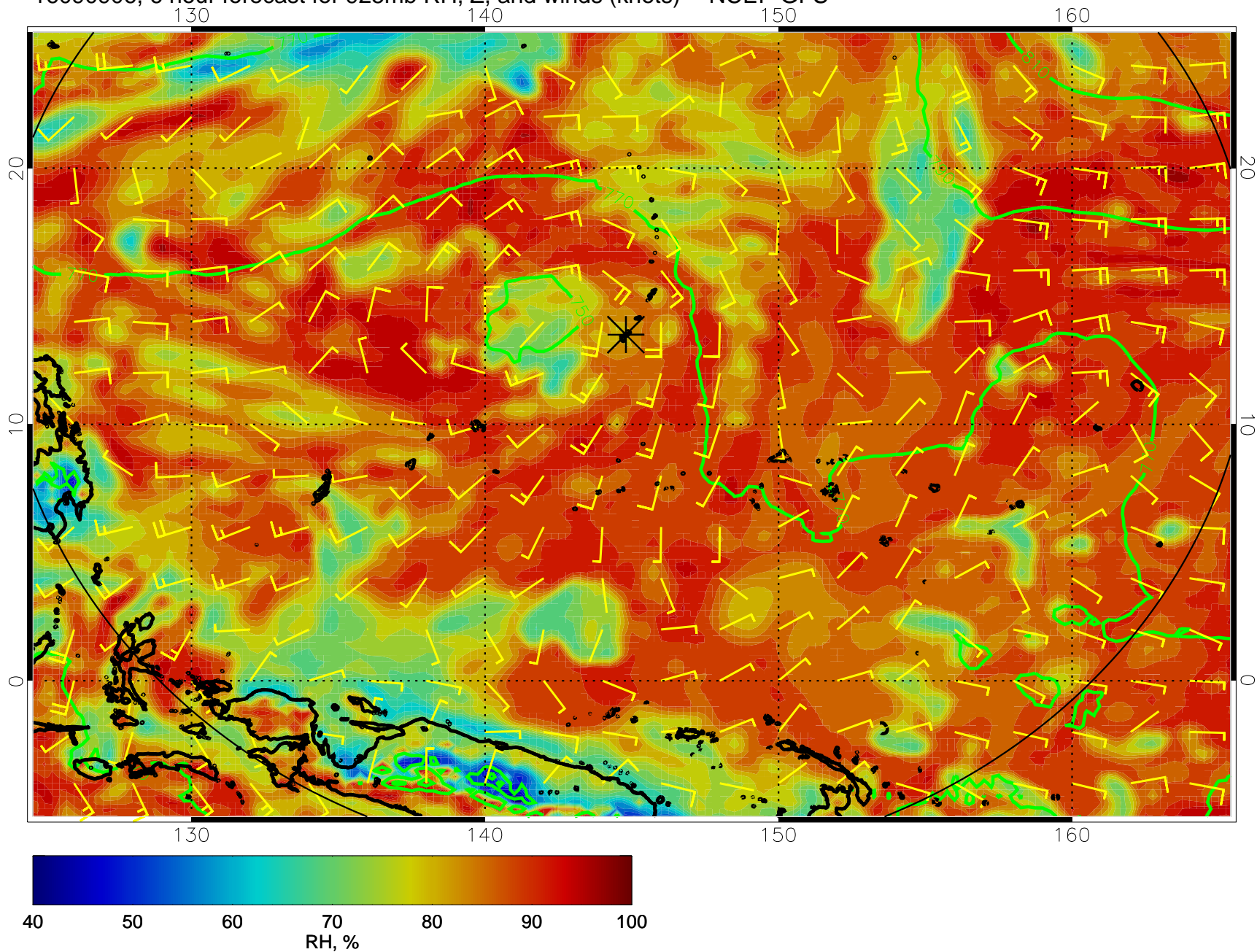
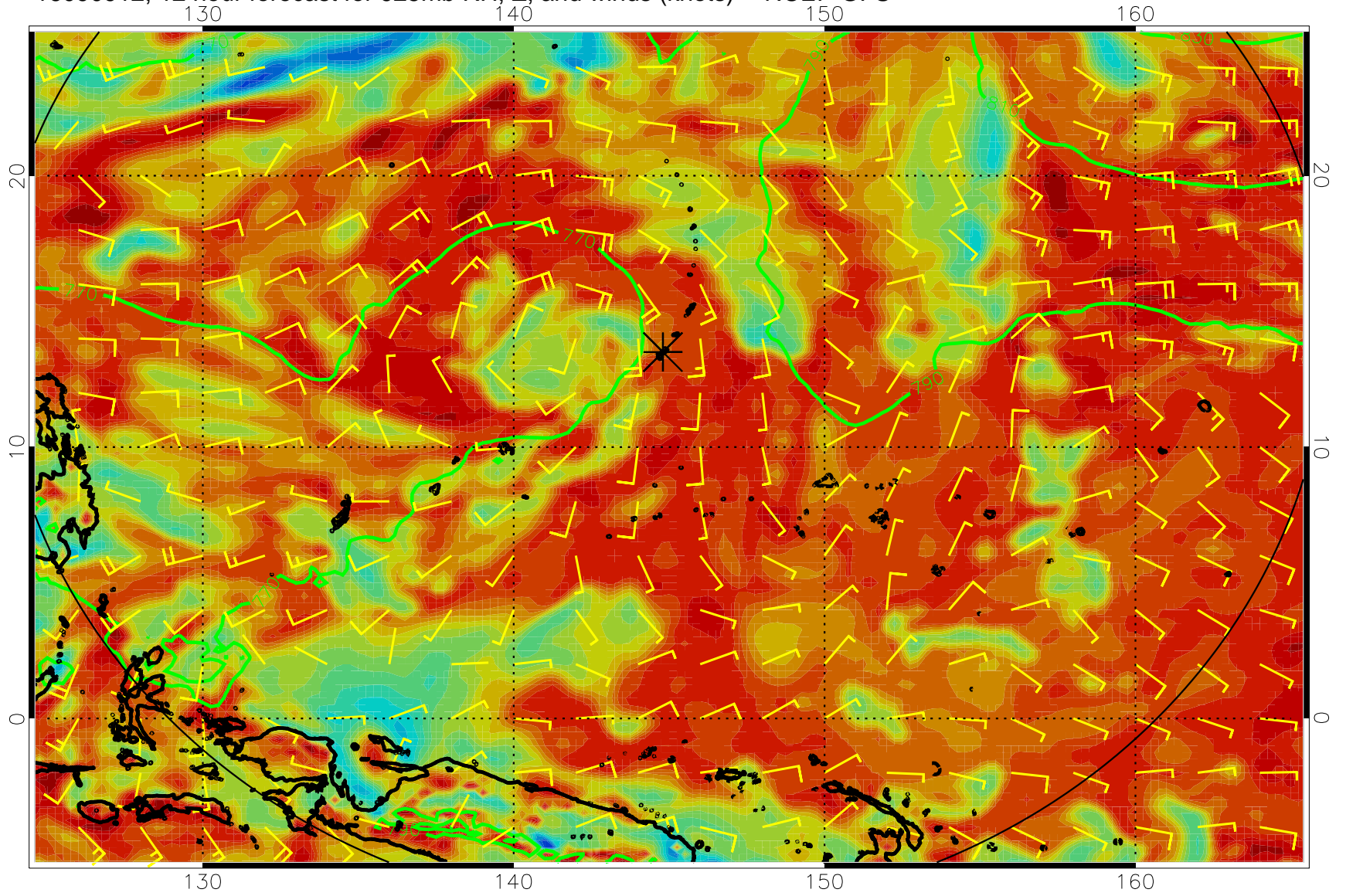


16090906, 6 hour forecast for 925mb RH, Z, and winds (knots) -- NCEP GFS

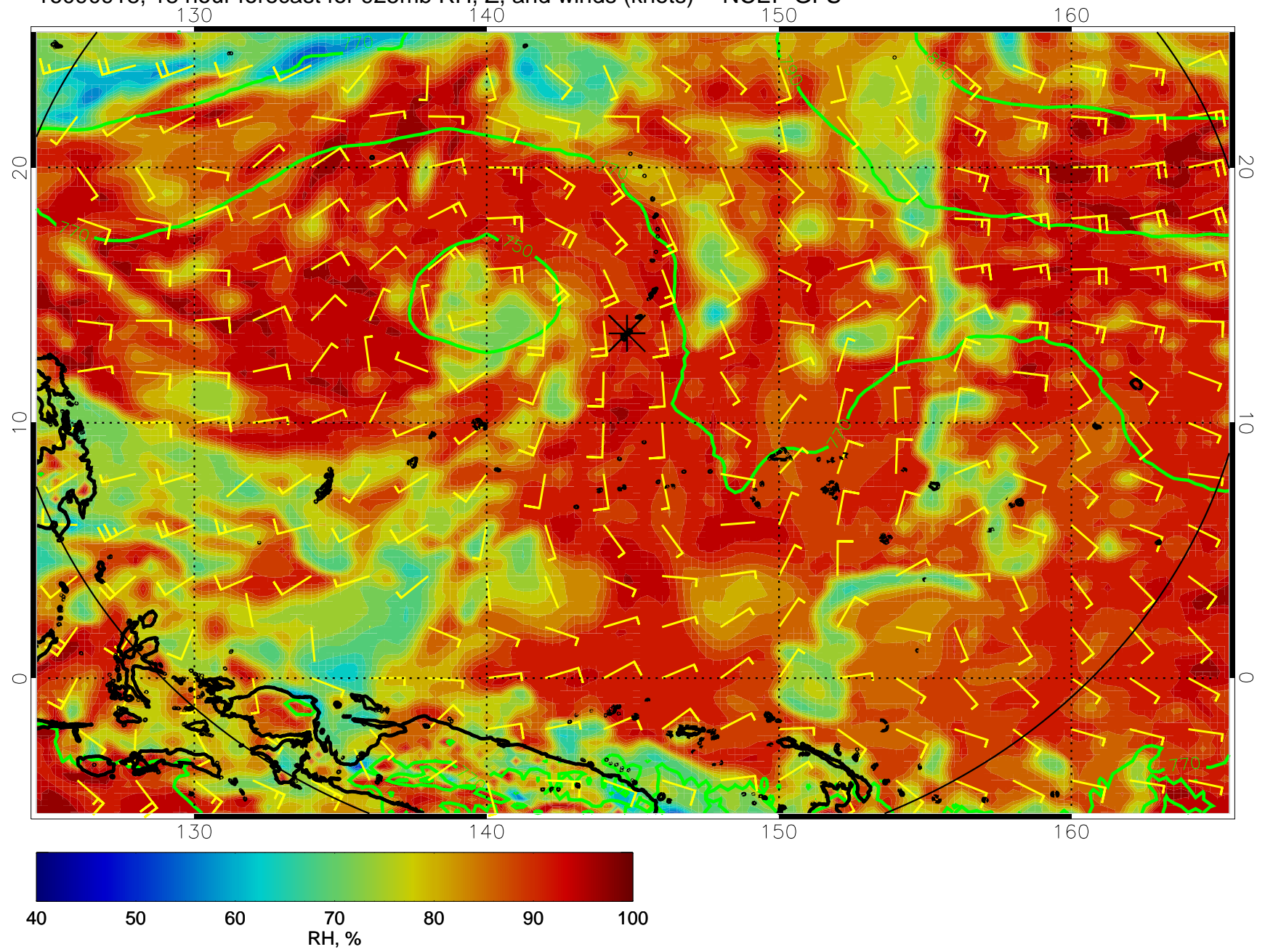


16090912, 12 hour forecast for 925mb RH, Z, and winds (knots) -- NCEP GFS

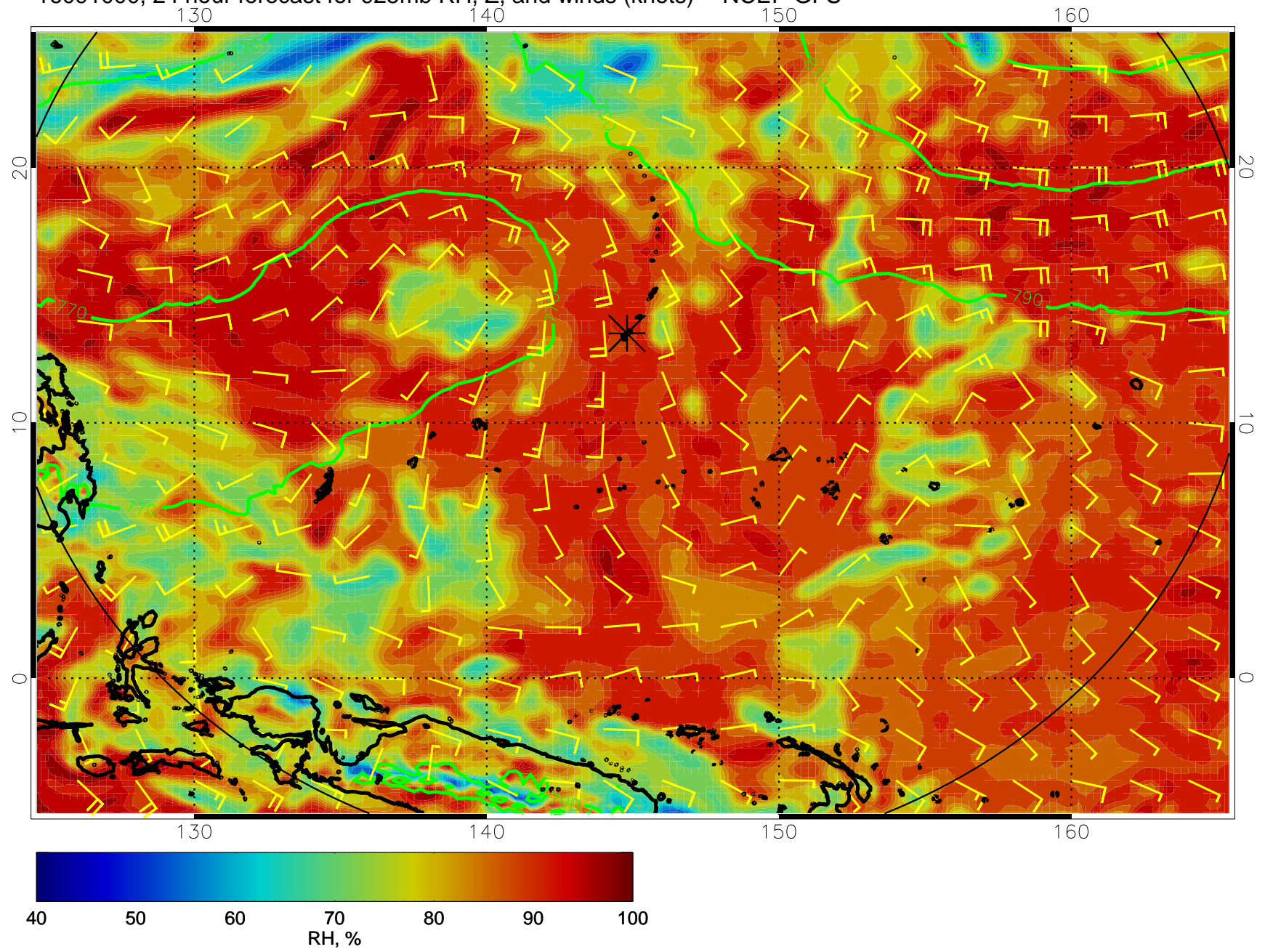




16090918, 18 hour forecast for 925mb RH, Z, and winds (knots) -- NCEP GFS

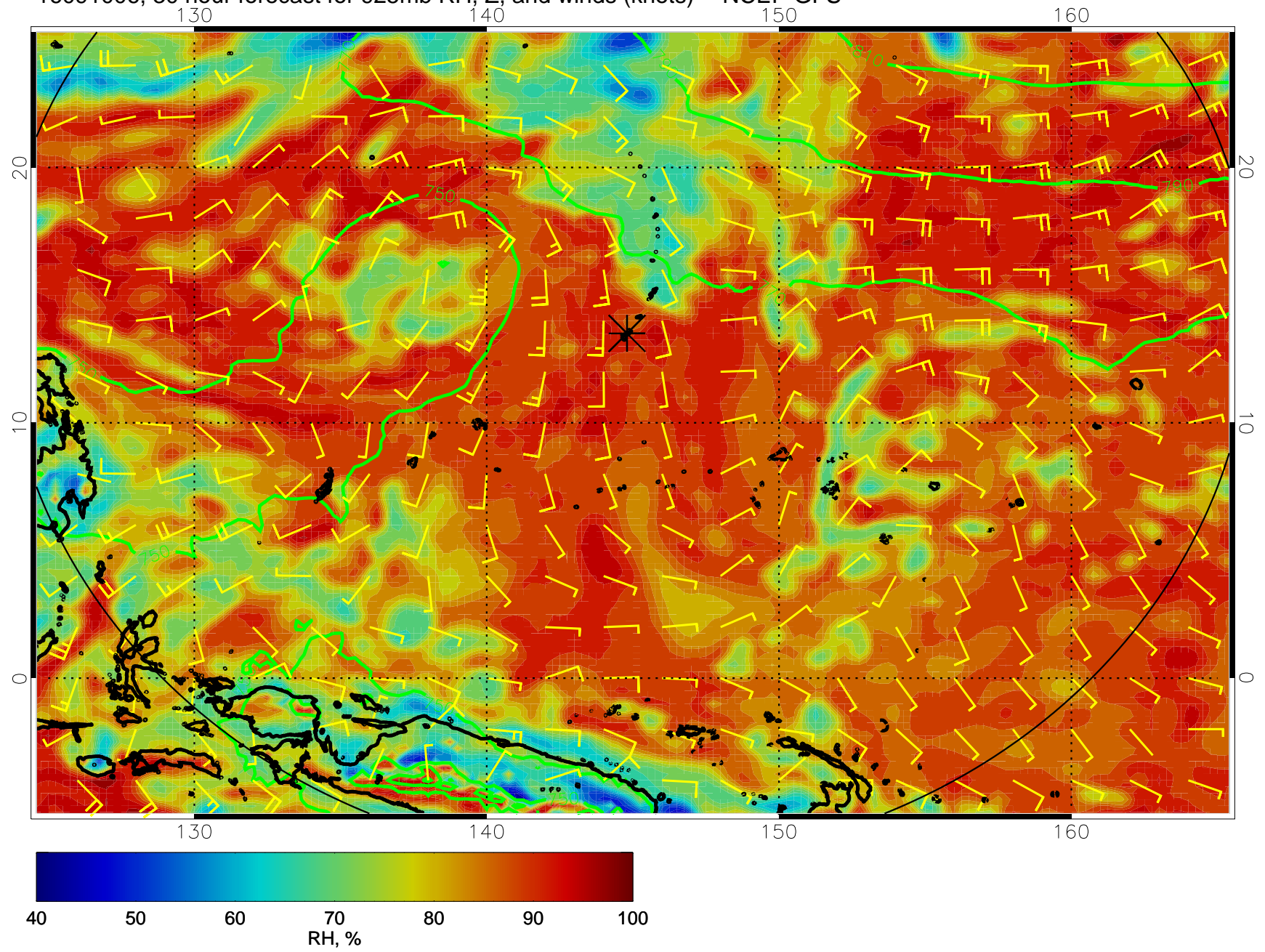


16091000, 24 hour forecast for 925mb RH, Z, and winds (knots) -- NCEP GFS

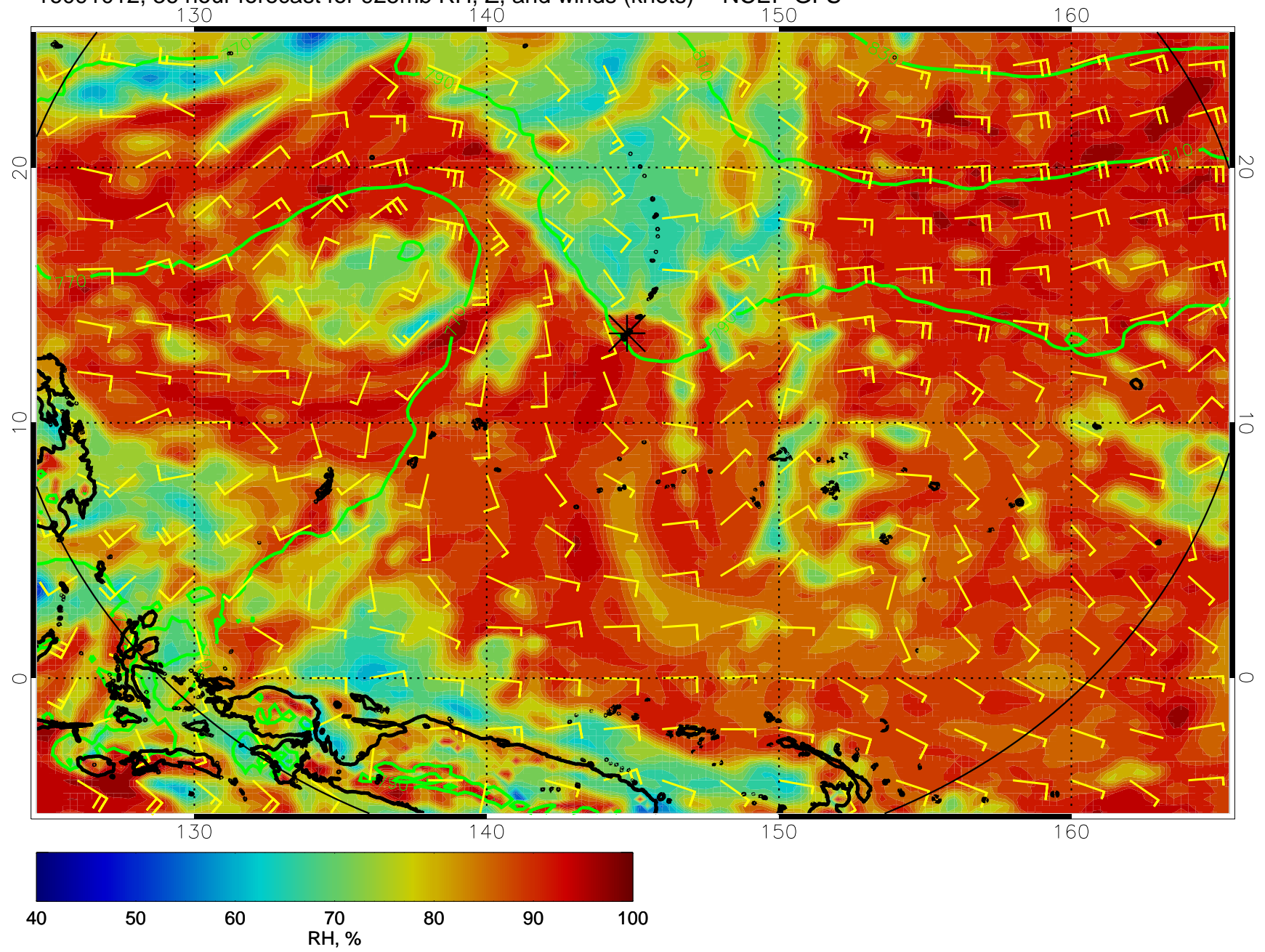




16091006, 30 hour forecast for 925mb RH, Z, and winds (knots) -- NCEP GFS

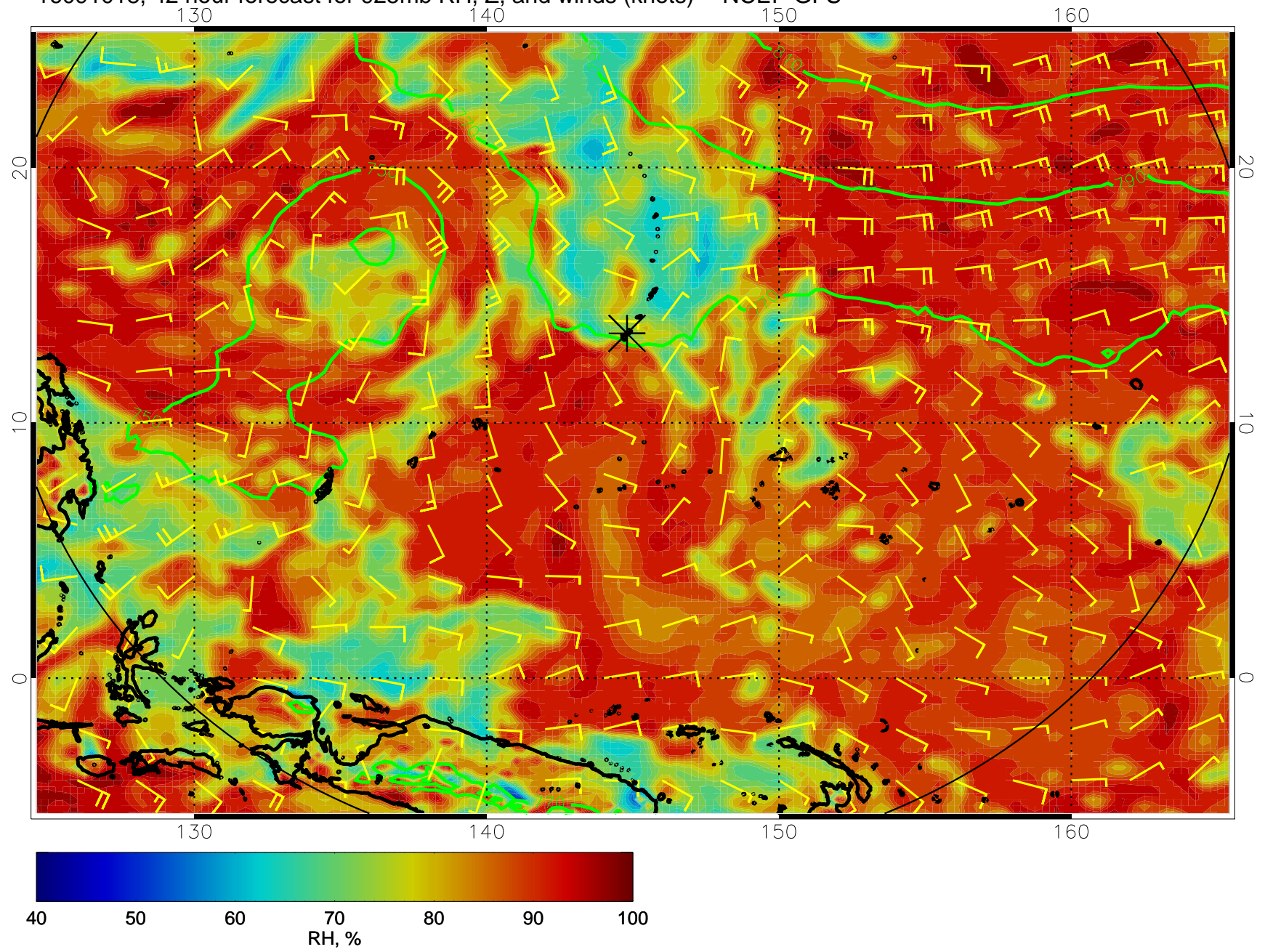


16091012, 36 hour forecast for 925mb RH, Z, and winds (knots) -- NCEP GFS

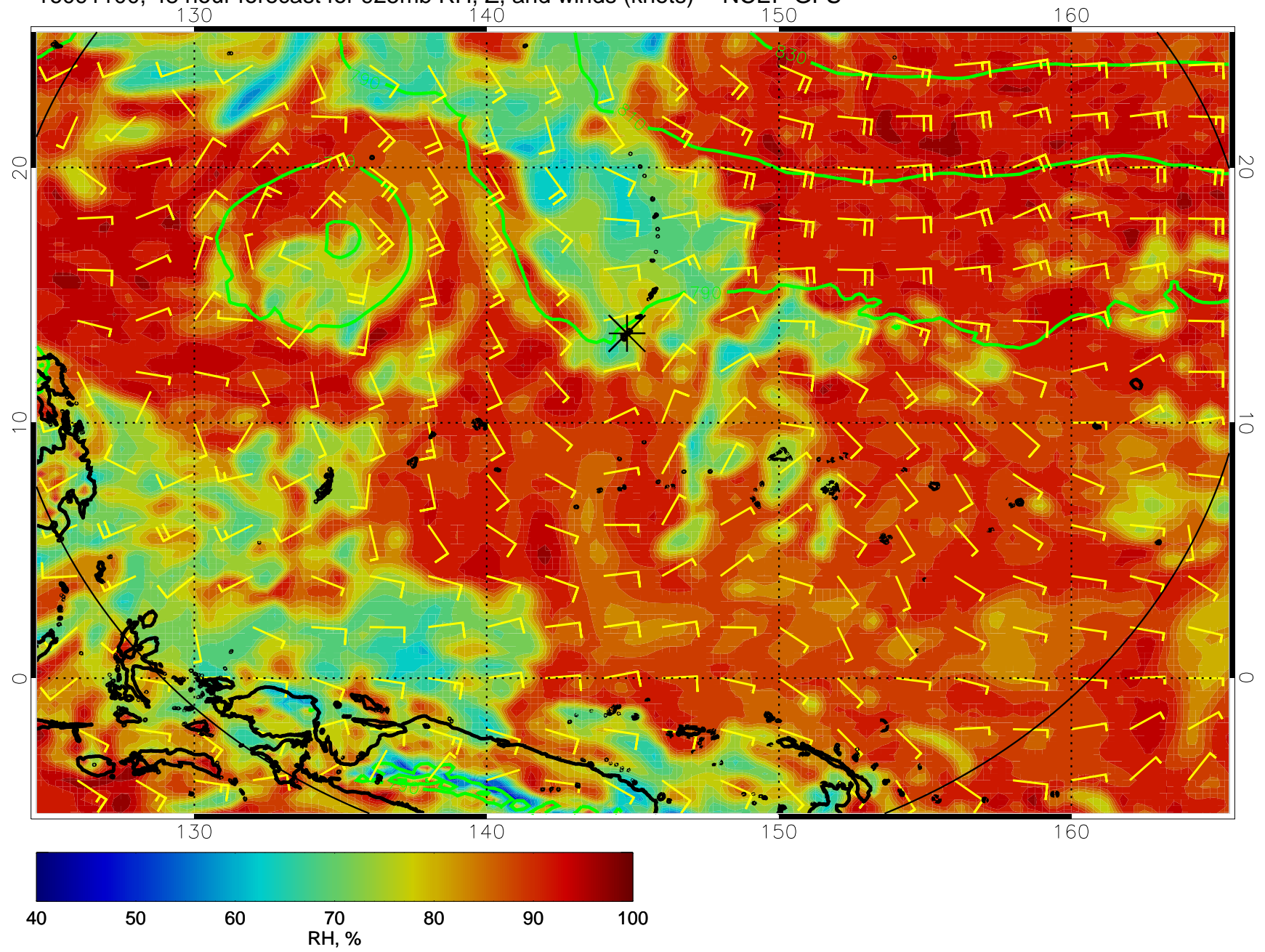




16091018, 42 hour forecast for 925mb RH, Z, and winds (knots) -- NCEP GFS

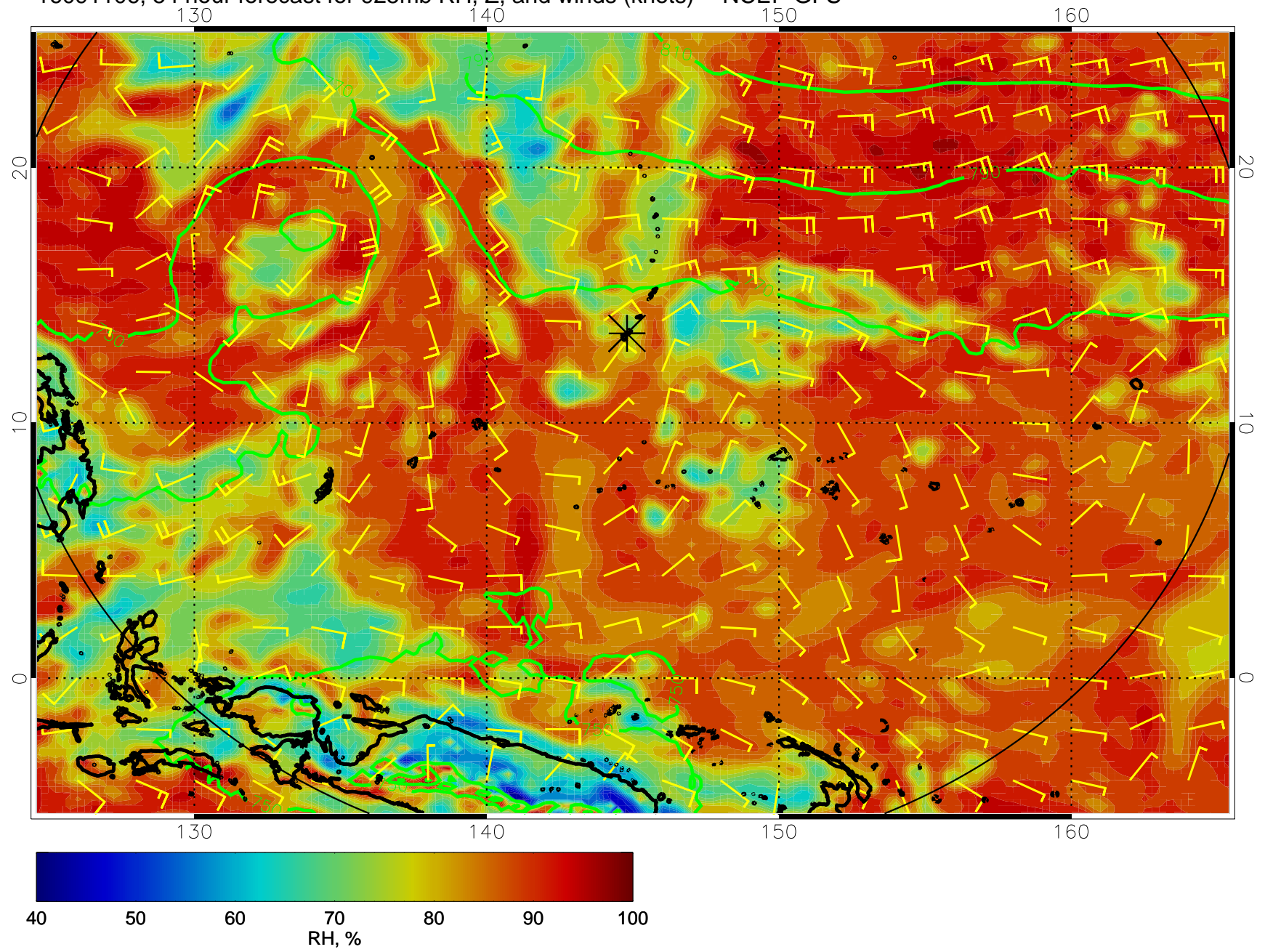


16091100, 48 hour forecast for 925mb RH, Z, and winds (knots) -- NCEP GFS

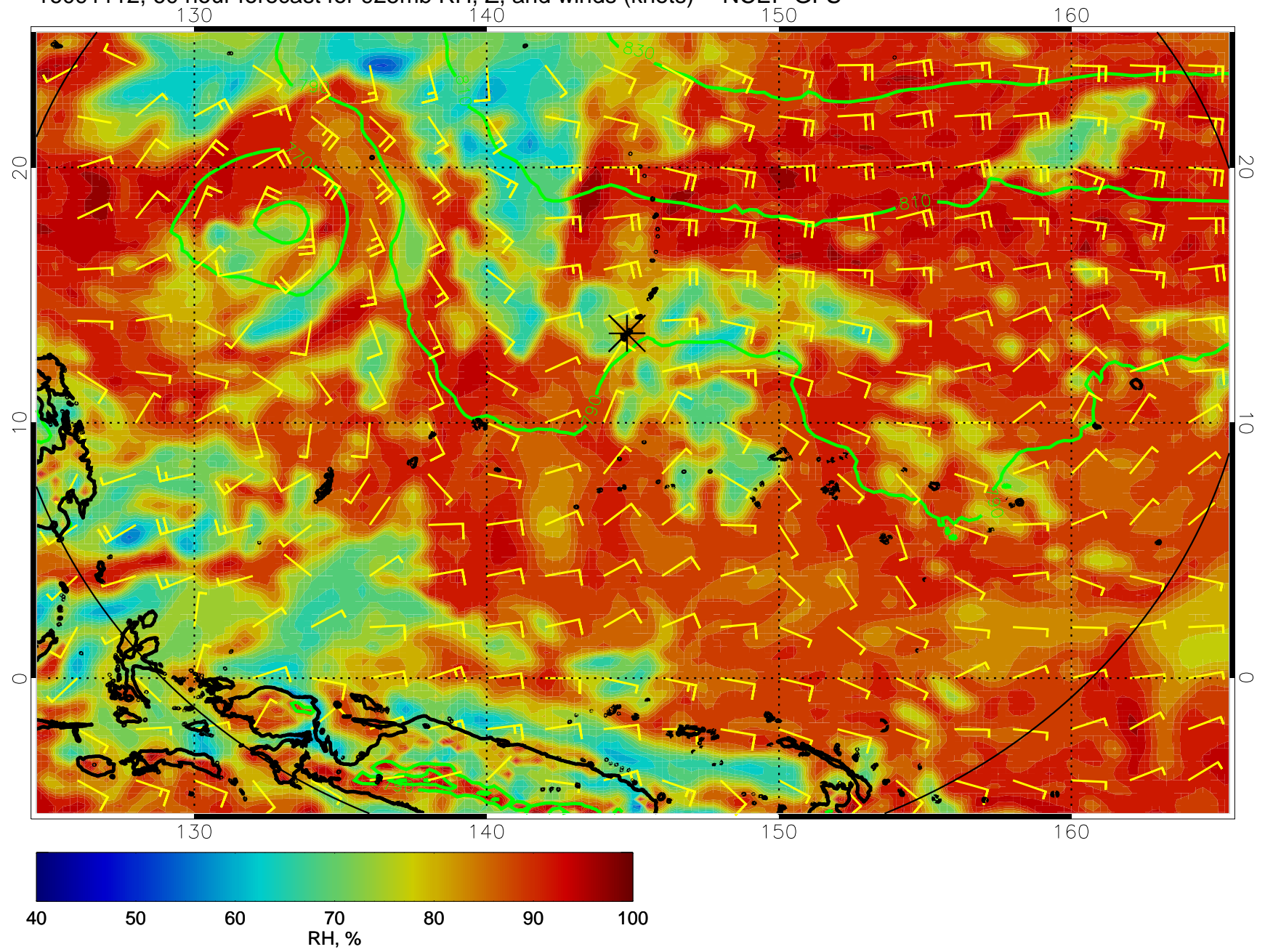




16091106, 54 hour forecast for 925mb RH, Z, and winds (knots) -- NCEP GFS

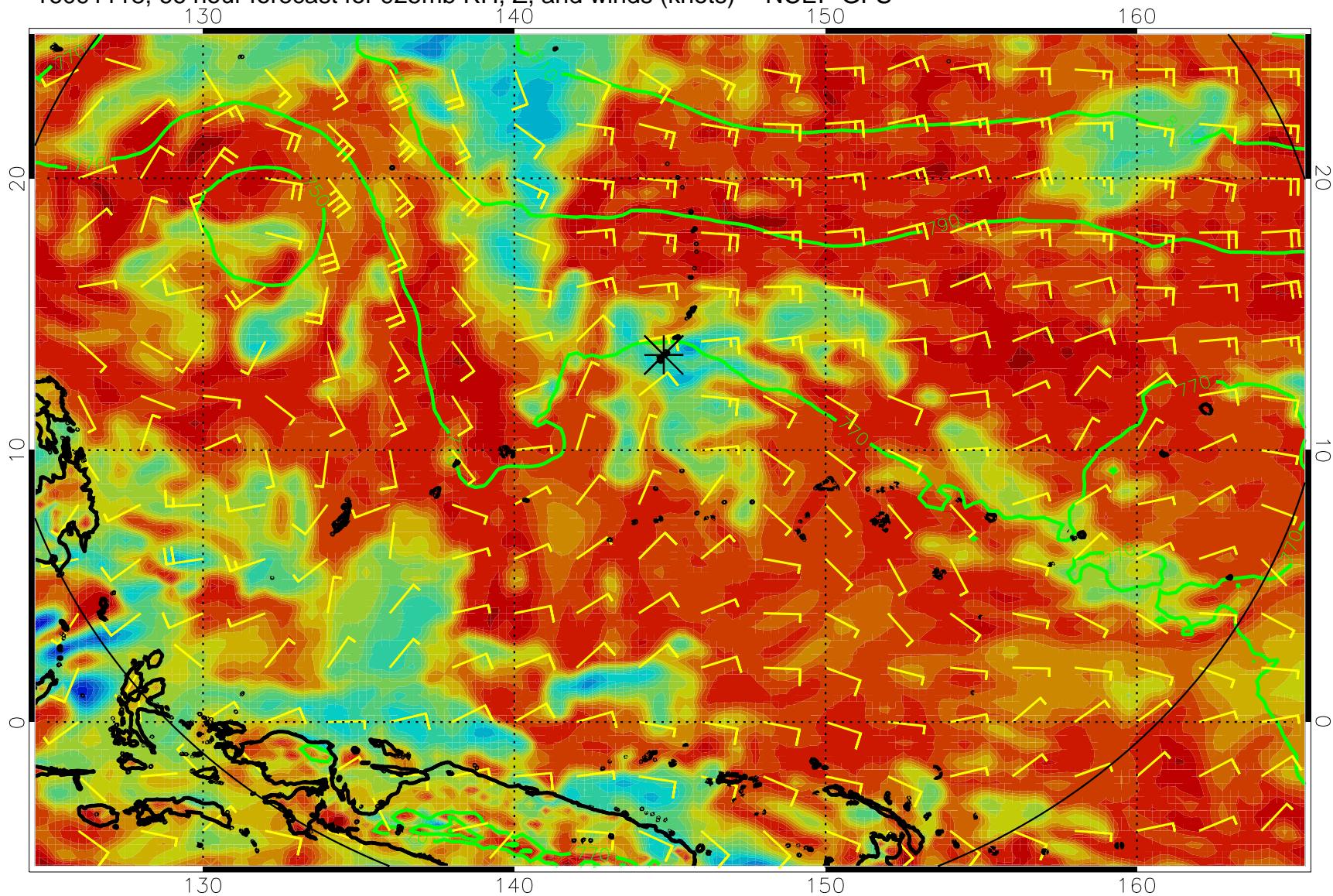


16091112, 60 hour forecast for 925mb RH, Z, and winds (knots) -- NCEP GFS

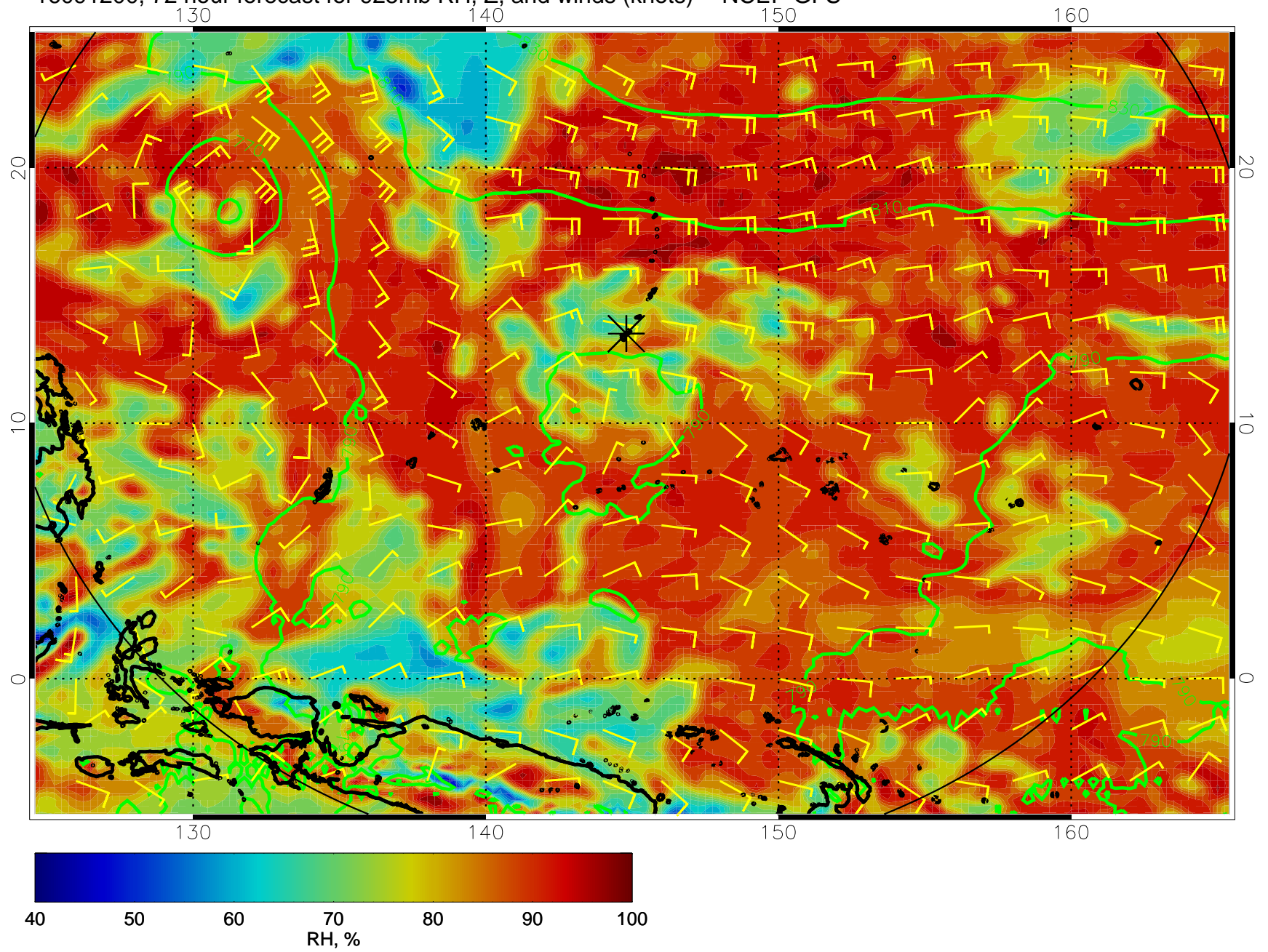




16091118, 66 hour forecast for 925mb RH, Z, and winds (knots) -- NCEP GFS

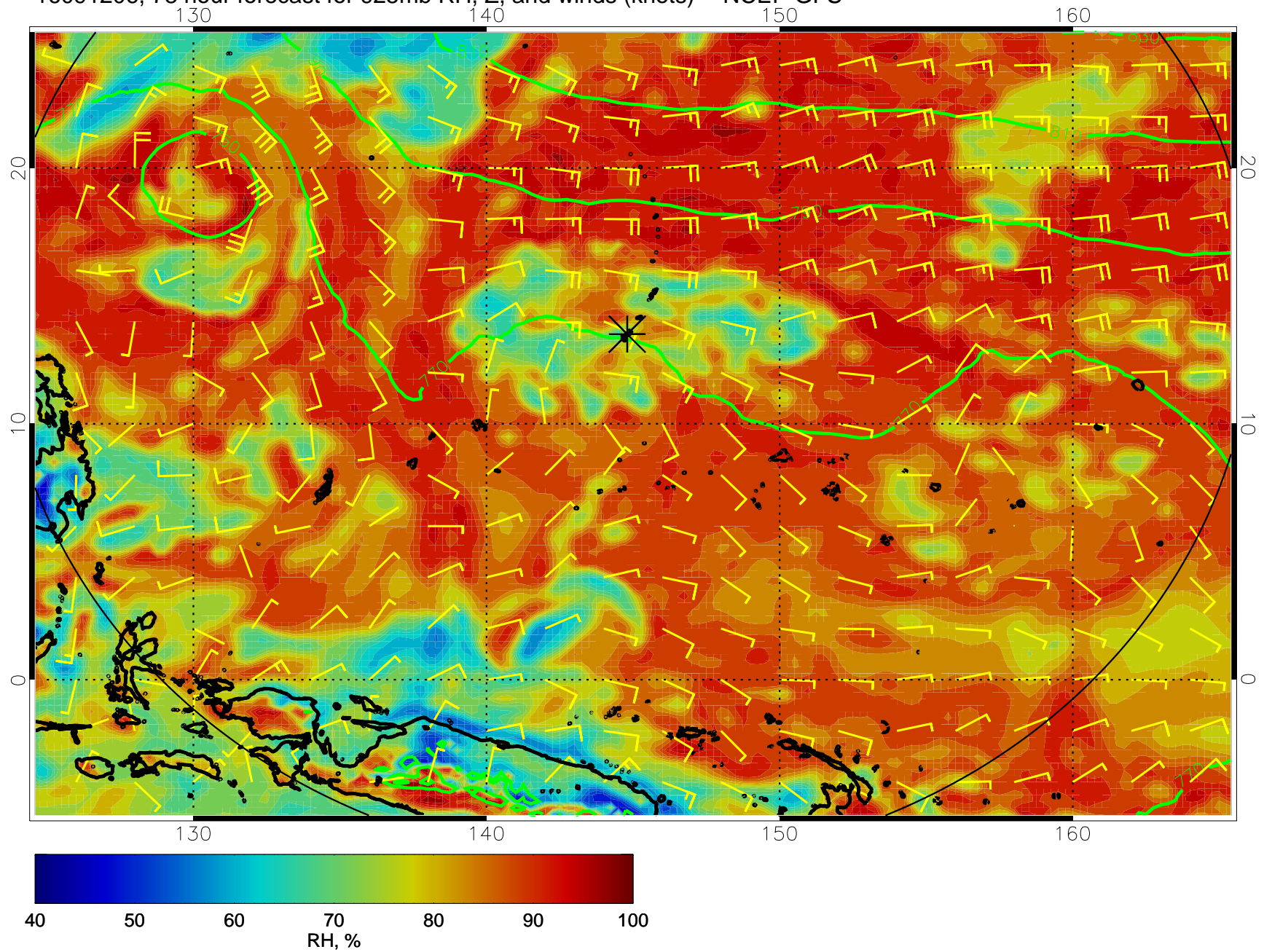


16091200, 72 hour forecast for 925mb RH, Z, and winds (knots) -- NCEP GFS

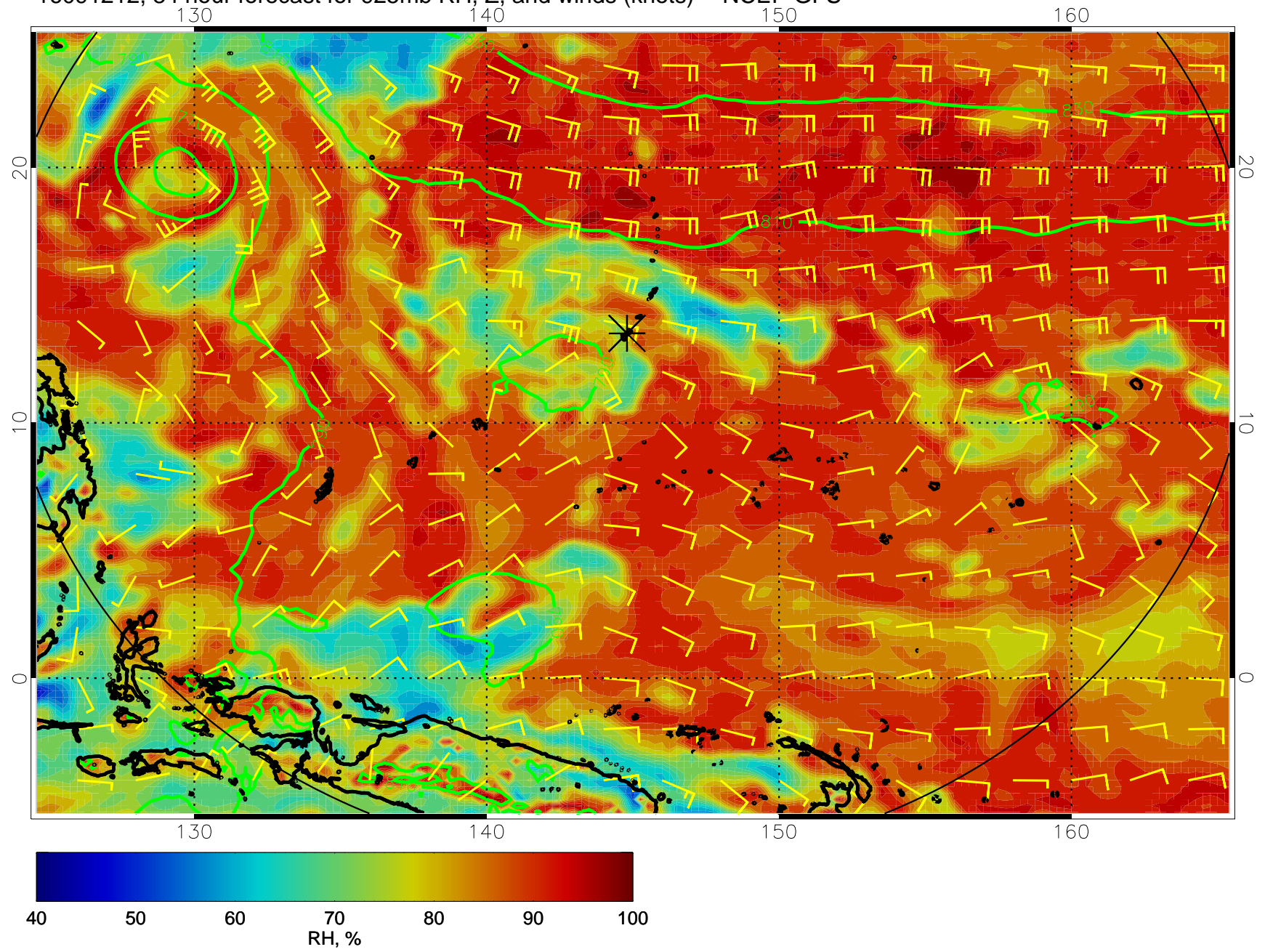




16091206, 78 hour forecast for 925mb RH, Z, and winds (knots) -- NCEP GFS

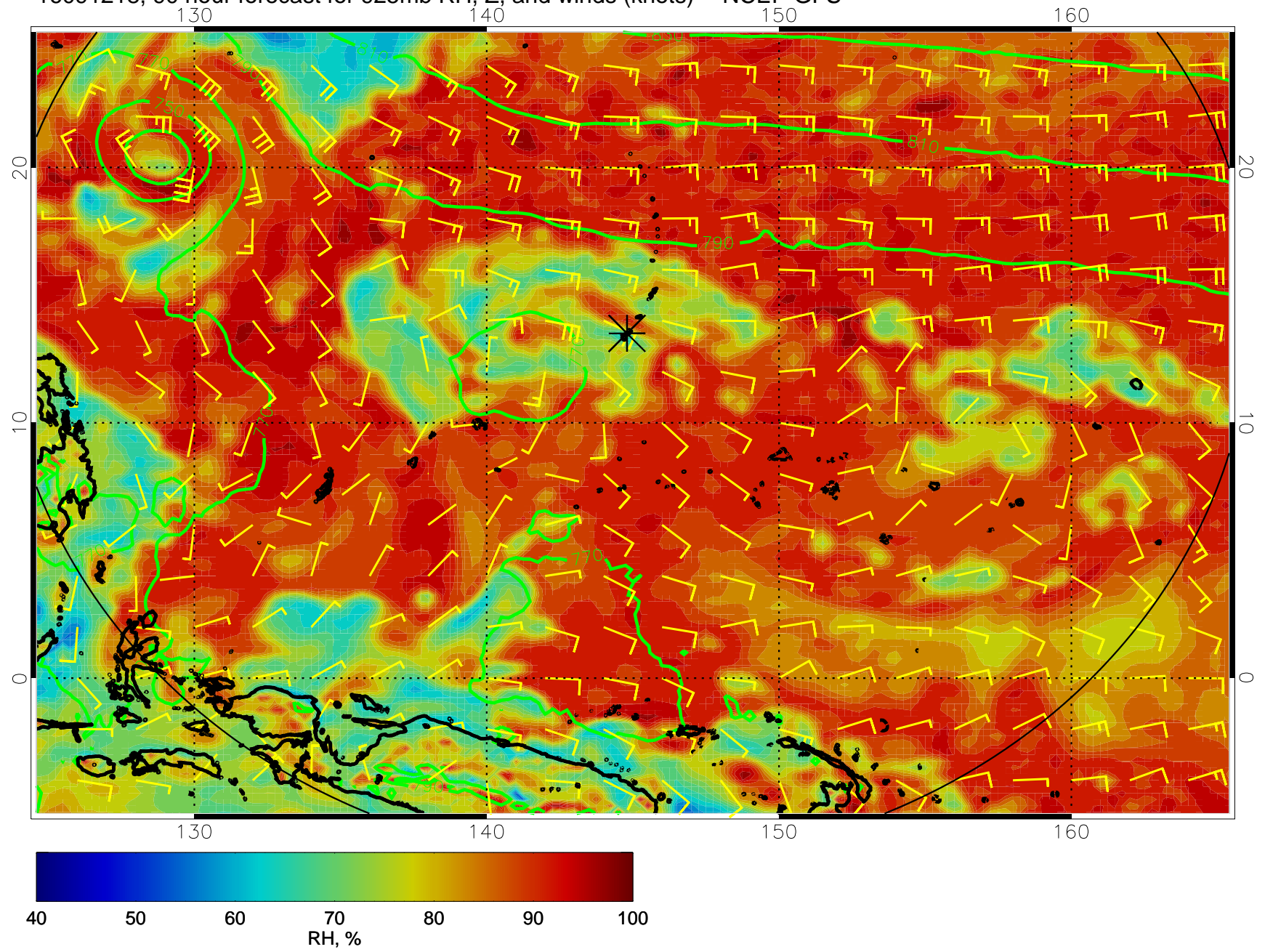


16091212, 84 hour forecast for 925mb RH, Z, and winds (knots) -- NCEP GFS

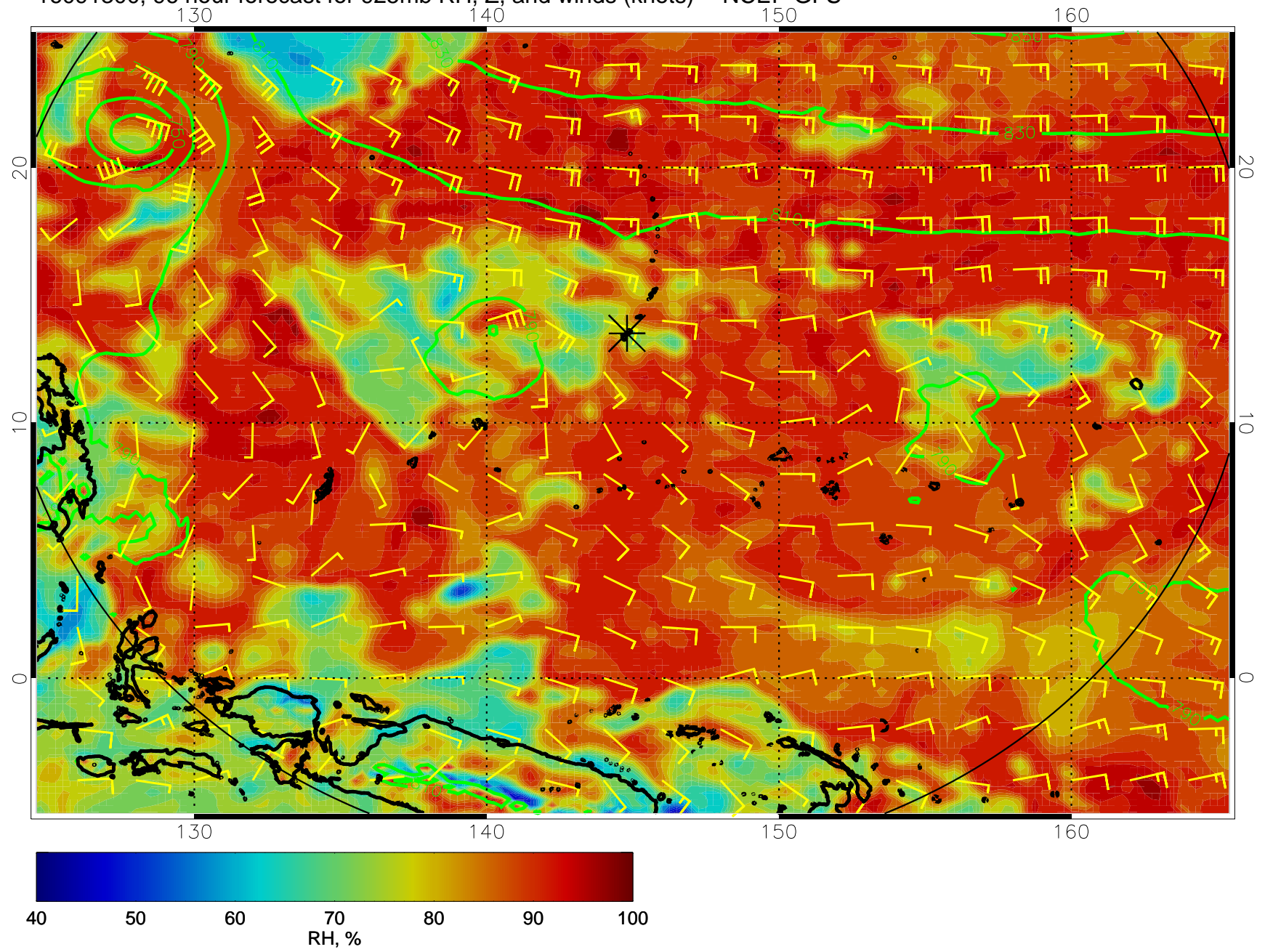




16091218, 90 hour forecast for 925mb RH, Z, and winds (knots) -- NCEP GFS

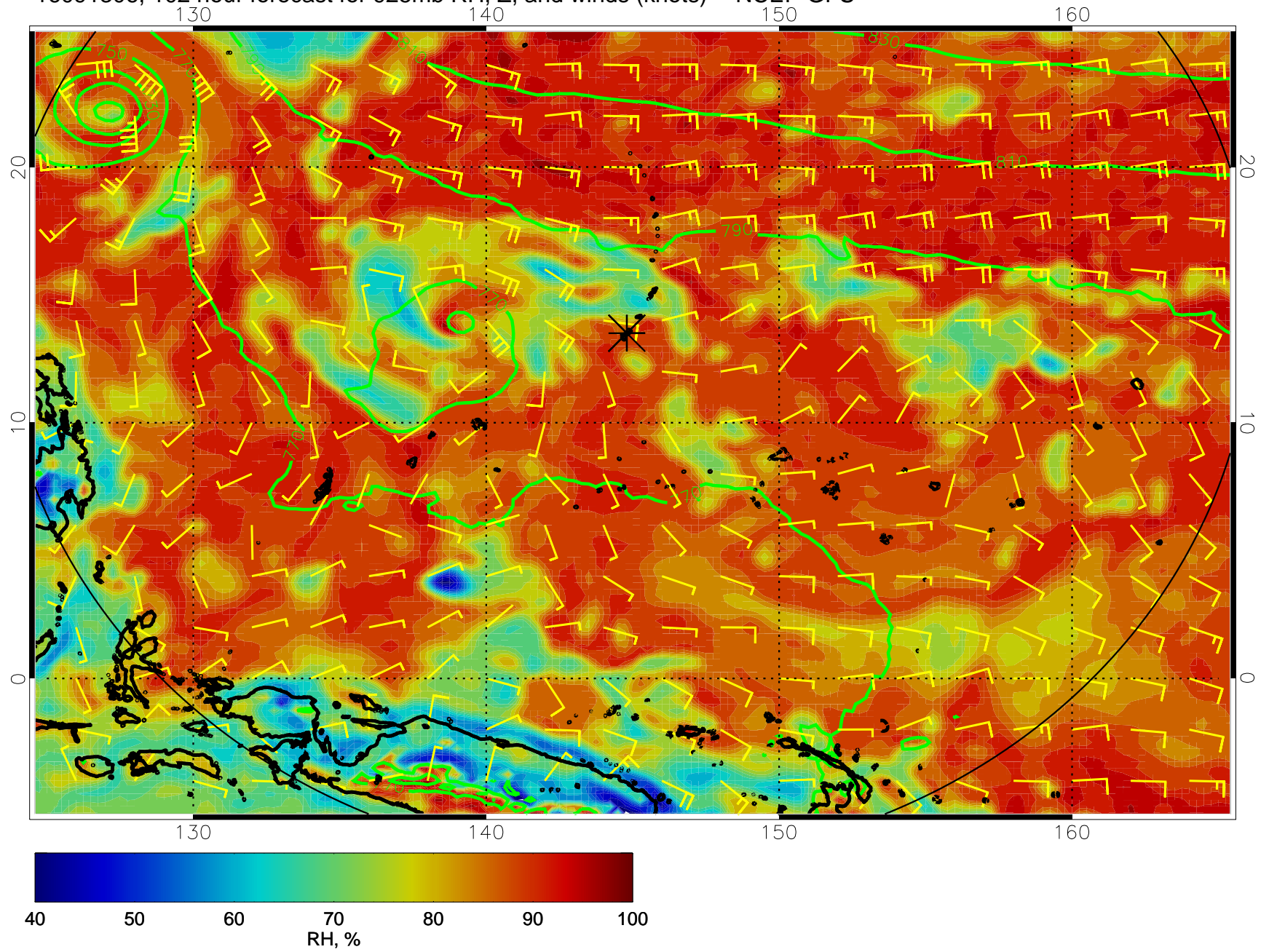


16091300, 96 hour forecast for 925mb RH, Z, and winds (knots) -- NCEP GFS

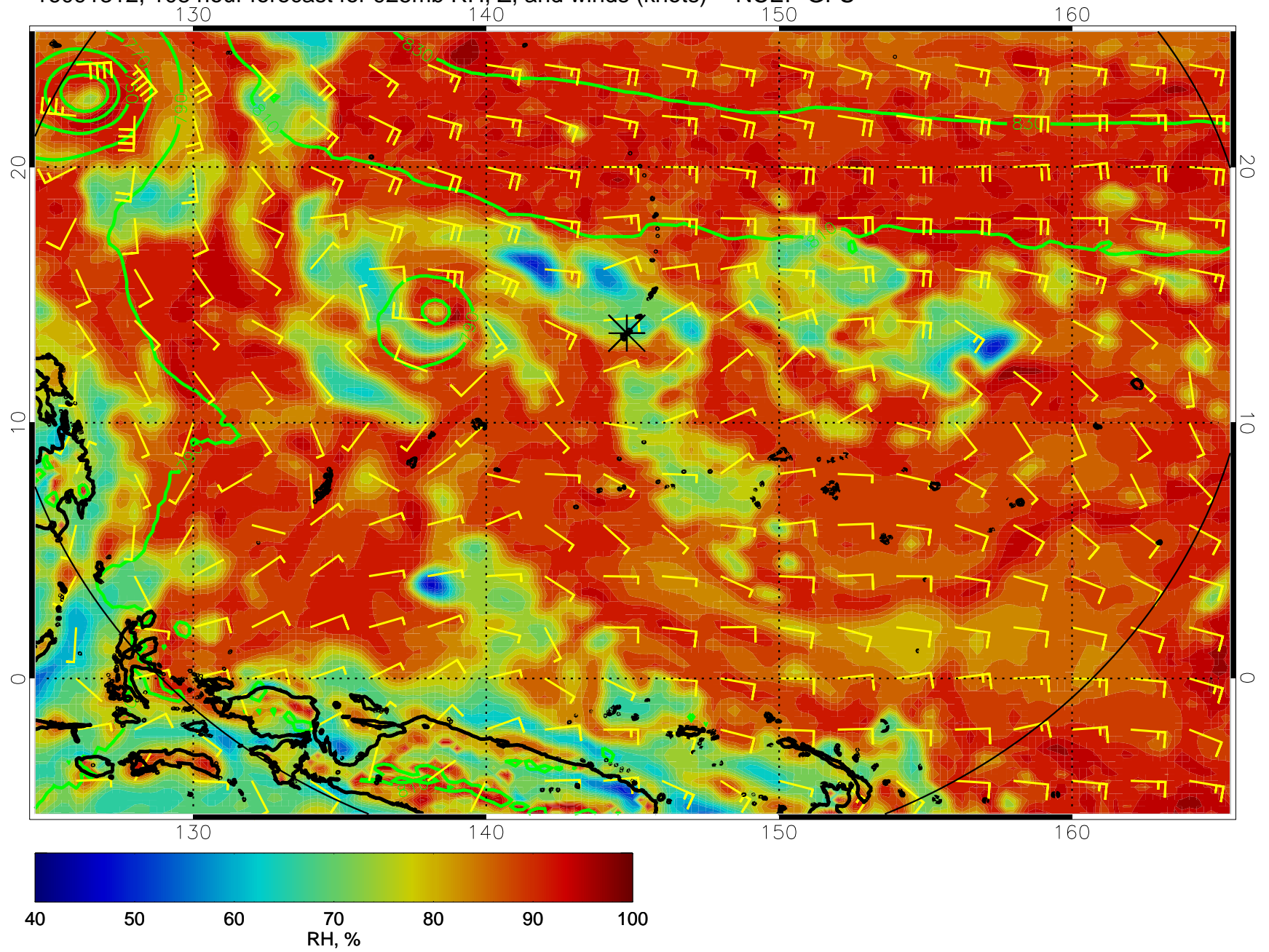




16091306, 102 hour forecast for 925mb RH, Z, and winds (knots) -- NCEP GFS

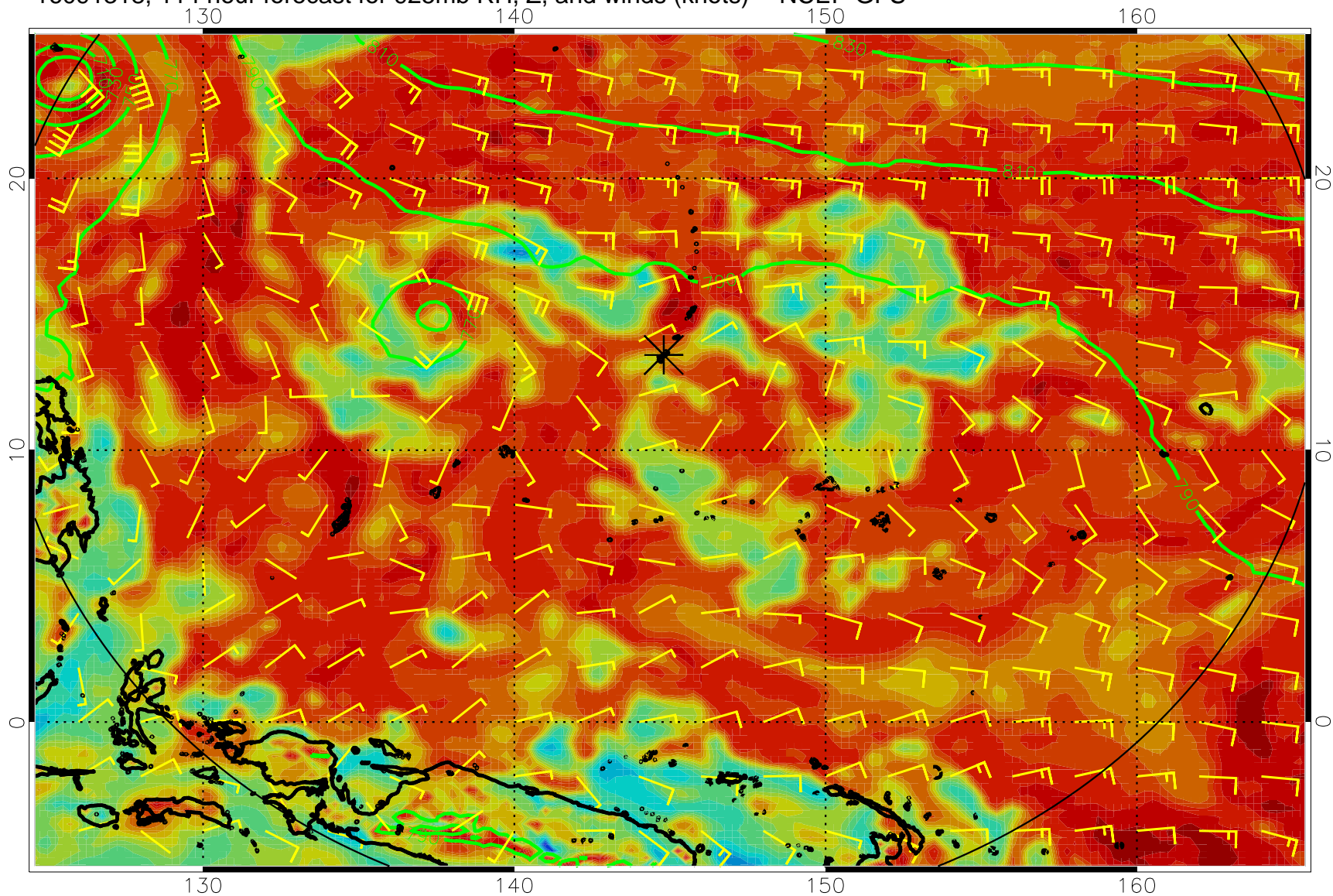


16091312, 108 hour forecast for 925mb RH, Z, and winds (knots) -- NCEP GFS





16091318, 114 hour forecast for 925mb RH, Z, and winds (knots) -- NCEP GFS



16091400, 120 hour forecast for 925mb RH, Z, and winds (knots) -- NCEP GFS

