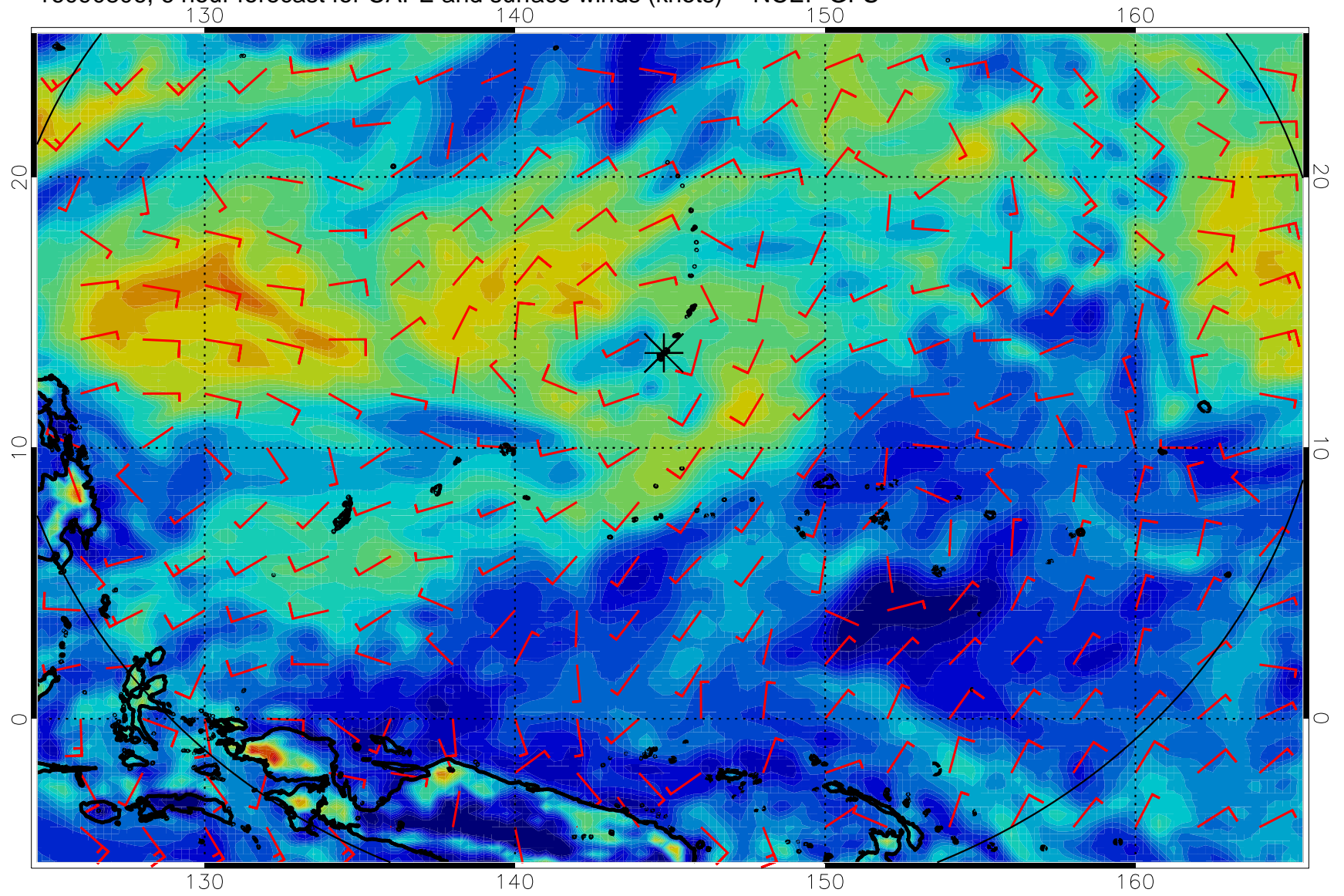
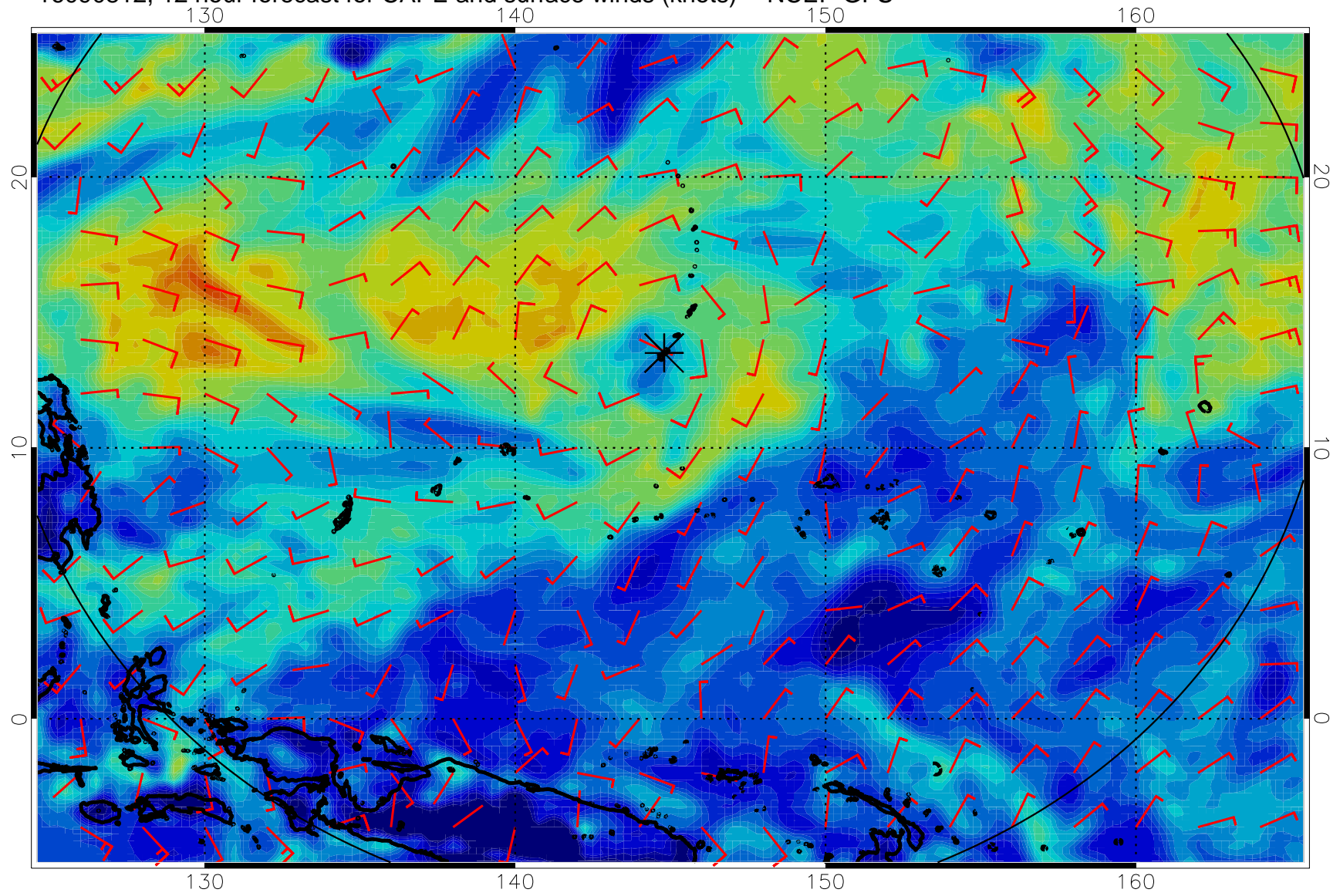


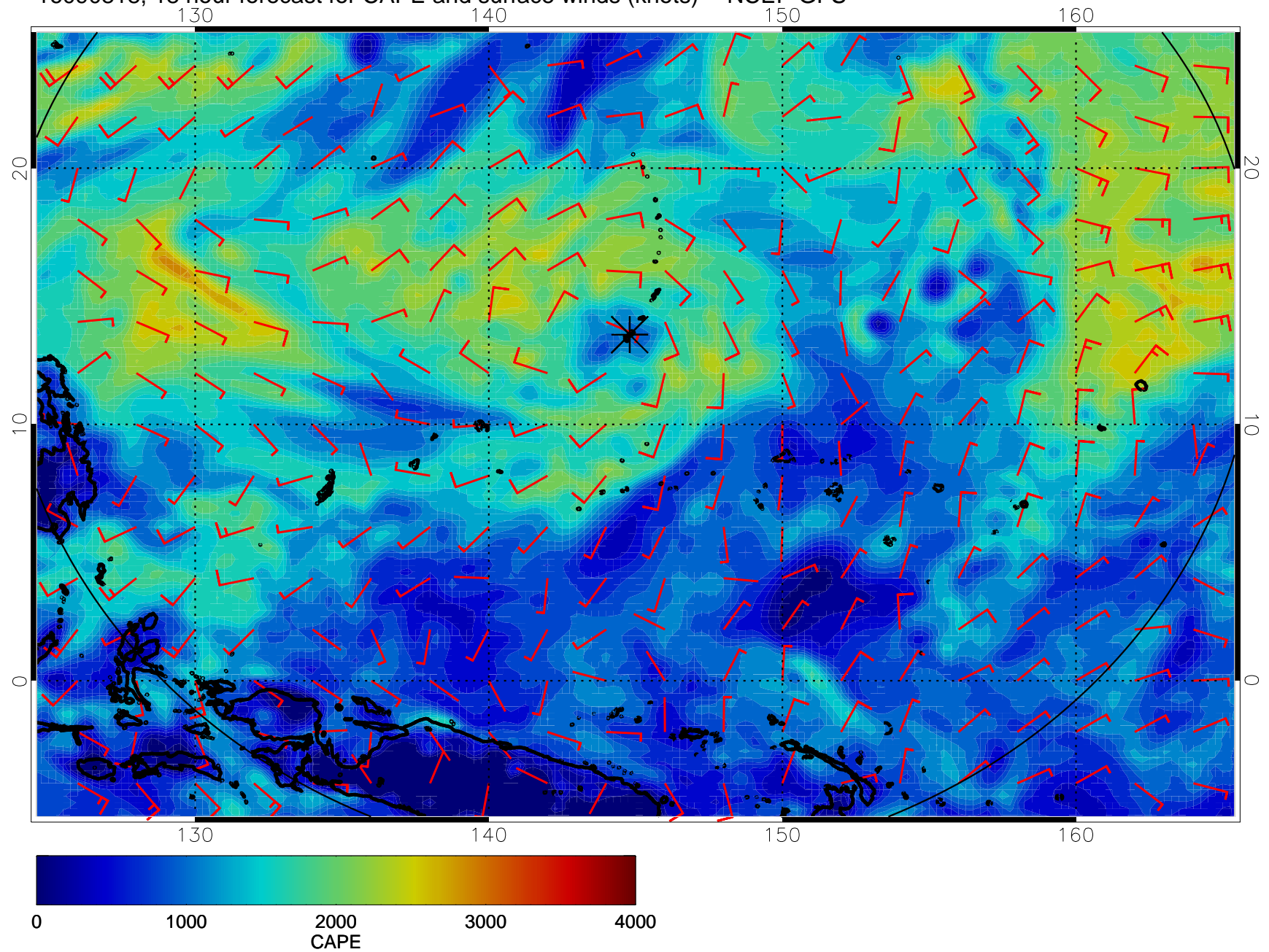
16090806, 6 hour forecast for CAPE and surface winds (knots) -- NCEP GFS



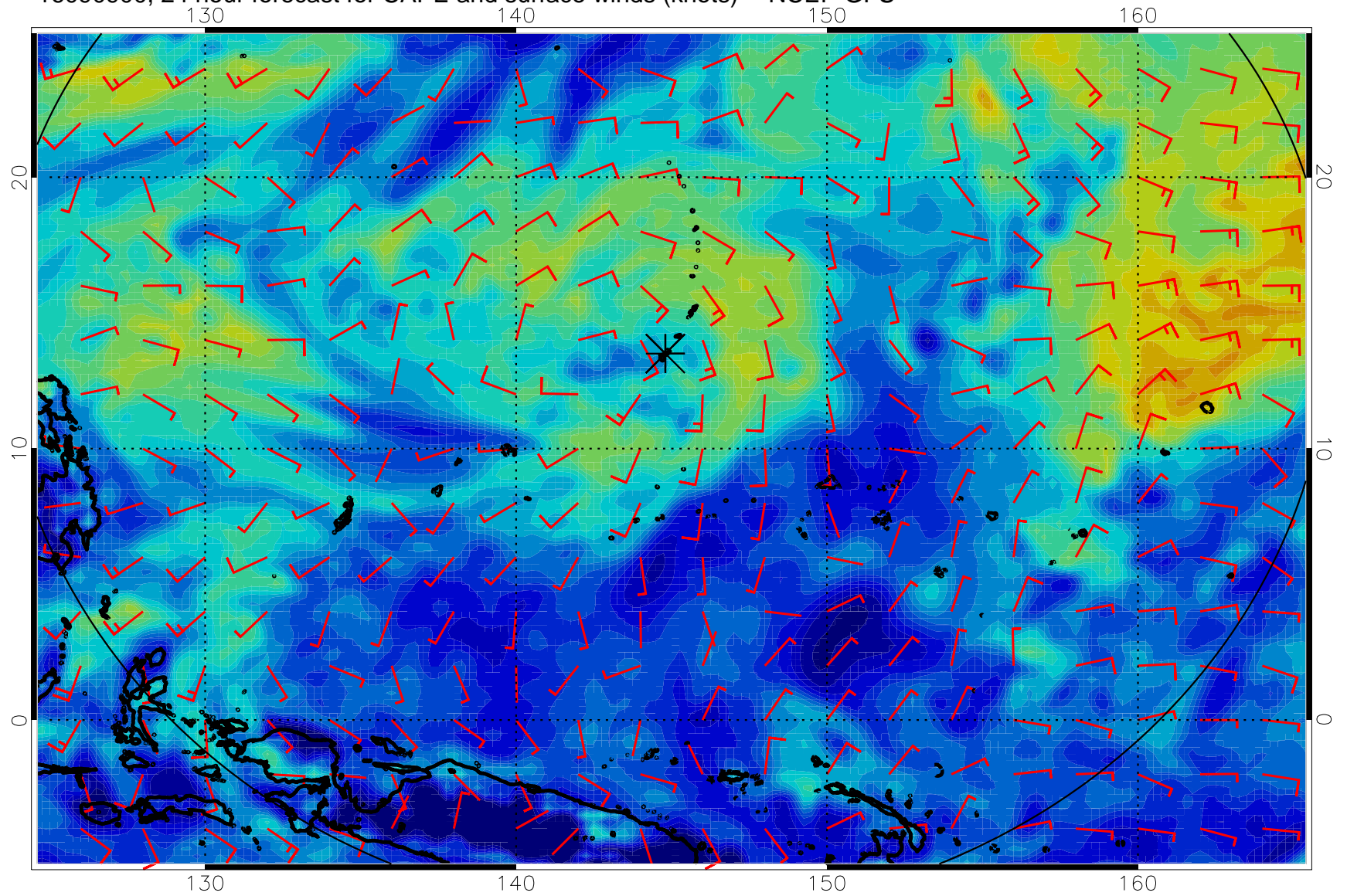
16090812, 12 hour forecast for CAPE and surface winds (knots) -- NCEP GFS



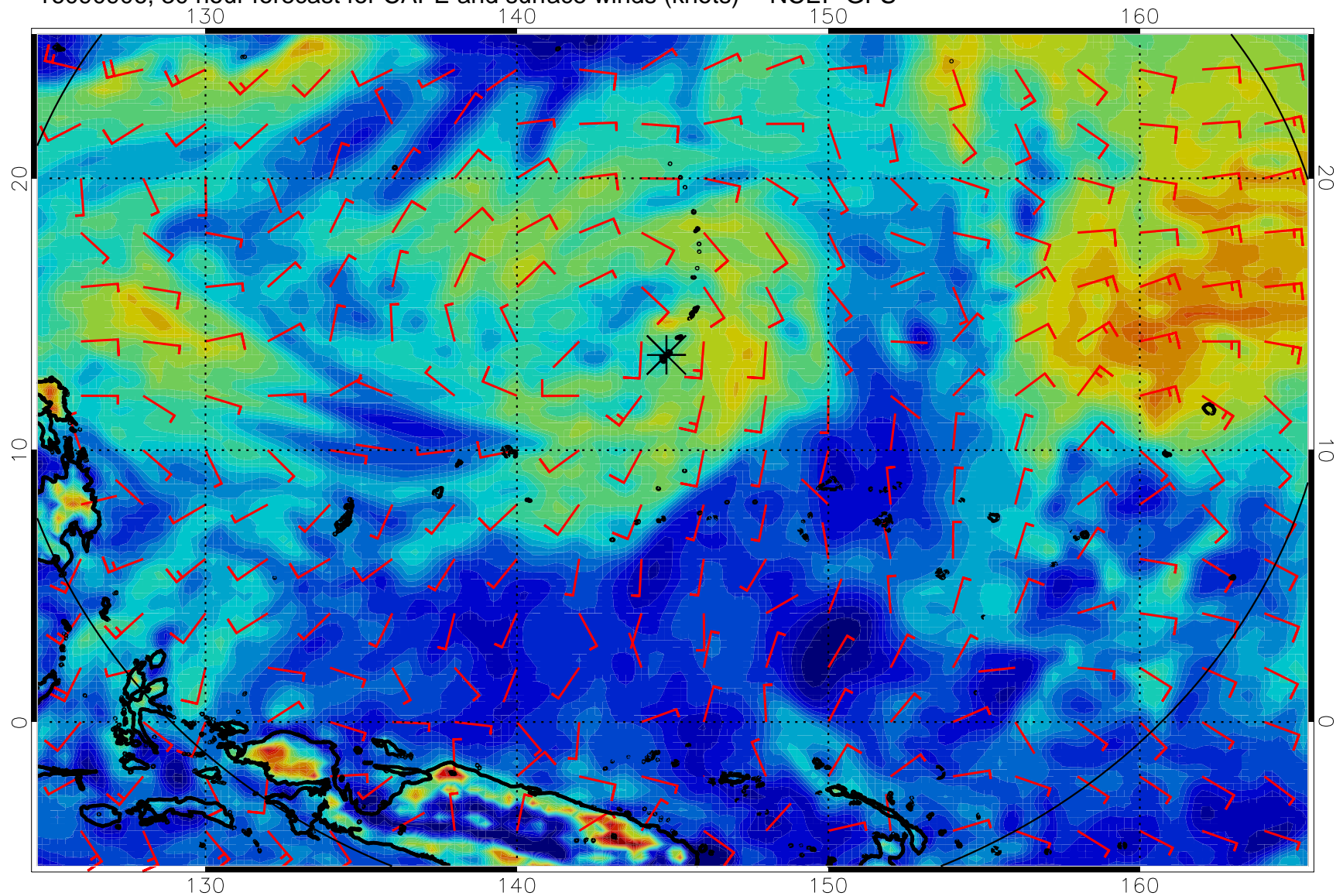
16090818, 18 hour forecast for CAPE and surface winds (knots) -- NCEP GFS



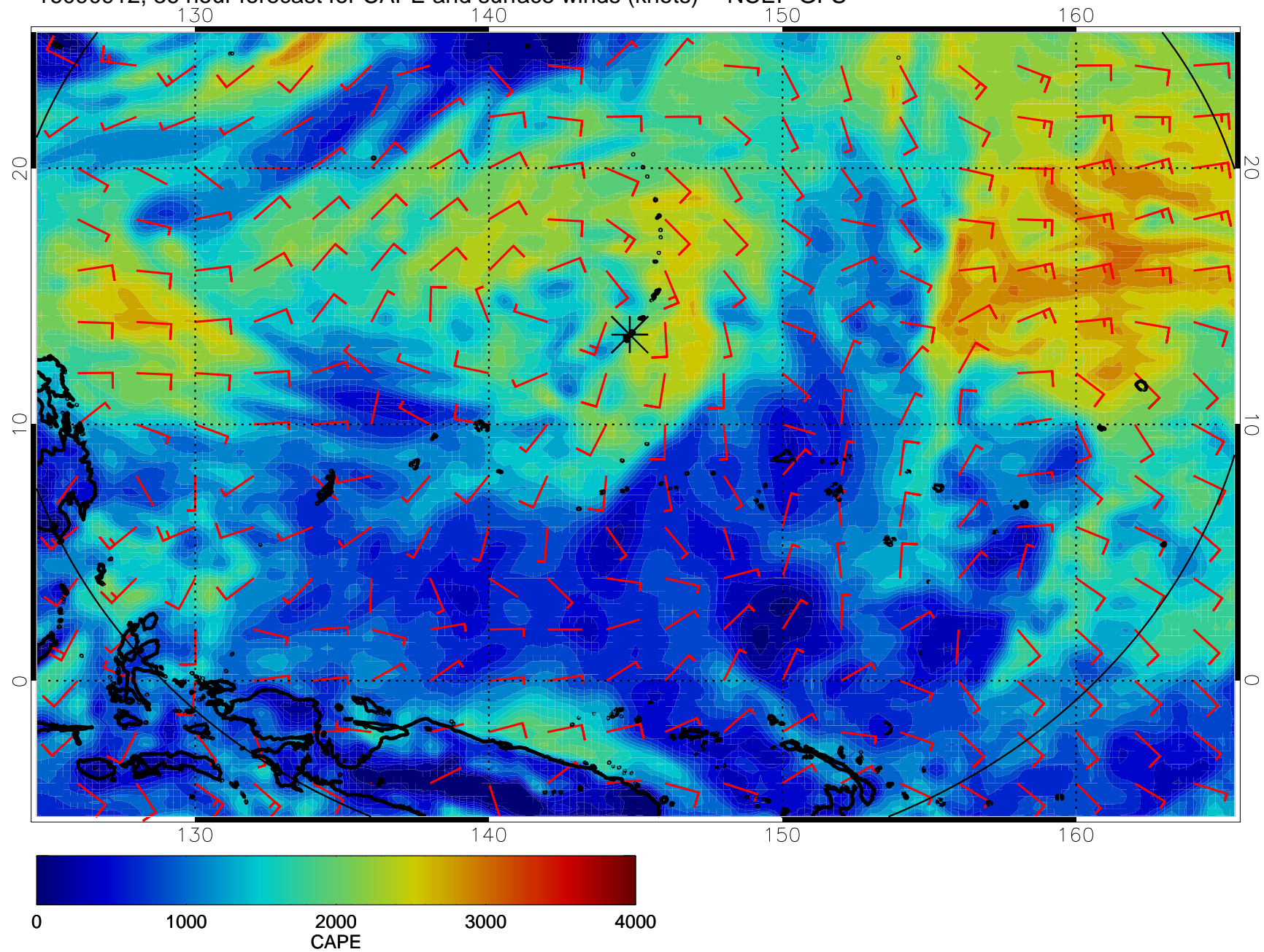
16090900, 24 hour forecast for CAPE and surface winds (knots) -- NCEP GFS



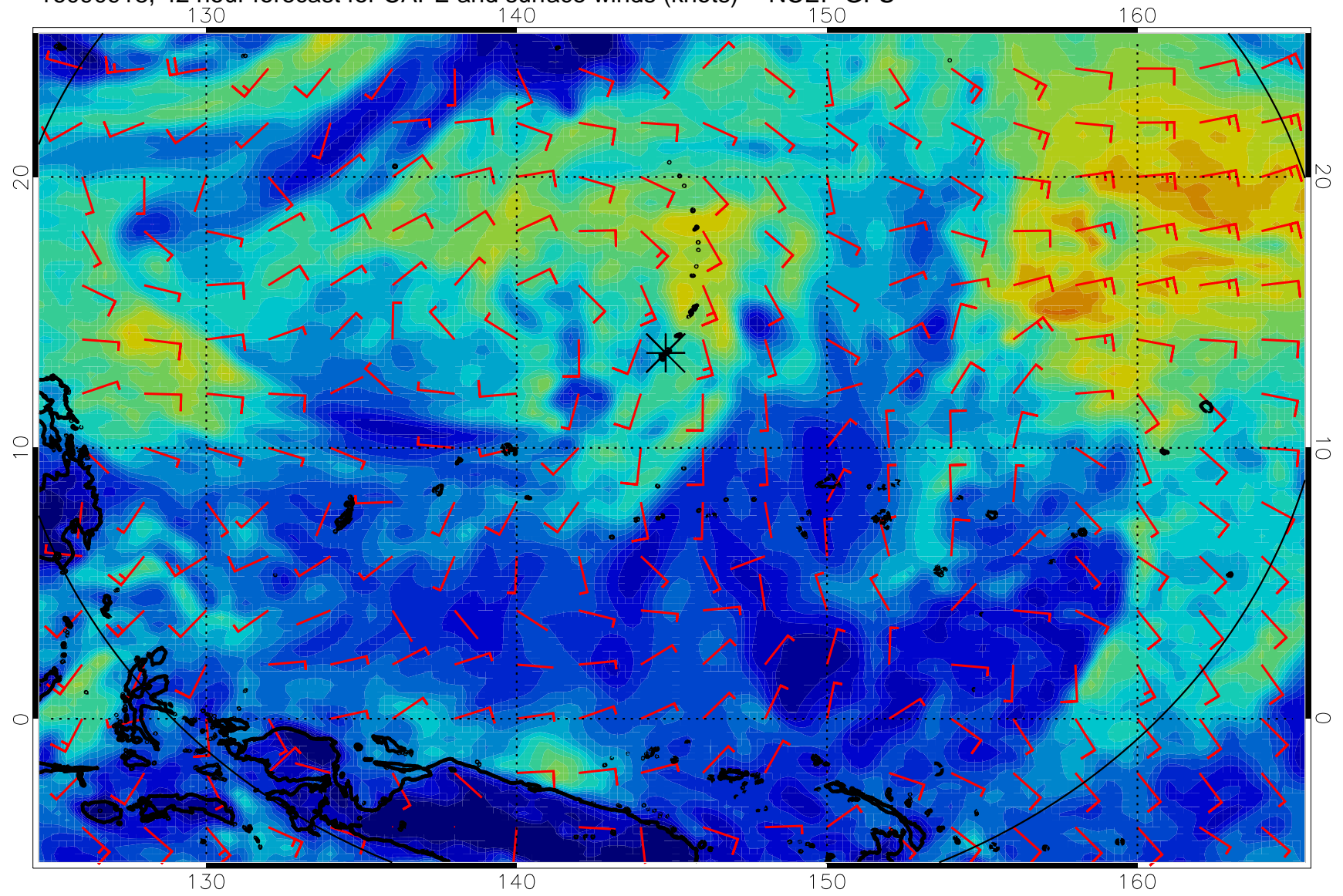
16090906, 30 hour forecast for CAPE and surface winds (knots) -- NCEP GFS



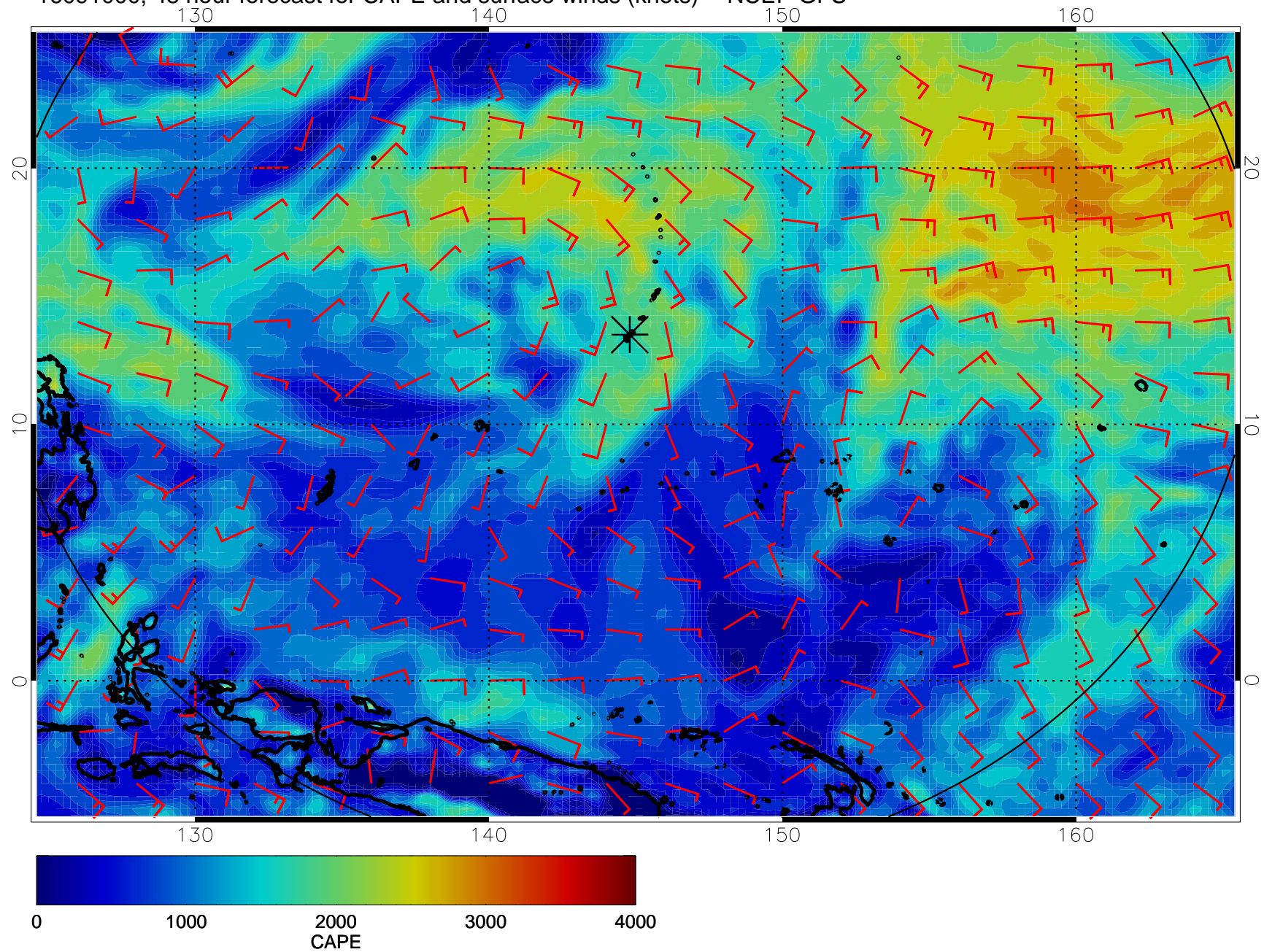
16090912, 36 hour forecast for CAPE and surface winds (knots) -- NCEP GFS



16090918, 42 hour forecast for CAPE and surface winds (knots) -- NCEP GFS

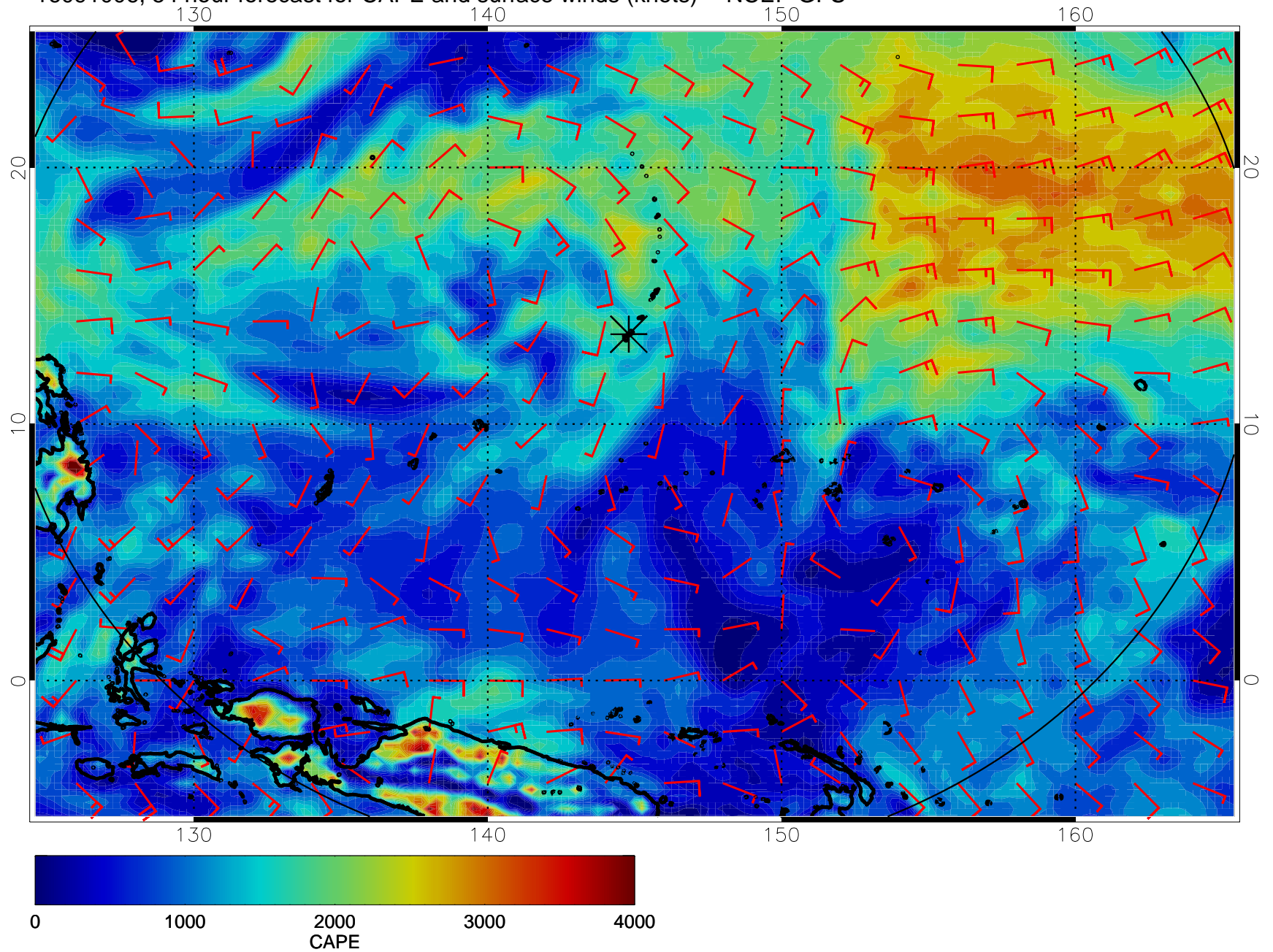


16091000, 48 hour forecast for CAPE and surface winds (knots) -- NCEP GFS

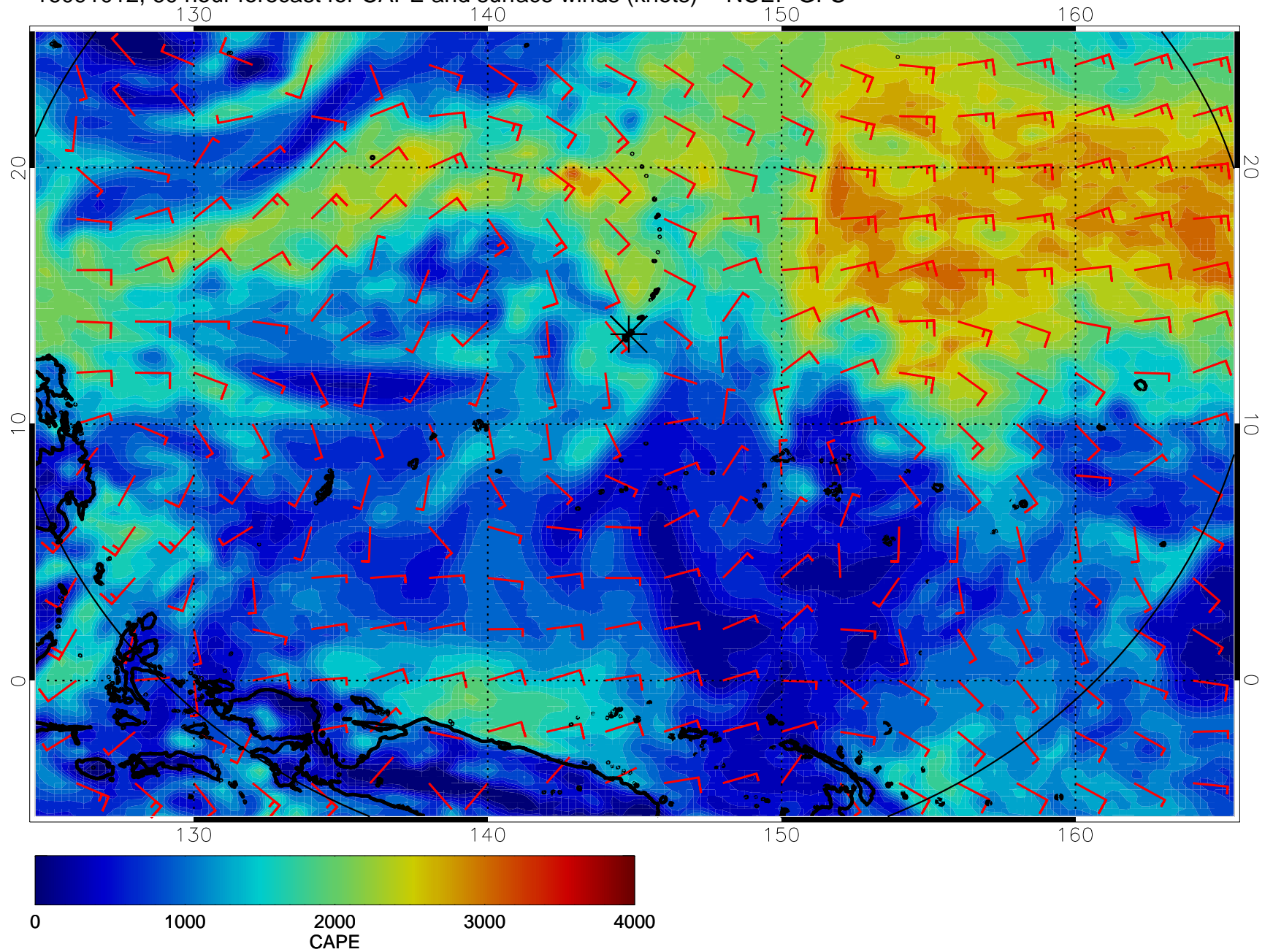




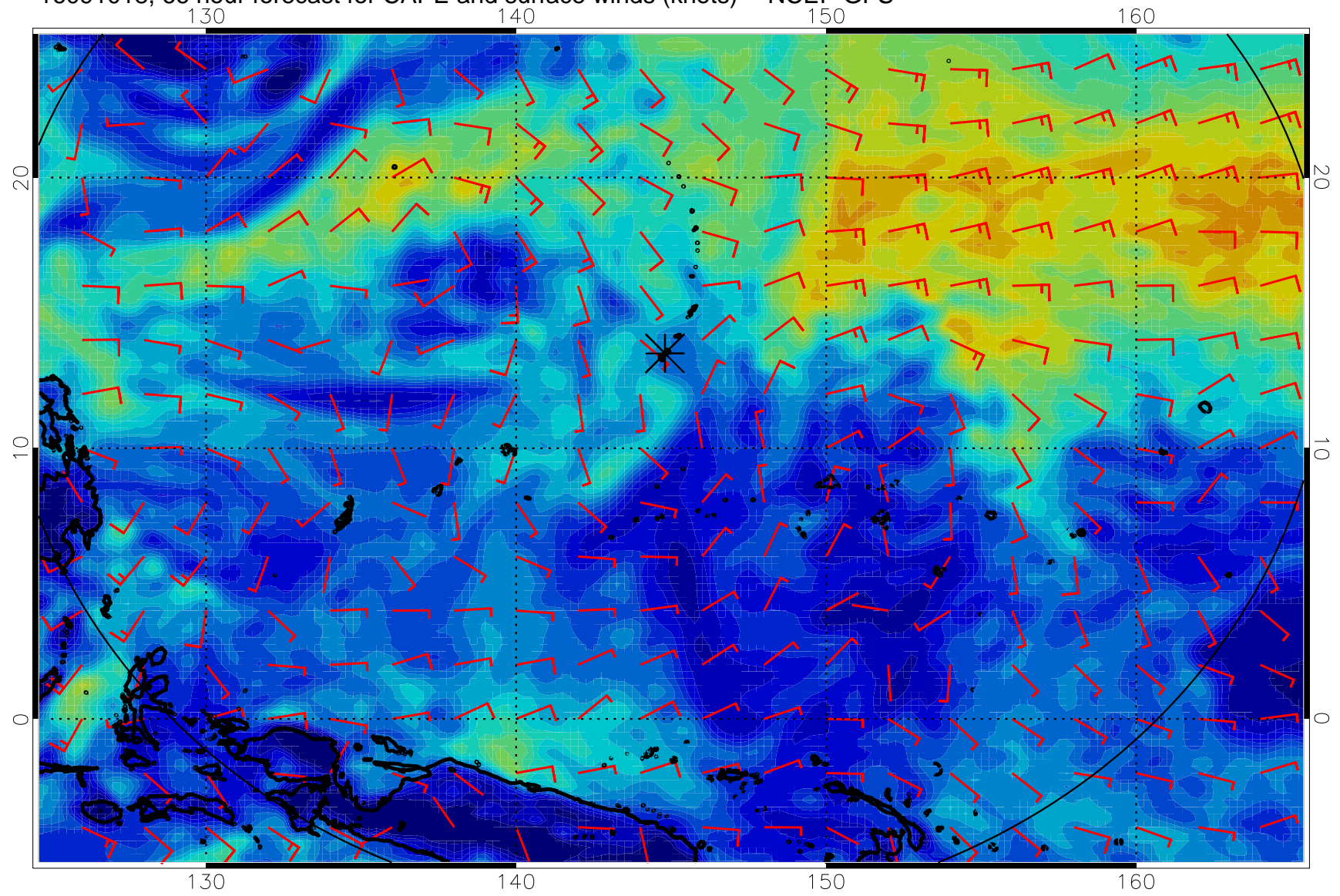
16091006, 54 hour forecast for CAPE and surface winds (knots) -- NCEP GFS



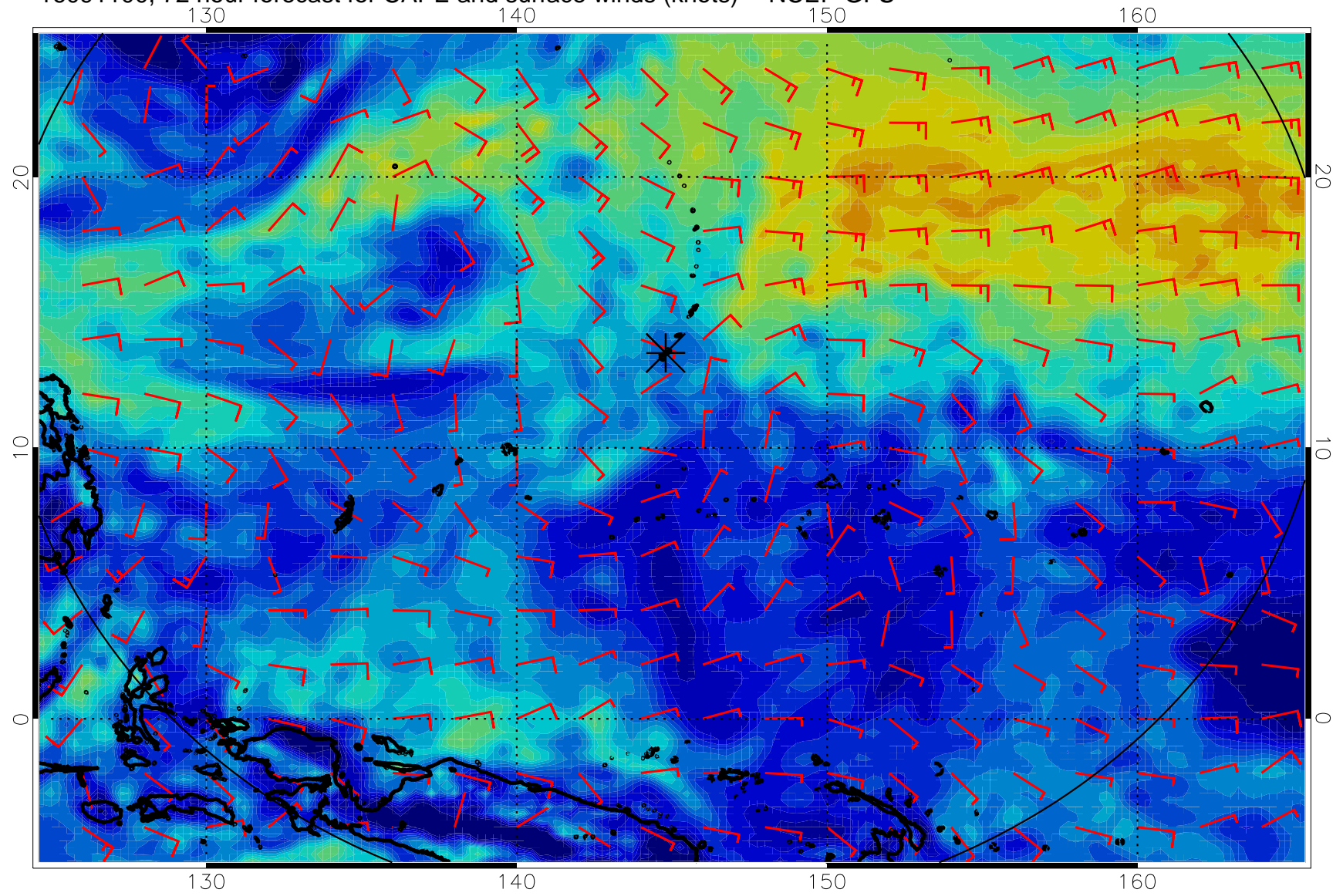
16091012, 60 hour forecast for CAPE and surface winds (knots) -- NCEP GFS



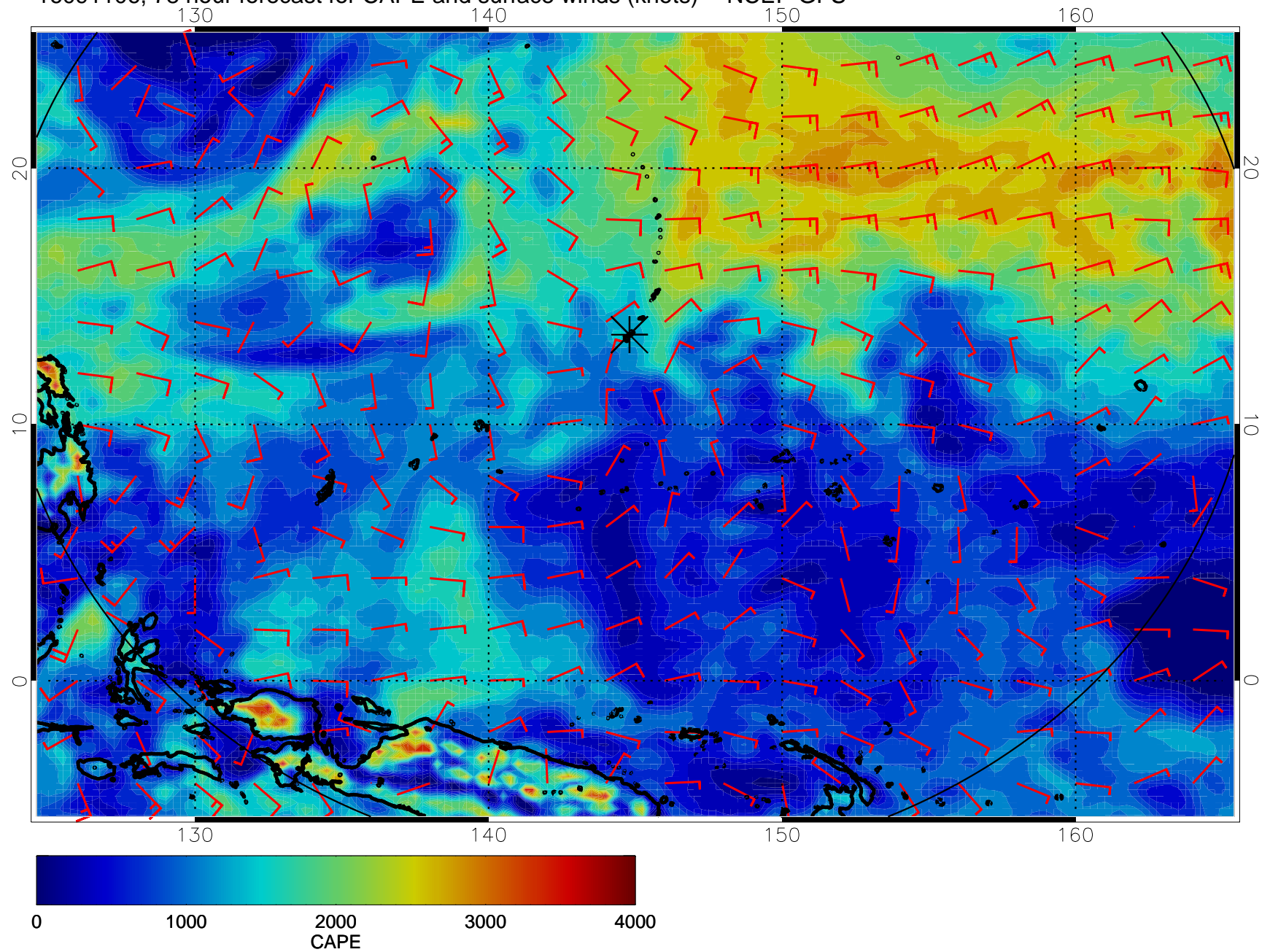
16091018, 66 hour forecast for CAPE and surface winds (knots) -- NCEP GFS



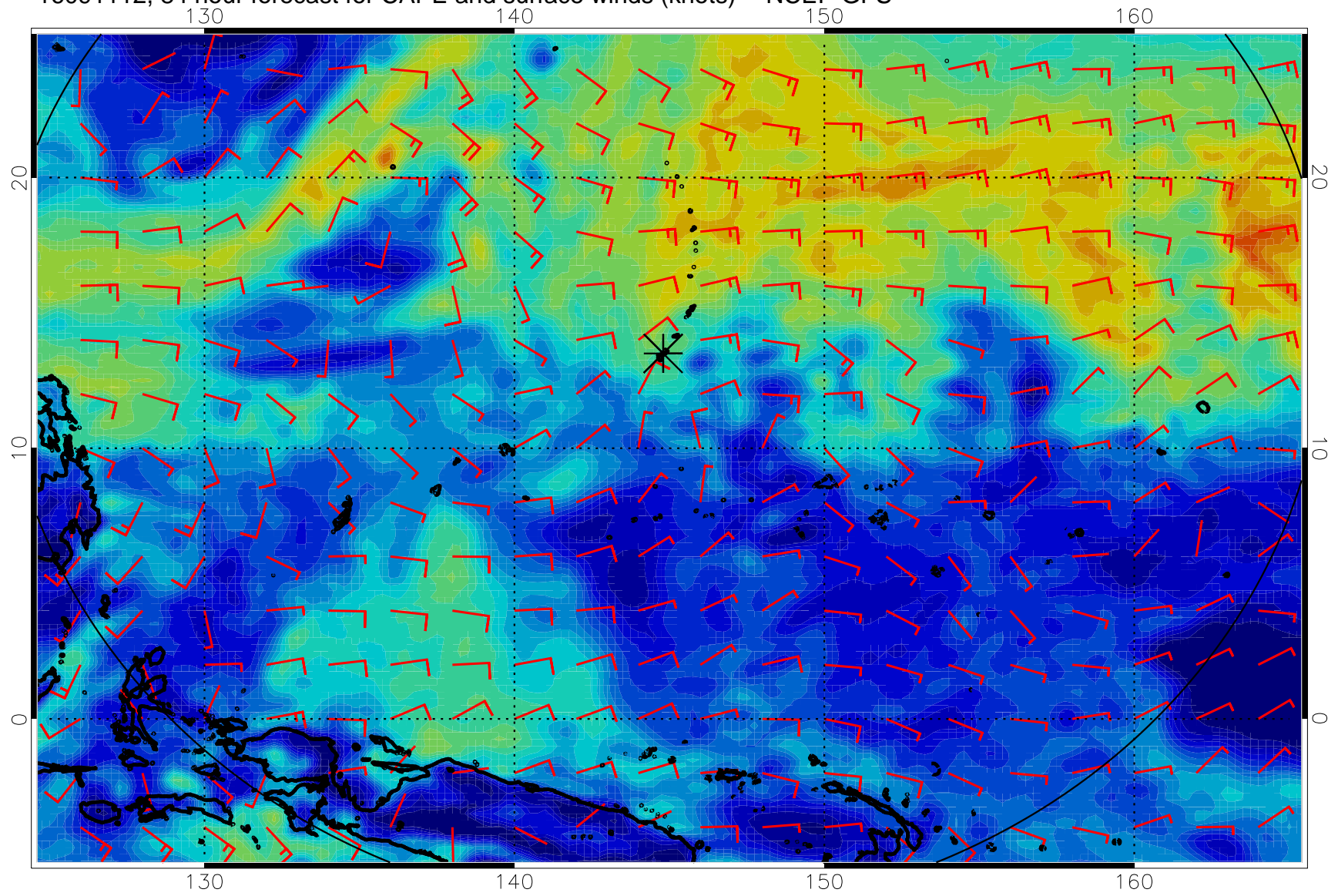
16091100, 72 hour forecast for CAPE and surface winds (knots) -- NCEP GFS



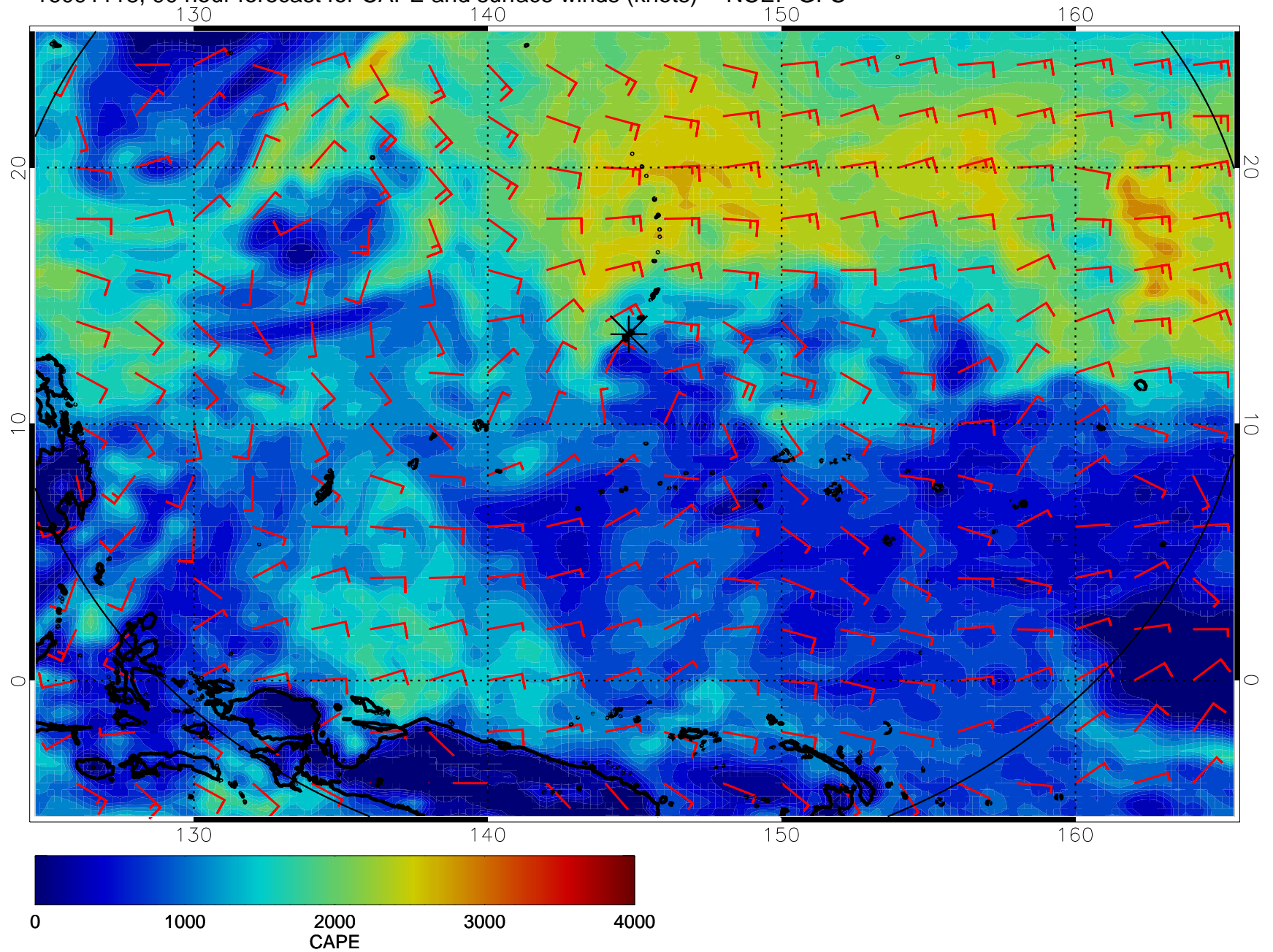
16091106, 78 hour forecast for CAPE and surface winds (knots) -- NCEP GFS



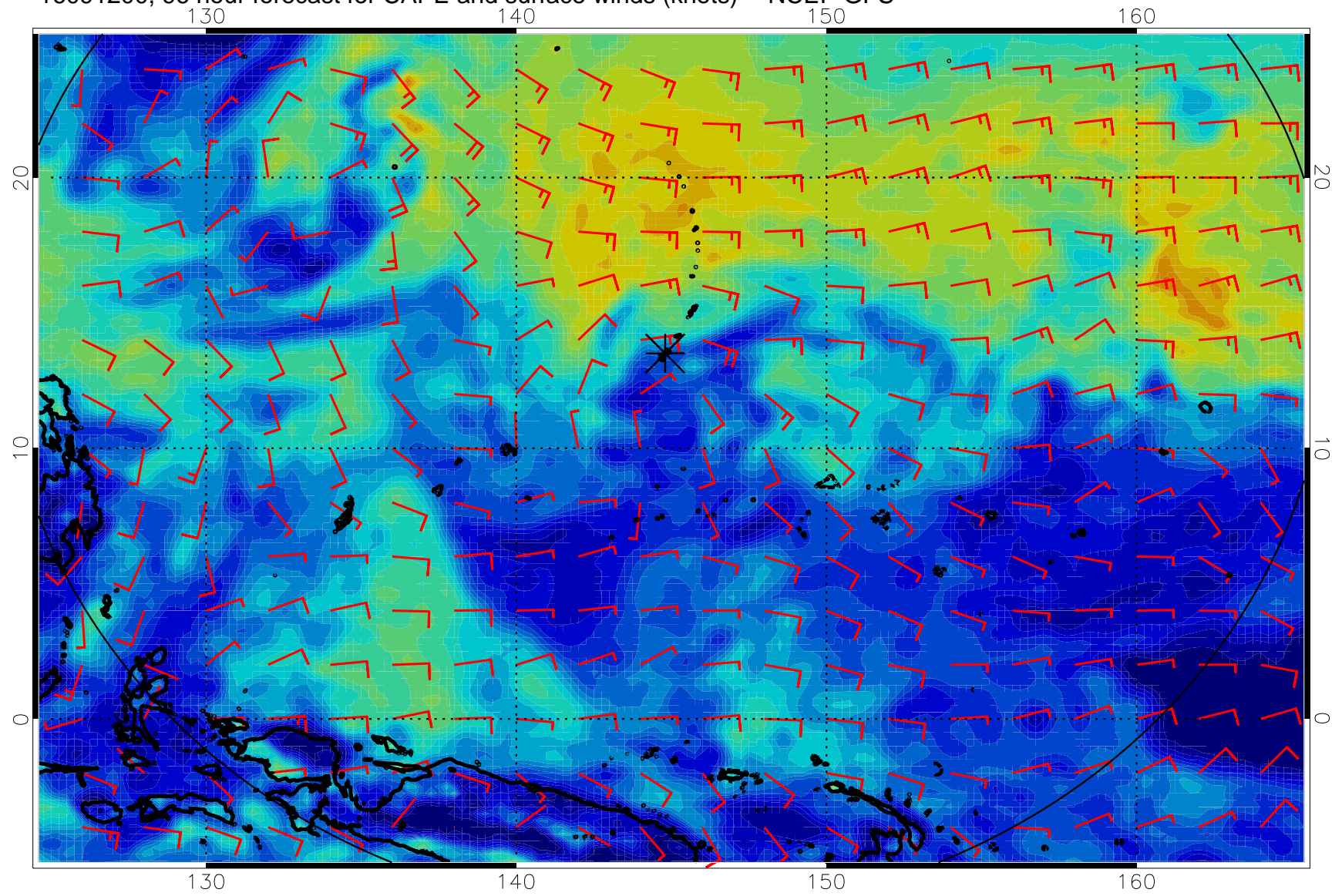
16091112, 84 hour forecast for CAPE and surface winds (knots) -- NCEP GFS



16091118, 90 hour forecast for CAPE and surface winds (knots) -- NCEP GFS

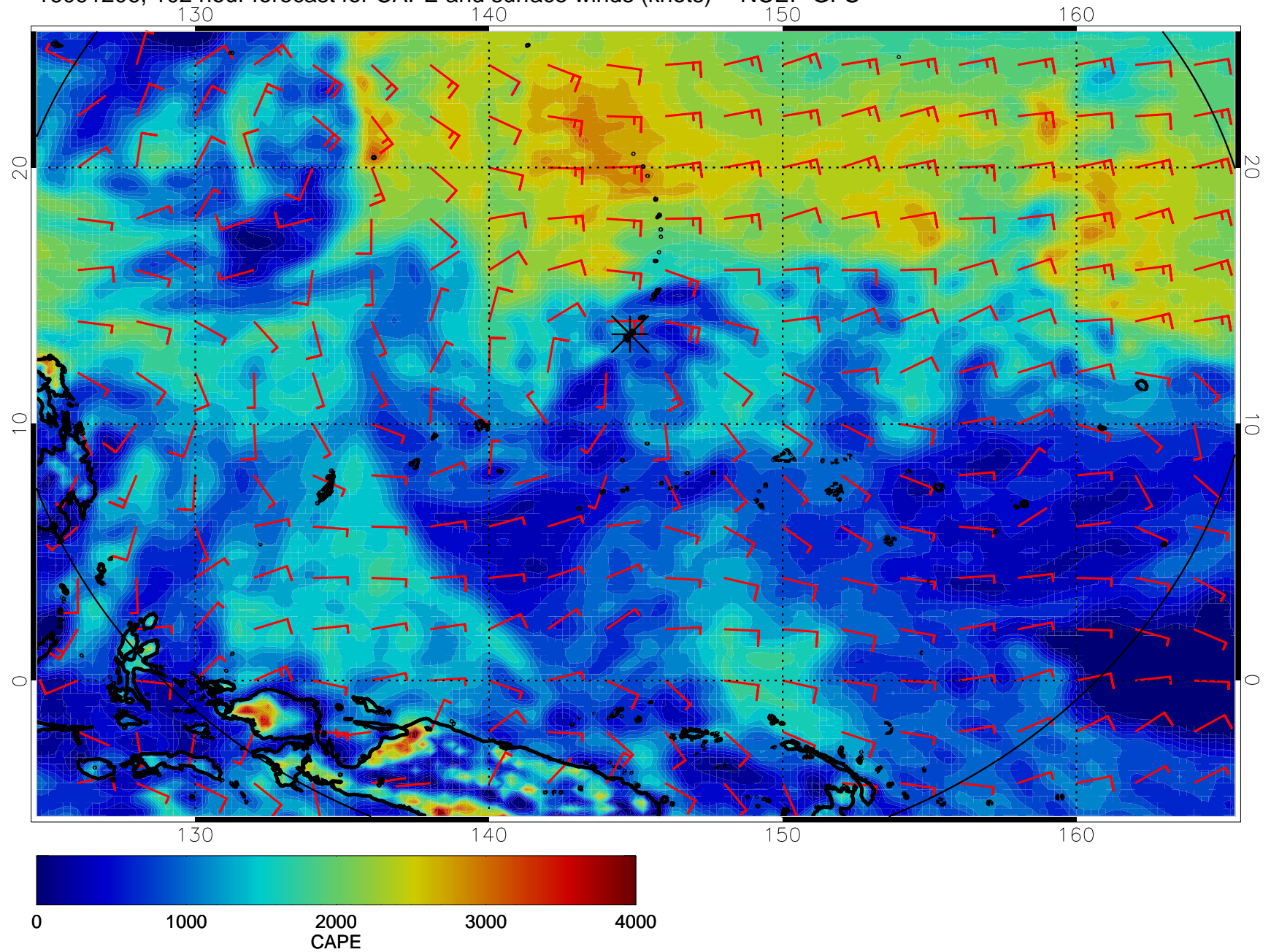


16091200, 96 hour forecast for CAPE and surface winds (knots) -- NCEP GFS

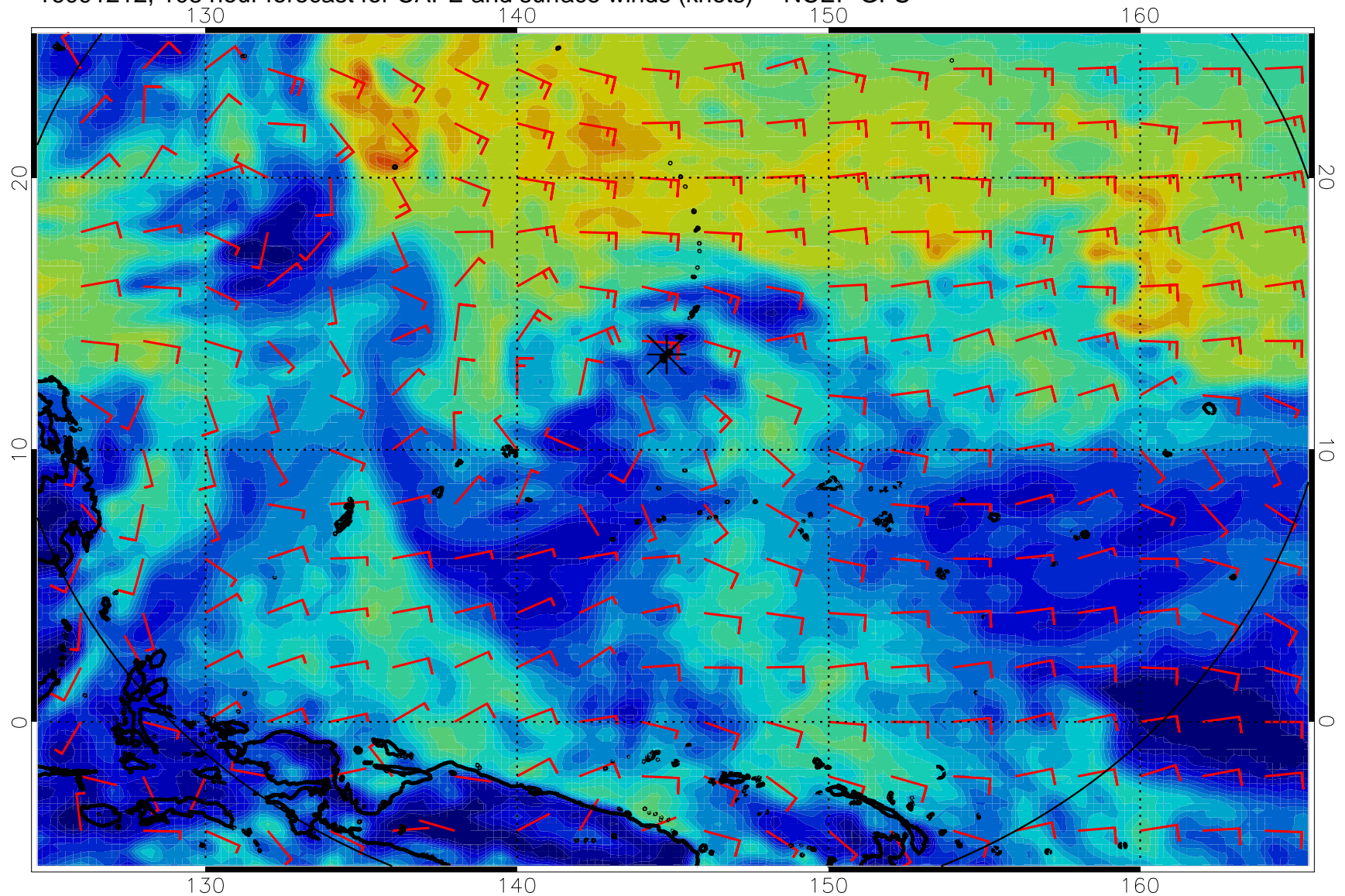




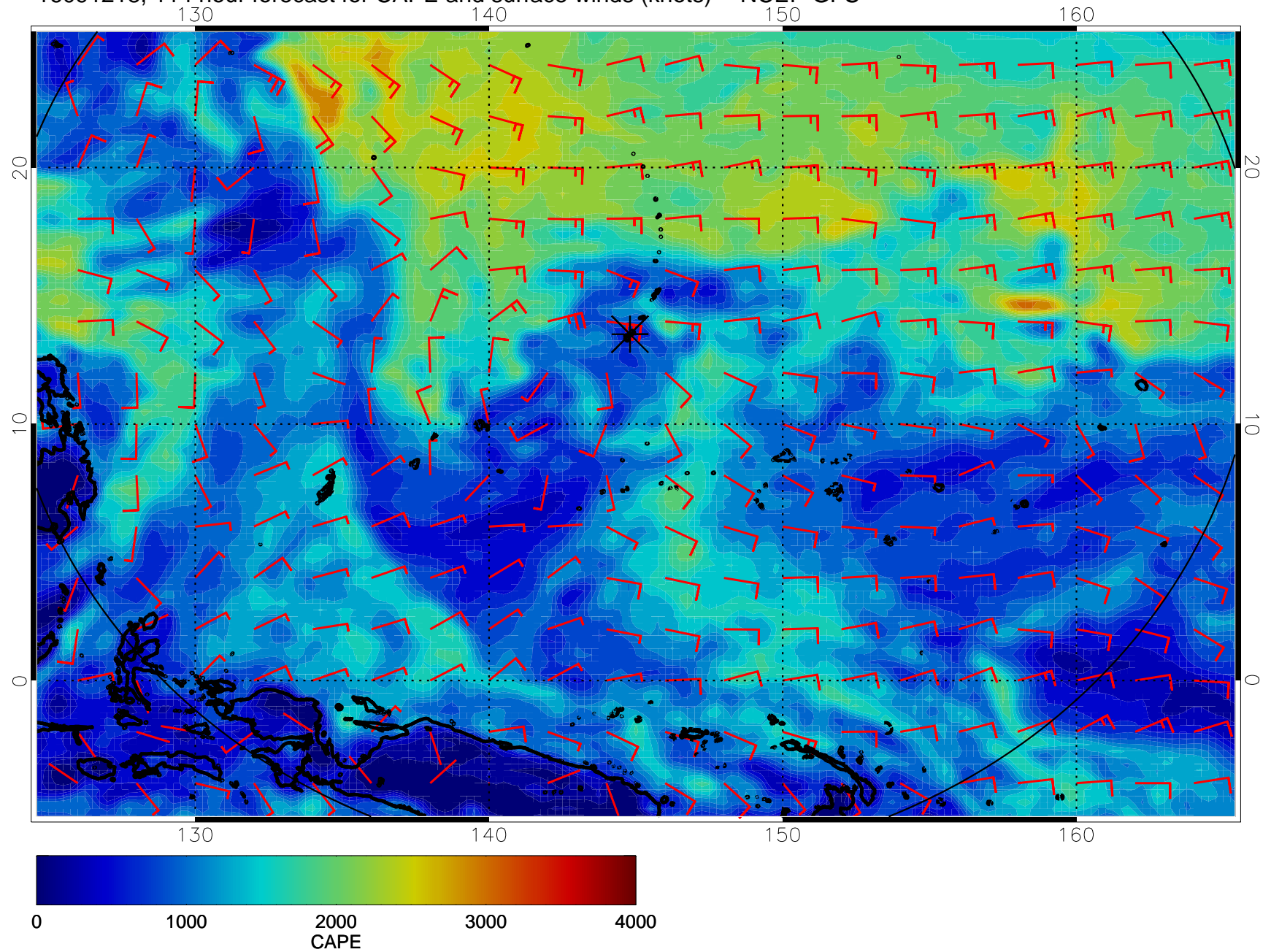
16091206, 102 hour forecast for CAPE and surface winds (knots) -- NCEP GFS



16091212, 108 hour forecast for CAPE and surface winds (knots) -- NCEP GFS



16091218, 114 hour forecast for CAPE and surface winds (knots) -- NCEP GFS



16091300, 120 hour forecast for CAPE and surface winds (knots) -- NCEP GFS

