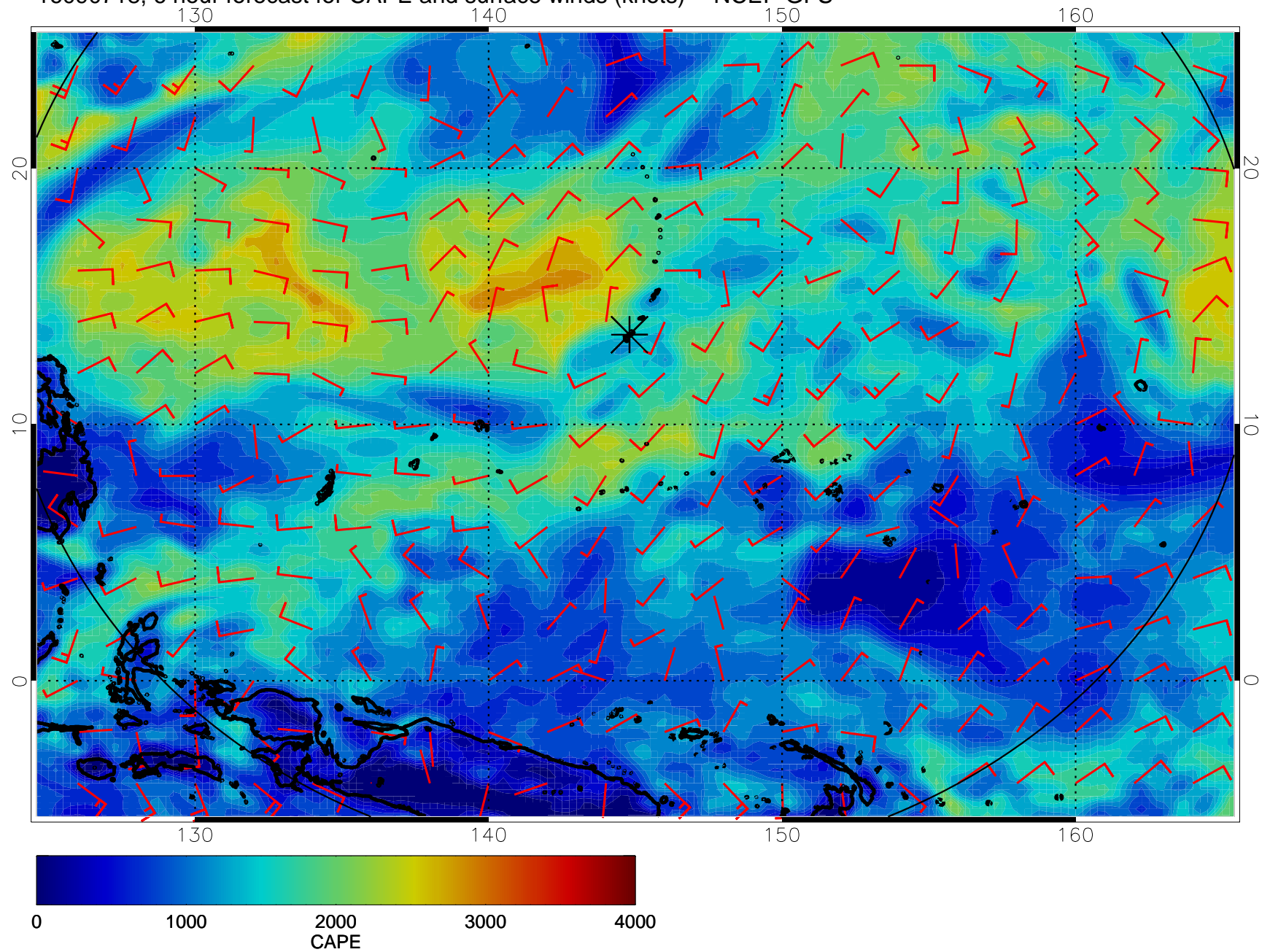
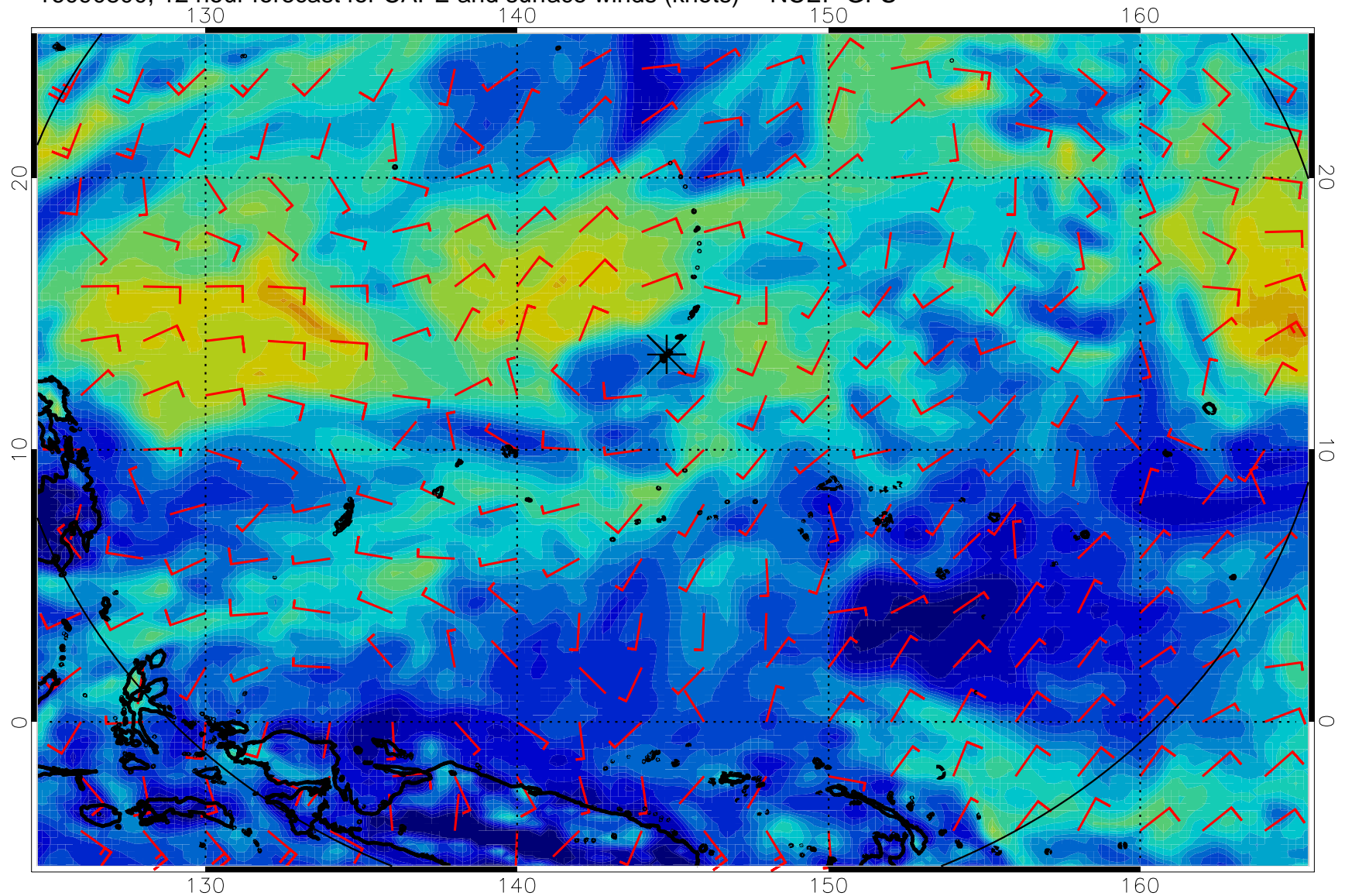


16090718, 6 hour forecast for CAPE and surface winds (knots) -- NCEP GFS

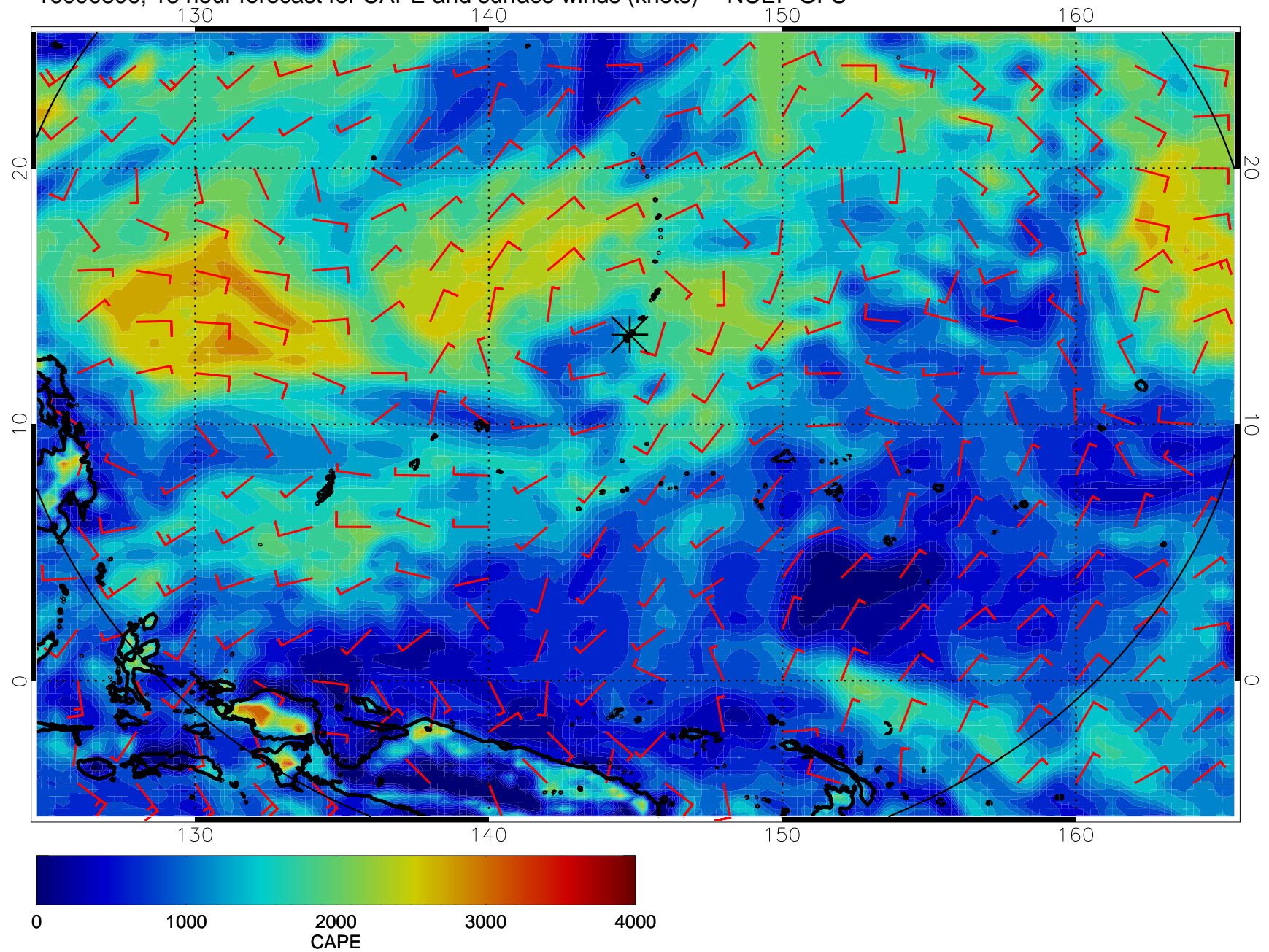


16090800, 12 hour forecast for CAPE and surface winds (knots) -- NCEP GFS

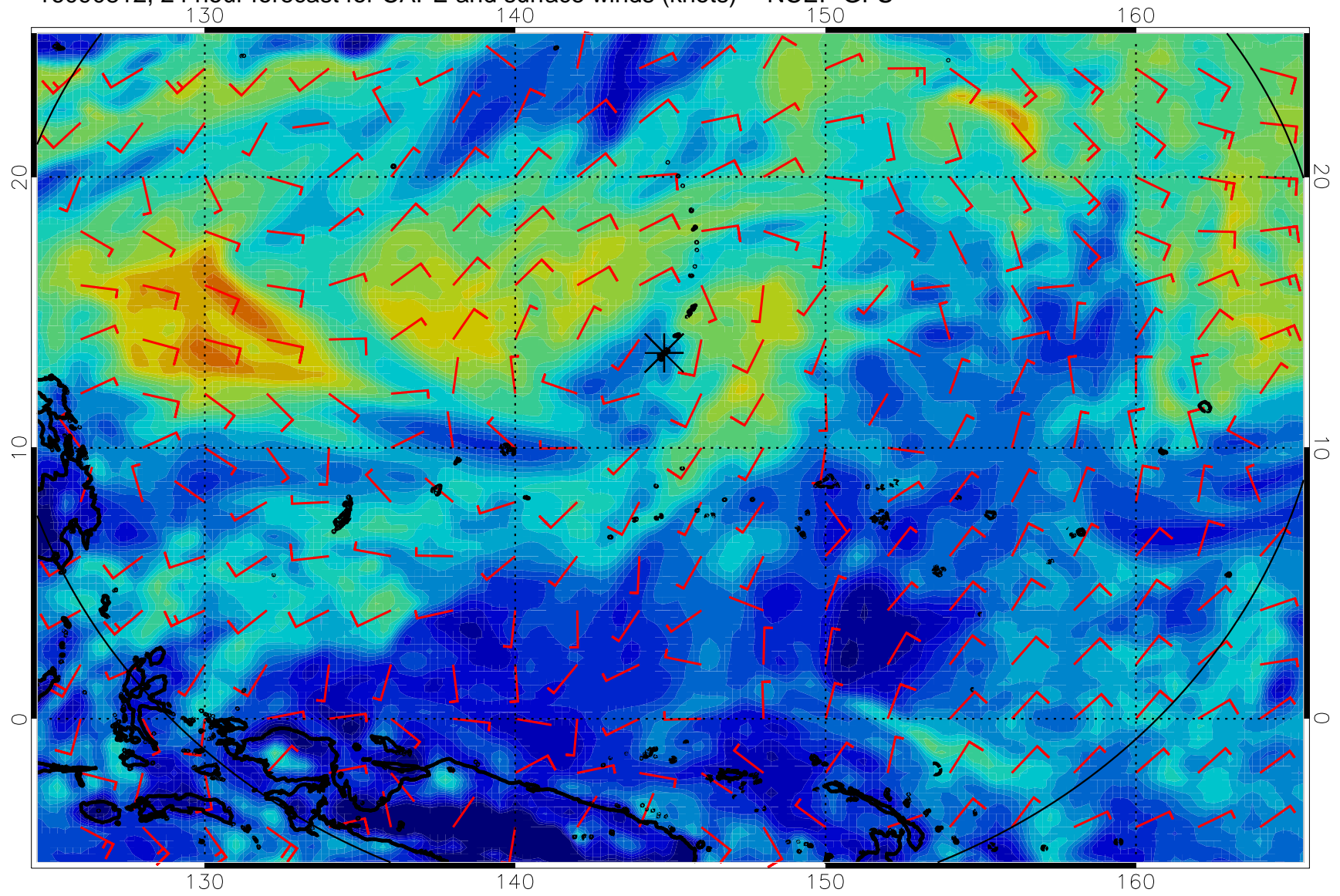




16090806, 18 hour forecast for CAPE and surface winds (knots) -- NCEP GFS

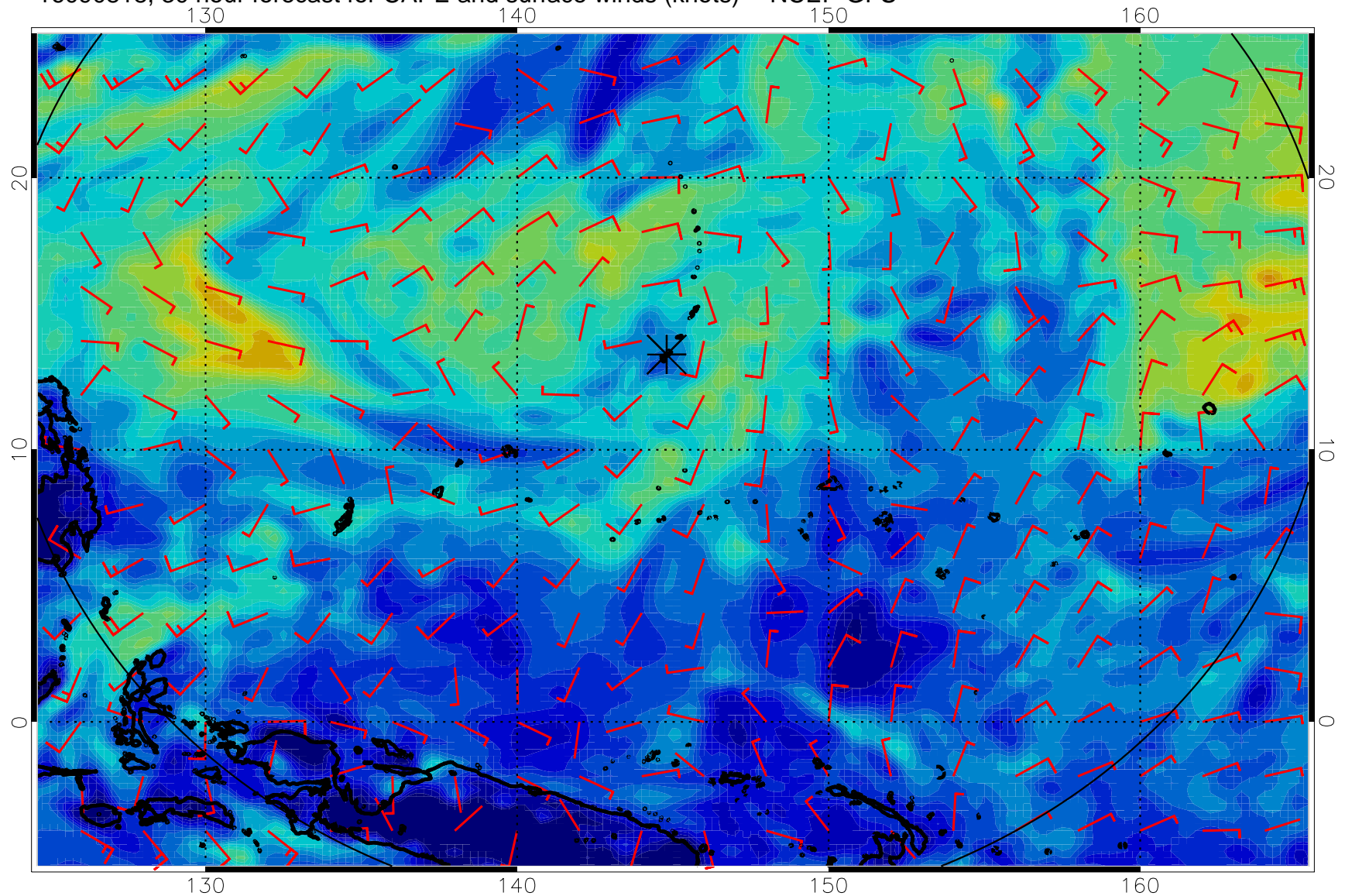


16090812, 24 hour forecast for CAPE and surface winds (knots) -- NCEP GFS

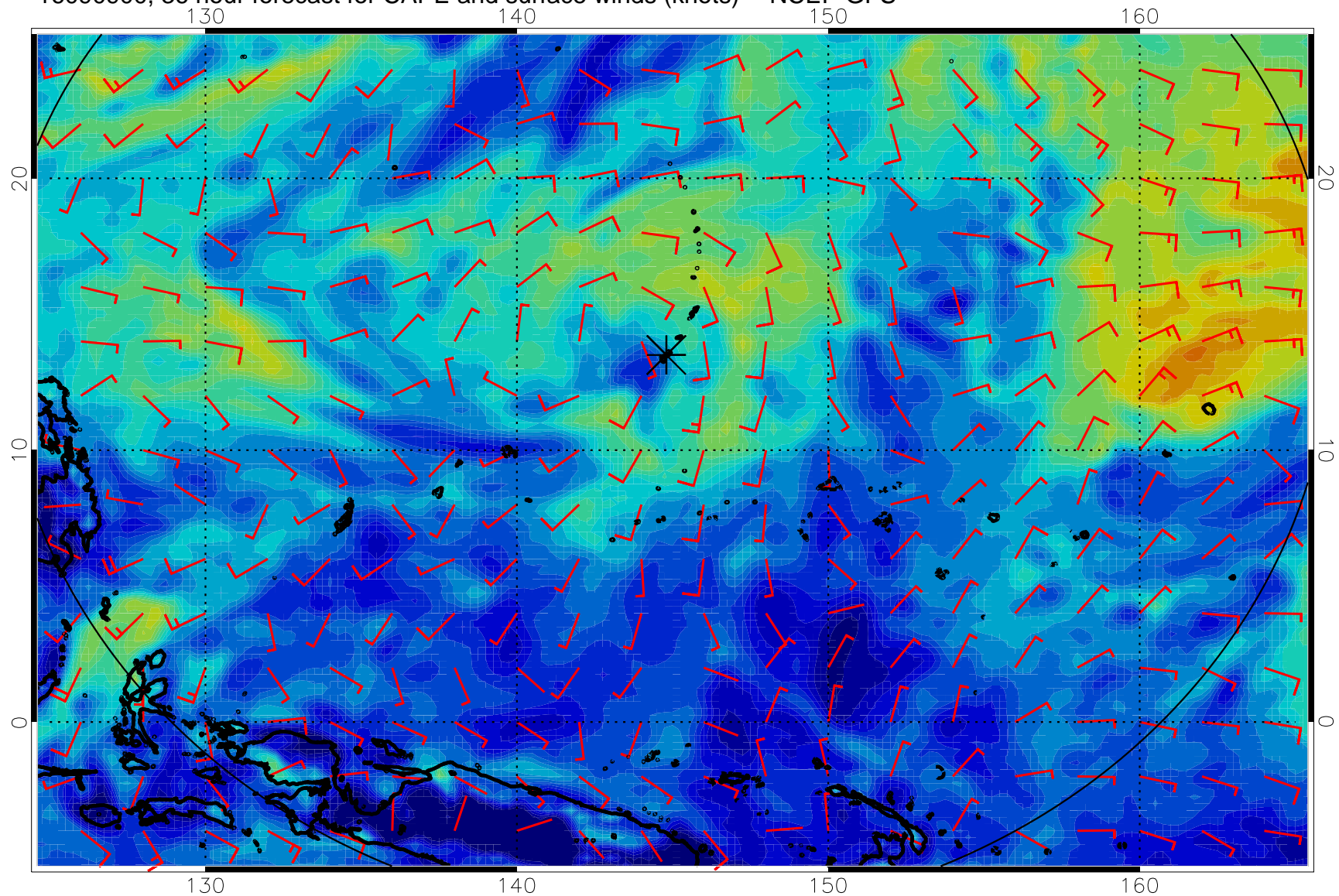




16090818, 30 hour forecast for CAPE and surface winds (knots) -- NCEP GFS

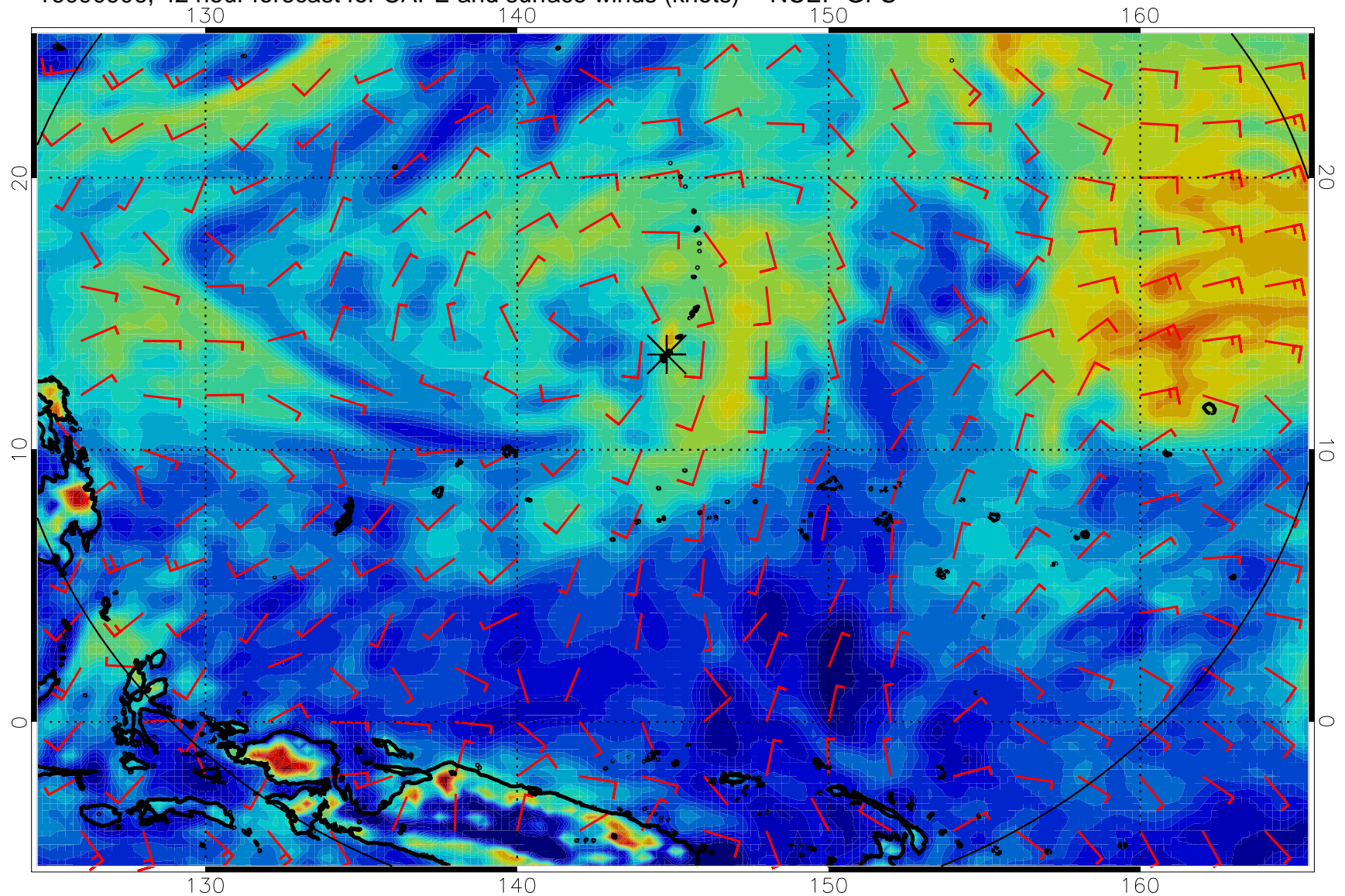


16090900, 36 hour forecast for CAPE and surface winds (knots) -- NCEP GFS

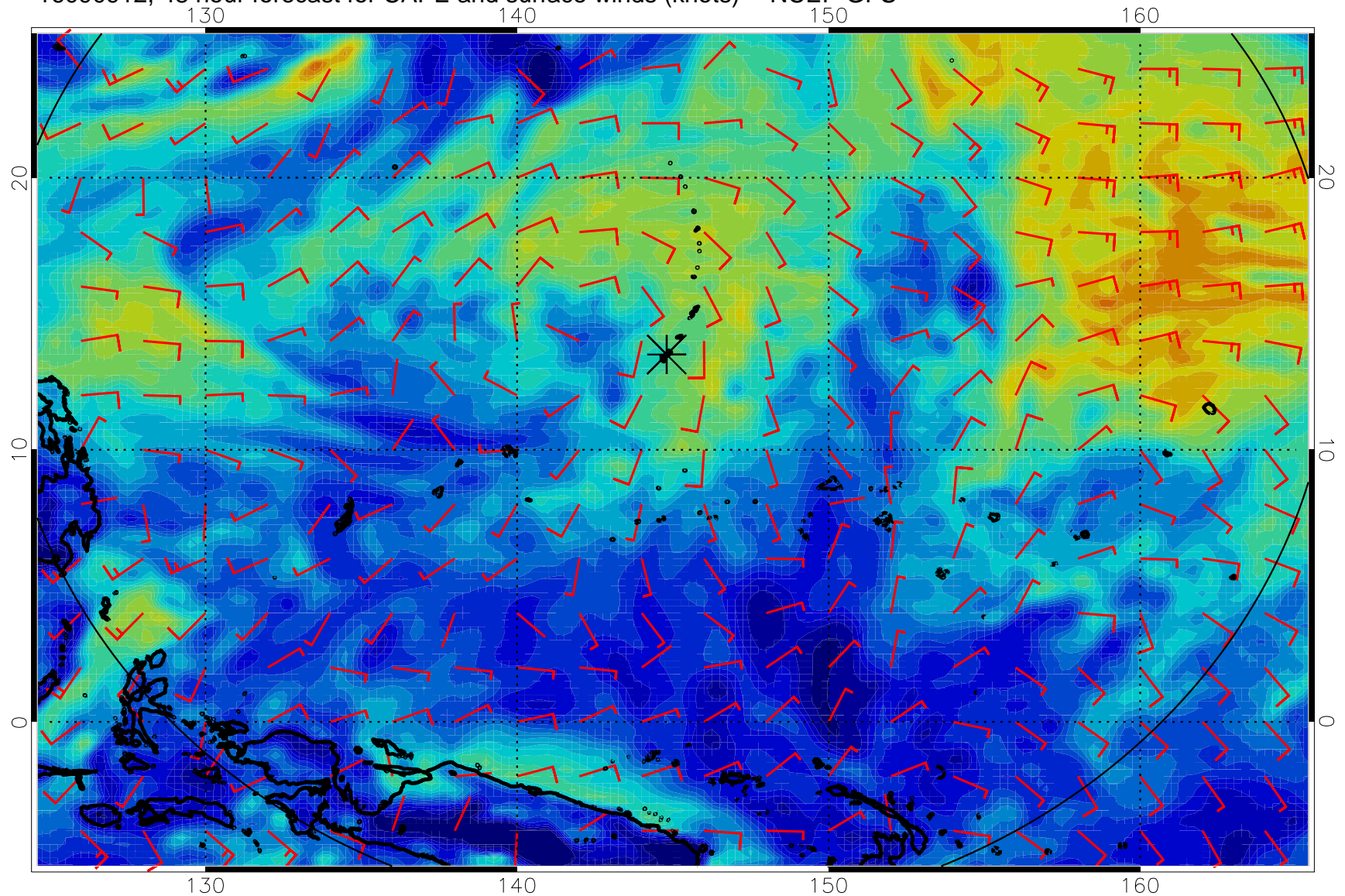




16090906, 42 hour forecast for CAPE and surface winds (knots) -- NCEP GFS

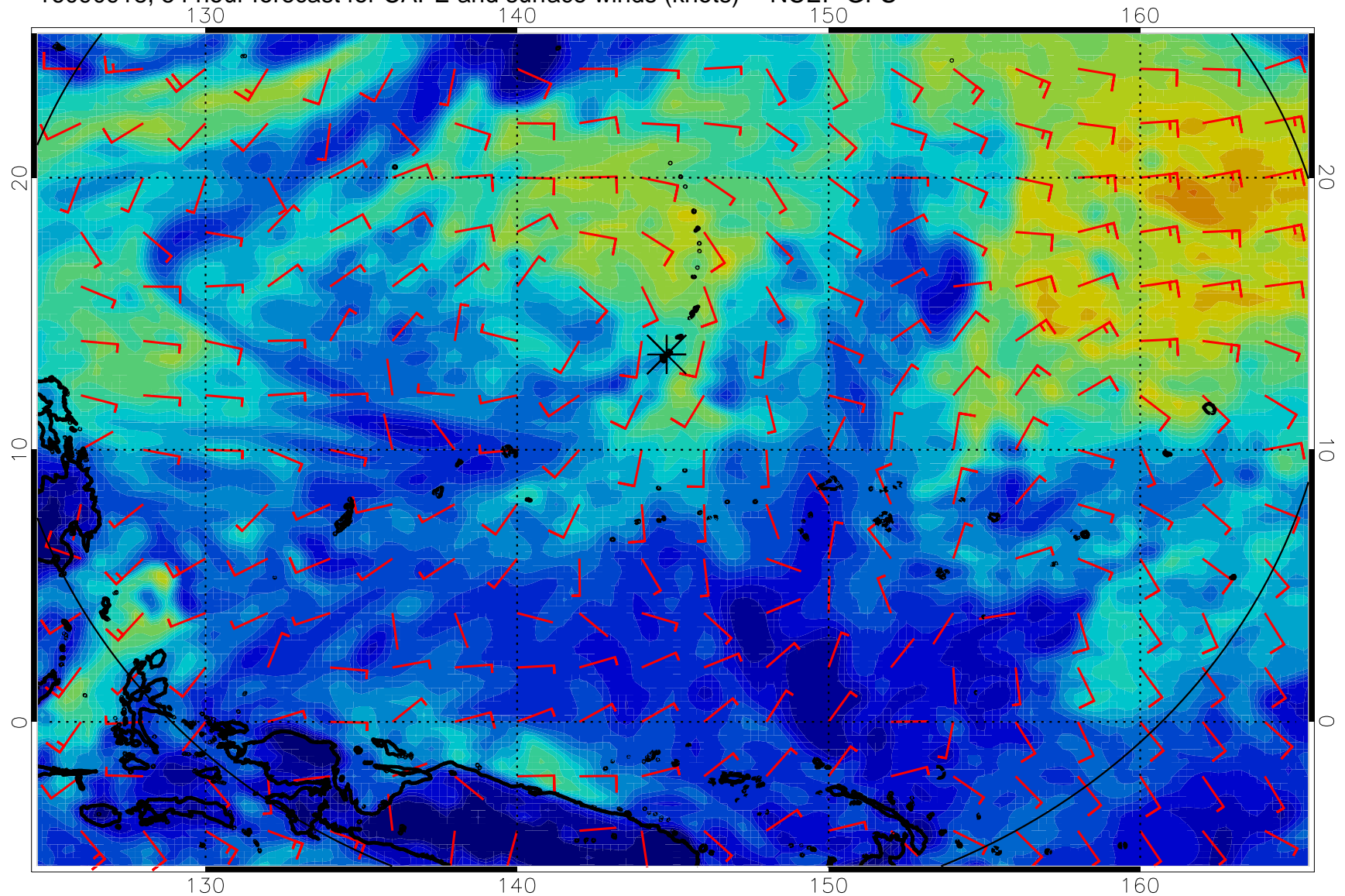


16090912, 48 hour forecast for CAPE and surface winds (knots) -- NCEP GFS

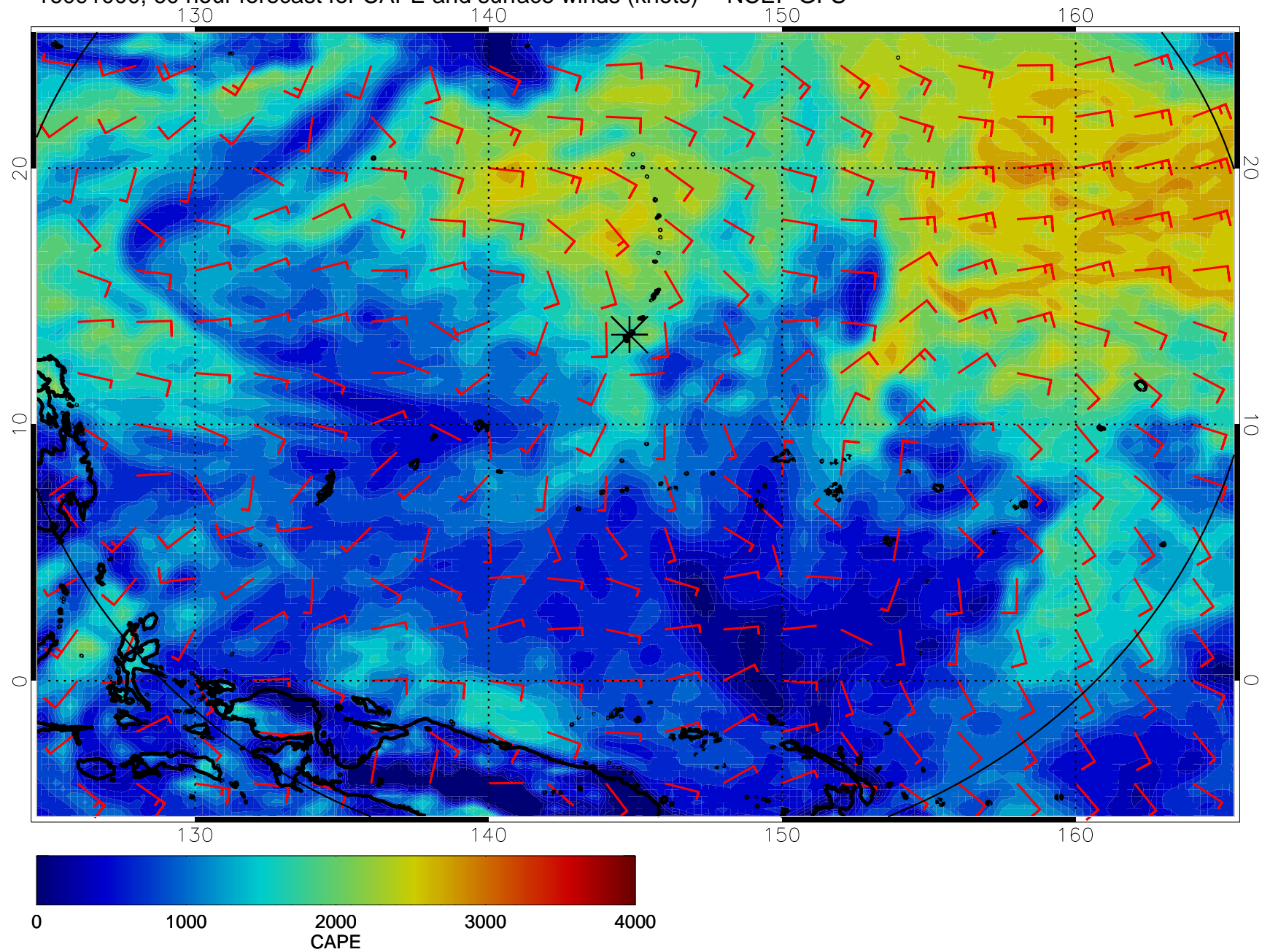




16090918, 54 hour forecast for CAPE and surface winds (knots) -- NCEP GFS

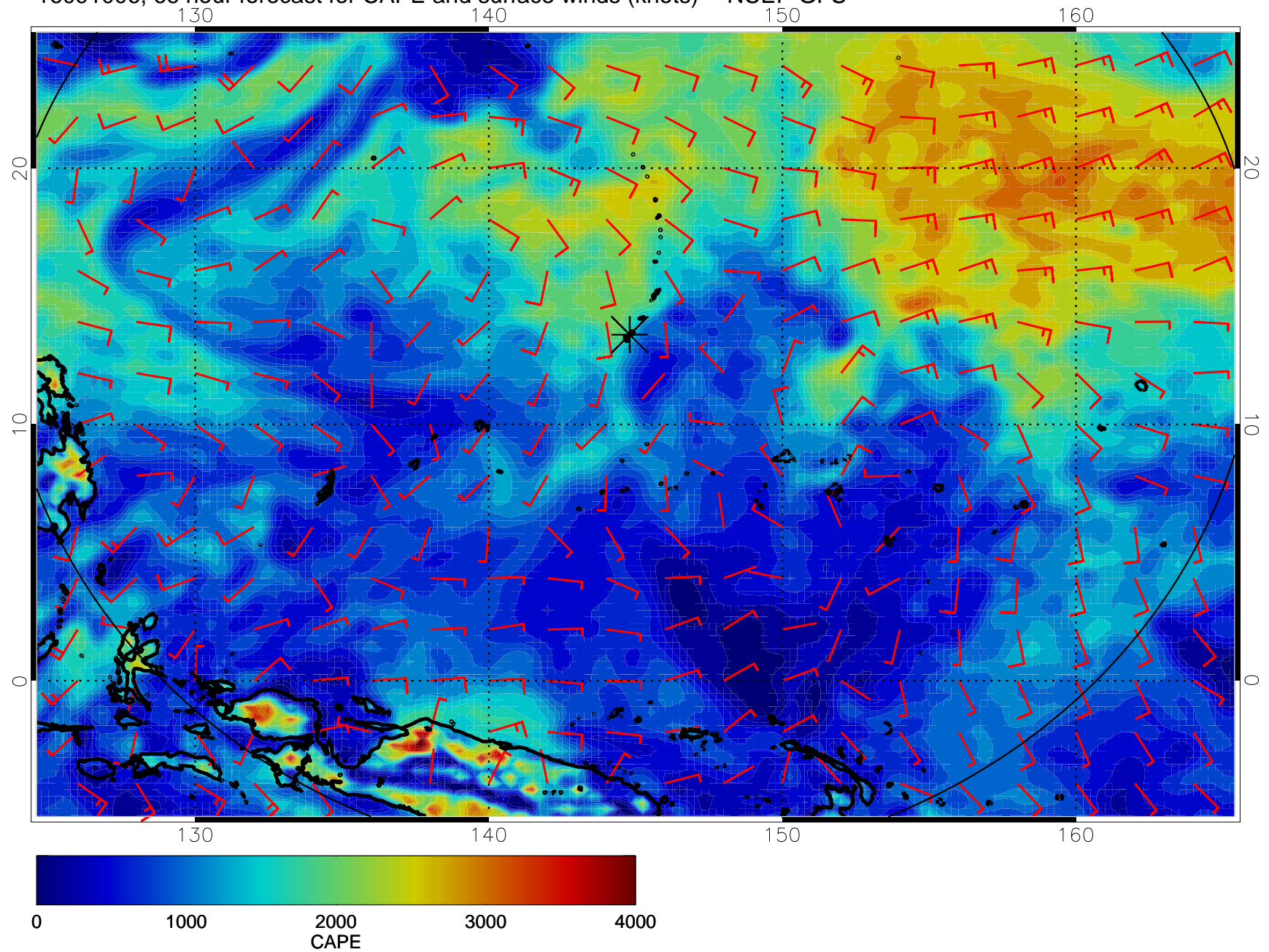


16091000, 60 hour forecast for CAPE and surface winds (knots) -- NCEP GFS

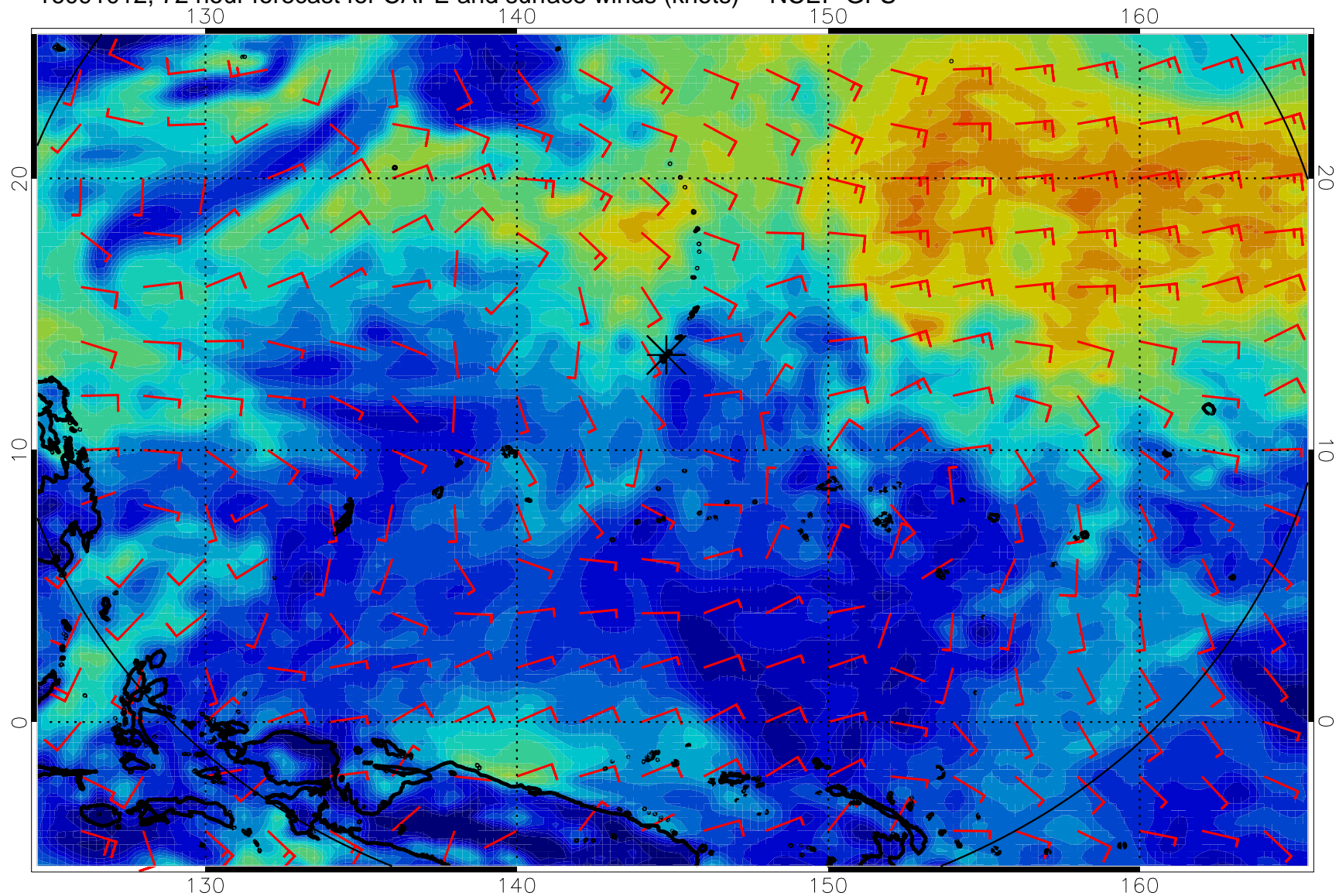




16091006, 66 hour forecast for CAPE and surface winds (knots) -- NCEP GFS

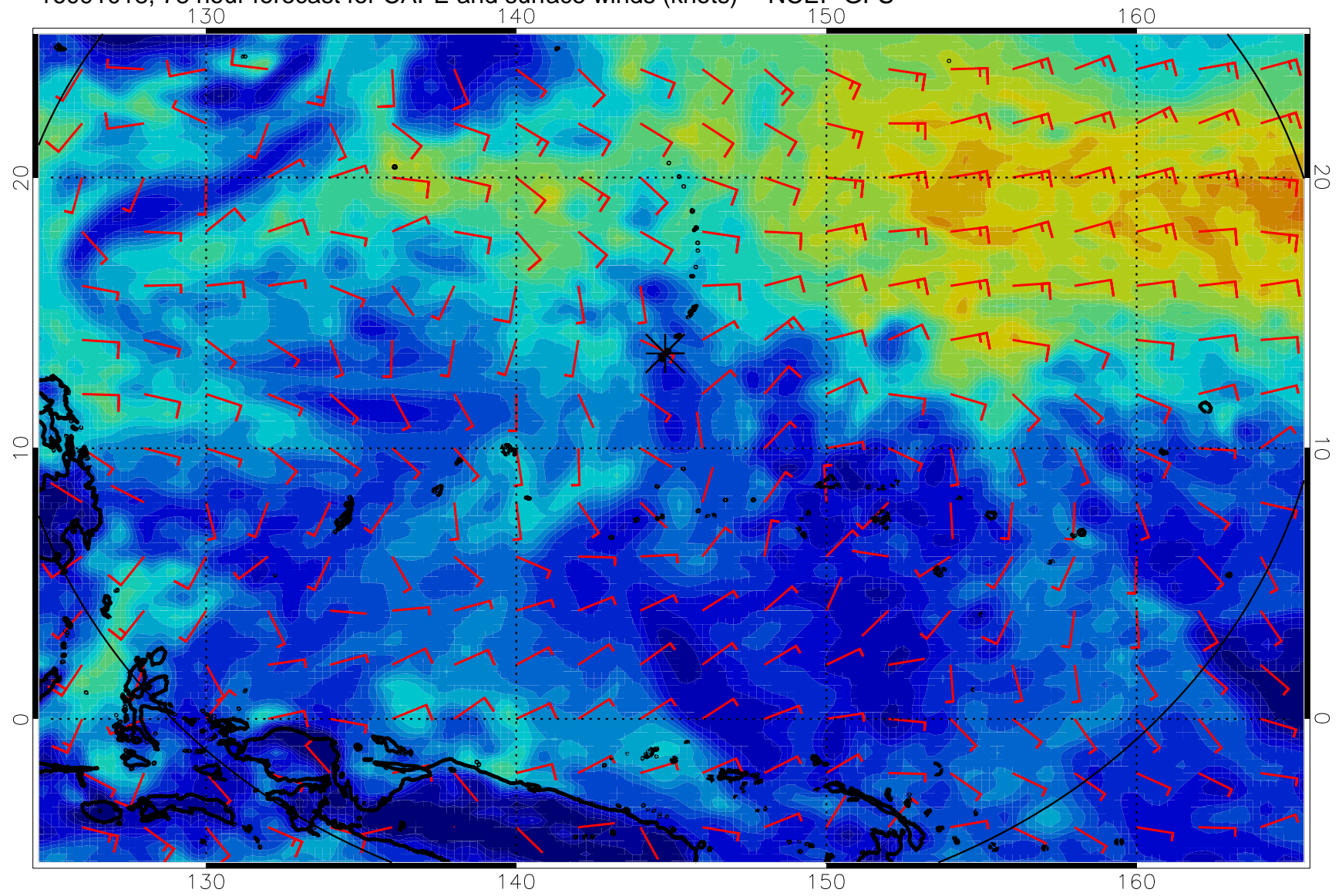


16091012, 72 hour forecast for CAPE and surface winds (knots) -- NCEP GFS

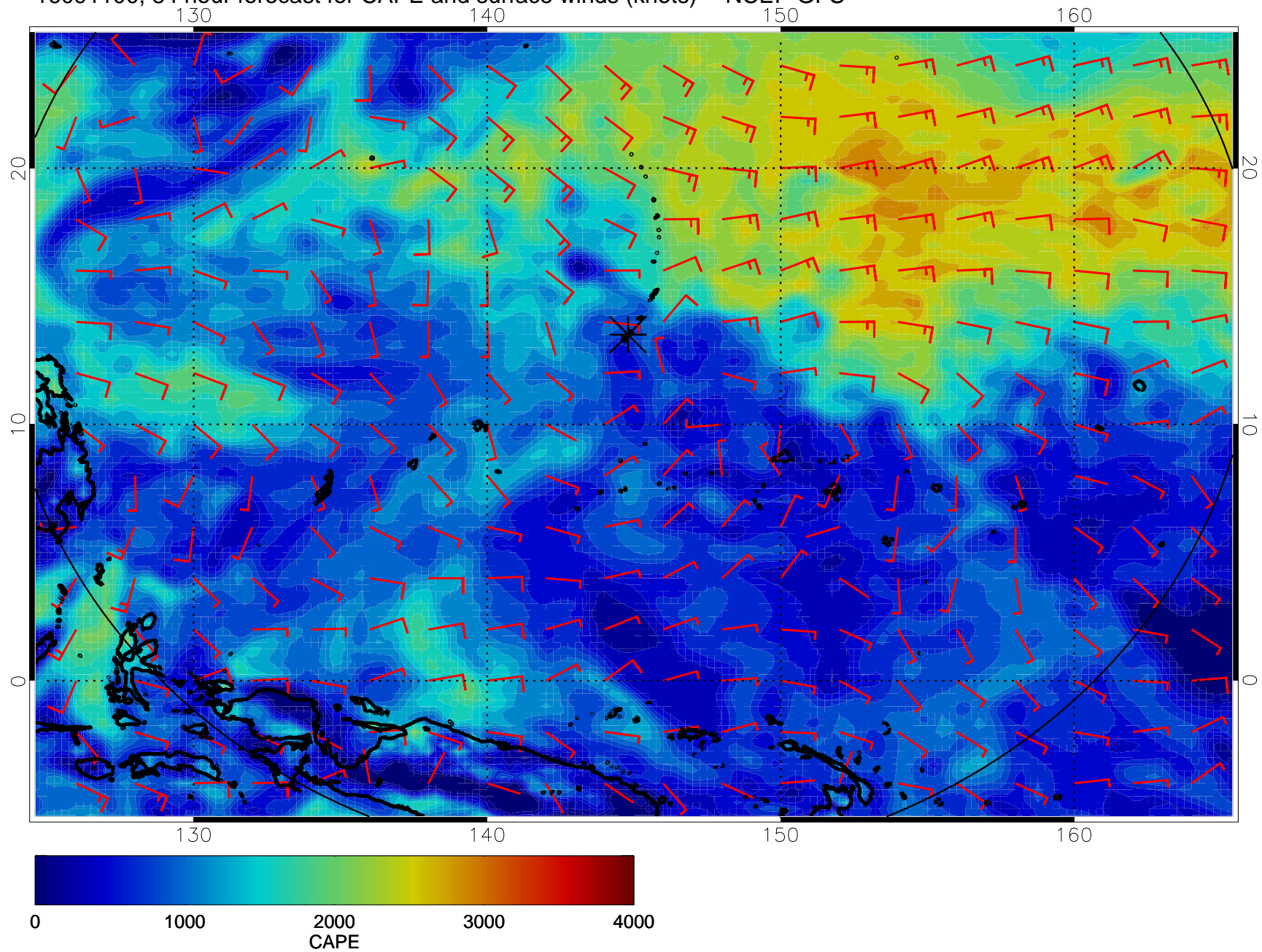




16091018, 78 hour forecast for CAPE and surface winds (knots) -- NCEP GFS

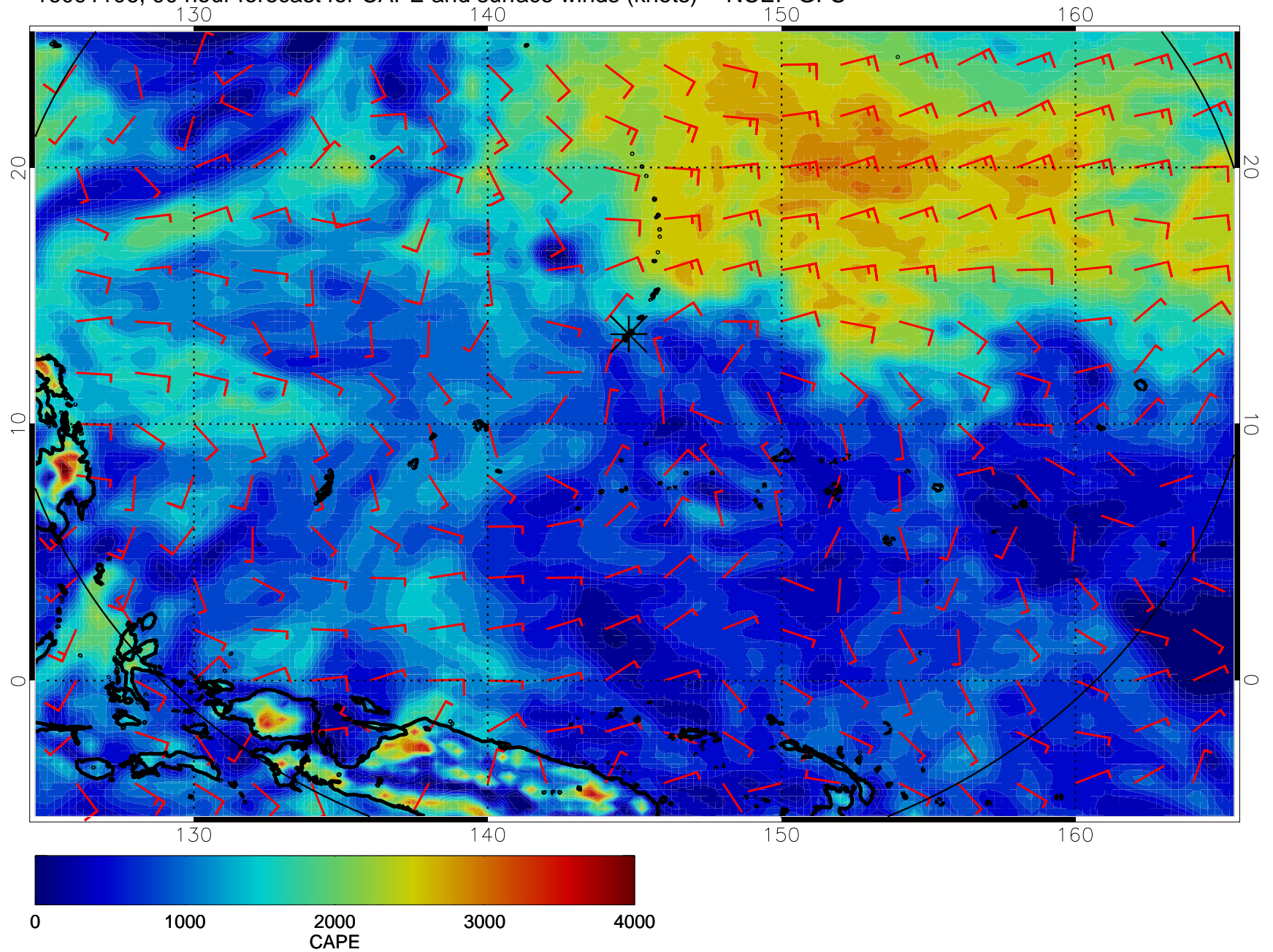


16091100, 84 hour forecast for CAPE and surface winds (knots) -- NCEP GFS

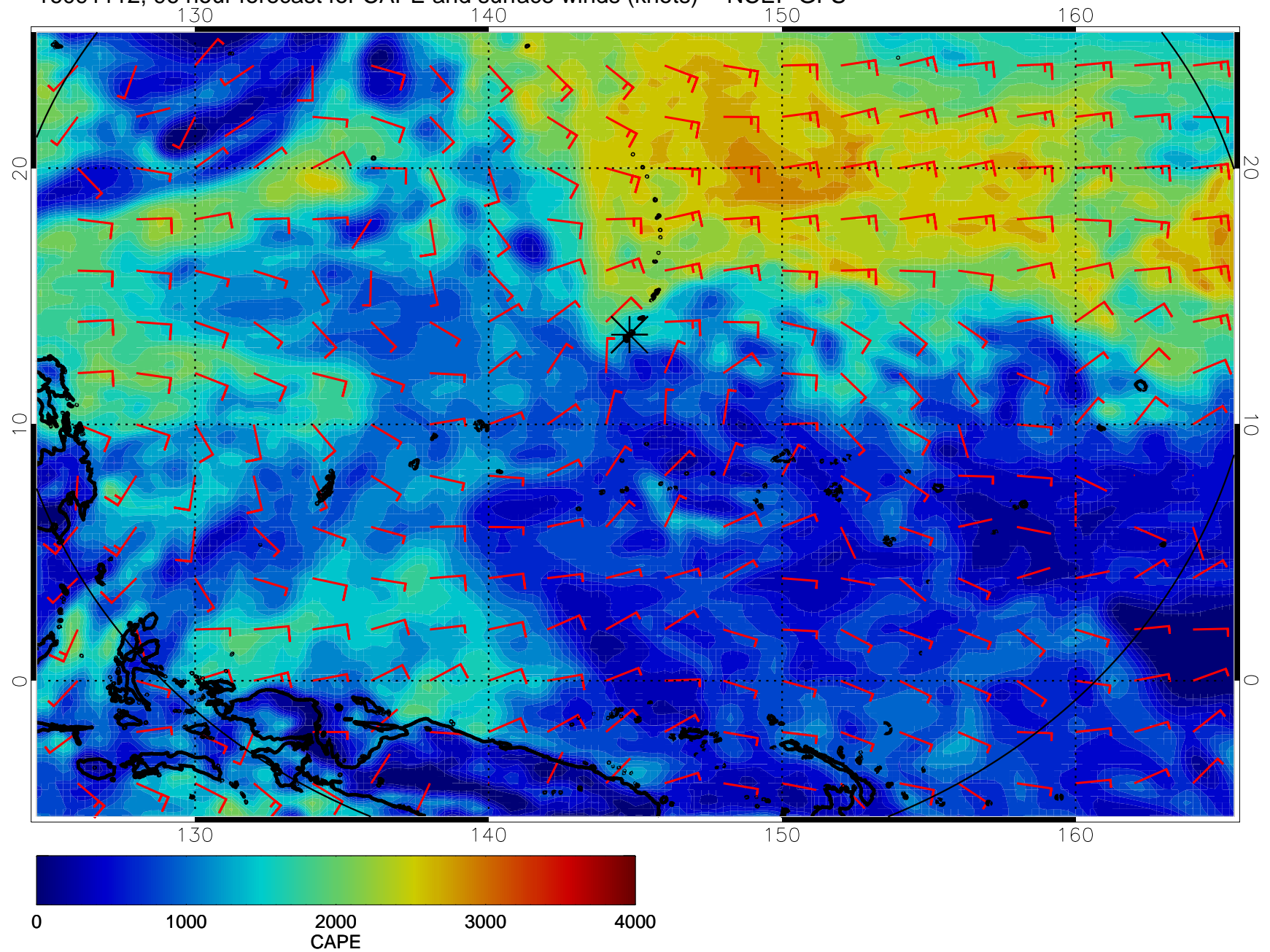




16091106, 90 hour forecast for CAPE and surface winds (knots) -- NCEP GFS

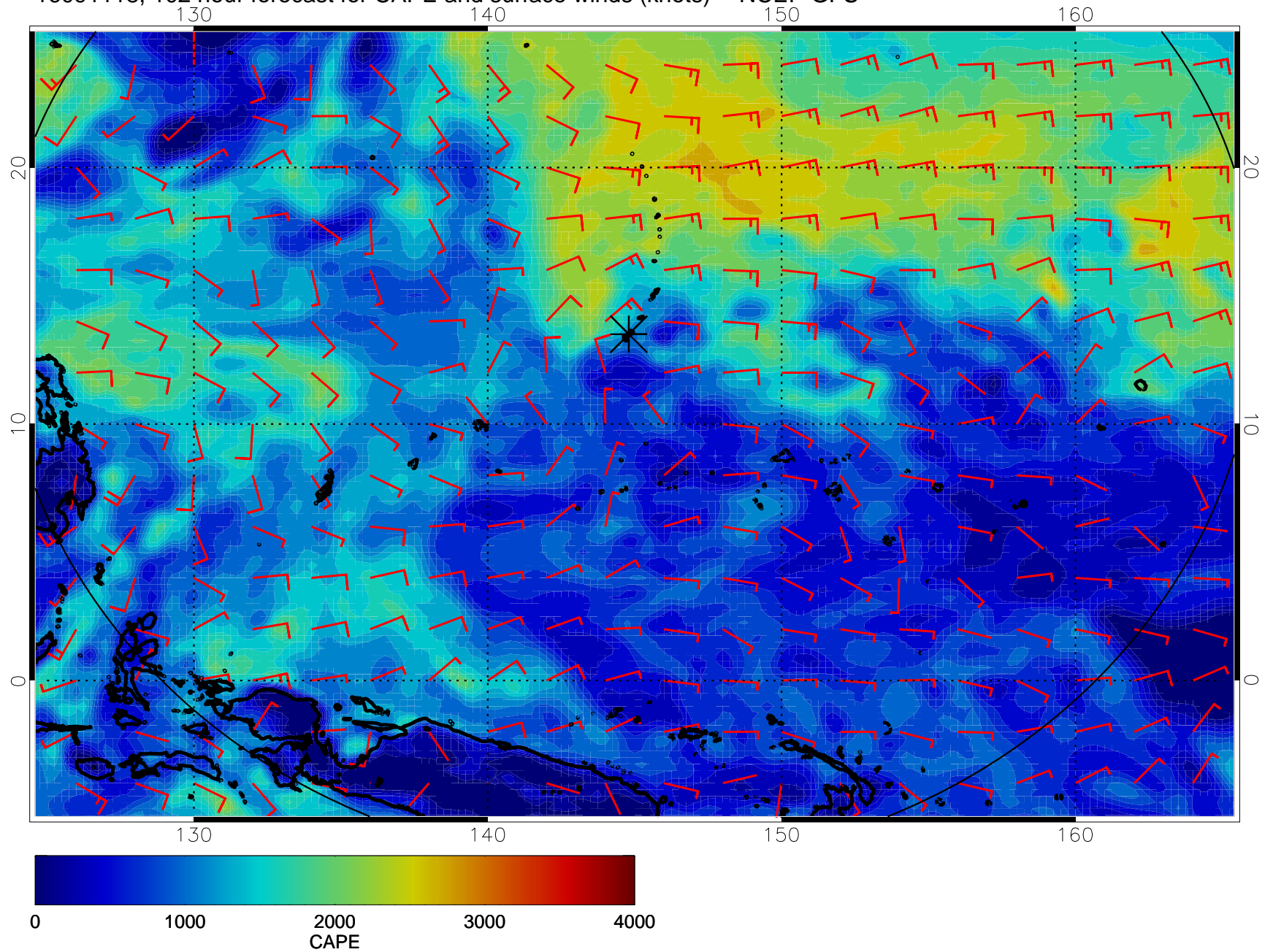


16091112, 96 hour forecast for CAPE and surface winds (knots) -- NCEP GFS

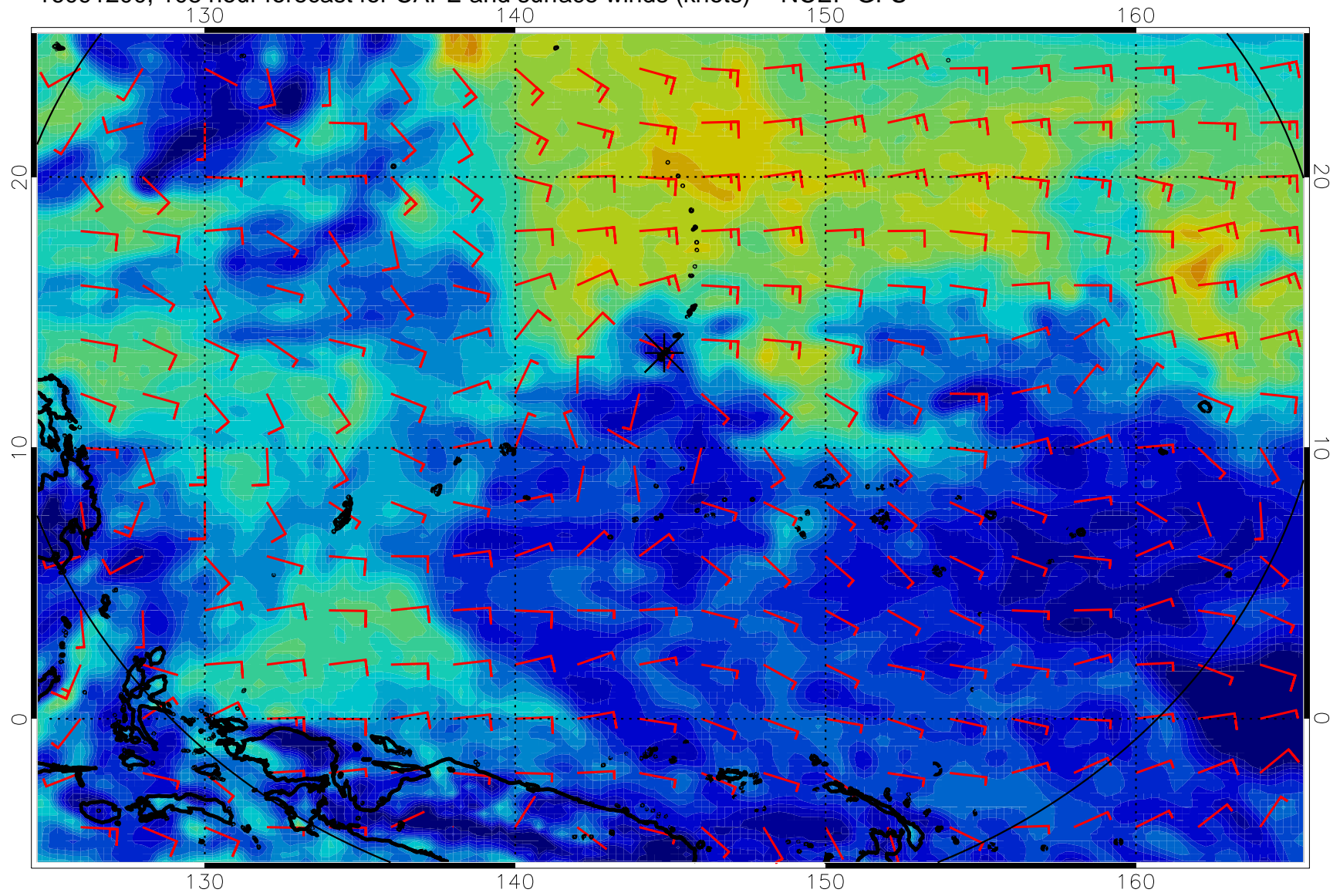




16091118, 102 hour forecast for CAPE and surface winds (knots) -- NCEP GFS

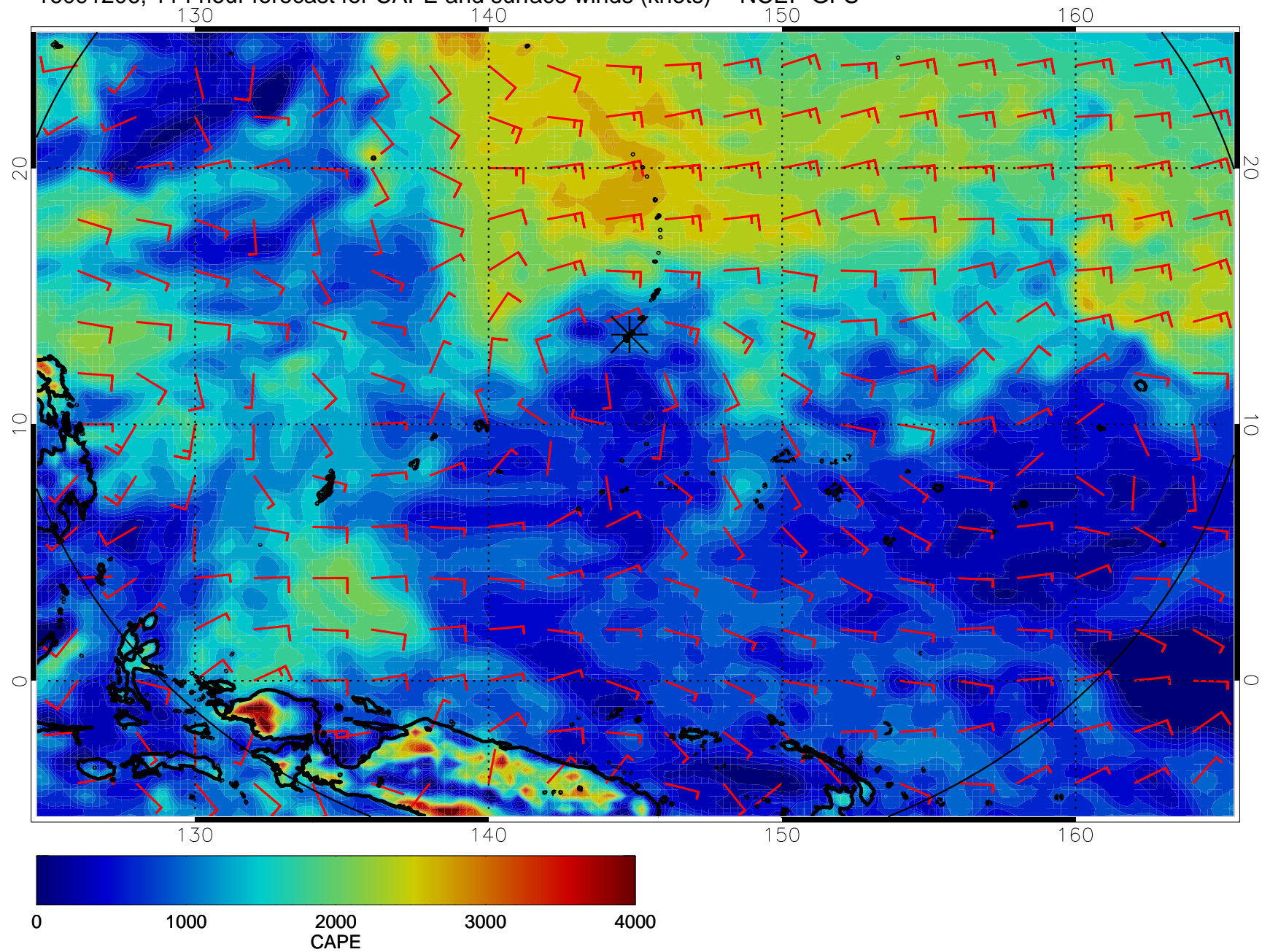


16091200, 108 hour forecast for CAPE and surface winds (knots) -- NCEP GFS





16091206, 114 hour forecast for CAPE and surface winds (knots) -- NCEP GFS



16091212, 120 hour forecast for CAPE and surface winds (knots) -- NCEP GFS

