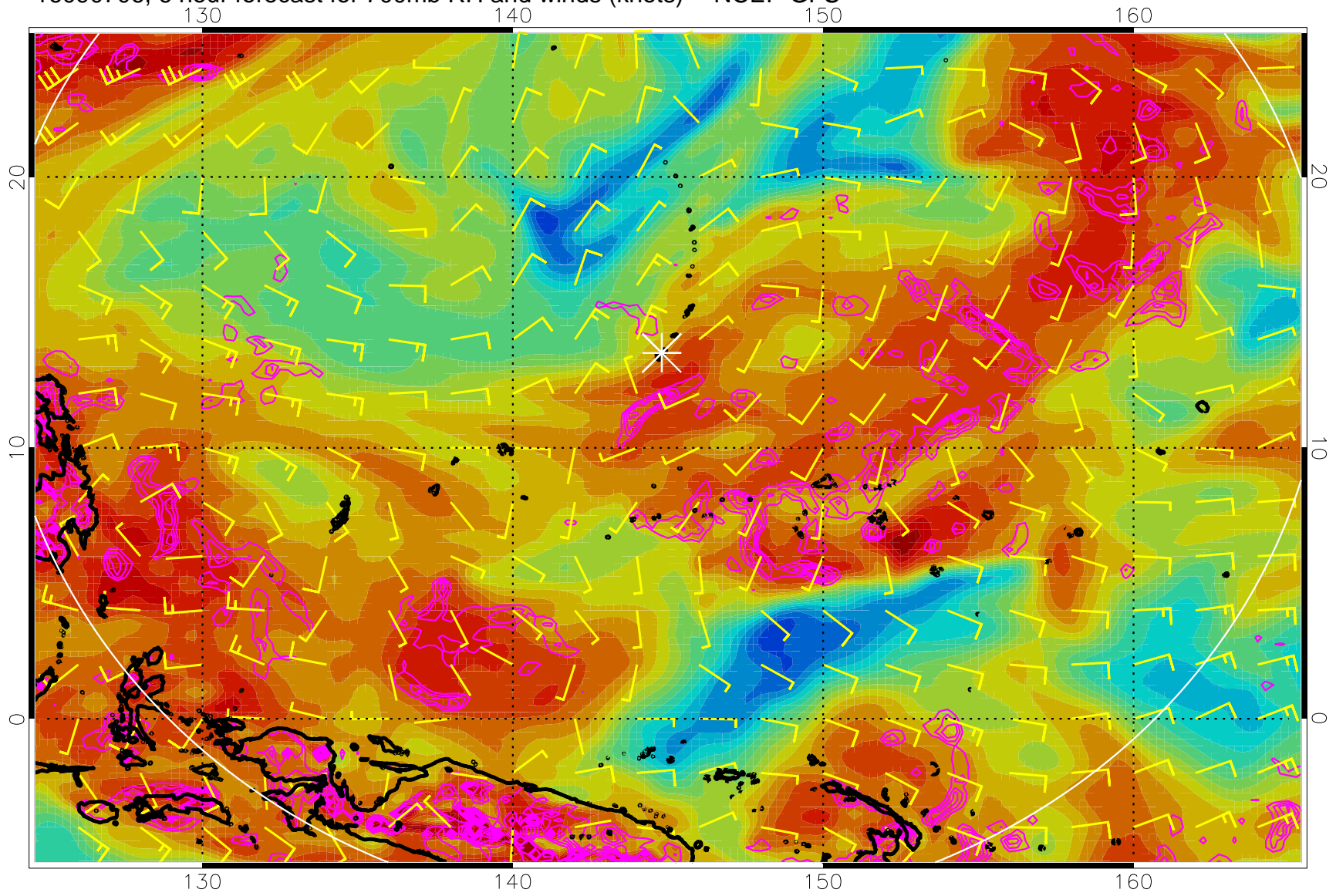
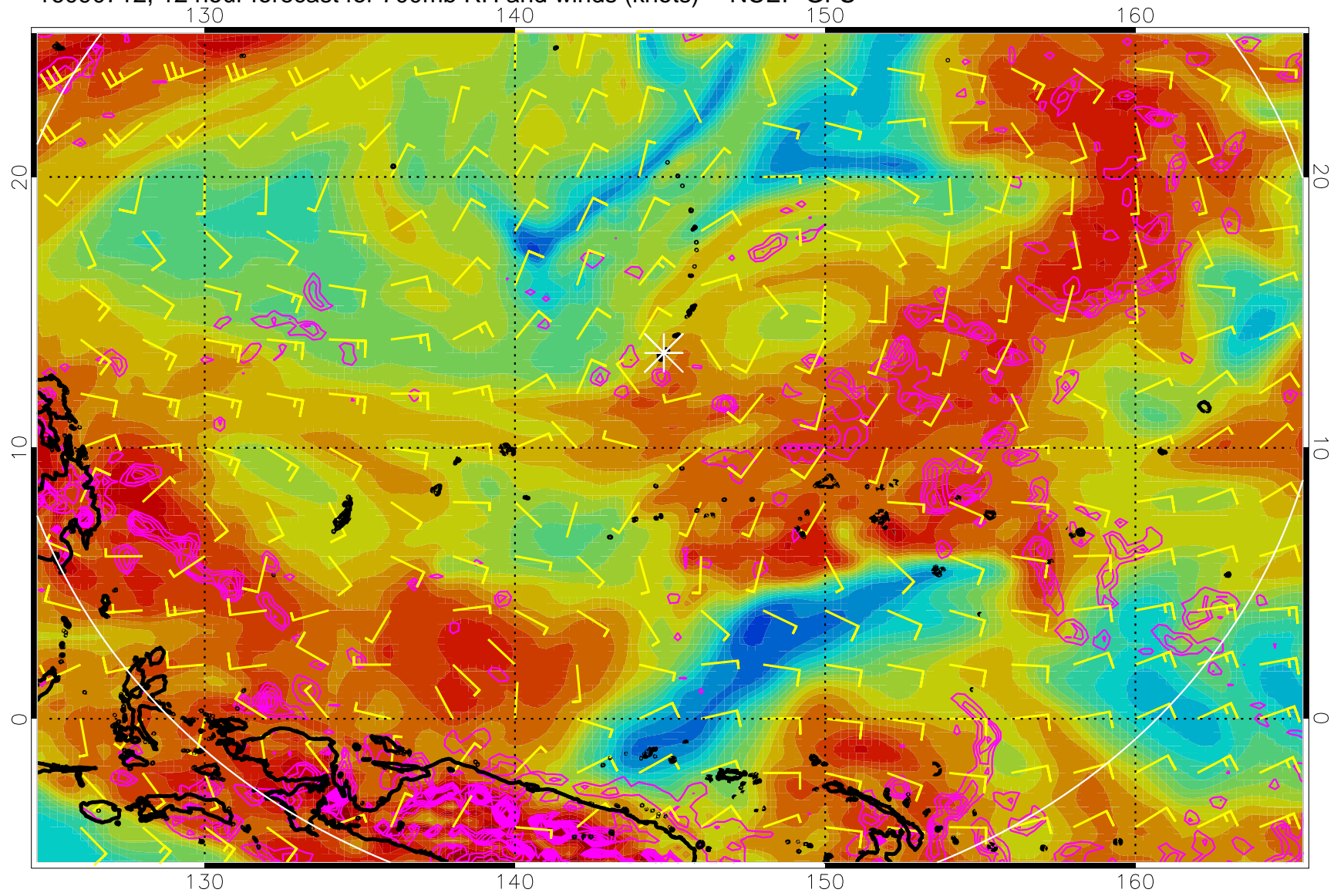


16090706, 6 hour forecast for 700mb RH and winds (knots) -- NCEP GFS



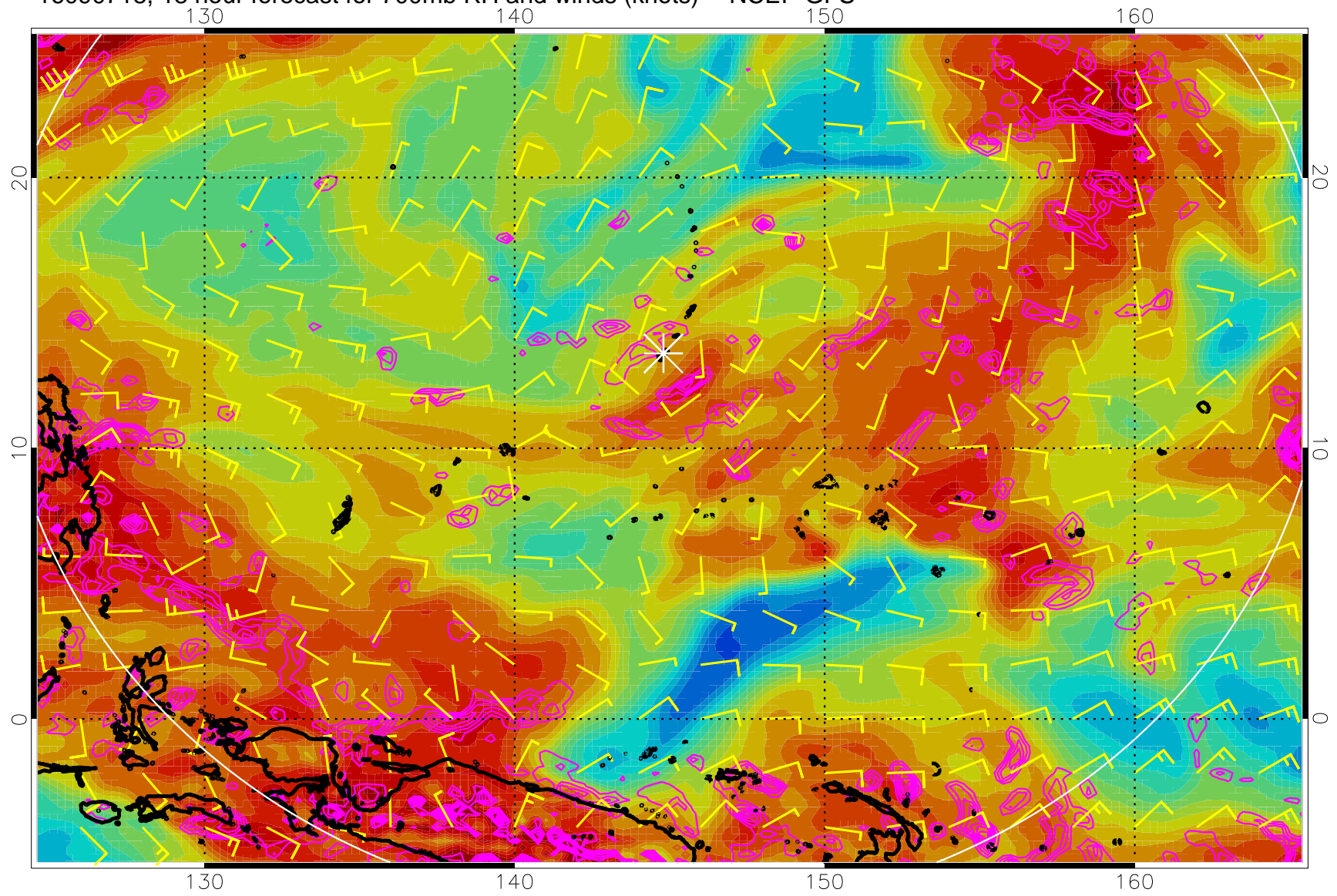
Negative Omegas less than -.3, contours of .3 Pa/s

16090712, 12 hour forecast for 700mb RH and winds (knots) -- NCEP GFS



Negative Omegas less than  $-0.3$ , contours of  $0.3$  Pa/s

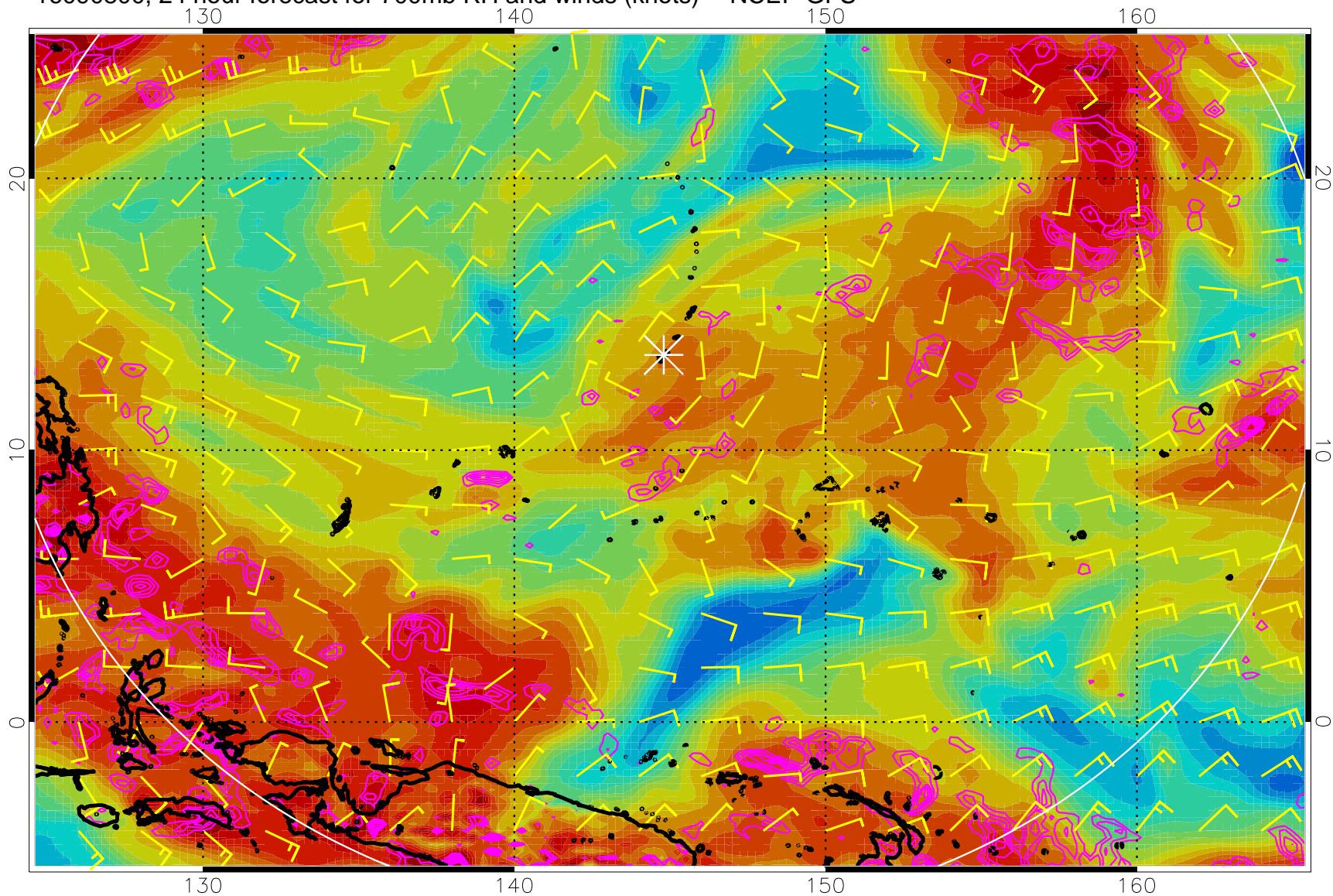
16090718, 18 hour forecast for 700mb RH and winds (knots) -- NCEP GFS



Negative Omegas less than  $-.3$ , contours of  $.3$  Pa/s



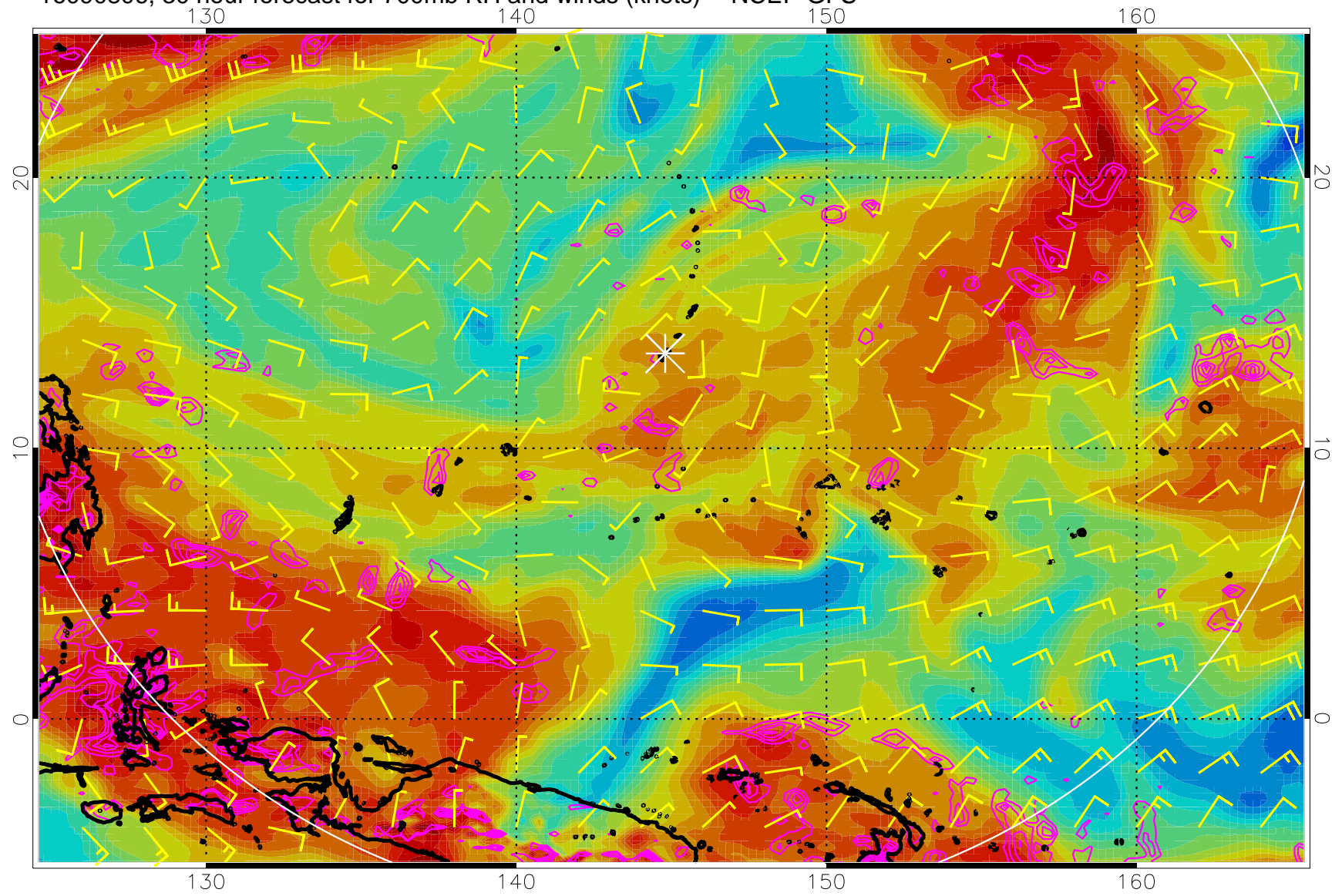
16090800, 24 hour forecast for 700mb RH and winds (knots) -- NCEP GFS



Negative Omegas less than  $-0.3$ , contours of  $0.3$  Pa/s

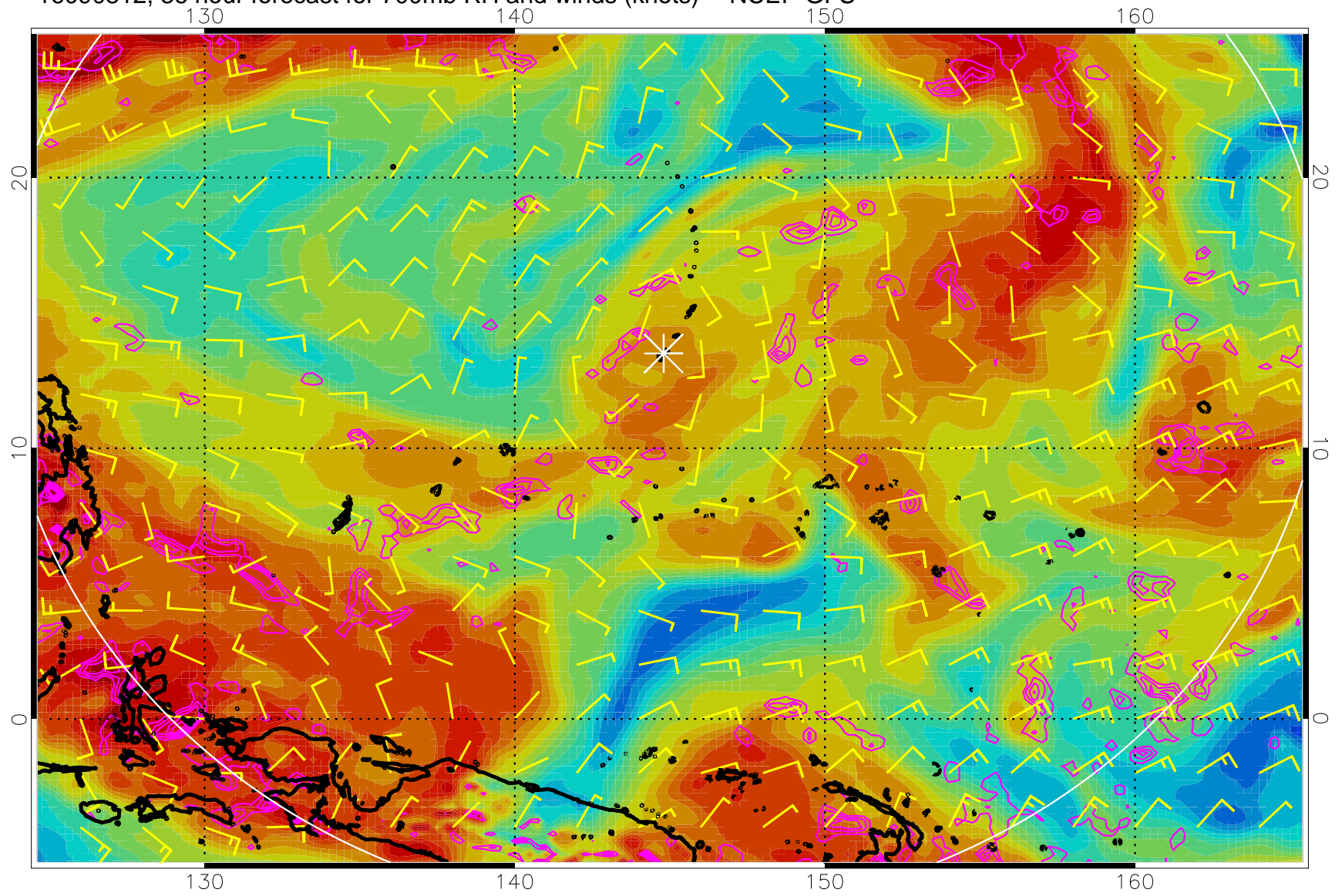


16090806, 30 hour forecast for 700mb RH and winds (knots) -- NCEP GFS



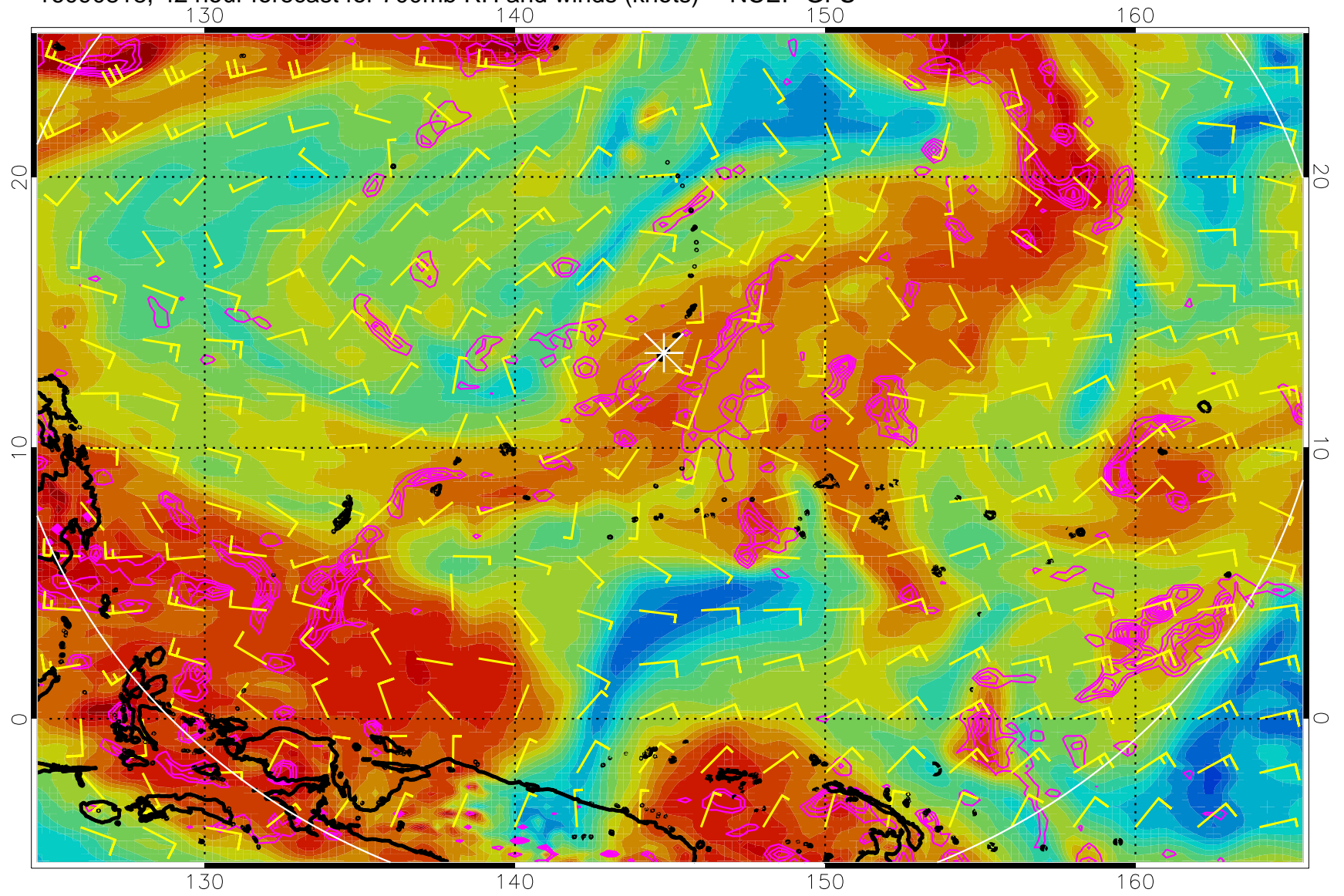
Negative Omegas less than  $-0.3$ , contours of  $0.3$  Pa/s

16090812, 36 hour forecast for 700mb RH and winds (knots) -- NCEP GFS



Negative Omegas less than  $-0.3$ , contours of  $0.3$  Pa/s

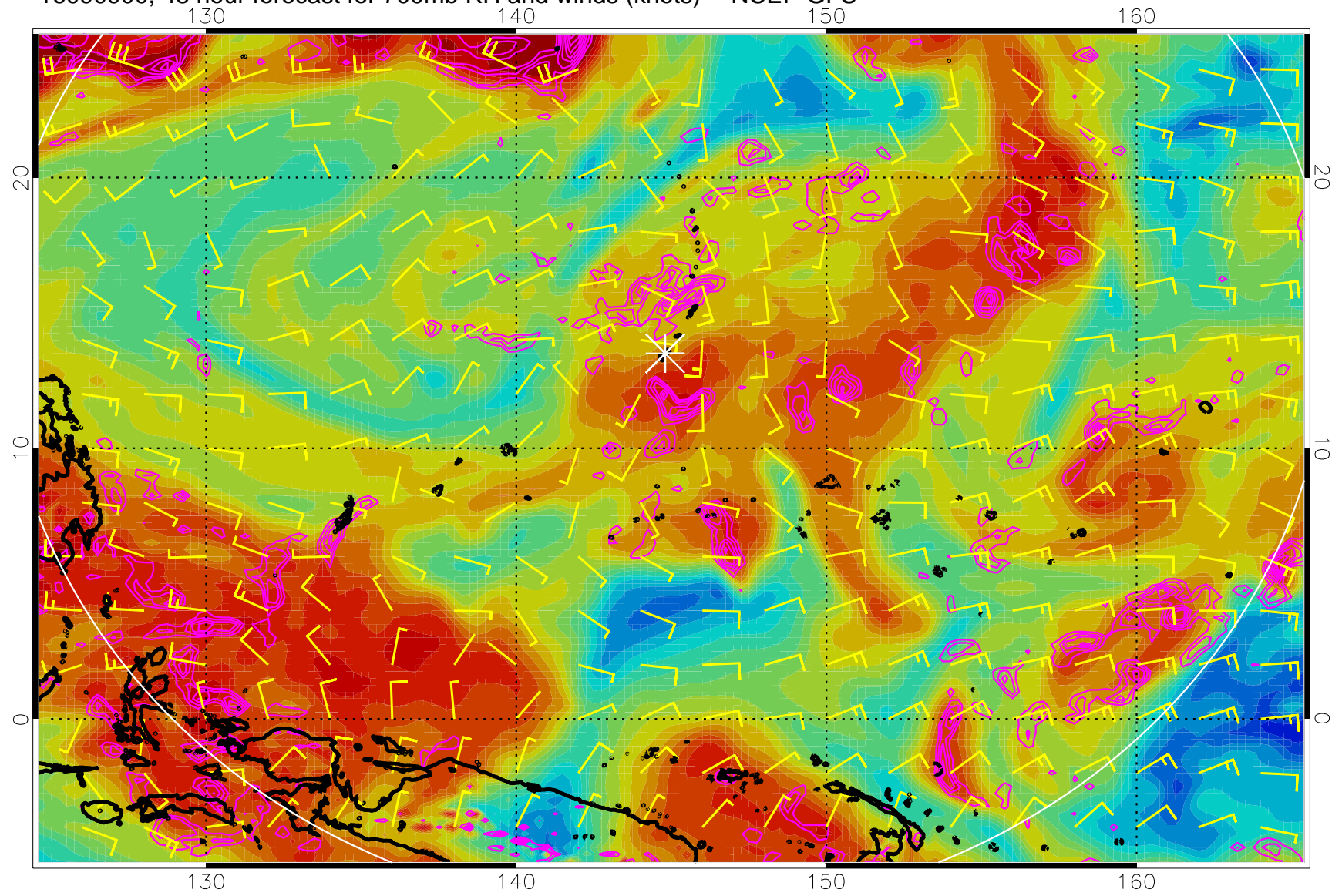
16090818, 42 hour forecast for 700mb RH and winds (knots) -- NCEP GFS



Negative Omegas less than  $-0.3$ , contours of  $0.3$  Pa/s

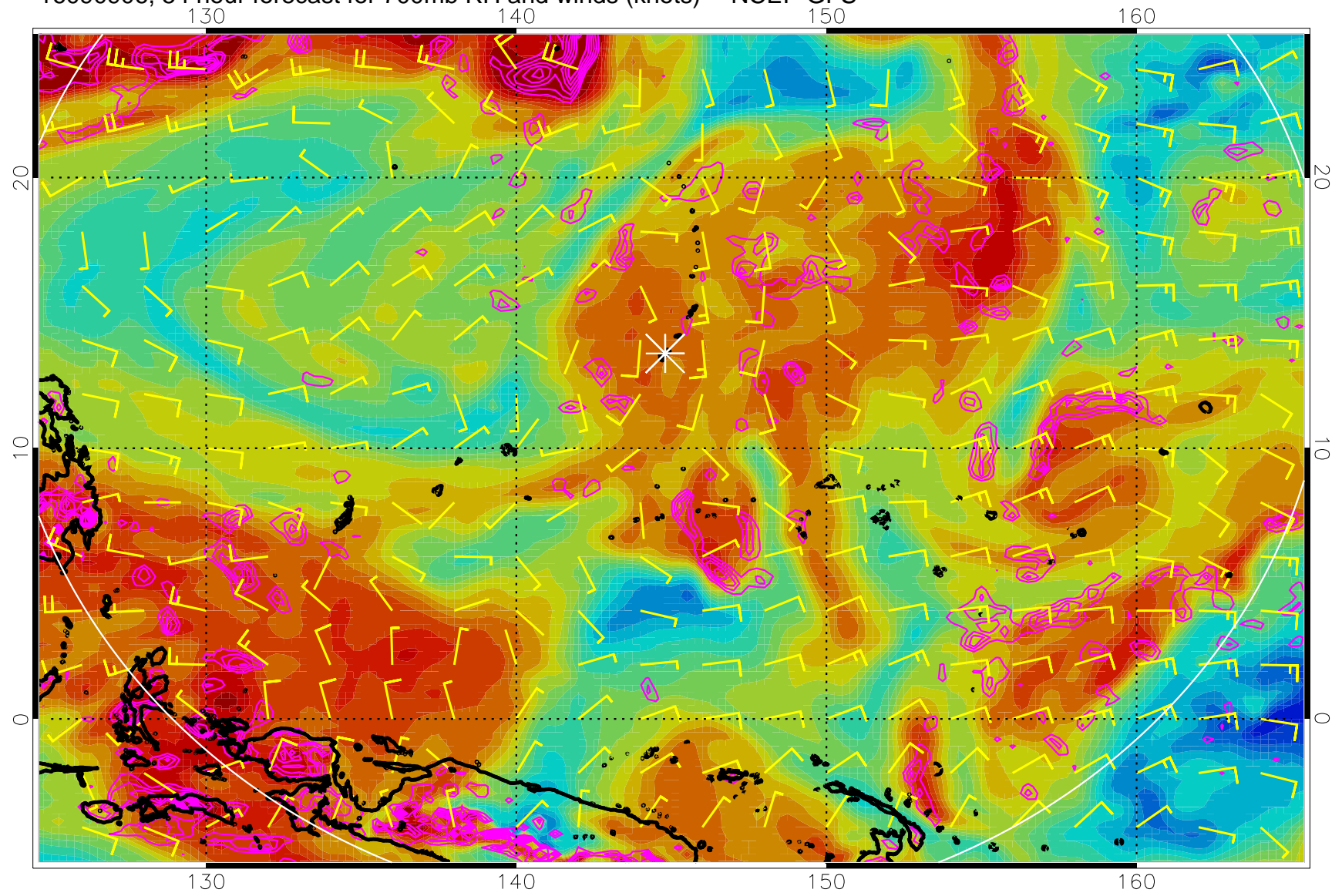


16090900, 48 hour forecast for 700mb RH and winds (knots) -- NCEP GFS



Negative Omegas less than  $-0.3$ , contours of  $0.3$  Pa/s

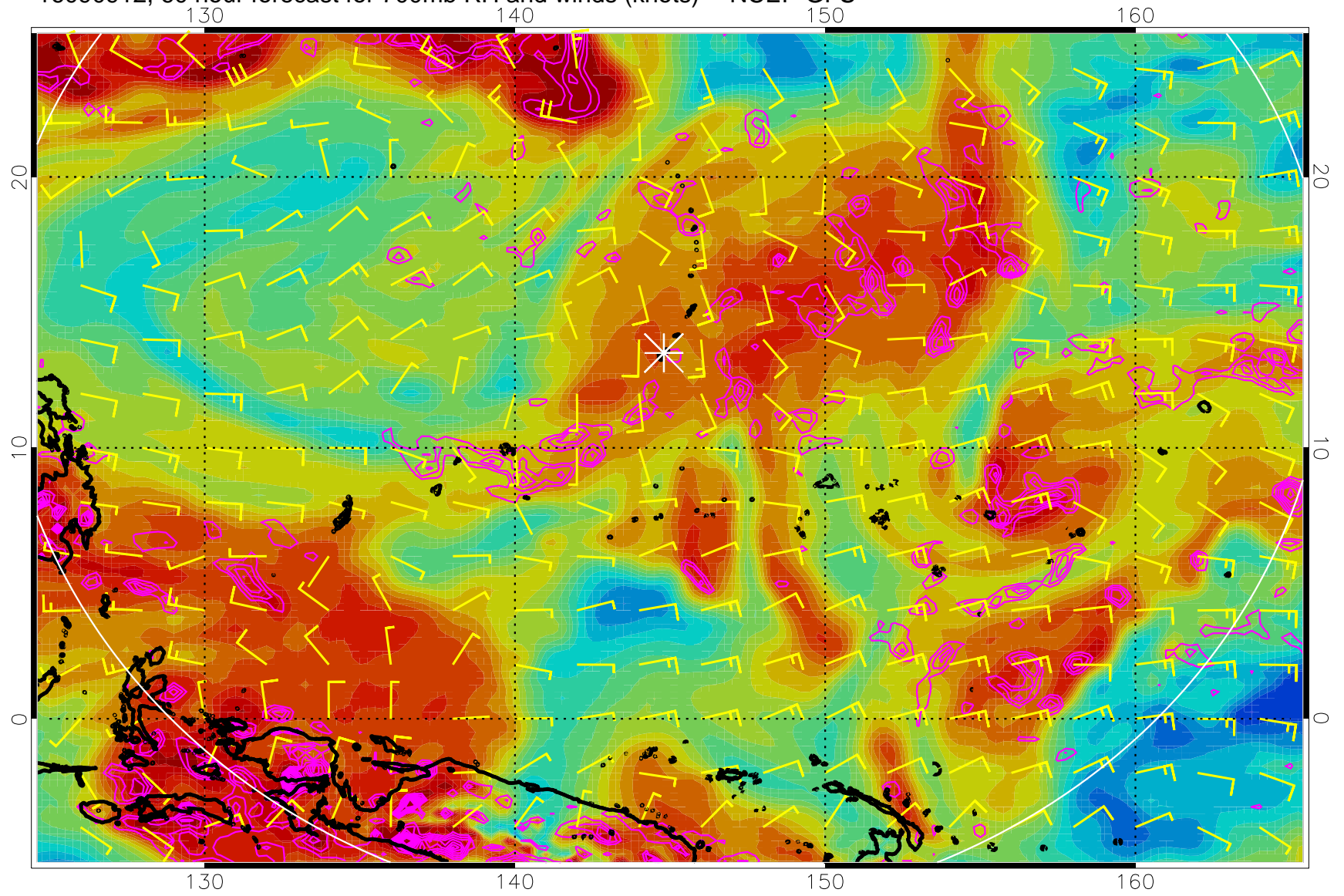
16090906, 54 hour forecast for 700mb RH and winds (knots) -- NCEP GFS



Negative Omegas less than  $-0.3$ , contours of  $0.3$  Pa/s



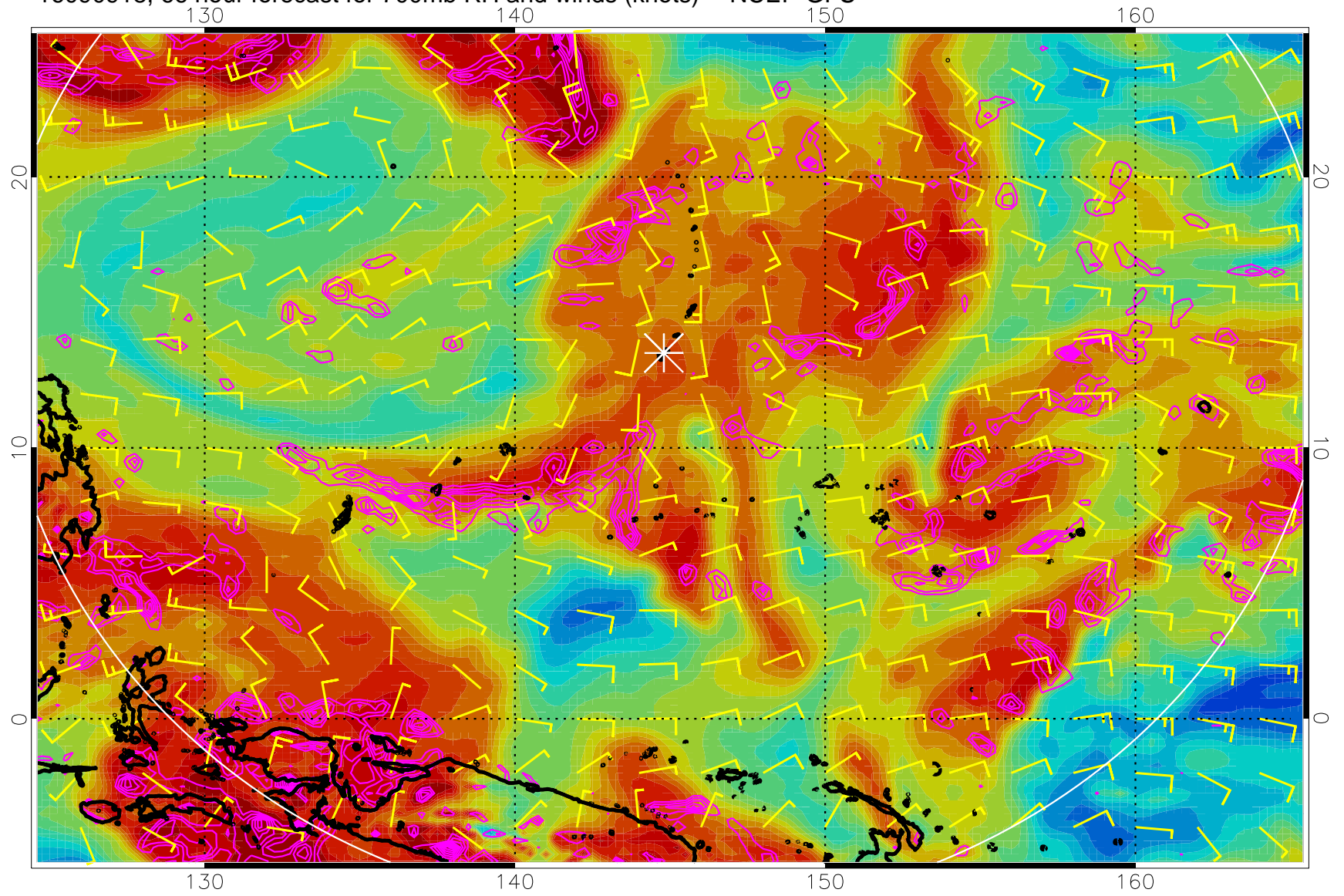
16090912, 60 hour forecast for 700mb RH and winds (knots) -- NCEP GFS



Negative Omegas less than  $-0.3$ , contours of  $0.3$  Pa/s

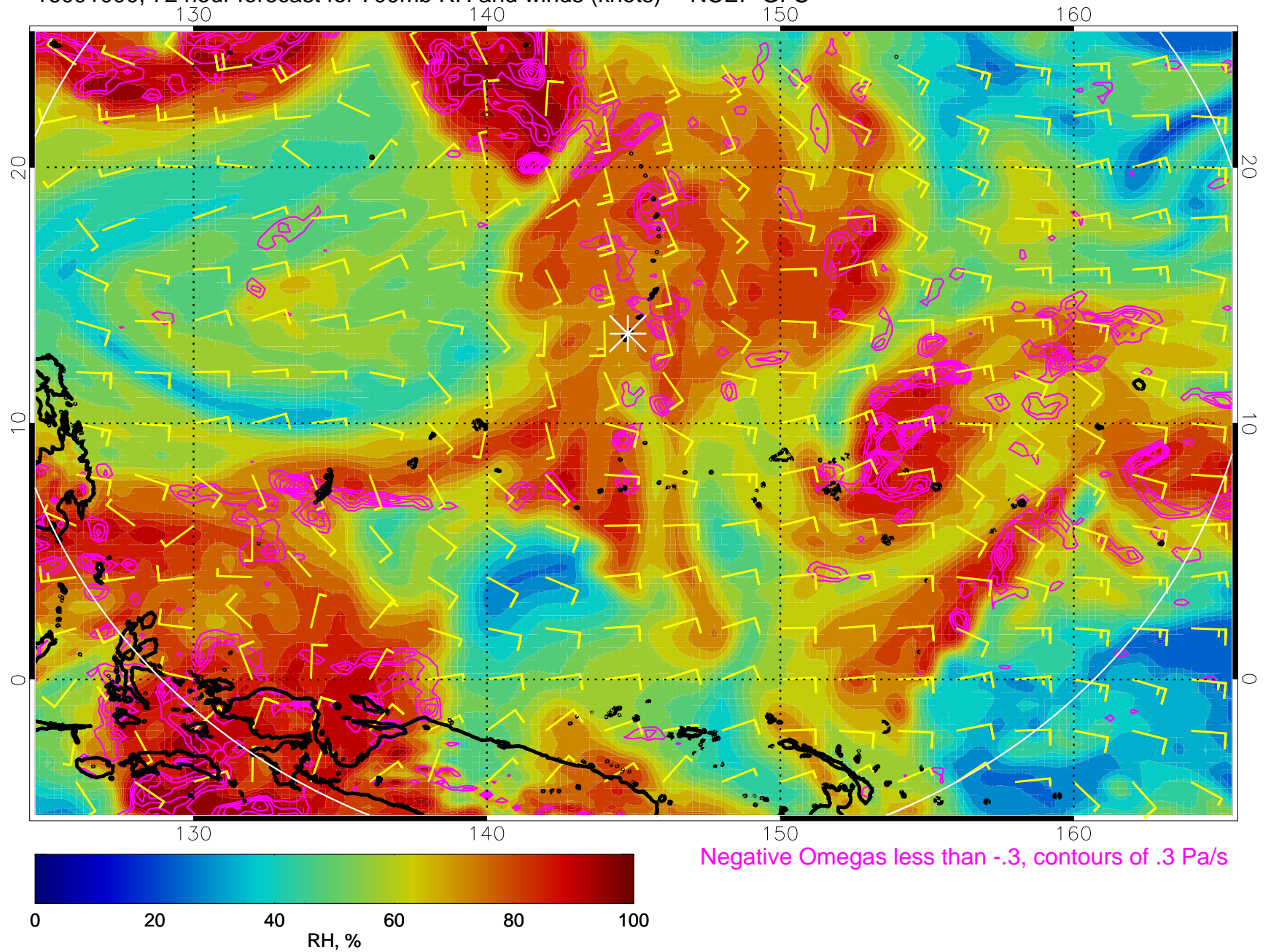


16090918, 66 hour forecast for 700mb RH and winds (knots) -- NCEP GFS



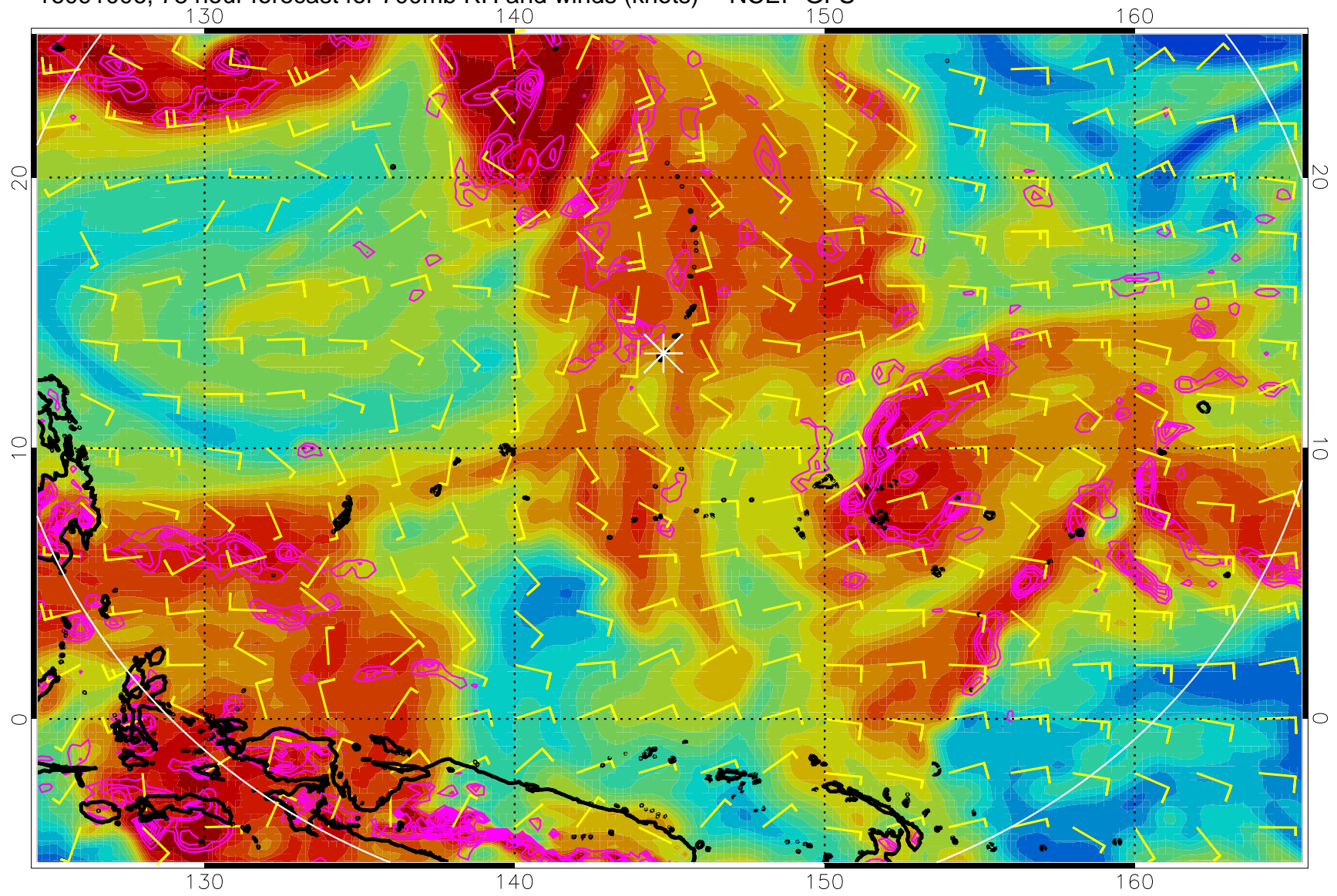
Negative Omegas less than  $-0.3$ , contours of  $0.3$  Pa/s

16091000, 72 hour forecast for 700mb RH and winds (knots) -- NCEP GFS





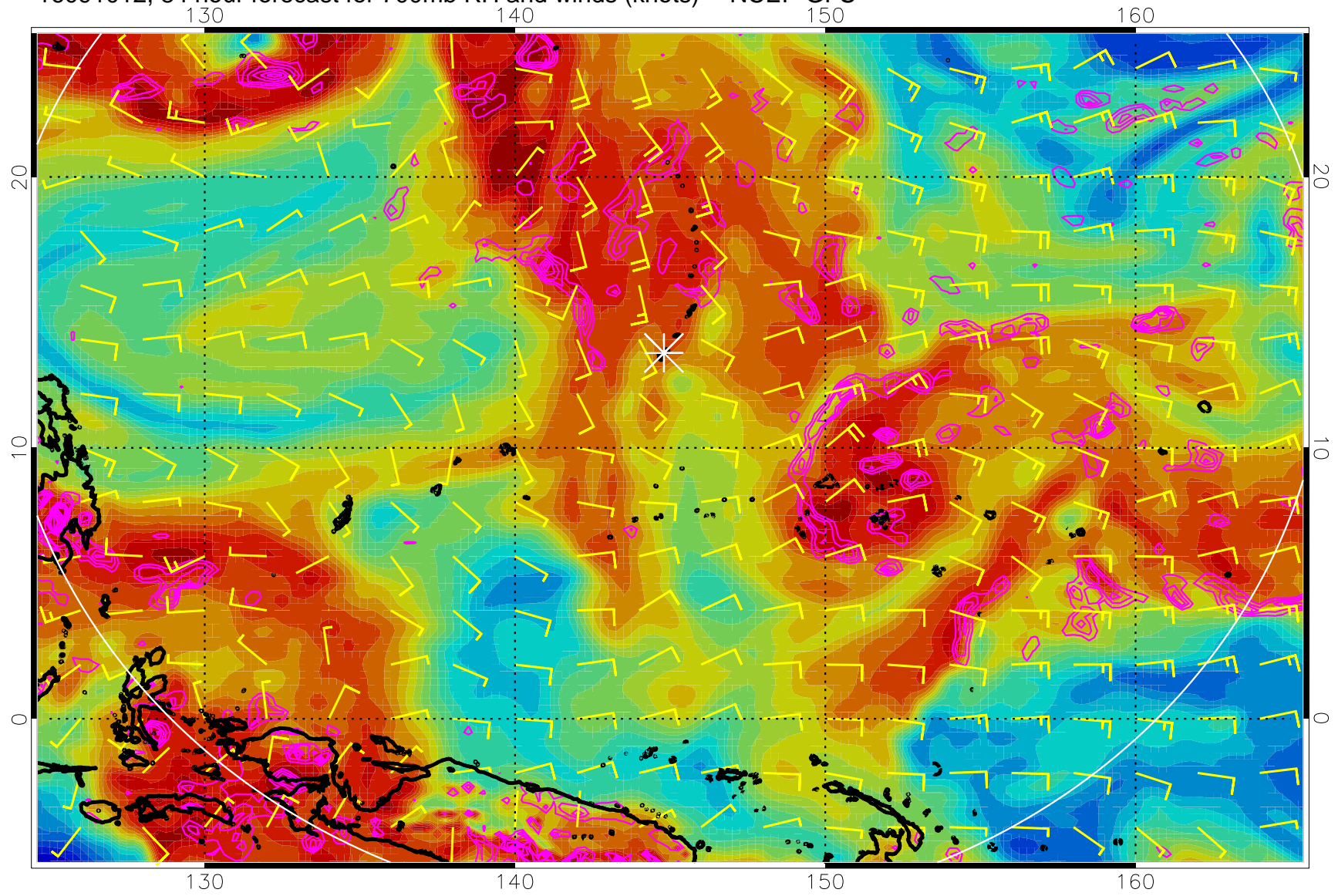
16091006, 78 hour forecast for 700mb RH and winds (knots) -- NCEP GFS



Negative Omegas less than  $-0.3$ , contours of  $0.3$  Pa/s

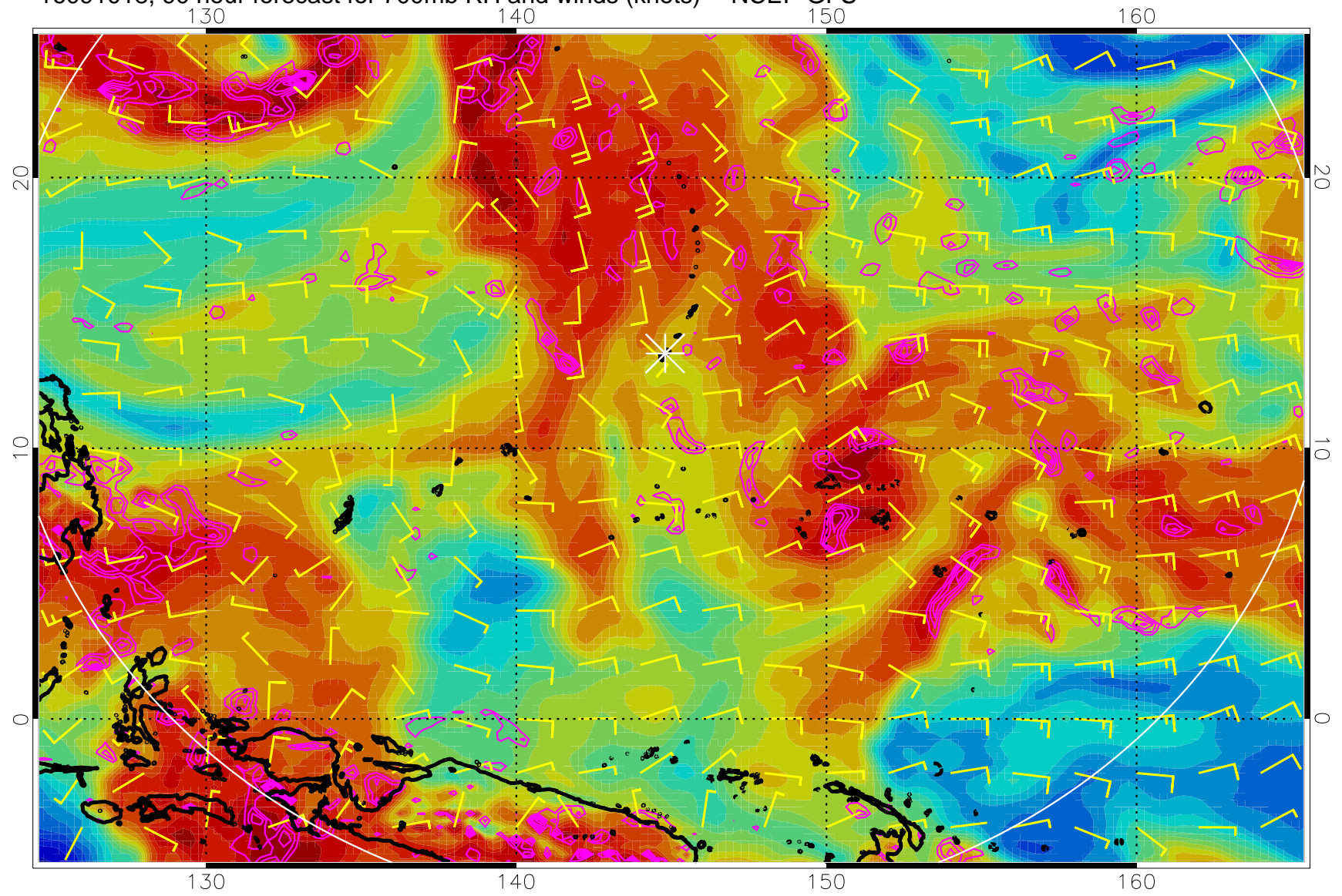


16091012, 84 hour forecast for 700mb RH and winds (knots) -- NCEP GFS



Negative Omegas less than -.3, contours of .3 Pa/s

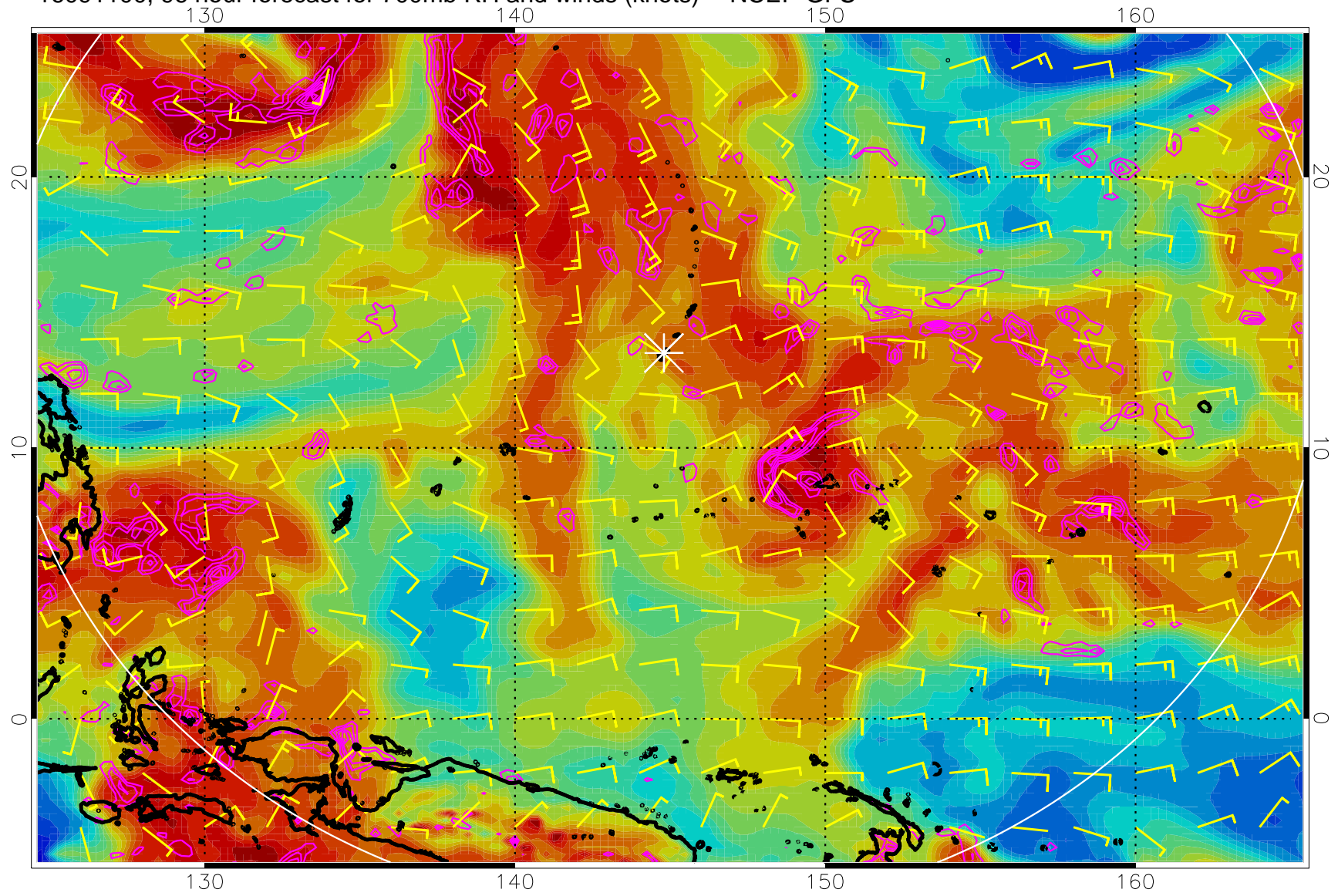
16091018, 90 hour forecast for 700mb RH and winds (knots) -- NCEP GFS



Negative Omegas less than  $-0.3$ , contours of  $0.3$  Pa/s



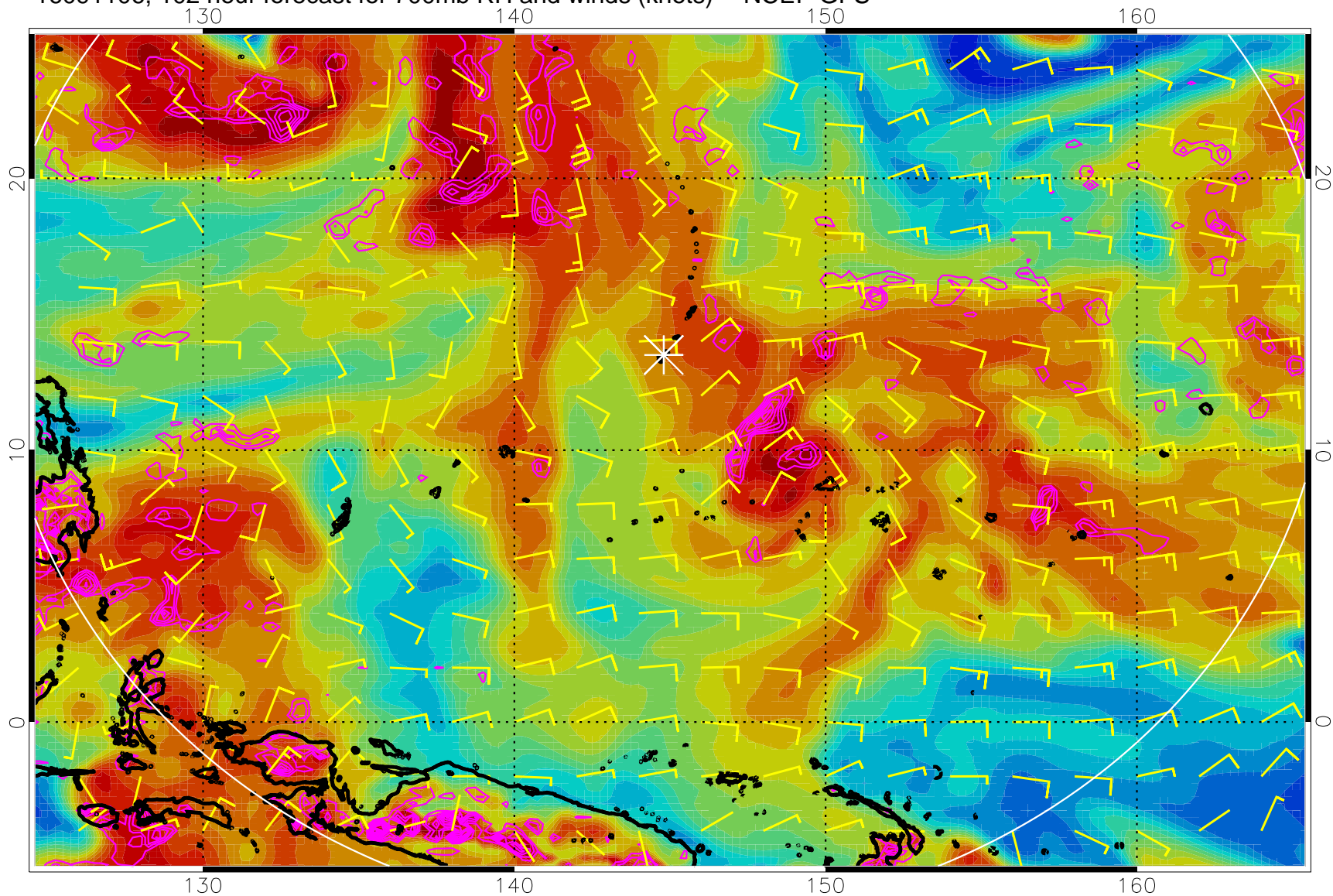
16091100, 96 hour forecast for 700mb RH and winds (knots) -- NCEP GFS



Negative Omegas less than  $-0.3$ , contours of  $0.3$  Pa/s

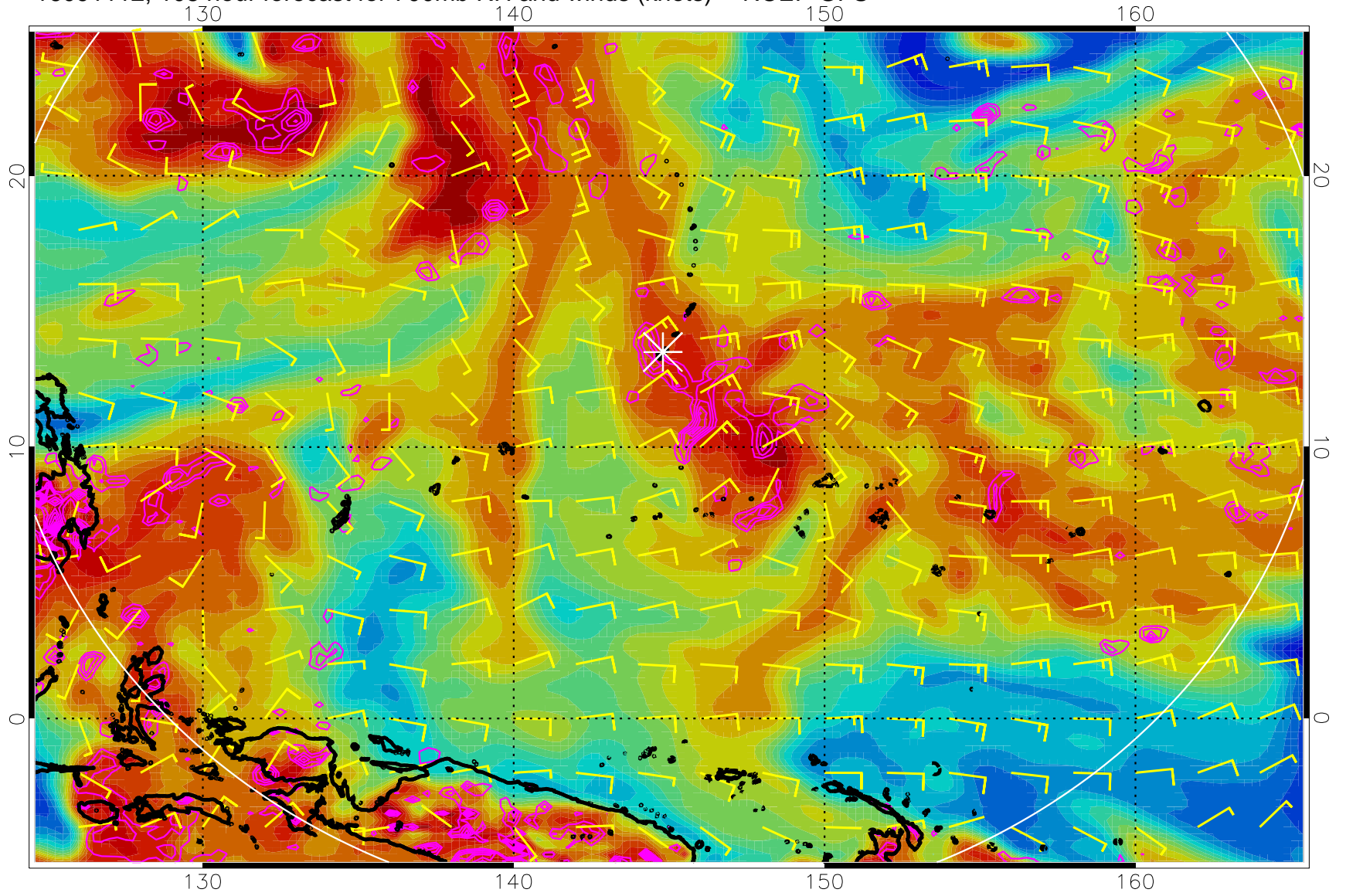


16091106, 102 hour forecast for 700mb RH and winds (knots) -- NCEP GFS



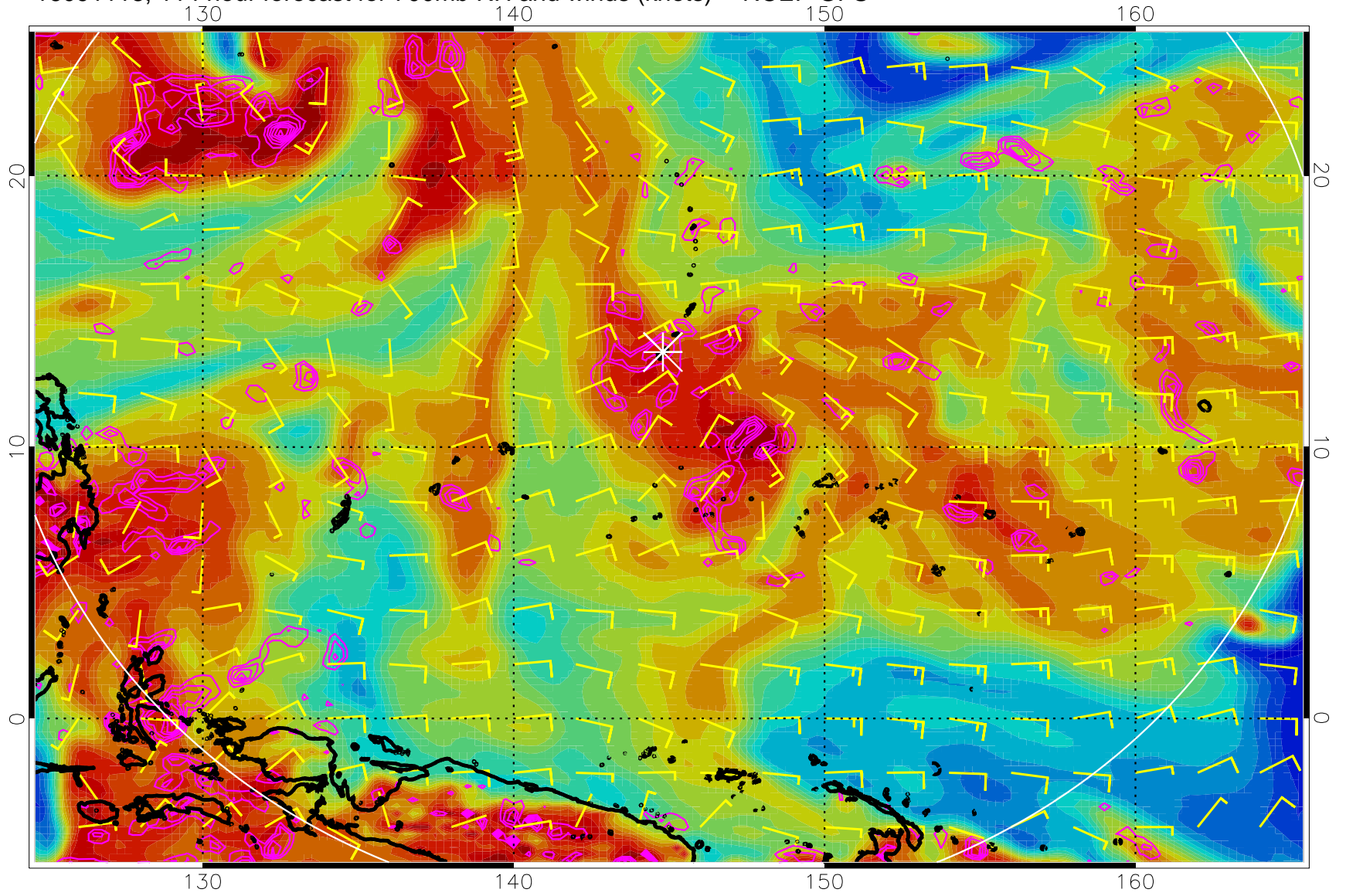
Negative Omegas less than  $-0.3$ , contours of  $0.3$  Pa/s

16091112, 108 hour forecast for 700mb RH and winds (knots) -- NCEP GFS



Negative Omegas less than  $-0.3$ , contours of  $0.3$  Pa/s

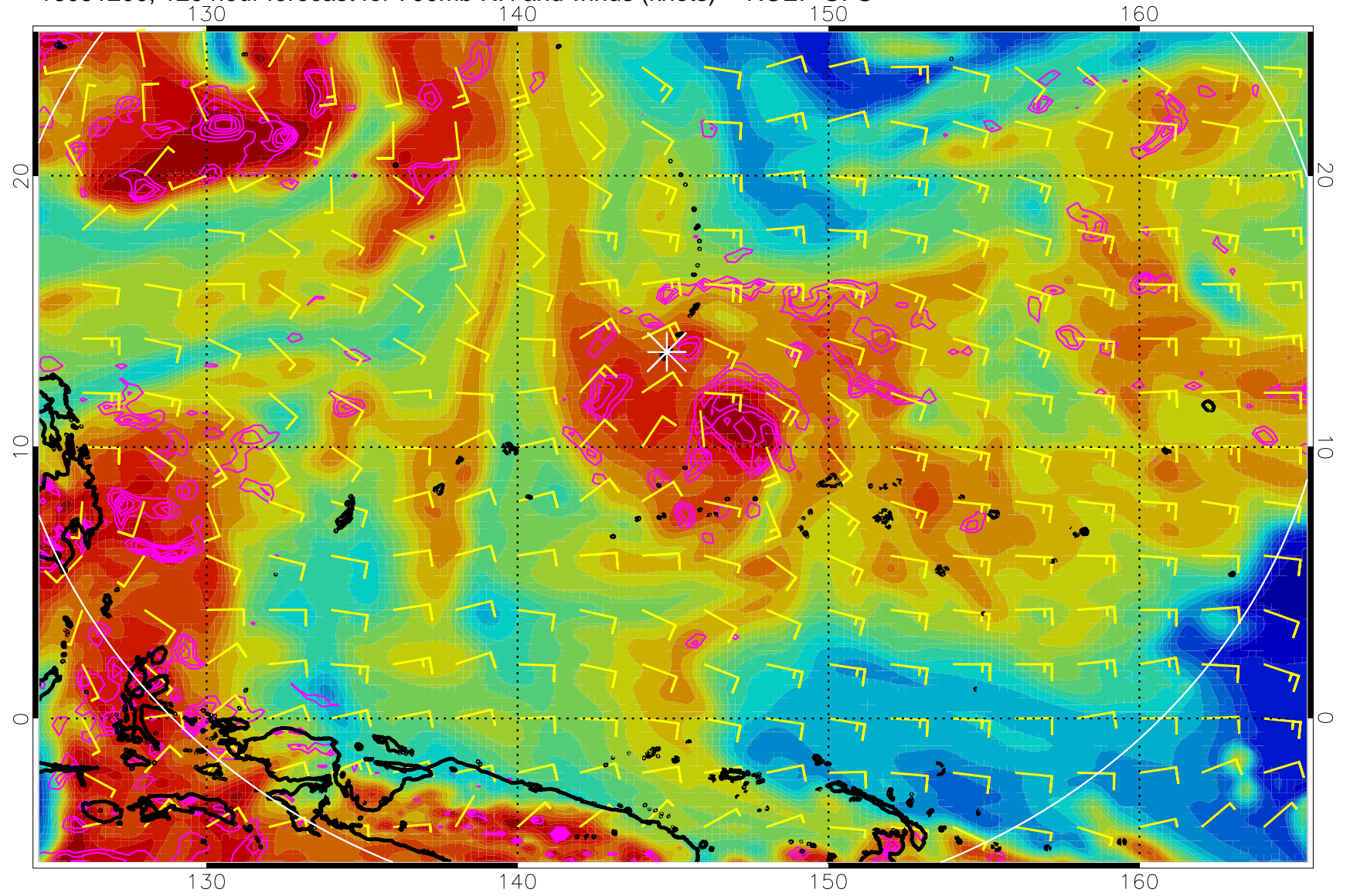
16091118, 114 hour forecast for 700mb RH and winds (knots) -- NCEP GFS



Negative Omegas less than  $-0.3$ , contours of  $0.3$  Pa/s



16091200, 120 hour forecast for 700mb RH and winds (knots) -- NCEP GFS



Negative Omegas less than  $-0.3$ , contours of  $0.3$  Pa/s