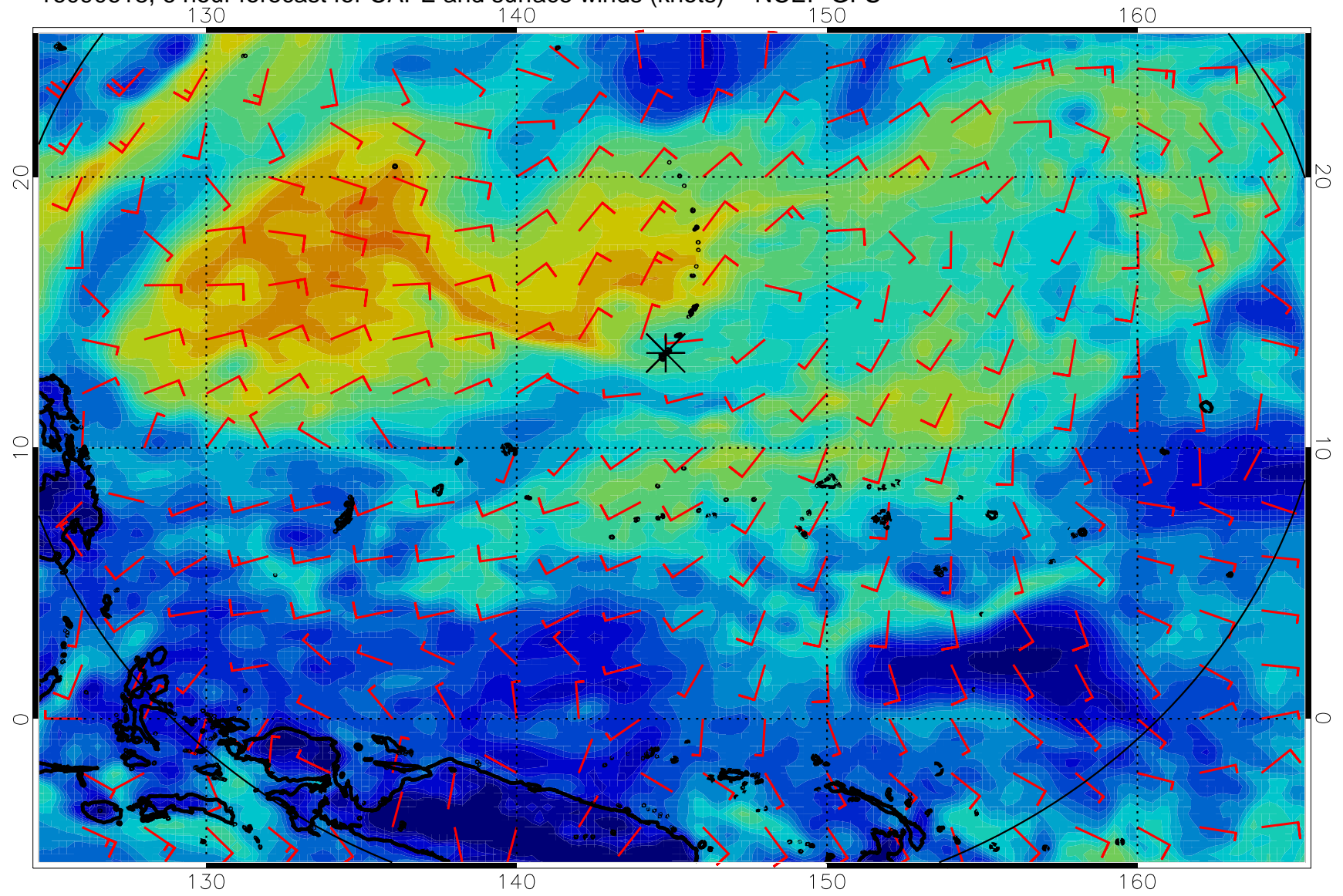
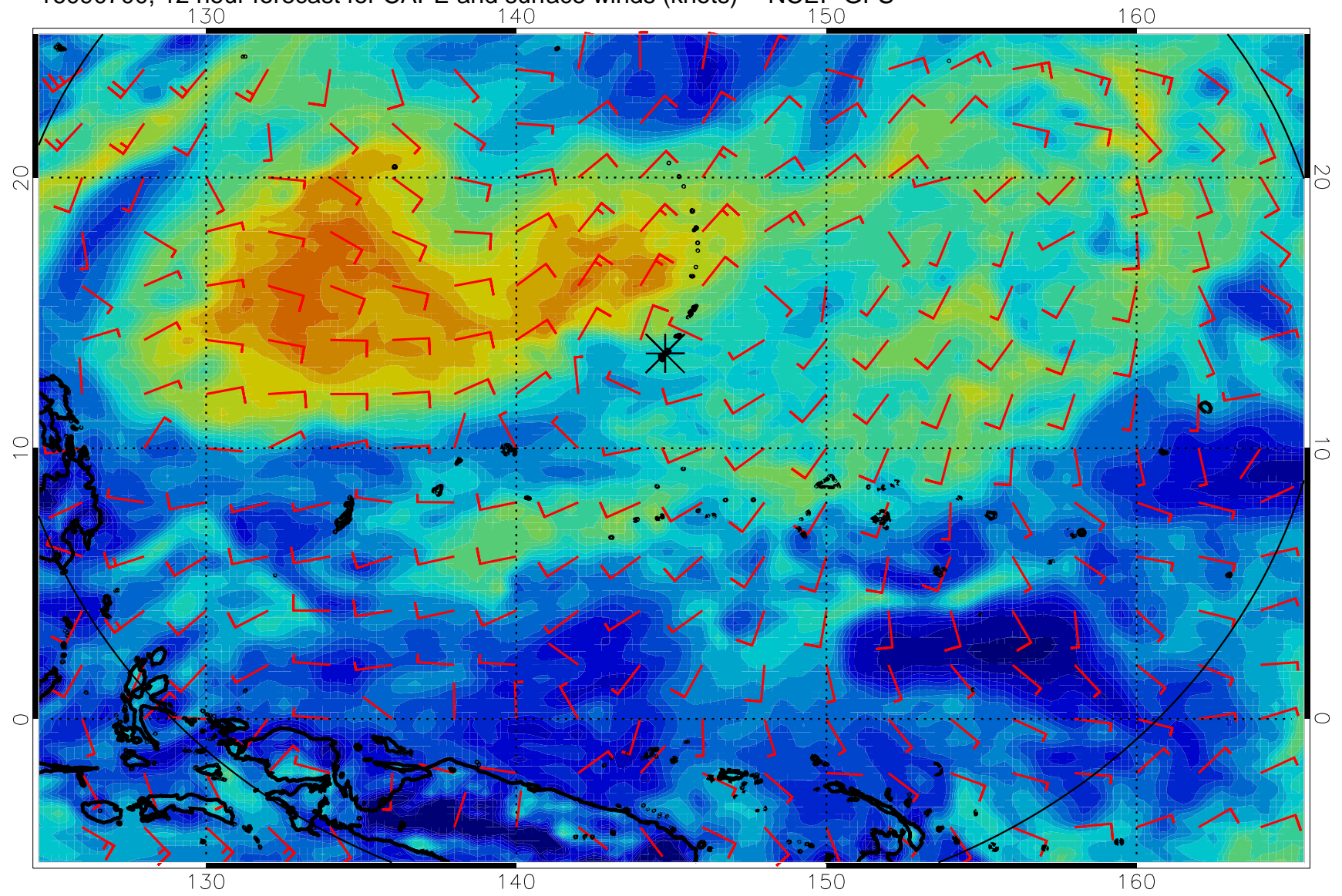


16090618, 6 hour forecast for CAPE and surface winds (knots) -- NCEP GFS

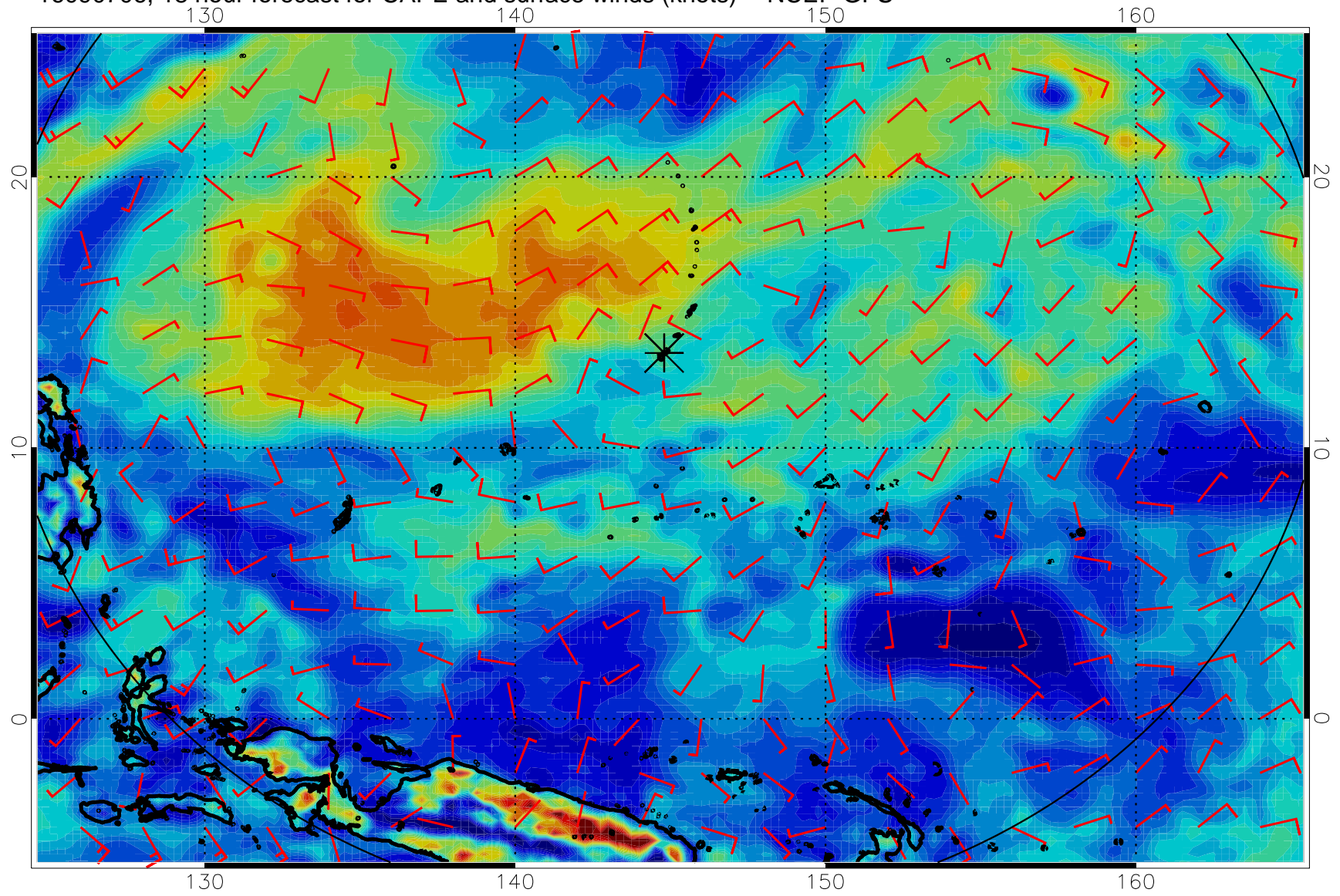


16090700, 12 hour forecast for CAPE and surface winds (knots) -- NCEP GFS

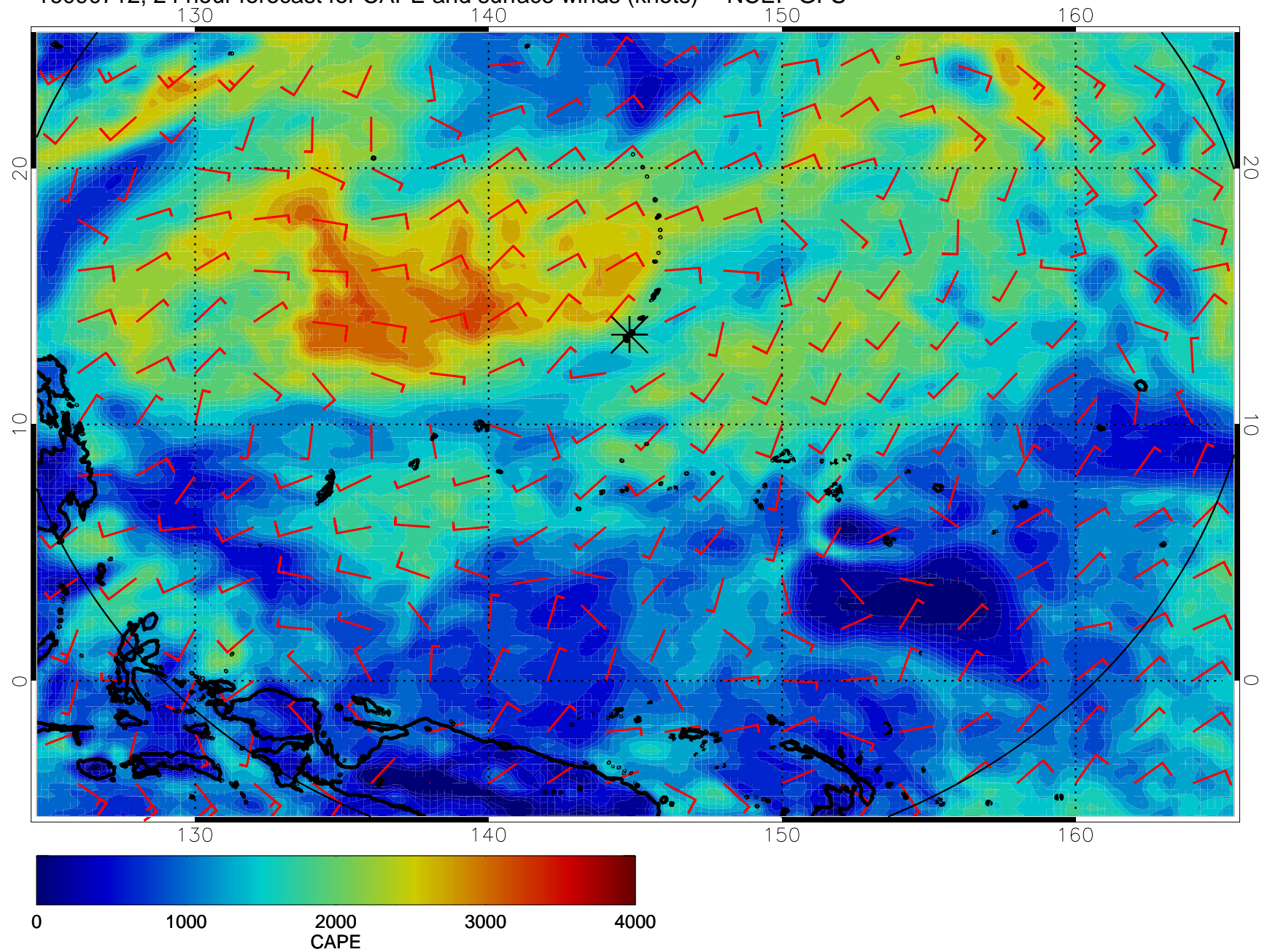




16090706, 18 hour forecast for CAPE and surface winds (knots) -- NCEP GFS

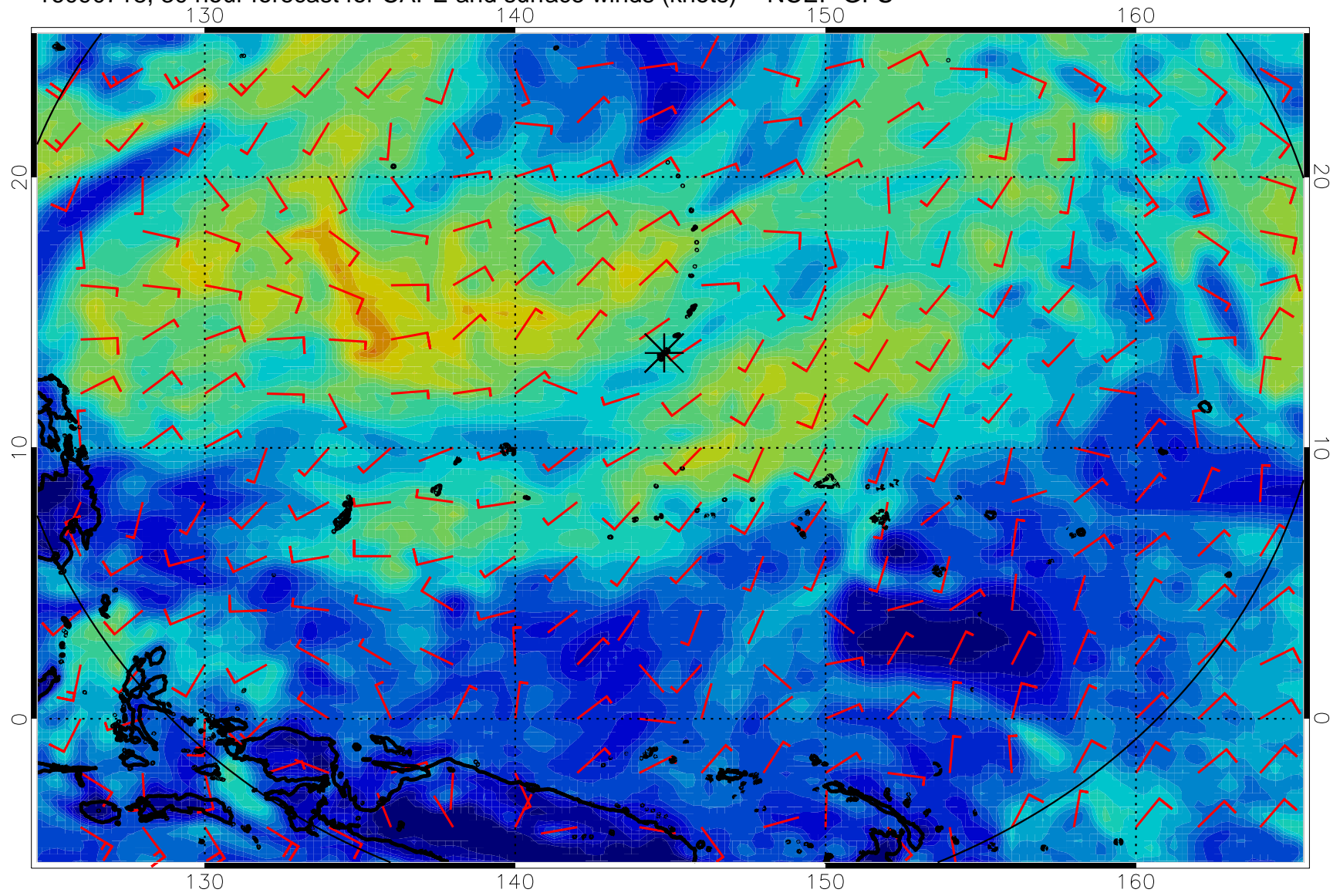


16090712, 24 hour forecast for CAPE and surface winds (knots) -- NCEP GFS

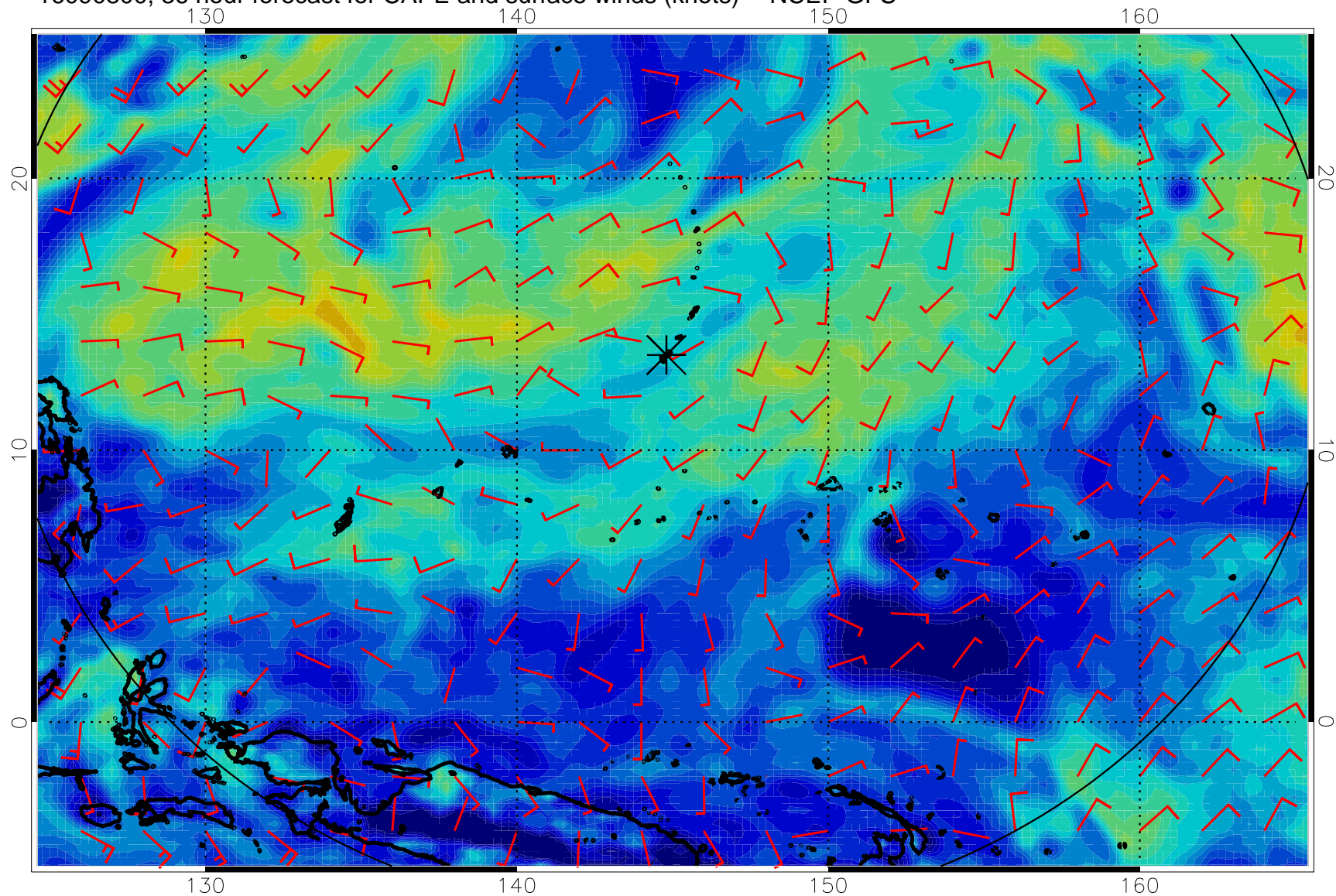




16090718, 30 hour forecast for CAPE and surface winds (knots) -- NCEP GFS

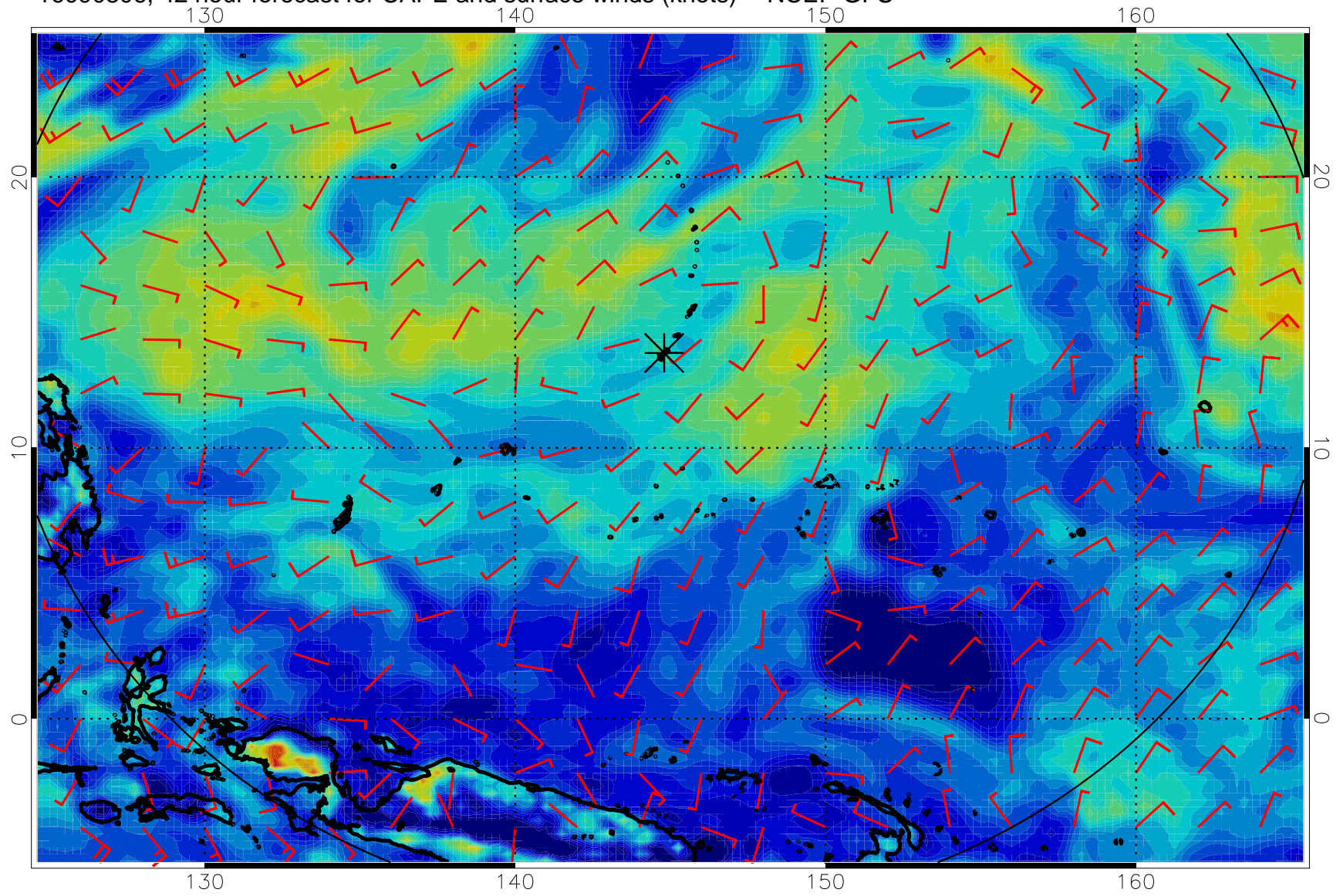


16090800, 36 hour forecast for CAPE and surface winds (knots) -- NCEP GFS

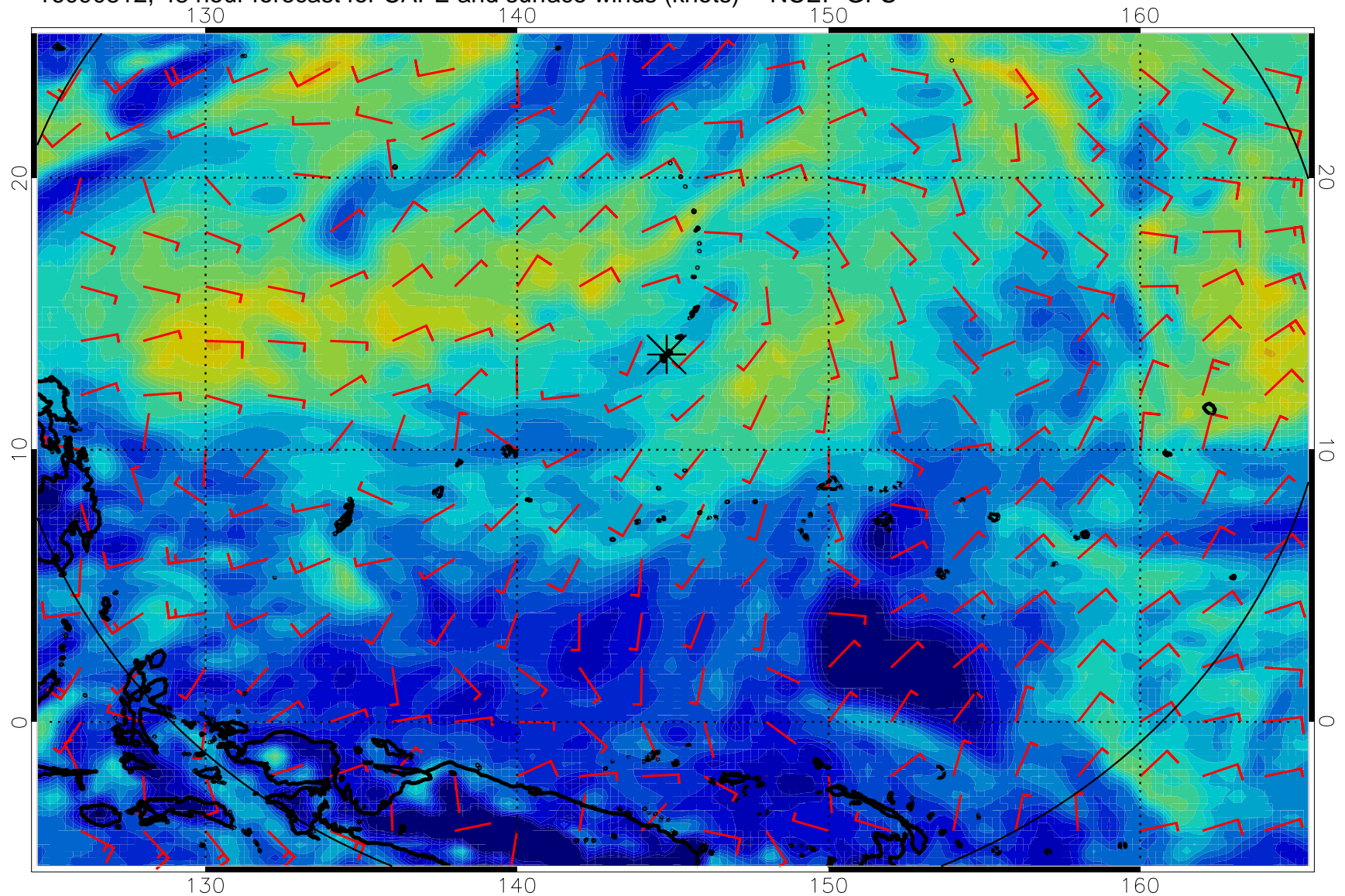




16090806, 42 hour forecast for CAPE and surface winds (knots) -- NCEP GFS

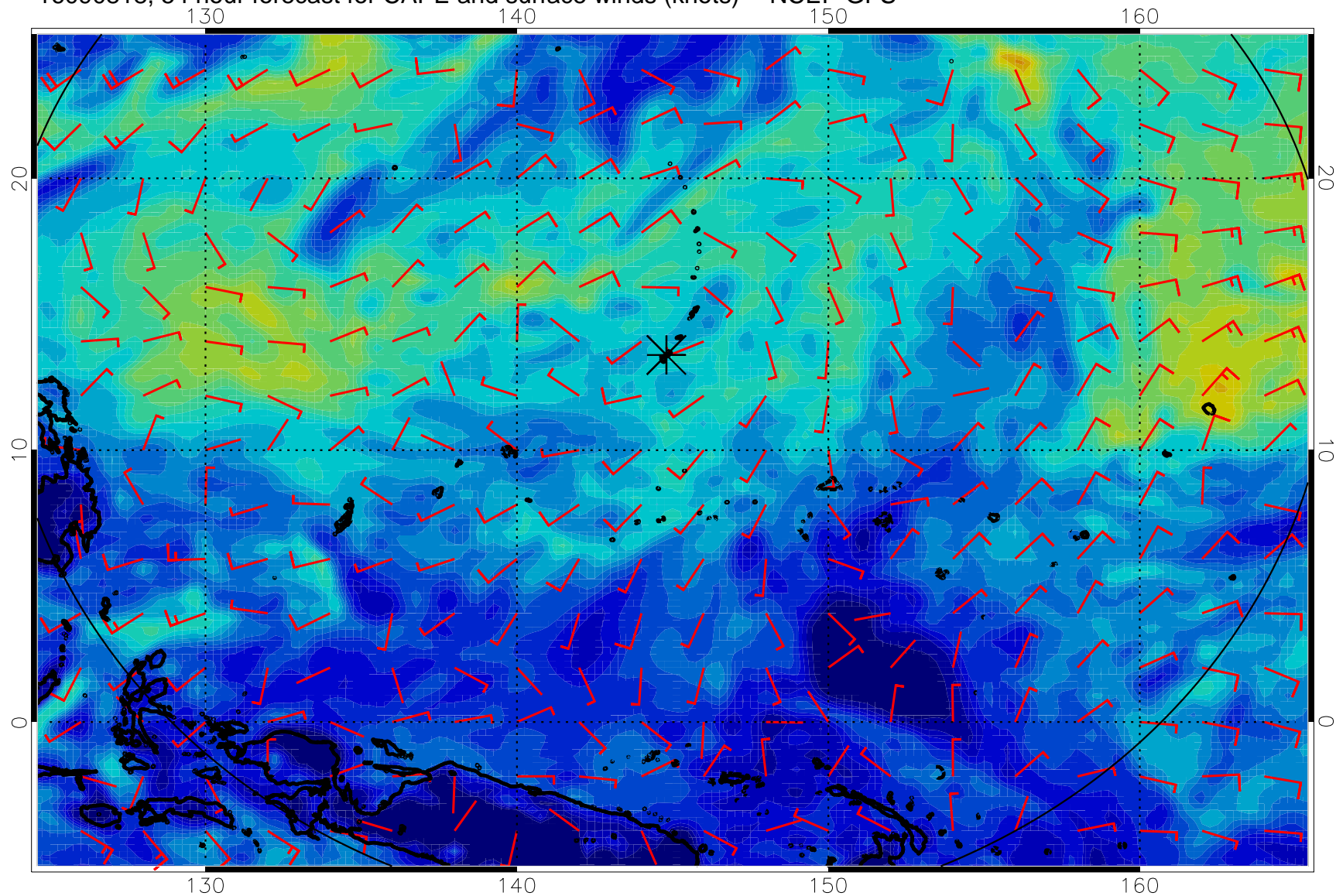


16090812, 48 hour forecast for CAPE and surface winds (knots) -- NCEP GFS

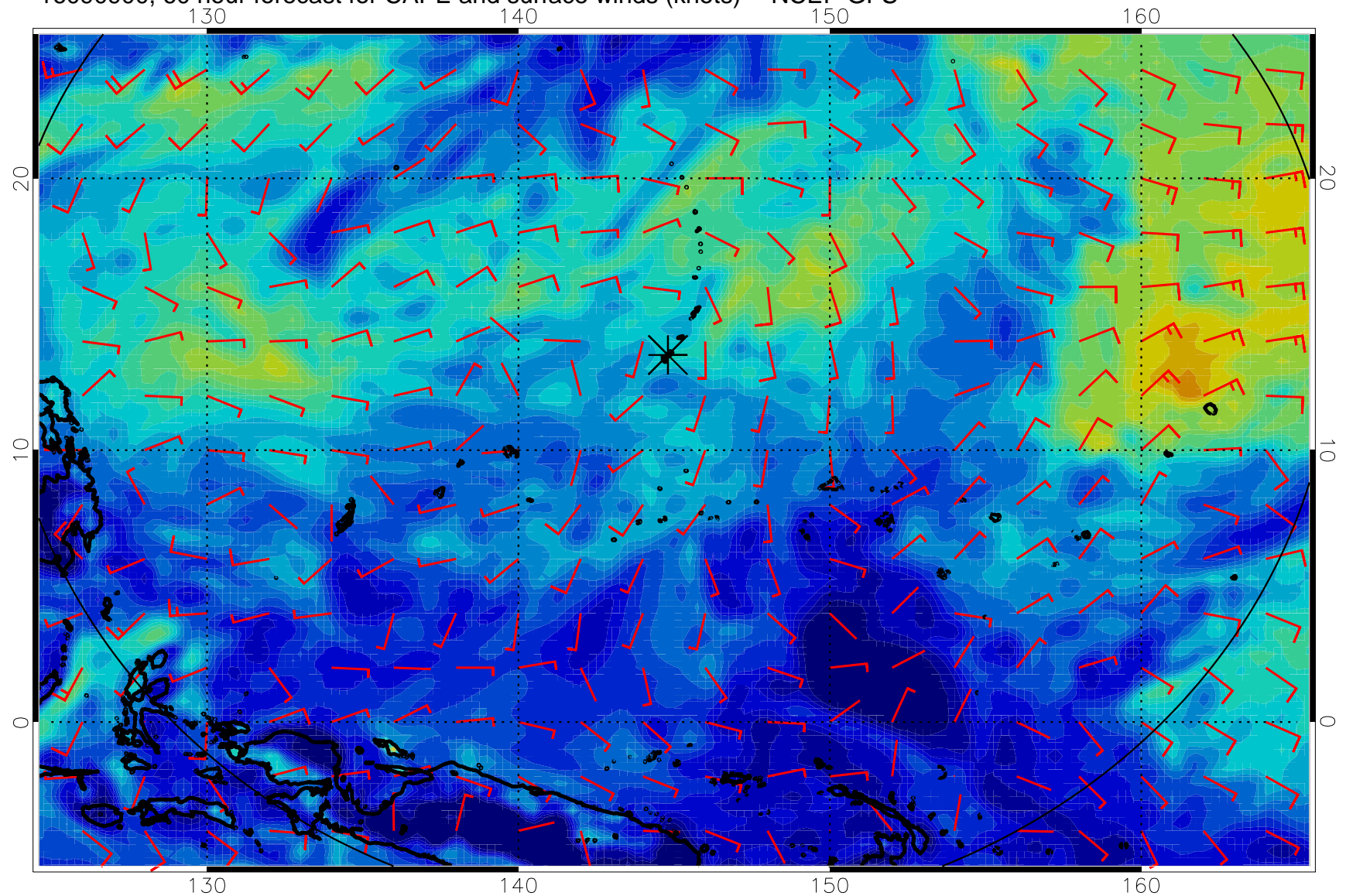




16090818, 54 hour forecast for CAPE and surface winds (knots) -- NCEP GFS

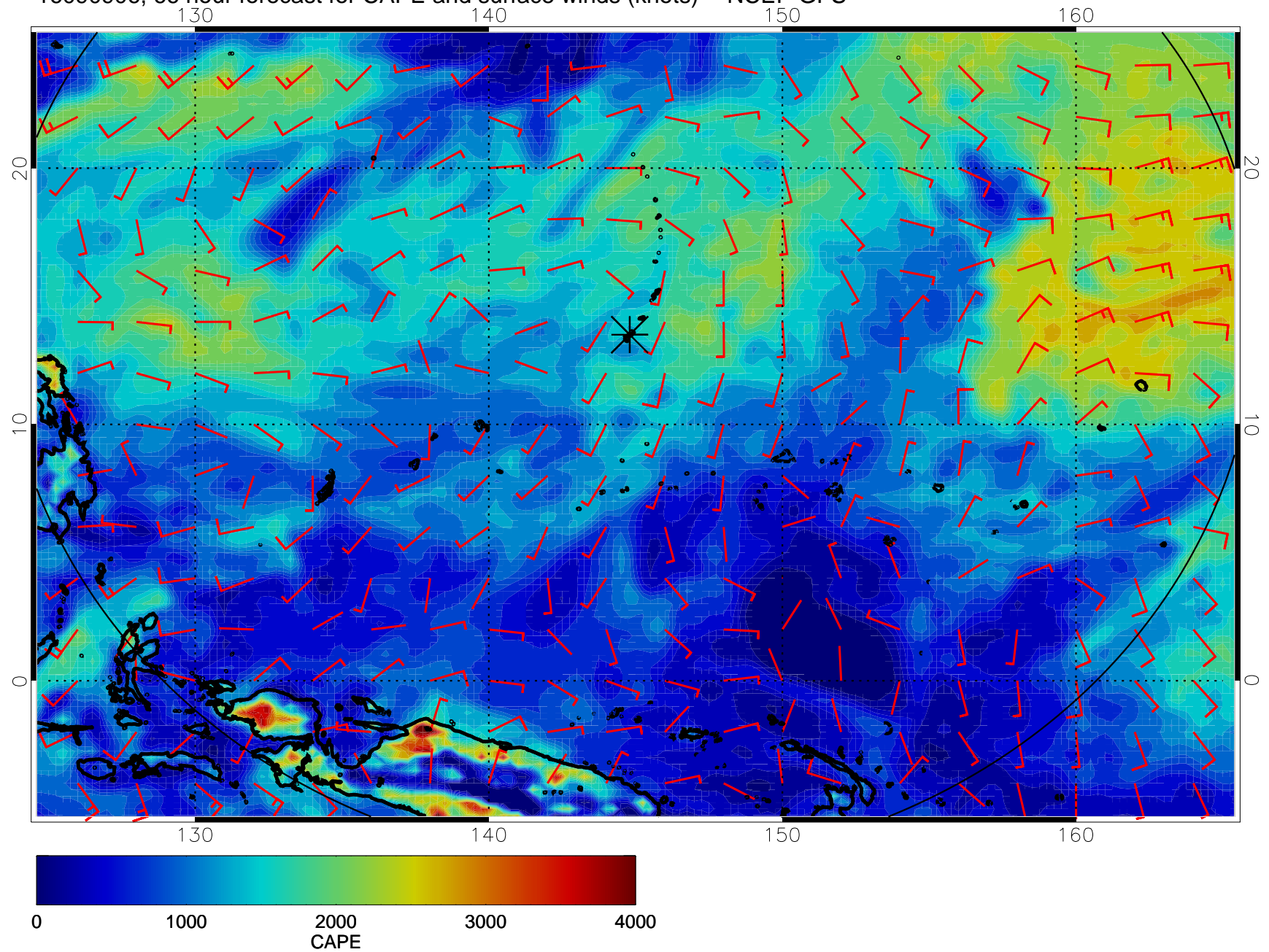


16090900, 60 hour forecast for CAPE and surface winds (knots) -- NCEP GFS

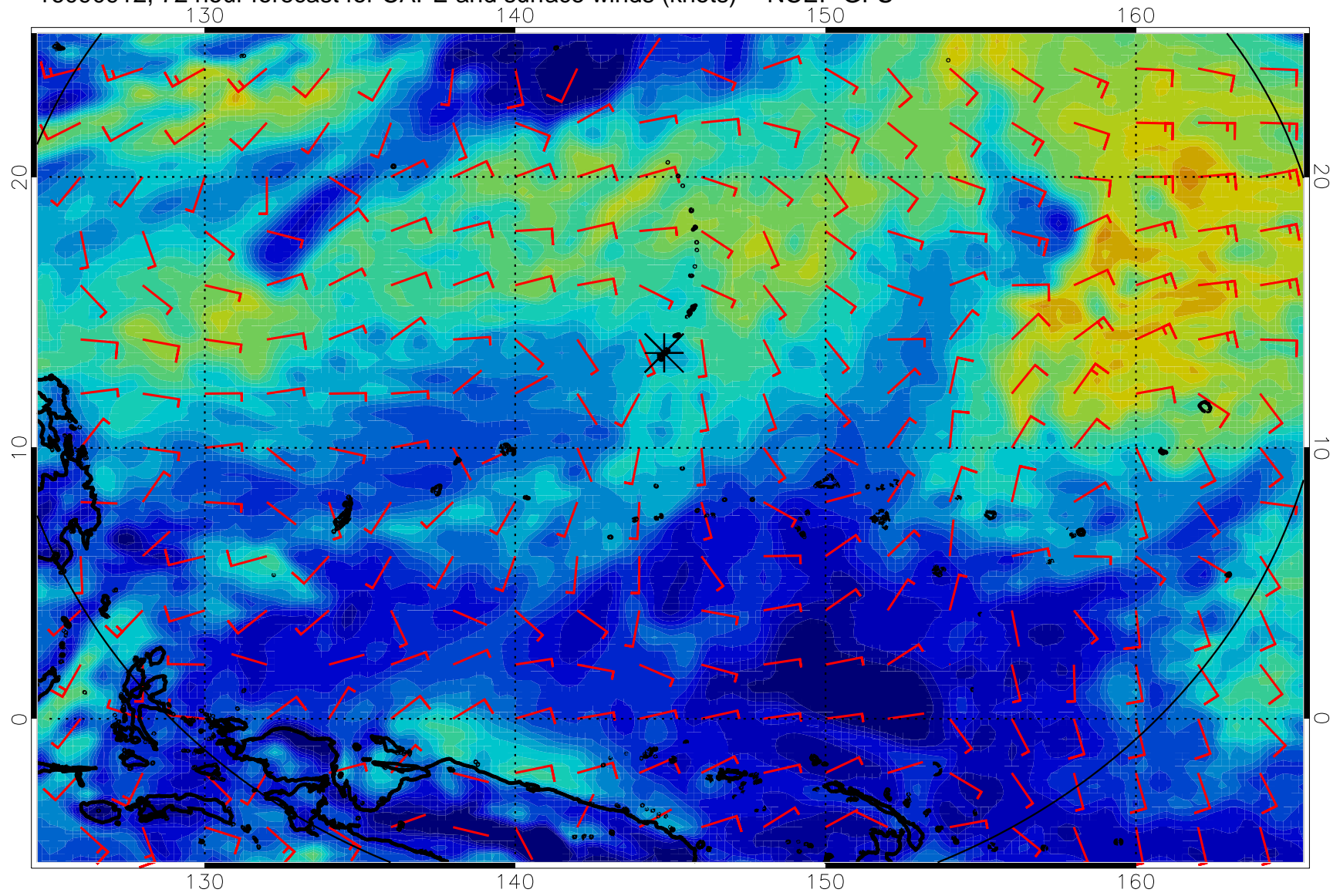




16090906, 66 hour forecast for CAPE and surface winds (knots) -- NCEP GFS

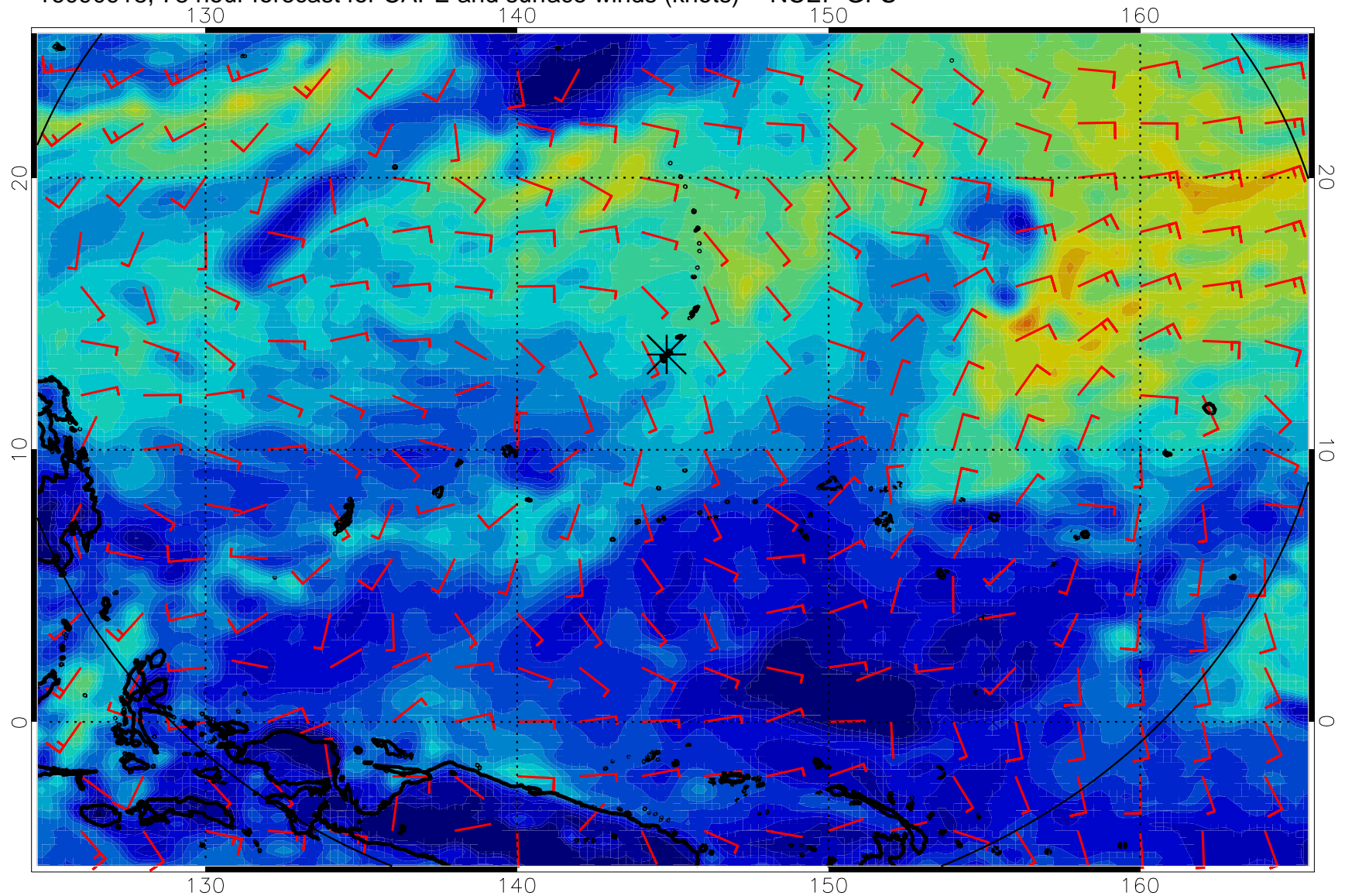


16090912, 72 hour forecast for CAPE and surface winds (knots) -- NCEP GFS

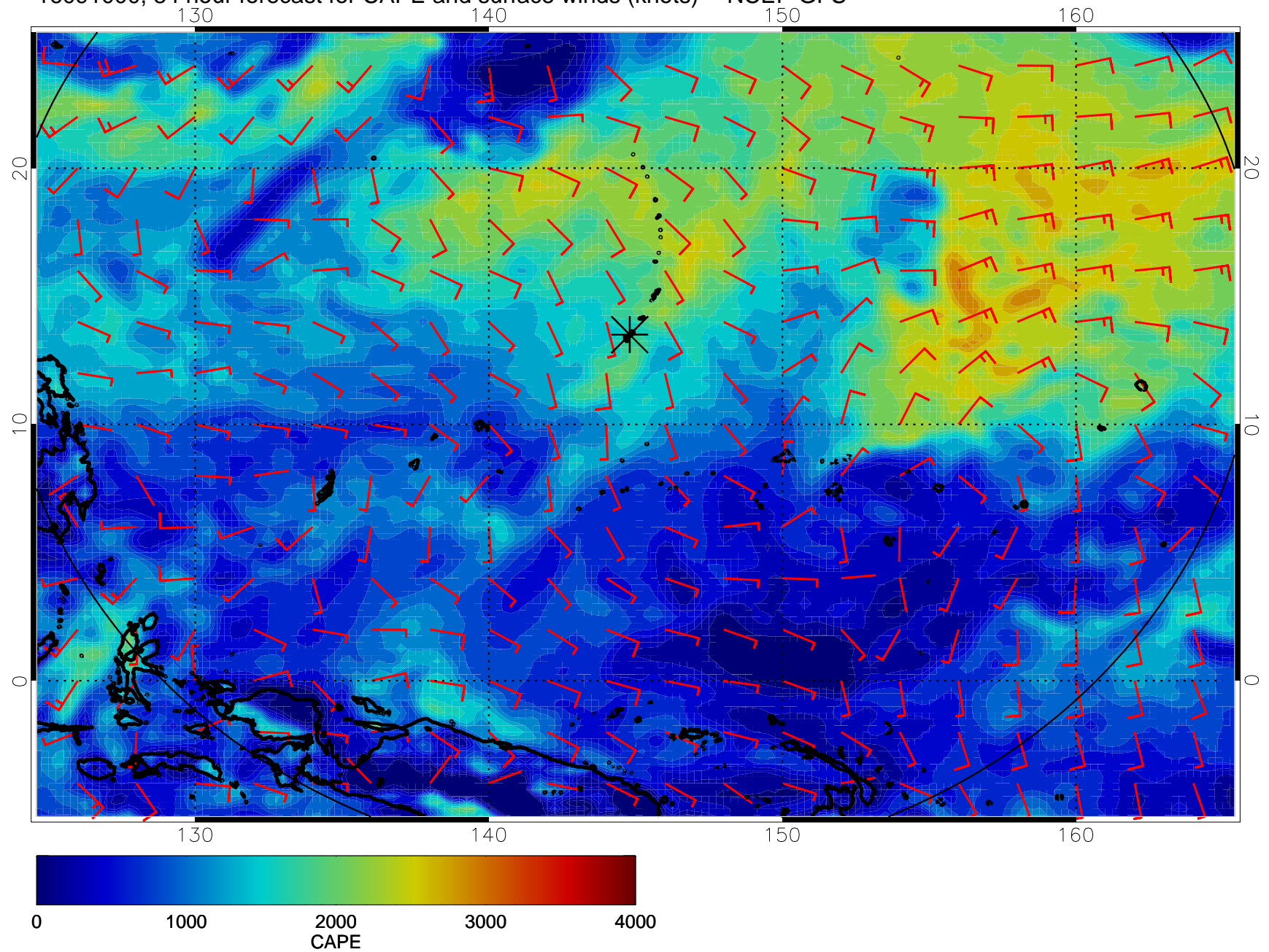




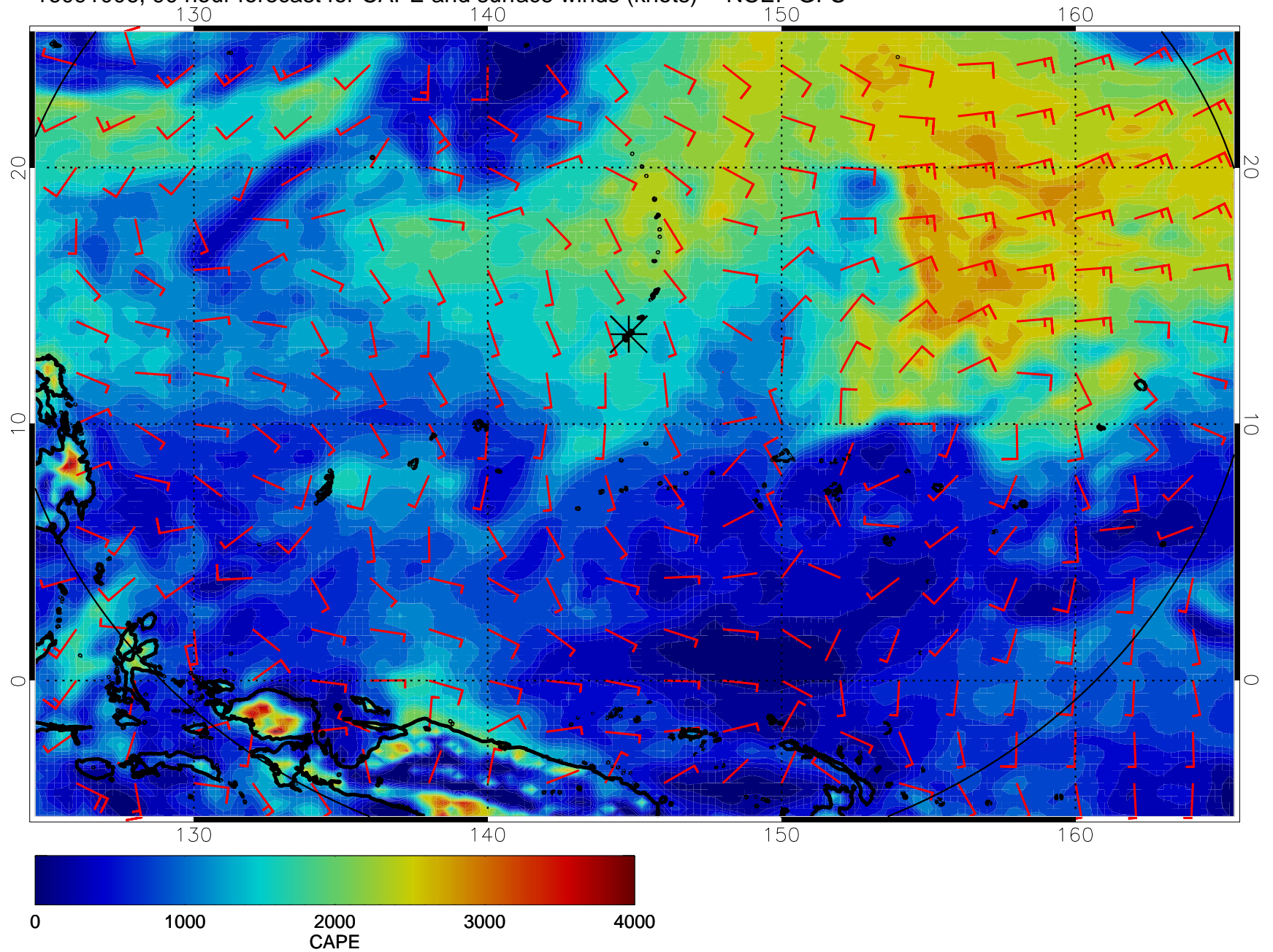
16090918, 78 hour forecast for CAPE and surface winds (knots) -- NCEP GFS



16091000, 84 hour forecast for CAPE and surface winds (knots) -- NCEP GFS

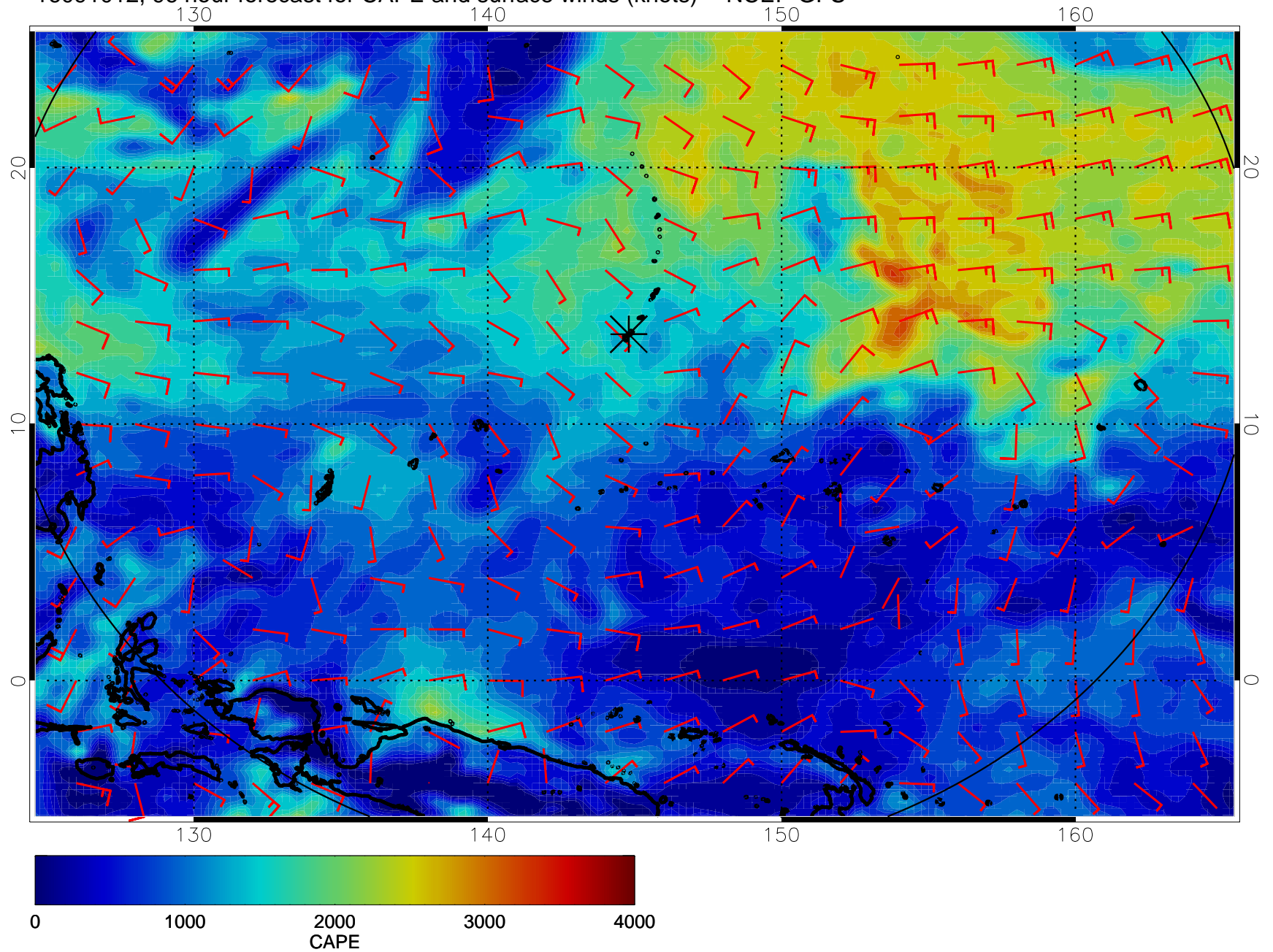


16091006, 90 hour forecast for CAPE and surface winds (knots) -- NCEP GFS

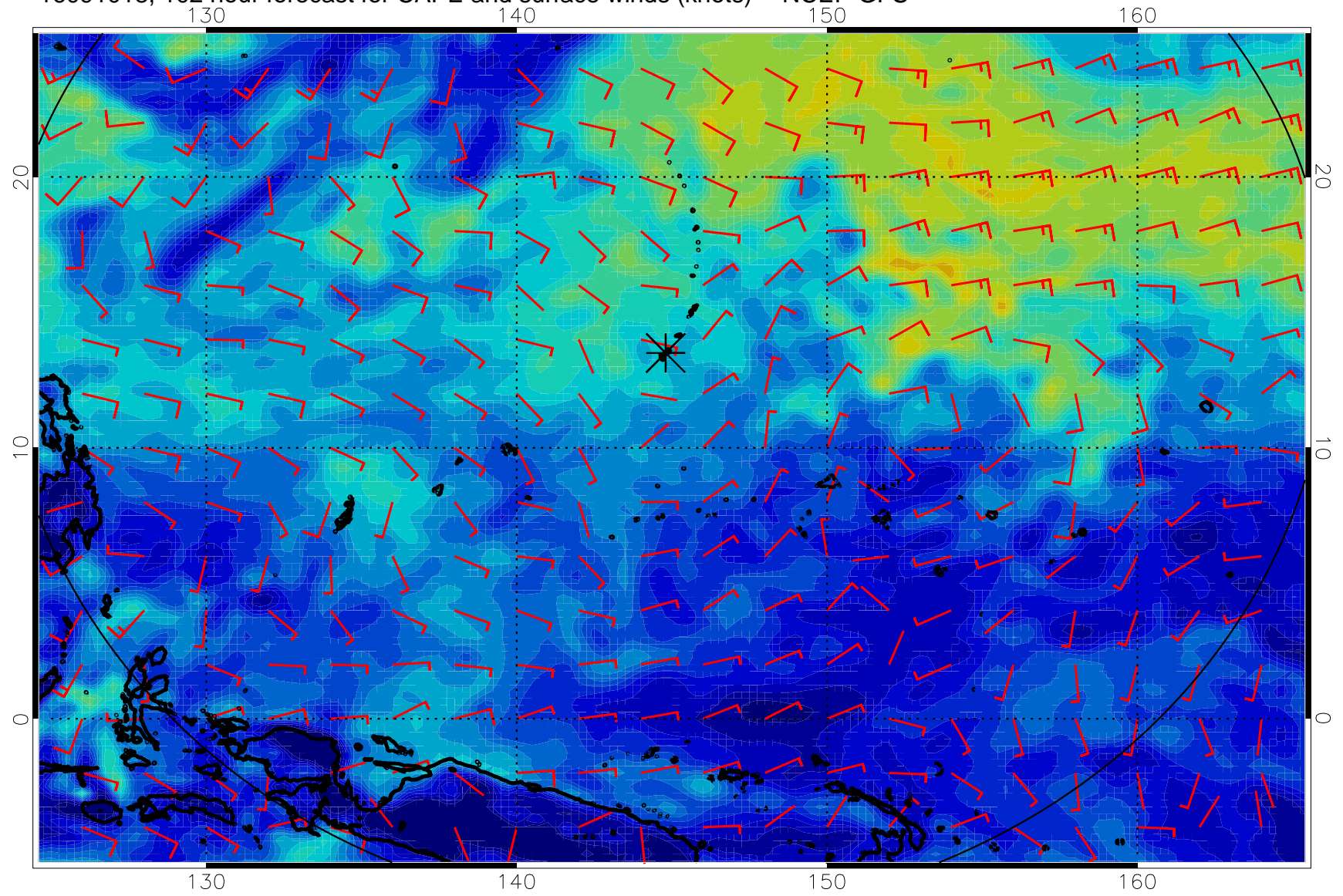




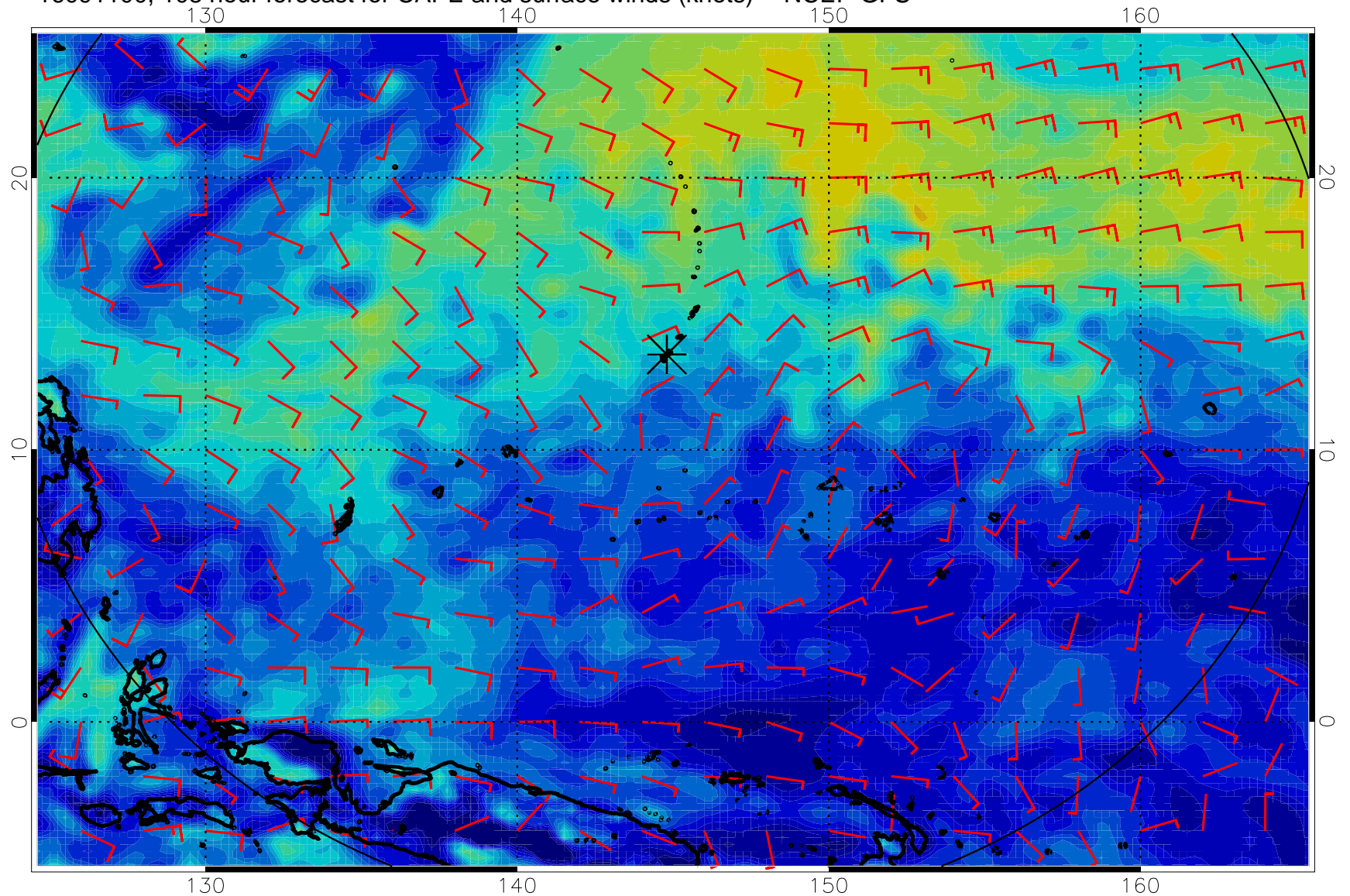
16091012, 96 hour forecast for CAPE and surface winds (knots) -- NCEP GFS



16091018, 102 hour forecast for CAPE and surface winds (knots) -- NCEP GFS

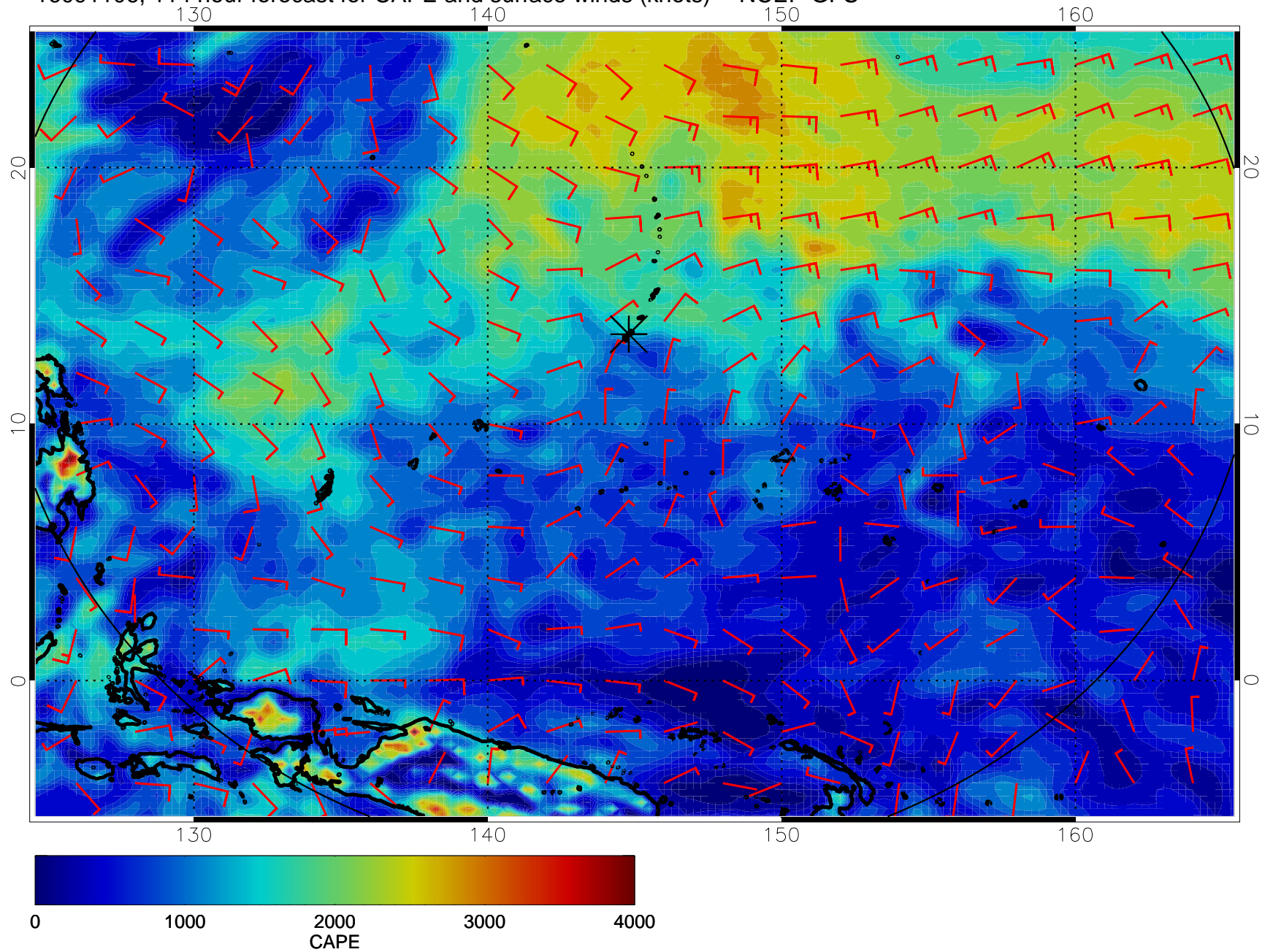


16091100, 108 hour forecast for CAPE and surface winds (knots) -- NCEP GFS





16091106, 114 hour forecast for CAPE and surface winds (knots) -- NCEP GFS



16091112, 120 hour forecast for CAPE and surface winds (knots) -- NCEP GFS

