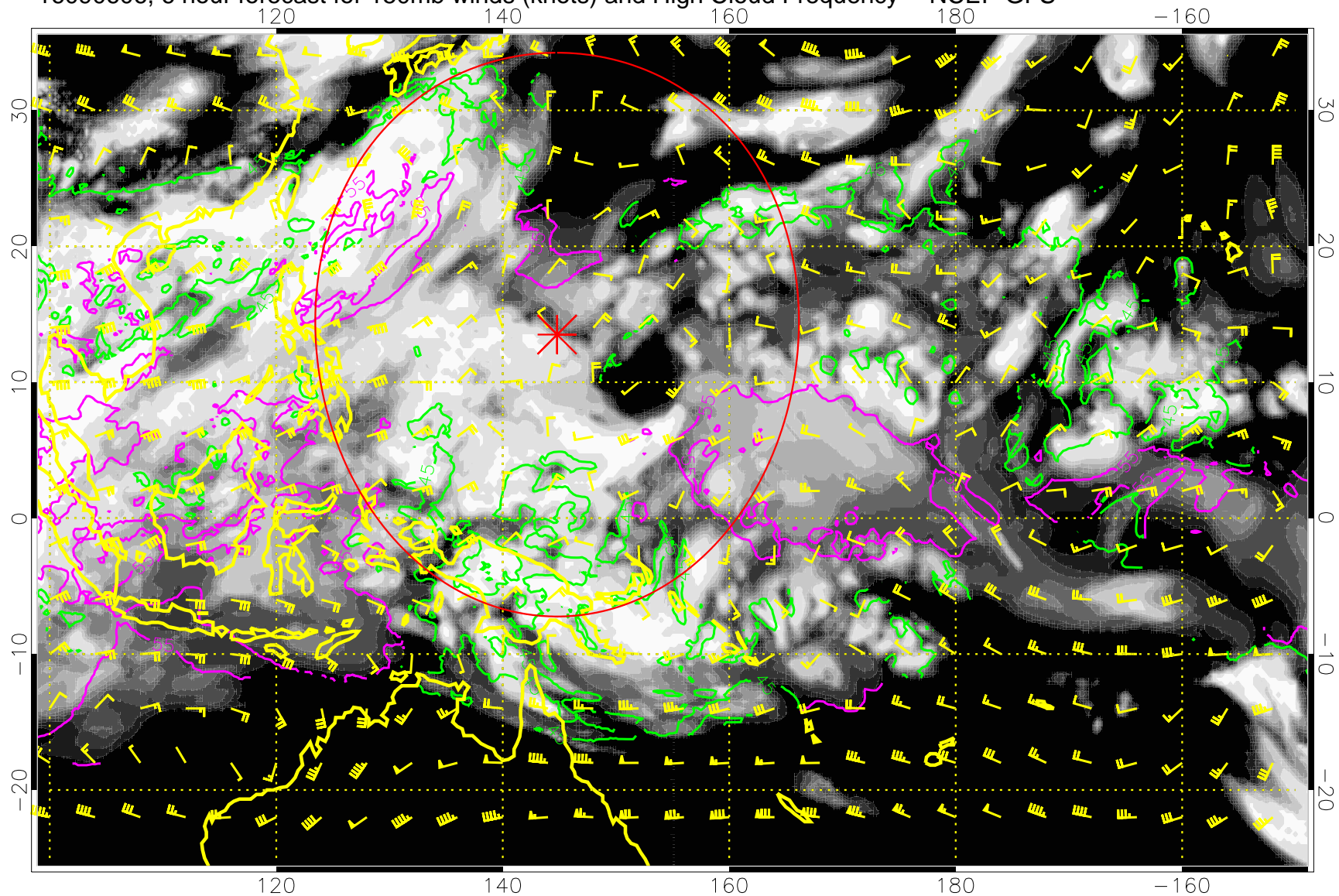


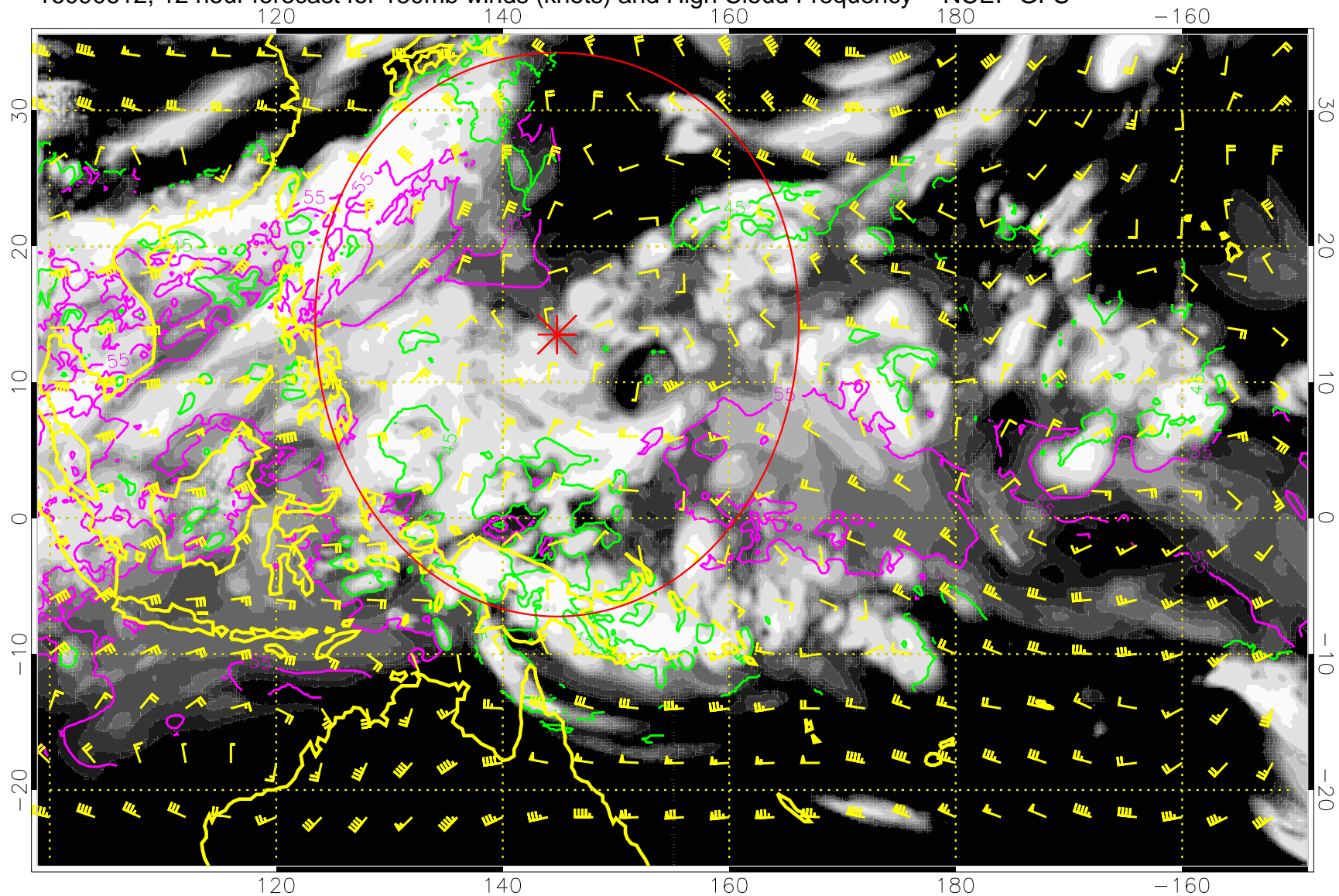
16090606, 6 hour forecast for 150mb winds (knots) and High Cloud Frequency -- NCEP GFS



45 kft  
55 kft

Range ring of 2304 km

16090612, 12 hour forecast for 150mb winds (knots) and High Cloud Frequency -- NCEP GFS

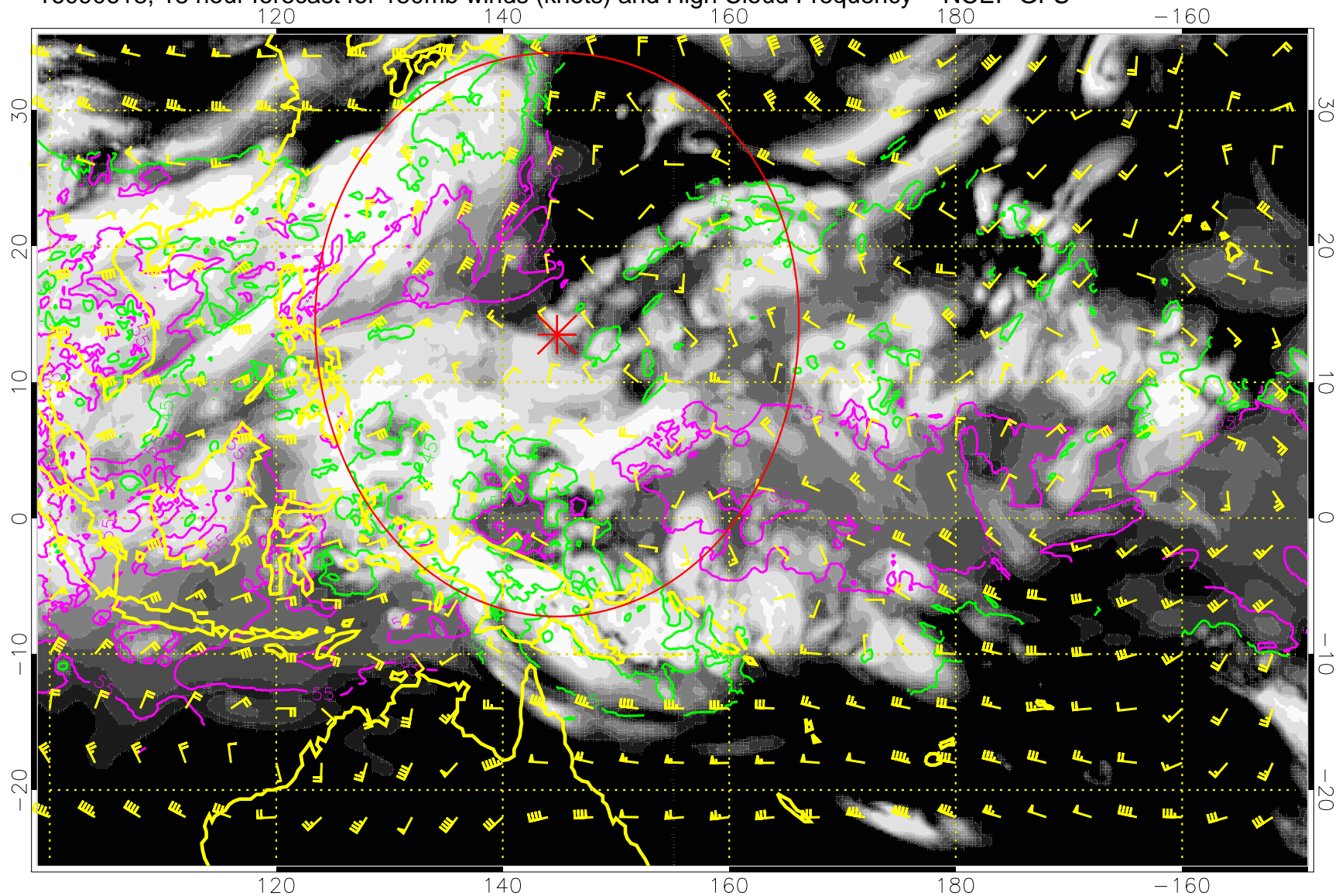


45 kft  
55 kft

Range ring of 2304 km



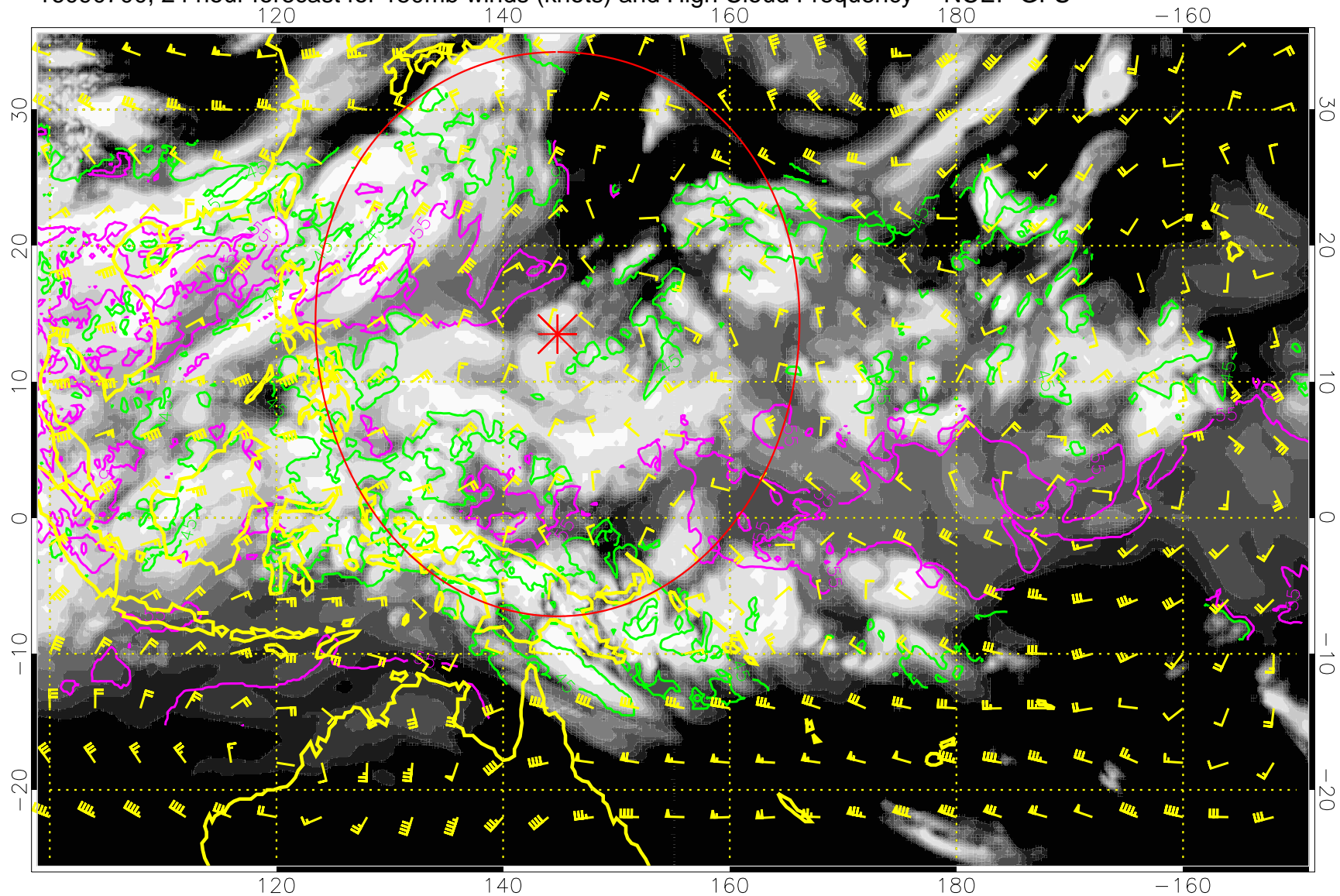
16090618, 18 hour forecast for 150mb winds (knots) and High Cloud Frequency -- NCEP GFS



45 kft  
55 kft

Range ring of 2304 km

16090700, 24 hour forecast for 150mb winds (knots) and High Cloud Frequency -- NCEP GFS

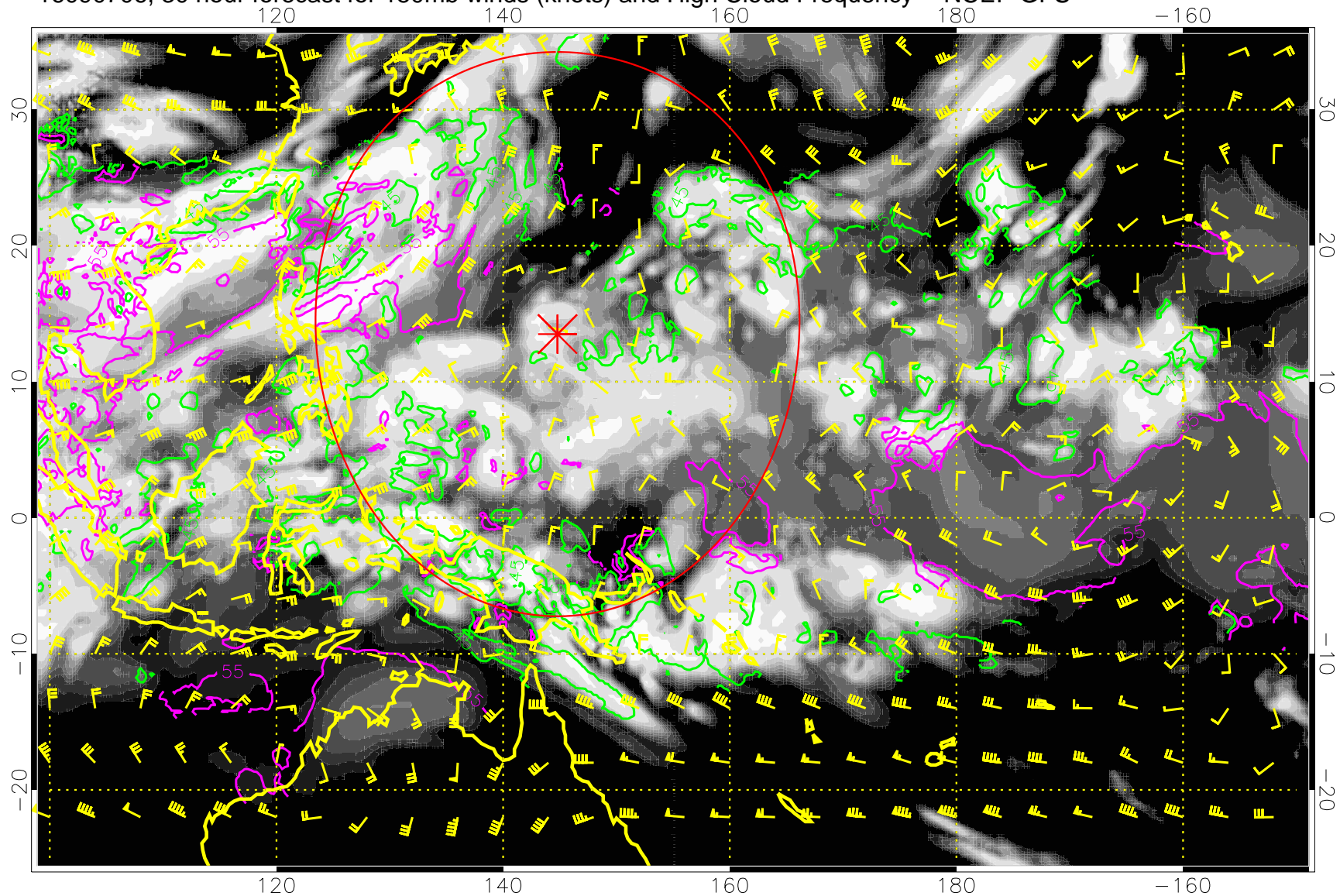


45 kft  
55 kft

Range ring of 2304 km



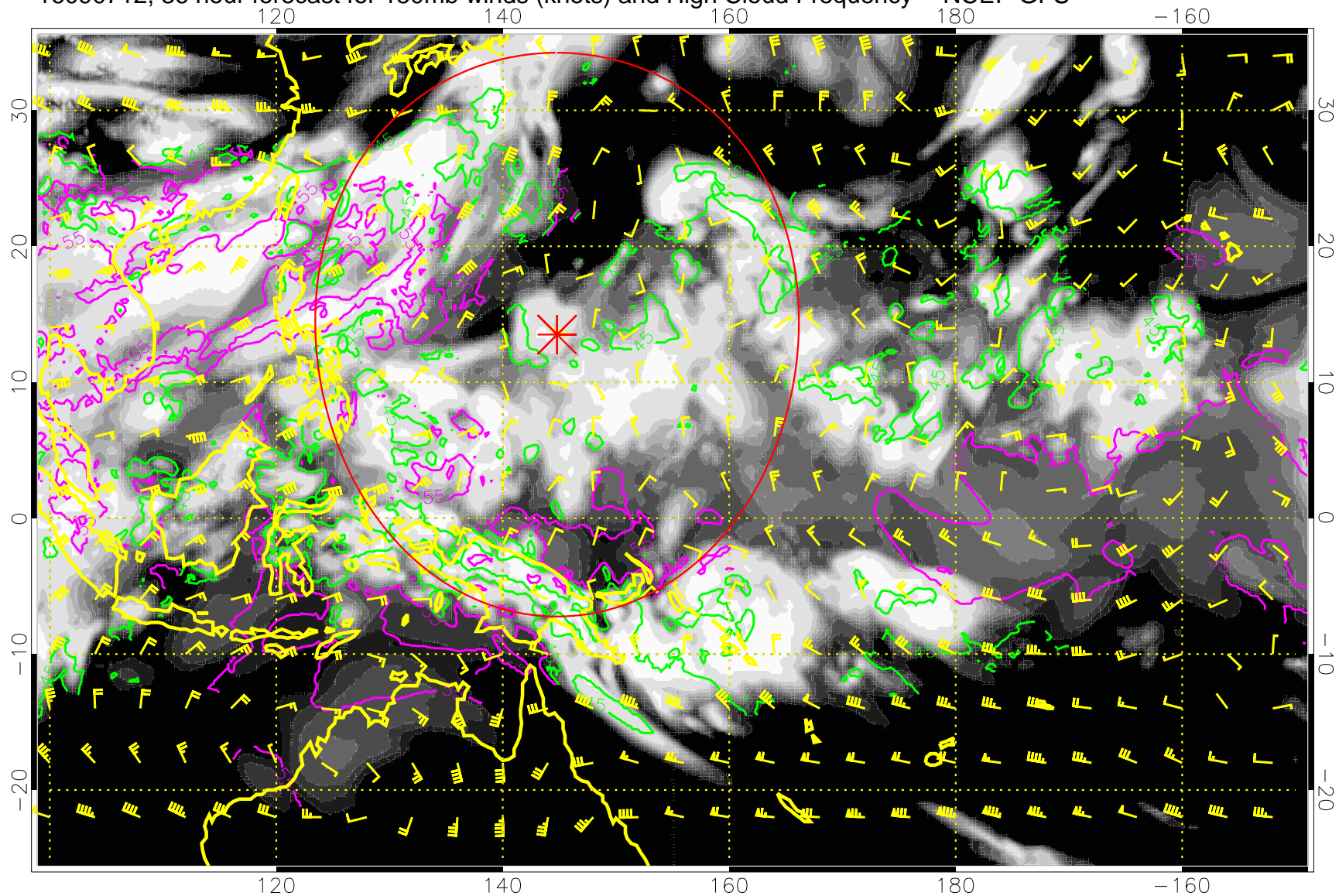
16090706, 30 hour forecast for 150mb winds (knots) and High Cloud Frequency -- NCEP GFS



45 kft  
55 kft

Range ring of 2304 km

16090712, 36 hour forecast for 150mb winds (knots) and High Cloud Frequency -- NCEP GFS

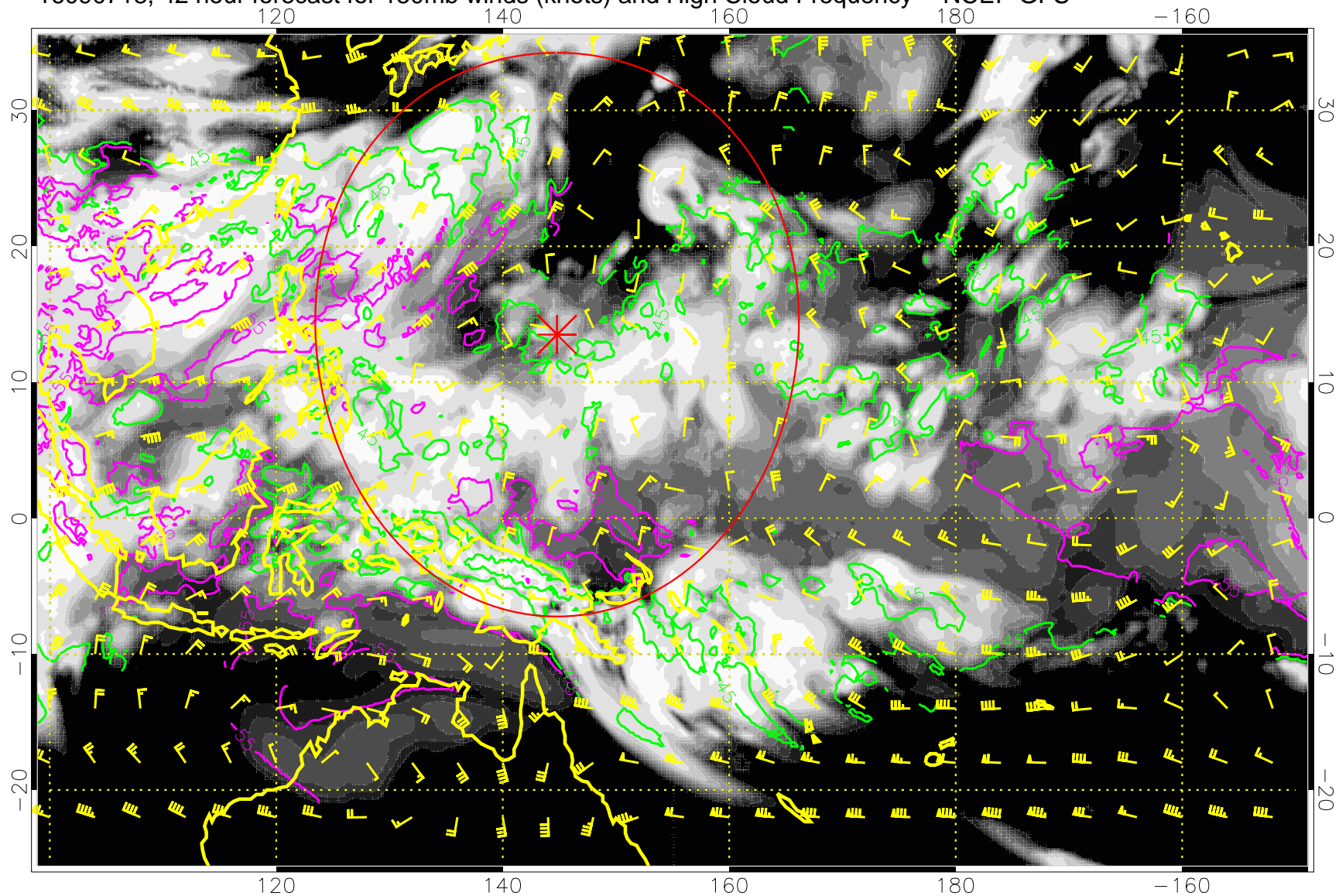


45 kft  
55 kft

Range ring of 2304 km



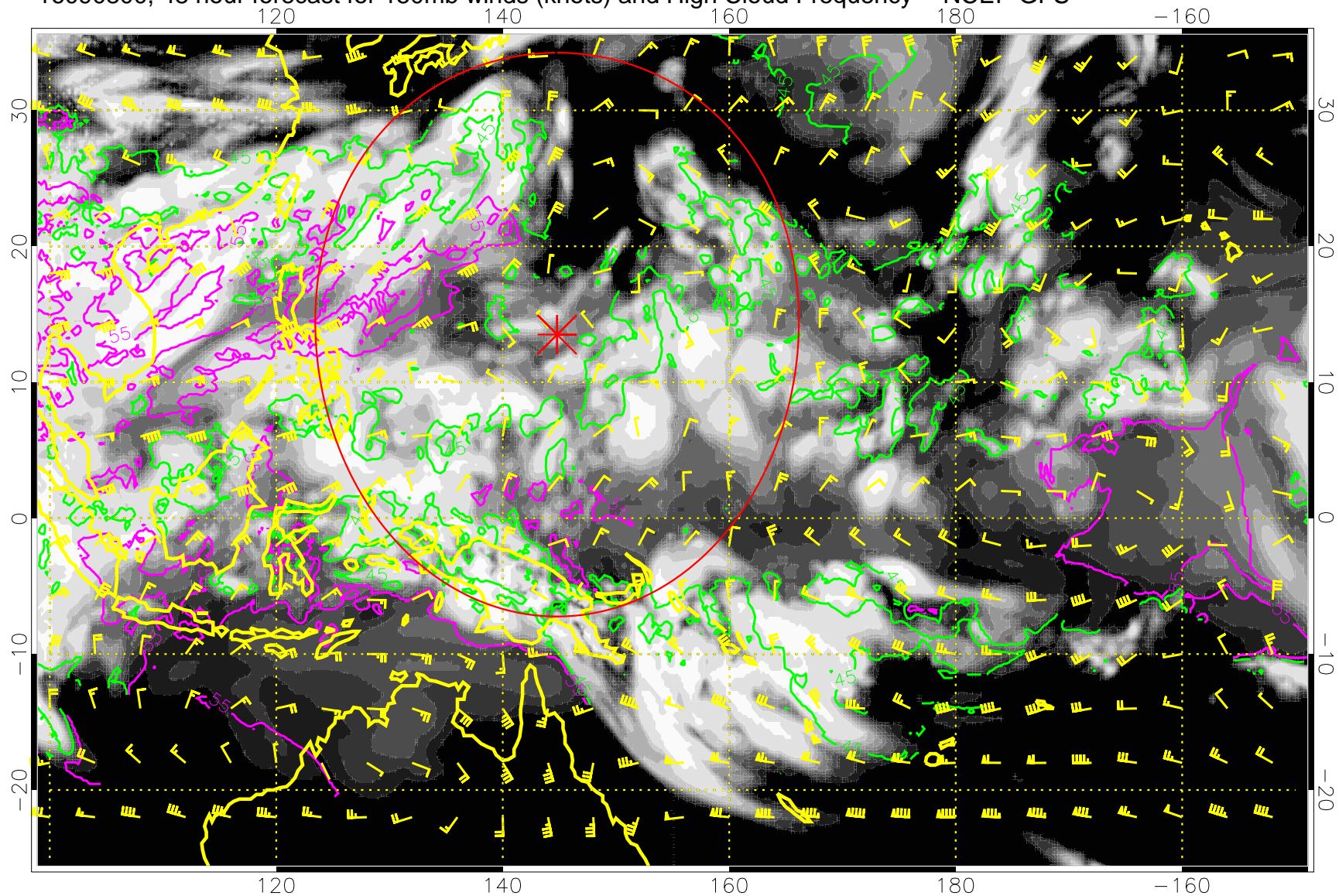
16090718, 42 hour forecast for 150mb winds (knots) and High Cloud Frequency -- NCEP GFS



45 kft  
55 kft

Range ring of 2304 km

16090800, 48 hour forecast for 150mb winds (knots) and High Cloud Frequency -- NCEP GFS

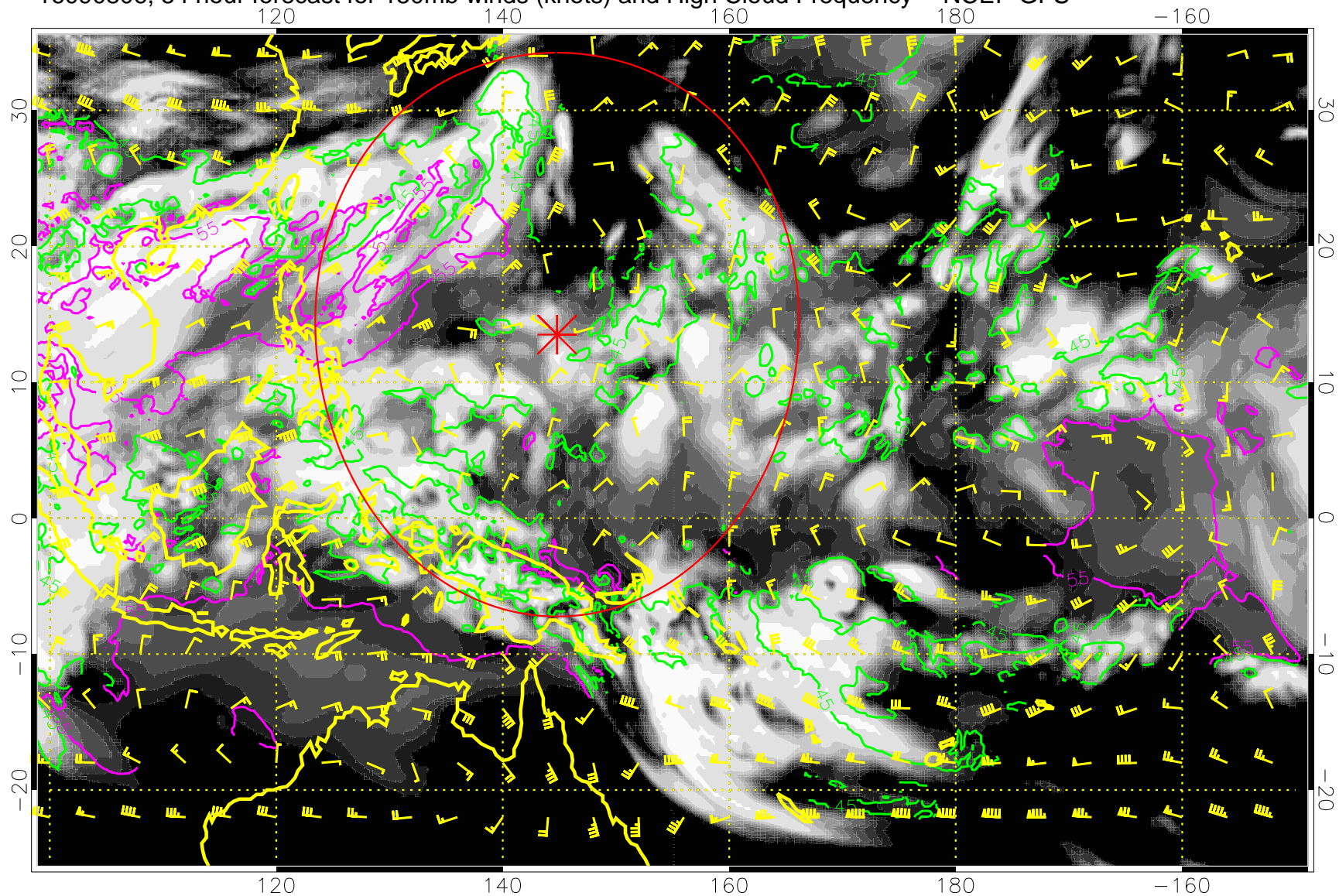


45 kft  
55 kft

Range ring of 2304 km



16090806, 54 hour forecast for 150mb winds (knots) and High Cloud Frequency -- NCEP GFS

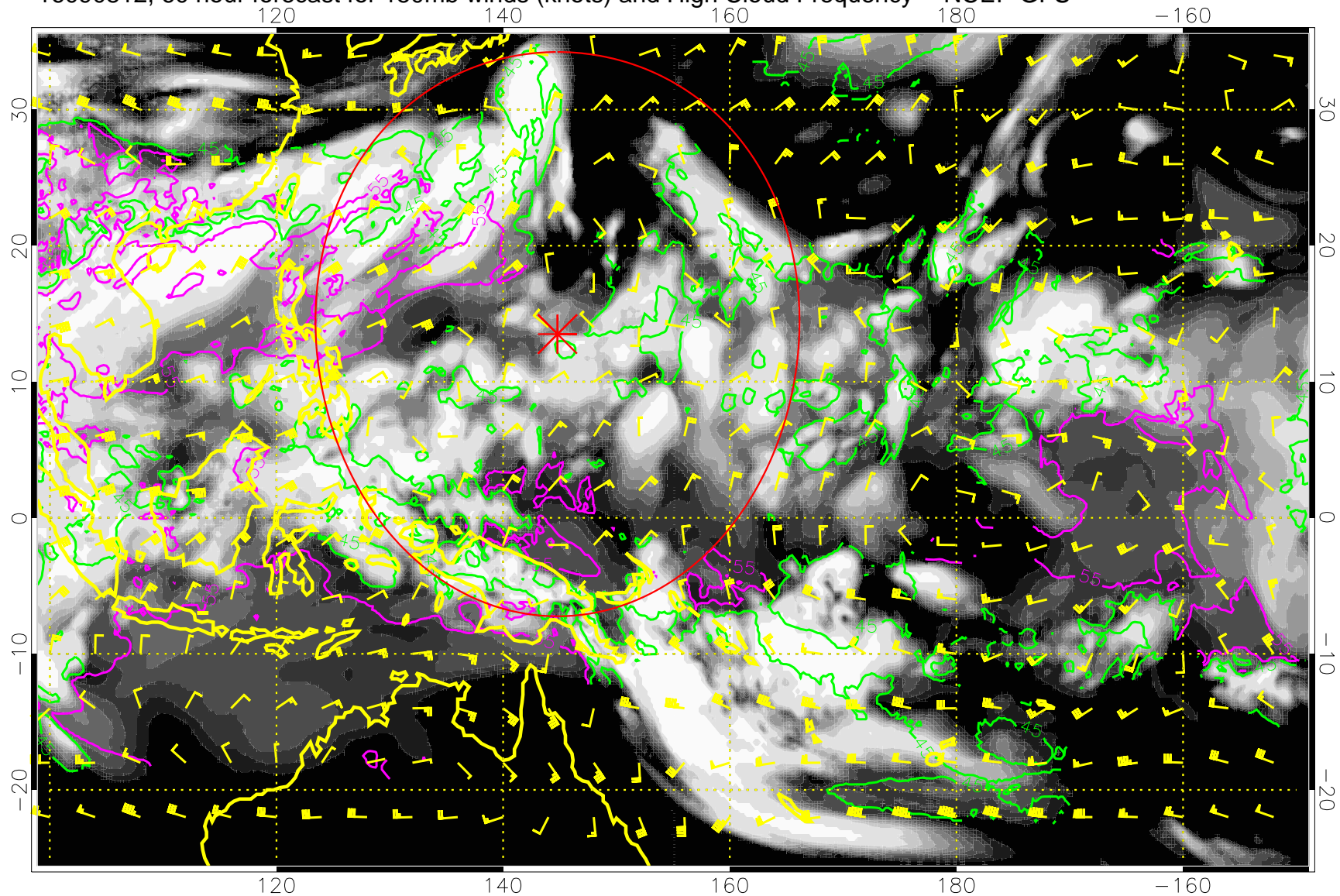


0.0 0.2 0.4 0.6 0.8 1.0  
High Cloud Frequency

45 kft  
55 kft

Range ring of 2304 km

16090812, 60 hour forecast for 150mb winds (knots) and High Cloud Frequency -- NCEP GFS

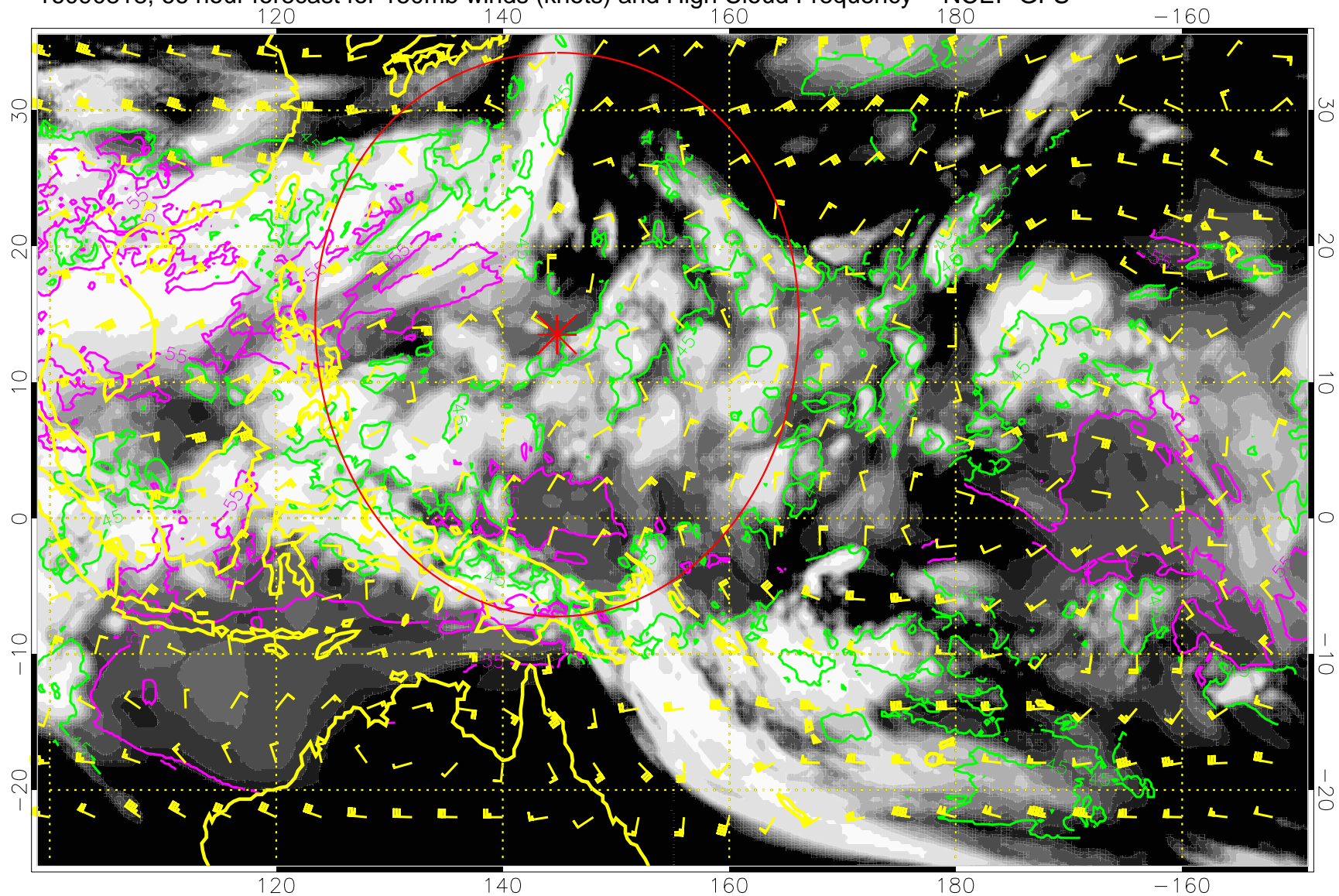


45 kft  
55 kft

Range ring of 2304 km



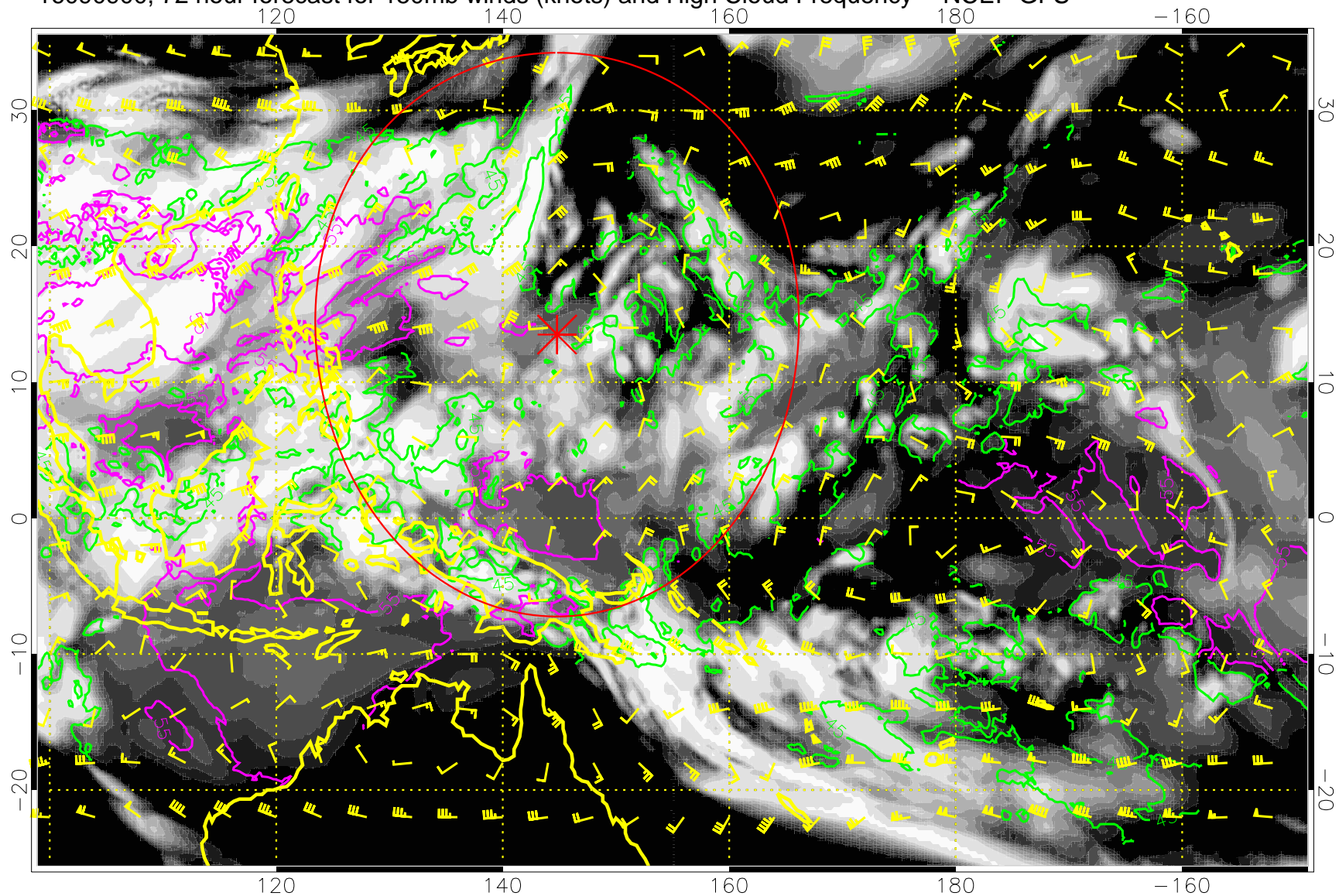
16090818, 66 hour forecast for 150mb winds (knots) and High Cloud Frequency -- NCEP GFS



45 kft  
55 kft

Range ring of 2304 km

16090900, 72 hour forecast for 150mb winds (knots) and High Cloud Frequency -- NCEP GFS

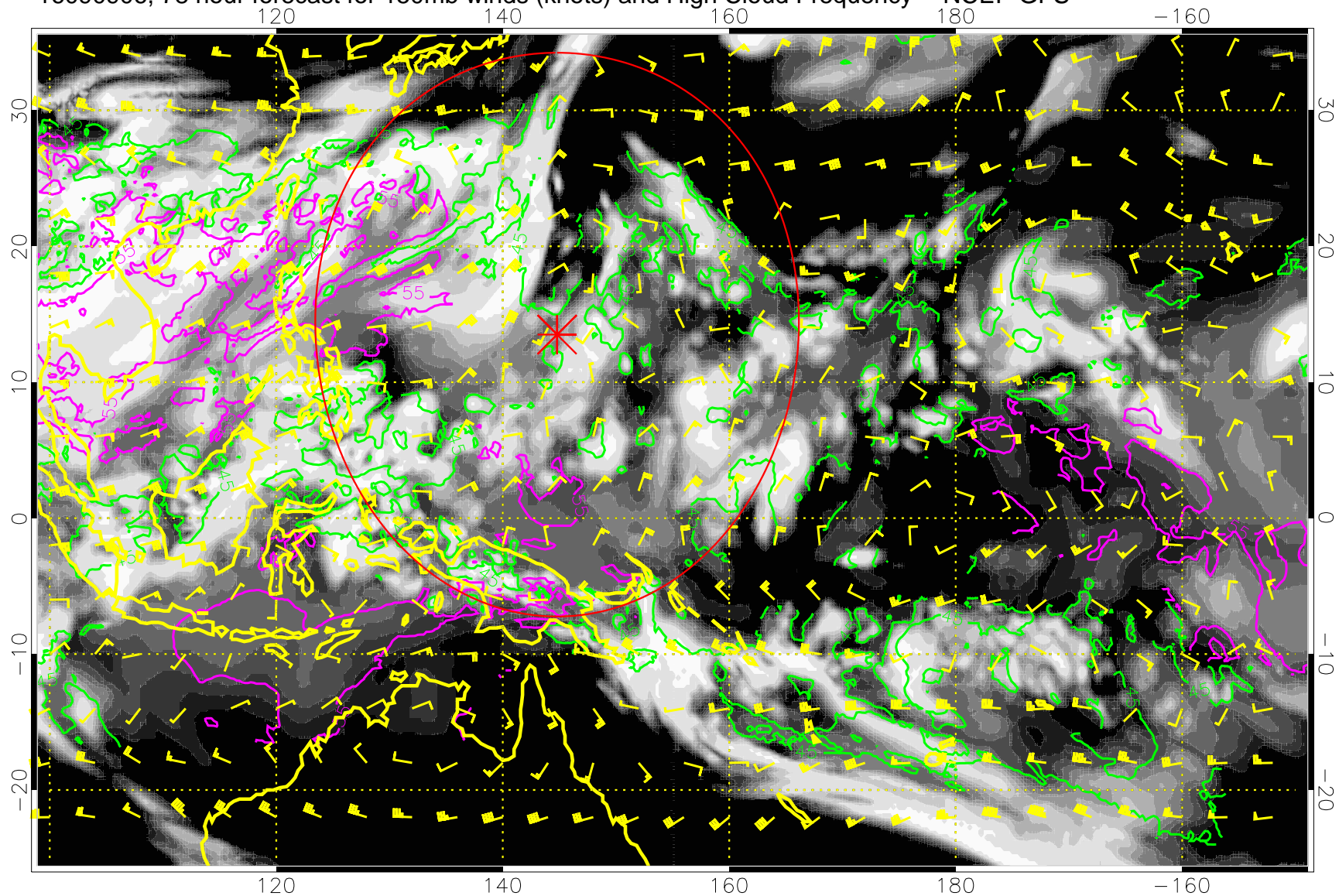


45 kft  
55 kft

Range ring of 2304 km



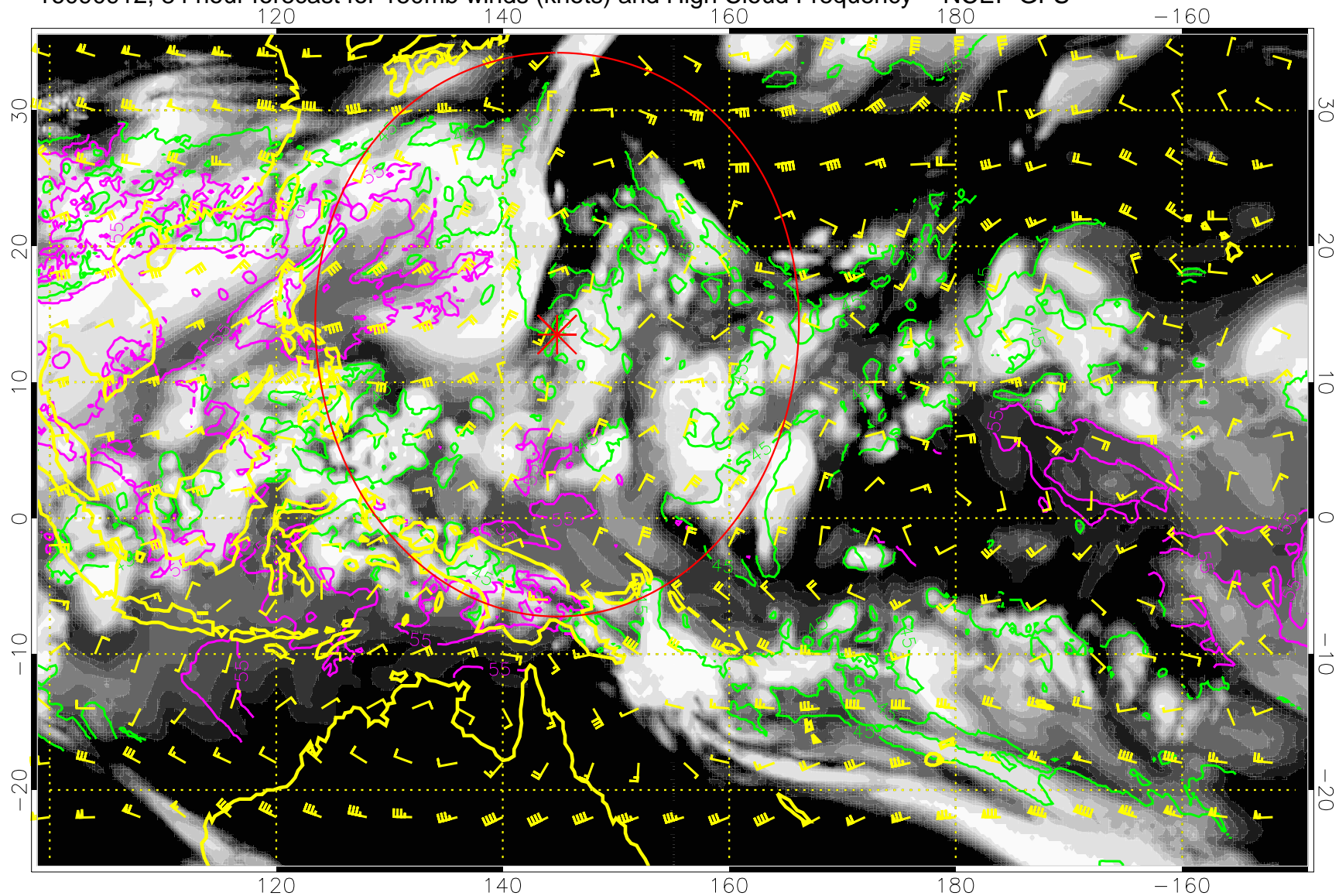
16090906, 78 hour forecast for 150mb winds (knots) and High Cloud Frequency -- NCEP GFS



45 kft  
55 kft

Range ring of 2304 km

16090912, 84 hour forecast for 150mb winds (knots) and High Cloud Frequency -- NCEP GFS

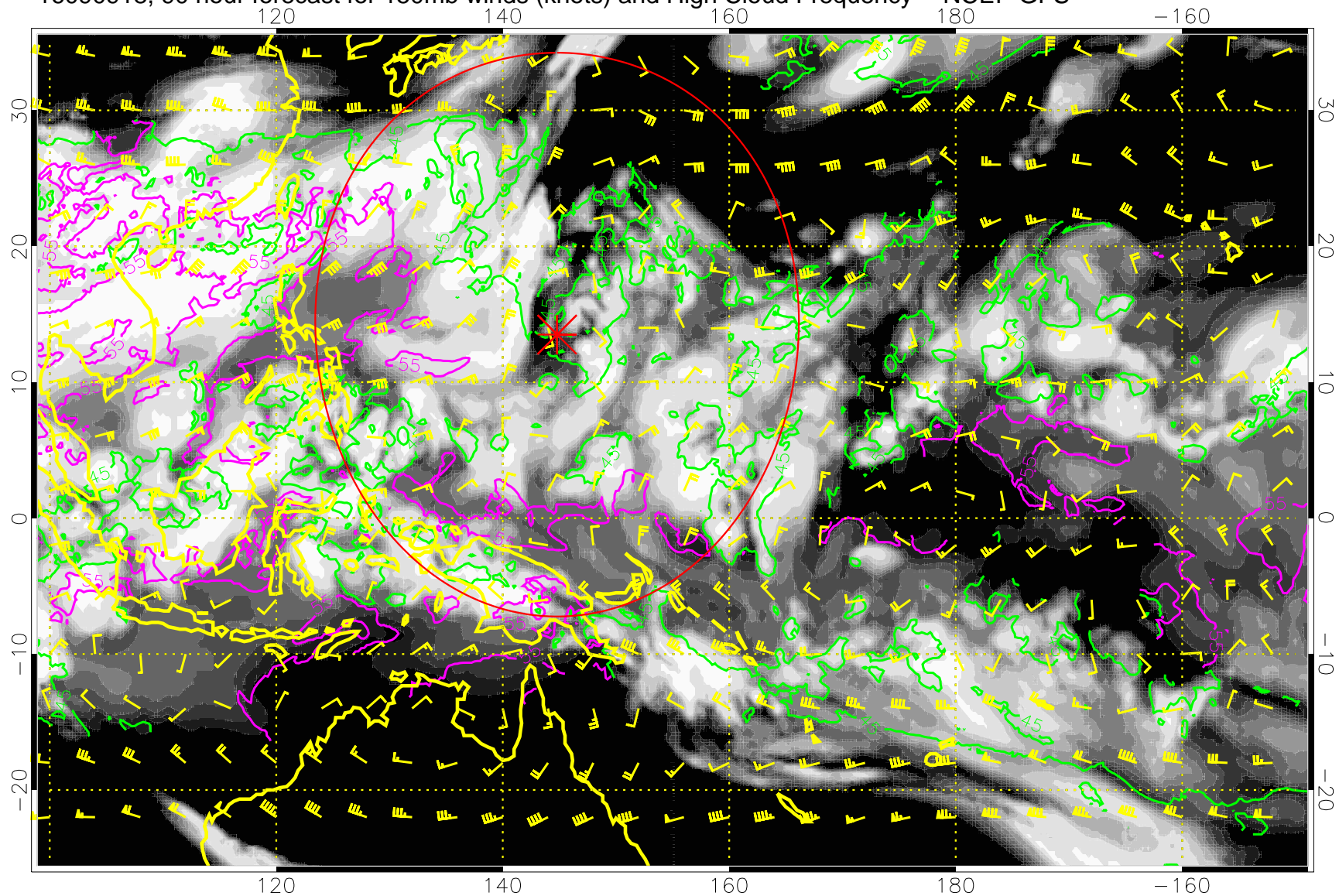


45 kft  
55 kft

Range ring of 2304 km



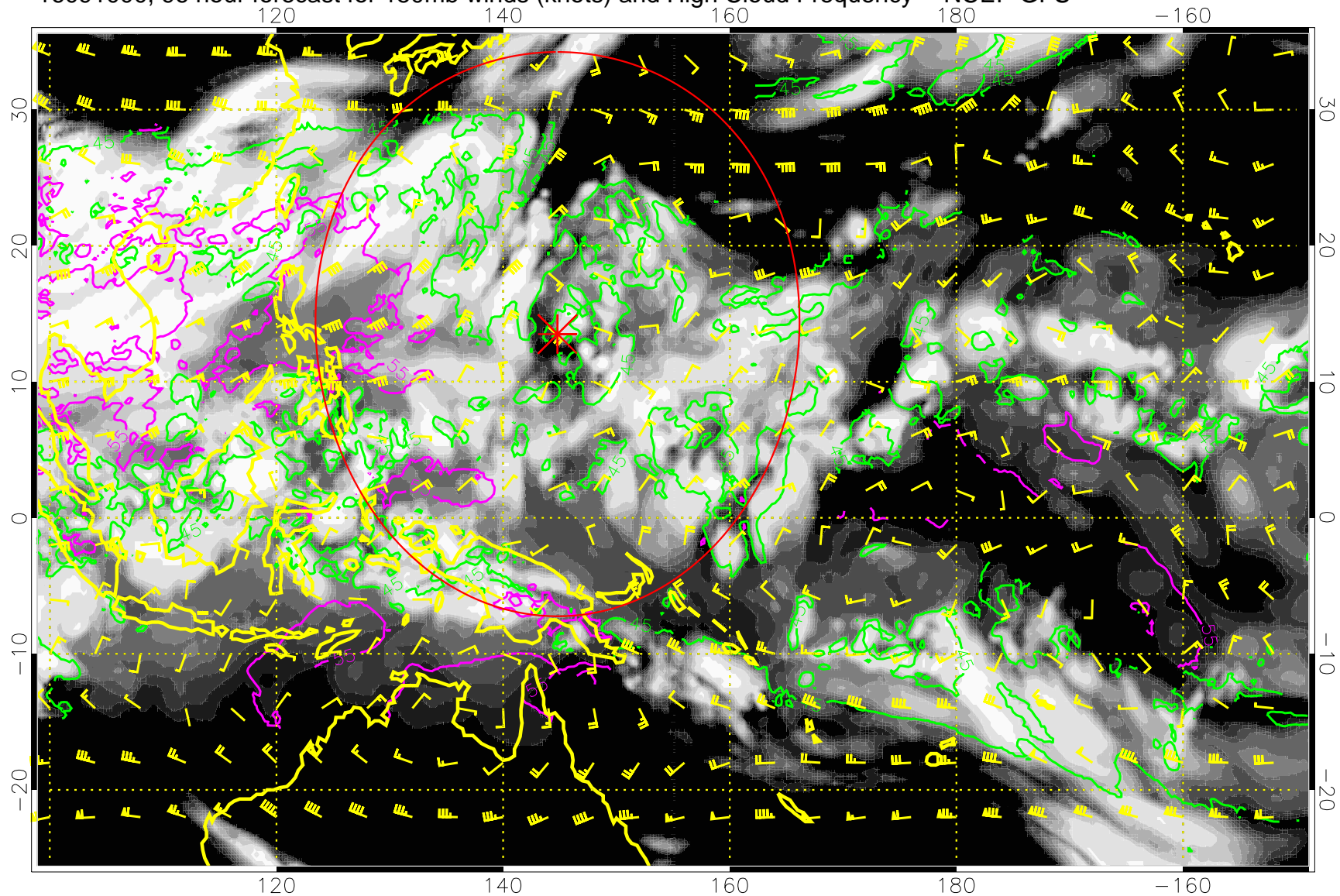
16090918, 90 hour forecast for 150mb winds (knots) and High Cloud Frequency -- NCEP GFS



45 kft  
55 kft

Range ring of 2304 km

16091000, 96 hour forecast for 150mb winds (knots) and High Cloud Frequency -- NCEP GFS

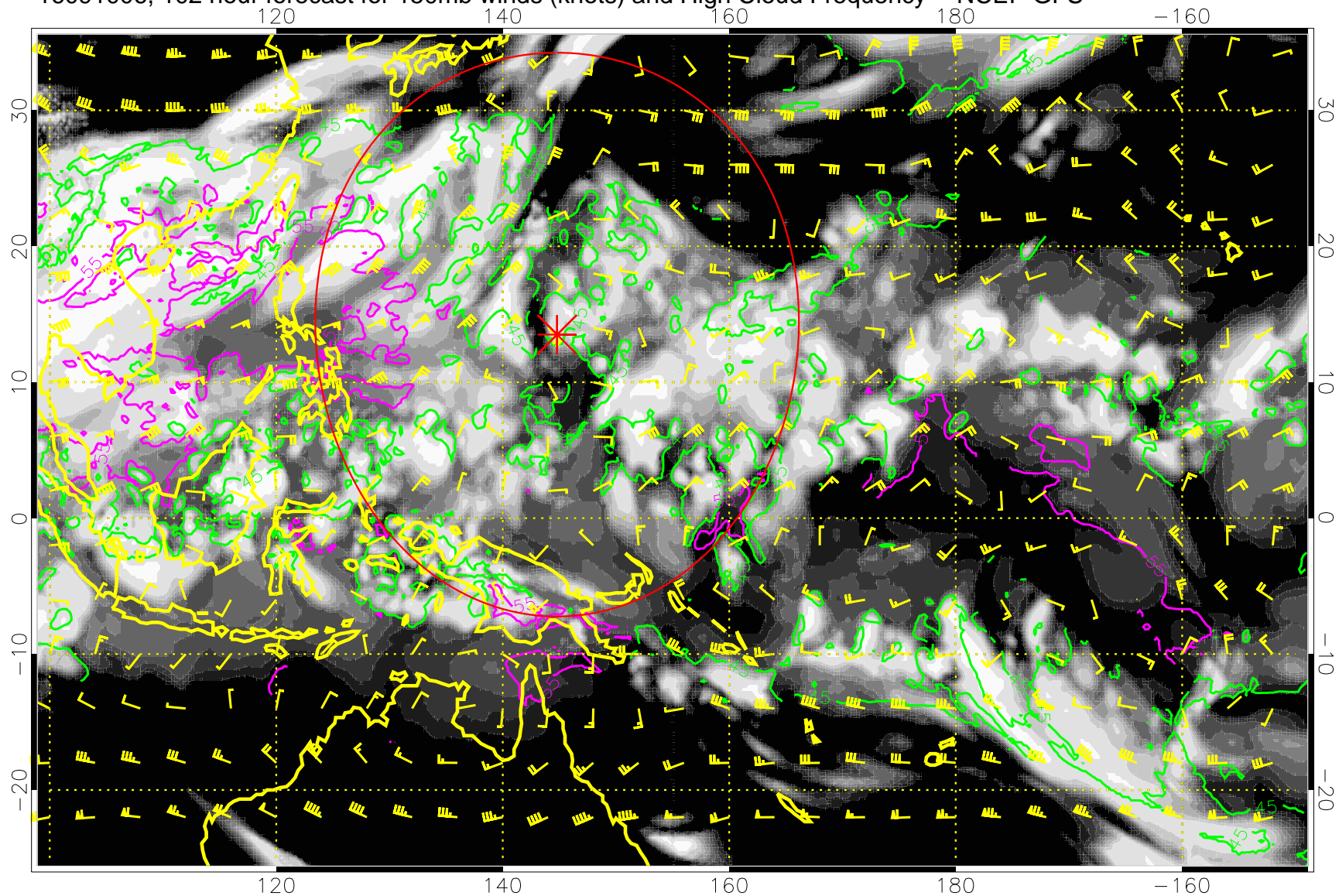


45 kft  
55 kft

Range ring of 2304 km



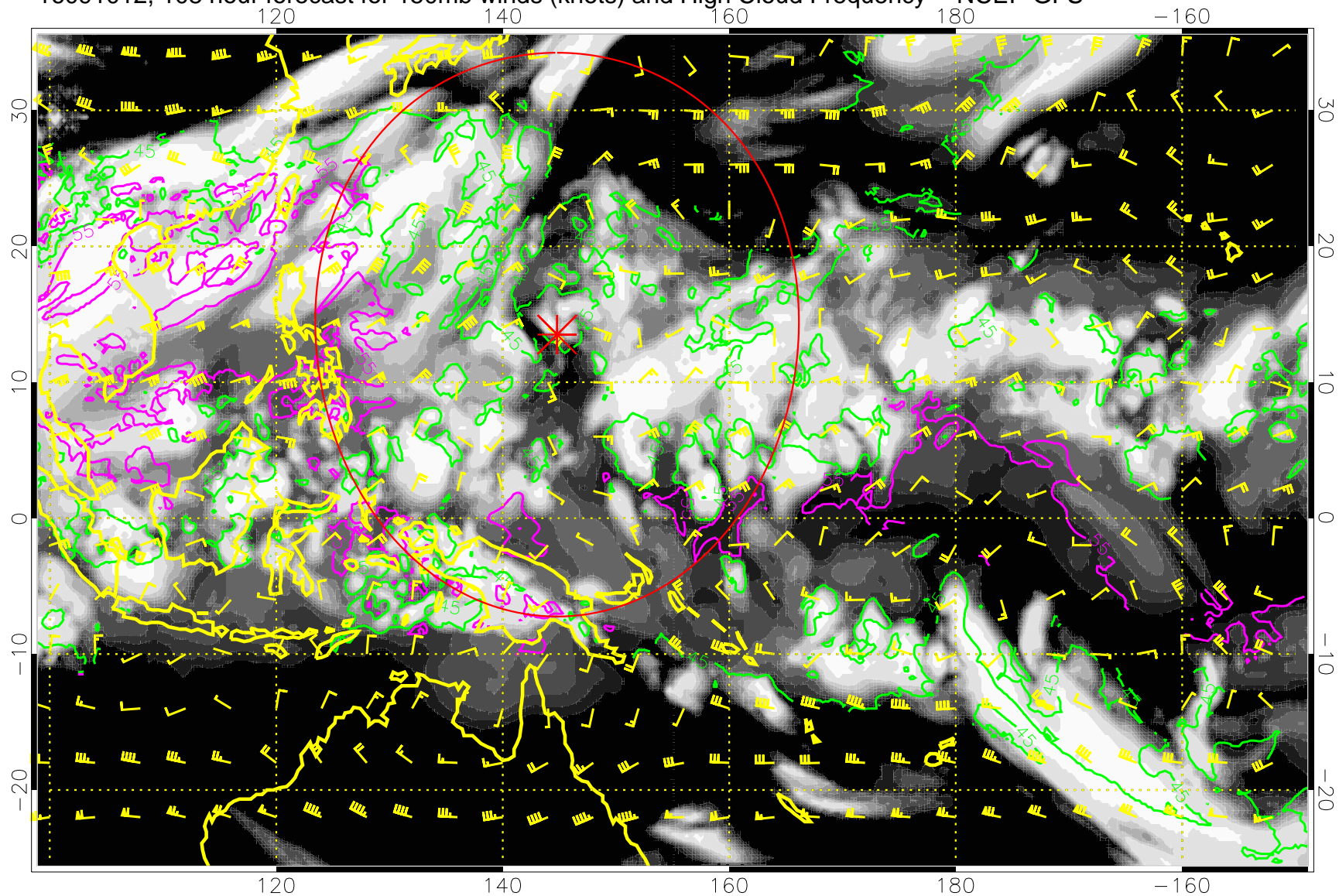
16091006, 102 hour forecast for 150mb winds (knots) and High Cloud Frequency -- NCEP GFS



45 kft  
55 kft

Range ring of 2304 km

16091012, 108 hour forecast for 150mb winds (knots) and High Cloud Frequency -- NCEP GFS

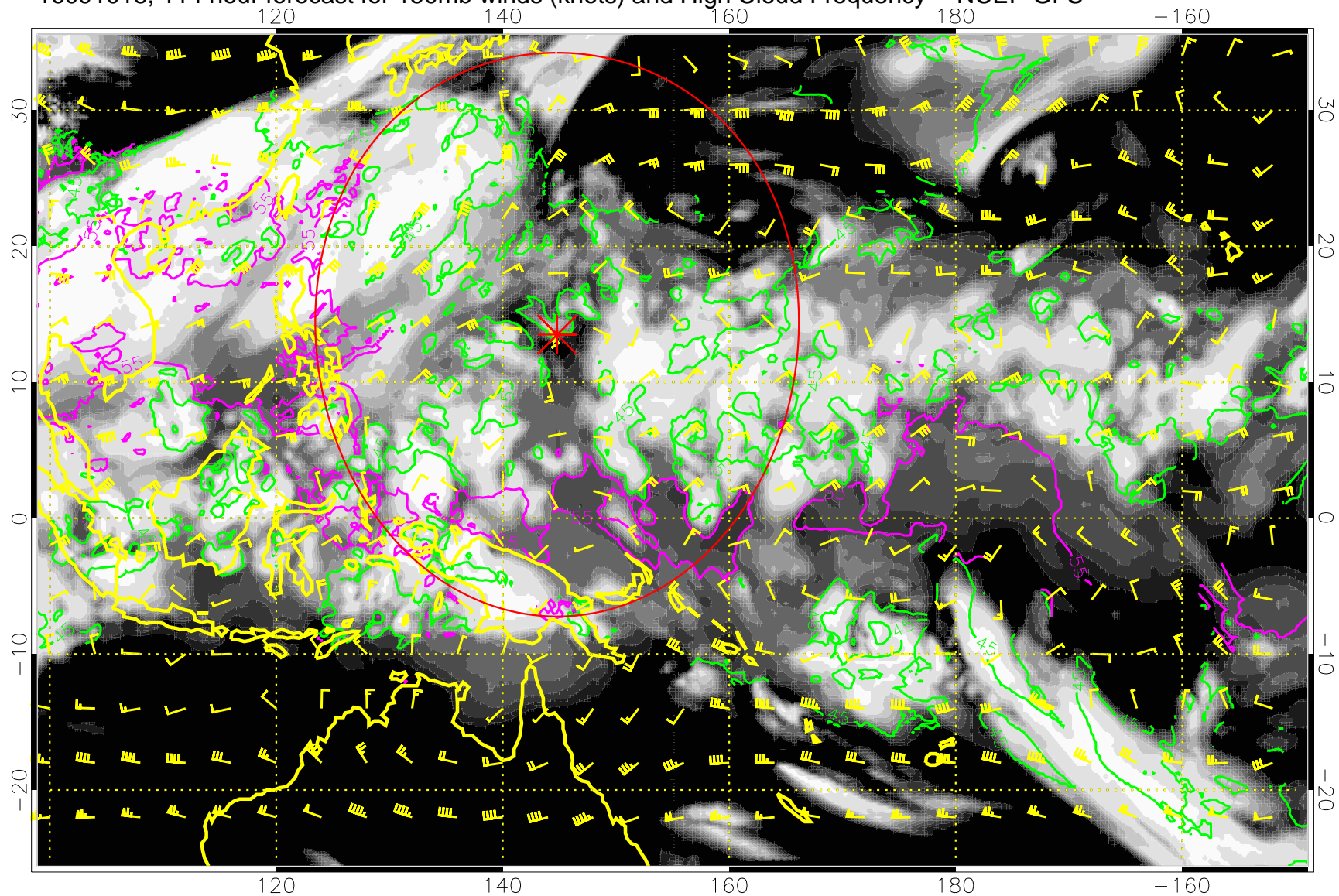


45 kft  
55 kft

Range ring of 2304 km



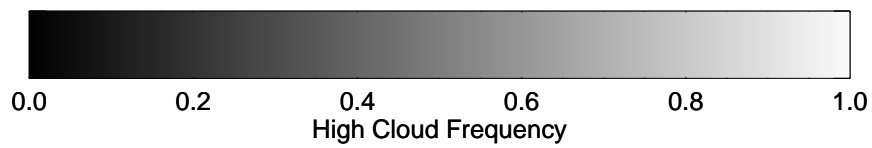
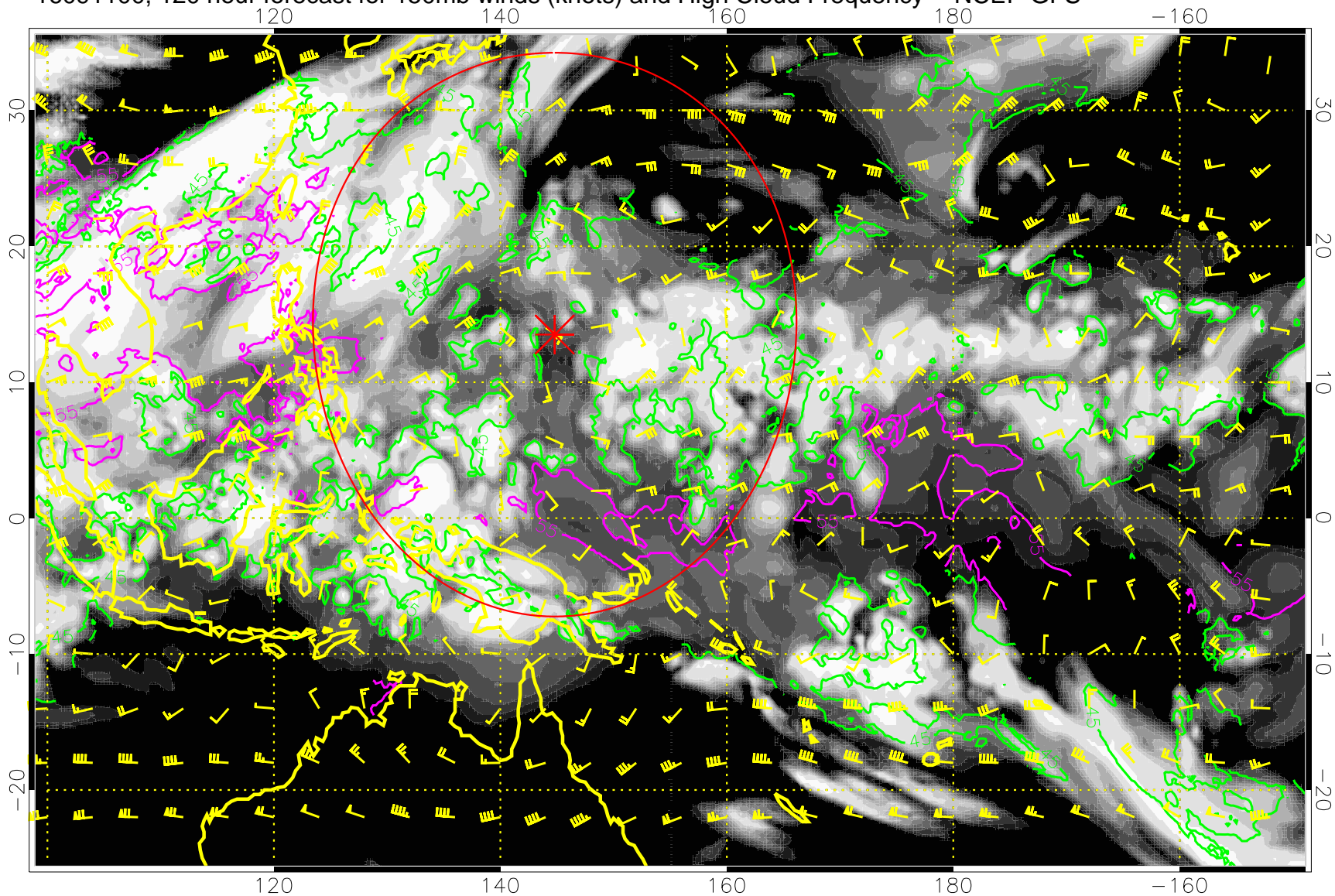
16091018, 114 hour forecast for 150mb winds (knots) and High Cloud Frequency -- NCEP GFS



45 kft  
55 kft

Range ring of 2304 km

16091100, 120 hour forecast for 150mb winds (knots) and High Cloud Frequency -- NCEP GFS



45 kft  
55 kft

Range ring of 2304 km