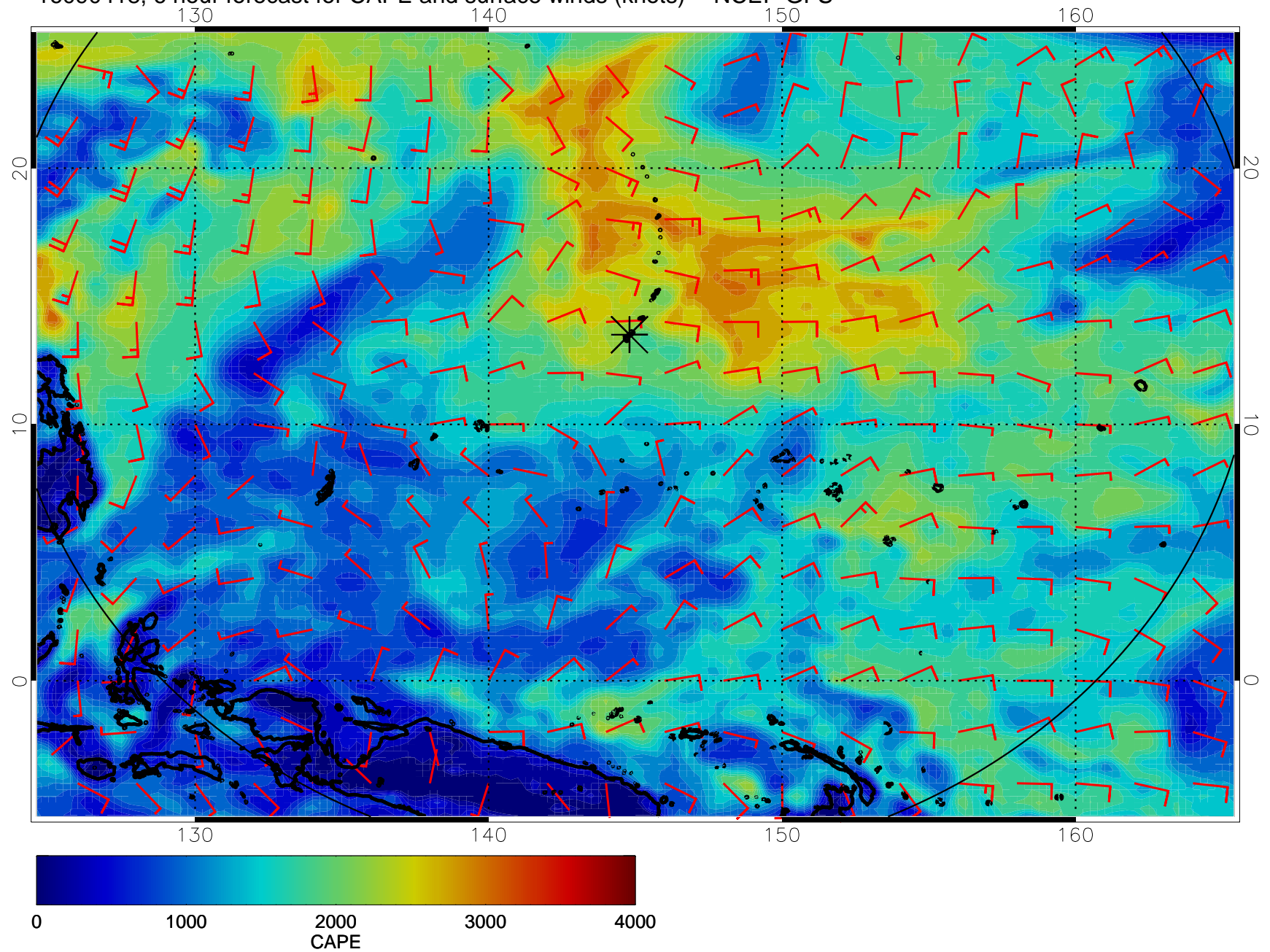
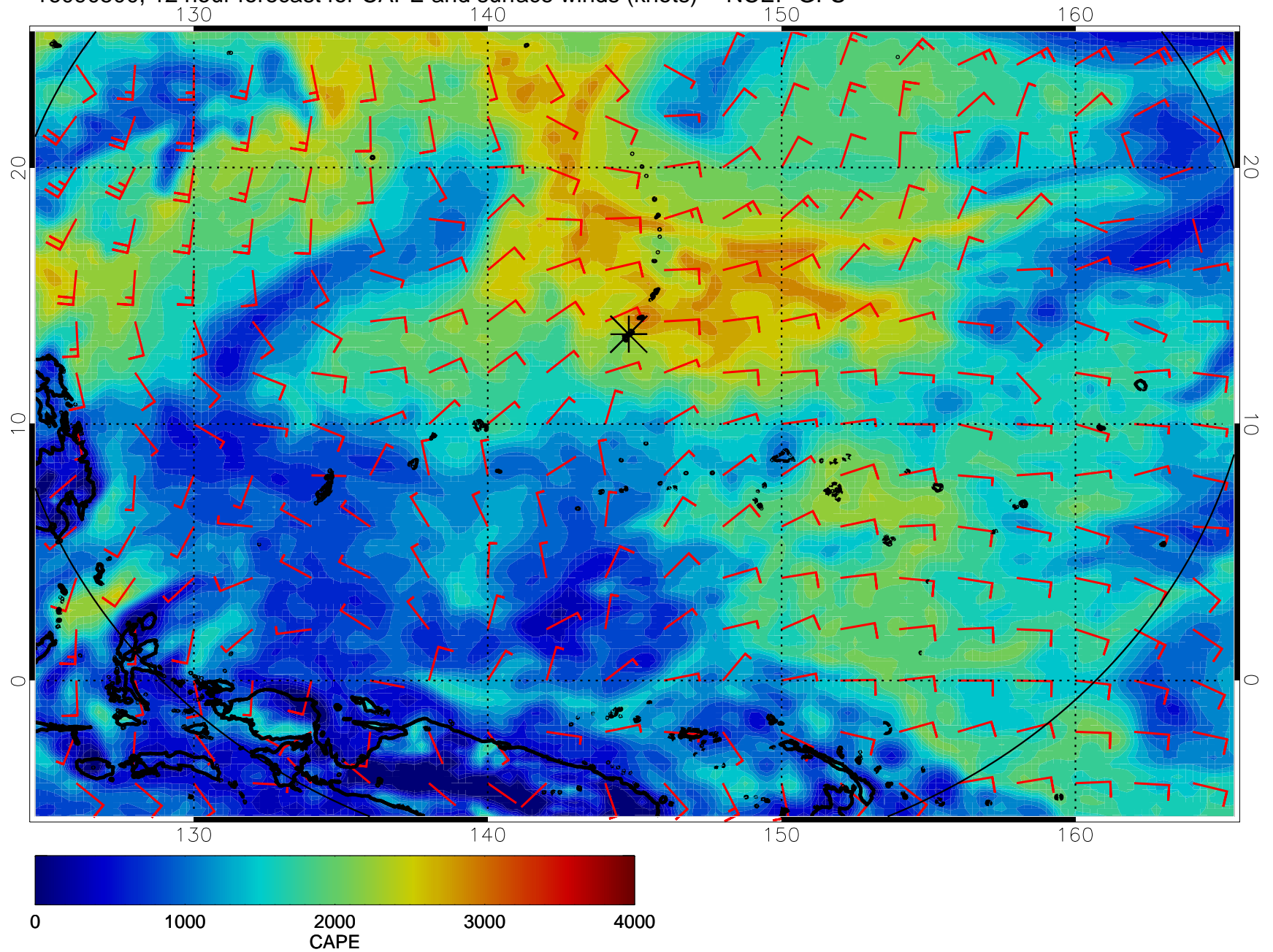


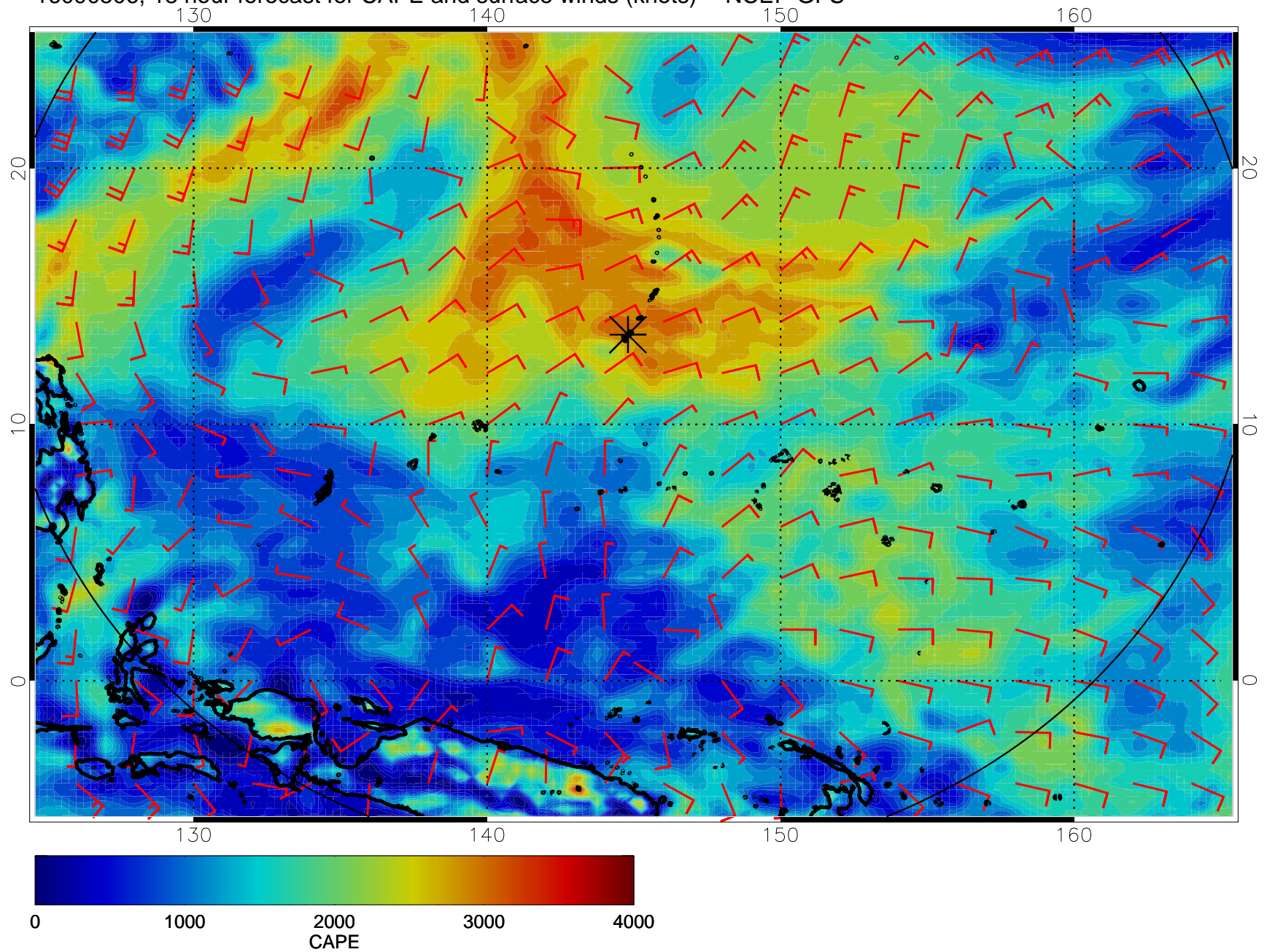
16090418, 6 hour forecast for CAPE and surface winds (knots) -- NCEP GFS



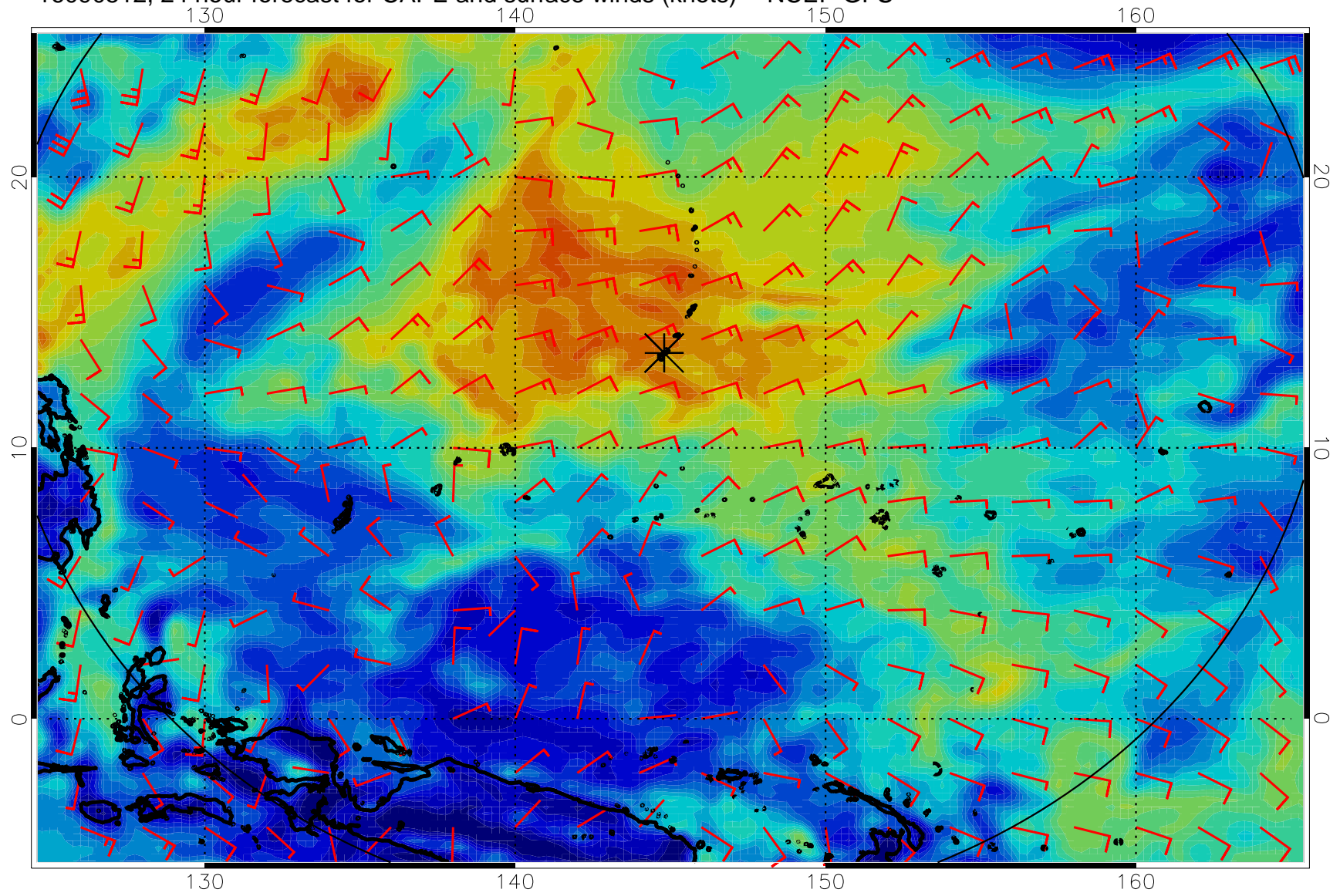
16090500, 12 hour forecast for CAPE and surface winds (knots) -- NCEP GFS



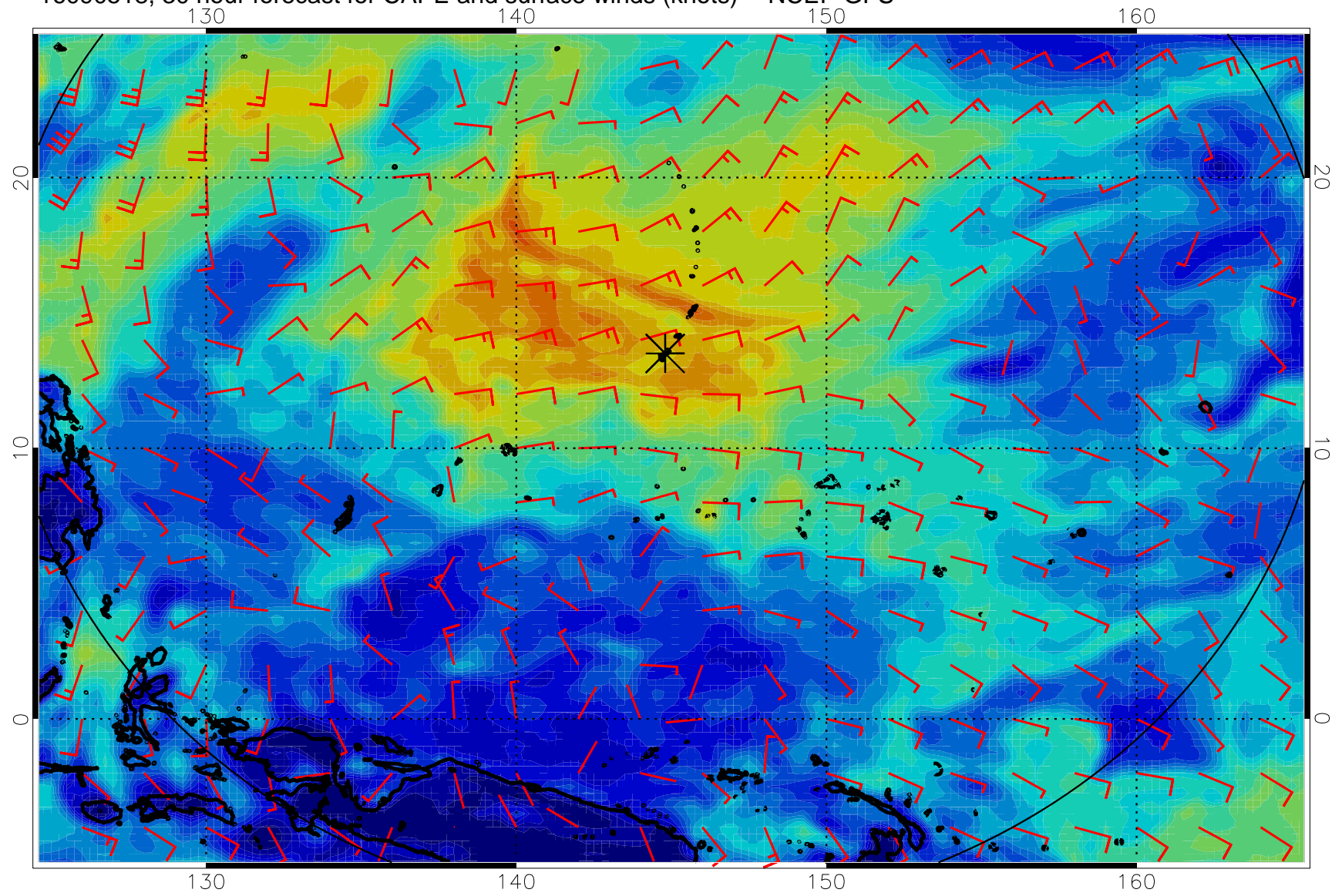
16090506, 18 hour forecast for CAPE and surface winds (knots) -- NCEP GFS



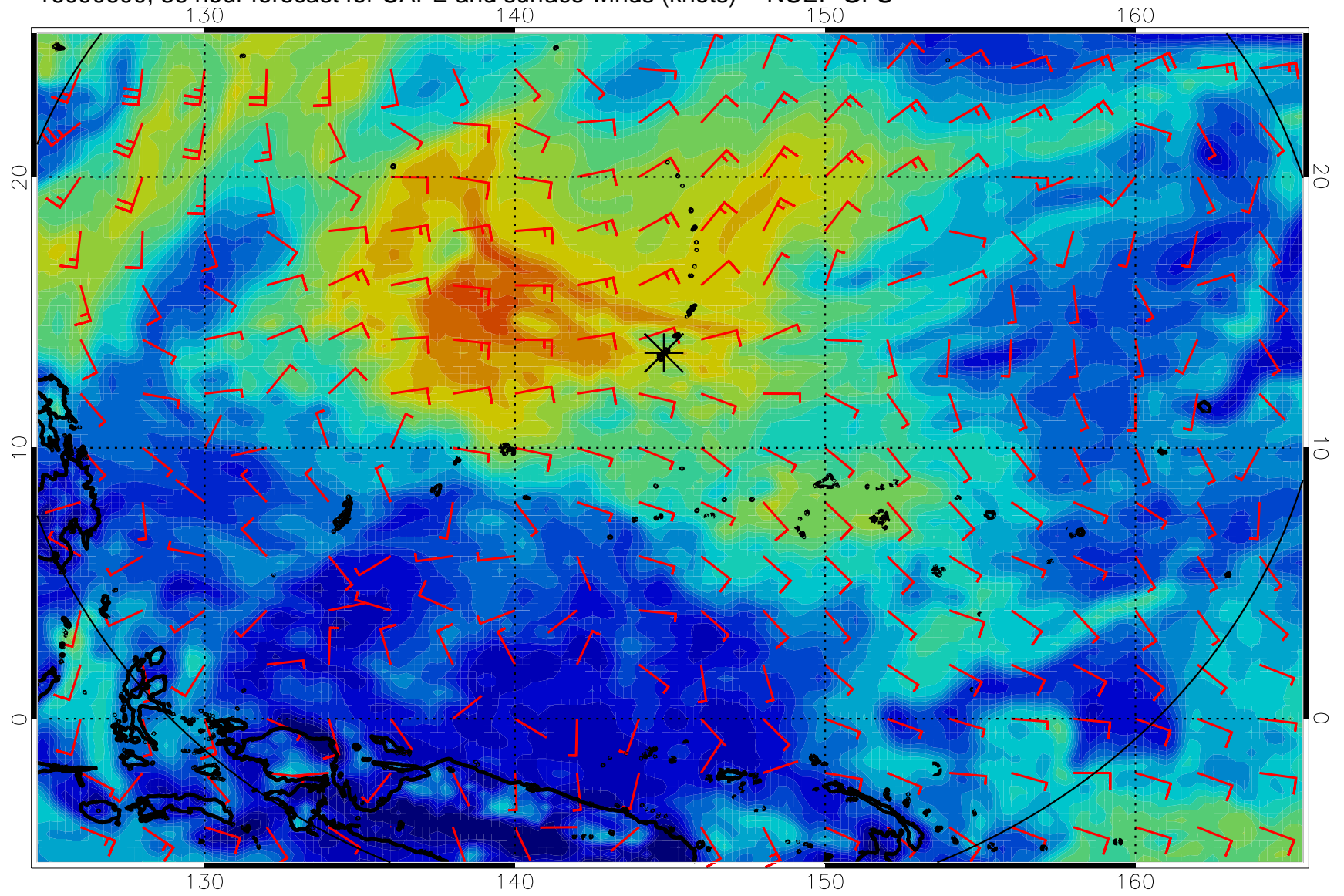
16090512, 24 hour forecast for CAPE and surface winds (knots) -- NCEP GFS



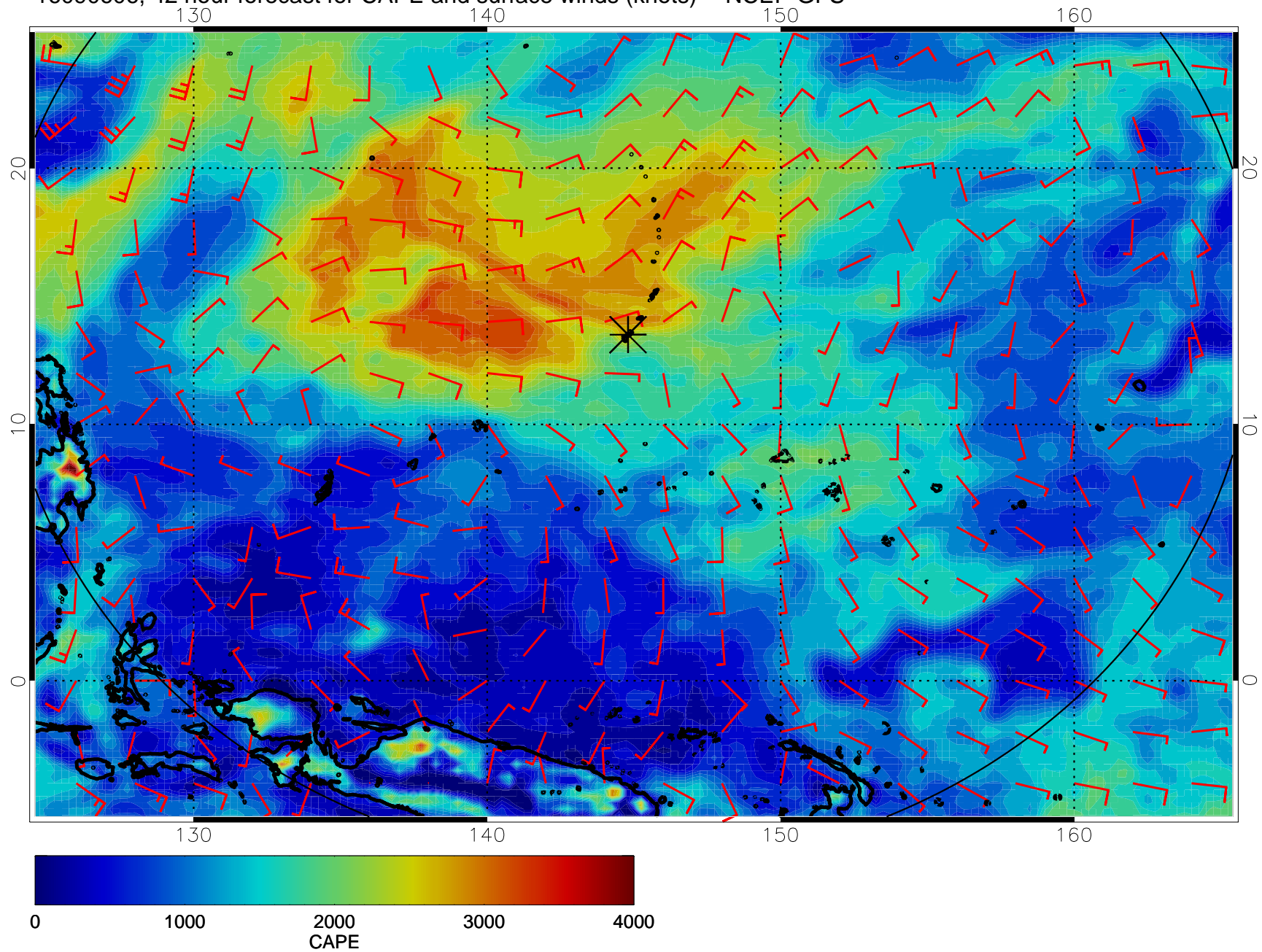
16090518, 30 hour forecast for CAPE and surface winds (knots) -- NCEP GFS



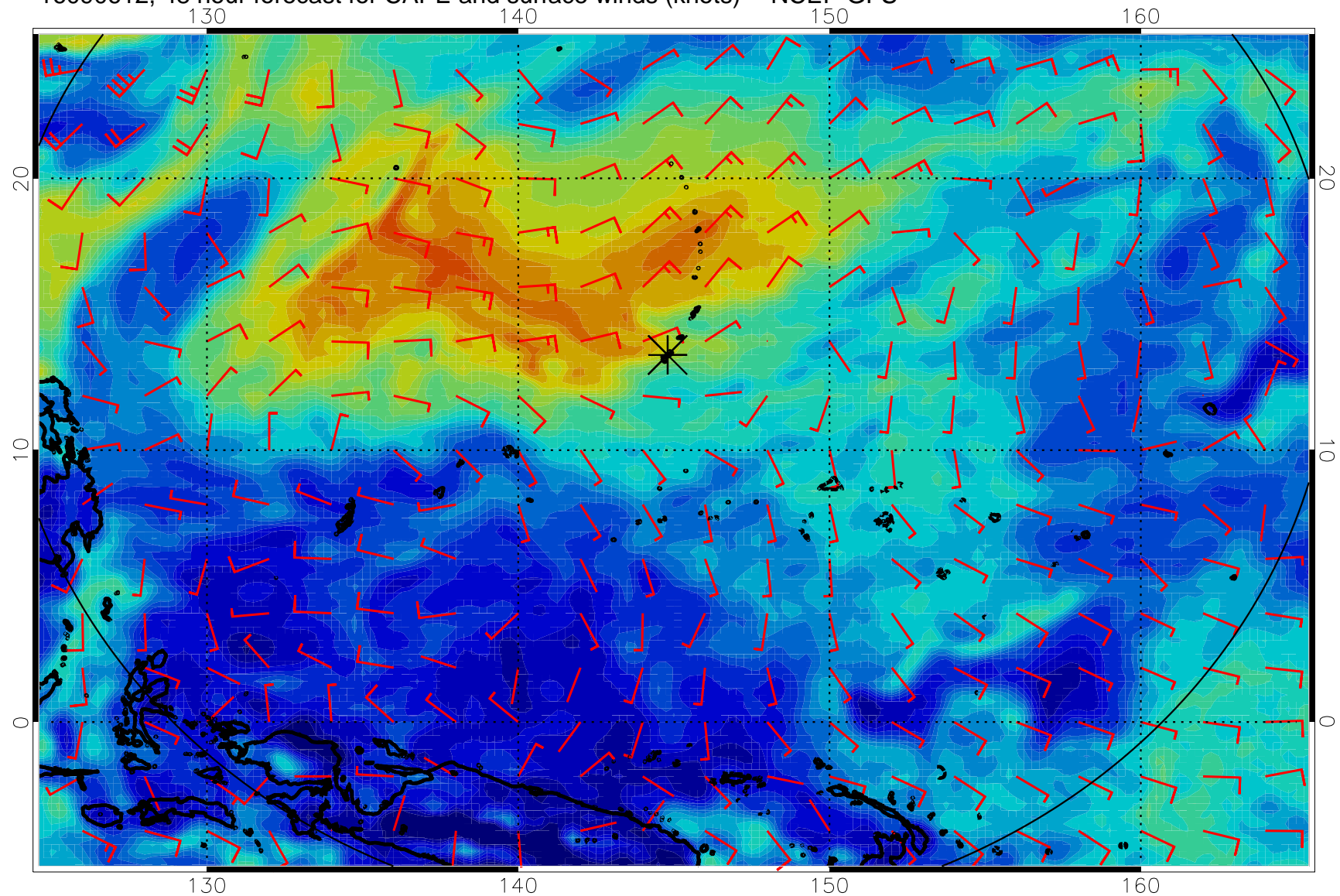
16090600, 36 hour forecast for CAPE and surface winds (knots) -- NCEP GFS



16090606, 42 hour forecast for CAPE and surface winds (knots) -- NCEP GFS

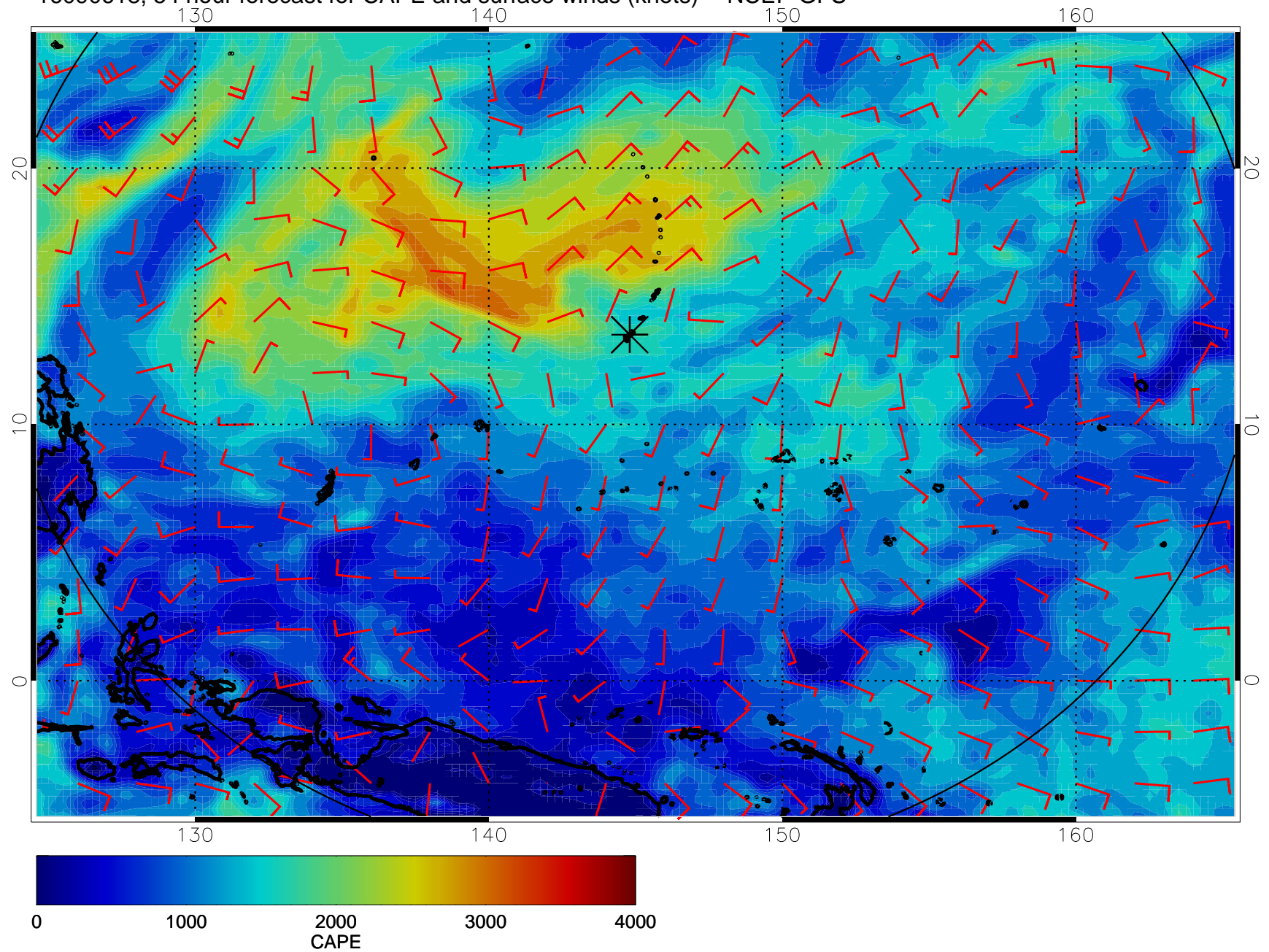


16090612, 48 hour forecast for CAPE and surface winds (knots) -- NCEP GFS

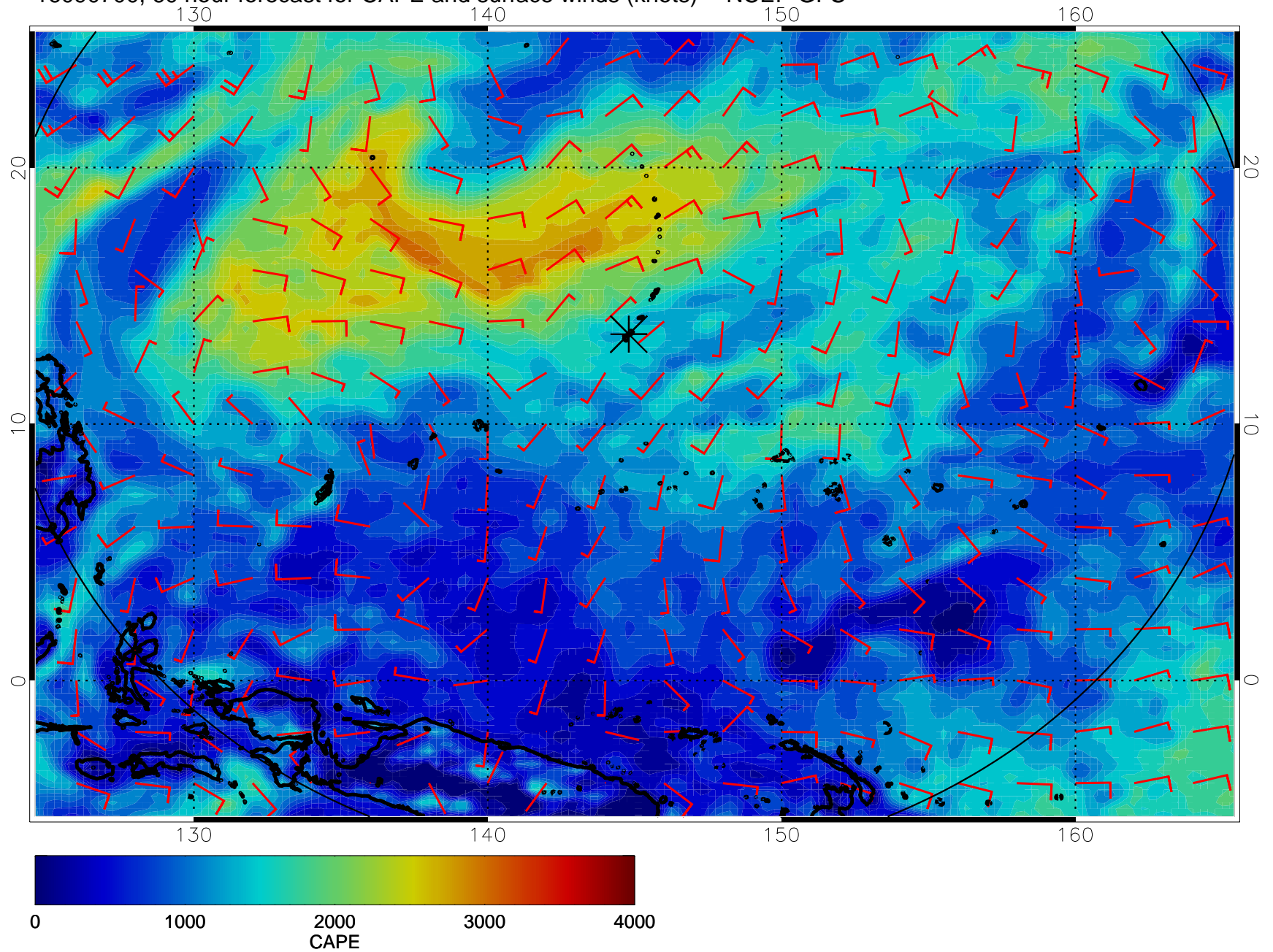




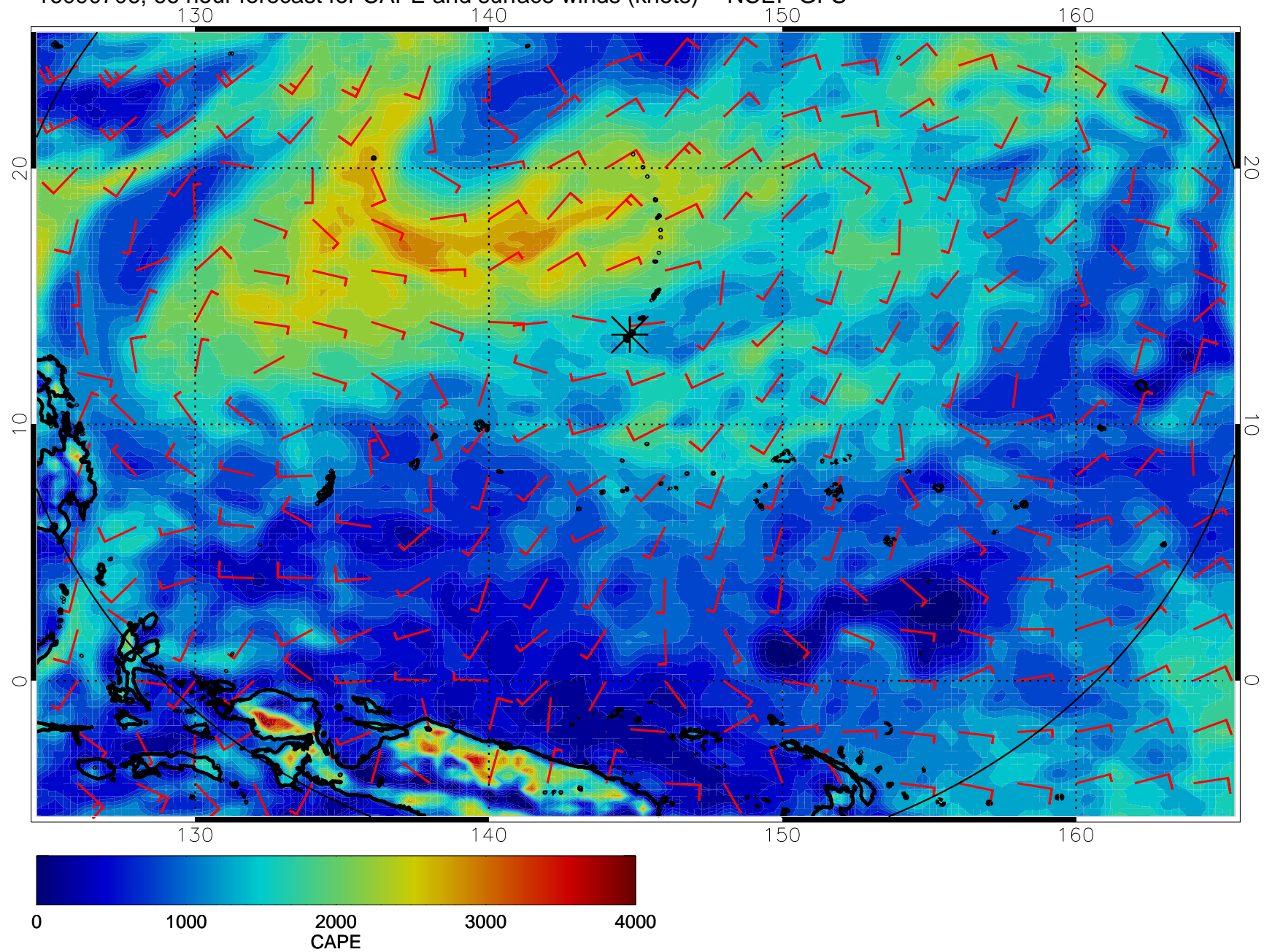
16090618, 54 hour forecast for CAPE and surface winds (knots) -- NCEP GFS



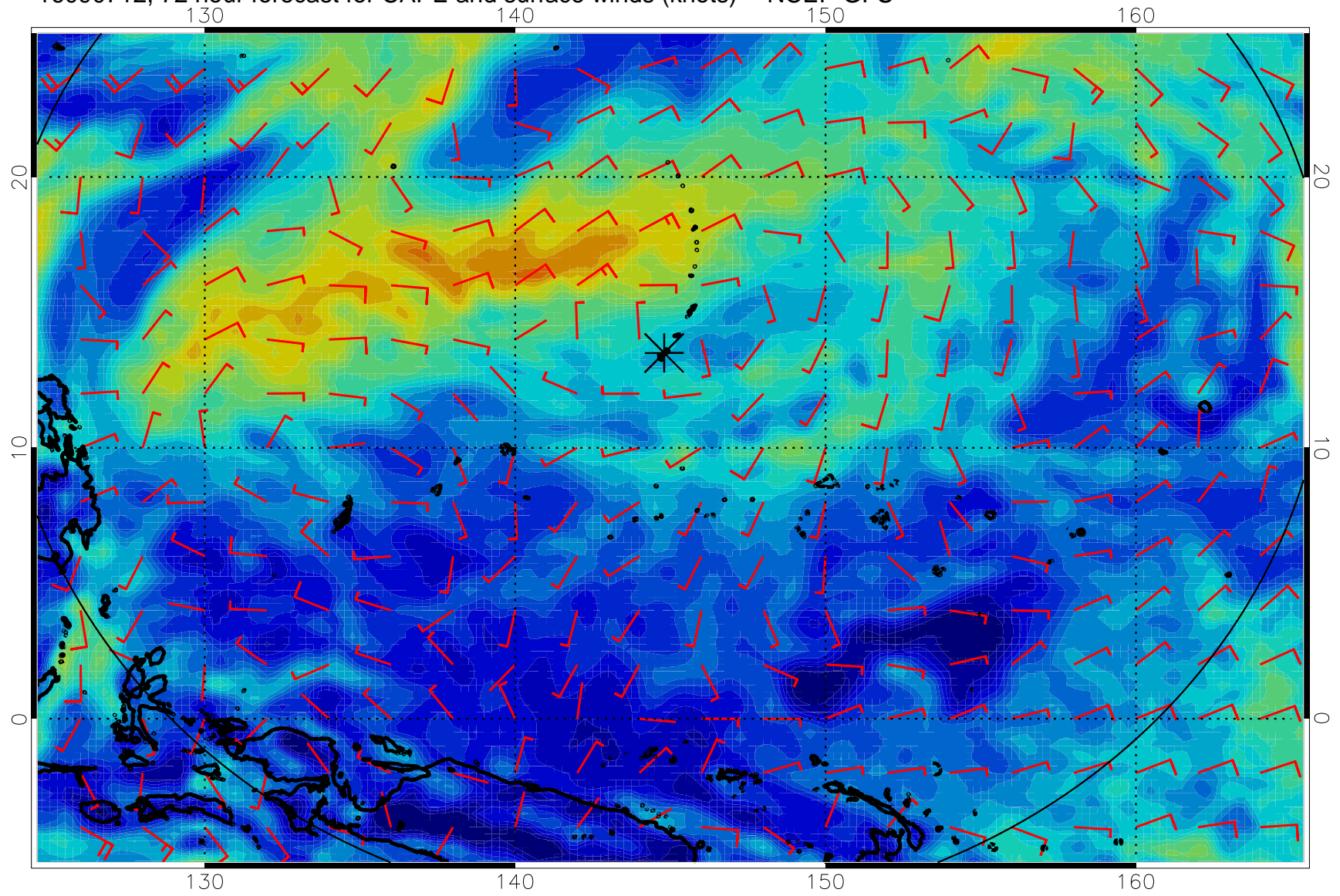
16090700, 60 hour forecast for CAPE and surface winds (knots) -- NCEP GFS



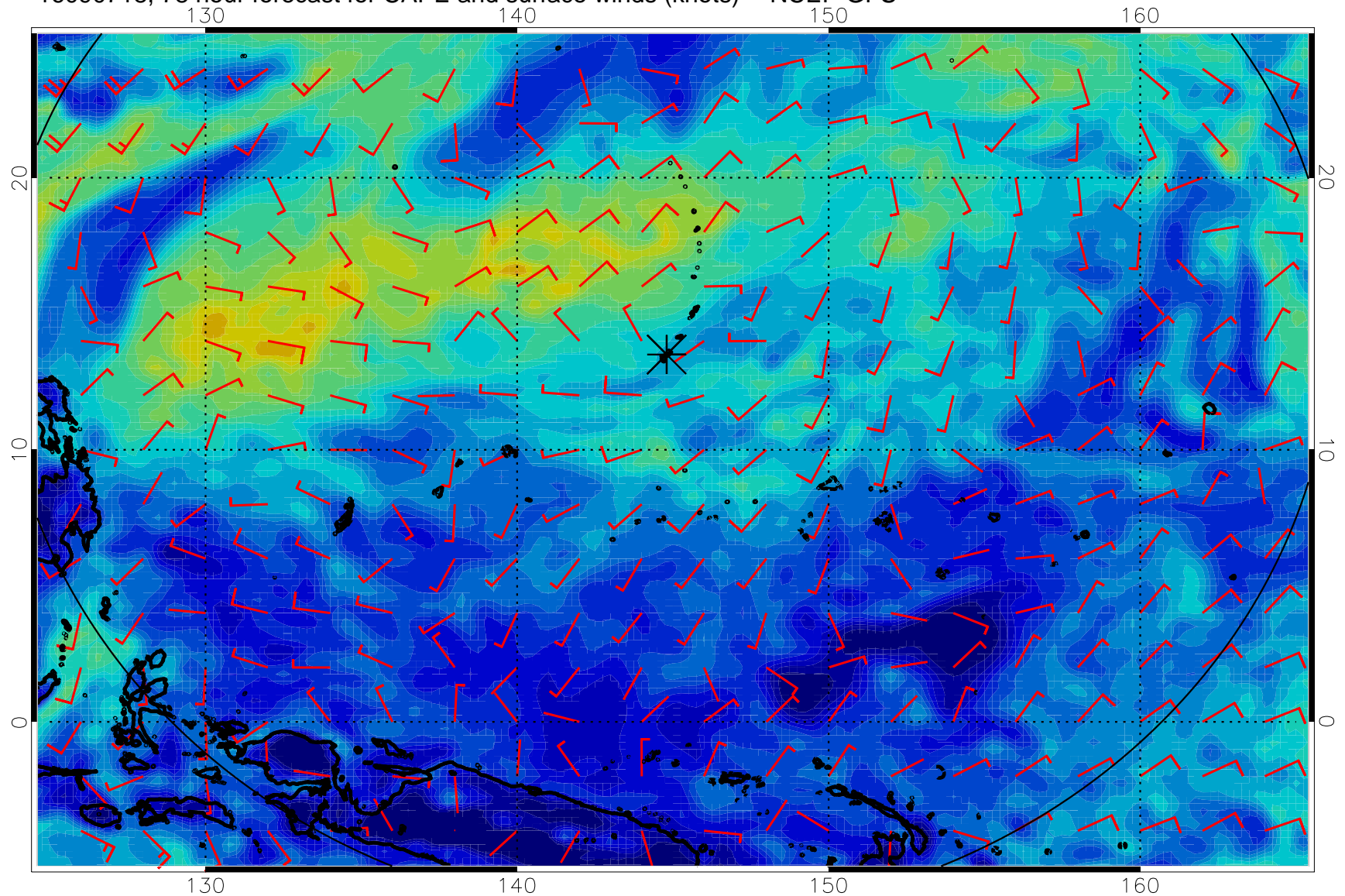
16090706, 66 hour forecast for CAPE and surface winds (knots) -- NCEP GFS



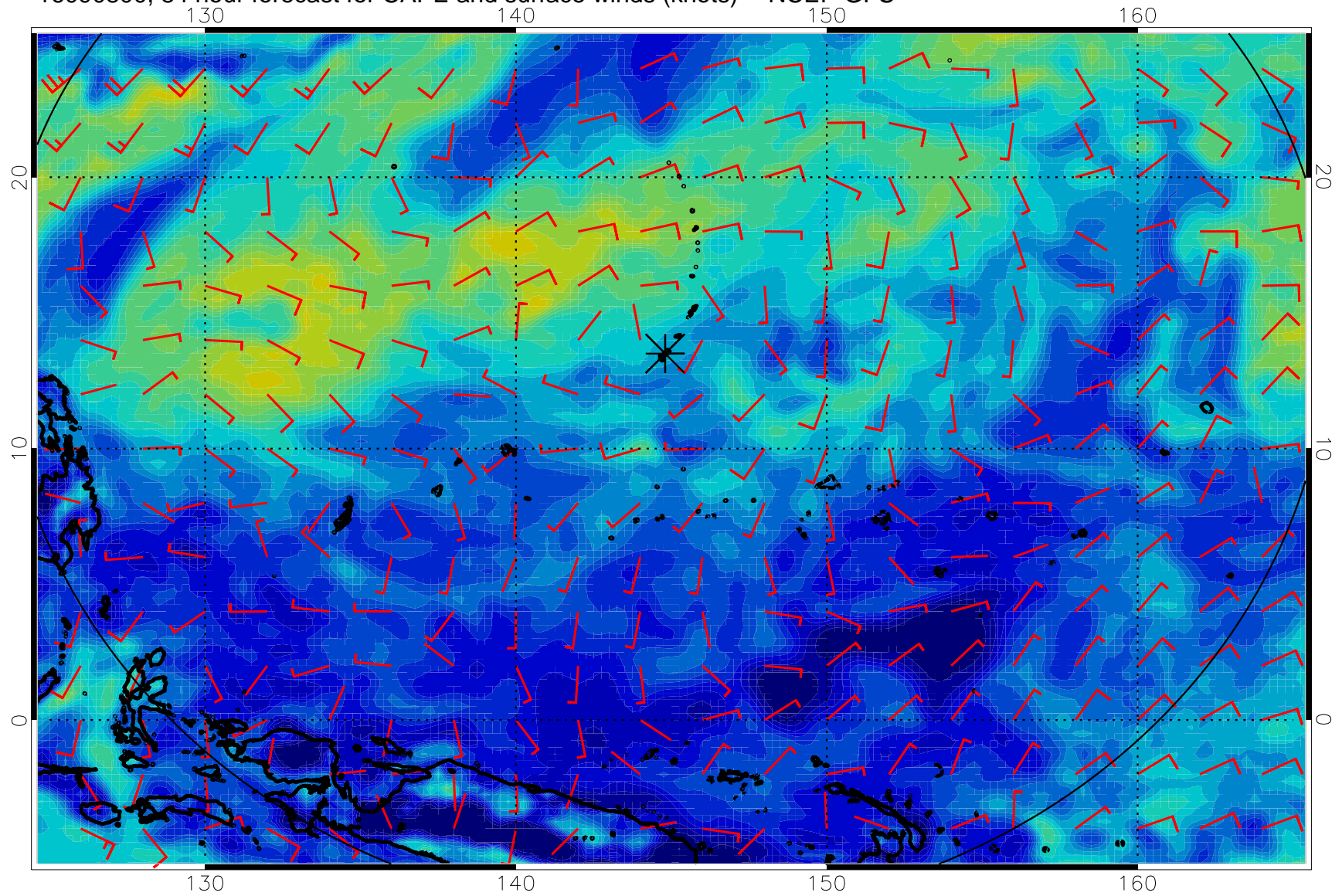
16090712, 72 hour forecast for CAPE and surface winds (knots) -- NCEP GFS



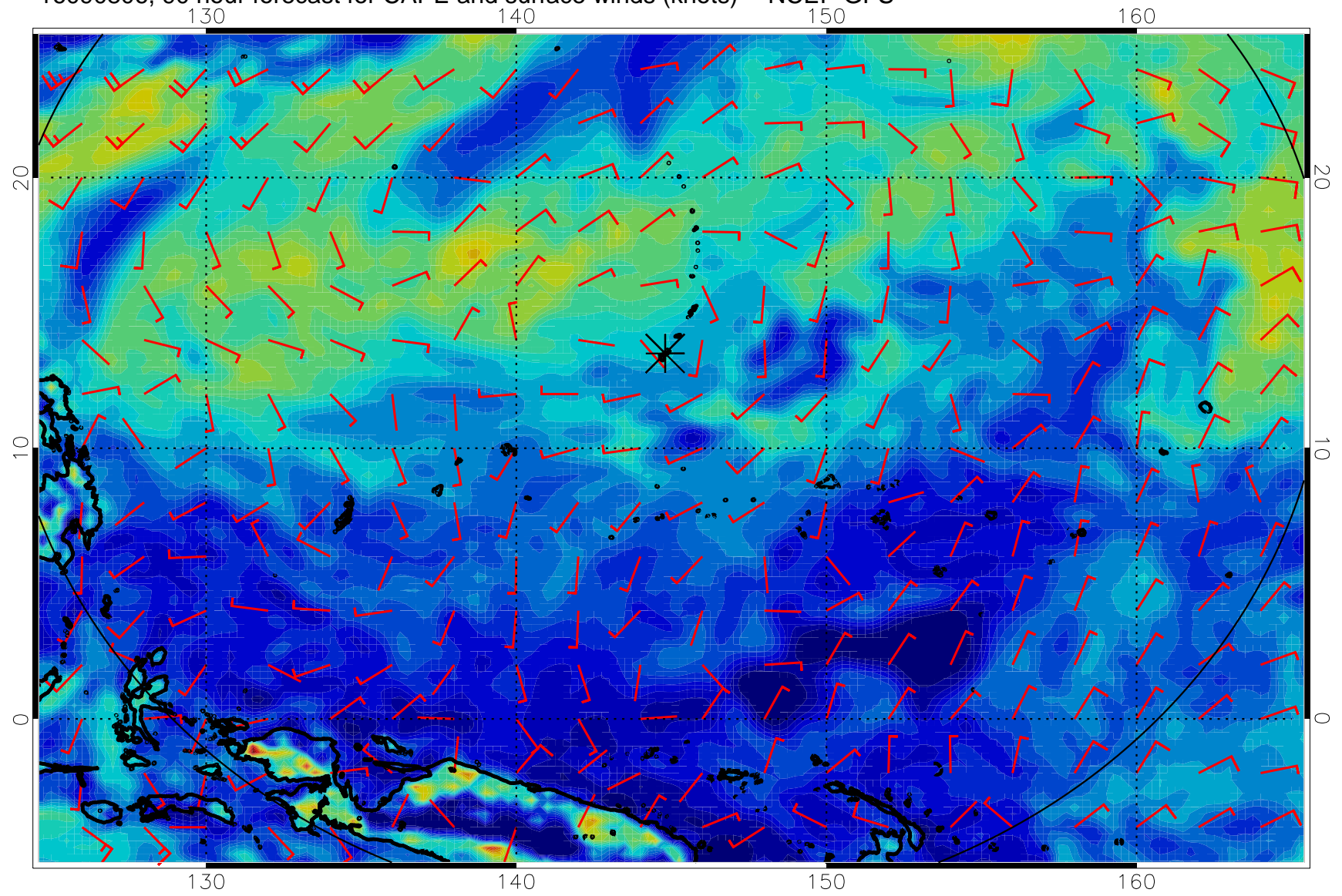
16090718, 78 hour forecast for CAPE and surface winds (knots) -- NCEP GFS



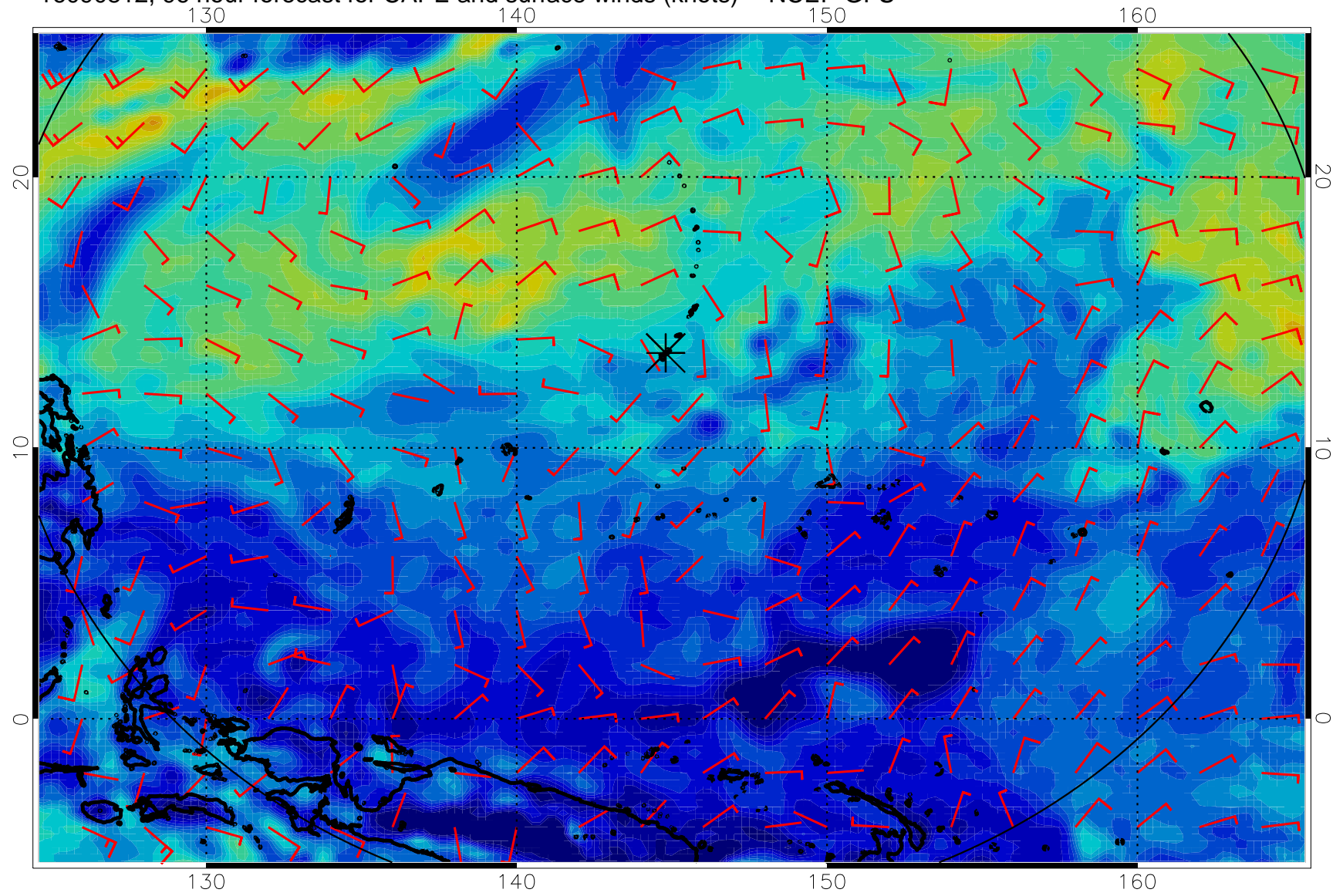
16090800, 84 hour forecast for CAPE and surface winds (knots) -- NCEP GFS



16090806, 90 hour forecast for CAPE and surface winds (knots) -- NCEP GFS

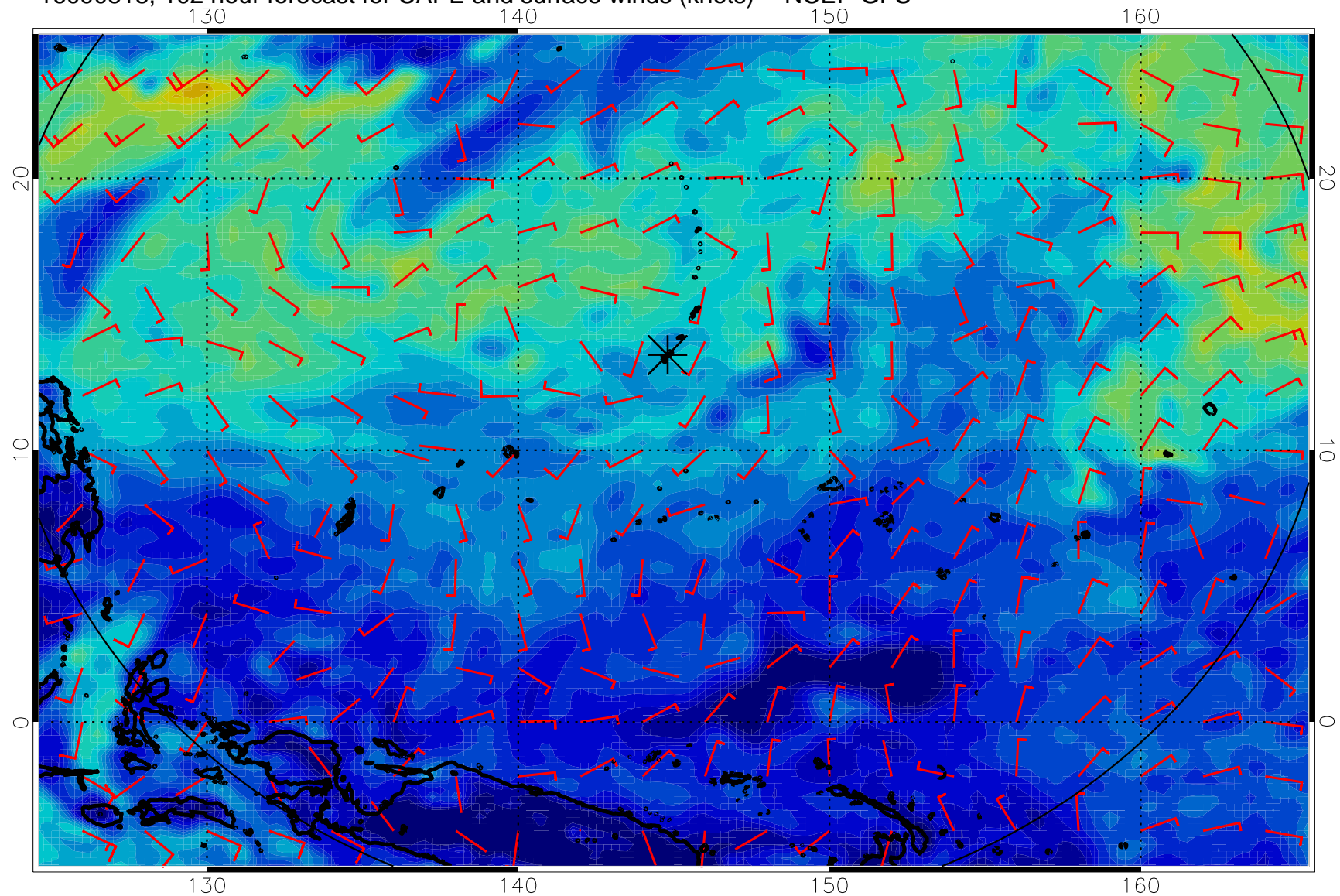


16090812, 96 hour forecast for CAPE and surface winds (knots) -- NCEP GFS

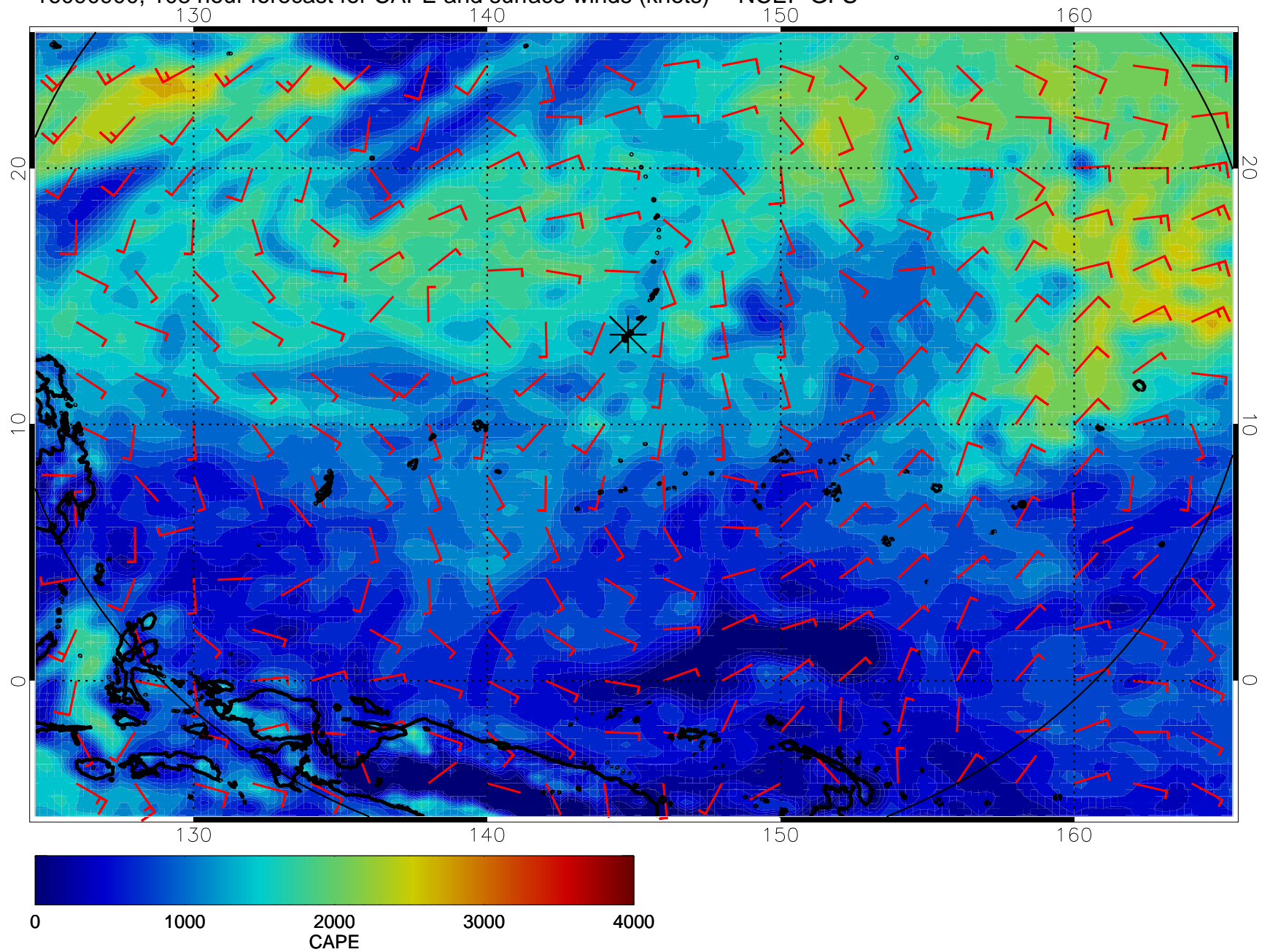




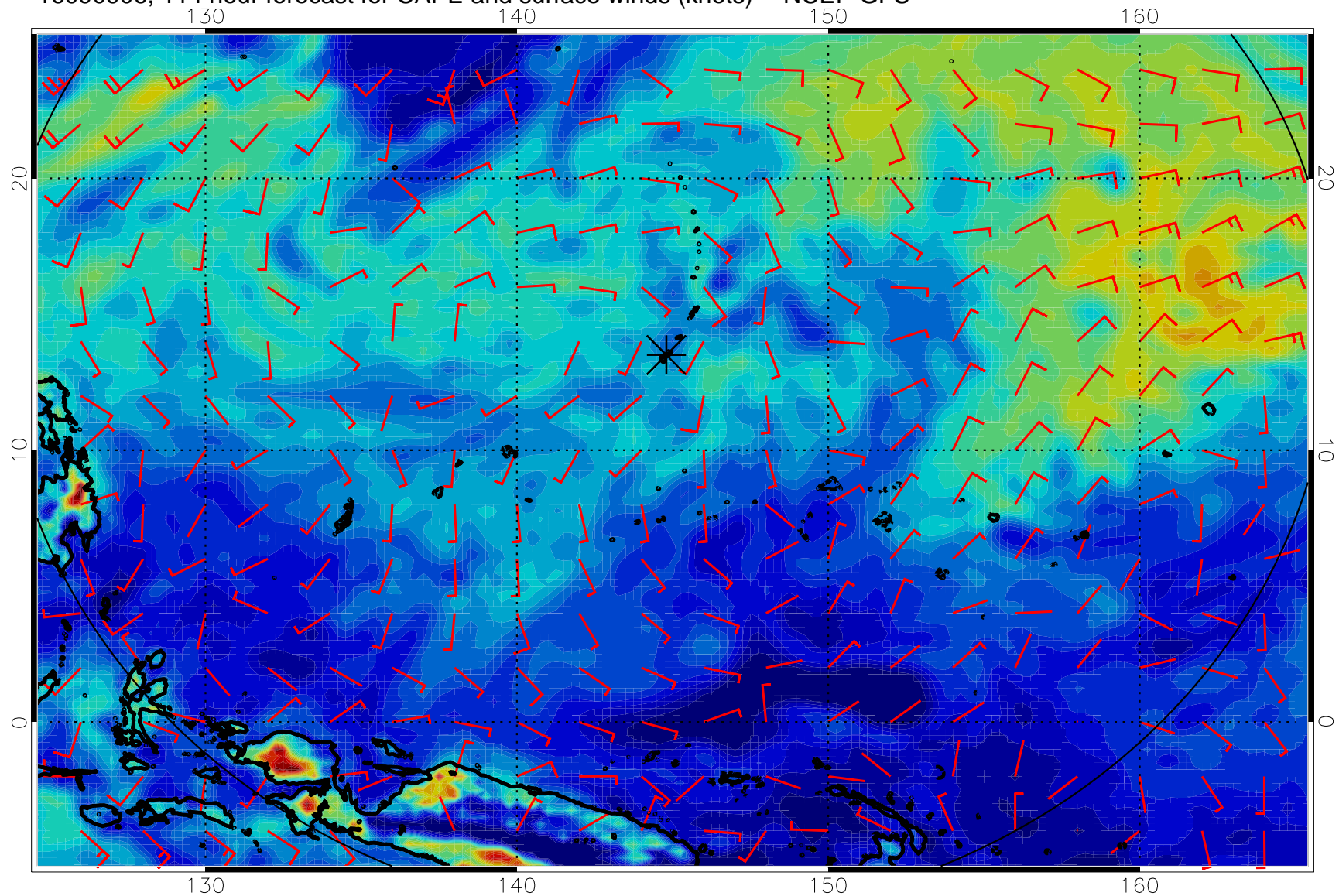
16090818, 102 hour forecast for CAPE and surface winds (knots) -- NCEP GFS



16090900, 108 hour forecast for CAPE and surface winds (knots) -- NCEP GFS



16090906, 114 hour forecast for CAPE and surface winds (knots) -- NCEP GFS



16090912, 120 hour forecast for CAPE and surface winds (knots) -- NCEP GFS

