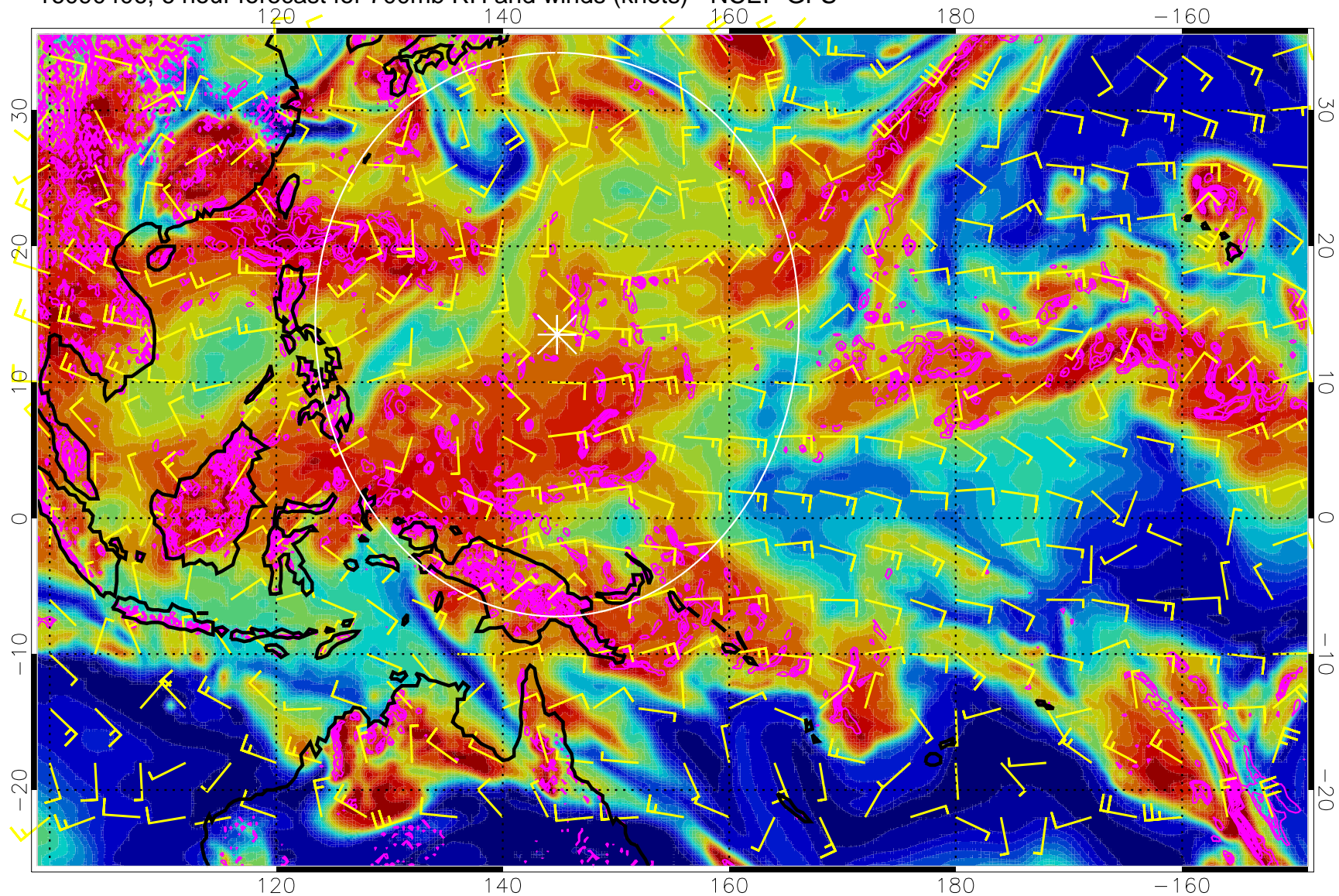


16090406, 6 hour forecast for 700mb RH and winds (knots) - NCEP GFS

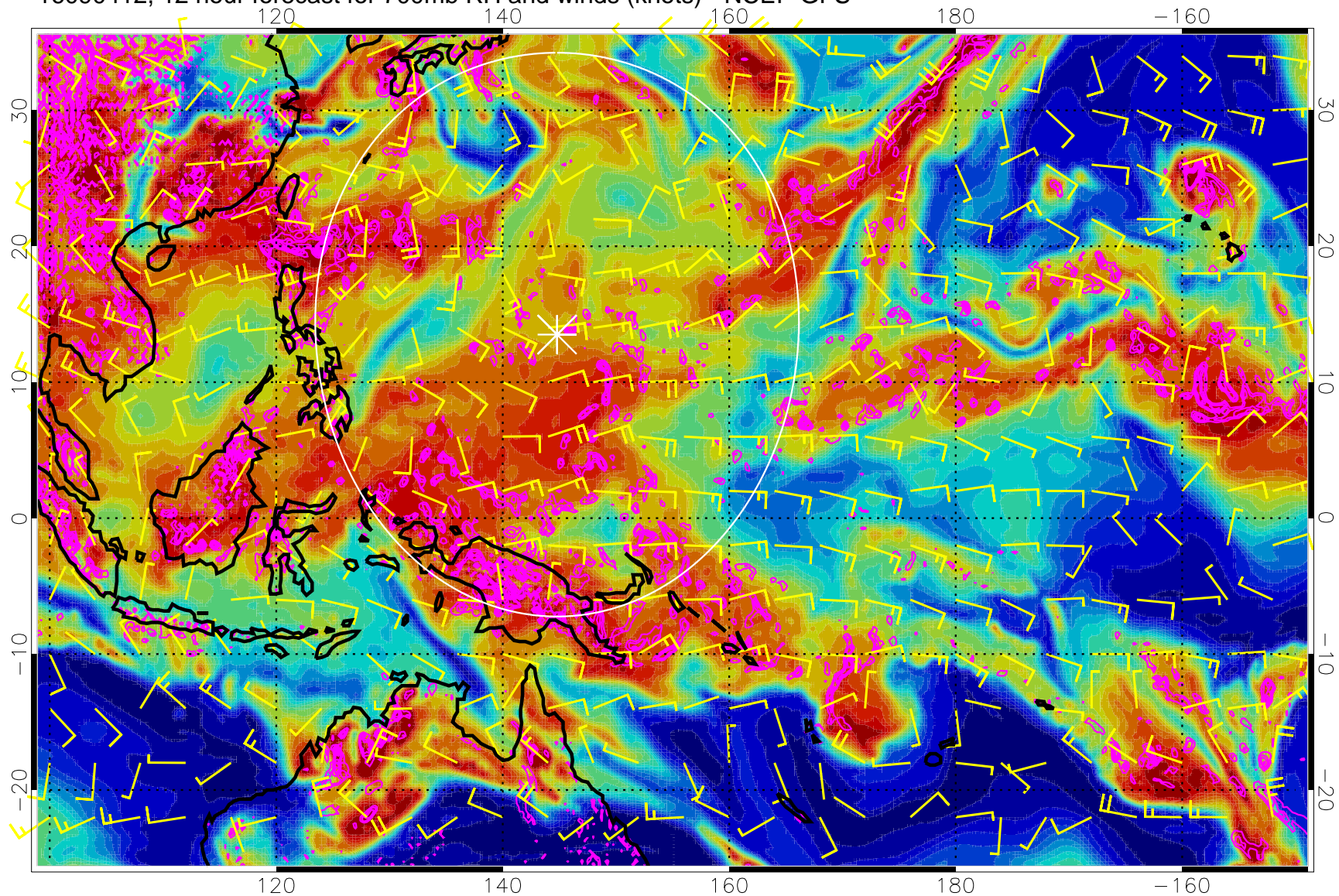


0 20 40 60 80 100
RH, %

Negative Omegas less than -0.3 , contours of 0.3 Pa/s

Range ring of 2304 km

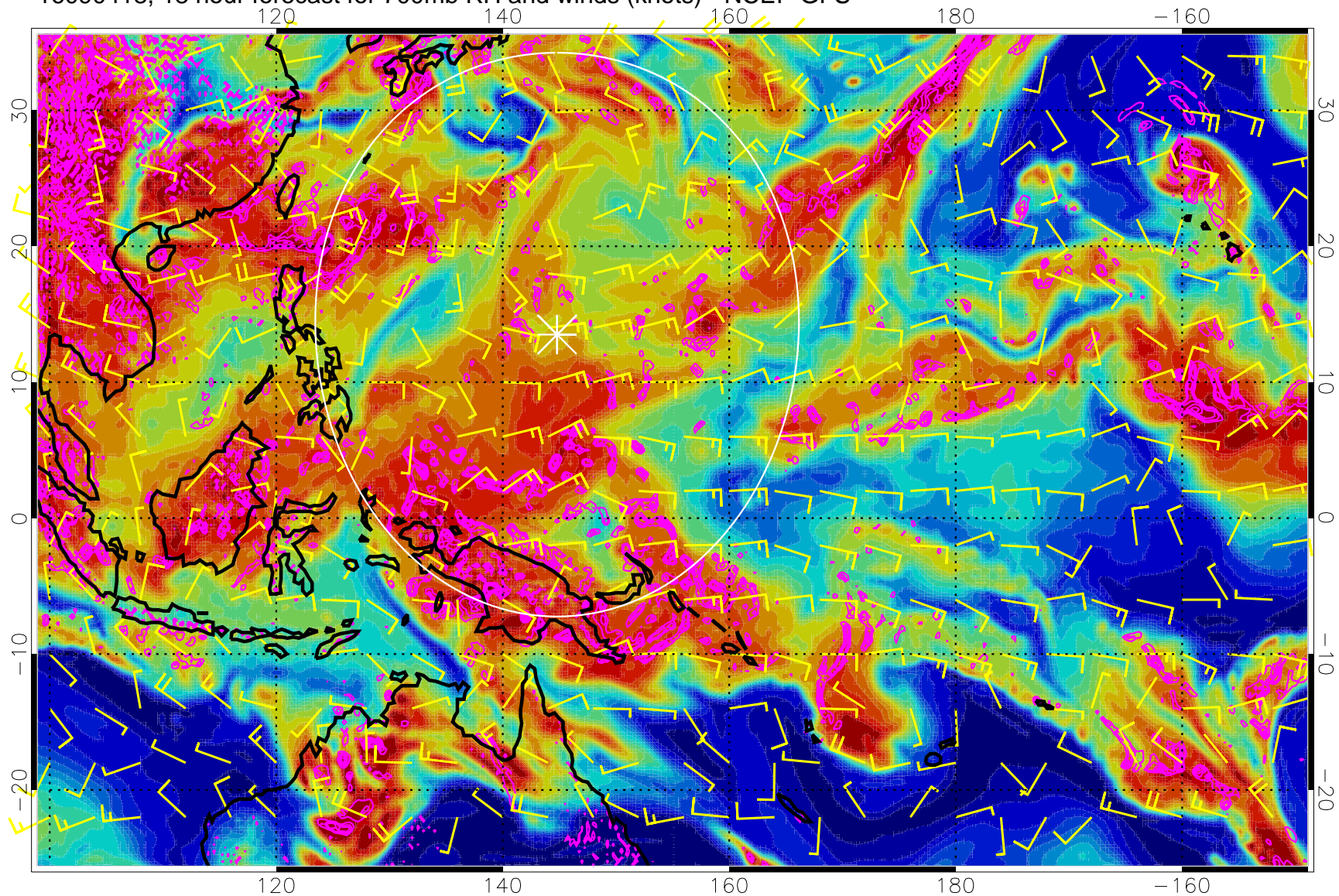
16090412, 12 hour forecast for 700mb RH and winds (knots) - NCEP GFS



Negative Omegas less than -0.3 , contours of 0.3 Pa/s

Range ring of 2304 km

16090418, 18 hour forecast for 700mb RH and winds (knots) - NCEP GFS

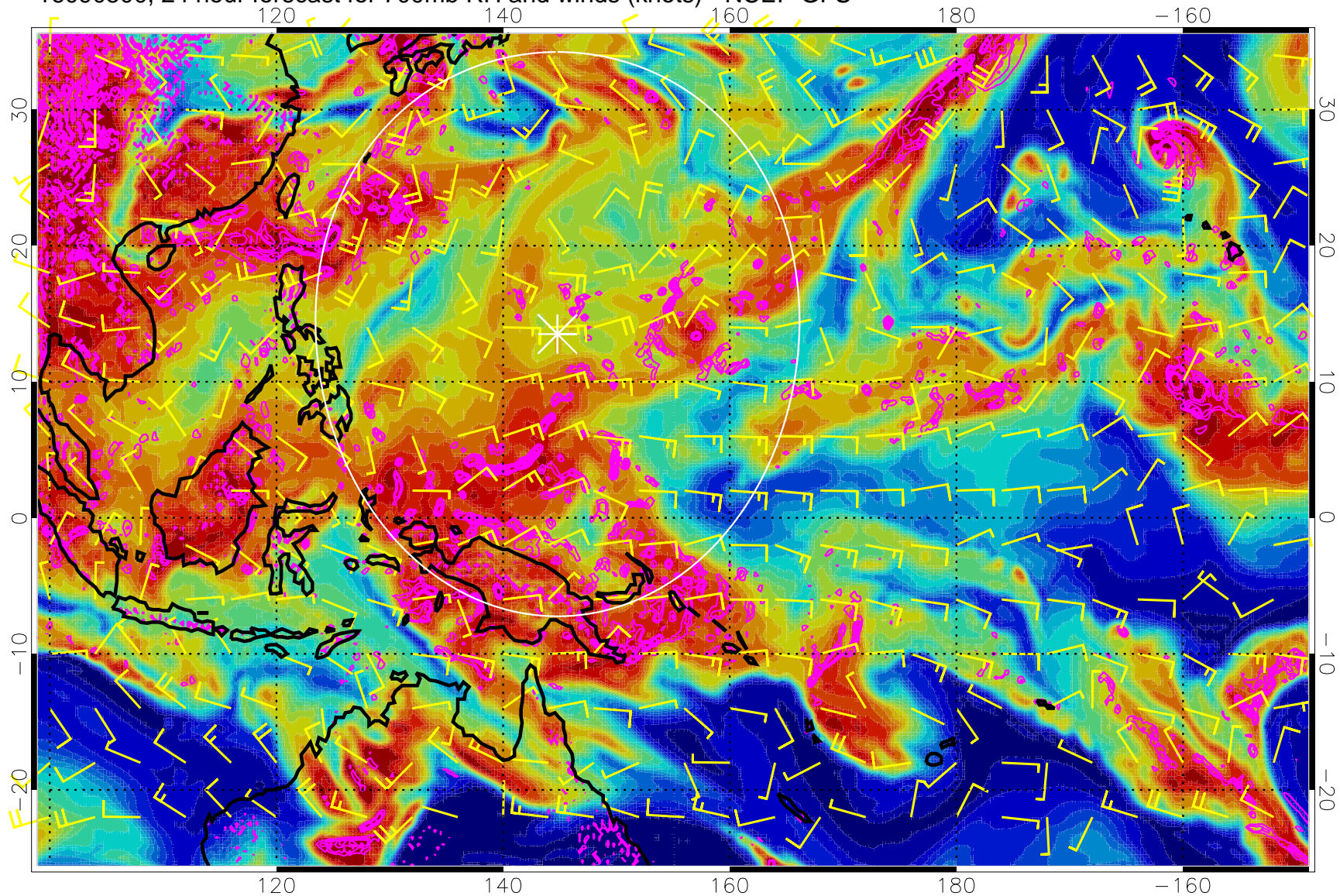


0 20 40 60 80 100
RH, %

Negative Omegas less than -0.3 , contours of 0.3 Pa/s

Range ring of 2304 km

16090500, 24 hour forecast for 700mb RH and winds (knots) - NCEP GFS

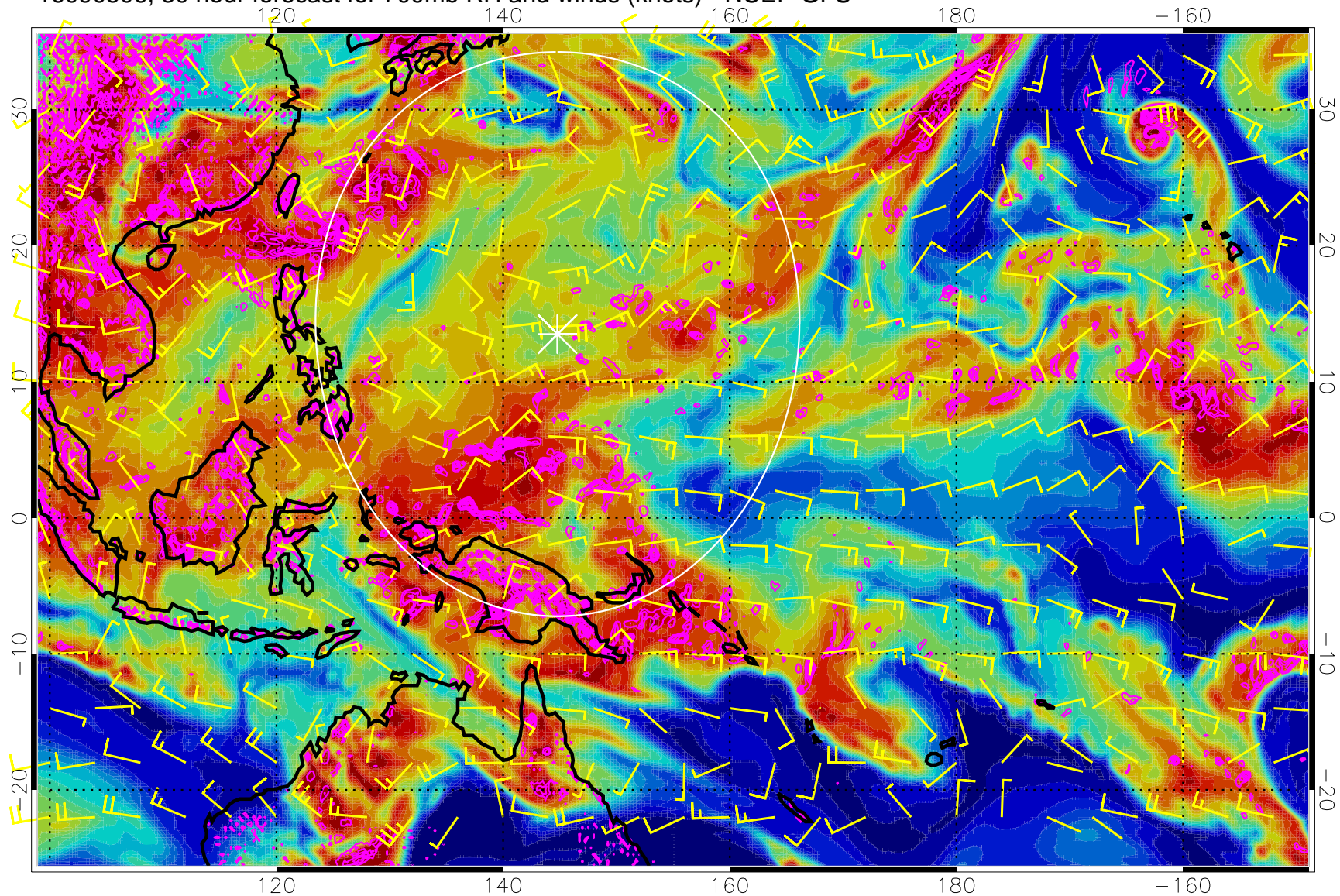


0 20 40 60 80 100
RH, %

Negative Omegas less than -0.3 , contours of 0.3 Pa/s

Range ring of 2304 km

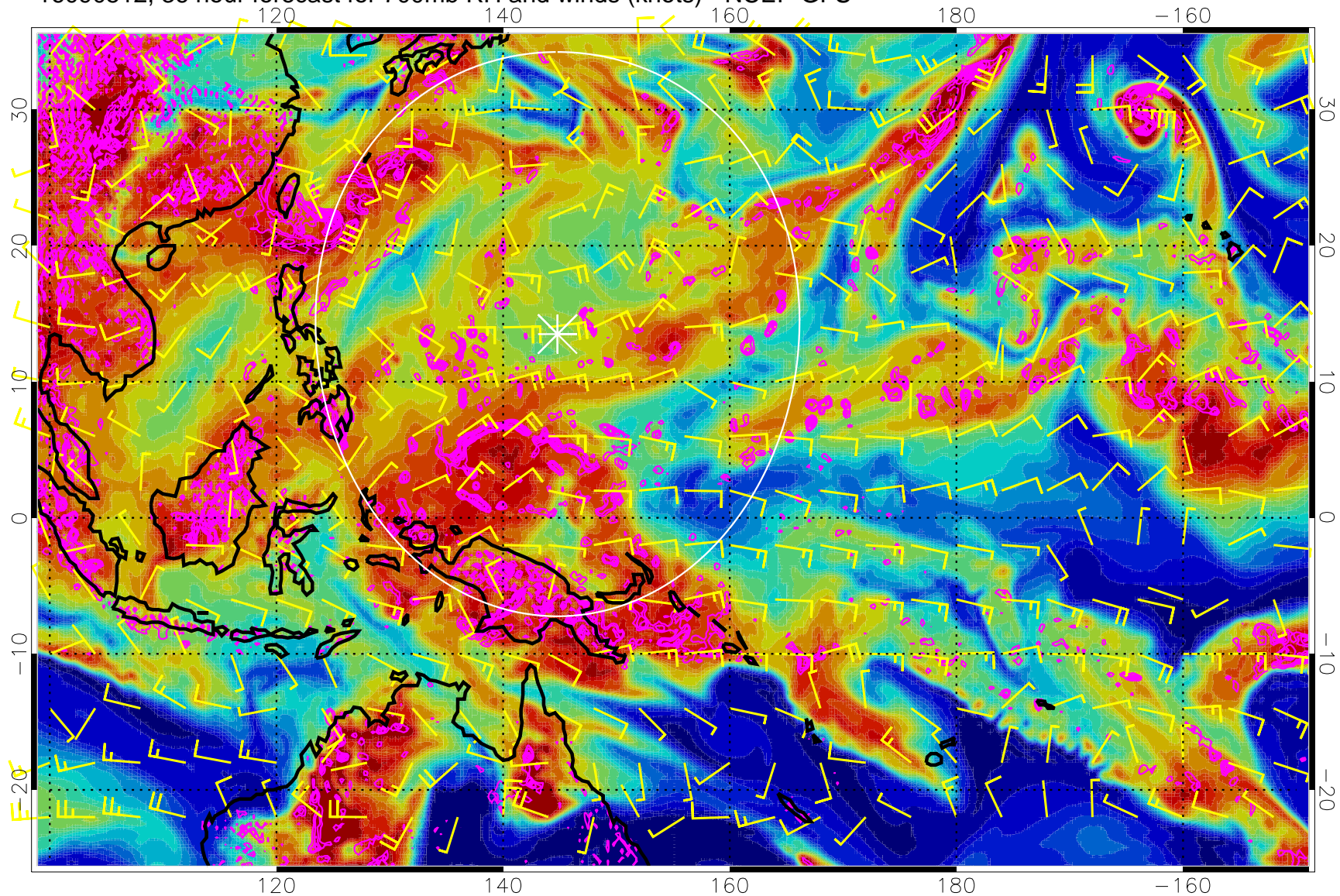
16090506, 30 hour forecast for 700mb RH and winds (knots) - NCEP GFS



Negative Omegas less than -0.3 , contours of 0.3 Pa/s

Range ring of 2304 km

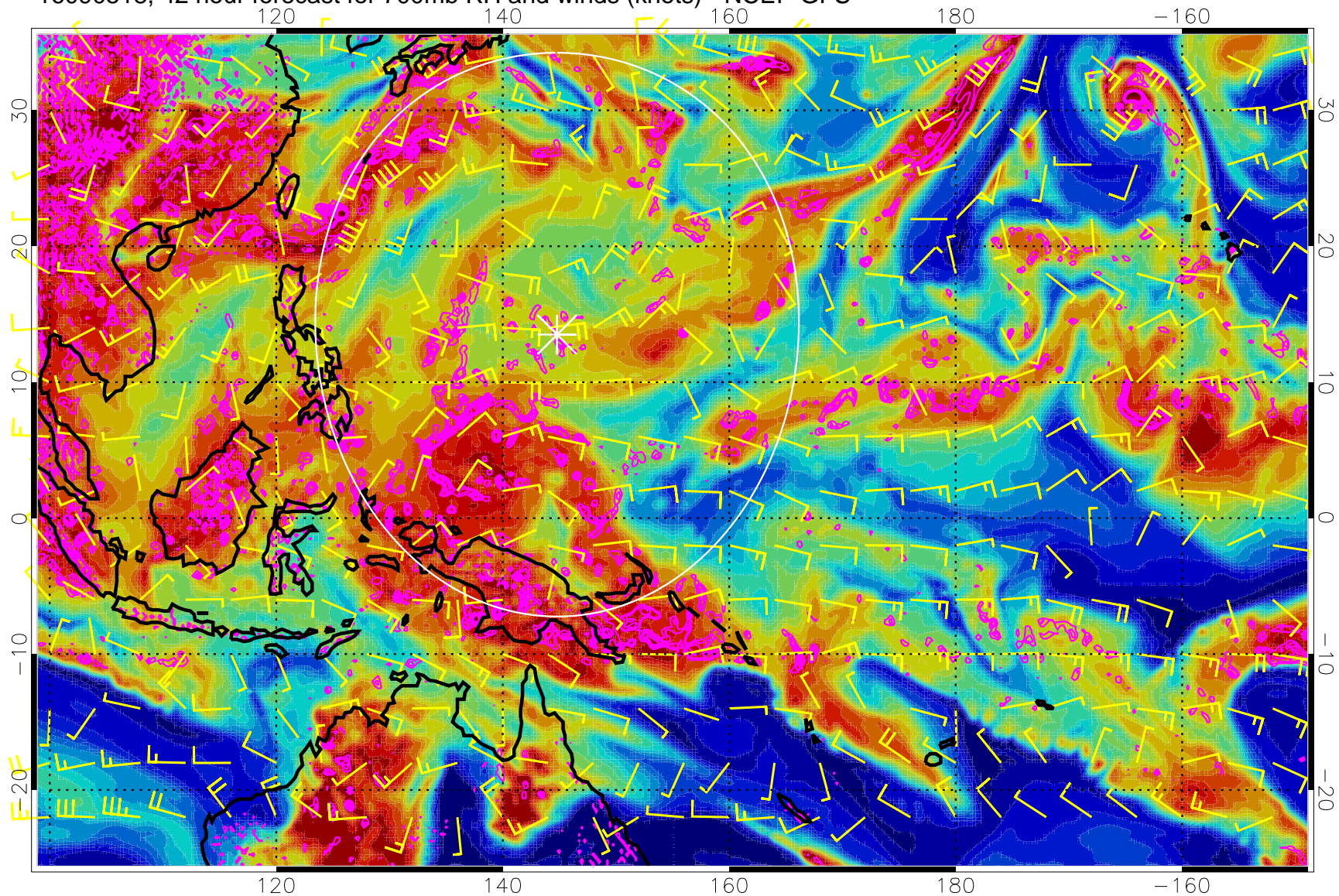
16090512, 36 hour forecast for 700mb RH and winds (knots) - NCEP GFS



Negative Omegas less than -0.3 , contours of 0.3 Pa/s

Range ring of 2304 km

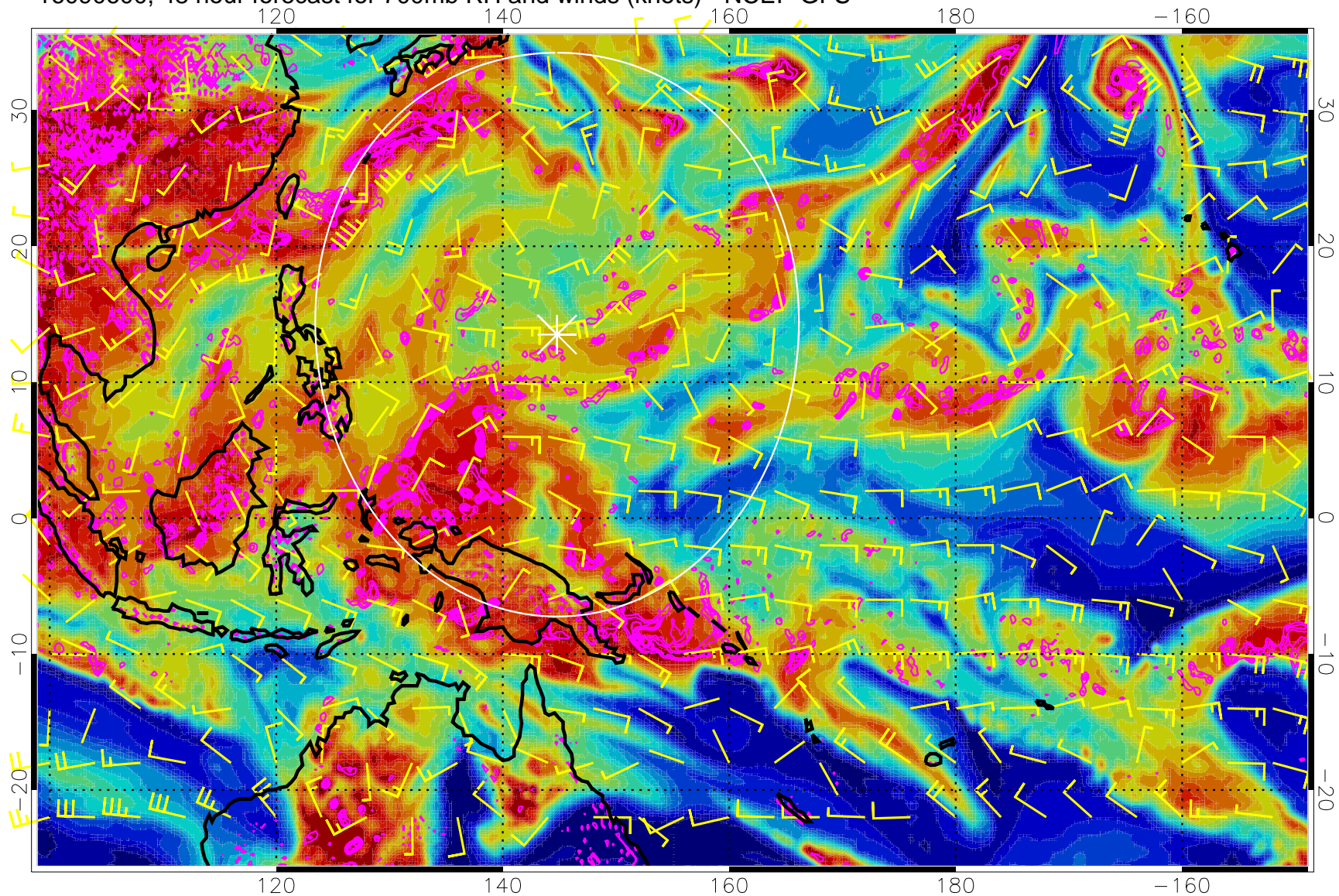
16090518, 42 hour forecast for 700mb RH and winds (knots) - NCEP GFS



Negative Omegas less than -0.3 , contours of 0.3 Pa/s

Range ring of 2304 km

16090600, 48 hour forecast for 700mb RH and winds (knots) - NCEP GFS

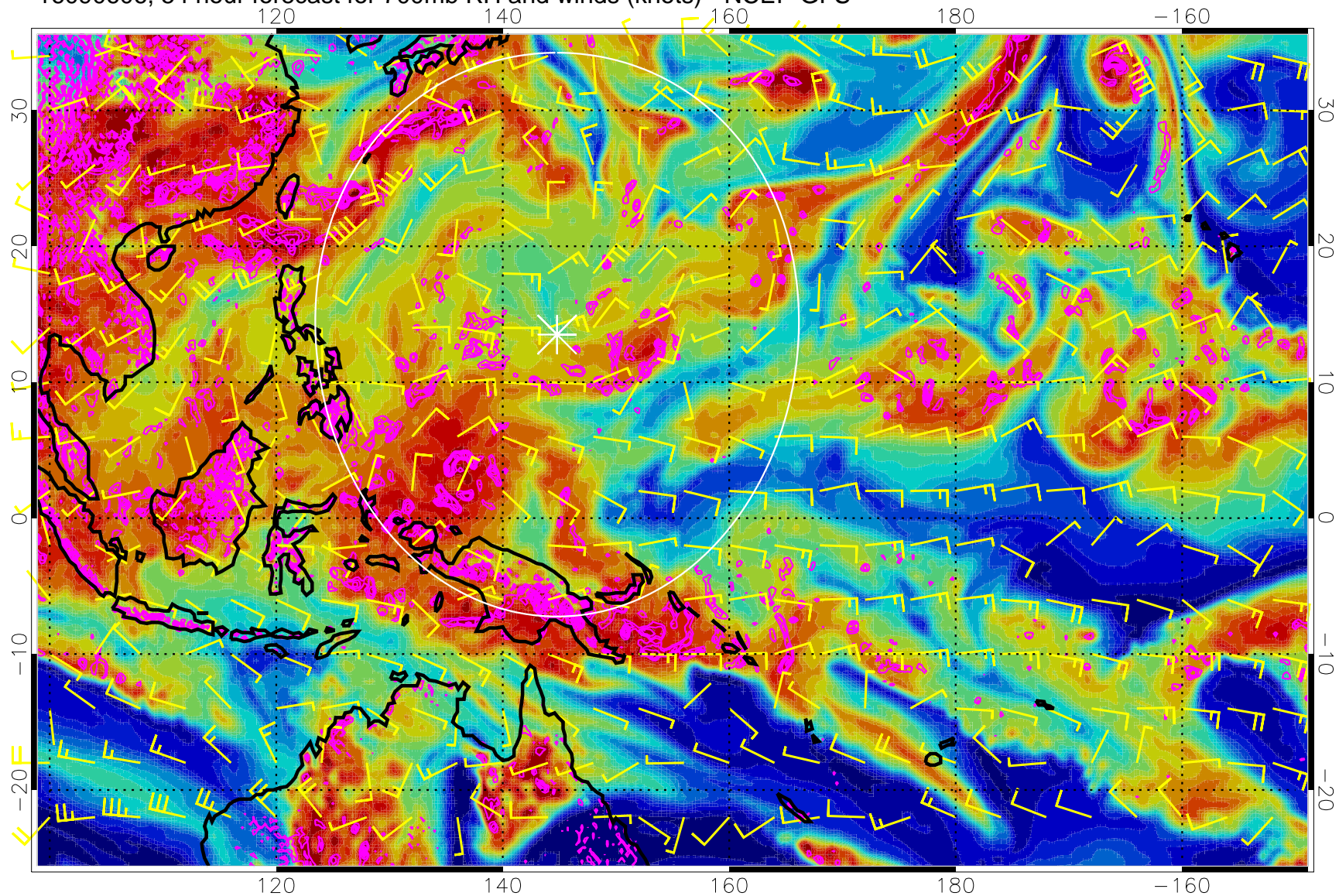


0 20 40 60 80 100
RH, %

Negative Omegas less than -0.3 , contours of 0.3 Pa/s

Range ring of 2304 km

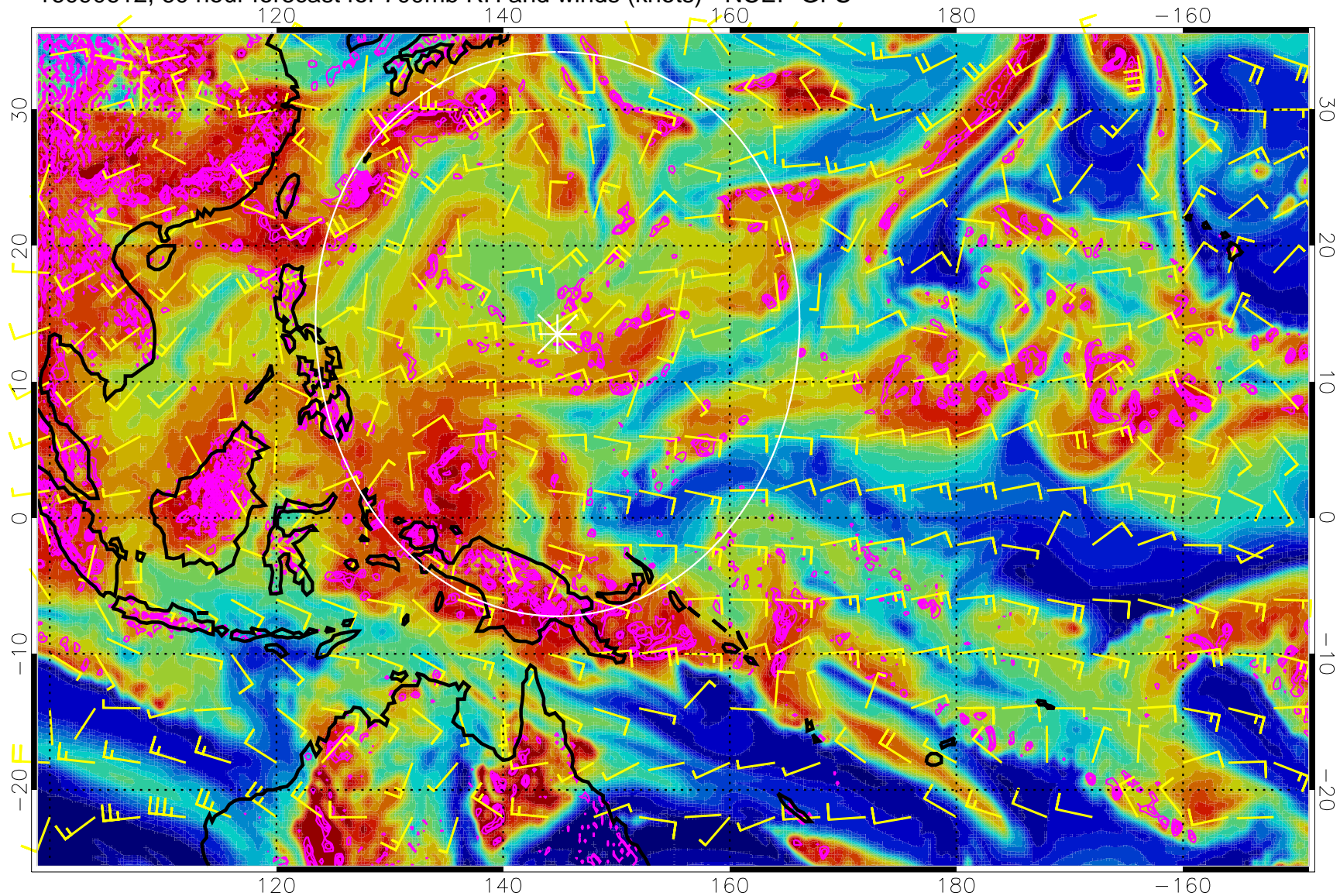
16090606, 54 hour forecast for 700mb RH and winds (knots) - NCEP GFS



Negative Omegas less than -0.3 , contours of 0.3 Pa/s

Range ring of 2304 km

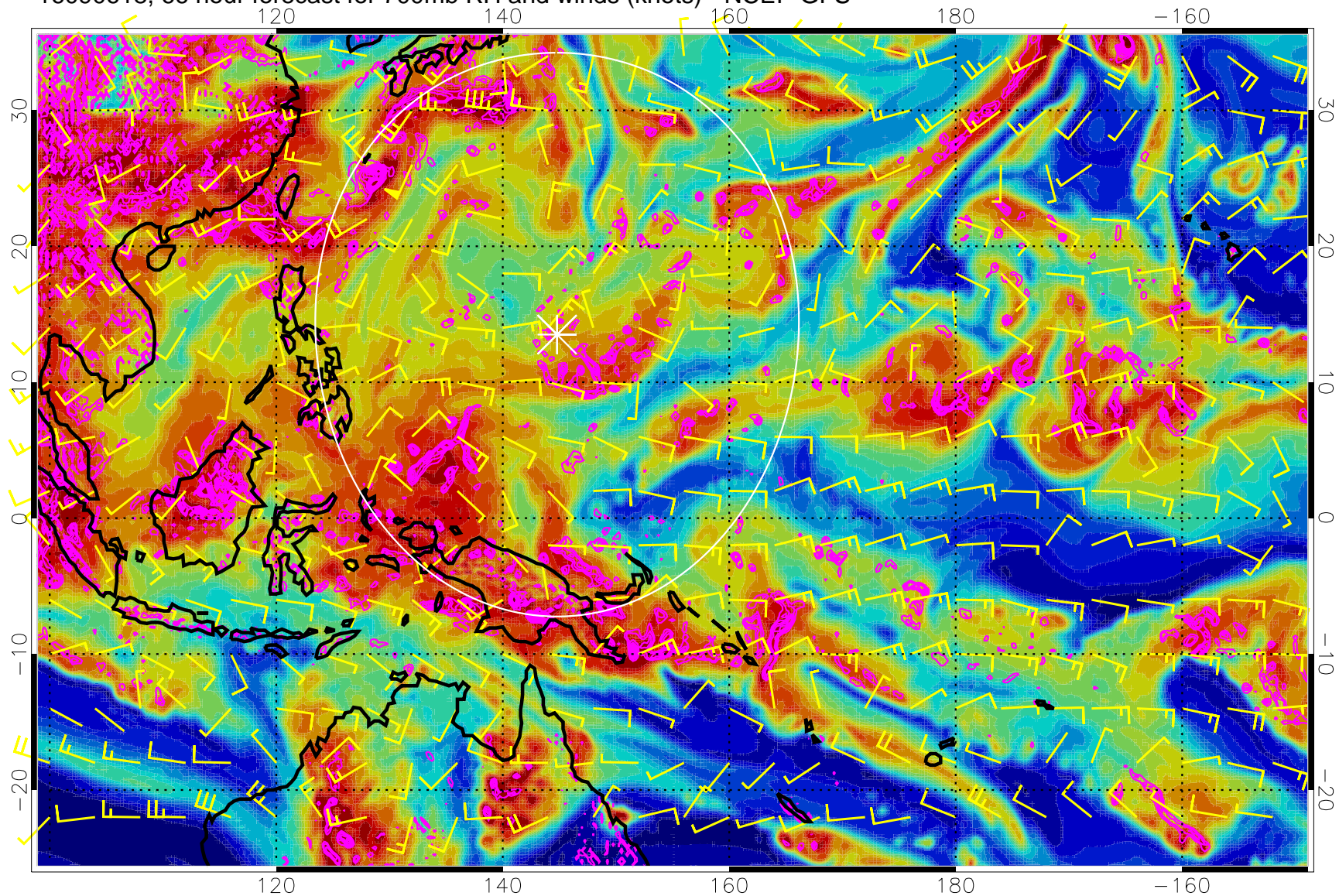
16090612, 60 hour forecast for 700mb RH and winds (knots) - NCEP GFS



Negative Omegas less than -0.3 , contours of 0.3 Pa/s

Range ring of 2304 km

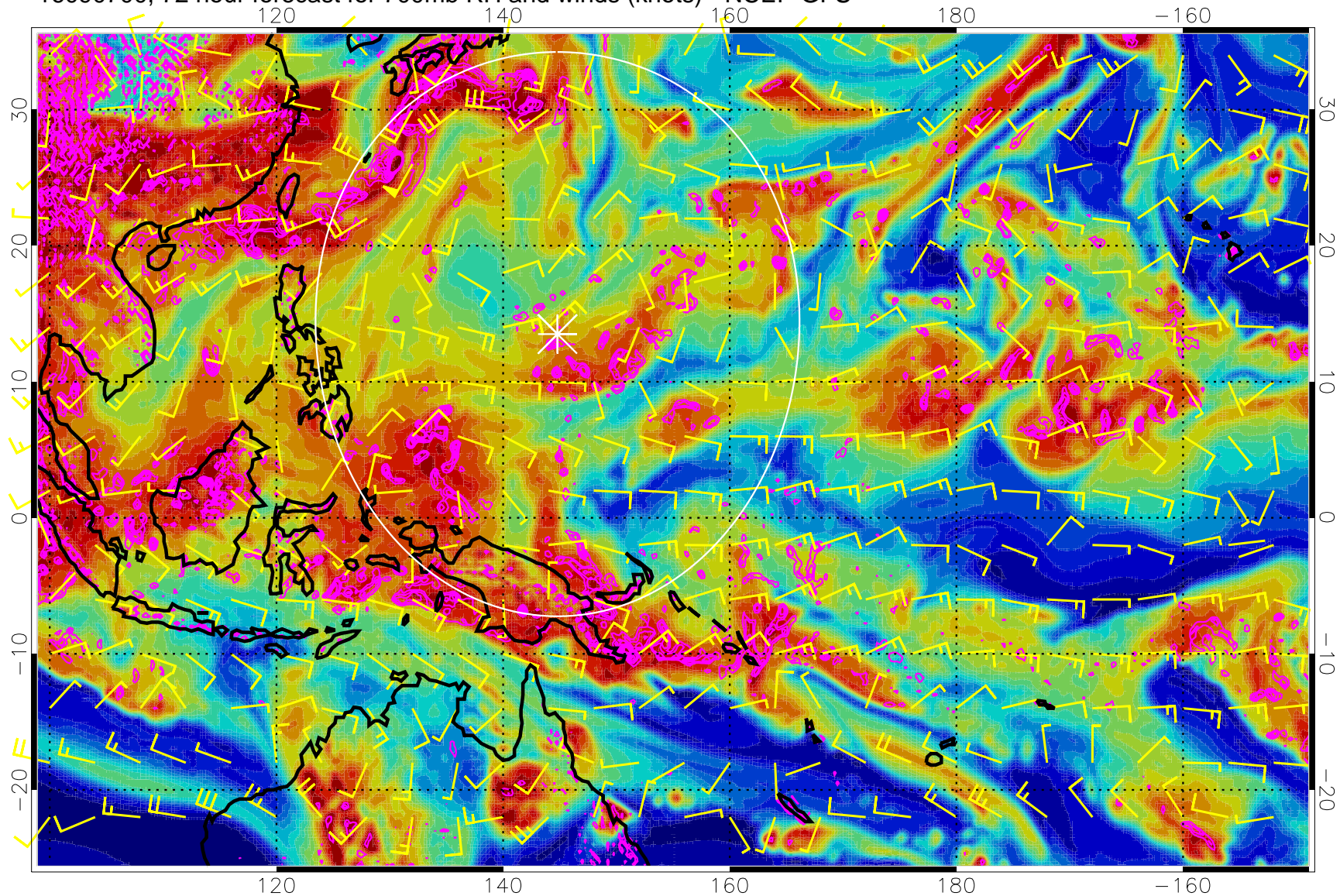
16090618, 66 hour forecast for 700mb RH and winds (knots) - NCEP GFS



Negative Omegas less than -0.3 , contours of 0.3 Pa/s

Range ring of 2304 km

16090700, 72 hour forecast for 700mb RH and winds (knots) - NCEP GFS

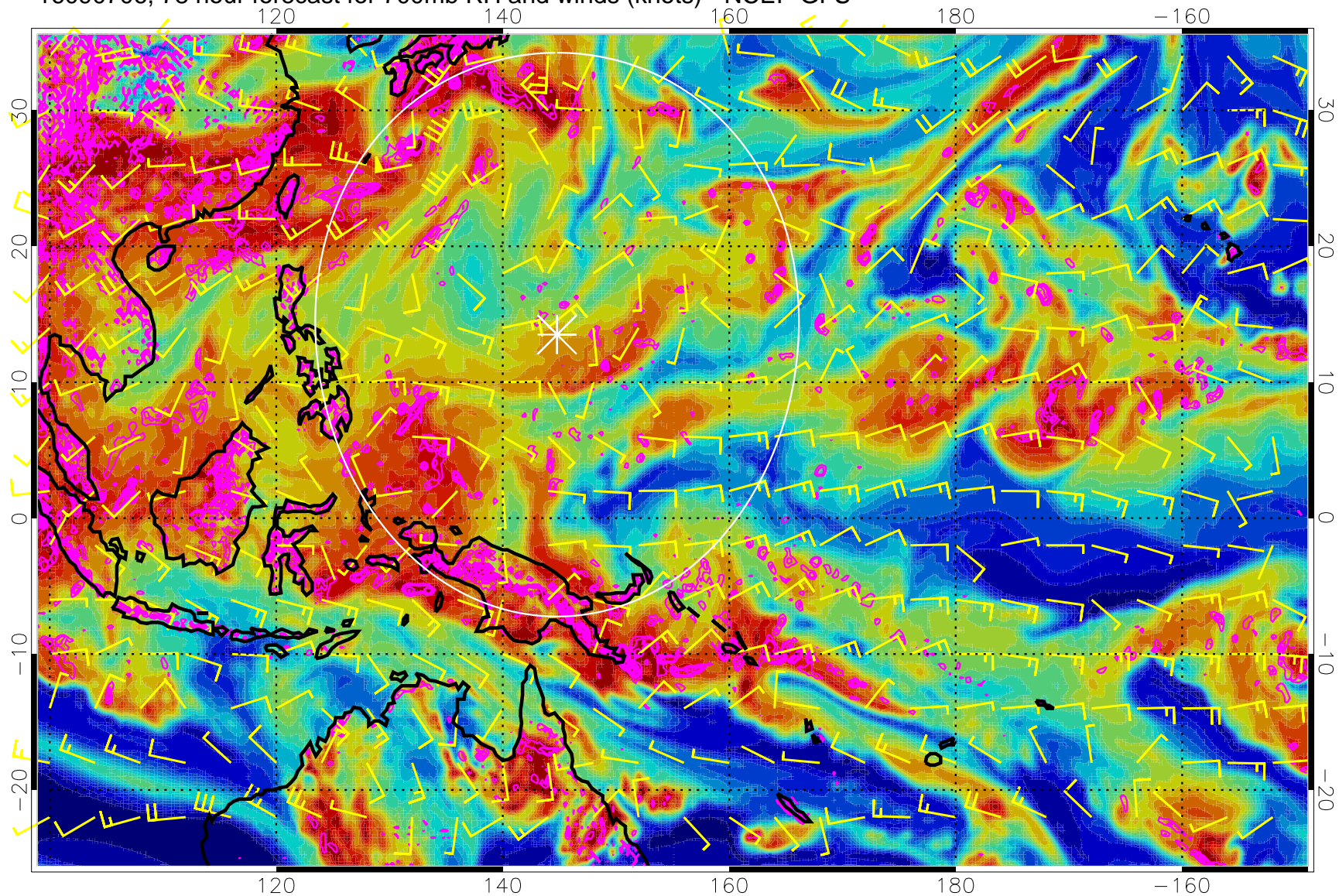


0 20 40 60 80 100
RH, %

Negative Omegas less than -0.3 , contours of 0.3 Pa/s

Range ring of 2304 km

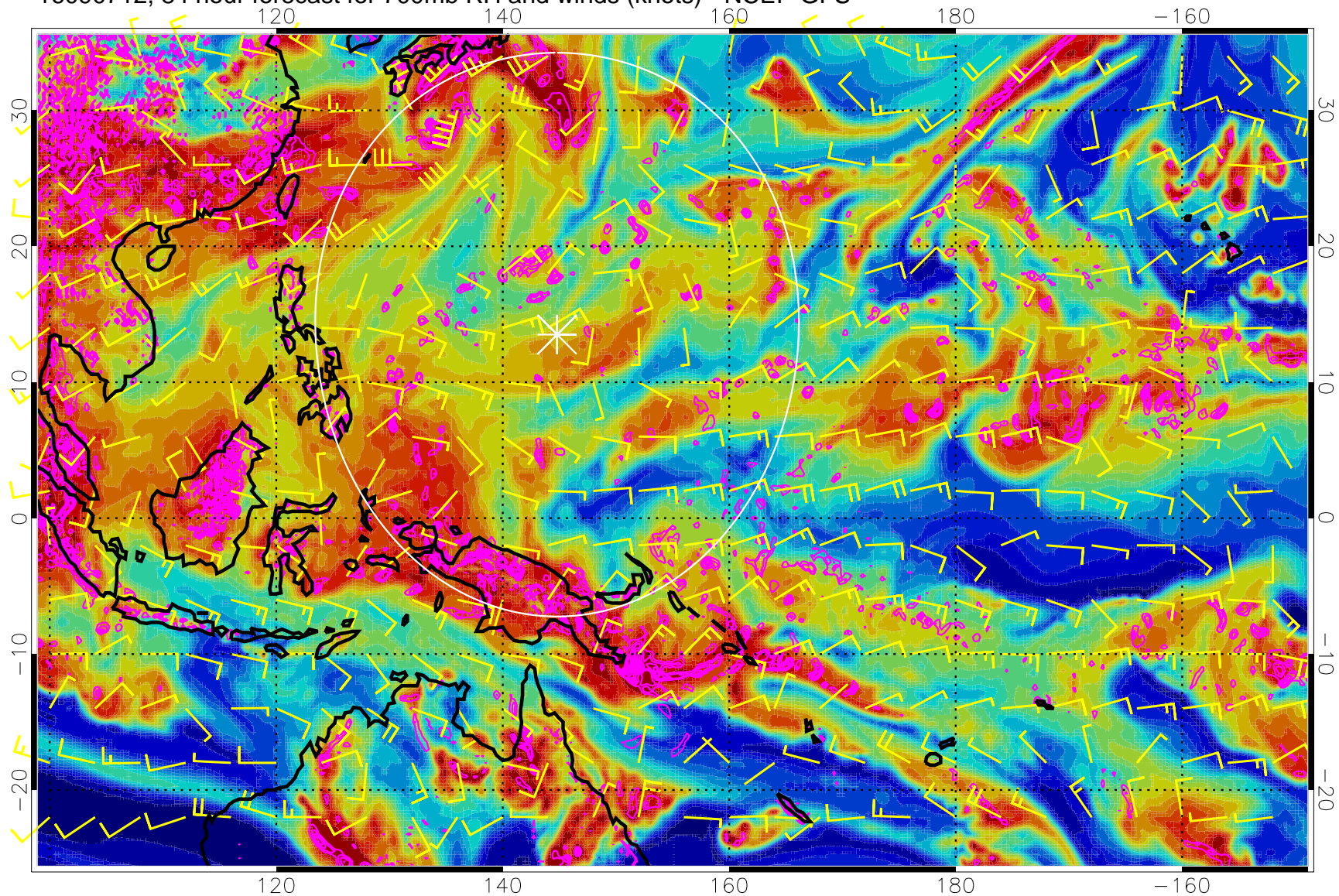
16090706, 78 hour forecast for 700mb RH and winds (knots) - NCEP GFS



Negative Omegas less than -0.3 , contours of 0.3 Pa/s

Range ring of 2304 km

16090712, 84 hour forecast for 700mb RH and winds (knots) - NCEP GFS

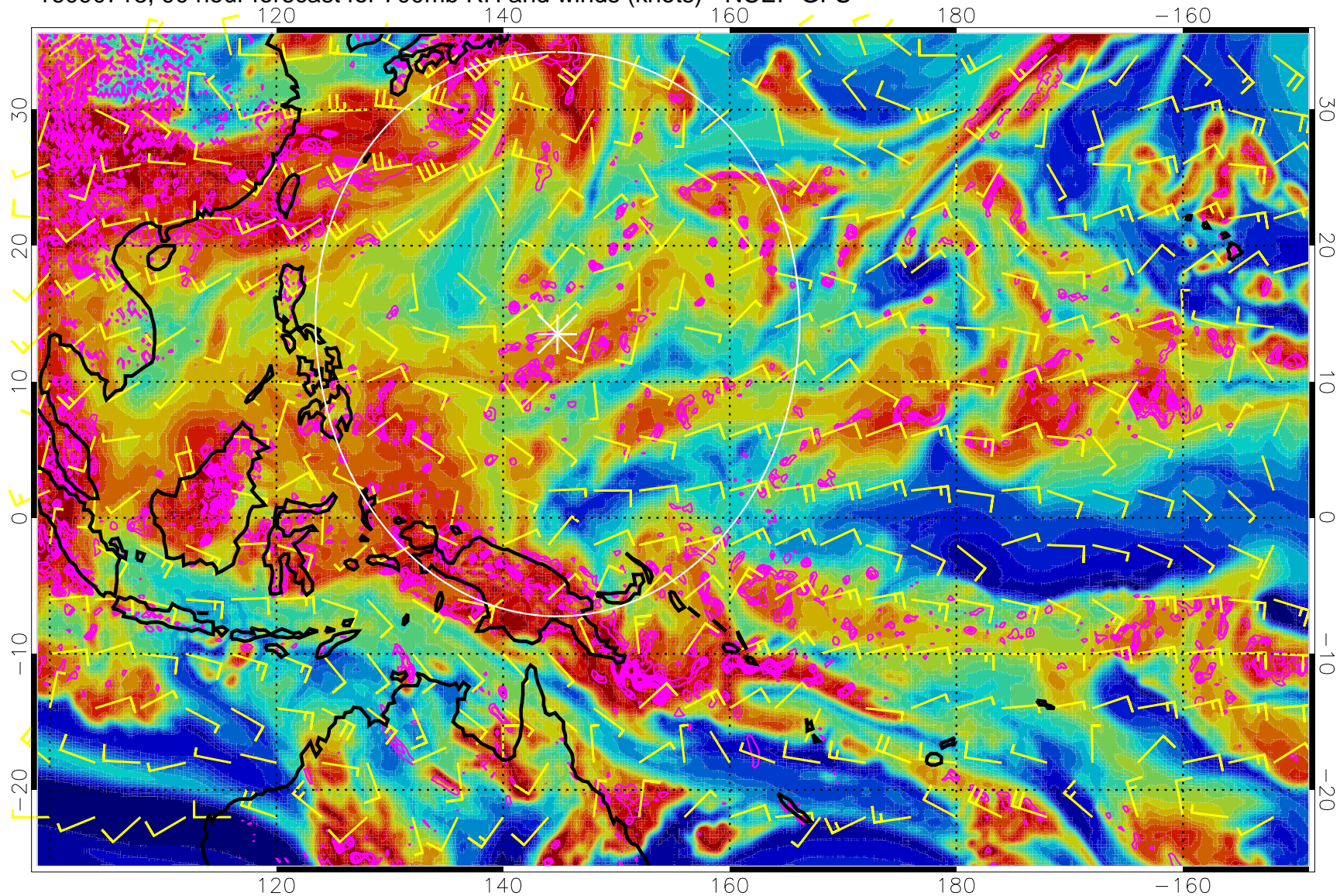


0 20 40 60 80 100
RH, %

Negative Omegas less than -0.3 , contours of 0.3 Pa/s

Range ring of 2304 km

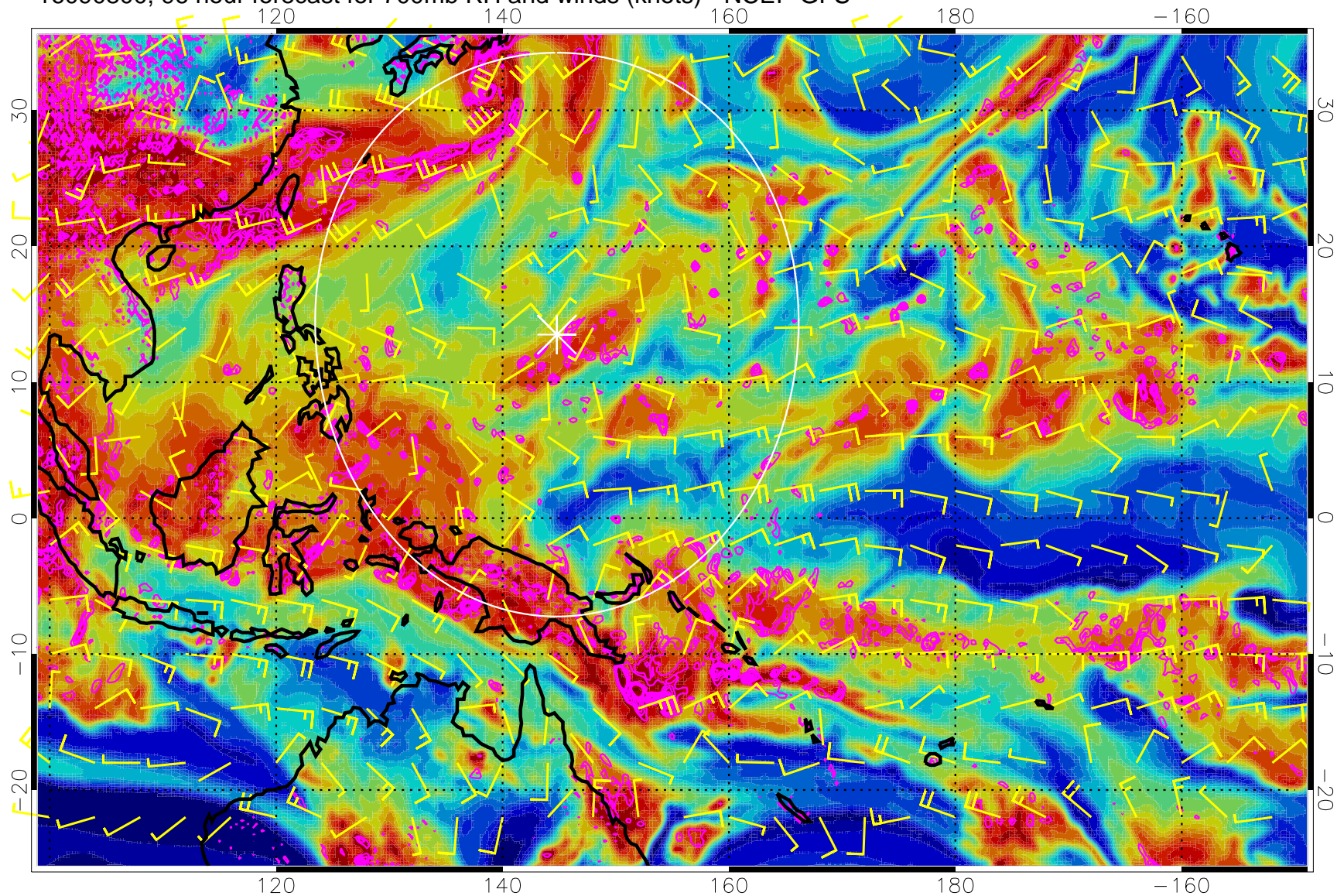
16090718, 90 hour forecast for 700mb RH and winds (knots) - NCEP GFS



Negative Omegas less than -0.3 , contours of 0.3 Pa/s

Range ring of 2304 km

16090800, 96 hour forecast for 700mb RH and winds (knots) - NCEP GFS

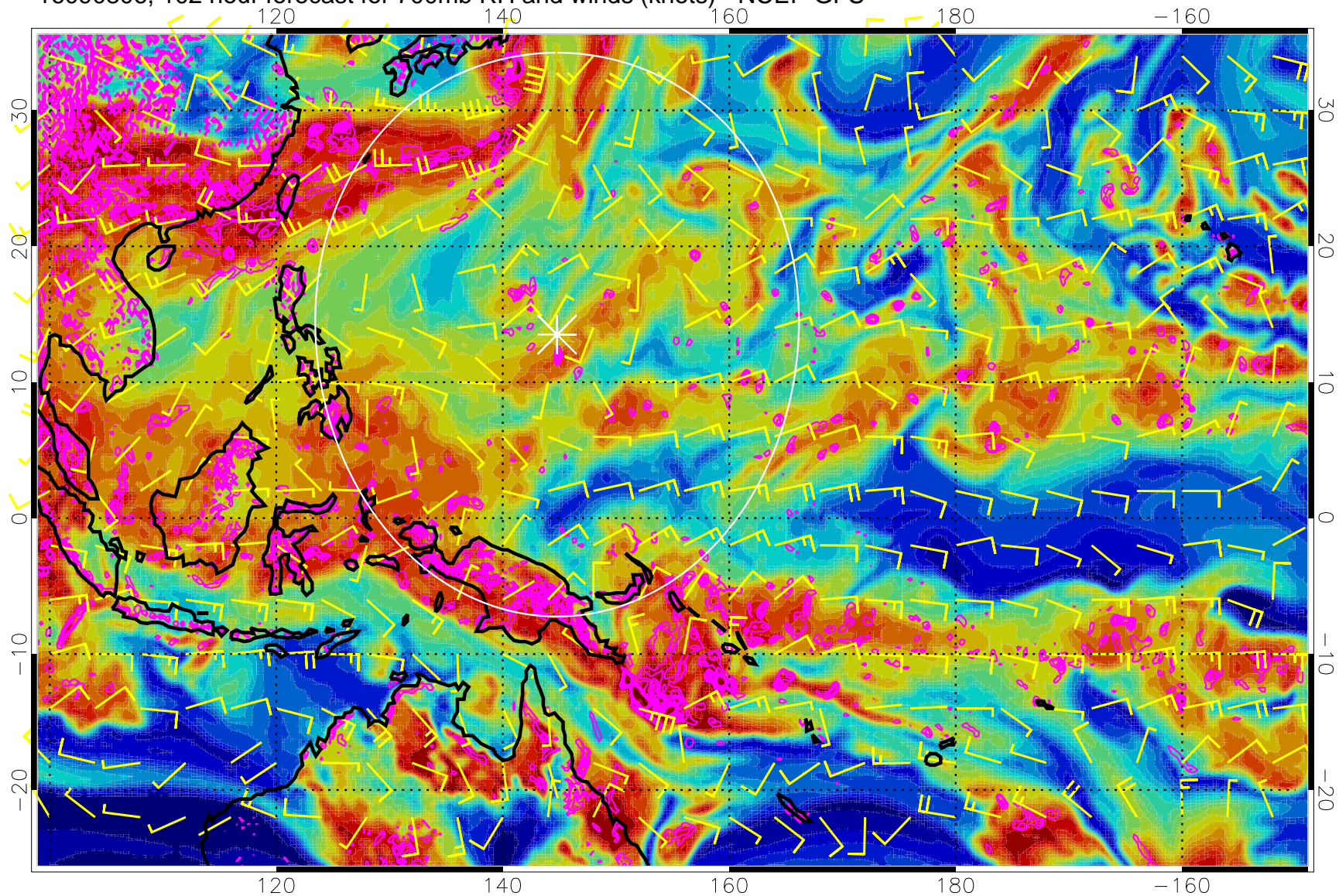


0 20 40 60 80 100
RH, %

Negative Omegas less than -0.3 , contours of 0.3 Pa/s

Range ring of 2304 km

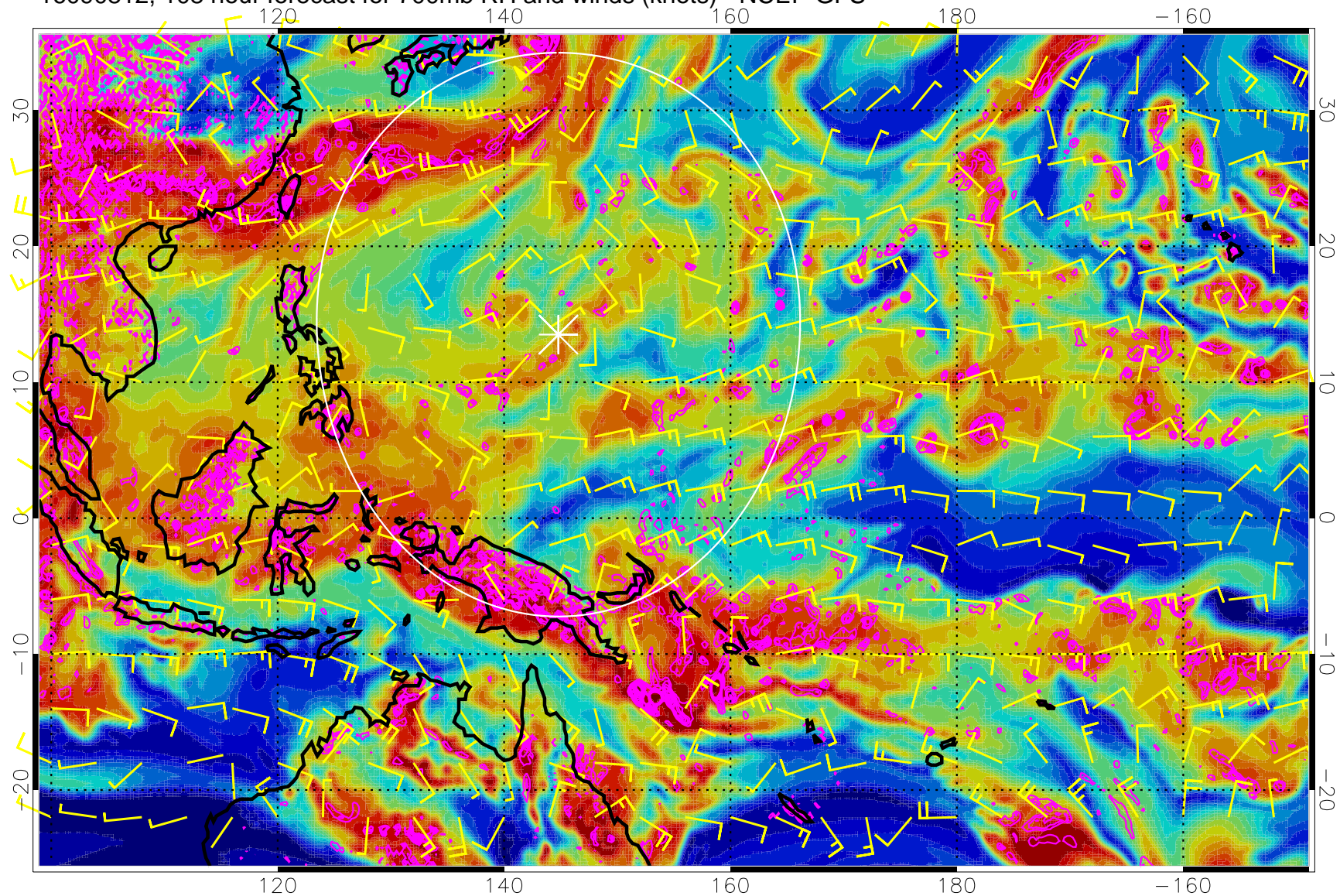
16090806, 102 hour forecast for 700mb RH and winds (knots) - NCEP GFS



Negative Omegas less than -0.3 , contours of 0.3 Pa/s

Range ring of 2304 km

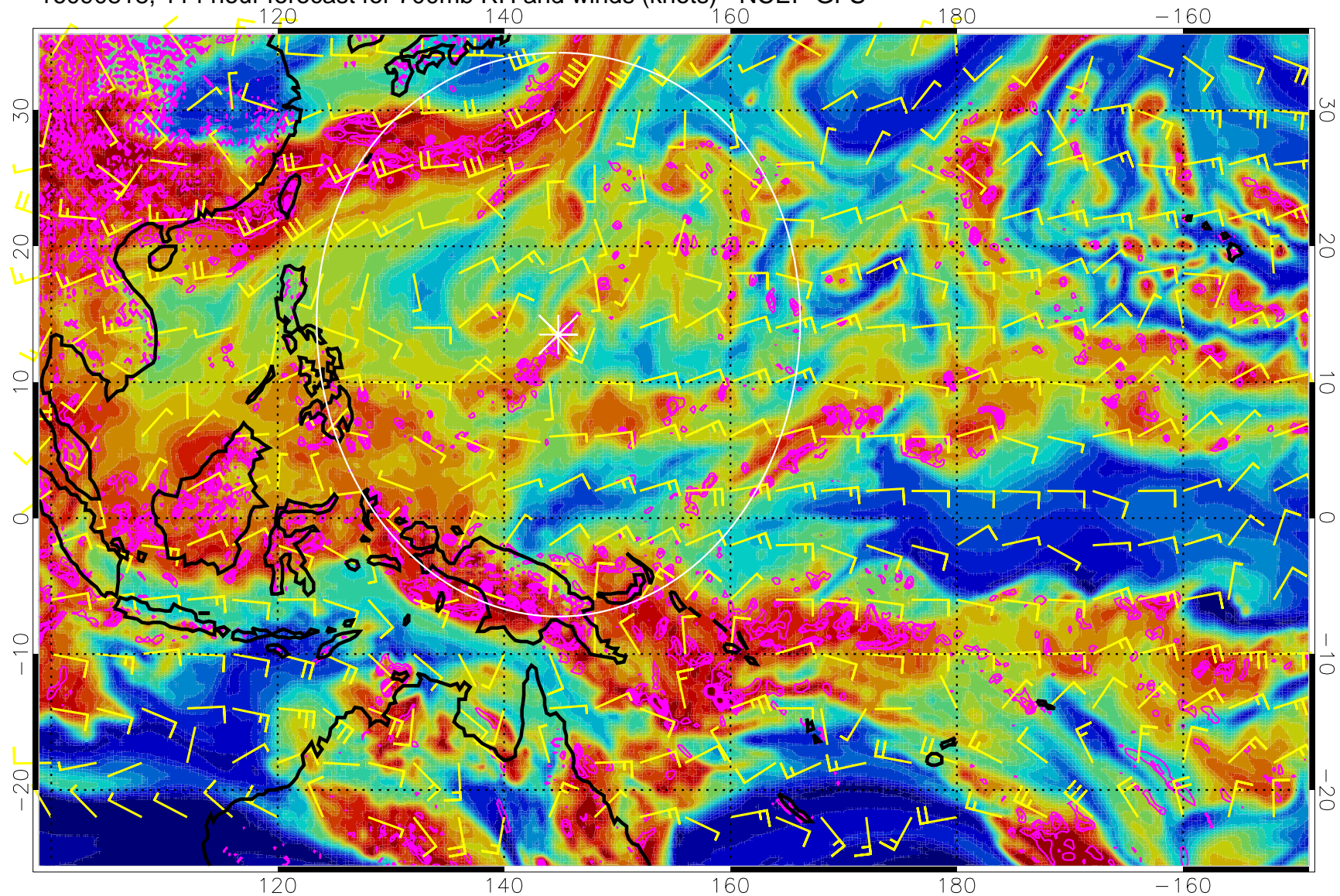
16090812, 108 hour forecast for 700mb RH and winds (knots) - NCEP GFS



Negative Omegas less than -0.3 , contours of 0.3 Pa/s

Range ring of 2304 km

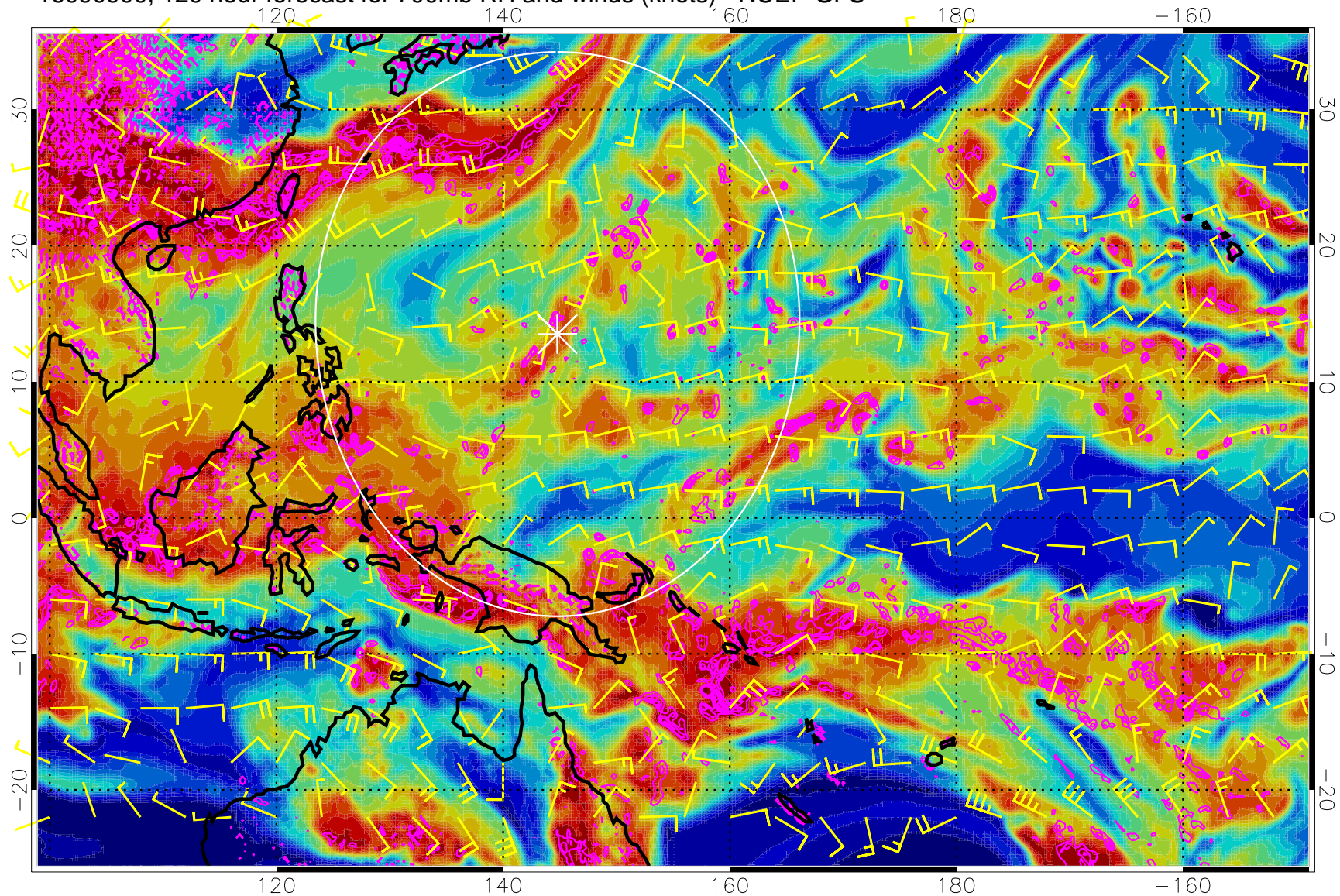
16090818, 114 hour forecast for 700mb RH and winds (knots) - NCEP GFS



Negative Omegas less than -0.3 , contours of 0.3 Pa/s

Range ring of 2304 km

16090900, 120 hour forecast for 700mb RH and winds (knots) - NCEP GFS



Negative Omegas less than -0.3 , contours of 0.3 Pa/s

Range ring of 2304 km