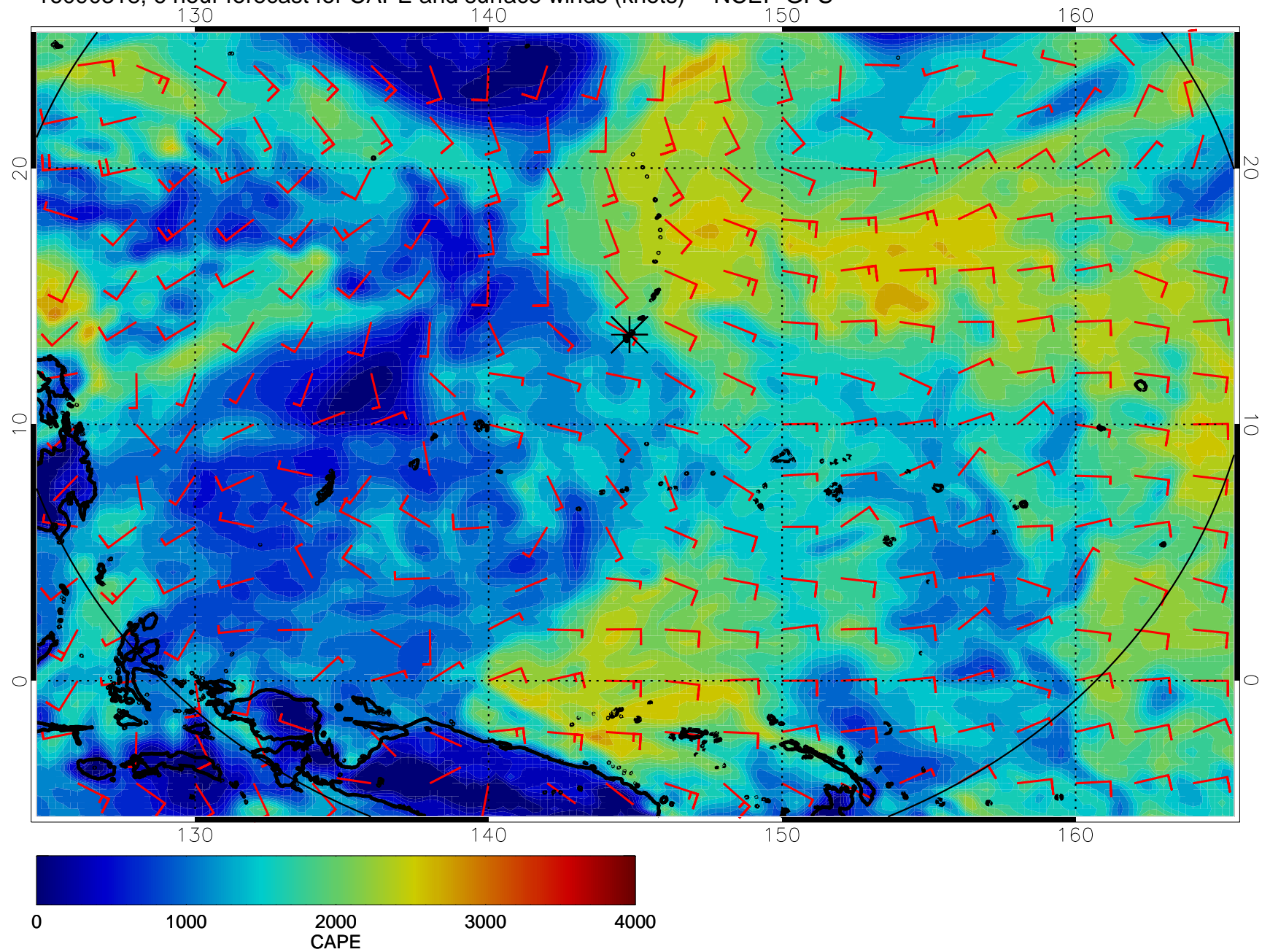
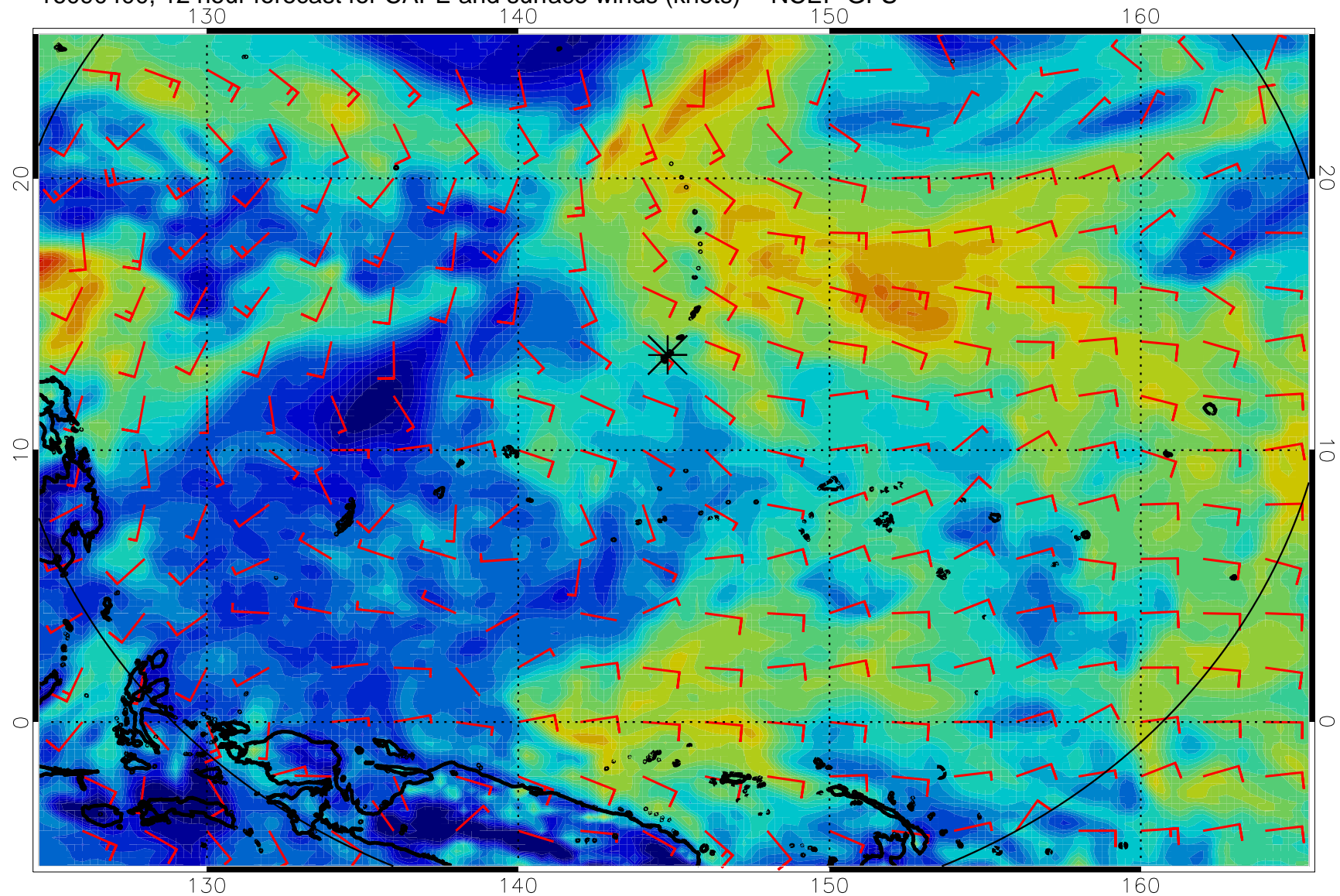


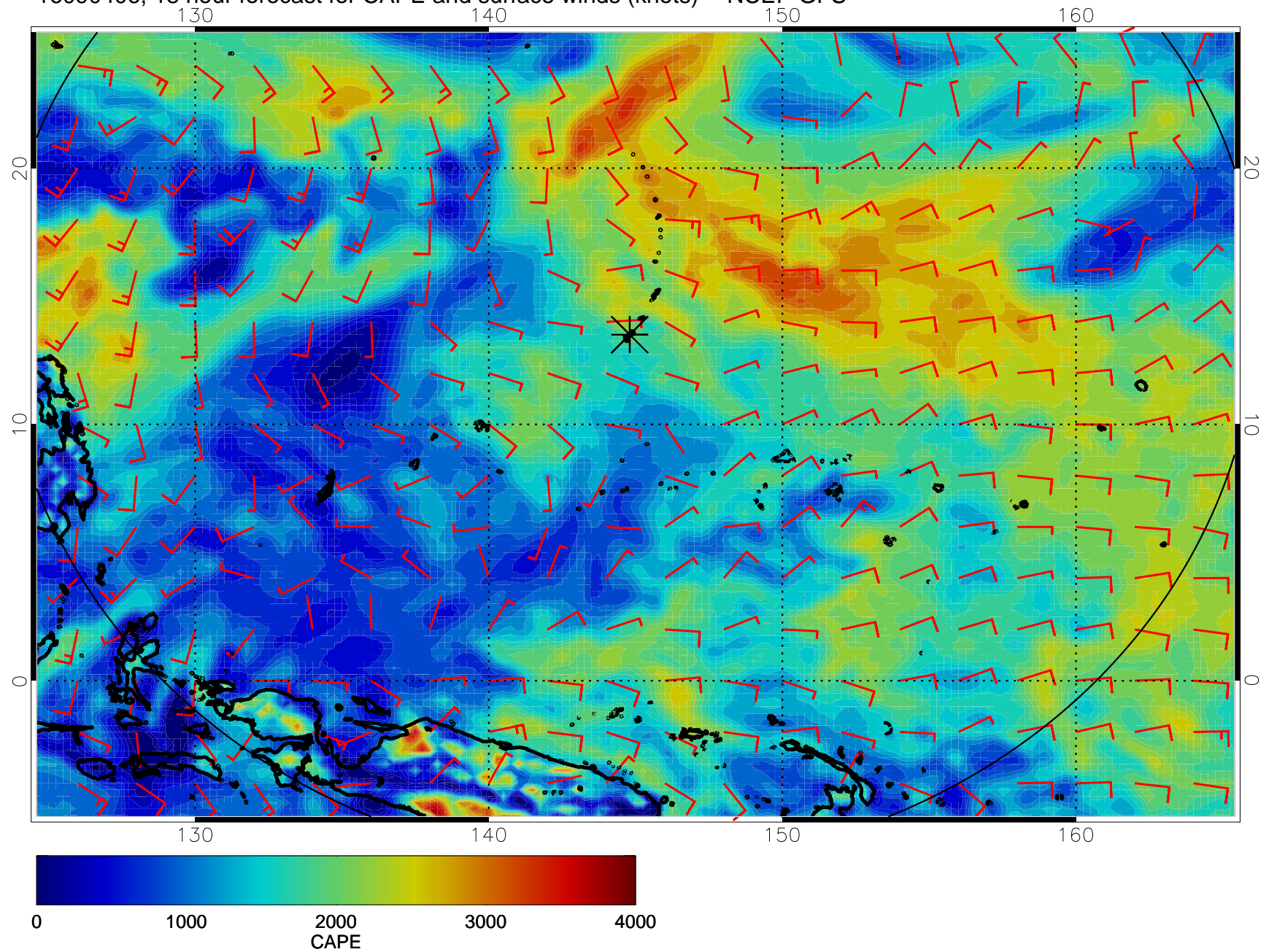
16090318, 6 hour forecast for CAPE and surface winds (knots) -- NCEP GFS



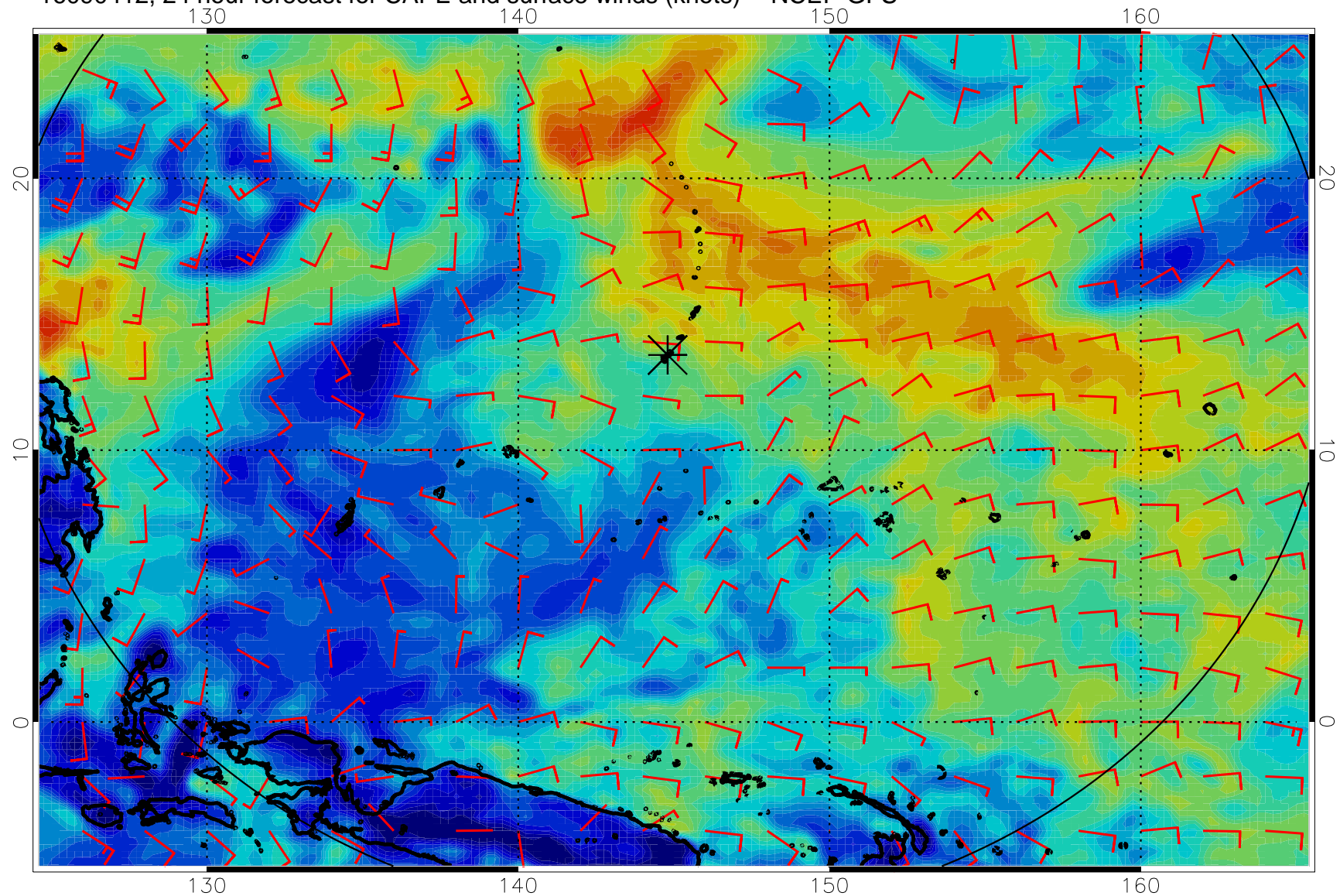
16090400, 12 hour forecast for CAPE and surface winds (knots) -- NCEP GFS



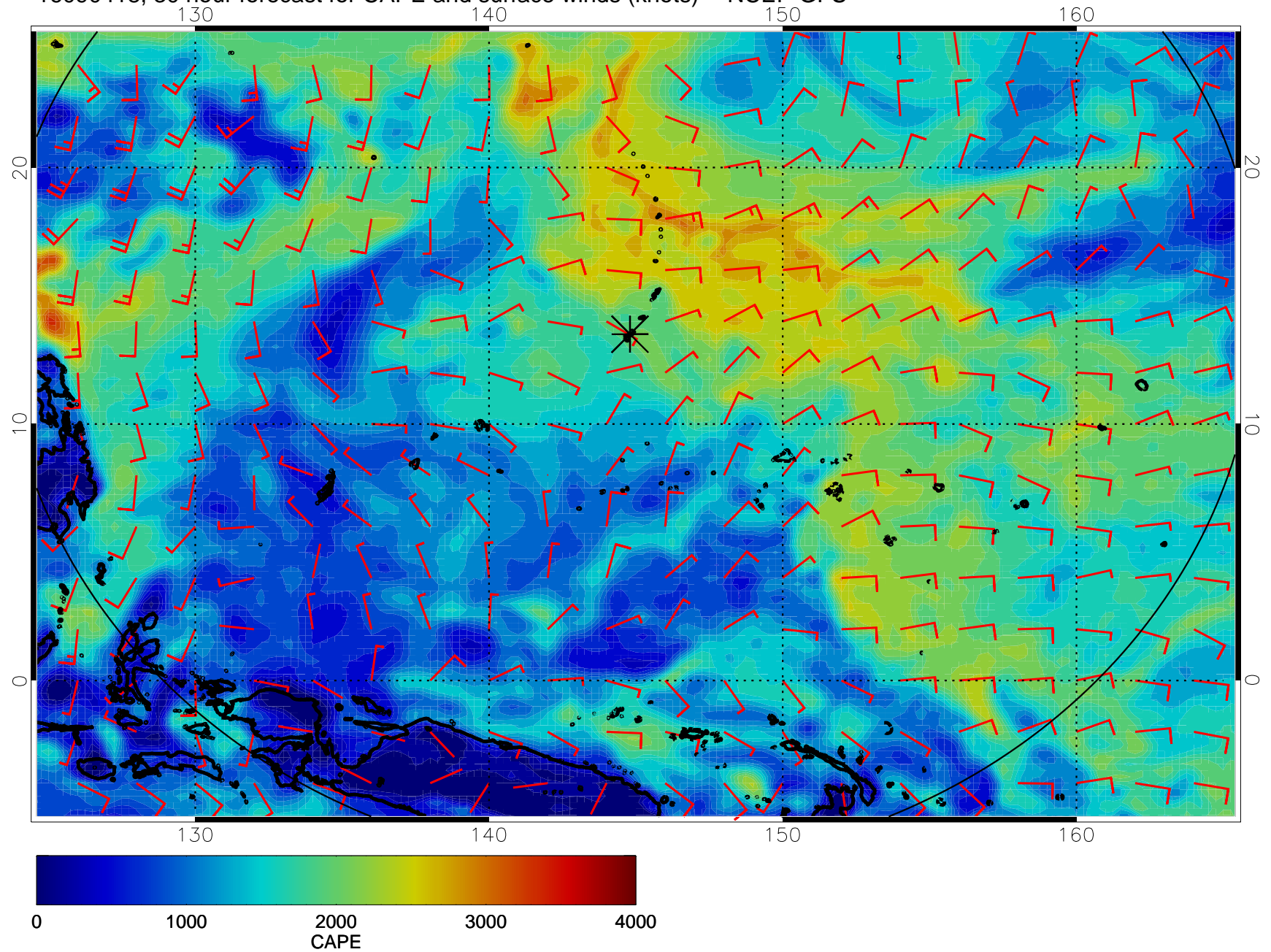
16090406, 18 hour forecast for CAPE and surface winds (knots) -- NCEP GFS



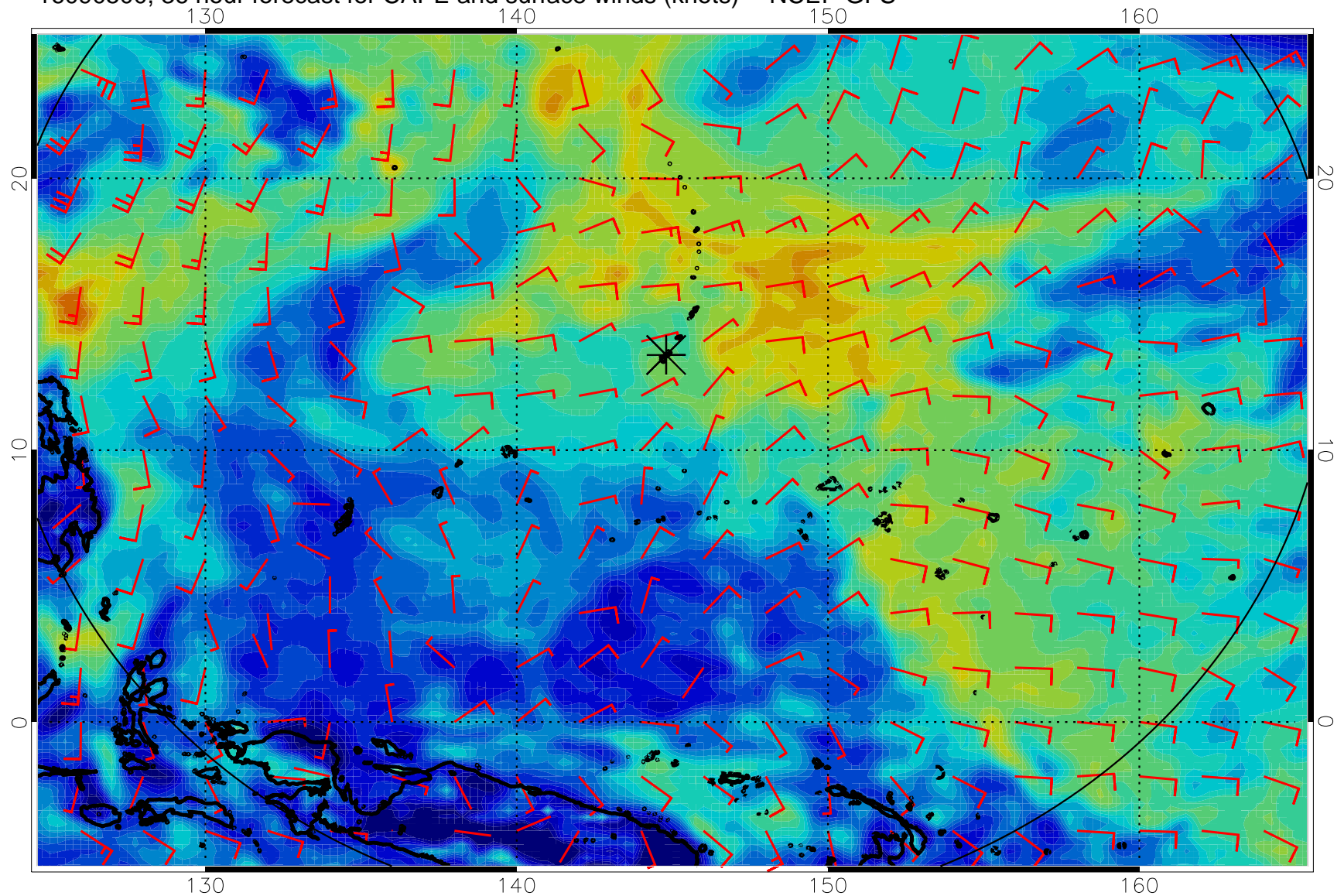
16090412, 24 hour forecast for CAPE and surface winds (knots) -- NCEP GFS



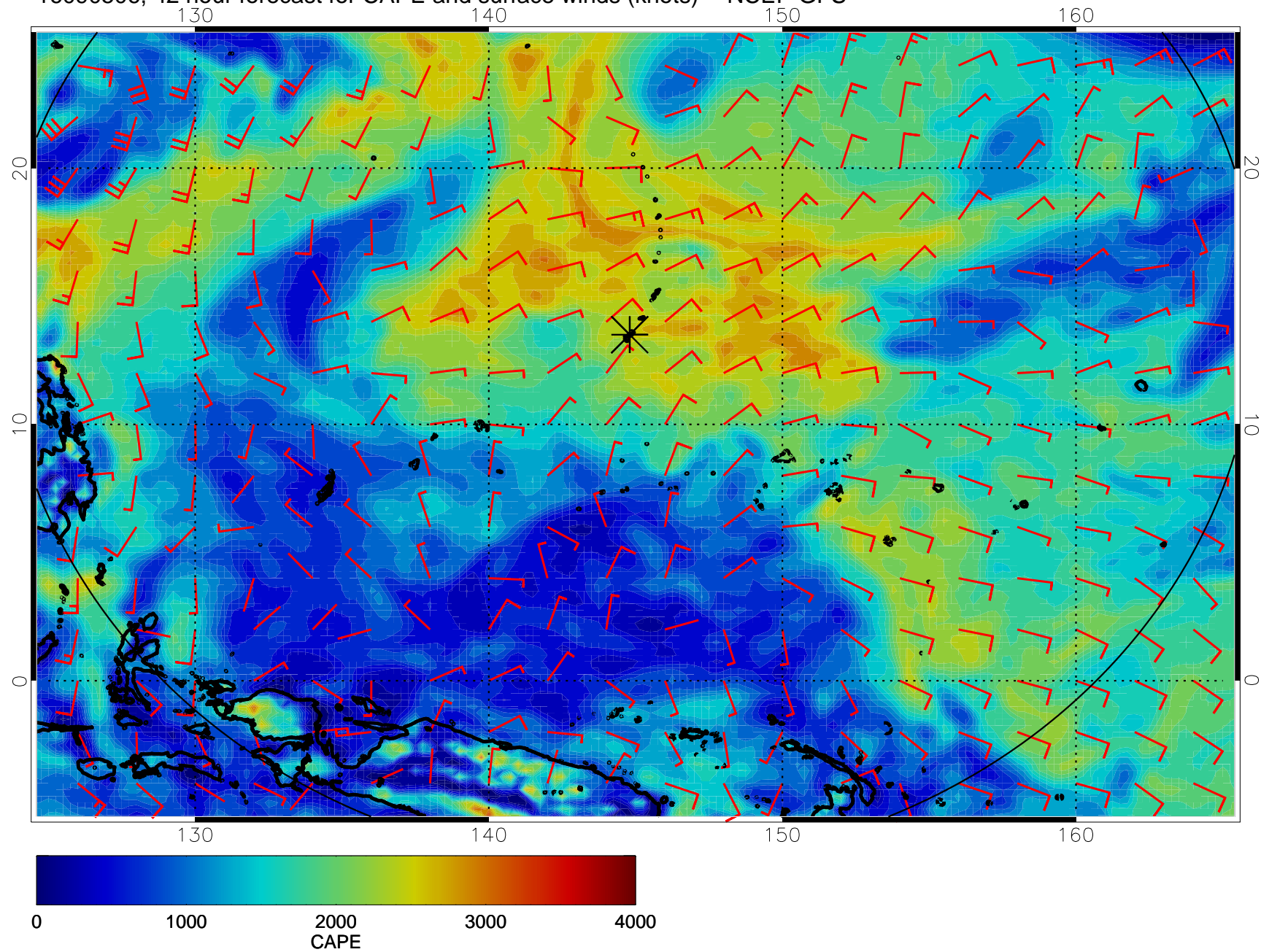
16090418, 30 hour forecast for CAPE and surface winds (knots) -- NCEP GFS



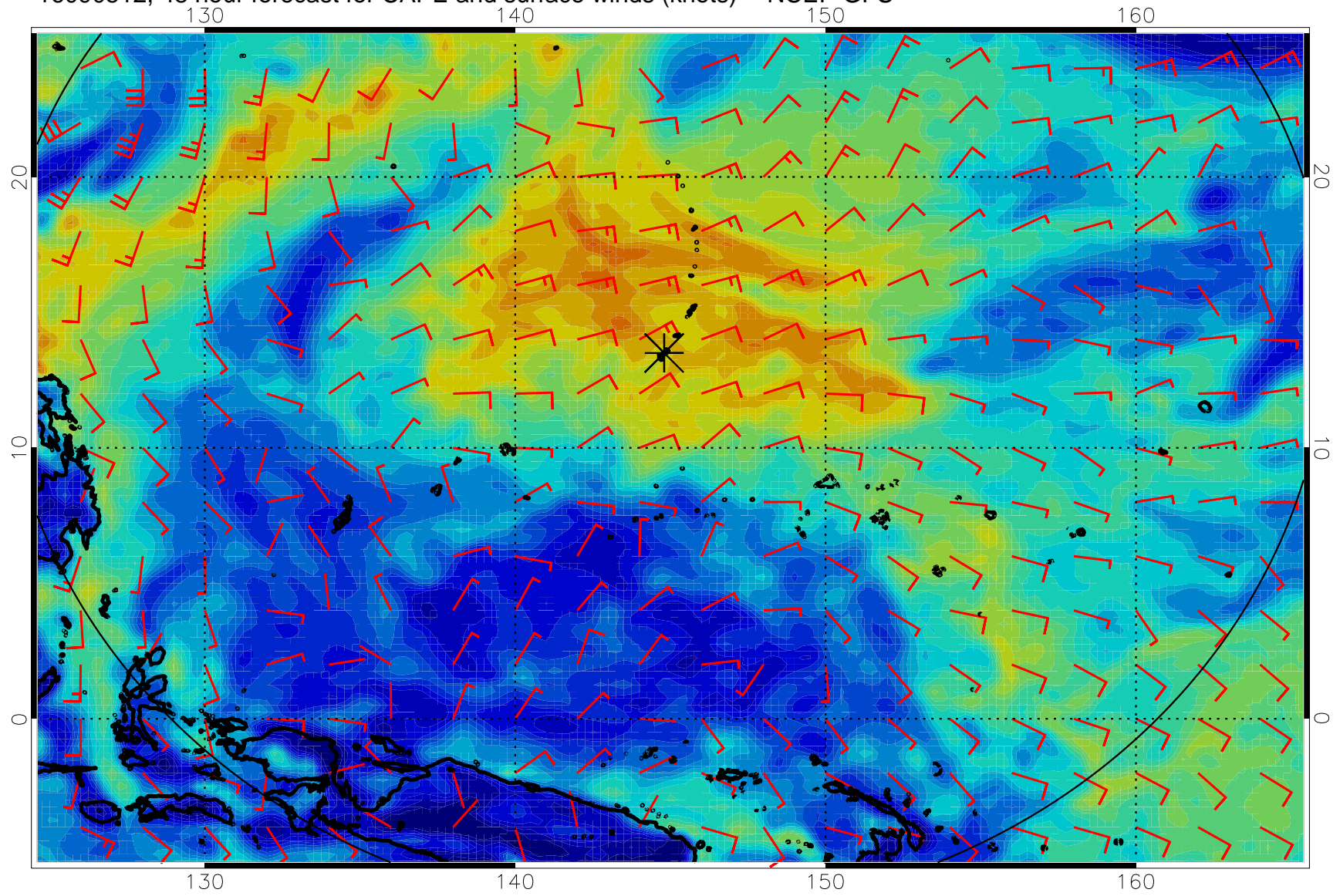
16090500, 36 hour forecast for CAPE and surface winds (knots) -- NCEP GFS



16090506, 42 hour forecast for CAPE and surface winds (knots) -- NCEP GFS

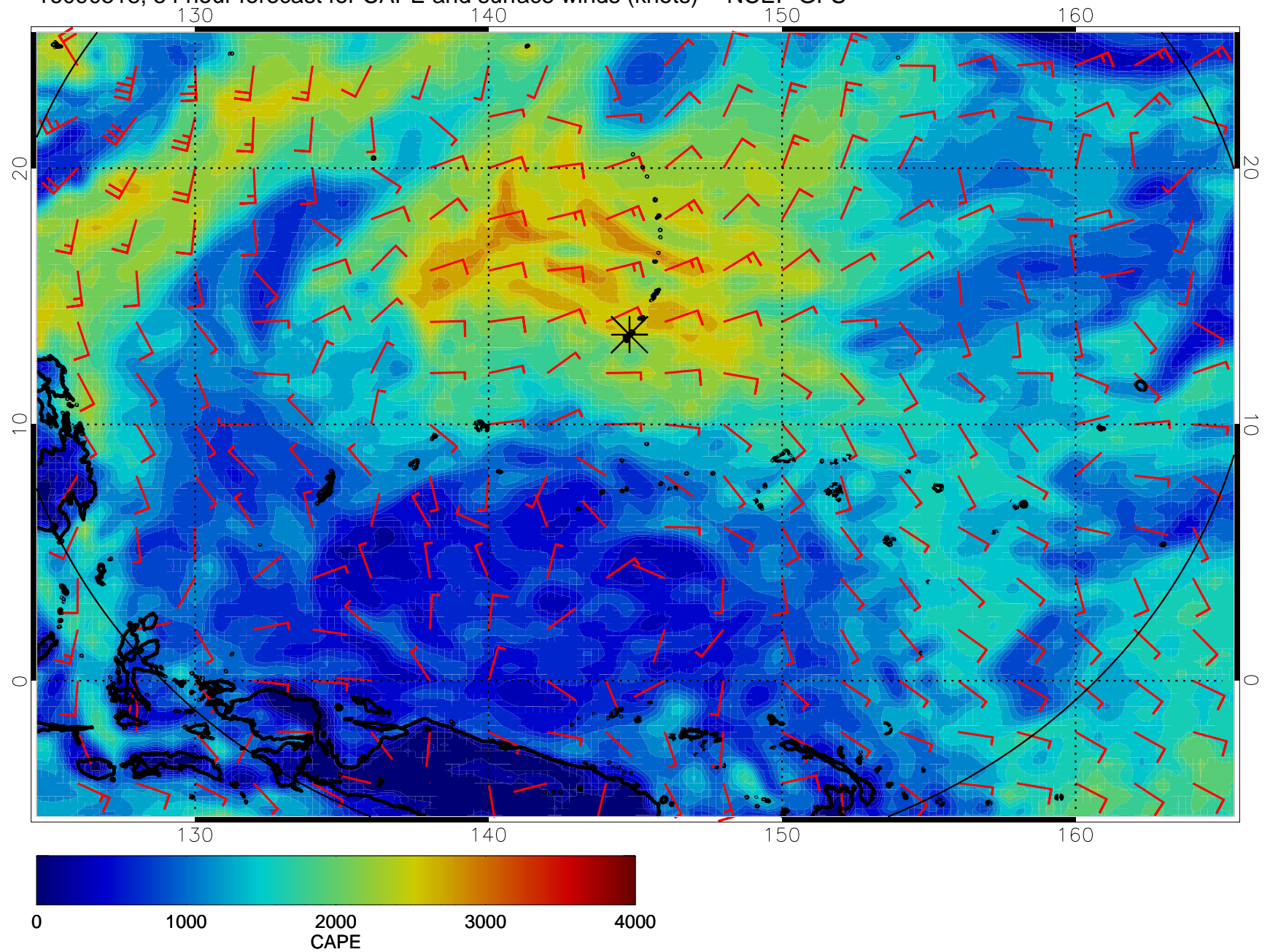


16090512, 48 hour forecast for CAPE and surface winds (knots) -- NCEP GFS

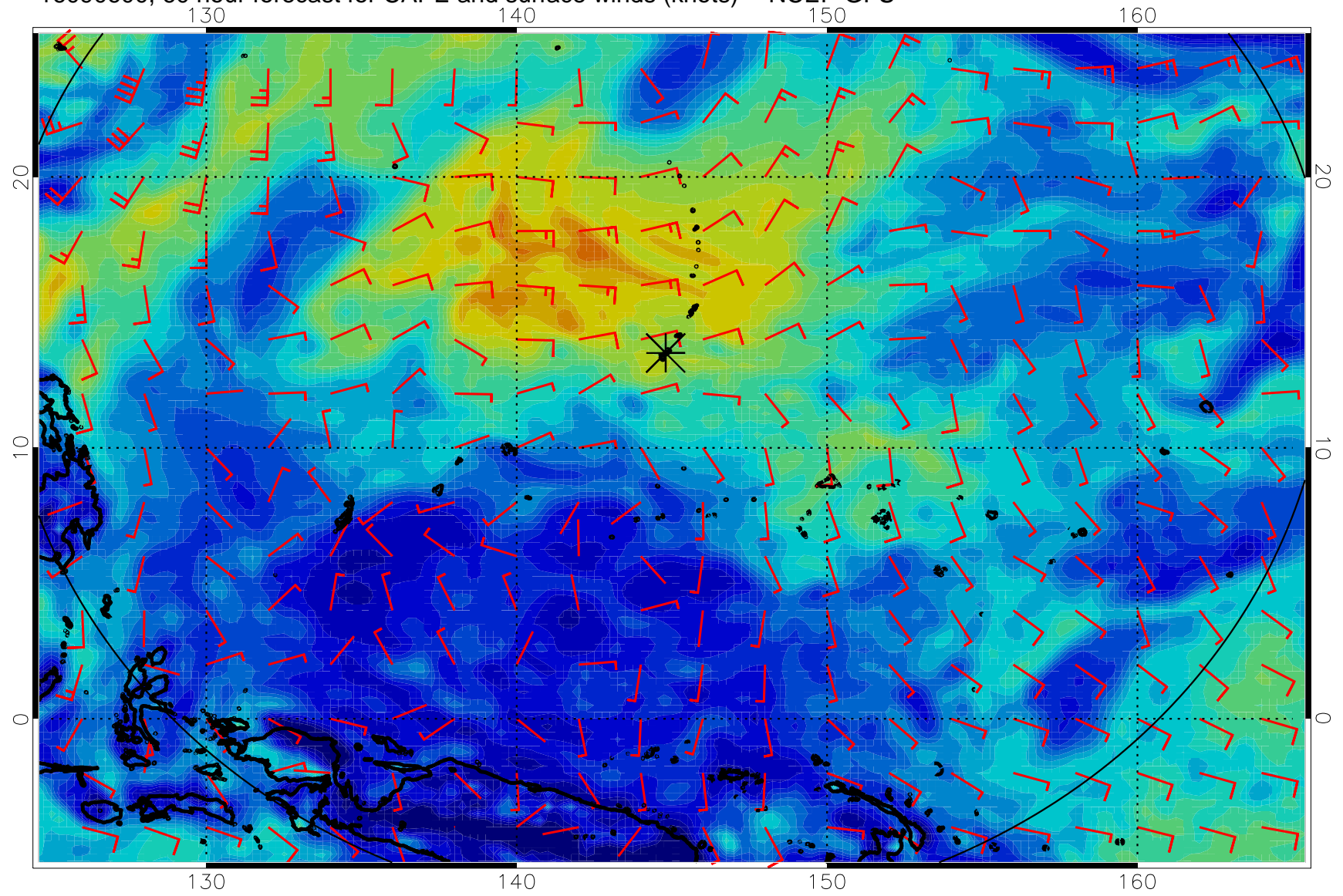




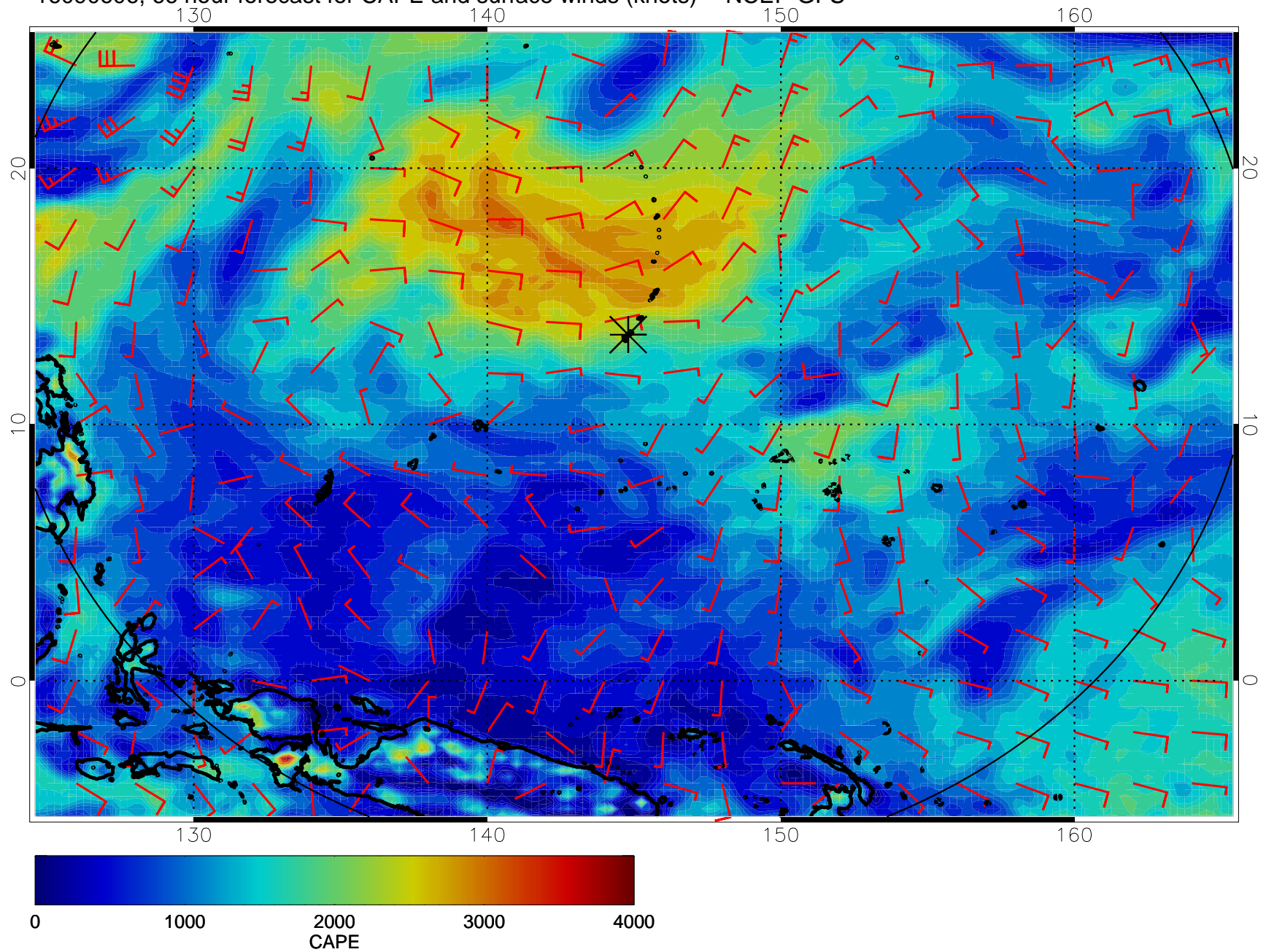
16090518, 54 hour forecast for CAPE and surface winds (knots) -- NCEP GFS



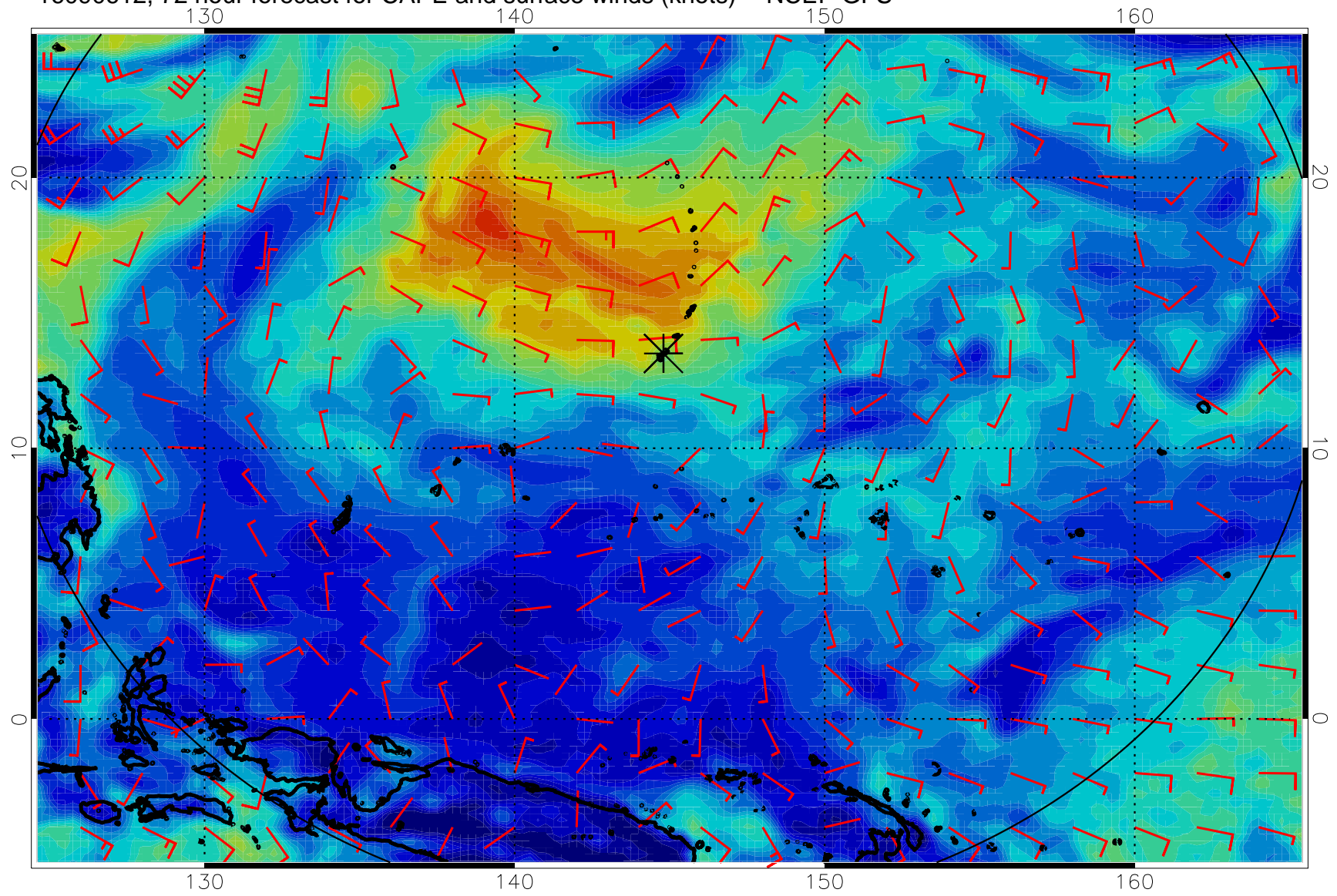
16090600, 60 hour forecast for CAPE and surface winds (knots) -- NCEP GFS



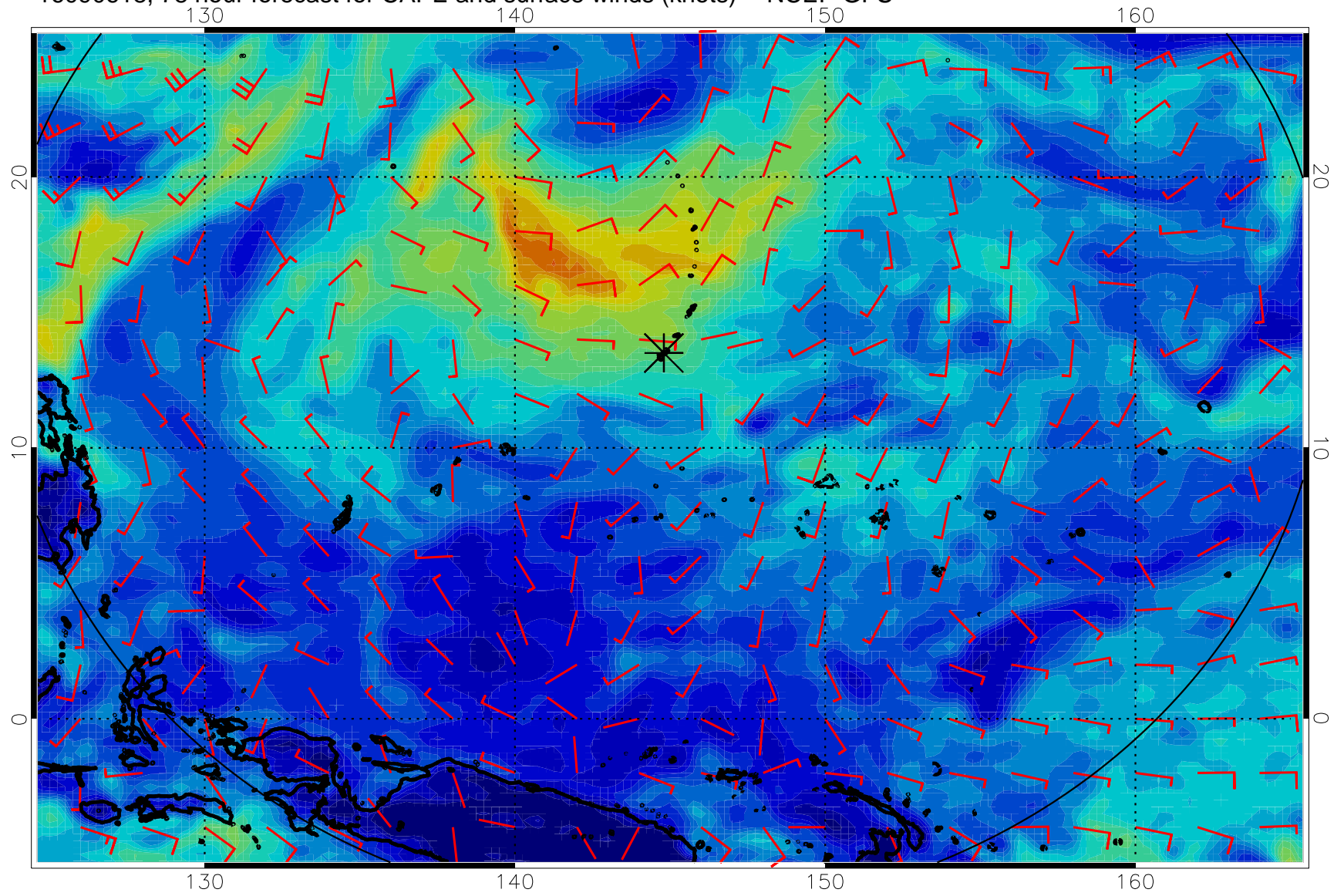
16090606, 66 hour forecast for CAPE and surface winds (knots) -- NCEP GFS



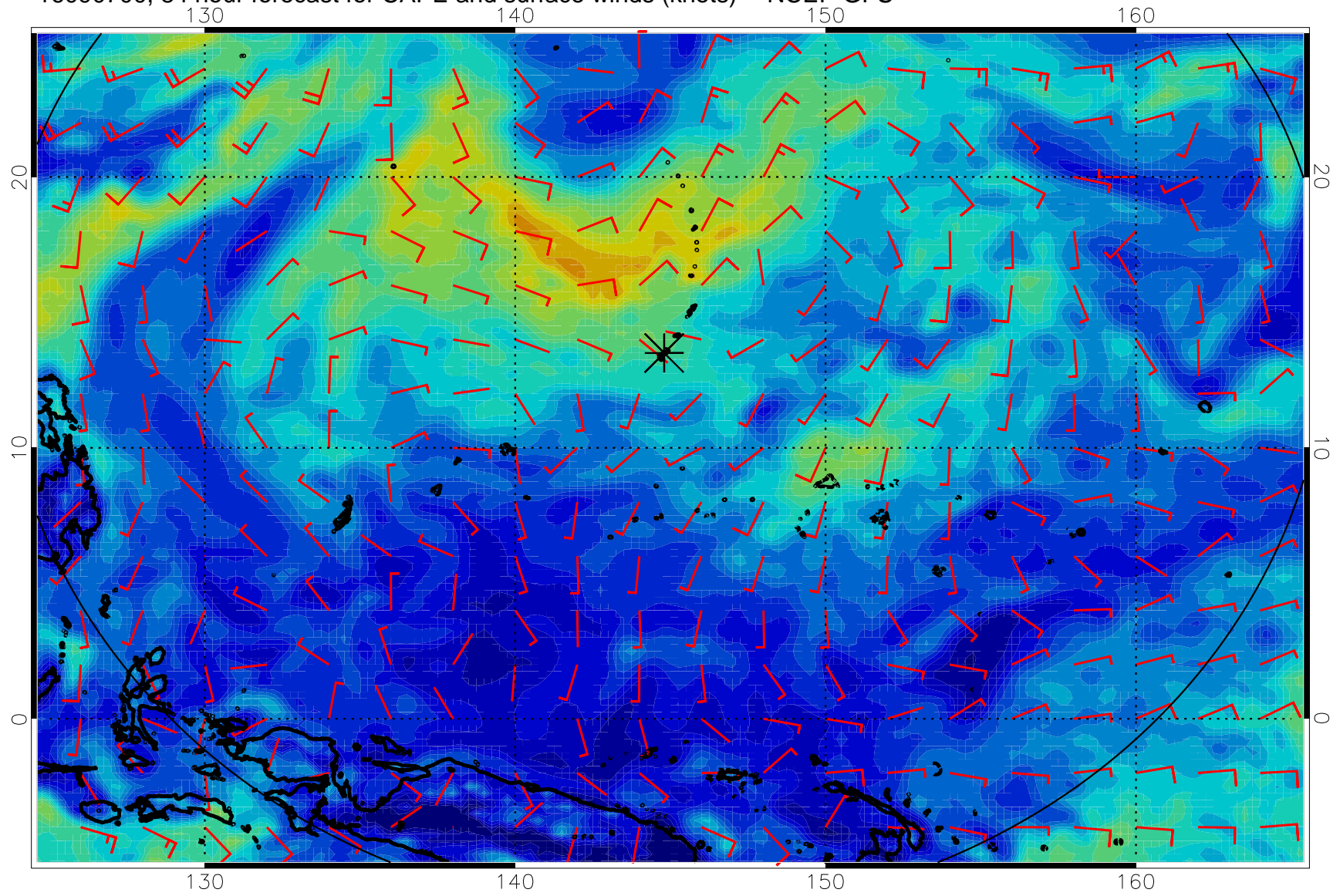
16090612, 72 hour forecast for CAPE and surface winds (knots) -- NCEP GFS



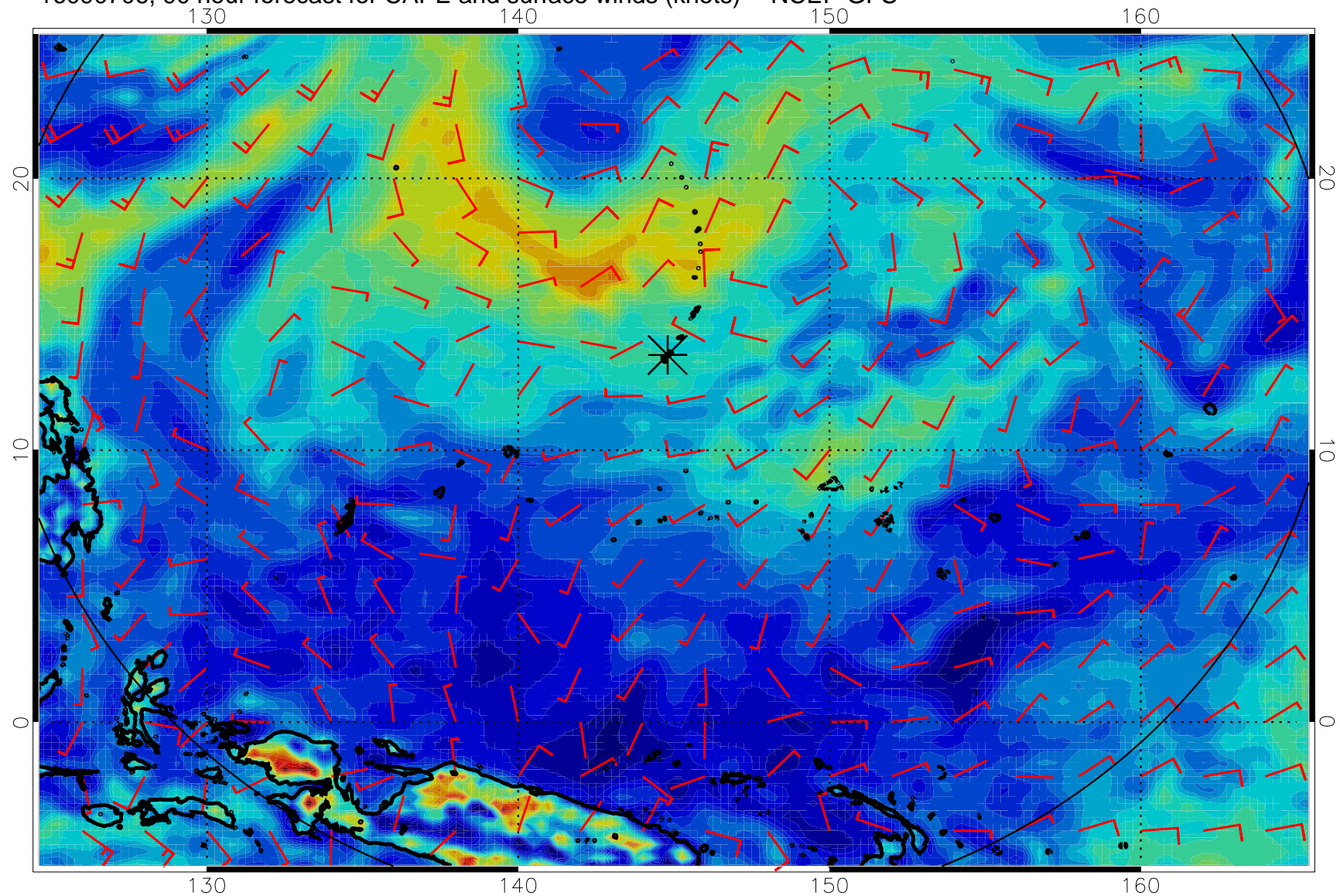
16090618, 78 hour forecast for CAPE and surface winds (knots) -- NCEP GFS



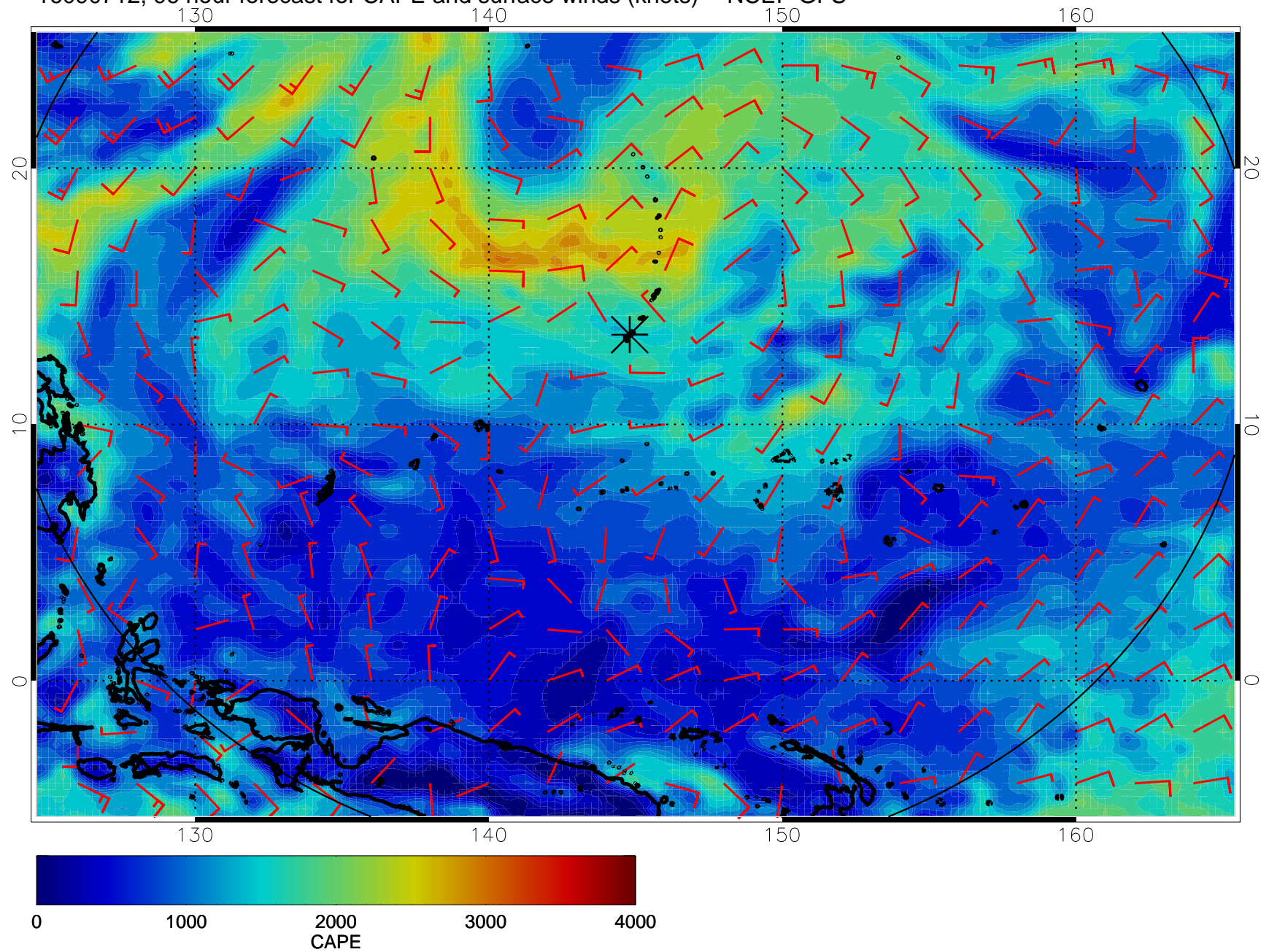
16090700, 84 hour forecast for CAPE and surface winds (knots) -- NCEP GFS



16090706, 90 hour forecast for CAPE and surface winds (knots) -- NCEP GFS

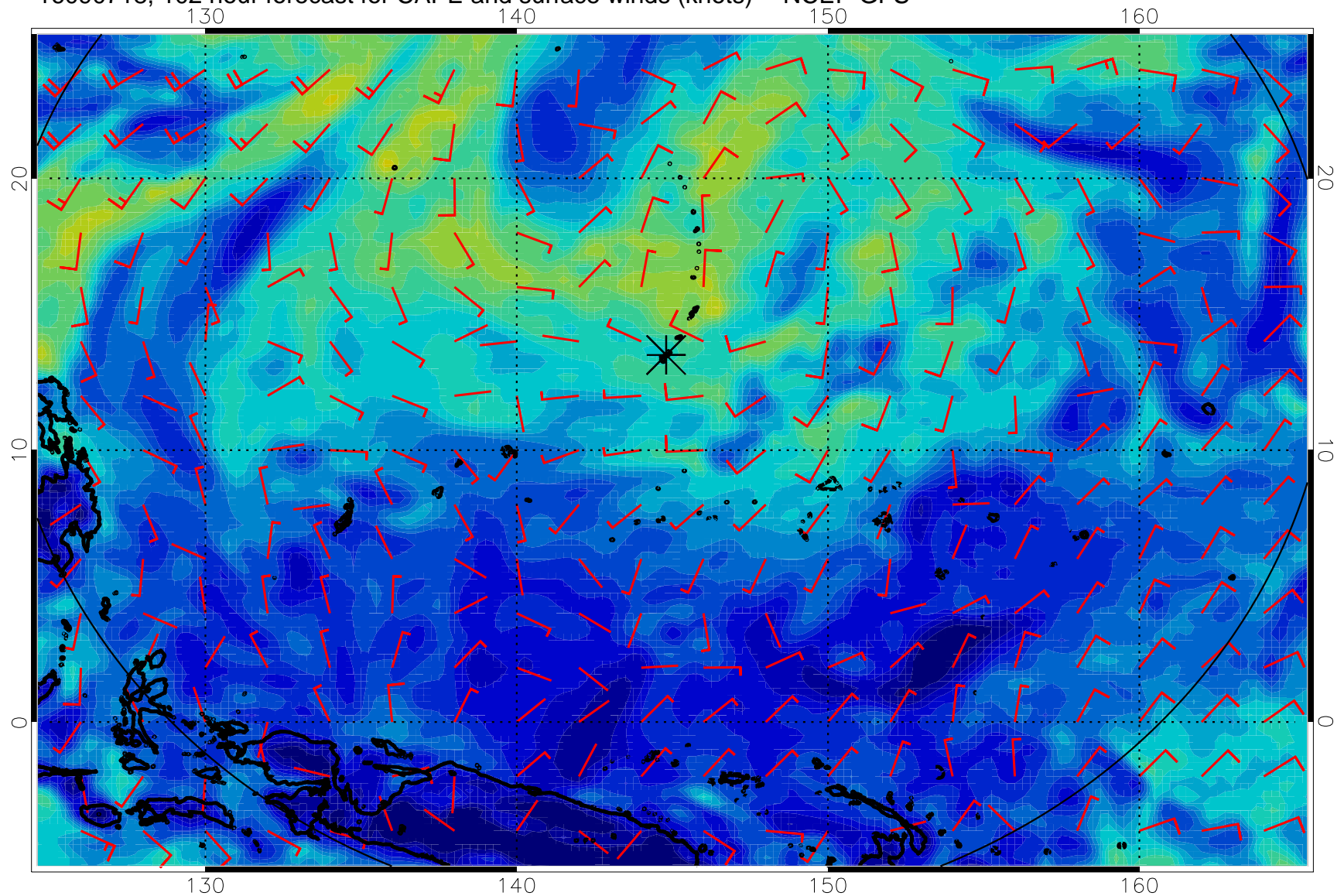


16090712, 96 hour forecast for CAPE and surface winds (knots) -- NCEP GFS

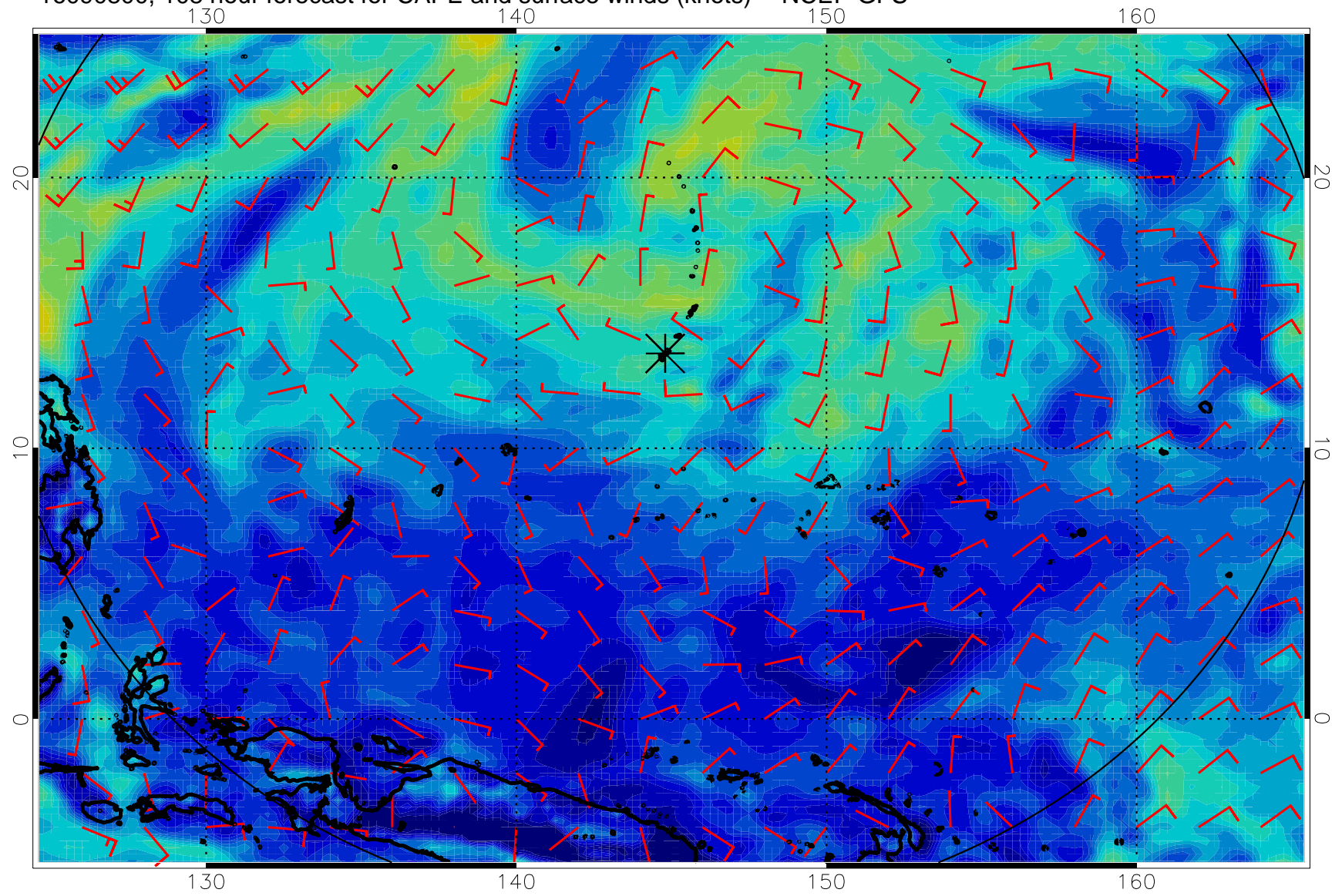




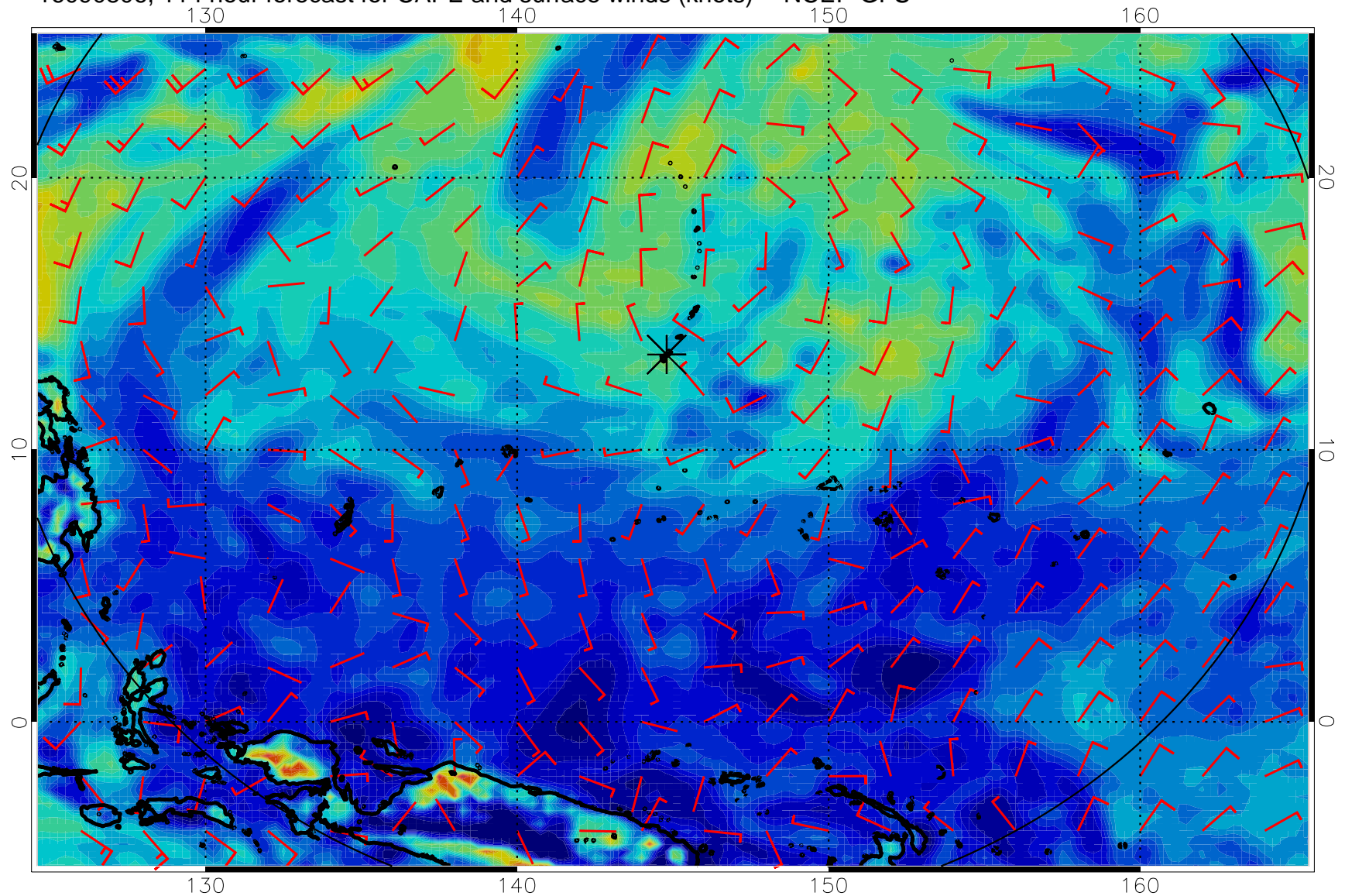
16090718, 102 hour forecast for CAPE and surface winds (knots) -- NCEP GFS



16090800, 108 hour forecast for CAPE and surface winds (knots) -- NCEP GFS



16090806, 114 hour forecast for CAPE and surface winds (knots) -- NCEP GFS



16090812, 120 hour forecast for CAPE and surface winds (knots) -- NCEP GFS

