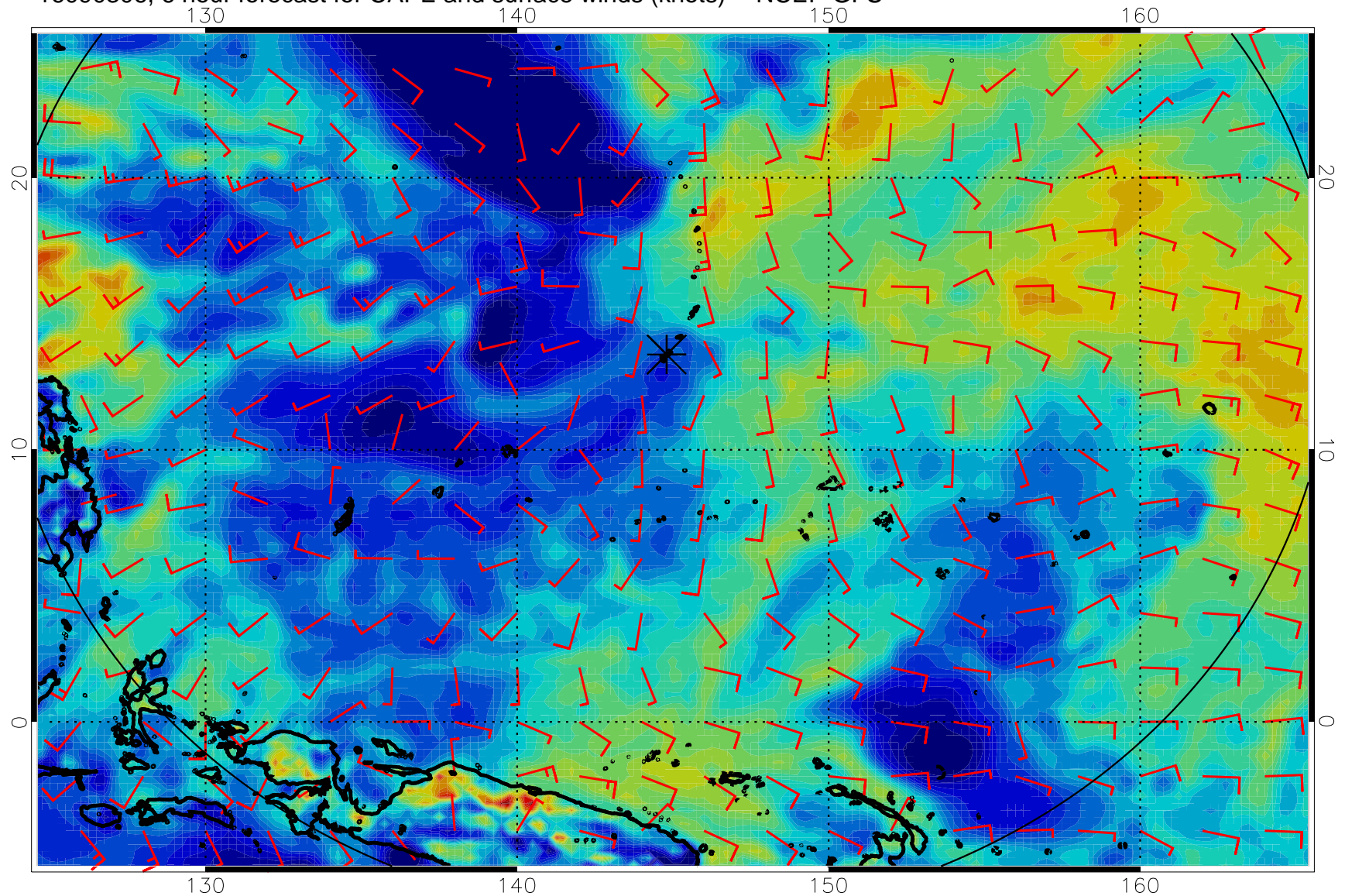
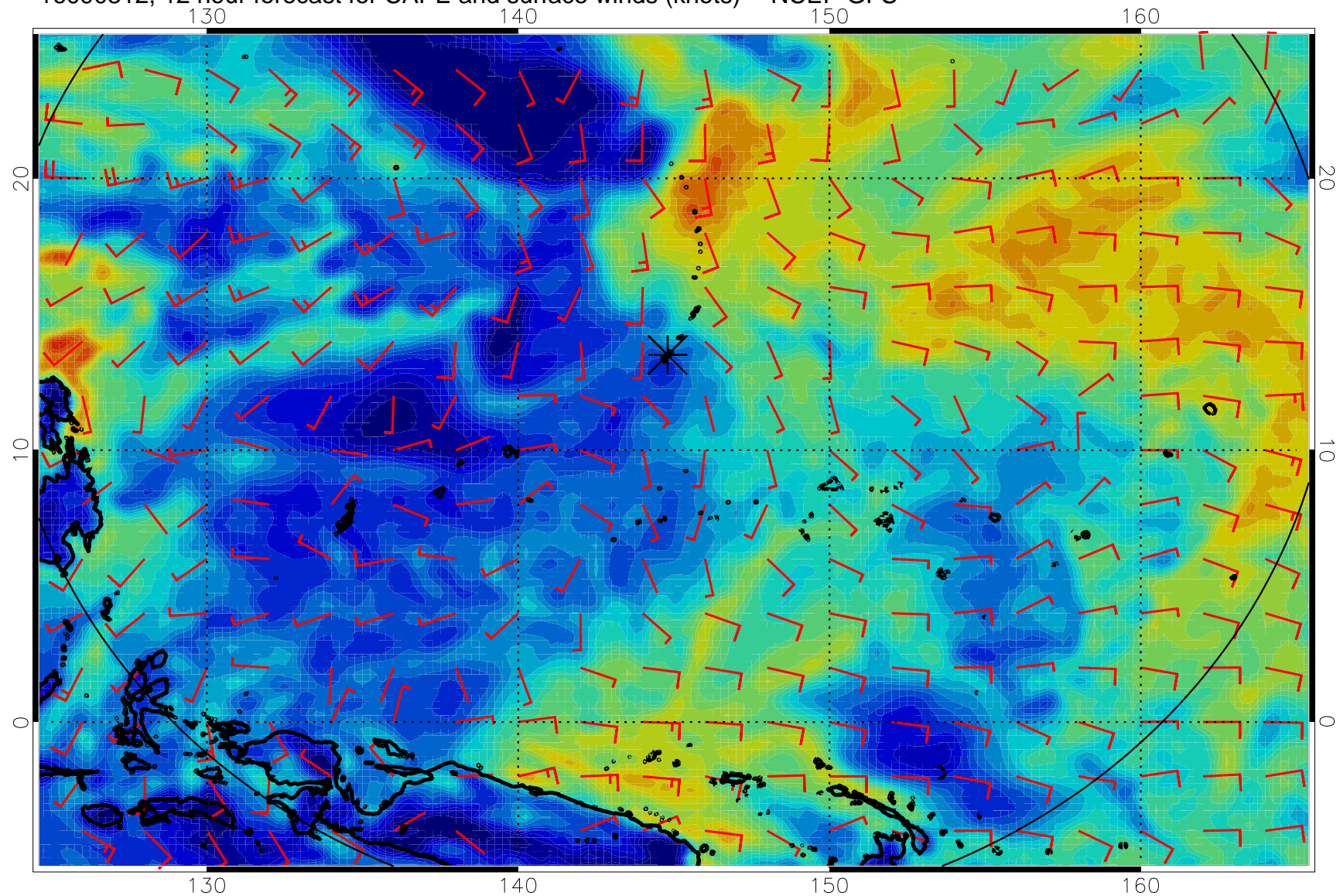


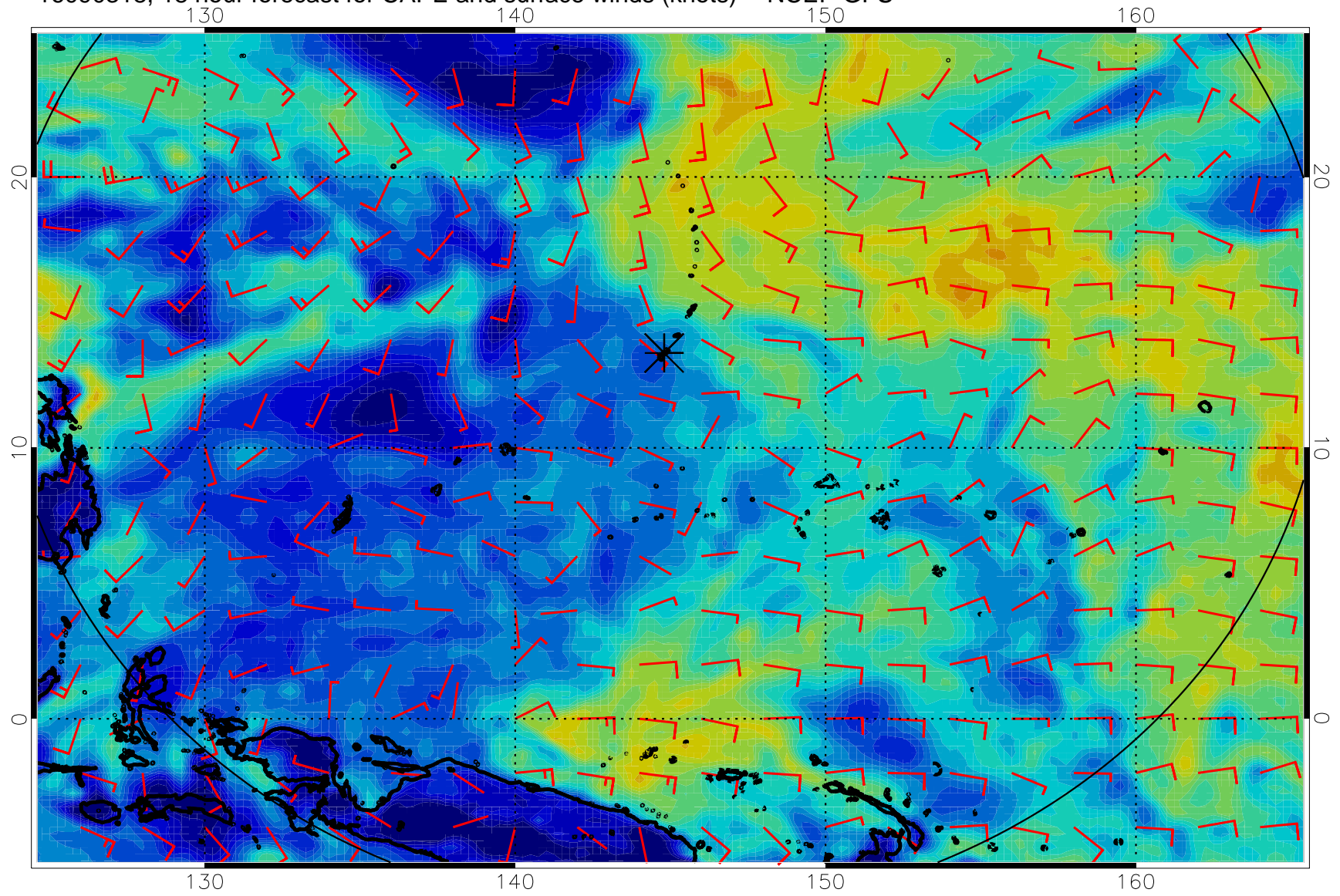
16090306, 6 hour forecast for CAPE and surface winds (knots) -- NCEP GFS



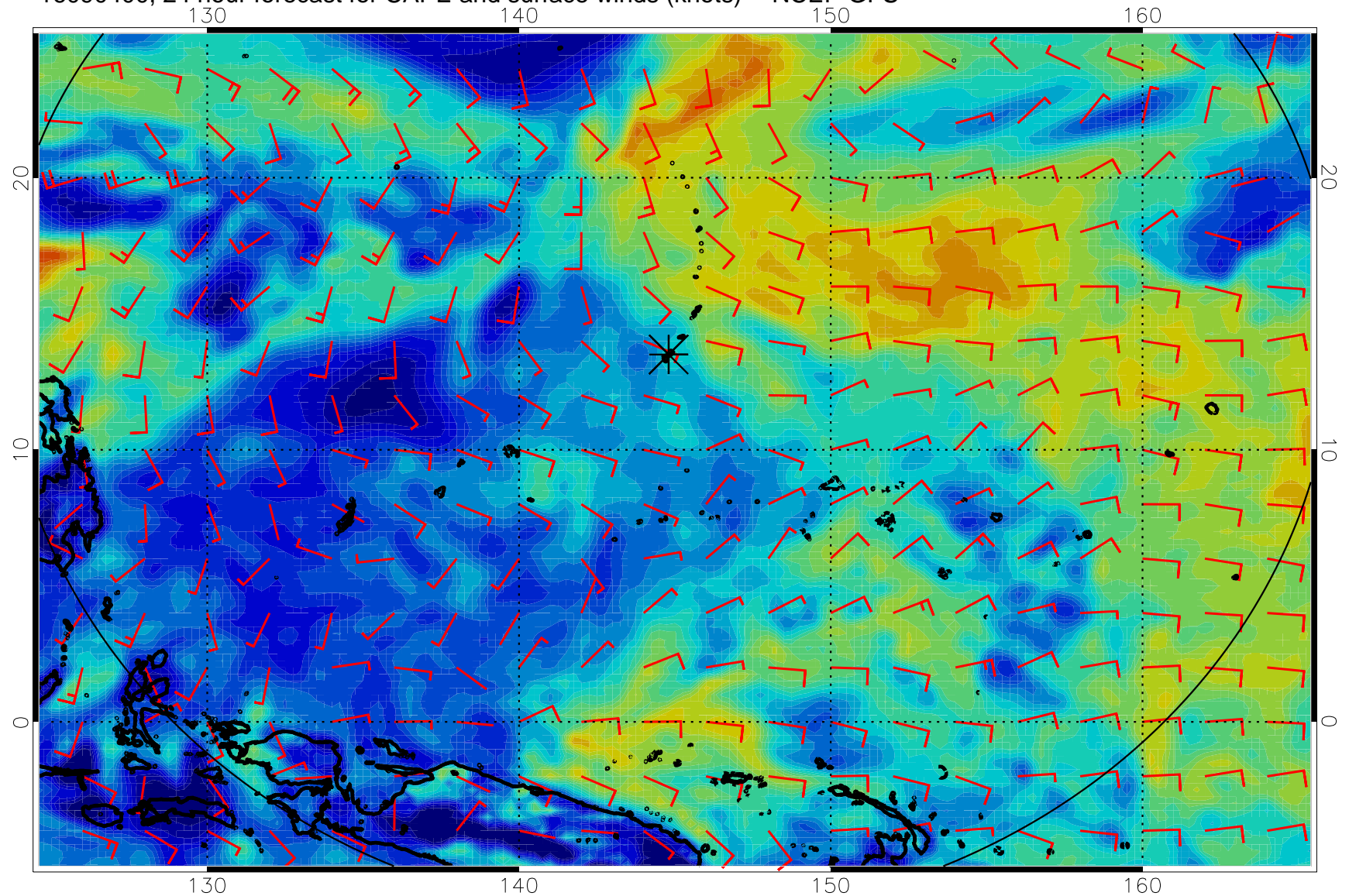
16090312, 12 hour forecast for CAPE and surface winds (knots) -- NCEP GFS



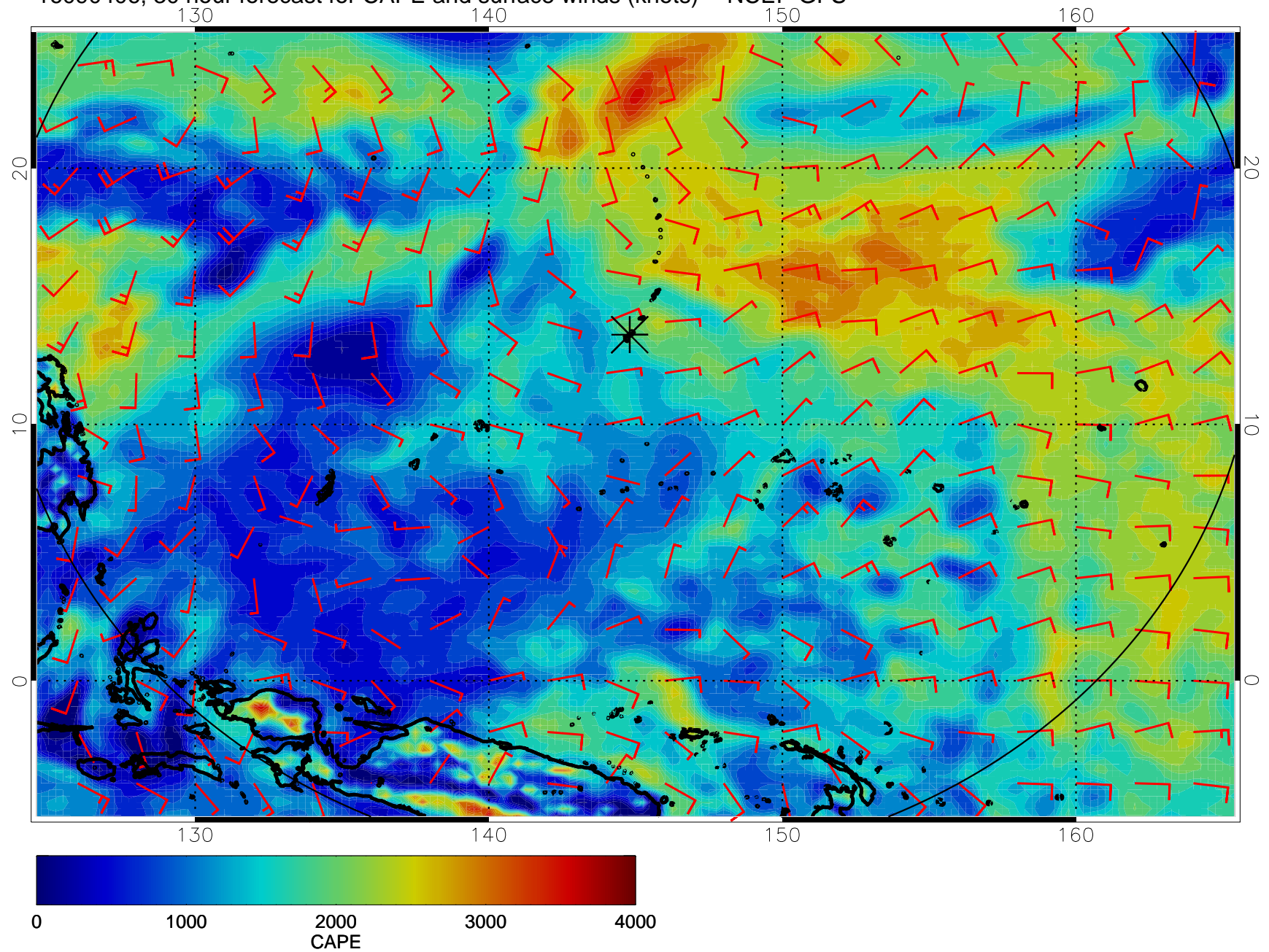
16090318, 18 hour forecast for CAPE and surface winds (knots) -- NCEP GFS



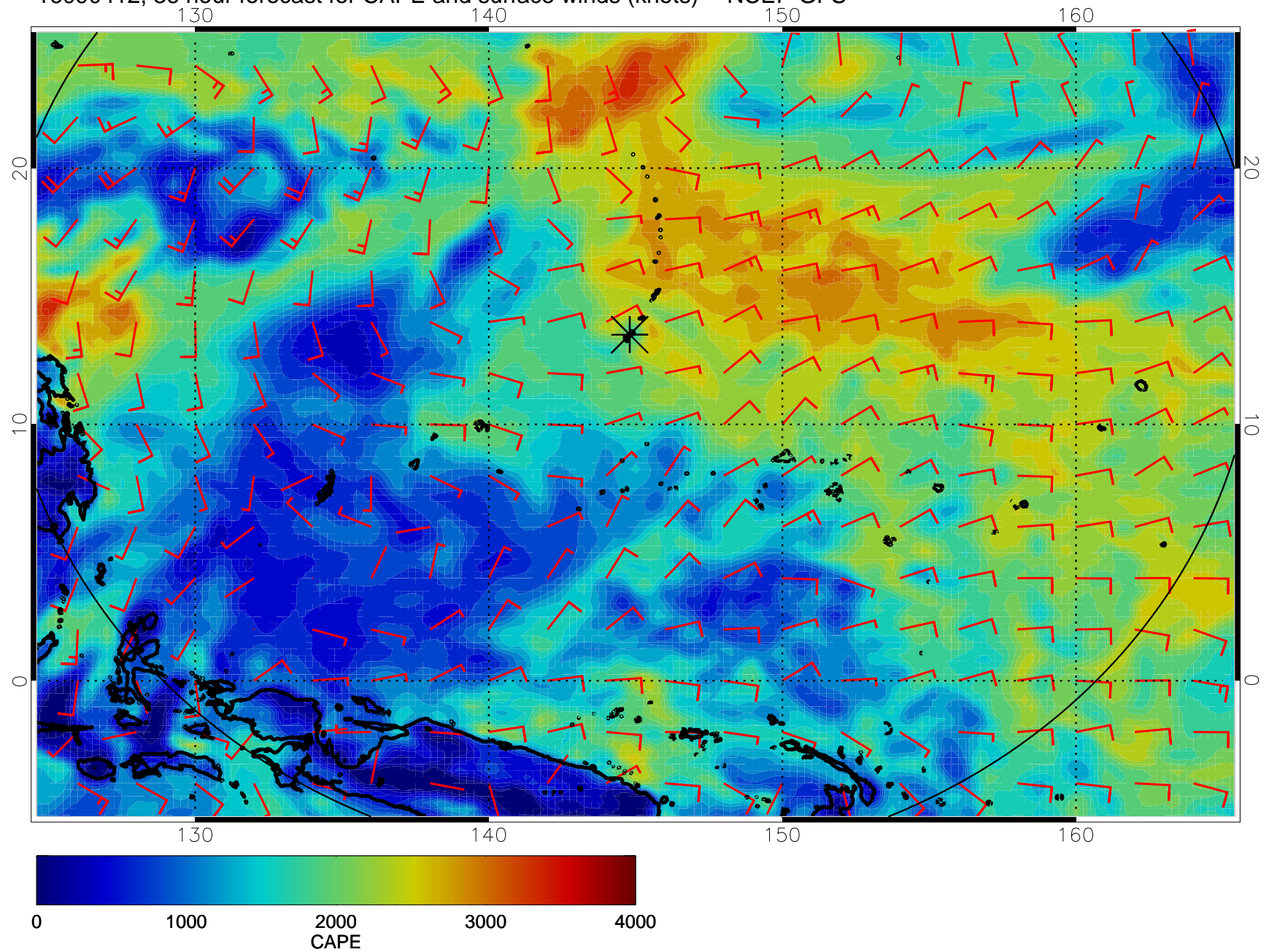
16090400, 24 hour forecast for CAPE and surface winds (knots) -- NCEP GFS



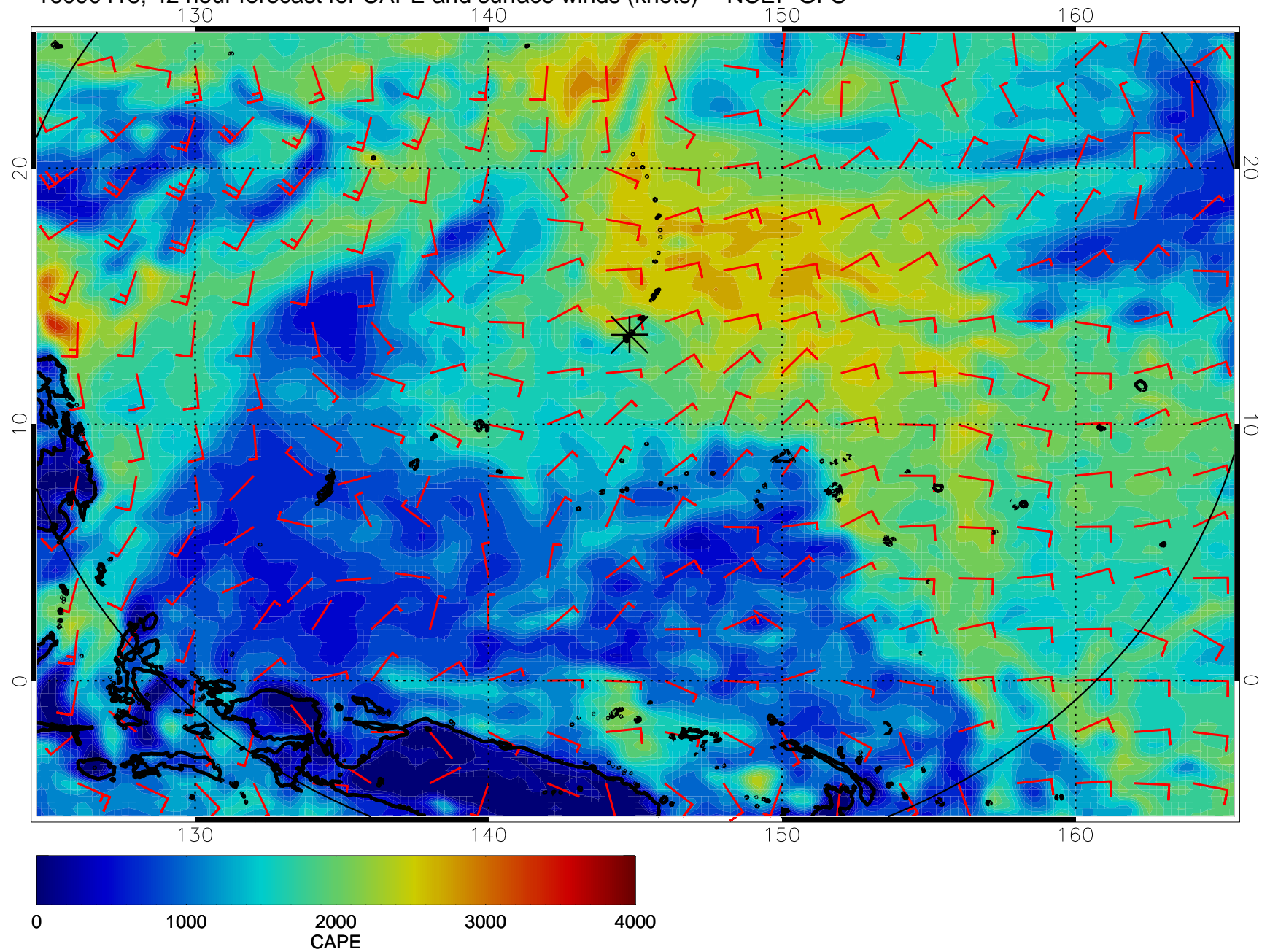
16090406, 30 hour forecast for CAPE and surface winds (knots) -- NCEP GFS



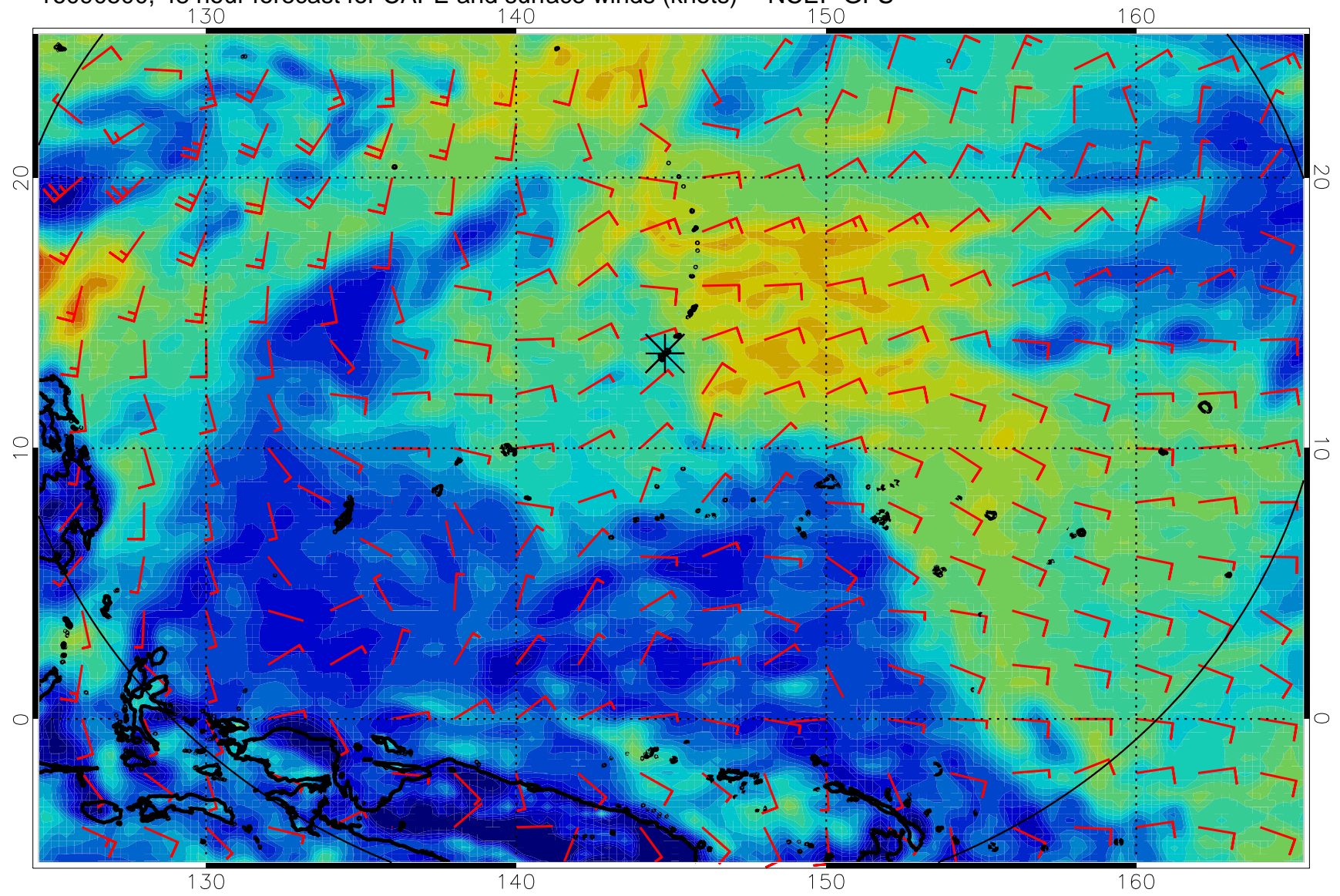
16090412, 36 hour forecast for CAPE and surface winds (knots) -- NCEP GFS



16090418, 42 hour forecast for CAPE and surface winds (knots) -- NCEP GFS

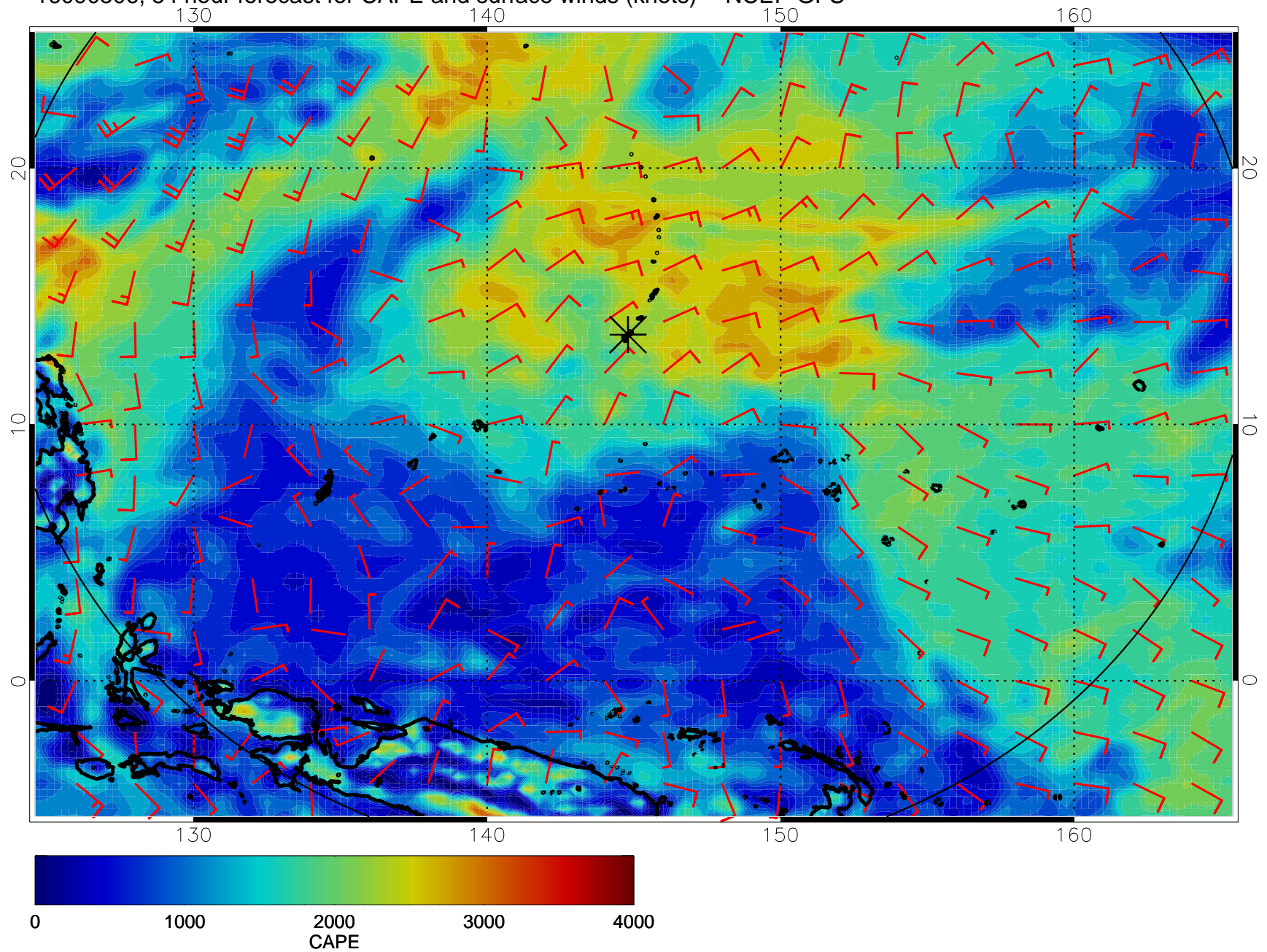


16090500, 48 hour forecast for CAPE and surface winds (knots) -- NCEP GFS

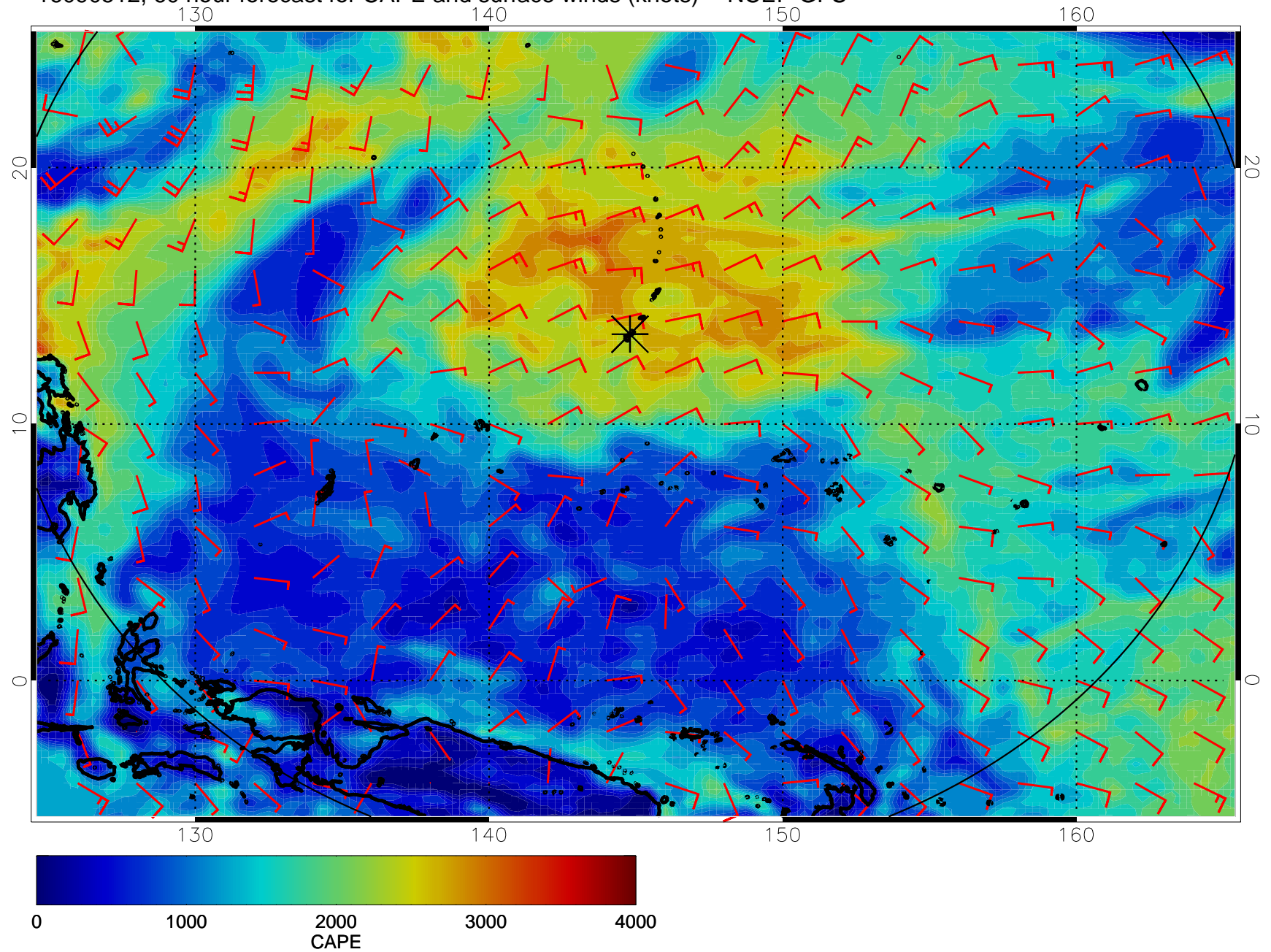




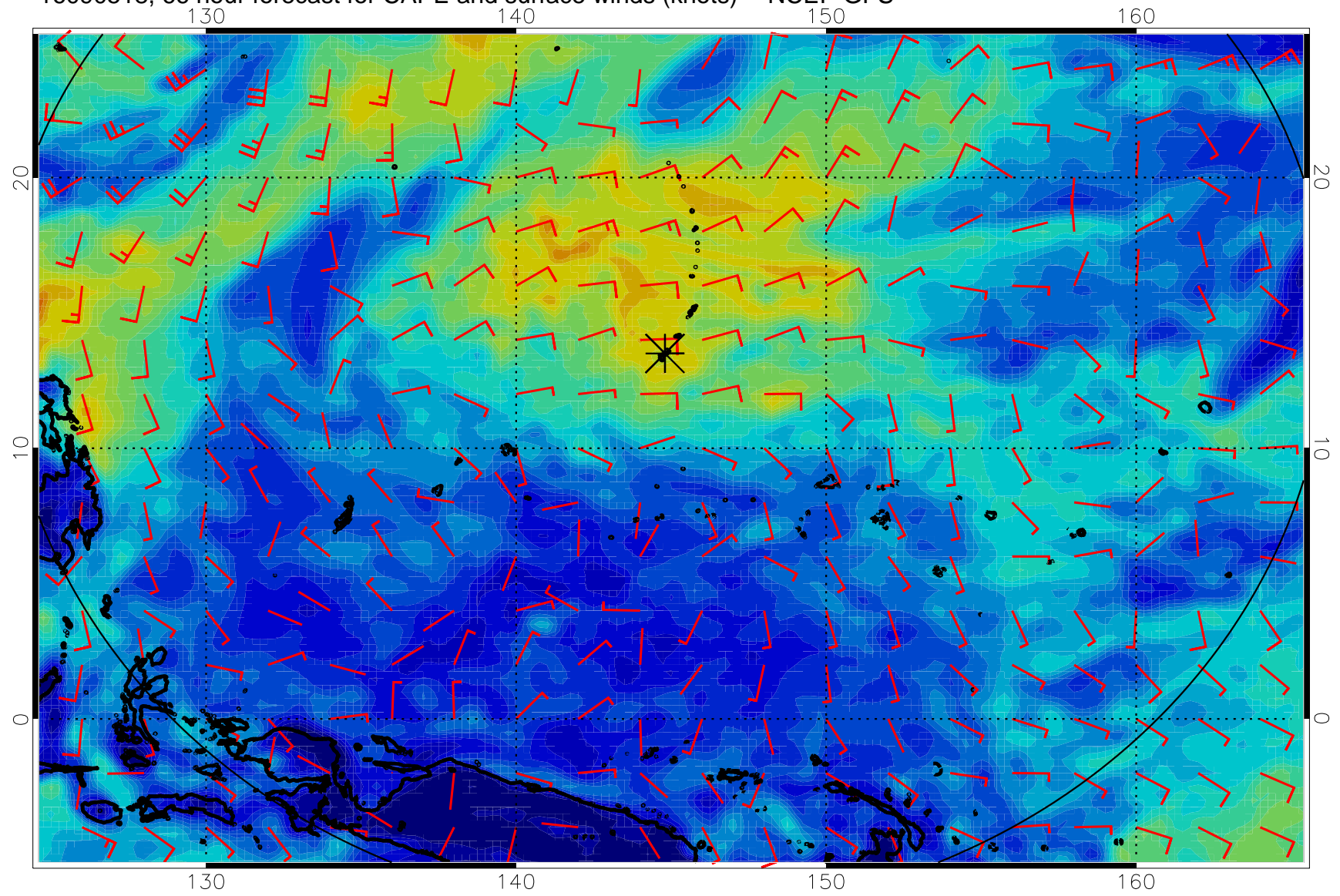
16090506, 54 hour forecast for CAPE and surface winds (knots) -- NCEP GFS



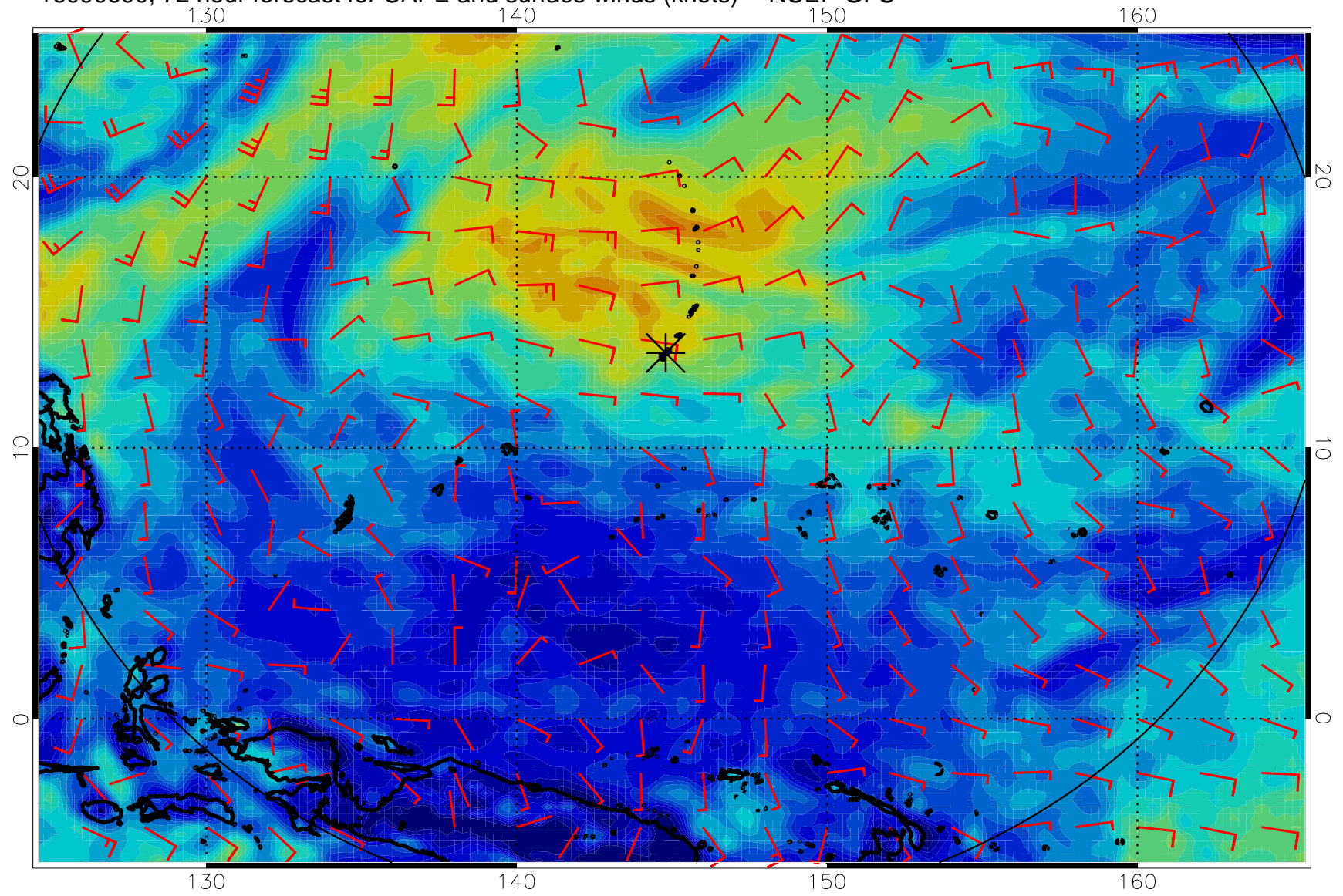
16090512, 60 hour forecast for CAPE and surface winds (knots) -- NCEP GFS



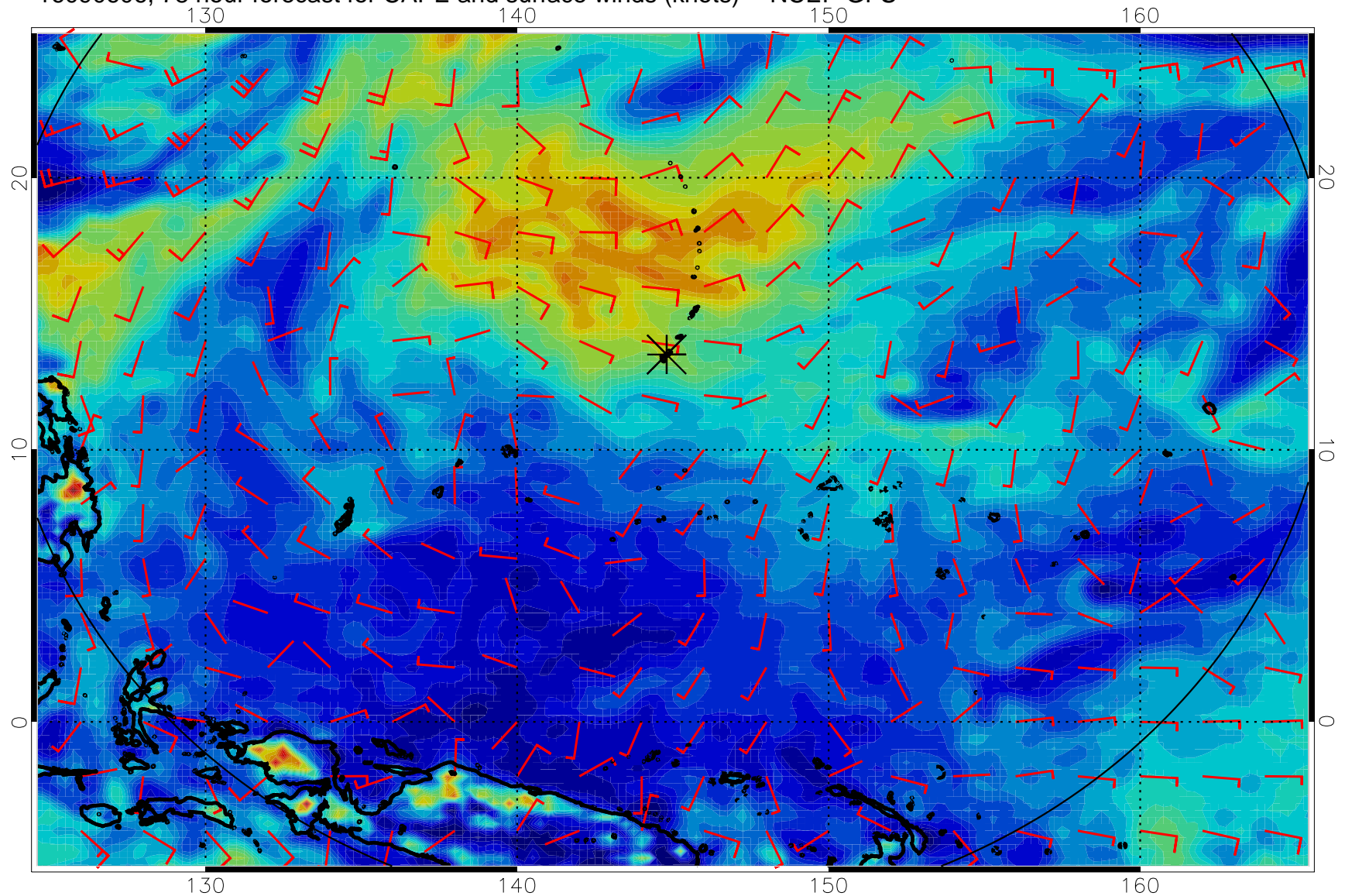
16090518, 66 hour forecast for CAPE and surface winds (knots) -- NCEP GFS



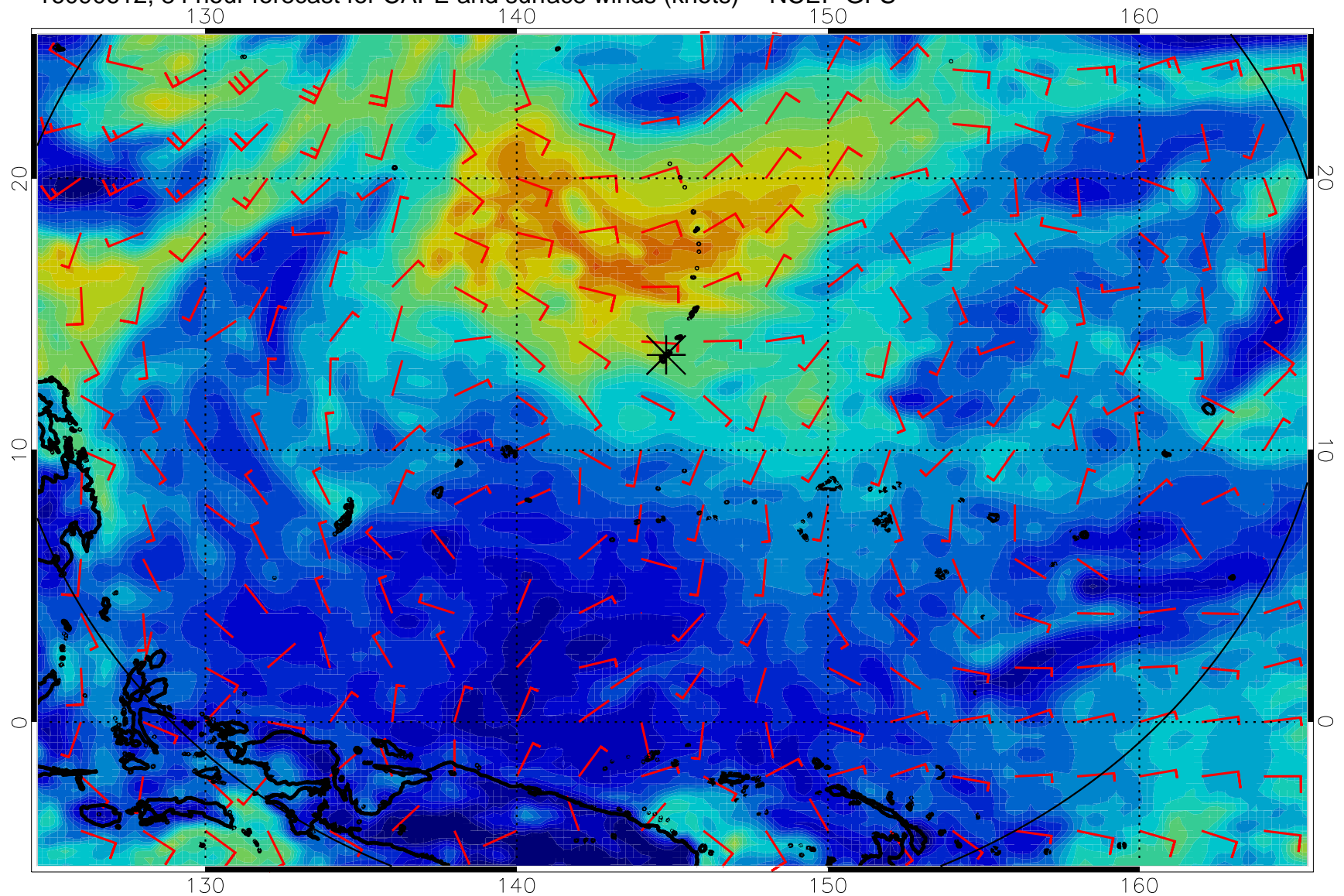
16090600, 72 hour forecast for CAPE and surface winds (knots) -- NCEP GFS



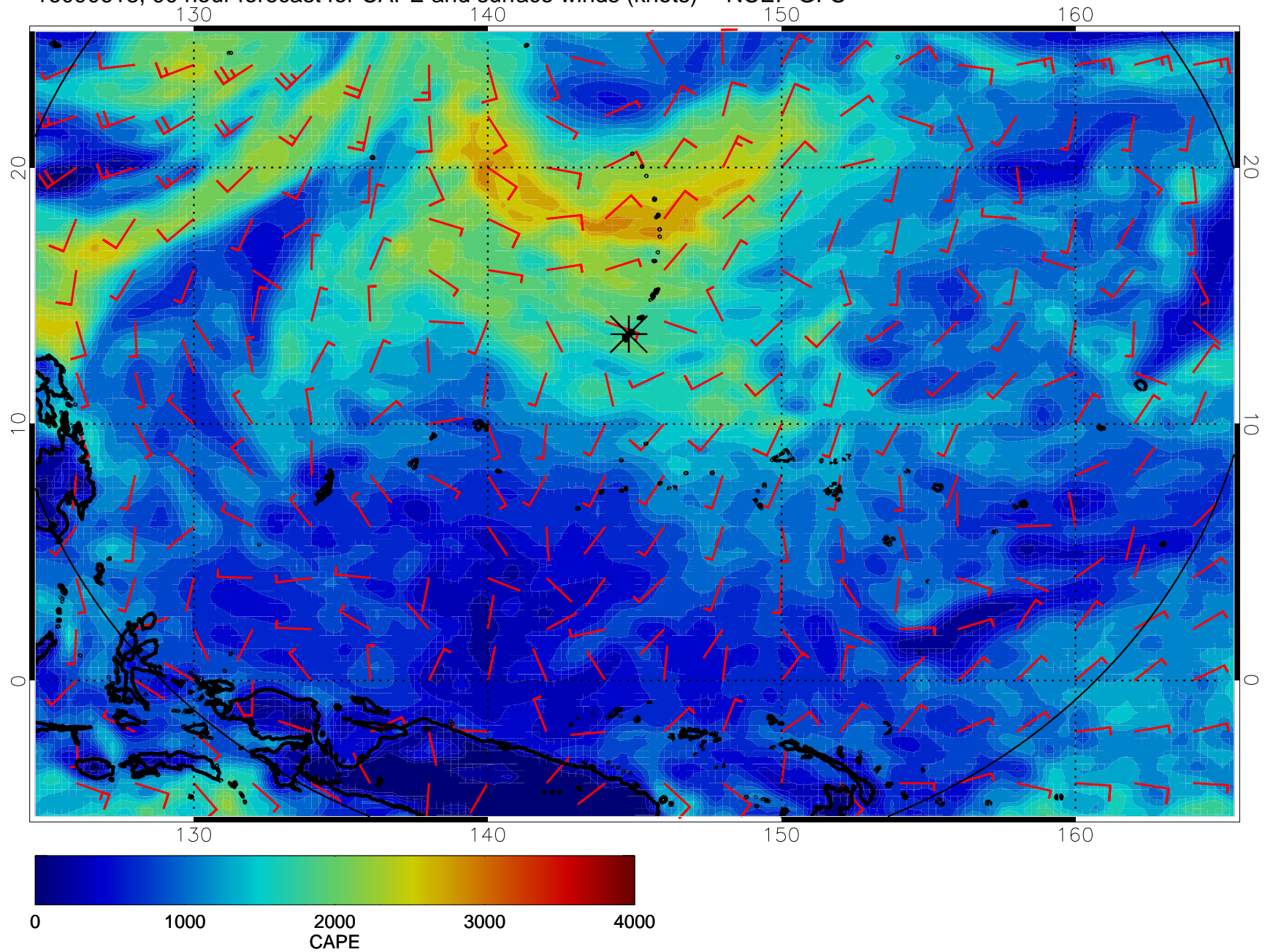
16090606, 78 hour forecast for CAPE and surface winds (knots) -- NCEP GFS



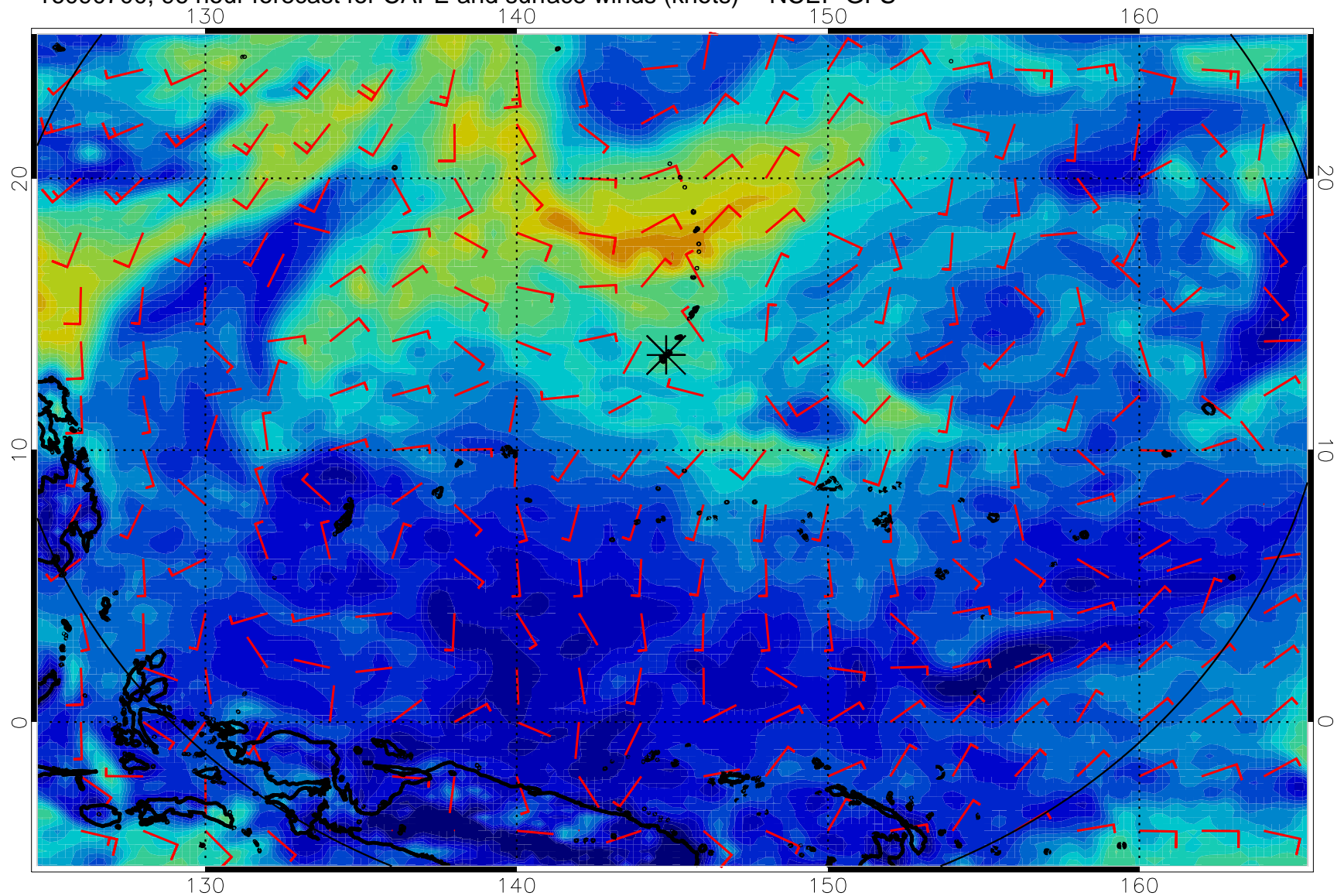
16090612, 84 hour forecast for CAPE and surface winds (knots) -- NCEP GFS



16090618, 90 hour forecast for CAPE and surface winds (knots) -- NCEP GFS

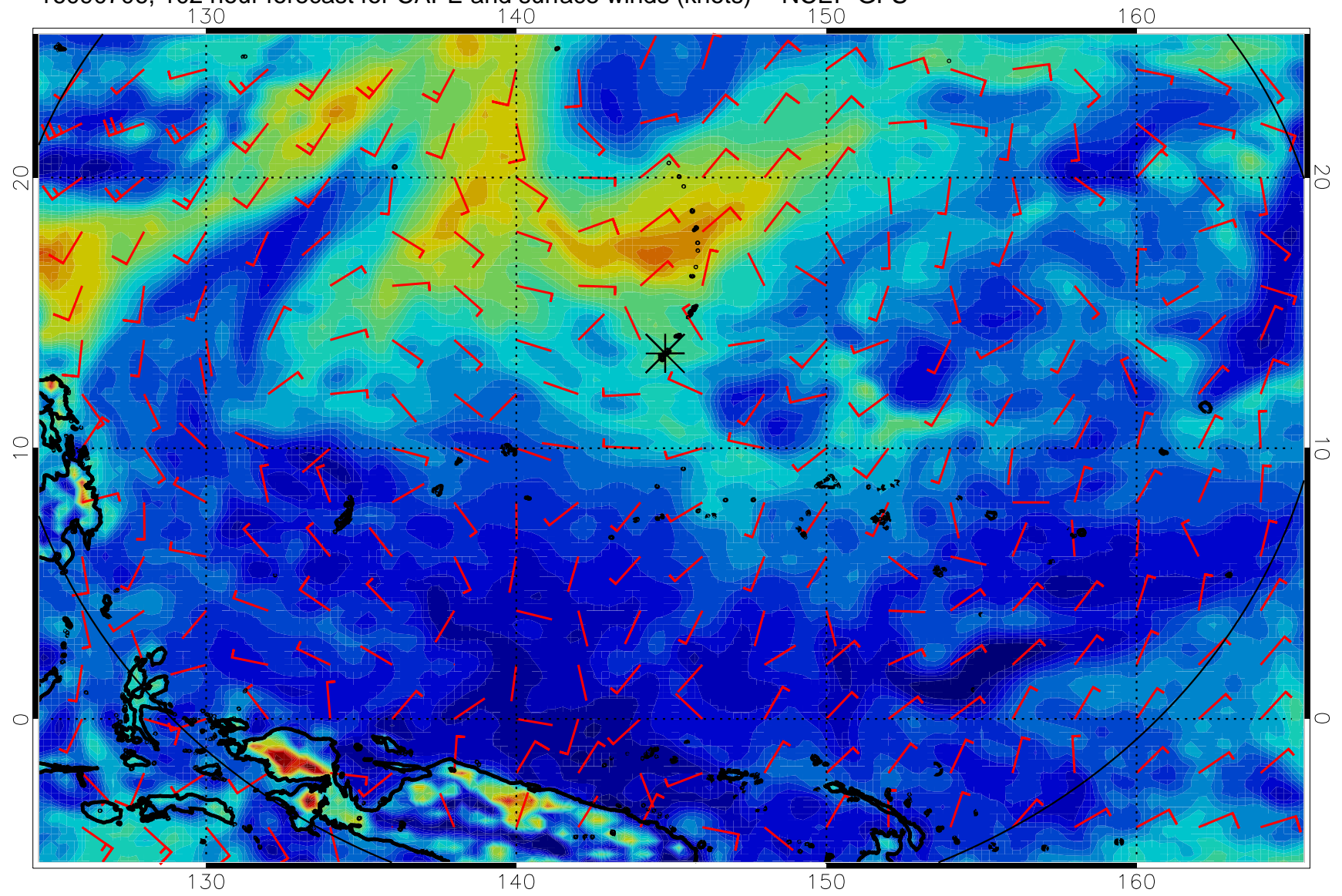


16090700, 96 hour forecast for CAPE and surface winds (knots) -- NCEP GFS

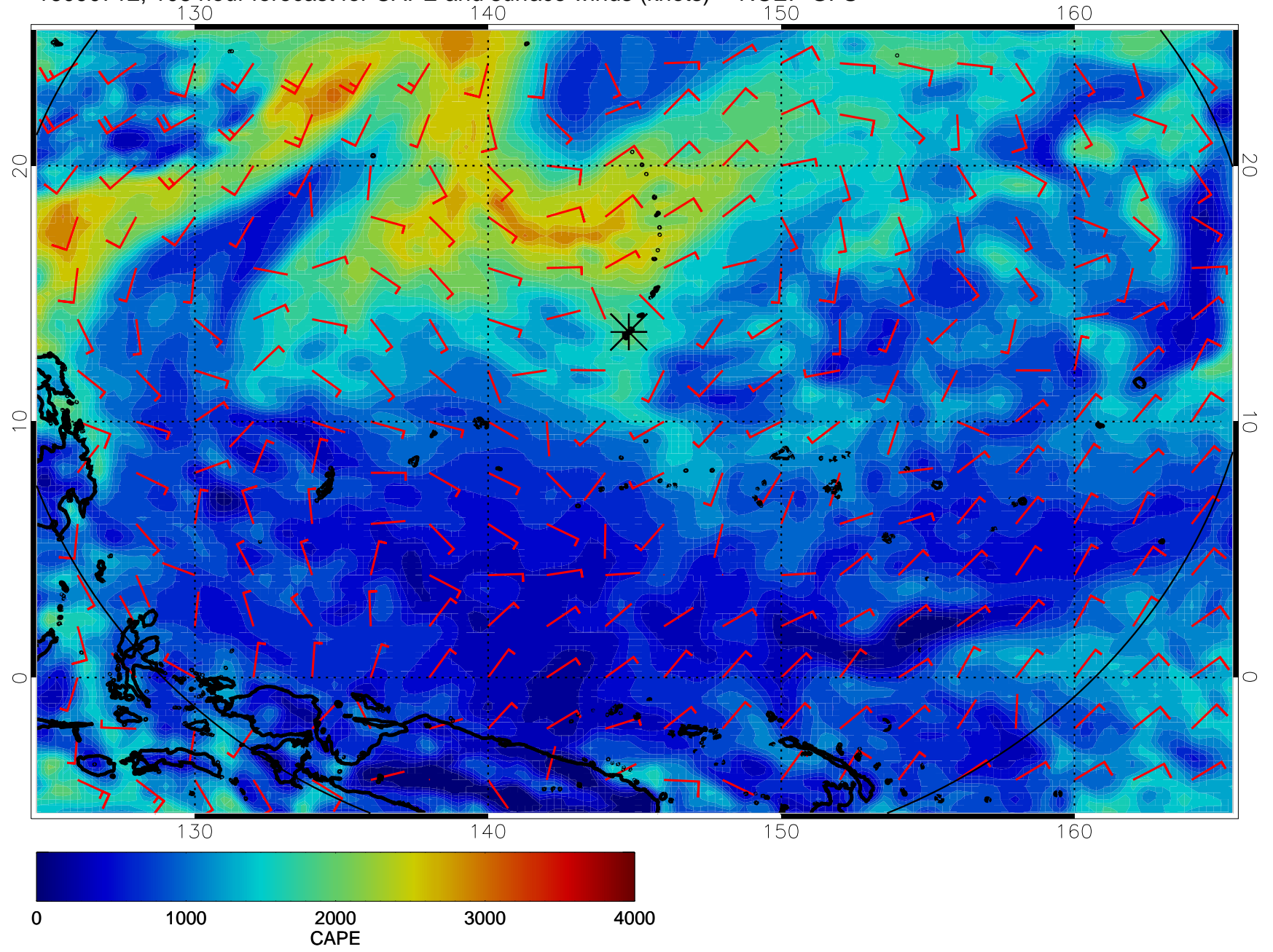




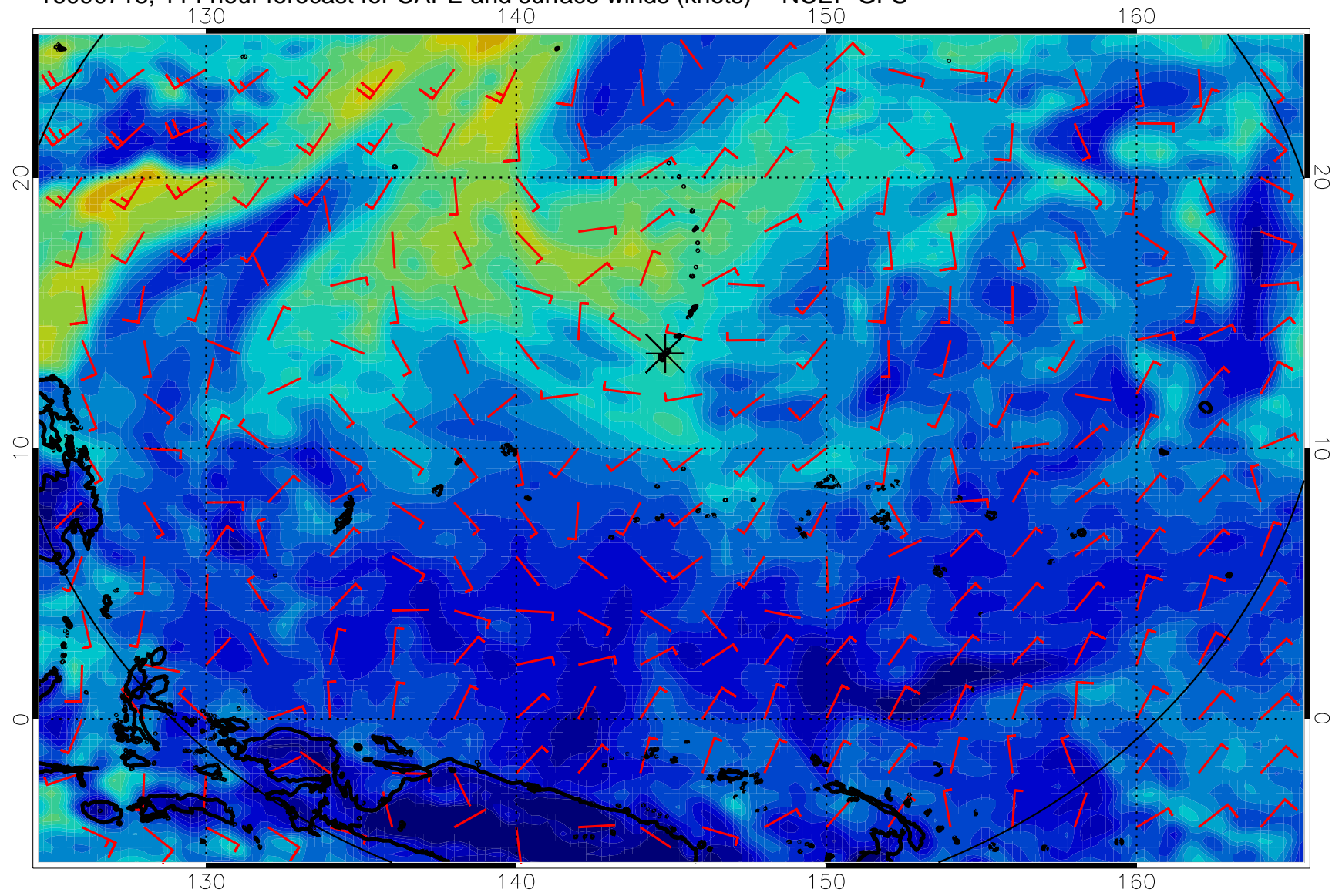
16090706, 102 hour forecast for CAPE and surface winds (knots) -- NCEP GFS



16090712, 108 hour forecast for CAPE and surface winds (knots) -- NCEP GFS



16090718, 114 hour forecast for CAPE and surface winds (knots) -- NCEP GFS



16090800, 120 hour forecast for CAPE and surface winds (knots) -- NCEP GFS

